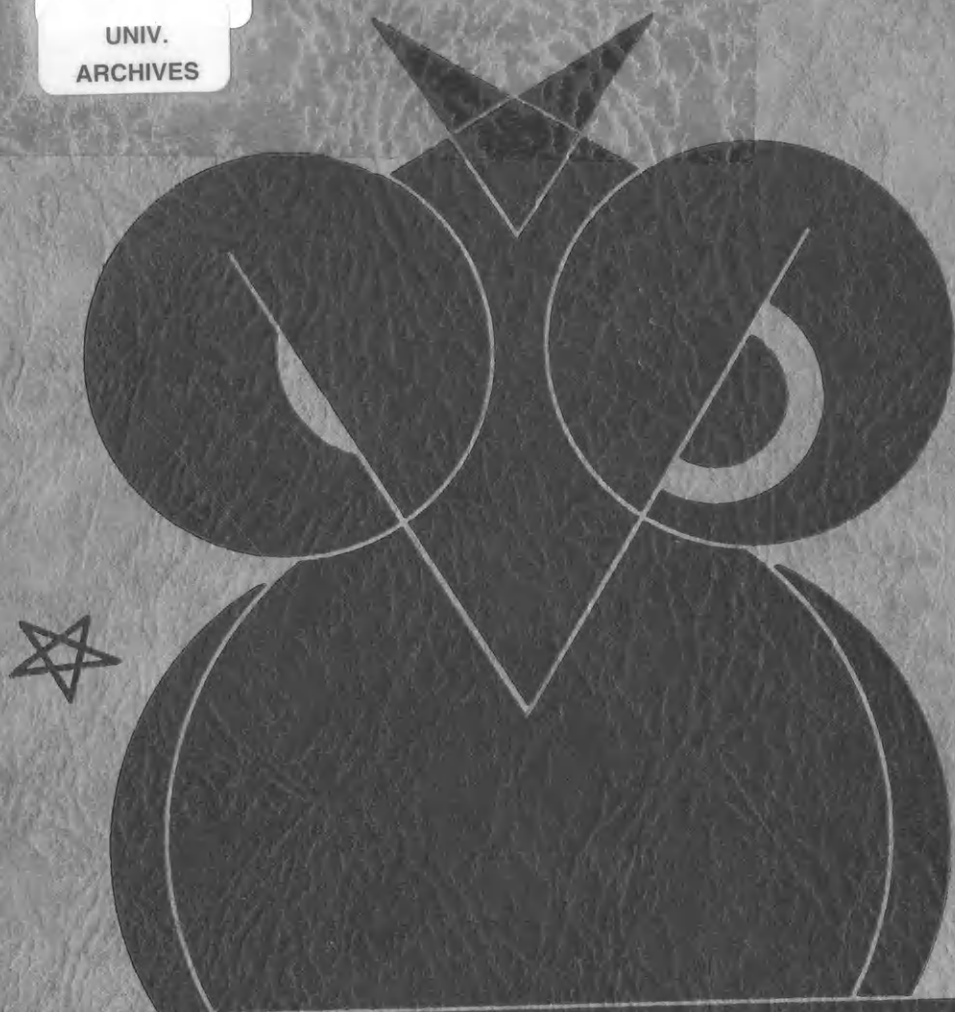


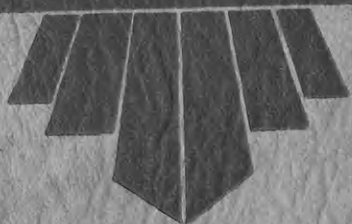
S  
534  
.K2  
C64  
1936

UNIV.  
ARCHIVES

936  
1936



WHO'S WHOOT



Blank page in original document

Blank page in original document

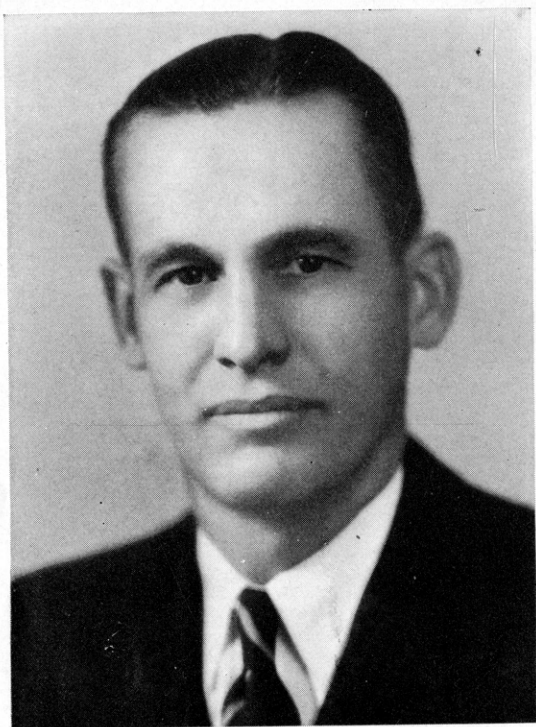
# *the* WHO'S WHOOT



*Published by*  
THE COLLEGIATE 4-H CLUB  
  
Kansas State College  
*of*  
Agriculture and Applied Science  
Manhattan, Kansas  
*For*  
The Who's Who 4-H Club of Kansas

1 9 3 6





## DEDICATION

To Mr. A. J. Schoth  
ever loyal and devoted in  
his service for the welfare  
of youth.

univ  
S  
534  
K2  
C64  
1936

# THE PREFACE



## 4-H CLUB WORK

### TRAINS HEAD TO—

Think  
Plan  
Reason

### TRAINS HANDS TO BE—

Useful  
Helpful  
Skillful

### TRAINS HEART TO BE—

Kind  
True  
Sympathetic

### TRAINS HEALTH TO—

Resist Disease  
Enjoy Life  
Make for Efficiency

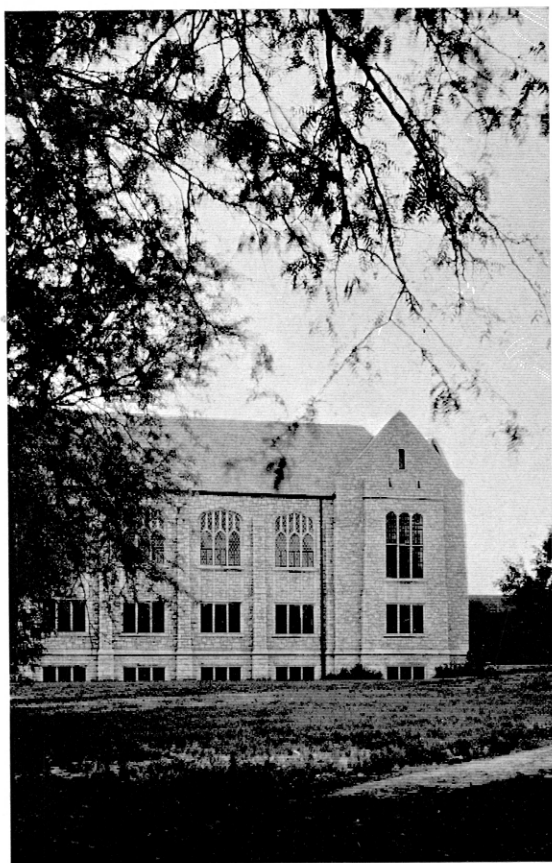
### CLUB PLEDGE

I pledge my head to clearer thinking, my heart to greater loyalty, my hands to larger service, and my health to better living for my club, my community, and my country.

### CLUB MOTTO

*"To make the best better."*

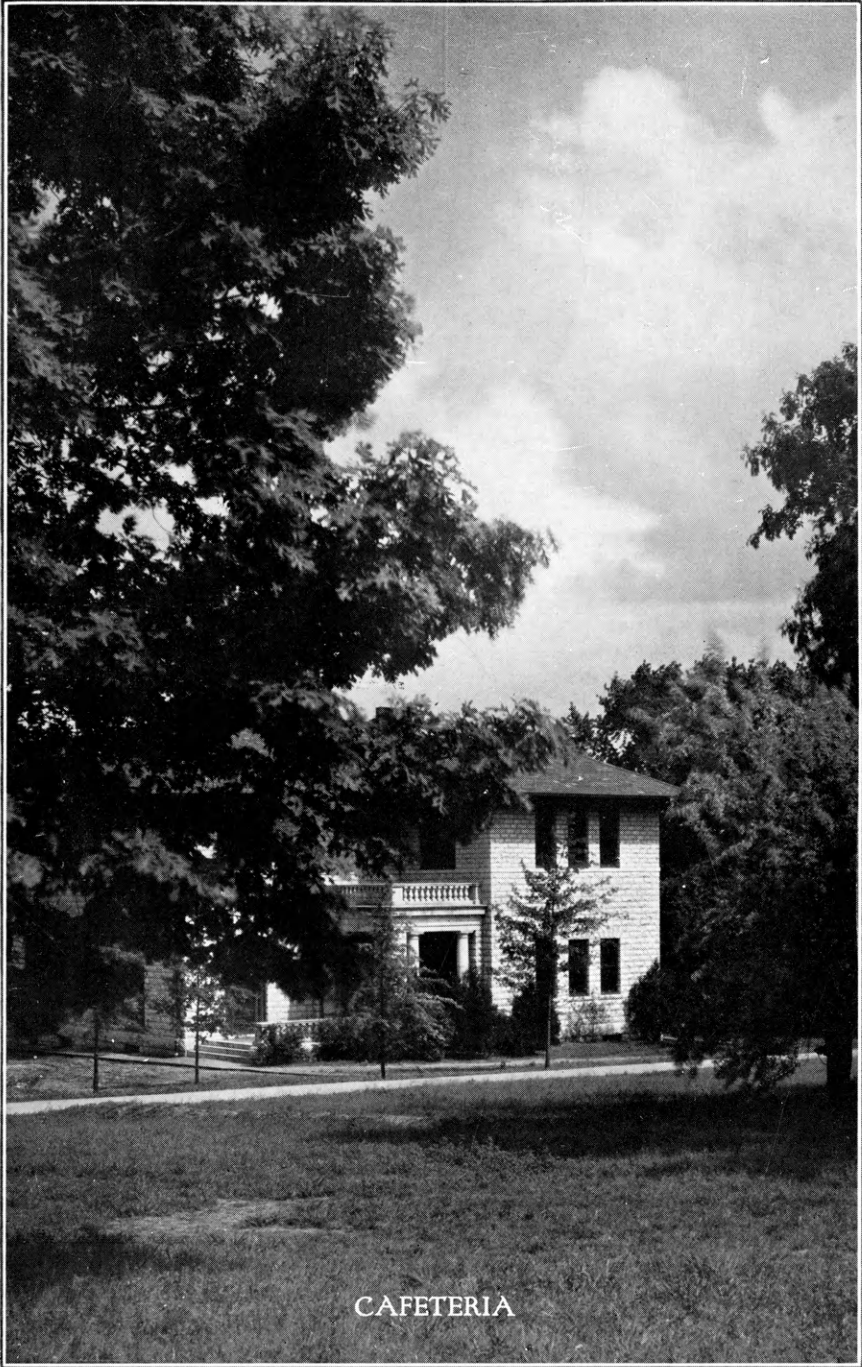




CONTENTS  
SPONSORS  
COLLEGIANS  
CHAMPIONS  
WHO'S WHO  
ACTIVITIES  
ADVERTISERS

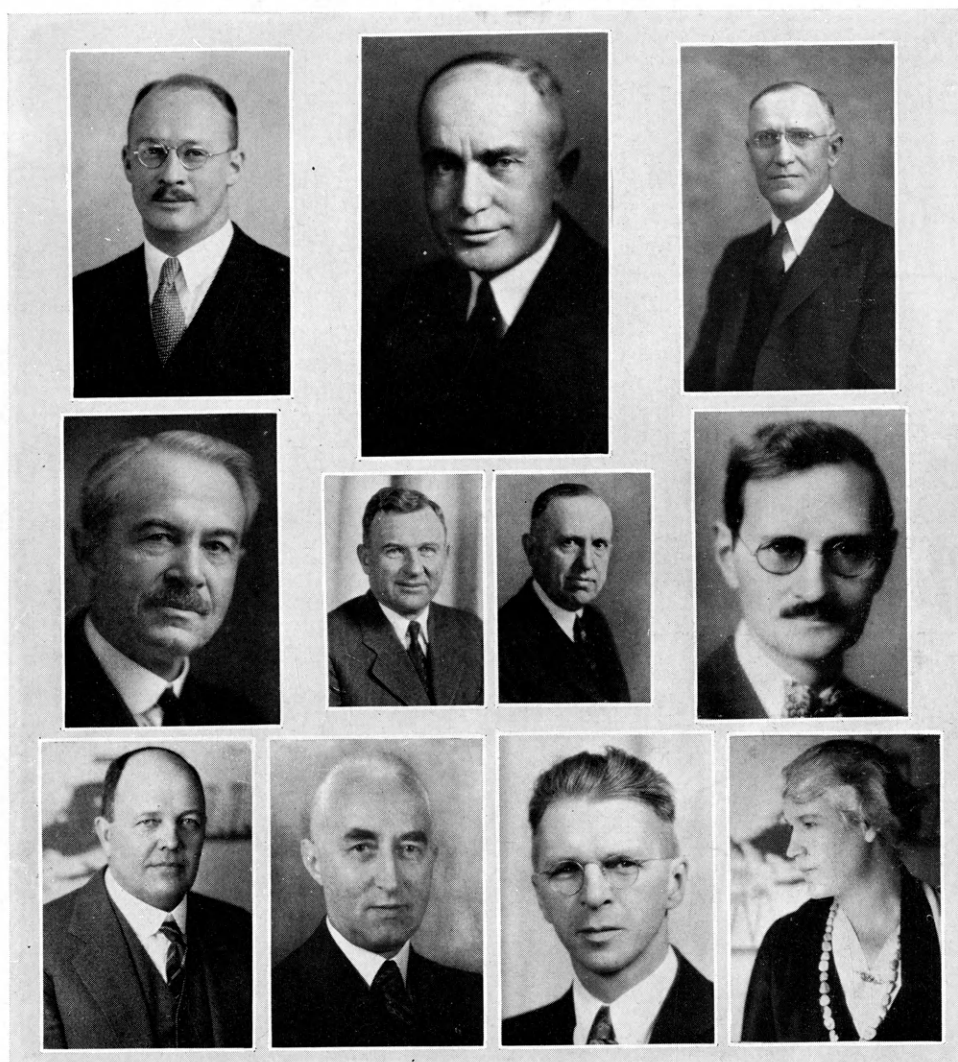


SPONSORS



CAFETERIA

## COLLEGE EXECUTIVES

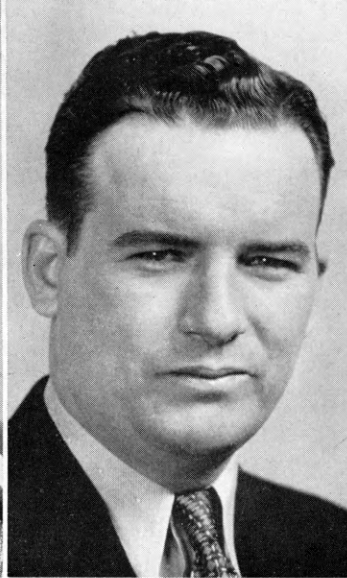


F. D. FARRELL (center)	President of K. S. C.
S. A. NOCK	Vice President of K. S. C.
H. UMBERGER	Dean of Extension
J. T. WILLARD	Historian of K. S. C.
L. E. CALL	Dean of Agriculture
E. L. HOLTON	Dean of Summer School
J. E. ACKERT	Dean of Graduate Study
R. A. SEATON	Dean of Engineering
R. R. DYKSTRA	Dean of Veterinary Medicine
R. W. BABCOCK	Dean of General Science
MARGARET M. JUSTIN	Dean of Home Economics





## ADVISORY MEMBERS



M. H. COE.....*State 4-H Club Leader*  
A. J. SCHOTH.....*Assistant State 4-H Club Leader*  
MARY ELSIE BORDER.....*Assistant State 4-H Club Leader*  
J. H. JOHNSON.....*Assistant State 4-H Club Leader*  
MABEL SMITH.....*Assistant State 4-H Club Leader*





## EXTENSION WORKERS

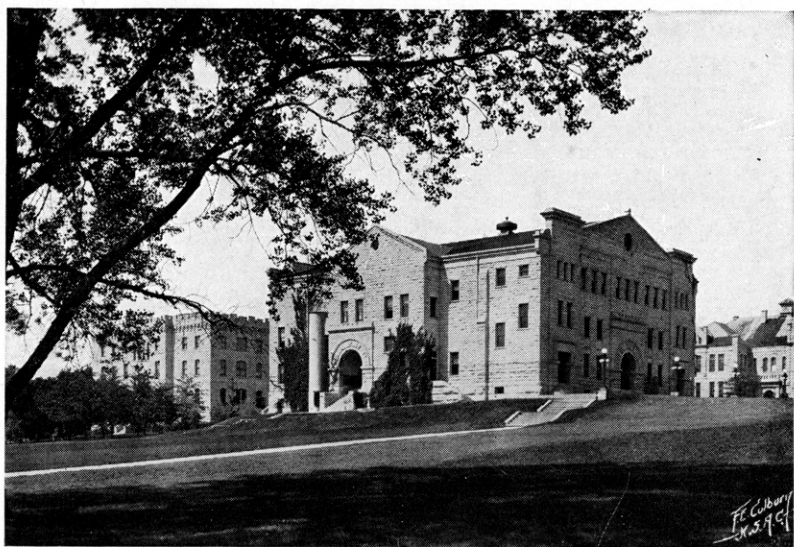


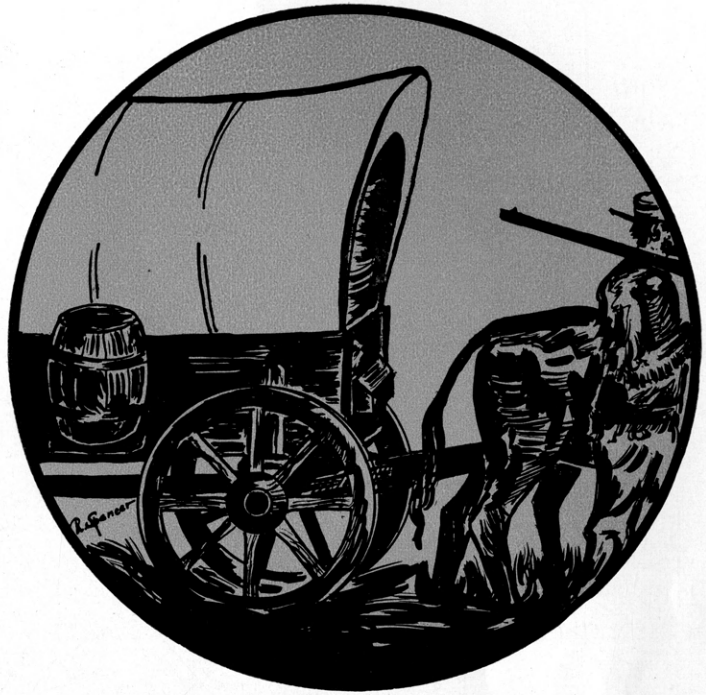
The members of the 4-H Clubs in Kansas owe their success to the county agricultural agents and home demonstration agents. They are always willing to guide club work in success or failure. This group works under the supervision of the state specialists and the Kansas State College, Manhattan, Kansas. The state leaders with whom they work in cooperation are: Mr. M. H. Coe, Mr. J. Harold Johnson, Mr. A. J. Schoth, Miss Mabel Smith, and Miss Mary Elsie Bordrer. Through the efforts of these people, 4-H Club work has been greatly successful.

The efforts of these people in the furthering of 4-H Club work has been sincerely appreciated by 4-H Club members throughout Kansas.









COLLEGIANS



Dr. Eugene Merritt is Extension Economist of the United States Department of Agriculture with headquarters at Washington, D. C.

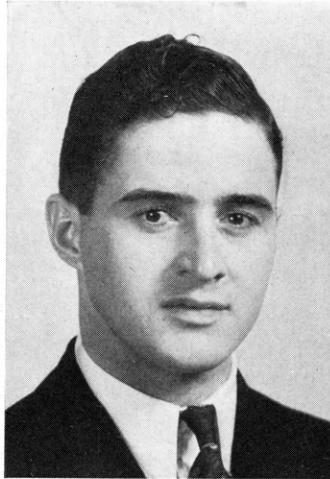
He was born on a farm in Millbrook, New York, and graduated from Cornell University in 1903.

He has given years of careful study to agricultural economics as related to the future welfare and progress of young people. No economist in the country today approaches the problem of young people in a more understanding, sympathetic, and human manner than does Dr. Merritt. He has made a number of visits to Kansas in the interests of both 4-H and Rural Life programs and many of us have learned to know him personally and appreciate his fine contribution to our Extension program.

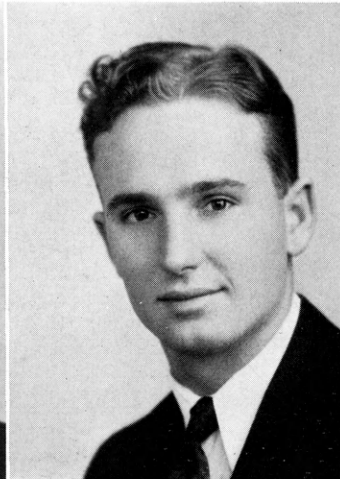




## COLLEGIATE OFFICERS



EARL PARSONS



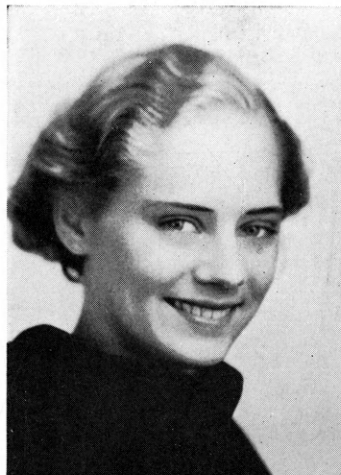
ALVIN MISTLER

### OFFICERS

#### FIRST SEMESTER

EARL PARSONS .....	<i>President</i> .....	ALVIN MISTLER
GRACE BURSON .....	<i>Vice-Pres.</i> .....	ELLEN BROWNLEE
RUBY CORR .....	<i>Sec'y. Treas.</i> .....	LAURO JO SKILLIN
WILTON THOMAS .....	<i>Marshall</i> .....	JOE LEWIS
ROBERT D. SPENCER .....	<i>Editor</i> .....	ROBERT D. SPENCER
MARJE BYLTHE .....	<i>Business Manager</i> .....	MARJE BLYTHE

#### SECOND SEMESTER



MARJE BLYTHE



ROBERT SPENCER





## WHO'S WHOOT STAFF



*Editor* ..... ROBERT D. SPENCER  
*Assistant Editor* ..... GERTRUDE GREENWOOD  
*Business Manager* ..... MARJE BLYTHE  
*Assistant Business Manager* ..... FRANK JORDAN

**CHAMPIONS**  
 Alvin Mistler  
 Dorine Porter  
 Authur Aushman  
 Joe Lewis

**COUNTY**  
 Otto Spencer  
 Vernal Roth  
 Harvey Goertz  
 Dean Abrahams  
 Robert Edwardson

**WHO'S WHO**  
 Lena Marie Hurst  
 Violet Bauer  
 Harvey Fisher  
 Florence Phillips

### STENOGRAPHERS

Grace Burson  
 Mary Lorane Havelly  
 Margaret Wilson  
 Pauline Hallman  
 Emmett Hannawald  
 Vernon Splitter

### WRITINGS, CUTS

Joe Spencer  
 May Young  
 Iola Meier  
 Letha Clark  
 Marje Gray

### SNAPS

Ellen Brownlee  
 Noel Robb  
 Warren Dittmore  
 Leona Ochsner  
 Lebert Shultz

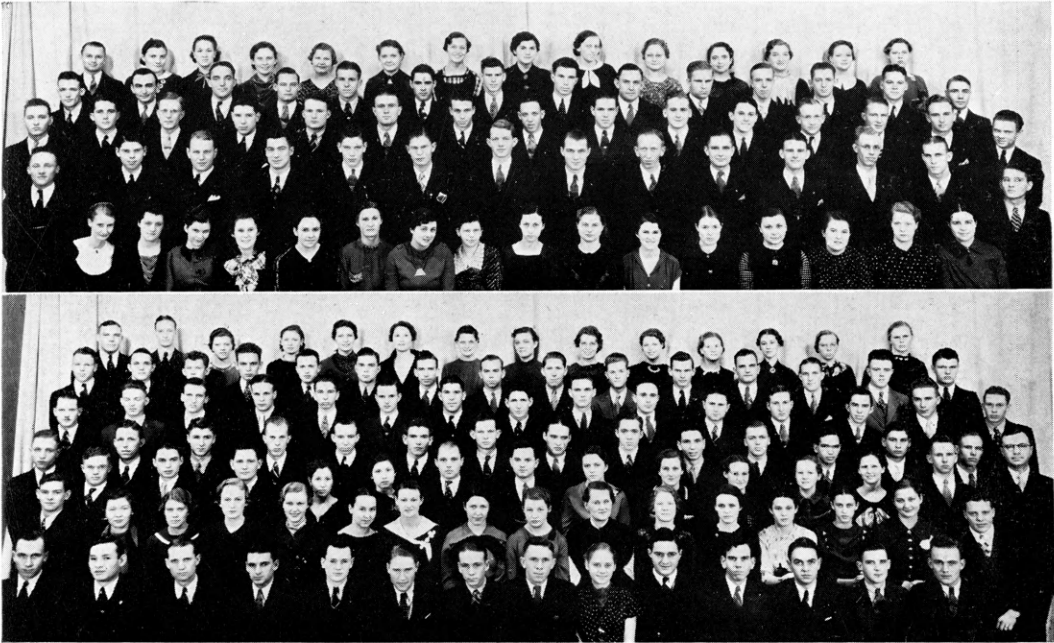
### ADVERTISING

Ruby Corr  
 Geraldine Cook  
 Joe Wetta  
 Carson Moore  
 Arthur Blyhte  
 Karl Shoemaker  
 Marjorie Williams





## COLLEGIATE 4-H CLUB



The Collegiate 4-H Club organized in 1927 has a membership of over three hundred. The club is one of the most outstanding and successful organizations on the campus.

The Collegiate Club is composed of college men and women who were former 4-H Club members. Each month the organization has two business meetings and one social function. Some of the activities of the club are: editing the Who's Whoot; radio programs over station KSAC; and sponsoring the Kansas Rural Life Conference. The purchasing of the dishes and utensils for the Hutchinson 4-H Club building was made possible through the Collegiate Club. The Collegiate 4-H Club now owns an animatophone that they loan to the counties on various occasions.







## KANSAS RURAL LIFE ASSOCIATION



### KANSAS RURAL LIFE ASSOCIATION

The second annual Kansas Rural Life Association Conference at Kansas State College, Manhattan, Kansas, was held March 27-28-29, 1936.

The purpose of the conference was to bring together young people between the ages of 18-28 years for the aim of considering the more important problems facing rural youth today. Pres. F. D. Farrell, Kansas State College, spoke on the chosen theme topic "Achieving Rural Progress."

This conference was sponsored by the Collegiate 4-H Club of Kansas State College with which valuable assistance was given by Mr. Eugene Merritt, Mr. R. A. Waite and Dr. E. L. Kirkpatrick.

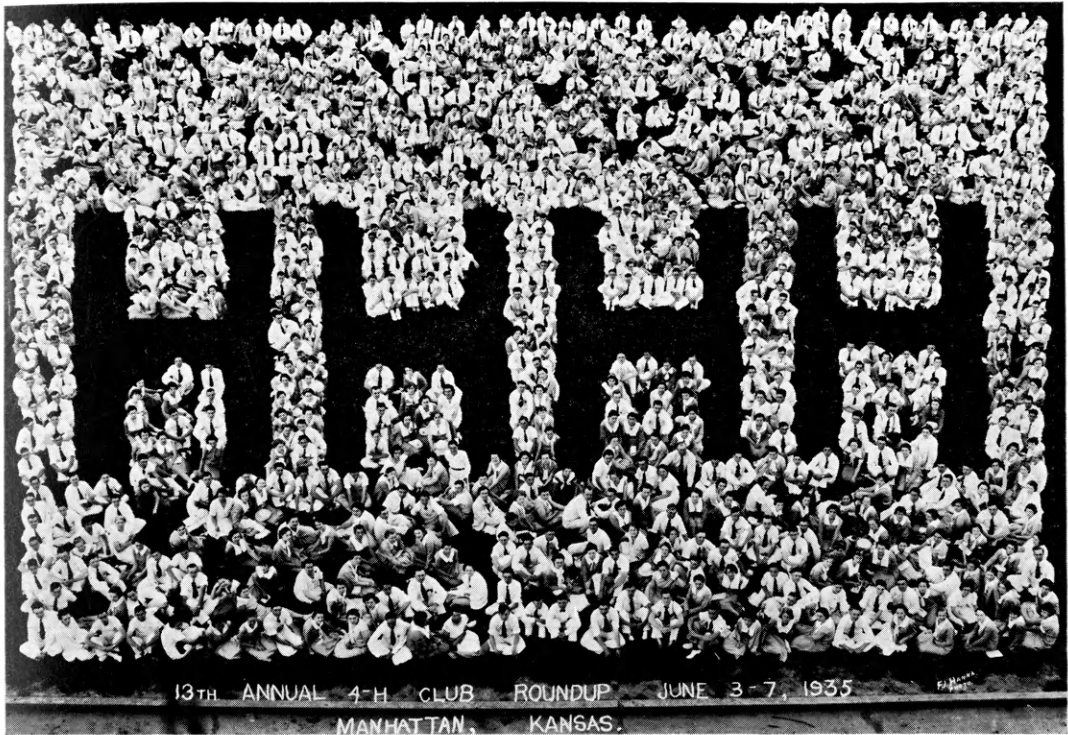
A definite result of the conference was the formation of the State organization known as the Kansas Rural Life Association, which will hold an annual meeting every March at Kansas State College.

The officers elected for the year of 1936 are: Vernal Roth, Lyon County, President; Clarence Dempsey, Leavenworth County, Vice-President; Ethel Avery, Riley County, Vice-President; Grace Burson, Logan County, Secretary.

Those for the year of 1935 were: Howard Moreen, Saline County, President; Edna Mae Reynolds, Montgomery County and Kenneth Middleton, Johnson County, Vice-Presidents; Marje Blythe, Morris County, Secretary.



## ROUND-UP



The thirteenth annual Kansas State 4-H "Round Up" was held June 3-7 with an attendance of one thousand one hundred and ten boys and girls and their leaders from ninety-one Kansas counties.

One of the main purposes of the "Round Up" was to bring together the 4-H people in annual convention who have interests in common as a result of their work together.

The week's program consisted of educational and inspirational work concerning the various works of 4-H projects, music, athletics, and health contests.

A banquet which was held in Nichols Gymnasium, Friday night, June 7, concluded the week of experience, amusement and fun. Ellen Brownlee acted as toastmistress. The address was given by Rev. Carter H. Harrison, Rector of Trinity Episcopal Church, Lawrence, Kansas.



## DINNER DANCE



The seventh annual Collegiate 4-H Club banquet was held at the Methodist Church, December 14, 1935. Bishop Robert Nelson Spencer gave the address of the evening. Invocation was given by Dr. A. A. Holtz. Alvin Mistler was toastmaster. A cup was presented to Robert D. Spencer as champion of the membership drive. Group singing was led by Marje Blythe. Robert D. Spencer entertained the group with a special number, and the octette sang Christmas Carols.

Christmas decorations in red and green adorned the tables.

After the dinner a dance was given at the Avalon Ballroom which concluded a very enjoyable evening.

## COLLEGIATE 4-H OCTETTE



The Collegiate 4-H Club quartette was organized in 1927. This year it has developed into an octette. This group represents the Collegiate Club in many programs during the year. Because of transportation difficulties only four of the members were able to sing at the Cloud County Achievement Banquet, Extension Conference Banquet, and other out-of-town functions. The octette has sung at the Master Farmers' Banquet, Rural Life Banquet, 4-H Radio broadcasts, club meetings and many other programs during the year.

The octette, under the leadership of Miss Hilda Grossman of the Music Department, has been a very successful group.

Members of the octette are: Dudley Flint, Crawford County, first tenor; Orville Morris, Kiowa County, first tenor; Carol Coleman, Reno County, 2nd tenor; Ike Kern, Smith County, 2nd tenor; Wilton Thomas, Clay County, baritone; John Hansen, Brown County, bass; and Monroe Coleman, Reno County, bass. They were accompanied by Rosamond Haeberle, Sedgwick County.

## KANSAS 4-H CLUB RADIO PROGRAMS



The Kansas State Collegiate 4-H Club has sponsored a weekly radio program since 1926. This program is known as the "Kansas 4-H Club Broadcast" and comes from Station KSAC every Saturday at 12:30. There are two parts of the broadcast. From 12:30 P.M. to 1:30 P.M. a program is presented by members of the Collegiate 4-H Club composed of readings, musical numbers, talks on club work, and faculty talks. From 1:30 P.M. to 2:30 P.M. a music appreciation program is given by Pauline Compton.

Mr. Coe directs these broadcasts with the help of Grace Burson and Iola Meier of the Collegiate Club.



# AMERICAN COUNTY LIFE CONFERENCE



1. Ladies of the crowd. 2. Mrs. Taylor, chaparon. 3. Let's think a while. 4. Boy's don't hit too hard. 5. Alvin Mistler. 6. Gathering Rocks. 7. Florence Phillips. 8. Meet Charles Beer. 9. Virginia Herst, Vice Pres. of the conference. 10. To Ohio. 11. Resting in a park.





## COLLEGIATE SNAPS



1. Let's study. 2. Spencer brothers at work! 3. To Round Up. 4. Oh Hum! 5. Loyal members. 6. Ready to go. 7. Big feet. 8. Alvin at R.O.T.C. camp. 9. Marjory Williams draws. 10. Wolf in sheeps clothing. 11. Whata ride. 12. At the Singing Tower. 13. Lebert Shultz. 14. Coeds. 15. A Clovia Chat. 16. Songsters. 17. Back to 1914. 18. Alpha Zeta initiates.





# COLLEGIATE SNAPS



1. Mr. and Mrs. Coe. 2. Violet and Ellen at Mt. Vernon. 3. When Marje was a girl. 4. Marje and Bob. 5. Miss Hilyard, former State Leader. 6. The Champion Persuader. 7. Survival of the fittest. 8. You think about it. 9. Benjamin Cephus (?) Kohrs. 10. Alpha Gamma Rho 4-H Members. 11. Bob Edwardson and his brothers.





CHAMPIONS



## NATIONAL LEADERSHIP CHAMPION



This year, for the third time, the Moses Leadership Trophy, which represents the highest honor in the field of 4-H leadership, has been brought to the Sunflower State. Betty Brown of Lyon County won the trophy this year as a result of her many achievements. Two of these trophies are awarded annually at the National Club Congress in Chicago, one each to the girl and boy who prove to be the most outstanding 4-H club leaders in the United States.

Betty Brown has been a club member in Lyon County for ten years. Her accomplishments are so numerous that it is not possible to list all of them. The most outstanding ones follow: President of local club, 1932-34; president of county honorary club, 1933; president of Lyon County Farm Bureau Chorus, 1934-36; assistant leader of club, 1933-34; leader of club, 1935-36; junior leadership medal at State Fair, 1935; superintendent of county fair, 1935; Danforth Scholarship winner, 1935; has completed 29 projects; and has participated in Round-up, county camp, exhibits, music appreciation, and other club activities.

## LEADERS OF MERIT



VIOLET BAUER



IRWIN BEAL

## VIOLET BAUER, CLAY COUNTY

Violet has been a junior 4-H leader in her community for four years and as a result of her excellent work received the scholarship offered by the union Pacific Railroad in 1933 and used it in attending Kansas State College in 1934.

During the time Violet was a leader she trained fourteen demonstration teams, four judging teams, and her group made 168 exhibits at fairs. One hundred twenty-seven projects have been completed in her club in the past four years. She was instrumental in getting a page for her county in the Who's Whoot. She has served her club in the following capacities during her nine years as a club member: president, vice-president, secretary, song leader, and reporter. She has successfully completed twenty-eight projects.

Violet won the state farm account contest in 1935 and was awarded one of the trips to the National 4-H Camp in Washington, D. C.

## IRWIN BEAL, SEDGWICK COUNTY

A junior leader for four years, Irwin Beal trained fourteen demonstration teams and two judging teams for county and state contests.

During the five years he has been a 4-H member, he has completed twelve projects and been president of his club three years, parliamentarian one year, and president of the County Who's Who one year.

In 1934 he received a trip to Chicago to the National Club Congress.

He graduated from high school in 1933, was president of his class, and attended Kansas State College in 1935. This scholarship will enable him to continue his college attendance.

## THE CHICAGO TRIP



Kansas was represented this year at the fourteenth annual National 4-H Club Congress by various county and state champions who won their trips by achievements in project and leadership work in their respective clubs and counties. Fifty-three club members with five representatives of the state department made the trip to Chicago. Of those who attended twenty-three were state champions and the rest were Rock Island and Santa Fe trip winners.

The weeks stay was one continual program planned especially for the club members enrolled at the Club Congress from nearly every state in the union. Headquarters for the Kansas group while in Chicago were at the Congress Hotel.

The daily programs included trips through important commercial plants such as various packing houses, the International Harvester Company, various Mailing Order Houses, National Livestock Marketing Association, and other places of interest such as the Planetarium, Lincoln Park, Marshall Fields Store, Field Museum, and various luncheons and dinners.

Thomas Wilson gave a special dinner for the club members attending the Congress which was an outstanding event featuring a very interesting program. The Kansas group held a luncheon party of their own the last day they were in Chicago. This served as a means of better acquaintance among this group of boys and girls.

This is a very educational and inspirational trip which every club member should strive for.

## THE MASTER 4-H CLUB



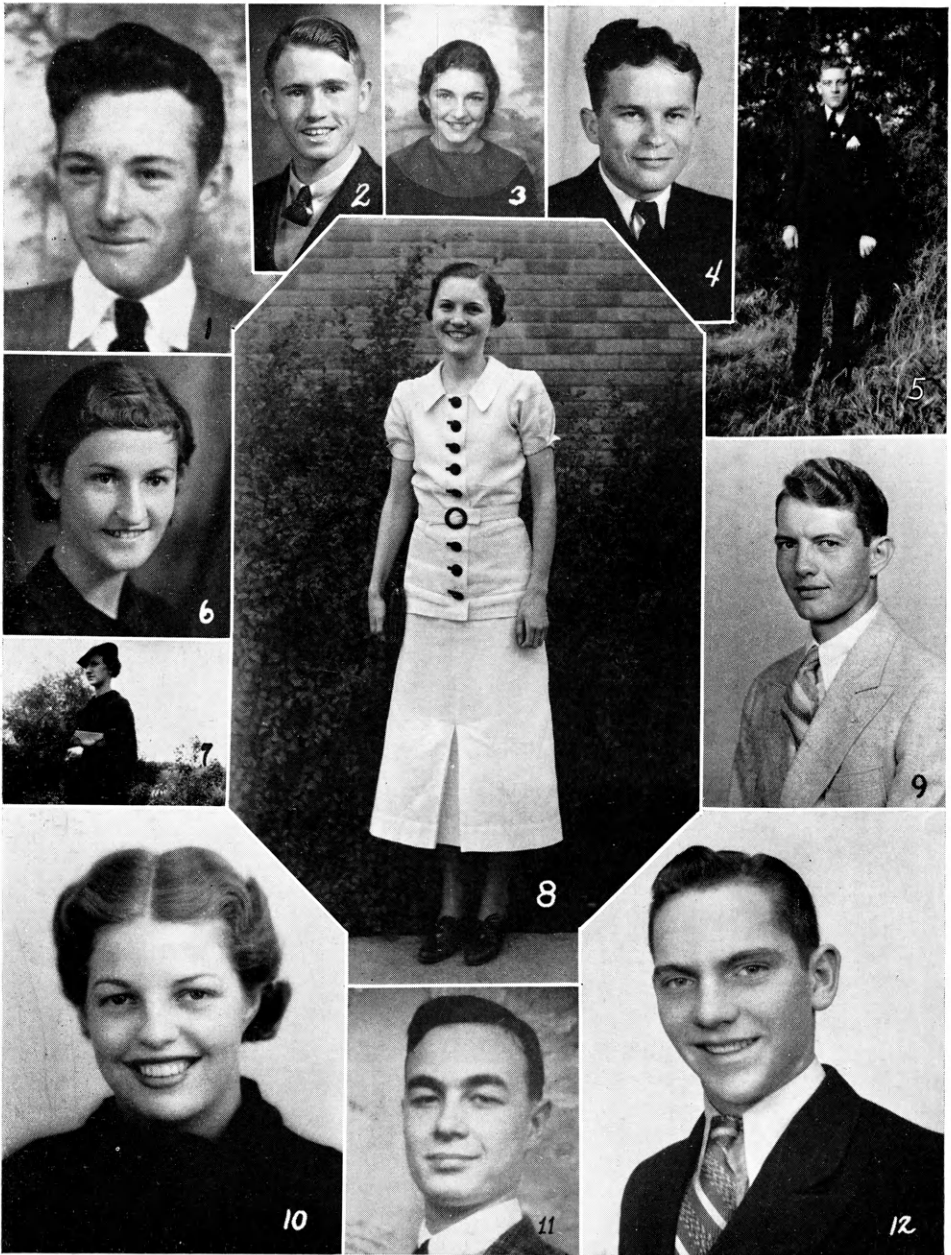
The master 4-H Club was organized in June, 1929, at the Seventh Annual 4-H Club Round-up held at Manhattan, for former club members who have been recognized for their leadership activities. The new members for 1935 are: Ellen Brownlee, Reno County; Violet Bauer, Clay County; and Kenneth Johnson, Lyon County.

During the State Round-up each year the club meets to discuss leadership problems, renew friendship, and initiate new members. The members of the Master 4-H Club are those who attended the National Encampment.

Since the organization of the camp in 1927, two girls and two boys from Kansas have attended each year. In 1927 they were Louise Lumb, Clay Co., Mary Tilton, Mitchell Co., Frank Parsons, Sherman Co., and Frank Zitnik, Cherokee Co. The 1928 delegates included Nola McCormick, Sedgwick Co., Lois Starbuck, Sherman Co., Lloyd Davies, Lyon Co., and Leonard Reese, Dickinson Co. Those attending the 1929 encampment were Mary Hellmer, Lyon Co., Ellen Blair, Franklin Co., Ben Kohrs, Dickinson Co., and Boyd Worthington, Harper Co. In 1930, Jeanette Gamble, Montgomery Co., Olga Larson, Lincoln Co., Gaylord Munson, Geary Co., and Albert Pease, Bourbon Co. In 1931, Vera Crispin, Jewell Co., Florence Melcher, Franklin Co., George McCole, Lyon Co., Milton Kohrs, Dickinson Co., and Pius Hostetler, Harper Co. In 1932, Maurine Knouse, Lyon Co., Vera McBratney, Sedgwick Co., Merle Crispin, Jewell Co., and Morris Humes, Mitchell Co. In 1933, Lottie Keasling, Cowley Co., Virginia Wagner, Franklin Co., Ronald Robb, Ford Co., and Joe Wetta, Sedgwick Co. In 1934 Ruby Corr, Sedgwick Co., Evenly Harley, Cherokee Co., Harry Stauffer, Mitchell Co., and Edgar Delmar, Crawford Co.



## STATE AND NATIONAL CHAMPS

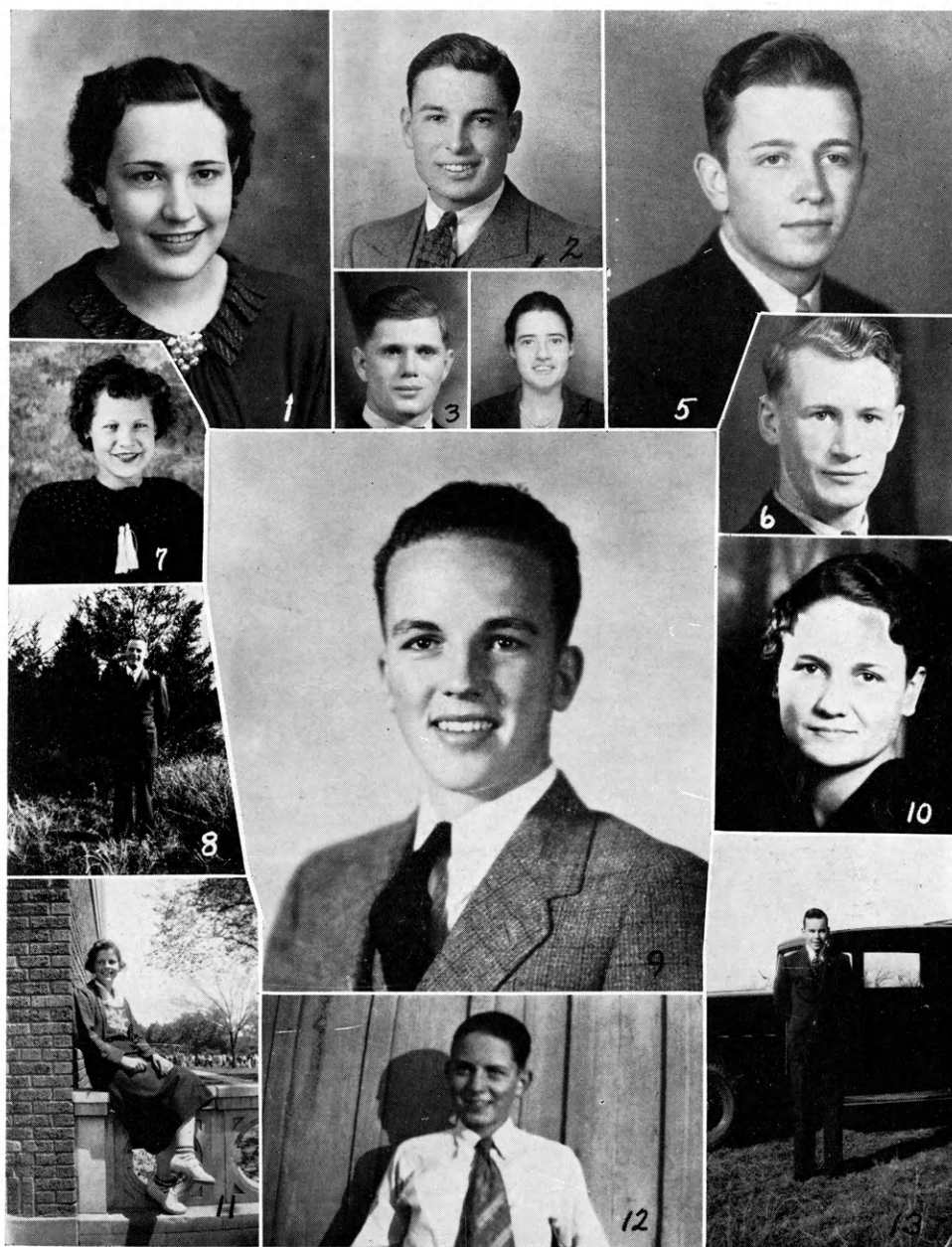


1. Willard Shaw. 2. Raymond Topham. 3. Eleanor Acher. 4. Joe Lewis. 5. Paul Sanford.  
6. Lois Carr. 7. Faye Haley. 8. Ruth Salley. 9. Alfred Schroeder. 10. Ena Carlisle. 11.  
Howard E. Hunter. 12. Charles Jordan.





# STATE AND NATIONAL CHAMPS



1. Martha Schinstock. 2. Frank Harshman. 3. Mark Wilson. 4. Mary Somers. 5. Scott Stuckey. 6. Charles Shidler. 7. Lovelle Lattimore. 8. Howard Zook. 9. Gerald A. Jamison. 10. Bessie West. 11. Jessie Collins. 12. Roy Upham. 13. Charles Zook.





## NATIONAL ENCAMPMENT



As a reward for the superior service rendered in 4-H club leadership, three outstanding 4-H club members were awarded trips to the Ninth annual 4-H Club Camp held at Washington, D. C., in June 1935. The delegates from Kansas were: Ellen Brownlee, Reno County, Violet Bauer, Clay County, and Kenneth Johnson, Lyon County. They were accompanied by Lora Hilyard, Assistant State Club Leader and Dr. J. W. Lumb, Extension Veterinarian.

The Kansas delegation went to Chicago on train and were there joined by delegates from Nebraska, South Dakota, North Dakota, Minnesota, and Iowa. The rest of the trip was made by way of Niagra Falls, Philadelphia, and Baltimore in a chartered bus. They returned by way of Gettysburg, Wheeling, West Virginia, and Chicago.

The camp programs consisted of inspirational discussions, assemblies, conferences, and sight seeing tours. The camp was located on the Mall in front of Dept. of Agri. Building. Some of the interesting places visited included Arlington National Cemetery, Folger's Shakespeare Library, Smithsonian Institute, White House, Capitol Building, Corcoran Gallery of Art, Pan-American Building, Lincoln Memorial, National Cathedral, and Library of Congress.

Kansas has now sent thirty-five young men and women to the National Encampment. Three of these young people are actively engaged in extension work in Kansas at the present time.



# WASHINGTON SNAPS



1. Cheering with Mrs. Roosevelt. 2. Under Niagara Falls. 3. Tomb of Unknown Soldier. 4. Ellen and Violet. 5. Dr. Lumb. 6. Kansas meets Senator Capper. 7. Chapel at Annapolis, Md. 8. The bus. 9. At Arlington cemetery. 10. Visit to the White House. 11. To Mt. Vernon. 12. Tecumseh. 13. The Capitol.







WHO'S WHO

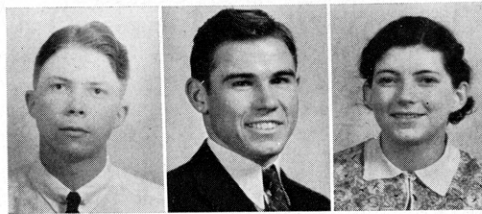


A SOUTH CAMPUS VIEW

*FE Colburn  
1915*



## WHO'S WHO



### OFFICERS OF STATE WHO'S WHO CLUB 1935-1936

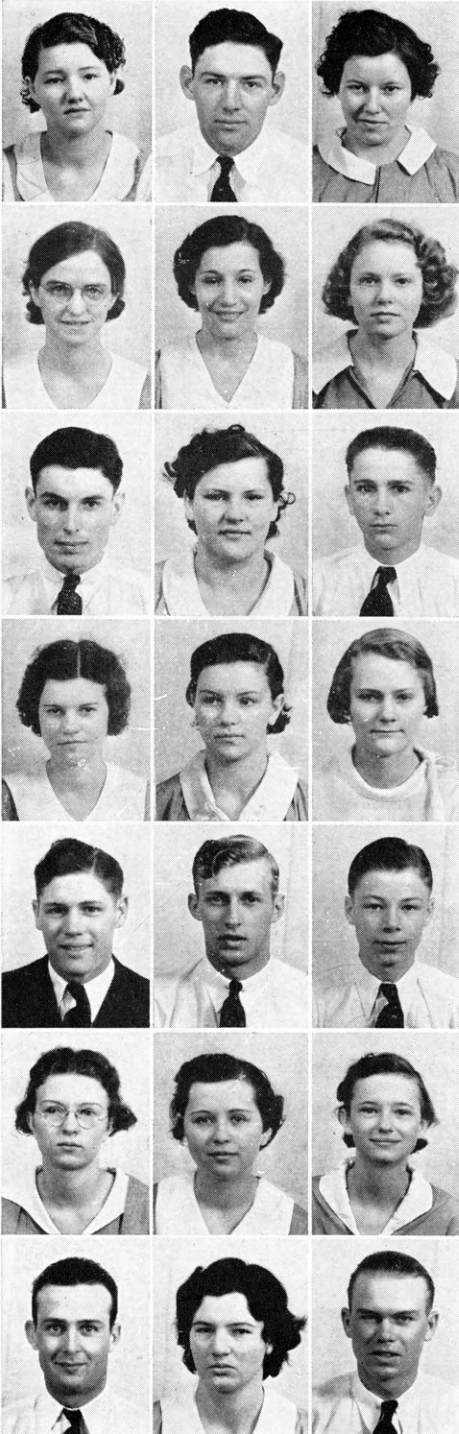
KENNETH JOHNSON, *President*

ROLAND ELLING, *Vice-president*

GRACE KELLOGG, *Secretary*

The Who's Who Club is a State Honorary 4-H Club that has been organized for twelve years. Its members are selected from the delegates attending the Round-up each year who have been most outstanding in their project work and leadership activities. They must have completed three years of successful club work and be fifteen years of age. There is a membership of 1040 in the Who's Who Club at the present time, 127 new members were initiated last year.





## ANDERSON COUNTY

Beard, Margerite—County Style Review  
Champion 1934.  
Moody, Edward—Santa Fe trip to Chicago  
1933.

## DARTON COUNTY

Stoskopf, Corinne—County Baking  
Champion 1934.

## BOURBON COUNTY

Ater, Olive Lucille—County Home Eco-  
nomics Champion.  
Hall, Luella—County Leadership  
Champion.  
Simpson, Sue—Baking and Sewing pro-  
jects.

## BUTLER COUNTY

Harshman, Frank—County Beef Champion  
—1933-1934.

## CHASE COUNTY

Melson, Mildred—Outstanding in baking  
project.  
Yenzer, Mack—Most outstanding 4-H  
member in county in 1934.

## CHAUTAUQUA COUNTY

Scott, Lela—County clothing champion  
1933.

## CLAY COUNTY

Bumsted, Lois Jean—Five years club  
member.  
Gerardy, Vera—Baking and clothing  
projects.  
Hartner, Harold—Attended National Club  
Congress 1934.  
Hatfield, James—Attended National Club  
Congress 1934.  
Nelson, Wilbur—Champion Boy's  
Demonstration of county 1934.  
Henry, Madge—Outstanding in baking  
and canning.

## COMMANCHE COUNTY

Brown, Winfred—Member of club four  
years.  
Harbaugh, Betty—Member of judging  
team.  
Nichols, Junior—County Council  
president.  
Toothaker, Floy—County Canning  
Champion 1934.

## COWLEY COUNTY

Beery, Ronald—National 4-H Congress  
1933.





COWLEY COUNTY (continued)

Thompson, Melvin—Member of club 4 years in Oklahoma.

CRAWFORD COUNTY

Ferguson, Vivian—Outstanding in clothing and poultry.

Salvaggid, Josephine—Baking and canning project.

DICKINSON COUNTY

Schlesencer, Mildred—Attended Round-up 1930-31-33-35.

EDWARDS COUNTY

Eslinger, Lawrence—Member of County Council 5 years.

Lippoldt, Marian—County Health Champion 1933-35.

ELLIS COUNTY

Henrickson, Robert—Projects in Swine and Poultry.

Henrickson, Tallif R.—Projects in kafir, breeding, heifer and baby beef.

Schmidt, Loretta—County home economics champion 1934.

FORD COUNTY

Cavanough, Jim—Outstanding in Swine and livestock.

Lightcap, Melvin—Member of county camp.

FRANKLIN COUNTY

Harrison, Kieth—County champion 1930-31-32.

Harstick, Dorothy—Outstanding livestock projects.

Kimball, Anna Beth—Completed projects in clothing, canning, supper, baking, and baby beef clubs.

Rule, Robert—Corn, swine, and dairy products.

GRAHAM COUNTY

Gross, Ruth—Food preparation champion 1933.

GREELEY COUNTY

Ochsner, Leona—County Farm Account Winner 1934.

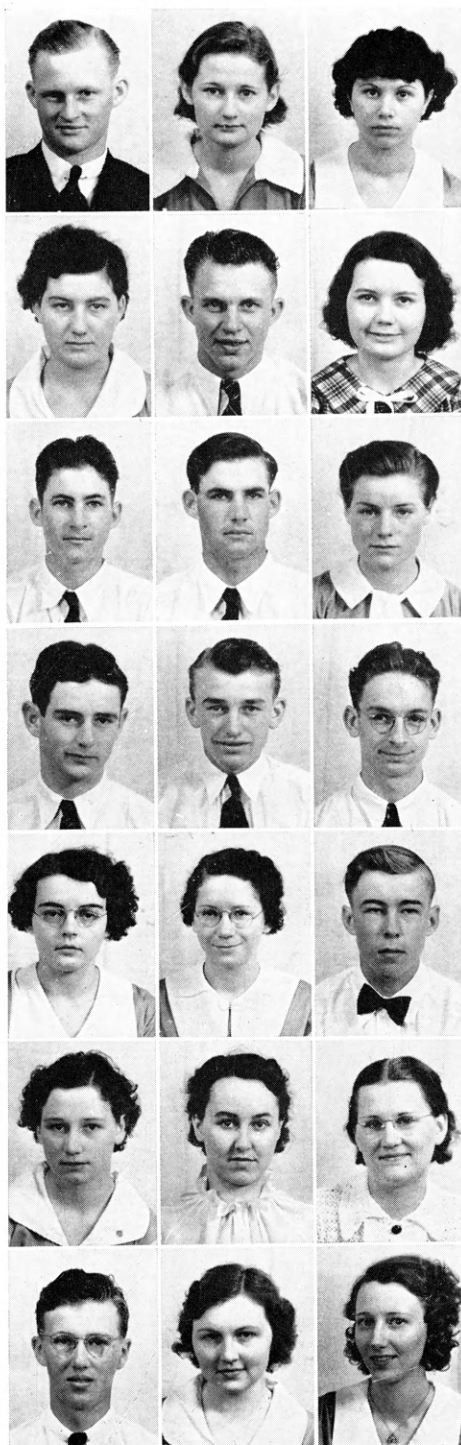
Singleton, Marialice—Outstanding in baby beef projects.

Singleton, W. T.—Outstanding in baby beef projects.

HARVEY COUNTY

Dart, Marguerite—Vice-president of Rural Life 1935.

Challender, Maxine—County style review champion 1931-34.







## HARVEY COUNTY

Horst, Earl—County Health Champion.  
Keller, Eulalia—County Best Groomed Girl 1933.

Schroeder, Alfred—State Round-up 1934.



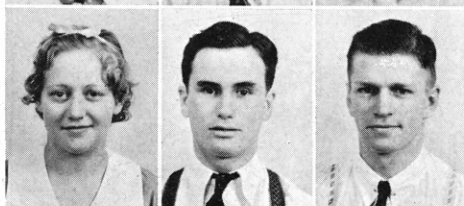
## HASKELL COUNTY

Hololovoch, Anna—County and State co-operative marketing winner 1934.

Miller, Earl—2nd State cooperative marketing contest 1934.

## JOHNSON COUNTY

Gulick, Alice Ruth—Home Economics member.



## KEARNEY COUNTY

McCue, Mary Alice—Active in Home Economics work.



## KINGMAN COUNTY

Mann, Paul—Attended Round-up 1931-35.

Robinson, Cecil—Round-up 1932-34.



## LABETTE COUNTY

Redman, Dorothea—Style review and best groomed girl.



## LINCOLN COUNTY

Larson, Olga—Washington trip winner 1930.



## LINN COUNTY

Green, Robert E.—County dairy champion 1934.

Holmes, Floyd—Completed projects in poultry, beef, swine.

Holmes, John—County livestock champion 1934.

Ungeheuer, Donald—T. E. Wilson award of county 1931 and county health champion 1935.



## MIAMI COUNTY

Barker, Lillian—Hutchinson State Fair.



## MONTGOMERY COUNTY

Campbell, Ronald Wayne—Member of State Chorus 1933-34-35.

Krone, Esther—County health champion 1935.



## MORRIS COUNTY

Huggins, Ronald—County 4-H farm account champion 1934.

Huggins, Raymond—County health champion 1934-35.

Miller, Ruth—County health champion 1934-35.



MORRIS COUNTY (continued)

Parker, Dwight W.—Member cement demonstration team.  
Williams, Mercedes—County judging team.

NEOSHO COUNTY

Fickel, Frank—Projects completed in baby beef, and dairy.

NESS COUNTY

O'Neil, Gordon—Health and poultry judging team.

RAWLINS COUNTY

Beindt, Alma—Completed projects in clothing, supper, swine, baking, and room improvement clubs.

REPUBLIC COUNTY

Blecha, Arnold—Grand champion miscellaneous booth.  
Dewey, Guy S.—Outstanding in baby beef.  
McKenzie, Maxine—Scholarship to Kansas State College.

RICE COUNTY

Goerl, Eleanor L.—Baking and Home Economics Champion.  
Stump, Marie—County clothing champion 1934.

RILEY COUNTY

Bergsten, Robert—County and state beef champion 1934.  
Endacott, Elton—State sheep champion 1933.  
Stagg, Dorothy Dawn—County champion in music appreciation, health and clothing.

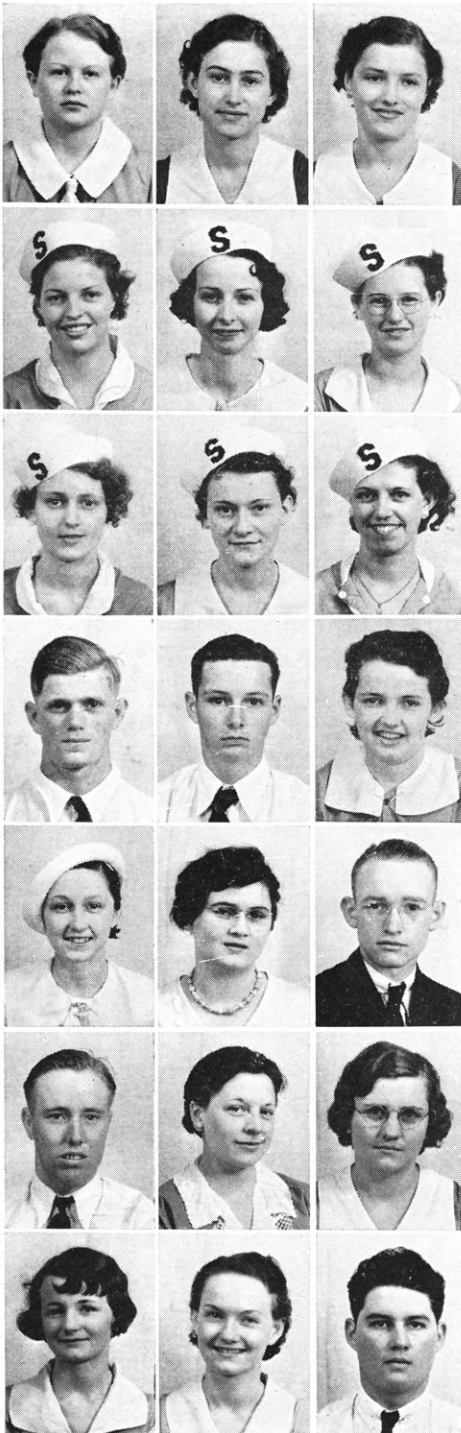
RUSSELL COUNTY

Bratton, Ruth—Music appreciation champion 1934-35.  
Carter, Eldin—County crops judging.  
Johnson, Winifred—County Home Economics Champion 1934.  
Trapp, Earl—Champion Hereford at State Fair.  
Trapp, Mary—County canning champion 1934.  
Ward, Evelyn—Health champion 1935.

SALINE COUNTY

Beil, Stella—Baking and clothing projects.  
Kline, Edwin—Outstanding in music appreciation 1931.





## SALINE COUNTY (continued)

Muir Betty—Attended Round-up 1933 34-35.

Schuetz, Evelyn Mae—County poultry champion 1934.

Shoffner, Maxine—Attended Round-up 1932-33-34-35.

## SEDGWICK COUNTY

Carlisle, Ena—Champion of all breeds of livestock at Kansas National Livestock at Wichita 1934.

Huff, Maxine—Music appreciation contest 1935.

Hutchinson, Betty—Fat stock show exhibitor at Wichita 1933-34.

Mann, Wilma Jean—Active in sewing and baking projects.

Orth, Kathaleen—Outstanding in Home Economics and corn projects.

Wilson, Margaret—Wichita U. Collegiate 4-H member 1934.

Wilson, Mark—First place sheep exhibit at Hutchinson 1933.

Young, Arthur—Baby beef, corn, and sheep projects.

## SHAWNEE COUNTY

Cochran, Ruth—Attended Round-up 1934-35.

Hutchinson, Mary Louise—Outstanding in demonstration work.

Kozak, Grace—Chicago trip winner and Livestock Convention.

Tibbs, De Lloyd—Attended Round-up 1932-35.

## SHERIDAN COUNTY

Breeden, Homer—Completed projects in swine, beef, heifer, and sorghum.

Derbert, Anna—Completed projects in baking, clothing and leadership.

Mowry, Vera—Completed clothing, leadership, baking and room improvement.

McWilliams, Alma Maude—County health champion 1935.

## SHERMAN COUNTY

Shaver, Helen—County style champion 1935.

Taylor, Archie—County health champion 1935.





## STAFFORD COUNTY

Francis, Lloyd—Member of County Council.  
 Kendall, Margaret—County Champion in 1930-32.  
 McNickle, Frieda—Member of County Clothing and Baking Judging teams.  
 Rodke, Helen—County Style Review Champion in 1934.  
 Smith, Lois Bell—County Baking Champion in 1934.



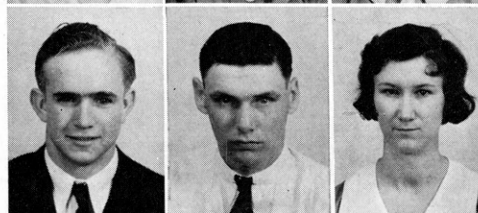
## THOMAS COUNTY

Bremenkamp, Edna—County Style Review Champion  
 Gross, Howard—Outstanding in Livestock Projects.



## WILSON COUNTY

Porter, Lynn—Attended Round-up in 1931-34.



## WYANDOTTE COUNTY

Breedlone, Helen—Member of Home Economics Projects.

## BARTON COUNTY

Keeley, Irene—Baking, clothing and canning projects.



## COMANCHE COUNTY

Deewall, Ralph—Outstanding in baby beef project.

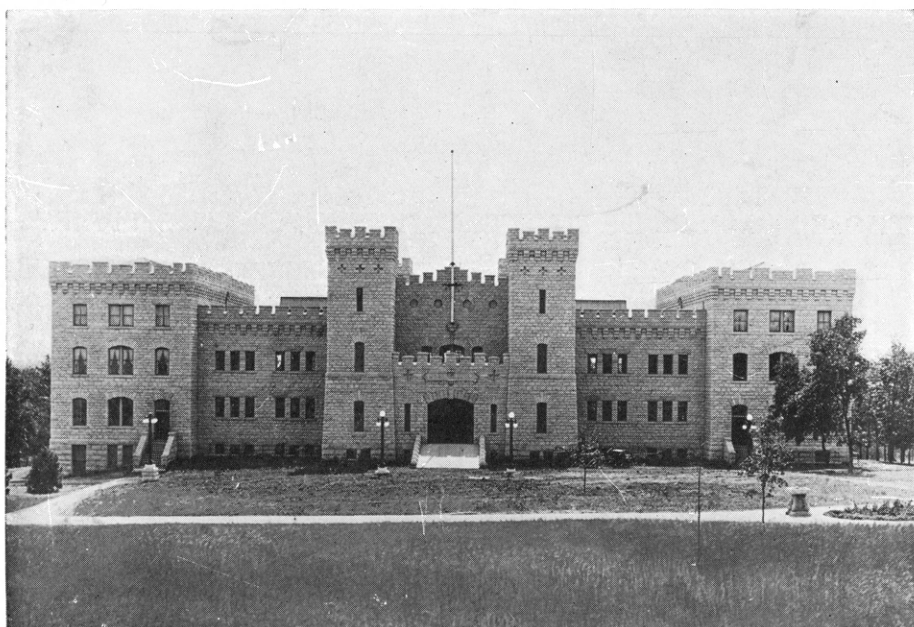
## SHERMAN COUNTY

Mogge, Carroll—Attended Round-up in 1933-34.

## THOSE MEMBERS INITIATED AT THE HUTCHINSON FAIR

Barton County—Achatz, Loretta—Attended Round-up in 1930.  
 Cheyenne County—Indorf, Arline—Outstanding in leadership in county.  
 Comanche County—Nichols, Violet—Outstanding in leadership.  
 Geary County—Erichsen, Evelyn—A member of baking and clothing projects.  
 Johnson County—Moore, Johnny—County demonstration team champion 1934.



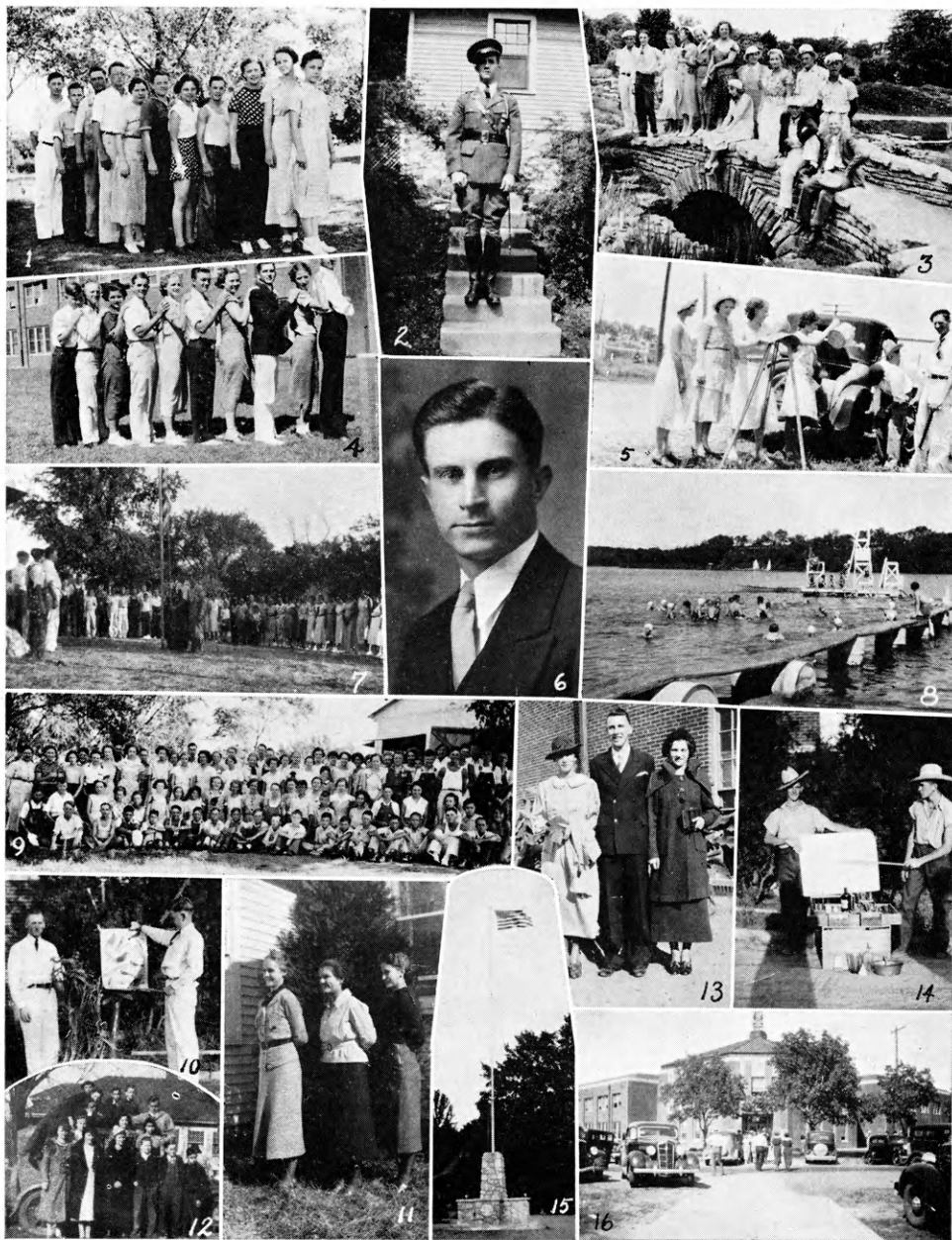






# ACTIVITIES

# LEAVENWORTH



1. Camp officials. 2. Danforth trip winner. 3. Round-up via. the rose garden. 4. Judging teams at state fair. 5. Flats to the Round-up. 6. Clarence Dempsey, 4-H Club leader to Danforth. 7. Day is done. 8. Ole swimming hole. 9. Everybody happy? Sure. 10. Conservation Dem. team. 11. State champ canning, judging team at Hutchinson. 12. Fairmount Club. 13. Style. 14. Ag. Dem. Team, second at Topeka and Hutchinson. 15. Old Glory. 16. State 4-H Home.



# PRATT



1. Mary Lou Brant. 2. To Round-up. 3. Camp leaders. 4. Best groomed. 5. Dick, swimming instructor. 6. Old swimming hole. 7. A boating. 8. Let's mount butterflies. 9. At Round-up. 10. To Round-up, so near—yet so far. 11. Flag raising at camp.



## CHAUTAUQUA



1. Mary had a little lamb. 2. Demonstration teammates. 3. Team at Hutchinson. 4. Le More Call. 5. Max, a president. 6. Lila Scott. 7. Float at Ark City. 8. Elizabeth Dye. 9. Club girls. 10. Gerald McAlester. 11. Belknap 4-H Club. 12. County swine champion. 13. County judging team. 14. Happy workers 4-H Club.







PQ

# HARPER



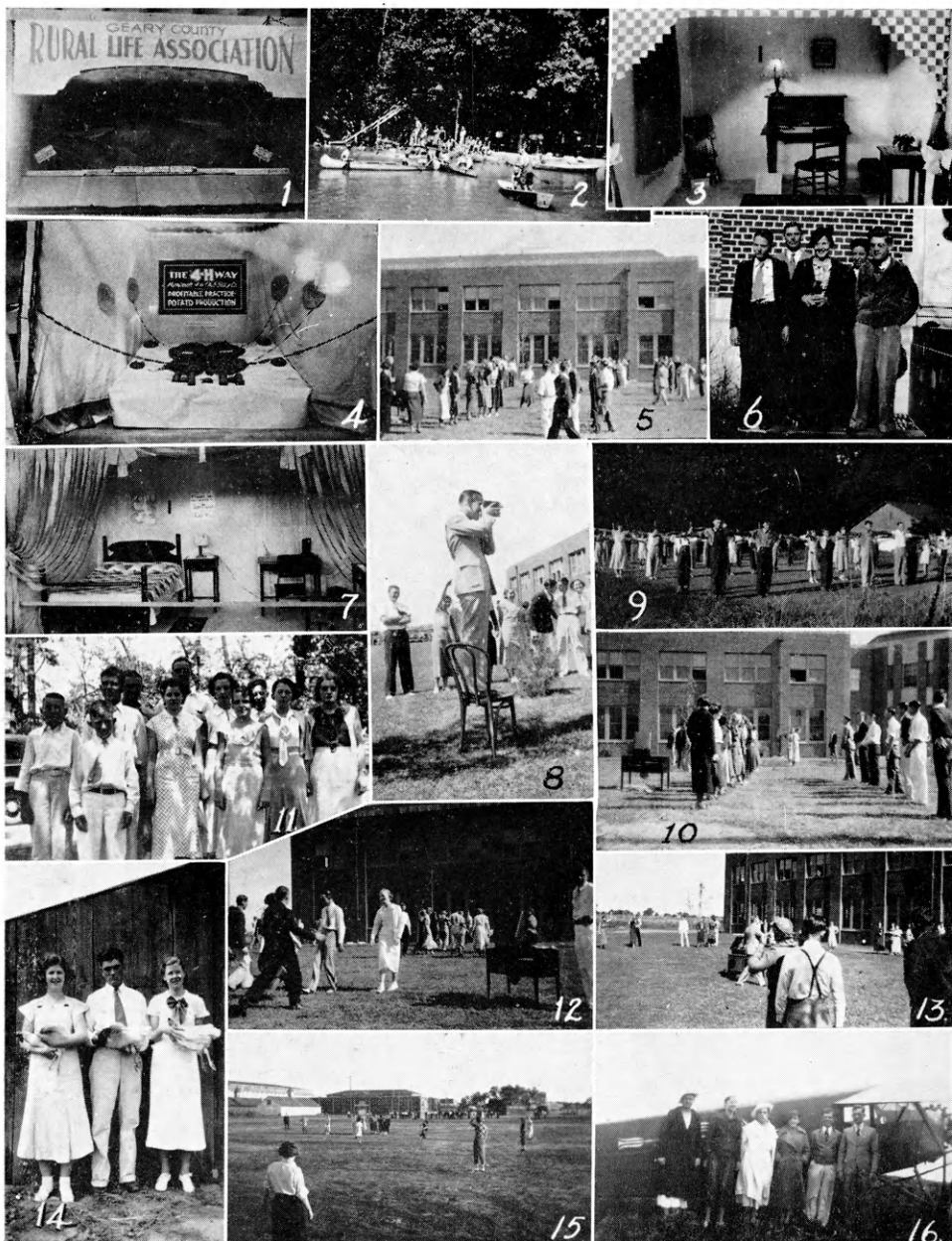
1. A baking club. 2. Cement demonstration team. 3. Round-up group. 4. Helen and George Crenshaw and their calves. 5. Style revue and best groomed girls. 6. Chas. Watt and his calf. 7. Pauline and Frances. 8. Another winning demonstration team. 9. John Parsons and Bob Stuchal, best groomed. 10. Clothing girls. 11. Jean and Alice. 12. Leaders at camp.







## GEARY



1. A winner. 2. County camp. 3. A winner. 4. Crops booth at state fair. 5. Virginia Reel. 6. Nat. champion poultry judging team. 7. Booth. 8. A. J. Shoth, state leader. 9. County camp. 10. Conservation outing. 11. Broadcasting over KSC. 12. Games at the state fair. 13. Green sleeves. 14. Poultry judging team. 15. Soft ball champion team at state fair. 16. To Round-up by plane.



# SALINE



1. A float. 2. Murvis Jones and her calf. 3. Mentor sewing club. 4. Kipp 4-H float. 5. Model meeting group. 6. Bavaria 4-H float. 7. Maynard and his champion. 8. Thad the Chicago trip winner. 9. Maxine Shoffner has a winner too. 10. Ray I. Graves, county agent. 11. Kipp 4-H on a tour. 12. Lourie Shoffner and the reserve grand champion. 13. Round-up. 14. Boys at the Round-up.

# ROOKS



1. Norma, best groomed. 2. Elsie May Reed. 3. 4-H camp. 4. Alfred Southard and colt. 5. 4-H camp at Hayes. 6. Worthwhile baseball team. 7. Camp mayor. 8. Winning demonstration team. 9. Kathleen Stewart. 10. Lavelle Tyler, food preparation champion. 11. Lyle, a champion cake baker. 12. Robert, best groomed. 13. Club tour. 14. Jacquelin McQueen and Paint.

# LABETTE



1. Style review. 2. Style review held at Parsons. 3. Second at Hutchinson in costume exhibit. 4. Round-up delegates. 5. Best groomed girl. 7. Dairy. 8. Danforth scholarship. 9. Judging school at Parsons. 10. County poultry champion. 11. County health champion. 12. Labette county 4-H camp. 13. Picnic at 4-H camp.





ANDERSON



1. Champion. 2. Future champion. 3. Project champions. 4. Outstanding club member. 5. County poultry champion. 6. Style review, champion. 7. Livestock judging team. 8. Arthur Jackman. 9. President of Silver Arrow. 10. Laverne Thiery and project. 11. Health Champion. 12. Livestock champion.





# CLOUD



1. Club officers. 2. Judging team. 3. Outstanding club worker. 4. Vinion and her ribbons. 5. Outstanding leaders. 6. Winning calf. 7. Conservation camp delegation. 8. Melford Key. 9. Club and leaders. 10. Trip winner.



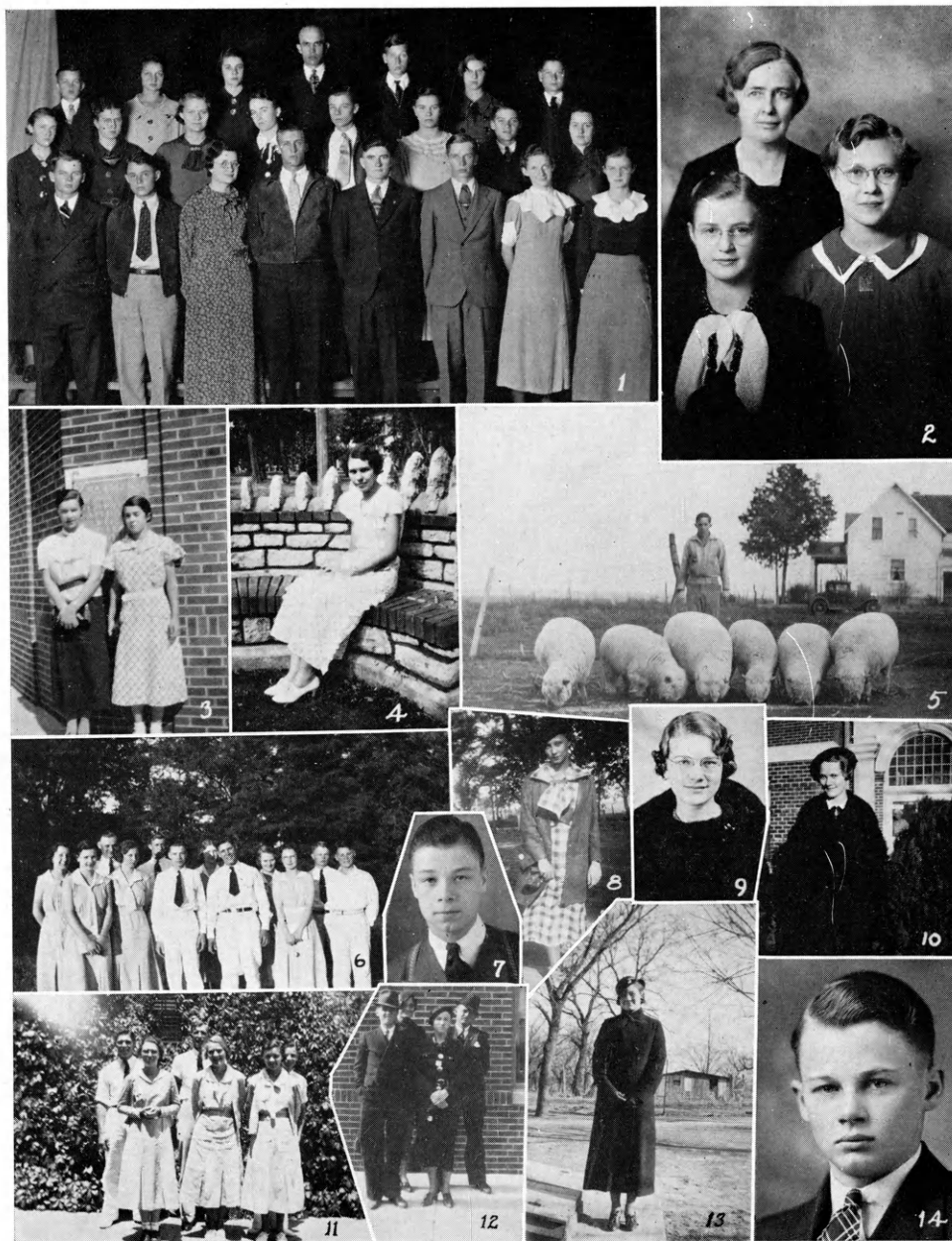
## REPUBLIC



1. County champion. 2. International winner. 3. Dairy judging champion. 4. Quartette. 5. Style champion. 6. Swaney. 7. Just two. 8. Nelson. 9. Stensaas. 10. Reserve champion at American Royal. 11. McClure. 12. Laren. 13. Mabel. 14. County Agent. 15. Evelyn. 16. Eva. 17. Trip winner. 18. Health Champ. 19. Judging team. 20. Demonstration team. 21. Chorus. 22. Song leader. 23. County booth.



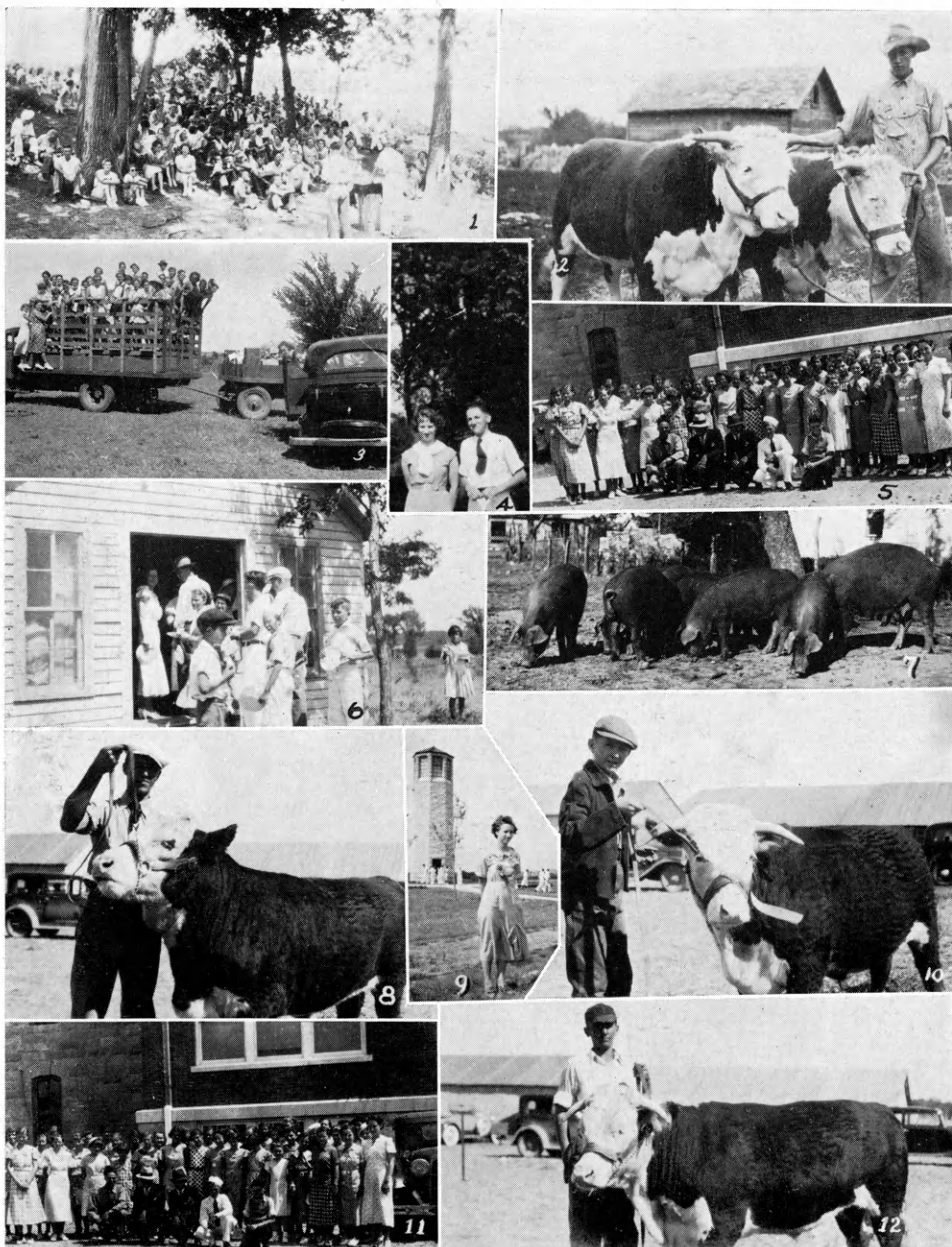
# CLAY



1. Delegation to Hutchinson Fair. 2. Demonstration team, first at Wichita. 3. Demonstration team. 4. Trip winner. 5. Winner of Wilson medal. 6. Round-up. 7. Danforth scholarship winner. 8. Style. 9. Kerr Glass Company medal. 10. U. P. scholarship. 11. Who's Who members. 12. Conservation delegates to Hutchinson. 13. International Harvester contest winner. 14. Health champion.



## CHASE



1. Music appreciation at camp. 2. Richard Leith and prize winners. 3. Do we like camps.  
 4. Health champs. 5. Style show contestants. 6. Picnic. 7. Richard Barret's ton litter.  
 8. Elmore and calf. 9. Outstanding girl. 10. Richard with his project. 11. Tri-county camp.  
 12. Mack and his project.







PR

## JEFFERSON



1. Wanda and Norma. 2. Fire prevention team. 3. Judges. 4. Grain judging champs. 5. Canning team. 6. Satisfied. 7. Baking demonstration team. 8. Lone Tree officers. 9. Outstanding member. 10. Nortonville club. 11. Margaret and prize fruit. 12. Clothing. 13. Potato king. 14. Outstanding workers. 15. Project club. 16. Canning champ.







## SEDGWICK



1. Best groomed boy. 2. Champ demonstrator. 3. State sheep shamps. 4. Lena M. Hurst. 5. State wheat champs. 6. Margaret Wilson. 7. National meat identification champ. 8. State home economics champ. 9. Leader's camp officers. 10. State Holstein champ. 11. Music appreciation. 12. Johnnie in the mud. 13. Music appreciation. 14. Rex Hobbie. 15. Beauty.





pd

## TREGO



1. U. P. scholarship winner. 2. U. P. scholarship winner. 3. In the good old days. 4. Outstanding poultry project. 5. U. P. Scholarship winner and state swine champion. 6. Our leader. 7. Clothing judging team. 8. Homeward bound. 9. Dairy project.





## RICE



1. Prize colt. 2. Conservation. 3. Van Horn. 4. Oat champ. 5. Duane and calves. 6. Cultivation corn. 7. County fair. 8. Best groomed. 9. 4-Hers on parade. 10. Baking champion. 11. County champions. 12. Best groomed boy. 13. Champion. 14. Here they come. 15. Champs. 16. Watch them grow. 17. Round-up. 18. Plowing. 19. County fair parade. 20. Winners. 21. Clifford and his sheep.



RILEY



1. Fred Talbot. 2. Helen Stagg. 3. Richard Endacott. 4. Virginia Velthoen. 5. Roy Currie Jr. 6. Kenneth Parsons. 7. Robert Bergsten. 8. Martha Wreath. 9. Robert Dresser. 10. Cleo Fear. 11. Helen Holt. 12. George Wreath. 13. Dorothy Stagg. 14. Billy Griffing. 15. Ruth Niemoeller. 16. Home economics judging team. 17. Clede Rundquist. 18. Jualneda Romine. 19. Junior Friedrich. 20. Eugenia Currie.



# NEOSHO



1. Round-up delegation. 2. At camp. 3. Old swimming hole. 4. Champion demonstration team. 5. Home economics champion. 6. Holstein winners. 7. Style champs. 8. Flag raising ceremonies. 9. Judging team. 10. County delegation at Hutchinson.







Pd.

## STAFFORD



1. Kieth and Jerry. 2. Margaret Kendall. 3. Nadine Shryock. 4. Marie Tuckwood. 5. Beef champs. 6. Foods by Nadine Shryock. 7. Round-up. 8. Wendell Veatch. 9. Frieda McNickle. 10. Maurice Frances. 11. Jack Cornwell. 12. Vern Thompson. 13. Steward Brock. 14. Helen Radke. 15. Lois Belle Smith. 16. Dale Hildreth. 17. Outstanding. 18. County news writing champ. 19, 20, and 21. Camp Carlisle. 22. Whip-poor-will club.





# LYON



1. Margaret McColm. 2. Kenneth Johnson. 3. Harry Edwards. 4. Ruth Pendegraft. 5. La Vonme Stedman. 6. Howard Hunter. 7. Betty Brown. 8. Helen D. Jenkins. 9. Vesta Stolfus. 10. Outstanding Member.





82

## JOHNSON



1. Canning Champion. 2. Livestock Judging Team. 3. News Writing Winner. 4. Demonstration Team. 5. Economics Champion. 6. Style Champion. 7. Farm Account Winner. 8. Livestock Judging Team. 9. Livestock Judging Team. 10. Chicago Trip Winner. 11. Conservation Champ. 12. Best Groomed Girl. 13. Round-up Delegation. 14. Round-up Delegation. 15. Health Champion. 16. Food Preservation. 17. Health Champion.





# CRAWFORD



1. Round-up. 2. After Dinner. 3. Officers at 4-H Camp. 4. Rest. 5. Lloyd and Paul. 6. Girls in Style Review. 7. Camp Delegation. 8. Girls at State Fair. 9. Style Review Champion. 10. Conservation Work. 11. Health Demonstration Team. 12. Achievement Day Winners. 13. Willis and his Brown Swiss. 14. Outstanding campers.

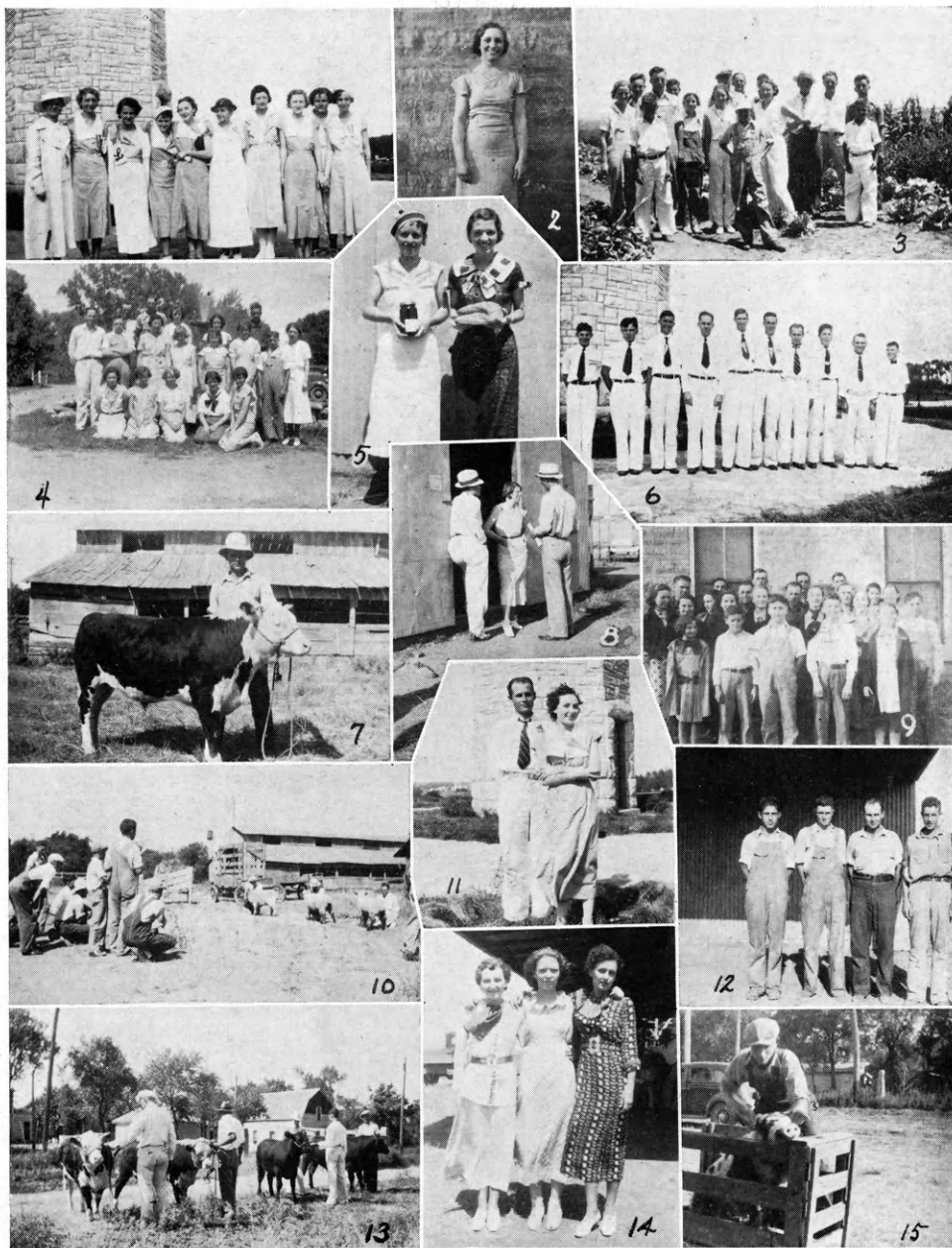






## RUSSELL

T21,



1. Round-up. 2. County Champ. Reporter. 3. Tour. 4. Camp. 5. Good Cooks. 6. Health camp.  
 7. County livestock champ. 8. Achievement judges. 9. Homeview club 10. Sheep judging contest.  
 11. Leaders. 12. County livestock judges. 13. Judging contest. 14. Clothing judging team.  
 15. First prize gilt.

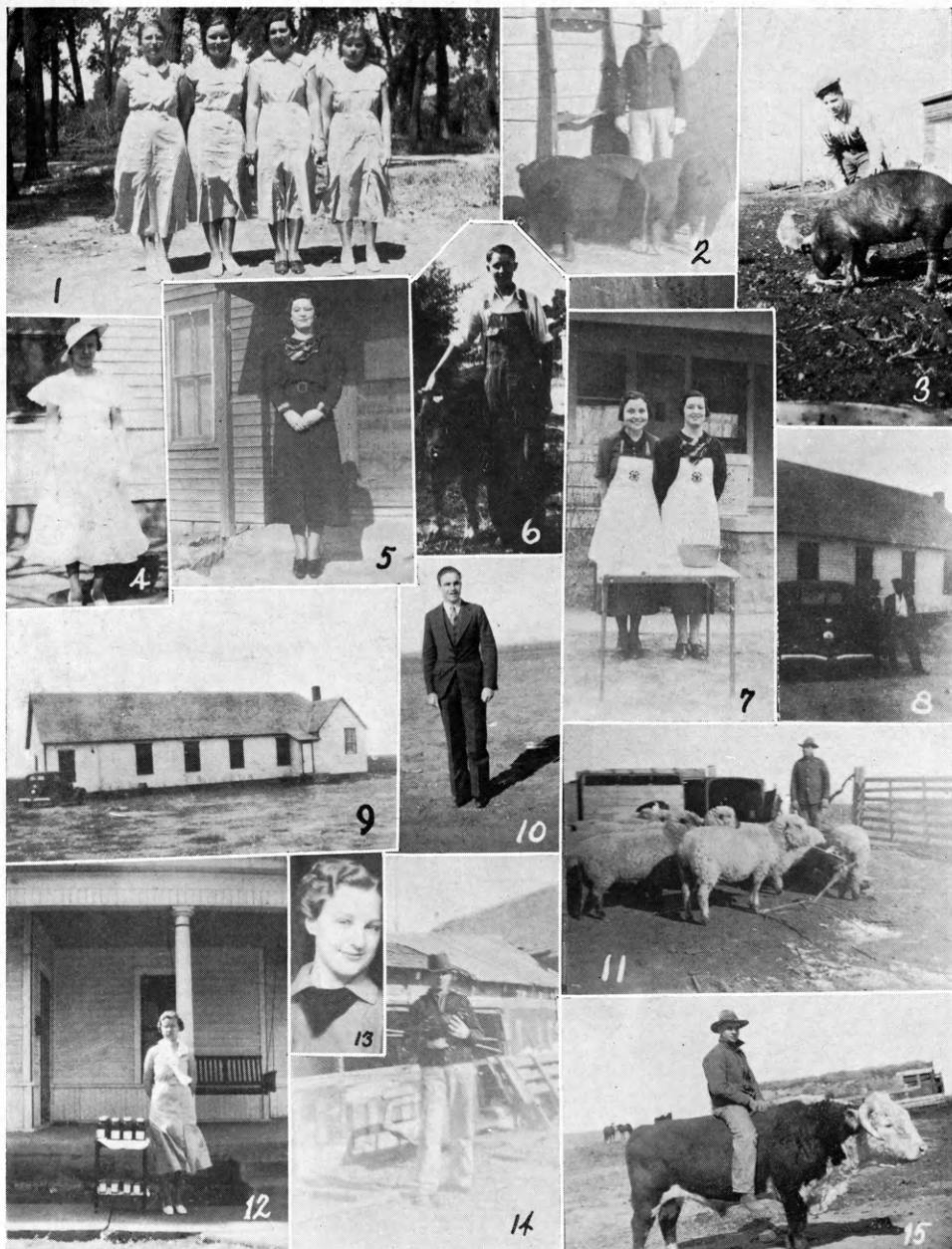






Dol

## ELLIS



1. Demonstration team. 2. County Swine Champ. 3. Ward Moore. 4. Scholarship winner. 5. Beulah Mae. 6. D. Joy. 7. Health demonstration team. 8. Leaders. 9. Club house. 10. Best groomed boy. 11. Livestock Champ. 12. County Canning Champ. 13. Foods Champ. 14. Poultry Champ. 15. Lester Hinrickson.

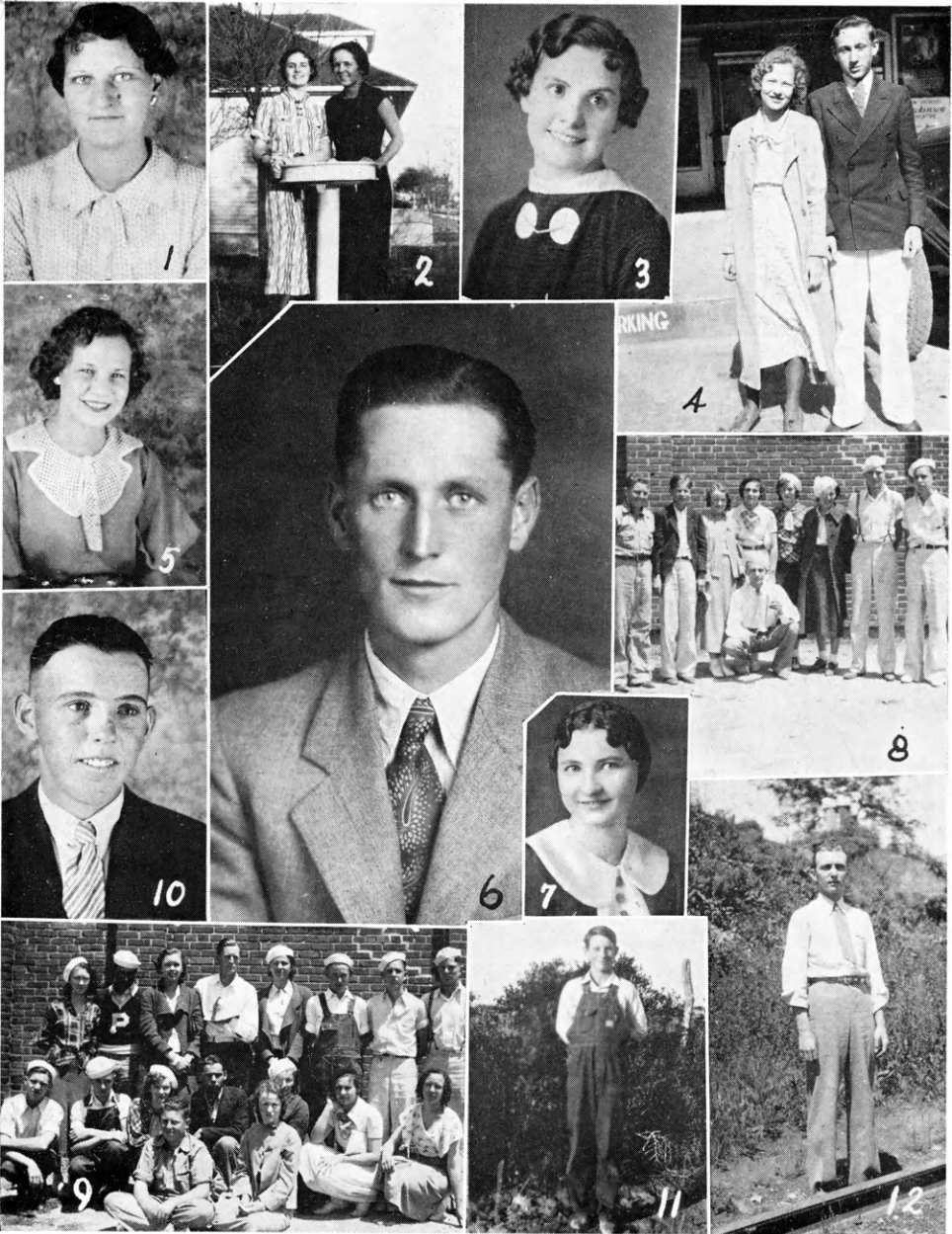


# EDWARDS



1. Camp. 2. Winners. 3. Live Wire bakers. 4. Demonstrators. 5. Coop. Champ. 6. Mrs. Behukie. 7. Health Champs. 8. Crops. 9. State Showman. 10. Round-up. 11. Dairy champ. 12. Clothing Champ. 13. Style. 14. Canning Champ. 15. Music. 16. Congress delegate. 17. Beef Champ. 18. Eslinger. 19. Mrs. Esbiger. 20. Grain Judges. 21. Leaders. 22. Pig Champ. 23. American Royal Delegates. 24. Poultry Champ.

# HASKELL



1. Canning Champ. 2. Demonstrators. 3. Home Economics Champ. 4. Health Champs. 5. Chicago trip. 6. Chicago trip. 7. Co-op winner. 8. County chorus. Model meeting group. 10. Wheat Champ. 11. Poultry Champ. 12. County Agent.



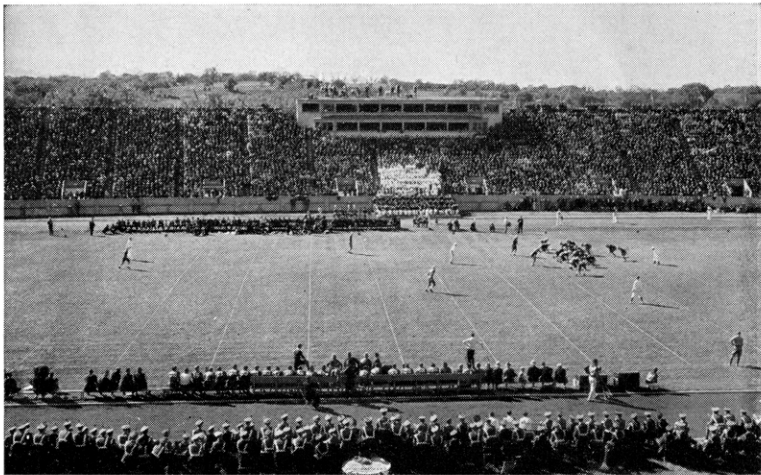
# MITCHELL

Td.



1. Reporter. 2. Project. 3. U. P. Scholarship and Grain Winner. 4. Style Champ. 5. At the Fair. 6. Home Economics Champ. 7. Health Champ. 8. Best-groomed. 9. Foods Champ. 10. County fair. 11. State Fair delegation. 12. Winning Garments the International. 13. Coop Champ. 14. Coop. Champ. 15. Model meeting. 16. At the county fair. 17. Judging. 18. Mildred Metcalf. 19. Viola Adams. 20. Volunteer oats.









ADVERTISERS



## *The World's Largest Store---*

*is as near to you as your own mail box*

When you shop by mail at Sears you make your selections at home at your own convenience. It is as simple and easy as writing your name. Ordering by mail gives you a selection of over 48,000 items. The best quality merchandise—laboratory selected and tested. A saving is assured, and your satisfaction guaranteed.

*Write For Catalogs or Information*

# **SEARS, ROEBUCK AND CO.**

**Kansas City**

"Say, Joe Wetta is not as big a fool as he used to be."

"Is he getting wiser?"

"No—thinner."

Davies: "Boy, Oh Boy! That was some blond with you last night. Where did you get her?"

Spencer: "Dunno, I just opened my billfold and there she was."

Marje: "I hear you're friendly with Olie."

Rufener: "Nonsense! We're married."

Margaret Glass: "I'll never ask another man to marry me as long as I live."

Florence Phillips: "Refused again, eh!"

Margaret: "No, accepted."

- A Toast
- To Mighty Senior's
- May You Always Enjoy the Best of Living.

## Allis Hotel

WICHITA, KANSAS

Barney L. Allis  
President

Frank Duggins  
Res. Mgr.

With a—

## JOHN DEERE TRACTOR

You Can Save

From \$1.00 to \$2.00 per day  
in fuel costs alone!

## John Deere Plow Company

KANSAS CITY, MO.

# Coleman Appliances

## for BETTER HOMES and BETTER LIVING

Coleman Gas-Pressure Appliances bring to rural homes everywhere the latest modern conveniences for better cooking, better lighting, easier ironing, better living generally.

### Coleman Self-Heating Iron

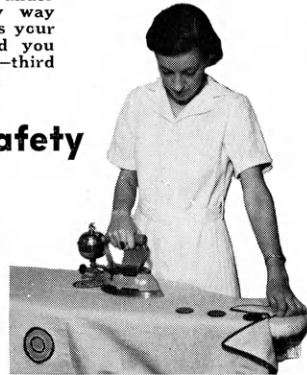
Can be used everywhere . . . indoors or out . . . wherever you can be most comfortable. No carrying of iron to and from stove. You never stop to change irons. It has no cords or tubes. It's ready in a jiffy. Lights instantly . . . no preheating.

The tapered ironing edge slips easily into pleats, tucks and under buttons. In every way the Coleman makes your ironing easier and you can do it in one-third less time.



### Coleman Safety Range

You'll enjoy better cooked foods every day on this beautiful new range. It lights instantly—like city gas. Makes and burns its own gas from ordinary lead-free gasoline. Produces a clean, intense flame. Improves appearance of any kitchen. Attractive models for every need to suit every purse.



### Coleman Lanterns

The finest out-door light made! Just the light needed for general farm use. Always ready any night, on any job, in any weather. Produce up to 300 candlepower steady-shining brilliance. Wind, rain and insect-proof. Sturdily built to give years of lighting service. Kerosene and Gasoline models.



### Coleman Pressure Lamps

Better light from these attractive Coleman lamps protects your sight. Produce up to 300 candlepower of clear, steady, eye-saving brilliance. Plenty of this "live" light in your home is your best insurance for eye-health. Poor light injures eyes. Protect them with the soft, mellow, natural light that a Coleman Lamp provides. Gasoline and Kerosene models.

Write for Free Descriptive Literature about the Coleman Appliances or see your local Coleman Dealer.

## THE COLEMAN LAMP and STOVE COMPANY

Wichita, Kans.; Chicago, Ill.; Philadelphia, Pa.; Los Angeles, Calif.; Toronto, Ontario, Canada.



# SAVOY HOTEL

9th & Central, Kansas City, Missouri

**Assisting All Possible in the Promotion of 4-H Clubs Interests**

Special rates for American Royal week. 75c per person per night for a room with bath occupied by two persons. 60c per person per night for room with bath occupied by four persons—good beds, no cots.

**You Will Enjoy Real Hospitality at the Savoy**

**These Rates Are Special to 4-H Groups Only**

The Editor and Business Manager wish to express their appreciation to those business firms that have taken advertisements, and also to the counties that have taken pages in this year's book. We also want to thank the members of the Staff who have helped to make this book a success.

**YOU**  
are making a success of your  
**4-H Club work**

**Why Not Combine a Thorough  
Business Education.**

50 years of experience in the  
successful preparation of young  
people for business.

**STRICKLER'S**

**Topeka Business College**

111 East 8th Ave.,

**TOPEKA, KANSAS.**



# HOTEL COMMONWEALTH

400 Rooms With Bath — Radio  
\$2.00 AND UP



*Popular Priced Coffee Shop*

*Garage Adjoins Hotel*

KANSAS CITY, MO.

Broadway at 12th Street

*We are happy to list in our accomplishments the fact that we have always sponsored and promoted 4-H Club Work.*

**Boys and Girls—We Believe  
in You**

**PRODUCERS COMMISSION  
ASSOCIATION**

*Farmer Owned and  
Controlled*

St. Joseph, Mo.      Kansas City, Mo.  
Member of the National Live Stock  
Marketing Association

Mr. M. H. Coe: (To newly hired typists). "Now I hope you thoroughly understand the importance of punctuation?"

Laura Ratliff: "Oh, yes, indeed, I always get to work on time."

Monroe Coleman: "I'm getting a new siren for my car."

Laura Jo Skillin: "Darling, does that mean we're through?"

Professor: "Take this sentence, 'Let the cow be taken out of the lot.' What mood?"

Alvin Mistler: "The cow."

Compliments of

*7dy 9*  
NATIONAL Bellas Hess, Inc.

New York City and Kansas City, Mo.



*Style Specialists by Mail Since 1888*

We welcome your patronage, and cordially invite you to pay us a personal visit



The Collegiate's Preference in Wichita

Cordial—Comfortable—Convenient

350  
ROOMS

Single: \$2.50, \$3.00, \$3.50, \$4.00

Double: \$3.50, \$4.00, \$5.00, \$6.00

A Few Rooms Without Bath

IN THE BUSINESS DISTRICT

Convenient to everything, close  
to the bus and railroad lines.

ABSOLUTELY FIREPROOF



*cut  
returned  
June 1, 193*

*70  
cut return  
June 1, 193*

72 ✓

## WINNERS

● The champion's victory is the result of steady preparation, intelligent coaching and the inspired desire to win. Whether it's in an interscholastic track meet or yearbook contest the victor is proclaimed in the judge's decision. Yearbooks produced in the Yearbook Design Department of the Capper Engraving Company have been consistent winners of highest awards by the National Scholastic Press Association. From the crack of the starter's gun in the Fall to the lunge at the finishing tape in the Spring your yearbook will receive the finest in service and design when produced by

# YEARBOOK · DESIGN

DEPARTMENT

● OF CAPPER  
ENGRAVING CO  
T O P E K A



12

*It's*

Comfortable— in spacious  
guest rooms.

Convenient— in location  
next door to  
everything in  
downtown  
Kansas City

Rooms With Bath \$2.00 Up

at the

## Hotel Baltimore

Thos. C. Bourke, Mgr.  
KANSAS CITY, MO.

## FINANCIAL SUCCESS

Financial Success is dependent upon the ability to save.

Food for the average American family requires the expenditure of from 25% to 40% of the gross income. Home Canning greatly reduces the amount of money spent for food—thus permitting the saving of a considerable sum of money.

The use of Kerr "Self-Sealing" Mason Jars increases this saving because they eliminate mold and spoilage.

Write to Kerr for complete information on canning by the Pressure Cooker, Hot Water Bath, Oven and Open Kettle Methods.



America's  
Favorites

**KERR GLASS MFG. CORP.**  
SAND SPRINGS, OKLAHOMA

"I am a son of the soil!" shouted Lester Zerbe the park orator.

"Yes, and I'm sorry for you," exclaimed Karl Shoemaker, "for I see you have your father on your hands."

"Well, Harvey, how did you like the first day of school?"

"It was rather good but there was a man in front of the class who kept spoiling the fun."

"Does your wife obey you?" asked Mr. Schoth.

Mr. Coe: "I'll say she does! Ten years ago, when we were married, I told her to run the house just as she pleased. And she has!"

Earl Parsons: "How was it that the lecturer didn't come and give his talk on self-management?"

Bob Latta: "His manager cancelled the date."

## BINDER TWINE AND ROPE!

MADE BY FREE, FULLY-  
PAID AMERICAN LABOR

Are Most Dependable for the  
Uses of the

AMERICAN FARMER

Ask For

Blue Heart Manila Rope,  
Red Heart Sisal Rope,  
Star Brand Binder Twine

Manufactured By

**The Hooven & Allison Co.,**

NORTH KANSAS CITY, MO.,  
XENIA, OHIO.



# REAL HOSPITALITY WHEN YOU STOP AT HOTEL PRESIDENT

400 ROOMS

WITH BATH

from \$2.00

There's a friendly greeting awaiting you the moment you enter the President. Every comfort and luxury at low cost. Finest of food in the Coffee Shop or the Walnut Room. Garage directly opposite entrance.

PERCY TYRRELL, Managing Director

Baltimore at 14th St.

Just Out Of The Noise Zone

## KANSAS CITY, MO.

Compliments of the

### KANSAS LIVESTOCK ASSOCIATION

With All Good Wishes to

### 4-H CLUB MEMBERS

W. H. Burke, Little River, President

J. H. Mercer, Topeka, Sec'y.-Treas.

"That coming-out party of your daughter was a great success, Mr. Gray."

"OUT is right. I am out \$1000, on account of it, Majory has been out every night since."

"What pupil can tell me what a but-tress is?" asked Leona, while practice teaching.

"Oh, I know," said Joe. "It's a nanny goat."

Mail clerk: "This letter is too heavy. You'll have to put another stamp on it."

Lebert Shultz: "That won't make it any lighter, will it."

Alvin Mistler: "You remind me of a magazine cover."

Dorine: "That's because you see me only once a month?"





**EYES + LIGHT = SIGHT**



## **HIS EYE TASKS WERE EASY**

The cave man who played hide-and-seek with dinosaurs and other prehistoric animals had at least one advantage over most of us living today. In so far as can be learned, his eyes usually remained keen and clear until a ripe old age. Perhaps that is because he did no reading or other close eye work.

The observance of three simple rules will do much to prevent abuse of the eyes. The first is to refuse to read fine print or look at small objects for long periods at a time. The second is to have the eyes examined regularly by a competent eyesight specialist. The third is to make sure that there is ample lighting wherever close eyework is done. Then we will at least compensate in some measure for the burdens imposed by our present-day civilization.

**KANSAS CITY POWER & LIGHT CO.**

**KANSAS CITY, MISSOURI**

1886  
Founded

# OUR GOLDEN ANNIVERSARY

1936  
Leaders

We offer you the results of our 50 years of experience in the live stock commission business.

CATTLE — HOGS — SHEEP

## JOHN CLAY & COMPANY

Live Stock Commission

STOCK YARDS KANSAS CITY, MO.

We also have our own offices at Chicago, Omaha, St. Joseph, St. Louis, Ft. Worth, Denver, Sioux City, St. Paul, Ogden.

Jack Knappenberger: "I am a little stiff from bowling."

Coach: "I don't care where you're from, get busy out on the track."

Geraldine Cook: "I want to try some truly kissproof lipstick."

Clerk: "Try this. It's a cross between an onion and bichloride of mercury."

Frank Jordan: "I suppose you dance."

Grace Burson: "Oh, yes, I love to."

Frank Jordan: "Great, that's betterin dancing."

Vernon Splitter: "Where is the best place to hold the World's Fair?"

Wilton Thomas: "Around the waist."

If The Calf Ever Gets Thirsty—

ask your dealer for a Red Bottom Stock Tank.



And if you are about to have to throw wheat on the ground, we can spare a Red Top Bin.

Be Sure To Specify Columbian  
**COLUMBIAN STEEL TANK  
COMPANY**

Kansas City - - - - - Missouri

Who's



Whoot

*Indice  
Contact.*



*cut  
returned  
June 1, 1936.*

NO COVER CHARGE

Bud Tracy and His Orchestra

NO MINIMUM CHARGE

Good Food and Good Music—A Gay Time You Will Enjoy  
at the

**BALTIMORE BUFFET SUPPER CLUB**

Hotel Baltimore, 11th Street Entrance

KANSAS CITY, MO.

20

*PD  
✓*

Compliments of

**CAPPER PRINTING COMPANY**



ATTEND

# THE KANSAS NATIONAL 4-H CLUB FAT STOCK SHOW

NOVEMBER 10 TO 14, 1936

*"The Fat Stock Show Devoted Exclusively to All the  
4-H Clubs of Kansas"*

And Visit

## THE KANSAS LIVESTOCK MARKET THE WICHITA UNION STOCK YARDS

*"The Market That Satisfies"*

### The LIBERTY LIFE Insurance Company of Kansas

TOPEKA

A wife sometimes objects to  
Life Insurance—

*A widow never.*

Mr. Johnson—"Say, porter, did you find a big roll of money under my pillow?"

Porter—"Yassuh, I did, suh, and I thanks you, suh, very much, suh."

His wife lay on her death bed. She pleaded. "John, I want you to make me one promise. Will you ride in the same car with mother to my funeral?"

He sighed. "O.K., but it's going to spoil my whole day!"

Otto Spencer, (over phone)—"Is this the lady who washes?"

Helen—"Indeed! I should say not!"

Otto—"Why, you dirty thing!"

Rowenna—"I want to try some truly kiss proof lipstick."

Milt Kohrs—"Try this! It's a cross between an onion and bichloride of mercury."



## DEAD ANIMALS

*Removed free of charge*

**Call us collect your nearest  
phone**

**Wichita . . . . . 4-43-61**  
**Haviland, Ks. . . . . 103**  
**Anthony . . . . . 92**  
**Arkansas City . . . . . 1246**  
**Hutchinson . . . . . 1122**  
**Emporia . . . . . 130R5**

**Manufacturers of W-D  
Meat Scraps**

**The Wichita Desiccating  
Company**

**WICHITA, KANSAS**

Joe Wetta, 4-H Radio Newsboy—  
 "Calling Car 63,—Calling Car 63—  
 there's a couple of suspicious looking  
 gentlemen here in the studio!"

Scotch Gent—My lad, are you to be  
 my caddie?

Charles Beer—Yes, sir.

S. Gent—And how are you at finding  
 lost balls?

Beer—Very good, sir?

S. Gent—Weel, look around and find  
 one so we can start the game.

Teacher—How many bones have you  
 in your body, Roth?

Roth—About 25,000.

Teacher—That's impossible.

Roth—No, its the truth. I ate sardines  
 for lunch.

Vernal Roth: "I drove so fast that the  
 trees appeared like a fence."

Edwin Schuetz: "I drove so fast that  
 the milestones made a stone wall."

Clayton Buster: "I went so fast that  
 I could see the number on the back of  
 my car."

Frank Jordan: "I'm through, sir."

Boss: "Thought what?"

Frank: "Through with the errand."

Boss: "What errand?"

Frank: "I don't remember, sir."

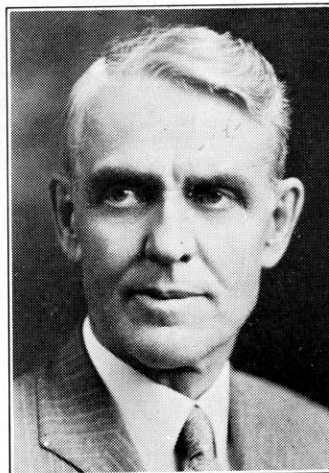
Boss: "Then do it again."

Writer—"Here's the manuscript I of-  
 fered you last year."

Bob Spencer, Editor: "Say what's the  
 idea of bringing this thing back when  
 I rejected it once?"

Writer—"You've had a years experi-  
 ence since then."

## GREETINGS



**To the Members of the  
4-H Clubs With the Best  
Wishes of**

**ARTHUR CAPPER**





## AMERICAN TRADITION DEMANDS THE BEST IN MEATS

And for over 108 years we have supplied the epicures of two continents with meats and meat products of surpassing quality. Morrell Pride Hams and Bacon are famous for their delicate flavor because they are fully cured.

### JOHN MORRELL & Co.

GENERAL OFFICE: OTTUMWA, IA.

Packing Plants: Ottumwa, Ia.; Sioux Falls, S. D.; Topeka, Kansas.

1936

KANSAS FREE FAIR  
4-H CLUB SHOW

TOPEKA

SEPT. 13 TO 19

MORE  
PREMIUM  
MONEY  
OFFERED  
THAN LAST  
YEAR

*Kansas Greatest  
Out Door Event*

MAURICE W. JENCKS, Mgr.

Jimmie Williams: "Say, Miss Blythe's niece is rather good looking."

Dean Abrahams: "Don't say knees is, say knees are."

Emmett Hannawald: "According to Will Rogers, what the youth of this country needs is narrower pants and broader ideas."

Jess Cooper: "Yes, that's right, and according to Miss Hilyard, what the girls need is lower skirts and higher ideals."

Mistler: "You know Ruby Corr has a canary at home, and she said to the servant, 'Has the canary had its bath yet?'"

Clare Porter: "What did the servant say?"

Mistler: "Yes, ma'am, you can come in now."



Vernal Roth: "The other day we were on a march in R.O.T.C. and Major Moreen was riding a horse. He didn't stop to establish a headquarters, so he sent word back to Colonel Sullivan that he had headquarters established in the saddle."

Earl Parsons: "What did Colonel Sullivan say?"

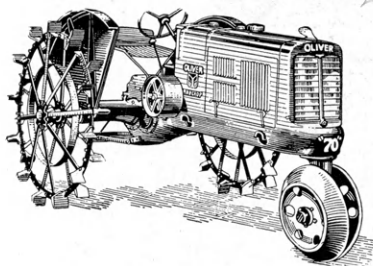
Vernal Roth: "He told Alvin Mistler that Moreen had his headquarters where his hind quarters should be."

During an intense love scene in the movies, when the hero was doing his stuff, Florence Phillips said to Ed McColm.

Why is it that you never make love to me like that?

Say, do you know the salary that guy gets for doing that?

It It's an OLIVER It's OK



The OLIVER "70" is a 6

Built by the Founders of the Tractor Industry

OLIVER TRACTORS ARE KNOWN  
THE WORLD OVER FOR  
SURPLUS POWER,  
ECONOMY, DURABILITY

OLIVER FARM EQUIPMENT  
SALES COMPANY

KANSAS CITY, MISSOURI

## I Stand For Four Big H's

Here they are:

**H**—Stands for Horsepower, the thing that makes the wheels of industry go 'round and 'round. I bring it to the farm, too. And it makes possible the doing of more things at a greater profit.

**H**—Stands for the Help which I can give to the farm housewife by helping to keep the place clean, heating water, cooking meals and providing plenty of well-pumped water to make the farm home as modern as the city one.

**H**—Stands for the Health that comes to the farm home when I refrigerate the food properly, and contribute all the health-giving factors that come from cleanliness and convenience.

**H**—Stands for the Happiness that goes along with my service whenever I come to the home.

Look me up—ask the local Kansas Gas and Electric Company office about what electricity can do on 'he farm.

Electricity  
is Cheap

KANSAS GAS & ELECTRIC COMPANY  
at your service

General Offices

Wichita, Kansas





# Autographs

