

Instant Crop Analysis By Flying Over A Field

210 @ 24.25
465 @ 24.25
523 @ 24.10
455 @ 24.00
462 @ 24.00
344 @ 23.30
380 @ 23.15
440 @ 23.15
540 @ 23.15
390 @ 23.15
320 @ 22.80
465 @ 22.40
330 @ 21.75

Aggriculture Department scien-
tists foresee amazing break-
throughs in agricultural practic-
es through application of re-
mote sensing techniques devel-
oped in conjunction with the
space program.

Some even see the develop-
ment as potentially of greater
impact on society than the de-
velopment of atomic energy
and the computer.

They described the adaptation
of the remote sensing tech-
niques, some already in use, in
terms at closed ses-
sions of a House Appropria-
tions subcommittee last month
and made some quick converts.

Among other things, they
said the techniques are being
used to identify accurately with-
in minutes, soil conditions and
moisture, crop yield, incidence
and severity of diseases simply
by flying the equipment over
the land.

Although now being used in
space, Dr. G. W. Irving Jr., ad-
ministrator of the Agricultural
Research Service, said that
now we are in operation from
satellite-type spacecraft, the
capabilities for securing vast
amounts of useful information
within extremely short periods
are almost limitless.

Dr. George L. Mehren, assist-
ant secretary of agriculture,
said "this is the greatest break-
through I have ever seen in
the field."

The remote sensing process
is a complicated one involving
photography, using infrared col-
or films, and various emissions
including infrared rays and ra-
dar.

Some of the complex instru-
mentation involved in sensing
is also being used for the Apo-
llo space program, but the Agri-
culture Department wants to
spend \$340,000 next year on re-
search to adapt the equipment
for its use.

Among the areas Mehren de-
scribed where it is useful are
detecting fires, tracking storms,
conducting crop censuses, keep-
ing track of past diseases, coun-
ting plans and mapping.

"I think more than anything
else, what it does is permit the
human being in any field, in
entomology, in plant pathology,
in plant nutrition, to see things
and to see them quickly that
you could never possibly have
seen before," he said.

In response to a question by
Rep. Odin Langen, R-Minn., Dr.
H. A. Rodenhiser, deputy ad-
ministrator of the research ser-
vice, said its current project
with the equipment is to iden-
tify the spectral characteristics
of different crop plants.

He said that is like determin-
ing a fingerprint which, once
identified, can be used to check
disease incidence, nutritional
activity and insect infestation.

GRASS

& GRAIN

13th year no. 14

June 6, 1967

'Bigger Share For Livestockman'

OMAHA — "It is a reasonable
conclusion that livestock produ-
cers and feeders are going to
receive a larger share of the
consumer's dollar spent for
meat," a leading livestock asso-
ciation executive said here.

Charles Phelps, Hastings,
Iowa, president of the National
Livestock Feeders Association,
based his observations on sev-
eral factors and industry ef-
forts:

- A determination on the
part of both feeders and grow-
ers of livestock to expedite a
self-help program aimed at re-
duced production of live meat
so the supply is ample but not
in excess of demand at favora-
ble and profitable prices;

- An inclination on the part
of livestock feeders to show
greater concern for the price of
live beef, pork and lamb, and
their insistence that prices they
receive be commensurate with
other segments of the economy;
and

- What appears to be realiza-
tion on the part of other seg-
ments of the meat industry and
perhaps many consumers that
the livestock feeders and grow-
ers must be justly paid for high
quality and abundant food so
they can meet costs of produc-
tion and make a reasonable re-
turn for labor and investment.

"Efforts are already under-
way to reduce imports of meat
products which add to our total
supply as well as under-sell our
market and compete unfairly
with domestic production,"
Phelps added. "Progress was
made in 1964 when the first
import legislation was passed,"
the national president explain-
ed, "but there is a need to tight-
en the restrictions beyond the
present law."

"With some reduction in im-
ports and cooperation in reduc-
ing domestic supply," Phelps
continued, "the industry has a
good chance to achieve its ne-
cessary goals."

To the question of possible ef-
fects of the industry's program
on retail meat prices, Phelps
acknowledged it is difficult to
answer positively.

"If there is currently some
slack in the wholesale-retail
price margins, the higher levels
for live meat may have little if
any impact on retail prices," he
observed. "On the other hand,"
the livestock dealer continued,
"if there is no slack, some ad-
justment in meat prices at re-
tail may occur."

In conclusion, the Iowa feeder
expressed the faith that con-
sumers do not expect feeders
and growers to supply their
food needs while operating at a
loss that might eventually pro-
duce shortages and much high-
er prices in the future.

Phelps believes consumers
surely do not object to reason-
able price figures for live meat
so they can continue to enjoy
an ample supply of beef, pork,
and lamb.

Salina
RVEST

Only

11:00 a.m. Cuth-
r they are consid-

230 @ 23.10
229 @ 23.10
246 @ 23.10
265 @ 17.90
229 @ 23.10
251 @ 23.10
212 @ 23.10
670 @ 16.80
250 @ 23.10
291 @ 22.00
221 @ 23.20
237 @ 23.10
231 @ 23.40
220 @ 23.30
243 @ 23.00
274 @ 22.10
241 @ 23.20
208 @ 23.30
430 @ 18.00
430 @ 18.00
455 @ 17.40
550 @ 17.40
210 @ 23.40
224 @ 23.40
500 @ 17.70
256 @ 22.70
@ 14.00
@ 16.00

anchers
SION CO.
S 40
-0211
censed

Riley County Coordinates Nine Rural Fire Districts

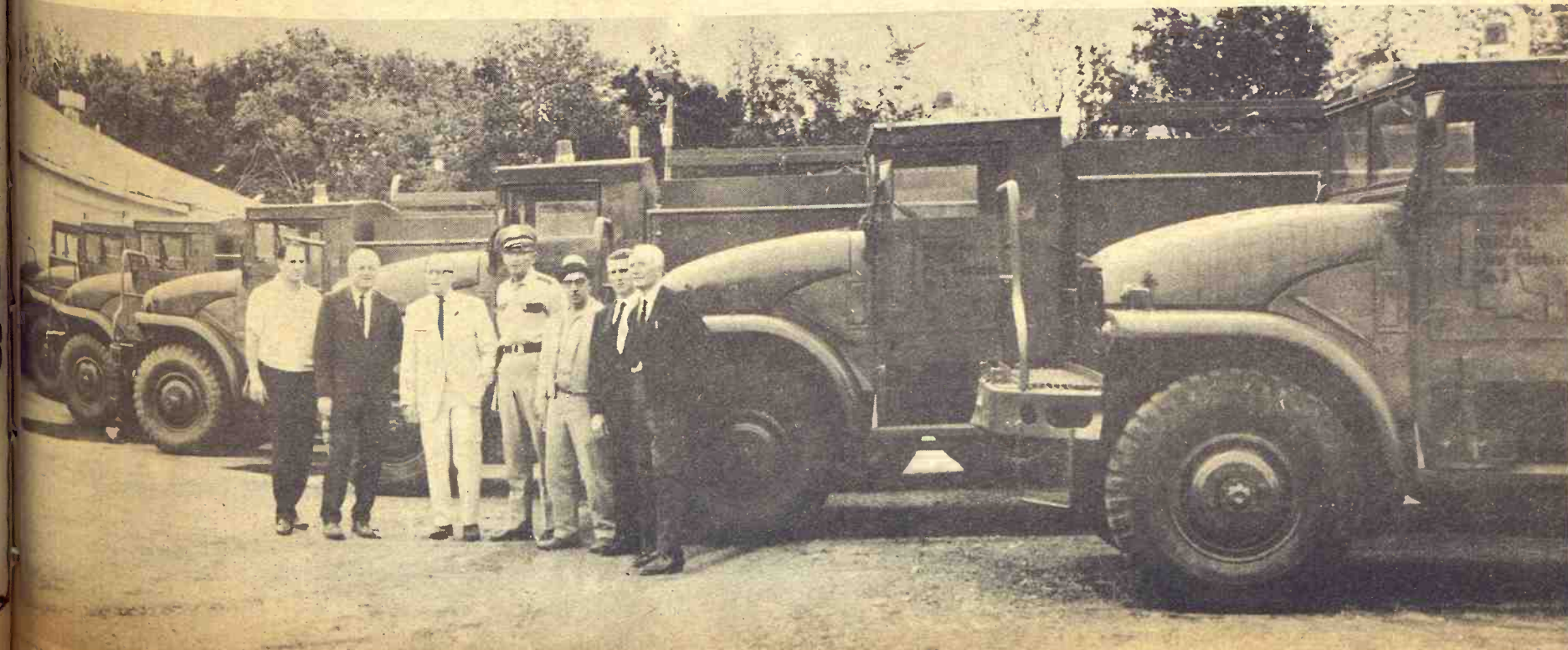
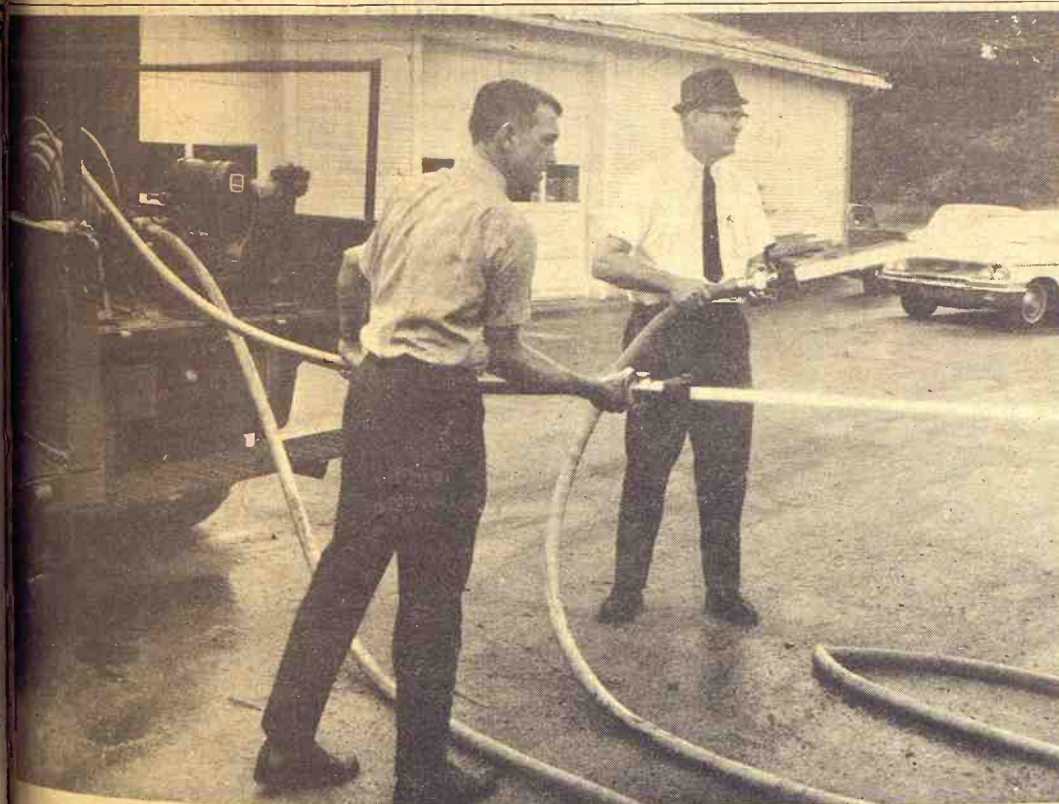
Rural fire protection in Kansas, once based on faith, close
neighbors, and lots of buckets, has improved enormously in re-
cent years with 255 rural fire districts organized in 103 coun-
ties.

While fire protection on the farm is still difficult and hair-
breadth, the development of districts does indicate that there
is both organization and equipment for the purpose.

One of the more completely organized efforts is in Riley
County, which has hired a county fire chief to coordinate nine
rural fire districts. Last week, fire-fighting equipment was dis-
tributed to nine districts after being painted and equipped at
county shops.

Below, Riley County firechief Del Petty, state forester Har-
old Gallaher, Riley county commissioner Cletus Grace, Ogden
policechief Gus Berry, volunteer firechief in a Tuttle Lake area
Fred Ernst, and commissioners George Rader and Ivan Sand
stand before the equipment.

At right Randy Biswell, assistant state forester, and Bob
Newsome, Riley County extension director, demonstrate some
equipment.



World Cattle Count At 1.14 Billion

WASHINGTON — A new record was set at the beginning of 1967 when world cattle numbers reached 1.14 billion head — up 1 percent from the 1956-60 average level.

Numbers increased in all geographic regions, according to Foreign Agriculture, a publica-

tion of the U.S. Department of Agriculture.

Moderate increases occurred in North America, South America, Western Europe, Asia, and Africa. The largest gains were recorded in the USSR, Eastern Europe and Oceania.

Numbers in North America

showed little change from a year earlier. Moderate declines in the United States and Canada were offset by a slight increase in Central America. The 1 percent increase in U.S. beef cattle numbers was more than offset by the 5 percent reduction in dairy cattle numbers.

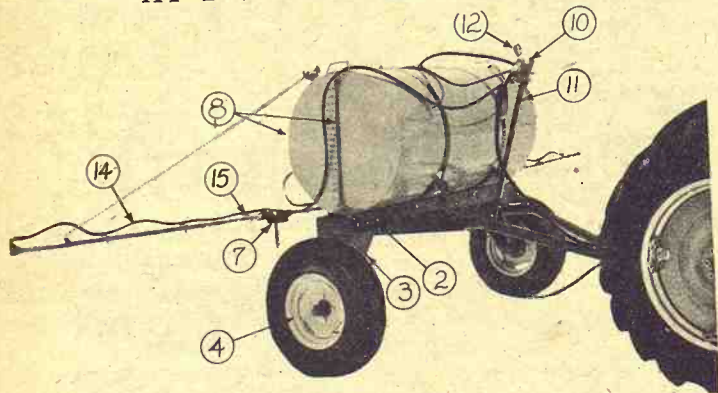
Cattle numbers in Eastern Europe were up 2 percent from 1966 and 15 percent from the 1956-60 average. Increased cattle numbers in some areas have led to surpluses of dairy products.

Continued low prices for dairy products could limit the expansion of cattle numbers in many European areas, since producers need favorable returns from both milk and meat in order to make the cattle enterprise profitable.

A total of 97 million head of cattle was reported in the USSR — up 4 percent from the 1956-60 average.

At least part of the rapid growth in cattle numbers has been attributed to the greater emphasis on raising more cattle

FIELD SPRAYERS AT DISTRIBUTOR'S PRICES



CHECK THESE FEATURES:

- ADJUSTABLE FRAME
- 8-ROW WITH RUBBER HOSE BOOMS TO ADJUST ROW SPACING
- 230 GAL. EPOXY LINED TANK
- 8 ROLLER NITRESIST PUMP

NOW CHECK THE PRICE —

(List \$525) **Our Price \$335**

Why do we have such a low price on these sprayers? In the first place we are distributors of these sprayers, and we sell direct to farmers. This is our way of doing business — to save you money.

Buy At Distributor's Prices From

BRUNA IMPL. CO.
HANOVER IMPL. CO.

MARYSVILLE
HANOVER

GRASS & GRAIN

The Mid-Kansas news weekly. Published each Tuesday at 1207 Moro, (Box 1009) Manhattan, Kansas, 66502 by

AG PRESS

Dean Coughenour
E. R. Woodward

Second class postage paid at Manhattan, Kansas
Subscription: \$3 year
CIRCULATION 11,108



Foul Smell on the Neosho

The Kansas Fish & Game Commission took this picture of bloated, foul-smelling fish in the Neosho-Cottonwood river system at Emporia. The Fish & Game Commission says it is water pollution from cattle feedlot runoff that is killing the fish, and estimated the most recent loss at 400,000 fish.

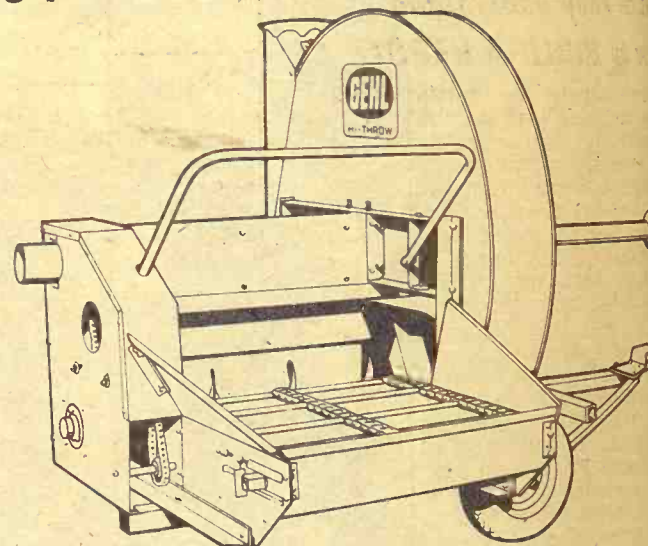
on the small private plots.

Cattle numbers in Russia increased substantially more in the private sector than in the socialized sector.

Another factor has been good feed supplies and favorable growing conditions, particularly in the last few years.

Numbers in Oceania were 3 percent in spite of heavy drought-induced slaughter in Australia in 1966. New Zealand — with the best pasture conditions in several years — showed a 6 percent increase in cattle numbers.

NEW! GEHL "HI-THROW" 54" BIG-CAPACITY BLOWER



The all new, 54-inch, 6-blade Gehl "Hi-Throw" blasts silage or haylage — to any silo height — at an unlimited capacity.

Low 20-inch hopper height and recessed wheel of the "Hi-Throw" virtually eliminates spillage — regardless of the unloading box you use.

- Direct PTO drive.
- Triple #67 Chain conveyor for positive feeding to 10" diameter auger.
- Hopper 20" high, 30" width (extends beyond fan housing).
- 6-Blade fan delivers full load to 9" blower pipe.

- Throw-out safety clutch for plug-free performance.
- Adjustable fan housing... any angle delivery.
- Rugged 10-gauge steel sides.
- Water intake opening.

Come in and see it today! Or call for a big-capacity demonstration on your farm. Financing available.



Make us Prove it with a Demonstration!

SABETHA
FLENTIE'S, INC.

HANOVER
HANOVER IMPL. CO.

PERRY
SEYLER FARM SUPPLY

GYPSUM
KUHN IMPL. CO.

ROSSVILLE
ROSSVILLE
TRUCK & TRACTOR

WATERVILLE
WATERVILLE MOTORS

LINN
KUHLMAN MOTOR CO.

MINNEAPOLIS
CHAPMAN IMPL. CO.



Mr. Rancher:

**EVERY SALE TO YOU
PUTS OUR
REPUTATION
ON THE LINE**

The really important part of a Naturich sale comes after it's made. That's when our product takes over — either performs or doesn't — and puts our reputation on the line.

**EXTRA-HIGH QUALITY — EXTRA-HIGH POTENCY
GOES INTO EVERY FORMULA!**

You can see this before you buy, because potency levels are guaranteed on the tag.

Put the quality of Naturich Formula Feeds to work for you, helping to protect your invested feed dollar.

NATURICH MILLS

Abilene Kansas

"A finer feed for every need"



**Fred Hall B
In Dodge C**

Fred Hall, once Kansas, is back pro in his old hometown City.

Hall, elected governor was a stormy figure in Republican politics the GOP primary Warren Shaw, who George Docking in her election. Ten his term as governor end, Hall resigned, a tenant governor, a Crish, who sat in nor's chair those fe pointed Hall to the preme Court.

Hall served a y bench, then went to first as a corpora and then as an ex noting a budding at Long Beach. H from that position never developed. Ha into practice in Be and ran, unsuccessful primary for U.S. Se losing to George M. Hall is 50 now, slowed. He suffer last year.

**Finance your
CATTLE OPER
where they un
how to BUILD**

Here's where t graze, and here's v money is to finan and farming oper Farmers and stock this 11-county area tral and North Cen sas discuss their problems with m know what the are.

If your operati times bog down fo an organized finan we invite you to your problem wi the nearby Produ dit Association m ces are for a solu There's no sh money with PCA payment is sched along with your plans. You pay fo of the money on actual days you

WATERVILLE



**MAKE A
WITH A PO**

Salina

Production Credit

730 N. 9th
Serving Lincoln, worth, Salina, Rice son Counties. Fiel Letourneaux, Salina Wilfred Elliott, Wh Curtis W. Syring, Residenc

Grass & Grain

0

I-THROW
BLOWER

GEHL

monstration!
HANOVER
OVER IMPL. CO.
GYPSUM
HN IMPL. CO.
WATERVILLE
RVILLE MOTORS
MINNEAPOLIS
MAN IMPL. CO.



Fred Hall Back In Dodge City

Fred Hall, once governor of Kansas, is back practicing law in his old hometown of Dodge City.

Hall, elected governor in 1954, was a stormy figure in state Republican politics, losing in the GOP primary in 1956 to Warren Shaw, who lost to George Docking in the November election. Ten days before his term as governor was to end, Hall resigned, and the lieutenant governor, John McCuish, who sat in the governor's chair those few days, appointed Hall to the State Supreme Court.

Hall served a year on the bench, then went to California, first as a corporation lawyer and then as an executive producing a budding worlds fair at Long Beach. Hall resigned from that position and the fair never developed. Hall then went into practice in Beverly Hills, and ran, unsuccessfully, in the primary for U.S. Senate in 1964, losing to George Murphy.

Hall is 50 now, and visibly aged. He suffered a stroke last year.

Finance your CATTLE OPERATION Where they understand how to BUILD A HERD!

Here's where the cattle graze, and here's where the money is to finance cattle and farming operations. Farmers and stockmen in this 11-county area of Central and North Central Kansas discuss their money problems with men who know what the problems are.

If your operations sometimes bog down for lack of an organized financial plan, we invite you to discuss your problem with one of the nearby Production Credit Association men. Changes are for a solution.

There's no shortage of money with PCA, and repayment is scheduled to go along with your marketing plans. You pay for the use of the money only for the actual days you use it.

Jewell	Republic	Washington
Mitchell	Cloud	
	Ottawa	
Lincoln	Saline	
Ellsworth		
Rice	McPherson	



MAKE A DATE WITH A PCA MAN



North Central Kansas
Production Credit Assn.

Salina
Production Credit Assn.
720 N. 9th
Serving Lincoln, Ottawa, Ellsworth, Saline, Rice and McPherson Counties.
Fieldmen: Lowell LeCompte, Salina, TA 7-5906; Wilfred Elliott, White City.
Dena W. Syring, mgr.
Residence — TA 5-0317

301 W. 7th
Serving Jewell, Republic, Washington, Mitchell and Cloud Counties.
Fieldman: Darwin Housholder, Courtland, Phone FE 5-2592.
James Ganson, mgr.
Office Phone CH 3-4164
Res. Phone CH 3-3597

Shawnee Milk OK's Merger Into Big Co-op

A giant milk cooperative that will include some 2400 members in Kansas, Missouri, Nebraska, and Iowa is being formed that will include many G&G area milk producers.

The Shawnee Milk Producers Assn. of Topeka voted last week to consolidate with the new dairy producers cooperative, Mid-America Dairymen Inc.

The Nemaha Cooperative Creamery Assn. of Sabetha and the Pure Milk Producers Assn. of Kansas City had earlier agreed to the union.

A fourth organization in the group is the St. Joseph (Mo.) Milk Producers Assn.

The groups are to merge July 1.

Current combined monthly milk production of the four groups is 55 million pounds. Their combined 1966 milk sales totaled \$35 million.

"The reasons for making this move are to give dairy farmers a stronger and more effective position in the market place and to develop maximum efficiency of operation," said Walter Lietz Jr. of Paxico, president of Shawnee Milk Producers.

"Dairy farmers have realized they must be represented by organizations that have the resources and are as financially strong as the people they deal with if they are to share in our nation's prosperous economy," he said.

The Shawnee association lists 274 members in counties in Northeastern Kansas. Members supply milk to processors in Topeka, Junction City, Council Grove, Emporia and Lawrence.

The Pure Milk unit at Kansas City has had 1100 members, and the Nemaha co-op about

the same, altho most of them have been producers of manufacturing milk rather than grade A.

Addington Grain Declared By Court To Be Abandoned

HUTCHINSON — Attorneys for the Addington Grain Co. and the Denver U.S. National Bank agreed last week to a court order in connection with last year's collapse of the William Addington grain empire.

The order, approved by District Judge James Rexroad, declared the Addington properties abandoned and waives an 18-month redemption period allowed the financially troubled firm.

The Denver bank initiated foreclosure proceedings last year. Under the court order, another lien-holder, the Trans-America Insurance Corp., has three months in which to redeem the mortgage. Otherwise, title is automatically transferred to the bank.

Addington, who once ran for the Republican nomination for governor of Kansas, still faces a five-count warrant in Reno County charging that he issued fraudulent warehouse receipts.

State grain inspectors said they found a shortage of 494,419 bushels of grain in Addington's Hutchinson elevator, valued at more than a half million dollars.

The Addington Grain elevator facilities at Hutchinson and Elkhart, Kans., were sold last Sep-

tember on court order. Civil judgements against Addington total more than \$2 million.

June 6, 1967

IN MANHATTAN, KANSAS
IN READING, KANSAS

frontier HYBRIDS



We Can Supply You With

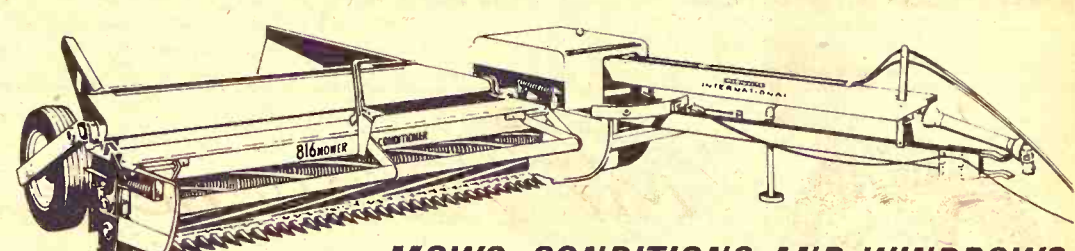
FRONTIER MILO 400C and 410E
FRONTIER HI-DAN 35 and 39
FORAGE SORGHUMS, Frontier S209 & S214

Flint Hills Feed & Grain

Manhattan Phone PR 8-5322

Reading Grain & Lumber Co.

Reading Phone AN 9-3842



MOWS, CONDITIONS AND WINDROWS
IN ONE LOW-COST OPERATION,
AND USES

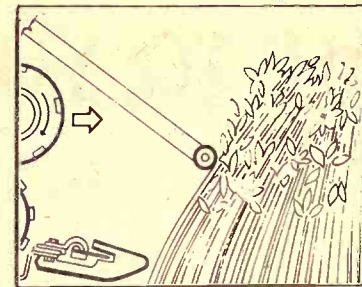
revolutionary flick-bar feeding system

New 816 Mower-Conditioner
eliminates troublesome feeding reel

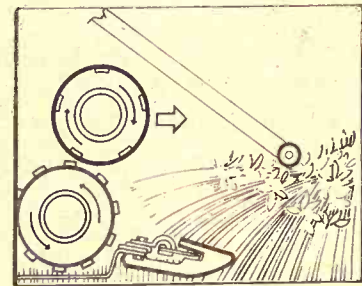
Simplified design, with the special new IH flick-bar system means fewer moving parts . . . less to go wrong . . . less to fix.

- One-trip operation saves time and money; requires fewer machines, less fuel
 - Famous IH Balanced-Head mowing action
 - Efficient rubber and steel conditioning rolls
 - Lays down swath or windrow
 - Exclusive adjustable wheel for row crops
 - Available in 7 or 9-foot models
 - Smooth, super-quiet operation
- Come in and see this revolutionary tool

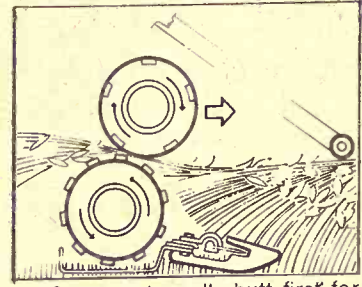
HOW THE FLICK-BAR OPERATES:



Flick-Bar positions crop for close uniform cutting at 1800 cycles per minute.



Crop flicks directly into spiraled rubber-to-steel rolls from integral mower.



Stems enter rolls butt first for full-length, tangle-free conditioning.

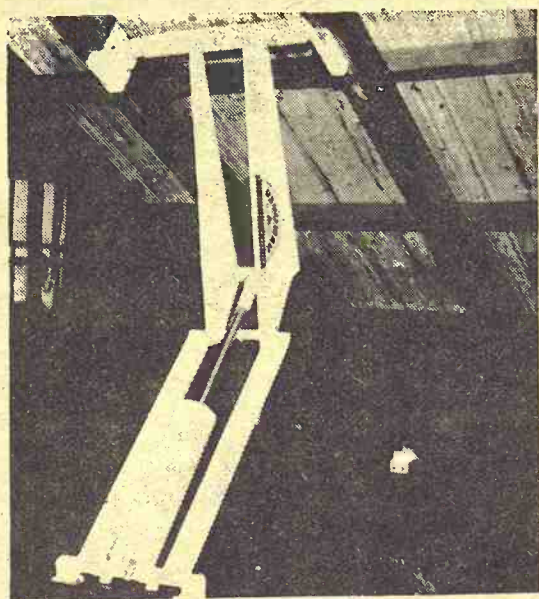
HERINGTON
Pioneer Service & Sales
MINNEAPOLIS
Chapman Impl. Co.
CLAY CENTER
Norquist's Inc.
ABILENE
Abilene Truck & Tractor

MARYSVILLE
Bruna Brothers
FALUN
Dauer Impl. Co.
HANOVER
Hanover Impl. Co.
LEONARDVILLE
Kendall Garage

WAKEFIELD
Auld Chevrolet
COUNCIL GROVE
Macha-Revere
BELLEVILLE
Chapman's On US hwy. 81
GYPSUM
Kuhn Impl. — OW 6-4411

HANOVER HOIST

A Truck Owner's Dream



Buy direct from the factory

Save up to \$200.00!

The Hanover Hydraulic Hoist is powerful, rugged, simple, light-weight and trouble free. Ruggedly built for long, dependable service and powered by a four-piston hydraulic pump.

No excess strain on chassis or box. Extra frame reinforces stringers and truck frame. Yet only raises truck bed three-quarters of an inch.

only
\$285.00

Plus Exise Tax

Write or Call ED 7-2821

HANOVER MANUFACTURING CO.

HANOVER, KANSAS

Pork Belly Market Gets Bigger—And Safer Too

Frozen pork bellies — introduced as a tradable futures commodity on the Chicago market in 1961 — have produced increasing action by traders since, and a recent change allowed in contracts will probably add to the activity even more.

In addition, the change should produce more price stability.

The change in contract specifications now allows pork bellies of 14-16 pound size to be traded. Previously pork bellies were traded only in 10-12 and 12-14 pound categories. These weights account for only about 35 per cent of the 1.885 billion pounds of green (unprocessed) pork bellies produced annually under Federal inspection.

Thus, 65 per cent of U. S. bacon output was officially blocked out of the futures market.

Still larger pork bellies are sold, but the addition of the 14-16 pound category will mean that about 60 per cent of the bacon commodities are eligible for futures trading.

The addition will not only add volume to futures trading but should add stability, as packers and processors can hedge of their inventories to protect their profit margins against unforeseeable price fluctuations.

When a packer buys his hogs from farmers, he can hedge by

selling futures contracts for an equal amount of pork bellies to ensure that his inventories will be worth no less than the futures contract selling price. If prices subsequently rise, the packer benefits and could sell his product for more than he paid; but if prices fall, his supplies on hand can't drop in value below the futures price he sold at since he could deliver the bellies on contract.

Activity in the distant futures is contributing to the overall growth of the pork-belly market. The Mercantile Exchange in Chicago first listed pork bellies in 1961, and in the following year only 561 contracts were traded.

Last year a record 728,000 contracts were traded, and total volume so far is running 28 per cent ahead of the year-earlier period. Everett Harris, president of the Exchange, believes more farmers are using the futures for hedging. "They're growing more sophisticated and not relying entirely

Some packers want not only on cash markets," he says. "More weights allowed as deliverable on futures, but to allow derind bacon slabs too."

The tough layer of skin, or rind, must be removed before the belly is sliced into packages. Packers derind some 90 per cent of the nation's pork bellies for prewrapped sliced bacon; only around 10 per cent is sold as slab (unsliced) bacon with the rind left on.

Until recently, most packers would leave rinds on the product for frozen storage and remove them only when it was to be cured and processed. But more packers are derinding the bellies at slaughtering plants and then freezing.

Derinding during the slaughtering operation saves transportation costs in moving the bellies into storage and later into bacon-making plants. And as an extra dividend, derinding immediately allows packers to move bigger pieces of the pig skin, and in some cases the entire skin. These sell at a premium in the skin market over smaller bits, benefitting both packer and farmer.

June 6, 1967

4

Grass & Grain

June 6, 1967

Grass & Grain

To Clean Gra
Use a bottle br
your hand grate



Federal
LAND BANK
Washington

Branch Office
Federal
LAND BANK

Serving Clay,
Geary, Pottawatomie

Pick-

for an
Sturdy

Mounted free on
your truck at
factory or ship-
ped to you.
Available in
stock rack or
fold-down
combination.

Fits all trucks. N
select kiln-dried
so pick-up ends
Lift-up gate slid
63". Special hei

When Order

HAUL-MOR

Ka
ser

There's something crooked in the Hog Business

Sure, crooked noses are ugly. But worse, they eat into hog profits. Atrophic rhinitis wastes feed in at least half the herds. And most damage is done long before they show up with crooked noses.

Now you can fight back. There's a new drug combination, Tylan and Sulfamethazine, which keeps weight gains steady



even in the presence of atrophic rhinitis. Plus they control vibronic dysentery, another costly disease.

We have Tylan and Sulfa in complete pig feed to protect your investment

up to 75 pounds. And we can add Tylan to promote growth all the way to market. Fight back. We can help.

COOP PIG FEEDS with Tylan and Sulfa

Junction City
Farmer-Stockman Co-op Assn
Council Grove
Junction City CE 8-4158

Manhattan
FARMERS Cooperative Assn.
Manhattan-Alta Vista
Westmoreland-Onaga

St. Marys
Farmers Union Co-op
Business Assn.

Clay Center
FARMERS Union Co-op
Clay Center-Bala
Miltonvale-Leonardville

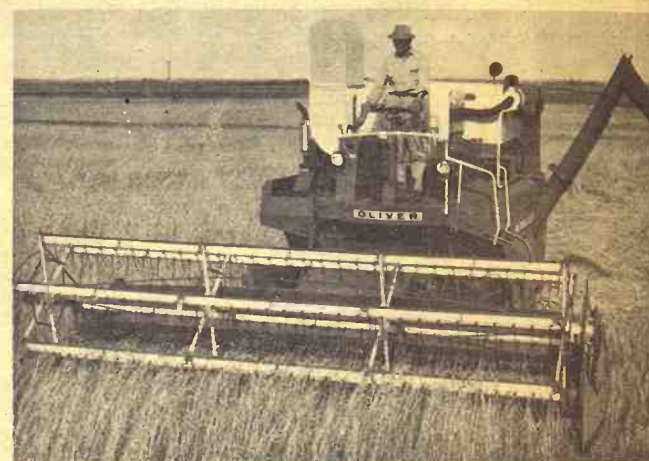
Greenleaf
Farmers Co-op Elevator Assn
Greenleaf-Linn
Washington

Alma
Farmers Union Co-op
Alma Ph. 765-3612
Eskridge Ph. 449-2291

Carlton
Farmers Union Co-op
CARLTON
TELEPHONE 31

Now Cash Bonus for Early Buyers

OF OLIVER COMBINES



Oliver's big-power, high-performance combine line now includes header widths up to 18 ft.; large-diameter cylinders in widths of 28, 34 and 42 inches; engines up to 115 hp.; diesel power optional on larger machines; also windrow pickup and 2, 3 or 4-row cornheads.

STILL TIME TO SAVE MONEY

If you buy your OLIVER COMBINE this month, Oliver Corporation will give you a check for

1 1/2%
of the purchase price.

2% in May
1 1/2% in June

Choose any model of new Oliver combine with equipment to meet your needs. Trade in your old combine in the usual way. See your Oliver dealer now and save

OLIVER
FOR MEN WHO GROW

DURHAM
G&R Impl. Co.

ABILENE
Wissing Motor Co.

CLAY CENTER
Toburen Imple. Co.

MARYSVILLE
Peschel Bros. Impl.

ALMA
Eberwein Garage

LAWRENCE
McConnell Mchry. Co.

SALINA
Lindquist Impl. Co.

EMPORIA
Arndt Bros. DI 2-5262

plu
nat

Kan
auto
out
ties.
men
colle

KAN
Phon

Plan Kitchen To Minimize Work Load

To Clean Grater
Use a bottle brush to clean your hand grater.

If you're remodeling your kitchen, don't begin and end with appliances. There are other

considerations as important to kitchen efficiency as the latest model range.

Since the kitchen is primarily a workroom, it should have a time-and-step-saving layout, spacious work counters, sufficient and convenient storage and easy-to-clean surfaces. Because a homemaker spends most of her time there, the kitchen should also be comfortable and attractive. Here are suggestions for an efficient work-saving kitchen:

LAYOUT — Most experts favor the "work triangle" design. This means placing the three work centers — cooking, clean-up and refrigerator — at approximately equidistant points of a triangle, with no more than seven feet between each major appliance. Tests show that this arrangement substantially cuts time and backtracking while providing plenty of elbow room.

WALLS — Plastic-surfaced hardboard paneling is a practical choice for hard-wear kitchen walls.

WORKSPACE — There should be at least 30 inches of counter-top area near the sink for dishes and food preparation; about 18 inches on the latch side of the refrigerator so you can set down food, and about 24 inches of heat-resistant work surface alongside the range for pots and pans.

STORAGE — Place overhead cupboards at a convenient height so there will be a minimum of reaching and climbing on step stools. Modern cabinets rarely extend to the ceiling.

Protects Thumb

Buy an extra-large thimble and wear it on your thumb when cutting up vegetables to prevent bruises on the thumb.

FARM & RANCH LOANS

Cost of money never can go up on a loan you have with FLBA, but the costs go lower when interest rates are reduced. You always know "how you stand."

R. STANLEY PARSONS, Mgr.
SEE ME AT

604 HUMBOLDT PR 8-2971
Res. Phone PR 6-9044

MANHATTAN

Open Mon. through Fri.
8 a.m. to 5 p.m. (closed 12-1)

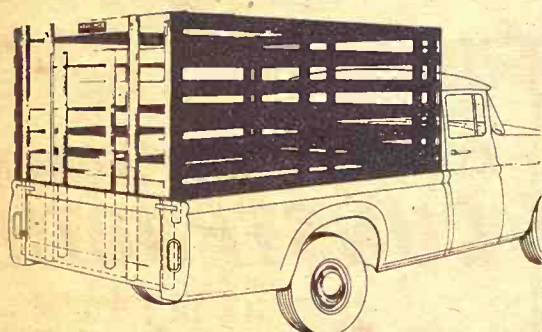
Branch Offices: CLAY CENTER & JUNCTION CITY

Federal
LAND BANK Assn. of
MANHATTAN

Serving Clay, Pottawatomie & Riley counties.

Pick-up racks

for any make or model pickup
Sturdy • Convenient • Practical

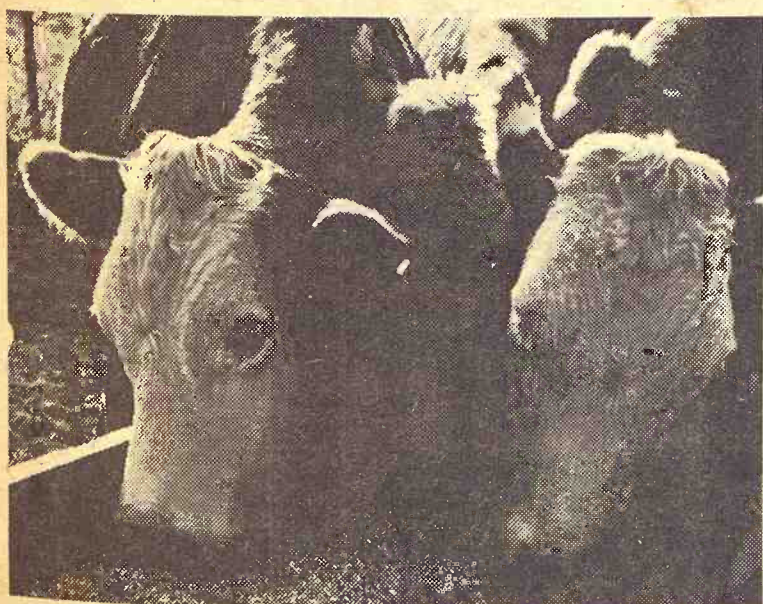


Fits all trucks. No bolt projections to injure stock. Top grade select kiln-dried lumber. Choice red or white. Fits precisely so pick-up endgate closes behind it. Sturdy oak stakes. Lift-up gate slides easily in steel channels. Standard height 60". Special height on order.

When Ordering Specify Make, Model, Size of Bed

HAUL-MOR, INC. valley falls, kansas • phone 945-3211

Kansas Soya provides complete services for feedlot operators...



plus scientific supplements from nature's richest source of protein

Kansas Soya services include formula guidance; automated custom-mixing; fast, automated, in-and-out service; on-time delivery; Grain Bank facilities. And, of course, 32% and 40% feedlot supplements from nature's richest source of protein. Call collect. Let us know how we can serve you.

KANSAS SOYA PRODUCTS CO., INC.
Phone Dickens 2-7270 • Emporia, Kansas



STORMOR DOES MORE



"SAVE BUSHEL.
INCREASE PROFITS WITH

STORMOR

DRY-O-MATION"

A STORMOR Dry-O-Mation System allows early harvest to avoid field losses — efficient drying — easy filling, unloading, transferring of grain.

■ STORMOR bins range from 14 to 60 ft. in diameter, 1,000 to 66,400 bushels in drying capacity.

■ STORMOR Dry-O-Mation Systems are engineered and field-tested to put your grain on the market at premium prices.

MAX MILL SYSTEMS

JAMES WAHLE A/C 913 CE 8-7660
RT. 2 JUNCTION CITY, KANSAS

• Dry-O-Mation • Clear-Span Steel Buildings • Cribbs
• Batch Dryers • Oxygen-Free Storage • Bulk Feed Bins

STORMOR Inc., Fremont, Nebraska



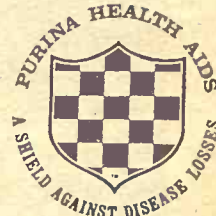
KILL EVEN THE "SUPER" FLIES

It might be said that flies are flies. But there are strains of "super" flies that have developed an immunity to older insecticides.

Purina Fly Baits—(Dry Killer and Sugar Base) are highly effective against "super" flies as well as the ordinary kind. They contain two remarkable insect-killers that kill flies outright... plus "come-and-get-it" attractants that lure flies, then kill 'em in bunches.

Purina Fly Bait—(Dry Killer) is a dry, granular scatter-bait for use on rough surfaces. **Purina Fly Bait (Sugar Base)** is a finely granulated sugar scatter-bait well suited for use on wood flooring.

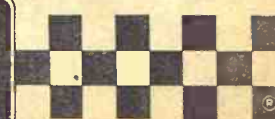
Control flies this summer with powerful, low cost, Purina Fly Bait (Dry Killer) or Purina Fly Bait (Sugar Base)



Flint Hills Feed & Grain	PR 8-5322	Manhattan
Farmers Union Feed Mill	437-2434	St. Marys
Mor-Kan Elevator	349-2214	White City
Reading Grain & Lumber	AN 9-3842	Reading
Bartlett Grain Co.	CE 8-5134	Junction City
Farmers Co-op Elev. & Supply	157	Hope
Americus Grain Co.	884-3465	Americus
Gorden Mark Elevator	ME 2-3381	Clay Center
Western Grain Mill	767-5933	Council Grove



**PURINA
HEALTH
AIDS**



OUR DAILY BREAD

— by G&G Area Cooks

Mrs Margaret Johnson, Centralia Winner Of Egg Poacher

Mrs. Margaret Johnson, Centralia, is the winner this week. Mrs. Johnson writes, "I am enclosing a main dish recipe which I have found is really good for church suppers and family gatherings, outdoor meals or most any occasion. It is a colorful as well as hearty dish and easy to prepare, one which your readers will enjoy using. I sure enjoy the Woman's Page and have collected and used several good recipes. I am a working gal and enjoy new and different recipes, especially the shortcut ones."

CALICO BEAN BAKE

- 1/4 pound bacon
- 1/2 cup chopped onion
- 1 pound hamburger
- Brown and drain. Then add:
- 1 can kidney beans
- 1 large can pork & beans
- 1 can lima beans, drained
- 1/2 cup brown sugar
- 1/2 cup catsup
- 2 tablespoons vinegar
- 1 tablespoon mustard
- 1 teaspoon salt

Mix and pour into baking dish and bake 1 1/2 hours at 300 degrees.

Mrs. Charles W. Olsen, R2, Alta Vista: "Here is a recipe my family likes real well."

TUNA-SPAGHETTI CASSEROLE

- 4 large sticks celery, diced

- 1 green pepper, diced
- 1 small onion, diced
- 1 large or 2 small cans tuna
- 1 can tomato soup
- 2 cans Franco-American spaghetti in tomato sauce with cheese

Cook celery, peppers and onion in skillet with enough water to cook till tender. Then add tuna, tomato soup and spaghetti. Mix all together in skillet and heat through. Pour into large casserole and top with squares of cheese or strips of cheese, whichever is preferred. Bake at 450 degrees for 20-30 minutes.

Mrs. Orley Renner, Leonardville: "I enjoy the recipe page in your paper so thought I

We're fussy when we fix your watch

Fastest Service In Town. Work done in our shop. All watches electrically timed and guaranteed to be as accurate as new.

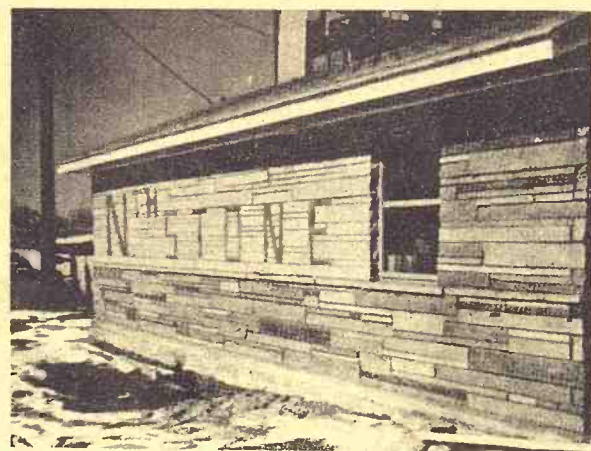
Manhattan's
**HOLIDAY
JEWELERS**

OF MANHATTAN
425 Poyntz—PR 6-7821
Across from the Courthouse

NTH STONE

Is The Nth Stone
for building

Nothing Like It . . . !



NTH
STONE Offers You . . .

- * Variety Of Color And Surface
- * Beauty And Versatility
- * Variety Of Design
- * Adaptability, Strength, Economy

For Brochure And Price Estimate Call or Write:

NTH STONE OF NEBRASKA

Manufactured by CONSOLIDATED SAND & GRAVEL CO.

Office: 712 D St.

Fairbury, Nebraska

Phone: 729-2590

William Meyer, Owner

Phone: 729-5673

would send you one of our favorites."

PINEAPPLE PIE

To 1 No. 2 can crushed pineapple, add 1/2 cup sugar, a pinch of salt and 1/2 cup hot water. Add 2 egg yolks, beaten until lemon-colored. Dissolve 3 tablespoons cornstarch in 2 tablespoons cold water and add to pineapple mixture. Cook over moderate heat, stirring constantly until mixture thickens. Cool. Fill a 9-inch baked pie shell (using your own recipe). Cover with meringue (2 egg whites and 1/4 cup sugar) and bake in moderate oven, 350 degrees, 15 minutes to brown the meringue slightly.

* * *

Mrs. W. M. Wedel, Langdon, Mo.: "This is a soggy-like cake but oh so yummy!"

BROWNIE TOP FUDGE CAKE

- 1 1/2 cups soft oleo or butter
- 6 eggs
- 1 1/2 cups sugar
- 2 cups flour
- 1 package (2 layer size) double fudge buttercream frosting mix
- 2 cups chopped walnuts

Cream butter in large bowl at high speed. Add eggs, one at a time. Gradually add sugar, beating until fluffy. By hand stir in flour, frosting mix and nuts until well blended. Pour into 10-inch tube pan. Bake at 350 degrees for 60-65 minutes. Cool 2 hours. Test for doneness after 60 minutes by observing dry, shiny brownie-type crust.

* * *

Mrs. Kenneth Shank, R2, Abilene: "This recipe is a favorite

for company, especially when one is preparing other foods in the oven."

SCALLOPED CORN

- 1 No. 2 can whole kernel or cream style corn
- 1/2 to 3/4 cup milk
- 1 cup dry bread or cracker crumbs (may use less)
- 1/2 small onion, chopped
- 3 tablespoons chopped green pepper
- salt and pepper
- 2 tablespoons butter

Combine ingredients and pour into greased casserole; dot with butter. Bake in moderate oven (350 degrees) for 30 minutes.

* * *

Mrs. John H. Curtis, R2, Greenleaf: "We've taken Grass & Grain several years now and really enjoy it. I've tried many of the delicious recipes but this is the first I've sent in. Here is a very easy to make and delicious cookie. Also good for weight watchers as each 2-inch cookie contains only 50 calories."

STIR-N-DROP COOKIES

- 2 eggs
- 3/4 cup Wesson oil
- 2 teaspoons vanilla (or any other flavoring)
- 1 teaspoon grated lemon peel (or few drops lemon flavoring)
- 3/4 cup sugar
- 2 cups sifted all-purpose flour
- 2 teaspoons baking powder
- 1/2 teaspoon salt

Heat oven to 400 degrees F. Beat eggs with fork. Stir in Wesson, vanilla, lemon peel. Blend in sugar (reserve 1 table-

June 6, 1967

spoon). Sift together flour, baking powder, salt, add to egg mixture. Drop by teaspoons onto greased cookie sheets. Stamp each cookie flat with bottom of glass dipped in sugar. Lightly oil glass, then dip in reserved sugar, continue dipping in sugar. ("We prefer a thicker, softer cookie so I just barely tap on.") Bake 8-10 minutes. Remove at once from cookie sheet. If you make the cookies one sheet at a time, stir the mixture between each batch. Yield: 24 thin 2-inch cookies.

Hardboard Panels Practical Choice For Bath Walls

Wall panels of plastic-surfaced hardboard will add a beautiful touch to the bathroom while keeping maintenance down to a minimum.

The panels are available in a wide range of colored, patterned, textured or woodgrained finishes appropriate to any bathroom decor. They are highly resistant to moisture and humidity conditions common in a bathroom. They also resist stains and can be cleaned with a damp cloth.

Install the panels over existing walls or furring strips with waterproof adhesive.

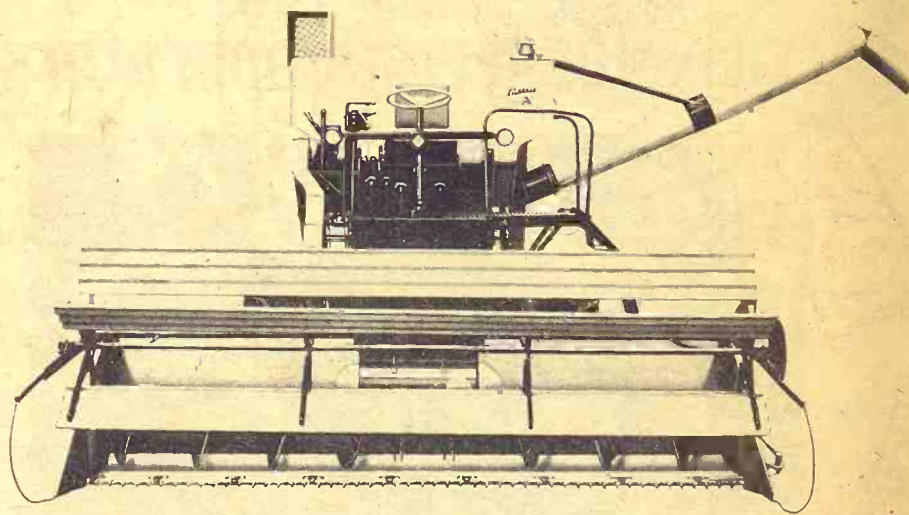
GLEANER Combine . . . DEPENDABILITY

LONG LIFE LOW UP-KEEP START WITH QUALITY CONSTRUCTION

GLEANER Combines have earned the reputation of being lower cost machines to operate and maintain. GLEANER durability begins with the heaviest main frame in the industry . . . built up from 7" x 1/4" pressed channel steel. There is a solid foundation to hold all shafts, bearings, sprockets and sheaves in perfect alignment. The combine runs lighter, lasts longer, performs better.

The separator framework is welded to and becomes a part of the main frame to provide exceptional top-side strength. There's no twisting of the separator body.

Choose the GLEANER from the GREAT SILVER FLEET that best matches your needs and enjoy the dependable quality that holds cost down, keeps combine value high.



5-BAT METAL REEL

... assures even feeding to the sickle. The reel bats are 10-inch wide, galvanized steel, your assurance of long reel life.

THE GREAT SILVER FLEET OF GLEANER COMBINES BUILT BY ALLIS-CHALMERS

Model A¹¹, "Flagship" of the Great Silver Fleet, is now bigger than ever . . . with increased capacity to handle bigger yields and larger acreages.

Model E, performance proved with the biggest capacity in the 13-foot size . . . an outstanding combine for diversified farming operations.

Model C¹¹, The Giant of the Harvest . . . favorite of custom operators, big wheat growers, men on diversified farms with large acreages of corn or soybeans the world over.

WATERVILLE
Waterville Motors

MARION
Longhofer Supply

HERINGTON
Lockard Impl. Co.

WASHINGTON
Hinkle Impl. Co.

ALTA VISTA
Buchman Farm Supply

COUNCIL GROVE
Patterson Impl. Co.

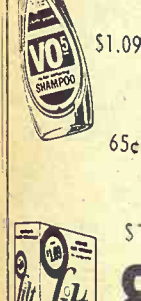
MARYSVILLE
Marysville Machinery Co.

WAMEGO
Bearman & Son

ABILENE
Wright Impl. Co.

SALINA
Midwestern Farm Impl.

MEN'S CO
Cushion foot
comfort. White
Sizes 10 1/2 T
BOY'S CRE
100% Cotton
foot. White o
Sizes 7 To 1
3



FAMILY SIZE
DISCOUNT PR
You will save e
on Health and B
Aids at Duckwa

ft together (the...
er, salt; add...
Drop by teas...
inches apart...
ie flat with...
ed in sugar...
then dip in...
continue dip...
prefer a thick...
so I just har...
e 8-10 min...
nce from cook...
ake the cook...
time, stir the...
each batch. Y...
cookies.

board Panels
al Choice
ath Walls
panels of plastic...
ard will add a...
to the bathroom...
maintenance down...
panels are available...
ge of colored...
ed or woodgrain...
appropriate to any...
or. They are high...
moisture and...
ions common in...
They also resis...
d can be cleaned...
loth.
the panels over...
or furring strips...
of adhesive.

NDABILITY

RT WITH
ON

er cost ma...
ns with the...
1/4" pressed...
ts, bearings...
runs lighter,

of the main...
twisting of

T that best...
t holds cost

le. The...
zed

le. The...
zed

le. The...
zed

le. The...
zed

le. The...
zed

le. The...
zed

le. The...
zed

le. The...
zed

le. The...
zed

le. The...
zed

DUCKWALL'S 66th. YEAR ANNIVERSARY SALE



KNIT T-SHIRT
Long wearing cotton knit. **44¢**
Sizes S-M-L-XL

MEN'S SHIRTS
Cool and comfortable short sleeve shirts. Plaids, patterns, stripes and solid colors. **2 \$3.00**
Sizes S-M-L
\$1.99 Value



CANDY SPECIALS
Choose from toffee, kisses and assorted hard candies. **37¢ lb.**
HOLLYWOOD CANDY BARS
20 For \$1.00 10 FREE



MEN'S COTTON SOCKS
Cushion foot for comfort. White only. **3 Pair 88¢**
Sizes 10 1/2 To 12

BOY'S CREW SOCKS
100% Cotton with cushion foot. White and colors. **3 Pair 77¢**
Sizes 7 To 10



GIRL'S JAMAICA SHORTS
PERMANENT PRESS
75% Cotton and 25% Nylon. Assorted styles and colors. **77¢**
Sizes 3-6X 7-14



BLOUSES
PERMANENT PRESS
65% Dacron and 35% Cotton. Assorted styles, and solid colors. **2 \$3.00**
Sizes 32 To 38

SUN SLIPS
FOR LITTLE MISSES
Cool, comfortable pinafore in assorted styles and colors. **77¢**
Sizes 1 To 6



SCOPE
13 Oz. **2 For 93¢**

Nylon HEADBANDS
Many styles and colors to choose from. **9¢**
29¢ & 39¢ Values

BOB PINS
1/2 Pound **47¢**
89¢ Value

KNIT BRIEF
Easy care Cotton in white only. **3 For 87¢**
Sizes 2 To 8
\$1.25 Value

CREST
FAMILY SIZE **57¢**
DISCOUNT PRICES
You will save every day on Health and Beauty Aids at Duckwall's.



TRAINING PANTY
Cotton terry cloth for longer wear. White and colors. **23¢**
Sizes 1 To 4
Regularly 33¢

KITCHEN TOWELS
No-lint cotton terry cloth. Stripes, checks, and patterns. **27¢**
49¢ Value



VINYL THONGS
CHILD'S - LADIES' - MENS'
Save here for the entire family. **23¢**
Your Choice

SPONGES
5 Qt. plastic bucket filled with assorted size sponges. **66¢**
88¢ Value

TABLECOVERS
Assorted outdoor patterns for pic-nic use. 54" x 72" **27¢**
49¢ Value

THESE ANNIVERSARY VALUES AT ALL DUCKWALL'S STORES

Modern Brides Are Choosing Traditional Look In Gowns

Summer's young bride-to-be may go for miniskirts and frugs, pop art and eye-jarring colors... but be prepared for a surprise.

Chances are the young modern will pick the most traditional look in sight. Best sellers in bridal gowns this season are the traditional full-skirted ones and if they're long and white, so much the better.

The typical "bride-y"-looking gown is apt to be of sheer cotton organza, delicately embroidered and styled with fitted bodice and flowing overskirt.

Other popular trends in bridal fashions include sheaths, A-lines and the cage. Especially noteworthy is the baby dress, complete with puffed sleeves and a "baby bonnet" headpiece.

While the favorite color is white, many of the traditional gowns are seen in rich ivory tones. There's also a smattering of natural or ecru shades in the Mexican tucked cotton wedding dresses.

Increasing emphasis is being placed on pure cotton for both bride's and bridesmaids' fashions. These range from the sheers to the heavy brocades.

textured piques and exquisite laces.

In contrast to the full-skirted, traditional look of the bride's dress, the attendants' gowns are styled along close-fitting empire lines... usually with floating panels at back or side. They're especially new-looking in floral-printed cottons and in interesting two and three-tone color combinations, ranging from soft pastels to more vibrant hues. Also making fashion news in bridesmaids' dresses are the tent, the net mini... and even the culotte dress.

Save Shower Curtain

Put away that old plastic shower curtain after it has been washed thoroughly. It might come in handy to substitute as a rubber sheet when company with small children pay you a visit.

Have Thread To Match Socks

Build up a large assortment of thread to match socks that need darning by saving the cuffs from worn-out socks.

Ravel the thread on the cut end of the cuff and roll it on an empty sewing-thread spool. This makes for economical and neat darning.

Double-Corn Sticks

Double-corn sticks make double-good eating. To make these, just add drained canned whole-kernel corn to cornbread batter to be baked in a cornstick pan.

Use about half a cup of corn kernels for half a dozen sticks.

MATTRESS & BOX SPRINGS
Specials Every Day
New Low Prices
Buy Direct
Also Complete Rebuilding Service
Manhattan Mattress Co.
414 S. 4th PR 8-5302

G&G Directory

AUCTIONEERING
Lawrence E. Welter
AUCTIONEER
REAL ESTATE BROKER
Your Sale Solicited
Large or Small
EAST HIGHWAY US 24
MANHATTAN PR 8-3455
Real Estate
And General Sales

Ed Reimer
AUCTIONEER
We Specialize in Selling
DAIRY CATTLE
"A complete Sale Service"
Phone or write for sale dates.
Telephone 367-2373
GOESSEL, KANSAS
"Marion County"

DAIRY SUPPLIES
DeLaval Clay
All Makes
Service & Repair
Dairy Equipment
Joe McClure
Ph. 229-5284 Alta Vista

Dale Wells
SURGE
Pipe Line Bucket Milkers
Stalls
324 Frederick ME 2-2811
CLAY CENTER, KANS.

CONSERVATION
Land Improvement
"Soil Conservation Doesn't Cost-It Pays"
Ponds, terraces, waterways, and leveling, drainage ditches, clearing, landscape grading.
ROGGENDORFF
Conservation Construction
Arthur Roggendorff
Phone JE 9-3984
1630 Osage - Manhattan

Memorials
CEMETERY MEMORIALS
54 Year Continuous Service
Display Located on US24
East of City Limits
SCHAUBEL
MONUMENT CO., INC.
RR 3 Box 20 ME 2-3531
Clarence Blanc, President
CLAY CENTER

MONUMENTS
MANHATTAN MONUMENT CO.
J. J. BEAUDET
Office and Display
123 No. 3rd
Office Phone PR 8-5137 Res. Phone PR 8-4978
MANHATTAN, KANS.

PEOPLE READ
The G&G Directory
Just as You are Now

June 6, 1967

OTTAWA COUNTY, KS., POPULATION DROPS

MINNEAPOLIS — The population of Ottawa took a 177-person loss, according to the 1967 figures from assessors' records. The new county total is 6709. The population of Minneapolis remained practically steady at 2127. Other county towns had these counts: Bennington 509, Culver 165, Delphos 664, Tescott 424.

IMPLEMENT • TRACTOR ITCO PARTS • ACCESSORIES

CULTIVATOR REPAIRS

4" low crown cultivator sweeps	.78
6" low crown cultivator sweeps	.89
8" low crown cultivator sweeps	1.05
10" low crown cultivator sweeps	1.25
6" high crown cultivator sweeps	.96
8" high crown cultivator sweeps	1.15
10" high crown cultivator sweeps	1.35
Also half sweeps in the above sweeps	
Spearpoint shovels	1.08
Laced Roto Baler belts	
Short — 7.39 — Long — 9.59	

HEAVY DUTY

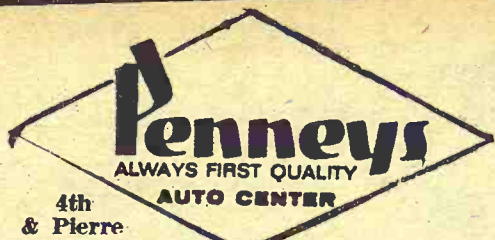
12 OZ. TARPAULINS

6x10	8.19
6x12	9.95
8x10	10.89
8x12	12.89
10x16	20.95
10x18	24.95
10x14	18.95
12x16	24.95
12x18	27.95
15x20	37.95

Grenfield Supreme baler twine,
10 bales or more — \$8.25 bale
1 used ITC 2-row cultivator,
fast hitch No. 235

HOLT FARM SUPPLY

Next To Sale Barn
MANHATTAN PR 8-4343



IN MANHATTAN



See Floyd Woodworth and Carl Oliver
For Sales & Service of all Your Farm Needs

Large Selection
Of
Citizen Band
Radio's — Crystals — Accessories

Open Mon. & Thurs. 9:30 til 9:00 ... Other Days 9:30 til 5:30
SHOP PENNEYS NEW CATALOG ... Phone PR 6-4711

Your Tire and Battery HEADQUARTERS

Nylon Rears For Only:

Size	Price	Fed. Tax
• 12.4/28	\$49 4 Ply	4.25
• 12.4/38	\$58 4 Ply	5.39
• 13.6/38	\$77 6 Ply	6.57
• 15.5/38	\$84 6 Ply	7.73

12 Volt Batteries
Low As 12.95

RED FENCE AND BARN PAINT

Non-Leaded Only **\$3.44**
Gal.

Manhattan Commission Co., Inc. Sale Every Thursday

We had a very good run of cattle at our sale last Thursday, with a number of out-of-state buyers, all looking for good feeder cattle. Prices on feeder steers and heifers were 50¢ to 75¢ higher. Our cow and bull market has been extra good. If you have any cattle to sell, don't fail to get in touch with someone at the Manhattan Commission Co. and let us talk to you. The following is a partial listing of our sale:

FAT CATTLE & FEEDERS

1 whiface steer	850 @ 26.40
1 whiface steer	720 @ 26.20
1 black steer	635 @ 25.10
1 blkwhif steer	735 @ 25.10
1 black steer	845 @ 25.10
60 mixed heifers	720 @ 24.65
1 whiface heifer	760 @ 24.65
7 charolais heifers	720 @ 24.60
1 black steer	1095 @ 24.60
2 black steers	752 @ 24.10
1 blkwhif steer	790 @ 23.70
1 blkwhif steer	935 @ 23.60

1 whiface heifer	855 @ 23.50
1 whiface steer	940 @ 23.25
1 black heifer	645 @ 22.90
1 black heifer	890 @ 22.70
1 whiface heifer	695 @ 22.70
1 black steer	600 @ 22.50
1 black steer	600 @ 22.50
1 whifacerdnk hfr	655 @ 22.30
3 holstein steers	1150 @ 22.00
5 holstein steers	903 @ 22.00
1 whiface heifer	770 @ 21.30

STEER CALVES

2 whiface steers	342 @ 32.50
9 black steers	407 @ 31.75
1 whiface steer	306 @ 30.00
1 whiface steer	400 @ 28.30
1 red steer	425 @ 28.10
1 black steer	485 @ 28.00
1 whiface steer	505 @ 28.00
1 blkwhif steer	395 @ 27.90
3 blk bulls	350 @ 27.80
1 black steer	430 @ 27.30
5 whiface bulls	482 @ 26.90
3 whiface steers	521 @ 26.40
3 whiface steers	538 @ 26.00
1 blkwhif steer	550 @ 26.00
1 whifacerdnk str	535 @ 25.30

1 blkwhif steer	585 @ 25.00
1 black steer	595 @ 24.50

HEIFER CALVES

3 black heifers	295 @ 26.30
5 black heifers	376 @ 25.75
5 whiface heifers	388 @ 25.75
1 whiface heifer	340 @ 25.40
1 black heifer	360 @ 24.40
5 whiface heifers	511 @ 23.80
1 whiface heifer	380 @ 23.60
1 whiface heifer	445 @ 22.70

BULLS

1 red bull	1490 @ 23.20
1 black bull	1470 @ 23.20
1 whiface bull	645 @ 23.10
1 whiface bull	1375 @ 22.70
1 whiface bull	1040 @ 22.20
1 whiface bull	1370 @ 21.90
1 whiface bull	1625 @ 21.40
1 whiface bull	@ 235.00

COWS

1 whiface hfrett	975 @ 22.90
1 whiface cow	680 @ 20.60
1 holstein cow	1415 @ 19.50
1 holstein cow	1380 @ 18.80
1 holstein cow	1380 @ 18.70
1 holstein cow	1545 @ 18.70

1 holstein cow	980 @ 18.60
1 whiface cow	780 @ 18.50
1 whiface cow	995 @ 18.40
1 whiface cow	1065 @ 18.30
1 holstein cow	1020 @ 18.10
1 holstein cow	1310 @ 18.00
1 whiface cow	915 @ 17.90
1 whiface cow	1180 @ 17.90
1 whiface cow	735 @ 17.90
1 whiface cow	1040 @ 17.70
1 whiface cow	1065 @ 17.65
1 whiface cow	1090 @ 17.60
1 whiface cow	1000 @ 17.50
1 holstein cow	1485 @ 17.50
1 holstein cow	1430 @ 17.40
1 whiface cow	1215 @ 17.40
1 whiface cow	1180 @ 17.10
1 whiface cow	720 @ 17.00
1 whiface cow	1325 @ 16.85
1 whiface cow	880 @ 16.50
1 blkwhif cow	800 @ 16.00
1 whiface cow	845 @ 15.80
1 whiface cow&clf	@ 207.00
1 whiface cow&clf	@ 205.00
1 whiface cow&clf	@ 202.00
6 whiface cows&clfs	@ 200.00

2 1/4 MILES EAST OF MANHATTAN ON US 24

BUYING FAT HOGS

We buy fat hogs daily at the Manhattan Commission Co., Inc. sale barn. We buy direct with no commission to the seller.

BUYING HOURS:

Mondays thru Fridays
8 a.m. to 4 p.m.
Saturdays 8 a.m. - 2 p.m.
Manhattan PR 8-4415

WE ARE ALSO BUYING FAT HOGS AT THE W. E. DUGAN YARDS ALTA VISTA

SATURDAYS & MONDAYS
8 a.m. to 3 p.m.
Phone Alta Vista 229-6430
or Manhattan PR 8-4415

AT ALMA & ESKRIDGE EVERY WEDNESDAY

From 8 a.m. to 1 p.m.

Please do not bring hogs in for sale on Thursday afternoon, as we will be having large runs of cattle and you might not be able to unload, and they will get hot on you. For information call the barn in Manhattan, PR 8-4415. In Alma, Oscar Nelson, 765-3861. In Alta Vista, W. E. Dugan, 229-6303. Or you may call Joe Raine at Maple Hill, MI 3-2226 or Eskridge Yard 449-2347.



Light sales are expected until harvest is over, but the Manhattan Sale will run every Thursday as usual, on schedule.

FOR ESTIMATES

W. E. DUGAN ----- Alta Vista, 229-6430
JOE RAINE ----- Maple Hill, MI 3-2226
DON WELLS ----- Manhattan, JE 9-3744
MERVIN SEXTON ----- Abilene, CO 3-3449
C. J. WENTZ, bus. mgr. Manhattan, JE 9-5561

BARN PHONE ----- Manhattan, PR 8-4415

Consignment Reports

WIBW radio 6:30 A.M. Thursdays
WIBW-TV 12:15 Noon Wednesdays

The Manhattan Commission Co., Inc.



MANHATTAN, KANSAS

East On US 24

Auctioneer: Joe Raine

re
ery
RS
Only:
Fed.
Tax
4.25
5.39
6.57
7.73
N
only \$344
Gal.
5:30
1
ursday
TAN ON US 24
BUYING
T HOGS
fat hogs daily
hattan Commission
sale barn. We buy
h no commission
BUYING HOURS:
days thru Fridays
a.m. to 4 p.m.
days 8 a.m. - 2 p.m.
ttan PR 8445
RE ALSO BUYING
HOGS AT THE
DUGAN YARDS
ALTA VISTA
AYS & MONDAYS
a.m. to 3 p.m.
Alta Vista 224-4444
anhattan PR 8445
LMA & ESKRIDGE
RY WEDNESDAY
n 8 a.m. to 1 p.m.
o not bring hogs
on Thursday after
we will be having
s of cattle and
ot be able to unload
will get hot on you
information call
Manhattan, PR 8445
Oscar Nelson, 205
Alta Vista, W. E. De
-6303. Or you may
Raine at Maple 151
26 or Eskridge 151
Commission
Co., Inc.
NHATTAN, KANSAS
East On US 24
Joe Raine

Summertime in the G&G Area



Remember

Many G&G readers will remember when the hottest thing on the market was the Fordson tractor. This 1922 model shown by George Lesovsky of Cuba is owned by Dean and Paul Walthers.

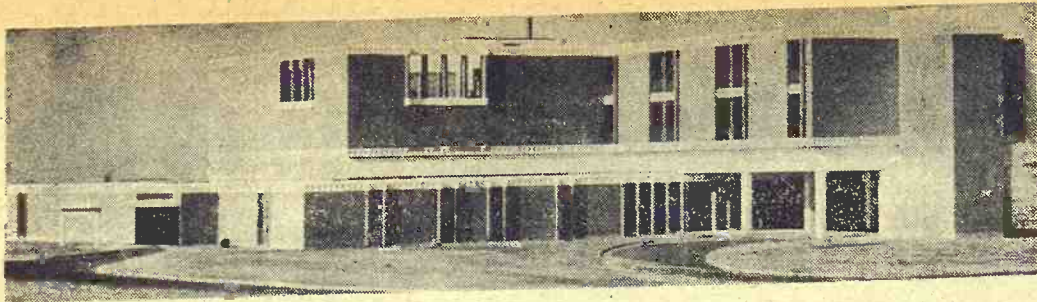
Pouring A Porch

Lavon Boman of Belleville unloads gravel for concrete for a porch yet to be built. Wife Doris looks on. The Bomans are fixing up the yard around the mobile home east of Belleville. Boman is an employee of WCK Electric Cooperative.



A Time To Renew Old Friendships

With schools out for the summer all around the G&G area, many kids are spending time with their pets. Peggy Lesovsky of Cuba, Republic County, plays with her Pekinese, Heidi-Shan-Fanny and her pups. Peggy is a seventh grader.



New Hospital at Junction City

Junction City dedicated its new \$2.187 million hospital Sunday and will transfer patients from the present 60-bed facility to the new 92-bed hospital starting June 11. The new hospital was financed with \$1.1 million in county general obligation bonds and \$1,042,500 in federal Hill-Burton matching funds. The hospital is located near US77 in southwest Junction City.

Sees Stable Feed Grain Prices

By Gary L. Vacin
Kansas State University

Prices will remain stable, exceeding year earlier levels. That's the capsule outlook for feed grains during the next few months.

The law of supply and demand was at work on feed prices last winter. Cattle, hog, and poultry feeding was up from a year earlier. This created a strong demand for feed, pushing prices above 1965-66 levels.



October-March prices for the four feed grains — corn, barley, grain sorghums, and oats — averaged about 13 percent higher than the same period a year earlier. April cash grain prices were 10 to 15 cents per hundred weight higher than in 1966. Sorghum grain has been up more from a year ago than other feed grains.

Sales of feed grains will probably continue small during the next few months due to reduced CCC stocks of corn this spring. Most sales will be limited to corn going out of condition, sales under the Emergency Livestock Feed Program, and foreign donations.

Corn acreage is expected to be up 7 percent and grain sorghums 9 percent from last year. Barley and oats should be down around 9 percent from 1966's acreage. The expected increase in total feed grain acreage will still be 7 percent less than the 1960-64 average.

An average growing season would see feed grain production increasing to a record 170 million tons, 8 percent more than a year earlier.

April 1 estimates placed the stocks of the four feed grains at 103 million tons, down 10 percent from a year ago. Feed grain stocks on farms totaled 69 million tons, 5 percent less than 1966 levels. Stocks of CCC totaled three million tons, half that of last spring.

Use

AMIBEN (Pre emergence) for BEANS
VERNAM

(Pre or Post emergence) for BEANS

HERBAN (Pre emergence) for MILO

SALVO (Post emergence) for MILO

MORRISON ELEVATOR

231 E. 8th

CE 8-6118

Junction City, Kans.

Advance's High-Tonnage Champion



ADVANCE 14

ADVANCE 14 is one of the most important developments in hybrid sorghum in recent years. Yields of from 15 to 31% over RS-608 and RS-610 are not uncommon. Although Advance 14 was first introduced only three years ago, consistently high yields in all sorghum-producing areas have pushed it to the forefront faster than any sorghum in our experience. Highest yields will be obtained on good soil where rainfall is ample, or under irrigation, but it also produces excellent yields under dry-land farming.



FARMERS COOPERATIVE ASSN.
MANHATTAN, KANS.

PR 6-9467

ACT NOW!

JUNE 5 TO JUNE 10 IS

**GOOCH'S BEST SPECIAL
DOLLAR-SAVING WEEK**

This Week Only Your Gooch Dealer Is
Passing Along Big Dollar Savings Per Ton On



**SUPER
CALF
GOOCHIES**

Now that you've decided to creep feed your calves — stock up this week (May 29 through June 3) on Gooch's Best Super Calf Goochies! Get big dollars savings on every ton of Gooch's Best, the creep feed that grows calves into extra calf crop income.

See Your Gooch Dealer! Or Contact
The Gooch Feed Mill Office in Salina, Kans.

Only a
world of time
can bring you
the flavor of
Kentucky's
Finest
Bourbon



**OLD CHARTER
8 years old**

tick-tock-tick-tock
the Bourbon that didn't
watch the clock.



STRAIGHT BOURBON WHISKY • 86 PROOF • © OLD CHARTER DIST. CO., LOUISVILLE, KY.

Start Collec
2½% Sale
IN Nebraska
Retailers began c
braska's first sales t
2.5 per cent tax on
sold at retail.

World's
Effic
Ex

Agriculture is
tries. The ave
feed thirty-seve
has ever know
ress with agricu
er . . . provid

is.

We salute
them that the
position to str
that give you t

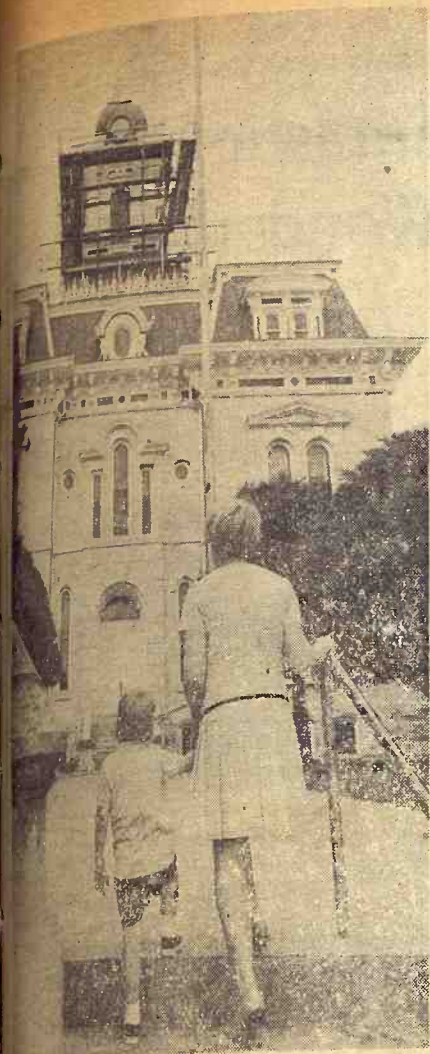
Se

Feder
LAND BA
Associat

TOPEKA
Office: 1717 G
Wm. H. Snyder,
Serving Jackson
and Wabaunsee

EMPORI
Office: 115 W
O. E. Roberts, M
Serving Chase, Co
and Osage Co

for BEANS
for BEANS
for MILO
for MILO
TOR
on City, Kans.



Chase Co. Rebuilds Its Courthouse Tower

Alternately scorned and loved for its bizarre architecture, the Chase County Courthouse at Cottonwood Falls is having its tower restored. The famed old landmark of the Flint Hills was damaged in a fire last December. Altho much of the millwork had to be shaped by hand, Chase countians decided to have tower restored exactly as it was.

Millwork alone has cost \$5600 to replace, altho the original building cost only \$41,000. There is no estimate of the total cost of repairs. The building was built in 1871-73, and is the oldest courthouse in continuous use in Kansas.

Start Collecting 2½% Sales Tax IN Nebraska

Retailers began collecting Nebraska's first sales tax June 1, a 2½ per cent tax on most items sold at retail.

Under the new sales tax law purchases up to 14 cents are exempt, items costing from 15 to 59 cents are taxed one cent, items from 60 to 99 cents, taxed two cents and one cent of tax is added for each additional 39 cents thereafter.

The rate is scheduled to be cut back to two per cent Jan. 1, 1969.

World's Greatest Efficiency Expert



Agriculture is one of the most efficient of all industries. The average farmer produces enough food to feed thirty-seven people—it's the finest food the world has ever known. We're proud to be partners in progress with agriculture and we salute the American farmer... provider of plenty.

*June
is Dairy Month*

We salute the producers in Kansas and remind them that the Federal Land Bank Associations are in position to strengthen dairy operations through loans that give you time to develop and grow.

See a nearby FLBA manager.



TOPEKA

Office: 1717 Gage Blvd.
Wm. H. Snyder, Manager
Serving Jackson, Shawnee
and Wabaunsee Counties

EMPORIA

Office: 115 West 5th
O. E. Roberts, Manager
Serving Chase, Coffey, Lyon
and Osage Counties

HERINGTON

Office: 107 N. Broadway
Richard L. Worley
Serving Marion, Morris
and Dickinson Counties

MANHATTAN

Office: 6th and Humboldt
R. Stanley Parsons
Serving Pottawatomie, Riley,
Clay and Geary Counties

MARYSVILLE

Office: 211 South 10th St.
Allen L. Holeman, Manager
Serving Washington, Marshall
and Nemaha Counties

Estimates of the sales tax yield range from \$50 million to \$66 million annually, with retailers permitted to keep three per cent of the tax to defray collection costs.

The law exempts prescription medicines, feed, seed and fertilizer used by farmers, gasoline for automobiles, which already is subject to a state tax, and meals served by schools and churches.

YEARLY CO-OP TRAFFIC HITS \$15 BILLION

Dollar volume business by

farm cooperatives hit \$15 billion by the end of June 1965, according to a recent USDA study. This is 53% more than the yearly rate 10 years earlier. California, Minnesota and Iowa were first, second, and third in total net dollar volume.

WOODMAN Motor Grader Booms for All Makes and Models of Motor Graders

PATENTED 3,145,015

MANUFACTURED BY

BIGBEE MFG. CO., INC.

Route 3

MANHATTAN, KANSAS 66502



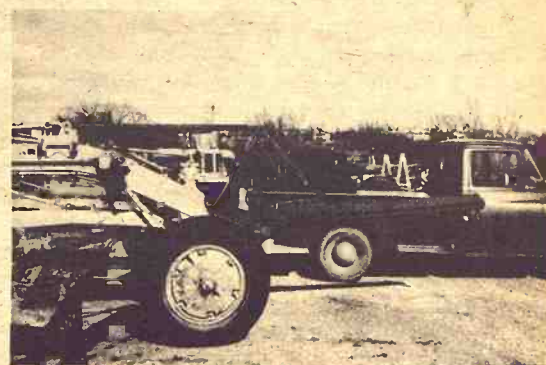
ALLIS-CHALMERS MODEL "D"



CATERPILLAR WITH CATERPILLAR LIFT GROUP.
OWNED BY MANHATTAN TOWNSHIP,
MANHATTAN, KANSAS



ALLIS-CHALMERS MODEL "D"



BOOM MOUNTED ON CATERPILLAR

The Woodman Motor Grader Boom is a new low cost, time saving, lifting device adaptable to all motor grader units with scarifier or snow plow lift groups. The boom is manufactured in two sections for standard 10' or 12' lengths with a 3' or 5' extension available.

The type "A" boom (A110, A112) lifts a rated 2 tons. The type "B" boom (B210, B212) lifts a rated 4 tons.

The boom folds into a convenient carrying position that does not obstruct normal operation of the grader.

PHONE
DAYS: PR 8-5172
ROUTE 3

NIGHTS: PR 8-5857

Keep Manhattan beautiful... drive a '67 Ford

Enjoy a trouble-free vacation... travel with the strongest, quietest Ford ever built.



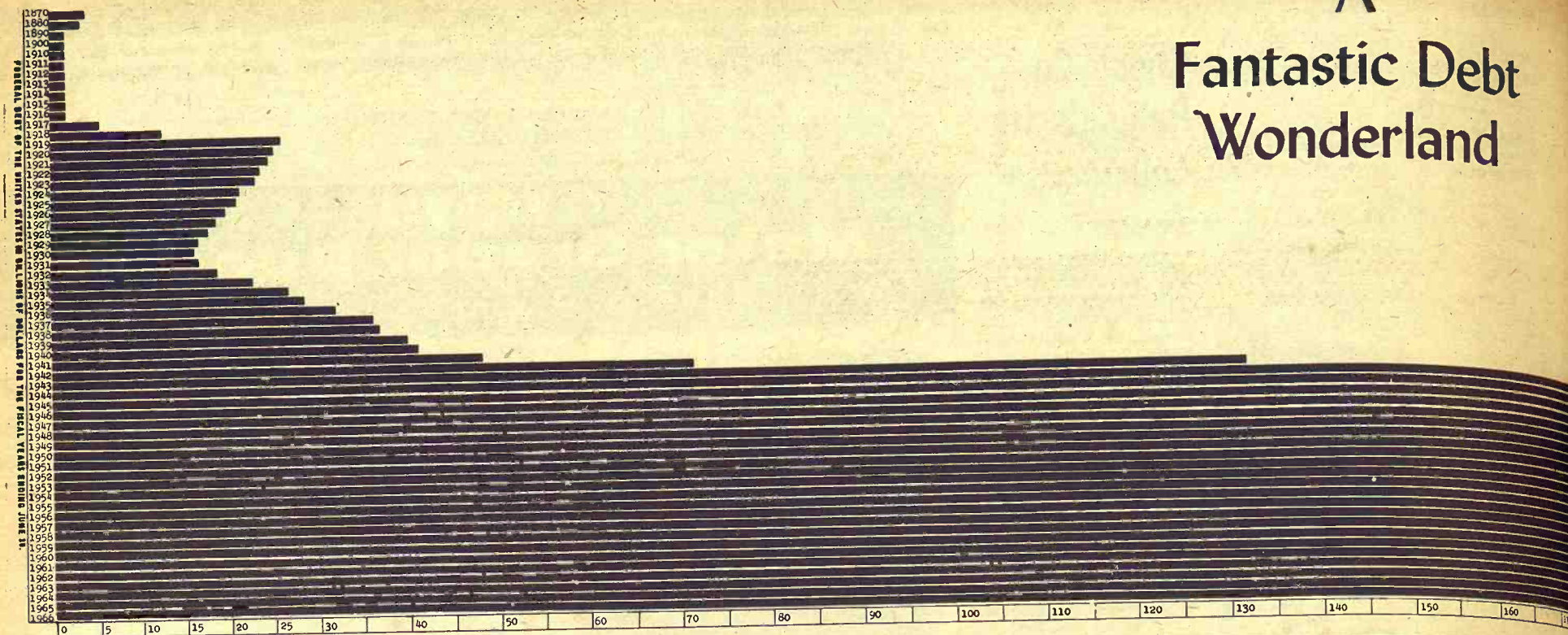
Ford better ideas for sale!
SKAGGS MOTORS, INC.

SECOND & HOUSTON

MANHATTAN, KANS.



A Fantastic Debt Wonderland



Limit Fuss On Feedlots

It looks as if feedlot operators are not going to put the fuss expected to water pollution controls.

"It looks as if major feedlot operators are going to cooperate fully," say an official at the Kansas State Department of Health last week.

Livestockmen were plainly fighting major controls from the Department of Health when water pollution was a legislative subject late in the 1967 session. There had been a June 30 deadline set by the federal government for states to enact effective water pollution controls.

Kansas' water pollution control laws, passed in the final days of the session, are thought to be adequate, acceptable to the federal government, and constitutional.

The Kansas law becomes effective July 1.

Aimed at livestock feeding operations of more than 300 head, it provides that:

- Any new feedlot opening after July 1 must build water pollution control features into the lot before beginning operation.

- Existing feedlot operations register with the Kansas State Department of Health prior to Jan. 1, 1968.

- The health department evaluate water pollution potential of any proposed operation and advise the operator of necessary pollution control facilities.

- Existing feedlots be evaluated on a priority basis. (For instance river basins with existing pollution problems).

- Feedlots with fewer than 300-head capacity be subject to control if water pollution occurs as a result of operation or if complaints are received and validated.

- No one will be required to build unnecessary control facilities.

- Existing feedlot operators should not build control facilities until consulting with engineers from the health department.

ONE OF LARGE POPULATION GAINS IN RILEY COUNTY

MANHATTAN — The 1967 population of Riley county is officially 34,047 — a gain of 771 from last year, one of the largest gains in the G&G area. The count is from the January 1 assessment compilation. The gain in Manhattan was 370, pushing it to 23,850. Other Riley county town populations: Leonardville 388, Ogden 1697, Randolph 114, Riley 629.

Next year population figures will be compiled along federal census guidelines, which will add student and military personnel to a greater extent than by enumeration methods.



AGGIE HARDWARE
1205 Moro MANHATTAN

Paper Back Books
Largest Stock In Town

University Book Store
623 N. Manhattan Manhattan

Livestock feeding operations, including operations for horses and dogs in confined areas, will be subject to the new standards.

Minimum and maximum facilities for handling run-off rains up to three inches are to be established by the health department.

However, the department and the law itself are designed so that each lot will be examined on an individual basis. Department officials have said current plans call for establishment of only enough control facilities to assure adequate protection of water supplies.

Officials said the Cottonwood-Neosho Basis is first in line for control measures since that area has a concentration of livestock feedlots which pollute streams and John Redmond Reservoir near Burlington.

Next in line will be the Arkansas River Basin and streams that feed that river area.

Major lots will be examined first, with the smaller ones down to the 300-head size last

in line, they said.

Officials emphasized that in construction of new lots, serv-

ice will be given swiftly so that planning for new facilities will not be delayed.

AUTO RACES

Sun. Nite — 8 p.m.
PLAZA SPEEDWAY
Junction City

ONE MILE EAST ON J-HILL

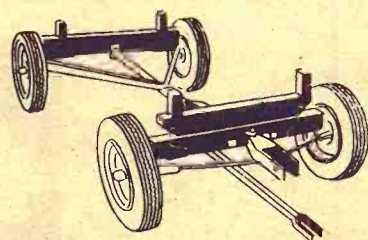
2 CLASSES JALOPIES (305 cu. in. motors)
SEMI-LATE MODEL STOCK CARS — '49 Thru '60

RACES EVERY SUNDAY
NIGHT AND HOLIDAYS

Finest And Fastest Quarter
Mile Track In The Country

Be an

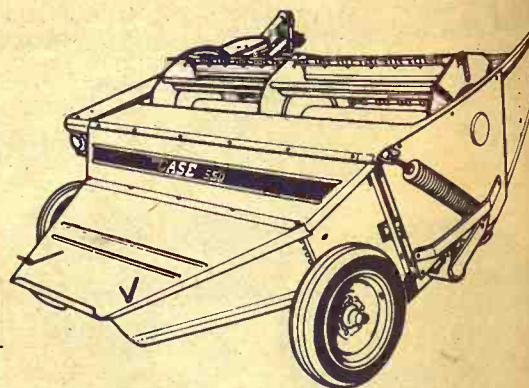
Early Bird



BUY ANY **CASE**
FORAGE HARVESTING
EQUIPMENT AND GET A
SIX-TON Wagon Gear
AS A FREE BONUS IN JUNE

550 PULL-TYPE WINDROWER

- Mows, conditions and rakes in one sweep; a big saving in time and equipment
- Whips through dense stands at up to 8 mph; saves protein-rich tips and leaves
- 9-foot cutting width
- Simple straight-through feed eliminates augers or drapers
- A 3-plow tractor pulls it
- Unitized construction and carefully engineered system of balanced weight distribution eliminates side-draft difficulties



Now It's "Case Wagon Days" — See A Dealer Today
Buy on Case Crop Way And Get Your Gear Now

LINN
Kuhlman Motor Co.

CHESTER, NEBR.
Grabau Impl. Co.

MARYSVILLE
Brauchi Brothers

CENTRALIA
McBratney Impl.
Phone 857-3815

CLAY CENTER
Porter Eqpt. Co.
1121 Crawford ME 2-5202

ESKRIDGE
Hogue Farm Service

MARION
Longhofer Supply

SALINA
Vahsholtz Impl. Co.

Livestock Supply Headquarters



ANIMAL HEALTH PROTECTION

Let Us Discuss With You—Your Needs For:
VACCINES & BACTERINS INSECTICIDES
INSTRUMENTS - TREATMENTS REMEDIES

A FULL-SERVICE STORE
FOR ANIMAL MEDICINES
PHONE ME 2-3272

HELD'S
STORE
CLAY CENTER, KANS.



WE CAN FIT YOU
Justin • Acme • Texas
Nexona and Tony Lama
On US 24 — 2 Blocks East
of Cloverleaf on US 24
TOPEKA, KANS.

Breathe

Farmers who were a little concerned about livestock prices are easier now that the showing some tend strengthen.

Robert L. Copper stock marketing ec



Our m

Because beer brewers like right. So U members of Boards thro

These me with service licensees, pu civil, profess underage, an

We're proud o UNITED STAT

P.O. B

"One

For Our Run Who Want

Save i

BUSINESS HOU
9:30 A.M. — 4:00
SATURDAYS
9:30 A.M. to 12:00

This bar graph well illustrates how the debt of the U. S. government has soared since the post-Civil War days. About two-thirds of the debt was accumulated in World War II.

Breathe Easier On Livestock Prices

Farmers who were becoming a little concerned about low livestock prices are breathing easier now that the market is showing some tendency to strengthen.

Robert L. Coppersmith, livestock marketing economist at

Kansas State University, believes the trend toward higher prices which began in May will continue throughout the summer for most classes of livestock.

The late spring and summer pig crop may be 3 to 5 percent

below last year, says Coppersmith. He looks for hog prices to reach a high of \$24 to \$25 in July and August, followed by a seasonal drop to the \$19 to \$20 level late this fall.

The K-State economist also sees higher cattle prices during the coming weeks. Cattle on feed were up 3 percent on April 1, mostly in the heavier weight groups. If these heavier cattle are sent to market, we should see some decrease in receipts and higher prices the last half of 1967, he says. He feels choice steer prices will near the \$26 level in late July and August.

Coppersmith is less optimistic about lamb prices, however. He looks for a seasonal downturn in the trend which saw lambs climb to the \$30 range in May. There were fewer sheep and lambs on farms January 1, and the spring lamb crop is lower than a year ago. Early 1967 slaughter was considerably higher than a year ago, however.



Our man with the Armed Forces

Because beer is such a favorite with service men, we brewers like to do all we can to keep its surroundings right. So USBA representatives serve as adviser members of the Armed Forces Disciplinary Control Boards throughout the country.

These men from the USBA operate hand in hand with service and civilian police, with malt beverage licensees, public boards and committees: military, civil, professional. Object: to protect those who are underage, and to insure strict observance of the law.

We're proud of the work they do.

UNITED STATES BREWERS ASSOCIATION, INC.

P.O. Box 1435, Topeka, Kansas 66601



Harvey Quarter For \$270 Acre

NEWTON — A quarter-section of land on which the Harvey County Farm was located has sold at auction for \$43,200 — an average of \$270 per acre.

The buyer was Edward Toevs of Halstead, an oil and land investor. Harvey county countians voted in August 1966 to sell the county farm rather than spend the money to comply with Department of Health regulations.

"One Friend Tells Another and HOME Grows"

For Our Rural Neighbors
Who Want To Strengthen Their Financial Positions

THE HOME SAVINGS PLAN
WILL Work For You . . . As It Does For Others
INSURED SAFETY OF SAVINGS

Save in person or by mail

BUSINESS HOURS
9:30 A.M. — 4:00 P.M.
SATURDAYS
9:30 A.M. to 12:00 Noon

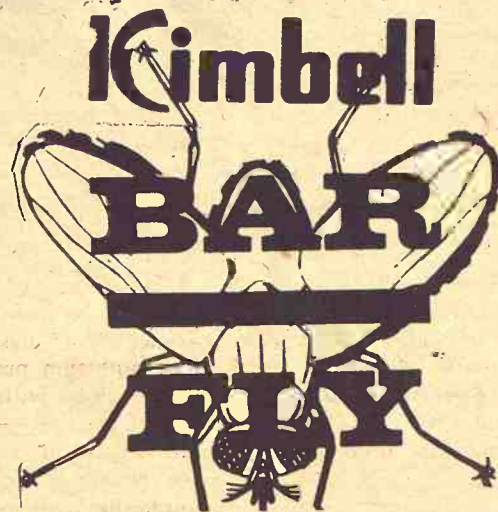
HOME
SAVINGS AND LOAN ASSOCIATION

107 NORTH FOURTH STREET

MANHATTAN, KANSAS

YOUR COMMUNITY HOME FINANCING CENTER

FREE
STEAM IRON
with 2 tons of

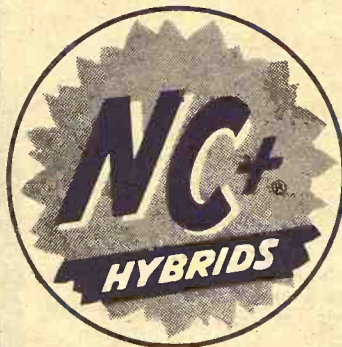


ONE WEEK ONLY — OFFER EXPIRES JUNE 14

See Your Key Dealer or Call Collect

KEY MILLING CO.
CLAY CENTER, KANS. ME 2-2141

IF YOU CARE ENOUGH
TO PLANT THE VERY BEST



RS671

A Strong Stalked Mid-Season
Milo Now Available through
your NC+ Dealer.

Check the Official Kansas State
Grain Sorghum Performance
Bulletin 504.

First in Greeley County Irrigated tests on both the two and three-year average.

First in Ford County Dryland tests on both the two and three-year average.

First in Finney County Fallow tests for the average of the past three years.

22% above the average in LaBette County in 1966 and 11% above the average the past 3 years.

15% above the average in Ellis County the past three years.

16% above the test average in Stafford County in 1965.

8% above the test average in Reno County in 1966 and 6% above the past three years.

8% above the average in Thomas County the past two years.
6% above the test average in Brown County the past three years.

For a consistently good hybrid grain sorghum — Pick up RS671 today.

Alida Co-op
CHAPMAN

Farmers Co-op
HOLTON

Farmers Co-op
MANHATTAN

Scott Kilsey
ROSSVILLE

The reason GRASS & GRAIN has

More Readers

of its classified advertising and sales section than any newsweekly in the state is that Grass & Grain has

More Classified

advertising for readers to read. Last year Grass & Grain ran 25,084 inches (314 pages) of classified ads and sales. This year volume is running 24% over last year.

Sell Land, Livestock, Implements, Cars & Trucks, Furniture, Feed & Seed, Antiques, Services. Find a Good Buy. The Way to Tell the Most — for the least cost — is thru G&G Classified.

\$1 A WEEK
15 words or less
5c word, additional

REACH 11,100 SUBSCRIBERS

WRITE YOUR
AD HERE



Don't forget to include
name, address and/or phone.

FIGURE YOUR COST HERE.

TOTAL NO. OF WORDS

RATE: (Minimum) 15 words or less \$1.00

Additional words @ 5c each (Example, a 20-word ad has 5 more words than 15. Five words @ 5c each would be 25c)

COST FOR 1 WEEK
(Add figures above) \$

Multiply one-week cost times number of weeks you want ad to run.

LESS DISCOUNTS
(See below)

I ENCLOSE \$

RUN THIS AD CONSECUTIVE WEEKS

DISCOUNTS: (with cash orders only) deduct 10% if ad runs 2 weeks. Deduct 25% if ad runs 4 weeks. **REFUNDS:** you may collect a refund at the Ag Press office for any unused amount paid if an ad is cancelled.

CLASSIFIED DISPLAY (boxed ads) \$1.68 a column inch.

CASH: Ads not accompanied by cash have a 25-cent billing charge added.

MAIL TO:
AG PRESS — 1207 MORO —
MANHATTAN, KANSAS
P.O. BOX 1009 —

GRASS & GRAIN

CLASSIFIED ADVERTISING

RATES: \$1 a week for 15 words or less. Add 5c a word for additional words. **Boxed ads:** \$1.82 an inch per issue, no discount. Send your ads to Ag Press, 1207 Moro, Manhattan, Kansas 66502, PO Box 1009. Phone PR 8-4458 (25c handling charge if payment does not accompany ads charged by the word.

Livestock

WANTED TO BUY FEEDER HOGS
40 to 100 lbs. Top prices paid.
J. D. SIMPSON
130 Grant Ave., Junction City
Phone CE 8-3754 or CE 8-3939

MR. CATTLE & SHEEP FEEDER
Alfalfa-Molasses Pellets
Produce Better Gains
Lower Feed Costs
No Waste — Easy To Handle

Contact
PRESTON MILLING INDUSTRIES
Home of SUR-GAIN Feeds
Fairbury, Nebraska
Phone 729-6145

FOR SALE: Meat type Duroc boars. Nationally accredited SPF test station figures available. Fred Germann, Dwight, Kans. Phone Junction City CE 8-4382, Noon hour only. SB14

FOR SALE — Registered 9 mo. Holstein bull, Burke Ormsby breeding. First bull calf in Central Dist. B & W. Dam Forty-Niner daughter from our "Star" family still milking on first calf record of 244d 14910 lb. m 515 lb. f. Dam of sire has 3 records of over 1000 lb. f. Price now \$250. Herbert M. Olson, Alta Vista, Kans. Phone 229-6802. SB15

STILL NEED an Angus bull. For sale — 3 twos & coming two year old bull. Also will sell 2 of our herd sires, one weighs over 1700 lbs. Phone 437-2774. Hammarlund Angus Farm, St. Marys. x14

FOR SALE — Three fancy Angus herd bulls, guaranteed in every way. Marvin Johnson, Brookville, Kans. 225-4575. SB15

FOR SALE — National accredited SPF Hampshire gilts, and boars ready for service. Galen Wiethorn, Axtell, Kans. Phone 726-2777. x21

FOR SALE — Registered Hereford bulls widely recognized for quality and satisfaction — reasonable prices. Located 2 mi. north and 2 east of Junction highways 15 & 18. Jones Hereford Farms, Abilene. SB16

REGISTERED YORKSHIRE Serviceable age boars, outstanding individuals, proven bloodline. Neill R. Walker, Rt. 2, McPherson, Kans. CH 1-2599. SB16

DAIRYMEN FARMERS

With advancing milk prices, now is the time to start a dairy herd or add to your present one. We believe we have in all of Kansas the best selection of Holstein, Guernsey, Jersey, Brown Swiss and Milking Shorthorn fresh and springer cows and heifers.

COME, HAVE A LOOK—
You'll be glad you did.
Financing available on cows & heifers.

Calves-Calves-Calves

We also have those good fast gaining beef cross calves from 2 weeks to 400 lbs. Also Holstein bull and heifer calves.

New shipments in every Saturday.

SPECIAL

75 bred fall freshening Holstein heifers.
50 open Holstein heifers
50 Holstein heifer calves
The ideal thing to put on pasture.

W. G. Wiebe

Phone CI 4-7625
SUMMERFIELD, KANSAS

FOR SALE — Good registered Zato Hereford bull, 6 years old. Cleo Brunkow, Wamego, Phone 456-2407. x16

MEAT TYPE Nationally Accredited SPF Yorkshire boars. Serviceable age, guaranteed. Harvey Herrs, Linn, Kans. phone DI 8-2252. x15

FOR SALE — Yorkshire boar from SPF stock. Back fat probe .8, weight 350 lbs. Glenn Lee Lacy, Miltonvale, Kans., Ph. 427-3165. x15

2 2000 lb. Polled Hereford bulls 4 2-year old Polled Hereford bulls. 15 Hereford cows. Delbert Johnson, Junction City, Kans. x17

NATIONALLY ACCREDITED SPF Yorkshire boars & open gilts, serviceable age. Floyd Meyer, Phone 308, Palmer, Kans. SB17

FOR SALE — Purebred Hampshire boars and bred gilts. Glenn E. Miller, Vermillion, Kans. x17

FOR SALE — Milk cows: 10 Holstein, 3 to 6 yrs. old, 3 to freshen in July, some have just freshened; 4 B/W heifers, 2 just fresh, 2 to freshen the next 2 mos. Good production. Call after 5:00 p.m. in the evening between 5 & 7:00 p.m. Also 2-unit DeLaval electric pulseolator milking machine. Telephone No. call Area 913 482-3345. SB15

WANTED — GOOD registered horned Hereford herd bull. John Gurney, Clements, Kansas. 66-844. Phone: 27 43198, Cedar Point. x14

FOR SALE — Two quarter mares, sound, broke, real nice. Ralph Hammond, Wakefield. x14

WANTED TO buy approx. 50 weaning lambs. Phone CE 8-6622 or CE 8-4341 Junction City, Al Junghans. SB14

FOR SALE — 48 crop bred feeder pigs, cast and vac. for cholera & erysipelas. Ready to sell Fri. June 9th. Ronald Wohler, Rt. 5, Clay Center. Phone ME 2-3031. SB14

REG. YORKSHIRE bred gilts. Neill R. Walker, Rt. 2, McPherson. CH 1-2599. SB16

FOR SALE — Bred Yorkshire gilts eligible to register. Also weanling Yorkshire gilts. Larry Ryan, Enterprise, Kansas, Phone WA 2-6729.

5 W.F. COWS and heifers with calves. Floyd Parry, Morganville, Kans. Phone WA 6-3647. x14

Poultry

FOR SALE — 500 started pullets, 5 weeks old. Would sell at day old price. To be picked up immediately. Mak's Hatchery, Marysville, Kans.

Feed & Seed

DAIRY PELLETS, range pellets and all kinds of fertilizers. Manhattan Milling Co., 107 Pierre, Manhattan. TF Chg

SADDLE MATE — Honey Bloom, a blood building vitamin iron compound in a pure honey base for horses. Key Milling, Clay Center, Kansas. SB16

FOR SALE — Ford soybean seed. Certified last year, \$3.25 per bu. bin run. Phone 455-3604, Lyle Beaumont, Clifton, Kans. x14

FOR SALE — Certified Clark 63 soybeans. Germ. 85. Purity 99.47. Grown from College seed. Wesley Heilman, Green. Ph. WI 4-2233. x14

FOR RENT — Pasture for 10 cows. Jack Quinn, Wamego, Kans. x14

FOR RENT — Pasture for 100 steers or 60 cows — Phone 225-4607 — Elmer Laas — Brookville, Kans. x15

Automotive

1963 CHEVROLET truck, LCF, 327 motor, heavy duty, no. 60 series, new tires, heavy springs & axles, 20-ft. giant bed, 66,000 miles, always shedded, good shape, priced to sell. Marvin Cottrell, Onaga, Kans., ph. 889-4665. SB14

Quitting Business

These items will be for sale Wedn., June 7, thru Friday, June 9, at our shop on highway 24 east of Manhattan, Kans.

All are in good condition. These and many other shop, office, and automotive items.
Sun Master motor tester \$150
Sun distributor tester \$65
Sun volt & ampere tester, alternator & generator \$40
Sun battery & starter tester \$40
Sun battery charger with hydrometer & cell tester \$35
Black & Decker super service valve refacer \$75
Black & Decker grinder buffer \$20

Steel shop bench & Tru-Cut electric armature lathe \$40
Lincoln metal shop bench & attaching cabinets \$40
Alemite cross sight wheel aligner, 1 yr. old, complete \$375
Grinder & stand, 220 volt \$45
2 sets aluminum alloy stands, adjustable, each \$750
1 set stands adjustable \$4
Alternator diode tester \$7
Compression gauge \$5
Transistor tack & dwell gauges \$22
Champion spark plug cleaner & tester \$5
Undercoating machine \$25
Manzel 4-wheel engine stand \$20

2 11-drawer metal tool cabinets each \$10
1 lot special tools \$50
Heat lamp stand, 5-bulb \$10
10 vinyl fender covers each \$1
Metal service desk \$10
Clarke electric floor buffer & polisher \$25
1958 Harley Davidson 3-wheel motorcycle \$135
10 fire extinguishers, each \$4.50
1/2" electric drill \$30
5 4-drawer metal file cabinets each \$22
Typewriter table, metal \$3
2 maple desks each \$35
2 swivel executive chairs each \$10
Paymaster check protector \$10
Large fire proof safe, 28"x28"x62" \$100
Electric pop machine & water fountain \$10
1 pair metal lockers \$10
Guiberson oil burning heating stove \$8
10 48" Fluorescent fixtures, ea. \$2.50
Misc. trailer hitches each \$2.50
Chamois, Barrell & Winger \$8
Metal ash trav & hall tree \$5
2 new 700x16 6-ply Goodyear tires each \$17
1 new 700x17 6-ply Goodyear tire & wheel \$25
Lot 24 pieces assorted radiator hoses \$18
Lot 17 pieces assorted fan belts \$13
New 20"x6" 6-hole truck wheel \$5
2 new 1966 Dodge or Plymouth radios \$25

Warren Poston Motors

Highway 24 East
MANHATTAN, KANSAS

GMC

TRUCKS

1/2 Ton - 60 Ton
Sales & Service

TRI-COUNTY MOTORS
307 N. 3rd
MANHATTAN

Harvest

1959 Chev. 2 to
gine, 2-speed
1956 Chev. 2 to
gine, 2-speed
& saddle tank
& saddle tank
1957 Chev. 1 1/2
under 4-speed
1945 Chev. 1 1/2
ft. stock rack
hoist
1963 Chev. 1/2 to
under, 4-speed
Fleetside bed,
1960 Ford 1/2 ton
der, 4-speed tr
side bed
1960 Chev. 1/2 to
under, 4 speed
Fleetside bed,
1959 Ford 1/2-ton
under with 3 s
ft. Styleside be
1958 IHC picku
with 3 speed t

Large stock of C
hardtops on han
1 —
3 —
1 —
2 — Con
Good stock of 4
Open Evenings

OBERN

Marvin Obern
Ph. BL 8-2421
HERINGTON
Call BL 8
Evening Ap

SKAGGS OF

OFFERS HAR

USED T

1966 Econoline
dio & heater.
1965 Ford 3/4 T V
trans, radio &
cab
1965 Chevrolet
radio & heater
1964 Ford 1/2 T 3
1961 Chevrolet
spd, chassis &
1958 Dodge 1/2 T,
engine just co
1958 Ford 1/2 T 3
tires
1946 Chevrolet 1
grain bed wi
racks, runs g
THIS IS FOR
WHAT ARE Y
Open Even

SKA (FORD)

"Where C
Send Thei
2nd & Houston
MANH

WHEAT TRU

63 Ford F600
262, 6-cyl., 84
61 Chevy 60 Se
261, 6-cyl., 2
recent motor
80% tread
60 Chevy 60 Se
261 motor, 2-
tread
59 Chevy 60 Se
hoist, new 15
2-speed, new
recent motor
59 Chevy Serie
hoist, new 13
box, new pai
overhaul, tire
58 IHC 180 C
5-speed, 2-sp
18,000 rear ax
el, new paint
57 Ford 750 C
302 V-8, 13M
5-speed, 2-sp
axle, 7000 fr
paint, 80% r
20 other used
used underbo

AM
CHEVRO
Phone 316
MOLINE,

WANTED — A
6x6 truck. State
condition. Rud
ville, Kans.

Harvest Trucks

1959 Chev. 2 ton truck, V-8 engine, 2-speed axle
1956 Chev. 2 ton truck, V-8 engine, 2-speed axle, new paint
1957 Chev. 1 1/2 ton truck, 6 cyl. 4-speed transmission
1945 Chev. 1 1/2 ton truck, 13 1/2 ft. stock rack, grain bed & hoist
1963 Chev. 1/2 ton pickup, 6 cyl. 4-speed trans., 8 ft. hoist
1960 Ford 1/2 ton pickup, 6 cyl. 4-speed trans., 8 ft. hoist
1960 Chev. 1/2 ton pickup, 6 cyl. 4-speed trans., 8 ft. hoist
1959 Ford 1/2 ton pickup, 6 cyl. 4-speed trans., 6 1/2 ft. Styleside bed & stock rack
1958 IHC pickup, 6 cylinder with 3 speed trans.

Large stock of Chevrolet 2 door hardtops on hand:
1 - 1965
3 - 1964
1 - 1962
2 - Convertibles
Good stock of 4 doors, all prices
Open Evenings At 1st & Main

OBERMEYER

Marvin Obermeyer, Owner
Ph. BL 8-2421 Open to 9 p.m.
HERINGTON, KANSAS
Call BL 8-2421 For Evening Appointment

SKAGGS OF MANHATTAN OFFERS HARVEST-READY USED TRUCKS

1966 Econoline 6 cyl. 3 spd., radio & heater. Local one owner mature lathe. \$1695
1965 Ford 1/2 T V-8 pickup, 4-spd. trans., radio & heater; custom cab. \$1795
1965 Chevrolet 1/2 T 4 spd. V-8, radio & heater, custom cab. \$1895
1964 Ford 1/2 T 3 spd. V-8 \$1395
1965 Chevrolet 1 1/2 ton 6 cyl. 4-spd. chassis & cab. \$1295
1968 Dodge 1/2 T, 4 spd., 6 cyl.; engine just completely rebuilt. \$545
1968 Ford 1/2 T 3 spd., 6 cyl., new tires. \$545
1966 Chevrolet 1 1/2 T 4 spd. 6 cyl. grain bed with fold-down racks, runs good. \$595

THIS IS FORD COUNTRY
WHAT ARE YOU DRIVING?
Open Evenings THU 9

SKAGGS (FORD) MOTORS

"Where Customers Send Their Friends"
2nd & Houston PR 8-3525
MANHATTAN

WHEAT TRUCK SPECIALS

65 Ford F600 Chassis, 2-speed, 262, 6-cyl., 84" CA, real good
61 Chevy 60 Series cab-chassis, 261, 6-cyl., 2-speed, 84" CA, recent motor overhaul, tires 80% tread
60 Chevy 60 Series cab-chassis, 261 motor, 2-speed, rears 75% tread
60 Chevy 60 Series, Garwood hoist, new 15 1/2" box, 4-speed, 2-speed, new paint. Tires 90%, recent motor overhaul
58 Chevy Series 60, Marion hoist, new 13 1/2" Tradewind box, new paint, 8M on motor overhaul, tires 80% tread
58 IHC 180 Chassis 102" CA, 5-speed, 2-speed, 308 engine, 18,000 rear axle, 7000 front axle, new paint, tires 90% tread
57 Ford V-8 13M Chassis, 108" CA, 302 V-8, 13M on rebuilt motor, axle, 7000 front axle, new paint, 80% rubber
50 other used 2 & 2 1/2 tons - used underbody hoists.

AMES CHEVROLET CO.

Phone 316 MI 7-3251
MOLINE, KANSAS
WANTED - ARMY surplus truck. State year, price and condition. Rudolph Laas, Brookville, Kans. x17

TRUCKS

1966 IH Scout 4x4, new \$2300
1963 IH 1600 2-ton, 2-speed axle \$1895
1957 IH 170 2-speed axle \$875
1950 IH L150 w/ bed and hoist \$845
1950 IH L150, good \$250
1948 Chev. 1 1/2-ton w/ bed and hoist \$595
1959 B 120 3/4-ton pickup, good \$1195
1962 Studebaker 3/4-ton pickup \$550
1950 IH L160, 2-speed, bed and hoist, O.H. \$945
1962 IH Scout, 4-wheel drive \$995

FARM MACHINERY NOT INCLUDED IN OUR REGULAR AD

John Deere ensilage harvester \$150
Case windrow attachment for ensilage harvester \$125
IH No. 30 manure loader, good \$175
IH No. 15 ensilage harvester \$895
IH No. 20 C ensilage harvester \$575
Papee ensilage harvester \$395
Case ensilage harvester \$445
Allis Chalmers ensilage harvester \$595
Farm Hand manure loader, good \$225
Case manure spreader \$200
Case blower w/ pipe \$75

Schumacher's Inc.

Highway 36
EA 5-2316
WASHINGTON, KANS.

FOR SALE - 61 Chevrolet pickup, 61 Ford tractor, 350 Farmall, 340 Farmall, H Farmall, New Holland baler. Jack Quinn, Wamego. x15

1951 3/4-TON 4-speed Dodge, good tires, flat bed, grain & stock rack, recently overhauled. Phone 494-2327, St. George. x14
FOR SALE - 13 1/2 ft. truck, bed, complete with stock rack and grain sides. Sylvester Umscheid, St. George, Ks. Phone 494-2264. x14
WANTED - A or T Ford car, state price & condition first letter. Roy F. Beam, RR3, Topeka, Kansas. x14
FOR SALE - Chev. 1/2 T pickup, 7000 miles on Sears rebuilt engine, good tires, runs good: 100 head weaning pigs: 21A MH SP 14' combine, running condition; two 30" apt. size natural gas ranges. Want to buy: 13 1/2 ft. grain bed with stock racks, must be in good condition. Larv Vilven, Rt. 1, Riley, Kans. Phone HU 5-2290 after 5 p.m. or weekends. SB15

FOR SALE - 1955 Chevrolet V-8, 2-speed, good, 13 1/2' fold-down box, hoist, new 8:75 rubber. Ronald Wiens, Rt. 2, Beatrice, N-br. Ph. 228-0654. x15

Real Estate

SUBURBANS

3-bdr., modern, natural gas, double garage, poultry house, 3A. 5 mi. from Manhattan.
New 3 bdr., carpeted, fireplace, A.C., built-in kitchen, paneled, 1 1/2 baths, patio, double garage, 2 acres. Manhattan.
2 bdr. on 2 lots, modern, basement, at Wabaunsee, Kans.
3 bdr., modern, barn, poultry house, automatic water, fruit trees. Westmoreland, Kans.

LIKE NEW

2 bdr. modern, paneled, carpeted, located Olsburg, Kans.

Fulmer Real Estate

CATHERINE J. FULMER
REALTOR
Office 456-7696
Res. 456-9281
WAMEGO



RETIRING? SEE at your convenience this low priced suburban. Well landscaped. Garden space. Fenced yard. Designed for efficiency. Redecorated. 220 wiring. One mile from Manhattan. Phone PR 6-8192.

FARMS

We have three farms northwest of Abilene, Kans., totaling about 900 acres, close enough to make a good unit. One with exceptionally good buildings, late type modern home. About 80% of land is farmed, lays very good.

Also 80A, 1/2 grass, very nice improvements, just north Abilene.

Wilson Real Estate

Abilene, Ph. CO 3-1812
or CO 3-2400

FARMS FOR SALE

Unimproved 160 between Clifton and Palmer, 104 cultivated, 46 wheat, 56 feed grains, balance good pasture with never failing spring, \$35,000.
Improved 320, lights, school bus, 280 cultivated, 61 wheat, 225 feed grain, 215 acres growing wheat on farm now, \$52,000.
Nicely improved 240 with 5 bedroom modern home, 112A very good cultivated land, 48 wheat, 40 feed grain, \$42,000. Will carry \$20,000.
Unimproved 160, irrigated, 90A leveled, 150 cultivated, 73.6 wheat, 72 corn & milo, \$60,000
Call collect for appointment. I have found farms for 12 prospective buyers since Jan. 1. I can find one for you if you will let me know what you want.

Call Collect for Appointment

Kvasnicka Realty

GERALD A. KVASNICKA
Realtor
HADDAM, KANS.
Ph. FR 6-2874

Samarrai Realty

1st Natl. Bank Bldg.
MANHATTAN, KANSAS
NEW ON MARKET

Horse Training Stables - 160 acres good pastures, near Clay Center, Kans. Large indoor arena; 2 lighted outdoor arenas; stud barn; 3 stud pens, 4-horse walker, hay barn, broodmare pastures and breaking pen. Large 4 bedroom modern home. A real set-up! \$65,000.
Section of good grass. Plenty of water & good fences. \$65,000
880 acre Cattle Ranch. 550 acres in pasture, the rest broke land. Good spring fed ponds. \$115,000. Could be divided; make offer.
Close to Manhattan, Kans.. 36 acres, pond, nice large building. \$30,000.
Locker and Meat Processing Business - Near Manhattan. Ideal for retired couple. \$14,500.
Suburban Manhattan - 2 bedroom house with small acreage. Barn, corral and double garage. \$15,000.

Call Collect For Appointment
(MRS.) DOLLY MOORE
Office: PR 8-5805
Home: PR 6-8104
MANHATTAN, KANS.

Farm For Sale

320 acres, just listed, near Niles, Kansas, on good road. A choice upland farm with just about everything done that needs done. Has 175A wheat this year, 12A milo, 90A grass. 1 1/2 miles new 5-wire fence, new pond. You'll have to see to appreciate it.

Wilson Real Estate

ph. CO 3-1812 or CO 3-2400
ABILENE, KANSAS

640 ACRES in good farming area. An exceptional upland farm consisting of 430 acres grass, well fenced and plenty of water, 210 acres in cultivation, 165 acres in wheat, 1/2 goes to buyer before harvest. There is a 3 bedroom modern house, 2 car garage, good barn and other buildings. Contract financing may be arranged.
We also have a commercial property in Solomon, Kans., suitable for heavy industrial machinery.

For other farm listings call or write J. Fred Martin, Rural Properties, Wenger Agency, P.O. Box 923, Salina, Kans. 67402. TA 7-3641. SB14

Wamego Homes For Sale

Lovely near new split level 3-bedroom home. All electric kitchen, 1 1/2 baths. Carpet. Central air. Family room & basement. \$20,000.

Near new 3-bedroom home, also office or den. Large family room, nice kitchen with built-in electric range & dish washer. Fully carpeted. Central air, 2 full baths. 2 car garage. FHA approved. Fire place. \$22,500.

3-year old 3-bedroom home. Full basement, attached garage. VA loan 5 1/4%. A nice home. \$17,500.

Lovely 3-bedroom home. Double fireplace. Split level. Family room, 2 full baths. Double garage, 2100 ft. living space. Lovely patio & shrubbery. \$23,000.

A few older cheaper homes for sale.

Investment property in Manhattan. Older home with 3 rental units, all rented \$200 per month income. Nice location. \$12,000.

McKowen-Jacobson Agency

Real Estate - Insurance
Ph. 456-9466
WAMEGO, KANS. 66547

WIDE SELECTION OF HOMES IN MANHATTAN

SPLIT LEVEL 3-BEDROOM HOME - MARLATT SCHOOL DIST. - Like New! Ceramic Tile Bath with Shower, Plus 2 Half Baths; Central Air Conditioned; (L) Living & Dining Room Built-in Appliances; Central entrance hall; Double Garage; Large Fenced Yard. - \$28,000.00.

NEW SUBURBAN HOME - WEST UNIVERSITY - NEARLY 3 ACRES - 4 bedrooms: 3 Baths; 2 fireplaces; Central Air Conditioned; Paneled; Double Garage; Low County Taxes.

NEAR BLUE HILLS SHOPPING AREA - 3-bedroom Home; Wall-Wall Carpeting; Well Landscaped Yard; All special Improvement Taxes Paid; Quick Possession - \$11,750.00.

VERY DESIRABLE HOME. SITE WITH TREES - NEAR SR. HIGH SCHOOL, IDEAL LOCATION.

NEAR UNIVERSITY - IEE SCHOOL DISTRICT - 3-BEDROOM HOME: Attached Garage, Carpeted Living Room; Finished Basement; 2 Baths - Only \$19,500.00

BRAND NEW HOME - NEAR MARLATT SCHOOL - 3 spacious Bedrooms; 2 full baths; Fully Carpeted; Attractive Kitchen & Family Room; Built-in Appliances, Washer & Dryer Space 1st Floor: Large Recreation Room; Walkout Level Basement; Central Air Conditioned; Large Lot: Double Garage - Move in Soon.

ONLY \$22,500.00 WILL BUY THIS - Nearly New Home; 3 Bedrooms; 2 Baths in Ceramic Tile; All Carpeted; Central Air Conditioned; Built-in Range & Oven, Dishwasher; Full Basement; Double Garage - Marlatt School Dist.

For complete Real Estate & Insurance Service Call

Maurice McNeil Realtor

Suite No. 11
Union National Bank Building
Office PR 8-4401 Res. JE 9-5164
MANHATTAN

27 MILES from Topeka in Eskridge area. 320 acre farm. Excellent facilities for handling cattle. Creek flows thru feed lot. 70 acres cultivated. Good production record. 8 room modern house with new furnace. Owner retiring. Priced at \$45,000. Lancaster Realty, Junction City, Kans. Phone CE 8-6809. SB15

FOR SALE - 160 acres, all tillable, 85 acres irrigated, has very good wheat and row crop allotments, 9000 bu. new storage bins, plus irrigation equipment and landlord's share of crops. All go if sold before harvest \$55,000. C&F Agency, Box 213, Concordia, Kans. Ph. 913 CH-1959. SB15

FOR SALE - 80 acres all grass. Modern house, three car garage. All other good improved buildings, plenty of water. Half mile east of Carneiro, Ks. 1211 Spring St., Ellsworth, Kansas, Phone GR 2-3817, Mrs. Ray Slaight. x16

FOR SALE - 10-room house in Randolph, Ks. Needs some repair. Jack Quinn, Wamego, Ks. x17

FOR SALE - 2 bedroom house, 1 floor, range, cabinets, 707 Oak, Wamego. \$6,000.00. Phone 456-7287 evenings. x17

Farm Equipment

Fairbanks Motor & Elec.



FORD MCHRY.
EX 6-2481
WHEATON, KS.

COMBINES

1965 JD 95, 16', cab, not a custom
1962 JD 55, 14', power steering
1961 JD 55, 13', Electro-clutch, pickup & regular reels
1956 JD 55, 14', cell grate
1954 JD 55, 14', Farrar cyl. & sickle drives
1957 JD 45 10', Hume reel
1956 JD 45, 10', above average
1954 MM SP 168, 14'
All JD's are serviced and ready for the field - Terms available on any of them.

ROW CROP TOOLS

Two No. 406 lister-planters
New 494A JD planter
4 & 3 section No. 14 JD hoes
IH: JD; Ford weedeers.
4 IH front mount cultivators
2 rear mount Ford cultivators

JD TRACTORS

1963 3010 gas
1964 3020 diesel
1961 4010 diesel
1964 4020 diesel
1959 JD 730 diesel

FORD TRACTORS

1962 No. 901 diesel
1959 No. 861 diesel
1957 Major diesel

MISCELLANEOUS

No. 858 JD rake
14T JD baler
4x14 semi-integral plow
4x16 semi-integral plow
40' JD 10 1/2" PTO elevator
No. 115 JD chukwagon
No. 30 Grainovator wagon
Kim trailer sprayer
Clark Pre-Emerge outfit

Washington Impl.



EA 5-2301
WASHINGTON

USED PIPE

IN ALL SIZES
Also used valves & pipe fittings
HOERMAN SUPPLY CO.
Phone Manhattan PR 6-9253
Warehouse ZEANDALE, Ks.

FOR SALE - New Holland No. 77 twine baler with good VF-4 Wisconsin motor, \$75. Easy-Flo silage distributor for 16-24 foot silos, including goose neck, good \$60. 6x6 dimension lumber. Eldred Schaefer, Bremen, Kans., Phone 767-4926, Odell, Nebraska. x15

USED MACHINERY AT READING, KANS.

Swather, Case 12', No. 850
Cutter, Gehl SP83, 1965
Combine, MF27, 16'
Silage loader, Oswaltz
Baler, AC, late model
Scraper, JD840, self-loading
Land plane, 40' W 10' blade
Disk, 9' Case offset

Walter Porter

Phone 913 528-1794
READING, KANS.

FOR SALE - 8N Ford tractor and equipment, extra good condition. 1941 B John Deere and No. 55 New Holland rake. Phill's Repair Shop, RR3, Manhattan, Kans. x14

FOR SALE - 95 combine, 14 ft. 1962 Model 30 John Deeres. PR 6-8454, Manhattan. x17

USED TRACTORS

1964 IH F706 D Farmall, new tires \$5750
1964 F504 gas tractor, 480 hrs. \$3450
1959 F560D Farmall \$3450
1963 Allis Chalmers D19, propane, very good \$3750
1953 WD Allis Chalmers, good pwr. strg. \$750
1955 F400 gas, F.H. \$1795
1955 F300 gas, F.H. \$1095
1951 Farmall MD, good \$875
H Farmall, overhauled \$345
M Farmall, good, new rubber \$795
1952 8N Ford \$545
9N Ford \$375
John Deere B tractor \$150
1953 Massey Harris No. 44 tractor \$545

USED COMBINES

IH 101 combine, extra good \$2950
No. 80 Massey Harris \$945
No. 12 S.P. Case \$450
IH 125 SPVC for repairs \$250

USED BALERS & HAY MACHINES

Case automatic baler \$145
IH 45 baler \$750
IH 46 baler \$950
Ford 250 baler \$445
N.H. 66 baler \$245
John Deere No. 5 mower, extra good \$225
John Deere No. 5 mower \$175
IH 25V mower \$95
N.H. No. 30 mower \$50
N.H. No. 400 hay conditioner \$95
IH No. 27 mower \$125

USED CULTIVATORS

John Deere 2-row cultivator \$65

AC 2-row cultivator \$75

AC 2-row cultivator, late type \$145

IH No. 261 cultivator, F.H. rear section \$235

F75 lister-cultivator, 2-row \$95

FA 40 lister-cultivator, 4-row \$295

IH 250 cultivator \$95

USED PLANTING EQUIPMENT

IH No. 449A 4-row planter w/ fertilizer attach., zero press wheels press \$695

IH No. 46 lister, zero press. tires \$175

IH No. 46 lister \$65

Dempster 2-row rotary mold-board lister w/ fertilizer \$275

Allis Chalmers 2-row planter, snap coupler \$125

IH No. 182 lister \$95

John Deere 730 lister w/ fertilizer attach. \$145

IH No. HM46 lister, rubber press wheels, fert. attach., like new \$175

M-M fertilizer drill 16-7 w/ press wheels \$495

IH No. MF, 16-8 fertilizer drill \$175

USED TILLAGE MACHINES

Krause 3-pt. oneway \$135

John Deere 6-ft. oneway \$145

John Deere RIN, 11-ft. wheel disk \$495

John Deere KBA 11-ft. wheel disk \$295

Ford 3-pt. tandem disk \$225

IH No. 309A 3-14, 3-pt. plow, like new \$375

John Deere 3-16 plow \$145

Cockshutt 3-14 plow \$65

IH 3-14 plow \$165

IH 4-14 plow \$375

IH 4-section springtooth \$75

Oliver 15-ft. springtooth \$65

IH No. 400 12-ft. springtooth \$175

IH 10-ft. Power set springtooth \$125

Ford 3-pt. plow, 3-14, extra good \$395

IH No. 37 12-ft. wheel disk \$525

Case 11-ft. wheel disk, extra good \$525

M-M 8-ft. 3-pt. tandem disk, extra good \$275

Krause 11-ft. wheel disk, extra good \$535

IH No. 412 4-14 semi-mtd plow, fast hitch \$450

Allis Chalmers 4-14 mounted plow, good \$465

IH No. 30 3-14 fast hitch plow \$145

IH No. 30 2-16 fast hitch plow \$125

IH tandem disk, 11-2", good \$95

OTHER MACHINES

Viking 36-ft. elevator \$275

Mulkey 32-ft. elevator \$245

IH 10-C hammermill \$75

Clark 3-pt. sprayer, like new \$275

Easy Way post hole digger \$75

Ford 3-pt. post hole digger \$95

End Gate seeder, new \$50

Bear Cat 10" hammermill \$65

Schumacher's, Inc.



Highway 36

EA 5-2316

WASHINGTON, KANS.

USED TRACTORS AT LEONARDSVILLE

Two 1960 Farmalls 460 gas, both fully equipped & overhauled
1958 F-350 utility, fast hitch
1962 Ford 971 dsl., pwr. steering, Select-O-Speed
1947 IH M; 1947 Ford 8N.
1958 F-200, wide front F.H.

BALERS

1961 IHC 56, wire tie

1962 IHC 46T, twine w/ bale thrower

45T; N-H 66 PTO

N-H 66 wire, with engine

OTHER MACHINERY

IHC No. 5 rake, low rubber

IHC No. 10, semi-mount rake

IHC No. 15 rake, 2-wheel

IHC 455 cultivator, fits IH 460 & 560

IHC 2-row rear mt. cult.

IHC 238

1962 JD 200 quick tach w/ 3-pt. rear section

Older John Deere 200

IHC No. 35 2-row weeder

IHC No. 37 12' disc

IHC No. 35 9" disc

JD 4-sec. sprg. tooth w/ carrier

Ford 3-pt. mower, real good

1963 IHC 303 combine, 14'

IHC 33A HM loader

Hydraulic loader, fits 800 and 900 series Ford

Jayhawk loader for 8N or 9N Fords

IHC 411 4-14 F.H. plow

IHC 540 4-14 steerable plow

JD 3-14 No. 55 plow

Letz 25x burr mill, like new

IHC 4-row top planter, 2 or 3-pt. hitch

Kendall Garage

& IMPLEMENT



Phone 122

Leonardville, Ks.

USED FARM TRACTORS AT HENRY'S, TOPEKA

C Allis with cultivator

CA Allis w/ cultivator

1962 A-C D-19, gas

Ford 8N with Henry Industrial loader

1961 IH 560 diesel

1960 Ford Model 601

WD 45 Allis, wide front end, completely overhauled

USED COMBINES

Gleaner C, exceptionally good, 16' grain with 4-row No. 40, cornhead

IH 101 with two 2-row cornheads

Case 800, 12', real good

1960 John Deere 45, 12'

1960 Gleaner A

COMBINE CLINIC

In Our Store

8 P.M. JUNE 1

Everyone welcome. Get the facts on combines from factory representatives. Refreshments served.

Henry Sales & Service, Inc.



E. Hwy. 24

& Meriden Rd.

FL 4-7641

TOPEKA, KANSAS

DAUER IMPLEMENT CO.

1960 F-460 tractor, 1300 hrs.

1959 Case 800B tractor

1954 Super MTA tractor

McCormick No. 412 4-16 semi-mounted plow

1957 McCormick 46T twine baler

1962 McCormick 46T twine baler

1964 McCormick 46W wire baler

1966 McCormick 47W wire baler

Windpower 4 sect. rotary hoe

McCormick No. 60 3-16 plow

McCormick No. 100 mower, 2 pt. hitch

1949 W6 McCormick tractor

1950 W6 McCormick tractor

1955 R160 International truck with bed & hoist

One nearly new tractor tire 13.6x36 4 ply \$360

McCormick 16x8 MF drill, low rubber & rubber press

IH 6' peg harrow sections



Falun

Phone 1011

Pipe, Steel & Shop Equipment

Like new bolts, 7-8, 3-4, 5-8, several lengths
8-inch used standard pipe, exc. cond. 32, 51, 36, 30 ft. lengths.
40 lengths of 3/4 & 1/2 sucker rod

Like new tube 3/4 O.D. Wall

3/16, 6 1/2 lbs. per ft., 4000 ft.

Also 2 1/2 O.D. 1/2 wall, 3000 ft.

Good 2" boiler flue, 400 ft.

Good 2" boiler flue, 250 ft.

Also 10" standard pipe, 12", 5", weld, elbow & flange.

Used oil field 2-inch tubing, good, 30 to 33-foot lengths.

3 750-800 gal. tanks, good for water tanks; one good, 2 fair.

4-cyl. Wisconsin motor with Rockford power take-off. Model GRA589 S215360.

25-lb. Little Giant triphammer, real good.

2 coal forges with electric fan. 2F., Buffalo blower.

Truck saddle tanks with 38-inch opening for frame.

750-gal water tank w/ 2" drain valve.

4 General Electric gas fired boilers, Model 211M. Steam (1440 sq. ft. output, 15 lbs. steam) or hot water (2300 sq. ft. output, 30 lbs. hot water). Input 432,000-output normal, 345,600 BTU.

Cable clamps: 7-8 galvanized; 1-inch galv.; 1-inch black; 1 1/2-in. galv.

Bolts: 0.875x4, 0.875x3 1/2, 0.625x6, 0.625x4, many others.

25-lb. sight feed acetylene generator.

35 hp. electric upright motor, could be used for irrigation.

Highway winch, two sets of poles, 15 ft. & 21 ft. 3 1/2" pipe.

18x6x30 ft. used I-beam and channel iron beams. Also new 4-inch and 5-inch channel. New angle 3/8 inch and 1/2 inch, several sizes.

Some used truck tires, real good for big farm trailers.

Water pumps for mailbox stands.

Disk sharpener, roller type, Blacksmith tongs, all sizes and shapes.

Bigbee Welding Shop

117 S. 3rd Ph. 8-5172

After hours Phone 8-5857

MANHATTAN, KANSAS

Wamego

Dairy Supply

Located At

Bit-O-Gold Cheese Bldg.

Dave Doperalski

Authorized DeLaval Dealer

Rubber parts for all makes

Service for all makes

Used milk machines, all makes

We would appreciate being of service to you.

Phone 456-7200

WAMEGO, KANSAS

COMBINE BARGAINS

PRICES HAVE BEEN CUT FOR CLEARANCE

ALL MACHINES RECONDITIONED - PAINTED

1953 JD 55, 14' header \$1000

1954 JD 55, 14' header \$1250

1955 JD 55, 14' header \$1250

1955 JD 55, 14' header \$1300

1957 JD 55, 14' header \$1500

1957 JD 55, 14' header \$1650

1958 JD 55, 14' header \$2300

1958 JD 55, 14' header \$2450

1961 JD 55, 14' header \$4250

1961 JD 55, 14' header \$4300

1964 JD 95, 16' header \$6900

1962 MF S92, 14' header \$3300

1963 MF S92, 14' header \$3700

Western Impl. Co.



2256 So. West St.

Phone WH 3-4261

WICHITA, KANSAS

FOR SALE - 1952 Massey Harris Model 27 14 ft. self-propelled combine. Mrs. Kenneth Roach, Chapman, Kans. x14

ALLIS C tractor with mounted bale loader, good tires & condition, \$150. Allis combine, power unit fits above tractor. Co-op tractor spreader, good tires, \$75. MM 69" combine, motor, good tires & belts; canvas, little wear \$30. Jas. K. Spradling, Mahaska, Kans. 66955. x15



BARGAINS - COMBINES

1966 New IHC No. 303 combine, 14 ft. cutter bar, fully equipped - SAVE -

NEW IHC No. 303 with cab, 13 ft. cutter bar, fully equipped

1964 IHC No. 403 combine, 14 ft. with cab - always shedded - see this machine

1959 IHC No. 101 reconditioned, ready to roll

TRACTORS

WE HAVE IN STOCK A GOOD SELECTION OF NEW TRACTORS - WE NEED GOOD USED TRACTORS - TRADE NOW.

IHC Farmall H tractor with 2-row cultivator - complete - \$425

Allis WD tractor fully equipped, reconditioned, runs like new

1957 IHC Farmall 350, power steering, TA, INPTO, FH, power adj. wheels, low hours, exceptionally clean one owner

Allis WC tractor \$150

Allis WC tractor \$250

Allis B tractor with side mower \$175

John Deere Model G with lift \$400

1959 Farmall 460 gas, fully equipped \$2300

1952 Farmall Super C with mower, & cultivator \$450

FARM MACHINES

IH No. 37 wheel disk, 10 ft. 9"

Davis 101 loader

Jayhawk loader \$25

Horn loader \$75

IH No. 5 low wheel 4-bar rake

IHC 2-row corn planter, disk openers \$75

IHC 2-row mounted lister with insecticide \$95

IH rear fast-hitch section for cultivator \$45

I

Farm Net At \$10,599 In Hutch Association

Since the Farm Management Associations were organized in Kansas in the early 1930s, there hasn't been much doubt that members are both bigger and apparently tighter managers than the average farmer.

The latest figures from one of the state management associations continue to bear this out.

From association number two — one centering in 11 counties around Hutchinson — the average net income in 1966 was \$10,599.

That compares with the state average of \$4450.

Farms belonging to the association are in Barton, Stafford, Rice, Reno, Kingman, Harper, Pratt, McPherson, Harvey, Sedgwick and Sumner counties.

The average, however, in this

area was down slightly from the \$10,791 average net of 1965.

Not all areas, however, did show declining nets in 1966. Associations around Salina and Emporia had higher average nets in 1966 than in 1965, as earlier reported in Grass & Grain.

Charles Hageman of Hutchinson, fieldman for the association, points out that of that \$10,599 average net income, some of that should be attributed to interest on the farmer's investment, and that the average return for labor and management was only \$7229 per farm.

Gross income exceeded that of 1965 by 7 percent, but a 10 percent rise in expenses held net income below the record level.

The average farm in the association grossed \$16,586 on

livestock and \$12,956 on crops. The livestock income was up from 1965, but the crop receipts were down, due to hail and dry weather.

Wheat had averaged 3.25 bushels per acre on the association farms in 1965 but fell to 25 bushels last year.

Farm expenses averaged 10 percent higher, with a \$24,731 mean in 1966. Income over this figure came from government payments as well as livestock and crop sales.

Some farms were more profitable than others. The most profitable one-fourth of the farms netted \$21,837, compared to the least profitable quarter which earned a net income of only \$2087.

Total expenses per \$100 gross income on the two types of farms were \$61.94 for the high income bracket and \$91.16 for the lower one-fourth.

The six specialized poultry farms in the association were the most profitable, netting \$23,115 per farm.

Sheep enterprises had a \$14,981 return.

Larger farms were more profitable than smaller ones. Farms with more than 800 acres averaged \$15,977 net income.

Farms with 601 to 800 acres averaged \$10,770; 401 to 600 acres, \$8926; and less than 400 acres, \$7532.

Wheels Of USDA Justice Turn Slowly—But Very

A 1959 sales promotion in which Armour and Co. gave a 50-cent refund to buyers of 2-pound packages of the firm's thick-sliced bacon has been declared an "unfair practice in violation of the Packers and Stockyards Act."

The decision, made in late May by USDA, completed a case that had been pending since 1962, when the complaint was issued.

The Armour sales refund was used only in five states, but USDA claimed that the refund made the sales at below-cost figures, a violation of P&S rules.

It is not unusual for delayed complaints and decisions to come from the USDA enforcement of the P&S Act, but the 3 years to make a complaint, five years to make a decision, and 8 years lapse from act to decision is long, even by USDA standards.

AUCTION

Sat., June 10

Starts 1:00 p.m.

At 1309 West 8th Street, Wamego, Kans.

21" cabinet tv; Jenny Lind bed, complete with springs & mattress; chest of drawers; Hide-A-Bed (divan), almost new; desk; hair dryer;

Recliner chair; platform rocker; 2 matched arm chairs; 2 9x12 rugs; 4 table lamps; 2 table radios; 1 coffee table; 2 lamp tables; walnut corner what-not; bird cage; double wash tubs; large picnic table & benches;

Window fan cooler, nearly new; hot water heater; girls bicycle; dishes; garden tools; clothing; and miscellaneous items.

Mr. & Mrs. Gail Simon

Terms: Cash

Aucts: Applegate & Welter. Clerk: Don Eisenbeis.

Reynolds Sale Barn

ABILENE, KANS. CO 3-3394

Selling Every Friday

Night Sales 8:00 P.M. Thru Harvest

A large crowd and a large run of cattle marked our second night sale of the summer last Friday. There were more buyers in the barn than we've seen here in many months, and they made this sale one of the best we've ever had. Bulk of the cattle went to Colorado, Nebraska and Iowa.

Following is a sample listing of the market:

1 bull, 1260 lbs.	23.00	30 WF 760 lbs.	26.30
1 bull, 1380 lbs.	22.75	29 WF, 806 lbs.	26.20
1 bull, 1670 lbs.	22.65	33 wf, 755 lbs.	26.20
1 bull, 1660 lbs.	23.50	33 wf, 681 lbs.	26.40
1 bull, 1140 lbs.	22.50	34 wf, 770 lbs.	26.05
3 bulls, 653 lbs.	24.80	27 wf, 840 lbs.	25.70
		29 wf, 771 lbs.	25.85
		36 mixed, 737 lbs.	25.40
		6 Shorthorns, 771 lbs.	26.00
		7 Holsteins, 615 lbs.	22.20

COWS

1 Holstein, 1315 lbs.	18.10
1 Brindle, 1255 lbs.	18.00
1 Holstein, 1220 lbs.	17.90
1 Holstein, 1350 lbs.	17.90
1 Holstein, 1340 lbs.	18.40
1 cow, 1145 lbs.	18.10
1 cow, 1170 lbs.	18.00
1 cow, 980 lbs.	17.90
1 cow, 1170 lbs.	17.65
1 cow, 1040 lbs.	17.85
1 WF cow & calf, pair \$231.00	
1 Angus cow & calf, pair \$238	

STOCKER & FEEDER STEERS

We had over 350 head of this grade.	
4 blk, 571 lbs.	27.20
3 blk, 565 lbs.	27.30
14 blkwf, 771 lbs.	26.35

STOCKER & FEEDER HEIFERS

2 wf, 422 lbs.	26.20
4 wf, 431 lbs.	25.90
5 wf, 464 lbs.	25.00

BUTCHER CATTLE

2 heifers, 780 lbs.	24.00
1 heifer, 870 lbs.	23.60
2 grain fed cows, 1030	20.65
1 hol. steer, 1150 lbs.	23.30
1 roan steer, 1080 lbs.	23.30
1 heiferet, 910 lbs.	20.95
1 heiferette, 1115 lbs.	20.20
1 steer, 910 lbs.	25.20

We look for a fair sale this coming Friday night.

BRING YOUR CATTLE IN AT ANY TIME DAY OR NIGHT; WE'LL HANDLE THEM FOR YOU AT YOUR REQUEST.

For information, requests for appraisals at no obligation, or inquiries regarding coming sales, call me at any time, day or night.

DUDE REYNOLDS Abilene, Kans. CO 3-3394

AUCTION SALE

Saturday
JUNE 17

Starts 10:30 a.m.

Lunch Served

Having sold our farm and quitting farming we will sell at public auction on the farm located 3 west and 1 1/4 south of Industry, Kans.

Farm Machinery

1951 Allis WD tractor, L. hyd., L.P.O., fair rubber, quick tach, good shape
1948 Massey Harris 21 A. 14-foot combine, running order
Allis 2-row mounted lister, fit WD
Allis 2-row mounted lister, fit WC
Allis rear mount dirt scoop, (like new)
Allis 2-row mounted cultivator, fit WD
2 Allis 2-row mounted cultivators, fit WC
Allis 3x14 mounted plow, fit WD
Allis 2x14 plow, on rubber
Allis mounted 7-ft. mower, P.T.O., good
2-point utility box
1952 Allis 5-ft. combine
MM 8-ft. oneway, on steel
9-ft. land roller
IHC 4-section spring tooth, with shop built wheel carrier
Wood Bros. single row corn picker
IHC 8-ft. tandem disc
IHC drag harrow
Old wagon
Dempster 7x15 grain drill, fertilizer, seeder, press on low rubber, good shape
Shop built P.T.O. post hole digger
7-ft. blade for manure loader
Steel road drag
Old 12x8 grain drill
Steel buzz saw frame and blade
2 old manure spreaders
3 dump rakes
Old junk combine
2-wheel stock trailer
2 4-wheel trailers, with flat

beds, grain sides; one has silage sides
2-row weeder with tractor hitch
6-in. 12-ft. grain auger
4-in. 12-ft. grain auger with mtr.

Other old misc. machinery; several piles of good junk iron.

TRUCK AND CAR

1948 Ford 1-ton pickup, grain sides and stock racks, over loads, 4-speed, fair rubber, good shape
1954 Ford 4-door sedan, 6 cylinder, heater, radio, in running order

FEEDERS, POSTS, PANELS, HAND TOOLS & MISC.

16-ft. hay or grain bunk; some hedge posts; barb wire; old tires; cement blocks; several panels; 4 Massey Harris wheels with good 24-in. ply tires;
Milo guards for 14-ft. combine; 500 gal. overhead gas barrel, hose and nozzle; used lumber; 50 gal. barrels; post and rail; electric mtrs.; tap and drill; die set, 1/4 to 3/4 (standard); Forks; silage fork; bolts; nuts; a lot misc. hand tools; walking plow; grease guns; log chains; power hack saw and many many small misc. items; 1 T-33 6-can milk cooler.

HOUSEHOLD GOODS

IHC 15-ft. chest type deep freeze; large office desk; antique dining chair; wall telephone; 2 copper boilers; several kero lamps; other misc. antique pieces.

Mr. & Mrs.

CHAS. DORNBERGER, Owners

Aucts: Foster Kretz & Elmo Steffen, Clay Center, Phone Morganville WA 6-4422.

Clerk: Calvin Jones, Abilene, Kans.

JUNE PACE-SETTER SALE

Special Prices On
New & Used Cars — Trucks
And Farm Machinery

OPEN SUNDAYS FROM 1:00-5:00 p.m.

Used Cars

- 1966 Chev. V-8 Bel Air, 4 dr., aut. trans.
- 1966 Impala 4-door V-8, automatic, PS, PB
- 1964 Plymouth Belvedere 4-dr., automatic
- 1964 Corvair Monza 4-speed
- 1963 Chevrolet Bel Air 4-door, 327 engine, 4-speed transmission
- 1963 Ford F-500 4-door, 8-cylinder, standard transmission
- 1963 Chevrolet Biscayne Station wagon, 6 cylinder, standard transmission
- 1962 Ford Galaxie 500 4-dr. V8, auto, p.s.
- 1961 Chev. Bel Air 4-dr. V8, pwr. glide
- 1961 Falcon station wagon, 6-cyl., 4-dr., aut.
- 1960 Ford 9 passenger station wagon, 4-door, 6 cylinder, standard transmission
- 1959 Mercury Monterey V-8 4-door, automatic, air cond. and power
- 1959 Rambler 4-door, 6-cylinder, automatic
- 1958 Chev. Biscayne 4-dr., V-8, auto. trans., recently o'hld.
- 1958 Chevrolet 4-door 6-cylinder, standard trans.
- 1958 Olds 88 4-door automatic (2 of these)
- 1957 Ford 4-door V-8, automatic
- 1957 Chevrolet Bel Air, 4-door, V-8, automatic
- 1957 Ford 2-door V-8 automatic
- 1955 Chevrolet 4-dr., 6-cyl., std. trans.
- 1953 Plymouth 4-dr. 6 cyl., std. trans.
- 1947 Chrysler 8 cylinder, 4-door, 8 passenger

- 1951 International WD-6 IH Model C with mower & cult.
- 1950 Massey Harris 30
- 1949 IH M
- 1947 International M-D
- 1947 International M
- 1947 Allis WC with cult.
- 1940 International M
- 1936 Allis U
- IH Model C with mower & cultivator

COMBINES

- 1955 International 141 with cab
- International 101 combine
- International 125 self propelled
- 1966 International No. 55 field harvester cutter
- 1963 No. 50 field cutter
- 20-C field cutter

BALERS

- IH 45T baler
- 1956 International 45T baler
- 1955 International 55W baler with engine

MOWERS

- Ferguson 3 pt. hitch bar
- International 9A mower
- Self propelled lawn mower

LOADERS

- IH 33A loader on M tractor

PICKERS

- 1953 IH 2 ME picker
- International 2M picker
- 1951 Case corn picker

PLANTERS & LISTERS

- IH 2-row planter
- John Deere 730 pull lister with fertilizer attachment
- Tandem hitch for listers

GRAIN DRILLS

- M-M grain drill, 13-7 w/ fertilizer attachment
- IH MF 16x8 MF drill with press wheels
- M 16x8 drill
- 12x10 M drill
- 12x10 M drill
- John Deere Plain grain drill with grass seeder

CULTIVATORS

- Allis 2-row cultivator with rear section

PLOWS

- John Deere 2x14 plow
- John Deere 2x16 No. 55 plow
- MM 2x14 plow
- IH No. 8 3x16 plow
- Case 3x16 plow
- MM 3x16 plow
- International 8L 4x14 plow
- IH 412 4x16 plow
- IH 512 5x16 plow

MISCELLANEOUS

- Peerless 10 P.A.H. roller mill
- IH 3-point adapter

Auld Chevrolet Co.

Phone HO 1-5414

WAKEFIELD, KANSAS



Price Index Moves Back Up

Mid-May prices received by Kansas farmers were higher than a month earlier for crops and for livestock and products, according to the Kansas Crop and Livestock Reporting Service.

The price index for all farm products stood at 241 percent of the 1910-14 base period average, up 9 points from last month and 2 points above a year ago.

Price increases from the previous month were noted for wheat, grain sorghum, hogs, beef cattle and lambs.

Price declines from mid-April included barley, soybeans, alfalfa hay, prairie hay and calves.

Crop Prices

The all crop price index, at 185 percent, was up 3 points from April and 12 points above May a year ago.

The price of wheat, at \$1.55 per bushel, was up 3 cents from last month and 9 cents more than May a year earlier. This is the highest average wheat price since last January when the price was \$1.56.

Corn averaged \$1.26 per bushel, the same as April and 2 cents more than May 1966.

Sorghum grain, at \$1.95 per cwt., was 2 cents above last month and 20 cents above this date last year.

Soybeans averaged \$2.63 per bushel, a 3 cent decrease from last month and 17 cents less than May a year ago.

Oats, at 79 cents per bushel, were the same as last month but 4 cents higher than May 1966. Barley, at \$1.00 per bushel, was down 1 cent from last month but 4 cents above a year ago, while rye, at 96 cents per bushel, was the same as last month's average and 4 cents higher than May 1966.

Alfalfa hay averaged \$24.50 per ton, down \$3.00 per ton from last month but \$5.50 per ton above May last year. Prairie hay, at \$19.50 per ton, was down \$1.00 per ton from a month ago but \$3.50 per ton above a year ago.

Livestock Prices

The livestock and livestock product index as of mid-May stood at 305 percent, up 16 points from mid-April but 9 points below May last year.

The meat animal price index, at 365 percent, was up 26 points from last month but 9 points below May a year ago.

Hog prices, at \$21.90 per cwt., were up \$4.90 from April but 10 cents per cwt. less than May 1966.

Beef cattle prices, at \$22.20 per cwt., were up 60 cents

from a month earlier and 80 cents below May last year.

Calf prices averaged \$25.50, 50 cents below last month and 80 cents less than May a year ago.

Lambs averaged \$27.00 per cwt., up \$5.00 from last month and \$2.50 per cwt. above May last year.

Dairy & Poultry

The dairy products price index for mid-May this year was 279 percent, down 4 points from a month earlier but 15 points above a year earlier. The preliminary May wholesale milk price, at \$4.45 per cwt., was down 15 cents from last month but 25 cents above May a year ago.

The poultry and egg price index, at 110 percent, was down 6 points from last month and 28 points less than May a year earlier.

Chicken prices, at 6.3 cents per pound, were down 0.5 cent from last month and down 2.9 cents from a year ago.

Egg prices, at 21.2 cents per dozen, were down 1.3 cents from last month and 5.2 cents below a year ago.

Prices Paid

Prices paid by Kansas farmers for feed were lower than the previous month but well above the level of a year ago.

PRICES RECEIVED BY FARMERS	May 15 1967	Apr 15 1967	May 15 1966
Wheat, bu-----	1.55	1.52	1.46
Corn, bu-----	1.26	1.26	1.24
Oats, bu-----	.79	.79	.75
Barley, bu-----	1.00	1.01	.96
Rye, bu-----	.96	.96	.92
Sorghum Grain, cwt--	1.95	1.93	1.75
Soybeans, bu-----	2.63	2.66	2.80
Alfalfa Hay, ton-----	24.50	27.50	19.00
Prairie Hay, ton-----	19.50	20.50	16.00
Alfalfa Seed, cwt-----	24.50	26.00	23.50
Red Clover Seed, cwt--		23.00	
Sweetclover Seed, cwt--	6.00	6.20	6.50
Hogs, cwt-----	21.90	17.00	22.00
All Beef Cattle, cwt--	22.20	21.60	23.00
Cows, cwt-----	17.20	16.60	18.40
Steers & Heifers, cwt--	23.50	23.00	24.50
Calves, cwt-----	25.50	26.00	26.30
Sheep, cwt-----	6.10	6.10	6.60
Lambs, cwt-----	27.00	22.00	24.50
Wool, lb-----	.37	.35	.44
Milk Cows, each-----	\$240.00	\$240.00	\$225.00
Milk (Wholesale), cwt--	\$4.45	4.60	4.20
Butterfat, lb-----	59.0	58.0	56.0
Chickens, live, lb-----	6.3	6.8	9.2
Eggs, dozen-----	21.2	22.5	26.4
Turkeys, live, lb-----	20.0	19.0	21.0

PRICES PAID BY FARMERS FOR FEEDS	May 15 1967	Apr 15 1967	May 15 1966
Cottonseed Meal (41%), cwt-----	5.10	5.20	4.50
Soybean Meal (44%) cwt-----	4.90	5.00	4.70
Bran, cwt-----	2.95	3.20	2.75
16% Dairy Feed, cwt--	3.75	3.80	3.50
Dairy Ration **, cwt--	2.80	2.75	2.58
Poultry Ration **, cwt--	3.21	3.22	3.04

FEEDING RATIOS	May 15 1967	Apr 15 1967	May 15 1966
Hog-Corn-----	17.4	13.5	17.7
Butterfat-Feed-----	21.1	21.1	22.4
Milk-Feed-----	15.9	1.67	1.63
Egg-Feed-----	6.6	7.0	8.7

* Preliminary
** Based on average prices for commercial feeds and value of grains in a composite ration.

INDEX NUMBERS - PRICES RECEIVED BY FARMERS (1910 - 1914 = 100%)	May 15 1967	Apr 15 1967	May 15 1966
All Farm Products-----	241	232	239
All Crops-----	185	182	173
Food Grains-----	182	178	171
Feed Grains-----	204	203	193
Hay-----	246	270	195
Livestock & Products-----	305	289	314
Meat Animals-----	365	339	374
Dairy Products-----	279	283	264
Poultry & Eggs-----	110	116	138
PARITY INDEX *-----			
PARITY RATIO **-----			

* Prices Paid, interest, taxes and wage rates.
** Prices Received index as percent of parity index.



Flint Hills Rodeo Queen

Sharon Kay Colvin of Leavenworth was named Miss Rodeo Kansas at the 30th annual Flint Hills Rodeo at Cottonwood Falls. She will represent the state in a Miss Rodeo America contest at Las Vegas in November.

The queen is second from left, top row, in the picture above. Others in the top row are Kay Redding, Hamilton; Arlene Wheat, Strong City; Peggy Talkington, Elmdale; Stephanie Baer, Ness City; and Kerry Linn Duch, Junction City. Front row: Debby Beaupeurt, Newton; Marjorie Lowder, Allen; Pat Miller, Zenda; and Mary Lou Brown, Junction City.

ANTIQUE AUCTION

We will sell 1/2 mile west of State Lake, or 5 miles north of Bennington and 1/2 mile east, or 5 miles southeast of Minneapolis on blacktop highway, rain or shine, on SATURDAY, JUNE 10—commencing 9:30 a.m. (Morning Sale)

Antique wardrobe, fainting couch, curved china cupboard, Royal Cauldon England 1774, 7 cups, 5 juice, 10 tea, 12 sherbets, 11 water, demitasse, 7 saucers, 11 small plates, 11 dinner plates, 10 saucers, 4 small soups, 7 saucers, 12 large soups, 10 sauce dishes, 5 bread and butters, 3 bowls, 2 platters, cream and sugar, tea pots, gravy boat, casserole, 12 glass pink plates, floor light, pictures, 3 lights, whatnot shelf, desk with glass front, high back red velvet chair, small tan upholstered chair, churn, ironing board, 2 clocks, 2 marble top tables, 2 plain lamp tables, oak desk, doll buggy, organ stool, 3 wicker desks, 3 wicker chairs, marble top commode, large, hanging mirror, 3 pictures, 2 wash bowls, 2 marble top dressers, 1/2 bed and mattress, long hall mirror with marble top (100 years old), 3-piece bedroom suite matched, marble top dresser and commode, 2 oak commodes, 2 cabinets, 2 refrigerators, oak dropleaf table, chairs, wicker rockers, trivets, muffin pans, waffle iron, bracket lights, crock jars, mustache cups, dishes, glasses, etc., 10 lanterns, railroad lantern, telephone, piano, cash register, French fryer, 2 iron seats, 6 long and 2 small tables, 3 ice cream chairs, 13 long tables, 5 chairs, cider press, lard press, heating stove, deep freeze, 2 wagon wheels, black pots, 1966 model Trail 90 Honda—and many other articles too numerous to mention.

This is a nice lot of antiques—be sure to attend this auction.

TERMS CASH — no property removed from premises until settled for.
WAUNITA AKERS, OWNER
AUCTIONEERS—FRANK HARZ and BOB PERRY, Salina
Phone TA 5-4579

ADD TO FORESTRY FIRE DISTRICT STAFF

William L. Loucks of Fredonia has been added to the Extension forestry staff at Kansas State University. His duties will include training rural fire district personnel.

HORSE SALE

Thurs. — June 15, 7 p.m.

Lyon County
Livestock Auction
EMPORIA, KANSAS

WESTERN SADDLE SUPPLY

J. J. RITTEL & SONS
WESTERN WEAR
In Mid-Kansas
Largest Saddle Selection
for the Entire Family
BOOTS • HORSE TRAILERS
Square Dancers Supplies
HOPE, KANSAS PHONE 43



AUCTION SALE

Tuesday
JUNE 13

Starts 12:30 Noon
Lunch Served

Due to the death of my husband I will sell at Public Auction to the highest bidder the following described farm equipment at the farm located 1 mile east of Saffordville and 6 miles south or 17 miles southwest of Emporia, Kansas.

Machinery

JD tractor, Model 60 row crop, 1956
JD tractor, Model B row crop, 1952
Ford 1 1/2 ton truck, 1955, with hoist, grain sides & stock rack
JD Model 55 SP combine with corn head
GMC 1 ton truck, 1949
Gehl Mix-All (combination grinder & mixer) near new, used 4 times
JD No. 214W hay baler, 1962
JD No. 5 mowing machine
13 ft. dual wheel dump trailer
Kelly Ryan wheel rake
Baled hay elevator
20th Century elec. welder, near new
gas welder with cutting attachment
Tractor mtd. field sprayer
Cement mixer
Rotary hoe
2 JD cultivators, 2-row

JD lister, JD curler
JD Van Brunt drill, 16 hole on rubber
Manure spreader
2 propane bottles & branding torch
Farm Hand loader; 2 2-16 pull plows; 4 rack wagons; 70 ft. 8 in. pipe; 20 ft. 6 in. pipe; 36 ft. 2 in. pipe.
Killifer disc; wheel disc, 8 ft.; 8 ft. tandem drag disc; road drag; Horne loader; spike tooth harrow; 100 gal. propane tank.

MISCELLANEOUS

Feed bunks; post hole digger; tank heater; air compressor; grain augers; sickle grinder; hog feeders; saddle; lots of scrap iron; chain saw; corrugated roofing; shop tools.

LIVESTOCK

100 Hy-line pullets, 3 mo. old; small Shetland pony.
Miscellaneous items too numerous to mention.

Mrs. Carl Beyer, Owner

Jim Barr, Auct. & Real Est. Broker

Glendon Barrett, Clerk

Tip Top, Southwest Producers To Merge Too

20

Grass & Grain
June 6, 1967

Most of the state's milk production will soon be either within the framework of the new cooperative formed in the northeast corner of Kansas or a new consolidation of Southwest Milk Producers of Wichita and Tip Top Dairies of Hillsboro.

The consolidation of the latter two firms was announced Saturday.

The merger, effective September 1, will involve total assets of \$7.7 million and directly affect 1700 member-producers in 68 counties in Kansas. The new organization will be known as Southwest Dairymen Inc., and will have its main offices in Wichita.

A merger, to be effective July 1, had been in the works for several months involving the Nemaha Cooperative Creamery of Sabetha, the Pure Milk Producers of Kansas City, the Shawnee Milk Producers of Topeka, and the St. Joseph Mo.

Milk Producers Assn. A story on this merger can be found on page three of this issue of Grass & Grain.

The Tip Top-Southwest merger was intended solely to strengthen the economies of both organizations, said Pius Hostetter, Hillsboro, general manager of Tip Top.

"I think the move will allow us to use our equipment more effectively and provide important economic support to the companies," said Hostetter.

Would the merger mean more income for the producers and more cost for the housewife when she buys milk at the store?

Hostetter doubted it. "The long-range goal of the new organization is to strengthen our bargaining position on milk prices. But as of now, I see no added money for the dairymen, nor increased cost to the retail producer," he said.

The Kansas state dairy commissioner also observed that a price hike probably wasn't the object of the merger.

"The group may aim for better prices for its members but the federal government currently sets the price of milk paid the dairymen," said Brace Rowley, state commissioner.

"If they are going to take any action, they will have to go thru a federal hearing that becomes very involved," he said.

Rowley added that the current price of milk, altho somewhat low, is likely to remain unchanged for another year.

Southwest was organized in

1963 as a combination of several small milk co-ops in Kansas. In 1966 the group was responsible for almost one fifth of all milk and dairy products in the state.

Tip Top Dairies, centered in Hillsboro, was started as a producing co-op. It obtained some surplus milk from Southwest, but relied on its own members for most of its supply. The new merger will have little effect on the members.

In 1966, the two organizations handled 565 million pounds of milk and 5.5 million pounds of butter.

The Wichita Armstrong Ice Cream Plant, one of the largest

in the state, will be used for manufacturing and packaging Quality Checkd Ice Cream, a product of the new company.

Other production facilities will be located at Hillsboro, Kansas City, Clyde, Pittsburg and Dodge City.

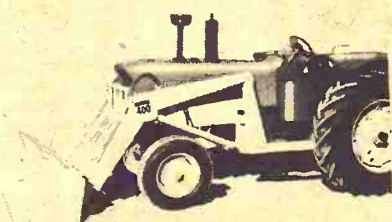
Despite the move "for economic reasons," the facilities of each company will remain in operation.

Hostetter said, "We won't be closing any facilities, nor will we be opening any. I think we have to wait awhile to work out the details and then see where we stand."

The merger of dairy co-ops at the eastern end of the G&G area is nearing completion. See story on merger of Pure Milk, Shawnee Producers, Nemaha Co-op Creamery, and St. Joseph Producers on page three.

The NUWAY model 400-1

THE REALLY NEW HEAVY DUTY LOADER WITH NEWLY DESIGNED, BALANCED PERFORMANCE HYDRAULICS, GIVES MAXIMUM LOADING CAPACITIES WITH TRACTOR HYDRAULICS.



- Step on design for use with most popular cabs.
- Large replaceable Pins and Bushings means longest service life.
- Heavy Sub-Frame made to handle the power of today's big tractors.

- On and off in 10 minutes quickly frees tractor for other work.
- Full 3 inch cylinders provide power for today's modern Loader attachments. Bale systems, Sweeps, Mat Forks, etc.

WANTED NOW! We need Tractors. Find out today how you can save \$200 on the purchase of your loader if you have the tractors we're looking for. Write for full information giving make, model and year of tractor in your first letter.

NUWAY

Dept. 110, Box 97, Barnard, Kansas 67418 913/792-3545

AUCTION SALE

Saturday
JUNE 17

Starts 12:30 Noon

Due to ill health and discontinuing farming, I will hold a clean sweep sale of farm machinery at the farm, Route 3, Manhattan, Kans.; across the viaduct south on 177 to Kistner's green house, then 2 blocks right, and 2 blocks south. Watch for sale signs.

MACHINERY

AC tractor, 1952, runs good, good rubber
AC post hole digger
Allis 2-bottom plow
Grain drill, 12 ft.
Model C Farmall tractor, runs good, good rubber
IH 2-row lister for C
IH 2-row cultivator for C
One-row corn binder
1-way disc plow; impl. trailer
15-ft. fertilizer spreader
International hay baler
1953 AC 66 combine
AC combine, needs repair
Co-op tractor, needs repair, good rubber
7' International mower
8' grain drill w/ atts.
Grain auger, elevator
15' grain auger w/ motor
John Deere rotary stalk cutter, near new
2-row stalk cutter

15 spools new barbed wire; 2 chain saws
5000-10000 gal. tank w/ door for grain bin
2 steel shelving bins
2 gates; 1000 gal. stock tank; Farmall tractor, needs repairs, good rubber

AUTOMOTIVE

1950 Ford F-600 1½-ton truck w/ 2-speed axle, grain bed & stock racks
1959 Ford station wagon
1959 Pontiac Chieftain 2-dr., V-8, radio, heater (consign- ed)
1940 ¾-ton Chevrolet pickup, 8x7 grain bed, new tires, runs good (consign- ed)
10-30' bridge timbers, good house moving timbers
15-15' bridge timbers
22-15 ft. pilings
15 2x10s, 16' long
9 sacks Vetch fertilizer

PONY

Shetland pony, 5 yrs. old, nice child's pony
Miscellaneous items too numerous to list.

MR. & MRS. CLARENCE JOHNSON,
Owners

Aucts: Shehi and Berbohm

VOTERS NIX ON 104 PERCENT OVERRIDE

OAKLEY — Patrons of unified district No. 274 defeated a proposal to increase their school budget by more than \$51,000. The vote was 738 against, 154 in favor.

It was believed to have been the first election under a new state law that allows a school district to increase its budget by more than the statutory 4 per cent, with voter approval.

Accident Fatal To Dr. Roy Walker

CLAY CENTER — Dr. Raymond Walker, a veterinarian here for 10 years, was killed last week as a stock tank heater evidently short-circuited and electrocuted him.

Authorities said Walker, 36, and David Cowing, 14, were tracing a short circuit in the heater used to heat water for stock at the farm northwest of here.

The Cowing boy said Walker sent him to a nearby unoccupied house to see if the electricity was on.

The youth said he returned in 5 minutes and found Dr. Walker had slipped in the mud and fallen on the electric wiring.

Young Cowing pulled the veterinarian from the wire, then walked a mile, to a farmhouse to summon help.

Walker was taken to the hospital where he was pronounced dead.

Walker was born in Norton, took his vet medicine degree from Kansas State, and first practiced after his graduation

in 1956 at Clyde. He came to Clay Center in December 1956, taking over the practice of Dr. F. W. Galley.

He is survived by his wife and four daughters. A son, Dayne, was killed in an accident in January 1964.

Co-op Can Sue Over Dismissal In NFO Case

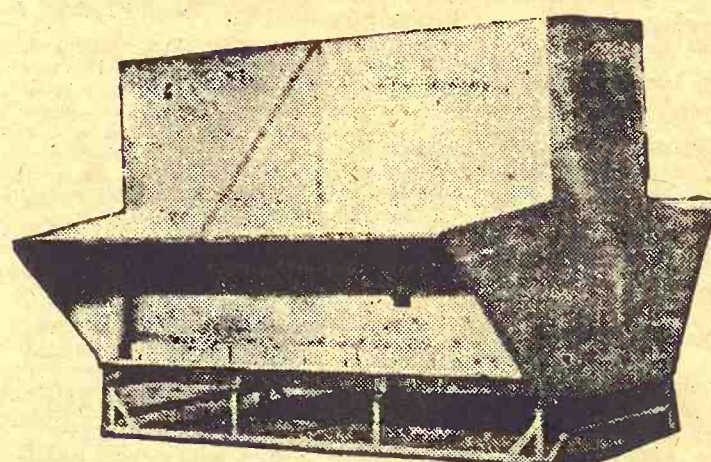
ST. PAUL, Minn. — The Benson Co-op. Creamery Ass'n., which signed a contract with the National Farmers Organization, is entitled to sue a Land O' Lakes Creameries subsidiary that expelled it from membership, the Minnesota Supreme Court has ruled.

The Co-op sued the First District Ass'n, Litchfield, for reinstatement and \$133,000 damages. The district court ruled it was entitled to reinstatement but not to damages.

The Supreme Court, although its decision was unanimous that the co-op is entitled to a trial to determine whether it was damaged by the expulsion, said it is not entitled to the \$500,000 punitive damages it asked.

SLIGHT INCREASE FOR MARSHALL CO. COUNT

MARYSVILLE — Population of Marshall County, according to 1967 assessment figures, is 15,415 — a modest increase of 94 from 1966. The population of Marysville was listed at 4043. Populations of other Marshall County towns: Axtell 513, Beatie 340, Blue Rapids 1415, Frankfort 1175, Oketo 178, Summerfield 271, Vermillion 224, Waterville 831.



Use a LUTTIG metal all-welded self-feeder to self-feed your cattle. Will not leak or rot, and feeds down good, reasonable in price.

Capacities of 150, 250, and 350 bushels.

LUTTIG TRAILER COMPANY

Telephones: Office 535-2610—Res.: 535-2350
EMMETT, KANSAS

Damaged Dentures

Sen. Frank Carlson had several teeth missing from his dentures and about 20 stitches required to close a hand laceration following an auto collision near Newton last week.

Traveling alone the state's senior senator was injured when his auto struck one of two cars which reportedly made sudden stops at the intersection of Interstate 35 bypass and USH in northeast Newton. The Carlson vehicle struck the rear of the second car, driven by Harold Krause, 75, Fullerton, Nebr.

COUNCIL GROVE GAINS NEW INDUSTRY

COUNCIL GROVE — The town will become the home of a Kansas plant for Industrial Plastics Corp. of Elkhart, Ind. A 10,080-square foot building will be built and plant activity in Council Grove is expected to start August 1. The corporation's Kansas operations have been discontinued.

Manhattan Vo Tech School Fall Opening

MANHATTAN — The Area Vocational Technical School will start classes here in a new facility next September, and applications are now being accepted from anyone aged 16 or over.

Fees will vary with the course from \$5 to \$75. The school is an eligible institution for student loans. Courses are approved for MDTA and GI training.

Courses which will be in session for September: auto mechanics, farm mechanics (diesel and tractor), electronics, appliance repair, radio-tv repair, drafting technology, bookbinding, cooperative industrial training, practical nursing, office secretarial training, food processing, air conditioning and refrigeration.

Kids Re

First you "put 2 cups of water in a pan. Take 1 cup of oil and 1 cup of butter and cook it on the stove for 10 minutes." That recipe for home made margarine is one of the samples from a new cookbook in the G&G area which not rival Fannie Farmer's but is a big in Marshall county. The cookbook is a graphed 25-page booklet. Hostetter said, "We won't be closing any facilities, nor will we be opening any. I think we have to wait awhile to work out the details and then see where we stand."

There are all sorts of recipes in the book. There is a chocolate cake — made with chocolate — and instructions for making coffee. There is a salad, egg sandwich, Second Grade

Second Grade

Cook

Valley Heights

Valley Heights

Valley Heights

Valley Heights

Valley Heights

Valley Heights

Valley Heights

Valley Heights

Valley Heights

Valley Heights

Valley Heights

Valley Heights

Valley Heights

Valley Heights

Valley Heights

Valley Heights

Valley Heights

Valley Heights

Valley Heights

Valley Heights

Valley Heights

Valley Heights

Valley Heights

Valley Heights

Valley Heights

Valley Heights

Valley Heights

Valley Heights

Valley Heights

Valley Heights

Valley Heights

Valley Heights

Valley Heights

Valley Heights

Valley Heights

Valley Heights

Valley Heights

Valley Heights

Valley Heights

Valley Heights

Valley Heights

Valley Heights

Valley Heights

Valley Heights

Valley Heights

Valley Heights

Valley Heights

Valley Heights

Valley Heights

Valley Heights

Grass & Grain
June 6, 1967

Kids Rewrite Cook Book

First you "put 2 cups of water in a pan. Take 1 egg if you want that many. Then you have to cook it on the stove for 15 minutes."

That recipe for hard-boiling an egg is one of the delightful samples from a new cookbook located at Hillsboro, Mo., in the G&G area which may rival Fannie Farmer or Betty Crocker but is going over in Marshall county.

The cookbook is a mimeographed 25-page booklet, a production of the second grade class at Valley Heights school in Blue Rapids.

"It was the talk of the town when it came out," says Mrs. Martin McLain, second grade teacher.

There are all sorts of recipes in the book. There is one for chocolate cake — minus the chocolate — and instructions for making coffee. Pancakes, egg sandwich, popcorn —

you can find the recipe in this book.

For pancakes, try this recipe by Jimmy Meyers, son of Mr. and Mrs. Joseph Meyers:

One half spoon of flour to get a batter, then you stir it around one minute. Leave it on the stove for 4 minutes.

For a salad which makes enough for five people, try this one from Carla Sutton, daughter of Mr. and Mrs. Harold Sutton:

3 carrots, 1 ball of lettuce, 1 pint of salad dressing. Cut it up in a bowl. You don't need to cook it.

For an easy-to-make raw egg sandwich, hear the suggestion of Andy Gallup, son of Mr. and Mrs. Ralph Gallup:

1 egg. A pan. Two pieces of bread. Put grease in a pan. Cook 20 minutes. Put the egg on one piece of bread. Then put the top piece of bread on.

Ricky Bishop, son of Mr. and

Mrs. Don Bishop, Jr., knows how to make a chocolate cake without any chocolate and the kitchen won't get too hot either:

2 cups flower, 1 cup milk, 1 pint sugar. You put in flower and sugar. Then you put in milk. The oven should be 7 degrees. Bake one hour.

That's not bad for a chocolate cake, and if you just want any old kind of cake, try this one from Lori Singleton, daughter of Mrs. Alta Barcklav:

1 teaspoon milk, two eggs, put in the oven for 2 minutes or Do to Hot.

Another good dessert is apple pie, and Georgena Lamb, daughter of Mr. and Mrs. William Lamb Jr., has this offering:

1 cup of flour, 2 cups of milk, a dish of apples, 3 cups of sugar. Put it in a big pan. Then put it in the oven. Teppncher is 101 degrees. Leave it in the oven for 12 minutes.

For those who like sweet drinks, Lori Weiche, daughter of Mr. and Mrs. Glen Weiche, has the answer with her Tea recipe:

1 tea bag and one cup of sugar. Cook it 11 minutes. Then put in 1 spoon sugar.

A unique dessert recipe entitled Chocolate Padding was contributed by Sandra Scritchfield, daughter of Mr. and Mrs. Ray Scritchfield:

1 cup of milk. Beat it until it is creamy and ready.

Popcorn seemed to be a favorite recipe of many of the children as several variations for fixing popcorn were included.

Lee Moser, son of Mr. and Mrs. Richard Moser, contributed these instructions:

2 cops full of popcorn, 2 spoonsful of lard. A popcorn popper. A cord. You put the lard in first. You put the popcorn in last. It takes 10 minutes to pop.

If that one doesn't turn out well, try this one from Nancy Roepke, daughter of Mr. and Mrs. Larry Roepke:

Put popcorn in a pan. Put the lid on it. Shake it for 10 minutes or until the bottom of the pan is full of popcorn.

WALTON CO-OP VOLUME AT \$2.3 MILLION

The Farmers Grain Cooperative at Walton in Harvey County had a volume of \$2.3 million in the past year with a saving of \$81,395. A new anhydrous ammonia plant was installed. Reelected to the board were Arnold Voth and Donald Claassen. Marvin Esau is manager.

DAVID ALTWEGG ON FFA TOUR TO EUROPE

RANDOLPH — David Altwegg is one of 17 State Farmers in the FFA honors program who will tour Europe as part of a Goodwill People-to-People travel program. The group leaves New York July 13 and will return August 13.

CATTLE SALE EVERY MONDAY

HOG SALE EVERY WEDNESDAY (Sale Time 12:00 Noon) BEATRICE, NEBR.

Beatrice 77 LIVESTOCK SALES CO. 2 1/2 miles north of Beatrice, Nebr., opposite the airport. Phone 223-3571 CLARENCE TEGTMEIER DELMAR JURGENS JR. THIMM

NIGHT SALES Every Wednesday

START 8:00 P.M. — THRU HARVEST

Onaga Community Sale

Marvin Cottrell — Phone 889-4461 or 889-4665

ATTENTION ... All Dairymen Plan To Attend The



Helmerichs Bros.

HIGH GRADE

Holstein Heifer Sale

Wed., June 14, 11 a.m.

FREE LUNCH

Sale held in tent at farm 3 miles south on Hwy. 99, then 1 1/2 mi. east on gravel road at SUMMERFIELD, KANS., 100 mi. north of Topeka, Kans.; or 100 mi. west of St. Joseph, Mo.; or 100 mi. southwest of Omaha, Nebr.

310 Head of Big, Top Quality, High Grade Holstein Heifers Sell at Auction.

35 Heavy Springer 1st calf heifers; 100 Fall Freshening & 25 late Winter Freshening Heifers; 25 Heifers ready to breed; 25 - 600 lb. Open Heifers; 50 - 200 lb. to 400 lb. Heifers; 50 Baby Heifer calves. All northern heifers. Best of Breeding, Type, Size, Quality, Production & Health. Tested T.B. & Vacc. for Bangs & Lepto.

Free Heifer Given Away.

For information contact:

Donald J. Bowman, Auct. & Sales Mgr. HAMILTON, MISSOURI 64644

HOLSTEIN DAIRY DISPERSAL

AUCTION SALE

Saturday JUNE 10

(Under Cover)

Starts 10:00 a.m. Lunch Served

Since we are leaving the state, we will sell our entire herd of Registered and High Grade Holstein cows, heifers, registered bull, dairy equipment, farm implements.

LOCATION:

From Hutchinson — 14 miles north, 1 west, 1/4 south of 30th and Plum. From McPherson — 14 miles west (56 Highway), 6 1/4 south. From Windom — 6 1/4 miles south.

Cattle



16 registered cows, Thonyma Ormsby breeding 29 grade cows, 8 calves Registered bull, Donvermac Fond Sultan, 2 years old 13 cows to freshen next 60 to 90 days 15 cows freshened last 20 to 60 days 17 cows in production to freshen fall of 1967 8 heifer calves 20 days to 5 months old

This herd is officially calf-hood vaccinated, T.B. and Bangs tested, health papers on each animal, daily production records, breeding and freshening dates will be given at ringside. Herd on DHIA, Grade A.

Artificially sired, carrying the service of the above bull, and ABS and KABSU bulls. Cows in this herd are 2 to 8 years old, gentle, good uddered, many in good production. Attend this sale if in need of Dairy Cows.

Dairy Equipment

2 unit DeLaval milking machine with No. 75 pump, 1 1/2 HP motor, new in 1965 Standby generator, Model No. 12TT2, 110 or 220, PTO, on trailer, new in 1965, A-1

Implements

1952 MH No. 44 tractor, good 1961 Massey Ferguson No. 72 4-14 plow, A-1 1966 Massey Ferguson No. 18 manure spreader, PTO, like new 1961 Massey Ferguson No. 32 manure loader, hydro, good 1959 John Deere 110 chuck wagon with tip top boards, A-1 2-way hydraulic cylinder, A-1 16-8 John Deere drill on steel, good 1956 14T John Deere baler, PTO, good 12 foot IHC springtooth IHC 8 ft. tandem disk Bumper grill to fit Massey Ferguson tractor Comfort Cover fit 65 Massey Ferguson tractor, A-1 Electric fence charger, post, wire 300 gallon fuel tank on rubber 1965 Serviss 5' 3 pt. blade, like new

TRUCKS

1954 IHC 1/2 ton pickup L-110, 4-speed, good 1946 Chev. 1 1/2 ton truck, Mid-west bed, steel floor, hoist, stock racks, silage sides, 8.25-20 tires, above average Other miscellaneous articles.

Mr. & Mrs. Cary L. Spohn, owners

Aucts: Ted Krehbiel, McPherson & Irvin Christensen, Durham

Clerk: L. J. Yoder

Listen to KNEX, Dial 1540, Monday Morning 8:45 For Auction Sale News

Cook Book



The mimeographed cook book of the Valley Heights 2nd grade at Blue Rapids features a green construction paper cover and some colorful pictures of food.

NEW SUPER CALF



6 times as much protection against scours

New Super Calf contains the greatest scours fighting team ever—a full six times as much antibiotic (a combination of Neomycin-Terramycin), as before, plus more Vitamins A and D.

Calves take to its milk-rich formula readily—for the fastest most economical starts. Stop scours and low-level disease cold, and raise big healthy calves, with new Super Calf. Come in today for full details.

The payoff's bigger with



Extra Rich SUPER CALF STARTER

MORRISON GRAIN Junction City WAKEFIELD CO-OP ELEVATOR Wakefield GALVA FEED MILL Galva

MARK GRAIN & LUMBER Dunlap ELMDALE ELEVATOR Elmdale ELMO GRAIN COMPANY Elmo LOCKARD IMPL. CO. Herington

G&G Calendar

June 6 — Quitting business auction in Waterville, Kans., Barleen Chevrolet Co. sale mgr. & auct. Jim Kirkemunde.

June 7 — Farmland auction (McPherson and Rice counties), Thompson estate; executor L. E. Quinlan, attorney, Lyons, Kans.

June 8 — Furniture & tools in Fairbury, Nebr., Pearly and

Edna Lemmon. Auct. Harold R. Siegel.

June 10 — Holstein dairy dispersal southwest of McPherson, Mr. and Mrs. Carly L. Spohn. Aucts. Ted Krehbiel and Irvin Christensen.

June 10 — Antique auction northeast of Bennington, Waunita Akers. Aucts. Frank Harz and Bob Perry.

The Growing Hog Market Is At WASHINGTON SALES CO.

TRY US SOON
HOGS every TUESDAY
CATTLE every WEDNESDAY

A Growing Market
for Finished Cattle

All Sales
Start 1:00 p.m.

ED BURT

Barn Phone EA 5-2266 Residence EA 5-2393
Washington, Kans.

PLAZA SPEEDWAY RACES

JUNCTION CITY, KANS.

Scheduled for Sunday, June 4
were cancelled due to rain.

MAKE-UP RACES WILL BE HELD

Wedn., June 7, at 8 p.m.

Marvin Berroth, Genl. Mgr.

Ronald Rice Motors, Inc.

CHEVROLET OLDSMOBILE CADILLAC
North Kansas' Largest Volume Dealer
NW 2nd Phone CO 3-4000 ABILENE, KANS.

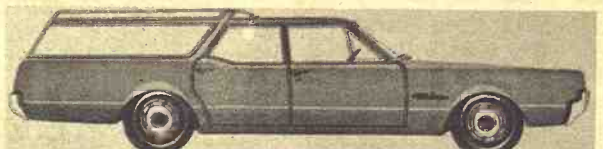
NEW CAR BUYERS
ONLY

4 Days Left

ON OUR BIG
OLDSMOBILE
SALES EVENT

June 10 is the last day to qualify for unheard of PRICE SAVINGS. High Trade-in allowances, and the longest terms. We have sold 41 new Olds during this sales promotion. And we are out to break the record.

If you are in the market for a new car don't buy, before you check our Go Go Oldsmobile Sales Prices.



June 6, 1967

22

Grass & Grain

June 10 — Household goods in Wamego, Mr. and Mrs. Gail Simon. Aucts. Welter and Applegate.

June 10 — Complete dispersal sale of registered Quarter horses, Elmer & Evelyn Zecker, Alma, Kans.

June 10 — Furniture & antiques in Junction City, estate of Robert Smith. Auct. C. W. Crites. Morning sale.

June 10 — Surplus cars in Junction City, Bud's Wrecker Service. Aucts. C. W. Crites. Afternoon sale.

June 12 — House & furniture in Hiawatha, Kans., Elmer Lohman. Auct. Harold R. Siegel.

June 13 — Farm sale southwest of Emporia, Kans., Mrs. Carl Beyer. Auct. Jim Barr.

June 14 — High grade Holstein heifer sale at Summerfield, Kans., Helmerichs Brothers. Auct. & sale mgr. Donald J. Bowman, Hamilton, Mo.

June 14 — Household & misc. in Miltonvale, Kans., Wm. (Doc) Babbett. Auct. Foster Kretz.

June 15 — Antique auction in Salina, Kans., Ruby Fink and Pauline Vering. Aucts. Frank Harz and Bob Perry.

June 15 — Household goods in Clay Center, Kans., Chester W. Oberg. Auct. Foster Kretz.

June 17 — Farm sale south of Manhattan, Kans., Mr. & Mrs. Clarence Johnson. Aucts. Shehi & Berbohm.

June 17 — Household & antiques at Manhattan. Mrs. Ella Smith Estate. Lawrence Welter, auct.

June 17 — Farm sale southwest of Industry, Kansas, Charles Dornberger. Auct. Foster Kretz.

June 24 — Household goods, surplus building materials & antiques in Milford, Melvin and Joanne Wood. Auct. C. W. Crites.

Oct. 28 — Kansas Milking Shorthorn Society state sale in Hutchinson, Freg Rogers, sale mgr. Dick Sears, auct.

Nov. 3 — 5th annual Hammarlund-Shamrock Angus sale. St. Marys, Kansas.

Nov. 4 — All breed calf sale in Manhattan, Olson and Fagerberg, joint sale.

Nov. 15, 1967 — Registered Hereford sale, Smolan, Johnson Hereford Farms; Elmer L. Johnson & Sons.

Nov. 18 — Kocher Herefords production sale in Onaga, Herman Kocher & Sons.

Nov. 18 — State ewe sale in Hutchinson, Kans. Purebred Sheep Breeders Assn., V. E. McAdams, sec.

Nov. 21 — Hereford production sale in Marysville, Peterson's Herefords. Elmer Peterson & Son.

Nov. 22 — Hereford production sale in Marysville, Peterson's

TEX REAL
ONWARD 95th

Cow Herd — Royal Essar C/Kato, Heir Apparent

SERVICEABLE BULLS WITH WEIGHT RECORDS
Priced . . . \$300 to \$500

GRANT POOLE
MANHATTAN, KANS.

Located 4 mi. south of I-70-K177 intersection, 2 mi. west on McDowell Creek Rd. Ph. PR 6-8315.

Herefords. Elmer Peterson & Son.

Nov. 25 — Fall sale of Arbuthnot Herefords, Haddam, Ks. Bob Arbuthnot.

Jan. 20, 1968 — Rebenstorf Herefords Production sale, Elmer Rebenstorf, Sylvan Grove, Kans.

BARNES CO-OP
SALES YEAR NOTED

BARNES — The Barnes Co-operative Association had sales of \$367,168 in the past year with a saving of \$8780. Members elected Lyman Richter and Marvin Wiechman Jr. to the board. va Zeller is manager.

NEW LUMBER

FROM R. R. DERAILEMENT

Must Be Sold At

RILEY, KANSAS

All New West Coast Lumber
To be sold as result of Rock Island freight derailment near Riley Grain & Supply Co. in Riley, Kans.

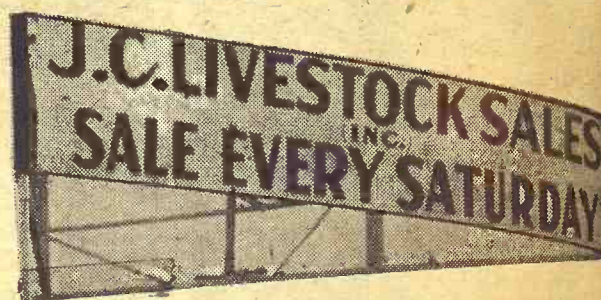
SELLING AT WHOLESALE & LESS

2x4s
2x6s

2x10s
1x12s

Bring Your Trucks & Pickups
Selling Hours Daily 8 a.m. to 6 p.m.

Morrison Warehouse & Lumber Co.



While we had a better run of cattle than expected at this season, we were really surprised at the run of hogs that came in last Saturday at the regular sale.

There were about 1500 head of swine of all classes, the largest hog receipts since we've owned this barn. And if you will compare the prices paid here with prices on the river market, or at the hog buying stations, you'll have to agree that it's better to pay a little commission to have your hogs sold on a competitive market like Junction City than to accept what is offered at buying stations. We have four major packer buyers looking for these good country butcher hogs, and they'll take all you will bring in this summer.

Tops on fat hogs was \$22.75, with some bringing \$22.50. We also had a number of feeder pig buyers coming from a good distance to bid on the feeders offered for sale. The cattle market was good, about the same as last week.

=====

DUE TO THE HOT WEATHER, AND THE LARGE NUMBER OF HOGS BEING SOLD, THE FAT HOG MARKET WILL BEGIN AT 11:00 A.M.

=====

The following is a sampling of our sale:

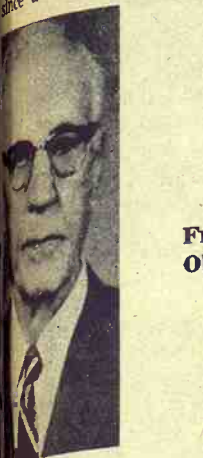
STEER CALVES			
10 black steers	590 @	27.10	went from \$18.50 to \$21.00
5 black steers	270 @	29.00	other canner cows went from \$15.50 to \$17.00.
1 redangus steer	410 @	27.80	
3 blk bull calves	410 @	26.00	
2 rdwhif bulls	475 @	26.70	
1 redwhif bull	425 @	27.20	
1 blkwhif steer	510 @	27.50	
HEIFER CALVES			
7 black heifers	545 @	23.30	
1 red heifer	400 @	24.50	
2 black heifers	420 @	23.60	
1 blkwhif heifer	600 @	23.00	
11 blkbrof heifers	390 @	25.80	
1 whiface heifer	485 @	23.50	
FAT CATTLE & FEEDERS			
5 whiface steers	975 @	24.35	
3 whiface heifers	805 @	23.70	
1 blkbrof steer	785 @	24.65	
1 whiface heifer	1030 @	23.00	
1 whiface heifer	700 @	22.90	
1 whiface steer	900 @	24.20	
COWS			
Last week's sale proved to be a very active one on the sale of cows. Good cows sold from \$17.00 to \$18.25. Some hfrtts to \$15.00.			
HOGS			
14 white butchers	226 @	22.75	
36 mixed butchers	213 @	22.75	
18 mixed butchers	239 @	22.75	
25 white butchers	224 @	22.75	
45 mixed butchers	222 @	22.75	
15 mixed butchers	203 @	22.75	
16 white butchers	226 @	22.75	
SOWS			
1 hamp sow	245 @	19.10	
5 mixed sows	566 @	17.25	
3 hamp sows	400 @	17.25	
1 black sow	435 @	17.50	
1 spotted sow	430 @	17.50	
1 white sow	315 @	18.50	
PIGS			
We had a very good, active sale on pigs. The bigger pigs went from \$17.50 to \$20.75 a head. Smaller pigs sold from \$15.00 to \$17.00, and a few little ones brought from \$11.50 to \$15.00.			

LICENSED AND BONDED
BARN PH. JUNCTION CITY CE 8-1471
If you have livestock to appraise, call:
VERN LANGVARDT, Manager, 502 UPLAND
HOWARD LANGVARDT, Auctioneer, 520 UPLAND
HERB NEUMEYER, White City, Phone 349-2863

Grass & Grain

June 6, 1967

DEATH TAKES CLAY
BANKER FRANK OBEY
CLAY CENTER — FRANK OBEY, longtime Clay center banker, died last week of age of 88. He had been since a stroke in early



berg had been connect
Union State Bank
here in 1901, be
president in 1934. He wa
Republican politics, h
served as Kansas
Commissioner and was
ected to the Kansas S

NEGRO POPULATION
UP TO 11 PERCENT
The rates of growth f
Negroes and whites hav
but the Negro popu
continues to grow more
does the white pop
best figures from t
census bureau show t
now comprise 11
of the total U.S.
Estimated Negro
as of last July 1 wa
18 million, compared
13 million figure at t
of the 1960 census.

Sale Eve



The market show
cattle, with co
The run was lig
before harvest
June 7; with re
scheduled for v
partial listing

2 b&wf str--71
1 hol steer--36
4 hol steers--60
1 hol steer--49
2 blk hfrs--48
1 blk hfr--39
1 hol steer--81
2 blk hfrs--47
1 wf steer--46
1 hol steer--71
1 blk hfr--53
1 bfw steer--42
1 blk steer--47
1 blk steer--51
1 blk steer--45
1 red hfr--56
1 black cow--83
1 black cow--107
1 black cow--137
1 roan cow--96
1 hol cow--117
1 hol cow--134

NEW T

Grass & Grain
ES — The Barter Association had 38 in the past year of \$8780. Memberman Richler and an Jr. to the board is manager.

ER
ILMENT
At
AS
Lumber
freight derailment
Riley, Kans.

SALE & LESS
2x10s
1x12s
Pickups
m. to 6 p.m.
Lumber Co.

NEGRO POPULATION NOW
UP TO 11 PERCENT
The rates of growth for both
Negroes and whites have declin-
ed, but the Negro population
continues to grow more rapidly
than does the white population.
Latest figures from the U.S.
census bureau show that Ne-
groes now comprise 11 per-
cent of the total U.S. popula-
tion. Estimated Negro popula-
tion as of last July 1 was nearly
25 million, compared with an
23 million figure at the time
of the 1960 census.

all classes, the
And if you will
the river market,
agree that it's be-
lieved on a com-
what is offered at
buyers looking for
y'll take all you

bringing \$22.50.
coming from a good
sale. The cattle
week.

E LARGE NUMBER
MARKET WILL BEGIN

of our sale:
m \$18.50 to \$21.00.
inner cows went for
to \$17.00.

HOGS
butchers 226 @
d butchers 213 @
d butchers 239 @
d butchers 224 @
d butchers 222 @
d butchers 203 @
d butchers 226 @

SOWS
245 @
566 @
400 @
435 @
430 @
315 @

PIGS
a very good, active
pigs. The bigger pigs
from \$17.50 to \$20.75.
Smaller pigs sold from
to \$17.00, and a few
were brought from \$11.00.

DED
ITY CE & 147
raise, call:
502 UPLAND
er, 520 UPLAND
Phone 349-2863

DEATH TAKES CLAY
BANKER FRANK OBERG
CLAY CENTER — Frank O.
Oberg, longtime Clay county
banker, died last week at the
age of 88. He had been inactive
a stroke in early 1966.

Frank
Oberg

Oberg had been connected with
the Union State Bank since it
opened here in 1901, becoming
president in 1934. He was active
in Republican politics, having
served as Kansas Bank
Commissioner and was twice
elected to the Kansas Senate.

NEGRO POPULATION NOW
UP TO 11 PERCENT
The rates of growth for both
Negroes and whites have declin-
ed, but the Negro population
continues to grow more rapidly
than does the white population.
Latest figures from the U.S.
census bureau show that Ne-
groes now comprise 11 per-
cent of the total U.S. popula-
tion. Estimated Negro popula-
tion as of last July 1 was nearly
25 million, compared with an
23 million figure at the time
of the 1960 census.

all classes, the
And if you will
the river market,
agree that it's be-
lieved on a com-
what is offered at
buyers looking for
y'll take all you

bringing \$22.50.
coming from a good
sale. The cattle
week.

E LARGE NUMBER
MARKET WILL BEGIN

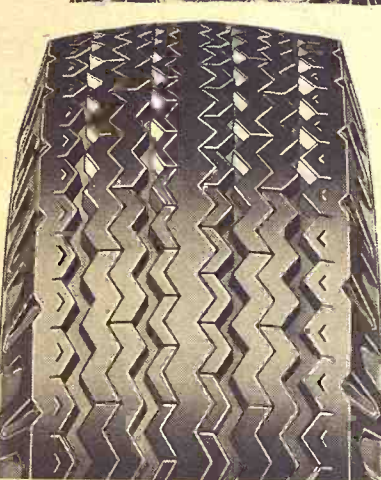
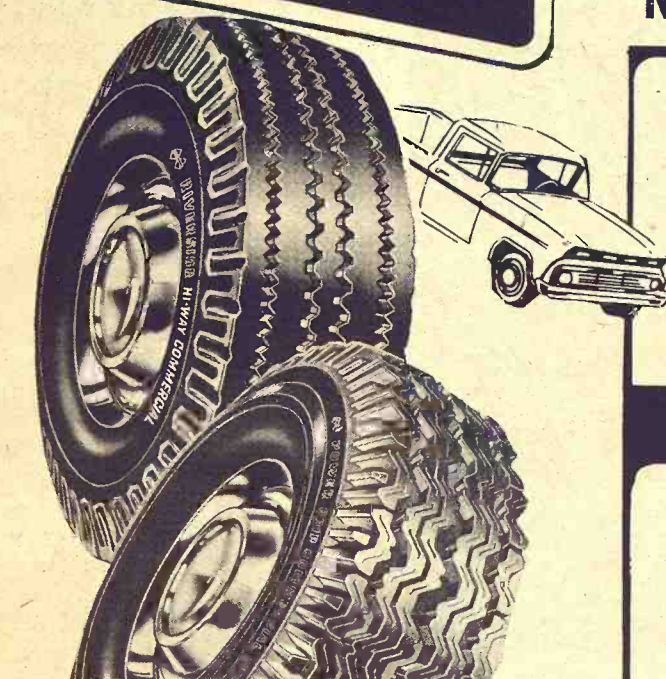
of our sale:
m \$18.50 to \$21.00.
inner cows went for
to \$17.00.

HOGS
butchers 226 @
d butchers 213 @
d butchers 239 @
d butchers 224 @
d butchers 222 @
d butchers 203 @
d butchers 226 @

SOWS
245 @
566 @
400 @
435 @
430 @
315 @

PIGS
a very good, active
pigs. The bigger pigs
from \$17.50 to \$20.75.
Smaller pigs sold from
to \$17.00, and a few
were brought from \$11.00.

DED
ITY CE & 147
raise, call:
502 UPLAND
er, 520 UPLAND
Phone 349-2863



IMAGINE ! REPLACEMENT LEVEL TIRES
AT THIS LOW PRICE

RIVERSIDE
HI-WAY TRACTION
On or off the road, no more
rugged, better performing re-
placement level tire. Nylon
Cord body.

3766
8.25x20
Plus F.E.T.
& Recappable
Casing

Priced so low we can't show
prices until we know your
needs . . . so call or stop in
your Ward truck tire center
today.

1010 West 6th JUNCTION CITY Phone Collect CE 8-4350

Save on Pickup Tires at FARM TIRE CENTER Junction City, Kans.

No Money Down • Free Mounting

RIVERSIDE® HI-WAY COMMERCIAL

17⁸⁸ 6.00-16 17⁸⁸ 6.50-16 18⁸⁸ 7.00-15 19⁸⁸
Plus F.E.T. Plus F.E.T. Plus F.E.T.
6.70-15
Plus F.E.T.

If initial cost is a major consideration, then this tire is for you! Look at the close zig-zag design that gives you the kind of traction you need. Look at the deep buttress grooves that cool the tire to give you greater safety on or off the road. Consider the number of recaps that it can take to give you longer service at a low cost!

ONLY \$2 MORE BUYS A MUD AND SNOW TIRE

RIVERSIDE® POWER GRIP COMMERCIAL

19⁸⁸ 6.00-16 19⁸⁸ 6.50-16 20⁸⁸ 7.00-15 21⁸⁸
Plus F.E.T. Plus F.E.T. Plus F.E.T.
6.70-15
Plus F.E.T.

This powerful mud and snow tire combines smooth over-the-road service with deep-biting traction. This means that if you are in the delivery or farm business, where traction can mean time savings as well as fuel savings, this Power Grip is built for you! Its skid resistor tread is backed with recappable 6-ply rated nylon cord body.

NO MONEY DOWN • FREE MOUNTING

Sale Every Wednesday

Hogs 12 noon
Cattle 1 p.m.



The market showed strength on all classes of cattle, with cows predominating in the receipts. The run was light as expected. Our final sale before harvest will be Wednesday, this week, June 7; with re-opening of regular weekly sales scheduled for Wednesday, July 5. Following is a partial listing of our consignments:

2 b&w str--710 @	24.10	1 blk cow&clf--- @	183.00
1 hol steer--345 @	24.30	1 blk bull--1385 @	22.30
1 hol steers--601 @	22.30	1 hol bull---635 @	20.60
1 hol steer--495 @	24.40	Fat Hog Top-----	22.50
2 blk hfrs---450 @	22.80		
1 blk hfr---390 @	22.40		
1 hol steer--810 @	19.90		
2 blk hfrs---470 @	21.10		
1 wf steer---465 @	22.90		
1 hol steer--745 @	21.80		
1 blk hfr---535 @	22.80		
1 bwf steer--420 @	25.50		
1 blk steer--410 @	24.10		
1 blk steer--515 @	25.50		
1 blk steer--450 @	24.00		
1 red hfr---565 @	22.60		
1 black cow--835 @	16.10		
1 black cow-1015 @	16.00		
1 black cow-1370 @	17.30		
1 roan cow---960 @	17.10		
1 hol cow---1170 @	18.20		
1 hol cow---1340 @	18.10		

FINAL SALE
Until After
HARVEST
WEDN. JUNE 7

Regular Sales
Scheduled To Re-open
Wedn. July 5.

BARN PHONE AT 3-5566

There is someone at the barn
all day Tuesday & Wednesday &
Thursday morning. Otherwise
call:

AUCTIONEER:

Floyd Gehring
Moundridge Phone 345-8195

NEWTON LIVESTOCK & COMMISSION CO. • NEWTON KANSAS

Sale Every Thursday

Hogs 11:30 a.m.
Cattle 1 p.m.



While the cattle receipts were light due to the difficulty in loading from wet grounds, we had an unusually large run of hogs. Three to four inches of rain fell over the area, and this made all of us feel pretty good.

The cattle market looked steady to strong, and the hog market ran strong. The extreme top on fat hogs was \$23.05, with the bulk of them going for \$22.65.

Feeder pigs were in large numbers and brought prices ranging from \$22.50 to \$23.50 cwt. These were in the 150 lb. range. Weaning pigs were slightly off bringing mainly \$17.25 a head.

Following the good rain, we expect a good sale this coming Thursday. The Marysville sale will continue on schedule until the usual closing during harvest, so if you have cattle or hogs ready for the market, bring them in.

RALEIGH BREEDING, MANAGER

barn HI 3-3671; home HI 3-3647

Auctioneer: Larry Lagasse,
Ph. Concordia, Kans. CH3-1714

MARYSVILLE LIVESTOCK & COMMISSION CO. MARYSVILLE, KANSAS

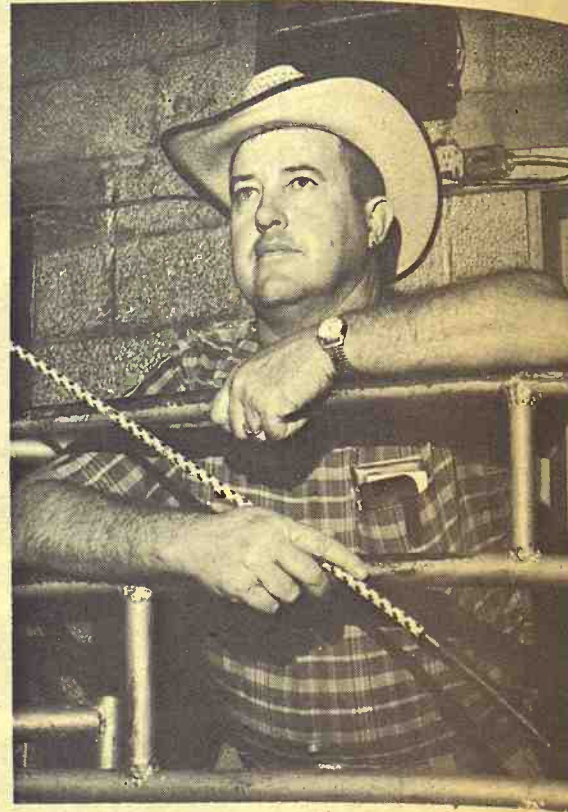
Sell At St. Marys

Sell
Or Buy

Cattle & Hogs

By
Auction

Tuesdays



For Information or Estimates

Rezac Barn St. Marys 437-2999
Delaine Rezac St. Marys 437-6266
Elmer Inthurn Maple Hill MI 3-2440
Paul Kramer St. Marys 437-2993

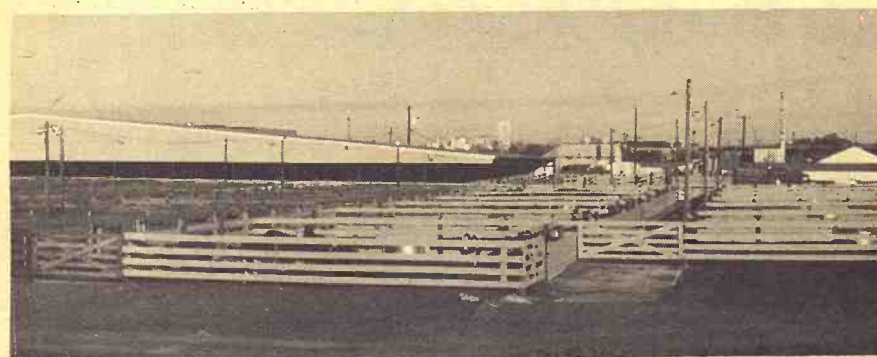
As we had no sale on May 30, Memorial Day Tuesday, we have no report this week. Our usual report will be resumed next week. We want to thank everyone for helping us have this holiday. We know you needed one, too.

LIVESTOCK COMMISSION
Rezac COMPANY



St. Marys,
Kans.

Auctioneers: Lawrence Welter and Gene Toby



Central Kansas Most
Modern Livestock Auction .. West Side Of **Salina**

MONDAY SALE ONLY THRU HARVEST

MONDAY

Fat Cattle 9 a.m.

Hogs sell at 11:00 a.m. followed by our regular cattle sale as they are unloaded.

THURSDAY

Cattle Only

Selling starts at 11:00 a.m. Cattle will sell in the order they are consigned on the books.

We sold 813 hogs and 834 cattle at our regular sale Monday. Not enough fat cattle shown to test the market. Out hog top was \$23.60. We had several hundred feeder pigs that sold on a very active market. Monday, June 5th, will be our last fat cattle sale until after harvest. Regular hog and cattle sale each Monday thru harvest.

FAT CATTLE

Rollie Clemence, Abilene	4 wf steers	951 @	25.10
Mrs. Rollie Clemence, Ab.	9 hol steers	174 @	21.70
M. Rasmusson, Lindsborg	9 mix str	964 @	24.85
M. J. Holler, Conway	4 bwf hfrs	833 @	23.30
M. J. Holler, Conway	1 blk steer	823 @	25.00

CATTLE

Max Redden, Gypsum	1 wf cow	1180 @	16.70
Max Redden, Gypsum	1 wf cow	985 @	17.50
Albert Choitz, Ellsworth	8 wf hfrs	748 @	21.60
Willis Nelson, Lincoln	1 hol cow	1135 @	17.40
Willis Nelson, Lincoln	1 hol cow	1450 @	17.00
Gerold Denny, Hope	5 wf steers	809 @	25.55
Gerold Denny, Hope	2 wf hfrs	695 @	23.00
Jack Gasaway, Ada	1 hol steer	935 @	21.50
Jack Gasaway, Ada	1 wfb steer	1155 @	23.85
Eugene Olson, Clifton	3 wf steers	448 @	28.40
Con Goracke, New Camb.	7 blk steers	524 @	27.70
Con Goracke, New Camb.	7 blk hfrs	502 @	24.20
Beemer & Beemer, Abilene	3 blk cows&clfs	@	210.00
Carroll Oleen, Falun	4 wf hfrs	906 @	20.95
Alvin Donley, Beverly	3 blk hfrs	468 @	23.70
Harold Andrews, New Camb.	8 wf hfrs	481 @	26.00
William Wacks, Ellsworth	2 blk steers	837 @	25.40
William Wacks, Ellsworth	2 blk hfrs	707 @	23.35
Ralph Bruning, Ellsworth	1 wf cow	1310 @	17.20
Clarence Becker, Ada	7 wf&rnstrs	894 @	25.30
Morrison Grain, Salina	9 blk steers	423 @	29.00
Emery Train, Lindsborg	56 mix str	879 @	24.11
Robt. Melander, Mentor	16 bwf hfrs	584 @	23.60
Charles Wood, Abilene	2 wf steers	670 @	25.00
Virgil Bennett, Manchester	10 wf str	602 @	27.55

Don Voupel, New Cambria	1 wf bull	1405 @	23.00
Leonard Hall, Lincoln	1 hol cow	1440 @	18.10
Leonard Hall, Lincoln	150 blk hfrs	610 @	23.82
Charles Wood, Abilene	3 sws steers	913 @	23.10
Charles Wood, Abilene	1 blk steer	860 @	23.30
Arlene Kissick, Tescott	1 bwf hfr	485 @	23.20
Dale Leive, Brookville	1 wf bull	1570 @	21.60
Leonard Hall, Lincoln	1 hol cow	1440 @	18.10
D. E. Winslow, New Camb.	1 hol cow	1400 @	17.40
Cirel Vanek, Brookville	1 hol cow	1245 @	18.00
Lindstrom Bros., Marquette	1 wf bull	@	345.00
Lindstrom Bros., Marquette	1 wf bull	@	335.00
Ivan Weibert, Durham	21 wf clfs	@	52.00
Ivan Weibert, Durham	1 blk clf	@	56.00
H. Schwerdtferger, Ells.	12 blk cows&clfs	@	220.00
R. E. Heimer, Assaria	1 hol cow	1330 @	16.90
R. E. Heimer, Assaria	1 hol cow	1065 @	17.00
Don Riffel, Enterprise	1 wf cow	1225 @	17.60
Marilyn Adece, Miltonvale	1 wf hfr	505 @	22.50
Marilyn Adece, Miltonvale	1 wf hfr	440 @	22.60
J. B. Adece, Miltonvale	1 hol cow	1220 @	17.20
Bill Brown, Minneapolis	1 blk bull	1270 @	21.70
Rex Jorgensen, Lincoln	17 wf str	858 @	25.60
Rex Jorgensen, Lincoln	11 bwf str	876 @	25.75
Pete Shank, Abilene	6 wf hfrs	663 @	24.20

FOR INFORMATION OR ESTIMATES

LAURENCE CLEMENCE
Abilene Phone CO 3-3091

MERRILL CHRISTIANSEN
Durham Phone 732-3371

BOB MUIR
Salina Phone TA 3-2963

Market Reports
Radio Station KSAL, Salina
6:45 a.m. Every
Monday, Wednesday & Friday
KFRM
6:55 a.m. Mon. through Fri.

HOGS

Kenneth Erickson, Marq.	13 hmp hgs	224 @	23.35
Max Boss, Bennington	5 spt hogs	224 @	23.10
Bert Zook, Abilene	10 mix hogs	232 @	23.05
Dwight Sperry, Beverly	10 mix hogs	227 @	23.30
Jay Everhart, Gypsum	3 mix hogs	238 @	23.25
Paul Rohrer, Culver	14 hmp hgs	225 @	23.30
Loren Johnson, Assaria	6 mix hogs	234 @	23.30
Karl Peteman, Ellsworth	12 mix hogs	209 @	23.40
A. Traulsen, Lincoln	10 mix hogs	224 @	23.50
Eli Drihl, Brookville	8 hmp hogs	225 @	23.60
Palmer P ice, Salina	17 mix hogs	228 @	23.35
Kenneth Kelly, Ada	12 mix hogs	214 @	23.35
Richard Johnson, Minn.	11 hmp hgs	243 @	22.90
Anthony Dolezel, Kanp.	8 mix hogs	210 @	23.40
Harvey Griggs, Tescott	9 red hogs	212 @	22.80
Warren Ayers, Salina	3 mix sows	536 @	17.80
Alfred Mayer, Gypsum	14 mix hogs	233 @	23.00
Art Weis, Minneapolis	11 mix hogs	197 @	23.00
Harold Morrical, Beverly	9 mix hogs	231 @	23.20
Richard Mortimer, Gypsum	2 hmp sows	380 @	18.70
Ernest Neagley, Abilene	6 mix hogs	207 @	23.15
Marvin Williams, Tescott	2 whi sows	417 @	18.60
Robbie Morrison, Salina	12 mix pigs	@	19.50
Loyal Rothburn, Beverly	13 mix pigs	@	14.00
Gourby Bros., Lincoln	30 mix pigs	@	13.25
W. R. Biggs, Barnard	30 hamp pigs	@	17.00
V. V. Owens, Gypsum	15 spt pigs	@	13.50
Don Keeler, Salina	26 mix pigs	@	15.00

Farmers & Ranchers

LIVESTOCK COMMISSION CO.

West On Old US 40

Salina, Kansas

Barn Phone TA 5-0211

Bonded • Licensed

Industry
June As

June is the month for roses, beautiful weather, green pastures, and June Month. It is the time that supplies are abundant. Month the dairy industry nationally and in Kansas by related businesses organizations to honor the women of the dairy industry and the fine family they produce. The Kansas program is under the direction of Charles L. Norton, H. Department of Dairy and

State Grade
Output On R

The number of dairy in Kansas is decreasing. Sales of Grade A milk in the state are higher than before, according to Kansas State university extension service publication. Authored by Roger H. weke, dairy marketing agent, the publication is the changing market for A milk between 1962 and 1965. Grade A milk is the dairy product in Kansas. Volume, value, and economic contribution, says W. Kansas dairy farmers sold 991 million pounds of milk in 1965, up 71 pounds from 1962. Cash from the farm sale of milk was \$44 million, up \$5 million in four years. Most other trends in milk production were the period. But the dairy farmers decreased 3,910 in 1962 to 2,509 in 1965. Offsetting the drop, however, has been a decrease in marketings. Producers sold an average of almost 395,000 pounds in 1965, an increase of 100 pounds during the 4-year period. Income per dairy farmer increased at an even faster rate. Average cash receipts per deer rose from \$12.94 to \$17.693 in 1965 — a 37 per cent increase. Kansas is a net exporter of Grade A milk. The notes these trends: Sales of bulk milk for use by Kansas cooperatives and out-of-state markets are up 10 million pounds. Sales of Class I fluid milk in other states by Kansas — up 18 million pounds. Producer sales direct to state handlers — up 10 million pounds. The increase in sales resulted in an increase in net out shipments from 10 million pounds in 1962 to 11 million pounds in 1965.