

## Long Walk

It's a long walk from Grandpa's pickup to the barn for Kenneth Lee, but he wanted to see a cattle auction. Taking him is his grandfather, Waldo Lee of Marysville. Kenneth is the son of Mr. and Mrs. Jerold Lee.

## More Taxpayers, Less Users In Coming Population Shift

If a large and relatively well-educated labor force has anything at all to do with economic growth in a country, the U. S. economy should grow in with enviable vigor in the years just ahead. Indeed, it's entirely possible that the much-publicized Soaring Sixties, which finally soared after some initial floundering, could be only a prelude to what might be dubbed the Heavenly Seventies.

Such optimism, to be sure, presupposes happy endings for a variety of current problems. At home, with an economy strained by war, inflation goes on. Abroad, the post-World War II system of economic cooperation between nations is in trouble. No one can say for certain whether such problems can be successfully resolved. But if they can be, there is reason to expect that the country's economic progress during the next decade or so will be most impressive.

The broadcast available measure of a country's economy, of course, is its gross national product, or output of goods and services. This overall output figure, in turn, hinges in large part on the size and efficiency of a country's labor force. Is the supply of working-age persons sufficient to accommodate rapid economic expansion? Are they well enough educated to perform jobs in an efficient manner?

The working-age population of the U.S. will grow dramatically in the years just ahead. The table shows the projected growth in the country's population, and in persons older than 19 years but less than 65. The totals are in thousands.

	1967	1980	Gain
Total Pop.	199,118	227,665	14%
20-64 Age Group	102,468	126,559	24%

The 20-64 group now accounts for about 51% of the total population. By the end of the 1970s, the group will make up 56% of the population. Put another

way, the percentage of the country's population that is generally least productive and must be supported by others — the young and old — will shrink in the years just ahead.

A major reason for the trend is the country's extraordinarily high birth rate in early postwar years. These "war babies" now are beginning to cross the 20-year mark. In the past year, some 3.8 million Americans turned 21, nearly 1 million more than a year earlier. The number reaching 21 will remain close to 3.8 million until about 1975 and then begin to push above 4 million. In 1975-80, on the average, some 4.2 million Americans will celebrate their 21st birthdays each year.

The country's expanding working-age population also will be better educated. At present, some 50% of Americans over 24 years have finished high school and about 10% have completed at least four years of college. By 1975, according to Government projections, the comparable percentages will rise to 59% and 12%, respectively. And the projections for 1980 are 64% and 13%, respectively. As recently at 1960, in contrast only 41% of the over-24 population had completed high school and only 8% had finished four years of college.

In most major nations, it should be noted, labor-force projections are far less rosy than in the U.S. Studies indicate, for instance, that West Germany's working-age population currently is shrinking and won't begin to expand again until the late 1970s. Projections for such countries as the United Kingdom, Italy and France are only slightly rosier. The reason is that in these countries, unlike the U.S., the ravages of World War II precluded any prompt return to normal family life. There were no baby booms right after the war. And now, there is no big stream of young persons about to pour into the labor force.

On the education front, the U.S. enjoys a commanding lead, which many experts believe will grow in coming years. The table below shows the percentage of persons in the 20-24 age bracket attending college in various countries.

20-24 Age Group in College	
United States	43%
France	16%
West Germany	8%
United Kingdom	5%

Analysts say that the European percentages remain far below the U.S. figure even when various European vocational institutions are counted as colleges. Moreover, there is wide

Continued on page 2 . . .

# GRASS & GRAIN

14th year no. 14

June 4, 1968

## Arguments Build To Reject Wheat Pact

Wheat, which struggled out of the price-depressing surplus problem of the early 1960s, may be headed for trouble again.

What prices have tumbled to near 26-year lows as U.S. production continues to outstrip domestic demand and as foreign competition for export markets get tougher. Now, to muddle the situation even further, comes sharply divided debate on whether to ratify a world wheat trade pact that U.S. negotiators helped draw up.

Government agricultural leaders are urging ratification of the International Grains Arrangement, hammered out at the tail end of the Kennedy Round tariff-cutting talks, when, ironically, it appeared that wheat supplies were in relatively short supply around the world.

The U.S. signed the pact, but it must be ratified by a two-thirds Senate vote. The pact first must be approved by a subcommittee of the Senate Foreign Relations Committee, which won't meet again until June, and endorsed by the full committee before it reaches the Senate floor.

Under the new agreement, which becomes effective July 1, world wheat prices would be raised under the old pact that expired last July.

Meanwhile, bigger-than-needed crops have pushed U.S. wheat prices below the new minimums, so, if the pact was operating now, an "inverse" subsidy would be needed to balance the price levels.

A leading grade of ordinary protein hard winter wheat is priced around \$1.51 a bushel in Kansas City; that's down 20 cents from a year ago and almost 10 cents since Feb. 1.

Even after transporting it to a Gulf of Mexico port, an exporter could buy the wheat for about 15 cents a bushel less than the minimum price called for under the International accord. But, if the U.S. abided by the pact, a foreign buyer would have to pay the minimum, and the Government would collect

the difference.

Only three months ago the situation was reversed, with the Government paying subsidies when U.S. hard wheat prices were above world levels.

Promoters of ratification for the International Grain Arrangement argue that formally joining the pact should help boost declining domestic prices, or at least stop their decline.

But opponents, including exporters and the American Farm Bureau Federation, think the agreement won't help, and may hurt, prices.

Exporters note that the U.S. is the only nation producing wheat under acreage controls. Thus, they say, the other 50 countries in the pact will be encouraged by higher prices under the arrangement to grow all the wheat they can while the U.S. is almost sure to cut back acreage for next year's crop.

The result: The additional foreign wheat is likely to capture more export markets, either through lower transportation costs or outright undercutting of the agreement's minimums.

In addition, Russia and other Iron Curtain countries aren't expected to be aligned with the pending international pact. They have been selling wheat in world markets cheaply this year, and they threaten to intensify such a competition.

"We've operated since last July without an agreement," says William R. Pearce, vice president of Cargill Inc., Minneapolis-based grain dealer, "and despite large wheat supplies we've seen no drastic decline in world prices."

He claims Senate rejection of the pact "wouldn't end prospects for useful cooperation in world markets."



## Down Goes Old Main

Old Main, a tower on the Bethany College campus at Lindsborg since 1886, is coming down to make room for two new buildings, and the college is going to remove some of the property in the building by an auction sale, set for June 8.

One of the items found in the building by the Bethany Dames, who for two months have been removing items from Old Main piece by piece, is this 25-foot cloth banner, which will be sold as the finale of the auction. Bethany officials are hoping for a curious — and bidding — crowd looking over the antiques, bottles, furniture, souvenirs, pool tables, and miscellany at the sale.



## More Taxpayers Cont. . .

belief that the "education gap" between this country and the U.S. will increase in coming years.

The quantity and quality of America's prospective labor force, most economists conclude, should help the nation's economy attain the gains they foresee. Their projections are bullish. Economists, of the National Industrial Conference Board, for instance, calculate that U.S. GNP will grow (after

eliminating "growth" due to inflation) at a rate of about 4.6% yearly in the period through 1975. In arriving at the 4.6% figure, the Conference Board estimates that U.S. employment will grow at 2% annually, that total hours worked will increase 1.7% a year (even though the workweek will get shorter) and that output per man-hour will rise 2.9% annually.

The projected rise in "real" GNP of 4.6% annually, the board notes, far exceeds the annual increase in most past periods.

In 1947-65, "real" GNP rose at an average rate of 3.9% yearly; in the past six decades, the increase averaged only about 3% yearly. The 4.6% rate, however, would not be "far over the rate prevailing in the early 1900s when immigration was swelling the labor force," the board states, adding that "much (through 1975) results from increased labor force growth."

The board recognizes that the projected rise is no sure thing. If American policy-makers are

unable to manage the country's affairs in such a way as to allow for a rapid expansion of jobs, soaring unemployment rather than soaring business growth could be the big economic news of the 1970s. And that would be doubly tragic, because the American economic opportunity right now is unique.

## Only Two Area School Districts Not Unified

The push to unify school districts in Kansas is apparently nearly complete, with only 900 students in the state in non-unified schools, except for a large block in the Shawnee-Mission area in Northeast Johnson county.

In the G&G area only two districts are not unified. One is the County, which has 222 pupils Florence district in Maron with a \$15,532 per pupil evaluation.

The other is Odin in Barton

### GRASS & GRAIN

The Mid-Kansas news weekly. Published each Tuesday at 1207 Moro, (Box 1009) Manhattan, Kansas, 66502 by

### AG PRESS

Dean Coughenour

E. R. Woodward

Second class postage paid at Manhattan, Kansas.

Subscription: \$3 year CIRCULATION . . . . . 12,710

June 4, 1968

County, with 134 students and a \$12,026 per-student valuation.

The other non-unified districts are at Coolidge in Hamilton County, Ensign in Gray, Kanorado in Sherman, and rural and grade districts at Leoville in Decatur County. The Leoville districts are entirely Catholic constituency and have been administered by nuns while operating as public schools.

The Johnson County situation is undergoing particular study by a legislative committee, which will make recommendations to the 1969 legislature.

There are 40,000 students in non-unified districts in Johnson County, including the Shawnee Mission rural high school district, which operates four high schools and a large group of junior high schools with a per-pupil evaluation of \$14,443. The Other 12 districts are elementary districts at Antioch, Corinth, Greenwood, Lenexa, Linwood, Merriam, Overland Park, Prairie Village, Roeland Park, Shawnee, Valley View, and Westwood View.

Unified districts operating grades from kindergarten through 12 were established by the legislature in the 1963 act to provide a uniform vehicle for distributing increased state aid instead of the 13 varied types of districts which had been in use prior to that time.

"One Friend Tells Another and HOME Grows"

For Our Rural Neighbors

Who Want To Strengthen Their Financial Positions

## THE HOME SAVINGS PLAN

WILL Work For You . . . As It Does For Others

INSURED SAFETY OF SAVINGS

Save in person or by mail

**BUSINESS HOURS**  
Monday through Thursday  
9 a.m. - 4 p.m.  
Friday  
9 a.m. - 7 p.m.  
Saturday  
—Closed—

# HOME

SAVINGS AND LOAN ASSOCIATION

107 NORTH FOURTH STREET

MANHATTAN, KANSAS

YOUR COMMUNITY HOME FINANCING CENTER

# Come One! Come All

31st Annual

## FLINT HILLS

R. C. A. Professional

Strong City  
Kansas

# RODEO

June 7, 8, 9



## Midwest's Greatest Rodeo

Thrilling Rodeo Fans for 31 Years

This Year Greater Than Ever

Five Major Professional Events

Over \$7500 In Prize Money

See Most Of Nation's Top Cowboys

Parades Dance Bar-B-Que

Great Lakes Navy Band

Wright Hawington, World Famous Rodeo Clown

Rodeo Stock by Walter Alsbaugh

"IN A NUTSHELL"

FRIDAY, JUNE 7 — FREE BAR-B-QUE AT 5:30 P.M.  
SHOW 7:30 P.M.

SATURDAY, JUNE 8 — PARADE 2 P.M. SHOW 7:30 P.M.

SUNDAY, JUNE 9 — FINAL 1968 PERFORMANCE  
AFTERNOON . . . 2:00 P.M.

Also featuring crowning of Miss Rodeo Kansas

— FINAL EVENTS —

SUNDAY, JUNE 9

2:00 p.m.

Featuring the crowning of  
Miss Rodeo Kansas



Elmore Stout, President  
Flint Hills Rodeo Association

### FRIDAY, JUNE 7

12:30 p.m. Miss Rodeo Kansas Queen luncheon and judging of Queen.

5:30 p.m. Flint Hills Rodeo Board Chamber of Commerce of Cottonwood Falls & Strong City will host everyone to a big free barbeque. Beef courtesy of Fanestil Packing Co. of Emporia, Kans.

7:30 p.m. First performance featuring Wright Hawington, world's most spectacular Rodeo Clown

### SATURDAY, JUNE 8

9:00 a.m. Miss Rodeo Kansas Horsemanship Contest — FREE TO PUBLIC

2:00 p.m. Parade leaves Swope Park for Strong City

7:30 2nd performance. 150-200 cowboys and girls trying for purse

9:30 p.m. Dance western style, music by Bar-Que's of Wichita.

The Flint Hills Rodeo Board and its stockholders strive each year to bring you a bigger and better professional rodeo. This is the first in Kansas. You will be thrilled at the scenic beauty of the Flint Hills. Plan now to bring the family.

## ADMISSION

General Admission

Children under 13 — 75c

Adults \$2.50

BOX SEATS ADVANCE \$2.50 AT GATE \$3.00\*

\*If Available

For Advance Tickets Call or Write Ken Clark, Strong City BR 3-6656 or Jim Bell Cottonwood Falls BR 3-6381.



Ken Clark, Secretary



Tools  
Too

AGGIE  
HARDWARE  
1205 Moro  
Manhattan, Kan

Keep feedlot heifers  
out of heat, promote  
growth, with

NEW MGA/100  
AVAILABLE IN 6  
Cooper FEEDS



- Stimulates Growth . . . field trials show MGA/100 improved average rate gain 11.1% over untreated heifers.
- Boosts Feed Efficiency . . . more beef on less feed.
- Reduces Feedlot Commotion . . . bellowing, fence-walking, dust, noise, generally linked with heifers in heat.
- Low Cost . . . ask how little it takes to feed a heifer a day on MGA.

THESE COOPER FEEDS CONTAIN MGA/100 • 32% LUCKY FINISHER • RUMEN • 32% COMMERCIAL BEEF (1 & 2 Lb. Supplement) • 40% COMMERCIAL BEEF • MEDICATED COOP-R-MIX

"MGA/100" is a registered trademark of Tuco Products Company, Division of The Upjohn Company.



We Don't Compete With Our Customers

THE O. A. COOPER CO.

MILLS AT HUMBOLDT, BEATRICE, COZAD AND SO. SIOUX CITY, NEBR.

Home Office: Humboldt, Nebraska 68376



# CALVES SHOT IN SALINA CO. PASTURE

SALINA — Three calves have been shot by a marksman with a high-powered rifle in recent weeks in Salina county. The

calves — all near yearlings — were killed on the farm of Gary Sparks. Sparks said the pasture in which calves were killed is within range of homes on Marymount road at the east edge of Salina.

# Warning On Sale Of 'Super Seeds'

One of the quickest ways to lose money on a wheat crop is to buy "super seeds" from a smooth salesman who promises rich rewards in one growing season.

Again this year Howard D. Wilkins, Extension crops and soils specialist at Kansas State University, has been chatting with wheat farmers who have been victims of this "sadder but wiser" experience. They have bought seed that is mixed with other grains, such as rye; seed that is a blend of several wheat

varieties; or seed that is not adapted to Kansas growing conditions.

"In almost every case," Wilkins notes, "such sales are made by itinerant salesmen who are armed with a glib tongue and a fistfull of testimonial letters. What the buyer should demand is research proof that the wheat has been tested and will produce well in Kansas, and the reputation of a reliable seed dealer who depends on the good will of his customers for next year's the form of Kansas State University."

Research proof is available in the form of Kansas State University crop performance bulletins, issued every year and made available through county Extension offices, Wilkins points out. New varieties are continually added to the tests and are quickly recommended when they prove adaptable to Kansas soils and growing conditions.

The Kansas Seed Law, administered through the Control Division of the Kansas State Board of Agriculture, also requires that all agricultural seed

offered for sale in the state be correctly labeled as to the name, variety, purity, and germination of seed. Such labels are often missing from bags of "super seeds," or are ignored by the buyer.

"If you are tempted to buy some unknown seed from some unknown salesman, Wilkins notes, "just remember these five safety checks:"

1) Think! Don't decide in a hurry! Consult your county Extension agricultural agent or the K-State Experiment Station first.

2) Save all correspondence, labels, and canceled checks related to the seed purchase.

3) Save a sample of the seed being planted for later tests in the event the crop fails to measure up to label or salesman's claims.

4) If a contract is involved, see your attorney before you sign.

5) If you are convinced that you must try the seed, buy only a small amount and try it this year. If the seed is good, you will still be able to harvest your jackpot of golden wheat next year.

# CO-OP

## AGRI-POWER

### Rear Tractor Tire

With New  
30° Cleat Angle

20%  
MORE  
DRAWBAR  
PULL

TIP TOP

HOLLAND  
BALER-TWINE  
BINDER-TWINE

6 95 BALE

6500 WIRE

1050 per carton

Satisfaction  
Guaranteed

LARSON  
BUILDING CENTER  
INC.

5th & Ash TA 7-4467

SALINA, KS.

**FARM & RANCH LOANS**

A Financial Service  
For The Farmer  
And By The Farmer

R. STANLEY PARSONS, Mgr.

SEE ME AT  
-604 HUMBOLDT PR 6-6931  
Res. Phone JE 9-8725  
**MANHATTAN**

Open Mon. through Fri.  
8 a.m. to 5 p.m. (closed 12-1)

Branch Offices: CLAY CENTER & JUNCTION CITY

Federal  
LAND BANK Assn. of  
MANHATTAN

Serving Clay,  
Geary, Pottawatomie & Riley counties.

THESE EXTRA QUALITY FEATURES  
ADD POWER, LIFE & ENDURANCE  
NYLON CORD

Pound for pound, Nylon cords are actually stronger than steel . . . with the added advantage of built-in resistance to "flex fatigue."

RESISTS BARNYARD ACIDS

Unaffected by eroding action of powerful acids. Special tire compounds protect against checking, cracking, chipping.

EXCELLENT ROADABILITY

Special tread design results in easy, free rolling, giving operator a more comfortable ride.

SPECIAL SALE PRICES NOW

56<sup>35</sup>

12.4-28/4 ply (11-28)  
\$4.21 Fed. Excise Tax

83<sup>15</sup>

13.6-38/6 ply (12-38)  
\$6.55 Fed. Excise Tax

107<sup>65</sup>

15.5-38/6 ply  
\$7.70 Fed. Excise Tax

132<sup>60</sup>

18.4-34/6 ply (15-34)  
\$10.47 Fed. Excise Tax

Plus trade-in

**Farmers Co-op Assn.**

2nd & Pierre PR 6-9467  
MANHATTAN, KANSAS  
Westmoreland Onaga Alta Vista

**Check-A-Month Plan**

paying **5 1/4%** earnings

**NOW—GET A MONTHLY  
INCOME CHECK...**

**INVEST A LUMP SUM—AND RECEIVE YOUR  
FIRST CHECK THE VERY NEXT MONTH!**

Now Capitol Federal is offering a new monthly income plan based on our extra high rate of 5 1/4%. Just open your Check-A-Month Plan with a 6-month savings certificate of \$5,000 or more in multiples of \$1,000 and receive monthly checks for the rest of your life.

Our new plan is easy to open in person or by mail—easy to change—and your money is always available when needed. Your account is insured, but the best insurance of all is the safety of Capitol Federal itself.

MONTHLY CHECKS RECEIVED WITHOUT USING PRINCIPAL						
Amount Invested	\$5,000	\$10,000	\$15,000	\$20,000	\$25,000	\$50,000
Monthly Income	\$21.87	\$43.75	\$65.62	\$87.50	\$109.37	\$218.75

COMPARE THIS PLAN TO OTHERS!

**"The Most Trusted Name In Savings"**

**Capitol  
Federal  
Savings**

700 KANSAS AVE. TOPEKA  
1201 TOPEKA BLVD. LAWRENCE  
2100 FAIRLAWN RD. KANSAS CITY



Docking Wins — Names His Own Man

## Coldwater Man Heads Brand Commission

WELLINGTON — Gov. Robert Docking named Doyle J. Heft of Coldwater as Kansas brand commissioner last week at a dinner meeting of the Kansas Livestock Association.

The move ends a feud between the governor and the association over filling the controversial post.

Heft, a Democrat, who was on a list of four names submitted to the governor for consideration as brand commissioner, will immediately take over the job of Hade Gupton, Greensburg. The governor had declined to reappoint Gupton.

Gupton, a Republican and his party's chairman for Kiowa County, was a veteran officeholder.

Governor Docking refused to reappoint Gupton when his term expired June 30, 1967, when the board of directors of the Livestock Association submitted a list of possible appointees, with Gupton the only person willing to accept the position.

The governor insisted that he should have a list of choices of persons willing and able to accept the appointment.

In a turnabout recently, the livestock association submitted a list of four names with the explanation that the Democratic governor could not be expected to appoint a Republican county chairman to the job.

Also on the list were Gupton, Allen S. Williams of Alma, and Byrd Hardy, Greensburg.

The announcement was on the eve of the governor's beef tour, sponsored by the livestock asso-

ciation, which includes visits to several ranches and feed lots in the blue stem grasslands and packing plants in the area.

There was a feeling of goodwill as the governor praised the cattle industry and pointed to the need for co-operation between ranchers and state government.

Still to be filled is the position of state livestock sanitary commissioner, held by A. G. Pickett, also a veteran Republican officeholder. The governor has refused to reappoint Pickett because he was the only person recommended for the position by officials of the Livestock Association.

The law requires that both officeholders carry the recommendation of the association.

The governor visited with several officers of the association about the sanitary commissioner an indications were that an agreement also would be worked out.

Heft will serve the remainder of the current unexpired term of the office, which Gupton has

been filling without gubernatorial appointment. It ends June 30, 1969.

Heft has been a member of the KLA since 1941 and is past president of the Comanche County Farmers Union and the county farm bureau. He is presi-

dent of the board of the CMS electric co-op of Meade, and a member of the board of the Protection Co-op Supply of Protection and Coldwater. Active in Masonic orders and the Shrine, he is married and has two sons who are building contractors.

MATTRESS &  
BOX SPRINGS

Specials Every Day  
New Low Prices  
Buy Direct

Also Complete Rebuilding  
Service

Manhattan  
Mattress Co.

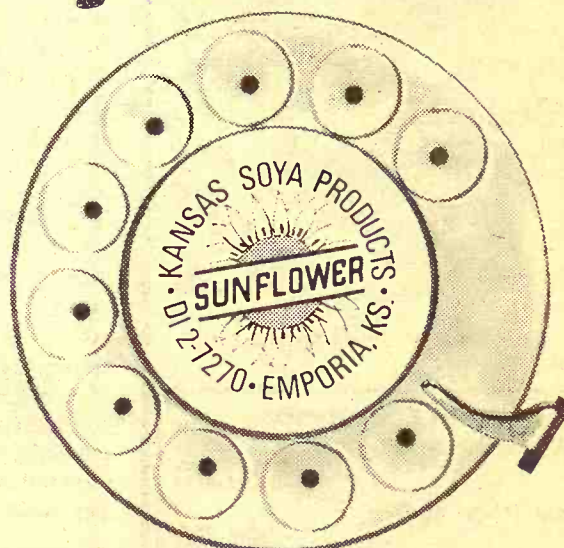
414 S. 4th

PR 8-5302



How much nutrition does your forage contain?  
Are your cattle getting enough protein?

**call  
information**



Just dial for formula guidance; for automated custom-mixing; for on-time delivery; and for Sunflower Brand Soybean Meal or Pellets (also 32% or 40% supplements) processed from nature's richest source of protein.



Kansas Soya Products Co., Inc., Emporia, Kansas, Phone Dickens 2-7270

**BRING YOUR  
WATCH  
TO A SPECIALIST FOR  
repairs**

Good watches  
deserve  
expert care!  
All others  
need it!



The more expensive your watch, the more it needs the attention of experts. But ordinary watches need extra special care because keeping perfect time is not just built-in. It's the result of extra care.

**SNYDERS JEWELRY**

Phone: ME 2-5155  
CLAY CENTER, KS.

**NFO ORGANIZED  
IN SALINE COUNTY**

SALINA — A Saline County NFO has been organized with 51 members. The organizational meeting was held this week, Monday, with Chris Walker, Mayetta, national director and treasurer of the organization, presiding before county officers were selected.

**"Best In Dust Protection"**



**Portable Cab Co.**

East 7th & Highway US36  
WASHINGTON, KS. 66968



**WE CAN FIT YOU**

Justin • Acme • Texas  
Nocona and Tony Lama  
On US 24 — 2 Blocks East  
of Cloverleaf on US 24  
**TOPEKA, KANS.**

## Compare capacity, efficiency, price. You'll pick the International 205

**Compare platforms.** Deep-ledge design puts the cutterbar 4 to 6 inches farther ahead of the auger. Cuts costly shattering losses in soybeans. Allows extra room for better feeding of tangled straw, fluffy crops. Choose 10 or 13-foot platform.

**Compare separators.** The 205 gives you a 42-inch wide cylinder, 42-inch-wide threshing, separating and cleaning all the way back. No funneling down to squeeze in the big threshing capacity.

**Compare straw racks.** Exclusive fin-and-wire straw racks have 50% more open space for grain to fall

through. Practically eliminate plugging in any crop—save more of your crop even at faster ground speeds.

**Compare grain tanks.** Twin grain tanks hold 60 bushels total—ride low over the drive wheels for better stability, better traction.

**Compare power.** The 205 has a 61 hp, 6-cylinder, 221-cubic-inch engine that's IH-built and serviced.

**Compare price.** See how much more combine your money can buy. Check your International dealer for all the other worth-more features of the 205. Flexible IHCC financing can put one to work on your place fast.



**Compare corn heads.** Choose 2-row-wide or 3-row-narrow—both the most efficient in the business. And both are backed by big horsepower and big capacity for handling heavy yields at a fast clip.



**First to serve the farmer**

BELLEVILLE  
Chapman's On US hwy. 81

ABILENE  
Abilene Truck & Tractor

HANOVER  
Hanover Impl. Co.

LEONARDVILLE  
Kendall Garage

WAKEFIELD  
Auld Chevrolet

MARYSVILLE  
Bruna Brothers

FALUN  
Dauer Impl. Co.

HERINGTON  
Pioneer Service & Sales

MINNEAPOLIS  
Chapman Impl. Co.

COUNCIL GROVE  
Macha-Revere



# One Time Only Big Savings On FARM SUPPLIES

Other Merchandise

Dealers Welcome

## Hydraulic Hose

1/2 in., 1 wire, 2000 PSI, all lengths, plus fitting installation free

50c ft.

We Also Have 1/4" & 3/8"  
Priced Accordingly

## Cross Hyd. Cylinders

Cross Utility dbl. action, 3 1/2"x8" — 2500 PSI

\$33.95

Utility 3"x8"  
1500 PSI

\$19.95

## Rex

(made in US)  
No. 50 - \$1.00 ft., No. 60 - \$1.20 ft., No. 80 - \$2.00 ft.

## Wire Rope

"Cable" Fiber Core — 3/16 to 7/16  
3/16 — 6c ft. 1/4 — 10c ft.  
3/8 — 12c ft. 7/16 — 15c ft.

## Roller Chain

3 16 to 7 16

## Moisture Meter

\$65.00

No. 200, batt. or elec. — Wholesale price \$74. Special now at

## Sisal Rope

Carton Packed Empire 1/4" up to 1/2"

per ft. 2c

## Tool Box

Far-Mech 18"x6 1/2"x5 1/2"

\$2.98

## Tractor Bucket Seat Cushions

\$3.75

2" Foam Rubber — Wholesale \$4.85  
31 JD Fulfoam 14 1/4"x20 1/2" for JD 520-530-620-630-720-730  
REPLACEMENT CUSHION Wholesale \$7.00

\$4.50

## Tank Heaters

\$24.95

Wholesale price \$30.00 Buy Now For  
J&K Oil burner — 2 1/2 gal. fuel tank. One gal. fuel.  
will heat 2'x10' tank all day

## Rocklin Power Drive Accessories

Telescoping Tumbling Rod. Wholesale \$15.60

\$10.00

U Joints — Wholesale Price \$6.75

\$4.00

Hub City Adapters, Sleeves & Reducers  
Overrunning Coupler — fit all tractors  
Wholesale Price \$19.50 — Our Price

\$14.00

## Impact Wrench

\$59.95

1/2" drive — 1800 RPM both ways — Wholesale \$76.95

## Canvas

\$26.00

Extra heavy Hinson Weatherbrake.  
We can fit all tractors. Wholesale \$39.95

## Save Up To \$200 on

## Hinson Tractor & Combine Cabs

### Safety Flag

\$1.45

Improved Red Hiway 15"x15", 8' two piece staff  
and bracket — Wholesale Price \$2.00

### Tractor Lamp

\$3.50

Double duty — 5" flood or taillight — With bracket

### Flashing Lantern

\$1.98

Delta red Less Batteries

### Sickle Grinder

\$36.50

Simco No. 33 Less Motor

### Sickle Bar Repair Set

\$2.49

P&C 4 piece

### Grain Scoop

\$6.35

Zephyr No. 14 Aluminum — Wholesale \$8.33

Our price

### Pitch Fork

\$2.45

Four tine Wholesale \$3.19

Our price

## Electric Fence Supplies

Round Posts 3/8"x54" 18c ea.

Porcelain Insulators 2c ea.

Plastic Insulators 1c ea.

Esco electric fence controllers — Start at \$9.25

1/2 mile roll electric fence wire — 17-19 ga. \$4.00

See Us For Your Paneling & Building Supplies

## Morrison Warehouse & Lumber

742 N. 13th

SALINA, KS.

TA 3-3001

# When It's Tornado Season...

This is tornado season in Kansas. June ranks high in the likelihood of these violent storms.

Although chances are slim that a tornado will strike any particular spot, citizens should know about tornados and how to protect themselves during a storm, Fred Bergstrud, Extension rural civil defense specialist at Kansas State University, says.

Whirling, twisting tornados form when layers of air have contrasting temperature, moisture, density, and wind flow. Funnels appear as extensions of heavy, greenish-black thunderheads that bulge downward. Tornados are associated with thunderstorms, but fortunately few thunderstorms develop tornados.

In the past 15 years, Kansas has had an average of 56 tornados on 24 days. Most likely time of day for tornados is late afternoon or early evening. Before a tornado strikes, the air is often still and seems oppressive.

The whirlpool structure of winds rotate about a hollow cavity, and as condensation occurs, the pale funnel cloud appears. When the storm moves on the ground, the outer ring of rotating winds becomes dark with dust and debris. A tornado sounds like the roar of hundreds of airplanes.

Tornado paths are seldom more than 1/4 mile wide and average about 13 miles long. The storms usually travel about 40 miles per hour in a southwest to northeast direction. Winds in the whirlpool have not been successfully measured, but are estimated to be around 300 miles per hour.

A "tornado watch" is the first alerting message for an area threatened by tornados. This Weather Bureau message defines a specific area and establishes a period of time when tornados may form. This means to be on the alert and stay tuned to a local radio station, but normal routine need not be interrupted.

A "tornado warning" is issued when a tornado has actually been sighted or indicated by radar. This warning gives the tornado's location, speed, and probable path. People in the danger area should take shelter when this warning is given by television, radio, or local warning system.

If you are outside when a tornado is coming toward you, move at right angles to its path. If there is no time to escape, lie in the nearest depression, such as a ditch or ravine.

If you are inside and have time, open windows on the north and east sides of the house. This will equalize air pressure and may save the house from destruction. Shut off electricity and heating appliances if time permits.

Take shelter in the southwest of the basement — or in a storm cellar or fallout shelter.

## Wanted

We will pay 10% over face value for U.S. half dollars minted before 1963. We are also buying other coins and silver certificates.

Highest Prices Paid

## Treasure Chest

Elden & Svlvia Leasure  
P.O. Box 304 308 Poyntz  
Phone 913 PR 8-5233  
MANHATTAN, KANSAS 66502

In homes with no basement, lie under heavy furniture against an inside wall. STAY AWAY FROM DOORS AND WINDOWS.

If you are in an office building when the "warning" is given, stand in an interior hallway on a lower floor or basement. Avoid auditoriums, gymnasiums and other structures with wide, free-span roofs.

Make arrangements now to use a shelter in the neighborhood if you don't have a shelter in your home. Also, don't stay in mobile homes when a tornado warning is received.

## NOW!

## An Antiseptic and Fungicidal Wound Dressing

that kills and protects against SCREWORMS, MAGGOTS,

FLEECEWORMS and EAR TICKS



Insecticidal WOUND DRESSING and PROTECTANT

Contains KORLAN



A FULL-SERVICE STORE FOR ANIMAL MEDICINES  
PHONE ME 2-3272

## HELD'S

STORE  
CLAY CENTER, KANS.

## OLIVER 525 perfectly balanced



Designed to match any condition, to bring new combining comfort

Here's a combine tailored to corn belt crop rotation, that's setting a new record in harvesting efficiency, driving comfort and maneuvering ease. It's the economical choice for the moderate-size farm, but has extra capacity all through for big acreages and high-speed combining. Compare its dimensions and capacities with all others, and you'll see why it's the new leader in its class.

## GRAIN

Your choice of two header widths, 11 or 13 feet, plus an 11-foot pickup header. A 6-inch gather adds another half foot to the cutting width of both headers.

## CORN

Now! Exact, on-the-row adjustability

Any Narrow 3-row width: 28 to 34 inches

Any Standard 2-row width: 36 to 42 inches

You can shift the gathering units on an Oliver corn head to any position within their adjustment range, match row width perfectly. And, traction wheel tread is 80 inches (97 when reversed) to straddle various row widths. Steering wheels are set at 64 1/2 inches. Main axle clearance is 20 inches.



DURHAM  
G&R Impl. Co.

ABILENE  
Wissing Motor Co.

CLAY CENTER  
Toburen Imple. Co.  
MARYSVILLE  
Peschel Bros. Impl.  
ALMA  
Eberwein Garage

SALINA  
Lindquist Impl. Co.

EMPORIA  
Arndt Bros. DI 2-5262



## OUR DAILY BREAD

— by G&G Area Cooks

### Recipe Prize Won By Mrs. Eugene Mullen, Ada

Mrs. Eugene Mullen of Ada wins the recipe prize. She writes, "have saved so many wonderful recipes — thought I'd share one. You'll find this a delicious surprise."

#### GREEN BEAN CASSEROLE (Serves eight)

3 tablespoons butter, melted  
2 tablespoons flour  
1 teaspoon salt  
1 teaspoon sugar  
1/4 teaspoon pepper  
1/2 teaspoon grated onion  
1 cup dairy sour cream  
2 12-ounce packages frozen green beans, cooked  
1/2 pound cheddar cheese, grated  
1/2 cup corn flake crumbs  
Combine 2 tablespoons butter and flour. Cook gently. Remove from heat; stir in seasonings and cream. Fold in beans. Place in shallow 2-quart dish. Cover with grated cheese, then with crumbs mixed with 1 tablespoon butter. Bake at 350 degrees 30 minutes.

Mrs. Leo Ebel, Wamego: "We have been subscribers to the Grass & Grain ever since you started to print the paper and we like it very much. I do enjoy the recipes and try lots of them. This is a good recipe."

#### MIXED VEGETABLES

Cook carrots and cabbage with

as little water as possible and 1 teaspoon salt. Cook until tender but do not overcook. Drain and add butter (not oleo) and more salt if needed and dash of pepper. "This is a different mixed vegetable dish but sure is good."

Mrs. Eldon Thorman, Clay Center: "This is a good crisp salad."

#### VEGETABLE SALAD

1 package celery or mixed vegetable gelatin  
1 cup boiling water  
2 teaspoons vinegar  
7 to 10 ice cubes  
1 cup shredded carrots  
1/4 cup diced celery  
2 tablespoons sliced stuffed olives  
Dissolve gelatin in boiling water. Add vinegar and ice cubes. Stir until thickened, about three minutes. Remove any unmelted ice. Stir in vegetables and olives. Spoon into molds. Unmold and serve with favorite dressing.

Mrs. D. G. Boeckner, Moundridge: "Here is a recipe for 'Our Daily Bread' which I want to share with you. So quick and

easy."

#### SOUR CREAM ROLLS

Dissolve 1 package yeast and 1/4 cup warm water. Heat 1 cup sour cream to lukewarm in large saucepan. Remove from heat and add:

2 tablespoons shortening  
3 tablespoons sugar  
1/4 teaspoon soda  
1 teaspoon salt

Stir until well blended then add 1 large unbeaten egg and the dissolved yeast. Mix in 3 cups sifted flour. Turn out on floured board and knead to form smooth ball. Cover with damp cloth and let rest five minutes. Roll dough as for cinnamon rolls. Spread with 2 tablespoons sugar, 1/2 cup brown sugar and 1 teaspoon cinnamon. Slice into 1 1/2-inch thick slices and place in greased pan or muffin cups. Cover with a damp cloth and let rise one hour. Bake in hot oven (375-400 degrees) until brown about 20-25 minutes. Frost while warm.

Mrs. Harold Faidley, Longford: "I am enclosing a recipe which I'd like to share with the readers, as I know if they are like me I always look forward to getting the 'Daily Bread' page to try new recipes."

#### NUT CHOCOLATE PIE

Cream:  
1/4 cup soft butter  
1 cup sugar

Add:  
1/4 cup flour  
1/2 cup cocoa  
1/2 teaspoon salt

Beat in:  
3 eggs, one at a time

Mix in:  
3/4 cup corn syrup  
3/4 cup evaporated milk or cream

1/2 to 1 cup nutmeats  
3/4 teaspoon vanilla  
Pour into unbaked pie shell. Bake at 350 degrees for 10 minutes then at 325 degrees for 50 minutes or until done. Chill. Note: This has a cake-like texture.

The following recipe is from Mrs. Jack Haist of Miltonvale:

#### APPLESAUCE BROWNIES

1/2 cup shortening  
1 1/2 cups sugar  
1/2 teaspoon cinnamon  
2 tablespoons cocoa  
2 eggs, unbeaten  
2 cups flour  
1 1/2 teaspoons soda  
1/2 teaspoon salt  
1 No. 2 can applesauce  
Combine all ingredients in the bowl and mix by hand until blended. Pour into greased pan, 9x13-inch, and sprinkle over top 2 tablespoons sugar, 1/2 cup chopped nuts and 1 small package of chocolate chips. Bake at 350 degrees for 30 minutes.

### Provide Children With Personal Grooming Aids

One way to encourage children to enjoy daily baths is by providing each young member of the family with personal grooming aids.

These can include long-handled back brushes and stiff-bristled nail brushes, perhaps with names or initials painted in bright colors on the handles.

### Good For Sealing

An electric curling iron is excellent to use for sealing sandwich bags and plastic bags for food stored in the freezer.

### The Latest 'Daily Bread' Prize

#### ICE BUCKET

THERMOS BRAND. High efficiency insulation. Extra-large capacity. Perfect for patio dining, picnics or parties. Has handle for easy carrying, tight-fitting lid and comes in lovely decorator colors.

The winner each week is drawn by lot from the recipes printed.

Win one by sending us your favorite recipe — this can be main dish, leftover, salad, side dish, dessert or what have you.

1. Check your recipe carefully to be sure all ingredients are accurate and accounted for.

2. Be sure your name and address are on the entry.

3. Only one recipe at a time, please.

4. Send it to Woman's Page Editor, Grass & Grain, Box 1009, Manhattan, Kansas.

### Personalized Patterns



For You  
By

Elena

SLACK, SHORT-TOP  
PATTERN.

especially designed for individual figure. Insure perfect fit every time. Send measurements — bust, waist, hips, height \$2.00 cash to

Elena

Box 1009

Manhattan, Ks. 66502

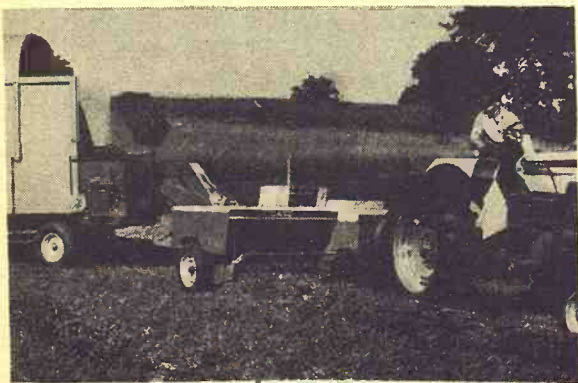
FREE OFF-STREET  
Parking  
While Eating at

SCHUESS

The Family House  
Cafe  
MANHATTAN

## A Case man makes 'em 100 pounds small!

Make 14 x 18-inch bales the way you like 'em—tight, firm and square. 12 to 52 inches long. High density bales that pack as much as 25% more hay in every bale. Fewer bales to handle. Less storage space. Easier to stack, too. The 330 has an auger-assisted Sweep-Feed that keeps the crop moving fast, surely but gently. Handles toughest crops. Backing up the high density idea is extra-strong construction to match. Heavier from hitch pin to bale chute. Reinforced bale chamber. Extra hay dogs. A 260-pound flywheel that smooths out plunger action. Twine or wire tie. Bale thrower available for twine model. Buy under the Case Crop-Way Purchase Plan or lease with option to buy. J. I. Case, Racine, Wisconsin.



The 230's a fast-stepping family-size baler with crop-saving Sweep-Feed. Advanced design eliminates over 50 unnecessary parts—saves you money when you buy, every day you use your 230. The labor-saving thrower runs off the back stroke of the plunger... handles 50 pound bales.

CASE

CLAY CENTER  
Porter Eqpt. Co.  
1121 Crawford ME 2-5202

CENTRALIA  
McBratney Impl.  
Phone 857-3815

MARION  
Longhofer Supply

CHESTER, NEBR.  
Grabau Impl. Co.

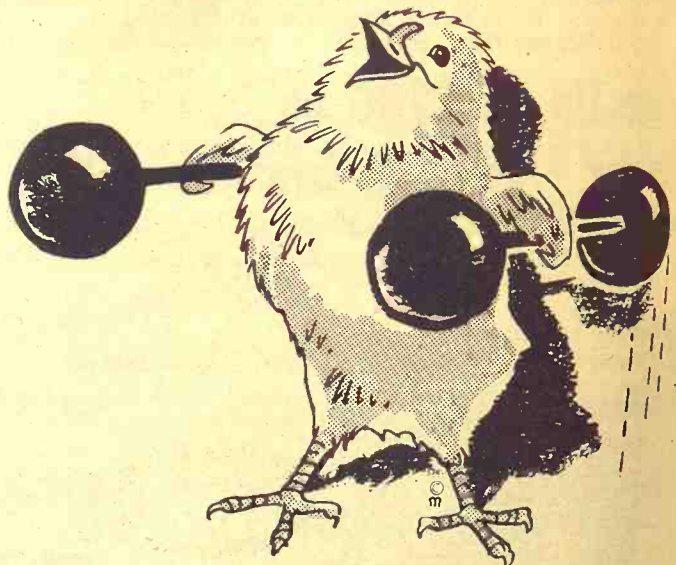
SALINA  
Vahsholtz Impl. Co.

LINN  
Kuhlman Motor Co.

MARYSVILLE  
Brauchi Brothers

CHAPMAN  
Jones & Knopp WA 2-3241

## Grow 'em Fast... Grow 'em Strong



WITH KEY NEW IMPROVED

Chick Grower

Order now and get a

FREE GLASS  
PERCOLATOR

With Every Ton Of Grower

Use it to make Coffee... Tea... Juices

SEE YOUR KEY DEALER  
OR CALL COLLECT ME 2-2141

KEY MILLING CO.

Clay Center, Kansas

Big C  
with  
breezes th

The brawny  
make full u  
chops more  
in haylage.

BIG IN FE

• New! 10.0  
tion) gives  
mounted k  
or at the r  
• Rugged 8-  
carbide fa  
• Select-A-C  
push of a  
• Big 127 s  
contours.

Make

HAN

HANOVER

NORTO

WEISHAAR

ROSS

ROSSVIL

& TR

PE

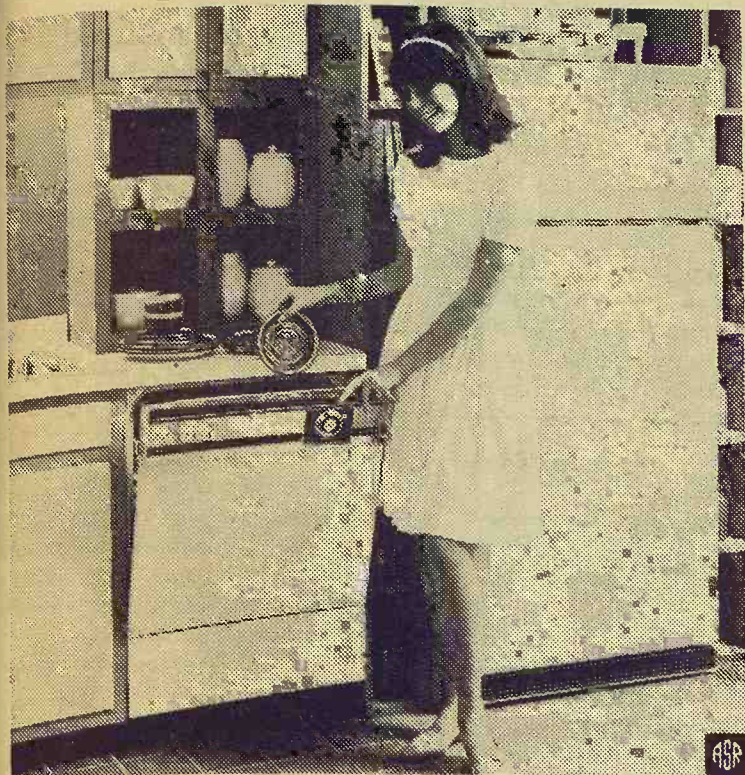
SEYLER F

MINN

CHAPMA



## Say Good-bye Forever To Dishpan Hands



The average household annually washes enough dishes to form a stack over twice as high as the Empire State Building and weighing close to six tons. That means that Mrs. Average Homemaker can look forward to spending as many as five or six years of her married life at the sink washing dishes.

With these staggering facts in mind, it's no wonder that most housewives are now ready to throw in the towel in favor of an automatic dishwasher.

According to the firm that pioneered the dishwasher, the homemaker can now cut meal cleanup time at least in half with a modern electric dishwasher. But getting out of the

kitchen fast and having more time for family fun isn't the only consideration.

Today's dishwashers thoroughly wash even the dirtiest dishes quietly and effectively in water much hotter than hands can stand, effectively killing germs and bacteria to help protect the family's health.

And they have banquet-sized capacity. The undercounter model, pictured, can wash and dry up to 17 complete table settings at one time.

Other time-saving features are a multi-level washing action which scours dishes clean without pre-rinsing, and a super wetting agent dispenser which prevents water spotting on fine

china and glassware and completely eliminates hand drying.

Dishwashers now are available in a variety of colors and with some models a wood panel kit is available which enables the homemaker to match the dishwasher front with existing cabinets.

### Hook-On Duals By Dietrich



Start At  
**\$106.00**

### B. F. Goodrich

119 N. 7th ..... TA 3-2271  
SALINA, KANSAS

June 4, 1968

Grass & Grain

7



### Grain Body with Combination Lift-Off Rack.

7'x80" wide  
8'x80" wide  
9'x93" wide  
10'x93" wide  
12'x93" wide

13'6"x93" wide  
15'6"x93" wide  
16'6"x93" wide  
18'x93" wide

- Regular grain body
- Hardwood lift-off rack
- Racks added to grain body give 66" height
- Perfect fit
- Furnished with 2 gates
- One for grain, one for stock rack

Special sizes easily manufactured to your requirements

When Ordering Specify Make, Model, Size of Bed  
**HAUL-MOR, INC.** valley falls, kansas • phone 945-3211

## Big Gehl Chop-King with 6-foot Hay Pick-up

breezes through toughest windrowed crops

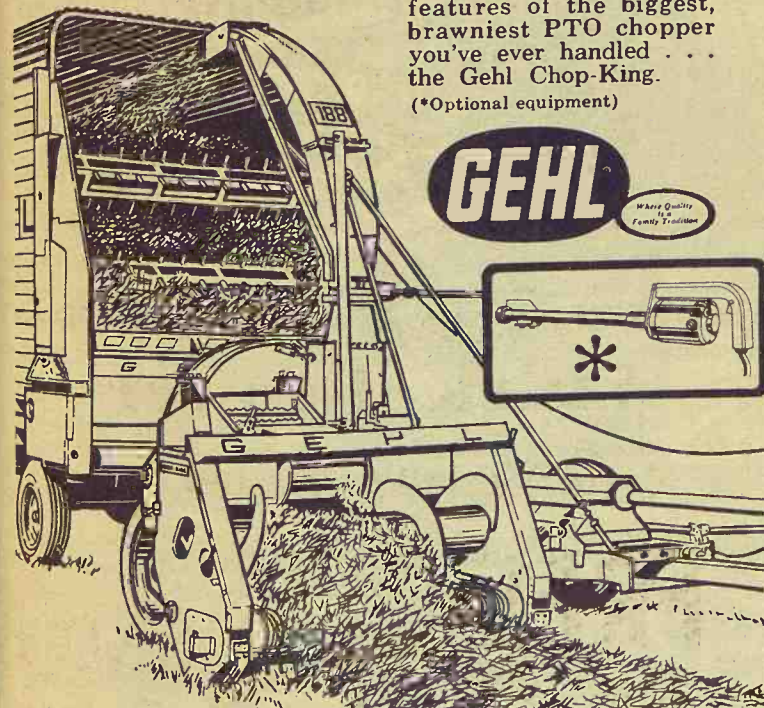
The brawny, Gehl Chop-King is the only chopper built to make full use of today's big-tractor horsepower. Short-chops more forage per hour than other choppers... even in haylage.

### BIG IN FEATURES TOO:

- New! 10,000 RPM Portable Knife Sharpener! (See illustration) gives minute-per-knife sharp cutting edge to flywheel mounted knives. Use right on the machine in the field — or at the machine shed. Gas or electric models.
- Rugged 8-knife flywheel. Knives chrome-edged. Tungsten carbide faced knives also available.
- Select-A-Cut Transmission changes forage lengths with push of a lever.
- Big 127 sq. in. throat area. Floating heads adjust to field contours.

STOP IN SOON. See all the features of the biggest, brawniest PTO chopper you've ever handled... the Gehl Chop-King.

(\*Optional equipment)



### Make us Prove it with a Demonstration!

HANOVER HANOVER IMPL. CO.	LINN KUHLMAN MOTOR CO.
NORTONVILLE WEISHAAR BROS., INC.	SABETHA FLENTIE'S, INC.
ROSSVILLE ROSSVILLE TRUCK & TRACTOR	WATERVILLE WATERVILLE MOTOR CO.
PERRY SEYLER FARM SUPPLY	GYPSUM KUHN IMPL., INC.
MINNEAPOLIS CHAPMAN IMPL. CO.	



## Why It Pays To Supplement Pasture With Good Formula Dairy Feeds

Grass alone cannot give your cows all the food values they need for sustained high production.

When you are feeding cows bred to be top milk producers, the need for proteins, minerals, vitamins and unidentified factors in the ration is very important. This need is even greater in late summer and early fall when pasture may be close-cropped and dry.

CO-OP Nutritionists know that dairy farmers must have proper feed to get maximum results at lowest possible costs. That's why CO-OP Dairy Feeds are Profit Checked for results. CO-OP Dairy Feeds are formulated to give a ration that will best supplement the shortcomings of the dairymen's forage program and will produce 100 lbs. of milk at the lowest feed costs.

- CO-OP Dairy Feed-12 is a high TDN, well-fortified dairy ration that contains essential vitamins and minerals. It is

recommended to be fed with excellent, high protein pasture or with liberal amounts of high quality all-legume hay.

- CO-OP Dairy Feed-14 should be fed to producing cows, dry and freshening cows, heifer or bulls on very good pasture or very good quality legume hay.

- CO-OP Dairy Feed-16 is a well-fortified, well-balanced ration that is preferred by thousands of dairymen who demand an efficient dairy feed for a variety of feeding conditions.

- CO-OP Dairy Concentrate-32 can be fed on top of the grain to dairy cows or may be mixed with farm grains to produce a well-balanced and fortified ration.

- CO-OP Dairy Concentrate-50 is designed for mixing with farm grains to produce an efficient, high production ration.

Come in and let us show you the CO-OP Dairy Feed best suited for your dairy herd.



DAIRY FEEDS

At Your Co-op NOW!

Clay Center  
Farmers Union Co-op  
Clay Center-Bala  
-Miltonvale-Leonardville

Carlton  
Farm Co-op Assn.  
Carlton  
Telephone 31

Herkimer  
Herkimer Co-op Bus. Assn.  
Herkimer HI 3-3824  
Oketo RI 4-2341

Manhattan  
Farmers Cooperative Assn.  
Manhattan-Alta Vista  
-Westmoreland-Onaga

Greenleaf  
Farmers Co-op Elevator Assn.  
Greenleaf-Linn  
-Washington

Holton  
Farmers Union Co-op Bus.  
Assn. Holton 364-3161  
Denison 50-Mayetta 28

Junction City  
Farmer-Stockman Co-op Assn.  
Council Grove  
-Junction City CE 8-4158

Alma  
Farmers Union Co-op  
Alma Ph. 765-3612  
Eskridge Ph. 449-2291

St. Marys  
Farmers Union Co-op  
Business Assn.







# PROPERTY TAX EXEMPTION ON CHURCH PROPERTY

The State Board of Tax Appeals has denied applications for property tax exemption by two church groups in Topeka. An office building owned by the Methodists was denied exemption on the basis that it was not used exclusively for religious purposes. The Seventh-day Adventists lost an exemption on a residence which had been used by a roving minister who filled in at various churches when needed but was not a pastor regularly preaching in a single church.



## TAKE YOUR PICK FOR FATHER'S DAY

Complete 3/8 & 1/2 socket set	10.49
3-piece drill set	10.49
Industrial reversible drill	31.75
Shopmate drill	17.99
Black & Decker variable speed, reversible	29.99
Black & Decker variable speed reversible	36.66
Black & Decker compact drill	26.66
Handyman Jack	20.95
Tractor radios	68.95
Air compressors	84.95
Air tanks	15.95
Grease guns	3.25
Grease gun fillers	5.95
Barrel pumps	6.79

### SUPPLIES

Mower knives as low as	9.99
Mower guards	1.05
Chisel teeth as low as	26c
Greenfield Supreme twine	7.95
Limited supply 24D245T spray on hand	

## HOLT FARM SUPPLY

Next To Sale Barn

MANHATTAN PR 6-7943

**Penneys**

HOME & AUTO CENTER

4th & Pierre

In Manhattan . . . Your Farm Headquarters  
For Tires And Batteries!

## FOREMOST TRUCK TIRES

### Cargomaster 920



Size	Ply	Price	f.e.t.
6.70-15	6	25.25	2.80
7.10-15	6	27.00	2.93
7.00-15	6	30.00	3.28
6.50-16	6	26.00	2.98
7.00-16	6	30.60	3.31
7.50-16	8	37.70	4.24
8.25-20	10	60.00	7.41

### Light Truck Traction



Size	Ply	Price	f.e.t.
6.70-15	6	19.88	2.80
7.00-15	6	22.88	3.28
6.00-16	6	19.88	2.61
6.50-16	6	22.88	2.98

FREE MOUNTING

### Super Cargomaster Cross Rib



Size	Ply	Price	f.e.t.
8.25-20	10	64.70	7.41
9.00-20	10	75.30	8.73
1000-20	12	95.45	10.96

ASK ABOUT PENNEYS  
FARM CREDIT PLAN

ALL PRICES ARE BASED ON YOUR TIRES IN EXCHANGE

## Store-Side Parking off Fourth Street

Also Shop Penneys Catalog Store

Phone PR 6-4771

OPEN NIGHTS MONDAY & THURSDAY

PHONE PR 6-9251

# Manhattan Commission Co., Inc. *Sale Every Thursday*

2 1/4 MILES EAST OF MANHATTAN ON US 24

As we had no sale last Thursday due to the Memorial Day holiday, we are publishing the market of our previous week's sale below.

For this week, Thursday, June 4, we are expecting a good sale with all the buyers back. Although we were closed the one day, we have been busy looking over cattle expected for this sale. See you Thursday.

### FAT CATTLE & FEEDERS

1 whiface steer	675 @	26.80
1 rn whif steer	795 @	26.10
1 whiface steer	735 @	26.10
1 whiface heifer	800 @	25.50
1 whiface heifer	765 @	25.50
6 whiface heifers	746 @	25.10
1 whif broc steer	920 @	25.00
1 whiface heifer	620 @	22.30
2 whiface heifers	768 @	21.70

### STEER CALVES

1 blkwhif steer	265 @	33.25
1 blkwhif steer	390 @	30.50
1 black steer	315 @	30.25
2 whiface steers	438 @	30.00
1 whiface steer	485 @	28.30
1 whiface steer	490 @	27.10
1 black steer	530 @	27.10
1 black steer	555 @	26.25

### HEIFER CALVES

2 whiface heifers	303 @	28.75
1 blkwhif heifer	290 @	28.60
2 whiface heifers	380 @	27.00
3 whiface heifers	378 @	27.00
2 whiface heifers	420 @	26.50
17 black heifers	505 @	26.00
2 blkwhif heifers	430 @	25.20
1 whiface heifer	475 @	25.10
1 whiface heifer	550 @	24.60
2 whiface heifers	513 @	23.10

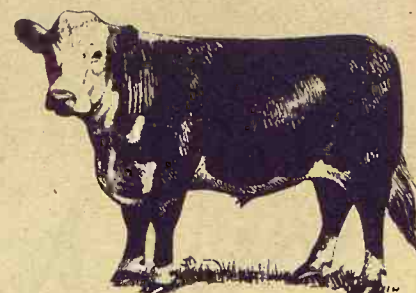
### BULLS

5 blkwhif bulls	400 @	26.70
1 whiface bull	695 @	25.00
1 whiface bull	1185 @	23.20
1 whiface bull	1420 @	22.60
1 whiface bull	910 @	20.20

### COWS

1 whiface cow	1025 @	21.60
1 whiface cow	725 @	21.50
1 whiface cow	985 @	21.30
1 whiface cow	875 @	20.60
1 whiface cow	855 @	20.30
1 holstein cow	1395 @	20.20
1 holstein cow	1175 @	20.00
1 gernsey cow	1260 @	20.00
1 whiface cow	1165 @	20.00
1 holstein cow	1255 @	19.70
1 whiface cow	1065 @	19.50
1 whiface cow	820 @	19.50
1 holstein cow	1550 @	19.40
1 holstein cow	1420 @	19.40
1 whiface cow	1060 @	19.40
1 whiface cow	1205 @	19.40

1 black cow	1210 @	19.40
1 whiface cow	1230 @	19.30
1 whiface cow	1050 @	19.20
1 whiface cow	1100 @	19.10
1 white cow	1280 @	18.90
1 black cow	1080 @	18.90
1 black cow	810 @	18.80
1 whiface cow	885 @	18.70
1 whiface cow	980 @	18.70
1 red horn cow	885 @	18.60
1 whiface cow	915 @	18.40
1 black cow	1150 @	18.30
1 holstein cow	990 @	18.30
1 whiface cow	770 @	18.20
1 whiface cow	1130 @	18.20
1 whiface cow	1095 @	18.10
1 whiface cow	1105 @	17.70
1 black cow	1055 @	17.50
1 whiface cow	970 @	17.30
1 cow	1035 @	17.20
1 whiface cow	1055 @	17.10
1 whiface cow	1030 @	16.90
1 jersey cow	895 @	16.20
1 whiface cow	710 @	15.10



## BUYING FAT HOGS

We buy fat hogs daily at the Manhattan Commission Co., Inc., sale barn. We buy direct with no commission to the seller.

At Manhattan  
Mondays thru Saturdays

### BUYING HOURS

8 a.m. to 1:00 p.m.

At Alma & Eskridge  
Every Wednesday

From 8 a.m. to 1 p.m.

\*\*\*

For information call the barn in Manhattan, PR 6-4815. Or you may call Joe Raine at Maple Hill 663-2226 or Eskridge Yard 449-2347; or Alma Yard 765-3841.

### FOR ESTIMATES

W. E. DUGAN -----Alta Vista, 229-6430  
JOE RAINE -----Maple Hill, 663-2226  
DON WELLS -----Manhattan, JE 9-3744  
MERVIN SEXTON -----Abilene, CO 3-3449  
C. J. WENTZ, bus. mgr. Manhattan, JE 9-5561

BARN PHONE -----Manhattan, PR 6-4815

Consignment Reports  
WIBW radio 6:30 A.M. Thursdays  
WIBW-TV 12:15 Noon Wednesdays

**The Manhattan Commission  
Co., Inc.**

MANHATTAN, KANSAS

East On US 24



Auctioneers: Joe Raine and Dale Feil









## Seven Injured

George Tisdale of St. George was one of seven high school boys taken to Genn Hospital at Wamego last week after a wreck on a county road four miles west of Wamego.

## FARMERS OUTLOOK

L.H. Simerl

# Who Buys, Who Sells Farmland

Prices of farmland continue to climb. The U.S. Department of Agriculture recently reported that the dollar value of farmland went up 6 percent during

the year ending last November. Prices have continued upward this year, according to a survey made recently by the Federal Reserve Bank of Chicago.

Land prices in 1967 went up 6 percent in Illinois, the same in the United States as a whole. Prices in most adjoining states went up even more: Increases were 8 percent in Iowa and Wisconsin, 9 percent in Indiana, and 11 percent in Missouri.

Some people "blame" the rise in land prices on farmers' efforts to get more land to increase their income. While there is some truth to this argument, a more fundamental factor is that rising prices for land reflect its competitive value as an investment.

For many years, returns on farmland have been comparable to those realized from corporation stocks, considering both yearly return and increase in market value. Farmland has been a far, far better investment than bonds of any kind or savings accounts.

We do not expect prices for farmland to rise continuously. There surely will be periods of decline, just as there are periods when the stock market goes down. But the long-time trend surely will be upward.

The increase in the value of farmland is usually ignored

when farm income is calculated and published. The increase in U.S. land value in 1967 was \$10.7 billion, according to USDA calculations. Realized net farm income for the year was reported at \$14.5 billion.

A dollar increase in land value is better for many people than a dollar of cash income. The increase in land values will be taxable as capital gains — taxed at no more than half the rates applying to current operating income. No tax is paid if the land is transferred to heirs.

**Who buys farmland?** More than 50 percent of the buyers of farmland are farmers who already own some land. Around 13 percent of the buyers are tenants making their first purchase of land. About 35 percent of the buyers are nonfarmers.

**Who sells farmland?** About 17 percent of the sales of farmland are made to settle estates. About 15 percent of such sales are made by retired farmers, and 40 percent by active farmers. The remaining sales, generally 25 to 30 percent, are made by non-farmers.

Of the tracts of land sold recently, 55 percent had been single farms, 36 percent had been parts of farms, and 9 percent had been part-time farms.

When the tracts of farmland were sold, 52 percent of them became parts of other farms, 35 percent were operated as independent farms, and 13 percent became part-time farms.

While some families acquire substantial acreages of land, this trend is partially offset by the division of holdings to set-

Visit Our Retail Display Of  
Lighting Fixtures

Endacott Electric Co.  
309 MORO — MANHATTAN

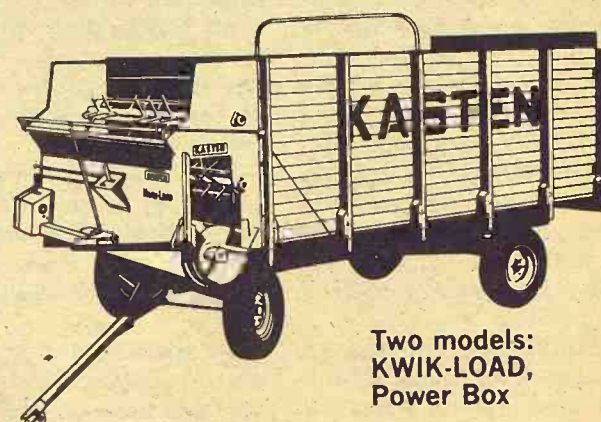
tle estates.

L. H. Simerl  
Univ. of Illinois

Grass & Grain  
June 4, 1968

11

## Just arrived! KASTEN FORAGE BOXES



Two models:  
KWIK-LOAD,  
Power Box

Brand new shipment of Kasten forage boxes — the most for your money considering design and ruggedness. Sweep speed on KWIK-LOAD model saves 3 minutes at each unloading, permits an extra load per day. Both models use deep, 16-inch-auger cross conveyor with 6-inch flights for speedy unloading from the left side.

# KASTEN

NOW IN  
STOCK AT

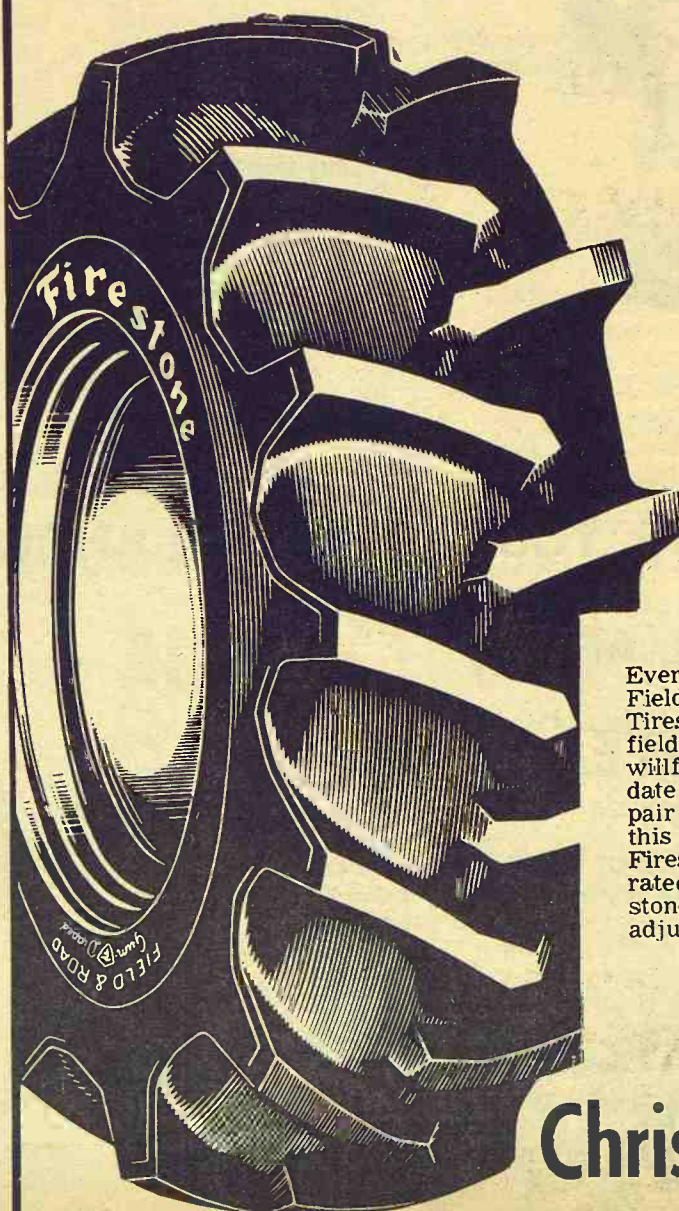
Buy Now for Best Price

A.A. KLUGHARTT MACHINERY CO.  
KANSAS CITY, MO. — distributors

ABILENE. . . . .	Wright Implement Company
COURTLAND. . . . .	C & W Farm Supply
HIAWATHA. . . . .	N.E.K. Motor & Implement
LARKINBURG. . . . .	Wheeler Hardware
MARYSVILLE. . . . .	Brauchi Brothers
SENECA. . . . .	Heiman Implement
ATCHISON. . . . .	Allen Motor & Implement
HIGHLAND. . . . .	Tom Miller Implement
LEONARDVILLE. . . . .	Kendall Garage & Implement
LINN — PALMER. . . . .	Bisping Implement
PAXICO. . . . .	Eddies Service
SALINA. . . . .	Martin-Lockard Implement
WAMEGO. . . . .	Meinhardt Farm Equipment

## Attention Farmers

Announcing a New Field Hazard  
Guarantee at Christenson Oil Co.  
On Firestone 23% Tractor Tires



# Firestone

## Field & Road Tractor Tires

With exclusive  
23 Degree Bars

Every Firestone Deep Tread, All Tractors Field & Road and Field & Road Tractor Tires we sell are guaranteed by us against field hazard injuries, except punctures or willful abuse, for a period of 3 years from date of purchase. At our option we will repair at no charge a tire adjustable under this guarantee — or replace it with a new Firestone tire of like size and grade, prorated on a monthly basis computed on Firestone's current printed price at the time of adjustment plus applicable taxes.

DON CHAMPLIN, Owner

# Christensen Oil Co.

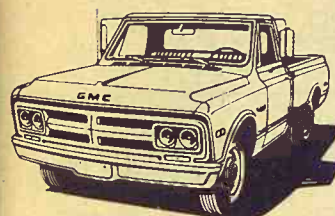
CH 3-2706

US-81

CONCORDIA, KANS.

## GMC TRUCK

**SAVE-ON-SALE!**



**SAVE ON**  
Special Trucks With  
Specially Priced Options

Here's a chance to get your GMC at substantial savings during our SAVE-ON-SALE. Prices are low . . . Savings are Big.

**SAVE UP TO \$495**

**Dale Sharp Trucks**  
TOPEKA, KANSAS  
600 W. Hwy. 24 CE 4-8606

## MIDWEST RENDERING & SUPPLIES BELLEVILLE, KANS.

We sell meat scraps and fat for feed. We pick up materials from butcher shops, locker plants and fresh dead animals.

For service call Belleville: JA 7-5545 or your local number.

Beloit . . . . . 738-3731	Jamestown . . . . . 439-2655
Cawker City . . . . . 781-4711	Leonardville . . . . . 99
Clay Center . . . . . 632-3424	Lincoln . . . . . 524-9990
Clyde . . . . . 446-3621	Linn . . . . . 348-3411
Concordia . . . . . CH3-4126	Mankato . . . . . 378-3771
Deshler, Nebr. . . . . 40	Marysville . . . . . 443-3726
Downs . . . . . 454-9527	Miltonvale . . . . . 427-3015
Glasco . . . . . 568-2636	Minneapolis . . . . . 392-3043
Hebron, Nebr. . . . . 402 768-6221	Morganville . . . . . 926-3674
Hunter . . . . . 529-2145	Washington . . . . . EA 5-2920
Ruskin, Nebr. 402 226-2261	



## Here Are Tips On Horse Care

Everybody — including politicians — need a horse to ride. Apparently Kansans believe this because they now own more than 100,000 horses valued at approximately \$30 million. This is about one horse for each six persons.

This surge in horse numbers brings a revitalization of some near-extinct services specializing in horse trade, but this also means that many people must learn about proper care of horses, explains a Kansas State University Extension veterinarian.

The expression "no feet, no horse" was never more true than at the present time, ex-

plains Dr. Homer K. Caley. The value of a horse is dependent on its ability to move. Most of the riding today is on good surfaces and in arenas, but foot trouble occurs even under ideal conditions.

Horses' feet are often neglected during winter. Long hooves with large cracks and broken areas are common this time of year. Hard riding without proper care of feet may cause damage that will render a horse unfit for use the entire season, Caley stresses.

Feet should be properly trimmed now, he says. If the horse is to be ridden on abrasive surfaces (gravel roads, concrete), shoes should be applied without delay.

Inexperienced horsemen should contact a competent farrier and have him trim the feet

and shoe the horse. If extremely bad cracks and breaks are present, consult a veterinarian, who in cooperation with the farrier, can properly care for your horse's feet.

The need for shoeing is largely manmade, Dr. Caley says. The change from free range to confinement and forced work has contributed to foot problems. The basically sound horse may break down under present day stresses.

Horseshoes provide several different functions. They are not designed for the horse's comfort. They prevent excessive foot wear, give relief from injured parts, increase traction, and correct defective stance or gait. In some cases, shoeing will aid unsound horses in performing satisfactory service.

Tips for proper care of the feet:

- Provide dry, clean quarters. (Standing in wet stalls contributes to foot problems).
- Shoe when necessary.
- Trim feet and reset shoes every 30 to 60 days.
- Feet and leg trouble may be caused by faulty conformation.
- If the horse is stabled, the feet should be cleaned daily and the stall rebedded.
- Improper shoeing may cause lameness and infection.
- Dry, cracked feet can be treated with hoof dressing.

### FLOOR COVERING

Carpet - Inlaid

Tile - Draperies

Phone 8-3893

**JUSTUS**

121 POYNTZ Manhattan

## Hercules Tire Sales

Farmer

**SPECIAL**

Farmer

Hercules Express 8.25x20 10 Ply nylon \$44.95 plus tax & recappable exchange.

13.6x28 6 Ply

\$64.95

plus tax

4 only — 7.00x16 Firestone 110, takeoffs, 6 Ply

\$29.95

2 750x18 Firestone used front tractor tires & tube — \$22.00 ea.

NEW TIRES — 10-16x5, 800-16x5 — SPECIAL PRICE

## Hercules Tire Sales

601 N. Third Manhattan, Kans.  
Where Prices Are Born and raised elsewhere

# HEIFER STEAK - MAKER

to keep feedlot heifers out of heat



improves  
daily gains  
and increases  
feed efficiency

IF YOU FEED HEIFERS, YOU'LL WANT TO KNOW

ALL ABOUT  
HEIFER STEAK - MAKER

Call or stop in and discover how easily, how economically, you can apply this important new concept in a feeding program tailored to your requirements.

**NATURICH MILLS**  
**ABILENE - KANSAS**

"A Finer Feed for Every Need"

## CONSOLIDATE ROUTES AT GREEN POST OFFICE

GREEN — Two rural mail routes out of this eastern Clay county town have been consolidated into one route.

## ANTIQUES

Brake Furniture  
Blue Rapids, Kans.

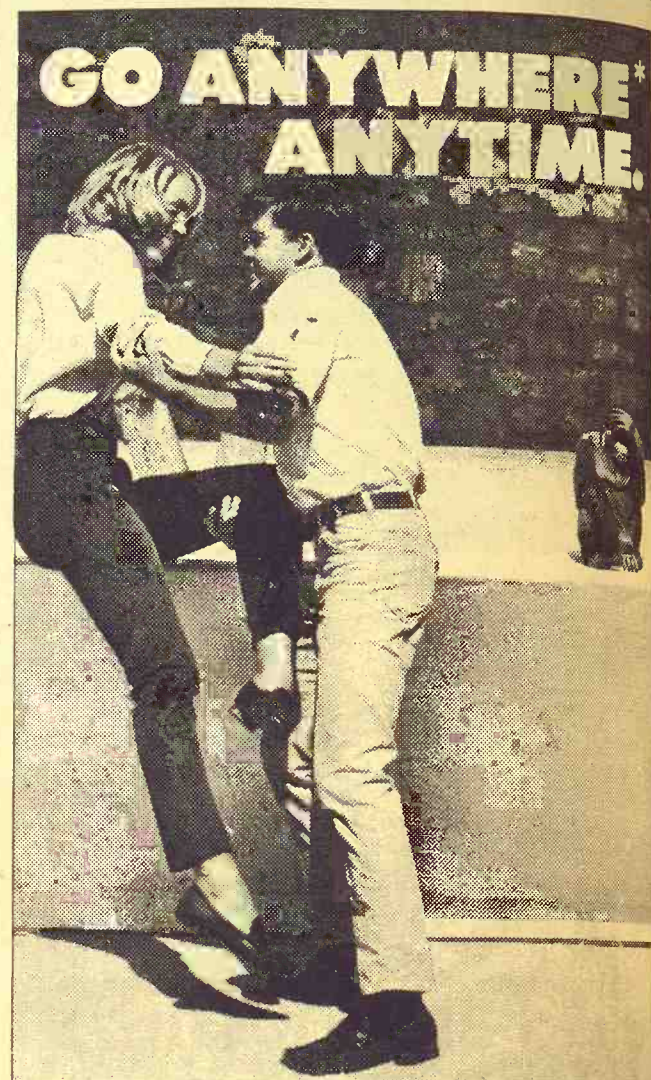
## LEASING

### Farm and Industrial Machinery

If you can't buy it you can lease any piece of Allis-Chalmers machinery you may need, and at low rates. See Bob Martin for Industrial leasing, Jim Gates for Farm Equipment leasing.

## HENRY SALES AND SERVICE

East Highway 24 and Meriden Road, Topeka, Kans. — FL 4-7641



WITH TRIM, SLIM, TAILORED  
**LEE-PRĚST Leens'**

*Bauer Clothing*

(FORMERLY GENTRY'S)

CLAY CENTER, KANSAS

## Keep It Beautiful

If America hired people for the job, it would take the largest sort of army to keep our country free of litter.

But there's no need to hire anyone. It's a job we can do for ourselves. All of us. Every family that spreads a picnic lunch. Every boatman who cruises the lakes and waterways. Every motorist who uses our roads and highways.

It is the pleasure of the U. S. Brewers Association each year to give its fullest support to the Keep America Beautiful Campaign. Remember: Every Litter Bit Hurts. This is our land. Let's treat it right.

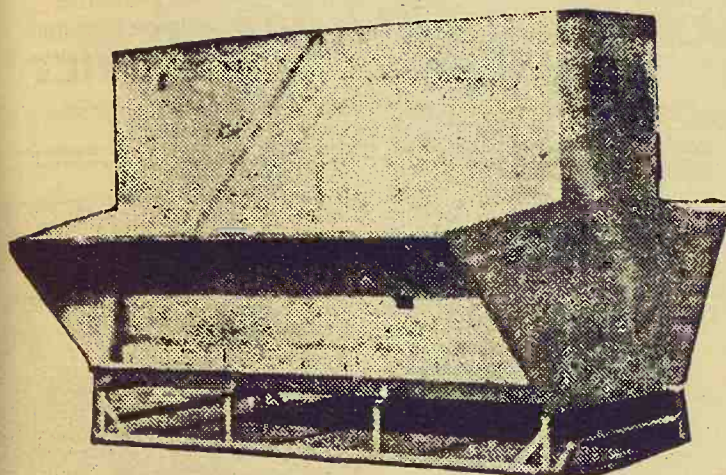
UNITED STATES BREWERS ASSOCIATION, INC.  
P.O. Box 1435, Topeka, Kansas 66601





## WESTERN SADDLE SUPPLY

J. D. RITTEL & SONS  
WESTERN WEAR  
In Mid-Kansas  
Largest Saddle Selection  
for the Entire Family  
BOOTS • HORSE TRAILERS  
Square Dancers Supplies  
HOPE, KANSAS PHONE 43



Use a LUTTIG metal all-welded self-feeder to self-feed your cattle. Will not leak or rot, and feeds down good, reasonable in price.

Capacities of 150, 250, and 350 bushels.

### LUTTIG TRAILER COMPANY

Telephones: Office 535-2610—Res.: 535-2350  
EMMETT, KANSAS

## Firestone

A JUST-IN-TIME SALE

## COMBINE TIRES



To help YOU and US, we offer these very special pre-harvest prices through June 3 only.

### ALL TRACTION CHAMPIONS

14.9	6-Ply	\$60
16.9-26	6-Ply	\$80
18.4-26	6-Ply	\$90

Prices plus Fed. Ex. Tax & Re-Salable Tire

FIRESTONE CHAMPION SPADE GRIP

18.4 6-Ply \$100

Plus Fed. Ex. Tax & Resalable Tires

### SPECIAL FLOTATION TIRE

11L-15 6-Ply

Plus Fed. Ex. Tax  
No Trade-In Needed

\$24

ADD \$20 ON ALL-TRACTION & SPADE TIRES IF YOU HAVE NO SATISFACTORY TRADE-IN

Slightly Blemished But Guaranteed

14.9-26	6-Ply	\$50
16.9-26	6-Ply	\$63
18.4-26	6-Ply	\$77

Plus Fed. Ex. Tax & Re-Salable Tire



TIRE STORE

on K-15 North of Square ME 2-2167

Clay Center, Kans.



REX'S SERVICE

LARRY COUP, Manager

6th & Buckeye Phone CO 3-9813  
Abilene, Kans.

### HALF INTEREST IN SHORTHORN FOR \$15,000

KANSAS CITY — A half interest in a polled shorthorn bull has been bought by Cyrus Eaton, Cleveland industrialist, for \$15,000. The 20-month old animal named KC Clipper Duke was raised by Dave Lorenz, who retains a half-interest. The bull will be shipped to the Eaton farm at Northfield, Ohio.

### MORGANVILLE CO-OP GROSS AT \$521,000

MORGANVILLE — The Farmers Cooperative Elevator Assn. here reelected Curtis Algren and elected Howard Lippe and Fred Griffiths Jr. at the recent annual meeting. Sales during the year were \$521,000 with savings at \$7972. Cash refunds totaled \$1376. Marion Patton is manager.

## Kansans Order Million Trees

Kansans went on a tree-planting spree again this year. About a million trees were ordered through the Extension tree distribution program of Kansas State University. They went to landowners in all counties.

This was about the same number ordered last year, but interest in black walnuts jumped considerably. Gene W. Grey, assistant Extension forester at KSU, announced this week.

Total number of walnut seedlings sent out was 41,000, seven times last year's figure. And orders for stratified walnuts included 75,000 nuts, a 50-percent increase. Stratified nuts are specially prepared over winter for spring planting.

Scotch pine orders were highest among the species — 180,000. Eastern red cedar was second highest. The pines are popular for Christmas trees. In all, about 2 dozen species of trees and shrubs are available each year to landowners for conservation plantings.

For the first time, potted seedlings were available in western Kansas. These had a 2x2x8-inch tar paper pot.

Although planting conditions were adverse in the west part of the state, about 40,000 potted seedlings were sold. "The potted trees were well received and we expect additional interest in them next year," Grey said.

Favorable weather conditions were present in eastern Kansas,

### 1968 GMC PICKUP

\$1995

Wide bed, 3-spd. transmission, fresh air heater and defroster.

### Dale Sharp Trucks

TOPEKA, KANSAS  
600 W. Hwy. 24 CE 4-8606

## BOOTS

MOST ALL BRANDS

Largest Display In Area

For Complete  
Line of Western  
Wear and Tack

## DALE'S

WESTERN STORE

1710 M Street BELLEVILLE, KS. JA 7-2363  
108 S. 3rd MANHATTAN, KS. PR 8-3466

but were late in coming, he said.

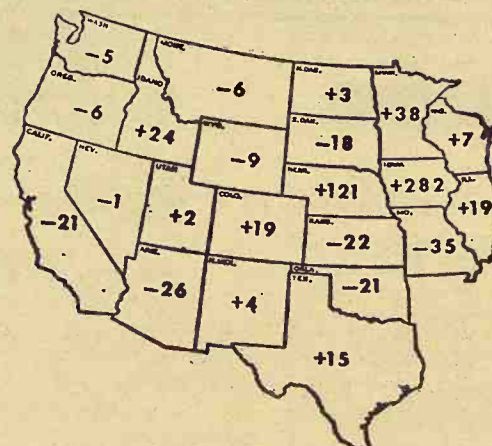
Trees and shrubs will again be available next year. Begin plans now to ground preparation can be started.

Grass & Grain

13

June 4, 1968

### CHANGE IN PLACEMENT ON FEED (THOUSAND HEAD CHANGE FROM YEAR EARLIER) JANUARY-MARCH, 1968



## Placements

January-March placements on feed for the United States were up 7 percent. This was an increase of 330,000 head from a year earlier. Placements were 280,000 head in Iowa alone, an increase of 28 percent. There were 120,000 more placed in Nebraska. The West showed little change in placements, with California, Arizona, Oklahoma, Kansas, and South Dakota being down. Texas, Idaho and Colorado were up.



## happy Dairy Days are here!

June is Dairy Month—an extra special time to enjoy delicious milk, ice cream, butter, cheese and all the other tempting foods produced by America's dairy farmers.

If you're a dairyman, you can be mighty proud of the part you play in one of our biggest, most important industries. Even if you raise livestock or poultry, you'll quickly recognize the contribution to good living made by our neighbors in dairying.

Let's salute them by adding nutritious dairy products like these to our daily diet. And, treat ourselves to extra health and nourishment by enjoying milk and milk products every day.

Mid-Continent Elevator ..... CE 8-4177 Junction City  
Americus Grain Co. .... 884-3465 Americus  
Gorden Mark Elevator .. ME 2-3381 Clay Center  
Western Grain Mill ..... 767-5933 Council Grove  
Flint Hills Feed & Grain .... PR 8-5322 Manhattan  
Farmers Union Feed Mill ..... 437-2434 St. Marys  
Mor-Kan Elevator ..... 349-2214 White City  
Reading Grain & Lumber ..... AN 9-3842 Reading

PURINA  
CHOWS



# GRASS & GRAIN CLASSIFIED ADVERTISING

RATES: \$1 a week for 15 words or less. Add 5¢ a word for additional words. DISCOUNTS: (with cash orders only) deduct 10% if ad runs 2 weeks. Deduct 25% if ad runs 4 weeks. REFUNDS: you may collect a refund at the Ag Press office for any unused amount paid if an ad is cancelled. CLASSIFIED DISPLAY: (boxed ads) \$1.82 a column inch. CASH: ads not accompanied by cash have a 25-cent billing charge added.  
Mail To: Ag Press - P.O. Box 1009 - 1207 Moro - Manhattan, Kansas 66502 - JE 9-7558

## Notices

## AUCTIONEERING

### Lawrence E. Welter

AUCTIONEER  
REAL ESTATE BROKER

Your Sale Solicited  
Large or Small

EAST HIGHWAY US 24  
MANHATTAN PR 8-3455

Real Estate  
And General Sales

### Ed Reimer

AUCTIONEER

We Specialize in Selling  
DAIRY CATTLE

"A complete Sale Service"

Phone or write for sale  
dates.

Telephone 367-2373  
GOESSEL, KANSAS  
"Marion County"

### ROBT. G. "BOB" WILSON

Auctioneering Sales Mgr.

All Types of Sales

Phone 494-2552

Box 118 St. George, Kans.

## DAIRY SUPPLIES

### Wamego Dairy Supply

Located At  
Bit-O-Gold Cheese Bldg.

Dave Doperalski  
Authorized DeLaval Dealer  
Rubber parts for all makes  
Service for all makes  
Used milk machines, all makes  
We would appreciate being  
of service to you.

Phone 456-7200  
WAMEGO, KANSAS

### DeLaval Clay

All Makes  
Service & Repair  
Dairy Equipment



### Joe McClure

Ph. 229-5284 Alta Vista

## MEMORIALS

### MONUMENTS

MANHATTAN  
MONUMENT CO.

J. J. BEAUDET  
Office and Display

123 No. 3rd

Office Phone Res. Phone  
PR 8-5137 PR 8-4978  
MANHATTAN, KANS.

### Dale Wells



Pipe Line Bucket Milkers  
Stalls  
324 Frederick ME 2-2811  
CLAY CENTER, KANS.

## CEMETERY MEMORIALS

54 Year Continuous Service  
Display Located on US24  
East of City Limits

### SCHAUBEL

MONUMENT CO., INC.

RR 3 Box 20 ME 2-3531  
Clarence Blanc, President  
CLAY CENTER

## LAND IMPROVEMENT

### LAND IMPROVEMENT

"Soil Conservation Doesn't  
Cost—It Pays"

Ponds, terraces, waterways,  
and leveling, drainage ditches,  
clearing, landscape grad-  
ing.

### Roggendorff

Conservation Construction  
Arthur Roggendorff  
Phone JE 9-3984  
1630 OSAGE-MANHATTAN

## Livestock

### Dairymen — Buy The Best For Less

We have for your selection at  
all times the largest supply of

FRESH SPRINGER  
HOLSTEIN — GUERNSEY  
JERSEY  
SWISS and MILKING  
SHORTHORN COWS &  
HEIFERS

Financing available — up to  
24 mos.

SPECIALS  
100 head of open Holstein hei-  
fers  
50 head Holstein heifer calves

CALVES! CALVES!  
We will have 400 to 500 calves  
beef cross. 2 weeks to 450 lbs.  
At our barn every week for the  
next several months.

### W. G. WIEBE

Phone CI 4-7265  
Summerfield, Kansas

WANTED TO BUY  
FEEDER HOGS  
40 to 100 lbs. Top prices paid.

J. D. SIMPSON  
130 Grant Ave., Junction City  
Phone CE 8-3754 or CE 8-3939

REGISTERED ANGUS  
BREEDING STOCK  
For sale at all times

LLOYD EDWARDS  
Belvue, Kansas  
Phone WAMEGO 456-7645

WAHOO CATTLE feeder — 10  
ton hexagon. Displayed fair-  
grounds, Hutchinson. Assem-  
bled ready for immediate use. Sac-  
rifice for less than cost to make  
room for new, rectangular pork  
finishing house, display. Terms.  
Write Ray Culver, 2023 E. 48th  
Terrace, Kansas City, Mo. 64130  
WA 1-1145 (area code 816).

PERFORMANCE AND produc-  
tion tested nationally accredited  
SPF purebred Hampshire and  
Yorkshire boars and open gilts.  
Can furnish backfat probes,  
Sonoray loin eye measurements  
and carcass cutouts. Floyd Mey-  
er, Palmer, Kans., Phone 308.

FOR SALE — Duroc boars,  
production tested bloodlines.  
Nationally accredited SPF  
Fred Germann, Dwight, Kans.,  
Phone Junction City CE 8-4382.

3-YEAR OLD registered Angus  
bull for sale; also IHC 4-row  
curlier. Clyde Waylan, Delavan,  
466-2845.

FIVE REG. Chester White  
boars. Vaccinated, will deliver.  
Jim Miller, Circleville, Kans.  
Ph. 924-2244.

FOR SALE — 15-mos. old  
Guernsey heifer, open, full  
blood. Two 50-gal. gasoline  
drums. International fertilizer  
spreader. Jet pump and jet.  
August H. Wille, Rt. 1, Wamego.

ENTIRE HERD of Angus and  
Shorthorn cows for sale; 30  
head, 3 to 8 years old. Also sell-  
ing 75 head 1 to 4 year old  
ewes. Art Thimm, Woodbine,  
Kans., Phone 7.

FOR SALE — 24 head milk  
cows, new Pipeline milker, 400  
gal. Mueller bulk tank water  
heater and stainless steel wash  
vat, all complete \$10,000. Also  
antiques. Henry A. Nutsch,  
Haddam, Kans., RR 1, 66944,  
phone 376-2642.

FOR SALE — Three year old  
mare, unbroke, sired by Champs  
Bucky. Phone 889-4825, Onaga,  
Kans.

FOR SALE — Two young 15/16  
Charolais cows with purebred  
calves at side. Priced right. My-  
ron Runft, Scandia, Kansas, Ph.  
913 FE 5-2582.

FOR SALE — 1135 pigs. Also 3  
sows & 21 pigs. Laurel Heath,  
Vermillion, Ks.

FOR SALE — Twelve Holstein  
heifers, fresh in August. Forrest  
Shum, Morrowville, Phone AN  
5-3641.

FOR SALE — 7 registered Hol-  
stein bred heifers, 2 due in June,  
4 last of July or Aug., one in  
Nov. Chester Unruh, Hillsboro,  
Kans.

HOLSTEIN HEIFERS, 11 large  
ones for sale. To freshen soon.  
Call collect Marysville, Kans.  
562-3361 or nights 562-2251. SB15

FOR SALE — Entire herd of  
high producing Jersey cows.  
1967 DHIA herd average 10-  
633 milk 5.2%, 558 fat. Records  
to 13,620 milk. These are large  
cows with dairy ability. Wesley  
Heilman, Green.

FOR SALE — Three-year old  
gelding, broke. Dale Morrison,  
562-3361 or nights 562-2251. SB15  
Abilene, Kans.

WANTED TO BUY — Well  
broke, gentle, 900-1000 lb. horse.  
prefer gelding, 4 to 8 yrs. W. L.  
Fate, RFD 2, Concordia, Ph. CH  
3-1518

FEEDER PIGS — For sale.  
Weaned, castrated & wormed.  
Mrs. Bernard Wassenberg,  
Marysville, Kans. Ph. 526-2047.

MEAT TYPE Yorkshire boars  
for sale, serviceable age. Larry  
Berger, Hanover, Kans. phone  
785-2394.

FOR SALE — Registered, top  
quality Charolais bull, good  
breeder, gentle, dam imported,  
raised by 4-T Ranches, Weslaco,  
Texas. Donald Froberg, Water-  
ville, Kans. & D. F. Blanke,  
Bremen, Ks.

FOR SALE — Reg. spotted and  
Yorkshire boars, ready for hea-  
vy service. Also 150 to 180 lb.  
open gilts, vaccinated. E. T.  
Lindquist, Waterville, Phone  
785-2358.

FOR SALE — Five Angus bulls,  
registered, two years old. Three  
of these are ½ brothers, sired  
by Conan of Wye. \$500 each.  
One registered Angus bull, five  
years old. Performance tested,  
\$400. Richard Errebo, Sylvan  
Grove, Kans. Phone (913)  
277-3502.

NATIONALLY ACCREDITED  
S.P.F. Hampshire boars. Sep-  
tember farrowing. H. Wayne  
Shirley, Horton, Kans. Phone  
Powhattan 474-3349.

FOR SALE — Purebred York  
boars, No. & Dec. farrowed,  
sired by Model Champ. Excel-  
lent quality vaccinated. 6 north  
2 east of Frankfort, Beattie  
Phone 1121E. Wm. Bramlage &  
Sons.

## Feed & Seed

WANTED — Baled alfalfa.  
Send complete information in-  
cluding price to P. O. Box 503,  
Hutchinson, Kans. x16

HAVE PASTURE for 300-700  
ewes from one owner; 4' woven  
wire fence, cross-fence for rota-  
tion, fertilized. Call Doug Wild-  
in, 316 662-7543, Hutchinson,  
Kans. 67501. SB14

WANTED — PASTURE for 50-  
70 head of yearlings. Contact  
James Forshee, Aurora, Kans.  
x14

FOR SALE — Good prairie hay,  
inside \$20 ton. J. M. Hart, Del-  
phos, Kans. Ph. 623-4438. x14

DAIRY PELLETS, range pellets  
and all kinds of fertilizers.  
Manhattan Milling Co., 107  
Pierre, Manhattan. TF Chg

FOR SALE — Clark 63 soy-  
beans. Been run, Detroit eleva-  
tor. Phone AC 913 WE 4-2495,  
Enterprise, Kans. SB16

FOR SALE — We have 250 gal.  
of Brush Killer on hand, 1 gal.  
and 5 gal. cans. Roy Lewis Seed  
Store, Home, Kansas. SB15

FOR SALE — Soybeans, Clark,  
Clark 63, Kent, Wayne and Shel-  
by. Cleaned and bagged in 1 bu.  
bags. 93% germination. Roy  
Lewis Seed Store, Home, Kans.  
SB15

## Automotive

### GMC

TRUCKS

½ Ton - 60 Ton  
Sales & Service

TRI-COUNTY MOTORS  
307 N. 3rd MANHATTAN

### USED TRUCKS

1965 Ford F500, V8, 1½ ton  
\$1595  
1958 Ford F600 winch truck,  
hyd. gin poles \$1595  
1965 IH ½ ton with utility bed,  
V8, 3 speed \$1195

### Long-McArthur, Inc.

Ford-Lincoln-Mercury  
340 N. Santa Fe Salina, Kans.  
TA 3-2237

FOR SALE — 1952 Ford 1½  
ton truck with good grain box.  
Ed Klozenbucher, Ph. 747-5796,  
Greenleaf, Kans. x14

FOR SALE — 1966 Heavy duty  
Dodge D600 dump truck, like  
new, JE 9-7303, Manhattan, Ks.  
x14

1963 IHC cab and chassis, LWB,  
V8 engine, 5-speed and 2-speed  
rear end. Robert G. Wilson, ph.  
494-2552, St. George, Ks. SB15

FOR SALE — 1952 GMC 1½ ton  
truck, Giant bed & Anthony  
hoist. New motor. Joe Straub,  
Wamego, Ks. Phone 456-9255.  
x17

FOR SALE — 8' Melroe pickup,  
extra good, price \$250. Phone  
913 ID 9-2340, Eugene Sham-  
burg, Scottsville, Kans. x17



1966 Ford N-600, 361 V-8, 5-  
speed trans., 17,000, 2-speed,  
16-ft. stock & grain bed with  
hoist. 26,000 miles.

1965 Ford F-600 330 V-8, HD, 4-  
speed, 2-speed, 18' Obeco fold  
down with Krause 2 ton  
hoist, 35,000 miles.

1964 Ford F-600 174" W.B.,  
chassis cab, V-8, 4-spd., 2-spd.,  
13,800 miles.

1963 Ford F-600 174" W.B. chas-  
sis cab, V-8, 4-spd. 2-spd.

1963 Chev. 2-ton, 175" W.B., V-8,  
4-speed, 2-speed

1963 Ford F-600, 156" W.B. chas-  
sis cab, V-8, 4-speed, 2-speed

1965 Ford ¾ ton 6 cyl. pickup,  
4-speed

1965 Chev. ½ ton pickup, 6 cyl.  
1964 International Scout with  
4 wheel drive

1950 Jeep 4 WD

### Taylor Motor Co.

Phone EA 5-2202  
WASHINGTON, KANSAS

FOR SALE — 1959 Chevrolet  
engine, 261 cubic inch. Complete  
ready to run. Less than 40,000  
actual miles. Excellent condi-  
tion. Adelbert Stewart, Wash-  
ington, Kans. Phone EA 5-2570.  
x14

1965 Chev. ¾ ton, big bed, big  
6, 4 speed  
1960 Chev. ½ ton, 6 cyl., 4 spd  
2 1966 Chev. SW, aut., V8, pow-  
er steering. One has factory  
air

Several older pickups

### Barleen Motor Co

Phone 785-2511

2 blocks No., 77-9 Jct  
WATERVILLE, KANS.

1939 Chevrolet four-door  
1965 Ford F100, custom cab,  
speed, LWB

1962 Volkswagen  
1964 Chev. Impala

2 used Eldorado campers  
1 used Eldorado 14' camping  
trailer

FORD SALES & SERVICE  
Stenberg Motors

Ph. 446-3532 Clyde, Ks. 66608

### Only Skaggs

(FORD)

Sells A-1

Used Cars

IN MANHATTAN

1968 Torino Fastback, V8, auto-  
matic transmission, power  
steering, factory air, R&H.  
Executive car. —  
TREMENDOUS SAVINGS!

1967 Falcon 4 dr. sedan, 6 cyl.,  
in-der, automatic trans., R&H,  
local one owner, low mileage.  
New car warranty .... \$1895

1967 Ford Country Sedan 4dr.  
V8, automatic trans., R&H,  
p-steering, factory air \$2795

1966 Galaxie 500 XL 2-dr. hard-  
top, V8, automatic trans.,  
power steering, factory air,  
R&H \$2295

1964 Thunderbird V8, automatic  
trans., p-steering, factory air  
all-leather interior, R&H, local  
one owner \$2295

BUSINESS IS GOOD

IN FORD COUNTRY

OPEN EVENINGS

BANK RATE FINANCING

Skaggs (Ford) Motors

Your Transportation

Headquarters

"Where Customers Send

Their Friends"

2nd & Houston Phone 8-3525

MANHATTAN, KANS.

### USED TRUCKS at Moline, Kansas

1966 Ford F600, takes 20' bed

1965 Chev. 1 ton winch truck

1964 Chev. 60 winch truck

1964 Chev. 2 ton chassis

1963 Chev. V8, tandem

1961 Ford F600, hoist/box

1961 Ford F600, 4 yd. dump

1960 Chev. 60, hoist/box

1960 Chev. 60, 4 yd. dump

1959 Dodge 700, 5 yd. dump

1959 Dodge 700 winch truck

1958 Ford F750 chassis

1957 Ford F750 chassis

### AMES

CHEVROLET CO.  
Phone 316 MI 7-3251

MOLINE, KANSAS

### Need A Pickup?

GET A NEW ONE

IN WAKEFIELD

We have a good selection of  
½ & ¾ Ton Pickups

1965 Dodge ½T V-8, clean

1966 Chev. 1534 ½ T, 8-cyl., 4  
spd.

1962 Ford F600, 2T, w/ 16' bed  
& hoist

1959 Chev. ½ Ton Pickup

1958 Chev. ½T, wide box, 6  
cyl., 4-speed

1957 International ¾ T pickup  
grain sides & stock rack

1959 IH ½ ton pickup, 4 speed,  
6 cyl.

1949 Dodge 1½T with bed

### AULD

CHEVROLET

HQ 1-5414

WAKEFIELD







## TRUCKS

1967 Ford pickup, 1/2-ton, 6-cyl., 4 speed  
1967 Ford pickup, 1/2 ton, V8, 3-speed, LWB  
1966 Chevrolet pickup, 1/2 ton, 6 cyl., 3 speed  
1963 Chevrolet 1/2 ton 4-speed, 4-wheel drive  
1967 Honda cycle, 90cc, like new

## Boss Motors

106 South 7th 913 562-3696  
FORD-MERCURY DEALER  
MARYSVILLE, KANSAS

## Quality Double Checked Used Cars

1966 Volkswagen sta. wagon dlx., like new  
1965 Buick Wildcat 4-dr. sedan, full power, factory air cond., two-tone paint  
1964 Buick Wildcat 4-dr. H.T., power steering, power brakes, air cond., good solid transportation.  
1963 Buick Elec. 4-dr., H.T., power steering, power brakes, air cond., power seat, power windows, nothing but luxury.

Many More To Choose From

## Manhattan Motors

311-317 Houston PR 8-3537  
Used Car Lot 214 Houston  
BUICK FOR  
50 YEARS  
MANHATTAN, KANSAS

FOR SALE — 1950 Chevy 1 1/2 ton, 13 1/2' bed, racks. 1953 Chevy 2 ton, 15 1/2' bed, fold downs, hoist  
Hoyt Woodbury, Clifton, Ks. x14

FOR SALE — 9N Ford with overdrive. Good rubber, good condition, \$325. Clyde Dull, Washington, Kans., EA 5-2409. x17

## TRUCKS

1967 Chev. 1/2-ton, long wide, 4-speed, 4-whl. drive, 11,000 miles, warranty  
1958 Chevrolet 1/2 ton, 6 cyl., 4-speed, radio, wide box  
1952 Dodge 1 1/2 ton truck, 2-spd.  
1951 Dodge 1 ton, 4-spd., 6 cyl., stock racks. Good tires  
1951 Chevrolet 3/4 ton, 4-speed, stock racks  
1951 Chevrolet 3/4 ton, 4-speed, box and hoist  
1948 Chevrolet 1/2 ton, 4-speed

## Myers Motor Co.

CHEVROLET — PONTIAC  
— CADILLAC —  
562-2383 562-2384  
MARYSVILLE, KANSAS



## LARGE STOCK OF TRUCKS

1963 IH Scout ..... \$1045  
1964 Chev. 2-ton, LWB, 2-spd. .... \$2195  
1965 Chev. 1/2T, 6-cyl., LWB, 4-speed ..... \$1395  
57 American 38 ft. platform ..... \$2250  
65 Chev. tandem tractor \$5750  
1963 Chev. 80 tractor ..... \$2995  
1961 Chev. 6 cyl. tractor, 5 spd., 2 speed axle ..... \$1345  
53 GMC 2 ton LWB ..... \$400  
62 Int'l 2 1/2 ton tandem 13 ft. dump ..... \$2750  
1966 GMC 1/2, LWB, PS, PB ..... \$1695  
62 International 2 1/2 ton tandem 13' dump ..... \$2750  
1961 IH tractor, 5 sp., 2-sp. \$1295  
55 Chev. LWB 2 ton, hoist & grain box ..... \$1250  
64 Ford tandem tractor \$3995  
61 Chev. tandem tractor \$3750  
1959 Ford 2 ton, LWB, 2 speed, with new 13 1/2' Giant box ..... \$1495  
1951 36' all alum. air cond. mobile home ..... \$945  
55 Chev. 2 ton LWB—Junker ..... \$345  
55 Chev. 1/2 ton plain ..... \$345  
1958 IH 1/4 ton, 4wd ..... \$895  
1960 Chev. 1/2-ton, V-8, auto. \$695

## Melton Motor Co., Inc.

16th and M Sts. JA 7-2201  
BELLEVILLE

## USED TRUCKS

1967 Ford F-250, 3/4 ton pickup, 6 cyl. engine, radio, HD rear springs, very clean  
1966 Ford Ranchero, V8 engine, std. trans., radio, air cond., power steering, low mileage  
1966 Ford F100 4-wheel drive, 4-spd. trans., lockout hubs, very clean, low mileage  
1965 Ford F100 Styleside pickup, 6 cyl., 3-spd. trans.  
1964 Ford F100 styleside pickup, V-8 engine, 4-spd. trans., heavy duty springs  
1963 Ford F100, 6 cylinder, 4-spd. transmission, extra clean, good rubber  
1962 Ford F100 pickup, 1/2 ton, long wide box, 6 cyl., 4-spd. transmission  
1962 Ford F100, 6 cylinder, 4-spd. transmission, cab, chassis clean  
1961 Ford F100 Flareside pickup, 6 cyl., 4 spd. trans., HD springs  
1950 Chevrolet 3/4 ton pickup, 4-spd., good old truck

## McComas Motors

240 West 6th CH 3-3634  
CONCORDIA, KANSAS

## FOR SALE: USED PIPE

Used 2 inch oil field pipe, \$75 per ton by trailer load, or 20 cents per foot.  
New Harsh hoists & Badger beds  
New & used trucks tandems installed.

## C&D Used Trucks

Phone 913 535-2770  
EMMETT, KANS. 66422

## USED TRUCKS

1956 Chev. PU, 3/4 ton  
1958 IH PU, 3/4 ton, good  
1962 IH PU, 3/4 ton, overhauled  
1962 Travellett, 4-wheel drive  
1960 2T Chev dump truck  
1958 Chev. Pickup, w/ utility bed  
1958 White tractor  
1960 IH V205  
1947 KB5 w/ bed, IH  
1959 B.E.L. 60 w/ bed & hoist, IH, good

## Abilene Truck & Tractor, Inc.



CO 3-4727  
714 So. Buckeye  
ABILENE, KANS.

## USED TRUCKS WORTH THE MONEY

1962 Ford Styleside pickup, 8' Fleetside bed, 6-cyl., 4-spd. trans.  
1962 Chevrolet 1/2T pickup, 8' Fleetside, 6 cyl., 4 speed trans.  
1958 Chevrolet 3/4 ton pickup, V-8 with 4-speed  
1959 Chev. pickup, V-8, 1/2 ton pickup, auto. trans.  
1958 Ford 3/4 ton pickup, V-8 with 4-speed  
1954 Ford 1/2 ton pickup, can be used for odd jobs, trash hauling, fishing and for work. .... only \$195

## NEW TRUCKS

Here are a couple we'd like to deal on.

1968 Chevrolet 1/2-ton Fleetside pickup, 8-ft. bed, V-8 engine, 4-speed transmission, custom equipment, tinted glass, gauges, stabilizer bar, and many extras, white with red trim  
1968 Chevrolet 3/4-ton Fleetside pickup, V-8 engine, 8-ft. bed, 6-ply tires, gauges, heavy duty radiator, overload springs, stabilizer bar, no-spin axle, blue/blue trim

## OBERMEYER



Marvin Obermeyer, Owner  
Ph. BL 8-2255 Open to 9 p.m.  
HERINGTON, KANSAS

FOR SALE — Good 36 passenger school bus for camper. Eldon Henton, Rt. 3, Manhattan. x15

FOR SALE — 1951 1 1/2 ton Ford truck, 13'6" Giant bed, grain sides & stock racks. Underbody hoist, 5000 miles on reconditioned motor. Truck in excellent shape. Howard Miller, 1105 South Garfield, Junction City, Kansas. SB14

FOR SALE — 1965 Cushman scooter with electric starter, lots of accessories and low mileage. Brad Wilgers, Washington, Kans. 66968. DI 8-2326. x14

## Real Estate

## REAL ESTATE Sales - Auctions

MARVIN COTTRELL, salesman  
ARMON BOSSE, Realtor  
Your listings appreciated  
ONAGA, KANSAS

## Fulmer Real Estate

CATHERINE J. FULMER, REALTOR  
Office 456-7696  
Res. 456-9281  
WAMEGO



## LAKE OF THE OZARKS RENTALS: SELL OR TRADE

Has over 900 ft. lake frontage; 10 double cottages, 2 singlles. 3-bedroom living quarters. This resort was built in 1961. Owner says gross revenue during season \$10,000. Has bait shop & groceries. Located about 90 miles from Kansas City. Owner lives alone and his advanced age prevents active operation. He will trade for a farm or a motel.

## Dain's Real Estate

Phone 316 582-4520  
SILVER LAKE, KANS.

## 1280 Acre Ranch

with a LOVELY BRICK HOME in a QUIET, BEAUTIFUL SETTING lots of LARGE SHADE TREES  
Ranch borders U. S. 54 Highway in eastern Pratt Co. All mineral go; oil production nearby. Abundance good water and springs plus the Ninnescah River. Excellent fishing and hunting. Ranch consists of 320 acres farmland, 960 acres good grass. Good corral and fences. Owner will SELL ON CONTRACT. Exclusively listed with —

GENE WATSON, REAL ESTATE AUCTIONEER - REALTOR  
313 663-3174 14 Hillcrest  
Doug Wildin, Rt. 1  
316 662-7543, 662-2521  
HUTCHINSON, KANS.

FOR SALE — Improved 160 acres along highway. 1/2 farmland & 1/2 grass. Howard Rowe, Scranton. x16

FOR SALE: 417 acre farm located 40 miles NE of Salina. 279 crop land, all terraced except 30 acres. 80 acre wheat base and 144 feed grain base. 138 pasture with two new, large ponds. Over \$32,000 has been invested in buildings & land improvements during the last five years. Near new house with full, finished basement, large machine shed, hay storage, grain storage and cattle sheds. Price \$87,500, would consider contract. E. Ray, 930 N. Eighth St., Salina, Kans. x14

SELL OR LEASE — Cafe in good small Kansas town. Clean with good business. Box 264, Blue Rapids, Kans., Call CA 6-7250. SB15

## CLAY CENTER FARMS FOR SALE

160 South part of county, \$17,500  
160 South part of county, 30 grass, balance broke  
240 improved, 126 broke, balance grass & lots. Good contract.  
240 North Green, 160 broke, sell on contoret.  
80 West edge county, all broke, but 6 acres. Contract.  
320, 180 acres good grass, balance terraced.

To Buy or Sell See

## LEO CHAPMAN

Real Estate & Investments  
Phone ME 2-2077  
425 Anthony Clay Center, Ks.

CHILEN ANGUS Farms for sale. Fred P. Chilen, Miltonvale, Kans. SB15

## Farm Equipment

## COMBINES

1967 Gleaner C-II 16'  
1963 Gleaner C, 16'  
1962 Gleaner C, 18'  
1965 Gleaner A-II, 16'  
1964 Gleaner A-II, 14'  
1958 Gleaner A 14'  
1960 IHC 101 with cab, 12'

## Ostlund Implement

CH 3-4088

## CONCORDIA

## Used Combines

1956 MH 80 14'; 1959 MH 92 14'; 1961 Super 92 MH 14'; 1967 MH 410; 1965 JD 45 12'. Will trade and finance.

## Jim La Barge

AURORA, KANS.  
464-3721

## USED TRUCKS GREEN

1965 Ford C700 tilt cab, 153" wheel base, 126 capped axle, 16 to 18 ft. bed, 330 heavy duty V-8, 30,000 miles on new engine. 9,000 lb. front axle, heavy duty two speed power steering, heavy duty heater, West coast mirrors, 5 speed Clark transmission. Heavy duty front & rear springs. Heavy duty seats, cab lights, cast spoke wheels, radio, 9.00x20 tires.

## RED

1964 Ford C700 tilt cab, 153" wheel base, 126 capped axle, 16 to 18 ft. bed, 330 heavy duty V-8, 25,000 miles on new engine. Tachometer, 9,000 lb. front axle, heavy duty two speed power steering, heavy duty heater, West coast mirrors, 5 speed Clark transmission. Heavy duty front & rear springs. Heavy duty seats, cab lights, cast spoke wheels, radio, 9.00x20 tires.

## BLUE

1964 Ford C700 tilt cab, 153" wheel base, 126 capped axle, 16 to 18 ft. bed, 330 heavy duty V-8, 32,000 miles on new engine. 9,000 lb. front axle, heavy duty two speed power steering, heavy duty heater, West Coast mirrors, 5 speed Clark transmission. Heavy duty front & rear springs. Heavy duty seats, cab lights, cast spoke wheels, radio, 9.00x20 tires.

## LIGHT BLUE

1963 Ford C700 tilt cab, 135-in. wheel base, will take 15-16 ft. bed. 202 heavy duty V-8 w/ 26,000 miles on new engine. 9,000 lb. front axle, heavy duty two speed power steering, heavy duty heater, West coast mirrors, 5 speed Clark transmission. Heavy duty front & rear springs. Heavy duty seats, cab lights, cast spoke wheels, radio, 9.00x20 tires. These have all been services & maintained by our maintenance men in proper service intervals.

## A-J Enterprise

Authorized Ford Leasing System  
201 S. Main Hillsboro, Kans.  
Albert Reimer 316 947-3136  
John Reimer 316 947-3135

## USED MACHINERY

1960 MM M-5 standard LP, pwr. steering, eta hyd., cab, good 1  
1962 MM Uni tractor, extra good  
1959 IH baler, good  
MM picker sheller unit  
1949 Ferguson 3 pt. tractor, good  
Ferguson 2 row 3 pt. cultivator  
Ferguson 3 pt. rear scoop  
1958 MM UTU, wide front end  
1962 OMC 12' windrower, good  
1952 Ford 3 pt. 6 cylinder tractor  
DeLaval table model separator, stainless steel, all electric, good one

See Us For Good Prices

## DEHAVAN FARM SUPPLY

Call Morning or Noon, or Evening after 6 p.m.  
913-466-2225  
DEHAVAN, KANSAS

WANTED — HUME Reel. Give size, condition, price. Box 406, Buhler, Kansas. x14

## HAY TOOLS

1956 45T IH baler ..... \$195  
1954 45T IH baler ..... \$95  
New Idea hay conditioner \$350  
Case rake, rubber rear .... \$95  
4 14T JD PTO balers, all re-conditioned & ready to go, ..... from \$495 to \$695  
214T JD PTO baler ..... \$750  
AC PTO rake ..... \$95  
MM rake on steel ..... \$50  
IH rake on rubber ..... \$90  
JD rake on rubber ..... \$95  
Two JD rakes on steel \$75 each  
Two No. 25V IH mowers \$50 ea.  
Two No. 5 JD mowers, \$95 each plus hookup

New 880 JD hydrostatic windrower for sale

## ROW CROP TOOLS

Two row Dempster rotary plant-all ..... \$175  
No. 6 planter, Power trol \$235  
No. 6 planter, fert., mechanical lift ..... \$250  
No. 6 planter, fert., power trol ..... \$250  
4-row IH planter, fert., rubber press ..... \$195  
HM 46 IH lister with fert. \$75  
T4R JD 4 row cult. with 30 & 40 hookup ..... \$595  
No. 40R JD 4-row cult. with 60-630-730 hookup ..... \$550  
RG 630 6-row JD rear cultivator ..... \$695  
3 section Ford hoe ..... \$75  
No. 850 series JD powertrawl weeder ..... \$150  
Two No. 2'8 & two No. 250 IH cultivators ..... \$60 ea.  
JD No. 14 hoe at \$50 per section

## TILLAGE TOOLS

32' Crustbuster with smoother ..... \$595  
28' Parker wheel harrow \$635  
16' JD wheel springtooth \$295  
10', 12' & 13' Case wheel disks  
10', 12' & 14' IH wheel disks

## Washington Impl.



EA 5-2301

## WASHINGTON

## USED TRACTORS

1955 850 Ford, overhauled & painted  
1957 850 Ford, overhauled & painted  
WD Allis-Chalmers  
1951 8N Ford, backhoe & front blade  
1949 8N Ford  
1949 TO 20 Ferguson  
1945 M Farmall, good  
1957 450 IHC diesel  
1952 G John Deere  
1950 DC Case tractor & cultivator  
1939 Oliver & mower, 7'  
1947 B Farmall, good  
1955 2-door Chevy, new block & tires

## USED MACHINERY

BMB 6 ft. & 5 ft XL-3 cutter  
BMB Fury 80H cutter  
2-14 Dearborn plow  
7' Dearborn mower  
503-10 mounted Ford rake, 3 pt.  
4 HP roto-tiller  
4-row Case planter and fertilizer  
BMB 5' special cutter  
8 1/2' Flexo hitch disc, 3 pt.  
2-row rotary moldboard lister, 3 pt.  
4-16 Ferguson plow, 3 pt.  
3-16 Ferguson rollover plow  
Massey-Harris combine, 26  
IHC 2-row pull type monitor  
Dearborn 2-row cultivator, 3 pt.  
3-14 Allis plow  
New Holland 77 baler

## M. B. Salisbury Co.



114 Quiney

CE 3-7411

TOPEKA, KANS.

## MACHINERY

1962 IH F 460 D, wide front axle ..... \$2650  
1956 IH F400D, power steering ..... \$1350  
1947 M Farmall, new fire crater pistons & sleeves ..... \$695  
1950 John Deere A, starter & lights ..... \$395  
1942 IH Farmall H ..... \$295  
John Deere No. 45 combine, 12' cut ..... \$1850  
Massey Harris Super 80, 12' cut ..... \$975  
IH 46T hay baler ..... \$875  
IH No. 100 fast hitch mower, with hay conditioner hitch ..... \$325  
New IH 656 gas, fully equipped, at old price. You can save lots of dollars on this tractor.

## Macha-Revere Impl. Co.



## COUNCIL GROVE

767-5014



**GOOD USED PARTS**  
Tractors, Combines & Farm Machinery. We buy wrecked or burned late model tractors & farm machinery.  
North 81 Tractor Salvage  
Route 1 PR 2-5491  
SEDGWICK, KANS. 67135

**COMBINES**  
1961 Gleaner C combine, 14-ft.  
1958 JD 45 12'  
1952 JD 55 w/ cab, 12-ft.  
1956 MH 80 12-ft.  
1950 JD 55 12-ft.

**TRACTORS**  
1967 JD 3020 dsl, tractor with F145 4-14 semi-mtd. plow  
1950 JD A, reconditioned  
MF 35 tractor with loader  
IHC 560 Gas  
MF 30 tractor

**MISCELLANEOUS**  
Mayrath trailer sprayer, 300-gal. tank  
Heavy duty twin-draulic loader with double acting cylinder for 85 or 90 MF tractor  
IHC No. 37 10'9" wheel disc, sealed brgs., good blades  
F931 wheel cart 20' springtooth with smoothing att.  
JD 4 section pull type rotary hoe  
JD No. 5 mower, completely reconditioned  
JD 406 planter with fert.  
1966 4-row Dempster 3-pt. w/ rotary mold board, fert. & insect.  
4-row MF cult. for 85, 90, or 180 MF tractor  
494 A JD planter with fert. & preemergence tank  
JD 851 two wheel rake, reconditioned  
2 JD No. 9 mowers, completely reconditioned  
JD 290 planter w/ fert.

### Frankfort Impl.



913 292-4458

FRANKFORT, KANS.



PRICES HAVE BEEN CUT FOLLOWING MACHINES ON THE

- 1 JD 1953 55 combine, 14' platform
- 1 JD 1960 55 combine, 14'
- 1 JD 1958 55 combine, 14'
- 1 MF 1958 82 combine, 14'
- 1 JD 1962 95 combine, 18'
- 1 JD 1958 55 combine, 14'
- 1 JD 1959 55 combine, 14'
- 1 MF 1959 82 combine, 14'
- 1 MF 1956 80 combine, 14'
- 1 JD 3020 dsl., 67 model, 3 pt., low hours
- 1 JD 4010 dsl., 61 model, 3 pt., new paint
- 1 MF 85 gas, 59 model, 3-pt., good condition
- 1 MF 90 gas, 62 model, 3 pt., excellent cond.
- 1 IHC 806 gas, 67 model, new cond.
- 1 JD 70 RC gas, adj. ft. axle, completely overhauled
- 1 Case 730 dsl., 1960 model, 3 pt.
- 1 JD 3010 gas, 63 model, 3 pt.
- 2 JD 60 gas, good cond.
- 1 JD 420 gas, 1958 model, 3 pt., good cond.

### Salina Impl. Co.

Box 1029 Ph. TA 3-2206  
SALINA, KANSAS 67401

**1953 M-M COMBINE**  
Can't afford a \$9000 combine? I have a 1953 M-M 14' combine w/ power steering & disc brakes. Motor needs rings. \$500 as is; or \$750 with motor rebuilt & other minor repairs.

**ROY STEVENS BOX 292**  
CHAPMAN, KANS.  
Ph. before 7 am.  
or after 8 pm.  
WA 2-6247

1961 IH 101, 12-ft. platform, corn head, cab, \$2500; 1966 gas Farmall, No. 656, wide front end, fully equipped \$4500. Chapman's International, Belleville, Kans. x15

**FOR SALE — 16' Hume pickup** reel and a 7' Sund raking pick up. Both used only 1 season, less than 500 acres. Lazy JD Ranch, Hoyt, Kans. 66440. SB14

**FOR SALE — 1959 Model 45** John Deere combine, 12-ft. header, good condition, always shedded \$1800. Also 1961 Model 55 John Deere combine, good condition. A. P. Betzen, Colwich, Kans., FL 9-4623. x14

### Harvest Specials

1967 C-II Gleaner, new  
1965 C-II Gleaner, 14' with cab & rice tires  
1965 C-II Gleaner, 14' with cab  
1964 C-II Gleaner, 16' with cab  
1962 A Gleaner, 14'  
1955 John Deere 45, 10'  
1952 IH Super 27, 14'  
1955 AC 66 all crop, 6 ft.  
1968 G, F & E Gleaners in stock

### Marysville Mchry.



East US 36

HI 3-4746

MARYSVILLE, KANSAS

### Machinery

12' Miller offset disk, 24" blades  
1968 Oliver 1850, over & under, hyd. shift, 250 hrs.  
1967 Oliver 1650 tractor, 400 hrs., gas, wide front end  
1958 961 Ford tractor .... \$1295  
Oliver 640 cultivator, 4-row \$450  
AC loader, only ..... \$150  
11'6" JD disk  
Several 3 pt. 3-btm. plows, priced from \$100 & up  
1100-16 tires & tubes \$75.00 pr.  
MF 2-row cult., like new for an M 65  
Tractor Radio ..... \$53.95  
Complete Line Of  
Bolen Garden Tractors  
Complete Car, Truck  
Tractor Repair

### Peschel Bros.



NEW LOCATION

400 Center

562-2377

MARYSVILLE, KANS.

### GUARANTEED Used Combines

MF 410 14' with cab, like new condition  
MF 300 13', like new condition  
MF 92 12' with cab  
MF 92 14'  
MF 82 12' with cab  
MF 80 12'  
1967 410 MF unused with new quick tach table  
**MACHINERY**  
1955 JD 60, PS, P trol, 3-pt.  
Used No. 26 side rake, MF 10' JD wheel disk  
New 46 MF 6-row planter, fully equipped. Will sell at close-out price  
See us for any Massey-Ferguson new equipment. — We know how to deal with you.

### Kuckleman Impl.

SENECA, KANSAS  
Phone Day or Nite DE 6-2143

### HAY EQUIPMENT

1958 IH No. 45 twine bale, PTO drive, bale chute & hitch \$395  
1950 IH No. 16 7' mounted mower, hyd. lift, good .. \$95  
1954 IH No. 27 VA semi-mounted 7' mower, hyd. lift .. \$150  
1950 Case 4-wheel SD rake \$50  
John Deere 4-wheel low rubber s.d. rake ..... \$125  
New Idea 4-wheel low rubber s.d. rake ..... \$75

### COMBINES

1952 IH No. 127 12-ft., big tires, good ..... \$795  
1952 JD No. 55, 14-ft., eng. overhauled ..... \$1050  
1958 IH No. 141, 14-ft., reconditioned ..... \$1695  
1952 Massey Super 26 12', motor overhauled, machine good ..... \$750

### TRACTORS

1950 Farmall H, new paint, good rubber ..... \$595  
1951 Allis WD, new rings, new paint ..... \$795  
1956 Farmall 400, new paint, near new rubber ..... \$1650  
1959 Allis D-17D, new paint, good cond., 3-point .... \$1995  
1959 IH 460D, new paint, good cond., fully equipped .. \$2095  
1964 Farmall 706G, fully equipped ..... \$5195  
1964 Farmall 706D, fully equipped, new paint ..... \$4995

### TRUCKS

1947 Chev. 1 1/2 ton, 4-speed, 6-cyl., very good, 13' body \$550  
1955 Dodge 1/2 ton, 4-speed, 6-cyl. .... \$995  
1962 Int'l 3/4 ton, 4-wheel drive, V-8, 4-speed, radio, hoist & many other extras ..... \$1595  
1963 Chev. 1/2 ton H.D., 6-cyl., 4-speed, radio, good .. \$1250  
1965 Chev. 1 1/2 ton, Big 6, 2-speed, good cond. .... \$1850

### Kuhn Impl., Inc.

Highway 4 Gypsum, Kans.  
Phone OW 6-4411

### COMBINES

1963 IH 403 with 14 ft. platform  
1959 IH 101 12' platform  
1955 JD 45 12' platform

### USED EQUIPMENT

1960 IH F340 tractor, fast hitch, WFA  
IH 4-row lister  
2 Dempster 2 row pull type, rotary moldboards  
JD 2 row 730 lister  
IH 463 cult. with disk hillers  
IH 470 lister-cult.

### CHAPMAN'S IHC

BELLEVILLE, KANSAS  
Phone JA 7-2273

### Spring Clean-Up On New Equipment

IH 11'6" wheel disk, regreasable seal bearing, 18" blades  
IH 4-row No. 53 rear mtd. cult.

### USED COMBINES

IH No. 403 14' combine  
IH No. 303 14' combine demo, used by Chapmans last year

### USED TRACTORS

Farmall 806 D tractor, fully equipped, 1300 hrs.  
IH 706 D tractor, fully equipped, 800 hrs.  
IH F706 D tractor  
Come to Minneapolis for all your needs. Our town has them. Watch for Big Spring Bargain Day, Thursday, June 13th. Everyone will be open till 9 p.m. Entertainment and bargains.

### Chapman Impl. Co.



Phone EX 2-2101

MINNEAPOLIS

### USED TRACTORS

IH 1-330 w/ loader  
1966 Farmall 656 gas  
1953 Ferguson 30 w/ loader & rear blade  
1959 Farmall 460 gas  
1958 JD 820 diesel  
1952 Farmall Super C.  
1951 Allis WD  
51 IH WD6 tractor  
51 IH W6 gas tractor  
50 MH 30 tractor  
Farmall 560 gas; 350 gas  
1950 Oliver 77 LPTO  
1945 IH H; 1944 JD A; 1941 IH H  
1947 IH "M"  
47 IH MD tractor  
47 Allis tractor with cultivator  
36 Allis U tractor, recently overhauled

### MACHINERY

IH 4-row rear mounted cultivator, like new  
Ford 2-row 3-pt. cult.  
2 IH 2-row 250 cultivators, one w/ fast hitch, rear section  
IH 261 2-row cultivator w/ fast IH 12' FH springtooth hitch, rear sect.  
Howard Rotovator  
2 IH 2-row F-35 weeders  
IH fast hitch disk  
IH 260 2-row F.H. planter  
Allis field cutter w/ windrow pickup att.  
IH 55T PTO baler  
1967 IH No. 550 2-row field cutter  
Allis 6 combine with motor in IH 125SP combine  
Allis 2R cultivator  
IH 4-row pull type weeder  
John Deere KBA 10'9" wheel disk  
Case 10'9" wheel disk  
IH 4-section springtooth JD 3-sect. springtooth  
IH one-way disc plow  
John Deere 2x14 plow  
MM 2x14 plow  
IH No. 70 4x16 pull plow  
IH No. 8 3x16 plow  
IH No. 8 3x14 plow  
IH No. 8L 4x14 plow  
See us for Lillison rolling cultivators.

Hours: 8:00 a.m. - 6:00 p.m.  
Emergency Parts Ph. HO 1-5628 or HO 1-5811.



### AULD

CHEVROLET

HO 1-5414

WAKEFIELD

**FOR SALE — Stock trailer,** 11' open top, tandem axle, hammer blow hitch. Contact OK Ranch, Rt. 4, Junction City, Kans. Phone CE 8-3798. SB14

**FOR SALE — 1958 Gehl Chop-** all, with 1 row & nearly new pickup attachments, good condition; 1957 JD 620 3-pt., wide front, engine like new; New Holland automatic 80 bale wagon, used several seasons, good condition. Call Manhattan 913 JE 9-8123 after 6:00 p.m. x14

### QUALITY USED EQUIPMENT

1950 Dodge truck with 13 1/2-ft. grain bed, stock racks & hoist ..... \$875  
1947 Ford truck with 13 1/2-ft. grain bed ..... \$425  
1946 Chev. truck with grain bed & hoist ..... \$475  
1965 IHC 1890 chassis w/ 5-spd., 2-spd. .... \$3450  
1960 IHC B-120 4x4, new paint and seat covers, A-1 condition ..... \$1250

1950 IHC L-120  
1966 IHC C-1000, salesman's pickup ..... \$1475  
1965 F706D, excellent, 875 hrs. .... \$5400  
1963 F560 D with duals & all att. .... \$3400  
1964 F706 D 2-pt., with all att. .... \$4750  
1958 F450 D, 2-pt., with all att. .... \$1750

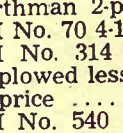
1946 M with hyd. & PTO ..... \$500  
1946 H, A-1 condition .... \$450  
Set of 18.4x30 duals with tires ..... \$300  
2 IHC No. 101 combines, A-1 condition ..... \$2500  
1957 Massey No. 60 SP combine, good ..... \$1275  
Oliver SP combine ..... \$325  
IH 2-row rotary moldboard lister, with fertilizer, like new ..... \$475  
IH 4-row rotary moldboard lister, with fertilizer, like new ..... \$1000

IH No. 449, A planter w/ fertilizer, like new ..... \$750  
4 insecticide units, like new \$120  
No. 28 3-point tool bar carrier ..... \$50  
Orthman 2-pt. adapter .... \$40  
IH No. 70 4-16" plow ..... \$475  
IH No. 314 14" roll-over plow, plowed less than 50 acres, half price ..... \$750  
IH No. 540 16" steerable plow, plowed 120 acres ..... \$1025  
IH No. 411 4-16" plow ..... \$375  
IH No. 50 2-row crop F. harv., 3-chain, 2 yrs. use ..... \$1900  
Gehl 2-row crop F. harv., good ..... \$800

24-ft. 1-yr. old Crust Buster \$500  
Ford frt. end loader ..... \$125  
No. 470 IH 4-row weeder cult., like new ..... \$600  
3 IH FA 40 lister cult., your choice ..... \$175  
No. 2 hay conditioner .... \$100  
No. 27 VA mower ..... \$125

### Cloud County

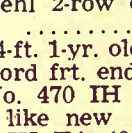
TRUCK & TRACTOR



Phone 913

243-1840

CONCORDIA, KANS.



DO YOU NEED A

DEPENDABLE COMBINE

See our reconditioned used machines.  
1963 JD No. 95, 16-ft.  
1959 Oliver No. 40, 14-ft., slick  
1957 JD No. 55, 14-ft.  
1955 JD No. 55, 14-ft.  
1951 Gleaner R, 14-ft.  
21A M-H, 14-ft., cheap  
1950 JD No. 55, 14-ft., cheap  
1964 JD 4020 dsl., R/C, 3-pt.  
1961 JD 4010 dsl., std.  
1960 JD 730 dsl., std., 3-pt.  
1958 JD 720 R/C, LP gas, wide front  
1952 JD R dsl., new tires, A-1  
IHC W6 gas, good  
4-row JD No. 70 Flex planter w/ fert.  
Broyhill trailer sprayer, good  
15-ft. Ad-Flex V-plow  
12-ft. JD No. 850 tiller, like new  
8-ft. Ford, 3-pt. mower, like new  
No. 32 Papec 1-row forage harvester  
Oliver side delivery rake

MILLER DISCS

CRUSTBUSTER HARROWS

FLEX-KING V-PLOWS

**Blanding Impl. Co.**

PE 8-3066

BELLOIT, KS.

CHEAP COMBINES — 1954 JD

\$1250. Gleaner 14' \$1150. 1951 Massey 26, \$395. 1952 Case, 1951 MM, choice, \$195. Co-op, \$95.

TRACTORS — 1956 LP 70 RC, loaded, new tires, paint, \$1350. JD 60, gas, \$995. 1952 LP JD G, 3-point, new tires, \$795. 1951 Massey 44, \$495. Straw choppers for A, C, Nickel Brothers, Buhler, Kans. x14

**FOR SALE — IHC 400 fast** hitch, full hydraulic control. T. am. Po T. trans. T. am, just been overhauled, newly painted, motor in perfect condition. Extra good tires. IHC 314 three-point hitch, 530 plow, like new. Two Wisconsin motors, V.P.4.D. 3 1/2 x4. One with starter. Extra good condition. One New Holland 80 baler, extra good condition. Harry McClintock, Simpson, Kans. x13

### TRACTORS

1963 JD 3010 dsl. .... \$3750  
1959 JJD 630 gas, 3 pt. .... \$2200  
1961 JD 4010 dsl. .... \$4150  
1959 JD 630 gas WFE, 3 pt. .... \$2250  
1957 IH 450 LP tractor, WFE ..... \$1550

### COMBINES

1965 JD 95 16' with cab ..... \$6800  
1965 MH 410, 16' ..... \$6200  
1963 JD 45 with cab ..... \$3750

### MACHINERY

1967 Dempster 6 row planter, like new ..... \$1450  
1965 406 JD planter ..... \$125  
1966 IH No. 55 2 row forage harvester ..... \$175  
1965 JD No. 12 2 row forage harvester ..... \$155  
1957 Gehl with row crop unit ..... \$650  
1955 Papec No. 62 row crop & direct cut ..... \$375  
1965 JD 224 wire baler ..... \$1675  
1962 JD 214 wire baler ..... \$1275  
1957 JD 14T baler ..... \$150  
1957 IH 45T ..... \$250

### Belleville Impl. Co.



JA 7-2261

BELLEVILLE

### USED COMBINES

1959 MF 82 14-ft. with cab \$2650  
1958 MF 82 14-ft. .... \$2100  
2 1964 MF 300 13-ft. with cabs ..... each \$4750  
2 1964 MF 410 14-ft., with cabs ..... each \$5850  
1966 MF 410 diesel, 18-ft., straw chopper, also trailer for table ..... \$6800  
1958 MH 92 14-ft. .... \$1800  
2 1951 MH 27, field ready, ..... each \$600  
2 new 8-ft. Melroe pickups for 92 or 410 ..... each \$450

### TRACTORS

2 MH std., 1 with hydraulic ..... each \$400  
1949 IHC M, has Farmall & wide axle ..... both \$700  
1966 Ford 3000 gas, only 400 hours ..... \$2500  
1962 MF Super 90 gas ..... \$2300  
1963 MF Super 90 diesel \$3250  
1949 Ford 8N, new tires, completely overhauled .... \$500

### HESSTON SWATHERS

No. 600 14-ft.; No. 500 14-ft. PT 12; PT 10

### Pfister-Rhodes Impl. Co.

Phone 439-2445  
JAMESTOWN, KANS.

### A GOOD SELECTION OF USED MACHINERY

19 bu. ES 60D, overhauled, FH  
1960 F460 gas  
1958 F350 D, FH  
1958 F350 gas, FH  
1948 M  
1948 M w/ power steering & live hyd.  
1947 WD-9  
1951 A, JD w/ cult.

### MACHINES

255 2-row cultivator  
463 4-row cult., FH, 1 yr. old  
2 IH 2-row weeder  
2-row rotary moldboard, Dempster lister w/ fert.  
12-ft. Schaffer wheel disc  
12-ft. JD wheel disc  
10'9" IH wheel disc, seal brg.  
10'9" IH wheel disc, plain brg.  
10-ft. Case wheel disc, plain brg.  
1954 Baldwin A 14-ft., cab  
1951 Baldwin A, 14-ft. cab  
1954 IH 127, 12-ft. cut  
1963 56W baler, good  
No. 28 FH mower  
No. 15 IH 2-wheel rake  
JD low wheel 4-bar rake  
1964 50 2-row field harvester, good  
1963 50 2-row field harvester  
IH 8-16 MFF grain drill w/ rubber press  
JD 8-16 fert. drill; JD 45 loader  
All kinds of new IH balers, rakes and mowers.

### Abilene Truck & Tractor Co.



CO 3-4727

714 So. Buckeye

ABILENE, KS.

**NEW FARMALL 656 diesel,** hydrostatic drive tractor. 2 pt. hitch, dual hydraulic, independent PTO, adjustable wide front axle, 6.50x16 front, 15.5x38 rear. \$5350. New Massey 410 14' combine, \$7800. See at Morrison Elevator, Salina, Kansas. Ask for Ellis, 913/827-7248. Night 913/827-5105.

### USED MA

Case VAC Rowcr  
tor, runs good  
1950 IH Model M  
good and fair  
hydraulics  
1949 Case Mode  
factory LP,  
runs OK  
1964 Oliver 550  
PTO, 3 point  
ing, one own  
hours. Shedde  
Half price  
1958 MH combi  
Machine read

1963 Oliver Mo  
plow, sealed  
good  
1961 Papec Mo  
forage harve  
good  
Case belt blowe  
pipe, real go  
NEW MA  
New Oliver Mo  
semi mounte  
New Oliver 165  
at old price.  
New Oliver M  
14 & 16' cor  
price.  
New Porta wh  
all sizes. At  
they last.

### Wissing

614 S. Buckey  
ABILENE  
Salesman:  
Ralph (Pete)  
Service: SH

### See

AT LIN  
HAY  
IHC 7' mower  
JI Case E7, 7'  
John Deere 7'  
MF Model 25  
1966 MF Mode  
1965 JI Case 2  
1951 Allis Ch  
1965 Massey 1  
baler  
IHC forage h  
JI Case Mode  
vester

### CO

1959 Allis Cha  
1956 John De  
1958 Massey  
1954 Massey  
1959 Massey  
1959 J I Case  
1961 J. I. Case  
1963 MF Sup  
1964 MM Mod  
1966 JI Case

### TR

1949 Case V  
1950 JI Case  
1951 Allis Ch  
1951 Ferguso  
1



## USED MACHINERY

Case VAC Rowerop with cultivator, runs good & good rubber \$175  
1950 IH Model MD diesel. Runs good and fair rubber. PTO & hydraulics \$1075  
1949 Case Model LA wheatland, factory LP, on fair rubber, runs OK \$495  
1964 Oliver 550 gas utility, live PTO, 3 point & power steering, one owner, 493 actual hours. Shedded, looks new. Half price \$1475  
1958 MH combine, 12' header. Machine ready to cut wheat \$1475  
1963 Oliver Model 4340 3 base plow, sealed wheel bearings, good \$350  
1961 Papec Model 92C two row forage harvester corn head, good \$1475  
Case belt blower with 50-ft. good pipe, real good condition \$85  
**NEW MACHINERY**  
New Oliver Model 565 & 566 semi mounted plows, all sizes. New Oliver 1650 and 1850 diesels at old price. Only one of each New Oliver Model 535 and 545 14 & 16' combines. Special price.  
New Porta wheel springtooths, all sizes. At old price while they last.

## Wissing Motor Co.

614 S. Buckeye CO 3-2592  
ABILENE, KANSAS  
Salesman:  
Ralph (Pete) Schmutz  
Service: Shelby Steenson

## See These

AT LINN, KANS.

## HAY TOOLS

IHC 7' mower; MH 7' mower  
JI Case E7, 7' mower  
John Deere 7' mower  
MF Model 25 rake  
1966 MF Model 25 rake  
1965 JI Case 200 baler  
1951 Allis Chalmers baler  
1965 Massey Ferguson No. 10 baler  
IHC forage harvester  
JI Case Model 212 forage harvester

## COMBINES

1959 Allis Chalmers Model 90 9'  
1956 John Deere 55 12'  
1958 Massey Harris 60, 12'  
1954 Massey Harris 80, 14'  
1959 Massey Harris 92, 14'  
1959 J I Case 800, 14'  
1961 J. I. Case 1000, 14'  
1963 MF Super 92, 14'  
1964 MM Model 3490, 14'  
1966 JI Case 600, 13'

## TRACTORS

1949 Case VAC  
1950 JI Case DC4  
1951 Allis Chalmers WD  
1951 Ferguson TO30  
1955 IHC F300; 1957 IHC 350  
1957 JI Case 401  
1961 MM VI LP gas  
1958 John Deere 420  
1960 JI Case 611B  
1965 JI Case 741 gas  
1966 MF 180 diesel

## Kuhlman Motors

CASE M-F  
Phone 348-2471  
LINN, KANSAS

## USED TRACTORS

1965 Farmall 706D  
1965 Farmall 706 gas  
1964 Farmall 706D  
1959 Farmall 560  
1957 Farmall 450  
1955 Farmall 300  
1954 Farmall Super MTA, diesel  
1947 John Deere B  
1941 Farmall H  
**MISCELLANEOUS**  
IH 2-row cultivator for Farmall 340  
IH 2-row cultivator for C tractor  
IH 2-row No. 261 cultivator for 460 and 560  
IH 461 4-row cultivator  
IH 455 4-row cultivator  
John Deere 4-row cultivator  
IH No. 379 7" wheel disk  
IH No. 101 combine, 12-ft. platform

## Rossville Truck & Tractor Co.

Phone 584-3560  
ROSSVILLE, KANS.

1958 14' Gleaner A Combine with cab. Good condition, \$2000. Allis round baler with new endless belts, \$500. Alfred Roeder, Seneca, Kans. x15

## TRACTORS

1967 JD 4020 D, demo., reduced price  
1962 2010 JD gas, completely recond. \$2595  
1964 JD 1010 gas tractor \$1995  
1958 MF 50 with loader \$1395  
1959 JD 730 gas \$2695  
1957 JD 620 gas \$2250  
1949 JD A, overhauled \$595  
1962 JD 2010 gas \$2295

## COMBINES

1956 JD No. 45, overhauled  
1959 JD No. 45, with cab, good



**Young & Son**  
Impl. Co.  
Council Grove  
Kans.  
Ph. 767-5018

## DAUER IMPLEMENT CO.

1964 McCormick F-806 gas tractor  
1966 McCormick F706D, 735 hours  
1949 McCormick Farmall II tractor  
1967 SBA motorcycle, 3000 miles, excellent condition  
1965 International Scout pick-up  
1956 IH I-300 utility with manure loader, under 1200 hours  
IH No. 70 4-14 plow  
Snowco feed wagon  
No. 31 IH manure loader  
8 ft. Knapheide truck bed complete with stock racks  
IH 2-row lister with hard ground bottoms & fertilizer atts., 2 or 3-pt. hitch  
IH 141 12' combine  
IH side delivery rake on rubber, high wheel  
McCormick No. 311, 3-16 plow  
McCormick No. 60 3-16 plow  
36-ft. Mayrath grain auger  
1940 Farmall M with factory LP gas  
1941 M tractor  
1957 McCormick 46T twine baler  
1962 McCormick 46T twine baler  
McCormick 16x8 MF drill, low rubber & rubber press



## Falun

Phone 1011

Falun is located 20 miles southwest of Salina

## NEW DIESEL TRACTORS

1 66 JD 95 combine  
1 59 JD 55 14' combine  
1 JD 4x14' semi-mtd. plow, like new  
1 67 JD 3020 dsl., 3-pt., HD, PTO, 350 hrs.  
1 61 JD 4010 dsl., 3-pt., HD, PTO, dual rear wheels.  
1 60 JD 730 dsl., 3-pt., HD, PTO new rear tires  
1 60 JD 630 gas, 3-pt., HD, PTO, low hrs.  
1 64 JD 4020 dsl., 3-pt., HD, PTO  
1 64 JD 4020 dsl., power-shift, 3-pt., PTO, new rear tires  
1 61 AC D17 gas, fully equipped  
1 60 IHC 560 dsl., TA, PTO, fast hitch  
1 66 IHC 303 14' combine  
3 61 JD 55 14' combines

**TERMS AVAILABLE**  
Good Selection Of  
Late Model Used Combines

**Western Impl. Co.**  
2256 S. West St. WH 3-4261  
WICHITA, KANS.

## NEW GLEANERS

F combines  
New 1967 E combine  
G combines

## USED

1965 C-II Gleaner w/ cab, 18-ft. 314 IHC fast hitch plow  
414 IHC pull type plow  
12' IHC wheel disc  
12' AC wheel disc  
1967 Baldwin A, 14'  
1963 303 IHC combine, 14' with cab  
D-17 tractor, with PS  
3-pt. New Holland mower  
Used 3 & 4 bottom snap coupler plows  
AC Roto Baler  
228 2 row IHC corn head

## Cuba Impl. Co.

Phone 4F 7

Cuba, Kans.

**FOR SALE** — 1963 John Deere 45 12' platform. Hoyt Woodbury, Clifton, Kans. x14

## COMBINES IN HILLSBORO

1967 Gleaner C-II, 18-foot, low acreage  
1966 Gleaner A-II, cab, cut 800 acres  
1964 Gleaner A-II, 16-foot header  
1961 Gleaner A, 14-foot, cab  
1958 Gleaner A, 14-foot, farmer owner  
1955 Gleaner A, 14-foot, shedded  
1962 Super 92 MF, 14-ft., big tires  
1957 IH "141", shedded  
1962 AC Super 90, like new  
**TRACTORS**  
1964 AC D-19D, low hours  
1962 AC D-17D reconditioned  
1963 NH super 69T baler, clean  
1957 NH super 66 baler  
1964 NH "56" rake  
1954 Travelo house trailer 8'x40' fully equipped

## Jost Implement Co.

947-3182

HILLSBORO,  
KANS.



## HARVEST SALE

1962 Ford combine w/ cab, pwr. strg., low acreage, 12' cutter bar & 2-row cornhead \$3500  
Long fiber treated baler twine, per bundle \$90c  
1962 Ford tractor, live PTO, power steering, live hyd., good rubber, real clean \$1950  
Heavy duty Davis loader, hyd. bucket and blade \$750  
1962 Ford Major tractor, PTO, good rubber, power steering & live hydraulic, aux. valve \$2250  
971 Ford diesel tractor, LPTO, live hydraulic, power steering, 10 speed \$2000  
961 Ford tractor with LPO, hydraulics, 3-point hitch, weights power steering \$1650  
UT Minneapolis Moline tractor, factory propane, clean, good rubber, PTO, turning brake \$450  
U Minneapolis Moline tractor, LPTO, disc brakes, good rubber, row crop, or wide axle \$750  
UB Minneapolis Moline tractor, LPTO, live hydraulics, row crop, weights, good rubber \$1250

## SAVE ON SPRAY

Use only 1/2 amount of Atrazine by using Crop Oil to spray post-emerge weeds in milo and corn, per gallon \$90c  
Fordson Major LPTO, live hyd., 3-pt hitch, raised PTO \$1150  
10' Ford wheel disc, sealed bearings, flex model \$400  
11'2" Kewanee sealed bearings wheel disc \$450  
3-pt. tandem disc \$125  
14' Kewanee wheel disc with outrigger spools \$600  
New Roto weeder four row cultivator, rear mounted \$785  
2-row Ford front mounted cultivator \$250  
Used Ferguson 3-pt. lister, rotary bottoms \$125  
9' IHC mounted disc, quick hitch \$200  
New Idea four bar wheel rake \$125  
60" BMB rotary cutter, 3-pt. hitch, PTO, used \$175  
Cockshutt mower \$75  
John Deere Rigid wheel disc, 11'4", 9" spacing, used \$450  
8 1/2' pull type John Deere one way on rubber, real clean, used \$200  
3-pt. rotary lister \$125  
Made over John Deere used lister, 3-pt. \$75  
Used 3-pt. mtd. lift disc, good \$125  
Used 2-14 Ford plow, Radex lays \$125  
Used 11'2" Krause disc, rigid, sealed bearings \$500  
Used PTO post hole digger \$100  
Used New Idea heavy duty loader with manure bucket and 80" material bucket hydraulic bucket control, fits several make tractors \$450  
New Bush Hog, 10 horsepower tractor, PTO, automotive clutch gear drive with 42" mower \$850  
See Us For Ford Tractor & Machinery Sales & Service  
The Mow-Ditioner will save you money and time in haying. See it now.

## D & D Farm Eqpt.

Phone

913 ME 2-5212

CLAY CENTER, KANS.

**FOR SALE** — 461 Int. cultivator with fast hitch rear section, 560 mts. \$375. Matt Roeder, Seneca, Kans. DE 6-2663 x14

## JUNCTION CITY



## COMBINES

1960 IHC No. 151 self propelled 15' \$3100  
1958 Oliver Model 40 self propelled 14' \$2250  
1961 IHC No. 91 self propelled 10' \$2495

## TRACTORS

1957 IH I-300 utility, TA, INPTO FH with IH loader & blade \$995  
1959 Allis Model D-14 wide front, power steering, reconditioned, clean \$195  
1961 IH I-460 utility, TA, INPTO FH, power steering, with IH No. 2000 HD loader  
1956 IH I-300 utility, fully equipped with Henry loader & Henry back hoe, good  
1950 IH Farmall H fully equipped with Kosch 7' side mount mower  
1946 IH Farmall H, fully equipped \$445  
IHC Farmall A \$195  
IHC Farmall Super C, new paint \$395  
IHC Farmall F-20 on good rubber, with starter & lights \$150  
**FARM TOOLS**  
IH No. 463 cultivator, 4-row rear mount \$595  
Viking elevator with drag hopper \$195  
Oliver trail type 7' mower \$75  
IH No. 25V power mower \$75  
Oliver 7' power mower \$75  
JD 9' wheel disk \$195  
IH H&M 250 2-row cultivator \$50  
Sears hydraulic loader \$75  
IH No. 27V power molder \$145  
IH 2-section springtooth harrow \$25

IH No. 45T hay baler, PTO, chute & hitch \$150  
IH No. 46T hay baler, PTO, chute & hitch \$845  
IH No. 100 fast hitch mower, 7' \$375  
IH No. 5 low wheel side del. rake \$175  
David Brakley 4 bar side del. rake on rubber \$75  
IH H&M 46 lister, 2-row, mounted \$25  
IH No. 314 3x16 rollover plow, FH, like new \$875  
IH No. 15 side del. rake \$375

## TRUCKS

1954 Chevrolet, duals, 2-speed rear axle, 12' grain & stock body, hoist \$945  
International 1 1/2 ton, duals, 13 1/2' platform, grain & stock sides, clean \$545  
1963 IH C-1000 1/2 ton pickup, V8, 4-speed, radio & heater, clean local truck  
1964 Chevrolet 1/2 ton long wide box, clean, with camper  
1961 GMC 1/2 ton pickup, heater, rear bumper, local, low miles  
1953 Ford 1/2 ton pickup \$145

## Mohn Implement Co.

Telephone CE 8-5101

## Junction City, Kansas

**FOR THE ride of your life,** ride a Big Horn saddle from Key Milling. Clay Center, Kans. SB TF

**WANTED** — CASE backhoe on rubber. Ambrose Haug, R 2, Holton, Kans. 66436. x14

**JOHN DEERE 215A SP** windrower with conditioner, lots of extras — has been demonstrated once — Only \$3850. IH 58 6-row 30-inch planter — has the works for attachments — looks new and only 1 year old \$1700. Osage Farm Eq. Co., Inc., Osage City, Kansas. Phone LA 8-1422. SB14

**WANTED** — Cheap used mower bar for pull 818 New Holland chopper. Please state condition & price. Flenties, Inc., Sabetha, Kans. SB14

**FOR SALE** — 18' Universal pickup reel, cut less than 200 acres, price \$300. See George Guy, Longford, Ks. Phone 388-2523. SB15

**FOR SALE** — 4-wheel trailer w/ automatic hitch, steel bed. Size 6x8 1/2. Approximately 275 feet of 6-inch and approximately 352 feet of 4-inch metal irrigation pipe w/ sprinklers and a large selection of fittings. See Mr. Williams, Manhattan Marina, K-Hill, Manhattan, Kans. SB15

**REPOSSESSED** 1968 GMC 1/2-ton; 1960 Corvair; also reconditioned 14' IH 151 combine, fully equipped. Rundquist Assaria Banker, Assaria, Kans. x14

**FOR SALE** — 1956 Super W-6 TA, live PTO, live hyd., belt, pulley, low hours, one owner, shedded. J. M. Hart, Delphos, Kans., Ph. 623-4438. x16

## New 1967's Special Prices

## 50 MILES FREE DELIVERY

D-17 Ser. IV, 3-pt. .... \$4383.48  
12' AC drill disc, demo \$825  
11' AC whl. disc .... \$677.57  
190 XTD, 70 hrs., demo., full warranty, without fr. & rear weights \$6603.67  
Gleaner C-II 14' combine \$8340.47  
302 baler \$1499.52  
A 240 corn head \$1639.33  
AC 30 6-row cult. .... \$768.68  
Fert. conversion kit for 4-6 row AC 500 planter, incl. fert. & bar ext. .... \$248.13  
Nu Way bale arrange .... \$215  
Nu Way bale clamp .... \$385  
AC 10 hp. garden tractor, demo AC 77 rake 5 bar rubber teeth \$501.64  
AC 77 rake 5 bar steel teeth \$469.70  
AC 82R mower, 9' .... \$565  
Emmett minimum tillage attach. for 4-row AC planter \$315  
w/ hyd. lift & 42" mower \$795

## USED EQUIPMENT

1963 Ser. 11 D 15 tractor \$2495  
1949 11' SP Cockshutt, runs good \$395  
1951 IHC 125 SP combine \$295  
NH hay baler \$245  
WD 9 IHC tractor \$495  
AC D-17 w/ fr. loaders, 4 new tires, excellent \$2695  
1959 12' SP Cockshutt combine, very good cond. .... \$1295  
Financing available with normal down payments — up to 5 year terms on new tractors and combines and no carrying charges till 10-1-68.

SO — if you want to buy new farm equipment — See us LAST.

## Hinkle's Impl. Co.

EA 5-2334



WASHINGTON, KANS.

## HERINGTON



## USED COMBINES

1966 JD No. 95, 19'  
1962 Massey 72, 12'  
1959 John Deere 95, 16'  
1959 John Deere 45, 12'  
1959 John Deere 45, 10'  
1956 IHC No. 141, 14'

## MACHINERY

1967 Hesston PT-10 windrower  
1964 John Deere 215A windrower with hay conditioner  
JD No. 10 and 9 mowers  
JD 4-row front mounted cultivator, like new  
JD 2-row 3-pt cultivator  
JD 2-row cultivator for JD 40 tractor  
IHC 2-row front mt. cultivator for 350 & 460 tractors  
A-C 2-row front mt. cult., for WD tractor  
JD 4-row pull curler  
JD 2-row pull curler  
IHC 2-row pull curler  
Case 4-row lister, 3-pt., with fertilizer  
JD 2-row 3-pt. lister w/ fert., herb. & insect.  
IH 2-row fast hitch lister w/ fertilizer  
Like new JD 4-sect. rotary hoe  
Pre-emerge att. for JD 494A planter

We have several used sprayers

## USED TRACTORS

1966 JD 3020 gas, 750 hrs.  
1963 Ford 4000 dsl., o'hld.  
1959 IHC 560 gas, wide front  
1958 JD 620 dsl., new block  
1958 John Deere 620 gas  
1958 IHC 350 utility  
JOHN DEERES: 1957 420; 1955 40; 1956 60LP; 1952 G; 1952 IHC W-6  
1951 JD A; 1950 R dsl.; 1949 A  
1948 IHC M; 46 IHC H  
1955 JD 40 w/ cult.

## SEE US FOR

New Hesston swathers; Gehl feed machinery; Crust Buster Harrows; G-B loaders; Danuser diggers; Lilliston rolling cultivators; Grain-O-Vators.

## Tri-County Sales

George Munkres  
Phone Collect  
BL 8-2249 or BL 8-2991  
HERINGTON, KANSAS

**FARM EQUIPMENT For Sale:** Above average 1954 Massey Harris 90 special 14 foot combine on bomber tires. Motor and machine in good shape and ready to cut. \$975. Marvin Strunk, RR2, Abilene. Phone Navarre 22F03. x14



## NEW JD 5020

### "Make Me an Offer"

It's a rowcrop with dual tires & 3-pt. hitch. Always shedded. We went overboard on these 5020s, and had too many on hand.

### Combines

We've got deals going on these, and are ready to close. We want them all gone by harvest start.

JD 1965 45, 12' with cab  
JD 1962 55 12', with cab  
MH 1957 82, 14'  
MH 80 SP 14'  
JD 1965 95, 14', really sharp  
JD 1961 95, 14'  
JD 1963 55 12', real good  
JD 1963 55 12', real good, w/cab  
JD 1958 55 12', good  
JD 1958 45 10', good  
JD 1957 55, 12'  
MH 1965 410, 14'

### USED TRACTORS

We had 9 JD 4020s. Only 2 left.  
Oliver 1950 88, good  
IHC 1957 450, overhauled, complete with new head  
IHC 1950 M; IHC 1949 M  
JD 1965 4020 dsl., p-shift, ps, wide frt.  
JD 1961 3010 gas, overhauled, painted  
JD 1962 2010 gas, overhauled, painted, wide front  
JD 1961 2010 gas, overhauled, painted, wide front  
JD 1961 2010 gas, wfe, real good, adj. wheel  
JD 1959 730 dsl., with dual control  
JD 1959 730 dsl, overhauled, painted  
JD 1959 630 gas, good  
JD 1957 620 gas, good  
JD 1949 A  
JD 1948 G  
JD 1954 60 gas, painted  
JD 1946 A  
JD 1964 4020 dsl., p-shift, ps, wfe, air cond. cab  
JD 1964 4020 dsl, p-shift, ps, wfe real good  
JD 1946 R&G loader  
JD 1954 MT, good, new tires  
AC 1962 D15, wide front, sharp  
MH 1962 65 dsl. w/ front over-haul  
MH 1950 44 gas  
MH 1949 44 gas, wide front  
Ford 1953 & Davis loader

### SPECIALS

John Deere No. 406 planter w/ fert. & insect.  
LOTS & LOTS & LOTS MORE MACHINERY ON OUR LOTS

## Farmers Union Hdw. & Implement



Everett Hoobler  
Mgr.  
Ph. 437-2913

ST. MARYS, KANS.

FOR SALE — 1955 14' JD combine, motor completely overhauled, new reel, cylinder bars, concaves, feeder chains, all new belts, excellent cond. Braun Bros., Miltonvale, Kans. Ph. 427-5155. x14

FOR SALE — 1968 IHC 6 row 30" planter, No. 58, ready to go, \$1000 James Zvolanek Jr., Liberty, Nebr. 696-4546. SB14

FOR SALE — 16' Hume reel and 7' Sun pickup attachment. John E. Diehl, Hoyt, Kans. 66440. SB14

FOR SALE — 1951 JD 14-ft. combine, excellent condition, always shedded. Duane McClintock, Simpson. Ph. 593-2433 or 738-3263. x14

FOR SALE — Good late model AC 2 pt. snap coupler, 7 ft. hay mower, or will trade for good rotary mower. Phone 6-8007, Manhattan. SB14

FOR SALE — 1959 JD No. 45 12' combine with cab and No. 10 2-row corn head. JD 2-row mounted lister with fertilizer attachment. JE 9-8501, Manhattan, Kans. x14

FOR SALE — Crawler Allis Chalmers M with starter, duals, 5' bucket, 2 way cylinders, live hydraulic system. Harold Mertz, Phone Wamego 456-9605. SB14

FOR SALE or trade. 1955 DC 3-4 Case tractor, Eagle hitch, dual hydraulics, foot clutch, good condition. Will trade for John Deere 50, TO 35 Ferguson or 600-800 Ford. Gene Mohr, CH 2-3155, Ottawa, Kans. SB14

FOR SALE — 1967 IHC 403 combine, cut 150 acres milo, ready for wheat, cab & fully equipped, \$8750 with new warranty. James Zvolanek Jr., 696-4546, Liberty, Nebr. SB14

## Tractors

F806D 1964, low hrs. ... \$6350  
F560D 1960 cpt. overhaul \$3750  
F560D 1959, cut. overhaul \$2750  
F560, 1959, cpt. overhaul \$2995  
JD 720D, 1957 3-pt. .... \$1995  
Farmall H 1950, new tires \$525  
F560 gas, 1963, like new \$3250  
F560 gas, 1959, comp. over. .... \$2995  
F450 gas, 1957, fair ..... \$925  
DC Case, 1950, good ..... \$395  
Farmall M, 1943 w/ 33A loader ..... \$795

## Combines

IH 203, 1964 w/ corn head, cab \$4250  
MH No. 90 Sp., 1956 plain \$1895  
MH No. 82 1959 plain ..... \$2995  
Case 1957 120 12' ..... \$950

## Balers

IH No. 47T, like new ... \$1475  
IH No. 45T aver. .... \$195

## Tillage

IH No. 468 cult., good .... \$795  
IH No. 463 cult. .... \$575  
3 IH No. 455 cult. \$325 to \$375  
IH C254 cult., fast hitch ... \$95  
JD rot. hoe, 4-sec. .... \$150  
2 IH No. 255 cult. ... \$115 to \$125  
JD 4-row monitor ..... \$265  
IH 4-row monitor ..... \$150

## Mowers

IH 25V mower ..... \$95  
JD No. 5 mower ..... \$115

## Listers

IH No. 465 lister w/ fert. ... \$595  
IH No. 465 lister w/ insect. \$435  
2 IH No. 46 F/H lister w/ fert. & insect. .... \$150

## Miscellaneous

Peerless roller mill .... \$275  
Dempster 7' chisel ..... \$175  
Graham Hoeme 10' chisel ... \$795  
Seaman rot. tiller ..... \$375  
No. 0 Grain-O-vator ..... \$695  
Many plows — disks — field harvest — drills — etc. on hand.

## Red Tag Specials

W DANIEL  
AL WENDLAND  
DON BLAKER



International  
Harvester  
Sales & Service

1939 N. Topeka Blvd.  
Topeka, Kans. CE 4-2606

## GUARANTEED USED TRACTORS

1964 4020D JD, wide front  
1963 4010D JD wide frt.  
1967 3020 gas JD low hrs.  
1963 3010D JD nice one  
1962 3010 gas JD overhauled  
1959 630 JD real good  
1961 D15 D AC, wide front  
1958 D17 gas AC wide frt.  
1956 60 JD overhauled  
1954 60 JD priced to sell  
1953 50 JD overhauled  
1958 65 MF gas wide frt.  
1951 B JD  
1949 A JD  
1948 IHC M good condition  
1951 8N Ford  
1949 IHC M overhauled  
1951 DC Case

## USED BALERS

1964 JD 214 WS (wire)  
1960 JD 214 W (wire)  
1959 JD 14T (twine)  
1958 IHC 45T

## USED HAY RAKES

1964 JD 894A  
Late model New Holland 5 bar  
MH 4 bar  
JD 4 bar  
New Idea 4 bar  
1967 JD 480 mower-conditioner  
1960 JD hay conditioner  
#9 3 pt. JD mower  
#5 QT JD mower  
Give us a try before you buy

## Todd Tractor Co., Inc.

Junction Hwys. 36 & 63  
Store Phone DE 6-2138  
SENECA, KANSAS

IHC 2-row weeder, 14', Universal pickup reel with JD 55 combine mountings. George Visser, Riley, Kans. HU 5-2578. x14

NO. 871 FORD Diesel Tractor for sale. Selecto-Speed, completely reconditioned, nearly new tires, new paint, 3 point hitch, live power take-off, remote control hydraulic & power steering. Center Equipment Co. Inc., Phone 913 282-6564, Smith Center, Kansas, 66967. SB14

FOR SALE — 2 Model 66 AC combines, PTO, 6' cut, good condition, always shedded. Henry Wagner, Rt. 1, Junction City, Kans. Phone 238-5051. x15

## USED CARS & TRUCKS

1965 Chev. Station wagon. This wagon is real good, has power brakes, air conditioning, 47,000 actual miles. New camshaft at 45,000 miles. 4 new white sidewall tires. If you are looking for a lot of good family transportation, come in see us on this one ... \$1750

1965 IHC 1700, good V-8 304 engine, long wheel base, good 900x20 10-ply tires, red & white ..... \$2650

1964 IHC 1800 V-8 345 engine, overhauled 5000 miles ago. This is a tractor, equipped with full air, good 5th wheel, good tires ..... \$2850

1963 1200 pickup, good tires, completely reconditioned ..... \$1450

1961 IHC B160 V-8 304 engine, good tires, has new Omaha standard 16-foot bed with fold-down stock racks, 18 to 20 ton hoist, real good truck ..... \$2850

1961 IHC B180 V-8 345 engine, just overhauled. This is a dump truck, has fair bed with good hoist ..... \$1650

1953 Chev. 1 1/2 ton truck, 16-foot bed and hoist, had a complete engine overhaul, like new brakes, both were done 10,000 miles ago ..... \$1275

1952 Ford truck 1 1/2 ton, has had frame lengthened, good tires. Reconditioned engine, has 8000 miles on it .... \$385

1959 Chev. 1 1/2 ton truck with refrigerated body, a real good truck ..... \$1000

1961 3/4 ton Chev. pickup, new engine overhaul ..... \$850

1958 3/4 ton IHC, reconditioned ..... \$750

1958 B110 IHC, reconditioned ..... \$650

1953 Ford 3/4 ton pickup flat bed with stock rack, real good pickup ..... \$495

## Nemaha Motor & Impl. Co.



Phone 913  
AV 4-2167

SABETHA, KANS.

## USED COMBINES

1965 Gleaner C 20'  
1966 JD45 12' with CH  
1960 IHC 101 12' with CH  
1964 Gleaner E 12'  
1965 Gleaner C 14'  
1966 Gleaner C 18'  
1959 MF 92 14'

## USED TRACTORS

2 730 JD diesels  
1 XT 190 AC, like new

CHECK OUR  
LAWN SPECIAL SALE  
Free steak dinner for two.  
Now is the time to buy.

## Henry Sales & Service, Inc.



E. Hwy. 24  
& Meriden Rd.

FL 4-7641

TOPEKA, KANSAS

## USED TRACTORS AT WAMEGO, KANS.

1965 A-C D-17  
2-1959 AC D-17, series IV  
2 new 1967 series IV D-17  
Demo. A-C 180 diesel  
4000 Ford with loader  
8 N Ford; 1949 IH M  
2 M Farmalls, 1950 IH

## BALERS

N-H Super 69 twine  
N-H Super 69 wire  
John Deere 214W, wire  
N-H Super 77 w/engine  
No. 50 Oliver, twine.  
1966 wire N-H 269, this was a rental baler to K-State.  
New No. 56 N-H rake  
7 ft. N-Idea mower, rope lift

## MISCELLANEOUS

Allis No. 66 pull combine  
2 Super 27 Masseys, 14 ft., self propelled  
2 A-C WD 45 cultivators  
10' John Deere wheel disk  
Mtd. 2-row IH lister  
We have the complete line, parts & service: A-C and N-H haying equipment.

## Meinhardt Farm Eq.



456-2310

WAMEGO, KANS.

FOR SALE — 28-ft. IHC hay & grain elevator, PTO drive, shedded. Oliver Bolte, Lincoln, Ks., Phone LA 4-4679. x16

## TRACTORS

1961 Deere 4010D with new rear tires  
1967 Deere 3020D, only 385 hours  
1959 IHC 460 gas, WFE, excellent  
1955 Deere 60 with PS, nice  
1953 Deere 60 with LPTO  
1955 Case SC with LPTO & 3 pt.  
1958 Deere 620 with excellent engine  
1951 Massey 44, one gas, one dsl.  
1959 Deere 730 diesel, WFE  
1956 IHC 40 gas, WFE  
M 47 IHC, 47 Deere A, 46 Deere G, 50 Deere G, 50 Moline U, 45 Deere A  
53 Case LA on LP with hyd.  
1962 Deere 2010 RC with wide front axle  
1956 Deere 70 gas tractor  
1954 Ford Major diesel

## COMBINES

1950 Deere 55 with 12' head  
1960 Deere 45 HiLo with cab  
1963 Massey Super 92 with 14' head  
1964 Massey 510 with 16', with chopper  
1951 Massey 26 with 10' head

## MISCELLANEOUS

1962 2-row Fox industrial field cutter  
1963 Gehl 2 row with pickup  
1964 Deere 12 cutter with pickup & 2-row head  
New pickup attachment for No. 6 or No. 12 cutter  
5 section spring tooth, JD, like new wheel type  
3 point 5 section springtooth, JD  
4 section IHC drawbar type  
2 row Ford 3 pt. weeder, late  
2 row 3 pt. JD cultivator  
2 row Ford cultivator  
JD quick tach cultivator, A  
Quick tach only for 620, 720,  
A-4 cultivator, WFE

36' JD hay & grain elevator  
14T Deere baler with thrower & motor  
55W IHC wire baler  
66 Holland twine baler  
4 row wheel type rotary lister  
Several JD & Dempster rotary fert. listers  
Couple 114W Deere balers, will sell for parts  
Shawnee 6' blade, 3 point  
Case blower (belt drive) with 45' pine  
Old IHC 4x14 wheel plow  
66H Deere wheel plow, 4x14  
Deere 16'6" wheel foldover disk  
Several used grain drills, 16-8  
503A New Idea loader for 445 Moline  
Like new No. 8W mower with crimper drive  
2"5X Letz PTO burr mill  
Several mtd. plows, 3x14, 4x14, 4x16  
No. 5 Moline mower  
Several older hay rakes  
28' Mayrath 3 point sprayer, like new  
21' wheel sprayer with 125 gal. tank  
2 row cultivator, like new for 2010 U  
Snowro feed wagon, late type  
4 row wheel type weeder, excellent shape  
Several 2 row IHC & JD weeders

## SHOUSE

IMPL. CO.

Abilene, Kans.



Store CO 3-3051  
Ed Shouse CO 3-1066  
Ron Shouse CO 3-4515

## TRACTORS

1968 JD 3020 diesel, demo.  
1961 240 IH  
1961 D17 Allis Chalmers  
1958 JD 620  
1955 JD 70 standard  
1955 JD 60; 1951 M IHC  
1955 JD 50

## MACHINERY

4 section Borrell lift hitch  
JD 8' disk tiller  
No. 6 JD two row forage harvester  
No. 6 JD single row forage harvester  
4-16 JD No. 66 plow  
26' Parker harrow  
FB 16-8 fertilizer grain drill  
Letz mixer-grinder  
210 corn att.; No. 10 corn att.  
14T baler, JD  
JD 810 3-14 plow  
PA 302 JD lister with fertilizer att.  
2 row Ford front mtd. cultivator  
RB JD 16-8 grain drill  
24' Mordridge soil mulcher

## W. W. Smith & Sons



ME 2-3148

CLAY CENTER

FOR SALE — No. 101 12-ft. IHC combine 1960 good, \$2500. 1953 Oliver tractor 88 and cultivator good, \$850. Ph. CE 8-3087. Ralph Meyer, Junction City, Kans. x14

## TRACTORS

JD 4020 diesel  
JD 730 diesel, good  
JD 70 diesel, good  
JD 70 gas, good  
IH 424, like new  
AC C with cult.  
MH 44 gas

## MISCELLANEOUS

JD 494A pre-emerge, insecticide, fertilizer  
JD 406 fertilizer, insecticide  
IH 4-row fast hitch, fertilizer, insecticide  
Hesston 500 12' self propelled windrower  
Curier, JD 4-row

## COMBINES

JD Hi-Lo 45  
JD Hi 45 with cab  
JD Hi 55  
MH 72

## Kansas Farm Mch.



CE 3-1374  
West 24  
at Goodyear  
TOPEKA

COMBINES — Slick 1960 Gleaner, 1955 Gleaner, \$1350. 1952 Gleaner, \$1150. 1959 JD, 1954 JD, \$1250. 1951 Massey 26, \$395. 1952 Case, 1951 MM, choice, \$195. Co-op, \$95. TRACTORS — 1956 LP 70 RC, loader, new tires, paint, \$150. JD 60 gas, \$995. 1952 JD LP G, 3-point, new tires, \$795. 1951 Massey 44, \$495. Straw choppers for A, C. Used Hume reels. Nickel Brothers, Buhler, Kansas.

FOR SALE — International 125 SPVC 13' combine in excellent condition. Clarence Schwartz, ED 7-2894, Hanover, Kans. x15

FOR SALE — 1959 Model 45 JD combine, 12' header, good condition. Always shedded, \$1800. Also 1961 Model 55 JD combine, good condition. A. P. Betzen, FL 9-4623, Colwich, Ks. x17

FOR SALE — Oliver Radex plow, 3 bottom 14" 3 pt. Reasonable. Wayne W. Bergin, Route 1, Clay Center, Kansas. x14

FOR SALE — Pair good used 15.5x38 tractor tires, \$30. Phone YV 3-2805, Peabody. x14

FOR SALE — 612 Ford field cutter, like new. Call Upland 511 or CE 8-3509, Junction City. x15

ONE PAIR 500 pound outside wheel weights for International tractor, one pair 500 pound split inside weights. \$100 per pair. International 150 pound weights. \$35 per pair. Marvin Maxfield, Admire. x14

FOR SALE — Irrigation equipment. IHC 1800 rpm motor & pump, 150 joints alum. pipe, propane tank, 2 wagons, risers, couplers, birds, plugs, elbows — everything goes. \$5000. Call or write: Geo. T. Dawson, owner, Elmdale, Kansas. SB14

1959 A Baldwin 14', A-1, ready for harvest. Ernest Nutsch, Rt. 2, Derby, Kansas 67037 SP 6-2229. x14

FOSTER CHAFF wagon, used one year. Has own engine, \$1500. Richard Errebo, Sylvan Grove, Kans., Phone (913) 277-3502. SB15

## Help Wanted

EARN MONEY in your spare time. If you have 2 hrs. a day to spare from your home we can train you to earn over \$100 a month extra income. Write for interview appointment. C. K. Emrich, Rt. 2, Manhattan, Ks. x15

HELP WANTED — Mechanic to work in our service dept. Good working cond. Marysville Machinery Co., Marysville, Ks. SB17

## Stud Service

FOR SALE — 2-year old dun stallion with dorsal stripes with three socks, blaze face; sire Banjo Blair by Joe Blair; 2 year old brown filly by Harlan Tyree an outstanding filly. Also some other good two year olds and yearlings. Ph. 868-2020, Corn-ing, Kans., Frank Alexander. SB15



## Miscellaneous

### FREE K-State Football Season Tickets

Write: University Park  
Rural Route 4  
Manhattan, Kansas

WELL DRILLING, gravel  
packed wells. Our 38th year.  
Call collect Blue Rapids CA  
6-7276. Strader Drilling Co. x16

JUST ARRIVED: 1000 sheets  
new 4'x8' paneling, 3.50 to 4.25;  
3/4" ash, birch, mahogany &  
white pine cabinet plywood. Car-  
load 2x6's @ 10 1/2c bd. ft. groce-  
ries, hardware, clothing. Open 7  
days 8 to 8. McCoy's One Stop,  
Inc., 1 mi east Eskridge Hwy.  
x14

FOR SALE — 735 gal. Sunset  
bulk tank. Used 90 days. Dale  
Herpich, phone White City 349-  
2829. x14

FOR SALE — Saddle, bridle and  
all tack room supplies, also  
good saddle horses. W. E. Du-  
gan, Alta Vista, Kansas 66835.  
Phone 229-6430. SB14

LIKE NEW Garden tractor, 7  
hp, reel type & rot. motor,  
wheel weights, plow, snow push-  
er, rider, 2 cultivators. New  
\$700, our price \$250. Firestone  
Stores, 904 Center, Marysville,  
Kans. x16

## REMINDER

### AUCTION

at the residence located 1203  
4th St. in Clay Center, Kans.

WEDN., JUNE 5  
Starts 10:00 a.m.

Antiques  
Collectors Items  
Household Goods  
Many Misc. Items  
For full listings, see Grass  
& Grain May 28.  
Mr. & Mrs.  
Wes Norgaard  
Auct. Foster Kretz.

WANTED — FERTILIZER and  
lime bed. Also 14 or 16 ft. stock  
trailer. Pat Finnertz, Rt. 1, Hart-  
ford, Kans. x14

WANTED — Bulk tank, good  
condition, 160 gallons or less.  
State Model and price and year.  
Jack Clark, RR1, Florence, Kan.  
sas 66851. x14

## Poultry

750 WELP-LINE 937 pullets, 3  
wks. old; 400 Cal. White pullets,  
3 wks. old; 225 Top Cross pul-  
lets, 3 wks. old. Started cocks to  
go with pullets. Hoerman Hatch-  
ery, DI 8-2661, Linn, Kans. x14

## Mobile Homes

FOR SALE — 1959 Detroit  
Mobile Home 8x36, 2 bedroom,  
excellent condition, \$900. John  
Benda, Hanover, Kans., Ph. ED  
7-2451. x15

## Pets

REGISTERED BLUE Austral-  
ian puppies. Natural heelers.  
Highly intelligent. Affectionate  
pets. Also stud service. Jack E.  
Park, Solomon, Kans. OL 5-4547.  
SB15

FOR SALE — Registered Brit-  
tany Spaniel pups, 16 weeks  
old. Outstanding individuals  
from good hunting stock. Ready  
for training. Victor Daniels,  
Powhattan, Kans. phone 474-  
3223. x14

## 4-H FOUNDATION HIRES TWO NEW MEN

The Kansas 4-H Foundation  
has hired William M. Riley  
Jr. of Salina as assistant direct-  
or and Robert Judd of Cotton-  
wood Falls as editor of the 4-H  
monthly magazine, the Journal.  
Riley, a native of Washington  
County, has been a teacher in  
Salina. Judd is just graduating  
from K-State.

### AUCTION SALE

Sat., June 8

Starts 2 p.m.

105 Chestnut  
WAMEGO, KANSAS

I will sell my home, 2 lots & frl. at public auction.

### House, 2 Lots — Wamego, Kansas

Legal Description: Lots 112, 113 & frl., lot 114.  
General Description: Extra nice 2 bedroom modern home on  
2 lots & frl., with large living room, floor furnace, dining  
room, kitchen builtins, garbage disposal, large bath, 1/2 base-  
ment, garage attached, shop.

This home is in very good condition, both exterior and  
interior, rugs on living room, linoleum on bedrooms.

There is a large garden, strawberry patch, raspberries,  
grapes, 3 large apple trees.

Real Estate Sold By  
CARLSON AGENCY OF MANHATTAN, KS.

For more information and to inspect the property, call or see  
LAWRENCE WELTER, auctioneer, PR 8-3455, Manhattan,  
JOHN D. PARRY, 704 Vine, Wamego

For full information, see Grass & Grain, May 28.

John D. Parry, Owner

## LOOK THESE OVER

1961 Model 6000 Ford tractor, well equipped, with late 4-row cul-  
tivator ..... \$3250

1967 Model Allis Gleaner C-II, 18-ft., combine with cab, straw chop-  
per, etc., exceptionally clean machine ..... \$7500

IHC W-9 LP tractor with hyd.  
..... \$465

Allis SP100 combine, 12-ft. .... \$395  
53 Massey Super 26, 12-ft. .... \$395  
Massey Ferguson with backhoe & loader  
Work Bull tractor, priced down . \$1995  
1968 Case 930 diesel demonstrator with 5-16  
plow priced under the market.

New Case heavy duty A series plow, 6-bottom,  
16-inch ..... \$1095

1962 Allis Chalmers D-17 diesel, lead ballast tires,  
well equipped ..... \$2750

Massey Harris 44 with cultivator  
..... \$295  
4-bottom John Deere ABH plow,  
very good ..... \$385  
1955 John Deere No. 60 tractor,  
clean ..... \$945  
1963 D-19 Allis diesel tractor  
..... \$3695  
1960 Allis D-17 gas tractor, pow-  
er steering, clean ..... \$2250

Crawler-tractor with Case high loader  
..... \$1550  
D-2 Caterpillar crawler with loader  
..... \$1095

1961 Case 530 tractor backhoe, loader tractor  
..... \$2995

2 1967 Model Allis Gleaner combines, A-II's (save two thousand on  
these)

1966 Gleaner C-II combine, very clean 18-ft. header  
IHC 300 tractor with backhoe & loader, a good clean unit

1958 900 Case diesel tractor, new tires, a five-  
plow tractor ..... \$2695

IHC M tractor, runs good ..... \$550  
Blair 5-12 feeder wagon, 170 bu., used one day  
..... \$1219

1966 Gleaner C-II combine, very clean 18-ft. header  
IHC 300 tractor with backhoe & loader, a good clean unit

1958 900 Case diesel tractor, new tires, a five-  
plow tractor ..... \$2695

IHC M tractor, runs good ..... \$550  
Blair 5-12 feeder wagon, 170 bu., used one day  
..... \$1219

1966 Gleaner C-II combine, very clean 18-ft. header  
IHC 300 tractor with backhoe & loader, a good clean unit

1958 900 Case diesel tractor, new tires, a five-  
plow tractor ..... \$2695

IHC M tractor, runs good ..... \$550  
Blair 5-12 feeder wagon, 170 bu., used one day  
..... \$1219

## ADDINGTON'S SENTENCE IS 1 TO 7 YEARS

William Addington, former  
Wichita grain dealer, was sen-  
tenced to 1 to 7 years in prison  
last week by District Judge Tom

Grass & Grain  
June 4, 1968

19

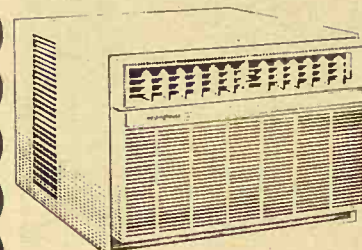
Raum, on a charge of making  
false entries in books of a corp-  
oration. Addington has 10 days  
to appeal.

## Compare - You'll Buy

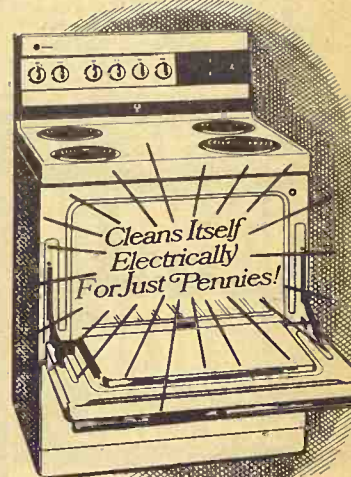
Westinghouse Appliances  
With The Advanced Features



Keep Cool With A  
Room  
Air Conditioner



Automatic Self Cleaning  
Electric Range



- Cleans in 2 hours
- Plug out surface units
- Automatic timing center

For the cleanest oven you can  
be sure if its Westinghouse.

5000 BTU \$99  
21,000 BTU  
only 14.5 amps. \$312.00  
17,000 BTU  
only 24" wide 14" high \$269.00

## BOYD APPLIANCE & TV

212 POYNTZ

Manhattan, Kans.

Your Westinghouse Dealer Since 1958

## SYLVAN SALES COMPANY INC.

AND  
MEYER STOCKER - FEEDER  
Sylvan Grove, Kansas

### SALE EVERY FRIDAY

84 consignors sold 789 cattle to 64 buyers. Nebraska and  
Iowa buyers bought 407 replacements. Oklahoma and Kansas  
packer buyers bought the butcher cattle and hogs. Butcher  
cows sold steady with last week. Butcher bulls steady to  
stronger. Feeder steers and heifers sold fully steady. Stocker  
steers and heifers steady. Stock cows steady.

Kind	Wt.	Amount	County
1 Bull Calf	BH	\$56.00	Ellsworth
2 Heifer Calves	BH	\$43.00	Barton
11 Whiface Steers	608	\$28.55	Russell
9 Whiface Steers	725	\$27.20	Lincoln
20 Angus Heifers	308	\$30.35	Ellsworth
15 Whiface Steers	900	\$25.85	Lincoln
4 Black Heifers	643	\$25.70	Osborne
11 Whiface Heifers	747	\$25.40	Lincoln
19 Angus Steers	301	\$34.35	Ellsworth
1 Butcher Bull	1330	\$23.00	Ellsworth
6 Holstein Steers	763	\$24.25	Lincoln
1 Butcher Cow	1295	\$19.00	Barton
13 Butcher Cows	1086	\$18.05	Ellsworth
44 Black Steers	429	\$31.75	Lincoln
5 Roan Heifers	579	\$25.20	Osborne
6 Angus Steers	392	\$33.50	Lincoln
19 Whiface Steers	809	\$26.10	Barton
9 Whiface Heifers	802	\$24.70	Barton
19 Whiface Steers	441	\$31.00	Lincoln
1 Butcher Bull	1625	\$22.90	Ellsworth
5 Black Heifers	493	\$27.30	Osborne
5 Whiface Heifers	621	\$25.35	Osborne

Micky Meyer - Phone 526-3295

Mike Meyer - 526-3535

Sale Barn - Phone 526-3225

## RADIO PROGRAMS:

KRSL Russell - 990 on dial Monday through Thursday  
Noon at 12:40 - Friday Morning 7:15  
KMMJ Grand Island Nebr., 750 on Dial 7:30  
Friday Morning

## LONGHOFFER SUPPLY

## MARION, KANS.

ALLIS CHALMERS and CASE  
Phone EV 2-2620



**LINN CO. CO-OP**  
**GROSS AT \$1.4 MILLION**  
 MOUND CITY — The Linn County Cooperative Assn. had sales of \$1.4 million and a savings of \$60,177 in the past

year with \$13,644 in cash refunded at the annual meeting. New directors are Albert McGee, Harold West and LeRoy Lamb. Quinton Ghormley is manager.



**Sales Co., Inc.**

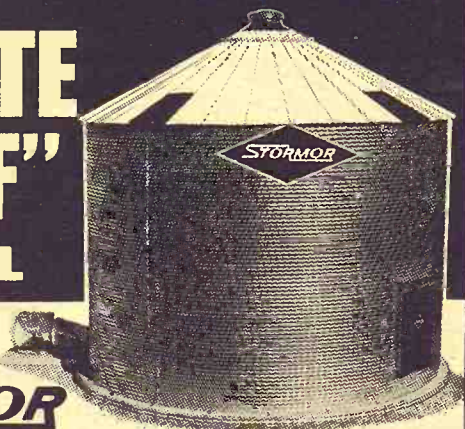
**CONSIGNMENT HORSE SALE**

**Sat., June 8**  
 50 to 75 Head

**Last Sale This Summer**  
 For More Information, Call  
 Rollie Lagasse  
 Phone 243-2215

Tom Walker, Owner  
 Phone 243-1674  
 Barn 243-1074  
 Larry Lagasse  
 Phone 243-1714

**JUNE**  
**"WHITE**  
**ROOF"**  
**SPECIAL**



from

**STORMOR**

until **JUNE 29, 1968**

**A "WHITE ROOF" AT NO EXTRA CHARGE!**  
 (SAVE \$200 to \$300)

Buy a Stormor Dry-O-Mation System Bin — with exclusive, glossy white roof, color permanently bonded to metal — at regular Dry-O-Mation System Prices!

Beautify your farmstead! Stormor "White Roof" is the bin farmers — and their wives — are talking about. A superior bin that also dresses up your farm with white roof, sparkling red Vac-U-Vents, door and hatch. Stormor Dry-O-Mation will handle more grain with less labor.

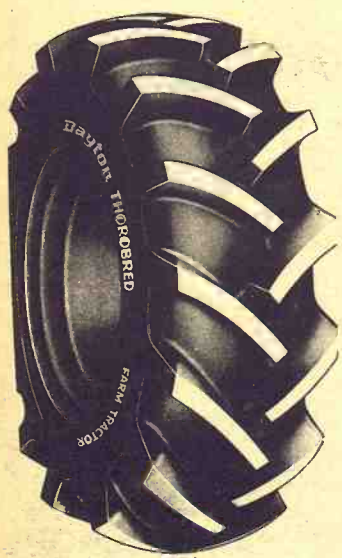
**WE MUST HAVE YOUR ORDER BY CLOSE OF BUSINESS JUNE 29, 1968. Erect later on if you choose.**

**MAX MILL SYSTEMS**

Jim Wahle Phone CE 8-7660  
 Route 2

**JUNCTION CITY, KANSAS**

**Dayton Thorobred**  
**REAR TRACTOR**  
**farm tires**



Dayton Thorobred  
 18.4 - 34

**\$133.48**

\$10.57 F.E.T.  
 Plus Exchange

The Dayton Thorobred REAR TRACTOR TIRE is specifically designed for rear power wheels on tractors used in all purpose farming under varied climatic and soil conditions. It is built to deliver years of dependable performance in all types of tractor operation. Full 24 month guarantee.



**Dick's**  
**Tire & Auto Service**  
 CONCORDIA, KS.

81 Hwy. & 15th CH 3-1362

**20** Grass & Grain  
 June 4, 1968

**First Wheat In**  
**Southern Kansas**  
**Cut This Week**

The wheat harvest in the southern tier of Kansas counties is expected to begin this week, with a peak being reached in the north part of the state by July 5, the Labor department says.

Crop prospects in Kansas are 76 percent of normal. The department said some spot shortages of experienced combine, tractor and truck operators are anticipated but that movement to harvest areas without having commitments was "definitely discouraged."

In other parts of the wheat belt, Oklahoma is expecting an all-time record yield, with a heavy demand for combines and trucks. The Colorado wheat harvest will be about 110 per cent lower than normal, and Nebraska is expecting the fourth largest crop on record.

About average production is expected in South Dakota, Wyoming, North Dakota and Montana, where the harvest will not begin until late July or August.

The department emphasized that in Kansas combine needs probably will be less overall than in previous years, particularly in the west, because of a lack of spring moisture.



**Speedway Winner**

Here's Bobby Unser who won the Indianapolis Speedway, driving the 500 miles at a record pace of 152.8 miles per hour. Unser is from Albuquerque.

**QUITTING BUSINESS**

**AUCTION**

**ONEIDA, KANS.**

**Fri., June 14**

**Starts 10:00 A.M.**

Entire shop equipment, buildings, 3 lots and a 1962 Ford LWB pickup.

For complete listings see Grass & Grain next week, June 11.

**OSTERHAUS BROS.**

Aucts: Gene Toby and Vern Groff; clerks Ed Boeing and Bob Toby.

**AUCTION SALE**

**Wednesday**  
**JUNE 12**  
 Starts 1:00 p.m.

Having sold my farm, I will sell all of my farm machinery, personal property, and miscellaneous items at public auction on the farm located at the southeast corner of Clay Center, Kans., or 1 block North of Clay Center fair ground 80 rods east on McBratney St.

**Farm Machinery**

1947 Ford tractor, motor in good condition, tires & tubes new  
 Belt pulley to be sold separately  
 Two-bottom 14" mounted plow  
 Seven-ft. mounted disc  
 Sixteen-ft. 4-section drag harrow  
 Mounted buzz saw and 3 blades  
 Mounted blade with angle adjustments  
 12 hole Case grain drill, good & tight  
 6-ft. McCormick pull type mower

10-ft. McCormick hay rake  
 One hay rack & wagon  
 One iron wheel low wagon  
 One iron wheel wagon  
 One grindstone  
 One hand corn sheller  
 One Fresno, one slip

**SHOP TOOLS & MISC. ARTICLES**

20 rods woven wire, 4-ft. high  
 1000 bu. wire crib  
 Butane kitchen range  
 Large wood heater  
 100 ft. of good garden hose  
 An assortment of 2x6 and 2x4  
 3 12x3 planks, 14-ft. long  
 100 hedge posts  
 12 large corner posts, 12-ft.  
 Several piles of concrete blocks 4" & 8"

**VALORIAL SHIELDS, Owner**

**TERMS: CASH.**

Aucts: Eldon Thorman & Clerk: Wm. Rankin  
 Dillon Williams, Clay Center, Ph. ME 2-3008 or ME 2-3560.

**AUCTION SALE**

**Wednesday**  
**JUNE 26**  
 Starts 1:00 p.m.

**Real Estate — 1352 Acres**  
**of Riley County Land**

We will sell at Public Auction all of our real estate acreage of approximately 1352 acres of farm and pasture land at the ranch headquarters located three miles east of Manhattan, Kansas on K-18 Highway in various tracts as described.

**GENERAL DESCRIPTION:** This tract of land lies just southeast of Manhattan, Kansas. All of the pasture land has been rested from one to two years and is in excellent condition. All tracts have excellent water either with good wells or large ponds or both. We will offer these various acreages as described separately with the auctioneer holding the bid on each high bidder of each tract and then he will offer the entire unit for sale and whichever brings the higher bid, it will be sold.

**Tract No. 1 — 160 Acres**

The NE 1/4 of Section 27-10-8 consisting of 160 acres comprises about 90 acres of good bottom land with 27.6 acre wheat base with the balance in row crop and alfalfa with about 20 acres of meadow and balance pasture. Excellent improvements, consisting of a 3 bedroom modern home, large barn, hay barns, implement sheds, granaries, and other buildings. Has a large area with various corrals and pens making an ideal cattle feeding location.

**Tract No. 2 — 640 Acres**

The NW 1/4 and South 1/2 of Section 27-10-8 consisting of 640 acres which is pasture land.

**Tract No. 3 — 412 Acres**

A tract of land and located in Section 27-19-8 consisting of approximately 412 acres of pasture land which is known as the Scott Pasture.

**Tract No. 4 — 140 Acres**

A tract of land located in Section 34-10-8 consisting of 140 acres of pasture land which joins the Deep Creek road to the North.

**Tract No. 5 — 160 Acres**

The SW 1/4 of Section 26-10-8 consisting of 160 acres of pasture land and known as the McLaughlin pasture.

**TERMS:** The Purchaser will buy this land only under contract with 25% down on date of sale when possession will be given with payment of 25% per year over a three year period or the purchaser may pay in full anytime after the first year. The Seller will retain the 1968 wheat crop and will give possession of this acreage after harvest. Purchaser will pay the 1968 taxes.

For further information contact the **HAROLD CARLSON AGENCY**, 801 Poyntz Avenue, Manhattan, Kansas, Telephone PR 8-3083, or **LAWRENCE WELTER**, Auctioneer-Salesman, Route No. 5, Manhattan, Kansas, Telephone PR 8-3455.

**LAZY-T RANCH**  
**Ambrose, Hunter & Lundberg**  
 Route 3, Manhattan, Kansas



## To Add Land For Gunnery Range

**SALINA** — An additional 2100 acres of land will be acquired around the Smoky Hill gunnery range southwest of here. The

estimated cost for the land is \$357,000, officials of McConnell Air Force base training facility, say.

The total cost of revamping the range will be more than a half-million dollars.

The relocation and realign-

ment of target complexes account for \$240,000 of the expenditure. The range is used primarily for air-to-ground weapons practice by F-105 Thunderchief pilots from McConnell near Wichita, who are training as replacement units for forces in Southeast Asia. It covers 35,000 acres of rolling hills in Central Kansas.

A new more central location of target complexes is planned. Air Force officials said, to reduce overflight of adjacent farm land and to lessen the danger of ordinance being released off-range.

## CLAY CENTER SALES CO.

**Hog Sale Every Monday** Starts 1:00 p.m.

**Cattle Sale Every Tuesday** Starts 12:30 Noon

Fat cattle featured last week, with a top of 25.60 for steers and 24.10-24.70 for heifers. Steer calves 30.00-39.25; heifer calves 26.00-30.25; Holst. steers 24.50-26.20; cows 17.50-20.50; bull top 24.00; heiferettes 23.50.

Fat hogs 18.00-19.25; sows 16.25-13.50; pigs by head 12.50-20.00; hogs over 260 lbs. @ 18.15.

H. P. ROBBINS, Clay Center, ME 2-3210

R. A. BRUEGGEMANN, Clay Center, ME 2-2761

MORACE WARE, Longford, ph. 338-2439

Barn Phone ME 2-2861

**CLAY CENTER, KANS.**

## Bypass County Dairy Princess Contests

**MANHATTAN** — County contests to select candidates for District Dairy Princess contests will not be required in Kansas this year, Dr. C. L. Norton, state chairman, has announced.

Rules were changed so that more emphasis is placed on the district events, according to Dr. Norton, who is head of the poultry and dairy science department at Kansas State University, Manhattan.

The 10 district winners will compete for the state crown during the Kansas State Fair next September in Hutchinson. The Kansas Dairy Princess will enter national competition.

"Many of the counties can't muster enough contestants to support a county contest," Dr. Norton said. "Some of the larger counties will continue to hold a contest and enter the winner in the district event."

Counties which do not hold contests may enter as many contestants as they wish in the district, according to Dr. Norton. Most district events will be held in June, which is National Dairy Month. Some are scheduled for August.

The Dairy Princess program is sponsored by the American Dairy Association of Kansas.

## Public Sale

I will sell at public auction the following property located at the farm 1 mile north and 1 1/2 miles west of Clyde on black-top road starting at 11:00 a.m. on — Household goods will sell first

**Friday, June 7th**

### HOUSEHOLD GOODS

4-burner gas range; Frigidaire refrigerator; metal cabinet; 1 wood cabinet; Dinette set with 6 chairs; small dinette table; roll-away bed; chest of drawers; antique cupboard; 1965 Sears deep freeze, good; 2 wood tables; one small heater; 1967 Maytag washer; 1967 Maytag dryer, both are real good; hall tree; dining table with 4 chairs; 3 buffets; 2 armchairs; Couch and chair, real nice; Youngstown base cabinet; Youngstown metal cabinets; six small tables; Sentinel TV with stand; Radio; Hall tree; 2 platform rockers; round coffee table; small antique table; Davenport and chair, like new; Beckwith piano and bench; library table; Edison record player; tea serving cart; 20" window fan; Warm Morning 8500 BTU stove; pole lamp; table lamps; bed & dresser; several rugs; treadle sewing machine; 3-pc. Vanity bedroom set; covered rocker; shelving; commode; sheets; quilts; pillow case; three 9x12 rugs; throw rugs; 14x15 carpet, near new; Venetian blinds; lamps; mirrors; pictures; tablecloths; towels; several sets of dishes; toaster; canister set; glasses; coffee maker; silverware; pot & pans; houseplants; 12-ga. shotgun; 22-cal.

Springfield rifle; Marlin 22-cal. pump-rifle; rifle shells.

### MACHINERY

IHC H-tractor, good rubber and in good shape; 6" auger; 4-wheel trailer on rubber; 12-8 grain drill JD burr mill; 1951 Chevrolet car with powerglide trans; IHC 7-ft. tractor mower; 16-8 Moline drill on steel; New Idea side delivery rake; 2 old IHC combines; dirt Fresno; spiketooth harrow; old machinery; dump rake; manure spreader on steel; 2-16 JD plow on steel; 300-gal. gas barrel & stand; 500-gal. propane tank.

### TOOLS

1/2-HP electric grinder; 6" table saw with motor; wood vise and bench; Shopmate 1/2-in. drill and bits; Sabre saw; tap & die set; Shopmate 7" skilsaw; set of box & open end wrenches; set of carpenter tools; planes; squares; saws; pipe wrenches; C-clamps; electric hedge trimmer; lawn mower; post-hole digger; hand sprayer; ladder; garden hose & tools; jacks; chains; drill press.

### MISCELLANEOUS

40 bales straw; electric fence posts; used lumber; well pump; block & tackle; scoops; forks; and many items not listed.

Terms: Cash day of sale.

Exchange National Bank, Clerk

**Mrs. Leslie Hanchett**

AUCTIONEERS:

Rollie Lagasse, Ph. CH 3-2215 Larry Lagasse, Ph. CH 3-1714

## Cloud County Livestock Commission Co.

Concordia, Kansas

**Sale Every Saturday**

### STOCKER & FEEDER STEERS

2 whiface steers ..... 465 @ 31.60  
2 whiface steers ..... 440 @ 31.10  
1 whiface steer ..... 810 @ 24.00  
1 whiface steer ..... 330 @ 32.00  
1 whiface steer ..... 480 @ 30.50  
1 blkwhiface steer ..... 530 @ 25.60

### STOCKER & FEEDER HIEFERS

1 whiface heifer ..... 450 @ 25.00  
1 whiface heifer ..... 320 @ 27.50  
1 whiface heifer ..... 300 @ 28.75

### COWS

1 black cow ..... 1210 @ 18.50  
1 whiface cow ..... 920 @ 22.00  
1 holstein cow ..... 1400 @ 18.60  
1 holstein cow ..... 1305 @ 19.10  
1 whiface cow & calf ..... @ 232.00 pr.  
1 black cow & calf ..... @ 240.00 pr.  
3 whiface cows ..... 1040 @ 20.25  
Baby Calves ..... 18.00 to 70.00 ea.

### BULLS

1 charolais bull ..... 1145 @ 22.30  
1 angus bull ..... @ 225.00 hd.

### HOGS

7 butcher hogs ..... 220 @ 19.25  
6 butcher hogs ..... 277 @ 18.35  
5 butcher hogs ..... 240 @ 18.40  
21 baby pigs ..... @ 13.50 ea.  
19 baby pigs ..... @ 13.75 ea.  
28 baby pigs ..... @ 13.00 ea.  
41 mixed pigs ..... @ 13.00 ea.  
13 mixed pigs ..... @ 12.50 ea.  
Pigs averaged about 35 lbs. a head.

For Information or Estimates:  
**GAIL GARTON, Concordia 243-1181**

**LEO RAUCH, Clay Center 632-3092**

Radio KNCK '1370' 6:45 T.T.S.

**J.M. "MATT" DAVIS, Delphos 623-4543**

June 4, 1968

Grass & Grain

21

## AUCTION SALE

**Thursday**

**JUNE 6**

Starts 1:00 p.m.

### TURKEY FARM EQUIPMENT

We have been instructed by James L. Quinn, Trustee in Bankruptcy, Topeka, Kansas, to sell the following described property by public auction, located at the John L. Scott Farm 3 1/2 miles south and 2 1/2 miles west of White City, Kansas. Equipment will be sold piece by piece and in lots to suit buyers.

36 Portable Range Houses 12 ft. by 20 ft., Suitable for Poultry or Hogs	12 Portable Range Houses 12 ft. by 12 ft., Suitable for Poultry or Hogs	OTHER EQUIPMENT 16 turkey range feeders, 16' long 70 automatic range feeders, 8' long 48 Turkey Poult starting waterers, 8 ft. 100 3-gallon waterers 120 starting feeders, 4 ft. 250 50-pound hanging turkey	feeders 150 wooden range trench feeders 200 steel posts, 5' to 6 1/2' 29 rolls of 20 rod hog wire 40 brooder stoves 1 IHC deep freeze, 11 cu. ft. 1 space heater 2 refrigerators 1 washing machine 1 old desk 2 exhaust ventilators with motor 10 roof ventilators
-------------------------------------------------------------------------------	-------------------------------------------------------------------------------	--------------------------------------------------------------------------------------------------------------------------------------------------------------------------------------------------------------------------------	-----------------------------------------------------------------------------------------------------------------------------------------------------------------------------------------------------------------------------------------------------------------------------------------------------

Terms:  
Cash or approved checks

Sale Conducted by **JIM KIRKEMINDE**, Auctioneer  
135 East 29th St., Topeka, Kansas — Phone AM 6-4590

### FARM LAND IN KANSAS

## AUCTION SALE

**Friday**

**JUNE 14**

Starts 10:30 A.M.  
(Note Sale Time)

We will sell at public auction the farm owned by the late **Lynn J. L'Ecuier** at the farm located 14 south, 5 east and 1 1/4 north of Concordia, Kans., 8 west and 2 1/4 north of Miltonvale or 5 east & 1 1/4 north of Junction 24 & 81 highways.

Legal Description: The Southwest 1/4 of Section (5), and the North 1/2 of the Southeast 1/4 of Section (5) and the E 1/2 of the Southeast 1/4 of Section (6), in township (8) Range (2) West of the sixth principal meridian in Cloud County, Kansas.

This is improved 320 acre farm with house, barn, other small building, good water supply pond, 189 broke ground, balance grass.

51.4 acre wheat allotment, average yield 23, feed grain base 110 acre, average yield 37; 10 acre soil conserving base, partially terraced and eligible for cost sharing for reshaping terraces, has 51A good growing wheat, 70 acres milo, 40 acres of alfalfa.

This farm will be sold in one unit, sold with present tenants rights.

Terms: 25% down, balance in 30 days or when abstract is delivered. Sellers to pay 1967 and all prior year taxes.

Buyer to get rent share of growing crops, the Government Certificates and pasture rent, to pay 1968 taxes, to get possession of buildings 1st March, 1969, wheat ground after harvest, feed grain ground 1st Jan. 1969.

Down payment to escrowed with the buyer and seller each paying 1/2 of escrow charges. Carol B. Begnoche is the tenant.

Your inspection invited prior to sale day. For further information contact auctioneer or **Don Diederich**, Salina, Kans., Box 1247.

This is a genuine auction sold to the highest bidder sale day. Terms and statement announced sale day shall take precedence.

Heirs of the

**LYNN J. L'ECUYER ESTATE**

Owners

C/O Don P. Diederich, Box No. 1247, Salina, Kansas  
Aucts: Foster L. Kretz, Clay Center, Kans.,  
Ph. Morganville WA 6-4422





## G&G Calendar

June 5 — Household goods in Clay Center, Kans., Wes Norgaard. Changed from May 29. Auct. Foster Kretz.

June 6 — Turkey farm equipment southwest of White City, Kans., James L. Quin, trustee in bankruptcy, Topeka Auct. Jim Kirkemide.

June 6 — Farmland sale in Dickinson County, Ks., northwest of Abilene, G. B. Foster estate, Amos & Guy Foster, administrators. Auctions Harold R. Siegel and Ray D. Wilson.

June 7 — Household goods east of Axtell, Kans., Tillie Peterson. Auct. Loren Johnson.

June 7 — Household goods southwest of Axtell, Kans., Tillie Peterson. Auct. Loren Johnson.

June 7 — Farm sale northwest of Clyde, Kans., Mrs. Leslie Hanchett. Auctions Rollie Lagasse and Larry Lagasse.

June 8 — Antique auction in Lindsborg, Kans. Antiques from (old Main) on Bethany

College campus.

June 8 — Real estate in Wamego. John Parry. Lawrence Welter, auct.

June 8 — Real estate sale in Junction City, Kans., Sunbeam Payne estate. Auct. C. W. Crites

June 8 — Real estate in Marysville, Kans., Eathel Finch estate. Auct. Don Roche.

June 8 — Antiques and household goods near Goessel, Ks., Mrs. P. S. Voth. Auct. Ed Reimer.

June 8 — Sale of donated items to The Roxbury Presbyterian Church, Roxbury, Kans., some antiques and weanling pigs included. Auct. Lee Remy.

June 12 — Farm sale southeast corner of Clay Center, Kans., Valorial Shields. Auctions Eldon Thorman and Dillon Williams.

June 12 — House and household sale at Wamego. Earl Sackrider. Lawrence Welter, auct.

June 12 — Buildings & Household goods in Idana, Kans., Crouse Bros. Auct. Foster Kretz.

June 14 — Farmland southeast of Concordia, Kans., estate of Lynn J. L'Ecuier, Don P. Diederich, Salina, Kans. Auct. Foster Kretz.

June 14 — Quitting business sale of Osterhaus Bros. in Oneida, Kans. Auctions Gene Toby and Vern Groff.

June 15 — Freight salvage in Clay Center, Kans., Topeka Motor Freight Inc. Auct. Foster Kretz.

June 15 — Furniture sale in Junction City, Kans., Kenneth Harding. Auct. C. W. Crites

June 15 — Household goods in Salina, Kans., Anna Kellogg estate. Auctions Frank Harz and Bob Perry.

June 15 — Furniture sale in Concordia, Kans., Edward Gross. Auctions Rollie Lagasse and Larry Lagasse.

June 21 — Auto service sellout in Seneca, Kans., Bergman Auto service. Auctions Gene Toby and Vern Groff.

June 22 — Furniture sale in White City, Kans., Mrs. Fitz-

simmons est., Mrs. Russell Sanford admin. Auct. H. M. Sharp.

June 22 — Real estate in Wamego. Robert Curtis. Lawrence Welter, auct.

June 22 — Quarter Horse Dispersal at St. Marys. Victor Zeckser. Bob Wilson, auct.

June 23 (Sun.) — Farmland and machinery north of Randolph, Kans., Hanson & Carlson. Auct. Bob Wilson.

June 26 — Farmland, Lazy-T Ranch, Manhattan, Kans. Harold Carlson, realtor; Lawrence Welter, Auct.

July 6 — Farmland auction northeast of Haddam, Kans., estate of Lillian Throop. Auct. J. T. Dickson, atty. for estate, F. R. Lobaugh, Washington.

July 12 — Farmland auction southwest of Herington, Kans., George Merilatt estate. Co-executors Neva Applegate and Lyle Shirk. Auct. & real estate broker Carl Schnell.

July 22 — Farm sale southwest of Talmage, Kans., Ralph Marrs. Auct. Foster Kretz.

Oct. 31 — Angus production sale, Wymore, Nebr., Double "C" Angus Farm, Clement Jones.

Nov. 1 — Hammarlund & Shannock annual Angus sale in St. Marys, Kans.

Nov. 11 — 23rd annual Hereford production sale southwest of Haven, Kans., W. H. and Harold Tonn, Auct. Harold Tonn.

Nov. 19 — Annual production sale of registered Herefords, Marysville, Kans. Elmer Peterson & Son.

Nov. 20 — Annual production sale of registered Hereford cattle, Elmer L. Johnson & Sons, Smolan, Kans.

**TEX REAL ESTATE**  
ONWARD WITH  
Cow Here  
Royal Essar  
C. Kato, Her  
Apparent

**SERVICEABLE BULLS WITH WEIGHT RECORDS**  
Priced . . . \$300 to \$500

**GRANT POOLE MANHATTAN, KANS.**  
Located 4 mi. south of I-70-K177 intersection, 2 mi. west on McDowell Creek Rd. Ph. PR 6-815.

The No. 1 Hog Market In Kansas

**WASHINGTON SALES CO.**

TRY US SOON

**HOGS every TUESDAY  
CATTLE every WEDNESDAY**

**YOU GET ACTION  
AT THE WASHINGTON AUCTION**

**ED BURT**

Barn Phone EA 5-2266 Residence EA 5-2393  
Washington, Kans.

**J.C. LIVESTOCK SALES INC.**  
**SALE EVERY SATURDAY**

**HOGS START AT 11:00 A.M.  
CATTLE AT 1:00 P.M.**

We were looking for a lighter run of livestock at our sale last Saturday, but receipts were heavier than expected, and prices were strong on a very active market, with hogs holding the gain of a week ago. Butchers topped at \$19.35.

On the cattle market, steer calves 350-500 lbs. sold @ \$29.00-\$33.00, with one calf bringing \$37.75. Heifer calves 350-500 lbs. @ \$25.00-\$26.30.

A good run of feeder cattle sold on an active scale, prices ranging from \$25.65-\$27.20 on feeders weighing 700-1100 lbs. The cow market was real good, mainly bringing \$18.00-\$19.25, with heiferettes @ \$20.00-\$22.00.

Two Angus bulls sold by the head @ \$370.00 and \$365.00. Butchers \$22.00-\$22.90.

We expect our sales will taper off as we near harvest, but want to remind you that we'll be operating for you as usual every Saturday.

Following is a resume of the hog market:

HOGS			PIGS		
23 white hogs	200 @	19.35	1 white sow	400 @	16.00
33 mixed hogs	226 @	19.35	1 white sow	340 @	15.90
15 mixed hogs	212 @	19.30	1 hamp sow	505 @	14.10
20 red hogs	232 @	19.25	1 red sow	650 @	14.30
21 mixed hogs	223 @	19.20			
21 mixed hogs	219 @	19.20	The pig market was somewhat lower. Good pigs weighing 60 lbs. to 90 lbs. brought \$17.00 to \$19.00. Smaller pigs from \$14.00 to \$16.00, and real small pigs from \$10.00 to \$13.00.		
21 mixed hogs	232 @	19.20			
13 mixed hogs	233 @	19.15			
SOWS					
1 hamp sow	340 @	16.00			

**LICENSED AND BONDED  
BARN PH. JUNCTION CITY CE 8-1471**  
If you have livestock to appraise, call:  
**VERN LANGVARDT, Manager, 502 UPLAND  
HOWARD LANGVARDT, Auctioneer, 520 UPLAND  
HERB NEUMEYER, White City, Phone 349-2863**

**Wednesday**

**JUNE 12**

Starts 11:00 a.m.

**AUCTION  
SALE**

I will sell at public auction at my home at 301 Walnut, Wamego, Kans.

**Real Estate  
Wamego**

Corner lot located 300 Walnut, 50x150, paved & guttered — paid.

Building 11x22 on skids. Can easily be moved.

**HOUSEHOLD GOODS**  
IHC 11-ft. deep freezer; refrigerator

Wood range with gas burner; Maytag electric washer; new electric skillet, cooking utensils; General Electric sweeper, electric iron;

Kitchen cabinet; silverware; treadle sewing machine; writing desk; piano & bench; bed spring, mattress; single bed; baby bed; iron cot; porch swing; porch glider;

3 dressers; 2 rocking chairs; trunks; 2 foot stools; flower boxes; cooper boiler; bedding & sheets.

**ANTIQUES**  
Maple table & 4 matching chairs; drop leaf table; combination china closet & book case, good condition; old battery radio; old trunk;

Oak library table; chest of drawers; 7 day clock; several old clocks; hall seat, good condition;  
Othe pieces antiques.

**PAINT, LUMBER, MISCELLANEOUS**

108 gal. paint, exterior & interior, white & all colors

300 quart paint, exterior & interior, white & all colors

Linseed oil, paint brushes & rollers, thinner

Paint sold in quantities; entire stock wall paper

1 lot 2x4 lumber

1 lot 4x4 lumber, oak wagon tongue

1 lot gal. roofing

Screen wire, tile cutter, cistern pump

36-ft. extension ladder

16-ft. ladder

10-ft. ladder

4 step ladders

Lawn mower

Paint tools, paper hanging tools

New toilet bowl & water bowl standard No. 12

This is a large sale with lot small items, tools, and other items too numerous to mention.

**EARL SACKRIDER**

Auctions Lawrence Welter, Glenn Applegate.

Clerk: Don Eisenbesis.

**Ronald Rice Motors, Inc.**

CHEVROLET

OLDSMOBILE

CADILLAC

North Kansas' Largest Volume Dealer

NW 2nd

Phone CO 3-4000

ABILENE, KANS.

**BIGGER & BETTER TRADES  
MADE MAY 1968 OUR BIG MONTH**

We went over our quota last month, and with our June drive for volume, you can expect the wildest deals yet.

1967 FORD XL convertible . . . . . \$3295

Radio, heater, automatic transmission, full power.

1966 OLDSMOBILE Dynamic 88 4-dr. . . . . \$2595

Radio, heater, automatic transmission, power steering and brakes.

1965 FORD Fairlane 2-dr., hardtop . . . . . \$1595

Radio, heater, 3 speed, V-8, red.

1965 PLYMOUTH Belvedere 4-dr. . . . . \$1395

Radio, heater, stick shift, V-8.

1965 OLDSMOBILE Delta 88 4-dr. hardtop . . . . . \$2295

Radio, heater, automatic transmission, fully loaded, air conditioner.

1965 PLYMOUTH Fury III, 4 dr. wagon . . . . . \$2195

9 passenger, radio, heater, automatic transmission, power steering.

1963 FORD Wagon 4-dr., 9 passenger . . . . . \$1295

Radio, heater, automatic transmission, power steering and brakes, air conditioner.

1967 CHEVROLET Impala, 2-dr. hardtop . . . . . \$2695

Radio, heater, automatic transmission, factory air, 18,000 miles.

1966 CHEVROLET Impala 2-dr. hardtop . . . . . \$2295

Super Sport, radio, heater, 4 speed.

1965 FORD Custom 2-dr., V-8 . . . . . \$1395

Radio, heater, stick shift, air conditioner.

1965 CHEVROLET Impala 4-dr. hardtop . . . . . \$1795

Radio, heater, automatic transmission, power steering and brakes, 24,000 miles.

1964 CHEVROLET Impala 4-dr. . . . . \$1495

Radio, heater, automatic transmission, power steering, air conditioner.

1963 PONTIAC Bonneville 4-dr. hardtop . . . . . \$1595

Radio, heater, automatic transmission, power steering and brakes, air conditioner.

1963 CHEVROLET Impala convertible . . . . . \$1495

Radio, heater, automatic transmission, power steering.

Open Evenings Till 9 p.m.  
Sundays 1 to 5 p.m.

This Year Put Up  
**MONSANTO**

**SEAL-VAC  
VACUUM SILAGE**

**NEXT TO  
NO SPOILAGE**

For more information, call  
your SEAL-VAC Dealer.

**Victor Kruse**  
Phone 2609  
Barnes, Kans.

**Livestock**

**Sale**

**Every**

**Wednesday**

Sale Starts 1:30 p.m.

**Lincoln**

**Sales Company**

Phone LA 4-4685 Lincoln, Ks.



# Did Feds Load Evidence On Meat Inspection Law?

Rep. Robert Dole (R-Kan.) has called for a congressional inquiry into methods used by

the Agriculture department in gathering data to support the need for a federal meat inspection bill.

Dole quoted a recent article in the National Observer newspaper which he said alleges that federal inspectors were sent into several states to find horrible examples of unsanitary condi-

tions in processing plants not federally inspected.

"If this report is accurate, and if the department undertook to mislead the American people, causing them to believe their state and local officials were incompetent and incapable of protecting them from the dangers of unsanitary meat," Dole said, "those responsible for this departure from democratic and accepted practice should be required to answer for their conduct and be dismissed immediately."

Congress passed a broad meat inspection bill last year which is to extend federal standards within three years to 15,000 plants that were not covered in the past.

States have up to two years — three if significant progress is made — to set up inspection programs for meat produced and sold within their borders. The federal government pays half the cost of the programs, which must be at least equal to federal standards. Prior to the bill's enactment, federal regulations applied only to meat moving in interstate commerce.

## Increase Value In Condemnation

ATCHISON — An Atchison County District Court jury has awarded an Atchison County farmer \$18,500 for 31 acres of his farm condemned for re-routing of US-73 near here.

Appraisers originally said the acreage was worth \$11,846, but Arthur W. Weinman appealed and asked for a jury trial to set a higher price.

This was the fourth jury trial conducted in district court here involving appeals from the awards of appraisers. Each of the four juries has set awards exceeding those set by apprais-

ers. The new route of the highway will begin at the south city limits and extend south to the vicinity of St. Patrick's Catholic Church where it will join the present route.

June 4, 1968

# AUCTION SALE

Saturday JUNE 8

Starts 1:00 p.m. Lunch Served

## FURNITURE

- 1 Used Miller piano, 55 years old
- 1 Old upright piano
- 2 End tables
- 1 What-not shelf
- 1 Drop leaf kitchen table
- 5 Kitchen chairs
- 5 Parlor chairs
- 1 Refrigerator
- 2 Beds and springs
- 2 Rocking chairs
- Treadle sewing machine
- 1 Hand electric sweeper
- Some lamps
- Potty chair
- 3 Odd chairs
- 2 Buffets
- Child's chair
- 1 Antique bookcase
- Library table

## MACHINERY & EQUIPMENT

- Sickle drive for '55 John Deere combine
- Pick-up guards for Massey-Harris combine
- 40 bu. hog feeder
- 7 12-in. Duckfoot shovels
- 3 Sections 7-ft. IHC 27 mower
- Set of 16 discs for Van Brunt drill
- Border wire for garden
- Auto crank case heater
- Washing machine
- 1 Water pump with electric motor
- 1 No. 5 John Deere 7-ft. mower, in good condition
- 1 27-ft. 6-in. grain auger, good
- 20,000 BTU heating stove, like new
- 1 Van Brunt drill w/fertilizer attachment
- Push reel lawn mower
- Cistern pump buckets
- Drive belt, 6-in., 50-ft. long
- 1 Used hay fork

## LUMBER

- Used lumber 2-in. x 8-in.; 2-in. x 6 in.
- Hedge posts
- Lots of used lumber
- Several hundred square feet of 4-in. flooring (used)

## PIGS

- 8 Weanling pigs

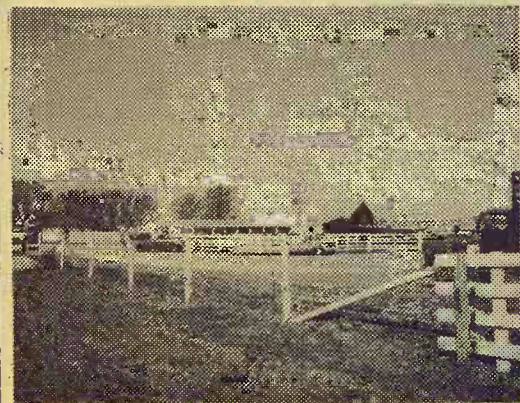
## MISCELLANEOUS

- 1 5 Gallon can Mobil oil
- 1 1 Gallon ice cream freezer
- Wicker flower baskets
- 1 Large outdoor flower planter
- Some Christmas decorations
- Bird cage on stand
- Man's bowling ball and bag
- Woman's bowling ball and bag
- Empty 5 gallon cans
- Small barrels
- 1 Baby stroller
- 2 Girl's bicycles
- 1 Tricycle
- 1 Child's spring jumping horse
- 1 Kerosene lantern
- 1 Aladdin kerosene lamp
- 2 Gasoline lamps
- Glass top fruit jars
- Many unlisted items
- Bedsprads
- Dishes
- Antique iron kettle
- Garden tools
- 4 Gallons paint
- 2 Mail boxes

## ROXBURY PRESBYTERIAN CHURCH

Auct: Lee Remy.

Clerk: The Church Treasurer.



# Reynolds Sale Barn

ABILENE, KANS.

Selling Every FRIDAY AFTERNOON

THE REYNOLDS SALE BARN  
WILL BE CLOSED FRIDAY, JUNE 7  
(One Sale-day Only)

to make arrangements for our  
**NIGHT SALES TO START**  
**FRIDAY, JUNE 14 at 8:00 p.m.**

Our night sales have proved very successful for many years. You can bring your livestock in any time, day or night, and they will be cared for at your request. We have good shedded feeding pens.

## Early Consignments For Opening Night

- 69 choice thin WF & Angus steers, 600-700 lbs.
- 17 WF heifers 650-750 lbs.
- 11 grain fed steers 1000 lbs.
- 65 choice WF steers, 700 lbs.
- 40 butcher cows

YARDMEN ON DUTY 24 HOURS A DAY.

## CALL DUDE REYNOLDS COLLECT

For information, requests for appraisals at no obligation, or inquiries regarding coming sales, call me at any time, day or night.

CO 3-3394  
DUDE REYNOLDS Abilene, Kans.

Bring your cattle in at any time day or night; we'll handle them for you at your request.

## Sale Every Thursday

Hogs 11:30 a.m.  
Cattle 1 p.m.

We did not hold a sale Memorial Day so the following is from the consignments for our sale of May 23rd.

## FAT CATTLE & FEEDERS

1 black steer-----	540 @	29.50
1 black steer-----	520 @	28.20
1 whiface steer-----	675 @	25.40
3 blkwhif heifers ----	572 @	25.40
2 black heifers -----	593 @	24.60
1 whiface heifer-----	690 @	23.00
1 whiface steer -----	775 @	22.75

## HEIFER CALVES

3 black heifers-----	387 @	26.90
5 mixed heifers -----	447 @	26.30
1 black heifer -----	325 @	26.10
2 blkwhiface heifers--	280 @	25.90

## HOGS & PIGS

25 mix fats-----	209 @	19.55
21 mix fats-----	240 @	19.35
22 mix fats-----	215 @	19.20
1 hamp sow-----	390 @	15.70
1 black sow-----	480 @	15.20
6 mix sows-----	602 @	14.70
1 white gilt -----	370 @	19.00
1 hamp boar-----	235 @	13.40
1 hamp boar-----	615 @	12.70
6 white feeders-----	157 @	21.00
3 white feeders-----	175 @	18.30
5 black pigs-----	@	22.50
15 white pigs-----	@	20.50
13 mix pigs-----	@	17.25
96 hamp pigs-----	@	16.50
20 red pigs-----	@	15.50
67 white pigs-----	@	15.00
35 mix pigs-----	@	10.25

## COWS

2 holstein cows-----	1300 @	19.70
1 holstein cow-----	1370 @	19.60
1 black cow-----	980 @	19.30
1 whiface cow-----	940 @	18.80
1 red cow-----	1130 @	18.60
1 blkwhiface cow-----	925 @	18.30
1 whiface cow&bull calf--	@	257.50
1 whiface cow&hfr calf---	@	239.00
1 blkwhiface heifer-----	@	210.00

## BULLS

1 whiface bull-----	@	275.00
1 black bull-----	@	240.00

## BULL & STEER CALVES

1 whiface steer-----	260 @	35.25
2 blkwhiface steers --	243 @	35.00
5 black steers-----	406 @	32.75
2 mix whif steers-----	430 @	29.70
1 holstein steer -----	390 @	24.75

## RALEIGH BREEDING, MANAGER

barn 562-3671; home 562-3547

Auctioneer: Larry Lagasse,  
Ph. Concordia, Kans. CH 3-1714

Marysville

LIVESTOCK & COMMISSION CO.  
MARYSVILLE, KANSAS



# Sell At St. Marys

Sell  
Or Buy

## Cattle & Hogs

By  
Auction

## Tuesdays

We had a good active market on receipts of 711 cattle. All classes of stockers and feeders were selling steady. Killing cows and bulls were steady. The following is a sampling of the sales made:

### STOCKER & FEEDER STEERS

3 black steers	585 @	29.00
9 black steers	557 @	28.70
1 whiface steer	595 @	28.50
6 whiface steers	595 @	28.20
1 blkwhif steer	630 @	28.10
1 whiface steer	610 @	28.00
1 black steer	700 @	27.50
1 black bull	595 @	27.40
1 whiface bull	595 @	27.30
10 black steers	667 @	27.30
1 black steer	685 @	27.20
3 black steers	556 @	27.10
18 black steers	683 @	27.10
1 black steer	630 @	27.00
2 black steers	560 @	27.00
1 black steer	745 @	26.90
36 blk&blkwhif steers	742 @	26.90
1 blkwhif bull	585 @	26.80
4 whiface steers	858 @	26.65
1 black steer	660 @	26.50
1 blkwhif steer	605 @	26.50
3 whiface steers	676 @	26.50
1 blkwhif steer	910 @	26.30
2 black steers	712 @	26.30
15 mixed steers	886 @	26.20
1 black steer	935 @	26.20
36 mixed steers	875 @	26.20
1 blkwhif steer	705 @	26.00
40 mixed steers	812 @	26.00
11 mixed steers	808 @	26.00
7 shthorn steers	715 @	25.90
10 whiface steers	919 @	25.80
5 whiface steers	830 @	25.75
2 whiface steers	620 @	25.70
4 whiface steers	578 @	25.60
5 mixed steers	824 @	25.60
17 mixed steers	1046 @	25.55
3 whiface bulls	640 @	25.50
12 mixed steers	826 @	25.25
37 mixed steers	790 @	25.25

### STEER CALVES

3 whiface steers	250 @	40.00
1 black steer	405 @	32.10
2 whiface steers	462 @	31.60
5 blkwhif steers	492 @	30.30
4 whiface steers	546 @	29.70
3 black steers	547 @	29.60
1 whiface steer	395 @	29.40
1 black steer	560 @	29.40
2 black steers	527 @	29.35
15 whiface steers	527 @	29.30
1 blkwhif steer	540 @	29.30
1 whiface steer	425 @	29.00
2 black steers	535 @	28.90
1 blkwhif bull	430 @	28.90
4 black steers	508 @	28.80
2 whiface steers	430 @	28.50
1 blkwhif steer	500 @	28.20
1 blkwhif steers	425 @	28.20
2 shthorn steers	415 @	28.00
1 whiface steer	540 @	27.80
1 whiface steer	435 @	27.60
1 blkwhif steer	550 @	27.60
2 whiface steers	545 @	27.50
4 blk&blkwhif steers	483 @	27.40
2 whiface steers	490 @	27.20
2 black bulls	530 @	26.90
3 whiface bulls	503 @	26.80
2 whiface steers	535 @	26.60
2 whiface steers	505 @	26.50
1 holstein steer	415 @	26.00
1 holstein steer	410 @	26.00
5 holstein steers	509 @	25.90
2 mixed steers	507 @	25.80
1 holstein steer	555 @	25.40

For Information or Estimates

Rezac Barn

St. Marys 437-2999

Delaine Rezac

St. Marys 437-6266

Elmer Imthurn

Maple Hill MI 3-2440

Paul Kramer

St. Marys 437-2993

### STOCKER & FEEDER HEIFERS

1 whiface heifers	570 @	26.10
18 mixed heifers	556 @	25.90
6 black heifers	587 @	25.60
17 black heifers	606 @	25.55
24 black heifers	732 @	25.25
4 whiface heifers	675 @	25.10
14 blk&blkwf heifers	690 @	25.10
1 shthorn heifer	745 @	25.00
1 shthorn heifer	675 @	25.00
5 whiface heifers	630 @	25.00
2 whiface heifers	605 @	24.70
1 black heifer	895 @	24.10
1 blkwhif heifer	995 @	24.00
1 whiface heifer	955 @	23.80
1 whiface heifer	830 @	23.60
1 whiface heifer	670 @	23.60
1 blkwhif heifer	585 @	23.60
5 mixed heifers	559 @	23.55
1 black heifer	700 @	23.40
5 black heifers	626 @	23.10
1 charolais heifer	560 @	23.10
2 whiface heifers	650 @	23.00

### HEIFER CALVES

4 whiface heifers	442 @	27.90
9 blkwhif heifers	503 @	27.55
3 blkwhif heifers	361 @	27.30
18 mixed heifers	499 @	27.00
1 whiface heifer	185 @	26.75
2 whiface heifers	525 @	26.50
1 whiface heifer	415 @	26.10
8 whiface heifers	535 @	25.85
2 blkwhif heifers	555 @	25.80

### COWS

1 roan cow	1040 @	20.10
1 holstein cow	1685 @	20.00
1 holstein cow	1285 @	19.65
1 holstein cow	1270 @	19.55
1 holstein cow	1350 @	19.50
1 holstein cow	1445 @	19.10
1 black cow	1320 @	18.75
1 whiface cow	1020 @	18.60
1 whiface cow	1195 @	18.40
1 whiface cow	860 @	18.40
1 holstein cow	1110 @	18.30
1 holstein cow	1125 @	18.30
2 whiface cows	1242 @	18.10
1 black cow	1380 @	18.00
4 black cows	1057 @	17.80
1 black cow	880 @	17.60
1 whiface cow	1185 @	17.35
2 whiface cows	885 @	17.20
1 whiface cow	880 @	17.00
1 black cow	1000 @	16.90
1 spotted cow	1210 @	15.80
1 black cow	770 @	15.70

### BULLS

1 whiface bull	1330 @	23.80
1 black bull	1510 @	23.80
1 whiface bull	1340 @	23.55
1 black bull	1650 @	23.50
1 whiface bull	1450 @	23.30
1 whiface bull	1365 @	23.00

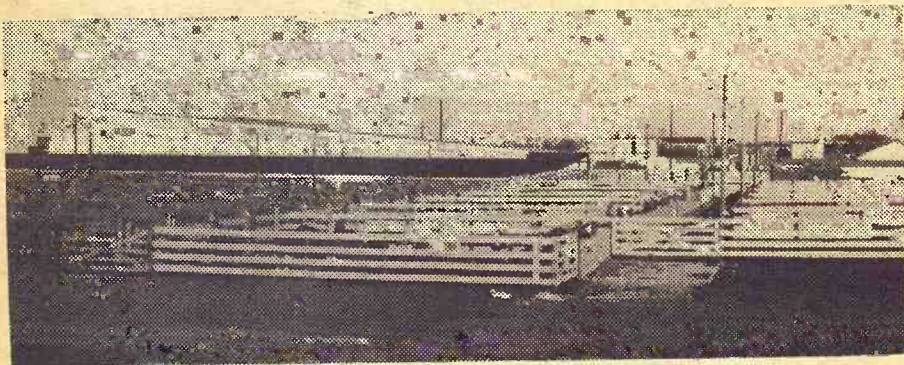
Auctioneers: Lawrence Welter, Gene Toby & Dennis Rezac

LIVESTOCK COMMISSION  
COMPANY

Rezac



St. Marys,  
Kans.



Receipts for the week totaled 709 hogs and 701 cattle with all classes of both cattle and hogs selling on a very active market. Fat hog top was \$19.35. We will not have a sale Monday June 10th, as we will be doing some remodeling work on our sale ring, raising it 18" for better visibility of the stock when being sold. The following is a partial listing of the sales made:

### CATTLE

Stan Bickle, Gypsum	1 bwf hfr	605 @	26.30
Clay Powell, Beverly	1 wf str	1020 @	25.50
Ernal Nelson, Falun	1 wf str	710 @	26.00
George Farney, Wilson	1 wf cow	1040 @	18.80
A. C. Perry, Tescott	1 hol cow	979 @	18.90
Bob Roesner, Salina	1 hol str	255 @	29.75
R. S. Godlove, Ada	1 wf hfrt	940 @	21.10
Len Unruh, Tampa	1 hol cow	1335 @	19.50
Ed Howie, Abilene	1 hol cow	1555 @	19.80
Eldon Adey, Wells	1 wf bull	1230 @	23.90
Mel Cox, Abilene	1 wf cow&clf	@	180.00
August Krauss, Gypsum	1 brs bull	1280 @	22.90
Harold Morical, Culver	1 blk bull	725 @	24.00
Jasper Sexton, Abilene	1 wf cow&clf	@	230.00
Miller Bros., Great Bend	6 blk str	926 @	25.55
Miller Bros., Great Bend	4 blk str	768 @	26.20
LeRoy Soukup, Lincoln	1 wf hfrt	855 @	20.60
LeRoy Soukup, Lincoln	1 blk bull	455 @	30.75
Marlin Burger, Halstead	1 chr bull	1430 @	24.20
Charles Prohaska, Soloman	1 chr bull	2095 @	24.90
Harold Pangrac, Niles	3 sht str	358 @	32.60
Leon Janzen, Lorraine	6 wf str	414 @	34.50
Willis Gans, Jr., New Camb.	1 wf str	505 @	30.50
Willis Gans, Jr., New Camb.	1 char str	510 @	30.90
Detrick Farms, Culver	1 hol cow	1305 @	19.90
Charles Carlson, Minneap.	6 wf hfrs	669 @	25.60
Dean Seim, Salina	1 hol cow	415 @	19.70
Ruben Galliard, Dorrance	1 red str	280 @	36.00
Louis Brenemen, New Camb.	1 blk bull	395 @	24.00
Homer Carlson, Lindsborg	1 wf str	445 @	31.75
Pauline Nienke, Lorraine	6 bwf str	512 @	30.60

Fred Janda, Wilson  
Ralph Cartner, Abilene  
Ralph Cartner, Abilene  
Sun Ranch, Falun  
Sun Ranch, Falun  
Kent Brummer, Ramona  
Kent Brummer, Ramona  
Carl Lindquist, Salina  
Carl Lindquist, Salina  
Brown Bros., Smolan  
Verl Buffington, Marquette  
Verl Buffington, Marquette  
Beemer & Beemer, Abilene  
Chester Long, Abilene  
Rick Rundquist, Assaria  
Merle Kuhlman, Gypsum  
Dave Lindholm, Lindsborg  
Eugene Alquist, Tescott  
Henry Benthurp, Sylv. Gro.  
Joyce Carlson, Lincolnville  
Fred Schueller, Minneapolis  
Melvin Schneider, Marquette

6 wf hfrs	386 @	29.75
24 wf hfrs	677 @	25.40
3 bwf hfrs	600 @	25.50
14 wf str	444 @	33.70
27 wf hfrs	410 @	28.60
25 wf cows	944 @	18.30
1 wf cow&clf	@	262.00
1 blk cow&clf	@	247.50
11 wf hfrs	945 @	24.50
11 bwf hfrs	936 @	24.05
1 hol cow	1255 @	19.40
1 hol cow	1390 @	19.10
1 hol cow	1750 @	18.70
1 gur cow	1165 @	18.70
2 hol str	432 @	26.30
1 wf hfr	780 @	24.50
5 char hfrs	512 @	26.40
1 wf hfr	365 @	26.80
1 hol cow	1060 @	17.60
1 hol hfr	665 @	17.25
2 wf hfrs	810 @	24.80
1 hol cow	1170 @	18.00
2 wf hfrs	642 @	25.10

Thelma Stafford, Miltonvale 1 wf bull 425 @ 28.00  
Robert Siemsen, Holyrood 1 char hfr 430 @ 27.10

### HOGS

Lester Saenger, Salina	12 mx hgs	222 @	19.30
W. D. Grassie, Tescott	20 mx hgs	212 @	19.35
Marilyn Burger, Assaria	5 red sows	430 @	15.40
Glen Nelson, Lincoln	7 mx hgs	223 @	19.25
John Lomax, Minneapolis	11 mx hgs	231 @	19.20
Melvin Sundberg, Lindsborg	13 mx hgs	228 @	19.20
August Mayer, Gypsum	10 mx hgs	215 @	19.10
Ron Phillips, Abilene	1 hm boar	430 @	12.50
Arnold Lindblade, Assaria	2 whi boar	242 @	13.90
Don Kissick, Beverly	22 mx hgs	222 @	19.30
Earl Mattison, Jr., Salina	2 spt sows	587 @	14.55
Dave Wright, Marquette	12 mx pigs	@	19.25
Billie Nolan, Abilene	9 blk pigs	@	16.00
Debbie Nolan, Abilene	9 mx pigs	@	15.50
Robert Kempke, Jr., Kanop.	13 whi pigs	@	16.00
Harold Tillberg, Salina	12 blk shoats	@	21.00
Doug Anderson, Smolan	1 blk cow	655 @	14.60
Emory Frost, Smolan	14 mx hgs	222 @	19.10
Alfred Mayer, Gypsum	26 mx hgs	231 @	18.70

### FOR INFORMATION OR ESTIMATES

LAURENCE CLEMENCE

Abilene

Phone CO 3-3091

MERRILL CHRISTIANSEN

Durham

Phone 732-3371

BOB MUIR

Salina

Phone TA 3-2963

Market Reports  
Radio Station KSAL, Salina  
6:45 a.m. Every  
Monday, Wednesday & Friday

KFRM  
6:55 a.m. Mon. through Fri.

Farmers & Ranchers  
LIVESTOCK COMMISSION CO.



West on old US 40  
Barn Phone  
913 TA 5-0211 SALINA, KS.

Bonded

Licensed