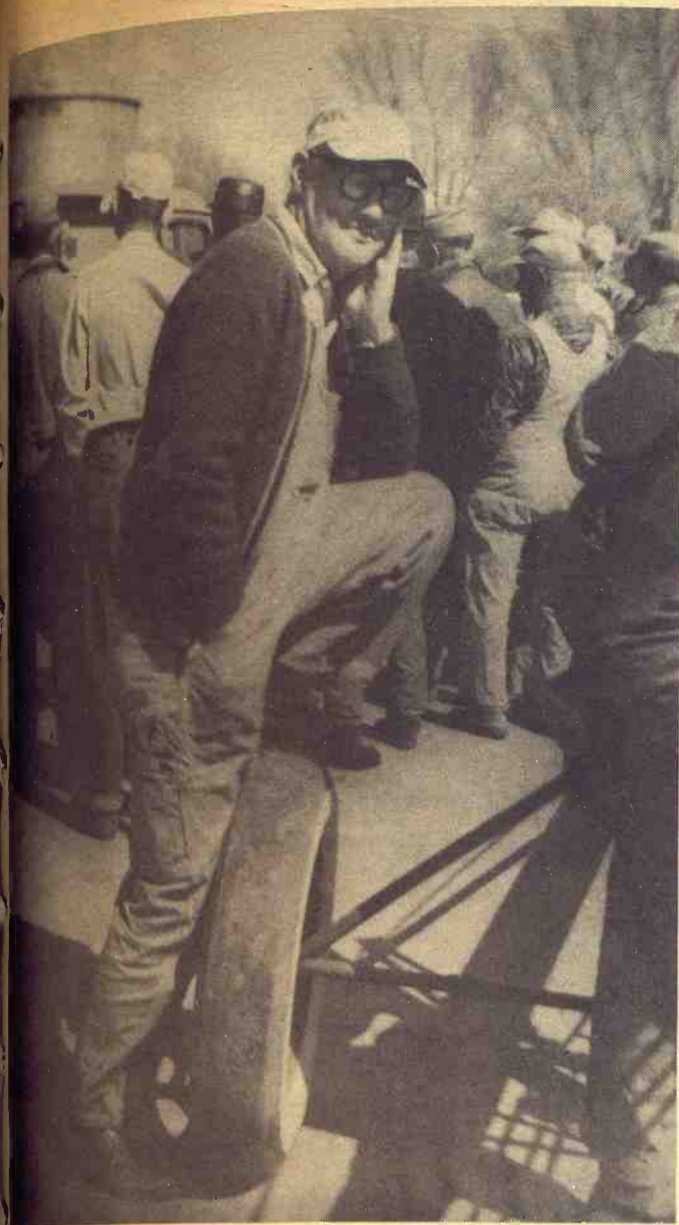


S
 WS
 ---1350 @ 18.00
 ---1170 @ 18.00
 ---1052 @ 18.00
 ---1160 @ 18.00
 ---960 @ 17.50
 ---900 @ 17.50
 ---1235 @ 17.50
 ---1195 @ 17.50
 ---1080 @ 17.50
 ---1045 @ 17.50
 ---1090 @ 17.50
 ---1025 @ 17.50
 ---833 @ 17.50
 ---1085 @ 17.50
 ---1085 @ 17.50
 ---1550 @ 17.50
 ---960 @ 16.50
 ---886 @ 16.50
 ---955 @ 16.50
 ---925 @ 16.50
 ---932 @ 16.50
 ---1185 @ 16.00
 ---970 @ 15.75
 ---853 @ 15.75
 ---1020 @ 14.50
 --- @ 264.00
 --- @ 250.00
 --- @ 244.00
 --- @ 232.50
 --- @ 228.00
 --- @ 227.00
 --- @ 210.00
 --- @ 184.50
 --- @ 171.50
 MISSION
 Marys
 Kans.
 Salina
 Only
 :00 a.m. Cattle
 they are consign-
 1077 @ 23.70
 1054 @ 22.85
 1205 @ 23.50
 835 @ 22.60
 986 @ 22.90
 1130 @ 23.75
 992 @ 22.90
 1033 @ 24.05
 924 @ 23.00
 213 @ 17.50
 208 @ 17.50
 207 @ 17.35
 217 @ 17.35
 217 @ 17.30
 215 @ 17.40
 466 @ 14.50
 435 @ 14.30
 312 @ 15.75
 226 @ 17.50
 223 @ 17.25
 223 @ 17.35
 202 @ 17.40
 510 @ 14.00
 226 @ 17.20
 231 @ 17.10
 nchers
 ON CO.
 40
 211
 used



Not Much Interested
John Larson, Concordia farmer, takes a rest and figures he's not missing much at an area auction.

Takes A While To Assay Freeze Damage

What has been the frost damage to wheat in Kansas? You can't evaluate the injury until 7 to 10 days after the freeze, after the weather has warmed up, Frank Bieberly, Extension agronomist at Kansas State University, says.

Wheat plants start to lose resistance to cold temperatures as soon as they begin to grow in the spring. The more they advance in development, the more tender they become, and they reach the most susceptible stage during the bloom stage, he explains.

The extent of damage to wheat depends on 1) how low the temperature was and for what length of time, 2) the stage of development of the plant, and 3) the condition of the soil.

Over the state, wheat varies in development from the jointing stage to heading, Bieberly says.

To evaluate frost damage, select stems at random from all parts of your field about a week or 10 days following the frost. Split the stems lengthwise with a sharp blade.

Observe the bud or growing point just above the top joint. A normal bud has a greenish color and is plump and succulent. When it has been killed by frost, it turns white, then yellow, and finally to brown and shriveled.

If the wheat plant is frozen at the boot stage and the growing point is killed, it won't come out, Bieberly reminds. It is possible that tillers will grow from the crown and produce grain. Wheat stems can also be injured by frost, which would result in lodging. Plants may or may not recover from this damage. Wheat that is frozen in the heading stage will have sterile or partially sterile heads.

Cash receipts from milk and cream sold by Kansas farmers during 1966 reached a 14-year high despite a continuing decline in total milk production, according to the Kansas Crop and Livestock Reporting Service.

Sales value of milk and cream in 1966 totaled \$71,055,000, 11 percent more than in 1965 and 13 percent more than the 1960-64 average.

Receipts from whole milk sold to plants and dealers reached an all-time high of \$65,240,000. Farm-separated cream brought in \$3,735,000 and milk and cream retailed by farmers \$2,080,000.

The gross farm income from dairy products in 1966, which included \$2,848,000 worth of milk, cream and butter consumed on the farm in addition to receipts from marketings, totaled \$73,903,000. The highest since 1957.

The value of milk produced, including the value of whole milk fed to calves was \$75,784,000 in 1966.

Dairymen in Kansas sold 1400 million pounds of whole milk to plants and dealers. Whole milk sold to plants accounted for 82 percent of all the milk produced in 1966 compared with 81 percent in 1965. Milk separated and sold as cream accounted for 175 million pounds of milk, down 12 percent from last year and represented 11 percent of the total milk utilized in products sold.

Milk retailed by the farmers direct to the consumer as fluid milk and cream in 1966 was estimated at 21 million pounds, down 2 million pounds from 1965. Milk used on farms where produced continues its downward trend and totaled only 107 million pounds.

Milk production per cow continued to increase, setting a new high at 7,470 pounds in 1966, up 390 pounds from a year earlier.

GRASS & GRAIN

13th year no. 9 May 2, 1967

Cheer In May Price Forecast

May should be a good month, price-wise, for most classes of livestock, report Kansas State University economists in their monthly Market Forecast.

At the other extreme are dairy products, which figure to suffer a seasonal price decline.

The forecast, commodity by commodity, is as follows:

FAT CATTLE — Steady to Slightly Higher. Continued heavy receipts with heavy weights will prevent a significant price increase.

HOGS, SPRING LAMBS — Steady to Slightly Higher. These commodities usually show seasonal strength this time of year as supplies ease off relative to demand.

FEEDER, SLAUGHTER STEERS, HEIFERS — Steady. Continued heavy supplies are expected in immediate future.

Improved pasture conditions may help stoke market.

GRAIN SORGHUMS, CORN — Steady. Feed demand offsets increased planting intentions and receipt of rainfall.

WHEAT — Steady to Slightly Lower. Much-needed moisture makes possible new alltime record production in 1967.

GRADE A MILK — Steady To Slightly Lower. Expected Class I price increases should retard seasonal price drop.

MANUFACTURING MILK — Slightly Lower. Prices will decline seasonally as imports and government purchases are stepped up.

EGGS — Slightly Lower. High production will continue. Late pullets are now coming into production.

'66 Milk Income Was A 14-Year High

The number of milk cows continued to decline and the annual average number of 228,000 in 1966 was the lowest in 43 years of record.

Milk production for the state was likewise at a 43-year low of 1,703,000 pounds, a 3 percent decrease from 1965.

United States

The number of milk cows on the nation's farms in 1966 was the smallest of record at 14.1 million.

However, they produced at a new high rate of 8,513 pounds per cow, resulting in a total of 120.2 billion pounds of milk. The farm value of milk produced in 1966 was a record high of \$5,781 million. Cash receipts of \$5,513 million from farmers' marketings of milk and cream

were a record—topping the 1965 previous high by 9 percent.

U.S. milk production in 1966 was down 3 percent from 1965 but output per cow was up 3 percent from the previous year.

Milk used on farms where produced is estimated at 5,494 million pounds in 1966. This was less than a year earlier by 8 percent. Farm use in 1966 consisted of 1972 million pounds fed to calves, 3160 million pounds consumed as fluid milk and cream, and 362 million pounds used for farm churned butter.

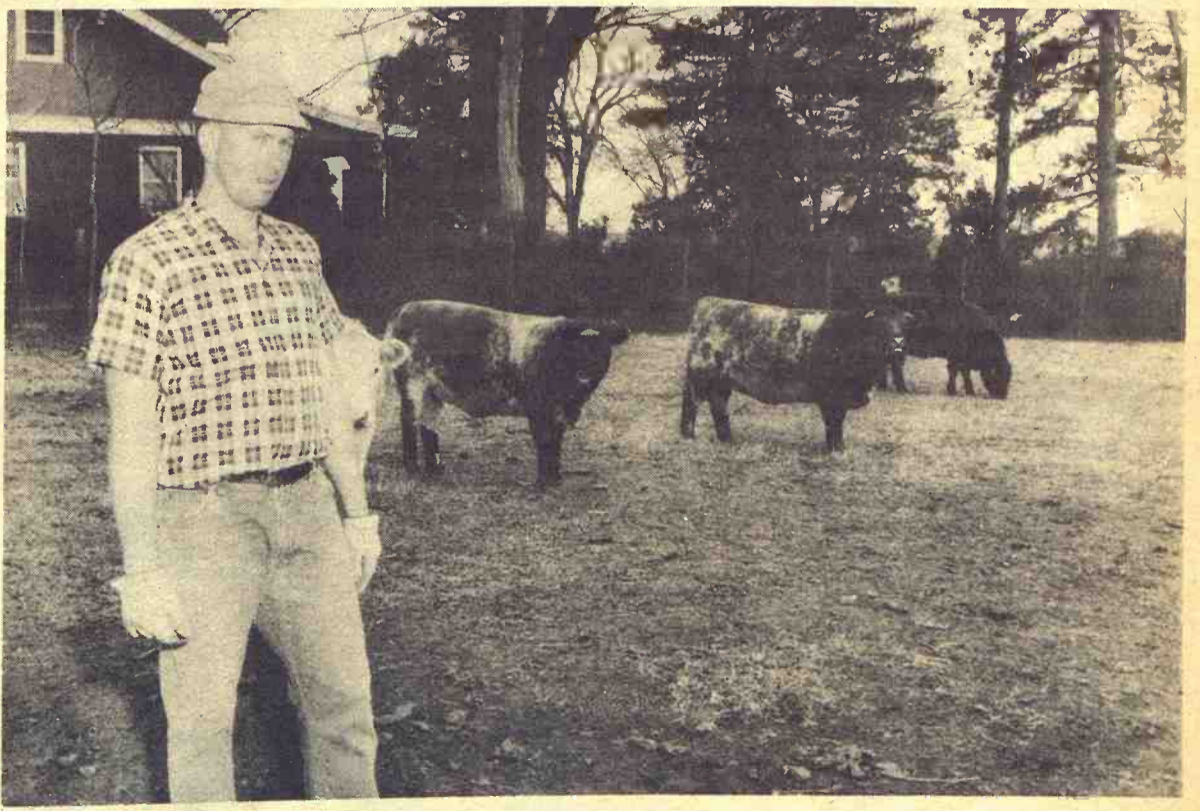
Milk and cream marketed by farmers totaled 114.7 billion pounds of milk equivalent in 1966, down 3 percent from 1965. Marketings of whole milk to plants totaled 110.0 billion

pounds in 1966, about 2 percent less than during 1965. Milk skimmed for sale as farm-separated cream totaled 3.0 billion pounds compared with 3.7 billion pounds in 1965.

Milk sold directly to consumers totaled 1.7 billion pounds in 1966, about 6 percent less than in 1965.

HOLTON YOUTH IS BEST AREA FFA JUDGE

BLUE RAPIDS — Alan Simmons of Holton was high individual judge at the Northeast Kansas FFA livestock judging contest at the Harold Stump farm near here. Next best were Jerry Conley of Centralia, Gary Linkugel, Marysville, and Alan Schlodder of Holton. Holton was the team winner.



He Likes Shorthorns
Eddie Grathwohl of Hiawatha shows part of registered Shorthorn herd. He runs about 20 cows and farms with his father, John Grathwohl. The family operates about 480 acres.

L.H. Simerl

Why Corn Dipped

When corn prices tumbled in mid-April, a lot of farmers started asking questions. (Farmers ask questions when prices fall; consumers, when they rise.) We will try to list a few facts about the corn situation and the outlook.

As estimated by the USDA, stocks of corn on farms April 1 totaled 2,034 million bushels. This amount was 4 per cent less than a year ago. The estimate of stocks of all grains in elevators and other off-farm storage facilities as of April 1 will be released on April 24.

Sorghum grain stocks on farms at the first of April totaled 137 million bushels — up 2 percent from last year. Barley farm stocks were 114 million bushels — up 15 percent. But oat stocks were down 21 percent, to 354 million bushels. Total farm stocks of the four feed grains were 2,471 million bushels — 5 percent less than on April 1 last year.

Foreign demand has been less than a year ago. Exports of corn from Oct. 1 to Apr. 7 totaled 258 million bushels — down 29 per cent from last year. Exports of sorghum grains were 142 million bushels — down 11 per cent. Barley exports were only 16 million bushels — down 58 per cent. Exports of oats totaled only 7 million bushels — off 53 per cent.

Exports sales of corn have been less than last year because other countries have more feed, the quality of our corn is poor, and our prices have been relatively high.

The disappearance of corn on farms in the six months from October 1 to April 1 was 2,599 million bushels — up 2 per cent from a year earlier. Disappearance of sorghum grain was 634 million — up 10 per cent.

Farmers are using more corn because they have more livestock and poultry. They had 9 per cent more cattle on feed October 1 than the year before, 7 per cent more on January 1, and 3 per cent more on April 1. Furthermore, the increases were in heavy cattle — big eaters at the feed bunk.

Hog numbers were also up sharply, as shown by pork production figures. In the six months from October 1 to March 1, pork output was greater than a year before. On March 1, farmers reported having only 3 per cent more pigs and hogs on hand than a year earlier.

Poultrymen have used more feed too. Broiler production has been up about 10 percent; egg production, 6 percent. Dairymen probably have been using about the same amount of feed as last year, since milk production has been about the same.

USDA statisticians now expect that the carryover of old feed grains will total 25 million tons — 7 weeks supply at the present rates of use and export. Prices are dominated now by

changing prospects for 1967 crops. Harvest is already underway in the southern hemisphere. Argentina expects a record crop — 350 to 400 million bushels, 25 to 40 percent larger than last year. South Africa also has a record crop — 300 million bushels, 50 percent more than a year ago. Europe is likely to have big feed crops. Much land usually seeded to winter wheat will be planted to barley and other feed crops.

If the weather is average and U.S. farmers carry through with the intentions they reported, they will produce about 4.6 billion bushels of corn — 9 percent more than last year.

L. H. Simerl
Univ. of Illinois

GRASS & GRAIN

The Mid-Kansas news weekly. Published each Tuesday at 1207 Moro, (Box 1009) Manhattan, Kansas, 66502 by
AG PRESS
Dean Coughenour
E. R. Woodward
Second class postage paid at Manhattan, Kansas
Subscription: \$3 year
CIRCULATION 11,108

LOSES BARN TO FIRE NEAR LORRAINE
LORRAINE — Albert Koutz has lost a barn to fire near here. He was burning hedge and the barn caught fire.



Tools Too

AGGIE
HARDWARE
1205 Moro
Manhattan, Ks.

May 2, 1967

2

Grass & Grain

MIDWEST RENDERING & SUPPLIES

BELLEVILLE, KANS.

We sell meat scraps and fat for feed.
We pick up materials from butcher shops, Locker plants, and Fresh Dead animals.

For service call Belleville: JA 7-5545 or your local number:

Beloit	738-3731	Leonardville	
Cawker City	781-4711	Lincoln	524-0900
Clay Center	632-3424	Marysville	443-3725
Clyde	446-3621	Miltonvale	427-3015
Glasco	568-2636	Minneapolis	392-3043
Hanover	337-2291	Morganville	926-3074
Hunter	529-2145	Washington	325-2911
Jamestown	439-2655		

"One Friend Tells Another and HOME Grows"

For Our Rural Neighbors
Who Want To Strengthen Their Financial Positions

THE HOME SAVINGS PLAN
WILL Work For You . . . As It Does For Others
INSURED SAFETY OF SAVINGS

Save in person or by mail

BUSINESS HOURS
9:30 A.M. — 4:00 P.M.
SATURDAYS
9:30 A.M. to 12:00 Noon

HOME
SAVINGS AND LOAN ASSOCIATION
107 NORTH FOURTH STREET
MANHATTAN, KANS.

YOUR COMMUNITY HOME FINANCING CENTER

Head Start on Safety



In a **Flame Orange** COOPER CAP



On the highway and in the field, you will be SAFE when SEEN!



Get your cap FREE with the purchase of COOPER FEEDS. See your dealer for complete information.

It's Safer to be a Standout!



Cooper Feeds



(Void in states where prohibited by law)

The O. A. COOPER COMPANY, Humboldt, Beatrice, Cozad, and So. Sioux City, Nebr.
HOME OFFICE: HUMBOLDT, NEBRASKA 68376

We don't compete with our customers by raising meat — this means broilers, layers, turkeys, hogs or cattle — nor do we intend to.

Paper Back 25c - 35c
Books 50c - 75c
Largest Stock In Town



University Book Store

623 N. Manhattan Manhattan



Murphy-Miller
Kroehler Rockey



Team Back
with Nylon
Fibre Cover 29.



OPEN NIGHTS
FREE DELIVERY

Sedlacek's FURNITURE & APPLIANCES

"We'll Eat The Price Tags"

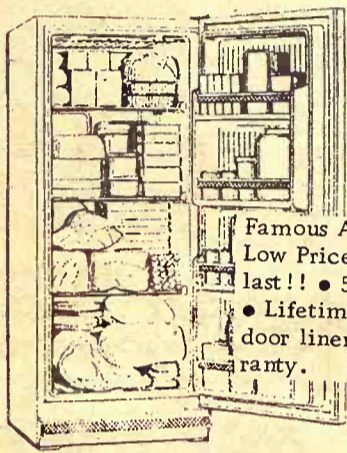
Show You Offer

WE MATCH OR WE BEAT THE ADVERTISED PRICE OF ANY COMPETITOR IN OUR 40000 SQUARE MILE TRADE AREA

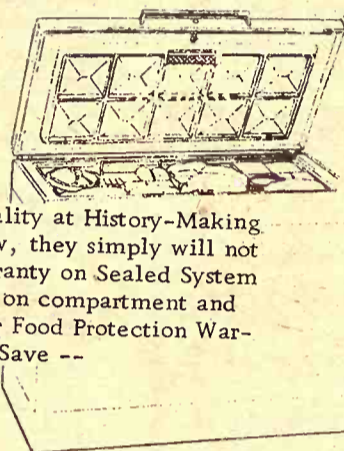
Try and Beat These Values and We'll Eat the Price Tags



EASY CREDIT



Famous Admiral Quality at History-Making Low Prices. Buy now, they simply will not last!! • 5-Year Warranty on Sealed System • Lifetime Warranty on compartment and door liners • 5-Year Food Protection Warranty. Trade & Save --



YOUR CHOICE Upright Or Chest 15'

\$169

Admiral



Imperial Duplex 19 AUTOMATIC-DEFROST Refrigerator **SAVE \$100**
Trade & Save **\$349**

• 21 1/2 lb. True Sub-Zero Freezer
• The narrowest side-by-side Freezer-Refrigerator Ever

BARGAINS IN BEDROOM DEPARTMENT

OVER 600 PIECES

All these famous names: * Bassett * Stanley * Sprague-Garleton * Kling * Coleman * Ward * Broyhill * Johnson-Carper * Timely * Vaughan * Delker * Jamestown Taylor.

The Danholm Group

- Double Dresser with Landscape Mirror
- Full Size Panel Bed
- Center Drawer Guides and Dustproof
- Matching Chest of Drawers \$39.95 Extra

109⁸⁸

The Biggest Selection Anywhere — Living Rooms, Dining Rooms — Appliances.

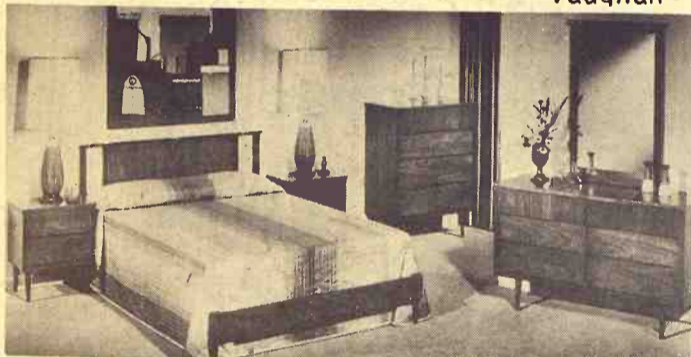


\$139

Murphy-Miller Kroehler Rocker



29.88



\$12.95 Aluminum 5' Step Ladders **8.88**

Medicine Cabinet With Mirror \$5.95 **4.88**

\$8.95 Ladies Electric Hair Dryer **4.88**

4.95 Electric Corn Popper **2.88**

6.95 Family Barber Kit **4.88**

Non-Skid Carpet Runner **2.25**

\$12.95 Eskimo-Oscillating Electric Fans **7.88**

52 inch - Steel Wall Cabinet **12.88**

\$24.95 Beds Wood Panel **12.88**

CARPETING

We are stocking the largest selection in Kansas.

BIRCH CRIB

with Steel Spring \$22.95 Value **\$15⁸⁸**

MODERN NURSERY CHIFFROBE

• Select Hardwood Construction
• 4 Large Drawers
• Roomy Wardrobe with Metal Clothes Hanger
\$49.95 Value **\$36⁸⁸**

SHOW YOU SALE ENDS AS ANNOUNCED AFTER SATURDAY, MAY 6th.

AIR CONDITIONERS

General Electric - Admiral - Gibson - Amana

Buy Now and Save.

89⁸⁸

Telephone ED 7-2345

- Compact
- Long Life Filter
- 280° Air Flow Louvers
- Removable Front Grill
- Easy to Install

Prices Start At -----

One of the Largest Stock of Air Conditioners All Sizes.



OPEN NIGHTS WEDNESDAYS & SATURDAYS • CLOSED ON SUNDAYS
FREE DELIVERY WITHIN 200 MILES OF HANOVER, KANSAS

Sedlacek's
Furniture & Appliance
HANOVER, KANSAS

Good Pay For Chick Handlers

If you can tell whether a chick will become a hen or a rooster and handle the job at a rate of 700 an hour with 90% accuracy, you can get a job in Tennessee. The Tennessee Department of Employment Security says it is looking for experienced chicken sexers. Pay is \$175 for a 40-hour week.

Bill Lagemann Buys Concordia JD Agency

CONCORDIA — After 10 years as a company representative of John Deere, Bill Lagemann has resigned as JD branch manager in Salina and has taken over the John Deere dealership in Concordia, formerly Huber Implement Co. Lagemann headed the factory

May 2, 1967

4

Grass & Grain



branch in Salina for the past three years, succeeding Brock Smith, who was called into the Kansas City offices. Smith will operate the Salina branch until a new manager is named.

A graduate of University of Missouri in agricultural economics, Lagemann spent most of his employed years with John Deere.

The Lagemann family, Mrs. Lagemann and the three children, will live in Concordia after the school semester is completed. The children are aged 6, 8 and 12.



Working Hard

Auctioneer Larry Lagasse works hard to move some property at a G&G area auction.

Increase Your Production Efficiency with

DODSON'S BIG-BOY SILALL SYSTEM

LIVESTOCK FEEDERS AND DAIRYMEN PROFIT FROM DODSON'S YEAR-AROUND "FILL AND FEED" MECHANIZATION...

Why should you use a Dodson Silall System? Ask a dozen Silall owners, and you get a dozen answers which add up to SILALL SYSTEMS MAKE PROFITS FOR THEIR OWNERS! Eliminate waste of feed, time, labor and money by bringing production efficiency to your operation. Write today for complete information! Absolutely no obligation!

DODSON MFG. CO., INC./1463 BARWISE/WICHITA, KANSAS 67214

Stop in and Get this...



PURINA SURE-AIM SPRAY HANDLE

A 89¢ value for only 25¢ when you buy any Purina Health Aid.

- Snaps on Instantly
- Makes Spraying Easy
- Insures Aim Control
- Fits Most Aerosol Cans
- Handy Around the House or Barn

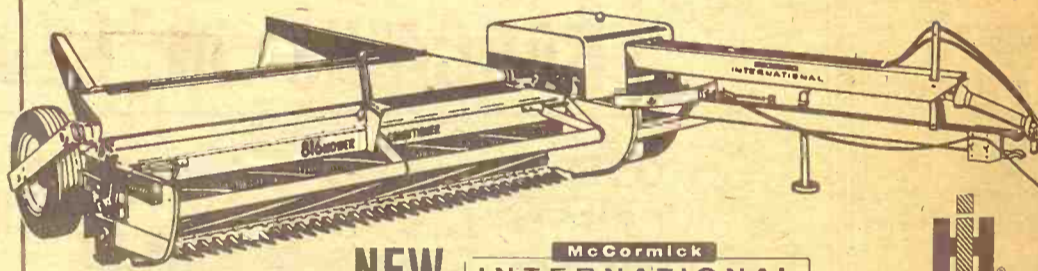
Get one while they last. No limit per customer... one with each Purina Health Aid purchase.

Act now. Take advantage of this special offer. We carry a complete line of Purina Health and Sanitation products. There's a product to fit your specific need.

- | | | |
|------------------------------|-----------|---------------|
| Gorden Mark Elevator | ME 2-3381 | Clay Center |
| Western Grain Mill | 767-5933 | Council Grove |
| Bartlett Grain Co. | CE 8-5134 | Junction City |
| Farmers Co-op Elev. & Supply | 157 | Hope |
| Mor-Kan Elevator | 349-2214 | White City |
| Reading Grain & Lumber | AN 9-3842 | Reading |
| Flint Hills Feed & Grain | PR 8-5322 | Manhattan |
| Palmer Grain Co. | Phone 3 | Palmer |
| Farmers Union Feed Mill | 437-2434 | St. Marys |
| Americus Grain Co. | 884-3465 | Americus |



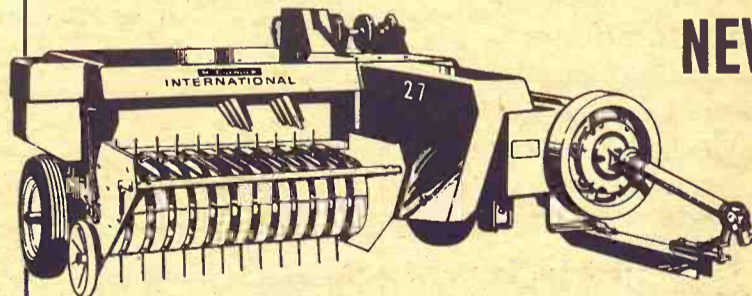
The ONE, TWO PUNCH that KNOCKS OUT Haymaking Problems



NEW INTERNATIONAL 816 MOWER-CONDITIONER

Mows, conditions and windrows in one simple operation. Because it uses a revolutionary new Flick-Bar instead of a reel, the 816 costs less at the start... costs less to maintain... and works in anything from clover to tallest sudan hybrids without bunching or tangling. You also

get balanced-head mower action, full-width conditioning rollers with quiet poly V-belt drives and a new three-knuckle PTO drive assembly that delivers smooth power in the tightest turns. In 7 or 9-foot cutter-bar models.



NEW INTERNATIONAL 27 BALER

Make full use of good haymaking hours with the 27 Baler. You'll pack your crop away at a rate of up to 14 tons per hour. With a big 52" wide pickup and 2½" flare, you take the entire windrow without driving over any of it. Feeder tines gently

move the hay into the baling chamber with no damage to protein-rich leaves. And just like bigger IH balers, the 27 has a big heavy-duty power train and famous 3-phase knotters that tie bales 17% stronger.

See the new International Harvester Haymaking Combination at...

- | | |
|--------------------------------------|---------------------------------------|
| HERINGTON
Pioneer Service & Sales | HANOVER
Hanover Impl. Co. |
| MINNEAPOLIS
Chapman Impl. Co. | LEONARDVILLE
Kendall Garage |
| CLAY CENTER
Norquist's Inc. | WAKEFIELD
Auld Chevrolet |
| ABILENE
Abilene Truck & Tractor | COUNCIL GROVE
Macha-Revere |
| MARYSVILLE
Bruna Brothers | BELLEVILLE
Chapman's On US hwy. 81 |
| FALUN
Dauer Impl. Co. | GYPSUM
Kuhn Impl. — OW 6-4411 |

LETTER

Why No P&S News

In the past we read in Grass & Grain from the Packers Division concerning revocations of barns and livestock

the

it a

Dogs are the first

Wolves and better cooperation trained dog today you'll

That's not v... just bec... When you k... work on nu... animals.

Dogs for inst... CO-OP Chur... venience for... Dogs like to... stomachs are... Surprise your

COOP

chunk s... DOG

Ma F...

Alma Farmers Uni... Alma Eskridge

St. Marys Farmers Un... Busin...

Greenleaf Farmers Co-op Elev... Gr...

Spraying Seeding Defoliating Bonded Oper Work Guar...

LETTERS—

Why No P&S News?

In the past we often used to read in Grass & Grain, news from the Packers & Stockyard Division concerning various license revocations of auctioneers and livestock dealers. We

from the G&G Area

haven't seen any such news in the newspaper for a year or more. Are area livestock people better behaved than they used to be, or is G&G falling down in not reporting such activities?

SEH
SALINA
There have been probably a

They started it all



Dogs are credited with starting the first cooperative.

Wolves and wild dogs learned they could hunt better cooperatively. In packs. Man gradually trained dogs to be 'man's best friend,' but even today you'll see them running in packs.

That's not why CO-OP makes dog food, though... just because dogs started the first cooperative. When you keep colleges and research scientists at work on nutrition you just naturally learn about animals.

Dogs for instance.

CO-OP Chunk Style Dog Food offers real convenience for you in either 10 or 25-pound bags. Dogs like to eat chunky food. Their teeth and stomachs are built for chunks.

Surprise your dog soon.

COOP
chunk style
DOG FOOD



Manhattan FARMERS Cooperative Assn.
Manhattan-Alta Vista
Westmoreland-Onaga

Alma Farmers Union Co-op
Alma Ph. 765-3612
Eskridge Ph. 449-2291

Carlton Farmers Union Co-op
CARLTON
TELEPHONE 31

St. Marys Farmers Union Co-op Business Assn.

Junction City Farmer-Stockman Co-op Assn
Council Grove
-Junction City CE 8-4158

Greenleaf Farmers Co-op Elevator Assn
Greenleaf-Linn
-Washington

Clay Center FARMERS Union Co-op
Clay Center-Bala
-Miltonvale-Leonardville

dozen and a half such P&S actions concerning this area in the past year. Four current ones, for example, are a livestock dealer who has not paid for livestock and is in poor financial condition; another dealer who continued to trade after his bond was terminated; a barn whose charges were questioned as "unreasonable;" and a dealer who was insolvent. Grass & Grain has refrained from reporting these suspensions or charges because while it does appear that USDA does not make charges unless previous warnings have been ignored, such cases do involve a form of judicial inquiry and USDA's means of handling publicity about the charges and its great tardiness in handling the cases falls considerably short of democratic justice.

Too Many Letters From Fred

Enjoy Grass & Grain very much but get a little tired of reading Fred Kilian and his opinions so often in the letters column.

L. V. Drapal
CUBA

G&G gets that criticism from time to time. Both the number and length of Mr. Kilian's letters are edited, but he's still G&G's most prolific letter writer. We invite letters of rebuttal, support, or varying subject matter.

A&P DROPS TRADING STAMPS IN EAST

A&P, the U.S.' largest grocer, has discontinued trading stamps in Boston and Albany, citing lack of acceptance enough to justify costs. A&P has used Plaid Stamps in Boston since 1962.



Johnny Kaw
Says:

"Success on the plains as everywhere means being adept to adapting."

MATTRESS & BOX SPRINGS

Specials Every Day
New Low Prices
Buy Direct

Also Complete Rebuilding Service

Manhattan Mattress Co.

414 S. 4th PR 8-5302

Now Is The Time To CONTRACT

aerial spraying to control brush

for brush control, the government pays

1/2 of costs

PAUL KITCHEN, owner
ph. 456-7358
409 W. 6th Wamego, Ks.

Jayhawk Aerial Spray Service

- Spraying
- Seeding
- Dusting
- Defoliating
- Bonded Operator
- Work Guaranteed

Ever had BEER-BECUE?



Get the recipe in this FREE GUIDE to Beer Party/USA

It's chockful of ideas for decorations, entertainments and recipes for the most fun party of all. Send for it today!

U.S. BREWERS ASSOCIATION, Inc. / 535 Fifth Avenue, New York, N.Y. 10017

I'm interested in beer-becue. Send me my free copy of Beer Party/USA.

Name _____
Street _____
City _____ Zip _____
State _____

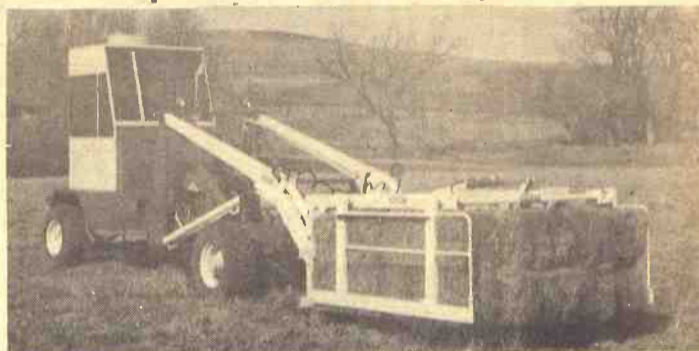
UNITED STATES BREWERS ASSOCIATION, INC.
P.O. Box 1435, Topeka, Kansas 66601



ONLY NuWay gives you a Choice in HAY HANDLING Equipment. Two Self-Propelled Units...

Also, Three Tractor-Loader Mounted Clamps in 8, 12 and 16 Bale Sizes for your tractor. Eliminates Hand Labor. Loose Hay Equipment TOO!

MAT-TRAC 1200 and "Super 16" bale clamp



Mat-Trac loads, hauls, unloads, reloads or stacks with ONLY One Man—Power to Pull 200 Bale Loads. Attachments for Silage, Snow, Loose Hay, Manure, Logs, Rocks and Pulpwood.

MAT TRUC 710



Best Unit built for filling haymows and barns; Big 168 Bale Loads—Moves Bales Under Cover Fast!

NUWAY

Dept. 106 Box 97 Barnard, Kansas 67418
Write NUWAY Now

OUR DAILY BREAD

- by G&G Area Cooks

Winning Recipe Submitted By Mrs. Lois Stohr, Hutchinson

The winner this week is Mrs. Lois Stohr, 417 East 16th, Hutchinson. Mrs. Stohr writes, "I like the many recipes Grass & Grain publishes and would like to contribute one of our favorites which is delicious for all ages and perfect for all occasions."

HELLO DOLLY COOKIE

1 stick oleo
24 vanilla wafers (crumbled)
1 cup coconut flakes
1 package butterscotch bits
1 can Eagle Brand milk
Melt oleo in 7x10-inch baking dish - or square pan. Sprinkle all the above ingredients on in order. (Don't stir). Spoon or pour milk on last. Bake in 350-degree oven for 25-30 minutes.

Mrs. Ed Chaput, Clyde: "Please enter this recipe in 'Our Daily Bread' contest. This is very good for people who don't like just plain spare ribs."

BARBECUED SPARE RIBS

3 pounds fresh spare ribs
1 medium onion, chopped
1 tablespoon vinegar
2 tablespoons brown sugar
1 teaspoon dry mustard
1 bay leaf
1 tablespoon butter
1 8-ounce can tomato sauce
1 tablespoon lemon juice
1 teaspoon salt
1/2 teaspoon tabasco sauce
1 clove garlic
1/4 cup water
Cut the ribs in small pieces. Place in a shallow pan; sprinkle with salt and pepper. Roast in a hot oven (450 degrees) for 30 minutes. Combine all other ingredients in a sauce-pan. Bring to a boil then pour over spare ribs. Reduce heat to 350 degrees. Roast for one hour. Baste twice during last hour.

Mrs. Orval Bruning, R 1. Ellsworth: "I have a recipe for the lady who wanted one for Peanut Butter Brownies. These are very good in lunch boxes."

PEANUT BUTTER BROWNIES

1 cup sifted flour
1 teaspoon baking powder
1/4 teaspoon salt

1/2 cup butter
1/2 cup peanut butter
1 cup sugar
1/4 cup brown sugar
2 eggs
1 6-ounce package chocolate bits
1/2 teaspoon vanilla
Sift together flour, baking powder and salt. Beat till light the butter and peanut butter. Add sugar and brown sugar gradually. Beat in eggs, one at a time. Add dry ingredients. Beat well. Add chocolate bits and vanilla. Spread in a well-greased pan, 9x13-inch. Bake in 350-degree oven 25-30 minutes. Cut into squares while slightly warm.

To Hem Knits

When hemming knitted fabrics, use nylon lace instead of silk seam tape for a smoother hem. The lace will stretch with the knit fabric just a little.

To Clean Sneakers

Use a moistened soapy scouring pad for easy quick cleaning of the white rubber on your children's sneakers. If the rubber is extra soiled, dip the pad in cleansing powder.

Aluminum Utensils Need Special Care

Aluminum utensils should be sudsed, rinsed and dried each time they are used, even if only for boiling water, because the minerals in water and foods cause pitting if not removed promptly. Use fine steel wool and suds to remove food which has stuck to the surface. On spun aluminum, scrub parallel to the lines of the design during cleaning.

If food is burned on, soak the utensil for about 15 minutes in warm suds and then scrape the surface with a wooden spoon or rubber scraper.

Avoid cooking eggs in aluminum vessels, since this causes quick discoloration. To brighten darkened aluminum boil for a few minutes with a solution of two teaspoons of cream of tartar to a quart of water. Then wash in soapsuds, rinse with hot water and polish with a soft cloth.

Shiny Collar

To treat a shiny collar sponge it first with vinegar then press on the wrong side.

Ironing Shortcut

Try this for a real ironing shortcut: Hang on one line all clothes to be ironed. When they

May 2, 1967

are dry, sprinkle with fine-sprayed garden hose, all at once. Roll up each piece as you remove it from the line.

Smoother Gravy

When making thickening gravies and vegetables, use hot (not boiling) water. The flour and water mix much smoother. Use the emptied vegetable can to save another dirty dish.

Stops Slipping

To prevent sleeveless garments from slipping off wire hangers, bend up both ends of the hanger.



See The NEW SPEED MOVER

AT WORK ON YOUR FARM

Now YOU can be your own contractor for less than the cost of the average terracing job on your farm. The SPEED MOVER can move "100 to 150" yards of dirt per hour with your own tractor.

Here Are a Few of the Many Jobs It Can Do for You

SPREADS GRAVEL • BUILD TERRACES • CLEANS CATTLE LOTS
GRADE ROADS OR DRIVEWAYS • CONSTRUCT WATERWAYS OR PONDS
PULL EXCESS DIRT AWAY FROM FENCES • FILL MUD HOLES • LEVEL GROUND FOR IRRIGATION.

Ask for a No-Obligation Demonstration on Your Farm

ROY LIPPERT

GREEN, KANSAS
Phone 944-2723

Enjoy Great New Outdoor Living with a KPL

PATIO PAIR



GAS AND ELECTRIC GRILLS AND YARDLIGHTS

Now you can enjoy more outdoor living with the convenience of the "Patio Pair" from KPL. Take your choice of an electric yardlight and an electric grill or a gas yardlight and a gas grill. You can buy them together or separately and the prices start as low as \$1.95 a month. Just add the cost to your KPL service bill.

Lighten up your outdoor living with the "Patio Pair". It's the easy way to live.

ELECTRIC

YOU MAY ORDER THE PATIO PAIR, A GRILL AND YARDLIGHT FOR ONLY \$5.65 A MONTH... YARDLIGHT ONLY FOR AS LOW AS \$1.95 A MONTH AND THE GRILL SEPARATELY FOR AS LITTLE AS \$3.95 A MONTH.

GAS

YOU MAY ORDER THE PATIO PAIR, A GRILL AND YARDLIGHT FOR ONLY \$3.60 A MONTH... YARDLIGHT ONLY FOR AS LOW AS \$1.95 A MONTH AND THE GRILL SEPARATELY FOR AS LITTLE AS \$2.49 A MONTH.

Offer good to KPL retail gas or electric customers only.

CONTACT YOUR KPL OFFICE OR ASK ANY KPL EMPLOYEE



Plant the NEW Better

DEKALB BREAKTHRU Sorghum

SUPPLIES ARE GOING FAST SO SEE YOUR DEKALB DEALER TODAY!

THERE'S A DEKALB DEALER NEAR YOU

- | | | |
|--------------------|---------------|-----------|
| Hines Farm Center | WAMEGO | 456-7557 |
| Ralph Suther | BLAINE | 224-3458 |
| Don Ubel | MANHATTAN | 776-7263 |
| Harry Puett | MANHATTAN | 776-7452 |
| Chester Wienstroer | ONAGA | 889-4305 |
| Robert Reid | ROSSVILLE | 584-3396 |
| David Demaray | BURR OAK | 587-3527 |
| George Dugan | LEONARDVILLE | 2211 on 3 |
| Dale Moore | CLYDE | 446-3615 |
| Walter Stuenkel | LINN | 348-2207 |
| V. I. Wagor | WATERVILLE | 785-2411 |
| Ivan Isaacson | RANDOLPH | 785-2108 |
| Dick Blanke | BREMEN | 337-2398 |
| Wallace Backman | HOME | 799-2161 |
| Glenn Johnson | CENTRALIA | 857-3918 |
| Otto G. Hall | CONCORDIA | 243-2058 |
| Willard Kramer | JUNCTION CITY | 238-2606 |
| Don A. Martin | CLAY CENTER | 485-2507 |
| Harold E. Riek | GREEN | 964-2313 |

Make Raisin-Nut Muffins For Breakfast Or Brunch



When the weekend approaches, it's time to think of fixing a relaxed breakfast or brunch. As a special treat for family or friends, make something different to serve with the usual bacon and eggs. Raisin-Nut Muffins will star at any brunch. You make them from a base of packaged graham cracker crumbs, orange rind, raisins and pecans. The recipe easily can be doubled and baked ahead of time. Serve piping hot with sweet butter. Here's how:

- RAISIN-NUT MUFFINS**
- 1 cup graham cracker crumbs
 - 1/2 cup milk
 - 1 egg, beaten
 - 1 teaspoon grated orange rind
 - 2 tablespoons shortening, melted and cooled
 - 1/4 cup seedless raisins
 - 1/4 cup chopped pecans
 - 1/4 cup sifted flour
 - 1 1/2 teaspoons double acting baking powder
 - 1/4 teaspoon salt
- Preheat oven to 425 degrees. Soak packaged graham cracker

Be Sure Fever Thermometer Always Is Sanitary

Before replacing a fever thermometer in its case make certain it is sanitary for the next time it is needed. After using, wash the thermometer with soapsuds or detergent suds and cool water. Hot water is not necessary, as the suds serve to wash germs and bacteria away. Rinse under cool running water, shake down the mercury and put the thermometer in its container.

No Trussing

After stuffing turkey or chicken, insert the heel of a loaf of bread to close the opening and there'll be no need to truss or sew the bird.

crumbs in milk for ten minutes. Add egg and orange rind and beat well; stir in melted shortening, raisins and pecans. Sift together flour, baking powder and salt; add to mixture and stir until flour is moistened but not smooth. Do not beat. Pour into ten medium-sized muffin tins, oiled on bottoms only. Bake for 15 minutes or until golden brown. Remove from pans at once. Serve hot or cool. Yield: ten muffins.

DID YOU KNOW

You Can Get **PICNIC TABLES COMPLETE** Or Save by Buying **DO-IT-YOURSELF UNIT**



We Have:

- Basketball Posts
- Clothes Line Poles
- Burning Barrel Lids
- Porch Railings

Aluminum & Stainless Steel Heli-arc Welding

Plus any welding repair job or building of anything from steel.

Portable Equipment

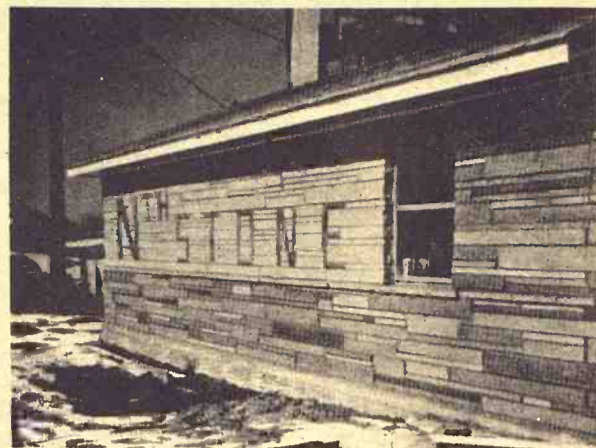
Bigbee Welding

117 S. 3rd Phone PR 8-5172
After Hours: Ph. PR 8-5857
MANHATTAN, KANS.

NTH STONE

Is The Nth Stone for building

Nothing Like It . . . !



NTH STONE Offers You . . .

- * Variety Of Color And Surface
- * Beauty And Versatility
- * Variety Of Design
- * Adaptability, Strength, Economy

For Brochure And Price Estimate Call or Write:

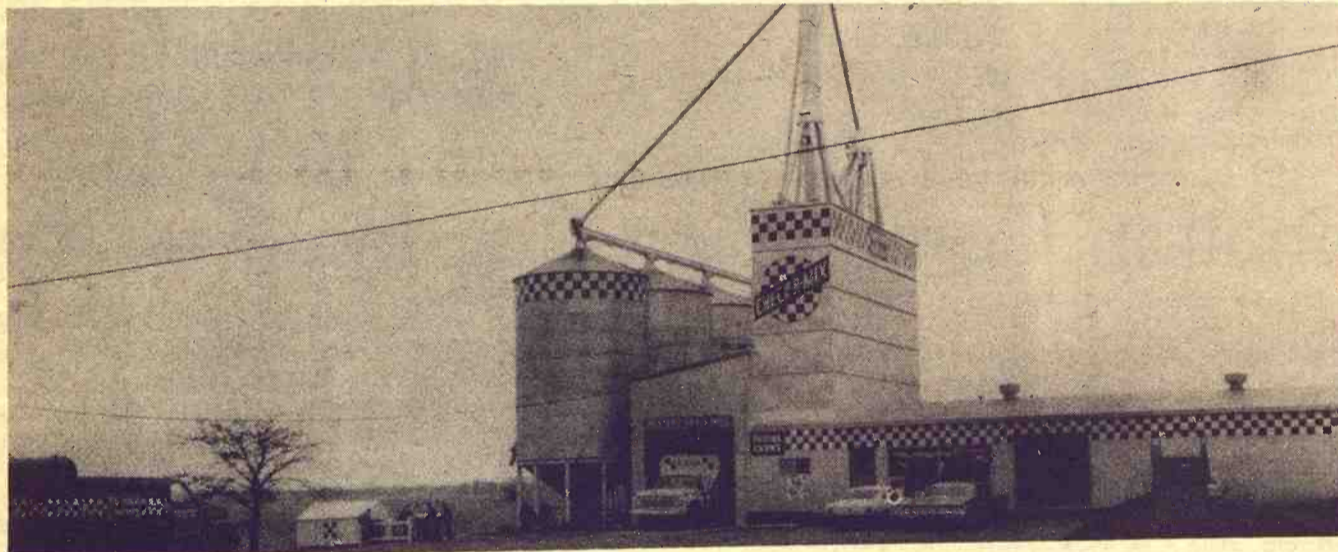
NTH STONE OF NEBRASKA

Manufactured by CONSOLIDATED SAND & GRAVEL CO.

Office: 712 D St. Fairbury, Nebraska Phone: 729-2590
William Meyer, Owner Phone: 729-5673



You Are Invited To Watch The Progress of Our WESTERN GRAIN MILL HOG DEMONSTRATION



Pictured Above Is the New WESTERN GRAIN MILL — Council Grove, Kans., Now Featuring a Public Hog Demonstration at Left of Elevator.



Leland Zerber, right and Pete Peterson, left, will soon be holding a sausage & egg breakfast & short hog meeting. Ask them about the date of this event. Come in and WATCH THEM GO & GROW ON PURINA.

These Hogs Have Gained 45 lb. in the last 28 days or 1.6 lbs. - day.
These Hogs Have Used 2.6 lbs. feed - lb.. of gain.

We have access to records on over 250,000 hogs & more records being compiled.

WESTERN GRAIN MILL Council Grove Ph. 767-5933
MOR KAN ELEV. White City Ph. 349-2214

Your Complete Farm Service Center



Bring This Ad And Your Watch for Complete Overhaul

\$750 INCLUDING PARTS

We guarantee it will run better than new.

HOLIDAY JEWELERS

425 POYNTZ
Opposite the courthouse
MANHATTAN

Badly rusted or damaged watches not eligible.

wing

LOW AS

65 A MONTH

CTRIC

LOW AS

60 A MONTH

AS

PL

KANSAS POWER LIGHT COMPANY

EMPLOYEE

COW POKES

By Ace Reid



"Paw, I shore hope that ole hen didn't have as much trouble layin' them eggs as you did gatherin' 'em!"

000 on April 1, 1966. Stocks of other grains on April 1 this year and last, respectively, included: Rye 24,254,000 and 24,

814,000 bushels; oats 441,318,000 and 535,613,000 bushels; barley 205,894,000 and 193,135,000 bushels; sorghum grain 529,877,000 and

724,143,000 bushels; soybeans 459,967,000 and 375,635,000 bushels and flaxseed 18,995,000 and 26,637,000 bushels.

Big Slice In Spring Feed Grain Stores

The Agriculture department

How can we afford to make this amazing guarantee?



CHICKS LIVE OR WE PAY!

The reason is obvious. Pay Way Chick Starter has the antibiotics and coccidiosis preventative to keep chicks alive. It offers them all-weather, all-season protection. And it's thrifty. See us today for full details of this offer.

The payoff's bigger with **PAY WAY**

Extra Rich **CHICK STARTER**

MARK GRAIN & LUMBER Dunlap

ELMDALE ELEVATOR Elmdale

ELMO GRAIN COMPANY Elmo

LOCKARD IMPL. CO. Herington

MORRISON GRAIN Junction City

WAKEFIELD CO-OP ELEVATOR Wakefield

GALVA FEED MILL Galva

reported that stocks of the livestock feed grains — corn, oats, barley and sorghum — on April 1 totaled 103 million tons. This was 10 percent less than a year earlier and 19 percent below the April 1 average.

The decline reflects heavy usage of feed grains and raises the prospect that supplies could become tight in the next year. Farmers have indicated they plan to plant a smaller acreage of feed grains this year than last.

The department also reported April 1 stocks of soybeans were at a record high, 22 percent above April 1966, and more than one-third above the average. Some growers have been holding soybeans back from markets, expecting higher prices.

Stocks of wheat were down 23 percent from a year earlier, reflecting heavy movement into domestic and export markets.

Stocks of wheat stored in all positions on April 1 totaled 702,690,000 bushels, compared with 917,325,000 on April 1, 1966. Stocks of drum wheat were reported at 45,787,000 bushels, compared with 83,287,000 a year earlier. Corn stocks totaled 2,703,963,000 bushels, compared with 2,863,293,

Only a world of time can bring you the flavor of Kentucky's Finest Bourbon



OLD CHARTER 8 years old

tick-tock-tick-tock the Bourbon that didn't watch the clock.



STRAIGHT BOURBON WHISKY - 86 PROOF - © OLD CHARTER DIST. CO., LOUISVILLE, KY.

Kansas' Largest Financial Institution

Capitol Federal stands

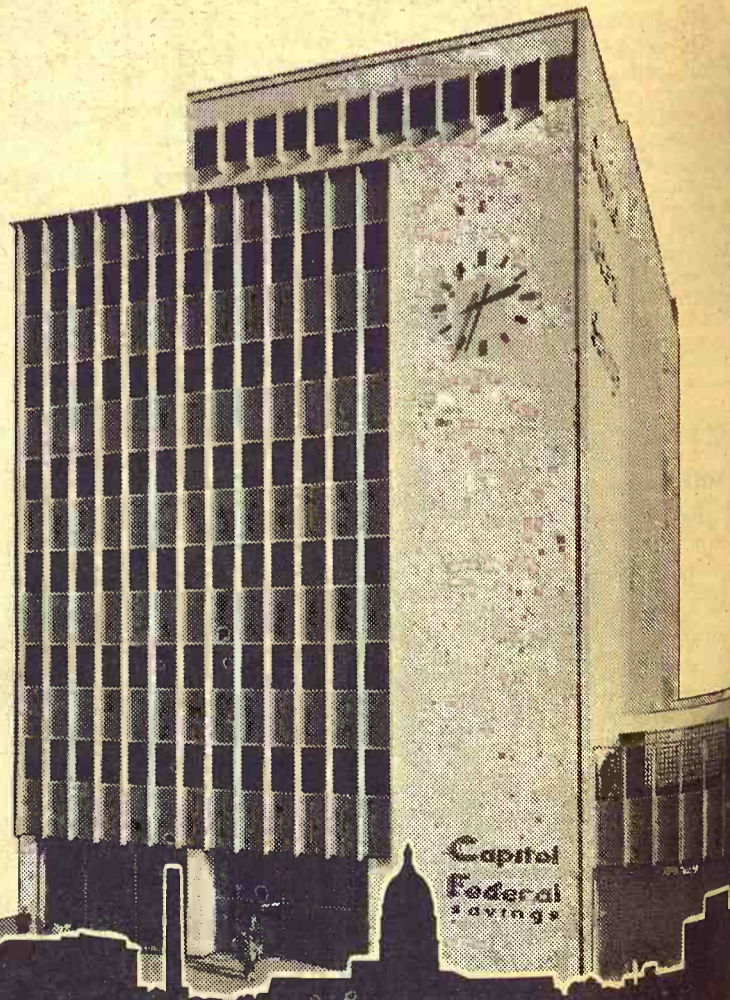
alone in safety

Capitol Federal is the only financial institution in Kansas that offers your savings the safety of over 300 Million Dollars — plus insurance... Safety that cannot be matched.

5 1/2%

6-Month Savings Certificates issued for \$5,000 in multiples of \$1,000. 4 3/4% on Passbook Savings — deposits or withdrawals in any amount.

The Highest Rate Federal Law Allows



700 KANSAS AVE. TOPEKA We Pay Postage Both Ways

"The Most Trusted Name In Savings"

Cold Iron B... The still experim... which has been p... place the hot iron... chilled copper iron... pigment cells and... brand by causing... back white. The s... in photos taken at... city of Illinois has... damages: it damag... less. It is easier an... the less stress. Steps in the br... eature involve clo... the hair in area t... (top picture), chilli... ons to -70 degrees... ice and alcohol bat... and applying the... for the time require... the pigment (below

M-F Re... your m... FOR THO... SE... EL... O... JUST RE... M-F... 615 WEST

bushels; soybeans 450,000 and 375,635,000 bushels; corn 18,956,000 bushels.

May 2, 1967

AVERAGE NET UP IN AREA MANAGEMENT ASSN.

ALMA — The East Central Farm Management Association, of which Leonard Parker is fieldman, had an average

\$10,681 net return in 1966, highest since the organization formed. The 5-year average for 1961-65 was \$4676. Expenses on the 312 farms in the association averaged \$27,098. The low 25 percent in the membership had an average net of only \$1707, but the top 25 percent averaged a \$23,393 net income.

You can wean your pigs to...

1. Gain a pound a day!
2. Turn 2 lbs. feed into a pound of growth!

Here's the Gooch's Best Feed you'll need to do it!



PIG GROWER 250

supplies pigs Aureo SP 250 in the ready-to-use grower that is pig proven to take the worry out of weaning.

We have a supply for you!



C K PROCESSING CO.

—MANHATTAN—
2 1/2 Miles East of Sale Barn Phone PR 6-9269
Clay Center Alfalfa Mill
Clay Center, Kans. Phone ME 2-3401

Jansen Hotel Steak House

JANSEN, NEBRASKA

NOW FEATURING THE GREAT HUGO & LIZA DUO



Continued By Popular Demand Golden Fried Chicken Picnic Style **85c**
Served Every Sunday: Noon Till 4 P.M.

frontier Facts

FRONTIER SUPER 400 Hybrid Grain Sorghum was introduced last year on a limited scale. It has proven to be an excellent hybrid. It is recommended for all areas and soils — dryland and irrigated. Medium early in maturity, it has good seedling vigor, is drought resistant, with large, semi-compact heads with genetic head drying allowing for faster drying in the fall. Heads are carried well above its dark green foliage for easy combining.

The average yield in 9 state tests in Kansas in 1966 was 87 bu. per acre, as against Frontier 400C at 93 bu. per acre average. Frontier Super 400 has some advantages over 400C however. It is somewhat shorter, has excellent smut resistance, and better standability, as shown by the same state tests. Both male and female parents are red seeded, and the resulting grain of Super 400 is a darker red, and somewhat higher in protein.

Try NEW Frontier Super 400 in 1967. You will like it.

SEE YOUR LOCAL AUTHORIZED FRONTIER DEALER OR WRITE

The Bowman Seed Co.

CONCORDIA, KANSAS 66901
FOR NAME OF FRONTIER DEALER.

Cold Iron Branding

The still experimental process which has been proposed to replace the hot iron uses super-chilled copper irons to destroy pigment cells and to produce a brand by causing hair to grow back white. The system shown in photos taken at the University of Illinois has several advantages: it damages cow hide less. It is easier and causes cattle less stress.

Steps in the branding procedure involve close-clipping the hair in area to be branded (top picture), chilling copper irons to -70 degrees F. in a dry ice and alcohol bath (center) and applying the chilled iron for the time required to destroy the pigment (below).

ARTER old
lock
hat didn't
k.

ER DIST. CO. LOUISVILLE, KY.

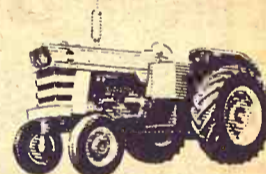
GRAND OPENING Thursday, May 4



Every One Welcome to Clay Center's New Massey-Ferguson Dealership



SEE . . . In the field Pressure Control Demonstrations



FREE LUNCH AT NOON
Register For
FREE PRIZES

Farmers Only Eligible For These Prizes

New location on West Court features Complete Sales and Service

M-F Representatives to answer your machinery & tractor questions

FOR THOSE PRESENT AT THE DRAWINGS 11:00 a.m. and 1:00 p.m.

SEVERAL CAMERAS
ELECTRIC SHAVERS

OTHER VALUABLE PRIZES
JUST REGISTER • NOTHING TO BUY

Phone ME 2-3441



William Thurlow SALES DEPT.



Calvin Thurlow SERVICE DEPT.



CIRCLE



IMPL. CO.

615 WEST COURT

Massey-Ferguson

Tox-o-Wik

Kelly-Ryan

CLAY CENTER, Kansas

What To Do If A Tornado Comes

MANHATTAN — This is tornado season in Kansas. May ranks first in the likelihood of these violent storms and June is next in rank.

Although chances are slim that a tornado will strike any

particular spot, it is important to know about tornados and how to protect yourself against them. Richard Jepsen, Extension rural civil defense specialist at Kansas State University, says.

A tornado is a whirling, twisting wind storm that forms several thousand feet above the earth's surface, usually during warm, muggy weather, and usually in conjunction with a severe thunderstorm.

Funnels appear as extensions of heavy, greenish-black thunderheads that bulge downward and stretch to the ground like a twisting rope. Not all tornados hit the ground, however, Jepsen reminds.

Before a tornado strikes, the air is often still and oppressive. A tornado sounds like the roar of hundreds of airplanes. Wind speeds within tornados have been estimated at more than 500 miles an hour.

Tornados can develop at any hour, but most develop in the hours following the warmest part of the day. The most dangerous period is 4 to 6 p.m., Jepsen says. Their movement usually is from southwest to northeast.

A "tornado watch" means that conditions are ripe for a tornado to develop within a defined area. This is the time to be alert and tune to a local radio station, but there is no need to interrupt normal routine except to watch for threatening weather.

A "tornado warning" means that a tornado has been sighted and verified by radar. Warnings give the tornado location, the area through which it is expected to move, and the time period during which the tornado should move through the warning area.

This is the time to take shelter if you are in the danger area, Jepsen explains. The warning system is designed to give you 10 minutes to prepare.

If a tornado strikes, keep calm, he urges. Getting excited only increases the hazard.

If you are outside when a tornado is coming toward you, move at right angles to its path. If there is no time to escape, lie in the nearest depression such as a ditch or ravine.

If you are inside and have time, open the windows on the

north and east sides of the house, the K-State specialist advises. This will equalize air pressures and may save your house from destruction. If you have time, shut off electricity and heating appliances.

Then, take shelter in the southwest corner of your basement — or in a storm cellar or fallout shelter. If you don't have a basement, make arrangements now to use your neighbor's basement for shelter. If you don't have time to escape, take cover under heavy furni-

12 Grass & Grain
May 2, 1967

ture against inside walls on the lowest floor of your home. STAY AWAY FROM DOORS AND WINDOWS!

If you are in a city or public building, stay inside, away from windows, and near an inside wall. Avoid auditoriums, gymnasiums and other areas with long roof spans and few supporting posts, Jepsen adds.

AMERICUS GRAIN CO.

Invites You to the

Open House

AND FORMAL PRESENTATION OF THE NEW CHECK-R MIX BULK FEED MILL & FERTILIZER

Saturday, May 6

10:00 a.m. To 4:00 p.m.

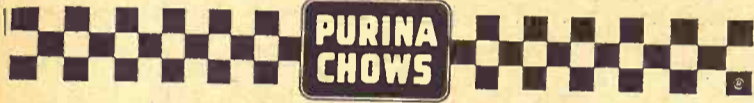
DOOR PRIZES • LUNCH SERVED

We now offer the area a COMPLETE PURINA FARM SUPPLY CENTER. Purina Feeds in bag or bulk. We suggest that you scan the pig parlor where we have 200 pigs under the Purina feed test.

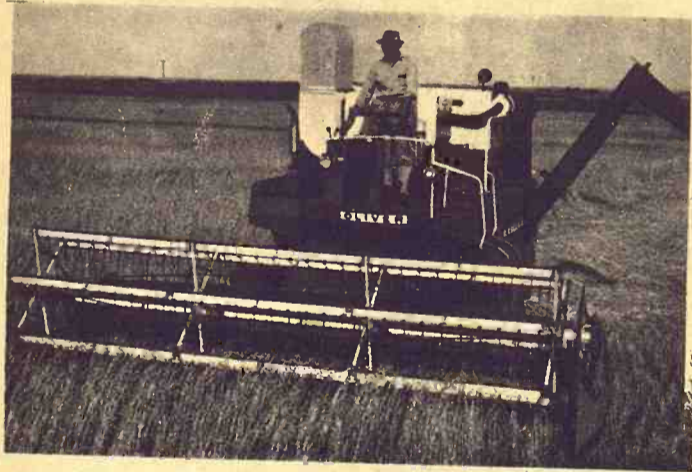
We acknowledge the contribution of our suppliers: Purina; Olin Agriculture Division; Agrico Chemical Co. of Olathe, Kans.

AMERICUS GRAIN CO.

AMERICUS, KANS.



Now Cash Bonus for Early Buyers OF OLIVER COMBINES



Oliver's big-power, high-performance combine line now includes header widths up to 18 ft.; large-diameter cylinders in widths of 28, 34 and 42 inches; engines up to 115 hp.; diesel power optional on larger machines; also windrow pickup and 2, 3 or 4-row cornheads.

Close your deal and the Oliver Corporation writes you a check — your Early Buyers Bonus. The earlier you buy, the more you save.

2% in May
1 1/2% in June

Choose any model of new Oliver combine with equipment to meet your needs. Trade in your old combine in the usual way. See your Oliver dealer now and save hundreds of dollars. Oliver Corporation, Chicago, Ill. 60606.

OLIVER

FOR MEN WHO GROW



DURHAM
G&R Impl. Co.

ALMA
Eberwein Garage

ABILENE
Wissing Motor Co.

LAWRENCE
McConnell Mchry. Co.

CLAY CENTER
Toburen Imple. Co.

SALINA
Lindquist Impl. Co.

MARYSVILLE
Peschel Bros. Impl.

EMPORIA
Arndt Bros. DI 2-5262

Carlton, Dillon Co-op Merger Put Off Until May 11

ABILENE — Consolidation of the Carlton Farmers Union Cooperative Association with the Dillon Co-op will be put to a vote on May 11, as a continuation of the annual meeting of the Carlton co-op from last week.

The Carlton co-op elected Frank Myers, Carl Woods and James Wendt as new directors at the meeting. Clarence Lauer is new president; John Bonfield, vice president; and Carl Woods, secretary.

Advance's High-Tonnage Champion



ADVANCE 14

ADVANCE 14 is one of the most important developments in hybrid sorghum in recent years. Yields of from 15 to 31% over RS-608 and RS-610 are not uncommon. Although Advance 14 was first introduced only three years ago, consistently high yields in all sorghum-producing areas have pushed it to the forefront faster than any sorghum in our experience. Highest yields will be obtained on good soil where rainfall is ample, or under irrigation, but it also produces excellent yields under dry-land farming.

FARMERS COOPERATIVE ASSN.
WESTMORELAND ONAGA ALTA VISTA
MANHATTAN, KANS. PR 6-9467



GARY W. BECK
Farm Service
Director

him something he has already known for years certainly won't solve this situation and the public should know the truth about prices farmers receive.

We realize these are challenging times for the American farmer but improved technology, increased productivity and efficiency have kept him in business. With grain reserves dwindling, the farmer is being challenged again to produce more food for a growing population. Our farm customers will always be a key segment in our economy and the Union State Bank will continue to provide them with a sound program of financing.



Corner Post Comments

Higher Farm Prices?

A recent Grass and Grain article indicated that in the near future food prices along with prices farmers receive will be higher and the consumer will just have to get accustomed to it. Just what events and circumstances will create this panacea remain to be seen, but nonetheless they are overdue. It seems the biggest job agriculture has today is educating the consuming public that food is a bargain and that it takes a smaller chunk out of the pay check than ever before. Perhaps attractive displays of these facts should be arranged over food counters throughout the nation's food markets. Consumers don't seem to worry about paying higher prices for new automobiles, new homes, TV sets or appliances but let meat go up a nickel or bread go up 2c a loaf and the squawk is heard all the way to the Capitol.

The mixed emotions from Washington have done little to alleviate the plight of the farmer when the housewife is told to be more selective and to shy away from "expensive" food items while another segment of the administration soothingly tells the farmer he isn't getting a fair share of the national prosperity. Telling

Deposits insured up to \$15,000.00 for each depositor by the Federal Deposit Insurance Corporation.

UNION STATE BANK



CLAY CENTER, KANSAS

Member Federal Deposit Insurance Corporation



Here!
The livestock Kansas received price of \$22.50 beef cattle sold according to the K Reporting Service. This price is higher than record 1965, and \$2.36 higher than 1964 average. By months, the

PRICES RECEIVED

Month	Price
January	22.50
February	22.50
March	22.50
April	22.50
May	22.50
June	22.50
July	22.50
August	22.50
September	22.50
October	22.50
November	22.50
December	22.50
1964-65 Average	22.50
1965	22.50



NEW 55" BIC

The all new blasts silage or capacity. Low 20-in. h spillage regarded



Make us Pr HERINGT TRI-COUNTY CLAY CENT TOBUREN IMP VALLEY FA VALLEY IMP SENECA SENECA IMPL

Grass & Grain
May 2, 1967

Here's Detail On '66 Beef Prices

The livestock producer in Kansas received an average price of \$22.50 per cwt. for all beef cattle sold during 1966, according to the Kansas Livestock Reporting Service. This price is \$2.80 per cwt. higher than received during 1965 and \$2.36 more than the 1960-64 average price. By months, the highest price

was \$24.70 in March and the low price was \$21.20 recorded in December.

Cattlemen received an average price of \$24.70 per cwt. for steers during 1966, up \$2.50 from 1965 and \$2.46 above the 1960-64 average. The highest average monthly price for the year occurred in March when the price rose to \$27.00 per cwt.

Heifers sold for an average of \$22.90 during the year, up \$2.90 from the previous year and \$2.08 above the 1960-64 average. The highest heifer price occurred during the month of March when the price was \$24.30.

Prices for cows ranged from a low of \$14.20 per cwt. in January to a high of \$18.40 in May, with the average price for the year \$16.80, some \$3.50 per cwt. more than in 1965.

Stockmen received an average price of \$25.10 for their calves sold during 1966. This was a substantial increase of

\$3.80 per cwt. over the previous year and \$2.68 above \$23.00 in January to \$26.60 in March.

Steers comprised 53 percent of the liveweight of beef cattle sold, excluding calves, in 1966. Heifers represented 22 percent, cows 22 percent and bulls 3 percent of the liveweight market.

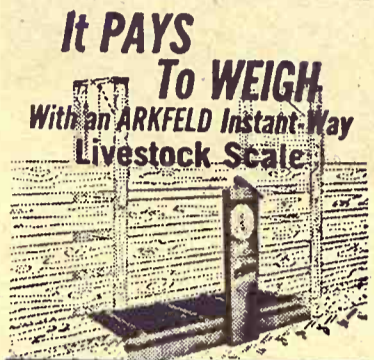
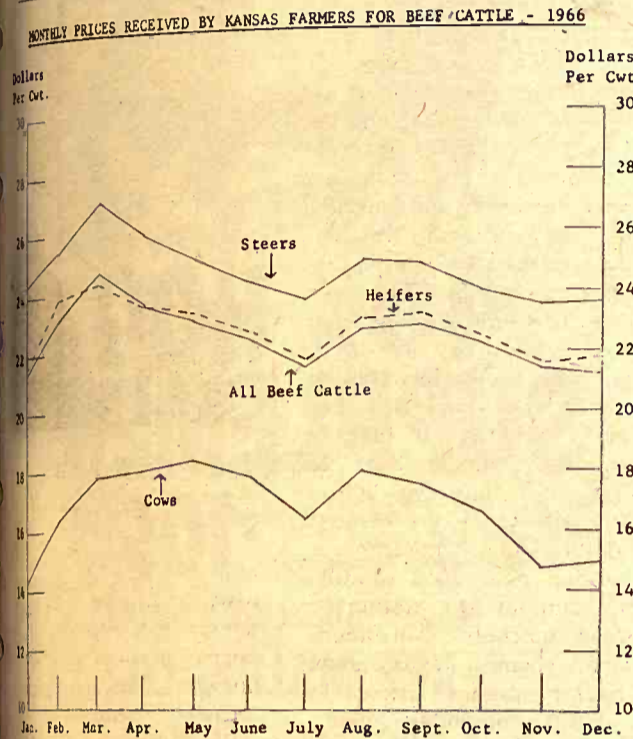
This compares with 52 percent for steers, 22 percent for heifers, 23 percent for cows and 3 percent for bulls during the previous year.

May 2, 1967

HALLMARK TO ENTER BOOK PUBLISHING FIELD
Hallmark Cards, the Kansas City-based firm which is the nation's largest greeting card firm, will enter the book publishing field later this year. The company will issue its first 24 titles under the imprint Hallmark Editions on August 1. The company plans to concentrate on gift books initially.

PRICES RECEIVED BY KANSAS FARMERS FOR BEEF CATTLE AND CALVES - 1966

Month	PRICES BY CLASSES AND MONTHS			
	Steers	Heifers	Cows	All Beef Cattle
January	\$24.20	\$21.50	\$14.20	\$21.40
February	25.50	23.30	16.30	23.20
March	27.00	24.30	17.80	24.70
April	25.90	23.60	18.00	23.60
May	24.30	23.30	18.40	23.00
June	23.70	22.70	17.80	22.40
July	23.00	21.70	16.40	21.40
August	24.80	23.20	18.00	22.70
September	24.00	22.50	17.50	22.80
October	23.50	21.60	16.60	22.20
November	23.60	21.80	15.00	21.40
December	23.50	21.80	15.00	21.20
Annual Average 1966	24.70	22.90	16.80	22.50



It PAYS To WEIGH
With an ARKFELD Instant-Weigh Livestock Scale

Eliminate Non-Profit gainers. Scale is complete, ready to install in existing chutes & alleys. Quick Dial Readings. NO BALANCING - NO LEVELING. Weighs 5-1600 lbs. accurately.

GET THE WEIGHING FACTS TODAY!

SEE OUR DISPLAY AT THE A&I SHOW MAY 6 & MAY 7 LINCOLN, KANS. ZEITLOW DISTRIBUTING CO. Phone 732-3155 DURHAM, KANSAS

OPEN HOUSE

WEDN., MAY 3
Door Prizes
Gifts • Refreshments



PORTER EQUIPMENT CO.
East Hwy. 24 Clay Center, Ks.

See The Latest In N-H HAYING EQUIPMENT

- BALERS — BALE THROWERS — MOWERS
- CONDITIONERS — RAKES — CROP CHOPPERS
- FORAGE HARVESTERS — AUTOMATIC BALE WAGONS
- WINDROWERS — COMBINES — GRINDER-MIXERS
- AND OTHER MACHINERY

Come — be our guests

NEW! GEHL "HI-THROW" 55" BIG-CAPACITY BLOWER

The all new, 55-in., six-blade Gehl FB88 Hi-Throw blasts silage or haylage to any silo height, at unlimited capacity.

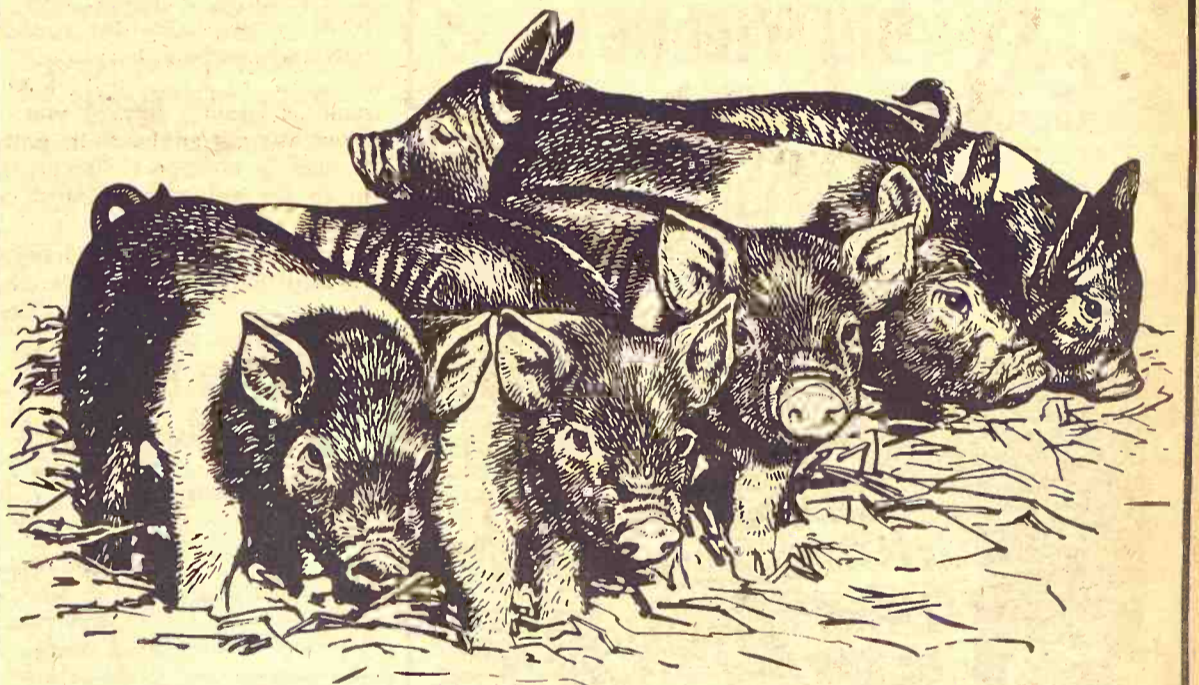
Low 20-in. hopper and recessed wheel virtually eliminate spillage regardless of the unloading box you use.

- CHECK THESE: • Direct PTO drive • Triple #67 chain conveyor for positive feeding to 10-in. diameter auger • Hopper 20-in. high, 30-in. width (extends beyond fan housing) • Six-blade fan delivers full load to 9-in. blower pipe • Throw-out safety clutch • Adjustable fan housing • Rugged 10-gauge steel sides • Water intake opening.



Make us Prove it with a Demonstration!

- HERINGTON TRI-COUNTY SALES
- CLAY CENTER TOBUREN IMPL. CO.
- VALLEY FALLS VALLEY IMPL. CO.
- SENECA SENECA IMPL. CO.
- LINCOLN RHODY & SONS, INC.
- WAMEGO WAMEGO TRUCK & TRACTOR, INC.
- MARYSVILLE BRUNA IMPL. CO.
- SALINA LINDQUIST IMPL. CO.



Start pigs the Naturich way . . . and help your pigs

OUT RUN TROUBLE

Start pigs on the road to market quickly with Naturich Pig Pre-Starter Pellets and Naturich Pig Starter Kandy Pellets. Growth-rate is mighty important to young pigs! Fast-growing pigs just seem to outrun trouble! Long before lots of baby pig problems have a chance to appear, Naturich-fed pigs aren't pigs any more . . . they're hogs!

Naturich-fed pigs grow fast because Naturich Pig Pre-Starter Kandy contains vitamin, mineral and antibiotic fortification little pigs need to held them through the dangers that threaten their very lives.

See your Naturich dealer for details. Let him help you grow your pigs strong . . . FAST!

NATURICH MILLS

Abilene Kansas
"A Finer Feed For Every Need"

May 2, 1967

SURGE

SURGE SERVICE
Service you can count on...
Backed by a company with
over 50 years in the Milking
Machine Business.

Orville Marten
ONAGA, KS.
Phone Wheaton EX 6-2562



Ready For Judging

Cattle are led to the ring to be judged at the annual Geary-Dickinson Angus Association Better Livestock Day near Chapman last week.

AGRICULTURAL LIME

Now Available

Bayer Construction Co.

PR 6-8839 — 509 Yuma — MANHATTAN, KANS.

NEW STATE RECORD FOR NORTHERN PIKE

A record-sized Northern Pike has been caught in the Tuttle Lake area by Al Wood, a Man-

Baby Chicks
Order Yours Now



"CHICKS THAT MAKE EGGS THEIR BUSINESS" at the following dealers

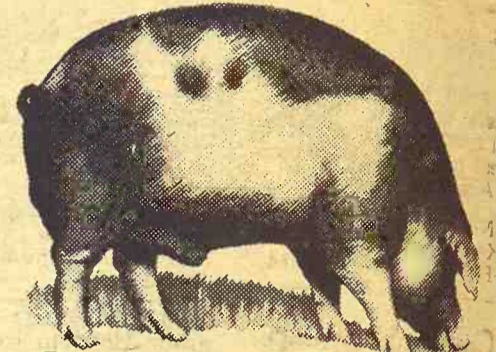
at the following dealers:

- Weiters Produce Industry, Ks.
- Farmers Union Co-op Eskridge
- Mark Grain & Lumber Co. Dunlap
- Farmer-Stockman Co-op Council Grove
- Morrison Grain Elevator Junction City
- Grange Produce Harveyville
- Flint Hills Produce Osage City
- Marion Elevator Marion
- Farmers Union Feed Store St. Marys
- Hines Farm Center Wamego
- White City Grain Co. White City
- Wilsey Feed & Grain Wilsey

- Jefferson County Co-op Valley Falls
- Young Produce Seneca
- Goff Grain Co. Goff
- Haag's Mobil Feed Service Holton
- Meriden Co-op Elevator Meriden
- Jefferson County Co-op Oskaloosa
- Allen Elevator Co. Allen
- Farmers Co-op Onaga
- Sturdy Grain Co. Lyndon
- Overbrook Farmers Co-op Overbrook
- Moore Feed & Produce Scranton
- Johnson Feeds Washington

or
Carey Hatchery
US Appr. Pullorum Typhoid Clean
Ph. 765-3611
ALMA, KANSAS

KEY



40% HOG SUPPLEMENT

MEAL OR PELLETS Sacked F.O.B. Mill In Clay Center, Kansas **\$105.00** Per Ton

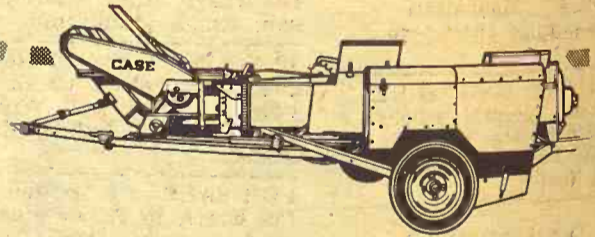
Call Collect ME 2-2141

KEY MILLING CO.

Clay Center, Kansas

Family-size or big-tonnage baler!

We've got the best of both!



See the NEW Case 230 and Case 330 Balers



Crop Way Purchase Plan Available

- High-capacity balers that make firm, tight 14"x18" bales
- Smooth Sweep Feed, with auger assist, handles toughest, heaviest crops. That's the 330 twine tie case
- Time-proved Case knotter, with new twine dump tucker finger, assures dependable tying
- Rope-controlled swinging drawbar permits safe transport
- Plunger-powered bale launcher eliminates extra man — won't chew ends, burn twine

- CENTRALIA
McBratney Impl.
Phone 857-3815
- CLAY CENTER
Porter Eqpt. Co.
1121 Crawford ME 2-5202
- MARYSVILLE
Brauchi Brothers

- LINN
Kuhlman Motor Co.
- CHESTER, NEBR.
Grabau Impl. Co.
- MARION
Longhofer Supply
- SALINA
Vahsholtz Impl. Co.



BIG YIELDS!

...yours with Asgrow

CORN and SORGHUM SEED

PROFIT

with Asgrow varieties adapted to your growing conditions

ASGROW SEED IS WHAT YOU NEED



GRAIN and FORAGE SORGHUM

There's an Asgrow Seed Variety Just Right for You

HYBRID CORN

WASHINGTON COUNTY

- Herb Meyerhoff Phone 711 Palmer
- Hollenberg Grain Company Hollenberg
- Frank Nutsch FR 6-2335 Haddam
- Victor Stigge Phone 2914 Barnes
- Dan German Ph. Morganville WA 6-4648 Clifton
- Douglas Toll 455-3379 Clifton

REPUBLIC COUNTY

- Ben Blecha Phone 3613 Munden
- Harold Hedstrom 374-2420 Courtland
- Clarence Wurtz Ph. Concordia CH 3-1015 — Belleville

MARSHALL COUNTY

- Burger Fertilizer Co. HI 3-4337 Marysville
- Verne Merrill ST 5-2658 Waterville
- Ivan Wienck Ph. Waterville ST 5-2495 Blue Rapids

THAYER COUNTY, NEBR.

- Elmer Holmes CE 6-4336 Deshler

GAGE COUNTY, NEBR.

- Roy Coburn 228-0054 Beatrice

CLA
RATES
Boxed
Moro,
if paym

Livest

WANTED FEEDER
40 to 100 lbs. T
J. D. S
120 Grant Ave.,
Phone CE 8-3754

REG. ANGU
FOR S

Select from la
farm where they
Buy with confide
as' largest produ
able age Angus b

KENMORE
Kenneth
ROXBURY

Mr. Cattle
Feed

Short On Alf
Don't W

We Offer Alf
Blended With

One ton replaces 2
No Waste - Easy
Better Gains - Low

Conta

Preston Mill
Home of Sur-
Fairbury, Nebr.

HERD REDU
REG. HERE

As we are ove
our grass, we offe
private treaty.

100 Registered
males — Cows wi
cows with spring
and bred heifers o
face, any age.

These are not cu
every one would
addition to any he
Good size, good
good quality bred
with quality.

Write or

SUN RAN
Box 856 Salina,
Phone: 913 TA

HORSE SHO
& Hoof Trim

VERLYN D. L
Rt. 4 Man
Phone Riley H

EXCELLENT YOP
Duroc and Hampsh
carcass data, big
viable. Don Gro
3-5684, Newton.

DAIRYM
FARME

With advancing
now is the time to s
herd or add to your
We believe we hav
Kansas the best sel
stein, Guernsey, Je
fresh and springer
heifers.

COME, HAVE A
You'll be glad y
Financing available
heifers.

Calves-Calves-
We also have those
gaining beef cross
2 weeks to 400 lbs
stein bull and heif
New shipments in
today.

SPECIA
75 bred fall freshent
heifers.
50 open Holstein h
50 Holstein heifer ca
The ideal thing to p
ture.

W. G. W
Phone CI 4-7
SUMMERFIELD, I

DAUER PLEMENT

FOR SALE — 1963 New Hol-lars harrow-bed hay trailer. 1949 Model, 80 bale size. Elmer Donley, Ellsworth, Kans. Phone WE 4-5477. x10

1955 IHC 55 baler w/ motor, \$350 John Deere 3 section spring-harrow \$40. Phone Buck-woth harrow \$40. Route 5, Box 3213. Loyd Engle, x9

FOR SALE — 1964 Oliver 430 combine with 512 corn head and 14 ft. cutting bar, cab, hyd. reel. Charles Cline, Republic, MO. Phone FO 1-4121. x10

WANTED — Late Model John Deere moldboard lister with fertilizer attachment. Thomas Bartley, Wilsey, Kans., Tele-Phone 497-2837. x9

FOR SALE — Sears sursingle machine. Star four can milk cooler. Both reasonable. Dale Crisler, Harveyville, Kansas 66431. Phone 589-2435. SB9

FOR SALE — IHC H tractor. C tractor 1954, good. 2 point hook-up, wide front. Phone 704, Woodbine. x10

FOR SALE — Forty 10 gal. cream cans, grade A. Cheap. Secondary Dairy, Lincoln, Kans. x13

IRIGATION PIPE, 400 ft. of. for sale. Call Junction Ci-ty, Kans., CE 8-2332 or CE 8-1850. SB10

FOR SALE — 1959 F560 diesel, overhauled, fully equipped. 1962 F560 diesel, new paint; 1958 Star M&M propane, 3 pt., pow-er adjust wheels, power steering. Valley Equip., Lindsborg, Kans. SB9

ED'S SKEETER — AQHA. Ok-lahoma Star & Hancock. Sorrel with flashy markings. A natural cowhorse with wonderful dispo-sition. \$100 reg., \$50 unreg. Wayne Dunafon, Westmoreland, Kans. x10

Help Wanted

WANTED
AUTOMOBILE MECHANIC
TRAINEES

to fill responsible positions after training. No experience neces-sary, only desire to improve your standard of living. Train in your home town. Age no prob-lem.

write "TRAINEES"
c/o Grass & Grain
Box 1009, Manhattan, Ks. 66502

Pets

PUREBRED BLUE Australian Shepherd puppies. Intelligent, affectionate pets, natural heel-ers. Buford Taylor, Palmer, Kans. x9

FOR SALE — Siamese kittens. Cuba Phone 16F17, Joe Klima, Cuba, Kansas. x9

FOR SALE — Americas No. 1 stock dog. Border Collie pups just old enough to go. LeRoy McCosh, R1, Abilene, Kans. Phone Buckeye 3512. x11

MECHANIC
TRUCK AND TRACTOR

Top wages for qualified mechanic, excellent working conditions, good shop; must have own hand tools.

Apply in person to
John Lucas at

BOWMAN
Farm Impl. & Truck Co.
240 East Eighth
JUNCTION CITY, KANS.

BUSINESS OPPORTUNITY
John Deere Agency in Nebraska

Am offering for sale the John Deere Agency in Pawnee City, Nebr.
This is a very profitable business. Has been doing a large volume for years. Owner's health reason for selling.
If interested contact

JOHN W. HEIST
105 North 5th Street
Real Estate and Auction Service
BEATRICE, NEBR.

FARM & RANCH LOANS

LAND BANK LOANS
for nearly every
agricultural purpose

R. STANLEY PARSONS, Mgr.
SEE ME AT
604 HUMBOLDT PR 8-2971
Res. Phone PR 6-9044
MANHATTAN
Open Mon. through Fri.
8 a.m. to 5 p.m. (closed 12-1)

Branch Offices: CLAY CENTER & JUNCTION CITY

Federal
LAND BANK Assn. of
MANHATTAN

Serving Clay,
Geary, Pottawatomie & Riley counties.

Haying Time Is Coming . . .
and we have for you our annual

**Baler & Hay Tool
SMOKER**

MAY 4 at 7:30 p.m.
EVERYONE WELCOME

REGARDLESS OF THE MAKE YOU OWN, YOU
SHOULD BENEFIT AT THIS SESSION.

AULD CHEVROLET
WAKEFIELD, KANSAS

ONLY \$325 Fully Guaranteed Completely Installed

HAUL-MOR, INC.

The Hydraulic Hoist Anyone Can Use
At A Price Everyone Can Afford!

PTO operated hydraulic hoist for 10' and smaller beds!
Six ton hoisting power. Can be used on 1 ton and smaller trucks.

NOW — Even small trucks can have hydraulic hoisting.

Fingertip Control From Cab
Chrome Plated Piston Gives You Smooth, Positive Power

- Durable
- Practical
- Convenient

HAUL-MOR, INC. valley falls, kansas • phone 945-3211

John Deere — G.M.C. MACHINERY

1961 John Deere 214 WS wire baler PTO, completely overhauled	\$1095
1958 Allis Roto Baler	\$595
Fertilizer Attachment for 4-row John Deere 871 bedder, save 1/2	\$150
Insecticide attachment for 4-row John Deere	\$50
IHC No. 5 Side Delivery rake, low wheel	\$250
IHC No. 15 Side Delivery rake, 2 wheel	\$295
2 John Deere 200 series, 2 row quick tach cultivators	\$95 & \$125
John Deere No. 6, 2 row pull type planter, runner & disc openers, fert. attach., rubber press, like new	\$495
IHC Model 37 tandem disc, 10-ft.	\$295
John Deere 3-14 & 3-16 plows each	\$165
John Deere 45 combine, 10-ft. 1958 model, very good, always shedded	\$2350
John Deere 45 Combine, 10-ft. 1956 model	\$1695
1956 IHC 141 Combine, 14-ft. bar, always shedded, excellent condition	\$1750

IF YOU CARE ENOUGH TO PLANT THE VERY BEST

NC+ HYBRIDS RS671

A Strong Stalked Mid-Season Milo Now Available through your NC+ Dealer.

Check the Official Kansas State Grain Sorghum Performance Bulletin 504.

- First in Greeley County Irrigated tests on both the two and three-year average.
- First in Ford County Dryland tests on both the two and three-year average.
- First in Finney County Fallow tests for the average of the past three years.
- 22% above the average in LaBette County in 1966 and 11% above the average the past 3 years.
- 15% above the average in Ellis County the past three years.
- 16% above the test average in Stafford County in 1965.
- 8% above the test average in Reno County in 1966 and 6% above for the past three years.
- 8% above the average in Thomas County the past two years.
- 6% above the test average in Brown County the past three years.

For a consistently good hybrid grain sorghum — Pick up RS671 today.

Alida Co-op CHAPMAN
Farmers Co-op HOLTON
Farmers Co-op MANHATTAN
Scott Kilsey ROSSVILLE

Call Us Collect CE 8-4103

BOWMAN'S

JUNCTION CITY
Your
Junction City - Manhattan Area
John Deere Dealer

Miscellaneous

ARMY SURPLUS
OUTSIDE WHITE
PAINT
\$2.93
Per Gallon

Kimberly Washable Vinyl Latex Wall Paint

FAITH'S
Furniture
East US 24 PR 8-3786
MANHATTAN

FOR THE sake of your life, ride a Big Horn saddle from Key City, Clay Center, Kansas. SB TF

FOR SALE — Dayton Electric motors, largest selection in northeast Kans. Also used 3 hp, 1/2 hp, 7 1/2 hp. Van's Electric, Fairview, Phone 467-3387. x10

PORTABLE CORRALS for sale. Dicks Ranch Supply, Osburg, Kans., phone 468-3376. SB11

FOR SALE — 1947 John Deere, 12', always shedded, overhauled last year. Frank Thiessen, LI 3-2332.

FOR SALE — New weather with Ford 1966 Hesston PT 18. E. C. Riley Co., Cawker City, MO.

FOR SALE — 1958 John Deere, 14 ft. platform, er. Good condition. etrich, Junction City, CE 8-3004.

FOR SALE — Farm house, to be moved or wrecked, all go away prices. Wind mill, cylinder 3 mi north Mil-Phone evenings CE 8-1000, Ralph Rudolph, Junction City. 9

REGISTERED AMERICAN wide pickin bale, Richard Chartier, Kans.

FOR SALE — Green ropelled hay wagon, old, Arlie Kuerst, Falls, Phone BR 3-303.

FOR SALE — Massey baler, used one year, Kilian, Wamego, MO. 303.

Stud Service

FOR SALE — JD 1400 wide pickin bale, Richard Chartier, Kans.

FOR SALE — Green ropelled hay wagon, old, Arlie Kuerst, Falls, Phone BR 3-303.

FOR SALE — Massey baler, used one year, Kilian, Wamego, MO. 303.



Watching The Show

Part of the crowd at the Better Livestock Day at the Schuler Farm near Chapman last week.

Milk Bottlers Say They'd Need More

The milk industry and the government are at odds whether a federally ordered increase in producer prices of milk should increase consumer costs. The increases, announced by Secretary of Agriculture Orville L. Freeman, range from a half-cent to 1½ cents a quart for fluid or bottling milk. Affected are 70 urban milk marketing areas throughout the country.

AUCTION

Having decided to close out our antiques and collectors items, we will hold a public auction at the farm located 2 miles north and 4 miles east and ½ mile north of Bennington, Kans.; or 11 miles southeast of Minneapolis at the Dan Startzman farm.

Wedn., May 3
Starts 10:00 a.m.

Mostly Antiques Dishes & Lamps

Cut glass bowl
Cut glass cream and sugar
Red and green glass
Water sets; bowl sets; tooth-pick holders; plates; bottles; paper weights; powder boxes; several different kinds of goblets; hanging lamp; kerosene lamp; many dishes several lanterns; lamp bracket and reflectors; butter molds; churns; jugs; flat iron; dated fruit jars; crocks; granite ware; bar; mugs; stools; brass gardenier; German hand-made violin and case, good

HOGS

30 Hampshire pigs and shoats
8 Hampshire gilts
Hampshire boar

These will be sold about 3:00 o'clock.

FURNITURE, ETC.

Swinging rocker, good; book case; marble top table; walnut chest of drawers; walnut table; walnut 3 drawer chest; maple cabinet; kitchen chairs; commodes; trunks; picture frames; clock; beds and dressers, very old; mangle, very old.

MISCELLANEOUS

Wagon wheels; buggy supplies; Model T parts; cistern wheels; antique saddle; cast iron spittoon; shoe lasts; meat block; coal buckets; corn planters; boilers; banks; old car tags.

Many more articles as this is only a partial listing.
DAN & LILLIE STARTZMAN
LORA NELSON EST.
Auct: Ed, Slim and Andy Montgomery, Mankato, Kans.
Phone FR 8-3336.
Clerk: Citizen's National Bank, Minneapolis, Kans.

Freeman told newsmen the increases would not justify higher retail prices. But the Milk Industry Foundation, an association of milk processors and distributors, said "no fluid milk distributor that we are aware of is in a position to absorb these increased

21st Kansas Registered RAM SALE — 170 HEAD —



MON., MAY 8

HUTCHINSON, KANSAS
Show 8:00 a.m. Sale 12:30 p.m.

Hampshires — Southdowns
Suffolks — Corriedales
Dorsets — Shropshires
Top Bloodlines
SELECTED RAMS
Some rams sold in pens of three
Catalogs on Request
V. E. McAdams, Sec.
KANSAS PUREBRED

SHEEP BREEDERS ASSN.
Weber Hall, Kansas State U.
Manhattan, Kansas 66502
Auct. Harold Tonn, Haven
Judge Charles Brink, Paola



VIGOR TESTED WINTER TESTED FIELD PROVEN

EXTRA CARE PUTS THE + IN



SEED CORN
Farmers Co-op
ONAGA ALTA VISTA
WESTMORELAND
MANHATTAN, KANSAS

milk costs." Producer prices which the Freeman action will provide

**16th ANNUAL
4-H and FFA
WETHER
Lamb Sale
SAT., MAY 6
1:00 P.M.
Lunch Served
Valley View Ranch
HAVEN, KANS.
120 HEAD**
SOUTH DOWNS: Irvin Cooper & Sons; Harold Tonn.
SHROPSHIRE: Wayne Worthington & Sons
HAMPSHIRE: Garnie Rhodes
DORSET: David Wolgomott
No Lambs Sold Before
Sale Day
VALLEY VIEW RANCH
3 mi. W & 3¼ S. of Haven

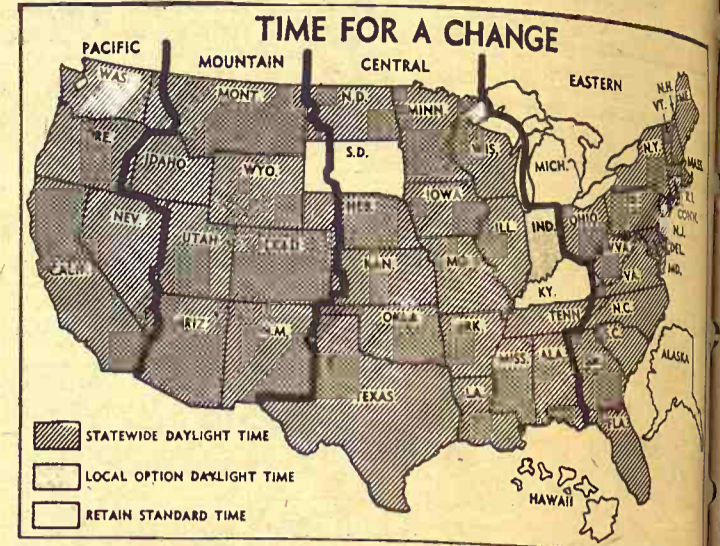
**Kansas Largest
Feeder Pig Sale
— 3020 HEAD —
Farm Fresh Pigs
THURS., MAY 4
1:00 p.m.**
Kansas State Fairgrounds
HUTCHINSON, KANSAS
all sow herds vet inspected on the farm. All pigs vaccinated for cholera and erysipelas, castrated and weaned.
Sponsored by Mid-Kansas Swine Improvement Assn.
For Information Contact
Gerald Simon, Nashville, Ks.
Phone 246-3648
Edw. D. Clarke, Lyons, Kans.
Phone CL 7-2595
Paul Keesling, Plevna, Kans.
Phone 287-3133
Auctioneer Joe Davenport

AUCTION

Due to my health I will sell by public auction the following listed and described items located on Highway 15 just across the Rock Island Railroad track south and 2¼ blocks west in Durham, Kans.

Friday, May 5
Starts 1:00 p.m.
Mchry. & Trucks
IHC 1960 Model 151 combine, good
1961 Chev. V-8 2-ton truck, 4-speed & with good grain bed
1955 Chev. 6 cyl. heavy duty ½ ton pickup, 4-speed transmission
1951 Chev. 1½ ton truck with bed hoist & good grain bed
1949 Zimmar house trailer, 8x30, with 2 bedrooms, kitchen & living room & furnishings and some other items.
Terms: Cash
Alvie Rader, Owner
Carl Schnell, Lee Remy & wm. Schnell, Auctioneers
Durham Bank, Cashier & Clerk

for fluid or bottling milk compared with the April prices, respectively, include:
St. Louis, \$5.47 and \$5.07;
Springfield, Mo. \$5.22 and \$4.87;
Kansas City \$5.60 and \$5.20;
Neosho Valley (Pittsburg, Ks) \$5.69 and \$5.15; Wichita \$5.35 and \$5.75.



Savings Time

Nearly all the country went on daylight savings time this week. Only the South Dakota and Michigan legislatures voted to stay on central time to over-ride federal legislation. Since its legislature doesn't meet this year, Kentucky has been given a year of grace to make its decision. Alaska and Hawaii, along with Puerto Rico, have been granted exemption pending revision of their time zones. Only Indiana, by a legal twist, has contrived to retain local option. The legislature voted to permit each locality to follow either standard or daylight time but requires each to set up an "official" clock showing daylight time.

SPECIAL CONSIGNMENTS

NIGHT SALES AT ONAGA START
Wedn. May 3 — 8:00 p.m.

Special Consignments

- 20 Hereford steers, weight 600 lbs.
- 15 Angus steers, weight 600 lbs.
- 15 Holstein steers, weight 500 lbs.
- 10 Hereford steers, weight 500 lbs.
- 2 Angus bulls, 2 yrs. old.

We are looking for a good run of cattle and hogs for our first night sale of the season. Fat hogs sell first.

Onaga Community Sale

Marvin Cottrell — Phone 889-4461 or 889-4665

WOULD YOU BELIEVE?

We have a NEW JI Case
MODEL 444 4-ROW PLANTER
Complete with fertilizer & herbicide attachments
Reg. \$1429 **Special \$1060**

Also Have A NEW Massey Ferguson
NO. 78 4-ROW PLANTER
Includes fertilizer, herbicide and insecticide attachments
Reg. \$1637.50 **Special \$1160**

KUHLMAN MOTOR CO.
Linn, Kansas

Wednesday MAY 10

Starts 12:30 noon
Lunch Served

AUCTION SALE

Due to the death of my husband I am leaving the farm. I will sell at public auction all equipment at the farm located 18 miles southeast of Junction City, Kans., on the Humboldt Rd.; or 7 miles northwest of Alta Vista on the Humboldt Rd. Watch for sale sign.

MACHINERY

This is a partial listing:
IHC Farmall 200 tractor
1964 M-F wire tie baler
1964 M-F side del. rake
1960 A-C hay conditioner
1950 Ford F-2 pickup
IHC 2-14 plow
John Deere 2-14 plow
3-sec. spike tooth harrow
16-8 grain drill
7' No. 5 John Deere mower
30 ft. hay elevator
Woods Bros. corn snapper
IHC tandem disc
3 rubber tired hay wagons

2 wheel rubber tired trailer
A-C 5-ft. combine
P&O 2-row lister
Skyline hammer mill

MISCELLANEOUS

500 gal. propane tank
300 gal. gas tank & stand
300 gal. water tank
Shallow well pump
Sickle grinder; blacksmith vise; anvil; electric fence; native lumber; miscellaneous tools, farm and hand; lots of old iron.
Some furniture including some antiques.

DOLLY EDWARDS, Owner
Aucts. C. W. (Bill) Crites, Junction City, Kans.; and Ron Montgomery.
Clerk, Everet Sheen
For sale dates call CE 8-5720, Junction City.

Grass & G
May
LA
(Land know
of Verdi, K
Kans.)
TRACT NO
26, Townshi
West Half
25, Townshi
East Half
25, Townshi
Part of the S
of Section 2
All cont
taining 103.1
tract is choi
TRACT NO.
(NE¼) Secti
Containin
feed grain 4
Possessio
Possession o
season and v
¼ of 196
plus landlord
Sellers to
Warranty
furnished sub
SALE
MAY
Terms: 25% o
approved.
FOR PARTIC
Abilene, Kans
Lehman, Rom
Estate: C. A. H
Kansas, Co-ex

22

The herd
7 miles east
Lawton, then

105 Reg. Ho
milk
52 Reg. Heif
5 Reg. Bull
The N
1966
1965
1964
1963
1962

There will be
to select from.

These cows
They were rais
ready to go on
100 cows. The c
individual cows
out performanc
tion records. T
ditions and hav
Calthood Vacc
Henry, Lois
Ron Beal, Herds

LIVESTOCK
SAT.,
Judging A

21 Cattle Association Move To Force Prices Upward

Grass & Grain
May 2, 1967

LAND AUCTION

(Land known as the George Hobbs estate, located at the edge of Verdi, Kansas, on the Solomon River, in Ottawa County, Kansas.)

TRACT NO. 1: Part of the Northeast Quarter (NE $\frac{1}{4}$) Section 26, Township 12, Range 2, north of river; West Half (W $\frac{1}{2}$) of the Northwest Quarter (NW $\frac{1}{4}$) Section 25, Township 12, Range 2, north of river; East Half (E $\frac{1}{2}$) of the Northwest Quarter (NW $\frac{1}{4}$) Section 25, Township 12, Range 2;

Part of the South Half (S $\frac{1}{2}$) of the Southeast Quarter (SE $\frac{1}{4}$) of Section 23, Township 12, Range 2, east of river; All containing 235 acres more or less. Wheat base containing 103.1 acres, feed grain 22 acres, barley 30 acres. This tract is choice river bottom land.

TRACT NO. 2: North Half (N $\frac{1}{2}$) of the Northeast Quarter (NE $\frac{1}{4}$) Section 34, Township 12, Range 1; Containing 80 acres, more or less. Wheat base 16.8 acres, feed grain 4 acres, barley 5 acres, balance pasture land.

Possession of wheat land when 1967 crop is harvested. Possession of pasture and spring crop land end of pasture season and when spring crop is harvested. $\frac{1}{2}$ of 1967 crops to purchaser and cash rent from pasture, plus landlord's share of ASC payments.

Sellers to pay 1966 taxes and all prior taxes on both tracts. Warranty deed and abstract showing merchantable title furnished subject to existing easements.

SALE WILL BE HELD AT THE LOCATION OF THE VERDI SCHOOL HOUSE MAY 6TH, 1967 AT 1:30 P.M.

Terms: 25% down on day of sale and balance when title is approved.
FOR PARTICULARS CONTACT: Ray D. Wilson, Broker, Abilene, Kansas; or Willis Darg, Broker, Bennington, Kansas; Lehman, Romine & Guilfoyle, Abilene, Kansas, Attorneys for Estate; C. A. Hobbs, Abilene, Kansas, or R. E. King, Solomon, Kansas, Co-executors of Estate.

DENVER — Cattlemen, caught in the cost-price squeeze that is distressing most American farmers, are taking a serious step toward voluntary production and marketing control.

The American National Cattlemen's association has announced the start of a campaign among its 42 state affiliates and 300,000 members to seek a five per cent reduction in the supply of beef.

Joe Entz of Glendale, Ariz., co-chairman of the association's new market development committee, laid the groundwork for the campaign by summing up the problem of overproduction in the cattle industry at the end of a two-day meeting.

"Everybody's in trouble," Entz declared. "The rancher's in trouble. The grazer's in trouble, and the feeder's in trouble."

William C. Helming, the association's director of economic research, said the purpose of the proposed cutback was to force the price rise that has historically followed a decrease in production.

Up And Down

He cited figures to show that when commercial beef production increased 11.3 per cent from 1952 to 1956 prices decreased 9.8 per cent. From 1956 to 1958 production decreased four per cent, he said, and prices went up 19.1 per cent.

A one per cent drop in cattle production led to a three to six per cent rise in prices, he added. At that rate, the five per cent cutback the association is

seeking could lead to a price increase of 15 to 30 per cent.

He declined to predict how much of this would be passed on to the consumer.

"I don't know what kind of a markup the retailers have to

have," Entz said. "They have a large markup now between the wholesale and retail level. I assume they could absorb some of it, but I just don't know."

"Apparently the consumer hasn't gotten the full benefit of the decrease in price that we've taken. But one of the big fallacies in this whole situation is the feeling on the part of the consumer that beef is high. We're going broke and the consumer is getting a bargain."

FT. RILEY P.X. GARAGE EQPT.

AUCTION SALE

**Saturday
MAY 6**

Starts 10:00 a.m.
Lunch Served

Seventh and Franklin, one block east First National Bank, Junction City, Kans.

As I have closed the P.X. Garage at Ft. Riley, Kans., I will sell at public sale all the shop equipment, fixtures, hand tools, office equipment and misc. items.

FOR COMPLETE LISTINGS SEE GRASS & GRAIN APR. 25

To inspect equipment between 8 a.m. & 5 p.m. call CE 8-4193 Junction City, Kans.

KENNETH CHRISTIAN, Owner

Aucts: C. W. (Bill) Crites, Junction City, Kans.
and Ron Montgomery.
Clerk: Everett Sheets.

To arrange sale date, call Junction City CE 8-5720.

220 HEAD REGISTERED HOLSTEINS



Sell At
LAWTON, OKLA.
SAT., MAY 6
10 a.m. Sharp

The herd being completely dispersed at the farm, located 7 miles east on Oklahoma Hiway No. 7 from downtown Lawton, then 1 mile south and a half east.

105 Reg. Holstein cows in milk	32 bred Reg. Heifers, Sept. freshening
52 Reg. Heifers 6 to 15 mo.	25 Reg. Heifers under 6 mo.
5 Reg. Bull calves	12 grade cows, exceptional producers

The Niederjohn Herd Performance on DHIR

1966	105 lactations	16,958 milk	560 fat
1965	67 lactations	16,471 milk	550 fat
1964	74 lactations	15,242 milk	542 fat
1963	66 lactations	15,244 milk	564 fat
1962	51 lactations	15,950 milk	580 fat

Heifers In Quantity

There will be over 100 head of registered heifers available to select from. They are well-grown and all home bred.

TYPE

These cows have size, bone, and stand on plenty of leg. They were raised in the Southwest and are acclimated — ready to go on working. They are handled in one unit of over 100 cows. The cows are well fed but no special care is given individual cows. The policy has been that a cow has to turn out performance to stay as is indicated by the above production records. The cows are handled under mechanized conditions and have the will to work.

Calfhood Vaccinated

Health Papers Furnished

Henry, Lois & Peggy Niederjohn, Owners
Bon Beal, Herdsman
E. A. Dawdy, Salina, Sale Mgr.
Lawton, Oklahoma

Regional Job For SCS Man Gene Bohnenblust

McPHERSON — Gene F. Bohnenblust, work unit conservationist for the U. S. Soil Conservation Service at McPherson is being promoted and reassigned as civil engineer, Soil Conservation Service, effective June 4. He will remain at McPherson.

Bohnenblust will be working in Barton, Stafford, Rice, McPherson, Harvey, Marion, and Chase Counties.

He has been work unit conservationist at McPherson for the past 11 years. Before that he was assigned as work unit conservationist at Great Bend for four years and Ellsworth for a year and a half. He began his Soil Conservation Service as agricultural engineer at Lyons in 1948.

Replacing Bohnenblust as work unit conservationist will be Robert E. Whelpley, who has been work unit conservationist at Holton, since February, 1962.

AUCTION SALE

**Saturday
MAY 6**

Starts 12:00 Noon
Lunch Served

We will sell the listed items located 2 1/4 miles north on Hiway 15 from the 14th St. & Buckeye intersection in Abilene.

MACHINERY

1957 Massey Ferguson Model 50, equipped with hydraulic JD 1950 12 ft. No. 55 combine Dearborn 2x14 plow
2-row 3-Pt. lister
Ferguson 3-pt. parallel bar rake
Ferguson 3 ft. 3-pt. oneway Ferguson mower
1958 IHC 45T baler with rebuilt heads
9 ft. IHC tandem disc Ferguson cultivator
Ferguson 3 pt. 9 ft. spring tooth harrow
3 pt. Handyman carrier
John Deere 820 weeder
IHC 4-section springtooth
16 ft. hay elevator
3 pt. Cherokee 360 degree blade
Hyd. cylinder with hoses for tractor
1946 Ford 6 cyl. 1 1/2 ton truck, good
Stockland 3 pt. scoop
John Deere No. 5 mower with quick tach
John Deere 730 lister

John Deere 16x8 drill with fert. attachment, press wheels and grass seeder
Moline 4-wheel manure spreader
Moline side delivery rake
10 ft. Ezee flow fert. spreader
Red Rider riding lawn mower
Root riding lawn mower
Roll of sheep wire; 2-wheel trailer, Handyman jack, 18 ft. ladder; chain hoist; many other misc. items; some scrap iron; good pump jack in oil bath; 1/2 HP motor; sump pump; metal welding table; 500 chick electric brooder; good; 5 gal. Transdraulic oil; 15 gal. of motor conditioner.

HOUSEHOLD ITEMS

2 piece matching bedroom suite, complete; iron bed, complete; 2 bedding chests; beige late model 2-pt. divan and chair set; 3-pillow sofa lounge; night stand; 2 rockers; trunk; rotor antenna; magazine racks; wash stand; lamp tables & lamps; 4 750x14 4-ply tires; screens; storm windows; inside varnished door.
Antique dishes; other dishes; cooking utensils; fruit jars etc.

AARON STRUNK ESTATE

ROSE ELLA CURRAN EXECUTRIX

Aucts: Cols. Carl Schnell, Lee Remy & Wm. Schnell
Clerk: Karl Harshman.
Cashier: Farmers National Bank

Remember the dates • Remember the Place

Mid-Kansas A & I Show

SAT. & SUN., AUG. 6 & 7

LINCOLN, KANSAS

Agriculture and Industry on Parade
SEE YOU AT THE SHOW — EVERYONE



LIVESTOCK SHOW
SAT., MAY 6
Judging At 10 a.m.

light savings time...
legislation...
Hawaii...
twist...
time but requires...
daylight time.

START...
:00 p.m.

unity Sale...
4461 or 889-4665

IEVE?...
ANTER...
attachments...
cial \$1060

son...
TER...
side attachments...
cial \$1160

Wednesday...
MAY 10...
Starts 12:30 noon...
Lunch Served

um leaving the farm...
at the farm located...
ns., on the Humboldt...
on the Humboldt

rubber tired trailer...
combine...
ow lister...
hammer mill...
CELLANEOUS...
ppropane tank...
gas tank & stand...
water tank...
well pump...
grinder; blacksmith...
vil; electric fence...
umber; miscellaneous...
rm and hand; lots of

furniture including...
tiques...
Owner...
Kans.; and...
Clerk, Ever Sheet...
unction City.

G&G Calendar

- May 2 — Guernsey dispersal southeast of Peabody, Kans., Lowell E. Cooper, owner.
- May 2 — Farm sale south of Junction City, Mrs. Edna Peck. Auct. Foster Kretz.
- May 3 — Antique and collectors' sale northeast of Bennington, Startzman and Nelson estate. Auct. Ed Montgomery & Sons.
- May 4 — Mid Kansas Swine Improvement assn. feeder pig sale in Hutchinson.
- May 4 — Household dand misc. in Salina, Paul Coder. Aucts Frank Harz and Bob Perry.
- May 5 — 240 acres land, Lincoln, Kans. W. H. Davis Estate, heirs. Auctioneers Frank Harz & Bob Perry.
- May 5 — Land sale southwest of Lincoln, Kans., heirs of W. H. Davis estate. Aucts. Frank Harz and Bob Perry.
- May 5 — Household goods northeast of Clay Center, Mrs. Otto Sewell. Auct. Foster Kretz.
- May 5 — Trucks and combine in Durham, Kans., Alvie Rader. Aucts Carl Schnell, Lee Remy & Wm. Schnell.
- May 6 — Hardware Store & plumbing supplies, D. M. Heron. Salina, Kans. Frank Harz & Bob Perry.
- May 6 — Farm sale northeast of Abilene, Kans., Aaron Strunk est., Rose Ella Curran, exec. Aucts Carl Schnell, Lee Remy & Wm. Schnell.
- May 6 — Sixteenth annual 4-H & FFA wether lamb sale, Valley View Ranch, Haven, Kans. Auct. Harold Tonn.
- May 6 — Farmland auction at Verdi, Kans., George Hobbs estate. Ray D. Wilson and Willis Darg, brokers; Lehman, Romine & Guilfoyle attorneys for estate; C. A. Hobbs and R. E. Kind, co-executors.
- May 6 — Registered Holstein dispersal at Lawton, Okla., Henry, Lois and Peggy Niederjohn. Sale mgr. E. A. Dawdy, Salina, Kans.
- May 6 — PX Garage Eqt. at Junction City. Kenneth Christion. Bill Crites, auct.
- May 6 — Consignment sale, farm implements, livestock & misc., Congregational Church, Little River. Auct. Ted Krehbiel.
- May 8 — State ram sale in Hutchinson, Kans. Purebred Sheep Breeders Assn., V. E. McAdams, sec.
- May 8 — Farm sale southeast of Belleville. Ed Valek & Son. Larry & Rollie Lagasse, aucts.
- May 9 — Real estate & household goods in Clifton, Mike Rossman estate. Auct. Foster Kretz.
- May 10 — Farm sale southeast of Junction City, Kans., Mrs. Dolly Edwards. Auct. C. W. Crites.
- May 10 — Farm Sale, Wm. J. Debold estate, west of Salina. Frank Harz & Bob Perry.
- May 10 — Dispersal of Mt. Zion Milking Shorthorns, Ness Cl-

May 2, 1967

ty, C. E. Dietz. Fred Rogers, Menlo, sale mgr.; Dick Sears, auct.

May 12 — House & Furniture, Mayme B. Forrey estate, Salina, Kans. Aucts. Frank Harz & Bob Perry.

May 13 — Household goods in Salina, Donald E. Gray est. Aucts Frank Harz and Bob Perry.

May 13 — Farm sale, road machinery, shop tools, & misc. Mrs. Paul Woerz, northwest of McPherson. Auct. Ted Krehbiel.

May 20 — Real estate & personal property in Greenleaf, Leona Killman Lueker. Auct. Don Roche.

May 20 — Furniture & antiques in Galva, Ruth Hill. Auct. Ted Krehbiel.

May 24, 25, 26 — Antiques, household and misc. items in Clifton, Kans., Carl Schumaker est. Auct Foster Kretz.

May 27 — Complete dispersion sale northeast of Lawrence, Ks., Juniper Hill Farm, Stewart Newlin and Gordon S. Kay. Phil Ljungdahl, sale mgr. Ray Sims, auctioneer.

June 3 — Contractors eqpt. & household sale in Manhattan, Joe Pakan. Lawrence Welter, auct.

June 10 — Complete dispersal sale of registered Quarter horses, Elmer & Evelyn Zecker, Alma, Kans.

Oct. 28 — Kansas Milking Shorthorn Society state sale in Hutchinson, Freg Rogers, sale mgr. Dick Sears, auct.

Nov. 3 — 5th annual Hammarlund-Shamrock Angus sale. St. Marys, Kansas.

Nov. 4 — All breed calf sale in Manhattan, Olson and Fagerberg, joint sale.

Nov. 15, 1967 — Registered Hereford sale, Smolan, Johnson Hereford Farms; Elmer L. Johnson & Sons.

Nov. 18 — Kocher Herefords production sale in Onaga, Herman Kocher & Sons.

Nov. 18 — State ewe sale in Hutchinson, Kans. Purebred Sheep Breeders Assn., V. E. McAdams, sec.

Nov. 22 — Hereford production sale in Marysville, Peterson's Herefords. Elmer Peterson & Son.

Nov. 25 — Fall sale of Arbuthnot Herefords, Haddam, Ks. Bob Arbuthnot.

Jan. 20, 1968 — Rebenstorf Herefords Production sale. Elmer Rebenstorf, Sylvan Grove, Kans.

WASHINGTON STATE JUMPS GAS TAX TO NINE CENTS

The state of Washington has increased the state's gasoline tax by 1½ cents, boosting it to nine cents a gallon and making it the highest in the nation. Alaska's eight-cent-a-gallon tax has been the highest. The gas tax in Kansas is five cents.

TEX REAL ONWARD 95th

Cow Herd — Royal Essar CKato, Heir Apparent

SERVICEABLE BULLS WITH WEIGHT RECORDS
Priced . . . \$300 to \$500
35 HEAD REG. HEIFERS
GRANT POOLE
MANHATTAN, KANS.

Located 4 mi. south of I-70-K177 intersection, 2 mi. west on McDowell Creek Rd. Ph. PR 6-8315.

COW POKES

By Ace Reid



"I ain't trying to ride him . . . I'm lookin' fer a clear spot to land!"

The Growing Hog Market Is At WASHINGTON SALES CO.

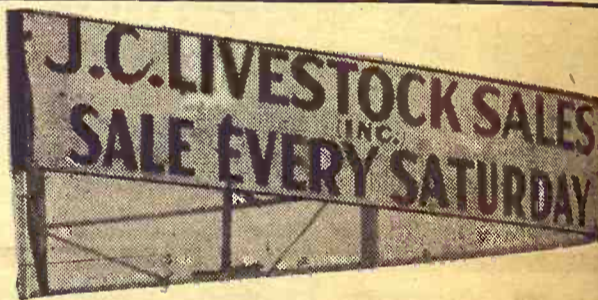
TRY US SOON
HOGS every TUESDAY
CATTLE every WEDNESDAY

A Growing Market for Finished Cattle

ED BURT, Owner

CALL ME IF YOU WANT AN APPRAISAL

Barn Phone EA 5-2266 Residence EA 5-2393
WASHINGTON, KANS.



We had one of our most active sales this past week. Lots of hogs and cattle sold in an active market bringing good, strong prices all the way through, especially the feeder cattle. Many buyers and sellers keep coming back to handle their livestock the Junction City Livestock Sales way, because they have compared livestock stations, and have found our auction way the best.

Another good sale is in the making for this next week, with many buyers and lots of livestock. The following is a sampling of our sale:

STEER CALVES		COWS	
3 whiface steers	365 @ 31.00	6 cows&clfs	@ 23.00
15 black bulls	325 @ 28.00	6 whiface cows&clfs	@ 24.00
5 black steers	350 @ 29.25	2 black cows&clfs	@ 22.50
21 whiface steers	325 @ 29.00	2 black cows&clfs	@ 22.50
13 black steers	455 @ 27.70	The cow market was exceptionally good. Most good cows sold from \$16.50 to \$18.00 with a few heifers and holsteins in the \$18.00's. Others sold from \$15.00 to \$16.50.	
5 black bulls	325 @ 28.00		
1 whiface steer	325 @ 29.00		
4 black steers	425 @ 28.80		
HEIFER CALVES		HOGS	
10 whiface heifers	605 @ 23.10	30 mixed butchers	228 @ 17.00
7 whiface heifers	405 @ 25.30	8 hamp butchers	197 @ 18.00
14 whiface heifers	545 @ 23.40	6 white butchers	175 @ 18.00
1 whiface heifer	430 @ 24.60	20 mixed butchers	218 @ 17.00
6 whiface heifers	380 @ 25.30	25 mixed butchers	206 @ 17.00
3 black heifers	360 @ 26.10	15 mixed butchers	234 @ 17.00
11 whiface heifers	430 @ 24.60	28 mixed butchers	202 @ 17.00
14 whiface heifers	460 @ 25.10	13 white butchers	205 @ 18.00
FAT CATTLE & FEEDERS		SOWS	
32 black steers	740 @ 24.05	6 red sows	461 @ 15.00
5 whiface steers	825 @ 24.15	2 mixed sows	360 @ 15.00
36 whiface steers	820 @ 24.10	1 hamp sow	300 @ 15.00
23 whiface steers	725 @ 23.95	3 hamp sows	406 @ 15.00
18 whiface steers	935 @ 23.45		
9 roanwhif steers	920 @ 23.55		
10 black steers	665 @ 25.10		
32 whiface heifers	790 @ 21.55		
HOLSTEIN STEERS		PIGS	
4 holstein steers	675 @ 22.00	On a good pig market, pigs weighing 50 pounds and over sold from \$17.50 to \$21.25. The smaller pigs brought \$14.00 to \$17.00.	
3 holstein steers	350 @ 26.75		
2 holstein steers	650 @ 21.80		
2 holstein steers	360 @ 26.75		

LICENSED AND BONDED
BARN PH. JUNCTION CITY CE 8-1471
If you have livestock to appraise, call:
VERN LANGVARDT, Manager, 502 UPLAND
HOWARD LANGVARDT, Auctioneer, 520 UPLAND
HERB NEUMEYER, White City, Phone 349-2863

Ronald Rice Motors, Inc.

CHEVROLET OLDSMOBILE CADILLAC
North Kansas' Largest Volume Dealer
NW 2nd Phone CO 3-4000 ABILENE, KANS.

IT'S GO! GO! GO! At Ronald Rices

Our big Oldsmobile APRIL-MAY-JUNE Campaign is half over. We have sold 18 new Olds the first half. We are out to beat our record the second half. Our Chevrolet May-June Campaign is now under way. Hurry on in for the hottest deal on a new Olds or Chev. Big Trade-in, Low Prices, Long Terms.

NEW and USED TRUCKS

1966 CHEVROLET ½ Ton LWB, radio, heater, hitch, very nice	\$1695
1965 CHEVROLET ½ Ton LWB, full custom equip-plus power steering, power brakes, automatic transmission, real nice unit.	\$1675
1963 CHEVROLET ½ Ton LWB, 4 speed, heater, hitch, overloads, motor overhauled, real nice, new paint.	\$1295
1963 FORD ½ Ton LWB, V-8, 4 speed, radio, heater, hitch, this is a real good solid unit.	\$1145
1963 FORD ½ Ton LWB, V-8, radio, heater, hitch	\$1095
1962 CHEVROLET ½ ton LWB, V-8, heater, hitch, SPECIAL	\$795
1962 CHEVROLET ¾ Ton V-8, 4 speed, radio, heater, hitch, overloads, good tires, real good camper unit.	\$1145
1961 INTERNATIONAL 1½ Ton V-8, heavy duty tires, real good condition.	\$895
1960 CHEVROLET ½ Ton 3 speed heater, (needs some work)	\$395

Ready to Go Used Cars

1966 CHEVROLET Impala 4 dr. V-8, station wagon . . .	\$3295
Radio, heater, automatic transmission, power steering, power brakes, air conditioner.	
1966 OLDSMOBILE 88 Jetstar, 4-dr., hardtop	\$2995
Radio, heater, automatic transmission, power steering, power brakes, air conditioner.	
1965 CORVAIR 2-dr. 6 cyl.	\$1495
Radio, heater, 4 speed	
1965 CHEVELLE MALIBU 2-dr. V-8, sports coupe	\$1895
Radio, heater, automatic transmission, power steering, air conditioner	
1965 PONTIAC Catalina 4-dr. sta. wagon	\$2295
Radio, heater, stick shift, air conditioner.	
1964 OLDSMOBILE F-85 Cutlass, 2-dr. hardtop	\$1695
Radio, heater, automatic transmission, air conditioner.	
1964 VOLKSWAGEN 2-dr.	\$1095
Radio, heater, 4 speed.	
1963 OLDSMOBILE Starfire, 2-dr., hardtop	\$1895
Radio, heater, automatic transmission, power steering, power brakes, air conditioner.	

By Ace Reid



Brownie's A Work Horse

Joe Tucker of Coffeyville often uses Brownie, a 10-year old, 1800 pound steer, to pull a plow, a cultivator or a wagon around his farm. "One thing for sure, you don't ever want to use a plow on a steer or cow," says Tucker. "You can spoil a good animal that way."



JIM ALLEN, Manager

Hercules EXPRESS



All Nylon Cord Construction
Full Size & Load Capacity
Well Siped Rope-Like Tread
Prevents Side Slippage
Dura-Syn Tread Runs Cooler,
Gives More Mileage
Excellent For Commercial
and Farm Service

1300x24 Roadmaster Cans
10-Ply Nylon — \$47.00
Plus Carcass

NATIONWIDE DOUBLE GUARANTEE

Passenger Tires
1. Guaranteed Against All Road Hazards... resulting from usual wear and tear in road service under normal conditions.
Passenger and Truck
2. Guaranteed Against All Defects... in workmanship and materials for the life of the original tread, without limit as to time or mileage.

WE HANDLE US ROYAL TRUCK AND PASSENGER CAR TIRES
WE ARE AUTHORIZED DEALER FOR FARM BUREAU SAFE MARK TIRES

Hercules Tire Sales of Manhattan SPRING SALE



Uni-Royal Grip Master Nylon

11.2/10-24	4-ply	20.79	plus fet 3.14
11.2/10-28	4-ply	26.90	plus fet 3.50
12.4/11-28	4-ply	32.59	plus fet 4.25
12.4/11-38	4-ply	39.59	plus fet 5.39
11.2/10-38	4-ply	37.68	plus fet 4.46
14.9/13-26	6-ply	49.11	plus fet 6.37
16.9/14-30	6-ply	74.59	plus fet 9.98
16.9/14-34	6-ply	76.26	plus fet 8.82
13.6/12-38	4-ply	41.72	plus fet 6.22
14.9/13-38	6-ply	62.31	plus fet 7.89
15.5-38	6-ply	68.26	plus fet 7.73
13.6/12-38	6-ply	53.29	plus fet 6.57

All prices include Fed. excise tax and recappable tire.

Buy Now And Save

HERCULES EXPRESS			
825x20	10-ply	33.36	fet 6.26
900x20	10-ply	37.36	fet 7.48
1000x20	12-ply	43.43	fet 9.54

All prices include Fed. excise tax and resaleable tire.

- HERCULES Farm Tires**
- o Farm Tractor Rear
 - o Farm Tractor Front
 - o Farm Wagon
 - o Implement
 - o Garden Tractor

- HERCULES Special Purpose Tires**
- o Road Grader
 - o Earth Mover
 - o Mine Service
 - o Low Platform Trailer
 - o Industrial



HERCULES TIRE SALES
OF MANHATTAN, INC.
610 N. 3RD PR 6-9453



JIM ALLEN
RES. PR 6-7090

PASSENGER - FARM - FLEET
GIANT EARTHMOVER
24 Hour Road Service



RECAPPING ALL SIZES SPECIALIZING IN ALL MAJOR BRANDS

Former Secretary Wickard Dies

Claude R. Wickard, who was secretary of agriculture during World War II, was killed in an



Claude Wickard

automobile-truck collision near Delphi, Indiana, last week. Wickard was 74.

Wickard became secretary of agriculture under President Franklin Roosevelt in September 1940 and held the post until 1945. Later he was administrator of the Rural Electrification Administration under Harry S. Truman from 1945 to 1953.

HOSPITAL RATES GO UP AT MCPHERSON

MCPHERSON — Room rates at the McPherson County Hospital went up May 1. The hike will change rates to \$16 per day for wards, \$18 for semi-private rooms, and \$19 for private rooms. Rates were last increased here two years ago. The hike this time amounted to \$3 per day in each category.

Sale Every Wednesday

Hogs 12 noon
Cattle 1 p.m.

at NEWTON

Our market was very active on classes of cattle. We had buyers for every size of livestock. Fat hog top was \$18.75. Following is a partial listing of our last sale:

1 blk str--- 665 @ 22.10	1 brof str-- 660 @ 22.80
3 bwf hfrs-- 733 @ 20.00	4 blk str-- 815 @ 26.90
1 blk hfr--- 875 @ 19.40	1 blk hfr--- 710 @ 20.00
3 bwf hfrs-- 366 @ 23.75	1 wf str--- 560 @ 26.90
2 hol bulls- 310 @ 24.30	2 hol str-- 580 @ 24.50
2 hol str-- 380 @ 28.25	3 hol str-- 700 @ 23.20
1 wf str--- 840 @ 22.40	1 bwf str--- 490 @ 27.75
1 wf str--- 750 @ 24.00	2 blk str-- 550 @ 26.20
4 blk str-- 800 @ 23.90	4 red hfrs-- 410 @ 22.25
30 wf str-- 430 @ 28.45	2 wf str-- 325 @ 30.10
5 blk str-- 560 @ 26.00	3 wf str-- 360 @ 28.70
4 wf str-- 400 @ 28.80	1 wf str--- 430 @ 28.40
9 blk str-- 422 @ 28.10	1 wf hfr--- 485 @ 22.80
1 blk str--- 580 @ 22.10	1 blk hfr--- 650 @ 19.00
1 hol str--- 655 @ 16.10	3 hol str-- 455 @ 24.10
1 hol bull-- 670 @ 18.20	6 wf hfrs--- 382 @ 24.20
4 wf str-- 320 @ 31.10	4 hol str-- 381 @ 25.40
4 wf hfrs-- 365 @ 23.50	3 hol str-- 1100 @ 20.10
2 wf hfrs--- 400 @ 21.00	1 wf str--- 765 @ 23.70
1 wags str-- 325 @ 16.80	1 wf hfr--- 1150 @ 18.40
1 blk hfr--- 535 @ 22.60	1 bwf hfr--- 965 @ 19.90
1 wf hfr--- 435 @ 23.25	4 hol str-- 529 @ 22.90
1 wf hfrs--- 600 @ 22.25	1 wf hfr--- 545 @ 19.00
2 blk hfrs--- 635 @ 22.50	2 blk str-- 710 @ 23.90
2 blk str-- 607 @ 24.10	1 wf str--- 615 @ 25.10
1 blk hfr--- 515 @ 18.30	13 blk str-- 586 @ 26.70
2 hol str-- 835 @ 21.60	
1 wf hfr--- 575 @ 21.90	
1 blk bull-- 480 @ 26.10	
1 wf bull--- 505 @ 26.20	
1 wf str--- 450 @ 27.00	
1 blk hfr--- 375 @ 24.10	
1 ron str--- 505 @ 24.10	
1 wf hfr--- 755 @ 20.80	

BARN PHONE AT 3-5566
There is someone at the barn all day Tuesday & Wednesday & Thursday morning. Otherwise call:
AUCTIONEER:
Floyd Gehring
Moundridge Phone 345-8195

NEWTON LIVESTOCK & COMMISSION CO. • **NEWTON KANSAS**

Sale Every Thursday

Hogs 11:30 a.m.
Cattle 1 p.m.

We had another big run of cattle at our sale Thursday. Prices were steady to strong and all classes in good demand. We expect another large run of cattle next week. The hog market was up from a week ago with an extreme top of \$18.05 and the bulk of the butcher hogs going at \$17.75 to \$17.95. The following is a sampling of our consignments.

FAT CATTLE & FEEDERS		
3 whiface str-- 522 @ 27.30	11 black steers--- 408 @ 28.80	
10 black steers--- 635 @ 25.40	10 whiface steers--- 429 @ 28.75	
2 whiface steers--- 568 @ 24.90	6 black steers--- 470 @ 28.50	
5 mixed steers--- 656 @ 24.40	2 whiface b cfs--- 393 @ 28.50	
5 whiface steers--- 640 @ 24.25	4 whiface b cfs--- 435 @ 28.10	
12 black heifers--- 583 @ 23.60	10 whiface b cfs--- 484 @ 27.10	
1 black steer--- 740 @ 23.50	HEIFER CALVES	
1 charloais steer--- 600 @ 23.40	1 roan heifer--- 155 @ 36.00	
5 whiface steers--- 714 @ 23.30	61 bwf hfrs--- 426 @ 25.90	
1 holstein steer--- 685 @ 22.80	50 black heifers--- 494 @ 25.00	
3 black steers--- 617 @ 22.80	18 blkwhif heifers--- 500 @ 25.00	
1 charloais steer--- 875 @ 22.70	6 whiface heifers--- 371 @ 24.80	
2 black heifers--- 593 @ 22.30	2 blkwhif heifers--- 398 @ 24.75	
8 black steers--- 780 @ 22.20	3 black heifers--- 447 @ 24.75	
3 whiface steers--- 830 @ 22.00	2 whiface heifers--- 300 @ 24.75	
1 whiface heifer--- 640 @ 21.90	1 holstein heifer--- 225 @ 24.50	
	3 blkwhif heifers--- 357 @ 24.30	
	1 whiface heifer--- 330 @ 24.10	
COWS		
2 whiface cows&cfs--- @ 235.00		
1 bwf cow&cfs--- @ 232.50		
1 whiface cow&cfs--- @ 192.00		
1 hol cow&cfs--- @ 175.00		
2 red heifers--- @ 153.00		
2 whiface cows--- 918 @ 19.70		
21 whif cows--- 1076 @ 17.00		
1 guernsey cow--- 850 @ 17.00		
BULLS		
2 whiface bulls--- 657 @ 23.80		
1 angus bull--- 1340 @ 23.00		
1 whiface bull--- 1550 @ 22.70		
1 whiface bull--- 1275 @ 22.70		
1 holstein bull--- 925 @ 22.10		
1 whiface bull--- 1955 @ 20.30		
BULL & STEER CALVES		
1 blkwhiface b cf--- 170 @ 38.50		
2 red steers--- 208 @ 37.50		
1 whiface b cf--- 295 @ 31.75		
1 whiface b cf--- 325 @ 29.50		
1 black steer--- 355 @ 29.25		
5 whiface steers--- 402 @ 29.10		

RALEIGH BREEDING, MANAGER
barn HI 3-3671; home HI 3-3547
Auctioneer: Larry Lagasse,
Ph. Concordia, Kans. CH3-1714

MARYSVILLE LIVESTOCK & COMMISSION CO. **MARYSVILLE, KANSAS**

