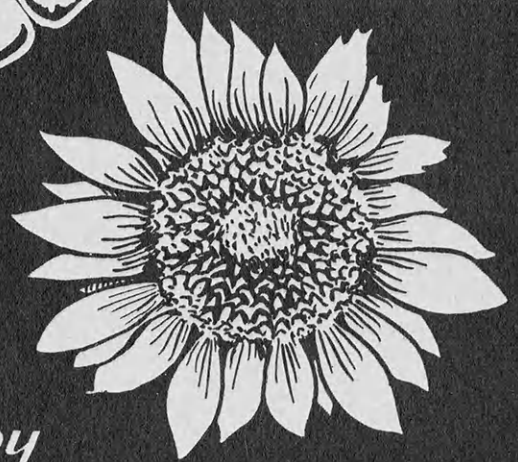
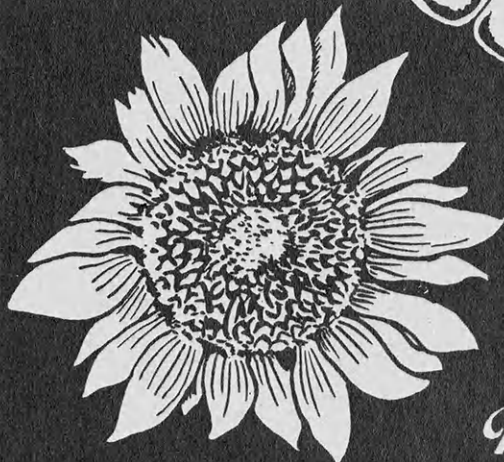
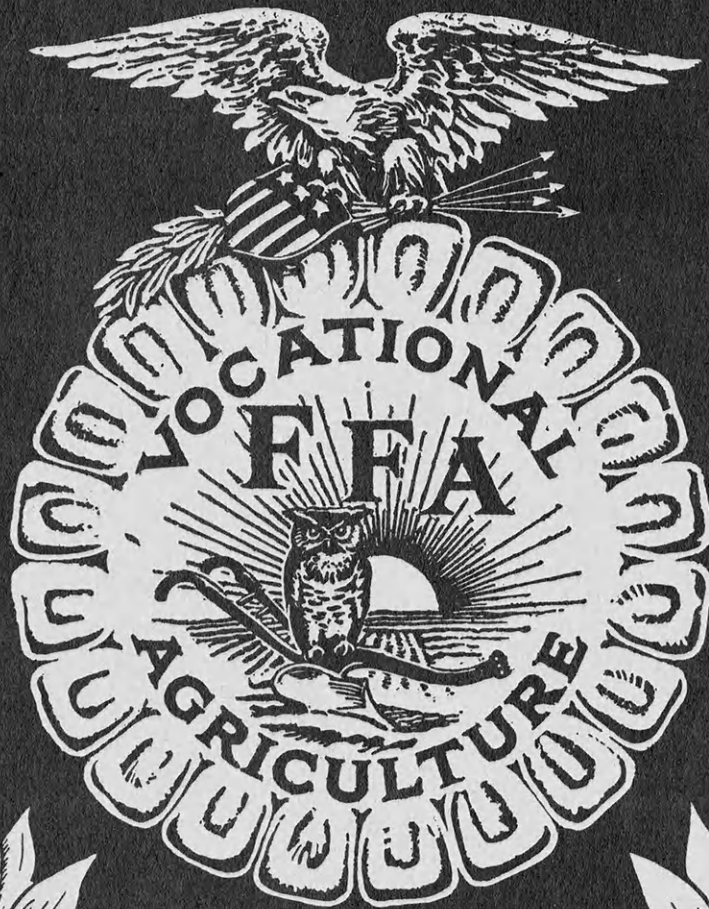


MAY 15 1955

# *The* KANSAS Future Farmer



*Published by*  
THE KANSAS ASSOCIATION  
FUTURE FARMERS OF AMERICA

NATIONAL OFFICERS, FUTURE FARMERS OF AMERICA

1954-55

Constituting the  
NATIONAL BOARD OF STUDENT OFFICERS

PRESIDENT . . . . . William D. Gunter  
Live Oak, Florida  
REGIONAL VICE PRESIDENT . . . . . Charles W. Anken  
Holland Patent, New York  
REGIONAL VICE PRESIDENT . . . . . Bobby Futrelle  
Mt. Olive, North Carolina  
REGIONAL VICE PRESIDENT . . . . . Jay Wright  
Alamo, Nevada  
REGIONAL VICE PRESIDENT . . . . . Lowell Gisselbeck  
Castlewood, South Dakota  
STUDENT SECRETARY . . . . . L. Philip Brouillette  
Richford, Vermont  
ADVISER . . . . . W. T. Spanton  
Washington, D. C.  
EXECUTIVE SECRETARY . . . . . A. W. Tenney  
Washington, D. C.  
TREASURER . . . . . Dowell J. Howard  
Richmond, Virginia

- - - - FFA - - - -

NATIONAL FFA BOARD OF DIRECTORS

W. T. SPANTON, Chairman, U. S. Office of Education, Washington, D. C.  
E. J. JOHNSON, U. S. Office of Education, Washington, D. C.  
R. E. NAUGHER, U. S. Office of Education, Washington, D. C.  
H. N. HANSUCKER, U. S. Office of Education, Washington, D. C.  
A. W. TENNEY, U. S. Office of Education, Washington, D. C.  
HAROLD E. URTON, State Supervisor Agricultural Education  
Pierre, South Dakota  
COLA D. WATSON, State Supervisor Agricultural Education  
Montpelier, Vermont  
H. E. WOOD, State Supervisor Agricultural Education  
Tallahassee, Florida  
JOHN W. BUNTEN, State Supervisor Agricultural Education  
Carson City, Nevada

THE KANSAS FUTURE FARMER  
 A. P. Davidson, Editor  
 H. R. Bradley, Asst. Editor

OFFICERS OF THE KANSAS ASSOCIATION  
 FUTURE FARMERS OF AMERICA

Dean Peter, President Edson	John Milton, Reporter Ottawa
Waldo Anderson, Vice-President Oberlin	Paul Faidley, Sentinel Clay Center
Lynn Perkins, Secretary Howard	C. C. Eustace, Adviser Topeka
Ron McKinnie, Treasurer Beloit	A. P. Davidson, Deputy Adviser Manhattan
L. F. Hall, Executive Secretary Manhattan	

Volume XXVI

May 15, 1955

Number 6

INDEX

	Page
Pictorial.....	1
Kansas Association of FFA Highlights.....	2
Dates of Importance.....	2
Reservations for the National FFA Convention.....	2
FFA Supplies.....	2
1955-56 State FFA Officers.....	3
1954-55 State FFA Convention.....	3
Pictures of 1955 State Farmer Class.....	4
1955 Chamber of Commerce Banquet.....	4
1955 State Chapter Contest.....	4
1955 Class of State Farmers.....	6
1955 Honorary State Farmer Degrees.....	7
The National Future Farmer Magazine.....	7
1955 State FFA Speech Contest.....	8
Agricultural Education Club Award.....	8
Chapter Safety Award.....	10
1955-56 State FFA Officers--Briefs.....	11
Report of the President of the Kansas Association of FFA.....	13
Report of the Reporter of the Kansas Association of FFA.....	14
Report of the Treasurer of the Kansas Association of FFA.....	15
Report of the Secretary of the Kansas Association of FFA.....	20
Results of 1955 State High School Agricultural Judging Contests.....	22
Results of 1955 State High School Farm Mechanics Contests.....	24
Chapter News.....	26

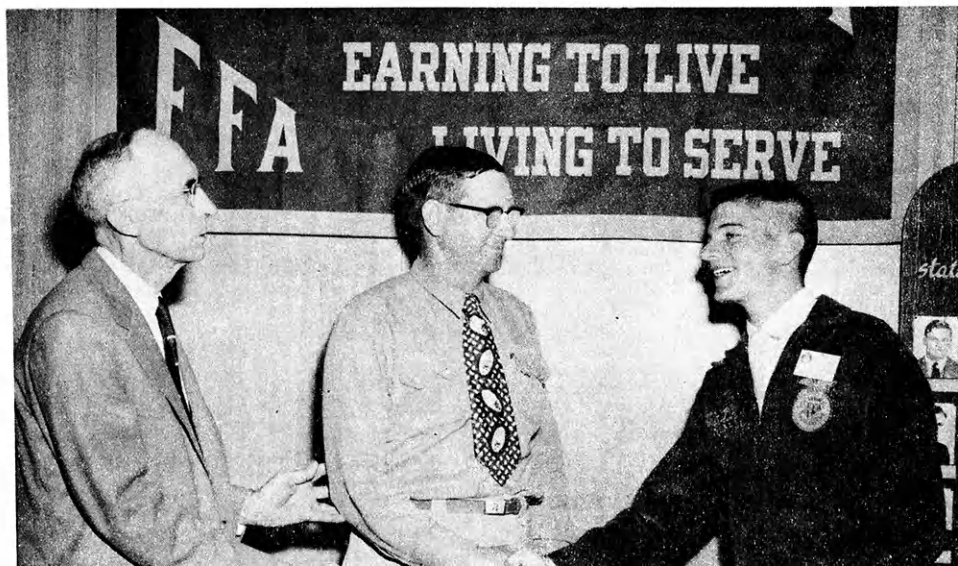


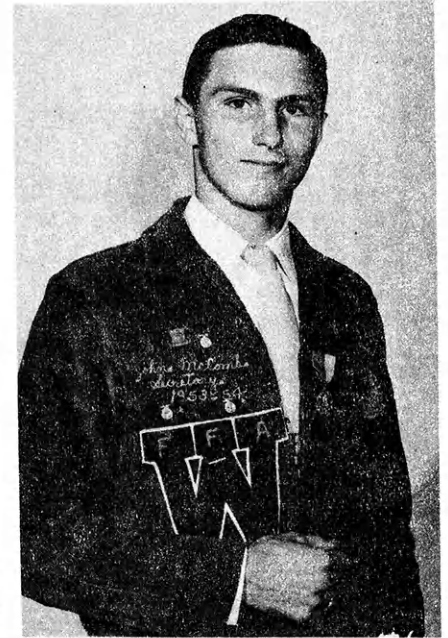
State Officers of the Kansas Association of FFA for 1955-56. L-R Manuel Bruch, Kingman, Reporter; John McComb, Washburn, Treasurer; Loy Reinhardt, Chanute, Secretary; Dean Ebel, Wamego, Vice-President; Larry Figgs, Effingham, President; Ray Drumright, Harper, Sentinel.



Dean A. D. "Dad" Weber, Dean of Agriculture, K.S.C., with National President Bill Gunter, Kansas FFA President Dean Peter, and State Supervisor C. C. Eustace, examining one of the Chapter Reports in the State Chapter Contest.

Past and present presidents of the Kansas Association of FFA. Ira Plank, Winfield FFA Chapter Adviser, introduces Boyd Waite, first State FFA President, to Dean Peter, 1954-55 State FFA President.





Left: Chanute Chapter, winner of the Agricultural Education Club Plaque, received the highest total score in all activities open to FFA members. Right: John McComb, Washburn Chapter, won the 26th Annual FFA Speech Contest and will represent Kansas in the Regional Contest held on the Purdue University Campus, Lafayette, Indiana, August 8.



Kansas State Singers, members of the A Cappella Choir, directed by Wm. R. Fischer, pleased the House of Delegates audience with a twenty minute program.

KANSAS ASSOCIATION OF FFA HIGHLIGHTS, 1954-55

1. There are 208 departments of Vocational Agriculture in Kansas, with a total enrollment of 6,803.
2. Two hundred and seven departments have paid state and national dues. We hope to have 100 per cent by the close of the fiscal year.
3. The Kansas Association has an active FFA membership of 7,464 members. This is 110 per cent on the basis of enrollment.
4. Seven Kansas FFA members were awarded the American Farmer Degree at the 27th National FFA Convention.
5. The Atchison County Chapter, Effingham, won Gold Emblem classification and the Holton Chapter won Silver Emblem classification in the 1954 National Chapter Contest.
6. Philip Kinast, Haven Chapter, represented Kansas in the Regional Speech Contest at Olney, Illinois. He failed to place in the first four.
7. Ottawa Chapter placed first in the Booth Exhibits at the Topeka Fair. Salina Chapter won first in the Farm Mechanics Exhibits at the State Fair at Hutchinson. First place in County Booth Exhibits prepared by FFA chapters at the Hutchinson Fair were won for their respective areas by the Buhler Chapter and the Coldwater Chapter. The Grand Championship in this event was won by the Buhler Chapter.
8. Kansas teams participating in National FFA Judging Contests won two Gold Emblem classifications, one Silver Emblem classification, and two Bronze Emblem classifications.
9. The Chanute Chapter won the Agricultural Education Club Award Plaque in 1955.
10. One hundred forty-five Chapter Farmers from 84 chapters were raised to the State Farmer Degree at the 27th Annual Convention of the Kansas Association of FFA.
11. Two Honorary State Farmer Degrees were awarded.
12. The Kansas Association was honored by having National FFA President William D. Gunter, Jr., Live Oak, Florida, assist with the Convention.
13. One hundred thirty-nine three-man teams entered the 1955 Annual High School Judging Contests in Agriculture, and 103 two-man teams entered the Farm Mechanics Judging Contests.
14. The House of Delegates was favored with a 20 minute special music program by the K-State Singers. This group consisted of six girls and six boys, all members of the Kansas State College A Cappella Choir. Professor Wm. R. Fischer of the Music Department directed the group.

DATES OF IMPORTANCE

1. FFA Regional Speech Contest, August 8, at Lafayette, Indiana.
2. National Judging Contest in Dairy Cattle, Waterloo, Iowa, October 3.
3. National Judging Contest in Dairy Products, Waterloo, Iowa, October 4.
4. National Judging Contests in Livestock, Meats and Poultry, Kansas City, Missouri, October 12.
5. National FFA Convention, Kansas City, Missouri, October 10-13.
6. Kansas members of the National FFA Band and National FFA Chorus, first practice session, Kansas City, Missouri, 1:00 p.m., Friday, October 7.

RESERVATIONS FOR THE NATIONAL FFA CONVENTION

The State Deputy Adviser will handle reservations for Delegates, American Farmers, and members of the National FFA Band and National FFA Chorus.

If you plan to have judging teams participating in the FFA judging contests at Kansas City, it is advisable to make hotel reservations early. Please address your requests for reservations to Mr. Robert B. Coyner, Manager, Convention and Visitors Bureau, Chamber of Commerce of Kansas City, 1030 Baltimore Avenue, Kansas City 6, Missouri.

FFA SUPPLIES

The Future Farmer Supply Service, Alexandria, Virginia, handles all official FFA supplies except the L. G. Balfour Contract. The L. G. Balfour Company, Attleboro, Massachusetts, will continue for another year to handle all FFA degree pins, FFA plaques, FFA rings, belt buckles, etc., as listed in the Balfour catalog.

The State FFA office at Manhattan will continue to handle the following FFA supplies:

1. FFA Charters
2. State Farmer Degree Pins and Charms
3. FFA membership cards
4. FFA award certificates & plaques on the state level

PLAN YOUR FFA SUPPLY NEEDS FOR NEXT YEAR AND ORDER EARLY.

Reasons: Most of the business handled during the year by the Supply Service is during the months of September to December.

Approximately 70,000 official FFA jackets were sold last year. It takes thirty minutes to letter a jacket. During the rush season allow four weeks for delivery on jackets.

As many as 700 pieces of mail are received by the Supply Service in a single day. The staff has been increased to facilitate handling the business. Careless filling out of order forms results in much delay. You can help by filling out order forms correctly and in a legible hand.

1955-56 STATE FFA OFFICERS

Eighteen FFA members, all recommended by their local advisers and approved by the reviewing committee, were interviewed by the nominating committee for State Office. Ten excellent candidates were included in the slate presented to the House of Delegates. The choice of your 1955 House of Delegates for the leadership of the Kansas Association of FFA during 1955-56 follows:

Larry Figgs, Effingham, President  
Dean Ebel, Wamego, Vice President  
Loy Reinhardt, Chanute, Secretary  
John McComb, Washburn, Treasurer  
Manuel Bruch, Kingman, Reporter  
Ray Drumright, Harper, Sentinel

The State Office extends congratulations and best wishes to this group of young men, and predicts a highly successful year for the Kansas Association of FFA under their leadership.

- - FFA - -

1954-55 STATE FFA CONVENTION

Approximately 150 of the 208 FFA chapters in Kansas sent representatives to the Twenty-Seventh Annual State Convention. There were 139 agricultural teams entered in the agricultural judging events. One hundred three schools entered teams in the farm mechanics contests. There were 27 contestants in the State FFA Public Speaking Contest and 47 chapters entered the State FFA Chapter Contest. One hundred forty-three schools seated delegates at the annual FFA meeting. The tour groups under the direction of Professor John Sjo, Department of Economics and Sociology, were comprised of approximately 175 alternates. Two hundred twenty FFA members found rooming quarters in the Men's Gymnasium and the Hospital Annex, while the remainder of the contestants and their advisers found rooms in town.

A box lunch was served on the campus to contestants in the agricultural and farm mechanics contests. Eight hundred fifty lunches were served.

Professor Joe Koudele of the Department of Economics and Sociology was in charge of compiling statistics in the various judging events.

Many departments of the college cooperated in making the Twenty-Seventh Annual State FFA Convention a success.

The Kansas Association was honored to have William D. Gunter, Jr., Live Oak, Florida, President of the National Organization of Future Farmers of America, as a guest throughout the convention. President Gunter addressed the House of Delegates meeting and brought greetings to the Chamber of Commerce Banquet. Illinois State FFA President Larry Royer, Assumption, Illinois, was a guest during the entire convention.

- - FFA - -



PICTURES OF 1955 STATE FARMER CLASS

Pictures of the 1955 State Farmer Class are available on order at 75 cents each. Address Floyd Hanna, Illustrations Department, Kansas State College, Manhattan, Kansas. Order Photograph Number CO 6208.

-- FFA --

1955 CHAMBER OF COMMERCE BANQUET

The Kansas Association of Future Farmers of America wishes to take this means of thanking the Manhattan Chamber of Commerce for the Twenty-Seventh FFA Banquet furnished by this group. President C. M. Skaggs, Secretary Lud Fiser, and W. O. Rehschuh, Chairman of the Agricultural Committee, can rest assured that both the FFA members and their advisers are duly appreciative of the efforts of the Manhattan Chamber of Commerce to make their closing event such a delightful occasion.

The annual FFA banquet is a cooperative affair whereby the food is furnished by the Chamber of Commerce and is served under the direction of Professor Davy Mackintosh. The physical properties are provided by Kansas State College under the direction of Professor R. V. Olson, while the program is under the direction of the State Association of FFA. The Block and Bridle Club and the Agricultural Education Club assisted in serving the food. The flags of the United Nations were furnished through the courtesy of the Office of the Dean of Students. Band music was furnished by the Kansas State College Band under the direction of Professor W. L. Burford.

The entire banquet program was well received, and the State Association turned the meeting over to Professor Rufus Cox, Chairman of the College Contest Committee, at 8:40 p.m.

-- FFA --

1955 STATE CHAPTER CONTEST

Forty-seven chapters entered the 1955 State Chapter Contest. The ratings of the National Score Card used in the National Chapter Contest were used in the Kansas Chapter Contest. Under each of the eight headings the same items were given consideration in ranking the chapters as listed in the April issue of The Kansas Future Farmer Newsletter. The State Chapter Contest is designed to encourage and reward chapter effort over a wide range of activities. The first State Chapter Contest was held in Kansas in 1932, and these contests have been held annually since that date.

In addition to the eight major headings listed in the National Chapter Contest Score Card, the scoring committee checks each chapter activity program against the annual State Association Program of Work. Attention is also given to chapter performance in District FFA Leadership Schools.

The three major classifications for recognizing the merit of chapter programs are: Gold Emblem classification, Silver Emblem classification, and Bronze Emblem classification.

## 1955 State Chapter Contest (continued)

The results of the 1955 State Chapter Contest follow:

GOLD EMBLEM CLASSIFICATION - HIGHEST RANK

Arkansas City Chapter, Harold Walker, Adviser  
Beloit Chapter, Frank Carpenter, Adviser  
Buhler Chapter, J. A. Johnson, Adviser  
Chanute Chapter, Charles O. Carter, Jr., Adviser  
Clay Center Chapter, Ray W. Morrison, Adviser  
Effingham Chapter, Roy Eck, Adviser  
Ellsworth Chapter, Lester L. Crandall, Adviser  
Emporia Chapter, Emory Groves, Adviser  
Little River Chapter, Milton Kohrs, Adviser  
Oberlin Chapter, Lloyd Moody, Adviser  
Ottawa Chapter, S. S. Bergsma, Adviser  
Shawnee-Mission Chapter, Harold D. Garver, Adviser  
Stockton Chapter, Floyd A. Blauer, Adviser  
Washburn Chapter, Charles Ross, Adviser

SILVER EMBLEM CLASSIFICATION

Alma Chapter, Walter R. Gehlbach, Adviser  
Bonner Springs Chapter, L. L. Van Petten, Adviser  
Coffeyville Chapter, Marvin L. Riggs, Adviser  
Coldwater Chapter, L. E. Melia, Adviser  
Eldorado Chapter, William R. McMillan, Adviser  
Eureka Chapter, Harry L. Coffel, Adviser  
Harveyville Chapter, Duane McCune, Adviser  
Holton Chapter, Harold Gentry, Adviser  
Hoxie Chapter, Virgil Severns, Adviser  
Kingman Chapter, Virgil Lake, Adviser  
Kiowa Chapter, Allen Starosta, Adviser  
Olathe Chapter, A. G. Jensen, Adviser  
Seaman Chapter, Marvin Smith, Adviser  
Simpson Chapter, Robert J. Severance, Jr., Adviser  
Smith Center Chapter, Charles Mantz, Adviser  
Solomon Chapter, Clyde Venneberg, Adviser  
St. Francis Chapter, Donald E. Hall, Adviser  
Washington Chapter, Otis Dewey, Adviser  
Williamsburg Chapter, Earl Anderson, Adviser  
Winfield Chapter, Ira L. Plank and John Lowe, Advisers

BRONZE EMBLEM CLASSIFICATION

Ashland Chapter, Charles M. Campbell, Adviser  
Delphos Chapter, Kenneth Wilson, Adviser  
Eskridge Chapter, James D. Dobkins, Adviser  
Garnett Chapter, Clarence Anderson, Adviser  
Highland Chapter, Walter H. Saathoff, Adviser  
LaCygne Chapter, L. O. Gugler, Adviser  
Liberal Chapter, C. C. Griffin, Adviser  
Lindsberg Chapter, Delbert Jamison, Adviser  
Meade Chapter, Howard Thomas, Adviser  
Mulvane Chapter, Lee Doyen, Adviser  
Ness City Chapter, Warren E. Stone, Adviser  
Palco Chapter, Benjamin Schweitzer, Adviser  
Phillipsburg Chapter, Frank Freeman, Adviser

1955 CLASS OF STATE FARMERS

There were 145 FFA members from 84 chapters elected to the State Farmer Degree at the Twenty-Seventh Annual FFA Convention. This brings the total number of FFA members elected to the State Farmer Degree in Kansas to 1,924.

<u>NAME</u>	<u>CHAPTER</u>	<u>NAME</u>	<u>CHAPTER</u>
Dean Gladow	Alma	Larry Boone	Eureka
Gerald Marten	Alma	Dwayne Broddle	Eureka
Richard Hotz	Almena	Calvin Massey	Eureka
Claude Geiger	Altamont	Gene Potter	Fort Scott
Donald Johnson	Altamont	Glenn Henley	Fredonia
Dale Lavender	Altamont	Darrell Goss	Garden City
Benny Brent	Alton	Dwayne Vaughn	Garden City
Fred Nichols	Alton	Richard Woodard	Garden City
Richard Streets	Altoona	Charles Parks	Garnett
Gary Barton	Arkansas City	Wesley Roecker	Garnett
Silas Foiles	Arkansas City	Gerald Emig	Goodland
David Thompson	Arkansas City	Delton Evers	Great Bend
Jim Webb	Arkansas City	Dale Otte	Great Bend
Gerald Blazek	Belleville	Keith Allerheiligen	Hanover
Gerald Holmberg	Belleville	Ray Drumright	Harper
Larry Van Pelt	Beloit	Larry Elgin	Harveyville
Gerald Coleman	Buhler	Darrell Groves	Harveyville
Marion Heim	Buhler	Lester Kimball	Harveyville
John Jewell	Burlingame	Philip Kinast	Haven
Cecil Green	Cedar Vale	Dean Zimmerman	Haven
Gary Naughton	Chanute	Duane Blumenkamp	Herington
Loy Reinhardt	Chanute	John Meyer	Herington
Clinton Swiler	Chanute	Larry Gilmore	Highland
Arthur Benson	Clay Center	Norman Voss	Hill City
Dean Faidley	Clay Center	Lyle Beam	Holton
Jon Larson	Clay Center	L. C. Bowser	Holton
James McChesney	Clay Center	Charles Clinkenbeard	Holton
Edward Germann	Clifton	Jimmy Popp	Hoxie
Coy Allen	Coffeyville	Edwin Simon	Hoxie
Tom Albright	Colby	Wade Smith	Hoxie
Loren Henry	Colby	Donald Sumner	Hoxie
Donald Alexander	Coldwater	Wayne Gustafson	Independence
Donald Parcel	Coldwater	Jim Jarnagin	Jetmore
Gene Hamilton	Columbus	Fred Kittle	Kincaid
Dewey Smith	Columbus	Roland Belcher	Kingman
Dale Swenson	Concordia	Manuel Bruch	Kingman
Ivan Walker	Concordia	Robert Young	Kingman
Don Peter	Edson	Alfred Seele	Lawrence
Larry Figs	Effingham	Norman Hackerott	Lebanon
William Wilson	Effingham	LeRoy Hayes	Little River
Melvin Schmidt	Eldorado	Max Stowe	Little River
Alex Vodraska	Ellsworth	Douglas Matson	Longford
William Wachs	Ellsworth	Donald Carlson	Manhattan
Bill Zavesky	Ellsworth	Harlow Vader	Mankato
Ronald Zvolanek	Ellsworth	David Dettke	Marysville
Calvin Roberts	Emporia	Leroy Duensing	Marysville
George Bartholomew	Erie	Donald Froberg	Marysville
Doug Battershell	Erie	Delbert Shepard	McCune
Rex Logan	Eskridge	Charles Shipman	McCune

1955 Class of State Farmers (continued)

<u>NAME</u>	<u>CHAPTER</u>	<u>NAME</u>	<u>CHAPTER</u>
Kenneth Long	McDonald	Dennis Reeder	Silver Lake
Jack Painter	Meade	Bobby Corwin	Smith Center
Charles Hall	Medicine Lodge	Ben Leibbrandt	St. Francis
Kenneth Preheim	Moundridge	Carl Carlson	St. Marys
Larry Sarver	Natoma	Bob Mason	Stockton
Dee Doebbeling	Ness City	Melvin Huser	Syracuse
Laurice Margheim	Ness City	William Johnson	Trousdale
Emery Corbett	Ottawa	Ronald Schultz	Trousdale
Marrel Macy	Ottawa	Richard Folsche	Troy
Gerald Schneider	Ottawa	Dean Ebel	Wamego
Laurence Boehm	Paola	Don Edson	Washburn
Roy Debrick	Paola	Larry Engler	Washburn
Robert Scherman	Paola	John McComb	Washburn
David Craig	Peabody	Melvin Hubbard	Washington
Howard Garvert	Plainville	Bill Meyer	Washington
Gary Rempe	Plainville	Malcolm Stamm	Washington
Herbert Wenger	Powhattan	Chester Fredricks	Williamsburg
Steve French	Pretty Prairie	Billy Malir	Wilson
Reed Graber	Pretty Prairie	Stanton O'Neil	Winfield
Paul Rhine	Quinter	Ronald Shoup	Winfield
Robert Tuttle	Quinter	Dwaine Waite	Winfield
Raymond Frost	Randolph	Gary Sullivan	Yates Center
Jack House	Shawnee-Mission	Arthur Tannahill	Yates Center
Gene Allen	Silver Lake		

- - FFA - -

1955 Honorary State Farmer Degrees

The State FFA Executive Committee recommended and the House of Delegates approved the granting of the Honorary State Farmer Degree to:

Walter M. Arnold, Director of Vocational Education in Kansas  
 C. C. Eustace, Supervisor of Agricultural Education

- - FFA - -

THE NATIONAL FUTURE FARMER MAGAZINE

Of the 371,592 total FFA membership in the National Organization of Future Farmers of America, 171,121 are subscribers to The National FUTURE FARMER. The percentage of members subscribing to The National FUTURE FARMER was 46.05. The North Central Region led the four regions in percentage of membership listed as subscribers, with an average of 55.95 per cent. Minnesota led the states of the Central Region in percentage of membership subscribed with 115.58. Iowa with 111.94 and Ohio with 104.52 ranked second and third respectively in the Region. Kansas ranked seventh with 72.65.

- - FFA - -

1955 STATE FFA PUBLIC SPEAKING CONTEST

The Twenty-Sixth Annual FFA Public Speaking Contest was held on the campus at Kansas State College, Tuesday, May 3, 1955. State President Dean Peter, State Vice President Waldo Anderson, State Secretary Lynn Perkins and State Treasurer Ron McKinnie presided. Judges for the speech contest were Professors L. W. Schruben, Kenneth O'Fallon, George Olson, Paul L. Kelley and Reuben Lind, and Mr. Winzer Petr of the Kansas State Board of Agriculture.

The results of the 1955 FFA Speech Contest follow:

<u>RANK</u>	<u>NAME AND CHAPTER</u>	<u>SUBJECT</u>
1	John McComb, Washburn	Make Your Soil Stay at Home
2	James Ellis, Olathe	The Hidden Power in Agriculture
3	Loren Mall, Clay Center	Cultivate Farm Safety...and Harvest Happiness
4	Laverne Tuttle, Garden City	Agricola Prolema
5	Franklin Donnel, Syracuse	Grass on the Horizon of Tomorrow
6	Doug Battershell, Erie	What Farm Life Means to Me
7	Benny Brent, Alton	The Meaning of Our Creed
7	Darrel Arnold, Shawnee-Mission	Johnson Grass - Friend or Foe
7	Denzil Franklin, Buhler	Under Cover

- - FFA - -

AGRICULTURAL EDUCATION CLUB AWARD

The Chanute Chapter, under the direction of Charles O. Carter, Jr., won the 1955 Agricultural Education Club Plaque. This plaque was awarded by Damon Slyter, President of the Agricultural Education Club, to the chapter making the highest total score in all activities open to FFA members. The score card used would make it possible for a team to win 105 points in the agricultural events, 99 points in the farm mechanics events, and 102 points in the FFA events. The score card used in determining the winners follows:

SCORE CARD

Breakdown for Agriculture - High Ten Teams

1st place -	29 points
2nd place -	28 points
3rd place -	27 points
4th place -	26 points
5th place -	25 points
6th place -	24 points
7th place -	23 points
8th place -	22 points
9th place -	21 points
10th place -	20 points

## Agricultural Education Club Award (continued)

For each of the four divisions in Agriculture -  
Dairy, Animal Husbandry, Poultry, Agronomy

1st place - 19 points  
2nd place - 18 points  
3rd place - 17 points  
4th place - 16 points  
5th place - 15 points  
6th place - 14 points  
7th place - 13 points  
8th place - 12 points  
9th place - 11 points  
10th place - 10 points

## Breakdown for Farm Mechanics - High Ten Teams

1st place - 29 points  
2nd place - 28 points  
3rd place - 27 points  
4th place - 26 points  
5th place - 25 points  
6th place - 24 points  
7th place - 23 points  
8th place - 22 points  
9th place - 21 points  
10th place - 20 points

For each of the seven areas in Farm Mechanics - Farm Power,  
Farm Carpentry, Concrete, Arc Welding, Farm Machinery,  
Sharpening Tools, Soil Conservation

1st place - 10 points  
2nd place - 9 points  
3rd place - 8 points  
4th place - 7 points  
5th place - 6 points  
6th place - 5 points  
7th place - 4 points  
8th place - 3 points  
9th place - 2 points  
10th place - 1 point

FFA SECTION

## Chapter Contest

50 points - Gold Emblem  
30 points - Silver Emblem  
15 points - Bronze Emblem  
5 points - Honorable Mention

## Agricultural Education Club Award (continued)

## FFA Public Speaking Contest

1st place -	10 points
2nd place -	9 points
3rd place -	8 points
4th place -	7 points
5th place -	6 points
6th place -	5 points
7th place -	4 points
8th place -	3 points
9th place -	2 points
10th place -	1 point

## State Farmers

Chapters having 1 -	10 points
Chapters having 2 -	20 points
Chapters having 3 -	30 points
Chapters having 4 -	40 points
Number points possible -	40 points

## Seating Delegates

One delegate -	1 point
Two delegates -	2 points

The ranking of the high ten chapters with total points earned follows:

<u>RANK</u>	<u>CHAPTER</u>	<u>SCORE</u>
1	Chanute Chapter	257
2	Clay Center Chapter	220
3	Beloit Chapter	116
4	Ottawa Chapter	115
5	Coldwater Chapter	109
5	Hoxie Chapter	109
7	Oberlin Chapter	99
8	Arkansas City Chapter	92
8	Ellsworth Chapter	92
8	Washburn Chapter	92

- - FFA - -

CHAPTER SAFETY AWARD

This year for the first time the Kansas Association of FFA participated in the National FFA Chapter Safety Award Contest. The Little River Chapter, Milton Kohrs, Adviser, was announced as the winner of this event at the House of Delegates meeting. The chapter will receive \$100 from the Future Farmers of America Foundation, Inc., and will be eligible to compete in the National FFA Chapter Safety Award Contest. The cash award must be spent for chapter betterment.

- - FFA - -

THE 1955-56 STATE OFFICERS

The following briefs of the 1955-56 state officers are presented in the hope that our membership will know more about the boys who will be in charge of the Kansas Association of FFA for the next year.

Larry Figgs, Effingham, President

Larry is 18 years old and a senior in Atchison County Community High School. He is president of his chapter at present. He was granted the Degree of State Farmer at the 1955 State Convention. Larry was a member of the chapter ritual team receiving the Gold Emblem ranking in the Northeast Kansas District Leadership School. After three years in vocational agriculture he had a net worth of \$3,310.56. Larry played four years of football, captaining the team in his senior year. He was also a member of the track squad for four years. He was president of the student council in his senior year. Larry ranked in the upper one-third of his high school class of 63 in scholarship.

Dean Ebel, Wamego, Vice-President

Dean is chapter secretary this year. He is 18 years old and a senior in Wamego High School with four years of vocational agriculture. Dean ranked 14th in scholarship in his class of 47. He was granted the State Farmer Degree at the 1955 State Convention. His beginning net worth was \$603.75 and at the close of his third year of farming his total net worth was \$4,926.18. He was a member of the team in the Northeast Kansas Leadership School which placed in the Gold Emblem classification in the ritual contest and in the information contest. His high school activities include student council representative and class secretary. Dean takes an active part in church and community groups.

Loy Reinhardt, Chanute, Secretary

Loy is 17 years old and a senior in Chanute High School. His many high school activities include sentinel and vice-president of the FFA chapter, treasurer of the senior class, member of the student council for three years, member of Gold Emblem ritual team in the Southeast Kansas District Leadership School, and Key Club vice-president. He was granted the Degree of State Farmer at this year's convention. After three years in vocational agriculture Loy had a net worth of \$2,011.36. He ranked 14th in his class of 137 students in scholarship.

John McComb, Washburn, Treasurer

John is chapter treasurer and was formerly secretary of his chapter. He is 17 years old and a senior in Washburn Rural High School, Topeka, with four years of vocational agriculture. His beginning net worth was \$2,872.90 and at the close of his third year of farming his total net worth was \$10,235.69. He ranked in the upper one-half in a class of 34 students in scholarship. John was a member of the team winning Gold Emblem in both the FFA ritual and information contests at the Lawrence District Leadership School and was treasurer on the Master Ritual Team at this school. He was granted the Degree of State Farmer at this year's convention. Extra-class activities in which John was active include president of the senior class, on the debate team two years, a member of the football team four years, and a member of the basketball and baseball teams three years.



## 1955-56 State Officers (continued)

Manuel Bruch, Kingman, Reporter

Manuel is 17 years old and a senior in Kingman High School. He was granted the Degree of State Farmer at the 1955 State Convention. During his four years in FFA he served as secretary of the chapter in his junior year, reporter in his sophomore year, and president in his senior year. This is Manuel's fourth year in vocational agriculture, and after three years he had a net worth of \$1,904.29. He ranked 15th in a class of 60 seniors in scholarship. Manuel held a class office during three of his four years in high school and has been very active in church and community groups.

Ray Drumright, Harper, Sentinel

Ray is 17 years old and a senior in the Harper High School. During his three years in FFA he served as chapter treasurer and vice-president. He was granted the Degree of State Farmer at the 1955 State Convention. After three years of farming his end of year net worth was \$2,013.16. Ray served as class secretary in his sophomore year and class treasurer in his junior and senior years, took part in the junior and senior plays, and was on the track squad his junior and senior years. He ranked in the upper one-fourth in his class of 34 students in scholarship.

- - FFA - -

OKLAHOMA: The Oklahoma Association of FFA has taken the wraps off its new, far-reaching awards program which it expects to inaugurate in 1955. The plan calls for awarding \$2,500 in cash prizes annually to 46 top FFA boys and nine FFA chapters in 12 different fields of their FFA work. The awards program, designed to improve agriculture and leadership in the state, is sponsored by the National FFA Foundation and must be approved by the foundation's board of trustees before the plan can be set in action. Approval is virtually assured, however, since the Oklahoma FFA Association has followed closely recommendations of the board in setting up its awards program. The \$2,500 awards program represents an increase of \$1,850 in FFA Foundation awards for farm mechanics, farm safety, soil and water management, dairy farming, electrification, public speaking, parliamentary procedure; beef, swine, sheep and poultry production. Instead of only one FFA boy receiving the State Star Farmer award, as in the past, one state and four district Star Farmers will be selected under the new plan. The first place winners of each of the 12 awards will receive \$100, and lesser cash prizes will go to runners-up in the contests. Under the old plan only six FFA boys and one chapter received foundation awards. The new plan will increase the number of boys receiving awards to 46 and nine chapter awards.

NEW MEXICO: The Texico Future Farmers weighed their chapter hogs recently and calculated the cost of gain from January 1. It took 264 pounds of grain and 45 pounds of supplement, plus aureomycin to put on 100 pounds of gain. The feed cost per 100 pounds of gain was \$9.88. For each 100 pounds of grain the boys fed they got \$5.36 per hundred by putting it through the hogs. The boys butchered the hogs and sold them for 32 cents per pound.

- - FFA - -

REPORT OF THE PRESIDENT OF THE KANSAS ASSOCIATION OF  
FUTURE FARMERS OF AMERICA 1954-55

The annual meeting to formulate the State Program of Work was held in Professor A. P. Davidson's office, September 11, 1954. A State Program of Work was formulated and published in the September 15, 1954, issue of The Kansas Future Farmer Newsletter.

During the year three chapters were chartered. They were Caney, Geneseo, and Lindsborg. There are 208 vocational agriculture departments in Kansas with a total enrollment of 6,803. The total FFA membership to date is 7,464. This gives Kansas an active FFA membership of 110 per cent, which constitutes the highest percentage of FFA membership in the North Central Region, comprised of 13 states.

Past State President Nelson D. Galle, Moundridge Chapter, and President Dean Peter, Edson Chapter, served as delegates to the Twenty-Seventh National Convention of Future Farmers of America at Kansas City last October. An over-all story of the Twenty-Seventh National FFA Convention was carried in the November, 1954, issue of The Kansas Future Farmer Newsletter. As time will not permit, I shall not attempt to review this convention. I would strongly urge that you examine carefully the November issue of The Kansas Future Farmer Newsletter, if you have not already done so.

Eleven District FFA Leadership Schools were held with State FFA Officers in attendance at each school. A complete report of the District FFA Leadership Schools will be found in the December, 1954, issue of The Kansas Future Farmer.

The Atchison County Chapter, Effingham, won Gold Emblem classification in the 1954 National Chapter Contest. The Holton Chapter won Silver Emblem.

Kansas FFA members receiving the American Farmer Degree at the Twenty-Seventh National Convention were: Leonard Chamberlain, Emporia Chapter; Mark Kline Drake, Winfield Chapter; Nelson D. Galle, Moundridge Chapter; Leo John Hall, Great Bend Chapter; Harold Paul Heymann, Burns Chapter; Billy Ray James, Clay Center Chapter; and Gary J. Neilan, St. Francis Chapter.

The plaque awarded by the Agricultural Education Club, Kansas State College, was won by the Clay Center Chapter in 1954. This award goes to the chapter making the highest total points in events open to FFA members in connection with the Annual Vocational Agriculture Judging and Farm Mechanics Contests.

One hundred and eighty-six chapters filed Programs of Work on or before November 1, 1954.

Seventeen chapters merited Gold Emblem classification in the 1954 State Chapter Contest. These chapters were listed in the May, 1954, issue of The Kansas Future Farmer Newsletter.

One hundred and forty-eight Chapter Farmers from ninety chapters were raised to the State Farmer Degree in 1954.

Kansas had four members in the National FFA Band and seven members in the National FFA Chorus.

## President's Report (continued)

State FFA Sentinel Paul Faidley met with the State FFA Executive Committee April 7, 1955, for reviewing applications for the State Farmer Degree. One hundred and forty-five applications were recommended by the committee for approval by the House of Delegates.

Practically 100 per cent of the chapters cooperated with the state program in safety, fire prevention, pest eradication, soil conservation and live-stock loss prevention.

Philip Kinast, Haven Chapter, participated in the Regional Speech Contest held at Olney, Illinois, September 16, 1954. He failed to place in the first four.

Kansas FFA teams participating in the National FFA Judging Contests held at Waterloo, Iowa, and Kansas City, Missouri, won two Gold Emblem classifications, one Silver Emblem classification and two Bronze Emblem classifications. These rankings were listed in the November, 1954, issue of The Kansas Future Farmer.

The Ottawa Chapter placed first in Booth Exhibits at the Topeka Fair. The Salina Chapter won first in the Farm Mechanics Exhibits at the State Fair in Hutchinson.

First place in County Booth Exhibits prepared by FFA chapters at the Hutchinson Fair were won for their respective areas by the Buhler Chapter and the Coldwater Chapter. The Grand Championship in this event was won by the Buhler Chapter. A complete report on chapter ranking in FFA exhibits at both the Topeka and the Hutchinson Fairs will be found in the November, 1954, issue of The Kansas Future Farmer Newsletter.

The Kansas Association of FFA assumed the responsibility of securing subscriptions to The National FUTURE FARMER Magazine and sent 5,456 subscriptions to Editor Iano Barron, Alexandria, Virginia. This represented 73.3 per cent of our total membership.

Respectfully submitted,

Dean Peter, President  
Kansas Association of FFA

- - FFA - -

REPORT OF STATE FFA REPORTER, 1954-55

Including the May, 1955, issue of The Kansas Future Farmer, six copies of the newsletter will have been printed and distributed during the year.

As was done last year, requests for local chapter news for The Kansas Future Farmer were sent from the state office. During the year 416 requests were sent and 232 responses were received. This is a response of 56 per cent, a decrease of four per cent under last year.

Six issues (including May 15, 1955) of The Kansas Future Farmer Newsletter were published. The plan of devoting the first half of the newsletter to state and national items of interest and the last half of the newsletter to local FFA chapter news was continued.

## Reporter's Report (continued)

A pictorial section, which was added to The Kansas Future Farmer Newsletter beginning with the September, 1951, issue, was continued.

Each issue of the newsletter carried out the FFA calendar and gave emphasis to major FFA activities calendared, for example:

- September issue - State FFA Program of Work; Summary of Kansas Association of FFA Report to National Association; Budget of the Kansas Association of FFA; and Establishing FFA Chapters.
- November issue - Devoted entirely to the Twenty-Seventh National FFA Convention, National FFA Judging Contests, Winning FFA Exhibits at the State Fairs; Budget for the National Organization of FFA; and Report of the National Treasurer.
- December issue - 1954 District FFA Leadership School; National Chapter Contest; Future Farmers of America Foundation, Inc.; National Executive Secretary's Report.
- February issue - Kansas FFA Public Speaking Contest; National FFA Week; State Awards for Improving Agriculture and Leadership.
- April issue - State FFA President issues Convention Call; Rank in FFA Membership; Evaluating FFA Chapter Activity Programs; An Analysis of a Selected List of Chapter Programs; The Budget of the Future Farmers of America Foundation, Inc.
- May issue - Will be devoted to the activities of the Twenty-Seventh Annual Convention of the Kansas Association of FFA.

The chapter notes were satisfactorily written in most cases. Items from The Kansas Future Farmer Newsletter were reprinted in several publications in the field of agricultural journalism.

Respectfully submitted,

John R. Milton, Reporter  
Kansas Association of FFA

- - FFA - -

REPORT OF STATE FFA TREASURER, 1954-55

Professor Theodore O. Dodge, Certified Public Accountant, audited the Kansas Association of FFA treasurer's books for 1954-55.

Professor Dodge's audit follows:

The examination was limited to cash transactions. The cash in bank balance per books at April 1, 1954, in amount of \$3,446.77 was reconciled with the bank balance at that date. All receipts of cash as shown by the records were

## Treasurer's Report (continued)

deposited in the Union National Bank, Manhattan, Kansas, during the fiscal year, except for \$384.65 which was on hand at March 31, 1955, but deposited April 5, 1955. All disbursements of cash as shown by the records were made by check properly drawn on the bank account. The cash in bank balance per books at March 31, 1955, in amount of \$3,199.65 was in agreement with the independent confirmation which was obtained from the bank.

<u>Cash in bank and on hand</u>			
Bank Balance, March 31, 1955			\$3,226.93
Less - Outstanding checks, March 31, 1955			
Check			
<u>Number</u>	<u>Payee</u>	<u>Amount</u>	
842	Altoona FFA Chapter	\$25.98	
870	Mervin McKinsey	<u>1.30</u>	<u>27.28</u>
Bank Balance, March 31, 1955, as adjusted			\$3,199.65
Add - Cash on Hand, March 31, 1955			<u>384.65</u>
Total Cash, March 31, 1955			<u><u>\$3,584.30</u></u>

The examination did not include the taking of inventories. However, in comparing sales and purchases of pins and charms during the fiscal year, the inventories decreased slightly.

In my opinion, the accompanying Statement of Cash Receipts and Disbursements presents fairly the results of the Kansas Association of Future Farmers of America cash operations for the fiscal year ended March 31, 1955.

Respectfully submitted,

Theodore O. Dodge  
Certified Public Accountant

Kansas Association of Future Farmers of America  
Statement of Cash Receipts and Disbursements  
April 1, 1954, to March 31, 1955

Bank balance per books, April 1, 1954 \$ 3,446.77

## Receipts:

Dues - 7434 at 30 cents	\$2,230.20
Subscriptions for National FFA Magazine	1,213.00
Charms and Pins	779.20
Supplies (plaques, jackets, charters, pictures and music)	168.54
Contributions	
Chicago, Burlington & Quincy Railroad	\$100.00
Atchison, Topeka & Santa Fe Railroad	<u>800.00</u>

## Treasurer's Report (continued)

FFA Foundation, Inc.		
Improvement of Agriculture and Leadership Awards	\$973.99	
Travel - National Judging Contest	<u>147.65</u>	\$1,121.64
Future Farmers Supply Service		397.26
United States Treasury Bonds matured		1,000.00
Silver Anniversary Luncheon ticket sales		205.50
Miscellaneous		<u>13.61</u>
Total receipts		<u>\$ 8,028.95</u>
Total to account for		\$11,475.72

## Disbursements:

Dues - 7,424 at 10 cents	\$	742.40
Subscriptions to National FFA Magazine		1,162.53
Charms and Pins		682.46
Supplies (plaques, badges, buttons, jackets, etc.)		415.22

## Awards:

Chicago, Burlington & Quincy Railroad	\$100.00	
Atchison, Topeka & Santa Fe Railroad	800.00	
Improvement of Agriculture and Leadership Awards	<u>973.99</u>	1,873.99
Travel - National Judging Contest		147.65
State and National Conventions expense		862.28
Leadership School Expense		51.68
United States Treasury Bonds purchased		1,008.00
Silver Anniversary Luncheon Expense		799.46
Printing		47.25
Auditing		10.00
Insurance		41.90
Safe Deposit Box Rent		3.30
Mailing permit and postage		25.00
Refunds		<u>18.30</u>

Total disbursements 7,891.42

Balance per books, March 31, 1955 \$ 3,584.30 \*

\* This balance includes \$745.70, representing national FFA dues for 1954-55, and \$745.70, representing state dues collected for the purpose of sending Kansas National FFA Band and Chorus members to the National Convention in 1955, for which the Kansas Association acts as a repository.

CHECKS WRITTEN FOR DISBURSEMENT  
FROM 4/1/54 - 3/31/55

4- 2-54	L. G. Balfour Company, 3 public speaking medals	\$	7.55
4- 2-54	L. G. Balfour Company, state award plaque (Pollom)		22.95
4-10-54	J. C. Darling Company, rubber stamp		1.35
4-20-54	Diane Hills, lettering, Silver Anniversary		3.50
4-22-54	Harry M. Stewart, auditing FFA books		10.00
4-22-54	J. C. Darling Company, rubber stamp		1.23
4-24-54	Diane Hills, lettering, Silver Anniversary		1.00

## Treasurer's Report (continued)

4-26-54	Wareham Hotel, FFA officers dinner	\$ 16.76
4-29-54	Wareham Hotel, FFA Silver Anniversary Luncheon	254.10
5- 1-54	L. G. Balfour Company, 9 10K gold State Farmer pins	48.97
5- 1-54	Chamber of Commerce, 250 celluloid name holders; 20-25 extra guests at banquet	35.00
5- 1-54	Gillett Hotel, rooms for FFA officers	39.65
5- 1-54	Forrest Davidson, leading group singing at FFA convention	5.00
5- 1-54	Mrs. Harold Hunt, accompanying singing, FFA convention	2.50
5- 1-54	Margaret's Flowers, bouquet Silver Anniv. Luncheon	9.18
5- 3-54	Campus Book Store, Silver Anniv. exhibit expense	1.67
5- 3-54	College Book Store, Silver Anniv. exhibit expense	.60
5- 3-54	Aggie Hdwe. & Elec. Co., Silver Anniv. exhibit expense	3.19
5- 3-54	Guerrant Studio, Silver Anniversary Luncheon pictures	37.00
5- 3-54	Illustrations Dept., FFA convention pictures	6.50
5- 3-54	Art Craft Printers, 250 tickets, 350 place cards, 350 name plates, 2500 programs, 1600 inserts	382.22
5- 3-54	L. F. Hall, FFA convention TV picture expense	5.25
5- 4-54	Karl K. Gaston, lettering certificates	10.00
5-12-54	Guerrant Studio, convention pictures	72.00
5-12-54	Illustrations Dept., 2 prints of State Farmer group	1.00
5-17-54	Gilmore Dahl, state convention expense	2.50
5-17-54	Bob Watkins, state convention expense	5.00
5-17-54	Sam Peppiatt, state convention expense	4.00
5-17-54	Nelson D. Galle, state convention expense	5.05
6- 2-54	Dowell J. Howard, Natl. Treas., 7424 dues @ 10¢	742.40
6- 4-54	Lano F. Barron, Editor, 3 subs. to Natl. Mag.	.68
6- 7-54	Future Farmers Supply Service, 6 officer jackets	54.00
6-29-54	Future Farmers Supply Service, 1 emblem electrotpe	1.50
7-14-54	J. C. Darling Company, rubber stamp	.68
7-14-54	Art Craft Printers, 300 FFA calendars	39.75
9- 1-54	St. Louis Button Company, 420 leadership school badges	71.22
9- 7-54	Union National Bank, U.S. Treas. Bonds, Series J	1008.00
9-11-54	Gillett Hotel, state officers luncheon	11.05
9-14-54	L. F. Hall, defray expenses of Philip Kinast to regional public speaking contest	25.00
9-16-54	Lano Barron, Editor, 3430 - 1 yr., 2 - 2 yr., 17 - 5 yr. subs. to Natl. Mag.	757.45
9-20-54	Lano Barron, Editor, 248- 1 yr. subs. to Natl. Mag.	55.80
9-22-54	Lynn Perkins, Santa Fe Award	70.00
9-22-54	John Milton, Santa Fe Award	70.00
9-22-54	Ron McKinnie, Santa Fe Award	70.00
9-22-54	Paul Faidley, Santa Fe Award	70.00
9-22-54	Paul Hansen, Santa Fe Award	70.00
9-22-54	Rex Bolack, Santa Fe Award	110.00
9-22-54	Bob Sears, Santa Fe Award	70.00
9-22-54	Lynn Reed, Santa Fe Award	110.00
9-22-54	Neil DeWerff, Santa Fe Award	90.00
9-22-54	Ray Hilts, Santa Fe Award	70.00
9-29-54	Continental Casualty Co., FFA insurance (band, chorus, American Farmers, delegates)	41.90
10- 2-54	Lano Barron, Editor, 1053 - 1 yr., 22 - 5 yr. subs.	234.73
10- 6-54	Art Craft Printers, binding FFA volumes	7.50
10- 7-54	Illustrations Dept., 20 5x7 prints @ 25¢	5.00
10- 8-54	Nelson D. Galle, leadership school expense	.90
10- 8-54	Lynn Perkins, leadership school expense	13.15

## Treasurer's Report (continued)

10- 8-54	John R. Milton, leadership school expense	\$ 9.78
10- 8-54	Waldo Anderson, leadership school expense	14.37
10-18-54	Paul Faidley, leadership school expense	12.48
10-18-54	Ron McKinnie, leadership school expense	1.00
10-18-54	Nelson D. Galle, delegate expense, national convention	18.73
10-18-54	Dr. Henry S. Brunner, 5 FFA Band uniforms	75.00
10-18-54	Dr. James W. Hatch, 8 FFA Chorus uniforms	120.00
10-19-54	Gilmore Dahl, delegate expense, national convention	16.40
10-22-54	Thomas Kieffer, National FFA Chorus expense	60.30
10-22-54	Paul Kurtz, National FFA Chorus expense	52.20
10-22-54	Johnnie Gaither, National FFA Chorus expense	46.71
10-22-54	Raymond Mabry, National FFA Chorus expense	63.24
10-22-54	Harold P. Heymann, National FFA Chorus expense	54.00
10-22-54	Herb Lee, expense as Kansas publicity director at national convention	10.64
10-22-54	Montgomery Foto Service, national convention pictures	39.25
10-22-54	Illustrations Dept., delegate pictures	2.25
10-23-54	Michael King, National FFA Band uniform reimbursement	7.50
10-23-54	Donald Lonker, National FFA Chorus uniform reimbursement	7.50
11- 2-54	Perry Bemis, National FFA Chorus expense	59.27
11- 2-54	Bob Johnston, National FFA Chorus expense	59.96
11- 2-54	Lanny Ross Brent, National FFA Band expense	53.00
11- 2-54	Jerry Akens, National FFA Band expense	48.50
11- 2-54	Lano Barron, Editor, 295 - 1 yr. subs. to Natl. Mag.	66.38
11- 4-54	Norton FFA Chapter, Burlington Railroad Grant	12.50
11- 4-54	Almena FFA Chapter, Burlington Railroad Grant	12.50
11- 4-54	Norcatour FFA Chapter, Burlington Railroad Grant	12.50
11- 4-54	Oberlin FFA Chapter, Burlington Railroad Grant	12.50
11- 4-54	Atwood FFA Chapter, Burlington Railroad Grant	12.50
11- 4-54	McDonald FFA Chapter, Burlington Railroad Grant	12.50
11- 4-54	Bird City FFA Chapter, Burlington Railroad Grant	12.50
11- 4-54	St. Francis FFA Chapter, Burlington Railroad Grant	12.50
11- 8-54	Kenneth Glasgow, National FFA Band expense	57.37
11- 8-54	Robert Berends, National FFA Band expense	65.20
11- 8-54	Dean Peter, delegate expense, national convention	8.00
11-17-54	Beloit FFA Chapter, State Awards for Improving Agric.	34.38
11-17-54	Buhler FFA Chapter, State Awards for Improving Agric.	34.38
11-17-54	Chanute FFA Chapter, State Awards for Improving Agric.	34.38
11-17-54	Clay Center FFA Chapter, State Awards for Improving Agric.	34.38
11-17-54	Effingham FFA Chapter, State Awards for Improving Agric.	34.38
11-17-54	Ellsworth FFA Chapter, State Awards for Improving Agric.	34.38
11-17-54	Emporia FFA Chapter, State Awards for Improving Agric.	34.38
11-17-54	Holton FFA Chapter, State Awards for Improving Agric.	34.38
11-17-54	Howard FFA Chapter, State Awards for Improving Agric.	34.38
11-17-54	Little River FFA Chapter, State Awards for Improving Agr.	34.38
11-17-54	Shawnee-Mission FFA Chapter, St. Awds. for Improving Agr.	34.37
11-17-54	Oberlin FFA Chapter, State Awards for Improving Agric.	34.37
11-17-54	Olathe FFA Chapter, State Awards for Improving Agric.	34.37
11-17-54	Ottawa FFA Chapter, State Awards for Improving Agric.	34.37
11-17-54	Simpson FFA Chapter, State Awards for Improving Agric.	34.37
11-17-54	Stockton FFA Chapter, State Awards for Improving Agric.	34.37
11-17-54	Washburn FFA Chapter, State Awards for Improving Agric.	34.37
11-17-54	Alma FFA Chapter, State Awards for Improving Agric.	25.98
11-17-54	Altoona FFA Chapter, State Awards for Improving Agric.	25.98
11-17-54	Arkansas City FFA Chapter, St. Awds. for Improving Agric.	25.98



## Treasurer's Report (continued)

11-17-54	Bonner Springs FFA Chapter, St. Awds. for Improving Agr.	25.98
11-17-54	Burlingame FFA Chapter, State Awards for Improving Agric.	25.98
11-17-54	Coldwater FFA Chapter, State Awards for Improving Agric.	25.97
11-17-54	ElDorado FFA Chapter, State Awards for Improving Agric.	25.97
11-17-54	Eureka FFA Chapter, State Awards for Improving Agric.	25.97
11-17-54	Hoxie FFA Chapter, State Awards for Improving Agric.	25.97
11-17-54	Medicine Lodge FFA Chapter, St. Awds. for Improving Agr.	25.97
11-17-54	Smith Center FFA Chapter, St. Awds. for Improving Agric.	25.97
11-17-54	St. Francis FFA Chapter, St. Awds. for Improving Agric.	25.97
11-17-54	Washington FFA Chapter, State Awards for Improving Agric.	25.97
11-17-54	Williamsburg FFA Chapter, St. Awds. for Improving Agric.	25.97
11-17-54	Winfield FFA Chapter, State Awards for Improving Agric.	25.97
12- 4-54	Yates Center FFA Chapter, reimbursement for Natl. Judging Contest travel	11.91
12- 4-54	Belleville FFA Chapter, reimbursement for Natl. Judging Contest travel	18.89
12- 4-54	Winfield FFA Chapter, reimbursement for Natl. Judging Contest travel	21.76
12- 4-54	Clay Center FFA Chapter, reimbursement for Natl. Judging Contest travel	39.01
12- 4-54	Pretty Prairie FFA Chapter, reimbursement for Natl. Judging Contest travel	56.08
12-10-54	Lano Barron, Editor, 81 - 1 yr., 8 - 5 yr. subs.	25.43
12-14-54	Lano Barron, Editor, 10 - 1 yr. subs. to Natl. Mag.	2.25
12-17-54	Lano Barron, Editor, 35 - 1 yr. subs. to Natl. Mag.	7.88
12-17-54	Union National Bank, rental on safety deposit box	3.30
1- 3-55	Leon FFA Chapter, refund of overpayment on dues	2.00
1- 3-55	Will R. West, Postmaster, annual bulk mailing fee	10.00
2- 8-55	Lano Barron, Editor, 37 - 1 yr., 4 - 5 yr. subs.	11.93
2-22-55	Marillyn Weisbender, stamps	15.00
3- 4-55	Guerrant Studio, 6 enlargements, state officers picture	3.00
3-15-55	Mervin McKinsey, reimbursement on dues	1.30
3-15-55	St. Louis Button Co., 1000 celluloid buttons	30.65
3-16-55	L. G. Balfour Company, State Farmer pins and charms	633.49
3-22-55	L. G. Balfour Company, FFA State Award plaque (Ag-Ed)	22.01
3-22-55	L. G. Balfour Company, public speaking medals	7.08
	TOTAL DISBURSEMENTS	<u>\$7,891.42</u>

Respectfully submitted,

Ron McKinnie, Treasurer  
 Kansas Association of FFA

-- FFA --

REPORT OF THE STATE FFA SECRETARY, 1955

House of Delegates meeting, College Auditorium, May 2, 1955, 7:30 p.m.

The meeting was called to order by President Dean Peter.

Formal opening ceremony was used.

Two hundred eighty one delegates from 143 chapters were seated.

## Secretary's Report (continued)

President Peter stated that in order to get certain releases to the press in time for the morning papers, he was suggesting that the House of Delegates dispense with the regular order of business and turn to the head of New Business.

It was moved by Jim Harrison, Washburn Chapter, and seconded by Gary Williamson, Washburn Chapter, that we dispense with the regular order of business and turn to the head of New Business. The motion carried.

The report of the nominating committee was made and voting for state officers took place.

The Petticoat Lane Trio Plus One sang two numbers.

Under the head of New Business 145 State Farmer candidates were nominated, elected, and raised to the Degree of State Farmer. It was moved by State Adviser C. C. Eustace and seconded by Larry Schooley, Kiowa Chapter, that we accept the candidates as State Farmers. The motion carried.

It was moved by Lynn Perkins, State Secretary, and seconded by George Lovell, Jr., Arkansas City Chapter, that we elect Mr. Walter Arnold, Director of Vocational Education in Kansas, and Mr. C. C. Eustace, State Supervisor of Agricultural Education, to the Degree of Honorary State Farmer. The motion carried.

The House of Delegates meeting was favored with a 20-minute program of special music by the K-State Singers. This group was composed of six boys and six girls, all members of the Kansas State College A Cappella Choir. Professor Wm. R. Fischer of the Music Department directed the group.

It was moved by Gale Haag, Holton Chapter, and seconded by Leo Bindel, Fairview Chapter, that we return to the head of Old Business. The motion carried.

The minutes of the previous House of Delegates meeting were read and approved.

John Milton, State Reporter, recommended that in order to allow time for the speech of the National President, the Reporter's Report be approved as it will appear in the May 15, 1955, issue of The Kansas Future Farmer Newsletter. Larry Stephenson, Ford Chapter, moved that the report be accepted as so published. The motion was seconded by Gerald Salmans, Jetmore Chapter. The motion carried.

State Treasurer Ron McKinnie read a summary of the financial activities of the previous year. Treasurer McKinnie moved that the report be accepted and placed on file. Larry Walker, Beloit Chapter, seconded the motion. The motion carried.

President Dean Peter moved that the President's Report be approved as it will appear in the May 15, 1955, issue of The Kansas Future Farmer. The motion was seconded by Jack Kelly, Oberlin Chapter. The motion carried.

Vice-President Anderson reported on the proposed change in the National Chapter Award system.

Announcement was made of the winners in the State Chapter Contest.

## Secretary's Report (continued)

The Jittle River Chapter, Milton Kohrs, Adviser, was announced as winner of the State Safety Award by President Peter. The chapter received a prize of \$100.00 and an opportunity to enter the National Safety Contest.

William D. Gunter, Jr., National FFA President from Live Oak, Florida, addressed the House of Delegates meeting.

Larry Royer, State FFA President from Assumption, Illinois, was introduced.

The results of the ballot for state officers were announced. The following were the successful candidates:

Larry Figgs, Effingham, President  
 Dean Ebel, Wamego, Vice-President  
 Loy Reinhardt, Chanute, Secretary  
 John McComb, Washburn, Treasurer  
 Manuel Bruch, Kingman, Reporter  
 Ray Drumright, Harper, Sentinel

Vice-President Anderson announced the events for the coming day.

Closing ceremonies were given and the meeting adjourned at 9:30 p.m.

Respectfully submitted,

Lynn Perkins, Secretary  
 Kansas Association of FFA

-- FFA --

RESULTS OF 1955 STATE HIGH SCHOOL AGRICULTURAL JUDGING CONTESTS

Gold Emblem Teams--Entire Agricultural Contest

<u>Team</u>	<u>Coach</u>
Chanute	Charles O. Carter, Jr.
Newton	R. M. Karns
Coldwater	L. E. Melia
Beloit	Frank Carpenter
Clay Center	Ray Morrison
Miltonvale	Truman Diener
Ottawa	S. S. Bergsma

Gold Emblem Teams--Dairy Contest

Beloit	Frank Carpenter
Stockton	Floyd Blauer
Lawrence	William R. Essick
Osborne	Merwin Stearns
Hoxie	Virgil Severns
Partridge	Floyd Nighswonger
Coldwater	L. E. Melia
Scandia	William Nelson
Clay Center	Ray Morrison

Results of 1955 State High School Agricultural Judging Contests (continued)  
 Gold Emblem Teams--Dairy Contest (continued)

<u>Team</u>	<u>Coach</u>
Ottawa	S. S. Bergsma
Paola	Benjamin Attebery
Emporia	Emory Groves
Shawnee-Mission	Harold D. Garver

Gold Emblem Teams--Animal Husbandry

Newton	R. M. Karns
Clay Center	Ray Morrison
Chanute	Charles O. Carter, Jr.
Alton	Gerald Meyer
Iakin	Dean Hoppas
Moundridge	Willard Obley
Norton	Herbert Hoskins
Fort Scott	Charles Smith
Miltonvale	Truman Diener
Downs	Robert Hewlett
Belcit	Frank Carpenter
Belleville	Carl Beyer
Haven	Glen Schulthess

Gold Emblem Teams--Poultry Contest

Chanute	Charles O. Carter, Jr.
Clay Center	Ray Morrison
Cherryvale	C. H. Young
Miltonvale	Truman Diener
Newton	R. M. Karns
Jetmore	George Turnbull, Jr.
Fort Scott	Charles Smith
Coffeyville	Marvin Riggs
Stockton	Floyd Blauer
Altamont	Courtney D. Bennett
Emporia	Emory Groves
Ottawa	S. S. Bergsma

Gold Emblem Teams--Agronomy Contest

Newton	R. M. Karns
Chanute	Charles O. Carter, Jr.
Coldwater	L. E. Melia
ElDorado	William R. McMillan
Bazine	Edward Brenner
Altamont	Courtney D. Bennett
Jetmore	George Turnbull, Jr.

Gold Emblem Teams--Dairy Products

Clay Center	Ray Morrison
Fairview	Marvin Pinnick
Beloit	Frank Carpenter

RESULTS OF 1955 STATE HIGH SCHOOL FARM MECHANICS CONTESTSGold Emblem Teams--Entire Farm Mechanics Contest

<u>Team</u>	<u>Coach</u>
Chanute	Charles O. Carter, Jr.
Almena	Sam Stenzel
Yates Center	Don W. Brock
Oberlin	Lloyd Moody
Clay Center	Ray Morrison
Neodesha	Wayne Coltrain
Erie	Harold B. Van Cleave
Colby	Gordon K. Cunningham
Lakin	Dean Hoppas
Moundridge	Willard L. Obley

Gold Emblem Teams--Tool Conditioning

Chanute	Charles O. Carter, Jr.
Colby	Gordon K. Cunningham
Almena	Sam Stenzel
Effingham	Roy Eck
Yates Center	Don W. Brock
Emporia	Emory Groves
Clay Center	Ray Morrison
Fredonia	Harold Shoaf
Oberlin	Lloyd Moody
Altamont	Jack Shell

Gold Emblem Teams--Farm Machinery

Chanute	Charles O. Carter, Jr.
Yates Center	Don W. Brock
Oberlin	Lloyd Moody
Almena	Sam Stenzel
Moundridge	Willard L. Obley
Colby	Gordon K. Cunningham
Smith Center	Charles Mantz
Erie	Harold B. Van Cleave
Coffeyville	Marvin L. Riggs
Neodesha	Wayne Coltrain

Gold Emblem Teams--Arc Welding

Oberlin	Lloyd Moody
Almena	Sam Stenzel
Erie	Harold B. Van Cleave
Chanute	Charles O. Carter, Jr.
Colby	Gordon K. Cunningham
Coffeyville	Marvin L. Riggs
Clay Center	Ray Morrison
McPherson	Richard Ramsdale
Cherryvale	C. H. Young
Neodesha	Wayne Coltrain

## Results of 1955 State High School Farm Mechanics Contests (continued)

Gold Emblem Teams--Farm Carpentry

<u>Team</u>	<u>Coach</u>
Chanute	Charles O. Carter, Jr.
Delphos	Kenneth Wilson
Clay Center	Ray Morrison
Miltonvale	Truman Diener
Effingham	Roy Eck
Lakin	Dean Hoppas
Emporia	Emory Groves
Jetmore	George Turnbull, Jr.
Lyndon	Thomas C. Roberts
Cottonwood Falls	Richard Patton

Gold Emblem Teams--Soil Conservation

Chanute	Charles O. Carter, Jr.
St. Francis	Donald E. Hall
Yates Center	Don W. Brock
Clay Center	Ray Morrison
Salina	William D. Smith
Moundridge	Willard L. Obley
Lyndon	Thomas C. Roberts
Osborne	Merwin Stearns
Liberal	C. C. Griffin
Cherryvale	C. H. Young

Gold Emblem Teams--Concrete Contest

Osborne	Merwin Stearns
Beloit	Frank Carpenter
Chanute	Charles O. Carter, Jr.
Almena	Sam Stenzel
Neodesha	Wayne Coltrain
Colby	Gordon K. Cunningham
Lakin	Dean Hoppas
Fredonia	Harold Shoaf
Lyndon	Thomas C. Roberts
Cherryvale	C. H. Young

Gold Emblem Teams--Farm Power

Almena	Sam Stenzel
Colby	Gordon K. Cunningham
Chanute	Charles O. Carter, Jr.
Medicine Lodge	Norman Mills
Harveyville	Duane McCune
Neodesha	Wayne Coltrain
Clafin	Wallace Terrill
Cottonwood Falls	Richard Patton
Yates Center	Don W. Brock
Oberlin	Lloyd Moody

CHAPTER NEWS

GENESECO: Farm mechanic projects completed this school year are: two portable loading chutes, two implement carriers, three two-wheel trailers, three gasoline tank stands, four barrel stands, one power take-off post hole auger, one picnic table, five steel gates, five hog houses, a hog feeder, one feed bunk, and many home projects...The school has eight acres of land which we intend to secure for an experimental milo plot. The milo will be used for a county experimental milo plot as well as to raise funds for the FFA...A hog house built by FFA members from donated lumber was sold at a farm sale for \$35...We plan to start a gilt ring this year before school is out...A gas forge plus another electric welder has been added to the shop equipment.

Arden Alexander, Reporter

COTTONWOOD FALLS: Our Parent-Son Dinner was held in the high school. A program consisting of two numbers by the FFA Quartette, a play by the boys, two farm films, and a tour of the shop and remodeled classroom was enjoyed...We are sponsoring a heifer feeding project to raise money for the treasury. The heifers were wintered well and put on full feed the first of March. They will be sold the first of June...Gary Scott showed the Grand Champion steer at the County Spring Beef Show...We built a machinery yard west of our shop in order to have more room for our shop projects.

Robert Simmons, Reporter

ELLSWORTH: A summary of events and accomplishments of the Ellsworth Chapter shows that the chapter won a Gold Emblem award for the third straight year; members planted 461 acres of legumes, fertilized 1,835 acres of land, seeded 2,176 acres on contour, planted 4,384 acres with treated or certified seed, laid out nine and three-fourths miles of terraces, landscaped 25 acres of public lands, pruned 2,500 trees in cooperative activities...Three scholarships are now available to Ellsworth County FFA members - a \$100 Soil Conservation award based on work the boy does on the home farm, sponsored by the local Soil Conservation District; a \$100 Grass-Farming award sponsored by the Farmers Union to establish a better grass program in this county; and a \$100 Conservation award sponsored by the Citizens State Bank to instruct and encourage the county's young people in conserving and fertilizing soil...The School Board bought the vo-ag department a new three-fourths ton pickup. The FFA Chapter added \$50 in padding for the seats. A 500-watt film projector and a used typewriter were also purchased...Shop projects are: two dozen wheel gates, two hay bucks, miscellaneous sheet metal equipment, \$500 portable cattle squeeze, truck bumper, six rabbit hutches, ten sheep feeders, 50 posts for electric fence, five stock racks for half and three-fourth ton trucks, five four-wheel trailers, 35 steel hog troughs, two loading chutes, cattle spring-o-matic, six cattle hay feeders, two power hack saws, one post hole digger, one four-wheel self-unloading two-ton wagon, one self-feeder for hogs, five barrel stands, five A-type hog houses, and one 700 gallon steel stock tank.

Larry Webb, Reporter

OTTAWA: In February we held a banquet honoring parents of our FFA members. Mr. Harold Staadt, Mr. Kenneth Corbett, and Mr. C. W. Schneider were received into the chapter as honorary members. Guest speaker for the evening was Mr. Walter Arnold, State Director of Vocational Education.

Squire Foster, Reporter

LAWRENCE: This is the first year of farm mechanics in our chapter. Some of the shop projects are: two tractors painted, three portable loading chutes, four four-wheel wagon running gears, one complete wagon running gear and grain bed, one two-wheel tip-top implement trailer, one tandem implement trailer, three two-wheel trailers, one garden tractor, two gas barrel racks, three feed bunks, six turkey feeders, five hog troughs, one combination hay and grain cattle feeder, one one-ton truck bed with grain sides, one two-ton truck bed and grain sides, one community type hen nest, and miscellaneous items.

Don Cronk, Reporter

PRATT: Two television programs have been given over KTVH at Hutchinson, one on "Tool Sharpening" and the other on "Planning the Farmstead." A demonstration on "Tractor Safety," patterned after the Hope FFA demonstration, was given before several service clubs and in the high school assembly...The chapter made a farm fuel and oil survey for the Pratt County Co-op Association which netted us a profit of \$170...Shop projects completed this year are: calf creep feeder, three loading chutes, castrating table, work benches, tool cabinet, ping pong table, and other small items...Plans are being made to cooperate with other departments in the annual school exhibit.

Richard Smith, Reporter

MEDICINE LODGE: We collected  $16\frac{1}{2}$  tons of metal which was sold to a local scrap iron dealer for \$265, on our drive which covered the entire community. Trucks were furnished by chapter members and the school furnished cutting torches to cut up the iron...The junior class went on a soil conservation tour of Barber County with the S.C.S. Unit Conservationist, Vic Griswald. We observed crop land that had been reseeded to grass, terrace layouts, waterways, and several different types of irrigation systems. We observed one field that had been leveled for flood type irrigation system and was already in wheat. The Unit Conservationist discussed the steps in leveling land and its advantages over the sprinkler type irrigation system, providing the land can be leveled for approximately \$50 per acre...Our calf chute which was purchased last spring as a community service for farmers is in great demand this spring. The chute is rented to farmers for 5¢ per head and has already been used on 1,160 head of cattle...Dan Willms has been awarded the Register of Merit from the National Spotted Poland China Association for producing a litter of pigs weighing more than 270 pounds in 51-61 days. His gilt had nine pigs weighing 380 pounds in 56 days for an average of 42.44 pounds per pig.

Jack Wortman, Reporter

CHAPMAN: We held our annual Parent-Son Banquet March 22 and had a very good attendance...The annual chapter fishing party was held the night of April 28. ...The junior boys have been responsible for trimming cedar trees and shrubbery around the campus this spring...Major construction jobs being completed are: one hay and silage trailer, four steel gates, two sheep feeders, air compressor, tractor disc, post drill, show box, poultry feeders, three steel hog troughs, spring tooth harrow repair, tractor weeder, two ladders. A new "Sight Feed" acetylene generator was purchased for our shop last week.

Ronnie Sutton, Reporter

SILVER LAKE: We held our annual Parent-Son Banquet May 10. Wes Seyler was guest speaker...A TV program is planned for May 26...Plans are under way for a summer fishing trip.

Marlin Constant, Reporter



SOLDIER: We have 27 members in our chapter...Our chapter sold "Scotchlite" safety tape as a money raising activity...We are planning a two day fishing trip on the Blue River immediately after school is out...Some of the shop projects are: wooden gates, steel gates made from iron wheels, loading chute, tractor overhaul, mineral feeder for cattle, two horsedrawn cultivators changed to tractor drawn, truck flat bed, 2-wheel trailer, and numerous small projects.

Roger Coverdale, Reporter

McPHERSON: We have sold more than 100 subscriptions to farm magazines. This project added \$250 to our chapter treasury...Our chapter is planning an educational tour of points of agricultural interest in Wichita on May 26...Some of the completed shop projects are: three two-wheel trailers, farm wagon with flat bed and grain sides, baled hay elevator, three portable adjustable livestock loading chutes, livestock loading chute for the county building, numerous gates, hog troughs, and TV antennas.

Duane Mowbray, Reporter

OSAGE CITY: The average net worth of each chapter member this year was \$813.44...Our three senior members and adviser represent the nominating committee for our chapter officers for the coming year. The newly elected officers will be installed May 13 and take office June 1...Our annual FFA picnic is scheduled for May 21 at Lake Wabaunsee. Eats are furnished by the members, the chapter furnishes transportation, pop, ice water, games and some camping equipment.

Torsten Isaacson, Reporter

HARPER: The Twenty-Fifth Anniversary of our chapter was observed at our Parent-Son Banquet. Former presidents, American Farmers, and honorary members were chapter guests...Our chapter finances were taken care of by collecting and selling 11 tons of paper, operating concession stands at basketball games, and by placing a pencil vending machine in the school...Eight members spent a day in Hutchinson as guests of the Farmer's Co-op, visiting the Board of Trade, State Grain Inspection Laboratory, and the grain elevator terminals.

Bill Barnes, Reporter

NATOMA: Our Parents' Night is held in the vo-ag shop and attendance is excellent. The business meeting and entertainment is carried out by FFA members...A new seesaw was constructed for the city park, and stronger chains placed on the swings...The chapter received fifty chicks from the local hatchery and sold them within a short time as a means of increasing funds.

Douglas Hale, Reporter

SABETHA: The Sabetha Chapter won a purebred Berkshire gilt at the Little American Royal. We purchased another Berkshire gilt and the two were taken by Douglas Metzger and Gary Studer. They will be used to form a gilt ring for the chapter...Our boys will plant 163 acres of corn, 23 acres of oats and 40 acres of wheat. We have 29 head of beef cattle, 117 hogs, 26 sheep and 16 dairy heifers...Feed bunks, chicken feeders, picnic tables and a wagon box were made in shop this year...We are inviting the seventh and eighth grade boys and their parents to an open shop night.

William Ralston, Reporter

MINNEAPOLIS: Our Parent-Son Banquet was held May 9. Ron McKinnie, Past State Treasurer, was guest speaker...We have built several trailers in shop this year, made barrel and wooden feed bunks, and a pasture terracer in cooperation with the Soil Conservation District in our county...As a money making project during the year we sold subscriptions to farm magazines.

Gary Kay, Reporter

ATWOOD: Our chapter attended the National Western Livestock Show held in Denver...We have been working on the Atwood golf course. We made nine rakes for the greens and also repaired the greens themselves...At the beginning of basketball season our chapter invested \$340 in stadium seats which were rented at basketball games and wrestling matches. A total of \$260 was repaid and we hope to pay off the remaining balance in the near future.

Lynn Anderson, Reporter

ALTAMONT: The junior and senior classes are building 1,850 feet of terraces at the school garden...The senior class has planted five varieties of wheat on the school farm. A yield test is being made on Concho, Poncha, Triumph, Pawnee and Wichita...Our chapter held its Parent-Son Banquet with Dr. Wm. A. Albrecht, Professor of Soils at the University of Missouri, as guest speaker. About 450 persons attended the banquet...The chapter let 30 gilts out to beginning boys on the chain program...The ag shop boys have moved into a new 50'x50' building which is an addition to the old shop.

Roy Helms, Reporter

OLATHE: FFA boys are enjoying the parking area and driveway improved through the efforts of our chapter members. The driveway extends by the shop and the parking area by the side of the shop...FFA members have been extending a helping hand in cleaning up the site for another new grade school building on the east side of Olathe...During the year the FFA had a basketball team which played other FFA teams.

James Ellis, Reporter

TROY: We held our Parent-Son Banquet March 15 with 120 members and guests present...Our chapter operated the popcorn machine at all athletic contests during the year and made \$120 profit...A paper drive netted \$45...The chapter will have an 80 acre corn project this summer. Each boy will help at least one day during the summer in cultivating and spraying the corn. Fertility plots and variety tests will be conducted in connection with this project...Shop projects include a portable loading chute, wagon, two trailers, hog self-feeders, bolt and nail storage rack, and other small projects. Several pieces of farm machinery have been reconditioned.

Richard Folsche, Reporter

SEAMAN: The Seaman Chapter officers conferred the degree of Honorary Chapter Farmer on Mr. C. M. Miller at our annual Parent-Son Banquet. Mr. Miller is a resident of the Seaman Community and was Director of Vocational Education in Kansas for 31 years...We held a joint meeting with the FHA. Each group used their opening ceremony and then each had a short program...The chapter is going to the Purina Research Farm after school is out. We will visit the mill and laboratory, go to the farm and see different management practices, and attend a banquet...We planted  $2\frac{1}{2}$  acres of corn on a school plot. This corn will be used to save feed costs on the chapter boar.

Richard Rees, Reporter

ATTICA: The Attica FFA painted parking lines on our city streets recently as part of our community service. The boys were allowed one day out of school for this activity...We are planning a farming program tour to the different boys' farms to observe the various farming programs...Our annual FFA outing will be held at Lake Kanopolis May 23, 24 and 25.

Loren Wingate, Secretary

TROUSDALE: Our chapter is planning a trip to Bull Shoals Lake in North Arkansas the week after school is out...We have organized an FFA Cooperative to buy feed, show supplies and other needs of the boys...We have our first large group of show stock including seven steers, one heifer, several barrows and some lambs...Our Sweetheart Contest is underway and the Sweetheart will be crowned at our Parent-Son Banquet.

Fred Elledge, Reporter

JENNINGS: We are enjoying our new shop this year. Projects completed are: two-wheel implement carrier, tractor cab, paint job on tractor and truck, hog house, wire roller and clothesline poles...We have 40 acres of wheat for a chapter project...Our chapter is planning a fishing trip the first Saturday after school.

Richard R. Poage, Reporter

HILLSBORO: Some of the projects constructed in shop are: livestock rack, three bale elevators, two two-wheel trailers, four four-wheel trailers, six four-wheel trailer beds, two loading chutes, three implement carriers, three fuel tank stands, two hog feeders, one hog house, one granary, three lawn mowers and one manure spreader rebuilt...We have our annual fishing trip on Cow Creek.

Morris Woelk, Reporter

WELLSVILLE: We held our Parent-Son Banquet April 1. One hundred twelve members, parents and guests were present...Farm mechanics projects completed are: Two machinery trailers, repaired tractor, cleaned and spray painted tractor, five gas barrel stands, three feed bunks, loading chute, four-wheel trailer, four pipe gates, and several items of farm machinery repaired.

Alan Schendel, Reporter

GOODLAND: For the first time in many years Goodland will offer a fourth year course in vocational agriculture...Members of the chapter have over 50 head of deferred fed steers this year...The young farmers of Goodland have completed a successful course and will meet once a month during the summer. Most of the young farmers are former members of the Goodland FFA Chapter.

Stan Kenny, Reporter

ALTOONA: Mr. and Mrs. Reed A. Streets had a chili feed for our chapter, after which we held our regular monthly meeting. We discussed the ice cream supper the losers of the pest eradication contest will give the winners. After a short business session the meeting was adjourned.

Kenneth L. Streets, Reporter

COLBY: At the February meeting thirteen boys received the Green Hand Degree and nine boys were advanced to the Chapter Farmer Degree...Our annual Parent-Son Banquet was held April 21...The chapter has earned nearly \$500 from the sales from our popcorn machine and coke machine.

Robert Sowers, Reporter

RANDOLPH: Our chapter has been taking field trips to prune grapevines and peach and apple trees. We also have dehorned cattle...Major shop jobs are: feed bunk, loading chutes, operating table for animals, bale loader, dehorning chute, gates, wagon box, hog troughs, boat, picnic tables, hog house and lawn chair...In our gilt ring, Ray Frost has the gilt and it had eleven pigs. ...March 23 we had a pot luck supper and invited the FFA members' families.

Bob Lutz, Reporter

ELDORADO: Shop projects include hog troughs, TV towers, gates, chicken feeders, loading chute, trailer, calf table and picnic tables...Each Saturday two members of the Eldorado FFA Chapter discuss their farming program and chapter activities over Radio Station KBJD...Our Parent-Son Banquet is planned for May 18.

David Templeton, Reporter

COLDWATER: Donald Alexander was an exhibitor at the Fourth Annual Barrow Show, winning Grand Champion pen of three and Reserve Champion of the show on his Yorkshire barrows...Our members attended a land judging school. We had the first team plus having the high individual, Jimmie Copple.

Clay Morris, Reporter

CLAY CENTER: Three members gave a half-hour TV program on poultry over WIBW-TV at Topeka...A self-unloading, portable grain bin, several portable loading chutes, a calf creep feeder, eight trailer beds, two cattle guards, several sickle grinders, and other items have been built recently in the ag shop.

Loren Mall, Reporter

BURLINGAME: We held an informal Parents' Night, using our opening ceremony and having one of the officers read our accomplishments for the year. Musical talent from our chapter provided entertainment. Refreshments were served at the close of the meeting...We are going on a three day fishing trip to Burlington. Food will be provided by the chapter--we hope the river will provide the fish.

Gary Rieck, Reporter

ST. MARYS: Our chapter staged a television program February 3 over WIBW-TV entitled "How to Prepare for a Litter"...On May 18 the chapter held its annual Parent-Son Banquet.

Larry Marstall, Reporter

LONGFORD: The theme of our FFA banquet was "Our Farming Programs." Each class reported on their activities and the scope of their farming programs... Shop projects are: "A" type hog houses, farm gate, steel post drivers and clothesline poles...We are planning an over-night fishing trip at the Ottawa State Lake this spring.

Dean Kobetich, Reporter