

S
534
.K2
C64
1928

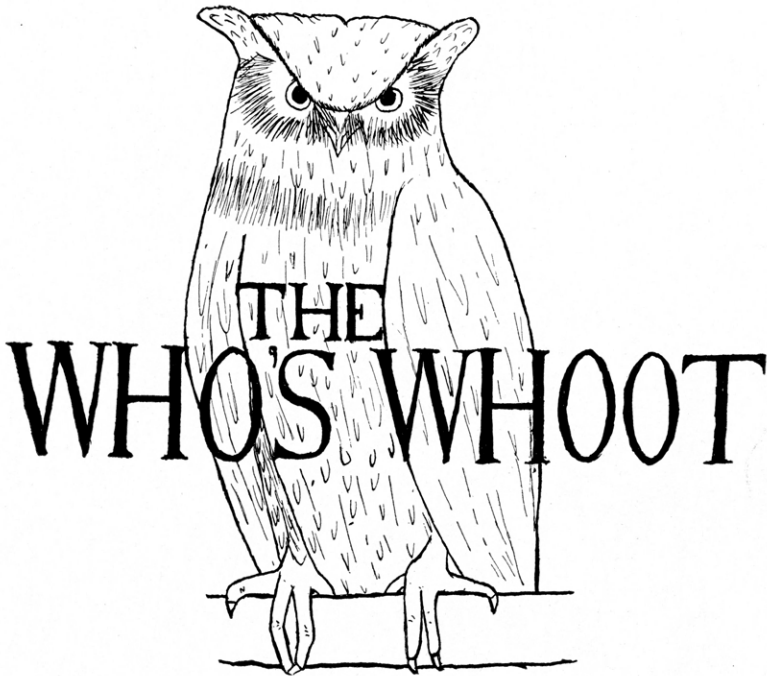
UNIV.
ARCHIVES



1928



Who's Whoot



1928

Published by

THE WHO'S WHO 4-H CLUB

KANSAS STATE AGRICULTURAL COLLEGE

MANHATTAN, KANSAS





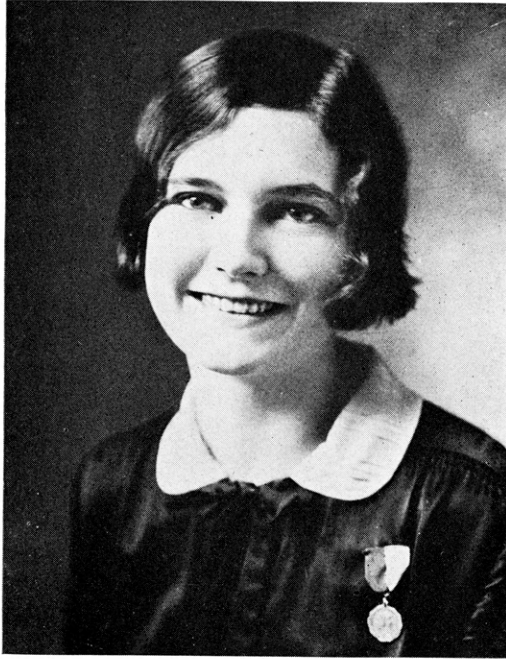
Dedication

To one who has always encouraged and promoted 4-H Club work; who has many times expressed infinite faith and confidence in the achievements of 4-H Club members—to F. D. Farrell, President of the Kansas State Agricultural College, do we earnestly dedicate this book.



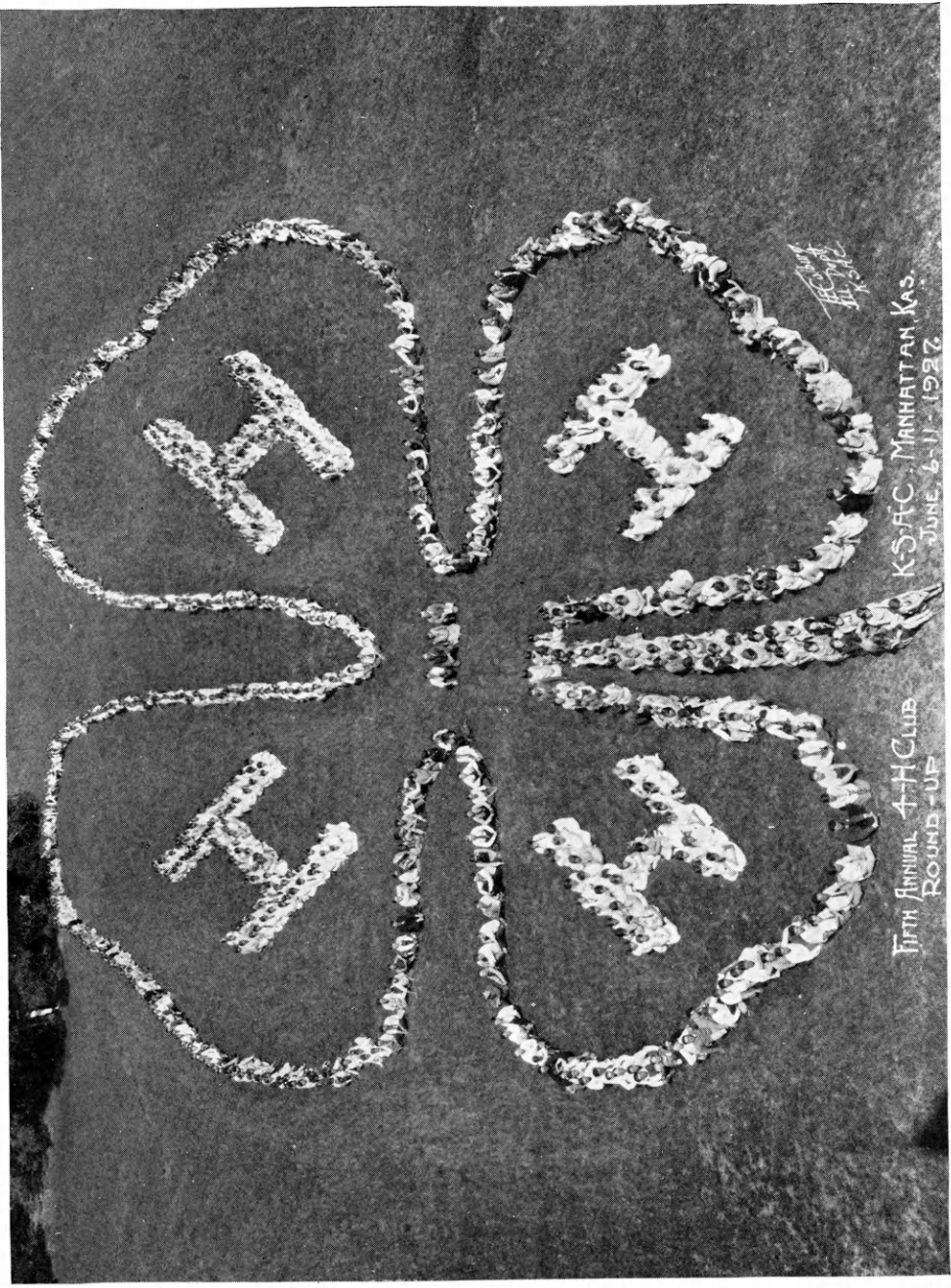


univ
S
534
K2
C64
1928



MARIE ANTRIM, of Kingman County, was selected by a committee of physicians as the National 4-H health champion at the National Boys' and Girls' Club Congress at Chicago in 1927, when forty-four states were represented in 4-H Club work. She competed with other state champions of their respective states, winning with a score of 99.15 per cent. Twice before, Marie had contested for the state championship, each time winning second place. Last year she made her third attempt and won gloriously. She then entered the National contest and received her hard earned reward by winning the National championship. This is the greatest impetus which 4-H Club work in Kansas has ever received. Probably it has done more for club work in general than anything ever before accomplished by any club member in the state. Through perseverance, through strict application to the things she knew were right, and finally through sheer determination, this Kansas club girl has made a name for her state, her club and herself.





The 1927 State 4-H Club Roundup

THE MOST IMPORTANT 4-H CLUB activity of the year was the annual Roundup, which was held at the Kansas State Agricultural College during the week beginning June 6. Nine hundred club folks registered from fifty counties, and there were probably over one hundred present who did not register, making a total of over one thousand present. The boys were housed in Nichols Gymnasium and the girls in Van Zile Hall, the new dormitory for girls.

A part of the program for the week consisted of interesting lectures and demonstrations centering around the work of the various 4-H Club projects. Other features of the program included club contests, music, travel and sight-seeing trips. The mornings were devoted to separate classes for boys and girls; the afternoons were given over to field trips for both; and the evenings were left for general entertainment and education. The entire group of boys was divided into eight smaller groups, and the girls were also divided into eight groups, with a group leader in charge of each. County Agents and Home Demonstration Agents were pressed into the service of leading groups and were held strictly accountable for the activities of their groups.

Special acknowledgment should be made of the outstanding contributions made by Miss Streeter, of the Victor Talking Machine Company, in connection with the music work of the Roundup; and by Mr. John Bradford, of the Playground and Recreation Association of America, in recreational work. Acknowledgment should be made also of the very personal and enthusiastic support given by President Farrell, Dean Umburger, and by other members of the college faculty, in making this the best Roundup on record. The Kansas Bankers Association deserves the gratitude and appreciation of all Kansas club members for their generosity in financing many of the trips, prizes, awards and other features of the Roundup.

The winners of the various contests were as follows:

Health—

Marie Antrim, Kingman County
Dwayne Case, Cheyenne County

Music Memory—

County—Douglas County
Individual—Mary K. Frederick

Attendance—

Sherman County

Demonstrations—

Home Economics—Sherman
County
Agriculture—Reno County

Stunt—

Cherokee County

Groups—

Boys, Group Fifteen
Girls, Group Eighteen

Judging—

Baking—Harper
Clothing—Pratt County
Livestock—Cherokee County
Poultry—Lyon County
Grain—Labette County
Dairy—Allen County

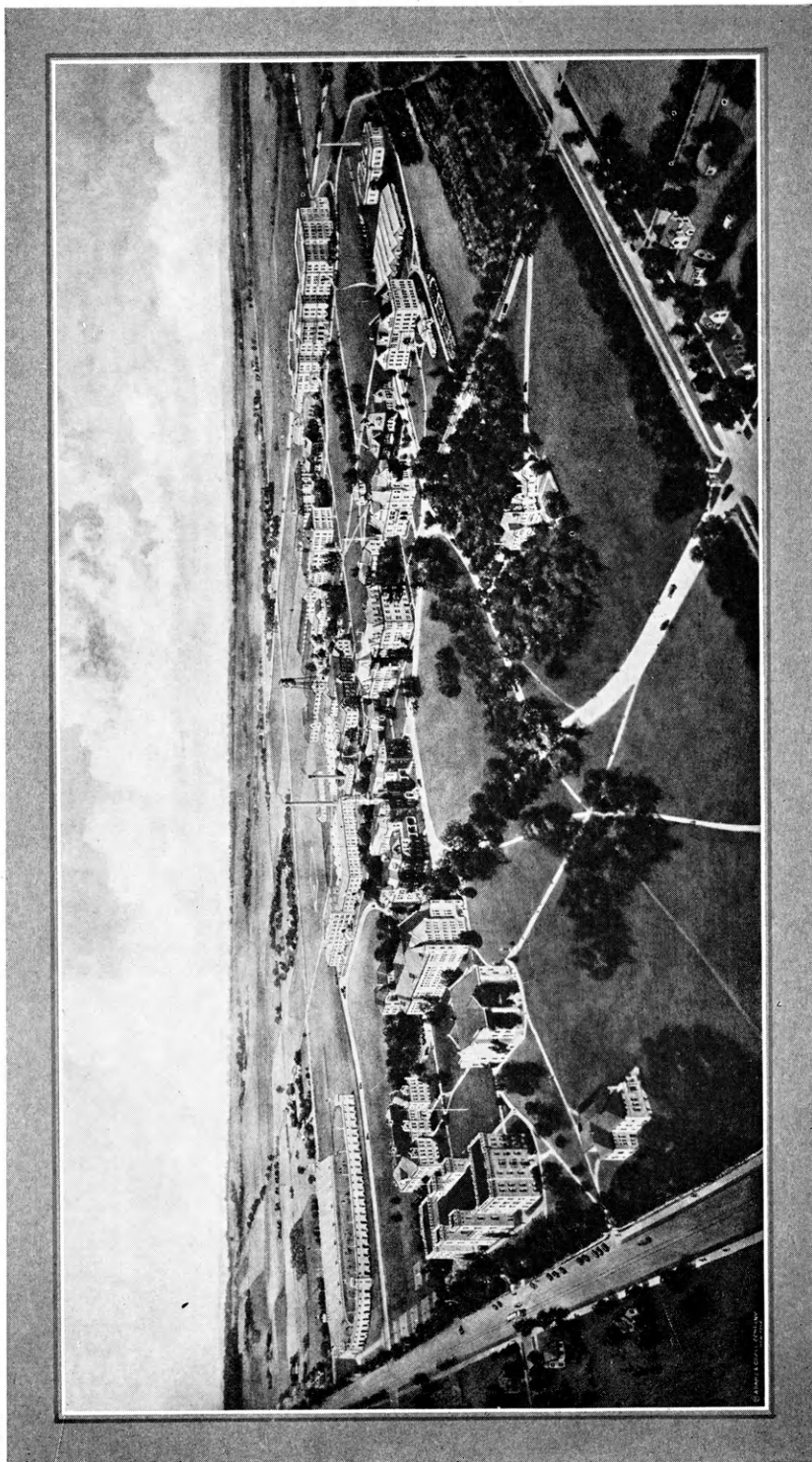
Model Club Meeting—

Allen County

Chorus—

Bourbon County





Airplane View of the Kansas State Agricultural College





THE COLLEGE CAMPUS of 160 acres occupies a commanding and attractive site upon an elevation adjoining the western limits of the City of Manhattan, with street car service into town and to the railway stations. The grounds are tastefully laid out according to the designs of a landscape architect, and are extensively planted with a great variety of beautiful and interesting trees, arranged in picturesque groups, masses and border plantings, varied by banks of shrubbery and interspersed with extensive lawns, gardens and experimental fields. Broad, well-shaped macadamized avenues lead to all parts of the grounds. Cement walks connect the buildings with one another and with the entrances. The buildings are harmoniously grouped, and are uniformly constructed of limestone.

The College is the oldest state-supported College in Kansas, having opened its doors in 1863. It is operated mainly for the education of people who work for a living—on the farm, in the factory, in the home, or elsewhere. The curriculum includes twenty different four-year courses and a number of other shorter courses. Last year more than 4,000 students attended from 104 Kansas Counties, 33 states and eight foreign countries.





The National 4-H Club Encampment at Washington, D. C.



Secretary Jardine and the Kansas Delegation

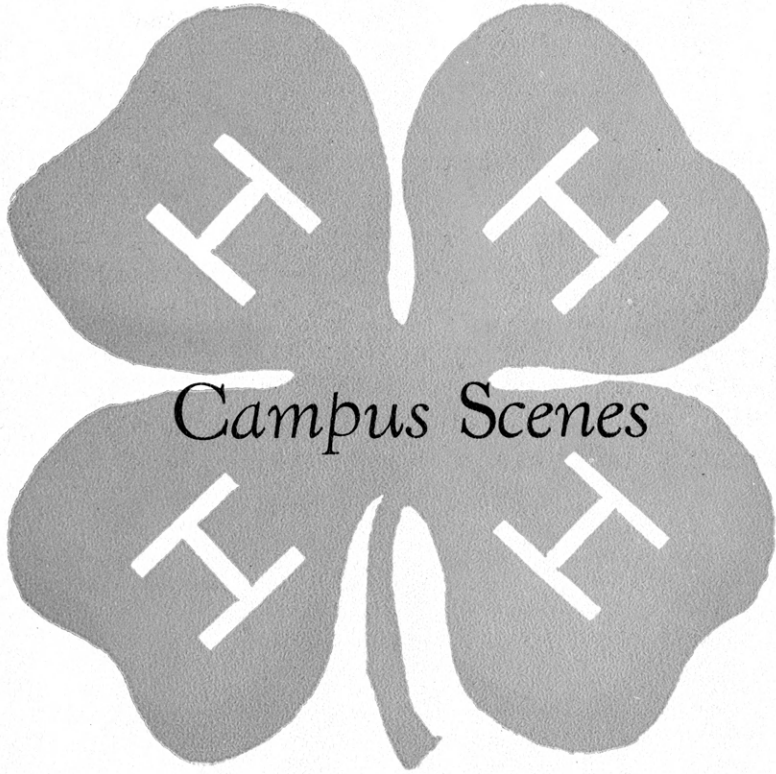
THE FIRST NATIONAL 4-H CLUB CAMP was held in Washington, D. C., June 16 to 23, 1927. Forty-one states were represented by their highest winning Club members, especially in Leadership activities; each state representation being limited to two boys and two girls.

The camp was composed of seventy-five army tents pitched on the mall of the United States Department of Agriculture. The girls' tents were on one side and the boys' on the other, with an open space between, in which were held the camp gatherings and campfire programs.

The program for the day was as follows: 6:30—Flag raising, sitting up exercises and swimming; 8:30—Breakfast; 9:00—General Assembly; 10:00—Sight seeing trips; 1:00—Dinner; 2:00—Noon conference; 3:00—Educational tours; 6:00—Supper; 7:00—Campfire meeting; 10:00—Taps. Some of the sight seeing trips included trips to the following: Mt. Vernon, Boat Trip Down the Potomac River as guests of the Navy Department, Arlington Cemetery, Memorial Amphitheater, Tomb of Unknown Soldier, Capitol, Library of Congress, National Museum, Washington Monument, National Zoo, Washington Cathedral.

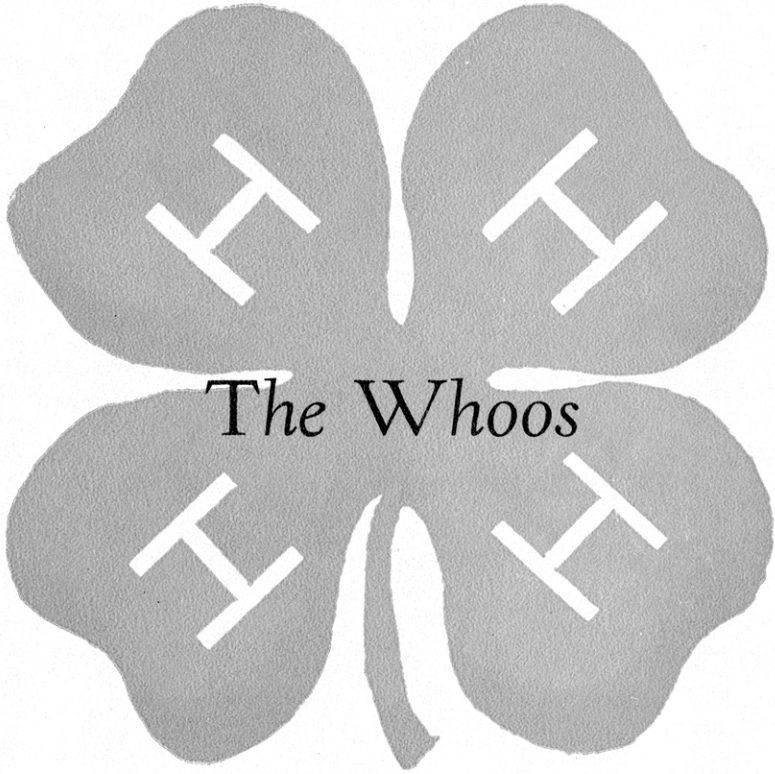
Reading from left to right in the picture above are: Frank Parsons, Mr. Scoth, Louise Lumb, Mrs. Coe, Sec. Jardine, Mary Tilton, Frank Zitnik and Mr. Coe.





Campus Scenes

Blank page in original document

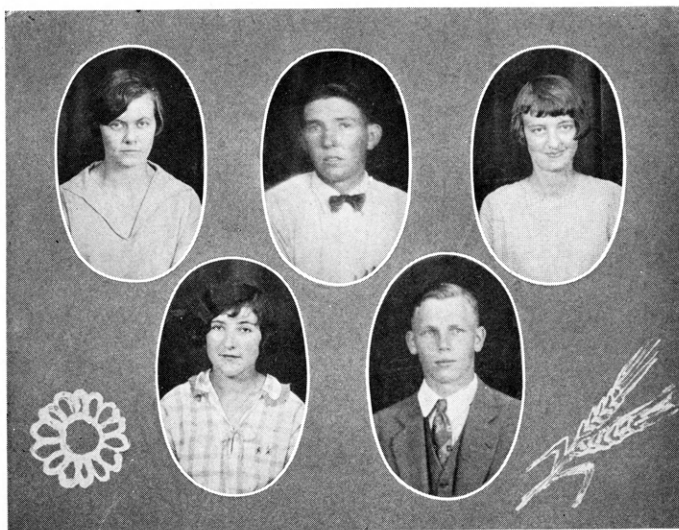


The Whoos

Blank page in original document



Club Officers



EDITH PAINTER *President*
 LLOYD DAVIES *First Vice-President*
 HAZEL DEE FIX *Second Vice-President*
 RUBY HOWELL *Secretary*
 BEN KOHRS *Treasurer*

IN HIS MESSAGE TO THIS PUBLICATION, President Farrell stated that he felt certain that the Who's Who's Who contains many names of boys and girls who will later be listed in Who's Who in America. Such an expression was undoubtedly prompted by a full realization of the valuable work of the Who's Who 4-H Club of this state, the membership of which is presented in this yearbook.

May we at this time pay tribute to our officers who have so efficiently guided and directed the organization during its fifth year of activity. Their efforts in carrying on the work of the Who's Who 4-H Club, its purposes and ideals, is most sincerely appreciated and valued.





Honorary Members



F. D. FARRELL..... *President of the Kansas State Agricultural College*
 M. H. COE..... *State Club Leader*
 MARGARET M. JUSTIN..... *Dean of Home Economics, Kansas State Agricultural College*
 L. E. CALL..... *Dean of Agriculture, Kansas State Agricultural College*
 A. J. SCHOTH..... *Assistant State Club Leader*
 H. UMBURGER..... *Dean of the Division of Extension, Kansas State Agricultural College*
 EDNA BENDER..... *Assistant State Club Leader*
 AMY KELLEY..... *State Home Demonstration Leader*





NOLA MCCORMICK Sedgwick County
Poultry, Meal Preparation, Sewing, Can-
ning and Sheep Clubs, 1922-'27; Leader-
ship Trip to Washington, D. C., 1928.

HELEN HOSIER Cherokee County
Sewing, Meal Preparation, 1925-'27;
Clothing Judging, 1926; State Club
Roundup, 1927.

HARRY SCHLICKAU Reno County
Baby Beef and Pig Clubs, 1923-'27; Na-
tional Club Congress, 1926; Livestock
Judging, 1926-'27; State Club Roundup,
1927.

ELINA NORDMAN Sherman County
Canning Club, 1924-'27; State Cham-
pion Canning, 1925; State Club Round-
up, 1926.

HAZEL HEDSTROM Morris County
Baby Beef, Poultry and Sewing Clubs,
1921-'27; State Club Roundup, 1925-
'27; National Club Congress, 1926.

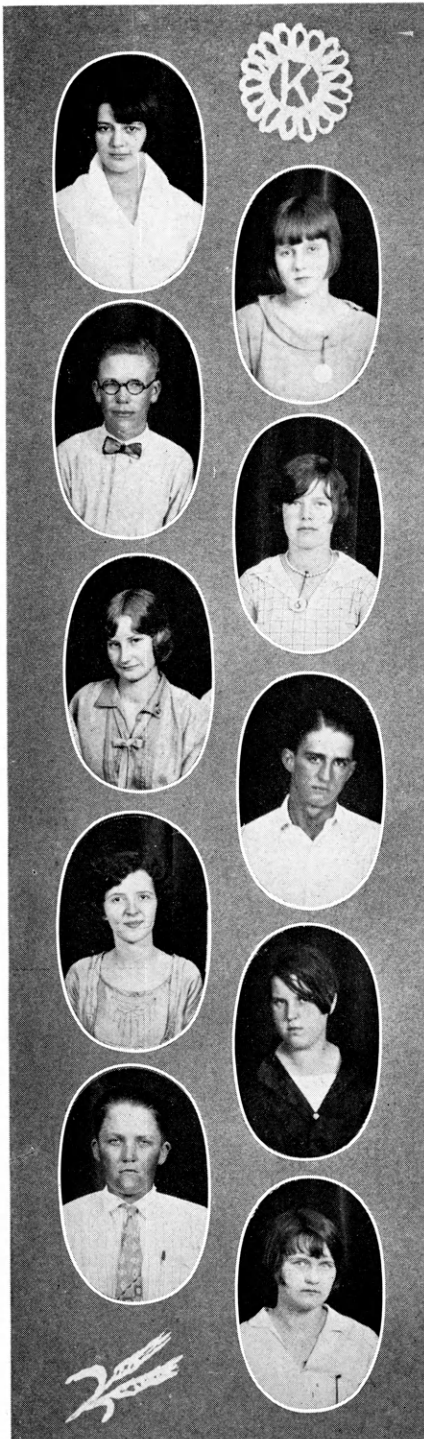
HERBERT AVERY Clay County
Baby Beef, Poultry, and Pig Clubs, 1922-
'26; American Royal, 1925; State Club
Roundup, 1927.

DOROTHY KILLION Bourbon County
Sewing and Baking Clubs, 1925-'27;
Baking Demonstration, 1926; State Club
Roundup, 1927.

DOROTHY KEEFER Lyon County
Sewing Club, 1923-'27; State Club
Roundup, 1926-'27; Kansas Free Fair,
1926.

RHINALDO MEREDITH Butler County
Pig and Calf Clubs, 1925-'26; Kansas
State Fair, 1926; Wichita Livestock
Show, 1926.

WINIFRED HOCH Lyon County
Poultry, Sewing and Meal Preparation
Clubs, 1922-'27; American Royal, 1925;
State Club Roundup, 1927.





LOYD DAVIES Lyon County
 Corn, Pig, Baby Beef and Poultry Clubs, 1923-'27; National Club Congress, 1926; Kansas Free Fair and American Royal, 1923; Leadership Trip, Washington, D. C., 1928.

ALMA WEIGEL Leavenworth County
 Clothing and Canning Clubs, 1924-'27; State Roundup, 1926-'27; Kansas Free Fair, 1926; Winner of Edison Medal in a Canning Exhibit, 1926.

LOUISE LUMB Clay County
 Sewing, Calf, Poultry and Health Clubs, 1921-'27; National Club Congress, 1925; State Roundup, 1925-'27; Leadership Trip, 1927.

BEN KOHRS Dickinson County
 Corn, Dairy and Baby Beef Clubs, 1924-'27; Dairy Judging Team, 1927; Kansas State Fair, 1926; U. P. Scholarship, 1926.

JOHN WILSON Allen County
 Pig, Corn and Dairy Clubs, 1926-'27; Livestock Judging, 1926; State Dairy Champion, 1927; National Dairy Show at Memphis, 1928.

THELMA MORELAND Clay County
 Calf, Sewing, Clothing and Own Your Own Room Club, 1922-'27; Demonstration Team, 1927; State Roundup, 1925-'27.

MARIE ANTRIM Kingman County
 Poultry, Sewing, Own Your Own Room Club, 1924-'27; National Health Champion, 1927; National Champion Poultry Demonstration Team, 1926; National Club Congress, 1927.

WILLIAM DREHR Allen County
 State Champion Dairy Demonstration Team, 1926; Dairy Club, '26-'27; Livestock Judging, 1926; National Dairy Show, '26; Interstate Fair at Sioux City, '26; State Roundup, '27.

EFFIE MARIE CARTER Cherokee County
 Sewing Club, 1925-'27; State Roundup, 1926-'27; Kansas Free Fair, 1927.

ALICE WEBB Ford County
 Baking and Clothing Clubs, 1925-'27; State Club Roundup, 1927.





MENGA BLANKLEY Morris County
Poultry, Clothing and Baking Clubs,
1924-'27; Kansas Free Fair, 1925; Kan-
sas State Fair, 1925; State Club Round-
up, 1927.

ARNOLD CHASE Dickinson County
Baby Beef, Sorghum and Corn Clubs,
1925-'27; American Royal, 1926; State
Club Roundup, 1927; U. P. Scholarship,
1927; Collegiate 4-H Club.

LOIS STARBUCK Sherman County
Baby Beef, Canning, Baking and Leader-
ship Clubs, 1923-'27; State Club Round-
up, 1924-'27; National Club Congress,
1926; Leadership Trip to Washington,
D. C., 1928.

RUTH HICKLIN Sedgwick County
Canning, Sewing, Meal Preparation and
Supper Clubs, 1925-'27; State Club
Roundup, 1925-'27; Demonstration
Team, 1926.

GEORGE MCCOLM Lyon County
Sheep, Corn, Pig, Poultry and Canning
Clubs, 1923-'27; Grain Judging Team,
1927; American Royal, 1925; State Club
Roundup, 1924-'27.

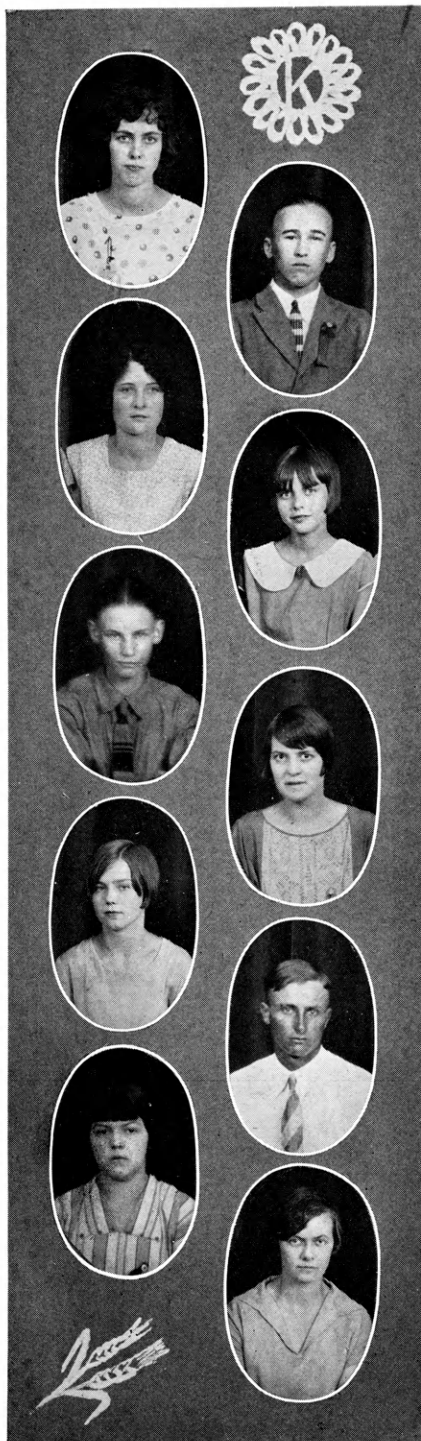
GLADYS VANDERSTELDT Clay County
Sewing, Health and Poultry Clubs, 1922-
'27; State Health Champion, 1924; Na-
tional Club Congress, 1924; State Club
Roundup, 1924-'27.

MARGARET STAUTH Ford County
Baking, Clothing Clubs, 1925-'27; State
Health Champion, 1926; National Club
Congress, 1926; State Club Roundup,
1926-'27.

FRED HEDSTROM Morris County
Corn, Calf and Pig Clubs, 1918-'27;
Kansas Free Fair, 1925-'27; State Club
Roundup, 1924-'27; Champion Ton
Litter, 1924.

VERA HICKOX Lyon County
Sewing and Poultry Clubs, 1922-'27;
State Club Roundup, 1926-'27.

EDITH PAINTER Meade County
Clothing, Baking, Supper and Leadership
Clubs, 1922-'27; State Club Roundup,
1924-'26-'27; Champion in Home
Economics, 1925; Baking Judging Team,
1925; National Club Congress, 1925;
Collegiate 4-H Club.





VICTOR MORTON Sherman County
Colt, Corn and Heifer Clubs, 1926-'27;
Livestock Judging Team at Hays, 1926-
'27; International Boys' and Girls' Club
Congress, 1926; State Club Roundup,
1927.

MARY KIMBELL Ford County
Baking and Clothing Clubs, 1926-'27;
County Judging Team, 1927; State Club
Roundup, 1926-'27; International Boys'
and Girls' Club Congress, 1926.

LOUISE BLUBAUGH Bourbon County
Calf, Sewing, Baking and Leadership
Clubs, 1925-'27; State Club Roundup,
1927.

HARRY GREATHOUSE Allen County
Pig, Dairy and Beef Clubs, 1926-'27;
Winning Stock Judging Team at Topeka
State Fair, Sioux City, 1926; State Club
Roundup, 1927.

CARL HEDSTROM Morris County
Corn and Pig Clubs, 1918-'26; County
Judging Team, 1921; State Club Round-
up, 1927.

MYRTLE BRESCH Cherokee County
Sewing Club, 1925-'27; Topeka State
Fair, 1926; State Club Roundup, 1927.

LOLA ADAMS Ford County
Baking Club, 1926-'27; County Baking
Judging Team, 1926; State Club Round-
up, 1926-'27.

WILLIAM AULD Clay County
Calf Club, 1924-'27; Stock Judging
Team, 1925-'26; Topeka Fair, 1924-
'26; Wichita Wheat Show, 1925; State
Roundup, 1927.

MAUD MAYFIELD Allen County
Baking and Sewing Clubs, 1925-'27;
State Roundup, 1926-'27.

STELLA JOHNSON Allen County
Sheep, Dairy and Sewing Clubs, 1925-
'27; National Boys' and Girls' Congress,
1926; State Roundup, 1925-'27.



ELIZABETH CONGDON Sedgwick County
Nutrition and Supper Clubs, 1926-'27;
Kansas State Fair, 1926; State Club
Roundup, 1926-'27.

RUBY MCCOLLUM Cherokee County
Sewing and Baking Clubs, 1926-'27;
State Club Roundup, 1927.

LOUIS BLUBAUGH Bourbon County
Poultry, Crops and Leadership Clubs,
1924-'27; State Club Roundup, 1927.

LILLIAN LAUGHLIN Sherman County
Poultry Club, 1924-'27; Member of
Winning Agricultural Demonstration
Team, Kansas State Fair, 1925; State
Club Roundup, 1926-'27.

MARY CATES Kingman County
Sewing Club, 1925-'27; Sewing Demon-
stration Team, 1926; State Club Round-
up, 1926-'27.

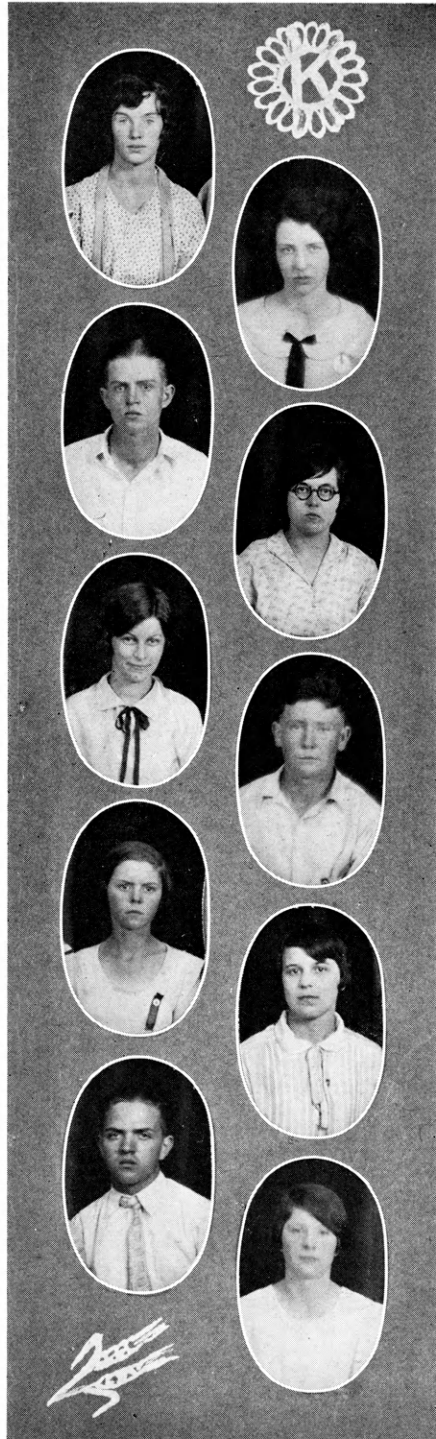
KERMIT DAVIES Lyon County
Poultry, Corn, Kafir, Pig and Baby Beef
Clubs, 1923-'27; Kansas Free Fair 1926;
American Royal, 1925-'26; State Club
Roundup, 1926-'27.

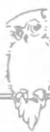
NADINE BROWN Lyon County
Poultry Club, 1924-'27; American Royal,
1925-'26; State Club Roundup, 1927.

MARJORIE RAYL Reno County
Baking Club, 1926-'27; Kansas Free
Fair, 1926; Kansas Wheat Train Demon-
stration Team, 1926; Kansas State Fair,
1926; State Club Roundup, 1927.

ROBERT PEASE Bourbon County
Corn, Calf and Poultry Clubs, 1924-'27;
Dairy Judging Team, 1926; State Club
Roundup, 1927.

MILDRED HIGGINBOTHAM Allen County
Baking and Sewing Clubs, 1925-'27;
State Club Roundup, 1926-'27; Kansas
State Fair, 1926.





BERNICE LEHR Butler County Dairy and Pig Clubs, 1924-'27; Kansas National Stock Show, 1926; State Club Roundup, 1926; Wichita Wheat Show, 1926.

ARDEN BOOTH Brown County Dairy Club, 1925; County Judging Team and Dairy Judging Team, Kansas State Fair, 1925.

CATHERYN MARSH Neosho County Clothing Club, 1923-'26; Topeka Fair, 1925; State Club Roundup, 1926; Clothing Demonstration Team, 1926; Own Your Own Room Club, 1926.

HAZEL DEE FIX Cheyenne County Poultry, Clothing and Baking Clubs, 1924-'27; State Club Roundup, 1925-'27; Hays Roundup, 1927.

WAYNE STEWART Lyon County Poultry, Corn and Pig Clubs, 1923-'27; Grain Judging Team, 1926; State Club Roundup, 1925-'27.

ARLINE PINKERTON Kingman County Clothing, Baking and Poultry Clubs, 1925-'27; State Clothing Judging Champion, Kansas State Fair, 1926; Hays Roundup, 1927; State Club Roundup, 1926-'27.

VELDA COX Bourbon County Clothing and Baking Clubs, 1925-'26; Meat Demonstration Team, Kansas Free Fair, Royal Conference, 1925; State Club Roundup, 1925.

PAUL DAVIES Riley County Baby Beef, Lamb and Corn Clubs, 1923-'27; Kansas Free Fair, Kansas State Fair, American Royal, 1925; State Club Roundup, 1925-'27.

EDWARD MARTIN Cherokee County Dairy, Baby Beef and Pig Clubs, 1922-'26; Kansas Free Fair, 1926; Kansas State Fair, 1926; State Club Roundup, 1926; State Livestock Judging Team, 1927.

AGNES PEARSON Cherokee County Sewing and Meat Preparation Clubs, 1925; American Royal, 1926; State Club Roundup, 1925-'26; National Dairy Show, 1927.





HOMER HEITT Reno County
Heifer, Pig, Calf and Poultry Clubs, 1920-'27; County Stock Judging Team, 1923; State Club Roundup, 1923; National Club Congress, 1922; Collegiate 4-H Club.

CARL CONGER Allen County
Dairy and Poultry Clubs, 1921-'27; High in Judging at State Fair, National Club Congress, 1925; State Club Roundup, 1926; Collegiate 4-H Club.

GRACE VANSCOYOC Anderson County
Canning and Poultry Clubs, 1919-'20; State Club Roundup, 1920; Collegiate 4-H Club.

FREDERICK SCHULTIS Lincoln County
Poultry Club, 1923-'26; Winner of Union Pacific Scholarship, 1926; Livestock Judging at Hays, 1926; Collegiate 4-H Club.

LLOYD COMPTON Brown County
Pig Club, 1923-'24; State Pig Club Champion, 1924; National Club Congress, 1924; Collegiate 4-H Club.

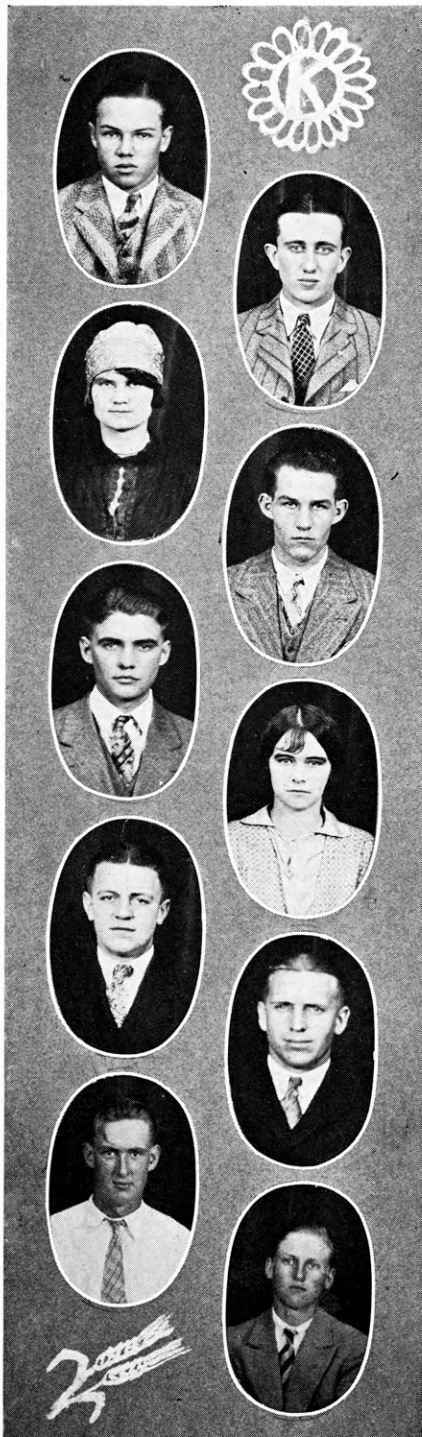
REOLA KISTLER Kingman County
Poultry, Baking and Clothing Clubs, 1925-'27; State Club Roundup, 1925-'26; Collegiate 4-H Club.

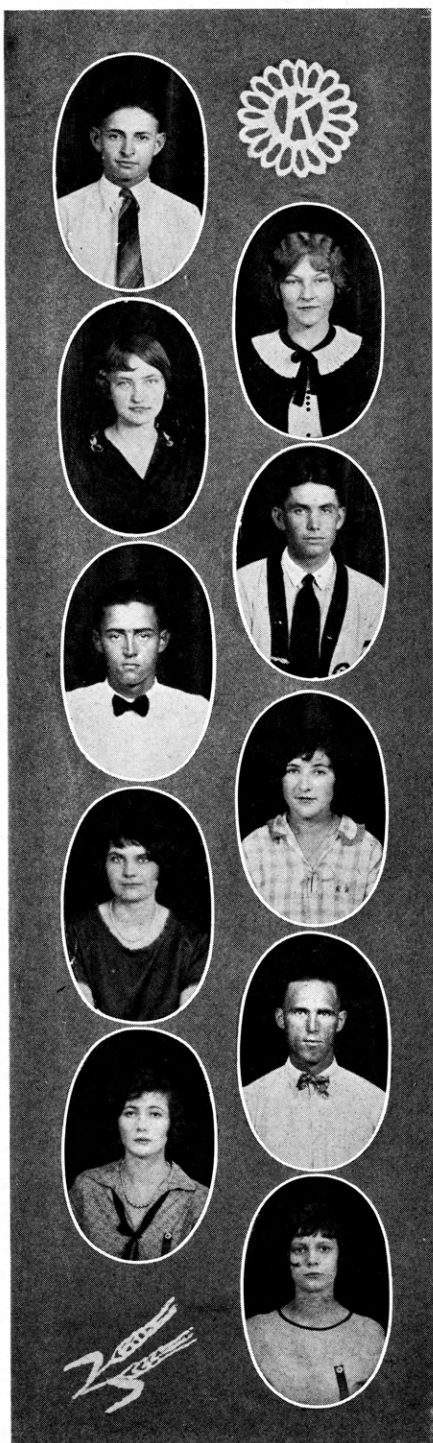
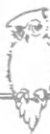
CLIFFORD HARDING Clay County
Poultry, Beef and Pig Clubs, 1922-'26; Judging Team, State Fair, Sioux City, 1924; State Baby Beef Champion, 1926; State Club Roundup, 1924; National Club Congress, 1926; Collegiate 4-H Club.

FRANK ZITNIK Cherokee County
Livestock and Leadership Clubs, 1923-'26; Member Kansas Livestock Judging Team, 1925; National Club Congress, 1925; Second High Individual at Chicago, 1925; Leadership Trip to Washington, D. C., 1927; Collegiate 4-H Club.

ARTHUR THOMSON Cherokee County
Pig Club, 1926-'27; Stock Judging Team, 1926-'27; Grain Judging, 1926; Kansas State Fair, Kansas Free Fair, American Royal, 1926; State Club Roundup, 1927.

EVERETT ALSOP Clay County
Colt and Poultry Clubs, 1923-'27; American Royal, 1924; Grand Champion Steer, 1924; State Club Roundup, 1927.





HAROLD SPRINGER Riley County
Pig and Poultry Clubs, 1925-'26; County Poultry Judging Team, 1926; State Club Roundup, 1926.

MARY TILTON Mitchell County
Poultry, Sewing, Canning, Own Your Own Room Clubs, 1922-'25; Kansas State Fair, 1924; Leadership Trip to Washington, 1927; State Club Roundup, 1923-'27.

ALICE RIDGE Kingman County
Poultry Club, Clothing Club, 1924-'27; State Champion Agriculture Demonstration Team, 1924; Kansas State Fair, 1924-'26; State Club Roundup, 1925-'27; National Boys' and Girls' 4-H Club Congress, 1924.

FRANK PARSONS Sherman County
Pig, Corn and Wheat Clubs, 1924-'26; Leadership, 1926; State Club Roundup, 1925-'27; National Boys' and Girls' Club Congress, 1926; 2nd Leadership Trip to Washington, D. C., 1927.

EDWARD ANTHONY Kingman County
Pig Club, 1921-'26; County Stock Judging Team, 1922; State Club Roundup, 1925-'27.

RUBY HOWELL Marshall County
Baby Beef Club, 1922-'26; 1st Prize Baby Beef at Kansas Free Fair; Roundup, 1923-'27.

ALICE PARSONS Sherman County
Canning and Baking Clubs, 1924-'26; State Club Roundup, 1926-'27.

RALPH HAUPTLI Mitchell County
Pig Club, 1925-'26; Hutchinson State Fair, 1925; State Club Roundup, 1926-'27.

MARY LOUISE HUGHES Lyon County
Poultry, 1922; Room Imp. Club, Clothing Judging Team at State Roundup, 1927.

NORA MAE JACOB Lyon County
Poultry, Sewing and Baking Clubs, 1924-'27; State Club Roundup, 1927.



DOROTHY SHIRKEY Lyon County
Sewing, Poultry, Baby Beef and Baking
Clubs, 1924-'27; State Club Roundup,
1927.

LUCILLE PIPER Sherman County
Canning and Poultry Clubs, 1924-'27;
Member Winning Agricultural Demonstration
Team, Kansas State Fair, 1925;
State Club Roundup, 1926-'27.

MADLINE WEST Cherokee County
Sewing and Meal Preparation Clubs,
1925-'27; Clothing Judging, 1927;
State Club Roundup, 1926-'27.

FORREST BOOTH Brown County
Dairy Calf Club, 1925-'27; Dairy
Demonstration Team, Kansas State Fair,
1925; State Club Roundup, 1926-'27.

MARGUERITE COFFMAN Clay County
Sewing, Meal Preparation and Own Your
Room Clubs, 1923-'27; State Club
Roundup, 1924-'25-'26-'27.

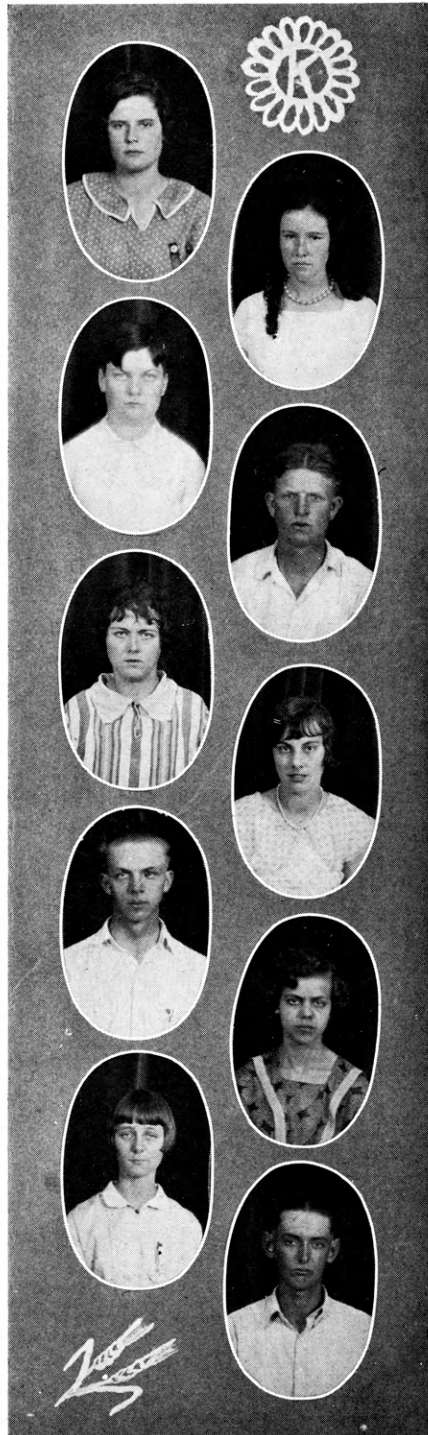
MILLIE DAVIS Kingman County
Poultry, Sewing and Sorghum Clubs,
1925-'27; State Club Roundup, 1925-'
'26-'27.

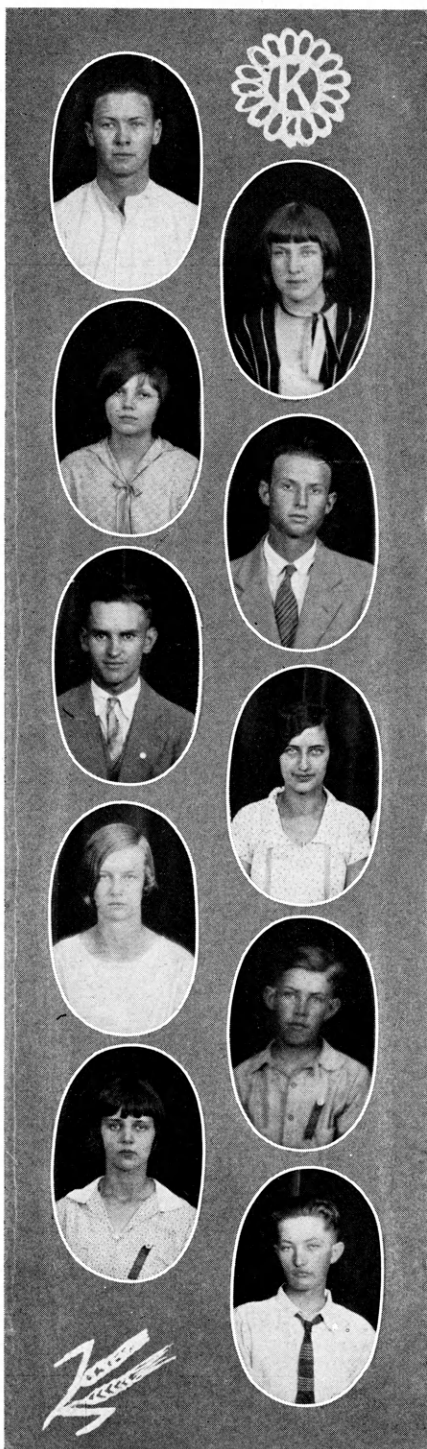
ALBERT PEASE Bourbon County
Dairy Calf Club, 1925-'27; Member of
State Dairy Team to Indianapolis, 1925;
State Club Roundup, 1926-'27.

LORETA PEASE Bourbon County
Baking, Sewing, Supper and Leadership
Clubs, 1925-'27; Baking Team on Wheat
Train, 1926; Meat Team, American
Royal, 1926; State Club Roundup, 1927.

EDNA ALLEN Ford County
Baking Club, 1925-'27; Baking Demon-
stration Team, 1926-'27; State Club
Roundup, 1927.

KENNETH JOHNSTON Bourbon County
Corn, Kafir and Alfalfa Clubs, 1924-'27;
Judging, Kansas Free Fair, 1925; American
Royal, 1925; State Club Roundup,
1927.





STANLEY COX Bourbon County
County Stock Judging, 1927; Crops Club,
1923-'27; Stock Judging, 1923-'27.

MAUDE RENICK Cherokee County
Clothing and Baking Clubs, 1924-'27;
State Club Roundup, 1925-'26.

KATHERYN HUGHES Lyon County
Clothing Club, 1925-'27; Clothing Judg-
ing Team, 1927; State Club Roundup,
1926-'27.

IRWIN TIPPIN Allen County
Baby Beef and Dairy Clubs, 1925-'27;
Dairy Judging, 1926; State Dairy Demon-
stration Champion, 1925; State Club
Roundup, 1926-'27; National Dairy
Show, 1926.

LEONARD A. REES Dickinson County
Crops, Poultry and Pig Clubs, 1925-'27;
Crops Demonstration Team, 1927; Amer-
ican Royal, 1926; State Club Roundup,
1926-'27.

MARY ELIZABETH ALLMAN Riley County
Clothing and Pig Clubs, 1925-'27; State
Club Roundup, 1926-'27.

HELEN JENNINGS Cherokee County
Clothing and Baking Clubs, 1922-'27;
Clothing Demonstration, 1924; State
Club Roundup, 1925-'27.

GEORGE WRIGHT Lyon County
Corn and Kafir Clubs, 1924-'27; State
Club Roundup, 1927.

MAURINE KNOUSE Lyon County
Clothing, Poultry, Baking Clubs, 1924-
'27; Clothing Judging, 1927; State Club
Roundup, 1926-'27; American Royal,
1925-'26.

ALLEN RIDGE Kingman County
Poultry and Sorghum Clubs, 1924-'27;
Poultry Judging, 1926; Kansas State Fair,
1925-'27; State Club Roundup, 1925-
'26-'27.



JOE DAVIES Lyon County
Corn, Kafir, Calf, Pig and Poultry Clubs,
1921-'27; Stock Judging Team, 1927;
American Royal, 1926; State Club
Roundup, 1925-'27; National Club
Congress, 1927.

MARY K. FREDERICK Leavenworth County
Sewing and Leadership Clubs, 1925-'27;
Clothing Demonstration Team at State
Fair, 1925; State Club Roundup, 1925-
'26-'27; National Club Congress, 1925-
'26.

WINNIE STRATTON Kingman County
Poultry and Sewing Clubs, 1925-'27;
Clothing Judging at Hays, 1926; Round-
up at Hays, 1926; State Club Roundup,
1927.

JUNIOR CASSIDY Reno County
Poultry Club, 1924-'26; Poultry Judg-
ing Team, 1926; State Club Roundup,
1927.

WILLIS THOMSON Cherokee County
Calf and Pig Clubs, 1926-'27; State Fair,
1926; Kansas Free Fair, 1926; American
Royal, 1926; State Club Roundup,
1927; Stock Judging Team, 1927.

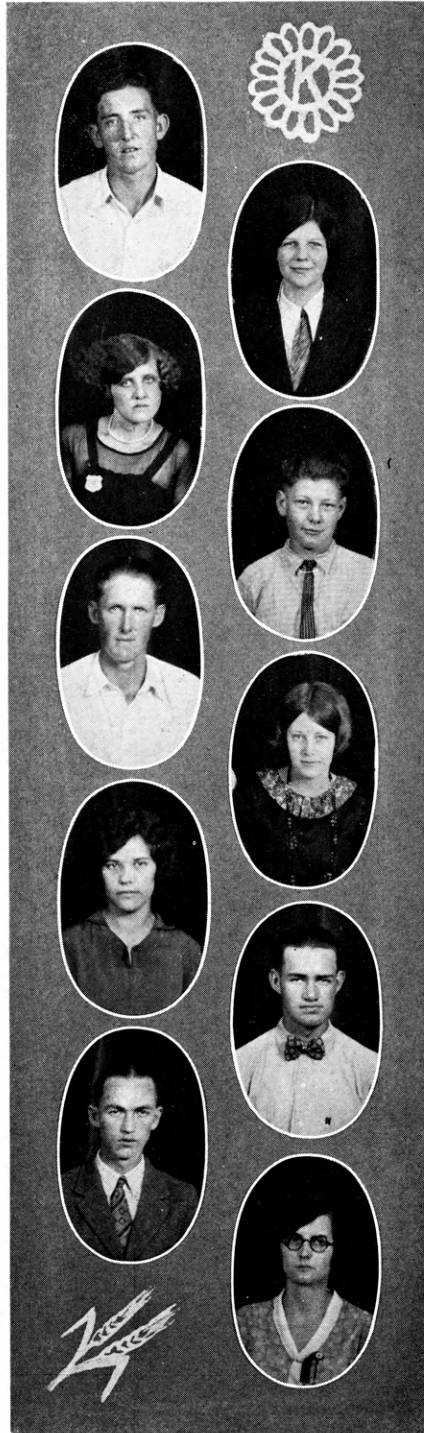
GENEVA O'NEIL Kingman County
Poultry and Sewing Clubs, 1923-'27;
State Fair, 1924; State Club Roundup,
1923-'27.

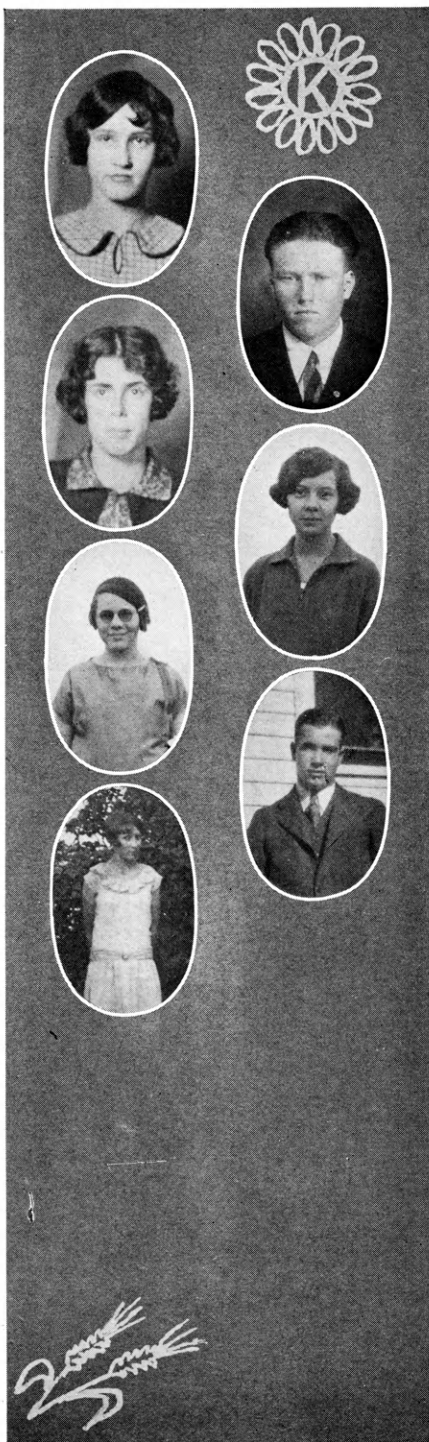
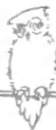
CLARA LEE RAYL Reno County
Baking Club, 1926; Kansas Free Fair,
1926; State Club Roundup, 1927.

WAYNE AYRES Butler County
Pig Club, 1925-'27; American Royal,
1925; State Club Roundup, 1927.

LEWIS BREWER Dickinson County
Dairy Club, 1925; State Club Roundup,
1927.

MARY HELLMER Lyon County
Poultry, Canning and Baking Clubs,
1925-'27; State Club Roundup, 1926-
'27.





THELMA BRADEN Bourbon County
Sewing and Baking Clubs, 1925-'27;
State Club Roundup, 1926-'27.

LEWIS BACON Lincoln County
Baby Beef Club, 1925-'27; Hays Judg-
ing Contest, 1926; American Royal,
1925; State Club Roundup, 1926; Na-
tional Club Congress, 1926.

EULA KEPLEY Bourbon County
Sewing and Baking Clubs, 1925-'27;
State Club Roundup, 1927.

LORENA KINDSCHI Finney County
Poultry and Sewing Clubs, 1923-'27;
State Club Roundup, 1924; National
Club Congress, 1924.

KATHERN FORREST Finney County
Poultry and Clothing Clubs, 1922-'27;
State Club Roundup, 1925.

LYLE STOVER Lincoln County
Pig and Baby Beef Clubs, 1924-'27;
National Club Congress, 1924; State Club
Roundup, 1924.

NELLIE GRAVES Kingman County
Poultry and Sewing Clubs, 1923-'27;
Kansas State Fair, American Royal, 1926;
State Club Roundup, 1926.

See page 33 for following:

FRANK STAUFFER Mitchell County
Pig and Sheep Clubs, 1924-'27; Kansas
State Fair, 1925-'27; State Club Round-
up, 1925-'26.

ORPHA GREER Butler County
Sewing Club, 1924-'27; State Club
Roundup, 1927.

OLGA LARSON Lincoln County
Sewing, Own Your Own Room and
Leadership Clubs, 1923-'27; State Club
Roundup, 1926.

CLARENCE MORELLA Bourbon County
Baby Beef and Crops Clubs, 1925-'27;
State Dairy Judging Team, 1926; State
Club Roundup, 1927.

WILMA MARSH Neosho County
Sewing, Baking and Own Your Own
Room Clubs, 1924-'27; State Club
Roundup, 1926; Kansas Free Fair, 1927;
Clothing Judging, 1927.





- I. K. TOMKINS *President*
- ALICE ADAMS *Vice-President*
- MARJORIE CURTIS *Secretary-Treasurer*
- FENTON BRANNAN *Corresponding Secretary*

THE FIRST COLLEGIATE 4-H CLUB in Kansas was organized in December, 1927, at the Kansas State Agricultural College at Manhattan. Similar organizations have existed in a number of other states for several years, but this is the first one of its kind in Kansas.

The purposes of this club are: First, to administer to the needs and interests of 4-H Club members in college at K. S. A. C.; Second, to keep these members in touch with the progress of 4-H Club work; Third, to help interest more 4-H Club members over the state to secure a college education.

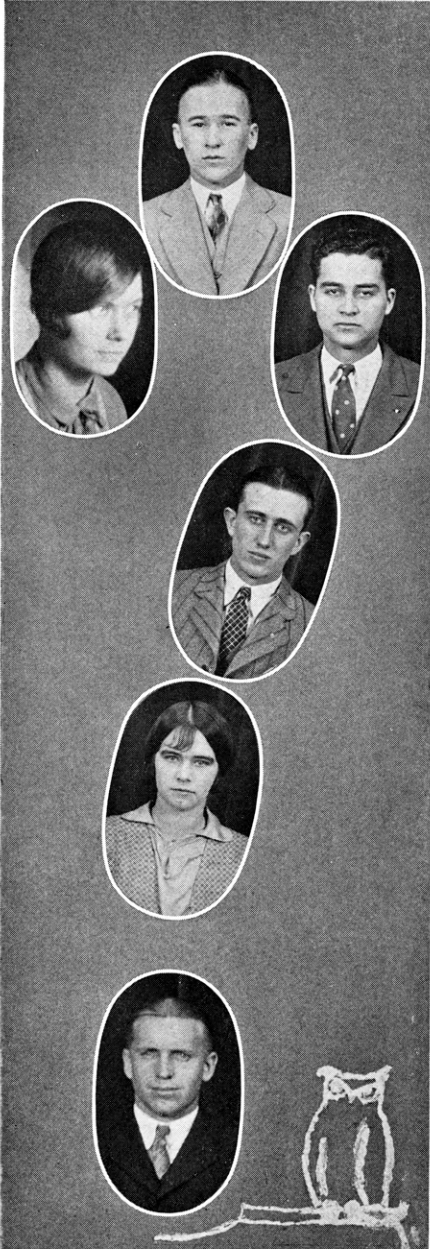
There were enrolled in K. S. A. C. this year, one hundred and fifty-six former club members, of whom between sixty and seventy took an active interest in the Collegiate Club. Meetings were held once each month during the school year, in order to carry on the activities of the club. Many splendid opportunities were found for carrying on a great deal of constructive work through the Extension Division and through the uses of the radio broadcasting station.

By creating among the members a common interest in working to induce other 4-H Club members to come to college, and by the real success of our own meetings, the organization has succeeded in accomplishing all of its purposes this year, and all are looking forward to a bigger and better Collegiate 4-H Club next year.





Here They Are



STAFF

- EDITH PAINTER *Editor*
- ARNOLD CHASE *Feature Writer*
- EBUR SCHULTZ *Assistant*
- CARL CONGER *Joke Editor*
- REOLA KISTLER *Assistant*
- FRANK ZITNIK *Assistant Editor*

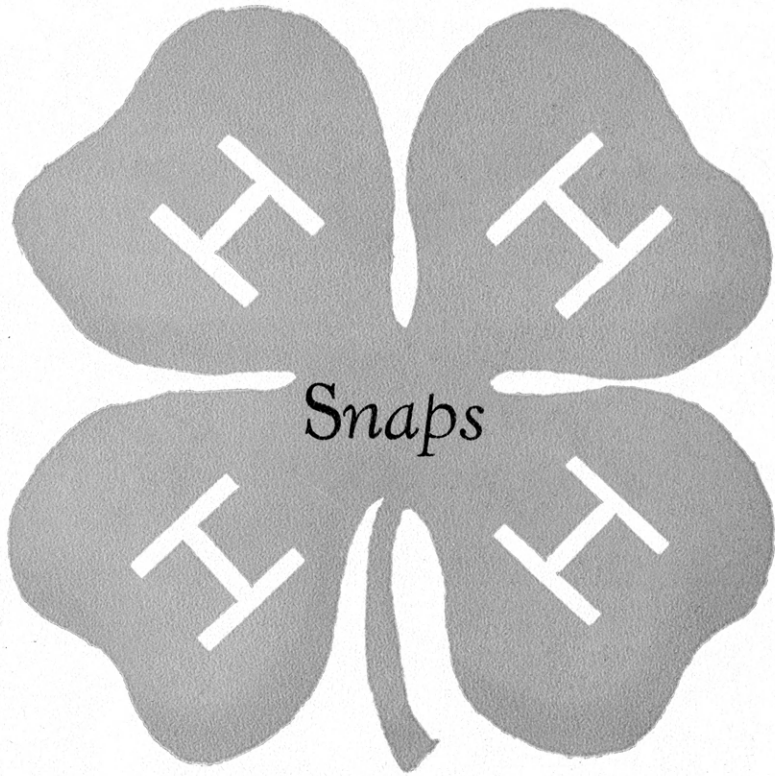
During the past year the 4-H Club movement in Kansas has advanced by leaps and bounds. It has received an impetus which promises enormous proportions in extent and influence. It has given Kansas a more important place among other agricultural states of the Union, as a participant in the general movement for the improvement of agriculture and home making. Leaders have come to realize the paramount importance of the work which 4-H boys and girls are doing.

In this annual we have endeavored to portray at least a few of the multitude of forces which have contributed to this movement. We have attempted to make manifest some conception of the high ideals and purposes which in one year have made the activities of 4-H Club boys and girls mean so much to our state.

We wish to thank our members who have so willingly cooperated with us in making this possible. We also wish to commend to our readers those firms who have shown their interest in 4-H Club work by taking advertising space in our book. We hope that all will recognize the value of their cooperation.

In the interests of better club work do we present this book to our readers.







LEARN
BY DOING

Sooooo! Bossie

Western Kansas Beauties

RED HAIR AND FRECKLES

Both Well Fed

On Your Mark

Three White Faces

The Specialist Tells 'Em

The Champion and his Understudy

Heads I Win

Geo. and the bean S A I K S

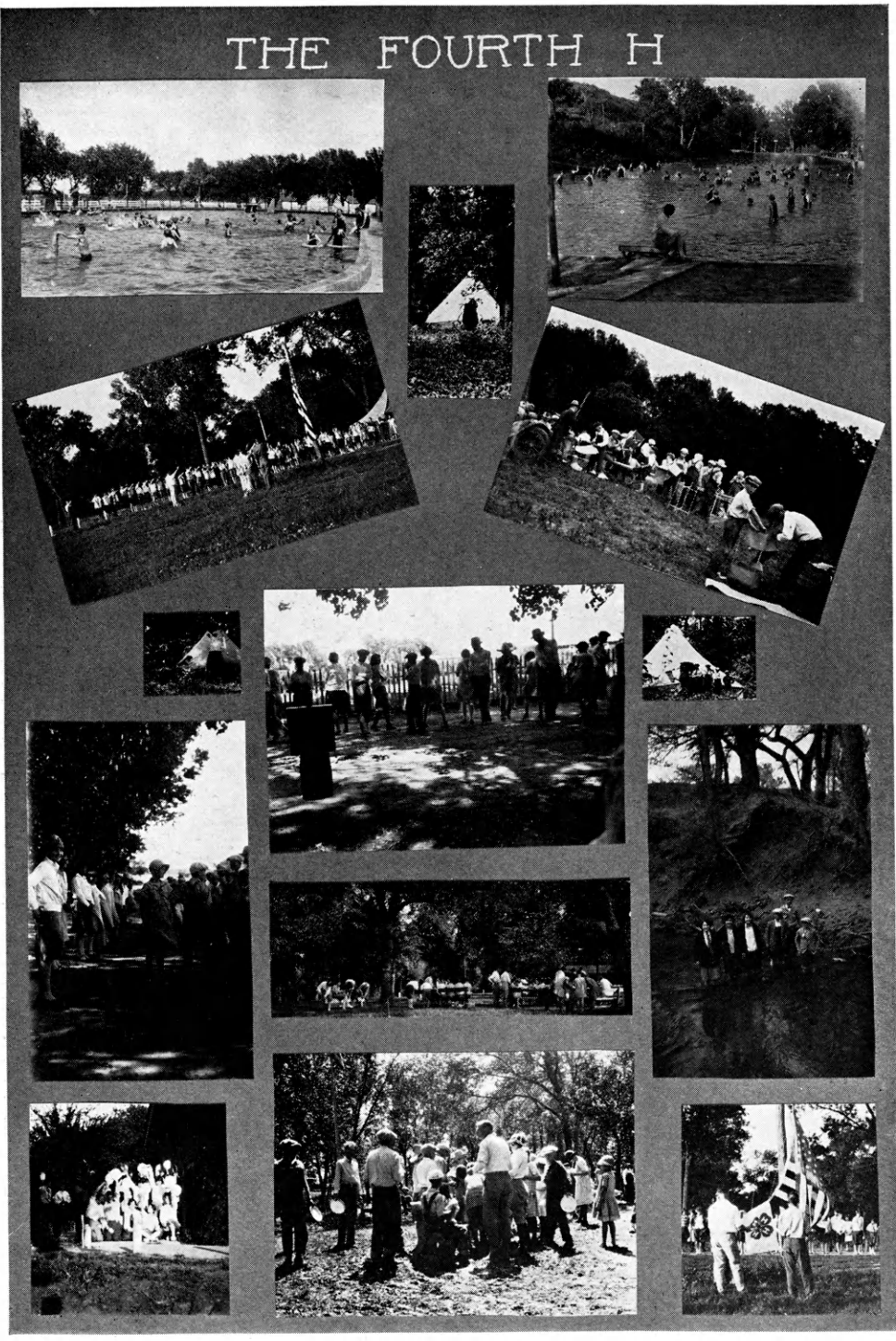
"Reds"

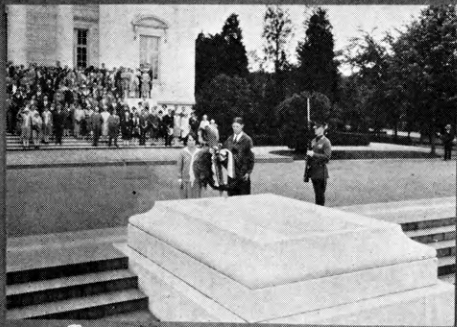
We got a hen down in our club

Beef and Bacon



THE FOURTH H

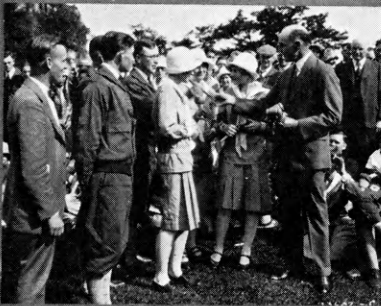




Tomb of unknown Soldier

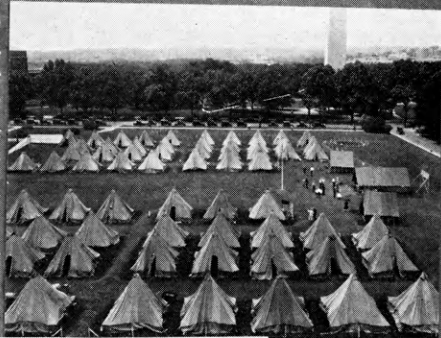


Arlington Amphitheater



Mr. Coe gets his gavel

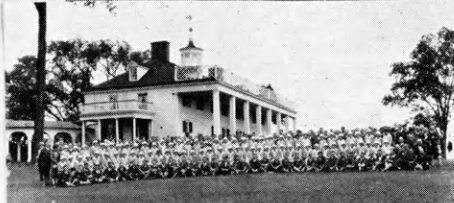
WASHINGTON
ENCAMPMENT



Camp



Sunset



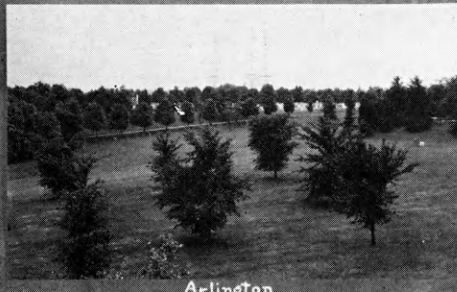
Mt. Vernon



Washington's Tomb



Daily Dozen

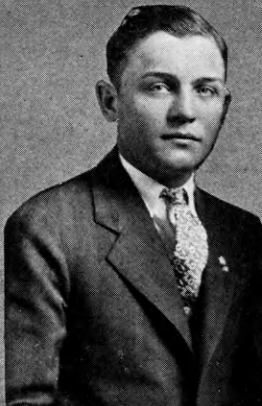


Arlington



How We Got Around





Warren Ljungdahl
Beef Champion
U.P. Scholarship



Raymond Middleton
Potato Champion



Paul Engler
Sheep Champion

Frank Stauffer
Pig Champion



Lola Adams
Baking Champion



Agnes Johnson
Helen Johnson

WINNERS



Marie Antrim
Health Champion



John Wilson
Dairy Champion



Lloyd Davies
Leadership Champion



Dairy Judging Team



Arthur Thomson



Francis Costello



Ed Martin

Milk Demonstration Team



Willis Thomson

Livestock Judging Team



Barbara Peterson
Canning Champion



Clarence Morala
Dairy Judging Team 2nd



Wilma Marsh



Orpha Greer



Home Ec. Garden Champion



George McCall
Crops Judging Team



Olga Larson
Clothing Champion





ACTIVITIES

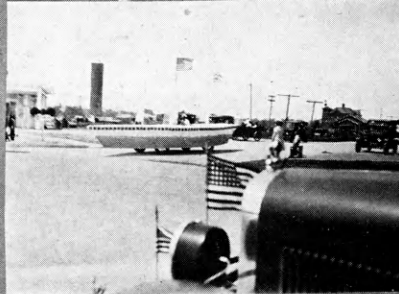


Kingman Kubs

All Aboard!



Elmer Hartman

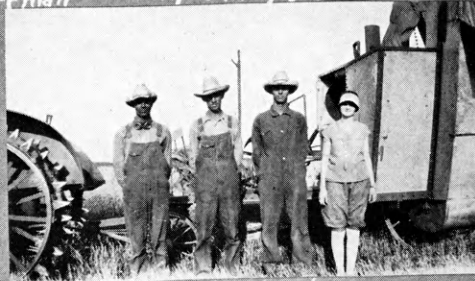


Ship Ahoy! Sherman

Standards of Worth



Here We Are! Lyons



Harvest Hands



Homer Heitt



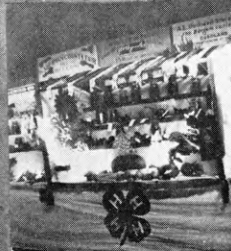
Why Yes! Bourbon



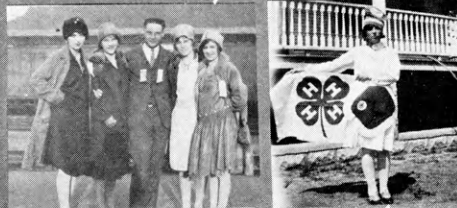
Allen County Fair Beauties



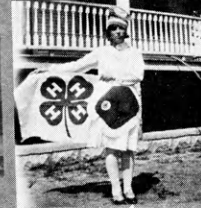
Cowboy Conger



Something Done



Dairy Champs



I Pledge





WINNERS
in 4-H Club Work Visit Us

IT is our privilege, now and then to welcome to the Executive Offices of Montgomery Ward & Co., many members of 4-H Clubs from all over the country. At the time of the annual International Live Stock Show in Chicago last year the winning members, as you see in the photograph above, visited us in Chicago and gave us the opportunity to congratulate them in person for their success.



It is natural that as a company we should take a deep interest in your activities. Many of you, either directly or

through your parents, have dealt with us, and because our business has always been conducted in so intimate a way, we feel that we know you personally.

The greatest reason, though, for our interest in what you are doing is the contribution that you are making to national prosperity in working together; and through cooperation to improve farm, home and community practice. We congratulate you on your activities and wish you continued success in your many interesting projects.

Montgomery Ward Co.

Satisfaction Guaranteed or Your Money Back

The Oldest Mail Order House is Today the Most Progressive

CHICAGO, BALTIMORE, KANSAS CITY, ST. PAUL,
PORTLAND, ORE., OAKLAND, CALIF., FORT WORTH





As evidence of our best wishes for 4-H Club Work in Kansas, we will again offer cash awards in the Canning, Sewing and Poultry Divisions at the 1928 Kansas State Fair and Kansas Free Fair.

FOLGER'S COFFEE

KANSAS CITY



Carl Conger says he'd like to take an Eskimo girl home in September and have her say, "Come on in for the evening."

* * *

Lady: "Could I see the Captain?"

Sailor: "He's forward, Miss."

Lady: "That's all right, I'm not afraid. I've been out with College boys."

* * *

FAIR PREMIUM

Guard: "So you would like to have a job in the mint, eh? What salary would suit you?"

Frank Parsons: "Well, I'd be willing to pay about fifteen dollars a day."

* * *

BLOW THE WHISTLE

Caller: "Mr. Smith in conference?"

Sporting Office Boy: "Yeh, the old boy's gone into the huddle."

GET A CRADLE

Boss: "What sort of a position would you like best?"

Student: "As nearly horizontal as possible."

* * *

A GOOD WISH

"I just swallowed a wishbone and now I won't be able to make a wish."

"Nonsense. Just wish you hadn't swallowed it."

* * *

Reola: "Yes, I was absolutely outspoken at the meeting this afternoon."

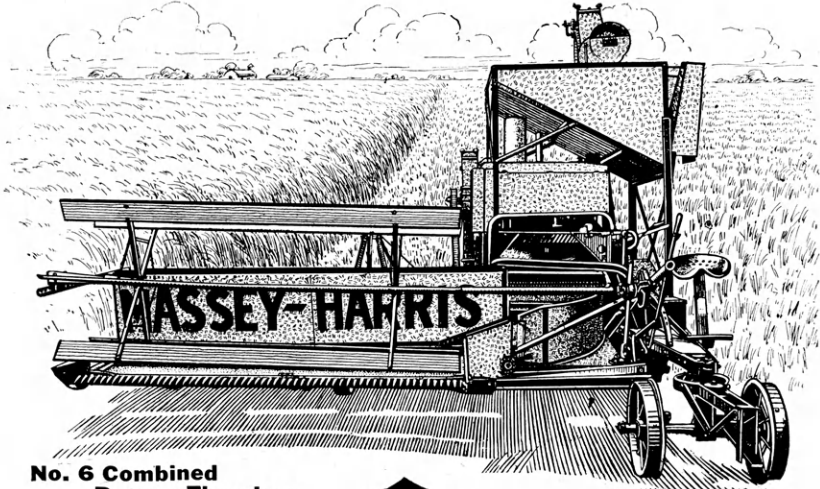
Lloyd: "Impossible. Who outspoke you?"

* * *

Judge: "Are you the defendant in this case?"

Darkey: "No, sah; I'se got a lawyer to do my defenden'. I'se de gentleman what stole de chickens."





**No. 6 Combined
Reaper-Thresher**

**Saves More Grain
Delivers a Cleaner Sample
Earns Larger Profits**

THESSE are three very good reasons why you should own a MASSEY-HARRIS Combined Reaper-Thresher. The MASSEY-HARRIS Combine has been steadily perfected through a quarter century of farm machinery building.

**Gently Rubs Out All the Grain
as you would in the palms of your hands**

THE CORRUGATED BAR CYLINDER rubs out all the grain without breaking any of it. The main gears run in oil baths. Effective Oiling System assures perfect lubrication. Pur-O-lator keeps the oil in condition and prolongs life of the machine. SKF and self-aligning Bearings are used at all vital points to reduce friction. High-grade Buda Motor, especially built for Reaper-Thresher work supplies ample power.

*Write for new free Folders on Reaper-Threshers
They will give you some interesting and valuable information*

The Complete MASSEY-HARRIS line includes:

Mowers, Reapers, Wagons, Grain Binders, Corn Binders, Dump Rakes, Hay Tedders, Side Rakes, Disc Harrows, Soil Pulverizers, Hay Loaders, Cultivators, Manure Spreaders, Harrows, Headers, Pump Jacks, Ensilage Cutters, Reaper-Threshers, Cream Separators, Grain Drills.

MASSEY-HARRIS HARVESTER CO., INC.

Builders of Warranted Reaper-Threshers Since 1903

Dept. X-27 Batavia, New York

**Stocks Maintained at
Many Western Points**

**Rubs
Out the
Grain Like
Human Hands**



This
Young
Lady
Knows
Where
to
Ship:

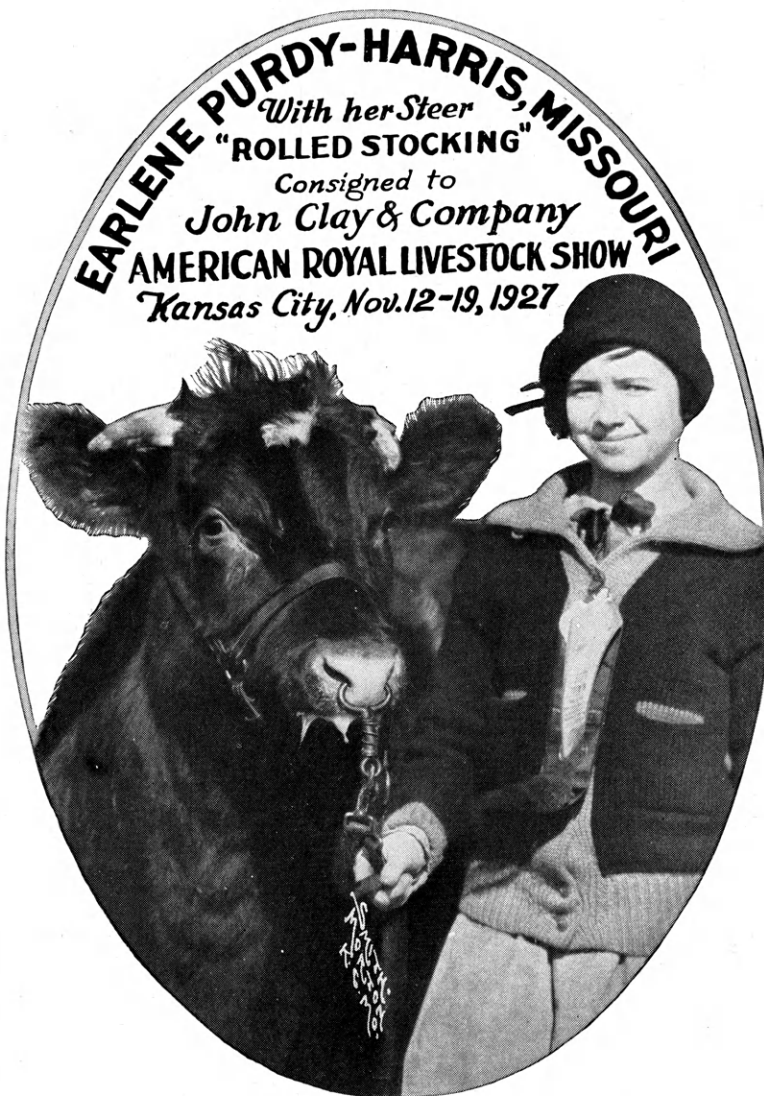
She wrote us:
"I will exhibit a calf at the American Royal Show and I am consigning my calf to John Clay & Co. I was well pleased with the sale of my calf through your firm last year. I have been taught in my short life that John Clay & Co. is a safe place to consign live stock."

Our Records at the 1927 American Royal Show for the boys and girls:

\$59.00—highest price on record for cattle in the Boys' and Girls' Division. Sold for Homer Theiman, Aullville, Mo.

\$30.00—highest price for Fat Lamb in Boys' and Girls' Division. Sold for Harold Freeman, Manhattan, Kans.

\$18.00—highest price for any Fat Hog in the show. Sold for John Samuel, Manhattan, Kans.



JOHN CLAY & COMPANY

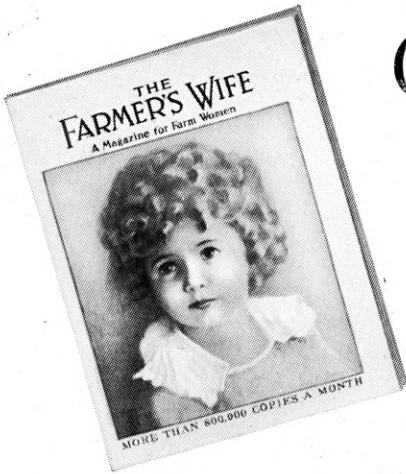
LIVE STOCK COMMISSION

KANSAS CITY STOCK YARDS

WE ALSO HAVE OUR OWN OFFICES AT CHICAGO, OMAHA, ST. JOSEPH, DENVER, SIOUX CITY,
ST. LOUIS, BUFFALO, OGDEN, ST. PAUL, FORT WORTH



Congratulations



to the Who's Who 4-H Club for your achievements in club work. May your records be an inspiration to younger girls and boys for more and better club work.

Write for our Club Service Plan which will help your club secure extra money for your club activities. There is no obligation in any way.

THE FARMER'S WIFE

The Magazine for Farm Women

Saint Paul,

Minnesota

SAFETY FIRST

Teacher: "Norman, give me a sentence using the word 'diadem.'"

Norman: "People who drive onto the railroad crossing diadem sight quicker than those who stop, look and listen."

* * *

Mr. Scoth: "Since I bought my car, I don't have to walk to the bank to make my deposits."

Mr. Coe: "Oh, you ride there?"

Mr. Scoth: "No, I don't make any."

* * *

Patient: "Doctor, how can I ever pay you for your kindness to me?"

Doctor: "By check, money order or cash."

* * *

Why such a wry face?

Rye, nothin', I got too much sense to drink, besides it hurts my throat.

THERE ARE SOME BRIGHT ONES

Wife: "Are all men as stupid as you?"

Hubby: "No, my dear, look at all the bachelors there are."

* * *

"If you please, mum," said the boy in an appealing voice, as he stood at the back door, on wash day, "I've lost my leg—"

"Well, I haven't got it," shouted the woman, closing the door with a bang.

* * *

NATURE'S HELPER

"You say your sister makes up jokes; then she's a humorist?"

No; she works in a beauty parlor."

* * *

A SALESMAN PROPOSES

Remember, this is positively the last day of this astonishing offer.





'SH VER' DIFFICUL'

"Zat choo, Bill?"

"Yep."

"Well, shay, tell me where I am."

"Why you're right in front of your own house."

"Shufferin' catfish! Thash th' place I been tryin' to get away from all evenin'."

* * *

Motorist: "Will a dollar pay for this wrecked hen which I've just run over?"

Farmer: "You'd better make it two. I have a rooster that thought a lot of that hen and the shock might kill him too."

* * *

We knew a Scotchman who wouldn't send his kids to school because they had to pay attention.

"Fadder," said Ikie, "give me a penny."

"Vot you want mit a penny?" asked his father.

"To buy an all-day sucker."

"Vat, an all-day sucker and it's three o'clock in the afternoon already?"—Everybody's Magazine.

* * *

Willie was a pretty sick lad and the doctor was called in. He told the boy he would have to go to the hospital. But Willie protested strenuously. "Doctor, I don't want to go to an old hospital!"

"Why, Willie, a hospital is a fine place—clean and convenient and comfortable."

"But, Doc, I don't want to go there. I don't want a baby, I want a pup!"

KANSAS NATIONAL LIVESTOCK SHOW

WICHITA

November 12-13-14-15, 1928

The Show Where Everybody Boosts for the 4-H Clubs

At the 1927 Show our calf club sale made the highest average of any sale held during the year





LACE your Annual in the hands of a printer who *specializes in College Annual work*—one who knows your problems, and is able by experience and willing by real interest to co-operate in every step of its production. That one act will be a long step toward *your goal of success*. Get in touch with us early, so that we may help you all the way, both for fine results and economy.

Twenty-Five Years Successful Printing Service

SMITH-GRIEVES · COMPANY
KANSAS CITY, MISSOURI



Have you received copies of Hazel-Atlas Glass Company's two NATIONAL CANNING CONTESTS OPEN TO 4-H CLUB MEMBERS?

Write Georgia W. Hess, Education Department, for complete information.



PRIZES AWARDED FOR PRODUCTS PUT UP IN EITHER "ATLAS" E-Z SEAL or "ATLAS" GOOD LUCK JARS



HAZEL-ATLAS GLASS COMPANY
WHEELING, WEST VA.

MANUFACTURERS OF **H** GLASSWARE

Over One Billion Pieces Annually

Edith: "When I'm married I'm going to keep a diary of all my doings."

Carl: "Oh! Kind of a scrapbook, I suppose." * * *

Alkali Ike: "What's happened to the tenderfoot who was here last month?"

Texas Pete: "Oh, that poor feller? The second morning he was here, he was brushin' his teeth with some of that foamy toothpaste, and one of the boys that he had hydrophobia and shot him." * * *

"I'm not going to step out with Hazel any more."

"Why not?"

"She didn't invite me to her wedding." * * *

We once heard of a Scotchman who used free air for the first time and blew out all four of his tires.

You leap-year girls, attention, please.

A question has arisen:

When you propose, should you, or not,

Get on your knees, or his'n.
* * *

Love is said to be blind, but I know lots of fellows in love who can see twice as much in their girls as I can.
* * *

Mary had a parrot green

That filled her heart with rage,
Because when Mary's best beau came

The parrot told her age.
* * *

"Several men proposed to me before I married you."

"Why didn't you marry the first fool who came along?"

"I did."



HOME—

Home ain't a place that gold can buy or get up in a minute;

Afore it's Home there's got to be a heap of living in it.

—Edgar A. Guest.

* * *

Lettuce find health along the milky way.

—C. H. S.

* * *

He who eats cabbage has a good head.

—J. H. S.

* * *

The unhealthy bird catches the germ.

—C. H. S.

* * *

A tooth brush in time will save many a dime.

—H. H. S.

GAPING CAVITY

Null: "I started out on the theory that the world had an opening for me."

Void: "And you found it?"

Null: "Well, rather. I'm in a hole now."

* * *

Mose: "How come youah feet stoved up so bad?"

Rastus: "I wuz standin' on a rock and a friend hit me ober de head wid an ax."

* * *

Reola: "Let's go to the picture show."

Terrill (pointing to the sign, "The Woman Pays"): "All right, but you'll have to buy the tickets."

* * *

Headline: "Lightning Knocks Man Out of Bed."

We suppose he said, "All right, dear, I'll get right up."



The Guide to High Grade Foods ~ ~

HERE is the brand that for more than a quarter of a century has stood for purity and finest quality. Whatever the food that bears this brand, whether put up in cans, cartons or bottles, it represents the highest standard of goodness.

Quality, satisfaction and protection of health are constantly assured the thousands of families who invariably insist on the Lee brand. It takes all the guess work out of buying.

At Your Grocer's



A hired man observed his employer hiding a jug of whiskey in a shock of oats. After the employer departed he secured the jug, removed the cork and raised the jug to his lips. Just at that moment he heard a buzzing sound—looking down he observed a large rattlesnake coiled for battle. The hired man said, "Strike! durn ye, strike! You'll never find me better prepared."

* * *

Student: "Why does that girl close her eyes every time I kiss her?"

Roommate: "Did you ever look at yourself in the glass?"

* * *

Hubby comes home hiccupping and meets his wife on the steps.

Hubby: "Who are you?"

Wife: "I'm the devil."

Hubby: "Glad to meet you. I married your sister."

A man was being shown through an insane asylum, and coming to a big clock, he pulled out his watch and compared time, then asked: "Which is right?"

Guide: "Oh that clock is off, it wouldn't be here if it wasn't."

* * *

"Come on and I'll show you how to milk the cow."

"Maybe I better start on the calf."

* * *

Clerk: "Nice suit, all wool and two pairs of pants."

Ebur: "Nothin' doin'. It's too hot wearin' two pairs of pants."

* * *

Well, well, how are the twins?

Fine. We named 'em Bill, Jr., and Onyx.

Why Onyx?

Why, Onyx-spected, of course.

THE COMMONWEALTH

Kansas City's New Downtown Hotel

Ideal home for Shoppers, Week-Enders, or those seeking a Holiday in Kansas City.
 Large Rooms, Large Closets, Vitrolite Bath Rooms, Large Assembly Room.
 Coffee Shop, Popular Prices, Barber Shop, Valet and Garage.
 Five minutes from Union Station on Fifth and Broadway car line.
 Closest Hotel to Stock Yards, Wholesalers, Jobbers; within strolling distance of the Theatres, Shopping Center and Downtown District.

Fireproof

*Rates
 \$2 and up*



*"A Radio in
 Every
 Room"*

ON BROADWAY AT TWELFTH



If he asks me, I'll say "Yes." It doesn't make much difference. He's clever and good looking. His hands are gentle. I like to feel them in my hair. I think he would treat me all right. If he don't ask me, never mind—but if he does, I'll say "Yes."

"Shampoo, madam?"

"Yes."

* * *

St. Peter: "Who's there?"

Voice without: "It is I."

Peter (peevy): "Getouta here, we don't want any more school teachers."

* * *

The guards grimly went about their tasks of affixing the electrodes to the body of the doomed man in the chair. The kindly chaplain bent over him.

"Any request, my poor mortal?" he inquired.

"Yes, Parson," the wretch replied. "It'll comfort me a lot if you'll just hold my hands."

* * *

They call us the rising generation, but that's after 10:00 a. m.

* * *

And then there is the Scotchman who sleeps in a hammock because bed springs give so much.

* * *

She approached me in the moonlight—seeming a fairy vision beautiful beyond word or expression. Her golden hair seemed a halo about her fair head, and her skin looked white as new washed fleece. Ah! She came closer, and smiled at me, and it seemed all the happiness of the world was in that smile. I took her hand and led her to a luxuriant garden. We sat upon the cushioned seat, and she sank upon my heaving bosom. I drew her closer and she waited with upturned face for the loving kiss that I should give. Then—the alarm rang!

Sober: "Hey, friend, where ya goin' with that spade?"

Not Ditto: "Jush wa'sh me. I'm gonna dig a hole for th' Saturday Evening Post."

* * *

He named his child Montgomery Ward, because it was of the male order.

* * *

A new instrument is a combination of the violin and the saxophone. We were afraid someone would think of this.

* * *

"I just came from Jack's funeral."

"Is he dead?"

"Well, if he isn't they certainly did play a dirty trick on him."

* * *

Carl: "I clearly had the right of way when this man ran into me, and yet you say I was to blame."

Cop: "You certainly was."

Carl: "Why?"

Cop: "Because his father is mayor, his brother is chief of police, and I go with his sister."

* * *

Frank: "Did you see that? Those girls smiled at me."

Arnold: "Yes. They were too polite to laugh."

* * *

The man went into the hat shop and asked for a derby. "Fine," said the salesman. "What color?"

"Oh, it doesn't matter what color," said the man.

"So much the better," said the salesman. "What size?"

"Well," replied the man, "I don't care very much about the size."

"This," said the salesman, "is indeed strange. You come to buy a derby and don't care about color or size!"

"No," said the man. "You see, it is for my trombone."





THE OFFICERS AND DIRECTORS
OF THE
AMERICAN ROYAL
LIVE STOCK SHOW

extend greetings to the

4-H BOYS AND GIRLS
OF KANSAS

The splendid accomplishments of the past and the work that is now being done by the 4-H Boys and Girls means much to the future of agriculture.

We wish to express our appreciation for the loyal support given by the 4-H Clubs to the American Royal Live Stock Shows in the past, and we extend to all a most cordial invitation to attend our next American Royal Live Stock Show which will be held November 17-24, 1928.

AMERICAN ROYAL
LIVE STOCK SHOW

J. C. SWIFT, *President*

W. H. WEEKS, *Vice-President and General Manager*

F. H. SERVATIUS, *Secretary*

A. M. PATERSON, *Assistant Secretary*



Your Heritage

*Staunch the heart of the Farmland Lad,
Sturdy and stalwart the soul;
Imbued with a force and a spirit glad
That carry him on to his goal!
With heritage clean and outlook bright,
And mind and body strong,
He's given the courage to dare and fight,
Upholding right from wrong!*

*And sweet the soul of the Lassie, fair—
Who shares God's sun and earth—
Given a grace and courage rare
By the miracle of her birth.
Knowing no course, but what is right,
Carrying on with a song;
Helping her brother to dare and fight—
Upholding right from wrong.*

*With heritage old as the Evening Star,
And pure as the heaven above,
The hearts of these Lads and Lassies are
Imbued with a loyal love
To play the game with honest might,
And smile as they go along;
Ever with courage to dare and fight—
Upholding right from wrong!*

*And through the years that come and go,
These Youths of the countryside,
Achieve and conquer and gallantly sow
The seeds of a nation wide.
Knowing no course, but what is right,
With minds and bodies strong,
They're given the courage to dare and fight—
Upholding right from wrong!*

—JACK THOMAS.



Who's Whoot



Autographs





Autographs

