

KANSAS

DECEMBER, 1960

# 4-H Journal

The 4-H Family Magazine

Kansas 4-H Foundation, Inc., Publisher

6:12

## In This Issue

- 4-H Swine Project  
Page 3
- Duties of a President  
Page 4
- Kansas National  
Winners  
Page 5
- Goods for the Holidays  
Pages 6 & 7
- Holiday Service Projects  
Page 8
- New Woodworking Plans  
Page 9
- Song of the Month  
Page 14
- Personal Development—  
New 4-H Project  
Page 15

15 Cents



Jimmy and Shirley Townsdin, Cloud county 4-H'ers, will have six sows farrow as 4-H projects in the spring. For more information on this top 4-H project, see page 3.

# The Purpose of 4-H Awards and the Real Reward in 4-H

The National 4-H Congress now in session in Chicago serves to put the nation-wide spotlight on the 4-H Clubs.

Thirty-three Kansas 4-H members are among the more than 1,000 attending from the 50 states.

Most of those attending have worked hard to distinguish themselves in their 4-H activities; most are deserving of the recognition which is being heaped upon them as representatives of the more than two million 4-H'ers. It is these two million who combine to make the 4-H program truly outstanding for its contribution to youth.

Too often, 4-H'ers, and many adults, too, think of this trip and other awards as rewards for a job well done.

The real purpose of awards is not to reward those selected to

receive them. Rather the purpose is to stimulate a greater degree of participation in the project or activity.

The real reward for a job well done in 4-H, on the other hand, is the personal satisfaction the individual receives and the personal growth he or she makes.

## Letters

*If you have ideas or 4-H Club experiences that you would like to write about or if there is something you like or dislike about the Kansas 4-H Journal, write to the Editor, Kansas 4-H Journal, Manhattan, Kansas.*

*Leaders, parents, members, agents and 4-H friends are invited to write.*

### I Like City 4-H

Dear Editor:

Being in hearty agreement with "A City Leader and Parent," I thought I'd add my two cents worth to the subject (of

city 4-H). Since I'm a city girl I'd often been told 4-H was for farmer's kids. I am quite glad to say I now know differently.

4-H has so much to offer today's youth I feel it a shame even to suggest barring anyone from this organization. I am a little sorry I wasn't born on a farm but through 4-H I have come to know a little of what farm life is like.

Although 4-H will always have a definite touch of agriculture, the new projects offered apply to both the city and farm home. I do hope 4-H will continue to spread throughout the city as well as the country.

Pamela Bowen,  
Topeka Toppers Club

**Kansas 4-H Journal**  
VOL. VI, No. 12                      December, 1960

Date April.....Editor

**Editorial and Business Office**

Phone JE 9-2211 Ext. 208  
Manhattan, Kansas

Published Monthly By

**KANSAS 4-H FOUNDATION, INC.**

J. Harold Johnson.....Executive Director

**BOARD OF TRUSTEES**

W. Dale Critser, Chrm.....Wichita  
E. B. Shawver, Vice Chrm.....Wichita  
Don Atha.....Mission  
Clifford Hope.....Garden City  
A. D. Jellison.....Junction City  
Harold E. Jones.....Manhattan  
J. J. Moxley.....Council Grove

George B. Powers.....Wichita  
Roger E. Regnier.....Manhattan  
Dolph Simons.....Lawrence  
Fred D. Wilson.....Andover

**ADVISORY MEMBERS**

Harry Darby.....Kansas City  
W. Laird Dean.....Topeka

Entered at the postoffice in Lawrence, Kansas, as second-class matter under the Act of March 3rd, 1879.

Advertising rates and circulation data on request.

Group subscriptions \$1.00 per year.  
Individual subscription \$1.50 per year.  
Single copy 15 cents.

Use of the 4-H name and symbol approved by the Secretary of Agriculture of the United States, January 23, 1951, under the provisions of the law as reenacted by Sec. 707 of the Act of June 25, 1948 Public Law No. 772, 80th Congress (10 USC 797)

*Announcing . . . . .*

**A Personal Development Project  
for Kansas 4-H Club Teenagers**

Based on YOUR:

Appearance

Manners

Speech and Writing

Character Development

Personality

Philosophy of Life

Career Exploration

Awards will be provided winners at the county, district and state levels. See your county extension agent for complete project details.

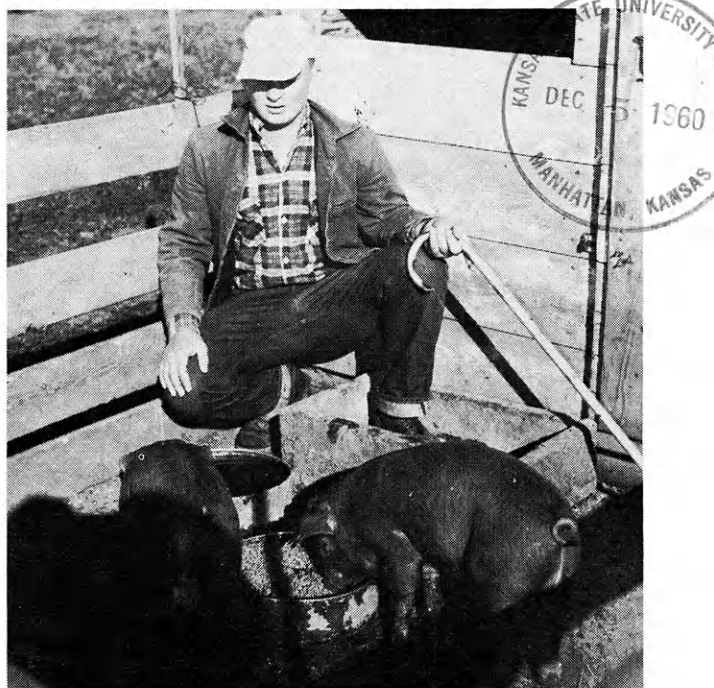
**SOUTHWESTERN BELL**



**TELEPHONE COMPANY**



## Feeding, Management Are Vital Keys to Top 4-H Swine Projects



Jimmy Townsdin, Cloud county, uses a creep feed pen for his suckling pigs.

Jim and Shirley Townsdin, Cloud county, are two of nearly 4,000 Kansas 4-H'ers with swine projects.

The Townsdins, including an older sister Sandra, have taken swine projects for eight years. Among their projects have been at least four champion gilt exhibits at the Kansas State Fair in Hutchinson. The three—Jimmy, Shirley and Sandra—have shown numerous runners-up in both breeding and fat animal classes at the State Fair.

Their livestock is of good quality but it's their top management that puts the finishing touches which result in purple ribbons at the state shows.

### Feeding, Management Are Keys

While many 4-H'ers may not be able to raise or buy top quality stock for projects, each member is limited only by his own skill when it comes to feeding and management practices.

Jimmy and Shirley, for example, use farrowing crates to raise the percentage of farrowed pigs raised to weaning. They leave the sows in the crates for 10 days after farrowing. The Townsdins have one box stall they use for nervous sows.

Sows and gilts may be either hand-fed or self-fed a 15 percent protein ration during the gestation period. Sows should be fed separate from gilts with mineral and salt fed free choice.

While self-feeding saves labor, hand-fed animals can be forced to eat more pasture and other roughage during gestation.

Bred animals should be fed to gain about one pound per day during gestation.

### Sanitation Program

Stalls, pens, buildings and other equipment should be completely cleaned and disinfected before being occupied by farrowing sows. Sows or gilts should be washed with soap and water before being transferred to the farrowing house.

Farrowing house temperature should be between 55 and 65 degrees with creep air temperatures near 80 degrees for new born pigs.

The sow or gilt should be allowed to become accustomed to the farrowing house before farrowing time if possible.

A bulky ration is recommended at farrowing time, especially if the sow is confined in a farrowing stall. The ration should contain 30 to 40 percent bran or alfalfa meal or a mixture of the two.

### Put Litters Together

If there is no more than one week's difference in the pigs' age, four to six sows may be put together when pigs are one to two weeks old. The sow's ration during lactation should be large

enough to insure an adequate flow of milk.

Nursing pigs should have their needle teeth clipped soon after birth. Pigs should be fed a creep ration at an early age.

Baby pigs should be given some kind of anemia protection from birth until they are (1) weaned, (2) consuming  $\frac{1}{8}$  pound creep ration per day or (3) are moved to pasture.

Further details on how you may improve the feeding and management of your sow and litter project may be obtained from your county extension office or your local livestock project leader.

This cement feeding area is easy to keep clean, makes it easier to keep the pigs clean and saves on feed bills, says the Townsdin 4-H'ers Jimmy and Shirley.



## Are You A

# Good 4-H Club President?

To many 4-H'ers, it may seem as if the club president's major responsibilities are presiding at the local club meeting.

This is one of his duties—and one of his more important ones. It is the president's job to keep the business part of the meeting

moving, make suggestions or ask for a motion.

Certainly the president should call the meeting to order on time and encourage full participation by every member in discussion on business items. He or she also signs the secretary's

minutes when approved.

There is more to being a 4-H Club president than presiding at the monthly meeting of the 4 H Club, however. Presidents of good 4-H Clubs know of these other duties and do them well in order to have a smoothly running organization — one whose members will have a good time and learn something from their experience.

**Kay Campbell and Carol Blumanhourst are both second term officers of the Belmont 4-H Club, Kingman county. Kay is secretary and Carol is president. Carol says one of the most important duties of the president is to keep order and conduct the meeting in an orderly fashion.**



### Check Details

Good presidents, for example, check last minute details of the meeting with leaders and asks them about the business which should be discussed.

The president is always at the meeting place on time; he generally arrives early to make certain everything is properly set for the meeting.

One of the big jobs of being president is delegating responsibility to others. The president shows committees he appoints he has confidence in their ability. He may need to check to see if the committee is working, but he does not meddle.

### Consult with Leaders

It is a good idea to consult with leaders before appointing any members to committees. It's often a good idea to have both younger and older members on committees. Presidents should be sure to assign all members to at least one committee during the year.

Remember to thank a person or a committee for a job well done. Show appreciation to others for their efforts and help.

The president should be friendly to each member, especially the new, shy and younger members. Give them a "pat on the back" for a good talk, etc. Encourage them to take part in the discussion.

If you are a club president or a leader—and would like more detailed information on duties of presidents, ask your county extension agent for a copy of the leaflet, "The 4-H Club President."

## MERRY CHRISTMAS

The Rural Electric Cooperatives of Kansas join together to wish you the happiest Christmas ever as you work toward making the best, better.



## Kansas Electric Cooperatives, Inc.

420 W. 9th

Topeka, Kansas



## Kansas 4-H Clubs Are Represented by Seven Natl. Winners

Kansas 4-H Clubs are represented at the National 4-H Congress in Chicago November 27-December 2 by seven national winners of \$400 scholarships.

The scholarships were awarded the seven Kansans as recognition not only for the outstanding work done by themselves, but also for the work done by each of the 30,000 Kansas 4-H Club members.

The national winners, their home county, the field in which they won the award and the donor of the award are listed.

Gary Kilgore, Kiowa, Agricultural, International Harvester Company.

Kenneth Thomas, Lyon, Auto Care and Safety, Firestone Tire and Rubber Company.

Larry Theurer, Sumner, Field Crops, Arcadian Products Department of Allied Chemical Corporation.

Janice Hossfeld, Brown, Fro-

zen Foods, RCA Whirlpool Corporation.

Janet Patton, Cherokee, Home Economics, Montgomery Ward and Co.

Daryl Dirks, Ford, Home Improvement, Sears Roebuck and Co.

Connie Reder, Butler, Swine, Moorman Manufacturing Co.

## Kansas 4-H Journal Sponsors

### These Sponsors Have Renewed Their County Support of the Kansas 4-H Journal

#### Ellsworth

Bank of Holyrood, Holyrood  
Citizens State Bank, Ellsworth  
Kanopolis State Bank, Kanopolis  
Lorraine State Bank, Lorraine  
Wilson State Bank, Wilson

#### Ford

Bucklin State Bank, Bucklin  
Farmers State Bank, Bucklin  
Fidelity State Bank, Dodge City  
First National Bank, Dodge City  
Ford County State Bank, Spearville

#### Gove

First National Bank, Quinter  
Peoples State Bank, Grinnell  
The Citizens State Bank, Grainfield

#### Harper

Anthony Farmers Co-operative  
Elevator, Anthony  
Danville Co-op Association, Danville  
Farmers Co-op Business Association,  
Corwin  
State Line Grain Company,  
Manchester, Okla.

#### Jefferson

Sunflower Tip Top Dairies Company,  
Valley Falls

#### Kiowa

First State Bank, Mullinville  
Greensburg State Bank, Greensburg  
Haviland State Bank, Haviland

#### Lyon

Citizens National Bank, Emporia

#### Marshall

Citizens State Bank, Marysville  
Citizens State Bank, Waterville  
Exchange Bank of Schmidt &  
Koester, Marysville  
First National Bank, Beattie  
First National Bank, Summerfield  
First National Bank in Frankfort,  
Frankfort

#### McPherson

Oketo State Bank, Oketo  
The Bremen State Bank, Bremen  
The State Bank of Axtell, Axtell  
The State Bank of Blue Rapids,  
Blue Rapids

#### Nemaha

Vermillion State Bank, Vermillion  
The Farmers Cooperative  
Association, McPherson

#### Riley

Winterscheidt Milling Company  
Seneca  
First National Bank, Manhattan  
Leonardville State Bank,  
Leonardville  
Union National Bank, Manhattan

#### Seward

Citizens State Bank, Liberal  
First National Bank, Liberal  
Peoples National Bank, Liberal

#### Stanton

Collingwood Grain Inc., Johnson,  
Manter and Big Bow

#### Stevens

The Citizens State Bank, Hugoton

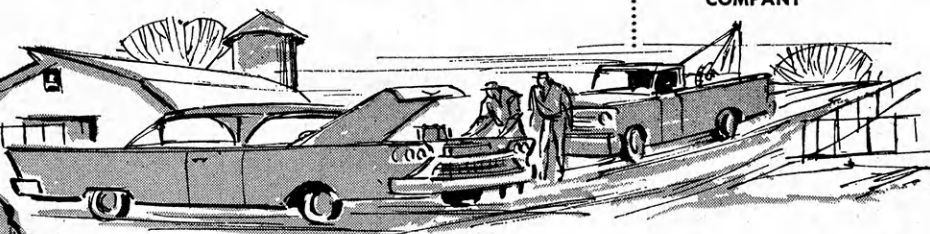
*I'm sure glad I insured my car*

with **STATE FARM MUTUAL**

Three miles from town with the temperature below zero and me already late for the area basketball finals, the engine conks out. First man I thought of was my local State Farm Agent. After a call on a neighbor's phone my State Farm Agent got in touch with a local garage, had me towed into town within half an hour and ready to go again by the time the game was over. Two days later a check to cover my towing charges showed up. That convinced me. Dad was right when he steered me to State Farm right off the bat. Whatever the situation, I know I can rely on my State Farm Agent to bail me out . . . fast.



- ROCK-BOTTOM RATES
- HOMETOWN SERVICE
- BANK PLAN FOR AUTO FINANCING
- OVER 7500 AGENTS
- WORLD'S LARGEST AUTO INSURANCE COMPANY



*It pays to know your State Farm Agent*  
**YOU'LL FIND HIM LISTED IN THE YELLOW PAGES**

**STATE FARM MUTUAL AUTOMOBILE INSURANCE COMPANY**

Home Office: Bloomington, Illinois



# As Have These Stafford County 4-H'ers, You, Too, Can Add Interest to the Holiday Table

Christmas-tide imagination gives the go-ahead signal for Stafford county and all Kansas 4-H'ers to add that festive touch to holiday foods.

Karen Shoop, Antrim Streamliners Club in Stafford county, loves to cook and, according to other family members, she spends a great deal of time in the kitchen. Her mother says she uses cooking as a diversion at times to help ease tension resulting from a heavy round of studying. She is a straight A student.

A light evenly textured bubble loaf coffee cake is one of her specialties. She has learned, too, that yeast bread products are always favorite gift items with friends and relatives.

## Bubble Loaf Coffee Cake

Use a portion of your favorite basic sweet dough recipe. After second rising, cut dough into pieces the size of walnuts. Form into balls. Roll each ball in  $\frac{1}{2}$  cup melted butter (total amount). Then roll in mixture of  $\frac{3}{4}$  c sugar, 1 t cinnamon and  $\frac{1}{2}$  c finely chopped nuts.

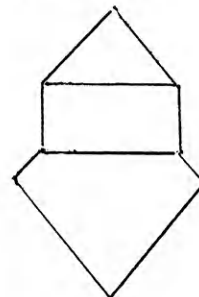
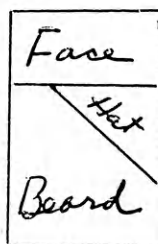
Place one layer of balls so they barely touch in well greased 9" tube pan. Sprinkle with a few nuts. Add another layer of balls pressing them in slightly. Let rise approximately 45 minutes. Bake 35 to 40 minutes at 375 degrees. Loosen

from pan. Invert pan so butter sugar mixture runs down over cake. To make Christmas wreath design, place two rows of maraschino cherries in bottom of pan before first layer of balls is added.

The different kinds of cake designs for different occasions has been a demonstration subject for Janice Toot, Eden Valley Club, for the past few years. The Christmas season, of course, presents a pleasant challenge to the imagination. A cake Santa is quite simple to make even though at first glance the finished product may look complicated. You will be able to add sparkle and interest to your holiday table with a cake similar to hers.

## Santa Cake

First bake a 13" x 9" x 2" cake using your favorite plain cake recipe. Cut crosswise from end of cake  $4\frac{3}{4}$ " wide for Santa's face. Cut across remaining cake diagonally to make a triangle  $7\frac{1}{4}$ " on each of two sides for the hat.



Diana Sittner—Decorative Tree.



Second, tint half of boiled frosting pink and frost hat. Frost face with rest of pink, making deep swirls for cheeks. Then swirl the white frosting on the hat band and beard.

Third, don't forget a frosting tassel for the hat. Make tassel, hatband and Santa's beard look snowy white with flake coconut. Give him bushy coconut eyebrows too! Then, with laughing red candy mouth and sparkling blue gumdrop eyes, Santa says Merry Christmas.

## Boiled Frosting Recipe

Combine  $1\frac{1}{2}$  c sugar,  $\frac{1}{8}$  t cream of tartar,  $\frac{3}{4}$  c boiling water and a few grains of salt. Stir until dissolved. Boil to soft ball stage (236 degrees F.). Pour slowly, beating constantly, over 2 stiffly beaten egg whites, and also adding the marshmallows (total of 12) a few at a time until all are dissolved. Add 1 t vanilla flavoring and beat until thick and creamy.

Janice's sister, Rajean, has proved she is quite adept at cookie making. To tempt the most timid of nibblers she fashions plain sugar cookies in a variety of shapes and sizes, then uses confectioners' sugar frosting for trim. These make delightful conversation pieces for adult groups or whimsical favors at children's parties. Using cookies as the trim for a small tree is another party idea. Holiday sparkle may also be found in a gift of as-



sorted cookies wrapped in transparent covering and tied with a colorful bow.

#### Sugar Cookies

Cream  $\frac{3}{4}$  c shortening and 2 c sugar. Add 2 well beaten eggs. Sift 4 c flour, measure and sift with  $\frac{1}{4}$  t baking soda, 1 t nutmeg and  $\frac{1}{4}$  t salt. Add  $\frac{1}{2}$  c sour milk alternately with dry ingredients. Mix thoroughly. Drop by teaspoonfuls onto well oiled baking sheet. Bake in hot oven (430 degrees F.) 10 to 12 minutes. Makes six dozen cookies.

#### Confectioners Sugar Frosting

Cream 4 T butter. Stir in about  $\frac{1}{4}$  c sugar gradually. Add unbeaten 1 egg yolk and 1 t vanilla flavoring. Then add  $1\frac{3}{4}$  c sugar. Add a few drops at a time of cream or rich milk until the mixture has the right consistency to spread. Butter frosting should be creamy when it is spread because it hardens as the butter cools.

And now for the Christmas feast, complete with all the trimmings. Your table isn't really set unless it has a decorative centerpiece.

Since Christmas is the season for many different foods and lots of it, Diana Sittner, Jolly Workers club in Stafford county, suggests patterning the festive family dinner after a Swedish smorgasbord.

For this occasion a stylized Swedish Christmas tree will furnish distinctive ornamentation. For you, a copy of hers might be adapted using empty thread spools and wooden meat skewers or perhaps parts of old tinker toys.

The trim is miniature birds and candy fruit. Painted brightly using red, green, blue and yellow, it produces a lovely effect with the glow from lighted candles.

Rajeon Toot—Cookies on the Tree



Janice Toot—Santa Cake



Karen Shoop—Bubble Loaf Coffee Cake

# Christmas Time is Sharing Time



The Kiowa Club, Barber county, represented here by Kathleen Farney, Heather Heath, Diane Farney and Carmen Combrink deliver a Christmas tree and a box of food to a local elder citizen.



These were some of the vases of flowers given elderly ladies of the community by the Friendly Farmers Club, Wabaunsee county, for Christmas.

Members of the Murdock Wranglers Club, Butler county, give boxes of fruit and candy to a committee from the Fairmount School, Wichita. This school committee distributed the boxes to underprivileged children in their community.



"Christmas time is even better when shared with others," says Susan Fagan in reporting on the Christmas community service projects of the Murdock Wranglers Club, Butler county.

The Club has two projects—one for the young and one for the aged.

For guests at the Walnut Valley Nursing Home in Augusta, members of the club sang carols, gave readings, played musical instruments and visited with the guests. Angels and cookies were given to those present at the program and delivered to the bedfast guests.

Sacked fruit and candy was taken by the club to a committee from the Fairmount Club. The school committee, in turn, gave the treats to less fortunate children in their community.

## Other Service Projects

All members of the Friendly Farmers Club, Wabaunsee county, got into the act of providing 46 vases of flowers and 61 coffee cans of cookies for elderly women and men in the community.

Younger members helped make bud vases by painting bottles with black enamel and then covering them with glitter. They were filled with pompom mums and cedar.

Coffee cans were covered with aluminum foil and filled with homemade cookies.

Members of the Shamrock Club, Neosho county, went caroling and gave candy to aged people and shut-ins in the community.

600 cookies were sacked and delivered to the Good Samaritan Village as a holiday treat for each patient by members of the Lawnridge Club, Cheyenne county.

All Admire Club members, Lyon county, gave a donation at their Christmas party instead of the usual fifty cent Christmas gift exchange. The money was sent to the Kansas Children's League Service.

Members of the Manning Jayhawker Club, Scott county, contributed money for a dozen caps to be sent to refugee children. As each member paid his money he wrote his name on a Christmas card which was pinned in the cap and the cap hung on a "Cap Tree."

Caroling for rural homes in Smith county was a special project of the Bellaire Willing Workers Club and in Rooks county by the 4-W Club.

Something a little different was the project of the Prosperity Club, Reno county. The club voted to sell Christmas tree tickets for the Hutchinson Physically Handicapped Club. The tickets were worth \$1 toward the purchase of a Christmas tree at most Hutchinson stores.

Two Barber county ladies really felt the Christmas spirit when the Kiowa Club purchased and decorated two Christmas trees. Club members also donated food for two boxes. A final touch was the purchase, by the club, of a very nice gift for a small blind boy in Kiowa.

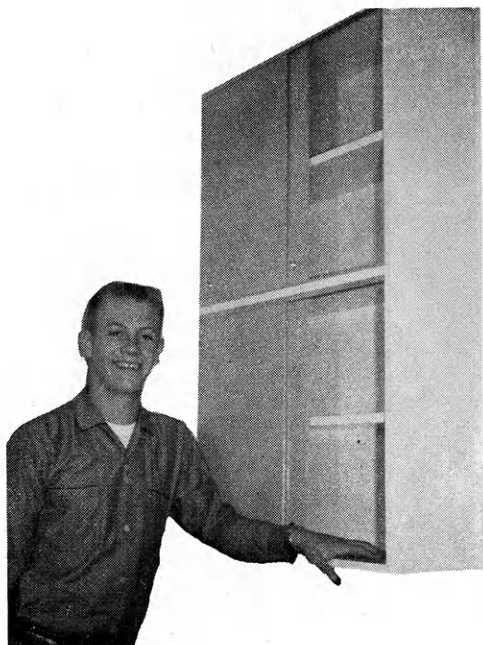
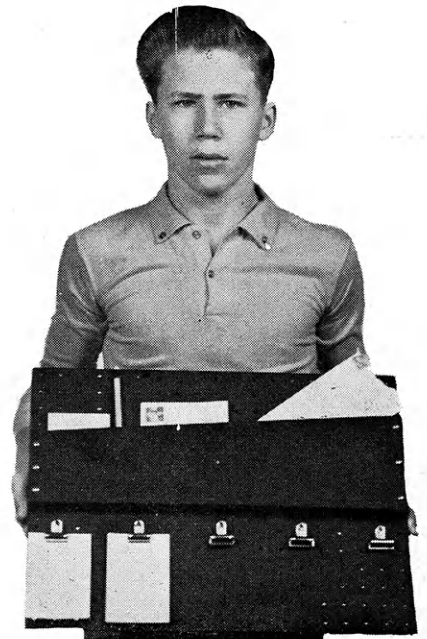


# FREE!!

## New 4-H Woodworking Plans

*Get Plans for These Two New 4-H  
Projects At Your Lumber Dealers*

**For MOTHER in the kitchen or for your OWN STUDY, this memo board made by GEORGE FULLER, FRANKLIN COUNTY, was an exhibit at the Kansas State Fair in September.**

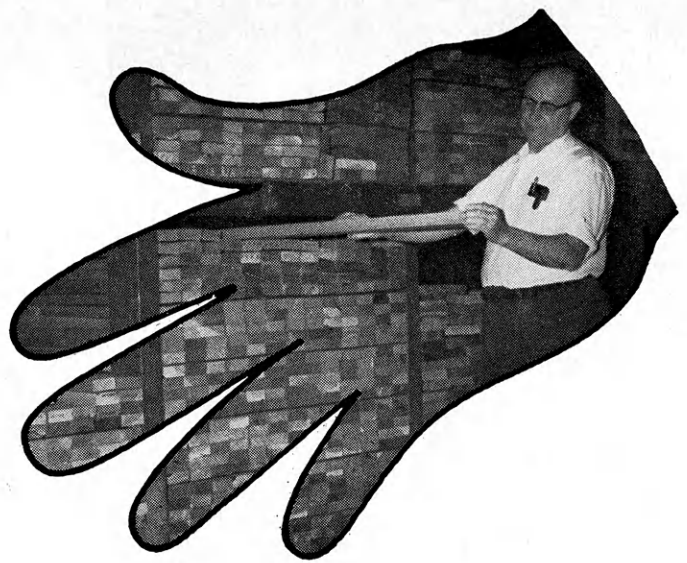


**This handy and very ATTRACTIVE BATHROOM WALL CABINET was made and exhibited by RONALD HUSER, HAMILTON COUNTY. It is now installed in the home of his Hamilton county friends and neighbors, Mr. and Mrs. Clell Cauthon.**

*Plans for These Items Are  
Available At The Lumber Dealers  
Listed on The Next Two Pages. Ask For Them.*

**For other FREE 4-H woodworking plans, see the next pages.**

# Always on hand... YOUR LUMBERMAN is your best friend when you need good material



Abilene  
Central Lumber Company

Agra  
Agra Lumber Company

Albert  
Albert Lumber-Hardware and  
Appliance Company

Almena  
Foster Lumber Company

Alta Vista  
Wolgast Lumber Company

Alton  
Alton Lumber and Coal Company

Arma  
Bosinio Lumber Yard

Anthony  
Rock Island Lumber Company

Arkansas City  
Central Lumber Company  
Comley-Neff Lumber Company

Asherville  
Asherville Lumber and Coal Company

Ashland  
Don Spotts Lumber Company  
Home Lumber and Supply Co.

Atchison  
Hixon Lumber Company

Attica  
Crowell Lumber Company

Atwood  
Atwood Lumber Company  
Foster Lumber Company

Basehor  
Basehor Lumber Company

Bazine  
Humburg's

Beloit  
Beloit Lumber Company  
Murray Lumber Company  
Peoples Lumber and Coal Company

Bern  
Bern Lumber Company

Bird City  
The Bird City Equity Mercantile  
Exchange  
Griffin Lumber Company

Bison  
Humburg Lumber Company, Inc.

Bonner Springs  
Bonner Springs Lumber Company

Brownell  
Richolson Lumber and Hardware  
Company, Inc.

Bucyrus  
The Blaker Lumber and Grain Company

Buhler  
Buhler Lumber Inc.

Burr Oak  
Burr Oak Lumber and Coal Company

Caldwell  
Antrim Lumber Company  
Cawker City  
Cawker City Lumber Company

Chanute  
Smith Lumber Company

Chapman  
Sanborn Lumber Company

Cimarron  
Anawalt-Campbell Mercantile Company  
Wilson Lumber Company, Inc.

Clay Center  
Kansas Lumber Company

Coffeyville  
The Home Lumber and Supply  
Company, Inc.  
Kansas Lumber Company

Colby  
Foster Lumber Company  
Hardman Lumber and Coal Company  
Hess Lumber Company

Coldwater  
Gilchrist Lumber Company  
Home Lumber and Supply Co.

Concordia  
Leidigh Lumber Company  
Sanborn Lumber Co.

DeSoto  
DeSoto Lumber Company

Denison  
Denison Lumber and Hardware  
Company

Denton  
C. H. Gish Company

Devon  
Devon Lumber Company

Dodge City  
The T. M. Deal Lumber Company

Edgerton  
Edgerton Lumber Company

Edna  
The McCoy Lumber Company

El Dorado  
Home Lumber Company

Elkhart  
The Star Lumber Company

Emporia  
Home Lumber and Supply Co.  
Kansas Lumber Company  
The Smith Lumber Company

Erie  
Howard Bros. Lumber Company  
Johnson and Son, Inc.

Eudora  
Eudora Lumber Company

Eureka  
A. C. Houston Lumber Company  
Rock Island Lumber Company

Everest  
Alexander Lumber Company

Fowler  
The T. M. Deal Lumber Company, Inc.

Frankfort  
Searle and Chapin Lumber Company

Fredonia  
The Home Lumber and Supply  
Company, Inc.

Garden City  
Ed Porter Lumber Company

Garden Plain  
Fisher Lumber Company

Gardner  
Gardner Lumber Company

Gaylord  
Hardman Lumber Company

Glen Elder  
Dickinson Lumber Company

Goodland  
Foster Lumber Company  
Hardman Lumber Company  
Rasure Lumber Company

Gorham  
Russell Lumber Company

Great Bend  
Everitt Lumber Company  
Foster Lumber Company  
Rock Island Lumber Company  
Whitesell Lumber Company

Greensburg  
Home Lumber and Supply Co.

Halstead  
Harris Lumber Company

Harper  
Rock Island Lumber Company

Hartford  
Thomas Lumber Company

Hays  
Hardman Lumber Corporation, Inc.

Healy  
Healy Co-op Elevator Company

Hesston  
Kropf Lumber Company

Hill City  
Farmers Lumber Company  
Hardman Lumber Company

Hillsboro  
Hillsboro Lumber Company

Hoisington  
Foster Lumber Company

Holton  
Brown-Hedge Lumber Company  
Holton Lumber Company

Holyrood  
Home Lumber and Supply Co.

Hoxie  
Foster Lumber Company

Hugoton  
The Star Lumber Company

Humboldt  
Barfoot Lumber Company

Hutchinson  
F. E. Perry Lumber Company  
George Stuckey Lumber

Inman  
Inman Lumber Company

Independence  
Rock Island Lumber Company

Iola  
Klein Lumber Company

Jennings  
Foster Lumber Company

Jetmore  
Foster Lumber Company

Johnson  
Seyb-Tucker Lumber and Implement  
Company

Junction City  
Home Lumber Company  
Rock Island Lumber Company

Kinsley  
Kinsley Co-op Exchange Lumber Yard  
Home Lumber and Supply Co.

LaCygne  
Blaker Lumber and Grain Company

LaHarpe  
Blaker Lumber and Grain Company  
Diebolt Lumber and Supply

FREE 4-H Woodworking Plans  
Available at Lumber Yards  
Listed On These Pages  
They Display This Emblem





THE lumber dealers listed on these two pages are supporting the 4-H woodworking project with this information and free woodworking plans. Get your plans from them.

Lakin  
Hart and Company  
Lakin Lumber Company, Inc.

Lancaster  
T. E. Snowden Lumber Company

Lansing  
International Paper Company, Long-Bell Division

Larned  
Antrim Lumber Company  
Clutter-Lindas Lumber Company

Lawrence  
Woods Lumber Company

Lebanon  
Lebanon Lumber Company

Lenexa  
Lenexa Lumber Company

Lenora  
Lenora Lumber Company

Leoti  
Foster Lumber Company

Liberal  
The Star Lumber Company

Lincoln  
Leidigh and Havens Lumber Company

Little River  
The T. M. Deal Lumber Company, Inc.

Logan  
Logan Lumber Company

Longford  
Longford Lumber & Grain Co.

Louisburg  
Louisburg Lumber Company

Lyons  
Foster Lumber Company

Macksville  
Home Lumber and Supply Co.

Manhattan  
Griffith Lumber Company  
Kansas Lumber Company  
Ramey Brothers

Marysville  
Foster Lumber Company

Matfield Green  
Paul Bell Hardware-Lumber-Feed

McPherson  
Lake Superior Lumber Company  
McPherson Lumber Company

Meade  
Home Lumber and Supply Co.

Minneola  
The T. M. Deal Lumber Company, Inc.

Moundridge  
Clayton Vogt Lumber Co., Inc.

Neodesha  
O. B. Woods Lumber Company

Ness City  
Rock Island Lumber Company

Newton  
The Houston-Doughty Lumber Company

Nickerson  
The D. J. Fair Lumber Company

Norton  
Foster Lumber Company  
Newbury Lumber Company  
Norton Lumber Company

Nortonville  
Alexander Lumber Company

Norwich  
H. S. Eshnaur & Sons

Oakley  
Oakley Lumber Company

Oberlin  
Foster Lumber Company

Offerle  
Offerle Co-op Grain and Supply Company

Olathe  
Cowley Lumber and Hardware Company  
Hodges Brothers

Osawatomie  
Leidigh and Havens Lumber Company  
Osawatomie Lumber Company

Oswego  
Home Lumber and Supply Co.

Ottawa  
Hubbard Lumber Company, Inc.

Overland Park  
Overland Park Lumber Company

Paradise  
Paradise Lumber Company

Parker  
Blaker Lumber and Grain Company

Parsons  
The Home Lumber and Supply Company, Inc.

Phillipsburg  
Hardman Lumber Company  
Home Lumber Company

Plains  
Home Lumber and Supply Co.

Pleasanton  
Blaker Lumber and Grain Company

Pratt  
The Ortmeier Lumber Company

Prescott  
Prescott Lumber Company

Pretty Prairie  
The George W. Ulitch Lumber Company

Protection  
Home Lumber and Supply Co.

Riley  
Alexander Lumber Company

Russell  
Hardman Lumber Company of Russell Inc.

Sabetha  
Farmers and Merchants Lumber

St. Francis  
Foster Lumber Company  
St. Francis Equity Exchange

St. Marys  
St. Marys Lumber Company

St. John  
English Lumber and Supply Company  
Home Lumber and Supply Co.

Salina  
E. D. Bishop Lumber Company  
Larson Lumber Company, Inc.  
Leidigh and Havens Lumber Company  
Michaelsen Lumber Company

Satanta  
The T. M. Deal Lumber Company, Inc.

Scott City  
Foster Lumber Company

Selden  
Foster Lumber Company

Seneca  
Koelzer Lumber Company  
Seneca Lumber Company

Severy  
Tolman-Gibbon Lumber Company

Silver Lake  
J. Thomas Lumber Company

Sharon Springs  
Foster Lumber Company

Smith Center  
Mid-West Lumber Company  
Smith Center Lumber Company

Spring Hill  
Spring Hill Lumber Company

Stafford  
The T. M. Deal Lumber Co., Inc.  
Home Lumber and Supply Co.

Stanley  
Stanley Lumber Company

Sterling  
The D. J. Fair Lumber Company

Stockton  
Stockton Lumber Company

Sublette  
The T. M. Deal Lumber Company, Inc.

Summerfield  
Meyer Lumber and Hardware

Syracuse  
Foster Lumber Company

Sylvia  
The D. J. Fair Lumber Company

Topeka  
Whelan Lumber Company  
Main Store, 715 E. 4th  
Pauline Branch at Pauline  
Highland Crest Branch, 200 E. 29th  
Seabrook Branch, 2019 Gage

Tribune  
Foster Lumber Company

Ulysses  
The T. M. Deal Lumber Company, Inc.

WaKeeney  
Hardman Builders Supply Company

Wakefield  
Sanborn Lumber Company

Wathena  
Farmers Grain and Lumber Company

Wellington  
Antrim Lumber Company  
Wellington Lumber and Supply Company, Inc.

Wichita  
Lawrence Lumber Company  
Rock Island Lumber Company  
Stockyards Cash and Carry Lumber Co.

Wilson  
Hoch Lumber Company  
Wilson Lumber Company

Winfield  
Deal Lumber and Hardware Company, Inc.  
A. B. Everly Lumber Company

Woodbine  
Kohler Lumber Company

Yates Center  
F. H. Conger and Son

Zenda  
The George W. Ulitch Lumber Company

#### Missouri

Kansas City  
The George W. Ulitch Lumber Company, 11432 Truman Road

Any one of 17 4-H  
Woodworking Plans Available  
At Lumber Yards Listed  
On These Pages  
They Display This Emblem



## Looking for Christmas Ideas

*For Gifts or Decorations*

## See Any of These Lumber Dealers for a Free 4-H Woodworking Plan

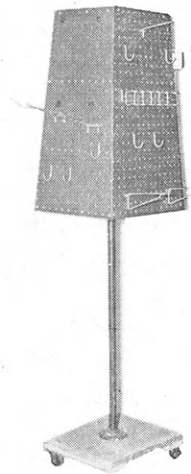
See The Following Page  
and Page 9 for Pictures  
of Available Plans

# Local Lumber Yards Listed on Pages 10 & 11 Make This 4-H Woodworking Plan Service Available. Ask Them For Your 4-H Woodworking Plans.

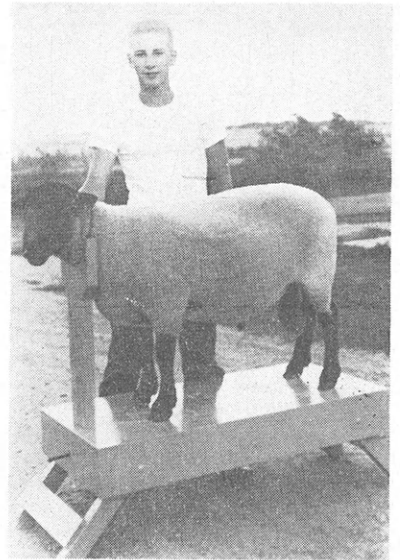
**AUTOMATIC BIRD FEEDER**



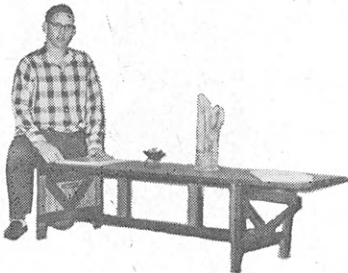
**ROTATING SELECTION TOOL RACK**



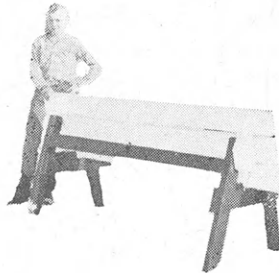
**SHEEP BLOCKING BOX**



**COFFEE TABLE**



**PICNIC TABLE**



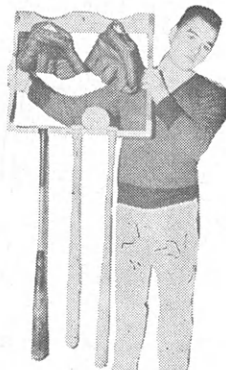
**SANDBOX**



**CHRISTMAS TREE GIFTS**



**BILL'S BASEBALL RACK**



**HANDY GUN RACK**





*For Christmas or For Everyday*

*Make a*

**4-H Woodworking Project**

**Get FREE 4-H Woodworking**

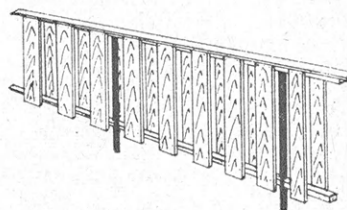
**Plans at Lumber Yards Listed**

**On The Two Previous Pages**

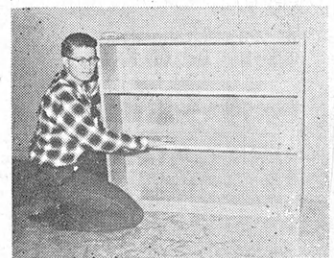
**GATE SIGN**



**A BACK YARD FENCE**



**BOOK CASE**



**SIMPLE WORK BENCH**



**HOLDING GATE**



**YARD CART**



# Silent Night—The Universal Christmas Carol

Christmas Carols is a term used to describe a large variety of songs sung in the Christmas season. They may be either religious or convival.

One celebrates the birth of Jesus, the other features the season of mirth and feasting.

Examples of carols having no direct connection whatever with the Nativity include: Deck the Halls with Boughs of Holly; Good King Wenceslas; The Twelve Days of Christmas. However, these songs are fully

expressive of various phases of the Christmas spirit.

### Religious Theme

The carols with a definite religious theme include many with beginnings in the church. From the hymns and chants used in the early church, a freer, more popular sort of Christmas singing arose.

This is the sort we recognize when we distinguish carols from hymns. Among these are, It Came Upon the Midnight Clear, We Three Kings of Orient Are,

God Rest You Merry Gentlemen, Oh Come All Ye Faithful, and Oh Little Town of Bethlehem.

Perhaps no carol is so universally known, loved and sung as the simple Austrian song, Silent Night. Because the stories of the carols add still more to the interest and delight in singing them, the brief story below might well be presented in a quiet, almost worshipful manner before the club sings the carol.

### Origin of Song

On Christmas Eve, 1818, the organ of St. Nicholas Church, Oberndorf, Bavaria, was in need of repair. Oberndorf was snow-bound, and there was no repairman for miles. This meant there would be no music for the Christmas Midnight Mass.

Franz Gruber, church organist, was very much concerned as there must be some form of special music for the Christmas service. He talked to the priest of the little church, Joseph Mohr, suggesting a new song might be helpful in the emergency. Both were concerned.

It happened the priest, Joseph Mohr, made a call to a family up in the mountains the afternoon before the Midnight Mass. He got a late start and it was dusk as he returned.

Walking home alone in the quietness of the snow-covered country and in the beauty of a star-studded sky, the words of "Silent Night" came to him—as if it were a miracle. He hurried home, wrote down the words and took them to the organist, Franz Gruber.

### Written in a Few Hours

The words struck an inner feeling and soon the tune came to Franz Gruber as he plucked his guitar. So "Silent Night" was sung for the first time on Christmas Eve, 1818. It was sung in a three part arrangement to the accompaniment of guitar. Within a few hours, "Silent Night" was written.

It was so beautiful people continued to sing the song. When

(Continued on Page 18)

## Kansas 4-H Journal Index by Subject

January through December, 1960

(For an index for 1957 through 1959, see the December, 1959, Kansas 4-H Journal)

Achievement Meetings.....	September	Home Beautification.....	September
Advisory Committees.....	September	Home Improvement.....	September
Alumni.....	September, October	International Farm Youth Exchange	January, May, October
Auto Care and Safety.....	Jan., March, Sept.	Judging.....	June, September
Beef Cattle.....	September	Junior Leadership.....	March, September
Best Groomed Boy.....	September	Kansas 4-H Foundation.....	March, September
Booths.....	July, November	Kansas 4-H in Review.....	August, September
Businessmen's Picnics.....	March, September	Leaders.....	January, September
Calendar of Events.....	January	Leaders' Conference.....	April
Camps.....	March, May, August, September	Meats Identification and Judging.....	July, November
Careers.....	February, July	Membership.....	July, November
Cherry Pie Baking Contest.....	February, September	Money Raising Projects.....	March, April
City 4-H Clubs.....	January, September	Music.....	June, September, December
Civic Supporters.....	September	National 4-H Conference.....	April, June
Clothing.....	January, March, April	National 4-H Congress.....	January
Club Meetings.....	September	Officers.....	September, December
Collegiate 4-H Club.....	August, September	Parents.....	May, September, November
Colt.....	March, July, September	People to People.....	September
Community Service Projects.....	January, March, June, September, November	Personal Finance.....	September
Conservation.....	September	Personal Development.....	November, December
County Council.....	September	Photography.....	September
County and Club Events, Miscellaneous.....	September	Poultry.....	April, September
Crops.....	September	Program Planning.....	October
Dairy Project.....	July, September	Programs, Public.....	November
Dairy Princess.....	June	Promotional Activity.....	September
Demonstrations.....	March, May, June, September	Public Speaking.....	September
Dog.....	September, October	Recreation.....	January, March, June, July, September
Electric.....	January and every month	Rock Springs Ranch.....	April, May
Entomology.....	September	Rodent Control.....	September
Fairs, County and State.....	August, September, October	Safety.....	January, April, September
Floats.....	January	Scholarships.....	February, July
Foods Project.....	January, March, June, August, September, December	Sheep.....	September
Four-H Club Days.....	May, September	Soil Conservation.....	September
Friends of 4-H.....	June	Style Revue.....	September
Garden.....	September	Sunday, 4-H.....	September
Grain Marketing.....	September	Swine.....	September, December
Grooming.....	September	Talent Contest.....	March, September
Health.....	January, June, July, September, October	Tours.....	April
		Tour, Legislature.....	March
		Tractor.....	September
		Window Exhibits.....	March, July
		Woodworking.....	January and every month





Two of eight older 4-H'ers attending the planning session for the new personal development project in Wichita November 4 and 5 were Benny Oeding, Finney county, and Gloria Bartholomew, Osborne. They are shown receiving certificates of recognition from John Oxler, Division Manager of Southwestern Bell Telephone Co.

## Older 4-H'ers Help Plan New 4-H Project

Newest of 4-H Club projects is Personal Development. Designed primarily for teenagers, the project should have wide appeal for both urban and rural 4-H'ers.

Seven areas have been suggested for the project. They are appearance, manners, speech and writing, character development, understanding others, philosophy of life, and career exploration.

### 4-H'ers Make Recommendations

A group of older 4-H'ers, serving as a committee to make recommendations for the new project, met in Wichita November 4 and 5. They suggested it be organized as an individual project with requirements and a simple evaluation type of report.

### To Encourage Participation

To encourage more participation in the new project, Southwestern Bell Telephone Company has agreed to provide awards on a county, district and state basis for those members with outstanding participation records.

The Bell Telephone Company will also promote and provide tips on participation in the project in a series of advertisements in the Kansas 4-H Journal.

Arrangements for support of the project by the Southwestern Bell Telephone Company was arranged by the Kansas 4-H Foundation.

As a part of their activities in Wichita November 4 and 5, those older members helping to plan the new project toured Beech Aircraft Co., Seven-Up Bottling Co., and the Southwestern Bell Telephone Co. offices. Here Wendell Sullivan of Beech explains the features of one of the planes to Anne Lee Claycamp, Coffey county, and Margene Savage, Marion.



*We  
Send*

**CHRISTMAS  
GREETINGS**

*and our  
continued  
support of*

**Your Clubs  
and your  
Kansas 4-H  
Foundation**

**The Folger Coffee Co.**  
KANSAS CITY, MO.

# Easy Way to Handle Your Holiday Bills...

Start Christmas Saving Now

at

Your Savings and Loan Association



**SAVE EACH WEEK  
FOR 50 WEEKS**

**RECEIVE IN CASH  
NEXT NOVEMBER**

\$1	\$50
\$2	\$100
\$3	\$150
\$5	\$250
\$10	\$500

BE AS GENEROUS as you like with next year's Christmas gifts... without the usual burden of January bills.

Starting now, you can have up to \$500 extra shopping cash by holiday time next year. Stop in and save this week at your Savings and Loan Association.

## VISIT YOUR NEAREST *Progressive* **KANSAS** Savings & Loan Association

### Arkansas City

First Federal Savings and Loan Ass'n of Arkansas City

### Augusta

The Commercial Savings and Loan Assn.

### Beloit

The Beloit Building and Loan Assn.  
First Federal Savings and Loan Assn. of Beloit

### Clay Center

Northwestern Federal Savings and Loan Ass'n. of Clay Center

### Dodge City

First Federal Savings and Loan Ass'n. of Dodge City

### El Dorado

Eureka Federal Savings and Loan Association  
Mid-Continent Federal Savings and Loan Assn. of El Dorado

### Emporia

The Columbia Building and Loan Assn.

### Erie

The Erie Savings and Loan Assn.

### Fort Scott

Liberty Savings and Loan Assn.

### Garnett

The Garnett Savings and Loan Association

### Goodland

Goodland Savings and Loan Assn.

### Great Bend

The Prudential Building and Loan Assn.

### Hays

The Hays Building and Loan Assn.

### Hutchinson

First Federal Savings and Loan Assn. of Hutchinson

### Iola

The Security Savings and Loan Assn.

### Kinsley

The Kinsley Savings and Loan Assn.

### Larned

The Larned Savings and Loan Assn.

### Lawrence

Capitol Federal Savings and Loan Assn.

### Leavenworth

The Leavenworth Mutual Building, Loaning and Savings Assn.

### Liberal

First Federal Savings and Loan Assn. of Liberal

### Lyons

The Lyons Savings and Loan Assn.

### Medicine Lodge

The Barber County Building and Loan Association

### McPherson

The Pioneer Savings and Loan Association of McPherson

### Mission

Capitol Federal Savings and Loan Assn.

### Newton

First Federal Savings and Loan Assn. of Newton

### Norton

Norton County Savings and Loan Association

### Ottawa

Ottawa Savings and Loan Assn.

### Overland Park

The Overland Park Savings and Loan Assn.

### Parsons

First Federal Savings and Loan Assn. of Parsons

### Plainville

Rooks County Savings Assn. of Plainville

### Pratt

The Western Savings Assn.

### Salina

The Homestead Building and Loan Assn.

### Topeka

Capitol Federal Savings and Loan Assn. at 6th and Kansas, and 12th and Topeka Blvd.

### Wichita

The Commercial Savings and Loan Assn. at 4601 E. Douglas Avenue and 147 North Market Street

All Accounts in These  
Savings and Loan Associations



Insured by the Federal Savings and Loan Insurance Corporation

\$10,000 for each account

\$70,000 for a family of three



# Pictures From Kansas 4-H'ers

## SEND IN YOUR PICTURES

We want pictures taken by Kansas 4-H'ers. Prizes will be given for all pictures used in the Journal.

The picture need not be on 4-H Club work, but pictures with subjects related to 4-H Clubs are preferred. Action pictures are desired.

All pictures should be glossy prints at least five by seven inches in size unless accompanied by the negative.

Photographs should be accompanied by a short statement explaining the picture and including the names of persons shown.

Entrants should designate their choice of the following prizes. A year's subscription to the National 4-H Club News, one roll of color film—sizes 620, 120, 616, 116, 127 or 35 mm only, or a 4-H Club photograph album.

4-H members, parents, leaders, county agents or friends of 4-H may send in pictures.



This club house of the Gladstone Club, Chase county, needed and got a repainting at the hands of club members, leaders and parents.

Armin Ross, second from right, principal of the Burlingame Grade school and Gloria Johnson, right, of the Burlingame 4-H Club give milk to four grade school students. As a community service project, the 4-H Club gives milk to all local grade school students for one day.

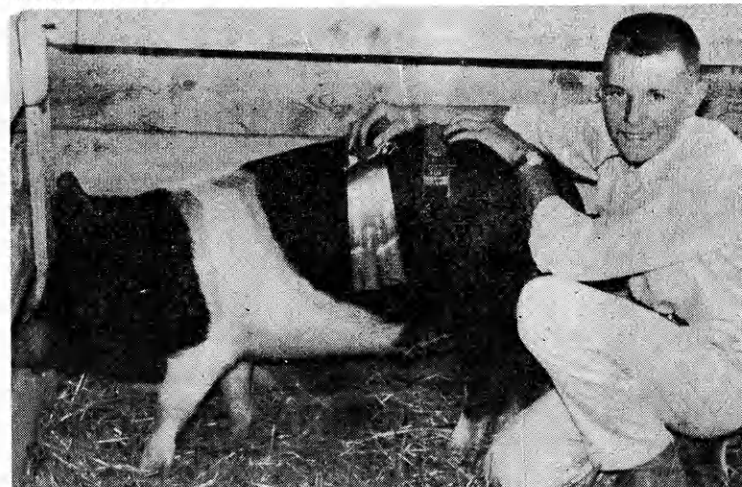


These first and second year foods members of the Udall club, Cowley county, have prepared assorted cookies and fruit punch for an afternoon tea. The girls have just invited their mothers to sample the food and were proud and happy to escort their mothers to the serving table.



Community leader Mrs. C. B. Vesecky installs newly elected officers of the Timken Roller Bearings Club, Rush county. Officers are reporter Janet Pechanec, secretary-treasurer Rosalee Vesecky, vice president Evelyn Hurst and president Jim Folkerts.

Dale Naiman, Wichita county, started with a Hampshire gilt at the age of 4; this year he showed the grand champion fat barrow at the county fair. Dale has his own herd of registered Hampshire hogs.



# Ideas That Work

*Reporter's Notice: The Kansas 4-H Journal would like to print interesting stories of your local club events, activities, members and leaders. Local club meeting stories, if submitted, should contain something unusual or of interest to people outside your county.*

*Outstanding projects, services or events of your club, or stories of individuals within your club that would give ideas to other 4-H'ers would make excellent stories.*

*Prizes will be awarded all blue award stories each month. Please state your choice (1) a year's subscription to the National 4-H Club News or (2) a hard cover loose leaf 4-H notebook.*

## Spooky Halloween Party

A halloween party can be fun as Jayhawk Club members, Franklin county, found out in October. Guests of the evening entered a spooky room lighted by a single Jack-O-Lantern. Trying to guess a person masked isn't very easy and that was one of the assigned tasks of the evening. Dale Pearson won first place in costume judging. The members played Halloween games. Doughnuts and cider helped put a final touch to the evening.

Margaret Good, Rep.

## Safety is Activity Fourth Year

Safety is the club activity for the Dearing Bees Club, Montgomery county, for the fourth consecutive year.

Some of the club activities last year included purchasing six Stop and three Yield Right of Way signs for surrounding community roads. The club members planned and presented two fifteen minute radio broadcasts, entered safety booths at county and interstate fairs, distributed approximately 11,000 safety pamphlets and leaflets, arranged two safety window displays, made farm safety checks, attended safety meetings, showed safety films, gave safety talks and demonstrations to other organizations, made home safety hazard checks and wrote safety articles for news-

papers.

Ronnie Holmes, Safety Chm.

## Weatherwax Speaks for IFYE, 4-H Foundation

Lester Weatherwax, retired Wichita radio announcer now devoting full-time to the promotion of 4-H, spoke at a community meeting sponsored by the Langdon 4-H Club, Reno county, on November 21.

Purpose of the meeting was to raise Money for Reno county's second IFYE delegate applicant in as many years—Hal Judy of the Partridge Club.

Weatherwax spoke on the International Farm Youth Exchange Program and the Kansas 4-H Foundation. Langdon club reporter Judy Holmes reported "no one is better qualified to help promote 4-H than Mr. Weatherwax who inspires young and old alike."

The Langdon club also presented a program of numbers from seven 4-H Clubs in the county to "weld the evening together from 4-H'ers to International Understanding."

Judy Holmes, Rep.

## Teen-Agers Can Benefit From 4-H

Benefits teen-agers have by staying in 4-H was emphasized at the meeting of the Cloverleaf Club, Gove county, by Sandra Owens.

Sandra, a member of the Ve-Go Club, pointed out teenage 4-H'ers have chances to meet many members from other clubs and to make new friends while attending camps and other events. She told about the trip to Chicago she won as a Kansas delegate to the National 4-H Congress.

Sandra advised younger members to put down everything in their record book so they would have the information available when they try for awards in later years.

Bettie Rae Sutcliffe, Rep.

## Club Has Safety Patrol

The Indian Creek Club, Shawnee county, sponsors a school safety patrol. Each week two of the ten members assigned to the patrol are designated to patrol for a week at two traffic points. The members have received instruction from Topeka police department officials on their duties and responsibilities with the safety patrol.

Connie Metz, Rep.

## Ideas in Brief

"Will Your Vote Count?" was the theme of a citizenship window display prepared by the Richland Club, Harvey county, in a Whitewater window, reports Danna Lockwood, reporter . . . Reporter Nancy Sherylnn Lue reports the Scranton Scramblers Club, Osage county, plans to take gifts for the Children's Ward at Stormont Vail and Topeka State Hospitals, instead of having a gift exchange at their Christmas party . . . Members of the Walnut Club, Reno county, have voted to send money to CARE

## Song of the Month

(Continued from Page 14)

the organ repairman arrived from Tyrol a few days later, he also heard the song and was impressed by its beauty. In fact, "Silent Night" was the tune played by Franz Gruber as the repairman stood by to see if the organ had been properly fixed.

## Song to Germany

The repairman took the song back with him and presented it to a family in the Austrian Tyrol who made extended concert tours and were famous for their singing of folk songs. Thus the song became known in Germany before it was published.

It was printed and became known as a "Tyrolean" Christmas song. In its travels about Germany the song had lost the names of its composers. It was thought to be a folk song. But in 1854 inquiry was made by the musicians of the royal court of Berlin and its true composers were found.

So from the little hamlet of Oberndorf in Germany, the song has found its way into every hamlet of the Christian world. It is one of the universal favorites and has been translated into no less than ninety different languages and dialects.

# Have You Said

# Thanks To Your



# Kansas 4-H Journal Sponsor?

He Displays the Emblem Above



for use in Chile, according to a report from Larry McCoy, reporter . . . New officers were elected at the October meeting of the Obee Club, **Reno** county . . . County camp fees for leaders acting as councilors were paid by the Partridge Club, **Reno** county, treasury . . . Three **Montgomery** county 4-H presidents represented the 4-H and other organizations at the Governor's Safety Conference in Topeka, October 24. Bonnie Uppdal was a delegate of the Busy Band Club and the Tornado Tillies (Field Kinley High School group). Larry Erne was a delegate of the Bob White Club and Coffeyville Junior College and Ronnie Holmes represented the **Montgomery** county 4-H Clubs and the Junior Red Cross . . . In addition to winning a purple seal for the 14th consecutive year (a no small achievement for any club), members of the Country Pals Club, **Thomas** county, received nine county winner awards and five leaders were recognized for their 26 years of service at the county achievement program . . . Seventy attended the annual achievement banquet program of the Walnut Valley Club, **Barton** county. Politics was the theme and all participated in a pre-election vote with voting booths and ballot box showing the soon-to-be voters the exact procedure. Results were Kennedy-Johnson 22 and Nixon-Lodge 35. Donkeys and elephants decorated the tables and walls . . . Members of the Plevna Club, **Reno** county, plan a paper drive to raise money for IFYE delegate Hal Judy . . . Thirty-eight members of the Union Valley Club, **Reno** county, won 295 county fair ribbons . . . Members of the Prosperity Club, **Reno** county, entertained their parents in a special October program with a quartet vocal group, a demonstration and explanation of the 4-H program by several of the members . . . Club members of the Bird City Go-Getters Club, **Cheyenne** county, expressed high appreciation of the no-bake cookies prepared by Linda Beeson in her club meeting demonstration . . . As a holiday service project, members of the Prosperity Club, **Reno** county, will sell Christmas tree tickets—proceeds to go to the handicapped . . . Leroy Schmidt demonstrated how to "Adjust Points and Clean Plugs on an Air Cooled Motor" at the October meeting of the Haven Club, **Reno** county . . . The Turon Lions Club were guests of the Turon Lucky 4's Club, **Reno** county, at their October meeting . . . Members of the Union Valley Club, **Reno** county, have plans to present a program at the local PTA meeting in the spring . . . Norval McGonigle, Salem Club, **Reno** county, community leader for 20 years, retired at the October meeting of the club . . . "Decorating cup cakes for Halloween" was the subject for a demonstration given by Margaret Beck at the October meeting of the Richland Club, **Harvey** county.

## Getting It in the Neck



Taxes collected (excluding social insurance) by Federal, state and local governments reached an all time high—\$100 billion—in fiscal 1959, or \$567 for every American. The per person size of the tax burden by tax category is shown above, with the individual income tax the largest.

The continued growth of the American economy requires a sustained growth in savings and investment. Extreme graduation in income tax rates tends to kill the incentive to save and invest. Economic growth and private control of the economy cannot be maintained if a continually increasing proportion of the national income is withdrawn from the economy through taxes.

In order that state and local governments may provide services requested by their citizens, it is imperative that certain areas of taxation now pre-empted by the federal government be systematically restored to state and local governments.

## Kansas Farm Bureau

105 County Farm Bureaus

Working Together

# Safety is Important Part of 4-H Electric Project

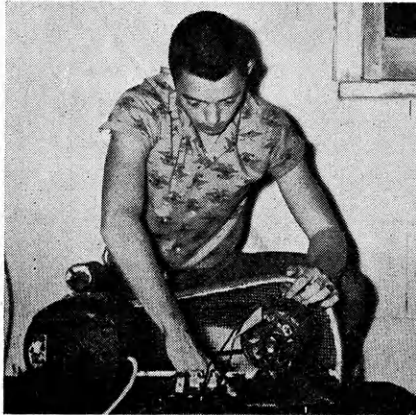


Larry White, Geary county, has used this demonstration board to impress his audiences at the Mid-America, Kansas State and county fairs with the importance of electrical safety.

"The most important thing I have learned in 4-H is the use and care of electrical equipment," says Larry White, Geary county 4-H'er and winner of one of the educational trips to Wichita for top electric members.

### Safety Is Important

"The most valuable thing in the electric project has been the emphasis on safety—so many people don't realize how dangerous electricity is—they're too careless with it," Larry said in telling why he considers his safety demonstration one of his Larry made this battery charger his first year in the electric project—finds it and his soldering iron the two most useful projects he has made.



most important.

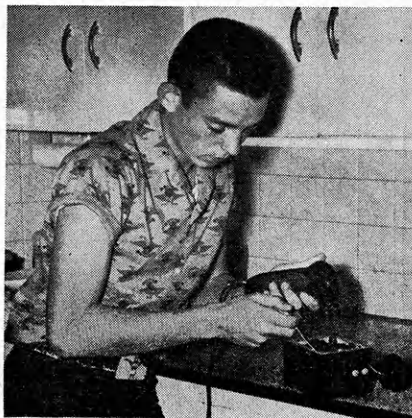
He gave the demonstration, using the board pictured at upper right, at both county and state fairs.

In his demonstration, Larry told his audiences there were 5,000 volts going through the high line on his board. He used rubber gloves tested to withstand 10,000 volts current.

### Bird Is Safe

"You have probably wondered why a bird can sit on a highline and not be injured," he says. "This is because the bird is in contact with the wire only. Should it touch anything in contact with the ground at the same time it is sitting on the highline it would be killed instantly." "When a car hits a high line pole, the first rule to remember is to stay in the car because the steel frame grounds you and the rubber tires are insulators."

In the past year, Larry made the electric soldering iron he is shown using to make his safety flasher for use during road emergencies.



contact with the wire only. Should it touch anything in contact with the ground at the same time it is sitting on the highline it would be killed instantly.

"When a car hits a high line pole, the first rule to remember is to stay in the car because the steel frame grounds you and the rubber tires are insulators."

### Safety Rules

Moving well pipe or high machinery, TV antenna's too close to the high line and wires hanging over highlines are all danger points one should watch for, Larry points out. In his demonstration, Larry lists four safety rules for electrical highlines—

1. When a car hits a pole, stay in the car.
2. When moving high machinery, stay clear of high lines.
3. Never install a TV antenna close to a high line.
4. When you see something in contact with a high line, don't touch it or anything contacting it.

"A good safety rule to remember is distance is the best insulator for electrical high lines," Larry concluded.

WATCH THIS  
PAGE FOR IDEAS  
ON FARM AND  
HOME ELECTRIC  
PROJECTS

## Electric Light and Power Companies in Kansas

The Kansas Power and Light Company

Central Kansas Power Company

Kansas City Power & Light Company

Kansas Gas and Electric Company

Western Light & Telephone Company