

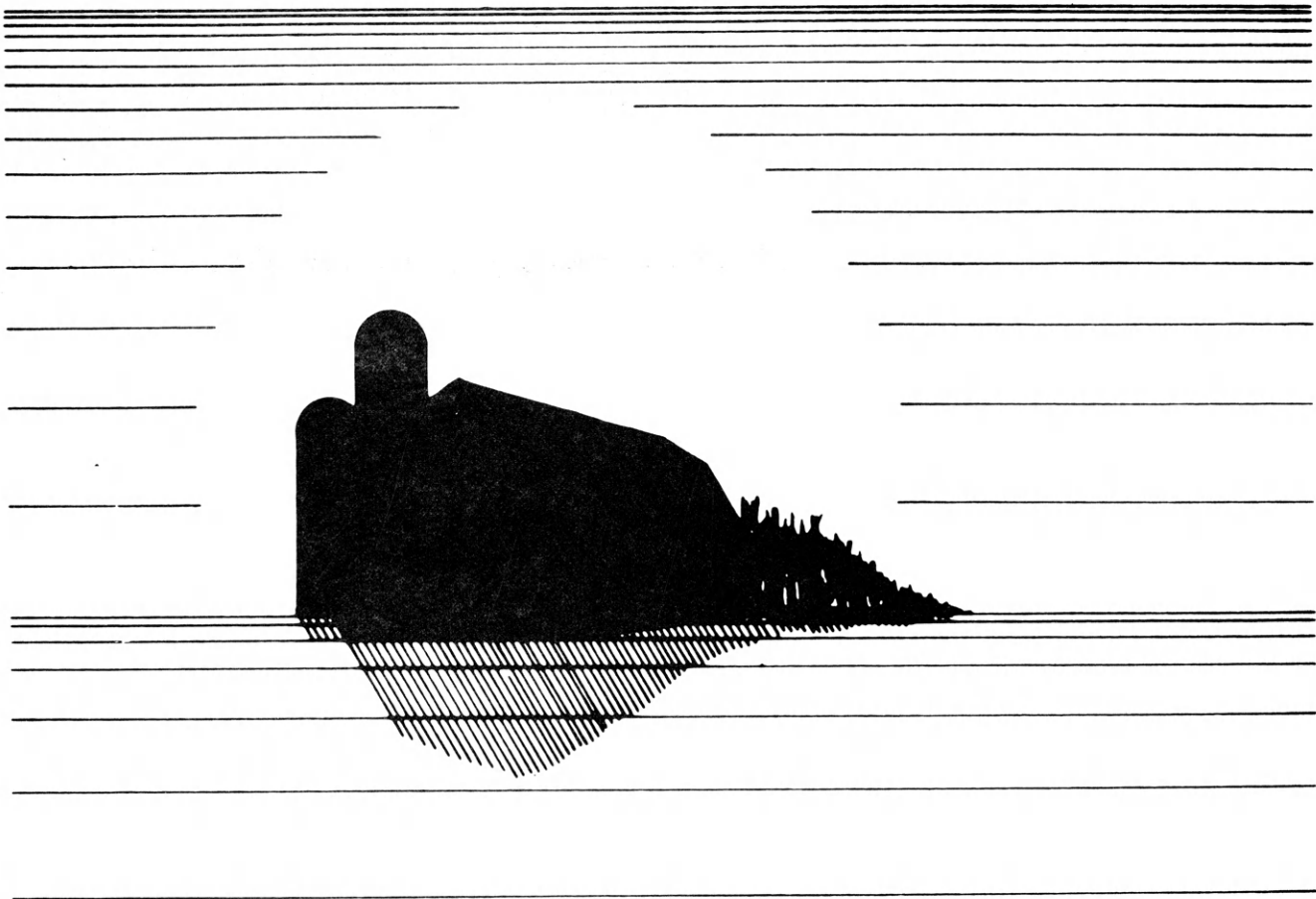
Kansas 4-H Journal

The Family Magazine

June 1982



Kansas 4-H Family of the Year



Nearly 30 Kansans are killed each year in farm-related accidents. Proper safety procedures and equipment could reduce the number of fatalities and injuries. Be safety-conscious when working with farm livestock, machinery, electrical equipment and chemicals.

Your 4-H club can make people more aware of farm, home and highway safety. Plan and carry out a club safety project. Submit a report this fall for consideration as one of the top ten club safety projects. Kansas Farm Bureau awards the top club a trip to Kansas 4-H Congress for eight 4-H members and two leaders. The next nine clubs win \$35 for the club's treasury and a scholarship to the Farm Bureau Youth Safety Seminar next summer. The 4-H members who go to the Safety Seminar must be 14 or 15 by June 1, 1983.

Someone at your county Extension office can tell you how to enter and can give you safety information. Or write to Kansas Farm Bureau, Safety Division, Manhattan, Kansas 66502.

KANSAS FARM BUREAU

SAFETY DIVISION

MANHATTAN



Kansas 4-H Journal

Volume XXVIII, No. 5

June 1982

COVER: The Al Pendleton family from Douglas County is the 1982 Kansas 4-H Family of the Year. Family members are: (standing, from left) sons John, Scott and Jim. Seated are (from left) Karen Riley (Mrs. John) Pendleton, Al Pendleton, Lorita Pendleton, and Marilyn Lacey (Mrs. Jim) Pendleton, holding Jared. See related story on pages 16 and 17.

Sara Gilliland.....Editor
Teri Springer.....Secretary

Address all correspondence:
 Kansas 4-H Journal
 Umberger Hall, KSU
 Manhattan, Kansas 66506
 Phone 913-532-5881



Kansas 4-H Journal is published
 10 times a year by
KANSAS 4-H FOUNDATION, INC.

Merle Eystone.....Executive Director
Trisha Cash.....Secretary
Ann Walker.....Asst. Treasurer

BOARD OF TRUSTEES

Governor John Carlin
 Honorary Chairman

Wm. M. McDonald, Chrm. Shawnee Mission
 Glee Smith, Vice-Chrm. Larned
 John Junior Armstrong, Treas. Manhattan
 Duane Acker Manhattan
 Ross Beach Hays
 Mrs. Edna Collingwood Johnson
 W. Dale Critser Wichita
 Max Dickerson Kansas City
 Richard Dillon Hutchinson
 John O. Dunbar Manhattan
 Mrs. Olive Garvey Wichita
 Balfour S. Jeffrey Topeka
 J. Harold Johnson Manhattan
 John D. Montgomery Junction City
 George B. Powers Wichita
 Fred Sobering Manhattan
 Mrs. Charles Streeter Manhattan
 Robert Wagstaff Shawnee Mission
 Mrs. Dwane Wallace Wichita
 *Glenn M. Busset Manhattan
 *Sen. Frank Carlson Concordia
 *Harry Darby Kansas City
 *Roger E. Regnier Manhattan
 *Dolph Simons, Sr. Lawrence
 *Advisory Member

Use of the 4-H name and symbol approved by the secretary of Agriculture of the United States, January 23, 1951, under the provisions of the law as reenacted by Sec. 707 of the Act of June 25, 1948, Public Law No. 772 80th Congress (10 USC 797).

ARTICLES

Family fun and changes are part of county fairs 4,5
Shawnee County 4-H clubs donate aquarium to Capper Foundation 6
New director starts at Rock Springs Ranch 8
Al Pendleton family honored as 1982 Kansas 4-H Family of the Year 16,17
Former delegates gather for Master 4-H Club reunion 18

REGULAR FEATURES

Editorial 3
Kansas 4-H Foundation Honor Roll 9-16
Energy Challenge Page 19
Ideas & News 22
Family Fun Page 23

Keep judging in perspective

by A. Lois Redman

Extension Specialist, 4-H—Youth Programs

Too many times I hear, "Everything was great with our 4-H club until we went to the fair and then the judge ruined it all." Have you heard that?

There are many people who can help evaluate a 4-Hers work. First of all, 4-Hers should be evaluating their own work. When project leaders meet with 4-Hers and help them with their project work this is a real learn-by-doing process. The 4-Her, the parent and the 4-H leader should be evaluating the project as the 4-Her works on it. By exhibiting at the fair, the 4-Her asks an adult, usually a stranger, to give an opinion about the exhibit. That's all the county fair judge is—one adult giving the 4-Her their opinion. The 4-Her has asked for that opinion so should at least be nice about the answer given. We do not always have to agree with the judge's decision, but we have asked them to give us their best judgement.

I really feel that some 4-Hers think judges have horns. It's as if they're trying to find out everything wrong. But that's not true. Judges have halos too. They really do want to help boys and girls improve their products.

Counties can help judges do a good job at their county fairs by being sure that the judges know what has happened in the county in the past year. If 4-H leaders have said a certain seam is O.K. for the clothing projects, then the clothing superintendent or the Extension agent should be sure to let the judge know that they have been encouraging 4-Hers to use a certain type of seam. The judge then can reinforce those things which 4-Hers have been learning.

4-Hers should not be making exhibits just for judges. Nellie enjoyed making bread. She went to the state bread baking contest and the judge told her "you use too much flour in your bread. The dough is too stiff." So for one whole year Nellie tried to make a very light dough. She went back to the state fair, a different judge was judging that year, and the judge said, "you are not using enough flour in your dough. The dough is too soft." So Nellie decided that she would go back to making bread the way she wanted to make bread and the way that her family enjoyed it.

(Continued on page 7)

Family fun & changes—all part of county fair

By Kathleen Ward
Assistant Extension Editor
4-H and Youth

County fairs can be almost like family members—as well-known as first cousins, as comfortable as grandma and as much fun as a favorite uncle.

“County fairs seem to be as popular as ever,” says Bill Borst, Kansas State University’s northeast area extension 4-H-youth specialist. “And most are still growing.”

Like families, fairs have a way of changing. And their growth is partly a result of creativity and a willingness to try new things that could make today’s fairs even better.

Leavenworth County, for example, has started judging its 4-H home economics exhibits several weeks before county fair time. Members bring their exhibits to an air-conditioned school room. In the privacy of that setting, judges can take the time they need to talk to each 4-H member about his or her entry.

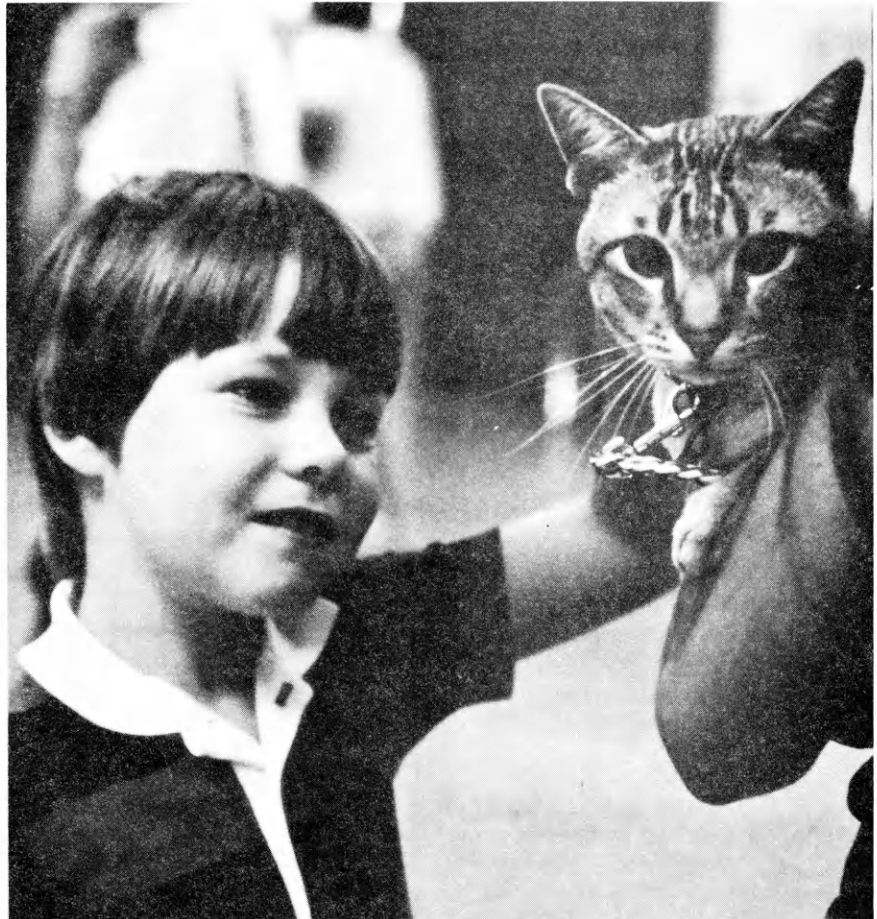
“The kids learn a lot more in conference judging,” points out Leavenworth’s 4-H agent, Ralph Rector. The 4-H members know their ribbon placing after this early judging, but to get their ribbon, they must exhibit at Leavenworth’s fair. And most of them do.

Johnson County gets an early start on its fair, as well. Before 4-H rocket builders can exhibit their projects at the county fair, their rocket must qualify by actually working at an early countywide blastoff, conducted by the fair’s rocket department committee.

Barton County has a kick-off breakfast for 4-H families on entry day at its fair. Security State Bank in Great Bend supplies the chuck wagon breakfast, which 4-H agent Bill VanSlike says is a highlight of the county’s fair.

Barton has another activity that 4-H members may enjoy even more. After the livestock exhibits, members go outside to cool off and have fun at an All-American watermelon feed. American State Bank is the sponsor.

Lyon County has an equally



popular event. The fair board there sponsors a 4-H rodeo that attracts participants from many nearby counties. With some categories restricted by age, the rodeo features goat tail tying, goat tying, steer riding, team roping, break-away roping, ribbon roping, tie-down calf roping, barrel racing and pole bending. Young 4-H rodeoers can participate in any four events.

Miami County gets outsiders involved in its fair, too. The County 4-H Council and fair board co-sponsor both a talent show and a Gee Whiz Pet Show that are open to the public. The contests attract all age groups and are held in the show arena as beginning fair events.

The pet show probably has the more unusual judging criteria. Fish compete in the best trick event. Youngsters may dress like their guineas to improve their chances in the look alike category. The person and pet who have netted the most points at the end of the show get a trophy.

Harvey County attracts fair audiences with an afternoon hand pet show in the fairgrounds arena. While the pets are on exhibit on tables, the show judge talks to the 4-H pet owners about their rats, gerbils, fish or cats.

Lyon piloted an attention getting 4-H cookoff and had such good results that it’s now looking for a sponsor to make the contest an annual event. During the dinner hour one day, 4-H contestants brought outdoor grills, prepared a meal and set the table for it. The smell of teriyaki pork chops and hamburgers attracted big crowds, says Lisa Ramsey, Lyon’s 4-H agent.

Kingman, as do many counties, uses food as a money making source for 4-H members. But Kingman doesn’t just run a booth. The junior leaders hustle selling advance tickets for a big pork barbecue and then run the barbecue themselves.

Pottawatomie also puts a twist on food sales—in fact, two. With the help of county pork producers and



rancher Dick Robbins, county 4-H clubs sell pork burgers and longhorn burgers at their stand. To show appreciation to 4-H supporters and to increase fair attendance, the 4-H Council gives away food stand coupons good for one free burger and a small drink. Those coupons go to such people as last year's livestock buyers, the principal of the school where county 4-H day is held and the business owners who supply trophies.

Phillips County has sold food exhibits to the public for years. But this year the county is trying something new at that sale. All exhibits will sell for set prices, no matter if they're blue or white ribbon winners. The proceeds will go into a fund that will go back to the 4-H members, in premiums which reflect the ribbon placings the young people earned.

Lincoln County 4-H members, on the other hand, can sell any one project item they wish—anything from a macrame key chain to a rabbit. They accompany their item into the show ring between livestock sales, and the auctioneer takes bids for them.

Kathy Lupfer, Lincoln extension home economist, says most county 4-H members participate in the sale.

Some really merchandise their products. For example, they may put rolls they're selling into a fancy cloth-lined basket.

Neosho County will try auctioning off food between livestock events this year, but that's just one change the county has tried in its attempt to make the 4-H livestock sale more fun and fairer to all involved.

To someone who doesn't frequent sale barns, bidding by cost per pound while trying to remember how much of that cost is premium and how much is the base bid that a packer has offered to pay can be confusing. So, Neosho announces each base bid, but auctions off only the premium—and that's in dollars, not cents per pound.

Neosho sells in reverse order—starting with the white ribbon animals. The auctioneers, who donate their time, rotate, so no one gets tired or lets the momentum drop. A fair sales committee collects money from local businesses that don't want to buy an animal. The committee pools that money and then uses it to bid when an animal isn't bringing as much premium as the rest in its ribbon class.

As Neosho 4-H members leave the sale barn, they get a rosette to take to their premium buyer. The members collect their premiums themselves and are encouraged to take cookies or such as a "thank

Marion is one of those counties that has included a Bike Rodeo at its fair. Focus is on safety. Younger members take a simple quiz and then ride through the rodeo's obstacle course.

McPherson is a leader among those counties that allow card table displays. In McPherson the class isn't limited to those who have no other contest in which to exhibit their project. For example, members with livestock projects can enter a display. Mary Anne Hart, the county's 4-H agent, says this allows someone who may not ride that well or may not be able to afford quality animals a chance to succeed in their project in another way. Reading project members still set up the most displays, however.

Sedgwick invited 4-H members to bring their camera to the county fair and to shoot a roll of film. The exposed rolls were processed overnight. Then the participants got to select four prints to mount for exhibition during the rest of the fair.

Ottawa has special awards it gives members who have done one thing particularly well, even if their entire exhibit didn't rate a blue ribbon. Spotlight Awards may appear, for example, on a zipper that was well done or on a craft project that made especially good use of color or line.

(Continued on page 7)

Shawnee County 4-H clubs donate aquarium to Capper Foundation teens

Three Shawnee County 4-H clubs from the north part of Topeka have furnished a fish tank, complete with eight gold fish, for the residents of Unit 3 at the Capper Foundation.

Unit 3 is the year-round home for eight teenagers. Each teen is anxious for their turn at feeding the fish and is looking forward to the 4-Hers visits.

During May, members of the Pleasant Hill 4-H Club checked the tank and the air pumps, and made sure that enough food was available. During June and July, Indian Creek 4-H Club and Elmont Wildcat 4-H Club members will take turns checking on the fish tank and visiting the kids.

This community service project is in effect until the end of July. At that time the clubs and the Capper Foundation kids will evaluate the project to see if it should be continued.

A member of the Rocky Hill 4-H Club donated the fish tank. The air filters, rocks and air pump were donated by an Elmont Wildcats 4-H Club member. The cost of the fish and the food is split by the three participating clubs.

The Capper Foundation is a private, nonprofit organization dedicated to the education and habilitation of physically handicapped children. Located in Topeka, the Foundation provides services for infants and preschoolers, school-aged children, and handicapped adults.



Residents of Unit 3 of the Capper Foundation, Topeka, will have a lot of fun watching and caring for the gold fish provided by three Shawnee County 4-H clubs.

Both residential and out-patient services are provided. The teenagers in residential Unit 3 have placed their aquarium in the common living area which they use for socializing and eating.

**state-wide services,
border-to-border**

COLUMBUS • COUNCIL GROVE
GOODLAND • JUNCTION CITY • KANSAS
CITY (2) • LAWRENCE • LEAWOOD
MISSION • OLATHE • OTTAWA
OVERLAND PARK • SHAWNEE • WESTWOOD

THREE HUNDRED MILLION DOLLARS STRONG

**Anchor
savings**
ASSOCIATION

INSURED
F.S.L.I.C.

Money For Your Treasury

OVER 2 MILLION
Sunflower Dishcloths

WERE SOLD LAST YEAR BY
MEMBERS OF GROUPS, SOCIETIES,
CLUBS, ETC.

THEY ENABLE YOU TO EARN
MONEY FOR YOUR TREASURY
AND MAKE FRIENDS FOR YOUR ORGANIZATION

Sample FREE to Official.

SANGAMON MILLS, INC., Cohoes, N. Y. 12047
KJ Established 1915

Congratulations, graduates!

If you receive money for graduation gifts, be sure to deposit some of it in your

Kansas Savings and Loan

Arkansas City First Federal Savings & Loan Assn.	Liberal Frontier Federal Savings & Loan Assn.
El Dorado Mid-Continent Federal Savings & Loan Assn.	Lyons Lyons Savings & Loan Assn.
Eureka Eureka Federal Savings & Loan Assn.	Manhattan Manhattan Federal Savings & Loan Assn.
Fort Scott Liberty Savings & Loan Assn.	Medicine Lodge The Barber County Savings & Loan Assn.
Garnett The Garnett Savings & Loan Assn.	Parsons Mid-America Federal Savings & Loan Assn.
Hutchinson Valley Federal Savings & Loan Assn.	Plainville and Stockton Rooks County Savings Assn.
Leavenworth Citizens Mutual Savings & Loan Assn. Mutual Savings Assn.	

Judging (Continued from page 3)

I did some conference judging with 4-Hers who had exhibited baked products. One cake was almost perfect except that there was a tiny airhole right in the middle. I cut another piece, so I could cut out the airhole. As I visited with the 4-Her, and as her mother listened, they both became excited because it was an excellent product and would be purple quality. But before the girl left I said, "let me let you in on a secret. Look what I found in your cake." I turned over the piece of cake and showed her the hole. We talked about why that happened. It was evident to me that she knew how everything else should be done. And that was just probably a little air hole that didn't get destroyed. So I just cut it out. At the end of the conversation the mother said, "well I never knew a judge would do a thing like that." That mother learned that judges do want to help 4-Hers.

Some critics say 4-H is the biggest elimination contest for boys and girls in the whole United States. That statement troubles me, but sometimes I'm afraid it's true. Some boys and girls that need 4-H leave our program because they cannot meet our high expectations. Our goal is to make boys and girls feel good about things they accomplish in 4-H. If we use competition right we can help them to grow and to feel positive.

One county agent felt a sense of

* * * * *

Fairs (Continued from page 5)

Pawnee County will have a new foods class this year that not only includes new exhibitors but also teaches more about good nutrition. Exhibitors will bring a sample of their favorite food, a menu that includes that food and a table setting. They'll discuss with the judge their favorite's cost and nutritive value. After the judging everyone will be able to sample the other 4-H members' entries and to exchange recipes.

Many of these ideas are traded across county lines. The changes are intended to get more kids involved, make contests fairer, and still retain that familiar feeling that fairs generate—fun.

accomplishment when he heard a 4-H member give a report at his community club. The 4-Her said, "guys, I'd like to thank you for having this 4-H club because I would never have gotten to go to the state fair if it hadn't been for you." And then he described the big dormitory where he stayed and met 4-Hers from all over the state. He was impressed with the big barns and all the cattle. He had fun on the ferris wheel. He thanked the club and sat down. Another boy popped up and asked, "What did you get on your calf?" The 4-Her said, "Oh, I forgot to tell you. I got a red ribbon on my calf."

He didn't get up and say, "I really let you down, I only got a red ribbon." Everything else at the fair had been such a positive experience that he was not a failure. He had learned a lot of things and really felt good about getting a red ribbon on his calf.

Your challenge today is to make boys and girls feel good about themselves. If they can get up in the morning, look in the mirror and like what they see, then we have achieved. But it's so much easier to always wish you were like someone else. Through positive 4-H experiences. we can help boys and girls feel good about themselves.

If you think you need a four-year education to get a good job with a good salary, you're wrong.



You can get all the education you'll ever need in just 18 months at Electronics Institute.

At Electronics Institute you'll receive the most up-to-date instruction available on sophisticated equipment used in business, medicine, television, avionics, computers and many other technically advanced areas. It's the kind of education that can start you off in a career where you can earn as much or more than many four-year graduates.

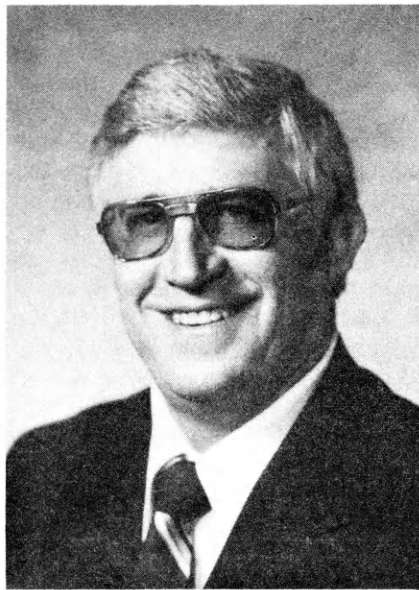
If you're interested in becoming a part of a field where highly trained professionals are always in demand, call Electronics Institute collect at 816-361-5656. We can help you get the education you'll need to enjoy the kind of career, and salary, you want.



**ELECTRONICS
INSTITUTE**

A Division of Manufacturers Technical Institutes, Inc.

5605 Troost Kansas City, MO 64110
(816) 361-5656



New director starts at Rock Springs Ranch

L. Douglas Munsell, the new director of Rock Springs Ranch, was hired just in time for the busiest time of the year at the state 4-H center south of Junction City. Munsell says he's excited to work at such a "fantastic facility" and looks forward to working with the current year-round staff and the 40 extra employees hired for the summer.

Munsell is accustomed to working with youth, handling administrative duties and developing programs. For the past ten years he has been a district Scout executive with the Boy Scouts of America. He was assigned to Hutchinson, Garden City and most recently, North Platte, Nebraska.

Munsell spent the first 16 years of his life in Oklahoma and was a 4-H member there. He lived in Liberal, Ks. for the next 16 years. He graduated with a degree in health and physical education from Panhandle State University in 1972.

Munsell and his wife Elaine have two sons, Danny, age 16, and Doug, age 20. Besides his professional activities, Munsell is interested in photography, camping and sailing, and is a former rodeo competitor.

Chris Knobel, the former director of Rock Springs Ranch, resigned to enter farming.

Karen Russell

LR TRAINING STABLE

Route 5, Box 19 Hutchinson, Kansas 67501

Within the last month, these sponsors have agreed to provide Kansas 4-H Journal subscriptions for the coming year. Be sure to thank them.

BARTON

American State Bank & Trust, Great Bend
Great Bend Co-op, Great Bend

BROWN

*Citizens State Bank, Hiawatha
*Farmers State Bank, Fairview
*Morrill State Bank, Sabetha
*The Bank of Horton, Horton
*The Bank of Robinson, Robinson
*The Morrill & Janes Bank, Hiawatha
*The Union State Bank, Everest

CLAY

*Union State Bank, Clay Center

CRAWFORD

*Farmers State Bank, Walnut
*First State Bank, Arma
*First National Bank, Girard
*The First State Bank & Trust Co., Pittsburg
*Girard National Bank, Girard
*Hepler State Bank, Hepler
*McCune State Bank, McCune
*National Bank of Pittsburg, Pittsburg
The City National Bank of Pittsburg, Pittsburg

FORD

*Fidelity State Bank & Trust, Dodge City
*Farmers State Bank, Bucklin
*Ford County State Bank, Spearville
*First National Bank & Trust Co., Dodge City
*First National Bank, Spearville
*Bucklin State Bank, Bucklin

FRANKLIN

*Peoples National Bank, Ottawa
*Wellsville Bank, Wellsville

GEARY

*Central National Bank, Junction City

GREELEY

*Greeley County 4-H Council

JEWELL

*Burr Oak State Bank, Burr Oak
*Citizens State Bank, Jewell
*The Formoso Bank, Formoso
*First National Bank, Mankato
*Randall National Bank, Randall
*State Bank of Esbon, Esbon
*State Exchange Bank, Mankato

LINN

*Bank of Pleasanton, Pleasanton
*Centerville State Bank, Centerville
*Farmers State Bank, Blue Mound
*First State Bank, Pleasanton
*Linn County Bank, LaCygne
*Prescott State Bank, Prescott
Linn County 4-H Council

McPHERSON

McPherson County 4-H Development Fund

NESS

Ness County 4-H Council

THOMAS

Sunflower Savings Assn., Colby

WABAUNSEE

*Alta Vista State Bank, Alta Vista
*Eskridge State Bank, Eskridge
*First National Bank, Alma
*First National Bank, Harveyville
*The Stockgrowers State Bank, Maple Hill
Wabaunsee County 4-H Council

**These sponsors have provided Kansas 4-H Journal for 4-H families for 20 or more years.*

BEST WISHES TO ALL 4-H MEMBERS



THANK YOU for helping make it possible for us to observe our 100th year.

STEFFEN DAIRY FOODS COMPANY
Wichita • Dodge City • Hutchinson

1981 Donors,

The Kansas 4-H Foundation means many things to many people. For many 4-H members it means Rock Springs Ranch, Lake Perry 4-H Center or the Southwest 4-H Center. For many young college women, it means Clovia cooperative living houses at Kansas State University and Fort Hays State University. For over 15,000 4-H families throughout Kansas, it means receiving the Kansas 4-H Journal ten times a year. To others, it means receiving awards and scholarships.

To me, the Kansas 4-H Foundation is a vehicle used by over 1300 individuals, businesses and organizations to contribute to and support a program which they feel is important to the youth of Kansas. The Board of Trustees of the Kansas 4-H Foundation is one link in the chain of support. The strongest links are those of you who contribute time and money to make the Kansas 4-H Foundation a reality and make the program work. Thanks for your cooperation.

***William M. McDonald
Chairperson
Kansas 4-H Foundation
Board of Trustees***

***KANSAS 4-H FOUNDATION
1981 HONOR ROLL***

KANSAS 4-H FOUNDATION

1981 HONOR ROLL

EXECUTIVES

These donors provided more than \$25,000 for 4-H during 1981.

- 13 Wiedemann, K.T. Foundation

SPONSORS

These donors provided from \$5,000 to \$24,999 for 4-H work during 1981.

- 5 Baughman Foundation
- 8 Dillon, Richard W.
- 22 Farmland Industries
- 5 Finnup Foundation Trust
- 14 Frye, Raymond G.
- 22 Garvey Foundation, Inc.
- 6 Hansen, Dane G. Foundation
- 6 Jenner, The John W. or Hazel M. Trust
- 4 Klein, Mr. and Mrs. G. T.

PATRONS

These donors provided from \$1,000 to \$4,999 for 4-H work during 1981.

*For an initial \$1,000 gift to 4-H work, persons on the Patron Honor Roll will receive a Benefactor Plaque.

- 4 Baker, The Mary F. and Albert Memorial Trust
- 12 Border, Mary Elsie
- 3 Breidenthal, The Willard J. and Mary G. Foundation
- 7 Duckwall-Alco Stores, Inc.
- 21 Eyestone, Mr. and Mrs. Merle
- 29 Federal Cartridge Corporation
- 21 Federal Land Bank of Wichita
- 3 Fink Foundation
- 29 Fox, Elmer, Westheimer, and Company
- 19 Gwin, Mr. and Mrs. Paul B.
- 4 Hedrick, Frank E. Foundation
- 26 Hicks, Mr. and Mrs. William
- 8 Humphreys, Lewis H.
- 10 Jeffrey, Mr. and Mrs. Balfour S.
- 2 Kansas Association of Bank Agricultural Representatives
- 29 Kansas Bankers Association
- 29 Kansas Committee on the Relation of Electricity to Agriculture
- 29 Kansas Farm Bureau
- 1 Landfield, The Michael S. Fund
- 1 McRae, Mr. and Mrs. Donald D.
- 4 Osborne, R. R.
- 8 Rice, Ethel and Raymond Foundation
- 22 Southwestern Bell Telephone Company
- 2 Sunderland, Lester T. Foundation
- 11 Texas Educational Association
- 6 Winter, Winton A.

FRRIENDS

These donors provided from \$500 to \$999 for 4-H work during 1981.

- 1 Anderson, Hannah
- 1 Anderson, Henry C.
- 1 Anderson, Laura
- 3 Archer, Mr. and Mrs. Rex
- 2 Beech Aircraft Foundation
- 4 Carlson, Mr. and Mrs. Frank
- 15 Carpenter, William 4-H Foundation, Inc.
- 10 Dubbs, Clara Louise
- 29 Folgers Coffee
- 1 Griffing, Mr. and Mrs. William J.
- 9 Hesston Foundation
- 2 Hoff, Daniel and Minnie Charitable Trust
- 4 Holmes, Blanche
- 1 James, Frederick
- 29 Johnson, J. Harold
- 13 Kansas IFYE Alumni Association
- 6 Knorr, Mr. and Mrs. Eric T.
- 10 Krause, The Henry Charitable Foundation
- 5 Monroe, Miss Day
- 8 Muchnic Foundation
- 3 Pizza Hut, Inc.
- 1 Red Baron Pizza
- 7 Richards, Mrs. Emily Jane Atkinson Estate
- 7 Rockwell International Corporation
- 2 Rolph, Darrel

HONOR ROLL OF OTHER DONORS

- | | | |
|--|---|---|
| <ul style="list-style-type: none"> 1 Acheson, Gregory and Paula 5 Adair, John A. and Grace S. 1 Adam, Jim and Barbara 1 Adams, James and Mary Jane 1 Ailor, Dick 3 Akin, Mrs. Tom 6 Albers, Mr. and Mrs. Clyde 2 Alden, Evelyn 1 Aldrich, Phillip and Thyla 3 Allen, Elton Family 2 Altwegg, Frederick and Noreen 1 Ames, Jennifer 4 Anderson, E. T. and Cora F. Foundation 23 Apel, Dale and Mary Dean 19 Appleby, Tom and Mariellen 4 Armstrong, Mr. and Mrs. John J. 1 Avery, Dr. and Mrs. Thomas 4 Ayres, Mr. and Mrs. K. Wayne
 1 B & L Trash Service 1 Bachus, Terry and Kay 1 Baker, James 7 Baker, Mr. and Mrs. Kirk 19 Baker, Louis A. 2 Balderson, Inc. 7 Balding, Mr. and Mrs. James L. 7 Bank of Commerce and Trust Co. of Wellington | <ul style="list-style-type: none"> 2 Banker, Aldean 3 Barger, Rosa E. 6 Barker, Mr. and Mrs. Norman 19 Barr, Mr. and Mrs. Bernard 1 Barrand, Monty 1 Baskett, Ferol and Joan 1 Bass, Linda 16 Bates, Mrs. Viola 6 Bathurst, Mrs. Dale R. 1 Beckwith, Sara K. 8 Beems, Mr. and Mrs. Harold M. 5 Beesley, Rodger 5 Beesley Farms Inc. 9 Beezley Dairy Farm 15 Beninga, Mr. C. T. 1 Benton, Timothy T. 2 Bergsten, Mr. and Mrs. Ralph 1 Berrie, Donald M. and Ann 6 Bertram, Mr. and Mrs. Galen 3 Bertrand Elevators Inc. 3 Beverly State Bank 4 Beyer, Mr. Roscoe A. 13 Bird, Byron G. and Donna M. 2 Bird, Mr. and Mrs. Daniel M. 1 Bird, Maurice and Ingrid 3 Black, Dr. and Mrs. Cyril V. 1 Black, Mr. and Mrs. John V. 3 Blue Crown Plumbing Inc. | <ul style="list-style-type: none"> 4 Bluestem Farm and Ranch Supply, Inc. 1 Blunt, Charles E. and Helen A. 4 Bockhaus, Mr. and Mrs. Ray 3 Boehm, Ralph and Mary 1 Boettcher, Jarold and Barbara 11 Bolt, Mr. and Mrs. W. Fred 1 Bonczkowski, Larry and Mary 11 Booth, Arden 7 Booth, James C. or JoAnne 1 Borck, Lee 1 Borst, William G. and Margery H. 1 Boswell, Dr. and Mrs. H. Craig 2 Bourbon County Farm Bureau 3 Boyd, Dean and Dorothy 2 Bracken, Lyle and Sharon 5 Braden, James D. 6 Bradley, Dr. and Mrs. W. F. Family 8 Brady, Elaine 2 Brant, Mr. and Mrs. John 1 Braun, Melvin 6 Brookover Feed Yards, Inc. 8 Brooks, Miss Blanche 3 Brown, Dr. and Mrs. Cyril 1 Brown, Megan 20 Brown, Mr. and Mrs. Ralph E. 5 Brulez, Isadore 1 Brull, Mr. and Mrs. Randolph 1 Bruning, Gordon Family |
|--|---|---|

Note: The figures preceding the name indicate the number of years of support since the Kansas 4-H Foundation Membership and Share Recognition Plan was started in 1953. Please call omissions to our attention.

MEMBERS WHO HAVE BEEN WITH US SINCE 1953

- | | | |
|--|---|--|
| 5 Bryant, E. A. | 1 Doll Oil Co., Inc. | 6 Grant County State Bank |
| 1 Bunger, Mr. and Mrs. Bill | 1 Doty, Paul and Judy | 1 Gray, LaDonna |
| 7 Burkhard, Kenneth and Maxine | 1 Droge, Leslie and Lola | 1 Gray, Mr. and Mrs. Lyle |
| 9 Burlington Northern Foundation | 6 Drouhard, Mr. and Mrs. Leo | 1 Great Plains Mfg. Inc. |
| 14 Busset, Dr. and Mrs. Glenn M. | 7 Dulaney, Johnston & Priest | 3 Grider, Mr. and Mrs. James |
| 4 Butler County Farm Bureau | 1 Dunham Drilling Co. | 7 Griffin, Mr. and Mrs. James |
| | | 4 Griggs, Otis and Roselma |
| 5 Calbeck, John | 6 Eckerman, Louis and Vera | 10 Groene, Mrs. Joseph |
| 5 Caldwell State Bank | 5 Eckles, Mr. and Mrs. LaVern | 6 Gross, Mr. and Mrs. Ralph L. |
| 2 Calhoun Foundation, Inc. | 8 Edwards, Mrs. John E. | 18 Gugler, Mr. and Mrs. Don P. |
| 8 Cantrell, Dale L. and Wanda | 5 Elder, Mr. and Mrs. Neal | |
| 1 Carlile, James | 3 Elliott, Mr. and Mrs. Harold | 2 Hackler, Mr. and Mrs. Frank |
| 3 Carnahan, Nancy | 9 Ellis State Bank, The | 1 Haines, Joe D. |
| 2 Carnahan, Sara and Quentin | 1 Engelkemier, Larry Family | 8 Halbleib, Mr. and Mrs. George J. |
| 1 Carpenter, Gary | 1 Epler, Mr. and Mrs. John M. | 1 Hall, Jason |
| 16 Carr, Francis E. | 3 Erickson, Henry and Doris | 1 Hallett Construction Company |
| 1 Carr, Mrs. Jean | 8 Ernest, Felix H. | 4 Hallmark Cards, Inc. |
| 3 Carswell, Harold and Pat | 6 Etherton, Mr. and Mrs. Robert | 1 Hamala, J. Family |
| 5 Carter, Louis and Iola | 3 Evans Grain Company | 2 Hamilton County Farm Bureau |
| 3 Casey, Edwin M. and Alice | 1 Ewing, Marlene | 21 Hamilton, Mr. and Mrs. Dean |
| 7 Cash, Walter and Trisha | 3 Exchange National Bank of Cottonwood Falls | 1 Hamilton, Mr. and Mrs. James Family |
| 13 Caspar, Mr. and Mrs. Charles L. Sr. | | 1 Hamilton, Lester D. |
| 7 Cessna Foundation Inc. | 20 Eyestone, Cecil L. and Phyllis | 1 Hamm, Mr. and Mrs. Lee |
| 4 Chadwell, Mr. and Mrs. Roger | | 5 Hamon, Mr. and Mrs. Charles |
| 6 Chandler, Mr. and Mrs. George | 5 Far-Mar-Co, Inc. | 6 Hamon, Mr. and Mrs. John |
| 1 Chapman, Kenneth and Janet | 5 Farm Bureau Mutual Insurance Co., Inc., The | 1 Handle, Wayne and Gloria |
| 15 Chapman, Mr. and Mrs. William | | 1 Hanes, Staci |
| 3 Chase County Farm Bureau Association | 6 Farmers and Merchants State Bank of Argonia | 7 Hanna, Mr. and Mrs. John B. |
| 1 Chautauqua County Farm Bureau | 5 Farmers Co-op Association of Lawrence | 1 Hansen, Dix and Paula |
| 4 Cherokee County Farm Bureau Association, Inc. | 5 Farmers State Bank of Sabetha | 1 Hanson, Robert D. |
| 1 Childs, John R. and Dianne | 1 Farm-way Co-op, Inc. | 5 Hardin, Warren and Kathleen |
| 4 Citizens Bank of Abilene | 17 Federal Intermediate Credit Bank | 5 Harding, Mr. and Mrs. Warren |
| 1 Citizens National Bank of Fort Scott | 19 Felt, Esther L. | 1 Harms, Mary M. |
| 3 Citizens State Bank of Paola | 3 Fendorf, James and Gloria | 4 Harper County Farm Bureau, Inc. |
| 6 Citizens State Bank of St. Francis | 4 Finchman, Mr. and Mrs. Donald | 4 Harris Enterprises, Inc. |
| 9 Citizens State Bank and Trust Co. of Manhattan | 8 Fink, Ben J. and Dorothy | 1 Harris, Jason |
| 1 Citizens State Bank of Waterville | 4 First National Bank of Conway Springs | 1 Hart, Mary Anne |
| 2 Claasen, Mrs. Emil | 5 First National Bank of Fredonia | 5 Hartford State Bank |
| 1 Claussen, The Dr. Verne Jr. Family | 1 First National Bank of Herington | 4 Hartman, Mrs. Aline |
| 7 Clawson, Mr. and Mrs. Eldon L. | 3 First National Bank of Owego | 5 Harvest Publishing Co. |
| 1 Cleland, Miles and Nora | 3 First National Bank of Sedan | 10 Haskin, Mr. and Mrs. Glenn |
| 1 Cleverdon, Jack and Barbara | 5 First National Bank of Wellington | 1 Hassett, John D. III |
| 1 Clock, Jack and Ardath | 7 First State Bank of Healy | 1 Hatch, Dr. and Mrs. Dennis |
| 10 Coberly, Miss Goldie | 8 First State Bank of Tonganoxie | 1 Hayden, Ruth Kelley |
| 9 Cole, Mr. and Mrs. Robert | 6 Fischer, Rex R. and Alice | 7 Haysville State Bank |
| 16 Cole, Dr. and Mrs. Ward M. | 3 Fisher, Steve and Karla | 6 Heifner Nursery, Inc. |
| 5 Collingwood Grain, Inc. | 8 Flanders, Raleigh B. | 2 Heldstab Appliance |
| 2 Commerical State Bank of Long Island | 6 Floyd, Mr. and Mrs. R. D. | 6 Henricks, Mr. and Mrs. Edgar |
| 7 Conrad, Mrs. J. R. | 1 Ford, Roy D. | 3 Henry, Pierre C. |
| 2 Considine, Mr. and Mrs. Gene | 1 Forsythe, Margie S. | 3 Herbster, Mr. and Mrs. Robert |
| 1 Cook, Carol | 2 Fowles, Mrs. MaryAnn | 6 Hesston State Bank |
| 7 Cook, Dr. and Mrs. James E. | 1 Frahm, Ken 4-H Family | 1 Hevelone, James and Sandra |
| 5 Cooksey, Mr. and Mrs. James L. | 4 Franklin, Paul T. | 1 Hildenband, Chris A. and Kathleen |
| 9 Cooper, Mrs. Margaret | 1 Freeborn, Dr. and Mrs. Warren | 5 Hiller, Mr. and Mrs. Charles |
| 3 Cooperative Grain and Supply | 1 Frick, Barbara Dragt | 1 Hinkle, Ronald G. |
| 1 Cope, Cheryl | 1 Frick, The Jack Family | 1 Hinnen, John |
| 1 Copeland, Janette M. | 14 Fry, Mr. and Mrs. Ralph A. | 8 Hixson, Mr. and Mrs. Larry |
| 19 Counter, Mr. and Mrs. Perry | 1 Fullington, Barbara | 3 Hixson, Warren C. and Sharon G. |
| 9 Cox, Lawrence J. and Jessie V. | 1 Fulton, W. Clarence and Edith | 6 Hlasney, Faye J. |
| 1 Crawford, Mr. and Mrs. Loun | 3 Funk, Clyde and Betty | 1 Hodges, Mr. and Mrs. Dale |
| 1 Cressler, Larry and Irene | | 4 Holmes, Ethel D. |
| 7 Crist, Rosemary | 14 Garten, Mr. and Mrs. Clarence | 27 Holstein-Friesian Association of Kansas |
| 29 Critser, W. Dale | 23 Garten, Mr. and Mrs. Frank | 1 Home Lumber Company |
| 23 Cubit, James and Helen | 1 Garza, Karen | 10 Honstead, Arliss |
| 6 Cudney, Ray E. and Joyce | 1 Gaston, Alva Lee and Phyllis | 5 Hook, Maynard C. and Helen |
| 3 Culver, Mr. and Mrs. William | 1 Gateno, Joseph 4-H Family | 1 Hoover, Gerald and Wilda |
| | 1 Geary, Rick | 21 Hoover, Mr. and Mrs. Laurence J. |
| | 3 Geitz, James Herman | 2 Hope, Randle and Marian |
| | 1 George, W. M. | 8 Horlacher, Mr. and Mrs. Wayne A. |
| | 1 Gephardt, Norman and Janet | 3 Hottman, Mr. and Mrs. Orren |
| | 12 Gfeller, Mr. and Mrs. Harvey | 1 Howard, Donald 4-H Family |
| | 1 Giefer, The Larry Family | 6 Hoxie High Kayettes |
| | 1 Gilliland, Don and Sara | 5 Hoyt, Mr. and Mrs. Gordon E. |
| | 20 Gillmore, Ralph E. | 1 Huddleston, Jerry Lee and Joyce |
| | 10 Givens, Mr. and Mrs. Don | 1 Hudson, Larry |
| | 5 Glasco Drugs, Inc. | 13 Humboldt National Bank |
| | 7 Goff, Mr. and Mrs. Harold A. | 13 Humphrey, Mrs. Henry A. |
| | 3 Goodfellow, Mr. and Mrs. Donald | 1 Hunt, The Melvin Family |
| | 9 Goyen, Mr. and Mrs. Lester | 7 Huyett, George L. |
| | 7 Goyen, Mrs. Minnie | 1 Icke, Russell and Jane |
| | 7 Grant County Conservation District | 1 Ingham, Mr. and Mrs. Jim |
| | | 10 Ingle, Donald W. and Frances |

Note: The figures preceding the name indicate the number of years of support since the Kansas 4-H Foundation Membership and Share Recognition Plan was started in 1953. Please call omissions to our attention.

MEMBERSHIP LIST OF THE KANSAS 4-H FOUNDATION

- | | | | | | |
|----|--|----|--|----|--|
| 3 | Ireland, James L. and Lynn | 6 | Linder, Mrs. Lee | 1 | Nelson, Mr. and Mrs. LaVern |
| 20 | Ives, H.M. and Sons | 2 | Lindholm, Nora B. | 2 | Nelson Poultry Farms |
| | | 4 | Lions Club of Goff | 1 | Nelson, Robert and Sharon |
| 6 | Jackson, Dwight S. and Janice | 1 | Long, David and Gloria | 2 | Nemaha County United Charities |
| 7 | Jackson, Mr. and Mrs. M. E. | 5 | Longbach, Mr. and Mrs. Clarence | 3 | New, Bill and Loris |
| 1 | Jenner, Ruby M. | 7 | Lotker, Mr. and Mrs. Floyd Lee | 7 | Newsome, Bob and MaryLou |
| 12 | Jensen, Miss Mabel | 5 | Loughridge, Wayne | 7 | Niccum, Mrs. Elwin W. |
| 1 | Johnson, Mr. and Mrs. Einar | 1 | Luthi, Lloyd and Joann | 2 | Nicholas, W. C. and Marcile |
| 3 | Johnson, Lee | 1 | Luthi, Mr. and Mrs. Robert | 1 | Nichols, Mrs. B. E. |
| 8 | Johnson, Mr. and Mrs. Raymond | 9 | Lyon County 4-H Council | 1 | Nikkel, Leon and Karen |
| 6 | Jordan, Dr. and Mrs. Frank | 1 | Lyons, The Laurence Family | 1 | Ninemire, Mr. and Mrs. Gerald |
| 7 | Jorns, Mr. and Mrs. Arnold B. | 9 | McClallen, Velma E. | 15 | Nixon, Mr. and Mrs. Robert S. |
| 1 | Judd, Mr. and Mrs Willard | 13 | McClung, Irvin A. Family | 16 | Norby, Oscar and Pauline |
| 1 | Kalcik, Raymond and Betty | 2 | McClure, Mr. and Mrs. Clayton | 5 | Novotny, Mrs. William |
| 11 | Kansas Arabian Horse Club, Inc. | 3 | McDaniel, Mr. and Mrs. George, Nancy and Sally | 1 | Nowak, Matthew C. |
| 6 | Kansas Association of Nurserymen | | | 1 | Oakleaf, Carl and Edna |
| 7 | Kansas Ayrshire Breeder Association | 3 | McDougal, Mr. and Mrs. Delmar | 2 | O'Brien, Mr. and Mrs. Harold T. |
| 5 | Kansas Beef Council | 1 | McElwee, Carl Family | 1 | O'Hara, Jack |
| 23 | Kansas Brown Swiss Association, Inc. | 4 | McGaugh, Velma M. | 4 | Ohnemiller, Alma Furman |
| 7 | Kansas City Implement Hardware & Tractor Club | 1 | McGill, Stanley and Linda | 5 | Olsen, Mr. and Mrs. Dale N. |
| 6 | Kansas Dairy Herd Improvement Association | 15 | McGinness, Kenneth E. and JoAnne H. | 21 | Orsborn, Charlotte A. |
| | | 1 | McGrew Tire Co., Inc. | 1 | Ott, Keith and Zola |
| 17 | Kansas Electric Cooperatives, Inc. | 2 | McKenna, M.J. | 19 | Ottaway, Lois M. |
| 7 | Kansas Extension Homemakers Council | 1 | McKinney, Robert and Judith | 17 | Otte, Mr. and Mrs. Alvin |
| 1 | Kansas Grain Sorghum Growers Association | 1 | McMillen, Kathryn | 6 | Otto, Raymond |
| 6 | Kansas Independent Oil and Gas Association | 8 | Mackey, Mr. and Mrs. Frank | 1 | Overfield, Earl |
| 7 | Kansas Livestock Association | 1 | Malone Sales Company | 5 | Oxford Bank, The |
| 6 | Kansas Master Farmer Homemakers Guild | 3 | Manry, Mr. and Mrs. Clifford E. | 3 | Pacey, Mr. and Mrs. Franklin |
| 22 | Kansas Milking Shorthorn Society | 3 | Marley Fund, The | 4 | Page, Mr. and Mrs. J. C. |
| 6 | Kansas Pork Producers Council | 1 | Marshall, Mr. and Mrs. J. E. | 1 | Parcel, Clair K. |
| 5 | Kansas Pork Producers Council - Purebred Committee | 1 | Marshall, The Norris Family | 2 | Park Laundry and Cleaners, Inc. |
| 6 | Kansas Poultry Association | 1 | Marston, The Larry Family | 6 | Park, Dr. and Mrs. Emmet B. |
| 8 | Kansas Quarter Horse Association | 8 | Matson, Leonard and Hulda | 6 | Parker, Don and Alice |
| 1 | Kansas Sheep Association | 12 | Maxon, Mr. and Mrs. Dale D. | 1 | Pease, Gregory and Joan |
| 1 | Kansas State Bank in Holton | 4 | Mayfield State Bank | 7 | Peirce, Mr. and Mrs. Walter C. |
| 1 | Keener, Patrick A. Family | 1 | Mayhugh, Wesley and Mable | 6 | Pendleton, Mr. and Mrs. Al Family |
| 1 | Keeseey, Gena | 2 | Mears, Mr. and Mrs. Ronald D. | 1 | Petersen, Karl A. and M. Eileen |
| 11 | Keller, Mrs. Earl | 1 | Medlin, Mr. and Mrs. Bob | 8 | Peterson, E. Jack |
| 1 | Kendall, John and Juanita | 4 | Meng, Mr. and Mrs. Jerry | 2 | Pethtel, Carl A. |
| 1 | Kennedy, Garth M. | 2 | Meinen, Stanley R. | 1 | Petracek, Marian H. |
| 1 | Kennedy, Kay A. | 4 | Mertz, Mr. and Mrs. Harold D. | 1 | Phelps, Mr. and Mrs. Howard |
| 1 | Ketcherside, James and Norene | 6 | Meyer, Ella M. | 1 | Pickett, Bill and LaDonna |
| 1 | Kill, Mr. and Mrs. Don | 1 | Meyer, Mr. and Mrs. William H. | 3 | Pillot, Mr. and Mrs. Joseph |
| 4 | Kingman County Farm Bureau | 6 | Miami County Farm Bureau | 3 | Pine, Roger Family |
| 7 | Kincaid, Mr. and Mrs. Roy C., Jr. | 12 | Mickey, Mr. and Mrs. Vernon L. | 1 | Pittsburg and Midway Coal Mining Company |
| 2 | Kirkman, Barbara A. | 10 | Mid-America Dairymen, Inc. | 9 | Plessy Inc. - Welco Division |
| 21 | Kirkwood, Frances | 10 | Midland United Dairy Industry Association | 8 | Plested, Mr. and Mrs. William Jr. |
| 1 | Kiskadden, Robert M. and Barbara | 4 | Midwest Minerals, Inc. | 8 | Poister, Mrs. Emmett |
| 1 | Kleeman, Earl and Judy | 3 | Miller, Mr. Edwin B. Jr. | 1 | Polcyn, Richard and Carol |
| 1 | Kleinschmidt, Richard and Janice | 1 | Miller, Howard and Bettie | 3 | Postier, Galen W. and Shirley |
| 2 | Klema, Mr. and Mrs. Dell | 6 | Miller, Mr. and Mrs. Marshall F. | 1 | Potter, Mr. and Mrs. Roger E. |
| 9 | Klenda, Mr. and Mrs. Albert | 17 | Mills, Lambert D. and Rosalea | 7 | Potter, Mr. and Mrs. Thomas M. |
| 1 | Kleyman, Blane F. | 1 | Moll, The David Family | 6 | Pratt Feeders, Inc. |
| 1 | Kling, Emily | 6 | Montgomery, Mr. and Mrs. Don | 9 | Prawl, Mr. and Mrs. Warren L. |
| 4 | Knobel, Chris and Barbara | 8 | Morgan, Mr. and Mrs. L. D. | 19 | Presnal, Glade C. |
| 6 | Knop, Mr. and Mrs. E.C. | 5 | Morris County Farm Bureau | 18 | Presnal, Mr. and Mrs Ross |
| 1 | Koenig, Dr. and Mrs. Michael M. | 7 | Morrison Grain Elevator | 1 | Preston, Clifford and Winifred |
| 3 | Kohl, Margaret F. | 2 | Morse, John and Kay Stine | 1 | Prince, Paul and Shiela |
| 3 | Krueger, Irene | 4 | Morton County Farm Bureau | 1 | Pringle, Mr. and Mrs. Nelson |
| 1 | Kvasnicka, Earl | 1 | Mosier, Mr. and Mrs. William | 2 | Prothe, Robert and Gladys |
| | | 3 | Mueller, Mr. and Mrs. Marvin | 1 | Putnam, Mr. and Mrs. Perry |
| 2 | Ladd, Alan and Christy | 1 | Muir, Leonard E. and Shirlee | 29 | Quinlan, L. R. |
| 1 | Lang, Hope | 12 | Mull, Mr. and Mrs. Keith | 7 | Rahjes, Mr. and Mrs. Doyle D. |
| 2 | LaToush, Mr. and Mrs. Harry | 1 | Mullen, Robert | 8 | Ramsour, Mr. and Mrs. Walter A. |
| 1 | Lawless, The Eldon D. Family | 5 | Mulvance State Bank | 9 | Randle, Mr. and Mrs. Herb |
| 8 | Lee Company, The | 4 | Munsell, Opie B. | 1 | Rau, Gregory and Sandra |
| 1 | Lee, Jerry | 17 | Munson, Gaylord R. | 3 | Redman, A. Lois |
| 1 | Lee, Melba H. | 3 | Munson, Mary K. | 1 | Reed, A.J., M.D. |
| 7 | Lee, Mr. and Mrs. Norman | 17 | Munson, Ralph C. | 1 | Reed, George and Betty |
| 6 | Legg Co., Inc., The | 2 | Murphy, Pat and Ann | 7 | Reed, Mr. and Mrs. Wendell |
| 4 | Lemon, Mr. and Mrs. George C. | 9 | Murrey, Mr. and Mrs. Chester | 3 | Rees Fruit Farm |
| 7 | Leonard, Mrs. Ralph H. | 4 | Musil, Mr. and Mrs. Elmer R. | 20 | Regnier, Mr. and Mrs. Roger E. |
| 1 | Leonard, Roy and Edythe | 14 | Musil, Mr. and Mrs. Theodore | 2 | Reichenberger, T.W. |
| 7 | Lewis, Robert W. | 1 | Musser, R. E. and Carolyn | 10 | Reitz, Dr. and Mrs. Leland |
| 9 | Lewis, Mr. and Mrs. Walter M. | 5 | Myers, George M., Inc. | 1 | Reitz, Mr. and Mrs. Richard |
| 1 | Lewman, Mr. and Mrs. Robert | 2 | Myers, Mr. and Mrs. LaVerne | 1 | Remington, Mr. and Mrs. Don |
| 1 | Lindeloff, Mr. and Mrs. S. M. | | | 4 | Renn, R.J. |
| | | 1 | Neitzel, Bill and Karen | 1 | Rethorst, George |
| | | 1 | Nelson, Dr. and Mrs. Eugene | 3 | Retzlaff, R.E. |
| | | 1 | Nelson, Gloria | 8 | Reusser, Rae and Athol |
| | | 1 | Nelson, Kenneth E. and Annalee | | |

Note: The figures preceding the name indicate the number of years of support since the Kansas 4-H Foundation Membership and Share Recognition Plan was started in 1953. Please call omissions to our attention.

MEMORIALS TO THEIR IDIORS

- | | | |
|---|---|--|
| 2 Rezac, Don and Barbara | 2 Springer, Teri | 5 Waetzig, Mr. and Mrs. Scott |
| 2 Rhodes, Mr. and Mrs. Ernest | 13 Starkey, Mr. and Mrs. R. M. | 5 Walker, Ann |
| 3 Richardson, Lindy L. | 4 State Bank of Conway Springs | 23 Walker, Mr. and Mrs. Howard R. |
| 2 Ridenour, Mr. and Mrs. Philip | 4 State Bank of Satanta | 3 Walker, Mr. and Mrs. Irving |
| 1 Ridley, Ron | 1 Stephens, Bud and Donna | 1 Walker, Terry and Geraldine |
| 1 Riese, Mr. and Mrs. Robert C. | 1 Stephens, Robert and Barbara | 2 Wall, E.A. |
| 14 Riley, Mr. and Mrs. William J. | 5 Stephenson, Mr. and Mrs. John C. | 3 Wallace, Berenice |
| 2 Rilinger, Laurence | 15 Stewart, John T. III | 1 Wal-Mart Stores, Inc. |
| 3 Ring, The Bob Family | 5 Stock Exchange Bank of Caldwell, The | 4 Walton, Mr. and Mrs. Keith |
| 8 Robbins, Benny and Linda | 1 Stone, Arthur and Rose Marie | 3 Warner, Jim and Stacey |
| 6 Roberts, Ivan L. | 3 Strauss, Mr. and Mrs. William | 1 Warner, Mr. and Mrs. W.B. |
| 9 Robinson, Elsie | 5 Streeter, Brad and Karen | 3 Washington County Farm Bureau |
| 8 Robson, Mrs. Marie A. | 20 Streeter, Charles and Martha | 1 Wasmund, LeRoy and Joyce |
| 8 Roesler, Mr. and Mrs. Otto R. | 3 Stretcher, Joan and John | 6 Wasserman, Gilbert and Edith |
| 14 Rogers, Irene | 2 Strickler, Dixie E. | 7 Weathers, Mrs. George |
| 1 Rooney, Michael and Janyce | 19 Strickler, Mr. and Mrs. Ivan K. | 8 Weaver, Eldon and Mildred |
| 2 Ross Industries | 1 Strnad, Mrs. Billy | 1 Weber, Dr. and Mrs. Wallace |
| 1 Ross, Mike and Barbara | 1 Stuckey, Lloyd R. | 1 Weeks, Julie |
| 5 Rosser, Mr. and Mrs. Frank | 7 Sucht, Leon A. and Elizabeth, Gayle,
LeAnn, and Steven | 8 Wehrman, Claude |
| 9 Rost, Mrs. F.J. | 3 Sumner County Family Care Center, P.A. | 13 Wellington Daily News |
| 4 Roy's Rexall Drugs | 5 Sumner-Cowley Electric Co-operative,
Inc. | 5 Werner, Mr. and Mrs. Dale |
| 1 Rubison, Richard and Toni | 1 Svaty, Ron and Pat Family | 1 Wertemberger, Phil Family |
| 16 Ruhnke, Mr. and Mrs. John | 1 Swayze, Mr. and Mrs. Dennis | 7 Wertzberger, Georgia |
| 8 Rupp, Mr. and Mrs. Clarence | 1 Sweany, Jim and Alice | 12 Weside Dairy, Inc. |
| 14 Rusk, Mr. and Mrs. Ralph | 6 Sweat, Mr. and Mrs. Ronald | 8 West, Mr. and Mrs. Roland |
| 7 Rusk, Ray and Roberta | | 7 Western Retail Implement and Hardware
Association |
| 1 Russell, Arden and Cheryl | | 1 Westwood Memorials |
| 1 Russell, Roger and Lois | | 7 Wheat State Morgan Horse Association |
| | | 3 White, Dr. James R. |
| 29 Safeway Stores, Inc. | 15 Taylor, Miss Ethel M. | 5 Whitehair, Mr. and Mrs. Raymond |
| 1 St. Marys State Bank | 9 Taylor, Richard P. | 18 Wichita Bank for Cooperatives |
| 3 Saline County Farm Bureau Association | 17 Teagarden, Mr. and Mrs. Earl H. | 1 Wichman, Dan and Sandra |
| 3 Sander, Freeman | 5 Teagarden, Mr. and Mrs. Robert | 18 Wild, Violet Carroll |
| 9 Sanford, Dr. Paul E. | 2 Tegtmeier, Mrs. Dana | 5 Wiles, Don K. |
| 7 Schafer, David E. and Jeanne | 10 Tennant, Marjorie Ann | 1 Williams, Mr. and Mrs. Frank D. |
| 1 Schmitz, Francis | 1 Thieme, Robert Family | 1 Williams, J.D., Vicky, and J.J. |
| 1 Schnake, L. Donald and Barbara | 3 Thomas, Mr. and Mrs. Homer W. | 3 Wilson, George W. |
| 5 Schneider, Mr. and Mrs. Lewis | 1 Thomas, Mr. and Mrs. Robert F. | 19 Wilson, John L. |
| 3 Schweitzer, Mr. and Mrs. Ralph | 2 Thompson, Mr. and Mrs. Charles | 8 Wilson, John and Glenna |
| 1 Seaboard Allied Milling Corp. | 6 Thompson, Dwight H., Jr. | 5 Wilson, Mr. and Mrs. R.E. |
| 13 Security Benefit Group of Companies | 8 Thorpe, Dr. and Mrs. F. A. | 3 Wilson, Mr. and Mrs. Richard |
| 17 Security State Bank of Wellington | 10 Tillotson, Mr. and Mrs. Raymond J. | 1 Wilson, Mr. and Mrs. Roger |
| 1 Security State Bank Charitable Trust of
Great Bend | 4 Times Publishing Company | 8 Wilson State Bank |
| 6 Setter, Mr. and Mrs. Andrew | 7 Tjaden, Mr. Wayne | 1 Wilson, Mr. and Mrs. Warren |
| 1 Seufferling, Mick | 1 Toburen, Don and Dana | 5 Winchester Packing Company |
| 1 Shaw, Amy and Erin | 10 Todd, Mr. and Mrs. Charles | 5 Wing, Mark and Karen |
| 10 Shaw, Mrs. Lawrence | 1 Torrey, Frank W. and Paula M. | 8 Wingert, George |
| 9 Shaw, Willard B. and Elsie | 3 Trostle, Mr. and Mrs. Dee | 1 Wolfe, Fred J. |
| 2 Shawnee Federal Savings and Loan | 6 Truax, Mr. and Mrs. L.L. | 3 Wood, Mr. and Mrs. Robert D. |
| 22 Shepherd, Mr. and Mrs. Ronald | 19 Truman, Maxine | 3 Wootton, Carl W. |
| 2 Shields, Bruce and Sandy | 4 Tudgay, Mrs. Geraldine W. | 7 Works, Mrs. George |
| 7 Shipman, Larry and Judy | 1 Tuley, Ken Family | 1 Wright, Duane and Doug |
| 3 Shirk, Mr. and Mrs. Fred | 3 Tyler, Mr. and Mrs. Richard | 3 Wright, Mr. and Mrs. Lloyd |
| 1 Shumate, Robert D. 4-H Family | | 1 Wright-Lorenz Grain Company, Inc. |
| 1 Sibley, Marie L. | 1 Unger, Samuel G. and Elizabeth A. | 3 Wulf, The Otto Family |
| 5 Sievers, Mr. and Mrs. Harold | 1 Unruh, Earl and Louise | 7 Wulfkuhle, Mr. and Mrs. Clarence |
| 6 Sigley, Allen L. | 8 Utermoehlen, Mr. and Mrs. Ralph E. | 14 Wyckoff, Maurice I. and Thelma |
| 1 Simms, Nancy, Roger, Jeanette, and Ed | | 1 Wynne, Robert Family |
| 25 Simons, Dolph Sr. World Co. | 2 Vahsoltz, Merle W., Inc. | 1 Wysong, Benny and Janice |
| 17 Slaten, Mr. and Mrs. J.M. | 3 Van Blaricum, Mr. and Mrs. Kenneth | |
| 4 Slawson, Charles J. | 8 Veltman, Floyd | 1 Young, Dell |
| 5 Smith County State Bank & Trust | 1 Vesecky, Mr. and Mrs. Clarence | 1 Young, Harvey L. and Audrey |
| 3 Smith, Mr. and Mrs. Glee S., Jr. | 2 V.F.W. Ladies Auxiliary Post No. 3111 | 1 Youth of the 80's |
| 1 Smith, O. Jerry Family | 11 Visser, Edward W. | |
| 4 Sobering, Fred D. | 5 Visser, Mr. and Mrs. George | 1 Zajic, Julianne |
| 1 Sommers, Keith | 5 Vista at Lawrence, Inc. | 1 Zimmerman, Allen Family |
| | 1 Vista at Topeka, Inc. | |
| | 8 Vogt, Mr. and Mrs. Roland | |

MEMORIALS & HONOR GIFTS

Ralph L. Bergsten
 Kay Bigler
 Mabel Boller
 Mrs. Charles V. Cochran
 Rex D. Crane
 Edward Dickerson
 Dennis Grater
 Edith Beryl Guy
 Robert Keith Holland, Jr.
 C. R. Hubbard

J. Harold and LaVerne Johnson family
 Kayette campers and staff
 Emma Kelly
 Catherine Koenig
 Ruth Lamb
 Marc Lindholm
 Masonic Grand Lodge of Kansas
 Lanson Mayes
 Mildred McKaig
 Gertrude McMaster

Francis M. McWilliams family
 Mrs. Clayton Moon and Allen Moon
 Mary Ann Mueller
 Fred H. Paulsen
 Ann Saving
 Katherine Sexton
 Everett and Ruth Muenzenmayer Staatz
 Lori Wade
 Benj. O. Weaver

E.H.U. & 4-H

Many Kansas 4-H clubs and extension homemaking units and other organizations regularly contribute to 4-H work by sending a donation to Kansas 4-H Foundation. Those who contributed in 1981 are listed here as more friends of 4-H.

ANDERSON COUNTY

- 2 Harris Progressive E.H.U.
- 2 Selma Flaming Arrow 4-H Club

ATCHISON COUNTY

- 6 Friendly Farmer Fellows 4-H Club
- 9 Good Intent 4-H Club
- 2 Lancaster Lightning 4-H Club

BARBER COUNTY

- 11 B-Square 4-H Club
- 8 Gyp Hills Pioneers 4-H Club
- 15 Stateline 4-H Club
- 5 Sunflower 4-H Club

BARTON COUNTY

- 6 Busy Buzzers 4-H Club
- 8 Cleveland 4-H Club
- 1 Ellinwood Energizers 4-H Club
- 4 Eureka Homesteaders 4-H Club
- 10 Fairview Scouts 4-H Club
- 10 Ft. Zarah 4-H Club
- 2 South Bend Jolly Workers 4-H Club
- 4 Town and Country 4-H Club

BOURBON COUNTY

- 4 Southeast Scott 4-H Club
- 2 Uniontown 4-H Club

BROWN COUNTY

- 7 Fairview Willing Workers
- 8 Hamlin Pied Pipers 4-H Club
- 7 Modern Sunflower 4-H Club
- 8 Robinson Meadowlark 4-H Club

BUTLER COUNTY

- 1 Andover Aces 4-H Club
- 6 Cassoday Boosters 4-H Club
- 18 Flint Hills 4-H Club
- 20 Hickory Helpers 4-H Club
- 8 Lily Lake 4-H Club
- 7 North Butler 4-H Club
- 9 Rose Hill Rustlers 4-H Club
- 16 Towanda Rustlers 4-H Club

CHASE COUNTY

- 7 Toledo 4-H Club

CHEROKEE COUNTY

- 6 Prairie Ramblers 4-H Club
- 8 Sheridan 4-H Club
- 4 Spring Valley Sparklers 4-H Club

CHEYENNE COUNTY

- 11 Happy Lark 4-H Club
- 5 Lawn Ridge 4-H Club
- 4 Plum Creek 4-H Club

CLARK COUNTY

- 8 Bearcreek Boosters 4-H Club

CLAY COUNTY

- 7 Hayes Boosters 4-H Club
- 5 Washington Headliners 4-H Club

CLOUD COUNTY

- 8 Hill and Dale 4-H Club

COFFEY COUNTY

- 15 Blue Ribbon 4-H Club
- 8 Smilin' Thru 4-H Club



Women's groups and clubs throughout the state provided funds for the newly completed Kansas Council of Women's Cottage at Rock Springs Ranch. Extension Homemakers Units (E.H.U.) were the largest contributors to the building fund. The cottage will accommodate eight guests on each of the two floors. Guests can overlook the swimming pool and Rock Springs Ranch grounds from the deck.

COMANCHE COUNTY

- 2 Kiowa Creek 4-H Club
- 6 Loyal Hustlers 4-H Club

COWLEY COUNTY

- 7 Burden 4-H Club
- 5 Cameron 4-H Club
- 7 Cowley County 4-H Council
- 7 Floral 4-H Club
- 3 IXL Unit
- 8 Martha Washington 4-H Club
- 4 Otto 4-H Club
- 7 Pleasant Valley 4-H Club
- 8 Tisdale 4-H Club
- 14 Udall 4-H Club

DECATUR COUNTY

- 7 Maverick 4-H Club
- 7 Sappa Valley 4-H Club

DICKINSON COUNTY

- 9 Abilene Aggies 4-H Club
- 6 Chapman Shamrock 4-H Club
- 6 Fragrant Hill 4-H Club
- 8 Harmony Hustlers 4-H Club
- 9 Holland Sunflowers 4-H Club
- 13 Jolly Jayhawkers 4-H Club
- 2 Mt. Ayr Go-Getters 4-H Club
- 6 Navarre 4-H Club
- 7 Newbern Wide Awake 4-H Club
- 4 Sand Springs Rustlers 4-H Club

DONIPHAN COUNTY

- 10 Bendena Community 4-H Club
- 1 Circle B 4-H Club
- 5 Highland 4-H Club
- 3 Sunflower 4-H Club

DOUGLAS COUNTY

- 6 Buffalo Booster 4-H Club
- 18 Cottonwood 4-H Club
- 2 Early Bird E.H.U.
- 9 Eudora 4-H Club
- 11 Four-Leaf Clover 4-H Club
- 5 India E.H.U.
- 23 Kanwaka 4-H Club
- 5 Kanza 4-H Club
- 9 Marion Boosters 4-H Club
- 12 Meadowlark 4-H Club
- 9 Palmyra 4-H Club
- 11 Sunflower 4-H Club
- 13 Vinland Valley 4-H Club
- 5 Willmyra E.H.U.

EDWARDS COUNTY

- 6 Better Homes E.H.U.
- 8 Northern Star 4-H Club
- 18 Sunflower 4-H Club
- 4 Trenton Workers 4-H Club

ELK COUNTY

- 7 Flint Hill Boosters 4-H Club
- 7 Paw Paw Lucky Clovers 4-H Club

ELLIS COUNTY

- 4 Buckeye Junior Farmers 4-H Club
- 7 Meadowlarks 4-H Club
- 5 Victoria Vikings 4-H Club
- 23 Winner's 4-H Club

ELLSWORTH COUNTY

- 15 Ellsworth County 4-H Council
- 4 Jayhawk 4-H Club
- 15 Trying Tommies 4-H Club
- 5 Wilson Winners 4-H Club

Note: The figures preceding the name indicate the number of years of support since the Kansas 4-H Foundation Membership and Share Recognition Plan was started in 1953. Please call omissions to our attention.

FINNEY COUNTY

- 4 Beacon Boosters 4-H Club
- 4 Pawnee Indian 4-H Club

FORD COUNTY

- 12 Happy Hour Homemaker E.H.U.
- 5 Happy Hustlers 4-H Club
- 4 Harmony E.H.U.
- 6 Prairie Schooners 4-H Club

FRANKLIN COUNTY

- 12 Full O'Pep 4-H Club
- 11 Pottawatomie Valley 4-H Club
- 4 Shaff 4-H Club
- 4 Town and Country 4-H Club
- 2 Willing Workers 4-H Club

GEARY COUNTY

- 7 Clarks Creek 4-H Club

GOVE COUNTY

- 2 Angelus 4-H Club
- 4 Golden Plains 4-H Club
- 14 Hackberry 4-H Club

GRAHAM COUNTY

- 10 Graham County 4-H Council
- 8 Happy Crickets 4-H Club
- 4 Spring Creek Hustlers 4-H Club

GREELEY COUNTY

- 15 Go-Getters 4-H Club
- 15 Golden Opportunities 4-H Club
- 13 Greeley County 4-H Council
- 14 Straight Ahead Strivers 4-H Club
- 16 Thrifty Thrivers 4-H Club

GREENWOOD COUNTY

- 10 Upper Fall River Jayhawkers 4-H Club
- 1 Willow Valley Go-Getters 4-H Club

HAMILTON COUNTY

- 5 Busy Bears 4-H Club

HARPER COUNTY

- 7 Sunnyside 4-H Club

HARVEY COUNTY

- 3 Campus 4-H Club
- 8 Macon 4-H Club
- 9 Newton City Slickers 4-H Club
- 10 Richland Livewires 4-H Club
- 14 Sedgwick Sunflowers 4-H Club

HASKELL COUNTY

- 4 Cloverleaf 4-H Club
- 5 Sehasco 4-H Club
- 4 Soul-Seekers 4-H Club
- 4 Victory 4-H Club

JACKSON COUNTY

- 2 Soldier Boosters 4-H Club
- 4 Sunshine Winners 4-H Club

JEFFERSON COUNTY

- 10 Clover Power 4-H Club
- 5 Crackerjack 4-H Club
- 10 Prosperity 4-H Club
- 18 Rock Creek Boosters 4-H Club

JEWELL COUNTY

- 11 Webber Wide Awake 4-H Club
- 8 White Rock Hustlers 4-H Club

JOHNSON COUNTY

- 9 Busy Bees 4-H Club
- 8 Greenwood Meadowlarks 4-H Club
- 4 Happy Helpers 4-H Club
- 10 Morning Glory 4-H Club
- 6 Nite-Owls E.H.U.
- 16 Oxford Hustlers 4-H Club
- 4 Pioneers E.H.U.
- 17 Sharon 4-H Club
- 7 Spring Hill Rustlers 4-H Club
- 18 Zion Zippers 4-H Club

KINGMAN COUNTY

- 11 Galesburg 4-H Club
- 14 Hawl 4-H Club
- 6 Whispering Willow 4-H Club

KIOWA COUNTY

- 6 Southwestern Royals 4-H Club
- 15 Upward Strivers 4-H Club

LANE COUNTY

- 9 Eager Beavers 4-H Club

LEAVENWORTH COUNTY

- 5 Basehor Rustlers 4-H Club
- 5 Boling 4-H Club
- 3 Leavenworth Leaders 4-H Club
- 4 Valley View 4-H Club

LINCOLN COUNTY

- 2 Lincoln County Extension Homemakers Council

LINN COUNTY

- 4 Parker 4-H Club

LOGAN COUNTY

- 7 Annie Oakley 4-H Club

LYON COUNTY

- 4 Chamness 4-H Club
- 13 Frost 4-H Club
- 4 Logan Avenue 4-H Club
- 2 North Line E.H.U.
- 11 Riverside 4-H Club

MCPHERSON COUNTY

- 1 Galva Go-Getters E.H.U.
- 1 Hilton Homemakers E.H.U.
- 2 King City E.H.U.
- 13 New Frontier Trailblazers 4-H Club

MARION COUNTY

- 7 Friendly E.H.U.
- 19 Happy Hustlers 4-H Club
- 9 Ramona Red Chiefs 4-H Club
- 9 South Cottonwood 4-H Club
- 12 Willing Workers 4-H Club

MARSHALL COUNTY

- 3 Balderson Boosters 4-H Club
- 8 Beattie Musketeers 4-H Club
- 2 Busy Beavers 4-H Club
- 2 Trail Blazers 4-H Club
- 3 Wide Awake 4-H Club

MEADE COUNTY

- 2 Three C 4-H Club
- 1 Wilburn E.H.U.

MIAMI COUNTY

- 2 Bucyrus Boosters 4-H Club
- 2 Busy Beavers 4-H Club
- 4 Franklin 4-H Club
- 2 Hoot'n Holler 4-H Club
- 3 Osage Pioneers 4-H Club
- 4 Twin Valley 4-H Club
- 2 Victory 4-H Club

MITCHELL COUNTY

- 15 Cloverleaf 4-H Club
- 8 Hunter 4-H Club
- 1 Sunflower 4-H Club
- 12 Tipton 4-H Club

MONTGOMERY COUNTY

- 1 Angola Hustlers 4-H Club
- 7 Drum Creek E.H.U.
- 3 Drum Creek 4-H Club
- 12 Elk River Homemakers E.H.U.
- 10 Gingham Aprons E.H.U.
- 1 Good Neighbors E.H.U.
- 3 Happy Hustlers 4-H Club
- 4 Helping Hands E.H.U.
- 9 Loyal Workers E.H.U.
- 5 Lucky 13 E.H.U.
- 5 Pleasant Hill Pals E.H.U.
- 7 Sunflower Workers E.H.U.
- 6 Sunrise Pals E.H.U.
- 13 Sycamore Valley E.H.U.
- 5 Town and County E.H.U.
- 5 Tyro Home Improvement E.H.U.
- 4 Up and Coming 4-H Club
- 4 Wayside E.H.U.

MORRIS COUNTY

- 2 Delavan E.H.U.
- 13 Delavan 4-H Club
- 2 Four Mile E.H.U.
- 3 Valley Unit E.H.U.

MORTON COUNTY

- 3 Best-Yet 4-H Club

NEMAHA COUNTY

- 6 Busy Jayhawkers 4-H Club
- 5 Centralia Aces 4-H Club
- 4 Hustlers 4-H Club
- 1 Lucky Clover 4-H Club
- 4 Lucky Shamrock 4-H Club
- 7 Red Vermillion 4-H Club
- 10 Rustlers 4-H Club
- 4 Woodlawn Unit

NEOSHO COUNTY

- 7 Hillcrest 4-H Club

NESS COUNTY

- 13 Prairie Schooners 4-H Club
- 7 Schoharie 4-H Club

NORTON COUNTY

- 2 Norton County 4-H Council
- 7 Prairie Dog 4-H Club

OSAGE COUNTY

- 27 Carbondale Rustlers 4-H Club
- 12 Melvern Jr. Highline 4-H Club
- 12 Willing Workers 4-H Club

OSBORNE COUNTY

- 8 Eager Beavers 4-H Club
- 7 Kill Creek E.H.U.
- 5 Liberty Bell 4-H Club
- 12 Penn 4-H Club
- 4 Riverview 4-H Club
- 6 Solomon Valley 4-H Club

OTTAWA COUNTY

- 13 Culver Livewires 4-H Club

PAWNEE COUNTY

- 8 Burdett Blue Ribbons 4-H Club
- 7 Rozel Rockets 4-H Club
- 11 Tiny Toilers 4-H Club

PHILLIPS COUNTY

- 21 Deer Creek 4-H Club
- 3 Hustlers 4-H Club
- 5 Lone Prairie 4-H Club

POTTAWATOMIE COUNTY

- 28 Blackjack 4-H Club
- 5 Emmett Hustlers 4-H Club
- 6 Jayhawkers 4-H Club
- 3 Olsburg E.H.U.

PRATT COUNTY

- 12 Glendale Reapers 4-H Club
- 4 Golden Valley E.H.U.
- 10 Lincoln Climbers 4-H Club
- 15 Preston 4-H Club
- 17 Richland Rustlers 4-H Club
- 9 Southwest 4-H Club

RAWLINS COUNTY

- 7 Cloverleaf 4-H Club

RENO COUNTY

- 2 Central Hustlers Club
- 13 Huntsville Helpers 4-H Club
- 4 Mitchell 4-H Club
- 7 North Reno 4-H Club
- 17 Plevna 4-H Club
- 6 Southwest Reno 4-H Club
- 5 Union Valley 4-H Club

REPUBLIC COUNTY

- 4 Merry Meadowlarks 4-H Club
- 2 Munden 4-H Club
- 3 Narka 4-H Club
- 2 Pawnee Indians 4-H Club
- 5 Republic Pioneers 4-H Club
- 6 Sherdahl Boosters

Al Pendleton family honored as 1982 Kansas 4-H Family of the Year

For the Al Pendleton family of Douglas County, the shock of being named 1982 Kansas 4-H Family of the Year was much more pleasurable than the shock son John received late one summer night in the darkroom. He had been working late in the darkroom printing photos for his fair exhibit and decided to take a quick shower. Not bothering to dry off thoroughly in his haste to finish up, he grabbed the enlarger and the shock knocked him to the floor.

To those who know the Pendleton family, it's no shock to learn they were named Kansas 4-H Family of the Year during Friends of 4-H Day, June 6. However, the Pendletons were quite surprised when Merle

Eyestone, executive director, Kansas 4-H Foundation, telephoned them to tell them they'd won.

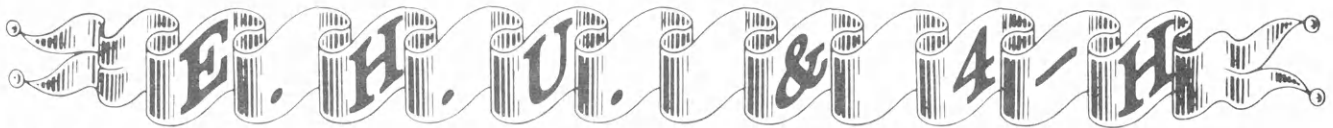
The Meadowlark 4-H Club, the club the Pendletons joined 17 years ago, nominated the family, but kept it a secret. The club started with a notebook which had been compiled when the Pendletons were named Douglas County 4-H Family of the Year in 1975.

In 1975, the Pendleton family consisted of parents Al and Lorita Pendleton, and sons Jim, John and Scott. Since 1975, the family has grown to include Jim's wife, Marilyn (Lacey) Pendleton, and son Jared, and John's wife, Karen (Riley) Pendleton. This summer the family also includes Andy Whalley,

a visitor from England who is staying with the Pendletons to gain some farming experience.

Karen was the only family member who had a hint that something sneaky was going on. She made up a story to get the notebook out of the Pendletons house, but at the time didn't know the real reason.

Unfortunately, when the Pendletons were honored at Friends of 4-H Day, two of the sons were unable to be there. Jim, Marilyn and Jared left on January 1 for Nigeria where they will serve for two and a half years as missionaries. Lorita said she told them of the honor in her letter written the third week of May, but it will take two or



RICE COUNTY

- 10 Chase We Willing Workers 4-H Club
- 13 Country Pals 4-H Club
- 22 Fairplay 4-H Club
- 9 Lyons Learners 4-H Club
- 22 Valley Bluebirds 4-H Club

RILEY COUNTY

- 11 College Hill 4-H Club
- 12 Kaw Valley E.H.U.
- 13 Lee Hilltoppers 4-H Club
- 6 Leonardville Hustlers 4-H Club
- 13 Strong 4-H Club
- 15 Zeandale 4-H Club

ROOKS COUNTY

- 7 Bow Creek 4-H Club
- 6 Busy Bee 4-H Club
- 8 Eager Beaver 4-H Club
- 5 Helpful Hands 4-H Club
- 10 Mt. Pleasant 4-H Club
- 7 Palco 4-H Club
- 17 Rooks County 4-H Council

RUSH COUNTY

- 4 Alexander Whippets 4-H Club
- 4 Prairie Valley 4-H Club

RUSSELL COUNTY

- 7 Big Creek 4-H Club

SALINE COUNTY

- 11 Brookville 4-H Club
- 12 Falun 4-H Club
- 12 Friendly Valley 4-H Club
- 13 Kipp Wide Awake 4-H Club
- 14 Mentor 4-H Club
- 9 Sasnak 4-H Club
- 21 Willing Workers 4-H Club

SCOTT COUNTY

- 13 Luck Clover 4-H Club
- 12 Town and Country 4-H Club

SEDGWICK COUNTY

- 7 Andale Jets 4-H Club
- 3 Rolling Hills 4-H Club

SEWARD COUNTY

- 3 Eager Beavers 4-H Club

SHAWNEE COUNTY

- 11 Dover 4-H Club
- 12 Indian Creek 4-H Club
- 21 Riverside 4-H Club
- 25 Rochester Heights 4-H Club
- 6 Rocky Hill 4-H Club
- 22 Shunga Valley 4-H Club

SHERIDAN COUNTY

- 4 Sunshine 4-H Club

SHERMAN COUNTY

- 3 County Clovers 4-H Club
- 21 Glendale Livewires 4-H Club
- 2 Happy Hour E.H.U.
- 4 Warren Star Busy Bees 4-H Club

SMITH COUNTY

- 6 Busy Bees 4-H Club
- 4 Four Oaks 4-H Club
- 3 Heart of America 4-H Club
- 4 Meadowlark 4-H Club
- 4 Oak Creek 4-H Club
- 5 Solomon Valley 4-H Club

STAFFORD COUNTY

- 10 Eden Valley Hustlers 4-H Club

STANTON COUNTY

- 15 Big Bow 4-H Club

STEVENS COUNTY

- 4 City Slickers 4-H Club
- 10 Cloverleaf Cowboys 4-H Club

SUMNER COUNTY

- 7 Cardinal 4-H Club
- 2 Cloverleaf 4-H Club
- 7 Drury Millers 4-H Club
- 2 South Haven Happy Hustlers 4-H Club

THOMAS COUNTY

- 6 Gem 4-H Club
- 4 Highlander 4-H Club
- 4 Prairie Gem 4-H Club
- 4 Solomon Valley 4-H Club

TREGO COUNTY

- 5 Busy Kansan 4-H Club
- 12 Ogallah 4-H Club
- 13 WaKeeney Willing Workers 4-H Club

WABAUNSEE COUNTY

- 8 Blue Ridge 4-H Club
- 8 Friendly Farmers 4-H Club
- 4 Happy Valley 4-H Club

WALLACE COUNTY

- 12 Harrison Endeavor 4-H Club

WASHINGTON COUNTY

- 20 Busy Bee 4-H Club
- 8 Happy Go Lucky 4-H Club
- 3 Happy Workers 4-H Club
- 6 Linn Livewires 4-H Club

WILSON COUNTY

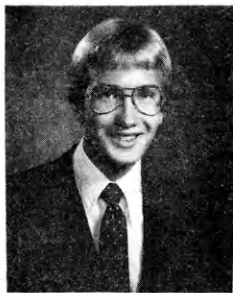
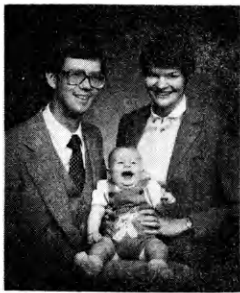
- 3 Denim Dames E.H.U.
- 3 Kansas Kids 4-H Club
- 3 Sunflower Go-Getters

WOODSON COUNTY

- 2 Eager Beavers 4-H Club
- 1 M.R.B. 4-H Club

WYANDOTTE COUNTY

- 4 Glenwood 4-H Club
- 24 Horanif Hustlers 4-H Club
- 6 Nearman 4-H Club
- 2 Tiblow 4-H Club
- 4 White Church E.H.U.
- 2 Wyandotte Pioneers 4-H Club



Above: Jim and Marilyn Pendleton and son Jared.

Center: Scott Pendleton

Right: Andy Whalley (far left) is living with the Pendleton family this summer. Seated beside Andy is Karen, John, Lorita and Al Pendleton.

three weeks to reach them. Scott is backpacking in Europe and won't return until the middle of June.

The Pendletons live on a farm east of Lawrence which they moved to in 1953, the year they were married. John and Karen are restoring a 115-year-old home about a half-mile away.

John and his father are partners in the farming and feedlot operation. Their latest endeavor is growing asparagus. They've started with nearly one-half acre and intend to expand.

Visitors to the Pendleton farm have included groups from France, India, England, Italy, Iran, Russia and Tunisia, as well as local grade school, Kansas University, and vocational agriculture groups. Jim had a special interest in the Russian guests, since he served as a Young Agricultural Specialist Exchange Program (YASEP) delegate to the Soviet Union in 1977.

4-H was new to the Pendletons when the boys joined during their grade school years. Al and Lorita grew up in towns where 4-H was not available at the time. They are proud of the progress Douglas County has made in attracting city kids to 4-H.

When the boys joined, Al and Lorita volunteered as project leaders. Al served as county fair superintendent in the forestry and entomology divisions for ten years. He also has organized training sessions and workshops for leaders and field trips and tours for project members.

Al and Lorita have continued to serve on the club's advisory and

records screening committees. Lorita has been a club project leader for 17 years. She helped organize the county-wide arts and crafts project and still serves as one of the primary leaders. She also has been active on the state 4-H arts committee.

Lindy Richardson, Douglas County Extension 4-H Agent, says, "Before most of us understood the importance of making our program child-centered, Lorita Pendleton was striving to make every 4-Her she worked with feel good about himself and his work." In 1978, Lorita was recognized as Douglas County's Outstanding 4-H leader.

The Pendleton boys are well-known for their outstanding photography. All three were state award winners in the photography project—Jim in 1971, John in 1972 and Scott in 1977. Scott won the state award at age 14. Many people thought he would lose interest in 4-H, but instead he became a project leader and channeled his energies into helping younger members excel. Jim, John and Scott have shared their photographic talents with others and have provided many articles and photos for the *Kansas 4-H Journal*.

They're modest about their photographic skills, but John's 4-H recordbook, complete with photos, earned him a position as a photo lab assistant at Kansas State University. Jim earned money during college by photographing special events. Karen and John are documenting the progress of their home restoration project and the asparagus growing operation by taking slides.

Karen and John are project leaders and help with many Douglas County 4-H events. John is a member of the county 4-H advisory committee and Extension Council Executive Board. Karen is the advisor for the new county 4-H Ambassador program.

Jim, Marilyn, John and Karen all are graduates of Kansas State University. Scott will return next fall for his sophomore year at K.S.U., where he is working toward a degree in secondary education. He is active in church and campus activities.

The amazing thing about the Pendletons is that they have been just as active in church, community and school activities. "Somehow, you have time if you care enough," Lorita says.

The Pendleton family obviously "cares enough"—about each other, and their club, their community, their country and their world.

Fifteen other families were nominated for the 4-H Family of the Year. Listed alphabetically, by county, they are: DICKINSON, Andy Schuler, Jr. family; EDWARDS, Robert Shanks family; FINNEY, Leon Betts family; Darrell Goss family; Cliff Mayo family; HODGEMAN, Jerry Whipple family; JEFFERSON, David Heston family; JOHNSON, David B. Anderson, Sr. family; MIAMI, Jim Wise family; NEOSHO, Richard Reinhardt family; OSAGE, Don Becker family; RENO, Larry DeCou family; RILEY, Arlan Bohnenblust family; SHAWNEE, James Hundley family; and THOMAS, Lyman Goetsch family.

Former delegates gather for Master 4-H reunion

Unlike most 4-H clubs, the Master 4-H Club is very restrictive about membership. Only those 4-Hers who have gone to National 4-H Conference (or National 4-H Club Camp, as it used to be called) in Washington, D.C. are eligible for membership.

In April, about 50 former delegates gathered in Manhattan for a reunion. Mrs. Carl Conger, Iola, attended the reunion. She was one of four delegates who went to the first National 4-H Club Camp in 1927. Also in attendance were two of the four 1982 delegates from Kansas—Gary Wesche, Manhattan, and Jay Rezac, Onaga.

Martha Streeter, a 1939 delegate, and a member of the Kansas 4-H Foundation Board of Trustees, emphasized the fact that Jay Rezac, a 1982 delegate, is the grandson of Mrs. Dorothy Fisher Tanner, a 1940 delegate. Mrs. Streeter said, "We've had delegates whose parents have gone before, and brothers and sisters who have both attended, but this is the first time we've had a grandchild—grandparent combination."

Kansas 4-Hers also can be proud of the fact that two delegates, Jay Bohnenblust in 1981 and Russell Galle in 1980, were chosen to help plan the following year's conference.

Dale Apel, assistant director of Extension, 4-H—Youth programs (acting), is one of two members of the state 4-H staff who have won the National 4-H Conference trip. Apel was a delegate in 1947.

During the reunion, which included a luncheon at the K.S.U. Union and a reception at Dale and Mary Dean Apel's home, delegates reminisced and discussed how the conference had changed. When the event began, it was designed to reward outstanding 4-Hers and acquaint club members with government. Now, National 4-H Conference is a discussion-oriented conference where delegates help shape the direction of national 4-H—youth programs.



Jay Rezac and his grandmother, Mrs. Dorothy Fisher Tanner, have the distinction of being the first grandchild-grandparent combination who have attended National 4-H Conference in Washington, D.C. Jay was a delegate in 1982 and Mrs. Tanner attended in 1940.

The Master 4-H Club used to get together each year at 4-H Round-Up. Now, members meet every three years. Michelle Hightower, a 1979

delegate, was the chairperson of the committee who organized the 1982 reunion.

TRUCKS

Help Bring
Better Living
To Kansas Farms,
Homes, Industries

*If You've Got It — A
Truck Brought It!*



KANSAS MOTOR CARRIERS ASSOCIATION
2900 Topeka Blvd.
Box 1673
TOPEKA, KANSAS 66601



June Energy Challenge

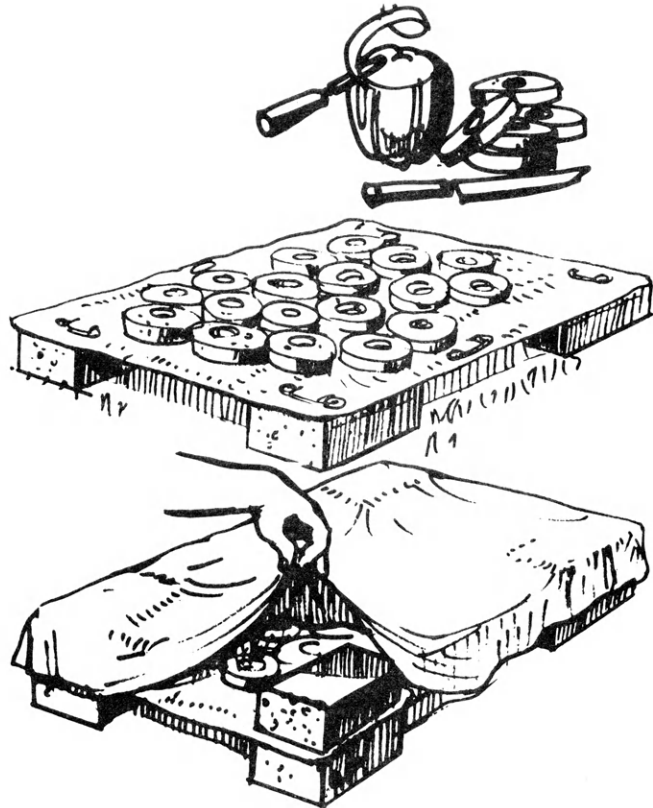


ENERGY CHALLENGE: Learn how to use solar drying to preserve food.

MEET THE CHALLENGE: Dry apples with sun energy. This activity could be started at a foods or horticulture project meeting.

- Materials:**
- 6 apples (don't use more until you have dried these successfully)
 - rack from oven or charcoal grill
 - clean cheesecloth, netting, or old sheet large enough to cover rack twice
 - vegetable peeler, knife, apple corer
 - safety pins
 - 8 bricks

- Instructions:**
- Peel, core and slice apples in 1/8" rings.
 - Spread a sheet of cloth over the rack and fasten with safety pins.
 - Place the rack in a sunny spot, using 4 bricks as legs. **CAUTION:** Do not dry food outside near a large highway or well traveled road.
 - Place apple rings over the cloth. Put 4 bricks on top of rack and drape another layer of cloth over the top.
 - Turn apples a few times each day. Bring rack inside at night to stop dew or rain from getting the apples wet.
 - Return the rack to a sunny spot in the morning.
 - Test the apples at the end of the second day. If they feel dry, tough and flexible like leather, and don't stick together, they are dry.
 - When dry, eat or store in airtight containers. Check food for spoilage before eating or storing.



What Happened? Why was the rack placed off the ground?
 When did the apples weigh the most?
 Is solar drying suitable for all parts of Kansas?
 How would a rainy day affect drying?

MAKE AN ENERGY DIFFERENCE:

- Drying works best with herbs and some fruits and vegetables.
- Many vegetables and fruits require blanching, or other treatment to keep them safe and tasty.
- Discuss with your family how other dried foods are used in your home. (Remember cereal and spaghetti are dried foods.)
- Think of the advantages and disadvantages of solar-dried food. Is it a practical way to save energy?
- For plans to build a solar dryer using a light bulb for heat, send \$1.00 to: Fruit Dryer, #6202, Ag Engineering Dept., UW-Madison, 460 Henry Mall, Madison, WI 53706

[adapted from material developed by University of Wisconsin-Extension]

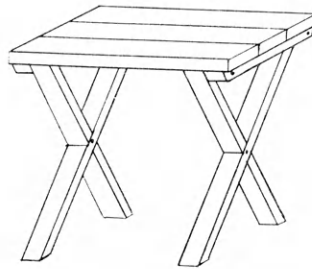
DID YOU DO IT?

- How long did it take for your apples to dry? _____
- What ideal weather conditions should exist for solar drying to work best? _____
- What other types of food could you dry with your solar dryer? _____

Free!

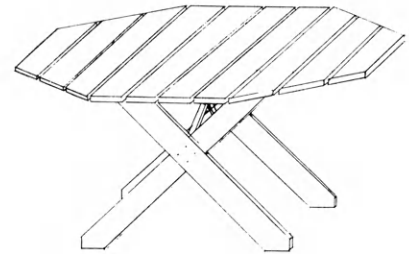
4-H Woodworking Plans from YOUR LUMBER DEALER

These plans
are available:



Patio Table

Made by
Greg Tomlinson, Wetmore



Picnic Table

Made by
Lyle Blockcolsky, Olsburg

For your free plans, see your lumber dealer; he will also help you select the material you need.

Ashland
Don Spotts Lumber Company

Atchison
Frakes Lumber Co., Inc.

Belleville
Belleville Lumber Co.

Beloit
Peoples Lumber Co.

Bern
Bern Lumber Company

Blue Rapids
Blue Rapids Lumber Company

Chapman
Hyder Building Materials

Clay Center
Fullingtons

Coldwater
Home Lumber and Supply
Company

Concordia
Mid-West Lumber Company

Dighton
Stephens Lumber Co.

El Dorado
Home Lumber & Supply Co.

Emporia
Fleming Lumber & Material Co.
Mark II Lumber

Erie
Johnson & Son Lumber Co.

Eureka
Home Lumber & Supply Co.

Frankfort
Fox Lumber Co.

Galva
Galva Lumber Co.

Garden City
Cash & Carry Lumber Co., Inc.

Great Bend
Everitt Lumber Co., Inc.

Greensburg
Hildinger's Lumber & Hardware
& Ready Mix Inc.

Harper
Town & Country Lumber Co.

Hillsboro
Hillsboro Lumber Co.
The Lumberyard Inc.

Holton
Building Supply Center

Hoxie
Hoxie Lumber Co., Inc.

Hugoton
Hugoton True Value Lumber &
Hardware

Independence
Sandott Lumber

Iola
Klein Lumber Company

Johnson
Seyb-Tucker Lumber and
Implement Company

Junction City
Builders Lumber Inc.

La Cygne
La Cygne Lumber and
Ready Mix, Inc.

LaHarpe
Diebolt Lumber and Supply

Lansing
Lansing Lumber Inc.

Larned
T.M. Deal Lumber Co.

Lawrence
Whelan's Home Center

Leavenworth
Whelan's Home Center

Louisburg
Great Plains Hardware &
Home Center

Manhattan
Ramey Brothers

Mankato
Mid-West Lumber Company

Marion
Mack-Welling Lumber & Supply

Marysville
Howell Lumber Company

Newton
Boise Cascade Building Materials
Center

Nickerson
The Home Lumber & Supply Co.

Norton
Norton Lumber Company

Nortonville
Nortonville Lumber Inc.

Oberlin
Nichols Building Supply, Inc.

Offerle
Offerle Co-op Grain & Supply Co.

Osage City
Martin Material Co., Inc.

Ottawa
Hubbard Lumber Company, Inc.
Ottawa Lumber Co.

Parsons
Woods-Seward Lumber Co.

Pittsburg
Broadway Lumber Co. Inc.

Plains
Home Lumber and Supply Co.

Pratt
W.R. Green Lumber Co., Inc.

Russell
Schwaller Lumber

OTHER PLANS AVAILABLE

Bookcase	Planter Bench
Clock	Planter Mailbox
Coat Rack	Portable Sandbox
Cold Frame	Pump Handle Lamp
Desktop Organizer	Saddle Rack
Early American Shelf	Saw Horse
Fences	Safety Swing
Flower Box	Serving Tray
Food Dehydrator	Sm. Bench w/storage
Fox & Geese	Solar Firewood Dryer
Garage Wall Storage	Spoon Rack
Garden Bench	Stereo Shelf
Hall Tree	Tack Box
Hobby Horse	Tennis Rack
Hurricane Lamp	Tool Box
Letter Tray	Toy Storage Bench
Magazine Rack	Trellises
Magazine Rack Table	Truck Caddy
Martin Bird House	Washboard Mag. Rack
Picnic Bench	Wood Picture
Plant Stand	Wood Box

St. Francis

St. Francis Mercantile Equity Exchange

Salina

Easterday-Boster Lumber Co.
Morrison Building Supply

Scott City

Scott City Building Materials

Stafford

T.M. Deal Lumber Co.

Syracuse

Hess Lumber Co.

Tampa

Hajek Lumber & Hardware

Topeka

Whelan's Main Yard
Whelan's Fairlawn Home Center

Tribune

Foster Lumber Company, Inc.

Ulysses

Sunflower Lumber Co., Inc.

Waterville

Waterville Lumber

Wichita

Alexander Lumber Co., Inc.
Star Lumber & Supply Co.
(three locations)

Wilson

Hoch Lumber Company

Winfield

A.B. Everly Lumber Co.
Everitt Lumber Co., Inc.

Wright

Right Co-op Assn.

Zenda

Farmers & Builders Lumber Co.

We're looking for leaders



Since 1919, farm producers have helped shape state and national legislation through active participation in Farm Bureau.

Grassroots policy development gives every farm member a voice. Leadership development programs encourage thorough policy discussion and deliberation through democratic control.

When considering your voice for agriculture, consider Farm Bureau.

Join Farm Bureau today!

Kansas Farm Bureau
2321 Anderson Ave.
Manhattan, Ks. 66502

Young boy teaches foods classes

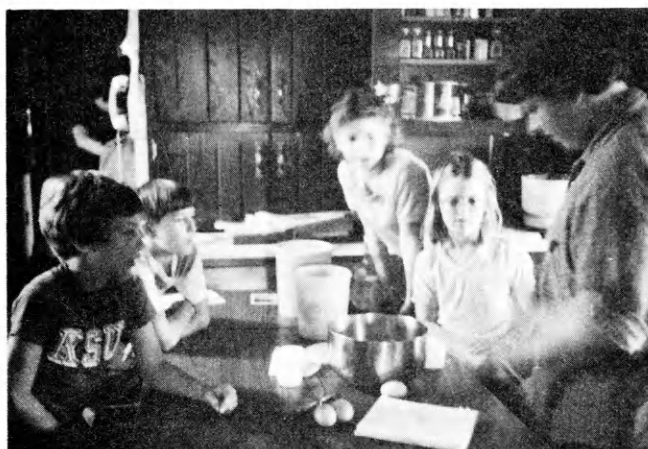
A thirteen year old teaching Tricks for Treats! Not unusual you say. What about when it's a boy teaching the class?

The six youth in the class belong to the Redwing 4-H Club of Sumner County, and Rustin Clark is their teacher.

They have prepared wieners and cheese on bread, cocoa and toast, pizza (prepared own dough) and made decorated cookies at Christmas.

Rustin includes nutritional information in the meetings and stresses cleanliness in preparing the products.

His mother, Mrs. Larry Clark, of rural Mayfield, says, "He runs me out of the kitchen during his classes."



All eyes are on Tricks for Treats teacher Rustin Clark. Project members are (from left) Al Baumgartner, Travis Willis, Michelle Wade and Rochelle Lintecum. Other project members not pictured are Brian and Eric Watts.

Club restores schoolhouse for Rock Springs Ranch

In 1916, the 29th year the Green Valley District #96 schoolhouse was in use, there was no electricity, no indoor plumbing and the school teacher made \$50 a month. Times have changed.

However, the Green Valley Schoolhouse, built in 1887, has been restored to its original condition by the Sunflower 4-H Club in Marshall County. After the school closed in 1964, Glennon Wuester bought the building and donated it to Rock Springs Ranch.

The club members and many of their parents and grandparents who attended the school have worked for three years on the restoration project. The club received Citizenship in Action grants for two years which helped pay for supplies, paint and curtains. Other furnishings were purchased by the club or donated by community members.



Photo Courtesy of Full-O-Pep

In Franklin County, 4-H means many things including FUN. More than 75 club members and community friends gathered at Briles School for Full-O-Pep 4-H Club's annual box supper. In addition to the decorated box suppers, auctioneer Bob Carlton sold many homemade pies to help boost the income for the club's only fundraising activity.

Family Fun Page

The answers to the Silly Game printed in the May *Kansas 4-H Journal* are printed in italics below. Only three entries submitted were entirely correct. The winner in zip code area 665 is the **Lee Lukert family** from Sabetha, from the 674 area the winner is **Bruce Garten** from Abilene, and from the 678 area, **Bret and Carey Wilken** from Modoc are the winners. Four other entries deserve special recognition for their originality. Instead of answering "Mixing Work & Play," the Gerry Thompson family, Courtland, answered "Boss Hog," and Randy Tosh, Topeka, answered "Pig Latin." Instead of answering "New Year's Eve in Times Square," the Gregory Pease family, Maple Hill, answered "New Year's Eve in Excess." Mary Schleicher, Pomona, answered "sowing wild oats" instead of "Minnesota."

<u>Quarters</u> <i>Close Quarters</i>	Ar row <i>Broken Arrow</i>	T @ IV <i>Tea at 4:00</i>	---Snow--- <i>Dashing through the Snow</i>	—Standing— <i>Standing in Line</i>
Arrest ur <i>You are Under Arrest</i>	XXXXX X Dec X X 31 X XXXXX <i>New Year's Eve in Times Square</i>	LAWPORKY <i>Mixing Work and Play</i>	☺ Me Me ☺ <i>Sock It To Me</i>	pigs pigs pigs <i>Three Little Pigs</i>
fry <i>Small Fry</i>	MD MD <i>Paradox</i>	HN AEYSE TDALCEK <i>Needle in a Haystack</i>	s o t a <i>Minnesota</i>	C a k e <i>Upside Down Cake</i>
h how h o THAT o w how w <i>How About That</i>	G N I N I L <i>Lining Up</i>	S L O W I N G <i>Slowing Down</i>	W H I T E <i>White Lies</i>	1,001,000 <i>One in a Million</i>

Segments reprinted with permission of Farm Wife News, P.O. Box 643, Milwaukee, WI 53201.

Classified ads reach 16,000 4-H families in Kansas. **RATES:** 25¢ per word, per insertion. 10% discount for same ad in five issues. 20% discount for same ad in ten issues. Deadline for each issue is 15th of the month preceding the month of publication. Payment must accompany the advertising order. Please print the ad and send to: Kansas 4-H Journal, 116 Umberger, K.S.U., Manhattan, KS. 66506.

For Sale

In Manhattan—The latest styles of nationally known brand name women's shoes and boots at rock bottom, outlet prices. Lady Foot Shoes, 221 Poyntz. 913-776-5331.

Tri-Chem Liquid Embroidery, Paints & Crafts. A craft for everyone in the family. Box 57, Aurora, KS. 67417, 913-464-3431.

Wanted

International Harvester tractor—460 or 560 with 3-point hitch for Rock Springs Ranch. Donation or cheap. Contact Merle Eyestone, Kansas 4-H Foundation, 116 Umberger, K.S.U., Manhattan, KS 66506, 913-532-5881.

Events

Kansas Junior Shorthorn Field Day, July 17, Harvey County Fairgrounds, Newton. 4-Hers and FFA members eligible. Steer and female classes. Contact Joyce Roux, R.R. 1, Box 108, Moundridge, Ks. 67107.



REGISTER YOUR
BUCKSKIN-DUN OR GRULLA HORSES
WITH THE
AMERICAN BUCKSKIN REGISTRY ASSN.
FOR INFORMATION CONTACT THE
KANSAS BUCKSKIN HORSE CLUB
400 Story No. 12 Topeka, Ks. 66604 (913) 234-8233

U.S. POSTAGE
P A I D
Permit 85
Non-Profit Organization
Lawrence, Kansas

Need a bright idea?

Power company representatives are a good source for educational materials and programs about electricity and energy. Contact your local power supplier to arrange for a speaker, tour or audio-visual materials.

In Arkansas City, El Dorado, Newton, Fort Scott, Pittsburg, Independence and Wichita contact the **Kansas Gas and Electric Company**. KG&E has a "Program Services Catalog" which gives specific information on multimedia kits, films, video tapes, slides and filmstrips that may be checked out by leaders.

Tours of KG&E generating stations also are available. Since the tours are technical, they are most meaningful for 4-Hers 12 years of age and older and adults. Make tour reservations through the nearest KG&E office for the Murray Gill Station, Hoover & 55th Street South, Wichita; Gordon Evans Station, K-96 near Colwich; and the Neosho Station, near Parsons. Tours are available of the construction site at the Wolf Creek Generating Station in Coffey County near Burlington, Kansas' first nuclear fueled generating plant. To make arrangements, contact KG&E Information Services, (316) 261-6258, or write Box 208, Wichita, Kansas 67201.

Consumer consultants are available to present group programs on energy within the KG&E service area.

In Caldwell, Concordia, Dodge City, Ellsworth, Great Bend, Harper, Medicine Lodge, Ness City, Phillipsburg, Plainville and Smith Center contact the **Western Power Division of Central Telephone and Utilities Corporation**. Energy conservation materials and electrical safety films are available on a loan basis.

In the **Kansas Power & Light** service area, contact your nearest KP&L office to schedule a program on energy conservation. For a list of the programs available, write to Kansas Power & Light, Attn. Linda Few, 818 Kansas, Topeka, Kansas 66601. Materials on electrical safety also are available.

What are you or your family doing to conserve energy? Please send your ideas, with illustrations if possible, to Electric Page, Kansas 4-H Journal, Umberger Hall, KSU, Manhattan, Kansas 66506.



Watch This Page For Ideas On Farm And Home Electric Projects

ELECTRIC LIGHT and POWER COMPANIES in KANSAS

The Kansas Power and Light Company Kansas Gas and Electric Company
Western Power Division of Central Telephone & Utilities Corporation

