

Source: Natural Enemies of Soybean Aphids. (1986) Shandong Science and Technology Press pp.49-50,74-79,118-119,124-125,129,162-177.
Translated by Judong Shen, Edited by Mohan Ramaswamy, Kansas State University Libraries

[Excerpts from the book]:

NATURAL ENEMIES OF SOYBEAN APHIDS
Zhengquan Ma, Dean Shan, Yaoshun Qu, Xiaohua Gao

1. P49-50

Diplozon laetatorius (Fabricius) (Fig. 41)

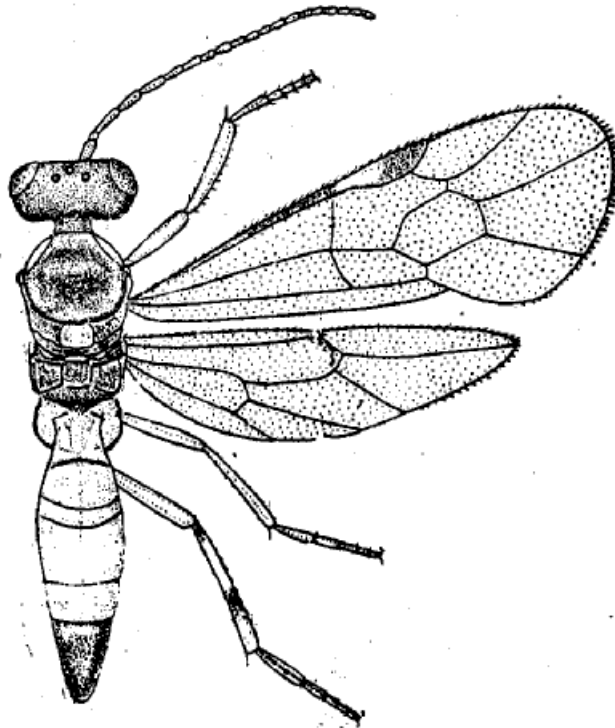


Fig. 41 *Diplozon laetatorius* (Fabricius)

2. P74-79

Aphididae

Ephedrus plagiator (Nees) (Fig. 59)

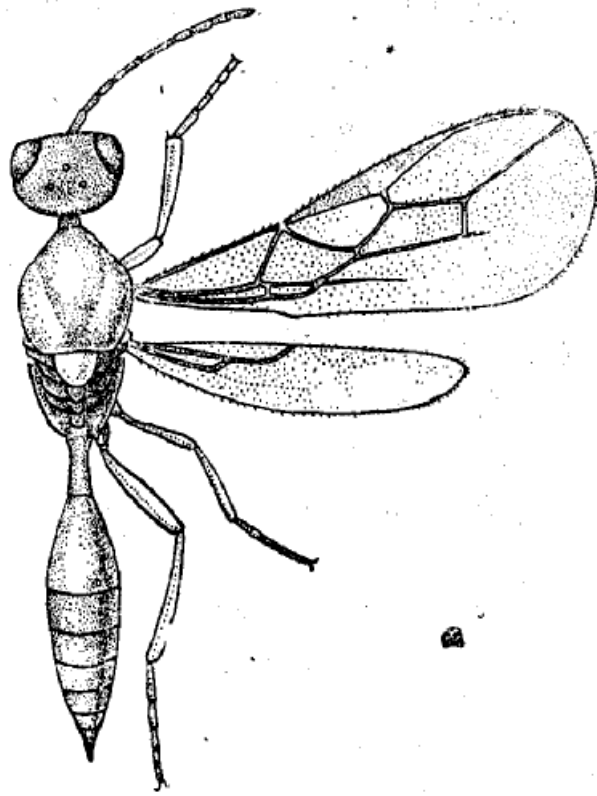


Fig. 59 *Ephedrus plagiator* (Nees)

Lysaphidus sp. (Fig. 60)

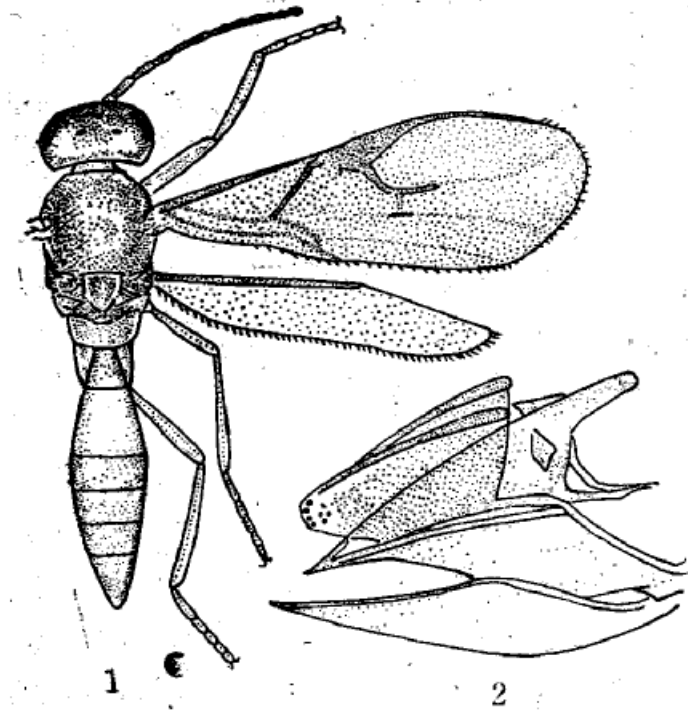


Fig. 60 *Lysaphidus* sp.

1. Imago, 2. Female reproductive organ (.....)

Trioxys auctus Haliday (Fig. 61)

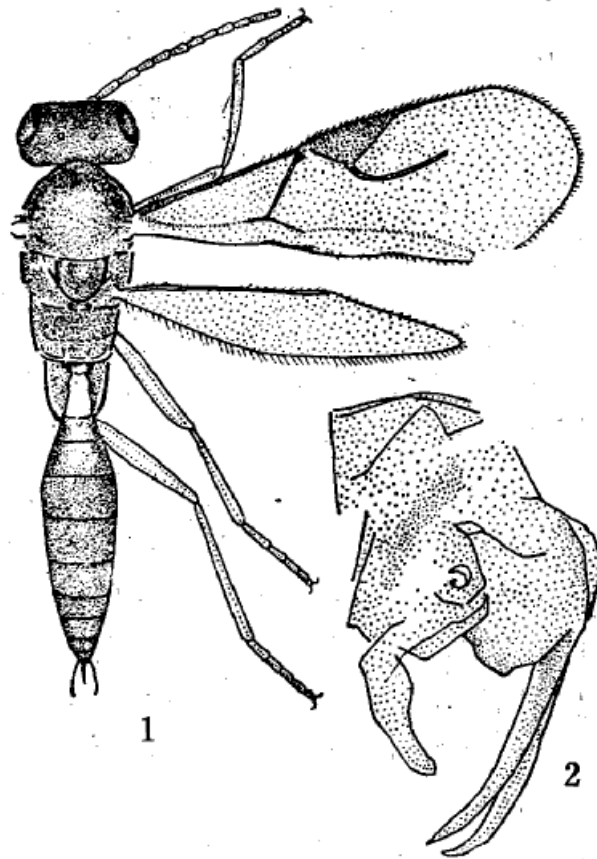


Fig. 61 *Trioxys auctus* Haliday

1. Imago (♀), 2. Female reproductive organ

3. P118-119

Aphelinidae

Aphelinus sp. (Fig. 85)

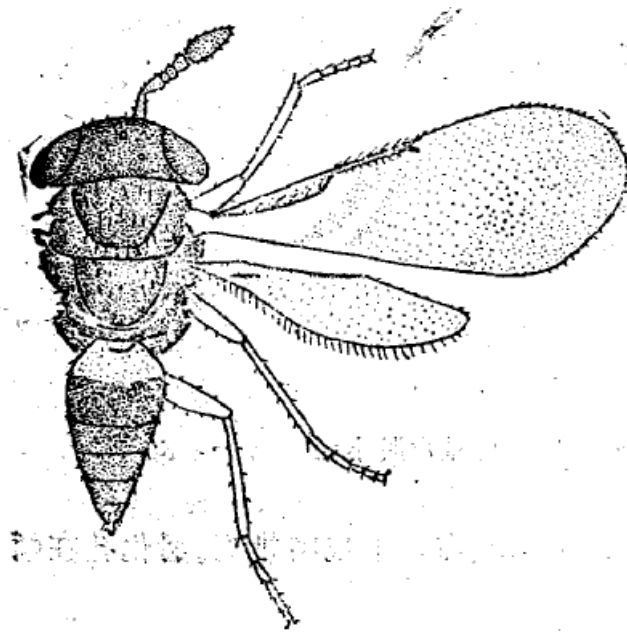


Fig. 85 *Aphelinus* sp.

4. P124-125

Goniozus japonicus Ashmead (Fig. 88)

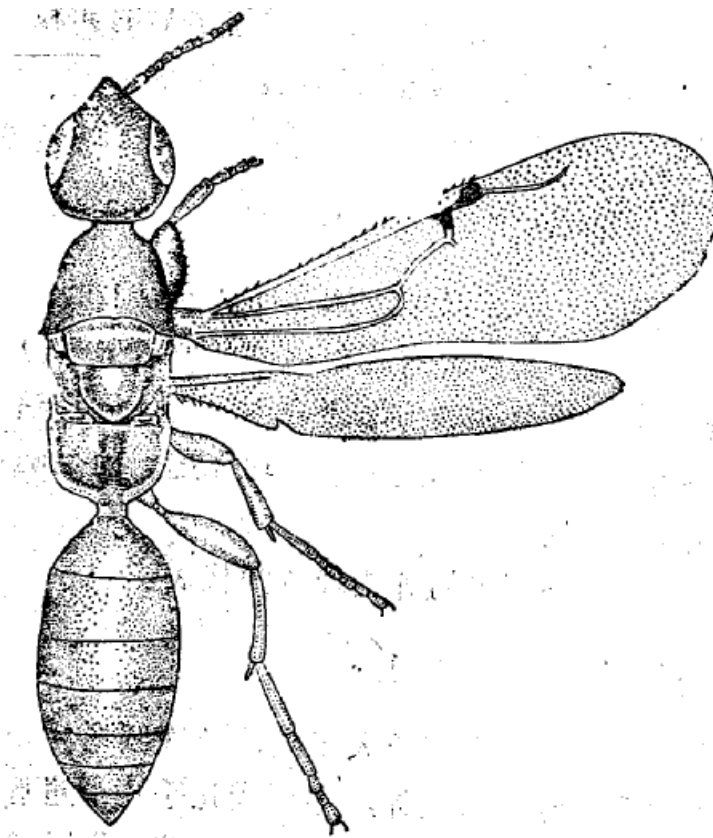


Fig. 88 *Goniozus japonicus* Ashmead

SCOLIOIDEA

Scoliidae

6. P162-177

Syrphidae

Ephistrophe balteata De Geer (Fig. 105)

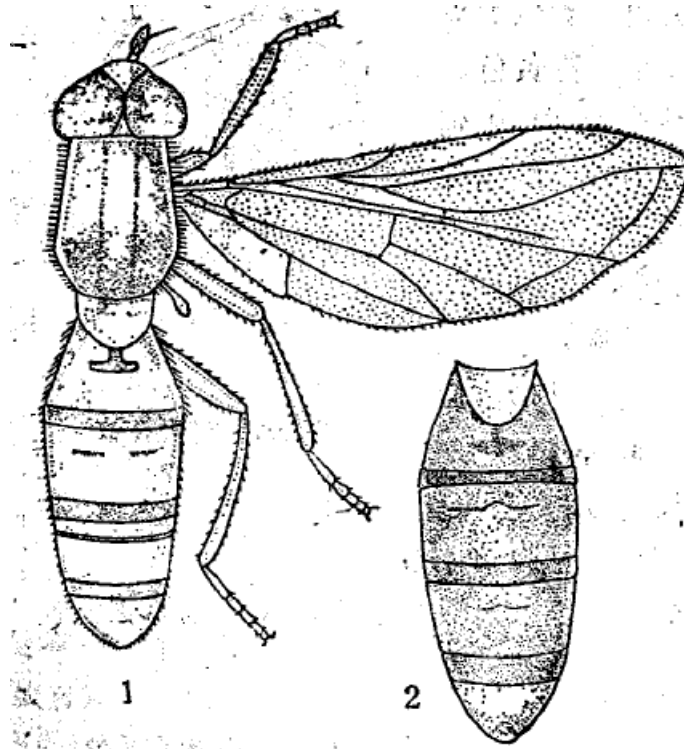


Fig. 105 *Ephistrophe balteata* De Geer

1. Male , 2. Female

Sphaerophoria sp. (Fig. 106)

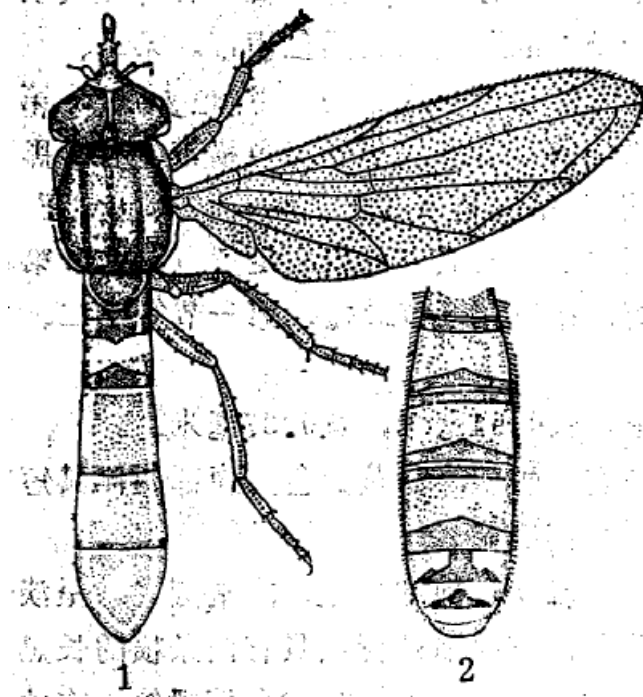


Fig. 106 *Sphaerophoria* sp.
1. Male , 2. Female

Lasiopticus pyrastris (Fig. 107)

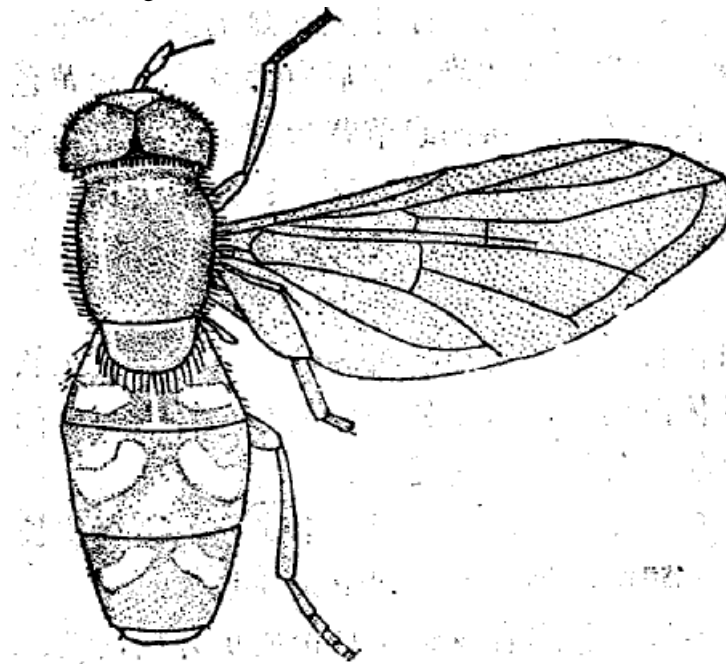


Fig. 107 *Lasiopticus pyrastris*

Metasyrphus corollae Fabricius (Fig. 108)

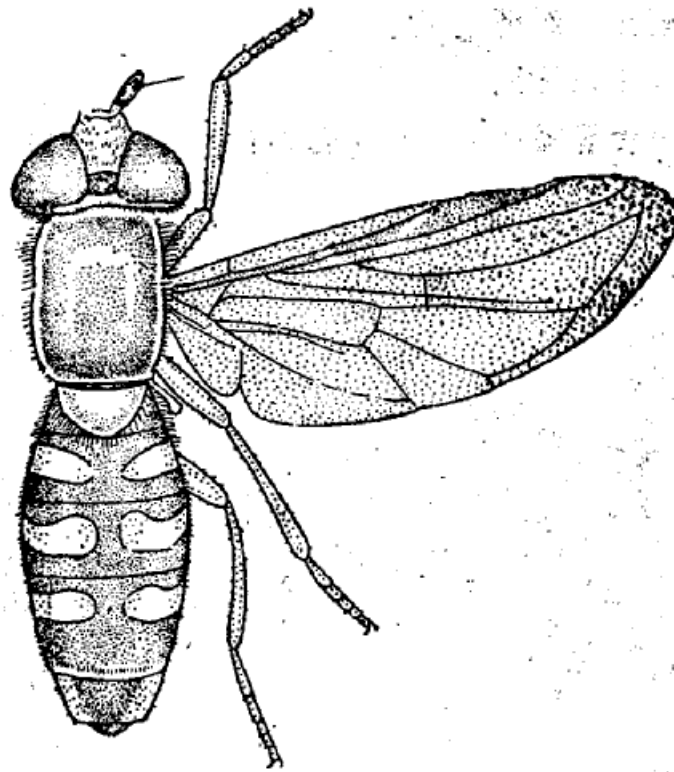


Fig. 108 *Metasyrphus corollae* Fabricius

Paragus quadrifasciatus Meigen (Fig. 109)

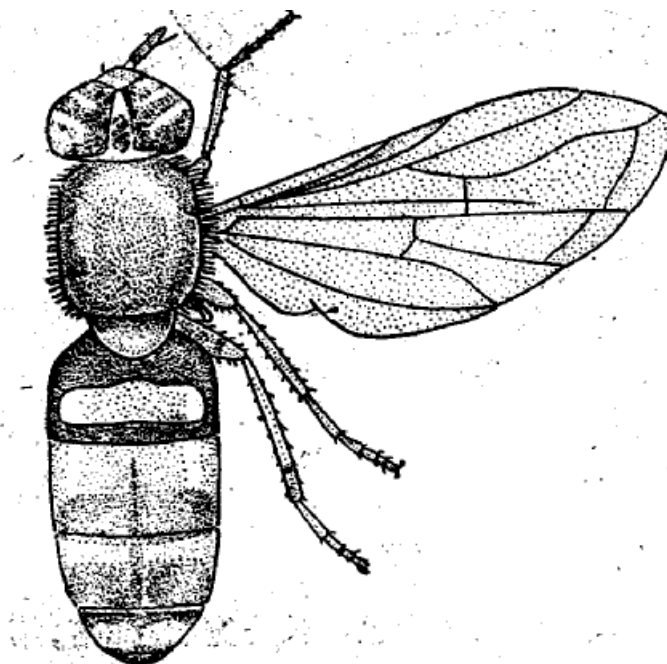


Fig. 109 *Paragus quadrifasciatus* Meigen

P.tibialis Fallen (Fig. 110)

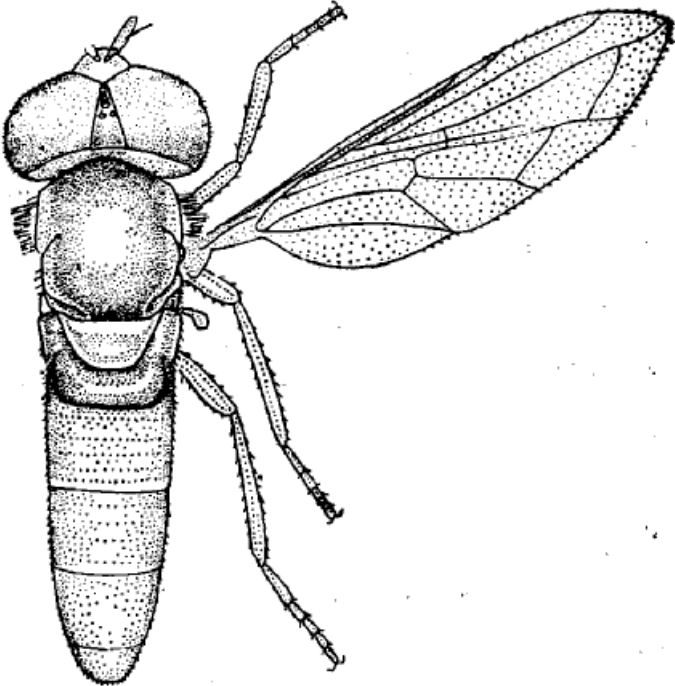


Fig. 110 *P.tibialis* Fallen

Sphaerophoria scripta (Linnaeus) (Fig. 111)

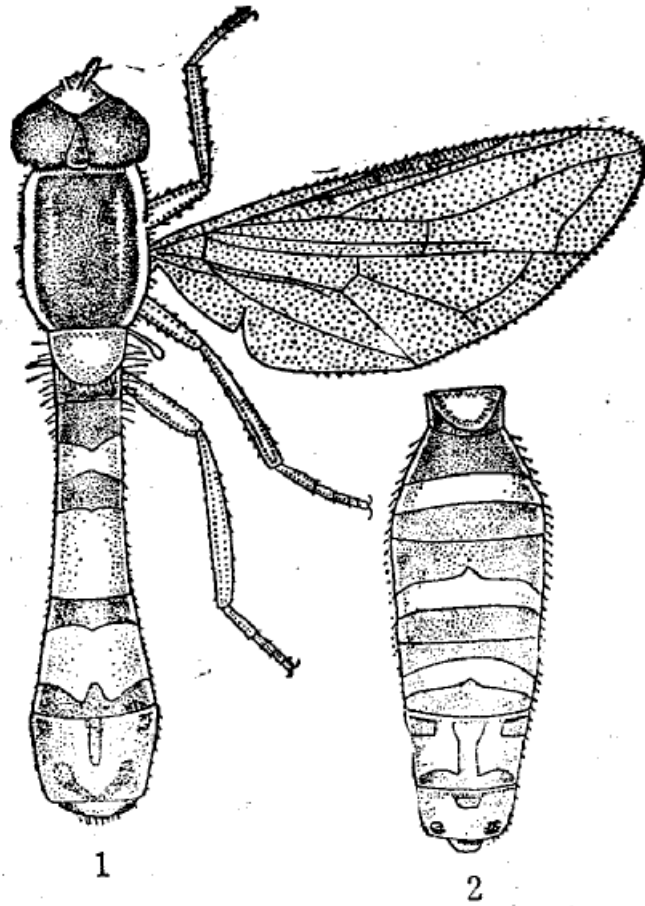
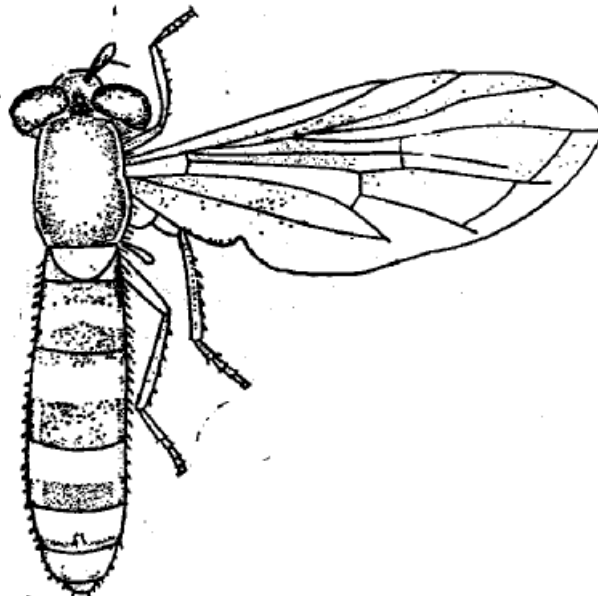


Fig. 111 *Sphaerophoria scripta* (Linnaeus)
1. Male , 2. Female

S.indiana Bigot (Fig. 112)



S.menthastri Linne (Fig. 113)

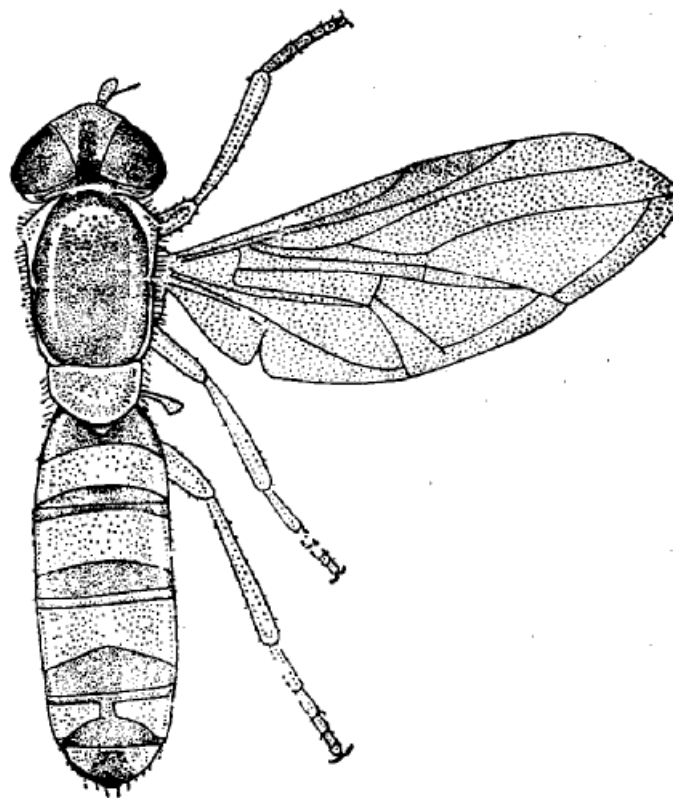


Fig. 113 *S.menthastri* Linne

Syrphus corollae Fabricius (Fig. 114)

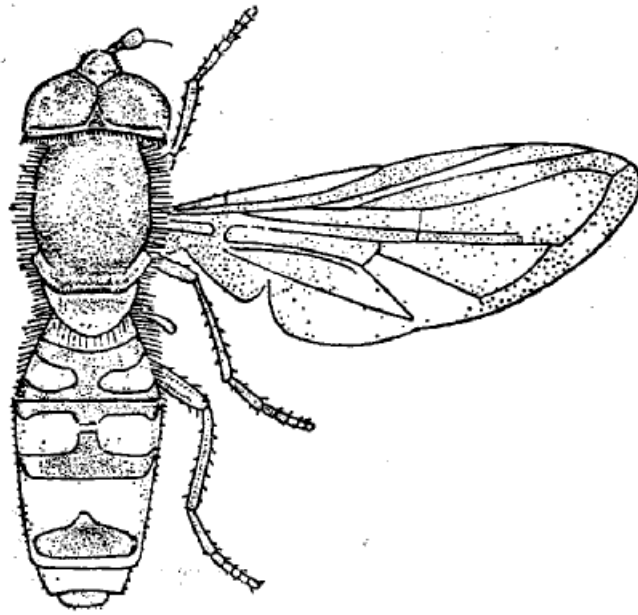


Fig. 114 *Syrphus corollae* Fabricius

***Melanostoma Scalare* Fabricius (Fig. 115)**

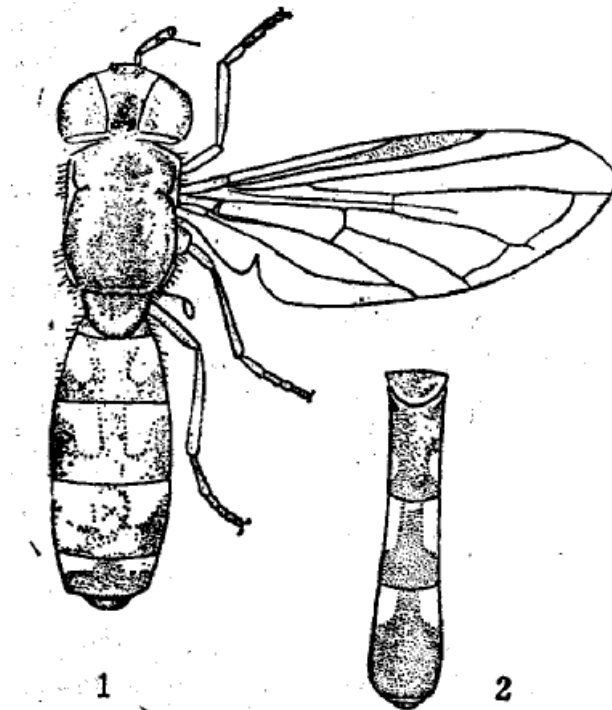


Fig. 115 *Melanostoma Scalare* Fabricius

