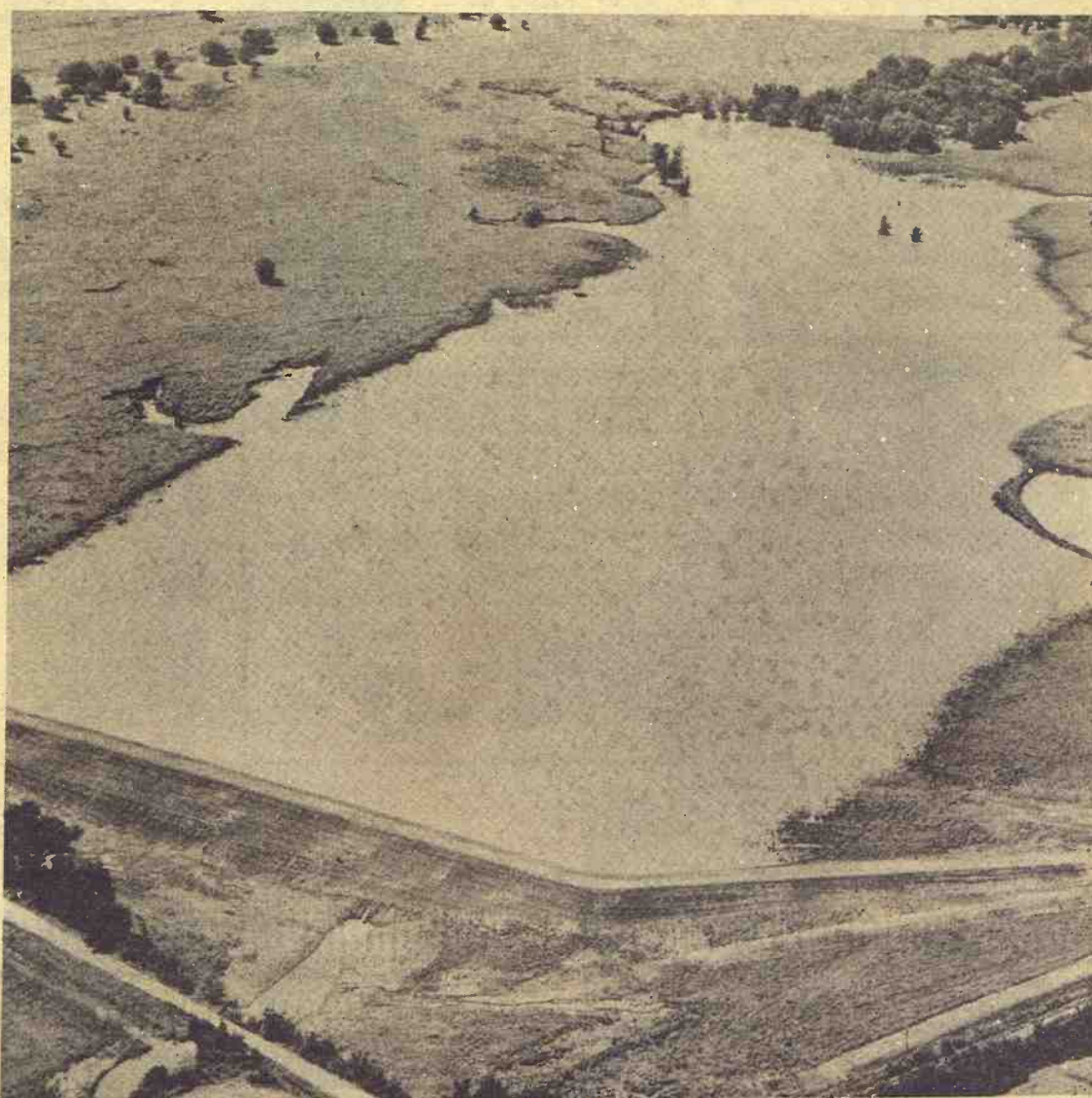


# GRASS & GRAIN



## The Land

Kansas' 105 conservation districts work to transform the land to steady productive improvement. Above, Lynn Buerki of Goddard looks over a duck blind on his stockwater pond built for his dairy herd. At right is a flood control dam on the Frog Creek Watershed in Coffey County.



## Soil Conservation Districts Meet At Wichita Next Week

"Patterns for Progress" is the theme of the 24th annual KACD convention December 1-3 at Wichita.

The Broadview Hotel is the site of the meeting of the Kansas Association of Conservation Districts.

Keynoting the convention Monday morning, December 2, is Floyd E. Heft, executive secretary of the Ohio Soil and Water Conservation Committee.

This follows the annual message by KACD president Lyle Bauer.

Also speaking that morning are:

J. Lee Mayes  
Chief Engineer, Dept. of Health  
Robert A. Bohannon  
KSU Extension director  
David Stewart Jr.  
League City, Texas

Banquet speaker Tuesday evening, Dec. 3, is John Harms, editor of the Kiplinger Agricultural Letter. Governor Robert Docking will speak Tuesday noon.

Monday noon the convention will be addressed by Robert S. McClelland, program advisor, NACD Western Regional office, Denver, Colo.



### KACD President

President of the Kansas Association of Soil Conservation Districts is Lyle Bauer of Harper.



## Entertainment

Part of the entertainment at the annual meeting at Wichita will be provided by the Boeing Stratosingers, whose program includes semiclassical, Broadway and patriotic tunes.



### Directors

Directors of Kansas Association of Soil Conservation Districts, besides president Bauer, are Bartos Brown, Jennings; Raymond Schemm, Neosho Rapids; Harold Johnson, Dwight; and Wilbur Wilson, Kinsley. Johnson is vice president.

"WHERE YOU ALWAYS BUY THE BEST FOR LESS"

# GIBSON'S

## DISCOUNT CENTER

# Big values Big selection

## FOR EARLY CHRISTMAS SHOPPERS

Open 9 am. to 9 pm. Daily — Sunday 1 pm. to 6 pm.

# 353 GRANT AVE. - JUNCTION CITY, KANSAS



49c Value  
First Quality Seamless

### Ladies Nylon Hose

Run-Guards in the toe and top  
400 Needle — 15 Denier  
Sizes 8 to 11 — Plain or Mesh.

Tropicana Cinnamon and Desert Sand

Gibson's Discount Price  
**23¢** Pair



Nylon Reinforced  
**Boy's Jeans**

TUFF AND RUFF PERMANENT PRESS  
Blue, Black, Green and Beige  
Sizes Slim & Regular  
6-16  
3.49 Values

Gibson's Discount Price  
**2.00** Pair

Men's Long Sleeve  
**Sport Shirts**

PERMANENT PRESS SOIL RELEASE  
3.98 Value

Gibson's Discount Price

**1.87**



MOTORIFIC FIREBIRD  
**RACERIFIC**  
with New 2 speed chassis!

- 2-speed Car
- 17 Feet of Track

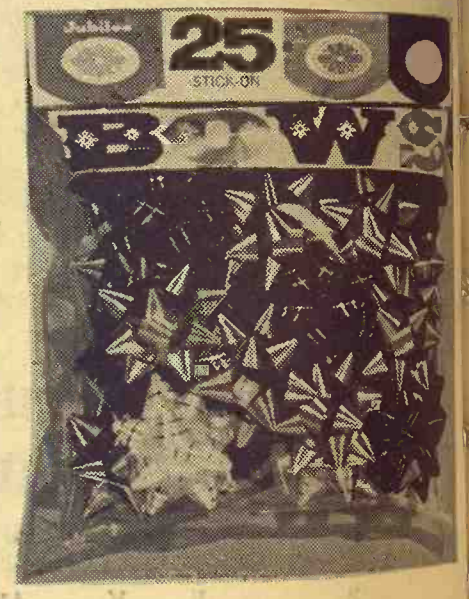
Gibson's Discount Price  
**6.97**



New !!  
**Talking Barbie**

- Chic Swim Suit
- Real Eyelashes
- Bendable Legs
- 11 1/2" Tall

Gibson's Discount Price  
**3.87**



**BOWS**

Stick On Backs  
25 per Package  
Assorted Colors

Gibson's Discount Price  
**47¢**



**Icicles**

29c Value  
Gibson's Discount Price

**8¢**



**Aluminum Christmas Tree**

94 Branch — 6 foot

Gibson's Discount Price  
**5.77**



**OUTDOOR LITE SET**

15 LITES  
Assorted Colors

Gibson's Discount Price

**1.97**

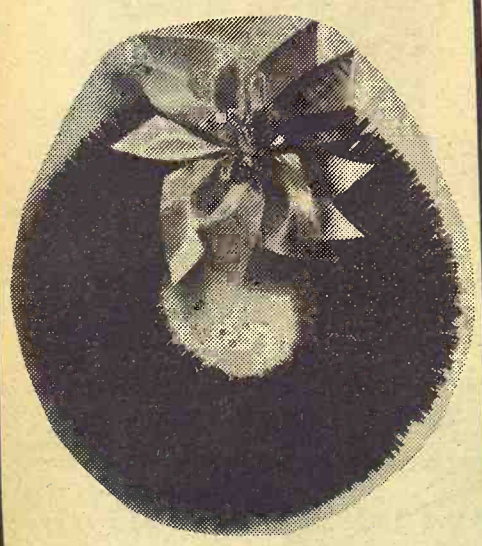


**INDOOR LITE SET**

7 Lite Set  
Assorted Colors

Gibson's Discount Price

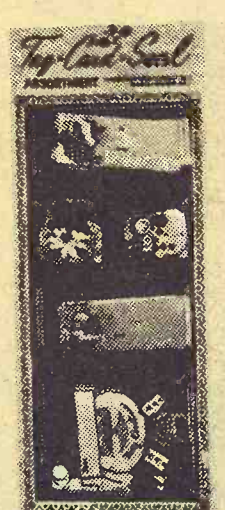
**77¢**



**BRUSH WREATH**

17" Cedar Green Flock

Gibson's Discount Price  
**2.27**



**Tag - Card - Seal Assortment**

Over 200 Pieces

Gibson's Discount Price

**21¢**



**Gift Wrap**

8 Rolls

Gibson's Discount Price  
**83¢**



**Samsonite Furniture Set**

KING SIZE  
Table and Four  
Matching Padded  
Chairs

\$63.75 Value

Gibson's Discount Price

Choice of:  
WHITE OR TAN FINISH

**37.87**

Nothing If Beef  
The Agricu  
has announce  
the hot dog a  
look at what  
One key is  
producers sho  
the future to  
25 per cent  
still call the



Pick up

Phone E

## Nothing Chicken About Hot Dog If Beef Is Heard In Washington

The Agriculture Department has announced plans to open up the hot dog and take a good look at what's inside.

One key issue is whether producers should be allowed in the future to put in as much as 25 per cent chicken meat and still call the product a hot dog.

The poultry industry wants the change. The beef cattle industry opposes it.

Another major question is whether the department should go ahead with its own proposal to limit the amount of fat in franks to 30 per cent. There is no legal limit now.

The hearings, expected in December and January, are addressed specifically to the chicken and fat contents of frankfurters and other processed meats classified as "cooked sausage." This also includes bologna, knackwurst, garlic sausage and Vienna sausage, but not salami or pure pork sausage.

The proceedings, however, could uncover a whole market bag of other disputes.

"I'm not so worried about the chicken, although we have to look into that," said Erma Angevine, executive director of the National Consumer Federation of America. "It's some of the other stuff they put in that we ought to examine carefully."

Under existing Agriculture Department regulations, meats can be sold in interstate commerce under the name "hot dogs," "frankfurters" wieners," or "bologna" as long as they consist of beef, pork, mutton, goat meat, fat, and not more than 3.5 per cent cereal or other filler.

But if they include any chicken at all, the title of the product must so indicate. The label must read in big letters — not just in the fine print — "franks and chicken," or "chicken and hot dogs" or some such legend. Meat products labeled in this way have had poor consumer reception.

In June 1966 a Georgia chicken firm applied to the Agriculture Department for a change in the hot dog and bologna labeling rule.

It proposed that such products be allowed to include in their protein content up to 25 per cent

poultry meat without a change in the product name being required. The fact that chicken or turkey was included would be revealed only in the fine print.

The American National Cattlemen's Assn., chief spokesman for beef producers in the west, opposed this as likely to cut down on use of beef.

But the National Broiler Council and spokesmen for the turkey producers who would like more of an all-year-round market backed it strongly.

Some sources said the proposed 30 per cent fat limit might end up being more disputed by the meat industry than includ-

November 26, 1968

ion of chicken.

While the Agriculture Department has a fat limitation on hamburger, it has never imposed one before for frankfurters.

### GRASS & GRAIN

The Mid-Kansas news weekly. Published each Tuesday at 1207 Moro, (Box 1009) Manhattan, Kansas, 66502 by

AG PRESS

Dean Coughenour

E. R. Woodward

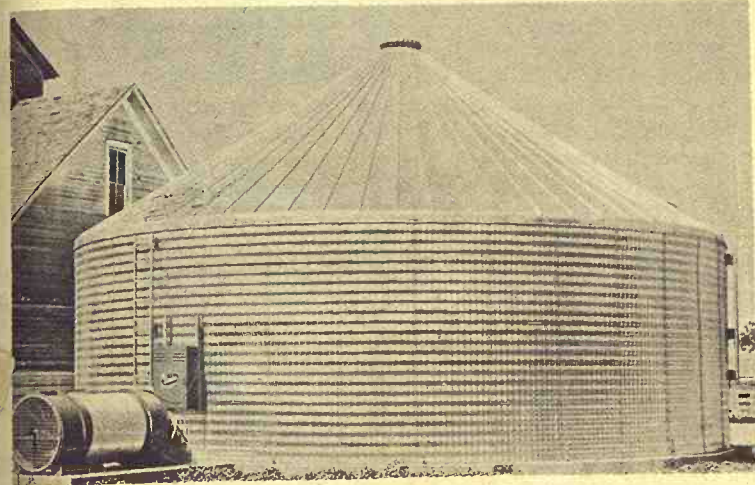
Second class postage paid at Manhattan, Kansas.

Subscription: \$3 year

CIRCULATION . . . . . 14,200



## Grain Bins & Grain Storage Curvet



Pick up in one day or we deliver in 3 weeks.

**Wayland Const. Co.**

Phone EA 5-2134

Washington, Kansas 66968

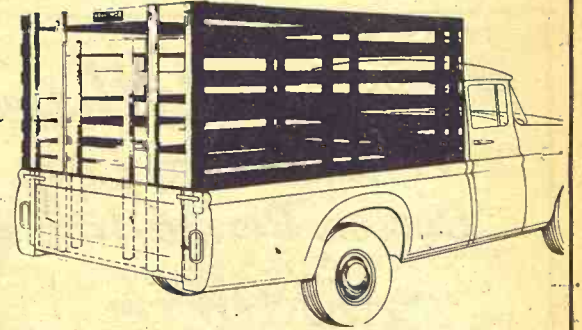
## Pick-up racks



for any make or model pickup

Sturdy • Convenient • Practical

Mounted free on your truck at factory or shipped to you. Available in stock rack or fold-down combination.



Fits all trucks. No bolt projections to injure stock. Top grade select kiln-dried lumber. Choice red or white. Fits precisely so pick-up endgate closes behind it. Sturdy oak stakes. Lift-up gate slides easily in steel channels. Standard height 63". Special height on order.

When Ordering Specify Make, Model, Size of Bed

**HAUL-MOR, INC.** valley falls, kansas • phone 945-3211

"If I have questions about bills, payment arrangements, or some other telephone matter, whom do I call?"



Here's the expert.

She's your telephone service representative. To many telephone users, she is the phone company.

She answers questions, provides personal number booklets, directories and duplicate bills. She helps you get new phones installed.

As a service representative, she has to be something of a lady executive, a bit of a diplomat and an expert in phone service.

And she is. She was hired from a select group of applicants and put through an extensive training program.

And she attends regular meetings to discuss customer service.

Next time you need help on a telephone problem, just call the telephone business office.

Your service representative will take it from there.

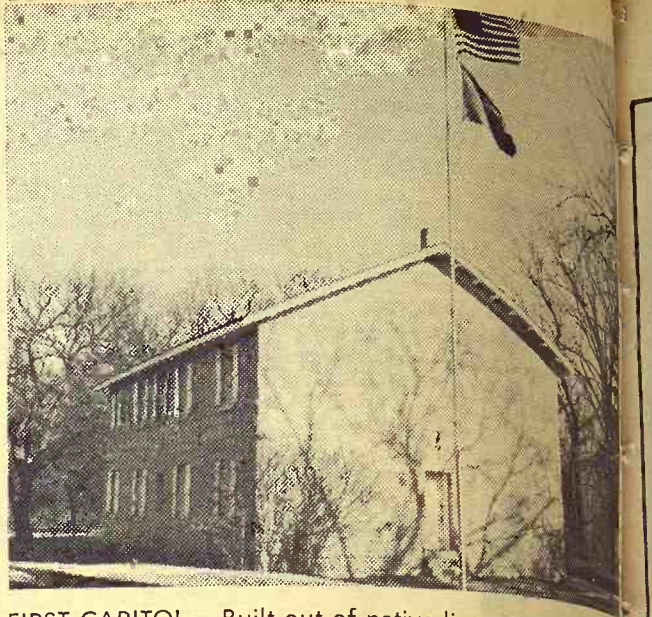
Southwestern Bell





## Hays Feedlot To Expand

The Hays Land & Cattle Co. says it will expand its feedlot there to 20,000 head capacity in 1969. Glenn Feldman, manager, says the addition will double the capacity.



**FIRST CAPITOL** — Built out of native limestone, the first territorial capitol of Kansas was this building which is now maintained by the state as a museum at Fort Riley. Gov. Andrew H. Reeder issued a proclamation on April 16, 1855, calling the territorial legislature to meet at Pawnee, Kansas, July 2, providing Pawnee could make available a suitable building. The above-pictured structure, actually a warehouse, was hastily constructed. It contained no doors — only huge holes in the side — as it housed Kansas' first legislative meetings. Pawnee was located on land adjacent to Fort Riley. — ENJOY KANSAS — TAKE A KANSAS HOLIDAY.

## at Bauer Clothing

CLAY CENTER, KANS.

Decton Perma-Iron

by **ARROW** for

CHRISTMAS

permanently ironed to last the life of the shirt...

It's the perfect gift for him at Christmas... and a year round present for you. The luxurious fabric of 65% Dacron\* polyester, 35% cotton is completely machine washable and tumble dries to a wrinkle-free finish wash after wash.

We have his favorite collar styles in white, solid colors and today's new fashion stripes.

\*DuPont R.T.M.

\$7.50



## Farmers Union Favors Limit On Subsidies

Kansas members of the National Farmers Union voted in favor of limiting subsidy payments to farmers.

The vote came in the closing hours of the group's annual convention at the Broadview Hotel.

After considerable discussion, the resolution passed, urging Congress to enact a graduated schedule of payments including direct payments, certificates and

diverted acreage payments as follows:

- \$20,000 and under — full payment
- \$20,001 - \$25,000 — 75 per cent of payment
- \$25,001-\$30,000 — 50 per cent of payment
- \$30,000 and over — 25 per cent of payment

In effect, this scale would mean that a man whose payments totaled \$35,000 as the law

is today, would receive under the limitation full pay (\$35,000) for the first \$20,000; then 75 per cent for the next \$5,000; \$25,000 for the next \$5,000; and \$12,500 for the final \$5,000, giving him a total of \$37,500 under the new law of \$27,500.

Reuben Johnson, NFU Washington representative, said the move to limit payments might in fact, be a deciding factor in enabling farm organizations to keep the 1965 Food and Agriculture Act, which is favored strongly by all farm organizations except the Farm Bureau.

## LEASING

**Farm and Industrial Machinery**

If you can't buy it you can lease any piece of Allis-Chalmers machinery you may need, and at low rates. See Bob Martin for Industrial leasing, Jim Gates for Farm Equipment leasing.

**HENRY SALES AND SERVICE**

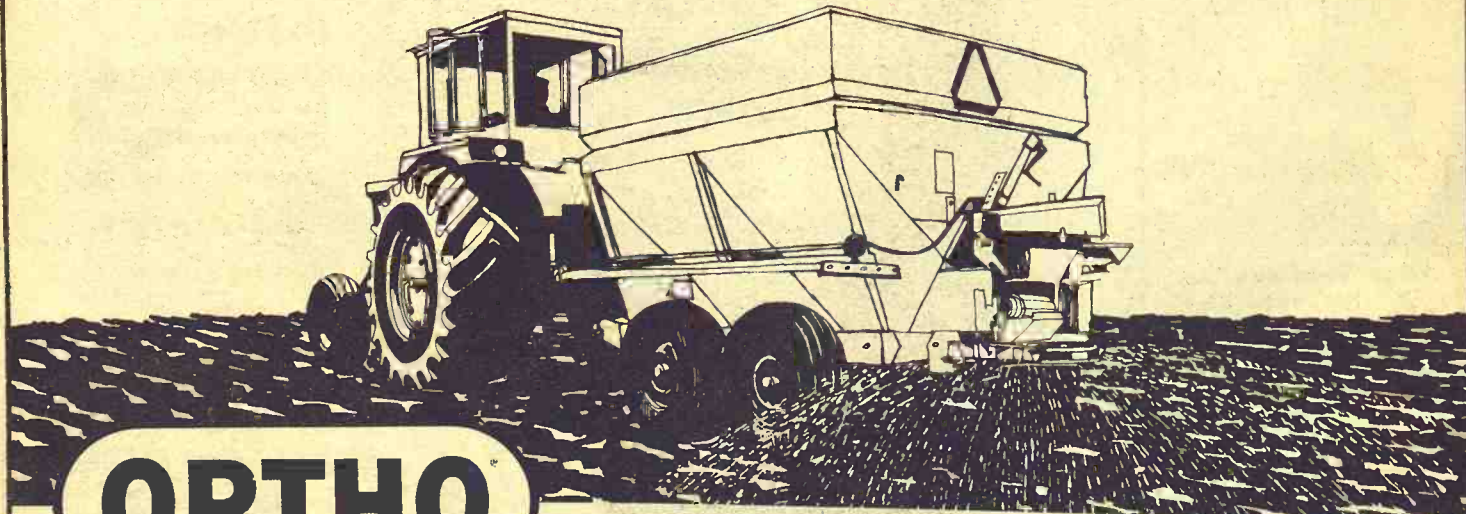
East Highway 24 and Meriden Road, Topeka, Kans. — FL 4-7641

Fertilizing in the fall can benefit you much more than just giving you a head start next spring. □ If you broadcast UNIPELS on top of this year's crop stubble and plow it all down, you'll have a fertilizer working for you all year 'round. □ During the fall and winter months, the nutrients in UNIPELS will be helping break down crop residue and preparing the soil for early nutrient release in the spring. □ With fertiliz-

ing done, you'll be among the first to plant come spring. And the early planters get the greatest yields! □ During the heat of summer, your plant roots will be feeding on the vital UNIPEL nutrients down in the moisture zone where roots are most active. □ This is why we call UNIPELS "The All-Season Fertilizer."

□ Come see us soon and learn how you can get more value from your fertilizer investment with UNIPELS.

# Does your fertilizer work for you all year 'round?



# ORTHO

Galva Grain Elev. — 654-3261 — Galva  
Gorden Mark Elev. — 632-3381 — Clay Center  
Mid-Continent Elev. — 238-4177 — Junction City  
Mor-Kan Elev. — 349-2214 — White City

TM'S ORTHO, CHEVRON DESIGN, UNIPEL-REG. U.S. PAT. OFF.



Large Stock of Penta-Treated

## Posts

GUARANTEED FOR LIFE CAN BE PAINTED IMMEDIATELY

2 1/2" x 6 1/2' 50 or more	\$1.49
3 1/2" x 6 1/2' 50 or more	\$1.49
3 1/2" x 8' 50 or more	\$1.25
4" x 6 1/2' 50 or more	\$2.20
5" x 8' 50 or more	\$1.20
5" x 7' sawn half	\$4.25 ea.
5" x 10'	\$5.30 ea.
5" x 12'	\$6.39 ea.
5" x 14'	\$7.15 ea.
5" x 16'	\$8.30 ea.
5" x 18'	\$9.50 ea.
5" x 20'	\$16.98 ea.
5" x 25'	

Satisfaction Guaranteed



5th & Ash TA 7-467

SALINA, KS.

a fork and moisten with a little of the cream, if necessary. Shape into three balls for the body and head of the snow man.

new program:

# Mineral Rights

## Farmland changes calcium-phosphorus ratio

Researchers are the first to admit they still have some "bugs" to iron out in pinpointing needs of livestock. Nonetheless, they have nailed down two major conclusions:

1. You can't afford to ignore mineral requirements or take them for granted. Livestock rations aren't balanced if mineral content is overlooked. Too much of one mineral can be just as costly as too little.
2. New research findings have outdated long-held "rules-of-thumb" on mineral feeding. Animal scientists from coast to coast generally agree that the best buy for most livestock producers is a mineral supplement with a calcium-phosphorus ratio of 1:1.

You can now capitalize on this new research information, thanks to Farmland's just-announced line of mineral concentrates. Modern new mixtures with a calcium-phosphorus ratio at or near 1:1 are now available at your local CO-OP. Another formulation, designed specifically for high-grain rations, is high in calcium (17%) and low in phosphorus (4%).

**Holton**  
Farmers Union Co-op Bus. Assn.  
Holton 364-3161  
Denison 50-Mayetta 28

**St. Marys**  
Farmers Union Co-op Business Assn.

**Herkimer**  
Herkimer Co-op Bus. Assn.  
Herkimer HI 3-3824  
Oketo RI 4-2341

**Carlton**  
Farm Co-op Assn.  
Carlton  
Telephone 31

**Clay Center**  
Farmers Union Co-op  
Clay Center-Bala  
-Miltonvale-Leonardville

**Greenleaf**  
Farmers Co-op Elevator Assn.  
Greenleaf-Linn  
-Washington

**Manhattan**  
Farmers Cooperative Assn.  
Manhattan-Alta Vista  
-Westmoreland-Onaga

**Alma**  
Alma Oil Co-op Ass'n.  
Alma Ph. 765-3612

**Junction City**  
Farmer-Stockman Co-op Assn.  
Council Grove  
-Junction City CE 8-4158

## Weekly Prize Won By Mrs. Edna Harding, Waterville

Mrs. Edna Harding, Waterville, weekly prize winner, writes: "Cranberries are plentiful, rich in Vitamin C and a colorful addition to our diet."

### COTTAGE CRANBERRY LOAF

- 1/2 cup butter
- 3/4 cup firmly packed light brown sugar
- 2 eggs
- 1 cup cottage cheese
- 2 tablespoons grated orange rind
- 2 tablespoons grated lemon rind
- 1/4 cup orange juice
- 3 cups sifted all-purpose flour
- 3 teaspoons baking powder
- 1 teaspoon baking soda
- 1 teaspoon salt
- 1 cup cranberries, cut in halves
- 1 cup raisins
- 1/2 cup chopped pecans

Preheat oven to 325 degrees. Butter loaf pans (2) and line bottoms with wax paper. Cream butter and sugar until light and fluffy. Add eggs, cottage cheese, orange and lemon rinds and orange juice. Beat well. Sift together flour, baking powder, baking soda, salt; gradually add to creamed mixture; add cranberries, raisins, and pecans. Divide mixture in half and spread in pans; bake one hour. Cool 10 minutes, then remove to wire racks to cool before slicing.

Mrs. Frank Say, R 1, Alma: "We enjoy the Grass & Grain paper very much. This is a recipe good for any time of year."

### ANGEL NUGGETS

Bake an angel food cake in a long loaf pan. When cool cut into 3-inch long, 1 1/2-inch thick bars or make slices 1 1/2-inches thick across the cake. Then ice all around the bars or slices with a powdered sugar icing made with butter, hot water or hot milk and butter. Next, roll in ground-up salted peanuts and let set a few minutes. "They are

delicious."

The next recipe is from Mrs. H. A. Walter, R 2, Lincoln:

### NORDIC SNOW MAN

- 1 pound cream cheese
  - 3 or 4 tablespoons cream
  - 2 whole cloves
  - Bits of angelica
  - 1 slice of orange
  - Evergreen for garnishing
  - 1 piece candied pineapple
  - 2 strips candied orange peel
  - 3 red cinnamon drops
  - 1 tablespoon sugar
- Work the cream cheese with

## The Latest 'Daily Bread' Prize



### Hostess Serverette

A SQUEEZE for ease in serving. An ingenious fork and serving combination that makes hot and hard to handle food items easy to serve. Made of the finest triple chrome plate steel. Handsome, durable cape handles. Picks up meat, baked potatoes, etc., and pushes them off tines onto serving plate.

The winner each week is drawn by lot from the recipes printed.

Win one by sending us your favorite recipe — this can be main dish, leftover, salad, side dish, dessert or what have you.

1. Check your recipe carefully to be sure all ingredients are accurate and accounted for.

2. Be sure your name and address are on the entry.

3. Only one recipe at a time, please.

4. Send it to Woman's Page Editor, Grass & Grain, Box 1009, Manhattan, Ks., 66502.

## Old Charter's too good-looking to send. Bring it.



Available in elegant Award Decanter handsomely gift wrapped—all at no extra cost.

## OLD CHARTER

Kentucky's Finest Bourbon

Tick-tock, tick-tock... the Bourbon that didn't watch the clock.

Use cloves for eyes and bits of angelica for nose and mouth. Arrange the orange peel for arms and place a sprig of evergreen in the hand. Press red cinnamon drops in the coat for buttons. Sprinkle the sugar over the hat like snow. Place snow man in center of a large tray and surround with assorted cheeses and several kinds of crackers. Use sprays of evergreen for decoration.

Mrs. Pat Knudsen, Winchester: "Have tried this recipe several times and it always turns out real good. My husband says this sure is good bread."

**OATMEAL MAPLE RAISIN BREAD**

Frost it for company, toast it for breakfast or serve it with butter for meals and snacks.  
2 packages active dry yeast  
1/2 cup warm water  
1 cup raisins  
1 cup quick-cooling oatmeal  
1/2 cup maple blended syrup  
2 teaspoons salt  
1 tablespoon shortening  
4 1/2 to 5 cups flour  
Soften yeast in 1/2 cup warm water. Pour boiling water over raisins and oats; cool to lukewarm. Add maple syrup, salt, shortening and yeast to raisins and oats. Beat in about 4 1/2 cups flour. Turn onto lightly floured board and knead 8-10 minutes

or till smooth and elastic. Place in lightly greased bowl, turn once to grease surface and let rise in a warm place till double in bulk, about one hour. Punch down; divide dough into two portions; let rest 10 minutes. Shape into two loaves and place in two greased 8 1/2 x 4 1/2 x 2 1/2-inch loaf pans. Bake in a moderate oven (375 degrees) 40 minutes or till done. Cool on rack. Frost with confectioners' sugar icing, if desired.

Mrs. Philip Novak, Blue Rapids: "I am sending a recipe for Holiday Ring Coffee Cake. I made it and we like it real well."

**HOLIDAY RING COFFEE CAKE**

2 packages dry yeast  
1/2 cup warm water  
1 teaspoon salt  
2 eggs, beaten  
3/4 cup milk, scalded  
1/2 cup butter  
1/2 cup sugar  
4 cups all-purpose flour  
1 cup chopped candied fruit  
Sprinkle yeast over warm water. In a bowl combine milk, butter, sugar and salt. Cool to lukewarm. Stir in eggs and yeast. Beat in 1 cup flour, beating after each addition. Stir in fruit. Cover and let stand in warm place for one and one-half hours. Beat batter down then

**8th Annual Grass & Grain Bonus Recipe Contest**

All recipes submitted for "Our Daily Bread" between November 9 and December 9 will automatically be entered in the special "grand prize" contest. The winner will be announced in the December 24 issue.

The grand prize winner will be selected on the basis of originality & quality. Weekly winners will remain eligible for the special event.

- G.E. Automatic Grill & Waffle Baker
- Hamilton-Beach Electric Knife
- Sunbeam Cooker & Deep Fryer, 6-Qt.
- Sunbeam Electric Skillet, 11-inch

**CONTEST RULES**

1. All recipes submitted for "Our Daily Bread" between November 9 and December 9 will be eligible. Date of entry will be postmarked.
2. Winning recipe will be selected on basis of originality, quality.
3. Grand prize winner may select one of several prizes.
4. Weekly prize winners will not be disqualified.

**TO ENTER —**

Pick the holiday recipe you want to submit. Check to make sure all ingredients are included, measurements accurate and writing is legible. Be sure your name and address are on the entry — not just on the envelope. Please send only one recipe at a time. Mail entry to Woman's Page, Editor, Grass & Grain, Box 1009, Manhattan, Kansas 66502. Good luck!

beat for four minutes with wooden spoon. Turn into greased 10-inch tube pan. Spread evenly. Cover and let stand about 45 minutes. Bake in preheated 350-degree oven for 45 minutes. Turn out at once onto wire rack. Cool right side up. Frost with icing.

**ICING**

1/4 cup powdered sugar  
1 tablespoon milk  
1 teaspoon corn syrup  
1 teaspoon butter  
1/2 teaspoon vanilla  
In a small mixing bowl beat together sugar, milk, syrup, butter and vanilla until smooth. Drizzle over coffee cake. Cherry decorations may be put on the top to make it look Christmasy.

Mrs. Stanford Stamm, R 2, Washington: "I have enjoyed reading your recipes very much. I try a recipe from it almost every week. I made that 10-

minute Catsup recipe and have given it to three or four people since then. Here is one of my favorite recipes that I fix quite often. This makes a very good salad as well as a dessert."

**BLUEBERRY DESSERT**

2 packages blackberry flavored gelatin  
2 cups boiling water

2 cups cold water and juice  
1 small can crushed pineapple  
1 cup whipped cream  
Dissolve 2 packages of gelatin in boiling water. Add 2 cups cold water and juice combined. Chill till syrupy. Reserve 1 cup of gelatin; to rest of gelatin

*I didn't know how pleasant and convenient banking could be until I opened an account at the Central National Bank.*

Junction City, Kansas

MEMBER FEDERAL DEPOSIT INSURANCE CORPORATION

**Stop thinking of Ford as just better than Chevy. This '69 Ford is out after Pontiac, Buick, Olds. See it at your Ford Dealer's.**

**Top Fords are front-runners**  
Last year, our big Ford luxury cars — LTD's, XL's and Country Squire Wagons outsold their competition by a good margin. This year, these cars are not only more luxurious but bigger than they were in '68.

Now we have cars we can sell to Pontiac, Olds and Buick buyers.

**Big where it counts**

Our new '69 Fords have about the same front headroom and legroom as a Chrysler Imperial. As much front legroom as Cadillac. More trunk room than Buick Le Sabre. Even Ford's track is as wide as Cadillac's.



Big-car luxury and room inside, too

**New interior styling**  
Interior styling is all new. Seats are wide, comfort-



Big, luxurious '69 LTD by Ford

able, luxurious. Changes in doorway dimensions make getting in and out easier.

**Quieter than the '68 Ford**

Three years ago car buyers heard scientific proof that a Ford rode quieter than a Rolls-Royce. The '69 Ford is designed to ride quieter than the '68 — more proof of the quality built into today's Ford.

Compare with cars costing far more

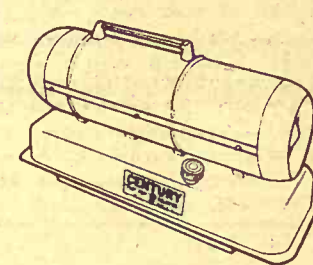
Here, in the 1969 Ford,

then, you have a car that deserves thoughtful comparison with whatever car you would like to own... regardless of price. Make the comparison, judge for yourself.



Make this your year to enter Ford Country.

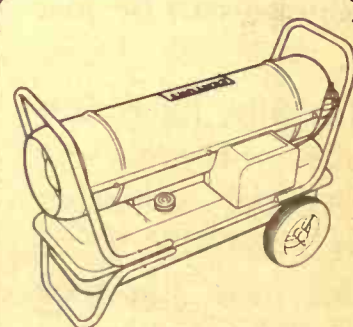
**SKAGGS MOTORS, INC.**  
Second & Houston  
Manhattan, Kansas



CPH-50A Thermostat Optional

**50,000 BTU CAPACITY Century "FLIP-TOP" PORTABLE HEATER**

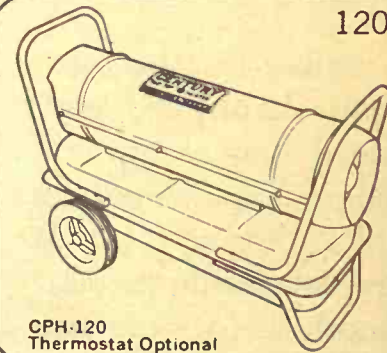
Here's a compact "Flip-Top" for those with limited heating requirements. Ideal for suburban, resort, or farm use. Weighs only 39 pounds (less fuel) yet has enough capacity to heat a 4-room house. Small enough to fit in auto trunk. Heats all day or all night on only 4 1/4 gallons of kerosene or No. 1 fuel oil. Low cost, plug-in type Automatic Shut-Off Control can be added at any time.



CPH-90C Thermostat Optional

**75,000 BTU CAPACITY Century "FLIP-TOP" PORTABLE HEATER**

The most popular size. Combines extra capacity, low price and maximum portability. Weighs only 63 pounds (less fuel) yet has enough capacity to warm a 5-room house. Heats all day or all night without refilling. 4 to 6 hours longer with a thermostat. Low cost, plug-in type Automatic Shut-Off Control can be added at any time.



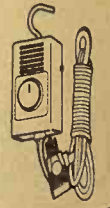
CPH-120 Thermostat Optional

**120,000 BTU CAPACITY Century "FLIP-TOP" PORTABLE HEATER**

For those who require a bigger heater. Weighs only 70 pounds (less fuel) yet has enough capacity to heat a 6-room house. Heats all day or all night without refilling — 4 to 6 hours longer with a thermostat. Low cost, plug-in type Automatic Shut-Off Control can be added at any time.

**SAVE 30% to 50% on fuel!**

Get automatic control, more uniform heat, refill fuel tank less often and save enough to pay for your heater in 6 to 9 months with a low cost, plug-in type



**CENTURY THERMOSTAT**

A.A. KLUGHARTT MACHINERY CO.  
KANSAS CITY, MO. — distributors

SEE A NEARBY CENTURY DEALER

- Abilene Truck & Tractor ..... ABILENE
- C & W Farm Supply ..... COURTLAND
- Kendall Garage & Impl. .... LEONARDVILLE
- Brauchi Brothers ..... MARYSVILLE
- Farmers Co-op Elev. .... ONAGA
- Farmers Co-op Assn. .... MANHATTAN
- Wamego Truck & Tractor ..... WAMEGO
- Tri-County Sales ..... HERINGTON

to glass dish about 8x8-inch. Chill 10 minutes. Whip 1 cup cream and add the 1 cup of reserved gelatin. Chill five minutes and pour over gelatin mixture. The cup of reserved gelatin may be beaten into the whipped cream or folded in by spoon.

Mrs. Wilbur Wilhelm, R 1, Salina, sent the following:

**SURFER SQUARES**  
 1 cup butterscotch pieces  
 1/4 cup brown sugar  
 1/4 cup butter  
 1 egg  
 3/4 cup flour  
 1 teaspoon baking powder  
 1/4 teaspoon salt  
 1 cup semi-sweet chocolate pieces  
 1 cup miniature marshmallows  
 1/2 cup chopped nuts  
 1 teaspoon vanilla  
 Melt butterscotch pieces, sugar and butter in saucepan over medium heat, stirring constantly. Remove from heat, add egg, beat well. Add flour, baking powder and salt. Stir in remaining ingredients. Spread in greased 8-inch square pan. Bake at 350 degrees for 20-25 minutes. Cool, cut into bars.

This recipe is from Mrs. Helen Rosebrook, Culver:

**CHERRY CRISP SALAD**  
 2 1/2 cups tart cherries  
 2 1/2 cups crushed pineapple  
 1 1/2 cups sugar  
 1/2 cup minute tapioca  
 Mix together above ingredients and cook until clear, five to eight minutes.  
 1/2 cup 40 Percent Bran Flakes flakes  
 1 1/2 teaspoons soda  
 1 cup quick cook oatmeal  
 1/2 teaspoon salt  
 3 cups sifted flour  
 2 teaspoons vanilla  
 1 1/2 cups brown sugar, well-packed  
 1 cup melted butter  
 Mix dry ingredients together well and pour over melted shortening. Press half of mixture in greased baking dish 9x13x2 1/2-inch. Pour in fruit mixture then place rest on top for crust. Bake in 375-degree oven 30 minutes or until well done and

brown. Serves 15. Use topping of ice cream, whipped cream or plain.

Mrs. Vernie Ecklund, Burdick, submitted the next recipe:

**SQUASH ROLLS**  
 1/4 cup warm water  
 1 package active dry yeast  
 Dissolve yeast in water, stirring to dissolve then add:  
 1/2 cup warm milk, not hot  
 1 cup mashed squash (carrots or pumpkin can be used)  
 1/3 cup brown sugar, packed  
 1/2 teaspoon salt  
 1/2 cup butter or oleo  
 1 teaspoon grated lemon or orange rind  
 Add 2 cups flour, beat until smooth. Stir in enough additional flour to make a soft dough. Place in a greased bowl, turning to grease all sides. Cover; let rise in a warm place until double in bulk. Punch down. Let rise again and shape into rolls. Let rise and bake at 400 degrees for about 8-10 minutes or until golden brown. Time depends on size of rolls. These rolls would go well with a Thanksgiving or Christmas dinner.

Due to space limitations it is not possible to print all recipes received for the Annual Bonus Recipe Contest. However, it has been Grass & Grain's policy to print the names of all contestants. Should we overlook any names, please accept our apologies.

Here are additional contestants:  
 Mrs. Robert Fink, Alta Vista; Mrs. David Rundle, Clifton; Mrs. Marie Hein, Hillsboro; Mrs. Howard Truelove, Burling; Mrs. Henry Horgan, Wheaton; Opal Saueressig, Lebo; Mrs. L. Joseph Wedel, Langdon, Mo.; Mrs. Dale Ade, Gypsum; Mrs. Harold Hooke, Clay Center; Mrs. W. F. Watkins, Manhattan; Mrs. Paul Rombeck, Blue Rapids; Mrs. Carolyn Oroke, Gladstone, Mo.; Esther Seyler, Perry; Mrs. Laurence Countermarsh, Leonardville; Mrs. William Wapp, Frankfort; Mrs. Lee Johnson, Effingham; Mrs. Lee Onstott, Hesston; Mrs. Len-

os Lundberg, Frankfort; Mrs. Creo Long, Frankfort.  
 Mrs. Mabel Keim, Mineapolis; Mrs. John Roth, Green; Mrs. Carl Fengel, Jr., Oak Hill; Mrs. Floyd Lehman, Halstead; Mrs. Charles Pearce, Miltonvale; Mrs. W. J. Kerwitz, Alma; Mrs. Frang Bergmeier, Wakefield; Mrs. Hugo Rolf, Westphalia; Mrs. Harold Bowes, Fairbury, Nebr.; Mrs. Milton Ronnau, St. Marys; Leona Stroud, Wichita; Ann Rudolph, Manhattan; Mrs. Ed Belisle, Augusta; Mrs. Don Banks, Wamego; and Mrs. Eldon Thorman, Clay Center.

**Points On Planning "Dream" Kitchen**

Planning a "dream" kitchen? Here are a few pointers to keep in mind:

Know your individual work habits; remember to locate the kitchen near the service entrance and dining area; investigate local wiring, plumbing and building codes before remodeling or building; choose appliances that will adapt to the changing patterns of family activities, and before actually beginning the work, make a detailed plan on paper to avoid costly mistakes.



**Tools Too**  
**AGGIE HARDWARE**  
 1205 Moro  
 Manhattan, Kas.

Now You Can SAVE  
 Up to 4 Bu. of Corn  
 per 100 lbs. of Pork with

**KEY**

**40% HOG FATTENER CONCENTRATE**

Your corn or maize can prove to be a mighty expensive ration unless you provide your hogs with the necessary nutritive requirements that ordinary grains do not have. That's why this scientifically formulated concentrate can save you up to four bushels of corn for every 100 lbs. of pork. It not only stretches your feed dollar but shortens finishing time as much as 25% when fed with your grain and pasture.

Try Key 40% Hog Supplement  
 At This Very Special Offer

On Our Dock **\$5 PER TON DISCOUNT**

LIMITED TIME ONLY

See A KEY Dealer Or Call Mill Collect

**KEY MILLING CO.**

Clay Center, Kans. ME 2-2141

**"Your choice" offer** LIMITED TIME ONLY!  
**RUGGED TOP-QUALITY NYLON CORD TRUCK TIRES**



**HEAVY DUTY EXPRESS**  
 The all-wheel tire specifically designed for rural delivery and pick-up service

**TRACTION PLUS**  
 The all-season, all-surface truck tire... top performer on or off the road

HEAVY DUTY EXPRESS			TRACTION PLUS			
Price of First Tire	Price of Second Tire	Fed. Ex. Tax Per Tire	Size and Ply Rating	Price of First Tire	Price of Second Tire	Fed. Ex. Tax Per Tire
TUBELESS						
19.50	15.40	2.36	7.00-13 6	25.85	20.35	2.56
21.65	17.00	2.54	7.00-14 6	28.60	22.50	2.81
23.85	18.75	2.76	8.70-15 6	-	-	-
-	-	-	7-17.5 6	39.50	31.15	3.71
-	-	-	8-17.5 6	45.20	35.60	4.25
TUBE-TYPE						
21.45	16.90	2.43	6.70-15 6	26.75	21.35	2.80
28.50	22.45	2.89	7.00-15 6	35.45	27.95	3.28
26.30	20.30	2.55	7.10-15 6	-	-	-
18.30	14.45	2.37	5.00-16 6	22.65	17.85	2.61
23.65	18.60	2.66	6.50-16 6	29.45	23.20	2.98
28.50	22.40	3.03	7.00-16 6	35.60	28.05	3.31
36.90	29.05	3.74	7.90-16 8	48.10	40.70	4.24
33.05	26.00	3.50	7.00-17 6	-	-	-
51.30	43.35	5.17	7.90-20 10	53.85	45.50	6.22
57.10	48.25	6.20	8.25-20 10	60.70	51.10	7.41
71.05	59.85	7.35	9.00-20 10	75.30	63.45	8.73
92.60	77.90	9.33	10.00-20 12	95.55	80.40	10.96

Last Chance  
**STP 59¢**  
 Limit 3 Cans At This Price

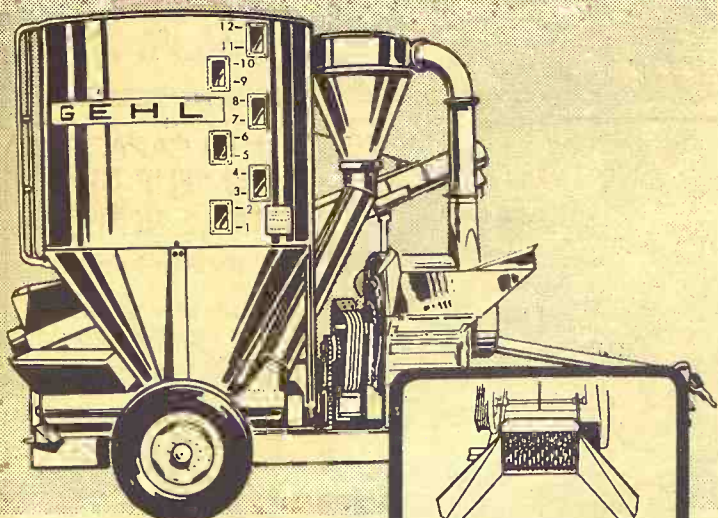
TIRE OFFER LIMITED IN TIME

On K-15 North of Square  
 Phone ME 2-2167



REX KOPPES, OWNER, CLAY CENTER, KANS.

Also available at Rex's Deep Rock, Abilene



**GEHL MIX-ALL**  
**Grinds! Mixes! Delivers!**

The Gehl Mix-All, with economy plain feeder and exclusive crusher-feeder attachment, grinds, mixes and delivers the most uniform on-the-farm feed.

Here's proof: Samples of feed grains, ground by Gehl and competitive mills, were compared in a "sieve-shaker" analysis (a grinding uniformity test used also by commercial feed manufacturers). In test after test, Gehl samples were the most uniformly ground. And, the more uniform the grind, the better the mix!

In the Mix-All hammermill, 66 thin, alloy-steel hammers cut... not pound ingredients on a big grinding surface for faster feed flow with reduced "fines." Come on in for a close-up look at all the Mix-All features, including the swinging auger-feeder.



Make us Prove it with a Demonstration!

WAMEGO  
**WAMEGO TRUCK & TRACTOR**

LINCOLN, KANS.  
**RHUDY & SONS, INC.**

SALINA  
**LINDQUIST IMPL. CO.**

CONCORDIA  
**CLOUD COUNTY TRUCK & TRACTOR**

MARYSVILLE  
**BRUNA IMPL. CO.**

SENECA  
**SENECA IMPL. CO.**

ABILENE  
**WISSING MOTOR CO.**

VALLEY FALLS  
**VALLEY IMPL. INC.**

CLAY CENTER  
**TOBUREN IMPL. CO.**

HERINGTON  
**TRI-COUNTY SALES**

## Children Enjoy Using An Electric Toothbrush

Do you need a means of motivating the children to brush their teeth? An electric toothbrush might be the answer.

Extensive clinical research in major universities has established that power toothbrushes offer definite advantages over hand brushing when used in a regular program for oral hygiene to supplement regular professional care.

Children enjoy doing things that are fun and brushing their teeth with an electric toothbrush is fun. It becomes an easy way to teach proper care of the teeth and promote better oral hygiene.

Adults, too, will find the electric toothbrush can do a better job of cleaning than ordinary hand brushing. Plus they will like the way it leaves the mouth clean and refreshed.

Some of the latest electric toothbrush models have been improved greatly over early models. One company has introduced a unit which can clean up to 42 per cent better than ordinary hand brushing.

The improved performance comes from two features, a rotating action that brushes up-down and around at the same time, plus a serrated bristle design of the brush itself.

### WESTERN SADDLE SUPPLY

J. D. RITTEL & SONS  
WESTERN WEAR  
In Mid-Kansas

Largest Saddle Selection  
for the Entire Family

BOOTS • HORSE TRAILERS  
Square Dancers Supplies  
HOPE, KANSAS PHONE 43



## BS & B

### Grain Bins

Immediate Delivery

ON 1330, 1660, 2200 BUSHEL  
CAPACITY BINS AND ACCESSORIES  
As Well as Other Sizes

North Central Steel Co., Inc.  
116 West Second EX 2-2077  
Minneapolis, Kansas 67467

Along with a new motor that delivers more power and more torque, a new higher-capacity battery has been added.

Design changes also were carried into the shape of the power handle, making it easier for a child to grip.

## Canning Can Be Fun With Electric Blender



Canning is a truly creative kitchen activity and it can be fun! The time-consuming tasks of pureeing, chopping and grating fruits and vegetables can now be done in seconds with an electric blender. Here's a carrot-cabbage relish that is just one example of how easy canning can be.

**CARROT-CABBAGE RELISH**  
3 cups peeled carrot pieces  
3 sweet red peppers, cut into pieces  
3 sweet green peppers, cut into pieces  
4 cups cabbage pieces  
3 large onions, cut into eighths  
3½ cups vinegar  
½ cup water  
1½ cups sugar  
3 tablespoons salt  
1 tablespoon mustard seed  
1 tablespoon celery seed

Put carrot pieces into blender container, cover with cold water, cover container and process at Hi (Liquefy) and Off quickly two or three times to coarsely chop carrots. Pour through

a strainer or colander. Chop remaining vegetables in same manner, using Hi (Chop) and Off method. Drain vegetables well, then mix together. Mix remaining ingredients in a large saucepan and boil three minutes. Add vegetables and bring to a boil. Boil exactly one minute. Pack into sterilized jars and seal. Yield: about six pints.



Q. How do you recommend thawing a frozen turkey so it may be stuffed?

A. The frozen unstuffed tur-

key may be thawed in the original moisture-proof wrapper in the refrigerator. Or, the wrapped bird may be placed in a pan of cold water for thawing. Change water frequently.

Q. What is the advantage of a deep basted turkey?

A. Special self-basting mixture, added deep inside where hand basting can't reach, bastes the turkey all the way through as it cooks. Exclusive vegetable oil recipe won't alter the natural flavor but assures you of tenderness and juiciness never before possible... every turkey



Q. Is hand basting the key during the roasting process?

A. No it is not. Hand basting aids the browning of the turkey and gives the cook great satisfaction. However, the drippings cannot penetrate the skin to give any added flavor or moisture.

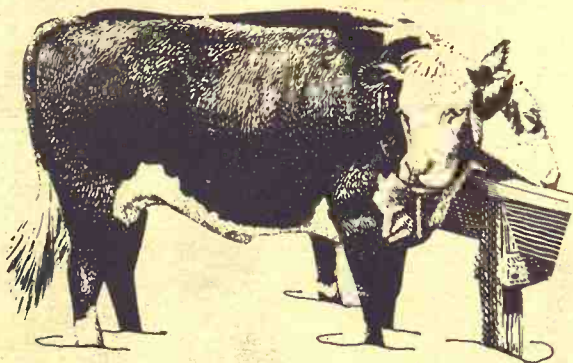
Q. How long can well-basted cooked turkey be stored in the freezer?

A. Use within 1 month.

### Advice On Refreezing Foods

What about refreezing thawed foods? According to experts, foods which have been thawed completely should not be refrozen. In an emergency, foods may be refrozen if the food is still firm and ice crystals remain. However, these foods will be of lower quality and less flavorful. Shellfish is an exception and cannot be kept above 10 degrees safely because of bacterial growth.

## Feed Sunflower Soybean Pellets and watch winter weight snowball.



It's a long drive to market bloom and few cattlemen can afford to sit out the winter. So, to finish ahead of the other herds this spring, feed Sunflower Soybean Meal Pellets this winter.



During winter months, most of the feed your cattle will eat merely goes to meet basic energy requirements. Most

herds will be doing well to hold their own. That's why you need a super-charged protein supplement if you're looking for a substantial winter weight gain. The best one you can buy, and feed, is Sunflower Soybean Meal Pellets.

This is a supplement made from nature's richest source of protein.

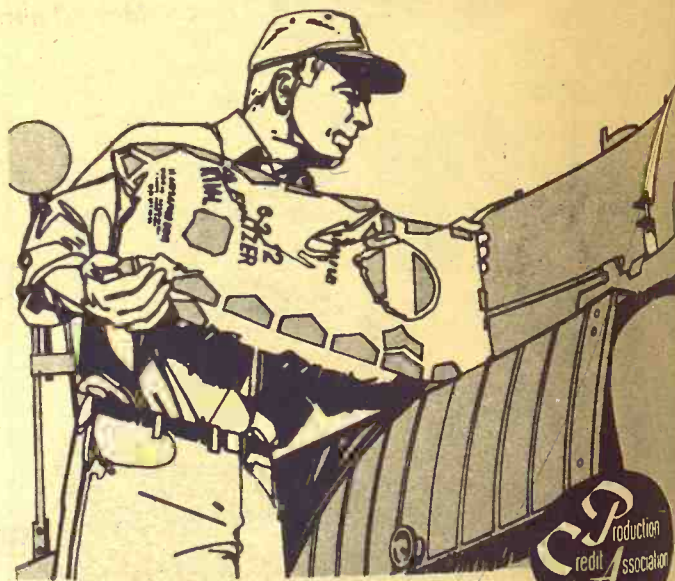
Prime soybeans. They're carefully processed to preserve vital protein content while actually increasing their palatability and digestibility.



Feed Sunflower in 40% soybean meal pellets or as 36%, 32%, or 22% formulated range cubes.

Don't let cold weather hold up your herd's drive toward market bloom. Keep them moving. Supplement winter grasses with Sunflower Soybean Meal Pellets and pack on the pounds. That way, winter feeding will be more than just dead wait.

KANSAS SOYA PRODUCTS COMPANY, INC.  
Dickens 2-7270 • Emporia, Kansas



## Your production can be PLANNED FOR PROFIT with a PCA LOAN

It takes a lot of money to finance the production expenses of an up-to-date farm or ranch unit.

For over thirty years, your Production Credit Association has been the dependable source of production credit for many of the successful operations in this area.

At the farmer-owned PCA, you deal with people who understand what it takes to farm or ranch today...and you pay only simple interest on a repayment plan tailored to your marketing program.

Plan for profit today with PCA!

Manhattan  
Production Credit Assn.

6th & Humboldt Ph. 776-7061

Serving Marshall, Clay, Riley, Geary, Pottawatomie & Wabaunsee Counties. Branch offices at Clay Center, Marysville, Fieldmen: Owen Duer, Asst. mgr.; Ray Cohorst, Marysville, HI 3-4005; Floyd Rutherford, mgr.

Residence — Ph. 776-5483



Council Grove  
Production Credit Assn.

315 W. Main — 777-5551

Serving Dickinson, Marion, Morris, Chase & Lyon Counties. Branch offices at Abilene, Emporia, Marion. Fieldmen: Bill Abilene, Marion; James Peter, Emporia; Wilfred Elliott, White Center. Charles E. Graham, mgr. Residence — 777-5551



GRASS

& GRAIN

Manhattan Shoppers Section  
Next 16 Pages



Mrs. Phil Chalmers, route 3 Manhattan, says this is the first time she can Christmas shop for a grandson. Mrs. Chalmers has five granddaughters and now has her first grandson.

# Manhattan Shoppers Section



An early shopper in Manhattan as been Brian Taylor, son of Mr. and Mrs. Marvin Taylor, route 5.



Tammy Randall, 4, and her father Bob Randall have been Christmas shopping early this year. Tammy said she was looking for a gift for her mother.













Your Christmas Dollars Go Further at Sears

loads of going gifts  
in Sears luggage department  
ready for you to cart away



Forecast luggage looks good under the tree . . .  
stays good looking for many a Christmas

Give Forecast this Christmas...next Christmas it will still look like new. The molded Titanite shell wards off scratches and bruises. It washes like a breeze inside and out...won't fade, spot, peel. The ribbed aluminum frame snaps shut, stays shut. 6 Colors that stay colorful. Locks with easy-action release. Add pieces later.

shown:

- a. 27-inch Pullman . . . . . \$30
- b. 21-inch Weekender . . . . . \$22
- c. Cosmetic Case . . . . . \$18
- d. 2-Suiter . . . . . \$28
- e. Companion Case . . . . . \$21

not shown:

- 18-inch Overniter . . . . . \$20
- 24-inch Pullman . . . . . \$25
- Model's Tote . . . . . \$18
- 3-Suiter . . . . . \$31
- Attache Case . . . . . \$19



Sears has lots of travel gifts for everyone. Take a look at our splashy print totes in 6 sizes. We've numerous smart attaches. All kinds of travel kits, some fitted that are a boon to weekend travelers. Our many luggage lines are full of cases that make marvelous gifts: Tote Bags, Cosmetic Cases, 21-inch Weekenders for women and 2 and 3-Suiters for men. These are just a few of the many gifts.

SHOP AT SEARS AND SAVE  
Satisfaction Guaranteed or Your Money Back

**Sears**  
SEARS, ROEBUCK AND CO.  
MANHATTAN, KANSAS

Phone PR 6-8886  
205 South 4th

Open Thurs. & Fri. 9:30 a.m. to 9 p.m.  
Other Week Days 9:30 to 5:30 p.m.  
Free Parking Next To Service Station

# CHRISTMAS IS THE TIME FOR

# MOTOROLA

# COLOR

## TELEVISION AND STEREO



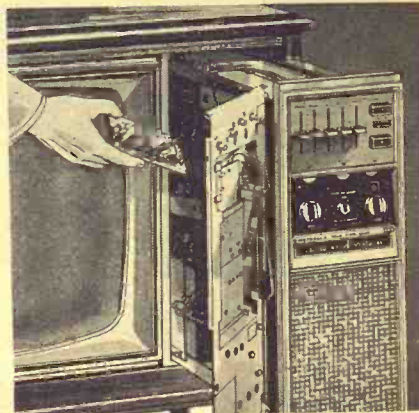
Featuring

### Quasar™

### "works-in-a-drawer" serviceability.

Pull-out drawer...snap in circuit.

It's that easy!



**Pull-out drawer for fast, at-home service**  
The drawer holds the works: 10 snap-in mini-circuits that provide years of solid-state dependability, because they are designed to stay at home working. But, if service is ever needed, mini-circuits can be replaced in your home by a serviceman in minutes.

**23-in. picture (measured diagonally; 295 sq. in.)**  
the biggest on the market today. The cabinet is crafted from select hardwood veneers and solids with oiled walnut finish.

**Quasar tunes with a light**  
Quasar has an automatic fine tuning system that can be tuned without looking at the picture. You tune it right with a light. When light goes out, picture is accurately tuned. All you do to lock in this fine-tuned picture is push the AFC control.

All 82 Channel UHF/VHF

Two Year Registered Guarantee on Picture Tube and All Parts

### TAKE YOUR PICK!

PRICED FROM

# 299<sup>88</sup>

Exclusive 2 year Registered Warranty

Free warranty service from our own service dept. with 15 years experience

FREE - UHF Antenna with color TV

Antenna Installation



# K

## HILL

Furniture & Appliance

# MART

MANHATTAN

East Over the Viaduct on Hiways 177 and 18 Pr 6-9707

### Grange

A G&G Nebr., has v Dodge, a m receives the representati Peoria, Ill. Her all-green and s winner from her husband DeWitt Gr home econo former hon

### Broad

### Stamp

The gover program h serve 280,0 persons in states, agr ville L. Fr The 235 begin food this fiscal ties and where no distribution been opera New foot Houston; Des Moines Freeman s When im expansion available t million per the Distric said. About 2 persons w Another sons will nated food ment's cor program Food st low-incom pons wort stores th spent on t Freeman designated state welf recent car ment's cor service, w stamp pro

NO BASH BLACK D MARYS black dis Marshall "pure hy A. F. We school at one isola near Sur

















# Penneys

DOWNTOWN MANHATTAN

Downtown Manhattan

## 2 HUGE STORES TO SERVE ALL YOUR GIFT NEEDS



### 4th and HOUSTON STORE PENNEYS ENLARGED STORE FOR THE FAMILY

FEATURES PENNEYS FAMILIAR BRANDS . . .  
ADONNA® . . . TOWNCRAFT® . . . GAYMODE® . . .  
Women's Accessories and Furnishings, Sportswear, Men's Wear, Women's  
Apparel, Girls', Infants', Boys' Department, Family Shoe Department,  
Drapery and Home Furnishings, Piece Goods, Household Textiles, Gifts.

### DEPARTMENT STORE GIFT SUGGESTIONS!

- Perfume - Cologne
- Leather Accessories
- Bath Accessories
- Gourmet Gifts
- Flower Arrangements
- Ceramics and Pictures
- Lamps and Wall Plaques
- TV Trays and Hassocks
- Home Gifts



### 4th and PIERRE STORE PENNEYS COMPLETE HOME AND AUTO CENTER

FEATURES PENNEYS OWN FAMOUS BRANDS . . .  
FOREMOST® . . . PENNCREST® . . . PENNCRAFT® . . .  
Tires and Batteries, Auto Repair, Paint, Hardware, Power Tools, Large  
and Small Appliances, Hi-Fi, T.V., Stereo, Electrical and Plumbing  
Supplies, Sporting Goods, Refrigerators, Freezers, Washers and Toys.

### HOME AND AUTO CENTER GIFT SUGGESTIONS!

- Automotive Gifts
- Toys
- Exercisers and Equipment
- Complete Sporting Goods Dept.
- Power and Hand Tools
- Portable and Console TV
- Portable and Console Stereo
- Large and Small Appliances
- Complete Floor Care Line



### See Our Complete New Dinette Department

8 NEW 5-pc.—7-pc.—9-pc. DINETTE SETS  
NOW IN STOCK! PRICED \$59 to \$129



### See Our Complete Toy Department

CHOOSE FROM OVER 197 OF  
THE MOST POPULAR NEW TOYS

Open Every Night Til Christmas Til 9:00 p.m.

Also Shop Penneys Catalog Phone PR 6-4711





## Peru First, U.S. Sixth In Fish Haul

The world's total haul of fish surpassed 60 million metric tons in 1967 and Peru became the first nation to take more than 10 million tons, the Food and Agriculture Organization reported Monday.

Japan had the second largest haul, Communist China presumably was third, the Soviet Union was fourth and for the second successive year Norway placed fifth ahead of the United States.

The figures were given in FAO's yearbook of fisheries statistics which gave the total catch for 1967 as 60.5 million metric tons, 5.5 per cent more than the 1966 haul of 57.3 million metric tons.

Peru, already the world's No. 1 fishing nation in terms of volume of catch, hauled in 10.1 million tons of fish. Almost all the Peruvian catch is anchoveta, used for fish meal.

Japan, with a smaller tonnage, had the world's best catch in terms of total value. Japan brought in 7.8 million tons, an increase from the previous

year's 7.1 million.

No figures were available again on mainland China's 1967 catch. FAO continued to use the 1960 figure of an estimated

5.8 million tons. Presumably this would have shown some increase since then, keeping China in third place.

The Soviet Union reported 5.8 million tons, compared to 5.3 million the year before.

Norway had 3.2 million tons, up from 2.9 million.

The United States dropped from 2.5 million tons in 1966 to 2.4 million in 1967. It was the smallest U.S. catch since 1962.

Other nation's reporting 1967

November 26, 1968  
catches of a million tons or more were South Africa 1.43, India 1.4, Canada 1.07, Denmark 1.07, Chile 1.05, Britain 1 million.

## See Way To Cut Output Cost Of Liquid Nitrogen

New developments in the chemical fertilizer business were discussed at the annual convention of the Agricultural Nitrogen Institute at Topeka last week.

A trade show being held in connection with the convention brought together more than 100 exhibits, making it the largest event of its kind in the history of the institute. One of the fertilizer companies represented at the convention, Ferguson Industries of Dallas, claimed a new process in fertilizer manufacture, which it said would reduce the cost.

Sam Ferguson, president of the company, said the new process makes it possible to produce liquid fertilizer nutrients at a price competitive with dry fertilizer.

The process, he explained, produced high-analysis ammonium polyphosphate fertilizers using merchant grade 54 per cent phosphoric acid and anhydrous ammonia as feed stock. Both of these materials are widely available. Ferguson said that the new system would reduce the cost of making high-analysis fertilizer by more than 20 per cent.

A large part of the convention program is being devoted to panels on technical and business problems of the fertilizer industry. The commercial exhibits in the auditorium in the main demonstrated transportation equipment and machines for applying fertilizer to farm fields.

### YEAR-AROUND Quarter Horse Training



**LARGE INDOOR ARENA**  
Roping - Reining - Cutting  
Western Pleasure - Performance  
Location: North Edge Of  
Marysville, Kans.

**Travelute's Stables**  
Call Us At Waterville, Ks.  
ST 5-2526 or ST 5-2136

## COMING TO MANHATTAN SUNDAY, DECEMBER 1

Then, you can dial your own station-to-station Long Distance calls to almost any city in the nation.

If you are dialing a town that has the same area code as Manhattan (area 913), merely dial 1 plus the distant phone number. For example, to call Topeka KL 5-2368, you would dial 1 plus KL 5-2368.

To call outside area 913, dial 1, then the distant area code, and the distant phone number. For example, to call Denver 303 KL 5-2368, dial 1, then 303, and KL 5-2368.

The Long Distance call you dialed will go speeding on its way. Area codes and Direct Distance Dialing information are in the front of your telephone directory.

Long Distance calls dialed direct from your phone are automatically timed by electronic machines. They record your number, the number of the called telephone and its location, the time your conversation begins, and the time it ends.

Economical DDD costs about one-third less than person-to-person calls. You talk longer for less money. Only station-to-station Long Distance rates are charged.

**SOUTHWESTERN BELL**  
Making telephone service better to serve you better.

Water D  
Study In  
Mitchell  
TIPTON —  
has begun le  
possible rura  
serving a larg  
ern Mitchell  
If organized  
tually might

26, 1968  
million tons  
South Africa  
a 1.4, Canada  
Chile 1.05,  
n.

## Water District Study In Western Mitchell County

TIPTON — First investigation has begun leading toward a possible rural water district serving a large portion of western Mitchell County. If organized, the district eventually might distribute water

from the Glen Elder Reservoir, Lake Waconda.

The communities of Tipton and Hunter probably would be included in the organized district.

A steering committee of Max Greif, Gerald Streit, Robert Corpstein, Clarence Hake and Leon Eck, all of Tipton, has been meeting with Walter J. Campbell, Mankato, supervisor for the Farmers Home Administration for Jewell and Mitchell

counties, in preliminary planning.

The committee has been collecting money from prospective district patrons to finance a feasibility study. A consulting engineering firm will be hired to make the study.

If fully organized, the district could serve over 400 patrons on farms and in the Tipton and Hunter communities. Both Tipton and Hunter have had past water supply problems with

Hunter facing a serious shortage in recent years.

Campbell said the district eventually might be served by a filtration plant treating water from Lake Waconda.

The district would be financed by a FHA loan repayable thru collection of charges for water.

The steering committee said the proposal has met with support throughout the area.

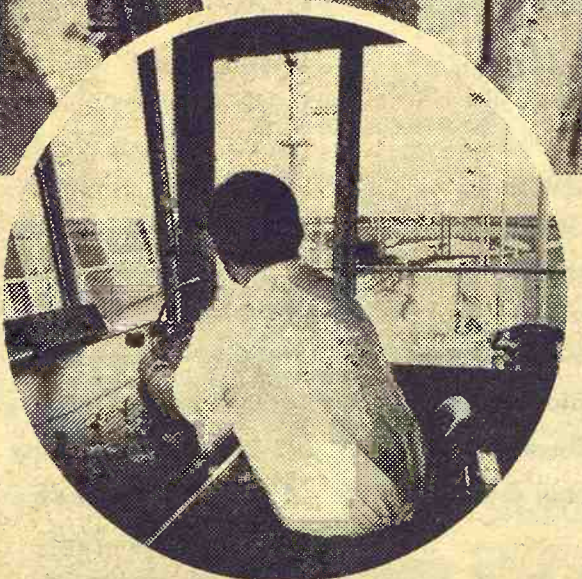
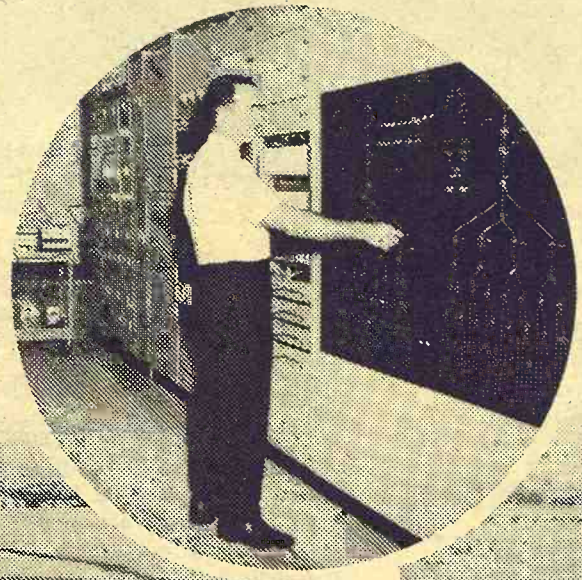
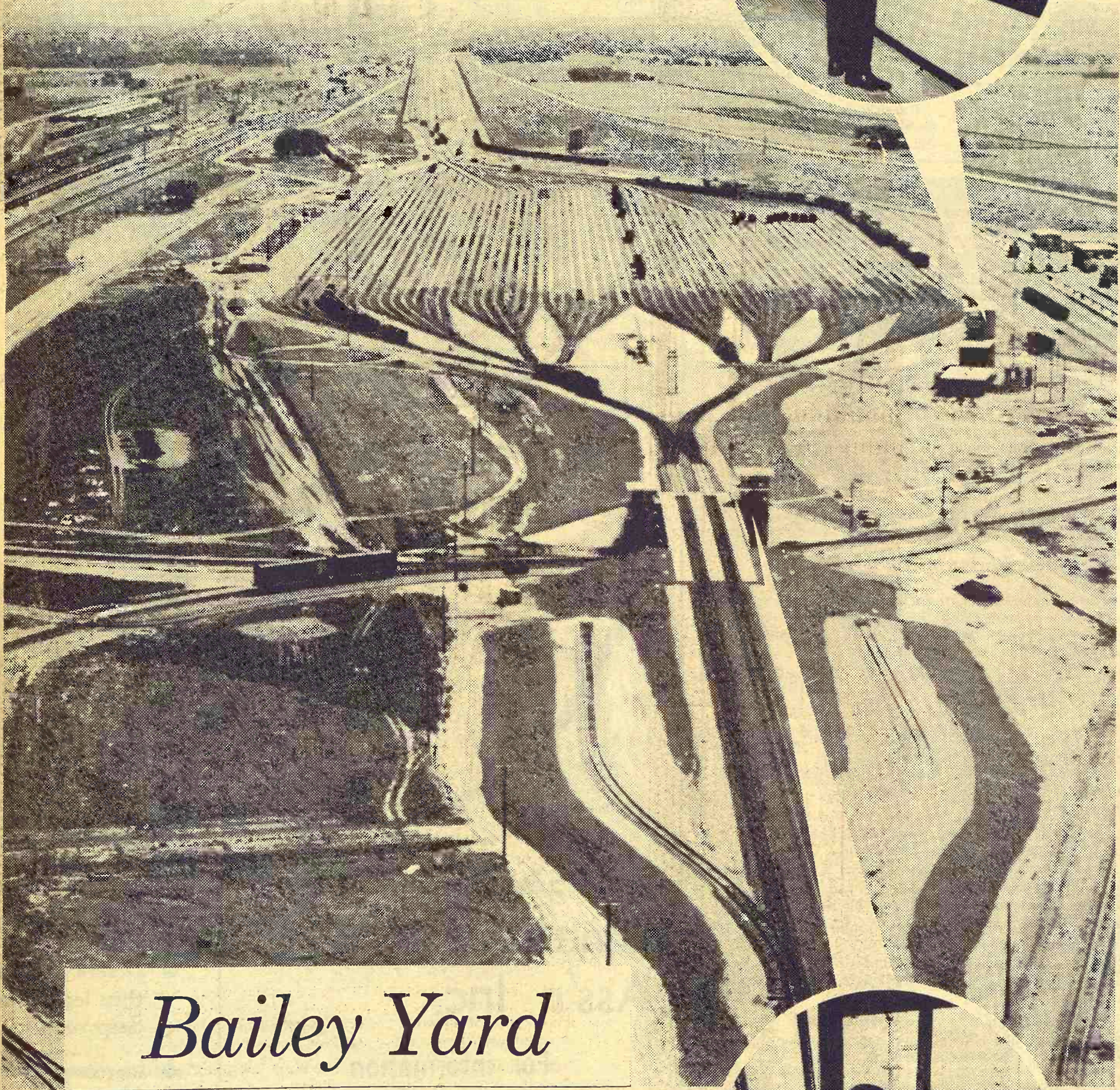
**MATTRESS & BOX SPRINGS**  
**Specials Every Day**  
**New Low Prices**  
**Buy Direct**

Also Complete Rebuilding Service

**Manhattan Mattress Co.**  
 414 S. 4th PR 8-5302

# Union Pacific takes another big step in the right direction

## NEW AUTOMATIC CLASSIFICATION YARD



# Bailey Yard

This giant new \$12 million freight car distribution center was designed to provide faster service for both Eastbound and Westbound Shippers.

Bailey Yard, strategically located at North Platte, Nebraska, was planned and built with the needs of today's shipper in mind.

Another step ahead in the right direction to provide our customers the best in transportation service.



*Gateway to and from the booming West*

BELL  
e you better



## Geary Extension Board

New officers of the Geary County extension board at Junction City are Harvey Gfeller, L. J. Hoover, and Mrs. Earl Wolf.

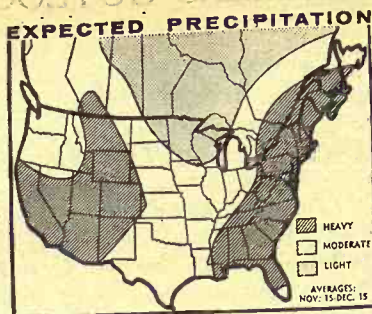
## Setback For Glenn Cunningham Youth Ranches

Glenn Cunningham, the one-time great runner and more recently a moralist speaker and operator of small ranches where foster children are raised, had a

major setback in his hopes of setting up youth ranches last week.

A fund-raising for the ranches was discontinued at Elkhart, Cunningham's boyhood home, and money already raised was returned to donors.

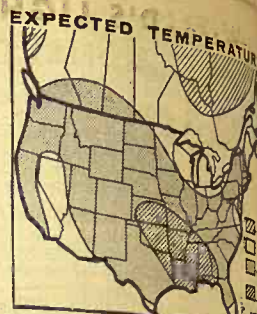
The drive was called off after disclosure that neighbors of Cunningham's "ranches" were



Precipitation is predicted to exceed normal over the western third and eastern fourth of the nation with about normal amounts over states in between.

## Weather Outlook

The G&G area should have moderate moisture and much colder than normal temperatures up to December 15, according to the long-range outlook by the U.S. Weather Bureau.



Temperatures are expected to average below normal over most of the nation except for maximums in the Great Lakes region and some coastal areas.

at least divided as to the value of training and the number of youths served, that the attorney general's office was investigating for the Health Department the Cunningham ranch near Augusta, and that Cunningham and his wife were listed for \$28,000 in total salaries from the corporation which was to operate the youth ranches.

Cunningham once had located his ranch at Cedar Point in Chase County and more recently near Augusta in Butler County. The ranches were not authorized to take children less than 16 years of age, had not yet been registered with the state to solicit funds as a charity, and brochures promoting the ranches apparently were not clear as to the number of children the Cunninghams had actually served and how much control over corporation funds was limited to the Cunninghams only.

## GREEN'S BOOK SHOP

WE INVITE YOU TO BROWSE OUR MOST UNUSUAL STORE

DECORATIVE

Christmas Candles

BIBLES

Books for Children & Adults

DESK ACCESSORIES

PEN & PENCIL SETS  
by Sheaffer • Parker • Cross

PARTY SUPPLIES

Everything in Large Assortment

GIFTS OF ALL KINDS

DOWNTOWN MANHATTAN PR 8-3236



## TRY *New* PURINA RANGE & PASTURE MINERAL

...the high phosphorus supplement

Phosphorus and calcium make up more than 70 percent of the minerals in cattle. For good body condition and maximum performance, cattle require an adequate supply of both at a ratio near 1:1.

Range and pasture grasses are very low in phosphorus content. Grazing cattle may get only 50 to 60 percent of their phosphorus needs in summer, and as little as 40 percent under drought or winter conditions.

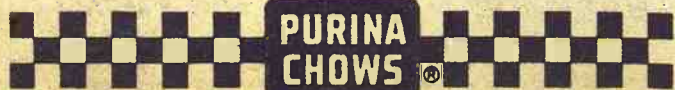
Purina Range & Pasture Mineral, with its 16% phosphorus level, is formulated specifically to supplement mineral deficiencies of pastures and range.

Fed free choice, Purina Range & Pasture Mineral supplies all the known mineral requirements for cattle in amounts exceeding the National Research Council's recommendations. Phosphorus is supplied from three sources to insure availability; all trace minerals are present in readily available form.

Purina Range & Pasture Mineral contains organic iodine to help prevent foot rot and soft tissue lumpy jaw, iron in highly available sulfate form giving it a light instead of red color, cobalt, manganese, zinc and copper.

Stop by at the sign of the Checkerboard to find out what this quality mineral supplement can do for your cattle.

Mid-Continent Elevator ..... CE 8-4177 Junction City  
Americus Grain Co. .... 884-3465 Americus  
Gorden Mark Elevator .. ME 2-3381 Clay Center  
Western Grain Mill ..... 767-5933 Council Grove  
Flint Hills Feed & Grain .... PR 8-5322 Manhattan  
Farmers Union Feed Mill ..... 437-2434 St. Marys  
Mor-Kan Elevator ..... 349-2214 White City  
Reading Grain & Lumber ..... AN 9-3842 Reading



## Agricultural

# L I M E

... backbone of all

## SOIL CONSERVATION

## Kansas Limestone Ass'n, Inc.

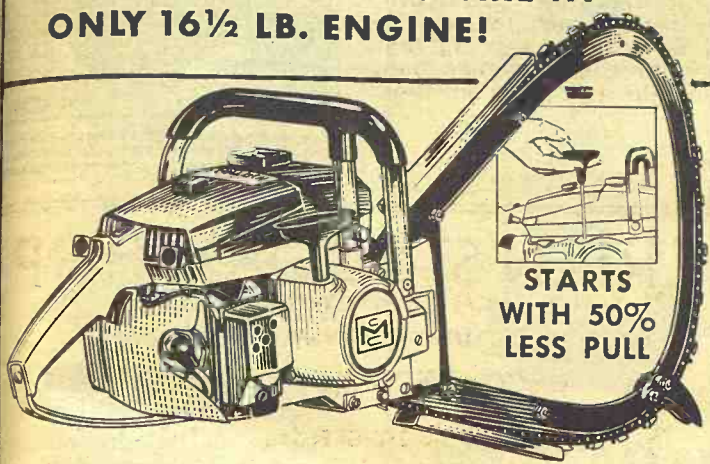
For information on Agri-Lime see your local Limestone Association member.

The Kansas Limestone Association is organized to sponsor and encourage Limestone Research and to develop and promote the best uses of Kansas Limestone in Municipal Highway and Airfield Surfaces and Pavements and in Agricultural Applications.

- Supplies Calcium
- Deters Erosion thru legumes & deep roots
- Increases activity of all commercial fertilizers
- Provides Best All-Around Soil Building for grass & crops

**SOIL CONSERVATION DEPENDS ON YOU!**

**WORLD'S LIGHTEST, QUIETEST PROFESSIONAL GEAR DRIVE SAW!**  
**McCULLOCH LG-6**  
**PACKS POWER TO SPARE IN ONLY 16½ LB. ENGINE!**



**STARTS WITH 50% LESS PULL**

What a performance package! Lifts like a lightweight—engine weighs 16½ pounds! Works like a heavyweight—4.3 cu. in. engine—professional power and stamina! Add—new 75%\* quieter "Sound Silencer" patented muffler. Add—new 50% easier starting with McCulloch DSP compression release! Add—new Safe-T-Start™ that holds chain still for safer starts. No jobs too big! Takes bars or bows up to 36-inch! See it!

\*Comparison made to standard cavity-type muffler

SEE A NEARBY McCULLOCH DEALER FOR SALES & SERVICE

**BELLEVILLE IMPL. CO.**

Belleville JA 7-2261

**JORDEN IMPLEMENT CO.**

Abilene CO 3-2041

**DUMMERMUTH IMPLEMENT CO.**

Marysville 562-2476

Waterville 785-2241

**WASHINGTON IMPLEMENT CO.**

Washington EA 5-2301

**VAHSHOLTZ IMPLEMENT CO.**

Salina TA 5-4521

**K-HILL ENGINE SERVICE**

Manhattan PR 6-4181

**W W SMITH & SONS**

Clay Center ME 2-3148

**KANSAS FARM MACHINERY**

Topeka, W Hwy 24 CE 3-1374

**YOUNG & SONS IMPL. CO.**

Council Grove 767-5018

## FARMERS OUTLOOK

L.H. Simerl

### Soybeans Under Loan Level

Prices of soybeans reached a low around the first of October, then climbed about 5 cents a bushel as the harvest neared completion. Soybean prices received some support from a bulge in meal prices early in October, then a little help from soybean oil.

Even after the small advance, soybean prices were still 20 cents or so below the county price-support loan levels. Any major price advance seems to depend on farmers locking up a large volume of soybeans under the loan program. The prices of soybean futures, however, are not promising. They indicate that soybean dealers, processors, and speculators doubt that farmers will hold enough soybeans to bring a strong price advance.

**Soybeans yield well.** Reports from many farmers indicate that soybean yields were generally very good, even where the corn crop was disappointing. The 1968 soybean crop seems to be well in excess of the amount that can be used and exported during this marketing year.

In early October, the USDA estimated 1968 soybean production at 1066 million bushels — up from last year's 973 million. (The November estimate was not available when this report was prepared.) Of the estimated 93 million bushel increase in soybean production this year, about two-thirds would come from higher yields per acre and about one-third from more acres.

The carryover of old soybeans was estimated at 167 million bushels, compared with 90 million a year ago. That would

make the total supply available for this marketing year — carryover plus new crop — around 1,233 million bushels. The figure a year ago was 1063 million bushels.

The market for our soybeans is not growing as fast as it was a few years ago. Many users of soybeans say that beans have become over-priced, so users are turning to competitive products such as sunflower oil, fish meal, and urea.

Soybean processors in the U.S. crushed 576 million bushels of beans during the marketing year that ended September 1. If the growth rate of the past two years continues this year, processors will use about 595 million bushels. Foreign buyers took 265 million bushels of soybeans last year. If the growth rate of the past two years is extended to next September 1, exports during this marketing year will be around 275 million bushels. Farmers will need about 50 million bushels of soybeans for seed, and another 10 million probably will be fed or lost. Thus, total use and exports of soybeans may be around 930 million bushels. That would leave around 300 million bush-

els for carryover next September 1.

More than one-third of the expected carryover is already under price support — beans from previous crops. Another 40 million bushels is needed to "keep the pipelines full." That leaves 150 million bushels of new-crop beans that would have to be locked up, in order to bring about any squeeze on the market supply.

Farmers have never placed large amounts of soybeans under loan before, because there have been no large surpluses. Many producers do not use the loan because they have no place to store beans on the farm, and they do not want to pay for commercial storage. Soybean dealers, processors, and speculators are watching closely to see how many soybeans farmers lock up under loans.

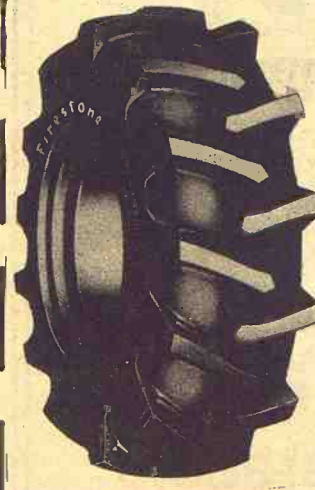
L. H. Simerl  
 Univ. of Illinois



*Johnny Kaw Says:*

You cannot kill a crazy idea with a gun — you must replace it with a good idea.

# Firestone



**All Traction  
 Field & Road**

Firestone's new 23° angle traction bar tire gives "the greatest traction on earth." It is the top choice original equipment tire for harnessing all the power built into today's new tractors. It outwears any other original equipment tire and gives up to double-the-life of old style 45° bar angle on hard surface road.

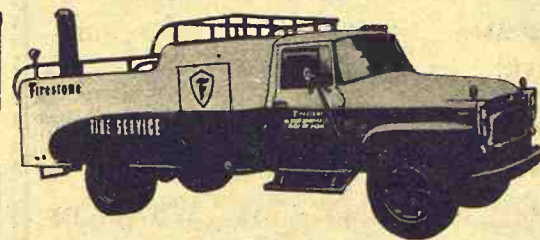
ASK ABOUT OUR FIELD HAZARD GUARANTEE

### FIRESTONE TRUCK TIRES

For pick-up and delivery trucks

<b>Firestone Town &amp; Country</b>	<b>AT PASSENGER TIRE PRICES</b>	<b>Firestone Transport</b>
2 for \$46.00	2 for \$36.90	
EXCHANGE SIZE 6.70-15 Plus \$2.80 Fed. Excise Tax	EXCHANGE SIZE 6.70-15 Plus \$2.43 Fed. Excise Tax	

We want your business.  
 We think you will like doing business with us.



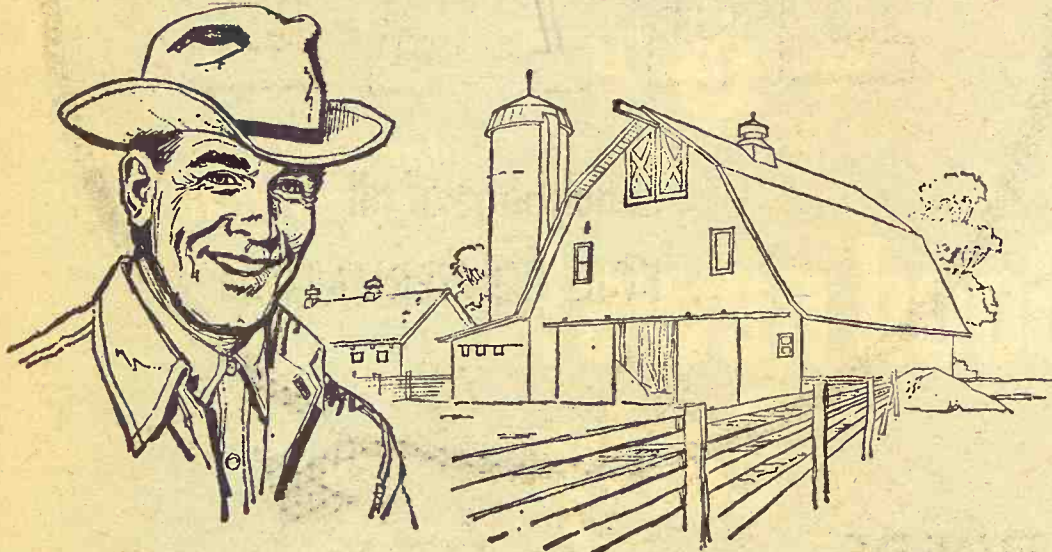
**ON YOUR FARM TIRE REPAIR & REPLACEMENT**

**YOUR COMPLETE TIRE CENTER**

**Firestone**

**300 Poyntz**

**MANHATTAN, KANSAS**



**\$10,000.00**

**EXTRA INCOME FOR EVERY 100 ACRES!**

Crop tests prove that every 100 acres of unlimed soil can earn you up to \$10,000 extra income every 10 years *due only to liming* when Ag-Lime\* and Fertilizer are teamed up!

You're losing money if your fields are acid. Chances are, a soil test would show at least some of your fields need liming. Get those soil samples in now!

**Be Sure!**

**use... AG LIME**

**Bayer Construction & Quarries Co.**

509 YUMA TELEPHONE PR 6-8839  
**MANHATTAN**

**Walker Stone Co.**

BOX 247 TELEPHONE WA 2-4711  
**CHAPMAN, KANS.**















### AUCTION

## 7 1/2 Acres with 3 Bedroom Home Near Harvey County Park

1 mile east of the north entrance to Harvey County Park, blacktop county road No. 564.

### Mrs. William "Babe" Hoffman, Owner

The following described property will be offered for sale by Public Auction, on the premises, located 8 miles west of Newton on 12th street, then 2 north and 2 1/2 west; or, 6 miles north of Halstead, then 2 1/2 west; or, 5 miles west of Hesston Manufacturing Co., then three south and 2 1/2 west; or, 8 miles south of Moundridge and 2 1/2 west on

FRIDAY, DECEMBER 6, 1968, 2:30 P.M.

### IMPROVEMENTS      LOANS

All modern 3-bedroom frame home with 2 bedrooms up and 1 down. Bath, living room, dining room, kitchen, utility room, washer and dryer connections in partial basement. 500 gallon propane tank. Several outbuildings. Large flower garden, Montmorency Cherry tree, 2 Elberta Peach trees. Abundance of good well water. Electric water pressure system. Hot water heater.

If a loan is desired, please be sure to contact your loan representative before day of sale.

### POSSESSION

Buyer will receive possession on day of sale.

### LAND

5 acres of pasture, 1 1/2 acres alfalfa balance yard. Lays good. Approximately 20 rods frontage on south side of 564 and 6 rods deep. Good fences.

### Escrow Agent

Citizen's State Bank, Moundridge, Kansas.

### TERMS

Ten per cent down day of sale and balance upon delivery of merchantable title and warranty deed.

### INSPECTION

The house will be open for inspection on Monday, December 2 from 4 until 7 p.m.

## JIM KIRKEMINDE, AUCTIONEER

135 East 29th Street, Topeka, Kansas 66605

Phone AM 6 4590

Green City (Mo.) Sale Pavilion

## Special Breeding Cow & Bred Heifer Sale SATURDAY, NOVEMBER 30

Selling both registered & commercial cattle  
ALL DAY SALE • STARTS 11:00 A.M.  
Sale Regardless Of Weather  
Lunch Served All Day



# 2100 HEAD



Including

- 1000 Choice 2 yr. old Angus Bred Heifers
- 500 Young Angus Cows (some with calves by side)
- 200 Reg. Angus Cows & 2 yr. old bred Heifers
- 300 Hereford Cows & 2 yr. old bred Heifers
- 100 Open Heifer Calves (Registered & commercial)

### EARLY LISTINGS:

- 110 choice young registered Angus cows & 2 yr. old bred hfrs from a reputation breeder
- 165 choice young Angus cattle from one farm, 2 to 9 yrs. old, a complete dispersion
- 50 big fancy quality 2 yr. old Angus bred hfrs, 25 will be registered, March calves
- 74 Hereford cows from one farm, a complete dispersion
- 120 young Angus cows from one farm, 2 to 5 yrs. old, some with clvs., balance to calf in January
- 35 fancy quality Angus young cows, January clvs, a complete dispersion
- 27 choice Angus cows, 2 to 5 yrs old.
- 34 young Hereford cows, some with calves
- 62 fancy quality Angus bred hfrs, March calves
- 135 choice Angus 2 yr. old bred hfrs, February clvs
- 104 choice Hereford 2 yr. old bred hfrs, mated to Angus bulls
- 21 registered Angus open heifer calves, 500 lbs.
- 42 registered Angus bred hfrs, March clvs., O.C.V., 2 yrs old.
- 24 young Angus cows 3 to 6 yrs. old, clvs by side.
- 122 choice young Hereford cows, 2 to 5 yrs old
- 22 young registered Angus cows, 3 yrs old
- 84 good Angus cows 2 to 5 yrs old, a complete dispersion
- 9 head choice young quality registered Angus cows, 500 lbs. clvs. by side
- 52 choice young Angus cows, 2 to 5 yrs. old, March calves
- 60 choice quality Angus bred hfrs., O.C.V., March calves
- 45 fancy quality Hereford bred hfrs, O.C.V., March calves

Will be selling 800 head cows and 2 yr. old bred heifers including some with calves by side. These cows and bred heifers are consigned by farmers of this north Missouri area.

These cows will be T.B. and Brucellosis tested with health papers furnished by the consignors. Most of the young cows and bred heifers will be pregnancy tested.

Your light planes can land at Green City Airport. Lunch room open all day.

## Green City Auction Company

GREEN CITY, MISSOURI

Ovid Vestal, 874-2405      Barn Phone 874-2090  
Lawrence Couch, 874-2875      Karl Bohner, 874-3155

## Selling Problems In Nitrogen

The nation's nitrogen fertilizer industry, now facing an over-capacity for production, must find new markets and induce farmers to increase usage, John R. Douglas Jr., staff economist of the Tennessee Valley Authority, said at the 18th annual convention of the Agricultural Nitrogen Institute meeting at Kansas City.

"Nitrogen is leading the field in rate of increase in use, as well as the fact that facilities for its production have been expanded at an even more unprecedentedly fast rate," Douglas said.

"The United State fertilizer industry," Douglas said, "undoubtedly has a tremendous potential for growth. However,

it is evident that a large amount of over-capacity for production exists. Future potential for growth may be quite different from the past decade of growth, both by areas and by crops. Less than a decade ago, only a small share of crops, which now use the largest part of total nitrogen, was being fertilized.

"Today a large majority of the crops which use the fertilizer the most are already being fertilized, and they are being fertilized at rates which were unheard of 10 years ago."

Douglas used many charts to show the increased use of nitrogen fertilizers and pointed out that 90 per cent of the increase in its use in the corn belt was in the 1964-67 period.

"If the trends continue," he added, "all the corn will soon be fertilized and there will be no potential for increased fertilizer

use based on per cent of crop fertilized. Although farmers are fertilizing at an increasingly high per-acre rate, the rate of increase is decreasing. Therefore, the total conclusion is that, unless other trends intervene the large increases in nitrogen fertilizer use in this country must come from other crops changed trends in corn fertilization."

### CARL MENZIES TAKES SOUTH DAKOTA JOB

A man who has been in the of sheep research at Kansas State University and a former secretary of the Kansas Sheep Breeders Assn. has been appointed head of the Department of Animal Science at South Dakota State University. He is Carl C. Menzies. He will take South Dakota job February

CATTLEMEN — YOU'LL WANT TO ATTEND THIS EVENT

## REGISTERED HEREFORD SALE

Friday, Dec. 6

Clay Center, Ks.

Starts at 1:00 p.m.  
In Heated Sale Barn

— Selling 50 Lots —

30 BULLS

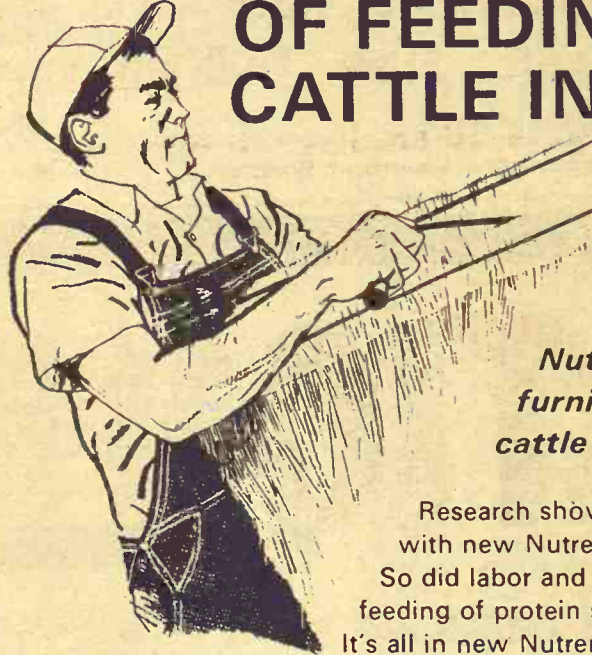
20 Cows

The bulls and heifers are sons and daughters of PV Zato Ton 49th Majestic Silver 135th and Silver Crest 49th.

For More Descriptions, See Grass & Grain Next Week, Dec. 3.

B-K Hereford Ranch  
Clarence F. Bergmeier & Son, Owners      Longford, Kansas

## NO MORE BOTHER OF FEEDING HAY TO CATTLE IN FEEDLOT!



## NEW!

Nutrena Beef Kwik-STB-18  
furnishes everything your  
cattle need when fed with grain

Research shows . . . costs went down with new Nutrena Beef Kwik-STB-18. So did labor and bother. No more separate feeding of protein supplement and hay or silage. It's all in new Nutrena Beef Kwik-STB-18—

along with vitamins, minerals and Stilbosol®—everything needed to balance your grain.

### Feed costs down 10% in feeding tests

This new all-in-one balancer combines the best of famous Nutrena Beefcake-32 and Nutrena Beef Kwik—and more. In Nutrena research tests, new Beef Kwik-STB-18 fed with corn reduced feed costs per pound of gain by a full 10% compared with Nutrena Beefcake-32, hay and corn. Total feed costs per pound of gain was only 17¢. And that's figuring the corn fed at \$1.35 a bushel. Pelleted.

Interested? Come in and let's talk it over. Better yet, give it a try. You be the judge.

 Nutrena Feeds

### OTHER NEARBY

#### NUTRENA DEALERS

- CENTRALIA GRAIN CO.  
Raymond Hoar, Mgr.  
Phone 857-3215 . . . CENTRALIA
- GRAHAM GRAIN CO.  
Larry Heinen, Mgr.  
Phone 736-2245 . . . . . AXTELL
- GRAHAM GRAIN CO.  
Tony Zelony, Mgr.  
Phone 562-3046 . . MARYSVILLE
- SOWERS GRAIN CO.  
Jim Sowers, Mgr.  
Phone 636-8353 . . . . . PAXICO
- RYAN BROTHERS  
Myron Anderson, Mgr.  
Phone 934-2509 . . ENTERPRISE

- WARDERS FARM CENTER  
Joe Warder, Mgr.  
Phone 226-3021 . . BLUE RAPIDS
- TAMPA COOPERATIVE ASSN.  
Harold Tucker, Mgr.  
Phone 23 . . . . . TAMPA
- FARMERS CO-OP ELEVATOR  
Warren Prose, Mgr.  
Phone 823-2383 . . . . . BAVARIA
- WILSEY FEED & GRAIN  
Gary Dalquest, Mgr.  
Phone 497-2223 . . . . . WILSEY
- OSAGE GRAIN CO.  
Ed Peterson, Mgr.  
Phone 528-2051 . . OSAGE CITY
- HOLLENBERG GRAIN CO.  
Frank Temeyer, Mgr.  
Phone AL 3-7441 HOLLENBERG

See Bob McCoy, Mgr.  
Phone TW 4-2011

C-G-F  
Grain Co.  
Oneida, Ks.











# AUCTION

Saturday, Dec. 7 - 1:00 pm.

HINERVILLE SCHOOL - 4 miles north of Alma on Highway 99  
Native stone building 30x39 with attached kitchen 12x18  
and 2 acres of land - Good well & pump

- |                        |                          |
|------------------------|--------------------------|
| 1000 gal. propane tank | Old fashion desk & seats |
| Set of play swings     | Folding tables           |
| Flag pole              | Piano                    |
| 300 feet of fence      | Stove                    |
| 12"x28" school bell    | Cabinet                  |
| Steel cabinet 18x36    | Stage curtain            |
| Wooden cabinet 12x60   | Misc. items              |
| Wooden tables          |                          |

PERSONAL PROPERTY - Cash  
Real Property: 15% down, balance on delivery of abstract & deed

School District 329, Owner

Jim Kirkemunde, Auctioneer Fred C. Clark, Clerk

## CLAY CENTER SALES CO.

Hog Sale Every Monday Starts 1:00 p.m.

Cattle Sale Every Tuesday Starts 12:30 Noon

A DEPENDABLE MARKET FOR ALL CLASSES OF CATTLE

A LEADING MARKET PLACE FOR HOGS

H. P. ROBBINS, Clay Center, ME 2-3210  
R. A. BRUEGGEMANN, Clay Center, ME 2-2761  
HORACE WARE, Longford, ph. 338-2439

Barn Phone ME 2-2361  
CLAY CENTER, KANS.

BURLINGTON, KANSAS

## Coffey County

Livestock Sale Every Wednesday

STARTS 12 NOON

CATTLE and HOGS

400 To 700

Good Cattle

300-600

Feeder Pigs

Our market last week was fully steady on all classes except light steers 350-450 lbs. They were down 50c-1.00. Cows were somewhat lower, as has been the trend in the area.

The consignment of Angus cows and calves sold on a good market, the pairs bringing \$255 and the dry cows \$210.

There was another consignment good 735 lb. blk & blkwf steers that brought 26.20.

CONSIGNMENTS FOR NOV. 27

65 good wf steer & heifer calves 450-550 lbs.

57 wf yearling steers & heifers 600-650 lbs.

29 yearling blk & blkwf feeder heifers 600-650 lbs.

42 wf & blkwf steer & heifer calves, 350-400 lbs.

7 calfhood vacc. Holstein yearling heifers

19 thin yrkg. Holstein steers, 600 lbs.

We are expecting a good run of stocker cattle.

Raymond Vaughn

BURLINGTON 364-2581  
BARN PHONE 364-9576

## Eureka Auction

Sale Every Monday

STARTS 1:00 P.M.

1200 Head

Sold Last Saturday at our final special stocker & feeder sale.

A brief report of the sale follows:

Steer calves, 350-450 @ 29.00-31.00.

Steer calves, 450-550 @ 27.00-29.00.

Heifer calves, 350-450 @ 25.50-26.50.

Heifer calves, 450-550 @ 24.50-26.00.

Yearling steers, 550-700 @ 26.00-28.00.

Feeder heifers, 550-700 @ 23.00-25.00.

Feeder steers, 700-850 @ 24.50-25.50.

GOOD MARKET ON CALVES & FEEDERS

We continue to have demands for this class of livestock, so now that our series of fall special Saturday sales are over, you'll have good buyers for calves & stockers at our regular sale.

SPECIAL CONSIGNMENT for next Monday: 100 head extra good feeder pigs.

Try us for selling cows.

Last week pairs were selling \$240 and springers @ 200.00.

Herb Rockhill

EUREKA GI 3-5493  
BARN PHONE GI 3-9946

## Cattlemen's Assn. Likes Current Feeder Report

DENVER - The cattle on feed report for six leading feeder states on Nov. 1 by the U.S. Department of Agriculture was again heartening in all areas since it revealed factors that mean continued stable prices, says the American National Cattlemen's Assn.

In interpreting the figures, the ANCA market development committee said the fact that October marketings were up 10 percent and October placements were down four percent "is an encouraging sign for immediate weeks ahead and for the next several months."

The analysis added that "placements in the Cornbelt are below normal levels for this time of year. The ratio of placements to marketings is more favorable in 1968 than it was in 1967 for October."

Bill Helming, ANCA economist, expressing the findings of

the committee, added that "feed-lots throughout the U.S. are very current; slaughter weights are down, cattle are moving in

an orderly manner, and there continues to be considerable strength and foundation to the current market."



### IHC Honors

Bill Auld, IHC dealer at Wakefield, has won an all-expense trip to Hawaii in a recent sale campaign by International Harvester. Here Auld receives a 25-year award from M. W. Wright, IH zone manager.

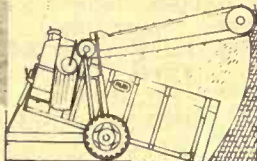


Farmers go for the SILAGER in a big way because of the work it does! This one unit digs and loads horizontal silage or haylage, meters in feed and supplement if desired, unloads into feed bunk... all with one-man operation direct from the tractor seat! Rations can be changed from lot to lot from the same load! Precision blades and wide cutter head, controlled by powerful hydraulic cylinders, freely dig any medium- or short-cut silage under all conditions. Patented packing action increases silage capacity. The SILAGER carries a full 6,000-lb load of silage and 45 bushels of grain supplement mix. Operation is simple, trouble-free, field-proved.

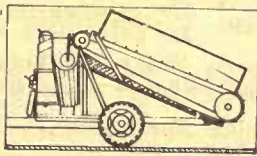
(above) Model 3TG Silager with Grain/Supplement Tank

ALSO AVAILABLE:  
SILAGER MODEL 3-T  
6,000-lb. Model—Silage only. Does not include grain/supplement tank. Designed especially for medium size feeders, dairy operations, etc.

"Best Hired Hand a Farmer ever Had"  
THE SILAGER



Hydraulic cylinders control tilting, raise cutting head to 18-ft. Slats drag and pack silage. Loading time, 4 minutes.



Bed gradually rises for unloading through discharge auger and swinging spout. Discharge rates for all feeds controlled. Grain tank loads top or bottom.

SILAGERS are engineered to work without strain. Power requirements are low. The results are smooth, non-hucking operation; low upkeep; costs and long life.

FACTORY DISCOUNT WHILE 1968 MODELS LAST

Al Hammersmith & Son Mfg. Co.

Day Phone 913 / 486-2121 HORTON, KANSAS

Night Phone 913 / 486-2406 HORTON, KANSAS

## For Sale-By Sealed Bids

### LAND IN HERMAN F. TESSENDORF ESTATE

In order to dispose of certain land in the Estate of Herman F. Tessoroff, Deceased, ordered sold by the Probate Court of Pottawatomie County, Kansas, at private sale, I, C. B. Hilliard, Administrator of said estate, will offer the following described properties in Pottawatomie County, Kansas, for sale by sealed bids, said bids to be delivered to C. B. Hilliard, Administrator, Wamego, Kansas, on or before 2:00 o'clock p.m. C.S.T. on December 10, 1968, when said bids will be opened.

**TRACT 1** - A tract beginning at a point 40 rods East and 20 rods North of the Southwest Corner of the Northeast Quarter (NE 1/4) of Section Thirty-five (35), Township Seven (7), Range Ten (10), thence running south 20 rods to center line of said Section 35; thence East to Southeast Corner of the said Northeast Quarter; thence North on East line of said Northeast Quarter; thence West on the North line of the said Northeast Quarter 185 1/7th rods; thence South 140 rods; thence East to the place of beginning, containing 177 acres, more or less.

**TRACT 2** - North Half (N 1/2) of Southeast Quarter (SE 1/4) in Section Thirty-Five (35), Township Seven (7), Range Ten (10).

**TRACT 3** - South Half (S 1/2) of Southeast Quarter (SE 1/4) in Section Thirty-five (35), Township Seven (7), Range Ten (10). (Landlord's share of growing wheat passes to buyer.)

**TRACT 4** - Northwest Quarter (NW 1/4) of Southwest Quarter (SW 1/4) less Northeast 5 acres, in Section Thirty-six (36), Township Seven (7), Range Ten (10).

Purchasers will take possession on signing of contract, subject to tenant's rights of possession. Abstract showing merchantable title will be furnished. Terms: 20% when contract is signed, balance due within 60 days with \$500.00 to be held in escrow if abstract showing merchantable title cannot be furnished within said 60 days. Taxes for 1968 and prior years to be paid by estate.

Administrator will submit a protective sealed bid on each of the above numbered Tracts, and the highest bid on each Tract or combination of Tracts, if in excess of protective bid, will be accepted. Bids may be submitted on each or any of the above numbered Tracts, or any combination of the above numbered Tracts. Bid forms will be furnished by the Administrator and may be obtained from James E. Sullivan, Attorney, Wamego, Kansas, or from the Administrator.

For further or more complete information contact the Administrator.

C. B. HILLIARD, Administrator

First National Bank, Wamego, Kansas



November 26, 1968

Grass & Grain 43



Sylvan SALE CO., INC.

Sylvan Grove, Ks. FRIDAY SALES EACH WEEK Selling 1000-1500 fresh country stocker and feeder cattle, calves and stock cows each week.

Quinter LIVESTOCK COMM. CO. Quinter, Ks.

MONDAY SALES EACH WEEK Selling 1000-1500 fresh country stocker and feeder cattle, calves and stock cows each week.

Meyer Stocker Feeder Order Buying Service Featuring Cattle Direct From The Country

Mike Meyer, Sylvan Grove, Ks. Micky Meyer, Sylvan Grove Jay Meyer, Quinter, Ks.

Prevent Losses! FRANKLIN

TRI-SULFA SOLUTION BOLUSES Keep a supply on hand for prompt treatment of CALF PNEUMONIA CALF DIPHTHERIA SHIPPING FEVER FOOT ROT

A FULL-SERVICE STORE FOR ANIMAL MEDICINES. PHONE ME 2-3272

HELD'S STORE CLAY CENTER, KANS.

FREE OFF-STREET Parking While Eating at

SCHUESS The Family House Cafe MANHATTAN

Herington Livestock Auction Co.

Sale Every Tuesday

Operating under Federal Supervision & Bonded for your protection.

Reporting for the Herington Livestock Auction Co. Tuesday Nov. 19, 1968: We sold cattle for 88 consigners to 61 buyers on a market that was steady on all stocker and feeder cattle over previous week.

Table with columns for Stocker & Feeder Steers and Stocker & Feeder Heifers, listing counts and prices.

Table with columns for Butcher Cows and Butcher Bulls, listing counts and prices.

Herington Livestock Auction Co. Herington, Kans.

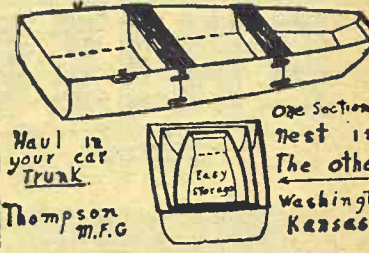
Area Mobile Homes Makers In Deal

Guerdon Industries, which operates a mobile homes plant at Newton, has agreed to buy 51 per cent of Lonerger Corp., a mobile homes maker that has headquarters in Elkhart, Ind. One of the Lonerger plants

is at Manhattan. The sale is to be a cash one for an undisclosed amount. Industry sources say the value of the transaction still to be approved by Guerdon directors is around \$6 million. Lonerger has sales of \$13 million a year, and according to Guerdon, is profitable. The company plans to operate Lonerger as an autonomous division of Guerdon. Lonerger also operates plants

at Scranton, Pa., Ocala, Fla., and at Elkhart, and employs about 400 people.

Nested Fishing Boats



CASE

Makes buying now a true investment

WAIVER OF INTEREST & FINANCE CHARGES ON PURCHASES NOW New & Used

Tractors - Combines

TRACTORS INTEREST FREE TO MARCH 1, 1969 COMBINES INTEREST FREE TO APR. 1, 1969

NOW - You Can Deal - NOW

See One of These Case Men Nearest You

- CLAY CENTER: Porter Eqpt. Co., 1121 Crawford ME 2-5202; CENTRALIA: McBratney Impl., Phone 857-3815; SALINA: Vahsholtz Impl. Co.; CHAPMAN: Jones & Knopp WA 2-3241; MARYSVILLE: Brauchl Brothers; LINN: Kuhlman Motor Co.

Monday Sale

Starts 1 p.m.

This week's sale was a good calf and stocker sale. The majority was small farmer consignments on calves and stocker yearlings, selling mostly to local and Kansas buyers.

The market was uneven in selling action but all selling on a very steady market. Good and choice calves sold fully steady and active - plainer kinds about steady but lacking the action. All yearlings sold fully steady to 25¢ higher.

Table with columns: Name, Address, Description, Weight, Price. Lists various livestock items and their sale prices.

RADIO ANNOUNCEMENTS AND TIMES K.F.R.M. - 7:50 A.M. Saturday, Sunday and Monday K.S.A.L. - 12:45 A.M. Saturday, Sunday and 6:25 A.M. Mon. K.M.M.J. ....7:30 to 7:40 A.M. Mondays

Glasco Livestock Exchange

OWNERS & OPERATORS: L. R. NOTHERN, ROLAND NOTHERN, LYLE BELDEN-Beloit, ARNOLD FILE-Beloit; SALES REPRESENTATIVES: Phone 568-2716, Phone 568-2350, PE 8-5037, PE 8-3413



# Baughman Ranch Hereford Bulls Average \$865

WALDO — The Baughman Ranches Hereford sale grossed \$45,035, with bulls averaging \$865, females \$723, and junior heifers \$274.

A ½ interest in a yearling son of BRI Mischief 824 was bought by Homm Hereford Ranch of Burlington, Colo., for \$2500.

A 2-year old Silver Onward bull brought \$2450 from Nicholson Brothers, Springfield, Nebr. Herman Harsh of Oxford, Nebr., was a buyer at \$1525.

The top in the female sale was \$2000, paid for two animals, one going to Dennis Knowland Jr. of Shanfield, Arizona, and the other to Jackson Hereford Ranch, Muldow, Okla.

Volume female buyers were Paul Stephenson of Sterling and Winrock Farms, Sulphur, Okla.

George Morse was auctioneer and sale manager.

# See Slackening Of Charolais Imports To Canada

Demand from United States livestock breeders for Charolais cattle imported into Canada from France should taper off in a few years, it was reported to the Canadian government's agriculture committee.

Since first imports to Canada in 1965, American buyers, barred by U.S. law from importing them direct from France, have been ready to pay as much as \$50,000 for a single animal for breeding purposes, it was re-

ported. Dr. Kenneth Wells, federal veterinary director-general, said basis for "fantastic" interest by livestock raisers in European cattle is that Charolais cross-breeds gain weight faster than regular North American

breeds and produce beef more economically.

Interest of American buyers is not confined to Charolais. It covers five or six other breeds as well. Canadians have been importing Charolais at a rate of

about 240 a year, placing them in federal quarantine for five or six months to ensure they are disease-free and using them to establish the Charolais breed in Canada and cross-breed with North American beef cattle.

November 26, 1968

Grass & Grain 45

## SEDLACEK'S of HANOVER

We CHALLENGE ANY DEALER TO BEAT THESE VALUES

# Pre-Season Christmas SPECIALS



**Economy Food Freezer**

Model CA-12D  
11.6 cu. ft.

**\$179**

Big convenience, low cost!  
Upright design! Fast freezing!

**General Electric Two Door 14'**

13.5 cu. ft.

**TWO Appliances in One!**

Big zero-degree freezer  
Holds up to 131 lbs!  
Automatic defrost refrigerator section.

Model TB-14  
**235<sup>00</sup>** W/T\*

New 14" Diag. Rectangular Picture

**Admiral Color**

**3-YEAR COLOR TUBE WARRANTY!...NOT 2 YEARS!...**

The COLOR PLAYMATE 14" 4009P  
Slim, lightweight, true portability in handsome White finish. Super-Bright Rectangular Color Picture Tube. Automatic Degaussing Circuit and many big set quality features.

**ONLY \$269<sup>95</sup>**

**RECLINER.**  
OVER 50 TO CHOOSE FROM!

- ◆ Foam Cushion and Back
- ◆ Nylon Cover

SEDLACEK'S SALE PRICE **\$3995**

**2-Pc. Living Room Suite**

- ◆ Choice of Nylon Covers
- ◆ Foam Reversible Cushions
- ◆ Hardwood Frame

SEDLACEK'S SALE PRICE **\$9988**

**SUNBEAM CORDLESS HYGIENIC TOOTHBRUSH**  
Model CT8

Beautiful NEW functional styling. Brushes up-and-down automatically. Short, powerful, yet gentle strokes-1800 per minute-do a better, faster job. Safe-cordless. Hygienic—easy to keep clean. Recharges overnight in stand. "Travel Charger" charging unit is removable from base for portability, travel, and extra convenience. Can be wall mounted. Complete with 6 brushes.

Sale Price — — — **\$16.95**



### Robinson Co-op

Don Dumler, left, has succeeded Joe Bottiger, right, as the manager of the Robinson Co-op, the large cooperative in Brown County. Dumler was raised near Russell and has been associated with co-ops since 1961.

**EASY CREDIT**  
Free Delivery 200 Miles

Delayed delivery of Gift Purchases if you wish.

# SEDLACEK'S

HANOVER, KANS. Phone ED 7-2345

**OPEN EVENINGS**  
Every  
Wednesday & Saturday  
on Sundays we are closed.

## Cloud County Livestock

### Commission Company

Concordia, Kansas

Sale Every Saturday



Gail Garton, Concordia  
243-1181

Cattle were selling steady to stronger here this past Saturday. Butcher hogs were 25¢ to 50¢ higher than the previous week.

We have a good demand for feeder cattle, both steers and heifers. There is a good supply of grain and roughage available which is one reason for the demand for feeders. If you have cattle that you are thinking about selling, consider the CLOUD COUNTY LIVESTOCK COMMISSION CO. as the place to sell. We treat each customer, both buyer and seller, equally and fairly. All consignments are sold in the order they unload at dock. Cattle purchased

may be left over Sunday and fed at no cost to the purchaser.

The following are some of the sales made this past Saturday out of 96 consignments. 54 buyers were present for the sale.

#### STOCKER & FEEDER STEERS

2 holstein steers	1025 @ 21.30
4 whiface str	812 @ 25.80
6 whiface str	545 @ 27.40
7 whiface str	760 @ 26.50
10 mixed str	580 @ 28.15
7 blkwhiface str	406 @ 30.20
4 black steers	315 @ 33.50
9 black steers	330 @ 30.75
4 whiface steers	600 @ 27.80
7 whiface steers	712 @ 26.90

#### STOCKER & FEEDER HEIFERS

5 whiface heifers	524 @ 26.20
6 mixed heifers	425 @ 26.10
7 black heifers	300 @ 26.20
7 whiface heifers	584 @ 25.00
6 whiface heifers	590 @ 24.70
3 black heifers	533 @ 25.60
2 Char. heifers	1165 @ 23.75
2 roan heifers	710 @ 23.60

#### COWS

1 holstein cow	1540 @ 17.00
1 black cow	1130 @ 16.00
1 whiface cow	1030 @ 17.50
1 whiface cow	1055 @ 18.90
4 whiface cows	1050 @ 17.60
2 Char. cross cows	1120 @ 20.10

#### HOGS

8 butchers	225 @ 17.60
13 butchers	220 @ 17.50
8 butchers	206 @ 17.85
5 butchers	244 @ 17.85
15 butchers	218 @ 17.55
6 butchers	225 @ 18.00
6 sows	265 @ 15.85
10 weaning pigs	@ 13.75ea
27 weaning pigs	@ 14.50ea
19 baby pigs	@ 10.50ea
10 feeder pigs	@ 18.25ea
14 feeder pigs	@ 17.25ea
29 weaning pigs	@ 14.50ea

Boars, 11.40 to 14.40 per hundred.

Leo Rauch, Clay Center, 632-3092

Radio KNCK '1390' 6:45 T. T. S.

J.M. "Matt" Davis, Delphos 623-4543



November 26, 1968

## Way To Cut Hospital Costs

Dale E. Gilman, administrator of St. Catherine Hospital at Garden City, said Friday a pilot project will enable the 98-bed hospital to lower wage costs by \$42,000 a year.

Gillan told about the project in an address to some 350 persons attending the annual convention of the Kansas Hospital Association.

"Hospital costs have risen about 14 per cent annually over the last two years," Gillan said. "Sixty per cent of the cost is labor. The savings reflect a sev-

en to eight per cent reduction in the total cost of labor — so the reduction in cost becomes quite significant."

The hospital was one of nine surveyed in a pilot project sponsored jointly by the Kansas Hospital Association, Blue Cross, and the participating hospitals.

The firm of George N. Williams of Minneapolis, Minn., sent industrial engineers to the hospital.

## Quinter, Winfield Men To Board Of Farm Bureau

Members of the Kansas Farm Bureau elected two men to the bureau's board of directors and re-elected three others.

They also re-elected five women to the State Committee of the Farm Bureau Women.

Ray G. Beesley of Quinter and Gerald Lawrence of Winfield were elected to the bureau board of directors, succeeding Gilman E. Bishop of Norton and Paul H. Nelson of McPherson, respectively.

Re-elected were Frank Boyd Jr. of Moran, Walter H. Porter of Reading and Brad Judy of Montrose.

Re-elected to the State Committee of Farm Bureau Women were Mrs. Harold Jones of Hamlin, Mrs. Chester Reed of Peru, Mrs. Dan Musil of Frankfort, Mrs. Louis Ahnert of St. John and Mrs. John Valentine of Ashland.

Feb. 5 — Farm sale east of Elmo, Floyd Beemer. Auct. Foster Kretz.

Feb. 7 — Farm sale northwest of Blue Rapids. Paul Miller. Roche & Raleigh Breeding, aucts.

Feb. 8 — Seventh annual Polled Hereford production sale Valley Hereford Farm, Goff, Kans., Carl J. Funk.

Mar. 27 — Northeast Kansas Angus Assn. sale in Horton, George Hook, Morrill, Ks., sale mgr.



## FARM & RANCH LOANS

A Financial Service For The Farmer And By The Farmer

R. STANLEY PARSONS, Mgr.

SEE ME AT  
604 HUMBOLDT PR 6-6931  
Res. Phone JE 9-8725

MANHATTAN

Open Mon. through Fri.  
8 a.m. to 5 p.m. (closed 12-1)

Branch Offices: CLAY CENTER & JUNCTION CITY

Federal  
LAND BANK Assn. of  
MANHATTAN

Serving Clay, Geary, Pottawatomie & Riley counties.

## Reynolds Sale Barn

ABILENE, KANS.

Selling Every

FRIDAY

Starts 1:00 p.m.

Over 1100 cattle moved through the ring last Friday afternoon. Many buyers locally and out of state paid steady prices for stocker calves. Feeder steers and heifers sold \$1.00 or more higher. Packer cows were again under pressure and looked \$1.00 or more lower.

### BULLS

1 bull ----- 1090 @ 20.00  
1 bull ----- 1490 @ 20.50  
1 bull ----- 1380 @ 20.55  
5 whiface bulls- 516 @ 28.15

### COWS

1 cow ----- 1135 @ 1/2

### COWS

1 cow ----- 920 @ 15.80  
1 cow ----- 1135 @ 15.95  
1 cow ----- 1230 @ 15.95  
1 cow ----- 1550 @ 15.70  
1 cow ----- 1315 @ 14.80  
1 cow ----- 1290 @ 14.50  
1 cow ----- 1310 @ 15.30  
2 cows ----- 1130 @ 14.60  
1 cow ----- 1170 @ 14.50  
1 cow ----- 1390 @ 16.00

### STOCKER & FEEDER STEERS

3 whiface steers--333 @ 32.30  
34 whiface str --398 @ 32.10  
2 whiface steers- 315 @ 22.10  
50 blk&blk wf str 383 @ 31.80  
38 blk&blk wf str 468 @ 30.90  
5 black steers ---414 @ 31.40  
4 black steers --- 502 @ 29.10  
7 whiface steers - 550 @ 28.40  
2 black steers --- 585 @ 27.30  
10 blk&blk wf str 438 @ 29.90  
8 black steers --- 516 @ 29.00

22 blk whifc str-- 588 @ 28.30  
24 whiface str-- 663 @ 27.05  
31 black steers -- 641 @ 26.90  
22 black steers --744 @ 27.00  
11 black steers -- 744 @ 26.75  
14 black steers -- 883 @ 26.25  
12 whiface steers 828 @ 26.25  
5 whiface steers - 692 @ 26.65  
32 mixed steers - 818 @ 25.75  
6 black steers -- 725 @ 26.10

### STOCKER & FEEDER HEIFERS

8 black heifers --319 @ 27.10  
57 blk&bf wf hfrs --367 @ 26.90  
26 b&b whifc hfrs --384 @ 26.60  
29 whiface heifers 424 @ 26.70  
48 whiface hfrs --359 @ 26.90  
4 black heifers ---571 @ 25.50  
18 blk whifc hfrs --562 @ 25.80  
35 med. qual. -----  
black heifers -- 630 @ 25.15  
35 med. qual. -----  
black heifers-- 608 @ 25.15  
1 black heifer--- 630 @ 25.20  
4 blk whifc hfr ---537 @ 25.40

Already listed for Friday, Nov. 29

o 24 choice angus cows - 3 to 7 yrs old. 16 calves by side, balance will calve soon.  
o 50 choice angus and black whiteface heifers, 500 lbs. - off brome grass pasture.  
o 200 choice whiteface & angus heifers, 400 lbs. weaned & vaccinated.  
o 65 choice angus & black whiteface steers and heifers 450 to 550 lbs, weaned & vac.  
o 85 choice whiteface & angus steers, 400 to 450 lbs, weaned and vaccinated.

YARDMEN ON DUTY 24 HOURS A DAY

CALL DUDE REYNOLDS COLLECT

For information, requests for appraisals at no obligation, or inquiries regarding coming sales, call me at any time, day or night.

CO 3-3394

DUDE REYNOLDS Abilene, Kans.

Bring your cattle in at any time day or night; we'll handle them for you at your request.

## AUCTION SALE

Saturday

NOV. 30

Starts 10:00 a.m.

Lunch Served

We are giving up all our farming operations, and will sell all of our farm, hay, silage, and feeding equipment at a public auction. Sale will be held at the farm 2 1/2 miles west of Gardner, Kans., on county road, then 2 1/4 miles north.

### Machinery

D6 Cat, hyd. dozer blade  
1966 JD 4020 dsl., 3-pt., interlocking rear end, Power-trol transmission, low hours  
1966 JD 4020 dsl., 3-pt., interlocking rear end, Power-trol transmission, wide front end  
1965 JD 4020 dsl., 3-pt., interlocking rear end, Power-trol transmission, wide front end  
1964 MF 65 dsl., fully equipped  
1951 Farmall M, with hyd., comp. overhaul, good cond.  
1961 Case 3GH gas tractor, w/ Case back hoe & loader  
1950 JD B, 2-row mtd. cult.  
2 1966 JD 5-14 semi-mtd. plows, like new  
1964 MF 4-14 mtd. plow  
1966 JD 12' wheel disc, like new  
1966 JD 12' grain drill, with fert. & grass att.  
1967 JD 1245 4-row planter, with fert. & germinicide att.  
1967 JD 4-sec. rotary hoe  
1967 JD 16' springtooth harrow  
1966 B&B rotary mower  
1964 JD 6' rotary mower  
1965 JD 9' sickle bar mower  
1967 JD self-propelled High Boy automatic field sprayer, 40' booms, like new  
AC round baler, excellent cond.  
1964 Superior heavy duay high loader, for MF or Ford  
1967 NH 35' bale elevator  
1966 NH self propelled automatic bale wagon.  
1966 NH self propelled baler, Ford 4-cyl. eng., water cooled

1965 NH string tie baler, water cooled 4-cycle Ford ind. engine  
1965 NH 12' swather, hay cond., rubber rollers, self-propelled, Ford 4-cycle water cooled industrial engine  
1966 NH 12' swather, Ford 4-cycle watercooled ind. eng.  
1967 NH 3-pt. PTO side d. rake  
1960 side delivery rake  
Mulky 40' hay & grain elev.  
JD 30' hay & grain elevator  
1965 Fox 2-row SP ensilage cutter, corn head, hay head, all other necessary attachments, 200 HP GM diesel  
1965 Fox blower, 6' dump table blower, pipe, with reduction gear box  
1965 Fox pull-type ensilage wagon, 6T trailer, airplane tires  
Late model JD 130 bu. 2-whl. PTO spreader  
JD 2-whl. spreader, all metal  
12' Ezy flow  
4-whl. wagon, with grain bed  
1966 Ford 2-ton truck, long wheelbase, Oswald ensilage bed  
1966 Oswald ensilage bed  
1954 IHC 2-row mtd. cornpicker  
Lots of Other Good Machinery  
1963 JD combine, 14' grain head, 2-row corn head  
1963 Ford combine, 12' grain head & a corn head  
**TRUCKS**  
1951 Ford F800 truck, with new engine & Lowboy to carry Cat dozer  
1966 Ford Bronco sta. wagon, new mtr., 4WD, good  
1956 Int. 3/4T pickup, 4-wheel drive, flat bed

GAULTCREST FARMS

Sale Every Thursday

Hogs 11:30 a.m.  
Cattle 1 p.m.

# Thanksgiving

NOV. 28

## NO SALE

## THIS WEEK

Due to the Thanksgiving Holiday

SALE AS USUAL

NEXT THURSDAY

See Grass & Grain next week for report of our sale last Thursday.

We Wish You All

a

Satisfying Holiday

Marysville

RALEIGH BREEDING, MANAGER

barn 562-3671; home 562-3547

Auctioneer: Larry Lagasse,  
Ph. Concordia, Kans. CH 3-1714

LIVESTOCK & COMMISSION CO.  
MARYSVILLE, KANSAS

