

ifers-----345 @ 25.3
ifers-----447 @ 25.3
if heifers 403 @ 25.3
ifers-----333 @ 25.3
ifers-----300 @ 25.3
heifers---439 @ 24.8
ers-----367 @ 24.8
ifers-----397 @ 24.8
fers-----503 @ 24.8
if heifers 474 @ 24.8
ifers-----413 @ 24.8
ers-----410 @ 24.8
if heifers 424 @ 24.8
ifers-----365 @ 24.8
ers-----512 @ 24.8
fers-----507 @ 24.8
ifers-----522 @ 24.8
heifers---540 @ 24.8

COWS
ow-----1140 @ 14.8
ow-----1240 @ 14.8
ow-----1340 @ 14.8
ow-----1620 @ 14.8
ow-----1255 @ 14.8

ow-----1310 @ 14.8
ow-----1350 @ 14.8
ow-----1010 @ 14.8
ows-----1075 @ 14.8
ow-----840 @ 14.8
ow-----1110 @ 14.8
ow-----1165 @ 14.8
ow-----930 @ 14.8
ows-----970 @ 14.8
ow-----900 @ 14.8
ow-----830 @ 14.8

MISSION CO.
ANY
St. Mar
K
Y
tle Only
at 11:00 a.m.
order they are

wht hogs 242 @ 11.2
mix hogs 214 @ 11.2
spt. hogs 241 @ 11.2
mix hogs 241 @ 11.2
mix hogs 215 @ 11.2
mix hogs 231 @ 11.2
wht hogs 237 @ 11.2
mix hogs 285 @ 11.2
mix hogs 260 @ 11.2
mix hogs 229 @ 11.2
mix hogs 238 @ 11.2
spt. hogs 227 @ 11.2
mix hogs 215 @ 11.2
wht hogs 227 @ 11.2
mix hogs 252 @ 11.2
mix hogs 222 @ 11.2
mix hogs 229 @ 11.2
mix hogs 242 @ 11.2
mix pigs @ 11.2
mix pigs @ 11.2
belt pigs @ 11.2
mix pigs @ 11.2
wht pigs @ 11.2
mix pigs @ 11.2
mix pigs @ 11.2

Rancher
MISSION CO.
old US 40
Barn Phone
-0211 SALLINA
icensed



But You Can't Make Him Drink

The cat isn't sure he wants a drink, but young Robert Cross tries to persuade the feline. Robert is the son of Mr. and Mrs. Paul Cross, who live east of Manhattan.

Slow Initial Profits On Hybrid Wheat

Farmers in the G&G area are not strangers to hybrid corn and sorghum but hybrid wheat?

Major seed companies are now experimenting with hybrid wheat which, according to Dr. Ronald W. Livers, project leader for cereal improvement at the Fort Hays experiment station, will improve yields but may not improve profits — not at first, anyway.

Yields per acre are reported to range generally from 20 to 40 percent above ordinary varieties.

"Hybrid wheat is going to involve a pretty substantial investment per acre, so returns from it will be more assured in those wheat producing areas where yields are high," he said.

Private seed companies should have the wheat on the market by the 1970's, according to Dr. Livers, who has been engaged in developing hybrid wheats since he joined the station staff at Hays and Kansas State University.

"This big hurdle is the universal use of wheat hybrids such as we see with corn and grain sorghums. This would allow production of sufficient quantities of wheat seed to sell at a price that would permit farmers to plant hybrid grain profitably.

Hybrid wheat research started at Fort Hays experiment station when Jim Wilson began working on it in 1957.

After seven years, critical problems have been overcome and wheat researchers are optimistic about the future outlook.

All genetic materials are available to produce hybrid wheat right now, Dr. Livers says. But how to produce a sufficient amount of seed for the farmer and find solutions to problems concerning testing large amounts of the seed are still under study.

In 1964, tests at Fort Hays Experiment Station showed 18

hybrids averaged 37 bushels per acre, 20 percent more than the average of the seven parent varieties in the same test.

The yield of the best hybrid was 45 bushels, 33 percent more than the average of the seven parent varieties in the same test.

The yield of the best hybrid was 45 bushels, 33 percent more than the best variety.

In 1965, tests expanded to include 36 hybrids and nine parent varieties. The results were similar. The best hybrids, Scout and Bison — had a yield of 57 bushels or 29 percent more than the best variety — Scout. All 36 hybrids averaged 48 bushels, 37 percent above the average of 35 bushels produced by the parents.

Generally, hybrids have baking qualities intermediate to qualities exhibited by parent strains.

Quality breeding in hybrids will probably parallel variety breeding.

Millers may, however, find hybrids more desirable because science will be able to alter quality factors genetically to bring about balances which presently are the result of blending.

Hybrid vigor is also expected to give the producer more consistent stands.

Disease and insect resistance may be genetically bred.

Another benefit is the ability to develop hybrids for the geographic areas and climates.

Cost of seeding per acre, however, may increase from \$4 to \$12 per acre.

If seed companies do expand production of the hybrid wheat for the commercial market, large acreages will be needed to produce the seed. This is seen as a possible economic factor, since good farmers with properly isolated fields would contract to grow hybrid wheat seed from material provided by the seed companies.

GRASS

& GRAIN

13th year no. 41

December 12, 1967

Flip-Flop In Cotton Program

A federal farm program to cure a cotton surplus headache has worked well — so well that the government and farmers now fear the nation may face a shortage of home-grown cotton.

The program has done in two years what it was expected to take four years to accomplish: Make room in the market for a record large surplus.

Now, at the halfway point in its planned operation, the program has forced reductions in cotton supplies that have driven prices up, generated heavy speculation in cotton futures delivery markets and raised the threat of a shortage.

When the 1966 crop was planted there was a record large surplus of nearly 17 million bales — most of it tied up in govern-

ment hands under grower price-support programs. At that time, domestic and export markets required only about 13 million bales a year.

Congress authorized a four-year program under which farmers would be offered substantial payments for cutting back sharply on production. This reduction was designed to make room in markets for the surplus.

The 1966 and 1967 crops were reduced sufficiently to allow markets to absorb all the surplus. This quicker-than-expected reduction in supplies, aided by bad weather, has been accompanied by sharp price advances.

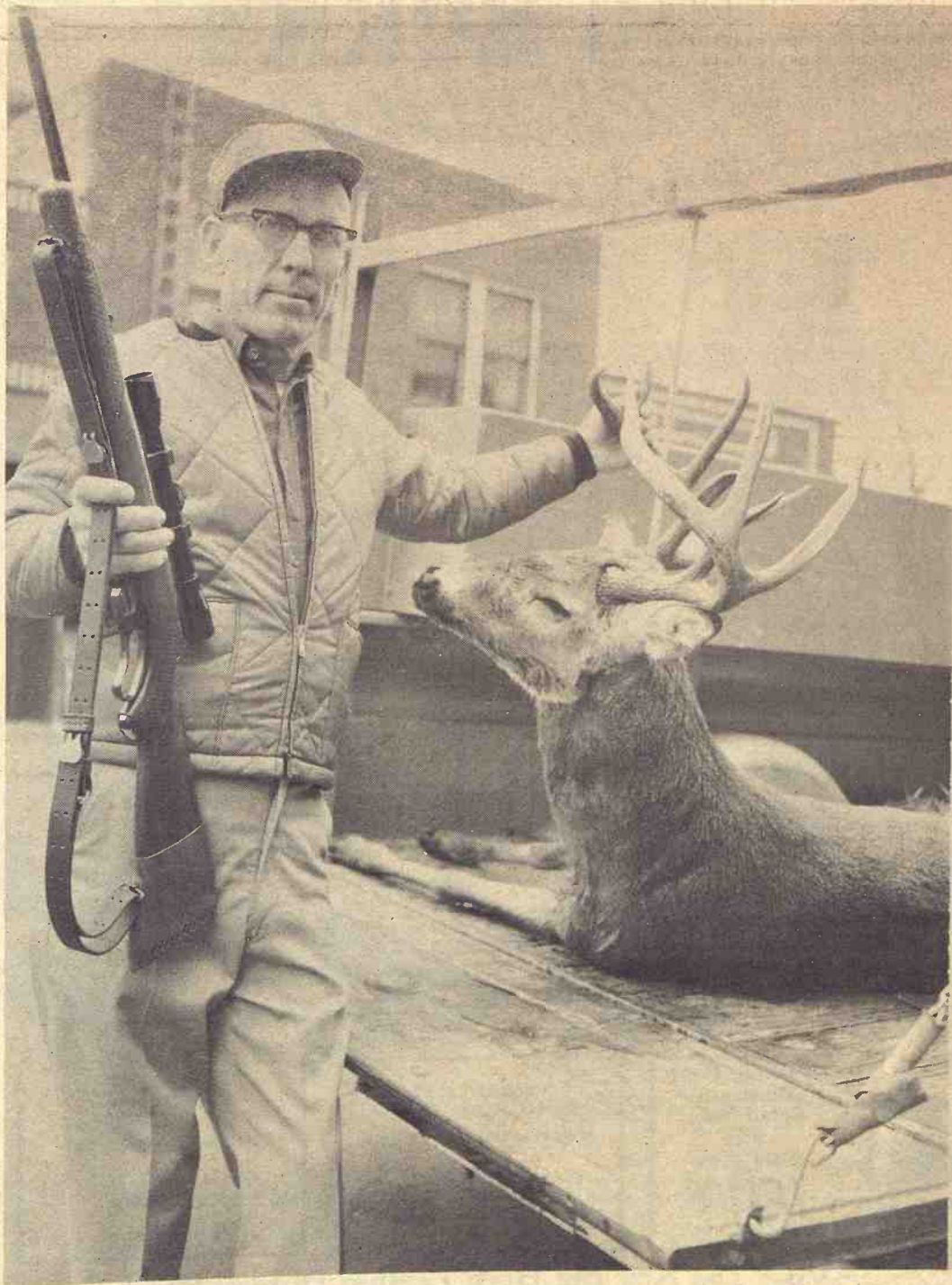
The government recently announced the 1968 program would seek a 65 per cent increase over this year's very

small crop of 7.9 million bales. It aims at encouraging growers to plant larger acreages by reducing the payments for idling land.

But many cotton industry leaders doubt the 1968 program will encourage as large an acreage as the government has recommended. Some are urging the Agriculture Department to revise the program by further reducing payment rates.

The price upturn this year is running counter to one of the purposes of the cotton program: to keep U.S. prices fully competitive with foreign cotton and with man-made fibers.

This price would need to average 21 cents a pound. But recent prices have been running close to 27 cents, a price officials say would put cotton at a market disadvantage.



Season Opens

Vincent Lundin, Manhattan Contractor, was one of the first in G&G area to bag a deer when the season opened last week. The 9 point deer was shot just after the gun season opened Friday. The deer weighed 200 pounds field dressed.

Farm Index Dips Again

Prices received by Kansas farmers at mid-November were slightly below the previous month and considerably below last year, according to the Kansas Crop and Livestock Reporting Service.

The index of prices received by Kansas farmers on November 15 was 214 percent of the

1910-14 base period compared with 223 percent at mid-October and 243 percent in November 1966.

The price of beef cattle and hogs declined substantially from October and those for wheat, corn and sorghum grain were down a little while those for barley, hay, milk, chickens

and turkeys showed small increases. Most prices were below a year earlier with especially sharp decreases in wheat, corn, sorghum grain, hogs, eggs and turkeys.

Crop Prices

The crop price index was 156 percent of the 1910-14 base at

BY FARMERS	Nov 15 1967	Oct 15 1967	Nov 15 1966
Wheat, bu	\$ 1.31	1.35	1.63
Corn, bu	\$ 1.02	1.03	1.28
Oats, bu	\$.74	.75	.76
Barley, bu	\$.99	.97	1.01
Rye, bu	\$.94	.94	.96
Sorghum Grain, cwt	\$ 1.63	1.65	1.76
Soybeans, bu	\$ 2.39	2.39	2.68
Alfalfa Hay, ton	\$ 21.50	21.00	26.00
Prairie Hay, ton	\$ 15.50	15.50	20.00
Alfalfa Seed, cwt	\$ 34.00	29.50	23.50
Red Clover Seed, cwt	\$ 26.00	25.00	23.50
Sweetclover seed, cwt	\$ 5.30	5.40	6.50
Hogs, cwt	\$ 16.50	17.80	18.90
All Beef Cattle, cwt	\$ 20.50	22.10	21.40
Cows, cwt	\$ 14.40	16.20	14.80
Steers & Heifers, cwt	\$ 22.20	23.70	23.10
Calves, cwt	\$ 25.00	25.00	24.80
Sheep, cwt	\$ 5.10	5.40	5.60
Lambs, cwt	\$ 21.40	21.50	21.00
Wool, lb	\$.34	.35	.41
Milk Cows, each	\$240.00	255.00	235.00
Milk (wholesale), cwt	\$ 5.30	5.25	5.15
Butterfat, lb	\$ 62.00	61.00	60.00
Chickens, live, lb	\$ 7.4	6.9	7.4
Eggs, dozen	\$ 19.4	19.6	32.0
Turkeys, live, lb	\$ 18.0	17.0	23.0

FARMERS FOR FEEDS	Nov 15 1967	Oct 15 1967	Nov 15 1966
Cottonseed Meal (41%), cwt	\$ 5.10	5.20	5.20
Soybean Meal (44%), cwt	\$ 4.85	4.95	5.20
Bran, cwt	\$ 3.10	3.00	3.25
16% Dairy Feed, cwt	\$ 3.75	3.75	3.75
Dairy Ration **, cwt	\$ 2.60	2.90	2.70
Poultry Ration **, cwt	\$ 3.01	3.06	3.17

FEEDING RATIOS	Nov 15 1967	Oct 15 1967	Nov 15 1966
Hog-Corn	16.2	17.3	14.8
Butterfat-Feed	*23.8	21.0	22.2
Milk-Feed	*2.04	1.81	1.91
Egg-Feed	6.4	6.4	10.1

* Preliminary
** Based on average prices for commercial feeds and value of grains in a composite ration.

INDEX NUMBERS - PRICES RECEIVED BY FARMERS (1910-1914 = 100%)	Nov 15 1967	Oct 15 1967	Nov 15 1966
All Farm Products	214	223	243
All Crops	156	160	192
Food Grains	154	158	191
Feed Grains	170	171	197
Hay	211	207	262
Livestock & Products	281	296	302
Meat Animals	323	347	342
Dairy Products	314	309	306
Poultry & Eggs	103	103	159
PARITY INDEX **	-	-	-
PARITY RATIO **	-	-	-

* Prices Paid, interest, taxes and wage rates.
** Prices Received index as percent of parity index.

mid-November, down 4 points from October and 36 points below a year earlier.

Wheat, at \$1.31 per bushel, reached the lowest level in more than 2 years. This was 4 cents below October and 32 cents below November last year.

Corn averaged \$1.03 per bushel, 1 cent below October and 26 cents below a year ago.

Oats, at 74 cents per bushel, were down 1 cent from October and 2 cents below last year.

Barley, at 99 cents per bushel, was up 2 cents from the previous month but 2 cents below a year ago.

Sorghum grain averaged \$1.63 per cwt., down 2 cents from October and 13 cents below last year.

Soybeans, at \$2.39 per bushel, were unchanged from last month but 29 cents below last year.

Livestock Prices

The livestock and livestock products price index at mid-November was 281, down 15 points from the previous month and 21 points below a year ago. The meat animal price index on November 15 was 323 compared with 347 in October and 342 last year.

Hogs, at \$16.50 per cwt., were \$1.30 below October and \$2.40 below November 1966.

Beef cattle prices, at \$20.50 per cwt., were \$1.60 below last month and 90 cents below last year. This is the lowest level since 1965.

Steers and heifers brought \$22.20 per cwt., down \$1.50 from October and 90 cents below a year earlier. Calves averaged \$25.00, unchanged from October but 20 cents above November 1966.

The dairy products index rose to 314 percent of the 1910-14 base, compared with 309 last month and 306 last year. The preliminary wholesale milk price, at \$5.30 per cwt., was up 5 cents from October and 15 cents above last year.

GRASS & GRAIN

The Mid-Kansas news weekly. Published each Tuesday at 1207 Moro, (Box 1009) Manhattan, Kansas, 66502 by

AG PRESS
Dean Coughenour
E. R. Woodward
Second class postage paid at Manhattan, Kansas.
Subscription: \$3 year
CIRCULATION 11,108

Egg prices averaged 19.4 cents per dozen, 0.2 cent below October and 12.6 cents below last year. Turkeys brought 18 cents per pound compared with 17 cents last month and 23 cents last year.

Prices paid by Kansas farmers for protein supplements were mixed from a month earlier while complete feeds were unchanged to lower.

Farm Credit Banks To Build In Wichita

The Farm Credit Banks of Wichita, biggest money lenders to farmers, ranchers and cooperatives in the nation's multibillion-dollar Federal Land Bank system, reportedly hope to build new 7 to 10-story, 5 million office building in the center of downtown Wichita.

The Farm Credit Banks of Wichita are composed of the Federal Land Bank of Wichita (FLB), Federal Intermediate Credit Bank of Wichita (FICB) and the Wichita Bank for Cooperatives (WBC).

According to the report, the three farmer-oriented banks have submitted a proposal to build a new office building complex on the 1.34 acre Urban Renewal Agency "Skyline" project site.

The site is at the north end of the downtown block bounded by Douglas on the south, 1st on the north, Water on the west and Main on the east.

Considered "prime land," the project area is one block north of the city's new \$15 million Civic Cultural Center and adjacent to the pending new Gateway enterprises complex scheduled to be built in a one-block area directly to the west.

MATTRESS & BOX SPRINGS

Specials Every Day
New Low Prices
Buy Direct

Also Complete Rebuilding Service

Manhattan
Mattress Co.

414 S. 4th PR 8-5302

For An Honest Deal
See Fink In Wamego



Sample
775x15 Tube Type 4-ply
12.95 plus tax



You always save at

FINK

Wamego, Kansas Tire Service

450-2575

NOW SAVE 10% DURING frontier HYBRIDS FALL FESTIVAL

- 1 Order your sorghum and corn requirements now and save 10% under regular cost. This offer expires Dec. 31, 1967.
- 2 In addition to saving 10% by ordering now, you can increase yields and profits when you choose Frontier hybrids.
- 3 By ordering now, you get the best choice of varieties.

SEE YOUR LOCAL FRONTIER DEALER NOW!
Or Write
THE BOWMAN SEED CO.
CONCORDIA, KANS. 66901
OR NAME OF YOUR CLOSEST DEALER

BIG HORN'S Christmas Package Deal



Package P-107
Illustrated
Retail Value \$229
Sale Price
159.95

Package P-27
Retail Value \$69.95
Christmas Sale Price
49.95

Package P-87
Retail Value \$99.95
Christmas Sale Price
69.95

Visit The Key Big Horn Leather Display Room
KEY MILLING CO. CLAY CENTER, KANS. PHONE ME 2-2141

Veterin
Surpris
Kansas State
discloses
\$200,018,97
disclosed
the report is
through the offic
Calvin, univers
study was
Corneliu
primary schoo
Caley, exte
Caley prepa
far, the re
buted main
als, legislat
of simila
not yet be
public.
WESTERN
ROOTS
SALO
WOCASIA
WE CAN F
Acme
Neoma and T
US 24 - 2
of Cloverleaf
TOPEKA, K
Picko
for an
Sturdy
all trucks. N
ect kiln-dried
pick-up endg
up gate slide
Special heig
When Order
AUL-MOR,
Federal
LAND BAN
ing Clay,
Pottawator

Veterinary Study Shows Surprising Livestock Loss Figure

Kansas State University veterinarians are circulating a report which discloses that during 1966 Kansas livestock losses totaled \$200,018,971 from causes including disease, parasites and associated conditions.

The report is being issued through the office of Dr. James McCain, university president. The study was the idea of Dr. Charles Cornelius, dean of the Veterinary school, and Dr. Homer Caley, extension veterinarian. Caley prepared the report.

So far, the report has been distributed mainly among state officials, legislators and other parties of similar interests. It has not yet been released to the public.

Cornelius says the losses, although surprising to most Kansas livestock raisers, is not unique for Kansas nor other states with a large livestock industry.

"These figures, no matter how high they look, are not unique for Kansas," he says, "most states with heavy livestock numbers would have similar losses."

The report covers losses (not necessarily deaths) based on livestock information from 1966. It was not based on national information.

"Exotic and spectacular diseases are not included in the statistics, but only diseases and conditions that are present in Kansas today," says the report.

A strict definition of "livestock" would include laboratory animals, dogs and cats, but these animals have not been included. There is an estimated population of 600,000 dogs and 333,000 cats in Kansas.

"In my conservative opinion, however," the veterinarian says, "these disease figures are still not as high as they really are usually."

Caley says he consulted with many groups, including the U.S. Department of Agriculture, the state livestock sanitary commissioner, professional meat inspectors, other veterinarians and many county agents.

"The further I went, the more surprise I got out of it," he says.

Caley and the dean felt livestock losses were considerably higher in Kansas than believed by most stockmen, and this partly prompted their probe. They also wanted the informa-

tion in guiding their research into disease prevention and to point out the need for a modern up-to-date veterinary school.

Caley says some who have seen the high loss figures have been shocked and said that national figures must have been used. This is simply not true, he says.

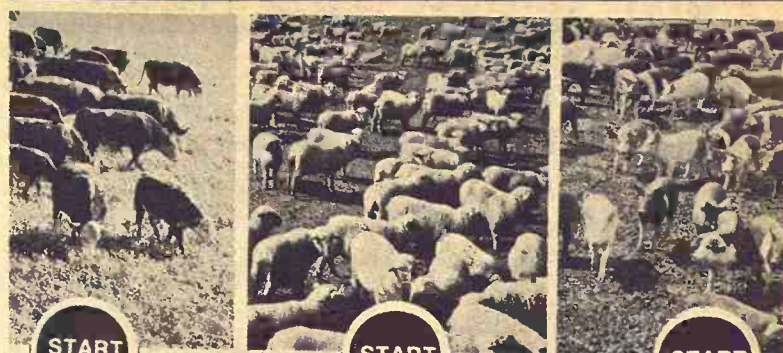
"This is a Kansas report," Caley contends, "and only Kansas people were consulted for the most part."

The extensive work of the study is evidenced by the final section which includes a six-page list of information sources.

Five pages of figures are carried in the report, listing losses for each disease in beef cattle, dairy cattle, horses, swine, sheep and poultry.

One of the highest loss figures was in breeding inefficiency in beef cattle. The loss was \$56,310,000 due to loss in production and death loss, including congenital defects.

The following is a summary of losses recorded in the report: Beef cattle, \$152,633,971; dairy cattle, \$23,640,000; horses, \$3,966,000; swine, \$15,529,054; sheep, \$1,750,000, and poultry, \$2,500,000.



All Systems "GO" with PCA Loans!

PCA Loans can put more "GO" in any livestock operation. With a line of credit from your local Production Credit Association, you can buy when you're ready... sell when you want to... and buy feed and supplies as you need them.

And you'll like the people you meet at Production Credit Association. You'll find that PCA managers understand your needs... help you grow safely and profitably. At the PCA, you come first because PCAs are owned by the people they serve. Your loan makes you a stockholder and part-owner of your local association with a vote in the operation.

MID-KANSAS FEEDERS: If you want to put MORE GO in your operations, stop at your nearest PCA office and talk it over with the manager.



Salina
Production Credit Assn.

1321 W. Crawford TA 5-4641
Serving Lincoln, Ottawa, Ellsworth, Saline, Rice and McPherson Counties. Fieldmen: Lowell Letourneux, Salina, TA 7-5906; Wilfred Elliott, White City. Curtis W. Syring, mgr. Residence - TA 5-0317

North Central Kansas
Production Credit Assn.

301 W. 7th Concordia
Serving Jewell, Republic, Washington, Mitchell and Cloud Counties. Fieldman: Darwin Housholder, Courtland. Phone FE 5-2592. James Ganson, mgr. Office Phone CH 3-4168 Res. Phone CH 3-3597

Paper Back Books
25c - 35c
50c - 75c
Largest Stock in Town



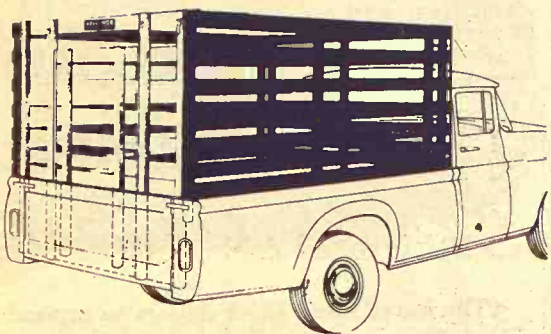
University Book Store
623 N. Manhattan Manhattan



WE CAN FIT YOU

Justin • Acme • Texas
Nocona and Tony Lama
On US 24 - 2 Blocks East
of Cloverleaf on US 24
TOPEKA, KANS.

Pick-up racks
HAUL-MOR, INC.
for any make or model pickup
Sturdy • Convenient • Practical



Mounted free on your truck at factory or shipped to you. Available in stock rack or fold-down combination.

Fits all trucks. No bolt projections to injure stock. Top grade select kiln-dried lumber. Choice red or white. Fits precisely so pick-up endgate closes behind it. Sturdy oak stakes. Lift-up gate slides easily in steel channels. Standard height 63". Special height on order.

When Ordering Specify Make, Model, Size of Bed

HAUL-MOR, INC. valley falls, kansas • phone 945-3211



FARM & RANCH LOANS

LOW COST LOANS... Over the years, Land Bank Loans have had the lowest interest rates generally available on farm real estate loans. The interest rate on your loan cannot be increased, but may be reduced during the life of your loan.

R. STANLEY PARSONS, Mgr.

SEE ME AT
604 HUMBOLDT PR 8-2971
Res. Phone PR 6-9044
MANHATTAN

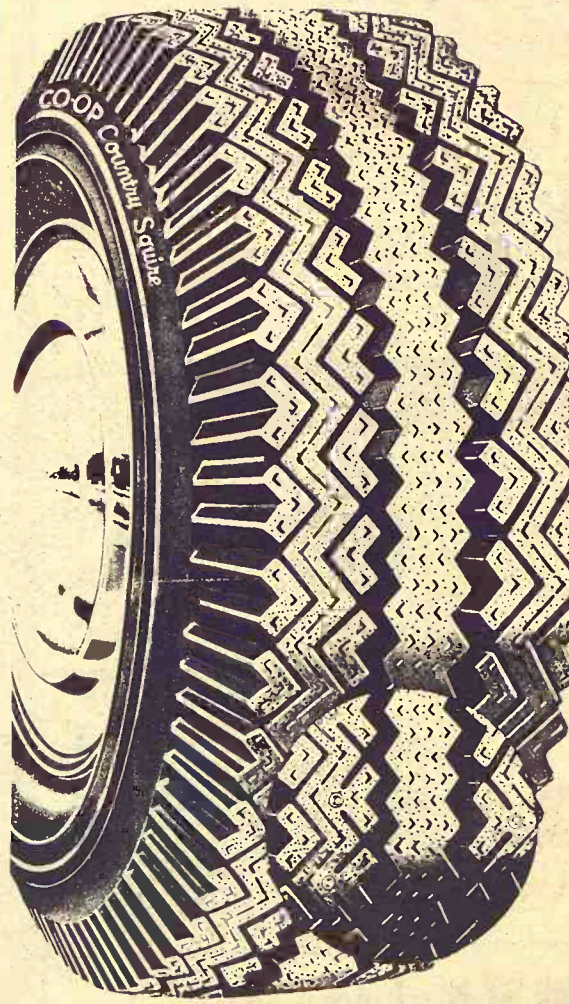
Open Mon. through Fri.
8 a.m. to 5 p.m. (closed 12-1)

Branch Offices: CLAY CENTER & JUNCTION CITY

Federal
LAND BANK Assn. of
MANHATTAN

Serving Clay, Geary, Pottawatomie & Riley counties.

bite deep - grip solid - push out - move on



country squire
mud & snow

passenger tire

Engineered for the country. Where winter comes on stronger. Extra-traction tread design. Four-ply nylon cord construction. Cool, quiet-running at higher speeds.

with tougher-than-steel tungsten carbide studs for extra traction, safer cornering, shorter braking distance on glazed, sleet or hard-packed snow covered roads.

\$15³⁵
6.50-13/4
\$1.80 Fed. Excise Tax

\$6⁴⁰
per tire more

\$18³⁵
7.75-14/4 7.75-15/4
\$2.21 Fed. Excise Tax \$2.23 Fed. Excise Tax

\$9⁶⁰
per tire more

\$20³⁵
8.25-14/4 8.15-15/4
\$2.38 Fed. Excise Tax \$2.33 Fed. Excise Tax

\$9⁶⁰
per tire more

(Prices indicated are for blackwall tubeless with trade-in. Whitewalls only \$2.50 more.)

(Permissible in all states except Oklahoma and Texas)

WINTERIZE YOUR WHEELS NOW
WHILE PRICES ARE ROCK BOTTOM

FARMERS COOPERATIVE ASSN.

MANHATTAN, KANS.
ALTA VISTA ONAGA

PR 6-9467
WESTMORELAND

FARMERS OUTLOOK

L.H. Simerl

Silver Lining On Hog Cloud

Many of the farmers who produce our ham and pork chops have been disappointed. Prices for hogs have been lower than they expected. The lower prices however, will bring some benefit. They will help to prevent an excessive increase of pork production next year.

Hog prices have been lower than some of us expected, primarily because market supplies have been larger than we anticipated. Back in June, the USDA reported that the 1967

spring pig crop was only 1 percent larger than that of the previous year. The spring pig crop includes all pigs born from the previous December 1 to the first of June. Most of these pigs are marketed during the last half of the year.

We expected marketings of hogs to be a little larger than the reported increase in the number of pigs born and saved; we thought that farmers would hold back relatively fewer gilts for breeding this year than they

did in 1966. We expected marketings to run no more than 3 percent greater than last year.

Actual marketings of hogs were up 13 percent in July and August, and around 5 percent since September 1. Since the first of July, the output of other red meats (beef, veal, lamb, and mutton) has been close to year-before levels.

If the market receipts had been no larger than last year, prices probably would have held around the \$20 level. Such prices would surely have stimulated too much production in 1968.

Actual prices for hogs in recent weeks often were much lower — around \$17 and \$18. While these prices permit most hog producers to make a little money, they probably have not been good enough to bring on much of an increase in production.

The Pig Crop Report issued in September pointed to fall and

winter farrowings (September-February) of 1 percent less than a year ago. Pigs from these farrowings will make up the market supplies during the 6 months beginning with April.

The September Pig Crop report listed 6 percent fewer hogs weighing 60 to 120 pounds on hand September 1 this year than 1 year before. These hogs will be going to market beginning in December. Pigs weighing under 60 pounds were estimated to number 1 percent more than last year. They will make pork beginning in March.

There has been some talk about a heavy run of hogs when farmers round up the hogs in the corn fields. But the number of such hogs is much smaller than it was 10 or 20 years ago. Modern farming methods just don't provide much opportunity for finishing hogs in corn fields.

Illinois farmers may be loosening their grip on the nation's hog business. They are credited with producing about 13 percent of the nation's pork in 1966. Two years earlier, they produced nearly 14 percent of the hogs.

L. H. Simerl
Univ. of Illinois

Wheat Growers Aim At Larger Brazil Market

A contract between Great Plains Wheat Inc. and the Nebraska Assn. of Wheat Growers to expand market development projects in Brazil has been announced by presidents of the two organizations.

Merle Gifford of Gardner, N.D., Great Plains president, said the contract places special emphasis on new development projects in Brazil, which he described as one of the most promising markets for U.S. wheat. Great Plains has an office in Rio de Janeiro.

Ray Davis, Potter, Nebr., president of the wheat growers association, said his organization has received a contract from the wheat development division of the Nebraska Department of Agriculture to carry on the project.

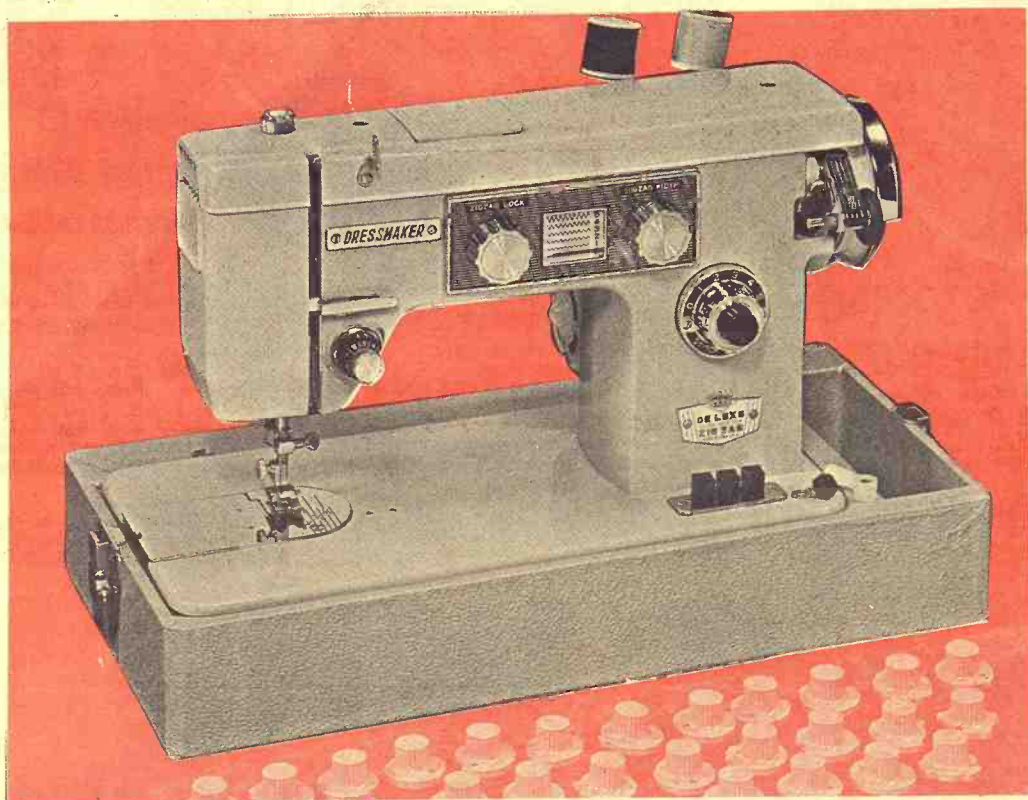
Similar grower organizations in Kansas, both Dakotas, Colorado and Oklahoma support GPW.

1968 Introductory Offer

Low Price
only **219⁹⁵**

UP TO \$100
Trade-in allowance
for your present
sewing machine

UP TO \$100
Trade-in allowance
for your present
sewing machine



MODEL SWA - 2000

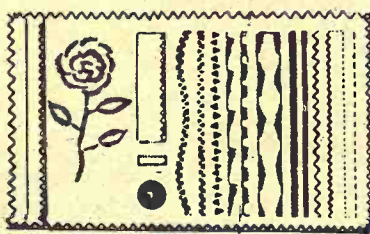
The 24 Cam Automatic is designed to do everything — Makes Button Holes, Blind Stitches, and does several beautiful, decorative patterns. Full size — Heavy Duty machine head.

Will Do This and Much More!



- 30-year written guarantee
- Trade-ins accepted

AR
Monograms



"Largest Display of Machines
In State of Kansas"

Drive A Little — Save A Lot

City Sewing Machine Company

818 Broadway

Phone HI 3-3731

MARYSVILLE, KANSAS



**A Chandelier
for Christmas?**

Why not . . .

You are cordially invited to visit our new retail fixture show room. You will find on display a new stock of lighting fixtures for every room in your home.

ENDACOTT ELECTRIC CO.

309 Moro Street — PR 6-4482 — Manhattan, Kansas



The use of Land Bank dollars to expand or modernize your farming operation could be your key to a brighter future. Land Bank dollars do more for you because Land Bank loans are tailored to help farmers increase their earning power. Among the many advantages of Land Bank loans are the long terms, the low interest rate, and the privilege of paying any amount in advance at any time without penalty. You'll go ahead faster with a Land Bank loan on your land. Stop in and talk over your plans with the manager of your local Land Bank Association.



TOPEKA
Office: 1717 Gage Blvd.
Wm. H. Snyder, Manager
Serving Jackson, Shawnee
and Wabaunsee Counties

EMPORIA
Office: 115 West 5th
O. E. Roberts, Manager
Serving Chase, Coffey, Lyon
and Osage Counties



HERINGTON
Office: 107 N. Broadway
Richard L. Worley
Serving Marion, Morris
and Dickinson Counties

MANHATTAN
Office: 6th and Humboldt
R. Stanley Parsons
Serving Pottawatomie, Riley,
Clay and Geary Counties

MARYSVILLE
Office: 211 South 10th St.
Allen L. Holeman, Manager
Serving Washington, Marshall
and Nemaha Counties

juice, then tuck in the middle of each cherry in the cavity left by the stone, the kernel of a hazelnut, previously blanched by lying in boiling water for a few minutes then stripped of the skin. The kernels should be perfectly cold and crisp until you are ready to serve the salad. Serve a few spoons of the nutted cherries on lettuce leaves and pour a good mayonnaise over them. A very ornamental and delicious salad.

Mrs. W. R. Zimmerman, Alta Vista: "This is a very acceptable recipe to those who prefer peanut butter flavor to a plain custard."

PEANUT BUTTER PIE

1 cup light syrup
1 cup sugar
½ teaspoon vanilla
½ cup smooth or chunky peanut butter
1 cup milk
3 eggs
¼ teaspoon salt
Combine sugar and peanut butter and cream thoroughly. Mix in the syrup gradually; add the egg yolks which have been beaten well. Add salt and milk, mixing well. Pour into prepared, unbaked pie shell. Bake in 450-degree oven 10 minutes, reducing heat to 325 degrees and bake 30-45 minutes or until a knife inserted in center comes out clean (test as for custard pie). Beat egg whites for meringue with 9 tablespoons of brown sugar (level and pressed down). Cover pie and return to oven (350 degrees) until browned, 10-15 minutes.

Mrs. Jean Johnson, Leanderville, sent the following recipe:
SPECIAL CRANBERRY BREAD

Sift into bowl:
2 cups flour
1 cup sugar
½ teaspoon salt
½ teaspoon soda
1½ teaspoons baking powder
Mix in bowl:
1 egg, well beaten
½ cup orange juice

2 tablespoons melted butter
Mix dry ingredients with above. Add the following:
2 tablespoons hot water
½ cup pecan meats
1½ cups cranberries, cut in half
Bake at 350 degrees one hour and 10 minutes. Take out of pan immediately and wrap in wax paper. Put in cool place.

Mrs. D. G. Boecker, Moundridge: "Here is a pickle which is different and good for the Holiday Season or relish plate."

PICKLED SQUASH

2 cups vinegar
2 cups sugar
1 tablespoon pickling spice tied in cheesecloth
Cook the above ingredients for 15 minutes. Add enough squash for syrup to cover. Squash should be cut in 1-inch squares then put in hot sterilized jars. Pour boiling syrup over pickles and seal. Red or green food coloring may be added to syrup for color.

Mrs. Ralph B. Cole, 113 West Fifth, Washington:

"I enjoy the recipes in Grass & Grain very much. Here is a good peanut brittle recipe that goes very well for Christmas."

PEANUT BRITTLE

3 cups white sugar
½ cup water
1 cup Karo syrup
3 cups raw peanuts
3 teaspoons butter
2 teaspoons soda
1 teaspoon salt
Boil sugar, water and syrup together, until mixture spins a thread, then add peanuts, stirring continuously until golden brown. Remove from fire and add butter, soda and salt. Stir and pour on greased surface.

Due to space limitations it is not possible to print all recipes received during the Annual Bonus Recipe Contest. The recipes that do appear are picked at random with the exception of the weekly contest winner. All entries receive equal considera-

tion in both the weekly contests and the bonus contest. Grass & Grain does attempt to list the names of all readers who send contest entries. This week's list follows:

Mrs. A. A. Carlson, Gypsum; Mrs. Floyd Gee, Rossville; Mrs. Iva White, Gypsum; Mrs. Sara Plenert, Lehigh; Kate Marsh, Beverly; Mrs. Victor Oberg, Marquette; Mrs. Wilbur Hett, Lincolnville; Mrs. Charles Graham, Council Grove; Mrs. Richard Chestnut, Clay Center; Mrs. Glenn Frye, Haddam; Mrs. Frank Kantack, Clifton; Mrs. Cleo Mayer, Haddam; Mrs. Ernest Schwarz, Gypsum; Ann Rudolph, Manhattan; Mrs. Elmer Schrum, Clay Center; Mrs. Myron Wohler, Jr., Clay Center; Mrs. Paul Roeber, Home; Mrs. Mabel Keim, Minneapolis; Mrs. Don Banahan, Steele City, Nebr.; and Mrs. Tom Holt, Gypsum.

Mrs. Wendell Tranter, Eskridge; Mrs. Philip Anderson, Lindsborg; Mrs. W. J. Davenport, Harveyville; Mrs. June Jorgenson, Barnes; Mrs. Marvin Mayers, Russell; Mrs. Helen Frye, Haddam; Mrs. Goldie Walker, Wamego; Mrs. Paul Roeber, Home; Gladys Rezabek, Sylvan Grove; Mrs. L. W. Leffler, Americus; Mrs. Claude McClintock, Simpson; Mrs. William Hanson, Hope; Mrs. Alden Barten, Hope; Mrs. L. J. Wedel, Langdon, Mo.; Miss Lucy Schumer, Hope; Donna Frederick, Topeka; Mrs. Martin Langsdorf, Centralia; Mrs. John Walker, Gypsum; Mrs. Art Harris, Frankfort; Mrs. John Patterson, Haddam; and Mrs. Warren Sanneman, Clay Center.

Recipe Correction

Baking instructions were omitted from a Date Nut Pudding recipe sent by Mrs. Tom Holt, Gypsum. The pudding recipe, which appeared in the November 21 issue, should be baked at 350 degrees for 45 minutes to one hour.

Neater Sweaters

To make children's sweaters look neat and the pockets last longer, always line the pockets of new sweaters before the

sweaters are worn. Then the endless number of treasures stored in the pockets will not cause them to wear out so quickly or make them sag so much.

Candy Cane Centerpiece For Colorful Holiday Effect



Set a pretty table during the holidays with this Candy Cane Centerpiece made from puffed rice. Shaping the puffed ricemarshmallow mixture on aluminum foil is a simple trick and the decoration is easy, too. Just pipe frosting where you want the "stripes," then place halves of red candied cherries over the frosting "glue."

For a colorful holiday effect set the candy cane (still on foil) on Christmas greenery and complete the centerpiece with candles or other Christmas trimmings. Later you can slice the cane and serve it as a fitting finale to a festive holiday party.

CANDY CANE

(Makes one cane)

- 7 cups puffed rice
- ¼ cup butter or margarine
- 4½ cups miniature marshmallows
- ½ teaspoon anise extract
- Thick, white confectioners'

sugar frosting
Heat puffed rice in shallow baking pan in preheated moderate oven (350 degrees) about 10 minutes. Pour into a large greased bowl. Melt together butter and marshmallows over low heat, stirring occasionally. Stir in anise extract. Pour over cereal, stirring until evenly coated. With greased hands, shape to form a log about 28 inches long on a large piece of aluminum foil. Allow bottom side to remain flat. Bend one end of log to form neck of candy cane. Pipe two wide lines of frosting diagonally across cane at 2-inch intervals to form stripes on cane. Attach cherries, cut side down to frosting. Let set about three hours. Trim foil to edges of cane. Place on bed of Christmas greens; attach bow at neck of cane, if desired. Use as centerpiece; slice and serve as a confection.

OPEN NIGHTS TIL' 8.30

Mondays thru Fridays — Saturdays Close 5:30



At Woodward's
You'll See The
Largest Choice In

ROBES

Brushed Nylons in Pastels and Deeper Shades, Quilted Robes in Nylons & Cottons. Both long & short styles.

\$12. to \$36

Lovely Lingerie

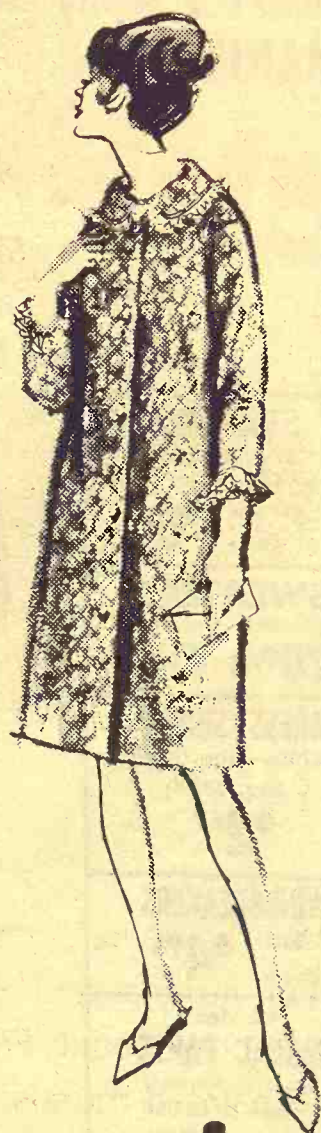
- Robe Sets — \$15. to \$30.
- Gowns & P.J.'s — \$3.50 to \$13.
- Slips — \$4.00 to \$13.
- Panties — 89c to \$3.50
- Bed Jackets — \$5.00 to \$10.00

GIFT WRAPPING SERVICE

Woodward's

Downtown

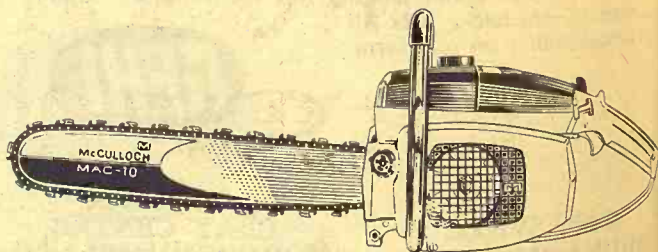
MANHATTAN



**DO YOU KNOW
WHAT DAD
REALLY WANTS
FOR XMAS?**

A McCulloch CHAIN SAW

Here's the complete gift for a man who wants a product he can trust and depend on. With a new McCulloch chain saw he can tackle any wood cutting job. He can cut firewood, clear land, maintain trees around the farm, home or camp. Just name the job: there's a McCulloch to do it.



SEE AN AUTHORIZED MCCULLOCH DEALER

- W. W. SMITH & SONS
ME 2-3148 — Clay Center
- WATERS HARDWARE
CE 8-3114 — Junction City
- K-HILL ENGINE SERVICE
PR 8-2011 — Manhattan
- VAHSOLTZ IMPL. CO.
TA 5-4521 — Salina
- WASHINGTON IMPL. CO
EA 5-2301 — Washington

- DUMMERMUTH IMPL. CO.
HI 3-4476 — Marysville
- TODD TRACTOR & EQUIP
MENT CO.
DE 6-2138 Seneca or AV 4
2129 Sabetha
- DAVENPORT EQUIP. CO.
LA 8-1151 — Osage City
- JORDEN IMPLEMENT CO.
CO 3-2041 — Abilene

KENTUCKY STRAIGHT BOURBON WHISKEY 86 PROOF. DISTILLED AND BOTTLED BY THE FAMOUS OLD CROW DISTILLERY CO., FRANKFORT, KY.

'More Jobs In The Country,' Freeman Goal

U.S. Secretary of Agriculture Orville L. Freeman called for reversal of "decay in the countryside; congestion, pollution, tension, strife in the cities."

In an address at a regional conference of the Industrial Development Research Council at San Francisco, Freeman traced the problems to the technological revolution in agriculture, accompanied by declines in rural jobs and an exodus to the cities.

"I believe that we can achieve a proper balance of land and of people — what I call rural-urban

balance — and I believe we can do it by the year 2000," he said.

Freeman said federal, state and local governments can help, but the real solution must be provided by business and industry.

"Everytime you want to expand," he said, "take a serious, open-minded look at what countryside USA has to offer.

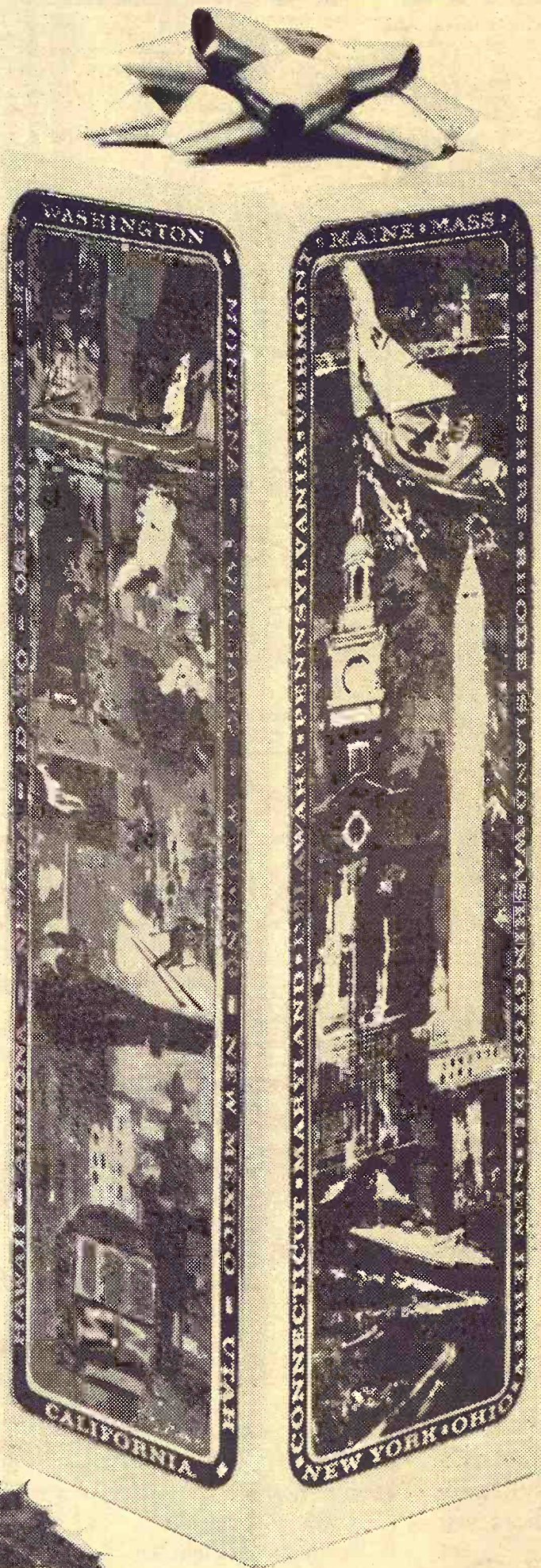
"I am asking you, when you leap, to take the big leap, the leap beyond the suburbs to the countryside where you will find clean air, cheap land, usually lower taxes and a willing labor force," he said.

CHANGE MANAGERS AT BREMEN CO-OP

BREMEN — Jerry Mason of Herkimer is the new manager

at the Bremen Co-op, replacing Ralph Riekenberg, who resigned. Mason has been employed at the Marshall County co-op as an elevator man for four years.

KENTUCKY STRAIGHT BOURBON WHISKEY 86 PROOF. DISTILLED AND BOTTLED BY THE FAMOUS OLD CROW DISTILLERY CO., FRANKFORT, KY.



Give something to crow about

Famous, smooth and mellow Old Crow. It's the most popular Bourbon around. And in its distinctive holiday gift wrap, it's really something to crow about. Featured on this handsome holiday package are colorful, hand painted murals depicting outdoor panoramic American scenes; North, South, East and West.

Give the world's most popular Bourbon

YOU KNOW
DAD
WANTS
XMAS?

CHAIN SAW

n who wants a product
a new McCulloch chain
g job. He can cut fire
around the farm, home
's a McCulloch to do it.



ULLOCH DEALER

MERMUTH IMPL. CO.
3-4476 — Marysville
D TRACTOR & EQUIP.
T CO.
6-2138 Seneca or AT
9 Sabatha
ENPORT EQUIP. CO.
8-1151 — Osgood, Wis.
DEN IMPLEMENT CO.
3-2041 — Abilene

Your Dollar Deserves Respect

SAVE \$70



Contemporary

**3-Piece Bedroom Suite
In Natural Walnut Finish**

Johnson-Carper designed this bedroom for those who think modern . . . live modern. Natural Walnut finish over selected cabinet woods. Tops protected against spills, stains, heat by a high pressure laminated finish.

★ TRIPLE DRESSER WITH MIRROR

★ 5-DRAWER CHEST

★ HEADBOARD AND FRAME . . .

189⁸⁸
REG. \$269.95

GE RECORD PLAYER
Solid State

Plays All Size Records

\$39.95 Value Only **19⁸⁸**

Stereophonic Record Albums

Such recordings as My Fair Lady - The Sound of Music - Jose Melis & others Only **89^c**

45 RPM RECORDS ---- **9^c**

CHEST OF DRAWERS
(unfinished)
Sturdy Construction **9⁹⁹**

ELECTRIC CAN OPENER
• Open any size can
• Magnetic lid holder
• Built-in bottle opener **8⁹⁹**

THRU-HEAT Electric Iron
• Permora Heating Element **6⁹⁹**

TABLE MODEL RADIO
• 5 Tubes
• Dial Tuning **5⁹⁹**

AUTOMATIC ELECTRIC TOASTER
• Chrome Finish
• Thermostat Controlled **6⁹⁹**

AUTOMATIC ELECTRIC MIXETTE
Three Speed - High, Low, Medium **6⁹⁹**

ELECTRIC CARVING KNIFE
• Stainless Steel Blades **9⁹⁹**

COMPLETE BARBER KIT
Electric Clipper - Comb - Scissors, etc. **6⁸⁸**



HOOVER

Constellation with Attachments
\$59.95 Value **29⁹⁹**

9' x 12' RUGS



Sedlacek's Price **14⁸⁸**

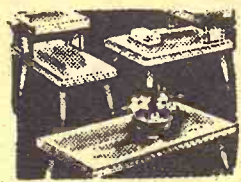
\$69.95



Studio Couch

Coil Springs Construction

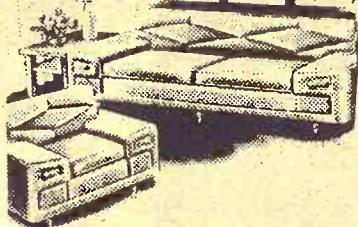
NOW ONLY **29⁹⁹**



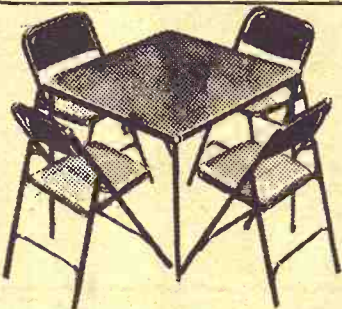
**Walnut Step Tables
Coffee Tables**

Your Choice
\$9.95 value **5⁹⁹**

2-Pc. LIVING ROOM SUITE



• Foam Cushions
• Hardwood Frame
• Spring Construction **89⁹⁹**



Card Table Set
5-Pieces for only **19⁸⁸**



NYLON COVERS

• Upholstered Arms
• Coil Spring Construction
• Studio Makes into Full-Size Bed.

Sedlacek's Sale Price **59⁸⁸**

25 Bulb Outdoor Weatherproof Light Set
Each bulb burns independently

Only..... **5²⁹**

OUTDOOR ALL RUBBER WELCOME MATS **89^c**

SPEED QUEEN WASHER



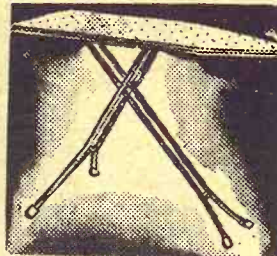
A complete line of Speed Queen Washers & Dryers
\$99.95 Value

69⁸⁸

SLEEPER



• Beautiful Davenport by day, luxury bed at night
• Reversible Foam Cushions
• Full-Size Innerspring Mattress
\$169.95 value **89⁹⁹**



All-Steel Folding Ironing Board

Perforated Top
Sedlacek's Price **4⁹⁹**

Innerspring MATTRESSES



• Coil Innersprings
• Full Size

14⁹⁹

6 ROLLS CHRISTMAS WRAP
44 Feet Long **98^c**

CORN POPPERS

ELECTRIC

The easy way to make popcorn.

\$7.95 value



3⁹⁹



TV table-trays
4 trays on legs. One with handle, casters for serving.
REG. \$12.95---
Sedlacek's Price **5⁹⁹**



RECLINER

• Adjust Automatically
• Largest Selection Anywhere!

49⁸⁸

\$1.49 Value
5 CELL FLASHLIGHT SPOTLIGHT **89^c**

FOLLOW THE CROWD TO
The largest furniture & appliance store of its kind in the Midwest.

Sedlacek's

FURNITURE and APPLIANCE

Phone ED 7-2345

INSTANT CREDIT — FREE DELIVERY

HANOVER, KANSAS

Cattle Plague Threat In Russia

Recent outbreaks of foot and mouth disease in the Soviet Union may become a serious threat to livestock throughout Eastern Europe, an expert of the U.N. Food and Agriculture Organization said today.

Spread of the epidemic might prove more devastating in Eastern Europe than the present foot and mouth outbreak in England and Wales, where 268,802 animals have been slaughtered, FAO said.

IMPLEMENTS • TRAILERS
ITCO
PARTS • ACCESSORIES

CHRISTMAS GIFTS FOR DAD

Montclair sport jackets \$12.85
Insulated brush jacket \$8.25
Servis insulated pac 13.45
2 pc. insulated best quality suit 10.45
Tractor heater cabs, all models 36.95
Engine heaters, 850 watt 7.59
Engine heaters, 1500 watt 10.65
Tank heaters, electric 14.25 & 21.55
Tractor radios, 2 left, 1 red, 1 green, reg. price \$68.95. Christmas special \$59.95
Electric Drills
Shopmate 1/4" 10.89
Shopmate 3/8" 17.99
Shopmate 1/2" reversible 31.75
Black & Decker kit, 1/4" 13.95
Black & Decker kit, 3/8" 19.99
Black & Decker 1/2" compact 26.66
Socket sets from 10.49 to 20.59
24-piece drill set 10.49
Tap and die sets 11.95 & 26.79
1/2 hp air compressors 89.95
Air tanks 15.95
Hyd. jacks from 9.99
Hoist - puller 20.98

HOLT FARM SUPPLY

Next To Sale Barn

MANHATTAN PR 6-7943

Penneys
HOME & AUTO CENTER

4th & Pierre IN MANHATTAN

TOY Clearance



1.66

Such nice little friends to have!
Horse Pull Toy



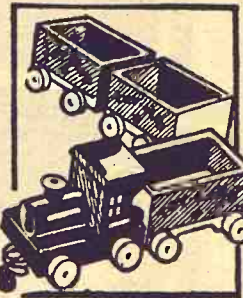
1.66

Okay everybody — say 'cheese'!

Camera with Flash

OVER 200 TOYS

YOUR CHOICE \$1.33 Each



1.66

Toot! Toot! Comin' down the line!
4-pc. Pull Train



1.66

Wow, What a great race!

HERE ARE JUST A FEW OF MANY OTHER TOYS

Baby Hungry	9.99	Oak Drop Side Crib	4.99
Posi Playmate	3.99	Doll Cradle	2.44
36" Walking Doll	7.99	Pool Table	4.99
Negro Sweetums Doll	3.99	Crackfire Rifle	3.99
Negro Mama Voice Doll	4.99	Mattel Power Shop	15.99
Suzy Homemaker Vanity	10.99	Captain Action	2.99

OPEN EVERY NIGHT TO 9:00 P.M. UNTIL CHRISTMAS • FREE PARKING

Manhattan Commission Co., Inc. Sale Every Thursday

2 1/4 MILES EAST OF MANHATTAN ON US 24

We had a good run of all classes of cattle for this time of year, sold 1392 head. Prices were some lower on all cattle, but prices held up real good due to the lower prices at the terminals.

The following is a partial listing:

FAT CATTLE & FEEDERS

1 whiface steer 600 @ 26.50
4 whiface steers 643 @ 25.20
1 blkwhif steer 655 @ 25.10
5 black steers 674 @ 25.00
7 black steers 666 @ 24.95
30 black steers 698 @ 24.90
22 whiface steers 792 @ 24.80
11 whiface steers 711 @ 24.70
1 black steer 660 @ 24.60
2 whiface steers 675 @ 24.60
3 black steers 716 @ 24.50
3 blkwhif heifers 977 @ 24.50
1 black heifer 670 @ 24.30
2 black steers 658 @ 24.25
60 whiface steers 777 @ 24.20
3 black steers 817 @ 24.20
64 whiface steers 875 @ 24.15
29 whiface steers 885 @ 24.00
12 whiface steers 843 @ 24.00
41 blkwhif hfrs 610 @ 23.85
7 whiface steers 793 @ 23.80
8 blkwhif steers 733 @ 23.70
7 whiface heifers 690 @ 23.60
2 blkwhif heifers 730 @ 23.50
4 black steers 676 @ 23.10
3 blkwhif steers 867 @ 23.00
22 whiface heifers 749 @ 22.70
4 blkwhif heifers 796 @ 22.60
1 holstein steer 830 @ 22.30
1 holstein steer 840 @ 22.00
1 holstein steer 620 @ 21.10
3 holstein steers 892 @ 21.00
7 holstein steers 1055 @ 20.65
3 holstein steers 798 @ 20.00
17 holstein steers 864 @ 19.85

2 whiface steers 253 @ 33.50
5 whiface steers 299 @ 33.00
2 whiface steers 210 @ 32.50
1 black steer 195 @ 32.25
6 whiface steers 289 @ 30.75
1 whiface steers 475 @ 30.50
4 whiface steers 339 @ 30.25
4 black steers 360 @ 30.00
8 whiface steers 433 @ 29.30
3 whiface steers 483 @ 29.30
12 whiface steers 375 @ 29.30
4 blkwhif steers 391 @ 29.25
2 black steers 258 @ 29.25
15 black steers 310 @ 29.10
6 whiface steers 422 @ 29.10
8 whiface steers 452 @ 29.00
2 whiface steers 530 @ 28.80
4 black steers 440 @ 28.80
3 whiface steers 432 @ 28.75
5 whiface steers 538 @ 28.70
11 whiface steers 465 @ 28.70
2 whiface steers 348 @ 28.50
2 whiface steers 395 @ 28.30
4 black steers 409 @ 28.30
2 black steers 485 @ 28.30
2 whiface steers 495 @ 28.25
20 black steers 420 @ 28.10
11 whiface steers 522 @ 28.10
2 whiface steers 385 @ 28.10
2 whiface steers 390 @ 28.10
3 whiface steers 492 @ 28.00
2 whiface steers 528 @ 28.00
4 black steers 493 @ 27.90
4 whiface steers 440 @ 27.75
4 black steers 396 @ 27.40
7 black steers 321 @ 26.70
7 blkwhif steers 531 @ 26.60
4 black steers 555 @ 26.40
7 char steers 449 @ 26.20
2 whiface steers 535 @ 26.10
3 blkwhif steers 504 @ 26.10
7 shrthrn steers 496 @ 26.00
7 whiface steers 596 @ 25.80
20 black steers 595 @ 25.65
3 blkwhiface str 514 @ 24.60
1 holstein steer 505 @ 21.90

6 whiface heifers 469 @ 25.70
3 whiface heifers 365 @ 25.70
3 black heifers 332 @ 25.60
2 whiface heifers 318 @ 25.60
4 whiface heifers 456 @ 25.50
4 black heifers 382 @ 25.50
4 whiface heifers 364 @ 25.40
4 whiface heifers 304 @ 25.30
6 black heifers 434 @ 25.30
3 black heifers 403 @ 25.20
4 blkwhif heifers 368 @ 25.10
3 whiface heifers 283 @ 25.10
5 whiface heifers 532 @ 25.10
9 black heifers 545 @ 25.10
6 whiface heifers 423 @ 25.10
2 whiface heifers 518 @ 25.00
3 whiface heifers 483 @ 25.00
13 whiface heifers 360 @ 25.00
6 blkwhif heifers 371 @ 24.90
2 whiface heifers 420 @ 24.80
3 whiface heifers 404 @ 24.80
2 whiface heifers 340 @ 24.75
4 black heifers 370 @ 24.70
4 whiface heifers 459 @ 24.70
13 blkwhif heifers 491 @ 24.60
2 whiface heifers 505 @ 24.25
3 black heifers 247 @ 24.10
3 black heifers 403 @ 24.10
4 whiface heifers 543 @ 23.80
3 black heifers 528 @ 23.70
4 black heifers 564 @ 23.10
4 whiface heifers 568 @ 22.80

8 charwhif hfrs 456 @ 22.50

BULLS

1 whiface bull 2155 @ 19.00
1 whiface bull 1260 @ 20.50
1 black bull 1660 @ 21.20

COWS

1 whiface cow 830 @ 18.80
1 black cow 850 @ 18.20
1 black cow 1035 @ 18.00
1 whiface cow 1130 @ 17.50
1 blkwhif cow 895 @ 17.25
1 white cow 1150 @ 16.80
1 whiface cow 900 @ 16.75
2 black cows 833 @ 16.50
1 black cow 1055 @ 16.40
1 blkwhif cow 1100 @ 16.40
1 whiface cow 965 @ 16.20
4 whiface cows 771 @ 16.10
1 holstein cow 1275 @ 16.00
3 whiface cows 852 @ 15.80
9 whiface cow 998 @ 15.70
2 holstein cow 1250 @ 15.60
3 whiface cows 907 @ 15.50
11 whiface cows 1029 @ 15.50
6 whiface cows 965 @ 15.40
1 holstein cow 1460 @ 15.40
9 whiface cows 1090 @ 15.30
1 whiface cow 1065 @ 15.10
2 black cows 1048 @ 14.80
2 whiface cows 1085 @ 14.35
2 whiface cows 1108 @ 14.20

SPECIAL FOR THURSDAY

10 good Angus cows, heavy three year old springers.
6 blackwhiface cows and calves.

FOR ESTIMATES

W. E. DUGAN ----- Alta Vista, 229-6430
JOE RAINE ----- Maple Hill, MI 3-2226
DON WELLS ----- Manhattan, JE 9-3744
MERVIN SEXTON ----- Abilene, CO 3-3449
C. J. WENTZ, bus. mgr. Manhattan, JE 9-5561

BARN PHONE ----- Manhattan, PR 6-4815

Consignment Reports
WIBW radio 6:30 A.M. Thursdays
WIBW-TV 12:15 Noon Wednesdays

The Manhattan Commission Co., Inc.



MANHATTAN, KANSAS

East On US 24

Auctioneer: Joe Raine

BUYING

FAT HOGS

We buy fat hogs daily at the Manhattan Commission Co., Inc. sale barn. We buy direct with no commission to the seller.

BUYING HOURS:
Mondays thru Fridays
8 a.m. to 4 p.m.
Saturdays 8 a.m. - 2 p.m.
Manhattan PR 6-4815

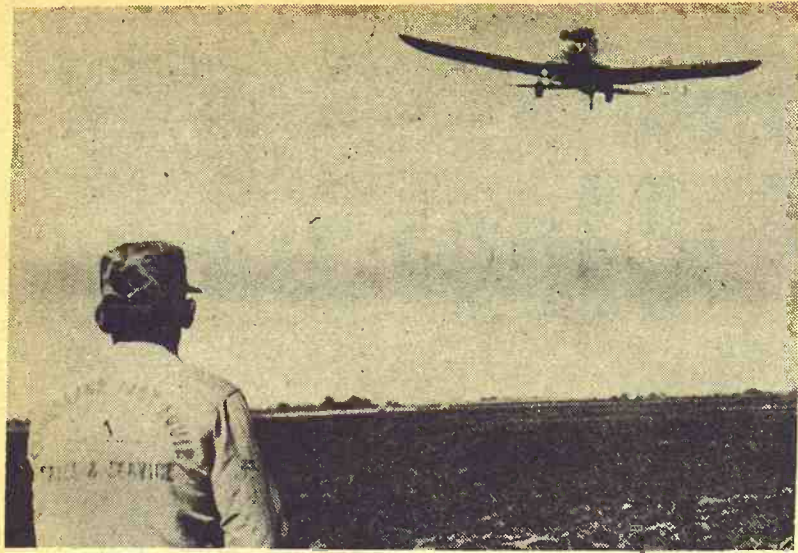
WE ARE ALSO BUYING FAT HOGS AT THE W. E. DUGAN YARDS ALTA VISTA SATURDAYS

8 a.m. to 3 p.m.
Phone Alta Vista 229-6430
or Manhattan PR 6-4815

AT ALMA & ESKRIDGE EVERY WEDNESDAY

From 8 a.m. to 1 p.m.

Please do not bring hogs in for sale on Thursday afternoon, as we will be having large runs of cattle and you might not be able to unload, and they will get hot on you.
For information call the barn in Manhattan, PR 6-4815
In Alta Vista, W. E. Dugan, 229-6303. Or you may call Joe Raine at Maple Hill MI 3-2226 or Eskridge Yard 449-2347.



Sowing Wheat From Air

Things were so wet around LeRoy, Kansas, that Red Sutherland finally decided to have it done from the air.

Darryl Esslinger, a Eureka flying service operator, did the job, loading about 1200 pounds of seed wheat and releasing it in 50-foot swaths from a 25 foot height. About two bushels per acre were used, slightly more than by the usual method.

"The cost was about the same as with ordinary planting," Sutherland said. "It's faster by plane, tho — takes about two hours to seed a 100-acre field."

Esslinger had never sown wheat from a plane but he said he had planted milo from the air in western Kansas last spring after flood waters had receded from fields there.

Kleppe's version would set wheat reserves at 300 million bushels, corn at 500 million bushels, and soybeans at 75 million bushels.

Purcell's would set reserves at 350 million bushels of wheat, 25 million tons of feed grains and 35 million bushels of soybeans.

KAW VALLEY HEREFORD CANCELS 1968 SALE

MANHATTAN — The Kaw Valley Hereford Association will not have a February sale, as it has in the past. Members voted at a recent meeting not to have the sale because of a shortage of high quality bulls for the sale.

Aerial Spraying

J. A. Bockenstette II & Co. Pr. 913 234-2710, Topeka or contact Wright Imple. Co., Abilene, 913 263-2061

Grain Reserve Bill Alive Again

Strategic grain reserves legislation, killed by a Republican-Democratic coalition of House Agriculture Committee members last month, is undergoing bipartisan resurrection.

Two similar versions for reserves to boost grain prices and provide for emergency needs have been introduced by Reps. Graham Purcell, D-Tex., and Tom Kleppe, R-N.D.

Purcell, chairman of the House grains subcommittee, was chief sponsor of the measure that was killed. Kleppe was one of the Republicans who lined up with two Democrats to kill it.

The two new House bills brightened prospects for approval of a reserve grains bill next year. Similar measures already had received bipartisan support in the Senate among farm state members.

Opponents condemned the original Purcell bill as a "political gimmick for the farm vote in 1968" and claimed it would be

a device by which the administration could dump grain to control prices.

"That other approach was strictly a marketing device," Kleppe said in an interview. "This is what my farmers were scared to death of, me included."

Purcell said his new bill erases all objections to the original but still would maintain reserves for foreign demands and protection against bad crop years or disaster.

"If we can get this bill enacted," Purcell added, "I expect an immediate price increase for farmers for their products."

Both the Purcell and Kleppe bills would reduce alleged threats of administration dumping by keeping grain reserves under farmer control through on-farm storage. Both would require that any resale of the reserve stocks be at 100 per cent of parity, which presently would be more than the market price.

KEY

16% PIG STARTER

THEN

15% MEDICATED PIG GROWER

Will get them to 70 lbs. Quickly and Cheaply



BOTH WITH SP-250 They'll Eat Like Pigs

ORDER THESE FEEDS NOW AT ONE-WEEK SPECIAL PRICES

16% \$107 STARTER per ton 15% \$79 GROWER per ton

See A KEY Dealer Or Call Collect ME 2-2141

KEY MILLING CO.

Clay Center, Kansas



Warm Morning

Gas Wall Furnaces

Heat up to 3 rooms, take very little floor space & add elegance to any home



Here are the heaters that use totally automatic, forced circulation, furnace-type heating to heat as many as three rooms. And you don't have to put in expensive duct work or remodel the room. The Warm Morning Gas Wall Furnaces install flush against any wall, recessed in a wall or flush in a corner.

BUY YOUR LP APPLIANCES FROM THE PEOPLE IN THE LP-GAS BUSINESS

Tri-County Skelgas Service

608 South 5th

MANHATTAN, KANS.

Phone PR 8-4891



This year give the Bourbon you'd rather keep.

OLD CHARTER

Before this golden Old Charter Bourbon was poured into its holiday decanter many long years passed by. That's why Old Charter is such a welcome holiday gift. This year, add your own name to your Old Charter gift list. You deserve it.



Tick-tock-tick-tock... the Bourbon that didn't watch the clock.



Decanter or Regular Fifth, Gift-Wrapped At No Extra Cost

OLD CHARTER
Kentucky's Finest Bourbon

"W...
F...



Bec...
FARM...
FREE G...

WHEN YOU...
F-11 LOADE...
FREE S...

OR GRA...

COME IN...
CHECK INT...
LOSE. HURR...

SPECIAL C...

FARMHA...
MADE IN FARM MATERIAL...
HAWARD, INC. - HOPKINS...

Farmland Sales At \$365 Million

KANSAS CITY — Farmland Industries has reported a record year in sales and savings. Ernest Lindsey, president of the organization which has 1,800 member cooperatives in 12

states, told the 39th annual convention that sales were \$365 million and savings to members nearly \$31 million. He said about half of the savings were refunded in cash to

member cooperatives on the basis of patronage last year. Nearly 10,000 delegates are here for the three-day convention.

Junction City Short Of Doctors

JUNCTION CITY — A critical shortage of medical doctors looms in the Junction City area, Keith Devenney, chairman of the Geary County Board of County Commissioners said last week. Contemplated retirement by three physicians next year will reduce the county's medical staff to five practicing MDs and two osteopaths, according to Devenney.

"The community must become concerned about this critical shortage," said Devenney. "According to the information we have, there should be one doctor for every 1000 persons, excepting military personnel and those eligible for treatment at Ft. Riley.

"This means that Geary County should have at least 12 or 13 doctors."

The hospital board had placed advertisements in national medical publications and "Army Times," a newspaper circulated among military personnel and civilians. The availability of excellent medical facilities, including a new \$2.2 million hospital here, and the need for additional doctors was set forth in the ads.

No replies were received from the advertisements.

Occupancy of the new 96-bed hospital has been about 55 per cent since it opened last June. Monthly losses have been \$1500 to \$3500.

Devenney said the board has reduced nonessential personnel and this will result in a \$3500 monthly saving in wages.

"The hospital medical staff is concerned about the shortage of doctors here because they can handle just so many patients," Devenney said.

"With the anticipated decrease in the number of doctors, the occupancy rate of the hospital will go down. We are told, even with the present medical staff, occupancy could increase only to a certain point.

"This emphasizes the need for additional doctors who would use the hospital," he said.

of the Kansas Commission on Civil Rights. Floyd said there had been complaints of racial discrimination against the clubs.

Class A clubs, which are operated by nonprofit fraternal and social organizations are excluded from the public accommodations law, Londerholm said.

Voters Agree To Spend For Area Watershed

MARYSVILLE — Voters gave narrow approval last week to a bond issue to aid in creation of the Upper Black Vermillion Watershed.

The vote in favor of a \$373,340 bond issue was 108-103.

The bond issue will help finance the local costs of land, easements, right-of-way and administrative expenses in carrying out the project.

Total local costs will be an estimated \$499,340 with the difference between that and the bond issue being raised through a general levy.

The project calls for 109 flood-retarding structures in Marshall, Nemaha and Pottawatomie counties.

Conservation measures in the district will include terraces, grass waterways, farm ponds, grass plantings and allied programs on individual farms.

Speers Hereford Loses Appeal

Three men associated with the Speers Hereford Farms and American Hereford Farms, which sold feeder calves into the G&G area and the rest of the U.S. from 1960 to 1963, have

lost appeals to reverse convictions for mail fraud.

Stephen Speers, 30, and Jerry Anden, 30, of Kansas City, and James Sidary of Houston were convicted in February 1966 at U.S. District Court in Topeka, and last week conviction was upheld in the U.S. Circuit Court of Appeals in Denver.

They have been free on \$2500 bond. Speers was sentenced to five years in prison; Anden, three years; and Sidary, 18 months.

The suit contended that they advertised choice Hereford feeder calves for sale, but delivered poor quality calves which were not Herefords.

POTTMIE CO. PONDERS FEEDER CALF GROUP

WESTMORELAND — Pottawatomie County may organize a county Feeder Calf Association, says Al Spencer, county agent. He's conducting a survey now to determine the feasibility of such an organization.

ing



pace home

ly automatic, for... to heat as may... ve to put in exper... room. The Warm... tall flush again... ash in a corner.

GAS BUSINESS

ervice

one PR 8-4891

TER DIST. CO., LOUISVILLE, KY.

"Why should I buy a Farmhand Loader?"



Because WHEN YOU BUY A FARMHAND F-10 LOADER YOU GET **FREE GRAPPLE FORK \$94.00** RETAIL VALUE

WHEN YOU BUY A FARMHAND F-11 LOADER YOU GET **FREE SILAGE FORK \$98.00** RETAIL VALUE

OR GRAPPLE FORK \$101.50 RETAIL VALUE

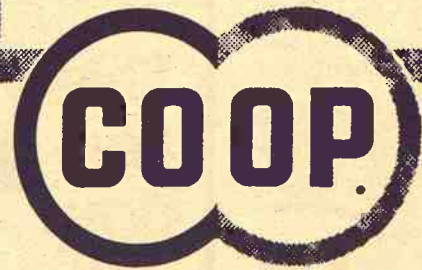
COME IN. CHECK OUT FARMHAND LOADERS. CHECK INTO OUR FREE OFFER...YOU CAN'T LOSE. HURRY—SUPPLY LIMITED.

SPECIAL OFFERS THIS MONTH ONLY

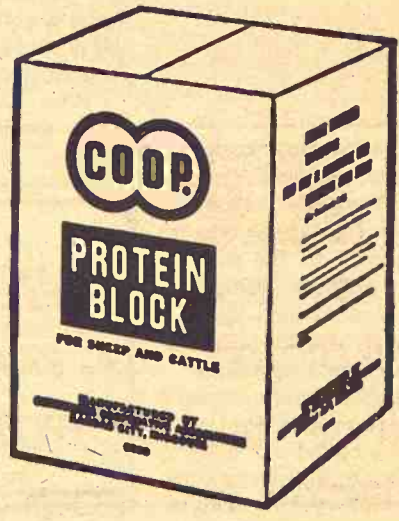


Buchman Farm Supply
A-C DEALER IH TRUCKS
Phone 229-6619
ALTA VISTA, KANSAS

NOW . . . YOU CAN ORDER HIGH PROTEIN



PROTEIN BLOCKS



CO-OP Protein Blocks are ideal for on-ground feeding. CO-OP Protein Blocks supply your animals with a high concentration of protein (39%), carbohydrates, vitamin A and minerals. All you do is put them on the ground. Cattle find them quickly. Cattle do well, look good and gain fast even on late summer pasture or fall cornstalk feeding with highly palatable CO-OP Protein Blocks.

LABORATORY TESTED... AND FEEDLOT-PROVEN



Cooperative Assn. Manhattan-Alta Vista -Westmoreland-Onaga.



FARMERS Union Co-op Clay Center-Bala -Miltonvale-Leonardville



CARLTON TELEPHONE 31



Farmer-Stockman Co-op Assn Council Grove -Junction City CE 8-4158



Greenleaf-Linn -Washington



Abilene Co-op Assn. Abilene CO 3-1660



Business Assn.



Alma Ph. 765-3612 Eskridge Ph. 449-2291

K-State Honors At Angus Show

HUTCHINSON — Kansas State University walked off with most of the top honors at the 13th annual Kansas Angus Futurity show.

Designated as the cream of the black crop was two-year-old Key K 25, owned by KSU, Manhattan, which took grand champion bull honors.

Runner-up as reserve champion bull was a 21-month-old bull, C S Colonel, owned by Shamrock Farms, Manhattan, and Fayne Caylor, Clifton.

KSU also carried away the two top spots in the heifer class-

es. Grand champion female was Miss Jingo K and reserve champion was Miss Powerhouse K 10, both owned by KSU.

In the Junior heifer show, grand champion was shown by Sheldon Fox, Cambridge. Reserve champion honors went to Kevin Honeycutt, Blue Rapids,

Get-of-Sire honors went to Shamrock Farms, Manhattan.

Picked to take their heifers to the Denver show, with expenses paid by the Angus Association, were junior exhibitors Kevin Honeycutt, Blue Rapids; Renee Wassenburg, Baileyville;

Lou Ann Kissick, Mt. Hope; Andy McCurry, Burrton; Sheldon Fox, Cambridge; and Debra Fox, Cambridge.

Alternates are Pamela Pack-er, McLouth; Clifton L. Willms, Hutchinson; and Kevin Honeycutt, Blue Rapids.

Two winners of the Junior showmanship class were presented special award trophies by Dr. Miles McKee, KSU, Manhattan.

Recipients were Andy McCurry, Burrton, and Eugene Gessell, Mt. Hope.

The trophies were awarded by Mr. and Mrs. George Crenshaw, Manhattan, in memory of their daughter Julie.

'Administration To Blame For Backlog Of Watershed Projects'

Rep. Robert Dole, R-Kan., said last week a huge backlog of watershed projects awaiting federal aid can be expected as a result of requirements by the Johnson administration. He called the situation critical.

Dole addressed the closing meeting of the Kansas Association of Conservation Districts at Wichita.

Dole said watershed project plans requiring congressional committee approval cannot receive federal funds even though such approval is given. He said the administration has opposed a requirement that project plans be approved by House and Senate committee.

Jobs Ready To Go

"Thus we can expect a huge backlog of watershed projects awaiting help — projects that are ready to go," Dole said.

"This situation is critical. What is done or not done for watersheds is important to the future water supply of rural and urban areas to alleviating floods, to controlling silt pollution and to developing and improving recreational resources," he said.

The association approved two resolutions for expanding research in the state. They backed a Kansas State University request for \$150,000 appropriation from the next Legislature to start research on evapotranspiration control, and they asked an appropriation of \$30,000 recommended by the Kansas Water Resources Board for research on recharging underground water supplies.

Harper Man Re-Elected

Lyle Bauer of Harper was re-elected president of the association. Other officers re-elected were Harold Johnson, Dwight, vice president; Bartos Brown, Jennings, secretary-treasurer; and Raymond Schemm, Neosho Rapids, director Area 5.

Four special awards were given for "outstanding contribu-

tions to soil and water conservation in Kansas."

The awards went to: Morrie Bolline, state conservationist, U.S. Soil Conservation Service, Salina;

Edward Gordon, Highland, member of the Kansas Water Resources Board;

Leon Trumbull, St. Francis, former president of the state association and director of the national association;

Ellis County soil conservation districts.

Campus Back To Traditional Noise

Are lovers at KU too loving? Is there too much smooching around the largest coed residence hall at the University of Kansas?

A student hall president, the KU dean of women, one of her assistants, an assistant to the dean of men and the joint men-women senate of the hall got into a public difference of opinion about the subject last week.

Emery Goad of Junction City, president of McCollum Hall, said that excessive public display of affection existed in the hall, but the senate said his charges were unauthorized and inaccurate.

Who cares? Lots of campus oldtimers may think that such traditional campus notoriety beats sit-ins, marches and demonstrations.

Who knows? Maybe goldfish swallowing will come back.

USED 2" PIPE

Available in trailer load lots. For information, write or call

LUTTIG TRAILER CO.
Emmett, Kansas

Winter your cows to come up with more strong calves!

Call Your Gooch's Best Headquarters . . .

CK PROCESSING COMPANY

MANHATTAN, KANSAS Telephone PR 6-9269

CLAY CENTER ALFALFA MILL

CLAY CENTER, KANSAS Telephone ME 2-3401

To deliver you a supply of . . .

GOOCH'S BEST

RANGE CUBES

House OK's Dole's Early Wheat Payment

The House of Representatives last week approved by voice vote legislation by Rep. Bob Dole to permit G&G area wheat growers and others in the nation to receive one half of their payments at time of signing up for participating the wheat program.

The Dole legislation applies to the 1968 and future crops and if approved by the Senate and signed by President Johnson would put wheat farmers on

the same basis as feed grain and cotton growers.

Sen. Frank Carlson was contacted by Dole immediately after the House action and the Kansas senior senator said he would urge Senate action on the legislation before Congress adjourns.

Dole introduced his legislation Feb. 28 and it was reported out of the House Agriculture Committee Oct. 25 by a vote of 22 to 7 for favorable action.

"It is unfortunate that this

legislation has been delayed," said Dole. "The delay stems from the fact that the bill was actively opposed by the Johnson administration, particularly by agriculture undersecretary John A. Schnittker.

KEYS
AGGIE HARDWARE
1205 Moro MANHATTAN



what do you need for the home?

CHAIRS? DIVANS? LAMPS?

We have a fine selection — Fine Quality . . . Sensible Prices

Make your shopping pleasant and restful. Come out on the highway where you won't be crowded or pushed. Make selection at your leisure, and if you don't buy, that's all right. We're easy to get along with.

CREDIT

DELIVERY

FAITH'S FURNITURE STORE

1/4 mile east of tracks on US 24 Phone PR 8-3786
MANHATTAN, KANSAS

Look For These Tags On International Equipment

TIME TO TRADE and SAVE

ON THIS ITEM AND MOST RELATED EQUIPMENT PURCHASED TOGETHER AND FINANCED THRU IHCC

FINANCE CHARGES ARE PAID FOR YOU WELL INTO 1968!
SEE A NEARBY IH DEALER

HERINGTON Pioneer Service & Sales

MINNEAPOLIS Chapman Impl. Co.

CLAY CENTER Norquist's Inc.

ABILENE Abilene Truck & Tractor

HANOVER Hanover Impl. Co.

LEONARDVILLE Kendall Garage

WAKEFIELD Auld Chevrolet

MARYSVILLE Bruna Brothers

FALUN Dauer Impl. Co.

COUNCIL GROVE Macha-Everson

BELLEVILLE Chapman's On US Hwy. 81

Government Drops NFO Lawsuit

The Justice Department says it is dropping its antitrust suit against the National Farmers Organization in exchange for a pledge of any future attempt to keep farm products off the market.

The suit was filed last March during the NFO's milk withholding campaign, an effort

aimed at winning higher prices for farmers.

The legal action led to a temporary restraining order forbidding coercion in trying to discourage farmers outside the NFO from marketing their milk.

Atty. Gen. Ramsey Clark announced the NFO agreed not to

oppose future preliminary injunctions if the Justice Department files antitrust charges supported by proper evidence in future market boycotts.

The agreement on court action and advance notice of withholding campaigns extends through 1972, the Justice Department said.

house, let's not put it in Westmoreland." Win or lose, the 1968 election promises to be a very interesting affair in Pottawatomie County.

Because Grass & Grain reaches so many people in Pottawatomie County, I would like to impose to ask you to print the following:

I would like to say to the more than 50 people who took time to circulate the petitions that their efforts are sincerely appreciated by the hundreds who signed them.

December 12, 1967

"Before God's footsteps to confess,
A poor soul knelt and bowed his head
'I failed,' he cried. The Master said
'Thou didst thy best — that is success.'"

So, if we failed, I for one will be proud to be on the losing side. We must live with our actions.

Eli Pinet
ONAGA

LETTERS—

Grange Members, Please Write

This is not a letter, but a note from G&G asking for letters. Last week, the membership chairman of the Kansas Grange phoned us, irate over an article in the Dec. 5 issue, written after the National Grange convention at Syracuse, N.Y., which opined that the organization must make some decisions soon to enable it to survive, or else the Patrons of Husbandry would die, lacking numbers, finances, and appeal to commercial farmers.

As members of the Grange were talking to themselves in similar words at the convention, both privately and officially, the reporting did not seem out of order, in our judgment. The New York Times said the same things following the convention. We asked the Grange membership chairman to rebut and perhaps he yet will. The letters columns of Grass & Grain are open to him and to any Grange members who want to attest that they are commercial farmers, that the Grange has some sort of continuing philosophy or program with which they agree, and that they believe the organization is viable and influential.

Editor
GRASS & GRAIN

Wants Change In SCD Law

We appreciate very much the Soil Conservation issue of Grass & Grain (Nov. 28). Because we have not had the best leadership in soil and water conservation

from the G&G Area

we see vast areas of our region taken over by dams, resort and recreation areas.

Because, as Fred Kilian would agree, of government control of market place and production, we farmers for economic reasons must produce the most for less with little regard for saving our natural resources for production later.

At present the Kansas SCD law requires two of the five supervisors in county SC districts appointed. Note: many of us believe for this reason we are influenced too much by federal and state bureaus, therefore hastening our downfall.

If a decision could be made at Kansas SC districts meetings at Wichita to recommend amending our state SCD law to cause all supervisors to be elected, we believe more leadership, interest, ideas by more farmers will follow as it has in the majority of other states.

L. D. Blvthe
WHITE CITY

More On Area Courthouse Issue

I would like to compliment Grass & Grain for a very impartial write-up on the courthouse situation in Pottawatomie County (G&G Dec. 5).

We have never questioned the legality of the issue, only the morality. The duty of the duly-elected commissioners is to honestly represent their constituents. We only ask to be permitted to vote on the question. If the commissioners believe a new courthouse necessary and that the majority of the Pottawatomie County citizens agree,

why do they refuse to call a special election or put the question on the ballot at the next general election?

The opposition has been careful to avoid mentioning that both the St. Marys and Wamego Chambers of Commerce have passed resolutions supporting the petition and presented resolutions to the commissioners.

Anyone who thinks that a majority favor building a new courthouse should contact one of the 50 people who circulated the petitions or ask the next 10 Pott county voters and they will have an answer.

While I do not attempt to speak for Onaga, St. Marys, Wamego or anyone other than myself, I do know that many people in all parts of the county favor moving the county seat to Wamego.

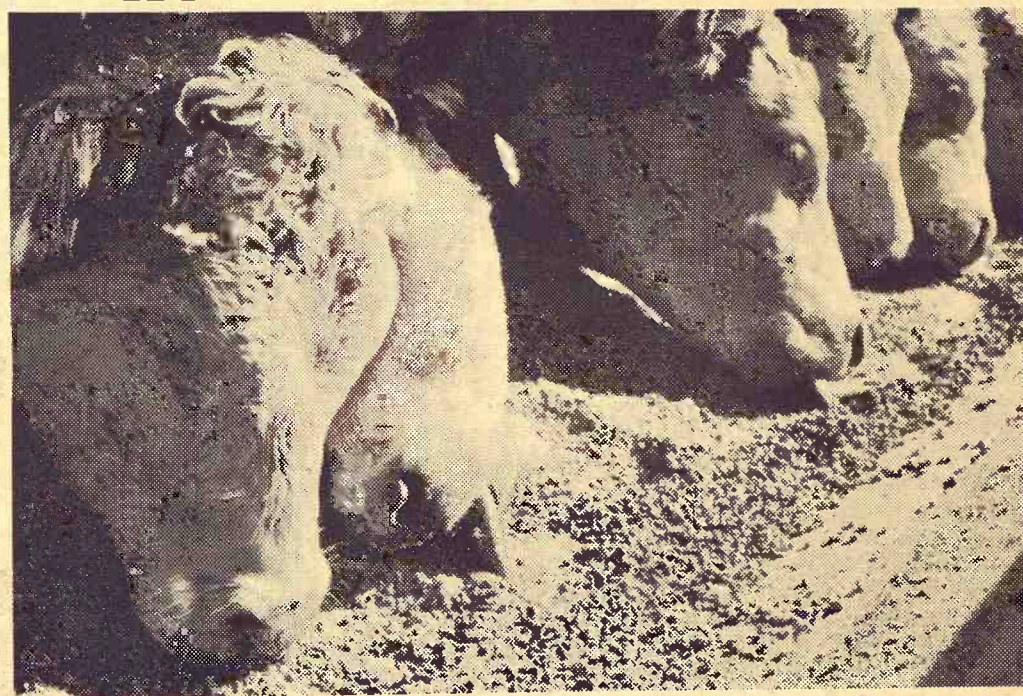
An unsolicited comment was, "If we must build a new court-



Nut Growers Officers

Elected 1968 officers for the Kansas Nut Growers Association at the group's annual meeting were from left, Paul Hibbard, Toronto; Bill Thielenhaus, Fredonia; Robert Weese, Mound City; J. M. Nixon, Belle Plaine; Wendell Greiner, Mulvane; and C. R. Roberts, Manhattan. Weese is president. Roberts, Kansas State University specialist, has resigned as the organization's secretary-treasurer and will be replaced by Frank Morrison, also of K-State.

Feed Costs Cut \$1.98 Per Cwt. With Purina Steer Chow



To prove that top performance is possible with a low cost feed, Purina conducted 10 comparative tests in Omaha feedlots. Results showed that 1,111 cattle on Purina

Steer Chow averaged 3 pounds per head daily gain on \$20.17 feed costs per cwt., \$1.98 less than 882 head averaging a 2.5 pound daily gain.

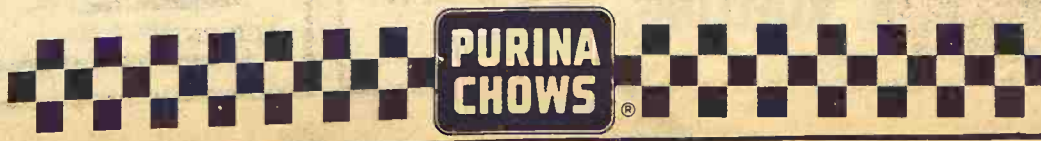
	Other Rations	Purina Steer Chow
Number Cattle	882	1,111
Pay Weight In	786	754
Pay Weight Out	1,091	1,126
Average Gain Per Head	305	372
Average Daily Gain	2.5	3.0
Pounds Feed Per Pound Gain	9.96	8.96
Feed Costs/Cwt./Gain	\$22.15	\$20.17

Purina Steer Chow can produce the economical gains cattlemen need. Commercial feeders finishing yearling cattle on a low roughage, high energy program will find

Purina Steer Chow made to order. Purina research has built a high level of Vitamin A into this 32% protein supplement, and made it available with antibiotics and stilbestrol.

Stop in at your Checkerboard store to find out for yourself how Purina Steer Chow may cut your feed costs.

- Flint Hills Feed & Grain PR 8-5322 Manhattan
- Farmers Union Feed Mill 437-2434 St. Marys
- Mor-Kan Elevator 349-2214 White City
- Reading Grain & Lumber AN 9-3842 Reading
- Bartlett Grain Co. CE 8-5134 Junction City
- Americus Grain Co. 884-3465 Americus
- Gorden Mark Elevator .. ME 2-3381 Clay Center
- Western Grain Mill 767-5933 Council Grove



WESTERN SADDLE SUPPLY

J. J. RITTEL & SONS
WESTERN WEAR
In Mid-Kansas
Largest Saddle Selection
for the Entire Family
BOOTS • HORSE TRAILERS
Square Dancers Supplies
HOPE, KANSAS PHONE 43



Announcing BURNS - SALISBURY MANHATTAN, KANS.

now Authorized Dealer for
KRAUSE Tillage Tools
Accessories and Repair Parts

Cut costs... save your soil with KRAUSE

Efficient Krause implements pull at lighter draft to finish up your tillage jobs in less time... do better work to boost yields and conserve your soil... save fuel and tractor wear. Try Krause on your farm.

Ask for a demonstration

KRAUSE CORPORATION
HUTCHINSON, KANSAS

BURNS-SALISBURY, INC.
AUTHORIZED FORD FARM EQUIPMENT DEALER
US 24 East Of Manhattan Phone PR 8-5731



Dear Crossing

The sign doesn't conform to state standards, but Mrs. Fred Kelman of Arlington thinks her sign may slow drivers along township road in front of her house.

Night Consignment HORSE SALE

At The WEST Barn
CONCORDIA, KANSAS

THURS., DECEMBER 14
Tack 6:30 p.m. Horses 7:30 p.m.



Expecting 50 to 75 Head

For Information Or To Consign. Contact:
TOM WALKER — CONCORDIA — CH 3-1674
ROLLIE LAGASSE — CONCORDIA — CH 3-2215
LARRY LAGASSE — CONCORDIA — CH 3-1714

Sell Every Wednesday AT ONAGA 1:00 P.M.

SPECIAL CONSIGNMENTS FOR DEC. 13

32 Hereford and Angus steers, 750-800 lbs., ready for feed lot.
10 Angus steers & heifers, 400 lbs.
20 WF steers, 500 lbs., 30 mixed heifers 400 lbs.
5 Holstein heifers, open, calfhood vacc., 600 lbs.
10 heifers 450 lbs.; 25 mixed heifers, 500 lbs.

We are looking for a good run of cattle and hogs for this coming Wednesday.

SELLING AT 12:30 NOON

(Just before regular sale)

HOUSEHOLD GOODS OF Late Pat Cullivan

Onaga Community Sale

Marvin Cottrell, Phone 889-4461 or 889-4665, ONAGA, KS.

AUCTION SALE

Saturday
DECEMBER 16

Starts 12:30 Noon

As we have decided to quit farming we will sell at public auction the following described full line of shop equipment, tools and farm equipment.

6 miles southeast of Silver Lake. From Kiro Corner one mile south, 1 1/2 miles east. From Westgate Bridge, 2 miles west on Lower Silver Lake Road.

2 Model 400 Case tractors, with wide front ends, 1957 and 1958. Complete with 4 row cultivators; 2 12-ft. tool bars, with shovels.

13 ft. Case tandem disc, 16 in. blades; 2 Case 16 in. 3-bottom plows; Case 14-in. 4-bottom plow; Case 4-section harrow; Case 12 ft. rotary hoe; New Idea 12 ft. fertilizer spreader; 12-ft. spring-tooth harrow; land leveler.

JD 2-row stalk shredder; 101 IH combine with header & 2-row corn head; JD 4-row planter, complete with fert., herbicide & insecticide attachments.

1000 bu. Columbian grain bin; 6 50-ft. lengths fire hose; New

Handy lawn trailer, 30"x40", for lawn tractors; Jeep, 4-wheel drive, 1953; Ford pickup, 3/4 ton, 1953; K-6 International truck with grain bed, hoist, and 2-spd. transmission; Kelly-Ryan elevator, 40'.

A good assortment of new shop tools; vise; drill press; grinder; electric welder; battery charger and 4 good batteries; gas tips and cart for gas bottles.

New 300-gal. gasoline barrel; 30 electric fence posts; fuel oil stove; 100 gal. fuel oil tank; 12'x20' tarpaulin; 4"10' auger; 75 No. 70 Rainbird sprinklers; 6 bunches plaster lath; miscellaneous.

C. H. KOELLING, Owner

Auct: Everett Hoobler

Clerk: Jim Smith

Hubert Tells NFO To Seek More 'Bargain Power'

LOUISVILLE, Ky. — Oren Lee Staley, of Rea, Mo., has been elected to his 13th term as president of the National Farmers Organization.

Vice President Hubert H. Humphrey encouraged the 12,000 delegates to seek more "bargaining power" in the sale of their products but warned them that attacks on the federal farm program was not the way to do it.

The vice president praised the NFO for its concept of collective bargaining by farmers and criticized the "strong forces that are trying to undermine U.S. farm programs."

Last spring members of the NFO held milk and milk products off the market in a bid to raise prices for their products. The withholding action was successful in many areas. Staley promises a withholding action in 1968 on all farm commodities although not all at the same time.

"Collective bargaining is no longer a theory" for farmers, Staley said and added that NFO farmers will "shut down the agricultural plant" until fair prices are reached.

The delegates adopted resolutions at their closing sessions calling for:

A food reserve to be purchased by the government "at a cost of production plus a reasonable profit for farmers."

A ban on publication of crop estimates by the U.S. Department of Agriculture until 15 days before harvest of the crops.

Negotiations to keep the United States the largest farm commodity exporter.

A cooperative effort by farmers to participate in feed grain and wheat programs to cut down crop surpluses.

Opposition to any effort to weaken or outlaw the closed shop laws.

Reg. Hereford Sale DEC. 16 — 12:30 Noon Heated Sale Pavilion EUREKA, KANSAS

25 BULLS — 25 FEMALES

Herd bulls, farm bulls, range bulls, replacement females, 4-H and FFA heifers. From a cowherd that is mostly Hazlett & Zato Bloodlines.

Auct. Gene Watson
JOE LEWELLEN
Rt. 4, Eureka, Kansas

REMINDER

AUCTION

As we are leaving the farm, we will sell at auction on the farm 4 1/2 miles west, 1/4 north of Leonardville, Kans., or 10 miles east, 1/4 south of Clay Center, on Highway 24.

Wedn., Dec. 13
Starts 11:00 a.m.

Cattle

WF cow 4 yrs., calf at side
WF cow, 5 yrs., calf at side
BWF cow, 7 yrs., calf at side
2 WF cows, 5 yrs., calf in Feb.
Black yearling steer
WF yearling steer

Farm machinery, hay, feeders, household goods and miscellaneous.

Also a misc. consignment by the Rev. David Bletscher.

For Full Listings See
Grass & Grain Dec. 5

Mr. & Mrs.

Henry Bletscher
Auct. Foster Kretz

KVASNICKA REALTY

Celebrates twenty years in the real estate business, the first sale having been made December 15, 1947.

This agency has handled an average of over one million dollars in real estate transactions for each of the past six years, representing 272 separate transactions.

Approximately 700 transactions have been made in the past twenty years with at least 250 of these on the Contract basis.

In twenty years no Contract buyer has ever defaulted on a single annual payment of principal or interest.

This agency takes special pride in the fact that it has been able to make repeated transactions for the same individual, 27 for one party, 17 for another, 14 for another and from 3 to 7 for several customers.

An active volume of sales generates additional listings which in turn gives prospective buyers a larger selection to choose from.

Thank you, thank you, our many friends, for contributing to the success of this Agency.

Gerald A. Kvasnicka, Realtor
Alice J. Kvasnicka, Sec'y

USED TRACTORS IN CONCORDIA

D-17 Allis Tractor (option of gas or LP), the cleanest in state power steering, traction hitch \$2550
John Deere 60, power steering, new block \$1800
John Deere 60, good; good tires \$900
1967 Sears 10 hp garden tractor, mower, cart, blade, snow blower, cultivator, disk, excellent cond., 1/2 price \$885

COMBINES — DUE IN

1965 John Deere 95, 16 ft., cab, all extras
1959 John Deere 55, power steering, cab
1958 John Deere 55, power steering, cab
1951 John Deere, very solid, very clean

MISCELLANEOUS

1964 Owatonna windrower, 14 ft., hay cond. \$1850
1967 Farm Hand bale accumulator with drive for baler \$750
1967 Farmhand bale fork with 3rd valve \$275
John Deere No. 22 roller mill, good cond. \$305
Stanhoist Loader, fits 620, 720, A, G, etc. \$225
Homemade stalk cutter, works good \$37.50
Tumble Bug (dirt scoop) \$37.50
John Deere 4 row weeder, good \$45
Danuser post hole digger \$67.50

SPECIAL BARGAINS

New Comfort covers for tractors with windshield \$35
New tractor tire take-offs,
Goodyear 18.4x34, 6 ply \$149 each
Goodyear 16.9x34, 6 ply \$137.50 each

COMPLETE ASSORTMENT OF MINIATURE JOHN DEERE CHRISTMAS TOYS

We are dealers for: Great Bend Loaders, Soil Mover Scrapers, Papec Feed Wagons, BMB Rotary Cutters, Flex-King V-Plows, Big Ox Chisel Plows.

CONCORDIA TRACTOR INC.



CH 3-3381 CONCORDIA, KS.

AUCTION SALE

Thursday
DECEMBER 14

Starts 10:30 a.m.
Lunch Served

Having decided to quit farming, I will sell at public auction at the place 4 1/2 miles east of Mahaska, Kansas; or 1 mile north of Farber's Sunrise Service on Highway 15 & 5 1/2 miles west; or 11 miles south of Fairbury, Nebr., on Highway 15 & 5 1/2 miles west; or 5 miles south of Reynolds, Nebr., & 3 1/2 miles east.

62 Head Cattle

5 Whiteface cows, 5 yrs. old, with calves at side
26 Whiteface cows, 5 yrs. old, bred to purebred Whiteface bull, start calving in April
29 steer and heifer calves, wt. 450 lbs.
Purebred Hereford bull from Amstein herd out of DHA
Crusty 236 & A Silver Princess 30

Cows TB & Bangs tested in last 30 days.
This is an outstanding herd of stock cattle — loading facilities.

BUILDINGS

HOUSEHOLD GOODS
Breakfast table & chairs; buffet; dresser; 3 chairs; library table; 6 dining chairs; baby bed; 2 single beds (com-

plete); refrigerator; some odds & ends.

Farm Machinery

1961 Ford 881 diesel tractor
1943 Ford 8N tractor
Ford Tandem disc, 6 ft.
Ford 7 ft. mower, with 2 ft. attachment
Ford 2-16 plow
Ford lister with fertilizer & chemical attachment
Ford 2-row cultivator
2-row monitor, 3 point
Dearborn loader for Ford 8N tractor
And many other implements.

POSTS & LUMBER

HAY

MISCELLANEOUS

For Complete Listings See
Grass & Grain Dec. 5

Mr. & Mrs. Louis V. Fiser

Mahaska, Kansas
Clerk: First National Bank, Fairbury, Nebraska
Auctioneer: Harold R. Siegel, 1528 F St., Fairbury, Nebr., 729-3461

I will sell
Clatonia, N
west, 2 1/2 m
miles south
Nebr. on H
north.

66



Cattle &

Sel
5 Holstein
with 1st
2 Holstein
with 1st
5 Holstein
with 2nd
Holstein he
spring
4 Holstein
fresh or t
date
6 Holstein
milking
Holstein co
freshen J
4 Holstein
fresh
2 Holstein
freshen so
2 Holstein
milking
Holstein cov

Lives
Irvin
Wayne
Duane

REALTY

the real estate business
ber 15, 1947.
verage of over one
s for each of the
transactions.
ns have been made
0 of these on the Com
buyer has ever
ncipal or interest.
ide in the fact that
actions for the same
mother, 14 for another
s.
generates additional
buyers a larger select
many friends, for com

A. Kvasnicka, Clerk
J. Kvasnicka, Clerk

IN CONCORDIA

or LP), the cleanest
h
new block
s
mower, cart, blade
dent cond., 1/4 price
DUE IN
extras
g, cab
g, cab
clean
NEOUS
hay cond.
r with drive for baker
rd valve.
d cond.
G, etc.
ood

RGAINS
with windshield

NT OF MINIATURE
STMAS TOYS
oaders, Soil Mover, S
Cutters, Flex-King

TRACTOR INC.

CONCORDIA, KS.

Thursday

DECEMBER

Starts 10:30 a.m.
Lunch Served

I will sell at public
aska, Kansas; or 1 mi
hwy 15 & 5 1/2 miles
on Highway 15 & 8 1/2
Nebr., & 3 1/2 miles

ete); refrigerator, s
ends.

arm Machinery

51 Ford 881 diesel
43 Ford 8N tractor
rd Tandem disc, 6 ft.
rd 7 ft. mower, with
attachment
rd 2-16 plow
rd lister with fertili
chemical attachment
rd 2-row cultivator
ow monitor, 3 point
arborn loader for
tractor
d many other imp

POSTS & LUMBER

HAY

MISCELLANEOUS

For Complete Listings
Grass & Grain Dec.

uis V. Fiser

ansas
, Fairbury, Nebraska
, St. Fairbury, Nebr.



At KACD Convention

These G&G area women, all wives of officers of the Kansas Association of Conservation Districts gave assistance in operating the annual convention at Wichita. They are Mrs. Lyn Buerke, Goddard; Mrs. Lawrence Blocklinger, Concordia; Mrs. Raymond Schemm, Neosho Rapids; and Mrs. Wendell Eggerman, Green.

Need a Big, Rugged ANGUS BULL?



We have a few left . . .
about 18 months old

READY FOR HEAVY SERVICE
We Invite You To Come Take A Look

Thomas McIlvain Cona Toma Ranch
Route 2
MADISON, KANSAS

Complete Dispersal

Grade A Holstein Dairy Herd

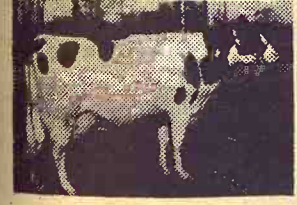


Friday
DECEMBER 22
Starts 12:00 Noon
Lunch Served

NEBRASKA SALE

I will sell at Public Auction at the place 1 1/2 miles east of Clatonia, Nebr., on Hiway 41, then 1/4 mile north; or 6 miles west, 2 1/2 miles south of Cortland, Nebr.; or 1 1/2 miles west, 4 1/2 miles south of Hallam, Nebr.; or 14 miles north of Beatrice, Nebr. on Hiway 77 to 41 Junction, then 4 miles west, 1/2 mile north.

66 Head



Cattle & Milking Eqpt.
Sell At 12:30

- 5 Holstein heifers, freshened with 1st calf, milking
- 2 Holstein heifers, to freshen with 1st calf by sale date
- 5 Holstein heifers, freshened with 2nd calf, milking
- Holstein heifer, to freshen in spring
- 4 Holstein cows, 4 yrs. old, fresh or to freshen by sale date
- 6 Holstein cows, 6 yrs. old, milking
- Holstein cow, 6 yrs. old, to freshen Jan. 3, 1968
- 4 Holstein cows, 7 yrs. old, just fresh
- 2 Holstein cows, 7 yrs. old, to freshen soon
- 2 Holstein cows, 9 yrs. old, milking
- Holstein cow, 10 yrs. old, milk-

ing
12 Yearling Holstein Heifers
9 Holstein heifers, 6 to 9 mo. old
12 Holstein heifer baby calves
Herd is open for inspection at any time. Individual DHIA test record will be given day of sale. John Sagehorn has been artificial insemination breeding since spring of 1947 and has been on DHIA testing since Jan. 30, 1957. Herd has been TB & Bangs tested within 30 days of sale.

MILKING EQUIPMENT
250-gal. Milk Keeper bulk tank
Surge 3 unit milker, with electric pulsators
2 Stainless steel milk filters
Stainless steel wash vat
Propane vented gas heater
Brooms & brushes
Other items not mentioned

FARM MACHINERY
Machinery Sells At 12 Noon
No Small Items
1967 New Papec forage wagon, with bunk feeder & 8-ton trailer
1957 Allis-Chalmers Model Super 100, 9-ft., self-propelled combine
1950 Ford tractor
Other machinery not mentioned

TERMS: Cash

John Sagehorn

Phone 989-4567, Clatonia, Nebraska
State Bank of Clatonia, Nebr., Clerk
Schultis & Son & Wolken, Auctioneers
Livestock, Real Estate and General Farm Sales
Irvin Schultis, 1109 K St., Fairbury, Phone 729-2435
Wayne Schultis, Diller, Nebr., Diller Phone 793-3005
Duane Wolken, Diller, Nebr., Harbine Phone 754-4371

KABS Interest At Schlickau Hereford Sale

HAVEN — The top ten bulls selling at the George Schlickau registered Hereford sale averaged \$1,482.

The Kansas Artificial Breeder's Service purchased three-fourths interest in the top selling bull for \$2000.

A total of 53 bulls went thru the sale and averaged \$686 per head.

The second top selling bull went for \$1,975 to the Kugler Hereford Farm at Bartlett, Nebr.

Averaging \$318 per head, 25 heifers paraded under the auctioneer's gavel.

Marvin Watt, Green City, Mo., bought the highest-priced heifer for \$640. The second top-selling heifer went for \$490 to Don Bacon, Fowler.

The sale totaled 80 head which were purchased by buyers from six different states.

Riffel Bulls Average \$905

ENTERPRISE — The Jesse Riffel and Sons Polled Hereford sale grossed over \$35,000 as 24 bulls averaged \$905 and 23 female lots averaged \$572.

One half interest in an extra lot, PVF Doubler Mixer 11, a Jan. 1967 son of D Mixer Domino 18, went to R. H. Ellis & Sons, Kingman, Indiana, for \$5000. Roanoke River Ranch, Jackson, N.C., took two of the top bulls in their purchases, at \$2700 and \$1500. Two other bulls sold for \$1000.

An extra lot topped the female sale. She went for \$1800 to Kiywana Farm, Stormville, N.Y. Gary Hoffman, Chapman, took the second top female at \$950.

Gene Watson was the auctioneer.

Selling At
MARSHALL CO. HEREFORD SALE
at the MARYSVILLE sale barn
MARYSVILLE, KANSAS
Saturday, December 16

Three sons of
M H SILVER MILL 39
15-16 months old
ALL CLEAN PEDIGREED

Ed and Arlyn Peterson
May be inspected at farm
7 1/2 miles northwest of
WATERVILLE, KANSAS

NINETEENTH ANNUAL
Marshall Co. Heref. Assn **SALE**

SAT., DECEMBER 16, 12:30 Noon
Marysville Sale Barn, 1/4 Mile West off US77
MARYSVILLE, KANSAS

Selling 24 BULLS — 12 FEMALES
20 Serviceable age — All clean pedigreed cattle.

For catalog: Arlyn Sheller, Rt. 1, Marysville, Kans.



Friday
DECEMBER 15

Starts 11 a.m.
Lunch Served

We are quitting farming and will sell at public auction on the farm located 2 west, 5 north and 1/4 east of Clifton, or 5 east, 4 north and 1/4 east of Clyde, Kansas.

Farm Machinery

- 1964 Allis Chalmers D-17 tractor, fully equipped, power steering, L hyd., LPO, quick-tach, LP gas, 1530 hrs., very good
- 1959 Baldwin 14 ft. Model A combine, good
- 1965 Krause 12 ft. wheel disc, like new
- 1965 Allis 4-row mtd: cultivator, good

And other tools & implements

TRUCK
1958 Chev. 1/2 ton pickup, long bed, 4-speed, overloads, runs good

HAY, SHOP TOOLS & MISC.

HOUSEHOLD GOODS
For Complete Listings See
Grass & Grain Dec. 5

Mr. & Mrs. John Raymer

Terms: Cash Day of Sale
Aucts: Foster Kretz & Elmo Steffen
Clerk: Exchange Nat'l Bank, Clyde, Ks.
Clay Center, Phone WA 6-4422 Morganville



Complete Dairy Dispersal

Monday, December 18

Implements 9:30 a.m.

Cattle 12:30 Noon
Lunch Served

Selling at Public Auction on the farm, Farm Implements, Trucks, Feed, Shop Tools and 110 Head of High Grade Holstein and Jersey Cows, Heifers, Calves and Bulls, Located 14 miles North of 30th and Plum, 6 West 3/4 South of Hutchinson, or 4 South 9 East 3/4 South of Lyons under cover

40 HOLSTEINS — GRADE A

15 Holstein Cows freshened last 90 days in heavy production; 20 Holstein Cows Milking, to freshen early 1968; 5 Holstein Cows to freshen in Dec. and Jan.; 7 Holstein Heifers to calve early 1968.

50 JERSEYS

10 Jersey Cows freshened last 90 days in heavy production; 18 Jersey Cows in production to freshen early 1968; 5 Jersey Cows to freshen by Sale Day; 17 Jersey Cows to freshen in 60 to 90 days; 6 Jersey Heifers to freshen in spring of 1968; 20 head of Jersey and Holstein Heifers 30 days to yearlings, 8 year old Reg.

DAIRY EQUIPMENT

4 Unit De Laval Pipeline Milker, good; 1966 Dari Cool Bulk Tank, A1; 1961 Stand By Electric Plant w/Motor, used very little.

IMPLEMENTS

1962 Massey Harris Super 92 14 ft. S.P. Combine, shedded; 1965 Massey Harris 1100 Diesel Tractor, fully equipped, A1; 1963 Massey Harris No. 90 Tractor, fully equipped, good; 1962 Massey Harris No. 85 Tractor, fully equipped, good; Massey Harris Manure Loader, hydraulic, good; 1962 Massey Harris No. 10 Baler, good; 1965 Massey Harris 5B 16 in. Plow, hydraulic, A1; Ford 4-14 Plow, 3 Pt. good; Oliver 3-16 Plow, on rubber; 1965 New Holland 2 Row Field Cutter w/Mower Bar, A1; 1962 New Holland No. 9 Swather, good; 1964 Allis Chalmers Silage Blower, A1; 1963 Nu-Way Bale Accumulator, hydraulic, good; 1965 Crust Buster, 36 ft., A1; 1963 John Deere 20-8 Drill, w/ferta., good; 1961 John Deere 12 ft. Oneway, ground lift on rubber, good; 1955 John Deere 12 ft. Spring Tooth; 1962 Oliver 16 ft. Spring Tooth; John Deere Blade, good; 1963 Big Boy Silo Unloader w/7 HP Electric Motor, A1; 1966 Model 65 Grain-O-Vator Feed Wagon mounted on 1953 IHC 2T truck, A1; 1961 Model 60 Grain-O-Vator Feed Wagon mounted on 1955 2T Ford truck, good; Portable Steel Stock Pens; Feeder System w/10 ton bulk bin, and 50 ft. auger.

CAR — TRUCKS

1966 Ford Galaxie 500, V-8, automatic drive, A1; 1966 GMC 3/4 ton V-six Pickup Truck, A1; 1959 Chevrolet 3/4 ton Pickup Truck, good; 1956 Ford 450 2T, 2 Sp. Truck Hoist, Grain Bed, good; 1938 IHC 2T w/hoist and grain bed.

FEED

350T Cane Silage in upright silo; 350T Cane Silage in trench.

SHOP TOOLS

1/2 Inch Electric Drill, Hand Tools, Forks, Scoops, and Other Articles Not Mentioned.

TERMS CASH

PAUL COLLE, Owner

Ted Krehbiel, McPherson
Marvin Krehbiel, McPherson, Auctioneers

Boesker Sale Service, Clerk.
Lunch On Grounds; Not Responsible For Accidents.

Nebraska Feeders Want More Time On Pollution

GRAND ISLAND, Nebr. — Feedlot water pollution drew a great deal of attention here at the annual convention of the Nebraska Livestock Feeders As-

sociation which drew some 500 stockmen and other representatives of the livestock industry.

In resolutions adopted, the feeders voted to work toward an equitable and effective solution to the feedlot waste problem but said it was not wise to set down a final program in the immediate future. They further requested the State Water Pollution Control Council for a

minimum of two years time for study, research, and education before reaching a final decision.

The feeder said that there remains much to be done in educating the general public as well as feedlot operators as to existing conditions. They also said little is known of the overall effects of feedlot waste or means by which waste can be effectively and economically

handled.

The feeders also pointed out that there is ample time under existing federal-state agreements to work out these problems and solutions in an orderly manner which would assure full effectiveness of the final program with adequate protection to the feedlot owner and operator.

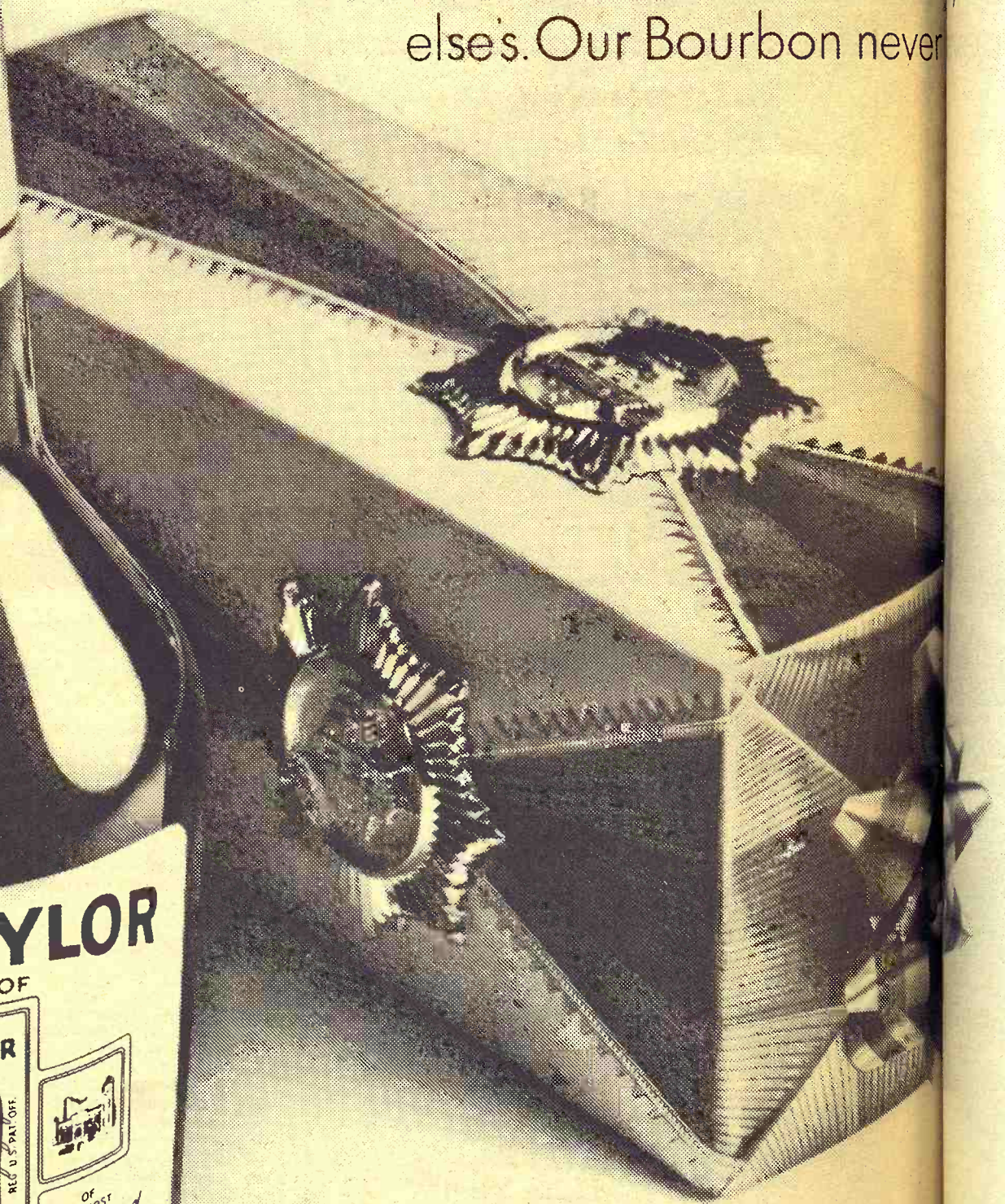
ULYSSES MAN HEADS IRRIGATORS ASSOCIATION

GREAT BEND — L. E. Annis of Ulysses has been elected president of the Kansas Irrigation and Reclamation Association. He succeeds John Ayers of Courtland. Other officers are Leslie McFadden, Ness City; Richard Kelsey, Rossville; Guy Caldwell, Harlan; and Chris Green, Courtland.

Same Old Taylor Some new bottles

Our new bottle just came out. In fact, it came out so pretty we're gift-wrapping it for the holidays.

How come we changed our bottles? Because it looked like a lot of other Bourbon bottles. Now our bottle's not like any else's. Our Bourbon never



MAN HEADS
TORS ASSOCIATION
T BEND — L. E. ...
has been elected ...
of the Kansas Irrigation
clamation Association
e tank farm here. The tank
ceeds John Ayers ...
d. Other officers ...
McFadden, Ness City
e Mobil refinery in Augusta.
Mobil also has pump stations in
the G&G area at Cassoday, Em-
l, Harlan; and Chris-
Courtland.
ria, Bazaar, Eldorado, Burlin-
ome, and Netawaka.

nylo
ott!
st came out
we're gift-
changed our
of other B
le's not like
urbon new



GRASS & GRAIN

CLASSIFIED ADVERTISING

RATES: \$1 a week for 15 words or less. Add 5c a word for additional words. SPECIAL: Four weeks for the price of three. Boxed ads: \$1.68 an inch per issue, flat rate. Send your ads to Ag Press, 1207 Moro, Manhattan, Kansas. Phone JE 9-7558 (25c handling charge if cash not with order.)

AUCTIONEERING

Lawrence E. Welter
AUCTIONEER
REAL ESTATE BROKER
Your Sale Solicited
Large or Small
EAST HIGHWAY US 24
MANHATTAN PR 8-3455
Real Estate
And General Sales

Ed Reimer
AUCTIONEER
We Specialize in Selling
DAIRY CATTLE
"A complete Sale Service"
Phone or write for sale
dates.
Telephone 367-2373
GOESSEL, KANSAS
"Marion County"

For Complete
Auction Service
Selling & Clerking
Call us collect for
sale dates & rates.

Morris Pollmann
765-3988 Alma, Ks.
George Pollmann
636-8531 Paxico, Ks.

FARMS

RANCHES · HOTELS · CAFES

**Real Estate
Selling At Auction**

It's experience and performance
that count. If you are looking
for property, as an investment
or for use, stop by and inspect
our listings.

DAIN'S
REAL ESTATE
Silver Lake, Kans. 582-2770
6 miles west of Topeka
On US Highway 24

ROBT. G. "BOB" WILSON
Auctioneering Sales Mgr.

All Types of Sales

Phone 494-2552

Box 118 St. George, Kans.

CONSERVATION

LAND IMPROVEMENT

"Soil Conservation Doesn't
Cost—It Pays"

Ponds, terraces, waterways,
and leveling, drainage ditch-
es, clearing, landscape grad-
ing.

Roggendorff
Conservation Construction
Arthur Roggendorff
Phone JE 9-3984
1630 OSAGE-MANHATTAN

DAIRY SUPPLIES

**Wamego
Dairy Supply**

Located At
Bit-O-Gold Cheese Bldg.
Dave Doperalski
Authorized DeLaval Dealer
Rubber parts for all makes
Service for all makes
Used milk machines, all makes
We would appreciate being
of service to you.

Phone 456-7200
WAMEGO, KANSAS

MEMORIALS

Cody Memorials

Homer Rundle, Owner
Stones designed and cut by
experienced craftsmen in our
own plant.

Office & Display
4th & Grant
ME 2-2323
CLAY CENTER



Livestock

**WANTED TO BUY
FEEDER HOGS**
40 to 100 lbs. Top prices paid.
J. D. SIMPSON

130 Grant Ave., Junction City
Phone CE 8-3754 or CE 8-3939

**Dairymen — Buy
The Best For Less**

We have for your selection
at all times the largest supply
of

**FRESH SPRINGER
HOLSTEIN — GUERNSEY
JERSEY**

**SWISS and MILKING
SHORTHORN COWS &
HEIFERS**

Financing available—up to 24
mos.

SPECIALS

100 head of open Holstein hei-
fers
50 head Holstein heifer calves

CALVES! CALVES!
We will have 400 to 500 calves
beef cross. 2 weeks to 450 lbs.
At our barn every week for the
next several months.

W. G. WIEBE

Phone CI 4-7625
Summerfield, Kansas

CALVES

HEREFORDS, ANGUS
or Black Whiteface calves
coming from North Wyoming

Weights from 300 lbs. and up
Delivery can be made in one
week or less with only 20 hrs.
on the road.

These are good calves for a
good price. Straight from the
farm to you. See them at my
farm.

Norman Kahle

Phone 466-2855
DELAVAN, KANSAS

**FOR SALE — Purebred Hamp-
boars 8-11 months. Stanley
Cairns, Greenleaf, Kans. Ph.
747-5795. x44**

**PIGS FOR SALE — 50 Choice
Hamps, approx. 65 lbs. Vernon
Nelson, Falun, Kans. x41**

**FOR SALE — Purebred York-
shire gilts, bred to reg. boars.
Feb. farrowing, ST 5-2495, Ivan
Wienck, Randolph, Kans. SB41**

**REG. & PUREBRED Yorkshire
boars & gilts, Edward Heikes &
Son, 5-H Farms, Wamego, Ks.,
Phone 913 456-9405. SB43**

**REGISTERED APPALOOSA, 7
mo. old, Ralph Richardson, Rt.
1, Manhattan, Phone PR 6-7124.
x44**

**HAVE CONSIGNED two per-
formance tested Polled bulls to
the Marshall County Hereford
Sale Dec. 16. Jim Rowland,
Marysville. x41**

**FOR SALE — Eighteen regis-
tered yearling Hereford heifers,
blackleg & calthood vaccinated.
Merl Beach, 535-2238, Emmett,
Kansas. x44**

**TOP 4H prospects. Reg. Angus
heifers 7 mo., reg. Quarter
Horses. Charles Michaels, Rt. 1,
Manhattan, Phone PR 6-7306.
x41**

**FOR SALE — Six nice yellow
Royal Husker yearling heifers
to be sold at the Marshall Coun-
ty Hereford Sale, Dec. 16, Har-
old Stump, Blue Rapids, Kans.
x41**

**FOR SALE — Angus bulls, reg-
istered, mostly Elleenmere
breeding, good selection of 21
month old, not highly grained.
Ralph Latzke, Chapman, Kans.
x44**

**WANTED — Livestock: Steers
or heifers. Will trade good 151
IH 14 ft. combine. John McCor-
mick, Assaria, Kans. x41**

**SPF REGISTERED Duroc and
Yorkshire boars. Serviceable
age. Phone 753-2314. Wilbur
Talkington, Matfield Green,
Kans. x42**

**PUREBRED CHAROLAIS
breeding bulls, including qual-
ified C.M.S. Bred with the com-
mercial man in mind. Loren
Bott, Linn, Kans. 66953. x42**

**EIGHT REGISTERED Angus
bulls, 12 to 20 months. 6 regis-
tered, bred heifers coming two,
4 grade heifers same age. Carl
C. Andersen, Jamestown, Con-
cordia, Phone CH 3-2762. x41**

**HIGH QUALITY registered ser-
viceable age Yorkshire boars for
sale. Neill R. Walker, Rt. 2, Mc-
Pherson, Kans., phone CH
1-2599. x44**

**FOR SALE: 100 Hereford & 25
young Angus cows, some calves
at side. Leonard & Allen Travel-
ute, Waterville, Kans. x41**

**NATIONALLY ACCREDITED
SPF registered Durocs. If you
are interested in some good
breeding stock. Please see these
outstanding boars & gilts. Ser-
viceable age, guaranteed. Harold
Brumm, R 3, Junction City, Ks.
Phone collect CE 8-7258 SB41**

**REGISTERED POLLED Here-
ford bulls 12 to 18 months old.
Phone Navarre. Harry Riffel,
Hope, Kansas. x46**

**WILL TRADE — Big type Pol-
led Hereford bulls, for corn or
late model pickup. Delbert John-
son, Junction City, Kans. x43**

**FOR SALE — Registered Short-
horn bulls, 15 to 20 months old.
Allen Lard, Clay Center, Kans.
x41**

**ANGUS BULLS for sale. All
ages to 2 years. Unusual size
and quality. Top bloodlines. Lar-
gest selection in Kansas. Our
bulls are working in many top
commercial herds. Kenmore
Farms, Roxbury, Kans., Phone
Kenneth Moore, No. 9 or 2314.
SB41**

**CHAROLAIS BULLS 20 mo.,
¾ to purebred. Delivered guar-
anteed. Paul Mannel, Lincoln,
Kansas. x41**

**FOR SALE — 10 registered An-
gus heifer calves sired by M.
Bardoliermere K6. A ton bull
bred by Kansas State Universi-
ty. Champion bull at Topeka
and Hutchinson Fairs. Honey-
cutt Angus Farm, Blue Rapids,
Kansas. x41**

**FOR SALE — Registered York-
shire boars, serviceable age or
younger. Lauer Farm, R3, Hope,
Kansas 67451. Phone Acme 1006
or 1008. x42**

**FOR SALE — American saddle
mare, broke. Call evenings af-
ter 5 p.m. Phone 792-3305.
Frank H. Srna, Barnard, Kan-
sas 67418. x41**

**BULLS FOR Sale. Have sold
all our cows. Bulls are Codd-
ing-Armour Performance tested; 6-7
yrs. old; range condition; very
gentle. Mrs. Slim Pickering,
Manhattan, Kans. Ph. 913 776-
8104. SB42**

**SHORTHORN BULLS suitable
for crossbreeding commercial
or Purebred use. Any age to
2 years old. Keith Lauer, R 3,
Abilene, Kans. x43**

**FOR SALE — 10 head fancy
Angus heifers, all guaranteed
open but all are old enough for
breeding. Also like new 250 bu.
cattle feeder. Leon Geisert,
Hope, Kansas. Phone Elmo 219
SB41**

**FOR SALE — 2 Angus herd
bulls, 3 yrs. old. Marvin John-
son, Brookville, Kans. Phone
225-4575. SB41**

**FOR SALE — 25 registered
coming 2 & 3 yr. old Angus
bulls. From \$225 to \$300. Leon-
ard Travelute, Waterville, Kans.
x44**

**HORSES; COLTS, yearlings,
brood mares; registered quar-
ter horses \$100 up. Mrs. Slim
Pickering, Manhattan, Kans.
Ph. 913 776-8104. SB42.**

**FOR SALE — Duroc boars.
Gilts bred for February and
March litters. Many bred to
Waterloo II, by Waterloo SCMS,
great test station & show boar.
Nationally accredited SPF. Fred
Germann, Dwight, Kans., 66849.
Phone Junction City CE 8-4382.
x44**

**REG. ANGUS heifers, five bred
to calve March to June, at 2
years or older. One Bandolier
bull 15 months old. A number
of early 67 bull prospects. Sell-
ing now, reasonable priced. C.
G. Wagoner, TA 7-6263. 929 So.
Santa Fe, Salina. x41**

**REGISTERED ANGUS bulls,
20 months, rugged, excellent
weight gainability. Keller's Cow
Creek Angus Farm, Chase, Ks.
316 WE 4-2124. x43**

**FOR SALE — 10 Registered
Red Angus bulls. Call Area
code 913 NEptune 4-5347, or
write Elmer L. Donley, Ells-
worth, Kans. x44**

**FIRST CALF Holstein heifer.
Freshen in 10 days. Dam 500
fat. Loren Holm, 913 482-3325.
x41**

**FOR SALE — Mexican Must-
tang Mare, 11 yrs. old. Gentle
with children. 212-12 Leonard-
ville. x41**

**FOR SALE — Serviceable age
registered Holstein bull. John
Meyer, Delavan, Kans. Phone
Burdick 3605. x41**

**FOR SALE — Purebred Hamp-
shire boars and gilts. Glenn E.
Miller, Vermillion, Kans. Phone
382-4220. x43**

**FOR SALE — 9 purebred York-
shire pigs, 6 weeks, nice. Phone
456-9407 Wamego. SB41**

**FOR SALE — 20 good big reg-
istered Holstein heifers with
bull now. Dames of these hei-
fers have excellent records. Al-
so 5 extra good registered hei-
fers to freshen in March. John
Webb, Baldwin, Kans., Phone
913 594-3102. x43**

**SELLING 100 head bred WF
heifers, choice quality, OCV.
Bob Boxberger, Russell, Kans.,
phone 913 483-5136. SB43**

**REGISTERED HAMPSHIRE &
Poland China boars ready for
service. Dean Funston, Abilene,
Kans. Phone Buckeye 3311. x43**

**REG. SHORTHORN bulls, reds
& roans. Sired by the 2000 lb.
Broadarrow 7th. Glenn E. Lacy
& Son, Ph. 427-4513, Miltonvale,
Kansas. x43**

**FOR SALE — Nationally ac-
credited Yorkshire open gilts.
Phone HO 1-5744, Kenneth Vis-
ser, Wakefield, Kans. x43**

**FOR SALE — Registered An-
gus bulls. Eldon Umscheid, St.
George, Phone 456-2372, Wame-
go. x41**

**70 GOOD quality Hereford
cows, weigh 1000 lbs., to calve
Feb. or Mar. \$185. Paul Evans,
Phone 316 439-5354, Kincaid, Ks.
SB42**

**FOR SALE — We always have
a good selection of registered
Angus bulls. Honeycutt Angus
Farm, Blue Rapids, Kansas. x41**

**SEVERAL BIG type serviceable
age registered Holstein bulls
from 20,000 lb. dams, and from
100,000 lb. lifetime record cows.
Harold Scanlan, R1, Abilene. x43**

**NATIONALLY ACCREDITED
SPF Purebred Yorkshire open
gilts. Serviceable age. Harvey
Herrs 4 miles west of Linn,
Kans. Ph. DI 8-2252. x43**

**FOR SALE — Purebred South-
down flock, twenty ewes, 6
rams, 15 lambs. Louis Cooper,
Minneapolis, Kans. EX 2-3051.
SB43**

**PUREBRED SPOTTED or
Yorkshire bred gilts for Jan-
uary and February farrowing.
Selling 40 head. E. T. Lindquist
& Son, Waterville, Kans.; ST
5-2358 or ST 5-2784. SB43**

FOR SALE — Hampshire weaning pigs and bred gilts; also 35 feeder steers. Lawrence Svoboda, Ph. 40, Lincolnville, Kans. x42

FOR SALE — 20 Registered Hereford bulls, 2-years old, sired by 2000 lb. CK Esquire and Battle Intense bloodlines. Muscling, gainability and size. \$300 to \$450. Warren St. Pierre, 10 miles east of Concordia, Kans., phone 913 446-3631 before 8:00 a.m. SB43

FOR SALE — Naturally accredited SPF Hampshire gilts. Galen Wietharn, Axtell, Kansas. Ph. 736-2777. x49

FOR SALE — 6 Holstein heifers to freshen in April & May. Paul Rombeck, Marysville, Pr. HI 34024. x41

FOR SALE — 45 2 yr. old Angus heifers start calving March 35 3 yr. olds, some calving now, balance March. Heifers are choice to fancy quality. Officially calfhood and Lepto vaccinated and pregnancy tested. Bred to Registered Angus Bulls. Ph. ID 9-2346, Jamestown, Burton L. Richards, Scottsville, Kansas. x43

FOR SALE — Approx. 40 Hampshire pigs. Sorrel mare, half sister to Heavenly Gold & Golden Vanity. David Demaray, Burr Oak, Kans. x41

Feed & Seed

DAIRY PELLETS, range pellets and all kinds of fertilizers. Manhattan Milling Co., 107 Pierre, Manhattan. TF Chg

WANT TO BUY

Dry-Baled Alfalfa Hay

Phone 388-2541
if no answer:
Phone 388-2321

LONGFORD MILL PRODUCTS, INC.
Longford, Kans.

FOR SALE — 2400 bales alfalfa hay. Howard Rowe, Scranton, Ks., Phone 793-2581. x41

Automotive

GMC

TRUCKS
½ Ton - 60 Ton
Sales & Service

TRI-COUNTY MOTORS
307 N. 3rd MANHATTAN

FOR SALE — 1965 Chev. V8 pickup with commercially built metal cover, \$1700. Call JE 9-3291, Clarence E. Crowl, RR1, Manhattan. SB42

Come To Skaggs IN MANHATTAN FOR USED CARS

See What The 68's Brought In

1967 Falcon Futura 4-dr. sedan, 6 cylinder, automatic trans., R&H, white sidewall tires, new car warranty. . . . \$1995
1966 Thunderbird 2-dr. hardtop, V-8, automatic trans., p-steering, p-brakes, factory air conditioning, local one owner. Like new; new car warranty. . . . \$3695
1964 Galaxie 500 2 dr. hardtop, V-8, 4-speed, R&H . . . \$1595
1963 Chevrolet Impala 4-dr. hardtop, V-8, automatic trans., p-steering, p-brakes, R&H, local car . . . \$1395
1963 Falcon station wagon, 4-dr., 6 cylinder, automatic trans., local one owner . . . \$1295

OPEN EVENINGS

BANK RATE FINANCING

Skaggs (Ford) Motors
"Where Customers Send Their Friends"

2nd & Houston Phone 8-3525

GOOD 1961 Chevrolet pickup, long stepside bed, 4-speed, mud tires with heavy wheels, two spares, tool box \$700. Marvin Maxfield, Admire, Kans. x41

FOR SALE — 1964 Chevrolet ¾ ton long-wide box, 6 cylinder, 4-speed, heavy springs and overloads, 35,000 miles. Extra good. Myers Motor Co., Marysville, Kans. SB43

70 Used Highway Trucks

58-59-60-61 CHEVY 60 SERIES DUMPS
261 engines, 5 speed, 2-speed rear axle.

60-61 CHEVY 70 SERIES DUMPS
348 V8 engines, 5 speed, 2 speed 18,000 lb. rear axles

59 DODGE D-700 Dumps
354 V-8 engines, 5 speed, 2-speed 18,000 lb. rear axles.

50 DODGE D-700 WINCH TRUCK
With air brakes, 354 V8 engine just overhauled, 5 speed, 2 speed, 20,000 lb. winch and cable, headache rack, gin poles, rolling tail board.

60-61 FORD F-600 DUMPS
292 V-8 engines, 5 speed, 2-speed rear axle

57-58 IHC 180 DUMPS
308 engines, 5 speed, 2 speed 18,000 lb. rear axles.

60 FORD F-600
292 V8, 5 speed, 2 speed, Garwood Hoist and new 13½ ft. Wheatking grain body.

60 CHEVY 60 SERIES
with 261 6 cyl. 5 speed, 2-speed, Garwood Hoist and new 13½ ft. Wheatking grain body.

61 FORD F-600
292 V8, 5-speed, 2 speed, Anthony Hoist and new 13½ ft. Wheatking grain body, choice of 2, one with 15½ ft. grain body.

58 CHEVY 60 SERIES
261 6 cyl., 4-speed, 2-speed Garwood hoist and new 13½ ft. Wheatking grain body.

2 1963 FORDS
One V8, one 6 cyl. F-600, 4-speed, 2-speed, 84" CA Top Rubber, good solid units.

Ames Chevrolet

Kansas' Oldest Chevy Dealership
Phone 316 647-3251
MOLINE, KANSAS

SELECTION & PRICES MAKE WAMEGO MOTORS BEST FOR USED CARS

1966 Ford Custom 500 V8 convertible, PS, air, radio, etc.
1967 Plymouth Fury II 4-door V8, auto., radio, air, etc.
1967 Ford Galaxie 500 390 convertible, PS, radio, air, all safety equipment, A-1
1962 Chrysler V-8, aut., radio, whitewalls, 2 door hardtop
1964 Ford Convertible V-8, aut., radio, new paint, good rubber, A-1
1964 Buick Wildcat 2 dr. hardtop, radio, air & PS
1966 Honda 160 cc, 4200 miles, like new
1967 Mustang demo., fully equipped
1967 Galaxie 500 4 dr. demo., like new

Wamego Motors, Inc.



Phone 456-9567
Wamego, Ks.

THESE TRUCKS ARE JUST RIGHT FOR FARMS

1965 Chev. ¾T 6-cyl., low mileage
1955 Jeep 4-wheel drive pickup w/ new motor
1961 Ford 2-ton 2-spd., 825 tires; can mount box & hoist to suit buyer
1960 Ford 2-ton V-8, 4-spd., good 13x6 Tradewind box
2 older 1½T trucks w/ boxes; your choice at \$295.

We have a NEW 4-wheel drive Chev. pickup V-8, 4-spd.

We have a new 1968 Chevy 50 series 2 tonner for immediate delivery. If you need a new or used truck, come to Skinner's & look over the large selection. We have a truck for you.

Skinner Chev. Co.

625 Lincoln ME 2-2101
CLAY CENTER, KANS.

FOR SALE — 1965 Chevrolet ½ ton, long-wide box, V-8, 4-speed, heavy springs and overloads, radio, heavy duty rear bumper. Low mileage, excellent truck. Myers Motors Co., Marysville, Kansas. SB43

FOR SALE — 1951 Jeep, Phone PR 6-8103, Manhattan. SB42

USED PICKUPS

'67 IHC demo, ½ T
'67 IHC SCOUT, full top, bucket seats, 4-wheel drive, save \$\$\$
'65 Ford F-100, real slick, lwb
'64 IHC, ¾ T, 4-speed, V-8
'64 JEEP "300", 4-wheel drive, winch, lwb, good shape
'64 IHC ¾ T, 4-speed, 6-cyl.
'63 IHC Travelette, the pickup with 2 full seats, nice unit
'61 DODGE "100", 3-speed, lwb
'61 FORD F-100, 4-speed, lwb
'58 IHC ¾ T, lwb, 4-sp., 6-cyl.
'57 ¾ T, recently overhauled
'55 CHEVY "3200", clean unit
'54 CHEVY, 4-speed, flat bed
'53 DODGE, flat bed, grain sides

This is a very good selection of good clean units. We have these priced to move.
SEE US CALL US
We Trade We Finance

Kuhn Truck & Tractor Co.



LAWRENCE, KANS.

SEE THESE TRUCKS IN HERINGTON EVERY ONE A BARGAIN

1965 Chevrolet ½T pickup, V-8 engine, automatic transmission, positraction rear axle, radio and heater, plus many features not found on a new one. Stop in and see this one.
1961 Chevrolet ½T Fleetside pickup, V-8 engine, 3-speed column shift, radio and heater, and a 6½-ft. bed
1962 Chevrolet ½T Fleetside, 8' bed, 4 speed, 6 cyl.
1960 Ford ¾T pickup, 8-foot Styleside bed, 6-cylinder, 4-speed, wrap around bumper
1959 Chevrolet ½T pickup, V-8 engine, 3-speed, 6½-ft. bed with custom equipment
1958 Ford ¾T pickup, V-8 engine, 4-speed transmission, 8-foot bed with wrap around bumper
1958 Chevrolet ¾T pickup, V-8 engine, 4-speed, 8-ft. Fleetside bed, radio, heater and wrap around bumper

BUY NEW NOW
Don't ask us why — but we're trading like mad.

OBERMEYER



Marvin Obermeyer, Owner
Ph. BL 8-2421 Open to 9 p.m.
HERINGTON, KANSAS

Call BL 8-2421 For Evening Appointment

Real Estate

SELLING A Central Kansas Livestock Commission Co.

50% FINANCING

Live Stock Commission Company, Central Kansas. The present owner is past 70 and he would enjoy stepping out.

This Livestock Sales Company is located on five acres of land, many pens of lots of concrete to load cattle on.

The sale barn, ring, seating capacity and the lunch facilities are well above the average.

Their sales day is Saturday and for many years, they have enjoyed a very nice sales volume. The present owner knows that two or three younger men working the area could double the present sales volume.

At present we have 50% financing available.

We will work out the arrangements with one or more individuals, or we will incorporate the business and sell shares to several individuals. You pick who you would like to have in the corporation. Then call us and we will work out the details. As you can see, at this time we are in a position to let you in a new money making business.

Call collect for information

Eldon Thorman

Real Estate & Auction Service
CLAY CENTER, KANS.
Phone 913 ME 2-2148

PRATT COUNTY RANCH

4820 acre unimproved cattle ranch with irrigation possibilities unlimited. Land is sandy and an abundance of water at 250 feet. Fences are in good repair, good native grass, water wells in all pastures. Producing gas well with prospects for more. Realistically priced at only \$100 per acre.

Lloyd H. Mills REALTORS

304 West St. (24-40 Hiway)
AC 913 VI 5-2712
TONGANOXIE, KANS.

CENTRAL KANSAS FARMS

2000 acre ranch, the best of grass & fencing. Lots of water, also some good bottom land that is seeded to brome grass. 2 farmsteads with good building

480 acres, a wonderful home and farmstead, cattle sheds, two upright silos, 290 acres, cultivated, the balance good grass. 115 acres of seeded wheat that goes with the farm. Possession soon. Clay County land.

400 acres, 100 acres creek land, 300 acres of grass, improved Cloud County.

320 acres, 190 acres of good farm land, balance grass. 115 acres of seed wheat that sells with the land. Clay County.

290 acres of 1st and 2nd bottom land.

240 acres, good large country home, the land lays real well. 190 acres broke and 50 acres grass. Cloud County.

160 acres, a wonderful farmstead and home. \$8000 was spent on this home just a few years ago.

80 acres, with a wonderful three bedroom home and many other good buildings, located on a blacktop road near Clay Center.

30 acres unimproved near Clay Center.

2 acres, two bedroom home and double car garage, located at the edge of Clay Center.

Call For Appointment

Eldon Thorman

Real Estate & Auction Service
Phone 913 ME 2-2148
CLAY CENTER, KANS.

THESE HOMES ARE A SHORT WALK TO K-STATE IN MANHATTAN

EAST AGGIEVILLE — 2 bedroom home plus large partially finished 3rd bedroom; gas log fireplace; basement apartment, garage. For the economy-minded buyer — \$10,500.

BETWEEN UNIVERSITY & SENIOR HIGH — Excellent family home; 4 bedrooms plus den; center hall plan; specially designed home; woodburning fireplace; formal dining room, large kitchen; full basement; shaded yard — \$32,000.

ARCHITECT DESIGNED HOME — Central entrance plan, spacious living & dining room, carpeted, wood burning fireplace; lots of built-in bookshelves & storage; screened patio porch; very efficient kitchen, utility room off kitchen; 2 bedrooms with special emphasis on storage closets; central air conditioned; part basement; attractive terms — \$25,850.

NEAR GRADE SCHOOL — 3 bedroom home, large living room, carport, low down payment, immediate possession — only \$11,000.

MOVE IN BEFORE CHRISTMAS — Convenient to Marlatt school — 3 bedroom home, 2 baths, full basement, attached garage: all brick, well landscaped yard — very good buy — \$21,750

For Complete Real Estate Service To Buy Or Sell Call

Maurice McNeil Realtor

Suite No. 11
Union National Bank Building
Office PR 6-4801 Res. JE 9-5164
MANHATTAN

2 BEDROOM HOUSE, breeze-way with attached garage, gas yard light. 229 E. 6th, Chapman, Kans. Phone WA 2-6771 x41

FARMS FOR SALE

160 acres choice upland, 30 acres grass, large modern home, good barn.

280 acres, all conservation work done, has 130 acres of exceptional, good fence and water.

120 acres, 25 acres bottom, 20 acres upland, 20 acres pasture. Some very good buildings. 80 acres nearly all farm land lays very good.

160 acres, good upland, very good barn and silo. 90 acres farmland, balance good grass. The above farms are south east of Abilene and lay close enough, could be farmed as a unit.

160 acres, a very well improved farm on Chapman creek north of Abilene, 30 acres of nearly all farm land creek bottom.

140 acres, just off 18 highway, modern home, half grass. These farms can be bought contract. Call

WILSON REAL ESTATE
CO 3-1812 or Res. CO 3-2400
ABILENE, KANSAS

100 ACRE FARM near Dwiner, Kans. 60 pasture, 40 crop. Home and farm building in good pair. \$4000 down. Jim Kinminde, Auctioneer and Real Estate Broker, 135 E. 29th, Topeka, Kans. 66605. AM 6-4590.

640A NEAR KANORADO

640 acre improved farm north Kanorado; REA, phone, school bus, 1 irrigation well. \$1800. Excellent 2000 acre ranch near Concordia; good fences, 13 lakes, 2 sets improvements, 130 acres US 24 — \$135 acre
640 acres irrigated, 63,000 lb. storage, 4 wells, excellent school, \$300 acre — and 640 acres of land, \$127.50. North of Colby
1600 acres combination grass, irrigated farm, 40x50 round good corrals, REA, phone school bus. — \$200 acre

GENE WATSON

REAL ESTATE AUCTIONEER - BROKER
14 Hillcrest 316 MO 3333
DOUG WILDIN 316 MO 2-7543
Rt. 1, Hutchinson, Kans.

FARMS FOR SALE

NEAR MANHATTAN, KANS.

60A, close to Manhattan
280A, 2nd river bottom
No improvements on either of the above farms.
500A 1st & 2nd river bottom, well improved, and most under irrigation.
Nice 2 & 4 bedroom homes. Manhattan.

Call or see:

Geo. Hoerner
REAL ESTATE
Phone PR 6-9392
MANHATTAN, KS.

Fulmer Real Estate

CATHERINE J. FULMER
REALTOR

Office 456-7636
Res. 456-9281
WAMEGO

SUBURBAN ACREAGE, for sale by owner, due to illness east of Manhattan, Kans., Hwy. 18. Approx. 6½ acres. pasture, 3 acre plowland; 2 bedroom modern home. Immediate possession. Price \$10,500. Phone 456-7636. Call for details. 6-8007.

FOUR ROOM modern house Newton, builtins, hardwood floors, 2 closets, utility room, large garage, garden spot. White Realty, 1144 S. Broadway, Wichita.

FOR SALE — Good Wabunsee County pasture, 205 acres & 180 acres. Elmer Zeekser, Alma, Kans., Phone 765-3420.

FOR SALE — Sat. date Dec 16, 1:00 o'clock. Seven room house and furniture. Antique dining room furniture and china cupboard & other antique furniture dishes, clocks, etc. 204 N. 3rd, Frankfort, Kans. x41

FOR SALE — 1150 acres pasture and 60 tillable good water and fences on contract. E. L. Williams, Frankfort, Kans. Olsburg. Phone 468-3549. x42

BUSINESS FOR
300 acre stock
home, other
Randolph,
\$22,000.
50 acre ranch
new home. Bl
Feed & Hatch
Blue Rapids. I
business.
Hotel, two sto
apartments. P
Marysville, Kan
neighborhood
with living q
good business
Transfer Com
ville. Owners
includes metal
freight equ
right.
Marysville, Ka
Excellent
operation. 10 u
land; reason
if you are in
into business
us. We have s
Northea
Ernest H. I
Henry Nier
709
Phone HI
Phone HI
MARYSVIL
148A-40
48A near Vli
allotments, c
40A south of
good allotm
partially cor
pasture inclu
160A SW of C
lotments
160A S of Cen
completed, a
200A, modern
near Kelly, J
buildings, g
lots of water
up, will sell
100A West of
priced for q
160A N of W
land, all com
ted
40A SW of C
improvement
water, some
stock farm
sell on contr
Glynn F
Pho
Office -
Residence -
AXTELL
FOR
90A farm, 120
pasture, mo
ments, very
stock farm.
tomie Count
20A, 140A far
ture; modern
bottom farm
see County.
365A, 130A far
ture. A lot o
house needs
contract \$55
down. Potta
21 lots in Wal
bedroom hou
all in wheat
shed, double
way 18 east
miles. A ve
\$10,000.
H. L.
Real Est
WAMEGO,
BUILDINGS F
building 25x10
any length; 1
without floors
for sheds or wa
with floor; 1
horse barn 16x
can be delivere
Age Co., Solor
FOR SALE —
miles North
Kans. on Hiwa
floore, Westm
FOR SALE —
ness, everythin
will sell store c
Grocery, Oak H
INCOME PRO
ation, Abilene
lease. Write
Kans.
Farm Ec
CIRCULATI
dryer, Portabl
Don Reed, Cou

BUSINESS & FARMS FOR SALE

203 acre stock farm, modern home, other buildings. North of Randolph, Kans., Priced \$21,000.

500 acre ranch, well improved, new home. Blue Rapids, Ks. Feed & Hatchery business in Blue Rapids. Doing excellent business.

Hotel, two stories, 43 rooms, 2 apartments. Priced to sell. Marysville, Kansas.

Neighborhood grocery store with living quarters. Doing good business in Marysville.

Transfer Company in Marysville. Owners desire to sell; includes metal building and other freight equipment. Priced right.

Marysville, Kans., on US 36 Motel. Excellent husband & wife operation. 10 units with 5 acres of land; reasonably priced.

If you are interested in going into business for yourself, see us. We have some of the best.

Northeast Realty

Ernest H. Plegge, Broker
Henry Nieman, Salesman
709 Center
Phone HI 3-4722 Office
Phone HI 3-3184, Home
MARYSVILLE, KANSAS

148A-400A FARMS

148A near Vliets, Kans., good allotments, over 100A bottom 400A south of Centralia, Kans., good allotments, conservation partially completed, 170A of pasture included

160A SW of Centralia, good allotments

160A S of Centralia, waterways completed, all farmland

320A, modern improvements, near Kelly, Kans., extra good buildings, good allotments, lots of water, good dairy set-up, will sell on contract

100A West of Corning, Kans., priced for quick sale

160A N of Wetmore, all farmland, all conservation completed

340A SW of Corning, modern improvements, abundance of water, some bottom, a good stock farm, on blacktop, will sell on contract.

Glynn Real Estate

Phones:
Office — 736-2365
Residence — 736-2713
AXTELL, KANSAS

FOR SALE

480A farm, 120A farm land, rest pasture, modern improvements, very best. Number one stock farm. \$65,000. Pottawatomie County.

720A, 140A farmland, rest pasture; modern house, all creek-bottom farmland in Wabaunsee County. \$135,000.

505A, 130A farmland, rest pasture. A lot of improvements, house needs some repair. On contract \$55,000 with \$10,000 down. Pottawatomie County.

21 lots in Wabaunsee with 3 bedroom house, modern lots, all in wheat; big barn, cattle shed, double garage, on highway 18 east of Manhattan 12 miles. A very nice home, \$10,000.

H. L. EKART
Real Estate Broker
WAMEGO, Phone 456-9505

BUILDINGS FOR SALE — One building 25x100 ft., can be cut any length; 1 20x36, 1 20x66, all without floors. They are good for sheds or warehouses. 1 20x66 with floor; 1 garney 10x14; horse barn 16x20 real good. All can be delivered. Bob Smith Salvage Co., Solomon, Kans. SB41

FOR SALE — 320 acre pasture, 4 miles North of Westmoreland, Kans. on Hiway 99. See E. H. Moore, Westmoreland, Kansas. SB43

FOR SALE — Quitting business, everything at discount, or will sell store complete. Fengels Grocery, Oak Hill, Kansas. 67472 x41

INCOME PROPERTY, good location, Abilene. For sale, trade or lease. Write box 334, Abilene, Kans. SB41

Farm Equipment

RECIRCULATING GRAIN Dryer, Portable 250 bu. size. Don Reed, Courtland, Kans. x41

1-STOP SERVICE Chain Saws

HOMELITE & MONO

Priced from \$109

Service & parts for all makes. We can take care of your saw.

KIRO Service

6 miles west of Topeka on US24
Phone 913/582-2770

SEE THESE AT MARION

1966 Allis Gleaner C II 18-ft. combine

1961 Case 1000 combine 16-ft. \$2950

1961 Case 800 combine, 14-ft. new overhaul \$2650

1958 John Deere 12-ft. No. 45 combine \$2450

1959 John Deere 12-ft. No. 45 combine \$1750

1964 D-19 Allis gas tractor, clean \$3750

2 New Gleaner A II combines on close-out

2 D-17 Allis gas tractors at close-out

New Oswalt silage loader on Ford tractor \$1950

New Blair feed wagons, all sizes

LONGHOFER SUPPLY CO.

J. I. Case & A-C
Phone EV 2-2620
MARION, KANS.

After Inventory Specials

TRACTORS

1963 I660D, good

1960 F560 gas, ready to go

1960 F460 gas

1959 F340 gas

1956 F400 gas; 1951 A JD

MACHINERY

1951 14 ft. A Baldwin

1963 56W baler, hyd. tension

MM 4-14 plow, pull type

IH FH 4x14 plow

JD 3 pt. 3x16 plow

Trailer with 7x14 box

JD 12 ft. wheel disk

Schaefer 12 ft. wheel disk

Schaefer 10 ft. wheel disk

IH No. 28 FH mower

IH No. 100 trailer mower

No. 50 2 row field harvester

No. 36 1 row field harvester

No. 90 2 row Papec

SEE US ABOUT OUR RED JACKET SPECIAL ON OVERHAUL OF TRACTORS

Abilene Truck & Tractor, Inc.

CO 3-4727
714 So. Buckeye
ABILENE, KANS.

Time For Tax Saving Clearance

SAVE ON EQUIPMENT PLUS EXTRA TAX DEPRECIATION

One new Ford tractor, diesel, Model 410 4E, Selectospeed trans. Ind. PTO, pwr. strg., diff. lock; 16.9x30 rear tires Regular price \$5227, our price \$4227

One new 501 7' Ford mower, regular price \$499. Our price \$400

One new 101 Ford 4 btm. plow, new price \$630, our price \$550

One new Ford loader, new style, one-arm farm type, new price \$425. Our price \$365

One new Ford 14 1/2' field cultivator, new price \$530. Our price \$425

One new three section lift-type spring tooth, new price \$270. Our price \$220

One new Ford 903 post hole digger, new price \$245. Our price \$199

Cash & Carry F.O.B. Fairbury Ford Tractor Division had announced price increase effective November 1, 1967.

H. B. Riley Company
Ford-Mercury-Tractor Dealer
FAIRBURY, NEBR.

IRRIGATORS WINTER Special, Tex-Flow, plain, gated & towlines. Check our price before you buy to save some money. Warren St. Pierre, 10 miles east of Concordia, Kans. Phone 913 446-3631 before 8:00 a.m. SB47

Move-Out-Sale

WE'RE IN A MOOD TO CLEAN THE LOT

TRACTORS

Several of the items listed below have been sold since this was published Nov. 28. However, we have good substitutes, such as a 1961 JD 3010 gas, wfe; and a 1962 real good gas 3010.

1966 JD 4020 dsl., synchro-range, wfe., like new

1964 JD 3020 gas, pwr. shift

1962 JD 3010 dsl., new tires, o'hld., painted

1961 JD 3010 gas, ptd., good

1962 JD 2010 gas, o'haule

1954 JD MT, new rubber

1954 JD 60, pwr. strg.

1955 JD 60, pwr. strg., 3-pt.

1950 JD B; 1948 A; 1946 A

1957 IHC 450 dsl., new rubber, painted; make offer

2 IH Super Ms, 1953, pwr. strg.

1949 IHC M; 1946 M; 1952 AC WD, sell it cheap; 1961 M-H 65 dsl.; 1954 M-H 33

1952 M-H 44, a good tractor

1950 M-H 44, wide front end

1959 Ford Select-O 871

TRACTOR NEWS:

We have traded for 7 late model John Deere 4020 tractors that will be coming in around the first part of the year. If you want a first class tractor with low hours, check with us later. Some of these have synchro-range, others pwr. shift.

USED COMBINES

We'd like to move these out this month, and will not refuse any reasonable, sincere offer on any of the following:

1962 JD 95 w/ 14' header; have 410 corn head to fit, and will sell single or in combination

1958 John Deere 45, 12'

1958 John Deere 45, 10'

1958 M-H 82 Special 12'; also No. 20 corn head to fit. Will sell with or without corn head; as combination we'll sell real reasonable

1956 M-H 80 Special 14', motor just o'hld. This will get your small acreage cut cheap and you'll still have the machine

A few good pull types left

OTHER MACHINERY

JD 210 corn head for 45

JD 10 corn head for 45

3 Hesston milo crop savers, almost new. Will sell these very reasonable

COME OVER & SEE US

We have a very large selection of all kinds of machinery & tools on our lot at east end of town. And we mean to move a lot of these machines fast by pricing everything to sell fast.

We have several used John Deere loaders and 5 different makes of new loaders. We have 2 JD 45 loaders & a 45W.

Farmers Union Hdw. & Implement

Everett Hoobler
Mgr.
Ph. 437-2913
ST. MARYS, KANS.

Vahsholtz Impl. Co.

145 S. 5th
TA 5-4521
SALINA

CHRISTMAS SPECIAL

Prior year model — but Brand New

1966 CASE 190

GARDEN TRACTOR

• 12 Horsepower
• Hydro-Static Drive
Regular list price \$1,238

Special Price \$995 Save \$243

How about a Christmas present for dad (and the entire family) that will be enjoyed for many years?

FOR SALE — No. 30 IHC loader, new cylinders, fits H & M. ST 5-2610, Fred Wienck, Blue Rapids, Kans. SB41

FOR SALE — VE4 20H Wisconsin engine, complete with clutch, \$25.00. Frederick Imhoff, Hanover, Kansas. x41

Specials At Topeka

BUY NOW AND SAVE REAL MONEY. NO INTEREST OR INSURANCE CHARGE ON NEW OR USED EQUIPMENT PURCHASED NOW TILL NEXT SUMMER.

THIS WEEKS SPECIAL

New MF 222 corn head for 300 or 410 combine, freight damaged, list price \$2050, our price \$1450

1964 MF22 corn head for 300, extra good, was \$1075, now \$895

1961 IH91 combine, one owner, excellent condition, with cab, was \$1995, now \$1795

1960 MF82 combine, 12', completely reconditioned, was \$2375, now \$2195

1964 Ford picker-sheller for Ford tractor, used 2 seasons, was \$795, now \$495

1963 MF300 combine 13', fully equipped, one owner, real good condition, was \$4975, now \$4595

1957 MH20 field harvester, PTO drive, very good with knife sharpener \$225

1959 MF 92 combine, airplane tires, one owner, A-1 mechanically, was \$2495, now \$2295

1959 MH 1 corn head for 80 or 82 combine, new gathering chains \$175

1952 MH 26 combine, 12', ready to go \$595

1952 MH 27 combine, good condition, was \$495, now .. \$395

1961 IH 76 combine, PTO, good condition \$225

1961 MH 20 corn head for 80 or 82 combine, extra good condition \$395

PRICED FOR QUICK SALE
New Winpower 6' 3-pt. blade, list price \$95, our price \$69

New Kewanee 8' demo. disk, weathered, HD blades, list \$585, our price \$395

Viking PTO hammer mill, always shedded, very good condition, \$195

New modern box scraper, lever type scarifier teeth, list \$370, our price \$225

Mono 5' pull type cutter demo., new guarantee, list \$380, our price \$225

1962 Super C Farmall, recent overhaul, new tires and paint, excellent condition \$695

1952 MH 44 tractor, new engine overhaul, power steering, near new tires, A-1 condition \$595

Twin-Draulic manure loader for MH 30 or 44 tractor, double-acting cyls., good condition \$225

75% Discount on Large Select Group of Slow Moving MH and MF Parts in Stock.

Wenger Impl. Co.

Boys Industrial School Road
off US 24
Store CE 4-8198
Res. FL 7-0613
NORTH TOPEKA

New Tractors AND OTHER EQUIPMENT At Lower Prices

FOR YEAR-END CLEAN-OUT

AC 190 diesel \$5750

AC 190XT diesel \$6650

AC D17 Series IV \$5000

M670 Super MM tractor \$6250

13 1/2' ft. disk \$900

4 row planter with fert. ... \$1250

6 row 30" cultivator \$995

INTEREST WAIVED INTO 1968

USED EQUIPMENT

Model 60 tractor, John Deere

Model M IHC tractor

Model A John Deere

Model 30 Ferguson tractor

2 JD 3 point plows

2-14 Case plow

Bearman Eqpt. Co.

Allis-Chalmers & Minneapolis Moline
WAMEGO, KS. 456-2310

FOR SALE — New Dempster 3/4 hp submersible pump complete with 42 gal. tank and 130 ft. new 1 1/2 in. pipe. Leonard Berger, Hanover, Kans., Waterville Phone 5-2394. x41

FOR SALE — 66 Gleaner C-II with cab, 16 ft. header, pickup & regular reel, header trailer, 7 ft. pickup attachment, cut less than 1000 acres. 1963 GMC 4000, 16 ft. bed, 42" sides, fold down racks, 14 ton hoist. Lazy JD Ranch, Hoyt, Kans., 66440. SB41

HERINGTON



USED TRACTORS

1964 JD 4020 diesel

1960 JD 3020 gas

1960 IHC 560 gas

1957 JD 620; '56 60 LP

1951 & '46 JD A

1948 IHC Model M

USED MACHINERY

John Deere 45 loader

IHC 33 loader w/ hyd. bkt.

Twin-Draulic for 2010 or Ford

1966 Grain-O-Vator, like new, No. 55

No. 30 Grain-O-Vator

JD No. 22 roller mill

USED COMBINES

1962 Massey 72, 12 ft.

1961 John Deere 45, 12'

1960 IH C 151, 12', w/ pwr. strg., straw chopper & rice tires

1959 JD 45 12'; & 95 16'

1956 IHC No. 141, 14'

1954 IHC No. 127, 14'

1956 A-C No. 66 Big Bin

1967 JD 2-row 34 field hvstr.

1965 IHC 5 field hvstr.

1962 Gehl 2-row harvester

1964 JD 215A windrower w/ conditioner

1963 IHC 163 windrower w/ conditioner

NEW EQUIPMENT ON HAND
See us for: Grain-O-Vators, Blair feed wagons, G-B loaders to fit all tractors.

Gehl feed machinery; Hesston windrowers; Crust Buster harrows; Danuser diggers.

CALL FOR SERVICE

Plan now to make your tractors, combines and balers ready for the new season. Call us for an appointment to do your overhaul work in our well equipped, well-manned shop.

We specialize in diesel work, and are equipped to haul your equipment into our shop and deliver it back.

Tri-County Sales

George Munkres
Phone Collect
BL 8-2249 or BL 8-2991
HERINGTON, KANSAS



SEE US NOW ORDER NOW

New 1968 GLEANERS

E III, G and F Gleaner combines for 1968.

SEE US NOW BUY NOW

New A-C 190XT, 180 and 170 tractors

Extended waiver of interest and other advantages for pre-1968 buyers.

"See Butch or Milt before you buy."

Waterville Motors
ST 5-2731
WATERVILLE, KANS.

Marysville Mchry.
HI 3-4746
MARYSVILLE, KANS.

PEARSON Farrowing Crates

Pearson Better-Built LIQUID MANURE WAGONS
Dealer Inquiries Welcome

Gaylord Mfg. Co.
LA CYGNE, KS. 66040

FOR SALE — 1960 COE 600 Ford with 18' stockrack, 37,000 on new motor, fair rack. 16' insulated body with full rear door & side door, good condition. C. F. Kincaid, Jr., St. Marys, Kans. Phone AC 913 437-2241. SB41



ONLY \$39

Dempster 8 ft. tool carrier
Case 7 ft. rear mount mower
John Deere 3-16 plow
BMB 5 ft. rotary mower frame
Cockshutt 3-16 plow

ONLY \$79

Ford reversible dirt scoop
Ford 2-row cultivator
Dempster 2 row mtd. lister
Ford 4 row mtd. weeder

ONLY \$99

Allis 3 btm. 14" mtd. plow
M&M 5 btm. 14" plow on rubber
IHC 4 btm. 14" plow on rubber
Tandem trailer with sides
Ford 6 ft. side mt. mower

ONLY \$149

Cement mixer, 3 pt. 1 sack
JD 900 12 ft. tool carrier
BMB 5 ft. rotary mower
Ford 12 ft. spring tooth
New Ford 6 ft. rear blade
6 ft. front dozer blade

ONLY \$199

1958 Case 130 mtr. twine baler
1955 NH S66 mtr. twine baler
Ford Standard manure loader
Ford front mt. cultivator
Ford economy cultivators

ONLY \$299

1946 JD D tractor, starter & lts.
1948 Ford 8N tractor
1958 NH 55 side rake
Ford 3 btm. 14" mtd. plow
Ford 3 btm. 16" mtd. plow
1950 Case tractor Model DC
6 ft. rotary bellv mt. mower

ONLY \$399

Sherman 8 ft. backhoe
1950 Case DC tractor
IHC No. 36 forage harvester
Ford 130 3-14 mtd. plow
New Ford 3 btm. 14" plows
Ford 6 ft. flail mower, 3 pt.
New Ford 10 ft. mtd. disc

ONLY \$499

1950 Ford 8N tractor
1952 Massey 55 std. gas tractor
1949 Massey 55 std. diesel
1949 Case LP model LA
1963 IHC 16 forage harvester
59 Crop Guard 275 bu. dryer

54 Ford NAA tractor, A-1 \$699
55 Ford 850 LP tractor \$799
56 Ford 850 tractor \$1299
60 Fordson FPM diesel \$1299
62 Ford 5000 diesel, LPTO \$1299
58 Ford 841 tractor \$1299
59 Ford 841 gas tractor \$1499
59 Ford 841 diesel \$1499
61 Ford 5000 diesel, LPTO \$1699
59 Ford 641 gas tractor \$1299
61 Ford 871 diesel \$1899
64 Ford 4000 gas tractor \$1899
64 Ford 4000 gas tractor \$1999
63 Ford 4000 diesel \$1999
65 Ford 4000 gas, power steering \$2299
65 Ford 4000 Selecto \$2399
65 Ford 3000 gas tractor \$2399
63 Ford 6000 diesel \$499
66 Ford 3000 gas, LPTO \$2999

MERRY CHRISTMAS
AND A HAPPY NEW YEAR

McPherson
Tractor Company

"Ford Tractor —
New Holland Dealer"
Ph. CH 1-2900, McPherson, Ks.

SALINA



1 1967 JD 55 14' combine
1 1961 JD 55 14' combine
1 1958 JD 55 14' combine
1 1953 JD 55 14' combine, cab
1 1962 JD 95 18' combine
1 1959 MF 82 14' combine
1 1963 JD 210 corn attachment
1 1957 IHC 450 RC D, hitch, TA
1 1956 IHC 400 RC D, hitch, TA
1 1949 IHC M RC gas, hyd., PTO
2 1951 Ford 8N gas, 3 pt., loaders
1 1955 Ferguson 35 gas, 3 pt.
1 1958 MF 65 gas, 3 pt., loader
1 1960 Case 730 RC D, 3 pt., PTO
1 1958 Case 800 RC gas, 3 pt.
2 1966 JD 4020 RC D, 3 pt., hyd
1 1962 JD 4010 RC D, 3 pt., hyd
1 1963 JD 3010 RC gas, 3 pt.
2 1961 JD 2010 RU gas, 3 pt.
1 1961 JD 2010 RC gas, 3 pt.
1 1960 JD 830 std. D, hyd., PS
2 1955 JD 60 RC gas, PTO, PS
1 1958 JD 720 RC D, 3 pt., hyd.

Salina Impl. Co.

Box 1029 Ph. TA 3-2206
SALINA, KANSAS 67401

COME TO SHOUSE'S
PREPARED TO BUY
TRACTORS

1957 Moline 445 gas w/ wide
frt.
1960 Ford 871 gas tractor
1960 Deere 730 diesel, nice
1958 Deere 520 gas, ready
1962 Deere 4010 dsl., full eqpt.
1964 Deere 3020 dsl., syncro.
1966 Deere 4020 dsl., w/ turbo
1966 Deere 2510 dsl., only 500
hrs.
1956 Deere 70 dsl., standard O.H.
45 JD Model G; 48 JD Model
B; 50 Model AR; 50 JD Mod-
el G; auso 47 IHC Model M;
49 Moline U; 44 IHC Model
H; and Case D, DC & VAC
57

PLOWS

Deere mtd. 3x14, 5x14
Case mtd. 4x14 w/ hyd. tail
wheel
Deere 66H 4x14 wheel type

DISKS, WHEEL

RW Deere 9'10", like new
blades
RW Deere 11', fair condition
KBA Deere 11', flexible

MISCELLANEOUS

New Idea loader for 445 Mo-
line
New Idea loader for IHC 450
w/ hyd. bucket
Farm Hand loader for U Mo-
line

47 JD loader for 2510 w/ hyd.
bucket & big bucket
Hawk-Bilt 145 spreader
220X Letz PTO burr mill
215A Deere swather
1958 JD 55 combine w/ 14' head
1962 JD 45 combine w/ 12'
head

Allis 9 shank 3-point chisel
BALERS

Deere 14-T w/ engine & throw-
er
Deere 214-WS, real good
Massey No. 3 twine, nice



SHOUSE

IMPL. CO
Abilene, Kans.

Store CO 3-3051
Ed Shouse CO 3-1166
Ron Shouse CO 3-4515

NEW & USED
FARM MACHINERY

1968 170 gas tractor
1951 WD Allis Chalmers
tractor, A-1, new paint
1954 WD 45 tractor, complete
overhaul, new paint
1967 5-ft. Bush Hog cutter, 3-
point hitch
1967 9 ft. Krause chisel, 3 pt.
1967 11 ft. Kewanee disc har-
row
1967 12 ft. Krause disc harrow
1967 Homelite chain saws, all
sizes in stock
1967 Number 170, D-17 loader
1967 New Idea fertilizer spread-
er
1967 3-16 mounted plow
1967 4 row rear mounted cultiva-
tors

Used 4 row Massey Harris lister
with fertilizers
Used Ned Idea side rake
Used Allis-Chalmers PTO side
rake
Used IHC silage cutter and pipe
Used 1951 Allis Chalmers 60 all-
crop harvester
Used 1947 Allis Chalmers 60 all
crop harvester
Used 1966 Sears 28 hp outboard
engine complete with controls
and gas tanks
2 used 25 hp Scott outboard en-
gines complete with controls
and gas tanks
New 3 hp — 6 hp — 9 1/2 hp — 18
hp Evinrude outboard engines
in stock

Gambles riding mower — a nice
one, good condition. 15 used
chain saws — all kinds and
sizes.

Many new plows — Implements
— Discs — Planters and Listers
Check our Christmas prices —
We are making room for all new
1968 merchandise

Patterson Impl. Co.

501 E. Main
Ph. 767-6213
COUNCIL GROVE, KANS.

FOR SALE or will trade for
cattle. 850 Ford tractor, 5-speed
transmission, power steering
and Wagner loader. Phil Hel-
wig, Box 205, Macksville, Ks.,
67557. SB43

TRACTORS — JOHN DEERE

1964 3020 dsl. with turbocharger
1964 4020 dsl. with new tires
1961 4010 dsl. with 18.4 tires
1963 3010 gas with 15.5 tires
1961 3010 dsl. with new tires
1961 3010 dsl. with 3020 pump
1962 3010 gas with new sleeves
1962 3010 gas with low hours
JD COMBINES WITH CABS
1965 95 16'; 1965 55 14'; 1963 55
14'; 1959 55 14'; 1958 45 12'
1953 IH No. 127 14'

MISCELLANEOUS

220X and 80X Letz mills
Viking PTO hammermill
4x14 steerable JD plow
4x14 semi-integral IH plow
10' JD chisel plow
No. 30 Grain-O-Vator
Horn Draulic, Farmhand and
Ford loaders
Oswalt Ensiloader
ready for demonstration & sale

Washington Impl.



EA 5-2301

WASHINGTON

NEW 1967
Mchry. Clearance

MAKE AN OFFER

1 C II Gleaner combine
2 A II Gleaners
1 D-17 gas, 3 point
3 A-C side del. rakes

USED EQUIPMENT

We have a variety of good
used machinery on our lot to be
moved out at inventory clear-
ance prices. Come and look this
over. You may find what you
want and at the right price.

Hinkle's Impl. Co.



EA 5-2334

WASHINGTON, KANS.

TRACTORS & TOOLS
READY TO GO

1963 M-F 65 gas, 985 hrs.
1962 JD 3010 dsl., o'hld.
1960 A-C D-14, wide frt.
1959 Farmall 460 dsl., new bear-
ing package, TA o'hauled
1959 Oliver 770, o'hld.
A good 1949 Oliver 88
1949 JD "B", real slick
Case 12' & IH 10' discs
Real clean IH 60 pull plow
No. 311 IH 3-14 plow
Oliver semi-mt. 5440 plow, 3-14

Peschel Bros.



304 Center

HI 3-4377

MARYSVILLE, KANS.

YEAR END
TRACTOR SPECIALS

1959 JD 830 dsl., dual hyd.
1953 JD 60 gas with 45W loader
1953 JD 60 gas, live hyd. & PTO
1952 MM G LP gas, A-1
1951 JD A, Powr-Trol
1950 JD A, Powr-Trol
1951 JD D with individual
brakes
1947 MM UTU, gas, recent ov-
erhaul

15 ft. Ad-Flex V-plow, like new
JD 8 1/2 ft. KBA wheel disc
Used 112 Chuckwagon, very
good
JD 4x16 mounted plow
Several good 3x16, 4x16 plows
New No. 6 field cutter, sacrifice

WALDON DOZERS
G-B LOADERS

Blanding Impl. Co.



PE 8-3066

BELOIT, KS.

INVENTORY SALE — Nice
1957 John Deere combine, Far-
rar sickle drive, only \$1495. Ex-
cellent 1955 Gleaner, only \$1350.
Good 9N Ford with Sherman
step-up, new paint, \$350. (Sale
ends Dec. 31) Nickel Brothers,
Buhler, Kans. x42

SPECIAL — 1956 John Deere
70 LP., new tires, paint, fully
equipped, excellent condition,
only \$1495. Good 1960 MM GVI,
only \$2250. 1964 MF 65 with
multi-power. Nickel Brothers,
Buhler, Kans. x41

1952 FORD 8N tractor, Sher-
man transmission, new paint,
runs good. Smith's Acetylene
torch; also welding tips, hoses
and gauges, good condition, \$50.
Duane Lund, 111 or 9, Leonard-
ville, Kans. x41

Feed Makers

Gehl No. 65 MX mixer-grinder
Oliver 406 mixer-grinder
Will Demonstrate
USED TRACTORS

931 Case, 1965
560D IHC, 1959, wide axle
400D IHC, 1955, RC
M IHC 1947, wide axles, a good
one
88 Oliver 1949, Wheatland
U MM, 1949
B AC 1957, wide front
Several good used loaders
325 New Holland spreader, new
at a low price

LINDQUIST IMPL.



TA 3-2451

808 N. 10th

SALINA, KANSAS

DAUER
IMPLEMENT CO.

1966 Oliver 1550 tractor, 360 hrs.
1959 IH I 560D tractor
1961 IH I 560D tractor
1940 Farmall M with factory
LP gas

1960 MF 85D tractor
IH No. 10 16x8 grain drill
1958 Massey-Harris 444 tractor
1967 IH 403 combine 16-ft., low
acreage.

1958 F450 tractor, gas
1941 M tractor
McCormick No. 35 13 ft. wheel
disk
McCormick No. 35 10'9" wheel
disk

1957 McCormick 46T twine baler
1962 McCormick 46T twine baler
1964 McCormick 46W wire baler
McCormick 16x8 MF drill, low
rubber & rubber press



Falun

Phone 1011

WICHITA



SEE US FOR CLEAN,
LATE MODEL EQUIPMENT
1966 JD 4020D, 600 hrs., 3-pt.,
23-in. rubber, big fenders
1966 JD4020 LP, 650 hrs., 3-pt.,
18.4 rubber
1963 JD 4010D std., clean
1962 JD 3010D, 18.4 tires, 3-pt.
1962 JD 3010 gas, 3-pt. \$3150
1966 Case 930LP, fully eqpt.
\$5600

1960 Case 930D std. \$3950
1959 AC D17 fully equipped
1957 M&M R w/ loader \$400
1958 JD 720B std., clean \$2500
Good selection of late mtd
JD 55 and 95 combines

Good Selection of Late
Model JD 55 & 95 Combines
FINANCE CHARGE WAIVED
TILL MARCH 1

Western Impl. Co.

2256 S. West St.
WICHITA, KANSAS
Call WH 3-4261

USED MACHINERY

1010 John Deere
51 Super M; 850 Ford, gas
49 8N w/ new Superior loader
49 M Farmall
57 Fordson Major
2 9N Ford tractors
971 D Ford, Tricycle, A-1
H & M IHC front end loader
JD Model 43 corn sheller
6-ft. Imco blade
2-16 A-C snap hitch plow
IHC 3-14 snap hitch plow
H & M cult.
6-ft. Ford 3-pt. flail mower
A-C combine w/ motor
1 1/2-ft. 3-pt. M-F lift disc

Burns-Salisbury



East US24

PR 8-5731

MANHATTAN

1952 FORD 8N tractor, Sher-
man transmission, new paint,
runs good. Smith's Acetylene
torch; also welding tips, hoses
and gauges, good condition, \$50.
Duane Lund, 111 or 9, Leonard-
ville, Kans. x41

LATE MODEL TRACTORS

1965 4000 Ford diesel, 1000 hrs.
1966 6000 Ford demo.
1967 3000 Ford demo.
1963 D-15 Allis Chalmers
1961 340 IHC & loader

OTHER MACHINERY

BMB Brute 6 ft. 3 pt. demo
BMB Brute 7 ft., 3 pt., demo
BMB XL 6 ft., 3 pt., demo
BMB Fury 80, trail type
Ford plow, 5-14, 118 series,
demo.
Ford plow, 4-16, 118 series,
demo.
Ford plow, 3-14, 130 series,
demo.

M. B. Salisbury Co.



114 Quincy

CE 3-7411

TOPEKA, KANS.

FOR SALE — Two bucket
Sears surcingle milker with De-
Laval pump. Roy Sheppard,
Tescott, Kans., Tele. 283-4611.

WANTED — HEADER trailer
for 410 Massey Ferguson com-
bine. Write Sylvester Voss, Se-
ward, Nebr. 68434. x41

1965 ALLIS fast-wrap proto-hal-
er, baled only 2000 bales. Just
like new, \$1000. Phone DE
6-2800. Seneca, Kans. x41

WANTED — Stationary baler,
horse power or belt driven. Al-
bert Ackerman, Sabetha, Phone
AV 4-3307. x41

FOR SALE — 13 ft. bed with
Ramsey winch and 16 ft. poles.
Glen Schlesener, Herington,
Kans. x42

FOR SALE — Seigler oil heat-
ers, one two room and one three-
room. Excellent condition. Roy
B. Shoffner, RR2, Chapman, Ks.
67431. Phone Upland 2411. x41

FOR SALE — Used Big Dutch-
man hog feeding equipment. 16
pens, slats, fence waterers, fog-
gers, feeders, 4 fans, time clock.
Lowell Larsen, Lincoln, Kansas
277-3565. x41

FOR SALE — Badger silo un-
loader for 16-foot silo. Dale Mil-
ler, Milford, Phone CE 8-7354.
Junction City. SB43

WANTED TO BUY — No. 50 or
550 IHC cutter with mower
bar. Phone 913 PE 8-5016, Paul
Mears, Beloit, Kansas. x42

WANTED TO BUY — Used sub-
soiler to fit Allis D-17. Floyd
Fisher, Cottonwood Falls, Kans.
x42

Pets

DOG BED; cedar shavings 25c
lb. Also dog bed-pad filled with
cedar shavings. Mrs. Slim Pick-
ering, Manhattan, Kans., Route
3, 66502. Ph. 913 776-8104. SB44

FOR SALE — 2 sets of coyote
dogs and dogbox. Gerald Berg-
son, Jamestown, Kansas. Phone
439-2228. x41

FOR SALE: Australian-English
shepherd pups, good watch dogs.
Harold Wagner, Wamego, Kans.
Phone 456-7488. x41

Miscellaneous

ARMY SURPLUS
OUTSIDE WHITE

PAINT

\$2.93

Per Gallon

Kimberly Washable
Vinyl Latex Wall Paint

FAITH'S

Furniture

East US 24 PR 8-3788

MANHATTAN

FOR THE ride of your life,
ride a Big Horn saddle from
Key Milling. Clay Center, Kans.
SB TP

Brand New — Full Services —
Private or Semi-Private Rooms
Total electric comfort in subur-
ban setting. Write or call
Leonardville Nursing Home
P.O. Box 217 (Phone 29)
LEONARDVILLE, KANSAS

Help Wanted

MAN WANTED — DHIA Supervisor position, full time employment, partial physically handicapped considered, phone Earl Wigle, Wilsey, Kans. Phone 497-2924. SB43

WANTED — MARRIED man for year round work on grain & livestock farm. Modern house furnished, 2 mi. from town. Write Box 1009 RS. Manhattan, Kans. SB42

HELP WANTED — Man to operate a grain elevator — also have an opening for oil station attendant. Farmers Union Co-op Business Assn., St. Marys, Kans. x41

GOVERNMENT SURPLUS OVERSHOES

Several thousand pair. Some priced as low, per pair:

97c

LLOYD'S SURPLUS SALES
St. Marys, Kansas

FOR SALE — Lumber of all kinds, some long lengths. 2x12 16 & 24 ft.; 2x14 & 24 ft. Feed bunks built to suit buyer. Building trusses, 20, 25 & 50 ft. widths, Bob Smith Salvage Co., Solomon, Kansas. SB41

LIGHTNING ROD sales & service. Prices on request. Old rods reworked, plenty of replacement parts. Weathervanes, old & new styles. Tri-State Lightning Rod Co., Box 183, Hillsboro, Kans., 67063. x43

FOR SALE — Oil burning floor furnace complete with auto control, \$100. 75,000 BTU. Harry Fagan, Rt. 2, Manhattan. SB41

Trueblood Sale Top At \$1275

OSAGE CITY — The Claude Trueblood & Sons Polled Hereford sale grossed \$19,400 with 20 bulls averaging \$398 and 27 females \$424.

The top bull went for \$700 to Serrien's Ranch, Lincoln, Kans. Two bulls brought \$500 each, one going to Jack Wiscomb, Overbrook, and the other to Carl Spooner, Wichita.

Ralph Waite was auctioneer.



SAVE ... AT VAN-T

- 65 Chev. 1/2 T flat bed
- 55 Chev. 1 1/2 T flat bed
- 63 Int. Tandem dump truck
- 65 Chev. tractor
- 67 Chev. 3/4 T pickup
- 67 Chev. 1/2 T pickup, have 3
- 67 Ford 1/2 T pickup
- 67 GMC 1/2 T pickup
- 66 GMC suburban
- 61 Chev. 1 T
- 65 El Camino
- 63 Ford 1/2 T

OVER 100 NEW TRUCKS IN STOCK.



CHEVY TRUCK CENTER

Open Weekdays
8 a.m. to 9 p.m.

3825 South Topeka
TOPEKA, KANSAS



Early Christmas Program

Christmas activity abounds all over the G&G area now, but few started earlier than at Concordia. A Christmas Fair was held there in early October. Here are Trella Currie, Cloud county HD agent, and Mrs. Everitt Higgins, president of the one of the units.

Stock Reduction In Beatrice, Nebr.

AUCTION SALE

**Wednesday
DECEMBER 20**

Starts 11:00 a.m.

Financing Available

Because of the tremendous acceptance of new John Deere equipment this year, we have traded for an outstanding number of good late model machines that we are offering for sale. To be held at Gage County Fairgrounds, Beatrice, Nebr. Loading facilities available. Delivery arrangements can be made. All goods are owned by Klippenstein's and have been traded for by them and will be sold to the highest bidder. There may be more goods added by sale date, as we are trading every day.

15 Tractors

- 1963 JD 4010 diesel
- 1962 JD 3010 gas
- 1961 JD 3010 gas
- 1957 JD 720 gas; 1957 JD 520 gas

- 1955 JD 70 diesel
- 1955 JD 70 LP
- 1952 IHC M with 3 point
- 1952 JD G; 1949 IHC M gas;
- 1949 JD A gas; 1949 JD B gas;
- 1946 JD G

- 1954 JD 50 gas
- 1955 IHC 400 diesel

COMBINES

- 1956 Massey 80 Special 14'
- 1957 JD 45 10'
- 1957 IHC 141

7 BALERS

- 1961 New Holland Super 69
- 1957 Oliver 60T
- 1958 New Holland Super 66
- 1955 Oliver 50T
- 1955 New Holland 66
- 1956 IHC 45
- 1956 Ford 250

LISTERS & PLANTERS

- 1966 Dempster 4-row Plantall with fertilizer
- 1966 Dempster 6 row Plantall, 3 point
- Dempster 4 row rotary lister, 3 point
- John Deere 4 row lister, 3 pt.
- IHC 450 4-row planter
- JD 290 planter on rubber
- JD 246 planter with fertilizer
- JD 4 row rotary lister, 3 point
- JD 540 rotary lister, rubber press

PLOWS & TANDEM DISKS

- AC 4 bottom snap coupler
- AC 3 bottom snap coupler
- MM 4 bottom pull type
- JD No. 55 3 bottom
- JD No. 44 2 bottom
- JD No. 44 2 bottom
- IHC No. 8 3 bottom
- JD P-75 3-point disk tiller
- Ford 3-14 3 point plow
- Kewanee 13' tandem
- Ford 13' tandem
- IHC 11' tandem No. 37
- IHC 10' tandem No. 35
- Cockshutt 10' tandem
- JD FWA 17' folding wings

SPRINGTOOTH HARROWS

- JD F 931 20' with car
- JD F 931 16' with cart
- JD TH 336 12' hydraulic
- IHC 16' pull type
- IHC 12' pull type
- Case 11' pull type
- New 20' Crustbuster

HAY TOOLS

- JD 350 3 point PTO rake
- JD 594 LW
- Several 4 bar Oliver MM, David Bradley, JD, IHC rakes
- JD 894 semi-integral rake
- JD 7' No. 5 mower, quick tach
- New Idea 7' semi-mount mower

- Farmhand wheel rake
- Gehl Forage box with trailer
- New Idea 7' trail mower

CULTIVATING EQUIPMENT

- 2 JD 414 rotary hoes
- JD 851 H 4 row listed corn cultivator
- Continental 2 row
- Ford 2 row cultivator
- IHC 4 row listed corn cult.

MISCELLANEOUS

- Farmhand stacker on F-20 tractor
- Knoedler PTO burr mill
- Letz 220 PTO grinder with mill feeder
- JD 10A hammer mill
- JD N PTO spreader
- MM 9' field cultivator
- NEW Malco 41' auger (demo)
- JD 40' elevator
- Krop King elevator
- Stan hoist loader to fit JD
- Eversman Land Plane
- Massey Harris 4 sec. rotary hoe
- Dunham 2 row rotary hoe
- Cheerokee 6' blade
- NEW Big Beaver 8' Industrial blade
- New Idea PTO stalk shredder
- 2 EZ Flow 12' fertilizer spreader
- New bale loader
- 6 row trailer sprayer

- Lawn & Garden Tractors
- IHC Cub Cadet with mower & snow blower
- JD 110 with mower
- 4x16 portable feed bunk

- Several small items—weights, cylinders, miscellaneous.

TERMS: CASH — Or financing available, one third down, up to 36 months on the balance. No interest until March 1, 1968 — make credit arrangements prior to the sale.

KLIPPENSTEIN'S

Authorized John Deere Dealer
804 South 6th — Phone 223-4052
BEATRICE, NEBRASKA
Clerk: Beatrice National Bank & Trust Co.
Schultis & Son & Wolken, Auctioneers
Livestock, Real Estate and General Farm Sales
Irvin Schultis, 1109 K St., Fairbury, Phone 729-2435
Wayne Schultis, Diller, Nebr., Diller Phone 793-3005
Duane Wolken, Diller, Nebr., Harbine Phone 754-4371

PURINA PLANT AT LIBERAL NOW OPEN

LIBERAL — A new Ralston Purina has already started selling bulk feed here altho the plant will not be finished until after the first of the year. The output of the plant will be 50,000 tons per year, with employment at 50 men under full production. There is a similar sized Purina plant at Wichita. The Liberal plant will start packing feed in 1968.

CONSIGNMENT

HORSE SALE
Wilson Sale Barn
SALINA, KANSAS
SUN., DEC. 17
To consign, contact:
Bernard Ireton
Salina, TA 3-8263
Al Soukup, Wilson, 658-2925
Roger Johnson
Salina, TA 3-9306
Bob Perry, Jr.
Salina, TA 3-6749

NEW IH MACHINERY & TRACTORS BUY BEFORE PRICE INCREASE

- | | |
|--|---|
| New 656 gas tractor | New IH 309A 3x14 plow, demonstrator, new price \$550. |
| New 656 D tractor | Sale \$385 |
| New 706D tractor | No. 45 Vibra Shank mounted cultivator, 12 1/2", can be extended, demonstrated |
| New 806 D tractor | No. 14 side rake |
| New 7' trailing chisel plow, demonstrated | New No. 120 balanced head mower |
| New Nu-Way bale handler, new price \$870, Sale \$575 | New No. 200 Pitman mower |
| New Fast Hitch 201 platform carrier | New No. 37T baler |
| New No. 550 5x14 steerable plow, 3 pt. or fast hitch | New No. 47T baler |
| New No. 560 6x16 steerable plow 3 pt. or fast hitch | New No. 303 13' combine, no cab |
| New 4 section rotary hoe | New No. 350 1-row field cutter |
| New No. 470 wheel disk with folding extension, 18"7" | New No. 311 66" cut rotary cutter trailing |
| New No. 370 wheel disk 12' 12" 11' and 14-ft. | New 201 fast hitch platform carrier |
| New No. 58 6-row planter | New No. 200 fast hitch back fill blade, 8' |
| New No. 10 combination 16x8 drill | New 2001 loader with hyd. bucket |
| New 663 6-row rear mounted cultivator, demonstrated | New No. 1050 grinder mixer |
| | 3 new Gandy insecticide units |

NO INTEREST UNTIL 1968 SEASON ON TRACTORS, COMBINES & HAYING MACHINES AND SOME OTHER ITEMS — ALSO USED TRACTORS & COMBINES

Used Equipment

- 1964 IH 706 dsil. tractor
- 1960 M-F 85 tractor
- 59 Ford 971 D tractor, recently overhauled \$1485
- 51 IH WD6 tractor \$295
- 51 IH W6 gas tractor \$395
- 50 MH 30 tractor \$285
- 47 IH MD tractor \$585
- 47 Allis tractor with cultivator \$195
- MM ZTU tractor \$85
- IH M tractor with live hydraulic \$595
- 36 Allis U tractor, recently overhauled \$95
- IH 4-row pull weeder ... \$195
- Case field cutter, single row
- 1967 IH 550 field cutter, used very little
- IH 101 combine, 12 ft. \$2745
- Allis 66 combine with motor in good shape \$295
- IH 125SP combine \$150
- 67 Ford No. 612 field cutter with cutter bar and row crop, pick-up att. \$1375
- IH 55W baler with engine \$295
- IH 55T baler with PTO .. \$395
- Co-op 7' PTO mower \$25
- Ferguson 3 pt. mower \$25
- IH HM 16 mower \$45
- Sears side rake \$145
- IH No. 5 side rake \$195
- IH 2 ME corn picker \$195
- IH 2M corn picker \$145
- 51 Case corn snapper, pull type \$95

Used Cars

- 1967 Camaro 6-cyl. std. demo. big reduction
- 1966 Impala 4 dr., 327 V8, power, aut. trans. \$2050
- 1966 Impala 4 dr. 327 V8, power, air, aut. trans. \$2250
- 66 Chev. II Super Sport coupe, 327 V-8 engine 4 speed, just in
- 1965 Volkswagen station wagon, just in
- 1964 Bel Air 4 dr. V8, aut. trans. \$1235
- 1964 Pontiac Catalina 4 dr. V8, power, air, aut. trans. ... \$1585
- 1963 Ford F500 V-8, just overhauled, std., 4 dr. \$880
- 1963 Impala 4 dr. V8, just overhauled, aut. trans. \$1095
- 1963 Ford Fairlane 2 dr. V8, std. trans., air \$850
- 1963 Chev. Bel Air 4 dr. V-8 pwr. glide, pwr. strg., just in
- 1962 Impala 4 dr. V-8, aut. trans., air \$955
- 1962 Bel Air 4 dr., V8, aut. trans. \$795
- 1961 Biscayne 2 dr. 6 cyl., std. trans. \$485
- 1961 Bel Air 4 dr., 6 cyl., aut. trans. \$545
- 1961 Biscayne 4 dr., 6 cyl., aut. trans. \$485
- 1960 Studebaker convertible, V8, aut. trans. \$275
- 1960 Chevrolet spt. cpe., V-8, aut. trans. \$450
- 1960 Ford station wagon 6 cyl., std. trans., 9 pass. \$375
- 1959 Bel Air 4 dr., V-8, aut. trans. \$295
- 1959 Biscayne 4 dr. V-8, aut. trans., air \$185
- 1941 Chev. coupe
- 1959 Ford spt. cpe., V8, 3 spd., trans., speed shift \$395
- 1956 Nash 4 dr., aut. trans., V8. \$175
- 1956 Chevrolet 4 dr. V8, aut. trans. \$195
- 1956 Cadillac Spt. Cpe., V8, aut. trans., power \$250
- 1963 Ford V8, half ton, 3-spd., with overdrive \$1035
- 1952 Chevrolet half ton, 4 speed \$125
- 1951 Chev. 1/2T pickup, grain sides & stock rack
- 1957 International 3/4 T pickup, grain sides & stock rack
- 1951 Ford three-quarter, 4 speed, 6 cyl. \$125
- 1959 IH 1/2 ton pickup, 4 speed, 6 cyl. \$395
- 1949 Dodge 1 1/2 T w/ bed . \$345
- IH No. 8 3x14 plow \$95
- Case 3x16 plow \$65
- IH No. 8L 4x14 plow \$195
- 67 RCD71L electric stove \$225
- Frigidaire refrigerator \$85
- Sargent manure loader

OPEN 8 A.M. TO 7 P.M. DAILY DURING SALE
OPEN 1 TO 5 P.M. SUNDAY
Evenings Call Bill Auld, HO 1-8311, Harry Marshall, HO 1-5826

AULD CHEVROLET CO.

PHONE HO 1-5414

WAKEFIELD, KANS.

New Feedlot Controls Set For January 1

GREAT BEND — New regulations to curb water pollution resulting from cattle feedlot operations are expected to be implemented Jan. 1.

J. Lee Mayes, chief engineer for Environmental Health Services, Kansas Board of Health, made the announcement while speaking on the management of feedlot runoff at the 4th annual meeting here of the Kansas Irrigation and Reclamation Association.

He said the new regulations, to be administered by the state Board of Health, would make it necessary for persons operating feedlots of 300 head or more to be registered with the agency.

Any persons proposing new feedlot operations of that size would be required to submit their plan of operation to the State Board of Health for approval before its initiation, Mayes said.

The regulations would have the effect of licensing feedlots to insure that they do not present a threat to the public health and welfare.

Mayes said officials of the agency still do not feel they know all the answers to controlling feedlot effluent.

"But we do know enough

about it to devise controls that will be substantially effective," he said.

Sanitation engineers are attempting to minimize feedlot runoff, he said, by diverting runoff from other land around feedlots to prevent its becoming contaminated. The second major endeavor is to devise ways of disposing of wastes caught in collection pools.

Mayes said the present approach is to follow the old tradition of returning it to the land as fertilizer.

"It is decidedly inferior to commercial fertilizers. We can't look at these materials as a substitute or competitor to commercial products," he said.

The main benefit is from control of nutrient pollution of streams, surface water, and keeping harmful nitrates out of ground water. The State Board of Health has plans to do research with test wells to determine some of the problems around effluent collection pools, Mayes said.

MORRIS BURWELL HEADS ABILENE CO-OP

ABILENE — Morris Burwell has been elected president of the Abilene Cooperative Association. Other officers are Henry Kohman, Richard Whitehair, and Robert Feigley.

The Growing Hog Market Is At

WASHINGTON SALES CO.

TRY US SOON

HOGS every TUESDAY
CATTLE every WEDNESDAY

All Sales Start 1:00 p.m.

YOU GET ACTION

AT THE WASHINGTON AUCTION

ED BURT

Barn Phone EA 5-2266

Residence EA 5-2393

Washington, Kans.

Ronald Rice Motors, Inc.

CHEVROLET OLDSMOBILE CADILLAC
North Kansas' Largest Volume Dealer
NW 2nd Phone CO 3-4000 ABILENE, KANS.

NEED A SECOND CAR ?

See Ronald Rice Motors
FOR YOUR BEST BUYS

1964 VOLKSWAGEN 1500 Series 2 dr. Radio, heater, stick shift.	\$1495
1964 CHEVROLET Biscayne 4 door V-8 Radio, heater, automatic transmission, power steering, power brakes, air conditioner	\$1345
1964 MG 1100 Series 2 door Radio, heater, 4 speed.	\$ 695
1963 CHEVROLET Biscayne 4 door 6 cyl. Radio, heater, stick shift.	\$1095
1962 FORD Falcon 2 dr. Station Wagon Radio, heater, automatic transmission	\$ 695
1961 PLYMOUTH Savoy 4 door 6 cyl. Radio, heater, stick shift. This is a real clean car.	\$ 495
1960 PLYMOUTH Savoy V-8 convertible Radio, heater, automatic transmission, power steering.	\$ 395
1959 BUICK LeSabre 2 door Hardtop Radio, heater, automatic transmission, power steering, power brakes.	\$ 295
1959 OLDSMOBILE Super 88 4 door Hardtop Radio, heater, automatic transmission, power steering, power brakes.	\$ 495
1959 CHEVROLET Impala 4 door V-8 Hardtop Radio, heater, automatic transmission.	\$ 695
1951 CHEVROLET 6 cyl. aut. trans.	\$ 145

Several Other Make And Models To Choose From
Also Plenty Of New Models

Open Evenings Till 9 p.m.
Sundays 1 to 5 p.m.

G&G Calendar

Dec. 11 — Farm Sale northeast of Concordia, Kans., Mr. and Mrs. Russell Kimmel. Auctions Larry Lagasse and Rollie Lagasse.

Dec. 12 — Farm sale north of Emporia, Kans., Mrs. Art Cole. Auct: Evert Smith.

Dec. 14 — Consignment horse sale in Concordia, Kans., Tom Walker. Auctions Rollie Lagasse and Larry Lagasse.

Dec. 14 — Farm sale southwest of Fairbury, Nebr., Mr. & Mrs. Louis Fiser. Auct. Harold R. Siegel.

Dec. 14 — Farm sale & cattle east of Mahaska, Kans., Louis Fiser. Auct. Harold R. Siegel.

Dec. 14 — Farm sale, Mahaska, Kans., Louis Fiser. Auct. Harold R. Siegel.

Dec. 14 — Farm sale south of Harbine, Nebr., Henry Oltman. Auctions: Schultis & Son & Wolken.

Dec. 14 — Second annual fall cleanup sale in Lenox, Iowa, Barker Impl. & Motor Co. Auctions, Hagel Auction Co.

Dec. 15 — Farm sale northwest of Clifton, Kans., Mr. & Mrs. John Raymer. Auct: Foster Kretz.

Dec. 15 — Consignment horse sale at Junction City, auctions Howard Langvardt and Duane Gugler.

Dec. 16 — Complete dairy dispersal southeast of Lyons, Kans., Paul Colle. Auctions Ted Krehbiel and Marvin Krehbiel.

Dec. 16 — Reg. Hereford sale in Eureka, Kans., Joe Lewellen. Auct. Gene Watson.

Dec. 16 — Real estate auction in Junction City, Howard Killian. Auct. & Real est. broker C. W. Crites.

Dec. 16 — Tractors and farm machinery in Laurel, Nebr., McCorkindale Implement Co. Auctions Hagel Auction Co.

Dec. 16 — Marshall County Hereford Assn. annual consignment sale, Marysville Sales Barn.

Dec. 17 — Consignment horse sale in Salina, Kans., Bernard Ireton, sale mgr.; Bob Perry and Roger Johnson, auctions.

Dec. 20 — Stock reduction auction in Beatrice, Nebr., Klippenstein's, John Deere dealer. Auctions Schultis & Son & Wolken.

Dec. 22 — Holstein dispersal northwest of Beatrice, Nebr., John Sagehorn. Auctions. Schultis & Son & Wolken.

Dec. 28 — Real estate in Clay Center, Kans., Imogene J. Burch estate, Bruce H. Winegerd, admin. Auct Foster Kretz.

Jan. 12 — Real estate & hospital equipment near Fort Riley, Kans., Geary County Commissioners. Sale mgr. & auct. C. W. Crites, real est. broker.

Jan. 20, 1968 — Rebenstorf Herefords Production sale, Elmer Rebenstorf, Sylvan Grove, Kans.

Jan. 24 — Farm sale northwest of Manhattan, Kans., Richard D. Martin. Auct: Foster Kretz.

Feb. 3 — BFY bred Hampshire gilt sale in Emporia, Kans.

Feb. 3, 1968 — Annual 4-H & FFA annual swine judging school in Smith Center, Kans.

Also Duroc auction. Albrecht and Popp.

Feb. 5 — Farm sale northeast of Enterprise, Guy Rider. Auct Foster rKetz.

Feb. 10 — Northeast Kansas Hereford Assn. sale in Wakarusa, Kans., L. Eldon Gideon, secretary.

Mar. 16 — Angus production sale southeast of Olsburg, Laflin Bros. Ralph Waite, auct.

Mar. 23, 1968 — Central Kansas Polled Hereford Assn. show & sale in Abilene, Kans., Arnold Wittorff, Inman, sec.

TEX REAL
ONWARD 95th

Cow Herd
Royal Essar
C Kato, Heir
Apparent

SERVICEABLE BULLS
WITH WEIGHT RECORDS
Priced . . . \$300 to \$500

GRANT POOLE
MANHATTAN, KANS.
Located 4 mi. south of I-70-K177
intersection, 2 mi. west on McDowell Creek Rd. Ph. PR 6-8315.

Consignment HORSE SALE

FRIDAY NIGHT,
DECEMBER 15

Tack 7:00 p.m. Horses 7:30 p.m.

At the JC Livestock

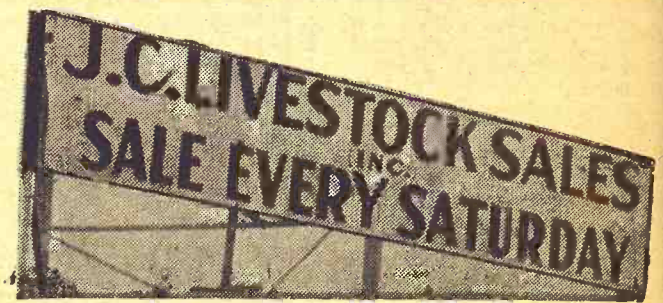
Sale Barn in
JUNCTION CITY, KS.



EXPECTING 50 TO 75 HEAD

We have several out-of-town buyers looking for good ponies. If you have horses to sell at an established sale like JC, contact us or the auctioneers or call the sale barn: 913 CE 8-1471.

— AUCTIONEERS —
HOWARD LANGVARDT **DUANE GUGLER**



HOGS START AT 11:00 A.M.
CATTLE AT 1:00 P.M.

There were over 150 consignments at the sale last Saturday, and buyers to take all the animals that went through the ring. The cattle market was a little rougher than a week ago, but prices held steady all the way. The hog market was steady to higher.

We have demands for more feeder cattle, both steers and heifers. If you have some you want to sell, let us know and we'll appraise them for you.

Also, we invite you to check the prices we've been getting for swine. Look at the weights and the prices and you'll know why more and more feeders are bringing their hogs to Junction City.

The following is a sampling of the sale last Saturday:

STEER CALVES		COWS	
27 black steers	520 @ 28.10	Better grade cows	\$14.50 to \$16.00.
22 whiface steers	395 @ 30.40	Canners	\$13.00 to \$14.50.
12 black steers	340 @ 29.00		
5 black bull clvs	590 @ 25.50	HOGS	
10 bull calves	485 @ 26.75	11 mixed hogs	223 @ 17.70
19 whiface steers	390 @ 28.40	16 hamp hogs	241 @ 17.60
25 whiface steers	410 @ 27.80	53 mixed hogs	210 @ 17.50
5 whiface steers	410 @ 29.80	8 mixed hogs	208 @ 17.60
		16 red hogs	240 @ 17.15
		44 hamp hogs	232 @ 17.20
		6 white hogs	247 @ 16.95
HEIFER CALVES		SOWS	
22 blkwhif heifers	295 @ 26.70	2 white sows	462 @ 14.20
8 whiface heifers	410 @ 24.00	6 mixed sows	484 @ 14.00
24 black heifers	405 @ 24.20	3 white sows	415 @ 13.90
12 whiface heifers	385 @ 24.90	1 hamp sow	485 @ 13.00
22 whiface heifers	445 @ 24.50	1 red sow	530 @ 13.90
16 black heifers	300 @ 25.50	1 white sow	635 @ 13.10
FAT CATTLE & FEEDERS			
4 whiface heifers	725 @ 22.50		
3 whiface steers	1010 @ 24.00		
1 whiface steer	865 @ 24.00		
15 whiface steers	830 @ 24.00		
15 blkwhif steers	905 @ 23.85		
17 whiface steers	795 @ 23.00		
9 whiface steers	860 @ 23.75		
HOLSTEIN STEERS			
Had a lighter run, brought \$20.55 to \$21.40.			

LICENSED AND BONDED
BARN PH. JUNCTION CITY CE 8-1471

If you have livestock to appraise, call:

VERN LANGVARDT, Manager, 502 UPLAND
HOWARD LANGVARDT, Auctioneer, 520 UPLAND
HERB NEUMEYER, White City, Phone 349-2863

Sell At St. Marys

Sell Or Buy Cattle & Hogs Auction Tuesdays

On receipts of 1608 cattle we had a very active sale. All classes of stockers and feeders were selling steady with the exception of fleshy feeder steers, which were 25¢ to 50¢ lower. All grades of killing cows were 50¢ lower. The following is a sampling of the sale:

STOCKER & FEEDER STEERS		
7 whiface steers	565 @	27.60
7 blk&blkwhif steers	562 @	26.30
11 black steers	595 @	26.30
8 black steers	561 @	26.10
30 whiface steers	621 @	26.00
7 whiface steers	637 @	26.00
7 whiface steers	664 @	26.00
2 whiface steers	655 @	25.75
9 black steers	603 @	25.70
20 black steers	738 @	25.50
3 black steers	710 @	25.30
12 black steers	657 @	25.30
17 black steers	681 @	25.20
6 black steers	634 @	25.00
6 black steers	656 @	24.95
4 black steers	790 @	24.95
33 whiface steers	705 @	24.85
24 whiface steers	742 @	24.85
20 whiface steers	711 @	24.75
4 black steers	730 @	24.70
23 blkwhif steers	814 @	24.65
26 black steers	807 @	24.65
18 black steers	765 @	24.50
8 charolais steers	670 @	24.50
7 whiface steers	701 @	24.50
7 whiface steers	763 @	24.15
35 black steers	927 @	24.10
8 blkwhif bulls	580 @	24.00
37 mixed steers	877 @	23.90
25 mixed steers	853 @	23.90
35 mixed steers	887 @	23.90
29 whiface steers	953 @	23.80
20 mixed steers	696 @	23.80
7 black steers	765 @	23.70

8 blkwhif steers	775 @	23.50
31 whiface steers	761 @	23.50
12 whiface steers	768 @	23.50
10 whiface steers	830 @	23.50
10 blkwhif steers	862 @	23.00
7 blkwhif steers	810 @	22.90
13 mixed steers	753 @	22.75
14 whiface steers	838 @	22.75
8 black steers	898 @	22.00
20 holstein steers	711 @	20.70
8 holstein steers	845 @	20.30
5 holstein steers	1058 @	19.75
8 holstein steers	933 @	19.65

STEER CLAVES		
1 black steer	450 @	31.00
16 black steers	370 @	30.40
14 whiface steers	351 @	30.00
7 black steers	326 @	30.00
5 whiface steers	326 @	30.00
3 whiface steers	423 @	29.80
13 black steers	502 @	29.60
4 whiface steers	480 @	29.30
3 whiface steers	316 @	29.00
5 black bulls	306 @	28.80
11 whiface steers	427 @	28.80
9 whiface steers	478 @	28.80
10 whiface steers	516 @	28.25
14 whiface steers	493 @	28.20
4 black steers	458 @	27.80
13 black steers	497 @	27.70
4 black steers	542 @	27.10
3 whiface steers	526 @	26.70
5 black steers	429 @	26.30

For Information or Estimates

Rezac Barn	St. Marys 437-2999
Delaine Rezac	St. Marys 437-6266
Elmer Imthurn	Maple Hill MI 3-2440
Paul Kramer	St. Marys 437-2993

Auctioneers: Lawrence Welter, Gene Toby

6 whiface steers	521 @	26.30
7 whiface steers	542 @	26.25
6 whiface steers	499 @	26.10
4 black steers	508 @	24.10
9 whiface bulls	538 @	23.70

STOCKER & FEEDER HEIFERS

14 whiface heifers	638 @	24.50
3 black heifers	578 @	24.10
2 whiface heifers	595 @	23.80
10 charolais heifers	640 @	23.55
3 black heifers	645 @	23.50
17 black heifers	576 @	23.40
3 black heifers	691 @	23.30
1 whiface heifer	715 @	23.00
3 mixed heifers	665 @	22.60
5 whiface heifers	594 @	22.25
9 black heifers	607 @	22.20
9 whiface heifers	723 @	22.10
8 black heifers	696 @	22.00
5 blkwhif heifers	673 @	21.85
2 whiface heifers	662 @	21.80
2 blkwhif heifers	635 @	21.70
7 mixed heifers	764 @	21.50
3 mixed heifers	776 @	21.30
6 black heifers	726 @	21.10
7 whiface heifers	883 @	21.10

HEIFER CALVES

3 mixed heifers	193 @	29.00
1 whiface heifer	225 @	26.50
12 whiface heifers	343 @	25.90
20 whiface heifers	386 @	25.60
5 whiface heifers	360 @	25.10
11 black heifers	400 @	25.00

15 whiface heifers	446 @	24.60
7 whiface heifers	551 @	24.60
14 whiface heifers	404 @	24.50
8 whiface heifers	494 @	24.50
14 blk&blkwhif heifers	440 @	24.50
7 whiface heifers	404 @	24.50
3 whiface heifers	520 @	24.40
13 black heifers	480 @	24.35
23 whiface heifers	484 @	24.30
4 black heifers	426 @	24.10
3 whiface heifers	456 @	24.10
9 blk&blkwhif heifers	432 @	24.00
3 blkwhif heifers	536 @	23.90
7 black heifers	527 @	23.10
10 whif&blkwhif heifers	430 @	23.10
5 whiface heifers	539 @	22.85
4 whiface heifers	511 @	22.80
4 blkwhif heifers	512 @	21.60
3 black heifers	443 @	20.70

COWS

3 holstein cows	1431 @	16.50
3 holstein cows	1353 @	16.25
1 holstein cow	1150 @	16.00
1 holstein cow	1285 @	15.80
1 black cow	1090 @	15.50
1 holstein cow	1140 @	15.30
1 whiface cow	1355 @	15.00
1 whiface cow	1265 @	15.00
1 holstein cow	1190 @	15.00
1 whiface cow	930 @	14.60
1 holstein cow	1155 @	14.10
1 whiface cow	910 @	14.00
1 whiface cow	930 @	13.70
1 brof cow	745 @	13.50
1 black cow	1030 @	12.70
6 whif cows & clfs		22.00
9 black cows & clfs		195.00
4 whif cows & clfs		168.00

LIVESTOCK COMMISSION COMPANY

Rezac



St. Marys
Kansas



We sold 3241 cattle, 873 hogs last week on a very active market. The feeder, steer and fat heifers were 25¢ to 50¢ lower. The yearlings look fully steady but the calves looked 50¢ to \$1.00 lower. The butcher cows were 50¢ lower on Thursday. We have another good sale lined up for next Thursday. We will not have a Monday Sale December the 25th. Only a Thursday sale that week. Here are a few sales made last week.

CATTLE

Florence Shoemaker, Min.	34 wf steers	884 @	23.50
Florence Shoemaker, Min.	5 blkwf hfrs	642 @	23.00
Norman Rundquist, Falun	4 wf steers	441 @	28.80
Norman Rundquist, Falun	11 wf hfrs	423 @	26.00
Bud Moll, Lit. River	27 shtn str	198 @	24.00
Bud Moll, Lit. River	24 blk str	740 @	24.70
Bud Moll, Lit. River	25 shtn hfrs	71 @	23.00
Joe Truhler, Lorraine	8 wf steers	505 @	28.25
Eli Deschand, Miltonv.	13 blkwf str	728 @	25.00
Robert Geis, Durham	10 wf str	851 @	23.10
Emery Ecklund, Miltonv.	6 wf str	695 @	24.60
Emery Ecklund, Miltonv.	3 blkwf str	623 @	24.60
Jim Stroble, Linds.	178 mx hfrs	706 @	22.80
C. E. Bengston, Linds.	12 sht str	391 @	29.70
Caldwell Bros., Culver	3 wf str	673 @	25.70
Caldwell Bros., Culver	7 wf str	767 @	24.35
Lowell Williams, Galva	24 wf str	730 @	25.60
LeRoy Sundberg, Linds.	73 wf str	805 @	23.78
Melvin Sundberg, Linds.	8 wf str	404 @	30.60
Melvin Sundberg, Linds.	10 blk str	368 @	31.70
Bocttcher Bros., Antelope	13 wf str	549 @	27.10
Sun Ranch, Falun	9 wf str	338 @	33.00
Sun Ranch, Falun	9 wf hfrs	327 @	27.00
Morris Dathrman, Bushton	9 blk str	470 @	27.90
Morris Dathrman, Bushton	6 blk hfrs	417 @	24.80
Curtis Bloomquist, Solmn	1 wf str	730 @	24.60
James Karber, Gypsum	1 wf cow	1015 @	15.50
Elmer Lass, Brookville	1 hol cow	1225 @	16.00
Rudolph Lass, Brookville	1 hol cow	1235 @	16.50
Leo Manke, Ellwood	1 wf bull	1410 @	21.05
D. N. Holmquist, Solmn	6 wf hfrs	355 @	26.30
Dwayne Manke, Ellwood	4 blk str	492 @	27.85

Dwayne Manke, Ellwood	4 blk hfrs	411 @	24.50
Don White, Bennington	11 wf cows		220.00
Don White, Bennington	9 wf cows		210.00
C.W. Erning, Solomon	17 blkwf str	583 @	28.70
C.W. Erning, Solomon	20 blkwf hfrs	352 @	24.80
Edward Kribs, Solomon	8 wf str	484 @	28.30
Verner Bloomberg, Assavia	10 wf str	696 @	24.90
Evertt Webb, Beverly	4 blk hfrs	360 @	26.75
Albin Lindahl, Falun	4 wf str	332 @	29.50
Albin Lindahl, Falun	9 wf hfrs	427 @	25.40
Elmer Schroeder, Genesco	6 blkwf str	359 @	29.60
Bill Heglund, Linds.	6 wf str	590 @	28.00
John Keiser, Canton	4 blkwf str	392 @	30.20
Delbert Hayes, Genesco	8 blkwf str	869 @	23.80
Carl Dond, Brookville	4 blk str	516 @	27.00
Arthur Kruse, Lorraine	10 wf hfrs	673 @	22.60
Marlin Sittner, Ellsworth	11 wf hfrs	375 @	26.30
Lloyd Pruitt, Barnard	14 hol str	1010 @	19.45
Harold Pangroc, Niles	9 shtn str	431 @	29.10
Harold Pangroc, Niles	13 shtn str	543 @	26.90
Erwin Momich, Herrington	1 wf hfr	550 @	24.60
Alfred Nightengale, Galva	4 blkwf str	511 @	25.60
Alfred Nightengale, Galva	3 blkwf hfrs	561 @	22.30
Herman Nightengale, Gal	13 wf str	743 @	24.65
Herman Nightengale, Gal	29 wf str	827 @	23.70
Keith Mullen, Ada	8 wf str	420 @	30.00
Keith Mullen, Ada	12 wf hfrs	489 @	24.85

FOR INFORMATION OR ESTIMATES

LAURENCE CLEMENCE	Abilene	Phone CO 3-3091
MERRILL CHRISTIANSEN	Durham	Phone 732-3371
BOB MUIR	Salina	Phone YA 3-2963

Market Reports
Radio Station KSAL, Salina
6:45 a.m. Every
Monday, Wednesday & Friday

KFRM
6:55 a.m. Mon. through Fri.

Central Kansas Most Modern Livestock Auction... West Side Of **Salina**

TWO SALES EVERY WEEK

MONDAY

Hogs & Cattle

Hogs sell at 11:00 a.m. followed by our regular cattle sale as they are unloaded.

THURSDAY

Cattle Only

Selling starts at 11:00 a.m. Cattle will sell in the order they are consigned on the books.

Lloyd Andrews, Gypsum	5 wf str	488 @	27.20
Chas. Berg, Windom	30 wf str	733 @	25.10
Chas. Berg, Windom	41 wf str	788 @	23.90

HOGS

W.D. Grassie, Tescott	4 mx hogs	200 @	17.75
Clarence Bieberle, Horr	14 mx hogs	242 @	17.20
Robert Kickhafer, Herring	10 mx hogs	230 @	17.25
Kenneth Kelly, Ada	6 mx hogs	235 @	17.35
John Schneider, Abilene	15 mx hogs	207 @	17.75
Thaine Meyers, Barnard	5 hamp hog	212 @	17.70
Larry Spear, Lincoln	9 wht hogs	223 @	17.75
Don Herpich, Herrington	66 mx hogs	249 @	16.85
Warren Coupall, Milton.	13 blt hogs	251 @	16.75
Cecil Keen, Jr., Wakefie.	12 mx hogs	240 @	17.30
Alfred Mayer, Gypsum	26 mx hogs	225 @	17.60
Denny Graham, Benning.	5 spt sows	542 @	13.00
Clarence Werener, Abile.	9 rd hogs	218 @	17.85
Dwight Sperry, Beverly	17 mx hogs	224 @	17.75
Emory Frost, Solomon	16 mx hogs	249 @	17.10
Dahlstein Farms, Marque.	17 wht hogs	210 @	17.85
Charles Souhup, Wilson	11 mx pigs		11.75
Robert Hempke, Jr., Knpl	11 mx pigs		14.50
Evan Ade, Oak Hill	15 mx pigs		12.00
Roy Hauk, Ada	28 mx pigs		14.75
Charles Shelton, Salina	23 wht pigs		15.00
Melvin Langdon, Manch.	16 wht pigs		16.50

Farmers & Ranchers LIVESTOCK COMMISSION CO.

West on old US 40

Barn Phone
913 TA 5-0211 SALINA, KS.



Bonded

Licensed

Stringing Dewayne