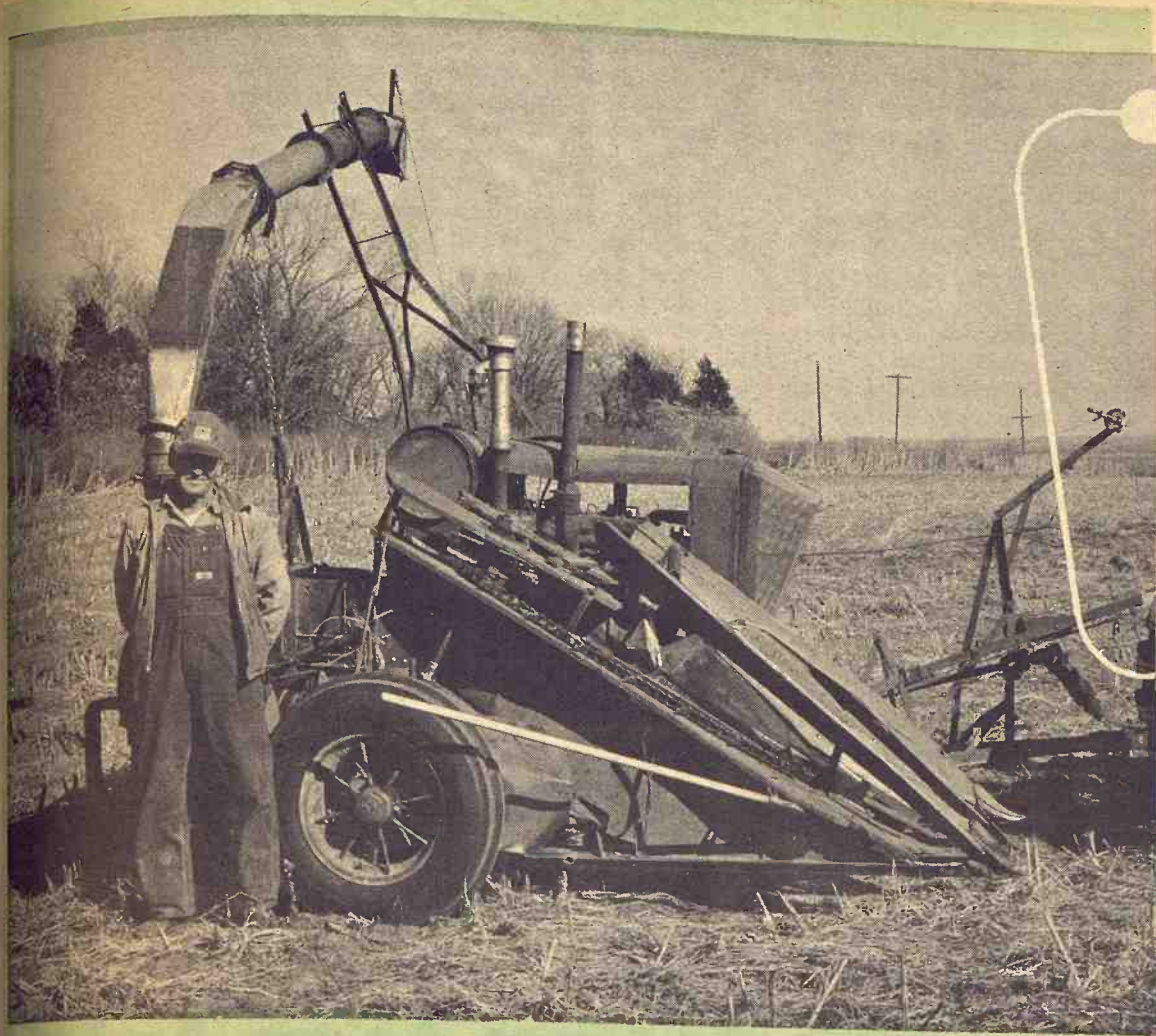


GRASS & GRAIN

13th year no. 40

December 5, 1967



Leonard Stirn of Tescott

He Just Builds His Own

by Kenneth Greene

Twenty years ago Leonard Stirn of Tescott decided to build a field cutter. The cutters down at the implement dealers just didn't suit him.

For one thing, they only cut one row at a time, and Leonard thought there was a better way. He got a used two-row corn binder and a stationary ensilage cutter. He cut the feed trough off the cutter and the bundle carrier and knottor off the binder, then welded the two together. He mounted a motor on the frame to run the cutter but left the binder part geared to the tractor power take-off.

This machine with several modifications through the years has been going ever since. Various parts have been replaced, but the binder section is original. The ensilage cutter has been replaced twice and several different motors have been used. The present one even has a starter on it.

Needless to say, this hybrid has made an experienced welder out of Stirn. He is always on the look-out for repair parts but he still hasn't found that "instruction book."

He takes a lot of ribbing from the crew, but they'll admit he's put up a lot of feed

in the last 20 years. This machine may have seen its last corn row though; Stirn is dreaming of building a self-propelled job before another silo-filling time.

When Leonard Stirn first built his field cutter, he used trailers pulled behind for the ensilage. Later this was changed to using trucks alongside the cutter. This speeded up the operation considerably.

This year Stirn built new automatic endgates for the trucks. The endgate has arms which are hinged on the side of the truck. Cables fastened to the top of the endgate run over the front of the truck bed on pulleys and have the other end fastened to the truck frame.

When the truck frame raises, the cables automatically pull the endgate up out of the way. This saves considerable time. On long hauls to a trench silo it saves enough time for two trucks to do the job of three with ordinary endgates.

He originally got the idea from Darwin McCall, another farmer from near Salina. Stirn and McCall will soon have plans and a materials list on sale to help anyone build their own.

Year-End Strategy Can Save Tax Dollars

Farmer Green had a fine corn crop this year and received a good price for his hogs, so his income will be higher than usual.

Farmer Brown's wheat crop was poor and he lost money on cattle, so his income will be far below his average.

Both these farmers — and most others — can use smart income tax management now to help themselves financially, says John H. Coolidge, Extension farm management economist at Kansas State University.

Some of the most important decisions affecting this year's income taxes will be made before the end of 1967. That's why December is known as "Tax Management Month."

Because of graduated tax

rates, the less a farmer's net income fluctuates from year to year, the less income tax he will pay over a period of years.

Thus, the goal of tax management is to "even out" your annual income over several years. The result will be more dollars left in your pocket after you pay your taxes.

Tax management in the long run is an effort to maximize "after-tax" income and net worth. In the short run, it is an attempt to maintain an annual net income at least equal to the year's allowable non-business deductions and personal exemptions, and yet avoid extremely high taxable income.

It is equally desirable to have a net income which approaches or equals the maximum earnings eligible for Social Security credit, says Coolidge. This figure is \$6,000 now, but may be raised by Congress at any time.

Tax management has some limitations, however. If you make decisions and transact business solely in an effort to reduce taxes, your net income after taxes may be lower.

For example, you may make a decision that saves you \$100 in income taxes but costs you more than this amount due to a lower selling price for a farm product.

Frequently, there is no conflict between a wise tax decision and a good farm business decision. But when you face a choice, make the one resulting in the larger net income after taxes.

For more information and dollar-saving ideas, pick up a copy of "Income Tax Management for Farmers" from your county Extension agricultural agent.

Judge Rules For Scully Tenants

MARION — Holders of Scully leases in the Marion County area have gotten some assurance that they have more than ordinary tenant rights, according to a decision handed down by United States District Judge George Templar.

The case before Judge Templar involved land being acquired by the federal government for the Marion Reservoir.

Basically the decision affirms a leaseholder's special interest in a Scully lease and his right to share in settlement when the land is acquired in condemnation.

Scully landholdings are most prominent in Marion County but are also in Geary, Dickinson and other G&G area counties.

Year-end Tax Management Can Save You Dollars

— See Stories In This Issue



Rock Enclosure

Morris county farmers Mr. and Mrs. Ivan J. Becker stand beside rock enclosure in yard near Herington.

Sharp Pencil Can Maneuver Taxes

It's that time again. Farmers are approaching the end of another business year when management decisions can have a major effect on the amount of their income tax.

John H. Coolidge, Extension farm management economist at Kansas State University, suggests that farmers sharpen their pencils and bring their business records up to date.

If you make an accurate accounting of income and expenditures before the end of the tax year, it's easy to estimate income and expenditures for the balance of the year.

With this estimate and an evaluation of inventories, you can buy or sell, thereby adjusting taxable income to your best advantage.

If your estimate indicates a probable net taxable income less than the total amount allowed for your personal deductions and exemptions, you will want to consider ways to increase your income.

Personal deductions and exemptions are allowed annually, so any credit for such exemptions not absorbed by current income is automatically lost. Unused exemptions credits cannot be carried over and applied against income for another year.

If you use the cash method,

here are several ways to increase income.

— Sell grain or livestock before the end of the year. Sales of livestock in December may be desirable from a tax standpoint, although at lighter weights the total sale price may be lower than if you sell later.

— Cull your dairy or breeding stock and sell before the end of the year.

— Sell any capital items no longer needed in your farm business.

— Collect money due for labor or custom work done.

— If you are eligible, take a CCC loan on as much grain as you want to have in this year's income.

— Pay only half your personal property taxes now.

— Do not buy new machinery. Postpone payment of operating expense charge accounts until next year.

If you use the accrual method, opportunities for increasing income late in the year are more limited. However, you might:

— Do off-farm or custom work for cash wages.

— Buy feeder stock or other inventory property which would increase in value by the end of the year.

— Incur as few deductible expenditures as possible during the balance of the year.

— Include all unsold livestock, crops, and supplies at full value in the ending inventory.

If you want to hold down this year's income, use methods just the opposite of those listed above. Delay sales of grain and livestock until 1968. Purchase feed, fertilizer, and other supplies and pay for them before the end of the year. Pay all charge accounts for deductible expense items.

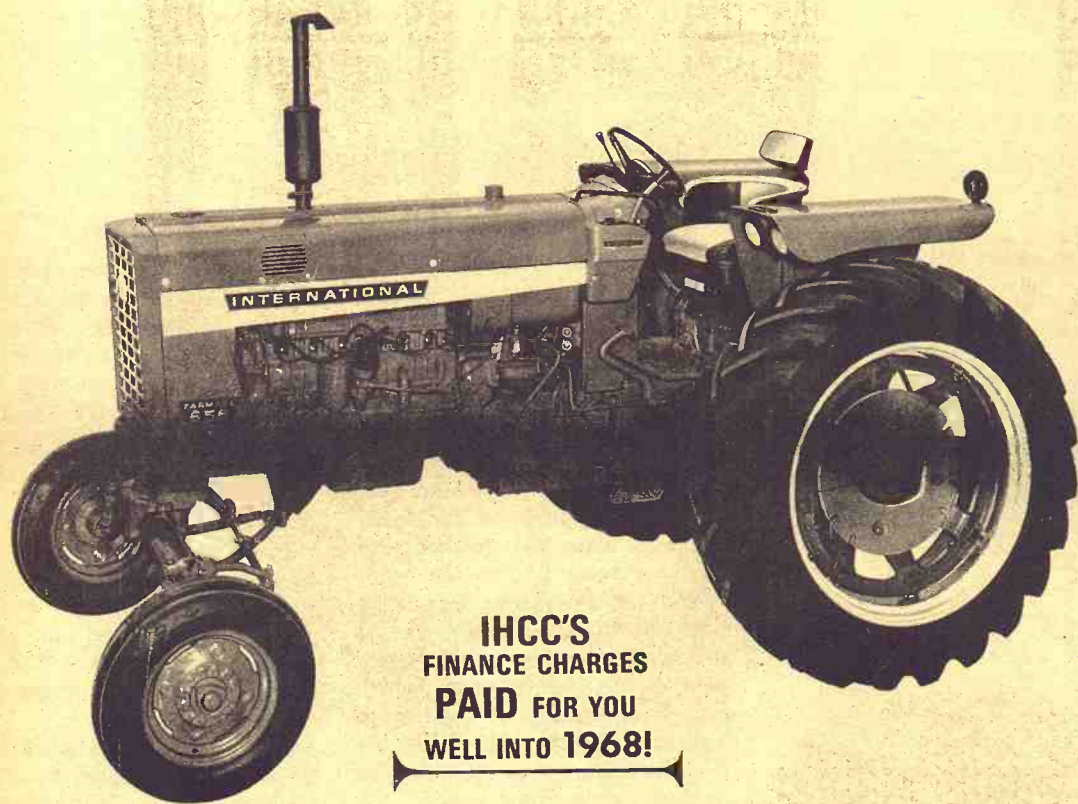
Unless you're quite familiar with tax regulations, you'll probably find it profitable to confer with a tax consultant, Coolidge suggests. But remember that you must take action before the end of the year on purchases and sales.

- 54 drawbar hp, 65 PTO hp (mfr. estimated max.)
- Hydrostatic All-Speed Drive provides any speed from 9 mph in reverse to 20 mph forward
- Gasoline, L.P. Gas, diesel engines
- Easy to drive, gets more work done
- New, accurate, easy-to-read speedometer

INTERNATIONAL® FARMALL®



**656 HYDROSTATIC
ALL-SPEED DRIVE TRACTOR**



**IHCC'S
FINANCE CHARGES
PAID FOR YOU
WELL INTO 1968!**

This is the first big farm tractor with Hydrostatic All-Speed Drive, the drive that provides any speed from 9 mph in reverse to 20 mph forward . . . change on the go, under load or with no load . . . with no clutch . . . and without touching the throttle.

Push the Speed Ratio (SR) control forward to move forward. The farther you push it, the faster the speed—from zero mph to 20 mph. To stop, just move the SR control back to zero mph and have smooth, safe, controlled stopping. To back up, move the control rearward into reverse ratio and pick any speed, zero to 9 mph in reverse.

That's all there is to it! No clutch to use. You're propelled by smooth IH hydrostatic power! At any speed from "9 below to 20 above."

Think of all the clutching and shifting you won't do

with Hydrostatic All-Speed Drive. Think of being able to maintain higher average speeds on every job by choosing the exact speed needed every time . . . and changing speed any time, on-the-go. It follows that no matter what the crop or conditions, this Hydrostatic All-Speed Drive provides the ideal speed for getting the most out of both tractor and equipment.

And it's a pleasure to drive. So easy to operate that any driver will get more done—and actually enjoy doing it—with IH Hydrostatic Drive. Farmers who helped us test this tractor say there is just nothing like IH Hydrostatic Drive to speed the work and save wear and tear on the man. Skeptical? A few minutes behind the wheel will make a believer of you.

**HERINGTON
Pioneer Service & Sales**

**MINNEAPOLIS
Chapman Impl. Co.**

**CLAY CENTER
Norquist's Inc.**

**ABILENE
Abilene Truck & Tractor**

**HANOVER
Hanover Impl. Co.**

**LEONARDVILLE
Kendall Garage**

**WAKEFIELD
Auld Chevrolet**

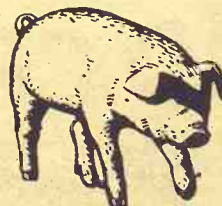
**MARYSVILLE
Bruna Brothers**

**FALUN
Dauer Impl. Co.**

**COUNCIL GROVE
Macha-Revere**

**BELLEVILLE
Chapman's On US hwy. 81**

keep 'em trim ... healthy ... profitable



**CO-OP Feeds with Tylan
and Sulfa Do It Best!**

A fat hog is as outdated as the horse-and-buggy days. Consumers demand good, lean meat . . . and smart producers are increasing their net profit by supplying good, lean hogs. Leaner market hogs bring more money and yield the meaty cuts the consumer wants.

CO-OP Protein Concentrates, Complete Swine Feeds and Pig Feeds won't make a pig leaner, but when properly mixed and fed will make pigs gain fast and efficiently.

CO-OP Feeds are available with Tylan and Sulfa. Tylan and Sulfa work together, increasing weight gains and improving feed utilization in the presence of dysentery and atrophic rhinitis.

The CO-OP Swine Feeding Program will do a good job in your operation. Get together with a CO-OP Feed man and get all the details.

**COOP swine feeding
program**

Carlton Farmers Union Co-op
CARLTON
TELEPHONE 31

Abilene Abilene Co-op Assn.
Abilene CO 3-1600

Junction City Farmer-Stockman Co-op Assn.
Council Grove
-Junction City CE 8-4158

Alma Farmers Union Co-op
Alma Ph. 765-3612
Eskridge Ph. 449-2261

Greenleaf Farmers Co-op Elevator Assn
Greenleaf-Linn
-Washington

Clay Center FARMERS Union Co-op
Clay Center-Bala
-Miltonvale-Leonardville

Manhattan FARMERS Cooperative Assn.
Manhattan-Alta Vista
-Westmoreland-Onaga

**St. Marys Farmers Union Co-op
Business Assn.**

Manage
To Incr
SS Bene
Farmers m
earn \$6,600
quality for
Security dem
ment. So they
action to m

KENTUCKY STRAIGHT BOURBON WHISKEY 86 PROOF, DISTILLED AND BOTTLED BY THE FAMOUS OLD GROW DISTILLERY CO., FRANKFORT, KY.

Taxes

off-farm or cash wages. Feeder stock or property which in value by the...
 as few deductible as possible during the year. Include all unexpended supplies at the end of the year. If you want to hold your income, use the opposite of the above. Delay sales of livestock until the feed, fertilizer, and other supplies are paid for at the end of the year. Large accounts for lease items.
 If you're quite familiar with regulations, you may find it profitable with a tax consultant suggests. But remember you must take action at the end of the year and sales.

Manage Income To Increase SS Benefits

Farmers nearing age 65 can earn \$6,600 this year and still qualify for maximum Social Security benefits after retirement. So they may wish to take action to maximize their in-

come at near this figure as possible. This may increase their income taxes, says John H. Coolidge, Extension farm management economist from Kansas State University. But higher Social Security payments will offset the higher taxes in most cases. Coolidge suggests these ways to increase income:

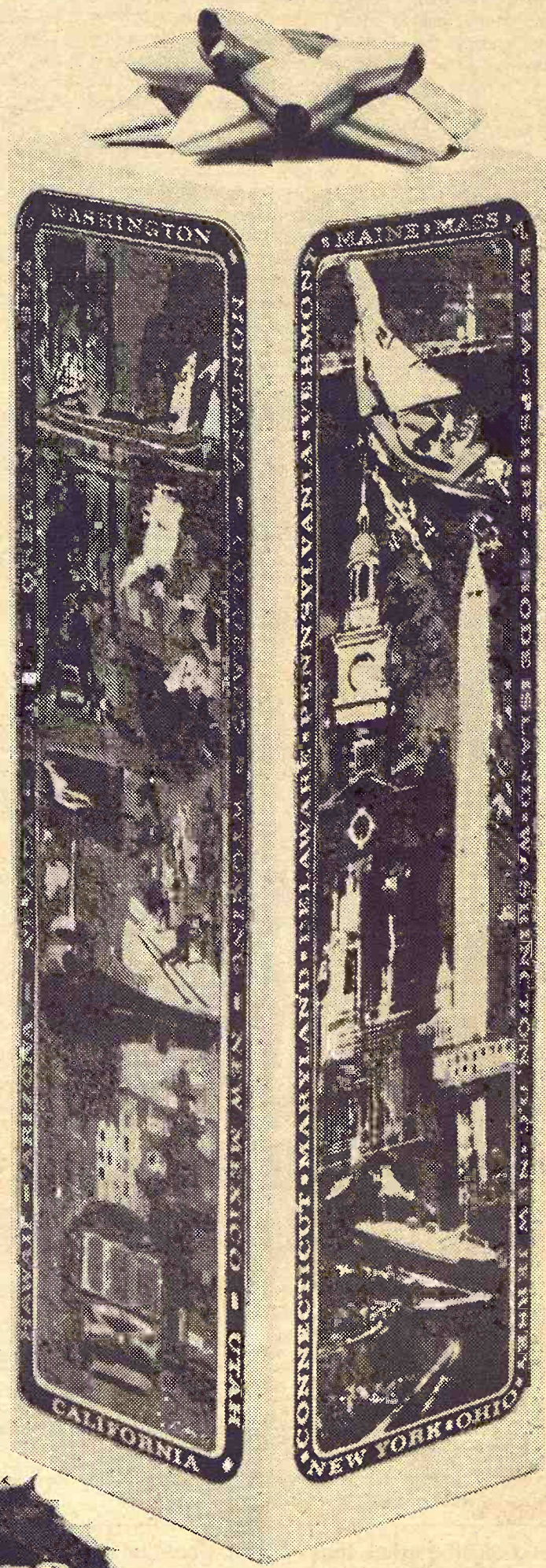
- Intensifying and expanding present enterprises.
- Electing to report sales of forest products as ordinary income.
- Selling more young livestock.
- Doing custom work or other off-farm work.
- Contracting pasturage and services together, so that the income is recognized as self-

employment income and not rental income. Net income may also be raised by reducing or postponing expenses. Repairing or painting buildings and fences may be delayed until after retirement. Operating expenses such as liming and fertilizing can be delayed. These expenses will apply against rental income after retirement.

GRASS & GRAIN

The Mid-Kansas news weekly. Published each Tuesday at 1207 Moro, (Box 1009) Manhattan, Kansas, 66502 by AG PRESS
 Dean Coughenour
 E. R. Woodward
 Second class postage paid at Manhattan, Kansas.
 Subscription: \$3 year
 CIRCULATION 11,108

KENTUCKY STRAIGHT BOURBON WHISKEY 86 PROOF. DISTILLED AND BOTTLED BY THE FAMOUS OLD CROW DISTILLERY CO., FRANKFORT, KY.



Give something to crow about

Famous, smooth and mellow Old Crow. It's the most popular Bourbon around. And in its distinctive holiday gift wrap, it's really something to crow about. Featured on this handsome holiday package are colorful, hand painted murals depicting outdoor panoramic American scenes; North, South, East and West.

Give the world's most popular Bourbon

Abilene Coop...
 Farmers Union...
 Alma Pa...
 Eskridge Pa...
 Farmers Union...
 Clay...
 Miltonvale...
 Farmers Union...
 Business...

'Weigh When Their Hot'

Officials of the National Livestock Feeders Association are pushing hard for the adoption by the federal government of a proposed regulation controlling packer purchases of livestock on a carcass grade and weight basis. And they are determined the weight shall be taken on a "hot" basis.

Marketing on a grade and weight basis has been done in Kansas the past several years by some hog slaughterers, and there is a growing hope that a similar method for buying can be adopted on a nationwide scale for all livestock.

A national proposal was made some time ago by the Department of Agriculture — and because the proposal drew a cer-

tain amount of protest, it became the subject for hearings in mid-November.

Some packers believe the weight should be taken after the carcass has been cooled — but most livestock producers believe the actual hot weight, less a given percentage, for shrink, would provide a more sound basis for the grade and weight purchasing.

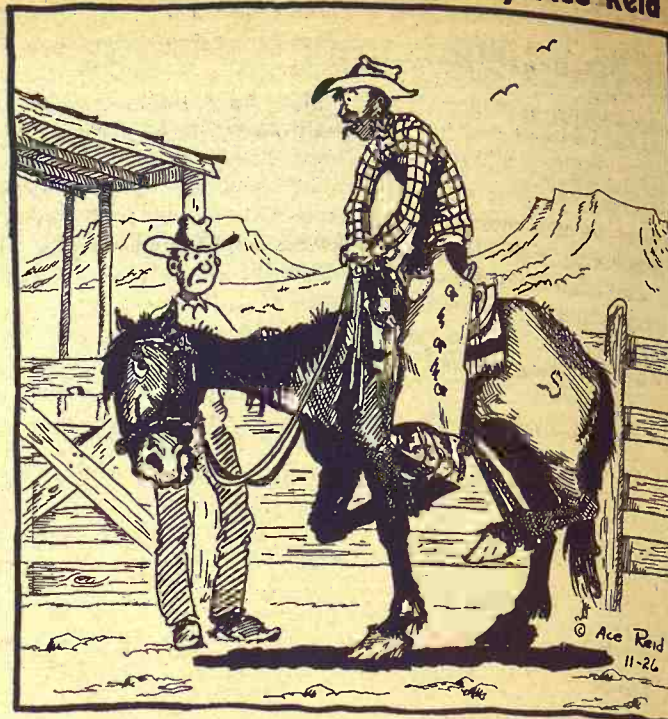
In a hearing in Des Moines, Iowa, before the Packers and Stockyards Administration, Charles Phelps, NLFA president from Hastings, Iowa, and Don Magdanz, executive secretary-treasurer of the NLFA, testified that feeders want the hot weight basis adopted.

"The controversy over the hot

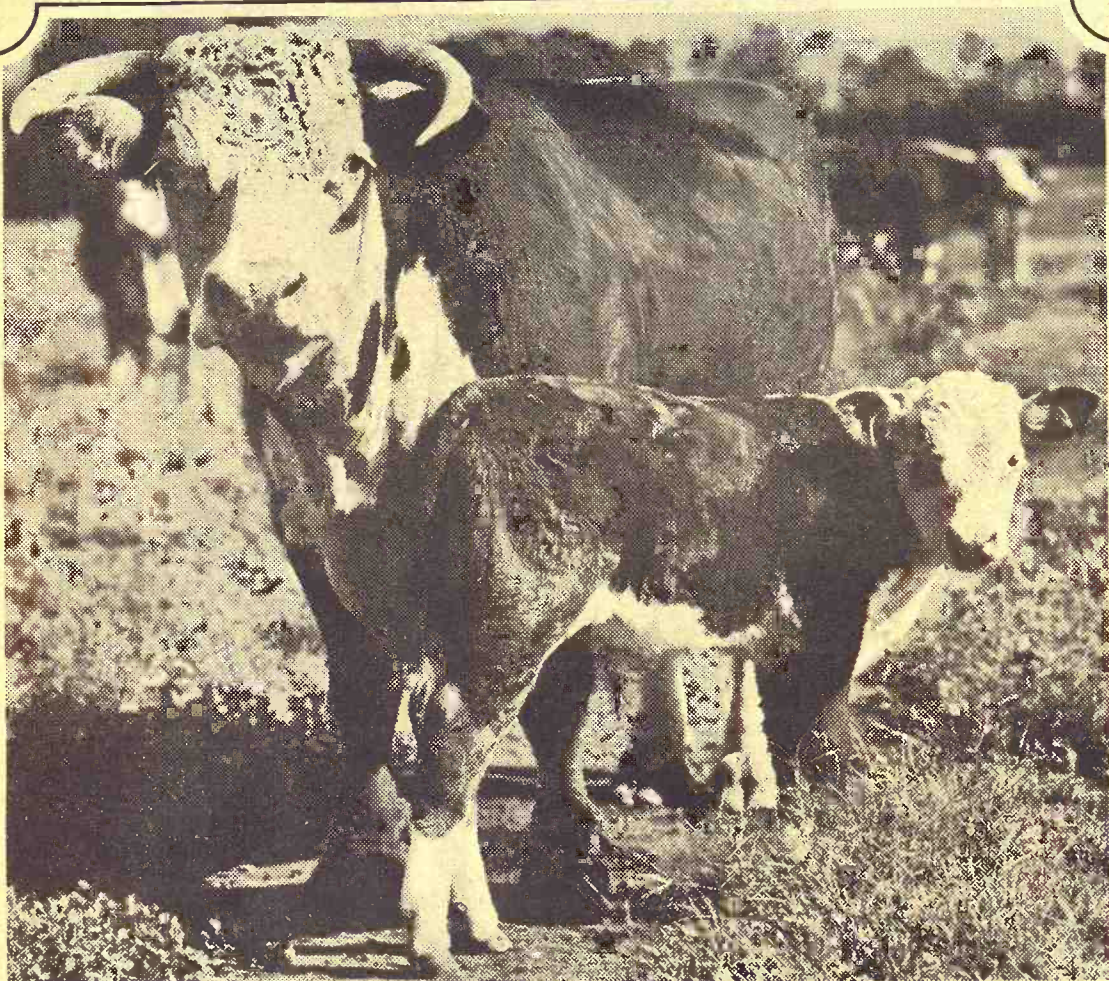
weight requirement rests clearly between payment on the basis of the actual weights with no shrink allowed and arguments in favor of settlement on a weight basis that is arbitrary and partially estimated," Phelps said.

"Thus it is obvious that packer objections to actual (hot) weights amount to arguments in favor of a procedure allowing for considerable latitude in the weights on which settlements are made. Latitude which can be used advantageously by the buyer," he added.

Magdanz and Phelps both pointed out that payment procedures on anything other than actual weights provided operational loopholes for unscrupulous buyers to take advantage of sellers. Furthermore, such practices also are unfair competition for the ethical and honorable slaughterers in the trade, they said.



"... but I jist feel safer with two feet tied up!"



CALVES WEANED 19 POUNDS HEAVIER WITH PURINA RANGE CHECKERS

In a test at the Purina Research Ranch, 41% cottonseed cake was matched against Purina 20% Range Checkers. The cows on Purina Range Checkers averaged calves 19 pounds heavier at weaning.

	41% Cottonseed Cake	Purina 20% Range Checkers
Pounds per cow per day	2½ lbs.	2½ lbs.
Difference in weaning weight at 210 days		+19

With a \$30.00 calf market, those 19 lbs. would be worth \$5.70.

Purina Range Checkers provide protein your cows need, plus the other ingredients necessary for proper diet. If you're looking for extra cow condition, an early calf crop and heavy weaned calves, stop in at our sign of the Checkerboard.

- Bartlett Grain Co. CE 8-5134 Junction City
- Americus Grain Co. 884-3465 Americus
- Gorden Mark Elevator ME 2-3381 Clay Center
- Western Grain Mill 767-5933 Council Grove
- Flint Hills Feed & Grain PR 8-5322 Manhattan
- Farmers Union Feed Mill 437-2434 St. Marys
- Mor-Kan Elevator 349-2214 White City
- Reading Grain & Lumber AN 9-3842 Reading



FARM & RANCH LOANS

Q. In the event of death, can the loan be carried on by heirs?
 A. Yes. They simply assume liability for its repayment and continue to make the payments as scheduled.

R. STANLEY PARSONS, Mgr.

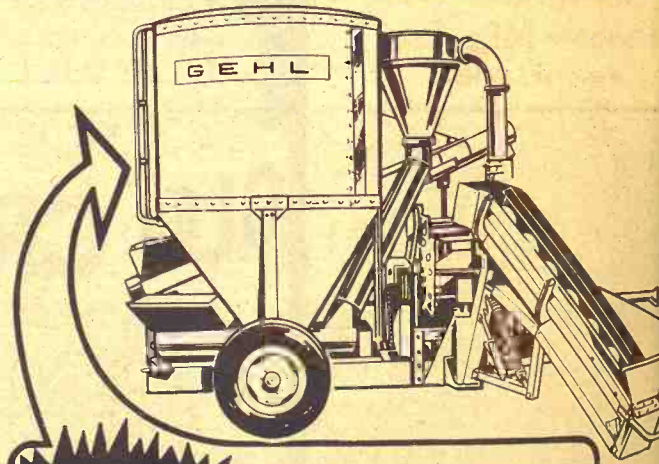
SEE ME AT
 604 HUMBOLDT PR 8-2971
 Res. Phone PR 6-9044
MANHATTAN

Open Mon. through Fri.
 8 a.m. to 5 p.m. (closed 12-1)

Branch Offices: CLAY CENTER & JUNCTION CITY

Federal
LAND BANK Assn. of
MANHATTAN

Serving Clay, Geary, Pottawatomie & Riley counties.



EXCLUSIVE FIBERGLASS TANK Lightweight, Strong as Steel

Another Gehl first! New, optional Mix-All tank of modern fiberglass reinforced plastic — the space-age building material. Advantages: tank is strong as steel, yet weighs ¼ as much; rust-proof (not affected by salt or minerals); permanent molded-in white color won't scratch, peel or require re-painting; smooth interior sides reduce feed bridging, allow faster unloading; insulates better, reduces moisture condensation.

OTHER GEHL MIX-ALL FEATURES:

- 66 thin, steel hammers that CUT . . . not POUND to give you a uniform grind.
- Semi-suction fan draws materials through screen quickly.
- Feed aerator cools all milled ingredients. Prevents caking.
- Swinging auger feeder uniformly loads the mill at your choice of speeds.

Come in! See the Gehl Mix-All with new fiberglass tank. Financing available.

Make us Prove it with a Demonstration!



WATERVILLE
WATERVILLE MOTORS

MINNEAPOLIS
CHAPMAN IMPL. CO.

SABETHA
FLENTIE'S, INC.

GYPSUM
KUHN IMPL. CO.

PERRY
SEYLER FARM SUPPLY

HANOVER
HANOVER IMPL. CO.

WINIFRED
WINIFRED IMPL. CO.

LINN
KUHLMAN MOTOR CO.

ROSSVILLE
ROSSVILLE TRUCK & TRACTOR

First-Year
 Thinking about combine or other
 ery? Now may
 make the move,
 your farm income
 than usual this
 The additional
 peciation provi
 possible for
 purchase of new
 reduce your tax
 Kansas State U
 farm mana
 John H. Cool
 farmers may de
 of the cost of n

HANOVER
 A Truck O

Buy direct
 factory . . .
 to \$20

Powerful
 Light-weight
 Trouble-free
 Rugged

for long, dep
 the Hanover Hoist
 four-piston hydraul
 excess strain on
 ball factory insta
 to do it yours
 Only \$285.0
 Plus

Write or Ca
 Hanover I
 HANOVER

a. Combo Dru
 Ideal set for the
 sional or advan
 drums are separ
 Chrome-plated
 outfit consists
 One 5"x14" sna
 One 14"x20" ba
 One 8"x12" tom
 One 12" quality
 A fine drum pe
 Flush base, sna
 One pair of sti
 One pair of bru
 outfit can be
 needed.

Write
 PIANOS
 GUITARS
 SYLVANIA ST
 "Quali

FA
 117 N. Third

First-Year Depreciation Cuts Tax

Thinking about buying a new combine or other piece of machinery? Now may be the time to make the move, particularly if your farm income was higher than usual this year.

The additional first-year depreciation provision may make it possible for you to use the purchase of new equipment to reduce your tax liability, says a Kansas State University Extension farm management economist.

John H. Coolidge notes that farmers may deduct 20 per cent of the cost of new or used per-

sonal property provided the following conditions are met:

- It has a useful life of 16 years or more.
- It is not acquired from spouse, parent, or child.
- It is not acquired in transactions between certain related partnerships.

Suppose you buy a new combine for \$10,000; before December 15. You may deduct 20 per cent of the cost, or \$2,000, as additional first-year depreciation. This leaves \$8,000 to be depreciated through regular methods.

Say you planned to keep the combine 8 years. Normal depreciation would be \$2,000 under the declining balance method during the first year you owned the machine.

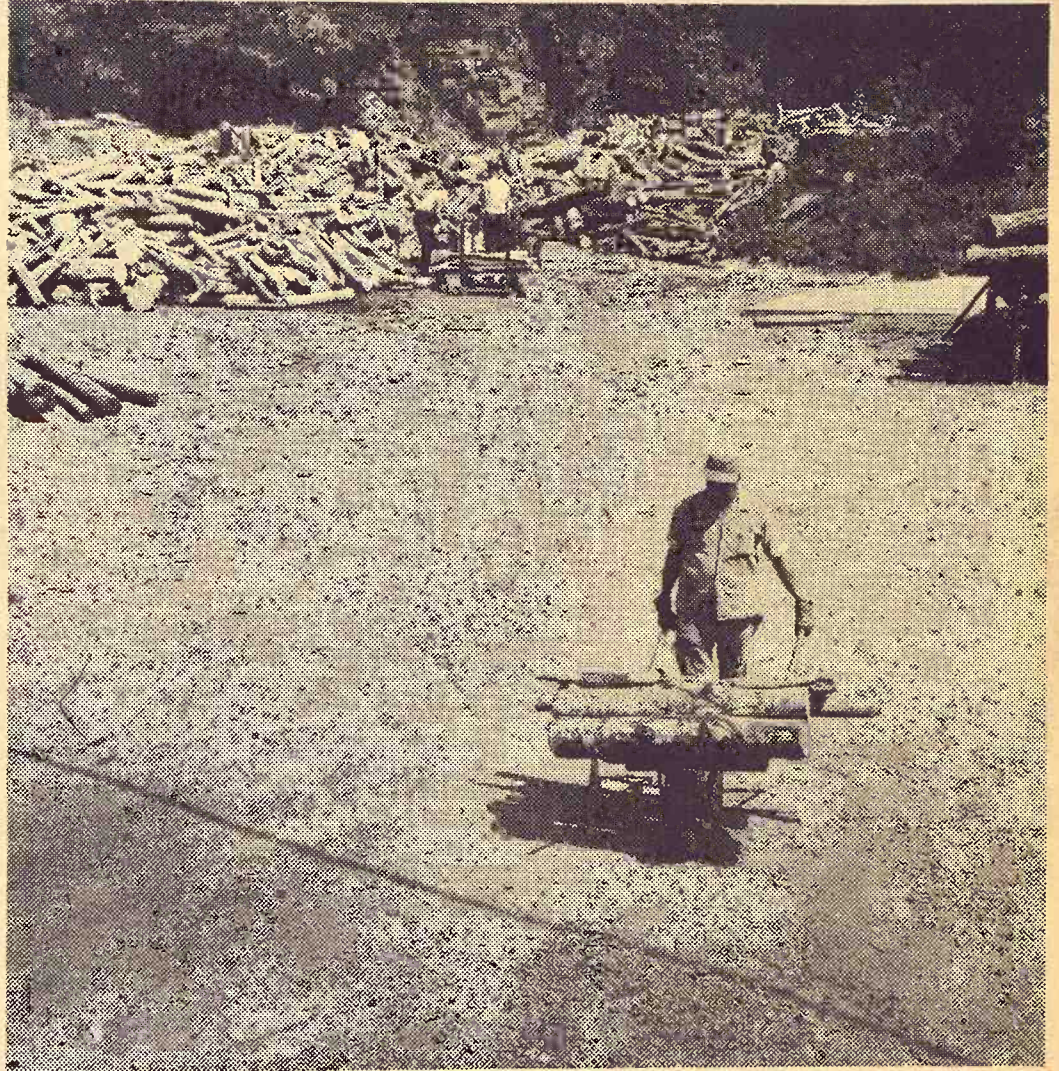
One-twelfth of this sum, or \$166.67, would be allowable for December. So your total depreciation on the new combine this year would be \$2,166.67. The remaining \$7,833.33 would be depreciated during the next 7 years.

The 20 per cent first-year additional depreciation is available only if the first-year regular depreciation is taken, says Coolidge. And you must purchase the machine by December 15 if you want to take depreciation on it this year.



At Planting Time

Clarence Rosebrook of Lincoln helped his brother Oscar with drilling wheat. The field is west of Salina.



HARD MAPLE is the only wood we use to smooth out Jack Daniel's. Any other maple is carried off and we don't care what happens to it.

A Tennessee whiskey tree is a *hard maple* from high ground. When anything else turns up, we always make sure it doesn't get mixed up with the good wood. For when this maple is rick-burned in the open air, it produces the special charcoal we need for Charcoal Mellowing. That's the process that helps give our whiskey its rare sippin' quality. After a taste, we feel, you'll be glad we have a reject system at Jack Daniel's.



CHARCOAL
MELLOWED
DROPPED
BY DROPPED

TENNESSEE WHISKEY • 90 PROOF BY CHOICE © 1967, Jack Daniel Distillery, Lem Motlow, Prop., Inc. DISTILLED AND BOTTLED BY JACK DANIEL DISTILLERY • LYNCHBURG (POP. 384), TENN.

HANOVER HOIST

... A Truck Owner's Dream



Buy direct from the factory... Save up to \$200.00!

- Powerful
- Light-weight
- Trouble-free
- Rugged

Built for long, dependable service, the Hanover Hoist is powered by a four-piston hydraulic pump.

No excess strain on chassis or box. Small factory installation charge, or easy to do it yourself.

Only \$285.00 Plus Exise Tax

Write or Call ED 7-2821

Hanover Mfg. Co.

HANOVER, KANSAS

MATTRESS & BOX SPRINGS

Specials Every Day
New Low Prices
Buy Direct

Also Complete Rebuilding
Service

Manhattan
Mattress Co.

414 S. 4th PR 8-5302



a. Combo Drum Outfit. An ideal set for the young professional or advanced student. All drums are separate tension. Chrome-plated hardware. The outfit consists of:
One 5"x14" snare drum
One 14"x20" bass drum
One 8"x12" tom tom
One 12" quality brass cymbal
A fine drum pedal
Flush base, snare drum stand
One pair of sticks
One pair of brushes
Outfit can be expanded as needed.

137.50

b. Economy Professional Drum Outfit. Professional in all respects but price. All drums are separate double tension (double lug) 6 ply. All metal parts are heavy chrome-plated.
14"x20" bass drum with cymbal holder
Tom tom holder and muffler
5 1/2"x14" snare drum
9"x13" & 8"x12" tom toms
16"x16" floor tom tom — High hat stand
Double post drum pedal
Snare drum stand
Two 12", one 16" cymbal
Wire brushes and drum sticks

280.00

Write Or Call For Free Christmas Catalog

PIANOS — ORGANS — COMBO ORGANS
GUITARS — AMPLIFIERS — ACCESSORIES
SYLVANIA STEREO — SONY ELECTRONICS — SERVICE
"Quality Does Not Have To Be Expensive"

BETTON'S
FAMILY MUSIC CENTER

117 N. Third Street MANHATTAN 66502 PR 8-3432

THIS CHRISTMAS

THE CHRISTMAS CITY OF KANSAS

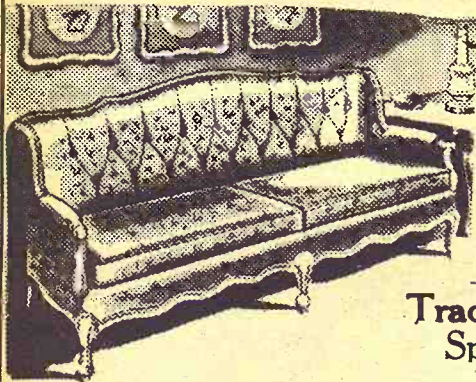


Make Your Holiday Shopping trip an excursion to a colorful and exciting Gift Land . . . Bring the family and enjoy a tour through Furniture City.

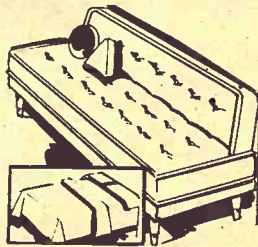
Santa's Christmas Bonus Sale

OPEN THURSDAY & SATURDAY
EVENINGS FOR YOUR
SHOPPING CONVENIENCE

Santa's Super Savings On Beautiful Sofas & Sleepers



Have a lovely new sofa for Christmas — Choose from our huge selection of



Modern — Contemporary
Traditional — Early American
Spanish — French, etc.

Look At These Specials

- * Modern slim arm 2 pc. suite Nylon fabric, pure foam cushions Reg. \$289 **Santa Bonus \$188**
- * 3 pc. sectional, foam tufted back, heavy duty nylon cover. Slim arm styling Reg. \$359 **Santa Bonus \$288**
- * Floral print sofa, traditional styling, foam cushioning Reg. \$169 **Santa Bonus \$88**

- Beautiful King-Size Sleeper, traditional styling, lovely gold cover, fully skirted. Reg. \$429 **Santa Bonus \$299**
- Simmons Sleeper, modern styling, foam cushioning Reg. \$219.95 **Santa Bonus \$188**

Have A Lovely Xmas With NEW CARPETING

Whether you do just one room or your entire home you may shop and save now!

Every Roll Of Carpet In Our Huge Inventory At "Xmas Bonus Savings"



**ACRILANS — NYLONS
HERCULONS KODELS ETC**
Nylon from \$3.99 sq. yd.
Herculon from 4.99 sq. yd.
Acrilan from \$5.89 sq. yd.
Kodel from 6.99 sq. yd.

● Furniture City offers complete carpet installation service



Hamilton Beach
Electric
Knife with
Tip that
Trims
Reg. 19.95



ONLY \$15.44

ELECTRIC PERCOLATOR
By Mirro
9 Cup Capacity
SANTA BONUS

\$6.99

Presto DELUXE HAIR DRYER
Reg. \$24.95
With Free Beach Bag

\$8.44

Udico Electric Can Opener
With Knife Sharpener
Reg. \$24.95

ONLY \$16.88

Visit Our Complete Appliance Dept. where you will always save on name brand Appliances.

Holiday Candles
Choice of Color

98¢



for Those Wonderful Christmas Dinners
A Lovely New Dining Room from Furniture City

Furniture City Has The Answer

Look At A Sampling of **Santa's Savings**
Lovely 8-piece Dining Room by Bassett

- * Beautiful 50" Enclosed China
- * Beautiful D.L. walnut table, formica top, 2 extension leaves.
- * 5 lovely caneback side chairs with foam seats
- * Matching arm chair

Reg. \$500 **SANTA SPECIAL \$399** all 8 pieces

View our fine selection of exciting styles . . .

- Modern
- French Provincial
- Italian
- Classic
- Mediterranean
- Early American

The Great Gift

Samsonite Card Tables & Chairs
Look! At this Xmas Bonus — Buy 4 regular \$7.95 Samsonite Folding Chairs at the special Savings Price of \$6.99 each, and receive **FREE** a matching \$10.50 Samsonite Card Table. Available in either antique white or tan.

Practical Gift Suggestions

- * 3 piece Bath Ensemble — Includes bath mat, stool cover, matching throw rug.
- * Do it yourself — Wall to wall bathroom carpet with matching stool cover
- * Quilted Bedspreads — Choice of sizes and colors
- * Dacron bed pillows — Regular & king size
- * Fieldcraft percale sheets, Queen & king size in fitted and flat
- * Fieldcrest pillow cases

WALL ACCESSORIES



That little "something extra" for your decor can be found in our huge collection of wall accessories.



DESKS

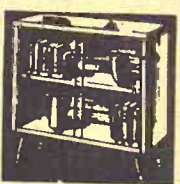
Smartly styled desks in many styles. Special Priced From

\$3400



HASSOCKS

ALL STYLES From **\$3.99**



ALL STYLES OF BOOK CASES SHOP & SAVE



You'll be a "clock watcher"

and you'll spend hours admiring the lovely Early Lexington Grammecher Clock, with its exquisite antique Fruitwood finish. Westminster chime 3/4 hours. Big Ben tells the hours. Save 50% **\$239**

BEDROOMS

Choose Your Style We Have It And you will Save at Santa's Special Prices

- on these famous brands
Basset
Broyhill
Coleman
Thomasville
Johnson Carper
Ward
and Many More

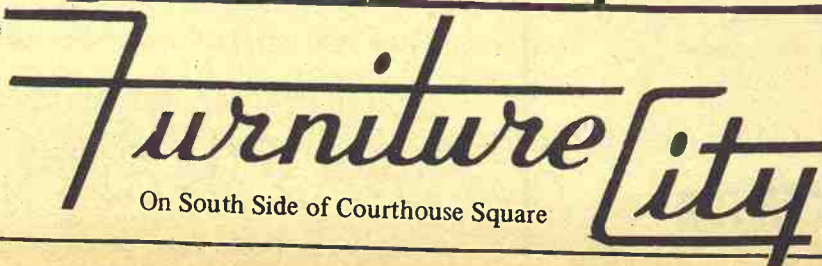
Modern 3-pc Bedroom
*Double Dresser *full mirror *chest * Bookcase bed.
Reg. \$219.00 **SANTA BONUS \$77**

Beautiful 3 pc. bedroom — Graceful triple dresser in walnut with rosewood inserts. * Framed plate mirror * Roomy chest * Styled Regular or queen size panel bed **SANTA BONUS — SAVE \$50.00**

Regular \$300 NOW **\$249**

Convenient Terms FREE DELIVERY phone ME 2 5215

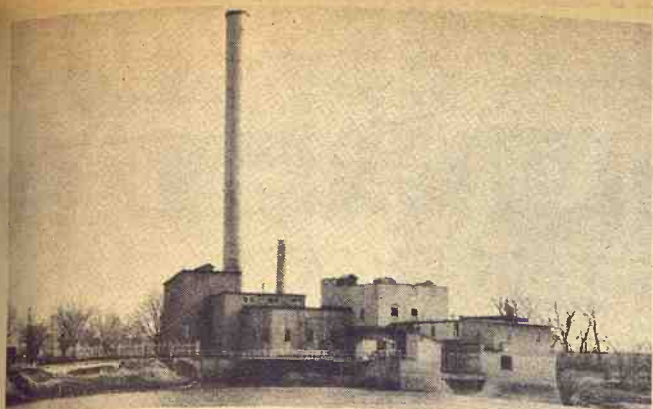
The Furniture Fashion Center of the Midwest



On South Side of Courthouse Square

CLAY CENTER, KANS.

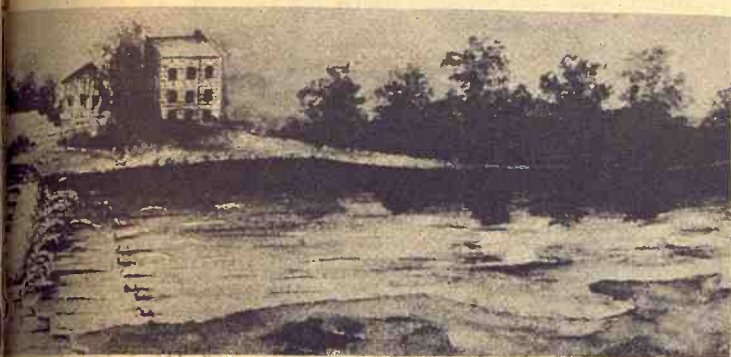
100 Goo can of w eve it to
Winter In short will hav
Built into Goo the "importan recover from
Blended
Guarant
Superior
GET YOUR SU
CK
2 1/2 Miles



The plant looked like this in its productive years.



Fishermen often find good luck on the ledge at the foot of the dam



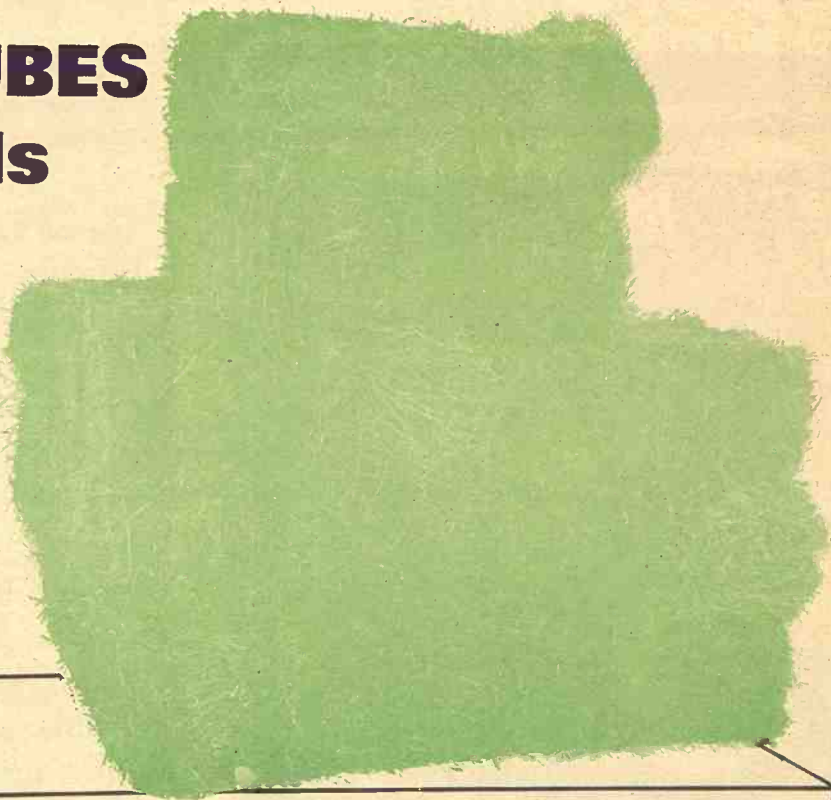
A painter saw the old grist mill at Rocky Ford looking like this when it was a log and stone structure.



Rocky Ford Now A Park

Rocky Ford, a location on the Blue River at Manhattan of frontier importance, has been given by the Kansas Power & Light Co. to the state of Kansas. The first Rocky Ford dam was built in 1867, one hundred years ago. First it was the power source for a grist mill, and later it was a source of electrical energy. It once served Manhattan and Junction City as well as nearby cities. During World War I it provided electricity for Camp Funston where 60,000 troops were in training. KP&L had owned the plant since 1932.

100 pounds of GOOCH'S BEST RANGE CUBES can replace 1,000 pounds of winter roughage - even when you have it to feed cattle!



Winter pastures are short! Hay is "expensive". In short, the feed help to meet your cattle's winter needs will have to be supplied through the winter supplement you feed.

Built into Gooch's Best Range Cubes are these "extras" to help your cattle winter through in top thriftiness. They are the "important plus" that makes Gooch Cubes so complete each pound can contribute to the feed value cattle can recover from daily intake of winter range or hay.

- Blended Protein - plus Energy!
- Guaranteed True Vitamin A!
- Superior Phosphorus - plus Trace Minerals!
- GBA-65 - the rumen digestive aid that helps cattle recover the maximum feed values from what roughage you do have for them!

GET YOUR SUPPLY OF GOOCH'S BEST RANGE CUBES NOW TO REPLACE THE WINTER ROUGHAGE YOU LACK!

CK PROCESSING CO.
2 1/2 Miles East of Sale Barn PR 6-9269
MANHATTAN, KANSAS

CLAY CENTER ALFALFA MILL
West Lincoln ME 2-3401
CLAY CENTER, KANSAS



RANGE CUBES

20% HIGH ENERGY GRAIN BASED CUBES
22, 32 and 41% RANGE CUBES

Continued from page 8

Put rind, walnuts through grinder. On paper, sift flour, baking soda, in mixture. Cool overnight in casserole before cutting. Decorate with candied cherries, if desired. Serves six to eight.

Mrs. Marvin Tischhauser, R 3, Peral Kopsa, Cuba: This makes a pretty appearance or may be used in place

CRANBERRY MILK SHERBET
 2 cups cranberries
 2 cups sugar
 2 cups milk
 1 cup cream
 3 tablespoons lemon juice
 Wash and cook cranberries in water to cover until tender. Put through sieve, add sugar and cook until sugar dissolved. Chill. Add lemon juice, milk and cream. Pour into freezer tray and freeze.

The following is from Mrs. Peral Kopsa, Cuba:
MINT CHIFFON PIE

1 envelope (1 tablespoon) unflavored gelatin
 1 cup milk
 1 1/4 cups after dinner mints (4-ounce package)
 3 eggs, separated
 1/2 teaspoon salt
 1/2 teaspoon vanilla
 green food coloring
 1/2 teaspoon cream tartar
 1/4 cup sugar
 1 cup whipping cream
 1 baked 9-inch pie shell

Soften gelatin in 1/4 cup of the milk for five minutes. Scald remaining milk. Add mints; stir until dissolved. Gradually beat a fourth of the milk mixture into beaten egg yolks. Stir into remaining milk mixture. Cook over moderate heat until slightly thickened. Add gelatin, stir until dissolved. Stir in vanilla, salt and food coloring. Chill until partially thickened. Beat egg whites until frothy. Add cream tartar. Continue beating until whites will hold a soft peak. Gradually add sugar; continue beating until stiff and glossy. Fold in gelatin mixture. Fold in whipped cream. Spoon into pie shell, spreading evenly. Chill until set. Before serving decorate with sweetened whipped cream and mints.

Mrs. Don Banks of Wamego entered the next recipe:

LEMON COCONUT BARS
 1/4 cup sifted confectioners sugar
 1 cup sifted flour
 1/2 cup butter or margarine
 3/4 cup sugar
 1/4 cup sifted flour
 1/2 teaspoon baking powder
 2 eggs, beaten until light and lemon-colored
 2 tablespoons lemon juice
 1 teaspoon grated lemon rind
 1/2 cup flaked coconut

Combine 1 cup flour and 1/4 cup confectioner's sugar; cut in butter until mixture resembles coarse meal (flour hands lightly). Pat mixture evenly into 9x9x2-inch pan. Bake in moderate oven (350 degrees) 15 minutes. Cool. Combine 3/4 cup sugar, 1/4 cup flour and baking powder. Add beaten eggs; blend thoroughly. Then add lemon juice, rind and coconut. Spread this mixture on crust. Bake in moderate oven, 350 degrees, 25-30 minutes.

Recipes also were received from the following:

Mrs. Claude Durkes, Axtell; Mrs. Joe Wedel, Langdon, Mo. Mrs. Joe Pacht, Munden; Mrs. M. R. Nothern, Glasco; Mrs. Arnold Trump, Clay Center; Mrs. Myron Wohler, Jr., Clay Center;

Elsie Gabrielson, Onaga; Mrs. John Jarrett, Barnes; Mrs. A. W. Lindquist, Gypsum; Mrs. C. P. Rensink, Ada; Mrs. Robert Bauer, Seward, Nebr.; Mrs. Clarence Hobbs, Beverly; Gladys Rezak, Sylvan Grove. Mrs. Neva Alexander, Geneseo; Mrs. James Cravens, Manhattan; Mrs. Owen Morstorf, Delia; Mrs. Otto Grieshaber, Bellevue; Mrs. Vernon Longenecker, Abilene; Mrs. Letha Hoffmann, Chapman.

Make Sure Home Properly Sealed Against Weather

Make sure your home is properly sealed against the winter rain and cold of these blustery winter days. First check the exterior of your home for caulking leaks or areas where caul-

ing is dried out or chipped. Scrape out the old compound and make certain the surface is clean, dry, and free of dust and grease. Clean greasy surfaces with mineral spirits or a similar spirit. Dust off masonry surfaces with a stiff bristled brush. Most caulking compounds should not be applied below 40 degrees or during rainy weather, as these conditions can cause failure of the compound to adhere.

Safety Measure

As a safety measure, always paint the basement steps a light color. Dark red or green might not show dirt so readily but light colors make the steps more visible in subdued light.

7th Annual Grass & Grain Bonus Recipe Contest

All recipes submitted for "Our Daily Bread" between November 7 and December 11 will automatically be entered in the special "grand prize" contest. The winner will be announced in the December 26 issue.

The grand prize winner will be selected on the basis of originality & quality. Weekly winners will remain eligible for the special event.

The winner will be permitted to choose from several prizes to be announced next week.

- G.E. Immersible Electric Percolator (9-cup)
- Dominion Portable Electric Oven Broiler
- G.E. Dry, Steam & Spray Iron
- Sunbeam Dual Control, Full-Size Electric Blanket

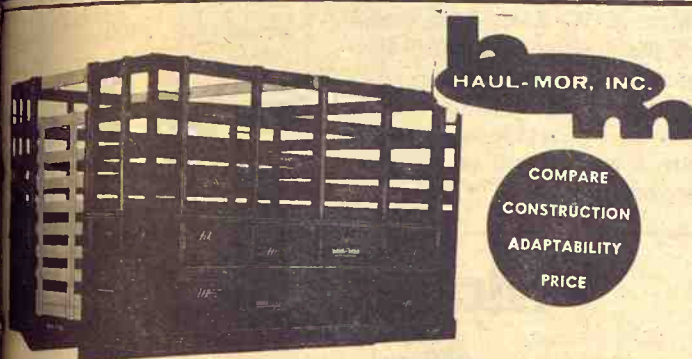
CONTEST RULES:

- All recipes submitted for "Our Daily Bread" between November 7 and December 11 will be eligible. Date of entry will be postmarked date.
- Winning recipe will be selected on basis of originality, quality.
- Grand prize winner may select one of several prizes.
- Weekly prize winners will not be disqualified.

TO ENTER—

- Pick the holiday recipe you want to submit.
- Check to make sure all ingredients are included, measurements accurate and writing is legible.
- Be sure your name and address are on the entry — not just on the envelope.
- Please, send only one recipe at a time.
- Mail entry to Womara's Page Editor, Grass & Grain, Box 1009, Manhattan, Kansas.

Good luck!



HAUL-MOR, INC.
 COMPARE CONSTRUCTION ADAPTABILITY PRICE

Grain Body with Combination Lift-Off Rack.

- Regular grain body
- Hardwood lift-off rack
- Racks added to grain body give 66" height
- Perfect fit
- Furnished with 2 gates
- One for grain, one for stock rack

Special sizes easily manufactured to your requirements
 When Ordering Specify Make, Model, Size of Bed
HAUL-MOR, INC. Valley Falls, Kansas • phone 945-3211



DO YOU KNOW WHAT DAD REALLY WANTS FOR XMAS?

A McCulloch CHAIN SAW

Here's the complete gift for a man who wants a product he can trust and depend on. With a new McCulloch chain saw he can tackle any wood cutting job. He can cut firewood, clear land, maintain trees around the farm, home or camp. Just name the job: there's a McCulloch to do it.

FREE CHAIN SAW FILE HOLDER

with purchase of every McCulloch saw before next Christmas.

K-HILL ENGINE SERVICE

NEXT TO SALE BARN PR 6-4181
MANHATTAN

NOW SAVE 10% DURING
frontier HYBRIDS FALL FESTIVAL

- Order your sorghum and corn requirements now and save 10% under regular cost. This offer expires Dec. 31, 1967.
- In addition to saving 10% by ordering now, you gain increased yields and added profits when you choose Frontier hybrids.
- By ordering now, you get the best choice of varieties.

SEE YOUR LOCAL FRONTIER DEALER NOW!
 Or Write
THE BOWMAN SEED CO.
 CONCORDIA, KANS. 66901
 FOR NAME OF YOUR CLOSEST DEALER

Buy now on the **EARLY BIRD PLAN**

Get a check for up to \$500.00
 direct from Massey-Ferguson on delivery of your combine!

Massey-Ferguson Inc.
 DES MOINES, IOWA

12 MONTH 26 DAY 67 YEAR
 PAY THE SUM OF \$500.00 AMOUNT
Massey-Ferguson Inc.

TO THE ORDER OF Bruce Morgan

FIRST NATIONAL CITY BANK
 388 PARK AVENUE
 NEW YORK, NEW YORK

John F. Johnson
 AUTHORIZED SIGNATURE

Now's the time to buy, and earn a big Early Bird bonus check! Don't delay—this offer is for a limited time only.

You get a check for:

- \$500 when you buy any MF 510 SP Combine (13' to 24' tables)
- \$450 when you buy any MF 410 SP Combine (10' to 18' tables)
- \$300 when you buy any MF 300 SP Combine (10' to 14' tables)
- \$225 when you buy any MF 205 SP Combine (10' to 13' tables)
- \$150 when you buy any MF 405 PT Combine (12' table)
- \$75 when you buy any MF 2-row 40-in. Corn Head
- \$100 when you buy any MF 3-row 40-in. Corn Head
- \$140 when you buy any MF 4-row 40-in. Corn Head
- \$100 when you buy any MF 3-row 30-in. Corn Head
- \$140 when you buy any MF 4-row 30-in. Corn Head
- \$180 when you buy any MF 6-row 30-in. Corn Head
- \$140 when you buy any MF 4-row 20-in. Corn Head
- \$180 when you buy any MF 6-row 20-in. Corn Head
- \$220 when you buy any MF 8-row 20-in. Corn Head

The above Early Bird Plan does not apply to used equipment.

YOUR MASSEY-FERGUSON DEALER

- SWIERCINSKY BROS. Belleville
- BRAUCHI BROTHERS Marysville
- BROWN MOTOR CO. White City
- CIRCLE T IMPL. CO. Clay Center
- GILLEY'S IMPL. CO. Minneapolis
- KUHLMAN MOTOP CO. Linn
- PFISTER-RHODES IMPL. CO. Jamestown
- SALINA FARM SUPPLY Salina
- WINIFRED IMPL. CO. Winifred

December 5, 1967

G&G Reader Sends Household Hint

Mrs. Amelia Vinduska, R 4, Munden, sent the following note and household hint:

"I read the Grass & Grain

from cover to cover every week. The first thing I turn to is the Woman's Page for recipes and hints.

"I have a good hint for a zip-

per that doesn't work like it should. Just take a bar of paraffin wax and slide it up and down the zipper once and the zipper will work like new.

Gifts To Please Teen-age Girls

When you make up your Christmas list — for getting or giving — do it "beautifully." Suggest a well-known magazine, particularly popular with teen-age girls. Some little luxuries to consider: A velvet bag filled with hair color-keyed lipstick and powder; ten mini-lipsticks magically floating in a transparent tube; false eyelashes for evening that have a special finish to make them shine; a palette of six eye shadow colors; moisturizing soap resting in its own shell-shaped golden dish.

Rear Mt. Blades For Year-Round Use

NEW SUPPLY ON HAND
We have on hand a supply of rear mount blades in 6, 7 and 8 ft. sizes that will pay for themselves in extra use. Landscaping, terracing, snow plowing, many uses in feedlots. Wherever this type of blade can work.

These can be offset 12 inches and are completely reversible. These are big labor savers at silo filling time.

Weights start at 400 lbs. on 6-ft. size.

Prices 6-ft. \$100—7-ft. \$110—8-ft. \$120.

Manufactured by:
FORGY WELDING
Phone 857-3241
CENTRALIA, KANS.

For An Honest Deal See Fink In Wamego



Sample
775x15 Tube Type 4-ply
12.95 plus tax



You always save at

FINK

Wamego, Kansas Tire Service

450-2575

Pure Irish Linen Cloth Dresses Up Round Table

Dining-in-the-round has become popular in the last few years and continues to gain new enthusiasts. Searching out old heavy oak pedestal tables in antique shops and auctions has become a challenge. And even those who like a more modern look are favoring the circular look in dining tables.

Table linens for the round table are something to be considered carefully. Pure Irish linen is the preferred choice because of its proven quality and large selection of styles. There are fine embroideries, brightly colored textures, new gay prints or very formal damasks available in a variety of sizes to suit the dimensions of any round table. Then your choice becomes a matter of using a tablecloth or place mats depending on the occasion.

If you decide on a tablecloth, you may prefer one that exposes the attractive carved pedestal base of your antique table. In this case, the easy rule to remember is to allow five to ten inches overhang for a small table, ten to fifteen inches overhang for larger tables. For more formal occasions, combine the

modern spirit of the round table with the tradition of a fine Irish linen damask tablecloth to the floor. Or for a very individual touch, use a floor length cloth of one color and place a shorter cloth of a contrasting color over it.

For an informal setting, use place mats. You will find the oval and round place mats very suitable and the contour mats shaped especially for a round table.

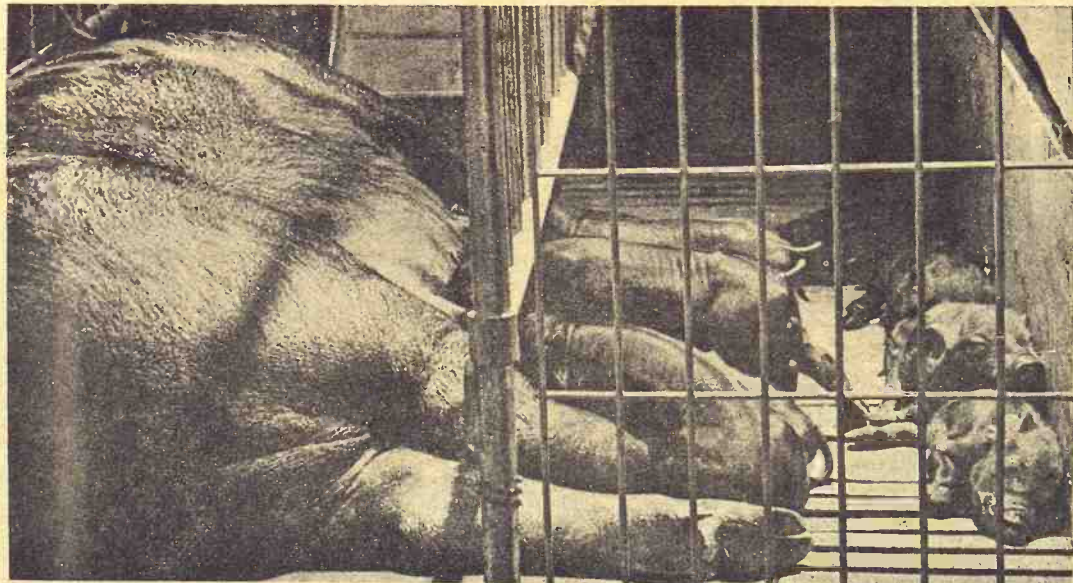
Enjoy dining-in-the-round by setting your table with attractive Irish linen. The added benefits to all homemakers are that Irish linen launders easily and maintains its good looks for many years.

Contest Winner Writes

Mrs. A. W. Katz, 2425 Anderson, Manhattan, sent the following note of thanks:

"Just a note to thank you for entering my recipe and for the prize I won. I will enjoy using the very nice set."

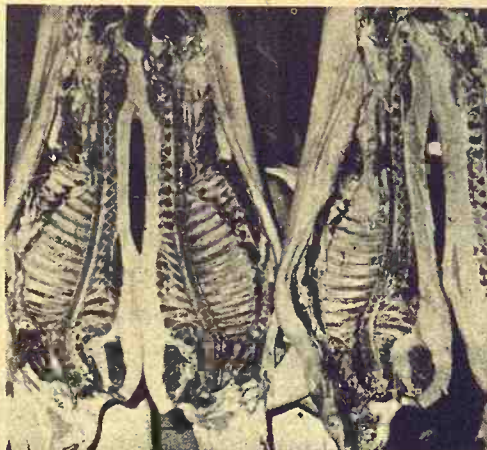
TIME will TELL



... Will you have **PIG PROFITS** or **PIG LOSSES**?

The smart hog feeder makes certain of two things for making profits from pigs . . . one, good management, and two, that he feeds quality **NATURICH** pig and hog rations formulated for each age group, and fortified with essential vitamins, minerals and other nutrients that make "GROWING UP" easier and faster for little pigs.

NATURICH can help you develop a program to fit your farm for profit-making hogs, either with complete feeds or for mixing with your grains, and with your good management and our **NATURICH** rations, time will be on your side — **YOU CAN BANK ON THAT!**



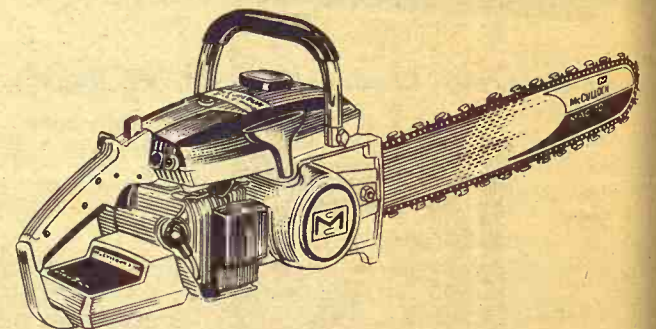
NATURICH MILLS
ABILENE, KANSAS



make the one season test
be convinced!

PRODUCTION DESIGNED FOR MORE FEEDER PROFIT.

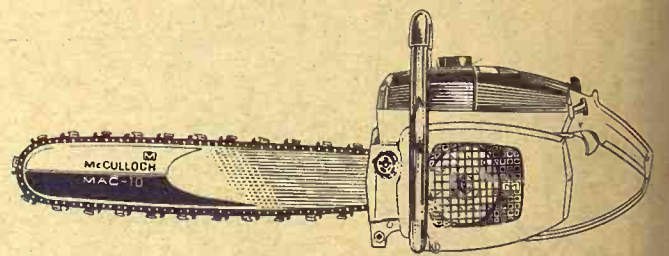
McCULLOCH



**BIG SAW POWER!
ELECTRIC STARTING!
MAC 5-10E**

Got an itchy finger? Touch a button—start this saw! Features built-in starter/generator/regulator. Self-charging. Portable. Get all McCulloch top features besides. Hurry!

McCULLOCH



**EASIEST OF THE EASY STARTERS!
EXTRA SAFE, TOO.
McCULLOCH 2-10 AUTOMATIC**

Two fingers worth of pull . . . half the usual effort . . . is all it takes for fast starts with DSP—special compression release. Don't doubt it. See us demonstrate. Features automatic Safe-T-Start™—chain doesn't move when starting. Automatic chain-bar oiler. Lightweight—11 1/2 lbs., less bar and chain.

W. W. SMITH & SONS
ME 2-3148 — Clay Center
WATERS HARDWARE
CE 8-3114 — Junction City
K-HILL ENGINE SERVICE
PR 8-2011 — Manhattan
VAHSOLTZ IMPL. CO.
TA 5-4521 — Salina
WASHINGTON IMPL. CO
EA 5-2301 — Washington

DUMMERMUTH IMPL. CO.
HI 3-4476 — Marysville
TODD TRACTOR & EQUIP.
MENT CO.
DE 6-2138 Seneca or AV 4
2129 Sabetha
DAVENPORT EQUIP. CO.
LA 8-1151 — Osage City
YOUNG EQUIP. CO.
767-5018 — Council Grove
JORDEN IMPLEMENT CO.
CO 3-2041 — Abilene

Investment Credit Takes Figuring

Investment credit provides a real tax break for farmers. But it can also be a source of trouble, says John H. Coolidge, farm management economist at Kansas State University. Investment credit allows a credit of 7 per cent on certain investments against your income tax liability. If you buy \$20,000 worth of farm machinery during 1967, for example, you get a \$1,400 credit against your income tax for the year

if you plan to keep the item in your business for 8 years.

Property qualifying for the investment credit includes practically every item you would put on your depreciation schedule except breeding, dairy, or work animals and major farm buildings.

Trouble starts when farmers don't keep equipment on which they have claimed investment credit for the full period of time used in computing the credit.

Coolidge gives this example. Suppose you bought a tractor in April 1963 for \$5,000. You expected to keep it for 6 years, so you claimed two-thirds of the investment credit allowed, or \$235.

But the tractor wasn't large enough, so you traded for a more powerful one in May 1967, investing an additional \$4,500.

Now your taxes are doubly complicated. Since you owned the tractor for only 4 years, you qualify for only a third of the total investment — not the two-thirds you claimed. Thus, you must pay back half the investment credit you claimed, or \$117.50, on your 1967 tax return.

Your second problem is to determine the basis for figuring credit on the new tractor you bought this year. The basis for this credit is the amount you paid over and above your remaining cost of the original tractor (in this case, \$4,500).

Since there were 2 years re-

maining of the 6-year life — or one-third — of the original \$5,000 tractor, the remaining value might be \$1,667. If so, the basis for determining investment credit on the new tractor would be the sum of \$4,500 and \$1,667, or \$6,167. The actual remaining cost on your books would depend on the depreciation method you had used.

If the life of the new tractor is 6 years, you could claim two-thirds of the full 7 per cent in investment credit allowance. This credit in this example

Grass & Grain

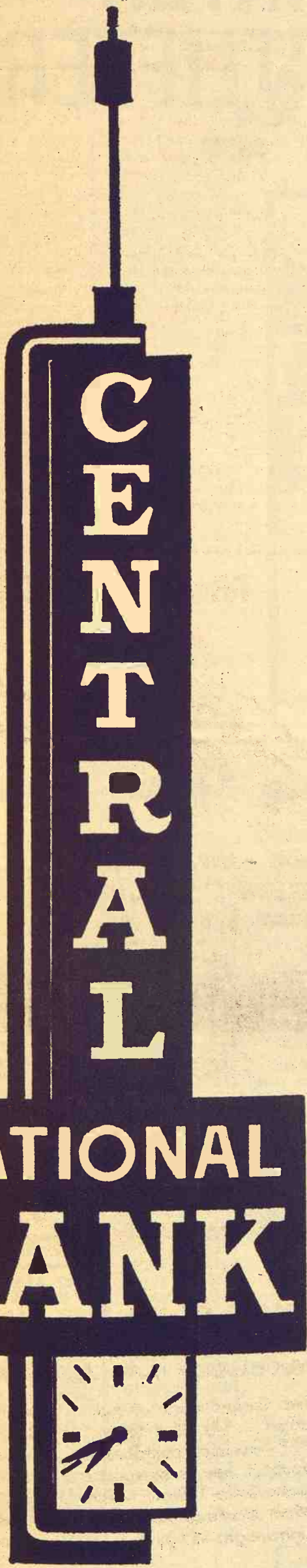
11

December 5, 1967

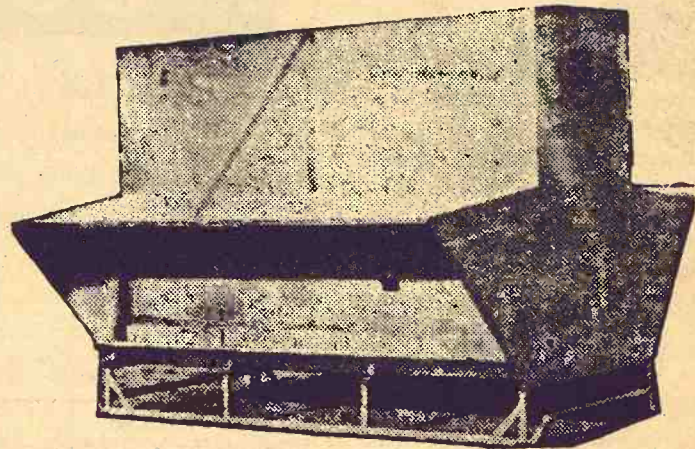
would be \$287. This figure will be used against your 1967 tax liability. It does not offset any recomputed credit you may have to pay.

"Don't fail to take advantage of investment credit," Coolidge advises. "It may seem complicated, but each dollar of the credit is a dollar of tax you don't have to pay."

A Bank Preferred by Farmers And Livestockmen



5%
ON CERTIFICATES OF DEPOSIT



Use a LUTTIG metal all-welded self-feeder to self-feed your cattle. Will not leak or rot, and feeds down good, reasonable in price.

Capacities of 150, 250, and 350 bushels.

LUTTIG TRAILER COMPANY

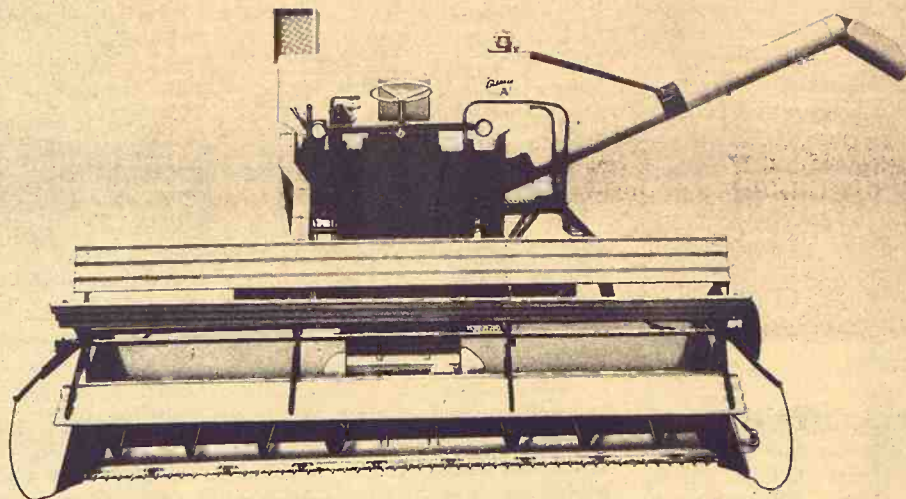
Telephones: Office 535-2810—Res.: 535-2350
EMMETT, KANSAS

QUALITY CONSTRUCTION

GLENER Combines have earned the reputation of being lower cost machines to operate and maintain. GLENER durability begins with the heaviest main frame in the industry . . . built up from 7" x 1/4" pressed channel steel. There is a solid foundation to hold all shafts, bearings, sprockets and sheaves in perfect alignment. The combine runs lighter, lasts longer, performs better.

The separator framework is welded to and becomes a part of the main frame to provide exceptional top-side strength. *There's no twisting of the separator body.*

Choose the GLENER from the GREAT SILVER FLEET that best matches your needs and enjoy the dependable quality that holds cost down, keeps combine value high.



Choose and use Your Gleaner Now
**INTEREST WAIVED
UNTIL JUNE 1, 1968**



Then Years To Pay

SEE A NEARBY ALLIS CHALMERS DEALER

MARYSVILLE
Marysville Machinery Co.

COUNCIL GROVE
Patterson Impl. Co.

WASHINGTON
Hinkle Impl. Co.

WAMEGO
Bearman & Son

HERINGTON
Lockard Impl. Co.

MARION
Longhofer Supply

ALTA VISTA
Buchman Farm Supply

EMPORIA - 1115 W. 6th
Schaefer Eqpt. Co.

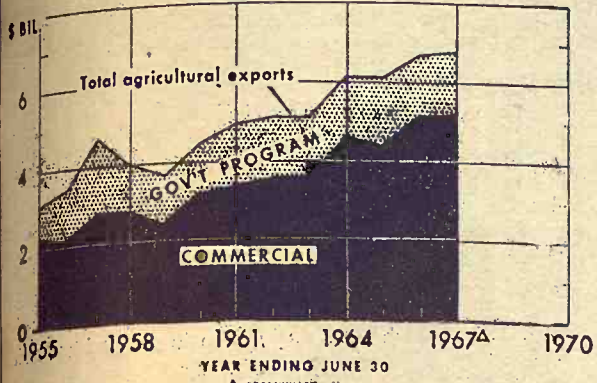
WATERVILLE
Waterville Motors

TOPEKA - East US 24
Henry Sales & Service

Phone DI 2-3172

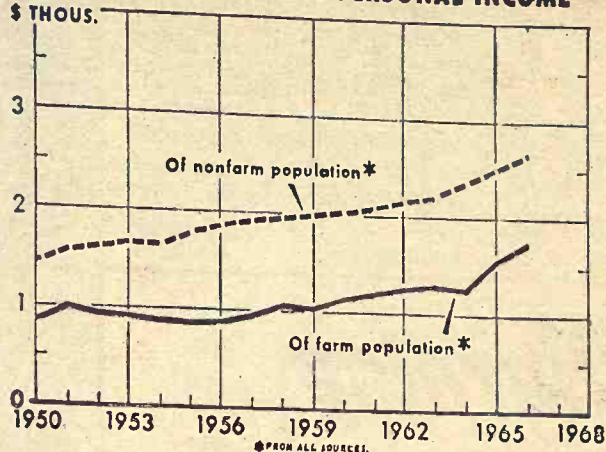
ABILENE
Wright Impl. Co.

U.S. AGRICULTURAL EXPORTS: COMMERCIAL AND UNDER GOVERNMENT PROGRAMS



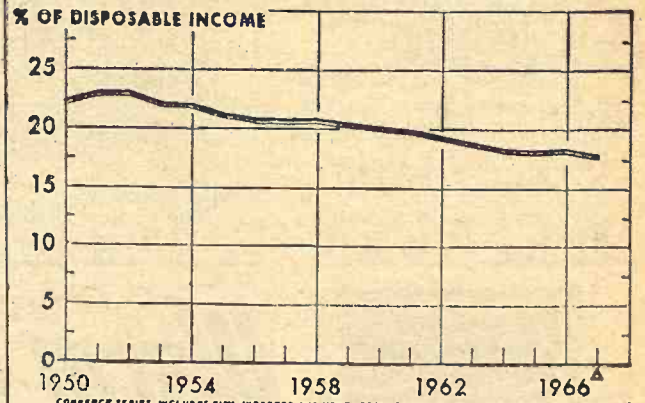
U.S. DEPT. OF AGRICULTURE ECONOMIC RESEARCH SERVICE

PER CAPITA DISPOSABLE PERSONAL INCOME



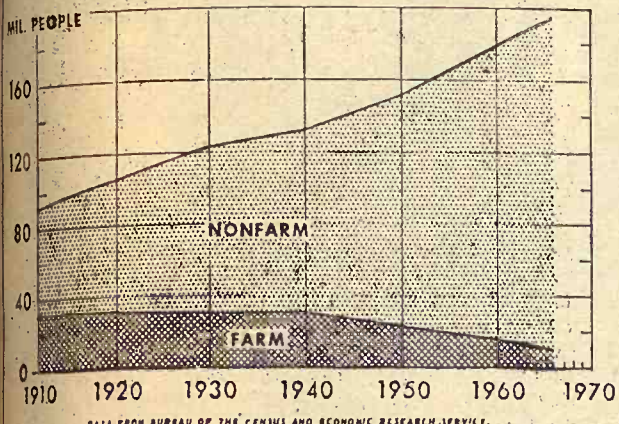
U.S. DEPT. OF AGRICULTURE ECONOMIC RESEARCH SERVICE

PERCENTAGE OF INCOME SPENT FOR FOOD



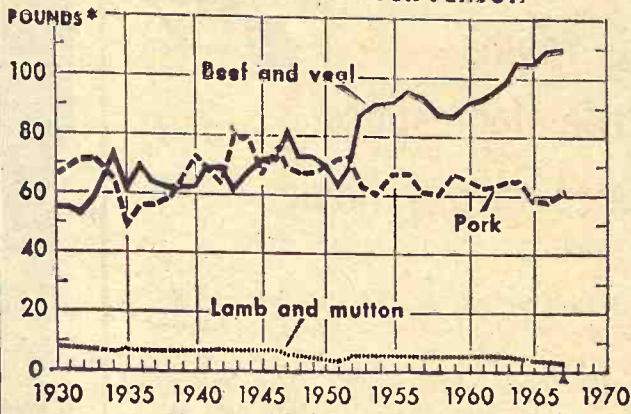
U.S. DEPT. OF AGRICULTURE ECONOMIC RESEARCH SERVICE

FARM AND NONFARM POPULATION



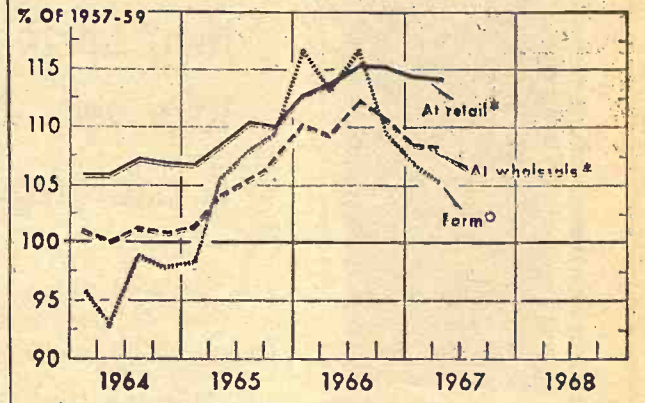
U.S. DEPT. OF AGRICULTURE ECONOMIC RESEARCH SERVICE

MEAT CONSUMPTION PER PERSON



U.S. DEPT. OF AGRICULTURE ECONOMIC RESEARCH SERVICE

FOOD PRICES

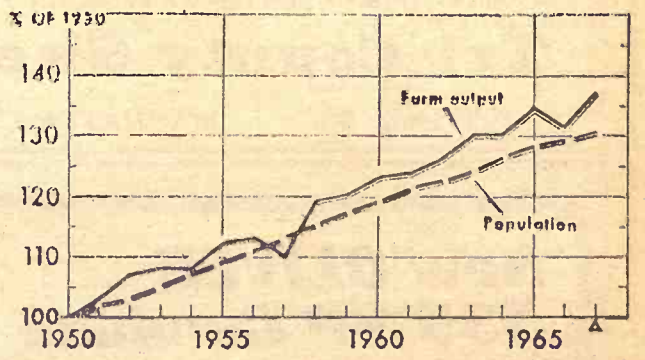


U.S. DEPT. OF AGRICULTURE ECONOMIC RESEARCH SERVICE

See 1968 Farm Income About On 1967 Level

These charts provide pertinent information on current farm income and expense data and provide projections into 1968. USDA economists say that net income in 1968 probably will change little from the 1967 level, or just under 15 billion dollars. The net in 1966 was \$16.4 billion, highest in history except for the 1948 mark of \$17 billion.

FARM OUTPUT AND U.S. POPULATION



U.S. DEPT. OF AGRICULTURE ECONOMIC RESEARCH SERVICE



Kent Brunner
Dickinson County
Beef



Cheryl Patterson
Kearny County
Health



Lee Musil
Pawnee County
Swine



Keith Toll
McPherson County
Corn



Steve Gatton
Russell County
Leadership and
personal development



Patty Douthit
Cherokee County
Leadership



Dennis Fisher
Saline County
Woodwork



Lois Newby
Pratt County
Public speaking



Sarah Shaw
Jackson County
Home improvement



Stephen Grisham
Butler County
Legumes, grasses



Barbara Munson
Geary County
Achievement



Adrian Polansky
Republic County
Field crops



Judy Hanson
Shawnee County
Potato



Dale Conard
Rush County
Poultry



Bette Booth
Douglas County
4-H Foundation talk



Allan Shorthill
Shawnee County
4-H Foundation talk
Photography



Kenneth Shields
Marion County
Tractor



Denise Reed
Pratt County
Personal development



Mike Shepherd
Sumner County
Rabbit



Latrel Ball
Wyandotte County
Clothing



Henry Diehl
Saline County
Wheat quality



Martha Christie
Franklin County
Dog



Jon Deese
Pawnee County
Wheat quality



Janis McCoy
Sumner County
Home economics



Kathleen Wenger
Brown County
Food preservation



Carl Raney
Stanton County
Wheat



Barbara McKinney
Comanche County
4-H Foundation talk



Dale Raymond
Anderson County
Agriculture



Twila Gore
Pawnee County
Personal development



Bruce Yahne
Barton County
Achievement and
personal development



Sandra Shaw
Shawnee County
Horticulture



David Powell
Sumner County
Entomology

Kansas Team Wins National 4-H Judging

The Kansas 4-H livestock judging team from Barber County won the National 4-H Livestock Judging Contest, a part of International Live Stock Show activities in Chicago. The Kansas team of 16-year-

olds, including a pair of twin brothers, was Brad and Doug Ott and Bill Kimmell, Kiowa, and Mike Spicer, Hazelton. Coaches were Marvin Ott and Ray Etheridge, Medicine Lodge, Barber County Extension agricultural agent.

The 4-H'ers received blue ribbons and silver plaques given by the Union Stock Yard and Transit Company.

The contest involved 30 teams. Doug Ott was first place individ-

14 Grass & Grain
December 5, 1967

ual judge with a score of 565 of a possible 600. He received a \$500 U.S. Savings Bond from Armour and Company.

Awards were presented at an honors banquet in the Saddle and Sirloin Club of the Stock Yards Inn given by the International Live Stock Exposition management.

Warm Morning

Gas Wall Furnaces

Heat up to 3 rooms,
take very little floor space
& add elegance to any home



Here are the heaters that use totally automatic, forced circulation, furnace-type heating to heat as many as three rooms. And you don't have to put in expensive duct work or remodel the room. The Warm Morning Gas Wall Furnaces install flush against any wall, recessed in a wall or flush in a corner.

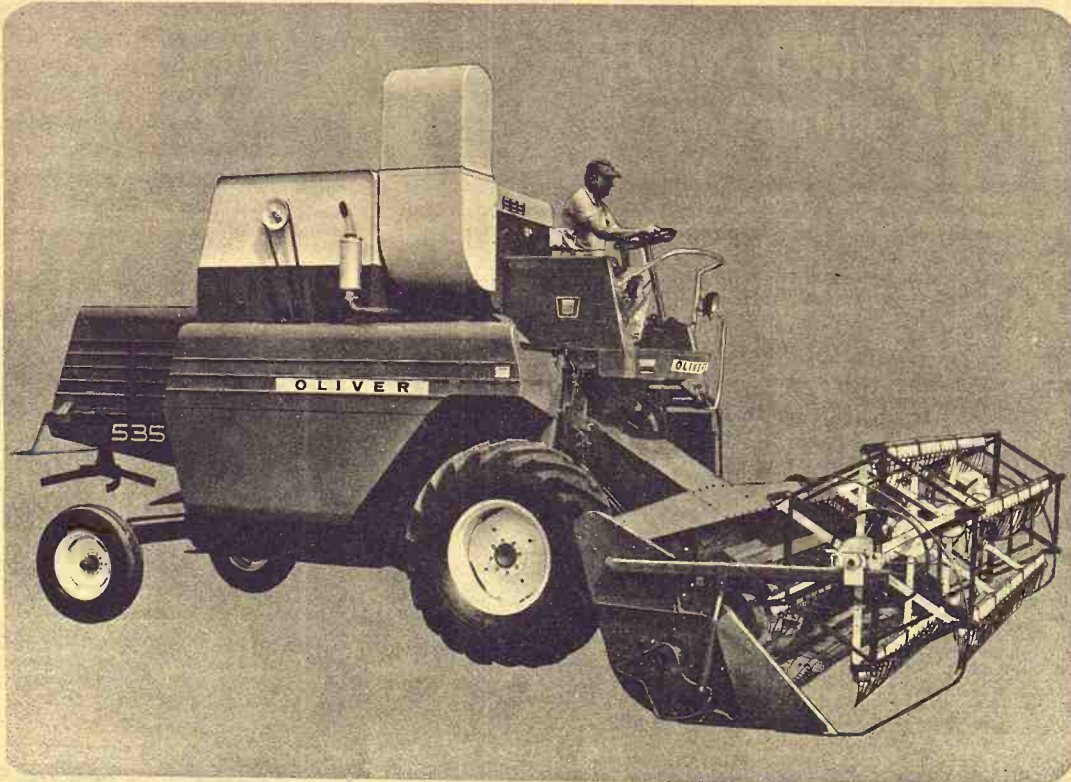
BUY YOUR LP APPLIANCES FROM THE PEOPLE IN THE LP-GAS BUSINESS

Tri-County Skelgas Service

608 South 5th MANHATTAN, KANS. Phone PR 8-4891

New OLIVER 535 SP Combine

12-13-14 Foot Grain Header
Adjustable 2-Row and 4-Row Corn Heads



BUY A NEW OLIVER — GET A BONUS IN CASH
2% of Purchase Price This Month
BUY AT 1967 PRICES
PLUS WAIVER OF INTEREST INTO 1968
Check will be mailed to you by Oliver

SEE YOUR NEARBY OLIVER DEALER

DURHAM
G&R Impl. Co.
ABILENE
Wissing Motor Co.
CLAY CENTER
Toburen Imple. Co.

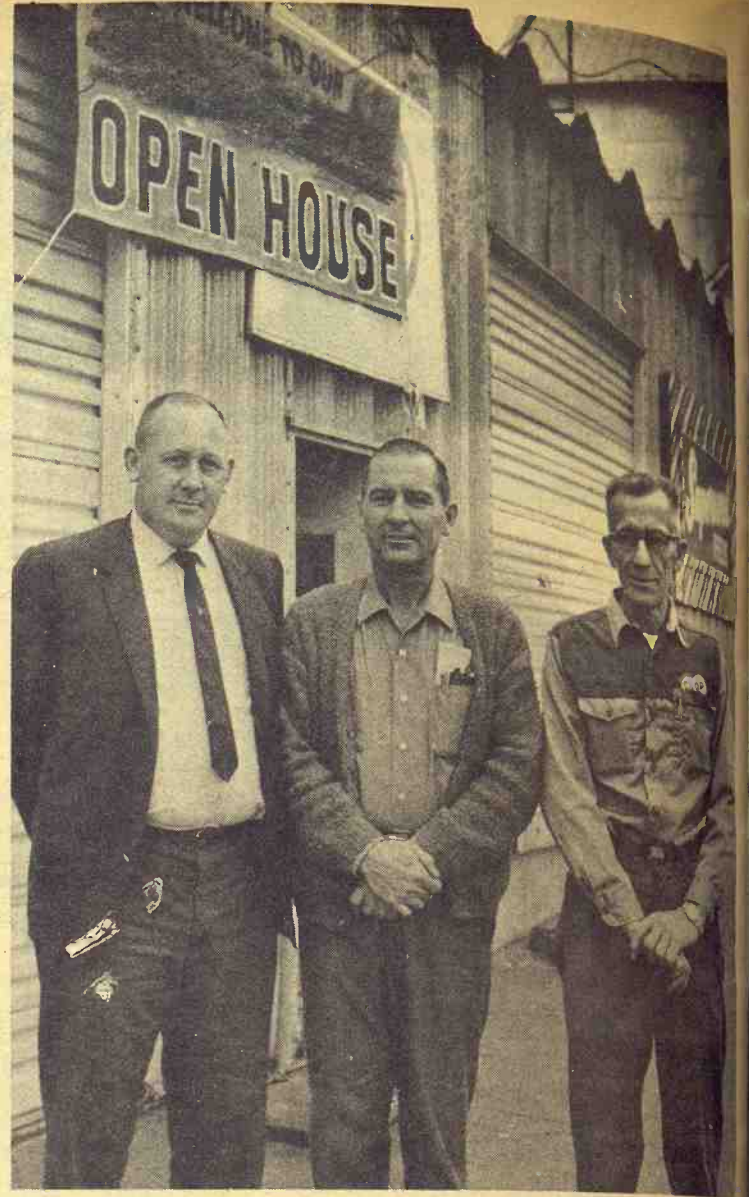
MARYSVILLE
Peschel Bros. Impl.

ALMA
Eberwein Garage

LAWRENCE
McConnell Mchry. Co.

SALINA
Lindquist Impl. Co.

EMPORIA
Arndt Bros. DI 2-5262



Promoters

Roger Heikes of Salina and Gordon Cooke and Barney Shirock, both of Solomon Co-op, worked recent open house at the western Dickinson county town.

CK Ranch Sale Hits \$156,640

BROOKVILLE — The CK Ranch fall sale — annually the largest grossing sale in the G&G area — totaled \$156,640, with 203 bulls averaging \$592 and 181 open commercial heifers going for a \$201 mean.

One of the highlights of the sale came when Matt Matthews of Albany, Texas, bid \$1060 for a bull. Since Matthews had purchased well over 200 bulls from CK in the past, the Vaniers, owners of CK Ranch, made a gift of the bull to him.

Topping the bull offering at \$6000 was a bull bought by Cleave and Joan Murrel, 7M Ranch of Mt. Pleasant, Texas. Two other Texas buyers paid \$3000 and \$2150 for bulls.

Volume bull buyers included Carl Hopkins, Miles City, Mont.; Arizona-Colorado Cattle Co., Phoenix, Ariz.; X Bar X Ranch, Parkman, Wyo.; Milldale Ranch, North Platte, Nebr.; C & H Plantation, Charleston, S.C.; Fred A. Drummond, Pawhuska, Okla.; Clarence Howard, Ed Howard, Glen Salmons, and Vern McNeal, all of Powder Horn, Colo., and Laurence Phelps, Gunnison, Colo.

The auctioneers were George Morse and Gene Watson.

Make sure
you get
"LIVING PROOF"
your cows are
well wintered!



**GOOCH'S
BEST**

See us for the complete calf building nutrition built into Gooch's Best.

RANGE CUBES

- Full Protein plus Energy
- Guaranteed True Vitamin A
- Superior Phosphorus
- GBA-65, the Digestive Aid

CK PROCESSING COMPANY

Manhattan, Kansas — Telephone PR 6-9269
Your best place to buy and sell grain in the country.

CLAY CENTER ALFALFA MILL

Clay Center, Kansas — Telephone ME 2-3401

Peanut Crop

Howard Blubaugh farms in the Kansas river valley south of Burrton. He planted peanuts as a crop this year. The crop didn't turn out too well this year, Blubaugh thinks. He'll try again next year, planting early. Blubaugh has a mind using peanuts as a livestock feed, but he doesn't count the possibility of sometime raising them for commercial use. He even built a harvester to do this year's crop.

The Mu

W
UN
DO
EL

PL

a dram
Union
on the
and it's
For
Union
Omaha

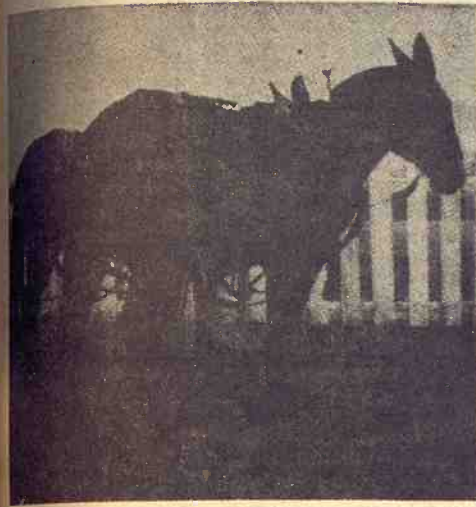
Peanut Crop

Howard Blubaugh, who farms in the Arkansas river valley south of Burrton, has tried peanuts as a crop this year. Altho the crop didn't turn out too well this year, Blubaugh thinks he'll try again next year, planting early in June rather than July.

Blubaugh has in mind using peanuts as a livestock feed, altho he doesn't discount the possibility of sometime raising them for commercial oil. He even built his own harvester to handle this year's crop.



Nip The Mule Dies At 42



Nip, a mule of more than 42 years of age, has died on the Everett Taylor farm north of Solomon. By usual comparison to human age, Nip's lifespan would be like 126 years of human age.

For years she was part of a team, Nip & Tuck, shown above. Both were born in 1925 on the Taylor farm, were broke to harness, and finally retired to pasture after being replaced by tractors, except for an occasional parade or bad weather cattle feeding. Tuck died in 1962.



Corn Picking

A cornpicker does its job on the Conrad Erickson farm east of Wamego. Farmer Garnett Rhodeman is at the wheel.

Kocher Herefords Average \$310

ONAGA — The annual Kocher Hereford production sale here grossed \$15,834, averaging \$310 on 51 lots.

The 31 bulls averaged \$414 and 20 heifers averaged \$150.

In general, demand was good for older bulls but somewhat less on younger calves.

The top bull went for \$835 to R. C. Melton of Havensville. A repeat buyer, E. M. Bailey of Silver Lake, paid \$650 for another top seller, and Richard Heidel of Manhattan bought one at \$600.

Four heifers brought \$200 each. Buyers were Gregory Buser, Whiting; Gloria and Linda Brammer, Topeka; and Melvin Swart, Goff.

Buser brothers, buyers of the top bull in the 1966 sale, were the volume buyers at this sale, buying eight heifers and one bull. The heifers were all 1967 calves.

Among the other buyers at the sale were William Wenderott, Alma; Duane Engelhe, Holton; Hal Falkenstein and Marvin Honig, both of Onaga.

George Morse was the auctioneer.

Simpson Ranch In Geary County Leased

JUNCTION CITY — The 5400 acre Simpson ranch in southeastern Geary County has been leased to L. M. McClure, a Tescott rancher, William Grossner, Salina, business manager, reports.

The ranch, one of the largest in Kansas, was purchased by the late Grover Simpson in January 1962 from John Salazar. Upon his death in July 1966, ownership passed to his son and daughter, John Simpson, Salina, and Mrs. Sarah Dean, of New Jersey.

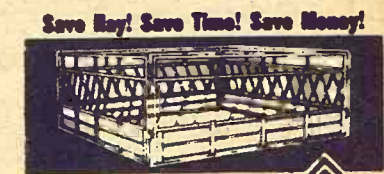
The ranch's 500 head of registered Hereford bulls, heifers, cows and calves were auctioned last week at the Manhattan Commission Co.

Grosser said the Simpson family also owns ranches at Oberlin and Marquette. They have a total of 10,000 acres.

The Marquette pasture has been leased. The Simpsons plan to continue their commercial Hereford and farm operation at the Oberlin ranch, according to Grosser.

WICHITA HOSPITAL RATES UP AGAIN

Hospital room rates have gone up again in Wichita. Ward rates at Wesley, St. Joseph and St. Francis hospitals will average \$28 per day and private rooms will average about \$40. The increase is the third at Wichita hospitals in 14 months.



Now you save all three with NEW Stroberg Slant Bar Feeder Panels.

1. YOU SAVE HAY . . . because Stroberg's exclusive slant bar panels keep cattle from scattering and wasting hay.

2. YOU SAVE TIME . . . because Stroberg Panels can be set up anywhere in just minutes.

3. YOU SAVE MONEY . . . because Stroberg Panels are low in initial cost and are maintenance free.

Ask your dealer or write for free literature.

Stroberg Equipment Co., Inc.
603 Urban Drive, Hutchinson, Kansas

WHAT'S UNION PACIFIC DOING WITH ELECTRONIC COMPUTERS?

PLENTY! They're breaking the time barrier and demonstrating a dramatic performance in transportation efficiency. Right now . . . Union Pacific salesmen are able to obtain the location and status of any car on the railroad. That's part of the job computers are doing at U.P., and it's only the beginning.

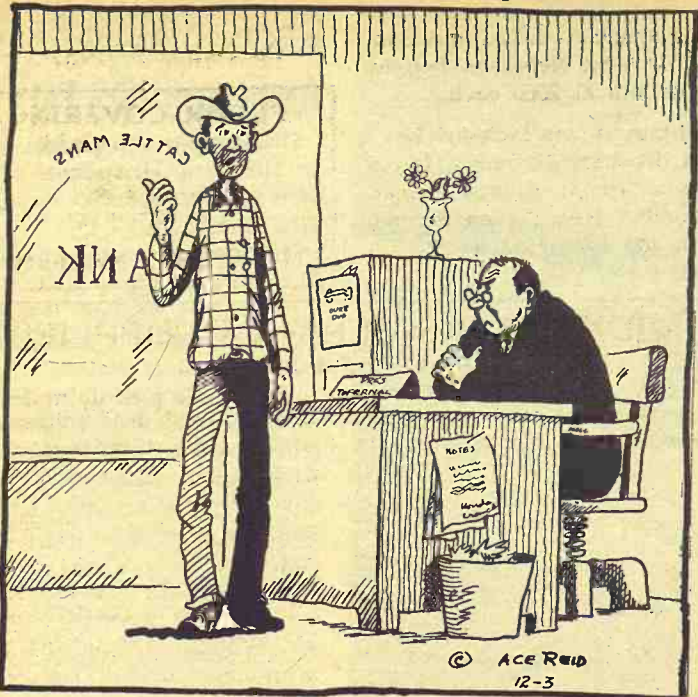
For computer information on choice industrial plant sites in the booming Union Pacific West, contact Edd H. Bailey, President, Union Pacific, Omaha, Nebraska 68102.



GATEWAY TO AND FROM THE BOOMING WEST

COW POKES

By Ace Reid



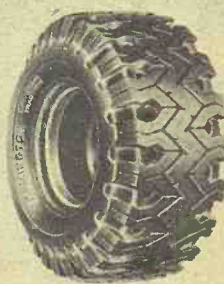
"Haw come when your other customers do it, it's jist an overdraft, but when I do it, it's a hot check!"

PRICE OF HAIRCUT IN TOPEKA AT \$2.25
The price of a haircut rose to

\$2.25 in some barber shops in Topeka last week. The price of a haircut in Topeka went up

December 5, 1967
from \$1.50 to \$1.75 in 1961 and to \$2 in 1965.

Remington or OK Truck Tires
1st Line — 1st Quality



Size	Ply	Highway Tread	Traction Tread	Size	Ply	Highway Tread	Traction Tread
6.70x15	6 ply	\$16.00	\$20.00	7.00x20	8 ply	\$32.00	\$36.00
7.00x15	6 ply	\$19.00	\$23.00	7.50x20	8 ply	\$33.00	\$37.00
7.00x15	8 ply	\$25.00	\$29.00	7.50x20	10 ply	\$35.00	\$42.00
6.00x16	6 ply	\$14.00	\$18.00	8.25x20	10 ply	\$37.00	\$44.00
6.50x16	6 ply	\$17.00	\$21.00	9.00x20	10 ply	\$51.00	\$58.00
7.00x16	6 ply	\$19.00	\$23.00	10.00x20	12 ply	\$61.00	\$68.00
7.50x16	8 ply	\$29.00	\$33.00	TUBELESS			
7.00x17	6 ply	\$24.00	\$28.00	6.70x15	6 ply	\$19.00	\$23.00
7.00x17	8 ply	\$28.00	\$32.00	6.50x16	6 ply	\$20.00	\$24.00
7.50x17	8 ply	\$33.00	\$37.00	7-17.5	6 ply	\$25.00	\$29.00
7.00x18	8 ply	\$33.00	\$37.00	8-17.5	8 ply	\$31.00	\$35.00

Plus Federal Excise Tax Exchange

Protected By Written Road Hazard Guarantee
BUY NOW AND SAVE — BE READY TO ROLL

FREE FAST MOUNTING

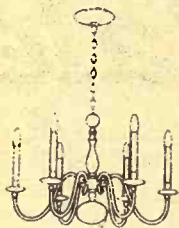


TIRE STORE

REX KOPPEL

OK Rubber Welders

813 Sixth St. Dial ME 2-2167
Clay Center, Kansas



A Chandelier for Christmas?

Why not . . .

You are cordially invited to visit our new retail fixture show room. You will find on display a new stock of lighting fixtures for every room in your home.

ENDACOTT ELECTRIC CO.

309 Moro Street — PR 6-4482 — Manhattan, Kansas



Corner Post Comments



Record Keeping A Chore?

Are your farm records up to date? The other day I overheard a couple of farmers talking about farm records and income taxes and one remarked, "you know I must be almost two months behind in my recordkeeping." I would imagine this a common situation about this time of year and some record books are probably behind even further.

During harvest and other busy times, a farmer doesn't have the time to sit down to his record book and make the entries as they occur. Consequently, unrecorded bills, checks, and deposits pile up, and cash transactions become harder to remember and some are even lost or forgotten.

Now you can leave your recordkeeping chores to a computer. The Computer-Ease system of recordkeeping gives you complete, up-to-date monthly reports which present valuable information for managing your farming operation. Checks and deposit tickets are easily coded to identify each business and personal transaction. No transactions



GARY W. BECK
Farm Service Director

are lost or forgotten. You receive a 10-month tax summary which enables you to make year end adjustments in purchases and sales. A year-end tax summary facilitates easy filing.

This past year many have profited from this computerized recordkeeping system. It has exceeded our expectations.

We are proud to offer this service to our customers as we all know a good record system is most essential to the successful farm operator.

Deposits insured up to \$15,000.00 for each depositor by the Federal Deposit Insurance Corporation.



UNION STATE BANK



CLAY CENTER, KANSAS

Member Federal Deposit Insurance Corporation



This year give the Bourbon you'd rather keep.

OLD CHARTER

Before this golden Old Charter Bourbon was poured into its holiday decanter many long years passed by. That's why Old Charter is such a welcome holiday gift. This year, add your own name to your Old Charter gift list. You deserve it.



Tick-tock-tick-tock . . . the Bourbon that didn't watch the clock.



Decanter or Regular Fifth, Gift-Wrapped At No Extra Cost

OLD CHARTER
Kentucky's Finest Bourbon

Frank Turn
Charles Knop
der. He oper
Miss Chalme
Merge V
Signal Oil
The Allis-Chalmer
System
Leans can put more
local Production Cr
you want to . . . and
you'll like the people
managers understand
you come first becau
you a stockholder a
person.
FLINT HILLS
GO in your oper
five and talk it o
Manhattan
Production Credit Ass
& Humboldt PR
Serving Marshall, C
County, Pottawatomie
County, Branch
Clay Center, Marysville
Duer, Asst. mg
Marysville, H
Marysville, H
Rutherford, mgr
Residence -



Crank Turner

Charles Knopp of Junction City turns crank on big loader. He operates a country machine shop.

Allis Chalmers To Merge With Signal Oil

The Allis-Chalmers Manufac-

turing Company, which has both sought a merger partner and been sought after in 1967, has finally come up with a corporate marriage.

According to an announcement by the two companies, Al-



All Systems "GO" with PCA Loans!

PCA Loans can put more "GO" in any livestock operation. With a line of credit from your local Production Credit Association, you can buy when you're ready... sell when you want to... and buy feed and supplies as you need them.

And you'll like the people you meet at Production Credit Association. You'll find that PCA managers understand your needs... help you grow safely and profitably. At the PCA, you come first because PCAs are owned by the people they serve. Your loan makes you a stockholder and part-owner of your local association with a vote in the operation.

FLINT HILLS FEEDERS: If you want to put MORE GO in your operations, stop at your nearest PCA office and talk it over with the manager.

Manhattan
Production Credit Assn.
15th & Humboldt PR 8-2226

Serving Marshall, Clay, Riley, Geary, Pottawatomie & Wabaunsee Counties. Branch offices at Clay Center, Marysville. Fieldmen: Owen Duer, Asst. mgr.; Ray Cohorst, Marysville, HI 3-4005; W. R. Eddy, Havensville, 889-4159. Floyd Rutherford, mgr. Residence — PR 6-5683

Council Grove
Production Credit Assn.
315 W. Main — 767-5515

Serving Dickinson, Marion, Morris, Chase & Lyon Counties. Branch offices at Abilene, Hillsboro, Marion. Fieldmen: Bill Alsboro, Marlon. Fieldmen: James Peters, paw. asst. sec. tr.; Wilfred Elliott, White City. Charles E. Graham, mgr. Residence — 767-5978

lis-Chalmers has agreed to merge with the Signal Oil and Gas Co. Special meetings to approve this action of the boards of directors of the two corporations will be held "as soon as possible."

Natoma, and A. R. Laflin & Son, Crab Orchard, Nebraska, bought two heifers at \$500 each.

Volume buyers included LaRosh Brothers, Natoma; Harold Larson, Green; Robert Helget, Alexander, Nebr.; Glen Strnad, Cuba, and John Hall, Forest City, Mo.

Arbuthnot Bulls Average \$449

HADDAM — The Arbuthnot Hereford sale here grossed \$28,157, with 26 bulls averaging \$499, 15 registered females, \$270, and 49 commercial heifers \$227.

The top bull, AA Solid Onward 6147, went to MilRay Herefords of Davey, Nebraska, for \$1500.

Two other top sellers went for \$720 each to LaRosh Brothers,

MIDWEST RENDERING & SUPPLIES

BELLEVILLE, KANS.

We sell meat scraps and fat for feed. We pick up materials from butcher shops, locker plants and fresh dead animals. For service call Belleville: JA 7-5545 or your local number.

Beloit	738-3731	Jamestown	439-2655
Cawker City	781-4711	Leonardville	99
Clay Center	632-3424	Lincoln	524-9990
Clyde	446-3621	Mankato	378-3771
Downs	454-9527	Marysville	443-3726
Fairbury, Nebr.	402 729-2147	Miltonvale	427-3015
Gasco	568-2636	Minneapolis	392-3043
Hanover	337-2291	Morganville	926-3674
Hebron, Nebr.	402 768-6221	Washington	EA 5-2920
Hunter	529-2145	Smith Center	282-3751

Ruskin, Nebr. 226-2261

Christmas Sale

Merchandise Reduced

10% - 30%

Orders taken until Dec. 15 on Schwinn bikes
Layaway Till Christmas with down payment

Smith Sporting Goods

Ed Shultz, Owner
221 Poyntz MANHATTAN Phone 776-8531

BIG HORN'S Christmas Package Deal

Package P-107
Illustrated Retail Value \$229
Sale Price **159⁹⁵**

Package P-27
Retail Value \$69.95
Christmas Sale Price **49⁹⁵**

Package P-87
Retail Value \$99.95
Christmas Sale Price **69⁹⁵**

Visit The Key Big Horn Leather Display Room

KEY MILLING CO.

CLAY CENTER, KANS. PHONE ME 2-2141



No Muddy Boots In The Living Room

Lee Montgomery, Junction City, takes off shoes before entering the house. Frequent wet fields, lateness of a killing frost have delayed fall field work all over the G&G area.

10,000 - Head Feedlot Forms At Hays

Add another town that is working to sell stock for a feedlot.

A corporation has been formed in Hays to sell \$500,000 in

stock to build a 10,000-head feedlot.

The firm will be known as the Hays Land & Cattle Co., and it has bought a smaller feedlot from Murray Eddy, Hays physician, who is one of the officers of the new corporation.

The first 10,000 shares of the corporation, which presumably brought in \$100,000, were bought

by the directors: Ralph Hunter, G. E. Frazier, Guy Bemis, P. F. Felton, Alphonse Gross, John McMurtie, Vernon Meckel, D. M. Pfeifer, and Eddy.

The feedlot is four miles west and three miles north of Hays.

Glenn Feldman, formerly of Belleville, has been hired to supervise the building and management of the lot.

December 5, 1967



Tools Too

AGGIE HARDWARE
1205 Moro
Manhattan, Ks.

Paper Back Books
Largest Stock In Town

25c - 35c
50c - 75c



University Book Store
623 N. Manhattan Manhattan

Furniture City

IN CLAY CENTER

PRICE CORRECTION

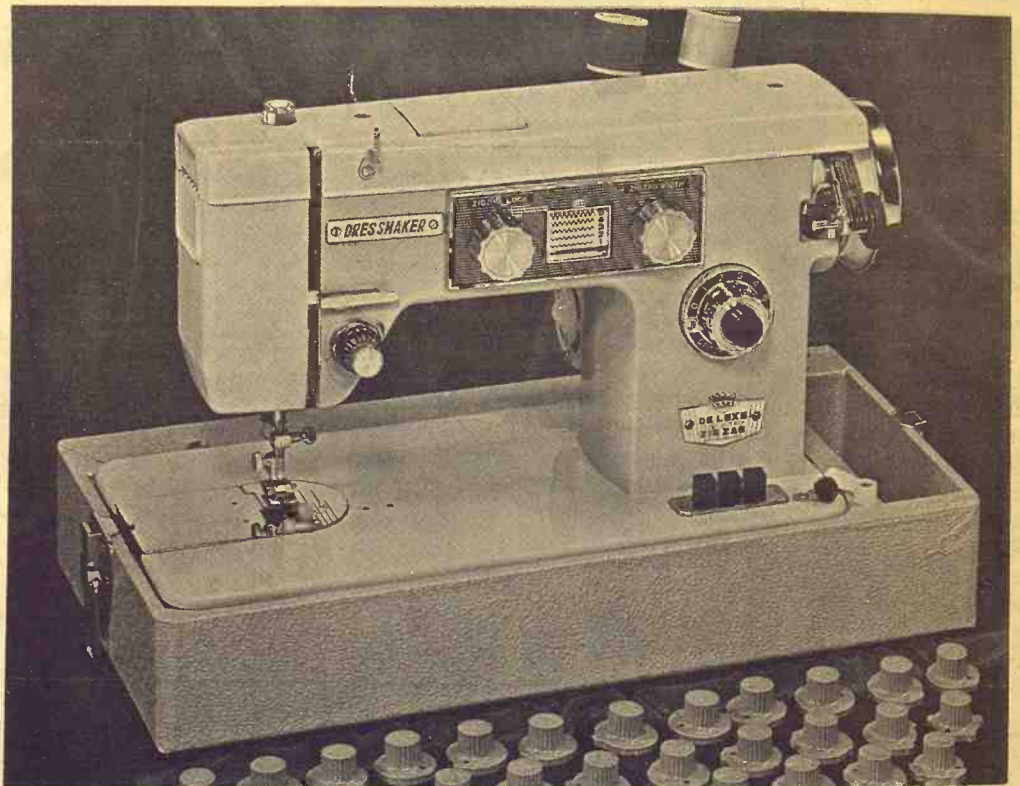
From Full Page Ad In First Section of this Issue
3-PIECE BEDROOM SUITE \$177
NOT \$77 AS APPEARS IN PAGE AD.

1968 Introductory Offer New Low Price

UP TO \$100
Trade-in allowance
for your present
sewing machine

only **\$219⁵⁰**

UP TO \$100
Trade-in allowance
for your present
sewing machine



MODEL SWA - 2000

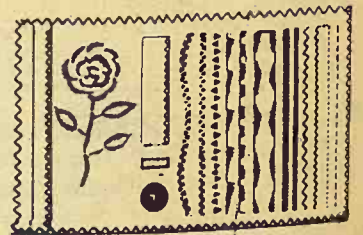
The 24 Cam Automatic is designed to do everything - Makes Button Holes, Blind Stitches, and does several beautiful, decorative patterns. Full size - Heavy Duty machine head.

Will Do This and Much More!



AR

Monograms



- 30-year written guarantee
- Trade-ins accepted

"Largest Display of Machines In State of Kansas"

Drive A Little - Save A Lot

City Sewing Machine Company

818 Broadway

Phone HI 3-3731
MARYSVILLE, KANSAS

THIS KEY SPECIAL

OF THE WEEK

will make you happy
and help your small pigs
grow bigger and faster



16% PIG STARTER

\$107 PER TON

KEY PIG STARTER is high in palatability, high in nutrients and has effective quantities of SP-250. Pigs like this 16%; they will eat it greedily and they will grow big and healthy. If you are not now feeding KEY 1690, buy it now, try it now, at this special low price.

See A KEY Dealer Or Call Collect ME 2-2141

KEY MILLING CO.

Clay Center, Kansas

**CARLOAD PRICES
ON BROWER EQUIPMENT**

Come to the track at the mill
and save plenty.

KEY MILLING CO.

Clay Center

Here's December Price Forecast

Slightly higher lamb prices are in the offing for December, report Kansas State University Extension economists in their monthly market forecast.

The lamb market should be somewhat stronger during the rest of the year, the economists say. This is contrast to last fall when lamb prices were steady to weak.

This year's lamb crop was down 6 percent from a year ago. Thus, slaughter during the October-December quarter will be moderately below year earlier levels.

The December forecast for other commodities is as follows:

EGGS — Steady. Supplies continue above market demands.

GRADE A, MANUFACTURING MILK — Steady. Prices will be at a seasonal high, but still about 15 cents lower than last year.

HOGS — Steady. Prices may be slightly higher the second half of the month, resulting from a decrease in marketings.

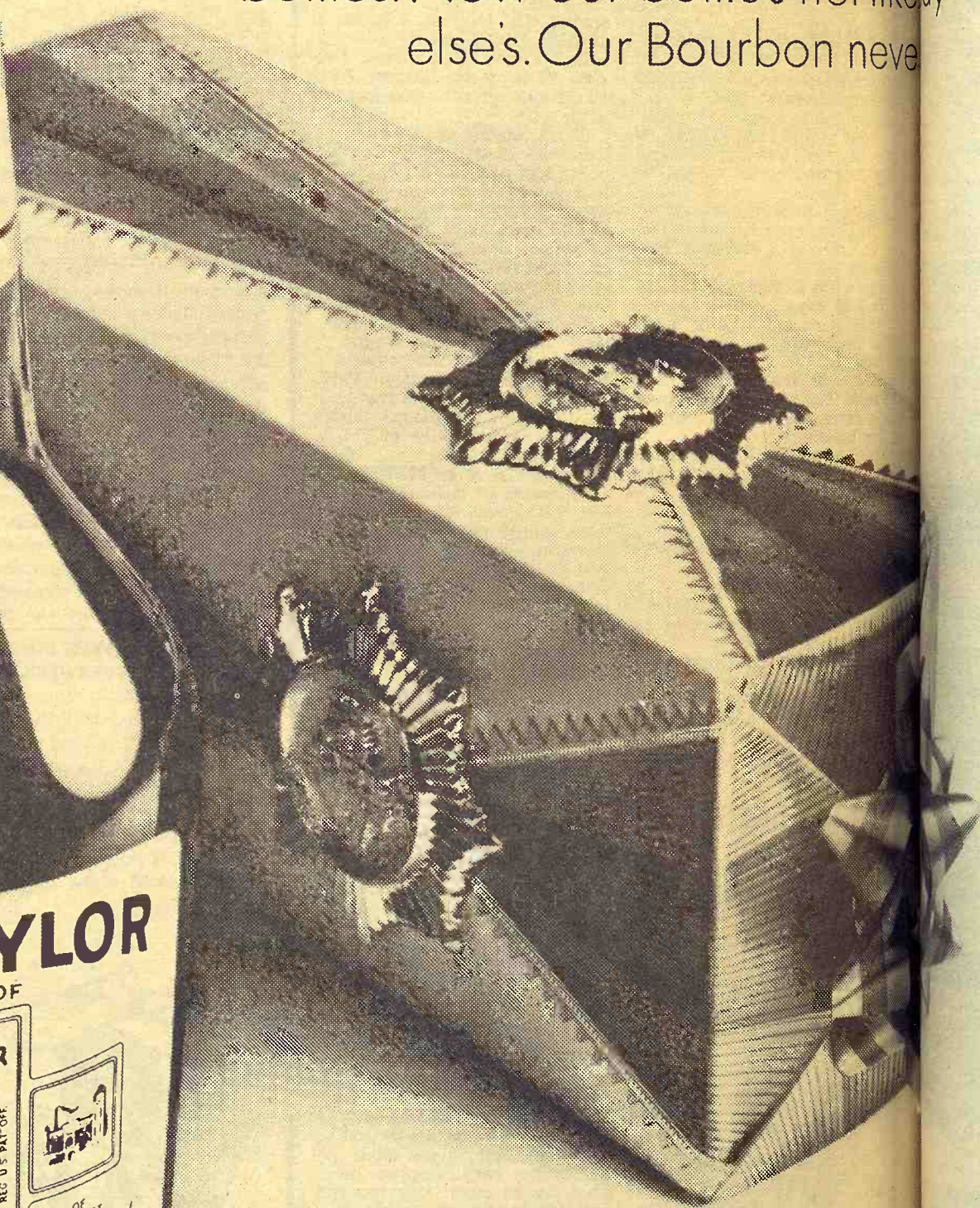
CORN, SORGHUM GRAIN — Steady.

Large
presses
WHE
export
are be
SO
ing w
CA
suppl
will keep price
Possibility of
of the Purcel
eady. Farmer
winter adv
Lower. Larg
heavy feedin

Same Old Taylor Some new bottles!

Our new bottle just came out. In fact, it came out so pretty we're gift-wrapping it for the holidays.

How come we changed our bottles? Because it looked like a lot of other Bourbon bottles. Now our bottle's not likely to be mistaken for any else's. Our Bourbon never



KENTUCKY STRAIGHT BOURBON WHISKEY, 86 PROOF, THE OLD TAYLOR DISTILLERY CO., FRANKFORT & LOUISVILLE, KY.

December 5, 1967

state pork producers councils and two cents by the National Council.

Pork is the first item eliminated in the diets of diet-conscious people; is not a convenient food, such as hamburger and other products; and it not considered a prestige food, nor a favorite of youngsters.

Of the five cents collected from producers, one cent will go to the National Livestock and Meat Board, Chicago, for its meats promotion program. Two cents will be retained by

OUTSTANDING CONSIGNMENT FOR THURSDAY, DEC. 7 SALE

10 Choice Angus Heifers

Calfhood vacc. and weaned. Weight 475 lbs. Would make good replacement heifers.

MANHATTAN COMMISSION CO. Manhattan, Kans.



Shorthorn & Polled Shorthorn SALE, DEC. 9 Farmers & Ranchers Barn SALINA, KANS.

92 HEAD REGISTERED

12 Bulls • 70 Females • 10 Cows Over half of registered cattle are polled

Commercial Shorthorns Sell after Registered

At least 300 Commercials • 25 Choice Club Calves 20 cows, some with calves 30 heifers to calf in spring 20 open heifers • 75 light heifer calves 80 light steer calves

QUALITY IS VERY GOOD FOR THIS SALE Additional Commercial Consignments Expected

For catalog: MILTON NAGELY, Abilene, Kans. Ph. Acme 305 Aucts: Lee Remy, Burdick; Jake Ulrich, Luray

"Why should I buy a Farmhand Loader?"



Because WHEN YOU BUY A FARMHAND F-10 LOADER YOU GET FREE GRAPPLE FORK \$94.00 RETAIL VALUE

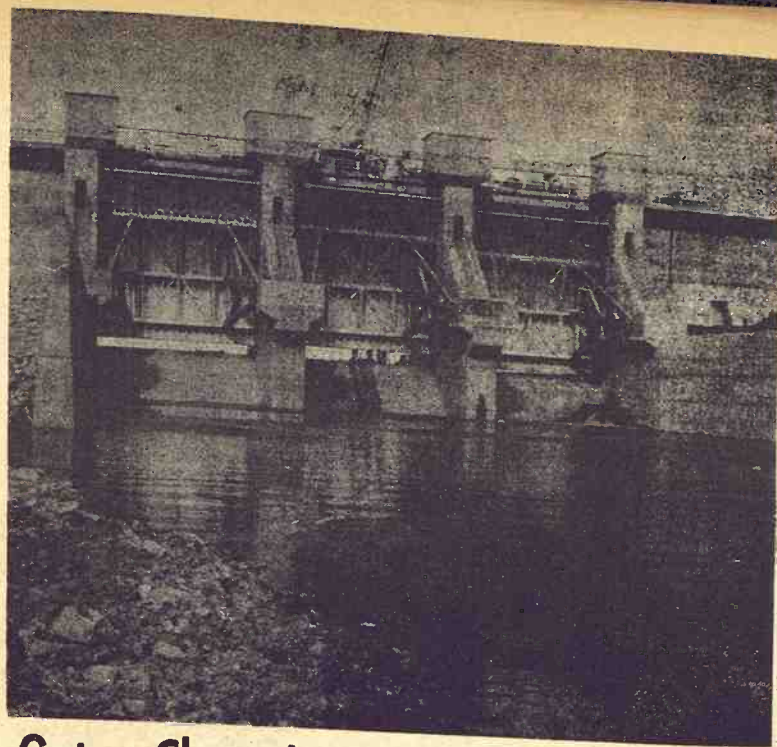
WHEN YOU BUY A FARMHAND F-11 LOADER YOU GET FREE SILAGE FORK \$98.00 RETAIL VALUE

OR GRAPPLE FORK \$101.50 RETAIL VALUE

COME IN. CHECK OUT FARMHAND LOADERS. CHECK INTO OUR FREE OFFER... YOU CAN'T LOSE. HURRY—SUPPLY LIMITED.



Buchman Farm Supply A-C DEALER IH TRUCKS Phone 229-6619 ALTA VISTA, KANSAS



Gates Close At Marion Lake

Gates at the Marion dam have been closed, altho permanent impounding of water probably won't start until January.

Pork Producers Work Toward Giant Promotion

LOUISVILLE, Ky. — The National Pork Producers Council agreed last week to launch a producer-financed pork promotion program that could amount

to as much as \$4 million a year.

It will be financed by a voluntary five-cent per hog deduction from producers' sales. One council official said the object would be to "correct some mistaken opinions some consumers have of pork."

The officials explained the program was accepted after a survey of consumers' meat preferences in three major cities show-

Kenmore Farms Registered Angus

5th Production Sale

At our Middle Creek Ranch in Chase County, 4 1/2 miles West of Elmdale, Kansas

Elmdale is located on US-50 Highway, 26 miles West of Emporia

Tuesday, December 12, 1967

12:00 Noon

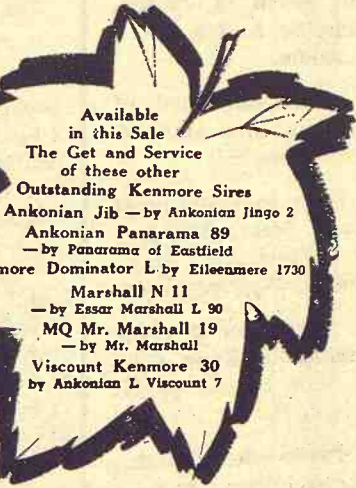
Catalogs sent on request

Flash!

Marshall N 11 Sired the Reserve Grand Champion Angus Steer at the 1967 National Junior Steer Show, Wichita Shown by Pam Packer, McLouth, Kansas

FEATURING ANKONIAN L VISCOUNT 7

1963 Denver Reserve Grand Champion 1962 International 1st Prize Winner



Available in this Sale The Get and Service of these other Outstanding Kenmore Sires Ankonian Jib — by Ankonton Jingo 2 Ankonian Panarama 89 — by Panarama of Eastfield Kenmore Dominator L by Eileenmere 1730 Marshall N 11 — by Essar Marshall L 90 MQ Mr. Marshall 19 — by Mr. Marshall Viscount Kenmore 30 by Ankonian L Viscount 7

40 Bulls Sell

Big, growthy, wide-topped sons of "Viscount". Good enough to improve any herd in Kansas, including our own. Also selling several good sons of Eileenmere 1703, Bandolier of Windfields 210, Kenmore Dominator L and Ankonian Jib.

40 Heifers Sell

The bred and open heifers are a very special uniform group. Included are 25 top daughters of Ankonian L Viscount 7, 3 by Bandolier of Windfields 210 and 2 by Kenmore Dominator L. Many sell bred to Ankonian Panarama 89 and Kenmore Dominator L.

20 Cows Sell

Top cows by Ankonian OB 333 and other Kenmore sires with a great set of calves at side. Also selling a daughter of O Bardolier-mere 100, one by Ermitre of Haymount and one by TT Eileenmere 500.

Service sires are "Jib", MQ Mr. Marshall 19, Marshall N 11.

WRITE FOR CATALOG TO

Phil Ljungdahl Box 1209 Dodge City, Kansas 67801 Sale Manager, or

Kenmore Farms Roxbury, Kansas

Keneth Moore, Owner



CHEVY TRUCK CENTER

Open Weekdays 8 a.m. to 9 p.m.

3825 South Topeka TOPEKA, KANSAS

SAVE ... AT VAN-T

- 65 Chev. 1/2 T flat bed 65 Chev. 1 1/2 T flat bed 65 Int. Tandem dump truck 65 Chev. tractor 67 Chev. 3/4 T pickup 67 Chev. 1/2 T pickup, have 3 67 Ford 1/2 T pickup 67 GMC 1/2 T pickup 66 Chev. 1/2 T pickup 66 GMC suburban 67 Chev. 1 T 65 El Camino 67 Ford 1/2 T

OVER 100 NEW TRUCKS IN STOCK.



CHEVY TRUCK CENTER

Open Weekdays 8 a.m. to 9 p.m.

3825 South Topeka TOPEKA, KANSAS

Advertisement for Kenmore Farms Registered Angus 5th Production Sale, featuring a large leaf graphic and detailed information about the sale.

Partial text from the left edge of the page, including dates like 'Saturday' and 'Friday'.

