

GRASS & GRAIN

12th year no. 45

January 3, 1967



When Winter Comes

The G&G area finally got some moisture before 1966 closed out. For sure it was too late for fall crop growth, but it wasn't too early to replenish 1967 ground moisture and make a start to filling farm ponds.

It was the first taste of prolonged winter for the G&G area as temperatures slid below zero, following snowfall accumulations of 10 inches over much of the area.

While many farmers said before Christmas that they would just as soon hold back any moisture until late March as it was too late to help crop growth and winter snows only made it tough on livestock feeders, when moisture comes, few farmers seem unwilling to receive it, no matter when, no matter how.

Winter Chore Time

Man did we have snow! quipped William Iseli, Axtell. Iseli was doing chores on the Robert Conger farm where he resides.



Pleased With The Moisture

George Holthaus and sons Nick, on tractor, and Galen, Baileyville, were glad to see the moisture even though it made considerable work to keep the yards and lots open for the extensive feeding operation they have.



Back And Forth

Orville Skeen, attendant at the Texaco Service, Beattie, carries the snow off the ramp again. High winds and the light snow made it an endless task to keep roads and service entrances open.

Favor In Pig Report

A slow-down in pork production next year has been indicated by a government survey showing farmers intend to produce only 3 per cent more pigs during the first half of the year

GRASS & GRAIN

The Mid-Kansas news weekly. Published each Tuesday at 1207 Moro, (Box 1009) Manhattan, Kansas, 66502 by
AG PRESS
Dean Coughenour
E. R. Woodward
Second class postage paid at Manhattan, Kansas
Subscription: \$3 year
CIRCULATION 11,108

than a year earlier.

An earlier survey had indicated expansion of at least 6 per cent during the first quarter of 1967. Pig production during the last half of this year was 9 per cent above a year earlier.

The prospective cutback in production plans follows a decline in hog prices during recent months.

Total Crop

An Agriculture Department authority said the 1966 pig crop totaled 5,526,000 head, up 8 per cent from last year's 78,940,000 from the 1963-64 average of 91,227,000.

The department forecast the 1967 spring crop at 47,200,000 head, 3 per cent more than the 1966 spring crop of 45,771,000. The average crop was 49,112,000.

The 1966 fall crop was reported at 39,755,000 head compared with 36,415,000 last year and 42,117,000 for the five-year average.

Spring pigs produce pork supplies during the last half of a year while the fall crop provides pork supplies during the first half of the following year.

The department said that the number of hogs on farms on Dec. 1 totaled 55,114,000 head. Last year's inventory was 50,519,000.

The fall pig crops by major producing states for 1965 and 1966, respectively included: Kansas 946,000 and 997,000.

FREE OFF-STREET
Parking
While Eating at

SCHUESS

The Family House
Cafe
MANHATTAN



PURINA HORSE CHOW CHECKERS COMPLETE!...NO HAY NEEDED!

Here's the product horse owners have been waiting for... Purina's revolutionary Horse Chow Checkers... with built-in hay.

It's tailor-made for folks where hay is a problem. Roughage is built right into the product—no extra hay is needed.

Because hay is built right in, extra hay feeding is eliminated. Horses like Purina Horse Chow Checkers almost as well as sugar... and it's economical.

If hay is no problem, ask for Purina Omolene, long-time favorite of horsemen the country over. But, if you don't want to bother with extra hay, feed Purina's new Horse Chow. Available now at our store in easy-to-handle 50-lb. bags.



- Abilene Co-Op Assn. CO 3-1660 Abilene
- Gorden Mark Elevator ME 2-3381 Clay Center
- Western Grain Mill 767-5933 Council Grove
- Bartlett Grain Co. CE 8-5134 Junction City
- Farmers Co-op Elev. & Supply 157 Hope
- Flint Hills Feed & Grain PR 8-5322 Manhattan
- Palmer Grain Co. Phone 3 Palmer
- Farmers Union Feed Mill 437-2434 St. Marys
- Mor-Kan Elevator 349-2214 White City
- Reading Grain & Lumber AN 9-3842 Reading

**PURINA
CHOWS**

YOU COME 1ST WITH US

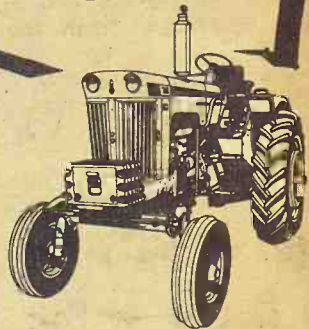
530 Row Crop-
Adjust. Axle-4 Wheel



OUR EVERY
FACILITY IS AT YOUR
SERVICE TO KEEP
YOU ROLLING—

GET YOUR
EQUIPMENT WHERE
THE SERVICE IS

AT A
NEARBY
CASE®
DEALER



730 Row Crop-Adjust. Axle-4 Wheel

MARYSVILLE
Brauchi Brothers

LINN
Kuhlman Motor Co.
CLAY CENTER
Porter Eqpt. Co.
302 5th ME 2-5100

MARION
Longhofer Supply

SALINA
Vasholtz Impl. Co.
CENTRALIA
McBratney Impl.
Phone 857-3815

AT THE SIGN

OF THE



DOUBLE "T"



5%

Interest Per Annum
now paid on one year

CERTIFICATES OF DEPOSIT at UNION STATE.

Present certificates will start drawing the new high rate automatically at their next anniversary date.

You can now receive a guaranteed high return on your funds from a bank with Capital funds and reserves in excess of \$1,200,000.00 and Federal Deposit Insurance Corporation protection for all deposits up to \$15,000.00 for each depositor.

UNION STATE BANK



CLAY CENTER, KANSAS

Member Federal Deposit Insurance Corporation

Deere To A

Deere & Co. reported earnings of \$1.10 per share in the first three months of the year. The firm had net income of \$5.46 a year ending year's total of \$3.39 a share to \$1.062 billion. Deere's operating profit was \$1.1 million, down from \$1.2 million a year before. The company planned to invest in its operations in Mexico.

Lyon County To Delay Tax Re

EMPORIA, Kan., Jan. 3.—Lyon County commissioners today voted to delay the 100 percent property tax increase until the firm under contract to appraise the county will not be ready to begin work in 1968.

Originally, the commissioners were preparing to raise the tax rate to 100 percent for the year ending May 1, 1968. The action was taken after a public hearing held by Jerry Demo, county clerk. "The reappraisal figures for 1968 will go on Lyon County for assessment in 1968."

"The Kansas area provide clerk shall not use the value of the reappraisal exceeding the year was complete appraisal, including appraisal complete and delinquent on or before the preceding year 1st, 1968. Therefore, the tax rate will not be based on the 100 percent fair market value appraisals, no commissioners of equalization based on these appraisals until May, 1968."

A protest was filed in county court following the reappraisal. Views were collected on days between the appraisal firm, a company, with headquarters in Manhattan. The commission now gives it a 30-day period to file out grievances. Appraisals are used for tax assessment.

FLETCHER



"IT'S A NEW ELEMENT FOR YOUR BIRTHDAY, NY REPORT FOR YOU TO SIGN

Deere Sales To A Billion

Deere & Co. has posted record earnings in fiscal 1966, passing the \$1 billion sales mark for the first time.

The farm equipment maker had net income of \$78.7 million or \$5.46 a share for the fiscal year ending October 31. Last year's totals were \$51 million and \$3.39 a share. Sales jumped to \$1.062 billion from \$886 million.

Deere's overseas totaled \$137 million, down 6% from the year before.

The company announced it planned to sell controlling interest in its subsidiary in Mexico to Mexican investors.

Lyon County To Delay Using Tax Reappraisal

EMPORIA — Lyon County commissioners have ruled the 100 percent appraisals of property made by a professional firm under contract to the county will not go into effect until 1968.

Originally the new figures were prepared for use for 1967 taxation purposes. The commissioners now contend that the appraisals were not submitted in time to be effective in 1967.

The action was explained by Jerry Demo, county attorney.

"The recent 100 percent appraisal figures completed on Lyon County property will not go on Lyon County's tax rolls for assessment purposes until 1968.

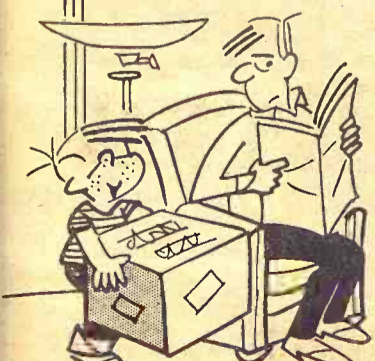
"The Kansas statutes in this area provide that the county clerk shall not be authorized to use the valuations submitted by the reappraisers in a year succeeding the year the reappraisal was completed unless the reappraisal, including all hearings on appraisal figures, was complete and delivered to such clerk on or before November 1st of the preceding year, or November 1st, 1966.

"Therefore taxes for 1967 will not be based on the recent 100 per cent fair market value reappraisals, nor will the county commissioners sit as the board of equalization on grievances based on these reappraisals until May, 1968."

A protest was raised in the county following announcement of the reappraisal figures. Interviews were conducted for several days between landowners and representatives of the appraisal firm, J. M. Cleminshaw company, with Kansas headquarters in Mission.

The commission's decision now gives it a full year to iron out grievances before the appraisals are used as a base for tax assessments.

FLETCHER THE 4-H®
© JOE E. BURESCH



"IT'S A NEW ELECTRIC MILKER FOR YOUR BIRTHDAY, DAD. BY THE WAY, MY REPORT CARD'S INSIDE FOR YOU TO SIGN!"

DUCKWALL'S

SAVINGS JUST LIKE THE GOOD OLD DAYS!

JANUARY SALE



PERMANENT PRESS BLOUSE

You will like these no-iron beauties of 65% Tetron and 35% Pima Cotton with roll-up sleeves and Bermuda collars. Assorted new solid colors for spring.

Sizes 32 To 38 A \$1.99 Value

FLANNELETTE GOWN

Warm, easy care cotton flannelette in assorted floral prints. Full cut and guaranteed washable.

Sizes S-M-L A \$1.99 Value



Sizes 8 To 18
A \$2.99 Value

Stretch Denim LADIES CAPRIS

Long wearing Nylon and Cotton stretch denim. Color fast navy with size zipper.

\$1.97



Boys and Girls BOXER LONGIE

Midvale cotton Corduroy longies that are flannel lined for extra warmth. Assorted colors.

Sizes 3 To 8

93¢



sale! sale!

SEAMLESS NYLONS

First Quality

Sheer, long wearing, perfect hose in two new spring shades.

Sizes 9 To 11

25¢

Sold 3 pr. To Pkg. Pair



BLANKETS

New fiberwoven solid color blankets. 94% Rayon and 6% Acrylic Fiber with 100% Nylon binding. All popular decorator colors.

72" x 90"

\$3.44

Regularly \$4.88



FRESH COOKIES

A big assortment of packaged cookies. Oven fresh and delicious. Buy several packages at this low price.

Package

23¢



BED PILLOWS

21" x 27" Dacron filled, with assorted color ticking.

\$2.47

A \$3.49 Value

Each



MATTRESS TOPPER POLY FOAM

3/8" poly foam for solid sleeping comfort. Adds to the life of your mattress. Full or twin bed size.

88¢

A \$1.98 Value

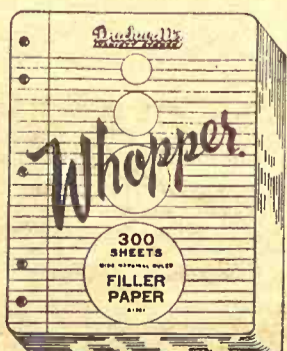


THROW RUG ASSORTMENT

Choose from many sizes, colors and shapes. A big assortment bought especially for this sale.

Values To \$4.00

\$1.66



300 SHEETS FILLER PAPER

300 sheets of quality paper, 5 hole, choose from wide or narrow rule.

47¢

SCHOOL PENCILS

A package of 10, regularly 29¢

21¢



METAL FILE BOXES

Start out 1967 with your personal records properly filed.

10" x 5 1/2" x 12 1/2" \$1.47
\$1.98 Value

12 1/2" x 9" x 10" \$1.87
\$2.98 Value

9" x 9" x 4 1/2" \$1.47
\$1.98 Value



SAVE Health & Beauty Aids

LISTERINE 20 oz. Family Size \$1.29 Value

73¢



ALKA SELTZER 25 Tablets

67¢ Value

37¢



CREST Family Size

95¢ Value

57¢



YORK ASPIRIN 100's

19¢ Value

9¢

LANDERS FAMILY SIZE TOILETRIES

Your choice of hand lotion, shampoo, hair rinse, bubble bath, talc and many others. 39¢ Value

23¢



FREE DISPENSER

with purchase of JERGENS LOTION

Both 75¢ \$1.49 Family Size

MATTRESS & BOX SPRINGS

Specials Every Day
New Low Prices
Buy Direct

Also Complete Rebuilding
Service

**Manhattan
Mattress Co.**

414 S. 4th PR 8-5302

**Their Classwork
Goes To Market**

HAYS — Fattening calves for sale is always an agricultural problem, but it is an especially important one for a group of students at Fort Hays Kansas State College.

With the sale of 60 fat calves at markets in Dodge City, Hays, and Garden City, the 17 members of the college's Problems

in Agriculture course completed their semester assignment. Students taking the course are assigned a calf in mid-September, which they must fatten, care for and finally sell.

The sales, this semester, also brought \$19,009 into the treasury of the college farm, which uses the money to meet operating expenses.

Members of the class include Norman O'Neill, Lyons; Larry Keyser, WaKeeney; Fred

Schmidt, Ellinwood; Bruce Wilkins, Scott City; Jack Humburg, Hays; Jim McCullough, Medicine Lodge; Richard Mentzer, Ensign; Lonnie Kent and Tom Symns, both of Hutchinson, and Brian Pywell, Zurich.

January 3, 1967

4

Grass & Grain

(-State B
Study In

An 18-month s
e modernizing
ustry of North
ill result from
ons by Dr. Joh
ansas State Ur

COW PO



"Wul



for lo



BLUE RIBBON

QUALITY

*The solid
reason behind
spectacular
feeding results*

The same CO-OP Feeds that are winning championship show results will give you championship returns on your feed dollar in livestock auction or stockyards sale pens.

The reason in both cases is CO-OP Quality, which means more nutrition and more nutritional balance. CO-OP provides every element your animal needs to grow or to produce milk or eggs. CO-OP Nutritional Balance allows your animal to get full benefit from every ounce of nutrient—full feed conversion with no waste as happens when part of the feed value passes through the animal unused.

The men who make CO-OP Feeds are closer to the farmer because they work for the farmer, in farmer-owned laboratories, test stations and feed mills. They have the courage and the incentive to keep working until they have the best feeds possible.

CO-OP Nutritionists were not satisfied, for example, with a very good beef ration that gave an average 2.6 lbs. gain per day. They kept reformulating and re-testing until they had a tremendous ration, which gave an average 3.6 lbs. gain in a test just completed at the CO-OP Demonstration and Research Farm. You can get this superior CO-OP ration for your beef cattle at your CCA-Member Co-op.

CO-OP Nutritionists kept experimenting with layer rations until they had one that balanced so well it can be mixed with farm-grown grain and still give the efficiency of whole feeds. They were pioneers in developing hog concentrates with plenty of vitamins and minerals, as well as protein—so your hogs can stay vigorously healthy, and gain still more from the protein.

The CO-OP Feeds you buy have been formulated, tested, re-formulated, re-tested, over and over again. They have survived all these steps of feed judging by the strictest judges in the feed industry, and have come out real feed champions. They give you championship feeding results whether you raise to show or sell.

This is the reason behind the big swing to CO-OP Feeds. Over the past five years, farmers and feeders have fed 35 to 45 percent more CO-OP Feed tonnage each year than the year before.



Pie-ed Piper Of Abilene

It's all pie, and a half yard wide. Winston Elliott, sales manager of Ronald Rice Motors at Abilene, received this 18-pounder for a holiday treat. A cream pie, his favorite, wouldn't have tempted him a year ago when he was in a Topeka hospital recovering from injuries suffered in an automobile crash.

**CATTLE FINANCING
In The Flint Hills Country**

Financing cattle operations in the Flint Hills country is an important function of the Council Grove and The Manhattan Production Credit Associations. If you are planning an extension in your livestock enterprise, you may find it to your advantage to visit the association office in your area. Both are farmer-owned and farmer-managed.



St. Marys
Farmers Union Co-op
Business Assn.

Manhattan
FARMERS Cooperative Assn.
Manhattan-Alta Vista
-Westmoreland-Onaga

Mahaska
Farmers Union Co-op Elev.
Mahaska Ph. 41

Greenleaf
Farmers Co-op Elevator Assn
Greenleaf-Linn
-Washington

Chapman
ALIDA CO-OP Elevator Co
Ph. WA 2-3741
WA 2-3041

Junction City
Farmer-Stockman Co-op Assn
Council Grove
-Junction City CE 8-4158

Clifton
Farmers Co-op Ship. Assn.
Clifton Ph. 455-3315

Alma
Farmers Union Co-op
Alma Ph. 765-3612
Eskridge Ph. 449-2291

Clay Center
FARMERS Union Co-op
Clay Center-Bala
-Miltonvale-Leonardville

Manhattan
Production Credit Assn.
5th & Humboldt PR 8-2226



Council Grove
Production Credit Assn.
315 W. Main — 787-5500

Serving Marshall, Clay, Riley, Geary, Pottawatomie & Wabaunsee Counties. Branch offices at Clay Center, Marysville. Fieldmen: Owen Duer, Asst. mgr.; Ray Cohorst, Marysville, HI 3-4005; W. R. Eddy, Havensville, 889-4159. Floyd Rutherford, mgr. Residence — PR 6-5683

Serving Dickinson, Marion, Morris, Chase & Lyon Counties. Branch offices at Abilene, Hillsboro, Marion. Fieldmen: Bill Apaw, asst. sec-tr.; James Peterson, Lehigh; Wilfred Elliott, White City. Charles E. Graham, mgr. Residence — 787-5500



Start
ucts we h
Gulf trad
The quali
To he
we have a
notebook
row row c
record da



"Don"
Flin
MANHAT
Rea
READING

<-State Beef Study In Nigeria

An 18-month study to aid in the modernizing of the beef industry of Northern Nigeria will result from recommendations by Dr. John H. McCoy, Kansas State University economist.

Kansas State University has been given the responsibility for the Northern Nigeria beef development study under the leadership of Vice President for Agriculture Glenn H. Beck and McCoy. The two men will select four scientists to conduct the study. McCoy has returned recently

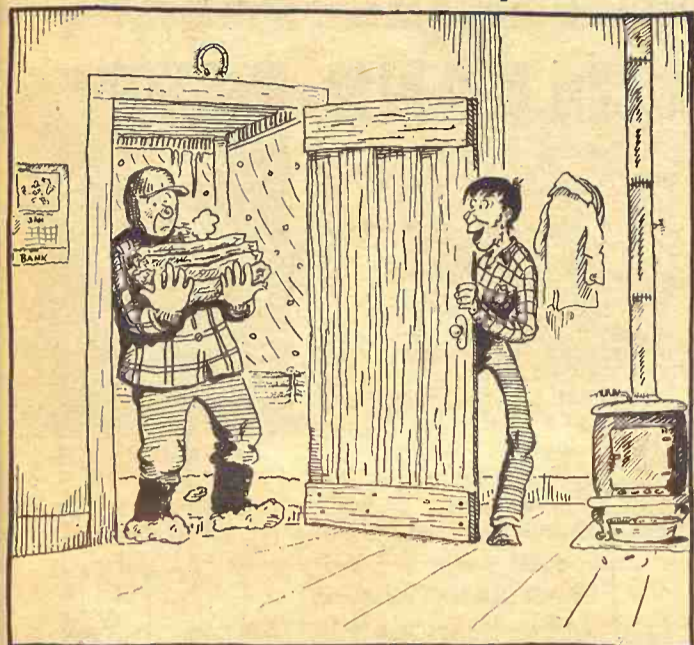
from extensive travel and investigations with Northern Nigerian government officials after being selected for the job by the Consortium for the Study of Nigerian Rural Development. The consortium was formed by the United States

Government with scientists and administrators at the University of Wisconsin, Colorado State University, K-State and Michigan State. McCoy proposed the important beef study after consulting with officials with the Agency

for International Development, the Food and Agricultural Organization in Rome, the Common Market in Brussels and with government officials throughout Northern Nigeria, including the field director of the United States AID program at Lagos.

COW POKES

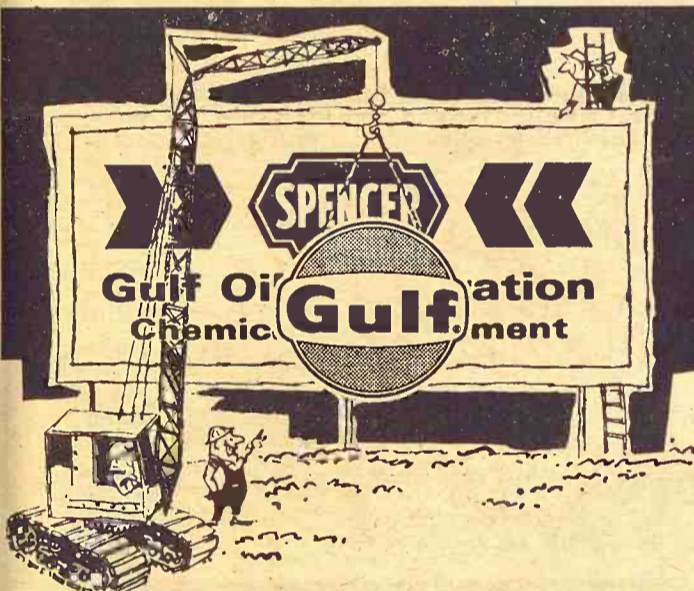
By Ace Reid



"Wul, wul, if it ain't ole Rudolph the Red Nose Cowpoke!"

Names change

for lots of good reasons



Starting now, the farm-famous Spencer products we have featured will carry the world-famous Gulf trademark. But only the name has changed. The quality is the same. Our service is the same.

To help remind you that Spencer is now Gulf, we have a free gift for you. It's the Gulf farm file notebook packed with helpful information on narrow row conversion, plant food removal rates, crop record data, etc.



FREE during "January Name Change Days"

The new fact-filled Gulf farm file notebook. Come in now for your FREE copy.



"Don't just fertilize... be Gulf wise!"

Grove Credit Assn. 767-5515
Marion, Mor...
Counties...
Hills...
men: Bill Als...
ames Peters...
tt, White Cl...

Flint Hills Feed & Grain
MANHATTAN PR 8-5322

Reading Grain & Lumber
READING AN 9-3842

For Our Rural Neighbors
Who Want To Strengthen Their Financial Positions

THE HOME SAVINGS PLAN
WILL Work For You . . . As It Does For Others
INSURED SAFETY OF SAVINGS

Save in person or by mail

BUSINESS HOURS
9:30 A.M. — 4:00 P.M.
SATURDAYS
9:30 A.M. to 12:00 Noon

HOMIE

SAVINGS AND LOAN ASSOCIATION

107 NORTH FOURTH STREET

MANHATTAN, KANSAS

YOUR COMMUNITY HOME FINANCING CENTER

You just can't beat an A-C tractor when it comes to pulling power... LOOK

FORECAST
Every day sunny and bright for Allis-Chalmers tractor owners.

GOOD FARMING NEWS

SUNDAY, SEPTEMBER 18, 1966 • OTTUMWA, IOWA • 1966 FARM POWER SHOW

OHIOAN WITH D-21 WINS TRACTOR PULL TITLE

Record Crowd Watches Hart Outpull All Comers



As thousands watch in tense excitement during the National Tractor Pulling Show, Hart and his D-21 power their way to the national title.

Harry Hart, Jr., Fostoria, Ohio, Drove His Allis-Chalmers D-21 Tractor 485 Feet, 1 1/2 Inches To Take National Heavyweight Tractor Pulling Title At The Farm Power Show

Harry Hart, Jr., hit the throttle and his turbocharged Allis-Chalmers D-21 responded with 127 plus horses to win the National Tractor Pulling Contest going away. This heavyweight division winner outpulled the nearest competitor by almost 25 feet... surging ahead with the power that is making the D-21 a favorite wherever it's used. These tractor pulling contests because each contestant is selected on the basis of his record. A point system is used to select the 20 top competitors in each class. All must list at least ten contests entered previously. Hart, for example, has been a consistent winner in Ohio contests over the past two years. This year's contestants came from Ohio, Kentucky, Illinois, Nebraska, Missouri and Iowa.

Hart Awarded Trophy For Win



Hart, left, in Harry Hart, 1966 National Tractor Pulling Champion, accepting the trophy for best show in the heavyweight division from (left) Missouri, president of the Farm Power Show, and (right) W. W. Co. Co., operator of the Farm Power Show. In the background is the turbocharged D-21 that pulled Hart to the big win.

100,000 SEE ALLIS-CHALMERS TURBOCHARGED D-21 OUTCLASS STRONG FIELD

The tractor pulling contest, divided into three divisions — heavyweight, middleweight, lightweight — is a highlight of the Farm Power Show. The 20 contestants in each class, selected on a point system, are the "cream of the crop" having competed successfully in many earlier contests in order to qualify for this, the big one. People travel hundreds of miles

to see the Show which had its beginning twelve years ago. The annual event is held at different midwestern locations each year. It offers exhibitors advantages over state and county fairs in that space and field crops are available for machinery demonstrations under actual field conditions. The 1967 show will be at Dixon, Illinois.

SEE A NEARBY ALLIS-CHALMERS DEALER ABOUT A TRUE CHAMPION TRACTOR

- | | | |
|---------------------------------|---------------------------------|--|
| WAMEGO
Bearman & Son | WATERVILLE
Waterville Motors | ALTA VISTA
Buchman Farm Supply |
| ABILENE
Wright Impl. Co. | MARION
Longhofer Supply | COUNCIL GROVE
Patterson Impl. Co. |
| SALINA
Midwestern Farm Impl. | HERINGTON
Lockard Impl. Co. | MARYSVILLE
Marysville Machinery Co. |
| | WASHINGTON
Hinkle Impl. Co. | |

OUR DAILY BREAD

- by G&G Area Cooks

Mrs. G. G. Cobb, Culver,
Wins Weekly Contest

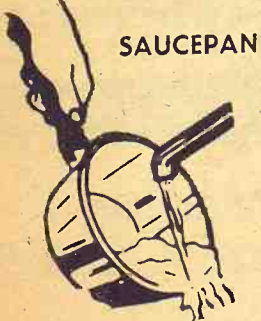
Mrs. G. G. Cobb, Culver, wins the "Our Daily Bread" contest prize. She writes, "this is a good quick recipe as leftovers may be used."

CORN RING WITH CREAMED DRIED BEEF

- 2 1/2 tablespoons butter
- 3 tablespoons flour
- 1 cup milk
- 1 teaspoon grated onion or onion flakes
- 1 1/2 cups fine bread crumbs
- 2 cups canned whole grain corn, drained
- 1 egg, beaten
- creamied dried beef

Melt butter. Add flour and mix well. Add milk slowly; stir until thickened. Salt and pepper to taste. Add onion, crumbs, corn and beaten egg. Bake in 375-degree oven until set. Fill center with creamied dried beef and serve hot. "Quick and very filling."

The Latest
'Daily
Bread'
Prize



SAUCEPAN

THREE-CUP, tefflon-finished saucepan is ideal for oatmeal, custards and warming leftovers. Markings on side to indicate one, two and three-cup measures. Food won't stick, scouring and scrubbing eliminated. Interior is decorator green. A product of Mirro Aluminum Company.

The winner each week is drawn by lot from the recipes printed.

Win one by sending us your favorite recipe - this can be main dish, leftover, salad, side dish, dessert or what have you.

1. Check your recipe carefully to be sure all ingredients are accurate and accounted for.
2. Be sure your name and address are on the entry.
3. Only one recipe at a time, please.
4. Send it to Woman's Page Editor, Grass & Grain, Box 1009, Manhattan, Kansas.

The next recipe was sent by Mrs. Max Krummel, 1702 I Street, Belleville:

FRUIT CAKE

- 1 pound candied cherries
- 1 pound candied pineapple
- 1 pound white raisins
- 1/2 pound citron
- 1 pound walnuts
- 1 fresh coconut, finely ground or 2 cups angel flake coconut
- 1 cup orange juice
- 1/4 cup butter
- 2 cups sugar
- 10 eggs
- 1 pound cake flour (4 1/4 cups sifted)
- 2 teaspoons mace
- 1 teaspoon baking powder
- 1 teaspoon vanilla

Chop fruits into 1/2-inch pieces (all fruit except coconut are soaked overnight in orange juice.) Cream butter, add sugar gradually, next add egg yolks. Sift flour, measure. Add mace and baking powder, sift again and add gradually to butter mixture. Mix fruits into butter. Fold in stiffly beaten egg whites. Bake approximately two hours at 250 degrees in six very small loaf pans. Line pans with wax paper. Place small container of water in oven during baking.

Mrs. August H. Wille, Wamego: "I clip so many recipes from your 'Woman's Page'. These cookies should really be called, 'Child's Delight', the way the children's faces light up when you give them one."

PEANUT BUTTER COOKIES

- 1/2 cup creamy peanut butter
- 1/2 cup brown sugar
- 1/2 cup white sugar
- 1/4 cup butter
- 2 eggs
- 1 teaspoon soda
- 1 cup flour
- 1 package Hershey's Kisses
- Cream the peanut butter, butter, brown and white sugar un-

As has been done in past years, Grass & Grain will print additional Bonus Recipe Contest entries along with current recipes in the "Our Daily Bread" column for the benefit of our women readers. The regrouping of these recipes means that once again they become eligible for a weekly contest prize. - ed.

til light; beat the 2 egg whites until stiff; add the yolks, beat again and fold into the butter and sugar mixture. Add the soda to the flour and mix all ingredients together. Set aside to chill. Roll into balls the size of a large marble. Roll in a mixture of sugar and cinnamon and place on cookie sheet. Bake in a 350 degree oven for 12-14 minutes. Remove from oven immediately while still on sheet. Put a dent in center of each cookie and place a Hershey's Kiss in each dent. Let stand awhile and then remove to cool.

quite stiff. Add a maraschino cherry in which a green birthday candle has been inserted. Light candle just before serving.

A ham loaf recipe was... Mrs. Charles E. Graham... Hockaday, Council Grove... HOLIDAY HAM LOAF... Next pre... follows:

- 1 large can sauerkraut 3/4 pound ground
- 1 green mango pepper 3/4 pound ground
- 1 small onion, chopped 1/4 cup catsup
- 2 cups celery, chopped 1/4 cups liquid
- 1 small can pimento 1/4 water
- 1/2 to 1 cup sugar 1/2 to 2 cups cr
- use a low calorie sweetener 1/2 teaspoons W
- if you are watching 1/2 teaspoons
- 1 1/2 teaspoons

FARM & RANCH LOANS

R. STANLEY PARSONS, manager of Manhattan FLBA, is ready to serve you at your farm or at three convenient offices:

CLAY CENTER
KM Securities Bldg.
Tues., 1 to 3 p.m.

JUNCTION CITY
105 West 7th
Fri., 1 to 3 p.m.

MANHATTAN
Home office at Manhattan is open Mon. thru Fri. 6th & Humboldt



OFFICE PHONE PR 8-2971
Residence Phone PR 6-9044

Federal LAND BANK Assn. of MANHATTAN
Serving Clay, Geary, Pottawatomie, & Riley counties.

In our book,
You are first



It's natural for farm equipment manufacturers to take pride in their products. Sometimes to the point where their enthusiasm carries them away.

International Harvester is proud of its products, too.

But it's more important to us that the buyers of our farm equipment take pride in it first.

For brag never raised a crop. That takes a man. A good one.

We know that no farm equipment—even ours—ever will make farming a soft job.

It still takes brains, smart planning, good business sense, sweat, long hours and usually a generous helping of good luck to make things pan out well on the farmstead.

No machine can take the credit for that.

IH makes good farm equipment—a lot of farmers say better than most. In fact, many ideas from farmers are included in them. But we know that no matter how well-designed and built our products are, none of them count as much as the farmer who operates them or directs their work.

For generations, IH has kept in the forefront of all farm equipment makers by this simple ambition:

To build farming tools that justify your judgment in buying them. That give you the dependability you count on. That win your approval for the excellence of their work, for the better yields they help produce. For the overall low cost of what they do for you.

It just sums up to this: we simply want to earn your belief that IH serves you best.

- | | | |
|--------------------------------------|--------------------------------|--|
| ABILENE
Abilene Truck & Tractor | FALUN
Dauer Impl. Co. | HANOVER
Hanover Impl. Co. |
| LEONARDVILLE
Kendall Garage | COUNCIL GROVE
Macha-Revere | MARYSVILLE
Bruna Brothers |
| HERINGTON
Pioneer Service & Sales | WASHINGTON
Schumacher's | WAMEGO
Wamego Truck & Tractor
Phone 456-9661 |
| SALINA
Harmon Truck & Impl. | CLAY CENTER
Norquist's Inc. | MINNEAPOLIS
Chapman Impl. Co. |
| WAKEFIELD
Auld Chevrolet | | |

FREE,
6 Sheffield Stainless
blade, Stag-Bone
Handle Steak Knives

with your qualifying purchase of...



SUPER
40
HOG SUPPLEMENT

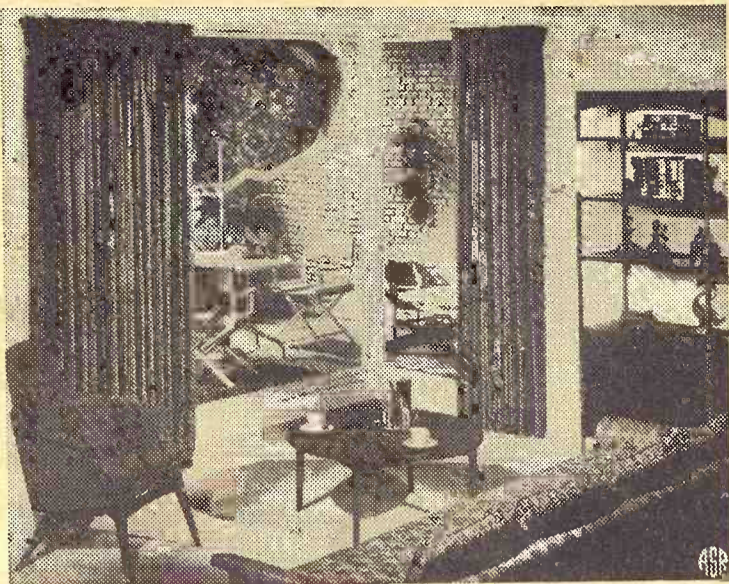


DURING JANUARY ONLY...qualifying purchases of Gooch Super 40 can earn you a Free set of Sheffield Steak Knives. Gooch Super 40 is the grain balancer so concentrated, 1/2 to 3/4 pound per head daily balances a full feed of grain to grow-finish hogs into market toppers days earlier!

See your nearby Gooch Dealer!

or contact the Gooch Feed Mill, Salina, Kansas

Treat Corner Windows As One Decorative Element



The lady whose home boasts a corner window is lucky, for even though it takes a trifle extra planning for this type window, the result can be spectacular. And even the planning is easy if you remember to treat the windows as one decorative element but be certain they function as two. If you want to screen a view, control the sun or catch a breeze from one side only, use two one-way draw traverse dra-

peries. They'll open independently but close neatly in the corner.

When your corner's composed of floor to ceiling windows, the solution is just as easy. Simply mount your drapery hardware directly on the ceiling. It takes special, but not expensive, traverse rods.

If your corner "windows" curtain a door, be dramatic — but practical, too. Put your hardware on the wall above and extend it well past the "windows" edge. Open, the draperies won't interfere with the function of the door and closed, you've created a wider window. A fabric-covered cornice, raised above the door frame, is a fine finishing touch.

Children Need Constant Supervision

Each day newspapers carry stories of tragic accidents involving children. In many of the cases, the child was left alone

for a few minutes while the mother was visiting a neighbor or making a hurried trip to the corner market.

Children cannot be held responsible for their actions when they are not supervised by adults. To prevent your child from becoming a statistic, always know where he is, what he is doing and never leave him in the house alone.

More Cake Recipes To Grass & Grain

Our thanks to two more women for responding to our appeal for the Milky Way Cake recipe. Mrs. Mabel G. Keim, Minneapolis, and Mrs. Vernon Richter, Alta Vista, also sent recipes to us.

Let stand overnight in refrigerator. Next prepare ham loaf as follows:
3/4 pound ground ham
3/4 pound group pork
3/4 pound ground beef
1/2 cup canned tomato soup
1/4 cup catsup
1 1/4 cups liquid (milk & water)
1 to 2 cups cracker crumbs
1 1/2 teaspoons Worcestershire sauce
1 1/2 teaspoons prepared mustard
Mix well and mold into loaf and place in refrigerator overnight. Bake two hours at 300 degrees.
Baste ham loaf with the following liquid while baking:
3/4 cup brown sugar
1/4 cup vinegar
1/4 cup water
1/2 teaspoon dry mustard
(Heat to boiling before basting with the liquid). When ham loaf is done, remove from oven and place on large platter. Place sauerkraut salad around ham loaf as a garnish or if you prefer you may pile it at one end of the large platter.

Never Scour China

Never use steel wool or scouring powder on fine china as they will scratch the colors and glaze.

NOW \$15,000 INSURANCE

BY THE FEDERAL DEPOSIT INSURANCE CORP.
OR UP TO \$105,000 FOR A FAMILY OF THREE

5% GUARANTEED

6 MONTH CERTIFICATES

SAVE BY MAIL...IT'S EASY

Union National Bank

MANHATTAN, KANSAS

T. J. GRIFFITH, Chairman of the Board



Yes, I Want Grass & Grain

Enclosed Find \$3 for 52 issues

Name

RFD or Address

Town

G&G Directory

AUCTIONEERING

LAWRENCE E. WELTER
AUCTIONEER

... wants your sale, large or small.
... call Manhattan PR 8-3455 collect for sale dates.

Real Estate & General Sales



Ed Reimer
-AUCTIONEER-

We Specialize in Selling DAIRY CATTLE

"A complete Sale Service"
Phone or write for sale dates.
Telephone 367-2373
GOESSEL, KANSAS
"Marion County"



DUANE GUGLER
Auct. and Sale Mgr.

We offer complete sale service. Call us and leave the details to us. No sale too large or too small. If you need an auctioneer or a complete sale service telephone:

1730, WOODBINE, KANS.
Res. R 1, Junction City

Memorials

Cody Memorials

Homer Rundle, Owner
Stones designed and cut by experienced craftsmen in our own plant.

Office & Display
4th & Grant
ME 2-2323
CLAY CENTER



CONSERVATION

Land Improvement
"Soil Conservation Doesn't Cost—It Pays!"
Ponds, terraces, waterways, and leveling, drainage ditches, clearing, landscape grading.

ROGGENDORFF

Conservation Construction
Arthur Roggendorff
Phone JE 9-3984
1630 Osage - Manhattan

DAIRY SUPPLIES

DeLaval Clay

All Makes Service & Repair Dairy Equipment



Joe McClure

Ph. 229-5284 Alta Vista

Dale Wells



Pipe Line Bucket Milkers Stalls
324 Frederick ME 2-2811
CLAY CENTER, KANS.

PEOPLE READ

The G&G Directory

Just as You are Now

Ice Makers Go To The Best Parties

For "real cool" entertaining on week-ends or holidays, ice is nice. Unfortunately, keeping the party in an abundant supply of ice is one of the problems of large-scale entertaining.

Most people own refrigerators that can't produce ice fast enough for party drinks. Refilling ice trays can be a sloppy job and storing ice ahead of time may result in cubes that are stuck together. So the problem is usually "solved" by borrowing ice trays from a neighbor or by buying ice from a vendor.

Storing ice is no problem in refrigerator-freezers equipped with a "no-frost" feature. Frost never forms in no-frost models and ice, ice trays and food packages stored in the freezer will not stick together.

The best solution to the ice supply problem is an automatic ice maker, available on most new refrigerator-freezer models.

Retread Boots

Here is a timely hint. If an otherwise good pair of boots has lost most of the tread, spread rubber cement over soles and dip into sand. Let dry and this will make a rough surface to stop slips on the ice.

Substitution

A six or eight-ounce can of mushrooms may be substituted in a recipe calling for one pound of fresh mushrooms. A three or four-ounce can is the equivalent of one-half pound of fresh mushrooms.

In addition to storing ice, it eliminates the messy job of filling and emptying ice trays.

Ice makers supply ice for daily needs as well as for entertaining. There are no trays to fill or spill and cubes never have to be pried out. The ice is stored "dry" in a handy storage bin and is replaced automatically as it is used.

IMPLEMENT • TRACTOR
ITCO
PARTS • ACCESSORIES

FARM USE HEATERS

850 watt engine heaters ..	7.59
1500 watt engine heaters	10.65
1000 watt tank heaters	14.25
1000 watt adjustable type tank heater	15.75
Battery chargers 4 amp	11.19
Battery chargers 6 amp	13.59
Battery chargers 10 amp	17.89
Battery booster cables, 12 ft.	4.35
Spark plugs	60c
Tuneup kits from	1.39
Generators most tractors from	14.55 ex.
Starters, most tractors, from	14.10 up ex.
5000 watt batteries, 4 year guarantee	20.95
Radiators most tractors —	
Water pumps new, most tractors	
Tractor heaters	
Jackets	
Overshoes all at big saving	
Insulated packs	
Portable air tanks	14.95
1/2 hp air compressors ...	89.95

Happy & Prosperous New Year

HOLT FARM SUPPLY

Next to Sale Barn
MANHATTAN PR 8-4343

Regular Beauty Routine Essential

The best way to attain beauty is a ritual of good habits. When you wash your face, don't forget neck, ears and hairline.

The powder, stale makeup and hair oils that collect on and around these areas give an unsightly appearance. An occasional or skimpy face-washing will do nothing to enhance your prettiness. Regularity that counts.

8

Grass & Grain



ADD WEIGHT, EVEN IN WINTER?
"winterize" your cattle with nature's richest source of protein

Much of the feed consumed by wintering cattle is used to meet basic energy requirements. When those needs are not met, body tissue breaks down. Cattle lose weight. You lose money. But now you can actually "winterize" your cattle against costly weight losses. Simply supplement your winter grass with Sunflower Brand Soybean Meal Pellets. Sunflower Brand is made from nature's richest source of protein. It is also highly digestible and palatable. Cattle thrive on it. Often add weight, even in winter. Reach market bloom earlier in the spring. To protect your profits, "winterize" your herd with Sunflower... the Brand with the Bloom... made from nature's richest source of protein. Available in 44% Soybean Meal Pellets and 36%, 32% or 22% Formulated Range Cubes.

KANSAS SOYA PRODUCTS CO., INC.
Ph. Dickens 2-7270 • Emporia, Kansas



Manhattan Commission Co., Inc. Sale Every Thursday

Our sale last week was very active price wise. However, our run was rather light due to the bad weather conditions, and the holiday season. Our cow market seemed to be exceedingly good.

When you consign your livestock to an old and established livestock auction market like Manhattan, you can expect top prices because the old and established buyers continue to come week after week.

We are expecting a much larger sale next Thursday, January 5, with several early consignments that are not listed at this present date.

We would like to take this opportunity to wish everybody a happy and prosperous New Year from all of us to all of you.

The following is a partial listing of our sale.

FAT CATTLE & FEEDERS

1 whif steer	610 @ 25.10
1 black steer	690 @ 22.75
1 whiface steer	670 @ 22.30
2 whiface heifers	992 @ 21.80
3 whiface heifers	668 @ 21.40
1 whiface heifer	740 @ 21.20
2 black heifers	607 @ 21.10
1 holstein steer	740 @ 20.10

STEER CALVES

1 blkwhif steer	310 @ 29.60
1 whiface steer	385 @ 29.10
1 black steer	340 @ 27.25
1 brofwhif bull	500 @ 26.70
6 holstein steers	584 @ 20.70
2 holstein steers	412 @ 20.60

HEIFER CALVES

1 whiface heifer	260 @ 25.60
1 whiface heifer	285 @ 25.50
1 whiface heifer	230 @ 25.40
4 whiface heifers	434 @ 23.90
1 whiface heifer	480 @ 23.60
3 whiface heifers	426 @ 23.20
1 blkwhif heifer	495 @ 23.00
1 red heifer	475 @ 23.00
1 whiface heifer	550 @ 21.25

BULLS

1 blkwhif bull	580 @ 22.90
1 black bull	1680 @ 21.40
1 black bull	1295 @ 19.90
1 whiface bull	@ 270.00

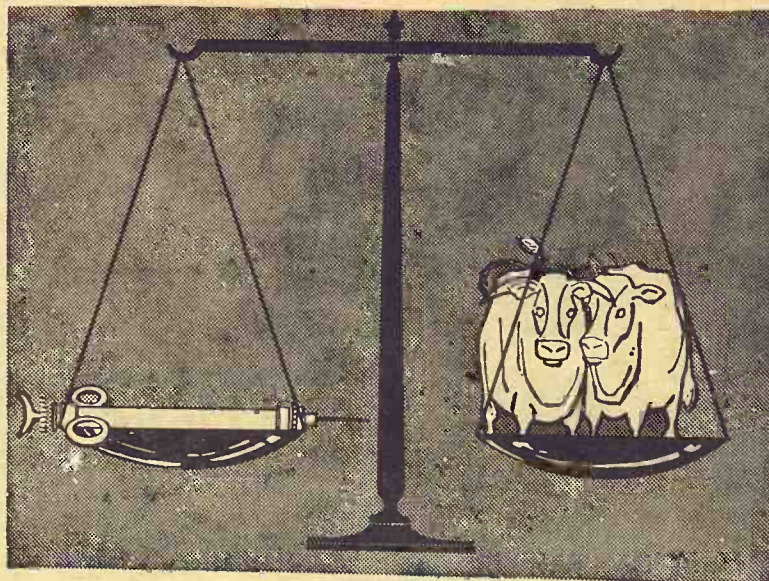
COWS

1 whiface cow	755 @ 20.10
1 brofwhif cow	1080 @ 19.30
1 whiface cow	665 @ 19.25
1 blkwhif cow	630 @ 19.10
1 whiface cow	1025 @ 18.70
1 whiface cow	1400 @ 18.60
1 charolais cow	945 @ 18.60
1 black cow	1240 @ 18.50
1 jersey cow	1060 @ 18.40
1 whiface cow	1175 @ 18.30
1 whiface cow	920 @ 18.20
1 jersey cow	1000 @ 18.20
1 ssthorn cow	1015 @ 18.20
1 holstein cow	1470 @ 18.10
1 jersey cow	905 @ 18.10
1 whiface cow	1130 @ 18.10
1 whiface cow	1400 @ 18.00
1 brswiss cow	1135 @ 18.00
1 whiface cow	985 @ 17.90
1 black cow	1045 @ 17.80
1 holstein cow	1355 @ 17.70
1 blkwhif cow	920 @ 17.70
1 whiface cow	995 @ 17.60
1 red cow	960 @ 17.50
1 whiface cow	960 @ 17.30
1 ssthorn cow	765 @ 17.30
1 whiface cow	1075 @ 17.20
1 jersey cow	840 @ 17.10
1 whiface cow	795 @ 17.00
1 jersey cow	1055 @ 16.90
1 whiface cow	745 @ 16.70
1 brofwhif cow	940 @ 16.20

1 whiface cow	950 @ 16.00
1 jersey cow	970 @ 15.90
1 black cow	925 @ 15.90
1 jersey cow	885 @ 15.80
1 jersey cow	750 @ 15.60
1 whiface cow	970 @ 15.30

2 1/4 MILES EAST OF MANHATTAN ON US

1 black cow	870 @ 14.90
1 whiface cow	1000 @ 14.80
1 whiface cow	870 @ 13.50
8 ssthorn cows&calfs	@ 207.50



FOR ESTIMATES

W. E. DUGAN ----- Alta Vista, 229-6430
JOE RAINE ----- Maple Hill, MI 3-2226
DON WELLS ----- Manhattan, JE 9-3744
MERVIN SEXTON ----- Abilene, CO 3-3449
C. J. WENTZ, bus. mgr. Manhattan, JE 9-5561
VICTOR LEWERENZ --- Manhattan, PR 8-3243

BARN PHONE ----- Manhattan, PR 8-4415

Consignment Reports
WIBW radio 6:30 A.M. Thursdays
WIBW-TV 12:15 Noon Wednesdays

The Manhattan Commission Co., Inc.



MANHATTAN, KANSAS
East On US

Auctioneer: Joe Raine

BUYING FAT HOGS

We buy fat hogs daily at the Manhattan Commission Co., Inc. sale barn. We buy direct with no commission to the seller.

BUYING HOURS:
Mondays thru Friday
8 a.m. to 4 p.m.
Saturdays 8 a.m. - 2 p.m.
Manhattan PR 8-4415

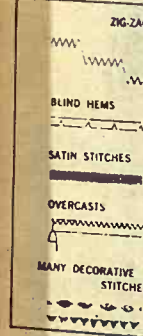
WE ARE ALSO BUYING FAT HOGS AT THE W. E. DUGAN YARD ALTA VISTA

Mondays 8 a.m. to 3 p.m.
Phone Alta Vista 229-6430 or Manhattan PR 8-4415

AT ALMA & ESKRIDGE EVERY WEDNESDAY
From 8 a.m. to 1 p.m.

Please do not bring hogs for sale on Thursday afternoon, as we will be having large runs of cattle and you might not be able to unload and they will get hot on the barn in Manhattan, PR 8-4415. In Alma, Oscar Nelson, 765-3861. In Alta Vista, W. E. Dugan, 229-6430. Or you can call Joe Raine at Maple Hill, MI 3-2226 or Eskridge, MI 449-2347.

The 24 Stitches machine



● Tr ● 25

C 818

SA Livestock Con

Congress May Axe Farm Budget This Time

A question arising among farm leaders in and out of government is, "Will Congress swing an ax on agricultural spending, and if so, where will it fall?"

There is a general belief among some of these leaders that the time is near when tax money spent on activities of the Agriculture Department will be reduced.

This concern exists despite the fact that Secretary of Agriculture Orville L. Freeman has said the agricultural budget President Johnson will recom-

mend to Congress for the next fiscal year will be slightly above the \$6 billion being spent this year.

Farm leaders base their expectation that Congress may do some budget trimming on several developments, including inflation, administration losses in recent congressional elections and widespread public demands that government spending be reduced.

Agricultural spending falls into four general categories: 1. Farm income assistance programs. 2. Rural areas economic

and social development programs. 3. Regulatory, food inspection and related programs of benefit to consumers. 4. Agricultural research which has both farm and urban aspects. The last costs relatively little compared with the other activities.

Of course, the public's attention has been centered mainly on the farm aid programs. This year those programs will take around \$4 billion, including about \$3.6 billion in direct payments to farmers to supplement incomes from the sale of farm

products.

It may be possible to reduce these payments \$500 million for the 1967 crop year.

There is strong feeling among some farm leaders that government spending on the rural areas development program should be increased from the relatively low level which has been provided.

Those who contend this argue that most of the poverty in rural America exists among low-income farmers who get little benefit from the big farm-aid programs and among people who live off farms in rural areas.

Programs which have been set up to assist these people have been limited in funds and as a consequence have not been able to provide the assistance Secretary Freeman has wanted.

These programs include assistance in development of plans for providing needed educational, health, social and economic services to underdeveloped communities. They also in-

clude subsidized loans for rural housing, recreational facilities, new business enterprises, sewer and water systems, and rural area planning for development.

In this category are the loans made for rural power and telephone projects.

Assuming that appropriations for the third category of department spending — that of regulatory, food inspection and related activities of interest to consumers — is maintained at current levels, any material reduction in the agency's appropriations would have to be made in farm aid.

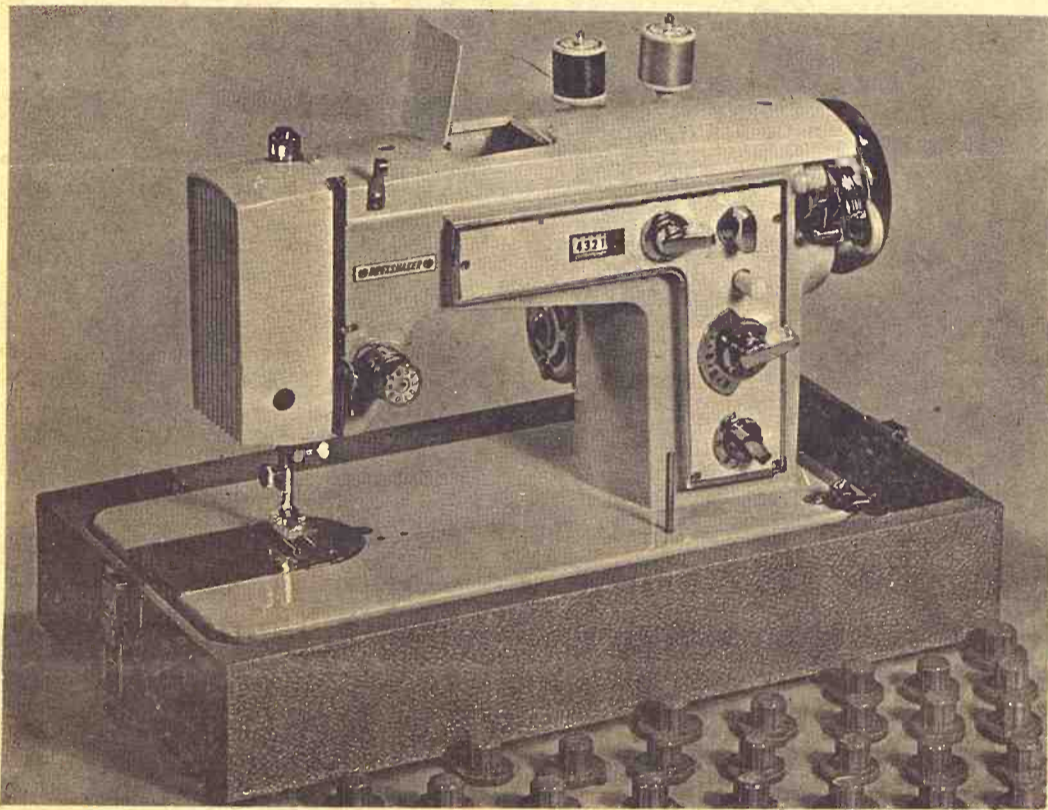
Certainly this would be the case should there be a desire on the part of the administration to increase assistance to underdeveloped rural areas.

Strong pressure for more funds for these latter programs could be expected should the administration and Congress provide increased federal aid for urban areas.

1967 Introductory Offer

New Low Price

only **189⁵⁰**



Model MOZ-2000

The 24 Cam Automatic is designed to do everything — Makes Button Holes, Blind Stitches, and does several beautiful, decorative patterns. Full size — Heavy Duty machine head.

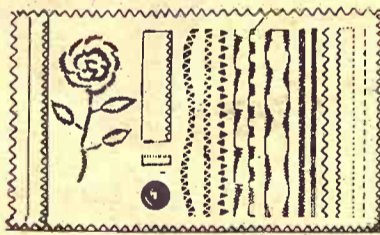
Will Do This and Much More!



Monograms



Makes Buttonholes and sews on Buttons



- Trade-ins accepted
- 25 year written guarantee

"Largest Display of Machines In State of Kansas"

Drive A Little — Save A Lot

City Sewing Machine Company

818 Broadway Phone HI 3-3731
MARYSVILLE, KANSAS

Worth Driving Miles For
Woodward's

STORE-WIDE

January Clearance
— SALE —

Starts Wednesday Morning 9:30 a.m.

We Guarantee You'll Save

1/4, 1/3, 1/2 off

REGULAR PRICES
on all sale items

- Ladies & Childrens Wearing Apparel
- Sportswear
- Ladies & Childrens Shoes
- Millinery
- Accessories
- Cosmetics
- Hosiery
- Piece Goods
- Home Needs
- Notion Items
- Curtains, Draperies
- Domestic
- Gift Dept. Items

WOODWARD'S DEPT. STORE
MANHATTAN, KANS.
Open Thursday Nights Till 8:30

SALINA
Livestock Commission
Company, Inc.



Bonded
and
Licensed

MONDAY
HOGS & CATTLE
FRIDAY
CATTLE ONLY

E. R. McCULLICK, Salina Phone TA 3-2963
EDWARD TOLLE, Roxbury Phone 1613
IRVIN CHRISTIANSEN, Durham Phone 732-3185
JOE CLEMENCE, Abilene Phone Acme 3405

Conservationists Don't Like It, But —

Stockmen Get Coyote Control

Are there too many coyotes in Kansas? You can find plenty of experts who say there are or there aren't, and this contention may end up pitting government agency against government agency, conservationists against livestockmen, and even neighbor against neighbor.

There may be a great number of people who don't know or care, but there are enough people with nonconflicting opinions that the differences may echo in the legislative halls this winter.

The issue has been accelerated with the recent knowledge that Gov. Avery had, in September, signed an agreement with the U. S. Department of the Interior, for the "control of certain varmints."

The agreement would supercede the present practice of counties paying coyote bounties if they desire. It would permit the use of professional exterminators upon the request of interested landowners and the consent of the local county commissioners.

Most persons concerned with the problem have been hesitant to become involved in the controversy, but the coyote problem always has been good for a heated argument in the Kansas legislature in the past. It is certain to come up in the 1967 session because the state eventually would have to pay part of the cost of the program, under the agreement.

At issue is the possibility that a big coyote kill would create an imbalance in nature, to the

point where rabbits and other small animals could create more damage than the coyotes.

On one side are livestock interests, who contend that coyotes are at a record level in Kansas and causing losses to ranchers. Farmers interested primarily in wheat and row crops have the theory that coyotes help level off the rabbit and rodent population, which damages green crops.

A. G. Pickett, state livestock sanitary commissioner, said pressure for the agreement came from ranchers in Comanche, Clark, Meade, Barber and Kiowa counties, where cattle and sheep losses from coyotes reportedly have been considerable.

Pickett said the federal program was used from about 1935 until 1962, when a new federal requirement prohibited U.S. Fish & Wildlife Service agents from operating in a state without an agreement.

Since then, coyote control has been handled thru the local bounties and a K-State Extension program supervised by George Halazon.

Halazon, or at least his program, is not well regarded by livestockmen who consider him too strongly allied with the conservationist school and not receptive enough to their problem.

Associated also in this group are H. T. Gier, professor of zoology at Kansas State, who directed a state project on the biology of coyotes from 1949 until 1963; and Dr. E. Raymond

Hall, director of the Museum of Natural History at the University of Kansas.

Carefully avoiding sides is the Kansas Fish & Game Commission, which has no statutory control over coyotes. It is not unreasonable to assume, however, that Fish & Game technicians will be aligned with the conservationists.

The conservationists are inclined to discount the livestockman's problem. They see what they think is "the big picture."



Organized coyote hunts have often been used to limit coyotes. This picture was taken after a 1953 hunt near Fort Riley. More than 1500 hunters took part in the big kill sponsored by Ft. Riley and Geary County wildlife associations.

And they don't think coyotes are much of an overall problem.

Says Gier: "The coyote population in Kansas is on the decline. Indications are it will decline further next year without any controls."

Federal control methods aren't liked by the conservationists. Some of the more ardent ones fear that hordes of paid hunters will descend upon an area. More of the controversy, however, swirls around the use of the toxicant, 1080. Says Gier, "1080 is the standard poison used by the Fish & Wildlife Service. It is not selective. It's about the most poisonous thing that has been invented. All carnivores are about equally

susceptible to it — coons, skunks, weasels, dogs, cats as well as coyotes."

Monte Dodson, state supervisor for Kansas and Oklahoma for the Fish & Wildlife Service has less fears for 1080 (sodium fluoroacetate). Dodson says it is a highly selective chemical which is "extremely lethal to coyotes but is just harmless to anything else."

But Dodson is well aware of the growing controversy in Kansas and other states. He emphasizes that his organization's services must be available for. When they are, Fish & Wildlife uses a variety of methods. Under usual circumstances one of the paid hunters would be in charge of one or two counties and use toxic cyanide "coyote getter," 1080, or firearms.

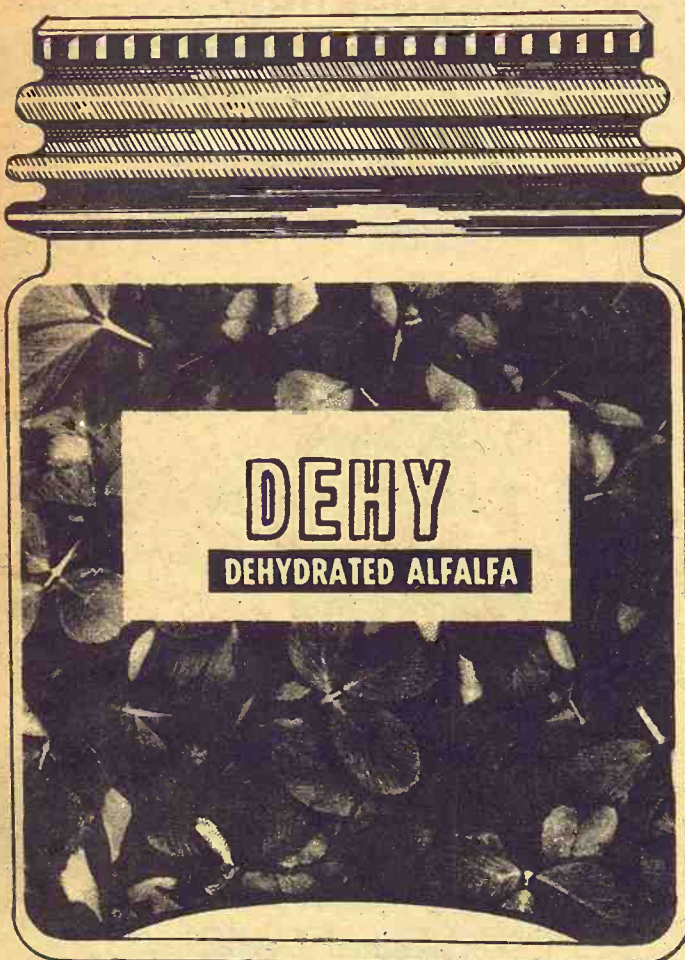
While the coyote work would begin until early in 1967, the agency has already answered a request. A Garden City farmer asked the agency to eliminate thousands of starlings which had been feeding on the corn as the cattle in the field contaminated grain and water.

Dodson said his agency could 90 to 95% kill on what he estimated as 50,000 starlings in a feedlot. He said a toxicant called DRC 1339 was used on birds and that the poison was effective only against starlings and blackbirds.

The Fish & Wildlife Service handles predator control in Nebraska, Colorado and Oklahoma. Missouri handles the problem thru the Extension Service in a program somewhat similar to the one Kansas has been using.

GREEN, LEAFY ALFALFA

Rich in Vitamins & Minerals



High in digestible protein and essential amino acids, plus unidentified factors that stimulate EXTRA growth. DEHY can help you to cattle and swine profits.

GET DEHY AS YOU NEED IT

Fresh as the day it was made.

To preserve the qualities that Nature gave DEHY, processors maintain it in special storage facilities. Take it out as you need it from a nearby processor, and your DEHY will always be just right.

SEE A NEARBY PROCESSOR:

ABILENE Abilene Alfalfa Mills
Telephone CO 3-2258

CONCORDIA Harry M. Ligget Co.
Telephone CH 3-2660

MANHATTAN (& Clay Center) C K Processing
Telephone PR 6-9269

ALFALFA HAY IS EXPENSIVE
DEHY IS CHEAP

the Peoples national bank
CLAY CENTER, KANSAS

NOW PAYING



5%

On One Year
Certificates
Of Deposit

Present Certificates may be redeemed on their anniversary date and a new 5% certificate issued.

Deposits Now Insured

By The Federal Deposit Insurance Corporation

For \$15,000



the Peoples national bank
CLAY CENTER, KANSAS

Member Federal Deposit Insurance Corporation

Plant Would Preserve Meat By Irradiation

The Atomic Energy Commission is inviting bids for the construction of a pilot plant that would irradiate a minimum of a million pounds of meat a year, Nebraska senators have been informed.

The AEC would furnish up to \$230,000 to provide a radiation source and \$140,000 toward engineering plans for the proposed plant, Sen. Carl T. Curtis and Sen. Roman L. Hruska were advised. Private industry would supply the remainder of the funds.

The irradiation process preserves meat for an indefinite time.

The Army would purchase at

least 300,000 pounds of meat annually from the proposed plant for the first three years — provided the Food and Drug administration and the Agriculture Department approve unlimited public consumption of the products.

Bids must be submitted to the AEC by April 17. Work on the project would start by June 30.

Curtis and Hruska have been urging that such a plant be established in the Omaha area because it has "the world's largest beef kill." The only irradiated meat product that has been approved thus far by the FDA for commercial distribution has been bacon.

An aide to Curtis said a petition was pending before the FDA for approval of irradiated ham to be distributed commercially. Another, for irradiated beef, is expected to be submitted to the agency. The proposed plant could then produce both beef and pork products.

Living On Our Resource Capital, He Warns

American is facing the dilemma of maintaining economic growth without appreciably diminishing its resource capital, a Kansas State University soil scientist warns.

Dr. O. W. Bidwell points out that America's standard of living is largely one of fortuitous circumstances — based on the coincidental arrival of North America on the international scene at a time when its natural resources were needed for the industrial revolution — that, plus the unusual American ability to exploit these resources.

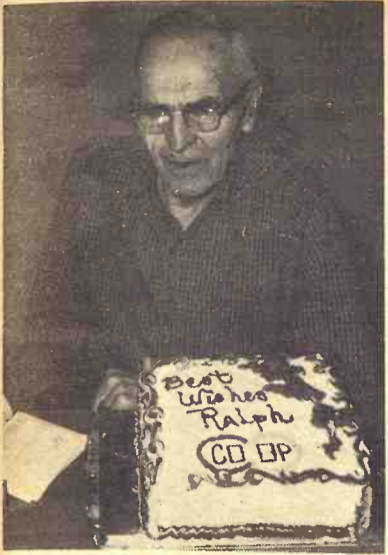
But the K-State agronomist is concerned because a sizable proportion of the nation's gross national product has come from exploitation of natural and human resources for immediate profit. We are, in Bidwell's opinion, living on borrowed resource capital.

Our nation is not a cornucopia, regardless of how vast its storehouse of raw materials may have seemed to our forefathers," he says. "Already depletion of the Mesabi range, contamination of our once-potable freshwater lakes and rivers, and depletion of groundwater resources in some of our

western states, make it emphatically clear that these resources have finite limits. By exploiting them we are, in truth, living on resource capital. Similar illustrative cases could be made for the exploitation of other resources, such as soil, forests, wildlife, and air."

As an increasing population demands more fresh air, water and pure food, it becomes more apparent each day that mankind no longer can afford the luxury of allowing a few to exploit natural resources.

"We must work diligently for more and better cooperation among men and between mankind and nature. Unless we do this voluntarily," Bidwell says, "it will be necessary to impose strict government controls. No country is so rich that it can squander its resources for the benefit of the few."



Retires At Co-op

Ralph Conwell has retired after 30 years as an employee with the Farmers Cooperative Association at Manhattan.



Jim Allen, Manager

30 DAY SALE

WHY YOU CAN SAVE MONEY AND ADD MILEAGE WITH HERCULES

Every quality engineered Hercules truck tire is subjected to load and road conditions that far exceed the punishment they'll receive in a normal lifetime.

Hercules' modern new testing facilities are as complete as any in the industry. Hercules engineers and technicians are constantly at work developing and testing new materials, new de-

signs and new tires to assure you the best possible value.

Premium quality is built into every Hercules Truck Tire. Compare the many quality features of any Hercules tire. You're sure to find "real-quality" ... and it's yours at a reasonable price.

This is why more and more of America's top truckers agree that you get "The Best Rubber on the Road" when you go Hercules.



HERCULES SUPER H.M.L.

- For high speed drive wheel operation
- "Dura-Syn" tread doubles the mileage
- New siped tread for greater traction
- Heavy Duty nylon construction for up to 3 and 4 recaps

Check These Low Prices

825x20	—	\$53.43	ex. tax 7.53
900x20	—	\$59.73	ex. tax 8.89
1000x20	—	\$68.95	ex. tax 11.05

All Prices Plus Recappable Tire

LIFETIME GUARANTEE

■ LIFETIME ROAD HAZARD GUARANTEE ... against road hazard damage for the life of the tread. ■ LIFETIME WORKMANSHIP & MATERIAL GUARANTEE ... for the complete tread life of the tire. ■

ROAD GRADER CAPS

1200x24/25	\$56.00	1400x20	\$74.50
1300x24/25	\$62.00	1600x20	\$120.00
1300x20	\$63.00	15.5x25	\$101.00
1400x24/25	\$74.00	17.5x25	\$125.00

All prices plus recappable tires & fed. ex. tax.

We Take Care Of US Royal Tire Adjustments

All Nylon Cord Construction

H.D.T.L.	FET	H.D.T.L.	FET
\$25.28	\$2.82	\$26.01	\$2.95
28.74	3.33	30.40	3.39
32.01	3.74	34.96	4.34
26.48	2.66	39.90	4.58
25.23	2.68	42.05	5.05



"H.D.T.L."



MICHELIN



HERCULES TIRE SALES

OF MANHATTAN, INC.
610 N. 3RD PR 6-9453

JIM ALLEN
RES. PR 6-7090

PASSENGER - FARM - FLEET
GIANT EARTHMOVER
24 Hour Road Service



UNIROYAL

RECAPPING ALL SIZES SPECIALIZING IN ALL MAJOR BRANDS

LOTS OF USED
7.50x20 - 8:25x20 TIRES

ASGROW GrazerA

SORGO-SUDANGRASS HYBRID

The sweet-stalk forage that livestock love!

Vigorous, leafy, high nutrient feed value. Resistant to leaf blight and other fungus diseases. Outstanding in dryland and irrigated areas. Tops for grazing, hay, green chop, silage, haylage, pellets and cover crop.

PLANT ASGROW
COMPARE RESULTS

WASHINGTON COUNTY

Herb Meyerhoff Phone 711 Palmer
Hollenberg Grain Company Hollenberg
Frank Nutsch FR 6-2335 Haddam
Victor Stigge Phone 2914 Barnes
Dan German Ph. Morganville WA 6-4648 Clifton
Douglas Toll 455-3379 Clifton

REPUBLIC COUNTY

Ben Blecha Phone 3613 Munden
Harold Hedstrom 374-2420 Courtland
Clarence Wurtz Ph. Concordia CH 3-1015 —
Belleville

MARSHALL COUNTY

Burger Fertilizer Co. HI 3-4337 Marysville
Verne Merrill ST 5-2658 Waterville
Ivan Wienck Ph. Waterville ST 5-2495 Blue Rapids

THAYER COUNTY, NEBR.

Elmer Holmes CE 6-4336 Deshler

GAGE COUNTY, NEBR.

Roy Coburn 228-0054 Beatrice



Bricks Or Asphalt?

Should Lindsborg pave its brick Main Street with asphalt? The city council thought it was making a progressive move recently when it decided to make street improvements in the downtown area. But several merchants want the 50-year old bricks to remain just the way they are, claiming it adds atmosphere to the town of 2300 which refers to itself as Little Sweden. Mayor Fritz Carlson looks over the bricks, which he thinks should be covered with asphalt, altho he is in no hurry to go against the wishes of his neighbors.

Soviet Farmers In Good Year

Russian agriculture, much criticized for shortages for several years, has apparently had a good year in 1966. No exact figures have been given by the Soviet government, but all-time

records for grain, meat, milk, eggs, cotton, sugar beets and fruit have been claimed.

And the Russian farmer is making more money, says a Tass farm writer. The writer, Ivan Artemov, says that in the Ukraine farm income was expected to rise 25% because of higher yields and higher state prices.

"Counting earnings from its private plot," Artemov wrote with reference to a capitalistic aspect of Soviet farming, "the income of the average Estonian collective farm family has equalled that of a skilled factory or office worker."

The factory and office average for the country is 95.6 rubles (\$102.22) a month.

COW POKES

By Ace Reid



"Jist shows you ole hoss, these wide open spaces ain't always so wide!"

WESTERN SADDLE SUPPLY

J. D. RITTEL & SONS
Largest Saddle Selection
In Mid-Kansas

WESTERN WEAR
for the Entire Family

BOOTS • HORSE TRAILERS
Square Dancers Supplies
HOPE, KANSAS PHONE 43



earn 6% & save

Order a new MF Combine or Corn Head now and you'll:

1. Earn 6% per annum on your down payment or trade-in.
2. Pay no finance charges until season of use.

This money-saving offer applies to the great MF Combines—the 205, 300, 405, 410 and 510, and to all MF Windrowers, Swathers and Corn Heads—2, 3, 4, 6 and 8-row, for 20" to 40" spacing. Hurry! The sooner you order, the more you save. See us now for a generous trade-in allowance. This offer is for a limited time only.

buy now

At today's prices—Personalized Financing

YOUR MASSEY-FERGUSON DEALER

BRAUCHI BROTHERS	Marysville
BROWN MOTOR CO.	White Center
CIRCLE T IMPL. CO.	Clay Center
GILLEY'S IMPL. CO.	Minneapolis
KUHLMAN MOTOR CO.	Liberal
PFISTER-RHODES IMPL. CO.	Jamestown
SALINA FARM SUPPLY	Salina
WINIFRED IMPL. CO.	Winifred

A Gift for Saving at Capitol Federal



14 - piece
MIX-N-STORE
BOWL SET

FREE FOR SAVING
\$500 or More
Thru JANUARY

The Best In EARNINGS, SAFETY And SERVICE At KANSAS' LARGEST

Get the most for your money . . . now up to 5 1/4% . . . backed by Capitol Federal's Triple Safety . . . PLUS this most useful gift for saving \$500 now—6 polypropylene bowls for mixing, storing or freezing, with 6 air-tight covers and 2 handy measure-dippers. Remember—we have more Insured Safety by the Federal Savings and Loan Insurance Corporation . . . now up to \$15,000 on accounts.

5 1/4%

SAVINGS
CERTIFICATES
compounded
each six months

PLEASE MAIL MY FREE BOWL SET

CUT ON DOTTED LINE AND MAIL WITH CHECK OR MONEY ORDER

I enclose \$ _____ Add to my account No. _____
(Passbook enclosed)

Issue new account as follows:

Individual Account _____ Joint Account _____

Name or names to appear on Account _____

(If joint account desired—Give full names of all persons)

Address _____ City _____

State _____ Zip _____

Signed _____

GOOD THROUGH JANUARY LIMIT: ONE GIFT PER FAMILY



**Capitol
Federal
Savings**

700 KANSAS AVE. TOPEKA

1201 TOPEKA BLVD. | LAWRENCE
2100 FAIRLAWN RD. | KANSAS CITY

Postage Paid Both Ways
"The Most Trusted Name In Savings"

K-HILL OF MANHATTAN JANUARY

Inventory Clearance **SALE** Store-Wide Including **Sealy Mattresses**

STEREOS - TVs AND APPLIANCES



ALL FURNITURE
20%
OFF REGULAR LOW
K-HILL PRICES

EXTRA SPECIAL SEVERAL GROUPS of OCCASIONAL CHAIRS



Not All Chairs Included

OUT THEY GO AT
50% off

THE COMFORTABLE WORLD OF SEALY VALUES



FIRM
Golden Sleeper

- Button-free surface
- Crush-proof borders
- Duro Flange borders
- Woven stripe cover

Reg. \$79.00
during our
GOLDEN SLEEP SALE
\$68.00
Per Set
Full or
Twin



EXTRA FIRM
Golden Sleep Supreme

- Quilted to foam*
- Hundreds of coils
- Golden Edge borders
- Luxury weave cover

Reg. \$99.00
during our
GOLDEN SLEEP SALE
\$78.00
Per Set
Full or
Twin
*urethane foam



LUXURY FIRM
Golden Rest Guard

- Quilted to foam*
- Coil-on-coil support
- Golden Edge borders
- Beige damask cover

Reg. \$119.00
during our
GOLDEN SLEEP SALE
\$88.00
Per Set
Full or
Twin
*urethane foam

CROSS THE VIADUCT IN MANHATTAN AND SAVE REAL MONEY ANY DAY

K-Hill Furniture & Appliances

Store Hours 8:30 a.m. to 7:30 p.m. (Closed Sunday)

Phone PR 8-5810

Station Wagons

- 966 COUNTRY SEDAN 352 fully equipped, one owner \$2975
- 966 COUNTRY SEDAN 289 Automatic & air, one owner \$2775
- 962 FALCON WAGON 6 Automatic, air, etc. \$895
- 961 BUICK WAGON 8 Stick shift, one owner .. \$725
- 960 FORD WAGON 8 Automatic, radio, 9 passenger, one owner \$725
- 959 Ford Wagon 8 Automatic, radio, 9 passenger \$525
- 958 FORD WAGON 6 Automatic, radio \$425
- 958 FORD WAGON V-8 Stick, radio, 9 passenger \$195

TRUCKS

- 952 FORD V8 1 1/2 TON No bed, good tires, 156" WB \$825
 - 956 FORD 1/2 TON 6, 4 spd., new paint \$525
 - 964 CHEV. 1/2 TON, 6 3 spd., new paint, one owner \$1465
 - 958 Ford V8, 4 spd., 3/4 ton \$525
- "Your Friendly Ford Dealer"

Wamego Motors, Inc.
305 Lincoln 456-9567
WAMEGO, KANS.

ONLY YOUR FORD DEALER SELLS TRUE

A-1 Used Cars IN MANHATTAN

- 965 Oldsmobile 2 dr. hardtop Sports Coupe, V-8, automatic, trans., R&H, p-steering \$2295
- 965 Volkswagen 2 dr. 4-speed, heater, local car, real clean \$1595
- 964 Falcon 2-dr. 6 cylinder automatic trans., R&H \$1295
- 964 Galaxie Fastback, V-8, standard trans., R&H, p-steering, low mileage \$1595
- 959 Dodge 4-dr. V-8, automatic trans., R&H \$395

Open Evenings Till 9

SKAGGS (FORD) MOTORS

"Where Customers Send Their Friends"
2nd & Houston PR 8-3525
MANHATTAN

Thank You

For helping us make our first full year on our new location a great success.

WE WISH YOU ALL AS GOOD A 1967 AS WE HAD IN 1966

AULD

CHEVROLET
HO 1-5414
WAKEFIELD

OBERMEYER Chevrolet-Olds Open to 9 p.m.

Marvin Obermeyer, Owner
Phone BL 8-2421
HERINGTON, KANS.

FOR SALE — Stock rack for chev. pickup, long, wide bed. All steel construction, complete with bows & tarp if desired. Old angle horse trailer, home made, cheap. Also one Badger silo unloader for 18 ft. silo. Good shape priced to sell. Glennon Crowder, Gypsum, Kans. 67448. Ph. 321 Roxbury. x47

965 JEEP WAGONEER for sale. 4-wheel drive, excellent condition, new tires, ideal station wagon for farm use. Stanley Parsons, Ph. Manhattan PR 9044 or PR 8-2971. SB45

FOR SALE — 1948 Chev. 1 1/2 ton truck with hoist, in good shape, motor just completely overhauled, 44,000 actual miles, wood tires, grain bed and stock rack. Frank Myers, St. George SB4-2431. x45

FOR SALE — 1959 Chevy "El Camino", 327 cu. in. engine, Hurst floor shift, Jesse Lawrence, Box 92, Chapman, Kansas. WA 2-6221. x45

Real Estate

Fulmer Real Est. CATHERINE J. FULMER REALTOR

Office 456-7696
Res. 456-9281
WAMEGO

NEED FARM & RANCH LISTINGS

Immediate Inspection

Lloyd H. Mills REALTOR

304 West St. (24-40 Hwy) AC 913 VI 5-2712
TONGANOXIE, KANS.

FOR SALE — 320 acres pasture on good oil road in Pottawatomie County, good grass & good water. Fairchild Real Estate, Westmoreland. Phone 224-3421. SB45

PROPERTY FOR SALE

Nicely improved 160, modern home, school bus to door, very good outbuildings, new water system with plenty water, half tillable half grass, \$21,000 with \$2000 down, \$2000 March 1, 1966. Will rent unimproved 160 with 120A cultivated for 3 yrs. with option to buy. Wheat on this farm made 40 bu. this year.

Unimproved 80 with 76A tillable all in wheat, \$13,500. Contract or cash.

Nicely improved 200 acres, modern home, school bus to door, 120A cultivated. This is very productive land. Price \$40,000 with nice contract.

Very good, clean drive in liquor store, in good location, on main national highway. Good business, will show books. At \$40,000 plus inventory. Terms.

I will show you these and several others in a 2000 square mile area. I can show you a size farm to please you at a price you can afford.

Please Call Collect For Appointment

Gerald A. Kvasnicka
FR 6-2874
HADDAM, KANS.

WASHINGTON COUNTY REAL ESTATE FOR SALE

Commercial feedlot and 14 acres of cropland at edge of Greenleaf. Plenty of storage for hay and grain. Large upright silo and a cattle shed. About one acre of concrete slab. Priced to sell.

240 acre farm, near Morrowville. Some creek bottom. Two houses and other buildings. Upland is terraced. \$36,000.

200 acre improved farm near Greenleaf. Good house and barn. 106 acres of above average cropland. \$40,000.

BUSINESS OPPORTUNITIES
Grocery store in small town. Only one in town. Doing a good business. Equipment in good condition. \$3500 plus inventory.

Filling station and bulk gasoline business. Room to do some mechanical work. For lease. Purchase inventory and equipment.

See us or call collect for more information on these and other listings.

The Moore Agency LINN, KANSAS

J. R. Moore
Linn DI 8-3101
or Marvin L. Heck
Washington EA 5-2538

435 WICKHAM ROAD — One of Manhattan's best built homes. Three bedrooms, 2 1/2 baths, full basement with workshop and large recreation room. Two fireplaces. A few blocks from K-State U. Manhattan's best buy at \$32,000, all cash or terms to suit. Fred Howse, 2130 North Cascade, Colo. Springs, 90907. x48

FOR SALE — Modern 2 bedroom ranch type home, 28'x50', garage attached, in Riley. Ed Sylvester, Riley HU 5-2622. x46

Farm Equipment

USED TRACTORS

- 65 J.D. 3020 D. wide axle \$5175
- 59 J.D. 730 D. wide axle \$3175
- 59 J.D. 730 D R.C. \$2995
- 57 J.D. 620 RC, very good \$2195
- 57 J.D. 620 wide axle .. \$2075
- 56 J.D. 70 D, leaded .. \$2175
- 55 J.D. 70 propane, wide A \$1875
- 53 J.D. 60, wide axle .. \$1350
- 53 J.D. 60, row crop \$1250
- 64 Ford 5000 D \$3575
- 61 IHC 340 row crop .. \$1650
- 58 Case 411B Dsl. \$1395
- 56 IHC 400D \$1275
- 3 1966 J.D. 14-ft. combines \$6475
- 1959 J.D. 95, 18-ft. \$3975

PETERSON BROS., INC.
Lindsborg, Kans.

FOR SALE: PICKUP

1960 IH 4-wheel drive pickup, 35,000 miles, with Knapheide combination grain & stock bed. Good condition.

Pioneer Service & Sales

BL 8-3222

USED TRACTORS

- Int'l 806, diesel, wide front end 1964
- Int'l 560, diesel, 1962
- Int'l 460 gas, 1962 with disc, plow
- AC WD 45, completely overhauled
- AC D14, excellent, wide front
- 8N Ford — AC, 1961 D17

MISCELLANEOUS

2 curlers, 2, 3-, 4-bottom AC plows (too many)
J.D., Int'l., Gleaner, Massey & Case combines

JUST ARRIVED

2 new D17 gas tractors
2 new D15 gas tractors

Henry Sales & Service, Inc.

E. Hwy. 24
& Meriden Rd.
FL 4-7641

TOPEKA, KANSAS

- 1963 271W N-H Hayliner . \$995
- 1961 S69W N-H Hayliner . \$975
- 1960 S68W N-H Hayliner . \$875
- 1962 46T IHC baler \$795
- 1961 46T IHC baler \$695
- 1958 14T JD baler \$475
- 1958 135W Case baler \$345
- 1958 140T Case baler \$395
- 1965 460 N-H haybine .. \$1495
- 1965 460 N-H haybine .. \$1295
- 1961 900 N-H Speedrower \$1975
- 404 N-H hay conditioner \$395
- 2A IHC hay conditioner .. \$495
- 1961 15 IHC forager \$775 (with nine knives)
- 1962 616 N-H forager \$575
- 1963 211 Case forager .. \$495

Hiser Impl. Co. Phone 316 EN 5-2451 IOLA, KANS.

WANTED: 4-ROW
Front Mounted
Cultivator for 44 MH, 3 point
J. B. WIEBE
Rt. 5 NEWTON

Fairbanks Motor & Elect.

FORD MCHRY.
EX 6-2481
WHEATON, KS.

WANTED — Allis B tractor. Also brochures, catalogues on farm machinery, cars, trucks, tractors, 1924 through 1940. Please help. Especially tractor catalogues. Box 1009 UP, Manhattan. SB45B

ASK US ABOUT OUR INTEREST FREE PLAN

TRACTORS

- 1954 Ferguson 30, OH, new tires
- 1960 John Deere 730D, elec. OH
- 1958 JD 720, OH, new tires
- 1960 JD 730D, gas starter
- 1956 Oliver 88 Super, OH w/hyd
- 1955 JD 60, p. steering
- 1964 Moline 602 LP gas, 3 pt., wide front
- 1961 JD 4010D, new pistons & sleeves with duals
- 1962 JD 4010D, 2200 hrs., new tires
- 1962 Massey 85D, overhauled
- 1950 Allis WD, special
- 1955 JD Model 70 diesel, OH

PTO BALERS GUARANTEED

- 1958 JD 14T, overhauled
- 1957 IHC 45T; 1958 JD 214W;
- 1958 JD 214T; 1955 New Holland; 1959 Massey No. 3.

COMBINES

- 1966 Carryover JD 55
- 1958 JD 55 14', one owner
- 1963 JD 95, with 16', 1600A
- 1957 JD 55 with 14'; 1955 JD 55 with 14'; 1956 JD 45 with 10', overhauled
- 1962 JD 45 12'
- Full vision cab for Hilo 45
- 1960 JD 45 with 12' & Comfort Cab
- 1950 JD 55 with 12' platform Belt pickup attachment for 55 with gauge wheels

PLOWS

- 1 New JD F120 4x16 mtd. \$450
- 4x16 JD mtd. 810A
- IHC 311 fast hitch 3x14
- JD 3x14 pull 55 w/ HS bottoms
- JD 825 3x14 turnover 3 pt.
- Moline 4x16 pull plow 1961

DISKS: WHEEL

- Massey 12' 3 pt., like new
- JD 12' RWA, excellent
- Krause 12', like new
- Schafer 12', heavy duty
- Schafer 10', lots of use yet

MISCELLANEOUS

- No. 26 JD flail type rotary stalk chopper
- Dempster 3 pt. cultivators
- 1962 JD 210 corn head
- 220 Letz PTO mill, never used
- 5 section JD wheel spring tooth Papec & Gehl field cutter
- PTO Deere N manure spreader with bunk feeder attachment
- No. 45W deere manure loader
- Ford heavy duty loader, also a light one

SHOUSE IMPL. CO.

Ablene, Kans.

Store Ed Shouse CO 3-3051
Ron Shouse CO 3-1066
CO 3-4515

WANTED — Pasture for 40 cows. 1/2 rent in advance. Loyal Shirley, Vermillion, Kans. Phone DU 2-5316. x48

USED TRACTOR PARTS

For all makes of tractors, at tremendous savings. Wrecking hundreds of late models such as JD60, JD70, IHC 400, IHC 450, many with live power, and fast hitch. Save money at

JOE GOODMAN
TRACTOR PARTS CO.
Box 748 Phone 489-1432
LINCOLN, NEBRASKA

Used Surge

3 unit Surge, stainless steel stanchion pipeline milker. Basically complete up to vacuum pump.

"BUY NOW — PAY LATER"
The Lindquist sales plan lets you make a small down payment now with the balance interest-free until April 1, 1967.

DAIRY SUPPLIES

All types of supplies. We have the best installation and service man in north central Kansas. Make Lindquist's your headquarters for all DeLaval equipment.

LINDQUIST IMPL.

TA 3-2451

808 N. 10th
SALINA, KANSAS

ALLIS ROUND baler. Baled only 11,000 bales. Shedded \$525. 1966 Crop brome grass seed 13c lb. Alfred Roeder, Seneca, Kans. x45

SOME REAL GOOD VALUES IN USED EQUIPMENT

- 1963 Case 930 CK diesel, clean & low hours \$3995
- 1963 4010 dsl, reconditioned
- 1958 JD 720 dsl. RC, wide front, 3 pt., hyd., reconditioned \$2850
- 1954 JD 70 dsl. RC, hyd., an extra good clean tractor \$1795
- 1955 IHC F400 gas RC, top condition \$1295
- 1955 MM UTS LP gas, hyd \$1095
- 1952 IHC W6 gas, extra good \$595
- 10 ft. V-blade (2 5s) only \$295
- 15 ft. Sunflower V-blade like new \$350
- 12 ft. Flex King V-blade, demo. \$950
- 4x14 IHC plow with slotted moldboards
- Several 3x16, 2x14, 4x16, & 5x14 good used plows
- 6 ft. 3 pt. rear blade, priced to sell

GB LOADERS

CRUSTBUSTER HARROWS

Blanding Impl. Co.

PE 8-3066

BELOIT, KANS.



SOME EARLY-YEAR MACHINERY BARGAINS

- 13' Case wheel disk
 - 2 11' JD wheel disks
 - No. 15 IH rake
 - No. 896A JD rake
 - No. 406 JD lister-planter
 - No. 494 JD planter
 - 2 4-row IH weeders
 - R JD; HH JD spreaders
 - 95 bu. New Idea spreader
 - No. 200 IH spreader
 - 2 No. 30 Grainovators
 - Horn loader for IH
 - Hi-Lo loader for IH
 - Hi-Lo curved boom loader for IH
 - Hi-Lo curved boom loader for JD
 - Ford box frame loader
 - Super 33 McCulloch saw
 - 33B McCulloch saw
 - Remington Bantam saw
- Some of the good deals in last week's ad are still open!

Washington Impl.

EA 5-2301

WASHINGTON



DAUER

IMPLEMENT CO.

- 1957 McCormick 46T twine baler
- 1962 McCormick 46T twine baler
- 1964 McCormick 46W wire baler
- 1966 McCormick 47W wire baler
- McCormick 55W wire tie baler with engine
- 1959 McCormick F-460D tractor
- 1966 McCormick 403 16' combine, only cut 500 acres
- 1952 Massey-Harris Super 27 16' combine
- 1953 Massey-Harris No. 70 12' combine
- 1961 F-560D, new pistons & sleeves, new rear tires.
- McCormick No. 412 4-16 semi-mounted plow
- McCormick No. 60 3-16 plow
- McCormick No. 37 10'9" wheel disk
- 1949 W6 McCormick tractor
- 1950 W6 McCormick tractor
- 1955 R160 International truck with bed & hoist
- 1962 IH 101 combine, 12'
- 1963 John Deere 45 manure loader, hydraulic bucket

Phone 1011

Falun



FOR SALE — hydraulic presses, electric, 25 ton 32" between uprights and a 100 ton 8' between uprights with 2 way control. Garv's Welding & Machine Shop, N. Interstate 70, Chapman Interchange. Shop Ph. WA 2-5411. Res. Ph. WA 2-6629. x46

FOR SALE — 1966 Gehl self-propelled industrial Harvest King two row forage harvester. Contact: Harvey Froese, 10 West A, Hutchinson, Kans. Ph. Days MO 3-3389. Nights MO 3-1406. SB46

Wamego Dairy Supply

Located at Bit-O-Gold Cheese Bldg. Dave Doperalski Authorized DeLaval Dealer Rubber parts for all makes Service for all makes Used milk machines, all makes We would appreciate being of service to you.

Phone 456-7200 WAMEGO, KANSAS

HERINGTON



Used Equipment

TRACTORS

- 1966 A-C D-17, power strg., 180 hrs., wide front
- 1965 JD 4020 dsl., power shift, 800 hrs.
- 1962 A-C D-17, power strg., wide front
- Three 1962 Masseys 65: LP, dsl., gas; all high arch, wide front
- 1960 IHC 460 gas, new rubber, real clean
- 1959 J D730 dsl., ohl., ptd.
- 1958 JD 720 dsl., o'hld., ptd.
- 1958 IHC 450 gas, o'hld., ptd.
- 1958 IHC 350 gas, o'hld., ptd.
- 1956 JD 70 dsl., fully equipped, overhauled
- 1956 JD 60, pwr. strg., o'hld., painted, new tires
- 1954 JD 60, o'hld., painted
- 1954 A-C WD 45, o'hld., ptd.
- 1953 IHC Super M; 1951 A-C WD; 1949 JD D, extra clean
- 1946 IHC M, overhauled, painted, live PTO
- 1946 JD G, overhauled
- 1947 Ford 9N, real clean
- Used belt pulleys for JD 1010, 3010 and 4010 tractors

COMBINES

- 1961 JD 45 12', one owner, always shedded, comp. o'hld.
- 1959 JD 55 14', one owner, always shedded, extra clean
- 1959 JD 95, comp. o'hld., ptd.
- 1957 JD 55, o'hld.; 1954 John Deere 55; 1952 Massey Super 26; 1957 JD 30, pull, 7 ft.
- 1955 JD 25, pull, 7 ft.

OTHER MACHINERY

- 2 used Grain-O-Vator No. 30 feed wagons
- 1 used No. 10 Grain-O-Vator, like new, with partitions & feed gates for mixing

SEE US FOR NEW

Grain-O-Vators; Blair and Gehl feeding machinery; Hesson windrowers, Crust Buster harrows; GB loaders, Ansel cabs. Danuser diggers. All this machinery is in stock and on display on our lots.

COMING JAN. 19-20-21

Our great anniversary celebration. Save at least one day for this event. Watch for publication of details.

Tri County Sales

George Munkres
Phone Collect
BL 8-2249 or BL 8-2991
HERINGTON, KANS.

WANT TO BUY — John Deere Model B tractor and cultivator, state price and condition. Floyd Fisher, Cottonwood Falls, Ks. x45

FOR SALE — Genuine John Deere 4010 Comfort cover used one season. Dean Constable, Randolph, Kansas. Ph. ST 5-2730 x45

FOR SALE — Oliver 88 diesel tractor, excellent condition. F. H. Jantz, Tampa, Ks. Ph. Durham 732-2460. x46

FOR SALE — 1963 4000 Ford tractor, No. 9 John Deere mower. 3 point rear blade. Also Whirlwind terracer. Can deliver. John Wallace. Ph. AC 913-698-2368, Luray, Kansas 67649. x45

FOR SALE — No. 3 Massey Harris baler, \$750. Also No. 10 Massey Harris baler, \$1200. Also 500 bales of good quality alfalfa hay. Fred Kilian, Wamego, Ks., Phone 456-9603. x46

FOR SALE — New JD cultivator, front mounted complete with rear rig, never set up. Less than dealer cost. Lawrence Evins, Route 3, Manhattan, Phone PR 6-8442. x45

For Sale: Flat bed hay rack, 8'x24'. Will haul 200 36" bales. Good saddle & bridle. Dean Carpenter, Beatrice, Nebr. 2280264

FOR SALE — 1961 JD 3010, power steering, wide front end, three point hitch. One Kewanee Disk, 11' 2". Heavy dimension lumber 10" — 15". F. P. Stockman, St. Marys, Kansas. SB45

4-ROW STANDARD mold-board, tool bar, fast hitch lister with rubber press wheels and insecticide attachments. Used 7 years. \$225. Melvin Roeder, Seneca, Ks. x45

FEED WAGON bargains, 5x12 Model 66 Kelly Ryan remix wagon, \$1500.96; 4x12 Remix \$1273.36. Both on 20" rims. Used 5x12 pockets, cut end 900x20 tires \$750.00. JD Chuck Wagon on K-6 IHC truck, good motor and tires \$450. New wagons all sizes. Adjustable loaders to fit most Kelly Ryan and Blair wagons, tractor hydraulic driven. Earl Kleinsorge, Cottonwood Falls, Kansas. x46

Miscellaneous

FARM PONDS cleaned or dug, drainage ditch cleaned or dug. Ray Bros. Crane Service, 3412 Bryant, Phone AM 6-8598, Topeka, Kans. 66605 x48

ARMY SURPLUS OUTSIDE WHITE PAINT

\$2.93

Per Gallon

Kimberly Washable Vinyl Latex WALL PAINT \$2.93 Gal

FAITH'S

Furniture

East US 24 PR 8-3786
MANHATTAN

FOR THE ride of your life, ride a Big Horn saddle from Key Milling, Clay Center, Kansas. SB TF

GOVT. SURPLUS OVERSHOES

We now have over 9 tons of govt. surplus overshoes. Some priced as low as 97c pr.

LLOYD'S SURPLUS SALES
St. Marys, Kansas

GRADED Hedge posts, thousands available. Now all sizes, lengths. Willard Bitts, Ph. 566-3403, Pomona, Kansas. SB45

ONE 55 by 10 ft. trailer house used one season, like new. Price \$2500. R. Czarnousky, Lincolnville, Ks. x46

JUST ARRIVED — Pickup chains 10.50; Western Wranglers 3.50; 100 prs. Engineer Boots 10.50; 250 cases 6/10 Stokely Peaches 4.00; Plywood, 2x4's; Hundreds of other items. McCoy's One Stop, Inc., 1 mi. east Eskridge, Kans. Hwy. 4. SB45

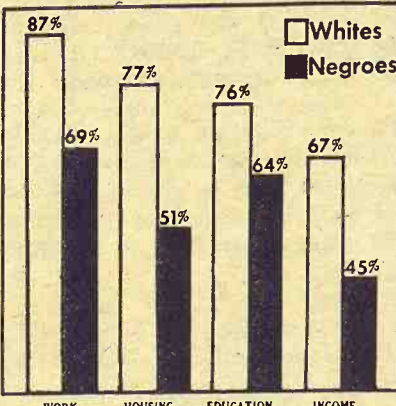
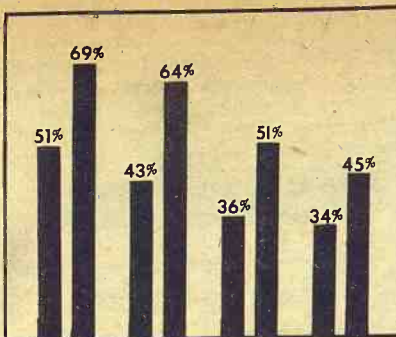
ONE USED Pitco Frialator Model Ten French Fryer, two basket, thermostat controlled, table model and quarter inch cutter, forty dollars. Inquire Gene's Cafe, Barnes, Kans. x45

FOR SALE — Approximately 1500 ft. well seasoned walnut lumber. \$500. Write John Stork, 907 Carolina, Marysville, Kansas. x48

REWARD OFFERED for information of the whereabouts of two female trail dogs. West of Riley. White with light brown spots and one white with sandy spots. Both have collars on. 2 yrs. old. Phone PR 6-8159, Manhattan, Kans. SB46

Pets

FOR SALE — 2 broke coon dogs: 2 basset hound pups. Max Snyder, 1006 McBratney, Clay Center. ME 2-3895. SB45



Negro Views

Satisfaction with their jobs, schooling, housing and income by Negroes may be higher than one might have supposed judging from a recent Gallup Poll. The chart compares Negro answers in 1963 and 1966 to the questions: "On the whole would you say you are satisfied or dissatisfied with: the education of your children? the work you do? your housing situation? your family income? At least the answers indicate significant improvement in Negroes' responses to their lot.

The second chart compares responses to the same questions by Whites and Negroes.

LETTERS

He Restates FU Co-op Resolution.

This letter refers to an article in the November 29 Grass & Grain which reported that Kansas Farmers Union in its annual convention passed a resolution warning against control of local cooperatives by regional cooperatives.

Here is the resolution on cooperatives:

"Since Kansas Farmers Union has organized more cooperatives in the state of Kansas than any other organization, we reaffirm our belief and support of farm cooperatives. However, we urge farmers to be on guard to keep control of their cooperatives in their own hands. We resent any regional cooperatives attempting to dominate the policies of local cooperatives."

The resolution is not aimed at any one regional cooperative, but is intended as a warning to local cooperatives to keep control in their own hands. Perhaps to make it more clear the last statement should read as follows: We would resent any regional cooperatives attempting to dominate the policies of local cooperatives.

Cyril J. Habiger
Member, FU Resolutions Committee
BAVARIA

Improvements Set For US77, K9

Two highway improvements in the G&G area that are scheduled are on US77 and K-82 in Riley County and on K-9 in Washington and Cloud counties.

Both projects are set for bids to be received by the State Highway Commission on January 26.

The Riley County project is due to the continued relocation of roads due the construction of Milford Reservoir and the expansion of Firt Riley. New alignment of both highways will begin at the north junction

of US77 and K-82 approximately one mile east of Bala. US77 will be built east 5 miles to a junction with US24 near Riley. K-82 will go north 4 miles to a junction with US24, north of Leonardville.

In Washington and Cloud counties, 19 miles of surfacing will be put down on K9 from the previously improved section east of Concordia, northeast to a junction with K15W south of the city of Washington. A 7 1/2 mile section of this work beginning east of Palmer and extending north to K15W is on new location.

AREA HOLSTEIN RECORD NOTED BY ASSOCIATION

A Holstein bull owned by W. Carlin of Smolan, Hughey Brothers of Waldron, and Albert McVay of Nickerson, has been designated a Silver Production Sire by the Holstein Friesian Association of America.

COTTON GROWERS AGREE TO PAY FOR PROMOTION

Cotton growers have agreed in a national referendum to have \$1 a bale checkoff on cotton to finance a research and sale promotion program. The assessment was \$88

FORD DEALER YEAR END SALE

- 66 Ford Galaxie 500 2 dr. HT 7 Litre, V-8, R-H-S-B-4 on floor
 - 66 Mustang 2 dr. HT, 289, C.O.M., R-H-W.S.W. (New)
 - 65 Ford LTD 4 dr. HT, R-H-A-S-B, factory air cond.
 - 65 Ford Galaxie 500 2 dr. HT, V-8, R-H-A-air cond.
 - 65 Ford Galaxie 500, 4-dr., V-8, R-H-A-S-B, air cond.
 - 65 Ford Custom 500 4 dr. V-8, R-H-A, air cond.
 - 65 Ford Custom 500 4 dr. V-8, R-H, stick trans., air cond.
 - 65 Plymouth Fury II 4-dr., V-8, R-H-A, factory air cond.
 - 65 Volkswagen Station Wagon, R-H
 - 63 Ford Gal. 500 XL 2 dr HT, 406 V-8, R-H, air cond., 4 on floor
 - 62 Fairlane 500 4 dr., V-8, R-H-A, factory air cond.
 - 62 Chev. Bel Air 4 dr. wagon, V-8, R-H-A, p-steering
- Several Others To Choose From —

TRUCKS

- 65 Ford 250 3/4 ton Styleside pickup, V-8, R-H, 4-speed
- 64 Ford 250 3/4 ton Styleside pickup, V-8, R-H, 4-speed
- 64 International 3/4 ton pickup, V-8, R-H, 4-speed, stock grain sides, H.D. wheels & tires
- 64 Chev. El Camino pickup, V-8, R-H-A
- 59 Ford 3/4 ton V-8 4-speed pickup

NEW TRUCKS IN STOCK

- 5 - Five pickups, Styleside, 6-cyl., V-8, 3-speed, 4-speed
- 2 - F-600 chassis & cab, 174" W.W., 330 V-8, 2-speed axle
- 3 - F250 3/4 ton Styleside Pickups, V-8, 4-speed

VERN BERGMAN FORD SALES

Hiway 36 East

Phone DE 6-2110

SENECA, KANSAS

AUCTION SALE

Monday
JANUARY 9

Starts 1:00 p.m.
Lunch Served

We are quitting dairying and will sell at public auction entire herd of dairy cattle, on the farm located 5 east, north of Clyde; or 1 west and 3/4 north of Clifton; or 3/4 north of Vining, Kansas, on a gravel road.

DAIRY CATTLE DISPERSAL

- Holstein cow, 3 years, been fresh 90 days
 - Holstein cow, 3 years, been fresh 90 days
 - Holstein cow, 4 years, milking now, to freshen in May
 - Holstein cow, 3 years, was fresh Nov. 4
 - Holstein cow, 7 years, been fresh 110 days
 - Holstein cow, 7 years, was fresh Nov. 10
 - Holstein cow, 7 years, been fresh 100 days
 - Holstein cow, 4 years, been fresh 60 days
 - Holstein cow, 5 years, was fresh Nov. 10
 - Holstein cow, 6 years, been fresh 60 days
 - Holstein cow, 4 years, was fresh Nov. 15
 - Holstein cow, 4 years, was fresh Nov. 8
 - Holstein heifer, 2 years, was fresh Nov. 1
 - Holstein heifer, 2 years, was fresh Nov. 3
 - Holstein heifer, 2 years, was fresh Oct. 31
 - Holstein heifer, 2 years, been fresh two weeks
 - Holstein cow, 5 years, been fresh two weeks
 - Holstein cow, 3 years, been fresh 100 days
 - Holstein cow, 3 years, will freshen Jan. 13
 - 7 Holstein heifers, yearlings being bred for fall freshening
 - Jersey cow, 4 years, will freshen March 23
 - Jersey cow, 10 years, been fresh 100 days
 - Jersey cow, 5 years, will freshen in 60 days
 - Jersey heifer, 2 years, been fresh 90 days
- NOTE: This is a good herd of dairy cattle, artificially bred, all raised on the farm, close culled, large type, good udders, in very good condition; giving up to 76 lbs. day. Bangs tested in last weeks; all calfhooed vacated are good milkers. Good milking facilities. Your inspection invited prior to sale date. Have bred and culled herd for 19 years.
- MILKING EQUIPMENT
1962 Milk Keeper 225 gal. milk bulk tank, good; Davison Bradley 2-unit milker, complete, good; Surge milker bucket.

MR. & MRS. DONALD JACKSON

Aucts: Foster Kretz & Elmo Steffen
Clay Center, Morganville WA 6-4422

Clerk: First National Bank, Clifton



LBJ Ranch

Not even a ranch as the name implies became known as the LBJ Ranch. The LBJ Ranch is in country near Johnson City, which is an acre of pasture or more, so by spreads reflect the leanness of the land. In 1960 the ranch in Blanco County means be considered. Since then the acreage. The ranch which was purchased for about \$1 1/4 million. Johnson holding his presidency. The 1966 counties show 14,811 acres of the President owned as a boy, grandfather era. Assessed value for the year. Does the J. "We try to pleasant doing good years and

EXTENSION VERN BERGMAN FORD SALES HAROLD SHANKLAND

Harold Shankland, who has been a member of the Cooperative Dairy Association since he retired after

graduate of the University of Missouri, Kansas City, and a member of the Extension Service

REPORT GRAIN FROM CCC BIN WASHINGTON

ated 1000 to 2000 bushels from the Co. Washington. The Davison project K15W about a mile Washington. Off the grain was truck semitrailer truck ident was reported county about two

POSTPONED AUCTION

Sale will be held inside the warehouse at 517 Grant St., Clay Center, Kansas.

Wedn., Jan. 4
Starts 9:30 a.m.

The sale of IHC parts, antique auto parts and miscellaneous surplus items from our old warehouse. Sale was postponed from Dec. 28 due to weather conditions.

Norquist's, Inc.
Clay Center IHC Dealer
Auct. Foster Kretz

CATTLE SALE EVERY MONDAY

HOG SALE EVERY WEDNESDAY
Sale Time 12:00 Noon
BEATRICE, NEBR.

Beatrice 77
LIVESTOCK SALES CO.
2 miles north of Beatrice, Nebr., opposite the airport.
Phone 223-3571
CLARENCE TEGTMEIER
DELMAR JURGENS
J.B. THIMM



LBJ Ranch Spread Now 15,000 Acres

Not even the King or 101 ranches would rival the LBJ Ranch as the best known spread in the USA since Lyndon Johnson became president.

Is the LBJ Ranch a livestock operation of major proportions by cattlemen's standards? Well, yes. And no.

The LBJ now totals almost 15,000 acres. That's a lot of territory, any owner of good grassland would tell you. But the LBJ near Johnson City in central Texas, just west of Austin, is in country semiarid, subject to frequent and prolonged drouths, which reduces the number of cows that can feed on an acre of pasture.

Some of the big Texas cattle empires cover a million acres or more, so by that standard the LBJ is not large. These big spreads reflect great wealth, of course, but partly they reflect the leanness of the land.

In 1960 the LBJ embraced only a little more than 400 acres in Blanco County. In the Texas Hill Country that could by no means be considered a unit that could be managed for profit.

Since then Johnson and his agents have steadily been buying acreage. The first purchase was the 1800-acre Scharnhorst Ranch which was bought for \$54,000 — about \$30 an acre.

Since then nearly 12,500 acres have been added at a cost of about \$1¼ million — the acres averaging about \$100. These purchases have been made in the names of the Texas Broadcasting Co., the Johnson City Foundation, or the LBJ Co., all Johnson holdings which have been placed in trusteeship during his presidency.

The 1966 tax rolls of Blanco, Gillespie, Llano and Burnet counties show the Johnson interests own or are partners in 14,311 acres of ranch land plus 93 lake front lots. In addition, the President owns the square block in Johnson City where he lived as a boy, and 24.6 acres on the edge of town where his grandfather erected several stone buildings.

Assessed valuation of all the property was \$157,265 and taxes for the year totaled \$4564.

Does the Johnson ranch make a profit?
"We try to make a profit," Johnson says. "It is not always pleasant doing so. But we work at it and sometimes we have good years and sometimes we don't."

More Evidence On Feedlot Water Pollution

A study of 6000 rural water supplies in Missouri has pinpointed three sources of pollution, Dr. G. E. Smith, director of the University of Missouri water resources center, told the American Association for the Advancement of Science.

Animal wastes, improperly constructed shallow wells and septic tank drainage are the main sources of water contamination, Dr. Smith said.

Agricultural fertilizers are only a subsidiary cause of contamination now, he said, but might become a future problem if excessive amounts were used.

His studies found that soil to a depth of 25 to 50 feet in feedlots used for 50 years contained nitrate nitrogen in amounts as high as 4000 pounds an acre. Relatively high nitrates in water can be dangerous to babies. The concentration of nitrates usually diminishes 200 to 300 feet from the pollution area, he said.



WE CAN FIT YOU
Justin • Acme • Texas and Nocona Boots
On US 24 — 2 Blocks East of Cloverleaf on US 24
TOPEKA, KANS.

AUCTION SALE Saturday JANUARY 14

Starts 9:30 a.m.
Lunch Served

As we have closed our plant, we will sell at public auction the following equipment:

- | | |
|---------------------------------------|--|
| OFFICE EQUIPMENT | 3 20 ton jacks |
| Copyrite duplicator | MISCELLANEOUS |
| Thermofax dry copy machine | 1200# reinforcement bar |
| Monroe electric tape calculator | 75 150' rolls 6' welded wire mesh |
| 2 Hon metal filing cabinets | 125 200' rolls galv. welded wire mesh |
| Typewriter stand | Metal building panels |
| Air-Quipe slide projector | 600' 4" I beam |
| 40"x41" DA-lite screen | Tons of scrap iron & pipe |
| SHOP EQUIPMENT | 3500 lbs. white marble sand |
| Bosch 2-speed heavy duty impact drill | 30,000 lbs. silica sand |
| Bosch heavy duty grinder (8500 rpm) | 10,000 quartz rock ½"x¾" |
| Partner hand held K-12 concrete saw | Lumber, all dimensions |
| Syntron electric hammer | Trucks And Cars |
| 3-phase electric tool grinder | 1958 International A-20 pickup with 1 ton elect. hoist, full power bed |
| Craftsman drill press | 1959 Chevy ½ ton pickup with steel floor |
| Craftsman 10' table saw | 1963 4 dr. Plymouth sedan, 6 cyl., air cond., radio, heater |
| 2 10" De Walt radial arm saws | 1966 Ford 600, 6 cyl. with 16 ft. Giant bed, twin Anthony Hoist, 2-speed low ratio rear end, 6700 actual miles |
| Black & Decker impact wrench | Many other items not listed |
| CONSTRUCTION EQPT. | |
| K&E transit | |
| Arc welder on trailer | |
| 35 hp concrete saw (self-propelled) | |
| 18 HP concrete saw | |

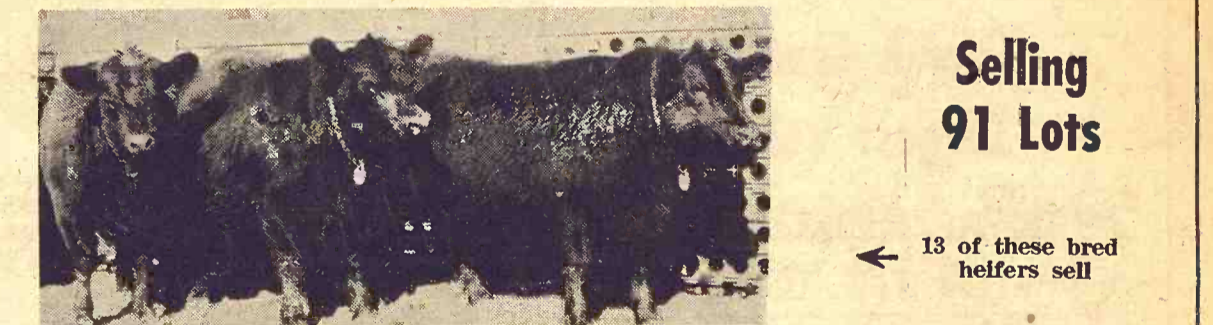
SUNFLOWER PRESTRESS
South Industrial Area — Southeast End of Salina, Kansas
Westland Auction Service
Sale Conducted By
P.O. Box 1152 SALINA, KANSAS
Joe Mendicina, Auctioneer Arlo Gruenthal, Clerk
Merchandise may be inspected prior to the sale. Call Joe Mendicina, Salina, TA 7-8072.

AUCTIONEER'S NOTE: You will find most of the equipment on this sale is in good working order, and all mdse. will be sold to the highest bidder. All sales final.

PARSONS ANGUS FARM ANNUAL PRODUCTION SALE

AT THE FARM AT 12:00 NOON

WEDN. JAN. 11 • Anthony, Kans.

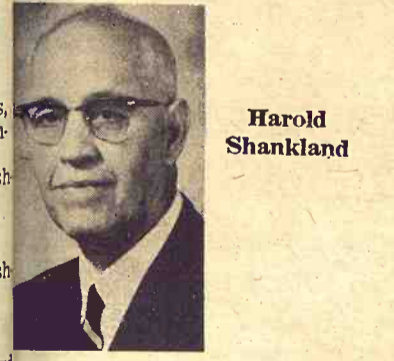


52 BULLS SELL
This group of serviceable age bulls is as uniform a group of big, thick, heavy-legged Angus bulls that will be found anywhere. In fact, 24 of these bulls are over 2-year-olds and 28 are 19 to 24 months old. They are the kind from which to select a group of half-brothers to assure a uniform calf crop.
50 of these bulls are sired by T F Bardoliermere 9, grandson of Dor Macs Bardoliermere 21, and Glengarian 1827, a son of the International grand champion, Eileenmere 1032.

39 FEMALES SELL
13 BRED HEIFERS—Daughters of T F Bardoliermere 9 and Glengarian 1827 selling bred to RSF Bardoliermere 52. A select group of foundation females.
26 OPEN HEIFERS—Really a great set of heifers—they are very uniform, correct type with quality, size, and breed character. You will really be impressed with these heifers.

Every Animal Selling Was Produced on Parsons Angus Farm
Sale Headquarters: Silver Top Motel, Anthony, Kansas
Auctioneer: Ray Sims
PARSONS ANGUS FARM, Anthony, Kansas
Robert and Ted Parsons, Owner
Sale Manager: Phil Ljungdahl, Box 1209, Dodge City, Kansas 67801

EXTENSION WRITER SHANKLAND RETIRES
Harold Shankland, editor for the Cooperative Extension Service at Kansas State University, has retired after 24 years. A



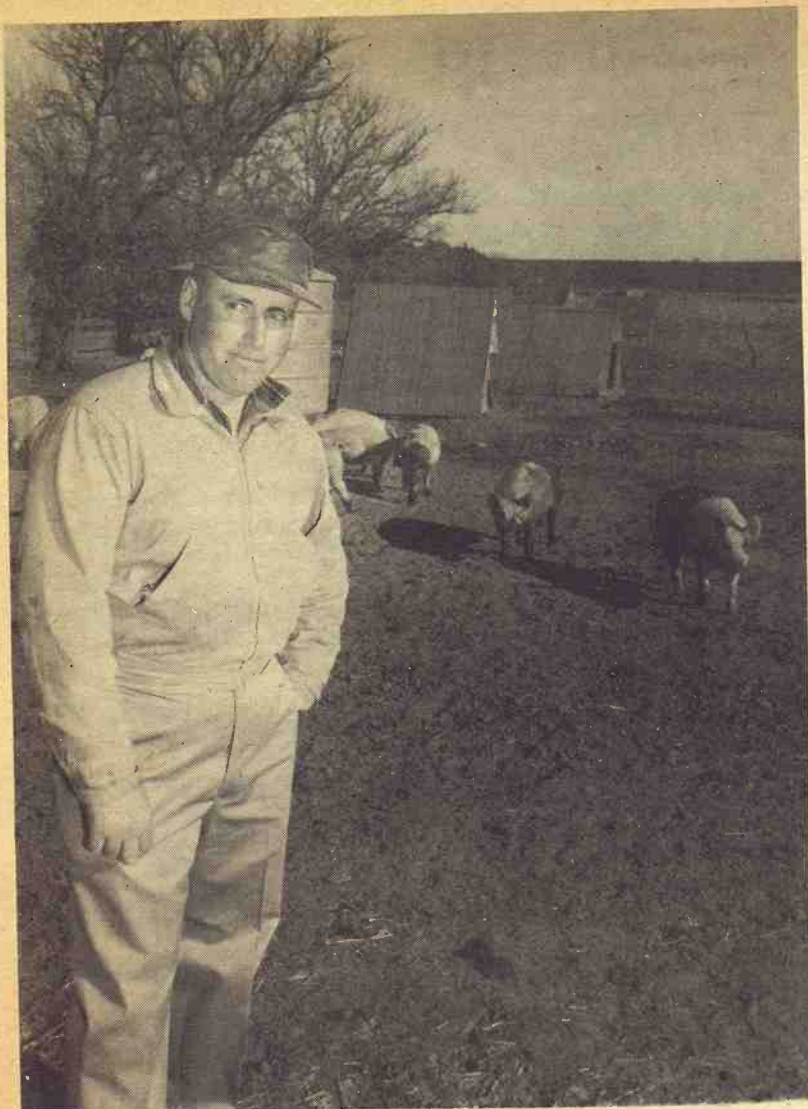
graduate of the College of Emory, Shankland was editor of papers in Cottonwood Falls and Junction City before joining the Extension staff.

REPORT GRAIN THEFT FROM CCC BINS
WASHINGTON — An estimated 1000 to 2000 bushels of corn have been reported missing from the CCC bins near Washington. The bins are along the Davison property along 15W about a mile south of Washington. Officials believe the grain was taken out in a semitrailer truck. A similar incident was reported in Marshall county about two months ago.

POWERFUL ONE-SHOT
Protection for Livestock

P D S*
*PEN-DI hydro
STREP L.A.
Fights Shipping Fever, Foot Rot, Pneumonia And Other Bacterial Infectious Diseases
LONG-LASTING CURE
Action works 6-9 days

*Trade Mark of related company
A FULL-SERVICE STORE FOR ANIMAL MEDICINES
PHONE ME 2-3272
HELD'S STORE
CLAY CENTER, KANS.



Organized Hog Man

Carroll Roth, Green, stands by his well organized hog pens. At present Roth has about seventy five head. He also runs a cow herd and operates 500 acres.

Beloit Co-op Second As Farmland Buyer

A Van Buren, Arkansas, co-op for the second successive year has been the biggest purchaser from Farmland Industries, the Kansas City regional cooperative which is the prime supplier of local co-ops.

The firm — Farmers Co-op of Arkansas and Oklahoma — bought \$3.7 million worth of

goods in the year ending with last August.

A G&G area co-op was the second largest purchaser from Farmland, the Mitchell County Farmers Union Cooperative Assn., headquartered at Beloit, buying \$3.3 million.

The Cooperative Service Association at Concordia, which led the list in 1956 with purchases of \$770,531, ranked 11th this year, altho it had a \$1.7 million volume.

One newcomer in the top 50 was Cooperative Grain & Supply of Hillsboro, which ranked 39th on the list.

Ronald Rice Motors, Inc.

CHEVROLET OLDSMOBILE CADILLAC
North Kansas' Largest Volume Dealer
NW 2nd Phone CO 3-4000 ABILENE, KANS.

1967

**WILL BE THE BIGGEST
YEAR EVER AT
North Central Kansas
Largest Volume Dealer**

**WE'RE GOING TO, MAKE IT
WITH THE BEST DEALS —
MORE FOR YOUR MONEY
MORE FOR YOUR OLD CAR**

**Here's A Handful Of
Early 1967 Better Buys**

- 1966 CHEVROLET Impala 4 door V-8 \$2995
Radio, heater, automatic transmission, power steering, power brakes, air conditioner, one owner.
- 1966 CHEVROLET Caprice 4 door hardtop \$3295
Radio, heater, automatic transmission, power steering, power brakes, air conditioner, one owner.
- 1966 OLDSMOBILE Deluxe 88 4 door \$3295
Radio, heater, automatic transmission, power steering, power brakes, air conditioner.
- 1966 CHEVELLE Super Sport 2 door hardtop, 396 \$3095
Radio, heater, automatic transmission, power steering, power brakes.

G&G Calendar

Jan. 4 — Antique and other abandoned warehouse items, Norquist's, Inc., Clay Center. Auct. Foster Kretz. Sale postponed from Dec. 28 due to snowstorm.

Jan. 4 — Sale southeast of Diller, Nebr., Paul & Helen Rettig. Aucts: Schultis & Son & Wolken.

Jan. 5 — Farm sale southwest of Diller, Alfred E. Carmichael. Aucts.: Schultis & Son & Wolken.

Jan. 7 — Farm sale northeast of Hebron, Nebr., Ray and Hilda Johnson. Aucts Schultis & Son & Wolken.

Jan. 9 — Dairy cattle sale northeast of Clyde. Mr. & Mrs. Donald Jackson. Auct. Foster Kretz.

Jan. 11 — Farm sale south of Morganville, A. W. Pierson Est. Auct. Foster Kretz.

Jan. 11 — Annual Angus production sale, Anthony, Kansas., Robert and Ted Parsons. Sale mgr. Phil Ljungdahl; auct Ray Sims.

Jan. 12 — Farm sale north of Clifton, Perry Peterson. Auct. Foster Kretz.

Jan. 13, 1967—Farm sale southeast of Chester, Nebr., Adolph Fairly, Jr. Aucts. Pierce and Siegel.

Jan. 14 — Close-out of factory equipment in Salina, Sunflower Prestress. Auct. Westland Auction Service, Joe Mendicino, auct.

Jan. 16, 1967 — Farm sale southwest of Hanover, John Bender. Auct. Foster Kretz.

Jan. 20 — Farm sale southwest of Hanover, Ed Allerheiligen. Auct. Foster Kretz.

Jan. 21 — Consignment sale in Plymouth, Nebr., Aucts.; Schultis & Son & Wolken.

Jan. 21 — Antique & household furnishings sale in Abilene, Phillip Peterson (Enterprise). Auct. Kenneth Crews.

Jan. 21, 1967—Household goods & antiques in Wamego, Fred Reisner. Aucts. Lawrence Welter and Glen Applegate.

Jan. 25 — Farm sale north of Morganville, Harvey Gooch. Auct. Foster Kretz.

Jan. 25 — Reg. Hereford sale in Concordia, Swanson Bros.

Jan. 25, 1967—Trinity Lutheran church consignment sale northwest of Waterville, Herman Holle and Henry Zabokrtsky, church committee. Aucts. Fisher and Holle.

Jan. 27 — Farm sale southeast of Riley, Oren Morris. Auct. Foster Kretz.

Jan. 28 — Reg. Shorthorn dispersal sale, Effingham, Kans., Orville & Tom McLaughlin (Muscotah, Kans.). Sale mgr. Milton H. Nagely.

Jan. 28 — Reg. Polled Hereford dispersal southeast of Mt. Hope, Paul A. Dick & Sons, Mt. Hope, Kans.

Feb. 1 — Farm sale south of Industry, Carl Kauffman. Auct. Foster Kretz.

Feb. 1, 1967 — Kaw Valley Hereford Assn. Sale in Manhattan, Garland Gideon, sale mgr.

Feb. 2 — Registered Polled Hereford sale west of Goff, Kans., Valley Hereford Farms Carl Funk and Edward Funk.

Feb. 4 — B.F.Y. swine sale in Emporia, Marion Boggs, Ken-

neth Fuller and James Yearout. Auct.: Loren Thiele.

Feb. 4, 1967 — Reg. Duroc sale and judging school, Smith Center. Vern V. Albrecht and Herman Popp.

Feb. 10, 1967—Farm sale south of Fairbury, Nebr., Mr. and Mrs. Harold Flower. Auct. Harold R. Siegel.

Feb. 13 — Farm sale northwest of Beatrice, Nebr., Homer J. Wenzel. Aucts.: Schultis & Son & Wolken.

Mar. 15, 1967 — Blue Valley Hereford Breeders Assn. show and sale in Fairbury, Nebr., Auct. Gene Watson; sec.-sale mgr. Don Banahan, Steele City, Nebr.

Mar. 15, 1967 — Latzke Angus of Junction City, Oscar and Larry A. Latzke. Changed from Mar. 14.

Mar. 18, 1967—P. R. I. Angus sale southeast of Olsburg, Lafflin Bros. & Fagerberg.

Mar. 24 — Production sale, Pohlman's Angus Ranch, Natoma, Kans. John Barton, sale mgr.; Ray Sims, Auct.

Mar. 24 — Complete dispersal of registered Polled Herefords, Elwin Thoes, Alma. Lea

January 3, 1967

18

Grass & G

May Be For 1967

Moves will be the coming season to give wheat a extra 50 cents a bushel removed abroad crop marketing reports at 800 million would cost \$400 million. Several members from Great Plains are planning measures calling payment. In addition Tony T. DeChambers Farmers Union will press for a wheat management school for growers who are eligible for payment. The meeting will be held here January 6 at Ramada Inn. The meeting will run from 10 a.m. until 5 p.m. Ed Call of K-State Extension will present the program on the basis of shares. In addition to for price support bushel. The proposed be made on w

MILK MANAGEMENT SCHOOL AT JUNCTION CITY

JUNCTION CITY — Management school for growers who are eligible for payment. The meeting will be held here January 6 at Ramada Inn. The meeting will run from 10 a.m. until 5 p.m. Ed Call of K-State Extension will present the program on the basis of shares. In addition to for price support bushel. The proposed be made on w



FOR SALE: Yearling Bulls

GRANT POOLE MANHATTAN, KANS. Located 4 mi. south of intersection, 2 mi. west of Dowell Creek Rd. Ph. 82

WASHINGTON SALES CO.

**HOGS every TUESDAY
CATTLE every WEDNESDAY**

All Sales Start 1:00 p.m.
**A GOOD TURNING POINT
FOR HEAVY CATTLE**

A Growing Market for Finished Cattle

Barn Phone EA 5-2266 Residence EA 5-2393
WASHINGTON, KANS.



HOGS START 12 Noon
WE WISH YOU ALL A GOOD YEAR FOR 1967.

We had a larger sale than we expected, considering the conditions. We'd say the market was sure higher all the way, the hogs especially surprised us after that \$1.50 drop earlier in the week.

Cattle ran steady to higher all across the board, from baby calves to big cows. Steers weighing 400 to 600 pounds sold @ \$25.30 to \$29.25. Cows brought \$17.50 to \$20.00. Cattle and feeders sold @ \$21.50 to \$23.25.

The market was strong on fat hogs, the good grades bringing \$19.60 to \$20.10.

BRING US YOUR HOGS
Our four packer buyers as well as other hog buyers will be as usual this coming Saturday, and we'd like to have plenty of hogs to fill their orders. You can expect top dollar at Junction City, where we've proven the auction way is the way for hog profits to the producers.

CONSIGNMENTS FOR THIS WEEK
50 choice whiteface calves weighing 400-500 lbs., one consignor.
28 black calves weighing 600 lbs., one consignor.
We have a lot of herds to look over this week, so we think our sale this coming Saturday will be a good, normal sale.

LICENSED AND BONDED
BARN PH. JUNCTION CITY CE & S
VERN LANGVARDT, Manager, 502 UPLAND
HOWARD LANGVARDT, Auctioneer, 520 UPLAND

AUGUST

I will sell
O. W. Pierson
ville, Kans.

Farm

1942 IHC rubber, 5-section, good crop, good condition, good John Deere and even IHC 2x16 plow, IHC 7 ft. ta Case side r on rear Case 3-section and even Case 4-wheel bed, steel, 4-wheel trail bin 12 ft. 6 in. wheels, with BUILD WIRE, P 1000 bu. brooder house several rolls panels; for Large grid hand spraying mower barrow; jump tools and m

1960 Plym 2 tone paint ber, 31,000 r HOUSE 1958 Ma washer and tric dryer, electric range co refrigerator

O. W. Loie Aucts: Foster Clay Center,

Sale

We ha Wednesday ther con very light ing. We week, an customer good ye

NE

May Be An Extra 50c A Bushel For 1967 Wheat For Export

Moves will be made during the coming session of Congress to give wheat producers an extra 50 cents a bushel on wheat moved abroad during the 1967 crop marketing year. With exports at 800 million bushels this would cost \$400 million.

Several members of Congress from Great Plains wheat states are planning to introduce measures calling for the added payment. In addition, President Tony T. DeChant of the National Farmers Union has said he will press for such legislation.

Under the present government wheat control program, growers who cooperate with the planting restrictions are eligible for payments of around \$1.25 a bushel on that part of the crop — about 525 million bushels — used for domestic food purposes. Payments are apportioned among producers on the basis of their production shares.

In addition they are eligible for price supports at \$1.25 a bushel. The proposed payments would be made on wheat exported.

Such payments also would be apportioned among growers on the same basis as the payments on domestic food wheat.

It is not known what position the Johnson administration would take toward the proposed additional payment.

George Fritz On Own Ranch

MEDICINE LODGE—George H. Fritz, who has been ranch manager at CK Ranch, Brookville, for more than nine years, recently resigned to devote full time to his own cattle and ranching operation near here.

George and Dorothy Fritz have two children — Jan, 15, and Randy, 11.

While at CK Ranch, George Fritz served as president of the Kansas Hereford Association and a director of the Kansas Livestock Association. He also served for eight years on the Brookville grade school board. Mrs. Fritz is the immediate past president of the Kansas CowBelles.

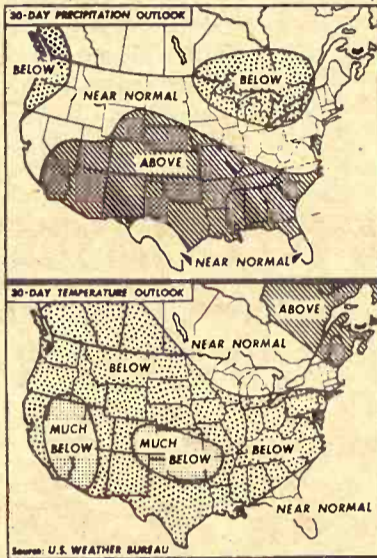
HAROLD STOVER, EXT. ENGINEER, RETIRES

A man long associated with rural electrification programs in Kansas has retired from K-



Harold Stover

State Extension work. He is Harold E. Stover, who is retiring after 30 years with Extension.



Weather Outlook

Snow and cold are forecast for the next 30 days in the G&G area by the U.S. Weather bureau as the map shows above average precipitation and below average temperatures for the area.



Getting Feed Pens Ready

Chester Stone, Leonardville, gets ready for winter feeding. He and son Roger farm seven hundred acres in Riley County.

AUCTION SALE

Wednesday JANUARY 11

Starts 11:00 a.m. Lunch Served

I will sell at public auction the personal property of the late O. W. Pierson at his farm located at the south edge of Morganville, Kans.

Farm Machinery

- 1942 IHC Farmall B tractor, rubber, starter, lights, row crop, good
- 1936 MM KT tractor, fair rubber, good shape
- John Deere No. 5 mower, good
- John Deere 12 ft. spring tooth and evener, good
- IHC 2x16 plow on rubber
- IHC 7 ft. tandem disc
- Case side rake, 4 bar, rubber on rear
- Case 3-section drag harrow and evener
- Case 4-wheel trailer with flare bed, steel, good
- 4-wheel trailer with flat bed
- 4-wheel trailer with combine bin
- 12 ft. 6 in. grain auger on wheels, with motor

BUILDINGS, POSTS WIRE, PANELS, MISC.
1000 bu. steel bin; 10x12 brooder house; hedge posts; several rolls hog wire; several panels; for ge and anvil.

Large grinder with motor; hand sprayer; Atlas Aire riding mower (near new); wheel barrow; junk iron; some hand tools and misc. items.

CAR
1960 Plymouth 4-door sedan, 2 tone paint, heater, good rubber, 31,000 miles, very good.

HOUSEHOLD GOODS
1958 Maytag automatic washer and 1958 Maytag electric dryer, good; 1957 Philco electric range, good; 1957 Philco refrigerator, freezer across

top, good; Moore 65,000 BTU gas heater; 25,000 Thompson gas heater; steel utility cabinet; wood utility cabinet.

Hoover sweeper and attachments; dressing table and bench; 2 floor lamps; Bush and Gerts piano and bench; table lamp; square dining table and leaves; drop leaf table; 9x12 wool rug; small sewing cabinet.

21 in Zenith TV, rotor and antenna; 2 metal beds, spring & mattress; magazine rack; 4-piece bedroom suite with springs; 2 commodes; several storage chests; cedar chest; several dressers.

2 High chairs; 2 baby beds; fishing equipment; hassock type fan; luggage; large coffee pot; a lot of dishes; pots; pans; fruit jars; electric grill; electric toaster; electric skillet; other miscellaneous items; bedding; pillows; ironing board; clothes hamper.

ANTIQUES

Gem City wood or coal heater; Perfection oil heater; umbrella; fruit jars; wide mouth jars; stone jars; kitchen cabinet; lanterns.

Brass bed with spring & mattress; 2 frosted glass 4 ft. x 2 ft.; solid cherry cupboard; cabbage cutter; gas light fixtures & globes; curtain rods; clothes dryer; kero lamp; pictures & frames; bottle capper; flat iron; chairs (nice); also other antique items.

O. W. PIERSON ESTATE, Owners

Lois Lippert, Executrix of O. W. Pierson Estate
Aucts: Foster Kretz & Elmo Steffen Clerk: Dan Roenigk
Clay Center, Morganville WA 6-4422. Morganville

AUCTION SALE

100% HOLSTEIN DISPERSAL

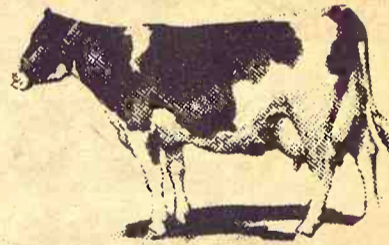
Tuesday, January 10

STARTS 11:00 A.M. LUNCH SERVED

As we are discontinuing our dairy operations will sell our entire herd of high grade Holstein cows and dairy equipment. Located 3 miles south of McPherson on Main St. blacktop road.

60 HEAD — 43 COWS NOW IN PRODUCTION

- 12 Cows, freshened in Aug., 1966, in heavy production.
- 5 Cows, freshened in Sept., 1966, in heavy production.
- 6 Cows, freshened in Oct., 1966, in heavy production.
- 9 Cows, freshened in Nov., 1966, in heavy production.
- 2 Cows, freshened in Dec., 1966, in heavy production.
- 9 Cows, freshened in 1966, in production, to freshen again in June, July, Aug., 1967
- 8 Cows, dry, to freshen by sale date.
- 2 Cows, dry, to freshen in Feb., 1967
- 4 Cows, dry, to freshen in March, 1967



DAIRY EQUIPMENT

DeLaval 4 unit milking machine, universal line worker, Kleen-O-Matic, new in 1961. A-1; Double stainless steel wash vat; 6 and 8 T 33 can coolers, can filler lids, like new, Clay Herringbone 4 double stalls. W/Feeders.

FEED

100 T Silage in stack.

TERMS CASH

Mr. & Mrs. Billy V. Potter, Owner

Aucts: Ted Krehbiel, McPherson & Ed Reimer, Goessel

L. J. Yoder, Clerk

Sale Every Wednesday

Hogs 12 noon
Cattle 1 p.m.

BARN PHONE AT 3-5566

There is someone at the barn all day Tuesday & Wednesday & Thursday morning. Otherwise call:

AUCTIONEER:

Floyd Gehring
Moundridge Phone 345-8195

NEWTON LIVESTOCK & COMMISSION CO. NEWTON KANSAS

Sale Every Thursday

Hogs 11:30 a.m.
Cattle 1 p.m.

Due to the fact that weather conditions prevented hauling of livestock last Thursday, we have no sales report for last week. We are expecting a good sale this coming Thursday if roads remain clear.

RALEIGH BREEDING, MANAGER

barn HI 3-3671; home HI 3-3547
Auctioneer: Leroy Gawith,
ph. Delphos, Ks. MA 3-4387.

MARYSVILLE LIVESTOCK & COMMISSION CO. MARYSVILLE, KANSAS

53% Of All Livestock Sales Now By Auction

Well over half of all livestock transactions in 1965 were by the auction, a recent study made for the Certified Livestock Markets Association shows.

The auction markets did a \$10.5 billion business, moving over 114 million head of livestock, out of a total of 215 million head sold for some \$19.8 billion in all livestock transactions in 1965.

The report was made for the association by an independent

EDITOR RAY GILKESON DIES IN TOPEKA

Raymond Gilkeson, long associated with Capper farm publications, died last week in Topeka. He was 69. He had been associated with Capper publications for more than 40 years



Raymond Gilkeson

and had been editor of the Kansas Farmer and the Missouri Ruralist. For the past six years he had been editor of the Kansas Farmer-Stockman, based in Oklahoma City although Gilkeson continued to live in Topeka.

Gilkeson helped organize the Kansas Flying Farmers and the master farmer and master homemaker projects in Kansas.

firm, Agri Research Inc. of Manhattan, Kansas.

On a dollar volume basis, 53% of all livestock sales were by means of auction markets.

Of the total the study shows that 95.2 million were cattle transactions valued at \$14.9 billion, 91.6 million were hog transactions valued at \$4.4 billion and 28.2 million were sheep transactions valued at \$500 million.

A fact brought out by the report is the increase in the number of times livestock is sold before slaughter. In comparison to information supplied in a pilot report four years ago, cattle sales transactions increased nearly 35% from 70.7 million in 1961 to 95.2 million in 1965, while cattle population figures for the same period showed that the number of cattle increased only 6.5% from 99.8 to 106.3 million.



Ceramic Touches

Area ladies do ceramic work at Finchams Ceramics, east of Blue Rapids. The ladies are, left to right, Mr. Raleigh Breeding, Marysville; Mrs. Moody Messick, Marysville; Mrs. Emma Breeding, Marysville; Miss Mary Allgeier, Frankfort; Mrs. Jack Fincham, Blue Rapids; Maxine Feldhausen, Frankfort; Jack Fincham, Blue Rapids; Mrs. Raymond Algeier, Frankfort; Mrs. Floyd Little, Marysville; Mrs. Fred Conz, Frankfort. This was an all day session, putting finishing touches on Christmas gifts.

SELLING EVERY TUESDAY - CATTLE AND HOGS
DUE TO THE STORM LAST WEEK, OUR SALE WAS CANCELLED
 Selling As Usual Today. A Good Sale is expected.

For Information or Estimates

- Rezac Barn St. Marys 437-2999
- Delaine Rezac St. Marys 437-6266
- Elmer Imthurn Maple Hill MI 3-2440
- Paul Kramer St. Marys 437-2993

Rezac



St. Marys
 Kansas

Auctioneers: Lawrence Welter, Gene Toby & Verlin Green



Central Kansas Most
 Modern Livestock Auction . . West Side Of **Salina**

TWO SALES EVERY WEEK

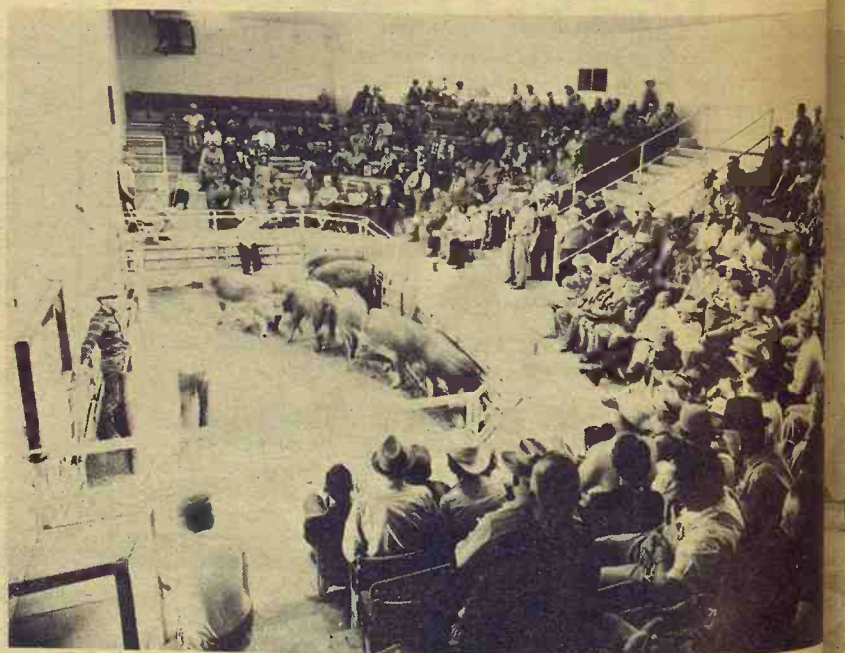
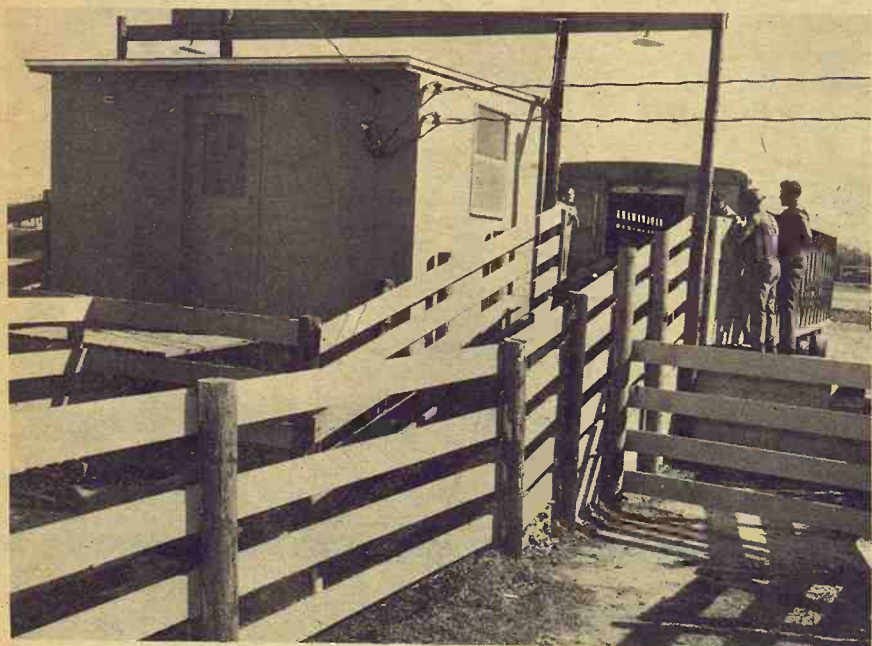
MONDAY
 Hogs And Cattle

Hogs sell at 11:00 a.m. followed by cattle, which will sell as they are unloaded.

THURSDAY
 Cattle Only

Selling starts at 11:00 a.m. Cattle will sell in the order they are consigned on the books.

Thank You — Everyone, for making our opening year a Success
WE WISH YOU ALL A HAPPY, PROSPEROUS NEW YEAR



Due to having no sale last week Monday, and weather conditions for our Thursday sale, we had a light run and are not making a market report this week. Everything as usual for the first week of the New Year.

- FOR INFORMATION OR ESTIMATES
- LAURENCE CLEMENCE
 Abilene Phone CO 3-3091
 - MERRILL CHRISTIANSEN
 Durham Phone 732-3371
 - BOB MUIR
 Salina Phone TA 3-2963

Market Reports
 Radio Station KFRM, Salina
 6:50 a.m. 12:30 Noon
 Monday Through Friday

Farmers & Ranchers
LIVESTOCK COMMISSION CO.
 West On Old US 40
 Salina, Kansas
 Barn Phone TA 5-0211
 Bonded • Licensed