

Junior and Juvenile Department

Juniors from 16 to 21

Juveniles from 6 to 16

Junior Motto: "He Loves His Country Best Who Strives to Make It Best"

FREEDOM

Behind a door deep in the night, I sit and watch

Bathed in a pool of glowing light I sit and hear what friends have said

I know that there are other lands Where freedom is the dimmest spark,

Freedom is living without fears, With those the Freedom understands—

"The Christian Science Monitor."

YOUR LEADER'S MESSAGE Esther Ekblad

In Just a Few Days

For weeks we have been looking forward to the state Convention at WaKeeney. Now we can count off the days on one hand.

At 5:30 Thursday evening there will be a special banquet for Juniors and Leaders. Following the banquet is the Junior Program which begins at 7:30.

A Junior Banner

At WaKeeney you will see a bright blue and gold banner which proudly carries the Farmers Union insignia and the words, FARMERS UNION JUNIORS.

A Western Story

The first installment of a "Western Story" with Frieda Maelzer as author appeared in the last issue of the Kansas Union Farmer.

News We Like to Hear

Who doesn't enjoy getting letters and as you tear the seal, wonder excitedly what's inside? Letters that come to us often make our "health" good

Elsie Clausen, Crawford County Leader, writes that she is going to start a juvenile class which will probably meet on Saturday afternoons.

Niles Gibson, Junior of the Scandia Local, McPherson county, is a freshman at K. U. this year. Bernard Gibson says their Junior class now has thirteen members.

With Your State Leader

From south to north has been the trail of our travels during the past few weeks. Mr. Fengel and I edged near the Oklahoma line in September when we visited Cowley county.

Nemaha county has many loyal Farmers Union members who believe in action. At present they are busy building a foundation for a cooperative grocery store and a cooperative credit union.

All of our meetings in Nemaha county were centered around Seneca, the first at the Lincoln Local on Tuesday evening, October 3.

Wednesday, with no meeting until evening Mr. Fengel and I got the roving spirit and drove to St. Joseph to visit with Paul Steele, manager of the F. U. Live Stock Commission Co. there.

As twilight came it looked as if prospects for a local meeting that evening were fading. Storm clouds, which are such an unusual sight

On Thursday the county Farmers Union met at the Community Hall in Seneca. A very tasty lunch was served at noon, followed by a very interesting afternoon meeting.

Friend—You say you never had a quarrel with your wife? Salina Man—Never. She goes her way and I go hers.

Class 1 railroads and the Pullman Company had 175 passenger cars on order on July 1, 1939, compared with 139 on the same day the preceding year.

At Your Service

Farmers Union Cooperative Educational Service Gladys Tabott Edwards Director

"Education—A debt due from the present for future generations."

Camp Scenes

Probably one of the best things we remember about camp is the friends we have made, or of some chat we had with one of the persons we met at camp.

At the left Mrs. Edwards, and Aubrey Williams, National Administrator of NYA are shown enjoying a chat on the sunny front porch of Camp Judson, during Mr. Williams' visit at All-State Camp this summer.

The administrator was much impressed with the camp. He invited her to make use of some of the NYA camps, free, for future All-State Camps.

Appreciation Warms the Heart Your Education Service office receives many requests for literature and information on the Farmers Union and in this cooperative movement.

More Poesies Place three placers on a table, fill one with flour, one with milk and put a wedding ring in the third.

Lights On Marriage Have each guest take a candle blowing out a candle by blowing through a funnel, made of paper.

War and Prices On the basis of price trends to October 5th CU can offer a few buying hints. Prices changes may have altered the picture somewhat by the time this column appears.

COOPERATIVE SUPPLY HOUSE By Frieda Maelzer Most of the fruit growers and farmers in the Yakima and Naches valleys are members of their farm organization.

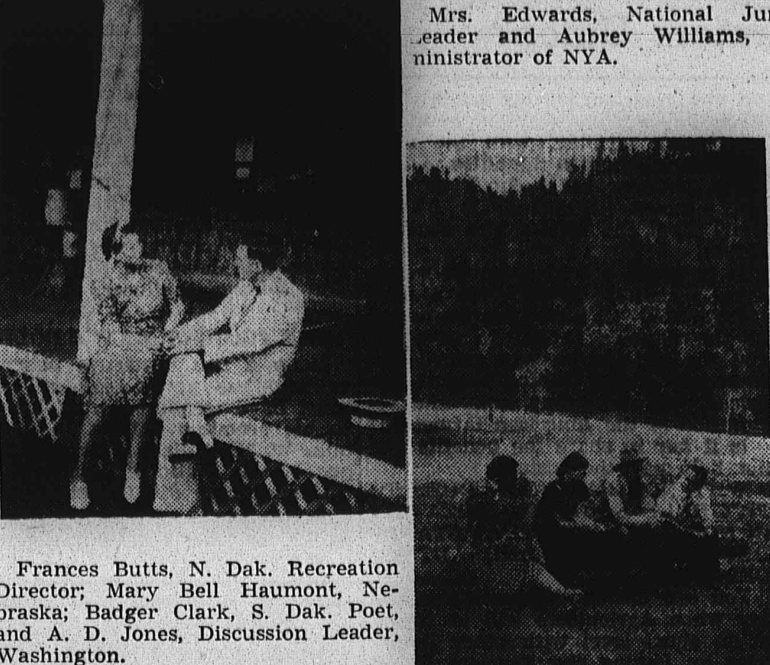
The News of the Day I can't keep up with the daily news, so I subscribe to one of the weekly news magazines.

The Kellogg Juniors The Juniors of Kellogg held their second meeting October 4. The meeting was called to order by the President Mildred Klotz.

FOR YOUR HALLOWEEN PARTY The invitation: Come all ye witches and ghosts, too. We're going to bid Old Gloom adieu.

GAMES: Says Witch Sides are chosen, and the players on each side stand close together in a row facing the other side.

Railroads of the United States in 1938 paid \$64,707,963 in taxes, or approximately one million dollars per day.



Mrs. Edwards, National Junior leader and Aubrey Williams, Administrator of NYA.

Your Dollar

By Consumer's Union

Are trade unions natural enemies of consumers? Are consumer interests opposed to labor interests? To the contrary, says Consumers Union.

CU's \$5,000 members, polled in a recent questionnaire overwhelmingly endorsed its stand. 88 per cent of all replying approve CU's policy of reporting on the labor conditions under which products are made.

War and Prices On the basis of price trends to October 5th CU can offer a few buying hints. Prices changes may have altered the picture somewhat by the time this column appears.

COOPERATIVE SUPPLY HOUSE By Frieda Maelzer Most of the fruit growers and farmers in the Yakima and Naches valleys are members of their farm organization.

The News of the Day I can't keep up with the daily news, so I subscribe to one of the weekly news magazines.

The Kellogg Juniors The Juniors of Kellogg held their second meeting October 4. The meeting was called to order by the President Mildred Klotz.

FOR YOUR HALLOWEEN PARTY The invitation: Come all ye witches and ghosts, too. We're going to bid Old Gloom adieu.

GAMES: Says Witch Sides are chosen, and the players on each side stand close together in a row facing the other side.

Railroads of the United States in 1938 paid \$64,707,963 in taxes, or approximately one million dollars per day.

ingly demonstrated that in a current California health "experiment." Twelve tuberculosis patients in San Bernardino county, California, most of them helpless because moneyless, are being dosed at public expense with Erus-Eruc, a quack tuberculosis cure in three parts—a liniment composed of sassafras, kerosene and yellow dye, an ordinary iron and wine tonic, and a eucalyptus inhalant.

Death certificates show that previous patients died. \$250 contracts and stories of mortgaged homes attest the exorbitant price asked for Erus-Eruc.

CU's \$5,000 members, polled in a recent questionnaire overwhelmingly endorsed its stand. 88 per cent of all replying approve CU's policy of reporting on the labor conditions under which products are made.

War and Prices On the basis of price trends to October 5th CU can offer a few buying hints. Prices changes may have altered the picture somewhat by the time this column appears.

COOPERATIVE SUPPLY HOUSE By Frieda Maelzer Most of the fruit growers and farmers in the Yakima and Naches valleys are members of their farm organization.

The News of the Day I can't keep up with the daily news, so I subscribe to one of the weekly news magazines.

The Kellogg Juniors The Juniors of Kellogg held their second meeting October 4. The meeting was called to order by the President Mildred Klotz.

FOR YOUR HALLOWEEN PARTY The invitation: Come all ye witches and ghosts, too. We're going to bid Old Gloom adieu.

GAMES: Says Witch Sides are chosen, and the players on each side stand close together in a row facing the other side.

Railroads of the United States in 1938 paid \$64,707,963 in taxes, or approximately one million dollars per day.

western Kansas, named the "Short Grass ranch" under management of Ray Henry, Zenith.

"Ray Henry, boss of the Short Grass ranch started off in a big way by rounding a 5,000 dollar application. This was offset at once by Clarence Houk, hard-riding cowboy of the Blue-Stem ranch when he put the Farmers Union brand on a couple of yearlings, one of which was a single premium \$4,000 twenty year endowment policy on which the premium was \$2,340.04.

CU's \$5,000 members, polled in a recent questionnaire overwhelmingly endorsed its stand. 88 per cent of all replying approve CU's policy of reporting on the labor conditions under which products are made.

War and Prices On the basis of price trends to October 5th CU can offer a few buying hints. Prices changes may have altered the picture somewhat by the time this column appears.

COOPERATIVE SUPPLY HOUSE By Frieda Maelzer Most of the fruit growers and farmers in the Yakima and Naches valleys are members of their farm organization.

The News of the Day I can't keep up with the daily news, so I subscribe to one of the weekly news magazines.

The Kellogg Juniors The Juniors of Kellogg held their second meeting October 4. The meeting was called to order by the President Mildred Klotz.

FOR YOUR HALLOWEEN PARTY The invitation: Come all ye witches and ghosts, too. We're going to bid Old Gloom adieu.

GAMES: Says Witch Sides are chosen, and the players on each side stand close together in a row facing the other side.

Railroads of the United States in 1938 paid \$64,707,963 in taxes, or approximately one million dollars per day.

What is a Good Life? Insurance Company

ONE that maintains a competent Agency Department.

ONE whose soul aim is Safety, Satisfaction and Service to the policyholder.

ONE whose entire organization is keyed to high efficiency, making possible Low Net Cost Protection.

Such is the Farmers Union Life Insurance Company—25% increase in new business this year.

FARMERS UNION LIFE INSURANCE COMPANY

LOCAL AND COUNTY Delegates Credential

FARMERS EDUCATIONAL AND COOPERATIVE UNION OF AMERICA

LOCAL BUSINESS ASSOCIATION Delegates Credential

FARMERS EDUCATIONAL AND COOPERATIVE UNION OF AMERICA

