

THE SPIRIT OF KANSAS.

LAWRENCE, WEDNESDAY, DEC. 8, 1880.

Patrons' Department.

NATIONAL GRANGE. Master—J. J. Woodman, of Michigan. Secretary—Wm. M. Ireland, Washington, D. C. Treasurer—F. M. McDowell, Wayne, N. Y.

KANSAS STATE GRANGE. Master—Wm. Sims, Topeka, Shawnee county. Secretary—P. B. Maxson, Emporia, Lyon county. Treasurer—W. P. Popenoe, Topeka.

THE NATIONAL GRANGE. Proceedings of the Fourteenth Annual Session, at Washington, D. C. REPORT OF COMMITTEE ON TRANSPORTATION AND COMMERCIAL RELATIONS.

The problem of transportation in its relations to agriculture confronts every farmer throughout the land. He may apply his labor with rare skill, propitious seasons may bless his efforts, and the fertile soil under these influences may return the most bountiful crops, yet there is the necessity of a market and the means of reaching it as the prime condition of profit.

Experience has shown that the corporate power which manages a railway is rapacious. It is marked by encroachments and usurpations. It does not abide within its sphere, where it is well-nigh autocratic. It assumes rights that belong to the people, forgetful of the fact that its first duty is respectful obedience to the people whence it emanated.

always to barter away our rights in the interest of the magnates they serve. Intrenched in the several state capitals, domiciled in the central citadel, confident and strong, railway power to-day sways the commerce of a continent, and dominates its industries with cold neglect of the golden rule that is the vitalizing spirit of free government, and with cynical contempt of the common honesty and homely virtues that support the structure of civil liberties.

associations that work in the interest of free and enlightened administration of justice, but for themselves they must move for the protection of natural rights against the monstrous greed of corporate power that riots in the chaos of principles overturned and confused by its wanton assumptions. They must invoke order, law, peace, justice for all, lest revolution intervene to clear away with rude hands the fabric of tyranny that now fetters industry and retards development.

ORDER!

OUR PRICE LIST NO. 28 FOR FALL AND WINTER 1880 FREE TO ANY ADDRESS UPON APPLICATION. IF THERE IS ANYTHING YOU WANT THAT OUR PRICE LIST DOES NOT DESCRIBE AND GIVE THE PRICE OF, LET US KNOW. SEND IN YOUR NAME EARLY, AS ORDERS ARE FILLED IN TURN.

1859. FOR TWENTY-ONE YEARS 1880. The Leading Fashion House in Every Respect!

MRS. GARDNER & CO., LAWRENCE, KANSAS. Hats, Bonnets and Elegant Stock of Notions. N. B.—Ladies, when you visit the city call at Mrs. Gardner's first and leave your orders, so that your goods may be ready when you wish to return.

1,000 SEWING MACHINES A DAY!

THE BEST ALWAYS WINS IN THE LONG RUN. No Singer Machine is Genuine without our Trade Mark, given above. THE SALES OF THIS COMPANY AVERAGE OVER 1,000 MACHINES PER DAY.



Long Experience has proven the Genuine Singer to be THE BEST MACHINE. THE SINGER MANUFACTURING COMPANY. Singer Building, Fifth and Locust streets, ST. LOUIS.

Southwestern Iron Fence Company,

MANUFACTURERS OF IMPROVED STEEL BARBED WIRE, Under Letters Patent No. 204,312, Dated May 28, 1878. LAWRENCE, KANSAS. We use the best quality Steel wire; the bars well secured to the wire, twisted into a complete cable, and covered with the best quality rust-proof Japan Varnish, and we feel sure that we are offering the best article on the market at the lowest price.

W. W. FLUKE,



DEALER IN PIANOS, ORGANS, SHEET MUSIC, And every description of Musical Merchandise. SHEET MUSIC AND MUSIC BOOKS A SPECIALTY. Agent for the Genuine Singer Sewing Machine, and Grants & Hempleson School Furniture. No. 127 Massachusetts Street. Orders by mail attended to promptly.

Bailey, Smith & Co., UNDERTAKERS -AND- FURNITURE DEALERS

Have a large assortment of all kinds of Furniture, Mattresses, etc., at lowest prices. Undertaking a Specialty. Metallic and Wood Caskets and Coffins in great variety. Burial Robes, etc., always on hand. We have a fine new Hearses. All orders promptly attended to day or night.

Merchant Tailor!

Travels with samples of his entire stock, solicits orders and takes measures for suits. Good Fits and Entire Satisfaction Guaranteed. Dealer in Clothing, Hats, Caps, Trunks and Gents' Furnishing Goods.

Home Nurseries

Offer for the spring of 1880. HOME GROWN STOCK. SUCH AS Apple Trees, Peach Trees, Pear Trees, Plum Trees, Cherry Trees, Quinces, Small Fruits, Grape Vines, Evergreens, Ornamental Trees. Also New and Valuable acquisitions in Apple and Peach Trees. We guarantee our stock TRUE TO NAME, propagating in the main from bearing trees. We invite all in reach of the nursery to a personal inspection. We know they are as fine as any in the West, and of varieties not one of which will fail. All have been proven to be of first value for this climate. Cash orders will receive prompt attention. No charge for packing. Send for Catalogue and Price List. A. H. & A. O. GRIEBA, Lawrence, Kansas.

THE LATEST MARKETS.

Produce Markets. ST. LOUIS, Dec. 7, 1880. Flour—Choice to fancy... \$5.20 @ 5.75 Family... 4.85 @ 5.00 XXX... 4.45 @ 4.60 Wheat—No. 2 fall, spot... 1.03 @ 1.03 1/2

CHICAGO, Dec. 7, 1880. Wheat—No. 2 spring, spot... \$1.05 @ 1.05 1/2 "December... 1.05 @ 1.05 1/2 "January... 1.05 @ 1.05 1/2

KANSAS CITY, Dec. 7, 1880. Wheat—No. 1 fall... 97 @ 97 1/2 "December... 97 @ 97 1/2 "January... 99 @ 99

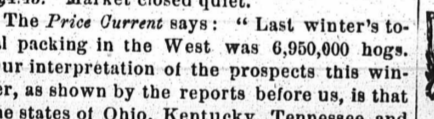
Live Stock Markets.

ST. LOUIS, Dec. 7, 1880. CATTLE—Receipts, 800; shipments, 600. Supply small, mixed butcher stuff, which went off slowly at a range of \$2.00 @ 3.25.

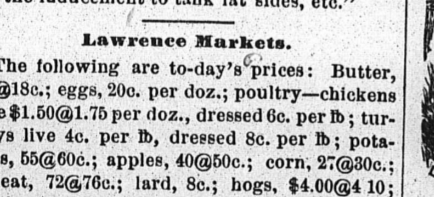
KANSAS CITY, Dec. 7, 1880. CATTLE—Receipts, 67; shipments, 124. The receipts were composed mainly of common stock.

HOGS—Receipts, 2,223; shipments, 171. The market opened with buyers and sellers apart, and but little could be done.

ROBERT COOK, Iola, Allen county, Kans., Importer, Breeder and Shipper of PURE POLAND-CHINA HOGS



ELMENDARO HERD. LEVI DUMBAULD, Hartford, Lyon county, Kansas, BREEDER OF THOROUGHBRED SHORT-HORN CATTLE



BERKSHIRE PIGS. Some of the most fashionable families represented in both classes of stock. Particular attention is given to producing animals of good form and quality.

GOLDEN BELT ROUTE.

KANSAS CITY TO DENVER VIA Kansas Division of Union Pacific Railway (Formerly Kansas Pacific Railway).

Only line running its entire train to Denver and arriving many hours in advance of all other lines from Kansas City or Leavenworth.

Denver is 114 Miles Nearer Kansas City by this Line than by any Other.

The Denver Fast Express with Pullman Day Coaches and Sleepers runs through To Denver in 32 Hours.

The Kansas Express Train Leaves Kansas City at 11 every Evening and runs to Ellis, 302 miles west. The first-class coaches of this train are seated with the Celebrated Horton Reclining Chairs.

The Kansas Division of the Union Pacific is the popular route to all Colorado Mining Camps, Pleasure and Health Resorts, and makes connections with all trains north and west from Denver.

ALL PERSONS en route to Leadville, Gunnison, Eagle River, Tonopah, Silver Cliff, the San Juan Region, and all other MINING POINTS IN COLORADO,

ALL PERSONS in poor health, or seeking recreation, and all students of nature, should take this route to the delightful Park, the game-filled Canyons, the lofty Mountains, the game-filled Woodlands, sparkling Trout Streams and Mineral Springs.

DAYLIGHT RIDE. The running time of the Denver Fast Express train between Kansas City and Denver enables passengers to

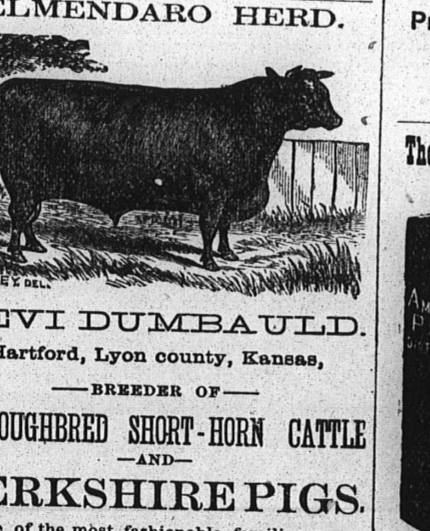
Through daylight the greater portion of the best belt of agricultural land in the state of Kansas thus affording an excellent view of that magnificent section of the Union—the first wheat producing state, and fourth in rank in the production of corn.

62,500 FINE FARMS for sale in Kansas at prices and on terms within the reach of all, and easily accessible to the great through line. These beautiful and fertile lands await cultivation, but the tide of immigration which is continually pouring into the state warrants the prediction that they will not be in market long.

NOW IS THE ACCEPTED TIME. Write to S. J. Gilmore, land commissioner, Kansas City, Mo., enclosing stamp, for a copy of the "Kansas Pacific Homestead," and to Thos. L. Kimball, general passenger and ticket agent, Kansas City, Mo., for the "Colorado Tourist," and for such other information as you may desire concerning the mines and resorts of Colorado, or the lands of Kansas.

THOS. L. KIMBALL, Gen'l Pass. & Ticket Agt., Kansas City, Mo. JOHN MUIR, Freight Agt., Kansas City, Mo. S. J. GILMORE, Land Com'r, Kansas City, Mo. S. T. SMITH, Gen'l Supt., Kansas City, Mo. D. E. CORNELL, Gen'l Agt., Pass Dept., Kansas City, Mo.

Prepared by Dr. J. C. Ayer & Co., Practical and Analytical Chemists, Lowell, Mass. SOLD BY ALL DRUGGISTS EVERYWHERE.



The American Popular Dictionary, \$1. Only. This useful and elegant volume is a complete library and encyclopedia, as well as the best Dictionary in the world—superiorly bound in cloth and gilt. It contains every word of the English language, with its true meaning, derivation, etymology, pronunciation, and a vast amount of absolutely necessary information upon Science, Mathematics, Biography, American History, Law, etc., being a perfect Library of Reference. We have never seen its equal, either in price, finish or contents.

UNPARALLELED SUCCESS

White Sewing Machine



IN THE THIRD YEAR OF ITS EXISTENCE, ITS SALES AMOUNT TO 54,853 Machines. NO OTHER MACHINE EVER HAD SUCH A RECORD OF POPULARITY.

It is the Lightest-Running, Easiest Soling, and Best Satisfying Machine IN THE WORLD.

Agents wanted. For terms, address White Sewing Machine Co., CLEVELAND, O.

J. T. RICHEY, Agent. Ludington House Corner, Lawrence, Kans.



Ayer's Hair Vigor,

FOR RESTORING GRAY HAIR TO ITS NATURAL VITALITY AND COLOR.

It is a most agreeable dressing, which is at once harmless and effectual, for preserving the hair. It restores, with the gloss and freshness of youth, faded or gray, light, and red hair, to a rich brown, or deep black, as may be desired.

The Vigor cleanses the scalp, cures and prevents the formation of dandruff; and, by its cooling, stimulating, and soothing properties, it heals most if not all of the humors and diseases peculiar to the scalp, keeping it cool, clean, and soft, under which conditions diseases of the scalp and hair are impossible.

As a Dressing for Ladies' Hair. The Vigor is incomparable. It is colorless, contains neither oil nor dye, and will not soil white cambric. It imparts an agreeable and lasting perfume, and as an article for the toilet it is economical and unsurpassed in its excellence.

Prepared by Dr. J. C. Ayer & Co., Practical and Analytical Chemists, Lowell, Mass. SOLD BY ALL DRUGGISTS EVERYWHERE.

The American Popular Dictionary, \$1. Only.

This useful and elegant volume is a complete library and encyclopedia, as well as the best Dictionary in the world—superiorly bound in cloth and gilt. It contains every word of the English language, with its true meaning, derivation, etymology, pronunciation, and a vast amount of absolutely necessary information upon Science, Mathematics, Biography, American History, Law, etc., being a perfect Library of Reference. We have never seen its equal, either in price, finish or contents.

DON'T READ THIS! GREAT VARIETY. LOWEST PRICES.

AND GENERAL FURNISHING GOODS. HATS AND CAPS, TRUNKS AND VALISES, MEN'S AND BOYS' CLOTHING.

103 Massachusetts Street, Lawrence, Kans. (Opposite George Ford's Grocery)

KANSAS CLOTHING HOUSE!

ESTABLISHED 1873. CHARLES BARSE & ANDY J. SNIDER.

COMMISSION MERCHANTS

For the sale of Live Stock. KANSAS STOCK YARDS, KANSAS CITY, MO. Consignments solicited. Personal attention paid to the care and sale of all stock.

J. S. CREW & CO.

OUR WALL PAPER STOCK IS VERY COMPLETE. Embracing all Grades, from Brown Blanks TO THE BEST DECORATIONS.

WINDOW SHADES MADE TO ORDER

ON KNAPP'S SPRINGS OR COMMON FIXTURES. 150 Children's Carriages from Five to Thirty Dollars, Croquet, Base Balls, etc.

SCHOOL AND UNIVERSITY BOOKS.

MY STOCK IS LARGE AND COMPLETE. PRICES GREATLY REDUCED. Districts supplied on Favorable Terms.

Miscellaneous and Blank Books!

I also carry in stock a full line of Stationery of all grades and prices. PICTURES AND PICTURE FRAMES, WALL PAPER, WINDOW SHADES, NOTIONS, ETC., ETC. It will pay you to examine stock and get prices before purchasing.

A. F. BATES, 99 Massachusetts Street.



We manufacture and keep on hand a full and fine assortment of

COFFINS, CASES AND CASKETS!

Of superior quality at moderate prices. Our Warerooms are at the Corner of Henry and Vermont streets, Lawrence, Kansas. HILL & MENDENHALL.