















THE LATEST MARKETS.

Table with market prices for various commodities like Flour, Wheat, Corn, Oats, Pork, Lard, Butter, Eggs in St. Louis, Chicago, and Kansas City.

The flour market at Kansas City remains unchanged, with quotations as follows: Fancy brands 3 sack, \$2.80; choice, \$2.75; XXX, \$2.35; graham, \$3.00. Rye flour, \$2.55. Corn meal 3 hundred, \$2.4c.

In reference to the next wheat crop, the Kansas City Journal says: "It would be better, perhaps, for the farmers of this country if the prospect for a large wheat crop next year were not as good as it is."

The San Francisco Herald says: "The wheat crop will be the largest ever garnered upon the Pacific slope, although 14 per cent. less than the most extravagant statement of yield a few weeks since."

Live Stock Markets.

CATTLE—Steady, with fair demand for natives at unchanged prices. Grass cattle in large supply and lower; choice to fancy shipping steers, \$4.65@4.80; good to prime, \$4.40@4.60; medium to fair, \$4.00@4.25; cows and heifers, \$2.90@3.60; grass Texans and Indians, \$2.40@3.25.

HOGS—The Drover's Journal reports: Receipts, 23,000; shipments, 5,500. Market active and 10c. higher; mixed packing, \$4.10@4.35; light, \$4.20@4.35; choice heavy, \$4.40@4.55.

CHICAGO, June 22, 1880. CATTLE—Receipts, 3,100; shipments, 3,100. Market moderately active; shipping, \$4.20@4.70; common butchers' dull, at \$2.00@3.00; grass Texans, \$2.00@3.60; Western, \$3.00@3.40.

There was a large run for the opening of the week composed mainly of Texas stock. As Eastern shippers were buying little or nothing the market was very quiet, sales being confined to the local canning and butchers' trade.

Receipts light and demand active, which enabled sellers to close out their consignments at an early hour. Values were firm, averaging about 5 cents higher than on last Saturday.

Lawrence Markets.

The following are to-day's prices: Butter, 10c@12c; eggs, 10c. per doz.; poultry—chickens live \$1.75@2.00 per doz., dressed 6c. per lb; tur-

keys live 7c. per lb, dressed 8c. per lb; potatoes, 60@75c.; corn, 25@27c.; wheat, 80@90c.; lard, 7c.; hogs, \$3.80@3.40; cattle—feeders \$2.00, shippers \$3.50@3.75, cows \$2.00@2.40; wood, \$5.00 per cord; hay, \$4.00@5.00 per ton.

E. P. CHESTER, DRUGGIST! Dealer in PURE DRUGS AND MEDICINES. Physicians Prescriptions Carefully Prepared.

Farmers of Douglas county, come and see me.

NATIONAL BANK OF LAWRENCE, UNITED STATES DEPOSITORY. CAPITAL \$100,000. COLLECTIONS MADE On all points in the United States and Canada.

Sight Drafts on Europe Drawn in sums to suit. J. E. McCoy - President, J. S. CREW - Vice-President, A. HADLEY - Cashier, J. E. NEWLIN - Ass't Cashier.

STALLIONS For Service at Norwood Stock Farm for the Season of 1880.

ALMONT PILOT (half brother to Musette, record 2:30).—Bay stallion 16 1/2 hands; star, and near hind pastern white. Foaled June 21, 1874. Bred by Richard West, Georgetown, Ky.

ST. CLOUD.—Dark seal-brown, nearly black; small star; 15 3/4 hands high. Foaled June 11, 1875. Sired by St. Elmo, son of Alexander's Abdallah, sire of Goldsmith Maid, record 2:14.

THE WHITE SEWING MACHINE. This machine possesses more advantages and satisfies those who use it better than any other machine on the market.

Lawrence Markets. The following are to-day's prices: Butter, 10c@12c; eggs, 10c. per doz.; poultry—chickens live \$1.75@2.00 per doz., dressed 6c. per lb; tur-

BOOTS AND SHOES DON'T YOU FORGET IT! We will sell you your boots and shoes as cheap as any one. PEREY & COMPANY, 117 MASS. ST., LAWRENCE.



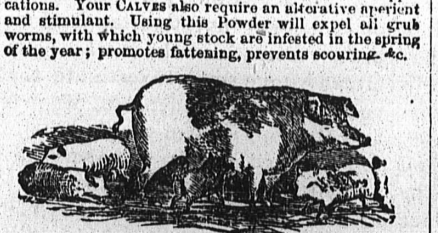
USE OF GEORGE LEIS' CELEBRATED CONDITION POWDER FOR HORSES & CATTLE. HAS THE LARGEST SALE OF any Horse and Cattle Medicine in this country.

Every Farmer a Stock Raiser is convinced that an impure state of the blood originates the variety of diseases that afflict a horse, such as Founder, Distemper, Fistula, Polt-Evil, Hilo-Bound, Inward Strains, Scratches, Mange, Kellow Water, Heaves, Loss of Appetite, Inflammation of the Eyes, Swelled Legs, Fatigue from Hard Labor, and Rheumatism (by some called Stiff Complaint), proving fatal to so many valuable Horses.



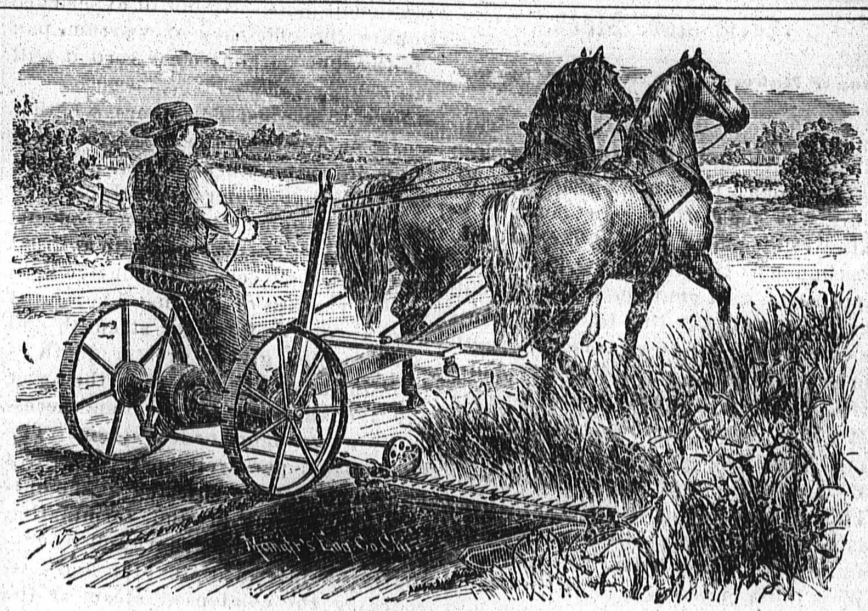
In all new countries you hear of fatal diseases among pigs styled Cholera, Cholera, Gapes, Blindness, Glan- ders, Megrine or Giddiness, &c. LEIS' POW. DEX. will eradicate these diseases.

Cows require an abundance of nutritious food, not to make them fat, but to keep up a regular secretion of milk. Farmers and dairymen attest the fact that by judicious use of Leis' Condition Powder...



LEIS' Powder is an excellent remedy for Hogs. The farmer will rejoice to know that a prompt and efficient remedy for the various diseases to which these animals are subject, is found in LEIS' Condition Powder.

WHOLESALE AGENTS. FULLER, FINCH & FULLER, Chicago, Ill. BROWN, WEBBER & GRAHAM, St. Louis, Mo. MEYER, BRO. & CO., St. Louis, Missouri. COLLINS BROS., St. Louis, Missouri.



Farmers will please call at 126 MASSACHUSETTS STREET, LAWRENCE, KANS., and examine our stock of IMPLEMENTS & FARM MACHINERY.

J. S. CREW & CO. OUR WALL PAPER STOCK IS VERY COMPLETE. Embracing all Grades, from Brown Blanks TO THE BEST DECORATIONS.

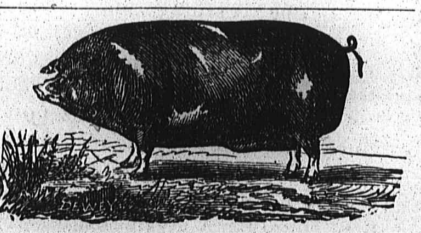
WINDOW SHADES MADE TO ORDER ON KNAPP'S SPRINGS OR COMMON FIXTURES. 150 Children's Carriages from Five to Thirty Dollars, Croquet, Base Balls, etc.

ESTABLISHED 1873. GEO. R. BARSE. ANDY J. SNIDER. Barse & Snider, COMMISSION MERCHANTS.

For the sale of Live Stock. KANSAS STOCK YARDS, KANSAS CITY, MO. Consignments solicited. Personal attention paid to the care and sale of all stock.

W. A. ROGERS. H. D. ROGERS. ROGERS & ROGERS, KANSAS CITY STOCK YARDS.

\$1500 TO \$6000 A YEAR, or \$5 to \$20 a day in your own locality. No risk. Women do as well as men.



ROBERT COOK, Iowa, Allen county, Kans., Importer, Breeder and Shipper of PURE POLAND-CHINA HOGS AND SHORT-HORN CATTLE.

Pigs forwarded to any part of the United States at the following prices per pair, persons ordering pigs paying freight on the same: Eight weeks old, \$22 00; Three to five months old, \$2 00; Five to seven months old, \$1 00.



ELMENDARO HERD. LEVI DUMBAULD. Hartford, Lyon county, Kansas, BREEDER OF THOROUGHBRED SHORT-HORN CATTLE AND BERKSHIRE PIGS.

Some of the most fashionable families represented in both classes of stock. Particular attention is given to producing animals of good form and quality. The premium show bull KING OF THE PRAIRIE, 17,468, at head of herd. Young stock for sale. Poland-China Hogs a Specialty.



A CHOICE LOT OF PIGS For this season's trade. Address HENRY MIEBACH, Hiawatha, Brown county, Kansas.