

SD 8

S
533
F8
K3
49/4
1/7

per

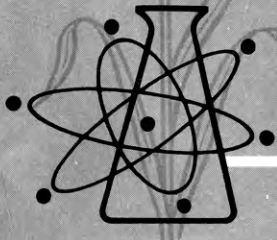
RECEIVED

APR 2 1979

THE LIBRARY
KANSAS STATE UNIVERSITY

Kansas

THE

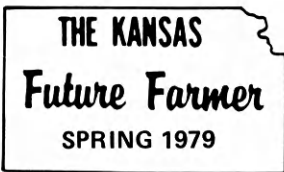


FUTURE FARMER

Kansas' First FFA Leadership—Citizenship Day



Governor Carlin Model's His New FFA Hat For The FFA Members At The FFA Leadership—Citizenship Day



Vol. XXXIX

No. 4

Table of Contents

Editor — Robert Broeckelman

Assistant Editors: Brenda Hundley
Cyndi Kempke

President Mark H. Sanborn
East Orwell, Ohio
Secretary Kelly Grant
Bolivar, Missouri
Central Region V.P. Kevin Drane
Nineveh, Indiana
Eastern Region V.P. Jeff Rudd
Yanceyville, North Carolina
Southern Region V.P. B. Dean Norton
Knoxville, Tennessee
Western Region V.P. Elvin L. Caraway
Spur, Texas

STATE OFFICERS

President Jeff Yarrow, Clay Center
Vice President Chuck Banks, Wamego
Secretary Jeff Bryant, Arkansas City
Treasurer Mark Stock, Troy
Reporter Brenda Hundley, Topeka
Sentinel Joe Rickabaugh, Garnett

DISTRICT OFFICERS

EAST CENTRAL

President, Dennis Rockers, Garnett; Vice President, Larry Bigelow, Prairie View; Secretary, Matthew McCarter, Lawrence; Treasurer, David Ramsey, Prairie View; Reporter, Paul Rickabaugh, Garnett; Sentinel, Brian Vining, Central Heights; Advisor, Sam Harris, Garnett.

NORTH CENTRAL

President, John Gilliam, Washington; Vice President, Lon James, Clay Center; Secretary, Loy James, Clay Center; Treasurer, Debbie Moody, Manhattan; Reporter, James Hedstrom, Courtland; Sentinel, Tim Ohlde, Linn; Advisor, Phil Kingston, Washington.

NORTHEAST

President, Joe Neuman, Troy; Vice President, Lynette Berger, Blue Rapids; Secretary, Todd Brethour, Wamego; Treasurer, Lance Rezac, Onaga; Reporter, Buck Peddicord, Wamego; Sentinel, Mark Ebert, Westmoreland; Advisor, Dan Palmateer, Blue Rapids.

NORTHWEST

President, J. P. Worcester, Hill City; Vice President, Troy Nelson, Norton; Secretary, DeeDee Brown, Lebanon; Treasurer, Stacy Shearer, Norton; Reporter, Kay Hopson, Phillipsburg; Sentinel, Bryan Russell, Plainville; Advisor, Joe Farrell, Hill City.

SOUTH CENTRAL

President, Phil Huston, Haven; Vice President, Robin Rusk, Medicine Lodge; Secretary, Justin Waite, Winfield; Treasurer, Mike Disberger, Haven; Reporter, Phil Bryant, Arkansas City; Sentinel, Ron Wineinger, Marion; Advisor, Greg Johnston, Haven.

SOUTHEAST

President, Randy Reinhardt, Erie; Vice President, Rick Carnahan, Labette Co.; Secretary, Rodney Mein, Girard; Treasurer, Rodger Miller, Uniontown; Reporter, Kevin Ericson, Uniontown; Sentinel, Lisa Simpson, Ft. Scott; Advisor, Wilbur Buntin, Erie.

SOUTHWEST

President, Steve Sterling, Scott City; Vice President, Jeff Adam, Holcomb; Secretary, Dennis Landgraf, Scott City; Treasurer, Mike Lobmeyer, Garden City; Reporter, Dewayne Goodrum, Tribune; Sentinel, Scott Barrows, Ness City; Advisor, Loren Zabel, Hugoton.

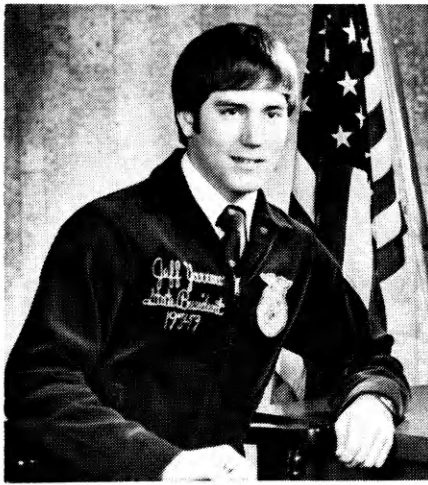
From the President's Desk3
 Dates to Remember3
 Leadership Citizenship Day4
 Grain Scholarships5
 Tentative 1979 FFA Convention Schedule6-7
 Nat'l President to Attend State Convention7
 Superior Safety Chapters7
 Agricultural Proficiency Award Winners8
 KABAR Sponsors District Stars8
 National Chapter Awards9
 BOAC Area Winners10
 Collegiate FFA at 20 Years10
 State Officer Candidates10
 Heifer Calf Contest11
 Alumni11
 Benefit Barbecue11
 Seven Kansas Chapter Winners14
 National FFA Winners to Europe 15
 1979 Farmer Candidates16
 New FFA Alumni Executive Secretary17
 National FFA Contest17
 Sheep Production Award17
 FFA Officers to Japan17
 Woody Cox Visits Kansas18
 From the Editor19
 Chapter Reports19-22
 A Smashing Success22

STATE FFA EXECUTIVE COMMITTEE

Les OlsenTopeka
 Dr. James AlbrachtManhattan
 Dr. David MuglerManhattan
 Dee JamesClay Center
 Prof. P. N. SeversonManhattan
 J. M. FreyAbilene
 Lloyd BarnettHiawatha
 Jeff YarrowClay Center
 Chuck BanksWamego
 Robert BroeckelmanManhattan

Kansas Future Farmer is a newsletter published quarterly for Members of the Kansas Association for FFA as a part of the vocational agriculture departments in local high schools in Kansas under the supervision of the State Department of Education.

The publication is edited by the Kansas Association of FFA under the advisorship of Bob Broeckelman, Department of Adult and Occupational Education, College of Education, Kansas State University, Manhattan, Kansas 66506.



Dates To Remember

March 31	Ag Science Day
March 31	Livestock Conservation Awards Due
March 31	Delegate Pre-registration Due — to Manhattan
April 4	National FFA Chorus & Band Applications Due
April 16	State FFA Contest Entries due to Dr. Field — KSU
April 29-May 1	State FFA Contests
May 1	Wildlife Damage Control Notebooks Due — KSU
May 1	Sweetheart Applications Due — KSU
May 2-4	National Land Judging
May 14	FFA Annual Report Due,
May 15	Pre-Registration to State FFA Camp Due — KSU
May 30-June 1	State FFA Convention
June 2	Post-Convention Activities

From the President's Desk

Now is the time of the year that all the time, effort, and hard work begins to pay off. I'd like to congratulate all of the District Proficiency Award winners as well as all of those receiving their State Farmer Degree this year. It was also exciting and encouraging to see the increased participation and submitted application in "The Big Three" areas — Safety, BOAC, and Superior Chapter. We also have selected 18 outstanding young leaders of our organization to be State Officer Candidates this year. Congratulations to all!

The State Officers have been very busy with pre-convention planning as well as our annual Goodwill Tour. The tour proved to be a very interesting and inspiring one. We made 55 stops at state and national sponsors who support organization. The reception we received was tremendous and that assured us that with continued support of individuals and organizations like these, the FFA will definitely have a brighter future.

Just a couple of quick reminders concerning upcoming deadlines. Livestock Conservation Award Applications as well as Pre-registration for State FFA Convention are due on March 31. Applications for National FFA Chorus and Band members are due by April 4.

On behalf of all of the State Officers, I would like to say we are very proud of the accomplishments of the individual chapters and members this year. We are looking forward to visiting many of you at your local and district banquets very soon.

Again, congratulations on a productive year!

FARMERS HOME ADMINISTRATION YOUTH PROJECT LOANS

The Farmers Home Administration can make loans to individual rural residents who are not less than 10 years old, but under 21 years of age to establish and operate income-producing farm or nonfarm projects of modest size.

Each project must be part of an organized and supervised program of work. The project must be planned with the help of the organization supervisor and operated under his guidance, must give indication that it will produce sufficient income to repay the loan, and must provide the youth with practical business experience.

Who may borrow?

To secure an FmHA Youth Loan one must:

- Be a citizen of the United States
- Be 10 years old, but under 21 years old
- Live in the open country or in a town of less than 10,000 people
- Be unable to get a loan from other sources
- Conduct a modest income-producing project in a supervised program of work, as outlined above.

Also one must have a good character, and be capable of planning, managing, and operating the project under guidance and assistance from a project advisor. The project advisor must recommend the project and the loan and agree to provide adequate supervision.

What are some possible projects?

Loans can finance nearly any kind of income-producing project, including:

- Crop production
- Livestock production
- Repair shops
- Woodworking shops
- Reupholstering and refinishing furniture
- Roadside stands and many others.

What may loans be used for?

Young people may use the money to:

1. Purchase livestock and farm equipment
2. Buy, rent, or repair needed tools and equipment
3. Pay operating expenses for running the project
4. Buy supplies.

What size project can one finance?

Only projects of modest size can be financed. A modest project is limited in physical size, capital requirements, and overall objective.

What is the interest rate?

The interest rate for youth loans is determined periodically, based on cost of money to the Government. However, when a loan is made the interest rate for that loan will not change, but if another loan is made later, the interest rate could be different.

What security is required?

To receive a loan one must sign a promissory note making him personally and fully responsible for the debt. Loans greater than \$2,500 must be cosigned. Sometimes the county supervisor may require a cosigner for loans \$2,500 or less.

In addition, loans will be secured by liens on products produced for sale and on chattel property, including livestock, equipment, and fixtures purchased with loan funds.

How about repayment?

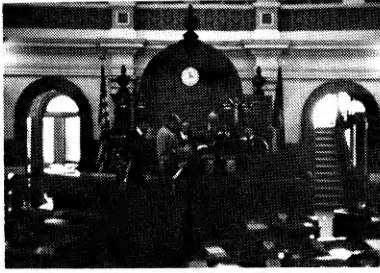
The schedule for repaying the loan will be worked out with the FmHA county supervisor. Payments will be determined by the type of project for which the loan was made. If it is raising livestock or crops, for example, the loan can be paid when the produce is sold. If the project is a repair shop or some other service operation, the loan can be paid from the weekly or monthly earnings.

Where and how are applications made?

Completed plans and budgets should be signed by the organization supervisor and submitted by the applicant to the local county office of the Farmers Home Administration.

Application forms for youth loans are available from the FmHA county supervisor. The FmHA has more than 1,750 offices throughout the county. Usually the telephone directory will give the nearest office location under "U.S. Government."

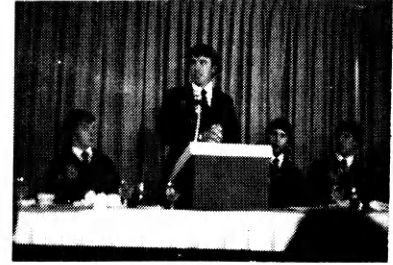
Each person who applies get equal consideration without regard to race, color, creed, sex, marital status, or national origin.



Students had the opportunity to visit the House and the Senate during their visit to the Capitol.



Ron Wineinger gave an impressive presentation on "What vocational ag and FFA did for him."



Governor Carlin addressed the group during the legislative day which was his second since he took office.



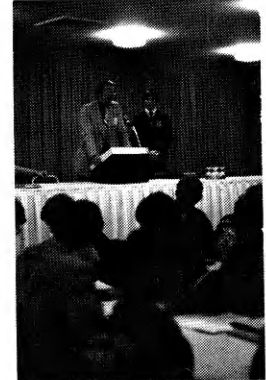
Virgil Huseman, KLA, discussed livestock legislation affecting agriculture.



Harold Shoaf, REC, discussed energy legislation affecting agriculture.



Dale Dennis, Commissioner of Education, discussed education legislation affecting agriculture.



Discussing land use value appraisal was Paul Fleener, a lobbyist for Farm Bureau.

Successful 1st FFA Leadership-Citizenship Day

FFA members took a giant step towards becoming involved and informed citizens and leaders about out state government at the FIRST FFA Leadership - Citizenship Day on January 22, 1979 at the Holiday Inn in Topeka. This special day was planned in such a way that students were given the opportunity to discuss the importance of agriculture, their vocational agriculture program, and FFA with the persons directly involved in the legislature. Therefore, learning was a "two-way street". . . FFA members learned the legislative process first-hand and the legislators learned of the significance of vocational agriculture programs and FFA.

Those in attendance included the Governor, Representatives and Senators, special guests, FFA members, advisors, school administrators, and State FFA Officers for a total of 147 persons in all.

Twenty-nine FFA chapters from across the state were represented.

Special features during the day included talks on varied topics by numerous important figures from State Government, Agriculture-related organizations and the FFA delegation.

Senator Ross Doyen informed everyone attending on "How a Bill Becomes Law." An ag forum was presented about topics in agriculture that are currently under the effect of legislation: Paul Fleener, from the Legislative Liason of Kansas Farm Bureau, spoke on "Land Use;" Harold Shoaf, Rural Electric Cooperatives, gave important concepts on "Energy;" and Virg Huseman, Kansas Livestock Association, spoke about "Livestock."

During the luncheon, the FFA was represented with a talk by Ron Wineinger, Marion FFA Chapter, as he explained

"What FFA Has Done For Me." Jeff Yarrow, State FFA President, followed by exemplifying "What Vo Ag and the FFA is Doing For Others." Their comments were well received.

Governor John Carlin briefly addressed the group with remarks concerning legislation that is pertinent to agriculture.

The FFA Leadership-Citizenship concluded with a visit to the Senate in session, to the House Committee Meetings, and a tour of the Capitol.

This day provided excellent opportunities for the personal development of vo-ag students in the areas of leadership and citizenship. We are looking forward to further development with similar activities in the future. We encourage all chapters to consider taking part in the next Leadership - Citizenship Day.

SENATE RESOLUTION No. 1807

A RESOLUTION commending and congratulating Future Farmers of America.

WHEREAS, The Future Farmers of America was founded in 1928; and

WHEREAS, FFA has grown to a membership of over one-half million; and

WHEREAS, FFA provides an opportunity for secondary high school students to learn about the varied aspects of agriculture and agribusiness; and

WHEREAS, FFA fosters character development, agricultural leadership and responsible citizenship to supplement training opportunities for students preparing for careers in farming and agribusiness; and

WHEREAS, The citizens of the State of Kansas can take great pride in the ideals, services and young people that are FFA: Now, therefore,

Be it resolved by the Senate of the State of Kansas: That we commend and congratulate this fine and outstanding young peoples' organization for its fifty years of service; and

Be it further resolved: That the Secretary of the Senate of the State of Kansas be directed to send enrolled copies of this resolution to H. N. Hunsicker, National Advisor, National FFA Center, Box 15160, Alexandria, Va. 22309; Les Olsen, State Advisor, Department of Education, 120 East 10th, Topeka, Kansas 66612; Bob Broeckelman, State Executive Advisor, Holton Hall, Kansas State University, Manhattan, Kansas 66502; and Jeff Eyarow, State President, R.R. 3, Clay Center, Kansas 67432.

Senate Resolution No. 1807 was sponsored by Senator Ross Doyen.

I hereby certify that the above RESOLUTION originated in the SENATE, and was adopted by that body

January 22, 1979

Ross O. Doyen
President of the Senate.

Lu Kenny
Secretary of the Senate.

Establish Three Grain Science Scholarships For FFA Members

Three \$1,000 scholarships have been designated at Kansas State University, Manhattan, for Kansas Future Farmers of America Members who major in milling, feed or baking science.

The scholarships, which have been set up by the KSU Department of Grain Science and Industry, will be awarded to incoming freshman or junior college transfer students who are or were members of a local FFA chapter, according to Charles W. Deyoe, professor and head of the department.

"By providing these scholarships, we hope to encourage outstanding FFA members to consider careers in the feed, milling and baking industries," Deyoe explained. "These industries are among the largest in the U.S., and because Kansas State University is the only university in the world that offers degrees in these fields, our graduates are in constant demand.

"We feel that FFA members, because of their scholarship, leadership and work experiences will become outstanding employees in these industries. In addition, the industries provide an opportunity for individuals with agricultural backgrounds to continue working with agriculture and in many cases directly with the farmer.

"There are opportunities for people trained in these fields to advance and become management leaders in these industries," Deyoe added.

In addition to being FFA or former FFA members, applicants must have graduated in the top 25 percent of their class and show academic promise. Applicants should be nominated by chapter advisers and should submit the standard university scholarship application form, a current high school or junior college transcript, accomplishments in FFA and other high school activities, career plans and objectives, and a typed essay outlining reasons for wanting to earn a degree in feed, milling or baking science.

Final selection will be made by the Grain Science and Industry Scholarship Committee.

Additional information on these scholarships is available from local FFA chapter advisers; from the Department of Grain Science and Industry, Shellenberger Hall, Kansas State University, Manhattan, 66506; from the KSU Office of Student Financial Assistance and the State FFA Office.

Notice
FFA CAMP DATES
Have been moved up one day.
CAMP DATES ARE:
JULY 23-26

1979 Kansas FFA Convention Schedule

(TENTATIVE)

Wednesday, May 30, 1979

8:00 a.m. Public Speaking Contest
Big Eight Room - Little Theater
Parliamentary Procedure Judges Meet
McCain Auditorium, Room 205 A

9:00 a.m. State Officer Nominating Committee Meeting
K-State Union, Room 213
Greenhand Creed Contest
Union, Rooms 206, 207, 209
Parliamentary Procedure State Contest
McCain Auditorium

10: a.m. State Officer Interviews
K-State Union, Room 213

11:30 a.m. State Officer Candidate Mixer
Cat's Pause

12:00 Noon State Officer Candidate Luncheon
K-State Union, Sunflower Room

1:30 p.m. State Officer Interviews
K-State Union, Room 213

4:00 - Convention Registration
6:00 p.m. Lobby, McCain Auditorium

6:15 p.m. KVATA District Meetings

6:30 p.m. Convention Delegate Orientation
McCain Auditorium

7:00 p.m. Delegate Committee Meetings

9:30 p.m. Vespers - Danforth Chapel

1:30 p.m.

SECOND SESSION - McCain Auditorium
Brenda Hundley, Chairman
Opening Ceremony
Greetings from District Sweethearts
State Sweetheart Report
Linda Otte, 1978-79 State Sweetheart
Parliamentary Procedure Awards
Monte Reese, Federal Land Bank of Wichita
Delegate Committee Reports
Retiring Address
Joe Rickabaugh, 1978-79 State Sentinel
Break
Delegate Committee Reports
Nominating Committee Report
Election of 1979-80 State Officers
Closing Ceremony

5:15 p.m. Honorary State Farmer Pictures
K-State Union, Cottonwood Room

5:30 p.m. Honorary State Farmer Banquet
K-State Union, Cottonwood Room
Farm Bureau Banquet

7:00 p.m. THIRD SESSION - McCain Auditorium
Jeff Bryant, Chairman
Opening Ceremony
Address by National FFA President
Mark Sanborn, Ohio
Honorary State Farmer Ceremony
Alumni Report and Awards
Star Farmer/Star Agribusinessman Ceremony
Star Agribusinessman Slides
Seven Stars Over Kansas - WIBW & Farmland
Industries - Kelly Lenz, Chairman
Star Farmer & Star Agribusinessman of Kansas
Closing Ceremony

Thursday, May 31, 1979

K-State Union, Main Ball Room

9:00 a.m. FIRST SESSION - McCain Auditorium
Jeff Yarrow, Chairman
Opening Ceremony
Posting of Colors

Thursday, May 31 (Continued)

Invocation - Dee James, 1977-78 State President
Welcome
Address Senator Nancy Landon Kassebaum
Roll Call of Chapters
Special Introductions - Jeff Yarrow
Convention Tips - Mark Stock
Approval of 50th Convention Minutes
Livestock Conservation Awards
Karl Heimke, Competitive Livestock
Marketing Association
Wildlife Damage Control Award
Robert Henderson
Parliamentary Procedure Finals
Break
Chapter Reporter Award
High Plain Journal Award
Bob Keating, High Plains Journal
Retiring Address
Chuck Banks, 1978-79 State Vice President
Membership Achievement Awards
Closing Ceremony

Friday, June 1, 1979

8:00 a.m.

FOURTH SESSION
Joe Rickabaugh, Chairman
Opening Ceremony
New Business
Retiring Address
Mark Stock, 1978-79 State Treasurer
Grass and Grain Record Keeping Awards
Frank Buchman, Editor of Grass & Grain
American Institute of Cooperation Scholarships
International Recognition
Vocational Education State Officers
FHA -
DECA -
OEA -
VICA -
Public Speaking Finals
State Contest Winners
State Chapter Awards Ceremony
Announcement of Top Nine Chapters
S.C. Jackson - Sunland Plans
Retiring Address
Jeff Bryant, 1978-79 State Secretary
Closing Ceremony

12:00 Noon Sponsors' Luncheon
K-State Union, Cottonwood Room

12:00 noon Sweetheart Luncheon
K-State Union, Key Room
Alumni Luncheon and Annual Meeting
K-State Union, Cottonwood Room

12:00 Noon

1:30 p.m. **FIFTH SESSION - McCain Auditorium**
 Mark Stock, Chairman
 Opening Ceremony

Public Speaking Awards
 Daryl Patton, President Collegiate FFA
 Kansas Farmer Awards
 Mid-Continent Farmers Association Presentation
 Ceremonies Honoring Parents & Advisors of
 State Officers
 Creed Speaking Awards
 Foundation Proficiency Awards

Santa Fe Scholarships
 Richard Bradley, Atchison, Topeka, &
 Santa Fe Railway
 Roy Freeland Scholarship
 Roy Freeland, Retired Secretary of Agriculture
 Union Pacific Scholarship Recognition
 Safety Awards
 Delbert Ekart, Safety Director, Kansas
 Farm Bureau
 Distinguished Service Awards
 Retiring Address
 Brenda Hundley, 1978-79 State Reporter
 Closing Ceremony

3:45 p.m. State Farmer Pictures
 Willard Hall, East Steps

4:00 p.m. State Farmer Reception
 K-State Union, Courtyard

5:30 p.m. Past State FFA Officer Banquet
 K-State Union, Cottonwood Room

7:30 p.m. **SIXTH SESSION - McCain Auditorium**
 Chuck Banks, Chairman
 Opening Ceremony
 American Farmer Recognition
 BOAC Awards
 Governor's Citation Award
 Address
 State Farmer Ceremony
 State Officer Report
 Retiring Address
 Jeff Yarrow, 1978-79 State President
 State Officer Awards
 State Alumni Association
 Installation of 1979-80 State Officers
 Closing Ceremony
 New State Officer Meeting - 205A McCain

Saturday, June 2, 1979

8:00 a.m. Post Convention
 8:00 a.m. Old & New State Officers' Breakfast
 9:30 a.m. Executive Committee Meeting
 Waters, Room 135

Nat'l President To Attend State Convention



Mark H. Sanborn, 20, of Colebrook, Ohio, is the National President of the Future Farmers of America (FFA). In this position he has responsibility for serving over one-half million FFA members in nearly 9,000 local chapters nationwide.

Through his supervised agricultural experience program, Mark has gained experience in both agricultural production and agribusiness. Under the supervision of Grand Valley FFA advisor Bob Rogers, he has carried projects consisting of dairy replacements, dairy steers, corn and wheat and received his State FFA Degree in the

area of production agriculture. One summer after graduation he was employed in the field of sales and service by Landmark, Inc., an agricultural cooperative and has since served as administrative assistant to Ohio Governor James Rhodes within the Ohio Department of Agriculture, Fairs Division.

Mark was the 1976 national FFA public speaking winner and served as chapter Sentinel and President, State Sectional Vice President, and State President of the Ohio FFA Association. He was valedictorian of his Grand Valley High School graduating class and was active in concert and marching band, dramatics, National Honor Society and varsity wrestling.

Sanborn has taken a leave of absence from The Ohio State University to serve as National FFA President. He is currently an honors student there, majoring in agricultural economics. He is also a member of Alpha Zeta Fraternity, president of the Agricultural Communicators of Tomorrow, and acting chairman of the Ohio State FFA Alumni Affiliate. Mark is the son of Mr. and Mrs. Leslie Sanborn.

Award Superior Safety Chapters

This is the seventh year that the Superior Safety Chapter award has been available. Of the Superior Safety Chapters which submit for State Awards, the top 10 percent will be designated as the Kansas entries for National recognition. We had an increase of 15 chapters this year participating in the safety program for a total of 38 chapters. They are:

East Central: Seaman, Washburn Rural, Osage City, Mission Valley, and Central Heights.

Northwest: Cheylin, Colby, Hill City, Hoxie, Norton, Phillipsburg, Plainville, and Russell.

Northeast: Marysville, Wamego, Hiawatha, Meriden, Powhattan, Westmoreland, and Atchison County.

Southeast: Caney, Cherryvale, Columbus, Fort Scott, Fredonia, and Labette County.

South Central: South Barber, Arkansas City, Central of Burden, and Marion Florence.

North Central: Clay Center, Chapman, Linn, Riley County, Washington, and Wilson.

District Agricultural Proficiency Award Winners

The Agricultural Proficiency Awards, sponsored by the Future Farmers of America Foundation, Incorporated, are designed to encourage FFA members to strive for excellence in their supervised agricultural occupational experience programs. These awards range from medals given at the local chapter level to plaque and cash awards presented on the district, state, regional and national levels.

First place district winners will receive a plaque and \$15 cash awards. The first place winners on the state level will receive a certificate and \$100 cash award. The first place winners in each of the districts are:

South Central: Crop Production - Jeff Blanchat, Chaparral; Dairy Production - Terry Pankratz, Hillsboro; Beef Production - Timothy Dierksen, Chaparral; Swine Production - Timothy Dierksen, Chaparral; Sheep Production - Brian D. Oldenettel, Haven; Horse Proficiency - Terry Romans, Chaparral; Poultry - Duane Banzet, Mulvane; Placement in Agricultural Production - Mike Kaufman, Moundridge; Agricultural Sales and/or Service - Mike Disberger, Haven; Agricultural Processing - Randall Richmond, Marion; Agricultural Mechanics - Jerry Winkley, Marion; Soil and Water Management - Kathy Jo Dubus, McPherson; Home and Farmstead Improvement - Gregory Molitor, Kingman; Fish and Wildlife Management - Danny Snelling, Marion; Outdoor Recreation - Victor E. Wade, Central of Burden; and Nursery Operation - Warren Hager, Marion.

East Central: Crop Production - Kevin D. Robinson, Mission Valley; Diversified Livestock Production - Kevin D. Robinson, Mission Valley; Dairy Production - Wayne Gabbert, Jayhawk-Linn; Beef Production - Robert W. Bacon, Council Grove; Swine Production - Kevin Broyles, Jayhawk-Linn; Sheep Production - Deanna Pettijohn, Jayhawk-Linn; Horse Proficiency - Mary Kane, Paola; Placement in Agricultural Production - Bill Johnston, Jayhawk Linn; Agricultural Mechanics - Bryce F. Schumann, Jayhawk-Lawrence; Home and Farmstead Improvement - Jonathan Larson, Jayhawk-Lawrence; Fish and Wildlife Management - Thomas J. Larson, Washburn Rural.

North Central: Crop Production - Douglas Schwartz, Washington; Diversified Livestock Production - John Gilliam, Washington; Dairy Production - Erle Bergstrom, Blue Valley; Beef Production - James Hedstrom, Concordia; Swine Production - Bob Van Winkle, Linn; Horse

Proficiency - Brenda Meehan, Chapman; Placement in Agricultural Production - Lee Zabokrtsky, Washington; Agricultural Sales and/or Service - Jeff Beikmann, Linn; Agricultural Processing - Robert Chiles, Salina; Agricultural Mechanics - Ronald Smith, Jewell; Soil and Water Management - Lee Zabokrtsky, Washington; Home and Farmstead Improvement - Dennis Welch, North Central; Fish and Wildlife Management - Douglas Nemechek, Salina; and Agricultural Electrification - James Vopat, Wilson.

Northeast District: Crop Production - Scott Witt, Sabetha; Diversified Livestock Production - Joni Snapp, Westmoreland; Dairy Production - Steven K. Metzger, Sabetha; Beef Production - Buck Peddicord, Wamego; Swine Production - Lance Rezac, Onaga; Sheep Production - Jeff Ebert, Westmoreland; Horse Proficiency - Mike Scraper, Hiawatha; Poultry - Danny Bauerle, Hiawatha; Ag Sales & Service - James Pittenger, Wamego; Placement in Ag Production - Joe Neumann, Troy; Agricultural Mechanics - Todd Ebert, Wamego; Forest Management - Bradley E. Tummons, Hiawatha; Soil and Water Management - Kenny Plummer, Westmoreland; Home & Farmstead Improvement - Joe W. Shade, Wamego; Fish & Wildlife Management - Scott Tryon, Hiawatha; Outdoor Recreation - David Ebert - Westmoreland; Agricultural Electrification - Bob Larson, Hiawatha.

Southwest District: Crop Production - Boyd Lear, Garden City; Diversified Livestock Production - Scott Barrows, Ness City; Beef Production - Boyd Lear, Garden City; Swine Production - Mike Lobbmeyer, Garden City; Sheep Production - Randy Hager, Ness City; Horse Proficiency - Scott Barrows, Ness City; Placement in Ag Production - Charles H. Foreman, Holcomb; Fruit and/or Vegetable Production - Chad Messenger, Holcomb; and Agricultural Electrification - Jerry Ryan, Garden City.

Northwest District: Crop Production - Herbert E. Cressler, Hoxie; Diversified Livestock Production - Mark Worcester, Hill City; Dairy Production - Henry Sander, Stockton; Beef Production - Mark Worcester, Hill City; Swine Production - Troy Nelson, Norton; Sheep Production - Brian Taylor, Phillipsburg; Horse Proficiency - Ellen Jarvis, Phillipsburg; Poultry - Larry Luck, Hill City; Placement in Ag Production - Steve Hamel, Palco; Ag Sales and Service - David Worcester, Hill City; Ag Mechanics - Larry Walt, WaKeeney;

Soil and Water Management - Joe Schamberger, WaKeeney; Home and Farmstead Improvement - Dwain Worley, Atwood; Fish and Wildlife Management - Ellen Jarvis, Phillipsburg; and Agricultural Electrification - Tim Morford, Hill City.

Southeast District: Crop Production - Darrin Jesse, Southeast; Diversified Livestock Production - Roger Miller, Uniontown; Dairy Production - Harry Clubine, Caney; Beef Production - Ronnie Hamilton, Columbus; Swine Production - Gerry Garrett, Girard; Sheep Production - Ken Swiler, Erie; Horse Proficiency - Rick McKinzie, Labette County; Poultry - Stan Clingan, Erie; Placement in Ag Production - Mike Giefer, Erie; Ag Sales and/or Service - Chris Bole, Southeast; Ag Processing - Sean Tindle, Elk Valley; Ag Mechanics - John Murray, Riverton; Soil & Water Management - Charles Atkinson, Columbus; Fish & Wildlife Management - Scott Williams, Girard; Fruit and/or Vegetable Production - Lisa Simpson, Fort Scott; Turf & Landscape Management - Mark Burris, Erie; and Ag Electrification - Mike Ross, Columbus.

KABAR Sponsors District Stars

Kansas FFA'ers are very fortunate that again this year, the Kansas Association of Bank Agricultural Representatives is sponsoring the plaques plus the \$40 cash award to each of the District Star Farmers and District Star Agribusinessmen. The FFA is very appreciative of KABAR'S not only sponsoring these very important incentive awards, but also for the service its members provide to Vocational Agriculture students through the loan programs for farming programs and other business ventures in agriculture.

Seven District Star Agribusinessmen are competing this year for the title of Star Agribusinessman of Kansas. They are: Scott Williams, Girard; Steve Hamel, Palco; Monte Hampton, Ensign; Robbi Ehrlich, Wilson; Larry Bigelow, Prairie View; Mike Disberger, Haven; and Joe Neumann, Troy.

The seven District Star Farmers competing for Star Farmer of Kansas are: Mike Rainwater, Hiawatha; Jeff Blanchat, Chaparral; Kevin Robinson, Mission Valley; John Gilliam, Washington; Teddy Unruh, Holcomb; Herbert Cressler, Hoxie; and Randy Reinhardt, Erie.

The Star Agribusinessman and Star Farmer of Kansas for 1979 will be announced during ceremonies at the Third Session of the 51st State FFA Convention.

Announce National Chapter Awards

The National Chapter Awards Program starts on the district level, where chapters apply to become Superior Chapters. From these Superior Chapters are selected the top chapters in Kansas and the top 10 percent will go to compete on the national level. This year, Kansas will have a record number of nine chapters representing Kansas due to the increase of chapters participating in the chapter award program. Eighty-eight chapters participated this year out of 161 chapters in the contest. They are the following:

East Central: Williamsburg, Paola, Central Heights, Wabaunsee, Jayhawk-Linn, Washburn Rural, Lawrence, Garnett, Prairie View, Mission Valley, Osage City and Seaman.

Northwest: Cheylin, Colby, Downs, Hill City, Hoxie, Jennings, Kensington, Morland, Norton, Oberlin, Palco, Phillipsburg, Plainville, Russell, and WaKeeney.

Northeast: Atchison County, Hiawatha, Holton, Meriden, Powhattan, Royal Valley, Sabetha, Troy, Wamego, Westmoreland, Valley Heights, and Marysville.

Southwest: Ensign, Garden City, Holcomb, Hugoton, Scott City, and Southwestern Heights.

Southeast: Labette County, Girard, Cherryvale, Uniontown, Columbus, Caney, Iola, Fredonia, West Elk, Southeast and Erie.

South Central: Buhler, Kingman, Great Bend, Stafford, South Barber, Claflin, Chaparral, Medicine Lodge, Haven, Newton, Mulvane, Arkansas City, Central, Peabody, Moundridge-Hesston, and Marion-Florence.

North Central: Abilene, Beloit, Clay Center, Hope, Linn, Manhattan, Miltonvale, North Central, Pike Valley, Salina, Riley County, Wilson, Washington, Jewell, Chapman, and Mankato.

Senator Kassebaum & Nelson Galle— Convention Speakers

Kassebaum and Nelson Galle, the 25th State FFA President, will be two of the featured speakers at the 51st State FFA Convention. More details will be in the next issue.

Name 145 State Farmer Candidates

Membership in Kansas FFA Chapter has shown an increase again this year from 7240 to 7310. This entitles the State Association to 145 State Farmer Degrees. The 145 State Farmer Candidates for 1979 are:

Southwest District: Monte Hampton, Ensign; Teddy Unruh, Holcomb; Scott Barrows, Ness City; Tony Martin, Hugoton; Steven Starling, Scott City; and Mike Matherly, Garden City.

Northeast District: Mike Rainwater, Hiawatha; Lynette Berger, Valley Heights; Joe Neumann, Troy; Roy Hatfield, Wamego; Todd Brethour, Wamego; Scott Witt, Sabetha; Bradley Tummons, Hiawatha; John E. Nordquist, Valley Heights; Randy Jacobson, Valley Heights; Wayne Diveley, Highland; Don Stryker, Valley Heights; Jim Rieger, Powhattan; Howard Elliot, Hiawatha; Kenny Krouse, Westmoreland; David Diveley, Highland; Bobby Hanf, Atchison County; Mark Tollefson, Hiawatha; Julie Tesselndorf, Wamego; Randy Jurgeneier, Hiawatha; Kenny Plummer, Westmoreland, and Roy Peters, Wamego.

South Central: Jeff Blanchat, Chaparral; Tim Dierksen, Chaparral; Mike Disberger, Haven; Jeff Kimmell, South Barber; Justin Waite, Winfield; Phil Huston, Haven; Mark Scott, Central of Burden; James Unruh, Peabody; Lyle Leppke, Peabody; Mike Kaufman, Moundridge; Robin Rusk, Medicine Lodge; Milford Hunter, South Barber; David Harms, Moundridge; Kevin Burke, Peabody; Craig Brawner, Haven; Brian Oldenettel, Haven; Mike Seeliger, Winfield; Brian Obermeyer, Peabody; Leah Schooley, Central of Burden; Terry McClure, Central of Burden; Jay Black, South Barber, Kyle Schrag, Moundridge-Hesston; Douglas Taylor, Great Bend; Rodney Jones, Kingman; David Schneider, Great Bend; Brenda Bilitier, Central of Burden, and Michael Zeller, Buhler.

Northwest District: Herb Cressler, Hoxie; Steve Hamel, Palco; Eldon Huff, Oberlin; Eric Antholz, Cheylin; Eric Thiele, Norton; David Sprigg, Norton; Stacy Shearer, Norton; Dale Carpenter, Stockton; Kelly Roush, Lebanon; John Griebel, Stockton; Stuart Jarvis, Phillipsburg; Dale Wagner, Downs; Merlin

Clayton, Atwood; J.P. Worcester, Hill City; Mark Worcester, Hill City; Steve Ohlroggee, Colby; Mike McClellan, Palco; Dale Bunjes, Cheylin; Scott Panter, Kensington; Bryan Russell, Plainville; Terry Talburt, Palco; and Brian Taylor, Phillipsburg.

East Central: Bryce Schumann, Lawrence; Steve Huddleston, Lebo; Denis Rockers, Garnett; Jeff Patterson, Garnett; Larry Bigelow, Prairie View; Paul Rickabaugh, Garnett; David Ramsey, Prairie View; Wayne Gabbert, Jayhawk-Linn; Kevin Broyles, Jayhawk-Linn; Bill Johnston, Jayhawk-Linn; Dan Signer, Jayhawk-Linn; Ken Kuykendall, Osage City; Scott Trueblood, Osage City; Bob Bacon, Council Grove; Brian Vining, Central Heights; Jay Wheeler, Mission Valley; Kevin Robinson, Mission Valley; David Gerken, Paola; Mary Kane, Paola, Mike Williams, Paola; and Kevin Fredrickson, Lawrence.

North Central: John B. Gilliam, Washington; Charles Stoffer, Abilene; Jeri Kennedy, Mankato; Jay Bohnenblust, Riley Co.; Brad Claussen, Wilson; Kendall Nelson, Mankato; Ryan Hobson, Pike Valley; Mark Vopat, Wilson; Robbi Ehrlich, Wilson; Loy James, Clay Center; Will Novak, Belleville; Gary Buss, Riley Co.; Royce Kolle, Linn; Robert Chiles, Salina; Richard Llewelyn, Riley Co.; Jim Severance, Beloit; John Eickman, Belleville; Don Russell, Riley Co.; Jeffrey Bohnenblust, Riley Co.; Maurice Waite, Pike Valley; Doug Nemechek, Salina; James Hedstrum, Concordia; and Deanna Hoard, Mankato.

Southeast District: Randy Reinhardt, Erie; Rodney Mein, Girard; Harry Clubine, Caney; Steven Kipp, Iola; Gerry Garrett, Girard; Donald E. Hauser, Humboldt; R. Scott Williams, Girard; Craig L. Good, Labette County; Sondra D. Van Cleave, Cherryvale; Douglas Simpson, Ft. Scott; Carol Saulsberry, Yates Center; Leon Heady, Erie; Jim Elwin Roberts, West Elk; John Dickerson, Ft. Scott; Rhonda Raven, Labette County; Peggy Wanita McCollum, West Elk; Michael Houck, Caney; Mike Davied, Girard; Michael Holloway, Iola; Ronnie L. Ervin, West Elk; Larry Garrett, Girard; Kenneth Alan Griffitt, Columbus, and Kevin McDermed, Fort Scott.

Notice

FFA CAMP DATES
Have been moved up one day.

CAMP DATES ARE:
JULY 23-26

Receive BOAC Area Winners

The Building Our American Communities BOAC program has become a tremendous community service tool for FFA Chapters across Kansas. The 63 chapters which excelled in BOAC and received the BOAC Area Award for 1979 are:

North Central: Beloit, Chapman, Clay Center, Hope, Linn, Manhattan, Miltonvale, North Central, Salina, Pike Valley, Wilson, Washington, and Riley County.

South Central: Buhler, Kingman, Great Bend, South Barber, Chaparral, Central of Burden, Peabody, Moundridge - Hesston, Marion - Florence, and Arkansas City.

Southeast: Caney, Cherryvale, Columbus, Fort Scott, Fredonia, Girard, Labette County, Southeast and Uniontown.

Southwest: Garden City and Southwestern Heights.

Northeast: Atchison County, Hiawatha, Meriden, St. George, Powhattan, Wamego, Westmoreland, and Marysville.

Northwest: Cheylin, Colby, Downs, Hill City, Jennings, Norton, Oberlin, Palco, Phillipsburg, Plainville, Russell, Stockton, and WaKeeney.

East Central: Central Heights, Seaman, Williamsburg, Mission Valley, Osage City, Lebo, Washburn Rural, and Paola.

Collegiate FFA At 20 Years

Collegiate FFA was chartered at Kansas State University on Feb. 24, 1959, and 20 years later the chapter celebrated with an anniversary banquet.

Nearly 30 members, alumni, advisers and guests attended the Feb. 24 event in Manhattan. After the collegiate officers did the opening ceremony, Merry Lu Pasley, banquet committee chairman, read a history of the chapter. Following singing and dinner, the chapter president, Daryl Patton, presented Prof. Paul Stevenson a plaque for his dedication to the chapter. Stevenson organized Collegiate FFA at K-State in 1959 and has served as adviser since.

A former national FFA vice president and K-State student body president, Sam Brownback, spoke to the group. He talked about how the chapter has always bounced back from its lows and kept busy with activities. He attributed this to the dedicated members.

Chapter officers who planned to banquet are Daryl Patton, president; Merry Lu Pasley, vice president; Ron Ditmars, secretary; Mike Raine, treasurer; Becky Vining, reporter; Sandra Hundley, sentinel; and Dale Unruh, Ag Council representative.

Announce State Officer Candidates

NE, Joe Neumann, Troy; and Todd Brethour, Wamego.

NW, J.P. Worcester, Hill City; Bryan Russell, Plainville; and Stacy Shearer, Norton.

SC, Justin Waite, Winfield; and Phillip Huston, Haven.

SE, Randy Reinhardt, Erie; Rodney Mein, Girard; and Mark Johnson, LCHS.

NC, John Gilliam, Washington; Loy James, Clay Center; and Jeff Bonenblust, Riley Co.

SW, Scott Barrows, Ness City; and Mike Lobmeyer, Garden City.

EC, Larry Bigelow, Prairie View; Denis Rockers, Garnett; and David Ramsey, Prairie View.



Kansas FFA Delegation at the 51st National Convention

Hanover Youth Wins Heifer Calf In Contest



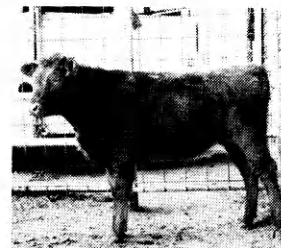
Brent Laue, a Future Farmer of America member at Hanover High School has won a Blonde d'Aquitaine heifer calf through a statewide FFA and 4-H club contest.

The heifer was donated by Floyd F. Schneider of the L Seven Ranch, Wa

Keeney, a Blonde d'Aquitaine breeder. Laue, son of Mr. and Mrs. Lester C. Laue, won the heifer over 31 other 4-H and FFA members by writing about his career goals, agricultural experiences and plans for the calf. He has shown and bred livestock since 1972 and competed in numerous livestock judging contests.

Both cattle and crops are included in Laue's supervised occupational experience farming program. He owns six registered cows, two heifers and three show steers.

Brad Lauer of the Holland Sunflowers 4-H Club in Dickinson County was first runner-up for the heifer, followed by Greg Wiens, Hillsboro FFA; Deanna Pettijohn, Jayhawk-Linn FFA; and David Donley,



Floral 4-H Club in Cowley County.

Honorable mentions went to James Hall, Longton FFA; Lon James, Clay Center FFA; Ed Hawkins, Marysville FFA; Kim Presson, Cherryvale FFA; and Van Dewey of the Vinita 4-H Club in Kingman County.

Alumni — They Will Help

FFA Alumni Affiliates, are being organized all across Kansas and the Nation by active and enthusiastic FFA Chapters. There is only a little effort required to get one started, but a great deal of planning is needed to keep them functioning.

With our Alumni just reaching their first year of achievements at Wamego, we have found that the first year is its proving period. If the Alumni does not involve all of its members in a variety of activities, many members will not rejoin due to the simple fact that they did not contribute. However, if the Alumni is rolling good about the time of dues renewal they seem to keep supporting the program.

Some simple but worthwhile activities that the Wamego Alumni has helped with this year is allowing the FFA members to

use their equipment, livestock, and facilities to prepare for contests. This has helped the chapter win seven first and three seconds in ten District Contests that we have competed in.

The Alumni have sponsored students to fairs, shows, and camps. Helping with shop projects, BOAC, Safety and Food for America programs all have benefitted the chapter members and community. They also enjoy helping with award selections, sponsoring awards, of their respective businesses.

The FFA Alumni will help agriculture youth in many ways. They have the resources; they were young and they enjoy contributing to a worthwhile cause! Use the FFA Alumni in your community!

Plan Benefit Barbecue With State Contests

The Multiple Sclerosis (MS) benefit barbecue will coincide with the opening day of State Contests. This year the barbecue, sponsored by Alpha Gamma Rho Fraternity and Alpha Delta Pi, Will be held in front of Weber Hall from 4-6 p.m. on April 29, 1979.

MS is a condition of young adults which the nervous system is attacked, often leaving the victim crippled for life. No cause or cure has been found for the disease.

The meal will consist of smoked roast beef, baked beans, cole slaw, icecream, milk or tea, and potato chips.

Entertainment will be provided by Flint Hills Fever, a local band.

Tickets for the barbecue can be purchased from any member of Alpha Gamma Rho or Alpha Delta Pi or they may be purchased the day of the barbecue. Prices are \$1.75 for children and \$2.25 for adults.

Of the money received, 40 percent is to be used for research, 10 percent for administration, 10 percent for education and 40 percent for therapy.



The chapter's BOAC project could not have been undertaken without the support of the FFA Alumni: Shown here are members working together moving stone by stone of the 100 ton Original Pottawatomie County Jail at Louisville which was moved to Wamego City Park to be made into a Museum. The Alumni supplied tractors, trucks, and equipment for the project.

Kansas Farmer Congratulates

Kansas Farmer proudly congratulates the winners of the 1978-79 **FFA/Kansas Farmer Subscription Program**. The 29 winning FFA members and three winning instructors pictured here will receive travel scholarships of a one week, all-expense-paid trip to Hawaii, beginning June 5. There they will see Hawaiian agriculture as well as the popular tourist attractions.

This is the second annual subscription program sponsored by **Kansas Farmer Magazine**. Through the program, FFA members throughout Kansas had the opportunity to participate in subscription sales. All proceeds collected by members were equally distributed — one-third to the chapter treasury in cash; one-third to the individual sales person in the form of prizes; and one-third to the travel scholarship fund.

Winners are determined by the highest dollar amount of subscription sales produced by a member. To assure all members an equal chance to win, **Kansas Farmer** selected winners from all seven of the state's FFA Districts.

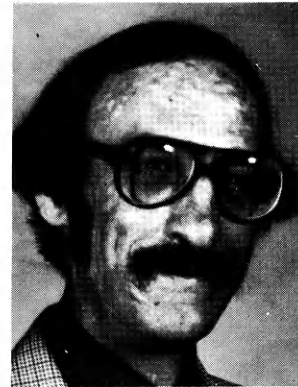
Kansas Farmer is proud to cooperate with the Kansas FFA in this mutually worthwhile program. We salute the entire FFA membership and its Vo-Ag Instructors for their fine efforts. And remember, **Kansas Farmer** has already begun making preparations for a third and even larger subscription program this fall. If you or your chapter wish to participate, have your instructor contact Lon Phillips, **Kansas Farmer**, 6811 W. 63rd St., Shawnee Mission, KS. 66202. ALOHA!!!



**Brian Beaumont,
Longton**



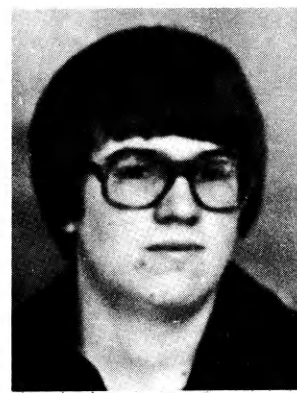
**Gary McAlister,
Howard**



**Howard Campbell,
Powhattan
Vo-ag instructor**



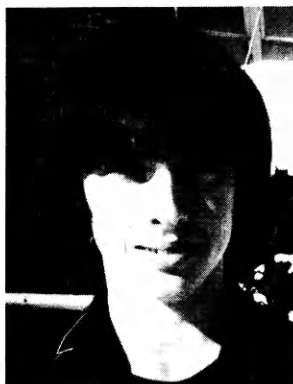
**Michael J. Houck,
Caney**



**Kenny Krouse,
Westmoreland**



**Jim Pittenger,
Wamego**



Jim Elder, Wamego



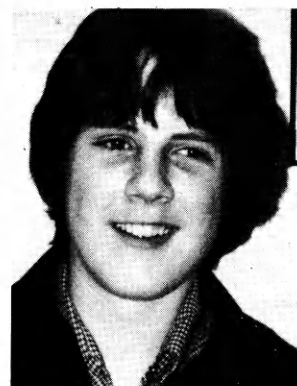
**Mark Marris,
Prairie View**



**Kenny Plummer,
Westmoreland**



**Daniel Renn,
Pittsburg**



Bill O'Conner, Paola



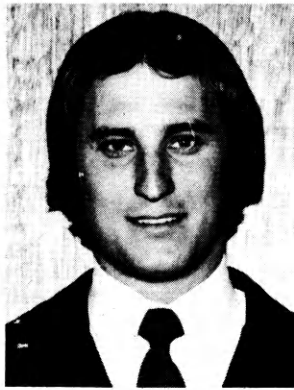
**Marvin Slyter,
Prairie View**



The Winners!



Kris Hanschu, Hope



**Don Phillips, Hope
Vo-Ag Instructor**



**Randy Rasby, Ness
City Vo-Ag Instructor**



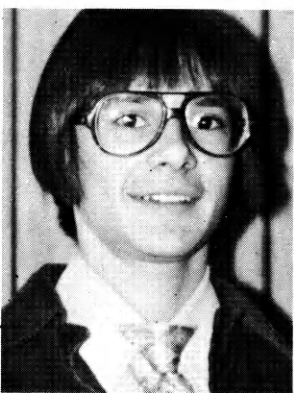
**Kelly Ladenburger,
Oakley**



**Michelle Stum,
Ness City**



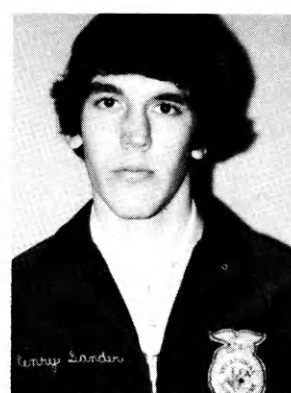
**Clinton Stamm,
Washington**



Daniel Deaver, Clifton



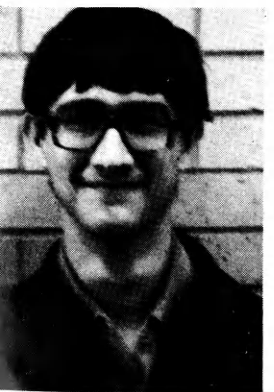
**Stephanie Smith,
Burden**



**Henry Sander,
Stockton**



**Chad Messenger,
Holcomb**



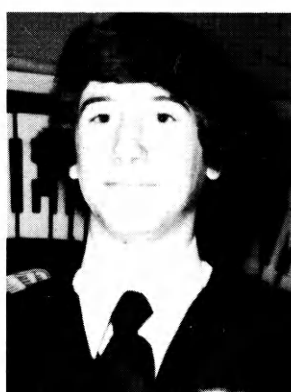
**Roger Sundgren,
Oakley**



**David Suderman,
Hillsboro**



Danny Cook, Hope



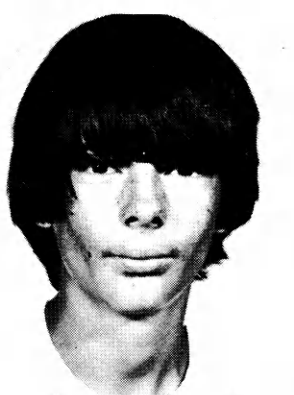
**Mike Worcester,
Hill City**



Frank Rohr, Quinter



Leah Schooley, Burden



Govie Mills, Lake City



Steve Drake, Burden



**Darwin Whipple,
Ness City**



Patrick Miller, Hays

Seven Kansas Farmer District Chapter Winners



NESS CITY FFA, l. to r.—Randy Rasby, VoAg Inst., Michell Stum, Darwin Whipple, and Mrs. Pauline Stacy, Program Specialist for Kansas Farmer



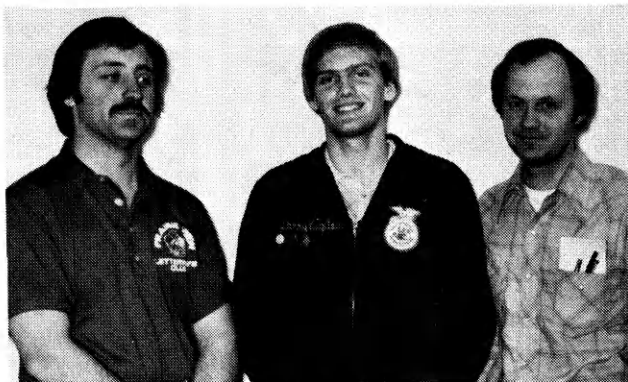
Hoxie FFA Chapter, l. to r. — Elizabeth Schroek, Herb Cressler, President, Hoxie FFA Chapter, and Paul Babcock, VoAg Inst.



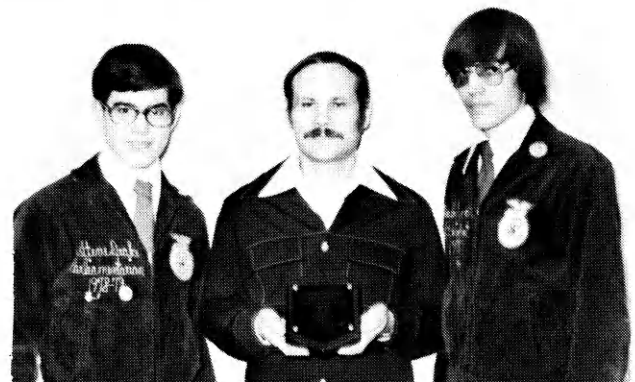
Hope FFA, l.to r. — Mr. Roy Smith Program Specialist for Kansas Farmer, Marty Schmitt Chapter President, and Mr. Donny Phillips VoAg Inst. North Central District.



Wamego FFA, l. to r. —Mr. George Ebert-Advisor, Roy Hatfield-Chpt. Pres. and Todd Brethour, Vice President.



LaCygne FFA, l. to r. — Mike Eastwood VoAg Inst.; Larry Bigelow Chapter President, and Marvin Creager VoAg Inst. East Central District.



Burden FFA, l. to r. — Steve Drake, Mr. David Brothers VoAg Inst., and Mark Scott Chapter President. South Central District.



Caney FFA, l. to r.— Mr. John Brooks VoAg Inst., Mike Houck, and Harry Clubine Chapter President. South East District.

National FFA Proficiency Winners To Tour Europe

Twenty-two top Future Farmers of America (FFA) award winners left New York today on the first leg of fifteen days of agriculture-related visits in five European countries. It is the first FFA trip of its kind to honor award winners according to FFA officials.

England, France, Belgium Luxembourg and Holland are countries scheduled on the trip, which is part of the FFA's incentive awards program encouraging proficiency in a variety of agriculture abilities. The participants won their right to go on the all-expense paid trip through their excellence in one of twenty-two particular endeavors, ranging from Diversified Livestock Production to Soil and Water Management, and Forestry to Floriculture. The travel seminar, like the monetary awards for the proficiency winners, is sponsored by concerns of business and industry through the National FFA Foundation.

"For the first time, these 'top of the heap' individuals will have a chance to see what agriculture is like in other countries, and perhaps see how people in other cul-

tures view our agriculture and country as a whole," said Robert Seefeldt, FFA Program Specialist for Awards, and coordinator of the International Seminar. Seefeldt also indicated that with the increasing "global nature" of American Agriculture—more exports of food and fiber—any exposure a young agriculturalist can receive to another culture would be beneficial as time goes on. "We need to be aware of how we are being perceived from outside the U.S.," he said.

The FFA members, ranging in age from 17-20, will start their travel seminar in Paris, where they'll visit the Paris International Agricultural and Machinery Exhibition, the largest show of its kind in the world, attracting nearly 1 million visitors yearly. Animals, machinery and food products are exhibited at the show, which draws visitors from 80 countries around the world. After two days here, the group will travel to England by Hovercraft where they'll visit London, Cambridge, the English Yong Farmer's Centre and a tractor manufacturing plant and farm machinery dealership.

A night boat trip will take them to Holland and sightseeing in Amsterdam. After early morning visits to greenhouses, nurseries and flower shops, the group will drive to Brussels for a briefing on the European Common Market. Return to the United States will be the following day after a brief tour of the Belgium countryside.

The FFA, chartered by the U.S. Congress as an integral part of the vocational agriculture program in the United States, already operates an international exchange program called Work Experience Abroad (WEA) that yearly involves several hundred young people, both foreign and American. Additional international involvement this year will stem from the Proficiency Travel Seminar and the National FFA Officers' Tour to Japan, which involved a week in February and was sponsored by Mitsui and Co., a Japanese trading firm.

Editors note: Don't you think you should apply for a proficiency award next year?



This is the Champion Livestock Judging team at the Denver Stock Show in FFA. From Left to Right - Representative of Public Service Co. of Colorado, Joe Rickabaugh, James Morgan, Paul Rickabaugh, Mark Rickabaugh, and Sam Harris, all of the Garnett FFA Chapter.

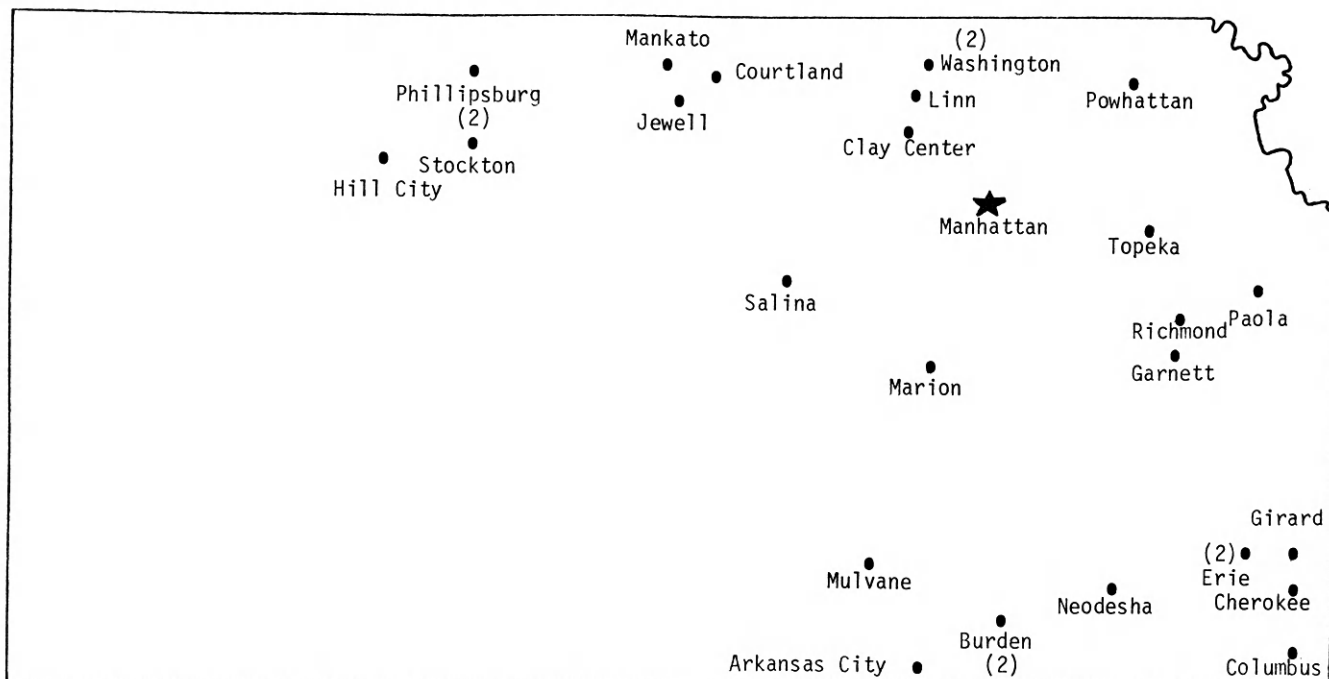
Mark was the high individual overall and was 5th in Swine, 4th in Sheep, and 6th in Beef.

Joe was 2nd individual overall and was 4th in Swine, and 3rd in Beef.

James Morgan was 10th overall.

Grass and Grain Record Book Awards

Record books are constantly being stressed in vocational agriculture and in FFA. "Grass and Grain" feels the same and are generous enough to recognize those individuals who excel in record keeping. This year's candidates for the awards are: Southeast - Randy Reinhardt, Erie, in Production; and Scott Williams, Girard, in Agribusiness; Northwest - J.P. Worcester, Hill City, in Production; Steve Hamel, Palco, in Agribusiness; Southwest - Monte Hampton, Ensign, in Agribusiness, and Teddy Unruh, Holcomb, in Production; North Central - John Gilliam, Washington, in Production; and Robert Chiles, Salina, in Agribusiness; East Central - Kevin Robinson, Mission Valley, in Production; and Larry Bigelow, Prairie View, in Agribusiness; South Central - Jeff Kimmell, South Barber, in Production and Mike Disberger, Haven, in Agribusiness; Northeast - Mike Rainwater, Hiawatha, in Production; and Joe Neumann, Troy, in Agribusiness.



The 1979 American Farmer Candidates

1. Leon LaGalle, Route #2, Colony, KS 66015 (Paola Chapter)
2. Gary Housholder, Courtland, KS 66939 (Pike Valley Chapter)
3. Roger E. Meyer, Route #1, Rock, KS 67131 (Central High - Burden)
4. Clint Trobaugh, Route #1, Burden, KS 67019 (Central High - Burden)
5. Daniel A. Lawless, Route #2, Box 445, Mulvane, KS 67110 (Mulvane Chapter)
6. Blaine D. Dryden, RR#4, Box 81, Phillipsburg, KS 67661 (Stockton Chapter)
7. Larry Lee Lankard, RR#1, Elk City, KS 67344 (Garnett Chapter)
8. Kevin Brockhoff, RR#4, Hiawatha, Ks 66434 (Powhattan Chapter)
9. David Loren Garrett, Box 332, Girard, KS 66743 (Girard Chapter)
10. Emanuel Joe Smith, RR#4, Independence, KS 67301 (Neodesha Chapter)
11. Becky Vining, RR1, Box 60, Richmond, KS 66080 (Central Heights Chapter)
12. Sandra Hundley, 3703 N. Kansas Avenue, Topeka, KS 66617 (Seaman Chapter)
13. Rodney D. Hughes, RR#1, Galesburg, KS 66740 (Erie Chapter)
14. Barbara K. Stich, RR#4, Chanute, KS 66720 (Erie Chapter)
15. Dee W. James, RR#1, Clay Center, KS 67432 (Clay Center Chapter)
16. Ronald S. Ditmars, RR#2, Washington, KS 66968 (Washington Chapter)
17. Kerry Zillinger, RR#4, Box 54, Phillipsburg, KS 67661 (Phillipsburg Chapter)
18. Jeffrey J. Zillinger, RR#4, Phillipsburg, KS 67661 (Phillipsburg Chapter)
19. Thomas K. Marr, RR#1, Box 77, Formoso, KS 66942 (Mankato Chapter)
20. Rodney Stewart, RR#2, Washington, KS 66968 (Washington Chapter)
21. Scott A. Lienberger, RR#2, Jewell, KS 66949 (Jewell Chapter)
22. Duane Meier, P.O. Box 58, Route 1, Palmer, KS 66962 (Linn Chapter)
23. C.J. Riemann, RR#2, Hill City, KS 67642 (Hill City Chapter)
24. Duane Edward Flaherty, 563 Berkshire Drive, Salina, KS 67401 (Salina Chapter)
25. Gerald W. York, RR#1, Box 141, Asbury, MO 64832 (Columbus Chapter)
26. Patrick Dale Smith, RR#1, Box 165, Oswego, KS 67356 (Southeast Chapter)
27. Jerry Winkley, RR#1, Box 175, Marion, KS 66861 (Marion Chapter)
28. Jeff Bryant, RR#2, Box 148, Arkansas City, KS 67005 (Arkansas City Chapter)

New FFA Alumni Executive Secretary



Dr. Lawrence (Larry) H. Erpelding is the new Executive Secretary for the Kansas FFA Alumni Association. He is a graduate of Atchinson County Community High School at Effingham, Kansas and received his B.S., M.S., and Ph.D. at Kansas State University. He is assuming the Alumni Executive Secretary position from Prof. Howard Bradley, who had done an outstanding job the past several years. Our thanks to him. Prof. Bradley is enjoying his retirement at 2147 Blue Hills Road in Manhattan.

Dr. Erpelding served as Regional Advertising Manager for the National Future Farmer Magazine from 1967-68. He taught vocational agriculture and was FFA advisor at Newton High School in Kansas for two years prior to that time. Several of his students were granted the State Farmer Degree. Dr. Erpelding's FFA Livestock Judging Team won first place in Kansas both years he taught. They represented his

home state in the National FFA Livestock Judging Contest and placed in the Gold Emblem Division. Dr. Erpelding's chapter was also a Kansas Gold Emblem Chapter. Two of his former students now teach vocational agriculture.

After receiving his Ph.D. at Kansas State University in 1972, Dr. Erpelding was the Director of Agriculture at Colby Community Junior College before becoming an assistant professor in Ag Education at Ohio State University. Last year he returned to Kansas State University and presently serves as Assistant Dean for the College of Agriculture.

Dr. Erpelding was active in the FFA during high school and college. He served as chapter FFA President, State President of the Kansas Association of FFA, and later became a member of the collegiate FFA chapter. He received the State Farmer degree and was honored as being the Kansas Farm Electrification winner and the Northeast Kansas District Star Farmer. He has received the honorary chapter degree from the Newton Kansas FFA Chapter and is a Charter Member of the FFA Alumni Association.

Dr. Erpelding is married to the former Donna Spachek from Lincolnville in Marion County. They have three children: Angela, 9, Bradley, 5; and Craig, 2.

We welcome Dr. Erpelding and thank him for taking on this additional responsibility.

To Sponsor National FFA Contests

Two companies recently signed agreements with the National FFA Foundation, Inc., to sponsor National FFA Contests in 1979. The agreements, signed by company officials, provide funds for administration, conduction and award presentations for two of the FFA's nine contests held at the national level.

The Patz Company of Pound, Wisconsin, has joined a present sponsor, Mid-America Dairymen, Inc., in co-sponsorship of the National Milk Quality and Dairy Foods Contest, and Hubbard Farms of Walpole, New Hampshire, is a new co-sponsor of the National Poultry Judging Contest. Hubbard joins Victor F. Weaver, Inc., in support of that contest.

All FFA contests are designed to follow closely the instruction presented in ag

classrooms across the nation related to the skills beneficial in obtaining gainful employment in a student's chosen career field, according to Ted Amick, FFA Program Specialist in the contest area.

The Poultry Contest is being co-sponsored by Hubbard Farms and Victor F. Weaver, Inc. Poultry Contest teams will evaluate two production classes of four production hens each, a class of production pullets and two classes of oral reasons on live birds. In addition the competition will include grading and evaluating a class of ready to cook broiler-fryers, a class of ready to cook turkeys, and a class of broken-out eggs—one for interior quality and a class for exterior quality. Here again, the teams will base their scores on U.S. Department of Agriculture standards.

Sponsors FFA Sheep Production Award

The National FFA Foundation, Inc., has announced the signing of a memorandum of understanding for sponsorship of the Future Farmers of America (FFA) Sheep Production Proficiency Award by American Sheep Producers Council, Inc., (ASPC) of Denver, Colorado. The agreement designating co-sponsorship with the National FFA Foundation General Fund, was recently signed by Richard D. Biglin, Executive Director of ASPC in Denver.

The Sheep Production Proficiency Award is one of 22 FFA Proficiency Award programs recognizing achievement in activities leading to careers in agriculture according to Robert A. Seefeldt, FFA Program Specialist. This award is presented at local, state, and national levels to FFA members who have demonstrated significant accomplishment in educational and work experience activities leading to a career in the sheep industry. Factors such as application of modern management practices, levels of efficiency, earnings and personal development are the basis for selection of winners in the award program.

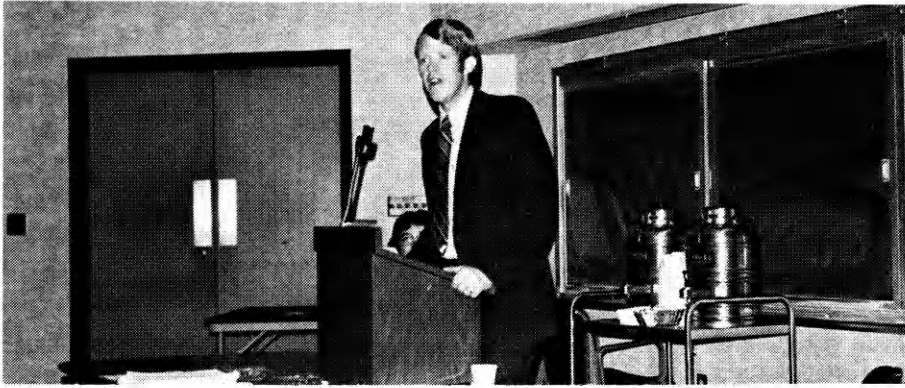
National FFA Officers To Tour Japan

Six National Officers of the Future Farmers of America (FFA) left Washington, D. C. bound for Tokyo, Japan and tours of the agricultural situation in that country, a large importer of U. S. farm products on February 9, 1979.

It is the first time the officers of the FFA, an organization of over 507,000 high school-age agriculture students, have travelled internationally through full financial support of a sponsor, this time Mitsui and Company, Ltd., a large Japanese trading company.

"It's the newest, most major addition to the Officer's activities," said Mark Sanborn, 20, of Colebrook, Ohio, who is National President of the FFA. "As agriculture becomes increasingly international in its scope, it's important that we make an effort to understand how our domestic production fits into the lives of those millions of people around the world that depend on it."

Woody Cox Visits Kansas



Woody Cox, Administrative Secretary to the FFA Alumni, presents his views to the group about the FFA Alumni.

Shortly before Christmas on December 13, 1978, Woody Cox made a special visit to Kansas to share with us his ideas concerning his philosophy towards organizing and productively using FFA Alumni Chapters. Fifty-five people from 15 differ-

ent chapters were represented at the meeting as well as Dr. David Mugler, Acting Dean, College of Agriculture, Dr. Larry Erpelding, Assistant Dean and Professor Paul Stevenson, Collegiate FFA Chapter Advisor.



FFA members from as far as Plainville attended the FFA Alumni meeting held in Manhattan in December.



National FFA Advisor H. N. Hunsicker looks on as Kelly Grant, National FFA Secretary, accepts a new brochure on the FFA National Hall of Achievement from R. M. Hendrickson, President of the Agricultural Division of Pfizer, Inc., and national chairman of the \$600,000 fund drive.

State Convention Supply Service

Don't Order anything from the National FFA Supply Service!

The Kansas State University Collegiate FFA chapter will sponsor a supply service again at this year's state convention. Caps, manuals, pocketknives, T-shirts, history books and necklaces are just a few of the items that may be purchased.

This Collegiate FFA service project helps chapters save postage and see exactly what they are buying. All of the merchandise comes from the National FFA Supply Service.

Attend FFA Leadership School

The Riley County FFA chapter attended the North Central District Leadership School on October 25.

Placing 2nd in the information contest and 3rd in the Ritual-Parlaw demonstration, Riley County received third place honors overall. This was the highest Riley County placing in five years.

Individually Riley County also did well. Rex Shorman was selected as sentinel for the Master Ritual team. Richard Lewelyn placed 3rd in the information contest. Jay Bohnenblust and Rex Shorman also well in this, placing 7th and 9th respectively.

Attend District Speech Contest

Riley County came away with a 4th place trophy and 2 medals at the North Central District Speech Contest held in Mankato, December 9.

Jay Bohnenblust led the way by placing 1st in the Junior Division with a score of 949 out of 1000, 26 points ahead of his nearest competition. His speech was entitled Personal Dynamics-The Mark of a Leader.

Keith Westervelt came home with the other medal for his 4th place speech in the Sophomore Division. Keith spoke on Horticulture Feeding a Hungry World.

Other placings were Glen Westervelt placing 10th in the Freshman Division. Other freshman were Blake Jorgenson and Mark Sylvester placing 21st and 23rd. Lynn Bohnenblust placed 19th in the Sophomres. Richare Llewelyn placed 6th in the Extemporaneous Division.

Formula for Eligibility

Have you wondered how to figure your eligibility for the Diversified Livestock Production Proficiency Award? Here's the formula.

ANIMAL UNITS GUIDE

<u>No. of Animals</u>		<u>No. of Animal Units</u>
_____ Beef-Bulls and Cows	x	1 = _____
_____ Beef under 1 year	x	.25 = _____
_____ *Beef over 1 year	x	.50 = _____
_____ *(not already listed this year)		Total Beef Units / _____ / A
_____ Swine-Boars and Sows	x	.4 = _____
_____ Swine-all other	x	.2 = _____
		Total Swine Units / _____ / B
_____ Sheep-Ewes & Bucks	x	.14 = _____
_____ Sheep-all other	x	.07 = _____
		Total Sheep Units / _____ / C
_____ Horses-1 year & over	x	1 = _____
_____ Horses-under 1 year	x	.5 = _____
		Total Horse Units / _____ / D

Grand total of all animal units owned by and which were a part of the student's Diversified Livestock Program the year he/she made application for recognition. (A + B + C + D) = E _____

Percent each

Species:

_____ _____ _____ _____
(A ÷ E) (B ÷ E) (C ÷ E) (D ÷ E)

Eligibility is determined on the basis of these final percentages. No applicant may have more than 66.67% of the animal units in any one species.

From the Editor

The Average Kansas FFA Chapter

Average is a word used in summarizing about everything. One definition of average is that it's the best of the worst and the worst of the best. How does your chapter rank? Compare it to the average FFA Chapter.

The average Kansas FFA Chapter has 51 vocational ag students and 45 of the 51 are FFA members. They will attend leadership school six out of ten years; attend FFA Camp five out of ten years; and will attend the State FFA Convention almost every year. The chapter will compete in 6.5 contests a year including 53 students and will be ranked a Superior Chapter in the National Chapter Award Program every other year; a Superior Safety Chapter every five years and an area BOAC winner two out of every five years. Two FFA members will apply for a district proficiency award and one member will be a State Farmer. Every twenty-five years the chapter will have a State Officer and every twelve years, the Chapter should have a District Star Farmer or Star Agribusinessman.

If you're not average, try to improve and if you are average — then remember you're still the worst of the best. Let's get together and make the best better.

CHAPTER REPORTS

Salina Central Places At The Meats Contest

The Salina Central FFA Chapter placed fourth in the district Meats contest held Thursday, February 8. Bob Chiles took eleventh in the individual ratings. Other team members were: Pat Wearing, John Zerger, Jennifer Boyce, Charles Gray, and Doug Nemochek.

Becky Jennison
Chapter Secretary

Salina Central Places In Crops and Poultry Contests

The Salina Central FFA Chapter placed third in the district Crops contest at Chapman. Team Members were: Roger Daily, who placed 6th high individual, Angela Einfeldt, Charles Gray, Pat Wearing, John Zerger and Bill Rauh. At the same contest Salina's poultry judging team took fourth with Freshman Doug Pahls 3rd high individual. Other members were: Lee Weis, John Thelander, John Zerger, and Bill Rauh.

Becky Jennison
Chapter Secretary

Float Takes First

The Marysville FFA Chapter had the first place float in the Homecoming Parade. The Freshman members had to be the Blue Jays and pull the float during the whole parade. The king, Brian Holle decided when one would go down. Then two guards would throw him to the back of the float into the mouth of a Bulldog. Everyone enjoyed it.

Mission Valley FFA At Hutchinson

by Scott Wendland

Mission Valley FFA Chapter Reporter

The Mission Valley FFA returned home with the Grand Champion Swine Herdsmanship Trophy and Ribbon from the Kansas State FFA Livestock Show at Hutchinson. The FFA show is held in coordination with the Kansas State Fair.

This is the fifth year the FFA has gone to Hutchinson.

This year the Chapter won Grand Champion Herdsmanship award. Herdsmanship is judged on the quality of the animals, the appearance of their animals, cleanliness of the stalls and aisleway, and identification of the exhibits. This year each member had a small outline of a hog with his name on it. In the middle of the pens they had a life size hog with the Chapter's name on it, showing that 29 people in our chapter are raising 1,444 hogs.

Kent Hannigan and Troy Sage were the sheep showmen this year. After being judged on a similar basis, they ended up placing third in herdsmanship.

The show was a good chance for members to practice leadership and responsibility as they organized in shifts to watch the barn, cleaned up and answered questions that anyone asked as they passed through the barn.

Fourteen people from Mission Valley attended. They were: Gail Sage, Jay Wheeler, Scott Breadow, Carey Elgin, Gary Montgomery, Howard Fritz, Bruce Fouts, Joe Crow, Jay Thompson, Craig Lister, Mike Mills, Brent Crow, Kent Hannigan, and Troy Sage.

M.V. Meats Team Places 12th in Nation

A team from the Mission Valley FFA designated as the official Kansas team returned from the National Meats Contest at the 51st National FFA Convention with a Silver award indicating a 12th place finish from among the 34 states entered.

Jay Wheeler received a gold medal for his achievements while Kevin Robinson and Rick Smith were each awarded silver medals. The alternate was Mick Bowers. Rick Smith was also high in the nation in beef grading.

At the national level, judging contest results are awarded on the basis of gold, silver and bronze with a number of states receiving no recognition or awards. The Mission Valley team, which scored 1,408

points, was only 114 points behind the first place team from Iowa while scoring 552 points more than the last place team which was New Hampshire.

The contestants had to evaluate classes of lamb carcasses, beef carcasses, beef ribs, pork carcasses, and hams. They also had to quality grade and yield grade 20 beef carcasses in the same manner as a USDA grader would. In addition, retail cuts of beef, pork, and lamb had to be identified.

This is the third time in the seven year history of Mission Valley High School that an FFA team from this school has earned the privilege of representing Kansas at a national contest.

Scott Wendland

Mission Valley FFA Chapter Reporter

Mission Valley FFA Brings Home Trophies

Mission Valley returned from the East Central Kansas District FFA Leadership contest with the biggest array of trophies and awards any chapter has compiled since the contest began. Both the regular FFA officers and the Greenhand officers won first overall in their respective division.

The regular FFA officers won first in the parliamentary procedure and ritual contest thereby qualifying the Mission Valley chapter to be one of the seven chapters in the state contest next June at the State FFA Convention. This is the first time that Mission Valley has ever won this contest although they have been second many times. In this phase of the contest, Rick Smith received a trophy plaque as the Star President of the District.

In the regular officers FFA information contest, M.V. ranked second with Kevin Robinson receiving a medal for being the second high individual.

The Greenhand segment of the contest really showed the superiority of the Mission Valley entries. In the Pre Law and ritual contest, Mission Valley won first while placing five of its members on the Star Officer team of which there are only six members. Ann Durkes was named as the Star President, Dave Fredrickson received the Star Secretary, Jim Rudeen was the Star Treasurer, Steve Gleason placed as the Star Reporter, while Mark Boline received the Star Sentinel. No chapter has ever placed five of its officers on the Star Ritual Team.

The Mission Valley Greenhands did not slow down when it came to the information contest. As a team they won first while as individuals Ann Durkes won first, Mark

Curran and Mark Boline placed second, Dave Fredrickson and Steve Gleason were fifth, and Jim Rudeen was ninth.

The results of the Leadership Contest are even more impressive when one considers there are 13 chapters competing — such as Seaman, Lawrence, Paola, Garnett, Emporia, and other large schools. Once again, competition reflects the quality of the education and training given to the FFA members at Mission Valley.

Scott Wendland

Mission Valley FFA Chapter Reporter

Southeast District Uses The Most Calendars!

Thirty-five chapters in Kansas used the FFA Calendars this year. Southeast District barely edged out South Central, North Central and Northwest districts in calendar usage. The following schools effectively used the FFA Calendar this year as a PR tool: Southeast — Altamont, Cherryvale, Erie, Fredonia, Girard, Howard, Longton, and Yates Center; North Central — Abilene, Chapman, Clifton, Ellsworth, Mankato, Morrowville, and Washington; Northwest — Hoxie, Hill City, Norton, Phillipsburg, Plainville, Smith Center, and WaKeeney; South Central — Council Grove, Lawrence, Mission Valley & Osage City; and Northeast — Wamego and Westmoreland.

Hayrack Ride For F.F.A. and F.H.A.

The annual FFA-FHA hayrack ride held last Saturday was on an unseasonably warm autumn night.

The two wagons, filled with the sponsors and about 60 girls and boys, left the Unified Office and headed to the rock quarry south of Eskridge.

As the groups arrived, the bonfires had already been lighted and the hot dogs, chips, marshmallows and apple cider were waiting.

After everyone finished eating they loaded up for the return trip. Roger Grodon, chairman, was in charge of the planning and arrangements for the hayrack ride.

Scotty Wendland, FFA reporter, said the FFA appreciated the use of the equipment donated by Jay Wheeler, Nancy Blythe, Jay Thompson, and Scott Robinson, and also appreciated Mr. and Mrs. Phil Wendland, Frank Miller, and Mr. and Mrs. Jim Williams serving as sponsors.

Scotty Wendland

Mission Valley FFA Reporter

Atchison County Has Busy Month

February was a busy month for the members of the Atchison County FFA Chapter, in Effingham, Kansas.

We served the FHA Parent and Daughter Banquet and on Feb. 21st we held our annual Father & Son Chili Supper. The night's activities included raising 15 Greenhands to the degree of Chapter Farmer and viewing the film entitled 7 Stars Over Kansas, featuring the 1978 District Star Farmers. Gregg Oswald, who was a former member and officer of our chapter was shown as the Star Farmer of North East Kansas.

During National FFA Week—Feb. 17th - 24th, several of our chapter officers and members made announcements concerning the FFA over our local KARE radio station.

We have chosen four candidates for our FFA Sweetheart. They are Laura Speer, Kathy Snyder, Rhonda Oswald and Penny Nieman.

On Feb. 24th, we competed in the North East District Farm Mechanics Contest at Meriden, Kansas. Our A-team placed third overall and the B-team placed first. Those members earning medals were Chris Wehking 2nd high for the A-team, and Duane Sinclair 1st high and Robert Rork 2nd high for the B-team.

Members are currently conducting the spring magazine sales.

Arthur Young
Atchison County FFA Reporter

Hawaii Trip For Holcomb Youth

Chad Messenger a Junior at Holcomb won an expense paid trip to Hawaii through selling the Kansas Farmer Magazine. Chad's sales amounted to \$290 which earned the Hawaii trip sponsored by the Kansas Farmer Magazine.

Rick Klaus,
Holcomb FFA
Reporter

Holcomb Students Win Awards At Banquet

Five members of the Holcomb FFA attended the annual Soil Conservation Banquet, January 22. The members had the opportunity to listen to guest speaker, Dr. Larry Flinchbaugh, assistant to the President at Kansas State University. The main topic of the speech was tax reform. Mem-

bers found Dr. Flinchbaugh to be very informative and humorous.

The members were present to receive land judging pins by placing at the State Land Judging Contest last fall. In the Junior Division, Teddy Unruh—first, Chad Messenger—second, and Ronnie Haas—third. In the freshman division, Randy Unruh was first and Alan Myers—second.

Rick Klaus
Holcomb FFA
Reporter

Ski Trip For Top Salesman

The Holcomb FFA Orange and Grapefruit Sales have been completed and as a result 4 members will be taking an expense paid ski trip to Powder Puff Resort in Red River, New Mexico. The group will leave on February 16th and return the 19th. Members selling over 1200 pounds of fruit were eligible for the trip.

Rick Klaus,
Holcomb FFA
Reporter

Holcomb Students Enter Corn Growing Contest

Seven Holcomb FFA members participated in the Rob-See-Co. 304-Bushell challenge Corn growing contest. Keith Richmeier placed third in Kansas competition with a yield of 170.6 bushels per acre. Greg Holsted was fourth and Bryan Roth was 7th.

For their efforts the boys will receive a jacket and plaque at a banquet in March. Others from Holcomb who will receive a cap and certificate are: Jeff Adam, Tom Miller, Karl Larson and Craig Adam.

Rick Klaus,
Holcomb FFA
Reporter

Announce District Winners From Holcomb

The State Farmer selection committee composed of Agriculture Teachers met Saturday, Feb. 24, at Liberal Community College for selection of State Farmers and District Award Winners. The Holcomb Chapter was designated as a superior chapter. Individual winners for Holcomb were: Teddy Unruh, District Star Farmer; placement in Agricultural Production — Chuck Foreman, and Vegetable and Ornamental Horticultural Production, Chad Messenger.

Teddy Unruh will receive a plaque and \$20 as District Star Farmer. In addition he will appear on the film, "Seven Stars over Kansas," to be shown during the State Convention in Manhattan in June. Chuck

and Chad will receive a plaque and \$15 and their entries will be entered in State competition. They will announce winners during the State Convention.

Rick Klaus, Reporter

FFA-FHA Pick King and Queen

The FFA-FHA dance was held in the Holcomb High School Dining Room on February 2. The theme of the dance was "Sharing the night together" The candidates for the FFA King were: Greg Holsted, Rick Klaus, Doug Munsel, Chuck Foreman and Jeff Sroufe.

The candidates for the FHA queen were: Paula Saiz, Carol Danler, Michelle Richmeier, Jennifer Kraus, and Sheila Hahn. The FHA queen was Carol Danler and The FFA King was Rick Klaus. A Garden City band, Majesty, played for the dance.

Rick Klaus
FFA Reporter

Riley Chapter Host Fall Grain Show and Chicken BBQ

The Riley County FFA chapter hosted it's annual Fall Grain Show and Chicken Barbeque on October 28.

More than 600 persons were served at the yearly public relations event including state officers Jeff Yarrow and Brenda Hundly. Les Olsen current state FFA adviser and former Riley County advisors also attended.

A program after the meal featured Jeff Yarrow, state FFA president as the speaker. Also at this time the chapter selected the 1978-79 sweetheart. Sharon Steiner was selected from three finalist and will represent Riley County at the district sweetheart selection.

The officers then gave a Par-law demonstration for the crowd and the meeting adjourned.

Marysville Attends National Convention

Six Officers and 4 Seniors attended the National Convention this year. Officers attending were James Friedrichs, Doug Linkugal, Brian Holle, Kevin Fritz, Jeanette Jones, and Shelly Pacha. Seniors were Ed Hawkins, Lori Koch, Mark Pralle, and Kevin Peeks.

Some of the highlights of the convention enjoyed were seeing Micky Mouse in per-

son, hearing Paul Harvey and President Carter and listening to the rock band. It was a great experience for all.

The Marysville FFA Livestock Judging Team went to the Angus Futurity at Hutchinson. They also took a 4-H Team which placed 1st. Peggy Pacha was high individual in the contest. The rest of the team consisted of Brenda Holle, Ann Schotte, and Shelly Pacha.

Name Sweetheart

Miriam Frese, Herkimer was named the Marysville FFA chapter sweetheart at the annual Kiwanis Farm-City Dinner. Her attendants were Gina Pacha and Colleen Rengstorf.

Seven girls were in the contest. The other four were Peggy Pacha, Jamie Breeding, Pat Moehlenbrink and Deb Sweet. Each of the girls had to give a speech about themselves, answer questions the judges asked, build a milk stool, milk a cow, stack hay and dress a baby pig in baby clothes. After their scores were added up the top three had to give a speech in front of the FFA. Members then decided on who they wanted as sweetheart.

Marysville Takes Third In Speech Contest

Marysville attended the Northeast District Public Speaking Contest at Hiawatha Wed, Dec. 20. They received third overall.

James Friedrichs placed 5th in the Senior division and will go to state in the spring. Doug Linkugal was 6th. In the Junior division Shelly Pacha placed 5th and Brian Holle received 9th. Becky Cohorst was first in the sophomore while Bryan Cudney was 2nd.

In the Freshman division Diane Hellmer received 2nd and Ann Schotte was 4th. In Extemp. Brian Holle received 2nd and Jeanette Jones was 3rd. They will also go state in the spring.

The creed was said by Ann Schotte who tied for 3rd and Brenda Holle tied for 7th. In the Extra-freshman division Lyle Peterson placed 2nd. Nancy Saathoff was 5th and Brenda Holle tied for 7th.

Chapter Reporter,
Shelly Pacha

A Smashing Success



Marvin Hachmeister, Plainville High School vocational agriculture instructor, shows FFA boys how to debone the meat used in making sausage. The organization made almost 5,000 pounds of sausage for a Saturday supper.

Because of the 750 supporting people that attended the FFA Pancake Supper or one of 585 persons who purchased some of the 4,500 pounds of sausage; the annual Plainville FFA Sausage project was a great success. The profit from the event is but one measure of success as there are many other valuable aspects which include; salesmanship, working with people and meeting the public, class learning and laboratory experience of the pork industry and food preparation, and serving the public. FFA members owe Bill Kriley of the Plainville Lockers many thanks as Bill not only permits the boys to use the locker facilities, but he shows the members how to use equipment and works with them during

the week of hard work. The Future Farmers of America organization worked nearly 500 man hours in processing and packaging the sausage plus numerous hours in securing orders and selling. Forty-five members, sixteen FFA mothers, and two school cooks prepared and served 350 pounds of sausage, 115 pounds of pancake flour and 1,080 eggs to the capacity crowd.

The project was one of several activities the vocational agricultural students conducted during National FFA Week which was February 17 to 24. The special week is for the purpose of informing the public of the Future Farmers of America Organization.

Other FFA Week activities to celebrate, "FFA at 50, A Golden Past, A Brighter Future" include: KAYS TV program, six interview programs on KJLS Radio, two window displays down town, full page of pictures and articles depicting the FFA Motto with other newspaper articles, church bulletin fillers, school bulletin board, outdoor billboard, all school program with sweetheart contest, overall and hat day, FFA jacket day, faculty cherry pie and ice cream social after school on Washington's birthday, and 300 envelope stuffers for the three school secretaries to use in school mailings.

Chuck Meyers—Reporter

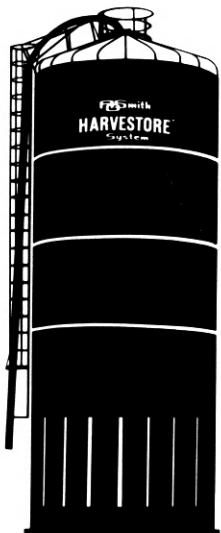
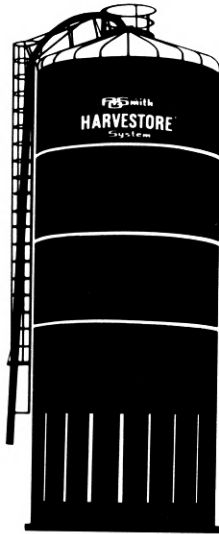
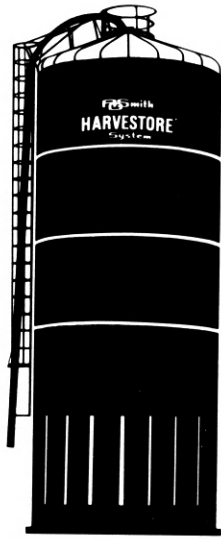
PANCAKE & SAUSAGE PROJECT Feb. 17, 1979

RECEIPTS:

Supper attendance (580 adults, 180 children, 85 FFA members and mothers)	\$2,185.00
Sale of 120 lbs. liver @ \$.40	48.00
Sale of 4350 lbs. of sausage (2 lbs. @ 3.80; 5 lbs. @ 8.50; order of 20 lbs. or more @ 1.60 per lb.)	7,308.00
TOTAL RECEIPTS	\$9,541.00

EXPENSES

22 sows weighing 9,095 lbs.	\$4,277.57
Beatrice Foods Co. (2 cases of oleo patties)	17.52
Gilpin-Gorton (9 lbs. coffee)	21.75
Gamble Robinson Co. (90 dozen eggs)	67.67
F. & A. Sales Co. (8 gal. syrup)	17.60
Mammels (3 gal. syrup, 1 gal. oil, napkins)	17.91
Finnesy Grain (110 lbs. pancake flour)	23.83
Mrs. Ross & Mrs. Strouse for labor at supper	52.80
Coop for gas for hauling hogs	13.20
Johnie Dauie for 11 gal. milk	12.00
Plainville Lockers	1,166.09
TOTAL EXPENSE	\$5,687.94
NET PROFIT	\$3,853.06



Own a Harvestore® system.



YES YOU CAN

Admit it, you'd like to own one but wonder if you'd be able to pay for it.

But have you ever wondered if you're paying for a Harvestore® system and still don't have one? Paying for it with the high cost of protein... and storage losses... and sweat and strain... and poor results when you are forced to feed rain-damaged crops.

Maybe you're paying for a Harvestore system without owning one. Find out. Start by filling out the coupon below and mailing it to us.

I'm ready. Please send me additional information about Harvestore® storage systems and feeding equipment.

To: (Newspaper — Insert dealer name and address)

Name _____

Address _____

Town _____ County _____

State _____ Zip _____ Phone (____) _____
Area Code Number

Acres farmed _____ Dairy _____ Hogs _____ Beef _____
(Number) (Number) (Number) (Number)

MID AMERICA HARVESTORE, INC.
2804 ARNOLD ROAD
SALINA, KANSAS 67401

Grow it your way



...with our crop money.

Growing crops is your business ... ours is financing agriculture. We're the farm credit people. That's our specialty.

So when you've got a cropping plan that calls for cash, count on PCA ... leaders in crop financing.

We understand your needs, large and

small. And we're committed to helping you achieve your goals. You'll find

that PCA has the flexibility to tailor loan terms and repayment to fit your particular plan.

We hear you talking. We understand. And with your sound plan

and our money, you can grow crops your way.



Visit the Kansas Production Credit Association office near you.

BELOIT
121 W. Main

CHANUTE
208 N. Lincoln

CLAY CENTER
906 Sixth

COLBY
1055 S. Range

CONCORDIA
301 W. 7th

COUNCIL GROVE
315 W. Main

DODGE CITY
1000 W. Wyatt Earp Blvd.

EL DORADO
5th and Main Plaza

FT. SCOTT
323 E. Wall

GARDEN CITY
1606 E. Kansas

GREENSBURG
203 N. Main

HOLTON
Highway 75

HOWARD
101 N. Wabash

KINGMAN
435 N. Main

LARNED
702 Broadway

LIBERAL
21 Plaza Drive

MANHATTAN
600 Humboldt

MANKATO
102 S. Commercial

OTTAWA
214 S. Hickory

PRATT
306½ S. Main

SALINA
1321 W. Crawford

STOCKTON
523 Main

LET'S TALK.



PCA

KANSAS ASSOCIATION OF FFA
Department of Adult & Occupational Education
Holton Hall, Kansas State University
Manhattan, Kansas 66506



46650
JUN 20 1980
KANSAS STATE UNIV
LIBRARY-SERIALS DEPT
MANHATTAN KS 66502
XXXX
XXXX

NON-PROFIT ORGANIZATION
U. S. POSTAGE
PAID
MANHATTAN, KANSAS
PERMIT NO. 26