

S
33
F8
K3
405

per

MAY 20 1970

S08

The KANSAS Future Farmer



Published by
**THE KANSAS ASSOCIATION
 FUTURE FARMERS OF AMERICA**

NATIONAL OFFICERS, FUTURE FARMERS OF AMERICA
1969-70

Constituting the
NATIONAL BOARD OF STUDENT OFFICERS

- PRESIDENT Harry Birdwell
Box B, Fletcher, Oklahoma
- VICE PRESIDENT, NORTH ATLANTIC REGION Charles S. Postles, Jr.
Milford, Delaware
- VICE PRESIDENT, SOUTHERN REGION C. W. St. John
Route 1, Box 117, Redfield, Arkansas
- VICE PRESIDENT, PACIFIC REGION David Dietz
Route 1, Box 398, Canby, Oregon
- VICE PRESIDENT, CENTRAL REGION Steven Zumbach
Route 1, Manchester, Iowa
- NATIONAL SECRETARY Dennis Pharris
Route 1, Hillsboro, Texas
- ADVISOR H. N. Hunsicker
Washington, D. C.
- EXECUTIVE SECRETARY William Paul Gray
Washington, D. C.
- TREASURER J. M. Campbell
Woodstock, Virginia

-----FFA-----

NATIONAL FFA BOARD OF DIRECTORS

- H. N. Hunsicker, Chairman, Office of Education, Washington, D. C.
- George R. Cochran, State Supervisor, Agricultural Education, St. Paul, Minn.
- James Fink, State Supervisor, Agricultural Education, Harrisburg, Pennsylvania
- V. B. Hairr, State Supervisor, Agricultural Education, Raleigh, North Carolina
- John W. Lacey, Office of Education, Denver, Colorado
- Byron F. Rawls, Office of Education, Kansas City, Missouri
- Jesse A. Taft, Office of Education, Boston, Massachusetts
- J. W. Warren, Office of Education, Charlottesville, Virginia
- D. E. Wilson, Chief, Agricultural Education, Sacramento, California

THE KANSAS FUTURE FARMER
Harold Shoaf, Editor

OFFICERS OF THE KANSAS ASSOCIATION
FUTURE FARMERS OF AMERICA

Doug Deets, President
Arkansas City

Stanley Jackson, Reporter
Smith Center

Phil Stinemetz, Vice President
Hill City

Ronald Roth, Sentinel
Clay Center

Robert Schrag, Secretary
Moundridge

Harold Shoaf, Executive Secretary
Topeka

Rod Rahn, Treasurer
Arkansas City

C. C. Eustace, State Advisor
Topeka

Volume XXXX

May 20, 1970

No. 5

TABLE OF CONTENTS

PICTURE SECTION

42nd State FFA Convention	1
Star District Farmers of 1970	2
Honorary State Farmers	4
Convention Organist	5
North Central District Achievement Banquet	7
Southeast District Achievement Banquet	8
Postsecondary Meeting	9
Kaw Area School	9
Inman Chapter Sweetheart	9
Arkansas City	9
1970 Summer FFA Leadership Conference Program	10

CONVENTION SECTION

Parliamentary Procedure Contest	11
Chapter Award Program Reports	12
Co-op Activities Awards	13
Robert Schrag, Moundridge, State Public Speaking Winner	13
Hill City Wins Scrapbook Contest	14
1970 Honorary State Farmers	14
Santa Fe Scholarships	15
Union Pacific Scholarships	15
1970 National FFA Foundation Award Winners in Kansas	15
State Farmers	17
Meet your 1970-71 FFA Officers	19
"Seven Stars Over Kansas"	19
First Star Agribusiness Award in Kansas	19
Ronald Roth 1970 Star Farmer	20
Attention Advisors	20

ACTIVITIES SECTION

Wanted: Ride to National FFA Leadership and Citizenship Conference 21

Attention: ABA and FFA Members 21

Osage City Needs Agricultural Employees 22

New Responsibilities for National FFA Leaders 22

Kansas FFA European Study Tour 23

25 Percent of Kansas Chapters use National FFA Calendar 23

National FFA Convention Needs Stage Crew Members 23

National Talent Show 23

Revamped Proficiency Awards 24

National FFA Magazine 24

1971 FFA Week Theme 24

Leadership Training: FFA Camp 24

CHAPTER AND DISTRICT SECTION

Arkansas City FFA Chapter News 25

North Central District 25

TABLE OF CONTENTS

PICTURE SECTION

1 42nd State FFA Convention

2 Star District Farmers of 1970

4 Honorary State Farmers

5 Convention Organist

7 North Central District Achievement Banquet

8 Southeast District Achievement Banquet

9 Postsecondary Meeting

9 Kaw Area School

9 Iman Chapter Sweetheart

9 Arkansas City

10 1970 Summer FFA Leadership Conference Program

CONVENTION SECTION

11 Parliamentary Procedure Contest

12 Chapter Award Program Reports

13 Co-op Activities Awards

13 Robert Schrag, Moundridge, State Public Speaking Winner

14 Hill City Wins Scrapbook Contest

14 1970 Honorary State Farmers

15 Santa Fe Scholarships

15 Union Pacific Scholarships

15 1970 National FFA Foundation Award Winners in Kansas

17 State Farmers

19 Meet your 1970-71 FFA Officers

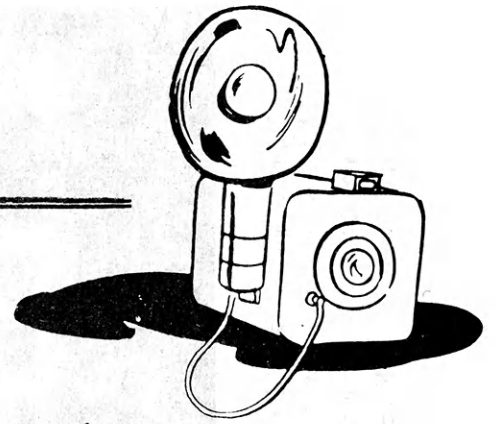
19 "Seven Stars Over Kansas"

19 First Star Agricultural Award in Kansas

20 Ronald Ross 1970 Star Farmer

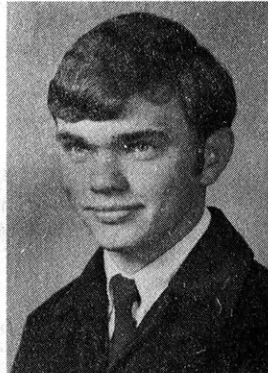
20 Attention Advisors

PICTURE SECTION



For complete stories of the pictures in this section, please refer to the Activities Section.

42nd STATE FFA CONVENTION



Doug Deets, senior at Arkansas City High School, will head the nearly 7,000 Kansas FFA members for 1970-71.



Ronald Roth, 17-year-old Clay Center FFA member was named Star Farmer of Kansas for 1970. From left to right are Mr. and Mrs. John Roth, Star Farmer Ronald Roth, Advisor Les Olsen, Principal Ed Butterfield, Assistant Principal Ernest Larson, and Superintendent Charles Stuart.



Mr. Clay Devitt presents the first place State chapter plaque to Concordia President Mike Cleveland. Left to right are Mr. Clay Devitt, Advisor Steve Reedy, and Mike Cleveland.

STAR DISTRICT FARMERS OF 1970

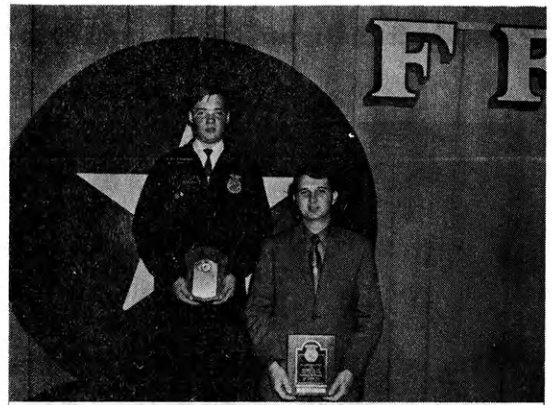


Northeast - David Carnahan, Wamego
East Central - Merrill Crawford, Seaman
Southeast - Kent Hansen, Altamont
South Central - Karl Magnusson, Winfield

Southwest - Wesley Schmidt, Hugoton
Northwest - Corey Lowdon, Osborne
North Central - Ronald Roth, Clay Center



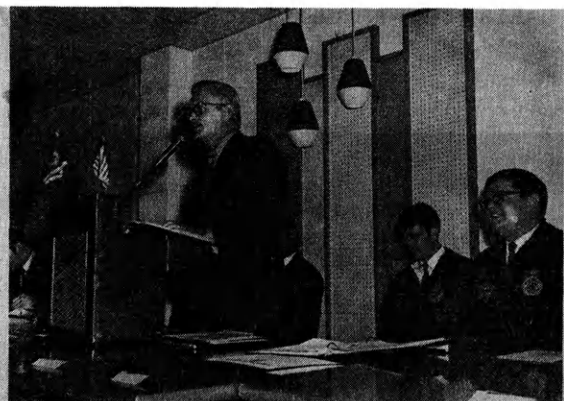
Mr. Bill Bork, Executive Assistant, Kansas Coop Council, presents the first place coop activities trophy to Advisor Terry Fanning, Eskridge.



First State Star Agribusiness Award winner is Robert J. Schrag, Moundridge FFA Chapter. Here the Star Agribusinessman is shown with Advisor Dan Marrs.



National FFA President Harry Birdwell challenges delegates to set high goals.



Mr. Clay Devitt, Regional Director, Sears-Roebuck Foundation, sponsored the delegate leadership training conference at the State convention. Mr. Devitt gives a few timely tips to the delegates.



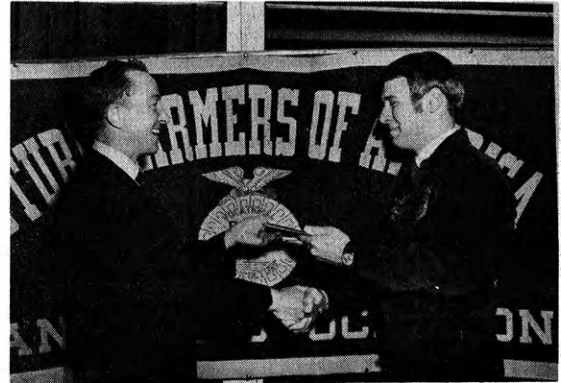
The number one State parliamentary procedure team is Hill City. From left to right are Gary Worcester, Phil Stinemetz, Pat Null, Bob Frazey, Gary Gano, Gary West, and Advisor Joe Farrell. The State Parliamentary Procedure Contest was sponsored by the Federal Land Bank of Wichita.

HONORARY STATE FARMERS

President Lauren Libby confers the Honorary State Farmer Degree on:



Loren Simmons
Special Assistant
Atchison, Topeka, and Santa Fe



Charles Sledd
Director of Information
Kansas Electric Cooperatives



G. D. Schumacher, President
Great Bend Manufacturing
Company, Inc.



Dick Bonfy
Maurer-Neuer Packing Company



John Keas
Kansas State Fair Board



Dr. Miles McKee
Animal Science and Industry
Kansas State University



Earl Baugher
Department of Ag. Engineering
Kansas State University



Virgil Huseman
WIBW Radio and TV
Topeka, Kansas



Melvin Briley, Asst. Director
Columbus Division
Southeast Kansas AVTS

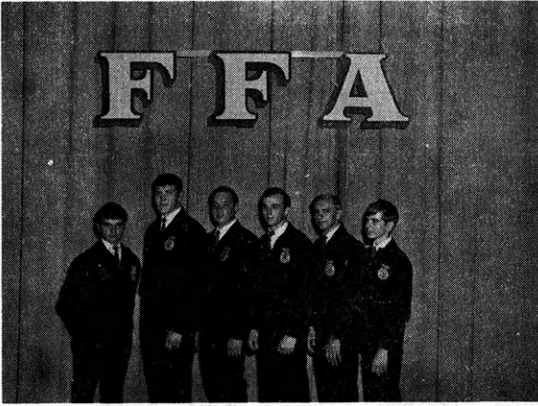


Jim Macy
President of KVATA

CONVENTION ORGANIST

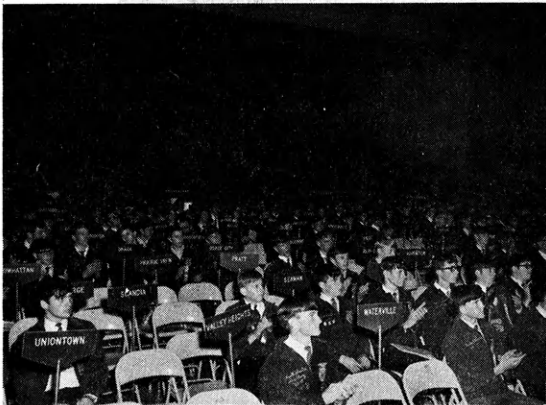
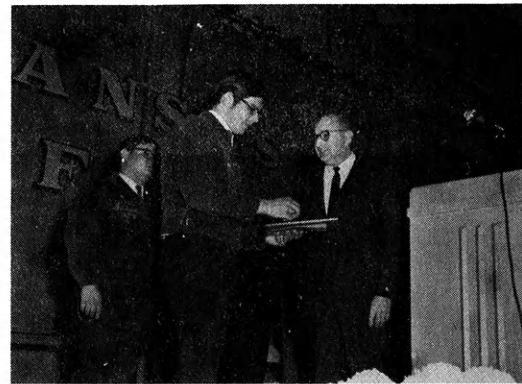


Organist John Carey of Alma served to brighten up the State convention with his musical talent.



The 1970-71 State FFA officers are, from left to right, Doug Deets, president, Arkansas City; Phil Stinemetz, vice president, Hill City; Robert Schrag, secretary, Moundridge; Rod Rahn, treasurer, Arkansas City; Stanley Jackson, reporter, Smith Center; and Ronald Roth, sentinel, Clay Center.

Mr. Charles Ellis, Chairman, Kansas Farm Electrification Council, presents the top electrical award to John Morgan, Concordia FFA Chapter.



Delegates transacted the business of the Kansas Association of FFA.

The 1970 State foundation award winners.



NORTH CENTRAL DISTRICT ACHIEVEMENT BANQUET



North Central District Star Farmer Ronald Roth shown with Advisor Les Olsen on left and Mr. and Mrs. John Roth on the right.



Paul Westerman, Ellsworth Chapter, is congratulated by Mr. Bill Bork, Executive Assistant, Kansas Coop Council, for first place Coop Quiz winner in the North Central District. Paul was high individual and his chapter was first in the district.



North Central District officers, left to right, are Advisor Les Olsen, Reporter Edwin Klippenger, Vice President Paul Westerman, President Ronald Roth, Secretary Marion McMillan, Treasurer Michael Krathy, and Sentinel Jerry Russell.



Mr. Willis Weichel, Assistant Manager, C & W Rural Electric Cooperative, presents the first place electrification award to John Morgan, Concordia.



Benson Keil, Star Farmer of Kansas in 1969, crowns Phyllis Salmon, Manhattan, as District FFA Sweetheart.

SOUTHEAST KANSAS DISTRICT ACHIEVEMENT BANQUET



Gerald Siscoe, Sears-Roebuck and Company, Pittsburg, Kansas, congratulates District Star Farmer Kent Hansen, Labette County Community High School.



Mr. Bill Bork, Executive Assistant, Kansas Coop Council, congratulates Joe Wunderly for being the high individual in the Coop Quiz Contest as well as representing the high chapter, Fort Scott.



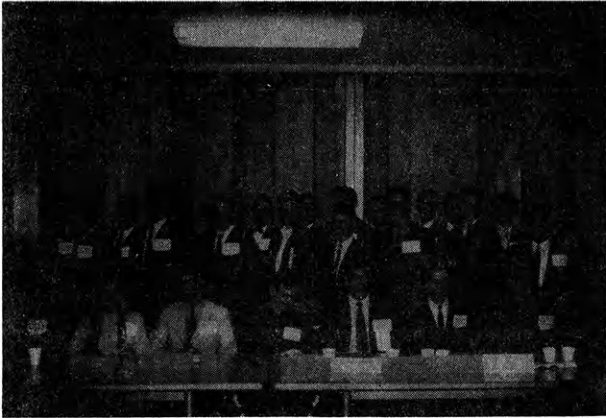
Joe Cumiskey, Division Manager, Kansas Gas and Electric, Pittsburg, Kansas, congratulates Earl Stone, Columbus FFA Chapter, for being first place winner, Southeast Kansas, in farm electrification.



1970 Southeast Kansas State Farmers.



1970 Southeast Kansas foundation award winners.



Kansas held the first postsecondary organization group meeting in the United States.



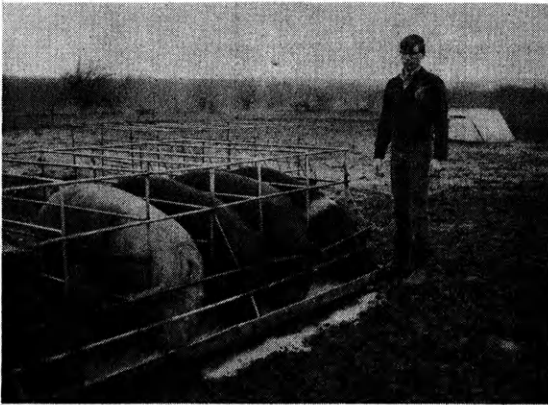
Kaw Valley Area School, Topeka, Kansas, offers the only posthigh horticulture program in Kansas. Enroll now by writing Dr. Lester Sanders, Director, Kaw Area School, 5724 Huntoon, Topeka, Kansas 66604, phone 272-8680.



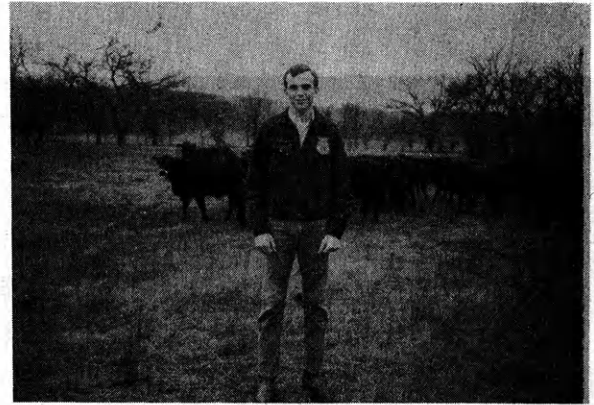
Kathy Nachtigal, daughter of Mr. and Mrs. Albert Nachtigal, was selected as Inman FFA Chapter Sweetheart. Two of Kathy's three brothers were Inman FFA Chapter presidents.



The Arkansas City FFA Kiddies Barnyard proved a real success during National FFA Week. Left to right are Keith Nulik, Rick Hatfield, and Rod Nulik.



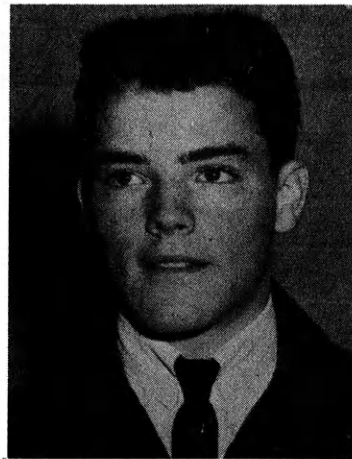
Ray Tipton, Arkansas City FFA Chapter, has developed a strong, profitable farming program. The hog feeder was built in the vocational agriculture shop. Ray received the South Central District FFA Swine Foundation Award.



Rod Rahn, State FFA treasurer and member of the Arkansas City FFA Chapter, has found crossbred calves profitable. He was the South Central District Beef Foundation Award winner.

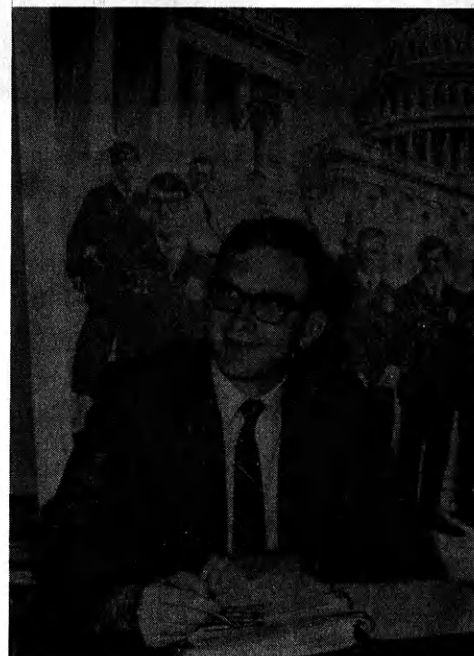


Keith Tolles, Arkansas City FFA Chapter, demonstrates his vocational agriculture skills in running contour lines for terracing. Keith received the South Central District Soil Conservation Foundation Award.



Robert Broeckelman, State vice president for 1965-66, has been chosen by the National FFA Office to be assistant conference director for the 1970 summer FFA Leadership Program.

George Fox, recently named National FFA Conference Director, looks over the schedule of events for the 1970 Summer FFA Leadership Conference Program, Alexandria, Virginia.



CONVENTION



SECTION

PARLIAMENTARY PROCEDURE CONTEST

The Hill City FFA Chapter officers won the State Parliamentary Procedure Contest with Caney second, Powhattan third, and Peabody fourth. The State awards were presented by Robert Randle, Director, Association Relations, Federal Land Bank of Wichita.

Some FFA members will be interested in the questions asked during the contest:

QUESTION I A committee report has been given. A member moves to receive this report. Is that proper parliamentary procedure? Why or why not?

ANSWER I It is not proper. The fact that the report has been read shows that it has already been received by the assembly. (Robert's Rules of Order, pages 222-223.)

QUESTION II Two of the parliamentary maneuvers are to rescind action and reconsider a vote. Under what circumstances or when is each used?

ANSWER II Rescinded action--Rescinded by a majority vote if notice has been given at a previous meeting; or may be rescinded without notice by a two-thirds vote; or by a majority vote of the entire membership.

Reconsider action--Can be made only on the day the vote to be reconsidered was taken, or the next succeeding day. It must be made by one voting on the prevailing side.

QUESTION III How may and under what conditions might the chairman take part in debate?

ANSWER III "The chairman sometimes calls a member to the chair and takes part in debate. This should rarely be done, and nothing can justify it in a case where much feeling is shown and there is a liability to difficulty in preserving order." (Robert's Rules of Order, Revised.)

CHAPTER AWARD PROGRAM REPORTS

The Kansas Association uses the State Gold Emblem, the superior, and the standard chapter awards in recognizing the outstanding accomplishments of local FFA chapter programs.

The Kansas Gold Emblem chapters were selected from the chapters that ranked in the superior division of the National Chapter Awards Program. Only ten percent of the State's chapters can receive the Gold Emblem Award. Each chapter which receives the superior award for the first time will receive a plaque from the National FFA Foundation. Each chapter which receives the Gold Emblem Award for the first time will receive a plaque from the Sears-Roebuck Foundation. A chapter receiving the Gold Emblem Award after receiving the plaque in a former year, will engrave the year on the plaque.

Each of the two top chapters in the State receive a \$100 award recognition from the Sears-Roebuck Foundation. The two chapters will represent Kansas in the national competition for the Better Chapter Awards Contest. The two top chapters in 1970 are (1) Concordia, and (2) Arkansas City.

The results of the National Emblem Award reports are as follows:

<u>Kansas Gold Emblem</u>		
1. Altamont	8. Cherryvale	35. Miltonvale
2. Atchison County	9. Claflin	36. Morland
3. Caney	10. Clay Center	37. Neodesha
4. Ellsworth	11. Columbus	38. Ness City
5. Eskridge	12. Crest	39. Newton
6. Fort Scott	13. Ellinwood	40. Norcatour
7. Garden City	14. Ensign	41. Norton
8. Hill City	15. Erie	42. Oberlin
9. Kingman	16. Ford	43. Onaga
10. Moundridge	17. Fredonia	44. Phillipsburg
11. Peabody	18. Garnett	45. Powhattan
12. Seaman	19. Goessel	46. Riley County
13. Valley Heights	20. Holton	47. Russell
14. WaKeeney	21. Hoyt	48. Sabetha
15. Winfield	22. Hugoton	49. Smith Center
	23. Inman	50. St. Francis
	24. Iola	51. Stockton
	25. Jetmore	52. Washington
	26. Jewell	53. Wilson
	27. Lawrence	
	28. Lebanon	<u>Standard Chapters</u>
<u>Superior Chapter s</u>	29. Lebo	1. Burlington
1. Alma	30. Leoti	2. Fowler
2. Atwood	31. Manhattan	3. Jennings
3. Blue Mound	32. Marion	4. Longford
4. Buhler	33. Marysville	5. Mankato
5. Chapman	34. McDonald	6. Scandia
6. Cheney		
7. Cherokee		

CO-OP ACTIVITIES AWARDS

The Kansas Cooperative Council has sponsored the Cooperative Activities Contest Awards for the tenth year in 1970. The chapter in each district which is judged to have the best cooperative activity program receives a wall plaque and a \$50 cash award. Second place receives \$35 and third place \$15. The advisor of the top chapter in the State wins an all-expense paid trip to the National AIC Meeting. The State winner also enters the National Cooperative Activities Contest.

The following is a list of the 1970 winners in the cooperative activities contest.

State Winner - Eskridge, Terry Fanning, Advisor

Southeast District

- 1st Fort Scott
- 2nd Caney
- 3rd Altamont

South Central District

- 1st Peabody
- 2nd Kingman
- 3rd Arkansas City

East Central District

- 1st Eskridge
- 2nd Burlingame
- 3rd Seaman

Southwest District

- 1st Hugoton
- 2nd Ford
- 3rd Garden City

Northeast District

- 1st Atchison Co.
- 2nd Marysville
- 3rd Valley Heights

Northwest District

- 1st Hill City
- 2nd WaKeeney
- 3rd Phillipsburg

North Central District

- 1st Concordia
- 2nd Chapman
- 3rd Riley Co.

ROBERT SCHRAG, MOUNDRIDGE
STATE PUBLIC SPEAKING WINNER



The fifteenth State FFA Public Speaking Contest was held on the campus of Kansas State University Monday, April 27, 1970. The preliminaries were held in two sections with the first two places in each section reaching the finals. The four finalists presented their speeches during the second general session of the convention. The winners of the first four places were as follows:

- 1st - Robert Schrag, Moundridge
- 2nd - Doug Deets, Arkansas City
- 3rd - Marion McMillan, Concordia
- 4th - Ronald Roth, Clay Center

The Collegiate FFA presented a plaque and medal to each of the State winners.



HILL CITY WINS SCRAPBOOK CONTEST

Hill City FFA Chapter, Joe Farrell, advisor, won the High Plains Journal Scrapbook Contest at the State convention. Fourteen scrapbooks were displayed relating chapter activities. This contest not only increases interest among local chapter reporters to organize and display scrapbooks, but also provides other chapter members and advisors an opportunity to gain ideas for possible use in their chapters.

A leather briefcase was presented to the Hill City chapter with the compliments of the High Plains Journal, Ray Pierce, Editor.

1970 HONORARY STATE FARMERS

Mr. Earl Baugher
Department of Ag. Engineering
Kansas State University
Manhattan, Kansas

Dr. Miles McKee
Associate Professor
Animal Science and Industry
Kansas State University
Manhattan, Kansas

Mr. Dick Bonfy
Provisions Manager
Maurer-Neuer Packing Company
Arkansas City, Kansas

Mr. G. D. Schumacher, President
Great Bend Manufacturing Co., Inc.
Great Bend, Kansas

Mr. Melvin Briley, Asst. Director
Columbus Division
Southeast Kansas AVTS
Columbus, Kansas

Mr. Loren Simmons
Special Assistant
Public Relations Department
Atchison, Topeka, and Santa Fe
Topeka, Kansas

Mr. Virgil Huseman
WIBW Radio and TV
Topeka, Kansas

Mr. Charles Sledd
Director of Information
Kansas Electric Cooperatives, Inc.
Topeka, Kansas

Mr. John Keas
Kansas State Fair Board
Effingham, Kansas

Fathers of 1969-70 State FFA
Officers

Mr. Jim Macy
KVATA
Minneapolis, Kansas



SANTA FE SCHOLARSHIPS

Mr. Loren Simmons, Special Assistant, Public Relations Department, Atchison, Topeka, and Santa Fe Railway Company, presented two \$500 scholarship certificates to outstanding vocational agriculture students in Kansas. The 1970 scholarship recipients are Henry Armknecht of St. Francis and Bertil Ledell of McPherson.

UNION PACIFIC SCHOLARSHIPS

The Union Pacific Railway annually provides a \$200 scholarship to a vocational agriculture student attending a school located in a county in which the Union Pacific Railway operates. In 1970 fourteen young men were winners of this scholarship and were presented certificates of recognition during the 42nd State convention. Presentation of the scholarship was made by J. R. Henderson, Agricultural Agent, Union Pacific Railway.

The 1970 scholarship winners and their local chapters are as follows:

Steven Aeschliman	Centralia	Brian Lamberson	Holton
Ronald Anderes	Chapman	Carl Miller	Lawrence
Ronald Roth	Clay Center	Eugene Skoch	Powhattan
Marion McMillan	Concordia	Vinton Visser	Riley County
Rodney Schoen	Downs	Merrill Crawford	Seaman
Ernest Lang	Ellis	Gale Maddy	Stockton
Elmer Donley	Ellsworth	David Carnahan	Wamego

1970 NATIONAL FFA FOUNDATION AWARD WINNERS IN KANSAS

The awards presented to Kansas FFA members and chapters were as follows:

Star Farmer of Kansas

Ronald Roth, Clay Center

District Star Farmers

David Carnahan, Wamego

Wesley Schmidt, Hugoton

Kent Hansen, Altamont

Merrill Crawford, Seaman

Karl Magnusson, Winfield

Corey Lowdon, Osborne

LIVESTOCK PRODUCTION AWARDState Winner

Ronald Roth, Clay Center

BEEF PRODUCTION AWARDDistrict Winners

Kevin Honeycutt, Valley Heights

Bernie Reinert, Ensign

Kent Hansen, Altamont

Ronald Bandel, Alma

Rod Rahn, Arkansas City

Corey Lowdon, Osborne

Elmer Donley, Ellsworth

SHEEP PRODUCTION AWARDDistrict Winners

David Kehler, Holton

David McClaskey, Girard

Leland Anderson, Williamsburg
Bennie Gehring, Moundridge
Corey Lowdon, Osborne
Mike Cleveland, Concordia

District Winners
Earl Stone, Columbus
James Ladd, Atchison Co.
Larry Wall, Eskridge
Rollie Peter, Ellinwood
Larry Lamber, Smith Center
Doug Hoppas, Lakin

SWINE PRODUCTION AWARD

District Winners

Charles Korte, Valley Heights
Kevin Hageman, Fowler
Bob Collins, Fort Scott
Merrill Crawford, Seaman
Ray Tipton, Arkansas City
Richard Warner, Lebanon
Ronald Roth, Clay Center

FARM FORESTRY AWARD

State Winner
Pat Null, Hill City

District Winners
Kenneth Johnston, Valley Heights
Joe Doll, Garden City
Craig Meyer, Moundridge

CROP PRODUCTION AWARD

State Winner
Paul Westerman, Ellsworth

District Winners
James Hoffman, Atchison Co.
Randy Selfridge, Hanston
Dean Jessee, Cherokee
Marvin Sluder, Blue Mound
Bertil Ledell, McPherson
Corey Lowdon, Osborne

FARM MECHANICS AWARD

State Winner
John Womack, Iola

District Winners
Charles Korte, Valley Heights
Charles Patterson, Garden City
Merrill Crawford, Seaman
Tim Diener, Hillsboro
Corey Lowdon, Osborne
Roger Hill, Wilson

DAIRY PRODUCTION AWARD

State Winner
Mike Bodenhausen, Atchison Co.

District Winners
Pat Burke, Hanston
Bill Hunter, Altamont
Jack Morrell, Blue Mound
Galen Waltner, Moundridge
Robert Hegler, Russell

HOME IMPROVEMENT AWARD

State Winner
Larry Wall, Eskridge

District Winners
Jay Armstrong, Atchison Co.
Tim Gillan, Garden City
Phillip Martinie, Altamont
Karl Magnusson, Winfield
Phillip Stinemetz, Hill City
Vinton Visser, Riley Co.

FARM ELECTRIFICATION AWARD

State Winner
John Morgan, Concordia

ORNAMENTAL HORTICULTURE AWARD

State Winner
Kevin Honeycutt, Valley Heights

District Winners

Dennis Eckardt, Columbus
Bennie Gehring, Moundridge

SOIL CONSERVATION AWARDState Winner

Phillip Martinie, Altamont

District Winners

George Williams, Rossville
Keith Tolles, Arkansas City
Paul Westerman, Ellsworth

POULTRY PRODUCTION AWARDState Winner

Robert Dehn, Williamsburg

District Winner

Earl Stone, Columbus

FARM SAFETY AWARDState Winner

Fort Scott Chapter

District Winners

Concordia Chapter
Marysville Chapter
Kingman Chapter
Eskridge Chapter
Hill City Chapter
Garden City Chapter

STATE FARMERS

A total of 115 FFA members were raised to the State Farmer Degree on Monday evening, April 27, 1970. The ceremony took place in activities associated with the 42nd State FFA Convention. This raises the total number of FFA members who have received the degree to 3,889. The 1970 State Farmers are as follows:

<u>Name</u>	<u>Chapter</u>	<u>Name</u>	<u>Chapter</u>
Ronald Bandel	Alma	Roger Holste	Atwood
Gerald Maike	Alma	Anthony Pochop	Atwood
Kent Hansen	Altamont	Robert Hanzlick	Belleville
Mike Hucke	Altamont	Jack Morrell	Blue Mound
Bill Hunter	Altamont	Marvin Sluder	Blue Mound
Phillip Martinie	Altamont	Eldon Epp	Buhler
Doug Deets	Arkansas City	Vernon Newby	Caney
David Doughten	Arkansas City	Steven Aeschliman	Centralia
Kent Nulik	Arkansas City	Steve Zumbrunn	Chapman
Rod Rahn	Arkansas City	Steven Ledford	Cherokee
Ray Tipton	Arkansas City	Kent Stevens	Cherokee
Keith Tolles	Arkansas City	Roy Weber	Clafin
Stephen Caplinger	Atchison Co.	Gerald Klocke	Clay Center
Wayne Chalfant	Atchison Co.	Ronald Roth	Clay Center
Robert Schletzbaum	Atchison Co.	Randy Hall	Columbus
Rick Taliaferro	Atchison Co.	Gary Hess	Columbus

<u>Name</u>	<u>Chapter</u>	<u>Name</u>	<u>Chapter</u>
Michael Cleveland	Concordia	Ben Hunsicker	Morland
Marion McMillan	Concordia	Lanny Livingston	Morrowville
Stanley Foulds	Dodge City	Tim Rhine	Morrowville
Elmer Donley	Ellsworth	Bennie Gehring	Moundridge
David Stroede	Ellsworth	Dennis Gehring	Moundridge
Russell Voeltz	Ellsworth	Bob Schrag	Moundridge
Paul Westerman	Ellsworth	James Miller	Neodesha
Ronnie Herrman	Ensign	Francis Hillebrand	Norcatour
Don Holsten	Ensign	Micheal Miller	Norcatour
Kenneth Miller	Ensign	Leslie Ward	Norcatour
Bernie Reinert	Ensign	Jerry Cox	Northern Valley
Dwight Baldwin	Erie	Dean Huff	Norton
Jay Merrill	Erie	Bill Anderson	Oberlin
Rex Sanders	Erie	Steve Schissler	Oberlin
Ken Taylor	Erie	Phil Wurm	Oberlin
Frank Young	Erie	Corey Lowdon	Osborne
Marvin Bush	Eskridge	Steve Lefever	Peabody
Larry Smith	Ford	John McGuire	Pratt
Bob Collins	Fort Scott	Vinton Visser	Riley Co.
Kevin Sterling	Garden City	Eddie Houser	Riverton
Eddie Mader	Garnett	George Williams	Rossville
Richard Hagemann	Girard	Merrill Crawford	Seaman
Howard Neibling	Highland	Philip Scritchfield	Seaman
Gary West	Hill City	Jorn Keller	St. Francis
Stuart Beckman	Hoxie	Stanley Jackson	Smith Center
Craig Cooper	Hoxie	Bryan Brunswig	Tribune
Mark Foster	Hoyt	Lawrence Daniels	Tribune
Michael Harding	Hoyt	Charles Korte	Valley Heights
Wesley Schmidt	Hugoton	Danny Lundberg	Valley Heights
Larry Wittorff	Inman	Mike Felder	WaKeeney
Max Cossman	Jetmore	Jim Marcy	WaKeeney
Edwin Kleppinger	Jewell	Phil Sandelin	WaKeeney
Doug Hoppas	Lakin	David Carnahan	Wamego
Murray Flory	Lawrence	James Hatfield	Wamego
Carl Miller	Lawrence	John Kasper	Wilson
Richard Warner	Lebanon	Bruce Ehmke	Winfield
Richard Wilson	Marysville	Thomas Herbers	Winfield
Warren McGown	McCune	Karl Magnusson	Winfield
Bertil Ledell	McPherson	Ed Fitzpatrick	Yates Center
John Peterson	McPherson		
Clyde Ribordy	McPherson		
Brent Halepeska	Miltonvale		
David Pacey	Miltonvale		
Bob Smith	Miltonvale		

MEET YOUR 1970-71 FFA OFFICERS

The official delegates to the 42nd Convention elected the following slate of officers for the Kansas Association to serve until the conclusion of the 43rd Convention in 1970.

President	Doug Deets	Arkansas City Chapter
Vice President	Phil Stinemetz	Hill City Chapter
Secretary	Bob Schrag	Moundridge Chapter
Treasurer	Rod Rahn	Arkansas City Chapter
Reporter	Stanley Jackson	Smith Center Chapter
Sentinel	Ronald Roth	Clay Center Chapter

"SEVEN STARS OVER KANSAS"

Kansas has a first in the seven star farmer film production, which had its premier showing at the State FFA Convention. The film was sponsored by Farmland Industries with George Logan, Farm Director, WIBW, producing the film.

This film will be available for showing in FFA chapters across the State. The seven star farmer film may be secured by contacting Harold Shoaf, Executive Secretary, Kansas Association of FFA, 120 East Tenth, Topeka, Kansas 66612, or by writing Mr. Russ Weathers, Manager, Young Farmers Department, Farmland Industries, P. O. Box 7305, Kansas City, Missouri 64116.

FFA members and civic groups across the State will be interested in this film, which describes the seven district star farmers as well as the presentation of the Star Farmer of Kansas award.

A thank-you letter would be in order to Mr. Ernest Lindsey, President, Farmland Industries, Inc., P. O. Box 7305, Kansas City, Missouri 64116, and a duplicate to George Logan, Farm Director, WIBW TV, Topeka.

FIRST STAR AGRIBUSINESS AWARD IN KANSAS

The first winner of the Star Agribusiness award in Kansas, Robert Joe Schrag, is from the Moundridge FFA Chapter. He received a \$200 FFA foundation cash award from the National FFA Foundation.

Schrag received his agribusiness experience with a feed milling and trucking business founded by his father, Walter Schrag, in 1958, and incorporated in 1969 as Walt's Feed, Inc. The firm is a franchised feed and seed dealer and has a large live poultry and egg hauling business. In addition, the firm carries a complete line of livestock supplies.

On the job, young Schrag has unloaded grain; waited on customers and written up orders; stocked shelves; sacked feed; cleaned the package mill and done general machinery maintenance; and assisted with loading and delivery of feed, poultry and eggs.

RONALD ROTH 1970 STAR FARMER

A 17 year old Kansas farm youth, Ronald Roth, was named Star Farmer of Kansas for 1970 at the 42nd annual convention of the Kansas Association of FFA.

A farming program which has netted more than \$20,000 over the past three years; outstanding leadership, particularly in the Future Farmers of America organization; and an outstanding academic record were the major factors in Roth's selection as the 1970 Star Farmer of Kansas.

Ronald's farming program consists primarily of a registered Hampshire sow herd and a beef cattle operation. In 1969 he handled 670 hogs and 28 head of beef cattle. He also had 25 acres of wheat which averaged 42 bushels to the acre.

Roth has been an officer in his FFA chapter for the past three years and currently is president of the North Central District. He has participated in public speaking contests and in numerous judging contests. He was a member of Clay Center's land judging team that participated in the national contest in Oklahoma.

At Clay Center Community High School Roth has been a near straight-A student while taking part in choral activities and serving on the Student Council. He also is president of his church youth group, president of his Sunday School class, and secretary of his church.

ATTENTION ADVISORS

Dan Marrs, advisor, Moundridge, would like for you to check your applications to see if his Gold Emblem Chapter application could have been accidentally attached. If this happens to be found, please contact Dan Marrs, Moundridge High School, Moundridge, Kansas.



ACTIVITIES

SECTION



WANTED: RIDE TO NATIONAL FFA LEADERSHIP AND CITIZENSHIP CONFERENCE

FFA members from Moundridge and Valley Heights Chapters desire to share expenses on transportation to the National Chapter Impact Conference in Washington June 15-20.

If your chapter plans to attend the Washington conference, please contact the State office so arrangements for transportation may be made. Dates for the Washington conferences are as follows:

National Chapter Impact

June 15-20
June 22-27
June 28-July 3

National Leadership-Citizenship

July 6-11
July 13-18
Aug. 3-8

ATTENTION ADVISORS AND SENIOR FFA MEMBERS

In September 1970, a two-year posthigh school course in ornamental horticulture will be offered at the Kaw Area Vocational-Technical School, 5724 Huntoon, Topeka, Kansas 66604. The course will be designed to train people for employment in landscape nurseries, retail garden centers, retail floral shops, green-house growing, lawn maintenance service, tree service work, spraying service, city parks and turf grass growing.

The program will consist of six twelve-week quarters plus a fourteen week on-the-job training period with a nursery, florist or related business.

Beginning in 1971, the course will commence in mid June and end in early March. This permits each student to participate in his job experience during the spring of the year. This allows each graduate to seek a job at the time employees are most needed.

Students interested in enrolling should fill out the following form and send it to John Tonkin, Ornamental Horticulture Department, Kaw AVTS, 5724 Huntoon, Topeka, Kansas 66604, phone (913) 272-8680.

<u>Name</u>	<u>Address</u>	<u>Phone No.</u>
_____	_____	_____
_____	_____	_____

I would like to earn while I learn. Yes No

OSAGE CITY NEEDS AGRIBUSINESS EMPLOYEES

Vocational agriculture graduates who are interested in employment in the International Harvester dealer farm equipment area should contact Mr. Bert DeBaun, President, DeBaun-International, Inc., 424 Market, Osage City, Kansas 66523, phone (913) 528-1921.

Shop men work a five-day week one week and a six-day week the next. Extra pay is given for Saturday. The starting wage in the shop is \$400 with an automatic increase to \$425 at the end of 90 days. Employees are covered with health insurance and premiums are paid by the company. This plan also includes a small life insurance policy and unemployment insurance policy for non-service connected unemployment.

NEW RESPONSIBILITIES FOR NATIONAL FFA LEADERS

New responsibilities were announced recently for National FFA executive secretary, Wm. Paul Gray, and FFA Program Specialist, C. Coleman Harris, according to National FFA Advisor H. N. Hunsicker, the realignment of job responsibilities will broaden the FFA role for Mr. Gray by freeing him to provide guidance in new FFA programs.

Under the realignment, Gray will assume the task of developing and promoting an organization for postsecondary agriculture students in area vocational-technical schools, junior colleges and community colleges.

Coleman Harris will assume responsibility for coordination activities of the National FFA officers in addition to his current responsibilities for national and regional FFA leadership conferences and the National FFA Community Development Program. Also included in Harris' new responsibilities will be the annual Good Will Tour of National FFA officers.

Planning and coordinating the National FFA Convention held annually in Kansas City, Missouri, will remain the responsibility of Mr. Gray.

KANSAS FFA EUROPEAN STUDY TOUR

Fourteen FFA members with Mr. Earl Wineinger as tour leader will leave on July 7 for a 20-day tour of Northern Europe. The group will visit England, France, Belgium, Holland, Germany, and Denmark. The group plans to return to the United States on July 28.

25 PERCENT OF KANSAS CHAPTERS
USE NATIONAL FFA CALENDAR

<u>State</u>	<u>FFA Chapters (July, 1969)</u>	<u>Chapters</u>		<u>Increase (+) or Decrease (-) Over 1969</u>	<u>Percentage of Chapters Participating</u>
		<u>Participating 1969</u>	<u>1970</u>		
Kansas	164	42	41	-	25.0

NATIONAL FFA CONVENTION NEEDS STAGE CREW MEMBERS

The Kansas Association of FFA has an opening for one local advisor and five FFA members to serve on the national convention stage crew. If your chapter is interested in being a representative from Kansas to work with the national officers and observe them in a leadership role, please fill out the attached form (yellow) and mail it to the State office not later than June 15.

NATIONAL TALENT SHOW

FFA members or groups who are interested in participating in the National Talent Show should fill out the talent entry form and mail to the State office by June 15. Individual acts will fill out form number one, group acts will fill out form number two.

The national organization has not allotted money for talent acts. The Board of National Officers and Directors did vote that members selected by State associations to participate in the talent program will receive an attractive talent pin to signify that they have performed at the national convention, and gold, silver and bronze plaques will be awarded participants on the basis of their performance. A group picture will be taken of all performers. One print will be presented to each performer and the directors.

REVAMPED PROFICIENCY AWARDS

The new proficiency awards will cover basically the same 13 areas currently used with the addition of two new awards and main changes for several of the old award areas.

More specific agribusiness and natural resources are areas of the new awards. Replacing the agribusiness proficiency awards are awards for (1) Placement in Sales and/or Service, (2) Placement in Processing. The natural resources award also was replaced by two more specific award areas. They are Soil, Water, and Air and Fish and Wildlife.

The 15 proficiency awards will be listed in eight basic groupings corresponding to occupational training groupings that are currently being used in reporting enrollment to the United States Office of Education.

Each proficiency award will have its own application form to obtain specific information relative to that award.

The National Board also advised that girls are to continue to wear tailored FFA jackets. Jewelry for girls was authorized to be added to the FFA supply catalog.

NATIONAL FFA MAGAZINE

The National Board of FFA approved recommendations of the National Future Farmer Magazine to increase subscription prices to non-FFA members from 50¢ to \$1.00. Prices for non-FFA members will go into affect on July 1 of this year.

1971 FFA WEEK THEME

The 1971 FFA Week theme will be "FFA--Involved in America's Future."

LEADERSHIP TRAINING: FFA CAMP

The State FFA Camp will do more to motivate chapter officers and give direction for a successful FFA activities program than any one activity during the year. Advisors are urged to bring their chapter officers and participate in one of the outstanding FFA camps in the nation.

The camp dates are July 29 - August 1. Enrollment of camp members will take place from 1 p.m. to 3 p.m. Wednesday, July 29. The program will be completed 1 p.m. Saturday, August 1. Application forms are in the April 1970 FFA newsletter or may be obtained from the State office.

CHAPTER AND DISTRICT

SECTION



ARKANSAS CITY FFA CHAPTER NEWS

The number two Kansas FFA chapter has had a most challenging and interesting year of FFA activities. The chapter co-sponsored the Kansas Spring Barrow Show. Members were responsible for setting up the armory and running the concessions during the show. FFA members also participated in the Junior Pig Show, which is a separate show for the local youth. Fourteen FFA members participated in the show. The Grand Champion of the Barrow Show was a cross-bred barrow shown by Ronnie Wolf, last year's chapter vice president.

The chapter also co-sponsored the National Spotted Swine Registry Show. Breeding stock from across the United States was shown.

During National FFA Week the chapter officers presented a radio program as well as presenting spot announcements concerning FFA week. FFA members sponsored a dress-up day in the junior and senior high schools where each FFA member wore the official dress. A Kiddies' Barnyard including a rabbit, chickens, goats, sheep, pigs and a steer was held. National FFA Week was finalized by attending church as a group.

Two State FFA officers have been selected from the Arkansas City chapter this year. This is the second time in the history of the Kansas Association that two FFA members have been selected from one chapter to serve as State officers in the same year.

NORTH CENTRAL DISTRICT

The North Central District held its third annual FFA banquet at Clay Center Saturday, April 11. Distinguished guests attending the banquet were Veldean Scott, State FFA Sweetheart; Benson Keil, 1969 Star Farmer of Kansas; Greg Hands, 1968-69 State FFA president; Don Martin, present Star Young Farmer of Kansas, and Bill Bork, Executive Assistant of Kansas Coop Council.

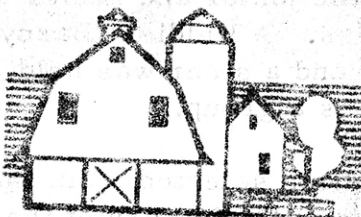
Don Martin presented the District Star Farmer award to Ronald Roth, Clay Center. Ron went on to be Star Farmer of Kansas for 1970.

Mr. Bork, Kansas Coop Council, presented the high coop quiz award to Paul Westerman of Ellsworth. Ellsworth FFA Chapter also received recognition for having the highest coop quiz score in the North Central District.

A most interesting part of the district achievement banquet was a showing of slides of district foundation award winners and of the State Farmers' farming programs.

Phyllis Salmon from Manhattan was crowned by Benson Keil as district FFA Sweetheart.

Respectfully Submitted
Edwin Kleppinger, District Reporter



STAGE CREW

State: _____ Advisor: _____

Date: _____

Name & Office in FFA

Home Address

- 1. Member _____
- 2. Member _____
- 3. Member _____
- 4. Member _____
- 5. Member _____
- 6. Teacher
(Advisor) _____

Our group will arrive in Kansas City (day) _____ (hour) _____

and will stay at the (hotel) _____

(Name) _____ (Title) _____

will be in charge of the FFA delegation at the national convention.

Please check session you would prefer (1st - 2nd - 3rd choice):

- | | | | |
|----------------------------|-------|------------------------------|-------|
| Vespers (Tues. evening) | _____ | 1st Session (Tues. evening) | _____ |
| 2nd Session (Wed. morning) | _____ | 3rd Session (Wed. p.m.) | _____ |
| 4th Session (Wed. evening) | _____ | 5th Session (Thurs. morning) | _____ |
| 6th Session (Thurs. p.m.) | _____ | 7th Session (Thurs. evening) | _____ |
| 8th Session (Fri. morning) | _____ | 9th Session (Fri. evening) | _____ |

Please return this form by June 15 to -
 Harold Shoaf, Executive Secretary
 Kansas Association of FFA
 120 East Tenth Street
 Topeka, Kansas 66612

TALENT ENTRY FORM - INDIVIDUAL ACT

State _____

1. Name of Entertainer _____
2. Complete Home Address _____
3. Chapter _____
4. Nature of talent (check and fill out appropriately)
 - a. Vocalist ___ 1st Tenor ___ 2nd Tenor ___ Baritone ___ Bass ___
 - b. Instrumentalist _____ Kind of instrument _____
 - c. Vocal and instrumental _____ Type of Voice _____
 - d. Comedy _____
 - e. Master of Ceremonies _____
 - f. Other _____
5. Brief description of entertainment _____

6. Name of songs which will be sung or played (list in order of preference)
 - a. _____ b. _____
 - c. _____ d. _____
7. Title of Comedy Monologues _____
8. Will you need an accompanist? _____
9. Approximate length of your number or act _____
10. Will you be at the audition on Tuesday afternoon? _____

Approximate time _____

Submitted by: _____

Approved by: _____

(State FFA Advisor or Executive Secy.)

Names and addresses of television stations, radio stations and newspapers serving the area in which you live.

TALENT ENTRY FORM - GROUP ACTS

State _____

1. Name and Addresses of Entertainers

Chapter

_____	_____
_____	_____
_____	_____
_____	_____

2. Brief description of entertainment (string band, vocal quartet, etc.)

3. Names of songs which will be sung or played (list in order of preference)

a. _____ b. _____

c. _____ d. _____

4. Number and nature of instruments used in act (one guitar, piano, one flute, etc.)

5. List any special props or effects you might need: _____

6. Name of your act _____

7. Will you need an accompanist? _____ If yes, indicate kind _____

8. Approximate length of your act _____

9. Will you be at the Audition on Tuesday afternoon? _____

Approximate time _____

Entry submitted by _____

Approved by _____

(State FFA Advisor or Executive Secy.)

Name and addresses of television stations, radio stations and newspapers serving the area in which you live.