

per

APR 10 1970 508

The KANSAS Future Farmer

APR 3 1970
BRAN
SITY



Published by
**THE KANSAS ASSOCIATION
FUTURE FARMERS OF AMERICA**

NATIONAL OFFICERS, FUTURE FARMERS OF AMERICA
1969-70

Constituting the
NATIONAL BOARD OF STUDENT OFFICERS

- PRESIDENT Harry Birdwell
Box B, Fletcher, Oklahoma
- VICE PRESIDENT, NORTH ATLANTIC REGION Charles S. Postles, Jr.
Milford, Delaware
- VICE PRESIDENT, SOUTHERN REGION C. W. St. John
Route 1, Box 117, Redfield, Arkansas
- VICE PRESIDENT, PACIFIC REGION David Dietz
Route 1, Box 398, Canby, Oregon
- VICE PRESIDENT, CENTRAL REGION Steven Zumbach
Route 1, Manchester, Iowa
- NATIONAL SECRETARY Dennis Pharris
Route 1, Hillsboro, Texas
- ADVISOR H. N. Hunsicker
Washington, D. C.
- EXECUTIVE SECRETARY William Paul Gray
Washington, D. C.
- TREASURER J. M. Campbell
Woodstock, Virginia

-----FFA-----

NATIONAL FFA BOARD OF DIRECTORS

- H. N. Hunsicker, Chairman, Office of Education, Washington, D. C.
- George R. Cochran, State Supervisor, Agricultural Education, St. Paul, Minn.
- James Fink, State Supervisor, Agricultural Education, Harrisburg, Pennsylvania
- V. B. Hairr, State Supervisor, Agricultural Education, Raleigh, North Carolina
- John W. Lacey, Office of Education, Denver, Colorado
- Byron F. Rawls, Office of Education, Kansas City, Missouri
- Jesse A. Taft, Office of Education, Boston, Massachusetts
- J. W. Warren, Office of Education, Charlottesville, Virginia
- D. E. Wilson, Chief, Agricultural Education, Sacramento, California

THE KANSAS FUTURE FARMER
Harold Shoaf, Editor

OFFICERS OF THE KANSAS ASSOCIATION OF
FUTURE FARMERS OF AMERICA

Lauren Libby, President Smith Center	Bob Price, Reporter Norcatatur
Thomas O'Neil, Vice President Marysville	Danny McMillan, Sentinel Garden City
Glenn Stucky, Secretary Moundridge	Harold Shoaf, Executive Secretary Topeka
Charles Van Petten, Treasurer Eskridge	C. C. Eustace, State Advisor Topeka

Volume XXXX

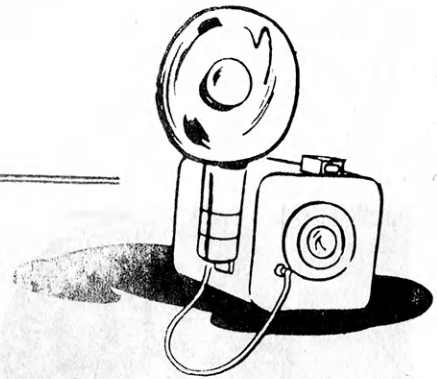
April 10, 1970

No. 4

TABLE OF CONTENTS

PICTURE SECTION	1
CONVENTION SECTION	
Call to 42nd Annual State FFA Convention	5
National FFA President--Harry Bridwell Featured Speaker at State Convention	5
Seven Stars Over Kansas	6
Fourth Annual Delegate Breakfast	6
Eligibility for State Contests	6
Helpful Convention Hints	7
Change of Time	8
Attention Delegates and Advisors	9
ACTIVITIES SECTION	
1971 FFA Theme	11
District and State FFA Foundation Winners	11
National Land Judging Contest	11
State FFA Camp - July 29 to August 1	11
State FFA Convention Needs Entertainment	12
National FFA Convention Needs Entertainment	12
Kansas Coop Council Quiz Winners	14
The National FFA Leadership and Citizenship Conference	14
K-State ATA Reminder	15
FFA Statistics	15
CHAPTER AND DISTRICT SECTION	
South Central District Good Will Tour	16

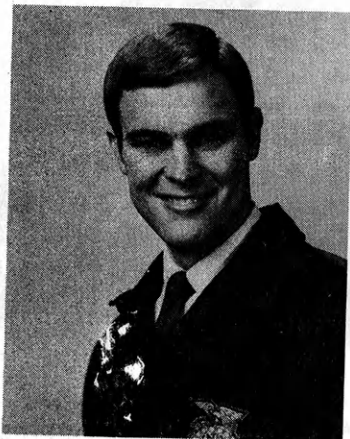
PICTURE SECTION



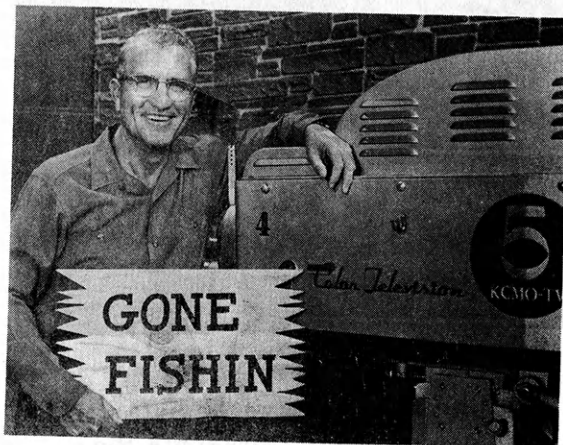
For complete stories of the pictures in this section, please refer to the Activities Section.



President Nixon met recently (Monday, March 2) with National Officers of the Future Farmers of America to discuss a nationwide community action program the FFA is developing in cooperation with the Farmers Home Administration. The program will combine classroom study with action projects to improve rural communities.



National FFA President Harry Birdwell, Fletcher, Oklahoma, will be a featured speaker at the Kansas FFA Convention to be held April 26-28 in the Municipal Auditorium, Manhattan, Kansas.



Harold Ensley, champion radio and TV personality, will be the Vespers speaker at the State FFA Convention 8 p. m. Sunday, April 26, in the Municipal Auditorium, Manhattan, Kansas.



The Northeast District Star Farmer is David Carnahan, Wamego FFA Chapter. Mr. and Mrs. Quentin Carnahan are the parents of David. They are shown here with advisor Ron Hollandsworth



Dean McKeever, KP&L Manager, Marysville, Kansas, presents the district farm electrification award to a representative of the Atchison County FFA Chapter.



Mr. Bill Bork, Executive Assistant, Kansas Co-op Council, presents the Co-op Quiz Award to Mr. Willis Ringen, Valley Heights FFA Chapter, for being the top chapter in Northeast Kansas.



Fourteen State Farmer applicants received recognition at the Northeast Kansas District Achievement Banquet. The award will be given 7:30 p. m. April 27, at the Municipal Auditorium, Manhattan, Kansas, during the State FFA Convention.



Ten State Farmer applicants from the East Central District were recognized for outstanding achievement at the district banquet, Williamsburg, Kansas.

FFA district foundation awards were presented to eight FFA winners. Each of the individuals will represent the Northeast District in competition for the top State award in their division.



Mr. J. C. Woody Woodman, District Manager, of Paola, Kansas Power and Light, Paola, Kansas, presents the East Central District farm electrification award to Larry Wall, Eskridge FFA Chapter.

Mr. Jim Ryssemus, Sears-Roebuck Foundation representative from Ottawa, Kansas, congratulates Merrill Crawford, Seaman FFA Chapter President, for being Star Farmer of the East Central FFA District.

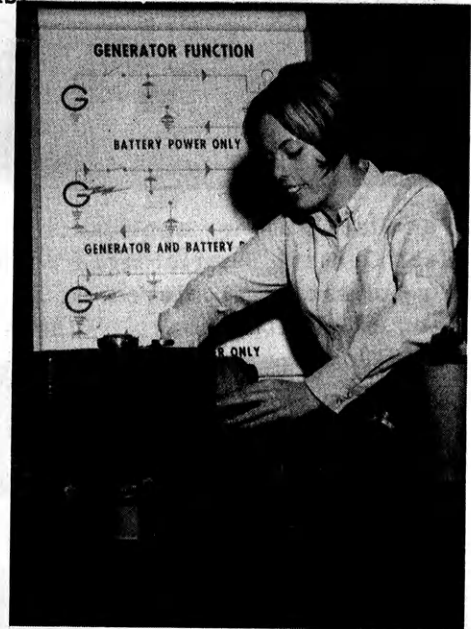


Mr. Bill Bork, Kansas Co-op Council, presents the East Central District Co-op Quiz Award to Wayne McClure, Williamsburg FFA Chapter.



Eight East Central District foundation award winners were presented a plaque and a check for \$15 for outstanding accomplishments in their respective divisions.

It isn't totally a man's world. Kansas State University agricultural education senior Nancy Denu of Ridgewood, New York, is proving exactly that. When Miss Denu graduates in May, she will have left her mark on Kansas State history by being its first female graduate in agricultural education.



National FFA officers and State presidents from Nebraska, Kansas, and Missouri are shown above during the Kansas City phase of the National FFA Good Will Tour. The FFA group is shown in a simulated cockpit at the pilot training center of TWA. Each officer had an opportunity to make an actual simulated landing of a TWA jet. With the group is Captain Vern Larson, one of four pilots in the world to have flown the much publicized Concord.



Pictured above are the Kansas FFA delegates to the 1970 National Poultry and Egg Fact Finding Conference held in Kansas City last February. The group is pictured with Mr. O. R. Anderson of the Seymour Packing Company of Topeka. The Seymour organization finances the Kansas FFA delegates to this national meeting. Pictured from left to right are Jim McClung of the Winfield FFA Chapter, Mr. Anderson, Terry Lawrence of the Winfield FFA Chapter, Murray Thole of the Stafford FFA Chapter, and Jim Muley of the Iola FFA Chapter.

CONVENTION

SECTION



CALL TO 42nd ANNUAL STATE FFA CONVENTION

As your State FFA president I am issuing a call to the 42nd Annual State FFA Convention to be held in the Municipal Auditorium, Manhattan, Kansas, April 26 through April 28.

This year I am requesting each chapter to send two qualified delegates who are informed on the issues. The State officer team sincerely hopes that the quality of the delegate body will be at a high tide because of the seriousness of this convention. Many far-reaching decisions are to be made that will affect the Kansas Association of FFA for many years to come.

I sincerely hope that each FFA member will come inspired and in high spirits for this gathering of those who we feel will be the true leaders of tomorrow!

I am sure many new friends will be made and old acquaintances renewed. My fellow State officers and I are hoping to meet each of you in person at the 42nd Annual State FFA Convention in Manhattan, Kansas, and to have opportunity to visit with you. See you on April 26.

Lauren Libby, President
Kansas Association of FFA

NATIONAL FFA PRESIDENT -- HARRY BIRDWELL FEATURED SPEAKER AT STATE CONVENTION

Harry Birdwell, 20, National president of the Future Farmers of America from Fletcher, Oklahoma, will be a featured speaker at the Kansas State FFA Convention Monday afternoon, April 27, at the Municipal Auditorium, Manhattan, Kansas. Harry was elected to represent approximately a half million Future Farmers as their National president during the past National convention in October in Kansas City, Missouri. At this time he was a junior at Oklahoma State University. He has taken a leave of absence for a year from school to fulfill the duties of his FFA office. Birdwell is majoring in Radio-TV broadcasting in college and is considering a career in agricultural broadcasting. He is in a farming partnership with his father.

SEVEN STARS OVER KANSAS

The premier showing of the "Seven Stars Over Kansas" film will be shown Monday evening, 7:30 p. m., April 27, at the Municipal Auditorium, Manhattan, Kansas. The film was taken by George Logan, Farm Director, WIBW Radio and TV. Mr. Logan was a former FFA member.

This is the first time Star Farmers of Kansas have been filmed by TV stations. The film is sponsored by Farmland Industries, Kansas City, Missouri.

After the premier showing, the complete story of the "Seven Stars Over Kansas" and including the Star Farmer of Kansas presentation will be televised over WIBW TV, Topeka, on May 1 at 6:30 p. m. to 7:00 p. m. It will also be shown on May 3 from 10:30 p. m. to 11:00 p. m.

This film will be available for showing at local FFA and district activities.

The Kansas Association is grateful to Mr. George Logan, Farm Director, WIBW TV, for his leadership in producing the film and to Farmland Industries for sponsoring the film. A note of thanks to Mr. George Logan, WIBW TV, Topeka, Kansas, and to Mr. Ernest T. Lindsey, President, Farmland Industries, Inc., P. O. Box 7305, Kansas City, Missouri 64116 would be in order.

FOURTH ANNUAL DELEGATE BREAKFAST

The fourth annual Delegate Breakfast will be held in the Derby Food Center, Kansas State University, 6:45 a. m. Monday, April 27 (CST). Enrollment will be from 6:45 to 7:30. Breakfast will be served at 7:30 a. m. All delegates are urged to be enrolled not later than 7:30 as a full session is planned for Monday morning. Dennis Shurtz, past FFA president, and Ed Bogner, past FFA vice president, will enroll the delegates in Derby Food Center.

The Sears-Roebuck Foundation sponsors the delegate session Monday morning. A special thank-you note should be written to Clay Devitt, Regional Director, Sears-Roebuck Foundation, 3625 Truman Road, Kansas City, Missouri 64127.

ELIGIBILITY FOR STATE CONTESTS

Eligibility for Kansas teams representing Kansas in the National contest: Team members must be eligible for the National contest at the time they win a State contest to represent Kansas in the National FFA contest.

If the Kansas team winning first place in the State contest consists of more than one team member who is not eligible for the National contest, the next place team with all members eligible shall represent Kansas in the National contest.

HELPFUL CONVENTION HINTS

Congratulations to all who have been selected to represent your chapter at the State FFA Convention. The officials and citizens of Manhattan give unselfishly of their time and effort to assure you of a successful convention. The character of our organization and its membership is judged to a certain degree by the actions of members at the State Convention. You are on parade. You represent your chapter, your community, and the FFA. Follow these suggestions and you will make the State Convention a success.

1. Wear your official FFA jacket whenever possible.
2. Sit with your group and near your advisor during convention sessions (if you are not a delegate).
3. Be prompt in attending sessions. If you are unavoidably detained, enter quietly.
4. If you must leave the assembly room before the session is over, please leave between special numbers.
5. Do not smoke while wearing your FFA jacket.
6. Wolf calling, whistling, and booing are not appropriate for FFA members at the State FFA Convention.
7. Make sure you are properly registered in your hotel. Someone may need to find you.
8. Inquire about hotel rates when you register. Tell the room clerk when you plan to go home.
9. Retire by 11:30 p.m. so you will feel well and be alert during the day.
10. Leave your room key with the desk clerk in the lobby when leaving the hotel.
11. You will be held responsible for any damage done to furniture in your room.
12. Telephones in your hotel rooms are for house calls. Calls outside of hotel are charged to you at about fifteen cents per call.
13. Bellhops answering room calls expect tips. Do not call for room service unless you expect to tip.



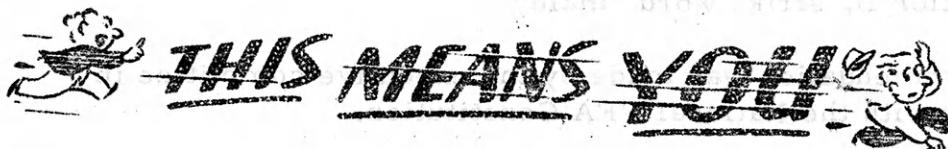
14. Loud music and other noise in hotel rooms will be reported by other guests. This may lead to the hotel detective calling on you. Be mindful of others.
15. Loud talk, vulgarity, boasting, and profanity are unbecoming to a Future Farmer. Watch your language.
16. Throwing material out of a hotel window is an offense subject to police action.
17. The elevators should not be misused. Other guests in the hotel also have important appointments.
18. Be courteous to the employees of the hotels and eating places.
19. Ask your advisor for tips in ordering meals.
20. Once you have selected a seat in a restaurant, remain there. Moving about confuses the waitresses and delays your order. Think of others.
21. Be courteous to young people and adults on the streets.
22. Be friendly to adults who wish to take with you about the FFA.
23. Stay out of bars and other questionable places.
24. Watch your money and other valuable possessions, especially in large crowds.
25. Be a gentleman, first, last, and always.

It will be appreciated if you will give attention to these items. If you do this, you will represent your local chapter and your State association in a very fine way at the State Convention. You will also have a good time.

CHANGE OF TIME

Central Daylight Savings Time will begin Sunday, April 26. Please note the change of time so you will not miss the Vespers Service at 8 p.m. Sunday.





ATTENTION DELEGATES AND ADVISORS

The following constitutional changes will be voted on by the delegates of the 1970 State convention.

The executive committee of the Kansas Association of FFA met March 20 in the conference room of the State Department of Education in Topeka, Kansas. The following information is submitted to each chapter so that the opinion of the chapter may be given to the delegates for proper voting.

1. Recommendation by Clay Center FFA Chapter: The State Convention and the State FFA Contests (livestock judging, farm mechanics, etc. excluding public speaking and parliamentary procedure) should be held on separate dates in order that both activities may function more appropriately. The executive committee approved the Clay Center recommendation.
2. The Clay Center FFA recommended: The executive committee be expanded by adding the following members--adult sponsor of Collegiate FFA at Kansas State University, past KVATA president, KVATA president elect, and five other State FFA officers.

The executive committee recommended that the following members be added to the executive committee--KVATA president elect, State FFA vice president or another officer at the choice of the State FFA president.

3. Article I, Section B, 2, be changed to read as follows, "To create and nurture a love of country life by encouraging members to improve the home and its surroundings, to assist in rural development, to develop organized rural recreational activities, and to create more interest in the intelligent choice of farming and other ag-related occupations;"
4. Article I, Section B, 4, be changed to read as follows, "To strengthen the confidence of young men and women in themselves and their work, to encourage members in the development of individual farming programs and other ag-related programs, and to promote their permanent establishment in agriculture."
5. Article III, Section A, change "associate" to "alumni"

6. Article III, Section B, strike word "male"

The above recommendation was made by the executive committee in order to comply with the National FFA Constitution.

7. The executive committee recommended that the State FFA dues be set at \$1 and \$1 for National dues, making a total of \$2 per member. This would include the National FFA Magazine.



WHAT IS FFA MEMBERSHIP?

It is pride in what you're doing.

It is a tiger in the tank of the organization.

It is the cement that binds us.

It is a sense of belonging.

It is BEING HEARD--where it counts.

It is testimony that you will work.

It is getting and giving.

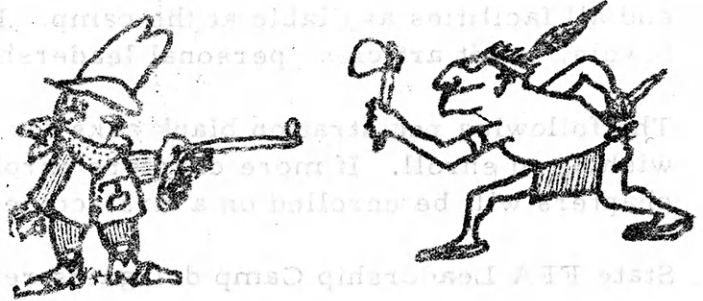
It is going where you can't go alone.

It is power in a power-conscious society.

Membership is YOU.

ACTIVITIES

SECTION



1971 FFA THEME

"FFA--INVOLVED IN AMERICA'S FUTURE"

DISTRICT AND STATE FFA FOUNDATION WINNERS

A Congratulations Booklet will be given to each district and State award winner. A personal thank-you letter to the FFA sponsoring committee, Mr. S. W. White, Jr., President, White Farm Equipment Company, 100 Erieview Plaza, Cleveland, Ohio 44114 is very important. A letter will let our friends know that the incentive awards are appreciated.

NATIONAL LAND JUDGING CONTEST

Kansas will be represented in the National Land Judging Contest on April 29 and 30 in Oklahoma City, Oklahoma, by the following chapters:

<u>Chapter</u>	<u>Instructor</u>
Council Grove	Gaylon Harris
Linn	Don Flenthrope
Ness City	Ed Brenner
Rossville	Ira Williams
Stockton	Ronald Peterson

STATE FFA CAMP - JULY 29 to AUGUST 1

One of the most important activities for the local FFA officers is attendance at the State FFA Leadership Camp. Chapter officers and advisors are urged not to miss the opportunity to be motivated and receive inspiration in making 1970-71 an outstanding one. The local 1970-71 chapter officers with their advisor or advisors are eligible to attend and will be expected to enroll for the entire camp period. Late arrivals or early departures cannot be accepted. The total cost of the camp will be \$15 per person. This includes nine meals, two official camp T-shirts,

and all facilities available at the camp. Each camper will furnish his own bedroll, towels, toilet articles, personal leadership material, and enthusiasm.

The following registration blank asks for a definite commitment of a chapter wishing to enroll. If more chapters enroll than the camp can accommodate, chapters will be enrolled on a first-come, first-served basis.

State FFA Leadership Camp delegates recommended the following:

1. Limit the number to 400 FFA members and advisors.
2. Chapter officers are preferred, but advisors may substitute if one or more officers cannot attend.
3. Full payment must be sent in to Kansas Association of FFA office by July 1 (full payment is \$15).
4. If one or more individuals do not attend camp, all but \$5 registration fee per member will be returned after the camp. This plan would assist in the following:
 - a. to determine more accurately the number to plan for at the State FFA Camp
 - b. save time and manpower plus confusion in enrolling
 - c. herds could be organized prior to camp
5. No chapter will be allowed to enroll without instructor or an approved representative by the State FFA office.



STATE FFA CONVENTION NEEDS ENTERTAINMENT

A talent program has been planned for Monday afternoon, 3 p.m. and possibly 7:15 p.m. Monday, April 27, in the Municipal Auditorium. If your chapter has an entertaining number, please contact the State FFA office (296-3956) immediately.

NATIONAL FFA CONVENTION NEEDS ENTERTAINMENT

If you would like to appear at the FFA Talent Program at the National Convention next October, please contact the Kansas Association of FFA office, 120 East Tenth, Topeka, Kansas 66612 by May 15. This is an opportunity to serve the Kansas Association and National FFA Organization as well as develop chapter talent.

CAMP REGISTRATION BLANK

The following FFA officers from the _____ Chapter are planning to attend the State FFA Leadership Training Conference at Rock Springs Ranch, Junction City, July 29 to August 1, 1970.

- 1. President _____
- 2. Vice President _____
- 3. Secretary _____
- 4. Treasurer _____
- 5. Reporter _____
- 6. Sentinel _____
- 7. Advisor _____

Please find enclosed a check for \$ _____ (\$15 per person). We understand that if we fail to attend camp as planned, we will forfeit the \$5 pre-enrollment fee. Payment by check should be made to Kansas Association of FFA, 120 East Tenth Street, Third Floor, Topeka, Kansas 66612 prior to July 1 deadline.

WRANGLER APPLICATION

Campers interested in a Wrangler position should complete the following form and return it to the State office not later than June 15. Any camper is eligible for this.

Name _____ Chapter _____ Age _____

Class 1970-71 school year _____ No. in High School Class _____

No. in Chapter _____ Offices held in your local chapter _____

Leadership activities you have participated in with your local chapter _____

Other high school leadership activities _____

Present Farming Program _____

What are your plans for the future? _____

KANSAS COOP COUNCIL QUIZ WINNERS

<u>District</u>	<u>Individual High Score</u>	<u>Chapter High Score</u>
East Central	82 - Wayne McClure Williamsburg	75.5 - Williamsburg
North Central	85 - Paul Westerman Ellsworth	75.9 - Ellsworth
Northeast	88 - Steven Hirt Valley Heights	71.2 - Valley Heights
Northwest	90 - Mark Karlin Ellis	75.0 - Ellis
South Central	89 - Terry Lawrence Winfield	73.0 - Winfield
Southeast	77 - Joe Wunderly Fort Scott	59.7 - Fort Scott
Southwest	99 - Stanley Stewart Tribune	79.8 - Tribune

THE NATIONAL FFA LEADERSHIP AND CITIZENSHIP CONFERENCE

Applications for FFA Washington conferences are flowing into the national center in Alexandria, Virginia. Last year Kansas had nine FFA chapters who participated in these conferences. Moundridge FFA Chapter has registered for this summer. May 15 is the deadline for registering.

If your chapter is interested in improving on building a chapter community development program, improving chapter public relations, financing chapter activities, or using foundation incentive awards effectively, the following dates for the National Chapter Impact Conference may be of interest to you: June 15 - 20, June 22 - 27, June 28 - July 3.

A \$20 deposit for each representative should be sent to Coleman Harris, National FFA Center, Alexandria, Virginia 22309.

If an individual or individuals in your chapter is interested in developing his leadership abilities, the following dates of the National Leadership and Citizenship Conference may be of interest to you: July 6 - 11, July 13 - 18, August 3 - 8. A \$20 deposit for each officer should be sent to Coleman Harris, National FFA Center, Alexandria, Virginia 22309 not later than May 15.

K-STATE ATA REMINDER

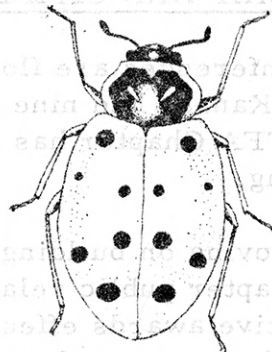
Bob Broeckelman, Alpha Tau Alpha president, Kansas State University, Manhattan, Kansas, would like to remind vocational agriculture instructors and FFA members of an interesting and valuable program available at no cost to the chapter. This program may fit into an FFA banquet or any other meeting.

The program consists of an 80-slide program illustrating local, State, and national FFA and other activities.

Advisors should contact Robert Broeckelman, Alpha Gamma Rho, 1919 Platt, Manhattan, Kansas 66502, phone (913) 539-2365.

FFA STATISTICS

	1967-68	1968-69	1969-70
FFA paid members	6,251	6,634	5,915
Vocational Agriculture	6,854	7,021	7,565
Departments	169	164	165



THE NATIONAL FFA LEADERSHIP AND CITIZENSHIP CONFERENCE

Applications for FFA Washington conference are flowing into the national center in Alexandria, Virginia. Last year Kansas FFA chapters who participated in these conferences. Mountbridge FFA chapter was registered for this summer. May 15 is the deadline for registering.

If your chapter is interested in improving your chapter community development program, improving chapter relations, financing chapter activities, or using foundation incentives effectively, the following dates for the National Chapter Impact Conference may be of interest to you. June 15 - 20, June 22 - 27, June 28 - July 3.

A \$20 deposit for each representative should be sent to Coleman Harris, National FFA Center, Alexandria, Virginia 22309.

If an individual or individual in your chapter is interested in developing leadership abilities, the following dates of the National Leadership and Citizenship Conference may be of interest to you. July 6 - 11, July 13 - 18, August 3 - 8. A \$20 deposit for each officer should be sent to Coleman Harris, National FFA Center, Alexandria, Virginia 22309 not later than May 15.

CHAPTER AND DISTRICT

SECTION



SOUTH CENTRAL DISTRICT GOOD WILL TOUR

The annual good will tour of the South Central district was held Monday, February 23. The tour included the Hutchinson area. The first stop on the tour was with Mr. Larry Kepley, extension economist. The next stop was Far-Mar-Co. The South Central district officers were luncheon guests of Far-Mar-Co. The third stop was at the Cessna Airplane Company at which the officers observed how a hydraulic system works. Next the group visited the Winchester Packing Plant. The last two stops were at the Krause Plow Company and the Rudy Patrick Seed Center.

Bennie Gehring
District Reporter
South Central District of the
Future Farmers of America

