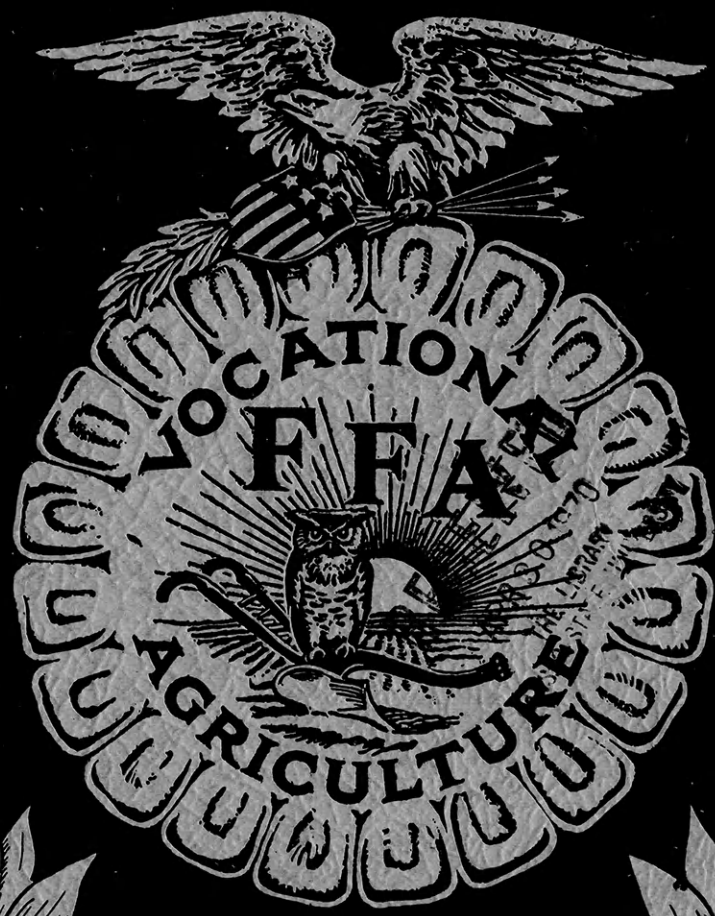


per

SEP 1 1960

508

The KANSAS Future Farmer



Published by
**THE KANSAS ASSOCIATION
FUTURE FARMERS OF AMERICA**

THE KANSAS FUTURE FARMER

Harold Shoaf, Editor

OFFICERS OF THE KANSAS ASSOCIATION OF FUTURE FARMERS OF AMERICA

Lauren Libby, President
Smith Center

Bob Price, Reporter
Norcatour

Thomas O'Neil, Vice President
Marysville

Danny McMillan, Sentinel
Garden City

Glenn Stucky, Secretary
Moundridge

Harold Shoaf, Executive Secretary
Topeka

Charles Van Petten, Treasurer
Eskridge

C. C. Eustace, State Advisor
Topeka

Volume XXXX

September 1, 1969

No. 1

TABLE OF CONTENTS

PICTURE SECTION

National Workshop for Professional Leaders in FFA	1
National Leadership and Citizenship Conference	1
Roy Freeland FFA Agricultural Education Scholarship	1
State FFA Camp	2
Ornamental Horticulture	4

ANNOUNCEMENT SECTION

Call to the National FFA Convention	5
National FFA Convention Registration of Chapters	6
Official Kansas Delegates to the National Convention	7
Tickets and Tours.	8
1969 National FFA Band	8
Dennis Deines Pianist for the National FFA Chorus	8
Wayne Converse Enters Central Regional Public Speaking Contest	9
1969 American Farmers	9
Kansas Entries in National Competition	10
National Better Chapter Entries	10
Dues and Magazine Subscriptions	10
Program of Work	11
Fifty-nine Chapters Attend Leadership Camp	11
1969 FFA Awards	11
Kansas Statistics	11
Charles Van Petten Receives Scholarship	12
Potential Changes in the FFA Organization	12

NATIONAL OFFICERS, FUTURE FARMERS OF AMERICA
1968-69

Constituting the
NATIONAL BOARD OF STUDENT OFFICERS

PRESIDENT Charles Hanlon
Route 1, Box 221, Cornelius, Oregon

VICE PRESIDENT, NORTH ATLANTIC REGION Glenn Weber
R.F.D. 2, Mohnton, Pennsylvania

VICE PRESIDENT, SOUTHERN REGION Lowell Catlett
Rehm Route, Box 405, Dalhart, Texas

VICE PRESIDENT, PACIFIC REGION Joe Martinez
Route 1, Box 297, Winters, California

VICE PRESIDENT, CENTRAL REGION Thomas Johnson
Route 1, Ashland, Illinois

NATIONAL SECRETARY Jerry Batts
Route 2, Box 191, Athens, Alabama

ADVISOR H. N. Hunsicker
Washington, D. C.

EXECUTIVE SECRETARY William Paul Gray
Washington, D. C.

TREASURER J. M. Campbell
Woodstock, Virginia

----FFA----

NATIONAL FFA BOARD OF DIRECTORS

H. N. Hunsicker, Chairman, Office of Education, Washington, D. C.

George R. Cochran, State Supervisor, Agricultural Education, St. Paul, Minn.

James Fink, State Supervisor, Agricultural Education, Harrisburg, Pennsylvania

V. B. Hairr, State Supervisor, Agricultural Education, Raleigh, North Carolina

John W. Lacey, Office of Education, Denver, Colorado

Byron Rawls, Office of Education, Kansas City, Missouri

Jesse A. Taft, Office of Education, Boston, Massachusetts

J. W. Warren, Office of Education, Charlottesville, Virginia

D. E. Wilson, Chief, Agricultural Education, Sacramento, California

ACTIVITIES SECTION

FFA Livestock Show 14
 1969 Leadership Schools 14
 National FFA Leadership and Citizenship Conference 19

CHAPTER SECTION

Kent Hamilton, Leoti FFA Chapter, Spends Summer Abroad 20
 Moundridge FFA Chapter Assists Cystic Fibrosis Campaign 20

Danny McMillan, Seminar
 Garden City

Thomas O'Neil, Vice President
 Marysville

Harold Shost, Executive Secretary
 Topeka

Glenn Stucky, Secretary
 Moundridge

C. C. Eustace, State Advisor
 Topeka

Charles Van Patten, Treasurer
 Haskins

TABLE OF CONTENTS

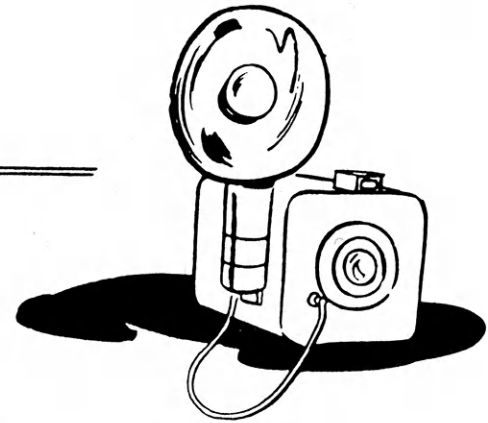
PICTURE SECTION

1 National Workshop for Professional Leaders in FFA
 1 National Leadership and Citizenship Conference
 1 Roy Freedland FFA Agricultural Education Scholarship
 2 State FFA Camp
 4 Ornamental Horticulture

ANNOUNCEMENT SECTION

5 Call to the National FFA Convention
 6 National FFA Convention Registration of Chapters
 7 Official Kansas Delegates to the National Convention
 8 Tickets and Tours
 8 1969 National FFA Band
 8 Donna Deines Pianist for the National FFA Chorus
 9 Wayne Converse Enters Central Regional Public Speaking Contest
 9 1969 American Farmers
 10 Kansas Entries in National Competition
 10 National Better Chapter Entries
 10 News and Magazine Subscriptions
 11 Program of Work
 11 Fifty-nine Chapters Attend Leadership Camp
 11 1969 FFA Awards
 11 Kansas Statistics
 12 Charles Van Patten Receives Scholarship
 12 Potential Changes in the FFA Organization

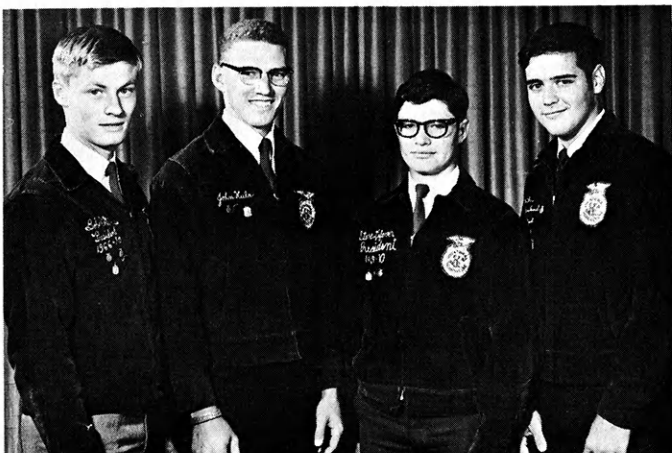
PICTURE SECTION



For complete stories of the pictures in this section, please refer to the Activities Section.



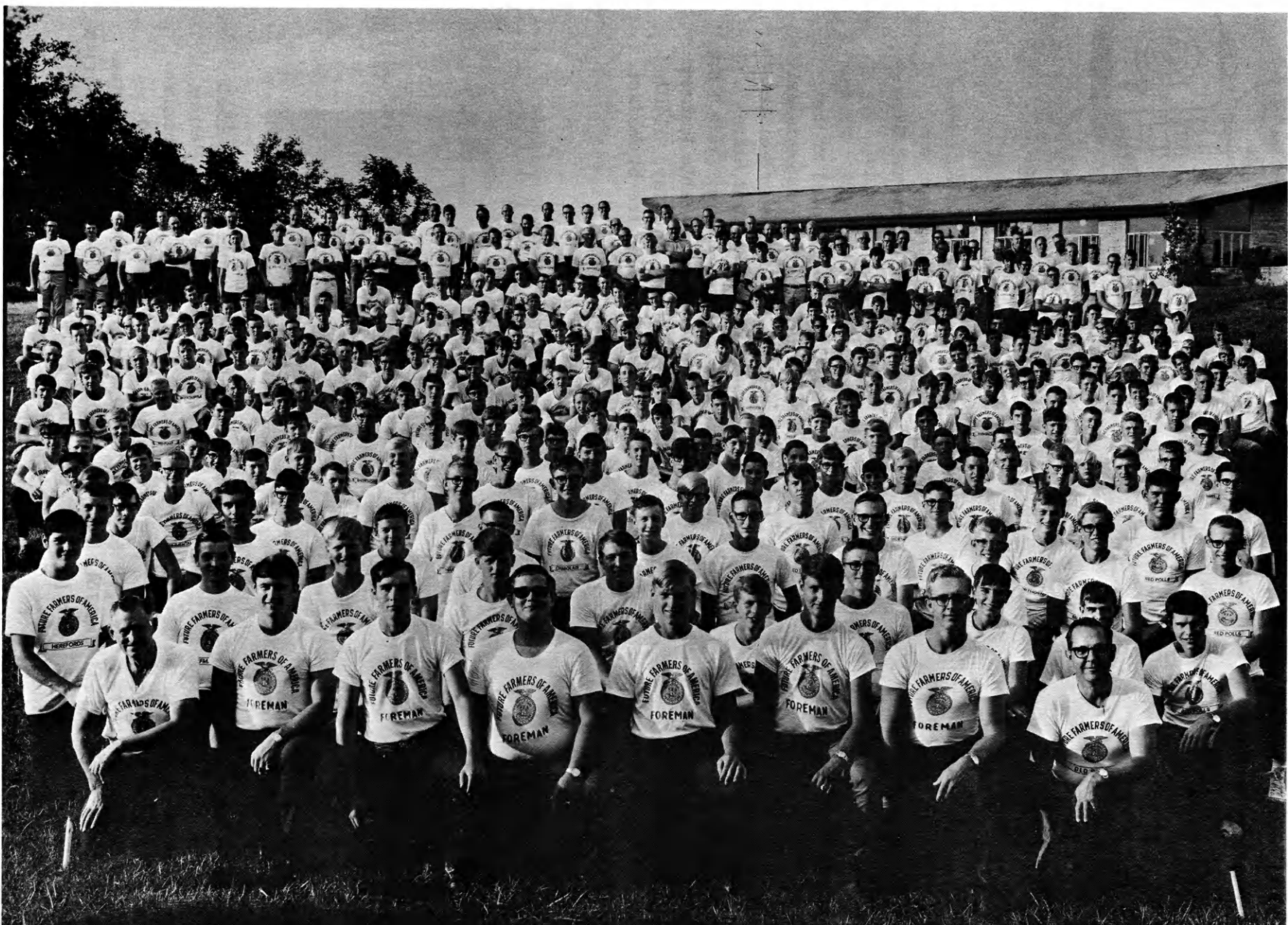
The Honorable Robert Dole, United State Senator from Kansas, was sponsor of the Congressional Breakfast for FFA leaders held in Washington, D. C., July 24. There were 47 States represented at the National Workshop for Professional Leaders in FFA. Left to right are Earl Wineinger, Assistant State Supervisor; Lauren Libby, State FFA president; and the Honorable Robert Dole, United States Senator. Keith Sebelius also attended the breakfast.



The Kansas Association of FFA was well represented at the National Leadership and Citizenship Conference held in the National FFA Center, Washington, D. C., in the month of July. Left to right are President Bobby Collins, Fort Scott; President John Hula, Valley Heights; President Steve Lefever, Peabody; and President Mike Cleveland, Concordia.

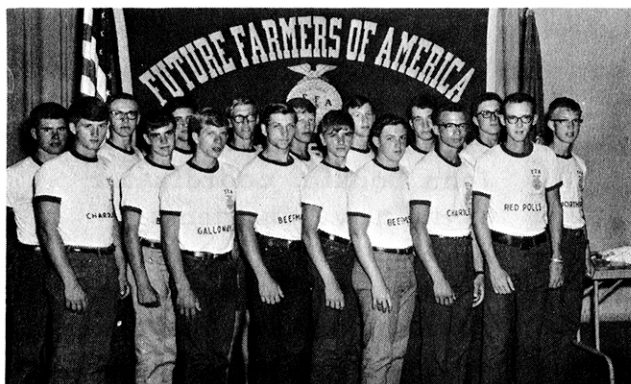


Mr. Roy Freeland presents a \$500 scholarship to Charles Van Petten, Eskridge High School. The scholarship is given by Harry Darby to symbolize the friendship of both men toward the Future Farmers of America program in Kansas.

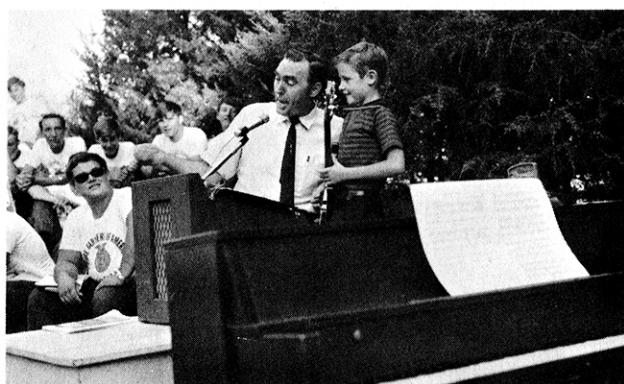


FUTURE FARMERS OF AMERICA LEADERSHIP CONFERENCE
ROCK SPRINGS RANCH — JULY 24-27 1969.

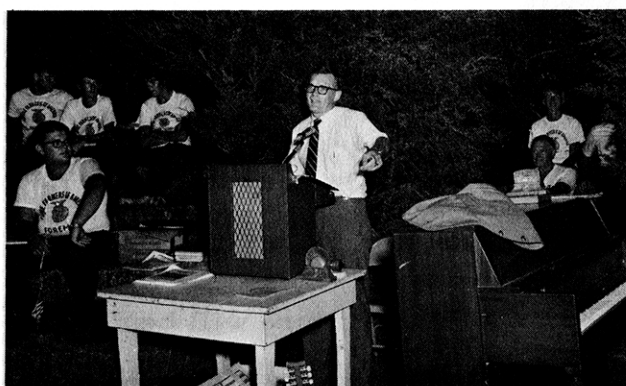
Photo
E. B. Bo
J. C. H. S.



Wranglers and assistant wranglers were key leaders at the 1969 FFA Camp.



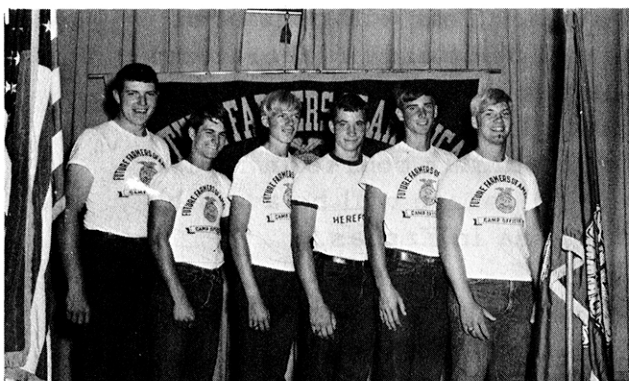
Bill Post and his son Johnnie furnished entertainment at the opening session.



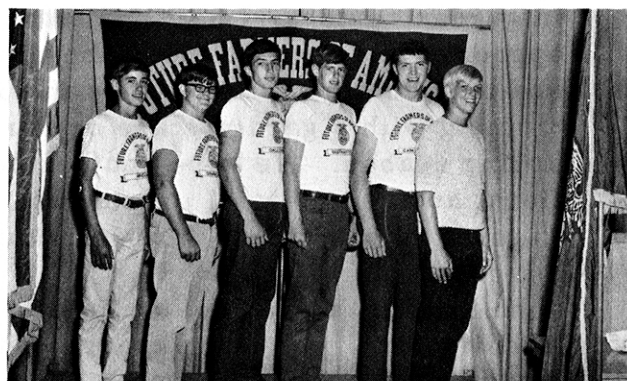
The keynote speaker at the FFA Camp was former FFA member Harold Stones, who is now Director of Research and Economic Education Coordinator at the First National Bank, Topeka.



Coach Vince Gibson, Kansas State University, gave an inspirational Vespers Service message on how to win at the game of life.



State Camp officers, 1969, left to right, President Reggie Spadel, Riley Co.; Vice President Robert Schletzbaum, Atchison Co.; Secretary Gordon Cummings, Seaman; Treasurer Mike Ramsey, Garden City; Reporter Duncan Durr, Eskridge; and Sentinel Phillip Stinemetz, Hill City.



State FFA Master Ritual Team, 1969, left to right, President Jay Montgomery, Sabetha; Vice President Phil Stinemetz, Hill City; Secretary Dale Boh, Eskridge; Treasurer Ralph Wilson, Arkansas City; Reporter Steve Bohn, Eskridge; and Sentinel Mark Mayfield. Canev.



Pictured at left is Mr. John Tonkin, coordinator of the new Ornamental Horticulture program at the Kaw AVTS, and Dr. Lester Sanders, director of the Kaw AVTS.

Ornamental Horticulture

Beginning with the fall term, a course in Ornamental Horticulture will be offered at the Kaw Area Vocational-Technical School in Topeka. A new building and greenhouse are being constructed and will be ready for use some time in September.

The program will consist of a basic course in Horticulture for posthigh and high school students. General knowledge in soils, plant propagation, growing of nursery and greenhouse plants, garden centers, and landscaping will be covered. Also starting will be a two-year posthigh course in garden centers, retail and landscape nurseries. This will consist of approximately two thirds of the time in class and one third in laboratory and outside application. Also included will be a four-month on-the-job training with a garden store or nursery which will correspond with the spring season. We hope another year to offer a similar course in retail floral and commercial greenhouse. The posthigh course will be available to students interested in horticulture from any area in Kansas.

John Tonkin, a graduate of Kansas State University in Landscape Architecture, will be in charge of the program. Mr. Tonkin has had 25 years of experience in the nursery business and, this past year, was an instructor in horticulture at the University of Nebraska School of Technical Agriculture, Curtis, Nebraska.

A N N O U N C E M E N T S E C T I O N

CALL TO THE NATIONAL FFA CONVENTION



Fellow members of the Kansas Association of Future Farmers of America, as your State president I am issuing a call to each local chapter to send their delegates to the 42nd Annual National FFA Convention to be held in Kansas City, Missouri, October 14 to 17, 1969, at the Municipal Auditorium.

Each chapter is allowed to send a maximum of six carefully selected delegates to the National Convention; this does not include National or regional award winners or those having a special part in the convention. I urge you to wear your FFA jacket proudly and properly at all times during the convention, as you are representing your chapter, State Association, as well as the National organization.

To attend the National Convention is a great experience. I am sure that while at Kansas City you will see numerous inspirational people, and those qualities of leadership which a Future Farmer should possess. I would hope that while there you would pick up many useful ideas to use in your local chapter and make many lasting friendships with other members.

Your State officers will be representing you and the State Association during the convention. I am looking forward to seeing and visiting with you in Kansas City.

Lauren Libby, President
Kansas Association of FFA

FELLOW FUTURE FARMERS OF AMERICA:

The 42nd annual National FFA Convention will be conducted October 14 - 17 at the Municipal Auditorium in Kansas City, Missouri. A stimulating program featuring inspirational speakers and FFA leaders of past and present has been planned. In addition we will be calling attention to FFA achievements, recognizing supporters of the FFA, and plotting the course of our organization for the coming year. With the participation of each and every member in attendance we are looking forward to an enjoyable and rewarding convention.

The convention will convene with the Vespers Service on Tuesday evening, October 14, and will conclude with the traditional Firestone entertainment program on Friday evening, October 17. All State associations in good standing with the national organization are to be represented by two official delegates plus one additional delegate for each 10,000 members or major fraction thereof above the first 10,000 and two alternate delegates. The delegates are expected to be present in Kansas City at 9:00 a. m. for the official delegate orientation and Officer-Delegate Luncheon. All American Farmer Degree candidates, award recipients, candidates for national office, and chapter representatives should be present for the first session Tuesday evening.

Each chapter is encouraged to send representatives equal to six members or 10 percent of its total membership. This figure does not include award winners or special convention participants. It is imperative that the representatives be carefully selected, registered, and oriented using "You and Your National Convention" as a guide. The eyes of many in Kansas City and across the nation will be on the gentlemen in blue and gold as our year's activities culminate during the convention.

Your 1968-69 national officers are anticipating your enthusiastic support and cooperation in making our 42nd annual National FFA Convention a memorable one.

Jeff Hanlon
National FFA President

NATIONAL FFA CONVENTION REGISTRATION OF CHAPTERS

Registration will be made by chapters, except for official delegates, band and chorus members, American Farmer candidates, student teachers, State staff members, parents, and guests. Registration cards are available on request from Harold Shoaf, Executive Secretary, Kansas Association of FFA, 120 East Tenth Street, Topeka, Kansas 66612.

The registration card will provide space for the names of the representatives of each chapter, plus the signatures of the vocational agriculture teacher and the local administrator.

Attendance at the National Convention will be limited to not more than six carefully selected members and one advisor from any given chapter, or ten percent of the chapter membership, whichever is greater.

The following members will not be counted in the local chapter quota: Courtesy Corps assistants, stage crew assistants, official State delegates, American Farmer Degree candidates, contestants in the National Public Speaking and Judging Contests, Regional and National FFA Foundation Award winners, and members of the National FFA Band and Chorus.

The following procedure will be followed:

1. Upon arrival in Kansas City, the advisor or chaperon of each chapter will present the completed registration card of his group at the registration desk in the Municipal Auditorium.
2. Each member will receive an identification card. This identification card will be required of all members as an admission pass to evening sessions.
3. No registration cards for chapters will be available in Kansas City. They must be obtained from the State office and completed before the member leaves home.

Registration of Judging Teams:

1. Judging team members and coaches will register on the FFA chapter's official registration cards.
2. Team coaches will confirm the names of all contestants in advance of the respective contests at the registration desk, Municipal Auditorium, Kansas City, from 10:00 a.m. to 2:30 p.m. on Tuesday and Wednesday, October 14 and 15.

OFFICIAL KANSAS DELEGATES TO THE NATIONAL FFA CONVENTION

Lauren Libby, State FFA president, Smith Center FFA Chapter, and Tom O'Neil, State FFA vice president, Marysville FFA Chapter, will represent the Kansas Association of FFA as official FFA delegates to the National FFA Convention, October 14 - 17, 1969. Charles Van Petten, State FFA treasurer, Eskridge FFA Chapter, and Bob Price, State FFA reporter, Norcatour FFA Chapter, will serve as alternates. Delegates will be located in the President Hotel.

TICKETS AND TOURS

Tickets for the American Royal Horse Show matinee on Friday afternoon, October 17, will be sold at the registration desk in the Municipal Auditorium on Thursday from 9:00 a.m. to 5:00 p.m. Price of tickets is \$.50.

Tickets for the FFA Educational Tour of Kansas City, scheduled for 1:00 p.m. on Tuesday, October 14, and 1:00 p.m. on Thursday, October 16, will be sold at the registration desk from 9:00 a.m. to 12:45 p.m. on the respective days. Price of tickets is \$.60.

1969 NATIONAL FFA BAND

The National FFA Band will again be under the direction of Mr. R. Cedric Anderson of Cedar Rapids, Iowa. The band, known as the "suitcase" band, will furnish music for the National FFA Convention.

Five Kansas FFA members have been selected to serve with the National FFA Band. The band will number approximately 120 FFA members. In addition to the convention, the band will perform during the opening sessions of the American Royal Parade, Saturday, October 18.

All Kansas FFA members can be proud of the following young men who have been selected for this outstanding band.

Richard Hagemann, Girard FFA Chapter
Arthur Jenkinson, Girard FFA Chapter
Steve Newby, Haven FFA Chapter
Jerry McNamar, Medicine Lodge FFA Chapter
Rick Hossfeld, Powhattan FFA Chapter

DENNIS DEINES PIANIST FOR NATIONAL FFA CHORUS

Mr. Marvin D. Myers, Director of the National FFA Chorus, has informed the Kansas Association of FFA that Dennis Deines, WaKeeney FFA Chapter, has been chosen for the second consecutive year to serve as pianist for the National FFA Chorus. This is the first time in the history of the Kansas Association that one of its members has served two consecutive years as pianist for the National FFA Chorus. The chorus will number approximately 100 members. Four Kansas Future Farmers will have opportunity to participate in the 1969 National Chorus. The four members are as follows:

Bernie Reinert, Ensign FFA Chapter
Wade Rozean, Plainville FFA Chapter
Steven Parkey, Powhattan FFA Chapter
James Lindquist, Valley Heights FFA Chapter

WAYNE CONVERSE ENTERS CENTRAL REGIONAL PUBLIC SPEAKING CONTEST

The Kansas Association of FFA will be represented in the Central Regional Public Speaking Contest by Wayne Converse of the Eskridge FFA Chapter.

The Regional contest will be held at 8:30 a. m., Tuesday, October 14, in Kansas City, Missouri.

The winner of the Central Regional Contest will be one of the four finalists in the National Public Speaking Contest on Wednesday evening, October 15, in the Municipal Auditorium, Kansas City, Missouri.

1969 AMERICAN FARMERS

The National Board of Student Officers and the National Board of Directors of the Future Farmers of America have recommended seven Kansas Future Farmers to receive the coveted award of the American Farmer Degree. The action of the Board of Directors must be confirmed by the official delegates to the 1969 National FFA Convention.

The American Farmer Degree ceremony and award will be held on Wednesday afternoon, October 15, in the Municipal Auditorium, Kansas City, Missouri.

Each American Farmer Degree winner will receive a certificate, gold key that symbolizes the degree, and a check for \$75 from the Future Farmers of America, Inc. Candidates must be present in order to receive the \$75.

The Degree is limited so that only approximately one FFA member in one thousand may receive it in any year.

Candidates who have been nominated from Kansas are as follows:

Richard C. Chambers, Oberlin FFA Chapter
Richard Gottlob, Arkansas City FFA Chapter
Samuel L. Hands, Garden City FFA Chapter
Gail E. Kueser, Garnett FFA Chapter
Dale M. Kueser, Garnett FFA Chapter
Robert E. Wiles, Leoti FFA Chapter
Orvill L. Stigge, Washington FFA Chapter

KANSAS ENTRIES IN NATIONAL COMPETITION

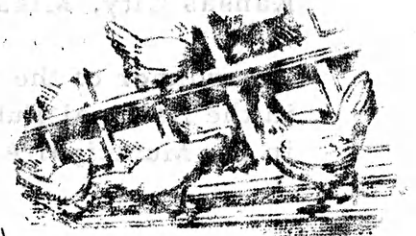
MEATS--Kansas representative in the National Meats Contest will be the winner of the State Meats Contest. The State Meats Contest will be held at the Cudahy Packing Plant in Wichita, Kansas, on October 7, 1969.

LIVESTOCK JUDGING--Valley Heights FFA Chapter,
Willis Ringen, Advisor

POULTRY JUDGING--Altoona FFA Chapter, John
Davis, Advisor

DAIRY JUDGING--Winfield FFA Chapter, John Baird,
Advisor

DAIRY PRODUCTS JUDGING--Winfield FFA Chapter, John Baird, Advisor

NATIONAL BETTER CHAPTER ENTRIES

The Council Grove and Atchison County Chapters will represent Kansas in the National Better Chapter Contest.

The National Gold Emblem Chapters will receive recognition on Wednesday, October 15, at the National Convention.

DUES AND MAGAZINE SUBSCRIPTIONS

Dues for 1969 and 1970 will be \$2. This includes the National Future Farmer Magazine. All members must pay the \$2 to be an official FFA member and to be eligible for awards and recognition in the Kansas Association of FFA.

Be sure the magazine subscription report is filled out completely and accurately. Only the form sent out from the National organization should be used.

The exact address including zip code is very important. Last year 27,000 copies of the National Future Farmer Magazine were returned at a cost of \$7,000 to \$10,000.

The dues and the magazine subscriptions should be sent to the Kansas Association of FFA, 120 East Tenth Street, Topeka, Kansas 66612. Magazine subscriptions will be forwarded to the National office as soon as they are received in the State office. It is suggested that dues and magazine subscriptions be sent in by September 15 so that every member may receive the first issue of the National Future Farmer Magazine. The most convenient time for collecting the dues is at the beginning of the school term.

PROGRAM OF WORK

The chapter program of work is due in the State office by October 31. The State FFA delegates recommended and the State Executive Committee approved that only chapters that have submitted program of work for their chapter be eligible for State Farmer.

FIFTY-NINE CHAPTERS ATTEND LEADERSHIP CAMP

More favorable comment on a successful FFA Camp was made to State FFA officers and staff this year than in any previous year in the history of the Kansas Association. The 328 FFA members and advisors were outstanding in cooperation and in making the camp a success. A special thanks to Greg Hands, past FFA president, who did much to assist the State officers in the many activities they were responsible for. The recommendations of the 1968 Camp Committee were employed which had much to do in the smoothness in enrolling and the change of activities which seemed pleasing to the FFA members.

The keynote session speaker, Mr. Harold Stones, and Mr. Bill Post, folklore song recording artist and writer, and his son Johnnie were sponsored by the Kansas Association of Bank Agricultural Representatives (KABAR). Incentive awards were also sponsored by KABAR.

Each FFA member and advisor should write a thank-you letter to Mr. Milton Thomas, President, KABAR, Fidelity State Bank of Garden City, Garden City, Kansas 67846; and a duplicate to Mr. Harold Walker, Vice President, Home National Bank, Arkansas City, Kansas 67005. Your letter should express thanks for their interest in our organization.

1969 FFA AWARDS

FFA members should be encouraged to consider applying for a district FFA foundation award. Deadline for applications is listed in the 1969-70 calendar of activities which has been furnished each chapter. All applications should be sent to Harold Shoaf, Kansas Association of FFA, 120 East Tenth Street, Topeka, Kansas 66612. A list of each of the awards has been furnished each chapter. Additional copies may be obtained by writing to Mr. Shoaf.

KANSAS STATISTICS

The Kansas Association of FFA had 6,334 active FFA members in the year 1968-69 ending June 30.

Forty-two Kansas chapters participated in the 1969 calendar program. This is 24.9 percent of the total chapters.

CHARLES VAN PETTEN RECEIVES SCHOLARSHIP

Charles Van Petten, FFA member and State officer from Eskridge High School, was the recipient of the Roy Freeland Future Farmers of America Award given by Harry Darby of Kansas City. The \$500 scholarship was presented at the Kansas Vocational Agriculture Teachers Association Banquet at Kansas State University, Manhattan, June 5.

The purpose of the award is to attract students of outstanding ability and sincerity of purpose to the teaching profession. The award is based on high school Future Farmer activities, scores on achievement tests, high school grades, character, personality, and the desire to be a teacher of vocational agriculture. Charles, son of Mrs. Ruth Van Petten, ranked third in his graduation class of 17 and plans to enroll in the agricultural education curriculum at Kansas State University this year.

This is the third year for the award. C. Scott Sparks, Kingman, a K-State sophomore in agricultural education, was the 1967 recipient; and Darrell Cardell, Richmond, a K-State freshman in agricultural education, was honored in 1968.

POTENTIAL CHANGES IN THE FFA ORGANIZATION



Did you ever notice that the owl of the FFA emblem is always looking forward? As successful and exciting as his past has been, he is consistently looking ahead to attempt to make his future as successful and exciting as his past. The current national leaders of the FFA are likewise exhibiting this "forward looking" image just as this age-old wise owl has.

As an indication of this "forward looking" attempt, the National FFA leaders are enthusiastically investigating the following potential changes in the FFA organization:

1. In some way, establish a youth organization for postsecondary students in agriculture. This could be done in a number of ways, but, in the words of Mr. Hunsicker, National FFA Advisor, this question is "first in priority" of all problems facing vocational education in agriculture. Some possible answers might be to have such an organization as part of the FFA, or under a broad umbrella of a federation-like organization of which the FFA would also be a part, or it could organize completely separate from the FFA.

2. Change the name of FFA (Future Farmers of America) to more nearly reflect the true image of the youth organization for vocational education in agriculture. A number of new names have been suggested. At this time probably the most popular is the name "Future Farmers and Other Agriculturalists." This would permit the organization to maintain the popular initials of FFA.

3. Make the FFA a truly integral part of vocational agriculture for all students of vocational education in agriculture. At the current time we tend to be talking out of both sides of our mouths when we claim that FFA is an integral part of vocational agriculture and yet we do not encourage and in some cases we do not allow all students of vocational education in agriculture to be a part of the youth organization.

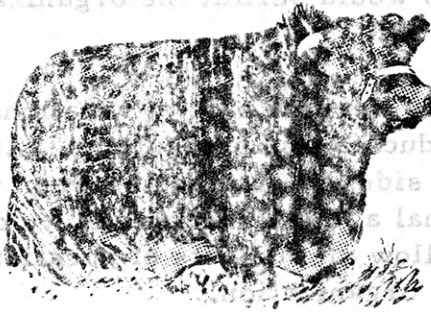
4. Develop an alumni association of FFA. There are approximately 4 million alumni to the FFA. It is anticipated that many of these alumni would be anxious to work together to assist in developing a facility such as the National FFA Center. If only half of the alumni would each contribute as little as \$5, this would be many times more than what would be required to build the desired center. If the alumni association was to be formed, it is very possible that the association type of membership would be abolished from the constitution.

5. Equalize the membership between the districts. Under the organization of the four regions now established, there is a range in membership from 24,000 in the North Atlantic Region to 242,000 in the Southern Region. There is one State in the Southern Region that has nearly twice the membership of the entire North Atlantic Region. As a result of these facts, the National leadership is investigating the possibility of changing the region lines so that the membership in the regions would be more nearly equal. There is a possibility that the United States would be divided into five or six regions instead of the traditional four. Another aspect to this problem is the apparent need for additional National officers.

6. Change the names of the degrees from American Farmer Degree to "American Degree," State Farmer Degree to "State Degree," and Chapter Farmer Degree to "Chapter Degree." With the broadening of emphasis of agriculture in FFA and vocational agriculture classes, it is becoming increasingly apparent that the present names of the degrees do not fit a number of the students in vocational education in agriculture. There is a possibility that a separate degree could be established for the students and members interested in this area. There are many people, however, who feel that the FFA should present a united effort in attempting to unify the efforts of production agriculture and agriculturally related people.

It is remarkable that the founders of FFA were able to have the foresight and knowledge to organize an association which could work effectively and successfully for a period of 40 years. Today's National leaders are doing what the original founders were doing 40 years ago: they are looking ahead.

ACTIVITIES SECTION



FFA LIVESTOCK SHOW

Kansas FFA members will for the first time this year be permitted to show livestock at the Kansas State Fair in a special section for FFA. Members will also be permitted to participate in encampment activities at the fair. Due to a number of problems, there probably will be no carcass or sonoray activities this year. A special committee has been appointed by the Executive Committee of the Kansas Association of FFA to determine the procedures and rules for the 1970 livestock show.

1969 LEADERSHIP SCHOOLS

The Federal Land Bank of Wichita will sponsor the awards for Leadership Schools. A special thanks should be sent to Mr. William G. Plested, Jr., President, The Federal Land Bank of Wichita, Box 458, Wichita, Kansas 67201.

<u>Date</u>	<u>District</u>	<u>Place</u>	<u>Teacher</u>
Oct. 1	SC	Buhler	Leslie Starks
Oct. 1	NW	Hill City	Joe Farrell
Oct. 1	EC	Williamsburg	Earl Anderson
Oct. 1	NC	Belleville	Olin Sandlin
Oct. 2	SW	Dodge City	Allen Starosta
Oct. 2	SE	Neodesha	Wayne Coltrain
Oct. 2	NE	Effingham	Roy Eck

All FFA chapters are urged to participate in all of the activities. This is an opportunity to learn. Last year 124 chapters or 75 percent of our total chapters participated in the information contest. Twenty-six chapters or

approximately 25 percent participated in the ritual contest. Ninety-three or 57 percent of the total chapters participated in parliamentary procedure. Chapters are urged to become acquainted with parliamentary procedure and to participate in this worthwhile activity.

FFA Information Contest

1. Twenty-five questions will be given.
2. Questions will be taken from the official FFA Manual, the November 1968 Future Farmer newsletter, the April 1969 Future Farmer newsletter, and the May 1969 Future Farmer newsletter.
3. The test will not include names of winners of district, State, or National contests.
4. The test will not include names or home chapters of American Farmer candidates.
5. The test will not cover names of Regional Vice Presidents or Board of Directors of the National organization.
6. The top ten individuals will be recognized.



Parliamentary Procedure

- I. General Plan
 - A. Each of the seven districts will select a winning team. The winning team will be eligible to compete in the State contest.
- II. Eligibility
 - A. A team shall be composed of six constitutional officers.
 - B. There is no limit as to the number of years an individual may participate on both the district and State levels regardless of his placing on either level.
- III. Parliamentary Procedure Quiz
 - A. Twenty true-false questions on Parliamentary Procedure will be given at the same time the Information Test is given.

B. Reference for the Information Test will be the same as last year. Robert's Rules of Order will be the accepted reference for Parliamentary Procedure. A guide to Parliamentary Practices by Henderson and Rucker is available from Interstate.

C. Each quiz question which is correct will count six points in the total score.

D. Thirty points are allotted for debate.

IV. Time Limit

A. On the District level, each team shall have a maximum of six minutes in which to demonstrate their knowledge of Parliamentary Procedure.

B. On the State level, each team shall have a maximum of eight minutes to demonstrate their knowledge of Parliamentary Procedure.

C. A one-minute warning will be given by the timekeeper.

D. On the State level, one question from each of three judges will be asked. Team may confer on answer.

Recommendations

The following rules were recommended by a group of advisors with Dean Knewton as chairman at the 1969 State FFA Camp:

1. Follow last year's recommendations and refrain from changing motions.
2. Explain that debate refers to discussion and not a formal two-sided debate.
3. Secretaries should be given two dividable topics (not necessarily motions) and the team should be limited to two main motions.
4. Three judges should be used. Possibly someone familiar with speech and grammar and two vocational agriculture instructors from another district who would be familiar with the scorecard would be good.

Suggested guidelines to district host chapters:

1. Adopt Robert's Rules of Order as the accepted reference.

2. Give full 10 points for each motion correctly seconded, even if it is not disposed of within the time limit.
3. Give partial points on individual motions which may be only partially handled correctly. (No blanket deduction on all motions). (Example-- a two-point deduction for failure to call for discussion, or to count the vote in a division of the house which requires a 2/3 vote.)
4. Points should be reduced if an unrealistic motion is used by using the top of the scorecard section-- "General Effect and the Use of Realistic Measures."
5. State office will furnish a parliamentary procedure test for each of the districts.

The State FFA delegates recommended the following for parliamentary procedure:

1. The district test should be furnished by the State and given to each of the districts. Time limit for each of the districts should be the same.
2. Sentinels should not assist in the answering of questions in the State Contest.
3. State and district time limit be set at 8 minutes.
4. In the State Contest, the State officer participants should be introduced early. The judge should not count off if the motion dies for lack of a second.

Score Card

Score	Abilities Demonstrated	Team Score
	Call to order	
20	Poise and personal appearance of presiding officer and manner displayed (1)	
40	Poise, appearance, and manner displayed by team	
10	Grammar and sentence structure (2)	
20	General effect and the use of realistic measures	
10	Secretary's minutes (used in case of tie)	
20	Effective use of debate	

RANKING MOTIONS (Ranked according to precedence)

A.	PRIVILEGED MOTIONS:	S	D	A	VOTE
10	To fix time to adjourn (4)	Y	N	(7)	M
10	To adjourn (5)	Y	N	N	M
10	To take a recess (6)	Y	N	(7)	M
10	To raise a question or privilege	N	N	N	(8)
10	To pass the gavel	N	N	N	
B.	SUBSIDIARY MOTIONS:				
10	To lay on the table	Y	N	N	M
10	To call for the previous question	Y	N	N	2/3
10	To limit or extend time of debate	Y	N	(7)	2/3
10	To postpone definitely (to certain time)	Y	Y	Y	M
10	To commit or refer	Y	Y	Y	M
10	To amend proposed amendment	Y	(9)	N	M
10	To amend	Y	(9)	Y	M
10	To postpone indefinitely	Y	Y	N	M
C.	MAIN MOTIONS:				
30	Main motion (to introduce business)	Y	Y	Y	M

NON-RANKING MOTIONS

A.	INCIDENTAL MOTIONS:				
10	To raise a point of order	N	N	N	(10)
10	To appeal from the decision of chair	Y	(11)	N	M
10	To suspend the rules	Y	N	N	2/3
10	To divide the question	(12)	N	Y	M
10	To call for a division of house	N	N	N	(13)
10	To rise to a parliamentary inquiry	N	N	N	N
10	To rise to request information	N	N	N	N
10	To withdraw a motion	N	N	N	N
10	To provide manner of voting	Y	N	Y	Y
B.	UNCLASSIFIED MOTIONS:				
10	To take from the table	Y	N	N	M
10	To reconsider	Y	(14)	N	M
30	Debate (5 points each for 6 times debate is used)				
20	Response to judge's questioning (State contest only)				
120	Parliamentary procedure quiz (20 questions)				
560	FINAL SCORE				

"D"--DEBATABLE; "A"--AMENDABLE; "M"--MAJORITY VOTE;
 "Y"--YES; "N"--NO

NOTES Pertaining to Specific Items on Official Scorecard

- (1) Also includes proper use of gavel.
- (2) Means correct English, clear, concise, direct, and well-phrased.
- (3) Omit.
- (4) Is a privileged motion only if made while another motion is pending, and in an assembly that has made on provision for meeting on the same or next day; otherwise, it is a main motion. The answers apply to the privileged motion.

- (5) When unqualified, is always a privileged motion except when effect would be to disband the group permanently. The answers apply to the privileged motion, not to a motion to adjourn.
- (6) Is a privileged motion if made when other business is pending; otherwise, is a main motion. Answers apply to the privileged motion.
- (7) Can be amended as to time.
- (8) Is usually disposed by chair, without vote.
- (9) Can be debated only when the question being amended is debatable.
- (10) Is usually decided by chair, without calling for a vote.
- (11) Cannot be debated if made during a division of the assembly, or when the pending question is undebatable. Cannot be debated when it applies to indecorum, transgression of the rules of speaking, or to priority of business.
- (12) The question must be divided at the request of a single member, (which request can be made when another has the floor), provided the resolutions relate to different subjects which are independent of each other.
- (13) When a division is called for, the chair proceeds to take the vote again by rising. No vote is taken on whether a division shall be made, i. e., on whether a standing vote shall be taken.
- (14) Debatable when the question to be reconsidered is debatable.

NOTE: The guide used to make the scoresheet was: "Robert's Rules of Order" and "A Guide to Parliamentary Practices" by Melvin Henderson and Herbert J. Rucker of the University of Illinois.

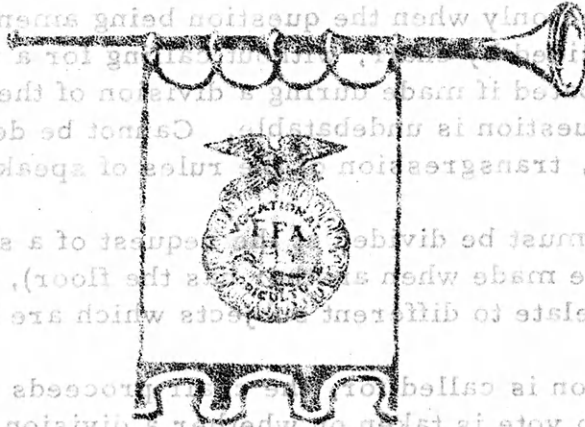
NATIONAL FFA LEADERSHIP AND CITIZENSHIP CONFERENCE

Nine FFA chapters from Kansas attended the National FFA Leadership and Citizenship Conference in Washington, D.C., and at the National FFA Center located near Alexandria, Virginia. The theme of the conference was "FFA--Emphasis Agriculture." FFA chapter presidents had the opportunity to hear of national and international career opportunities and to visit the world's largest Agricultural Research Center at Beltsville, Maryland. Thirty-five States attended the conference. Those chapters attending from Kansas were as follows:

Arkansas City, Rod Rahn
Concordia, Mike Cleveland
Fort Scott, Bobby Collins
Hill City, Gary Worcester
Manhattan, Steve Rogers

Moundridge, Bennie Gehring
Peabody, Steve Lefever
Valley Heights, John Hula
Winfield, Tom Herbers

CHAPTER SECTION



KENT HAMILTON, LEOTI FFA CHAPTER, SPENDS SUMMER ABROAD

NOTE: The guide used to make the score sheet was: "Robert's Rules of Order".

Kent Hamilton, son of Mr. and Mrs. Roger Hamilton, Leoti, Kansas, was one of 28 Future Farmers of America members from across the United States who spent three months abroad gaining experience in European agriculture and international living. Kent will return to the United States September 15 and will continue his education at Sterling College. Kent was State FFA secretary.

MOUNDRIDGE FFA CHAPTER ASSISTS CYSTIC FIBROSIS CAMPAIGN

The last line of the FFA motto "Living to serve" was put into action by the Moundridge FFA Chapter. The Moundridge Chapter organized and carried out the local cystic fibrosis campaign. The chapter members divided into groups of three and canvassed the surrounding area and collected \$155. This money was then sent to the district headquarters in Wichita where it will be used in research to develop a cure for young children's disease which effects respiratory and digestive systems.

Moundridge, Bernice Gehring
 Peabody, Steve Lelever
 Valley Heights, John Hula
 Winfield, Tom Herbers

Arkansas City, Rod Rahn
 Concordia, Mike Cleveland
 Fort Scott, Bobby Collins
 Hill City, Gary Worcester
 Manhattan, Steve Rogers