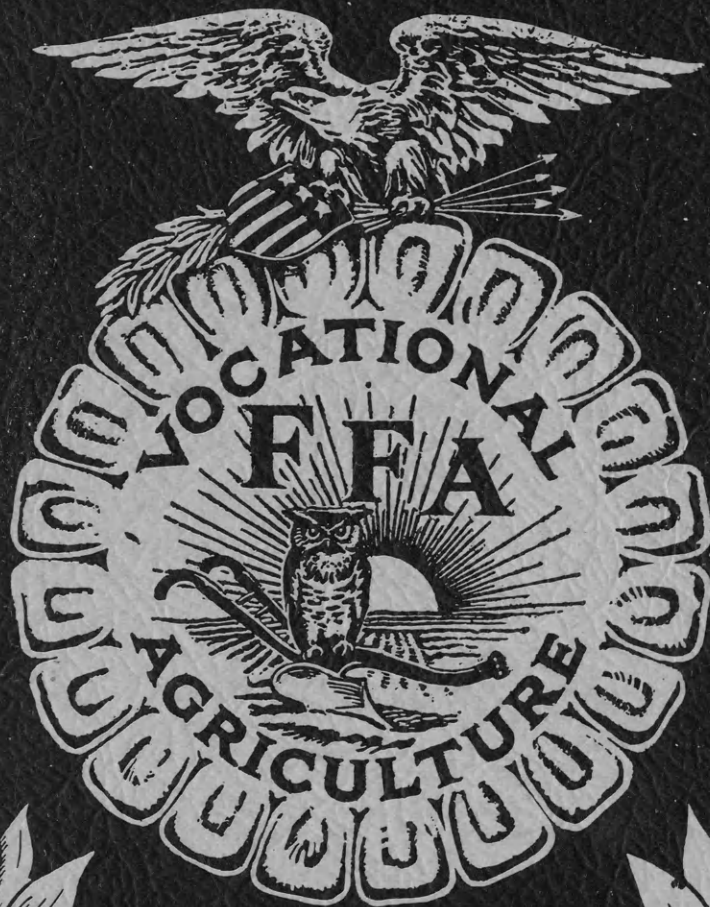


SEP 9 1968

# *The* KANSAS Future Farmer



*Published by*  
**THE KANSAS ASSOCIATION  
FUTURE FARMERS OF AMERICA**

NATIONAL OFFICERS, FUTURE FARMERS OF AMERICA  
1967-68

Constituting the  
NATIONAL BOARD OF STUDENT OFFICERS

PRESIDENT .....Greg L. Bamford  
Haxtun, Colorado

VICE PRESIDENT, NORTH ATLANTIC REGION.....Richard Jones  
Route 2, Hamilton, New York

VICE PRESIDENT, SOUTHERN REGION.....Robert D. Rish  
RFD 1, Pelion, South Carolina

VICE PRESIDENT, PACIFIC REGION..... John C. Gemmill  
Route 2, Box 697, Peoria, Arizona

VICE PRESIDENT, CENTRAL REGION.....William Boehm  
Route 1, Mosinee, Wisconsin

NATIONAL SECRETARY ..... Paul Diehl  
Route 6, Butler, Missouri

ADVISOR.....H. N. Hunsicker  
Washington, D. C.

EXECUTIVE SECRETARY.....Wm. Paul Gray  
Washington, D. C.

TREASURER..... J. M. Campbell  
Woodstock, Virginia

-----FFA-----

NATIONAL FFA BOARD OF DIRECTORS

H. N. Hunsicker, Chairman, U. S. Office of Education, Washington, D. C.

Joseph K. Bailey, U. S. Office of Education, Denver, Colorado

H. E. Edwards, U. S. Office of Education, Chicago, Illinois

M. C. Gaar, U. S. Office of Education, Atlanta, Georgia

Jesse A. Taft, U. S. Office of Education, Boston, Massachusetts

Dale C. Aebischer, Chief, Agricultural Education, Madison, Wisconsin

T. L. Faulkner, State Supervisor, Agricultural Education, Montgomery, Ala.

Percy Kirk, State Director, Agricultural Education, Cheyenne, Wyoming

W. H. Wayman, State Supervisor, Agricultural Education, Charleston, W. Va..

univ  
5533  
. F8  
K3  
v. 39

THE KANSAS FUTURE FARMER  
Harold Shoaf, Editor

OFFICERS OF THE KANSAS ASSOCIATION  
FUTURE FARMERS OF AMERICA

Gregory Hands, President  
Garden City

Steve Davis, Reporter  
Hugoton

Danny Scott, Vice President  
Caney

Kenneth Conway, Sentinel  
Plainville

Kent Hamilton, Secretary  
Wichita County

Harold Shoaf, Executive Secretary  
Topeka

Alan Johnson, Treasurer  
Frankfort

C. C. Eustace, State Advisor  
Topeka

---

Volume XXXVIII

September 9, 1968

No. 1

---

TABLE OF CONTENTS

PICTURE SECTION:

Ag-Related Awards.....	1
State FFA President Attends National Event.....	2
Sub-Regional Conference.....	2
Stockton FFA National Land Judging Team is Third.....	3
Four Top FFA Safety Advisors.....	3
Award of Honor to Fort Scott FFA Chapter.....	3
State FFA Camp.....	4

ANNOUNCEMENT SECTION:

Call to National Convention.....	6
National FFA Convention Registration of Chapters.....	7
Official Kansas Delegates to National FFA Convention.....	8
Tickets and Tours.....	9
1968 National FFA Band.....	9
1968 National FFA Chorus.....	9
Central Regional Public Speaking Contest.....	10
1968 American Farmers.....	10
Kansas Entries in National Competition.....	10
National Better Chapter Entries.....	11
Dues and Magazine Subscriptions.....	11
Program of Work.....	11
Kansas Association Has Address Change.....	12
Eighty-Five Chapters Attend FFA Leadership Camp.....	12
1969 FFA Awards.....	12

TABLE OF CONTENTS (cont.)

ACTIVITIES SECTION:

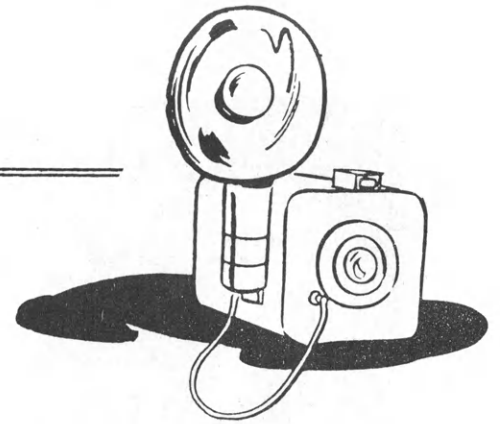
1968 FFA Leadership Schools..... 16

CHAPTER SECTION:

Kansas Top Land Judgers..... 21  
Letter From Moundridge State Farmer ..... 21



# PICTURE SECTION



For complete stories of the pictures in this section, please refer to the Activities Section.

## AG-RELATED AWARDS



Jim Hermann, FFA member from Seaman, receives a check for \$100 and a first place State Production Placement plaque from C. C. Eustace, State Supervisor of Ag Education. Mr. Jim Hundley is Jim's advisor.



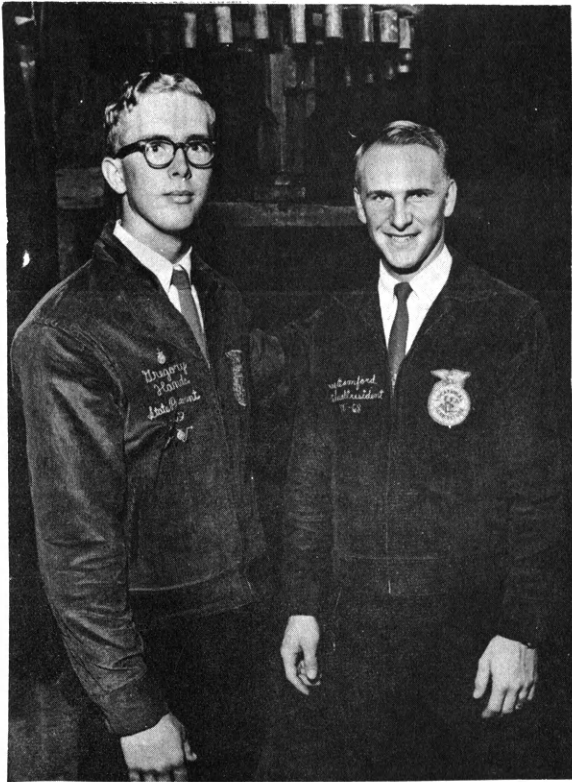
First place State plaque in Agribusiness and a check for \$100 was presented to Earl Pittman from Dodge City. Gerald Schmitt and Allen Starosta are on the right.



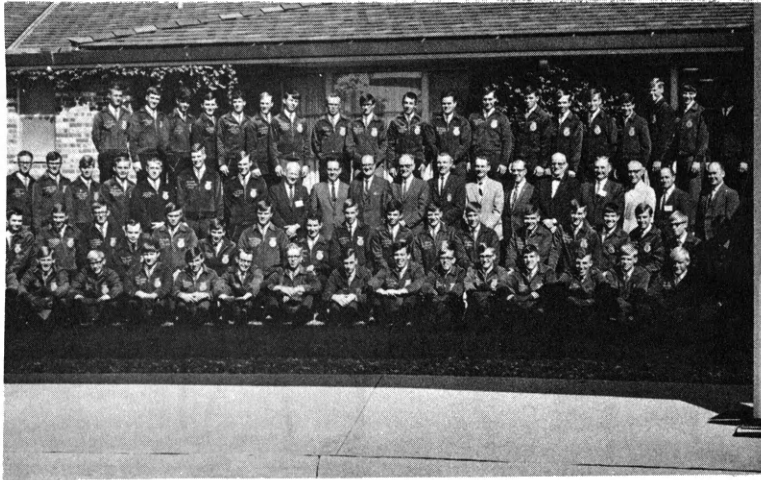
Bruce Middleton, Hill City FFA member, receives a first place State Award and a check for \$100 from C. C. Eustace, State Supervisor of Ag Education, for Agribusiness Occupational Experience in the Farm Machinery business. Joe Farrell is Bruce's advisor.



Kenneth Coester, Girard, received second place honors in Agribusiness Occupational Experience. He received a first place State plaque and \$50. Jack McClaskey on the right is Kenneth's advisor.



State FFA President, Greg Hands, on left, is shown with the National FFA President, Greg Bamford. State President Hands participated in the FFA's National Leadership and Citizenship Conference, July 14-20 in Washington, D. C. At the time of the photo, they were visiting the old George Washington Grist Mill near Mount Vernon. The mill is located on property adjacent to the National FFA Center. Fifty-four State FFA leaders from forty-seven States participated in the conference. "FFA, An Opportunity For Youth," was the theme of the conference.



Ten States attended the Sub-Regional Leadership Conference on July 1, 2, and 3.



Stockton FFA placed third in the National Land Judging Contest for 1968. Left to right are Ronnie Jackson (Alternate), Eldon Kriley, Kerry Maddy, Robert Lowry, and Brent Casad. Congratulations advisor, Floyd Blauer, and Land Judging team!



Awards to winners of the 1968 FFA Safety Contest were presented June 5 in Manhattan at a Kansas Farm Bureau Safety Department Banquet for Vo-Ag teachers. At the left is Delbert Ekart, Director of the department. The Vo-Ag instructors, left to right, their schools and rating in the State competition are Floyd Blauer, Stockton, fourth; Roy Eck, Atchison County, third; Leon Schmidt, Southeast Kansas Vo-Tech, Second; and Gale Seibert, Garden City, first. The Kansas Farm Bureau safety program for FFA rates competing chapters on the promotion of farm, home, and highway safety.

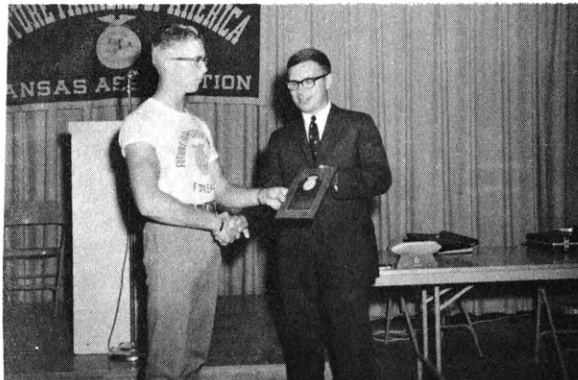
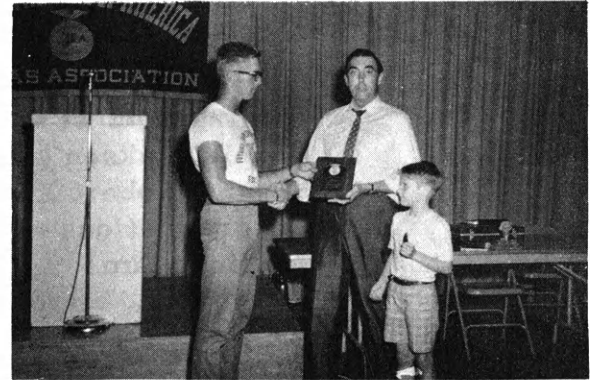


Philip Schmidt, National Safety Council, presented the Award of Honor Plaque to chapter officers and advisor Milton Kohrs at the Leadership Camp at Rock Springs on August 4. Fort Scott was one of three chapters receiving the award.



Early to bed--Early to rise.

FFA President, Greg Hands, presents a special honor plaque to Mr. Bill Post and his son John. Mr. Post is a recording artist and writer.

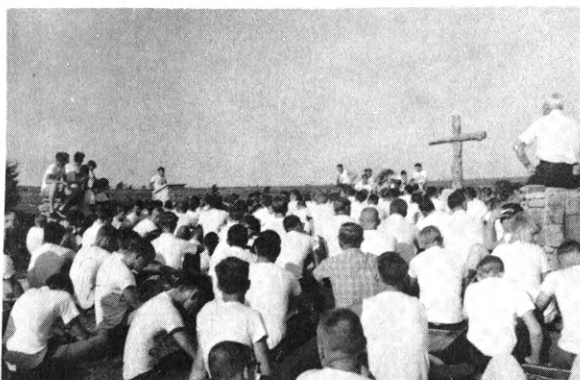


More automobiles in United States are stolen each year than are made in Russia in the same period of time. So stated Richard Hrdlicka of the Hesston Corporation.

Heave! Ho!



Evaluation and inspiration time.





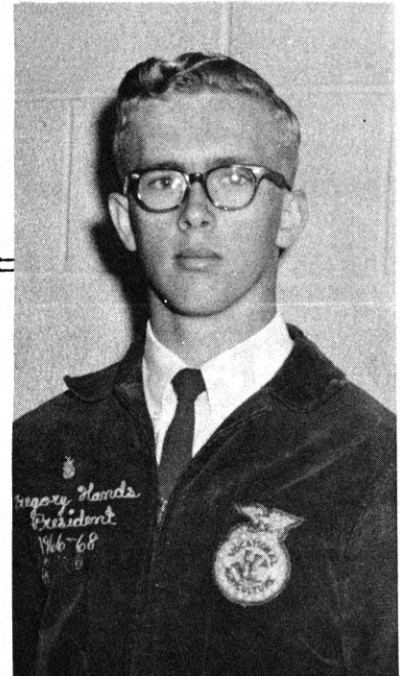


FUTURE FARMERS OF AMERICA LEADERSHIP CONFERENCE  
ROCK SPRINGS RANCH - AUGUST 3-6 1968.

photo  
E. BOBO  
7-15

# ANNOUNCEMENT

## SECTION



### CALL TO THE NATIONAL FFA CONVENTION

As your State President, I would like to encourage each local chapter to send their delegates to the 40th Anniversary FFA Convention. Our convention will be held again in the Municipal Auditorium in Kansas City, Missouri, October 15-18, 1968.

Each local chapter is entitled to send six delegates or ten percent of their total membership, whichever is greater. This number does not include National or Regional award winners or other special participants. I urge your chapter to carefully select your representatives to the convention, as they will not only be representing their local chapter and State Association, but the National Organization as well.

The jacket, which is a symbol of our organization to many people, should be worn properly and with pride. It is requested that you come to Kansas City with properly completed official registration cards. Upon receiving your brochure, "You and Your National FFA Convention," please review it with your advisor.

Our 40th Anniversary FFA Convention will be one of this year's highlights, and you will have an opportunity to hear and see many of our country's fine leaders. Attending the convention will give you a better idea of what it takes to achieve some of the higher goals in the FFA. A national convention such as ours is certainly educational and inspirational.

My fellow State officers and I will be representing you and your State Association during the convention. We are looking forward to seeing and visiting with you in Kansas City.

Gregory Hands, President  
Kansas Association of FFA

FELLOW FUTURE FARMERS OF AMERICA:

Our 40th Anniversary FFA Convention will be held in the Municipal Auditorium, Kansas City, Missouri, from October 15-18, 1968. The National Convention will open with a Vespers Service on Tuesday evening, October 15. An outstanding program featuring inspirational speakers and FFA leaders of the past and present has been planned. It is extremely important that all sessions be attended because they are carefully planned to conduct business, recognize achievements, demonstrate leadership, and set the course of our organization for the coming year. I believe every person who attends should go home more inspired and dedicated to the ideals and purposes of the FFA.

All chartered State Associations in good standing with the National organization are expected to send two official delegates and two alternates. The delegates should be in Kansas City by 9:00 a.m. on Tuesday, October 15, for official delegate orientation and to attend the Officer-Delegate Luncheon. Convention committees will meet in the afternoon. State Associations should meet in the afternoon. State Associations should have award recipients, American Farmer Degree candidates, candidates for National office, and others who have official business in attendance for the first session of the Convention on Tuesday evening.

Each chapter is encouraged to send representatives equal to six members or ten percent of its total membership. This number does not include award winners or special Convention participants. It is imperative that the representatives be carefully selected, registered, and oriented, using "You and Your National Convention" as a guide. This should be done before coming to Kansas City. During October 15-18, many eyes will be on the FFA as the "blue and gold" jackets gather in Kansas City. Thus, each member should set a gentlemanly example in conducting himself and wear the official jacket.

This Convention marks the 40th Anniversary of the FFA. A great program can only be successful with the cooperation and support of all those in attendance. I, therefore, urge your enthusiastic support to make this Convention a memorable one.

Greg Bamford  
National FFA President

NATIONAL FFA CONVENTION REGISTRATION OF CHAPTERS

Registration will be made by chapters, except for official delegates, band and chorus members, American Farmer candidates, student teachers, State staff members, parents, and guests. Registration cards are available on request from Harold Shoaf, Executive Secretary, Kansas Association of FFA, 701 Jackson, Topeka, Kansas 66603.

The registration card will provide space for the names of the representatives of each chapter, plus the signatures of the vocational agriculture teacher and the local administrator.

Attendance at the National Convention will be limited to not more than six carefully selected members and one advisor from any given chapter, or ten percent of the chapter membership, whichever is greater.

The following members will not be counted in the local chapter quota: Courtesy Corps assistants, stagecrew assistants, official State delegates, American Farmer Degree candidates, contestants in the National Public Speaking and Judging contests, Regional and National FFA Foundation Award winners, and members of the National FFA Band and Chorus.

The following procedure will be followed.

1. Upon arrival in Kansas City, the advisor or chaperon of each chapter will present the completed registration card of his group at the registration desk in the Municipal Auditorium.
2. Each member will receive an identification card. This identification card will be required of all members as an admission pass to evening sessions.
3. No registration cards for chapters will be available in Kansas City. They must be obtained from the State office and completed before the member leaves home.

Registration of Judging Teams:

1. Judging team members and coaches will register on the FFA chapter's official registration cards.
2. Team coaches will confirm the names of all contestants in advance of the respective contests at the registration desk, Municipal Auditorium, Kansas City, from 10:00 a.m. to 2:30 p.m. on Tuesday and Wednesday, October 15 and 16.

#### OFFICIAL KANSAS DELEGATES TO THE NATIONAL FFA CONVENTION

Greg Hands, State FFA president, Garden City Chapter, and Danny Scott, State FFA vice president, Caney FFA Chapter, will represent the Kansas Association of FFA as official FFA delegates to the National FFA Convention, October 15-18, 1968.

Kent Hamilton, State FFA secretary, Wichita County FFA Chapter, and Alan Johnson, Frankfort FFA Chapter, will serve as alternates.

Delegates will be located in the President Hotel.



TICKETS AND TOURS

Tickets for the American Royal Horse Show n atinee on Friday afternoon, October 18, will be sold at the registration desk in the Municipal Auditorium on Thursday from 9:00 a. m. to 5:00 p. m. Price of tickets is \$. 50.

Tickets for the FFA Educational Tour of Kansas City, scheduled for 1:00 p. m. on Tuesday, October 15, and 1:00 p. m. on Thursday, October 17, will be sold at the registration desk from 9:00 a. m. to 12:45 p. m. on the respective days. Price of tickets is \$. 60.

\* \* \* \* \*

1968 NATIONAL FFA BAND

The National FFA Band will again be under the direction of Mr. R. Cedric Anderson of Cedar Rapids, Iowa. The band, known as the "suitcase" band, will furnish music for the National FFA Convention.

Eight Kansas FFA members have been selected to serve with the National FFA Band. The band will number approximately 120 FFA members from forty-two states. In addition to the Convention, the band will perform during the opening sessions of the American Royal Parade, Saturday, October 19.

All Kansas FFA members can be proud of the following young men who have been selected for this outstanding band.

Greg Bowers of the Marion FFA Chapter  
Dennis Deaver of the Fowler FFA Chapter  
Steve Miller of the Norcatatur FFA Chapter  
Steve Newby of the Haven FFA Chapter  
Danny Ray of the Hugoton FFA Chapter  
Steven Schuessler of the Washington FFA Chapter  
Jim Settle of the Russell FFA Chapter  
James Womeldorff of the Erie FFA Chapter

\* \* \* \* \*

1968 NATIONAL FFA CHORUS

The National FFA Chorus will be under the direction of Mr. Marvin D. Myers, West Lafayette, Indiana. The chorus will number approximately 100 members from thirty-two states.

Four Kansas Future Farmers will have opportunity to participate in the 1968 National Chorus. The four members are as follows.

David Schmitz of the Wichita County FFA Chapter  
Ronnie Radcliffe of the Hill City FFA Chapter  
Dennis Deines of the Trego County FFA Chapter  
Tom Broeckelman of the Oakley FFA Chapter

STEVE DAVIS ENTERS CENTRAL REGIONAL PUBLIC SPEAKING CONTEST

The Kansas Association of FFA will be represented in the Central Regional Public Speaking Contest by Steve Davis of the Hugoton FFA Chapter.

The Regional contest will be held at 8:30 a.m., Tuesday, October 15, in the Music Hall of the Municipal Auditorium in Kansas City, Missouri.

The winner of the Central Regional Contest will be one of the four finalists in the National Public Speaking Contest on Wednesday evening, October 16, in the Municipal Auditorium, Kansas City, Missouri.

\* \* \* \* \*

1968 AMERICAN FARMERS

The National Board of Student Officers and the National Board of Directors of the Future Farmers of America have recommended seven Kansas Future Farmers to receive the coveted award of the American Farmer Degree. The action of the Board of Directors must be confirmed by the official delegates to the 1968 National FFA Convention.

The American Farmer Degree Ceremony and award will be held on Wednesday afternoon, October 16, in the Municipal Auditorium, Kansas City, Missouri.

Each American Farmer Degree winner will receive a certificate, gold key that symbolizes the Degree, and a check for \$75 from the Future Farmers of America, Inc. Candidates must be present in order to receive the \$75.

The Degree is limited so that only approximately one FFA member in one thousand may receive it in any year.

Candidates who have been nominated from Kansas are as follows.

Thomas Bradbury of the Uniontown FFA Chapter  
Thomas Collins of the Fort Scott FFA Chapter  
Leonard Davison of the Garnett FFA Chapter  
Kenny DeDonder of the Flint Hills FFA Chapter (Emporia)  
Gregory Farber of the Mulvane FFA Chapter  
Alan Guttery of the Osborne FFA Chapter  
John Stigge of the Washington FFA Chapter

\* \* \* \* \*

KANSAS ENTRIES IN NATIONAL COMPETITION

MEATS--Kansas representative in the National Meats Contest will be the winner of the State Meats Contest. The State Meats Contest will be held at the Cudahy Packing Plant in Wichita, Kansas, on October 1, 1968.

LIVESTOCK JUDGING--Alta Vista FFA Chapter, Darrell Stites, Advisor

POULTRY JUDGING--Manhattan FFA Chapter, Dean Prochaska, Advisor

DAIRY JUDGING--Blue Mound FFA Chapter, Sherman Lauder, Advisor

DAIRY PRODUCTS JUDGING--Clay Center FFA Chapter, Earl Wright, Advisor

\* \* \* \* \*

#### NATIONAL BETTER CHAPTER ENTRIES

The Garden City and Council Grove Chapters will represent Kansas in the National Better Chapter Contest.

The National Gold Emblem Chapters will receive recognition on Wednesday, October 16, at the National Convention.

\* \* \* \* \*

#### DUES AND MAGAZINE SUBSCRIPTIONS

The State and National FFA dues for 1968-69 will be \$1. This includes the National Future Farmer Magazine. All members must pay the \$1 to be an official FFA member.

The exact address including zip code is very important. 27,000 copies of the National Future Farmer Magazine were returned last year at a cost of \$7,000 to \$10,000. Let's save this loss.

The dues should be forwarded to the State office with the magazine subscriptions. Please use only the National form for submitting magazine subscriptions and dues. Magazine subscriptions will be forwarded to the National office as soon as they are received in the State office.

It is suggested that dues and magazine subscriptions be sent in by September 15 so that every member may receive the first issue of the National Future Farmer Magazine. The most convenient time for collecting the dues is at the beginning of the school term.

\* \* \* \* \*

#### PROGRAM OF WORK

The chapter program of work is due in the State office by October 31. A chapter must submit a program of work by October 31 to be eligible for participation in district and State FFA activities during 1968-69.

KANSAS ASSOCIATION HAS ADDRESS CHANGE

THE KANSAS ASSOCIATION OF FFA OFFICE HAS MOVED TO 701 JACKSON, TOPEKA, KANSAS 66603.

\* \* \* \* \*

EIGHTY-FIVE CHAPTERS ATTEND LEADERSHIP CAMP

1967 camp had a record number of chapters, FFA members, and advisors attending with fifty-seven chapters and three hundred seventeen total attendance. 1968 broke all records with eighty-five chapters and four hundred fifty-seven total attendance. The large number caused some adjustments, but in spite of this problem, the camp was a success--thanks to the assistance and cooperation of advisors. Many individuals had a part in making the camp successful. The camp objective is to assist local chapter officers in becoming effective leaders.

The Keynote Session speaker, Mr. Richard Hrdlicka, and Mr. Bill Post, folklore song recording artist and writer, were sponsored by the Kansas Association of Bank Agricultural Representatives (KABAR). Incentive awards were also sponsored by KABAR.

Each FFA member and advisor should write a thank-you letter to Mr. Duane Stoskopf, President, KABAR, First National Bank and Trust, Salina, Kansas, with a duplicate to Mr. Harold Walker, Vice President, Home National Bank, Arkansas City, Kansas 67005, expressing appreciation for the incentive to promote leadership.

\* \* \* \* \*

1969 FFA AWARDS

FFA members should be encouraged to consider applying for an award of their choice. The following list is submitted for 1969 on the District and State level.

Deadline for all applications, unless otherwise stated, is February 15. Applications are available on request from the State office, 701 Jackson, Topeka, Kansas 66603.

All FFA Foundation Awards on the State level will be made at the State FFA Convention in Manhattan on April 27, 28, and 29. District Foundation Awards should be made at the District Achievement Banquets.

1. Agribusiness--This award will be offered to those members whose work experience programs train them in providing services and supplies for farming operations or in processing and marketing farm products.  
Application due State office on April 14.

State

Plaque and \$100 (Award will be made at State FFA Convention)

No District Award



2. Agricultural Production Placement--This award will recognize achievement in gaining skills and experience from either work on a farm or in some other production phase of agriculture such as greenhouses, nurseries, etc. Occupational experience through placement does not involve ownership of production enterprises. Application due State office on April 14.

State	\$100 (Award will be made at State FFA Convention)
No District Award	

3. Natural Resources Development--FFA members will be awarded recognition for their personal efforts in conservation and improvement of agricultural resources for recreation; beautification; total environmental development; multiple use of forests, water, and wildlife for private and public use.

State	\$100 (Award will be made at State FFA Convention)
District Award	\$ 25

4. Star Farmer of Kansas \$100  
District Star Farmer \$ 25

5. Farm Safety

- A. State Chapter \$100  
B. District Chapter \$ 25

(1) Kansas Farm Bureau FFA Safety Awards

- a. Expense paid trip for seven FFA members and one advisor to National Safety Congress  
b. Trophies to top four chapters  
c. Plaque to top chapter in each of seven districts.  
Certificate to second and third place district winners.

(2) Kansas Safety Council

- a. \$200--1st place chapter  
b. \$100--2nd place chapter

6. Public Speaking

State	1st \$100
	2nd \$ 50
	3rd \$ 25
District	\$ 25

7. Agricultural Mechanics

State	\$100
District	\$25

8. Dairy

State	\$100
District	\$ 25

9. Crops

State	\$100
District	\$ 25

10.	Beef		
	State		\$100
	District		\$ 25
11.	Swine		
	State		\$100
	District		\$ 25
12.	Sheep		
	State		\$100
	District		\$ 25
13.	Farm and Home Electrification		
	State		\$100
	District		\$ 25
14.	Poultry		
	State		\$100
	District		\$ 25
15.	Home Improvement		
	State		\$100
	District		\$ 25
16.	Ornamental Horticulture		
	State		\$100
	District		\$ 25
17.	Soil and Water Management		
	State		\$100
	District		\$ 25

## Funds for Awards:

National FFA Foundation	\$1600
Dues and other sources	<u>2700</u>
Total	\$4300

An FFA member may enter only two District Agricultural Proficiency Awards in any one year.

If an FFA member is named Star District Proficiency Award winner in two areas, he should have a counsel with his advisor and parents to decide which award he should try to attain on the State level. The second place district winner would then be eligible in the area not selected by the district star winner.

Better Chapter Award--Applications due State office on April 4.

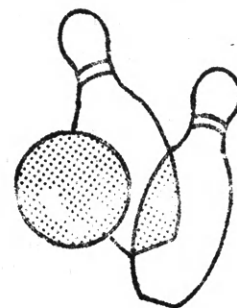
Sponsor--Sears-Roebuck Foundation	
1st Place	Plaque and \$100
2nd Place	Plaque and \$100
State Gold Emblem Chapters	Plaque



# ACTIVITIES

---

## SECTION



### 1968 LEADERSHIP SCHOOLS

The Federal Land Bank of Wichita will sponsor the awards for Leadership Schools. A special thanks should be sent to Mr. Wm. G. Plested, Jr., President, The Federal Land Bank of Wichita, Box 458, Wichita, Kansas 67201.

<u>Date</u>	<u>Starting Time</u>	<u>Dist.</u>	<u>Place</u>	<u>Teacher</u>
Sept. 23	9:30 a.m.	SW	Dodge City	Starosta (Wineinger and Hamilton)
Sept. 23	3:30 p.m.	NW	Hill City	Farrell (Eustace and Hands)
Sept. 23	3:30 p.m.	EC	Williamsburg	Anderson (Shoaf and Scott)
Sept. 23	3:30 p.m.	NC	Belleville	Mainquist (Rawson and Conway)
Sept. 24	3:30 p.m.	SC	Haven	Akers (Wineinger and Hamilton)
Sept. 24	3:30 p.m.	SE	Cherokee	Coltrane (Shoaf and Davis)
Sept. 24	3:30 p.m.	NE	Effingham	Eck (Rawson and Johnson)

Registration of schools should be from 3:30 to 4:00 p.m. with starting time on the dot of 4:00 p.m. Dodge City (Southwest District) enrollment from 9:00 to 9:30 a.m.

The opportunity to meet friends and participate in this school should not be overlooked. The objective of the school is to develop leadership in chapter officers. Each chapter will compete in his own district.

1968 FFA State Convention delegates recommended the following:

1. Where desirable two vocational agriculture instructors and one professional instructor in the field of forensics be used to judge the district Parliamentary Procedure Contest. The State office will suggest two vocational agriculture instructors to the host school advisor. (Names of suggested Parliamentary Procedure judges have been sent to host school.)
2. Host schools have been asked not to use vocational agriculture instructors as judges or score tabulators.



Tentative Program

Welcome--Host School  
Instructions--Host Advisor  
Instructions--State Officer  
Information and Parliamentary Procedure Quiz (Ten minutes)  
Ritual and Parliamentary Procedure Contest  
(1st half chapters to Ritual--2nd half chapters to Parliamentary Procedure)

Supper at 6:30 p. m.

7:15 p. m. --

Judges Comments  
How District Officers will be Selected--District Director  
(Each candidate speaks maximum of two minutes)  
Chapter officers vote on District officers  
Challenge by State officer  
Announce District officers  
Discussion: "Should the 1969 Leadership School be Held at Rock  
Spirings in August"  
Discussion of plans for 1969 District Achievement Banquets  
Other District Business  
National Convention Comments--State officer  
District Director and Federal Land Bank representative present  
plaques, ribbons, and medals.  
Closing Ceremony--District officers

FFA Information Contest

1. Twenty-five questions will be given.
2. Questions will be taken from the official FFA Manual--1968 and the Kansas Future Farmer newsletter for November--1967, January--1968, May--1968, and September--1968.
3. The test will not include names of winners of district, State, or National contests.
4. The test will not include names or home chapters of American Farmer candidates.
5. The test will not cover names of Regional Vice Presidents or Board of Directors of the National organization.
6. The top ten individuals will be recognized.

Parliamentary Procedure

- I. General Plan
  - A. Each of the seven districts will select a winning team. The winning team will be eligible to compete in the State contest.
- II. Eligibility
  - A. A team shall be composed of six constitutional officers.
  - B. There is no limit as to the number of years an individual may participate on both the district and State levels regardless of his placing on either level.
- III. Parliamentary Procedure Quiz
  - A. Twenty true-false questions on Parliamentary Procedure will be given at the same time the Information Test is given.
  - B. Reference for the Information Test will be the same as last year. Roberts Rules of Order will be the accepted reference for Parliamentary Procedure. A Guide to Parliamentary Practices by Henderson and Rucker is available from Interstate.
  - C. Each quiz question which is correct will count six points in the total score.
  - D. Thirty points are allotted for debate.
- IV. Time Limit
  - A. On the District level, each team shall have a maximum of six minutes in which to demonstrate their knowledge of Parliamentary Procedure.
  - B. On the State level, each team shall have a maximum of eight minutes to demonstrate their knowledge of Parliamentary Procedure.
  - C. A one-minute waving will be given by the timekeeper.
  - D. On the State level, one question from each of three judges will be asked. Team may confer on answer.

Score	Abilities Demonstrated	Team Score
	Call to Order	
20	Poise and personal appearance of presiding officer and manner displayed (1)	
40	Poise, appearance, and manner displayed by team.	
10	Grammar and sentence structure (2)	
20	General effect and the use of realistic measures	
10	Secretary's minutes (used in case of tie)	
20	Effective use of debate	

#### RANKING MOTIONS (Ranked according to precedence)

A.	PRIVILEGED MOTIONS:	S	D	A	VOTE
10	To fix time to adjourn (4)	Y	N	(7)	M
10	To adjourn (5)	Y	N	N	M
10	To take a recess (6)	Y	N	(7)	M
10	To raise a question or privilege	N	N	N	(8)
10	To pass the gavel	N	N	N	
B.	SUBSIDIARY MOTIONS:				
10	To lay on the table	Y	N	N	M
10	To call for the previous question	Y	N	N	2/3
10	To limit or extend time of debate	Y	N	(7)	2/3
10	To postpone definitely (to certain time)	Y	Y	Y	M
10	To commit or refer	Y	Y	Y	M
10	To amend proposed amendment	Y	(9)	N	M
10	To amend	Y	(9)	Y	M
10	To postpone indefinitely	Y	Y	N	M
C.	MAIN MOTIONS:				
30	Main motion (to introduce business)	Y	Y	Y	M

#### NON-RANKING MOTIONS

A.	INCIDENTAL MOTIONS:				
10	To raise a point of order	N	N	N	(10)
10	To appeal from the decision of chair	Y	(11)	N	M
10	To suspend the rules	Y	N	N	2/3
10	To divide the question	(12)	N	Y	M
10	To call for a division of house	N	N	N	(13)
10	To rise to a parliamentary inquiry	N	N	N	N
10	To rise to request information	N	N	N	N
10	To withdraw a motion	N	N	N	N
10	To provide manner of voting	Y	N	Y	Y
B.	UNCLASSIFIED MOTIONS:				
10	To take from the table	Y	N	N	M
10	To reconsider	Y	(14)	N	M
30	Debate (5 points each for 6 times debate is used)				
20	Response to judge's questioning (State contest only)				
120	Parliamentary procedure quiz (20 questions)				
560	FINAL SCORE				

"D"--DEBATABLE; "A"--AMENDABLE; "M"--MAJORITY VOTE;  
 "Y"--YES; "N"--NO

## NOTES Pertaining to Specific Items on Official Scorecard

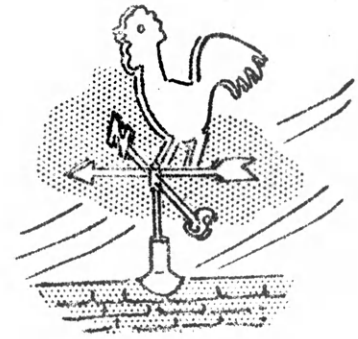
- (1) Also includes proper use of gavel.
- (2) Means correct English, clear, concise, direct, and well-phrased.
- (3) Omit.
- (4) Is a privileged motion only if made while another motion is pending, and in an assembly that has made no provision for meeting on the same or next day; otherwise, it is a main motion. The answers apply to the privileged motion.
- (5) When unqualified, is always a privileged motion except when effect would be to disband the group permanently. The answers apply to the privileged motion, not to a motion to adjourn.
- (6) Is a privileged motion if made when other business is pending; otherwise, is a main motion. Answers apply to the privileged motion.
- (7) Can be amended as to time.
- (8) Is usually disposed by chair, without vote.
- (9) Can be debated only when the question being amended is debatable.
- (10) Is usually decided by chair, without calling for a vote.
- (11) Cannot be debated if made during a division of the assembly, or when the pending question is undebatable. Cannot be debated when it applies to indecorum, transgression of the rules of speaking, or to priority of business.
- (12) The question must be divided at the request of a single member, (which request can be made when another has the floor), provided the resolutions relate to different subjects which are independent of each other.
- (13) When a division is called for, the chair proceeds to take the vote again by rising. No vote is taken on whether a division shall be made, i. e., on whether a standing vote shall be taken.
- (14) Debatable when the question to be reconsidered is debatable.

NOTE: The guide used to make the scoresheet was: "Roberts Rules of Order," and "A Guide to Parliamentary Practices" by Melvin Henderson and Herbert J. Rucker of the University of Illinois.

# CHAPTER

---

# SECTION



## KANSAS TOP LAND JUDGERS

Eight hundred contestants from twenty-eight States and six foreign countries participated in the 1968 National Land Judging Contest, Oklahoma City, Oklahoma.

Don Flenthrope, advisor at Linn, placed first in the Adult Division with a score of 234 points. Jerry Richter, Linn FFA member, was second high individual in the FFA Section with a score of 230 points out of a possible 240.

Stockton FFA Chapter placed third as a team.

This was the largest National contest to date. Congratulations to Kansas land judges.

\* \* \* \* \*

## LETTER FROM MOUNDRIDGE STATE FARMER

The following is a letter the State office received from Gary Regier, Moundridge FFA Chapter member, on May 15, 1968.

Dear Sirs:

I write this letter to you in great appreciation for all the many benefits that I have received through my membership in the FFA organization.

Several weeks ago, I walked across the stage at the Municipal Auditorium in Manhattan and received my State Farmer Degree. This is a Degree which I will both covet and treasure all my life. As I proceeded down the steps of the stage, I wondered how many of these 126 boys' interests in FFA will quit with this presentation. I hope there isn't a single one. My Degree marks one great milestone in my life and FFA career. But that is just one milestone, just as there are many miles, there also are many accomplishments with which to mark these miles. I hope that everyone who has received this Degree will strive on further to perhaps higher degrees, such as the American Farmer Degree, and perhaps some to just promoting and being proud of the Future Farmers of America organization. This is a job that can be done by each and every one of us regardless of our speaking abilities and farming program qualities.



Again, I would like to thank you for bestowing this award upon me and would like to congratulate the Kansas Association of Future Farmers of America for their outstanding work with today's young agriculturists of tomorrow.

A Fellow Future Farmer,

Gary Regier

\*\*\*\*\*

The Sunday school teacher was describing how Lot's wife looked back and turned into a pillar of salt, when little Jimmy interrupted. "My mother looked back once while she was driving," he announced triumphantly, "and she turned into a telephone pole!"

\*\*\*\*\*