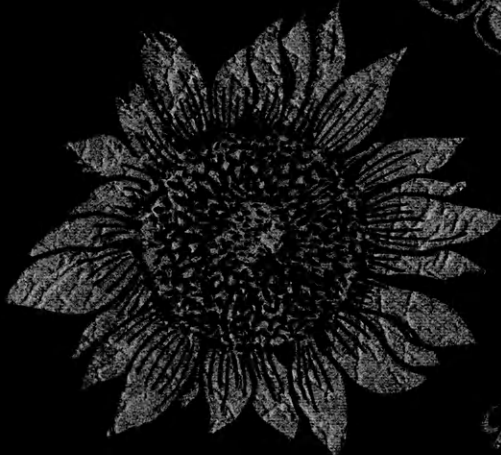


The KANSAS
Future Farmer



Published by
**THE KANSAS ASSOCIATION
FUTURE FARMERS OF AMERICA**

NATIONAL OFFICERS, FUTURE FARMERS OF AMERICA

1965 - 1966

Constituting the
NATIONAL BOARD OF STUDENT OFFICERS

PRESIDENT	Howard Lee Williams
VICE PRESIDENT, NORTH ATLANTIC REGION	R. #1, Olin, No. Carolina William M. Kelly, Jr.
VICE PRESIDENT, SOUTHERN REGION	Winchester, New Hampshire Norman Floyd Gay
VICE PRESIDENT, PACIFIC REGION	Rt. #1, Sumner, Georgia Larry E. Craig
VICE PRESIDENT, CENTRAL REGION	Midvale, Idaho James Shitzlein
STUDENT SECRETARY	Rt. #4, Ashland, Ohio Joseph B. Detrixhe
ADVISOR	R. #2, Ames, Kansas H. N. Hunsicker
EXECUTIVE SECRETARY	Washington, D. C. Wm. Paul Gray
TREASURER	Washington, D. C. J. M. Campbell
	Richmond, Virginia

--- FFA ---

NATIONAL FFA BOARD OF DIRECTORS

- H. N. HUNSICKER, Chairman, U. S. Office of Education, Washington, D. C.
E. J. JOHNSON, U. S. Office of Education, Washington, D. C.
T. L. FAULKNER, State Supervisor of Agricultural Educ., Montgomery, Ala.
PERCY KIRK, State Supervisor of Agricultural Education, Cheyenne, Wyo.
C. C. EUSTACE, State Supervisor of Agricultural Education, Topeka, Kansas.
NEAL ANDREW, State Supervisor of Agricultural Education, Concord, N. Hamp.

UNIV
 S533
 .FB
 K3
 v. 37

THE KANSAS FUTURE FARMER
 Earl Wineinger, Editor

OFFICERS OF THE KANSAS ASSOCIATION
 FUTURE FARMERS OF AMERICA

Dennis K. Shurtz, President Arkansas City	Steve McCorgary, Reporter Arkansas City
Robert Broeckelman, Vice President Oakley	Alan Cox, Sentinel Lawrence
Samuel L. Hands, Secretary Garden City	Harold Shoaf, Exec. Secretary Topeka
Robert E. Wiles, Treasurer Leoti	C. C. Eustace, State Advisor Topeka

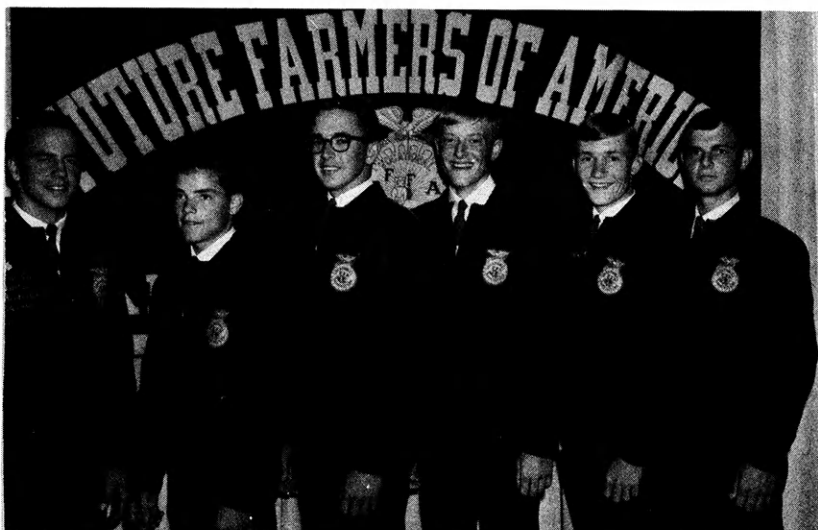
Volume XXXVII	September 9, 1966	No. 1
---------------	-------------------	-------

TABLE OF CONTENTS

	Page
Addresses of State Officers	1
American Farmers -- 1966	1
Kansas' First FFA Broiler Workshop and Contest	2
Ag-Related Occupations Awards Presented	3
Kansas Land Judges Do Well in National Contest	3
John Lacey Accepts National Position	3
State FFA President Reports on National Conference	4
Kansas State University Collegiate FFA Officials	5
Kansas FFA Officers Attend Subregional Conference	6
Kansas FFA Members Tour Europe	8
State FFA Leadership Camp	9
Mid America and State Fairs	15
Selling Pecans for Christmas	16
1966 FFA Leadership Schools	17
Call for National Convention	19
National Chorus	20
National Band	21
National Better Chapter Entries	21
Central Regional Public Speaking Contest	21
Kansas Junior Hereford Association Field Day	21
Changes in the Kansas FFA Association	22
Dues and Program of Work	23
Magazine Subscriptions	23
Scrapbook Contest	24
Safe Corn Harvest and Tractor Safety Programs	25
National Convention	26
National Convention Program	28
Eskridge FFA Chapter's Annual Spring Tour	29
Former FFA member injured in Viet Nam	29

ADDRESSES OF 1966-67 STATE FFA OFFICERS

<u>Name</u>	<u>Office</u>	<u>Home Address</u>	<u>Home Telephone</u>	<u>College Address</u>	<u>College Telephone</u>
Dennis Shurtz	President	Rt. #1 Arkansas City	HI 2-5024	Arkansas City Jr. College	Same as home
Bob Broeckelman	Vice Pres.	Rt. #1 Oakley	OR 2-3634	Goodnow Hall KSU	JE 9-2281
Sam Hands	Secretary	So. Star Rt. Garden City	BR 6-6337	West Hall KSU	JE 9-4184
Robert Wiles	Treasurer	Marienthal	FR 5-2769	Moore Hall KSU	JE 9-5381
Steve McCorgary	Reporter	Rt. #1 Geuda Springs	HI 2-4528	Arkansas City Jr. College	Same as home
Alan Cox	Sentinel	Rt. #2 Lawrence	VI 3-3193		



State FFA Officers

Left to right: Dennis Shurtz, Bob Broeckelman, Sam Hands, Robert Wiles, Steve McCorgary, and Alan Cox.

* * * * *

AMERICAN FARMERS

Eight of Kansas' most outstanding FFA members have been approved by the National Board of Student Officers and the National Board of Directors as candidates for the American Farmer Degree for 1966. The action of the Board of Directors must be confirmed by the official delegates to the 1966 National FFA Convention. The American Farmer Degree ceremony will be held on Wednesday afternoon, October 12, in the Municipal Auditorium, Kansas City, Missouri. Each American Farmer Degree winner will receive a certificate, a gold key symbolizing the degree, and a check for \$75 from the Future Farmers of America Foundation, Inc. Candidates must be present in order to receive the \$75 check. Candidates who have been nominated from Kansas are:

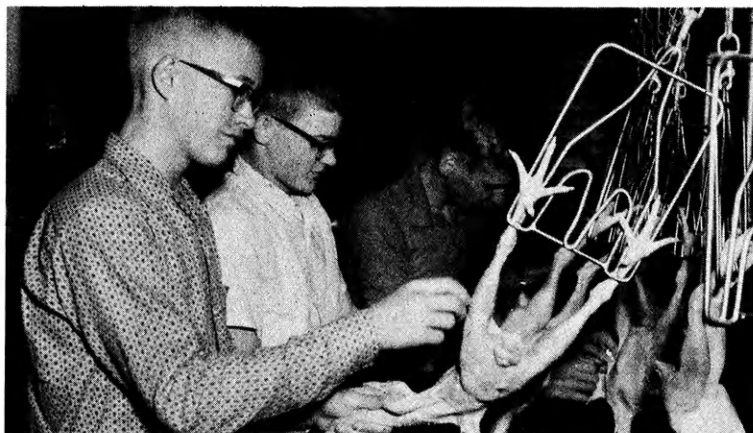
Dennis Bodenhausen, Effingham
Steve Westerman, Effingham
Dale Austin, Severy
Roger Teter, Rubler

David Farber, Mulvane
Donald McLaughlin, Stockton
Steven Cox, Long Island
Larry Leck, Washington

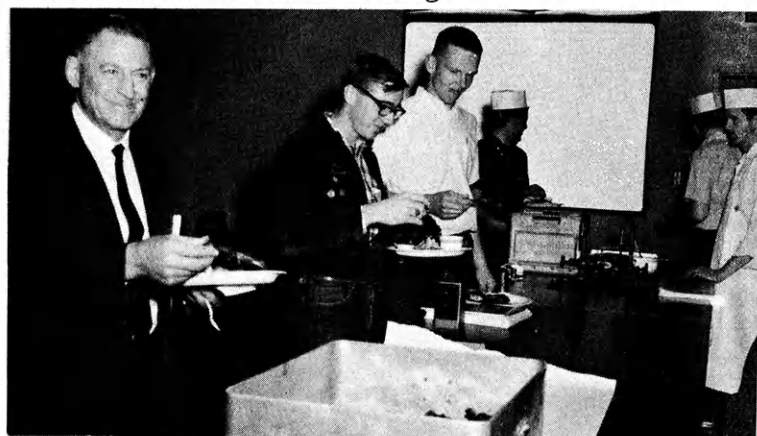
KANSAS' FIRST FFA BROILER WORKSHOP AND CONTEST

The May issue of the Kansas Future Farmer carried many details of the Broiler Workshop and Contest held last May. Pictures for the May issue were not available in time for printing; therefore, they are being published this month.

Each boy brought ten of his broilers to be dressed and judged. The boys were responsible for killing and dressing their own birds. Shown is the killing phase of the program.



FFA members are shown at left going through some of the final stages of dressing their broilers. After the broilers were dressed, they were judged for carcass quality. Factors considered were: (1) finish, (2) uniformity of the ten broilers, and (3) confirmation and fleshing.

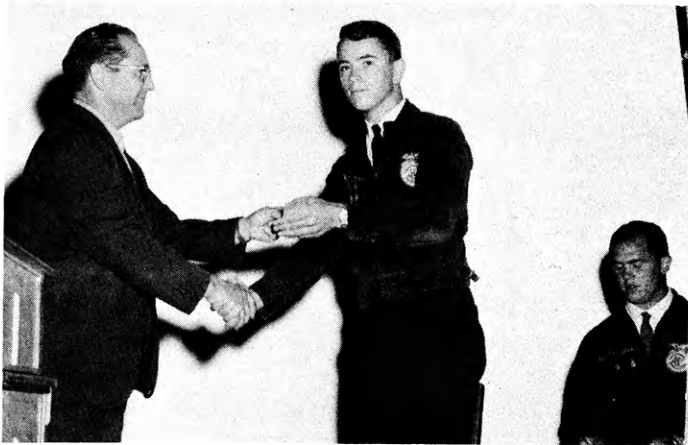


As much barbecued chicken as you could eat was the main feature of the noon meal sponsored by the Poultry Science Club of Kansas State University. Shown at right, left to right: C. C. Eustace, State Vo-Ag Supervisor; Everett Everson, Jr., and Howard Goff, both of the Manhattan FFA Chapter.



Dr. Norton, Head of the Poultry and Dairy Departments of Kansas State University, is shown presenting the winning plaque to Howard Goff of the Manhattan FFA Chapter. Looking on is Mr. C. C. Eustace, State FFA Advisor.

FIRST AGRICULTURAL-RELATED OCCUPATIONS AWARDS
PRESENTED



Harold Shoaf is shown presenting the top individual Ag-Related Occupations Award to Bob Bruton, Columbus FFA Chapter. This is the first Ag-Related Occupations Award to be presented in the State of Kansas on the State level. The award was made during the Annual Vocational Agriculture Teachers' Conference in June.



Harold Shoaf is pictured presenting the first-place Chapter Ag-Related Occupations Award to Marvin Wahl, representing the Columbus FFA Chapter.

FFA FFA FFA FFA

KANSAS LAND JUDGERS DO WELL
IN NATIONAL CONTEST

Members of the Caney FFA Chapter placed second in the Regional Land Judging Contest held at Oklahoma City last spring. The team also represented Kansas well by placing sixth in the National Contest

Tim Perkins placed sixth-high individual in the entire contest. Other members of the Caney team were: Alex Carra, Charles Harrison, and Randy Fuqua, alternate. Ralph Field is the advisor of the Caney FFA Chapter.

FFA FFA FFA

SAFETY SENIORS

Take an active part in club safety activities by assuming leadership on committees and assisting younger members with surveys. Seniors are required to make surveys in addition to making a plan of work and keeping a record to show accomplishments.

FFA FFA FFA

JOHN LACEY ACCEPTS NATIONAL
POSITION IN WASHINGTON, D. C.

Mr. John Lacey recently joined the U. S. Office of Education as Program Specialist in Agriculture Education. Mr. Lacey brings to the National staff a rich background of experience at Hill City and Hillsboro, Kansas; Assistant State Supervisor of Agricultural Education in Kansas; and more recently, Supervisor of Area Vocational-Technical Schools in Kansas. Mr. Lacey served as Executive Secretary of the Kansas Association of FFA for three years.

FFA FFA FFA

SAFETY STARTERS

Select one or more homes and farms and make a survey of safety hazards. Tag them and make plans with the owner for a return visit to check them after being corrected.

"National Youth Conference on Natural Beauty and Conservation"
Dennis Shurtz

"Twenty million teens have pledged themselves to make our land a cleaner, greener, better America.

"We look about our community and what do we see? rivers too dirty to drink or swim in. . . . streets, roads and recreational areas made unsightly by litter carelessly tossed on the ground. . . . smog hovering over many of our cities. . . . green countryside and open spaces disappearing, and what remains of native loveliness threatened by land spoilers.

"I believe we can help to restore and preserve the natural beauty of our towns and countrysides and that, teens though we are, have a role to play in conserving our rich natural resources for the ~~tomorrows~~ to come when, as adults, we will be responsible for them.

"In June this year, I was privileged to be one of 500 delegates from ten National youth organizations who went to Washington, D. C., to take part in a National Youth Conference on Natural Beauty and Conservation. The Conference was an outgrowth of Mrs. Lyndon B. Johnson's "Beautify America" project, and we were all guests of the First Lady on the lawn of the White House.

"In her words: "It is thrilling to me that, for the first time in history, America's major youth organizations are joining hands for a common purpose. It is doubly thrilling to me that this purpose is environmental beauty." Mrs. Johnson also said that when we talk of beautification, natural beauty and conservation, we are really talking about the life pattern of our generation and of those to follow. She challenged us to answer such questions as these:

'What will your environment be?
Will you live in communities that free the mind or imprison it?
Will your cities be places to thrive in or merely escape from?
And what places will there be left to escape to?'

"Secretary of the Interior, Stewart L. Udall, and Mrs. Orville L. Freeman, wife of the Secretary of Agriculture, and Russell E. Train, President of The Conservation Foundation, were our other main speakers.

"The delegates came from 50 States. All were of high school age or college freshmen. They represented ten cooperating youth agencies with combined membership of 20 million: Boys' Clubs of America, Boy Scouts of America, Camp Fire Girls, 4-H Clubs, Future Farmers of America, Girls' Clubs of America, Girl Scouts of the USA., Young Men's Christian Association and Young Women's Christian Association. In addition, three other agencies sent delegates: The American Red Cross, the Job Corps of the Office of Economic Opportunity, and the United States National Student Association.

"At the Conference, the delegates took an active part in workshops, exploring with experts in the fields of beauty and conservation, major problems on which teens could act most effectively in home communities. These areas were water pollution and waterfronts, littering, conservation education, parks and open spaces, city beautification, roadside control, air pollution and "how-to-do-it."

National Youth Conference, cont'd.

Perhaps you are thinking that, after the excitement of a visit to our National Capital and the surge of enthusiasm from many delegates and important leaders at the conference, such a grand movement will fizzle on the main streets back home. Let me tell you what's happening on Main Street, USA.

As soon as the 500 delegates returned home, a word went out to all members of all organizations. and that word was "ACTION." Newspapers, radio, and television media were alerted that youth was solidly behind this mass beautification movement and to be prepared for us to make NEWS by our "ACTION!" Every member of each group is involved as a participant. . . . and urged to become a leader in outdoor programs and to involve citizens and civic leaders in projects and discussion groups.

Twenty million teens are not satisfied to live in this land indifferent to people scarring its beauty and wasting its natural treasures. Therefore, I invite all of you to join wholeheartedly in this challenging crusade for beauty and conservation. To sum it up: "Let's stop talkin' and start movin'!"

* * * * *

KANSAS STATE UNIVERSITY COLLEGIATE FFA OFFICIALS

Officers of the Collegiate FFA Chapter of Kansas State University are also eager to assist or participate in local activities. These young men are also very capable of doing a good job. They are all located at Kansas State University during the school year.



COLLEGIATE FFA OFFICERS: Top row, l. to r.: Ross Crane, President; Delbert Rule, Sentinel; Robert Mainquist, Treasurer; and Floyd Latker, Reporter. Front row, l. to r.: Professor Paul Stevenson, Collegiate Advisor; John Holste, Parliamentarian; and Larry Epley, Vice President. Not pictured is Norman Galle, Secretary.

Kansas Association of FFA Officers Begin Year of Activities



Pictured above are two National FFA Officers and one representative from each of the States attending the Central Sub-Regional FFA Leadership Conference at Kansas City, July 13-15. Left to right: Jim Stitzlein, NC Regional Vice President from Ohio; Joe Detrixhe, National FFA Student Secretary from Kansas; Dave Malone, SE Area Vice President from Nebraska; Dennis Shurtz, FFA President from Kansas; Terry Heiman, FFA President from Missouri; Stan Metzger, FFA President from Indiana; Enid Schlipf, FFA President from Illinois; Darrell Hartle, Minnesota FFA Secretary; and Barrie Swinbank, FFA President from Iowa.

* * * * *

"The newly elected State officers for 1966-67 met in Topeka on July 12 for their first executive meeting. At this meeting, the officers evaluated the recommendations of the delegates to the 1966 FFA Convention. They started the initial steps in planning the 1966-67 program of work and arranged a calendar of activities for the year. Plans were made for the State FFA Camp, August 12-15, and a Kansas FFA Sweetheart Contest in conjunction with the Kiddies' Barnyard at the State Fair.

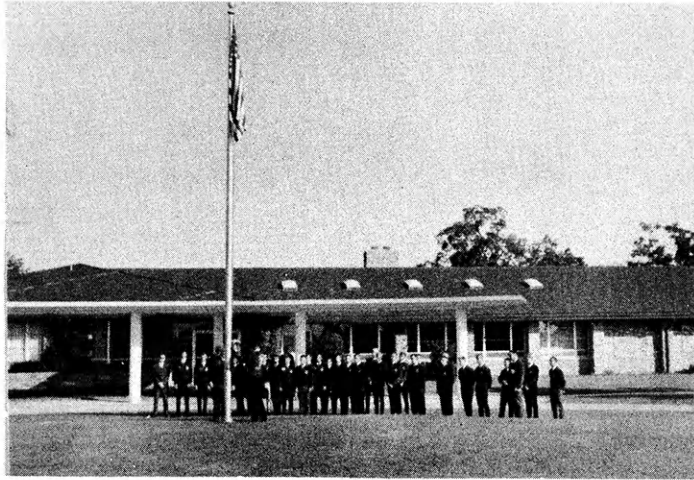
"The following morning the officers appeared over WIBW-TV with George Logan, the Farm Director. They then traveled to Kansas City to participate in the Central Sub-Regional Leadership Conference. At this conference, the officers gained valuable knowledge in planning and conducting a State Convention, making chapter visits, publicizing the FFA, and accepting many other State officer responsibilities. They had the opportunity to meet other State officers of six States and exchange ideas about State Associations. They brought back many ideas to put to work for Kansas FFA.

"During their stay at this conference, the officers had the honor of working with two National officers who were very inspiring. They were Jim Stitzlein, Vice President from the Central Region, and Joe Detrixhe, National Student Secretary. At a banquet sponsored by the Kansas Association, Dennis Shurtz, State President, presented a trophy to Joe for his outstanding accomplishments in FFA and his inspiration given to all Kansas FFA members."

----Steve McCorgary, Reporter
Kansas Association of FFA

* * * * *

State FFA Officers Attend Sub-Regional Conference (cont'd.)



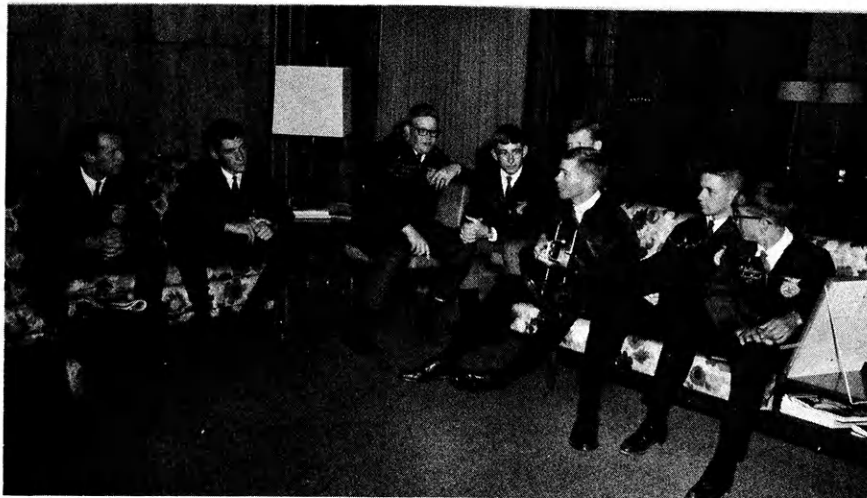
Flag raising ceremonies were observed each morning of the Central Sub-Regional Leadership Conference. National Officers presented patriotic messages each morning with all other participants observing.



Joe Detrixhe, National FFA Student Secretary, was presented a special award from the Kansas Association for his outstanding leadership and representation on both the State and National levels.



Leon Randolph, Director of Member Relations CCA, was awarded the Distinguished Service Plaque. Mr. Randolph has been instrumental in organizing and developing the conferences and other Vo-Ag work.



Informal group singing of country and folk songs was

KANSAS FFA MEMBERS TOUR EUROPE

Front row, 1. to r.: Miss Nicole Algeot, guide; Ernie Perry, Uniontown Chapter; John Lightner and Lynn Lightner, Garden City Chapter; Pat Randle, Pratt Chapter; Arris Sigle, Osborne Chapter; Terry Eberhard, Peabody Chapter; Virgil Lake, Leader/Host; 2nd row: Jim Schraeder, Jetmore Chapter; 3rd row: German Guide; Ronnie Fox, Plains Chapter; Howard Wallace, Oakley Chapter; 4th row: Dennis Rezac, St. Marys Chapter; Richard Lightner, Garden City Chapter; Ronald Mathes, Harper Chapter; back row: Buford Kurr, Jr., Newton Chapter; and Marvin Wahl, Columbus Chapter.

On July 11, 1966, fifteen Kansas Future Farmers of America and two advisors departed from Wichita on the first leg of a 22-day, People-To-People, journey which took them to Scotland, England, Hungary, Czechoslovakia, Belgium, Germany, Denmark, Holland, and Sweden. Heading the Kansas delegation was Mr. Virgil T. Lake, Vo-Ag teacher at Cheney High School, Cheney, Kansas.

The group arrived at Kennedy International Airport to board a Sabina Belgian World Airlines jetliner, July 11, 1966, at 9:30 a. m., for Brussels, Belgium. Meetings, interviews, visitations, and receptions were scheduled throughout the 22 days as the Kansas citizens took part in meetings with United States and foreign government authorities and met representatives of their occupational counterparts in Europe.

They returned to Kennedy International Airport on Monday, August 1, at 6:30 p. m., and then had a full day of sightseeing in New York. They arrived at the Wichita Airport on Tuesday, August 2.

1966 LEADERSHIP CAMP

Another record attendance at the 1966 FFA Leadership Camp tops all other previous Kansas FFA camps. There were 321 members and advisors from 55 chapters making the number of FFA members participating tops compared with other years.

The first Kansas Leadership Camp began in 1960 at Camp Fellowship at Lake Afton. The Camp was moved to Rock Springs, where it has been held continuously since 1962.

Activities at the camp included contests in parliamentary procedure, ritual performance, extemporaneous speaking, FFA officer leadership training, talent show, hog calling contest, and rodeo. Recreational activities included ping pong, swimming, softball, volleyball, steer wrestling, track meet, horseshoes, and trap shooting.

Speaking at the first general meeting of the 7th FFA Camp, Lt. Gov. John Crutcher told of his experiences traveling through the Socialist States.

Joe Detrixhe, National Student Secretary, reflected the success of FFA leadership development by naming congressmen who have been past FFA members, and by listing other activities and opportunities which go together to make the individual a stronger leader.

1966 CAMP AWARDS

Camp Officers: President, Jerry Myer, Marysville; Vice President, Ed Bogner, Winfield; Secretary, Jim Taphorn, Marysville; Treasurer, Dave Howard, Oakley; Reporter, Tom Broeckelman, Oakley; Sentinel, Mark McKee, Altamont.

Wranglers: Angus, Dale Raymond, Garnett; Brahmas, Rick Weaver, Arkansas City; Charolais, Jerry Hatfield, Wamego; Durhams, Larry Towns, Colby; Galloways, Bruce Covert, Columbus; Herefords, Terry Handke, Effingham; Longhorns, Howard Goff, Manhattan; Red Polls, Tim Jaeger, Leoti; and Shorthorns, Galen Biery, Eskridge.

Winning Herd: Herefords

Spelldown: Tom Broeckelman, Oakley

Speaking: Owen Mooney, Caney

Herd Test: Ed Bogner, Winfield; Tom Ferrell, Caney; Greg Hands, Garden City; Frank Kroboth, Ellsworth; John Krupp, Ellsworth; and Danny Scott, Caney; tied for first. Tom Broeckelman, Oakley; Dale Fruits, Winfield; Stanley Nichols, Winfield; Lester Priest, Winfield; and Tom Vaughan, Caney; tied for second.

Hog Calling: Dennis Fisher, Peabody; and Leonard White, Great Bend, second.

Flashlight Relay: Herefords--Terry Williams, Highland; Rodney Walters, Oberlin; Johnny Lindstrom, Silver Lake and Terry Handke, Effingham.

SWIMMING EVENTS

Beauty Contest: Jim Bauck, Leoti.

Rooster Fight: Steve Borg and Gregg Mitchell, Manhattan and McPherson Chapters, Red Polls.

Treasure Hunt: Greg Kubin, McPherson and Bob Johnson, Clay Center.

Free Style: A. Glen Biery, Eskridge; B. Bob Roepke, Waterville.

Tug of War: Shorthorns

Underwater: Richard Beddle, Winfield, Red Polls.

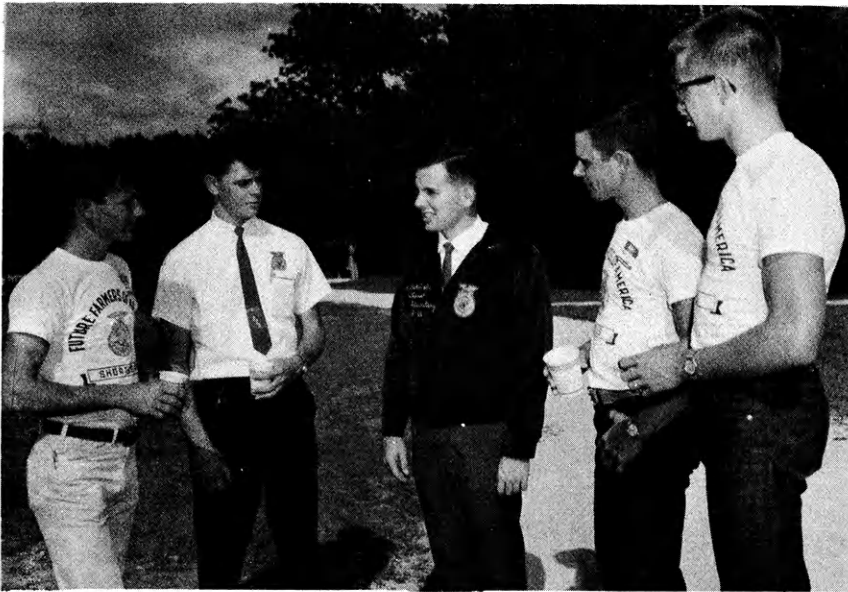
Balloon Contest: Phil Brown, Clay Center; Clayton Fast, Goessel.

Swim Relay: Charolais---Allan Mayhill, Arkansas City; Bob Roepke, Waterville; Rick Davignon, Hill City; and Chet Douthit, Columbus.



Front row: State FFA officers; second row: State Camp Wranglers; third row: State Camp officers; fourth row: Straw Bosses; and fifth row: Mavericks.

FFA CAMP 1966



Our State Officers

All State Officers were able to attend at least part of the Camp. L. to R. : Alan Cox, Sentinel, Lawrence; Steve McCorgary, Reporter, Arkansas City; Bob Wiles, Treasurer, Leoti; Sam Hands, Secretary, Garden City; Bob Broeckelman, Vice President, Oakley; and Dennis Shurtz, President, Arkansas City. Bob Broeckelman and Bob Wiles had to leave early in order to attend the National State Officers' Camp at Camp Miniwanca.

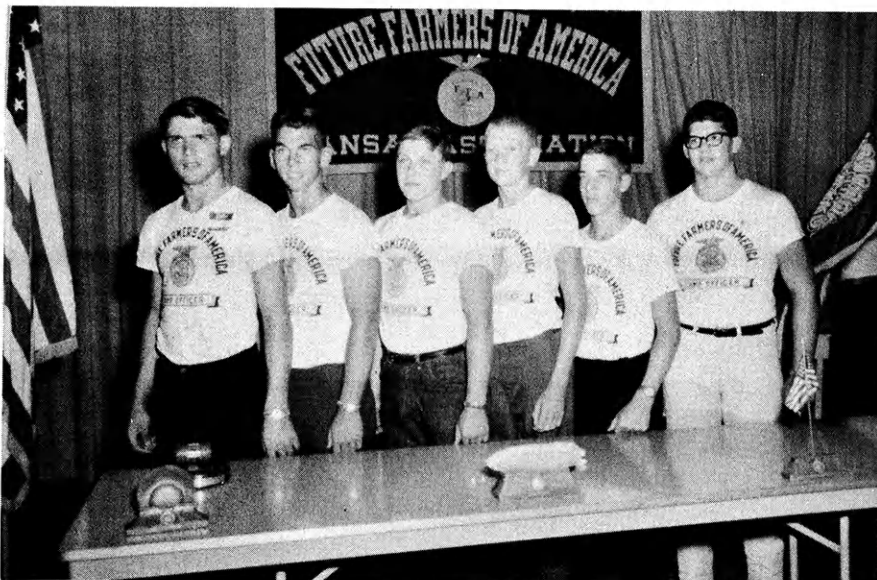
Special Guests

Left to right: Steve McCorgary, State Reporter, Arkansas City; David Thomas, Vice President of the Missouri Association of FFA; Joe Detrixhe, Student Secretary of the National FFA; Alan Cox, State Sentinel; Lawrence; and Sam Hands, State Secretary, Garden City.



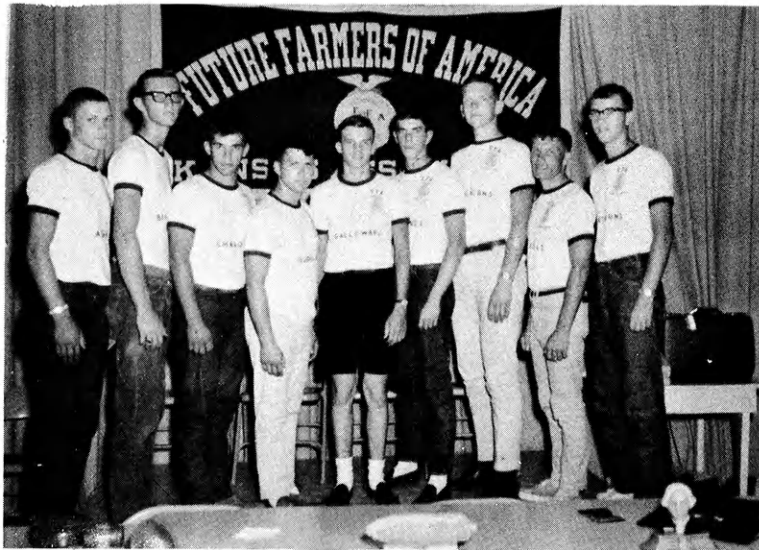
Camp Officers

Pictured at left are the Camp Officers of the 1966 FFA Camp: Jerry Myer, Marysville; Ed Bogner, Winfield; Jim Taphorn, Marysville; Dave Howard, Oakley; Tom Broeckelman, Oakley; and Mark McKee, Altamont,



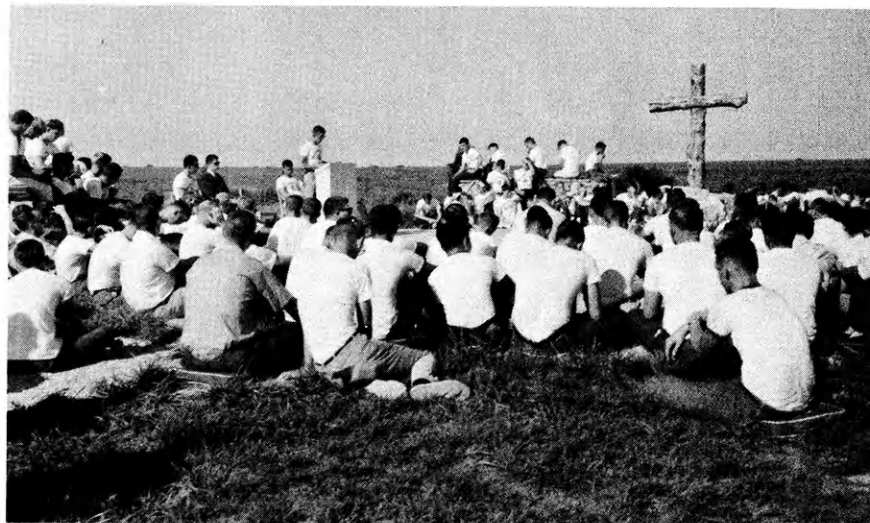
Wranglers

Wranglers for the 1966 FFA Camp, left to right: Dale Raymond, Garnett FFA; Rick Weaver, Arkansas City FFA; Jerry Hatfield, Wamego FFA; Larry Towns, Colby FFA; Bruce Covert, Columbus FFA; Terrell Handke, Effingham FFA; Howard Goff, Manhattan FFA; Tim Jaeger, Leoti FFA; and Galen Biery, Eskridge FFA.



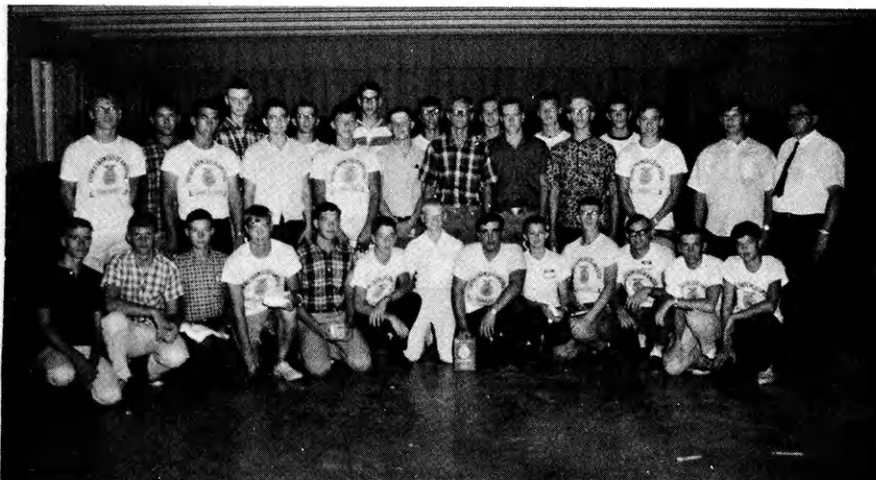
Vespers Service

Vespers Service for the FFA Camp was held atop the Chapel Hill overlooking the prairies of Kansas. Vespers speaker was David Thomas, Vice President of the Missouri Association of FFA.



Winners !!

The winning herd at the 1966 Leadership Camp was the Herefords. The Hereford herd is shown with Harold Walker, President of the Kansas Association of Bank Agricultural Representatives, who furnished awards for the camp.



FFA CAMP

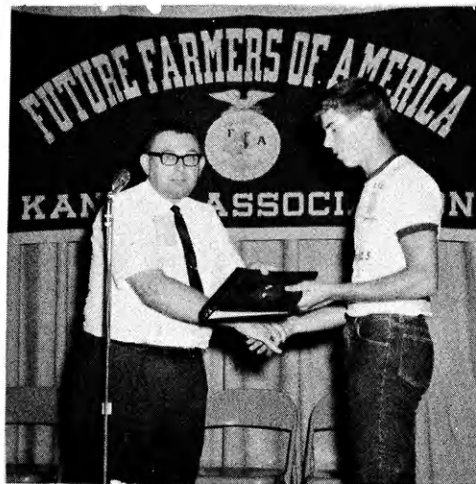
S
W
I
M
M
I
N
G



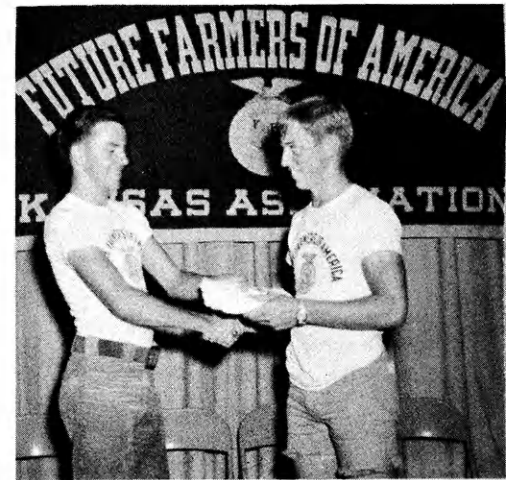
C
O
N
T
E
S
T
S



Lt. Gov., John Crutcher, spoke to the members of the FFA Leadership Camp and emphasized the bright views of farming. Dennis Shurtz is presenting him with a Distinguished Service Plaque.



The Kansas Association of Bank Agricultural Representatives furnished awards. Harold Walker, Pres. of KABAR, presents a notebook to Terrell Handke, a Wrangler of the winning herd.



Johnny Lindstrom, Silver Lake FFA Chapter, is shown receiving his award for throwing a football 135 feet and 6 inches.



This year's State FFA Leadership Camp provided time for members of local chapters to get together with advisors. Larry Kendall, Fredonia FFA, with his officers.



Group singing was part of the FFA Camp. L.to R : Alan Cox, State Sentinel; Lloyd Barnett; Lester Crandall; David Stucky; and Dennis Fildner, who lead the singing.

TRACK EVENTS

Horseshoes: Richard Schurle, Riley Co.

Ping Pong: Mark Calcara, Great Bend

100-Yard Dash: Chet Douthit, Columbus

Football Throw: Johnny Lindstrom, Silver Lake.

Standing Broad Jump: Chet Douthit, Columbus.

Shot-Put: (Who threw the shot-put 43' 8"?)

Trap Shoot: Chet Douthit, Columbus

TALENT CONTEST

Durhams

WINNING HERDS

Ritual Contest: A Team--Herefords;
B Team--Durhams.

Parliamentary Procedure: A Team--Herefords; B Team -- Durhams.

Singing Herd: Shorthorns.

Etiquette Contest:

1st -- Durhams
2nd -- Charolais, Galloways, and Herefords.

ATTEND CAMP

The following FFA Chapters attended Leadership Camp at Rock Springs:

Altamont	Arkansas City
Caney	Chapman
Cheney	Clay Center
Colby	Columbus
Effingham	Ellsworth
Elk City ✓	Erie

Chapters attending camp, cont'd.

Eskridge	Fort Scott
Frankfort	Fredonia
Garden City	Garnett
Girard	Goessel
Great Bend	Greeley Co.
Haddam	Harper
Highland	Hill City
Holcomb	Hugoton
Kingman	Leoti
Manhattan	Marysville
Mankato	McPherson
Morland	Morrowville ✓
Mulvane	Neodesha
Norton	Oakley
Oberlin	Powhattan
Peabody	Phillipsburg ✓
Riley Co.	Rossville
Seaman	Silver Lake
Smith Center	Troy ✓
Uniontown	Wamego
Waterville	Westmoreland
Winfield	

FFA FFA FFA

Personnel associated with vocational agriculture in Kansas were saddened by the death of Mrs. Donald McLaughlin of Stockton. Mrs. McLaughlin was the bride of the former Star Farmer of Kansas, Donald McLaughlin. They had been married only a few weeks. Death resulted from an automobile accident in Northwest Kansas. Donald was injured seriously; however, at the time of this printing it was reported that he would recover satisfactorily.

Donald is currently serving as State Sentinel for the Kansas Young Farmers Association, and will receive the American Farmer Degree at the National FFA Convention this October. Donald is also Kansas' representative for the coveted Regional Star Farmer Award.

FFA FFA FFA



HI ! HO! COME TO THE FAIR!

The FFA will be represented at the two major fairs in Kansas again this fall. These fairs are an excellent place to share and exchange ideas and promote the FFA image to the public.

MID AMERICA FAIR

Sept. 9-15, 1966, -- Topeka

AGRICULTURE MECHANICS: Construction Projects: Construction projects are always a popular exhibit at the fair. Many hours of labor are represented in these projects. Projects are to be in place not later than 9:00 a. m., Friday, September 9, 1966. The entries will be judged Friday, one day earlier than in the past. This year, also, the Ag Mechanics Exhibit will be located east of the Agriculture Building.

Skill Projects: There are some fine prizes in this important area and more chapters need to participate in this phase of the fair. Simply collect some of your department's top skill projects, place them attractively on a display board, and exhibit it at the fair.

EDUCATIONAL BOOTHS: Thirteen FFA chapters will construct booths at this year's fair. These chapters are: Alma, Burlingame, Caney, Eskridge, Highland Park, Hoyt, Lawrence, Manhattan, Osage City, Powhattan, Riley Co., Silver Lake, and Troy.

There is no more space available for this year's fair; however, the State Office is currently taking names for the 1967 fair. The quota for the next year is generally filled shortly after the fair starts, so if your chapter wants in, a letter to the State Office is your best chance.

COUNTY COLLECTIVE BOOTHS: Several chapters spend many hours preparing, collecting, and assembling the County Collective Booths.

FFA DAY: Saturday, September 10, is FFA Day at the fair. This year passes will be limited to those chapters exhibiting at the fair. No tickets will be sold for the afternoon races at the traditional reduced cost. Tickets must be purchased at the regular ticket office at regular prices.

KANSAS STATE FAIR

Sept. 16 - 22, 1966, Hutchinson

AGRICULTURE MECHANICS: Probably no place on earth is there a more extensive collection of agriculture machinery than at the Kansas State Fair, both commercial and constructed. FFA chapters can be proud of their part in this extensive collection.

KIDDIES' BARNYARD: Thousands of people, especially young city children, gained a new concept and understanding of FFA last year because of the Kiddies' Barnyard. Here, fairgoers had an opportunity to observe and to enjoy, often for the first time, animals which farm people raise for pleasure and profit. Plans for this year's Kiddies' Barnyard are even bigger and better.

STATE FFA SWEETHEART: Each district has selected, or is in the process of selecting, a District FFA Sweetheart. Details of selecting the district candidate are delegated to each district under the direction of the district director. The candidates will be special guests at the fair, Monday, September 19, in connection with the Kiddies'

State Fair, cont'd.

COUNTY COLLECTIVE BOOTHS: It is always inspiring to view the county collective booths. It is difficult to comprehend that so many products are produced from Kansas soil. FFA chapters can be proud of the way they exhibit their State's and country's products.

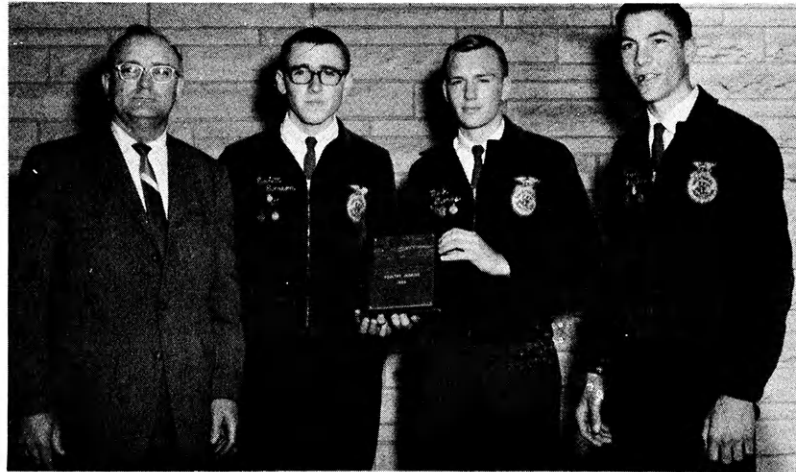
#

KANSAS ENTRIES IN NATIONAL COMPETITION

MEATS: Kansas' representative in the National Meats Contest will be the winner of the State Meats Contest to be held at the Cudahy Packing Plant in Wichita on October 4, 1966.

Livestock Judging

Poultry Judging



L. to R.: Larry Erpelding, Advisor; Buford Kurr, Jr.; Don Sauerwein; and Don McClure, from Newton FFA Chapter.

L. to R.: Merwin Stearns, Advisor; Everett Everson; Mark Stearns; and Wayne Parker, from Manhattan FFA Chapter.

DAIRY PRODUCTS JUDGING: Paul Wright; Tom Nelson; Robert Asp; Gailen Paronto, alternate; and Earl B. Wright, Advisor, from Clay County Community High School FFA. (Picture was not available).

DAIRY JUDGING: Alta Vista FFA Chapter (Names and picture are not available).

#

SELLING PECANS FOR CHRISTMAS

Several FFA chapters have found that selling pecans before Christmas is a good money-making activity. These chapters have also indicated interest in obtaining Kansas pecans, since this industry has been increasing in Kansas. Conard's Pecan and Walnut Shellers Plant of Chetopa, Kansas, is operated by a former FFA student and his family, who are currently strong supporters of the organization. If your chapter is planning such an activity, it might be beneficial to contact the Conards. If arrangements could be made, it might be possible to have State staff personnel deliver some shipments, if it could be worked into their schedules.

1966 FFA LEADERSHIP SCHOOLS

FFA INFORMATION TEST

TENTATIVE PROGRAM

The FFA Information Contest will consist of 50 questions. The test should not take over 20 minutes.

1. Questions will be taken from the official FFA Manual and the last four issues of the Kansas Future Farmer Newsletter, including September 1966 issue.
2. The test will not include winners of District, State, or National contests.
3. The test will not include names of home chapters of American Farmers or candidates for American Farmer.
4. The test will not cover names of Regional Vice Presidents or Board of Directors of the National Organization.
5. The test will not cover early history not included in the cited references above .

- Welcome by Host School and Chapter
- Evening Instructions
- Parliamentary Procedure and Ritual Contest
- Evening Meal
- Information Contest
- Program of Work Workshops
- Proper and Improper Dress Illustration
- Special Entertainment
- State Officer Address
- Special Announcements
- Announcement of Contest Results

SCHEDULE OF 1966 DISTRICT FFA LEADERSHIP SCHOOLS

<u>Date</u>	<u>Time</u>	<u>Place</u>	<u>Teacher</u>	<u>Teacher Trainer or State Staff</u>	<u>State Officer</u>
Sept. 26	3:30 p. m.	Buhler	Julian Johnson	Earl Wineinger	Dennis Shurtz
Sept. 26	4:00 p. m.	Emporia	Eugene Walker	C. C. Eustace	Alan Cox
Sept. 26	4:00 p. m.	Lawrence	Stan Larson	Harold Shoaf	S. McCorgary
Sept. 26	4:00 p. m.	Plainville	M. Hachmeister	Wilbur Rawson	Sam Hands
Sept. 26	4:00 p. m.	Jewell	Harold Severance	Howard Bradley	B. Broeckelman
Sept. 27	3:30 p. m.	Neodesha	Wayne Coltrain	C. C. Eustace	Alan Cox
Sept. 27	4:00 p. m.	Riley Co.	Les Olsen	Howard Bradley	Bob Wiles
Sept. 27	4:00 p. m.	Harper	Harold Mai	E. Wineinger	Dennis Shurtz
Sept. 27	4:00 p. m.	Colby	Charles Schaller	Wilbur Rawson	Sam Hands
Sept. 27	4:00 p. m.	Holton	Chas. Smith, Jr.	Harold Shoaf	S. McCorgary
Sept. 28	9:30 a. m.	Dodge City	Allen Starosta	E. Wineinger	Dennis Shurtz

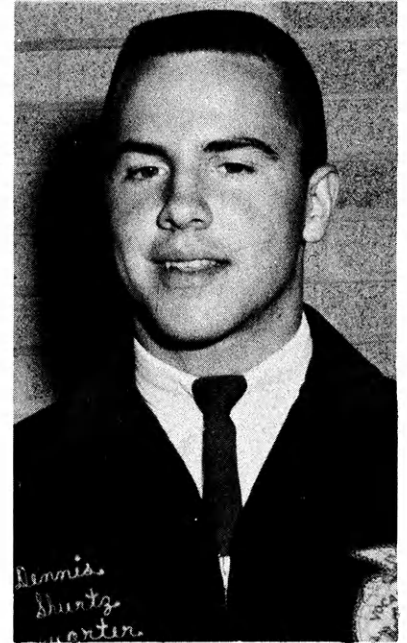
* * * * *

- BUHLER: September 26, Monday, 3:30 p. m.
Buhler, Claflin, Ellinwood, Ellsworth, Goessel, Great Bend, Haven, Hillsboro, Hoisington, Inman, Lindsborg, McPherson, Moundridge, Newton, Partridge, Peabody, Salina, Stafford.
- EMPORIA: September 26, Monday, 4:00 p. m.
Alma, Alta Vista, Burlingame, Burlington, Cottonwood Falls, Council Grove, Emporia, Eskridge, Florence, Hamilton, Herington, Kincaid, Lebo, Marion, Osage City.
- LAWRENCE: September 26, Monday, 4:00 p. m.
Blue Mound, Garnett, Highland Park, LaCygne, Lawrence, Louisburg, Paola, Parker, Rossville, Seaman, Silver Lake, Wellsville, Williamsburg.
- PLAINVILLE: September 26, Monday, 4:00 p. m.
Alton, Ellis, Hays, Hill City, Kensington, LaCrosse, Moreland, Natoma, Palco, Paradise, Phillipsburg, Plainville, Quinter, Russell, Stockton, WaKeeney, Wilson.
- JEWELL: September 26, Tuesday, 4:00 p. m.
Belleville, Beloit, Beverly, Concordia, Courtland, Delphos, Downs, Jewell, Lebanon, Mankato, Minneapolis, Osborne, Scandia, Smith Center.
- NEODESHA: September 27, Tuesday, 3:30 p. m.
Altamont, Altoona, Caney, Chanute, Cherryvale, Coffeyville, Columbus, Elk City, Erie, Eureka, Fort Scott, Fredonia, Girard, Howard, Humboldt, Iola, McCune, Neodesha, Riverton, St. Paul, Severy, Uniontown, Yates Center.
- RILEY COUNTY: September 27, Tuesday, 4:00 p. m.
Abilene, Barnes, Chapman, Clay Center, Clifton, Greenleaf, Haddam, Hanover, Hope, Linn, Longford, Manhattan, Marysville, Miltonvale, Morrowville, Randolph, Riley, Solomon, St. George, Washington, Waterville.
- HARPER: September 27, Tuesday, 4:00 p. m.
Arkansas City, Attica, Cheney, Harper, Kingman, Kiowa, Medicine Lodge, Mulvane, Pratt, Pretty Prairie, Udall, Winfield.
- COLBY: September 27, Tuesday, 4:00 p. m.
Almena, Atwood, Bird City, Brewster, Colby, Goodland, Hoxie, Jennings, Long Island, McDonald, Norcatur, Norton, Oakley, Oberlin, St. Francis.
- HOLTON: September 27, Tuesday, 4:00 p. m.
Centralia, Effingham, Frankfort, Highland, Holton, Hoyt, Meriden, Onaga, Powhattan, Sabetha, St. Marys, Troy, Wamego, Westmoreland.
- DODGE CITY: September 28, Wednesday, 9:30 a. m.
Bazine, Dodge City, Ensign, Ford, Fowler, Garden City, Hanston, Holcomb, Hugoton, Jetmore, Kinsley, Lakin, Leoti, Mullinville, Ness City, Southwestern Heights (Plains), Spearville, Tribune.

CALL TO THE NATIONAL CONVENTION!

"As your State President, I am issuing a call to all chapters to send delegates to the 39th National Convention, which is to be held in Kansas City, Missouri, at the Municipal Auditorium during the week of October 12-16, 1966.

"As has always been the policy, each chapter is allowed to send a maximum of six carefully selected members to attend the convention with properly completed official registration card. When you receive your brochure, "You and Your National FFA Convention," I urge you to review this with your advisor. To many people, the FFA jacket is a symbol of our organization; remember, you will not only be a representative of the Kansas Association of FFA, but the National Association of FFA as well. Therefore, I encourage each individual to wear his jacket properly and with pride during the convention activities.



Dennis Shurtz

"I assure you that your attendance at the National Convention will be a highlight of your FFA year for you will have the opportunity to hear many highly respected persons and inspirational speakers. The convention is designed to demonstrate and promote new leadership training and to leave a renewed dedication to the aims and purposes of the FFA and Vocational Agriculture within every FFA member.

"During the convention, I will be representing the State Association along with your State Vice President, Bob Broeckelman, as the official delegates from the Kansas Association. I hope to see and visit with many of you in Kansas City."

-----Dennis Shurtz, President
Kansas Association of FFA

NATIONAL FFA CONVENTION

TO MEMBERS OF THE FUTURE FARMERS OF AMERICA:

"As your National FFA President, I am issuing a call for all State Associations to send delegates to the 39th National Convention, which will be held in the Municipal Auditorium, Kansas City, Missouri, October 12-14, 1966.

"The convention will have a fitting introduction with a Vespers Program, Tuesday evening, October 11. Offering many highly respected personages and inspirational speakers, the convention sessions are planned to execute business, recognize outstanding achievements, demonstrate and promote leadership training, elect new officers for next year, set new goals, and leave every FFA member and adult with a renewed dedication to the aims and purposes of vocational agriculture and the FFA. Each session will be very meaningful; therefore, I urge attendance at all sessions.

"All chartered State Associations in good standing with the National Organization are

-----more

Call for National Convention -- cont'd.

expected to send two official delegates and two alternates from the active membership. Official delegates should arrive in Kansas City for the 10:00 a. m. delegate registration, which will be followed by the Officer-Delegate Luncheon at 11:45 a. m. on Tuesday, October 11. A short briefing session on organizational matters will follow with convention committees meeting that afternoon. State Associations should also have in attendance at the convention those candidates recommended for the American Farmer Degree, candidates for National Office, and those members who are to receive awards, and others who have official business at the convention.

"Local chapters are encouraged to send representatives to the National Convention. Chapters are entitled to a maximum of six, or ten percent of the total membership, whichever is greater, of carefully selected members to attend the convention, provided they come to Kansas City with properly completed official registration cards. This number does not include National or regional award winners, ushers or special participants. When you receive your brochure, "You... And Your National FFA Convention," I encourage you to review it with your advisor. To many people, the FFA jacket is a symbol of our organization; I encourage each representative to wear his jacket properly at all official convention activities.

"The 39th Annual Convention will be the highlight of our FFA year. I urge all FFA members who attend the convention to be present at all sessions from Wednesday morning through Friday evening, October 12 through 14. With the help and cooperation of all present, our convention will be a great success.

"I look forward to seeing you in Kansas City. "

----Howard L. Williams
National FFA President
Olin, North Carolina

* * * * *

NATIONAL CHORUS

Information from Mr. Wm. Paul Gray, National Executive Secretary of FFA, indicates that the selection for the 1966 National FFA Chorus has been made. The number in the chorus has been increased from 50 to 75 members in order to give more boys the opportunity to travel and participate in the chorus. The following members have been selected from Kansas:

Dennis Ballard, Plains, Southwestern Heights Chapter
Warren Lyerla, Carl Junction, Columbus Chapter
Dale Carter, Fort Scott, Fort Scott Chapter
Danny Smith, Kinsley, Kinsley Chapter

The 1966 National Convention is to be held October 11-14. The first chorus rehearsal is scheduled for 1:00 p. m., Sunday, October 9, Room 400. Chorus members are to remain in Kansas City until Saturday, October 15. If you cannot meet this schedule, please let me know immediately so that another individual will be preparing for participation in the chorus. No member will be granted an excuse for late arrival or early departure.

* * * * *

HERE AND THERE. . . .

1966 NATIONAL FFA BAND

The National FFA Band will again be under the direction of Mr. R. Cedric Anderson of Cedar Rapids, Iowa. The band, known as the "Suitcase Band," will furnish music for the National FFA Convention. Six Kansas FFA members have been selected to serve with the National FFA Band. In addition to the Convention, the band will perform during the opening sessions of the American Royal parade on Saturday, October 15. All Kansas FFA members can be proud of the following young men who have been selected for the National FFA Band:

- Ronny Haack, Bird City Chapter
- Jim Wineland, Alton Chapter
- Stephen J. Miller, Norcatour Chapter
- Dennis Fisher, Peabody Chapter
- Roger Russell, Downs Chapter
- Jim Schraeder, Jetmore Chapter

FFA FFA FFA

NATIONAL BETTER CHAPTER ENTRIES

Arkansas City and Garden City Chapters will again, this year, represent Kansas in the National Better Chapter Contest. The National gold emblem chapters will receive recognition Wednesday, October 12, at the National Convention. Kansas has two strong entries represented by these two outstanding chapters.

FFA FFA FFA

The Federal Land Bank of Wichita has suggested that our public speaking area include the topic: "American Farmer--- Provider of Plenty." This will be their theme in celebrating their anniversary this year. Prizes are involved which they will inform us about in the near future.

* * *

BALL ENTERS CENTRAL REGIONAL PUBLIC SPEAKING CONTEST

The Kansas Association of FFA will be represented in the Central Regional Public Speaking Contest by Victor Ball of the Garden City FFA Chapter. The Public Speaking Contest will be on Tuesday afternoon, 1:00 p. m., October 11, Music Hall, Municipal Auditorium, Kansas City, Mo. The winner of the Central Regional Contest will be one of the four finalists in the National Public Speaking Contest, Wednesday evening, October 12, in the Municipal Auditorium, Kansas City, Mo.

* * *

KANSAS JUNIOR HEREFORD ASSOCIATION FIELD DAY

The ninth annual Junior Hereford Association Field Day, cosponsored by the Kansas City Hereford Club, was held at the Schlickau Hereford Ranch, near Argonia on Friday, July 8. Guest speakers included Henry Matthiessen, Hume, Virginia, owner of Still House Hollow Farm and Vice President of the American Hereford Association, and Miss Martha Williams, Forest, Mississippi, Reporter for the American Hereford Association. The Field Day also featured judging, demonstrations, contests, and many other activities. Demonstrations were on feeding, grooming, showing beef animals, etc. Several FFA chapters from over the State attended and participated in the day's activities.

* * *

Parliamentary Procedure Contest will be six minutes long at the District, rather than eight minutes long as it is for the State. Recommended Guide, "A Guide to Parliamentary Practices," by Melvin Henderson and Herbert J. Rucker, may be purchased from: The Interstate, Printers and Publishers, 19-27 N. Jackson St., Danville, Illinois, price 20 cents.

* * *

CHANGESIn The Kansas Association of FFA As A Result
Of Recommendations From The State Convention

Recommendation: Add the percentage and letter grade scale to the State Farmer application form.

Result: The Executive Committee decided not to include the percentage and letter scale on the State Farmer application. The reason for this decision was that in the future, due to unification, most grading and percentage scales would be relatively the same. It was also felt that because a revision had just been made to the State Farmer application, this would not be an appropriate time to make other revisions.

Recommendation: To develop the plan whereby freshmen enrolled in schools associated with area vocational-technical schools might be able to associate with an FFA chapter.

Result: It was passed that the State Secretary contact a committee of Ralph Field, Vo-Ag Instructor at Caney (associated with the SE Kansas AVTS); Don Kastl, Vo-Ag Instructor at the NC Kansas AVTS at Beloit; and Eugene Walker, Vo-Ag Instructor at the AVTS at Emporia; to consider this situation and offer recommendations.

Recommendation: Awards be developed for Ag-Related Occupations Training.

Result: Awards for the Ag-Related Occupational Training Area have been developed and were executed during the past year. The actual awards were not presented until June; therefore, many delegates at the convention were not aware that these awards had been conducted.

Recommendation: The word "male" be deleted in Article 3, Section B, of the State Constitution and be made to read: "Any student regularly enrolled in an all-day or day-unit class in vocational agriculture is entitled to become an active member of any chartered FFA chapter upon receiving a majority vote of the chapter membership at any local chapter meeting."

Result: This possible amendment will be brought before the delegates of the 1967 convention.

Recommendation: There be no limit to the number of years a member could participate in the State Parliamentary Procedure Contest.

Result: The Executive Committee approved this recommendation.

Recommendation: Use the Illinois system of Parliamentary Procedure at State Leadership Camp in August.

Result: The Executive Committee approved this recommendation.

Recommendation: To have a State FFA Queen Contest in connection with the Kiddies' Barnyard at the State Fair.

Result: The Executive Committee referred this recommendation to Wilbur Rawson, Assistant State Supervisor of Vocational Agriculture, to develop this program as far as possible this year.

Recommendation: Any chapter failing to submit a Program of Work for the year be eliminated from all FFA activities for the year.

Changes (cont'd.)

Result: The Executive Committee felt that this was a good recommendation and was recognized as important to all chapters developing and issuing a Program of Work. However, the committee decided not to enforce this recommendation due to the fact that some special members may be severely penalized because of this recommendation (For example, State Farmers).

Recommendation: The Kansas Future Farmer Newsletter be published six times during the FFA year.

Result: The Executive Committee voted to have the Kansas Future Farmer Newsletter issued on September 9, November 15, January 15, February 15, April 10, and May 10.

Recommendation: The Camp Committee recommended that individual tournaments be dropped, Ritual and Parliamentary Procedure teams be elected one day earlier, and starting time of camp be moved up one hour.

Result: The Executive Committee approved this recommendation.

* * * * *

DUES AND PROGRAM OF WORK

DUES: The State FFA dues for 1966-67 will be changed to 50 cents per member. The National dues have changed this year to 50 cents per member. This may seem high at first but is actually a substantial saving when you consider the fact that it includes a subscription to the National Future Farmer Magazine. All members must pay the 50 cents according to the regulation, and a member cannot be exempt if he has a brother also in FFA and receiving the magazine. This regulation is somewhat different from the past policy. Adding these two items together gives a total of \$1 which should be sent to the State Office for each FFA member. FFA chapter treasurers are urged to collect dues by September 15 from 100 percent of the vocational agriculture students. Chapters collecting dues at the beginning of the school term have found this a convenient time.

PROGRAM OF WORK: Program of Work forms are due in the State Office by October 31. A chapter should submit a Program of Work by October 31 to be eligible for participation in District and State FFA events during 1966-67.

* * * * *

MAGAZINE SUBSCRIPTIONS

Submitting names for this year's National Future Farmer Magazine subscription will be handled different from what it has been in the past.

The plan is this:

1. On or before August 1 of each year, the National Organization will print a list of members by chapters as they appear in the records of the National Organization. Three copies of this list will be mailed to the local chapters in each State. For the year starting July 1, 1966, many chapters will receive only the blank forms.

---- more

Magazine Subscriptions, cont'd.

2. The local chapter will mark through the names and addresses of those to be dropped and add the names and correct mailing addresses of new members in the space provided. The forms will have carbon paper already in place for local and State office copies.
3. The local chapter will forward two lists with their dues to the State Association.
4. The State Association will keep one list for their records and send the other copy along with the appropriate amount of National dues to the National FFA Treasurer, P. O. Box 230, Woodstock, Virginia 22664.
5. Members will start receiving their copies of the magazine after their dues and complete mailing addresses are received in the office of the National Treasurer.
6. Local chapters may substitute names where there is more than one member in the same family. This may be done by putting a star by the member's name and adding the name of the person to receive the magazine at the end of the list.
7. Gift magazine subscriptions may also be included on this list at 50 cents each. Be sure to give the complete mailing address and check the appropriate column to indicate it is a nonmember subscription.

If a member's magazine subscription extends through 1966, a new subscription will begin where the old one expires. Each subscriber is guaranteed to receive six issues for one year's subscription. Be very careful that complete addresses are supplied on the magazine subscription blanks. If any new subscriber fails to receive his copy of the magazine, he should notify the State Office immediately.

* * * * *

SCRAPBOOK CONTEST

Reporters of local chapters will be interested to know that a State Scrapbook Contest will be held again this year during the State FFA Convention. Now is the time to start your chapter's scrapbook for 1966-67. The High Plains Journal of Dodge City is sponsoring the contest by awarding leather briefcases to the top reporters of the districts. The High Plains Journal would appreciate news articles from local chapters which might be of interest to other chapters.

* * * * *

Go-Getter: One who gets in behind you in a revolving door and comes out ahead of you.

1966-67 FFA SAFE CORN HARVEST AND TRACTOR SAFETY
PROGRAMS

If your FFA Chapter has the two safety kits this year, we recommend that the Safe Corn Harvest program be conducted during the fall and the Tractor Safety during the spring. Chapter safety activities will be more effective if their efforts are not diluted by conducting these two programs at the same time.

If you have any questions about either program, please direct them to the Farm Department, National Safety Council, or Harold Shoaf, Chairman, Kansas Rural Safety Committee, Topeka, Kansas.

SAFE CORN HARVEST: The Safe Corn Harvest program should be conducted just prior to or during corn harvesting season. It can be used by FFA Chapters in areas where corn is harvested as grain and/or silage. Many chapters limit that part of the program concerned with contacting the farmers to a two-month period between August and December.

Dates:	August	Plan FFA Chapter program, order items, orient members
	September and October	Conduct program
	November and Dec.	Conclude program Complete chapter report
	January 1	Chapter Safe Corn Harvest Report due in State office
	March 1	State Safe Corn Harvest Report due at Farm Department, National Safety Council

TRACTOR SAFETY: The Tractor Safety program may be conducted during the fall (if the chapter isn't in the Safe Corn Harvest program) or spring. If conducted in the spring, it would be done before spring field operations start.

The lesson outline in the kit should be used in the vo-ag class just prior to making farm visits or public appearances to promote the program in the community.

Dates:	Spring (or Fall)	Plan FFA Chapter program, order items, use class lesson, orient members
	Two-month period	-- Conduct program, complete chapter report
	June 1, 1967	Chapter Tractor Safety Report due in State Office
	June 30, 1967	State Tractor Safety Report due at Farm Department, National Safety Council

CERTIFICATES: A certificate of participation is available from the National Safety Council for each FFA Chapter reporting. The certificate, appropriate for each safety program, is Gold, Silver, and Bronze.

Gold certificates are for excellent chapter reports.

Silver certificates are for good chapter reports.

Bronze certificates are for acceptable chapter reports.

* * * * *

DID YOU KNOW..... THAT according to a federal survey, more people die of insect (mostly bee) stings than from poisonous snake bites?

NATIONAL FFA CONVENTION REGISTRATION

Registration will be by chapters except for official delegates, band members, American Farmer candidates, student teachers, State staff members, parents, and guests. Registration cards are available upon request or may be obtained during District Leadership Schools. The registration card will provide space for the names of the representatives of each chapter plus the signatures of the vocational agriculture teacher and the local school administrator.

Attendance at the National Convention will be limited to not more than six carefully selected members and one advisor from any given chapter or ten percent of the chapter membership whichever is greater.

The following members will not be counted in the local chapter quota: official State delegates, American Farmer Degree candidates, contestants in the National Public Speaking and Judging Contests, Regional and National FFA Foundation Award winners, and members of the National FFA Band and Chorus. The following procedures will be followed:

1. Each FFA member attending the convention must have signed a registration card before leaving home.
2. Chapter preregistration cards may be obtained from the State FFA advisor on request by local teachers.
3. Upon arrival in Kansas City, the advisor or chaperon of each chapter will present the completed registration card of his group at the registration desk in the Municipal Auditorium.
4. Each member will receive an identification card. This ID card will

be required of all members as an admission pass to evening sessions.

5. No registration cards for chapters will be available in Kansas City. They must be obtained and completed before the member leaves home.

The advisor in charge of the FFA group will present registration cards at the registration desk and will receive an identification card, a program, and other material for each member and himself. ID cards will be required of all members as an admission pass to evening sessions.

* * *

OFFICIAL KANSAS DELEGATES TO THE 39th NATIONAL FFA CONVENTION

Dennis K. Shurtz, State FFA President, Arkansas City FFA Chapter, and Bob Broeckelman, State FFA Vice President, Oakley FFA Chapter, will represent the Kansas Association as official delegates to the National FFA Convention, October 11-15, 1966.

Steve McCorgary, State FFA Reporter, Arkansas City FFA Chapter, and Alan Cox, State FFA Sentinel, Lawrence FFA Chapter, will serve as alternates.

* * *

TICKETS AND TOURS

Tickets for the American Royal Horse Show Matinee on Friday afternoon, October 14, will be sold at the registration desk in the Auditorium on Thursday from 9:00 a. m. to 5:00 p. m. Price of tickets are 50 cents.

Tickets for the FFA Educational Tour of Kansas City scheduled for 1:00 p. m. on Tuesday, Oct. 11, and 1:00 p. m. on Thursday, Oct. 13, will be sold at the registration desk from 9:00 a. m. to 12:45 p. m. on the respective days. Price 60 cents.

National Convention, cont'd.

REGISTRATION OF JUDGING TEAMS

1. Judging teams, members, and coaches will register on the FFA chapters' official (group) registration card.
2. Team coaches will reconfirm the names of all contestants in advance of the respective contests at the registration desk from 10:00 a. m. to 2:30 p. m. on Tuesday and Wednesday, October 11 and 12.

No registration cards for chapters will be available in Kansas City. They must be obtained and completed before the chapters leave home.

The following members will not be counted in the local chapter quota: Official State delegates, American Farmer Degree candidates, Contestants in the National Public Speaking and Judging Contests, regional and national FFA Foundation award winners and members of the National Band and Chorus.

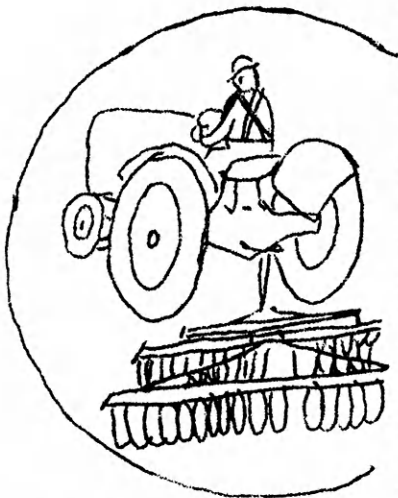
DID YOU KNOW. . . .

THAT less than ten species of wild birds have been domesticated? This is because confinement upsets the normal functions of birds' minds and bodies. The mallard duck, for example, changes from a wary game bird to a dull-witted puddle duck in two generations of captivity.

THAT USDA scientists have developed a method of freeze-branding animals that is painless, causes less damage to hides, and makes the brand easy to spot at long distances?

* * * *

Tractor Seat Reflections



Wonder how many young fellows are farming today who never plowed with a two-horse team? . . . Do in an hour with a tractor what used to take a day. . . . Gasoline fumes don't smell as good as horses did. . . . Believe she'll stand third gear . . . This is like driving twenty galloping horses. . . . Look at the dirt fly from those disks . . . Move over, you blackbirds, or you'll get disked under. . . . Hold that wheel, brother, it's rough going across this end. . . . These rubber tires do ease the riding and speed the job. . . . Good seed and a good seedbed are half the battle. . . . Twenty galloping horses, never out of wind, never stop to rest Some city folks'll pay \$40 a bushel for this wheat by the time they buy it in bread. . . . Makes a lot of jobs on the way though. . . . And even before. . . . Somebody dug iron for this tractor. . . . Factory men had to make it. . . . Oilmen got the gas for it. . . . When the wheat's combined, the elevator man, railroad man, miller, flour salesman, baker, grocer, delivery boy, bookkeeper, accountant, and who knows who else, got a job out of it. . . . Oh yes, the tax collectors. . . . Two more rounds and this field's done In the morning we'll sow----then let it rain.

HIGHLIGHTS
of
1966 NATIONAL FFA CONVENTION
October 12-14, 1966

Tuesday, October 11 - Morning

8:30 a. m. Regional Public Speaking Contests
10:00 a. m. Early Registration
11:45 a. m. Officer-Delegate Luncheon
Afternoon Tours to points of interest
1:30 p. m. Officer-Delegate Luncheon
Committee Meetings
Officer Candidate Meeting
Audition for FFA Talent
3:00 p. m. Meeting of Advisors
American Royal FFA Dairy Show
Evening
6:45 p. m. Meeting of Courtesy Corps
8:00 p. m. Vespers Program
Practice for American Farmer Degree Ceremony
Practice for Star Farmer Program
Meeting for Farm Proficiency Award Winners
Meeting for National Chapter Award Winners

Wednesday, October 12

Registration
Opening Session
Posting of Colors
Address of Welcome -- Mayor ILus W. Davis
Nomination of Honorary American Farmers
Address
Meats Judging Contest
Afternoon Conferring of Honorary American Farmer Degrees
Address
American Farmer Degree Ceremony
Awarding of Service Plaques
Poultry Judging Contest

Evening National FFA Band Concert
National FFA Public Speaking Contest
Presentation of National Gold Emblem Chapter Awards

Thursday, October 13

Morning Presentation of National Chapter Awards - Silver and Bronze
Presentation of Farm Proficiency Awards
Presentation of Distinguished Service Awards
Presentation of Distinguished Service Citations
Pageant
Livestock Judging Contest

Afternoon

1:00 p. m. Tours to Points of Interest
2:00 p. m. Business Session

Evening

7:00 p. m. FFA Talent Show
Introduction of Representatives of Donors to National FFA Foundation, Inc.
Recognition of 15-Year Donors
National FFA Chorus
1966 "Four Star Farmers" Movie
Presentation of Star Farmer of America

Friday, October 14

Morning Awards Breakfast for Judging Teams and Officials
Leadership Training Demonstration
We Salute our Foreign Guests
Address
Election of National Officers
11:30 a. m. Recess for Special Session-- FFA Day at American Royal Live Stock and Horse Show--American Royal Arena

----more

Friday, October 14 - Evening
 Special Talent Program
 National FFA Officers' Night
 Installation of 1966-67
 National Officers
 Firestone Show

Saturday, October 15

Morning American Royal Parade --
 led by National FFA Band.

* * * *

Eskridge FFA Chapter's Annual
 Spring Tour

A combination of information, study, and travel have again been accomplished by the Eskridge FFA Chapter as they recently completed a 2,043 mile spring trip.

This was the seventh in the series of trips. The purpose of these trips are to visit and study farms, ranches, agribusiness and industry, view various types of living and working conditions, and as a certain automobile manufacturer says "see the USA."

Space does not allow expanding upon the values of such an educational trip to the FFA members and what they receive from it. It is enough to say that a number of universities give college credit for trips of similar nature.

Soon after school was out, 20 Eskridge FFA members, T. D. Fanning, chapter advisor; and Gerry Rice, headed the school bus west. The visits in Kansas included Hesston Manufacturing plant in Hesston, Producers Cooperative packing plant and Brookover commercial feedlots in Garden City, and the Claude Hughes confinement hog feeding setup in Scott City.

In Colorado, they toured the Air Force Academy, International Beef Breeders artificial insemination station, Monfort Feedlot, which is the world's largest with 70 thousand head of cattle, and had a tour of the Greeley area where they

studied various types of irrigation, dairies, etc.

The chapter also took one day to go sight-seeing, cross the Continental Divide twice, and visit Rocky Mountain National Park. One night the boys had a special meeting with the advisor of the Platt Valley FFA Chapter, who gave them hints and ideas on becoming a National Gold Emblem Chapter.

Ranch operation was studied in Wyoming. Sheep raising was observed at the huge Warren Land and Livestock Company and a registered cattle operation was toured at the Wyoming Hereford Ranch.

After traveling several thousand miles, sleeping five nights on concrete floors, "sleeping" one night on the bus, and having numerous tours, the FFA members arrived in Eskridge with the thought that "home looks even better than ever!"

---George A. Bowers
 Reporter

* * * *

Thad Osgood, formerly an active FFA member from the Florence Chapter and now Pfc. of the 1st Cavalry Air Mobile of the US Army, is recuperating in the 8th Field Hospital in Nha Trang, Viet Nam, from injuries received while under heavy mortar fire on August 2. During the night of Aug. 1, two soldiers in the foxhole next to Osgood were killed. Later the entire platoon, except 3 were wiped out. Osgood was seriously injured. His left jaw was broken and he sustained injuries to his left shoulder and arm, and shell fragments were imbedded in his right wrist, and 75 stitches were required for his face and jaw. Osgood received treatment at Pleiku Delta and later transferred to Nha Trang, Aug. 5.

His mailing address is:

PFC Thad Osgood, US55824760
 8th Field Hospital APO
 San Francisco, California 96240.