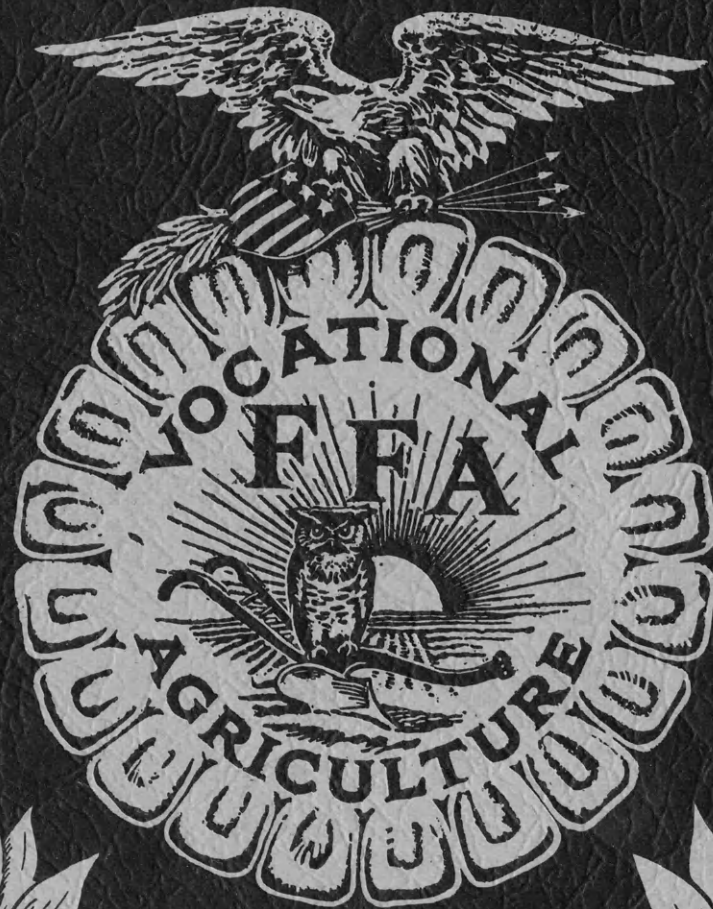


MAY 15 1966

The KANSAS Future Farmer



Published by
THE KANSAS ASSOCIATION
FUTURE FARMERS OF AMERICA

NATIONAL OFFICERS, FUTURE FARMERS OF AMERICA

1965 - 1966

Constituting the
NATIONAL BOARD OF STUDENT OFFICERS

PRESIDENT Howard Lee Williams
R. #1, Olin, No. Carolina
VICE PRESIDENT, NORTH ATLANTIC REGION William M. Kelly, Jr.
Winchester, New Hampshire
VICE PRESIDENT, SOUTHERN REGION Norman Floyd Gay
Rt. #1, Sumner, Georgia
VICE PRESIDENT, PACIFIC REGION Larry E. Craig
Midvale, Idaho
VICE PRESIDENT, CENTRAL REGION James Stitzlein
Rt. #4, Ashland, Ohio
STUDENT SECRETARY Joseph B. Detrixhe
R. #2, Ames, Kansas
ADVISOR H. N. Hunsicker
Washington, D. C.
EXECUTIVE SECRETARY Wm. Paul Gray
Washington, D. C.
TREASURER J. M. Campbell
Richmond, Virginia

--- FFA ---

NATIONAL FFA BOARD OF DIRECTORS

H. N. HUNSICKER, Chairman, U. S. Office of Education, Washington, D. C.
E. J. JOHNSON, U. S. Office of Education, Washington, D. C.
T. L. FAULKNER, State Supervisor of Agricultural Educ., Montgomery, Ala.
PERCY KIRK, State Supervisor of Agricultural Education, Cheyenne, Wyo.
C. C. EUSTACE, State Supervisor of Agricultural Education, Topeka, Kansas
NEAL ANDREW, State Supervisor of Agricultural Education, Concord, N. Hamp.

THE KANSAS FUTURE FARMER

Harold Shoaf, Editor

OFFICERS OF THE KANSAS ASSOCIATION
FUTURE FARMERS OF AMERICA

Dennis K. Shurtz, President
Arkansas City

Steve McCorgary, Reporter
Arkansas City

Robert Broeckelman, Vice President
Oakley

Alan Cox, Sentinel
Lawrence

Samuel L. Hands, Secretary
Garden City

Harold Shoaf, Exec. Secretary
Topeka

Robert E. Wiles, Treasurer
Leoti

C. C. Eustace, State Advisor
Topeka

Volume XXXVI

May 15, 1966

No. 4

TABLE OF CONTENTS

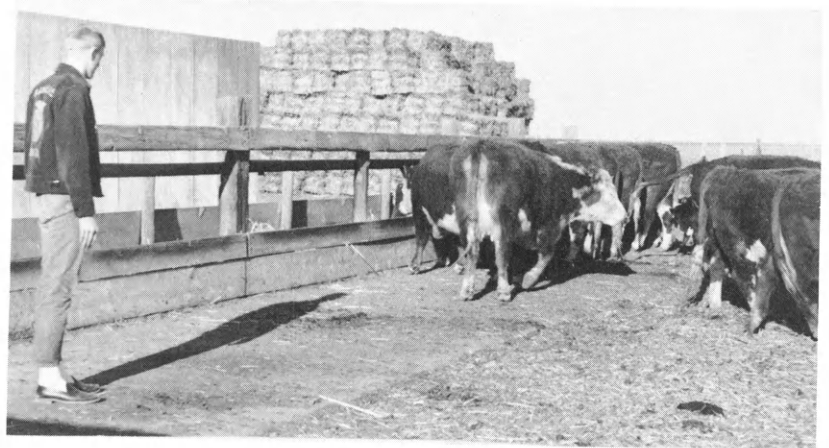
	Page
Star Farmer of Kansas	1
State Officers for 1966-67	2
State Farmers of 1966 (Picture)..	3
1966 Winners of High School Agriculture Contests (Pictures)	4
Farm Safety	6
Spotlighting the 38th Annual FFA State Convention	7
Donors	8
Parliamentary Procedure Winners	9
Highlights of the Kansas Association of FFA for 1965-66	11
In Memoriam	12
Honorary State Farmers for 1966	13
Distinguished Service Awards	16
1966 National Foundation Award Winners	17
1966 State FFA Speech Contest	19
1966 Chapter Awards	19
State Farmers	20
Union Pacific Scholarships	22
Hesston Tour	22
Results of 1966 State HS Agricultural Judging Contests	23
Results of 1966 State HS Farm Mechanics Contest	23
Broiler Contest	24
Kansas Co-op Council Awards	25
Audit for 1965-66	26

STAR FARMER OF KANSAS

Robert E. Wiles of the Leoti FFA Chapter was awarded the Star Farmer of Kansas award at the Kansas FFA Convention. Shown with Robert are his parents, Mr. and Mrs. Earl Wiles, and his Vo-Ag Instructor, Roger Hamilton, on the left.

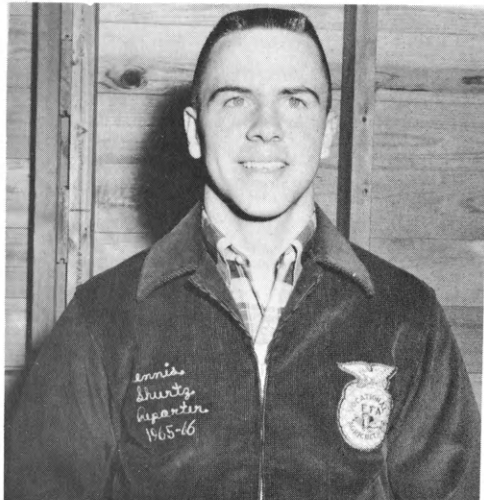
Star Farmer Robert E. Wiles also was the Kansas crop production winner this year. He operates 160 acres of irrigated land on which he came up with 115-bushel grain sorghum. He also grows dryland wheat in partnership with a brother.

Along with an extensive crop production project, the 1966 Kansas Star Farmer also has a livestock project. Here he is shown observing some of his Herefords as they feed.



The 1966 Star Farmer of Kansas watches as his vocational agriculture instructor, Roger Hamilton (standing) and his parents, Mr. and Mrs. Earl Wiles, discuss his record book.

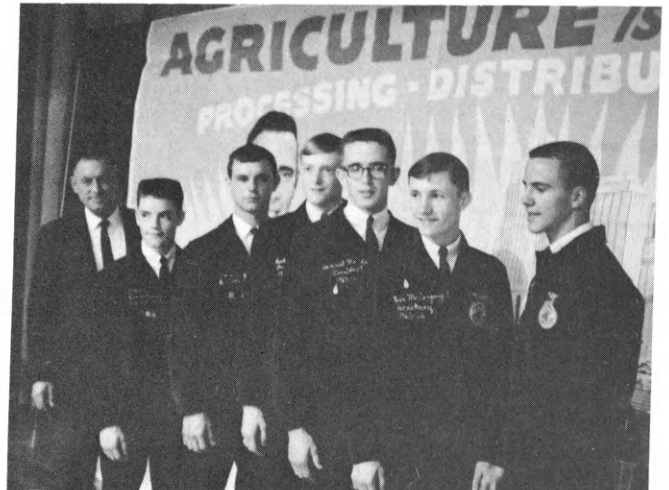
New President



Dennis K. Shurtz, Arkansas City, President, Kansas State FFA.

Dennis is an Arkansas City High School senior. He is the son of Mr. and Mrs. Lyle Shurtz, Route #1, Arkansas City, Kansas.

1966-67 State FFA Officers



Eighteen candidates were nominated by their chapters for a State office in the FFA. From these, 10 names went on the ballot.

The official delegates to the 38th Convention then elected the following officers for the Kansas Association to serve until the completion of the 39th State Convention in 1967.

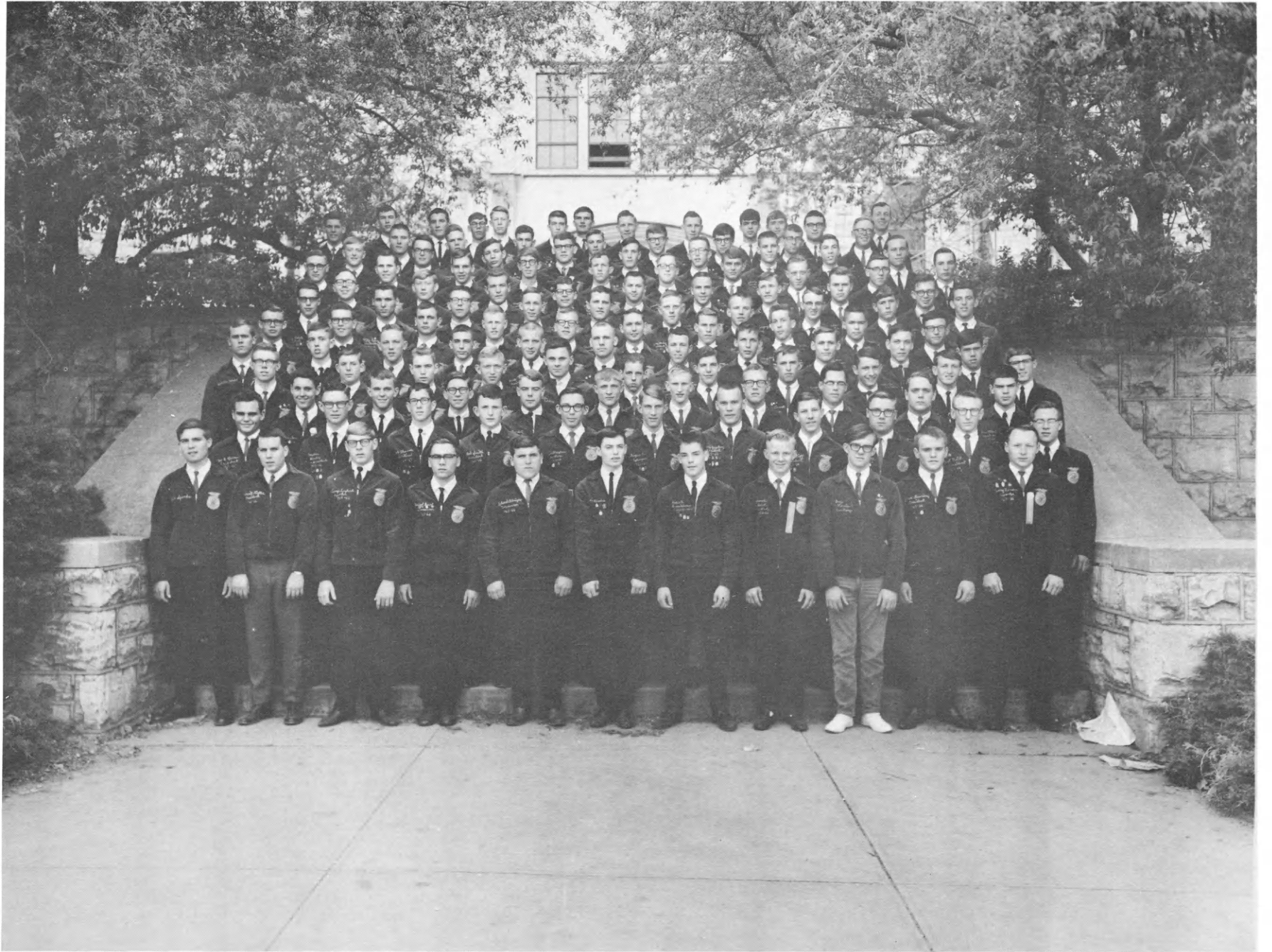
President	Dennis K. Shurtz Arkansas City Chapter
Vice President	Robert Broeckelman Oakley Chapter
Secretary	Samuel L. Hands Garden City Chapter
Treasurer	Robert E. Wiles Leoti Chapter
Reporter	Steve McCorgary Arkansas City Chapter
Sentinel	Alan Cox Lawrence Chapter.

Special Guests



Two special guests at the State FFA Convention were Joe Detrixhe, National Student Secretary of FFA; and Jill Solander, National FHA Historian from Garnett. Pictured: Roger Barr, State FFA President, Jill and Joe.

Pictured above are the State FFA officers with their State Advisor C. C. Eustace. L. to R.: C. C. Eustace, State Advisor; Robert Broeckelman, Vice President; Alan Cox, Sentinel; Robert Wiles, Treasurer; Sam Hands, Secretary; Steve McCorgary, Reporter; and Dennis Shurtz, President.

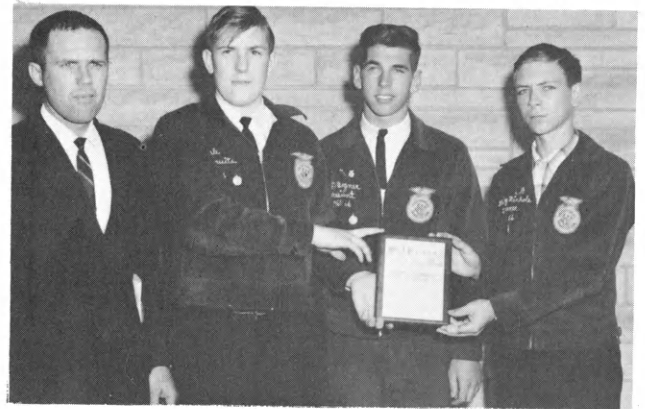


The 1966 Class of Kansas State Farmers

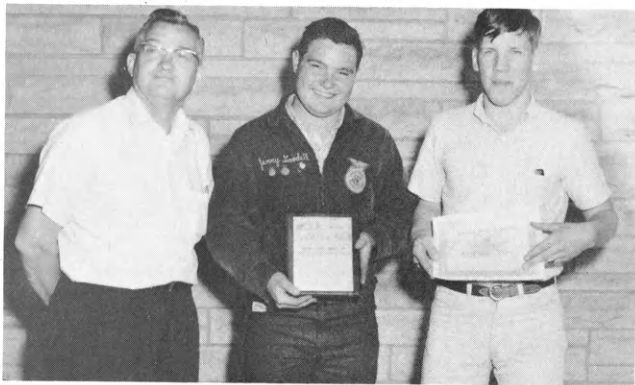
WINNERS !!
RESULTS OF 1966 STATE HIGH SCHOOL AGRICULTURAL CONTESTS



The first-place team in Poultry Judging was from Manhattan. L. to R.: Merwin Stearns, Advisor; Everett Everson, Mark Stearns; and Wayne Parker



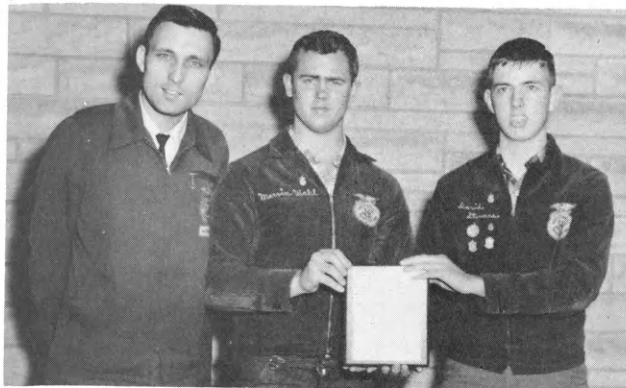
State winners in the Meats Contest held in Wichita are from Winfield. From L. to R.: Coy Allen, Advisor; Dale Fruits, Ed Bogner; and Stanley Nichols.



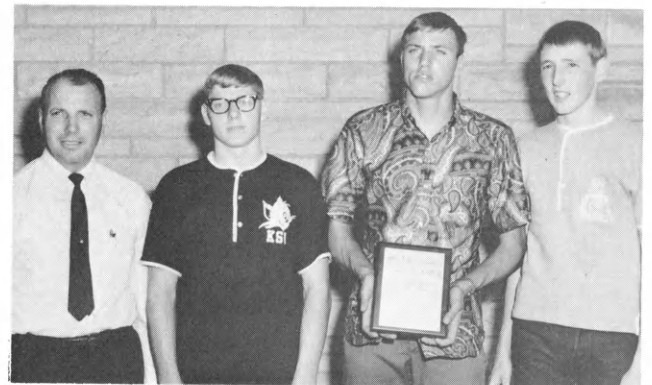
The first-place team in Horticulture was from Emporia. L. to R.: Eugene Walker, Advisor; Jerry Goodell; and Carl Stueve.



The first-place team in Livestock Judging was from Newton. L. to R.: Larry Erpelding, Advisor; Buford Kurr, Jr., Don Sauerwein; and Don McClure.

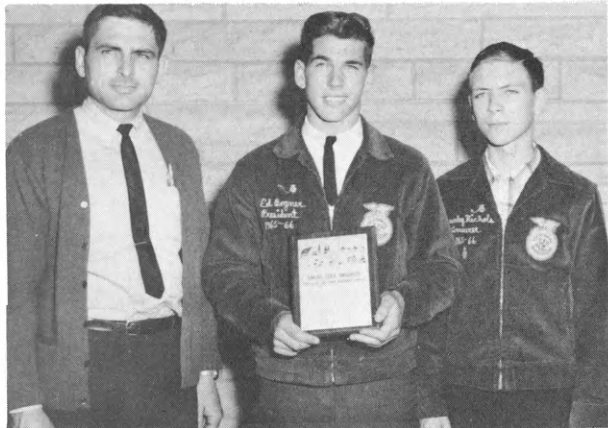


The first-place team in Entomology was from Columbus. L. to R.: Dean Knewtson, Advisor; Marvin Wahl; and David Stevens.



The first-place team in the Crops Contest was from Neodesha. L. to R.: Wayne Coltrain, Advisor; Larry Langhorst, Mike Alexander; and Tom Cohee.

WINNERS !!
RESULTS OF 1966 STATE HIGH SCHOOL FARM MECHANICS CONTESTS



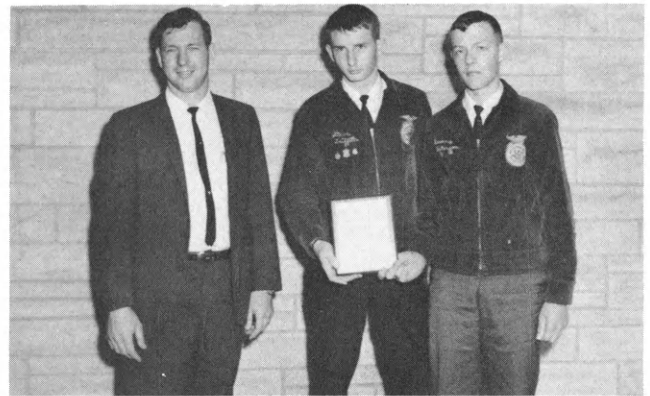
The first-place team in Farm Electrification was from Winfield. L. to R.: Richard Tredway, Advisor; Ed Bogner; and Stanley Nichols.



The first-place team in Farm Power and Machinery also from Winfield. L. to R.: Richard Tredway, Advisor; Lester Priest; and Ed Bogner .



The first-place team in Farm Welding was from Altamont. L. to R.: Hollie Thomas, Advisor; Bill Wagner; and Randy Trout.



The first-place team in Farm Carpentry and Concrete was from Altamont also. L. to R.: Hollie Thomas, Advisor; Steve Griffith; and Danny Peterson.



The first-place team in Soil Conservation was from Altamont also. L. to R.: Hollie Thomas, Advisor; Carl Johnson; and Chuck Jones.



Pictured, L to R: Taylor Neuschwander; Alva Burch; Dr. Leonard Axe, Chairman, Kansas Safety Council; Jim Grider, Vo-Ag Instructor; and Dan Nolan.

fasten their seat belts. The chapter also distributed 2000 pieces of literature on safety in the community. A safety exhibit was displayed at a local store, and the chapter put on a 15-minute safety skit on television.

* * * *

With road so dry and nice and straight,
He met his fate doing ninety-eight.

* * * *

FARM SAFETY CONTEST

Greeley County FFA captured the State honors in the Farm Safety Contest for 1966. The chapter conducted many safety activities. Three representatives of the chapter and their advisor were given a luncheon at the Jayhawk Hotel on May 2, sponsored by the Kansas Safety Council. Taylor Neuschwander and Alva Burch gave a very interesting resume of their chapter's safety activities.

The Tribune Chapter checked 500 cars, burned tumbleweeds at four locations, sold 20 pairs of seat belts, sold 9 fire extinguishers, checked fire extinguishers for operating, and handed cards to drivers requesting them to

fasten their seat belts. The chapter also distributed 2000 pieces of literature on safety in the community. A safety exhibit was displayed at a local store, and the chapter put on a 15-minute safety skit on television.

The young and old must share the blame;
Their highway toll is much the same.

Placing second in the Kansas FFA Safety Contest was the Caney FFA Chapter. Danny Thorne gave a very interesting account of the Caney FFA Safety activities.



Pictured at left, from left to right: Danny Scott; Danny Thorne; Dr. Leonard Axe, representing the Kansas Safety Council; Ray McKinney, administrator at Caney High School; and Terry McClure.

* * * *

Of the most prevalent types of accidents involving farm tractors on highways, approximately:

- a. One-sixth occur as tractor operator enters the highway from a driveway, private road, or at an intersection.
- b. One-third happen as tractor operator is leaving the highway by turning into a driveway, private road, or at an intersection.
- c. One-half are rear-end collisions by a motorist on open highways.

SPOTLIGHTING THE 38th ANNUAL FFA STATE CONVENTION

The Kansas Association of FFA officers are to be complimented for their conscientious service in making the 38th State FFA Convention a memorable occasion. Preparation for the State Convention started Friday afternoon and continued through Saturday and Saturday evening. The State officers met as a nominating committee on the afternoon of Sunday, April 24, and interviewed 17 State officer candidates. Ten future farmers were selected by this committee to be placed on the nominating ballot. Fred Schultis, President of KVATA; and State Supervisor, C. C. Eustace, served in a supervisory capacity to the nominating committee.

The Gold Emblem Selection Committee met at 3:00 p. m., April 24, to select the 18 Gold Emblem chapters in the State. Serving on this committee were Kenneth Pfaff, Southwestern District Director; John Cragun, South Central District Director; Gordon Morrison, East Central District Director; Marvin Fargo, Sears-Roebuck Foundation representative; Professor Lawrence F. Hall; and Wilbur Rawson, State Office staff. The Sears-Roebuck Foundation supplied plaques in recognizing the 18 top chapters in the State. Two checks of \$100 each were presented to Arkansas City and Garden City FFA Chapters to assist them in attending the National Convention this year. These two chapters will represent Kansas in the National Better Chapter Contest.

The Vespers service was enjoyed by 700 FFA members and advisors in the Municipal Auditorium in downtown Manhattan. Musical numbers were presented by the Peabody FFA Band and the Hope FFA quartet. Ernie Mehl, Sports Projects Editor, Kansas City Star, gave a most inspirational and challenging address to the delegates.

The inspiration of Ernie Mehl will long be remembered by the Kansas Association of FFA.

Kansas was honored to have one of their native sons represent the National organization at their State Convention. Kansas has not had this opportunity since 1939. Student Secretary, Joe Detrixhe, served the Kansas Convention with distinction and an honor to the National organization. His inspirational talk to the delegates, parents, and friends, will long be remembered. His leadership and assistance made the 38th Annual State Convention one of the outstanding conventions in the Kansas Association's history. Congratulations to Joe Detrixhe, National Student Secretary, for a job well done.

Highlight speakers of the 38th Annual State FFA Convention were:

Arlen Etling, former State FFA Vice President; George Stephens, Agriculture Director, KCMO; John Stevens, President of State VICA; and Jill Solander, National FHA Historian.

Mr. Bill Cox, Special Representative of the Santa Fe Railway, presented the annual contribution from that organization. Floyd Wentz presented the Union Pacific scholarships; J. D. Lynd, Assistant Executive Secretary of the Kansas Cooperative Council, presented the Cooperative Activities awards and the Co-op Quiz awards.

Professor Morris D. Hayes, Kansas State University, directed the 57 members of the State FFA Chorus. Members practiced throughout the day on Monday and presented an inspiring twenty minute concert immediately preceding the Monday evening session.

D O N O R S



The two outstanding FFA chapters in Kansas for 1966-67 are the Arkansas City and Garden City FFA Chapters. Pictured: l. to r. Richard Stewart, Regional Director, Sears-Roebuck Fdn.; Merrill Kistler, Pres. and David Williams, Advisor, of Arkansas City Chapter; Sam Hands, Pres. and Ira Mann, Advisor, Garden City FFA. The Sears Foundation awards \$100 to each of the two top winning chapters.



Bill Cox, Special Representative, Santa Fe Railway, is shown here making a special presentation to the Kansas FFA Association. Accepting the award for the FFA is Roger Barr, State FFA President.



Pictured above are the winners of the Co-op Activities Contest, who were awarded trophies during the State FFA Convention. This contest is sponsored by the Kansas Cooperative Council.



Pictured above are ten of the sixteen Union Pacific Scholarship winners with Mr. Floyd Wentz, Union Pacific Agriculture Agent, who presented each winner with a \$200 scholarship.



Victor Ball of Garden City FFA won the Public Speaking contest. He is being presented a check by Dale Richardson, President of the Collegiate FFA Chapter.



Larry Larsen of the Colby FFA Chapter was awarded first in the State Scrapbook Contest. Presenting the award is Ray Pierce, Editor, High Plains Journal, Dodge City, who sponsors the contest.

PARLIAMENTARY PROCEDURE

The Parliamentary Procedure Contest was held at 3:00 p. m. , Sunday, April 24, with eleven chapters participating. Judges for the contest were: Representative Lawrence Slocombe of the 50th District; Roger Regnier, State 4-H Leader; Bob Severance, Director, North Central Area Vocational-Technical School at Beloit; David Mugler, Instructor, Kansas State Poultry Department; Senator Charles Arthur from Manhattan; George Mathews, Vice President, Topeka Chamber of Commerce; Melvin Briley, Director, Southeast Kansas Area Vocational-Technical School, Columbus; and Earl Baugher, Instructor at North Central Area Vocational-Technical School at Beloit.

Awards for the Parliamentary Procedure Contest were presented with the compliments of The Federal Land Bank of Wichita. The delegate sessions pointed out the advancement of parliamentary procedure technics among our FFA members. It has been suggested that a parliamentarian be appointed by the president to serve the 1967 convention. This office could assist the president in carrying on the business of the State Association of FFA.



Pictured at left are the State winners in the Parliamentary Procedure Contest. L. to R.: David Williams, Advisor, Arkansas City FFA Chapter; Merrill Kistler; Rod Marrs; Steve McCorgary; Webster Ball; Roger Sparks; and Jim Sybrant.

Congratulations !

Parliamentary Procedure Results

Members of the Arkansas City FFA Chapter captured top honors at the finals of the State FFA Parliamentary Procedure Contest. Other teams in the finals were, Colby, second; Marion, third; and Peabody, fourth.

Four questions were asked at the end of each of the demonstrations of the finals. Listed below are the questions and a general answer to each of the questions:

Question I: What would you do if you were the presiding officer and you were about to announce the results of a vote when a member rises and says that he wishes to change his vote?

Answer I: Take the vote again. (A member has a right to change his vote up to the time the vote is finally announced. After that, he can make the change only by permission of the assembly.)

Question II: What would you do if you were the presiding officer and a member has just moved, and it is seconded, "to postpone the question indefinitely," and a second member moves, and it receives a second, "to lay the question on the table?"

-----more

Parliamentary Procedure Results, cont'd. -

Answer II: Entertain the motion "to lay the question on the table." The motion "to postpone indefinitely" has the lowest precedence of the subsidiary motions and, therefore, yields to the motion "to lay on the table" which has the highest precedence of the subsidiary motions.

Question III: Name three conditions in which the presiding officer may vote.

Answer III: 1. To break a tie vote.
2. Pass the gavel.
3. By ballot.

Question IV: Is the motion "to fix time to adjourn" always a privileged motion?

Answer IV: No. A motion "to fix time to adjourn" is a privileged motion only if made while another motion is pending, and in an assembly that has made no provision for meeting on the same or next day; otherwise, it is a main motion.

* * * *



The Collegiate FFA Chapter of Kansas State University held a banquet after the State FFA Convention in honor of the outgoing and new FFA officers. Also attending the banquet were advisors of the new officers and special guests.

National Convention Stage Crews

The National office is in need of six to eight FFA members and one advisor from Kansas to assist with stage arrangements for one session. This has been helpful to the National organization and has also provided representatives from Kansas the opportunity to "rub shoulders" with the National officers and observe them in leadership roles. This experience could be beneficial to outstanding chapters and prospective State and National officers who are on their "way up" in FFA. Please advise the State office immediately if there are individuals who are interested in serving in this capacity.

* * * *

Attention: Chorus Members

Congratulations to each of you for a job well done.

We are short eleven sets of the music. If you have these, please return them to the State Office so that we may use them next year.

HIGHLIGHTS OF THE KANSAS ASSOCIATION OF FFA FOR 1965-66

Robert E. Wiles of the Leoti FFA Chapter was selected Star Farmer of Kansas for 1966.

Seven Kansas State Farmers were awarded the American Farmer degree at the 38th National FFA Convention in 1965.

Nine members participated in the 1965 National FFA Band.

The Kansas Association has an active FFA membership of 6552 as of May 1, 1966.

There were 180 active FFA chapters in good standing with the State Association in 1965-66.

A record attendance of 294 members and advisors from 48 chapters attended the 6th Annual State FFA Leadership Training Camp at Rock Springs Ranch, August 14 to 17, 1965.

Nine vigorous supporters of Vocational Agriculture and the Future Farmers of America program received the Honorary State Farmer Degree.

The State FFA Chorus performed during the State FFA Convention. Fifty-seven members took part.

Fifty-eight large multi-colored signs were placed throughout the State to help advertise National FFA Week.

One hundred thirty-one Chapter Farmers from 78 chapters were raised to the State Farmer Degree at the 38th State FFA Convention.

The State FFA officers made their Good Will Tour February 1 and 2. The purpose of the Tour was to develop and maintain good public relations with organizations and agencies associated with the FFA. Santa Fe officials sponsored a luncheon February 1 for the State

group. The Santa Fe officials included Mr. M. L. Olsen, General Manager, and Bill Cox, Special Representative, Public Relations, as well as other officials. They discussed Santa Fe operations.

The Kansas Cooperative Council, WIBW Radio and TV, Hesston Manufacturing Company, The Federal Land Bank of Wichita, and the Agricultural Hall of Fame were visited. The Federal Land Bank sponsored the second-day luncheon. President Wm. G. Plested, and other officials of the Bank were on hand to explain the operations of The Federal Land Bank. State officers appeared on WIBW-TV and Radio during their visit in Topeka.

Arkansas City FFA Chapter won first place in the 32nd Parliamentary Procedure Contest held at the State Convention.

Richard Stewart, The Sears-Roebuck Foundation, presented plaques to the 18 Gold Emblem Chapters. The two top chapters received \$100 each.

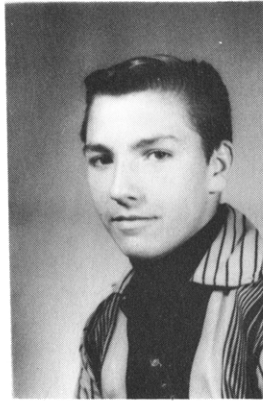
Dennis K. Shurtz, Arkansas City senior, was named President of the Kansas Future Farmers of America for the year 1966-67.

Arkansas City and Garden City FFA Chapters were chosen as the State's top chapters in the State, in that order.

Joe Detrixhe of the Concordia FFA Chapter was elected National Student Secretary for 1965-66.

The Garden City FFA Chapter was awarded the Gold Emblem Chapter classification with Arkansas City FFA Chapter receiving Silver Emblem Chapter at the National FFA Convention.

IN MEMORIAM



Stephen Nilges, a member of the Kincaid FFA Chapter, was accidentally killed on April 27, at his home while helping his father with the morning chores. Stephen was going for a load of silage with a tractor and trailer. He stepped down from the tractor to open a farmyard gate and apparently the brakes on the tractor slipped and pinned him between the tire and trailer.

Stephen was a junior at the Kincaid High School and he was an active and conscientious FFA member. His farming program this past year consisted of two Holstein cows and calves, and 15 acres of corn. He served on various committees and was a member of the judging team that entered both the Dairy and Livestock District Judging Contests.

In addition to the FFA, he was active in athletics and other school activities. He played both football and basketball, was president of the Junior class, member of the Junior play, and was elected FHA king.

Stephen was well liked by all who knew him. He will be greatly missed in his home, school, and community.

* * *

HONORARY STATE FARMERS



Wm. G. Plested, President of the Federal Land Bank of Wichita receives the Honorary State Farmer Degree from Past President. Terry Odle.



J. D. Lynd, Assoc. Exec. Secretary, Kansas Co-op Council, receives the Honorary State Farmer Degree from David Martin, Past State FFA Secretary.



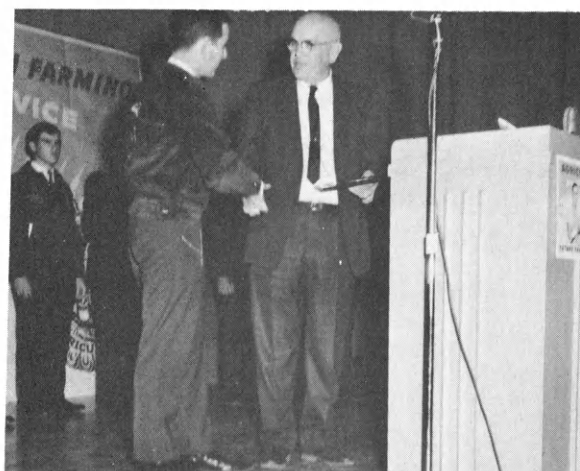
Dr. Robt. P. Ealy receives the Honorary State Farmer Degree from Don Barkman, State FFA Vice President.



Dru Richard presents the Honorary State Farmer Degree to Nelson Galle, Asst. Personnel Mgr., Hesston Mfg. Company.



Mr. George Schichlau, Haven, receives the Honorary State Farmer Degree from Bernard Hansen, State FFA Sentinel.



National Student Secretary, Joe Detrixhe, congratulates Ben Attebery, Paola Vo-Ag Instructor for receiving the Honorary State Farmer Degree.

Honorary State Farmers, cont'd.



Joe Farrell, Director N. W. District, receives the Honorary State Farmer Degree for Ed Fellers, who was unable to attend.

Professor Ross Mickelsen of the Dairy Science Department also received the Honorary State Farmer Degree but a picture was not available.

* * * *

"Working Together to Serve Kansas Farm Youth"

The following business organizations of the Kansas Association of FFA should receive a special thanks from each FFA member for their assistance in making our 38th State FFA Convention a success:

The Sears-Roebuck Foundation:

Mr. Richard Stewart, Regional Dir.
The Sears-Roebuck Foundation
3625 Truman Road
Kansas City, Missouri 64127

Sponsored the first FFA Delegate Breakfast in Kansas.

Recognized outstanding chapters in the Gold Emblem Division.

The Federal Land Bank of Wichita:

Mr. Wm. G. Plested, President
The Federal Land Bank
P. O. Box 458
Wichita, Kansas 67201

Provided plaques and incentives for the Parliamentary Procedure Contests.

Union Pacific Railroad:

Mr. Floyd Wentz, Agriculture Agent
Union Pacific Railroad
1416 Dodge Street
Omaha, Nebraska 68102

Nineteen scholarships

---more

The Santa Fe Railway:

Mr. Bill Cox, Special Representative Public Relations Department Atchison, Topeka, & Santa Fe Topeka, Kansas	Two Santa Fe Scholarship Awards - \$500 each
---	---

The Kansas Cooperative Council:

Mr. J. D. Lynd, Asst. Exec. Secretary The Kansas Co-op Council 700 Kansas Avenue Topeka, Kansas	Co-op Activities Contest and Co-op Quiz
--	--

Kansas Association of Agriculture Bank
Representatives:

Mr. Harold Walker, President Kansas Association of Agriculture Bank Representatives Arkansas City, Kansas	Supplied refreshments for delegates to the 1966 Convention
--	---

Kansas Cooperative Dairy Association:

Mr. P. D. Turner, President Sabetha, Kansas	Supplied refreshments for delegates to the 1966 FFA Convention
--	---

The High Plains Journal:

Mr. Ray Pierce, Editor The High Plains Journal Dodge City, Kansas 67801	Scrapbook Contest
---	-------------------

It would be in order for each advisor and local chapter officers, as well as members, to write our friends and let them know we appreciate their interest in our organization. I know you appreciate their interest but they will never know unless you write them.

* * * * *

"National FFA Convention Needs Entertainment"

If you would like to appear on the FFA Talent Program at the National Convention next October, please contact this office immediately. This is an opportunity to serve the Kansas Association and the National FFA organization as well as developing your own talent.

* * * * *

"1966 Mid America Fair Booths"

The following chapters have requested permission to display educational booths at the Mid America Fair in 1966: Alma, Burlingame, Caney, Eskridge, Highland Park, Hoyt, Lawrence, Manhattan, Osage City, Powhattan, Riley, Silver Lake and Troy; with alternates: Rossville and Meriden.

DISTINGUISHED SERVICE AWARDS



Professor Lawrence F. Hall of Kansas State University was awarded the Distinguished Service Award. He has been active in FFA and Vo-Ag since their beginning and he is retiring this summer. Roger Barr, Past President of State FFA presents the award.



Pres. Roger Barr presented the Distinguished Service Award plaque to his parents, Mr. and Mrs. Lowell Barr.



Vice Pres. Donald Barkman presented the same award to his parents, Mr. and Mrs. Floyd Barkman, Burden.



Secretary Dru Richard presented the same award to his parents, Mr. and Mrs. Loren Richard, Ellsworth.



Treasurer Stanley Buss presented the same award to his parents, Mr. and Mrs. Dale Buss, Holton.



Reporter Mike Ankenman presented the award to his parents, Mr. and Mrs. Dale Ankenman, Almena.



Sentinel Bernard Hansen presented the award to his parents, Mr. and Mrs. Adelbert Hansen, Peabody.

C O N G R A T U L A T I O N S ! !

F U T U R E F A R M E R S

1966 NATIONAL FFA FOUNDATION AWARD WINNERS IN
KANSAS

Eighty cash awards, totaling \$3,075, were presented to Kansas FFA members and chapters. The winners were:

Star Farmer of Kansas

Robert E. Wiles, Leoti \$200

District Star Farmers

Robert E. Wiles, Leoti \$50
 Arris A. Sigle, Osborne 50
 David A. Slead, Lebo 50
 John N. Butts, Altamont 50
 Dennis K. Shurtz, Arkansas City 50
 Orvill Stigge, Washington 50
 Robert Neill, Effingham 50

FARM SAFETY AWARD

State Winner

Tribune Chapter \$100

District Winners

Caney Chapter \$20
 Effingham Chapter 20
 Kingman Chapter 20
 Atwood Chapter 20
 Jewell Chapter 20
 Williamsburg Chapter 20

BEEF PRODUCTION AWARD

State Winner

Samuel Lee Hands, Garden City \$100

District Winners

Dick Poovey, Garnett \$20

Charles H. Lange, Effingham \$20
 Rudy E. Simpson, Fort Scott 20
 Dick Gottlob, Arkansas City 20
 Orvill Stigge, Washington 20
 Lynn Glasco, Bird City 20

SHEEP PRODUCTION AWARD

State Winner

Dean Bailey, Uniontown \$100

District Winners

James E. Hogan, Williamsburg \$20
 Merrill J. Kistler, Arkansas City 20
 Ronny Teare, Effingham 20
 Larry Larsen, Colby 20
 Alan L. Varney, Jewell 20
 Lloyd A. DeRemus, Garden City 20

SWINE PRODUCTION AWARD

State Winner

Michael T. Samples, Erie \$100

District Winners

Robert Williams, Stockton \$20
 Taylor Neuschwander, Tribune 20
 Gary Holle, Marysville 20
 Leon Boden, Jewell 20
 Alan Cox, Lawrence 20
 Dennis Shurtz, Arkansas City 20

DAIRY PRODUCTION AWARD

State Winner

James H. Peckham, Wellsville \$100

DAIRY PRODUCTION, Cont'd.District Winners

Daniel Laufenberg, Kinsley	\$20
Larry Montgomery, Effingham	20
Dewey K. Livingston, Coffeyville	20
Howard Goff, Manhattan	20

CROPS FARMING AWARDState Winner

Robert E. Wiles, Leoti	\$100
------------------------	-------

District Winners

Duane Campbell, Williamsburg	\$20
Roger C. Oplinger, Jewell	20
Dennis Shurtz, Arkansas City	20
Michael T. Samples, Erie	20
William J. Huss, Troy	20
Rodney Applegate, Norton	20

FARM MECHANICS AWARDState Winner

Gary Morehead, Manhattan	\$100
--------------------------	-------

District Winners

John W. Tolly, LaCygne	\$20
Ronald L. Stucky, Peabody	20
Marvin Wahl, Columbus	20
Dennis Wenger, Powhattan	20
Joe Zellner, Jr., Leoti	20
Stephen C. Fry, Alton	20

FARM ELECTRIFICATION AWARDState Winner

Marvin Wahl, Columbus	\$100
-----------------------	-------

District Winners

Gerald Lockhart, Osborne	\$20
Larry Coder, Effingham	20
Ed Bogner, Winfield	20
John Krupp, Ellsworth	20
Jim W. Tolly, LaCygne	20

POULTRY PRODUCTION AWARDState Winner

John N. Butts, Altamont	\$100
-------------------------	-------

District Winners

Howard Goff, Manhattan	\$20
David Sedlacek, Marysville	20

FORESTRY AWARDState Winner

Ronald L. Stucky, Peabody	\$100
---------------------------	-------

District Winner

Dale W. Engle, Chapman	\$20
------------------------	------

ORNAMENTAL HORTICULTUREState Winner

Robert E. Bruton, Columbus	\$100
----------------------------	-------

District Winner

Jack Burwell, Chapman	\$20
-----------------------	------

FARM AND HOME IMPROVEMENTState Winner

Bruce Covert, Columbus	\$100
------------------------	-------

District Winners

Steve Miller, Chapman	\$20
Jackie D. Freeborn, Florence	20

SOIL CONSERVATION AWARDState Winner

Robert Larson, McPherson	\$100
--------------------------	-------

District Winners

Tim Bathurst, Chapman	\$20
Gerald Lobmeyer, Tribune	20
James P. Kelly, Effingham	20
Bruce E. Covert, Columbus	20

PUBLIC SPEAKING AWARDState Winner

Victor Ball, Garden City \$100

Second Place Winner

Steve McCorgary, Arkansas City \$50

Third Place Winner

Briant Willson, Altamont \$25

Honorable Mention

Joe Giersch, Salina

1966 STATE FFA SPEECH CONTEST

The 38th State FFA Public Speaking Contest was held Monday, April 25. A total of 26 outstanding contestants reached the State Contest. The preliminaries were held in two sections with the first two placings in each section reaching the finals. Judges in the finals were Mr. Bill Cox, Special Representative, Santa Fe Railway; George Stephens, Agriculture Director, KCMO; and Harry Reed, Kansas State University.

The four finalists presented their speeches during the second general session of the Convention. Victor Ball's winning speech was titled "Agriculture--The Key to the Future."

The winners of the next three places were as follows:

2nd - Steve McCorgary, Arkansas City Chapter - "American Agriculture--Vital to World Peace."

3rd - Briant Willson, Altamont Chapter - "We've Got the Whole World In Our Hands."

4th - Joe Giersch, Salina Chapter - "Give Us Our Daily Bread."

1966 CHAPTER AWARDS

The Kansas Association of FFA recognized chapters as Cold Emblem, Superior Emblem, and Standard Emblem. The Kansas Gold Emblem Chapters were selected from the chapters that ranked in the Superior Division of the National Chapter Awards Program. A chapter receiving either the Standard or Superior award will receive a small classification plate for attachment to their plaque. Kansas Gold Emblem Chapters were awarded a plaque through the courtesy of The Sears-Roebuck Foundation.

There were a total of 75 chapters who submitted reports of their chapter activities during the 1965-66 school year. The results of the chapter awards are as follows:

Kansas Gold Emblem Awards

1. Arkansas City, David Williams
2. Caney, Ralph Field
3. Effingham, Roy F. Eck
4. Ellsworth, Lester L. Crandall
5. Eskridge, T. D. Fanning
6. Florence, Don Weiser
7. Fort Scott, Milton Kohrs
8. Garden City, Ira J. Mann, Jr.
9. Hill City, Joe Farrell
10. Lawrence, Roy K. Cropp
11. Oakley, Howard Wallace
12. Peabody, Gary Jones
13. Riley County, Leslie Olsen
14. Stockton, Floyd A. Blauer
15. Tribune, James T. Grider
16. Troy, James L. Hundley
17. Uniontown, Wilbur W. Hart
18. Winfield, Richard E. Tredway

Kansas Superior Chapter Awards

1. Altamont, Hollie Thomas
2. Atwood, Billy L. Wood
3. Buhler, Julian A. Johnson
4. Chapman, Duane A. McCune
5. Cheney, Virgil Lake

-- cont'd.

Chapter Awards, cont'd. (Superior)

6. Colby, Charles Schaller
7. Columbus, Dean Knewtson
8. Council Grove, Gordon Morrison
9. Courtland, Allan Elstrom
10. Ellinwood, John J. Cragun
11. Emporia, Eugene Walker
12. Erie, Wilber K. Buntin
13. Eureka, Elvis Howell
14. Ford, David Thompson
15. Frankfort, Max Schroeder
16. Garnett, Robert Davis
17. Hanston, Johnnie Medders
18. Highland, Raymond L. Studer
19. Holton, Charles Smith, Jr.
20. Iola, Edward B. Zahn
21. Kingman, Vernon Schweer
22. Kinsley, Donald E. Elson
23. LaCygne, Larry Schwintz
24. Lebanon, Robert Dills
25. Leoti, Roger Hamilton
26. Long Island, Shad Gager
27. Manhattan, Merwin Stearns
28. Marion, Jon Thole
29. Medicine Lodge, Layle D. Lawrence
30. Minneapolis, Bruce Cleveland
31. Neodesha, Wayne Coltrain
32. Ness City, Ed Brenner
33. Norton, Philip B. Finley
34. Oberlin, Don G. Guinn
35. Osage City, Darrell Williams
36. Osborne, Jim Macy
37. Paradise, James Duff
38. Phillipsburg, Frank R. Freeman
39. Plainville, Marvin H. Hachmeister
40. Russell, Sam Stenzel
41. Sabetha, Norman Hildwein
42. St. Francis, Donald E. Hall
43. Smith Center, Charles Mantz
44. Wamego, David Bothwell
45. Washington, Don L. Kastl
46. Wilson, Al Mannebach

Kansas Standard Chapter Awards

1. Burlington, Earle Simmons
2. Ensign, Gail LaMunyon
3. Hoisington, Norman McLaren
4. Holcomb, Gerald W. Hundley

5. Jewell, Harold G. Severance
6. Kincaid, Sam Harris
7. Miltonvale, Bill Fuller
8. Newton, Larry Erpelding
9. Silver Lake, Harold I. Loomis
10. Waterville, Willis E. Ringen
11. Williamsburg, Earl Anderson

--- FFA ---

Kansas' entry in the National Better Chapter Contest is: 1. Arkansas City; 2. Garden City.

--- FFA ---

A total of 131 FFA members, representing 78 different chapters were raised to the State Farmer Degree on Monday evening, April 25. The ceremony took place during activities connected with the 38th State FFA Convention. This raises the total number of FFA members who have received the State Farmer Degree in the history of the State FFA Association to 3398. The 1966 State Farmers are as follows:

- | | |
|------------------------|---------------|
| 1. Hahn, Mike | Altamont |
| 2. Trout, Randy | Altamont |
| 3. Butts, John N. | Altamont |
| 4. Fry, Stephen C. | Alton |
| 5. Crawshaw, Vern L. | Altoona |
| 6. Gottlob, Dick | Arkansas City |
| 7. Kistler, Merrill J. | Arkansas City |
| 8. McCorgary, Steve | Arkansas City |
| 9. Rogers, Cleo | Arkansas City |
| 10. Shurtz, Dennis K. | Arkansas City |
| 11. Sparks, Roger W. | Arkansas City |
| 12. Gatlin, Fred W. | Atwood |
| 13. Holste, Charles D. | Atwood |
| 14. Barnhart, Ronald | Buhler |
| 15. Bowen, Charles R. | Burlington |
| 16. Hess, Milton Ray | Burlington |
| 17. Carra, Alex Ray | Caney |
| 18. Munson, Robert | Chapman |
| 19. Bathurst, Tim | Chapman |
| 20. Robbins, John | Cheney |
| 21. Schurle, Wayne | Clay Center |
| 22. Larsen, Larry | Colby |

--cont'd.

State Farmers cont'd.		
		71. Wiles, Robert E Leoti
23. Saddler, Doyle E.	Colby	72. Faidley, Bill Longford
24. Casey, Charles R.	Columbus	73. Prothe, Rolland Louisburg
25. Stevens, David	Columbus	74. Everson, Everett K. Manhattan
26. Wahl, Marvin L.	Columbus	75. Morehead, Gary J. Manhattan
27. Swenson, Edward L.	Concordia	76. Parker, Wayne L. Manhattan
28. Burt, Daryl	Concordia	77. Blanke, Bob Marysville
29. Dirks, Eldon	Dodge City	78. Holle, Gary Marysville
30. Becker, LeWayne	Downs	79. Heersche, George Mulvane
31. Kelly, James P.	Effingham	80. Conrad, Bill Natoma
32. Linscott, Kenny	Effingham	81. Langhorst, Larry D. Neodesha
33. Neill, Robert	Effingham	82. Lowe, Richard D. Newton
34. Springer, Lyle	Elk City	83. McClure, Donald R. Newton
35. Warren, Tom	Eskridge	84. Applegate, Rodney L. Norton
36. Stuber, Larry P.	Eureka	85. Thiele, Gerald Norton
37. Hague, Dennis	Florence	86. Broeckelman, Robt. Oakley
38. Hett, Steve	Florence	87. Sigle, Arris A. Osborne
39. Gaut, Gene R.	Ford	88. Grecian, Kendal L. Palco
40. Schinstock, Jackie	Ford	89. Rhodes, Ronnie Paola
41. Albright, Richard	Ft. Scott	90. Wobker, Larry Paola
42. Simpson, Rudy	Ft. Scott	91. McNeal, Charles D. Paradise
43. Bramlage, Richard	Frankfort	92. Ammeter, Myron L. Peabody
44. Atherton, Samuel M.	Fredonia	93. Eberhard, Terry Peabody
45. Hands, Samuel L.	Garden City	94. Flaming, Melvin Peabody
46. Lightner, Lynn R.	Garden City	95. Hanneman, Delbert Peabody
47. Lightner, John	Garden City	96. Jost, Larry Peabody
48. Stone, Steven	Garden City	97. Stucky, Ronald L. Peabody
49. Kueser, Gail	Garnett	98. Wohlgemuth, John Peabody
50. Kueser, Dale	Garnett	99. Hanchett, Dale Phillipsburg
51. Poovey, Dick	Garnett	100. Carmichael, Kent Plainville
52. Humble, Calvine	Girard	101. Randle, Pat Pratt
53. Flaming, Alan P.	Goessel	102. Goff, Donald Riley
54. Morphew, James	Hill City	103. Visser, Gordon Riley
55. Quint, Ronnie	Hill City	104. Wendland, Larry H. Riley
56. Stites, Wayne	Hill City	105. Michaelis, Richard D. Russell
57. Maxwell, Larry	Holton	106. Meyer, Lynn Sabetha
58. Beesley, Walter	Hugoton	107. Lillich, Garry Allen St. Francis
59. Ford, Lex	Hugoton	108. Smith, Rob St. Paul
60. Thomas, Bobby	Hugoton	109. Giersch, Joe Salina
61. Turner, Darrell	Iola	110. Fogelberg, Larry R. Scandia
62. Ward, David R.	Jennings	111. Austin, Jack Severy
63. Oplinger, Roger C.	Jewell	112. Wendelburg, Rodney Stafford
64. Clouse, John	Kingman	113. Knight, Myron K. Stockton
65. DeHoff, Freddie	LaCygne	114. Neuschwander, Taylor Tribune
66. Cox, Alan	Lawrence	115. Waldren, Bruce Tribune
67. Mages, Larry	Lawrence	116. Lobmeyer, Gerald Tribune
68. Miller, Jim	Lawrence	117. Harris, Greg Tribune
69. Richardson, Glen	Lawrence	118. Gaul, Owen Troy
70. Slead, David A.	Lebo	119. Huss, William J. Troy

State Farmers, cont'd.

120. Wells, Deuane	Udall
121. Bailey, Dean	Uniontown
122. Bailey, Lonnie	Uniontown
123. Miller, Robert A.	Uniontown
124. Lynn, Ronald	WaKeeney
125. Mattke, Frank E.	Wa Keeney
126. Hieger, George	Wamego
127. Pannbacker, Bill	Washington
128. Stigge, Orvill	Washington
129. Peckham, James H.	Wellsville
130. Vopat, Alan G.	Wilson
131. Rahn, Phillip	Winfield

---- FFA ----

Individual and Chapter Awards for Ag-Related Occupations were made for the first time. Awards were presented at the Annual Vocational Agriculture Teacher's Conference.

---- FFA ----

UNION PACIFIC SCHOLARSHIPS

The Union Pacific Railroad annually provides a \$200 scholarship to a vocational agriculture student residing in a county in which the Union Pacific Railroad operates. In 1966 scholarship winners and their local chapters are as follows:

Daryl D. Burt, Concordia
 Owen A. Gaul, Troy
 Glen E. Richardson, Lawrence
 Roy J. Soukup, Ellsworth
 Edwin T. Courtney, Quinter
 Cecil E. King, Morland
 Lonnie D. Schroeder, Beverly
 Robert J. Broeckelman, Oakley
 Richard E. Bramlage, Frankfort
 Lynn R. Meyer, Sabetha
 Arris A. Sigle, Osborne
 George Hieger, Wamego
 Wayne L. Parker, Manhattan
 Myron K. Knight, Stockton
 Richard D. Michaelis, Russell
 Orvill L. Stigge, Washington

FFA Seniors Visit Hesston

Approximately 125 FFA members, advisors, and administrators were guests of President Lyle Yost and officials of the Hesston Manufacturing Company. The educational opportunity to observe the field of work in an Ag-Related Occupation was most valuable and interesting to each FFA member. In addition to the educational program, a delicious luncheon was served with Hesston Manufacturing Company as hostess. Nelson Galle, Assistant Personnel Manager, was chairman of the afternoon program. FFA members, including State Farmers, State Officers, Vo-Ag Instructors, and many friends of the FFA are on the staff of Hesston Manufacturing Company. The Kansas Association considers Hesston one of its closest friends.

If you are an FFA member and interested in an Ag-Related Occupation, you should contact Nelson Galle, immediately. Hesston is expanding their operations and will be in need of additional personnel approximately August 1. If you would like to work in an organization that has an appreciation for the training provided in vocational agriculture and FFA activities, this is your opportunity.

President Yost and Nelson Galle, Asst. Personnel Manager, are Honorary State Farmer members.

'Opportunity in Pennsylvania'

The State Office received a notice from the New Holland Machine Company, New Holland, Pennsylvania, that they are interested in hiring FFA members to fill positions in the plant and office. This is an opportunity for individuals desiring to be in the Ag-Related field.

Please correspond with Paul J. Kases, Industry and Relations Director, New Holland Machine Company, New Holland, Pennsylvania

RESULTS OF 1966 STATE HIGH
SCHOOL AGRICULTURAL JUDGING CONTESTS

Dairy Products:

Ten high teams: Clay Center, McPherson, Claflin, Manhattan, Longford, Washington, Emporia, Arkansas City, Chapman, and Belleville.

High individual: Robert Larson, McPherson.

Animal Husbandry:

Ten high teams: Newton, Arkansas City, LaCygne, Coffeyville, Lawrence, Altamont, Girard, Caney, Haddan, and Riverton.

High individual: Dennis Shurtz, Arkansas City.

Dairy Husbandry:

Ten high teams: Alta Vista, McPherson, Moundridge, Lawrence, Partridge, Washington, Ness City, Effingham, and Blue Mound.

High individual: Victor Ball, Garden City.

Crops Judging:

Ten high teams: Neodesha, Herington, Newton, Bazine, Altamont, Marion, Leoti, Chapman, Jewell, and Riverton.

High individual: Tom Cohee, Neodesha.

Poultry Judging:

Ten high teams: Manhattan, Winfield, Neodesha, Caney, Stockton, Chanute, Altoona, Wamego, Emporia, and Hillsboro.

High individual: Wayne Parker, Manhattan.

Entomology:

Eight high teams: Columbus, Florence, Ness City, Lawrence, Goessel, Osage City, McPherson, and Claflin.

High individual: Marvin Wahl, Columbus

Horticulture Judging:

Ten high teams: Emporia, Haddam, Peabody, Newton, Winfield, Caney, Columbus, Lawrence, Great Bend, and Washington.

Newswriting: Gerald Thiele, Norton; Wayne Friesen, Newton; Doug Stueve, Emporia; John Hall, Powhattan; Larry Foos, Oakley; Merrill Kistler, Arkansas City; Jim Mertz, Ft. Scott; Alan Sias, Salina; Neil Koster, Garden City; and Bob Jennings, Columbus.

1966 STATE HIGH SCHOOL FARM MECHANICS CONTESTS

Farm Welding: Ten high teams --

Altamont, Lawrence, Phillipsburg, Clay Center, Winfield, Osage City, McPherson, Paola, Burlington, and Garden City.

High individual: Bill Wagner, Altamont.

Soil Conservation: Ten high teams --

Altamont, Garden City, Topeka (Seaman), Burlington, Plainville, Columbus, Winfield, Norton, Newton, Phillipsburg.

High individual: Carl Johnson, Altamont.

Farm Shop Tools: Ten high teams --

Burlington, Paola, Garden City, Phillipsburg, Ness City, LaCygne, Hillsboro, McPherson, Stafford, Marion.

High individual: Harold Hess, Burlington.

Farm Power and Machinery: Ten high

teams: Winfield, Garden City, Altamont, Norton, Ness City, Phillipsburg, Chapman, Paola, Burlington, and Stafford.

High individual: Ed Bogner, Winfield.

Rural Electrification: Ten high teams:

Winfield, Clay Center, Lawrence, Scandia, Smith Center, Columbus, Garden City, Phillipsburg, Altamont, Ness City.

High individual: Ed Bogner, Winfield.

Farm Carpentry and Concrete: Ten high

teams: Altamont, Winfield, Altoona, Waterville, Lawrence, Norton, Burlington, Phillipsburg, Plainville, Columbus.

High individual: Steve Griffith, Altamont.

BROILER CONTEST

The first Kansas FFA Broiler Project Contest was held at Kansas State University at Manhattan on Saturday, May 14, 1966. Howard Goff of the Manhattan FFA Chapter captured first place with Gerry Godell of the Emporia Chapter being awarded second. The entries were judged in the areas of production records and quality of ten broilers dressed by the contestants during the contest. Below is a summary of the production records of the ten contestants:

<u>Name</u>	<u>Chapter</u>	<u>Pla- cing</u>	<u>Feed Effici- ency</u>	<u>Liva- bility</u>	<u>Aver. Weight</u>	<u>Return per Bird</u>	<u>Prod. cost per pound</u>
Howard Goff	Manhattan	1st	2.46:1	97.1%	3.4#	8.6¢	15.8¢
Gerry Godell	Emporia	2nd	*2.10:1	*100%	*3.6#	3.4¢	14.6¢
E. K. Everson	Manhattan	3rd	2.14:1	*100%	3.4#	*20.0¢	*12.0¢
Scott Berroth	Alma	4th	2.37:1	97.4%	2.8#	2.9¢	15.2¢
Chapter Proj.	Beverly	5th	2.43:1	96.3%	3.3#	.7¢	17.8¢
S. Scelter	Beverly	6th	2.35:1	99.0%	*3.6#	4.2¢	17.0¢
Loren Powell	Beverly	7th	2.59:1	99.0%	3.3#	-6.0¢	19.6¢
Melvin Haver	Alma	8th	2.55:1	*100%	3.0#	4.0¢	22.0¢
Chapter Proj.	Frankfort	9th	3.63:1	94.2%	3.2#	-3.3¢	19.0¢
Chapter Proj.	Alma	10th	<u>2.63:1</u>	<u>*100%</u>	<u>2.8#</u>	<u>-4.2¢</u>	<u>18.2¢</u>
Contest Averages			2.5:1	98.3%	3.2#	3.03¢	17.1¢

(In placing this contest, 100 points are possible on the information given above and 100 points possible for the quality of 10 carcasses. The placings above are over-all placings and not just production records.)

*Indicates the best production factor in that particular area.

During the day's activities the FFA members participating in the contest killed and dressed their broilers; toured Call Hall; observed demonstrations on preparation of chickens for marketing and cooking, and barbecuing chicken; and concluded the day with a barbecued chicken feast. Sponsoring their first FFA Broiler Contest were the Poultry Department and Poultry Science Club of Kansas State University.

KANSAS CO-OP COUNCIL AWARDS

The Kansas Cooperative Council sponsored a quiz contest and the cooperative activities awards for the sixth year in 1966.

The chapter with the highest average score in the quiz contest (classes above freshman level only) received a \$50 cash award.

The high individual in each KVATA District receives an expense paid trip to the American Institute of Cooperation meeting in August each year. The chapter in each District which is judged to have had the best cooperative activity program receives a traveling trophy and a \$50 cash award. Second place receives \$35 and third place \$15. When a chapter wins the traveling trophy three times, it becomes permanent possession of the chapter. A chapter winning first place two years in succession is eligible to receive \$50 cash only on alternate years. The second place chapter receives the cash award in this case.

The following is a summary of 1966 winners:

Chapter Quiz Contest Awards

Northwest	Smith Center	\$50
North Central	Ellsworth	\$50
Northeast	Effingham	\$50
East Central	Williamsburg	\$50
So. Central	Peabody	\$50
Southwest	Ford	\$50
Southeast	Ft. Scott	\$50

Individual Quiz Contest Winners

Northwest District	Darrell Doff	Paradise
North Central District	Frank Kroboth	Ellsworth
Northeast District	Bruce Hanke	Waterville
East Central District	Merlin Sowers	Williamsburg
Southeast District	Steve Haas	Ft. Scott
South Central District	Gary Langenegger	Peabody
Southwest District	Taylor Neuschwander	Tribune

--- FFA ---

National Farm Safety Week --
July 24 - 30, 1966

Kansas FFA members are urged to assist in the distribution of the SLOW MOVING VEHICLE emblems to farmers. There is a need also to educate our city cousins as to what this emblem is. Newspaper articles, TV, and Radio programs and appearance at civic clubs are suggested in an effort to save lives of both farm and city people.

SMV emblems are available from Delbert Ekart, Safety Director, Kansas Farm Bureau, Manhattan, Kansas, for \$2.

The Kansas Association of FFA in cooperation with the Rural State Safety committee and the National Safety Council is endeavoring to emphasize the SMV sign on slow moving vehicles in Kansas.

May 11, 1966

Kansas Association of Future Farmers of America
 11th Floor - State Office Building
 State Board for Vocational Education
 Topeka, Kansas 66612

Gentlemen:

I have examined the records of Mr. Harold Shoaf, Executive Secretary of the Kansas Association of Future Farmers of America, for the period beginning April 1, 1965, and ending March 31, 1966, and herewith submit my report with the following exhibits and comments:

- EXHIBIT A - General Fund - Cash Receipts and Disbursements from April 1, 1965 to March 31, 1966.
 EXHIBIT B - Sears Sheep Project Fund - Cash Receipts and Disbursements from April 1, 1965, to March 31, 1966.
 EXHIBIT C - Reconcilement of the Cash Account from April 1, 1965, to March 31, 1966, with adjustments to the Bank Balance as of March 31, 1966.

CASH BALANCE - \$11,620.22

All cash receipts as shown by the records of the Executive Secretary for the period examined, were traced into the bank account and cancelled checks for the period were examined for proper endorsements.

As of March 31, 1966, the Association's cash was on deposit in the First National Bank of Topeka, and was subject to withdrawals by Mr. Harold Shoaf, Executive Secretary of the Kansas Association of Future Farmers of America.

INVESTMENTS - \$6,984.97

These investments consist of five Series J., United States Savings Bonds, purchased September 9, 1954, and maturing September 1, 1966, as follows:

<u>BOND NO.</u>	<u>MATURITY</u>	<u>COST</u>	<u>REDEEMABLE VALUE</u>
	<u>VALUE</u>		<u>March 31, 1966</u>
C 113715 J	100.00	72.00	98.40
C 113716 J	100.00	72.00	98.40
C 113717 J	100.00	72.00	98.40
C 113718 J	100.00	72.00	98.40
M 111553 J	<u>1,000.00</u>	<u>720.00</u>	<u>984.00</u>
TOTALS	<u>1,400.00</u>	<u>1,008.00</u>	<u>1,377.60</u>

Capitol Federal Savings - Savings Account No. S 120162 in the name of The Kansas Association of Future Farmers of America.

<u>DATE OF DEPOSIT</u>	<u>INVESTMENT</u>	<u>REDEEMABLE VALUE</u>
		<u>March 31, 1966</u>
May 7, 1963	\$5,000.00	\$5,607.37

OTHER COMMENTS

The bonds are kept in a safety deposit box in the vaults of the First National Bank of Topeka. The only person with authorized access to the box is Mr. Harold Shoaf, Executive Secretary. The bonds were inspected by me on May 11, 1966

On the date of maturity of these series J twelve-year bonds on September 1, 1966, these bonds will no longer draw interest. Therefore, it is the opinion of this auditor, that these bonds be cashed and the money be reinvested in United States bonds or a savings and loan association.

The funds that were disbursed from the General Fund during the prior audit period for the activities of the Young Farmers Association in the amount of \$520.65 were restored back in the General Fund of The Future Farmers of America in this audit period.

Since the audit was confined to the records of the Association, this auditor does not certify to the correctness of the classification of Receipts or Disbursements in this audit period.

Respectfully submitted,
R. L. Davis, Auditor

EXHIBIT A

KANSAS ASSOCIATION OF FUTURE FARMERS OF AMERICA
RECEIPTS and DISBURSEMENTS - GENERAL FUND
FROM APRIL 1, 1965, to MARCH 31, 1966

RECEIPTS:

Dues collected	\$ 3,276.00
Magazine Subscriptions	3,196.75
Sale of Charms, Pins, Uniforms, Jackets, etc.	694.89
Chicago Burlington Railroad awards	100.00
Atchison, Topeka & Santa Fe awards	800.00
Atchison, Topeka & Santa Fe scholarships	1,000.00
National Future Farmers of America awards	1,418.11
National Future Farmers of America refunds on Public Speaking	
Contests, National Judging and Safety awards expense	240.53
Interstate Printers & Publishers - Royalty on Account Books	283.72
Sale of Livestock Judging Books	285.10
Summer Camp	3,307.00
Consumers Co-op Awards	101.35
Federal Land Bank of Wichita awards	164.16
Sale of FFA flags	56.71
Overpayment of dues, subscriptions, etc.	108.73
Sale of Place Mats	105.65
	<hr/>
TOTAL RECEIPTS	\$ 15,138.70

DISBURSEMENTS:

Awards	\$ 2,175.00
State and National Convention Expense	1,458.87
Purchase of Charms, Pins, Uniforms, Jackets, etc. for resale	1,191.90
Magazine subscriptions	2,907.00
National Future Farmers of America dues	669.50
Atchison, Topeka & Santa Fe Railway scholarships	1,000.00
Exepnses of State Officers	598.85
Expense of Public Speaking and National Judging Contests	220.77
State Office expense - supplies and services	229.56
Advertising - FFA Week posters , signs, and flags	368.25
Camp Expense	3,381.60
State Fair expense	241.80
Place mats expense	325.98
Livestock books	233.00
Refunds on overpayments, dues, subscriptions, etc.	78.70
Miscellaneous expenses	16.50

TOTAL DISBURSEMENTS \$ 15,097.28

EXHIBIT B

KANSAS ASSOCIATION OF FUTURE FARMERS OF AMERICA
RECEIPTS and DISBURSEMENTS - SEARS SHEEP PROJECT

From April 1, 1965, to March 31, 1966

RECEIPTS:

Sears Foundation	\$ 2,740.00
Chapter Repayments	6,348.26
Refund on purchase of sheep	314.10
Insurance on loss of rams	200.00
Sears-Foundation (Young Farmers Association)	500.00

TOTAL RECEIPTS \$ 10,102.36

DISBURSEMENTS:

Cost of sheep purchased, including transportation	\$ 7,563.20
Insurance on rams	112.00
Trophies and awards	28.56
Entertainment of Guests - Banquets	188.38
Young Farmers Association awards	100.00
Young Farmers Association - from Sears Foundation	500.00

TOTAL DISBURSEMENTS \$ 8,492.14

EXHIBIT C

KANSAS ASSOCIATION OF FUTURE FARMERS OF AMERICA
RECONCILEMENT OF CASH RECEIPTS AND DISBURSEMENTS

From April 1, 1965, to March 31, 1966

ADJUSTMENTS TO THE BANK BALANCE AS OF March 31, 1966

GENERAL FUND

April 1, 1965 - Cash Balance	\$ 8,937.06	
Outlawed and cancelled checks	45.75	
Repayment from Young Farmers Association	520.65	
Total Cash Receipts from 4-1-65 to 3-31-66,		
Exhibit A	<u>15,138.70</u>	
TOTAL CASH AVAILABLE	\$ 24,642.16	
Total cash Disbursements from 4-1-65 to 3-31-66		
See Exhibit A	<u>15,097.28</u>	
March 31, 1966, Cash Balance		\$ 9,544.88

SEARS SHEEP PROJECT

April 1, 1965 - Cash Balance	465.12	
Total cash receipts from April 1, 1965 to		
March 31, 1966 - See Exhibit B	<u>10,102.36</u>	
TOTAL CASH AVAILABLE	10,567.48	
Total Cash Disbursements from April 1, 1965,		
to March 31, 1966, - See Exhibit B	<u>8,492.14</u>	
March 31, 1966, Cash Balance		<u>2,075.34</u>
TOTAL CASH BALANCE, March 31, 1966		\$ 11,620.22

ADD: OUTSTANDING CHECKS AS OF MARCH 31, 1966

<u>DATE</u>	<u>CHECK NO.</u>	<u>PAYEE</u>	<u>AMOUNT</u>	
11-22-65	520	Goessell FFA Chapter	\$ 4.20	
3-21-66	571	Future Farmers Supply	13.39	
3-21-66	572	Nat'l. Future Farmer Mag.	<u>6.30</u>	<u>23.89</u>
March 31, 1966 - Balance Shown by the Bank Statement				<u>\$ 11,644.11</u>