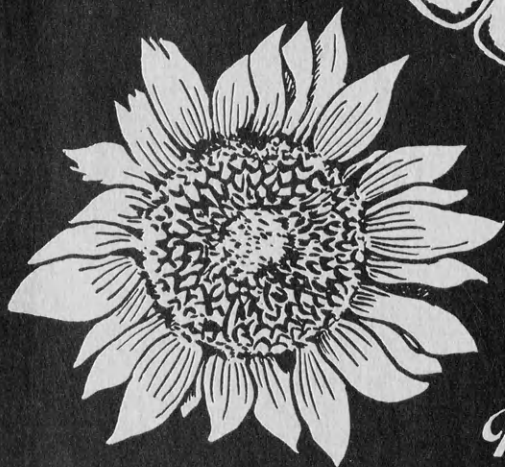
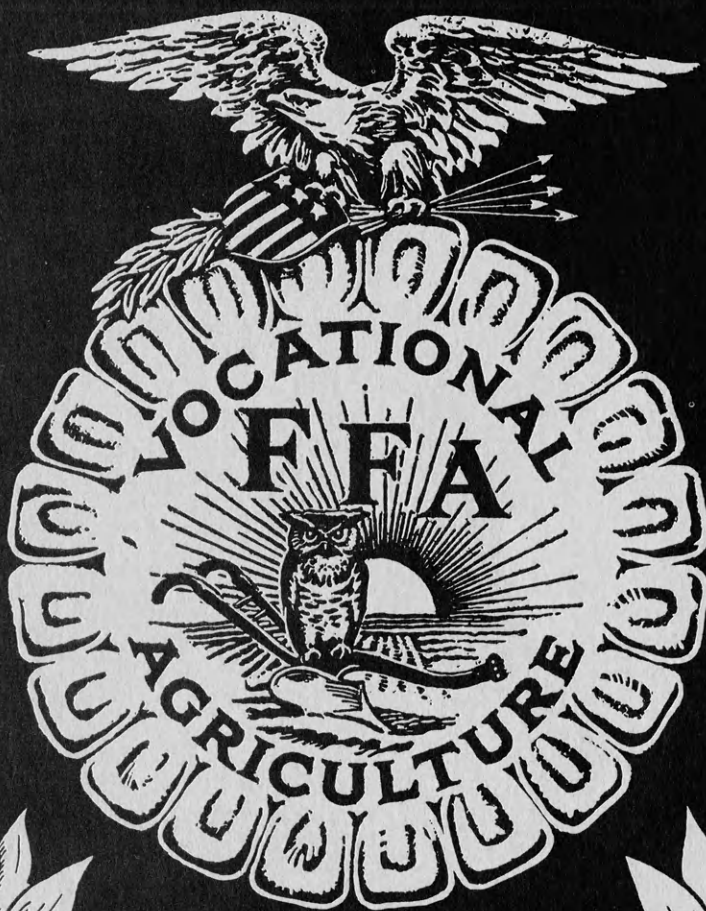


NOV 15 1965

# *The* KANSAS Future Farmer



*Published by*  
**THE KANSAS ASSOCIATION  
FUTURE FARMERS OF AMERICA**

NATIONAL OFFICERS, FUTURE FARMERS OF AMERICA

1965 - 1966

Constituting the  
NATIONAL BOARD OF STUDENT OFFICERS

PRESIDENT . . . . . Howard Lee Williams  
Rt. #1, Olin, No. Caroline  
VICE PRESIDENT, NORTH ATLANTIC REGION . . . . William M. Kelly, Jr.  
Winchester, New Hampshire  
VICE PRESIDENT, SOUTHERN REGION . . . . . Norman Floyd Gay  
Rt. #1, Sumner, Georgia  
VICE PRESIDENT, PACIFIC REGION . . . . . Larry E. Craig  
Midvale, Idaho  
VICE PRESIDENT, CENTRAL REGION . . . . . James Stitzlein  
Rt. #4, Ashland, Ohio  
STUDENT SECRETARY . . . . . Joseph B. Detrixhe  
Rt. #2, Ames, Kansas  
ADVISOR . . . . . H. N. Hunsicker  
Washington, D. C.  
EXECUTIVE SECRETARY . . . . . Wm. Paul Gray  
Washington, D. C.  
TREASURER . . . . . J. M. Campbell  
Richmond, Virginia

-- FFA --

NATIONAL FFA BOARD OF DIRECTORS

H. N. HUNSICKER, Chairman, U. S. Office of Education, Washington, D. C.  
E. J. JOHNSON, U. S. Office of Education, Washington, D. C.  
T. L. FAULKNER, State Supervisor of Agricultural Educ., Montgomery, Ala.  
PERCY KIRK, State Supervisor of Agricultural Education, Cheyenne, Wyo.  
C. C. EUSTACE, State Supervisor of Agricultural Education, Topeka, Kansas  
NEAL ANDREW, State Supervisor of Agricultural Education, Concord, N. Hamp.

THE KANSAS FUTURE FARMER

Harold Shoaf, Editor

OFFICERS OF THE KANSAS ASSOCIATION

FUTURE FARMERS OF AMERICA

Roger Barr, President  
Manhattan

Mike Ankenman, Reporter  
Almena

Donald Barkman, Vice President  
Winfield

Bernard Hansen, Sentinel  
Peabody

Dru Richard, Secretary  
Ellsworth

C. C. Eustace, Advisor  
Topeka

Stanley Buss, Treasurer  
Holton

Harold Shoaf, Exec. Sec-  
retary, Topeka

---

Volume XXXVI

November 15, 1965

No. 2

---

TABLE OF CONTENTS

Page

National Officer	1
American Farmer Degrees	2
Better Chapter Gold Emblem	2
Honorary American Farmers	3
Regional National Winners	4
Santa Fe Scholarships	6
National Gold Emblem Chapter Activities	7
Hesston Scholarship Winner	8
Mid America Fair Winners	9
Leadership Schools	10
Land Judging	12
President's Message	13
Buffaloburgers!	14
Mid America Fair Booths 1966	14
Public Speaking Contest Rules	15
Sears Range Ewe Banquets	17
Proficiency Awards	18
1965-66 State FFA Program of Work	19
Seating Arrangement for Ritual Contest?	22



## Joe Detrixhe, National Officer



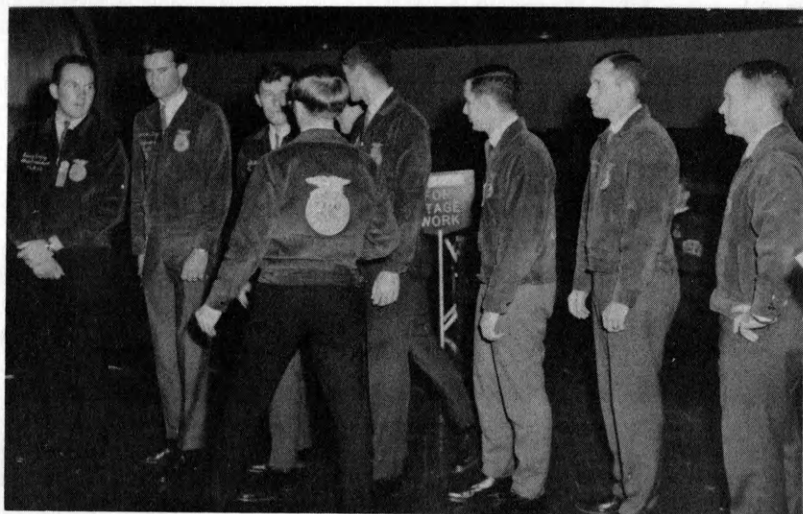
The Kansas Association of FFA was honored this year in having our past State President chosen as National Student FFA Secretary. This is a great honor for the Kansas Association and for Joe Detrixhe, Concordia. Joe is the fourth individual from Kansas to be elected to a National office. Boyd Waite of Winfield was the first FFA member from Kansas to be elected to a National office. Boyd was elected to the office of Fourth Vice President representing the north central region at the second annual convention in November 1929.

Leo Paulsen of Concordia was elected to the office of Student Secretary in November 1932. It is interesting to note that Joe is the second FFA member from Concordia to be elected to the same office of National Student Secretary.

Albert Coates, Jr. of Shawnee Mission, was elected to the office of Third Vice President, representing the north central region, in October 1938.

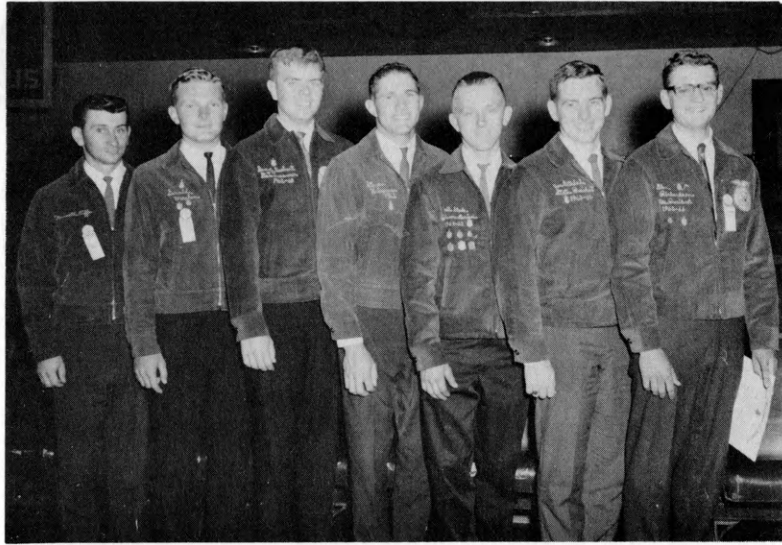
George Stelter, Abilene, was appointed during the spring of 1943 to the office of Third Vice President, representing the north central region, to fill the unexpired term of Willard Visek, who resigned to enter the Armed Service .

The Kansas Association salutes Joe Detrixhe, National Student Secretary. Joe was a student of Wilbur Rawson who is now a member of the State Office staff.



At right: Evan Green, National Student Secretary, lines up newly elected National officers. Joe is fifth from the left.

"Top Seven Farmers in Kansas"



Left to right: Kenneth E. Riffe, Stockton; Gerald Machin, Russell; Dennis Dechert, Colby; Steve Krispense, Marion; Cecil Stade, Pretty Prairie; Joe Detrixhe, Concordia; and William Sutton, Lawrence, Kansas.

Seven outstanding FFA members were awarded the American Farmer Degree for outstanding achievement in the business of farming at the 38th National Convention in Kansas City, Missouri.

This award is the highest award given a Future Farmer. Congratulations for a job well done!

\* \* \*



The Garden City Chapter received the Gold Emblem award at the National FFA Convention in Kansas City, Missouri. This is the highest award that a chapter may receive from the National organization. Congratulations to Ira J. Mann, Jr., Advisor; Sam Hands, President; and their outstanding members.

C. C. Eustace Honored



Dr. A. W. Tenney presenting award to Mr. C. C. Eustace, State Supervisor.

State Supervisor, C. C. Eustace, was awarded the Honorary American Farmer Degree at the National FFA Convention, Kansas City, Missouri. In addition to this high honor, he was presented a Distinguished Service Plaque for outstanding contributions to the National organization of FFA. He was also presented a plaque for serving on the National Board of Directors.

Congratulations to Supervisor Eustace for his contribution to the State and National FFA organizations!

\* \* \* \*

Sam Stenzel Honored

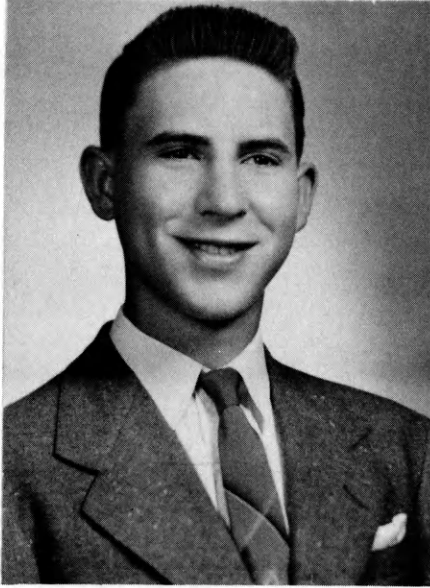


Sam Stenzel, President of the NVATA, and Vocational Agriculture teacher at Russell, Kansas, was awarded the Honorary American Farmer Degree at the National FFA Convention in Kansas City, Missouri.

Congratulations to Mr. Stenzel for his outstanding leadership on the State and National level.

\* \* \*

## REGIONAL DAIRY PRODUCTS WINNER



Thomas Ray Bradbury

Thomas Bradbury of the Uniontown FFA, son of Mr. and Mrs. William Bradbury of Uniontown, Kansas, is the Central Region winner of the FFA Foundation award in Dairy Farming.

Tom started in the dairy business as a freshman vo-ag student with one cow and two heifer calves. Through reinvestment of earnings he now owns a 33-cow herd of Holsteins. He also owns a full line of machinery and produces 90 percent of the feed for the dairy herd. The crops include 25 acres of corn, 17 acres of sorghum, 9 acres of wheat, 11 acres of oats, and 37 acres of alfalfa.

With the help of his brothers, he has constructed a hay and machine shed and poured 3,600 square feet of concrete for feeding areas.

He has served in the FFA as Chapter Reporter, on many committees, and entered the State Livestock Judging Contest. Tom is Junior Deacon in his church and president of his church youth organization.

The entire responsibility of managing the farm has been delegated to Tom due to his father's illness. He plans to increase crop production by additional fertilization and to improve the production of his Holsteins by following a rigid culling program.

Tom graduated from Uniontown High School last spring. His vocational agriculture instructor is Mr. Wilbur Hart.

\* \* \*

## REGIONAL FARM MECHANICS WINNER

The Central Region winner in Farm Mechanics is J. Alan Guttery, son of Mr. and Mrs. Porter Guttery of Alton, Kansas.

Alan's program during his four years in vocational agriculture has grown from 20 feeder steers to include 45 feeder steers and 265 acres of cropland.

The home farm shop, which Alan constructed, and the local high school shop, have provided an opportunity for machine repair and equipment construction which has contributed to his success in farming.

Under the guidance of instructor Jim Macy, Alan constructed 11 gates, a large hog feeder, steel stock rack and grain boards for a pickup truck,



National Pres. Kenneth Kennedy congratulates Alan Guttery.

---more

a steel cattle squeeze chute, a large 8 by 20 foot implement trailer, and a truckbed with grain and stock racks. In addition, he helped his father construct a 150 foot concrete feedbunk, 800 feet of board fence, and a wooden loading chute for livestock. He has reconditioned numerous machines in the home shop and has done considerable work in repairing buildings and equipment.

He served as president of his local FFA chapter, competed in the State Public Speaking Contest, was on the gold emblem leadership team, judged in the Crops, Livestock, Dairy, and Animal Husbandry State Contests, and was a three sport letterman, as well as serving as class officer and on the Student Council.

Alan graduated from the Osborne High School last spring. He is a student at Kansas State University majoring in agriculture.

\* \* \* \*

NATIONAL CONTEST TEAM WINNERS

<u>School</u>	<u>Contest</u>	<u>Rating</u>
Winfield FFA	Meats	Gold
Altamont FFA	Livestock	Bronze
Manhattan FFA	Poultry	Gold
Manhattan FFA	Dairy Products	Silver
Arkansas City FFA	Dairy Judging	Gold
Garden City FFA	National Better Chapter	Gold
Arkansas City FFA	National Better Chapter	Silver

\* \* \* \*

REGIONAL WINNERS

J. Alan Guttery, Osborne FFA Chapter, rated first in the Farm Mechanics Contest.

Thomas Ray Bradbury, Uniontown FFA Chapter, rated first in Dairy Products.

James Klassen, Lebanon FFA Chapter, rated fourth in Public Speaking.

\* \* \* \*

Attendance at the 1965 National FFA Convention, Kansas City, Mo.

American Farmers	7
State Staff	4
Guests	37
Parents	24
Members	426
Advisors	77
Administrators	2

\* \* \* \*



### NATIONAL BETTER CHAPTER WINNER

The Arkansas City Chapter of FFA was awarded the Silver Emblem citation. This is the second highest award given by the National organization.

Congratulations to David Williams, advisor, Merrill Kistler, President, and to the outstanding members of this FFA chapter.

- FFA -

### Meats Judging Team



Left to right: Stanley Nichols, Dale Fruits, Ed Bogner, Lester Priest, and Coy Allen, Vo-Ag Instructor.

The Winfield FFA Chapter received the Gold Emblem rating in the National Meats Contest. The team ranked individually in the Gold Division.

- FFA -

FREQUENT naps will keep you from getting old---especially if taken while driving.

- FFA -

### SANTA FE SCHOLARSHIPS

Our good friends of the Santa Fe Railway are making available two \$500 scholarships for Kansas Future Farmers enrolled at Kansas State University in the School of Agriculture, Agriculture Education, Veterinary Medicine, Agriculture Engineering, Agriculture Journalism or Forestry. Applications for these scholarships may come from any county in the State. The applicant must enter college in the fall of 1966. A high school scholastic record is necessary.

For further information contact Professor Howard Bradley, Department of Agriculture Education, Kansas State University, Manhattan, Kansas, or Mr. Harold Shoaf, Executive Secretary, Kansas Association of FFA, State Office Building, Topeka, Kansas 66612.

\$250 is paid to the scholarship winner after he enrolls in the University.

The second \$250 is paid when the individual enrolls in the second semester.

- FFA -

Congratulations to the Miltonvale FFA Chapter, under the leadership of Advisor Bill Fuller, for winning first place in the Farm Mechanics exhibit. Top honors went to Kenney Girard for planning and constructing a bale loader and unloader.

The Buhler Chapter, Julian Johnson, Advisor, won first place in the County Agriculture Booth display.

The above were winners at the Kansas State Fair at Hutchinson, Kansas.

- FFA -

CROSS SECTIONAL SUMMARY of 1965 NATIONAL GOLD EMBLEM FFA  
CHAPTER'S ACTI VITIES

- Arizona -- Developed a Livestock Dipping Center
- Arizona -- Conducted a Leadership Training Trip
- Arkansas -- Establishment of Farm Shops at Home Farms
- Colorado -- Conducted a Livestock Feeder Sale
- Colorado -- Recorded and Planned a Seven Year Supervised Farming Program.
- Colorado -- Conducted a Livestock Show
- Florida -- Grant Credit to Members for Farming Programs
- Florida -- Conducted Deep Sea Fishing Trip
- Georgia -- Treated Animals for Parasites
- Illinois -- Tested Soil Samples
- Iowa -- Program of Work Featured in Magazine and Film
- Kansas -- Offered Assistance to Agricultural Hall of Fame
- Kansas -- Radio Programs and Spot Announcements
- Minnesota -- Planted Trees for Conservation Purposes
- Minnesota -- Raised and Released Ducks and Pheasants
- Minnesota -- Exchanged Visits with Other Chapters' Parent-Son Banquets
- New Jersey -- Operated a School FFA Farm
- New Mexico -- Sold Brooms Made by the Blind
- North Dakota -- Organized a Local FFA Hall of Fame
- Ohio -- Organized a 100 Busnel Corn Club
- Tennessee -- Had Each Member Develop a Farm File
- Texas -- Constructed School Playground Equipment
- Virginia -- Planned and Built School Parking Area
- Washington -- Organized a Point System for Leadership to Determine  
Who Attended National FFA Convention
- West Virginia -- Landscaped School Grounds

\* \* \* \*

SELLING PECANS

Several chapters over the State sell pecans as a money making project prior to Christmas. Most of the chapters participating in this activity order their supply of pecans from the southern coastal States. Because of the increased interest in Kansas pecan production, some chapters have inquired about the possibility of obtaining their supply from a Kansas pecan producer. Below is some information concerning this possibility. This information may be too late to use for this Christmas season. However, it could be evaluated for use next year.

The Conard's Pecan and Walnut Shellers of Chetopa, Kansas, sell to many organizations and would like to have the FFA sell their pecans, also. They have one pound packages which sell for \$10 per dozen, plus postage. On orders of 300 pounds or more, the Conard's pay the freight. They also give organizations 60 to 90 days to pay.

Conards state that they "are cracking some good pecans now." They also emphasized that pecans are a little cheaper than usual, so it might be a good year to sell. Mr. and Mrs. Conard have two sons, Norman and Robert, who were members of the Columbus FFA Chapter. Both boys were talented in public speaking. Norman placed second in the State in 1963.

HESSTON SCHOLARSHIP WINNER

Kenneth Girard, Miltonvale Senior, and Grand Champion exhibitor in Kansas State Fair vocational agriculture competition, is shown receiving a plaque from Nelson Galle, Hesston Manufacturing Company official, emblematic of his selection as winner of the Hesston "Agri-Engineering Scholarship" of \$500.00. Also pictured are Girard's FFA advisor at Miltonvale Rural High School, Bill Fuller, and C. C. Eustace, right, State FFA Supervisor of Topeka, Kansas. Fuller's team swept to an easy first place triumph.

Kenny took the individual Grand Championship with an elaborate automatic bale wagon which has machinery experts buzzing. Kenny converted an old Chevrolet truck chassis to a remarkable machine for picking up bales of hay and loading them on a bed and unloading them at the barn. The conversion involved moving the engine to the middle of the chassis, installing a pickup elevator in front, an operator's platform, a drag chain on the bed to move bales back, and hydraulics to activate the chain and raise or lower the elevator. He spent more than 350 hours working on the project. He is the son of Mr. and Mrs. Emery Girard of Miltonvale. As a result of this championship exhibit, Kenny won the second annual Hesston \$500 Scholarship, awarded by Hesston Manufacturing Company to talented farm mechanics FFA members, to assist them in attending college.

\* \* \* \* \*

#### Lincoln Arc Welding Foundation Winners

Congratulations to Terry Donnelly, Ellsworth FFA member, and to his instructor, Lester Crandall, for placing second in the "Home and Recreational" area with a picnic table entry. Terry was the recipient of \$150.00 from the James F. Lincoln Foundation. Congratulations are also in order to Thomas M. Hall, Oakley FFA member who won fourth place in the same contest with a picnic table. Thomas' instructor is Howard Wallace.



Congratulations to the St. Marys FFA Chapter for placing first in the booth contest at the Mid America Fair in Topeka. Left to right: Mr. C. C. Eustace, State Supervisor, and Wilbur Rawson, Assistant State Supervisor, view the booth.



Gary Morehead was the high individual in the Farm Mechanics display at the Mid America Fair in Topeka. Additional emphasis is being given at both the Mid America Fair and the State Fair at Hutchinson in Tractor Maintenance and Repair as well as Machinery Overhaul and Repair. Burlington FFA captured first place in the Farm Mechanics display. The Manhattan Chapter placed first in the Farm Mechanics Freshman Skills exhibit.



## "1965 DISTRICT LEADERSHIP SCHOOLS

The 1965 District FFA Leadership Schools were conducted in eleven centers over the State on September 27, 28 and 29. One hundred and twenty-five chapters participated in the Ritual Contest, 123 chapters participated in the Information Contest, and 111 chapters participated in the Parliamentary Procedure Contest. The Parliamentary Procedure demonstration patterned after the Kansas FFA Camp proved very interesting.

A survey will be made among teachers to find out their recommendations for the 1966-67 contests.

The Parliamentary Procedure winners who will represent their District in the State Contest Sunday afternoon, 3:30 p. m., April 24, 1966, are as follows:

Arkansas City  
Colby  
Effingham  
Hugoton  
Lawrence  
Marion  
Neodesha  
Osborne  
Peabody  
Stockton  
Washington

The top four winners in the State Parliamentary Procedure Contest on Sunday, April 24 at 3:30 p. m., will then compete at 1:30 p. m. on Tuesday, April 26, for top honors.

It was a pleasure to have representatives of the Federal Land Bank of Wichita present the top team with an outstanding trophy. The Federal Land Bank of Wichita will present a \$40 check to each District winner who competes

in the State Contest (this award will not be made unless the team participates in State competition). An additional \$50 and a first place trophy will be awarded to the top chapter in the State Contest. Second, third, and fourth place plaques will also be presented.

\* \* \*

Many individuals worked hard to make our eleven Leadership Schools a success. Thanks to all the advisors and participating chapters.

\* \* \*

## THE WONDERFUL WORLD of FFA ---

Its Heritage . . . Is Your FUTURE

All persons associated with the FFA should know more about their organization, examine its great attributes, and personally visit the "wonderful world of FFA." The more you know about your organization, the more helpful you can be in this effort to make the FFA greater.

It should be the goal of every FFA member to make every effort to create a climate for expansion of present agriculture and agricultural business; to study the activities of the local, district, State and National groups; and to become completely acquainted with the aims and purposes of the FFA. To stimulate your interest, and the interest of others in the FFA, you should understand the functions of the FFA Foundation and the awards they offer. Of course, 100% effort in your Vocational Agriculture classes and shop work is the foundation for success in FFA.

-- FFA --

INFORMATION CONTEST

The top five placings in the Information Contest were as follows:

1st	Oakley Chapter, Howard Wallace, Advisor	574	points
2nd	Osborne Chapter, Jim Macy, Advisor	556	"
3rd	Garden City, Ira J. Mann, Jr., Advisor	554	"
4th	Flint Hills AVTS (Emporia), Eugene Walker, Advisor	550	"
5th	Winfield Chapter, Richard E. Tredway, Advisor	546	"
6th	Garnet Chapter, Robert Davis, Advisor	544	"
6th	Pratt Chapter, Norman Hildebrand, Advisor	544	"
6th	Stockton Chapter, Floyd A. Blauer, Advisor	544	"
7th	SE Kansas AVTS (Caney), Ralph Field, Advisor	542	"
8th	Highland Chapter, Raymond L. Studer, Advisor	540	"
9th	Ellsworth Chapter, Lester L. Crandall, Advisor	538	"

The high individuals in the Information Contest were as follows:

1st	Danny Scott, Caney Chapter	100	points
1st	Richard Bramlage, Frankfort Chapter	100	"
2nd	John Lightner, Garden City Chapter	98	"
2nd	Orville Stigge, Washington Chapter	98	"
2nd	Stanley Nichols, Winfield Chapter	98	"
2nd	Sam Hands, Garden City Chapter	98	"
2nd	Robert Broeckleman, Oakley Chapter	98	"
2nd	Larry Van Sickle, Norton Chapter	98	"
2nd	J. W. Twombly, Highland Chapter	98	"

\* \* \* \* \*

PROFICIENCY AWARDS 1965-66

The National Foundation of FFA is making recognition awards available in the following ten areas, on the local, State, and National level:

- |                    |                                  |
|--------------------|----------------------------------|
| Production Awards: | 1. Crops                         |
|                    | 2. Livestock                     |
|                    | 3. Dairy                         |
|                    | 4. Poultry                       |
|                    | 5. Forestry                      |
| Other Awards:      | 1. Ornamental Horticulture       |
|                    | 2. Soil & Water Improvement      |
|                    | 3. Home Improvement              |
|                    | 4. Agriculture Mechanics         |
|                    | 5. Farm and Home Electrification |
| Chapter Awards:    | 1. Safety                        |
|                    | 2. Better Chapter Awards.        |

\* \* \* \* \*

SOUTHEAST LAND JUDGING  
WINNERS

Caney will represent the Southeast Kansas Region in the National Land Judging Contest that will be held in Oklahoma City on April 27 and 28, 1966.

Left to right in the picture: Charles Harrison, Tim Perkins, Brent Mantooth, Bill Bailey, and Ralph Field, Advisor.



1965 High Team

- FFA -

\* \* \* \* \*

The following FFA Chapters, who are winners in the Area Land Judging Contests, will represent Kansas at the National Land Judging Contest in Oklahoma City, April 27 and 28, 1966:

<u>Chapter</u>	<u>Advisor</u>
Caney Chapter	Ralph Field
Linn Chapter	Don Flenthrope
Ness City Chapter	Ed Brenner
Stockton Chapter	Floyd A. Blauer
Ellsworth Chapter	Lester L. Crandall

\* \* \* \* \*



HIGH INDIVIDUAL  
SOUTHEAST AREA  
LAND JUDGING CONTEST

Bruce Covert, Columbus FFA Chapter



Roger Barr

President Roger Barr attended  
the Dodge City Leadership School  
----I think!

Dear Future Farmers:

During the latter two weeks of August, I had one of the most rewarding experiences I have had during my eighteen years. David Martin, Don Barkman, Mr. Merwin Stearns, and I, attended Camp Miniwanca which is located thirty-five miles north of Muskegan, Michigan.

This camp puts emphasis on good fellowship, life planning, and four-fold living. Four-fold living refers to developing oneself physically, mentally, socially, and religiously. The beautiful scenery of Michigan and the great blue Lake Michigan with its sandy beaches, provided a great atmosphere for deep thought. The thing that impressed me most about this camp was the high quality of the people there. The adult leaders were top men from across the nation and my fellow campers were really great guys.

I am very grateful to have had the opportunity to attend a camp such as Camp Miniwanca. I know I am a better individual because of it and I hope I can serve our FFA Association more effectively.

Roger Barr, President  
Kansas Association of FFA.

\* \* \* \*

### C O N G R A T U L A T I O N S !

The Troy Chapter was declared first place winner in the Kansas division of the 1964--304 Bushel Challenge. The May 15, 1965, issue of the Kansas Future Farmer Newsletter stated Hanover FFA Chapter was the State winner.

According to Mr. Alfred Sick, Jr., Director of Research for the J. C. Robinson Seed Company, due to the small number of irrigated entries, less than five, makes Hanover FFA Chapter ineligible for first place.

Congratulations to the Troy Chapter!

\* \* \* \*





### BUFFALOBURGERS!

The Florence FFA Chapter had a food stand during the Annual Labor Day celebration in Florence. They served approximately 650 buffaloburgers, 22 cases of pop, and 100 cups of coffee to the persons attending the celebration. The buffalo was a calf weighing about 550 pounds on the hoof. It was donated to the FFA chapter by Mr. and Mrs. August Lalouette of rural Florence. Mr. Lalouette is an Honorary Chapter member of the Florence Chapter.

The local members did the slaughtering and arranged for cooling of the carcass. The buffalo dressed out 256 pounds and was all ground into burger meat. The grinding was donated by a local butcher with the local officers and advisor doing the boning and grinding. The members worked in two-hour shifts in the stand starting at 9:00 a. m. on Labor Day. They cooked the burgers on grills made in the shop from gas oven burners and steel sheets, using three grills in the stand.

This was a lot of work and planning but proved worthwhile as the stand took in about \$300 in about ten hours. The above picture shows some of the crowd, arrangement of tables, members working and advisor in the foreground behind the tables. Mr. Don Weiser is the advisor of the Florence Chapter of FFA.

\* \* \* \*

The following schools have requested space for 1966 educational booths at the Mid America Fair. The first 13 listed chapters have been accepted.

Alma Chapter  
Burlingame Chapter  
Caney Chapter  
Eskridge Chapter  
Highland Park Chapter  
Hoyt Chapter  
Lawrence Chapter  
Manhattan Chapter

Osage City Chapter  
Powhattan Chapter  
Riley Chapter  
Silver Lake Chapter  
Troy Chapter

Alternates:  
Rossville Chapter  
Meriden Chapter.

\* \* \* \*

### DID YOU KNOW?

Did you know that sudden changes in barometric pressure can reduce a driver's efficiency? Eighteen weather experts recently reported to the World Meteorological Organization in Geneva, stating sudden changes lower power of concentration and lengthen reaction time. Their figures indicate that during a thunderstorm, for example, car accidents increase 70 percent and work accidents 20 percent.

### "State Public Speaking Contest "

The time for the delivery in the 1966 State FFA Speech Contest has been changed to a minimum of six minutes and a maximum of eight minutes. This is in accord with the National Public Speaking Contest for 1966. It is recommended that the District Contests follow the plan of the State Contest.

The preliminaries of the 37th State FFA Public Speaking Contest will be held on the Kansas State University Campus, Manhattan, Kansas, Sunday, April 24, beginning at 9:00 a. m. The finals will be held at the Municipal Auditorium, beginning at 3:30 p. m., Tuesday, April 26.

Each KVATA District may enter a minimum of one and a maximum of five contestants from their junior-senior division for this contest. Where there are less than fifteen entries in the junior-senior division (6 to 8 minute speeches) then one-third, or fraction thereof, of the contestants are eligible to enter State competition. This rule insures that contestants in the State Speech Contest will have placed in the upper one-third of their district. Only one member from any one chapter shall be eligible to compete in the State FFA Speech Contest.

Three typewritten copies of the speech entered in the contest will be required. Manuscripts must be in the hands of Howard Bradley, Kansas State University, by April 12. One original and two carbons will be acceptable. Please be certain that good carbon paper is used in order that the copies can be easily read.

#### Subjects

Contestants may choose any current subject for their speeches which is of an agricultural character (nature), and which is of general interest to the public. District public speaking judges should disqualify a contestant who speaks on a non-agricultural subject.

#### Eligibility

When selected to compete in the FFA Speech Contest, contestants must be active members of FFA chapters that are in good standing with the State Association and National organization. The State contest will be open only to boys less than 21 years of age who are regularly enrolled in all day classes of vocational agriculture during the current calendar year, or who are still in high school but have completed all the vocational agriculture offered.

Each contestant's manuscript will be the result of his own efforts. It is expected that he will take advantage of all available training facilities in his local school in developing his speaking ability. Facts and working data may be secured from any source.

A contestant shall wear the official FFA jacket when competing in the State Public Speaking Contest. Any student who has won first place in a previous State FFA Speech Contest is not eligible for the 1966 contest.

State Public Speaking Contest - cont'd.

### Order of Appearance

Drawings will be made for order of appearance by a disinterested party prior to the date of the contest. Information relative to place and order of appearance will be mailed to local chapter advisors who have entries in the contest. Note: Speech contestants who plan to participate in either the Agriculture Judging or Farm Mechanics Contest on Monday, April 25, must obtain permission to compete in the Speech Contest from Howard Bradley, Kansas State University, at the time copies of the speech are submitted for judging.

### Time

Each speech shall be a minimum of six minutes in length and a maximum of eight minutes. Each contestant will be allowed five minutes additional time in which he will be asked questions relating to his speech. This will apply in the preliminaries as well as in the finals. Deductions of 20 points per minute or major fraction thereof will be made from the score of each judge for speeches under six minutes or over eight minutes in length.

### The Bibliography

All candidates in the State FFA Speaking Contest should give credit to others where any direct quotes, phrases, or special dates are used in the manuscript in order not to be guilty of plagiarism.

A bibliography must be included as part of the public speaker's manuscript and direct quotes from any other source of information must be marked in "quotes" on the manuscript and be identified in the bibliography. Failure to do so will automatically disqualify a contestant.

In the State Public Speaking Contest a third place will receive \$25, second place \$50, and first place State winner will receive \$100. In addition a medal will be given to each of the top three winners.

\* \* \* \* \*

The National Public Speaking Contest for 1966 has set six to eight minutes as the time limit for each speaker. District speeches for this year may want to be adjusted accordingly.

\* \* \* \* \*

Leaving the stadium after losing by a big score, the unhappy coach was collared by an old grad. "How many students are enrolled in our university?" asked the o.g. politely. "About 17,000," replied the coach. "Is it asking too much to put two of them in front of a ball-carrier?" snarled the old grad.

## 1965 SEARS RANGE EWE AWARDS BANQUETS

Final arrangements for the annual FFA Sears Range Ewe Dinners have been completed for this year. The Western Division Dinner will be held November 30 at the Tower Cafe in Russell. The Emporia Young Farmers Association will serve the Eastern Division Dinner at Emporia on December 1.

Lamb roast with all the trimmings is the highlight of the evening menu. A speaker on lamb production and special entertainment are planned for the program, and Sears is furnishing some fine trophies for the winners of each division.

Kansas FFA members attending the activities at Russell will be:

Mark Stucky, Moundridge FFA Chapter  
 Larry Towns, Colby FFA Chapter  
 Steve Westfall, Haven FFA Chapter  
 John Jones, Kingman FFA Chapter  
 Wesley Herdt, Oakley FFA Chapter  
 Merle Carpenter, Colby FFA Chapter  
 Alva Burch, Hillsboro FFA Chapter

Kansas FFA members attending the activities at Emporia will be:

Wilbert Bartel, Hillsboro FFA Chapter  
 Les Burnett, Erie FFA Chapter  
 Gene Hirt, Williamsburg FFA Chapter  
 Dean Bailey, Uniontown FFA Chapter  
 Jim Hogan, Williamsburg FFA Chapter  
 Larry Lyon, Emporia FFA Chapter  
 Briant Wilson, Altamont FFA Chapter

Attending along with the FFA members will be their parents, the members' FFA advisor, and the advisor's wife.

\* \* \* \* \*

NOTE - Foundation Award Applications are available from the State Office on request.

Farm Mechanics Award: The State winner in Farm Mechanics will receive \$100. The six remaining district winners will each receive \$20.

Farm Electrification Award: \$100 award to the FFA member who has achieved the most in making practical electric devices. Six district winners will receive \$20 each.

Dairy Farming Awards: First place winner in the State will receive \$100. Six district winners will each receive \$20.

---more



## Foundation Awards, cont'd.

Farm Safety Award: The top chapter in safety will receive \$100. Each of the six district winners will receive \$20.

Public Speaking Contest: First place in the State will receive \$100. Second place \$50, and third, \$25.

Swine Farming Award: Top vocational agriculture in swine will receive \$100. Each of the six district winners will receive \$20.

Beef Farming Award: \$100 to top State winner. Each of the six district winners will receive \$20.

Sheep Farming Award: \$100 to State winner. \$20 to each of the six district winners.

Crops Farming Award: \$100 to top winner in State. \$20 to each of the six district winners.

Ornamental Horticulture: First place in the State will receive \$100. Each of the six district winners will receive \$20.

Home Improvement: The State winner will receive \$100. Each of the six district winners will receive \$20.

American Farmer Award: \$75, provided he attends the National FFA Convention. State is allowed 7 American Farmers.

\* \* \* \*

1965-66 STATE FFA PROGRAM OF WORK

1. One hundred percent of Kansas Vocational Agriculture departments to establish chapters of FFA, and each vocational agriculture student to be a member of the FFA.
2. One hundred percent of the FFA chapters in Kansas have a definite program of activities for the year and submit a copy of its Program of Work to the State office not later than October 31, 1965.

Only those chapters submitting a Program of Work by October 31, 1965, will be eligible for State or American Farmer Degree applications, participation at District or public speaking contests, and other State-sponsored FFA activities.

3. One hundred percent of the FFA chapters meet the minimum requirements for the standard chapter award. A complete copy of Form 1 of the Better Chapter Award Contest should be on file at the State office in Topeka by April 8, 1966.

--- more

## Program of Work, cont'd.

Fifty percent of the FFA chapters meet the minimum requirements for the Superior Chapter Award and file complete copies of Form 1 and 2 in the State FFA Office by April 8, 1966.

Ten percent of the chapters should be awarded the Gold Emblem classification. Two chapters will be selected from the Gold Emblem group by a teacher committee to represent Kansas in the National Better Chapter Contest.

In 1964, 11 chapters were rated Standard, 61 Superior, and 25 Gold Emblem. Eighty-seven chapters did not apply for any rating.

4. Ninety percent of the FFA chapters submit at least one candidate for the State Farmer Degree in 1965. Approximately 44 percent of the chapters applied for a State Farmer Degree in 1965. A goal of 90 percent has been set for 1966.
5. One hundred percent of the FFA members in Kansas subscribe to the National Future Farmer of America magazine.
6. The State Association to publish four issues of the Kansas Future Farmer Newsletter during the nine month school year. Dates for issues will be September 1, November 15, April 1 and May 15. Each FFA chapter will receive one copy of the State Newsletter.
7. The State Association to sponsor eleven District Leadership Training Schools with 85 percent participation by FFA chapter officers. Approximately 74 percent of the chapters participated in 1965.
8. The State Association to sponsor a District and State Parliamentary Procedure Contest with 75 percent of the FFA chapters participating in 1966. One hundred and twenty-eight chapters participated in a Parliamentary Procedure Contest below the State level in 1965.
9. In 1966 the State Association to sponsor a Leadership Training camp and encourage participation to the extent that the facilities will provide for. Forty-six chapters participated in the 1964 camp. Fifty-two chapters participated in 1965.
10. FFA members to be assisted in developing occupational experience that will lead to employment.
11. One hundred percent of the FFA chapters to use the official FFA Secretary's book and the official FFA Treasurer's book.
12. Each FFA Chapter to provide and use the official FFA paraphernalia. Each chapter to have framed under glass the chapter charter, the creed, and the purposes of the FFA.

Program of Work cont'd.

13. One hundred percent of the FFA chapters to promote one outstanding activity publicizing FFA during National FFA Week, February 20-26, 1966.
14. One hundred and fifty-two chapters conducted special activities in observance of National FFA Week in 1965.  
  
The State Association to sponsor fifty-two 91 x 20' billboard signs during National FFA Week.
14. One hundred percent of the FFA chapters to use from memory at each meeting the official ceremony for degree advancement and receiving honorary chapter farmers.
15. One hundred of the FFA chapters to participate in the District Public Speaking Contest. Ninety-nine chapters held a Public Speaking Contest in 1964-65 year.
16. The State Association to sponsor a Judging Team in each of the National Contests sponsored by the National organization.
17. Seventy-five percent of the FFA chapters in Kansas to have a Safety Promotion Program including goals and ways and means of accomplishing the desired results. Fifty-six chapters conducted a community-wide safety campaign in 1964-65.
18. Encourage the establishment of FFA chapter libraries and recommend the minimum requirements to be the following:
  - A. FFA Manual, 1965 edition for officers - 20 cents each.
  - B. Stewart's Parliamentary Procedure, one for each officer, 10 or more 15¢ each. Smaller quantities 20¢ each.
  - C. Complete file of National Future Farmer magazine for the past year.
  - D. A copy of the proceedings of the 38th National FFA Convention.
  - E. Reporting FFA News, C. E. Rogers, \$3.00.
  - F. A More Effective FFA, Wall, \$2.65.
  - G. If You Please, Allen & Brings, \$2.60.
  - H. Practical Activities for Future Farmers, Tenney, \$3.60.
  - I. Handbook on Speech for Future Farmers, Purkey, \$3.60.
  - J. I Dare You, Ralston-Purina., St. Louis, Missouri (free).

The publishers for the above are listed below:

- (A) Future Farmers Supply Service, Box 1180, Alexandria, Virginia.
- (B) W. F. Stewart, Rehearsal Hall, Ohio State University, Columbus, Ohio.
- (G) J. B. Lippincott Co., 333 West Lake St., Chicago, Illinois.
- (E, F, H, & I) Interstate Printing Co., 19-27 N. Jackson, Daville, Illinois.
19. State Officer Agenda, 1965-66: A two-day Good Will tour will be planned for February 1 and 2 to visit industries who have a vital interest in FFA and have supported the FFA program.

---more

Program of Work, cont'd.

20. Publicize FFA through Kiddies' Barnyard at the State Fair in Hutchinson.
21. Have Farm Mechanics displays at Mid America Fair and State Fair.
22. Sponsor 13 booths at Mid America Fair in Topeka.
23. Sponsor sale of plastic car flags with phrase - "Agriculture is More Than Farming." Cost 20¢ each. Available from State officers or State office.
24. Use place mats to promote FFA during FFA Week and State Convention. Chapters may purchase mats from State office at cost.
25. State delegates represent Kansas Association of FFA at the National Convention.

Roger Barr, President      Donald Barkman, Vice Pres.  
 Stanley Buss, Treasurer      Bernard Hansen, Sentinel  
 Kansas Association of FFA.

\*      \*      \*      \*      \*

"Seating Arrangement for Ritual Contest"

Some individuals at the Leadership Schools recommended a uniform seating of chapter officers participating in the Ritual Contest. The following recommendations are written for your consideration:

President should be seated at the center. The secretary should sit to the right of the president. A large majority of the secretaries will be right-handed, therefore, if the secretary is to the president's right, the president can easily read any notes taken by the secretary. Vice President is second in command and, therefore, should be placed next to the president. It may be necessary for him to assist the president on some matter confronting the chair or he might have to assume the chair's responsibility. Therefore, he should be close at hand. It is recommended the vice president be located at the left of the president. The sentinel should be in a position to lead the group to their respective positions and also be near the door or entrance. The sentinel, therefore, should be located at one of the extreme ends.

Most advisors would prefer to be seated at the extreme end and follow the group as they enter the stage, and also as they leave the stage. The reason for locating the advisor at the end, in most cases, is that the advisor will be dressed differently and would not add to the uniformity of the group.

The following seating is recommended for your consideration:

