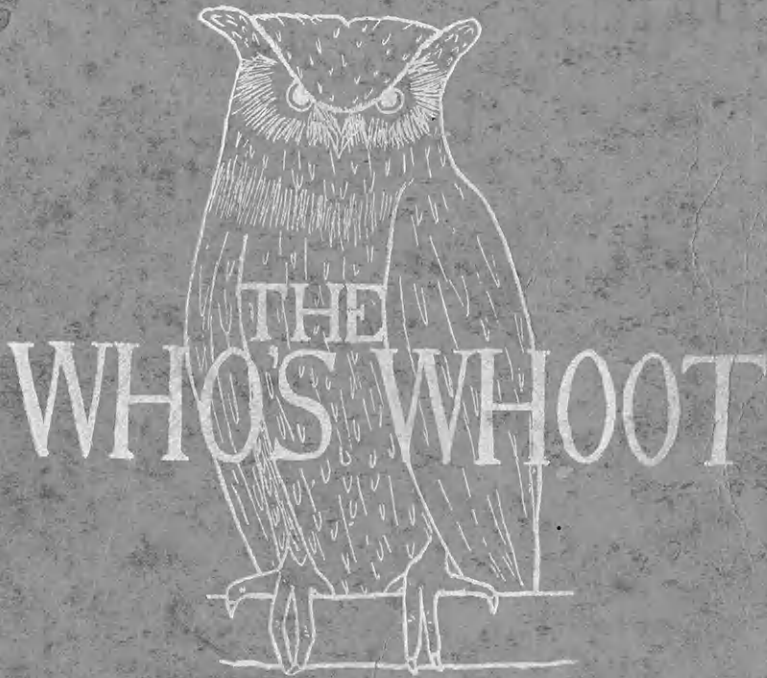


File Copy

S
534
.K2
C64
1929

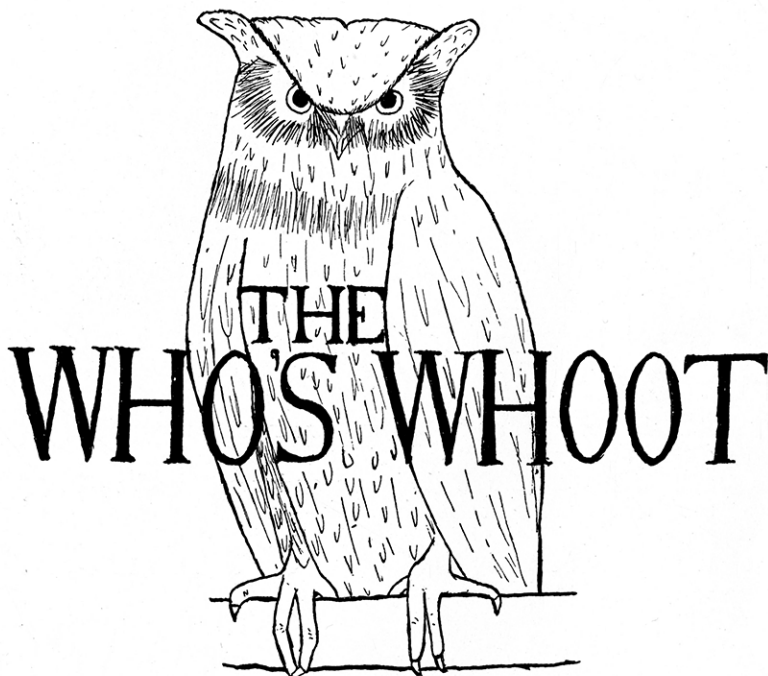
UNIV.
ARCHIVES



1929



Who's Whoot



1929

Published by

THE COLLEGIATE 4-H CLUB
KANSAS STATE AGRICULTURAL COLLEGE
MANHATTAN, KANSAS

for

THE WHO'S WHO 4-H CLUB
OF KANSAS





Dedication

Achievement and high ideals are two of the greatest factors influencing life. It is to one who has always encouraged high ideals and recognized real achievement in 4-H Club work—to H. Umberger, Dean and Director of the Division of Extension, of the Kansas State Agricultural College, that we earnestly dedicate this book.



univ
S
534
.K2
C64
1929



Blank page in original document

Honorary Members



F. D. FARRELL.....*President of the Kansas State Agricultural College*
 M. H. COE.....*State Club Leader*
 MARGARET M. JUSTIN.....*Dean of Home Economics, Kansas State Agricultural College*
 A. J. SCHOTH.....*Assistant State Club Leader*
 H. UMBURGER.....*Dean of the Division of Extension, Kansas State Agricultural College*
 EDNA BENDER.....*Assistant State Club Leader*
 AMY KELLEY.....*State Home Demonstration Leader*



Whos Who Officers



- Arnold Chase *President*
- Reola Kistler..... *Vice President*
- Alice Parsons *Secretary*
- Ebur Schultz *Treasurer*

Leadership and outstanding ability in club work are the standards of quality by which the Who's Who 4-H club members are chosen. In order to become a member of this group, a boy or girl must accomplish something of importance in club work, and this book presents those who by their efforts are members of the Who's Who 4-H club of Kansas.

It was from such a group that these officers were selected. To govern such a large body as this club is no small task, but our officers have served efficiently and faithfully during the past year. Their work in extending the purposes and details of the club has been truly appreciate by the members.



Kansas Collegiate 4-H Club

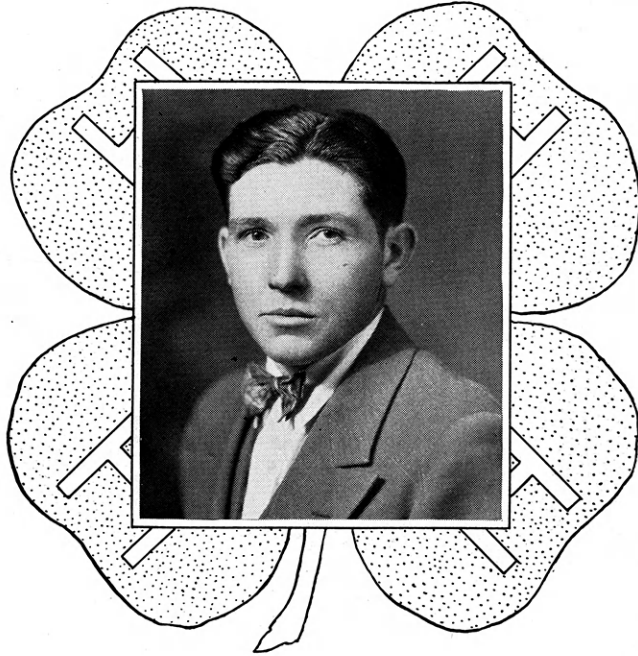


The Kansas Collegiate 4-H Club has just completed its second very successful year. With the enrollment of two hundred ten former 4-H Club members in the Kansas State Agricultural College, the club has been enabled to increase the scope of its work and influence over that of last year. It has furnished over one hundred radio programs during the year for the benefit and enjoyment of all Kansas 4-H Club members. It has assumed entire responsibility for publishing the Who's Whoot, and helped in preparing for the State Club Roundups at Manhattan.

In addition to these major activities, the club has begun to take its place in collegiate activities, such as dramatics, and social functions. It has a fifteen-piece orchestra which meets regularly twice each week for practice. All Collegiate Club members are prominent on the college campus, and are making a name for 4-H Club work among other college people. This club is filling an important place and promises to lead to something new and greater in 4-H Club work.



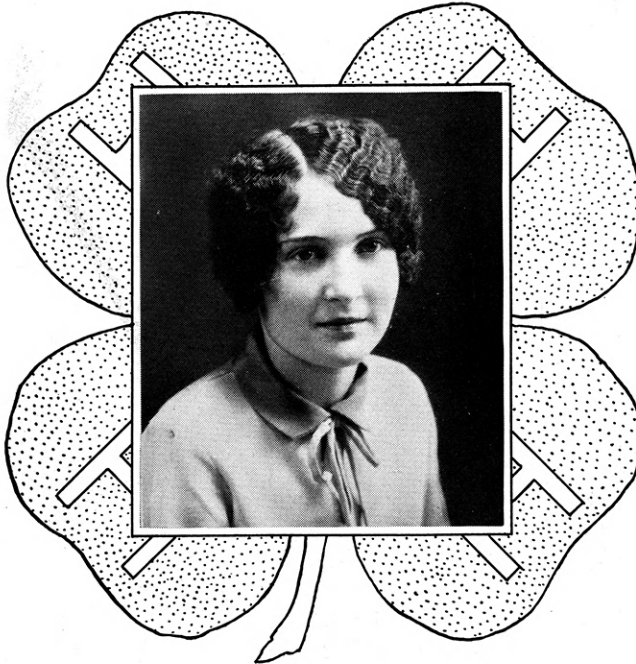
Leaders



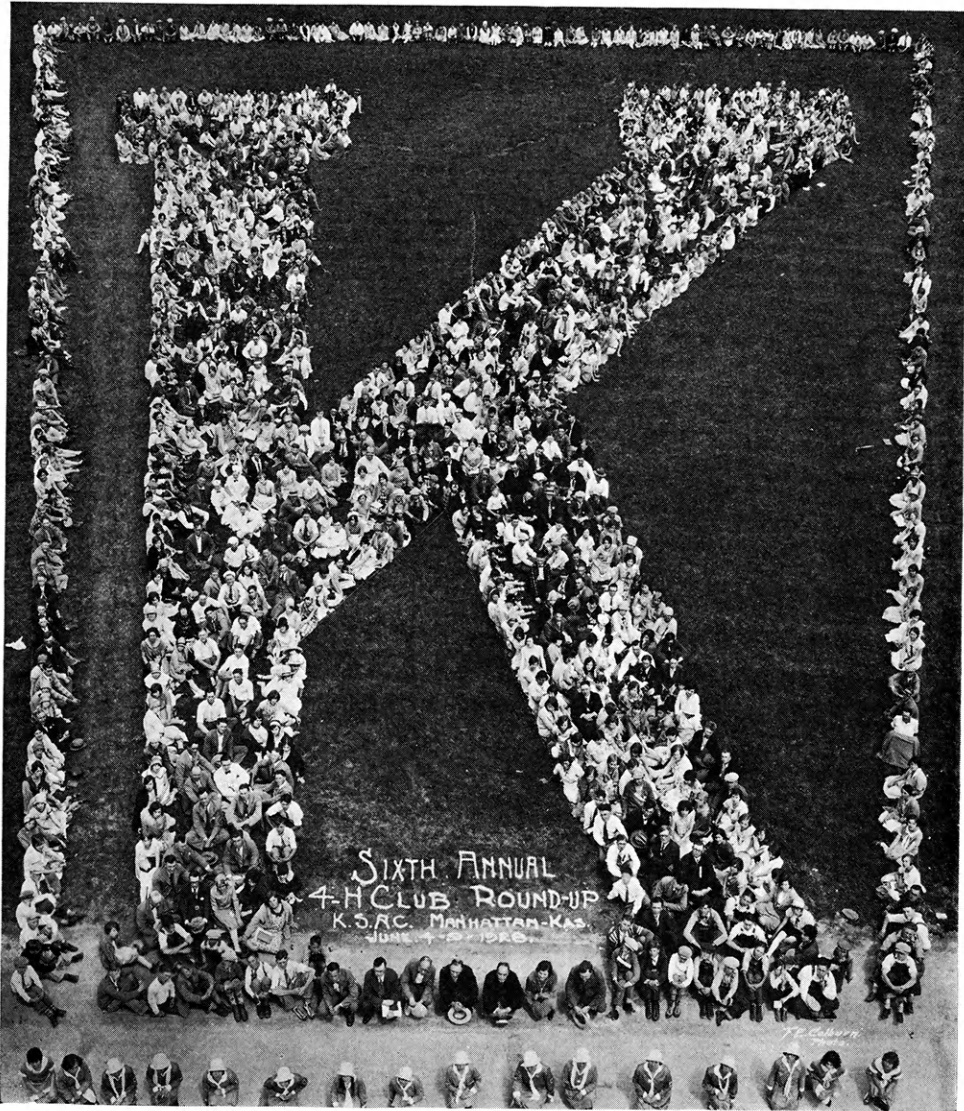
Lloyd Davies of Lyon County wins this recognition as the most outstanding 4-H Club member in Kansas in 1928. Lloyd has been a 4-H Club member continuously since 1923 and during that time has completed eighteen projects. He has been a member of several outstanding demonstration and judging teams, among them the state champion livestock judging team which competed at the International Livestock Show in 1923. He has assisted in the leadership of his club and since 1927 has been the community club leader. In 1928 his club had thirty-eight members and a 100 per cent completion. His club made 137 exhibits at the state fairs, besides being well represented at Interstate and National fairs and shows. Lloyd has been prominent in various farm bureau activities, and is at present a member of the executive board of the Lyon County farm bureau. He has also been very active and prominent in various church, social, and community activities. Lloyd has made a lasting contribution to 4-H Club work in Kansas and his work will be an inspiration to other club members for many years to come.



Of Merit



Lois Starbuck, of Sherman County, receives first place among the girls, as the most outstanding Club member in the state in 1928. She has been a 4-H Club member continuously for six years, beginning in 1923, and completed eight projects. She has won trips to Chicago, and Topeka, and has been a member of several state champion demonstration and judging teams. Since 1927 she has been leader of her club, and her assistance in county-wide activities has been particularly outstanding. She has been an officer in the state Who's Who 4-H Club, and won a leadership trip to Washington, D. C. as a result of her work in 1927. She has made a marked contribution to 4-H Club work in Kansas through exceptionally interesting and valuable talks, with which she has addressed several state-wide meetings. Hers has been a most outstanding contribution to the progress and effectiveness of club work.



The 1928 4-H Club Roundup

The most important 4-H Club activity of the year was the annual Round-up, held at the Kansas State Agricultural College, June 4 to 9, inclusive. Thirteen hundred of the most progressive club folks from 58 counties in Kansas attended. Meals were served at the college cafeteria, and all in attendance remained on the campus. The boys were housed in Nichols Gymnasium, and the girls in Van Zile Hall, and the girls' gymnasium.

The program consisted of regular morning classes, and general assembly each day, with sight seeing trips, lectures, field trips, club meetings, contests, and community recreation in the evenings; and programs, plays, and stunts at the auditorium at night. The entire group was divided into 16 smaller groups, with a group leader in charge of each, who was strictly accountable for the activities of his respective group. The Roundup was well and efficiently managed by those in charge, so that there were no unpleasant relations between the different factions concerned with the Roundup.

Special appreciation should be expressed for the outstanding contribution made by Miss Streeter, of the Victor Talking Machine Company; Mr. John Bradford, of the Playground and Recreation Association of America; Mr. James Hartley, of the Hohner Harmonica Company, and Mrs. Gladys Coon Sommer, of the National Dairy Counsel. Acknowledgment should be made of the personal and enthusiastic support given by President Farrell, Dean Umburger, and all members of the extension service, in connection with the Roundup.

More interest was shown in the various contests than ever before, and very satisfactory results were secured.

The winners of the various contests were as follows:

Health—

Wilma Cook, Pawnee County
Elvin Pine, Lyon County

Gertrude Hartzel, Shawnee County
George McColm, Lyon County

Attendance—

Sedgwick County

Demonstrations

Home Economics

Reno County

Agriculture

Douglas County

Stunt—

Sedgwick County

Judging

Baking—Ford County

Clothing—Allen County

Livestock—Cherokee County

Model Club Meeting—

Leavenworth County

Poultry—Jefferson County

Dairy—Lincoln County

Grain—Douglas County

Orchestra—Sedgwick County

Chorus—

Bourbon County

Music Memory—

County
Douglas County

Individuals

Tie

Agnes Kline, Douglas County

Style Show

Jeanette Gamble

WASHINGTON, D. C., DELEGATES, 1928

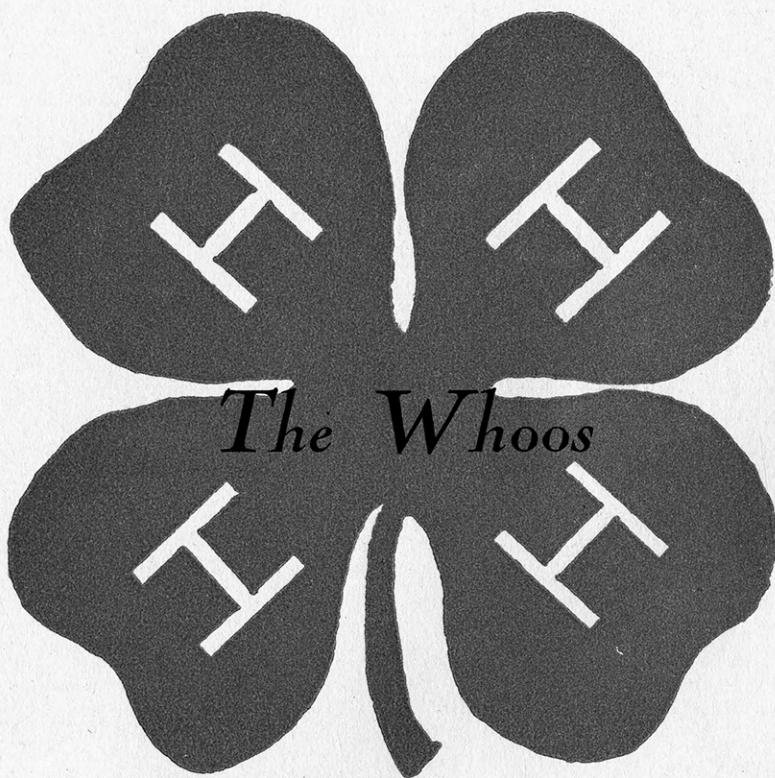


From June 21 to 26, 1928, about one hundred and fifty 4-H Club members representing thirty-nine states, were gathered at the National capitol, Washington, D. C., to attend the Second National 4-H Club Camp. The camp was erected on the mall of the United States Department of Agriculture, which is only a short distance from the magnificent Washington Monument, which towers five hundred and fifty feet in the air.

Much of the program was devoted to sight-seeing trips, while the evenings were spent around the campfire. Many interesting tours were made during the short stay in the capital city. These included Beltsville Experimental Farm, Bureau of Printing and Engraving, Mount Vernon, Capitol Building, Library of Congress, White House, Concoran Art Gallery, Smithsonian Institute, National Museum, Arlington Cemetery, Lincoln Memorial, and others.

A few of the most outstanding things seen on these trips were: The tomb of George Washington, the tomb of the Unknown Soldier, the well known "Spirit of St. Louis," the printing of currency and stamps, master pieces of famous painters, and many things of historical importance, while even many had the opportunity to sit in the President's chair for a short time.

After camp was over, the Kansas Delegation motored to the U. S. Naval Academy, Annapolis, Maryland, and also the Gettysburg Battlefield, Gettysburg, Pennsylvania. Both of these were wonderful trips. Those who win a trip to the National 4-H Club Camp will experience an opportunity of a life time.



The Whoos

Blank page in original document

MAURINE KNAUSE LYON
 Clothing, and Baking Clubs, 1924-'28; Judging Team, Topeka Fair, 1925-'26; American Royal, 1926-'27; State Club Roundup, 1927-'28.

LEWIS BACON LINCOLN
 Baby Beef Club, 1925-'28; American Royal, 1925; National Club Congress, 1926; State Club Roundup, 1926-'28; Hays Roundup, 1927.

EVELYN LEWIS RENO
 Meal Preparation Club, 1926-28; Hutchinson Fair, 1926-'27-'28; State Club Roundup, 1927-'28.

MENGA BLANKLEY MORRIS
 Poultry, Clothing, and Baking Clubs, 1924-'28; Topeka Fair, 1925; Hutchinson Fair, 1925; State Club Roundup, 1927-'28.

HARRY SCHLICHAU RENO
 Baby Beef, and Pig Clubs, 1923-'28; Livestock Judging, 1926-'27; State Club Roundup, 1927-'28; National Club Congress, 1926.

ELIZABETH CHAPMAN SEDGWICK
 Nutrition, and Pig Clubs; Hutchinson Fair, 1927; State Club Roundup, 1928.

ETHEL GRIMSLEY LYON
 Clothing, Canning and Baking Clubs, 1925-'28; Demonstration Team, 1927; American Royal, 1926; Topeka Fair, 1927; State Club Roundup, 1928.

WALDO WHEELER, JR. FRANKLIN
 Baby Beef, and Pig Clubs, 1927-'28; Livestock and Dairy Judging, 1927; American Royal, 1927; State Club Roundup, 1928.

CATHERINE TOMLINSON LYON
 Clothing, Canning, Baking and Room Improvement Clubs, 1925-'28; Demonstration Team, 1927; State Club Roundup, 1925.

ELLEN BLAIR FRANKLIN
 Room Improvement, Baking, Supper, and Clothing Clubs, 1926-'28; Clothing Judging Team 1926-'27; State Club Roundup, 1927-'28.





CARRIE MCCANINCH RILEY
Clothing, and Canning Clubs, 1926-
'28; State Club Roundup, 1926-'28.

NADINE BROWN LYON
Poultry, and Calf Clubs, 1924-'28;
American Royal, 1927; State Club
Roundup, 1928.

JOHN MARTIN CHEROKEE
Baby Beef Club, 1924-'28; State Fair,
1924-'26; American Royal, 1924-'26;
National Club Congress 1925; State Club
Roundup, 1924-'26-'28.

FLORENCE MELCHERT FRANKLIN
Dairy Beef, Room Improvement, and
Leadership Clubs, 1927-'28; Clothing
Judging, 1927; State Club Roundup,
1927-'28.

VERA MCBRITNEY SEDGWICK
Nutrition, Poultry, and Leadership
Clubs, 1925-'28; Hutchinson Fair,
1927; State Club Roundup 1928; Na-
tional Club Congress, 1927.

ROBERT PAIGE RILEY
Pig, and Poultry Clubs, 1924-'28;
American Royal, 1926; State Club
Roundup, 1928.

KATHERYN HUGHES LYON
Clothing Club, 1925-'28; Clothing
Judging, 1927, State Club Roundup,
1926-'27-'28.

BERNADETTE BUSER NEMAHA
Clothing, and Room Improvement
Clubs, 1926-'28; Topeka Fair, 1927;
Clothing Judging Team, 1927; Na-
tional Club Congress, 1927; State
Club Roundup, 1927-'28.

WILLIS THOMSON CHEROKEE
Calf, and Pig Clubs, 1926-'28;
Hutchinson Fair, 1926; Topeka Fair,
1926; American Royal, 1926; Judg-
ing Team, 1927; State Club Roundup,
1927-'28.

KATHERYN FORREST FINNEY
Poultry, and Clothing Clubs, 1922-
'28; Hutchinson Fair, 1925; State
Club Roundup, 1925-'28.

MARGUERITE COFFMAN CLAY
 Clothing, Meal Preparation, and Own
 Your Own Room Clubs, 1923-'28;
 State Club Roundup, 1925-'26-'27-
 '28.

THELMA MORELAND CLAY
 Calf, Clothing, and Own Your Own
 Room Clubs, 1922-'28; Demonstration
 Team 1927; State Club Round-
 up, 1928.

WILMA COOK PAWNEE
 Clothing, and Room Improvement
 Clubs 1925-'28; Hays Roundup
 1927; Hutchinson Fair 1927; State
 Club Roundup, 1926-'27-'28; State
 Health Champion 1928; National
 Club Congress, 1928.

BOYD WORTHINGTON HARPER
 Dairy, Baby Beef Clubs 1926-'28;
 Topeka State Fair 1926-'27; State
 Club Roundup 1926-'27-'28.

GLADYS MASON BOURBON
 Clothing, Baking, and Room Improve-
 ment Clubs, 1924-'28; State Cham-
 pion Home Ec. Team, 1926; Clothing
 Judging 1928; Topeka Fair, 1926;
 Hutchinson Fair, 1926, State Club
 Roundup, 1928.

ELMA BONHAM HARPER
 Baking and Supper Clubs 1926-'28;
 Foods Judging Team, 1927; State
 Club Roundup, 1927-'28.

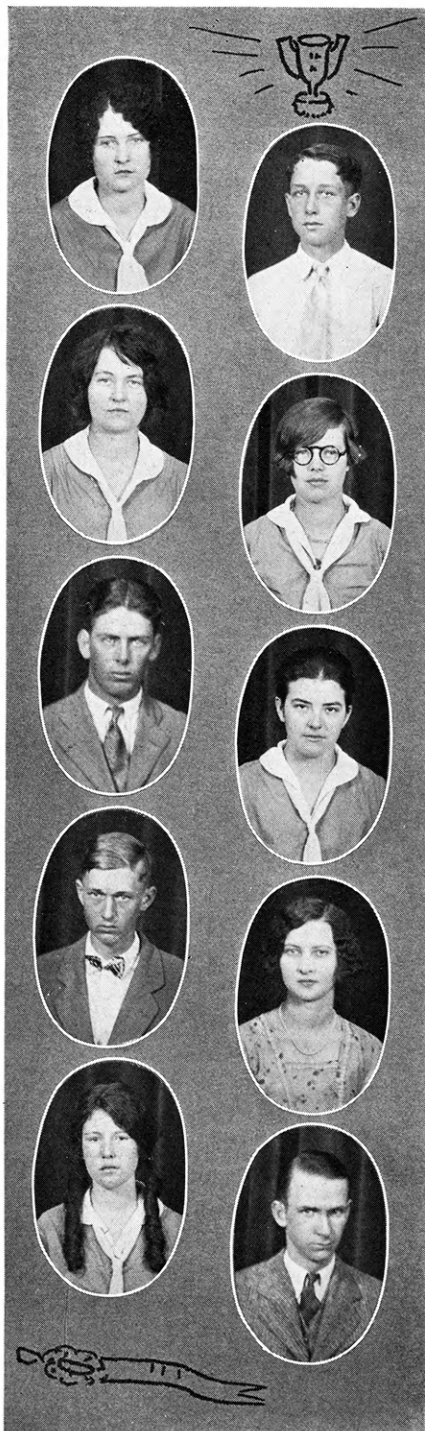
ARDEN BOOTH BROWN
 Dairy Club, 1925-'28; County Judg-
 ing Team, 1925; Hutchinson Fair,
 1925; State Club Roundup, 1927-'28.

HELEN JENNINGS CHEROKEE
 Clothing and Baking Clubs, 1922-'28;
 Clothing Demonstration, 1924; State
 Club Roundup, 1925-'27-'28.

EDITH HOERNER RILEY
 Canning, Garden, Poultry, and Cloth-
 ing Clubs, 1922-'28; National Club
 Congress, 1925; State Club Roundup,
 1927-'28.

ELMA SKELTON RENO
 Baking, and Supper Clubs, 1927-'28;
 Baking Demonstration Team, 1927;
 Hutchinson Fair, 1927.





LOIS STARBUCK SHERMAN
Baby Beef, Canning, Baking and Leadership clubs, 1923-'27; National Club Congress, 1926; State Club Roundup, 1924-'28; Washington, D. C., 1928.

LOWELL PRICE SHERMAN
Baby Beef, 1923-'27; Judging Team, 1926-'28; State Club Roundup.

ENOLA KOHLER SHERMAN
Calf, Canning, Baking, Garden, and Sewing, 1922-'28; Canning Club Team, '26, Baking Team, '27; Roundup, 1925-'27-'28; National Club Congress, 1926-'27.

ELINA NORDMAN SHERMAN
Canning Club, 1924-'28; State Champion Canning, 1925; State Club Roundup, 1926, '28.

EPH KEPLEY BOURBON
Corn and Baby Beef Clubs, 1925-'28; 1928 Crops Judging Team; State Club Roundup, 1928.

MARTHA ANDREW SHERMAN
Canning, Baking, Gardening and Sewing Clubs, 1925-'28; Canning, Baking and Salad Demonstration Teams; Roundup 1927-'28; Club Crops, 1927-'28.

LEONARD ALLGOOD BOURBON
Corn Club, 1927-'28; Crops Judging and Demonstration; State Club Roundup, 1928.

HELEN KNUDSEN LINCOLN
Clothing, and Own Your Own Room, 1923-'24-'25-'26; Roundup, 1926-'28.

LUCILLE PIPER SHERMAN
Canning, Poultry, 1924-'27; Demonstration Team at Kansas State Fair, 1925; Roundup, 1926-'27.

CLARENCE ATER BOURBON
Corn Club and Baby Beef, 1925-'28; Roundup, 1926-'28.



RUTH BARDSHAR SEDGWICK
 Clothing, Baking, and Canning Clubs,
 1923-'28; American Royal, 1926;
 State Fair, 1926-'27; State Club
 Roundup, 1923-'26-'28.

AGNES MCCANN RENO
 Clothing, Baking, and Supper Clubs,
 1925-'28; Clothing Judging Team,
 1927; American Royal, 1927; To-
 peka, and Hutchinson Fair, 1927;
 State Club Roundup, 1927-'28.

VIRGIL CLARK JEWELL
 Pig Club, 1926-'28; Judging Team,
 1927-'28; State Club Roundup,
 1927-'28; Collegiate 4-H Club.

FRANCES HUHN LEAVENWORTH
 Clothing, Baking, and Room Improve-
 ment Clubs, 1925-'28; Topeka Fair,
 1925; National Club Congress, 1927;
 State Club Roundup, 1927-'28.

RUBY HOWELL MARSHALL
 Baby Beef Club, 1922-'28; Hutchin-
 son Fair, 1923; State Club Roundup,
 1923-'27-'28.

HARRY TURNER HARPER
 Dairy Club, 1926-'28; Hutchinson
 Fair, 1926-'27; State Club Roundup,
 1926-'27-'28.

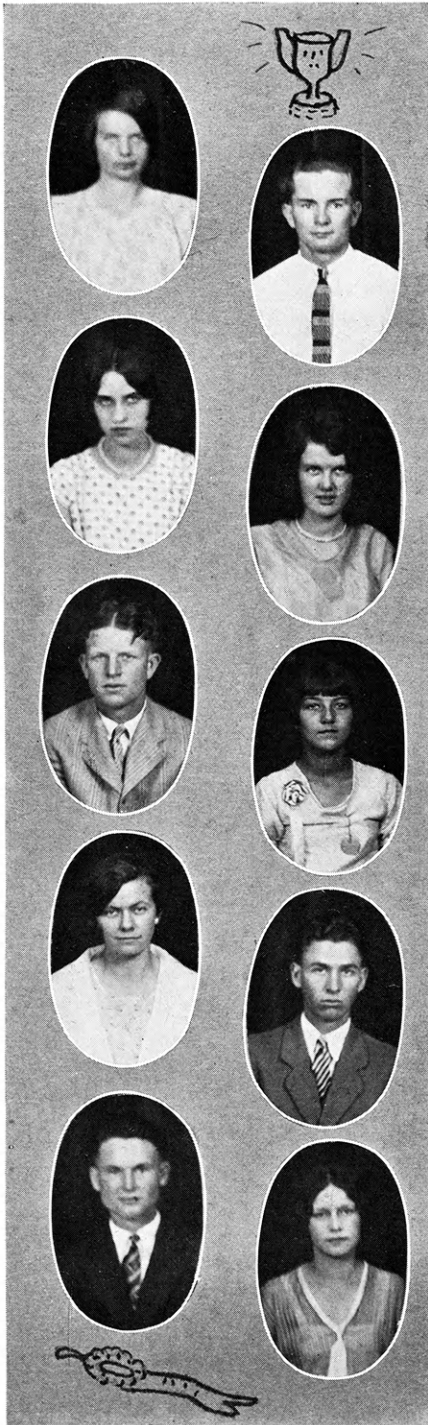
ALMA TAYLOR BOURBON
 Clothing, Baking, Canning, and Lead-
 ership Clubs, 1924-'28; State Club
 Roundup, 1928.

HELEN BAILEY RILEY
 Poultry, Clothing, and Pig Clubs,
 1926-'28; State Club Roundup,
 1927-'28.

ARTHUR THOMSON CHEROKEE
 Pig Club, 1926-'28; Stock Judging
 Team, 1926-'27; Topeka Fair, Hutch-
 inson Fair, and American Royal, 1926;
 State Club Roundup, 1927-'28.

WILMA MARSH NEOSHO
 Clothing, Baking, and Room Improve-
 ment Clubs, 1924-'28; Topeka Fair,
 1927; Clothing Judging; State Club
 Roundup, 1926-'28.





MYRTLE BRASCH CHEROKEE
Clothing Club, 1926-'28; Topeka Fair, 1926; State Club Roundup, 1927-'28.

HAROLD KIRKPATRICK JEWELL
Pig and Capper Clubs, 1926-'28; State Club Roundup, 1928; Collegiate 4-H Club.

JEANETTE GAMBLE MONTGOMERY
Dairy, Clothing and Leadership Clubs, 1924-'28; Clothing Judging, 1928; State Club Roundup, 1928.

ALMA WEIGEL LEAVENWORTH
Clothing, Canning, and Leadership Clubs, 1924-'28; Demonstration Team, 1925-'26; State Club Roundup, 1926-'27-'28; Topeka Fair, '26.

FORREST BOOTH BROWN
Dairy Club, 1925; Dairy Demonstration Team; Hutchinson Fair, 1925; State Club Roundup, 1926-'27-'28.

HESTER DETTER RENO
Baking, and Supper Clubs, 1927-'28; Baking Demonstration, 1925; State Club Roundup, 1928.

EDITH PAINTER MEADE
Clothing, Baking, Supper, and Leadership Clubs, 1922-'27; State Club Roundup, 1924-'26-'27-'28; Champion Home Ec. 1925; Baking Judging Team, 1925; National Club Congress, 1925; Collegiate 4-H Club.

FRANCES CASTELLO CHEROKEE
Pig, and Sheep Clubs, 1926-'28; Live-stock Judging Team, 1926-'27; Topeka Fair and Hutchinson Fair, 1927; American Royal, 1926-'27; National Club Congress, 1927; State Club Roundup, 1927-'28.

HERBERT CLUTTER PAWNEE
Pig Club, 1927-'28; Stock Judging, 1928; Hays Roundup, 1928; State Club Roundup, 1927-'28.

MAXINE HARDING CLAY
Own your own room Club, and Leadership Club, 1927-'28; Exhibit at Chicago, 1927; State Club Roundup, 1927-'28.



AGNES PEARSON CHEROKEE
 Clothing, and Meal Preparation Clubs,
 1925-'28; Foods Judging Team;
 American Royal, 1927; State Club
 Roundup, 1926-'27-'28.

LEE BLANKENSHIP HARPER
 Baby Beef Club, 1926-'28; State
 Fair, 1926-'27; Wichita Stock Show,
 1926-'27; State Club Roundup,
 1927-'28.

HELEN HOSIER CHEROKEE
 Clothing, and Meal Preparation Clubs,
 1925-'28; Clothing Judging Team;
 State Club Roundup, 1926-'27-'28.

GEORGE MCCOLM LYON
 Sheep, Corn, Pig, Poultry, and Can-
 ning Clubs, 1923-'28; Grain Judg-
 ing Team, 1927; American Royal,
 1925; State Club Roundup, 1924-
 '27-'28.

BELLE HEDGES CHEROKEE
 Clothing, Meal Preparation, and Dairy
 Clubs, 1925-'28; Clothing Judging
 Team; Dairy Judging Team; State
 Club Roundup, 1926-'27-'28; State
 Fair, and Memphis, 1927.

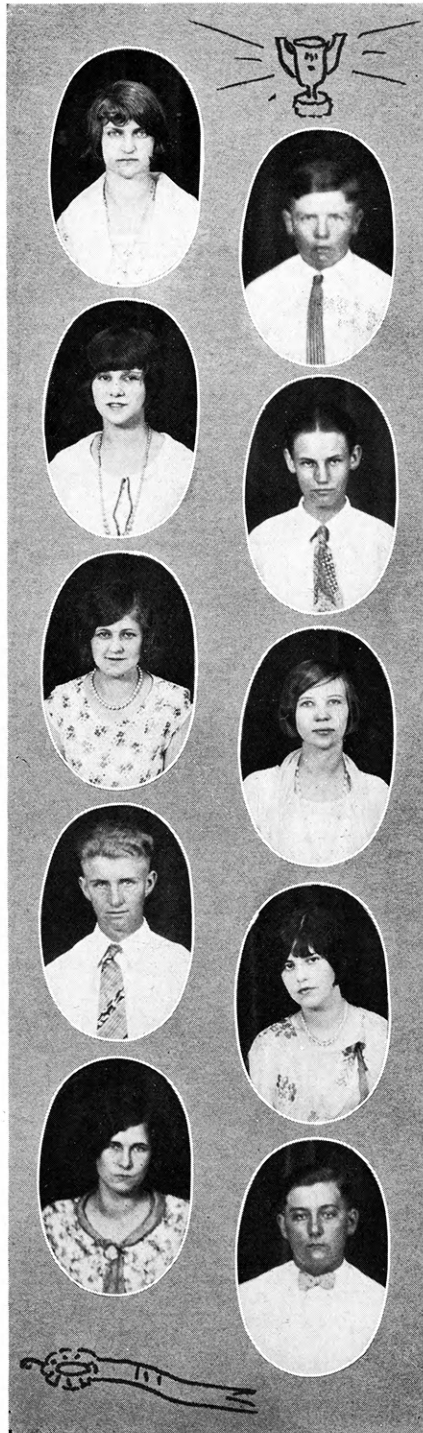
HELEN GRAVES FRANKLIN
 Clothing, and Poultry Clubs, 1925-
 '28; Clothing Demonstration Team,
 1925-'26; Topeka Fair; State Club
 Roundup, 1927-'28.

WAYNE STEWART LYON
 Pig, Poultry, and Corn Club, 1923-
 '28; Grain Judging Team, 1926;
 State Club Roundup, 1925-'27-'28.

EFFIE MARIE CARTER CHEROKEE
 Clothing Club, 1925-'28; Topeka
 Fair, 1926; State Club Roundup,
 1926-'28.

LOUISE LUMB CLAY
 Clothing, Calf, Poultry, and Health
 Clubs, 1921-'28; National Club Con-
 gress, 1926; State Club Roundup,
 1925-'27-'28; Washington, D. C.,
 1927.

MARLIN FISHER SEDGWICK
 Sheep, Baby Beef, Crops, and Leader-
 ship Clubs, 1924-'28; American
 Royal, 1926-'27; National Club Con-
 gress, 1926; State Club Roundup,
 1926-'28.





CLARA LEE RAYL RENO
 Baking Club, 1926-'28; Topeka Fair,
 1926; Hutchinson Fair, 1926; State
 Club Roundup, 1927-'28.

JOHN DUNN LYON
 Baby Beef Club, 1927-'28; State Club
 Roundup, 1928; Topeka Fair, 1927.

ROSA TOWNER JOHNSON
 Baking Club, 1927-'28; Baking
 Team, 1927; State Club Roundup,
 1928; Baking Demonstration Team,
 1926-'27-'28.

MILDRED BACON JOHNSON
 Baking Clubs, 1927-'28; Judging
 Team, 1928; National Club Congress,
 1927; State Club Roundup, 1928.

LOIS LUMB CLAY
 Clothing, Poultry, and Calf Clubs,
 1925-'28; State Club Roundup,
 1927-'28.

FRED GOEDEKE HARVEY
 Dairy, and Calf Clubs, 1925-'28;
 American Royal, 1925-'26-'27; State
 Club Roundup, 1928.

MARJORIE RAYL RENO
 Baking Club, 1926-'28; Baking and
 Meat Judging Team, 1926; Topeka
 Fair, and Hutchinson Fair, 1927;
 State Club Roundup, 1928.

GRACE WILLIAMS FRANKLIN
 Clothing, Room Improvement, Baking,
 and Gardening Clubs, 1924-'28;
 Clothing Judging, 1925-'26-'27;
 State Club Roundup, 1928.

ROBERT RICKLOFS DONIPHAN
 Pig Club, 1926-'28; Topeka Fair,
 1927; State Club Roundup, 1928.

LUCILLE NEWELL CLAY
 Health, Room Improvement, and
 Leadership Clubs, 1924-'28; Foods
 Demonstration Team, 1928; State
 Club Roundup, 1927-'28.



HELENA WOLLESEN LINCOLN
Clothing, and Room Improvement
Clubs, 1923-'28; Demonstration
Team, 1924; State Club Roundup,
1928.

CECIL JOHNSON LEAVENWORTH
Corn Club, 1926-'28; U. P. Scholar-
ship, 1927; State Club Roundup, '28.

GROSS PAGE RILEY
Pig, Poultry, and Leadership Clubs,
1924-'28; American Royal, 1926;
State Club Roundup, 1928.

WINIFRED HOCH LYON
Poultry, Clothing, and Meal Prepara-
tion Clubs, 1922-'28; American
Royal, 1925; State Club Roundup,
1927-'28.

DOROTHY SHIRKEY LYON
Clothing, Poultry, Baby Beef, and
Baking Clubs, 1924-'28; State Club
Roundup, 1927-'28.

LOREN ELLIOTT SEDGWICK
Corn, and Pig Clubs, 1925-'28; State
Club Roundup, 1926-'27-'28; County
Health Champion, 1928.

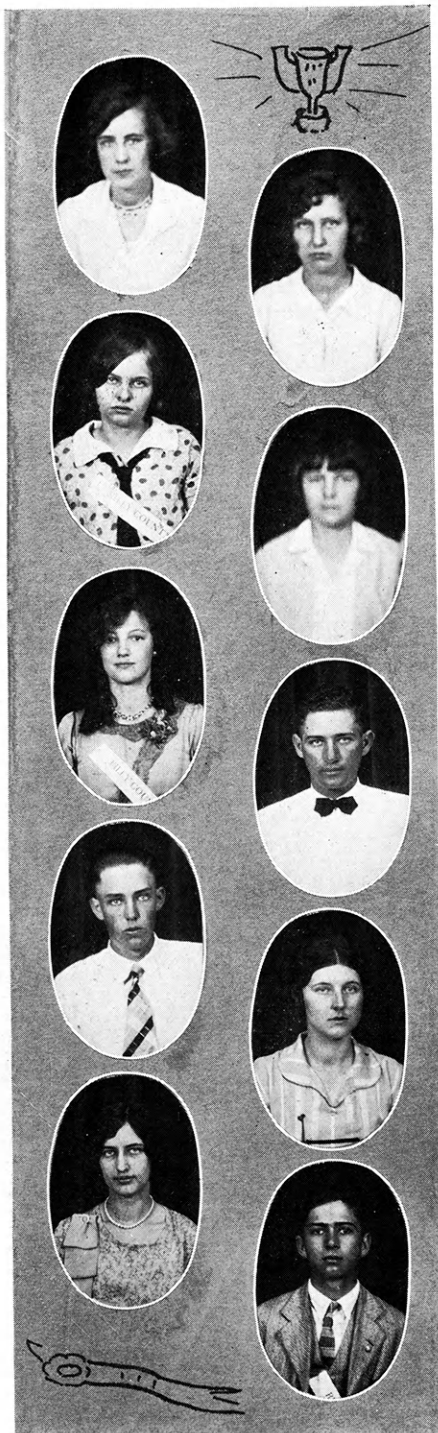
RUTH HICKLIN SEDGWICK
Canning, Clothing, Meal Preparation,
and Supper Clubs, 1925-'28; Demon-
stration Team, 1926-'27; Topeka
Fair, 1926-'27; State Club Roundup,
1926-'27-'28.

CLYDE BAKER BUTLER
Pig, and Dairy Clubs, 1925-'28;
Dairy Judging Team, 1928; State
Club Roundup, 1925-'28.

CHARLES NOBLE BUTLER
Pig, Dairy, and Calf Clubs, 1926-'28;
Judging Team; State Club Roundup,
1926-'28.

LETA FOSTER KINGMAN
Clothing, and Baking Clubs, 1925-
'28; Clothing Judging Team, 1928;
State Club Roundup, 1926-'28.





FRANCES JOHNSON BOURBON
Clothing, Canning, Baking, and Leadership Clubs, 1925-'28; State Club Roundup, 1927-'28.

HESTER DETTER RENO
Baking, and Supper Clubs, 1927-'28; Topeka Fair, 1927; Wichita Stock Show, 1927; State Club Roundup, 1928.

KATHERYN SAMUEL RILEY
Clothing, Poultry, Pig, Room Improvement, and Leadership Clubs, 1925-'28; Topeka Fair, 1927; State Club Roundup, 1928; National Club Congress.

EVELYN HARLEY CHEROKEE
Clothing, Baking, and Dairy Clubs, 1925-'28; Baking Judging Team at Sioux City, 1926; State Club Roundup, 1926-'28.

AMELIA KIENZT RILEY
Canning, Baking, Potato, Clothing, Garden, and Leadership Clubs, 1922-'28; Hutchinson Fair, 1926; State Club Roundup, 1928.

PIUS HOSTETTER HARPER
Dairy, and Pig Club, 1927-'28; Hutchinson Fair, 1927; Dairy and Livestock Judging Team, 1927; State Club Roundup, 1927-'28.

MERLE CRISPIN JEWELL
Pig, and Baby Beef Clubs, 1926-'28; Livestock Judging Team, 1927-'28; State Club Roundup, 1928; National Club Congress, 1926.

ESTHER BRITTAIN DONIPHAN
Clothing Club, 1926-'28; Hutchinson Fair, 1927; State Club Roundup, 1928.

MARY ALLMAN RILEY
Clothing, and Pig Clubs, 1925-'28; State Club Roundup, 1926-'28.

DALE EDELBLUTE RILEY
Corn, and Dairy Clubs, 1925-'28; Dairy Judging Team, 1927; American Royal, 1926-'27; State Club Roundup, 1927-'28.

MAUDE MAYFIELD ALLEN
 Baking Club, 1925-'27-'28; State
 Club Roundup, 1927-'28.

MILTON KOHRS DICKINSON
 Pig Club, 1925-'28; American Royal,
 1927-'28; State Club Roundup,
 1927-'28.

LEONARD REES DICKINSON
 Crops, and Poultry Clubs, 1925-'28;
 American Royal, 1926; Washington,
 D. C., 1927; State Club Roundup,
 1927-'28; National Club Congress,
 1927.

VIOLET HARMAN ALLEN
 Baking Club, 1927-'28; State Club
 Roundup, 1927-'28.

FREDA MONFORT ALLEN
 Baking, Clothing, and Canning Clubs,
 1927-'28; Baking Demonstration,
 1927; State Club Roundup, 1928;
 Topeka Fair, 1927.

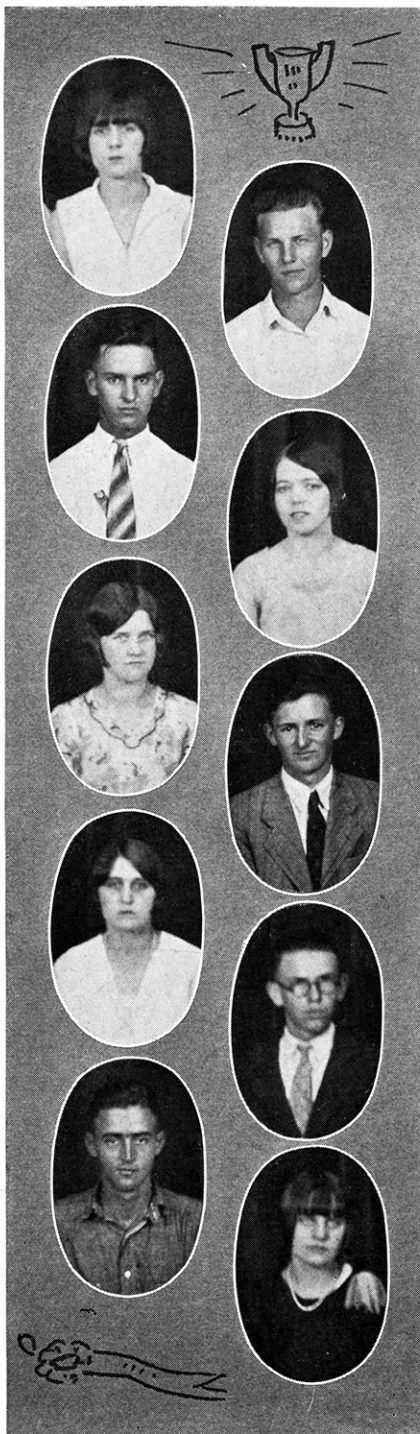
HARRY GREATHOUSE ALLEN
 Pig, Dairy, and Beef Clubs, 1926-'28;
 Stock Judging, 1927; State Club
 Roundup, 1927-'28.

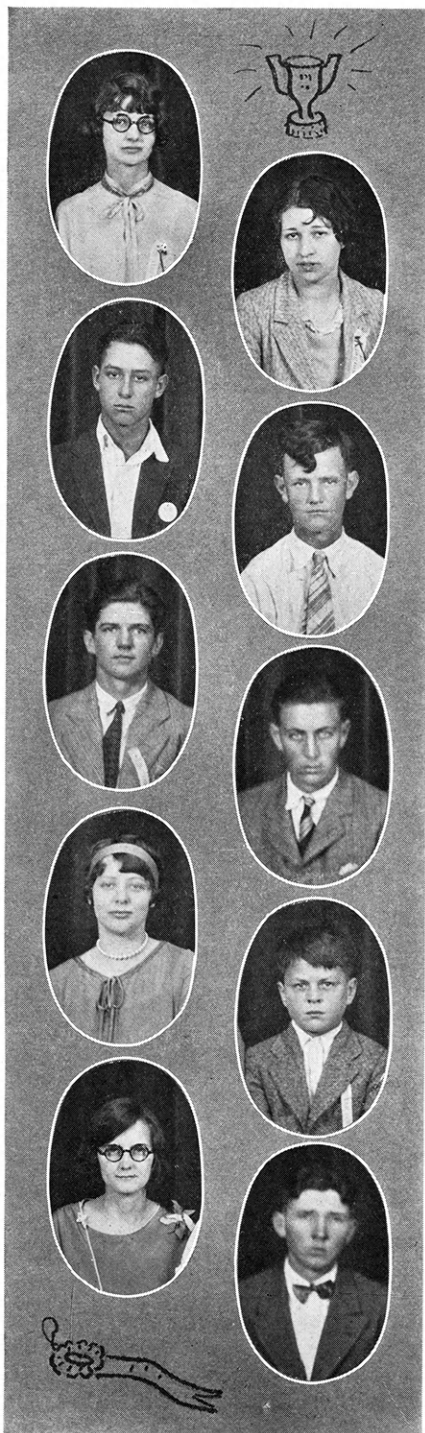
DOROTHY MAYFIELD ALLEN
 Clothing, Baking, and Livestock Clubs,
 1925-'28; State Club Roundup, 1925-
 '27-'28.

EDWIN MCCOLM LYON
 Corn, Kaffir, Pig, and Sheep Clubs,
 1922-'28; American Royal, 1923-'24-
 '25-'26-'27; Hutchinson Fair, and
 Topeka Fair, 1924-'25-'26-'27; State
 Club Roundup, 1927-'28.

EDWARD ANTHONY KINGMAN
 Pig Club, 1922-'28; Stock Judging
 Team, 1922; State Club Roundup,
 1925-'28.

KATHERYN WEITZEL ALLEN
 Clothing, Dairy, Garden, and Leader-
 ship Clubs, 1927-'28; State Club
 Roundup, 1927-'28.





BULAH CLARK BUTLER
 Clothing, Baking, and Canning Clubs,
 1926-'28; Clothing Judging Team,
 1928; State Club Round-up, 1927-
 '28.

HELEN GURTNER KINGMAN
 Baking, and Leadership Clubs, 1927-
 '28; Baking Demonstration Team;
 Hutchinson Fair, 1927; State Club
 Roundup, 1928.

HARRY GRIFFITH NORTON
 Pig, Baby Beef, and Calf Clubs, 1925-
 '28; State Club Roundup, 1928; Na-
 tional Club Congress, 1927.

TERIL LEEDON BUTLER
 Pig, and Beef Clubs, 1925-'28; State
 Club Roundup, 1927-'28.

WALTER FRENCH BUTLER
 Pig Club, 1927-'28; Judging Team,
 1927-'28; Wichita Stock Show, '27;
 State Club Roundup, 1928.

WILLIAM CHAPMAN SEDGWICK
 Pig Club, 1923-'28; County Health
 Champion, 1926; State Club Round-
 up, 1926-'28.

MARGARET BAKER BUTLER
 Pig, Canning, and Heifer Clubs,
 1926-'28; County Health Champion,
 1926-'28; State Club Roundup,
 1925-'26-'28.

CARROL MYLER BUTLER
 Poultry Club, 1926-'28; State Club
 Roundup, 1928.

MARY HELLMER LYON
 Poultry, Baking, Canning, and Gar-
 den Clubs, 1925-'28; State Club
 Roundup, 1927-'28.

LLOYD DAVIES LYON
 Corn, Pig, Baby, Beef, and Poultry
 Clubs, 1923-'28; National Club Con-
 gress, 1926; Topeka Fair, 1923;
 American Royal, 1923; Leadership
 Trip to Washington, D. C., 1928.



RAY CROGAN LYON
Corn Club, 1925-'28; American
Royal, 1926; State Club Roundup,
1928.

MARY CATES KINGMAN
Clothing, 1925-'26; Clothing Dem-
onstration, '26; State Club Roundup,
1926-'27-'28.

ALICE RIDGE KINGMAN
Poultry, and Clothing Clubs, 1924-
'25; Judging Team, 1924; Roundup,
1924-'28.

ESTELLA ENGLE DICKINSON
Clothing, Baking, and Canning Clubs,
1925-'28; Baking Team, 1927; State
Club Roundup, 1927-'28.

HOWARD STARK DICKINSON
Corn, and Dairy Clubs, 1927-'28;
Demonstration Team, 1927, and
Judging Team, 1928; State Club
Roundup, 1927-'28.

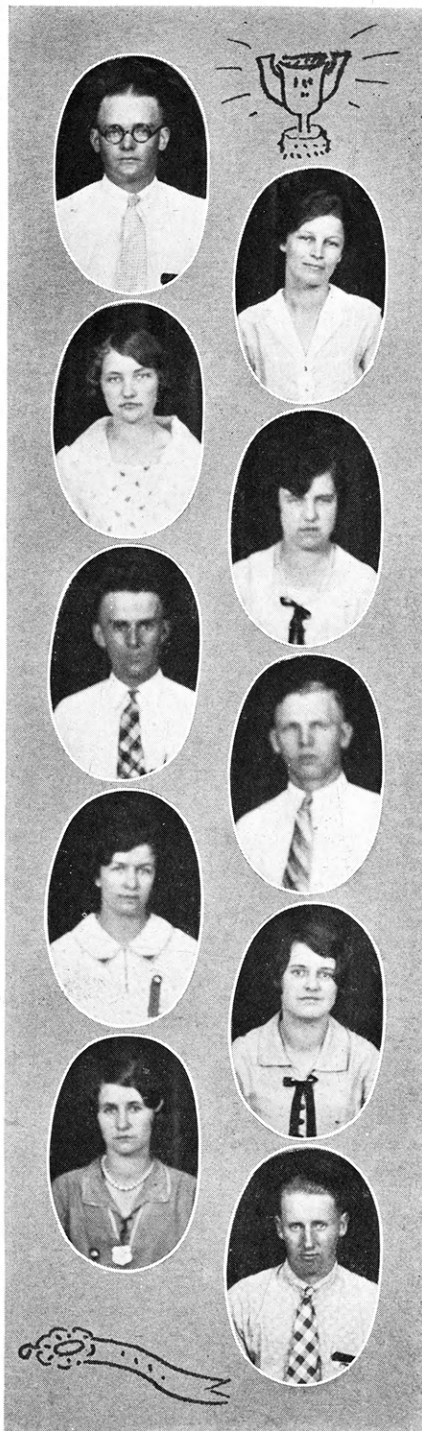
BEN KOHRS DICKINSON
Pig, Capper Pig, Corn, Dairy Clubs,
1924-'28; Dairy Judging Team,
1927; Livestock Judging, 1926; Na-
tional Club Congress, 1926; Roundup,
1926-'28.

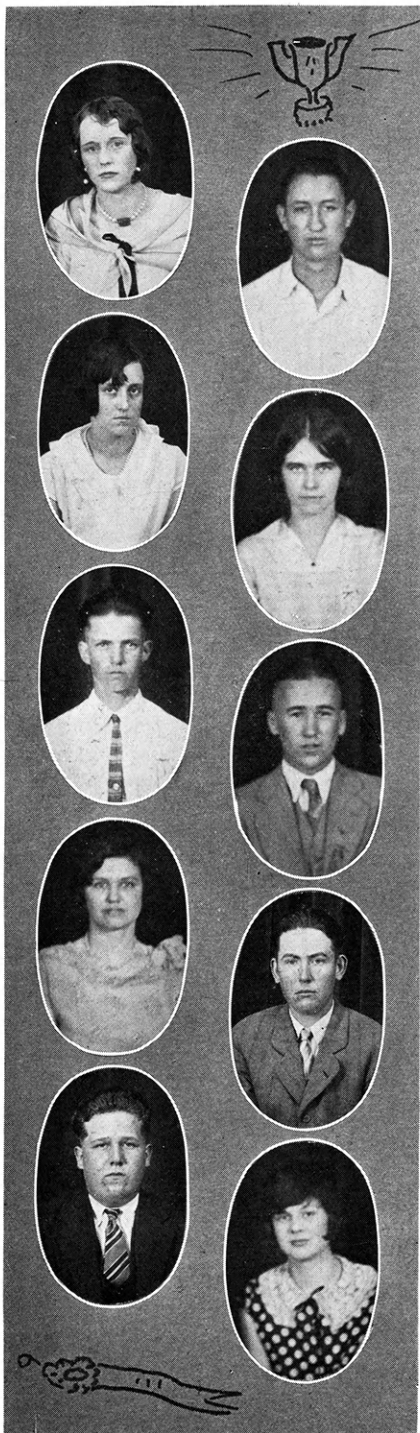
BEATRICE CRALEY DICKINSON
Baking, Clothing and Room Improve-
ment Clubs, 1926-'28; Demonstra-
tion Team, 1928; State Club Round-
up, 1927-'28.

ALICE ADAMS LEAVENWORTH
Meal Preparation, and Corn Club,
1923-'26; Demonstration, '23; State
Club Roundup, 1928; Collegiate 4-H
Club.

MARY CRALEY DICKINSON
Clothing, Baking and Room Improve-
ment, 1925-'28; Baking Team, 1927;
State Club Roundup, 1927-'28.

ARTHUR WEBB LYON
Corn Club, 1926-'28; State Club
Roundup, 1928.





BERTHA CLARK SEDGWICK
Nutrition, Clothing, and Canning Clubs, '25-'28; Demonstration Team, 1927; Hutchinson Fair, 1927; State Club Roundup, 1928.

CARL CRAIG SEDGWICK
Dairy, Pig, Potato, and Leadership Clubs, 1925-'28; National Club Congress, 1927; State Club Roundup, 1927-'28.

EDNA KIRKPATRICK SEDGWICK
Clothing, and Nutrition Clubs, 1923-'28; State Club Roundup, 1928; Demonstration Team, 1926; National Club Congress, 1926.

REOLA KISTLER KINGMAN
Poultry, Baking, and Clothing Clubs, 1925-'26; State Club Roundup, 1925-'26-'28; Collegiate 4-H Club.

KENNETH KORN DICKINSON
Pig Club, 1925-'28; State Club Roundup, 1928.

ARNOLD CHASE DICKINSON
Baby Beef, Sorghum, and Corn Clubs, 1925-'27; Judging Team, 1925; Demonstration Team, 1925; American Royal, 1926; U. P. Scholarship; State Club Roundup, 1926; Collegiate 4-H Club.

PAULINE SETTERGREN BUTLER
Sewing, and Baking Clubs, 1926-'28; State Club Roundup, 1927-'28.

JOHN HAMMON JEFFERSON
Baby Beef, 1926-'28; State Club Roundup, 1927-'28; American Royal, 1927; National Club Congress, 1927.

JOHN MILLER JEFFERSON
Baby Beef, and Poultry, Clubs, 1926-'27; State Club Roundup, 1928; American Royal, 1927.

WINIFRED O'DANIEL POTTAWATOMIE
Poultry, and Clothing Clubs, 1926-'28; State Club Roundup, 1926-'27-'28.



FRANCES BARNETT JEFFERSON
 Clothing, and Dairy Clubs, 1927-'28;
 American Royal, 1927; State Club
 Roundup, 1928.

DON MCNEAL JEFFERSON
 Poultry, and Pig Clubs, 1925-'28;
 Topeka Fair, '26; State Club Round-
 up, 1927-'28.

ALICE PARSONS SHERMAN
 Canning, and Baking Clubs, 1924-
 '28; State Club Roundup, 1926-'27-
 '28.

FRANK ZITNIK CHEROKEE
 Livestock, and Leadership Clubs, 1923-
 '28; Member Livestock Judging Team,
 1925; National Club Congress, 1925;
 Second High Individual, 1925; Lead-
 ership Trip to Washington, D. C.,
 1927; State Club Roundup, 1926-
 '27-'28; Collegiate 4-H Club.

WILBUR WAHL POTTAWATOMIE
 Pig, and Grain Clubs, 1927-'28;
 Dairy Judging Team, at Roundup,
 1927; Livestock Judging, 1928;
 State Club Roundup, 1927-'28.

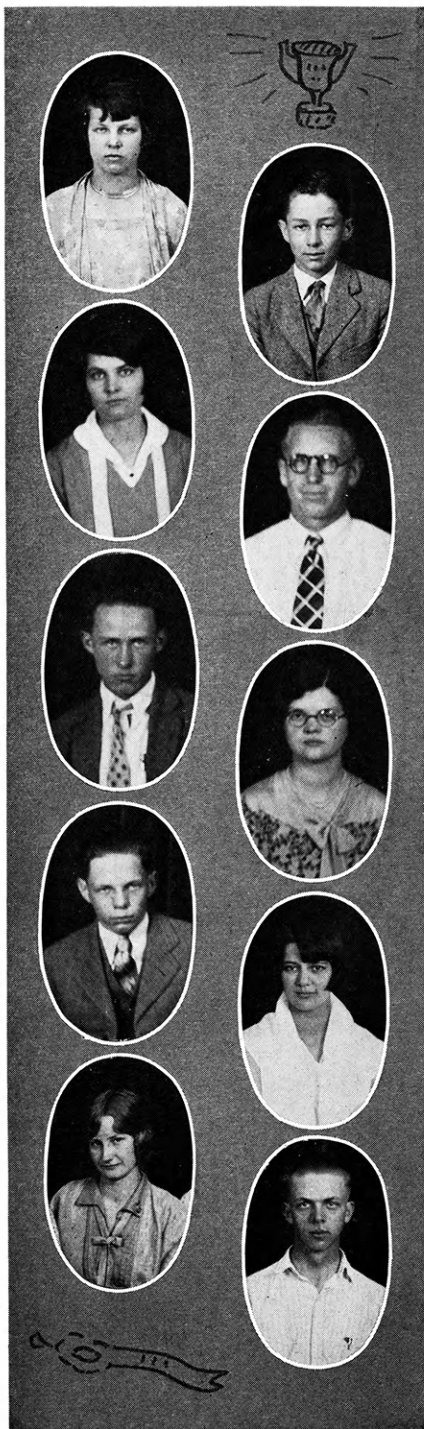
ORPHA GREER BUTLER
 Clothing, 1924-'28; State Club
 Roundup, 1927-'28.

DEAN MCNEAL JEFFERSON
 Poultry, and Pig Clubs, 1925-'28;
 Topeka Fair, '26; State Club Round-
 up, 1927-'28.

NOLA MCCORMICK SEDGWICK
 Poultry, Meal Preparation, Clothing,
 Canning, Sheep, and Leadership Clubs,
 1922-'28; State Club Round-up,
 1926-'27; Washington, D. C., 1928.

HAZEL HEDSTROM MORRIS
 Poultry, Clothing, and Beef Clubs,
 1921-'28; State Club Roundup, 1927-
 '25; National Club Congress, 1926.

ALBERT PEASE BOURBON
 Dairy Club, 1925-'28; State Dairy
 Team at Indianapolis, 1925; State
 Club Roundup, 1926-'27-'28.





MILLIE DAVIS KINGMAN
Poultry, Sewing, and Sorghum Clubs,
1925-'28; State Club Roundup, 1925-
'26-'27-'28.

RHINALDO MEREDITH BUTLER
Pig, and Calf Clubs, 1925; Hutchin-
son Fair, 1926; State Club Roundup,
1928.

HERBERT AVERY CLAY
Beef, Poultry, and Pig Clubs, 1926-
'28; State Club Roundup, 1928.

EDNA ALLEN FORD
Baking Club, 1926-'28; State Club
Roundup, 1928.

DOROTHY KILLIAN BOURBON
Clothing, and Baking Clubs, 1925-
'28; State Club Roundup, 1927-'28.

ALICE WEBB FINNEY
Baking, and Clothing Clubs, 1926-'28;
State Club Roundups, 1928.

RUBY MCCOLLUM CHEROKEE
Clothing, and Baking Clubs, 1926-
'28; State Club Roundup, 1927-'28.

GLADYS VANDERSTELDT CLAY
Clothing, and Poultry Clubs, 1922-
'26; State Club Roundup, 1924-'28.

KERMIT DAVIES LYON
Poultry, Corn, and Kaffir Clubs,
1923-'28; American Royal, 1925-
'26; Topeka Fair, 1926; State Club
Roundup, 1926-'27-'28.

VERA HICKOK LYON
Clothing, and Poultry Clubs, 1922-
'27; State Club Roundup, 1926-'27-
'28.



FRED HEDSTROM MARION
Corn, Pig, and Calf Clubs, 1918-'23;
State Club Roundup, 1927; Topeka
Fair, 1923; Champion Ton Litter,
1924.

MARIE ANTRIM KINGMAN
Poultry, Clothing, and Own Your
Own Room Clubs, 1924-'28; Na-
tional Health Champion, 1927; Poul-
try Demonstration, 1926; National
Club Congress, 1927-'28; State Club
Roundup, 1927.

MADLINE WEST CHEROKEE
Clothing, and Meal Preparation Clubs,
1925-'28; Clothing Judging, 1927;
State Club Roundup, 1926-'27-'28.

KENNETH JOHNSTON BOURBON
Corn, Kaffir, and Alfalfa Clubs, 1924-
'27; Judging Team, 1925; Topeka
Fair, 1925; American Royal, 1925;
State Club Roundup, 1927-'28.

MILDRED HIGGENBOTHAM ALLEN
Baking, and Clothing Clubs, 1925-
'28; State Club Roundup, 1926-'27;
Hutchinson Fair, 1926.

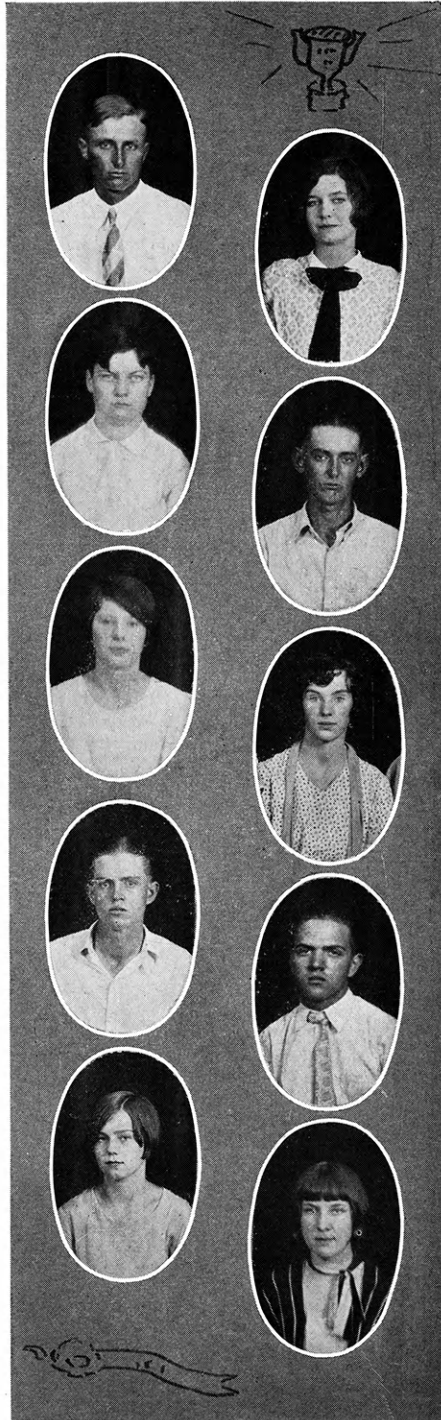
ELIZABETH CONGDON SEDGWICK
Nutrition, and Supper Clubs, 1926-
'27; Kansas State Fair, 1926; State
Club Roundup, 1927-'28.

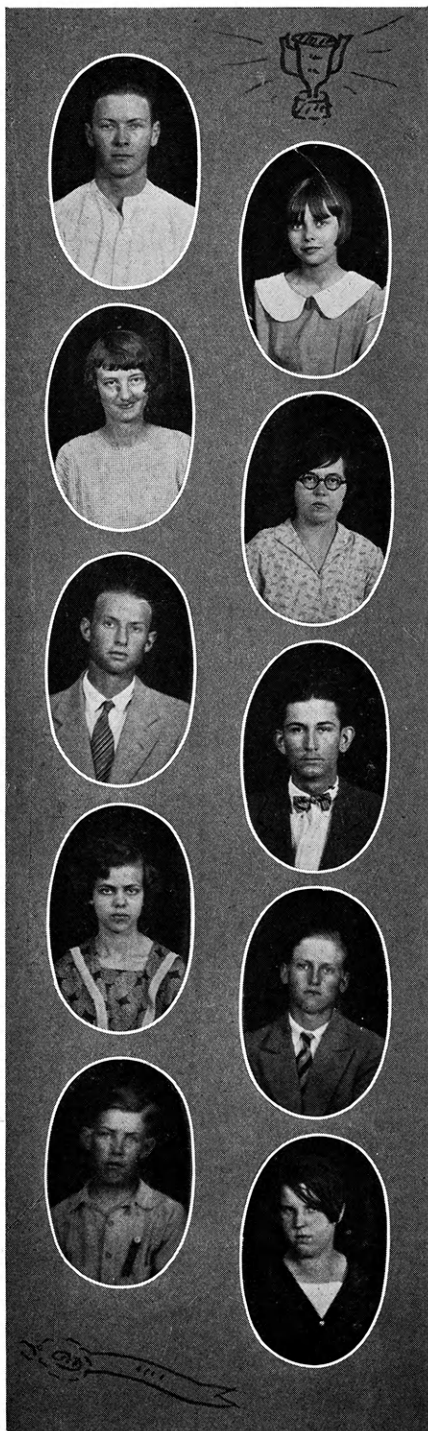
LOUISE BLUBAUGH BOURBON
Calf, Clothing, Baking, and Leader-
ship Clubs, 1925-'28; State Club
Roundup, 1927.

ROBERT PEASE BOURBON
Corn, Calf, and Poultry Clubs, 1924-
'28; Dairy Judging Team, 1926;
State Club Roundup, 1927.

MARGARET STOUTH FORD
Baking, Clothing Clubs, 1925-'27;
State Health Champion, 1926; Na-
tional Club Congress, 1926; State
Club Roundup, 1926-'27.

MAUDE REMICK CHEROKEE
Clothing, and Baking Clubs, 1926-
'27; State Club Roundup, 1926-'27.





STANLEY COX BOURBON
Crops, and Stock Clubs, 1923-'28;
Stock Judging Team, 1924; National
Club Congress, 1924; State Club Con-
gress, 1924-'28; State Fair, 1925.

RUTH HICKLIN SEDGWICK
Canning, Clothing, and Meal Prepara-
tion, Clubs, 1925-'28; Demonstra-
tion Team, 1926; State Club Round-
up, 1925-'27.

HAZEL DEE FIX CHEYENNE
Poultry, Clothing, and Baking Clubs,
1924-'28; State Club Roundup,
1925-'27-'28.

LILLIAN LANGHLIN SHERMAN
Poultry Club, 1924-'28; Demonstra-
tion Team, 1925; Hutchinson Fair,
1925; State Club Roundup, 1926-
'27-'28.

IRWIN TIPPIN ALLEN
Baby Beef, and Dairy Clubs, 1925-
'28; Dairy Judging, 1926; State Club
Roundup, 1926-'27-'28; State Dairy
Demonstration Champion, 1925; Na-
tional Dairy Show, 1926.

WILLIAM DREHR ALLEN
Dairy Club, 1926-'28; State Cham-
pion Dairy Demonstration Team,
1926; Livestock Judging, 1926; Na-
tional Dairy Show, 1926; Sioux City,
1926; State Club Roundup, 1927-
'28.

LORETA PEASE BOURBON
Baking, Clothing, Supper, and Leader-
ship Clubs, 1925-'28; Demonstration
Team on Wheat Train, 1926; Meat
Team; American Royal, 1926; State
Club Roundup, 1927-'28.

EVERETT ALSOP CLAY
Colt, and Poultry, Clubs, 1923-'28;
American Royal, 1924; State Club
Roundup, 1927-'28.

GEORGE WRIGHT LYON
Corn, and Kaffir Clubs, 1924-'28;
State Club Roundup, 1927-'28.

DOROTHY KEEFER LYON
Clothing Club, 1923-'27; Topeka
Fair, 1926; State Club Roundup,
1926-'27-'28.



THELMA BRADEN BOURBON
 Clothing, and Baking Clubs, 1925-
 '28; State Club Roundup, 1926-'27-
 '28.

FREDERICK SHULTIS LINCOLN
 Poultry Club, 1923-'26; U. P. Schol-
 arship, 1926; Livestock Judging;
 Hays Roundup, 1926; Collegiate 4-H
 Club.

CARL CONGER ALLEN
 Dairy, and Poultry Clubs, 1921-'27;
 Judging at Hutchinson Fair, 1925;
 National Club Congress, 1925; State
 Club Roundup, 1926; Collegiate 4-H
 Club.

HOMER HEITT RENO
 Heiffer, Pig, Calf, and Poultry Clubs,
 1920-'27; Stock Judging Team,
 1923; State Club Roundup, 1923;
 National Club Congress, 1922; Col-
 legiate 4-H Club.

LLOYD COMPTON BROWN
 Pig Club, 1923-'24; State Pig Cham-
 pion, 1924; National Club Congress,
 1924; Collegiate 4-H Club.

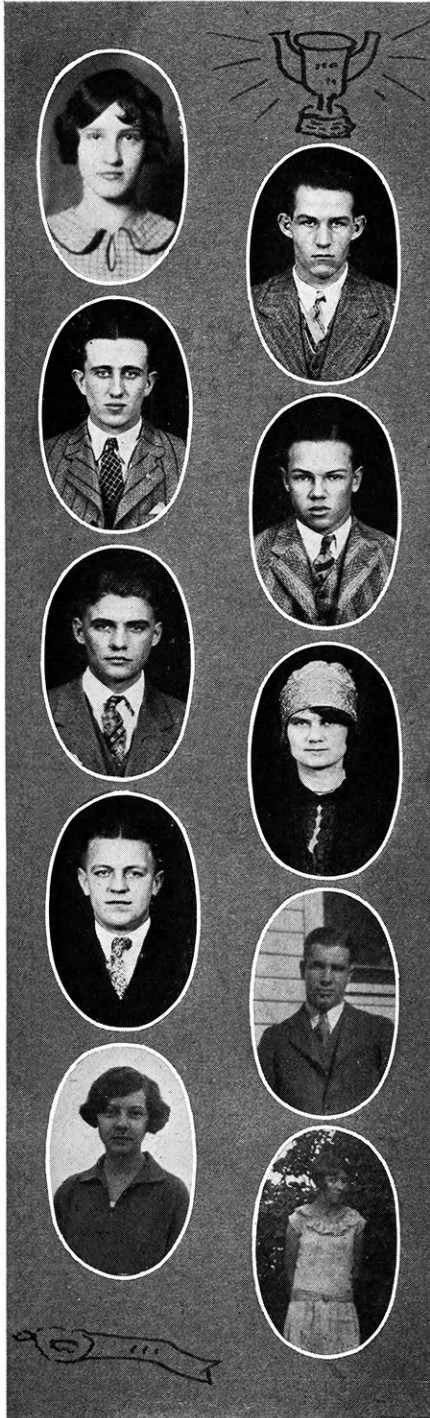
GRACE VAN SCOYOC ANDERSON
 Canning, and Poultry Clubs, 1919-
 '20; State Club Roundup, 1920; Col-
 legiate 4-H Club.

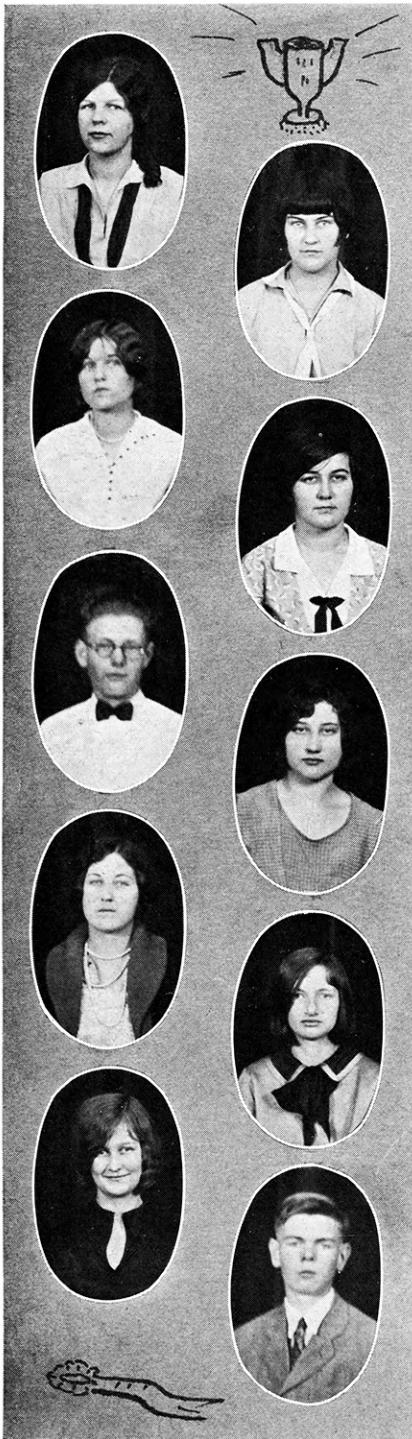
CLIFFORD HARDING CLAY
 Poultry, Beef, and Pig Clubs, 1922-
 '26; Judging Team at Hutchinson
 Fair, and Sioux City, 1924; National
 Club Congress, 1926; State Club
 Roundup, 1924; Collegiate 4-H Club.

LYLE STOVER LINCOLN
 Pig, and Baby Beef Club, 1924-'27;
 National Club Congress, 1926; State
 Club Roundup, 1926.

LORENA KINDSCHI FINNEY
 Poultry, and Sewing Clubs, 1923-'28;
 National Club Congress, 1924; State
 Club Roundup, 1924.

NELLIE GRAVES KINGMAN
 Poultry, and Sewing Clubs, 1923-'28;
 Hutchinson Fair, 1926; American
 Royal, 1926; State Club Roundup,
 1926.





MARY FREDERICK LEAVENWORTH
Sewing, and Leadership Clubs, 1925-'28; Clothing Demonstration Team at State Fair, 1925; State Club Roundup, 1925-'26-'27-'28; National Club Congress, 1925-'26.

RUTH SIPE BOURBON
Baking and Canning Clubs 1927-'28; State Club Roundup, 1927-'28.

NORMA HOFSESS RENO
Poultry Club, 1923-'28; Poultry Demonstration Team, 1927; Topeka Fair, 1928; State Club Roundup, '28.

LOIS DREHER ALLEN
Baking, Poultry, Clothing, and Canning Clubs, 1927-'28; State Club Roundup, 1927; Topeka Fair, 1927; Hutchinson Fair, 1927.

JUNIOR CASSEDY RENO
Poultry Club, 1924-'28; Poultry Judging Team, 1926; State Club Roundup, 1927.

VIOLET SAMP ALLEN
Clothing, Poultry, Dairy, Canning, and Leadership Clubs, 1927-'28; State Club Roundup, 1927-'28.

EDITH LEWIS RENO
Meal Preparation Club, 1926-'28; Topeka Fair, 1926-'27-'28; State Club Roundup, 1927-'28.

ETHEL BLUBAUGH BOURBON
Clothing and Calf Clubs, 1925-'28; Clothing Judging, 1927; State Club Roundup, 1928.

KATHERYN HEMPHILL LEAVENWORTH
Sewing Club, 1925; National Boys' and Girls' Club Congress, 1926; Meat Demonstration Team, Chicago, 1925.

JAMES REXROAD RENO
Poultry Club, 1926-'28; Poultry Demonstration Team, 1927; Topeka Fair, and Hutchinson Fair, 1927; State Club Roundup, 1927-'28.

KATHERYN FORREST FINNEY
Poultry, and Clothing Clubs, 1922-
'28; State Club Roundup, 1925.

EDWARD ANTHONY KINGMAN
Pig Club, 1921-'28; County Stock
Judging Team, 1922; State Club
Roundup, 1925-'27.

BERNICE LEHR BUTLER
Dairy, and Pig Clubs, 1924-'27;
American Royal, 1926; State Club
Roundup, 1926; Wichita Wheat
Show, 1926.

RALPH HAUPTLI MITCHELL
Pig Club, 1925-'28; Hutchinson
Fair, 1925; State Club Roundup,
1926-'27.

CATHERYN MARSH NEOSHO
Clothing Club, 1923-'28; Topeka
Fair, 1925; State Club Roundup,
1926-'27; Clothing Demonstration
Team, 1926.

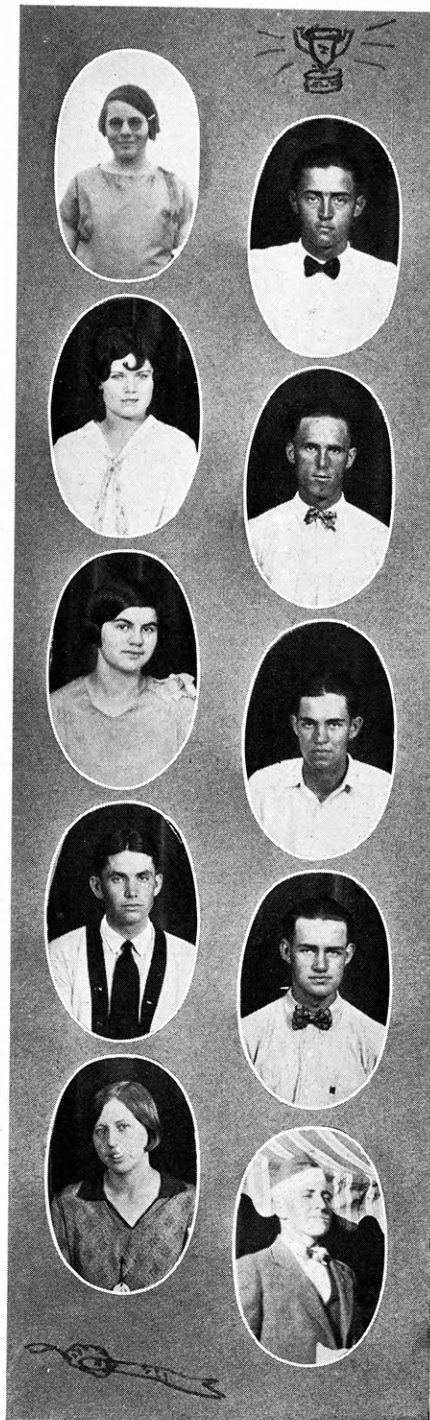
WILLIAM AULD CLAY
Calf Club, 1924-'28; Stock Judging
Team, 1925-'26; Topeka Fair, 1924-
'25; Wichita Wheat Show, 1925;
State Club Roundup, 1927.

FRANK PARSONS SHERMAN
Pig, Corn, Wheat, and Leadership
Clubs, 1924-'28; State Club Round-
up, 1925-'27; National Club Con-
gress, 1925; Leadership Trip to
Washington, D. C., 1927.

WAYNE AYRES BUTLER
Pig Club, 1925-'28; American Royal,
1925; State Club Roundup, 1927.

LOLA ADAMS FORD
Baking Club, 1926-'28; County Bak-
ing Judging Team, 1926; State Club
Roundup, 1926-'27.

JOE DAVIES LYON
Corn, Kafir, Calf, Pig, and Poultry
Clubs, 1921-'28; Stock Judging
Team, 1927; American Royal, 1926;
State Club Roundup, 1925-'27; Na-
tional Club Congress, 1927.



Who's Whoot Staff



Editor—Edith Painter
Album Section

Harold Kirkpatrick
Earl Regneir
William Newman
Olive Bland

Feature Section
Arnold Chase

Mary Wilson
Joe Green

Campus Section
Carl Conger
John Wilson
Snapshot Section

William Newman
Ebur Schultz

Muriel Howard
Advertisement Section
Terril Kirton
Carl Williams

County Section
Ben Kohrs
Leonard Rees
Alice Adams

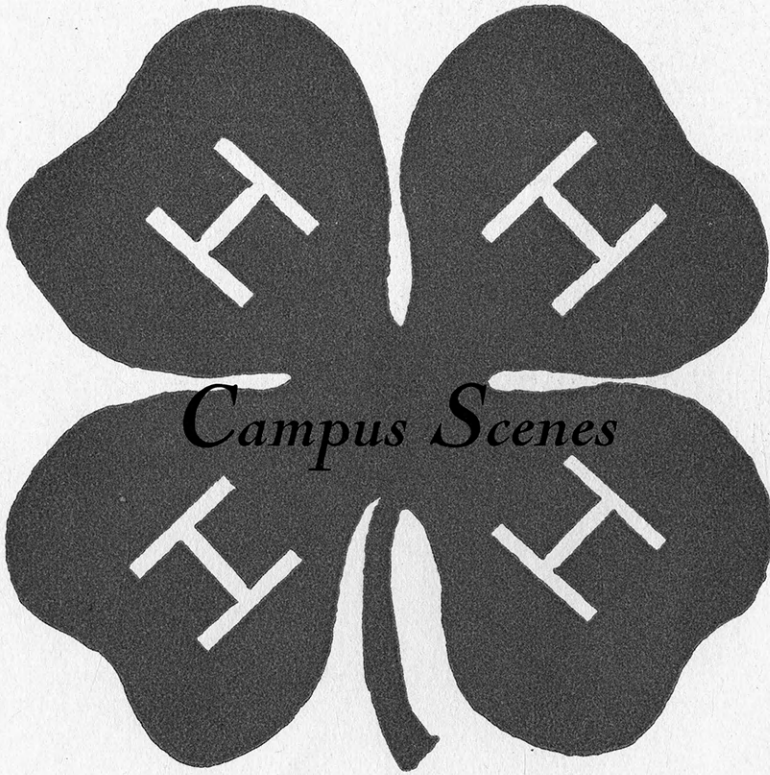
The growing interest in 4-H Club work has been more and more manifest in Kansas during the last year. There is a greater realization of the tremendous importance of club work, and its far reaching influence. The number of club members is growing, and the attractiveness of farm life is increasing. These and many other results, 4-H Club work is accomplishing.

This 4-H yearbook is published annually to show some of the ways these changes and improvements are taking place, and to give club members and others throughout the state a better opportunity to know about some of the 4-H Club achievements.

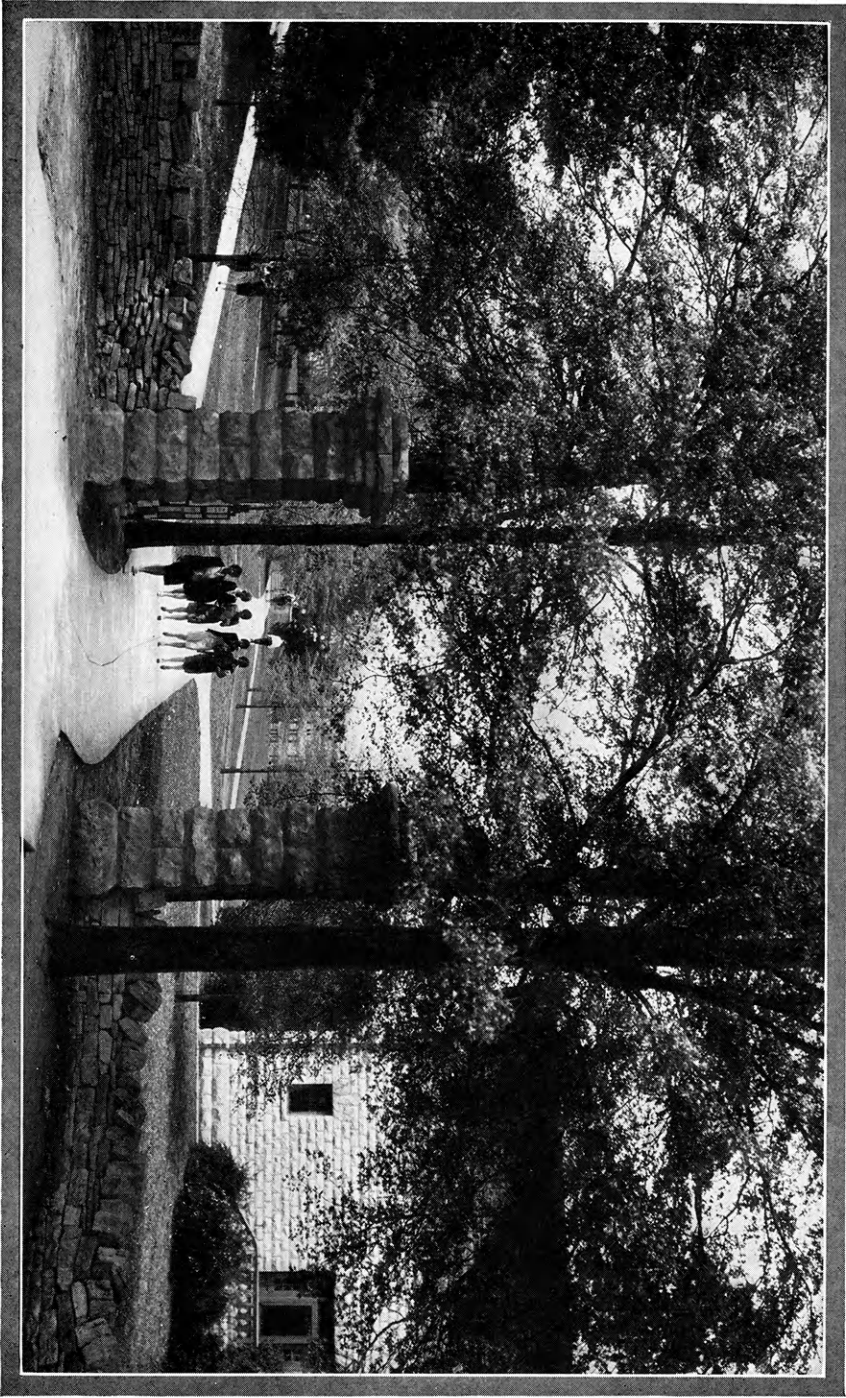
The Collegiate 4-H Club, composed of former 4-H Club members, at K. S. A. C., assumed the responsibility of putting out the Who's Whoot, as our contribution to the furtherance of club work. We hope its enlargement and improvements meet the approval of its readers.

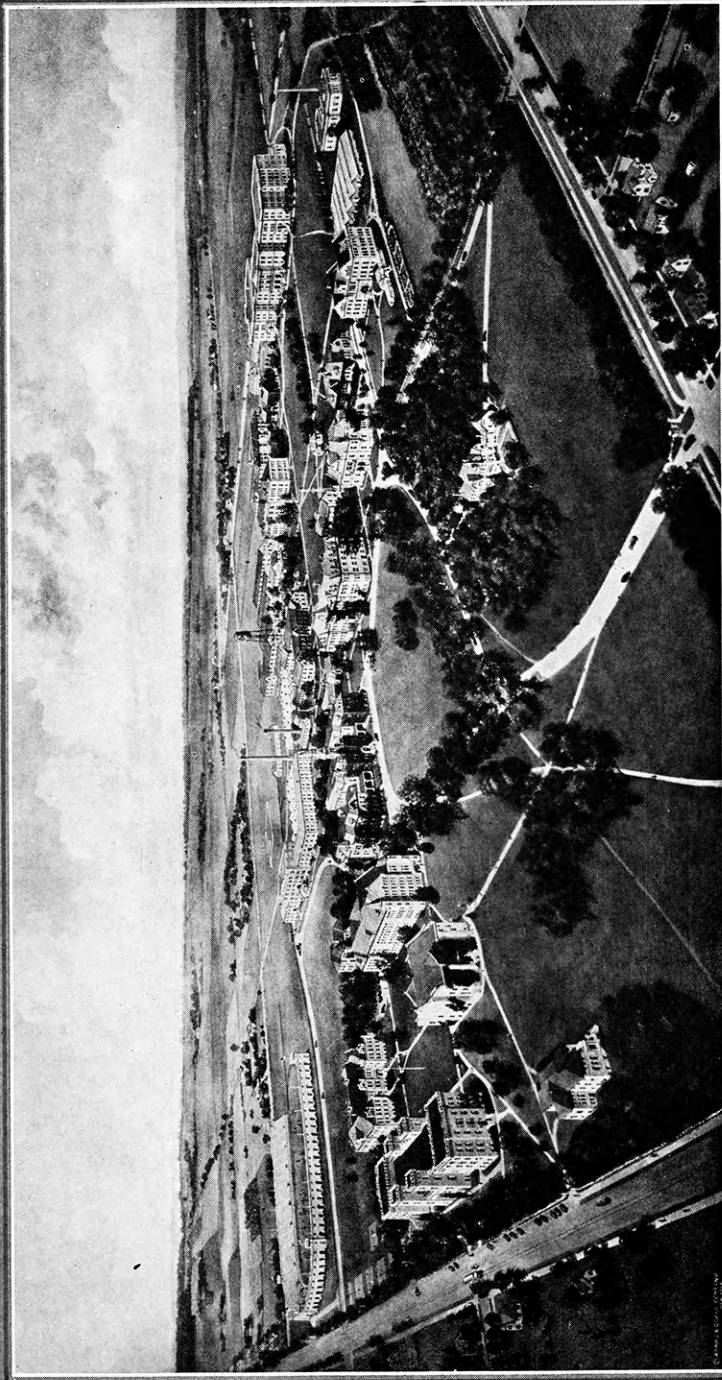
The staff wishes to thank all those who have co-operated, and we wish to commend to our readers, those firms who have shown their interest in 4-H Club work by taking advertising space in this book.

In the interests of more and better club work, we present this annual to our readers, the club boys and girls of Kansas.



Blank page in original document

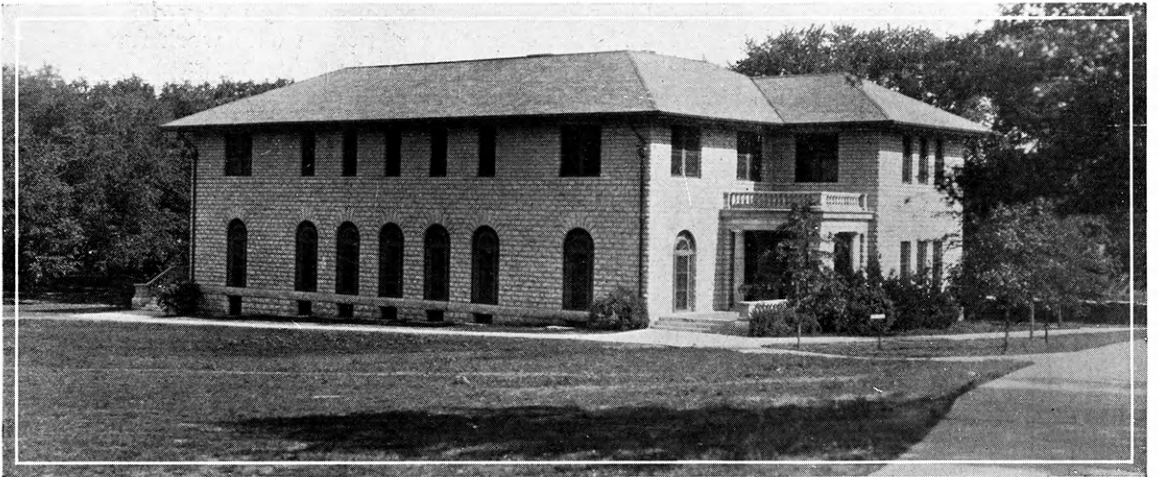
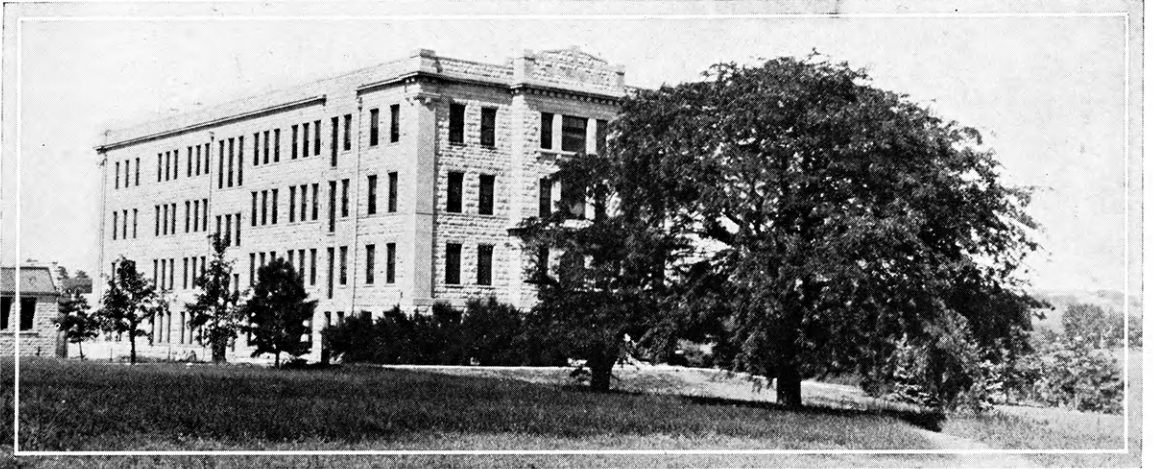


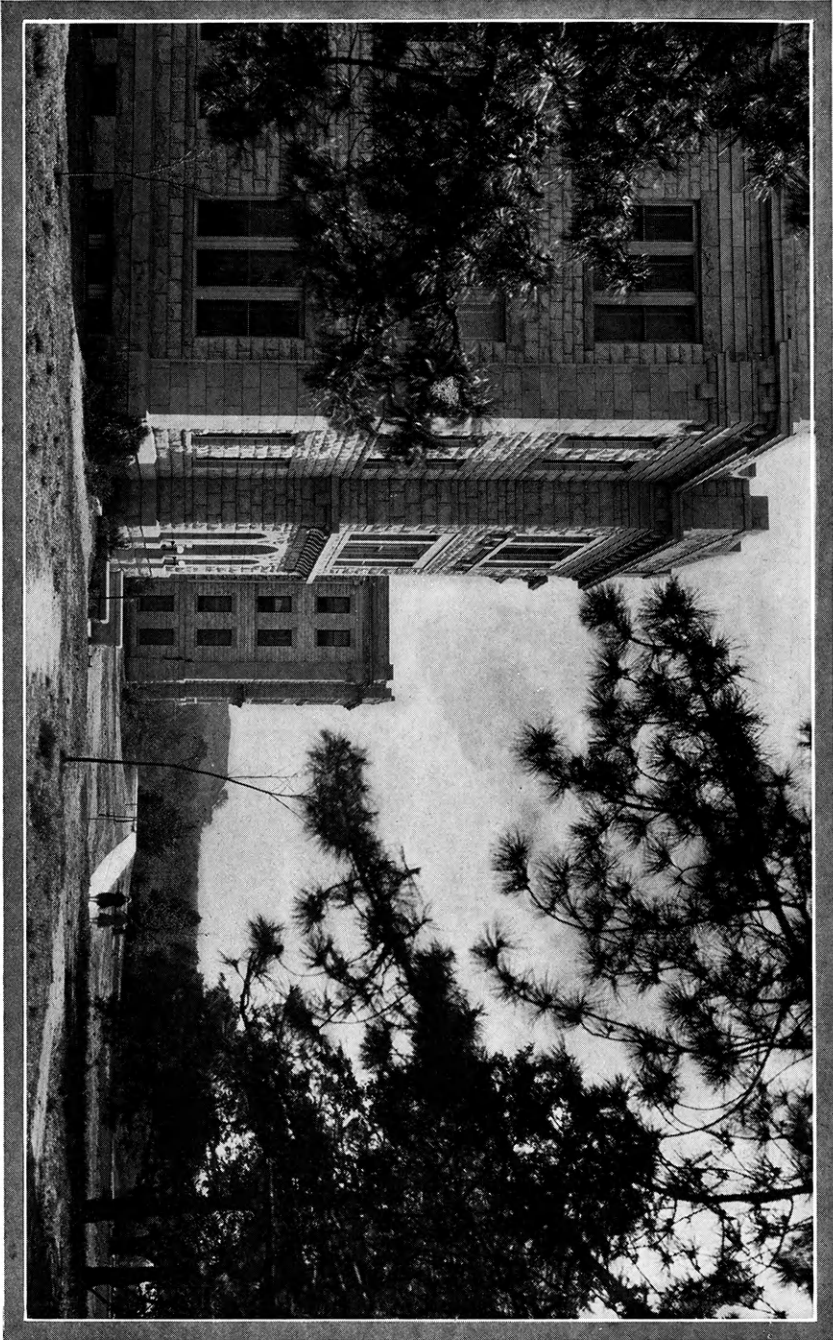


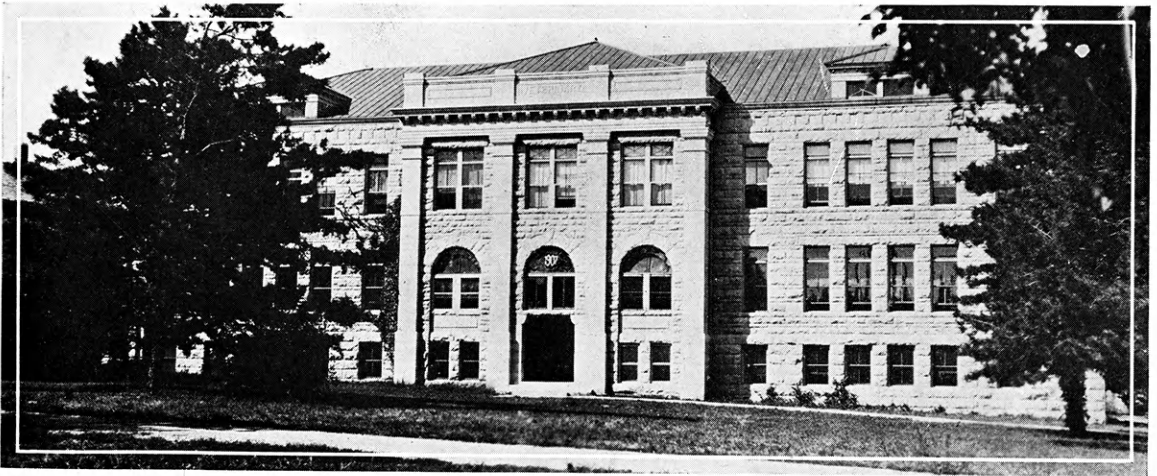
Airplane View of the Kansas State Agricultural College

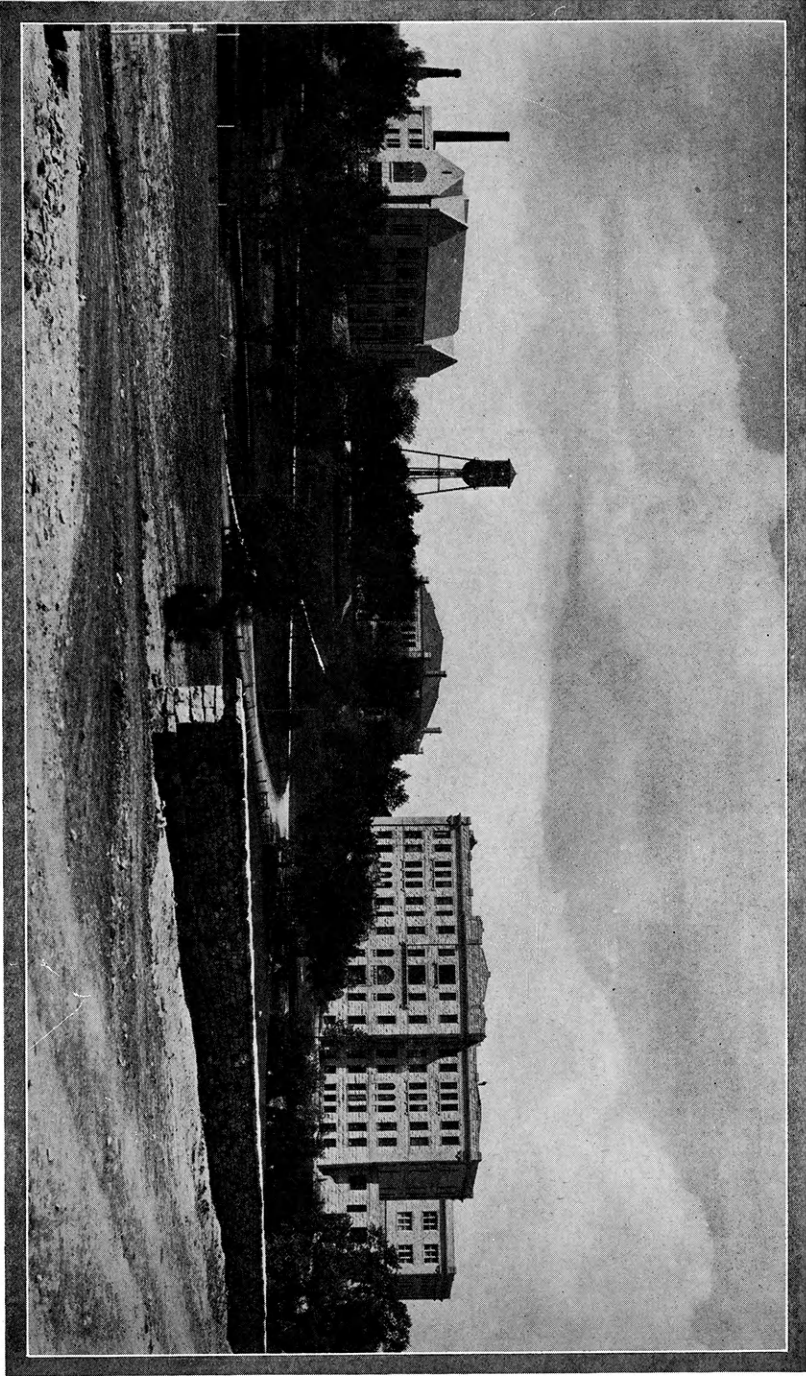
The COLLEGE CAMPUS consisting of 160 acres is situated upon an elevation adjoining the North and Western limits of the City of Manhattan with bus service to and from Manhattan and the railway stations. The grounds are tastefully laid out according to the designs of a landscape architect, and are extensively planted with a great variety of beautiful and interesting trees which are arranged in picturesque groups, masses and border plantings, varied by banks of shrubbery and interspersed with extensive lawns. The Campus is surrounded by a neatly laid stone wall made of native limestone with sidewalk and automobile entrances from all sides. Broad well shaped macadamized avenues lead to all parts of the grounds and cement walks connect the buildings with one another and the entrances. The buildings are uniformly constructed of native limestone and are grouped harmoniously and according to the needs of the student body.

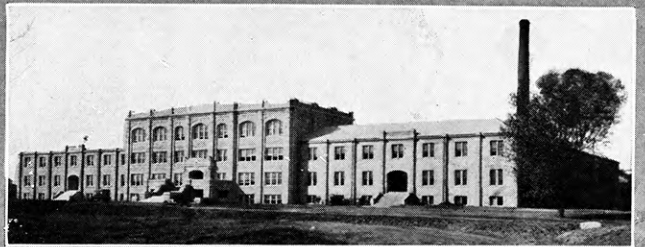
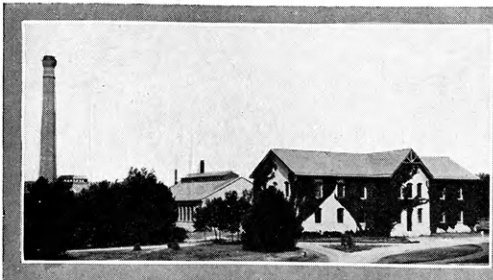
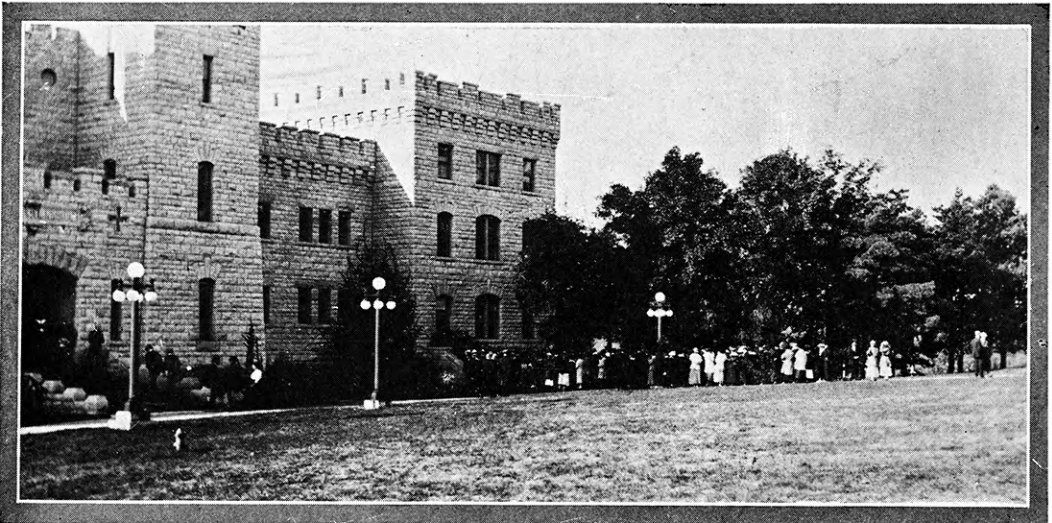
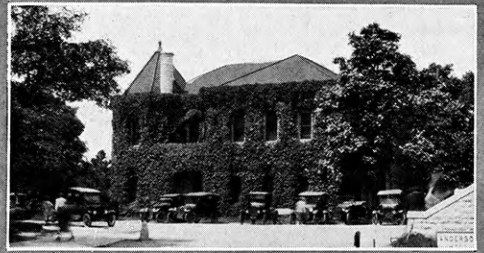
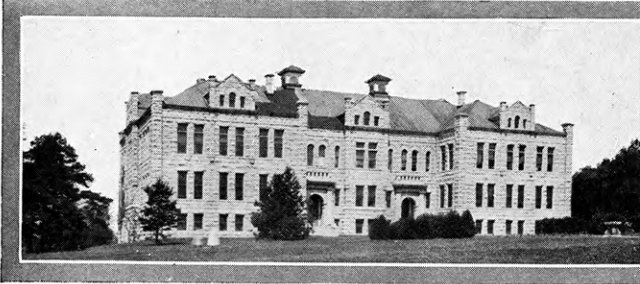
The College was first opened in 1863, and is the oldest State supported school in Kansas. The student body has the reputation of being very democratic and the College is operated for the education of people who work for a living on the farm, in the factory, in the home, or elsewhere. The curriculum includes twenty different four-year courses and a number of other shorter courses. The attendance ranges from 3,900 to 4,100; last year there being 3,900 students regularly enrolled in some college course. There are students from 103 Kansas counties, 28 states, and 13 students from foreign countries.

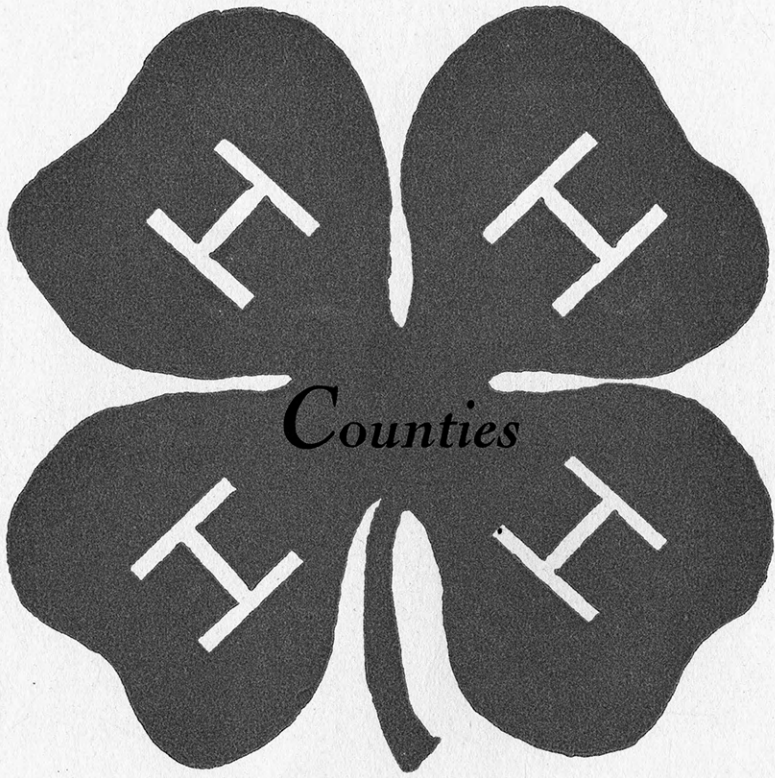












Blank page in original document



ALLEN



Year to Year



Hep! Hep!



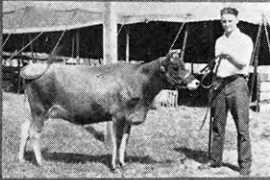
Bakers



Happy



The 4th H



Posing



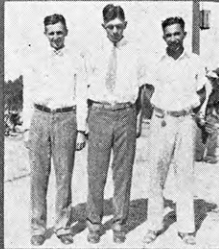
Dairy Champions



Chick Chick



Heads



Livestock Judges



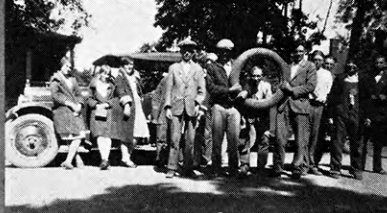
I win



Beauties



Mayor and Chief



Roundup and Roads



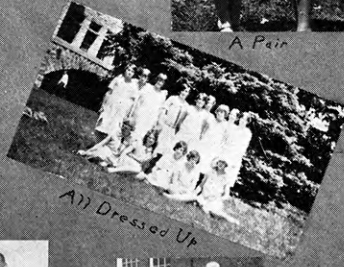
A Pair



Fitting and Showing



Dairy Demons



All Dressed Up



Heads I Win



Me and Mine



Showing Off



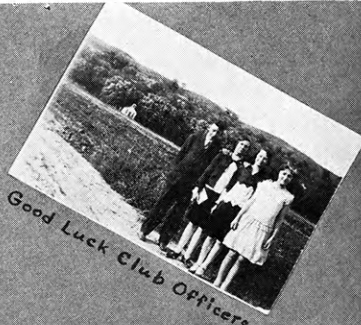
BOURBON



Where Next?



Chorus Contest Cup



Good Luck Club Officers



Gingerbread Girls



Bourbon's Canning Exhibit



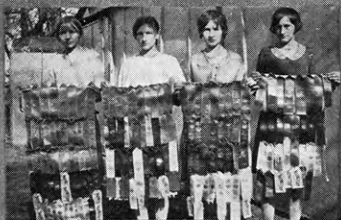
Prize Products



Wilfred and his Calf



A Devon Baby Beef



The Blubaugh Quartet



Going Up!



Lunch Time



Before



Baby Beef Boys



Before, too

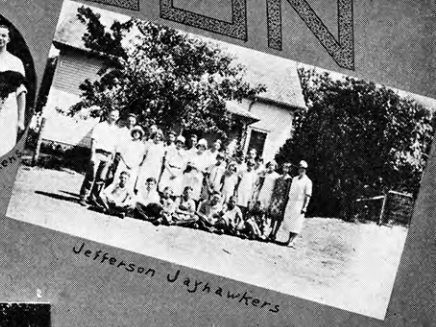
DICKINSON



Camp Hand Work



They Know Chickens



Jefferson Jayhawkers



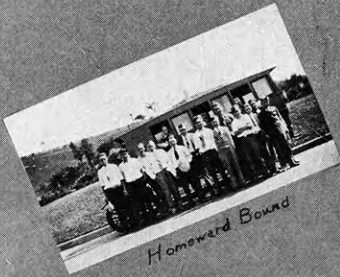
Newberns Achievement Day



Those Biscuits



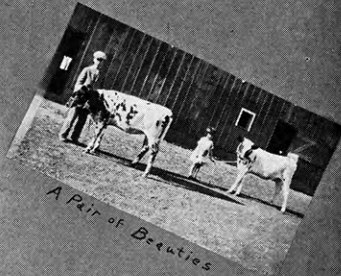
Smiles-Effect's of Round-Up



Homeward Bound



Solomon at the Round-Up



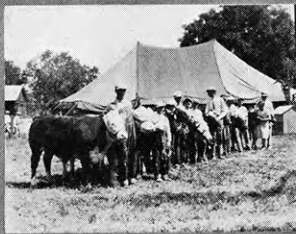
A Pair of Beauties



One Bright Look



Newberns Smiles at the Round-Up



Baby Beeves at Chapman



A Jayhawker
Ton Litter



She Made It



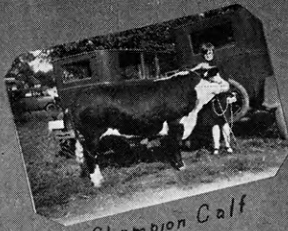
Ellwood's Worm Free Pigs



Telling Them How in Dickinson



Dickinson at Washington



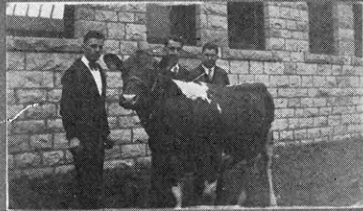
Champion Calf



Corn Queens



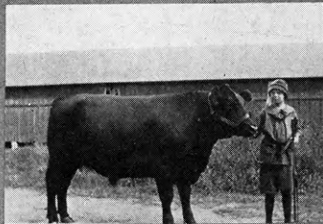
Members At Roundup



Judging Team



Weighing Club Calves



First Prize Angus

GEARY COUNTY 4-H CLUBS



What Makes Him Happy



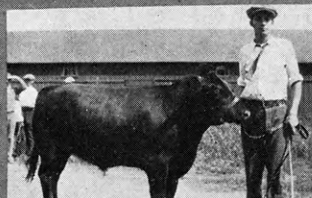
County 4-H Camp



How The Calves Are Weighed



A Culling Demonstration



Junior Champion American Royal



The Means Of Transportation On Club Tours

LYON COUNTY



Whittier



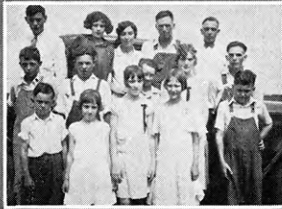
Our Champ



Rabbits



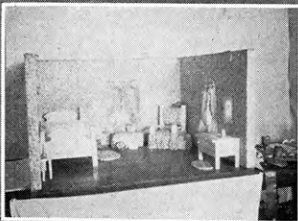
Americus



Frost



Rinker



Time To Retire - No!



A Distinguished Leader



All Ready for You



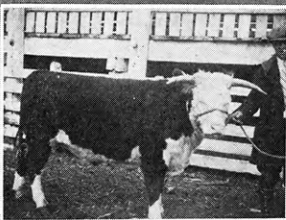
We Finished Our Work



Fremont



Good Looking ?



Sonny and His Champ

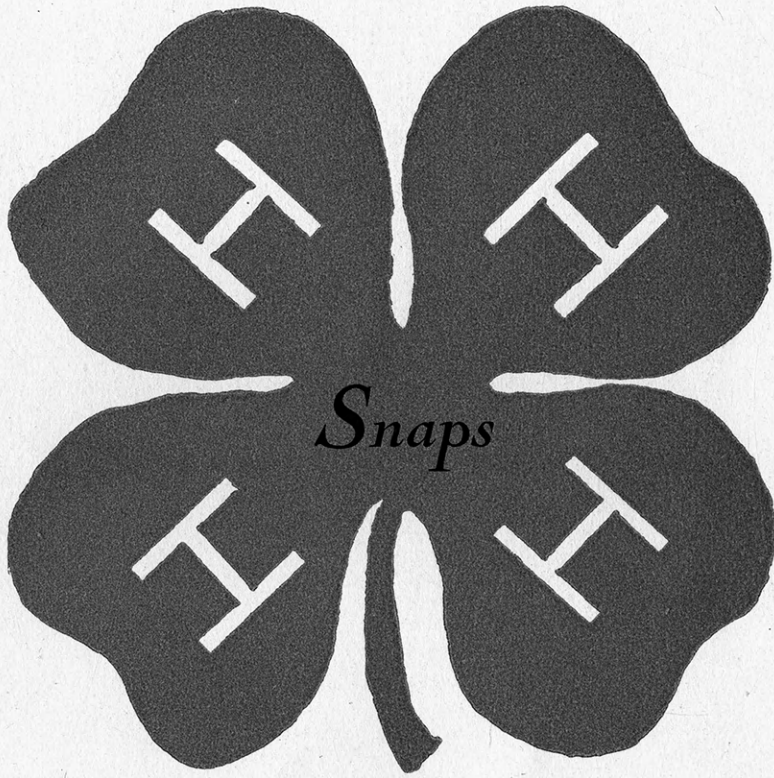


Miller



Section





Blank page in original document

STATE WINNERS



Lois Starbuck
Leadership
Washington Trip



Lloyd Davies
Leadership
Washington Trip



Nola McCormick
Leadership
Washington Trip



Leonard Flees
Leadership
Washington Trip



Wilma Cook
Health



Lonilo Murry
Corn



Earl Coultier
Livestock

Arden & Forrest Booth
Team



Maurine Knouss
Clothing



Clayton Nagel
Pigs



Frank Stouffer
Sheep



Jeanette Gamble
Style Show



Ellen Blair
Home Economics



Kermit Davies
Poultry

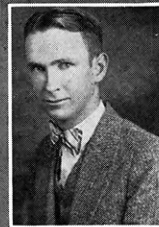


Erna Skelton
Baking

Edith Dettler
Demonstration Team



Frances Blubaugh
Baking



Clarence Aler
Dairy Beef



Elvin Pine
Health



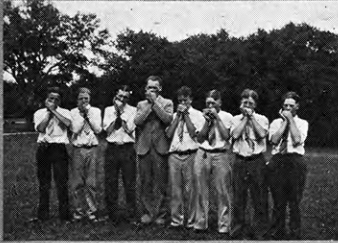
Boyd Werthington
Dairy

Pius Hostetter
Demonstration Team



Lloyd Ogler
Leadership

ROUNDUP ^a _d WASHINGTON



Results of Harmonica Man



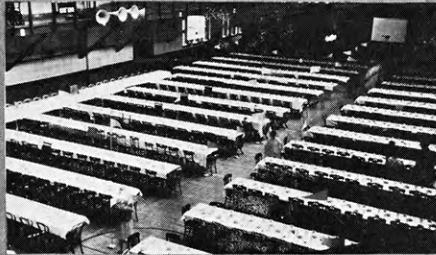
Saline's 5



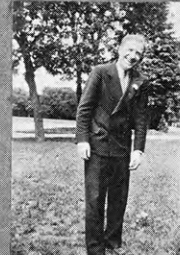
Daniphan Delegation



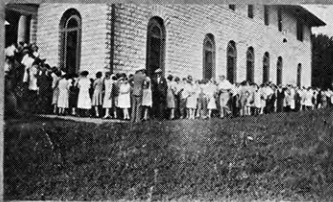
Bradford's



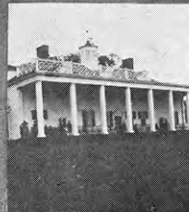
The Round-Up Barquet



Hertley



Chow Time - Round-Up



Mt. Vernon



Roar's from Lyon



Kansas Gang at Gettysburg



Washington Camp



Washington-Bound



Mt. Vernon



Lois + Her Meditations



Miss Bender



PROJECTS

Who's Whoot

We and Us

MOTHERS HELPERS

Look This way Please

Leavenworth Shows

Twin - etc.

Hot lying - Lyon

Me and Mine

How does your Garden Grow?

Be —

Can you bake a cherry Pie?

— af

Buff - alos

Weeee! Weeee!

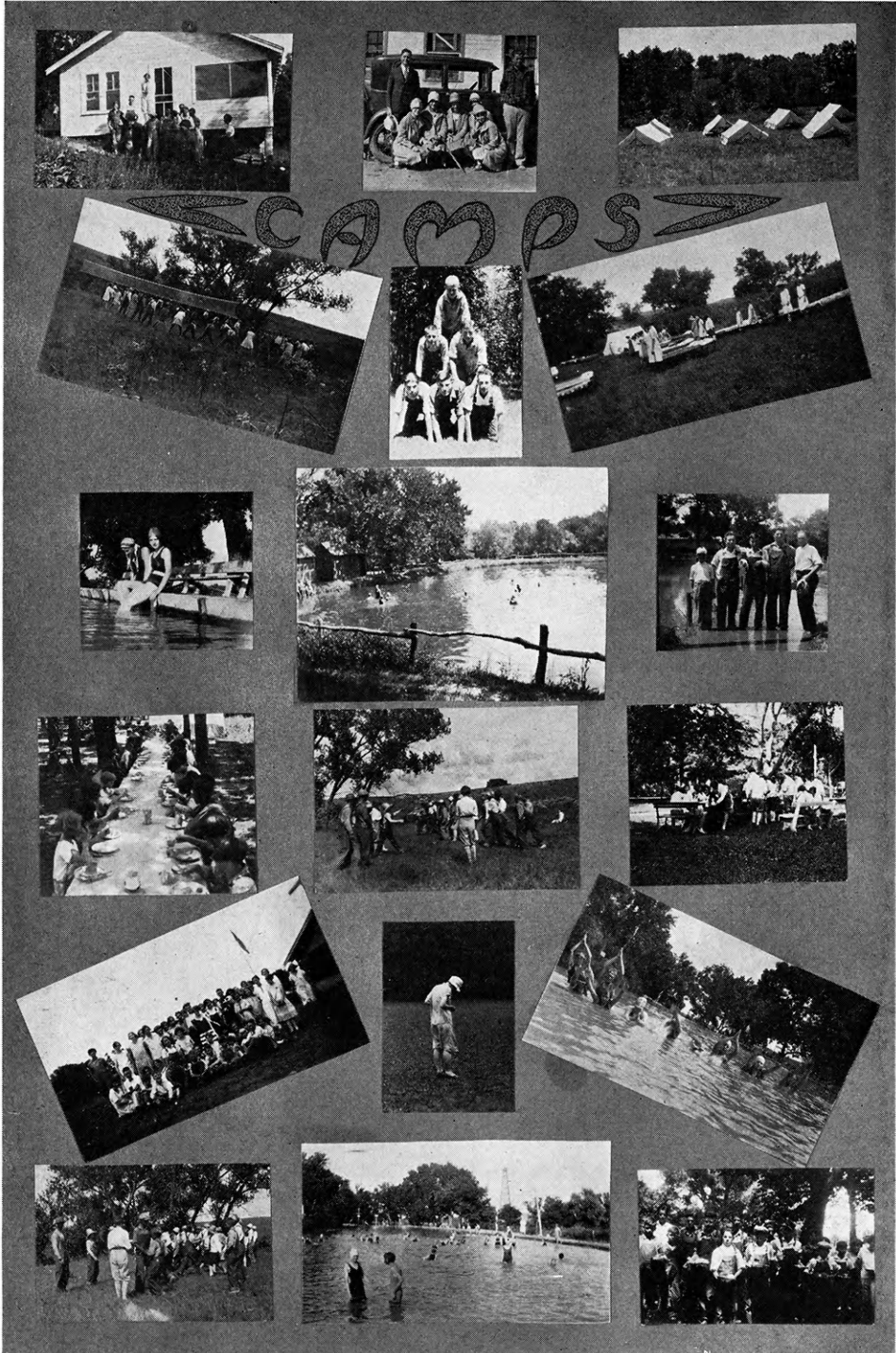
Just Look!

Milking Time

The Truth the Whole Truth etc.

Pork and (?) Bears





OTHERS



Mildred Ashlon
Neva Blair



Fremont's Leaders



Ellen Blair
Waldo Wheeler



Vera McBratner



Louise Schaub



Muriel Gibbens



Mary Hellmer



Eira Ruppe



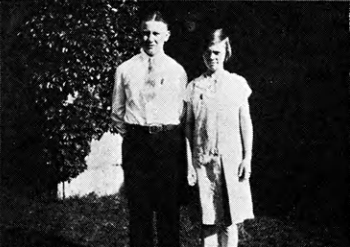
Lyon's Clothing Judges



Lewis Bacon



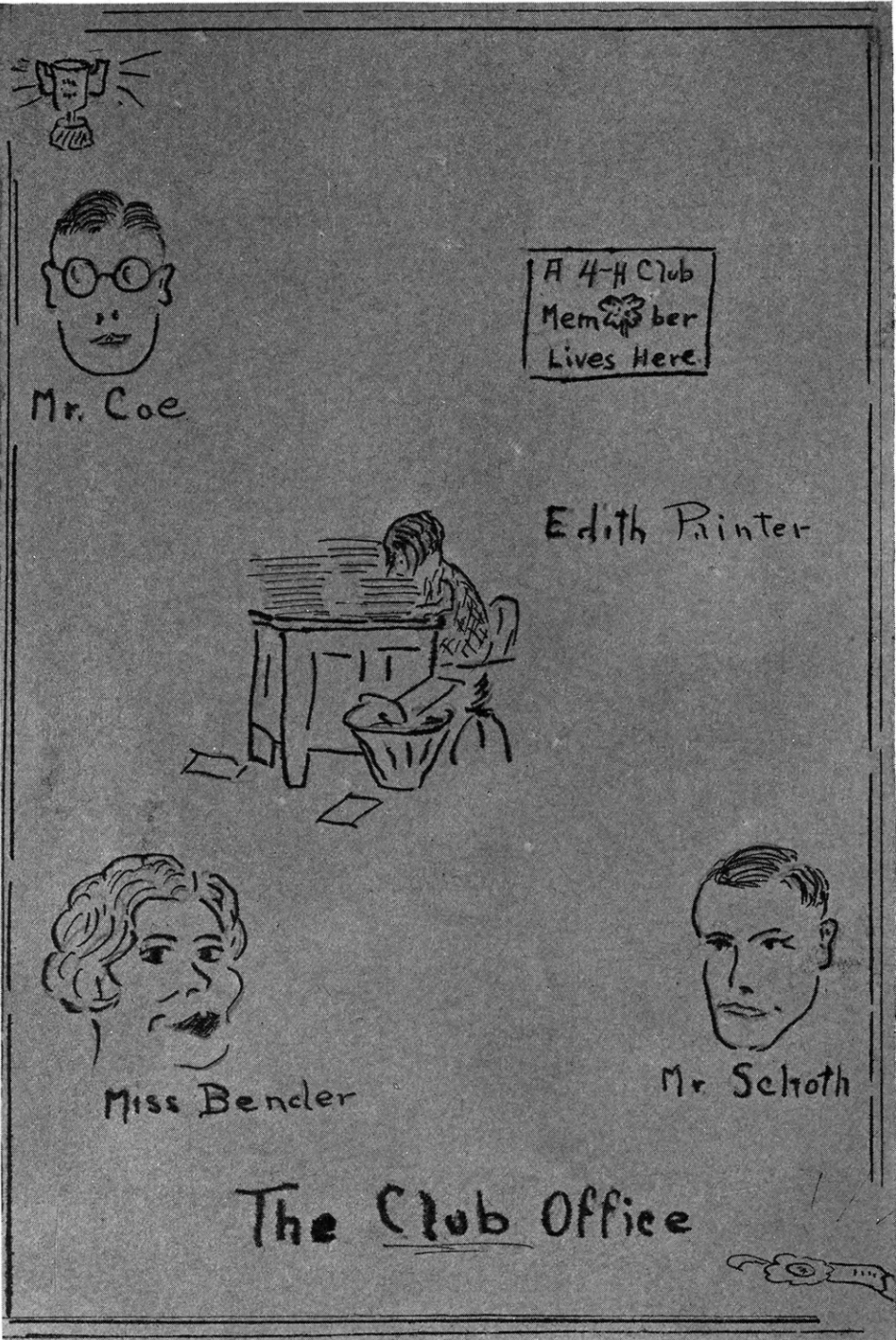
Cherokee Health Champs



Lyon's Healthiest



Frances Huhn



Mr. Coe

A 4-H Club
Member
Lives Here

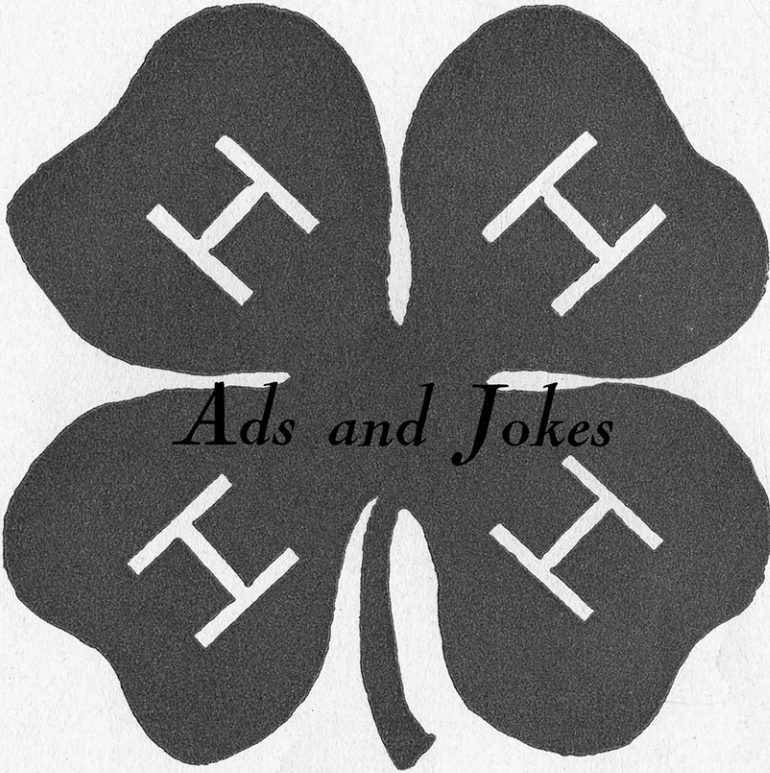
Edith Painter

Miss Bender

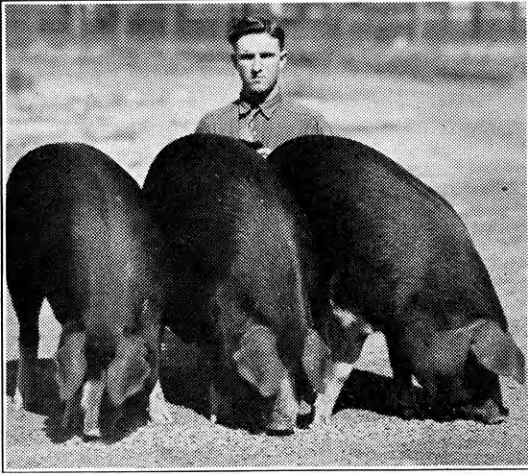
Mr. Schoth

The Club Office



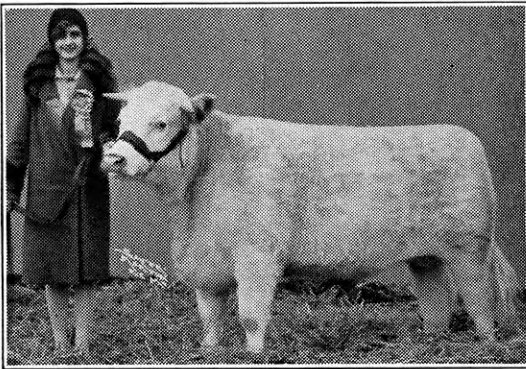


Blank page in original document



**FIRST PRIZE PEN INCLUDES
RECORD PRICE BARROW**

Douglas Ensminger, Belton, Mo., and his 1st prize pen of Poland Chinas in Vocational Boys' and Girls' Department. The middle barrow was the Grand Champion of the boys' and girls' show and was sold by John Clay & Co. at \$25 per cwt. to Wilson & Co. This is the highest price ever obtained for a barrow in the American Royal Show.



**BEST SHORTHORN STEER IN 4-H
DEPARTMENT**

Snowball, shown by Miss Cecile Ballew, Glasgow, Mo. Bought by Neuer Bros. Meat Market, Kansas City, Mo., at \$32. Sold by John Clay & Co. Weight 960 lbs.

**From the 1928 American Royal Show
All Sold By John Clay & Company**

**WE ARE 4-H
LEADERS**

**John Clay
and
Company**

LIVE STOCK COMMISSION

Kansas City Stock Yards

We also have our own offices at
Chicago, Omaha, St. Louis, St. Joseph, Denver,
Ft. Worth, Buffalo, Sioux City,
Ogden, St. Paul.



**RESERVE CHAMPION LAMB IN
JUNIOR DEPARTMENT**

Shown by J. Edwin McColm of Emporia, Kans., and sold by John Clay & Co. to the Kansas City Club at 50c per lb.





The Guide to High Grade Foods

In the famous Lee line of quality foods there are more than 300 delicacies—a food for every taste, a food for every purpose. Lee takes the guess-work out of table shopping.

At Your Grocers

The only safe way to destroy an enemy is to make him your friend.

I like to see a man proud of the place in which he lives. I like to see a man live in it so that his place is proud of him.—Lincoln.

"I want some bird seed, please," said the customer.

"Ho! You can't fool me," replied the store boy, "birds grow from eggs—not seed!"—The Progressive Grocer.

An Irishman who had become wealthy a few years after landing in New York, decided to go back for a visit, taking with him a dozen boon companions. There was too much feasting and drinking aboard the ship and the third day out the Irishman died. They buried him at sea weighting his body with two sacks of coal.

"Faith an' what'll the devil say whin he sees Mike bringin' down his own fuel?" said one sad companion.

EVOLUTION

1870—A gig and a gal.
1920—A flivver and a flapper.
1950—A plane and a jane.

"Those hills," said Lloyd Davies, "are too steep for even a donkey to climb, so I'm not going up them."

Then he wondered why the guide laughed.

"Mother," said 5-year old Helen, "I've got a stomach ache."

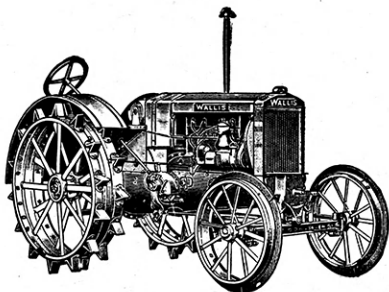
"That is because you haven't had any lunch. Your stomach is empty. You would feel better if you had something in it," mother replied.

That afternoon while Bill Newman was calling he remarked that he was suffering from a headache.

"That is because it is empty," said Helen seriously, "You would feel better if you had something in it."

Keep your temper—nobody wants it.

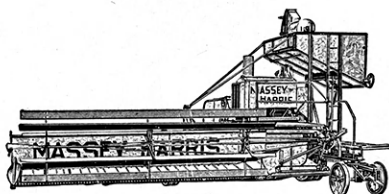




The **WALLIS**

delivers
MORE POWER
for
MORE YEARS
and at
LESS EXPENSE

—than any other tractor approaching it in Weight and Piston Displacement.



The New

MASSEY-HARRIS

Combined
REAPER-THRESHER

—is the greatest dollar for dollar value in its field—backed by 26 years of actual field service and research engineering—has the famous 33" corrugated bar threshing cylinder and the adjustable, full-width concave which threshes all kinds of grain without stopping the machine. 6258 square inches of separating surface. Two sizes—No. 9A, 12 ft., and No. 9B, 15 ft. Also Swathers—2 sizes, 12 ft. end delivery, 15 ft., end or center delivery.

THE MASSEY-HARRIS CO.

General Offices: Racine, Wis.

Factories: Racine, Wis., Batavia, N. Y.

Branches and Service Stocks at Leading Trade Centers



The New Hotel Commonwealth

12th & Broadway

400 ROOMS
EACH WITH BATH

FREE RADIO
IN EVERY ROOM

BEAUTIFULLY
FURNISHED
ROOMS

\$200
And Up
**SERVICE
SUPREME**

GOLF DRIVING AND
PUTTING GROUNDS
LARGE LAWN & PERGOLA
GARAGE
AND PARKING
POPULAR PRICED
COFFEE SHOP



Kansas City

Putting Them Over

An irate fan who had watched the home team go down in defeat stopped the umpire as he was leaving the park.

"Where is your dog?" he demanded.

"Dog?" ejaculated His Umps. "I have no dog."

"Well, your'e the first blind man I ever saw who didn't have a dog," returned the disgruntled one.

* * *

Arise!

Speaker: "What two things are helping mankind to get up in the world?"

Some dense person in the rear of the hall: "The alarm clock and the step ladder."

There, Now!

Mrs. Newedde: "You told me that piece of ice weighed fifty pounds that you left yesterday morning."

Iceman: "Yes, ma'am, it did."

Mrs. Newedde (Triumphantly): "Well, you were wrong. I had my husband weigh it when he came home last night and it only weighed twenty-five pounds."

* * *

A Benefactor In Disguise

Larkson: "I'm going up to the jail, I want to talk with the bandit who took my car."

Parkson: "What's the use?"

Larkson: "Maybe he'll tell me how he got fifty miles an hour out of her."



If you are interested in good stock of the better kind, it will pay you to write us.

A catalog well worth your while is yours for the asking.

BAKER HATCHERY

Producer of Strictly High Grade Poultry Products to the Trade for
Better Than a Quarter of a Century

ABILENE, KANSAS

Johnny was in the habit of swearing mildly when anything happened that did not please him. One day Mr. Coe heard him and said, "Johnny, don't you know that it is wrong to swear? Why, every time I hear you swear a cold chill runs down my back."

"Gee," said Johnny, "if you'd been at our house the other day when my dad caught his nose in the clothes wringer, you'd froze to death."

* * *

Ted Kirton: "Oh! I have a sliver in my finger."

Alice Adams: "Have you been scratching your head?"

* * *

"What could be more sad," said Leonard Rees, than a man without a country?"

"A country without a man," answered Alice Parsons.

* * *

And the woman threw the baby out the window—For cryin' out loud.

Gertrude S.: "Is this milk pasteurized?"

E. Regner: "Sure is. We got it from the preacher's cow."

* * *

John Wilson: "Do you know how to make a peach cordial?"

Belle Hedges: "Sure. Take her candy."

* * *

When you call on a business man, call on business, and state your business in a business-like manner. When you have concluded your business, go about your business, and leave him to his business, and mind your own business. That's business.

* * *

Just Married: "This steak tastes queer."

She: "I can't understand it dear. I did burn it a little, but I rubbed vaseline on it right away."

* * *

Don't grumble when folks lie about you. Suppose they knew the truth and told it.



A FAMOUS TRADE MARK

Appearing only on implements made in John Deere factories, it is the certificate of character that represents John Deere prestige—the good opinion of enough people to make John Deere Implements the world's standard for three generations and more.

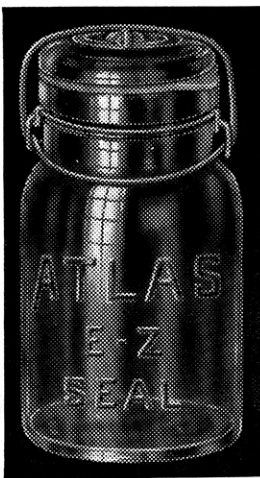
JOHN DEERE PLOW COMPANY

KANSAS CITY, MISSOURI



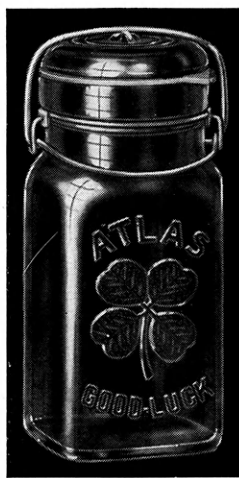
Have you received copies of Hazel-Atlas Glass Company's two NATIONAL CANNING CONTESTS OPEN TO 4-H CLUB MEMBERS?


Write Georgia W. Hess, Education Department, for complete information.



PRIZES AWARDED FOR PRODUCTS PUT UP IN EITHER "ATLAS" E-Z SEAL or "ATLAS" GOOD LUCK JARS.

HAZEL-ATLAS GLASS COMPANY WHEELING, WEST VA.



MANUFACTURERS OF  GLASSWARE
Over One Billion Pieces Annually

How Funny!

A match has a head but no face.
A watch has a face but no head.
A rooster has a comb but no hair.
A river has a mouth but no tongue.
A wagon has a tongue but no mouth.
An umbrella has ribs but no trunk.
A tree has a trunk but no arms.
The sea has arms but no hand.

* * *

Conclusive Evidence

"It is said that a paper can be used effectively in keeping a person warm."

"Yes, I remember a 30-day note once kept me in a sweat for a month."

* * *

Not So Dumb

Tourist (in village store): Whaddya got in the shape of Automobile tires?"

Saleslady: Funeral wreaths, life preservers, invalid cushions and doughnuts."

A Bit Too Personal

Book Salesman: "Have you a Charles Dickens in your home?"

Lady of the House: "No."

"Or a Robert Louis Stevenson? Or a Shakespeare?"

"No, we ain't and what's more this ain't no boarding house! If you're looking for those fellows you might try the house across the street as they take in roomers."

* * *

Gertrude: "Could I see the Captain?"

First Mate: "He's forward, Miss."

Gertrude: "I'm not afraid, I've been out with college boys."

* * *

"Any abnormal children in your class?" inquired the inspector.

"Yes," replied the harassed looking schoolmarm, "two of them have good manners."



CONTINUE YOUR EDUCATION
BY FREQUENT VISITS
To
The Kansas City Stock Yards
And the
Annual American Royal
Live Stock Show

These Rank as the

Second largest live stock and meat packing center in the United States and as the outstanding live stock show of the central west and west.

Make more money from your live stock operations by buying your feeders and selling your fat stock in Kansas City.

**THE MOST MODERN LIVE STOCK MARKET
IN THE WORLD**

OFFICERS

George R. Collett, President.

W. H. Weeks, Vice-President.

F. H. Betton, General Superintendent.

L. G. Trickett, Secretary and Treasurer.

I. P. Haren, Ass't. Sec'y. and Ass't. Treas.

DIRECTORS

Eugene V. R. Thayer

W. T. Kemper

Nelson Morris

H. L. Jarboe

E. F. Swinney

P. W. Goebel

Jno. E. Thayer, Jr.

W. H. Weeks

George R. Collett





WORTH WHILE

It is easy enough to be pleasant,
 When life flows by like a song,
But the man worth while is one who will smile,
 When everything goes dead wrong.
For the test of the heart is trouble,
 And the smile that is worth the praises of earth,
Is the smile that shines through tears.

It is easy enough to be prudent,
 When nothing tempts you to stray,
When without or within no voice of sin
 Is luring your soul away;
But it's only a negative virtue
 Until it is tried by fire,
And the life that is worth the honor on earth,
 Is the one that resists desire.

By the cynic, the sad, the fallen,
 Who had no strength for the strife,
The world's highway is cumbered today,
 They make up the sum of life.
But the virtue that conquers passion,
 And the sorrow that hides in a smile,
It is these that are worth the homage on earth
 For we find them but once in a while.

—Ella Wheeler Wilcox.





MEMORANDA





AUTOGRAPHS





AUTOGRAPHS

