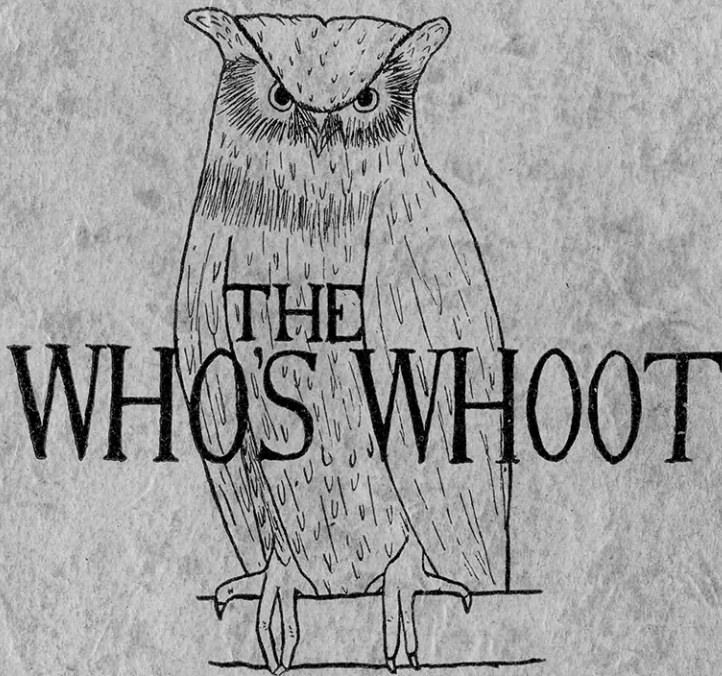


S  
534  
.K2  
C64  
1927

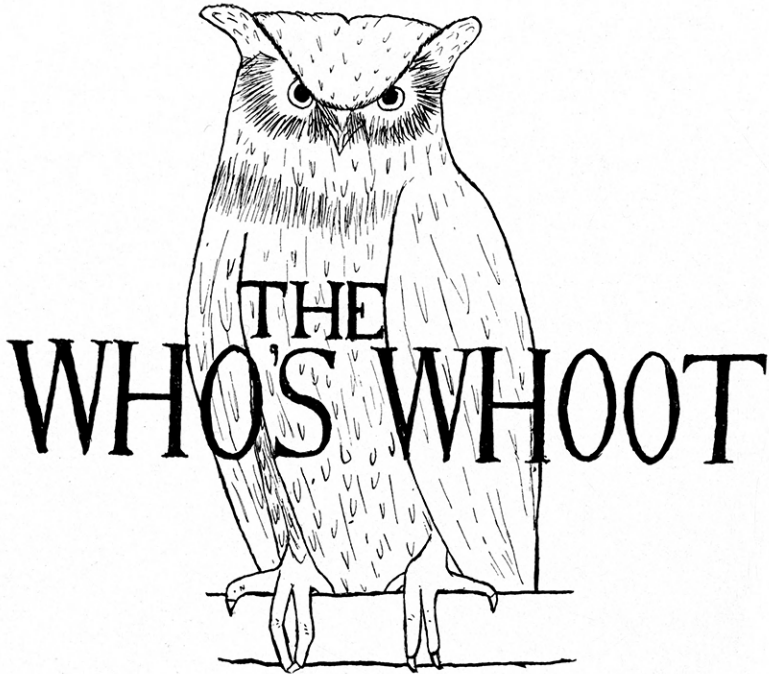
UNIV.  
ARCHIVES



1927



Who's Whoot



1927

*Published by*

THE WHO'S WHO 4-H CLUB

KANSAS STATE AGRICULTURAL COLLEGE  
MANHATTAN, KANSAS





## Dedication

*The Who's Who 4-H Club is not merely an honorary organization but aims also to be of service to the 4-H Club movement in Kansas, which is helping farm boys and girls to develop into good citizens. With this idea of service in mind the Who's Who 4-H Club has prepared this annual with the hope that it will set forth some of the high points in club work and the achievements of some of its outstanding members and thus inspire not only those who are already members, but also the countless number who ought to be, to more lasting and worthwhile achievements. To these purposes this book is most earnestly dedicated.*

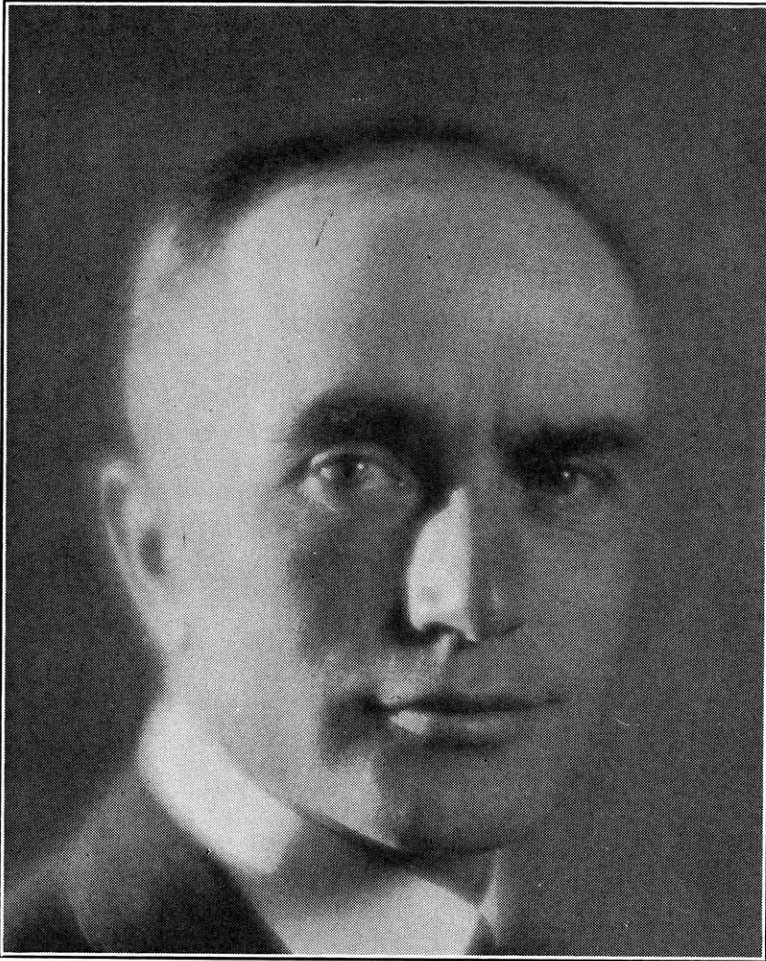


univ  
S  
534  
.K2  
C64  
1927

Who's



Whoot

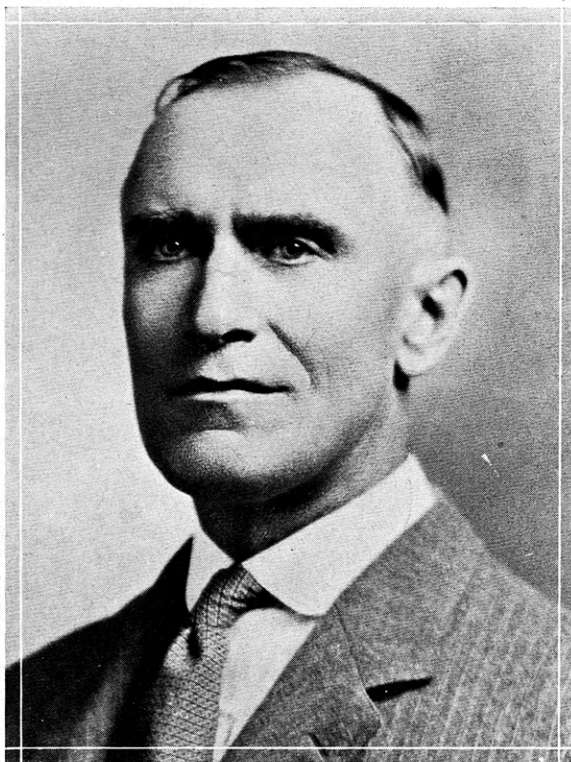


PRESIDENT F. D. FARRELL

The 4-H Club work is one of the most hopeful nation-wide activities in the United States. It is interesting, wholesome, constructive and inspiring. It capitalizes, for worthy purposes, one of the finest resources in the world—the bright enthusiasm of youth. It is developing what every civilization must have, to survive—a body of clean, vigorous, capable and patriotic leadership. To earn special distinction in this wonderful work, as the members of the Who's Who 4-H Club have done, is an achievement worthy of the best efforts of American youth.







DEAN H. UMBERGER

How can there be any question regarding the value of boys' and girls' 4-H Club work in the minds of those of us who are old enough to compare the opportunities of boys and girls in this work today with those of former days when these advantages were not available?

Today the boy or girl who is a club member not only learns that most important of all lessons, namely, "to do things well," but does his work better through the superior process of performing, thus gaining through their own personal experience the reasons for so doing. Experience is a superior method of teaching that greater satisfaction comes from doing well.

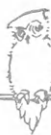




MR. COE

With the publishing of this 4-H Annual, the Who's Who 4-H Club has broadened its field of usefulness to include service as well as honor. A new era is thus established in the history of club work in Kansas, an era which we hope may be characterized by the word, "Service"—service to the great 4-H Club movement which has for its watchwords, leadership, health, intelligence, integrity, honor, loyalty, and high ideals. It is my hope that these new purposes will inspire all 4-H Club members to a keener intelligence, more sympathetic comradeship, a sterner loyalty, a greater efficiency in the practical affairs of life, and more effective health, and with it all may they experience that ever satisfying feeling that comes in the knowledge of duties cheerfully assumed and work well done. My heartiest congratulations to the members of the Who's Who 4-H Club, and especially to its officers and staff that have worked so conscientiously in the preparation and compiling of this first Annual—"The Who's Whoot."





# Club Officers



FRANK ZITNIK . . . . . *President*  
 MARY TILTON . . . . . *First Vice-President*  
 FRED SHULTIS . . . . . *Second Vice-President*  
 NOLA McCORMICK . . . . . *Secretary*  
 LOIS STARBUCK . . . . . *Treasurer*

The Who's Who 4-H Club is an honorary State 4-H Club Association, organized during the 1923 4-H Club Roundup at Manhattan. The stated purpose of this Association is "to give special recognition to those achieving honors and to thereby stimulate higher accomplishments of boys and girls in 4-H Club work." Accordingly, the membership qualifications were limited to the upper ten per cent of the Club membership in each club or county, based upon the character of work done and leadership qualities developed, including all county and state club champions of any character whatever. The annual meeting of the Association is held during the Annual 4 H Club Roundup at the Kansas State Agricultural College at Manhattan.

With the publishing of this Annual, this Association has become more than honorary, it has developed an attractive program of service, which it is hoped will prove effective in stimulating more and better club work. The Who's Who 4-H Club hopes that in presenting this first Annual, "The Who's Whoot," it thus will be making a step towards fulfilling its new program of service.





ROCKWELL GREENE Lincoln County  
Pig, Dairy and Baby Beef Clubs, 1923-'26; National Dairy Show, 1924; State Dairy Champion, 1924.

VELDA COX Bourbon County  
Clothing and Baking Clubs, 1925-'26; Kansas State Fair, 1925; Royal 4-H Club Conference, 1925.

NOLA McCORMICK Sedgwick County  
Poultry, Sewing, Canning, Sheep and Meal Preparation Clubs, 1922-'26; National Boys' and Girls' Club Congress, 1924.

KARL GARRETT Coffey County  
Livestock Club, 1924-'26; Member of Kansas Livestock Judging Team, 1924; National Boys' and Girls' Club Congress, 1924; High Individual and Member of Winning Team, Chicago, 1924.

DALE SHEEL Lyon County  
Pig and Bee Clubs, 1917-'25; Member of Kansas Livestock Judging Team, 1923; Royal 4-H Conference; National Boys' and Girls' Club Congress, 1923.

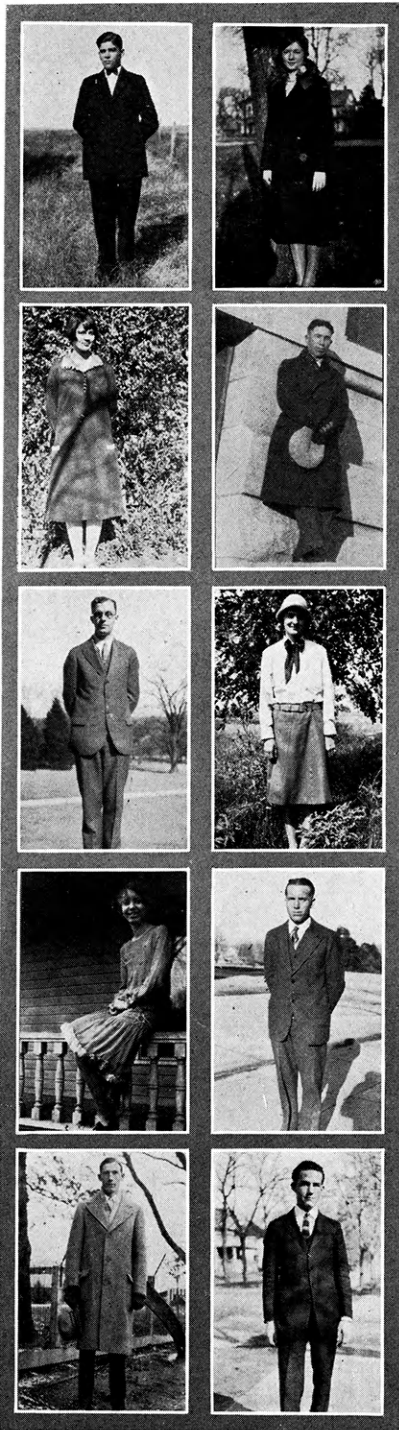
MATTIE BOYD Meade County  
Sewing and Meal Preparation Clubs, 1921-'26; Kansas Meal Preparation Champion, 1924; State Club Roundups, 1924-'25.

ROSEMARY BEALL Brown County  
Sewing and Own-Your Own-Room Clubs, 1922-'26; Kansas State Fair and Free Fair, 1923; Kansas State Round-up, 1923.

FRANK ZITNIK Cherokee County  
Livestock Club, 1923-'26; Member of Kansas Livestock Judging Team, 1925; National Boys' and Girls' Club Congress, 1925; Second High Individual Judging Contest, Chicago, 1925; Winner Leadership Trip to Washington, D. C., 1926.

GEORGE NEVIS Miami County  
Pig and Calf Clubs, 1921-'26; member of State Judging Team at Sioux City, 1922.

FRED SHULTIS Lincoln County  
Foultry Club, 1923-'26; Winner of Union Pacific Scholarship.







ARTHUR LUTZENMEIR Washington County  
Sow and Litter Club, 1921-'26; Kansas  
4-H Roundup, 1923, '24, '25.

HAZEL HEDSTROM Morris County  
Poultry and Sewing Clubs, 1921-'26;  
Kansas Free Fair, 1922; State 4-H  
Roundup, 1922-'23.

MENGA BLANKLEY Morris County  
Poultry, Clothing and Baking Clubs,  
1924-'26; Kansas State Fair, 1925;  
Kansas Free Fair, 1925; State 4-H  
Roundup, 1926.

HOMER HEITT Reno County  
Dairy, Pig and Poultry Clubs, 1920-'26;  
National Boys' and Girls' Club Con-  
gress, 1922; State 4-H Roundup, 1923.

LUCILE PIPER Sherman County  
Canning and Poultry Clubs, 1924-'26;  
Member of Winning Agricultural  
Demonstration Team at State Fair,  
1925; State 4-H Roundup, 1926; Owner  
of a Certified Poultry Flock.

LEONICE FISHER Bourbon County  
Clothing, Baking and Canning Clubs,  
1925-'26; Member of Winning Meal  
Demonstration Team at Kansas Free  
Fair, 1925; State 4-H Roundup, 1926;  
Member of Kansas Wheat Train, 1926.

ALLEN RIDGE Kingman County  
Poultry and Sorghum Clubs, 1923-26;  
Kansas State Fair, 1925; State 4-H  
Roundup, 1926.

ALICE PARSONS Sherman County  
Canning and Baking Clubs, 1924-'26;  
State 4-H Roundup, 1926.

LILLIAN LAUGHLIN Sherman County  
Poultry Club, 1924-'26; Member of  
Winning Agricultural Demonstration  
Team at Kansas State Fair, 1925; State  
4-H Roundup, 1926.

MIRIAM MARSH Neosho County  
Sewing Club, 1923-'26; Kansas Free  
Fair, 1924; State 4-H Roundup, 1925-  
'26; Royal 4-H Congress, 1926.





ESTER BENSON Lincoln County  
Clothing Club, 1923-'26; Member of  
County Demonstration Team; State  
Club Roundup, 1926.

KATHRYN GROVE Brown County  
Canning and Sewing Clubs, 1921-'23;  
State Club Roundup, 1923.

PAULINE WECKER Lyon County  
Poultry, Canning, Sewing and Sheep  
Clubs, 1921-'26; Royal 4-H Club Con-  
ference, 1925; National Boys' and  
Girls' Club Congress, 1924.

LAWRENCE SEYB Reno County  
Pig and Calf Clubs, 1922-'24; Kansas  
State Fair, 1922; State Club Roundup,  
1923; National Boys' and Girls' Club  
Congress, 1923.

EDWIN MOORE Smith County  
Poultry and Garden Clubs, 1922; State  
Club Roundup, 1923.

MILDRED ANDERSON McPherson County  
Poultry and Canning Clubs, 1922-'26;  
State Club Roundup, 1923.

CLIFFORD HARDING Clay County  
Poultry, Beef and Pig Clubs, 1922-'26;  
Member of Judging Team at State  
Fair and Sioux City, 1924; State Club  
Roundup, 1924; State Baby Beef  
Champion, 1926; National Boys' and  
Girls' Club Congress, 1926.

LOIS STARBUCK Sherman County  
Baby Beef Club, 1923-'26; State Club  
Roundup, 1926; Leadership Project,  
1926; National Boys' and Girls' Club  
Congress, 1924.

WARREN NEITZKE Butler County  
Pig Club, 1925-'26; National Boys' and  
Girls' Club Congress, 1926.

LUCY BRICKWELL Chase County  
Poultry Club, 1919-'20; State Fair at  
Hutchinson, 1920; State Fair at  
Topeka, 1920.





MINNIE TUNIS Jackson County  
Newata 4-H Club, 1925-'26; Sewing;  
National Boys' and Girls' Club Con-  
gress, 1925; Leadership Project, 1926.

LOUISE LUMB Clay County  
Sewing, Calf, Chicken and Health  
Clubs, 1921-'26; Winner Charles M.  
Sheldon Medal for Outstanding Club  
Work; Kansas Free Fair, 1926; Win-  
ner of Leadership Trip to Washington,  
D. C., 1926.

REOLA B. KISTLER Kingman County  
Poultry, Baking and Clothing Clubs,  
1925-'26; Kansas State Roundups,  
1925-'26.

FRED HEDSTROM Morris County  
Corn, Calf and Pig Clubs, 1918-'24;  
Kansas Free Fair, 1925; Kansas State  
Club Roundup, 1924; Champion Ton  
Litter, 1924.

CHARLOTTE ROBINSON Kingman County  
Demonstration Teams, 1925-'26; Kan-  
sas Free Fair, 1925; State Club Round-  
ups, 1925-'26.

PEARL FANNING Brown County  
Canning Clubs, 1922-'26; Demonstra-  
tion Team to Kansas Free Fair; Kan-  
sas State Club Roundups, 1925-'26.

WAYNE AYRES Butler County  
Banner 4-H Club, 1925-'26; Pig Club;  
National Boys' and Girls' 4-H Club  
Congress, 1926.

ETHEL BECKER Morris County  
Sewing and Poultry Clubs, 1924-'26;  
Kansas Free Fair, 1925; State Club  
Roundup, 1926.

GLADYS HARDING Clay County  
Calf and Health Clubs, 1923-'26; Kan-  
sas State Club Roundup, 1926.

CATHERINE MARSH Neosho County  
Clothing Club, 1923-'26; Member of  
Clothing Demonstration Team to Kan-  
sas Free Fair, 1925; Kansas State Club  
Roundup, 1926.



ETHEL MAY BLAZER Lincoln County  
 Pig, Clothing and Poultry Clubs, 1923-  
 '26; Kansas State Club Roundup, 1925;  
 National Boys' and Girls' Club Con-  
 gress, 1923.

PAUL DAVIES Riley County  
 Beef, Sheep and Corn Clubs, 1923-'26;  
 Royal 4-H Club Conference, 1924;  
 Kansas State Fair; Kansas Free Fair,  
 1924; State Club Roundup, 1925.

GENEVA KUCHERA Jefferson County  
 Poultry, Garden and Clothing Clubs,  
 1922-'25.

RUBY HOWELL Marshall County  
 Baby Beef Club, 1922-'26; State Club  
 Roundups, 1923-'26; Kansas Free Fair;  
 Kansas State Fair; Royal 4-H Confer-  
 ence.

ALBERT PEASE Bourbon County  
 Dairy Calf Club, 1925-'26; Member of  
 State Dairy Team to Indianapolis,  
 1925; State Club Roundup, 1926.

GWEN GALLE McPherson County  
 Poultry, Garment Making; Bread;  
 Meal Preparation and Clothing Clubs,  
 1919-'26; State Club Roundup, 1923;  
 National Boys' and Girls' Club Con-  
 gress, 1923.

WILMA MARSH Neosho County  
 Sewing Club, 1924-'26; State Club  
 Roundup, 1926

MARIE ANTRIM Kingman County  
 Poultry and Sewing Clubs, 1924-'26;  
 State Club Roundup, 1925-'26; County  
 Health Champion.

EVELYN HARLEY Cherokee County  
 Clothing, Dairy and Baking Clubs,  
 1923-'26; State Fair, 1925; Member of  
 Kansas Baking Demonstration Team to  
 Sioux City, 1926; State 4-H Roundup,  
 1926.

EDITH PAINTER Meade County  
 Clothing and Baking Clubs, 1922-'26;  
 State Club Roundups, 1924-'26; State  
 Champion in Home Economics, 1925;  
 National Boys' and Girls' Club Con-  
 gress, 1925; Baking Judging Team at  
 Chicago, 1925.







MILDRED RIDGE Kingman County  
Poultry and Sewing Clubs, 1923-'26;  
State Fair, 1925; National Boys' and  
Girls' Club Congress, 1925; Kansas  
State 4-H Club Roundup, 1926.

VERNIE CAIN Kingman County  
Pig and Sorghum Clubs, 1924-'26;  
Kansas State Fair, 1925; State Club  
Roundup, 1926; National Boys' and  
Girls' Club Congress, 1926.

LLOYD COMPTON Brown County  
Pig Club, 1923-'24; State Pig Club  
Champion, 1924; National Boys' and  
Girls' Club Congress, 1924.

UNA RUTHRUFF Morris County  
Clothing and Baking Clubs, 1923-'26;  
State Club Roundup, 1923-'24.

MRS. ORAH LYONS PARKS Smith County  
Clothing and Canning Clubs, 1921-'23;  
State Club Roundup, 1923.

MARSHALL McWILLIAMS Brown County  
Poultry Club, 1922; State Club Round-  
up, 1923.

FLOYD SEYB Reno County  
Colt, Pig, Calf and Poultry Clubs,  
1920-'25; State Club Roundup, 1924.

MARJORIE SMITH Rice County  
Sewing, Bread, Poultry and Garden  
Clubs, 1917-'25; Wichita Wheat Show,  
1918.

GENEVA O'NEAL Kingman County  
Poultry and Sewing Club, 1923-'26;  
Roundup at Kingman, 1924; State 4-H  
Roundup, 1923.

KATHERYN HEMPHILL  
Leavenworth County  
Sewing Club, 1925; National Boys' and  
Girls' Club Congress, 1926; Member  
of the Meat Demonstration Team at  
Chicago, 1925.



LYLE STOVER Lincoln County  
Pig and Baby Beef Clubs, 1924-'26;  
National Boys' and Girls' 4-H Con-  
gress, 1924; State 4-H Roundup, 1924.

ALICE RIDGE Kingman County  
Poultry and Clothing Clubs, 1923-'26;  
Member of Winning Agricultural  
Demonstration Team, Kansas State  
Fair, 1924; National Boys' and Girls'  
4-H Congress, 1924; State 4-H Round-  
up, 1925.

RALPH HAUPTLI Mitchell County  
Pig Club, 1925-'26; First Prize Pig,  
Kansas State Fair, 1925; State 4-H  
Roundup, 1926.

GEORGE McCOLM Lyon County  
Sheep, Corn, Pig, Poultry and Canning  
Clubs, 1923-'26; Kansas Free Fair and  
Kansas State Fair, 1923; Royal 4-H  
Conference, 1925; State 4-H Roundup,  
1924-'26.

ELINA NORDMAN Sherman County  
Canning Club, 1924-'26; Member of  
State Champion Canning Club, 1925;  
State 4-H Roundup, 1926.

CARL HEDSTROM Morris County  
Corn and Pig Clubs, 1918-'26; Kan-  
sas Free Fair, 1921-'24; State 4-H  
Roundup, 1925.

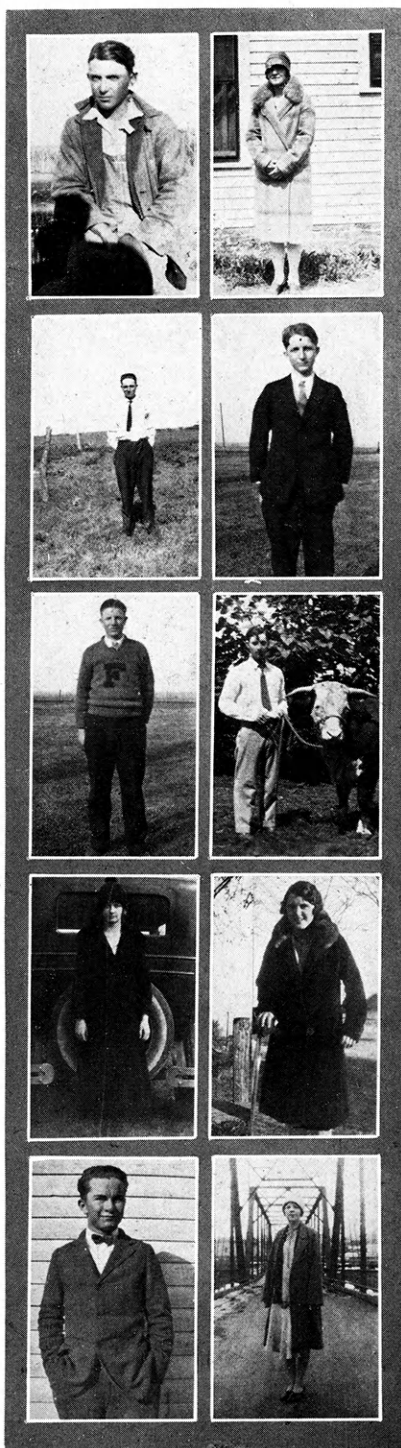
FRANK PARSONS Sherman County  
Pig, Corn and Wheat Clubs, 1924-'26;  
State 4-H Roundup, 1925-'26; National  
Boys and Girls' 4-H Congress, 1926;  
Winner of Leadership Trip to Wash-  
ington, D. C., 1926.

JANETTE KNAPPENBERGER  
Kingman County  
Pig Club, 1921-'26; Kansas State Fair,  
1923-'24; State 4-H Roundup, 1924.

HAYWARD SMITH Butler County  
Baby Beef Club, 1923-'26; National  
Boys' and Girls' 4-H Congress, 1923;  
State 4-H Roundup, 1924.

JOE KNAPPENBERGER Kingman County  
Pig and Poultry Clubs, 1922-'26; Na-  
tional Boys' and Girls' 4-H Congress,  
1925; State 4-H Roundup, 1924.





JOHN A. MARTIN Cherokee County  
Baby Beef Club, 1924-'26; Kansas  
Livestock Judging Team, 1925; Royal  
Club Conference; National Boys' and  
Girls' Club Congress, 1925; State Club  
Roundup, 1926.

GLADYS VANDERSTELDT Clay County  
Sewing, Health and Poultry Clubs,  
1922-'26; State Health Girl, 1924; Na-  
tional Boys' and Girls' Club Congress,  
1924.

CLIFFORD RICE Lyon County  
Corn and Kafir Clubs, 1921-'26; Na-  
tional Boys' and Girls' Club Congress,  
1925.

ARDEN BOOTH Brown County  
Dairy Calf Club, 1925-'26; Dairy  
Demonstration Team State Fair, 1925;  
National Boys' and Girls' Club Con-  
gress, 1926; State Club Roundup, 1926.

FORREST BOOTH Brown County  
Dairy Calf Club, 1925-'26, Dairy  
Demonstration Team State Fair, 1925;  
State Club Roundup, 1926.

A. J. SCHEUTZ Brown County  
Baby Beef Clubs, 1925-'26; State Fair,  
1925; National Boys' and Girls' Club  
Congress, 1925; State Club Roundup,  
1926.

HELEN JENNINGS Cherokee County  
Clothing and Cooking Clubs, 1922-'26;  
State Club Roundups, 1925-'26.

LUCILLE MEISENHEIMER Brown County  
Own Your Own Room, Meal Prepara-  
tion, and Clothing Clubs, 1924-'26;  
State Fair, 1925; State Club Roundup,  
1926.

HAROLD KIRKPATRICK Jewell County  
Pig Club, 1925-'26; State Fair, 1925;  
State Club Roundup, 1926.

MARY K. FREDERICK Leavenworth County  
Sewing Club, 1925-'26; Winning Cloth-  
ing Demonstration Team at State Fair,  
National Boys' and Girls' Club Con-  
gress, 1925-'26; State Club Roundups,  
1925-'26.



MARY TILTON Mitchell County  
Poultry, Sewing, and Canning Clubs,  
1922-'26; State Fair, 1924; State Club  
Roundups, 1923-'25; Winner of Leader-  
ship to Washington, D. C., 1926.

WILLIE BURTON Morris County  
Sow and Litter, and Judging Clubs,  
1922-'26; State Club Roundup, 1923.

HAROLD McCOMB Bourbon County  
Crops Club, 1923-'26; Member of State  
Dairy Judging Team, 1924; State Club  
Roundup, 1926.

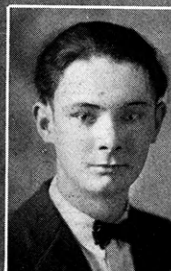
RALPH HAUPTLE Mitchell County  
Pig Club, 1925-'26; State Fair, 1925;  
State Club Roundup, 1926.

HAROLD SPRINGER Riley County  
Pig and Poultry Clubs, 1925-'26; State  
Club Roundup, 1926.

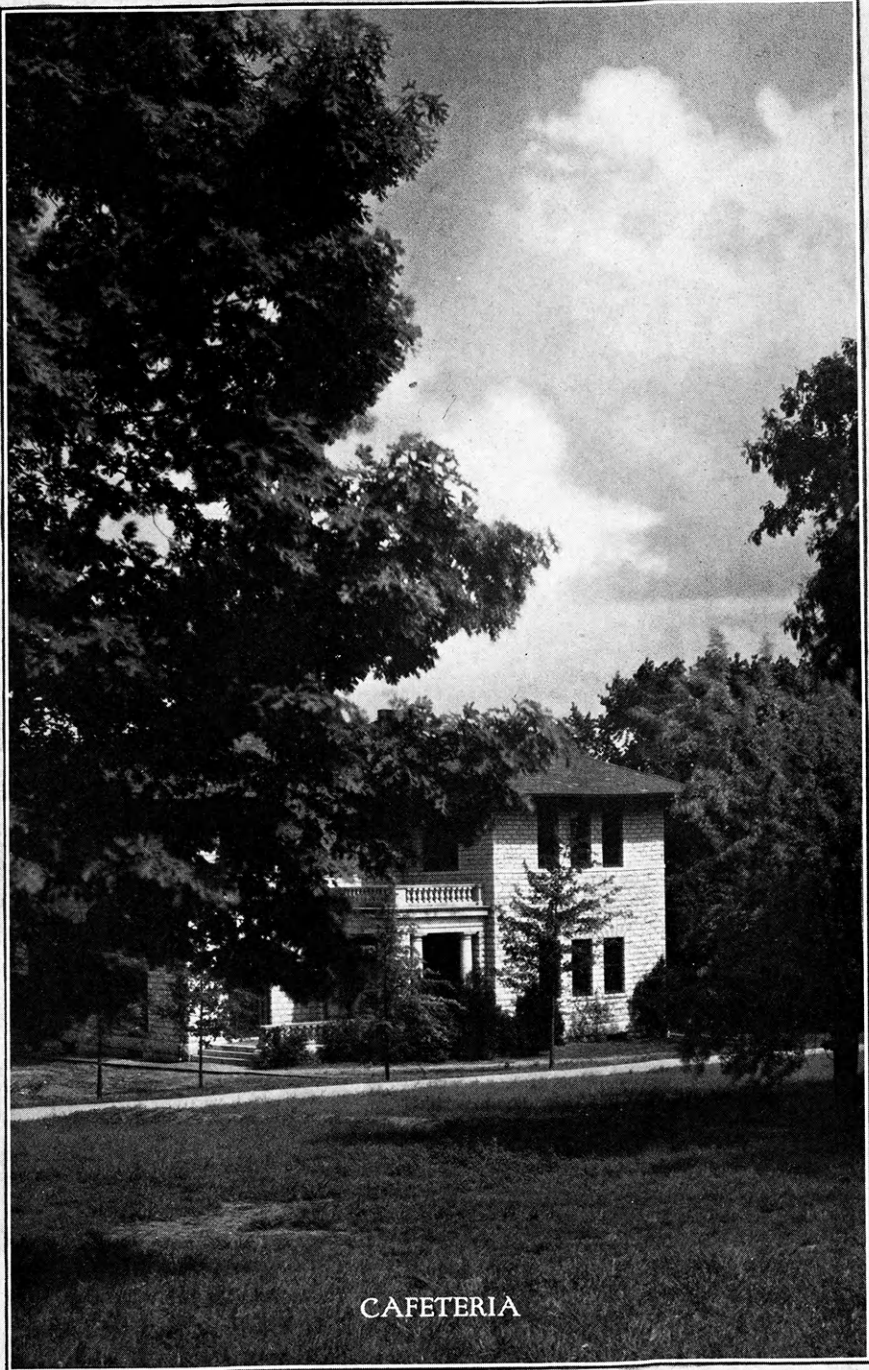
FLORENCE McCREATH Morris County  
Sewing and Poultry Clubs, 1923-'26;  
State Club Roundup, 1926.

LORETTA IVES Sedgwick County  
Meal Preparation, Sewing and Canning  
Clubs, 1923-'26; State Club Roundup,  
1925-'26; Wichita Wheat Show, 1925.

CARL CONGER Allen County  
Dairy and Poultry Clubs, 1921-'26;  
High Individual in Judging Contest at  
State Fair, National Boys' and Girls'  
Club Congress, 1925; State Club  
Roundup, 1926.

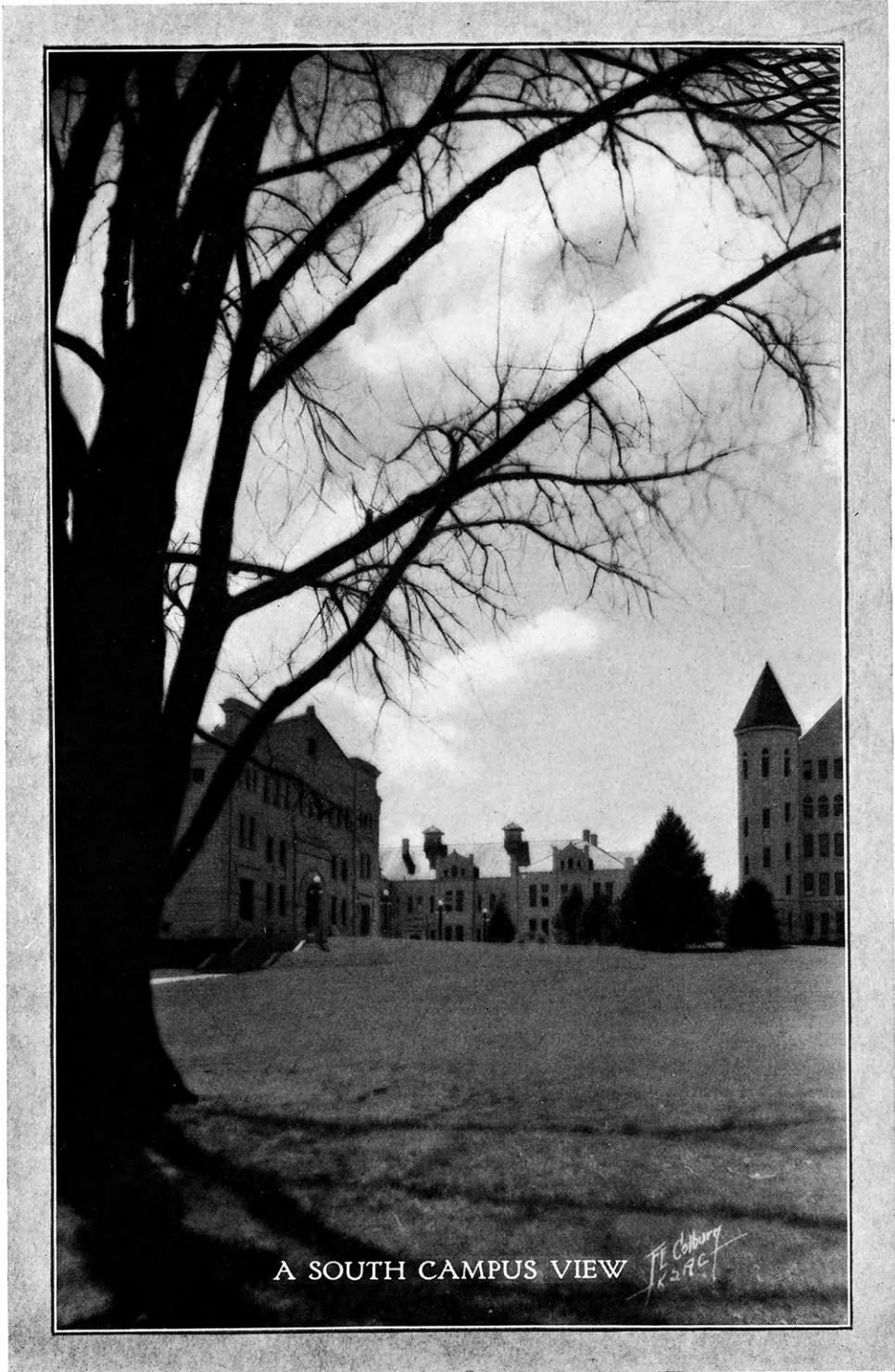






CAFETERIA

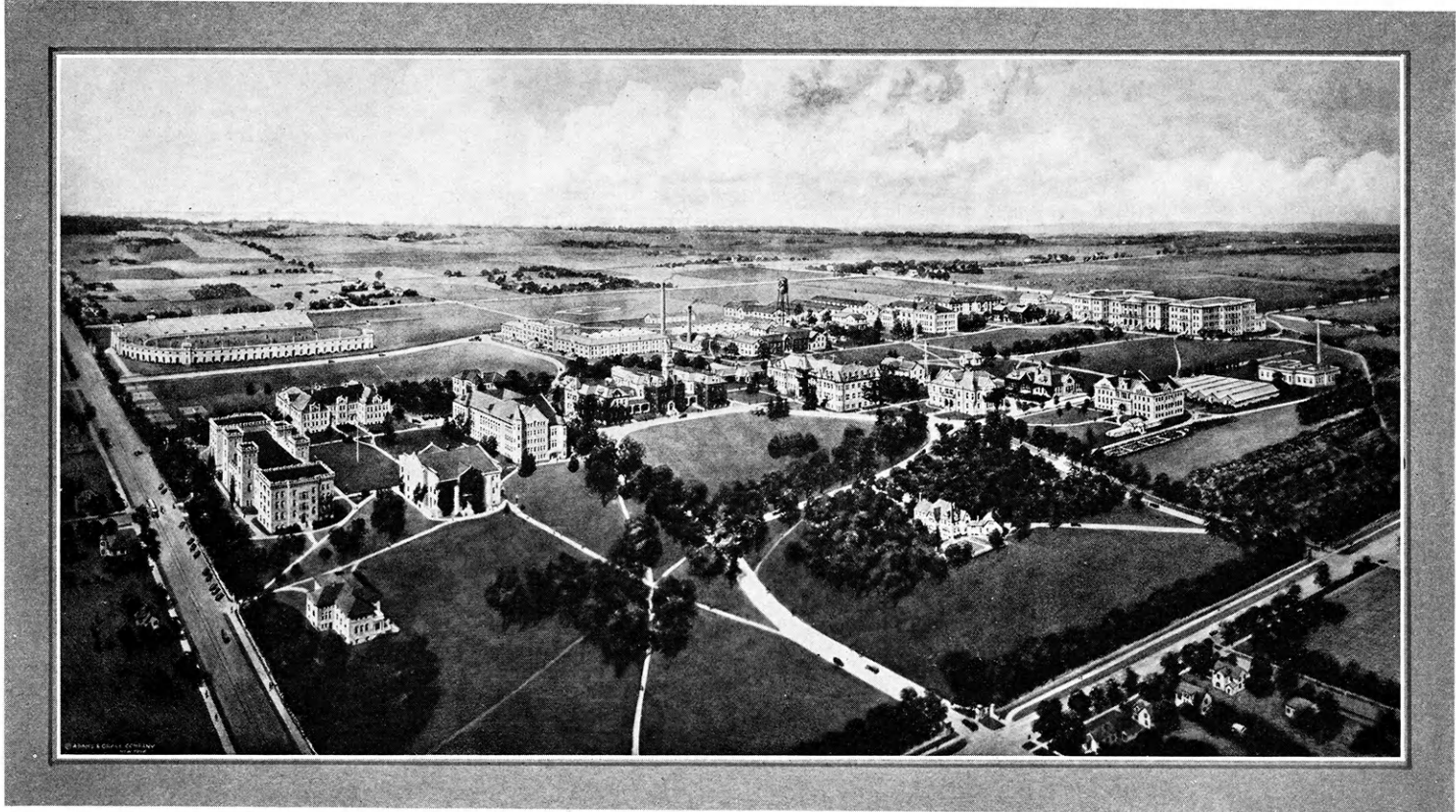




A SOUTH CAMPUS VIEW

*F. E. Colburn  
1927*





*Airplane View of the Kansas State Agricultural College*

Who's

Whoot

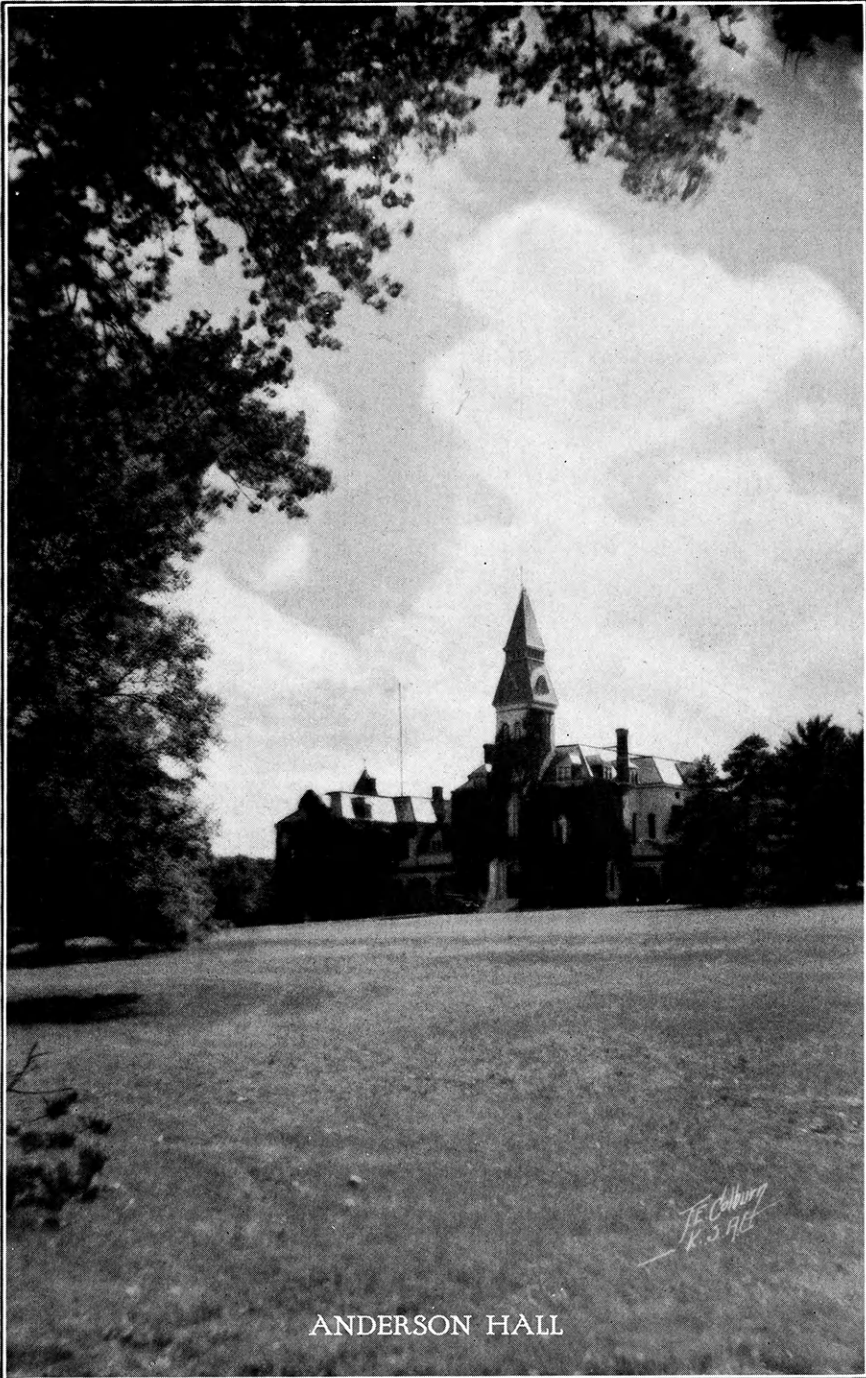


The College Campus of 160 acres occupies a commanding and attractive site upon an elevation adjoining the western limits of the City of Manhattan, with street car service into town and to the railway stations. The grounds are tastefully laid out according to the designs of a landscape architect, and are extensively planted with a great variety of beautiful and interesting trees, arranged in picturesque groups, masses and border plantings, varied by banks of shrubbery and interspersed with extensive lawns, gardens and experimental fields. Broad, well-shaped macadamized avenues lead to all parts of the grounds. Cement walks connect the buildings with one another and with the entrances. The buildings are harmoniously grouped, and are uniformly constructed of limestone.

The College is the oldest state-supported College in Kansas, having opened its doors in 1863. It is operated mainly for the education of people who work for a living—on the farm, in the factory, in the home, or elsewhere. The curriculum includes twenty different four-year courses and a number of other shorter courses. Last year more than 4,000 students attended from 104 Kansas Counties, 33 states, and eight foreign countries.



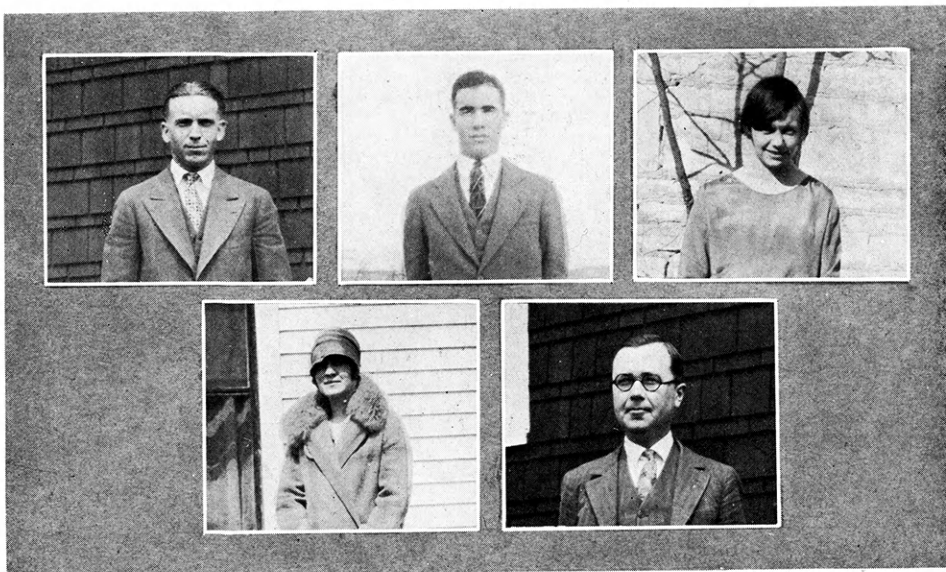




ANDERSON HALL



# The Guilty Parties

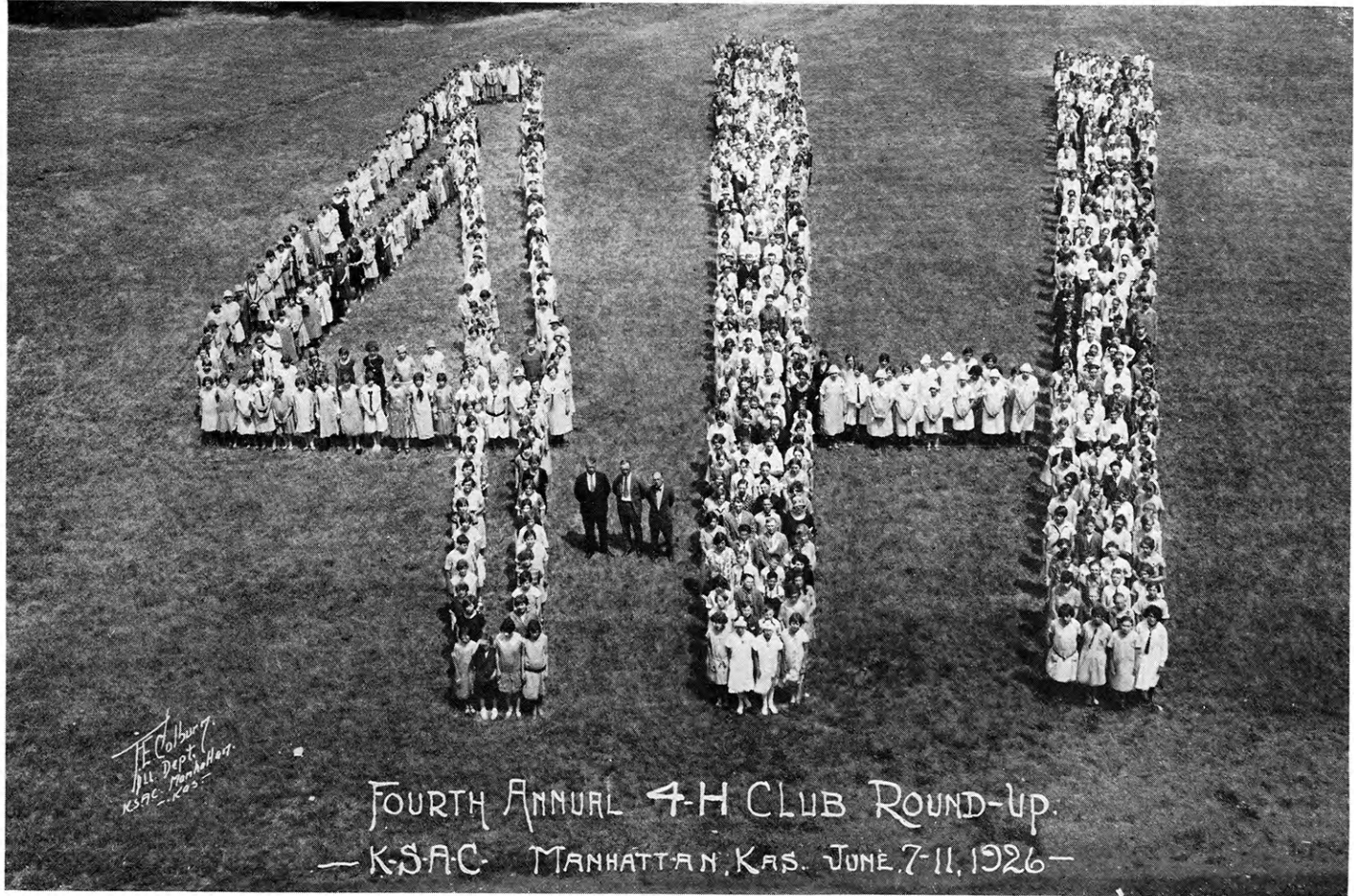


FRANK ZITNIK . . . . . *Editor*  
 LYLE STOVER . . . . . *Assistant*  
 EDITH PAINTER . . . . . *Associate Editor*  
 GLADYS VANDERSTELDT . . . . . *Assistant*  
 M. H. COE . . . . . *Business Manager and Advisor*

We have endeavored to produce an annual worthy of the interest of all 4-H Club members. It has been no easy task along with our college work but we feel that the book is ample reward for our labors. We wish to thank our members who have so willingly cooperated with us in this enterprise and especially do we thank Mr. Coe for his encouragement and advice. We wish to commend to our readers those firms who have shown their interest in 4-H Club work by taking advertising space in our book. We hope that all will recognize the value of their cooperation.

As a final word, let us say that we have portrayed, probably inadequately, but yet conscientiously, in these pages the worth while nature and manifold interests of Kansas 4-H Clubs. It has been our endeavor to give a glimpse of our work, our achievements, our activities, and our organization—to unite all these to give an adequate concept of the workings of this great 4-H movement. Whether we have succeeded or failed we leave to the decision of our readers.





Who's



Whoot





# The 1926 4-H Club Roundup

The 1926 Roundup was the most outstanding of all the four that have been held in Manhattan. Everyone cooperated in carrying out the program in a systematic manner, and thus the work went smoothly for the whole week. There were eight hundred and nine members registered. All the boys and girls in attendance were required to take their room and board on the campus. The girls were lodged in Calvin Hall and in the girls' gymnasium, and the boys in Nichols Gymnasium. Meals were supplied at Thompson Hall, the College Cafeteria.

The morning programs were arranged so that the periods were an hour long, and each of a different type. In addition to the regular program there was a definite leaders' conference for agents, leaders and older club members. The afternoon programs consisted of trips to points of interest both on the campus and in the surrounding country. Special attention was given to various contests, including health, team contests, and similar activities.

An educational trip to Fort Riley, where the soldiers were having an annual meeting, was among the special features. The Cavalry gave a drill and an exhibition of jumping and riding, and the Artillery gave a drill. After the exhibitions they gave a motion picture show in the Fort Riley theatre. The 4-H Club picture on the opposite page was the first of its kind and has attracted attention far and wide. The closing banquet, at which the prizes and trophies were awarded, was one of the largest ever held in Manhattan, there being seated nine hundred and fifteen.

Special acknowledgment is made of the valuable assistance given by Mr. R. A. Turner, of the United States Department of Agriculture, and the splendid cooperation received from the Victor Talking Machine Co., Farmers Wife, and the Jello Company, all of whom sent representatives who made valuable contribution to the program. The Kansas Bankers' Association deserve the unlimited praise and appreciation of all 4-H Club folks because of their generosity in providing the funds necessary for the prizes, awards and other special features for this roundup and other club affairs.

The winners of the various contests during the week are as follows:

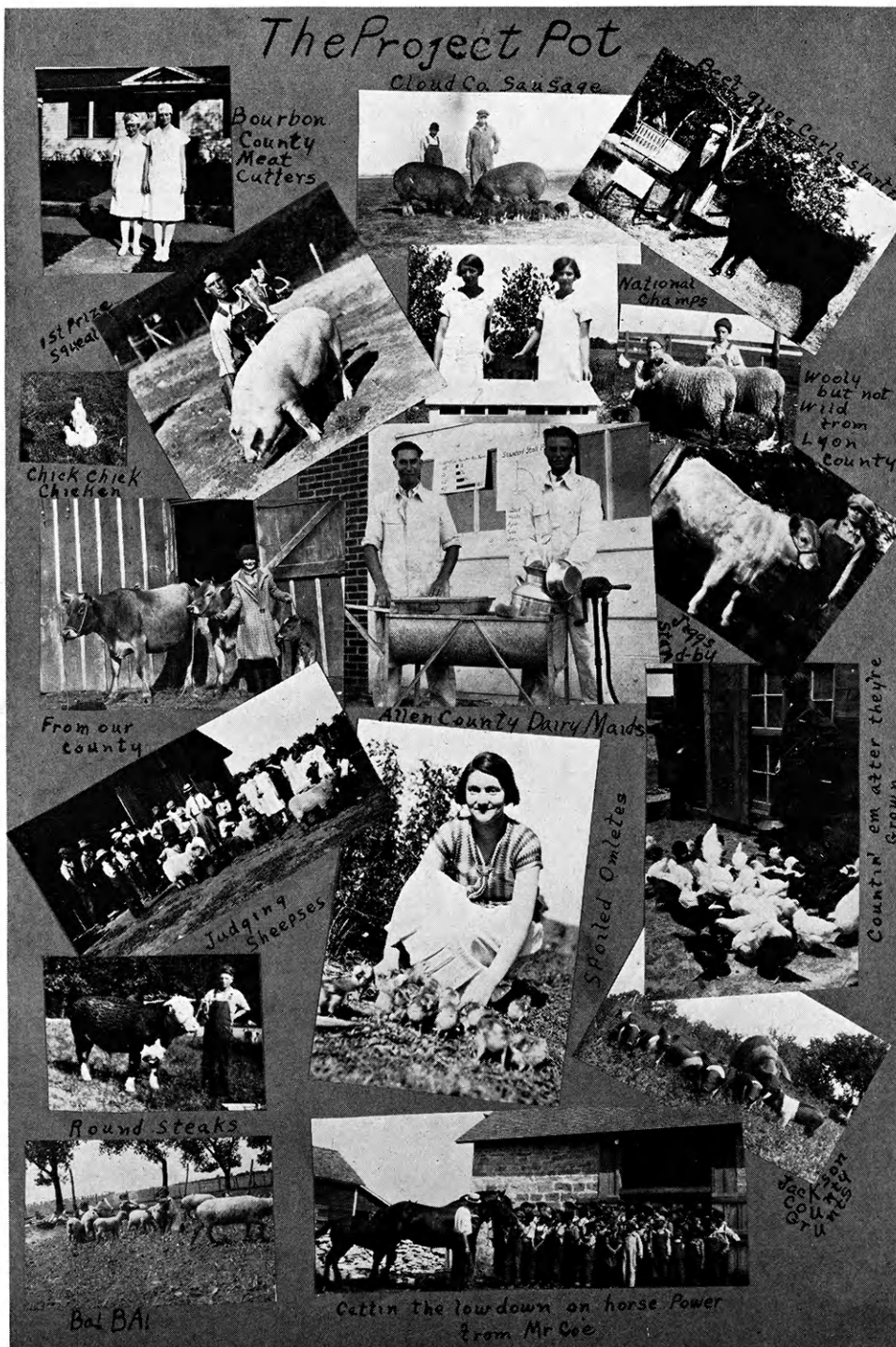
Health—Margaret Stouth . . . . .	Ford County
Attendance—Kingman County . . . . .	64 Present
Stunt . . . . .	Montgomery County
Home Economics Demonstration . . . . .	Cherokee County
Agriculture Demonstration . . . . .	Cheyenne County
Baking Demonstration . . . . .	Bourbon County
Model Club Meeting . . . . .	Leavenworth County
Food Judging . . . . .	Reno County
Clothing Judging . . . . .	Kingman County
Livestock Judging . . . . .	Labette County
Dairy Judging . . . . .	Cherokee County
Poultry Judging . . . . .	Riley County
Crop Judging . . . . .	Lyon County

The Roundup is the annual get-together for all 4-H Club folks of the state, and those who have failed to attend a 4-H Club Roundup have missed one of the best features of 4-H Club work in Kansas.

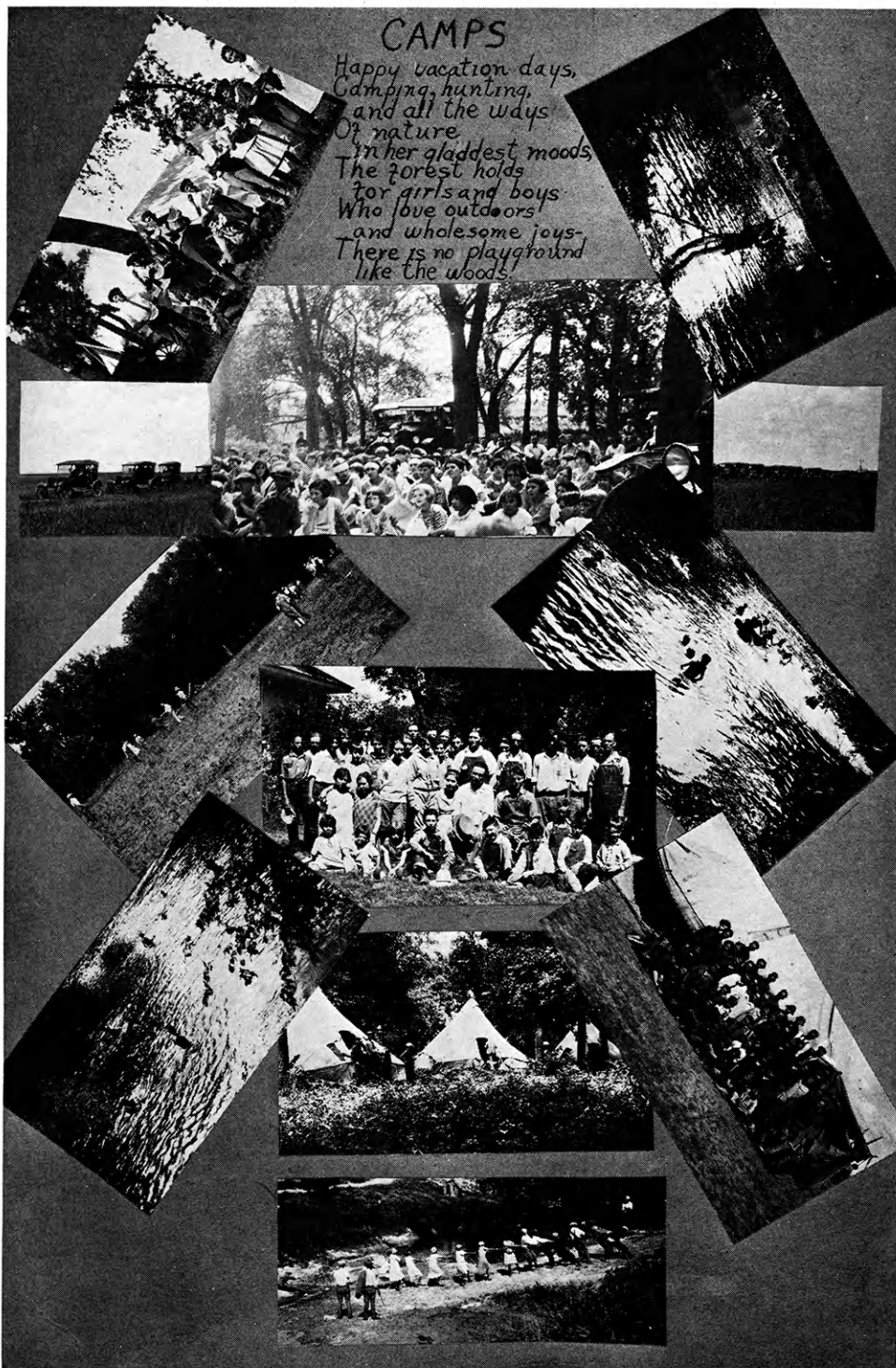




# The Project Pot







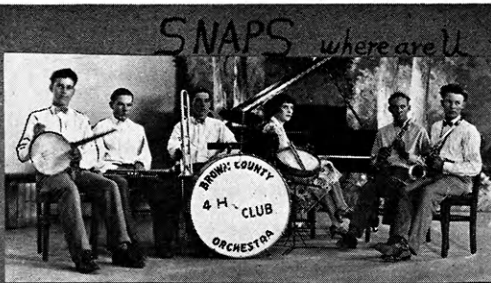
### CAMPS

Happy vacation days,  
Camping, hunting,  
and all the ways  
Of nature  
In her gladdest moods  
The forest holds  
For girls and boys  
Who love outdoors  
and wholesome joys-  
There is no playground  
like the woods!





The Club Booths



Brown Buglers

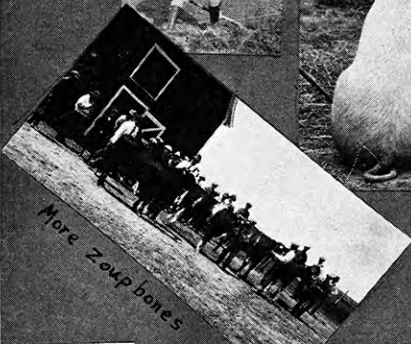


Leavenworth

Even the President works



Our Ringmaster



More Zoup bones



Busy Beavers



Our wedded



whos who



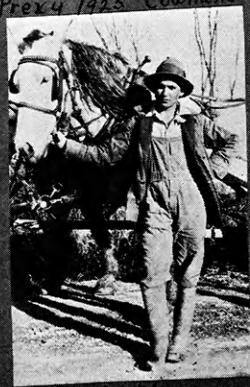
Our Sec.



Help! Porter!!



McCoe and without his collar



J. A. M.



Way out West in Kansas



Wanted One gray bonnet





## Whoots

Miss Bender: "Did you wash these fish before you cooked them?"

Her Roommate: "Why should I? They've lived in water all their life, haven't they?"

When Sally's arms her dog imprison,  
I surely wish my neck was his'n;  
How quickly would I stop and turn  
To get a pat from hands like her'n;  
And when she kisses Towser's nose  
Oh! How I wish my snoot were  
those.

Lady: "Which end of the car shall I get off at?"

Conductor: "It's all the same to me, lady. Both ends stop."—(Dirge.)

Mr. Scoth: "Jerry must be broke again."

Mr. Coe: "Why, has he been trying to borrow money of you again?"

Mr. Scoth: "No, I've been trying to borrow from him."

Midnight: "Eatin' wif yo' knife? Why, man, wheahs yo' eddiket?"

Sundown: "Doan try to elevated brow me, niggah. Ef de waitah hab giv' me 'n eddiket I'd eat wif it."

Uncle Zeke: "How much for this nightshirt?"

Clerk: "Two-fifty."

Uncle Zeke: "Too high, I don't go out at nights much nohow."

Hap McComb (in a barber shop): "How long will I have to wait for a shave?"

Barber (looking him over): "About three years."

I hate my woolen underwear.

It fairly makes me bawl.

It itches here, it itches there,

But when I scratch me anywhere

That ain't the place at all.

—(Medical Suggestions.)

Uncle Zeke arrives at the station as the train is pulling out. Chases it a quarter of a mile. Walks back meekly.

Bystander: "Couldn't catch it, uncle?"

Uncle Zeke: "No, but b'gosh I made her puff."

Bobbie ran into the sewing-room and cried: "Oh, mamma! There's a man in the nursery kissing the nurse."

Mamma dropped the sewing and rushed for the stairway. "April fool," cried Bobby. "It's only papa."

—(Medley.)

Musician (at hospital): "Doctor, if I permit you to operate on me, will you guarantee that I will be playing trap drums in two weeks' time?"

Doctor (slightly peeved): "Don't know about drums, but the last musician I tackled was playing a harp in twenty-four hours."

Husband (coming out from under ether): "Am I in heaven?"

Wife: "No, dear, I'm still with you."

Customer: "Two eggs and a cup of coffee without cream."

Waitress: "Sorry, sir. You'll have to take it without milk. We haven't any cream."

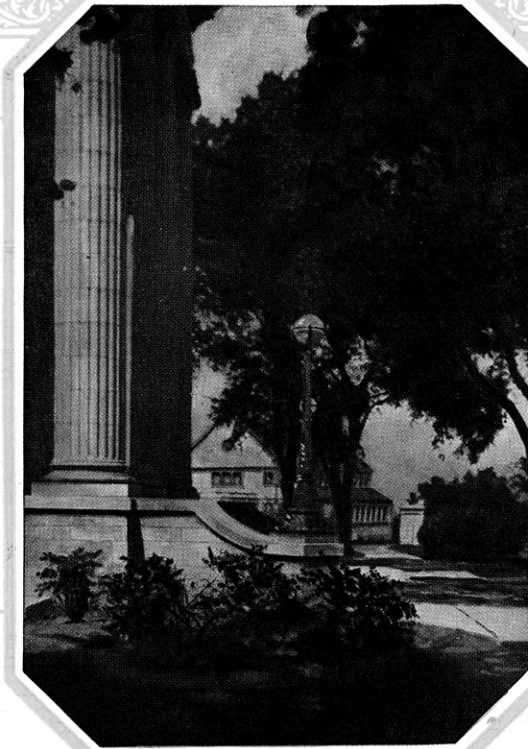
A Scotchman woke up one morning to find that in the night his wife had passed away. He leaped from his bed and ran horror-stricken into the hall. "Mary," he called downstairs to the general servant in the kitchen, "come to the foot of the stairs, quick."

"Yes, yes," she cried, "what is it?"

"Boil only one egg for breakfast this morning," he said.—(Bison.)

Colored Minister (conducting a funeral): "Farewell, brudder Jackson, we hopes you'se gone where we specks you ain't."





LACE your Annual in the hands of a printer who *specializes in College Annual work*—one who knows your problems, and is able by experience and willing by real interest to co-operate in every step of its production. That one act will be a long step toward *your goal of success*. Get in touch with us early, so that we may help you all the way, both for fine results and economy.

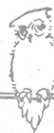
*Twenty-Five Years Successful Printing Service*

SMITH-GRIEVES · COMPANY

KANSAS CITY, MISSOURI







TO  
4-H CLUB MEMBERS



The  
Kansas City Stock Yards Company

Congratulates you

on your Success and Achievements

and extends

to you

a Cordial Invitation to Visit the

Stock Yards

at any Time, and to Attend the

AMERICAN ROYAL LIVE STOCK SHOW

held in November each year

Kansas City Stock Yards Company

GEO. R. COLLETT, Pres.

W. H. WEEKS, Vice-Pres.





**I**T'S the fond hope of Kansas Farmer that the Club Boys and Girls of Kansas enjoy their most prosperous year and that the cup of happiness runs over for each individual.

That's just another way of saying that Kansas Farmer is deeply interested in the success of the men and women of tomorrow, just as it is interested in the fathers and mothers of today and the parents of yesterday.

For this publication has been on the job 70 years, making good farmers better farmers (and their wives and children too) and feels that if it influences you toward better living in some slight measure, its mission will not have been in vain.

## Kansas Farmer

TOPEKA, KANSAS

Have you received copies of Hazel-Atlas Glass Company's two NATIONAL CANNING CONTESTS OPEN TO 4-H CLUB MEMBERS?

Write Georgia W. Hess, Education Department, for complete information.



PRIZES AWARDED FOR PRODUCTS PUT UP IN EITHER 'ATLAS' E-Z SEAL or 'ATLAS' GOOD LUCK JARS.



HAZEL-ATLAS GLASS COMPANY  
WHEELING, WEST VA.

MANUFACTURERS OF  GLASSWARE

*Over One Billion Pieces Annually*



\$37.00 Per Cwt.

SOLD BY

JOHN CLAY & CO.

Kansas City Stock Yards



ALASTAIR WISHART, MANHATTAN, KAS., AND HIS STEER "MAJOR"

*Champion Shorthorn Steer, American Royal Live Stock Show, 1926*

This steer brought the highest price of the show. Weighed 1,110 lbs. Bought by Neuer Bros., Kansas City butchers. We also sold a steer at \$15.00 for Ronald Wishart. These boys are sons of Neil Wishart, who, with W. A. Cochel, operates Bluemont Farms, specializing in Shorthorn cattle and Duroc-Jersey hogs.

We also have our own completely equipped offices at  
CHICAGO, OMAHA, ST. JOSEPH, ST. LOUIS, FT. WORTH, DENVER,  
SIOUX CITY, BUFFALO, OGDEN, ST. PAUL

JOHN CLAY & CO.

Live Stock Commission Merchants  
KANSAS CITY STOCK YARDS





# KANSAS NATIONAL LIVESTOCK SHOW

Wichita, Kansas  
Nov. 7-11, 1927

—  
\$2,000.00 in Premiums for  
4-H Clubs

—  
\$1,000 on Fat Calves  
\$350 on Pigs  
\$300 on Ton Litters  
\$200 on Sheep  
\$200 on Stock Judging

—  
Also Several Trips to  
Chicago, Kansas City and  
Manhattan

—  
*Write for Premium List*

LEWIS M. EGAN      WALTER J. WILSON  
President              Vice-President  
  
S. M. BREITWEISER  
Vice-President  
  
W. W. CLOUGHLEY      LEE M. EGAN  
Treasurer              Secretary

—  
For Universal "Good Prices,"  
"Good Fills" and Courte-  
ous Treatment

—  
CONSIGN TO  
AND  
BUY THROUGH

## Wilson, Egan & Company

Kansas City Stock Yards

—  
A crew of Hustlers that will  
"get there" for you!

—  
*Our Customers Swear  
"by" us, Not "at" us!*

—  
WRITE US    WIRE US    SHIP US





## "A Burger Book"

—the very name commands unusual interest for a college or school Annual; for more prizes have been won by books engraved by Burger than by those of any two other engraving houses. Give your book the same chance.

*The Burger Engraving Co.*

8th & WYANDOTTE STS  
~ KANSAS CITY ~

**B**

**Burger**



# MASSEY-HARRIS

## COMBINED REAPER-THRESHERS

### Will Save More of Your Crop

They rub out the grain similarly to the manner in which you rub it out between your hands when seeking a sample. They do not break or crack the kernels and do not cut up the straw. There is less chaff to handle and more grain and better quality results. The famous Massey-Harris Corrugated Bar Cylinder is the reason. Ask for details! The machines are built in three sizes—No. 9, 12 ft. and 15 ft.; No. 6, 10 ft. The No. 6 is built specially for the smaller tractors.

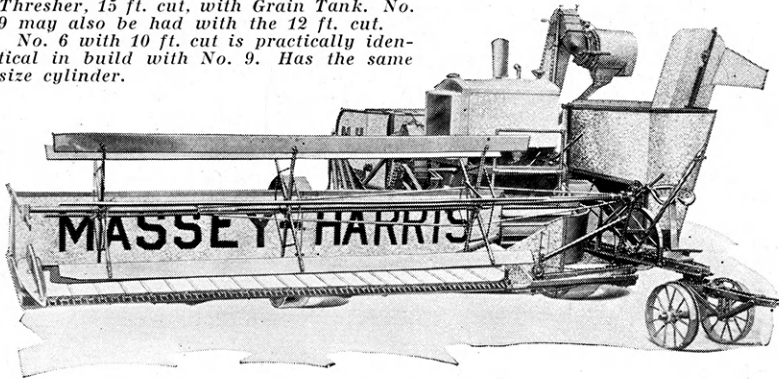
## MASSEY-HARRIS HARVESTER CO., INC., BATAVIA, N. Y.

*Builders of Warranted Farm Machinery Since 1850.*

Assembling Plants at Hutchinson and Kansas City.

Branches at Kansas City, Hutchinson, St. Louis and Minneapolis.

*Massey-Harris No. 9 Combined Reaper-Thresher, 15 ft. cut, with Grain Tank. No. 9 may also be had with the 12 ft. cut. No. 6 with 10 ft. cut is practically identical in build with No. 9. Has the same size cylinder.*



**“Good Equipment Makes a Good Farmer Better”**





The LEE Trade-Mark printed on the label is your assurance that the package or can contains the highest quality food obtainable. 200 kinds to select from.

The Guide to  High Grade Foods

AT YOUR GROCER'S



the original  
**cake eater**  
candy bar  
5¢

Butter cream center; covered with caramel, peanuts and chocolate.

LOOSE-WILES COMPANY

## THE COMMONWEALTH

### *Kansas City's New Downtown Hotel*

Ideal home for Shoppers, Week-Enders, or those seeking a Holiday in Kansas City. Large Rooms, Large Closets, Vitrolite Bath Rooms, Large Assembly Room. Coffee Shop, Popular Prices, Barber Shop, Valet and Garage. Five minutes from Union Station on Fifth and Broadway car line. Closest Hotel to Stock Yards, Wholesalers, Jobbers; within strolling distance of the Theatres, Shopping Center and Downtown District.

400 Rooms with Bath  
\$2.00 and Up



Fireproof

COMMONWEALTH HOTEL  
On Broadway at Twelfth



## To You Who Have Excelled in Club Work

We extend our hearty congratulations on having your names included in this volume. It is no small honor to be named among the leading 4-H Club members of your state, for you belong to an organization which is glorifying rural youth and lifting agriculture to a higher social and economic plane.

Perhaps some of you do not realize with how much interest you are being observed by the business world. At Montgomery Ward & Co., we feel we know you quite intimately. We have had the pleasure of meeting personally many of the boys and girls attending the National Club Congresses. Some of you have written us concerning your work—of your handicaps, the difficulties you have overcome and of your happiness when you have received recognition from your county or your state.

The parents of many of you are our customers and we can imagine their pride in your achievements and their hopes for your future.

We are back of the 4-H Club movement because we know that it is opening up many new interests to rural boys and girls, and life will be richer and more worthwhile because of its influence.

To you all, we wish continued success in your many interesting projects, with not only county, but state and national honors.

# Montgomery Ward Co.

Satisfaction Guaranteed or Your Money Back

*The Oldest Mail Order House is Today the Most Progressive*

CHICAGO, BALTIMORE, KANSAS CITY, ST. PAUL,  
PORTLAND, ORE., OAKLAND, CALIF., FORT WORTH





Who's Whoot



# Autographs



Who's Whoot



# Autographs

