

Photo
Deadline
10-31

November, 1964
15 Cents

KANSAS 4-H

Journal

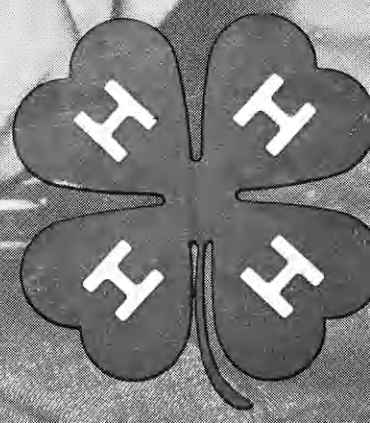
The 4-H Family Magazine

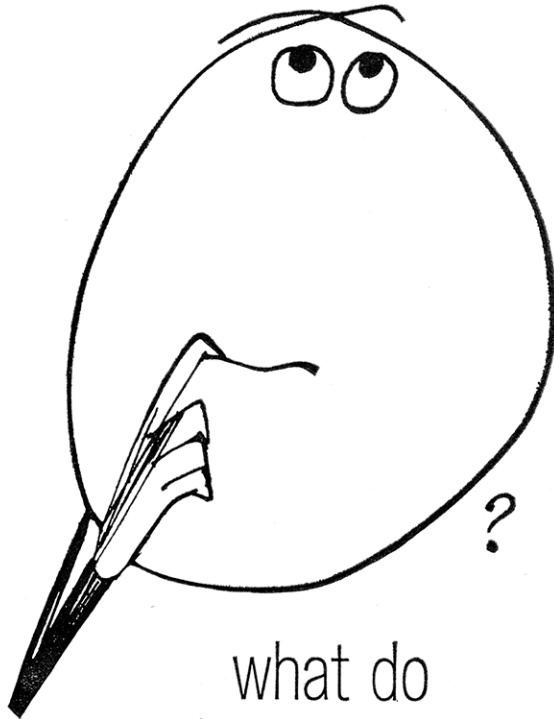
Kansas 4-H Foundation, Inc., Publisher

See



RECEIVED
NOV 4 1964
THE LIBRARY
KANSAS STATE UNIVERSITY





what do
you mean
banks
are
for everyone?

If you handle money, and everyone does, banks are for you . . . because banks keep your money safe and let you write checks . . . because banks keep your money safe and pay you guaranteed interest on savings . . . because

banks charge less for loans of all kinds . . . because banks have safety deposit boxes and travelers checks and money advice and many other services. At any time, for anybody, When Money Matters, you'd best see your Hometown Kansas Banker.

Hometown
Kansas
Banker



"A Search for New Ideas" is on among County Committees of the Kansas 4-H Foundation. District Chairman, appointed last year, are working to determine ways the 4-H program may be served more effectively. They work with the Foundation Board of Trustees and County Committees and are searching for other contacts, both by letter and personal. From ground work now, the Foundation will develop its 1965 program.

Any individual familiar with 4-H Club work may have ideas which would be helpful to the Foundation. Do not hesitate to submit them.

There have been many successful "Ideas" with excellent results. Not all can be reported here. A Decatur county 4-H Carnival planned by their Foundation County Committee and held recently will help them attain their 1964 Foundation goal. With booths from each club, home economics units contributing to a food sale, and a broad publicity campaign including radio, TV, posters, and newspaper notices and features, the first annual event was considered a huge success.

In Doniphan county the County Committee chairman reviewed the work of the Kansas 4-H Foundation and the urgent needs of 4-H before the County 4-H Council. It was unanimously voted to raise their goal.

Working together on such a worthwhile project gives personal satisfaction found in no other way. And what an opportunity to let your imagination and initiative go! Annual events of this kind become something to look forward to and improve and grow year by year. They do much more than meet goals—they create good community spirit.

Contact with bankers, lawyers and other legal counselors by the County Committees in Cowley, Hodgeman, Graham and Thomas counties to present information about the Kansas 4-H Foundation will probably provide a big boost to 4-H through the Foundation at some future date. Many people without heirs go to men in these positions for information on worthwhile programs to be included in their wills.

Many County Committees indicate they have made, or are making, plans to assist the Kansas 4-H Clubs through the Foundation. At this time, these are not available.

The Kansas 4-H Foundation Committee in your county provides opportunity for participation in promoting the growth of our most valuable crop—our boys and girls—tomorrow's leaders, important to each of us. We can never produce a surplus of good citizens. Why not assist your Committee as an active 4-H booster? You'll be glad you did.

IN THIS ISSUE

FEATURES

State 4-H Staff
 First in a Series 7
Bicycle Is A Hit..... 8
Mother Goose And A Burned Barn.....10
Stafford County Fair Provides for "New" Project Exhibits.....13
4-H Electric, A Project for Everyone.....14
 By Carrol Glanville
4-H Has New Projects.....16
Work Begin on 1965 "Review"19

DEPARTMENTS

This Is Kansas 4-H
 Pictures from 4-H'ers..... 5
Family Fun Page..... 6
Recreation, Games for the Holiday Season11
 By Dick Tomkinson
Ideas That Work.....18

Don Esslinger..... Editor

Editorial and Business Office

Phone JE 9-2211 Ext. 208
 Manhattan, Kansas

Published Monthly By

KANSAS 4-H FOUNDATION, INC.

J. Harold Johnson.....Executive Director
 Merle Eyestone.....Associate Director

BOARD OF TRUSTEES

- Governor John Anderson
 Honorary Chairman
 W. Dale Critser, Chrm.Wichita
 E. B. Shawver, Vice Chrm.Wichita
 D. J. Atha.....Shawnee Mission
 *Harry Darby.....Kansas City
 Mrs. Olive Garvey.....Wichita
 Clifford Hope.....Garden City
 A. D. Jellison.....Junction City
 Harold E. Jones.....Manhattan
 J. J. Moxley.....Council Grove
 George B. Powers.....Wichita
 Roger E. Regnier.....Manhattan
 Dolph Simons.....Lawrence
 *Lester Weatherwax.....Wichita
 *Fred D. Wilson.....Andover
 *Advisory Members

Second Class Postage Paid at Lawrence, Kansas. Return Form 3579 to Kansas 4-H Journal, Manhattan, Kansas.

Advertising rates and circulation data on request.

Group subscriptions \$1.00 per year.
 Individual subscription \$1.50 per year.
 Single copy 15 cents.

Use of the 4-H name and symbol approved by the Secretary of Agriculture of the United States, January 23, 1951, under the provisions of the law as reenacted by Sec. 707 of the Act of June 25, 1948 Public Law No. 772. 80th Congress (10 USC 797)

STATEMENT OF OWNERSHIP, MANAGEMENT AND CIRCULATION

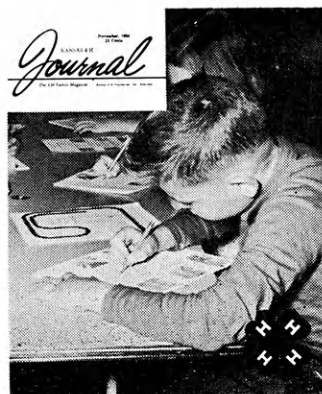
Kansas 4-H Journal
 Frequency of Issue: Monthly
 Location of Publication and Office of Publisher: Umberger Hall, Kansas State University, Manhattan, Kansas
 Owner and Publisher: Kansas 4-H Foundation
 Editor and Managing Editor: Don Esslinger
 Circulation:

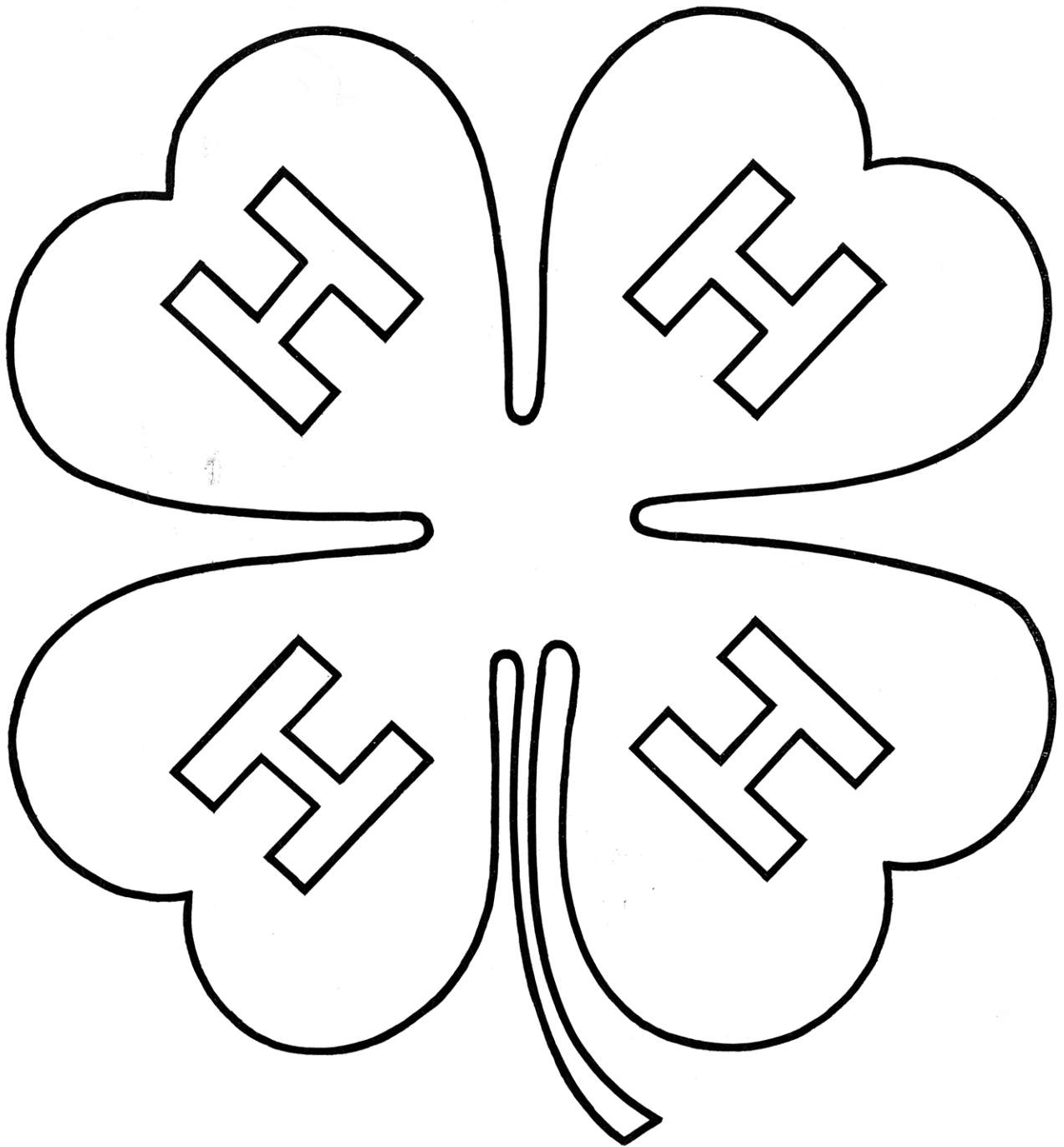
| | Average No. copies each issue during preceding 12 months | Single issue nearest to filing date |
|---------------------------------|--|-------------------------------------|
| Total Number Copies printed | 20,700 | 20,500 |
| Paid Circulation | 18,765 | 18,725 |
| Free distribution | 1,518 | 1,629 |
| Total Number Copies distributed | 20,281 | 20,452 |

The new 4-H Bicycle Project has scored a hit. Our cover shows fourth graders in the Allen Elementary School in Hutchinson as they complete work sheets in Part I of the project.

The school administration is enthusiastic about the project and the Police Department is giving their full support to it. Turn to pages 8 and 9 for more about this pilot idea in Reno county.

OUR COVER





Color It Green

Green for the color of growth . . . as Kansas 4-H grows and enriches so many young lives. ■ Green for the color of safety . . . as the sound principles and wholesome activities of active 4-H Club members provide a safe guide to the future.



THE FOLGER COFFEE CO., Kansas City



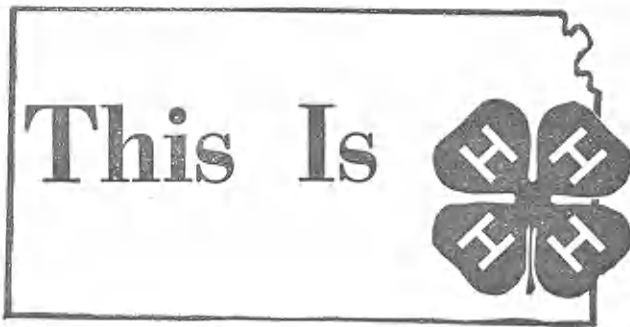
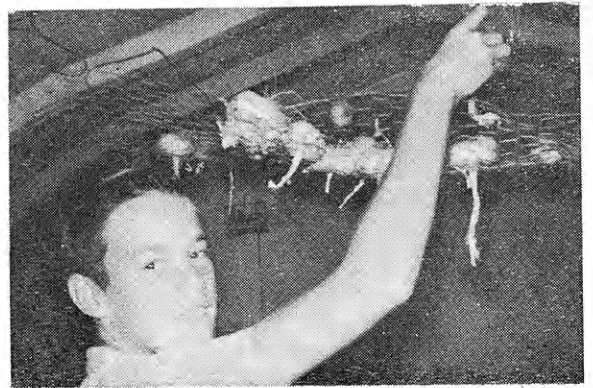
Above, mothers and members of the Balderson Boosters, Marshall County, serve cake at the club's ice cream social and achievement night. Below, Jeanne Woods of Mulvane 4-H Club, Sumner County, makes mock T-bones as part of her meat utilization project work.



Above, Sunshine 4-H Club members pose with the clothes, magazines, and papers they collected for the Salvation Army in Ness County. Below, Crawford Cloverites of Crawford County, provided free drinks and travel information to motorists traveling through Girard on Memorial Day and the Fourth of July.



Tim Webber, Victory 4-H Club in Haskell County, puts an onion in the onion drying rack which he made of chicken wire and coat hangers.



Below, Felix Reitcheck and Willard Morgan provide entertainment at Parent's night of the Fairview 4-H Club in Sheridan County. Both are leaders in the club. At left, Steve Breedlove and Karen Mosher, Hazel Grove 4-H Club of Wyandotte County, admire their club's project of placing directional signs to the county fairgrounds.



Definition Quiz

Fill in the blank spaces to match the definition in the right column. Score 10 points for each correct answer. 80-100 is good, 60-80 is average, and under 60, not so good.

- | | |
|----------------------|--------------------|
| 1. sea — | fur mammal |
| 2. sea — — — — | bird |
| 3. sea — — — — — | fish |
| 4. sea — — — — — — — | dressmaker |
| 5. Sea — — — — — — — | dog |
| 6. sea — — — — | looking for |
| 7. sea — — — — | sea plant |
| 8. Sea — — — — — | city in Washington |
| 9. sea — — — — | sailor |
| 10. sea — — — — — | harbor |

Matching Quiz

If you used the items below in your 4-H project, what size would you select from the other column?

- | | |
|--------------|-------------------|
| 1. 2 x 4 | A. Rifle |
| 2. 8A | B. Fuse plug |
| 3. 18 | C. Shoes |
| 4. 35mm | D. Motor |
| 5. 4hp | E. Lumber |
| 6. 6.70-15 | F. Dress |
| 7. 30 amps | G. Movie film |
| 8. 11 oz. | H. Women's hose |
| 9. 30-06 | I. Drinking glass |
| 10. 51 gauge | J. Auto tire |

Questions For You

- If you went to bed at 8 o'clock at night and set the alarm to get up at 9 in the morning, how many hours of sleep would this permit you to have?
- Some months have thirty days, some have thirty-one. How many months have 28 days?
- If a doctor gave you three pills and told you to take one every half-hour, how long would they last you?
- A farmer had 17 sheep. All but nine died, how many did he have left?
- Do they have a fourth of July in England?

Problem In Livestock

When a father with three sons died, his will included this provision for distributing the herd of dairy cattle:

The eldest son to get $\frac{1}{2}$ of the cattle

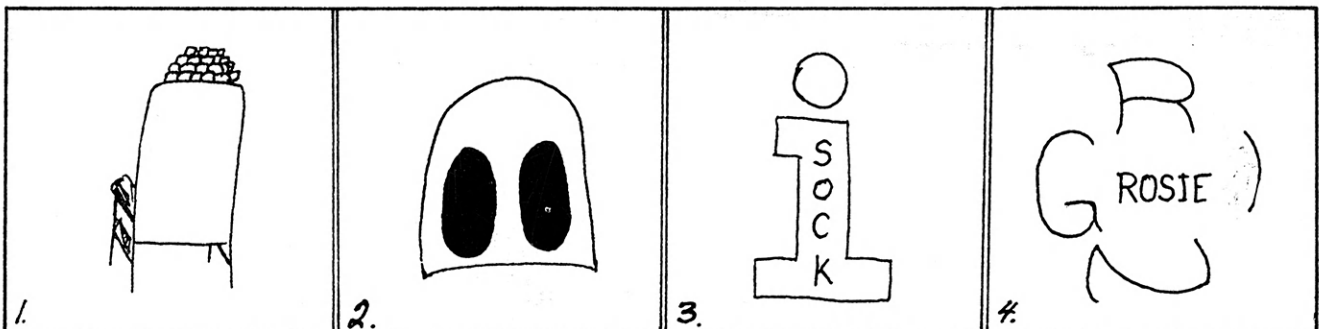
The middle son to get $\frac{1}{3}$ of the cattle

The youngest son to get $\frac{1}{9}$ of the cattle

Everything went well until it was discovered that there were 17 cattle. The boys fell to quarreling over how they would divide this unusual number of cattle. What would you do to help the sons divide the cattle equally?

Editor's Note: Send in your favorite joke. We will give you credit for sending it in and we can let many others enjoy this joke and puzzle page. . . . Send to Kansas 4-H Journal, Manhattan, Kansas.

What is it?



By Debbie Hunt, Attica

By Debbie Barber, Anthony



State 4-H Staff

Roger E. Renier, a member of the 4-H Staff since 1937 is State 4-H Leader. His position includes administration, staff coordination, office management, and supervision of the 4-H program in general.

Other responsibilities are his service of the 4-H Scholarships committee and the K-State General Scholarship committee, the Kansas State Fair and Mid-American Fair, American Royal Conference, National 4-H Club Congress, awards and recognition, and orientation of new agents.

Mr. Regnier attended Kansas State University where he received a bachelor's degree in

(Editor's Note: This is the first of a series introducing members of the State 4-H Staff to our readers.)

agricultural economics and a master's degree in education. He has also studied at Colorado State University.

A native of Wamego, Mr. Regnier and his wife Thelma live in Manhattan. They have two children, a daughter Ruth who lives in Long Beach, California, and a son, Edward, who lives in Los Angeles.

Farming operations, sports, public speaking, parliamentary practice and bridge claim part of Mr. Regnier's spare time. He has a special interest in the field of English.

Mr. Regnier is a member of Farmhouse, Scabbard and Blade,



Robert E. Regnier

Gamma Sigma Delta, Epsilon Sigma Phi, Rotary, and BPOE.

Before joining the staff, he was a county agricultural agent in Russell County and a vocational agriculture teacher at Fairview and Pleasanton.

Kansas 4-H Journal Sponsors

These Have Renewed Their County Support

Harper
Anthony Farmers Co-operative Elevator, Anthony
Danville Co-op Ass'n., Danville
Farmers Co-op Business Association, Corwin
State Line Grain Co., Manchester, Oklahoma

Lyon
Citizens National Bank, Emporia

McPherson
Farmers Union Elevator Co., Lindsborg
Moundridge Co-operative Elevator Ass'n., Moundridge
The Farmers Co-op Grain & Supply Co., Canton
The Farmers Co-operative, McPherson

Ottawa
Gilley's Firestone & Implement, Minneapolis

Pottawatomie
Union State Bank of Olsburg, Olsburg

Stanton
Collingwood Grain, Inc., Johnson, Manter and Big Bow

Stevens
Citizens State Bank, Hugoton



1965 The Kansas Co-op Council SPEECH CONTEST

offers
3 College Scholarships totaling \$600
and
27 Summertime Camp Scholarships to Kansas High School Youth

For the best 10-minute talk on one of these topics:

- "Leadership—An Agricultural Product in Demand"
- "Where Is the Agricultural Margin of Profit?"
- "Youth—The Power of Agriculture"
- "Farmers' Stake in Re-Apportionment"

Write for complete contest rules. Select a topic and we will send a set of useful material for you.

Name

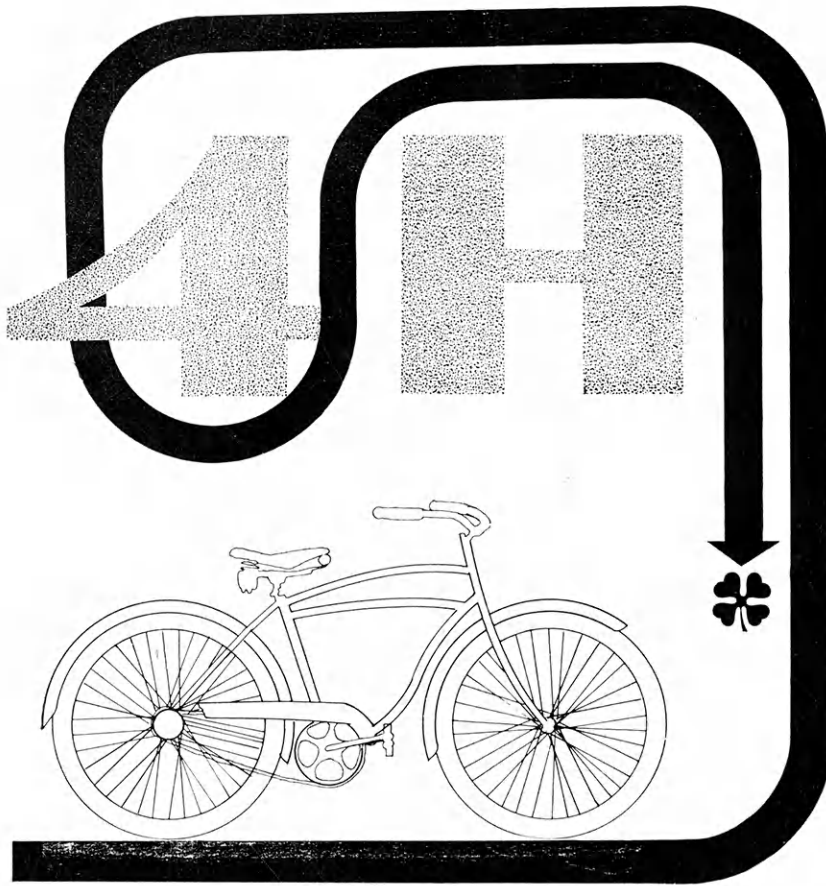
Address Town

High School

Topic Selected

Please Send Full Contest Rules

Mail to: Kansas Coop Council, 701 Jackson, Topeka



Left turn



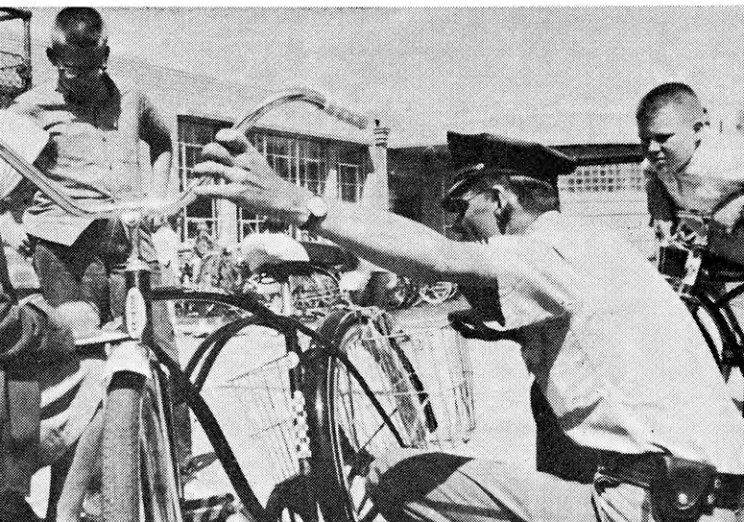
Right turn



Stop or
decrease speed

Bicycle Is A Hit With These Youth

Sgt. Johnson of the Hutchinson Police Department is checking a bicycle with the assistance of a leader. He is an active participant in the program.



Students who participated in the training proved their respect for safe bicycling in the annual Police Department parade. They were the only group who obeyed the rule to stay in line.

A 4-H bicycle project presented to both 4-H'ers and non-members through a public school program met with success in Reno County last spring.

The program was initiated after a president of a local 4-H club, interested in starting a school safety program, saw the 4-H Bicycle Project material in the Reno County Extension Office. 4-H Club Agent Jim Childers discussed the project with school principal Don Rankin, who referred him to the director of curriculums of Hutchinson schools who was receptive to the project.

A pilot project began in three rooms of fourth graders at Allen Grade School. Of the 75 students, 68 had bicycles.

Starting in early March, lessons in bicycle safety and care were presented each Thursday from one to one-thirty for fifteen weeks.

Local bicycle shop owner Harley Phillips was in charge of classroom sessions on parts of the bicycle and checking it. Five leaders and three assistants worked with the project each session and each was responsible for one lesson. Per-



Active leader interest was a big boost to the success of the bicycle program in Reno county. These attentive leaders attended all of the sessions, which is important for later work in riding and safety checks.



Indoor sessions were conducted in the school gym. Mr. Phillips is explaining parts of the bicycle in one of the early sessions.

formance tests at the end of the course were conducted by the leaders.

The bicycle project fit in well with the bicycle events sponsored annually in Hutchinson. Each year, city police conducted a safety check at the schools. This year, the 4-H bicycle leaders conducted the tests under supervision of Sgt. Johnson from the Safety Education Office In Hutchinson.

The Hutchinson Optimist Club, longtime workers in bicycle safety, sponsored a bicycle parade in April. The 4-H trained bicyclists demonstrated much improved safety procedures. All riders decorated their bicycles with crepe paper, signs, etc. and the 4-H project group carried safety top signs in addition.

Each student who completed the course received a recognition certificate.

In evaluating the program, questionnaires were sent to the parents. All but two of the 54 returned were in favor of the program. The student's evaluated the project in writing a summary of what they had learned. "I've learned that the bicycle is a vehicle the same as a car," "I am glad to have this bicycle safety because I learned how to ride my bicycle the right way", and "I have learned that bicycle safety is for everyone" were comments made by the students.

Plans for a second year are already being made. County Club Agent Jim Childers will organize training of those leaders who will conduct

the sessions. This work will be in Part II of the Project material. A county project chairman will be in charge of the program this year.

"There are great possibilities in the program," Childers said. "The project is something youngsters need." School principal Rankin and Sgt. Johnson are enthusiastic about the program

Project work in bicycle safety provides a balance between learning from worksheets, riding safety and bicycle maintenance. The project is divided into three principal parts. Part one is concerned with the condition of the bicycle safety-



Getting a closer look at the mechanical make-up of a bicycle, these youngsters get their questions answered by Mr. Phillips.

wise and proper bike riding. Members receive instruction in bicycle laws, take written tests on laws and safety practices, and take performance tests on their bicycles.

Part two reviews laws and tests of part one and adds bicycle adjustment instruction. Those enrolled in part three can assist with demonstrations and observe performance tests of younger members. They also learn how to remove, clean and adjust parts of the bicycle.

Program handbooks, work sheets and test sheets for each participant may be obtained at the Extension office. The Bicycle Project was adapted by the Kansas State 4-H Staff from materials prepared at the New York State College of Agriculture.

Mother Goose and a Burned Barn

Help 4-H'ers Promote Safety

Unusual safety projects were part of two 4-H club's work this year. Dorothy Schrader reports for her club in Atchison County, the Shining Star 4-H Club, and Lewis Crawford reports on the Sedan Willing Workers of Chautauque County.

Shining Star 4-H Club presented a program on "Mother Goose Goes Safety Conscious". Farmington Grade School students and several pre-schoolers helped pantomime jingles recited

Mother Goose takes the stage as Shining Star 4-H Club members, Atchison County, present a safety skit.



by junior high 4-H'ers in the skit.

A nursery rhyme was recited with a costumed character acting it out. Then a safety rhyme was read about the character. A sample safety rhyme was: Humphy Dumphy's healed once more./ He no longer gets those falls./ He knows enough to stay on the ground/ And not be climbing walls.

High school 4-H members joined in the final song "Safety" to the tune of "Old Smoky" at the close of the skit.

Other numbers at the safety meeting were a talk on gun safety, an illustrated talk on teen-age driving habits and a cake and candy "walk" to raise money for health funds.

4-H'ers enrolled in the safety project directed the Willing Workers in its many activities.

A fire safety theme was carri-



The "barn" float of the Sedan Willing Workers, Chautauqua County, catches fire in the fair parade. A fireman extinguishes the blaze as the crowd watches.

ed out with an entry in the fair parade. A model red barn was set afire and the blaze was extinguished by the Rural Fire Department during the parade. The burned barn was displayed at the fairgrounds for the remainder of the day. Two members stood by the display and handed out safety pamphlets furnished by the Extension Office.

The club placed four small fire safety posters around Sedan

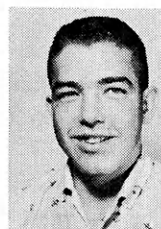
Recreation Awards

Recreation equipment will be presented by Kansas 7-Up to these Blue Ribbon Clubs.

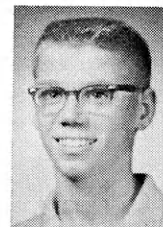
- St. Marys Telstars, Finney
- Richland Boosters, Ford
- Town & Country, Franklin
- Busy Bugs, Linn
- Prairie Schooners, Ness
- Gem Dandys, Pawnee
- Paradise Dell, Russell
- Lucky Clovers, Scott
- Sunflower, Sumner



DeAnna McIntyre Clark



Michael Beezley Crawford



Steve Fornelli Douglas



Diana Schmidt Edwards



Deanna Lahman Gove

Trip for Winners

Kansas 7-Up Bottlers host ten top individuals and the top club in recreation at an educational event in Wichita. The club is the Richland Rustlers of Pratt County and the top 4-H'ers are pictured above.

Kansas Seven-Up is Proud to Provide 4-H Recrea

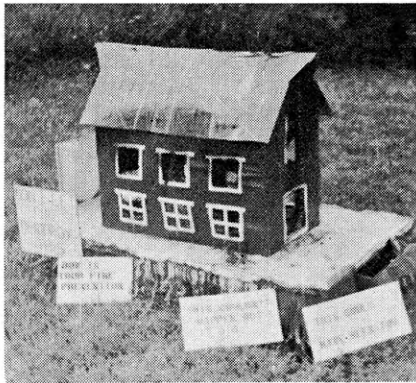
Kansas Seven-Up Bottlers Association

and later placed large fire prevention posters at local businesses.

Other safety work included a bicycle safety day in Cedar Vale. The program was presented in cooperation with the Cedar Vale 4-H Club, the Sedan V.F.W. and the Highway Patrol.

Forty five bridges in the Sedan area where "taped" as members put reflector adhesive strips on rural bridges and a few corner posts.

Sedan Willing Workers displayed the burned barn as a reminder of the need for fire safety measures.



RECREATION

Games for the Holiday Season

By Dick Tomkinson

Even though the Christmas season is more than a month away, recreation leaders should be planning games for early December meetings now.

Linda Hereford of the Northwest Scott 4-H Club in Scott County, used these games for her club's Christmas party.

Christmas Animals. Write a double set of animal names on slips of paper and give the names to the group. Each person goes around and looks for his partner. The "deer" finds the "deer" and so forth. When each has found his partner, give them five minutes to write two telegrams—one telegram has to answer the first one.

Christmas Scents. Put different items such as cedar, peppermint stick, etc. in small sacks.

Pass them around and let the group identify each one by sniffing the top of the bag.

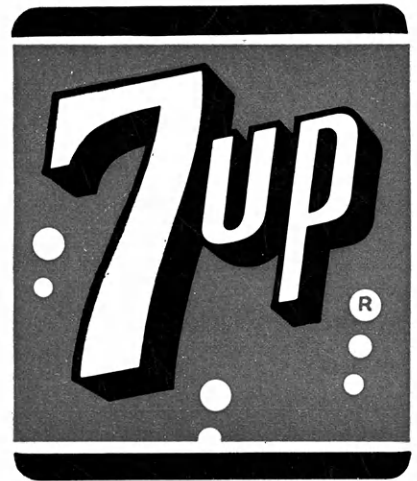
Christmas Candle Relay. Choose two teams. The first person in line carries a lighted candle from one end of the room to the other without letting the candle go out. If the candle goes out, the person must relight it and start over.

Christmas Bee. Start the game by spelling "Christmas". The next person spells a word beginning with "s" (last letter of Christmas) that he or she wants for a present, such as "shoe".

"We found that is we played a few games at the party, it got everyone in the mood. Then we danced and after the program, we played the rest of the games." Linda said.

Presented...

by



Get Real Action
7-Up Your Thirst Away



Joyce Peoples
Labette



Twila Gore
Pawnee



Connie McReynolds
Scott



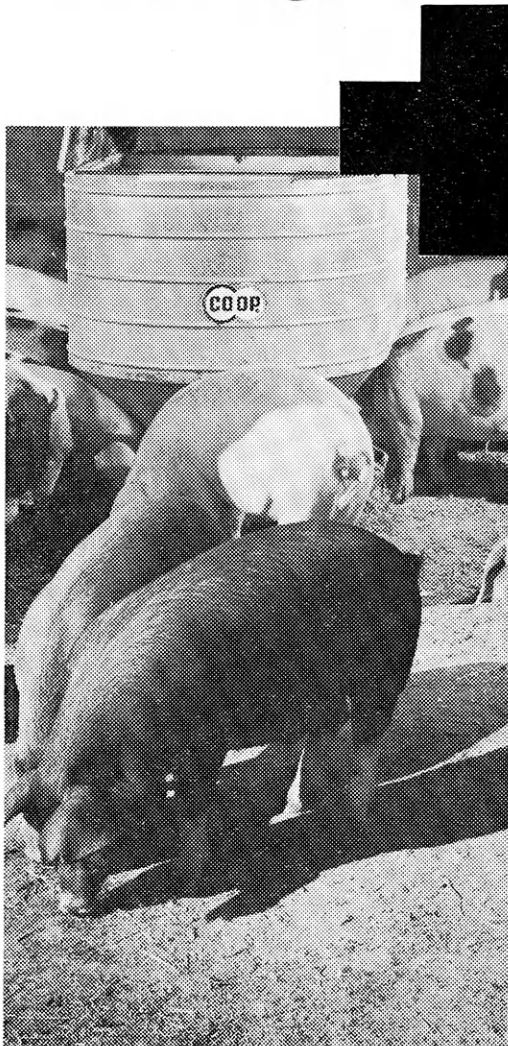
Linda Ann Davis
Sedgwick



Paul Blankinship
Summer

tion Awards

best gains = your own grain



HOG CONCENTRATE

All over the Mid-West, careful feeders have found they get the most gain per dollar feeding their own farm-grown grain custom-mixed with CO-OP Concentrates. See your CO-OP Feed Service Center for the complete CO-OP Custom-Mix Feeding Program. Three representative formulations for hogs are shown below. Other formulations cover other types of hog, and other livestock and poultry.

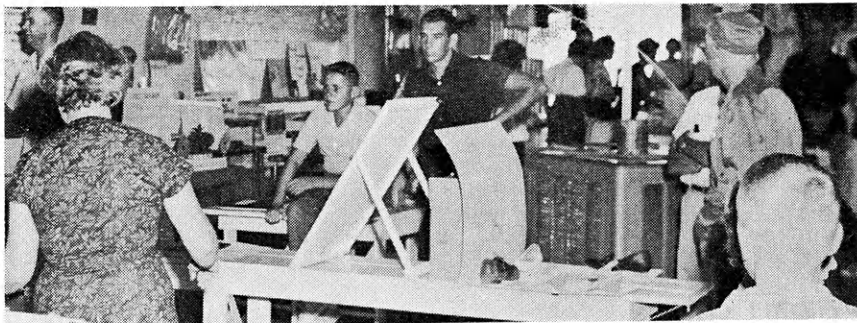
feed this farmer-owned CO-OP feeding program

| NAME OF FEED | FEEDING PERIOD (Age or Weight) | HOW TO MIX | |
|-------------------------------------|---|---|------|
| CUSTOM-MIX 14% HOG FINISHER FEED | FEED to hogs up to 100 lbs. in Weight. | Ground corn or Milo | 1500 |
| | | Oats, Shorts or Barley | 100 |
| | | CO-OP Hog Concentrate-35 or Hog Concentrate-40 | 400 |
| | | | 2000 |
| CUSTOM-MIX 12% HOG FINISHER FEED | FEED to hogs from 100 lbs. to 150 lbs. in weight | Ground corn or Milo | 1700 |
| | | CO-OP Hog Concentrate-35 or Hog Concentrate-40 | 300 |
| | May be fed until marketed if desired. | | 2000 |
| CUSTOM-MIX 10% HOG FINISHER FEED | FEED to hogs from 150 lbs. to market weight. | Ground corn or Milo | 1800 |
| | | CO-OP Hog Concentrate-35 or Hog Concentrate-40 | 200 |
| | | | 2000 |

don't let feeding dollars get away from you—SEE YOUR CO-OP NOW

CONSUMERS COOPERATIVE ASSOCIATION KANSAS CITY, MISSOURI

(Editor's Note: Although county fair time is months away, changes and additions to the fair must be planned now if they are to be effective. This article describes a change in fair exhibits which could be adapted in many counties.)



Stafford countians see new type exhibits by 4-H'ers enrolled in "new" projects.

Stafford County Fair Provides For "New" Project Exhibits

Something new in the exhibit line was added to the 4-H division of the Stafford County Fair this year. Special project displays made their appearance for the first time.

In the past, one of Stafford County's rules for project completion was that a member had to make an exhibit in the county fair. In the case of regular project favorites—food, clothing, crops, sheep, etc.—the exhibit set-up was standard and posed little problem regarding the type of fair exhibit a member could make.

But with the statewide change of activities to have the status of projects, exhibits for the "new" projects such as health, personal development, reading, recreation, safety, etc. were not so easily defined. Some members carrying several projects were required to make numerous exhibits while others, enrolled in a few of the "new" projects would not have to exhibit anything at the fair.

A committee from the 4-H Council made up of leaders and 4-H'ers worked out a plan to provide for exhibits from every 4-H project. The plan was subject to the approval of the Council.

The committee came up with the idea of an educational display as an exhibit in the "new" project category. In brief, the display was to reflect the 4-H member's imagination in its make-up. It was to teach a lesson along with broadening the scope of the fair viewer's understanding of the particular project.

To clarify some of the quali-

cations of the exhibit, the Council adopted this score card:

1. Stopping power—30 points. Is the main idea of the exhibit specific? Is the idea presented so clearly, so simply, so forcefully that it stops the casual observer?

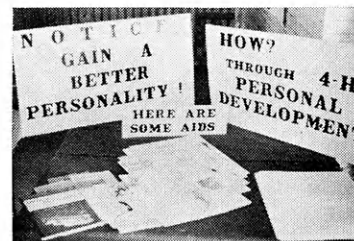
2. Interest Holding Power—30 points. If the passer-by stopped, will the exhibit give him additional facts in a clear, concise way so that he could not fail to be informed?

3. 4-H Project Application Power—30 points. Was the sub-

ject matter an effective "window" for this particular 4-H project?

4. Mechanical Power—10 points. Correct letter size, pleasing color combinations, appropriate symbols, models, and the like.

Fifty-five projects were displayed in this way at the fair.



A project display in the Personal Development project in Stafford County.



ALLIANCE INSURANCE COMPANIES
McPherson, Kansas
FIRE — CASUALTY — LIFE
Serving Kansas Since 1888

a simple flip of the switch

Every member of the rural family can now have electricity with just a flip of the switch, thanks to Electric Cooperatives.

This ample supply of low-cost power didn't come easily. It is the result of forward-thinking people working together to build and develop Electric Cooperatives to get the electrical power they could not buy elsewhere.



THE ELECTRIC Cooperatives
OF KANSAS

420 West 9th, Topeka, Kansas

CE 5-5321



4-H ELECTRIC

A Project For Every Member

By Carrol Glanville
Rural Sales Advisor
Kansas City Power & Light

With a new project year upon us, it is time to decide which projects, you, as 4-H members, will take or participate in. Each project has certain aspects which may or may not be best suited to your needs or capabilities.

One project from which every member can benefit is Electricity. This applies to boys and girls alike. The Electrical project is very well suited to those members who may live in urban areas. A large space is not required for the project, nor is a large investment. Each of us flips at least one light switch every day; usually, without a thought of what elements of safety and danger lie behind this action.

How often have you read reports of fires in homes and other buildings caused by "defective wiring"? Although many of these fires, in actuality, may be due to other causes, some others are caused this way. Perhaps a brief knowledge of some of the basic principles of electricity and wiring could have prevented a majority of these destructive and costly events. Perhaps the electric project is just the place for you to learn

of ways by which you may prevent trouble in your present or future home.

The Electric project is divided into basic, intermediate, advanced and electronics phases. The basic phase applies mainly to those members who are just beginning the project; teaching the basic principles of electricity and building the more simple items for exhibit. It is not advised to skip this phase just because of age. Many important factors pertaining to the complete project are taught here, before advancing to the next phase.

Each of the other phases are increasingly detailed and more challenging as you might expect.

The project offers a great variety of directions, so to speak, for the member to go. Although, there is a basic requirement of 6 lessons in each phase, including questions and exercises to be completed, a member may elect to follow any one or more of the fields including lighting, safety, wiring, motors, or heating.

This project has long been considered a "boys" project by most members, and understandably so, in that, farm wiring, electric motors, and their application were emphasized, for the most part. Today, this is not necessarily true. Girls do benefit as well.

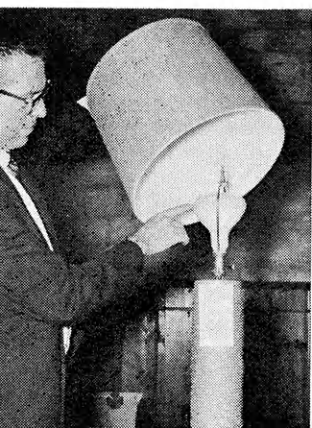
The electric project may be coordinated with the room improvement project. Lighting, its design and application, plays an important part in redecorating a room. A change of location of convenience outlets may be required. A girl enrolled in one of the cooking projects will benefit from the electric project by learning just how many portable appli-

ances may be plugged into one electrical circuit. She can also learn how to care for and use her electrical appliances in the most efficient way.

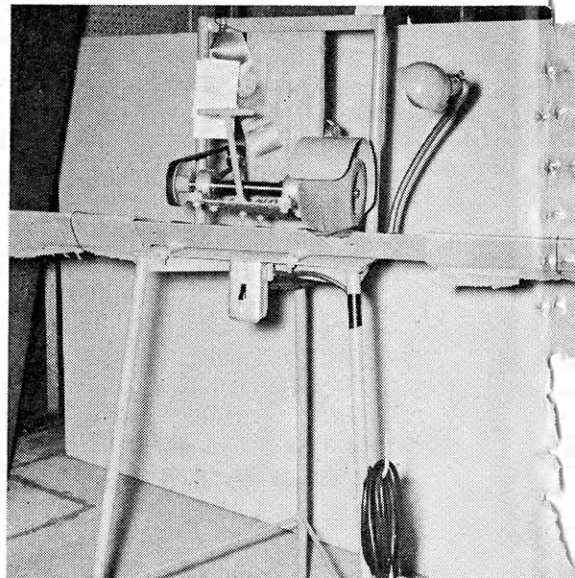
Our society, which is dealing more and more each year with electricity and its uses, is demanding a greater number of persons who can work in these fields. Here is a good opportunity for boys, who may desire this kind of work, to gain a basic knowledge of electricity and thus determine whether they wish to pursue the study further.

Job opportunities are also open to those girls who have a basic knowledge of electricity. Appliance manufacturers, utility companies, and architectural firms are just a few of the businesses which are seeking young women with this type

This cycle grinder is an original construction for motor application exhibited at the Kansas State Fair. It is a fine example of what is being done by boys in the 4-H Electric Project.



The author is showing a lamp given a purple award at the Mid-America Fair. This lamp is equipped with a wide harp for this special bulb.

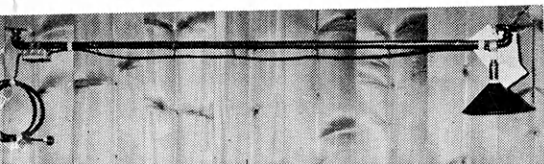


of background; and, as stated before, home makers are probably the largest single group which can make use of this training.

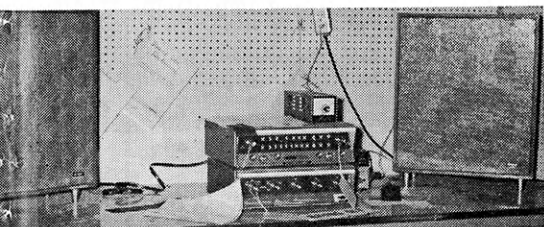
Boys may learn some of the basic skills of wiring, such as soldering, selection of proper materials, splicing, and other pertinent factors. As they advance in the project, they may help in re-wiring of homes of other buildings; doing minor repair work on appliances or motors; or design and build devices, operated by electricity, which may make certain operations in their home or on their farm more convenient or efficient.

Possibly, one reason the electric project has not been too popular in some instances there is a reluctance on the part of parents to serve as leaders. Most of us are "afraid" of the unknown. It is difficult for any of us to try something with which we are totally unfamiliar. For those prospective leaders for which this is a problem, many aids are available in the form of personal assistance through your county or club agent, a representative of your power supplier, or from private electrical firms, and various types of written or printed material.

Many 4-H members lose the opportunity to participate in a project, because of the lack of leaders. Each year the State 4-H Club Department, in cooperation with the majority of the power suppliers of Kansas, holds a 2-day workshop where electric leaders take the opportunity to learn. If your leader, or prospective leader, feels he needs addi-



Above, a shop light which slides along the work area is an example of original construction wiring exhibited by a 4-H'er at the Mid-America Fair. Below, this stereo was a combined project by several 4-H electric project members in one family. It is a good example of what is being accomplished in the electronics phase of the project.



tional information, urge him to attend the Electric Leaders Clinic at Rock Springs Ranch this December 3 and 4.

In conclusion, if your lighting needs improving; if you wish to learn more about electrical safety; if you wish to find a project which will be challenging as well as informative, investigate electricity. Boys !! Girls !! There's something in it for you.

“Live only for Today And You Ruin Tomorrow”

—Simmons

●
Events and circumstances
in your future
do not “just happen”

It is planning NOW
that creates a
life of satisfaction
and contentment
for later years.

A STUDENT SPECIAL
life policy will
financially do just that
for you - make your
future more
meaningful so that you
can do the things
you dream of doing when
you grow older!

**Ask your local
Farm Bureau Insurance
Agent what the
Student Special can do for you!**



**FARM BUREAU MUTUAL ●
KANSAS FARM LIFE ●
KFB ● Insurance Companies**

HOME OFFICE

MANHATTAN, KANSAS

4-H Has New Projects

Forestry and Weed Control are two new 4-H projects for selection in 1965.

Forestry is a versatile project adaptable to both town and country 4-H'ers. Project areas encourage identification of trees and the collection of the leaf, twig and fruit of different forest trees.

For older members in Forestry, the suggestions include drawing to scale a planting design for a windbreak, wildlife planting, shelterbread, forest tree nursery, Christmas tree plantation, or groves of pecans or walnuts. Club members may make plantings, determined by the need and available time, money or space. Forestry is a rapidly growing industry in Kansas.

A national awards program in the Forestry project provides awards at the county, state, sec-

tional and national levels.

A kit of materials including a leaders guide project record, and other project aids is available to those who enroll in the Forestry project.

4-H members enrolled in crops, garden, forestry, and landscape design projects are encouraged to enroll in the Weed Control Project. A guide for members and a key to weed identification are the basic materials for this project. A leaders guide is also available. Suggestions for the project include making a collection of weeds, collecting and identifying weed seeds found in crop seeds, and describing how weeds are controlled in the yard and garden, or on the farm.

A state blue award group was awarded an educational trip to Wichita in the Weed Control project this year.

PUZZLE PAGE ANSWERS

Definition QUIZ — 1-seal, 2-seagull, 3-sea horse, 4-seamstress, 5-Sealeyham, 6-search, 7-seaweed, 8-Seattle, 9-seaman, 10-seaport.

Matching Quiz — 1-E, 2-C, 3-F, 4-G, 5-D, 6-J, 7-B, 8-I, 9-A, 10-H.

Problem In Livestock — You will find the answer in the December issue of the Journal.

Questions For You — 1. One hour, 2. All of them, 3. One hour, 4. Nine, 5. Yes, but it is not celebrated as Independence Day as it is in the United States.

What Is It — 1. The back view of a girl in a chair with rollers in her hair. 2. A gnat's eye view of a human nose. 3. A sock in the eye. 4. Ring around the Rosie.

JOHN DEERE

Top Recreation Awardee to Chicago



Linda Ann Davis

Linda Ann Davis, 4-H'ers in Sedgwick county, will be the Kansas recreation delegate to the National 4-H Club Congress in Chicago this December.

The John Deere Company, to show its interest in a better rural America, will sponsor Miss Davis' trip.

In addition to the top award, John Deere presented certificates to 10 top Kansas 4-H Clubs for outstanding club and community recreation programs.



Toward a Better Rural America

JOHN DEERE COMPANY KANSAS CITY, MO.

CLUB AWARDS

Richland Rustlers, Pratt
St. Marys Telstars, Finney
Richland Boosters, Ford
Town & Country, Franklin
Busy Bugs, Linn
Prairie Schooners, Ness
Gem Dandys, Pawnee
Paradise Dell, Russell
Lucky Clovers, Scott
Sunflower, Sumner

RECREATION AWARDS

John Deere proudly provides the following awards in recognition of the excellent job Kansas 4-H clubs do in the field of recreation:

- * Six \$400 college scholarships are awarded national winners.
- * State winners receive a trip to the National 4-H Club Congress and Certificates to top clubs.
- * Four Certificates to Clubs with outstanding recreation programs.
- * Four Gold-filled medals of honor for individuals.

Salute 1964 Winners

4-H Personal Development Project

The personal development project is for all teenagers! Whether it's world affairs, dating . . . whether you want to better appreciate good books and music . . . there's a place for you in this project. See your leader soon! Because Southwestern Bell Telephone Company is interested in you, they are proud to have a part in sponsoring the personal development project, and happy to announce this year's winners.

COUNTY

Allen
LaAnna Diehl

Anderson
Kerry Howarter
Sharon Gray

Barton
Margaret Baker

Bourbon
Betty Kay Palmer

Brown
Steven Corbet

Butler
Ken Schwemmer
Patricia Reed

Chase
Nancy Mauderly

Chautauqua
Corrine Malone

Cherokee
Lee Schertzer
Patty Douthit

Cheyenne
Rudolph Douthit
Merla Howk

Clark
Gordon Miller
Martha Hulstine

Cloud
Pamela Nordquist

Coffey
Steve Birkbeck
Brenda Meyer

Comanche
Pansy Callaway

Cowley
Janell Groene

Crawford
Mike Beezley
Sandra Azamber

Decatur
Ernest May
Linda Kinser

Dickinson
Joanne Fajen

Doniphan
Judy Medsker

Douglas
Noell Wulfkuhle

Edwards
Bruce DeHaven
Barbara Cudney

Eik
Tom Osborne
Sandra Longfellow

Ellis
Harold Davis
Carmen Dies

Finney
Linda Schneider

Ford
Alexis Roaine

Franklin
Dennis Nelson
Janice Wagner

Geary
Bob Kramer
Patricia Gustason

Gove
Lea Anna Dohm

Grant
Gary Covey
Beverly Pucket

Greeley
Terry Waldren
Ann Kleymann

Greenwood
Carol Ann Storrer

Hamilton
Dana Wood
Jean Smith

Harper
Sheila Sevier

Harvey
Tom Gatz
Elizabeth Teten

Haskell
Linda Main

Jackson
Jane Kenney

Jefferson
Howard Cleavinger
Eileen McPherson

Jewell
Rarrell Marr
Mary R. Jones

Johnson
Bob Kochersperger

Kearny
Linda Grusing

Kingman
David Stucky
Darlene Werner

Kiowa
Kenneth Davis
Shirley Koehn

Labette
Ronnie Tullis
Janet McMunn

Lane
Wesley Berger
Connie Speer

Leavenworth
Greta Lowe

Lincoln
Steven Simmons
Arleta Lohmann

Linn
Bobby Steinsouer
Lynette Weese

McPherson
June Galle
Marion
Leslie Lalouette

Miami
Albert Schendel
Linda Osborn

Montgomery
Jim Mathis
Kay Jensen

Morris
Loren Johnson
Carol Hawthorne

Nemaha
Lynn Meyer
Susan Wittmer

Ness
David Halbleib
Shirley Everhart

Norton
Jan Combs
Sharron Rule

Osage
Wesley Garard
Rachel Winans

Osborne
Ivalee Smith

Ottawa
John Jagger

Pawnee
Lora Mae Smith

Phillips
Karolyn Kellogg

Pratt
Rodman Reed
Diedra Williams

Rawlins
Bob Burk
Cheri Burk

Republic
Carolyn Mikesell

STATE

Joanne Fajen, Rodman Reed,
Dickinson Pratt

Lou Ellen Bruning,
Brown

(\$200 bond and trip to Wichita Recognition Event)

DISTRICT

Bob Kochersperger, Janice Howell,
Johnson Stafford

Leslie Lalouette, Susan Irvin,
Marion Ness

Alexis Romine,*
Ford

(\$50 bond and trip to Wichita Recognition Event)
*Trip was previously won

John Jagger, Patricia Reed,
Ottawa Butler

(Trip to Wichita Recognition Event)

AT LARGE

Patty Douthit, Steven Corbet,
Cherokee Brown

Darlene Warner, Lynn Meyer,
Kingman Nemaha

Anna Mae Luker, Cady Engler,
Smith Shawnee

(Trip to Wichita Recognition Event)

Rice
Roger Griffin
Eileen Faris

Riley
Victor Moss
Margaret Bryant

Rooks
Janet Liebenau

Rush
Ken Georg
Arlene Trout

Russell
Larry Funk
Peggy Zweifel

Saline
Steve Beil
Karen McDaniel

Scott
David Herman
Teresa Herman

Sedgwick
Gary Pearson
Sue Mattox

Seward
John Bozarth
Patti Shover

Shawnee
Cady Engler
Janet Love

Sheridan
John Robben
Margaret Breeden

Sherman
Dale Nimz
Karen Kuhlman

Smith
Anna Mae Luker

Stafford
Jim Tanner
Janice Howell

Stevens
David Bozone
Linda Nease

Sumner
Terry Daley
Sue Eckermann

Thomas
Joyce Willcox

Trego
Terry Schoenthaler

Washington
Clare Rosenkranz

Wilson
Sandra McMillen

Woodson
Sheryll Lynch

Wyandotte
Ronnie Gossage
Gloria Servos

Wabaunsee
Jim Hoobler
Sheryl Lietz

SOUTHWESTERN BELL

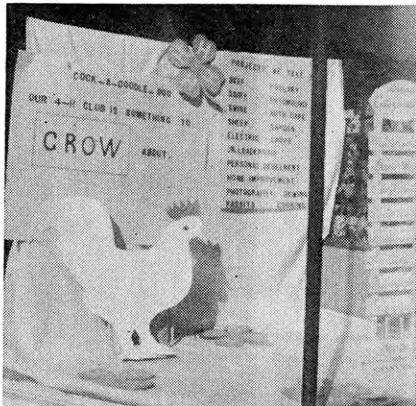


TELEPHONE COMPANY

Ideas That Work

WINDOW DISPLAY

Beattie Musketters 4-H Club in Marshall County felt their club was something to "crow" about. During National



4-H Club Week they put up a display listing club projects and goals in a store window. The display featured a model rooster.

Dick Tegethoff

COUNTYWIDE DISCUSSION

Nearly one hundred parents and young people attended and participated in a Franklin County meeting on "What Parents and Youth Expect of Each Other." Panel members Dr. C. W.



Henning, moderator; Max Shoemaker, Mrs. Raymond Wagner, 4-H'ers Joe Reed, Tnne Christie, John Brockway, and Rita Hollaway led the discussion.

THEMES FOR MEETING

City Slickers 4-H Club of Meade County centered the program of each monthly meeting around a special theme this year. This plan created more interest and enthusiasm in the meetings, and emphasize the club project, Citizenship.

Rather than holding a Christmas gift exchange for themselves, the club made and sent toys to a children's home in Wichita. The club's three recreation leaders were in charge of games at the January music and recreation meeting. Two song leaders taught new fun songs. For crafts, a demonstration was given on making and decorating glo candles.

Etiquette night in February saw each member dressed in his Sunday best. The Home Demonstration Agent had a quiz on manners as the special number on the program.

March's health theme was emphasized by a demonstration on mouth-to-mouth respiration and a talk on care of the teeth. In May, the club viewed Meade's newspaper and post offices. During the year, every member visited the courthouse and library.

To get acquainted with other members in the county, the City Slickers invited three clubs to a picnic supper and party. A scavenger hunt was part of the entertainment. Foods project classes and livestock judging demonstrations were held with another local club for members to get acquainted and to share leaders.

July's theme, citizenship, was carried out by a patriotic program by the boys of the club. Club members sent cancelled stamps to a German Orphanage for resale as collector's items. They made coasters from plastic bleach bottles for plants and flowers at the hospital. They donated magazines and clothing to the Salvation Army. A pen pal and magazine program is being set up with young people in Japan and Indonesia.

Jean Harris, President

Editor's Note: The Kansas 4-H Journal thrives on ideas—those that have been tried successfully by clubs throughout the state and that can be used by other clubs and members. Brief accounts of a community service project, an unusual club meeting, a unique handling of a project are just a few of the topics we can use on the "Ideas" section of the Journal. Send them to the Kansas 4-H Journal, Kansas State University, Manhattan. Copy deadlines are on the first of the preceding month, (November 1 for December issue)

GIRLS ON TV SHOW

The beginners cooking class of the Thomadora 4-H Club, Reno County, appeared on the TV program "Community Window" on Channel 12. Seven of the girls in the class took part in the program.

The girls presented demonstrations, each showing something they had learned this year at a project meeting. Cheryl Blank made a candle salad and Roxie Stoughton made a peach salad. Kathy Enns showed how to separate an egg. Janet Edger made steambot sandwiches. Kathy Nactgal showed the correct way to measure flour and Beth Ann Krehbiel cut a cake. Cheryl Suderman served as the narrator.

Jodene Ensz, Reporter

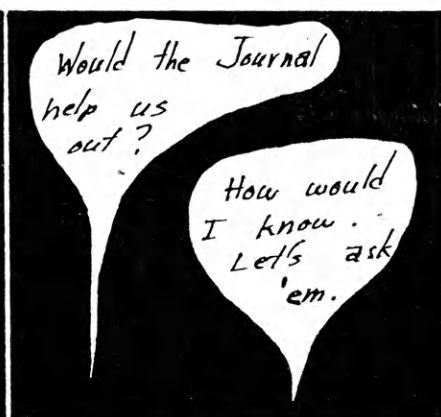
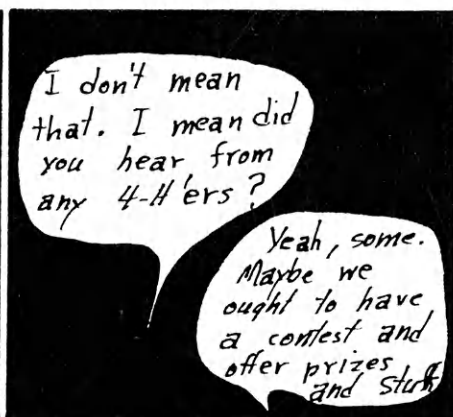
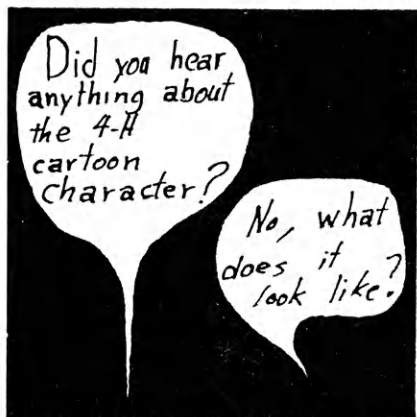
BRAZIL FEATURED

The People to People committee of the Salem 4-H Club of Saline County presented the program at one of the monthly meetings. Charles Magoffin, Doug Moser, Hap Ramsey, Kim Carey, and Kerry Givens gave informational talks on Brazil.

Mrs. Clinton Trostle played some tapes from her son Ronald who is serving in the Peace Corps in Ceara Brazil. Ronald is a former member of the Salem 4-H Club.

Mark Dietz, Kenton Kimble, Pat Duncan, Jennifer Segrist, Patty Flickinger, and Yvonne Classens sang a song in Spanish.

Jim Givens, Reporter



Work Begins

on 1965

“Review”

Work on the 1965 “Kansas 4-H In Review” is under way. Members of the Collegiate 4-H at Kansas State University are being recruited to sell advertising and write stories.

Larry Frazee, former 4-H member from Cherokee County, is editor of the '65 Review. Patty Patton, also from Cherokee County, is assistant editor. Managing the business side of the magazine are Fred William, Riley County, and Annette Buckland, Rooks County.

Copy will be handled by Ronni Jones, Miami; Anne Kramer, Geary; Marsha Lowther, Cherokee; and Diane Goertz, Marion. Material for the stories will be the responsibility of Stan Husted, Douglas.

District directors to oversee the activities of county representatives are Dwight Westervelt, Cherokee; Karen DeGood, Cheyenne; Gwen Leece, Jewell; Wilda Loepke, Hamilton; and Mary Kay Munson, Geary.

4-H members and leaders are urged to take pictures and write articles about activities and projects taking place now. These should be submitted to the County Extension Office which will forward them to the Review Staff.

In preparing pictures for the Review, identification of each should be attached to the picture. Paper clips are not advisable as they may scratch the picture. Black and white prints are preferred and negatives are not necessary. Names of people (unless large groups), the club, and the county should accompany the picture.

Written material can be typed or handwritten—in either case, each sheet of paper should have the topic name and county printed on it.

YOUR SAVINGS GROW



AT YOUR NEAREST

KANSAS Savings & Loan

- | | |
|---|--|
| Arkansas City First Federal Savings and Loan Ass'n. of Arkansas City | McPherson The Pioneer Savings and Loan Association of McPherson |
| Augusta American Savings Association | Mission Capitol Federal Savings and Loan Ass'n. |
| Beloit First Federal Savings and Loan Ass'n. of Beloit | Newton First Federal Savings and Loan Ass'n. of Newton |
| Clay Center Northwestern Federal Savings and Loan Ass'n. of Clay Center | Ottawa Ottawa Savings and Loan Ass'n. |
| Dodge City First Federal Savings and Loan Ass'n. of Dodge City | Parsons First Federal Savings and Loan Ass'n. of Parsons |
| El Dorado Mid-Continent Federal Savings and Loan Ass'n. of El Dorado | Pittsburg First Federal Savings and Loan Ass'n. |
| Fort Scott Liberty Savings and Loan Ass'n. | Plainville Rooks County Savings Ass'n. of Plainville |
| Garnett The Garnett Savings and Loan Association | Pratt The Western Saving Ass'n. |
| Great Bend The Prudential Building and Loan Ass'n. | Salina The Homestead Building and Loan Ass'n. |
| Hays The Hays Building and Loan Ass'n. | Topeka Capitol Federal Savings and Loan Ass'n. at 700 Kansas Ave., 12th and Topeka Blvd. and 2100 Fairlawn Rd. |
| Hutchinson First Federal Savings and Loan Ass'n. of Hutchinson | Wellington First Federal Savings and Loan Ass'n. of Sumner County |
| Iola The Security Savings and Loan Ass'n. | Wichita American Savings Association of Wichita, 4601 E. Douglas Avenue and 147 North Market Street |
| Larned The Larned Savings and Loan Ass'n. | |
| Lawrence Capitol Federal Savings and Loan | |
| Leavenworth The Leavenworth Mutual Building Loaning and Savings Ass'n. | |
| Liberal First Federal Savings and Loan Ass'n. of Liberal | |



INSURED SAFE

LEADERS! Plan now to attend— ELECTRIC LEADERS TRAINING CLINIC!

Rock Springs Ranch, December 3 and 4

Experts in Electricity will be on hand to instruct and guide you in practical sessions designed to help you become a better 4-H Electric Project Leader.

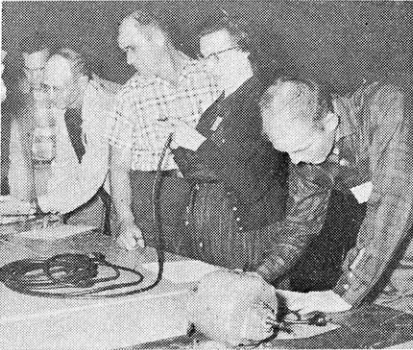
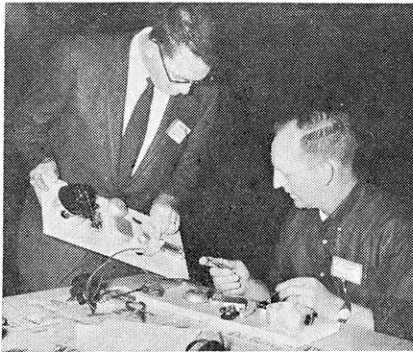
PROGRAM HIGHLIGHTS

December 3 (Thursday)

Face to Face (Your work with a project group)
Be Bright—Mechanics of Lighting
You Bet Your Life—Safety
Electronics
Special Evening Program—K-State Singers

December 4 (Friday)

Care to Prevent Repair
'Wire' We Here?
Special Workshop—Assemble a project to take home

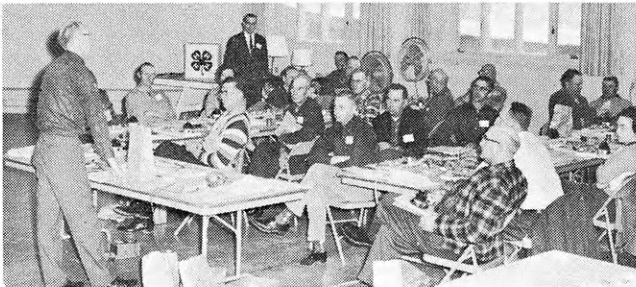


Top—A power company representative helps a leader with his special project—a warning system—last year. Above—leaders in a laboratory session on safety look for defects in display equipment.

FREE SCHOLARSHIPS AVAILABLE

Sponsored by Kansas Power Supplies

CONTACT YOUR COUNTY AGENT FOR INFORMATION



The workshop session is a special feature each year at the Clinic. Projects in the past have included a transistor radio and a soldering gun.



In this session at last year's Clinic, a small electric motor was assembled. Leaders may rotate by groups and take in three different sessions each day.



* Watch This Page For Ideas On Farm And Home Electric Projects

ELECTRIC LIGHT and POWER COMPANIES in KANSAS

The Kansas Power and Light Company

Kansas City Power & Light Company

Western Light & Telephone Company

Central Kansas Power Company

Kansas Gas and Electric Company