

KANSAS

# 4-H Journal



The 4-H Family Magazine

V 3:5

Kansas 4-H Foundation, Inc., Publisher

**In This Issue**

**H. I. Winner**  
Page 4

**As A Project**  
Page 7

**4-H Camps**  
Page 8 & 9

**Project Leader**  
**Has Fun**  
Page 10

**of Cattle Judging**  
Page 12

**Safety Project**  
Page 15

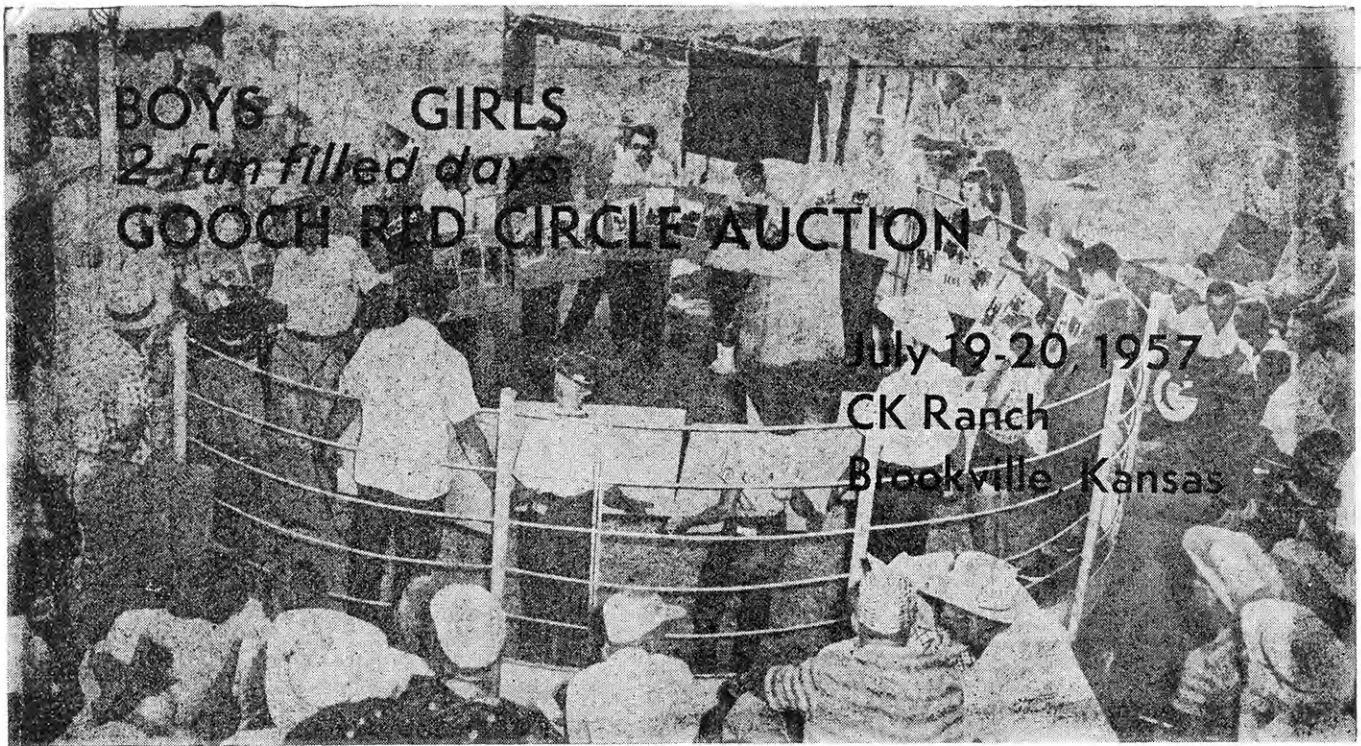
May  
1957

10 Cents



Swimming will be the highlight for nearly every one of the Kansas 4-H Club members expected to attend camp this summer from each of the 105 counties. For more 4-H camp pictures, see pages 8 and 9.





**BOYS GIRLS**  
*2 fun filled days*  
**GOOCH RED CIRCLE AUCTION**

**July 19-20 1957**  
**CK Ranch**  
**Brookville, Kansas**

**"THE TWO BEST DAYS OF THE SUMMER" - that's what boys and girls said about last year's exciting "no money" auction.**

This year YOU can attend this famous, western festivity—and bid on prize livestock for your project. You bid and "buy" with the Gooch Red Circles found on bags and packages of Gooch's Best Feeds and Foods. These great animals and sewing machines can be "bought" only with Red Circle Points—no money—and only by farm boys and girls. Start collecting Red Circles now from your folks, your friends and neighbors. Plan now to attend this big Mid-Summer Youth Event!

Again the Grand Achievement Award is the high-point of the first day's activities—See last year's successful bidders vie for 29 cash awards totaling \$470 plus the Grand Award of the \$300 Gooch College Scholarship to any college of the winner's choice. If you're a successful bidder in this year's auction you may win an added prize next year!

Ask your Gooch Dealer about this big Achievement Award Event.

**LOOK OVER THIS IMPRESSIVE PRIZE GROUP**

**40 PUREBRED STEER CALVES**—Sired by top Hereford bulls of CK Ranch, such as CK Crusty 60'h and CK Crusty 51st. Also top Angus and Shorthorn steers. 30 for Feed and Food Points; 10 for Food Points only

**5 REGISTERED HOLSTEIN HEIFERS** — Selected from the daughters of top-producing cows of outstanding Midwest dairy herds For Feed and Food Points combined.

**40 REGISTERED GILTS** — Fine Hampshires and Durocs, many sired by prize-winning boars, and out of the top sows of Gooch's own prize herd. 30 for Feed and Food Points; 10 for Food Points only.

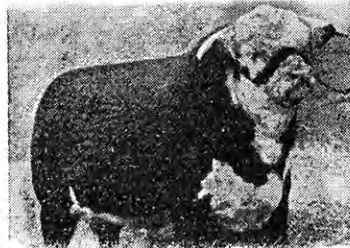
**5 REGISTERED HEREFORD HEIFERS** — Sired by the top breeding bulls at CK Ranch. For Feed and Food Points combined.

plus 10 MORSE Super-Dial SEWING MACHINES "Star Homemaker" Feature

Sews forward and backward; d a n s and e m b r o i d e r s. Reserved for girls who will use them in bona fide club sewing projects. For Food Points only.



**Famous Sires of Prize Livestock**



T.R. Zato Heir 40'h—from famous CK Ranch. Reserve Champion bull at 1952 Ft. Worth Exposition sire of some of the top steer calves featured at this year's Red Circle Auction.



Banner Display—1st prize Junior Spring Boar of 1954 Nebraska State Fair and Junior Champion of 1954 Kansas State Fair. One of the sires of the Hampshire Gilts offered.

**2 BIG DAYS**  
**of Fun & Excitement**

This year, the Gooch Red Circle Auction is going to be bigger than ever! It's going to last two days—with emphasis on fun and food. Here are some of the events we have planned—all at no cost to you:

- ★ COWBOY EVENTS  
Friday Afternoon, July 19
- ★ Grand Achievement Award Event  
Friday Afternoon, July 19
- ★ RANCH BARBECUE  
Friday Evening, July 19
- ★ BIG SQUARE DANCE  
Friday Evening, July 19
- ★ CAMPING UNDER THE STARS  
Friday Night, July 19  
Bring your bedding; plan to "camp out."
- ★ Chuck Wagon Breakfast  
Saturday Morning, July 20
- ★ JUDGING CLASSES  
Saturday Morning, July 20
- ★ Fitting & Showing Demonstration  
Saturday Morning, July 20
- ★ AUCTION  
Begins 10 a.m. Saturday, July 20

Wear your cowboy clothes and get in this pleasure-and-profit Western Jamboree!

**Buy These Wonderful "Project Prizes" With GOOCH RED CIRCLE POINTS From These GOOCH'S BEST Foods and Feeds:**

- |                |               |                    |
|----------------|---------------|--------------------|
| ● Chicken Feed | ● Rabbit Feed | ● Corn Bread Mix   |
| ● Turkey Feed  | ● Horse Feed  | ● Macaroni         |
| ● Hog Feed     | ● Sheep Feed  | ● Spaghetti        |
| ● Dairy Feed   | ● Flour       | ● Pure Egg Noodles |
| ● Cattle Feed  | ● Beans       | ● Popcorn          |
| ● Dog Food     | ● Corn Meal   | ● Pancake Mixes    |
- Ask any Gooch food or feed dealer for copy of the rules and lists of animals to be sold

**GOOCH**  
**Foods and**  
**Feeds**

Salina, Kansas  
 Lincoln, Nebraska  
 Dalhart, Texas  
 Council Bluffs, Iowa  
 Des Moines, Iowa



**Letters....**

If you have ideas or 4-H Club experiences that you would like to write about or if there is something you like or dislike about the Kansas 4-H Journal, write to the Editor, Kansas 4-H Journal, Manhattan, Kansas.

Leaders, parents, members, agents and 4-H friends are invited to write.

**I Belong to 4-H Because . . .**

Dear Editor:

It is a lot of fun getting together and practicing with friends, and I feel that it is good experience to get along with others and sometimes have to do what others want instead of what you might like better. Everyone learns to give as well as take. You learn to work together on things everyone likes to do and to make things for yourself. This is not only fun, but helps out on the budget.

To sum it up, 4-H is an organization where kids have fun, learn things that school cannot teach no matter how hard it tries. It is a place where you learn to lead and follow happily and to live with people who may not agree with you. And you also learn to look at a question from every angle instead of jumping to conclusions.

Anne Beck  
Pratt County Member

**In 4-H You Help Yourself**

Dear Editor:

As the old saying goes, God helps those who help themselves. Well, there's another saying which isn't as old or common, but it's just as true. 4-H helps those who help themselves.

You may not realize it, but you get out of 4-H exactly what you put into it. 4-H is giving you it's best. What are you giving it?

Virginia Black  
Barber County Member

**Correction**

Dear Editor:

I find a slight error in the April issue —on page 15 the second picture from the top is a group of Ford county girls.

H. W. Westmeyer  
Ford County Agent

**Feed and House Them Separate**

Dear Editor:

While it appears the combination

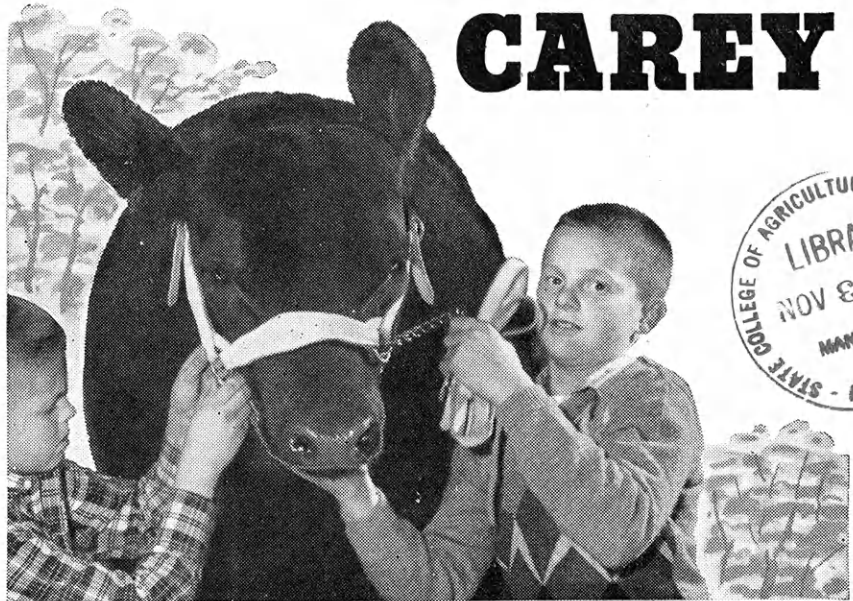
bird house and feeding station pictured in the April issue is well constructed, the idea of combining housing and feeding is basically unsound. Birds have nesting and feeding areas and will protect either of them; thus a bird inhabiting this box would surely

have a frustrating experience.

Besides this, the locations for a bird house and feeding station would be different, as well as hole sizes and house dimensions.

Mrs. Mary Ann Smith  
Woodson County Agent

**If You CARE  
Salt Your Stock With  
CAREY**



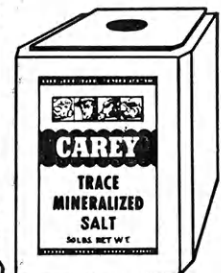
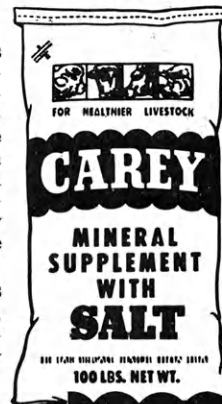
**CAREY TRACE MINERALIZED SALT  
CAREY MINERAL SUPPLEMENT  
WITH SALT**

Yes, if you want to keep your animals "in the pink" . . . giving you top production . . . then supply other minerals, too, when you salt them. Agricultural tests demonstrate both the need for minerals and the payoff in profits. And the easy, economical way is to salt your stock with *mineralized* Carey Salt. For just a few extra pennies Carey gives you these important advantages:

- 1. Mineralized** with trace quantities of pure Iron, Iodine, Manganese, Copper, Cobalt and Zinc—plus Calcium and Phosphorus in Carey Mineral Supplement with Salt.
- 2. Flavorized** with tasty feeding molasses that encourages animals to lick needed amounts.
- 3. Stabilized** with compatible minerals that keep the same analysis from first lick to last.

**PHENOTHIAZINE**—to control internal parasites—also now available in Carey Trace Mineralized Salt with Phenothiazine. 50-, 100-lb. bags.

Both available in 50-lb. blocks or bags and 100-lb. bags.



The Carey Salt Company, Hutchinson, Kansas



Idea and drawing submitted by Veryl Klein, Clay county 4-H'er; finished art work by Tom Swearingen.

**Kansas 4-H Journal**

Vol. III, No. 5 May, 1957  
Date April ..... Editor

**Editorial and Business Office**

Manhattan, Kansas  
Phone PR 6-8811 Ext. 208  
Published Monthly By

**KANSAS 4-H FOUNDATION, INC.  
BOARD OF TRUSTEES**

- |                             |               |
|-----------------------------|---------------|
| W. Dale Critser, Chrm. .... | Wichita       |
| R. B. Christy .....         | Scott City    |
| Harry Darby .....           | Kansas City   |
| W. Laird Dean .....         | Topeka        |
| Clifford Hope .....         | Garden City   |
| A. D. Jellison .....        | Junction City |

- |                        |           |
|------------------------|-----------|
| J Harold Johnson ..... | Manhattan |
| Harold E. Jones .....  | Manhattan |
| George B. Powers ..... | Wichita   |
| E. B. Shawver .....    | Wichita   |
| Fred D. Wilson .....   | Andover   |

Use of the 4-H name and symbol approved by the Secretary of Agriculture of the United States, January 23, 1951, under the provisions of the law as reenacted by Sec. 707 of the Act of June 25, 1948 Public Law No. 772, 80th Congress (10 USC 797)

Entered at the postoffice in Lawrence, Kansas, as second-class matter under the Act of March 3rd, 1879.

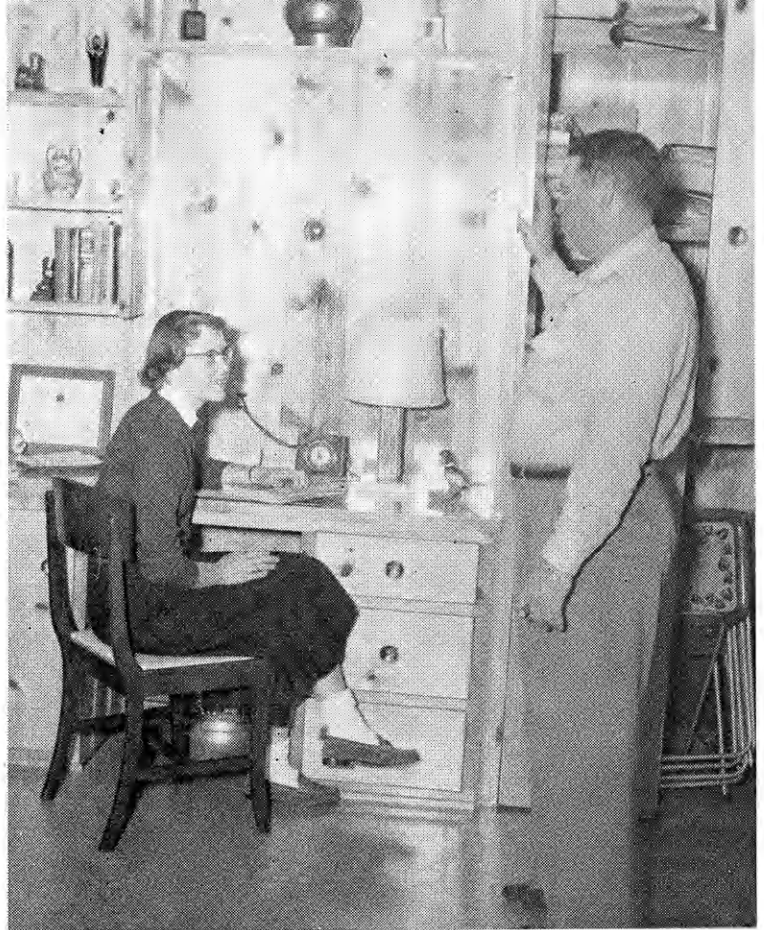
Advertising rates and circulation data on request.

Group subscriptions 75 cents per year.  
Individual subscription \$1 per year.  
Single copy 10 cents.





Carolee and her Mother find the cabinets built above the stove handy in addition to providing needed storage space.



At last a place to put and work with 4-H material. Carolee and her father talk about further improvements they plan for the "family study center."



Above, Carolee Orme says sizes of pictures should correspond and balance with the furniture over which they hang. Below, Carolee and her Mother in front of the picture window in the family room. Note the drapes selected to match the knotty pine walls.



## Home Improvement Is Family Project

Improving the appearance of your home can be an enjoyable family project, says Carolee Orme, Kansas 4-H home improvement winner.

Everyone likes to get into the act and every extra hand is welcome, especially when wallpapering, she adds.

Carolee has carried the home improvement project eight years. By taking a few things at a time she and her family have made a lot of improvements.

The first year or two, Carolee worked on her own room sewing stool covers and making a hobby table out of orange crates. Since then she has branched out into the kitchen, dining room and bathroom. One of the bigger projects was changing a porch

into a family room. Later a storage and study corner were added to the family room.

Carolee helped put new ceiling tile on the dining room, repapered the dining room, remade couch and pillow covers, refinished a picture frame and put cornice supports above the windows.

Mrs. Orme says, "Home improvement is the best project a girl can take. The things I never get done, Carolee somehow managed to get her father to do. All boys and girls will be homemakers some day. It's better you start out on your own."

As a junior leader Carolee gave project talks and demonstrations. She was high individual in the state home improvement judging contest.

**F**ARMERS  
LOW-COST  
Complete Protection  
Policy

**A**UTO  
And  
Fire

**I**NSURANCE  
Please Send Information  
Name .....  
Address .....

FARMERS-ALLIANCE INSURANCE — McPHERSON, KANSAS

# Off the 4-H Line

*Reporter's Notice: The Kansas 4-H Journal would like to print interesting stories of your local club events, activities, members and leaders.*

*Local club meeting stories, if submitted, should contain something unusual or of interest to people outside your county.*

*Outstanding projects, services or events of your club, or stories of individuals within your club that would give ideas to other 4-H'ers would make excellent stories.*

*Prizes will be awarded all blue award stories each month. Please state your choice of (1) a year's subscription to the National 4-H Club News or (2) a hard cover loose leaf 4-H notebook.*

## 4-H'ers Help Meet Health Emergency

When encephalitis reached epidemic stages in Scott county, members, parents and leaders of the Manning Jayhawkers 4-H club got 51 members of the community to take tests to help locate carriers.

Another phase of the club's health project was encouraging polio inoculation. To date 90% of the people associated with the club have had or are in the process of taking polio shots.

Charles Griffith, Rep.

## Their First Blue Ribbon!

*(Blue Award Story)*

"I won a blue ribbon! I won a blue ribbon!" exclaimed Linda Dow, a very new member of the Beacon Boosters Club model meeting group at the Finney county 4-H Day.

Blue Ribbons and awards are not the most important rewards gained from 4-H Day, but to these new, young members there is no thrill quite like this first blue ribbon they helped earn.

As 4-H Day ended, it was pretty certain that there were several wide-eyed youngsters determined that another year would find them participating more than ever in the county 4-H Day.

David McMillan, Rep.

## H. I. Group Tours Homes, Visits Store in Series of Five Meetings

Lincoln Bluebirds 4-H Club home improvement members, Pratt County, have had two project tours and three meetings to start the girls on their projects.

The last meeting was to visit a furniture store where the girls were

instructed on color, furniture styles and construction.

Anne Beck, Rep.

## Japanese Girls Entertain 4-H'ers

Four girls from Japan sang a Japanese song at the "World Citizenship" meeting of the Richland Boosters 4-H Club, Ford county. Teresa Kuroda, Michi M. Oki, Cecilia H. Matsui and Nobuko Nicholson were the guests.

In addition to the song, Nobuko showed a Japanese knitting machine,

the different stitches made and a sweater and shoes made from the machine.

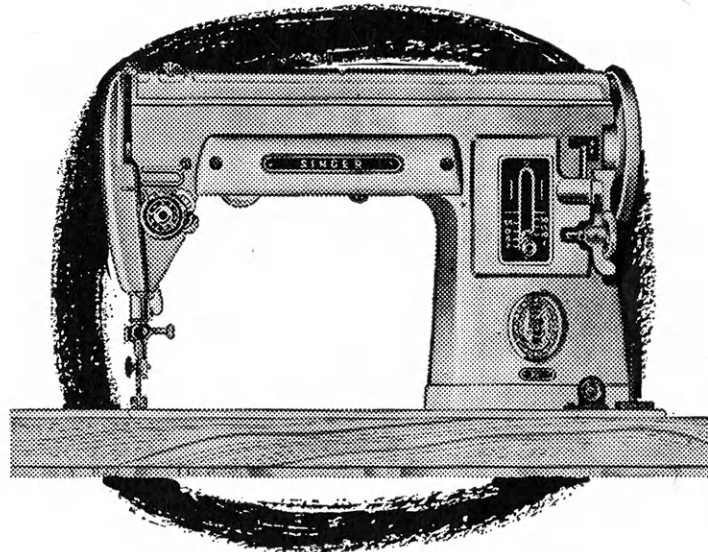
Carol Jean Hamilton, Rep.

## Here and There

Driftwood Club applicants for Round-up and Junior Leadership camp have been submitted to the Rawlins county extension office . . . Southwest 4-H District's, Sedgwick county, membership party honored new members and consisted of a recognition ceremony, square dancing and refreshments . . . Glenn Zwegardt, Plum Creek Club, Cheyenne county, demonstrated making a handy memo pad at a recent meeting . . . Kent

(Continued on Page 10)

# you can enjoy this SINGER SLANT-NEEDLE



For as little as **\$243<sup>†</sup>**  
A WEEK

<sup>†</sup> After minimum down payment.

Enjoy better sewing visibility and also perfect control at any speed. The only machine with a needle that slants towards you. The SINGER\* Slant-Needle does automatic stitching with Singer's exclusive automatic zig-zagger.

**WHEN YOU BUY SINGER YOU BUY THE BEST**

\*A Trade Mark of The Singer Mfg. Co.

**SINGER SEWING CENTER**

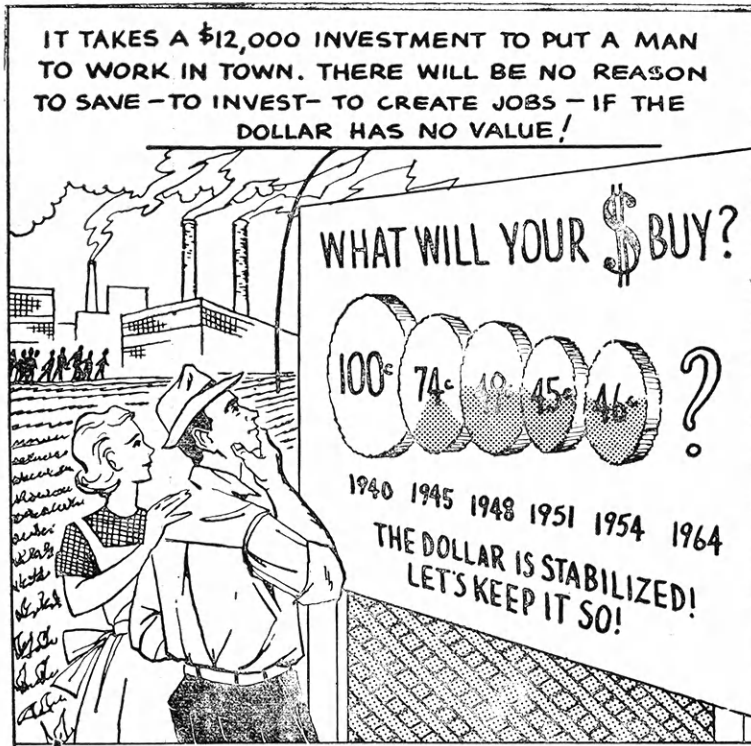


"I told Aunt Effie I was going to Round-up; Guess she didn't know much about 4-H."

Idea by Sara Hutchins, Coffey Co. Member



# IT TAKES FREE MEN AT WORK TO BUY WHAT WE GROW — TO MAKE WHAT WE WANT!



If we have to sell our products for unsound money, we cannot expect to do well in the long run, even though we cut costs, increase efficiency, practice thrift and retain government price supports.

It's the dollars we have left after costs . . . and also what these dollars will buy . . . that are important. If the value of the dollar were to continue to decline at the 1940 to 1950 rate, it would be worth only about ten 1940 cents in 1960. This kind of inflation would increase farmers' costs, reduce the value of savings, and lead to the destruction of our free-choice system.

Farm Bureau members believe that our government should manage the national debt, plan its taxing and spending programs, and otherwise exercise its powers in the money and credit field in a manner which will contribute to a stable general price level and an expanding economy.

We must be permitted to earn honest dollars!

## KANSAS FARM BUREAU

105 County Farm Bureaus Working Together

**FARM BUREAU KANSAS FARM**  
**MUTUAL LIFE**  
**Insurance Co. Insurance Co.**

Manhattan, Kansas

## Games for Summer

### Traveler

One player who is "It" stops before another player, points his finger, and announces, "I am going to Topeka," or to some other place. The player before whom he has stopped must call the names of three things beginning with the first letter of the announced destination of the traveler such as "ties, toothbrush, and tires," before "It" can count to ten, or the loser is "It."

### Midnight

Games played outdoors add variety to summer 4-H meetings. Try "Midnight" at that next meeting. One 4-H member is the fox, others are sheep. The fox may catch sheep only at midnight. Start the game with the fox standing in his den in one corner of the yard, the sheep in the sheepfold in the opposite corner. The fox may leave his den and wander about the yard; the sheep may do the same, coming as near to the fox as they dare. They may ask him as many times as they want, "What time is it?" If the fox says, "Three o'clock" or any hour but midnight, they are safe. But when he answers "Midnight" he starts chasing the sheep and they are safe only in the sheepfold. If the fox catches a sheep, he becomes the fox and the game continues.

'56 4-H Winner Says . . .

**Raising Pigs Is Profitable**

Raising pigs can be a profitable project, Edwin Keener, Barton County 4-H'er, says. Eddie was the 1956 state 4-H swine winner.

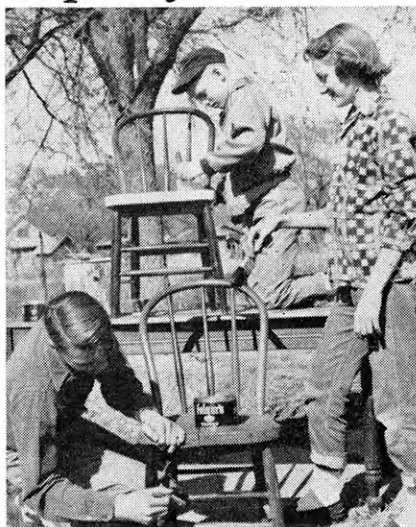
Last spring Eddie had eight sows farrowing. He saved 64 pigs, a good number for any experienced hog raiser. He sold some of the pigs early, but kept 36 for his 4-H project. Last fall his eight sows farrowed again, saving 62 pigs.

Eddie uses self-feeders and self-waterers so the pigs have access to them at all times. Usually he plants Sudan or some other green crop for pasture. He doesn't keep any of the pigs in one pasture too long, but likes to keep moving them to new areas. "Sanitation is very important in swine production. I raise pigs on new ground or thoroughly cleanse the old quarters."

Eddie's main feeds are ground corn and oats, maize, barley and hog pellets. Most of the feed he raises himself. Last year Eddie received \$1.32 in return for each \$1.00 spent for feed.

He started his project with two Duroc pigs. Over the years he has bought pure-bred swine from some of the better breeders in Kansas and is now able to sell young gilts and boars for breeding purposes at a better than normal price.

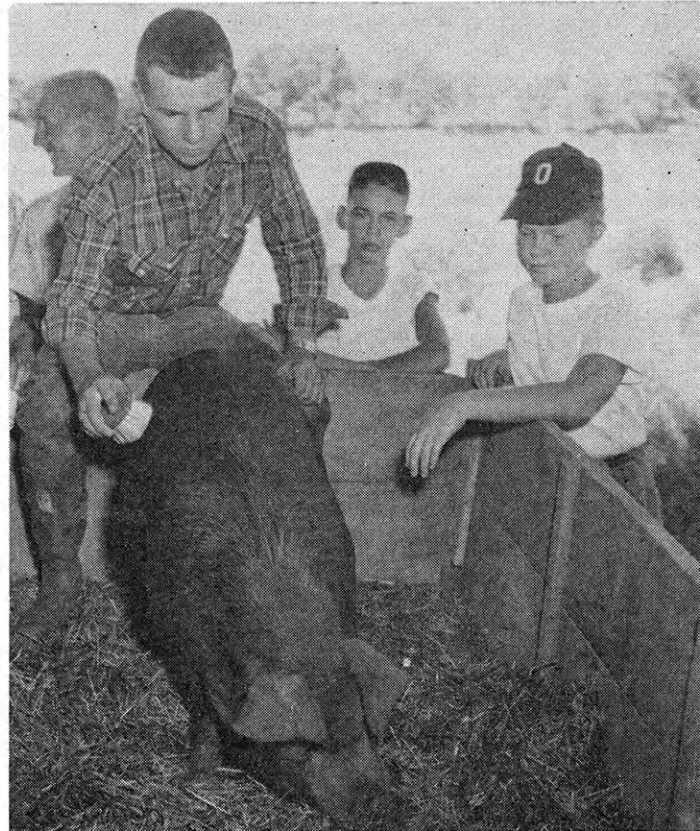
**4-H Club Cleans Up City Hall!!**



Willing Workers work on City Hall community service project.

Community service project of the Willing Workers Club, Saline county, was to renovate New Cambria's city hall.

Floors were waxed, walls painted, grounds cleaned up and chairs were varnished, painted and repaired.



Eddie Keener gets one of his Durocs ready for a fitting and showing demonstration.

**Kansas Cooperatives Are Kansas People**

Your community and regional farm cooperatives are your farming operation extended beyond the line fence.

**KANSAS COOPERATIVE COUNCIL**

523 Garlinghouse Building, Topeka

You Can Help

**JUNE IS DAIRY MONTH**

If you want ideas, here's some tips for your club.

- Give promotional dairy talks to civic groups
- Build window displays
- Encourage and sponsor contestants for County Dairy Princess Contest
- Prepare and present dairy foods demonstrations to homemaker and civic groups
- Distribute dairy month posters
- Assist with county dairy festival

Offer Your Services To Your County Dairy Month Chairman

**KANSAS DAIRY ASSOCIATION**

501 Jackson

Topeka







Just getting together to talk things over in a cool, restful atmosphere beside the stream or underneath a tree provides much of the serious side for 4-H camping.



These 4-H marksmen have lots of fun and it's all perfectly safe. All 4-H'ers are briefed on weapon safety before going to the range.

# Thousands of 4-H'ers

## Princess Contests Featured In June Dairy Month



Sally Jo Newman, 1956 dairy princess candidate of the Sunshine Winners 4-H Club, Jackson county, dishes up a luscious looking chocolate sundae for Harvey county 4-H'er Ralph Gilmore.

Have fun! Promote dairy products! June Dairy Month gives 4-H Clubs an opportunity to help promote the use of dairy products as a club project.

Clubs may wish to sponsor one of their members or former members as a dairy princess candidate as did the Sunshine Winners Club, Jackson county, last year. A member of the club, Sally Jo Newman, was county and district winner. She represented District 1 in the state contest in Hutchinson.

State dairy princess this year will be selected and announced at the State Fair in September.

Details on the dairy princess contest and other dairy month projects for 4-H Clubs are available from the county dairy month chairman.

Swimming, baseball, horseback riding, handicraft, informal dinners, lots of good food, relaxation await the 5,000 Kansas 4-H'ers attend 4-H Club camps in nearly a dozen

From Cameron Park in the Rockies of Colorado to the Labette county camp at Oswego, 4-H'ers will be staying in spots just a stone's throw from the farm homes from whence they came.

Kansas 4-H camps will be held at nearly a dozen sites in Kansas, Oklahoma and Colorado. Two of the busiest spots will be the Springs Ranch near Lawrence City and the Southwestern Camp near Dodge City.

Seventy-three counties have their county camps at the State 4-H Center, Rockwell Ranch. In addition to these camps, four state camps





as they are constantly supervised by one or more adults.



While not available at all 4-H camps, horses and horseback riding is a feature attraction for the nearly 5,000 4-H members who will camp at Rock Springs Ranch this summer.

# To Camp This Summer

ll, softball, horseshoes, discussions, rest and re- more than expected to s this sum- n locations.

ass in the to Rock Junction county camp will be com- r three day ep closer to a and rural they came. will be held es in Kan- orado. The be at Rock r Junction hwest 4-H ty.

nties will amp at the ck Springs the county ps for old-

er club members are scheduled. Music camp will open the 4-H camping season at Rock Springs Ranch May 28-June 1. Conservation camp will be June 22-26, junior leadership camp August 1-7 and health camp August 7-12.

A district 4-H camp at Coffeyville in June will help give junior leaders experience they can use in county camps later in the summer.

Swimming at 4-H camps is a universal highlight wherever pools are available. Handicraft ranging from lustra-lace to metal etching is popular at all camps.

Folk games, parties, and just plain fun are commonplace in the evenings. Cook-outs are popular when available. Horseback riding is never tiresome, even for those that have horses at home.

County agents have details on county camps as well as information on the state and district camps to be held this summer.

Handicraft varying from lustra-lace weaving to leathercraft to paper mache to making fine jewelry is popular with boys and girls at 4-H camps.



# 4-H Project Leader Duties Are Varied But Fruitful



Looks as if Carolyn Guy and Mary Thompson really enjoy filling out their project record blanks when Mrs. Lawrence Leonhard helps them.



Judy Ousdahl and Mrs. Lawrence Leonhard discuss principles in selecting measuring cups.

Ten fruitful years!! That's what Mrs. Lawrence Leonhard thinks of her 10 years as a foods project leader for the Jayhawk 4-H Club, Douglas county.

"The thing I have really enjoyed about my 4-H work is the vitality with which the members attack their projects and obligations," Mrs. Leonhard says. "It is always an inspiration to work with youth. They are really so capable if given a chance. I'm sure I have gained much more than I have given."

More than 50 4-H'ers have

received individual and project meeting instruction in foods during her 10 years as a leader. Jayhawk Club foods meetings are held in the girls' homes in the evening. Mrs. Leonhard adds, however, that a lot of project instruction is given over the telephone.

In demonstrations Mrs. Leonhard has helped a number of 4-H'ers with top demonstrations including two state fair blue and one state fair purple award demonstrations.

Don't overlook the junior

leaders in helping with project work, Mrs. Leonhard advises. She says they are "just itching to get a younger one under their wing."

Promote your project with the girls, but be sure to guide them in selection of their projects, Mrs. Leonhard advises. For instance, she says, the girls "should have at least two food preparation projects before taking a meal service project."

## Off The 4-H Line

(Continued from Page 5)

Thompson, Kechi Club, Sedgwick county, showed the proper way to cut a turkey at a recent nation-wide meeting of the Poultry and Egg Fact Finding Conference in Kansas City . . . The Come-As-You-Are party given by mothers of the finance committee of the Goddard Club, Sedgwick county, helps to swell the club treasury. Mothers come to the home of the community leaders for doughnuts and coffee . . . Bang! Bang! Bang! And an occasional "What did you think of that shot?" was almost all you could hear in the round-up of the rabbit hunt sponsored by Dickinson county's Newbern Wideawakes Club that resulted in 225 dead rabbits and \$45 for the club treasury . . . Zeandale Club members, Riley county, presented their 4-H Day numbers at a community meeting . . . Cheyenne county's Bird City Go Getters Club chorus of 25 voices has been invited to sing for the Northwest District of Kansas Associated Garden Clubs meeting on April 27 . . . As each

## GOT A PROBLEM On Your Electrical Project?

The Rural Electric Cooperative in your area can help you solve it — And give you all the additional information you need to mak your project successful.



### Kansas Electric Cooperatives, Inc.

Box 268 Topeka, Kansas



member of the Country Pals Club, **Thomas** county, gives a health, safety and conservation talk, these program numbers and illustrations are recorded in the club activity books by the members . . . **Saline** county's 4-H carnival is April 27 . . . Jayhawk Club, **Douglas** county, had nine blue ratings at the county 4-H Day, three in the Regional . . . County agent Jim Childers gives junior leaders much of the credit for the success of the first **Reno** county leader's recognition banquet. The 161 leaders recognized had a total of 369 years of 4-H leadership . . . Advanced foods girls, **Goddard** club, **Sedgwick** county, prepared fried chicken, mashed potatoes, gravy, fresh peas, yeast rolls and cherry cobbler at their fifth project meeting . . . **Rawlins** county 4-H Foundation committee has been asked to find an organization or group to sponsor the 4-H Journal in that county as it is being done in nearly 70 other counties . . . **Ness** county's Walnut Valley Club plans to attend the St. Lukes Lutheran Church on 4-H Sunday, May 26 . . . 13 out of 24 members of the Bob White Club, **Montgomery** county, gave demonstrations at the county 4-H Day with Darrell Jagers giving the top boys demonstration on "Finishing Blonde Furniture" . . . **Sedgwick** county's Kechi Club featured the Kansas 4-H Foundation in a window display and in a promotional talk given by one of the club members at a local PTA meeting and the West Side Kiwanis Club . . . 100% of the Grantville Club members entered the **Jefferson** county 4-H Day . . . Wide Awake Club members, **Lincoln** county, heard their parents tell "Why Parents Hair Turns Gray" at their parent's night meeting . . . Gifts were presented to project leaders of the Willing Workers Club, **Saline** county, in appreciation of their efforts . . . Six home beautification project members of the City Go Getters Club, **Saline** county, visited K-State landscaping and horticulture professors for ideas on their project. While in Manhattan they visited the Student Union and toured the campus . . . Fowler Go Getters, Meade county, won blue on all their 4-H Day entries . . . Dhirajkumar Contractor, Bombay, India, told Goddard 4-H members, **Sedgwick** county, many exciting facts about his country and his experiences in America . . . According to a music appreciation talk by Robert Lewis, Tiny Toilers Club, **Pawnee** county, the violin originated from turtle shells . . . Proceeds from a community program sponsored by the Spring Creek Rooters Club, **Greenwood** county, will go to improve a roadside park the club has as a community project .

# YESTERDAY TODAY TOMORROW



for more Profitable farming . . .

## CO-OPS Plan Ahead

In an era where planning ahead is essential, 4-H clubs and Farm Cooperatives have made important strides. 4-H clubs have given farm youth better methods . . . better thinking . . . for better farming. Farm Cooperatives have developed and are selling modern products . . . products that make farming easier and more profitable.

As you look ahead to your own farm, you will want to use the products that have kept pace with today's farming methods. These CO-OP products are available now and

will be available in the future, and as a member of the Consumers Cooperative Association you'll have the added benefit of generous Patronage Refunds.

As in 4-H work, getting together in Cooperatives is a valuable thing. Because you'll be able to share the ownership, control and savings of

this organization . . . influence the quality of their products and help establish a fair-price yardstick for the things you buy.

### A CO-OP PRODUCT MEANS QUALITY . . . AT FAIR PRICES

CO-OP Petroleum products are the best. They have kept pace with modern engines and equipment development . . . to save farmers money! They are made in farmer-owned refineries, sold at competitive prices . . . and as a CO-OP member you have the advantage of Patronage Refunds.

At C.C.A., progressive thinking never stops. For that very reason DM-1 Super Heavy-Duty Motor Oil was developed to assure trouble-free operation in modern high compression engines. Likewise, CO-OP Gasolines now have the higher octane rating to give modern engines more power . . . more mileage.

Advanced thinking produces advanced products at C.C.A., products to assure a more profitable future in farming.

### CO-OP PETROLEUM PRODUCTS

- Higher Octane Gasolines
- CO-OP Multi-Purpose Grease
- DM-1 Super Heavy Duty Motor Oil



# Consumers Cooperative Association

Kansas City, Missouri

# Expert Gives Tips on Judging

## Beef Cattle Judging Points Given By Top 4-H Judger

By Bob Krehbiel

When judging a beef cattle class, the first thing to do is to look at the steers from 20 to 30 feet away so you can see the whole class at once.

When considering general appearance, the main points are depth, blockiness, straightness of lines and compactness.

If a steer is compact he will be just as long or longer from his hooks to the rear (picture 1) as he is from his fore rib to the hooks (picture 2). He should be full and deep in the heart girth (picture 3). The head and neck should be short and broad (picture 4).

The beef animal should be straight in his top and bottom lines (picture 5). He should be wide chested. The

Bob Krehbiel was high member of the Kansas 4-H judging team from McPherson county which placed first in cattle judging at the International Live Stock Show in Chicago last fall. Pictures on this page were taken of Bob as he points out the important parts of the animal to consider when judging beef cattle.

shoulders should not be prominent but compact, smooth and well covered (picture 6). The back, loin and ribs are known as the steakhouse area of the steer. A large area here means a large amount of the higher priced cuts.

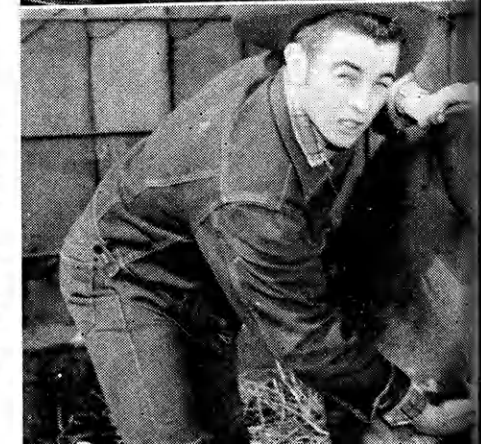
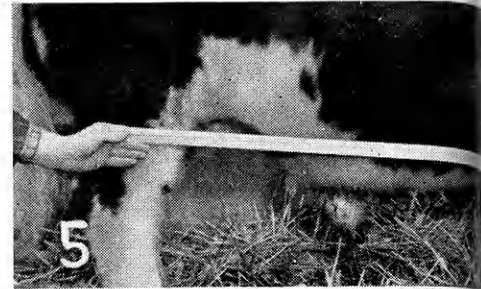
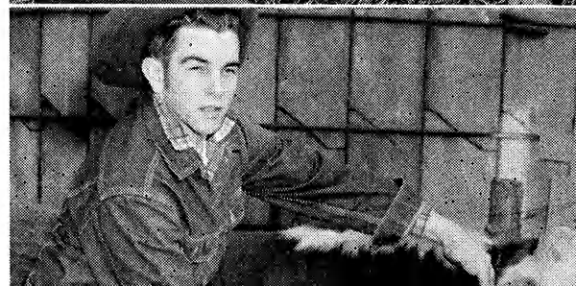
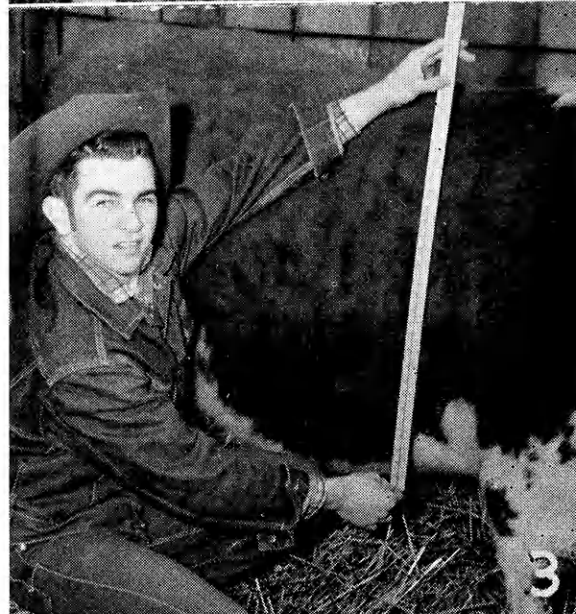
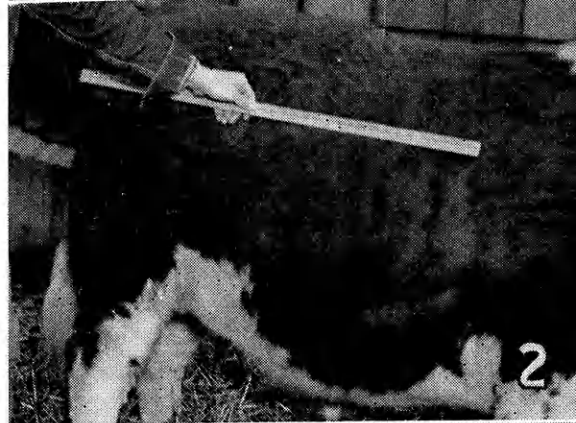
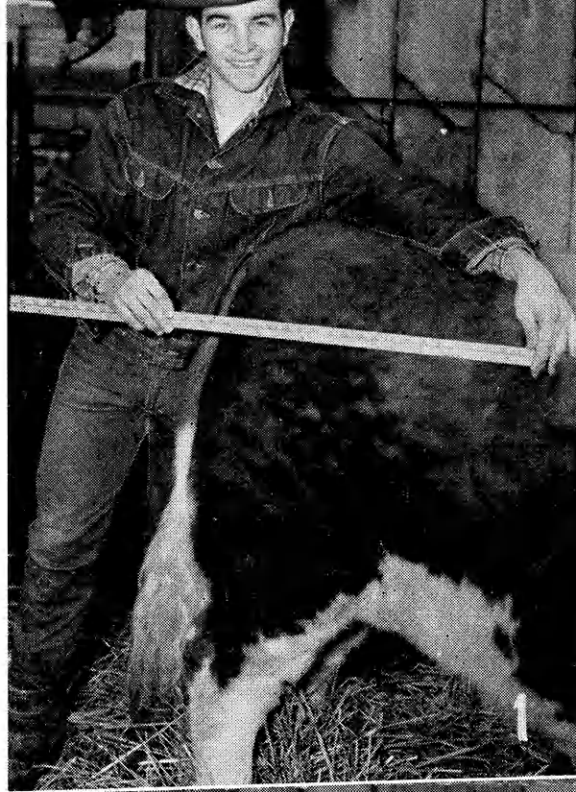
The crops should be broad and full of firm flesh. The back and loin should be broad, straight and covered with an even, thick layer of mellow flesh. The ribs should be well sprung so the digestive system has plenty of room with which to produce the goods.

His hind quarters represent one of the most popular cuts in the whole carcass. His rump (picture 7) should be long, level and as wide and full as the back and loin. The tailhead should be smooth and blend in well with the rump.

Because it is one of the higher price cuts, the rounds should be full, heavy and bulging. He should carry down deep in the twist (picture 8).

In fat steer classes finish is an important consideration while quality, build and breed characteristics get more emphasis in the breeding heifer classes of beef cattle.

Everyone has their own way of taking notes, but I have found that putting down notes on the main points—finish, width, depth, type and rear quarter—helps me from getting mixed up in my reasons.







Swimming in the pool at Rock Springs Ranch is one of the treats for 4-H Round-up delegates visiting the State 4-H Center on May 30.

After a swim in the pool, a fried chicken barbecue dinner will taste awfully good and that's just what's in store for the 1400 4-H Round-up delegates who visit the State 4-H Center at Rock Springs Ranch on May 30.

**Mostly at K-State**

The remainder of the five-day (May 28-June 1) program will be on the K-State campus at Manhattan.

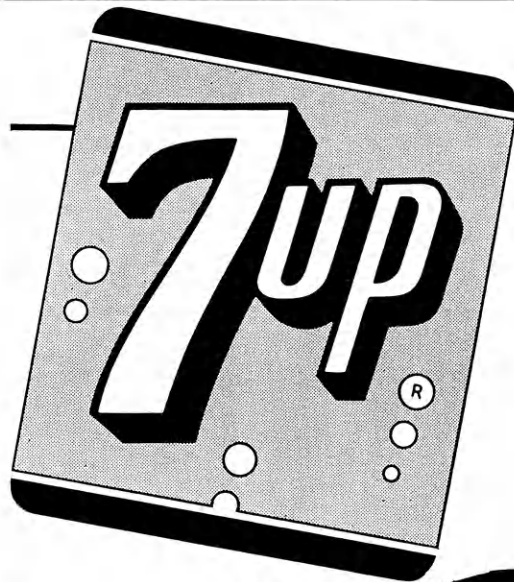
Boys uniform is white trousers and shirt with black tie.

Modeling the 4-H girl's dress at right is Pawnee county 4-H'er Gayla Gore. The dress has a pleated full skirt with fitted top, convertible collar and baby doll cuff. The material is a fine stripe in green and white cord.

Besides Round-up Gayla says the 4-H dress may be worn while giving demonstrations and at the State Fair.



Gayla Gore



# The All-Family Drink!

*You like it...  
it likes you!*







After a box supper to raise money for 4-H member and leader signs, junior leaders of the Willing Workers 4-H Club, Hamilton county, had a work party to put wood backing on the signs before erecting them at each family's home. Representing the 46 member club here are Roger Potter, Felva Shamburg, Dee Potter, Nelson Rudy and Helen Shorter.

LIBRARY  
NOV 8 1957  
MANHATTAN  
KANSAS



A Franklin county 4-H clothing leader, Mrs. Charley Roehl, gets help on sewing machine adjustments from HEA Mary Dean Holle. Clothing project leaders in all Kansas counties had the opportunity last winter and spring for this training sponsored cooperatively by the Extension Service and the Singer Sewing Machine Co.



... Above, Bishop George Hoover and maid Bonnie Hughes look on as Convict Gary Harmon gulps down his supper in a 4-H Club Day play presented by the Victory 4-H Club, Harper county. Below, a community directory built and erected by the woodworking leader and boys of the Kearny county Hi-Lander 4-H Club. The directory lists names of farmers and distance and direction to their farm.

WALLACE KUHLMAN	2 1/4 N	* JACK MILLER	3 1/2 N
CHAS. KUHLMAN	2N 1/4 W	* PRESTON RYSAR	1 N 2 1/2 E
ERWIN KUHLMAN	3 N	* JESS BEISSE	1 E 2 N
JACK RIEDL	3 N	* ALVIN WOODROW	1 E 3 1/2 N
ARTHUR JOINER	3 N 1/2 W	* LAWRENCE FULMER	1/2 N
FRANK PHILLIPS	3 N 6 W	* LEO MICHEL	1 S 1 W
EDE WILKEN	4 N 1 1/2 W	* EDD MURRAY	3 S
WESLEY GRUSING	3 1/2 N 2 E	* FRED BOHL	2 S 1 E 1/2 S
JOHN GRUSING	3 1/2 N 2 E	* WM. CRUMP	3 S 2 E 1/2 S
DICK LITTON	3 1/2 N 2 E	* R.R. GROPP	1 S 1 W

## SEND IN YOUR PICTURES

We want pictures taken by Kansas 4-H'ers. Prizes will be given for all pictures used in the Journal.

The picture need not be on 4-H Club work, but pictures with subjects related to 4-H Clubs are preferred. Action pictures are desired.

All pictures should be glossy prints at least five by seven inches in size unless accompanied by the negative.

Photographs should be accompanied by a short statement explaining the picture and including the names of persons shown.

Entrants should designate their choice of the following prizes. A year's subscription to the National 4-H Club News, one roll of color film—sizes 620, 120, 616, 116, 127 or 35mm only, or a 4-H Club photograph album.

4-H members, parents, leaders, county agents or friends of 4-H may send in pictures.

## We Want Cartoons

We want your ideas for cartoons. Our artists will draw them—you just tell us what to draw.

Or if you like to draw, send us a sketch of what you have in mind. If necessary, we will have our artist retouch your drawings.

Cartoons or cartoon ideas may or may not have a 4-H Club theme.

## 1958 Who's Who's Printed

The 1958 WHO'S WHOOT, Kansas 4-H yearbook published by the Collegiate 4-H Club at Kansas State College, will be distributed to Kansas 4-H'ers in May.

The publication, 30 years old this year, consists of county pages from nearly 70 counties, special feature pages on various 4-H activities and pictures of state winners. You may order your copy from your county agent or fill out the coupon below.

Mail to Kansas 4-H Journal, Manhattan

I am attaching \$1 for my copy of the 1958 WHO'S WHOOT.

Name .....

Address .....



# Club Aims to Make Roads Safe



Donna and Jerry Reser put the finishing touches on a culvert marker.

Two auto accidents on township roads within a mile of each other, one of which resulted in a fatality, brought home to members of the Full-O-Pep 4-H Club, Franklin county, the need for a highway safety program.

So last fall a survey of Peoria township was made by Gerald Reser, leader of the club, with the county undersheriff, highway patrolman and chairman of the county safety council.

This committee selected places where stop and caution signs and bridge markers should be placed. It was estimated that 100 stop and caution signs and 100 culvert and bridge markers were needed for the township.

The 4-H Club then undertook the project to build the necessary traffic markers. Scrap metal and scotchlite are furnished



Larry McCullah and Ronnie Daugharty finish putting up a stop sign.

by local merchants. Posts, bolts and paint have to be purchased by the club. Specifications for signs were furnished by the Franklin Co. Safety Comm.

All signs are made in Reser's garage by the 30 members of the club. Work so far has been confined to warm Saturdays, but business is expected to pick up during May.

Don Jones, Franklin County Safety Council chairman, says he hopes the Full-O-Pep Club project will be a model for other groups. "I am hopeful that other 4-H Clubs will follow suit and undertake similar projects."

# FILMS FILMS FILMS

FOR CLUBS

FOR SCHOOLS

FOR CHURCHES

Interesting — Entertaining  
— Educational . . .

May be borrowed FREE  
OF CHARGE from the

SOUTHWESTERN BELL  
TELEPHONE COMPANY

Send for our new film catalog  
today. Just clip and mail the  
attached coupon.

Area Information Manager  
Southwestern Bell Tel. Co.  
823 Quincy  
Topeka, Ks.

Please send me a free copy  
of your film catalog.

Name .....

Address .....

City .....

## Co-op Recreation Youth Camp

June 2-7, June 9-14, June 16-21, June 23-28



**Creative recreation and leadership training for farm youth. Any boy or girl 15 years or older is eligible to attend. See your local co-op manager for information or write for camp folder.**

**Youth Dept., Consumers Cooperative Association**  
Box 7305, Kansas City 16, Missouri

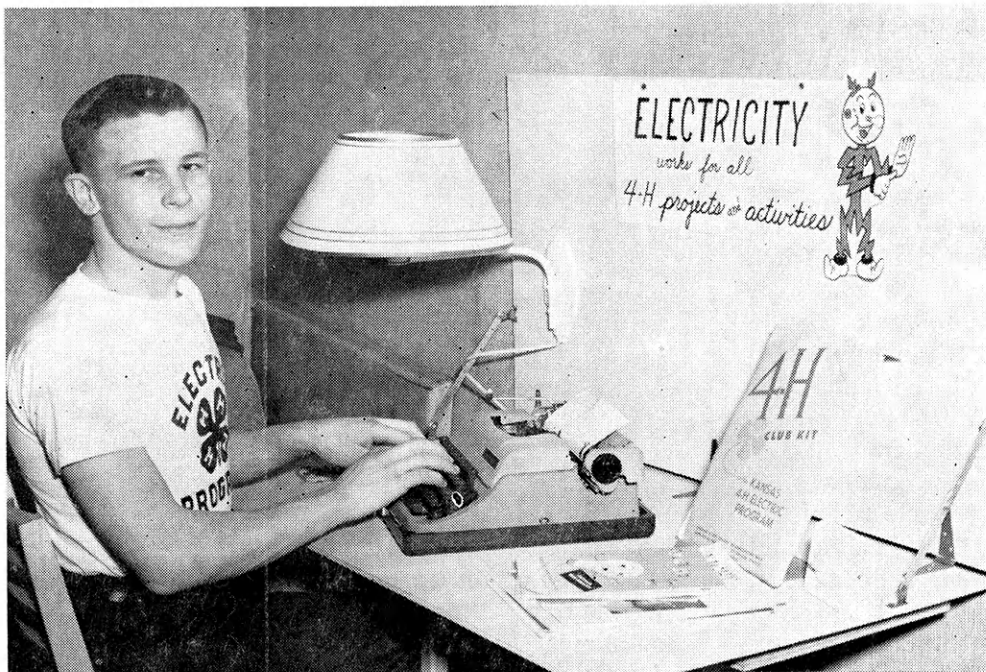
CIRCULATION DESK  
LIBRARY  
KANSAS STATE COLLEGE  
MANHATTAN, KANSAS

MISC KSC



# MEET LARRY SUNDERLAND

*...outstanding 4-H Electric Program enthusiast, demonstrator,  
speaker and safety committee member.*



"As a Jr. leader in 4-H club work and having used the 4-H electric program as my major activity for the past three years, I would like to encourage any younger members to enroll in this phase of the 4-H program. The county electric meetings are planned to encourage the safe and efficient use of electrical equipment. I have been interested in the electric program as, to me, it seems that the possibilities of electric equipment are unlimited. It is a *must* for the farmer as well as the city man and necessary in the workshop, barns and other buildings as well as the home. One very useful piece of electrical

equipment in our shop is our electric welder which saves many trips to town and cuts down on repair bills. It is very fascinating to study out a floor plan or wall plan of electrical wiring and outlets. I have enjoyed demonstrating SAFE installation of various types of electrical equipment."

*Larry Con Sunderland, 16*

**WATCH THIS  
PAGE FOR IDEAS  
ON FARM AND  
HOME ELECTRIC  
PROJECTS**

## ELECTRIC LIGHT AND POWER COMPANIES IN KANSAS

The Kansas Power and Light Company  
Kansas City Power & Light Company  
Central Kansas Power Company

Western Light & Telephone Company  
Kansas Gas and Electric Company  
Southwest Kansas Power Company