

KANSAS

AUGUST, 1960

4-H Journal

The 4-H Family Magazine

Kansas 4-H Foundation, Inc., Publisher

In This Issue

It's Fair Time
Page 3

New Foundation
Board Members
Page 4

Dairy Food Specials
Pages 6 & 7

5,000 4-H'ers To Be
Featured in September
Page 8

New Woodworking
Plans
Page 9

Points You Can Use
Page 13

Fun at Camps
Pages 14 & 15

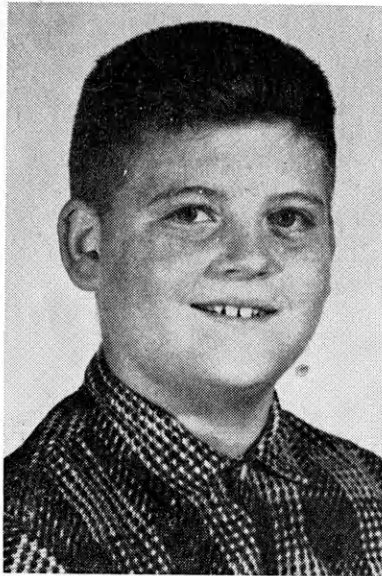
Pictures from 4-H'ers
Page 17

15 Cents



Sherry Powell, Pottawatomie county, believes a cool summertime milk snack hits the spot for both herself and younger sister Kay. Sherry says it's refreshing as well as nutritious. For more dairy foods, see pages 6 and 7.

EAGER BEAVERS



Larry Miller

I'm Larry Miller and "Eager Beavers" is the name of our Cowley County 4-H Club. That's a good description of our members. We're all young and eager to learn.

We've found you can learn a lot from good films. We recently borrowed one from the telephone company. It was educational but entertaining also and the grown-ups enjoyed it too.

If you need programs why not fill out the attached coupon and send for the catalog of films which may be borrowed FREE OF CHARGE from the telephone company.

SOUTHWESTERN BELL TELEPHONE CO.

Area Information Manager
Southwestern Bell Telephone Co.
823 Quincy
Topeka, Kansas

Please send me a free copy of your PROGRAMS catalog.

Name

Address

City

Best Wishes to a Friend of 4-H



Kansas Extension Director and 4-H Foundation Board Member Harold E. Jones, left, hands a certificate of appreciation to H. S. Hinrichs from the Kansas 4-H Foundation Board of Trustees in recognition of his service to 4-H Club work.

H. S. Hinrichs, Topeka, retires from his position with Kansas Power and Light Company on September 1 and moves to Peoria, Illinois.

Mr. Hinrichs has served as chairman of the Rock Springs Ranch Development Committee since the start of the state 4-H center in 1946. In addition to

his service as chairman of the Development Committee, Mr. Hinrichs has been an active 4-H booster in other ways.

As a member and often chairman of the Kansas Council on Rural Electrification, Mr. Hinrichs was an active promoter of the 4-H electric project. His many other 4-H Club interests would be difficult to enumerate.

Letters

If you have ideas or 4-H Club experiences that you would like to write about or if there is something you like or dislike about the Kansas 4-H Journal, write to the Editor, Kansas 4-H Journal, Manhattan, Kansas. Leaders, parents, members, agents and 4-H friends are invited to write.

Retiring—from Everything but 4-H

Dear Editor:

Visiting with you the other

day, it came to me I should have you make note in your Journal that I have retired and, after September 1, will be footloose.

Just note that I may be reached at my home address—3909 Willow Drive, Wichita. Letters addressed to me at KFBI may be delayed several weeks

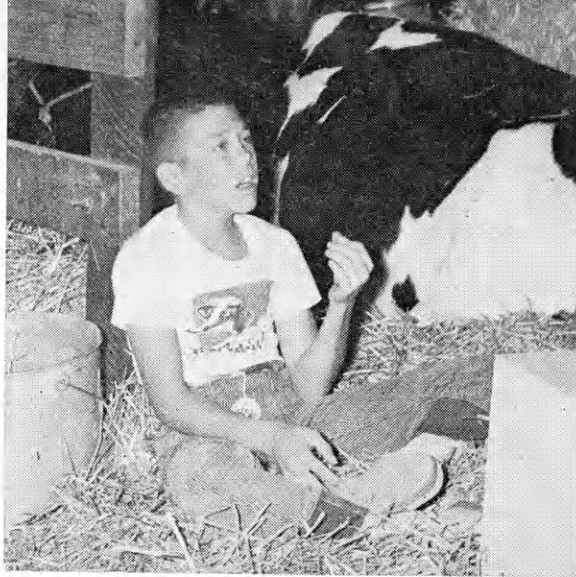
(Continued on page 15)

F ARMERS LOW-COST Complete Protection Policy	F IRE & A AUTO	I NSURANCE write to ALLIANCE COMPANIES McPherson, Kansas
		Name Address
SERVING KANSAS SINCE 1888		

Kansas 4-H Journal
VOL. VI, No. 8 August, 1960
Dale Apel.....Editor
Editorial and Business Office
Phone JE 9-2211 Ext. 208
Manhattan, Kansas
Published Monthly By
KANSAS 4-H FOUNDATION, INC.
J. Harold Johnson.....Executive Director
BOARD OF TRUSTEES
W. Dale Critser, Chrm.....Wichita
Clifford Hope, Vice Chrm.....Garden City
Don Atha.....Mission
A. D. Jellison.....Junction City
Harold E. Jones.....Manhattan
J. J. Moxley.....Council Grove
George B. Powers.....Wichita

Roger E. Regnier.....	Manhattan
E. B. Shawver.....	Wichita
Dolph Simons.....	Lawrence
Fred D. Wilson.....	Andover

ADVISORY MEMBERS
Harry Darby.....Kansas City
W. Laird Dean.....Topeka
Entered at the postoffice in Lawrence, Kansas, as second-class matter under the Act of March 3rd, 1879.
Advertising rates and circulation data on request.
Group subscriptions \$1.00 per year.
Individual subscription \$1.50 per year.
Single copy 15 cents.
Use of the 4-H name and symbol approved by the Secretary of Agriculture of the United States, January 23, 1951, under the provisions of the law as reenacted by Sec. 707 of the Act of June 25, 1948 Public Law No. 772, 80th Congress (10 USC 797)



The livestock barns are the center of attention at county and state fairs.



Let's Go To The Fair!!

Nearly everyone of Kansas' 30,000 4-H members and their parents will attend a county or a state-wide fair during August and September.

Most county fairs will be held in August with nearly all 4-H'ers having at least one exhibit and most having more than one. Ribbons will be won to go into scrap books and premium money checks will be cashed to buy school clothes and books for the coming year.

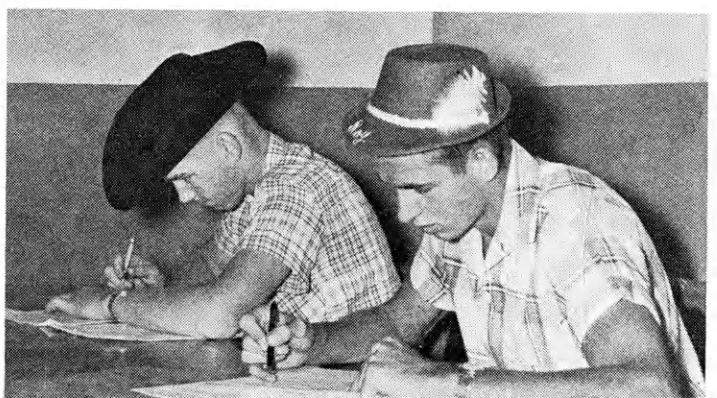
Demonstrations, talent shows, style revues, judging contests and best groomed boy contests will be part of most county as well as the state-wide fairs held in September.

Dates for the two state-wide fairs are September 10 to 15 for the Mid-America Fair in Topeka and September 17 to 22 for the Kansas State Fair in Hutchinson.



The talent show at the Kansas State Fair provides many interesting program numbers.

Left, girls learn the principles of buying towels at a judging class at a state fair. Right, two boys catch up on their school work they miss while at the fairs.





Don Atha, center, shows Finney county 4-H'ers Benny Oeding and Linda Quint part of the Folger Coffee Company's collection of antique English Coffee pots, largest in the world.

Three New Members Elected to Kansas 4-H Foundation Board

Three new members have been elected to the Kansas 4-H Foundation Board of Trustees.

They are Donald Atha, Mission; Dolph Simons, Lawrence, and J. J. Moxley, Council Grove.

Moxley is a prominent Hereford breeder and Morris county rancher. Formerly a county ex-

tension agent and specialist, he has long been a 4-H booster.

Dolph Simons is editor and publisher of the Lawrence Daily Journal-World. His local interest in 4-H Club work is overshadowed only by his enthusiasm and zeal for state-wide promotion of 4-H.

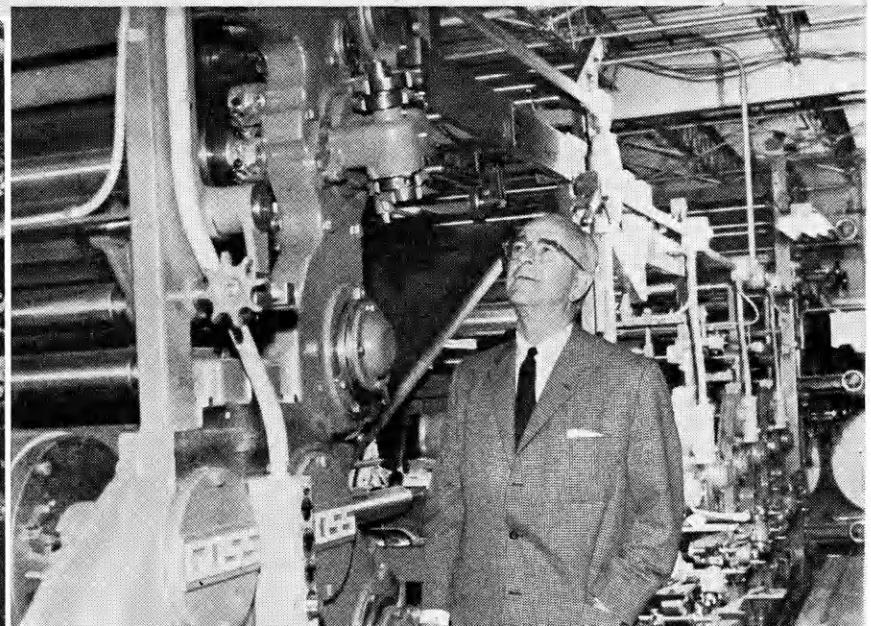
Donald Atha is an officer of

the Folger Coffee Company, Kansas City. Folger's have been supporters of Kansas 4-H Club programs since the late 1920's. In addition to the 4-H health program for which they provide awards, Folger's have made substantial contributions to Rock Springs Ranch and other state-wide 4-H programs.

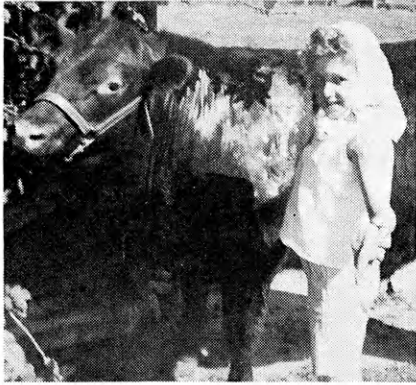
Jerry Moxley, Council Grove, with one of his prize Hereford bulls.



Dolph Simons, Lawrence Daily Journal-World Editor and Publisher, looks at the upper deck of the newspaper's new 40-page Goss color newspaper press.



Pictures from Kansas 4-H'ers



Linda Lou Lehman, Nemaha county, gets her calf "Buster" ready for the fair.

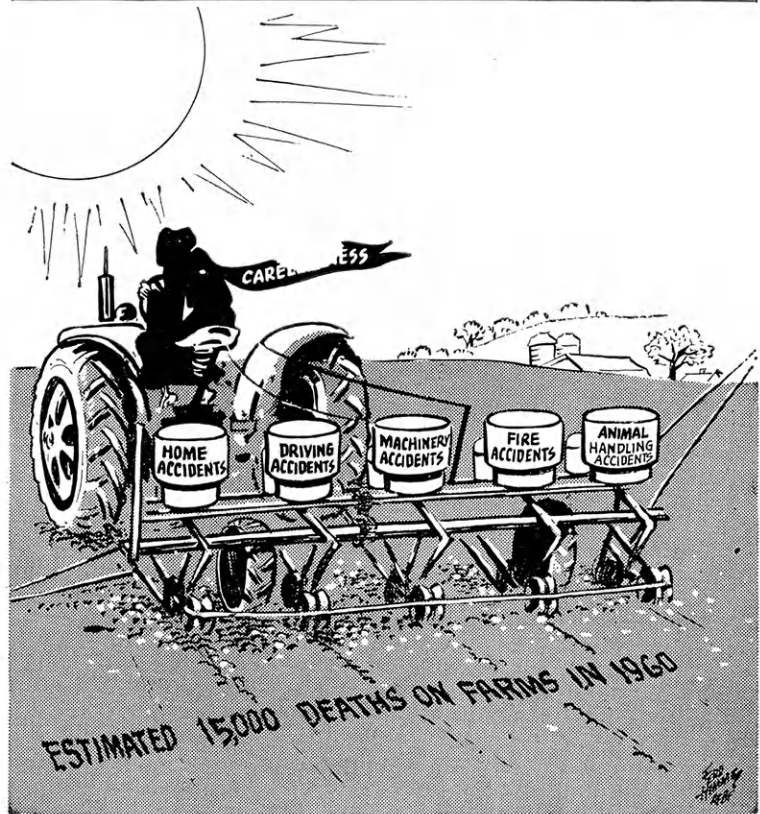


Members of the Kendall Up and Atom Club, Kearny county, remove the old and put on new vitrolane paper for their church windows as a community service project.



Brenda Darnall and Kathryn Meckfessel, Rozel Hustlers Club in Pawnee county, are washing test tubes used in a mass screening of 1,647 Pawnee county residents for Glaucoma-Diabetes. The 4-H Club cooperated with other agencies in the project; they also contacted 140 families in the community regarding the test, distributed 180 posters, presented programs and had charge of the publicity of the project including 30 news releases, radio and TV programs.

HIS ANNUAL PRODUCTION HAS BEGUN...



WHO AM I?

BY ROY K. MOULTON

in the

Grand Rapids, Michigan, News

I am more powerful than the combined armies of the world. I am more deadly than bullets, and I have wrecked more homes than the mightiest of siege guns. I steal in the United States alone over \$300,000,000 each year.

I spare no one, and find my victims among the rich and poor alike, the young and old, the strong and the weak; widows and orphans know me. I massacre thousands upon thousands of wage earners in a year. I lurk in unseen places, and do most of my work silently. You are warned against me, but you heed not.

I am relentless. I am everywhere; in the home, on the street, in the factory, at railroad crossings, and on the sea. I bring sickness, degradation and death, and yet few seek to avoid me. I destroy, crush and maim; I give nothing, but take all.

I am your worst enemy. I AM CARELESSNESS.

Kansas Farm Bureau

105 County Farm Bureaus

Working Together



Gloria Bartholomew—Osborne County

Fix These Dairy Food Snacks For

Jean Ann Warren—Ottawa County



Kansas 4-H'ers recommend using dairy foods for summertime meal and between meal highlights. These 4-H'ers from Pottawatomie, Osborne and Ottawa counties present some of their favorite recipes.

Sour Cream Cookies and Ice Box Dessert

Sharon White, Ottawa county, suggests using the 4-H recipe for sour cream cookies. For the dessert she says to cream 3 c powdered sugar into $\frac{1}{2}$ lb. melted butter. Separate 6 egg yolks from whites and beat. Mix with powdered sugar butter mixture. Add 1 c chopped nuts and put in pan. Sprinkle one c crumbled vanilla wafers on top of mixture. Cool in icebox.

Banana Parfait Pie

To make a banana parfait pie, Jean Ann Warren, Ottawa county, suggests dissolving 1 pkg. cherry jello in $1\frac{1}{4}$ c hot water using a 2 qt. saucepan. Add 1 pt.

vanilla ice cream by spoonfuls, stirring until melted. Chill until thickened but not set (15 to 20 minutes). Fold in $1\frac{1}{2}$ c sliced bananas. Turn into baked and cooled 9 inch pie shell. Chill until firm (10 to 15 minutes). Garnish with whipped cream and additional fruit.

Variety of Ice Cream Desserts

Doris Hofman, Pottawatomie county, recommends four ice cream desserts—vanilla ice cream with pecan nut and maple syrup topping, chocolate chip ice cream with marshmallow cream and pecan topping, pineapple sherbet with maraschino cherry and vanilla ice cream with pineapple preserves and maraschino cherry.

Cherry Trays

For meals or snacks, Mary Ann Nichols, Osborne county, suggests a cheese tray. Pictured at right is a tray with gouda cheese center surrounded by party crackers, potato chips, swiss, pimento and cheddar cheese slices.

The tray at left has a cheese ball centerpiece and is surrounded by swiss, pimento and cheddar cheese slices. The



Doris Hofman—Pottawatomie



Sharon White—Ottawa County

Your Family Too!! They're Fun!

ball is made of Philadelphia cream cheese, nippy cheese, sharp cheddar cheese, worcestershire and tobasco sauce and garlic salt. Roll ball in chopped nuts.

Patio Summer Salads

Cottage cheese takes the lead in the ten patio summer salads recommended by Gloria Bartholomew, Osborne.

To make the star mold, dissolve 1 pkg. lemon flavored gelatin in 1 c boiling water, stir in 1½ t grated lemon rind, 2 T lemon juice, and a few grains of salt. Add 2 c applesauce, 1 c diced celery and ¼ c diced pimento. Mix well and pour into mold. Chill. Serve on lettuce with seasoned cottage cheese. Garnish with sliced olives.

Two peach halves and 2 prunes stuffed with seasoned cottage cheese, arranged on lettuce makes a superb salad for any occasion.

Fill the center of a pineapple ring with cottage cheese. Top with a maraschino cherry and serve on lettuce.

Add color and nutrition to your cottage cheese by adding diced tomato and green pepper. Mix and season to taste. Serve on lettuce with tomato wedges.

Use the recipe for the mold salad above. Arrange cottage cheese around mold with orange slices. Garnish with 2 peppermint flavored cherries.

Try orange slices arranged in a flower effect. Center with cottage cheese. Paprika adds a finishing touch. Serve on lettuce.

To a package of dissolved lemon gelatin, add 1½ c cottage cheese. (Use only half the water normally required in making jello.) Add a few olives. Pour into custard mold. Serve on lettuce with tomato wedges and olives.

Scald tomatoes in boiling water. Remove skin and scoop out center. Sprinkle inside of each with salt and chill while combining cheese mixture. Add ¼ c diced cucumbers and ¼ c minced onion to one pkg. cottage cheese. Fill tomatoes and serve on lettuce. Garnish with olive.

Spread seasoned cottage cheese over lettuce. Arrange green pepper rings in 3-leaf clover effect over cottage cheese. Garnish with olive.

Cut a tomato in fourths approximately ¾ of the way down. Fill with seasoned cottage cheese. Garnish with paprika and serve on lettuce.

Mary Ann Nichols—Osborne County



5,000 4-H'ers Featured in 1960 4-H in Review

More Kansas 4-H'ers than ever before will receive a copy of the 1960 Kansas 4-H in Review, the third such annual edition published by the Collegiate 4-H Club at Kansas State University.

All Kansas 4-H'ers—in 105 counties—will receive at least a portion of the magazine as the September issue of the Kansas 4-H Journal.

4-H'ers in at least 94, and perhaps more, counties will receive the full issue.

Major sections will be on 4-H and College, Techniques for Talks, People to People Activity, Food Preservation, Urban Club Work, Swine, Home Grounds Beautification, Community Service Projects and What's New in 4-H.

Nearly 5,000 Kansas 4-H members will have their names or pictures in this issue. County and state winners in tractor, dairy, boys agriculture, frozen foods, garden, electric, achieve-

ment and safety will be listed in special salutes by dealers of companies providing awards for these 4-H programs.

This magazine is a service project of the K-State Collegiate 4-H Club. In 1958 it replaced the Who's Who, also published by the K-State Collegiate 4-H Club. The Who's Who had been published since 1927.

Nearly 200 K-State Collegiate 4-H Club members worked on the project. Their names will be carried in the September issue.

Major editors or chairmen were editor Marjorie Roeckers, Franklin county; assistant editor Harry Lehew, Brown; business manager Marilyn Hansen, Washington; assistant business manager Ruth Zweygerdt, Cheyenne; special features editor Karen Simpson, Cowley; projects and activities editor Leo Converse, Wabaunsee; material procurement Jean Leis, Woodson; secretary Barbara Sawyer, Rawlins; and district representatives Clyde Roberts, Wyandotte; Richard Rees, Montgomery; Ralph Gilmore, Harvey; Janice Laidig, Decatur; and Gary Swarner, Comanche.

A portion of the staff of the 1960 Kansas 4-H in Review to come out September 1 are pictured here. They are, seated, Karen Simpson, Cowley; Barbara Sawyer, Rawlins; Editor Marjorie Roeckers, Franklin; Marilyn Hansen, Washington; Clyde Roberts, Wyandotte. Standing, Rodney Vincent, Phillips; Janice Laidig, Decatur; Harry Lehew, Brown; Janet Robinson, Wabaunsee; Jean Leis, Woodson.



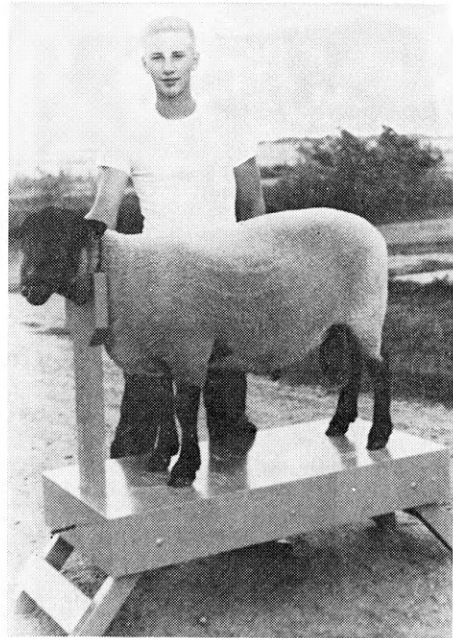
OUR GREATEST NATURAL RESOURCE

The Folger
Coffee Co.
KANSAS CITY,
MISSOURI

FREE!!

New Woodworking Plans

Plans for this **PORTABLE SHEEP BLOCKING BOX** (but not the sheep itself) are now available **FREE** at lumber yards listed on the following pages. This box was made by Barton county 4-H'er Ronald Tammen.



FOR LITTLE BROTHER OR SISTER, you can make this sandbox for summertime play. Complete plans and instructions and plans for this sandbox are available **FREE** at lumber yards listed on the following pages.

*Plans for These Items Are
Available At The Listed Lumber
Dealers. Ask For Them.*

For other **FREE** 4-H woodworking plans, see the next pages.

Always on hand... YOUR LUMBERMAN is your best friend when you need good material



- Agra**
Agra Lumber Company
- Albert**
Albert Lumber-Hardware and
Appliance Company
- Alma**
Wolgast & Haefke Lumber Company
- Almena**
Foster Lumber Company
- Alta Vista**
Wolgast Lumber Company
- Altamont**
Farmers Co-op Elevator Company
- Alton**
Alton Lumber and Coal Company
- Arma**
Bosinio Lumber Yard
- Anthony**
Rock Island Lumber Company
- Arkansas City**
Central Lumber Company
Comley-Neff Lumber Company
- Asherville**
Asherville Lumber and Coal Company
- Ashland**
Don Spotts Lumber Company
Home Lumber and Supply Co.
- Atchison**
Hixon Lumber Company
- Attica**
Crowell Lumber Company
- Atwood**
Atwood Lumber Company
Foster Lumber Company
- Basehor**
Basehor Lumber Company
- Bazine**
Humburg's
- Beloit**
Beloit Lumber Company
Murray Lumber Company
Peoples Lumber and Coal Company
- Bern**
Bern Lumber Company
- Bird City**
The Bird City Equity Mercantile
Exchange
Griffin Lumber Company
- Bison**
Humburg Lumber Company, Inc.
- Bonner Springs**
Bonner Springs Lumber Company
- Brownell**
Richolson Lumber and Hardware
Company, Inc.
- Bucyrus**
The Blaker Lumber and Grain Company
- Buhler**
Buhler Lumber Inc.
- Burlingame**
Burlingame Lumber Company
- Burr Oak**
Burr Oak Lumber and Coal Company
- Burrton**
Harris Lumber Company
- Caldwell**
Antrim Lumber Company
- Cawker City**
Cawker City Lumber Company
- Chanute**
Smith Lumber Company
- Chapman**
Sanborn Lumber Company
- Cimarron**
Anawalt-Campbell Mercantile Company
Wilson Lumber Company, Inc.
- Clay Center**
Kansas Lumber Company
- Coffeyville**
The Home Lumber and Supply
Company, Inc.
Kansas Lumber Company
- Colby**
Foster Lumber Company
Hardman Lumber and Coal Company
Hess Lumber Company
- Coldwater**
Gilchrist Lumber Company
Home Lumber and Supply Co.
- Concordia**
Leidigh Lumber Company
Sanborn Lumber Co.
- DeSoto**
DeSoto Lumber Company
- Denison**
Denison Lumber and Hardware
Company
- Denton**
C. H. Gish Company
- Devon**
Devon Lumber Company
- Dodge City**
The T. M. Deal Lumber Company
- Edgerton**
Edgerton Lumber Company
- Edna**
The McCoy Lumber Company
- El Dorado**
Home Lumber Company
- Elkhart**
The Star Lumber Company
- Emporia**
Home Lumber and Supply Co.
Kansas Lumber Company
The Smith Lumber Company
- Erie**
Howard Bros. Lumber Company
- Eskridge**
Clinton L. Scott Lumber Company
- Eudora**
Eudora Lumber Company
- Eureka**
A. C. Houston Lumber Company
Rock Island Lumber Company
- Everest**
Alexander Lumber Company
- Fowler**
The T. M. Deal Lumber Company, Inc.
- Frankfort**
Searle and Chapin Lumber Company
- Fredonia**
The Home Lumber and Supply
Company, Inc.
- Garden City**
Ed Porter Lumber Company
- Garden Plain**
Fisher Lumber Company
- Gardner**
Gardner Lumber Company
- Garnett**
Star Grain and Lumber
- Gaylord**
Hardman Lumber Company
- Glen Elder**
Dickinson Lumber Company
- Goodland**
Foster Lumber Company
Hardman Lumber Company
Rasure Lumber Company
- Gorham**
Russell Lumber Company
- Great Bend**
Everitt Lumber Company
Foster Lumber Company
Rock Island Lumber Company
Whitesell Lumber Company
- Greensburg**
Home Lumber and Supply Co.
- Halstead**
Harris Lumber Company
- Harper**
Rock Island Lumber Company
- Hartford**
Thomas Lumber Company
- Hays**
Hardman Lumber Corporation, Inc.
- Healy**
Healy Co-op Elevator Company
- Hesston**
Kropf Lumber Company
- Hill City**
Farmers Lumber Company
Hardman Lumber Company
- Hillsboro**
Hillsboro Lumber Company
- Hoisington**
Foster Lumber Company
- Holton**
Brown-Hedge Lumber Company
Holton Lumber Company
- Holyrood**
Home Lumber and Supply Co.
- Horton**
Horton Lumber Company, Inc.
- Hoxie**
Foster Lumber Company
- Hugoton**
The Star Lumber Company
- Humboldt**
Barfoot Lumber Company
- Hutchinson**
F. E. Perry Lumber Company
George Stuckey Lumber
- Inman**
Inman Lumber Company
- Independence**
Rock Island Lumber Company
- Iola**
Klein Lumber Company
- Jennings**
Foster Lumber Company
- Jetmore**
Foster Lumber Company
- Johnson**
Seyb-Tucker Lumber and Implement
Company
- Junction City**
Home Lumber Company
Rock Island Lumber Company
- Kansas City**
Logan-Moore Lumber Company
- Kinsley**
Kinsley Co-op Exchange Lumber Yard
Home Lumber and Supply Co.
- LaCygne**
Blaker Lumber and Grain Company
- LaHarpe**
Blaker Lumber and Grain Company
Diebolt Lumber and Supply

FREE 4-H Woodworking Plans
Available at Lumber Yards
Listed On These Pages
They Display This Emblem



THE lumber dealers listed on these two pages are supporting the 4-H woodworking project with this information and free woodworking plans. Get your plans from them.

- Lakin
Hart and Company
Lakin Lumber Company, Inc.
- Lancaster
T. E. Snowden Lumber Company
- Lansing
International Paper Company, Long-Bell Division
- Larned
Antrim Lumber Company
Clutter-Lindas Lumber Company
- Lawrence
Logan-Moore Lumber Company
Woods Lumber Company
- Lebanon
Lebanon Lumber Company
- Lenexa
Lenexa Lumber Company
- Lenora
Lenora Lumber Company
- Leoti
Foster Lumber Company
- Liberal
The Star Lumber Company
- Lincoln
Leidigh and Havens Lumber Company
Nitsch Lumber and Supply Company
- Little River
The T. M. Deal Lumber Company, Inc.
- Logan
Logan Lumber Company
- Longford
Longford Lumber & Grain Co.
- Louisburg
Louisburg Lumber Company
- Lyons
Foster Lumber Company
- Macksville
Home Lumber and Supply Co.
- Manhattan
Griffith Lumber Company
Kansas Lumber Company
Ramey Brothers
- Marysville
Foster Lumber Company
- Matfield Green
Paul Bell Hardware-Lumber-Feed
- McPherson
Deal Lumber Company, Inc.
Lake Superior Lumber Company
McPherson Lumber Company
- Meade
Home Lumber and Supply Co.
- Minneola
The T. M. Deal Lumber Company, Inc.
- Moundridge
Clayton Vogt Lumber Co., Inc.
- Neodesha
O. E. Woods Lumber Company
- Ness City
Rock Island Lumber Company
- Nickerson
The D. J. Fair Lumber Company
- Norton
Foster Lumber Company
Newbury Lumber Company
Norton Lumber Company
- Nortonville
Alexander Lumber Company
- Norwich
H. S. Eshnaur & Sons
- Oakley
Oakley Lumber Company
- Oberlin
Foster Lumber Company
- Offerle
Offerle Co-op Grain and Supply Company
- Olathe
Cowley Lumber and Hardware Company
Hodges Brothers
- Osawatomie
Leidigh and Havens Lumber Company
Osawatomie Lumber Company
- Oswego
Home Lumber and Supply Co.
- Ottawa
Hubbard Lumber Company, Inc.
Nuzman Lumber
- Overland Park
Overland Park Lumber Company
- Paradise
Paradise Lumber Company
- Parker
Blaker Lumber and Grain Company
- Parsons
The Home Lumber and Supply Company, Inc.
- Phillipsburg
Hardman Lumber Company
Home Lumber Company
- Plains
Home Lumber and Supply Co.
- Pleasanton
Blaker Lumber and Grain Company
- Pratt
The Ortmeier Lumber Company
- Prescott
Prescott Lumber Company
- Pretty Prairie
The George W. Ulch Lumber Company
- Protection
Home Lumber and Supply Co.
- Riley
Alexander Lumber Company
- Russell
Hardman Lumber Company of Russell Inc.
- Sabetha
Farmers and Merchants Lumber
- St. Francis
Foster Lumber Company
St. Francis Equity Exchange
- St. Marys
St. Marys Lumber Company
- St. John
English Lumber and Supply Company
Home Lumber and Supply Co.
- Salina
E. D. Bishop Lumber Company
Larson Lumber Company, Inc.
Leidigh and Havens Lumber Company
Michaelsen Lumber Company
- Satanta
The T. M. Deal Lumber Company, Inc.
- Scott City
Foster Lumber Company
- Selden
Foster Lumber Company
- Seneca
Koelzer Lumber Company
Seneca Lumber Company
- Severy
Tolman-Gibbon Lumber Company
- Silver Lake
J. Thomas Lumber Company
- Sharon Springs
Foster Lumber Company
- Smith Center
Mid-West Lumber Company
Smith Center Lumber Company
- Spring Hill
Spring Hill Lumber Company
- Stafford
The T. M. Deal Lumber Co., Inc.
Home Lumber and Supply Co.
- Stanley
Stanley Lumber Company
- Sterling
The D. J. Fair Lumber Company
- Stockton
Stockton Lumber Company
- Sublette
The T. M. Deal Lumber Company, Inc.
- Summerfield
Meyer Lumber and Hardware
- Syracuse
Foster Lumber Company
- Sylvia
The D. J. Fair Lumber Company
- Topeka
Whelan Lumber Company
Main Store, 715 E. 4th
Pauline Branch at Pauline
Highland Crest Branch, 200 E. 29th
Seabrook Branch, 2019 Gage
- Tribune
Foster Lumber Company
- Ulysses
The T. M. Deal Lumber Company, Inc.
- WaKeeney
Hardman Builders Supply Company
- Wakefield
Sanborn Lumber Company
- Wathena
Farmers Grain and Lumber Company
- Waverly
Star Grain and Lumber Co.
- Wellington
Antrim Lumber Company
Wellington Lumber and Supply Company, Inc.
- Wellsville
Star Grain and Lumber Company
- Wetmore
Wetmore Lumber Company
- White Cloud
White Cloud Lumber Company
- Wichita
Lawrence Lumber Company
Rock Island Lumber Company
Stockyards Cash and Carry Lumber Co
- Wilson
Hoch Lumber Company
Wilson Lumber Company
- Winfield
Deal Lumber and Hardware Company, Inc.
A. B. Everly Lumber Company
- Woodbine
Kohler Lumber Company
- Yates Center
F. H. Conger and Son
- Zenda
The George W. Ulch Lumber Company

Missouri

Kansas City
The George W. Ulch Lumber Company, 11432 Truman Road

Any one of a Dozen 4-H
Woodworking Plans Available
At Lumber Yards Listed
On These Pages
They Display This Emblem



Playing Baseball?

Need a Good Storage Place
for Those Gloves, Bats, Balls?

See Any of These Lumber Dealers
for a FREE 4-H Woodworking Plan

Showing How to Build

BILL'S BASEBALL RACK

HANDY GUN RACK



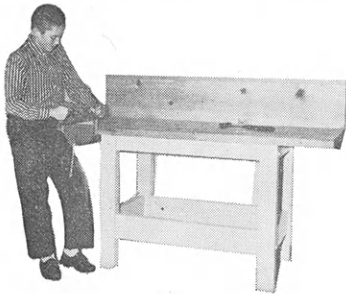
YOU Can Have *FREE*

Any One (Or All) of a Dozen

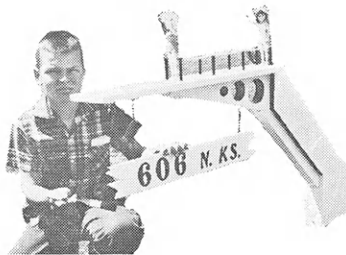
4-H Woodworking Plans

Ask Lumber Dealers Listed on These Pages for Any (Or All) of These Free Plans

SIMPLE WORK BENCH



GATE SIGN



HOLDING GATE



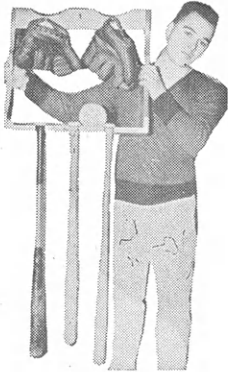
YARD CART



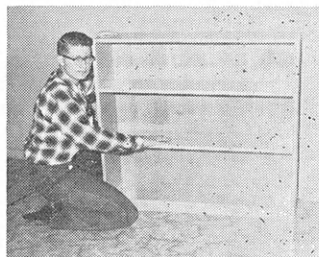
PICNIC TABLE



BILL'S BASEBALL RACK



BOOK CASE



AUTOMATIC BIRD FEEDER



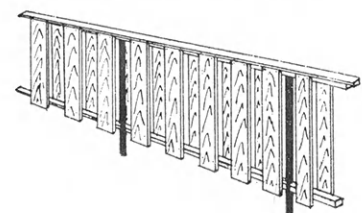
CHRISTMAS TREE GIFTS



COFFEE TABLE



A BACK YARD FENCE



Tips on Woodworking Joints

In a well-constructed piece of woodworking, several kinds of joints will usually be found.

Earl G. Darby, Kansas State University industrial arts professor, does relate, however, the various types of wood joints which may be used. The first of two articles on joints was carried in the June Kansas 4-H Journal. The material below concludes the series.

Dadoes and Rabbets

The dado joint consists of one piece of wood with a recess across the entire width, into which another piece is fitted (Figure 1).

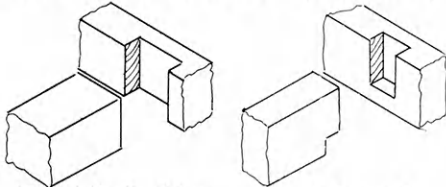


Fig. 1 Dado Joint

Fig. 2 Stopped, Gained or Blind Dado

The joint may be made more secure by using nails, screws and/or glue. Always cut this joint across the grain.

If the cut does not extend completely across the face of the wood, the joint is called a stopped, gained or blind dado (Figure 2).

To counteract a lateral strain, says Mr. Darby, use a dovetail dado joint (Figure 3). This joint may also be constructed as a stopped dovetail dado.

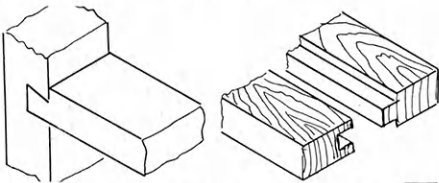


Fig. 3 Dovetail Dado Fig. 4 Tongue and Groove

The tongue and groove joint (Figure 4) is similar to the dado, except the cuts are made parallel to the grain of the wood.

A dado or groove cut has two "shoulders". If the dado cut occurs at the end of the wood, it loses one of its shoulders and becomes an

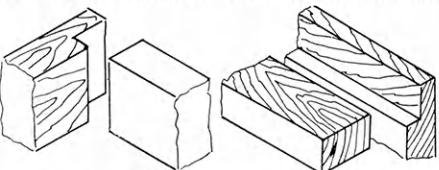


Fig. 5 End Rabbet Fig. 6 Edge Rabbet

end rabbet (Figure 5). If the cut occurs at the edge of a piece of wood, it again loses one of its shoulders and becomes an edge rabbet (Figure 6).

Mitres

The plain mitre is essentially a butt joint with contact surfaces

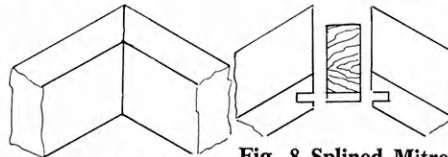


Fig. 7 Mitre Joint

Fig. 8 Splined Mitre

beveled so the pieces form an angle when placed together. This is illustrated with Figure 7.

A plain mitre held together with a spline (a small piece of wood fitting into notches cut at the angle) is called a spline mitre (Figure 8). Always cut the spline so the grain is at right angles to the mitre cut.

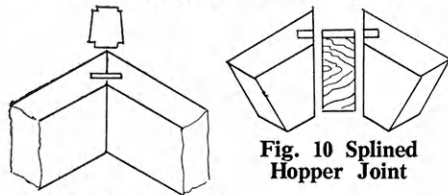


Fig. 9 Clamp Nailed Mitre

Fig. 10 Splined Hopper Joint

The clamped nailed mitre (Figure 9) is a plain mitre held together with a spline. This compound mitre accounts for the sloping sides of boxes and containers on which it is used.

The splined hopper joint (Figure 10) is a compound mitre joint held together with a spline. This compound mitre accounts for the sloping sides of boxes and containers on which it is used.

Corners

The dovetail joint is one of the strongest found in fine cabinet-making because it resists separation in every direction except the one from which the tenons were inserted. You can eliminate this weakness by gluing or pinning. As a corner joint, the dovetail is considered a mark of fine workmanship, since its close fit is achieved only at the price of accurate, painstaking labor and craftsmanship.

The single-through dovetail (Figure 11) is simply a modification of the open mortise and tenon joint.

The multiple through dovetail (Figure 12) is the same as the

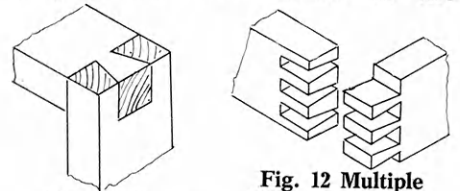


Fig. 11 Single Through Dovetail

Fig. 12 Multiple Through Dovetail

through dovetail, except it consists of two or more tenons.

The half blind dovetail joint (Figure 13) is a dovetail which allows the drawer sides to be at-

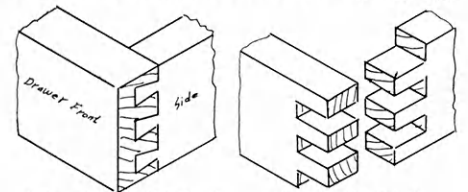


Fig. 13 Half Blind Dovetail

Fig. 14 Multiple Finger or Box Corner Joint

tached to the drawer front with no part of the joint showing when the drawer is closed.

The multiple-finger joint (Figure 14) is usually used at the corners of small boxes. It consists of a series of square tenons and mortises.

The box corner (Figure 15), or dado and rabbet joint, is a good one to use for the rear corner of a drawer. It consists of a dado in the drawer side and a rabbet in the rear piece of wood.

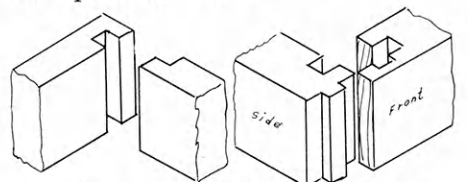


Fig. 15 Box Corner or Dado and Rabbet Joint

Fig. 16 Lock Joint

The most efficient of corner joints is the lock joint (Figure 16), since it resists separation in both directions. According to Mr. Darby, it is a popular joint for cedar chests, and is not difficult to make when you analyze carefully the sequence of cutting. It consists of the familiar dadoes and rabbets, accurately measured to interlock when assembled.

The lock mitre joint (Figure 17)

(Continued on Page 16)



An afternoon pause is always nice in the lounge of the Asa Payne cottage at Rock Springs. Pictured are Bette Harris, Bonita Guttery, Joan Yost and Mary Lou Zimmer, all of Osborne county.

Camping at Rock Springs Ranch

More than 6,000 Kansas youth, like the Northwest Kansas 4-H'ers pictured on these two pages, will stay at Rock Springs Ranch this summer for a three day county camp or a state-wide conference.

Handicraft, swimming and

horseback riding are perennial favorites of 4-H'ers visiting Rock Springs Ranch. The cooking of Miss Lulu Alcorn and the rifle range are favorites, too, of both 4-H'ers and their counselors.

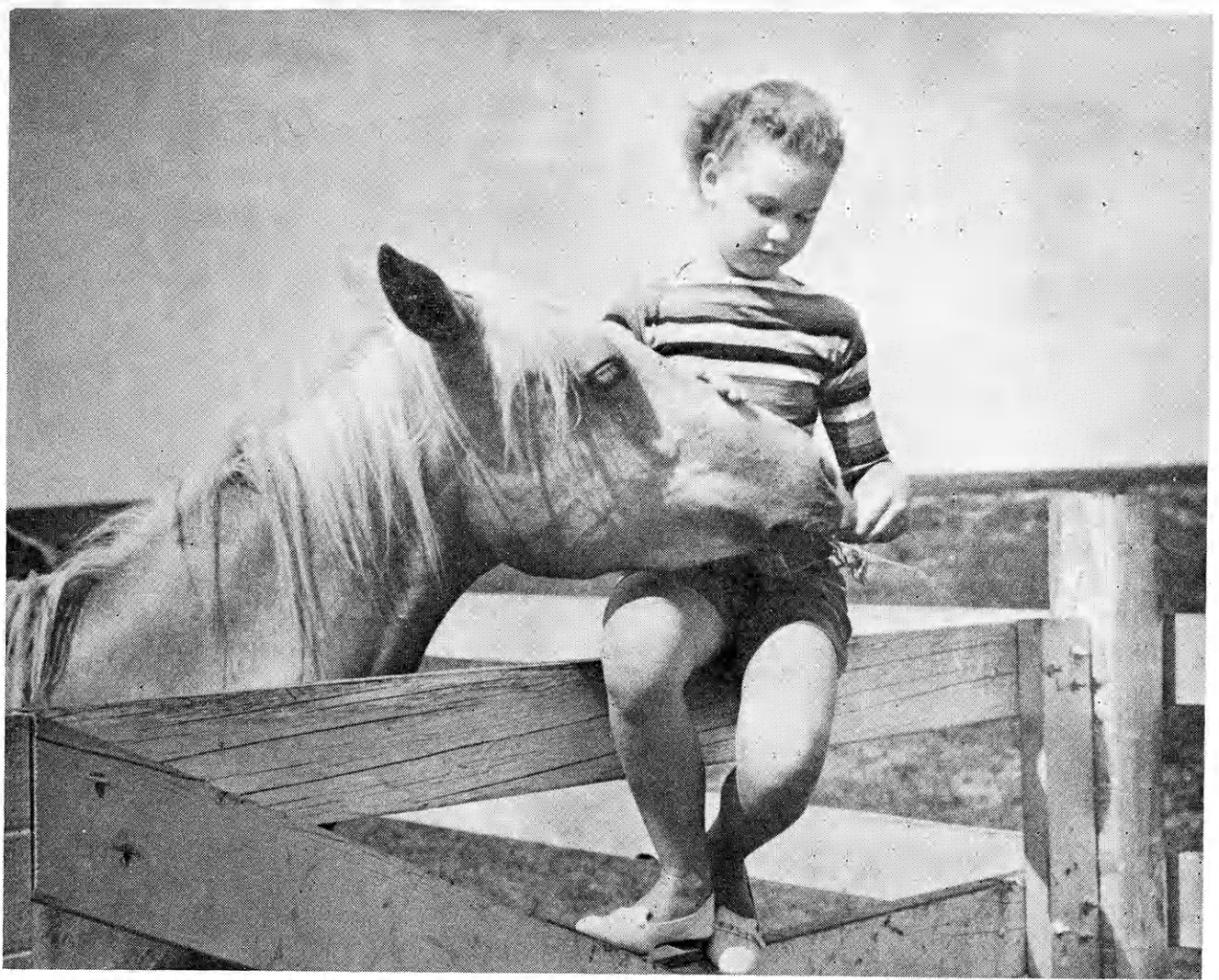
More than 70 Kansas counties will have camped at Rock

Springs Ranch this summer. Nearly, if not every, Kansas county will have 4-H'ers at one or more camps or conferences during the season.

Rock Springs Ranch, the state 4-H leadership training center, is operated for Kansas 4-H'ers by the Kansas 4-H Foundation.

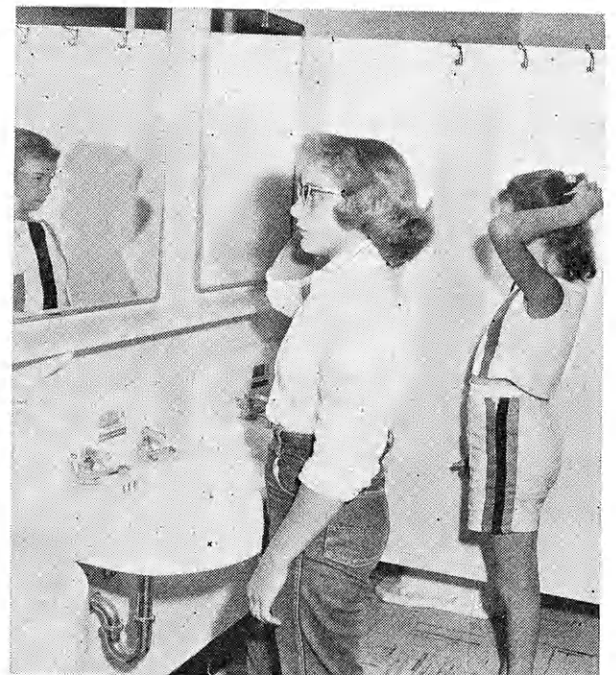
Left, cool spring water can serve a double purpose on a hot day at Rock Springs. Randy Janzen and Dave Christensen, both of Phillips county, cool their feet and soak reeds for a basket at the same time. Right, Roger McCollough, Jewell, Dick Snyder, Osborne, and Sharon Berger, Jewell county, pause after an insect hunt on the new bridge by the Asa Payne and Kansas Co-operatives cottages at Rock Springs.





Two "friends" at Rock Springs Ranch, Joan Jeannings, Logan county, and a palomino horse contributed by members of the Kansas Saddle Horse Association.

Left, looks like fun, thinks Bonnie Johnson, left, as she watches Kathy Holeman work on a ceramic tile tray. Bonnie is from Graham and Kathy is from Norton county. Right, getting ready for lunch are Sharon Rust, Smith and Mildred Harris, Osborne county, pictured in one of the two new cottages at Rock Springs.





Plant now
for
Profit...

At Your Kansas Savings and Loan

1. **SOW** your savings seeds NOW and watch them grow big profits.
2. **REAP** the fruits of your thrift harvest as your dividend earnings make you a generous profit.

VISIT YOUR NEAREST *Progressive* **KANSAS** *Savings & Loan Association*

Arkansas City

First Federal Savings and Loan Ass'n of Arkansas City

Augusta

The Commercial Savings and Loan Assn.

Beloit

The Beloit Building and Loan Assn.
First Federal Savings and Loan Assn. of Beloit

Clay Center

Northwestern Federal Savings and Loan Ass'n. of Clay Center

Dodge City

First Federal Savings and Loan Ass'n. of Dodge City

El Dorado

Eureka Federal Savings and Loan Association
Mid-Continent Federal Savings and Loan Assn. of El Dorado

Emporia

The Columbia Building and Loan Assn.

Erie

The Erie Savings and Loan Assn.

Fort Scott

Liberty Savings and Loan Assn.

Garnett

The Garnett Savings and Loan Association

Goodland

Goodland Savings and Loan Assn.

Great Bend

The Prudential Building and Loan Assn.

Hays

The Hays Building and Loan Assn.

Hutchinson

First Federal Savings and Loan Assn. of Hutchinson

Iola

The Security Savings and Loan Assn.

Kansas City

Anchor Savings and Loan Assn.

Kinsley

The Kinsley Savings and Loan Assn.

Larned

The Larned Savings and Loan Assn.

Lawrence

Anchor Savings and Loan Assn.
Capitol Federal Savings and Loan Assn.

Leavenworth

The Leavenworth Mutual Building, Loaning and Savings Assn.

Liberal

First Federal Savings and Loan Assn. of Liberal

Lyons

The Lyons Savings and Loan Assn.

Medicine Lodge

The Barber County Building and Loan Association

McPherson

The Pioneer Savings and Loan Association of McPherson

Mission

Anchor Savings and Loan Assn.
Capitol Federal Savings and Loan Assn.

Newton

First Federal Savings and Loan Assn. of Newton

Norton

Norton County Savings and Loan Association

Ottawa

Anchor Savings and Loan Assn.
Ottawa Savings and Loan Assn.

Overland Park

Jayhawk Savings Assn.
The Overland Park Savings and Loan Assn.

Parsons

First Federal Savings and Loan Assn. of Parsons

Plainville

Rooks County Savings Assn. of Plainville

Pratt

The Western Savings Assn.

Salina

The Homestead Building and Loan Assn.

Topeka

Capitol Federal Savings and Loan Assn. at 6th and Kansas, and 12th and Topeka Blvd.

Wichita

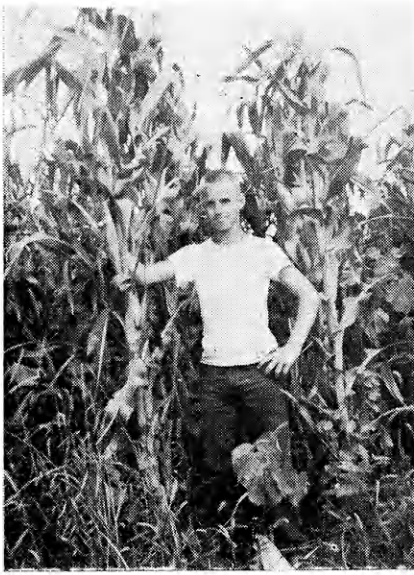
The Commercial Savings and Loan Assn. at 4601 E Douglas, 113 South Main and Boulevard Plaza

All Accounts in These Savings and Loan Associations



Insured by the Federal Savings and Loan Insurance Corporation

\$10,000 for each account
\$70,000 for a family of three



Lloyd Lynn, Johnson county, shows his corn to fellow 4-H'ers and tells of the fertilizer and variety he used. His corn made 95 bushels to the acre.



Two giant Kande sweet potatoes—3½ and 4 lbs—were raised by Donald Goetz, Sedgwick county in his second year garden project.

Pictures From Kansas 4-H'ers

SEND IN YOUR PICTURES

We want pictures taken by Kansas 4-H'ers. Prizes will be given for all pictures used in the Journal.

The picture need not be on 4-H Club work, but pictures with subjects related to 4-H Clubs are preferred. Action pictures are desired.

All pictures should be glossy prints at least five by seven inches in size unless accompanied by the negative.

Photographs should be accompanied by a short statement explaining the picture and including the names of persons shown.

Entrants should designate their choice of the following prizes. A year's subscription to the National 4-H Club News, one roll of color film—sizes 620, 120, 616, 116, 127 or 35 mm only, or a 4-H Club photograph album.

4-H members, parents, leaders, county agents or friends of 4-H may send in pictures.



Every well dressed heifer at the county fair will, or should, wear one of these straws—so says Gary Underwood of the Smoky Valley Club, McPherson county, as he relaxes with his Hereford heifer.

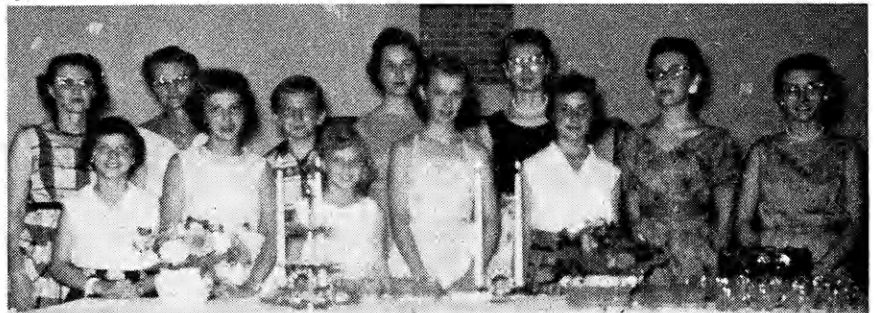


Billy Lingenfelter attacks the weeds in his 4-H garden project while brother Dan and a friend look on. Billy is a member of the Happy Hollow Club, Leavenworth.



Foods and clothing project girls of the Fairview Scouts Club, Barton county, planned and served a tea for mothers and local unit members. The older girls also styled garments they had made.

Pictured is the tea table and members of the Fairmount Club, Leavenworth county, at the tea and style show the girls held for mothers and friends.



Ideas That Work

Reporter's Notice: The Kansas 4-H Journal would like to print interesting stories of your local club events, activities, members and leaders. Local club meeting stories, if submitted, should contain something unusual or of interest to people outside your county.

Outstanding projects, services or events of your club, or stories of individuals within your club that would give ideas to other 4-H'ers would make excellent stories.

Prizes will be awarded all blue award stories each month. Please state your choice (1) a year's subscription to the National 4-H Club News or (2) a hard cover loose leaf 4-H notebook.

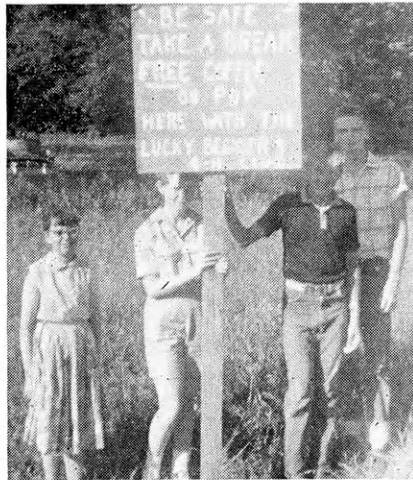
Musical Programs

The Lucky-13 Club junior leaders, Anderson county, have taken up a project of presenting musical entertainment to worthy organizations.

Last June the fourteen junior leaders, with the adults, presented a program of square dancing, vocal, piano and accordion solos, tap dancing and baton routines to the Southeastern Kansas TB center at Chanute. In August they visited the Wadsworth Veterans Hospital at Leavenworth.

Ruth Lee Raymond, Rep.

Many Good Citizenship Projects The Lucky Beginners Club, Wilson



Members of the Lucky Beginners Club, Wilson county, serve free coffee and pop at a roadside park on Memorial Day.

county, designated May as good citizenship month. Each of the 26 members told, at the June meeting, how they had been good citizens to neighbors, friends and community.

Good deeds included gifts of food and clothing, shrubs, plants, vegetables and fruits, and helping with chores, jobs and clean-up after a storm.

Several of the members gave special numbers at churches, schools and for civic groups as well as for shut-ins. There was a special ceremony for two high school graduates in the club.

On Memorial Day the club held a safety break at a roadside park and served free pop and coffee.

Lois Borland, Rep.

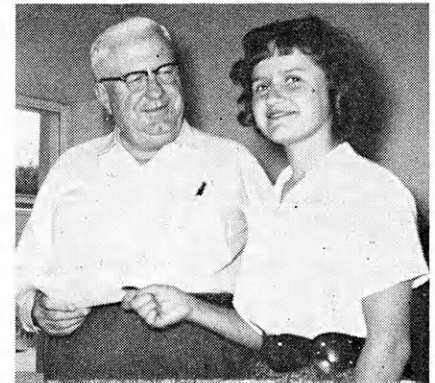
May Baskets for Service

Mingona Boosters Club, Barber county, made May baskets for patients at the Medicine Lodge Memorial Hospital. The baskets were used on patients trays.

Charles Pike, Rep.

"Thanks" for Journal

Lawncridge Club, Cheyenne county, presented thank you cards and served coffee and cookies to the employees of Citizens State Bank, St. Francis, in appreciation for the complimentary subscriptions of the Kansas 4-H Journal presented by the bank.



Karen DeGood, secretary of the Lawn Ridge Club, Cheyenne county, hands a thank you note to Mr. Kehmeier of the Citizens State Bank in appreciation for his support of the Kansas 4-H Journal for the club's members.

Kansas 4-H Journal Sponsors

WELCOME TO THESE NEW SPONSORS

Osage

Bulmer Grain Company, Michigan Valley
McDaniels Hardware, Lyndon
Williams Oil Company, Lyndon

These Sponsors Have Renewed Their County Support of the Kansas 4-H Journal

Brown

Bank of Robinson, Robinson
Citizens State Bank, Hiawatha
Farmers State Bank, Fairview
Home State Bank, Horton
The Bank of Horton, Horton
The Morrill and Janes Bank, Hiawatha
The Morrill State Bank, Morrill
The Union State Bank, Everest

Cheyenne

Citizens State Bank, St. Francis

Doniphan

Doniphan County Electric Co-op Association, Inc., Troy

Franklin

Peoples National Bank, Ottawa
The Wellsville Bank, Wellsville

Geary

Central National Bank, Junction City
The First National Bank, Junction City

Gray

Farmers State Bank, Ingalls
First National Bank in Cimarron, Cimarron
The Montezuma State Bank, Montezuma

Greenwood

C. K. Rawlings Insurance, Eureka
Citizens National Bank, Eureka
Eureka Federal Savings and Loan Association, Eureka
Hartong's Inc., Eureka
Home National Bank, Eureka
McManis Implement Company, Eureka
Race Parks Oil Company, Eureka
The A. C. Houston Lumber Company, Eureka

Harvey

Harvey County Bankers' Association

Haskell

The Haskell County State Bank

Kingman

C. R. Calvert Company, Kingman

Lincoln

Sylvan State Bank, Sylvan Grove

Linn

Bank of Pleasanton, Pleasanton
Centerville State Bank, Centerville
Farmers and Merchants Bank, Mound City
Farmers State Bank, Blue Mound
First National Bank, Pleasanton
Linn County Bank LaCygne
Parker State Bank, Parker
Prescott State Bank, Prescott

Logan

Farmers State Bank, Oakley
Farmers State Bank, Winona

Morris

Morris County Farm Bureau, Council Grove

Neosho

The Neosho Valley Co-op Creamery Association, Erie

Osage

Bob McNabb, Melvern
Hoyt Farm Equipment Company, Overbrook
Melvern Lockers, Market and Slaughterhouse, Melvern
Ross A. Coffman and Sons, Inc., Overbrook

Rawlins

Farmers National Bank, Atwood
Farmers State Bank, Ludell
Peoples State Bank, McDonald
State Bank of Atwood, Atwood
State Bank of Herndon, Herndon

Reno

Hutchinson National Bank and Trust Company, Hutchinson
Winchester Packing Company, Hutchinson

Riley

First National Bank, Manhattan
Leonardville State Bank, Leonardville
Union National Bank, Manhattan

Thomas

Farmers and Merchants State Bank, Colby

Letters

(Continued from page 2)

before reaching me.

I still think the Journal is the best 4-H booster.

Lester Weatherwax

(Editor's Note. While Mr. Weatherwax has retired from KFBI and from his duties as Minister of Music with Wichita's First Methodist Church, he is still an active 4-H worker.)

Excellent Article

Dear Editor:

The article on furthering education in the July 4-H Journal was very good. It contained many good suggestions for Kansas 4-H families. The four young people discussed were excellent examples of high quality 4-H workers in Kansas.

Betty Sellers

Graham County HEA



Lawn Ridge junior leaders pouring coffee for the employees of the Citizens State Bank.

The junior leaders also visited the county agents office and other local business houses to express appreciation for their help and support.

Patty Price, Rep.

Many Health Projects

With health as the special activity of the Keen Klippers Club, Ford county, this year, many projects have been completed.

Some of them include Christmas caroling at Dodge City hospitals and the Kansas Soldiers home at Fort Dodge, a gift of \$22 to the Cerebral Palsy Association, distributing and collecting Heart Fund kits, making 350 New Years Day, Valentine and Easter favors for hospital patients, and stamping and mailing TB association literature.

Club members have visited a local rest home three times.

Projects scheduled for the summer include a talk by the county health nurse at a club meeting and supervising children of parents attending a local convention for Retarded Children.

Within the club the health committee has tried to impress members with the importance of good health. Demonstrations or talks on health have been given at each club meeting.

Jane Kuhl, Chairman
Health Committee

Ideas in Brief

As a community service project, the 81 Hustlers Club, Saline county, plans to donate one cake per family to the ice cream social benefit for the National Association of Retarded Children. . . A picnic supper and swim followed the annual Gove county Ve-Go 4-H tour. . . Members of the Rozel Hustlers Club, Pawnee county, have voted to make first aid kits for each family in the club. . . The Plum Creek Club, Cheyenne county, had a July 4 party at Albert Keller's. . . Loretta Schuster showed, as a demonstration at a meeting of the Union Valley Club, Reno county, how smoke can be used to remove honey from a hive without being stung by bees. . . Special guest for the safety program of the Haven Club, Reno county, was Hutchinson police lieutenant Bill Wilson. . . Fairs, camps and record books were the subject for discussion at the June meeting of the Arlington Club, Reno county. . . Gertrude Hove, Reno home economics agent, told members of the Prosperity club "What makes a good demonstration" at their recent meeting. . . Members of the North Reno club, Reno county, plan an ice cream

social as a money raising project. . . "Who knows what is meant when the flag is upside down?" asked Sandra Price in a flag day talk at a meeting of the Lawnridge club, Cheyenne county. . . Patty and Sandra Price, Lawnridge club in Cheyenne county, took members back to the Gay Nineties when they sang "Peggy O'Neil" and "When Frances Dances with Me" at a recent meeting. . . The Home City Hustlers Club, Marshall county, had a swimming party in June. . . Members of the Turon Lucky 4's Club, Reno county, are taking swimming lessons at the Stafford swimming pool. . . As a community service project, members of the Partridge Club, Reno county, weeded the local church's tulip bed. . . The Emerald Club, Chase county, have made first-aid kits from coffee cans and gave them to each family in the club for their cars. . . Mel Westmeyer had the lucky number and won a decorated cake as a doorprize at the bingo party sponsored by the DIY Jrs. 4-H club, Ford county. . . Crawford Barber, Greensburg Rotary Club, spoke at a meeting of the Upward Strivers Club, Kiowa county, on "Agribusiness." . . . Members of the Huntsville Club Reno county, checked for safety hazards as they visited 4-H homes on their club's tour. . . A food sale and waste-paper drive added \$80 for remodeling the community kitchen. . . Selling ball point pens made by the blind is the money making project of the Langdon Club, Reno county. . . Nineteen members of the Hayes club, Reno county, answered roll call by estimating the age they would get married. . . Members of the Manning Jayhawkers club, Scott county, have planted shrubs around the local school. The Manning Jayhawkers furnished four cakes, seven pies, cookies and sold \$34 of tickets for a card party used as a money making project. . . Members of the Fairplay Club, Rice county, observed 4-H Sunday by attending services of the Ebenezer church of rural Lyons. . . The Plum Creek Club, nVplodn%g hf-H tin iCb Vc etaoin shm Cheyenne county, has donated \$5 to the

Agricultural Hall of Fame to be built near Kansas City. . . Sewing, electric, crops and livestock projects were exhibited on a tour by the Cameron Club, Cowley county, members. Refreshments of punch concluded the tour.

Wood Joints

(Continued from page 13)

is also popular for the corners of cedar chests and other cabinets of like construction, as no end grain shows when it is assembled.

Use the milled or dado, tongue and rabbet (Figure 18) to attach drawer sides to drawer fronts, thus hiding the end grain of the side pieces of wood.

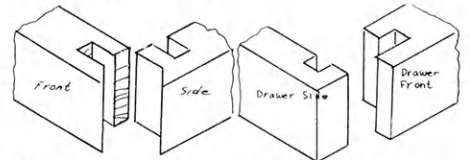


Fig. 17 Lock Mitre Joint

Fig. 18 Milled or Dado, Tongue and Rabbet Joint

To join the stretchers for the legs of a hexagon table, use the lapped, six-arm joint (Figure 19).

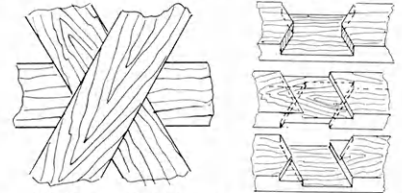


Fig. 19 Lapped Joint with Six Arms Fig. 20 Cuts for Joint in Fig. 19

The cuts are made one-third to two-thirds the thickness of the pieces of wood (Figure 20), as the case may be.

**Willie Leads
The Way!**

Willie Wiredhand, is way ahead in leading the way for better farm living. Electricity contributes so much to our enjoyment of life. Enables us to make the best, better.

Kansas Electric Cooperatives, Inc.

420 W. 9th Topeka, Kansas

Photography - Electricity

Many Pleasant Hours

For

Butler County 4-H'er Christine Brown



Christine Brown, Skyliners 4-H Club, Butler county, and her father made this darkroom set for their home use—the bottom side of the dryer above and the top of the printer below.



As a member of the Skyliners 4-H Club, Butler county, Christine Brown found the 4-H electric project came easy.

First, of course, her father had been an electrician at Boeing for 18 years. But that wasn't the only reason Christine took to electric like ducks to water. She liked the things electricity could do for her.

She liked one thing, especially, that electric could do for her. One of Christine's favorite hobbies is photography. As Christine says, "I'm interested mostly in darkroom work. I like to take them, too, but I'd rather develop them."

Make Darkroom Set

So, Christine and her father made their own darkroom printer and dryer—and you can make them, too.

The printer is made of plywood. It is 7½ inches by 9½ inches by 7 inches deep. A clear piece of glass fits into the top of the hole—measuring 3½ by 5½ inches—and rests on pieces of wood. Inside the printer is a 7 watt red bulb and a 50 watt white bulb. To hold down the printer paper is a hinged metal door with a rubber hose. An electric switch is built onto the side of the box.

The printer is also made of scrap lumber, a piece of muslin, a scrap of tin and a ferrotype plate. The ferrotype plate costs 95c and can be obtained at most photo supply stores—your local camera shop can order one for you.

Cost Only \$5

The rest of the material—sockets, wiring, four 60 watt bulbs for the dryer—could easily be purchased for no more than \$5, Christine says. She adds that many of you may have scrap material around your home that will do the trick.

Christine won a blue ribbon on this printer and dryer at the Butler County 4-H Fair. Besides, the blue ribbon, Christine has had many hours of enjoyment.

So, if you like photography and electricity, too, you can combine the two—save some money and have loads of fun.

WATCH THIS
PAGE FOR IDEAS
ON FARM AND
HOME ELECTRIC
PROJECTS

Electric Light and Power Companies in Kansas

The Kansas Power and Light Company

Central Kansas Power Company

Kansas City Power & Light Company

Kansas Gas and Electric Company

Western Light & Telephone Company