

# KANSAS 4-H JOURNAL

The Family Magazine

November/December 1987

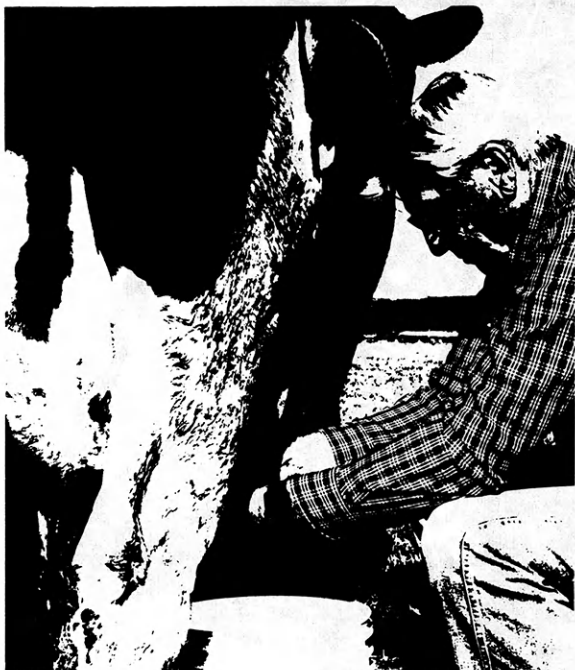


Kansas Farm Bureau, Inc.  
5321 Northeast Avenue, Manhattan, Kansas 66502 (913) 547-2261

# White and black Christmas

It's the nite before Christmas, and all through the stable  
 Not a bovine is stirring, not even old Mabel.  
 The cows are all hayed, and the calves are all fed  
 They're knee-deep in straw, and ready for bed.  
 The buckets are hung in the milkroom with care  
 No doubt that St. Nicholas will glance at them there.  
 The milking's completed, another day's chore  
 I take a last glance, before closing the door.  
 The calves have been romping and playing all day  
 They're now deep in slumber and dreaming of hay.  
 The cows are all lying and chewing their cuds  
 A sight of contentment that makes one feel good.  
 The cows have been faithful and stuck by the pail  
 The check is the payoff in every week's mail.  
 I take a last glance at the barnyard and lot  
 And think of folks fortunate, and those who are not.  
 I sit down to supper of good things to eat  
 From milk and from cream come Holiday treats.  
 Right then and there's where I make a strong vow  
 To always stick by her. . . the old HOLSTEIN cow.

*George Nichols*



Seasons Greetings from

**KFB** *Kansas Farm Bureau, Inc.*

2321 Anderson Avenue, Manhattan, Kansas 66502 / (913) 537-2261

**Collingwood**  
GRAIN INC.

*Serving Kansas  
Since 1890*

**Country Elevators  
and Terminals**

**Capitol  
Federal  
Savings**



TOPEKA  
GREATER KANSAS CITY  
MANHATTAN LAWRENCE OLATHE  
EMPORIA SALINA WICHITA

**Money For Your Treasury**

OVER 2 MILLION  
Sunflower Dishcloths



WERE SOLD LAST YEAR BY MEMBERS OF  
GROUPS, SOCIETIES, CLUBS, ETC.


THEY ENABLE YOU TO EARN MONEY FOR  
YOUR TREASURY AND MAKE FRIENDS FOR  
YOUR ORGANIZATION.

Sample FREE to Official.  
SANGAMON MILLS, INC., Cohoes, N.Y. 12047  
KJ Established 1915

**BUY,  
BUILD,  
SAVE WITH US**

- Competitive rates on savings and loans
- High-yielding C.D.'s
- 17 offices statewide

**anchor  
savings**  
ASSOCIATION





# KANSAS 4-H JOURNAL

**VOLUME XXXIII NO. 10**  
**November/December 1987**

**Rhonda Wessel Atkinson . . . Editor**  
**Linda Akin . . . . . Secretary**

Address all correspondence:  
Kansas 4-H Journal  
116 Umberger Hall, KSU  
Manhattan, Kansas 66506  
Phone (913) 532-5881

Single subscriptions are \$4 per year.  
Group subscriptions are available upon request.

Kansas 4-H Journal is published  
10 times a year by  
**KANSAS 4-H FOUNDATION, INC.**

Bill Riley . . . . . Executive Director  
Merle Eyestone . . Field Representative  
Trisha Cash . . . . . Secretary  
Ann Carr . . . . . Asst. Treasurer

## BOARD OF TRUSTEES

Governor Mike Hayden  
Honorary Chairman  
Glee S. Smith, Chrm. . . . . Larned  
Martha Wreath Streeter  
Vice-Chrm. . . . . Manhattan  
John Junior Armstrong,  
Treas. . . . . Muscotah  
Ross Beach . . . . . Hays  
Richard Dillon . . . . . Hutchinson  
Marilyn Pence Galle . . . . Moundridge  
Mrs. Olive Garvey . . . . . Wichita  
Balfour S. Jeffrey . . . . . Topeka  
J. Harold Johnson . . . . . Manhattan  
Wilbur E. Levering . . . . . Topeka  
Bernard E. Nordling . . . . . Hugoton  
Thomas M. Potter . . . . . Wichita  
C.R. Salmon . . . . . Manhattan  
Tom Shirley . . . . . Dodge City  
Walter Woods . . . . . Manhattan  
Robert Wagstaff . . . . . Shawnee Mission  
Mrs. Dwane Wallace . . . . . Wichita  
\*Glenn M. Busset . . . . . Manhattan  
\*Roger E. Regnier . . . . . Manhattan  
\*Dolph Simons, Sr. . . . . Lawrence  
\*Advisory Member

Use of the 4-H name and symbol approved by the Secretary of Agriculture of the United States, January 23, 1951, under the provisions of the laws as reenacted by Sec. 707 of the Act of June 25, 1948. Public Law No. 772 80th Congress (10 USC 797).

## In This Issue

A Thank You . . . . .	4
4-H Journal Sponsors . . . . .	5-6
Agents Establish Extension Scholarships . . . . .	7
Agents Receive Professional Improvement Scholarships . . . . .	8
Kansas 4-H Page Day . . . . .	9
4-H'ers Train Guide Dog in New 4-H Project . . . . .	10-11
Kansas Hosts North Central Regional Forum . . . . .	12-13
Discovery Days Instructors Needed . . . . .	14
We "Knead Your Recipes Now!" . . . . .	15
Photographs Hang In National Photography Exhibit . . . . .	16-17
Rock Springs 4-H Center Receives Truck from Southwestern Bell . . . . .	24

## Advertisers' Index

Kansas Farm Bureau . . . . .	2
Collingwood Grain, Inc. . . . .	2
Capitol Federal Savings . . . . .	2
Sangamon Mills, Inc. . . . .	2
Anchor Savings . . . . .	2
Flicks for 4-H Meetings . . . . .	18-19
4-H Woodworking Plans . . . . .	20
Kansas Wheat Commission . . . . .	21
Dillons Food Stores . . . . .	21
Farm Bureau Insurance . . . . .	22
Special Thanks . . . . .	22-23
Consolidated Printing . . . . .	23
Excel . . . . .	23
Kansas Savings and Loans . . . . .	23

A

A thank you means  
so much to the receiver ...  
and yet takes so little  
of your time. A thank  
you builds strong  
relationships.

# Thank You

It is surprising how often those deserving of special thanks are forgotten.

A thank you, personally written, on nice note paper,  
will brighten the givers day.

Short and simple thank you notes are the best,  
and the time it takes you to write it will be well spent,  
as thank you notes build friendships and good feelings.

Won't you take the time to make a friend,  
and thank those who are so often forgotten?



# 4-H Journal Sponsors

Have you said thank you to your *Kansas 4-H Journal* sponsor? These sponsors bring the 4-H Journal free to almost all 4-H families in the state.

The 4-H Journal is the only state 4-H magazine in the nation. A project of the Kansas 4-H Foundation, the Journal is a communication tool which unifies the state, a form of youth recognition and a promotional tool for the Kansas 4-H club program.

We think the Journal is important. We hope you do, too. Please help ensure the continuance of the Journal by thanking your Journal sponsor today.

Bold face type designates sponsors of 20 years or more.

- ALLEN**  
Mrs. Gwen E. Wilson Memorial Scholarship Fund
- ANDERSON**  
Anderson County 4-H Council
- ATCHISON**  
Rockwell International, Atchison  
Saunders Manufacturing Co., Atchison  
Atchison County 4-H Council
- BARBER**  
**First National Bank, Medicine Lodge**  
Barber County 4-H Council
- BARTON**  
American State Bank & Trust., Great Bend  
Great Bend Co-op Association, Great Bend
- BOURBON**  
**Citizens National Bank, Fort Scott**  
**Double Circle Farm Supply, Fort Scott**  
**Liberty Savings and Loan Association, Fort Scott**  
Security State Bank, Fort Scott  
**Union State Bank, Uniontown**  
Bourbon County 4-H Council
- BROWN**  
**The Bank of Horton, Horton**  
**The Bank of Robinson, Robinson**  
**Citizens State Bank, Hiawatha**  
**Farmers State Bank, Fairview**  
**The Morrill and Janes Bank, Hiawatha**  
**Morrill State Bank, Sabetha**  
**The Union State Bank, Everest**
- BUTLER**  
**First National Bank & Trust, El Dorado**  
National Bank of El Dorado, El Dorado  
**Potwin State Bank, Potwin**  
**Prairie State Bank, Augusta**  
**State Bank of Leon, Leon**  
**Walnut Valley State Bank, El Dorado**  
Butler County 4-H Council
- CHASE**  
**Exchange National Bank, Cottonwood Falls**  
**The Peoples Exchange Bank, Elmdale**  
Chase County 4-H Council
- CHAUTAQUA**  
Cedar Vale State Bank, Cedar Vale  
Chautauqua County Farm Bureau, Sedan  
Chautauque County 4-H Council
- CHEROKEE**  
Evan's Health Mart Drug, Columbus  
The Hartley Agency, Inc., Baxter Springs  
The Walberts and Timberlake Hardware & Furniture  
Company, Columbus  
H.D. Youngman Contractor, Inc., Baxter Springs  
Cherokee County 4-H Council
- CHEYENNE**  
Cheyenne County 4-H Council
- CLARK**  
**Citizens State Bank, Ashland**  
Peoples State Bank, Minneola  
**Stockgrowers State Bank, Ashland**
- CLAY**  
**Union State Bank, Clay Center**  
Clay County 4-H Council
- CLOUD**  
**Citizens State Bank, Miltonvale**  
**Cloud County Bank and Trust, Concordia**  
Exchange Bank of Clyde, Clyde  
People's Heritage Federal Savings & Loan  
Association, Concordia  
**The First National Bank of Glasco, Glasco**  
Cloud County 4-H Council
- COFFEY**  
Coffey County 4-H Council
- COMANCHE**  
**The Peoples State Bank, Coldwater**
- COWLEY**  
**The First National Bank, Winfield**  
**The Home National Bank of Arkansas City,**  
Arkansas City  
Cowley County 4-H Council
- CRAWFORD**  
**Bank IV, Pittsburg**  
**The City National Bank of Pittsburg**  
**Farmers State Bank, Walnut**  
**First National Bank, Girard**  
**First State Bank, Arma**  
**The First State Bank and Trust Company, Pittsburg**  
Girard National Bank, Girard  
Hepler State Bank, Hepler
- DECATUR**  
**Decatur Co-op Association, Oberlin**
- DICKINSON**  
**Farmers National Bank, Abilene**
- DONIPHAN**  
Atchison County Co-op, Denton  
Doniphon County REA, Troy  
Farmers State Bank, Wathena  
Robinson Farmers Co-op, Robinson  
Troy State Bank, Troy  
Valley Grain & Fertilizer, Highland
- DOUGLAS**  
**Douglas County State Bank, Lawrence**  
Douglas County 4-H Council
- EDWARDS**  
**The Home State Bank, Lewis**
- ELK**  
**Exchange State Bank, Moline**  
**Home State Bank, Longton**  
**Howard State Bank, Howard**  
Elk County 4-H Council
- ELLIS**  
**Ellis State Bank, Ellis**  
**Farmers National Bank, Victoria**  
**First National Bank, Hays**  
Farmers State Bank & Trust Co., Hays
- ELLSWORTH**  
**The Bank of Holyrood, Holyrood**  
**Citizens State Bank and Trust, Ellsworth**  
**Kanopolis State Bank, Kanopolis**  
**Lorraine State Bank, Lorraine**  
**Wilson State Bank, Wilson**
- FINNEY**  
**Fidelity State Bank, Garden City**  
First National Bank of Holcomb, Holcomb  
Fourth Bank of Garden City, Garden City  
**Garden National Bank, Garden City**  
Western State Bank, Garden City  
Finney County 4-H Council
- FORD**  
**Bucklin State Bank, Bucklin**  
**Farmers State Bank, Bucklin**  
**Fidelity State Bank and Trust, Dodge City**  
**First National Bank, Spearville**  
**First National Bank, Dodge City**  
**Ford County State Bank, Spearville**
- FRANKLIN**  
Franklin County 4-H Council
- GEARY**  
**Central National Bank, Junction City**  
J.C. Chamber of Commerce, Junction City
- GOVE**  
Howard & Ruth Cheney, Greenfield  
**First National Bank, Quinter**  
Grainfield Elevator, Inc., Grainfield  
**Peoples State Bank, Grinnell**
- GRAHAM**  
Citizens State Bank, Morland  
Consolidated State Bank, Hill City  
Farmers State Bank, Bogue  
**Farmers and Merchants Bank, Hill City**
- GRANT**  
**Grant County State Bank, Ulysses**  
Southwest Kansas National Bank, Ulysses  
Grant County 4-H Council
- GRAY**  
**Farmers State Bank, Ingalls**  
**First National Bank in Cimarron, Cimarron**  
**Montezuma State Bank, Montezuma**  
Gray County 4-H Council
- GREELEY**  
**First National Bank, Tribune**  
Greeley County 4-H Council
- GREENWOOD**  
**Citizens National Bank, Eureka**  
Emch Feed and Elevator Company, Madison  
Engle's Super Saver Food Center, Madison  
**Eureka Federal Savings and Loan, Eureka**  
First National Bank, Madison  
First National Bank of Hamilton, Hamilton  
**Freeman's T.V. and Appliance, Eureka**  
**Home Bank and Trust Company, Eureka**  
**Home Lumber Company, Eureka**  
Knight's Lumber, Hardware & Gifts, Severy  
**Parks Oil Company, Eureka**
- HAMILTON**  
**First National Bank, Syracuse**  
**Valley State Bank, Syracuse**  
Hamilton County 4-H Council
- HARPER**  
**Anthony Farmers Co-op Elevator, Anthony**  
**Danville Co-op Association, Danville**  
**Farmers Co-op Business Association, Hazelton**  
**State Line Grain Company, Manchester**  
Harper County 4-H Council
- HARVEY**  
**Bank IV, Newton**  
**First Bank of Newton, Newton**  
**The Halstead Bank, Halstead**  
**Hesston State Bank, Hesston**  
**Midland National Bank, Newton**  
**Sedgwick State Bank, Sedgwick**  
**State Bank of Burrton, Burrton**  
**Walton State Bank, Walton**  
Harvey County 4-H Council
- HASKELL**  
**The Haskell County State Bank, Sublette**  
Haskell County 4-H Council
- HODGEMAN**  
**Farmers State Bank, Jetmore**  
**Hanston State Bank, Hanston**  
Hodgeman County 4-H Council
- JACKSON**  
**Clark Chevrolet/Olds, Inc., Holton**  
Holton Lions Club, Holton  
Jackson County Farm Bureau, Holton  
Jackson Farmers, Inc., Holton  
Oldham's Farm, Kansas City  
Jackson County 4-H Council
- JEFFERSON**  
**Leavenworth-Jefferson Electric Co-op, McLouth**  
**Jefferson EHU Council**  
Jefferson County 4-H Council
- JEWELL**  
**Burr Oak State Bank, Burr Oak**  
**Citizens State Bank, Jewell**  
**First National Bank, Mankato**  
**The Formosa Bank, Formosa**  
**The Randall Bank, Randall**  
**State Bank of Esbon, Esbon**  
**State Exchange Bank, Mankato**
- JOHNSON**  
**Bank IV, Olathe**  
Farmers Bank and Trust Company, Gardner  
**First National Bank, Olathe**  
**Olathe State Bank, Olathe**  
**Shawnee State Bank, Shawnee**  
**State Bank of Spring Hill, Spring Hill**  
**State Bank of Stanley, Stanley**  
Johnson County 4-H Council
- KEARNY**  
Kearny County Feeders, Inc., Lakin
- KINGMAN**  
**C.R. Calvert Company, Kingman**
- KIOWA**  
Columbia Savings, Greensburg  
**Greensburg State Bank, Greensburg**  
**Haviland State Bank, Haviland**  
Kiowa County 4-H Council
- LABETTE**  
**American State Bank, Oswego**  
**First National Bank, Oswego**  
**Chetopa State Bank and Trust, Chetopa**  
**First National Bank and Trust, Parsons**  
**First State Bank, Edna**  
**Labette County State Bank, Altamont**  
Labette County 4-H Council
- LANE**  
**First National Bank, Dighton**  
**First State Bank, Healy**  
Lane County 4-H Council
- LEAVENWORTH**  
First State Bank & Trust, Tonganoxie  
Leavenworth County 4-H Council
- LINCOLN**  
Lincoln County 4-H Council
- LINN**  
**Bank of Pleasanton, Pleasanton**  
**Farmers State Bank, Blue Mound**  
**First State Bank, Pleasanton**  
**Linn County Bank, LaCygne**  
Linn County Farm Bureau, Mound City  
**Prescott State Bank, Prescott**  
Linn County 4-H Council
- LOGAN**  
**Farmers State Bank, Oakley**  
Gamma Pi Alpha Sorority, Oakley  
Logan County 4-H Council

**LYON**

Americus State Bank, Americus  
Bluestem Farm and Ranch, Emporia  
Bunge Corporation, Emporia  
Columbia Savings, Emporia  
Eureka Federal Savings, Emporia  
Farm Credit Services, Emporia  
Hartford State Bank, Hartford  
Lyon County Farm Bureau, Emporia  
Lyon County State Bank, Emporia  
Olpe State Bank, Olpe  
Reading State Bank, Reading  
Lyon County 4-H Council

**MARION**

Ag Service, Inc., Hillsboro  
**Cooperative Grain and Supply, Hillsboro**  
Country Charm, Marion  
Farmers Grain Cooperative, Peabody  
Jayhawk 4-H Club  
Mid-Kansas Co-op, Moundridge  
Ramona Red Chief 4-H Club  
Ratzlaff Automotive, Goessel  
Schmidt Studio, Goessel  
Sears Catalog Store, Marion  
Walker Refuse Service, Hillsboro  
Windy-Pond Holsteins, Goessel  
**Tampa Cooperative Association, Tampa**  
Tampa Triple T's 4-H Club  
Wheatland Bank of Goessel, Goessel

**MARSHALL**

**Blue Valley National Bank, Marysville**  
**Citizens State Bank, Marysville**  
Citizens State Bank, Waterville  
**Exchange Bank of Schmidt and Koester, Marysville**  
**First National Bank, Frankfort**  
**First National Bank, Summerfield**  
**Marshall County Bank, Beattie**  
**State Bank of Axtell, Axtell**  
**State Bank of Blue Rapids, Blue Rapids**  
**Vermillion State Bank, Vermillion**

**MEADE**

**Fowler State Bank, Fowler**  
**Plains State Bank, Plains**  
Meade County 4-H Council

**MIAMI**

**The Bank of Louisburg, Louisburg**  
Eddy Birchard Funeral Home, Osawatomie  
**First National Bank, Louisburg**  
Miami Veterinary Clinic, Inc., Paola  
Mossman Lumber Co., Louisburg  
Progressive 4-H Club, Paola  
Sinclair Rexall Drugs, Inc., Osawatomie  
Miami County 4-H Council

**MITCHELL**

**Farmers and Merchants State Bank, Cawker City**  
**Farmers State Bank, Hunter**  
**Farmers State Bank of Simpson, Simpson**  
**First National Bank, Beloit**  
**Guaranty State Bank, Beloit**  
**Tipton State Bank, Tipton**  
**Traders State Bank, Glen Elder**

**MONTGOMERY**

Citadel, Independence  
People's State Bank, Cherryvale  
Montgomery County 4-H Council

**MORRIS**

Morris County 4-H Council

**MORTON**

**Elkhart Cooperative Equity Exchange, Elkhart**  
Elkhart T.V. Cable System, Elkhart  
**Elkhart True Value Lumber, Elkhart**  
First National Bank, Elkhart  
**First State Bank, Elkhart**  
**Janzen-Elder Insurance and Real Estate, Inc., Elkhart**  
Morton County Fair Association, Elkhart  
Riley Chevrolet, Elkhart  
**Rolla Cooperative Equity Exchange, Rolla**  
Morton County 4-H Council

**MCPHERSON**

McPherson County 4-H Development Fund

**NEMAHA**

Baileyville State Bank, Seneca  
Citizens State Bank & Trust Co., Seneca  
Community National Bank, Seneca  
**Farmers Co-op Elevator, Sabetha**  
Farmers State Bank, Corning  
Farmers State Bank, Sabetha  
First National Bank, Centralia  
First National Bank, Goff  
First National Bank, Wetmore  
Lortscher Agri-Service, Inc., Bern  
Morrill State Bank & Trust Co., Sabetha  
**Nemaha County Co-op Association, Seneca**  
Seneca Elevator Company, Seneca  
State Bank of Bern, Bern  
Vermillion Grain Company, Inc., Vermillion

**NEOSHO**

Ash Grove Cement Company, Chanute  
Lester T. Sunderland Foundation, Kansas City, MO  
Nu-Wa Industries, Chanute  
Neosho County 4-H Council

**NESS**

**Bazine State Bank, Bazine**  
**Citizens State Bank, Utica**  
**First State Bank, Ness City**  
**First State Bank of Ransom, Ransom**  
Ness County 4-H Council

**NORTON**

Exchange Bank of Lenora, Lenora  
First State Bank, Almena  
**Kellings Fine Foods, Norton**  
Lenora Mercantile Exchange, Lenora  
Norton Appliance and Furniture, Norton  
**Norton County Farm Bureau, Norton**  
Rural Telephone Service Company, Inc., Lenora  
Security Abstract Co., Norton  
Norton County 4-H Council

**OSAGE**

AAA Wholesale, Carbondale  
Anstaett Angus Farm, Carbondale

Brosius & Meyers, Realtors, Osage City  
Calvin K. Williams Law Office  
Carbondale Pet Clinic, Carbondale  
Carbondale Pharmacy, Carbondale  
Carbondale Pro Hardware, Carbondale  
Carbondale Service Station, Carbondale  
Carbondale Rustlers 4-H Club  
Dayhoff Elevator, Osage City  
DeBauw Case/International, Osage City  
Dew Drop Inn, Osage City  
Handyman Hardware  
Jones Service Station, Melvern  
Lori's Secretarial Service, Scranton  
Mac Thompson Trucking  
**McNabbs Hy Klas, Melvern**  
Melvern J. Highline 4-H Club  
**Melvorn Super, Melvern**  
Osage Animal Clinic  
Pepper Patch, Carbondale  
Skip's Thriftway  
State Bank of Carbondale, Carbondale  
Stella's Hair Cottage  
T & D Trucking  
Terri's Style Shop, Carbondale  
Willing Workers 4-H Club

**OSBORNE**

**Downs National Bank, Downs**  
**Farmers National Bank, Osborne**  
**First National Bank of Natoma, Natoma**  
**First State Bank, Osborne**  
**First State Bank of Portis, Portis**  
**State Bank of Downs, Downs**  
Osborne County 4-H Council

**OTTAWA**

Delphos Co-op, Delphos  
**Hoover's of Minneapolis, Inc., Minneapolis**  
**Lott Implement Company, Minneapolis**  
Ottawa County 4-H Council

**PAWNEE**

First National Bank, Larned  
**First State Bank, Larned**

**PHILLIPS**

**First National Bank, Phillipsburg**

**POTTAWATOMIE**

**First National Bank, Wamego**  
**Farmers State Bank, Westmoreland**  
J. Warren Hildreth, Wamego  
**Kaw Valley State Bank and Trust, Wamego**  
**St. Marys State Bank, St. Marys**  
**Union State Bank of Olsburg, Olsburg**  
Pottawatomie County 4-H Council

**PRATT**

**Cairo Co-op Equity Exchange, Cunningham**  
**Cullison Co-op, Pratt**  
**Iuka Co-op Exchange, Iuka**  
**Preston Co-op Grain and Mercantile Co., Preston**  
**Sawyer Co-op Equity Exchange, Sawyer**  
Pratt County 4-H Council

**RAWLINS**

**Farmers Bank and Trust, Atwood**  
**Farmers State Bank, Ludell**  
**Peoples State Bank, McDonald**  
**State Bank of Atwood, Atwood**  
Rawlins County 4-H Council

**RENO**

Buhler State Bank, Buhler  
Central Bank and Trust, Hutchinson  
Citizens State Bank, Arlington  
Commerce Bank of Hutchinson, Hutchinson  
Farmers State Bank, Yoder  
First National Bank, Hutchinson  
Haven State Bank, Haven  
**Hutchinson National Bank and Trust, Hutchinson**  
Nickerson State Bank, Nickerson  
State Bank of Kansas, South Hutchinson  
State Bank of Plevna, Plevna  
State Bank of Pretty Prairie, Pretty Prairie  
Sylvia State Bank, Sylvia  
Turon State Bank, Turon

**REPUBLIC**

**Arbuthnot's Drug Company, Belleville**  
The Walthers Oil Company, Cuba  
Republic County 4-H Council

**RICE**

Alden State Bank, Alden  
**Bushton Grain and Supply, Chase**  
**Central Kansas Elevator, Lyons**  
**Chandler Bank, Lyons**  
Charles and Estelle Schmidt, Geneseo  
**Collingwood Grain, Inc., Little River**  
**Farmers Co-op of Alden, Lyons, Sterling and Pollard,**  
**Farmers State Bank, Sterling**  
First National Bank, Sterling  
Home State Bank, Little River  
Lyons IGA Store, Lyons  
Lyons Savings and Loan, Lyons  
**Pepsi-Cola Bottling Company, Hays**  
**Raymond State Bank, Raymond**  
Rice County State Bank, Chase  
Rice County 4-H Council

**RILEY**

Riley County 4-H Foundation, Manhattan  
Vista Drive-In Restaurant, Manhattan  
Riley County 4-H Council

**ROOKS**

Central Kansas Credit Union, Stockton  
**First National Bank, Palco**  
Norton-Decatur Co-op Electric Company, Norton  
Rooks County 4-H Council

**RUSH**

Rush County Banker's Association, Bison  
Rush County 4-H Council

**RUSSELL**

Gorham State Bank, Gorham  
Home State Bank, Russell  
Peoples State Bank, Luray  
**Russell State Bank, Russell**  
Russell County 4-H Council

**SALINE**

Assaria State Bank, Assaria

Falun State Bank, Falun  
First Bank and Trust, Salina  
**First National Bank and Trust, Salina**  
Gypsum Valley Bank, Gypsum  
National Bank of America, Salina  
Salina Area Chamber of Commerce, Salina  
Saline County 4-H Council

**SCOTT**

**First National Bank, Scott City**  
**Security State Bank, Scott City**

**SEDGWICK**

Chisholm Trail State Bank, Wichita  
**Citizens State Bank, Cheney**  
**First National Bank in Wichita, Wichita**  
**Bank IV, Wichita**  
**Home State Bank, Clearwater**  
Sedgwick County 4-H Achievement Foundation

**SEWARD**

**Citizens State Bank, Liberal**  
**First National Bank, Liberal**  
**Peoples National Bank, Liberal**  
Seward County 4-H Council

**SHAWNEE**

Goodyear Tire & Rubber Co., Topeka  
Silver Lake Bank, Silver Lake  
4-H Activity Fund

**SHERIDAN**

**First National Bank, Hoxie**  
**Mickey Hardware, Hoxie**  
**State Bank of Hoxie, Hoxie**  
State Bank of Selden, Selden  
Sheridan County 4-H Council

**SHERMAN**

Fairleigh Feeders II, Inc., Goodland  
T-Bone Feeders, Inc., Goodland

**SMITH**

**Farmers National Bank, Gaylord**  
**First National Bank, Kensington**  
**First National Bank, Lebanon**  
**First National Bank, Smith Center**  
**The Smith County State Bank and Trust Company, Smith Center**

**STAFFORD**

**Farmers and Merchants State Bank, Macksville**  
**Farmers National Bank, Stafford**  
**First National Bank and Trust, St. John**  
**Hudson State Bank, Hudson**  
**Macksville State Bank, Macksville**  
**St. John National Bank, St. John**  
Stafford County 4-H Council

**STANTON**

**Collingwood Grain, Inc., Hutchinson**  
Stanton County 4-H Council

**STEVENS**

**Citizens State Bank, Hugoton**  
Stevens County 4-H Council

**SUMNER**

Danville Co-op Grain Company, Argonia  
Farmers Cooperative Grain Company, Caldwell  
Farmers Cooperative Grain Company, Conway Springs  
Hunnell Elevator, Grain Haven  
**McDaniel Grain Company, Geuda Springs**  
**McDaniel-Wapels, Inc., Wellington**  
**Oxford Milling Company, Oxford**  
Ross Industries, Wellington  
**Wolcott and Lincoln, Inc., Corbin, Milan, Perth, Riverdale, South Haven, Wellington**  
Sumner County 4-H Council

**THOMAS**

**Farmers and Merchants Bank, Colby**  
Thomas County 4-H Council

**TREGO**

Eberle Oil Company, WaKeeney  
Dinkel Oil Company, Collyer  
Malsom Implement Company, Collyer  
Dave & Joan Roberts, WaKeeney  
**Schreiner's Service Station, Ogallah**  
Trego County 4-H Council

**WABAUNSEE**

**Alta Vista State Bank, Alta Vista**  
**First National Bank, Alma**  
**First National Bank, Harveyville**  
Flint Hills Bank of Eskridge, Eskridge  
**The Stockgrowers State Bank, Maple Hill**  
Wabaunsee County 4-H Council

**WALLACE**

**People's State Bank, Sharon Springs**  
Wallace County 4-H Council

**WASHINGTON**

Washington County 4-H Council

**WICHITA**

**First State Bank, Leoti**  
Wichita County 4-H Council

**WILSON**

**Cox Grain, Inc., Fredonia**  
Dr. Bert Chronister, Neodesha  
**First National Bank, Fredonia**  
**First Neodesha Bank, Neodesha**  
**Fredonia Co-op Association, Fredonia**  
IGA-Fredonia, Fredonia  
**Neodesha Building Supply, Neodesha**  
**Radiant Electric Co-op, Inc., Fredonia**  
**State Bank of Fredonia, Fredonia**  
**Wilson County Farm Bureau, Fredonia**  
Wilson County 4-H Council

**WOODSON**

**J.E. Sowder Seed Company, Toronto**  
Yates Center Branch Bank, Yates Center  
Woodson County 4-H Council

**WYANDOTTE**

**Brotherhood State Bank and Trust, Kansas City**  
**Coleman Implement Company, Bonner Springs**  
**Commercial State Bank, Bonner Springs**  
**Home State Bank, Kansas City**  
Promo-Graphics, Kansas City  
Welborn Animal Hospital, Kansas City  
Wyandotte County 4-H Council



# Agents Establish Extension Scholarships

Over 130 Cooperative Extension personnel from throughout Kansas were recognized at the Annual Extension Conference in Manhattan by the Kansas 4-H Foundation for their participation in establishing a new scholarship program for Kansas youth.

The Extension Professional Scholarship Program has been established as part of the Kansas 4-H statewide A STEP AHEAD campaign to raise \$2.6 million over the next three years, according to Bill Riley, executive direc-

tor of the Kansas 4-H Foundation.

The scholarship program will add five yearly scholarships to the 43 currently administered by the 4-H Foundation. Extension personnel have contributed or pledged over \$16,000 to the scholarship fund. Proceeds from the permanent endowment will be awarded each year under the general scholarship selection process coordinated by the Kansas 4-H Youth Department of the Cooperative Extension Service.

The Kansas 4-H Foundation is a

non-profit charitable foundation founded in 1952 to provide financial support from the private sector to strengthen and enhance the 4-H program for over 9,200 Kansas youth currently enrolled in 4-H activities.

The following Extension personnel have contributed to the Extension Scholarship program. The levels of contribution are: gold - \$300 or more over a three year period; Silver - \$150 minimum over a three year period; Bronze - \$75 minimum over a three year period.

### Gold Clover

- Adams, Jim
- Besthorn, Jodi
- Bozworth, Robert
- Burke, Jack
- Burke, Kathy
- Burns, Errol
- Coffman, Crystal
- Fisher, Steve
- Good, Don
- Goodheart, Clarene
- Helgesen, Robert
- Hodges, Jean
- Jacobs, Hyde
- Johnson, Juanita
- Keeler, Garry
- Keller, Glenda
- Kindler, Beverly
- Latoush, Elizabeth
- Lindquist, Jack
- Lindquist, Jim
- Lindquist, Lindy
- Mortvedt, Marjory
- Redman, Lois
- Salmon, C.R.
- Schlesener, Norman
- Tonn, Steve
- Woods, Walter

### Silver Clover

- Astroth, Kirk
- Blakeslee, Julie
- Branden, Elsie
- Buchanan, Christine
- Clarkson-Frisbie, Jean
- Ferrell, Pauline
- Finley, Philip
- Flinchbaugh, Barry
- Fultz, William
- Johnson, Art
- Koci, Julie

- Lanham, Eugene
- McClure, Gregory
- McColm, Michele
- McReynolds, Kenneth
- Molzen, Sharon
- Robbins, Benny
- Schafer, David
- Stephans, Janet
- Swenson, Shelly
- Thoden, Nada
- Van Meter, Earl
- Warner, Stacey
- Welch, Doris

### Bronze Clover

- Anderegg, Marvin
- Arnold, Jo Ellen
- Atkinson, Eric
- Beech, Douglas
- Biehl, Florence
- Borst, William
- Bowers, Jane
- Carlson, Lois
- Clawson, Eldon
- Collins, Bill
- Conley, Anita
- Counts, Catherine
- Cox, William
- Curry, Elizabeth
- Daharsh, Michael
- Davis, Robert
- DeWerff, Don
- Domsch, L. Ann
- Eberle, William
- England, Naomi
- Ewing, Marlene
- Fink, Carol
- Fisher-Rotman, Mary
- Flaming, Sharolyn
- Fowler, Joyce
- Frey, Alice

- Frisbie, Robert
- Gains, Sheila
- George, Herschel
- Glenn, Marilyn
- Griffin, Kitty
- Harter, Eugene
- Hartman, Paul
- Hayter, Richard
- Helmuth, Diane
- Hundley, William
- Krainbill, Milton
- Kriesel, Phyllis
- Ladd, Ray
- Lang, Teresa
- Lupfer-Nielson, Kathryn
- Manning, Leanne
- Martinson, Donna
- Mengarelli, Jimmie
- Molitor, Nancy
- Morrical, Carla
- Neier, Robert
- Nelson, Nancy
- Otte, Charles
- Otte, Eric
- Patterson, Susan
- Patton, Dennis
- Pawlowski, Lisa
- Richmond, Mary
- Rogers, Mary
- Rowland, Jean
- Siemens, Cynthia
- Slinkman, Zoe
- Sloderbech, Phillip
- Smith, Jenell
- Strickler, John
- Swisher, Brian
- VanHorn, Pam
- Walter, Douglas
- Watts, Tranda
- Weaver, Eldon

### Weaver, Marsha Yeager, Dorothy General Donations

- Clarke, Mary
- Davidson, Jeffrey
- Davison, Connie
- Eugler, Catherine
- Gaston, Gloria
- Huneycutt, Carol
- Huschka, James
- Jardine, Douglas
- Johnson, Robert
- Kling, Emily
- Krumm, Susan
- Ladd, Alan
- Lang, Charles
- Lang, Grace
- McNeill, Diane
- Moorman, Mitchell
- Nold, Mary
- Odle, Mary Lou
- Overly, Vicky
- Phillips, Margaret
- Snell, Richard
- Stalnaker, Amy Jo
- Walter, Linda
- Weidenback, Dorinda
- Wolfe, Frances
- Wood, Billy



## Agents Receive Professional Improvement Scholarships

**E**ight county Extension agents were awarded professional improvement scholarships at the 1987 Annual Extension Conference on the K-State campus.

The purpose of the scholarships is to recognize county Extension agents for demonstrating superior service in the maintenance and expansion of county 4-H programs, and the program is open to all county Extension agents with 4-H responsibilities. The scholarships were made possible by a grant from the Kansas 4-H Foundation.

There are four categories for the awards including: two agent county with a youth population of 0 - 800, two agent county with a youth population

of 800 and above, counties with a 4-H agent position and counties with multi-4-H agents.

The recipients of the \$250 scholarships are:

Agent	County	Category
Connie Dawson	Kiowa	2 agent, 0-800 youth
Dorothy Yeager	Chase	2 agent, 0-800 youth
Crystal Coffman	Harper	2 agent, over 800
Pamela Van Horn	Saline	Counties with 4-H agent position
Cindy Siemens	Harvey	Counties with 4-H agent position
Team Application	Sedgwick	Counties with multi-4-H agents
William Fultz	Jenell Smith	Eric Otte



We all join in wishing you  
 a wonderful holiday season  
 with happiness  
 throughout the year!

Happy Holiday!  
 The Kansas 4-H Foundation





# Kansas 4-H Page Day



Kansas 4-H'ers will have the opportunity for the first time to participate in a Kansas 4-H Page Day, March 9, 1988.

Members of the state 4-H citizenship developmental committee and The Honorable Robert V. Talkington, President of the Senate, have been working together to arrange the details of Kansas 4-H Page Day. Sixty 4-H'ers will have the opportunity to serve as a page in the Kansas Senate and the House of Representatives for one day. Forty youth will be selected as pages in the House of Representatives and twenty for the Senate.

4-H'ers will be selected on the following criteria:

- Age requirement is the 6th through 12th grades. Older members will be given priority for the Senate.
- Must have a minimum of three years in 4-H including the current year.
- Youth should have an interest and enrolled in the citizenship project.
- Youth must be neat, well-groomed, wholesome with a healthy appearance.
- They should have self confidence, friendly and open personalities, possess poise and move with enthusiasm.
- They should be able to explain the 4-H program and share, if asked, their experiences in the program. They should be well acquainted with the 4-H program on local, county and state level.
- The role of a page in the Kansas Legislature is one of assisting Senators and Representatives in session for one day at the State Capitol.
- Two applications may be submitted from each county to the State 4-H Office no later than Jan. 8, 1988.

APPLICATIONS ARE DUE IN THE COUNTY OFFICE NO LATER THAN DEC. 15, 1987. Counties will rank applications by a process of their choosing.

Selection of 60 pages will be announced by Jan. 15, 1988.

Remember to fill out this form and return it to the County Extension office by Dec. 15, 1987.

March 9, 1988

County Rank \_\_\_\_\_

Name \_\_\_\_\_  
 Address \_\_\_\_\_  
 \_\_\_\_\_ (city state zip)  
 This application is due in your County Extension Office by December 15, 1987.

County \_\_\_\_\_

Age \_\_\_\_\_ Grade \_\_\_\_\_ Sex \_\_\_\_\_

Years in 4-H \_\_\_\_\_ Are you enrolled in the citizenship Project? \_\_\_\_\_

Important 4-H club responsibilities you have had: (Limit to three: current or past)

\_\_\_\_\_  
 \_\_\_\_\_  
 \_\_\_\_\_

Do you have any County wide responsibilities? (Limit to three: current or past)

\_\_\_\_\_  
 \_\_\_\_\_  
 \_\_\_\_\_

Briefly summarize your community and school activities \_\_\_\_\_

\_\_\_\_\_  
 \_\_\_\_\_  
 \_\_\_\_\_

Tell something about a citizenship activity you have taken part in \_\_\_\_\_

\_\_\_\_\_  
 \_\_\_\_\_  
 \_\_\_\_\_

What State Representative District do you live in? \_\_\_\_\_

Who is your State Representative? \_\_\_\_\_

What State Senate District do you live in? \_\_\_\_\_

Who is your State Senator? \_\_\_\_\_

Why do you want to be a Kansas 4-H Page? Limit your answer to 50 words or less.

\_\_\_\_\_  
 \_\_\_\_\_  
 \_\_\_\_\_  
 \_\_\_\_\_

If chosen how will you share this experience with others? \_\_\_\_\_

\_\_\_\_\_  
 \_\_\_\_\_  
 \_\_\_\_\_

**FOR OFFICE USE ONLY**

Agent Comments \_\_\_\_\_

\_\_\_\_\_  
 \_\_\_\_\_  
 \_\_\_\_\_  
 \_\_\_\_\_

Agent Signature \_\_\_\_\_

**Due in the State Office January 8, 1988**



## 4-H'ers Train Guide Dogs in new 4-H Project

**A** new approach is being added to the traditional 4-H dog project, and the innovators of this type of project started in Neosho County under the direction of Marta Laylander, Extension Agricultural Agent.

The project is a 4-H Guide Dog Puppy Program which is a joint effort between Neosho Co. and Pilot Dogs, Inc. in Columbus, Ohio. Four 4-H'ers received four purebred labrador puppies last year at the beginning of the program.

4-H families across the United States have been selected to become a "foster parent" to the guide dogs in training.

"This is just the basic obedience training. The critical thing the 4-H'ers do is to raise them in a family environment. If they were raised in a kennel, they would never be guide dogs," Laylander said.

Neosho Co. 4-H'ers received the eight week old puppies with instructions to raise the puppy as a pet, with a few exceptions. The puppy is not allowed treats ... anything in his dish besides dog food is forbidden. The puppies are raised in a family environment. They learn to behave in the house, ride in a car, and get acquainted with all the new sights and sounds possible.

4-H'ers pay only for dog food, but many others contribute to the Pilot Dog project which allows the Pilot Dogs, Inc. to give the dogs to the sightless free and brings the dog and the new owner together for a month of training

in Ohio also at no cost.

A local veterinarian, John S. Smith, provides health care for the Neosho Co. dogs. Smith's son, Matthew, is one of the 4-H'ers training a dog in the Neosho Co. program.

Delta Airlines provides transportation from Ohio to Kansas for the puppies. "This is the key to the program," Laylander said. "We couldn't afford transportation charges."

The puppies are returned to the Ohio organization at one year of age. They then begin their formal training. Upon arrival, the puppy is placed in a two week quarantine and undergoes numerous physical exams.

After this time, it is assigned a trainer. Trainers can refuse or accept the puppy. If the first trainer rejects the puppy, it is given to another trainer. If he also rejects the puppy, then the puppy is returned to the family if they want the puppy back. If not, another home is found.

Once a dog is accepted into a training group it is continually challenged. The dog is worked up to two hours each day, facing obstacles such as revolving doors, escalators, heavy traffic. It must learn to avoid overhead obstacles, lay quietly under a table at a restaurant and "intelligently disobey" its trainer when a command would put the team in jeopardy.

When the dog successfully completes the training and exams, it is then matched with a compatible sightless person. Only about 68% of the original dogs make it this far.

All four of Neosho County's first

puppies completed their training. Laylander said the fact that all four dogs successfully completed their training at Pilot Dogs, Inc. is no small accomplishment.

"They have to look at about 400 dogs a year to get 160 that actually make it. We had a 100 percent success rate with the labs and the average is about 68 percent for their program overall," she said.

It is obviously hard for a 4-H'er to part with a puppy they have raised and trained, but as Jodi Clay, Neosho Co and guide dog trainer said, "I will always remember how I helped when I see a sightless person. If I should ever see a sightless person on TV with a yellow lab, I'll always wonder if it's Polly, and I will feel proud."

"It was a privilege to raise one of these puppies, and I would really emphasize getting one of the Pilot Dogs in the future to any 4-H member who wants to have the experience of a lifetime.

"I feel as if I helped something new get started in the state of Kansas, and I hope it continues to grow and prosper in the upcoming years," Clay said.

*EDITOR'S NOTE: Other Kansas counties are starting Pilot Dog programs with the help of Pilot Dogs, Inc., local and national businesses, and their community members. For more information on the Neosho Co. program, contact Marta Laylander, Neosho County Extension Agricultural Agent, P.O. 217, Courthouse, Erie, KS 66733, or at (316) 244-3251.*



*Marta Laylander, Neosho County Agricultural Agent, passes out the labrador puppies at the beginning of the Neosho County guide dog puppy raising project in Kansas.*



## Kansas Hosts North Central Regional Leaders Forum

**A**fter two long years of planning, preparing and waiting, the North Central Regional Leaders Forum convened in Manhattan on the campus of Kansas State University, Oct. 29 - Nov. 1.

Over 40 Kansas volunteer leaders worked on the planning committee for the forum titled, "Opening Minds." The conference was sponsored by the J.C. Penney and the National 4-H Council, and its purpose was to expand the horizons of leaders by providing training experience with volunteer staff from different states of the North Central Region. The forum was also designed to increase the effectiveness and competencies of volunteers working with boys and girls in 4-H by training volunteer leaders who will assist with volunteer leader programming within their state.

Bank IV of Wichita provided notebooks to each of the over 350 participants, and Gary Sherrer, also of Bank IV, was the speaker for the banquet the evening of Oct. 30.

The Kansas Arts Commission also supported the leaders forum through a matching grant funded by the Kansas Legislature and the National Endowment for the Arts.

Keynote speakers for the conference were Dr. Jim Boyer of Kansas State University and Ivan Scheier of New Mexico.

Dr. Boyer encouraged the delegation to take "A Closer Look at Kids in 4-H." He said the kids who are going to be in 4-H are from broken homes, mixed marriages and minorities. He also said 4-H has a great deal to offer these children, but volunteer leaders are going to have to reach out and invite them in the organization.

Ivan Scheier's topic was "The Volunteer Leader" as related to his experience in consulting and designing

a system to help volunteers coming into the 4-H program. He explained the principle of using the work fulfillment grid which is based on maximizing the extent to which volunteers are doing what they do best and like most. He said the payoff is the increased effectiveness and work satisfaction in the allocation or delegation of work, in the formation of teams, and in the building of motivationally self-powering networks.

Halloween afternoon conference delegates traveled to Rock Springs 4-H Center near Junction City to tour the year-round camping and conference facility owned and operated by the

Kansas 4-H Foundation.

Following the Rock Springs tour, delegates could tour Eisenhower Center in Abilene, Fort Riley near Junction City, the Veterinary Complex on the K-State campus or the new Manhattan Town Center Mall.

United States Senator Nancy Landon Kassebaum was the speaker for the J.C. Penney Recognition Banquet the evening of Oct. 31. She stressed the importance of leadership and the strength of the volunteer leader. Doug Van Westen, J.C. Penney representative from Manhattan presented participants with pins and certificates.

### *Congratulations to the Planning Committee for a Successful North Central Regional 4-H Leaders Forum*

Lynda Anderson  
Lois Bartley  
Sandy Browning  
Terry Carlgren  
Diane DeGood  
Charlene Edmonds  
Nancy Anderson  
Nancy Bohnenblust  
Everett Budenbender  
Cindy Casper  
Ginger Denning  
Betty Fenton  
Matt Ford  
Fran Garrison  
Lona Hinshaw  
Carol Huneycutt  
Betty Keener

Harvey Kiser  
Bill Fultz  
Greg Garrison  
Sarah Holbert  
Louise Jahnke  
Gail King  
Janet Kiser  
Carol Klover  
Susan Letourneau  
Sylvia Miller  
Pat Murphy  
Linda Pease  
Charles Lang  
Gloria Letourneau  
Brandon Lewis  
Ann Murphy  
Eric Otte

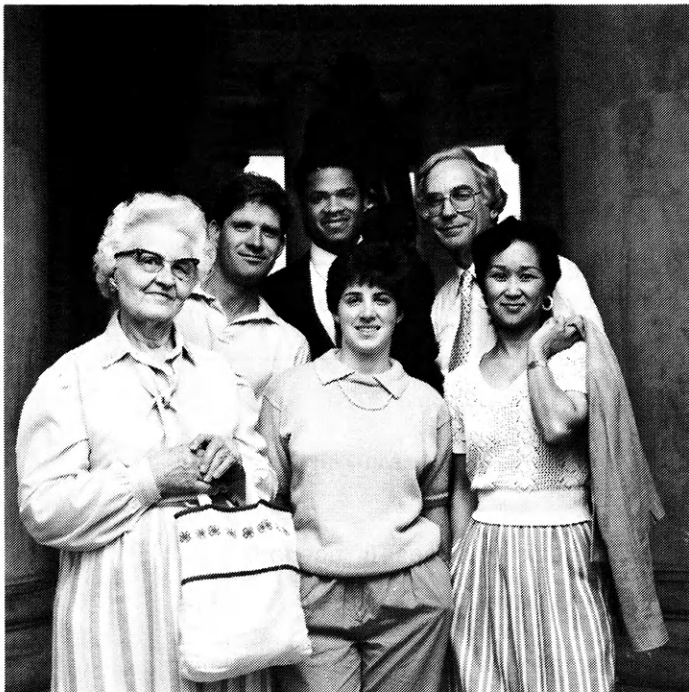
Ann Perl  
Barbara Rezac  
Raydon Robel  
Myrna Smith  
Joan Steenbock  
Rosalie Voorhees  
Charlotte Wessel  
Marie Watson  
Greene Scott  
Betty Rhodes  
Pearl Scott  
Karen Spaeth  
Karen Streeter  
Warren Voorhees  
Marilyn Woodard  
Corwyn Welton



Charlie Lang, Extension Specialist for Kansas 4-H Youth Programs and coordinator of the volunteer planning committee, complimented the volunteers on their hard work and efforts in making the North Central Leaders Forum in Kansas a success.

"The committee worked hard to ensure the forum would run smoothly, and it did just that. The participants were pleased according to the evaluation sheets turned in. Kansas 4-H volunteers conducted an outstanding forum for the north central region."

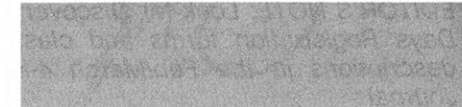
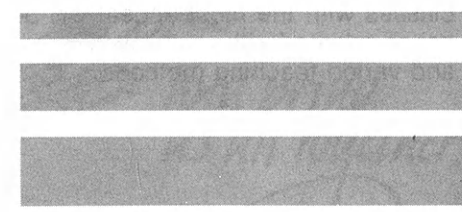
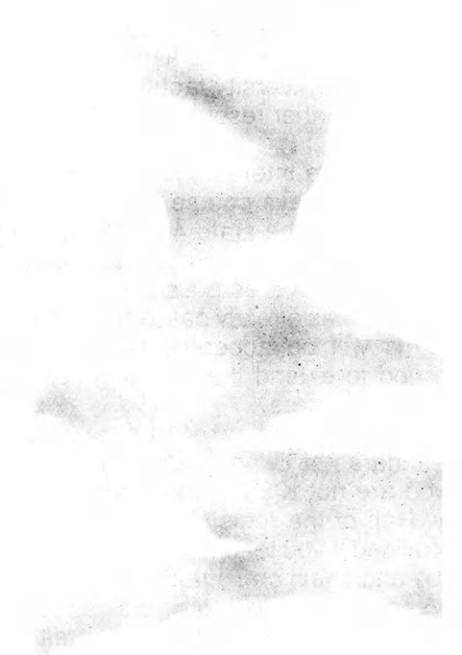
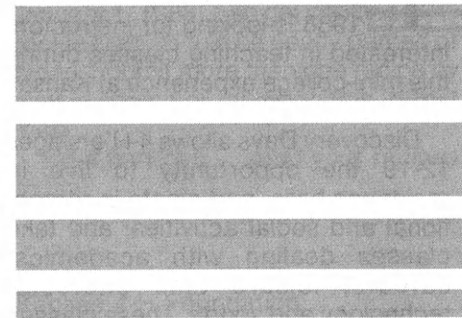
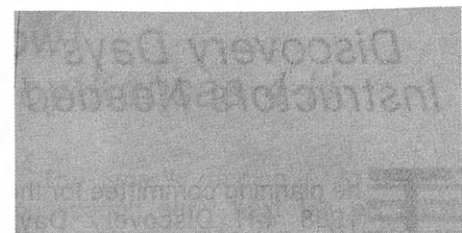
## At 4-H, We've Got One Crop that Grows as Well in the City as It Does in the Country!



The crop? Volunteers. And there are over 600,000 of them all across the nation . . . men and women who realize that it takes extra work and understanding to help today's young people develop into responsible adults.

Help shape the people who will shape tomorrow. Contact your county Extension office today.

Be A Volunteer





## Discovery Days Instructors Needed

The planning committee for the 1988 4-H Discovery Days scheduled for May 31 - June 2, 1988 is looking for instructors interested in teaching classes during this mini-college experience at Kansas State University.

Discovery Days allows 4-H'ers ages 12-19 the opportunity to live in residence halls, participate in recreational and social activities, and take classes dealing with academics, careers, leisure time interests, technology and sports. These classes should provide "hands-on" learning experiences for participating youth.

While attending 4-H Discovery Days at K-State, 4-H'ers can see what it is like to be a college kid and meet Kansas State University faculty and staff, as well as other resource people in the state.

If you are interested in teaching a Discovery Days course, please send this form to the state 4-H office, 201 Umberger Hall, KSU, Manhattan, 66506, as soon as possible. The first deadline has already passed; however, forms will be accepted for a short period to extend the teaching opportunity to others.

Scholarships are available to teachers not living in Manhattan and who are not K-State Extension faculty. Half of the registration fee will be provided if you teach a class on Tuesday and again on Thursday or teach a Wednesday class. All of the registration fee will be provided if you teach a class all three days.

Be creative! Classes can be almost anything imaginable, but remember classes with the most appeal will be action-oriented with youth involvement and varied teaching methods.

**EDITOR'S NOTE:** Look for Discovery Days Registration forms and class descriptions in the Feb/March 4-H Journal.

## Discovery Days

### 4-H Discovery Days Class Description May 31 - June 2, 1988

**Return To: Discovery Days  
State 4-H Office  
201 Umberger Hall, KSU  
Manhattan, KS 66506  
(913) 532-5800**

Class Name \_\_\_\_\_

Type of Class:

2 - 1/2 hour class (check both if offered both days)

\_\_\_\_\_ Tuesday 2:30 - 5:00 p.m.

\_\_\_\_\_ Thursday 8:30 - 11:00 a.m.

5 hour class

\_\_\_\_\_ Wednesday 8:30 - 4:00 p.m. (Lunch  
11:00 a.m. - 1:30 p.m.)

9 hour class

\_\_\_\_\_ Tuesday 2:30 - 5:00, Wednesday 8:30 -  
3:30 (lunch 11:00 - 1:30), Thursday 8:30  
- 11:00

Coordinating Instructor: \_\_\_\_\_

Day phone number \_\_\_ Night phone number \_\_\_

Mailing Address \_\_\_\_\_

County \_\_\_\_\_

Number of students allowable: Minimum \_\_\_\_\_

Maximum \_\_\_\_\_

Per person charge for supplies (if needed): \_\_\_\_\_

Are there going to be multiple instructors for this class? Y/N \_\_\_\_\_

If yes, this information will be gathered at a later date.

*Class Description: (A short paragraph to be printed in our publications.)*

**DO NOT USE**

Code

Len \_\_\_\_\_

Code

Co \_\_\_\_\_

MN \_\_\_\_\_MX \_\_\_\_\_

FEE \_\_\_\_\_

M-INST. \_\_\_\_\_



## We "knead" your recipes now! A New Cookbook Published Exclusively by Kansas 4-H

Help us round-up the ingredients of a deliciously different, prize winning cookbook. Submit your "specialty of the house" to be considered for publication in the first ever statewide Kansas 4-H cookbook.

Be creative and add "spice" to this uniquely Kansas 4-H cookbook by submitting recipes representative of the following categories:

- Appetizers, Beverages, Snacks
- Breakfasts and Brunches
- Soups and Sandwiches
- Meats (Beef, Pork, Lamb, Poultry, Fish & Wild Game)
- Combination Main Dishes

- Vegetables and Side Dishes
- Salads
- Breads
- Desserts
- Low Salt, Sugar and Special needs
- Quantity Cooking

(Don't forget to consider Recipes with special emphasis on Kansas products.)

4-H cooking is fun, funny, exciting, frustrating and rewarding, so please share your experiences and include a 4-H anecdote or recipe history. You will receive full credit if your "favorite" is selected to be shared in this first-of-a-kind Kansas 4-H Cookbook.

The timer's running ... to ensure publication early next fall we *must* have your recipes *no* later than January 1, 1988 ... so get cooking! The recipe form should be neatly printed or typed. Submit more than one recipe by simply coping or following this format style.

Be a part of it ... send your recipes today!

We'll let you know when it's done!

Kansas 4-H Cookbook  
Kansas 4-H Foundation  
116 Umberger Hall, KSU  
Manhattan, KS 66506

### Contact Your County Extension Office For Recipe Forms





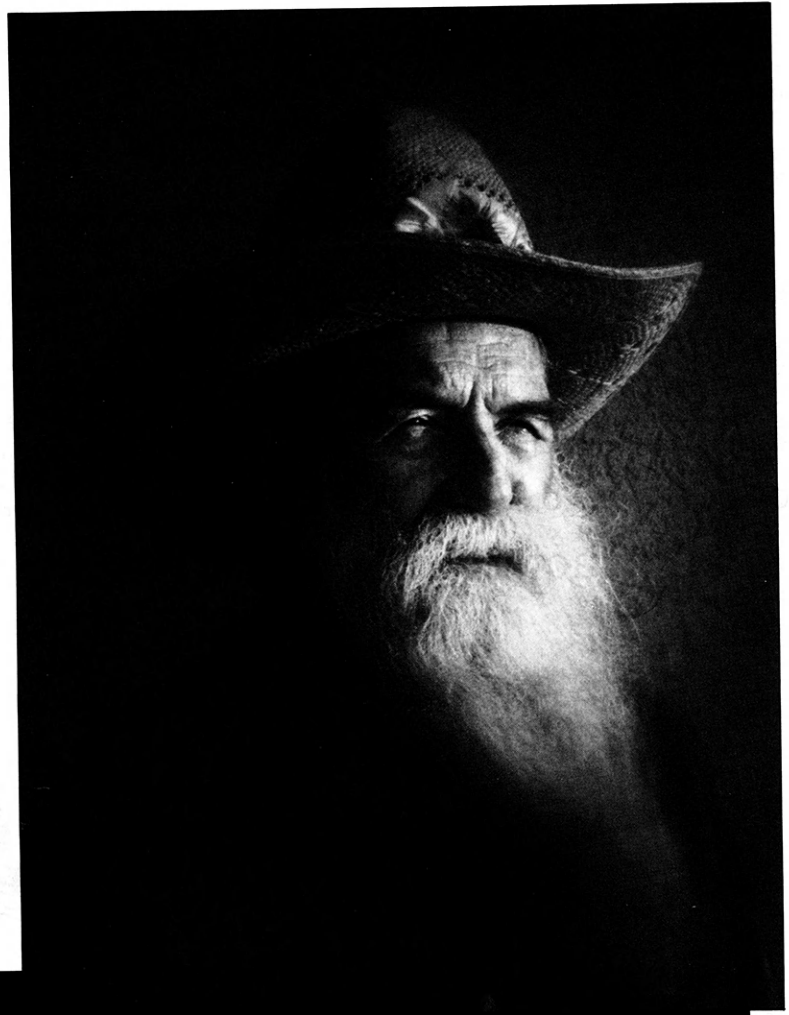
## Photographs hang in National Photography Exhibit

**F**our Kansas 4-H'ers have won the right to have their photographs displayed in the National 4-H Photography Exhibit at the National 4-H Congress and then will be moved to the National 4-H Center in Chevy Chase, MD. The photography exhibit is sponsored by Eastman Kodak Company in cooperation with the Cooperative Extension Service, National 4-H Foundation and the National 4-H Service Committee.

The four 4-H'ers are: Joy Hawley, Ford Co., Star Hildenbrand, Reno Co., Randy Jackson, Pawnee Co., and Lisa Leuthold, Riley Co.

Hawley's photo is titled, "Perfect Tranquility." She describes the picture and setting as, "'Perfect Tranquility' was taken in the autumn. A Butterfly catches the last few rays of sun before the sun goes down for the night. The flower and the butterfly really do show perfect tranquility. The picture was unplanned."

"A Cowboy's Gaze," is the title of the photo taken by Hildenbrand. "This portrait of Delos Smith was not taken



▲ *A Cowboy's Gaze - Star Hildenbrand*

◀ *Perfect Tranquility - Joy Hawley*

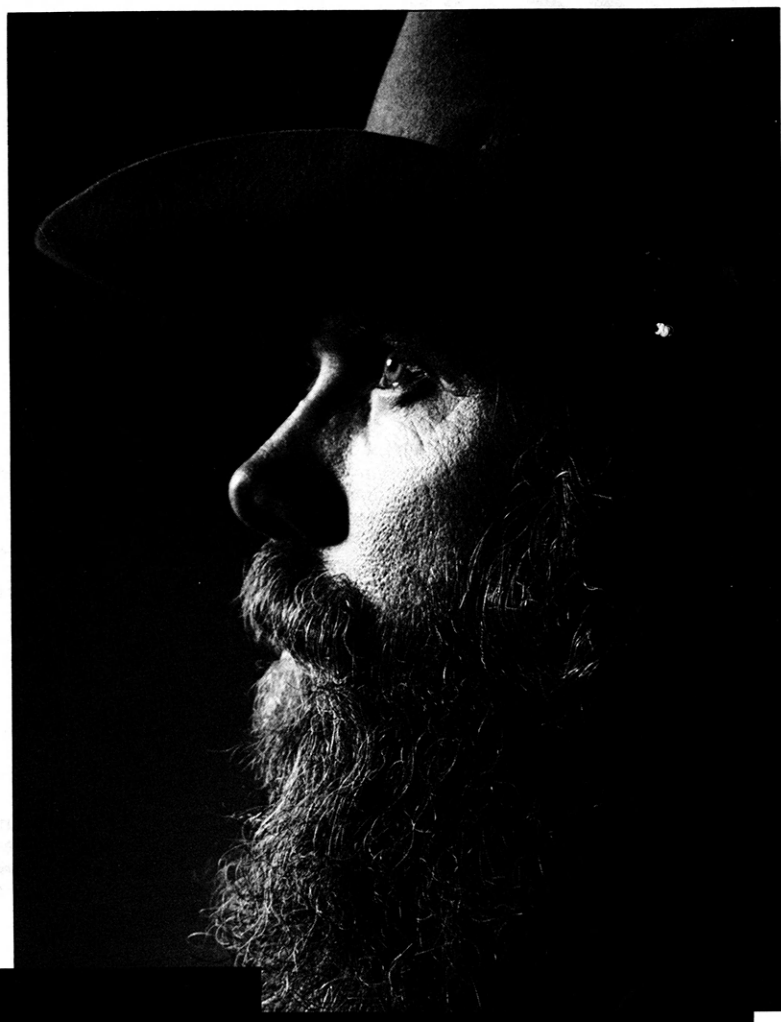




in a studio, but in front of Dillard's clothing store in the light of the setting sun. After taking pictures of him on several occasions, I came up with the idea of using gray spot filter to give a painting-like quality to the photo by softening the edges," Hildenbrand said.

Jackson's photo is called, "Zachariah Bones," and is a portrait of a cowboy. He said the photo was taken on a field trip. "I hope to graduate from high school in 1994 then go on to school. I would like to go into photo journalism or news broadcasting. Someday I plan to take over the Johnny Carson Show," he said.

"Musical Expression," is the title of Leuthold's photo. She said, "I wanted to take a picture that expressed the major role that music plays in my life. The worn valves demonstrate long and hard practice, the book of concertos expresses the difficulty of my work and my preference in music, and the rose adds a bit of romance that ties in with Mozart, the composer."



▲ *Zachariah Bones* - Randy Jackson

◀ *Musical Expression* - Lisa Leuthold

# Flicks for 4-H Meetings!

Learn how to do new things, improve your skills or simply develop a new interest. These video tapes, film strips and slide sets are for your use. These make excellent winter meeting material when 4-H'ers are not frantically working on fair projects and it's too cold to go outside. The materials are collected and presented by specialist in the field highlighted, and are available to you at no cost. Contact your county Extension agent to help you order the materials you want. There are also more items available so ask to see the 1987 Audio Visual Catalog published by the Instructional Media Center, Department of Extension Communications.

SS - Slide Set

4-H Projects and Activities  
F - Film

VTR - Video Tape Recorder

## A

Accessories Make A Difference (SS)  
Allergin Theory (SS)  
Ambassadors Tell 4-H Story (SS)  
American Paint Horse (SS)  
Annual 4-H Dairy Conference (SS)  
Art of Giving Oral Judging Reasons (VTR)

## B

Baby Pig Management (VTR)  
Basic Casting From A To Z (F)  
Begin To Sew (VTR)  
Beginnings of Black & White Printing (SS)  
Beginnings of Photo Composition (SS)  
Birds Around You (SS)  
Black American Culture & Cuisine (SS)  
Bombarding Things (F)  
Breeding & Kidding (F)  
Breeds of Beef Cattle (SS)

## C

Care Of Your Clothes (SS)  
Careers (F)  
Clothing Strategy (SS)  
Collecting Bugs For Entomology Collections (VTR)  
Commodity Marketing (SS)  
Construction Tips (VTR)  
Cookie Craft (SS)  
Count-Down (F)  
Count-Down (VTR)  
County 4-H Project Coordinators (VTR)  
Creative Accents (VTR)

## D

Dairy Cattle Judging (SS)  
Dairy Goat Selection (SS)  
Developing A Coaching Philosophy for Shooting Sports (SS)  
Development of Chicken Embryo (SS)  
Dogs (SS)  
Doing Your Own Slide Set (SS)  
Drugs Are Like That (F)

## E

Effective Use of Lenses (SS)  
Energy & Living Things (F)  
Exhibiting & Judging Vegetables  
Exhibiting Beef Cattle (VTR)  
Existing Light Photography (SS)  
Exhibiting & Judging Vegetables (SS)  
Exploring World Through Geology (SS)

## F

Fabric Know How (VTR)  
Fabric To Fashion (FS)  
Family In 4-H (SS)  
Fashion In Your Future (FS)  
Fashion Modeling (S)  
Feeding Your Club Calf (SS)  
Fish Identification (SS)  
Fishing Small Ponds (F)  
Fitting Beef Steers (VTR)  
Fitting Market Steers For Show (SS)  
Fitting Slacks (VTR)  
Fleischmann's Yeast Education Programs (VTR)  
For All Kansas Kids (SS)  
4-H Action In All Seasons (F)  
4-H Bicycle Series I (SS)  
1-Bicycle Driving Responsibilities (SS)  
2-Types of Bicycles & Sizing (SS)  
3-Bicycle Took Kit (SS)  
4-Can You Stop? Types Brakes (SS)  
4-H Bicycle Series II (SS)  
1-Bicycle Wheel Maintenance (SS)  
2-From Flat To Mobile, Tire Repair (SS)  
3-From Heat To Foot, Bearings (SS)  
4-Accessories, Needed Or Nice (SS)  
4-H Bike-A-Thon (SS)  
4-H Century Bike Ride (SS)  
4-H Club Congress (SS)  
4-H Entomology (SS)  
4-H Fashion Review '83 (SS)  
4-H Camp Counselors Roles and Responsibilities (VTR)  
4-H Horse Project (SS-Series)  
1-Genetics Of Coal Color (SS)  
2-Horse Safety, Catching, Leading (SS)  
3-Horse Safety, Saddling, Bridling (SS)  
4-What A Judge Looks For (SS)  
5-Intermediate Trail Riding (SS)  
6-Internal Parasites Of Horses (SS)  
7-Practical Horse Psychology (SS)  
8-Pre-Bit Hackamore Training (SS)  
9-Health Hints For Horses (SS)  
10-Basic Foot Care & Shoeing (SS)  
11-Saddle Selection (SS)  
12-Horse Training By Driving (SS)  
13-Buy A Horse-Not Trouble (SS)  
14-Horse Safety For Hunt Seat (SS)  
15-Long Line Training (SS)  
16-Plaiting Hunter's Mane & Tail (SS)  
4-H Is More (VTR)  
4-H Modeling (VTR)  
4-H Photo Print Mounting Methods (SS)  
4-H Record Books (VTR)  
4-H Shooting Sports - Something For Everyone (SS)

## 4-H Shooting Sports (FVTR-Series)

1-Kid Who Can't Miss (FVTR)  
2-Rifle Fund: Firing Shot (FVTR)  
3-Rifle Fund: Stand & Prone (FVTR)  
4-Rifle Fund: Kneel & Sit (FVTR)  
5-Pistol Shooting Fund (FVTR)  
6-Shotgun Shooting Fund (FVTR)  
4-H Vet Sc I, Normal Animal (SS-Series)  
1-Attitude & Behavior (SS)  
2-Skin, Membranes & Intest. (SS)  
3-Body Temp, Pulse & Resp (SS)  
4-Maintaining Animal Health (SS)  
5-Cleaning & Disinfection (SS)  
6-Cells Of The Animal Body (SS)  
7-Tissues Of The Animal Body (SS)  
8-Organs & Syst Of An Body (SS)  
4-H Vet Sc II, Anim Disease (SS-Series)  
1-Intro To Disease (SS)  
2-Bacteria & Disease (SS)  
3-Viruses & Disease (SS)  
4-External Parasites (SS)  
5-Internal Parasites (SS)  
6-Nutrition & Disease (SS)  
7-Poisons & Disease (SS)  
8-Stress & Disease (SS)  
9-Heredity & Disease (SS)  
4-H Vet Sc III, Immunol etc (SS-Series)  
1-Intro To Immunology (SS)  
2-Mech Of Invasion By Path (SS)  
3-Development Of Immunity (SS)  
4-Immunization Of Animals (SS)  
5-Allergin Theory (SS)  
6-Intro To Zoonoses (SS)  
7-Environmental Health (SS)  
8-Public Health (SS)  
9-Consumer Protection (SS)  
4-H, What's It All About (F)

## G

German American Culture & Cuisine (SS)  
Get Ready, Get Set, Grow (VTR)  
Getting Involved (F)  
Getting It All Together (F)  
Getting It All Together (VTR)  
Good Eating Plan (SS)  
Great American Eating Machine (VTR)  
1-Why Do We Eat (VTR)  
2-Where Does Food Come From (VTR)  
3-What's Good For Me (VTR)  
4-What's A Balanced Diet (VTR)  
Great Nutrition Turn On (F)  
Great Nutrition Turn On (VTR)  
Grooming For Success (SS)  
Guinea Pigs & Hamsters (SS)

## H

Hats Off To Leaders (SS)  
Hats Off To Leaders (VTR)  
Health Program Tips For Club Calves (SS)  
Here's To You With Poise (SS)  
Home Use Of Microcomputers (SS)  
Homemade Breads (SS)

## I

If (SS)  
IFYE Report-Japan (SS)  
IFYE-Mauritius (SS)  
IFYE-Poland (SS)  
IFYE-Sweden (SS)  
IFYE-Tiawan (SS)  
IFYE-Thailand (SS)  
Imaginative Use Of Filters (SS)  
Immunization Of Animals (SS)

## J

Joining The 4-H Dog Care Program (SS)  
Judging Colored Dairy Breeds (SS)  
Judging 4-H Entomology Collections (VTR)  
Judging Holstein Dairy Cattle (SS)  
Judging Horses On Conformation (SS)  
Judging Steers & Judging Heifers (VTR)

## K

Kansas 4-H Is For All Kansas Kids (SS)  
Kansas Mammals (SS)  
Kansas State Fair Foods Judging (VTR)  
Kid Who Can't Miss (F)  
Kid Who Can't Miss (VTR)

## L

Livestock Judging I (SS)  
Livestock Judging II (S)  
Living In A Nuclear Age (F-Series)  
1-Bombarding Things (F)  
2-Discovering The Atom (F)  
3-Nuclear Energy & Living Things (F)  
4-Power From The Atom (F)  
5-Radioisotopes (F)  
6-Society & Things Nuclear (F)  
Lucky: The 4-H Clowns (SS)

## M

Meat Identification (SS)  
Meat Identification Lessons 1-2-3 (SS)  
Meat Identification Lessons 4-5-6 (SS)  
Meat Identification Lessons 7-8-9 (SS)  
Meat Judging Classes (SS)  
Microwave Meals (SS)  
Microwaving Secrets (VTR)  
Mini 4-H Clubs (SS)  
Minigardens (F)  
Miscues With Machines (SS)  
More For Less (F)

Mulligan Stew (F & VTR-Series)

1-Great Nutrition Turn On (F/VTR)  
2-Look Inside Yourself (F/VTR)  
3-Flim Flam Man (F/VTR)  
4-Getting It All Together (F/VTR)  
5-Count-Down (F/VTR)  
6-Racer That Lost His Edge (F/VTR)  
Muskrat Trapping Techniques (VTR)  
My Grandson Lew (F)

## N

Nuclear Energy & Living Things (F)

## O

OBIS (F)  
On The Move With 4-H (SS)  
On The Right Channel (F)  
On The Right Channel (VTR)  
101 Meat Identification Cuts (SS)

## P

Pets Need More Than Love (SS)  
Photo Reports Make It Happen (SS)  
Photographers & Film They Choose (SS)  
Photographic Terms & Definitions (SS)  
Photographic People (SS)  
Photography In 4-H: What Camera Does (SS)  
Photography Is Seeing (SS)  
Photography Series: 35mm (SS)  
1-Advanced Black & White Printing (SS)  
2-Basic Picture-Taking Techniques (SS)  
3-Beginning Black & White Printing (SS)  
4-Beginnings of Photo Comp (SS)  
5-Camera: How It Works (SS)  
6-Effective Use of Lenses (SS)  
Pistol Shooting Fundamentals (F)  
Pistol Shooting Fundamentals (VTR)  
Plan To See Rock Springs (SS)  
Plant Identification (SS)  
Postures On Parade (SS)  
Power Tool Safety (SS)  
Project Enrollment Fair (VTR)

## R

Rabbits (SS)  
Rabbit Breeds and Varieties (VTR)  
Rabbit Disease and Health (VTR)  
Rabbit Feeding and Nutrition (VTR)  
Rabbit Housing and Equipment (VTR)  
Rabbit Management Tips (VTR)  
Racer That Lost His Edge (F)  
Racer That Lost His Edge (VTR)  
Radioisotopes (F)  
Recruiting 4-H Leaders (VTR)  
Reflecting On Responsibility (F)  
Reflecting On Responsibility (VTR)  
Reptiles & Amphibians (SS)  
Rifle Fundamentals: Firing Shot (F)  
Rifle Fundamentals: Firing Shot (VTR)

Rifle Fundamentals: Kneel & Sit (F)  
Rifle Fundamentals: Kneel & Sit (VTR)  
Rifle Fundamentals: Stand & Prone (F)  
Rifle Fundamentals: Stand & Prone (VTR)  
Rock Springs 4-H Center (VTR)

## S

Safe Operation Of Farm Tractors (F)  
Selecting 4-H Club Calves (SS)  
Selection Of A Youth Project Heifer (SS)  
Selecting Rabbits For Breeding Stock (VTR)  
Sharing The Load (SS)  
Sharing Volunteer Leadership (SS)  
Shotgun Shooting Fundamentals (F)  
Shotgun Shooting Fundamentals (VTR)  
Show Me Hunter (F)  
Showing Beef Cattle (SS)  
Something To Sing About (SS)  
Speed Tailoring (VTR)  
Successful Vegetable Gardening (SS)  
Survival Of The Fittest (F)  
Swine Breed Identification (VTR)  
Swine Judging (SS)

## T

This Business Of 4-H (SS)  
This Is 4-H (SS)  
To Be A Man (F)  
To Be A Woman (F)  
Tools For 4-H Leaders (SS)  
Tractor Safety For Use In Ag (F)  
Tractor Safety Is No Accident (F)  
Tractor Safety On The Farm (SS)  
Tractor Safety On The Road (SS)  
Tractor Tragedy (SS)  
Trade-Offs (VTR-Series)  
1-Malcolm Decides (VTR)  
2-We Decide (VTR)  
3-Give & Take (VTR)  
4-Less & More (VTR)  
5-Does It Pay (VTR)  
6-Learning & Earning (VTR)

## U

Understand Genetics & And Breeding (SS)

## W

Wearable Art (VTR)  
We're On Our Way (F)  
What An Equine Judge Looks For (SS)  
What's A Balanced Diet (VTR)  
What's Good For Me (VTR)  
Wheat Science (SS)  
Where Does Food Come From (VTR)  
Why Do We Eat (VTR)  
Wildlife Habitat & The Hunter (F)

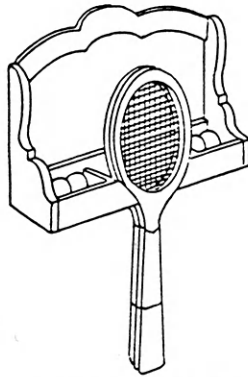
## Y

You & Your Child In 4-H (VTR)

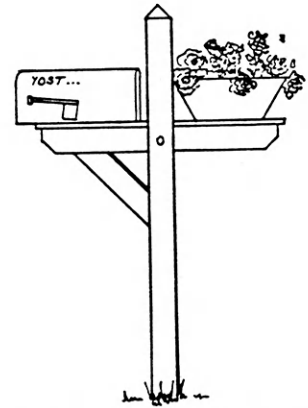
# Free!

## 4-H Woodworking Plans from YOUR PARTICIPATING LUMBER DEALER

These plans  
are available:



TENNIS RACK



PLANTER - MAILBOX

**For your free plans, see your participating lumber dealer; he will also help you select the material you need.**

**ABILENE**  
Abilene Lumber, Inc.

**ASHLAND**  
Don Spotts Lumber Company

**ATCHISON**  
Beverly Lumber Co., Inc.

**BELOIT**  
Peoples Lumber Co.

**BURLINGTON**  
Burlington Lumber & Supply

**CIMARRON**  
Stephens Lumber of Cimarron

**CLAY CENTER**  
Fullington's

**CONCORDIA**  
Mid-West Lumber Company

**EL DORADO**  
Home Lumber & Supply Co.

**EMPORIA**  
Fleming Lumber & Material Co.  
Mark II Lumber

**ERIE**  
Johnson & Son Lumber Co.

**EUREKA**  
Home Lumber & Supply Co.

**FREDONIA**  
Schoolcraft Lumber Co.

**GALVA**  
Galva Lumber, Inc.

**GARDEN CITY**  
Fankhauser, Inc.

**HUTCHINSON**  
Davis Home Center  
Kightlinger's

**INDEPENDENCE**  
Sandott Sentry Home Center

**IOLA**  
Klein Lumber Company

**JOHNSON**  
Seyb-Tucker Lumber and  
Implement Company

**JUNCTION CITY**  
Builders Lumber, Inc.

**KINGMAN**  
Kingman Lumber Co.

**LaHARPE**  
Diebolt Lumber and Supply

**LANSING**  
Lansing Lumber, Inc.

**LARNED**  
T.M. Deal Lumber Co.

**MANHATTAN**  
Cash Lumber & Hardware

**NEWTON**  
Claassen Hardware &  
Lumber Co.

**NICKERSON**  
The Home Lumber &  
Supply Co.

**NORTONVILLE**  
Nortonville Lumber, Inc.

**OTTAWA**  
Hubbard Lumber  
Company, Inc.

**PAOLA**  
Miami Lumber, Inc.

**PARSONS**  
Woods-Seward Lumber Co.

**PITTSBURG**  
Broadway Lumber Co., Inc.  
True Value Home Center

**PRATT**  
W.R. Green Lumber, Inc.

**Woodworking Plans Available:**

- Accent Table
- Bluebird House
- Book Rack
- Bulletin Board
- Cherry Wood Cabinet
- Child's Toy Wagon
- Child's Rocker
- Computer Desk
- Cutting Board
- Darning Doll
- Deacon's Bench
- Dog House
- Dresser Valet
- Easel
- Garden Seat
- Key Rack
- Letter Holder
- Mantel Clock
- Martin Bird House
- Novelty Rocking Horse
- Patio Chair
- Pedestal Desk
- Pet Food Bin
- Plant Stand
- Porch Swing
- Redwood Cart
- Revere Coat Rack
- Roll Top Desk
- Rolling Pin
- Stereo Case
- Towel Storage Rack
- Wall Book Shelf
- Walnut Headboard
- Wren House

**The Kansas Wheat Commission is proud to ...**

*\*sponsor a grain marketing study tour to Manhattan and Kansas City for state wheat quality project winners and the State Fair wheat variety booth winner*

*\*provide seed wheat for 4-H'ers in the wheat variety plot project*

*\*co-sponsor 4-H Wheat Shows*

**The Kansas Wheat Commission and Kansas 4-H members — promoting Kansas as a world leader in wheat production!**



**RUSSELL**  
Schwaller Lumber

**SALINA**  
Easterday-Boster Lumber Co.

**SHARON SPRINGS**  
Hennick Lumber & Supply Co.

**ST. JOHN**  
English Lumber & Supply Co., Inc.

**SYRACUSE**  
Hess Lumber Co.

**TOPEKA**  
Whelan's Inc.

**ULYSSES**  
Sunflower Lumber Co., Inc.

**WASHINGTON**  
Washington Lumber Co.

**WILSON**  
Hoch Lumber Company

**WINFIELD**  
A.B. Everly Lumber Co., Inc.  
Everitt Lumber Co., Inc.

**WRIGHT**  
Right Co-op Assn.

**Dillons**  
FOOD STORES

**The Best Food Store In Town!**

*Our People Make it Happen!*

# Wherever You Live in the Sunflower State....



*City or Country...  
We've got Kansas covered!!*

**WITH A FULL LINE OF INSURANCE PLANS  
AND OVER 400 AGENTS STATEWIDE.**

Outstanding coverage.  
Rates that are right. And  
with agents in every  
county and over 70 claims  
adjustors statewide, we'll  
be there — fast  
— when you need us.

Why not discover how  
we can make you — or  
your piece of Kansas —  
more secure.



**Farm Bureau Insurance**

FARM BUREAU MUTUAL • KANSAS FARM BUREAU LIFE • KFB INSURANCE COMPANIES

## Special Thanks

Thanks to The First National Bank of  
Phillipsburg, and all others for their con-  
tinued support.

Phillips Co. 4H

---

Thank you! 4H leaders, parents, and  
members for a great year in Scott County.

Betty and Al  
Scott County

---

A sincere Thanks to all volunteers and  
agents who have helped to make the past  
four years great!

Kirk Astroth  
Southeast Area Extension Specialist

---

Thanks to agents Linda Walter and Don  
Dauber for the positive influence and  
special interest they have extended to our  
kids.

The Jerry Whipple Family  
Hodgeman County

---

Victory 4H Club wants to thank Kit  
Griffon for all her extra efforts this year.

Victory 4H Club  
Haskell County

---

Thank you Hershel George of Paola,  
Kan., for your extra help and being there  
when we need you.

The Barnhills  
Miami County

---



Special thanks to everyone in Sumner County who has been so supportive and helpful during my first year as your 4-H agent!

Julie Koci  
Sumner County

The Spring Creek Hustlers 4-H Club of Graham County want to thank our leaders Jackie Clark and Gary Worcester for all they've done for our club. They're always there when we need them and they're very thoughtful.

The Spring Creek Hustlers 4-H Club  
Graham County

Thank you to Freone Hollinger for all of her work for Floriculture 4-Hers in Franklin County.

Trailblazers 4-H  
Franklin County

Leo, to the world's greatest 4-H leader, we say thanks.

Wilson Winners 4-H Club  
Ellsworth County

Thank you to Phyllis Williams for her many, many years as flower and houseplant project leader.

Trailblazers 4-H  
Franklin County

Thanks to our coach, Frank Swan from the Reserve Champion Western National 4-H Horse Judging Team.

Bill, Chris, Chris, Lori  
Stanton Co.

More money for post-high school education comes from family income and savings than from any other source. Be prepared; early in life start a savings account at your

## Kansas Savings and Loan

**Fort Scott**  
Liberty Savings & Loan Assn.

**Leavenworth**  
Citizens Mutual Savings & Loan Assn.

**Medicine Lodge**  
The Barber County Savings & Loan Assn.

**Hutchinson**  
Valley Federal Savings & Loan Assn.

**Lyons**  
Lyons Savings & Loan Assn.

**Plainville and Stockton**  
Rooks County Savings Assn.

**Manhattan**  
Manhattan Federal Savings & Loan Assn.

Remember to thank your 4-H Journal Sponsors!

# EXCEL

EXCEL beef products provide a standard of

*Excellence* around the world.

Headquarters: 151 N. Main  
P.O. Box 2519, Wichita, Kansas 67201

- Dodge City, KS • Friona, TX • Nebraska City, NE
- Philadelphia, PA • Plainview, TX • Wichita, KS

**We Relish Your Business!**

CALL IN ORDERS WELCOME

**CONSOLIDATED Printing Salina**  
1-800-432-0266  
SERVING ALL OF KANSAS

# Rock Springs 4-H Center Receives Truck from Southwestern Bell



Wayne Franklin, area manager-community relations for Southwestern Bell Telephone Co., presents keys to Director of Rock Springs 4-H Center, Bob Pinkall.

**A** used company truck has been donated by Southwestern Bell Telephone Co. to the Kansas 4-H Foundation.

The surplus telephone company vehicle will be used as a maintenance vehicle at the Rock Springs 4-H Center near Junction City. The truck is the sixth vehicle that Southwestern Bell Telephone has donated to the Kansas

4-H Foundation for use at Rock Springs since 1978.

Wayne Franklin, area manager-community relations for Southwestern Bell Telephone Co., presented the keys to Bob Pinkall, director of Rock Springs 4-H Center, in early October at the Southwestern Bell Telephone Co. building in Topeka.

Non-Profit Organization  
U.S. Postage  
**PAID**  
Permit No. 86  
Salina, Kansas