

Kansas 4-H Journal

The Family Magazine

November/December 1986



Season's Greetings



Farm Bureau

2321 Anderson Avenue
Manhattan, Kansas 66502
(913) 537-2261

Editor's note

"To make the best better" is the motto I learned while attending my first 4-H club meeting of the Chamness 4-H Club in Lyon County. The meeting was 17 years ago and was the beginning of my 4-H career. I remember the enthusiasm and excitement I felt as I became a member. The leaders probably tired of my endless questioning, but I couldn't learn fast enough about the 4-H program and all it had to offer.

For the next 10 years, I worked on making each of my projects better following the learning-by-doing technique. The support from my parents, sisters, 4-H and community leaders helped make my failures easier to take and my successes even brighter. In 1980, the time came to leave the 4-H program as an active member. By this time, 4-H had become a large part of my life. It was definitely one part I wasn't willing to give up so I became an active volunteer helping members where I could.

As the new editor of the *Kansas 4-H Journal*, I hope to continue helping 4-H members by providing the best communication tool possible. I have the same feelings of excitement and enthusiasm for the 4-H program as I did at my first club meeting. I am curious by nature, and I have many questions about what you're doing in 4-H. To find the answers, I will turn to you. Please remember you don't need to be asked to submit material to the *Journal*. If you have a story of interest, please feel free to send it to me.

I have a strong sense of pride in the 4-H program. Pride which I hope will be catching and will show in each issue of the *Journal*. The *Journal* is your magazine ... be proud of it.

To make the *4-H Journal* even better, I'll need your help to learn about events and activities in your area and in thanking your *4-H Journal* sponsors. Join me in my efforts of "learning by doing" to make the best 4-H magazine even better.

Rhonda Atkinson
Editor

Kansas 4-H Journal

Volume XXXII, No. 10
November/December 1986

Rhonda Wessel Atkinson . Editor
Glenda Eichman Secretary

Address all correspondence:
 Kansas 4-H Journal
 116 Umberger Hall, KSU
 Manhattan, Kansas 66506
 Phone (913) 532-5881

Single subscriptions are \$4 per year. Group subscriptions are available upon request.

Kansas 4-H Journal is published
 10 times a year by
KANSAS 4-H FOUNDATION, INC.

Bill Riley Executive Director
 Merle Eyestone Field Representative
 Trisha Cash Secretary
 Ann Carr Asst. Treasurer

BOARD OF TRUSTEES

Governor John Carlin
 Honorary Chairman

Glee S. Smith, Chrm. Larned
 Mrs. Charles Streeter, Vice-Chrm. Manhattan
 John Junior Armstrong, Treas. Manhattan
 Duane Acker Manhattan
 Ross Beach Hays
 Mrs. Edna Collingwood Johnson
 W. Dale Critser Wichita
 Richard Dillon Hutchinson
 Marilyn Pence Galle Moundridge
 Mrs. Olive Garvey Wichita
 Balfour S. Jeffrey Topeka
 J. Harold Johnson Manhattan
 Wilbur E. Levering Topeka
 Thomas M. Potter Wichita
 C.R. Salmon Manhattan
 Tom Shirley Dodge City
 Fred Sobering Manhattan
 Robert Wagstaff Shawnee Mission
 Mrs. Dwane Wallace Wichita
 *Glenn M. Busset Manhattan
 *Sen. Frank Carlson Concordia
 *Sen. Harry Darby Kansas City
 *George B. Powers Wichita
 *Roger E. Regnier Manhattan
 *Dolph Simons, Sr. Lawrence
 *Advisory Member

Use of the 4-H name and symbol approved by the Secretary of Agriculture of the United States, January 23, 1951, under the provisions of the laws as reenacted by Sec. 707 of the Act of June 25, 1948. Public Law No. 772 80th Congress (10 USC 797).

In this issue

Editor's Note	2
New Executive Director	4
New 4-H Journal Editor	5
1986 Sponsor Listing	6-7
Thank You	8
Special Thanks	9
Five Win Trips to 4-H Congress	9
Extension Expo	10
4-H Alumni ... Remember the 4-H Experience	11
Audio/Visual Aids Available	12-13
Applications Due	13
Poster Contest	18
Grove 4-H Club	19
Photo Contest Winner	20

Advertisers index

Farm Bureau	2
Flatland Invitational Quarter Horse Sale	14
Gerdes Quarter Horse	14
Farm Bureau	14
Anchor Savings	15
J Bar J Trailer Sales	15
Dillons	15
Kansas Savings & Loan	15
Consolidated Printing	15
Woodworking Plans	16-17
Kansas Wheat Commission	17
Excel	17
Piper Angus	18
Sangamon Mills	18
Grass & Grain	18
Collingwood Grain	19
Carr Enterprises	19

4-H Foundation names New Executive Director

The Kansas 4-H Foundation board of trustees has announced the appointment of Bill Riley as executive director of the Foundation. Glee S. Smith, chairman of the board, made the announcement following the fall board meeting in Wichita on Oct. 30.

The board decision followed the

"Bill is uniquely qualified for the variety of responsibilities involved with the Foundation activities."

—Glee S. Smith

notification by Merle Eyestone, executive director since 1971, of his intended retirement at the end of 1987. Eyestone agreed to the board's request to remain actively involved as a field representative until his retirement.

The board's selection of Riley was effective Nov. 1. Riley was a former member of the Foundation staff as director of camping and conference facilities, including Rock Springs Ranch and managing editor of the 4-H Journal.

"The board is pleased with the op-

portunity to bring Bill Riley with his management and fund raising background into the Foundation leadership position," Smith said. "Bill is uniquely qualified for the variety of responsibilities involved with the Foundation activities. We are particularly pleased with his availability and acceptance of

"The board has greatly appreciated the dedication and leadership of Merle Eyestone."

—Smith

this position."

"The board has greatly appreciated the dedication and leadership of Merle Eyestone," Smith said. "Merle has been a member of the Foundation staff since 1962 and executive director since 1971. He has been totally committed to the efforts of the Foundation and the 4-H program it supports."

"As a field representative for the Foundation, Merle's availability during the next year will be a great benefit to our fund raising efforts," Smith said.

Riley has recently been involved as a consultant to the Foundation and

previously served as executive director of the Arabian Horse Trust of America. In that position, he was responsible for a six million dollar campaign and the construction development of the Arabian Horse Center in Denver. The center provides a public museum, library, reference resource

"The board is pleased with the opportunity to bring Bill Riley with his management and fund raising background into the Foundation leadership position."

—Smith

and administrative headquarters for Arabian horse industry activities for the United States.

A permanent member and past president of the board of the Colorado Association of Fund Raisers, Riley was the recipient of a special leadership award from that 300 member organization. He is also a founding trustee and member of the board of the Rocky Mountain Philanthropy Fund. He is married to the former Erma Jean Karr, and they have three children who are all members of the Pillsbury 4-H club of Riley County.

4-H Foundation names New 4-H Journal Editor

by De McGlashon
Extension Communications

A former 4-H member and agriculture editor for the Kansas State Collegian has assumed the editorial duties for the *Kansas 4-H Journal*.

Rhonda Wessel Atkinson will coordinate news writing and advertising for the monthly publication, which serves as a link with 4-H volunteers and leaders, county extension staff and the Kansas 4-H Foundation.

"Rhonda's experience and abilities will permit us to expand our editorial responsibilities," Bill Riley, executive director of the Foundation, said. "Her position will include public relations and increased advertising duties. She will also serve as a representative of Kansas 4-H and the Kansas 4-H Foundation with media contacts."

Atkinson received a bachelor's degree in agricultural journalism from Kansas State University in 1985. She is working on a master's degree in public relations in the Department of Journalism and Mass Communications at K-State.

A 10-year member of Chamness 4-H Club in Lyon County, she was selected as the 1980 state 4-H horse award winner. During the same year, she was a delegate to the National 4-H Conference, Washington, D.C. While still a 4-H member, Atkinson began competing in national horse judging contests, and she continued to participate in these contests as a member of the K-State Horse Judging Team.

More recently, Atkinson was an advertising account executive for KQLA, a Manhattan radio station. In this capacity, she contacted prospective advertisers, prepared detailed marketing presentations and worked with advertising agencies.

Raised on a farm southwest of Emporia, she graduated from Emporia

High School in 1980. Her parents, Ronald and Charlotte Wessel, have been active 4-H volunteers for many years.

She and her husband, Eric Atkinson, agriculture director for Extension Communications, live on a small acreage near Manhattan.

Seasons Greetings from the 4-H Foundation



1986 Sponsor Listing

Have you said thank you to your *Kansas 4-H Journal* sponsor? These sponsors bring the 4-H Journal free to almost all 4-H families in the state.

The 4-H Journal is the only state 4-H magazine in the nation. A project of the Kansas 4-H Foundation, the Journal is a communication tool which unifies the state, a form of youth recognition and a promotional tool for the Kansas 4-H club program.

We think the Journal is important. We hope you do, too. Please help ensure the continuance of the Journal by thanking your Journal sponsor today.

- ALLEN**
Mrs. Gwen E. Wilson Memorial Scholarship Fund
- ANDERSON**
Anderson County 4-H Council
- ATCHISON**
Atchison County 4-H Council
Saunders Manufacturing Co., Atchison
- BARBER**
First National Bank, Medicine Lodge
Barber County 4-H Council
- BARTON**
American State Bank & Trust., Great Bend
Great Bend Co-op Association, Great Bend
- BOURBON**
Citizens National Bank, Fort Scott
Double Circle Farm Supply, Fort Scott
Liberty Savings and Loan Association, Fort Scott
Security State Bank, Fort Scott
Union State Bank, Uniontown
Bourbon County 4-H Council
- BROWN**
The Bank of Horton, Horton
The Bank of Robinson, Robinson
Citizens State Bank, Hiawatha
Farmers State Bank, Fairview
The Morrill and Janes Bank, Hiawatha
Morrill State Bank, Sabetha
The Union State Bank, Everest
- BUTLER**
Benton State Bank, Benton
First National Bank and Trust, El Dorado
Potwin State Bank, Potwin
Prairie State Bank, Augusta
State Bank of Leon, Leon
Walnut Valley State Bank, El Dorado
Butler County 4-H Council
- CHASE**
Exchange National Bank, Cottonwood Falls
The Peoples Exchange Bank, Elmdale
Chase County 4-H Council
- CHAUTAQUA**
Cedar Vale State Bank, Cedar Vale
Chautauqua County Farm Bureau, Sedan
- CHEROKEE**
American National Bank, Baxter Springs
Evan's Health Mart Drug, Columbus
The Hartley Agency, Inc., Baxter Springs
The Walberts and Timberlake Hardware & Furniture Company, Columbus
H.D. Youngman Contractor, Inc., Baxter Springs
Cherokee County 4-H Council
- CHEYENNE**
St. Francis State Bank & Trust Co., St. Francis
Cheyenne County 4-H Council
- CLARK**
Citizens State Bank, Ashland
Peoples State Bank, Minneola
Stockgrowers State Bank, Ashland
- CLAY**
Union State Bank, Clay Center
Clay County 4-H Council
- CLOUD**
Citizens State Bank, Miltonvale
Cloud County Bank and Trust, Concordia
Exchange Bank of Clyde, Clyde
First Bank and Trust, Concordia
The First National Bank of Glasco, Glasco
Cloud County 4-H Council
- COFFEY**
Coffey County 4-H Council
- COMANCHE**
The Peoples State Bank, Coldwater
- COWLEY**
The First National Bank, Winfield
The Home National Bank of Arkansas City, Arkansas City
Cowley County 4-H Council
- CRAWFORD**
Bank IV, Pittsburg
The City National Bank of Pittsburg
Farmers State Bank, Walnut
First National Bank, Girard
First State Bank, Arma
The First State Bank and Trust Company, Pittsburg
Girard National Bank, Girard
Hepler State Bank, Hepler
- DECATUR**
Decatur Co-op Association, Oberlin
- DICKINSON**
Farmers National Bank, Abilene
- DONIPHAN**
Atchison County Co-op, Denton
Doniphan County REA, Troy
Farmers State Bank, Wathena
Robinson Farmers Co-op, Robinson
Troy State Bank, Troy
Valley Grain & Fertilizer, Highland
- DOUGLAS**
Douglas County State Bank, Lawrence
Douglas County 4-H Council
- EDWARDS**
The Home State Bank, Lewis
- ELK**
Exchange State Bank, Moline
Home State Bank, Longton
Howard State Bank, Howard
Elk County 4-H Council
- ELLIS**
Ellis State Bank, Ellis
Farmers National Bank, Victoria
First National Bank, Hays
Hays State Bank, Hays
Farmers State Bank, Hays
- ELLSWORTH**
The Bank of Holyrood, Holyrood
Citizens State Bank and Trust, Ellsworth
Kanopolis State Bank, Kanopolis
Lorraine State Bank, Lorraine
Wilson State Bank, Wilson
- FINNEY**
Fidelity State Bank, Garden City
First National Bank of Holcomb, Holcomb
Fourth Bank of Garden City, Garden City
Garden National Bank, Garden City
Finney County 4-H Council
- FORD**
Bucklin State Bank, Bucklin
Farmers State Bank, Bucklin
Fidelity State Bank and Trust, Dodge City
First National Bank, Spearville
First National Bank, Dodge City
Ford County State Bank, Spearville
- FRANKLIN**
Franklin County 4-H Council
- GEARY**
Central National Bank, Junction City
J.C. Chamber of Commerce, Junction City
- GOVE**
First National Bank, Quinter
Grainfield Elevator, Inc., Grainfield
Peoples State Bank, Grinnell
- GRAHAM**
Citizens State Bank, Morland
Consolidated State Bank, Hill City
Farmers State Bank, Bogue
Farmers and Merchants Bank, Hill City
- GRANT**
Grant County State Bank, Ulysses
Grant County 4-H Council
- GRAY**
Farmers State Bank, Ingalls
First National Bank in Cimarron, Cimarron
Montezuma State Bank, Montezuma
Gray County 4-H Council
- GREELEY**
First National Bank, Tribune
Greeley County 4-H Council
- GREENWOOD**
Citizens National Bank, Eureka
Emch Feed and Elevator Company, Madison
Engle's Super Saver Food Center, Madison
Eureka Federal Savings and Loan, Eureka
First National Bank, Madison
First National Bank of Hamilton, Hamilton
Freeman's T.V. and Appliance, Eureka
Home Bank and Trust Company, Eureka
Home Lumber Company, Eureka
Knight Lumber and Hardware, Severy
Parks Oil Company, Eureka
- HAMILTON**
First National Bank, Syracuse
Valley State Bank, Syracuse
Hamilton County 4-H Council
- HARPER**
Anthony Farmers Co-op Elevator, Anthony
Danville Co-op Association, Danville
Farmers Co-op Business Association, Hazelton
State Line Grain Company, Manchester
Harper County 4-H Council
- HARVEY**
Bank IV, Newton
First Bank of Newton
The Halstead Bank, Halstead
Hesston State Bank, Hesston
Midland National Bank, Newton
Sedgwick State Bank, Sedgwick
State Bank of Burrton, Burrton
Walton State Bank, Walton
Harvey County 4-H Council
- HASKELL**
The Haskell County State Bank, Sublette
Haskell County 4-H Council
- HODGEMAN**
Farmers State Bank, Jetmore
Hanston State Bank, Hanston
Hodgeman County 4-H Council
- JACKSON**
Clark Chevrolet/Olds, Inc., Holton
Holton Lions Club, Holton
Jackson County Farm Bureau, Holton
Jackson Farmers, Inc., Holton
Oldham's Farm Sausage, Lee Summit, MO
Jackson County 4-H Council
- JEFFERSON**
Leavenworth-Jefferson Electric Co-op, McLouth
Jefferson EHU Council
Jefferson County 4-H Council
- JEWELL**
Burr Oak State Bank, Burr Oak
Citizens State Bank, Jewell
First National Bank, Mankato
The Formosa Bank, Formosa
The Randall Bank, Randall
State Bank of Esbon, Esbon
State Exchange Bank, Mankato
- JOHNSON**
Bank IV, Olathe
Farmers Bank and Trust Company, Gardner
First National Bank, Olathe
Olathe State Bank, Olathe
Shawnee State Bank, Shawnee
State Bank of Spring Hill, Spring Hill
State Bank of Stanley, Stanley
Johnson County 4-H Council
- KEARNY**
Kearny County Feeders, Inc., Lakin
- KINGMAN**
C.R. Calvert Company, Kingman
- KIOWA**
First State Bank, Mullinville
Greensburg State Bank, Greensburg
Haviland State Bank, Haviland
Kiowa County 4-H Council
- LABETTE**
American State Bank, Oswego
First National Bank, Oswego
Chetopa State Bank and Trust, Chetopa
First National Bank and Trust, Parsons
First State Bank, Edna
Labette County State Bank, Altamont
Labette County 4-H Council
- LANE**
First National Bank, Dighton
First State Bank, Healy
Lane County 4-H Council
- LEAVENWORTH**
First State Bank, Tonganoxie
Leavenworth County 4-H Council
- LINCOLN**
Sylvan State Bank, Sylvan Grove
Lincoln County 4-H Council

- LINN**
Bank of Pleasanton, Pleasanton Farmers State Bank, Blue Mound First State Bank, Pleasanton Linn County Bank, LaCygne Prescott State Bank, Prescott Linn County 4-H Council
- LOGAN**
Farmers State Bank, Oakley Logan County 4-H Council
- LYON**
Americus State Bank, Americus Bluestem Farm and Ranch, Emporia Farm Credit Services, Emporia Hartford State Bank, Hartford Lyon County Farm Bureau, Emporia Lyon County 4-H Council Eureka Federal Savings, Emporia Lyon County State Bank, Emporia Bunge Corporation, Emporia
- MARION**
Ag Service, Inc., Hillsboro Cooperative Grain and Supply, Hillsboro Farmers Grain Cooperative, Peabody G & R Implement Company, Durham Jayhawk 4-H Club Miller Funeral Home, Goessel Peabody Achievers 4-H Club Ramona Red Chief 4-H Club Ratzlaff Draperies, Inc., Goessel Schmidt Studio, Goessel Sears Catalog Store, Marion Tampa Co-operative Association, Tampa Tampa Triple T's 4-H Club Wheatland Bank of Goessel, Goessel Willing Workers 4-H Club
- MARSHALL**
Blue Valley National Bank, Marysville Bremen State Bank, Bremen Citizens State Bank, Marysville Citizens State Bank, Waterville Exchange Bank of Schmidt and Koester, Marysville First National Bank, Frankfort First National Bank, Summerfield Marshall County Bank, Beattie State Bank of Axtell, Axtell State Bank of Blue Rapids, Blue Rapids Vermillion State Bank, Vermillion
- MEADE**
Fowler State Bank, Fowler Plains State Bank, Plains Meade County 4-H Council
- MIAMI**
Eddy Birchard Funeral Home, Osawatomie First National Bank of Osawatomie, Osawatomie Miami Veterinary Clinic, Inc., Paola Sinclair Rexall Drugs, Inc., Osawatomie Wilson and Son Funeral Home, Paola
- MITCHELL**
Farmers and Merchants State Bank, Cawker City Farmers State Bank, Hunter Farmers State Bank of Simpson, Simpson First National Bank, Beloit Guaranty State Bank, Beloit Tipton State Bank, Tipton Traders State Bank, Glen Elder
- MONTGOMERY**
Citadel, Independence People's State Bank, Cherryvale Montgomery County 4-H Council
- MORRIS**
Morris County 4-H Council
- MORTON**
Elkhart Cooperative Equity Exchange, Elkhart Elkhart T.V. Cable System, Elkhart Elkhart True Value Lumber, Elkhart First National Bank, Elkhart First State Bank, Elkhart Janzen-Elder Insurance and Real Estate, Inc., Elkhart Morton County Fair Association, Elkhart Nusser Oil Company, Elkhart Rolla Cooperative Equity Exchange, Rolla Morton County 4-H Council
- MCPHERSON**
McPherson County 4-H Development Fund
- NEMAHA**
Baileyville State Bank, Seneca Citizens State Bank & Trust Co., Seneca Community National Bank, Seneca Farmers Co-op Elevator, Sabetha Farmers State Bank, Corning Farmers State Bank, Sabetha First National Bank, Centralia First National Bank, Goff First National Bank, Wetmore Lortscher Agri-Service, Inc., Bern Morrill State Bank & Trust Co., Sabetha Nemaha County Co-op Association, Seneca Seneca Elevator Company, Seneca State Bank of Bern, Bern Vermillion Grain Company, Inc., Vermillion
- NEOSHO**
GEO Churchill Pumping, Chanute NUWA Industries, Chanute Lester T. Sunderland Foundation, Kansas City, MO Neoshoe County 4-H Council
- NESS**
Bazine State Bank, Bazine Citizens State Bank, Utica First State Bank, Ness City First State Bank of Ransom, Ransom Ness County 4-H Council
- NORTON**
Exchange Bank of Lenora, Lenora First State Bank, Almena Kellings Fine Foods, Norton Lenora Mercantile Exchange, Lenora Norton Appliance and Furniture, Norton Norton County Farm Bureau, Norton Norton Livestock Auction, Norton Rural Telephone Service Company, Inc., Lenora Norton County 4-H Council
- OSAGE**
Aaron's Homestore, Carbondale Carbondale Pro Hardware, Carbondale Carbondale Service, Carbondale Carbondale State Bank, Carbondale Dayhoff Elector, Osage City DeBaun Case/International Dealer, Osage City Jones Service Station, Melvern Kemble Tree Farm, Carbondale Lori's Secretarial Service, Scranton McNabb Grocery Store, Melvern Melvern Super Saver, Melvern Skip's Thriftway, Carbondale Terri's Style Shop, Carbondale Virginia Lee Beauty Salon, Carbondale Williams Pharmacy, Carbondale
- OSBORNE**
Downs National Bank, Downs Farmers National Bank, Osborne First National Bank of Natoma, Natoma First State Bank, Osborne First State Bank of Portis, Portis State Bank of Downs, Downs Osborne County 4-H Council
- OTTAWA**
Delphos Co-op, Delphos Hoover's of Minneapolis, Inc., Minneapolis Loit Implement Company, Minneapolis 4-H Booster Club, Minneapolis Ottawa County 4-H Council
- PAWNEE**
First National Bank, Larned First State Bank, Larned
- PHILLIPS**
First National Bank, Phillipsburg
- POTTAWATOMIE**
First National Bank, Wamego Farmers State Bank, Westmoreland J. Warren Hildreth, Wamego Kaw Valley State Bank and Trust, Wamego St. Marys State Bank, St. Marys Union State Bank of Olsburg, Olsburg *Pottawatomie County 4-H Council
- PRATT**
Cairo Co-op Equity Exchange, Cairo Cullison Co-op, Pratt Iuka Co-op Exchange, Iuka Preston Co-op Grain and Mercantile Co., Preston Sawyer Co-op Equity Exchange, Sawyer Pratt County 4-H Council
- RAWLINS**
Farmers Bank and Trust, Atwood Farmers State Bank, Ludell Peoples State Bank, McDonald State Bank of Atwood, Atwood Rawlins County 4-H Council
- RENO**
Buhler State Bank, Buhler Central State Bank, Hutchinson Citizens State Bank, Arlington Commerce Bank of Hutchinson, Hutchinson Farmers State Bank, Yoder First National Bank, Hutchinson Haven State Bank, Haven Hutchinson National Bank and Trust, Hutchinson Nickerson State Bank, Nickerson State Bank of Kansas, South Hutchinson State Bank of Plevna, Plevna State Bank of Pretty Prairie, Pretty Prairie Sylvia State Bank, Sylvia Turon State Bank, Turon
- REPUBLIC**
Arbutnot's Drug Company, Belleville First National Bank, Belleville The Walthers Oil Company, Cuba Republic County 4-H Council
- RICE**
Alden State Bank, Alden Bushton Grain and Supply, Chase Central Kansas Elevator, Lyons Chandler Bank, Lyons Charles and Estelle Schmidt, Geneseo Collingwood Grain, Inc., Little River Farmers Co-op of Alden, Lyons, Sterling and Pollard, Farmers State Bank, Sterling First National Bank, Sterling Home State Bank, Little River Lyons IGA Store, Lyons Lyons Savings and Loan, Lyons Pepsi-Cola Bottling Company, Hays Raymond State Bank, Raymond Rice County State Bank, Chase Rice County 4-H Council
- RILEY**
Riley County 4-H Foundation, Manhattan Vista Drive-In Restaurant, Manhattan Riley County 4-H Council
- ROOKS**
Central Kansas Credit Union, Stockton First National Bank, Palco Norton-Decatur Co-op Electric Company, Norton Rooks County 4-H Council
- RUSH**
Rush County Banker's Association, Bison Rush County 4-H Council
- RUSSELL**
Farmers State Bank, Lucas Gorham State Bank, Gorham Peoples State Bank, Luray Russell State Bank, Russell Russell County 4-H Council
- SALINE**
Assaria State Bank, Assaria Falun State Bank, Falun First Bank and Trust, Salina First National Bank and Trust, Salina Gypsum Valley Bank, Gypsum National Bank of America, Salina Salina Area Chamber of Commerce, Salina Saline County 4-H Council
- SCOTT**
First National Bank, Scott City Security State Bank, Scott City
- SEDGWICK**
Chisholm Trail State Bank, Wichita Citizens State Bank, Cheney First National Bank in Wichita, Wichita Bank IV, Wichita Western State Bank Home State Bank, Clearwater Sedgewick County 4-H Achievement Foundation
- SEWARD**
Citizens State Bank, Liberal First National Bank, Liberal Peoples National Bank, Liberal Seward County 4-H Council
- SHAWNEE**
Goodyear Tire and Rubber Company, Topeka Shawnee Co. Agriculture Fund Silver Lake Bank, Silver Lake
- SHERIDAN**
First National Bank, Hoxie Hoxie State Bank, Hoxie Mickey Hardware Selden State Bank, Selden Sheridan County 4-H Council
- SHERMAN**
T-Bone Feeders, Inc., Goodland
- SMITH**
Farmers National Bank, Gaylord First National Bank, Kensington First National Bank, Lebanon First National Bank, Smith Center The Smith County State Bank and Trust Company, Smith Center
- STAFFORD**
Farmers and Merchants State Bank, Macksville Farmers National Bank, Stafford First National Bank and Trust, St. John Hudson State Bank, Hudson Macksville State Bank, Macksville St. John National Bank, St. John Stafford County 4-H Council
- STANTON**
Collingwood Grain, Inc., Johnson Stanton County 4-H Council
- STEVENS**
Citizens State Bank, Hugoton Stevens County 4-H Council
- SUMNER**
Danville Co-op Grain Company, Argonia Farmers Cooperative Grain, Wellington Farmers Cooperative Grain Company, Caldwell Farmers Cooperative Grain Company, Conway Springs Hunnewell Elevator, South Haven McDaniel Grain Company, Gueda Springs McDaniel-Wapels, Inc., Wellington Oxford Milling Company, Oxford Ross Industries, Wellington Wolcott and Lincoln, Inc., Corbin Wolcott and Lincoln, Inc., Milan Wolcott and Lincoln, Inc., Perth Wolcott and Lincoln, Inc., Riverdale Wolcott and Lincoln, Inc., South Haven Wolcott and Lincoln, Inc., Wellington Sumner County 4-H Council
- THOMAS**
Farmers and Merchants Bank, Colby People's State Bank of Rexford, Rexford
- TREGO**
Eberle Oil Company, WaKeeney Dinkel Oil Company, Collyer Malsom Implement Company, Collyer Schoenberger & McCoy Auction Service, Collyer Schreiner's Service Station, Ogallah Trego County 4-H Council
- WABAUNSEE**
Alta Vista State Bank, Alta Vista First National Bank, Alma First National Bank, Harveyville Flint Hills Bank of Eskridge, Eskridge The Stockgrowers State Bank, Maple Hill Wabaunsee County 4-H Council
- WALLACE**
People's State Bank, Sharon Springs Wallace County 4-H Council
- WASHINGTON**
Washington County 4-H Council
- WICHITA**
First State Bank, Leoti Wichita County 4-H Council
- WILSON**
Cox Grain, Inc., Fredonia First National Bank, Fredonia First National Bank, Neodesha Fredonia Co-op Association, Fredonia Neodesha Building Supply, Neodesha Radiant Electric Co-op, Inc., Fredonia Self-Service Grocery, Fredonia State Bank of Fredonia, Fredonia Wiggins Pharmacy, Fredonia Wilson County Farm Bureau, Fredonia Wilson County 4-H Council
- WOODSON**
J.E. Sowder Seed Company, Toronto State Exchange Bank, Yates Center Woodson County 4-H Council
- WYANDOTTE**
Ag Images, Kansas City Brotherhood State Bank and Trust, Kansas City Coleman Implement Company, Bonner Springs Commercial State Bank, Bonner Springs Home State Bank, Kansas City Melba's Fabrics, Kansas City Pet Palace, Kansas City SACO Petroleum, Kansas City Welborn Animal Hospital, Kansas City Wyandotte County 4-H Council

Thank You

Thank-you notes are a polite way of expressing gratitude, but more importantly they are an effective means of building strong relationships and creating good will for you and your organization.

It is surprising how many times those deserving of special thanks are forgotten. Unfortunately, individuals sometimes stop doing good deeds because they have never received a thank-you note for their generosity of time, money and support.

Writing a thank-you note is an expression of one's personality, and each individual will express thoughts differently — thus, developing a distinctive style of writing. While there is not a right or wrong way to write a thank-you letter, there are a few guidelines to follow:

- Write the thank-you on nice note paper.
- These notes should be handwritten and should become an automatic reaction to the nice things people do for you.
- Always find out the person's name if you don't know. Never send a thank-you letter to "Dear Sir."
- Tell the individual what you're thanking them for.
- Explain what their help or sponsorship meant to you.
- Make it a personal note so the person receiving it feels you're sincere about the thank-you. Believe it or not, the receiver of a thank-you can tell if your mom is standing over you forcing you to write it.
- Short and simple thank-you notes are the best.
- The stilted, long-winded style of writing thank-you notes makes you sound insincere.
- Always write a personal hand-written message. Never just sign a printed thank-you card.
- Deliver the card in person if it goes to a local person. Baked goods or craft items are a nice touch and are always appreciated by the recipient.
- Learn to write other kinds of personal notes to reinforce your personal friendships. React to what happens to people. Write to congratulate someone on good news and console someone on bad news.
- Remember, the written word puts your friendship and appreciation on record.

Special Thanks

A special thanks to Helen Stewart and Patricia Schwinn the community leaders of the Happy Hollow 4-H.
Paula Theis, Leavenworth

Thanks to all Leavenworth County adult 4-H leaders and junior leaders for going the extra miles to make the past 4-H year successful. I congratulate each of you on your good work.
Kay Hunter, Leavenworth

Big thanks to Chrisler Hilltop Haven for giving me the opportunity to win my new filly at the 1986 fair in Logan County. Thanks, Mr. Chrisler, from all 4-H'ers.
Erik Felker, Menlo

Happy Hustlers 4-H'ers and parents: It's been a real pleasure working with you all. Thanks.
Earl and Marsha Hartman, Cherokee

We appreciate the support that the Bird City community gives the 4-H members.
Bird City Go-Getters

Stanton County 4-H'ers: Thanks for making this year a great one. Your hard work is appreciated!
Frank, Lori and Velda

Jewell County Bankers: Thanks for providing a subscription to the Kansas 4-H Journal for each 4-H family.
Jewell County Extension office

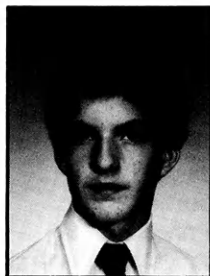
Finney County 4-H Families: Thanks for a great four years! Good luck and strive to "Make the Best Better!"
Janet Harrison, Garden City

Special thanks to everyone who helped us through another great year in 4-H, especially George Teagarden for buying our market lamb.
Van Valck family, LaCygne

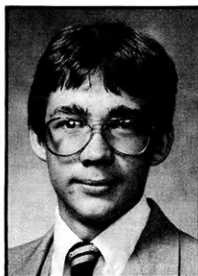
Nemaha County Journal sponsors: Thanks for all your hard work and support.
Nemaha County 4-H'ers

It's a family affair! The Jim McKee family of Johnson County says "thanks" to local, county and state 4-H leaders, and to all the volunteers for guidance and help with projects and activities.

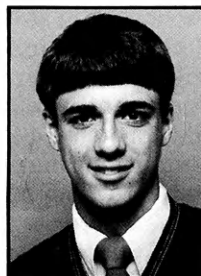
Thank you to all the 4-H sponsors and buyers for the 1985-86 4-H year at the Franklin County fairs in Ottawa, Lane and Richmond.
Full O Pep 4-H Club
Franklin County



Jeff Crouse
Petroleum Power



Terry Demel
Forestry



Ralph Gouvion
Citizenship



Ronna Manion
Safety



Lori Zoellner
Bread

Five win trips to 4-H Congress

Five Kansas 4-H'ers will join the state project winners at the National 4-H Congress in Chicago, Dec. 6-11. The Congress honors 1,700 of the nation's state and national 4-H winners. The five additional trips became available because of a change in the system of awarding medals, awards and trips to states by the National 4-H Council.

Each state is awarded one national trip for a project. Under the new rule,

if the state declines the trip, the state with the highest project enrollment will be offered the chance to send a delegate from that state. The National 4-H Council made the change in the system to be more accountable to donors sponsoring the trips.

Kansas took advantage of this offer in the forestry, safety, petroleum power, bread and citizenship projects. Once a 4-H'er accepts the trip and attends the Congress, he will not be allowed to compete for the title of a

state project winner in the future because he becomes ineligible to attend National 4-H Congress again.

Lori Zoellner, Riley County, received a trip to the Congress in the breads project, and Terry Demel, of Barton County, won a trip in forestry. A trip was awarded to Ralph Gouvion, Crawford County, for citizenship; Jeff Crouse, Wyandotte County, for petroleum power; and Ronna Manion, Miami County, in the safety project.

Lyon County Extension Expo 500 4-H Alumni Join Clover Countdown

by Ginger Wessel, Lyon County

In celebrating National 4-H Week, Lyon County 4-H'ers and Extension agents hosted the Extension Expo at the Flint Hill Shopping Center on Oct. 4-5. The festivities included a balloon lift-off, talent shows and club displays.

Over 2,000 people attended the event, and 500 alumni signed up for the Clover Countdown. The Clover Countdown is designed to count the number of Kansas 4-H alumni and is sponsored by the 4-H Foundation and the Cooperative Extension staff.

The Clover Countdown booth was run by volunteer alumni in the county. "It was fun to see the 4-H alumni in the community. I didn't know so many of our 4-H sponsors and friends of 4-H were past 4-H members," Ginger Wessel, committee chairman said. "Other counties should participate in the Clover Countdown so club members can meet and work with the 4-H alumni members in their community."

In the 4-H division of the Expo, 11 clubs set up displays featuring projects like crafts, horses, goats, swine, rocketry, beef, sheep, horticulture and electricity.

Members in the talent division were on center stage as they danced, sang, acted and gave public speaking and project talks. Twelve clubs provided entries in the talent portion of the Expo.

Chris Clover was on hand for the day and was a special favorite of the young children. Members wearing the Chris Clover costume greeted the Extension Expo guests and told the public about the 4-H program. One thousand balloons and 1,500 Chris Clover pins were distributed to create awareness for the 4-H program in Lyon County.

The shopping center area was decorated in 4-H green and white, along with a large club banner exhibit. The Extension agents provided displays along side the 4-H booths. In addition to the 4-H club displays, there were booths featuring a computer project on writing songs and community service projects. A booth celebrating the 125th birthday of Kansas was also set up.

The grand finale of the Extension Expo was a balloon lift-off. Approximately 350 balloons were set free, and seven hours later five balloons were

found and reported in Illinois. A grandmother southeast of Emporia found a balloon and is going to write the 4-H'er who let the balloon go because he's the same age as her grandson.

Countdown the 4-H alumni in your area by conducting your own countdown campaign. The *4-H Journal* would like to print examples of county events designed to sign up past 4-H members. Send information and photographs to:

Rhonda Atkinson
4-H Journal Editor
116 Umberger Hall
Kansas State University
Manhattan, Kansas 66506

CONGRATULATIONS

Errol Burns, Extension Economist, was elected to serve as the 1986-87 president of the National Association of Extension 4-H Agents in Hershey, Pennsylvania.

CONGRATULATIONS

Marion County Junior Livestock Judging Team captured first place honors at the annual Buchman's Double B Ranch field day.

FOUND

"Nozy," a junior buck, Black Silver Marten. Nozy was placed in the wrong pen at the Kansas State Fair. Please call or write Jack Bender to get Nozy home. Phone: (316) 722-6517, Address: 10520 W. 33rd N., Wichita, Kansas 67205.

4-H ALUMNI

REMEMBER THE 4-H EXPERIENCE

CLOVER COUNTDOWN 1986-87

REMEMBER working all year for the county fair ... the project meetings ... all those leaders who made your 4-H experience possible ... the successes ... the failure ...

REMEMBER the friends you made ... the basic life skill you learned ... the record keeping skills you gained ...

REMEMBER the enthusiasm you had as a youth ... the encouragement you received to "make the best better" ...

REMEMBER "learning by doing" ... the places you went ... the pictures you took ... the talents you perfected ...

Reminiscing is nice, but keep the memories alive ... Continue your participation in 4-H ... The 4-H Foundation and the Cooperative Extension Service State 4-H Staff invite you to participate in the Clover Countdown ...

Remember to fill out the attached form and mail it in ... The information will be used to provide former 4-H'ers with current 4-H news ... stimulate interest and enthusiasm in the 4-H ... increase volunteer assistance to promote 4-H on a local level ... establish a permanent record of 4-H alumni in the archives at Rock Springs Ranch ... and develop a contact list of prospective alumni with time, talent and funds to support the 4-H experience ...

**Relive the memories ...
send your reply to the Clover Countdown today!**

Return to: Kansas 4-H Foundation
Alumni Division
Umberger Hall, Room 116
Kansas State University
Manhattan, Kansas 66506

***If you are a 4-H alumnus,
you are important.***

Name _____
Last First (Maiden)

Current Address _____
Street, P.O. Box or RR Town Zip County

Is spouse a 4-H alum? Yes No Name _____
First Last (Maiden)

Your 4-H Membership Experience

Club _____ County _____ State _____

During the '20s _____ '30s _____ '40s _____ '50s _____ '60s _____ '70s _____ '80s _____ (check one)

4-H Participation, Honors & Recognition (check where appropriate)

National 4-H Congress State Fair State Award
Key Award Collegiate Club Other (list) _____
National 4-H Conference Clovia _____

These materials are available through your County Extension Office.
For a more complete listing, ask for the audio/visual catalog.

(SS) - Slide Set (F) - Film
(VTR) - Video Tape Recorder

4-H Projects & Activities

—A—

Accessories Make A Difference (SS)
Allergin Theory (SS)
Ambassadors Tell The 4-H Story (SS)
American Paint Horse (F)
Annual 4-H Dairy Conference (SS)

—B—

Basic Casting From A To Z (F)
Before You Hunt (F)
Beginnings Of Photo Composition (SS)
Birds Around You (SS)
Black American Culture & Cuisine (SS)
Bombarding Things (F)
Breeding & Kidding (F)
Breeds Of Beef Cattle (SS)
Building Trades (F)

—C—

Care Of Your Clothes (SS)
Careers (F)
Caring For Your Clothes (FS)
Cats (SS)
Choosing Your Clothes (FS)
Class Report (F)
Clothing Strategy (SS)
Color The City Green (F)
Commodity Marketing (SS)
Construction Tips (VTR)
Cookie Craft (SS)
Count Down (F)

—D—

Dairy Cattle Judging (SS)
Dairy Goat Selection (SS)
Development Of Chicken Embryo (SS)
Discovering The Atom (F)
Dogs (SS)
Doing Your Own Slide Set (SS)
Dress To Succeed (FS)
Drugs Are Like That (F)
Drugs, Drags & Drinks (F)

—E—

Energy & Living Things (F)
Exhibiting & Judging Vegetables (SS)
Exploring World Through Geology (SS)

—F—

Fabric To Fashion (FS)
Fashion In Your Future (FS)
Fashion Modeling (SS)
Fish Identification (SS)
Fishing Small Ponds (F)
Fitting Market Steers For Show (SS)
Film Flam Man (F)

—4-H—

4-H Action Programs For Members (SS)
4-H Club Congress (SS)
4-H Emergency Preparedness (SS)
4-H Fashion Review '83 (SS)
4-H Horse Project (SS-Series)
4-H Project Talks, Demos, Posters (SS)
4-H Record Books (VTR)
4-H Shooting Sports (F-Series)
4-H Vet Science I (SS-Series)
4-H Vet Science II (SS-Series)
4-H Vet Science III (SS-Series)
Fur Harvester (SS)

—G—

German American Culture & Cuisine (SS)
Getting Involved (F)
Getting It All Together (F)
Good Eating Plan (SS)
Great American Eating Machine (VTR)
Great Nutrition Turn On (F)
Grooming & Success (SS)
Guinea Pigs & Hamsters (SS)

—H—

Happiness Is 4-H (F)
Health Tips For Club Calves (SS)
Her's To You With Poise (SS)
Home Use Of Microcomputers (SS)
Homemade Bread (SS)
Horse Safety-Catching & Leading (SS)
Horse Safety-For Hunt Seat Rider (SS)
Horse Safety-Saddling & Bridling (SS)
Horse Training By Driving (SS)
Home To Plan A Demonstration (F)

—I—

IFYE-Mauritius (SS)
IFYE-Poland (SS)
IFYE-Sweden (SS)
IFYE-Thailand (SS)
Immunization Of Animals (SS)
Intermediate Trail Riding (SS)
Internal Parasites (SS)
Internal Parasites Of Horses (SS)
Introduction To Diseases (SS)
Introduction To Immunology (SS)
Introduction To Zoonoses (SS)

—J—

Joining 4-H Dog Care Programs (SS)
Judging Colored Dairy Breeds (SS)
Judging Holstein Dairy Cattle (SS)
Judging Horses On Conformation (SS)

—K—

Kansas 4-H Is For All Kids (SS)
Kansas Mammals (SS)
Kansas State Fair Foods Judging (SS)
Kid Who Can't Miss (F)

Audio / Visual

—L—

Livestock Judging I (SS)
Livestock Judging II (SS)
Living In A Nuclear Age (F-Series)
Longe Line Training (SS)
Look Inside Yourself (F)

—M—

Matter Of Record (SS)
Meat Identification (SS)
Meat Ident. Lessons 1-2-3 (SS)
Meat Ident. Lessons 4-5-6 (SS)
Meat Ident. Lessons 7-8-9 (SS)
Microwave Meals (SS)
Minigardens (F)
Miscues With Machines (SS)
Mr. Sawyer The Lawyer (F)
Mulligan Stew (F-Series)

—N—

Nuclear Energy & Living Things (F)

—O—

OBIS (F)
On The Right Channel (F)

—P—

Patterns Of Time: Hardwood
Story (F)
Pets Need More Than Love (SS)
Photography In 4-H (SS)
Photography Is Seeing (SS)
Pistol Shooting Fundamentals (F)
Place To Live (SS)

Plaiting The Hunter's Mane
& Tail (SS)
Plan To See Rock Springs (SS)
Plant Identification (SS)
Postures On Parade (SS)
Power From The Atom (F)
Power Tool Safety (SS)
Practical Horse Psychology (SS)
Pre-Bit Hackamore Training (SS)

—R—

Rabbits (SS)
Racer That Lost His Edge (F)
Radioisotopes (F)
Reflecting On Responsibility (F)
Reptiles & Amphibians (SS)
Rifle Fundamentals: Firing The
Shot (F)
Rifle Fundamentals: Standing
& Prone (F)
Rifle Fundamentals: Kneeling
& Sit. (F)

—S—

Saddle Selection (SS)
Safe Operation Of Farm
Tractors (SS)
Selecting 4-H Club Calves (SS)
Selection Of Project Heifers (SS)
Shotgun Shooting Fundamentals (F)
Show Me Hunter (F)
Something To Sing About (SS)
Speed Tailoring (SS)
Successful Vegetable Gardening
(SS)

Survival Of The Fittest (F)
Swine Judging (SS)

—T—

Techniques Of Line Driving (SS)
There Ought To Be A Law (F)
This Is Japan (SS)
To Be A Man (F)
To Be A Women (F)
Tractor Safety For Use in Ag (SS)
Tractor Safety Is No Accident (F)
Tractor Safety On The Farm (SS)
Tractor Safety On The Road (SS)
Tractor Tragedy (SS)

—U—

Understanding Genetics, etc. (SS)

—W—

We're On Our Way (F)
What A Equitation Judge Looks
For (SS)
What's A Balanced Diet (VTR)
What's Good For Me (VTR)
What's Under Your Hood (F)
Wheat Science (SS)
Where Does Food Come From (VTR)
Where Mileage Begins (F)
Why Do We Eat (VTR)
Wildlife Habitat & The Hunter (F)
Without Warning (F)

—Y—

Youth & The Law (F-Series)
Youth Clothing Scene (SS)

Applications due

4-H Citizenship Washington Focus Trip allows 4-H'ers 15-19 to explore the history of this country while learning more about citizenship and the functions of the governing bodies in Washington D.C.

To be considered for the 4-H Citizenship Washington Focus Trip, applicants must have completed three years of 4-H work and intend to remain in the program. Delegates will travel by chartered buses to Washington D.C. July 2-13, 1987.

Applications are available in the county Extension offices and are due in the state office by Jan. 15, 1987. A confirmation fee of \$50 is due March 20. Those applications submitted are reviewed by a state committee which will select delegates on the basis of responsibility, leadership and the ability to apply what's learned from their citizenship experience once the delegates return home.

Citizenship delegates will learn how a bill becomes a law, gain a perspective of international understanding, use leadership skills in workshops and committees and to see what 4-H programs are like in other states.

Members are encouraged to share the 4-H Citizenship Washington Focus Trip experience with their club and county and to set up a citizenship program in their area.

Famous monuments, Capitol Hill, the Washington Cathedral and a nightview of Washington D.C. are just a few of the highlights planned for the trip. Delegates will also attend a theatre performance and have a chance to visit with Kansas senators, congressmen and representatives.

For more information, contact the county Extension office or Charles Bates, state 4-H specialist and trip coordinator.

CONGRATULATIONS

The Kansas 4-H Dairy Judging Team placed 17th out of 37 teams at the 1986 National 4-H Dairy Judging Contest, October 1, in Madison, Wisconsin. The contest was held in conjunction with the World Dairy Expo. The team received 9th place honors in Jerseys

Team members were: Stephanie Veal, Auburn, Shawnee County; Duane Thiessen, Moundridge, Harvey County; Sam Rottinghaus, Seneca, Nemaha County; and Scott Riekeman, Abilene, Dickinson County. Cindy Siemens, Harvey County 4-H Agent, and Pam VanHorn, Saline County 4-H Agent, coached the team.

**SELLING
OUTSTANDING
SHOW and
PERFORMANCE
QUARTER HORSES**

*many proven individuals, as well
as top young prospects!*

**The Flatland Invitational
Quarter Horse Sale**

Saturday, January 10, 1987 — 12:00 Noon
The Kansas Coliseum Livestock Pavilion
Wichita, Kansas

*Held in conjunction with The Flatland
Quarter Horse Circuit
6 AQHA Shows held
January 6th through the 12th*

For catalogs and information, contact:

C.A. COFER

Auctioneer-Sales Management
7400 N. Broadway
Wichita, Kansas 67219
316-755-0733

**Wherever You Live
in the
Sunflower State....**



*City or Country...
We've got Kansas covered!*

**WITH A FULL LINE OF INSURANCE PLANS
AND OVER 400 AGENTS STATEWIDE.**

Outstanding coverage.
Rates that are right. And
with agents in every
county and over 70 claims
adjustors statewide, we'll
be there — fast
— when you need us.

Why not discover how
we can make you — or
your piece of Kansas —
more secure.



Farm Bureau Insurance

FARM BUREAU MUTUAL • KANSAS FARM BUREAU LIFE • KFB INSURANCE COMPANIES

HALTER

^{and}

**PERFORMANCE
Horses**

— FOR SALE —

**Gerdes Quarter Horses
HERKIMER, KANSAS**

*Home of the 1986 Grand Champion and
Reserve Champion Gelding at the Kansas
State 4-H Horse Show.

Skipper W
and Scooter Welch Breeding
Many brothers and sisters
to winning geldings.
Also proven broodmares.

**Bill and Linda Gerdes
Rich and DeAnn**

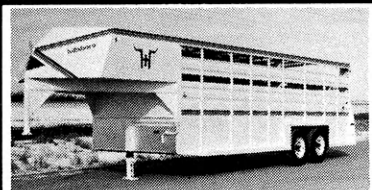
**(913) 744-3522
HERKIMER, KANSAS**

**BUY,
BUILD,
SAVE WITH US**

- Competitive rates on savings and loans
- High-yielding C.D.'s
- 17 offices statewide



**Why should you buy
a Hillsboro
Stock
Trailer?** *The WindBreaker*
QUALITY!



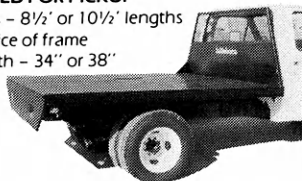
STEEL - Distinctive aero-dynamic styling

- Windbreaker front—pulls easy
- Sizes - 6x16, 6x20, 7x16, 7x20, 7x22, 7x24, and 7x28
- Many standard features

The stock trailer for people who want high quality and energy savings with reasonable prices.

MINI BED FOR PICKUP

- Sizes - 8 1/2' or 10 1/2' lengths
- Choice of frame width - 34" or 38"



J Bar J Trailer Sales

Steve Jackson
733-1106

13000 E. 47th St. So.
Derby, KS 67037



**The Best
Food Store
In Town!**

Our People Make it Happen!

Isn't it great to have money for
Christmas shopping in your savings account
at your

Kansas Savings and Loan

Fort Scott
Liberty Savings & Loan Assn.

Garnett
The Garnett Savings & Loan Assn.

Hutchinson
Valley Federal Savings & Loan Assn.

Leavenworth
Citizens Mutual Savings & Loan Assn.

Lyons
Lyons Savings & Loan Assn.

Manhattan
Manhattan Federal Savings & Loan Assn.

Medicine Lodge
The Barber County Savings & Loan Assn.

Plainville and Stockton
Rooks County Savings Assn.



**CONSOLIDATED
Printing & Stationery
SALINA, KANSAS**

1-800-432-0266

- ★ 4-Color Printers
- ★ Black & White and Letterpress
- ★ Authorized Minolta Copier Dealer
- ★ Office Supplies
- ★ Furniture
- ★ Scriptomatic Addressing Machines

**SERVING ALL OF KANSAS
For All Of Your
Office & Printing Needs!**

FOR SALE

13 Simmental cows, good ages, 10 A.I. by top sires, 5 polled, 6 purebred, 6 3/4, bred to outstanding double polled bull. Also, 3 yearling heifers. (316) 735-4233.

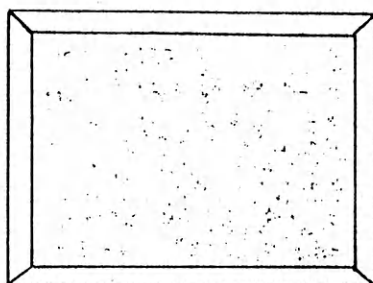
EARN EXTRA income working at home mailing circulars. Send self-addressed, stamped envelope: SLH Systems, Drawer 575-Q, Thorsby, Alabama 35045.

\$250/1,000 COLLECTING NAMES. RUSH stamped envelope: Kelley, Drawer 389, Clanton, Alabama 35045.

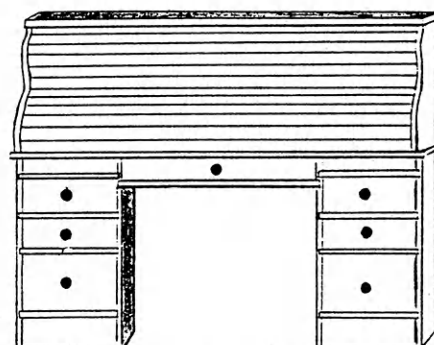
Free!

4-H Woodworking Plans from YOUR PARTICIPATING LUMBER DEALER

These plans
are available:



Bulletin Board
Designed by Daryl Rockers
and Jim Friberg
Palmyra 4-H Club
Douglas County



Roll Top Desk
by Rodger Moon
Blue Line 4-H Club
Geary County

For your free plans, see your participating lumber dealer; he will also help you select the material you need.

AMERICUS
Americus Building Materials

ERIE
Johnson & Son Lumber Co.

IOLA
Klein Lumber Company

NICKERSON
The Home Lumber &
Supply Co.

ASHLAND
Don Spotts Lumber Company

EUREKA
Home Lumber & Supply Co.

JOHNSON
Seyb-Tucker Lumber and
Implement Company

NORTONVILLE
Nortonville Lumber, Inc.

ATCHISON
Beverly Lumber Co., Inc.

FREDONIA
Schoolcraft Lumber Co.

JUNCTION CITY
Builders Lumber, Inc.

OFFERLE
Offerle Co-op Grain &
Supply Co.

BELLEVILLE
Belleville Lumber & Coal

GALVA
Galva Lumber, Inc.

LaHARPE
Diebolt Lumber and Supply

OTTAWA
Hubbard Lumber
Company, Inc.
Ottawa Lumber Co.

BELOIT
Peoples Lumber Co.

GARDEN CITY
Fankhauser, Inc.

LANSING
Lansing Lumber, Inc.

PARSONS
Woods-Seward Lumber Co.

BLUE RAPIDS
Blue Rapids Lumber Company

CLAY CENTER
Fullington's

GREAT BEND
Everitt Lumber Co., Inc.

LARNED
T.M. Deal Lumber Co.

PITTSBURG
Broadway Lumber Co., Inc.

CONCORDIA
Mid-West Lumber Company

HARPER
Town & Country Lumber Co.

MANHATTAN
Cash Lumber & Hardware

PRATT
W.R. Green Lumber, Inc.

EL DORADO
Home Lumber & Supply Co.

HUTCHINSON
Kightlinger's

MANKATO
Mid-West Lumber Company

RUSSELL
Schwaller Lumber

EMPORIA
Americus Building Materials
Fleming Lumber & Material Co.
Mark II Lumber

INDEPENDENCE
Sandott Sentry Home Center

NEWTON
Claassen Hardware &
Lumber Co.

SALINA
Easterday-Boster Lumber Co.

SCOTT CITY
Stephens Lumber Company

OTHER PLANS AVAILABLE

Accent Table
 Barn Cupola
 Bird Feeder
 Bicycle Parking Rack
 Bluebird House
 Boot Jack
 Car Creeper
 Chain-Saw Box
 Child's Toy Wagon
 Computer Desk
 Deacon's Bench
 Dresser Valet
 Gun Rack
 Hall Tree
 Martin Bird House
 Microwave Stand
 Night Stand
 Oak Chair
 Paper Towel Holder
 Patio Table
 Pedestal Desk
 Pet Food Bin
 Plant Stand
 Redwood Cart
 Rolling Pin
 Revere Coat Rack
 Rocking Horse
 Stereo Case
 Spoon Rack
 Toy Boat
 Wooden Stool
 Work Table
 Wren House
 Tool Box

The Kansas Wheat Commission is proud to ...

**provide a grain marketing study tour to Manhattan and Kansas City for state wheat quality project winners and the State Fair wheat variety booth winner*

**provide seed wheat for 4-H'ers in the wheat variety plot project*

**co-sponsor 4-H Wheat Shows*

**The Kansas Wheat Commission
and Kansas 4-H members —
promoting Kansas as a world
leader in wheat production!**



ST. JOHN
English Lumber &
Supply Co., Inc.

SYRACUSE
Hess Lumber Co.

TOPEKA
Whelan's Inc.

ULYSSES
Sunflower Lumber Co., Inc.

WICHITA
Star Lumber & Supply Co.
(two locations)

WILSON
Hoch Lumber Company

WINFIELD
A.B. Everly Lumber Co., Inc.
Everitt Lumber Co., Inc.

WRIGHT
Right Co-op Assn.

ZENDA
Farmers & Builders Lumber Co.

EXCEL

**EXCEL beef products provide
a standard of
*Excel*lence around the world.**

**Headquarters: 2901 North Mead
P.O. Box 2519, Wichita, Kansas 67201**

**• Dodge City, KS • Friona, TX • Nebraska City, NE
• Philadelphia, PA • Plainview, TX • Wichita, KS**

Poster Contest

by Emily B. Kling

The Kansas Wildlife Federation is sponsoring a statewide poster contest for elementary students in conjunction with Kansas Wildlife Heritage Month, which is in March. There are two divisions — junior (grades 1-4) and intermediate (grades 5-6). Each school will conduct its own contest and send the winning poster to a K.W.F. Regional Collection Point. Twelve regional posters will then be evaluated by the K.W.F. Conservation Education Committee to select the statewide winners.

Kansas Wildlife Heritage Month was established to inform and get the otherwise non-involved public to become active in working to protect our shared natural resources. This year's theme is "Wetlands — A Habitat Worth Saving."

Wetlands is an extremely important habitat in Kansas that is rapidly shrinking. While once having vast areas of natural wetlands, Kansas is now ranked last in the U.S. Important legislation dealing with wetlands, such as the State Water Plan, Cheyenne Bottoms Restoration, and a State Waterfowl Stamp, will be debated in the 1987 Kansas Legislature.

Information regarding the poster contest has been sent to science teachers at every elementary school in Kansas. For more information, contact Emily B. Kling, K.W.F. Poster Contest Chair, 201 Umberger Hall, Kansas State University, Manhattan, Kansas 66506 (913/532-5800).



*May the quiet peace
of Christmas
fill your heart and home.*

C.R. Salmon Emily B. Kling

Charles P. Bates

Paul Appel

Charlie Long

Marcia McDonald

Steve Fisher

Alan Friedman

Club Calves - Show Heifers

- ANGUS - 7 Frame Calves
 - Halter Broke
 - Out of Large Registered Female-AI Bulls
 - Located 5 Miles From I-70, Bonner Springs Exit - Please Call
 - You will like them ...
- Welcome

Paul & Frances Carpenter
Mark Van Winkler, Manager
(913) 721-1126 Day
(913) 721-2310 Night



Money For Your Treasury

OVER 2 MILLION
Sunflower Dishcloths



WERE SOLD LAST YEAR BY MEMBERS OF
GROUPS, SOCIETIES, CLUBS, ETC.

THEY ENABLE YOU TO EARN MONEY FOR
YOUR TREASURY AND MAKE FRIENDS FOR
YOUR ORGANIZATION.

Sample FREE to Official.

SANGAMON MILLS, INC., Cohoes, N.Y. 12047
KJ Established 1915

GRASS

& GRAIN

A farmer's newswatch
published each Tuesday

Complete Agriculture News
& Advertising;
Featuring 4-H Stories & Photos
Call or write today:
Box 1009, Manhattan, KS 66502
(913) 539-7558

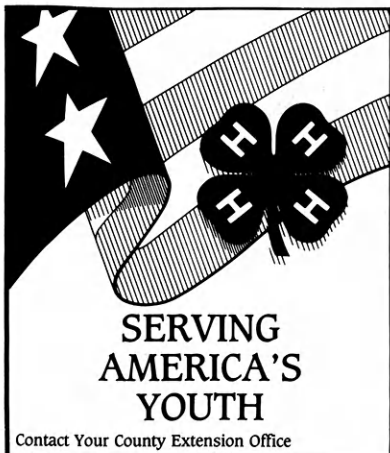
Celebrates 50 years

Grove 4-H Club celebrated its 50th anniversary on Oct. 5. The club survived the depression, recessions, wars and the trend of farm families moving to the cities.

At one time the town of Grove had a train depot, school, church, gas station, grocery store, grain elevator, and a saddle club. But today, all that's left of the small town is Grange Hall, which was the town's grocery store. Grange Hall is the meeting place for the club.

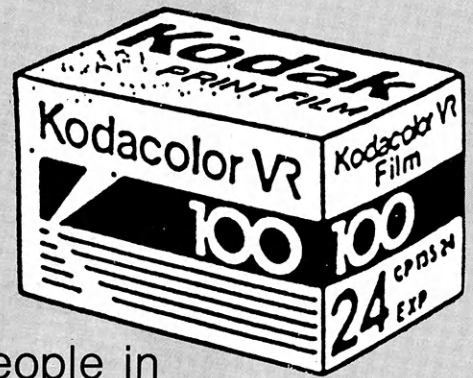
According to the 1936 secretary's record book, 17 families with 29 members made up the club at the end of the 4-H year. Eight club meetings, two picnics, one pie social and one weiner roast comprised the club's activities for the first year. Each member was offered only six projects to choose from during this time.

Even though most of the town of Grove is gone now, the Grove 4-H club has stood the test of time living by the 4-H pledge handed down from one generation to the next.



\$ 4 - YOU

- *If I will give you 26 rolls of Kodak film ...*
- *Would you donate \$4.95 to your organization?*



• If YOU would, and think the people in your community would, you have just found a dynamic, new fund-raising resource offered for the first time in Kansas.

It's a snap ...
raise money for your club, school, church civic organizations, etc. ...

Club or Organization _____

Contact Person _____ Phone _____

Address _____ City _____ State _____

Zip _____ Start Date for Fund Raising _____

Amount Needed _____ Number in Group _____

FOR MORE INFORMATION:

Return the above form to *CARR ENTERPRISES*, P.O. Box 1453, Manhattan, Kansas 66502. (913) 537-4907.

Non-Profit Organization
U.S. Postage
PAID
Permit No. 86
Salina, Kansas

**Serving the Kansas 4-H Club
Program for over 35 years:
The Kansas 4-H Journal, a project
of the Kansas 4-H Foundation.**

Photo Contest Winner



Holly Lambert, Riley County, captures the winning photograph with this shot of Sarah Mark, Riley County.

3531 6 274 4