

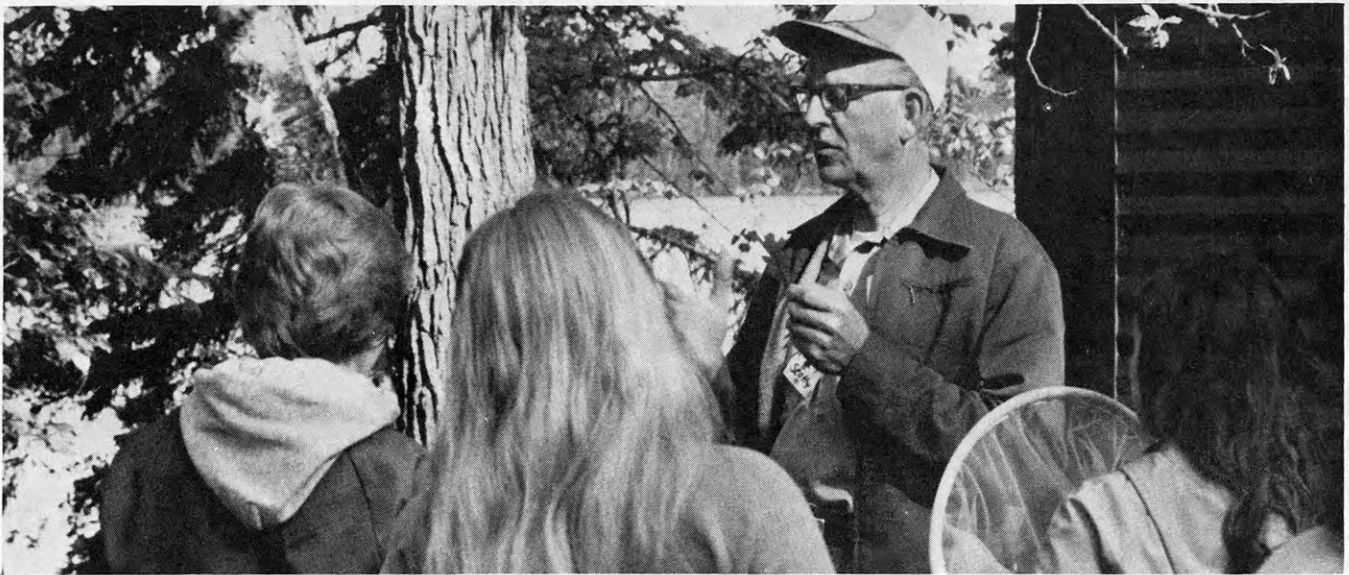
# *Kansas 4-H Journal*

The Family Magazine

June 1984



***Kansas 4-H Family of the Year***



## **Federal Cartridge salutes 4-H for 50 years of cooperation in Conservation Education Programs.**

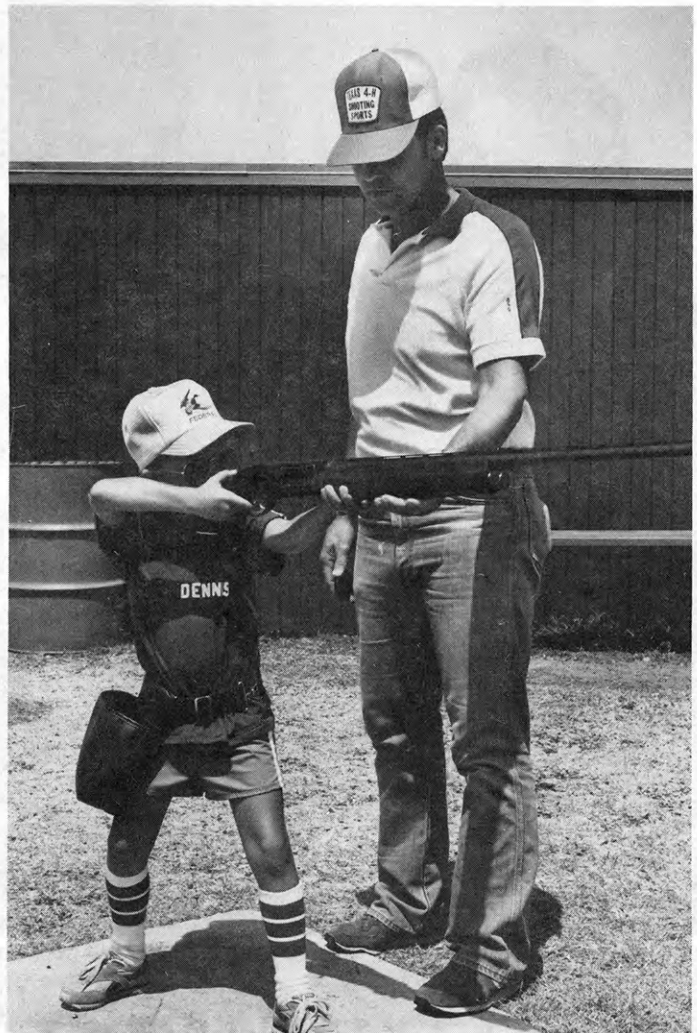
It was 1934. Federal Cartridge was looking for a way to help the youth of America learn how to manage our natural resources. We were delighted to join with 4-H in conducting the 4-H Conservation Camps. Since that seed was planted, over 350,000 4-H youth, leaders and agents have attended Federal Cartridge Corporation sponsored camps to learn more about managing our soil, water, forestry, fish and wildlife for future generations.

After successfully sponsoring these youth conservation camps for 50 years, Federal is now launching a new and exciting effort in 4-H Leader Training for Conservation and Shooting Sports. We're directing our efforts to help train volunteer leaders to teach youth about conservation, and instill in them the respect, responsibility and skills that the shooting sports command. This program is growing and by 1985 Federal will be providing support in all 50 states.

We couldn't do it without the caring Cooperative Extension Service staff members and the volunteer leaders who form the backbone of our 4-H. Thank you for giving us the opportunity to make a difference in young lives.

**FEDERAL<sup>®</sup>**

FEDERAL CARTRIDGE CORPORATION  
Minneapolis, MN 55402





# Kansas 4-H Journal

Volume XXX, No. 5

June 1984

## TABLE OF CONTENTS

**COVER:** The Harold Fehlman family from Clay County was named the 1984 Kansas 4-H Family of the Year at Friends of 4-H Day, June 3, 1984. Pictured on the cover, from left, (seated): Charlotte, Harold and Mildred; (standing) Howard, Marvin and David. See related story on page 22.

**Sara Gilliland** ..... Editor  
**Glenda Fox** ..... Secretary

Address all correspondence:  
 Kansas 4-H Journal  
 116 Umberger Hall, KSU  
 Manhattan, Kansas 66506  
 Phone (913) 532-5881

Kansas 4-H Journal is published  
 10 times a year by  
**KANSAS 4-H FOUNDATION, INC.**

Merle Eyestone ..... Executive Director  
 Trisha Cash ..... Secretary  
 Ann Carr ..... Asst. Treasurer

### BOARD OF TRUSTEES

Governor John Carlin  
 Honorary Chairman

Glee Smith, Chrm. .... Lamed  
 John Junior Armstrong, Treas. .... Manhattan  
 Duane Acker ..... Manhattan  
 Ross Beach ..... Hays  
 Mrs. Edna Collingwood ..... Johnson  
 W. Dale Critser ..... Wichita  
 Richard Dillon ..... Hutchinson  
 John O. Dunbar ..... Manhattan  
 Marilyn Pence Galle ..... Moundridge  
 Mrs. Olive Garvey ..... Wichita  
 Balfour S. Jeffrey ..... Topeka  
 J. Harold Johnson ..... Manhattan  
 Wilbur E. Levering ..... Topeka  
 John D. Montgomery ..... Junction City  
 Thomas M. Potter ..... Wichita  
 Tom Shirley ..... Dodge City  
 Fred Sobering ..... Manhattan  
 Mrs. Charles Streeter ..... Manhattan  
 Robert Wagstaff ..... Shawnee Mission  
 Mrs. Dwane Wallace ..... Wichita  
 \*Glenn M. Busset ..... Manhattan  
 \*Sen. Frank Carlson ..... Concordia  
 \*Harry Darby ..... Kansas City  
 \*George B. Powers ..... Wichita  
 \*Roger E. Regnier ..... Manhattan  
 \*Dolph Simons, Sr. .... Lawrence  
 \*Advisory Member

|   |         |
|---|---------|
| 4-H'er spreads message<br>about seat belt safety .....                          | 3       |
| Southeast Area<br>Highlights .....  | 4,5,6,7 |
| A real Betty Crocker leads<br>4-H foods project in<br>Cherokee County .....     | 8       |
| Kansas 4-H Foundation<br>Honor Roll .....                                       | 9-17    |
| Kansas 4-H Journal<br>sponsors .....  | 18,19   |
| Harold Fehlman family honored<br>as 1984 Kansas 4-H Family<br>of the Year ..... | 22,23   |
| Teens gather for Southeast<br>Area Youth Storm .....                            | 24,25   |
| Hedgerow Boys give hit<br>performance for 4-H<br>parents' night .....           | 26      |
| Family Fun Page .....   | 27      |
| Parents' silly antics<br>entertain 4-H'ers .....                                | 27      |

**1983 Kansas 4-H  
 Foundation Honor Roll  
 pages 9-17**

**Coming in July:**  
 Featuring Southwest  
 Kansas 4-H  
 international  
 programs

**Coming in August:**  
 Featuring Northeast  
 Kansas

## 4-H'er spreads message on seat belt safety

Dawnita Reinhardt, an 18-year-old Neosho County 4-H member, spoke on seat belt safety to a national audience attending the Lifesaver III Conference in Orlando, Florida last month. The conference was sponsored by the National Safety Congress and the National Highway Safety Association.

Dawnita and other youth in her 4-H club, school and community are taking an active part in encouraging highway safety by promoting the use of seat belts and preventing accidents caused by drunk drivers.

Dawnita spreads her message by talking to groups and showing films. She has been a guest speaker for Rotary club, Extension Homemaker Unit club and Jaycees meetings. She organized a county-wide safety film festival for every club in the county. "I asked a Highway Patrolman to show films and visit with the group about seat belt safety. I borrowed films from the library, Kansas Farm

Bureau and the Kansas PTA," she says.

If the films don't drive the message home, Dawnita thinks the Seat Belt Convincer will. This machine demonstrates the impact of a crash or sudden stop at speeds of 4 miles per hour and 8 miles per hour. Dawnita has arranged with the Kansas Department of Transportation to have the Seat Belt Convincer at the Neosho County Fair.

Another way Dawnita's encouraged the use of seat belts is by distributing stickers to put on the car dashboard. The stickers have the reminder message "Seat Belt Use Requested In This Vehicle."

Dawnita believes safety-consciousness should begin at an early age. She's developed a brochure for children to help them understand the importance of wearing seat belts. "In the brochure I tried to stress that if they would accept the responsibility for themselves, they would also influence the driver," she says.

Use of the 4-H name and symbol approved by the secretary of Agriculture of the United States, January 23, 1951, under the provisions of the laws as reenacted by Sec. 707 of the Act of June 25, 1948, Public Law No. 772 80th Congress (10 USC 797).

# Southeast Highlights

**Kirk Astroth, Southeast Area 4-H and Youth Specialist**, came to Kansas nine months ago from Utah where he completed a Master's degree in Extension and range science. Prior to that time he was a school teacher and youth program supervisor and worked for the Bureau of Land Management and Forestry Service.

He says he likes the variety of his job. "It always involves working with people, but one day I'm working with the livestock project and the next day I'm giving a workshop on recreation ideas and another day I'm working with professional agent training," he says. He's been working hard to make Extension agents and volunteers aware of the services offered by the staff of the Southeast Area Extension Office.

Kirk is proud of not only the programs that are offered in the Southeast Area, but the fact that all the programs he is involved with are evaluated and the results of the evaluation are reported. "I think that without this important step we make a lot of assumptions about our audiences that are not true. Through the evaluations we've conducted, we found out things that pointed to changes we could make that would make the programs more useful and convenient," he says.

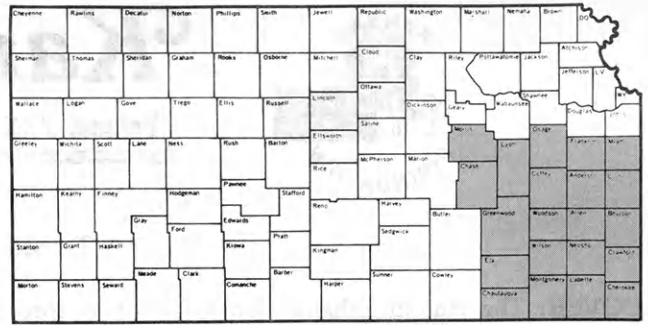
Kirk spends his free time fishing, backpacking, camping, hiking, hunting and bicycling. This summer he's looking forward to black powder muzzle loading club activities and he'll be teaching rock climbing sessions for the Sierra Club.

**Anderson County:** The Boot and Spur 4-H Bowl Team will be heading for Denver this fall to compete in the Western Stock Show. The team, composed of Brenda Minckley and Trena Goodell of the Colony Hi-Point 4-H Club, and Dea Sedge and Doug Hensley of the Luckey 13 4-H Club, placed second in the Kansas 4-H Horse Bowl contest in February. Danae Fuhrman of the Luckey 13 4-H Club is the team leader and Rena LaRue of Westphalia is the team adult leader.

Boot and Spur members have set up many practice events and moneymaking projects to help prepare for the trip. They will be selling 4-H license tags, name signs and bumper stickers throughout the summer. Also, they'll set up a food and game booth at various local events.

Spectators and participants in five local horse events also will help send the team members to Denver. Two open youth rodeos, May 26 and August 23; and three horse shows, May 6, June 23 and August 11, are scheduled. For more information about any of the events, call 913-448-6443 after 6:00 p.m.

**Greenwood County:** Sean Sherman, reporter for the Harmony Sunflowers 4-H Club, writes that 4-H square dancers entertained residents of the Eureka Rest Home. Couples who danced included: Bridget Hamilton and Sean Sherman; Holly Foster and Jay Guess; Jenny Prey and Galen DeVore and Chad Williams; and Jennifer Ebberts and Bret Howard.



The Southeast Area consists of 21 counties, with four counties bordering Oklahoma and five counties bordering Missouri. The Southeast Area Extension Office is located in Chanute, in Neosho County. 1983 statistics indicate that 5,269 4-H members joined 192 4-H community clubs in the Southeast Area. These members enrolled in a variety of projects — the most popular projects were arts and crafts, beef, clothing, foods and nutrition, leadership, sheep and swine. Nearly 14,000 youth participated in 4-H activities during 1983. Day camps and international 4-H programs were attended by over 2,000 youth and over 1,000 youth came to 4-H-sponsored petting zoos.

**Cherokee County:** The Businessman's Picnic is being revived in June to thank local sponsors for their support. Sponsored by the 4-H Council, the guests will be treated to a meal and an evening of entertainment and fellowship.

**Cherokee County:** A new opportunity for young 4-H'ers enrolled in the beef project has been developed by a committee of concerned beef project leaders. The feeder calf fair class is for members age 7-13 and gives them a chance to work with animals closer to their own size.

**Cherokee and Labette Counties:** "New Dimensions in 4-H" was the theme for a project leader workshop attended by over 40 people. Kirk Astroth, Southeast Area 4-H and Youth Specialist, presented a session on various methods of teaching, ranging from lectures to demonstrations. "I hear - I forget, I see - I remember, I do - I understand," Astroth said. He followed up the presentation with the leaders participating in a quiz bowl, judging, demonstrations and skillathons. Everyone had a chance to dock a stuffed lamb's tail, make terrariums, identify what was wrong with a chain saw and fix S'mores in the microwave. Marvin Anderegg and Jean Rowland, Labette County Extension Agents; Jack Rowland, Southeast Area Forester; Penny Morgan, Crawford County 4-H Agent; and Phyllis Kriesel, Cherokee County 4-H Agent also were on the program.

**Crawford County:** The first day of May is a special time of the year for the Lucky Liberty 4-H Club. Jackie McClaskey writes that the club delivers May Day baskets to numerous "special" people in Girard. The club members bake homemade goodies and pack them in baskets with fruit. Groups of club members deliver the baskets and enjoy seeing the surprise and pleasure on recipients' faces. "Last year we sang Happy Birthday to one of the women when we found out it was her birthday. The tears that came to her eyes made some of us blurry-eyed," Jackie said.

# Southeast Highlights

**Bourbon County:** Parents night is something special for the Hiattville 4-H Club — everyone gets into the act. Clarice Russell, community leader for 17 years, was the hit of the night with her skit about an old lady trying to cross a busy street. Clarice will retire this year, and her special talents will be missed, says Glenda Miller, 4-H parent and leader. A father of one of the newest club members also gave a popular presentation entitled “Dean’s Orange Drink.”

**Bourbon County:** Members of the Hiattville 4-H Club are enjoying celebrating birthdays this year — and they aren’t even their own! The birthday honorees are residents of the Marmaton Valley Nursing Home in Uniontown. Each month, the 4-H club members hold a birthday party for all residents who have a birthday that month. Cake and punch are served and the tune of “Happy Birthday” is voiced by all.

**Bourbon County:** It’s cookie season for the Hiattville 4-H Club. Each summer this club donates lemonade mix and homemade cookies to be served to visitors who stop at the Tourist Center in Fort Scott. The Old Fort Museum at Fort Scott is a popular tourist spot.

**Wilson County:** Kansas Kids 4-H project leaders hosted an all-day project fair in April. The purpose was to hold fifteen different project meetings on one day in one place to eliminate 4-H’ers having to spend a number of days going to project meetings. “It saved time and energy for everyone who participated,” says Sharon Frankenberry, community leader.

The project leaders provided a wide variety of activities for the members. Some of the topics included: casting practice (wildlife-fishing), cleaning greenware (ceramics), making pasta and snacks (foods), pattern layout and color analysis (clothing), video taping the project fair (photography), obstacle course (bicycle), gardening and dog. 4-H’ers were also given assistance with their record books.

**Osage County:** Roses are red, violets are blue, inside of everyone there is a clown, too. Clowning is one of the self-determined projects that is a lot of fun. Heather Baker, John and Emily Harsch are the first members of the Melvern Jr. Highline 4-H Club to enroll in clowning. Rita and Pat Harsch are the clowning project sponsors. Rita writes that the clowns have adopted Ann McIntosh, who is a project leader in the club. Ann had a bone marrow transplant and the clowns visited her in the K.U. Medical Center. They also visited with Whizzo the clown, who appears on WIBW television. The clowns have recently done clown face painting for a local Brownie troop. Plans are underway to promote 4-H during the county fair in July.

**Osage County:** Rita Harsch writes that the Melvern Jr. Highline 4-H Club is trying a new idea this year. They’ll have the club tour during the fair. “We’ll be able to enlarge the tour to include not only the animals but the finished sewing projects, woodworking, cooking, etc. Everyone feels like their projects are “on the club tour,” Rita says.

**Morris County:** Neosho Valley 4-H Club families hosted an appreciation dinner for 4-H supporters in the community. Lisa Landgren, club reporter, says that they hope to make it an annual event. After the dinner club members presented a program which included musical numbers and talks.

**Morris County:** Christmas carolling for the residents of the senior citizens center in Alta Vista, a valentine skating party, a one-act play at 4-H Club Day, and an educational tour of the K-State Veterinary Hospital and Dairy Processing Center are activities which members of the Busy Workers 4-H Club have enjoyed this year, according to club reporter Jennie Buchman.

The one-act play, “The Three V’s,” stressed the nutritional value and importance of fruits and vegetables in the diet. The cast included eleven members of the Busy Workers 4-H Club.

**Greenwood County:** Becky Knight, reporter for the Lucky 13 4-H Club, says that some members of the club recently discovered that reading is not only a good way to pass the time, but a good way to help children who are far less fortunate than themselves. Twenty-three members of the club have read a total of 299 books and raised \$498.96 for the Multiple Sclerosis Society Read-a-Thon in March. Denialla Robert read the most books and collected over \$100 in pledges. She received a pair of binoculars as the top prize. David Schmidt and Becky Knight read eight books and collected \$50 in pledges. They each won a Mystery Sleuth athletic bag. Frank Ledford, Angie Ware, Robin Baumgartel and Bobbie Doane received a Mystery Sleuth T-shirt for reading five books and pledges of over \$25. Mystery Sleuth spiral notebooks were received by Jeff Ledford, Forest Eaton and Jason Nusz for each reading three books and getting pledges of over \$15. Other members who read were: Robert Taylor, Joy and Billy Powell, James Eaton, Tina and James Altis, Jay Robert, Karen Bogle, Shelly Klepper, Rachel Ledford, and Valerie, Gina and Becky Mize. Each member will receive a certificate of achievement from the Mystery Sleuth and an iron-on patch.

# Southeast Highlights

**Lyon County:** Planting for the future was on the minds of the Lyon County 4-H Council when it took on a fairgrounds beautification project at the Lyon County Fairgrounds. A total of six Marshall Ash trees were planted with the help of several 4-H members and parents. The 4-H'ers took on the project to provide shade for the fairgoers during the hot summer heat and add beauty to nearly treeless areas, says Wes Fowler, Council president.

The clubs from the county will take on the chore of watering the trees on a rotation basis while the trees are growing. As a precaution, a pipe protection was erected around the trees for mishaps which may occur in a busy place like the fairgrounds. The 4-H'ers are excited about the project and are anxious for the shade which will come out of their hard work and determination for the project.

**Lyon County:** Come one, come all — to the MOST fun of all! The 5th annual Lyon County 4-H Petting Zoo was held May 9 and over 800 children from day care centers, homes and local grade schools signed up to attend. Walk-ins also were welcomed.

Last year's attendance was well over 1,000 and the highlight was the Welch Pony rides. The Petting Zoo is a fun, educational experience for many of the children who have never held or touched baby animals which include chicks, geese, ducks, goats, rabbits, pigs, lambs, ponies, dairy and beef calves, puppies and kittens, wild burro and donkey. The 4-H'ers give away 4-H buttons and balloons to all who attend and this year the 4-H clowning members greeted the groups and helped conduct the tour. Organizers of the event are Lyon County junior leaders.

**Lyon County:** Bearded lady bus driver award ... Second hand rose award ... Rinse and handle award ... These awards are not the average awards given to the individuals who did the best in a 4-H competition, admits Ginger Wessel, Chamness 4-H Club member. Ginger writes that Lyon County 4-H Horse Leader, Charlotte Wessel, recently presented 23 various prizes of tack and equipment to 35 members of the Rawhide Wranglers Horse Club at their first fun awards night.

"Everyone likes to win something and maybe these kids didn't place first in a horse show, but they deserve to be rewarded for other accomplishments," Charlotte says. The prizes were trophies, tack, ribbons and other items the club members had accumulated over the years from horse shows, judging contests and rodeos.

"It was a fun night. After the kids heard the first award they laughed so hard. I told them not to laugh so hard because the next one might go to them," Charlotte said.

"The kids are already asking if we're going to go for it again and what the awards will be next year," she said.

**Lyon County:** Gina Berrie writes that each year the Chamness 4-H Club gives a big thanks to businessmen, livestock buyers and trophy and award sponsors on Valentines Day. "We also show our appreciation to those who have helped with projects," Gina says.

Plates of assorted homemade cookies made by members and mothers of 4-H members are delivered along with specially-designed Valentines made by the craft project members. Banks, barnyards and bar-rooms are just some of the delivery stops made by the members.

**Crawford County:** Lisa Davied is "adding some meat" to monthly Farlington Best Yet 4-H club meetings by getting all the members involved in meat utilization activities. At the first meeting she gave a project talk about the parts of a beef. The next month she showed various beef cuts on slides. In April she brought different beef cuts for the 4-H'ers and parents to identify.

"The interest from all who attended was great. So now I have decided to set up a similar class on pork," Lisa says.

**Crawford County:** Lucky Riders 4-H club is really going to have a fun summer, according to reporter Shawn Pichler. The fun has already started with a novice skit, on Horse Safety Tips. The skit received a top blue at 4-H Days in Girard and so the group was entitled to go to regionals in Chanute. The skit was also presented at two area nursing homes.

This summer the Lucky Rider Club will be busy sponsoring four 4-county showde-o's, which will consist of the following events: horsemanship, showmanship, western pleasure, ride-a-buck, egg & spoon, and timed events. A running total of each event will be kept and at the end of the showde-o's an awards banquet will be held.

Also, Lucky Riders will be putting on a series of horse clinics throughout the summer. The clinics will be on grooming a horse, timed events, roping, horsemanship, showmanship and care of horses.

"We feel that sponsoring these showde-os and horse clinics has helped Lucky Riders to learn how to organize and how to accept responsibility," Shawn says.

**Coffey County:** Beverly Linder, assistant leader for the Blue Ribbon 4-H club, writes that the club presented Frances Spielman with a silver tray for her many years of service. "I like the children. I like to watch them grow and some of them really do," Frances comments about her 23 years as a community leader. Frances and Bill Spielman started as 4-H leaders when their three sons were in 4-H. Since then, they've had two grandsons in 4-H who are now grown.

Frances remarked "it takes good parent cooperation to keep a good 4-H club. The ones that do drop out usually lack parent support. Most of the families stay because they enjoy it as a family and they realize how much the children are learning." Beverly says that Frances has made memories for everyone who has been a part of the club. She's been a devoted leader who has helped bring honors to the club and to its members.

# Southeast Highlights

**M**orris County: An 8-month 4-H enrichment program to explain the importance of proper nutrition to first through third graders was recently completed by Morris County Extension Home Economist, Ann Sparke.

Beginning in October, Mrs. Sparke visited schools monthly in Council Grove, Dwight, Alta Vista, Wilsey and White City to present programs explaining six nutrients. Introductory and summary programs also were presented.

Nutrients covered included: Vitamins A, B, and C; Calcium, Iron, and Protein.

Food samples were used by Mrs. Sparke to help the students understand each program.

Mrs. Sparke noted that 310 students and 16 teachers were reached directly by the program, but added that take home sheets allowed the nutrition program to reach further into each community.

Partial funding for the program was made possible by a \$100 grant from the Kansas 4-H Foundation for innovative 4-H & Youth programs.

**N**eosho County: Mary Kate Burress from the Eager Beavers 4-H Club says that members enrolled in the foods project have found that it is fun and rewarding to do things for others. For the Christmas, Valentine and St. Patrick's Day holidays 4-H'ers made favors for residents of the local rest home and local senior citizens. There are 42 rest home residents and approximately 30 senior citizens. "We feel that a cheery hello and a simple question such as 'How are you today?' helped bring a little happiness to their day," Mary said.

**G**reenwood County: Tonya Harber writes that the Fancy Mustangs 4-H Club had a good time celebrating their 30th anniversary. Sixty-five guests enjoyed visiting and looking at old photos. The Fancy Mustangs first met at the one-room Fancy School in December 1953. Tonya says the Fancy School has been torn down, so now the club meets at the new Community Center in Neal. The club has donated tables, storm doors and brooms for use at the building.

**W**ilson County: Stuffing envelopes and making pizzas are two of the things that Kansas Kids 4-H Club from Altoona have been doing lately. As a community service, 13 4-H'ers and three adults stuffed 10,000 appeals for the Chanute Red Cross membership drive. "We were surprised that we could accomplish so much in only two hours, and we hope our efforts will gain many new members for the Red Cross," says Mitchell McClure, club member.

Mitchell says that members enrolled in the Neat-to-Eat Snacks and Fitting It All Together projects enjoyed a day during spring break visiting food businesses. They went to the Pizza Hut in Fredonia where they watched employees set up the salad bar and then the 4-H'ers each got to make a pizza. The best part was eating the pizzas, Mitchell says, and each member got an official junior pizza maker certificate. The next stop was at the Fredonia Town and Country Supermarket where the 4-H'ers learned about the different departments in a grocery store. Mitchell says everybody asked a lot of questions and enjoyed the day.

**M**ontgomery County: Cedar Bluff Camp was the setting for the 50th anniversary celebration of the Busy Band 4-H Club. The camp was an appropriate location since the club members have worked through the years on maintaining and improving the facilities. Don Edwards and Patty Wadkins write that the club was first called the Skyline Club and in 1934 was reorganized as the Busy Band Club. The Lucky 13 Home Demonstration Unit club agreed to sponsor the new club and provided project leaders.

Nearly 100 friends, former leaders and members gathered to celebrate the success and accomplishments of the club. Club historian Christina Engel worked to bring a 4-H memories scrapbook up-to-date for the event. Club president Mike White introduced Mrs. Grant Cotner as "the lady who started us off." Entertainment and refreshments were provided by club members.

---

## 4-H'ers eligible to win a free pony

If you're a Kansas 4-H member between the ages of 7 and 12, you have a chance to win a POA. What's a POA? POA stands for Pony Of the Americas, which is the name of a breed of horses. A POA is an ideal horse for youth — it looks like a miniature quarter horse with a small dished Arab head and Appaloosa spots. Adults can and do ride POAs, but

showing POAs is limited to youth 18 years and younger.

How do you win a POA? Interested 4-H'ers must fill out an entry form by July 15. Entry forms are available from your county Extension office or from Jeff Lahr, RR 5, Box 193-C, Emporia, Kansas 66801. Ten finalists will be selected from the entries and the finalists

will be interviewed during the Kansas State Fair. The winner will be announced at the Kansas State Fair 4-H Horse Show.

The winner will receive a registered POA, a halter and a lead rope. Glenn Greenlee, a POA breeder, will also provide a year's supply of feed.

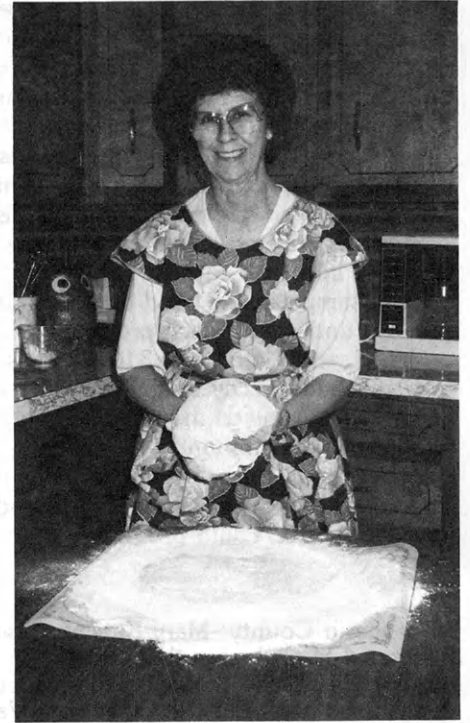
# A real Betty Crocker leads 4-H foods project in Cherokee County

by Judy Rosenstiel  
former 4-H community club leader,  
Chetopa

"Make someone happy, Betty Crocker can bake someone happy." Do you remember that famous Betty Crocker jingle? What does it make you think of? Perhaps you think of mouth watering delicacies such as cakes, cookies and breads. Yes, the famous Betty Crocker has satisfied millions with her delectable taste treats for years, but what does that name mean to 4-H'ers from Cherokee County? Actually, it means very much the same thing to them with one exception. We have our own local celebrity — Betty Crocker. What does she do? Why, she bakes and decorates beautiful cakes and cookies as well as delicious yeast breads. In fact, our very own Betty Crocker has been the Yeast Breads project leader for the Melrose Mustangs 4-H Club for two years.

Last year Betty taught her project group to make Cloverleaf Rolls, Parkerhouse Rolls and White Bread. She also gave individualized instruction in the art of making Maple Nut Rolls, 60 Minute Biscuits and Poppysseed Bread. The girls also experimented on Honey Dipt Donuts and Cinnamon Rolls on their own.

Mrs. Crocker has busily been preparing for this year's class and has agreed to share a few of the pointers and helpful tips that she plans to stress to the 4-H'ers. She said that an accurate cooking thermometer is a must for reaching the proper temperature of liquids and recommended that it also be used in the rising dough, as too much heat will kill the yeast. Betty suggested that mixing the salt into the flour allows for even distribution and prevents the salt from directly contacting the yeast. She pointed out that sufficient kneading of the dough is very important. You know the dough is properly kneaded when it is smooth and velvety. The dough quickly springs back at the gentle touch of your finger. Many people like to roll their dough to force out the gas bubbles, but Betty prefers the fold and stretch method. After forming the dough into a ball, gently stretch the dough to the full length of the pan and allow to rise again until double in bulk. After removing the freshly baked bread from the oven, she advised the beginning baker to lightly brush melted butter over the top to soften the crust and add a rich sheen. Mmmm! I could actually imagine that wonderful just baked aroma and taste. Our own Betty Crocker just beamed as she showed me the pictures and steps of baking while describing her



*Betty Crocker lives up to her famous name and is known throughout the county for her delicious baked goods.*

own special techniques.

Mrs. Crocker has some exciting activities planned for the Mustangs 4-H bakers this year. She plans to take them to a bakery, help them calculate the cost of homemade bread, visit a grocery store to compare the cost of bakery bread to homemade and teach them judging skills. She not only intends to teach them to make the standard yeast breads, but will teach them the art of making quick yeast breads as well.

Cherokee County's very own Betty Crocker truly lives up to her famous name. She has shown me a portfolio of beautifully decorated wedding cakes, groom's cakes, anniversary cakes, birthday cakes as well as all occasion cakes she has baked for people in the community and they are gorgeous. There isn't any doubt what Betty will take to meal time gatherings, why everyone expects her to bring hot rolls, pies and cakes. They can truly be considered to be Betty Crocker originals.

More money for post-high school education comes from family income and savings than from any other source. Be prepared; early in life start a savings account at your

## Kansas Savings and Loan

### **Fort Scott**

Liberty Savings and Loan Assn.

### **Garnett**

The Garnett Savings and Loan Assn.

### **Hutchinson**

Valley Federal Savings & Loan Assn.

### **Leavenworth**

Citizens Mutual Savings and Loan Assn.

Mutual Savings Assn.

### **Lyons**

Lyons Savings and Loan Assn.

### **Manhattan**

Manhattan Federal Savings and Loan Assn.

### **Medicine Lodge**

The Barber County Savings and Loan Assn.

### **Parsons**

Mid-America Federal Savings and Loan Assn.

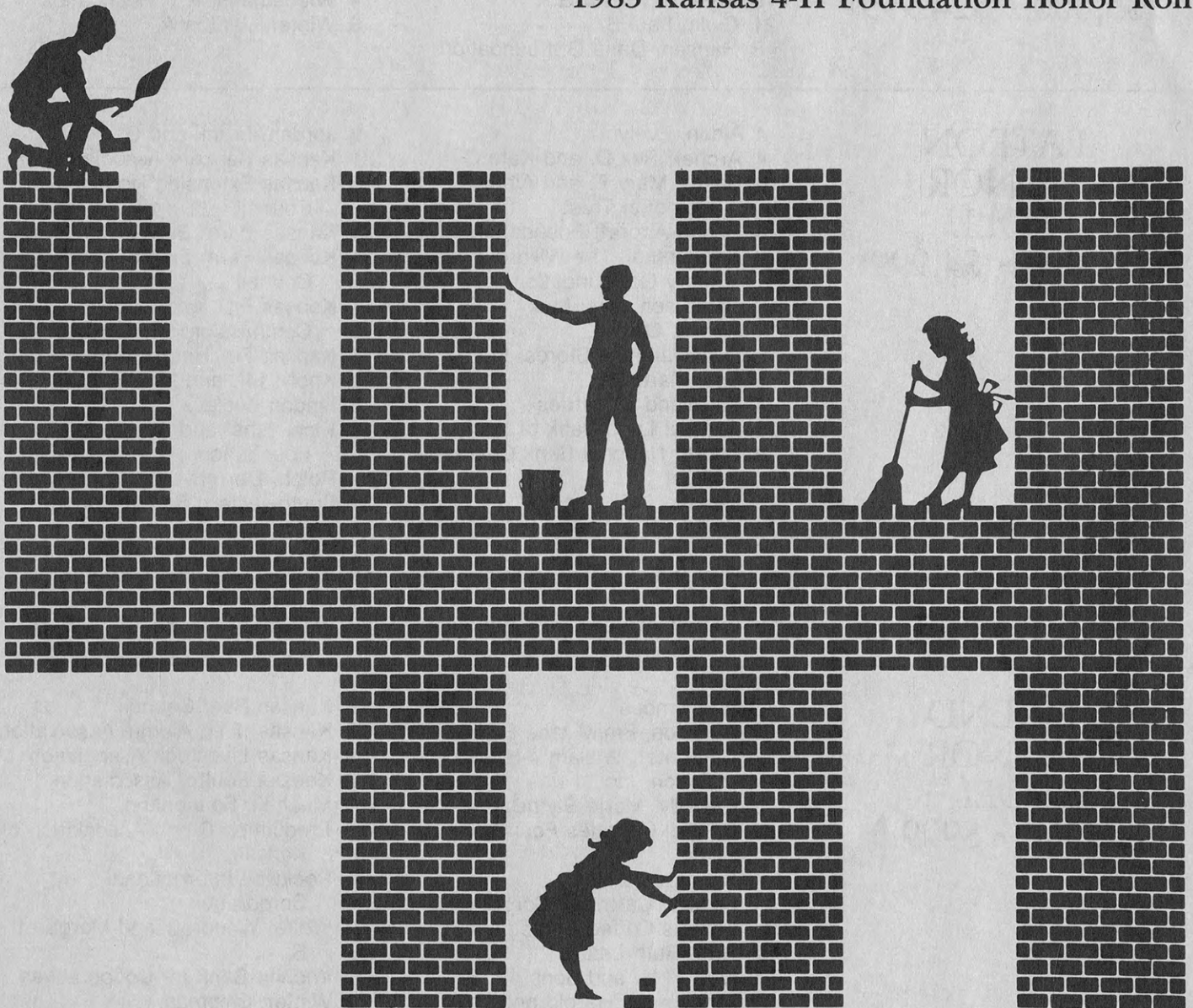
### **Plainville and Stockton**

Rooks County Savings Assn.



4-H  
Building  
On Experience

1983 Kansas 4-H Foundation Honor Roll





# Helping To Build Kansas 4-H

## 1983 Kansas 4-H Foundation Honor Roll

### EXECUTIVE HONOR ROLL (\$25,000 +)

- |                                   |                        |
|-----------------------------------|------------------------|
| 7 Finnup Foundation Trust         | 6 Osborne, R.R.        |
| 24 Garvey Family Foundation, Inc. | 1 Ramsey, Helen Estate |

### SPONSOR HONOR ROLL (\$5,000 - \$24,999)

- |                              |                                 |
|------------------------------|---------------------------------|
| 6 Anonymous                  | 8 Jenner, Hazel M. Trust        |
| 7 Baughman Foundation        | 5 Powell Family Foundation, The |
| 3 Cray, Cloud L. Foundation  | 1 Sharp, George H. Estate       |
| 13 Dillon, Richard W.        | 15 Starkey, Winona M.           |
| 31 Fox and Company           | 2 Sunderland Foundation         |
| 16 Frye, Raymond G.          | 14 Wiedemann, K.T. Foundation   |
| 21 Gwin, Paul B.             | 8 Winter, Winton A.             |
| 8 Hansen, Dane G. Foundation |                                 |

### PATRON HONOR ROLL (\$1,000 - \$4,999)

- |   |   |
|---|---|
| 4 Alden, Evelyn   | 9 Jordan, Frank and Gwen                    |
| 4 Archer, Rex D. and Kate C.                            | 31 Kansas Bankers Association               |
| 6 Baker, Mary F. and Albert<br>Memorial Trust           | 10 Kansas Extension Homemakers<br>Council   |
| 4 Beech Aircraft Foundation                             | 31 Kansas Farm Bureau                       |
| 6 Breidenthal, The Willard J. and<br>Mary G. Foundation | 31 Kansas Farm Electrification<br>Council   |
| 2 Dickerson, Mrs. Max                                   | 1 Kansas Fish and Game<br>Commission        |
| 12 Dubbs, Clara L.                                      | 1 Kansas Fur Harvesters                     |
| 9 Duckwall-Alco Stores, Inc.                            | 8 Knorr, Mr. and Mrs. Eric T.               |
| 8 Eby, Martin K.  | 8 Lindon, Violet                            |
| 24 Farmland Industries                                  | 10 Rice, Ethel and Raymond F.<br>Foundation |
| 23 Federal Land Bank of Wichita                         | 4 Rolph, Darrel                             |
| 9 Fourth National Bank Charitable<br>Trust              | 24 Southwestern Bell Telephone<br>Company   |
| 19 Hansen, A.S., Inc.                                   | 12 Texas Educational Association            |
| 28 Hicks, Mr. and Mrs. W.H.                             | 10 Wear Foundation, The                     |
| 6 Holmes, Mrs. O.W.                                     | 3 Weaver, A.B.                              |
| 10 Humphreys, Mr. and Mrs. Lewis<br>H.                  | 10 Wehrman, Claude                          |
| 12 Jeffrey, Mr. and Mrs. Balfour S.                     |   |

### FRIEND HONOR ROLL (\$500 - \$999)

- |   |   |
|---|---|
| 13 Anonymous                                    | 7 Kansas Beef Council                         |
| 9 Atkinson, Emily Jane Estate                   | 15 Kansas IFYE Alumni Association             |
| 17 Carpenter, William 4-H Foun-<br>dation, Inc. | 9 Kansas Livestock Association                |
| 2 Cassidy, Marje Blythe                         | 10 Kansas Poultry Association                 |
| 4 Central Charities Foundation,<br>Inc.         | 10 Muchnic Foundation                         |
| 7 Far-Mar-Co, Inc.                              | 19 Production Credit Association of<br>Kansas |
| 31 Federal Cartridge Corporation                | 9 Rockwell International<br>Corporation       |
| 31 Folgers Coffee Company                       | 2 White, Woodrow and Margaret<br>E.           |
| 22 Huff, Ruth Estate                            | 20 Wichita Bank for Cooperatives              |
| 21 Ives, H.M. and Sons                          | 1 Winter, Shipman                             |
| 31 Johnson, J. Harold and LaVerne               |   |

# Honor Roll of Other Donors

- 7 Adair, John A. and Grace S.  
5 Akin, Dorothy  
8 Albers, Clyde and Lois  
1 Albrecht, Myron and Bernadine  
1 Allen, David and Evelyn  
1 Allen, Gayla Jo  
3 A.A.U.W., Osawatomie-Paola Branch  
1 Americus State Bank, Americus  
2 Anderson, David B. Family  
6 Anderson, E.T. and Cora F. Foundation  
1 Anderson, John H. and Nancy  
21 Appleby, Tom and Mariellen  
6 Armstrong, Mr. and Mrs. John J.  
6 Atchison County Farm Bureau  
1 Atkinson, Mr. and Mrs. Charles R.  
6 Ayres, Mr. and Mrs. K. Wayne
- 9 Baker, Mr. and Mrs. Kirk  
7 Baker, Mrs. Russell  
9 Balding, Mr. and Mrs. James L.  
1 Baldwin, John and Judy  
2 Baldwin, Robert and Cynthia  
2 Bandel, Tom and Sandra  
9 Bank of Commerce and Trust  
Company Wellington  
4 Banker, Aldean  
1 Barber, Richard A.  
7 Barker, Mr. and Mrs. Norman  
4 Barker, Dr. and Mrs. Patrick  
21 Barr, Mr. and Mrs. Bernard  
18 Bates, Mrs. Viola  
1 Beach, Mrs. Marianna  
10 Beems, Harold M. and Marjorie E.  
7 Beesley Farms, Inc.  
11 Beezley Dairy Farm  
17 Beninga, Mr. C.T.  
1 Benne, William and Veronica  
1 Benteman, Arlan Family  
3 Berrie, Donald M. and Ann  
8 Bertram, Mr. and Mrs. Galen  
5 Bertrand Elevators, Inc.  
2 Bieber, William J.  
1 Biery, Mr. and Mrs. Freeman  
1 Birkeland, Wilma Evans  
4 Black, Dr. and Mrs. Cyril  
3 Black, Mr. and Mrs. John V.  
1 Blattner, Julia H.  
1 Blattner, Stanley and Rosa  
1 Blender, Howard and Trudie  
1 Blew Family Reunion  
1 Blinzler, Ron  
5 Bloom, Mr. and Mrs. L.A.  
5 Blue Crown Plumbing, Inc.  
6 Bluestem Farm and Ranch Supply, Inc.  
5 Boehm, Ralph and Mary  
3 Boettcher, Jarold and Barbara  
12 Bolt, Mr. and Mrs. W. Fred  
1 Boone, Thaine Family  
2 Boone, Wilford and Mary Lou  
14 Booth, Arden  
3 Borck, Lee  
14 Border, Mary Elsie  
13 Borst, William H.  
3 Bourbon County Farm Bureau  
1 Bowman, Mr. and Mrs. James D.  
5 Boyd, Dean and Dorothy  
3 Bracken, Lyle and Sharon
- 8 Bradley, Dr. and Mrs. W.F.  
1 Brant, Darrel and Pat  
3 Braun, Mr. and Mrs. Melvin  
1 Brewer, Charles  
1 Brewer, Clara Hampl  
1 Brillhart, Priscilla G.  
8 Brookover Feed Yards, Inc.  
10 Brooks, Blanche  
5 Brown, Dr. and Mrs. Cyril M.  
3 Brown, Megan  
22 Brown, Mr. and Mrs. Ralph E.  
4 Brown, Wayne E. and Esther  
7 Bryant, E.A.  
1 Budden, Rachelle  
3 Bunger, Mr. and Mrs. Bill  
11 Burlington Northern Foundation  
1 Buschow, Edna H.  
16 Busset, Dr. and Mrs. Glenn M.
- 7 Caldwell State Bank, Caldwell  
1 Callies, Duane  
10 Cantrell, Dale L. and Wanda  
2 Carlin, Governor and Mrs. John  
2 Carlson, Jean K.  
5 Carnahan, Nancy S.  
4 Carnahan, Quentin and Sara  
2 Carpenter, C.L.  
3 Carr, Dale and Linda  
1 Carr, Edward and Ruth  
18 Carr, Francis E.  
7 Carr, Keith and Ann  
5 Carswell, Harold and Pat  
7 Carter, Louis and Iola  
9 Cash, Wally and Trisha  
15 Caspar, Mr. and Mrs. Charles L., Sr.  
9 Caul, Jean F.  
2 Central Ayrshire Club  
9 Cessna Foundation, Inc.  
7 Chandler, Mr. and Mrs. George  
1 Chapman, Charles A. III Family  
18 Chapman, Mr. and Mrs. William  
5 Chase County Farm Bureau  
7 Cheek, Roy and Seva  
5 Cherokee County Farm Bureau  
Association, Inc.  
1 Christiansen, Mrs. Arthur  
6 Citizens Bank and Trust Company,  
Abilene  
11 Citizens Bank and Trust Company,  
Manhattan  
2 Citizens National Bank, Fort Scott  
1 Citizens National Bank and Trust  
Company, Emporia  
7 Citizens State Bank, Cheney  
2 Citizens State Bank, Morland  
5 Citizens State Bank, Paola  
8 Citizens State Bank, St. Francis  
4 Claassen, Mrs. Emil  
1 Clanton, Steven and Susan  
9 Clawson, Eldon and Patty  
1 Cloud County Bank and Trust, Concordia  
1 Cobb, Mary Catharine  
2 Cobean, Robert and Frances  
21 Coberly, Miss Goldie  
13 Cole, Mr. and Mrs. Robert  
18 Cole, Ward M., MD  
8 Collingwood Grain, Inc.
- 6 Conover, Mr. and Mrs. H.M.  
8 Conrad, Marie  
9 Cook, James E. and Muriel  
11 Cooper, Mrs. Margaret  
5 Cooperative Grain and Supply, Hillsboro  
2 Cope, William W. and Lois-Jo  
3 Copeland, Janette Family  
1 Copenhafer, Edith  
22 Counter, Mr. and Mrs. Perry  
11 Cox, Mr. and Mrs. Lawrence J.  
1 Cox, Mr. and Mrs. S.T., Jr.  
8 Crist, Rosemary A.  
31 Critser, W. Dale  
1 Cropp, David and Ruth Anne  
25 Cubit, James and Helen  
8 Cudney, Ray E. and Joyce  
9 Culver, Mr. and Mrs. William  
2 Curtis, Shana and Erin
- 1 Danville Cooperative Association,  
Danville  
1 Davidson, Harold Family  
1 Davault, Mr. and Mrs. Homer  
2 Davis, Mr. and Mrs. Robert  
1 Delta Kappa Gamma, Alpha Xi Chapter  
1 Delta Kappa Gamma, Beta Sigma  
Chapter  
2 Denner Welding and Machine Shop,  
Eureka  
3 Denton, Mr. and Mrs. Leland  
2 Derowitsch, Mr. and Mrs. Max  
6 DeWerff, Don  
1 Dicken, Kathryn  
1 Dienes, Leslie and Jennie  
22 Dies, Edgar and Geneva  
9 Dillard, Dean I.  
6 Dillon Stores  
9 Dillon, Helen  
5 Dixie Portland Flour Mills, Inc.  
1 Doherty, Mr. Pat H.  
3 Douthit, Thad J. and Hazel  
2 Downard, Darby and Debora  
2 Droge, Leslie and Lola  
9 Dulaney, Johnston, and Priest  
6 Dunbar, John O. and Fran  
2 Dunham, Don Family  
2 Dunn, Dr. and Mrs. Daniel  
2 Dunsmore, Sandra Shaw  
2 Dusenbury, Jerry and Mary
- 8 Eckermann, Louis D. and Vera B.  
2 Edwards, Billy C. and Sharon A.  
10 Edwards, Mrs. John E.  
9 Efken, Harvey  
1 Eidman, D.J.  
7 Elder, Neal  
1 Elliott, Beryle L.  
5 Elliott, Mr. and Mrs. Harold  
2 Elliott, Mr. and Mrs. Loren  
11 Ellis State Bank, Ellis  
1 Emerson, Margaret W.  
3 Engelkemier, Larry and Marjorie Family  
8 Enochs, Richmond M.  
3 Epler, Mr. and Mrs. John M.  
1 Erdman, Mr. and Mrs. Robert and Dave  
10 Ernest, Felix H.  
8 Etherton, Mr. and Mrs. Robert

**Note: The figures preceding the name indicate the number of years of support since the Kansas 4-H Foundation Membership and Share Recognition Plan was started in 1953. Please call omissions to our attention.**

# Honor Roll of Other Donors

- |    |  |    |  |    |  |
|----|--|----|--|----|--|
| 1  | Evan's Drug, Columbus                      | 5  | Geitz, James Herman                    | 3  | Hildenbrand, Chris A. and Kathleen       |
| 3  | Evans, Mr. and Mrs. Richard Jr.            | 14 | Gfeller, Mr. and Mrs. Harvey           | 1  | Hildreth, J. Warren Jr., DDS, PA         |
| 2  | Ewert, Mr. and Mrs. David                  | 1  | Gfeller, Mark and Joan                 | 6  | Hill, Bob                                |
| 2  | Ewing, Marlene and David                   | 1  | Gfeller, Mr. and Mrs. Wayne and Family | 3  | Hilt, Elton L. and Pauline               |
| 5  | Exchange National Bank, Cottonwood Falls   | 3  | Gilliland, Don A. and Sara C.          | 2  | Hintz, Maureen K.                        |
| 1  | Exchange State Bank, Douglass              | 22 | Gillmore, Ralph E.                     | 2  | Hi-Plains Cooperative Association, Colby |
| 22 | Eyestone, Cecil and Phyllis                | 12 | Givens, Mr. and Mrs. Don               | 10 | Hixson, Mr. and Mrs. Larry               |
| 1  | Eyestone, Gail                             | 2  | Glaze, Joe and De                      | 5  | Hixson, Warren C. and Sharon G.          |
| 23 | Eyestone, Merle and Willa Deanne           | 6  | Gleason, Maurice Family                | 8  | Hlasney, Faye Uhlrich                    |
| 1  | Fair, Bobby and Betty                      | 9  | Goff, Mr. and Mrs. Harold A.           | 2  | Hobble, Don and Maxine                   |
| 1  | Fair, Ed and Shirley                       | 2  | Good, Frederick and Marsha             | 10 | Hoffer, Mrs. Emma M.                     |
| 8  | Farmers and Merchants State Bank, Argonia  | 3  | Goodheart, Loren and Clarene           | 1  | Holliday, Richard Family                 |
| 6  | Farmers Cooperative Association, Lawrence  | 1  | Goss, Darrell and JoAnn                | 1  | Holt, Donnie                             |
| 7  | Farmers State Bank, Sabetha                | 12 | Goyen, Mr. and Mrs. Lester             | 12 | Honstead, Arliss                         |
| 1  | Farmers State Bank, Selden                 | 9  | Goyen, Mrs. Minnie                     | 7  | Hook, Maynard C. and Helen               |
| 1  | Farmers State Bank, Yoder                  | 3  | Gray, Mr. and Mrs. Lyle                | 23 | Hoover, Mr. and Mrs. L.J.                |
| 1  | Farris, Jerry and Mary                     | 9  | Griffin, Mr. and Mrs. James            | 1  | Horton, Lisa                             |
| 21 | Felt, Esther L.                            | 7  | Griffith, Mr. and Mrs. Charles F.      | 1  | Horttor, Donald                          |
| 21 | Felt, Sylvia S.                            | 1  | Grimm, Mr. and Mrs. Gerald             | 5  | Hottman, Mr. and Mrs. Orren F.           |
| 4  | Fendorf, James and Gloria                  | 12 | Groene, Mrs. Edith                     | 3  | Howard, Donald D. Family                 |
| 2  | Finger, Mr. and Mrs. Leonard               | 8  | Gross, Mr. and Mrs. Ralph L.           | 2  | Hoy, Garry and Marilyn                   |
| 5  | Finger, Marvin and Helen                   | 20 | Gugler, Donald P. and Evelyn F.        | 7  | Hoyt, Mr. and Mrs. Gordon E.             |
| 10 | Fink, Ben J. and Dorothy                   | 1  | Guyer, Judith                          | 1  | Hubin, David                             |
| 2  | Finley, Leonard and Evelyn                 | 3  | Hackler, Mr. and Mrs. Frank            | 2  | Hueske, Delbert                          |
| 2  | First Federal Savings and Loan, Wellington | 3  | Hagewood, Kenneth and Imogene          | 1  | Huff, Walt Family                        |
| 3  | First National Bank, Olathe                | 19 | Haines, Joe D. and Nancy               | 15 | Humboldt National Bank, Humboldt         |
| 7  | First National Bank, Wellington            | 2  | Haire, William and Claire Family       | 6  | Hummel, Charles Family                   |
| 1  | First National Bank and Trust, St. John    | 12 | Halbleib, Mr. and Mrs. George          | 15 | Humphrey, Mrs. Henry A.                  |
| 6  | First National Bank of Conway Springs      | 4  | Hall, Bob Family                       | 2  | Hund, Jack and Shirley                   |
| 8  | First National Bank of Lawrence            | 3  | Hall, C. Tom                           | 3  | Hunt, Melvin Family                      |
| 9  | First State Bank, Healy                    | 5  | Hallmark Cards, Inc.                   | 2  | Hunt, Mr. and Mrs. Walter                |
| 10 | First State Bank and Trust, Tonganoxie     | 2  | Hamala, John and Rosemary Family       | 2  | Hurt, David and Joyce A.                 |
| 5  | Fisher, Steve and Karla                    | 1  | Hamill, John Family                    | 8  | Huyett, George L.                        |
| 1  | Fitzgerald, Sturgeon and Leola             | 23 | Hamilton, Mr. and Mrs. Dean            | 1  | Hyberger, Hugh and Rebecca               |
| 10 | Flanders, Mr. and Mrs. Raleigh B.          | 2  | Hamilton, Mr. and Mrs. Jim and Family  | 2  | Ice, Mr. and Mrs. Tony                   |
| 13 | Floyd, Mr. and Mrs. R.D.                   | 2  | Hammeke, Robert and David              | 2  | Imm, Lewis and Darlene                   |
| 3  | Ford, Roy D. and Sylvia                    | 7  | Hamon, Mr. and Mrs. Charles            | 1  | Ingalsbe, Mr. and Mrs. Gary D.           |
| 1  | Forpahl, Richard and Jeanna                | 8  | Hamon, John and Bertha                 | 12 | Ingle, Don and Frances                   |
| 1  | Fowler, Mr. and Mrs. Harry                 | 6  | Hanks, Mr. and Mrs. E. Joe             | 2  | Isch, Mr. and Mrs. Frank                 |
| 1  | Fowler, Harry Jr. Family                   | 9  | Hanna, Mr. and Mrs. John B.            | 4  | Jackson County Farm Bureau               |
| 4  | Fowles, Mrs. Mary Ann                      | 2  | Hanson, Robert D. and Janice           | 8  | Jackson, Mr. and Mrs. Dwight S.          |
| 3  | Frahm, Ken Family                          | 11 | Harcourt Brace Jovanovich Publications | 9  | Jackson, Mr. and Mrs. M.E.               |
| 6  | Franklin, Paul T.                          | 7  | Harding, Mrs. Warren                   | 3  | Jacobsen, Mr. and Mrs. Homer             |
| 3  | Freeborn, Warren and Joann Family          | 1  | Harkness, Jerry and Glenda             | 3  | Janne, Melvin and Deloris                |
| 1  | Freedlund, Nancy Freed                     | 5  | Harper County Farm Bureau, Inc.        | 3  | Jenner, Ruby M.                          |
| 5  | Fridell, Mr. and Mrs. Max                  | 1  | Harper, Marion C.                      | 14 | Jensen, Miss Mabel                       |
| 6  | Fridell, Mr. and Mrs. Vernon               | 2  | Harris, Mr. and Mrs. Bo                | 3  | Johnson, Mr. and Mrs. Einar              |
| 1  | Fry, Donald and Hao                        | 7  | Hartford State Bank                    | 1  | Johnson, Elizabeth                       |
| 16 | Fry, Ralph A.                              | 3  | Haskin, Mr. and Mrs. Glenn             | 2  | Johnson, Gordon and Natalie              |
| 1  | Fuller, Daniel M. and Kathy                | 3  | Haskin, Sam and Dorothy                | 9  | Johnson, Mr. and Mrs. Raymond            |
| 2  | Fuller, Wayne and Evelyn                   | 6  | Hatfield, Mr. and Mrs. James           | 2  | Jones, Mr. and Mrs. Kenneth              |
| 3  | Gager, Mr. and Mrs. Ralph                  | 1  | Hauck, C. Ross                         | 1  | Jones, Roger A.                          |
| 2  | Gainer, Alphonso Jr. and Mary              | 1  | Haugh, Larry                           | 1  | Jordan, Frank R. and Marilyn             |
| 1  | Gallagher, John F.                         | 9  | Haynes, Nicole                         | 8  | Jorns, Mr. and Mrs. Arnold B.            |
| 6  | Galle, Nelson Family                       | 6  | Haysville State Bank, Haysville        | 4  | KABAR                                    |
| 1  | Garrett, Marvin and Emma                   | 6  | Hedrick, Mr. and Mrs. Frank E.         | 8  | Kaiser, Mr. and Mrs. Kenneth             |
| 1  | Garrigues, Maxine Wilson                   | 16 | Heersche, Mr. and Mrs. George          | 2  | Kane, William D. Family                  |
| 15 | Garten, Mr. and Mrs. Clarence              | 1  | Heidrick, Don and Mardy                | 2  | Kanopolis State Bank                     |
| 25 | Garten, Mr. and Mrs. Frank                 | 1  | Hein, Robert and Roberta               | 4  | Kansas Appaloosa Horse Club              |
| 3  | Gateno, Joseph Family                      | 8  | Heinly, Max and Kayann                 | 9  | Kansas Association of Nurserymen         |
| 1  | Gehrke, John W. Oil Producers              | 1  | Heller, Jayne                          | 24 | Kansas Brown Swiss Association, Inc.     |
|    |  | 8  | Henricks, Mabel and Family             | 9  | Kansas City Implement and Tractor Club   |
|    |  | 4  | Henry, P.C.                            | 2  | Kansas Council of Women                  |
|    |  | 1  | Herzog, Mrs. Mabel                     |    |  |
|    |  | 9  | Hesston State Bank, Hesston            |    |  |
|    |  | 1  | Hibbard, P.C. and Bernita              |    |  |

**Note: The figures preceding the name indicate the number of years of support since the Kansas 4-H Foundation Membership and Share Recognition Plan was started in 1953. Please call omissions to our attention.**

# Honor Roll of Other Donors

- |  |  |   |
|--|--|---|
| 8 Kansas Dairy Herd Improvement Association        | 2 Lindelof, Mr. and Mrs. S.M.                | 18 Mills, Lambert D.                          |
| 19 Kansas Electric Cooperatives, Inc.              | 4 Lindholm, Nora B.                          | 1 Mitchell County Farm Bureau Association     |
| 6 Kansas Federation of Women's Clubs               | 1 Lindholm, William and Gayla                | 2 Mitchell, Lee and Rosa                      |
| 8 Kansas Independent Oil and Gas Association       | 1 Linn County Bank, LaCygne                  | 7 Mogge, Mr. and Mrs. Carroll A.              |
| 10 Kansas Master Farm Homemakers Guild             | 6 Lions Club of Goff                         | 10 Montgomery Publications, Inc.              |
| 23 Kansas Milking Shorthorn Society                | 3 Long, David and Gloria                     | 8 Montgomery, Mr. and Mrs. Don                |
| 6 Kansas Pigeon Association                        | 1 Long, John W. Family                       | 1 Moore, Mr. and Mrs. Bob                     |
| 8 Kansas Pork Producers Council                    | 6 Longabach, Mr. and Mrs. Clarence           | 10 Morgan, Mr. and Mrs. L.D.                  |
| 8 Kansas Pork Producers Council Purebred Committee | 9 Lotker, Mr. and Mrs. Floyd Lee             | 7 Morris County Farm Bureau Association       |
| 10 Kansas Quarter Horse Association                | 1 Lott, Thomas J. and Nancy                  | 16 Morrison Grain Elevator, Junction City     |
| 3 Kansas Sheep Association                         | 1 Loucks, Jim Family                         | 1 Morrison, Marvin R.                         |
| 1 Kansas State Bank, Manhattan                     | 2 Lowell, Dorine Porter                      | 3 Morse, John R. and Kay Stine                |
| 2 Kansas State Bank, Newton                        | 2 Lunkwitz, Frank and Adela                  | 13 Mott, Mrs. C.C.                            |
| 3 Kansas State Bank, Holton                        | 7 Lunt, Harry B.                             | 5 Mueller, Mr. and Mrs. Marvin                |
| 2 Kansas State Rabbit Breeders Association         | 3 Luthi, Lloyd and Joann                     | 2 Mull, Mr. and Mrs. Glenn A.                 |
| 3 Keener, Patrick A. Family                        | 3 Luthi, Mr. and Mrs. Robert                 | 14 Mull, Mr. and Mrs. Keith W.                |
| 3 Keesling, Donald Family                          | 1 Lutz, Robert and Judith                    | 3 Mullen, Robert and Jane                     |
| 13 Keller, Mrs. Earl                               | 1 McAdam, Tom and Bonnie                     | 7 Mulvane State Bank                          |
| 1 Keller, Rachael                                  | 15 McClung, Irvin A. Family                  | 6 Munsell, Opie B.                            |
| 1 Kelley, Mr. and Mrs. Ronald                      | 1 McClure, Hazel Dean (Deana)                | 8 Munson, Charles Family                      |
| 1 Kemble, Dr. and Mrs. Roger                       | 4 McCormick, Dr. and Mrs. Eugene C.          | 19 Munson, Gaylord R.                         |
| 2 Kendall, John and Juanita                        | 3 McElwee, Carl Family                       | 4 Munson, Mary K.                             |
| 2 Kessler Foundation, Inc.                         | 17 McGinness, Kenneth E. and JoAnne H.       | 20 Munson, Ralph C.                           |
| 2 Killian, Mrs. Chloris                            | 4 McGrew Tire Company, Inc.                  | 3 Murphy, Pat and Ann                         |
| 6 Kingman County Farm Bureau                       | 1 McKee, Jim and Judy                        | 1 Murray, Dennis and Carolyn                  |
| 9 Kinkaid, Mr. and Mrs. Roy C., Jr.                | 3 McKinney, Robert and Judith                | 11 Murrey, Mr. and Mrs. Chester               |
| 4 Kirkman, Barbara A.                              | 1 Macha, Mr. and Mrs. Bob                    | 7 Musil, Mr. and Mrs. Elmer B.                |
| 23 Kirkwood, Frances                               | 10 Mackey, Mr. and Mrs. Frank                | 4 Mutual Savings and Loan, Leavenworth        |
| 1 Kiser, Harvey and Janet                          | 2 Maggard, L.O. and Blanche                  | 8 Myers, George M., Inc.                      |
| 3 Kiskadden, Robert M. and Barbara                 | 2 Mahieu, A.B.                               | 1 National Extension Homemakers Council, Inc. |
| 4 Klema, Dell and Anna                             | 1 Manhattan Retirement Foundation, Inc.      | 2 Neiswender, Raymond                         |
| 11 Klenda, Mr. and Mrs. Albert                     | 1 Mannebach, Roman                           | 1 Nelligan, William and Dorothy               |
| 3 Kleyman, Blane F.                                | 5 Manry, Mr. and Mrs. E. Clifford            | 3 Nelson Poultry Farms, Manhattan             |
| 3 Kling, Emily                                     | 4 Marcus, S.H.                               | 3 Nelson, Dr. and Mrs. Eugene                 |
| 11 Knappenberger, Dr. and Mrs. Joe                 | 2 Markley, Howard A. and Geta                | 3 Nelson, Mr. and Mrs. LaVern                 |
| 2 Knappenberger, Tom and Shirley                   | 1 Marmon, Raymond K.                         | 4 Nemaha County United Charities              |
| 6 Knobel, Chris and Barbara                        | 7 Marr, Charles W. and Joyce                 | 5 New, Bill and Loris                         |
| 7 Knop, Mr. and Mrs. E.C.                          | 1 Martinek, Melvin V. and Leah               | 9 Newsome, Bob and Mary Lou                   |
| 3 Koenig, Dr. and Mrs. Michael M.                  | 10 Matson, Leonard                           | 1 Nibbelink, Naomi                            |
| 1 Kolling, Ava Merryfield                          | 1 Matt, Loras and Susan                      | 9 Niccum, Mrs. Elwin W.                       |
| 1 Kriesel, Phyllis                                 | 1 Koenig, Donald and Leanne                  | 2 Nicholas, Mr. and Mrs. Robert               |
| 4 Krueger, Irene                                   | 6 Mayfield State Bank                        | 3 Ninemire, Mr. and Mrs. Gerald               |
| 2 Krug, Morris and Barbara                         | 1 Meade, Renee and Julio                     | 17 Nixon, Robert and Floy                     |
| 2 Kuhn, Mrs. Eugene                                | 3 Medlin, Mr. and Mrs. Bob                   | 18 Norby, Oscar W. and Pauline                |
| 1 LaBouff, Richard C. and Bonne J.                 | 1 Meek, Roberta Vawter                       | 3 Norton, Dr. and Mrs. C.L.                   |
| 3 Lang, Charles Family                             | 3 Meinen, Stanley R. and Irene               | 6 Novotny, Mrs. William                       |
| 10 Larson, Mr. and Mrs. Thaine                     | 6 Meng, Jerry and Mary                       | 3 Nowak, Matthew C.                           |
| 9 Lauer, Mr. and Mrs. Clarence                     | 1 Mensch, Gertrude L.                        | 8 Nunemaker, Mr. and Mrs. Eugene              |
| 7 Laughridge Insurance Agency                      | 6 Mertz, Harold and Jeanne                   | 4 Nunemaker, Wesley and Twila                 |
| 7 Laughridge, Wayne                                | 2 Metcalf, Sidney and Cheryl                 | 1 Nyhart, Sy Family                           |
| 2 Lawless, Eldon D. Family                         | 7 Meyer, Ella M.                             | 3 Oakleaf, Carl and Edna                      |
| 2 Lear, Byron and Toby                             | 7 Miami County Farm Bureau                   | 3 O'Brien, Mr. and Mrs. Harold T.             |
| 1 Lebestky, Tim                                    | 14 Mickey, Mr. and Mrs. Vernon L.            | 2 O'Donnell, Arthur Family                    |
| 2 Leddy, Mr. and Mrs. Dean                         | 12 Mid-America Dairymen, Inc.                | 6 Ohnemiller, Alma L.                         |
| 9 Lee Company, The                                 | 12 Midland United Dairy Industry Association | 1 Oliverius, Duane and Sheryl                 |
| 1 Legleiter, Cletus and Rita                       | 1 Milbourn, Mr. and Mrs. Wesley              | 23 Orsborn, Charlotte H.                      |
| 6 Lemon, Mr. and Mrs. George C.                    | 3 Miller, Clyde H. and Phyllis               | 21 Ottaway, Lois M.                           |
| 15 Leonard, Mrs. Ralph H.                          | 1 Miller, Don Paul and Margaret Brommer      | 19 Otte, Mr. and Mrs. Alvin                   |
| 9 Lewis, Mr. and Mrs. Robert W.                    | 4 Miller, Mr. Edwin B., Jr.                  | 8 Otto, Raymond                               |
| 11 Lewis, Mr. and Mrs. Walter M.                   | 1 Miller, G. Stanley and Vesta H.            | 3 Overfield, Mr. and Mrs. Earl R.             |
| 1 Lies, George and Joyce                           | 4 Miller, John O.                            | 2 PYW Dorrance                                |
| 1 Lindbloom, Gary and Oneta                        | 2 Miller, Mr. and Mrs. Larry and Family      | 5 Pacey, Mr. and Mrs. Franklin                |
|  | 3 Miller, Mr. and Mrs. Lowell                |   |
|  | 8 Miller, Marshall and Sharon                |   |

Note: The figure preceding the name indicate the number of years of support since the Kansas 4-H Foundation Membership and Share Recognition Plan was started in 1953. Please call omissions to our attention.

# Honor Roll of Other Donors

- 2 Page, Rick and Carol  
5 Paola Lumber and Coal Company, Paola  
7 Park, Mrs. Margaret  
8 Parker, Don and Alice  
1 Parry, Alberta M.  
1 Patton, Walter B. and Paula A.  
2 Pawnee County Farm Bureau  
1 Pearson, Clint and Lisa  
1 Pearson, Jamie L.  
2 Pease, Gregory and Joan  
9 Peirce, Walter C. and Frances  
8 Pendleton, Mr. and Mrs. Al Family  
1 Peoples Exchange Bank, Elmdale  
10 Peterson, E. Jack  
2 Phi State Delta Kappa Gamma Society International  
2 Pike, Ellis and Edna T.  
4 Pillot, J.R. and Helen  
5 Pine, Roger Family  
17 Plessey, Inc. — Welco Division  
10 Plested, Mr. and Mrs. William, Jr.  
1 Plunkett, Richard  
2 Poindexter, Jimmie and Virginia  
1 Post, Mr. and Mrs. Gary  
5 Postier, Galen W. and Shirley  
2 Potter, Mr. and Mrs. Roger E.  
9 Potter, Thomas M.  
2 Powell, Mrs. Alyce Mae  
11 Prawl, Mr. and Mrs. Warren L.  
21 Presnal, Glade C.  
20 Presnal, Mr. and Mrs. Ross  
1 Proctor, Ilene  
1 Proffitt, Becky  
3 Pyle, Dr. and Mrs. Lucien R.
- 1 Quade, Mrs. D.R.  
30 Quinlan, L.R.
- 2 Radenburg, Glenn C.  
8 Rahjes, Mr. and Mrs. Doyle D.  
1 Ramsey, John and Wanda  
1 Ramsey, M. Irene  
1 Randall, H. David Family  
10 Randle, Mr. and Mrs. Herb  
5 Redman, A. Lois  
4 Rees Fruit Farm, Topeka  
1 Regnier, Mr. and Mrs. Earl H.  
22 Regnier, Roger E.  
4 Reichenberger, T.W. and K.A.  
12 Reitz, Leland and Janice  
3 Reitz, Richard and Vera  
6 Renn, R.J.  
2 Reno, Earl, Connie, and Greg  
3 Rethorst, George  
10 Reusser, Rae and Athol  
4 Rezac, Don and Barbara  
4 Rhodes, Ernest and Betty  
2 Rice, Terry and Maxine  
2 Rickson, Warren Family  
4 Ridenour, Mr. and Mrs. Philip  
1 Ridge, William and Doris  
2 Ridley, Ron and Darca Ann  
1 Riggs, Mildred  
2 Riley, Jack Family  
1 Riley, John B.  
16 Riley, Mr. and Mrs. William M.  
5 Ring, Bob Family
- 9 Ringler, Dr. and Mrs. Wilber E.  
1 Rissman, Linda  
10 Robbins, Benny and Linda  
7 Roberts, Ivan L.  
5 Roberts, Marvin and Opal  
11 Robinson, Elsie  
1 Rogerson, Pauline M.  
10 Robson, Mrs. Marie A.  
1 Rocco, Vincent and Christine  
10 Roesler, Mr. and Mrs. Otto R.  
1 Rogers, Dana  
3 Rooney, Michael and Janyce  
2 Rosenhagen, Mr. and Mrs. Richard  
4 Ross Industries, Wichita  
2 Ross, Cynthia and Larry  
7 Rosser, Mr. and Mrs. Frank  
11 Rost, Eleanore Odell  
2 Rothgeb, Ray and Donna  
1 Rouser, Duane C. Family  
1 Rudick, Douglas and Susan  
1 Ruggles, Melvin W.  
10 Rupp, Mr. and Mrs. Clarence  
16 Rusk, Mr. and Mrs. Ralph  
12 Rusk, Ray and Roberta  
2 Russell State Bank, Russell  
3 Russell, Arden and Cheryl  
1 Ryman, Norma E.
- 31 Safeway Stores, Inc.  
3 St. Marys State Bank, St. Marys  
4 Saline County Farm Bureau Association  
1 Salmon, Dr. and Mrs. C.R.  
20 Samuelson, Mr. and Mrs. Armin  
11 Sanford, Paul E.  
2 Sawyer, Gary and Janice  
9 Schafer, David and Jeanne  
5 Schendel, Robert R.  
3 Schepmann, Mr. and Mrs. Nathan F.  
1 Schlesener, Norman and Mary Alice  
1 Schmidt, Melvin and Kathleen  
2 Schmitz, Francis and Ida  
3 Schnake, L. Donald and Barbara  
3 Schoeff, Robert W.  
10 Schroeder, Dr. Gail B.  
1 Schroeder, Mr. and Mrs. Philip V.  
1 Schroth, Fred and Joan  
1 Schultz, Steven and Rosslyn  
1 Schurle, Stanley and Betty  
5 Schweitzer, Ralph and Marcia  
19 Security State Bank, Wellington  
1 Seibert, Mr. and Mrs. Gary  
8 Setter, Mr. and Mrs. Andrew and Paul Setter  
2 Seufferling, Mick and Linda  
11 Shaw, Willard B. and Elsie  
24 Shepherd, Mr. and Mrs. Ronald  
9 Shipman, Larry and Judy  
5 Shirk, Mr. and Mrs. Fred  
1 Shores, Mrs. and Mrs. Bill  
2 Shupe, Roy S.  
2 Sibilla, Blase  
8 Sigley, Mr. and Mrs. Allen  
27 Simons, Mr. and Mrs. Dolph, Sr.  
19 Slaten, Grace  
1 Smerchek, Mrs. F.J. (Margaret)  
7 Smith County State Bank and Trust Company, Smith Center
- 2 Smith, Dr. and Mrs. Boyd  
5 Smith, Mr. and Mrs. Glee S.  
1 Smith, Jack  
1 Smith, Joseph E. Family  
1 Smith, Mary Beth  
3 Smith, O. Jerry Family  
1 Smith, Steve and Suzan  
6 Sobering, Fred D. and Esther  
1 Sobieski Family  
4 Sommers, Mr. and Mrs. Harold  
21 Sourk, Mrs. Ward and Family  
4 Springer, Teri  
1 Stafford County Flour Mills Company, Hudson  
1 Stahl, Mr. and Mrs. J. Michael  
2 Stallard, Wayne M. and Wanda S.  
1 Stanion Wholesale Electric Company, Pratt  
2 Stanion, Tom and Susan  
3 Stanley, The Honorable Arthur J., Jr.  
6 State Bank of Conway Springs  
6 State Bank of Satanta  
1 State Exchange Bank, Yates Center  
2 Steffen, Mr. and Mrs. Leon E.  
2 Stephens, Don and Jan  
2 Stephens, Harry and Sharon  
1 Stern, Maurice Family  
11 Stewart, John T. III  
1 Stine, Carol A.  
7 Stock Exchange Bank, Caldwell  
2 Stoskopf, Dean and Mary Anne  
2 Stoskopf, Mr. and Mrs. Wayne  
7 Streeter, Brad and Karen  
22 Streeter, Charles and Martha  
21 Strickler, Mr. and Mrs. Ivan  
2 Studer, Mr. and Mrs. Phil, Jr.  
1 Stutz, Duane and Elva  
7 Stutz, Mr. and Mrs. W.V.  
1 Stutzman, John and Rhonda  
8 Sucht, Leon A. and Elizabeth  
1 Sullinger, Madaline  
2 Sullivan, James W. Family  
5 Sumner County Family Care Center, P.A.  
7 Sumner-Cowley Electric Cooperative, Inc.  
3 Svaty, Ron and Pat Family  
3 Sweany, Jim and Alice  
8 Sweat, Ron and Janet
- 1 Talmadge, Mr. and Mrs. Roger  
1 Tarry, Ray and Mary  
11 Taylor, Richard P.  
19 Teagarden, Mr. and Mrs. Earl H.  
7 Teagarden, Robert and Iva  
12 Tennant, Marjorie Ann  
1 Thackrey, Mrs. Jessie Dean  
3 Thieme, Robert Family  
1 Thiessen, Doug and Arlene  
5 Thomas, Mr. and Mrs. Homer W.  
1 Thomas, Merle and Sharon  
8 Thompson, Dwight H., Jr.  
2 Thompson, Mr. and Mrs. Gerry  
3 Thompson, Mr. and Mrs. Robert E.  
2 Thompson, Wayne M. and Eula A.  
1 Thowe, Delmar and Sandy  
2 Tiao, Joe and Inge  
2 Tiberghien, Lee W.

**Note: The figure preceding the name indicate the number of years of support since the Kansas 4-H Foundation Membership and Share Recognition Plan was started in 1953. Please call omissions to our attention.**

# Honor Roll of Other Donors

- |                                       |   |  |
|---------------------------------------|---|--|
| 1 Tibbott, Eunice                     | 6 Waetzig, Mr. and Mrs. Scott                                       | 1 Wick, Dan and Darnel                                       |
| 12 Tillotson, Mr. and Mrs. Raymond    | 2 Wagner, Mr. John  | 1 Wiggins, Tom   |
| 9 Tjaden, Wayne                       | 25 Walker, Mr. and Mrs. Howard R.                                   | 20 Wild, Mrs. Violet J. Carroll                              |
| 12 Todd, Mr. and Mrs. Charles C.      | 1 Walker, W.H.  | 6 Wiles, Don K. and Donitta R.                               |
| 3 Tonn, Steven                        | 1 Wall-Rogalsky Milling Company,<br>McPherson                       | 1 Wilkens, Ruby H.   |
| 3 Torrey, Frank W. and Paula M.       | 1 Wall, Traci   | 1 Williams, Jessie   |
| 1 Tracy, Glenn D. and Ruth S.         | 1 Walters, D.L. and Ann   | 1 Williams, Robert C. and Bettie J.                          |
| 5 Trostle, Mr. and Mrs. Dee           | 7 Walton, Mr. and Mrs. Keith C.                                     | 1 Williams, Robert and Diana                                 |
| 8 Truax, Mr. and Mrs. L.L.            | 1 Warnken, Mr. and Mrs. Frederick                                   | 5 Williams, Mr. and Mrs. Wayne                               |
| 21 Truman, Maxine                     | 8 Wasserman, Gilbert and Edith                                      | 5 Willis, William G. and Jean                                |
| 1 Tryba, Janice K.                    | 1 Wasson, Brad and Sheri  | 10 Wilson State Bank, Wilson                                 |
| 6 Tubach, Jim and Pat                 | 1 Watson, Ella Mae  | 3 Wilson, Mr. and Mrs. Dean                                  |
| 5 Tudgay, Mrs. Geraldine W.           | 1 Watson, Robert and Susan  | 1 Wilson, Dennis and Charlene                                |
| 1 Tuggle, Thomas M. and Suzanne F.    | 9 Weathers, Mrs. George   | 21 Wilson, John L.   |
| 12 Turnbull, Mr. and Mrs. J.K.        | 10 Weaver, Eldon and Mildred  | 10 Wilson, John and Glenna                                   |
| 1 Turner, Courtney S.                 | 3 Weber, Dr. and Mrs. Wallace                                       | 1 Wilson, Lori   |
| 1 Turpen, Darlene J.                  | 1 Weigand, Kurt and Clara   | 7 Wilson, Mr. and Mrs. R.E.                                  |
|                                       | 1 Weisbender, Tricia  | 6 Wing, Mark and Karen                                       |
| 6 Umbarger, Mr. and Mrs. Vernie       | 16 Wellington Daily News, Wellington                                | 10 Wingert, Mr. and Mrs. George D.                           |
| 2 Unger, Samuel G. and Elizabeth A.   | 1 Wells, Mr. and Mrs. Melvin D.                                     | 1 Wolf, Wallace and Lulabel                                  |
| 1 Union State Bank, Clay Center       | 2 Wenger, Mr. and Mrs. Donald L.                                    | 1 Wolfe, Wallace and Thelma                                  |
| 2 United Telephone Company of Kansas  | 1 Wenger, Mrs. Leon   | 14 Wolfenbarger and McCulley, P.A.,<br>Architects, Manhattan |
| 10 Utermoehlen, Mr. and Mrs. Ralph E. | 7 Werner, Mr. and Mrs. Dale   | 5 Wood, Robert D. and Janice M.                              |
|                                       | 9 Wertzberger, Georgia  | 2 Woods, Mrs. Clyde, Jr.                                     |
| 3 Vahsholtz, Merle W., Inc.           | 9 West, Mr. and Mrs. Roland   | 2 Woods, Ray Family  |
| 1 Van Cleave, Ronald and Alice        | 2 Western Cooperative Electric<br>Association, Inc., WaKeeney       | 1 Wright, Marion L.  |
| 1 Van Horn, Pamela                    | 9 Western Retail Implement and Hardware<br>Association, Kansas City | 1 Wylie, David and Mary                                      |
| 2 Vanier, Mrs. John K.                | 9 Wetta, Joseph L. and Virginia M.                                  | 1 Young Development, Little River                            |
| 10 Veltman, Floyd                     | 2 Whitaker, Phil Family   | 1 Young, Carrie Ann  |
| 11 Vieux, Cecil and Marcile           | 2 White, Hugh E. and Jessie   | 1 Zenor, Larry and Linda                                     |
| 13 Visser, Edward W.                  | 1 White, Mr. and Mrs. Lloyd N.                                      | 1 Zielsdorf, Richard   |
| 7 Visser, Mr. and Mrs. George         | 7 Whitehair, Mr. and Mrs. Raymond                                   | 2 Zimmerman, Allen Family                                    |
| 6 Vista at Lawrence, Inc.             |   | 2 Zimmerman, Jerry Family                                    |
| 2 Vista at Topeka, Inc.               |   |  |
| 7 Vogel, John H.                      |   |  |

## Extension home economics & 4-H groups

### ALLEN COUNTY

- 4 Full-O-Pep 4-H Club

### ANDERSON COUNTY

- 6 Colony Hi-Point 4-H Club  
1 Glenlock Homemakers EHU  
3 Harris Progressive EHU  
1 Seekers-Not-Slackers 4-H Club  
5 Selma Flaming Arrow 4-H Club

### ATCHISON COUNTY

- 8 Friendly Farmers 4-H Club  
4 Lancaster Lightning 4-H Club

### BARBER COUNTY

- 13 B-Square 4-H Club  
11 Lone Eagle 4-H Club  
7 Mingona Boosters 4-H Club

### BARTON COUNTY

- 9 Busy Buzzers 4-H Club  
11 Cleveland 4-H Club  
3 Ellinwood Energizers 4-H Club  
12 Fairview Scouts 4-H Club  
13 Ft. Zarah 4-H Club

### BOURBON COUNTY

- 3 Uniontown 4-H Club

### BROWN COUNTY

- 10 Fairview Willing Workers 4-H Club  
7 Jayhawkers 4-H Club  
12 Modern Sunflower 4-H Club  
21 Robinson Meadowlark 4-H Club

### BUTLER COUNTY

- 6 Bluestem 4-H Club  
3 Burns Go-Getters 4-H Club  
2 Douglass Shockers 4-H Club  
23 Flint Hills 4-H Club  
23 Hickory Helpers 4-H Club  
9 Lily Lake 4-H Club  
10 North Butler 4-H Club

### CHASE COUNTY

- 2 Diamond 4-H Club

### CHEROKEE COUNTY

- 1 Melrose Mustangs 4-H Club  
8 Prairie Ramblers 4-H Club

### CHEYENNE COUNTY

- 8 Cheyenne County 4-H Council  
7 Go-Getters 4-H Club

### CLARK COUNTY

- 10 Bearcreek 4-H Club

### CLAY COUNTY

- 2 Grant Go-Getters 4-H Club  
3 Lincoln Creek 4-H Club  
1 Sturdy Oak 4-H Club

### CLOUD COUNTY

- 10 Hill and Dale 4-H Club  
8 Hopewell Corners 4-H Club  
1 Lucky Four 4-H Club  
10 Miltonvale Hustlers 4-H Club

### COFFEY COUNTY

- 17 Blue Ribbon 4-H Club  
10 Smilin' Thru 4-H Club

### COMANCHE COUNTY

- 8 Loyal Hustlers 4-H Club

**Note: The figures preceding the name indicate the number of years of support since the Kansas 4-H Foundation Membership and Share Recognition Plan was started in 1953. Please call omissions to our attention.**

# Extension home economics & 4-H groups

## COWLEY COUNTY

- 7 Cameron 4-H Club
- 9 Cowley County 4-H Council
- 9 Floral 4-H Club
- 9 I.X.L. 4-H Club
- 9 Martha Washington 4-H Club
- 9 Tisdale 4-H Club
- 6 Walnut Valley 4-H Club

## DECATUR COUNTY

- 9 Maverick 4-H Club
- 3 P.E.P. EHU
- 11 Sappa Valley 4-H Club

## DICKINSON COUNTY

- 7 Chapman Shamrocks 4-H Club
- 8 Fragrant Hill 4-H Club
- 11 Holland Sunflowers 4-H Club
- 16 Jolly Jayhawkers 4-H Club
- 10 Navarre Boosters 4-H Club
- 5 Sand Springs Rustlers 4-H Club

## DONIPHAN COUNTY

- 11 Bendena Community 4-H Club
- 6 Circle B 4-H Club
- 7 Highland 4-H Club
- 4 Sunflower 4-H Club

## DOUGLAS COUNTY

- 8 Buffalo Booster 4-H Club
- 20 Cottonwood 4-H Club
- 2 Douglas County EHU Council
- 11 Eudora 4-H Club
- 13 Four-Leaf Clover 4-H Club
- 7 Kanwaka EHU
- 6 Kaw Valley EHU
- 24 Kanwaka 4-H Club
- 7 Kanza 4-H Club
- 8 Lone Star 4-H Club
- 14 Marion Boosters 4-H Club
- 17 Sunflower 4-H Club

## EDWARDS COUNTY

- 16 Better Homes EHU
- 20 Sunflower 4-H Club
- 6 Trenton Workers 4-H Club
- 12 Trousdale EHU

## ELK COUNTY

- 9 Flint Hill Boosters 4-H Club
- 9 Longton Boosters 4-H Club
- 9 Paw Paw Lucky Clovers 4-H Club

## ELLIS COUNTY

- 7 Gemini Juniors 4-H Club
- 12 Good Hope 4-H Club
- 25 Winner's 4-H Club

## ELLSWORTH COUNTY

- 9 Elkhorn 4-H Club
- 17 Ellsworth County 4-H Council
- 2 Go-Getters 4-H Club
- 2 Ridge Riders 4-H Club
- 17 Trying Tommies 4-H Club

## FINNEY COUNTY

- 9 Beacon Boosters 4-H Club
- 7 Pawnee Indian 4-H Club

## FORD COUNTY

- 13 Happy Hour EHU
- 8 Prairie Schooners 4-H Club
- 4 Town and Twenty EHU

## FRANKLIN COUNTY

- 14 Full O'Pep 4-H Club
- 14 Pottawatomie Valley 4-H Club
- 5 Rambling Ranchers 4-H Club
- 6 S.H.A.F.F. 4-H Club
- 6 Town and Country 4-H Club

## GEARY COUNTY

- 8 Humboldt 4-H Club

## GOVE COUNTY

- 6 Golden Plains 4-H Club
- 16 Hackberry 4-H Club

## GRAHAM COUNTY

- 11 Graham County 4-H Council
- 10 Happy Crickets 4-H Club

## GRANT COUNTY

- 3 Grant County 4-H Council

## GREELEY COUNTY

- 17 Go-Getters 4-H Club
- 17 Golden Opportunities 4-H Club
- 15 Straight Ahead Strivers 4-H Club
- 18 Thrifty Thrivers 4-H Club

## GREENWOOD COUNTY

- 2 Lamont EHU
- 5 Lucky 13 4-H Club
- 12 Upper Fall River Jayhawkers 4-H Club

## HAMILTON COUNTY

- 6 Busy Bears 4-H Club

## HARPER COUNTY

- 4 Spring Robins 4-H Club
- 8 Sunnyside 4-H Club
- 1 Westside 4-H Club

## HARVEY COUNTY

- 2 Harmony Homemakers EHU
- 6 Kellas 4-H Club
- 16 Sedgwick Sunflowers 4-H Club

## HASKELL COUNTY

- 6 Cloverleaf 4-H Club
- 14 Colusa Go-Getters 4-H Club
- 2 Lakeview EHU
- 7 Sehasco 4-H Club
- 6 Victory 4-H Club

## HODGEMAN COUNTY

- 7 Busy Bee Juniors 4-H Club
- 4 Jolly Jayhawkers 4-H Club

## JACKSON COUNTY

- 7 Delia Early Birds 4-H Club
- 4 Denison Builders 4-H Club
- 3 Soldier Boosters 4-H Club

## JEFFERSON COUNTY

- 11 Clover Power 4-H Club
- 4 Lucky Four 4-H Club
- 11 Prosperity 4-H Club

## JOHNSON COUNTY

- 10 Busy Bees 4-H Club
- 11 Greenwood Meadowlarks 4-H Club
- 5 Johnson County EHU Council
- 18 Oxford Hustlers 4-H Club
- 15 Sunnyside 4-H Club

## KINGMAN COUNTY

- 13 Galesburg 4-H Club
- 4 Willowdale 4-H Club

## KIOWA COUNTY

- 4 Jayhawkers 4-H Club
- 8 Southwestern Royals 4-H Club
- 17 Upward Strivers 4-H Club

## LANE COUNTY

- 2 Dighton Gold Diggers 4-H Club
- 2 Spring Creek EHU

## LEAVENWORTH COUNTY

- 7 Boling 4-H Club
- 4 Fairmount 4-H Club
- 11 Glenwood 4-H Club
- 9 Happy Hollow 4-H Club
- 4 Livewires 4-H Club
- 15 Lucky Clover 4-H Club
- 5 Mayginnis Hustlers 4-H Club

## LINCOLN COUNTY

- 2 Ever-Ready EHU
- 4 Northwest Rainbow EHU
- 7 Westfall Winners 4-H Club

## LYON COUNTY

- 15 Frost 4-H Club
- 11 Logan Avenue 4-H Club
- 11 Lyon County 4-H Council
- 12 Model Boosters 4-H Club
- 14 Rinker 4-H Club
- 13 Riverside 4-H Club
- 7 Willing Workers 4-H Club

## McPHERSON COUNTY

- 2 Galva Go-Getters EHU
- 15 New Frontier Trailblazers 4-H Club

## MARION COUNTY

- 8 Friendly EHU
- 10 Goessel Goal Getters 4-H Club
- 13 Lincolnville Wide-Awake 4-H Club
- 11 Ramona Red Chiefs 4-H Club

## MARSHALL COUNTY

- 4 Balderson Boosters 4-H Club
- 9 Beattie Musketeers 4-H Club
- 8 Bremen Hustlers 4-H Club
- 5 Happy Harvestors 4-H Club
- 6 Wide Awake 4-H Club
- 3 Work to Win 4-H Club

## MIAMI COUNTY

- 5 Busy Beavers 4-H Club
- 2 New Lancaster EHU
- 5 Osage Pioneers 4-H Club
- 2 Rolling Hills 4-H Club

## MITCHELL COUNTY

- 10 Hunter 4-H Club
- 2 Twilight EHU

## MONTGOMERY COUNTY

- 8 Drum Creek EHU
- 4 Drum Creek 4-H Club
- 11 Gingham Aprons EHU
- 10 Loyal Workers EHU
- 6 Up and Coming 4-H Club
- 3 Valley Victors 4-H Club
- 5 Wayside Friends EHU

**Note: The figures preceding the name indicate the number of years of support since the Kansas 4-H Foundation Membership and Share Recognition Plan was started in 1953. Please call omissions to our attention.**



# Extension home economics & 4-H groups

## MORRIS COUNTY

- 2 Four Mile 4-H Club
- 4 Valley EHU

## MORTON COUNTY

- 14 Best-Yet 4-H Club
- 4 Dermont 4-H Club

## NEMAHA COUNTY

- 7 Busy Jayhawkers 4-H Club
- 6 Centralia Aces 4-H Club
- 9 Red Vermillion 4-H Club
- 12 Rustlers 4-H Club

## NEOSHO COUNTY

- 8 Up and Atom 4-H Club

## NESS COUNTY

- 10 Utica Meadowlarks 4-H Club

## NORTON COUNTY

- 10 Cedar Ridge 4-H Club
- 9 Prairie Dog 4-H Club

## OSAGE COUNTY

- 29 Carbondale Rustlers 4-H Club
- 15 Melvern Junior Highline 4-H Club
- 2 Michigan Valley 4-H Club
- 12 North Osage 4-H Club
- 2 Valley Brook Juniors EHU
- 13 Vassar Blue Ribbon 4-H Club

## OSBORNE COUNTY

- 9 Coronado EHU
- 8 Liberty Bell 4-H Club
- 4 Sumner 4-H Club

## PAWNEE COUNTY

- 11 Burdett Blue Ribbons 4-H Club
- 9 Roze! Rockets 4-H Club
- 13 Tiny Toilers 4-H Club

## PHILLIPS COUNTY

- 23 Deer Creek 4-H Club
- 8 Phillips County 4-H Council

## POTTAWATOMIE COUNTY

- 30 Blackjack 4-H Club
- 6 Pottawatomie County 4-H Council
- 1 Westmoreland Shamrocks 4-H Club

## PRATT COUNTY

- 16 Glendale Reapers 4-H Club
- 6 Golden Valley EHU
- 11 Lincoln Climbers 4-H Club
- 17 Preston 4-H Club
- 16 Sawyer Hustlers 4-H Club
- 10 Southwest 4-H Club

## RENO COUNTY

- 19 Plevna 4-H Club
- 9 North Reno 4-H Club

## REPUBLIC COUNTY

- 1 Liberty Rose Creek 4-H Club
- 5 Merry Meadowlarks 4-H Club
- 4 Munden 4-H Club
- 8 Sherdahl Boosters 4-H Club

## RILEY COUNTY

- 9 Be Busy 4-H Club
- 4 Cico Shamrocks 4-H Club
- 13 College Hill 4-H Club
- 4 Gingham Gals EHU
- 13 Kaw Valley EHU
- 2 Leonardville EHU
- 7 Leonardville Hustlers 4-H Club
- 15 Strong 4-H Club
- 17 Zeandale 4-H Club

## ROOKS COUNTY

- 10 Bow Creek 4-H Club
- 9 Eager Beaver 4-H Club
- 7 East Plainville 4-H Club
- 6 Helpful Hands 4-H Club
- 10 Livewire's 4-H Club
- 11 Mt. Pleasant 4-H Club
- 10 Palco 4-H Club
- 20 Rooks County 4-H Council

## RUSH COUNTY

- 6 Alexander Whippets 4-H Club
- 6 Otis Go-Getters 4-H Club
- 5 Prairie Valley 4-H Club
- 7 Lone Star Rangers 4-H Club

## RUSSELL COUNTY

- 9 Big Creek 4-H Club
- 3 Wolf Creek Valley 4-H Club

## SALINE COUNTY

- 11 81 Hustlers 4-H Club
- 14 Friendly Valley 4-H Club
- 16 Kipp Wide Awake 4-H Club
- 12 Sasnak 4-H Club
- 9 Space Agers 4-H Club
- 23 Willing Workers 4-H Club

## SCOTT COUNTY

- 11 Lake Wide Awake 4-H Club

## SEDGWICK COUNTY

- 11 Andover Aces 4-H Club
- 19 Riverview 4-H Club
- 15 Rolling Hills 4-H Club

## SHAWNEE COUNTY

- 13 Dover 4-H Club
- 3 Grove EHU
- 22 Pleasant Hill 4-H Club
- 23 Riverside 4-H Club
- 26 Rochester Heights 4-H Club
- 8 Rocky Hill 4-H Club
- 24 Shunga Valley 4-H Club
- 6 Town and Country EHU

## SHERIDAN COUNTY

- 8 Sheridan County 4-H Council
- 5 Sunshine 4-H Club

## SHERMAN COUNTY

- 15 Beaver Valley 4-H Club
- 22 Glendale Livewires 4-H Club

## SMITH COUNTY

- 2 Busy Bears 4-H Club
- 7 Busy Bees 4-H Club
- 6 Four Oaks 4-H Club
- 4 Heart of America 4-H Club
- 2 Home on the Range EHU
- 5 Meadowlark 4-H Club
- 2 Solomon Valley EHU
- 10 Solomon Valley 4-H Club
- 7 U.S. Center 4-H Club

## STAFFORD COUNTY

- 10 Antrim Streamliners 4-H Club

## STANTON COUNTY

- 17 Big Bow 4-H Club
- 3 Stanton County 4-H Council

## STEVENS COUNTY

- 3 Friendly Neighbors EHU

## SUMNER COUNTY

- 9 Cardinal 4-H Club
- 1 Golden Buffaloes 4-H Club
- 4 Happy Hustlers 4-H Club
- 6 Milan Dragons 4-H Club
- 10 Redwing 4-H Club
- 2 Slate Creek EHU

## THOMAS COUNTY

- 9 Brewster Prairie Gem 4-H Club

## TREGO COUNTY

- 7 Busy Kansan 4-H Club
- 13 Ogallah 4-H Club
- 14 WaKeeney Willing Workers 4-H Club

## WABAUNSEE COUNTY

- 10 Blue Ridge 4-H Club
- 6 Cottonwood 4-H Club
- 5 Happy Valley 4-H Club
- 10 Maple Hill Hustler 4-H Club

## WALLACE COUNTY

- 14 Harrison Endeavors 4-H Club

## WASHINGTON COUNTY

- 21 Busy Bee 4-H Club
- 10 Happy-Go-Lucky 4-H Club
- 7 Linn Livewires 4-H Club

## WILSON COUNTY

- 5 Kansas Kids 4-H Club
- 4 Homebuilders 4-H Club
- 1 Lucky Horseshoe 4-H Club

## WYANDOTTE COUNTY

- 10 Brauer Beavers 4-H Club
- 1 Buffalo 4-H Club
- 6 Grinter-Go-Getters 4-H Club
- 26 Horanif Hustlers 4-H Club
- 9 Wolcott 4-H Club
- 3 Wyandotte Pioneers 4-H Club

**Note: The figures preceding the name indicate the number of years of support since the Kansas 4-H Foundation Membership and Share Recognition Plan was started in 1953. Please call omissions to our attention.**

# KANSAS 4-H JOURNAL SPONSORS

These are the business firms and individuals who pay your Journal subscription.

Call on them or send them a thank you note to express your appreciation.

Those who have sponsored for 20 or more years are designated with an \*.

## ALLEN

Mrs. Gwen E. Wilson Memorial Fund

## ANDERSON

Bank of Kincaid, Kincaid

## ATCHISON

Atchison County 4-H Council, Effingham

## BARBER

\*First National Bank, Medicine Lodge  
Barber County 4-H Council, Medicine Lodge

## BARTON

American State Bank & Trust, Great Bend  
Great Bend Co-op Assn., Great Bend

## BOURBON

\*Citizens National Bank, Ft. Scott  
\*Farmers Co-op Assn., Ft. Scott  
\*Liberty Savings & Loan Assn., Ft. Scott  
\*The Bank of Bronson, Bronson  
\*Union State Bank, Uniontown  
Security State Bank, Ft. Scott  
Bourbon County 4-H Council, Ft. Scott

## BROWN

\*Citizens State Bank, Hiawatha  
\*Farmers State Bank, Fairview  
\*Morrill State Bank, Sabetha  
\*The Bank of Horton, Horton  
\*The Bank of Robinson, Robinson  
\*The Morrill & Janes Bank, Hiawatha  
\*The Union State Bank, Everest

## BUTLER

\*Augusta State Bank, Augusta  
\*Benton State Bank, Benton  
\*Citizens State Bank, El Dorado  
\*First National Bank & Trust, El Dorado  
\*Exchange State Bank, Douglass  
\*Potwin State Bank, Potwin  
\*Prairie State Bank, Augusta  
\*State Bank of Leon, Leon  
\*Walnut Valley State Bank, El Dorado  
Butler County 4-H Council, El Dorado

## CHASE

\*Exchange National Bank, Cottonwood Falls  
\*Strong City State Bank, Strong City  
\*The Peoples Exchange Bank, Elmdale  
Chase County 4-H Council, Cottonwood Falls

## CHAUTAUQUA

\*Sedan State Bank, Sedan

## CHEROKEE

American National Bank, Baxter Springs  
The Hartley Agency, Inc., Baxter Springs  
H.D. Youngman Contractor, Inc., Baxter Springs  
Evans Drugs, Columbus  
Ace Hardware, Columbus  
Cherokee County 4-H Council, Columbus

## CHEYENNE

\*Citizens State Bank, St. Francis  
Cheyenne County 4-H Council, St. Francis

## CLARK

\*Citizens State Bank, Ashland  
\*Stockgrowers State Bank, Ashland

## CLAY

\*Union State Bank, Clay Center  
Clay County 4-H Council, Clay Center

## CLOUD

\*Citizens State Bank, Miltonvale  
\*Cloud County Bank & Trust, Concordia  
\*First Bank & Trust, Concordia  
\*The First National Bank of Glasco, Glasco  
Exchange Bank of Clyde, Clyde  
Elk State Bank, Clyde  
Cloud County 4-H Council, Concordia

## COMANCHE

\*The Peoples State Bank, Coldwater

## COWLEY

\*The Home National Bank of Arkansas City, Arkansas City  
\*The First National Bank, Winfield  
Cowley County 4-H Council, Winfield

## CRAWFORD

\*Farmers State Bank, Walnut  
\*First State Bank, Arma  
\*First National Bank, Girard  
\*The First State Bank & Trust Co., Pittsburg  
\*Girard National Bank, Girard  
\*Hepler State Bank, Hepler  
\*McCune State Bank, McCune  
\*National Bank of Pittsburg, Pittsburg  
\*The City National Bank of Pittsburg, Pittsburg

## DECATUR

\*Decatur Co-op Assn., Oberlin

## DICKINSON

\*Farmers National Bank, Abilene

## DONIPHAN

Farmers State Bank, Wathena  
Doniphan County REA, Troy  
Troy State Bank, Troy  
Twombly Grain, Troy  
Robinson Farmers Co-op, Leona  
Atchison County Co-op, Denton

## DOUGLAS

\*Douglas County State Bank, Lawrence  
Douglas County 4-H Council, Lawrence

## EDWARDS

\*The Home State Bank, Lewis

## ELK

\*Exchange State Bank, Moline  
\*Home State Bank, Longton  
\*Howard State Bank, Howard  
Elk County 4-H Council, Howard

## ELLIS

\*Ellis State Bank, Ellis  
\*Farmers National Bank, Victoria  
\*First National Bank, Hays  
\*Hays State Bank, Hays  
Peoples Heritage Federal Savings, Hays

## ELLSWORTH

\*Citizens State Bank & Trust, Ellsworth  
\*Kanopolis State Bank, Kanopolis  
\*Lorraine State Bank, Lorraine  
\*The Bank of Holyrood, Holyrood  
\*Wilson State Bank, Wilson

## FINNEY

\*The Fidelity State Bank, Garden City  
\*The Garden National Bank, Garden City  
Western State Bank, Garden City  
Fourth Bank of Garden City, Garden City  
First National Bank of Holcomb, Holcomb  
Finney County 4-H Council, Garden City

## FORD

\*Fidelity State Bank & Trust, Dodge City  
\*Ford County State Bank, Spearville  
\*First National Bank & Trust, Dodge City  
\*First National Bank, Spearville  
\*Bucklin State Bank, Bucklin  
Ford County 4-H Council, Dodge City

## FRANKLIN

\*Peoples National Bank, Ottawa  
\*Wellsville Bank, Wellsville

## GEARY

\*Central National Bank, Junction City

## GOVE

\*First National Bank, Quinter  
\*Peoples State Bank, Grinnell  
Grainfield Elevator, Inc., Grainfield  
Deges Barber Style Shop, Grainfield

## GRAHAM

\*Farmers & Merchants Bank, Hill City  
Citizens State Bank, Morland

## GRANT

\*Grant County State Bank, Ulysses  
Grant County 4-H Council, Ulysses

## GRAY

\*Farmers State Bank, Ingalls  
\*First National Bank in Cimarron, Cimarron  
\*Montezuma State Bank, Montezuma  
Gray County 4-H Council, Cimarron

## GREELEY

\*First National Bank, Tribune  
Greeley County 4-H Council, Tribune

## GREENWOOD

\*Home Lumber Co., Eureka  
\*Citizens National Bank, Eureka  
\*Eureka Federal Savings & Loan, Eureka  
\*Freeman's T.V. & Appliance, Eureka  
\*Home Bank & Trust Co., Eureka  
\*Parks Oil Company, Eureka  
First National Bank of Hamilton, Hamilton  
Emch Feed & Elevator Company, Madison  
First National Bank, Madison  
The Madison Bank, Madison  
Engle's Super Saver Food Center, Madison

## HAMILTON

\*First National Bank, Syracuse  
\*Valley State Bank, Syracuse  
Hamilton County 4-H Council, Syracuse

## HARPER

\*Anthony Farmers Co-op Elevator, Anthony  
\*Danville Co-op Assn., Danville  
\*Farmers Co-op Business Assn., Hazelton  
\*State Line Grain Co., Manchester  
Harper County 4-H Council, Anthony

## HARVEY

\*First Bank of Newton, Newton  
\*Hesston State Bank, Hesston  
\*Kansas State Bank, Newton  
\*Midland National Bank, Newton  
\*Sedgwick State Bank, Sedgwick  
\*State Bank of Burrton, Burrton  
\*The Halstead Bank, Halstead  
\*Walton State Bank, Walton  
Harvey County 4-H Council, Newton

## HASKELL

\*The Haskell Co. State Bank, Sublette  
Haskell County 4-H Council, Sublette

## HODGEMAN

\*Farmers State Bank, Jetmore  
\*Hanston State Bank, Hanston  
Hodgeman County 4-H Council, Jetmore

## JACKSON

Clark Chev.—Olds, Inc., Holton  
Jackson Farmers, Inc., Holton  
Jackson County Farm Bureau, Holton  
Jackson County 4-H Council, Holton  
Holton Lions Club, Holton  
Oldham's Farm Sausage, Lee Summit, MO

## JEFFERSON

Valley Implement, Inc., Valley Falls  
\*Leavenworth-Jefferson Electric Co-op, McLouth  
\*Jefferson County E.H.U. Council, Oskaloosa  
Jefferson County 4-H Council, Oskaloosa

## JEWELL

\*Burr Oak State Bank, Burr Oak  
\*Citizens State Bank, Jewell  
\*The Formosa Bank, Formosa  
\*First National Bank, Mankato  
\*Randall National Bank, Randall  
\*State Bank of Esbon, Esbon  
\*State Exchange Bank, Mankato

## JOHNSON

\*Patrons State Bank & Trust, Olathe  
\*First National Bank, Olathe  
\*State Bank of Stanley, Stanley  
\*State Bank of Spring Hill, Spring Hill  
\*Shawnee State Bank, Shawnee  
\*Olathe State Bank, Olathe  
The First Citibank of Olathe, Olathe  
Farmers Bank & Trust Co., Gardner

## KEARNY

Kearny County Feeders, Inc., Lakin

## KINGMAN

\*C.R. Calvert Co., Kingman

## KIOWA

\*First State Bank, Mullinville  
\*Haviland State Bank, Haviland  
\*Greensburg State Bank, Greensburg  
Kiowa County 4-H Council, Greensburg

## LABETTE

\*Chetopa State Bank & Trust, Chetopa  
\*First State Bank, Edna  
\*First National Bank, Oswego  
\*First National Bank & Trust, Parsons  
\*Labette County State Bank, Altamont  
\*State Bank of Parsons, Parsons  
\*American State Bank, Oswego  
\*Parsons Commercial Bank, Parsons

## LANE

\*First National Bank, Dighton  
\*First State Bank, Healy  
Lane County 4-H Council, Dighton

## LEAVENWORTH

First State Bank, Tonganoxie  
Leavenworth County 4-H Council, Leavenworth

## LINCOLN

\*Sylvan State Bank, Sylvan  
Lincoln County 4-H Council, Lincoln

## LINN

\*Bank of Pleasanton, Pleasanton  
\*Centerville State Bank, Centerville  
\*Farmers State Bank, Blue Mound  
\*First State Bank, Pleasanton  
\*Linn County Bank, LaCygne  
\*Prescott State Bank, Prescott  
Linn County 4-H Council, Mound City

## LOGAN

\*Farmers State Bank, Oakley  
Logan County 4-H Council, Oakley

## LYON

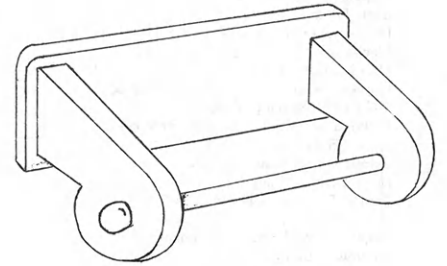
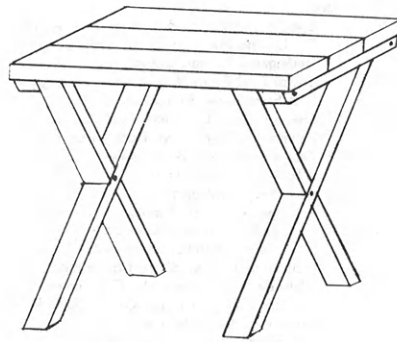
\*Citizens National Bank & Trust Co., Emporia  
Federal Land Bank Assn., Emporia  
Bluestem Farm & Ranch, Emporia  
Lyon County Farm Bureau, Emporia  
Hartford State Bank, Hartford  
Americus State Bank, Americus  
Lyon County 4-H Council, Emporia

- MARION**  
Wheatland Bank of Goessel, Goessel  
Crossroads Co-op, Goessel  
Goessel Goal Getters 4-H Club, Goessel  
Sears Catalog Store, Marion  
\*Co-op Grain & Supply, Hillsboro  
Hillsboro Ag Service, Hillsboro,  
Donahue Corporation, Durham  
Marion County Co-op Assn., Durham  
G & R Implement Co., Durham  
Hein Salvage & Auto Repair, Durham  
Durham State Bank, Durham  
E & M Cafe, Durham  
Williams Service, Florence  
Dari Corner, Florence  
Seward Hardware, Florence  
O'Dell's Grocery, Florence  
Florence State Bank, Florence  
Inlow Foam, Florence  
Dannenfelser Retail Liquors, Florence  
Lincolntonville Co-op Assn., Lincolntonville  
Otto Lehman Insurance Agency, Lincolntonville  
Farmers Grain Co-op, Walton & Peabody  
4-N Feed Company, Peabody  
Ramona Red Chief 4-H Club, Ramona  
Tampa State Bank, Tampa  
\*Tampa Co-op Assn., Tampa  
Butch's Diner, Tampa  
Tampa Triple T's 4-H Club, Tampa  
Kevin Blackwell, Lehigh  
Empire Home Furnishing, Lehigh  
Sunflower Energy Works, Inc., Lehigh  
Prieb Repair, Lehigh  
Hank's Car Wash, Lehigh  
Marion County 4-H Council, Marion
- MARSHALL**  
\*Bremen State Bank, Bremen  
\*Citizens State Bank, Marysville  
\*Exchange Bank of Schmidt & Koester, Marysville  
\*Marshall County Bank, Beattie  
\*First National Bank, Frankfort  
\*First National Bank, Summerfield  
\*Oketo State Bank, Oketo  
\*State Bank of Axtell, Axtell  
\*State Bank of Blue Rapids, Blue Rapids  
\*Vermillion State Bank, Vermillion  
Citizens State Bank, Waterville,
- MEADE**  
\*Plains State Bank, Plains  
\*Fowler State Bank, Fowler  
Meade County 4-H Council, Meade
- MIAMI**  
Kenneth R. Johnson Water & Oil Supplies, Osawatomie  
Wilson & Son Funeral Home, Paola  
Bank of Louisburg, Louisburg  
Eddy-Birchard Funeral Home, Osawatomie  
First National Bank of Louisburg, Louisburg  
First National Bank of Osawatomie, Osawatomie  
Miami County National Bank, Paola  
Miami County 4-H Council, Paola
- MITCHELL**  
\*Farmers & Merchants State Bank, Cawker City  
\*Farmers State Bank, Simpson  
\*Farmers State Bank, Hunter  
\*First National Bank, Beloit  
\*Guaranty State Bank, Beloit  
\*Tipton State Bank, Tipton  
\*Traders State Bank, Glen Elder
- MONTGOMERY**  
People's State Bank of Cherryvale, Cherryvale  
\*Citizens National Bank, Independence  
\*First National Bank of Coffeyville, Coffeyville  
Condon National Bank, Coffeyville  
Independence State Bank, Independence
- MORRIS**  
Morris County 4-H Council, Council Grove
- MORTON**  
\*Janzen-Elder Insurance & Real Estate, Inc., Elkhart  
\*Elkhart Co-op Equity Exchange, Elkhart  
\*Elkhart True Value Lumber Co., Elkhart  
\*First State Bank, Elkhart  
\*Fisher's Inc., Elkhart  
\*Rolla Co-op Equity Exchange, Rolla  
Elkhart TV Cable System, Elkhart  
Morton County 4-H Council, Elkhart
- McPHERSON**  
McPherson County 4-H Development Fund, McPherson
- NEMAHA**  
\*Farmers Co-op Elevator, Sabetha  
\*Nemaha County Co-op Assn., Seneca  
Seneca Elevator Co., Inc., Seneca  
C-G-F Grain Co., Inc., Centralia  
Lortscher Agri-Service, Inc., Bern
- NEOSHO**  
Ash Grove Cement Co., Chanute  
Kynts "Kay" Kennedy, Dodge City  
Lester T. Sunderland Foundation, Overland Park  
Thayer Farm & Ranch Supply, Thayer
- NESS**  
\*Citizens State Bank, Utica  
\*Bazine State Bank, Bazine  
\*First State Bank, Ness City  
\*First State Bank of Ransom, Ransom  
Ness County 4-H Council, Ness City
- NORTON**  
Norton Co. Farm Bureau, Norton  
Norton Livestock Auction, Norton  
Kansasland Tire Company, Norton  
A-T Implement Co., Norton  
Norton Appliance & Furniture, Norton  
Federal Land Bank Assn., Hays  
Norton County 4-H Council, Norton  
Kellings Fine Foods, Norton  
Lenora Mercantile Assn., Lenora
- OSAGE**  
Spalding Pharmacy & Variety, Burlingame  
Dr. Charles Massman D.C., Burlingame  
Burlingame Locker, Burlingame  
Taylor Real Estate & Insurance, Burlingame  
First State Bank, Burlingame  
Osage County Chronicle, Burlingame  
Patterson's Food Store, Burlingame  
Satzler Hardware, Burlingame  
J & R Cafe, Burlingame  
Jo's Place, Burlingame  
Burlingame Co-op, Burlingame  
Aaron's Homestore, Carbondale  
Carl Sullivan Family, Carbondale  
Catfish John's Bait Shop, Carbondale  
State Bank of Carbondale, Carbondale  
Garcia's Automotive Service, Carbondale  
Kemble's Tree Farm, Carbondale  
Old Southside Cafe, Carbondale  
Skip's Thriftway, Carbondale  
Virginia Lee Beauty Salon, Carbondale  
SONIC Drive-In, Osage City  
Citizens State Bank, Osage City  
Holthaus Motors, Inc., Osage City  
Bob's Chicken King, Osage City  
Jerry's Thriftway, Osage City  
Stop 2 Shop, Osage City  
Melvern Food Center, Melvern  
\*McNabb Hy-Klas, Melvern
- OSBORNE**  
\*Downs National Bank, Downs  
\*Farmers National Bank, Osborne  
\*First National Bank of Natoma, Natoma  
\*First State Bank, Osborne  
\*State Bank of Downs, Downs  
\*First State Bank of Portis, Portis  
Osborne County 4-H Council, Osborne
- OTTAWA**  
\*Hoover's of Minneapolis, Inc., Minneapolis  
\*Lott Implement Co., Minneapolis  
4-H Booster Club, Minneapolis  
Delphos Co-op, Delphos  
Ottawa County 4-H Council, Minneapolis
- PAWNEE**  
\*First State Bank, Larned  
First National Bank, Larned
- PHILLIPS**  
\*First National Bank, Phillipsburg
- POTTAWATOMIE**  
Pugh, Pugh, & Duesing, Attorneys at Law, Wamego  
J. Warren Hildreth, Jr., D.D.S., Wamego  
\*St. Marys State Bank, St. Marys  
\*First National Bank, Wamego  
\*Farmers State Bank, Westmoreland  
\*Union State Bank of Olsburg, Olsburg  
Pottawatomie County 4-H Council, Westmoreland
- PRATT**  
\*Cairo Co-op Equity Exchange, Cairo  
\*Iuka Co-op Exchange, Iuka  
\*Preston Co-op Grain & Mercantile Co., Preston  
\*Sawyer Co-op Equity Exchange, Sawyer  
\*Cullison Co-op, Pratt  
Pratt County 4-H Council, Pratt
- RAWLINS**  
\*Farmers Bank & Trust, Atwood  
\*Farmers State Bank, Ludell  
\*Peoples State Bank, McDonald  
\*State Bank of Atwood, Atwood  
\*State Bank of Herndon, Herndon  
Rawlins County 4-H Council, Atwood
- RENO**  
Buhler State Bank, Buhler  
Central State Bank, Hutchinson  
Citizens State Bank, Arlington  
State Bank of Kansas, S. Hutchinson  
Farmers State Bank, Yoder  
First National Bank, Hutchinson  
Haven State Bank, Haven  
\*Hutchinson National Bank & Trust, Hutchinson  
Nickerson State Bank, Nickerson  
Northgate National Bank, Hutchinson  
State Bank of Plevna, Plevna  
State Bank of Pretty Prairie, Pretty Prairie  
Sylvia State Bank, Sylvia  
Turon State Bank, Turon
- REPUBLIC**  
Arbuthnot's Drug Co., Belleville  
The Walthers Oil Co., Cuba  
First National Bank, Belleville
- RICE**  
Bushton Grain & Supply, Chase  
Rice County State Bank, Chase  
Farmers Co-op of Alden, Lyons, Sterling and Pollard,  
Sterling  
First National Bank, Sterling  
\*Farmers State Bank, Sterling  
Home State Bank, Little River  
\*Collingwood Grain, Inc., Little River  
\*Raymond State Bank, Raymond  
\*Pepsi-Cola Bottling Co., Hays  
Lyons IGA Store, Lyons  
Alden State Bank, Alden  
Lyons Savings & Loans, Lyons  
Palace Drug, Geneseo  
\*Central Kansas Elevator, Lyons  
Chandler Bank, Lyons
- RILEY**  
\*Leonardville State Bank, Leonardville  
Cox Gelbvieh Ranch, Manhattan  
Vista Drive-In Restaurant, Manhattan  
Cowan-Edwards-Yorgensen Funeral Home, Manhattan  
\*The Riley State Bank, Riley  
Kansas State Bank, Manhattan  
\*Citizens State Bank & Trust, Manhattan  
Rader Construction, Manhattan  
Riley County 4-H Council, Manhattan  
The Clothes Tree, Manhattan  
Brooks Yamaha/K-Hill Engines, Manhattan  
Home Federal Savings, Manhattan  
Calico Inn, Riley  
Old Shoppe, Riley  
Dillons, Manhattan  
Thomason Auto Service, Manhattan  
Ryan Realty, Manhattan  
Danker Roofing and Siding, Manhattan
- ROOKS**  
First National Bank, Palco  
Norton-Decatur Co-op Electric Co., Norton  
Plainville State Bank, Plainville  
Rooks County 4-H Council
- RUSH**  
\*Farmers & Merchants State Bank, LaCrosse  
Rush County 4-H Council, LaCrosse
- RUSSELL**  
\*Russell State Bank, Russell  
\*Farmers State Bank, Lucas  
Home State Bank, Russell  
Russell County 4-H Council, Russell
- SALINA**  
\*First National Bank & Trust, Salina  
First Bank & Trust, Salina  
Gypsum Valley Bank, Gypsum  
Falun State Bank, Falun  
Salina Area Chamber of Commerce, Salina  
National Bank of America, Salina  
Assaria State Bank, Assaria  
Saline County 4-H Council, Salina
- SCOTT**  
\*First National Bank, Scott City  
\*Security State Bank, Scott City
- SEDGWICK**  
K.T. Wiedemann Foundation, Wichita  
Chisholm Trail State Bank, Wichita  
\*First National Bank in Wichita, Wichita  
\*Fourth National Bank & Trust Company, Wichita  
\*State Bank of Colwich, Colwich  
\*Citizens State Bank, Cheney  
\*Home State Bank, Clearwater
- SEWARD**  
\*Citizens State Bank, Liberal  
\*First National Bank, Liberal  
\*Peoples National Bank, Liberal  
Seward County 4-H Council, Liberal
- SHAWNEE**  
West Lawn Memorial Gardens, Topeka  
Fairlawn Plaza State Bank, Topeka  
Kent Brown Chevrolet, Topeka  
Capitol City Office Products, Topeka  
Riverside 4-H Club, Overbrook  
Hall Directory, Inc., Topeka  
Goodyear Tire & Rubber Co., Topeka  
Silver Lake Bank, Silver Lake
- SHERIDAN**  
\*Farmers State Bank, Selden  
\*First National Bank, Hoxie  
\*Hoxie State Bank, Hoxie  
\*Mickey's Hardware, Hoxie  
Sheridan County 4-H Council, Hoxie
- SHERMAN**  
\*First National Bank of Goodland, Goodland

(cont. on page 21)

# Free!

## 4-H Woodworking Plans from YOUR LUMBER DEALER



**These plans  
are available:**

Patio Table  
Repeat of a popular plan  
by Greg Tomlinson

Paper Towel Holder  
Made by Dan Dunham  
Haskell County 4-H member

**For your free plans, see your lumber dealer; he will also help you select the material you need.**

**Ashland**  
Don Spotts Lumber Company

**Atchison**  
Frakes Lumber Co., Inc.

**Belleville**  
Belleville Lumber Co.

**Beloit**  
Peoples Lumber Co.

**Blue Rapids**  
Blue Rapids Lumber Company

**Clay Center**  
Fullingtons

**Concordia**  
Mid-West Lumber Company

**Dighton**  
Stephens Lumber Co.

**El Dorado**  
Home Lumber & Supply Co.

**Emporia**  
Fleming Lumber & Material Co.  
Mark II Lumber

**Erie**  
Johnson & Son Lumber Co.

**Eureka**  
Home Lumber & Supply Co.

**Frankfort**  
Davenport Lumber Co.

**Galva**  
Galva Lumber Co.

**Garden City**  
Cash & Carry Lumber Co., Inc.

**Great Bend**  
Everitt Lumber Co., Inc.

**Greensburg**  
Hildinger's Lumber & Hardware  
& Ready Mix Inc.

**Harper**  
Town & Country Lumber Co.

**Hillsboro**  
Ken's Home Center  
The Lumberyard Inc.

**Holton**  
Building Supply Center

**Hoxie**  
Hoxie Lumber Co., Inc.

**Hugoton**  
Hugoton True Value Lumber  
& Hardware

**Independence**  
Sandott Lumber

**Iola**  
Klein Lumber Company

**Johnson**  
Seyb-Tucker Lumber and  
Implement Company

**Junction City**  
Builders Lumber Inc.

**La Cygne**  
La Cygne Lumber and  
Ready Mix, Inc.

**LaHarpe**  
Diebolt Lumber and Supply

**Lansing**  
Lansing Lumber Inc.

**Larned**  
T.M. Deal Lumber Co.

**Lawrence**  
Whelan's Home Center

**Leavenworth**  
Whelan's Home Center

**Mankato**  
Mid-West Lumber Company

**Marion**  
Mack-Welling Lumber & Supply

**Newton**  
Boise Cascade Building  
Materials Center

**Nickerson**  
The Home Lumber & Supply Co.

**Norton**  
Norton Lumber Company

**Nortonville**  
Nortonville Lumber Inc.

**Offerle**  
Offerle Co-op Grain & Supply Co.

**Ottawa**  
Hubbard Lumber Company, Inc.  
Ottawa Lumber Co.

**Parsons**  
Woods-Seward Lumber Co.

**Pittsburg**  
Broadway Lumber Co., Inc.

**St. Francis**  
St. Francis Mercantile Equity  
Exchange

**Pratt**  
W.R. Green Lumber Co., Inc.

**Russell**  
Schwaller Lumber

**Salina**  
Easterday-Boster Lumber Co.

## OTHER PLANS AVAILABLE

Bicycle Parking Rack  
 Bookshelf  
 Car Creeper  
 Chain-Saw Box  
 Clock  
 Cold Frame  
 Flower Pot Holder  
 Fold-Up Server  
 Fox & Geese  
 Garage Wall Stor.  
 Gun Rack  
 Hall Tree  
 Hurricane Lamp  
 Key Holder  
 Microwave Stand  
 Plant Stand  
 Planter Bench  
 Portable Sandbox  
 Pump Handle Lamp  
 Redwood Patio Table  
 Safety Swing  
 Serving Tray  
 Solar Firewood Dryer  
 Spoon Rack  
 Step Stool  
 Tack Box  
 Tennis Rack  
 Toy Boat  
 Wheelbarrow Flower Planter  
 Wood Box  
 Wooden Stool  
 Work Table

## 4-H Journal Sponsors (cont. from page 19)

### SMITH

First National Bank, Gaylord  
 First National Bank, Kensington  
 First National Bank, Lebanon  
 First National Bank, Smith Center  
 The Smith County State Bank & Trust Co., Smith Center

### STAFFORD

\*Farmers & Merchants State Bank, Macksville  
 \*Farmers National Bank, Stafford  
 \*First National Bank & Trust, St. John  
 \*Hudson State Bank, Hudson  
 \*Macksville State Bank, Macksville  
 \*St. John National Bank, St. John  
 Stafford County 4-H Council, St. John

### STANTON

\*Collingwood Grain, Inc., Johnson  
 Stanton County 4-H Council, Johnson

### STEVENS

\*Citizens State Bank, Hugoton  
 Stevens County 4-H Council, Hugoton

### SUMNER

Garvey Elevator Co., Conway Springs  
 McDaniel Grain Co., Geuda Springs  
 McDaniel-Waples, Inc., Wellington  
 Oxford Milling Co., Oxford  
 Farmers Co-op Grain Co., Caldwell  
 \*Wolcott & Lincoln, Inc., Wellington  
 Wolcott & Lincoln, Inc., Corbin  
 Wolcott & Lincoln, Inc., Milan  
 Wolcott & Lincoln, Inc., Perth  
 Wolcott & Lincoln, Inc., Riverdale  
 Wolcott & Lincoln, Inc., South Haven  
 Farmers Co-op Grain, Wellington  
 Danville Co-op Grain, Argonia  
 Farmers Co-op Grain Co., Conway Springs  
 Blackwell Co-op, South Haven  
 Hunnewell Elevator, South Haven  
 Ross Industries — Dept. of Cargill, Inc., Wellington  
 Sumner County 4-H Council, Wellington

### THOMAS

Brewster State Bank, Brewster  
 Rexford State Bank, Rexford  
 Farmers & Merchants State Bank, Colby

### TREGO

Wm. Mai Oil Company, WaKeeney  
 \*Schreiner's Service Station, Ogallah  
 Malsam Implement Company, Collyer  
 Eberle Oil Company, WaKeeney

### WABAUNSEE

\*Alta Vista State Bank, Alta Vista  
 \*Eskridge State Bank, Eskridge  
 \*First National Bank, Alma  
 \*First National Bank, Harveyville  
 \*The Stockgrowers State Bank, Maple Hill  
 Wabaunsee County 4-H Council, Alma

### WALLACE

\*Peoples State Bank, Sharon Springs  
 Wallace County 4-H Council, Sharon Springs

### WASHINGTON

Washington County 4-H Council, Washington

### WICHITA

\*First State Bank, Leoti  
 Wichita County 4-H Council, Leoti

### WILSON

\*Cox Grain, Inc., Fredonia  
 \*First National Bank, Fredonia  
 \*First National Bank, Neodesha  
 \*Fredonia Co-op Assn., Fredonia  
 \*Wiggans Pharmacy, Fredonia  
 \*Radiant Electric Co-op, Inc., Fredonia  
 \*Joe Armstrong Equip., Inc., Fredonia  
 \*O.E. Woods Lumber, Neodesha  
 \*Self-Service Grocery, Fredonia  
 \*State Bank of Fredonia, Fredonia  
 \*Wilson Co. Farm Bureau, Fredonia  
 Neodesha Co-op, Neodesha  
 Wilson County 4-H Council, Fredonia

### WOODSON

\*State Exchange Bank, Yates Center  
 \*J.E. Sowder Seed Co., Toronto  
 Woodson County 4-H Council, Yates Center

### WYANDOTTE

\*Brotherhood Bank & Trust, Kansas City  
 \*Coleman Implement Inc., Bonner Springs  
 \*Commercial National Bank, Kansas City  
 \*Commercial State Bank, Bonner Springs  
 \*Home State Bank, Kansas City  
 \*Melba's Fabrics, Kansas City  
 \*Turner State Bank, Kansas City  
 \*SACO Petroleum, North Kansas City, MO  
 Welborn Animal Hospital, Kansas City  
 Wyandotte County 4-H Council, Kansas City

### Scott City

Stephens Lumber Company

### Syracuse

Hess Lumber Co.

### Topeka

Whelan's Main Yard  
 Whelan's Fairlawn Home Center

### Ulysses

Sunflower Lumber Co., Inc.

### Waterville

Waterville Lumber

### Wichita

Alexander Lumber Co., Inc.  
 Star Lumber & Supply Co.  
 (three locations)

### Wilson

Hoch Lumber Company  
 Wilson Lumber Company

### Winfield

A.B. Everly Lumber Co.  
 Everitt Lumber Co., Inc.

### Wright

Right Co-op Assn.

### Zenda

Farmers & Builders Lumber Co.

# TRUCKS

Help Bring  
 Better Living  
 To Kansas Farms,  
 Homes, Industries

*If You've Got It — A  
 Truck Brought It!*



### KANSAS MOTOR CARRIERS ASSOCIATION

2900 Topeka Blvd.  
 Box 1673  
 TOPEKA, KANSAS 66601

# Harold Fehlman family honored as 1984 Kansas 4-H Family of the Year

When 4-H is a meaningful part of growing up for parents, there's a natural inclination for the parents to want their children to have an equally good 4-H experience. That's exactly what happened for Harold and Mildred Fehlman of Clay County and their four children, David, Howard, Marvin and Charlotte.

The Fehlmans were named the 1984 Kansas 4-H Family of the Year during a ceremony June 3 at Rock Springs Ranch 4-H Center. "It's an exciting climax to a total of 55 years in 4-H for us," Mrs. Fehlman said. Mildred (Nitsche) Fehlman grew up in Riley County where she was a member of the Magic 4-H Club. Harold Fehlman, raised on the Clay County place he now farms, belonged to the Pioneer 4-H Club. Their four children and two of their grandchildren have been members of the Cloverleaf 4-H Club.

"When the two oldest boys, David and Howard, joined 4-H, we drove 15 miles to the club meetings,"

Mildred says, but the distance didn't stop them from becoming active participants. The Fehlmans live at the southeast corner of Clay County, close to the borders of Geary and Dickinson counties. Harold's grandparents homesteaded the farm in 1877. Construction of Milford Reservoir took part of the farm in the 1960's, but the family stayed. They raise Hereford cattle and grow milo, wheat and hay.

Showing cattle is something the whole family has in common. Harold recalls his 4-H days when the country roads were so muddy that they used a team of horses to pull the box wagon loaded with cattle. "We used the team to pull for about a mile and a half and then we could hitch the wagon on to the car. Coming home we had to do the same thing," he said. Harold showed cattle at the state fair, the Topeka fair and the American Royal. His children have followed in his footsteps.

Howard is now a professional cattle

fitter and showman. "The last three years I've just been passing through," he says. He works with Jensen Fitting Service, Courtland, and travels to state fairs, the American Royal, National Western Livestock Show in Denver, Co., and the North American International Livestock Exposition in Louisville, Ky. during the summer and fall and then works the purebred sale circuit in the spring.

Howard was home the weekend of May 19 to help Charlotte show at the Kansas Jr. Polled Hereford Livestock Show in Abilene. Charlotte came home with a grand champion trophy for her Polled Hereford steer.

Naturally, fairtime is always a busy time for the Fehlmans. "It seemed like each year we'd have more exhibits — the kids were into gardening, foods, poultry, and crafts exhibits," Mildred says. She recalls the year that Marvin and Charlotte were both enrolled in the foods project — "Our kitchen was being remodeled right before the fair and we had to move the stove into the living room. Marvin and Charlotte had baking to do, so each night we'd move the stove back into the kitchen and plug it in so the kids could do their baking," she said.

Jim Hoobler, Clay County Extension Director, notes that in all the years he's known the Fehlmans, the parents have served as superintendents at the county fair and the kids have been junior superintendents in almost every department.

"The state fair was our vacation each year," Mildred says. Of course, "vacation" for them meant showing cattle, participating in judging contests, entering and picking up exhibits. "Going to the state fair brings back fond memories for Harold and I," Mildred says. "In our day, all the 4-H members wore uniforms, but one thing that hasn't changed is the encampment building on the fairgrounds. It's really been fun having



The Fehlman family, from left, (seated) Charlotte, Millie, Mildred, Harold, Natalie and Alicia; (standing) Howard, Marvin, David, Corby and Kay.

(cont. on pg. 23)

our kids relive our 4-H experience," she says.

Thinking about the state fair prompted Charlotte to observe a difference between kids in 4-H and those who aren't in 4-H. "The 4-H kids are there to look at the exhibits and the other kids just come to go to the carnival," she said. Howard shared an example which shows how unfamiliar many people are with agricultural topics. "Last year at the Minnesota State Fair, our cattle were right by the main aisle in a heavy-traffic barn. We had a big bull tied right at the end of the aisle and, of course, people would come by and want to touch him or would have some comment to make about him. I remember one guy, who had his family with him, looked at the bull and said to me 'When is the big day?' I thought he was asking when was the show date, so I answered 'yesterday.' The guy turned to his family and told them that the cow was supposed to have calved yesterday. I got a real chuckle out of that," he said.

---

*"Mildred and Harold are two of the most dedicated parents you'll ever find."*

---

All the Fehman kids say that meeting different people was one of the most enjoyable parts of 4-H. David said that he saw people he'd met through 4-H at various FFA events and later when he attended K-State. He graduated from Kansas State University with a bachelor's degree in agricultural mechanization and now works in the parts department for the John Deere dealer in Junction City. He and his wife, Kay, have four children: Alicia, 16; Corby, 14; Natalie, 6; and Millie, 4. Being the oldest, David says he was the one that started the family in 4-H and then each member of the family achieved more and more. "When I was in 4-H the only kids that were members were farm kids," he said. "Now all kinds of kids are involved and they have so many more projects to choose from."

Howard concentrated on the 4-H livestock projects and his abilities in

livestock judging earned him a place on Colby Community College's livestock judging team. His team won the National Western Livestock Show judging contest.

Marvin compiled an outstanding 4-H record in agricultural projects, livestock and horse judging, and leadership activities. He was named the 1981 state 4-H agriculture winner and at National 4-H Congress in Chicago he received a \$1,000 scholarship as one of six national agriculture winners. He is a May graduate of Kansas State University with a degree in agricultural education.

Charlotte is completing her 11th year in 4-H. She also has been very successful in livestock projects and judging. Home economics and crafts projects have brought her recognition and satisfaction. She has a busy summer planned, including a 2-week trip to California for the American Home Economics Association national convention and the Washington, D.C. Citizenship Focus trip. She just finished her freshman year at Cloud County Community College and intends to pursue a degree in home economics education.

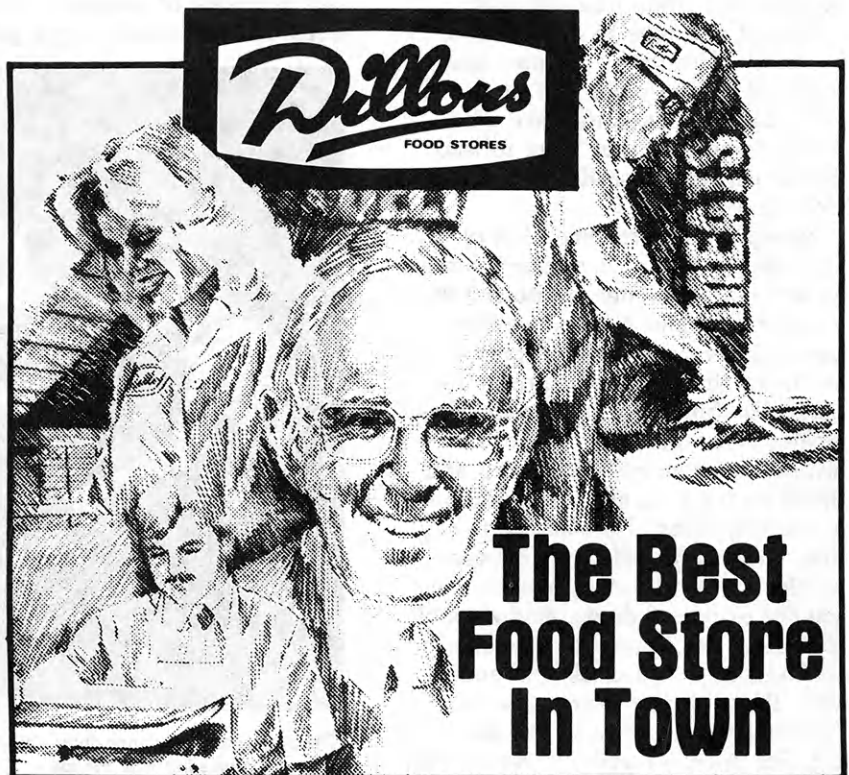
The Fehman kids believe the key to their success in 4-H is the strong

parental support they've received. "Mildred and Harold are two of the most dedicated parents you'll ever find," says Jim Hoobler, Clay County Extension Director. Since both Mildred and Harold have served as community club leaders and project leaders they feel that parental involvement is necessary for every 4-H member.

They all express gratitude for the lifelong lessons they've learned in 4-H. Charlotte says she is thankful for the public speaking experience she gained in 4-H activities. Kay says she thinks that 4-Hers learn a valuable lesson about winning and losing and persevering.

Although the Fehlmans have won their share of awards they emphasize participation and involvement. "It's easier to get more involved in the community if you've been out around people — and 4-H has plenty of opportunities to do that," Harold says. In the community involvement area, the parents have set an example of active leadership in township, county, Extension and church activities.

For the Fehlmans, the 4-H motto they've repeated for over 40 years — "To Make The Best Better" — is still very meaningful today.



The advertisement features a black and white illustration of a family. In the foreground, a man with glasses and a woman are smiling. Behind them, a young boy is looking down at something in his hands. To the right, a young girl is holding a large sign that says "MEATS". Above the family, there is a logo for "Dillon's FOOD STORES". The text "The Best Food Store In Town" is written in large, bold letters at the bottom right of the illustration.

# Teens gather for Southeast Area Youth

by John Watts & Shawn Mast,  
Lyon County 4-H members  
with Kirk A. Astroth,  
S.E. Area 4-H Specialist

Twenty-four hours of non-stop entertainment and serious issues were packed into the Southeast Area Youth Storm '84 held recently in Emporia. Nearly 175 youth, age 14-19, from 18 counties in southeast Kansas gathered to meet other 4-H'ers, socialize, dance and hear speakers on drug and alcohol abuse and coping with adolescent relationships.

Conducted as a "lock-in," all the activities — educational sessions recreation, eating and sleeping (very little) — are conducted in one facility on a continuous schedule. Planning for Youth Storm began over seven months ago and was developed by concerned 4-H'ers from Neosho, Lyon, Osage and Bourbon counties. The youth selected the topics they'd like to address.

Teens began arriving at the Emporia Recreation Center in Lyon County at noon Saturday, March 31. After everyone was registered and found a place to stow their luggage, the Osage County 4-H'ers led a get-acquainted human treasure hunt.

Then it was time to get down to business. "This year's program was designed to give older 4-H'ers the information they need to make wise decisions on how they want to lead their lives," said Lisa Ramsey, Lyon County 4-H agent.

Kenny Sinn, a certified alcohol counselor with the Southeast Kansas Mental Health Center, addressed the issue of drug and alcohol use from a personal perspective. As a former alcoholic, drug-user, and prison inmate, Mr. Sinn said that research indicates that a person's tolerance to alcohol is determined from birth and therefore the potential for alcoholism is predetermined. He went on to say that "there is no difference between an alcoholic and a drug abuser — it's just the choice of drugs. And alcohol is a drug." Mr. Sinn also cautioned youth to be aware of alcohol and drug abuse among their peers.

"Alcoholics make excuses for drinking. For them, everything should have

been done yesterday. They want you to feel sorry for them. But alcoholism is a disease and it should be treated," he said. Mr. Sinn also warned today's youth not to heed the current trend of thought that says marijuana is not harmful. According to Mr. Sinn, one month after smoking marijuana, 20% of the THC is still in the body. In addition, marijuana users have a 200% greater chance of having a baby with birth defects. Mr. Sinn concluded by urging the 4-H'ers to examine their own situations and their friends' situations, and resolve to rid themselves of any chemical dependency.

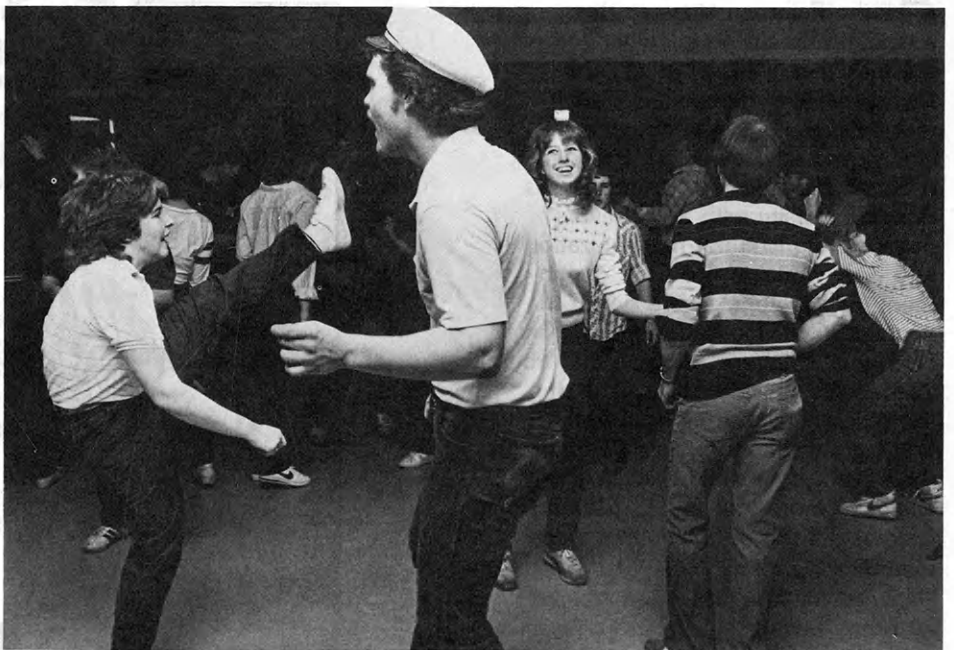
Dr. Tony Jurich, a member of the Department of Family and Child Development at Kansas State University, employed a humorous approach in his discussion of adolescent relationships. He emphasized that each person has to make choices and be responsible for his or her actions. He advised teens to talk openly about problems or feelings — "communicate with one another." In addition, he encouraged youth to ask questions without fear — only in this way will young people find answers to subjects which bother them. Dr. Jurich often used sarcasm or humor to show the awkward side of adolescent relationships. He continually urged youth to

be more open and honest in their relationships with each other.

To follow up on these two presentations, Marcia McFarland and Kirk Astroth, KSU Extension specialists in 4-H and Youth programs, led the group in a series of values clarification exercises. Such exercises help youth to examine in depth their own attitudes and values and determine if their behavior is congruent with their values. "We want them to look inside themselves to see how they feel and why they feel that way," Astroth says.

After nearly three hours of educational programs, everyone was given some free time to use the game room or just relax before supper. A local restaurant, Vista, served both supper and breakfast to the entire group. Marshall Miller, Emporia Vista owner, is an ardent 4-H supporter in Lyon County and prepared excellent meals for the group. Pepsi-Cola Bottling Company of Emporia supplied all the free drinks during Youth Storm '84.

Saturday evening continued with a flurry of activity. From 7:00 to 9:00 the swimming pool and game room were open to everyone. In addition, Color Time, a local television and video-tape store, supplied 10 movies for a nominal charge. Throughout the evening, youth were entertained by



The Saturday night dance during Southeast Youth Storm '84 was a popular spot for renewing acquaintances and meeting new friends.



# Storm

thrillers like "Halloween II," comedies like "Mr. Mom," and epics like "Star Trek II."

For those with itchy feet, Sounds Unlimited provided dance music from nine until midnight. After midnight, a few more movies ran, but by 3:00 a.m., most people had decided to catch a few hours of sleep.

After breakfast on Sunday morning, Rev. Dale Lewis, Calvary United Methodist Church, conducted a non-denominational church service. Rev. Lewis spoke and sang to the group about love and concern and accompanied himself on the guitar.

A twenty-member planning committee of 4-H'ers was established to plan for next year's event. Topics such as how to get along with parents and accepting criticism were discussed as potential speaker topics for next year.

"I feel that Youth Storm was a very successful experience," Astroth said. "It was really good to see 4-H'ers trading names and addresses at the end. This was the type of interaction we hoped would occur at Youth Storm '84. Exchanging ideas is the goal of this event," he said.

Youth Storm '84 was made possible by the following sponsors: Ser-toma Club of Emporia, Emporia Lions Breakfast Club, American Legion Special, Lowry Funston Post 1980, the Emporia Jaycees, Kansa Corporation and Kansas 4-H Foundation.

## Farm Bureau and 4-H: "Working Together"



For several decades, Farm Bureau has been a stalwart leader in the 4-H program's enhancement.

Scholarships, seminars and legislative action are just a few examples of Farm Bureau's commitment to the 4-H program and Kansas youth.

Farm Bureau knows that agriculture's future depends on the leadership development of Kansas youth, and we know that 4-H builds leaders.

**Kansas Farm Bureau, Inc.**

2321 Anderson Avenue, Manhattan, Kansas 66502 / (913) 537-2261



**CONSOLIDATED**  
Printing & Stationery  
SALINA, KANSAS

**1-800-432-0266**

- ★ 4-Color Printers
- ★ Black & White and Letterpress
- ★ Authorized Minolta Copier Dealer
- ★ Office Supplies
- ★ Furniture
- ★ Scriptomatic Addressing Machines

**SERVING ALL OF KANSAS**  
For All Of Your  
Office & Printing Needs!

# Buy, Build, Save With Us.

- One-half billion dollars strong.
- Competitive rates on savings and loans.
- Seventeen offices statewide:

**GOODLAND**  
1114 Main

**JUNCTION CITY**  
530 West 6th

**LAWRENCE**  
900 Ohio

**TOPEKA**  
3258 S. Topeka Ave.

**TOPEKA**  
29th and Gage St.

**LEAWOOD**  
9400 Mission Road

**SHAWNEE**  
Quivira at 10 Highway

**MISSION**  
56 Highway at 60th St.

**KANSAS CITY**  
(Downtown)  
731 Minnesota Avenue

**OTTAWA**  
421 South Hickory

**COLUMBUS**  
313 East Maple

**COUNCIL GROVE**  
123 West Main

**TOPEKA**  
White Lakes Mall

**OVERLAND PARK**  
9550 Metcalf Avenue

**WESTWOOD**  
4746 Rainbow Blvd.

**OLATHE**  
700 East Santa Fe

**KANSAS CITY**  
(Home Office)  
8200 State Avenue



**FSLIC**  
INSURED TO  
\$100,000



## Money For Your Treasury

**OVER 2 MILLION  
Sunflower Dishcloths**



WERE SOLD LAST YEAR BY  
MEMBERS OF GROUPS, SOC-  
IETIES, CLUBS, ETC.

THEY ENABLE YOU TO EARN  
MONEY FOR YOUR TREAS-  
URY AND MAKE FRIENDS  
FOR YOUR ORGANIZATION

Sample FREE to Official.

**SANGAMON MILLS, INC., Cohoes, N. Y. 12047**  
KJ Established 1915



4-H parents and leaders (from left) Bob Fehling, George Hickman, Jeff Walters and Chuck Wright became overnight celebrities with their imitation of the Oak Ridge Boys.

## Hedgerow Boys give hit performance for 4-H parents' night

The Hedgerow Boys, pantomiming the Oak Ridge Boys' popular hit "Elvira," made their debut performance at the Miami County Progressive 4-H Club parents' night. And, what a performance!

They'd rehearsed for two weeks in advance, managing to keep it a secret from their own children. They gathered wigs, dark glasses and the proper clothing to go with the act. Finally, the big evening came. The houselights were dimmed and the introductions were made. The crowd went wild when the Hedgerow Boys came on stage. The local newspaper had been tipped off in advance, so the group's photo appeared in the county newspaper.

A local farm implement dealer saw the article and hired the Hedgerow Boys to perform for Farmers' Day. They agreed, and sang for a crowd of nearly 400 people, with the money going to the 4-H club.

The Hedgerow Boys selected their group name because they'd helped clear out a hedgerow and sold firewood for the 4-H club moneymaking project.

## Marshall County Dog Show

The second annual Marshall County Invitational Dog Show (formerly the Northeast Area Show) will be held Saturday, June 23, at the National Guard Armory in Marysville. Any 4-H'er enrolled in the dog project is eligible to enter. Showmanship and obedience classes will be divided into age groups with first-time competitors and experienced competitors showing in separate classes.

Contestants must show vaccination certificates to the veterinarian the day of the show. An entry form and entry fee of \$1 per dog is due by June 15. To request an entry form and show rules, contact Connie Sutton, Rt. 1, Marysville, Kansas 66508, (913) 562-2039.

### Wanted

Mrs. Mary Little is looking for a plan to build a mirror tray. The tray is used to display items during demonstrations or project talks. A mirror on the top reflects whatever item is placed on the turn table. It's built in a case for easy storage and transporting. Mrs. Little thinks the plan may have originally been offered by the American Plywood Association. If you have this plan, write to Mrs. Mary Little, 814 N. Broadview Lane, Andover, Kansas 67002.

# Family Fun Page

Phyllis Kriesel, Cherokee County 4-H Agent, sent the following word search puzzle which includes the 21 counties in the Southeast Extension Area. They are listed horizontally, vertically, diagonally, forward and backward. Use the clues to fill in the county names and then find the counties in the puzzle. Answers will be given in the July issue.

|   |   |   |   |   |   |   |   |   |   |   |   |   |   |   |   |   |   |   |
|---|---|---|---|---|---|---|---|---|---|---|---|---|---|---|---|---|---|---|
| C | H | A | U | T | A | U | Q | U | A | P | A | B | B | A | M | T | O | O |
| H | R | Z | G | R | E | E | N | W | O | O | D | S | O | N | O | L | N | K |
| E | Q | A | L | L | E | N | I | M | A | I | M | E | U | C | R | A | I | C |
| R | U | C | W | I | L | S | O | N | N | R | U | 4 | R | O | R | B | L | O |
| O | I | E | J | F | Y | S | E | W | T | E | K | - | B | O | I | E | K | F |
| K | L | E | P | R | O | S | A | G | E | P | O | H | O | K | S | T | N | F |
| E | B | E | E | F | N | R | S | H | E | E | P | S | N | A | V | T | A | E |
| E | L | I | N | N | A | N | D | E | R | S | O | N | H | K | A | E | R | Y |
| L | Y | R | E | M | O | G | T | N | O | M | Z | C | R | O | W | S | F | E |

**CLUES:**

- Indian Tribes (2)
- What babies do plus the make of a car
- What police do to robbers
- President \_\_\_\_\_ D. Roosevelt
- In the deer family
- Actress Elizabeth \_\_\_\_\_, star of Bewitched
- George Burn's wife, Gracie \_\_\_\_\_
- Blonde Female Country Western Singer (2 words)
- President Woodrow \_\_\_\_\_

- Type of Alcohol
- What adults drink at breakfast
- The king of beasts
- A type of tree
- The color of grass plus what trees are
- Actress \_\_\_\_\_ Midler
- A city in Florida
- The famous cat
- What trees are plus not a daughter
- What county is left \_\_\_\_\_

## Parents' silly antics entertain 4-H'ers

by Craig & Jill Depenbusch and Raine & Matt Kalert  
 Shamrock 4-H Club, Cherokee County  
 Members of the Shamrock 4-H Club were recently treated to the "Greatest Show on Earth" as their parents rewarded them for their hard work in preparation for 4-H Days. The evening began with a scrumptious supper which was served to the 96 in attendance. Then the "stars" came out and performed several acts which won't soon be forgotten.

The Spring Style Show featured the following fashions — a seersucker blouse (the word Sears and suckers pinned all over), a can-can outfit (tin cans tied on with string), the make-it-yourself outfit (adorned with pattern pieces, tape measure, scissors, pins, etc), bell bottom pants (bells pinned onto the hem and derriere of slacks), night wear (a black rain slicker and flashlights), and the winning entries — the poodle skirt and cabbage patch dolls.

The ABC network may claim Howard Cosell, but Cherokee County has their own Ronnie Nelson who interviewed the world famous boxer "Rocky," alias David



Jo Kalert and Muffin (left) model one of the winning entries in the style show — a "poodle skirt" and Ann Thiele and Debbie Jarrett show their "cabbage patch doll" outfits.

Allen. Barb Depenbusch gave her rendition of the harmonica solo "Home on the Range" which she learned to play through a mail order home study course. As she'd only received her first lesson, she could only play the first note. Renowned animal trainer Jo Kalert had her ferocious "pigmy" lion perform

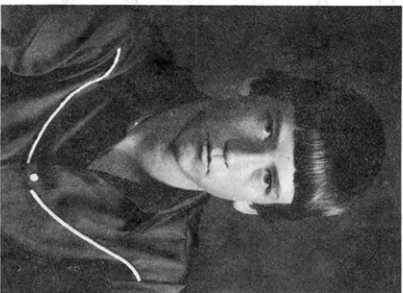
several clever tricks. Yes, that dog could really sit and speak. Straight from the P&S Kitchens in downtown Columbus Kitchens were Paula Andrews and Sara North who demonstrated how to prepare a relish plate.

Scott Jarrett sang his own version of "The Theme From Oliver," titled "Reviewing the Situation." The words gave everyone some thoughts to ponder. Madame Chestnut, otherwise known as Linda Tinney, performed a disappearing peanut trick. Pillow People Jane Ann Sarwinski and Mary Soper did the latest dance steps to music from "Footloose." Tom Thiele had several volunteers taste the local water. From the halls of CUHS University Professor Mathilda (Betty Schoech) shared her knowledge on rockets and the proper way to blast them off. The candy store skit was acted out with several innocent parents becoming the real "suckers."

The final skit of the evening was "Is It Time Yet?" The 4-H Building hadn't been the scene for so much laughter and merriment in quite some time. It was a night we'll never forget.

Non-Profit Organization  
U.S. Postage  
**PAID**  
Permit No. 86  
Salina, Kansas

## Dan Dunham advances quickly in 4-H electric project



After only two years in the 4-H electric project, Dan Dunham of Haskell County was one of five 4-H electric blue award winners honored during Kansas 4-H Congress held the last week in May. Dan attributes his rapid progress in the electric project to his experiences working with his dad on water pumps. "I work with my dad on house wells all summer, so we work around electricity every day," Dan says.

He has learned to splice electric wires when more wire is needed and knows how to check relays and capacitors to see if they need to be replaced. Dan says he has become very safety-conscious — he and his dad have to watch where they place the pump pulling rig because potentially-dangerous electrical lines are often nearby. Dan has given talks about electricity at his Colusa Go-Getters 4-H Club

meeting and a local school.

Last year Dan made a trouble light to use in the shop and when working on his pickup motor. He saved money and built a sturdier light by buying a metal shield at an auction. "Most of the ones you buy now are plastic and they break easier," he said. "I was able to make a heavy duty trouble light at a low price compared to what I would have had to pay for one already made," he said.

Dan was named the 1982-83 Haskell County champion in the electric project plus seven other projects. He enjoys woodworking, ceramics, leathercraft, gardening, and photography. He also is very active in citizenship and leadership activities. Next year he'll be a junior at Copeland High School. Don and Karen Dunham, Copeland, are his parents.

Watch This Page For Ideas on Farm and Home Electric Projects

**ELECTRIC LIGHT and POWER COMPANIES in KANSAS**

The Kansas Power and Light Company

Kansas Gas and Electric Company

Western Power — Centel Corporation

