

Kansas 4-H Journal

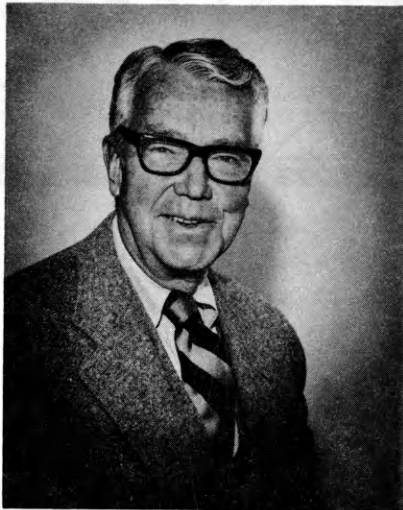
The Family Magazine

November-December 1982



*Seasons
Greetings*

Wagstaff joins 4-H Foundation Board



The newest member of the Kansas 4-H Foundation Board of Trustees is Robert W. Wagstaff. Wagstaff brings to the Board a variety of experiences in business and finance and a deep concern for youth and agriculture.

Robert W. Wagstaff was born in Independence, Kansas. He is a graduate of the University of Kansas, with a Bachelor of Arts Degree and of Harvard Law School, with Bachelor of Laws and Juris Doctorate Degrees. He received the

Distinguished Service Award from the University of Kansas in 1972.

He moved to Kansas City in the latter part of the 1930's as an attorney for Sinclair Refining Company. He later became General Counsel for The Vendo Company and subsequently became its Chief Executive Officer.

He is a founder and Chairman of The Coca-Cola Bottling Company of Mid-America, Inc. and of Mid-America Container Corporation.

Mr. Wagstaff has served on the Board of the American Royal and is the current president. He is also Chairman of the Kansas National Bank.

He was on the Board of Directors of the Federal Reserve Bank of Kansas City and was made Chairman of that Board, where he served for four terms.

He was elected to the Board of Directors of St. Luke's Hospital in June of 1950 and he headed the Hospital from 1966 until January of 1980, when he became Vice Chairman.

He is an active Episcopalian, having served as Chancellor of the Episcopal Diocese of West Missouri for seventeen years and many years

as a Vestryman and Senior Warden of St. Paul's Church of Kansas City, Missouri.

He has served on many Boards, including the Commerce Bank of Kansas City, the Johnson County National Bank and Trust Company, the Interstate National Bank, the Employers Reinsurance Company, Inc., and The Vendo Company. He also served on the Boards of the Civic Council, the Kansas City Crime Commission and the Midwest Research Institute.

Highlighting his and Mrs. Wagstaff's devotion to St. Luke's Hospital, was their gift of common stock with a market value of \$1.5 million, which was used for the erection of the new building that houses the Mid America Heart Institute at St. Luke's Hospital. The building is named the Robert Wilson Wagstaff Building.

The Wagstaffs have three children: Mrs. Katherine Hall Tinsman, of Kansas City; Robert Hall Wagstaff, a lawyer in Anchorage, Alaska; and Thomas Walton Wagstaff, a lawyer in Kansas City, with the firm of Blackwell, Sanders, Matheny, Weary and Lombardi.

Congratulations, County Electric Energy Winners

ALLEN Angie Davidson	BUTLER Robbie Cerney	CLAY Scott Thurlow	ELLIS Steve Hilger	GOVE James Zimmerman	HODGEMAN Jim Dauber	KINGMAN Brett Sowers
ATCHISON Kyle Heineken	Steven Saner	Joe Crawshaw	Mike Hilger	Troy Tuttle	JACKSON Roger Schock	Brian Long
BARBER Greg Schreiner	Trey Anderson	COFFEY Larry Boden	ELLSWORTH Terry Patry	GRAY Scott Ridenour	Jon Beam	LABETTE Dan Bolinger
George Schreiner	Ashley Anderson	COMANCHE Chris Graham	Marty Sneath	Eric Ridenour	Greg Tomlinson	Phil Markley
BARTON Travis Jerke	Jeff Hailey	COWLEY Garret Erickson	FINNEY Joe Soukup	David Campbell	JEFFERSON Sandra Nichols	LEAVENWORTH Shawn Frevele
BOURBON Brian Palmer	Vincent Hancock	Brian Button	John Soukup	GREELEY Trent Linder	Pat Dean	Lee Cunningham
BROWN Jeff Swearingen	CHEROKEE Craig Depenbusch	CRAWFORD Eddie Grant	FORD Brad Maxwell	Dale Stone	Brian Loving	Mike Winkler
Scott Wehrman	Mike Wahl	John Grant	Mike Schmitt	GREENWOOD Dwight Huntington	Chris Nichols	Andy Klamm
	Tom Wahl	DICKINSON Scott Emig	Tony Flax	HAMILTON Kevin Hook	JEWELL Mike Worm	LINCOLN Jodi Lyne
	CHEYENNE John Love	Thad Combs	Ain Thomasson	Curtis Wright	Penny Menhusen	Ron Chitty
	Matt Nolan	Leo Mauler	FRANKLIN Heath Higbie	Harlan Plunkett	Larry Langer	Teri Lyne
	Chris Nolan	Rita Wulfkuhle	Jeff Link	Darrell Fecht	JOHNSON Russell Secrest	LINN Eric Jackson
	Peter O'Brien	EDWARDS Chris Oess	Chad Reekie	HARVEY Amy Patton	Brad Aust	Ancil Avery
		ELK Darrin Clubine	GEARY Todd Strain	Brian Hook	Todd Knappenberger	Roberta Lewis
			Rob Smith	Brian Regier	Mike Koenig	Jeff Hampton
			Brian Schrader	HASKELL Dan Dunham	KEARNEY Larry Kleeman	LYON Shawn Mast
			Ben Schrader		Brett Horton	Brian Poertner



These investor-owned electric companies proudly salute the electric energy project winners listed here. As county winners, each received a Westinghouse medal. If you are not enrolled in electric energy, try it—it may turn you on!

Kansas Gas and Electric Company
Western Power Division of Central Telephone & Utilities Corporation



Kansas 4-H Journal

Volume XXVIII, No. 10

November-December 1982



Cover: "Winter Solitude" is the title of Gisele McMinimy's photograph, taken on her family's ranch near Ashland. Gisele is a former member of the Bearcreek 4-H Club, Clark County. She is now a freshman at Kansas State University majoring in general agriculture.

ARTICLES

Robert W. Wagstaff joins 4-H Foundation Board 2

4-Hers display art at Rock Springs Ranch State 4-H Center .. 4

Kansan captures tractor-driving title 5

4-Hers bring home 10 national awards 8

Ben Messer's self-determined mouse project 10,11

Photo leader attends national workshop 18

REGULAR FEATURES

Editorial 3

Ideas & News 13,14

Ideas, Ideas, Ideas from other clubs 15

Family Fun Page 19

Sara Gilliland Editor
Renee Zirger Secretary

Address all correspondence:
 Kansas 4-H Journal
 Umberger Hall, KSU
 Manhattan, Kansas 66506

Phone 913-532-5881



Kansas 4-H Journal is published
 10 times a year by
KANSAS 4-H FOUNDATION, INC.

Merle Eystone Executive Director
Trisha Cash Secretary
Ann Carr Asst. Treasurer

BOARD OF TRUSTEES

Governor John Carlin
 Honorary Chairman

Wm. M. McDonald, Chrm. Shawnee Mission
 Glee Smith, Vice-Chrm. Larned
 John Junior Armstrong, Treas. Manhattan
 Duane Acker Manhattan
 Ross Beach Hays
 Mrs. Edna Collingwood Johnson
 W. Dale Critser Wichita
 Richard Dillon Hutchinson
 John O. Dunbar Manhattan
 Mrs. Olive Garvey Wichita
 Balfour S. Jeffrey Topeka
 J. Harold Johnson Manhattan
 John D. Montgomery Junction City
 George B. Powers Wichita
 Fred Sobering Manhattan
 Mrs. Charles Streeter Manhattan
 Robert Wagstaff Shawnee Mission
 Mrs. Dwane Wallace Wichita
 *Glenn M. Buset Manhattan
 *Sen. Frank Carlson Concordia
 *Harry Darby Kansas City
 *Roger E. Regnier Manhattan
 *Dolph Simons, Sr. Lawrence
 *Advisory Member

Use of the 4-H name and symbol approved by the secretary of Agriculture of the United States, January 23, 1951, under the provisions of the laws as reenacted by Sec. 707 of the Act of June 25, 1948, Public Law No. 772 80th Congress (10 USC 797).

Update from the editor

by Sara C. Gilliland, editor, Kansas 4-H Journal

This issue is the final one for 1982. Bringing a year to a close and anticipating a new year gives me a chance to evaluate and explain some decisions about the magazine.

Freshest in my mind are some recent questions from readers concerning the Journal's advertising policy. Advertising is crucial for the survival of the magazine. The Journal has three sources of income: 1) advertising; 2) subscriptions by sponsors (see the entire list of sponsors on pages 16 and 17); and 3) contributions. I have made a special effort to increase the advertising revenue so the burden of the increasing production costs would not fall solely on the sponsors.

The Journal advertisers select their own message—to sell a product or service, deliver a public service message, etc. The message must be within the guidelines of the Journal's advertising policy as determined by the Kansas 4-H Journal advisory committee and the mandates of Public Law 772—80th Congress. An advertisement in the Journal is not a 4-H endorsement of a particular company, individual or product.

I've been pleased with the quantity and quality of material submitted to the Journal. The larger quantity of material that has come in allows me to be more selective about what is printed. Please be patient. Because of the amount of material that I receive and the time lag between issues, you may not see your name in print right away. But keep those letters coming!

If you're looking for some hints on what topics to write about in 1983, the themes for Journal issues are: January — Careers and Education, February/March — Outdoor and club activities, April — 4-H and the Family, May — Events (fairs, judging contests, tours), June — Open, July — International, August — 4-H & Schools, September — Getting Geared Up for the New 4-H Year, October — Arts & Crafts, November/December — Holiday Celebrations and New Ideas for Traditional Events. Remember to submit material at least a month before the issue comes out. Stories, photos, short news items, jokes and games are needed.

Include the 4-H Journal in one of your goals this year—write something, clip something out, share the Journal with a friend, or send a contribution! Have a happy holiday season.

4-Hers display art at Rock Springs Ranch

The new art exhibit at Rock Springs Ranch State 4-H Center is as varied as the talents of the 28 young artists who created the works. The exhibit will be displayed for one year in the gallery area of Heritage Hall.

Each county had the opportunity to submit one piece of work. The Rock Springs Ranch Art Committee reviewed the art in October and decided there was enough room to display all of them. "The quality and variety of the art was terrific," said committee member Zoe Slinkman, Extension Cultural Arts specialist.

The 4-Hers whose works are displayed are: Barbara Heffern, Allen County; Melanie Ross, Cherokee County; Ron Benson, Clay County; Lisa Berndt and Christine Berk, Cloud County; Lara McCall, Dickinson County; Chris Brull, Ellis County; Sherri Belcher, Finney County; Ron Corbin, Franklin County; Lynn Farnan and Tracy Hoogendoorn, Harvey County; John Hefty, Jefferson County; Melissa Owen, Johnson County.

Carissa Dunbar, Kingman County; Joan Williams, Lyon County; Janay Dunham, Meade County; Janeice Linden, Norton County; April Anderson, Osborne County; Stephanie Bearnese, Ottawa County; Joe Miller, Pawnee County; Curtis Tien, Phillips County; Kim Peirce, Reno County; Shannon Townley, Rooks County; Carrie Wilkens, Scott County; Becky Bozone, Sedgwick County; Crystal Hatcher, Sherman County; Michelle Krein, Smith County; and Ryan Fischer, Wallace County.

Paintings and drawings are the most numerous exhibits. Other exhibits include wheat weavings, a latch hook design, pottery, wood carving, leathercraft and batik. A handmade miniature horse-drawn wagon and model log cabin are displayed. One of the most unusual items is a coal bucket handcrafted from a washtub.

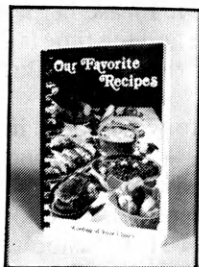
This is the first year for the 4-H art display at Rock Springs Ranch. Arts and crafts is one of the most popular 4-H projects, with more than 10,000 Kansas 4-Hers enrolled.



Raise \$200 to \$10,000 or More

PUBLISH YOUR OWN COOKBOOKS

With Favorite Hometown Recipes



Our low cost fund raising cookbook program is planned step-by-step and all you do is provide your favorite hometown recipes and Fundcraft does the rest. Thousands of clubs, churches and schools have turned "swapping recipes" into a big FUND RAISER. Fundcraft specializes in publishing inexpensive community cookbooks with up to 500 of your favorite recipes. No investment; Ad sales optional; No outside sales people; Pay after the books are sold.

Send to: **Fundcraft Publishing**
P.O. Box 575, Pleasanton, Ks

Send today for FREE, no obligation instruction kit and sample cookbook.

Name: _____

Organization: _____

Address: _____

It's Fun-- It's Profitable City: _____ State: _____ Zip: _____

THE RIGHT COMBINATION

services...people...technology...



MERCHANTS NATIONAL BANK

MEMBER F.D.I.C.
TOPEKA, KANSAS

Main Bank - 8th & Jackson

White Lakes Bank - 3600 Topeka Ave.

Motor Bank - 5th & Jackson

CASH FOR NEWSPAPERS

Large quantities picked up when our truck is in your area. Approximately 10 ton or more.

Midwest Thermal Products
1001 North Kauffman Road
Hesston, Kansas 67062
Call 316 / 327-2131

Money For Your Treasury

OVER 2 MILLION Sunflower Dishcloths



WERE SOLD LAST YEAR BY MEMBERS OF GROUPS, SOCIETIES, CLUBS, ETC.

THEY ENABLE YOU TO EARN MONEY FOR YOUR TREASURY AND MAKE FRIENDS FOR YOUR ORGANIZATION.

Sample FREE to Official.

SANGAMON MILLS, INC., Cohoes, N.Y. 12047
KJ Established 1915

Kansan captures tractor-driving title

Mark Leuthold, a 10-year Riley County 4-H member, brought home to Kansas the second place in the 26th Western U.S. 4-H Tractor Contest.

Mark competed in tractor operations and scored best among 15 state champions at maneuvering a four-wheel, tractor-drawn trailer. He had a perfect score in safety.

The event represents the highest competition level nationally in the 4-H tractor project, according to David Pacey, Extension agricultural engineer at Kansas State University and one of the contest judges.

"Compared to the other kids in Omaha, Mark was poised," Pacey said. "I guess you could say he was really cool."

Contestants faced two driving challenges, each with a course defined by posts topped with carefully balanced golf balls. They lost points for each second spent backing or twisting through the course, but were docked even more points if haste made them careless or unsafe.

"I think it was pretty obvious Mark was the best driver there," Pacey said.

Each contestant examined a tractor, to find at least 10 problems in maintenance or safety. They also

competed in a written exam.

"The guy who put the test together said he thought it was pretty hard. I decided to try it and missed eight myself. Of course, I didn't study for it," Pacey joked.

Mark, age 17, is the son of Erma Leuthold, rural Manhattan. He

qualified to represent Kansas in the regional event by winning the tractor operations championship at the 1981 Kansas State Fair.

Mark helps relatives farm and has carried the 4-H tractor project for four years. He's a ten year member of the Ashland Boosters 4-H Club.



Mark Leuthold's tractor driving skills earned him second place in the Western U.S. Regional Tractor Driving Contest. A representative of AMOCO, one of the contest sponsors, congratulates Mark at the contest in Omaha, NE.

**state-wide services,
border-to-border**

COLUMBUS • COUNCIL GROVE
GOODLAND • JUNCTION CITY • KANSAS
CITY (2) • LAWRENCE • LEAWOOD
MISSION • OLATHE • OTTAWA
OVERLAND PARK • SHAWNEE • WESTWOOD

THREE HUNDRED MILLION DOLLARS STRONG

**anchor
savings**
ASSOCIATION

INSURED
F.S.L.I.C.

**Capitol
Federal
Savings**

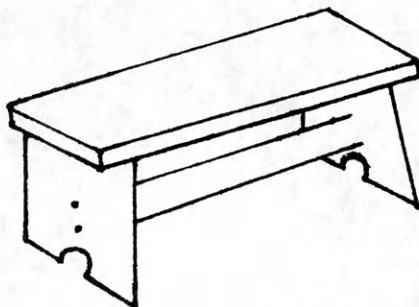
TOPEKA
GREATER KANSAS CITY
MANHATTAN LAWRENCE OLATHE
EMPORIA SALINA WICHITA

Isn't it great to have money for Christmas shopping in your savings account at your

Kansas Savings and Loan

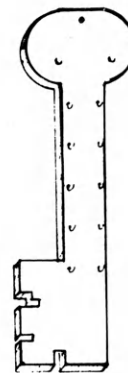
Arkansas City First Federal Savings & Loan Assn.	Lyons Lyons Savings & Loan Assn.
El Dorado Mid-Continent Federal Savings & Loan Assn.	Manhattan Manhattan Federal Savings & Loan Assn.
Eureka Eureka Federal Savings & Loan Assn.	Medicine Lodge The Barber County Savings & Loan Assn.
Fort Scott Liberty Savings & Loan Assn.	Parsons Mid-America Federal Savings & Loan Assn.
Garnett The Garnett Savings & Loan Assn.	Plainville and Stockton Rooks County Savings Assn.
Hutchinson Valley Federal Savings & Loan Assn.	
Leavenworth Citizens Mutual Savings & Loan Assn. Mutual Savings Assn.	

Free! 4-H Woodworking Plans from YOUR LUMBER DEALER



Step Stool

Made by Julie Brummett
Manhattan, Ks.



Key Holder

Made by Jason Brummett
Manhattan, Ks.

**These plans
are available:**

For your free plans, see your lumber dealer; he will also help you select the material you need.

Ashland Don Spotts Lumber Company	Eureka Home Lumber & Supply Co.	Junction City Builders Lumber Inc.	Nickerson The Home Lumber & Supply Co.
Atchison Frakes Lumber Co., Inc.	Frankfort Fox Lumber Co.	La Cygne La Cygne Lumber and Ready Mix, Inc.	Norton Norton Lumber Company
Belleville Belleville Lumber Co.	Galva Galva Lumber Co.	LaHarpe Diebolt Lumber and Supply	Nortonville Nortonville Lumber Inc.
Beloit Peoples Lumber Co.	Garden City Cash & Carry Lumber Co., Inc.	Lansing Lansing Lumber Inc.	Oberlin Nichols Building Supply, Inc.
Bern Bern Lumber Company	Great Bend Everitt Lumber Co., Inc.	Larned T.M. Deal Lumber Co.	Offerle Offerle Co-op Grain & Supply Co.
Blue Rapids Blue Rapids Lumber Company	Greensburg Hildinger's Lumber & Hardware & Ready Mix Inc.	Lawrence Whelan's Home Center	Osage City Martin Material Co., Inc.
Chapman Hyder Building Materials	Harper Town & Country Lumber Co.	Leavenworth Whelan's Home Center	Ottawa Hubbard Lumber Company, Inc. Ottawa Lumber Co.
Clay Center Fullingtons	Hillsboro Hillsboro Lumber Co. The Lumberyard Inc.	Louisburg Great Plains Hardware & Home Center	Parsons Woods-Seward Lumber Co.
Coldwater Home Lumber and Supply Company	Holton Building Supply Center	Manhattan Ramey Brothers	Pittsburg Broadway Lumber Co. Inc.
Concordia Mid-West Lumber Company	Hoxie Hoxie Lumber Co., Inc.	Mankato Mid-West Lumber Company	St. Francis St. Francis Mercantile Equity Exchange
Dighton Stephens Lumber Co.	Hugoton Hugoton True Value Lumber & Hardware	Marion Mack-Welling Lumber & Supply	Pratt W.R. Green Lumber Co., Inc.
El Dorado Home Lumber & Supply Co.	Independence Sandott Lumber	Newton Boise Cascade Building Materials Center	Russell Schwaller Lumber
Emporia Fleming Lumber & Material Co. Mark II Lumber	Iola Klein Lumber Company		
Eric Johnson & Son Lumber Co.	Johnson Seyb-Tucker Lumber and Implement Company		

OTHER PLANS AVAILABLE

Bookcase	Planter Bench
Clock	Planter Mailbox
Coat Rack	Portable Sandbox
Cold Frame	Pump Handle Lamp
Desktop Organizer	Saddle Rack
Early American Shelf	Saw Horse
Fences	Safety Swing
Flower Box	Serving Tray
Food Dehydrator	Sm. Bench w/storage
Fox & Geese	Solar Firewood Dryer
Garage Wall Storage	Spoon Rack
Garden Bench	Stereo Shelf
Hall Tree	Tack Box
Hobby Horse	Tennis Rack
Hurricane Lamp	Tool Box
Letter Tray	Toy Storage Bench
Magazine Rack	Trellises
Magazine Rack Table	Truck Caddy
Martin Bird House	Washboard Mag. Rack
Picnic Bench	Wood Picture
Plant Stand	Wood Box



FARM BUREAU INSURANCE IS READY TO ROLL IN KANSAS

If a major storm should affect many policyholders in one area, our claims office on wheels can be there in a matter of hours. Anywhere in Kansas. The mobile unit has the specialized equipment on board to communicate through a local county Farm Bureau Insurance office or branch claims center to our Manhattan home office claims department. This gives our policyholders faster service in receiving their claim checks. At Farm Bureau Insurance, we never stop looking for new ways to improve service to our policyholders.

See Your Local Agent

FBI® **Farm Bureau Insurance**

FARM BUREAU MUTUAL • KANSAS FARM LIFE • KFB INSURANCE COMPANIES

2321 Anderson Avenue, Manhattan, Kansas

Salina

Easterday-Boster Lumber Co.
Morrison Building Supply

Scott City

Scott City Building Materials

Stafford

T.M. Deal Lumber Co.

Syracuse

Hess Lumber Co.

Topeka

Whelan's Main Yard
Whelan's Fairlawn Home Center

Tribune

Foster Lumber Company, Inc.

Ulysses

Sunflower Lumber Co., Inc.

Waterville

Waterville Lumber

Wichita

Alexander Lumber Co., Inc.
Star Lumber & Supply Co.
(three locations)

Wilson

Hoch Lumber Company

Winfield

A.B. Everly Lumber Co.
Everitt Lumber Co., Inc.

Wright

Right Co-op Assn.

Zenda

Farmers & Builders Lumber Co.

4-Hers bring home 10 national awards

Kansas 4-Hers attending National 4-H Congress in Chicago last week brought home 10 national awards and one sectional honor. Kansas was one of the top three states in capturing national recognition for 4-H projects.

4-Hers receiving the national honors in Chicago are: **Mark Keener**, bicycle winner from Johnson County; **Michele Stehno**, consumer education winner from Republic County; **Shelby Hoobler**, dog care & training winner from Atchison County; **Donald W. Holtgraver, Jr.**, entomology winner from Johnson County; **Jeannie Koenig**, foods and nutrition winner from Johnson County; **John David Jasper**, forestry winner from Miami County; **Wes Fowler**, gardening winner from Lyon County; **Sandra Randall**, health winner from Johnson County; **Denise Kill**, horse winner from Miami County; and **Kimberly Forrest**, safety winner from Pawnee County.

Darla Paulsen won a sectional award in the clothing project. She is from Stafford County.

Bicycle Safety

Mark A. Keener's work with bicycles started when he repaired and maintained the nine bicycles his family owns. Then he became active in the Shawnee City Safety Council's safety and bike inspection program. He's the bike safety leader for the Greenwood Meadowlarks 4-H Club, Johnson County, and has promoted the project at 4-H and school events. Patrick and Betty Keener are Mark's parents. His trip to National 4-H Congress and a \$1,000 scholarship were sponsored by the National 4-H Council.

Consumer Education

Montgomery Ward and Company, Inc. sponsored Michelle Stehno's trip to Chicago and presented her a \$1,000 scholarship. Michele has shared her interests in foods and nutrition with a variety of audiences, emphasizing consumer education. She was a member of the Munden 4-H Club in Republic County and now attends Kansas State University. She is the daughter of Mr. and Mrs. James Stehno.

Dog Care & Training

Shelby Hoobler began the dog project when she was 10 years old. At that time she thought of her dog as "just another dog." During the next eight years, they've become companions and team-

mates. As she became more experienced, Shelby helped many younger members train their dogs. She was elected to serve as the teen leader on the State 4-H Dog Advisory Committee. As a national winner, Shelby received a trip to National 4-H Congress, transistor radio, and a \$1,000 scholarship from the Ralston Purina Company. Richard and Brenda Hoobler, Horton, are Shelby's parents.

Entomology

Mobay Chemical Company provided Donald Holtgraver, Jr.'s trip to National 4-H Congress, a \$75 savings bond, and a \$1,000 scholarship. It was a trip to the Mobay Chemical plant that prompted Donald to conduct research on insect defense methods and make an educational display. He's also done experiments on tomato worms, fire flies, termite control and pesticides for home gardens. His entomology collection includes 308 insects and 21 orders. Donald and Anna Holtgraver, Spring Hill, are his parents.

Foods & Nutrition

General Foods Corporation provided a trip to National 4-H Congress and a \$1,000 scholarship for Jeannie Koenig's 4-H achievements. After learning basic food preparation techniques, Jeannie has branched out to help cater a special function at her school for 400 guests and prepare food for a one-week family backpacking trip. She attends the University of Kansas. Dr. and Mrs. Michael M. Koenig, Shawnee, are her parents.

Forestry

John David Jasper combined several 4-H projects—weed control, acres for wildlife and gardening—to enhance the work he's done in the forestry project. Since 1978 he's planted 55 scotch pine seedling trees as part of a Christmas tree project. He's been active in establishing a 20-acre outdoor biology laboratory for his high school. He lives on a farm near Paola with his grandparents. International Paper Company sponsored his trip to Chicago and presented a \$1,000 scholarship.

Gardening

Wes Fowler's gardening interests include landscaping, growing vegetables and flowers and raising house plants. One of the special parts of his flower garden is a gladiola bulb plot. He plants

a dozen bulbs of each variety and then records how long it takes to bloom, length of the blooming period, and any other interesting features. Wes is the son of Harry and Marjory Fowler. Chevron Chemical Company sponsored his trip to Chicago and awarded him a \$1,000 scholarship and a \$75 savings bond.

Health

Sandra Randall became interested in the health project because her mother is a nurse. Health became one of her main 4-H projects and influenced her career choice. She is certified in CPR and helped organize an emergency first aid class. She designed a weight loss program for herself and her father. Sandra's parents are Mr. and Mrs. H. David Randall, Shawnee. Her trip to Chicago and a \$1,000 scholarship were sponsored by Kraft, Inc.

Horse

Denise Kill attributes her love and knowledge of horses to her involvement with 4-H and her father's help. She's qualified to show for the last three years in the National Stock Seat Equitation. She gives riding lessons and helps younger 4-Hers and Girl Scouts who are interested in horses. Denise is the daughter of Donald and Donna Kill, Paola. Denise won a \$1,000 scholarship and a trip to National 4-H Congress from the American Quarter Horse Association.

Safety

Kimberly Forrest's safety activities include skits and talks about fire safety, poisons and falls. She's helped organize a Memorial Day coffee stop for highway travelers. Posters and displays are other methods she's used to make the public more safety-conscious. General Motors sponsored Kim's trip to Chicago and awarded her a \$1,000 scholarship. Mr. and Mrs. James E. Forrest, Larned, are her parents.

Clothing

Darla Paulsen won a sectional award in the clothing project. Her trip to Chicago was sponsored by Coats & Clark, Inc. Darla has saved money by sewing many of her own fashionable garments. She's shared her talent by making baby clothes for a church lay mission and making pillows for residents of an invalid home. Dale and Dwilette Paulsen, Stafford, are Darla's parents.



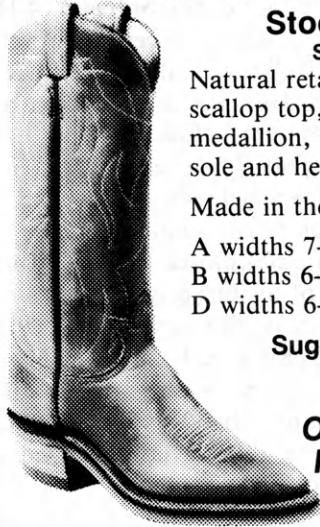
VANDERBILT'S

511 Lincoln
Wamego, Ks. 66547

913-456-9100

Store Hours
Daily 9-8, Sunday 12-5

Sorry, no seconds here, only first quality.



Stock No. 4013
STYLE 13-R-4

Natural retan foot and 13" full scallop top, silver 100 toe medallion, Chemigum natural sole and heel, natural finish.

Made in these sizes:

A widths 7-15 E widths 6-14
B widths 6-15 EE widths 6-13
D widths 6-15 EEE widths 6-11

Suggested Retail
\$139.99

Our Price ...
\$89⁹⁹



1902 — 12", Velva oiltan leather, harness stitched shaft, medallion stitched vamp
• leather lined throughout
• Hypalon oil resistant sole
• walking heel
• 940 toe



Available B8-13, D5-14, EE7-12

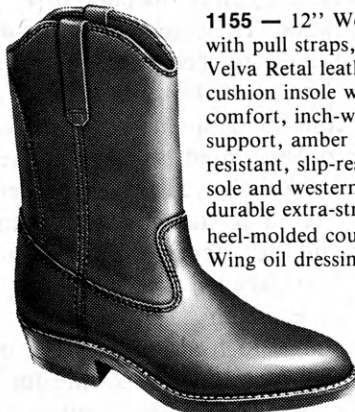
Compare at \$79.95
OUR LOW PRICE

\$49⁹⁹



Largest Red Wing Dealer in Kansas

RED WING

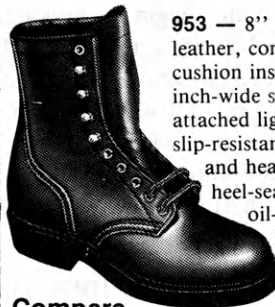


1155 — 12" Western Pecos style boot with pull straps, full-grain oil-tanned Velva Retal leather, durable cellulose cushion insole with inside arch lift for comfort, inch-wide steel shank for extra support, amber rubber midsole, oil-resistant, slip-resistant chemigum cork sole and western heel by RED WING, durable extra-strength waterproofed heel-molded counter. Maintain with Red Wing oil dressing.

Suggested Retail
\$76.65

LESS 25% **\$57⁷²**

AAA	AA	A	B	C	D	E	EE	EEE
10-14	9-15	8-15	7-16	7-14	5-16	6-15	6-14	7-14



953 — 8" full-grain oil-tanned Velva Retan leather, comfortable rolled top band, cellulose cushion insole with inside arch lift for comfort, inch-wide steel shank for extra support, direct attached lightweight, long-wearing, flexible, slip-resistant, oil-resistant blown Urethane sole and heel by RED WING, nail-less sewn heel-seat construction, rugged all-around oil-resistant storm welt, waterproofed leatherboard heel-molded counter. Maintain with Red Wing oil dressing or leather conditioner.

Compare at \$61.95

LESS 25%
953 SIZES

\$46⁴⁷

B	C	D	E	EEE
9 1/2-13	9-12	7-13	7-12	7 1/2-11



4607 "Longhorn" — Russet driftwood foot with matching man-made quarter with pull-holes and air cord medallion.

- 13 inch deep dip quarter
- 37-round butte toe
- Touch-O-Foam quarter lining
- Pre-finished outsole
- Undershot cowboy heel
- Goodyear welt construction

SIZES: B width, 6 1/2-12, 13, 14
D width, 6 1/2-12, 13, 14, 15
E width, 7-11, 12
EW width, 7-12



Compare at \$69.95
OUR LOW PRICE

\$44⁹⁹

acme

Size 13 — \$47.99 Size 14 — \$49.99



ORDER FORM



Name _____

Address _____

City _____ State _____ Zip _____

Stock No. **Size** **Quantity** **Our low price**

Add 3% sales tax
Add \$1.50 per pair for UPS shipping

Check enclosed for TOTAL
(COD orders accepted with check for \$1.50 per pair)

Charge to VISA, TOTAL AMT. _____

Charge to Master Charge _____

Credit Card # _____ Expiration Date _____

Make checks payable to Vanderbilt's,
511 Lincoln, Wamego, Ks. 66547

Nothing unusual about a four-legged 4-H project EXCEPT . . .



Ben Messer likes to do things that “not everybody does.” Take raising mice, for example. In the last year this Riley County 4-Her has raised more than 100 mice as part of a self-determined 4-H project. Ben not only raised them, but also wrote a detailed diary about this experience.

Ben’s out-of-the-ordinary 4-H project started last November when veterinarian Anne Collins gave Ben three adult mice and a cage. He named the brown and white male mouse “Luke.” The cream and white-spotted female he calls “Tidbit” and the beige female is named “Lilac.” Later in the year he got another female. He named this brindle-colored mouse “Carolyn” in honor of his bus driver.

The mice live in a special mouse cage, which is a plastic box, a little bigger than a shoe box, with a wire mesh lid. Ben uses a thick rubber band to keep the lid on — a technique that saved the mice from his brother’s cat, Stormy.

The mice scurry around inside the sawdust-lined box and Ben reaches in and pulls one out by the tail. “That’s the way you’re supposed to pick them up,” he explains.

They easily fit in the palm of 11-year-old Ben’s hand. They are quiet, clean and seem accustomed to being handled. But Ben never lets go of them. They’re so fast that they could be gone in an instant, and then the problem would be catching them.

When Anne gave the mice to Ben, it was with the understanding that Ben would return all the offspring. He raises them until they are weaned (about 3 weeks old) and then gives them to Anne. She uses the young mice to feed her 7½-foot boa constrictor, which has an appetite for about a dozen young mice twice a month.

Anne purposefully selected a solid-colored female and a spotted female for Ben, so he could begin to understand the genetics involved in determining the color of the babies. He knows that Tidbit, the spotted female, will always have spotted babies when mated with Luke, the spotted male. Solid-colored Lilac has spotted babies about half the time when Luke is the father.

When Ben came home from school one afternoon, he saw four adult mice piled on top of 29 baby mice. All three females had litters the same day! The babies were nestled in a hole scratched in the sawdust. At birth the mice are less than an inch long.

They have no hair and their eyes aren't open. Their skin is so transparent that you can see milk in their stomachs after they've nursed.

Because the females will nurse and care for another female's babies and the fur color of the babies is not distinct, Ben had to wait almost a week before he could begin to sort out which babies belonged to each female. Each time a litter is born, Ben records their markings in his diary. Twenty-nine baby mice at one time is the most Ben has cared for.

He's learned not to disturb the nests for several days after the babies are born, because if he cleans out the cage that soon after birth, the females kill the babies. If the litter is too large for the female to care for and keep warm or if some of the babies are sick, the female eats the weakest ones.

"Ben has developed a sense of objectivity about this project," Anne says. Seeing some of the babies die, knowing the healthy ones are fed to the snake, and realizing that his four adult mice are nearing the end of their 1-year life span are parts of the project that make the mice similar to research subjects.

In other ways, however, Ben treats the mice as pets. They eat dry corn and bread regularly, but occasionally Ben gives them treats. Marshmallows are one of their favorite treats. When Anne questioned feeding them marshmallows, Ben's explanation was "Well, it was Christmas!"

Without the arrangement of providing the baby mice for the snake's meals, Ben would soon be in the mouse business on a scale similar to Anne. One room in her earth-sheltered home is the mouse house. In glass aquariums and laboratory cages, hundreds of mice of every size and color live and reproduce every three weeks.

It's from this "mouse herd" that Anne and Ben will soon select some new adults and continue their project. This year they'll probably get deeper into principles of genetics.

As long as Ben has a customer for the baby mice and an enthusiastic leader, his mother's only other request is that Ben makes sure the mice don't get loose. Actually, Mrs. Messer doesn't even worry too much about the mice getting loose. She's gotten so used to Ben's project that instead of standing on a chair screaming she'd now be down on her hands and knees looking for the little rascals.



*Season's
Greetings
and
Every Good Wish
for the New Year*

FB® **Farm Bureau**

2321 Anderson Avenue, Manhattan, Kansas 66502



4-H Dairy News



Midland United Dairy Industry Association

1982

Promoting dairy and dairy products through non-brand advertising and promotion

Judging Teams

Kansas was represented at the National Dairy Judging Contest in Madison, Wisconsin by Danny and Daron Bauerle from Brown County, Tammy Penner from Marion County and Alan Myers from Dickinson County. The team placed 13th in the contest in which 147 judges participated. David Bauerle, Danny and Daron's older brother, coached the team.

Alan Myers was the 11th high individual judge. The contest was part of the World Dairy Expo. Over 2100 dairy cattle were exhibited.



The Kansas 4-H Dairy Judging Team (left to right): Alan Myers, Daron Bauerle, Tammy Penner, Danny Bauerle, and David Bauerle (coach).

Midland United Dairy Industry Association is proud of all 4-Hers who complete dairy and dairy foods projects. Raising, showing, and judging dairy cattle is an important part of the whole Kansas dairy industry.



State Winner

Scott Emig, Dickinson County, is the 1982 state 4-H dairy winner. He lives on an 800-acre dairy farm west of Abilene with his parents, Don and Linda Emig, and his sister.

Scott's dairy project started nine years ago when he borrowed money to buy his first heifer. His dairy herd now consists of 12 animals. Scott really had the opportunity to learn the dairy business following his father's heart attack and surgery.

He convinced his parents that he could manage the dairy operation during Don's recovery. Scott was a full-time dairy farmer the same year he was a sophomore at Abilene High School and a member of the champion football team. After high school he plans to attend Kansas State University and maintain his interest in the dairy industry.

4-Hers to National Conference

Four Kansas 4-Hers won trips to the National Dairy Conference in Madison, Wisconsin for their achievements in the dairy project. Selection was based on the overall dairy record this year, which includes leadership, production, management, and size of herd. Dana Wolford, Lyon County; Dwight Call, Chautauqua County; Kelli Anderson, Leavenworth County; and Scott Emig, Dickinson

County are this year's trip recipients. Nancy Anderson from Leavenworth County accompanied the group.

* * * * *

State Fair Judging Team

The Brown County dairy judging team placed first at the 1982 Kansas State Fair. Team members were: Daron and Danny Bauerle, Nathan Worth and Mike Koenig.

Ideas & News

From the Northeast Area:

Cloud County: **Denette Chartier** reports that for the past two years the **Miltonvale Hustlers 4-H Club** has worked on the Acres for Wildlife club project. They have preserved a plot for the wildlife by building brushpiles and feeders and have posted signs to identify the area and explain the project.

This year they held a poster contest with the theme of preserving wildlife. The posters were printed in the local paper and placed in the Home Cafe for the community to see.

The first place poster in the 8th to 12th grade category was made by **Karen Campbell**. Her poster was entitled "Home on the Range" and featured the state bird and state flower. **Denette Chartier** won 2nd place and **Jody Braun** and **Polly Pacey** tied for third.

In the 7th grade and under category, first place went to **Lisa Breen** with a poster titled "Whooo, who cares about wildlife?" **Belle Stevenson** won second and **Brian Yonally** placed third.

Marshall County: The highlight of the 50th anniversary celebration for the **Wide Awake 4-H club** was the presentation of a plaque to **Robert Mayer** naming him an honorary charter member of the club. Mr. Mayer has served 34 consecutive years as a community or project leader. He was a member of the club for 10 years before becoming a leader. Over 200 former members, leaders, parents and friends attended the event. **Spencer Sutton**, club reporter, sent this news to the Journal.

Marshall County: The **Happy Harvester 4-H Club**, as part of their club citizenship project, built and donated booths for the 4-H building at the fairgrounds. The woodworking project members built a scrapbook exhibit booth this year and built five home improvement exhibit booths last year. The club raises money to buy the booth materials by holding paper drives.

Riley County: Sixty-two 4-Hers and leaders from **Riley, Geary, Pottawatomie, Nemaha** and **Wabaunsee** counties enjoyed a fun-packed junior leaders retreat at Rock Springs Ranch. The October weekend event was hosted by Riley County junior leaders.

Karla Wienck reports that **Sam Ulsaker** from Goessel, Ks. talked to the group about problem solving and everyone discussed the topic of peer pressure. Some of the fun activities were: machine charades, airplane rides, volleyball and basketball games, dancing and a hugging circle.

Riley County: The **Lee Hilltoppers 4-H Club** honored their retiring com-

munity leaders, **Willa Dean (Mrs. Merle) Eyestone** and **Cecil Eyestone**, at the club's annual achievement program.

The Eyestone families have been associated with the club since it was organized in 1959 at the Cecil Eyestone home. During the past 23 years, nine Eyestone children have completed their 4-H careers as members of the Lee Hilltoppers. Every one of the Eyestone children served at least once as president of the club.

The club presented Chet Peters' wood carvings to Cecil and Willa Dean in appreciation of their many years of leadership. **Dorothy Fulghem**, senior reporter, and **Sharon Moreland**, junior reporter, sent this news to the Journal.

Wyandotte County: **Mauria Stonestreet**, reporter for the **Brauer 4-H Club**, sent this neat, new idea for county fairs—a Kiddie Tractor Pull. They set up the contest for kids 10 years of age and younger. They had three weight divisions, with a weight limit of 70 pounds. The toy tractors pulled bricks.

Paul Stonestreet headed the committee, set up the course and secured prizes for the contest, with the help of community leader **Don Crim**. It was enjoyable for the 36 kids who participated and for those who watched. The club plans to host the event again next year. They picked a first and second place winner in each division. They also had a drawing for a toy tractor.



Kiddie tractor pull contestants and spectators line up for the victory lap.



Attending the Wide Awake 4-H Club 50th anniversary celebration were: (from left) Dale Apel, acting assistant Extension 4-H youth director; Robert Mayer and Mrs. Leonard Bigham, community leaders; and Kent Mayer, club president.

Ideas & News

From the Northwest Area:

Barton County: During National 4-H Week, the 4-H Council delivered award-winning maple-nut twist coffee cakes to the county 4-H Journal sponsors, **American State Bank** and **Great Bend Co-op**. The cakes were made from the same recipe that won grand champion at the Barton County Fair, sold for \$400 at the food auction, and won a purple ribbon at the Kansas State Fair. Needless to say, the cake hit the spot and didn't last long.

From the South Central Area:

Harper County: Marty Seipel, Tip Top 4-H Club reporter, sent news of the observance of Fire Prevention Week. He gave a talk at the club meeting, sharing his experiences as a member of the Anthony auxiliary firemen. Fifteen-year-old Marty attended a fire fighting school this summer. He passed the entire course, which included a week of hard training about hazardous chemicals, ventilation, using a monitor nozzle and rescuing victims. The last night of the training included fighting a 250-gallon diesel fuel fire.

Harvey County: Elizabeth Wulf, Kellas 4-H Club, received a meat carving set from the **Kansas Beef Council** for giving the highest ranking meat utilization demonstration at the Kansas State Fair. Her talk, "Cut Up Beef, Cut Down Costs," showed how to cut up a tenderloin and a 3" thick round steak into family size portions for more economical eating. She also gave tips on buying knives, cutting boards and freezer wrap. **Robyn Miller** is the Kellas 4-H Club reporter.

From the Southeast Area:

Franklin County: Brett Dunlap, Franklin County photo club reporter, send a copy of the 1982 Special 4-H Edition run by the **Ottawa Herald**. Brett says thanks to the Ottawa Herald news staff; publisher **Robert Wellington**; and farm editor **Diane Yeamans** for another great 4-H Week celebration publication.

New items and features were supplied by club reporters, 4-Hers, parents, leaders and county 4-H agent **Jo Ellen Arnold**. **Diana Yeamans**, farm editor, did a super job of putting the six pages together.

For the sixth year, purple ribbon Franklin County Fair photos were printed as cover and feature pictures. County-wide 4-H photographers featured were: **Curt Collins, Chris Hoch, Kim Bealmer, Alan McClain, Tracy Shuck, Bill Rodgers, Terri Montgomery, Bob Kuestersteffen, Leslie Campbell** and **Rob and Brett Dunlap**.

Miami County: The Willow Branch 4-H Club window display won first prize in the annual National 4-H Week display contest. The display featured a "Get Cookin' with 4-H" theme. Each year the name of the winning club is inscribed on a plaque which hangs in the Extension office.

Sumner County: Mrs. Marion Watts, Corbin, organized a county-wide Bread Fair in November. Participants made bread in a plastic bag. While the dough was rising, 4-Hers gave demonstrations.

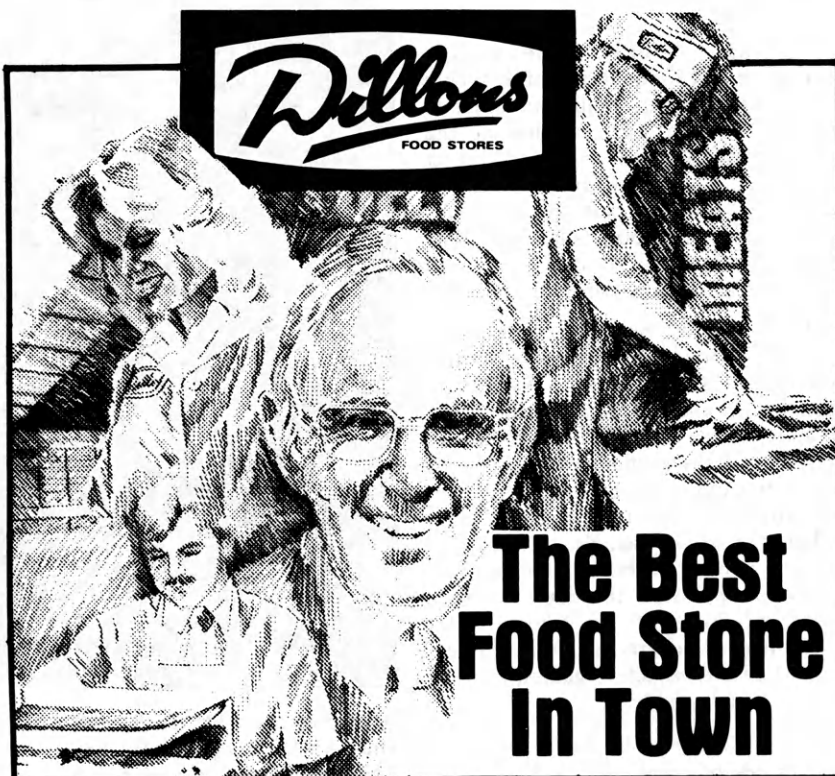
Sumner County: The Drury Millers 4-H Club promoted National 4-H Week with a window display at Caldwell. **Toni Wolff** and **Beryl Dvorak** are the leaders.

EXCEL

EXCEL beef products provide
a standard of
Excellence around the world.

Headquarters: 2901 North Mead
P.O. Box 2519, Wichita, Kansas 67201

• Dodge City, KS • Friona, TX • Nebraska City, NE
• Philadelphia, PA • Plainview, TX • Rock Port, MO • Wichita, KS



Dillons
FOOD STORES

**The Best
Food Store
In Town**

IDEAS . . . IDEAS . . . IDEAS

from other clubs

A regular Kansas 4-H Journal feature.

Many 4-H leaders are looking for a way to learn about successful club activities carried out in other 4-H clubs in Kansas. Since the Journal goes to nearly all 4-H families in the state, it's the perfect vehicle for the exchange. Learn from others and share your ideas!

This page is designed to be used with the new leader's resource *Out of Ideas? A Leader's Handbook*. The handbook contains a section entitled "Ideas from Other Clubs." The ideas are activities that help teach the five life skills: **Developing an Inquiring Mind, Making Decisions, Developing Self-Confidence, Getting Along with Others, and Developing a Concern for the Community.**

As this page appears, tear it out and add to the Ideas section of your handbook.

Our club shared a miniature "Noah's Ark" at the Pizza Hut employee's family picnic. Members brought 4 baby rabbits, 2 senior buck rabbits, 2 ducks, 2 chickens, 2 sheep, 2 lambs, 2 baby pigs, 1 goat, 1 calf and 1 goose.

*Kristy Ross
Andover Acres 4-H Club
Sedgwick County*

Get Along With Others

Our club (composed of members who live in the country and a small town) invited a Johnson County club to an exchange meeting. We compared our projects with the projects they took. They were impressed with our livestock. Our club will visit them for a day to complete the exchange.

*David Dysart
Franklin 4-H Club
Miami County*

Develop a Concern for the Community

Our club plans to offer a weekend babysitting service during the Christmas season for shoppers in Plainville.

*Eager Beavers 4-H Club
Rooks County*

Develop Self-Confidence

When Rooks County 4-H Ambassadors visited the Palco and Plainville elementary schools to talk about 4-H, they called on 4-Hers in the audience to share their experiences.

Rooks County

If you're willing to share your success stories with other Kansas clubs, please jot your ideas on the form below (you need not worry about your writing skills, the Journal staff will dress it up, if needed). Cut the page at the dotted line and mail to: **Sara Gilliland, Kansas 4-H Journal, 116 Umberger, K.S.U., Manhattan, KS 66506.**

.....
Activities we have used to (check one):

Develop an Inquiring Mind Make Decisions Develop Self-Confidence
 Get Along with Others Develop a Concern for the Community

Club Leader _____ Name of Club _____

Phone Number _____ County _____



These are the business firms and individuals who pay your Journal subscription.

Call on them or send them a thank you note to express your appreciation.

*Twenty-year Sponsors are denoted with an *.*

ATCHISON

Atchison Co. Ext. Office, Effingham
Atchison County 4-H Council, Effingham

BARBER

*First National Bank, Medicine Lodge
Barber County 4-H Council, Medicine Lodge

BARTON

American State Bank & Trust, Great Bend
Great Bend Coop, Great Bend

BOURBON

*Citizens National Bank, Ft. Scott
*Farmers Co-op Assn., Ft. Scott
*Liberty Savings & Loan Assn., Ft. Scott
*The Bank of Bronson, Bronson
*Union State Bank, Uniontown
City State Bank, Ft. Scott
Bourbon County 4-H Council, Ft. Scott

BROWN

*Citizens State Bank, Hiawatha
*Farmers State Bank, Fairview
*Morrill State Bank, Sabetha
*The Bank of Horton, Horton
*The Bank of Robinson, Robinson
*The Morrill & James Bank, Hiawatha
*The Union State Bank, Everest

BUTLER

*Augusta State Bank, Augusta
*Benton State Bank, Benton
*Citizens State Bank, El Dorado
*First National Bank & Trust, El Dorado
Exchange State Bank, Douglass
*Potwin State Bank, Potwin
*Prairie State Bank, Augusta
*State Bank of Leon, Leon
*Walnut Valley State Bank, El Dorado
Butler County 4-H Council, El Dorado

CHASE

*Exchange National Bank, Cottonwood Falls
*Strong City State Bank, Strong City
*The People Exchange Bank, Elmdale
Chase County 4-H Council, Cottonwood Falls

CHATAQUA

*Sedan State Bank, Sedan

CHEROKEE

American National Bank, Baxter Springs
The Hartley Agency, Inc., Baxter Springs
Vanatta Masonry & Concrete Co., Columbus
Vanatta's Beauty Salon, Columbus

CHEYENNE

*Citizens State Bank, St. Francis
Cheyenne Co. 4-H Council, St. Francis

CLARK

*Citizens State Bank, Ashland
*Stockgrowers State Bank, Ashland

CLAY

*Union State Bank, Clay Center
Clay County 4-H Council, Clay Center

CLOUD

*Citizens State Bank, Miltonvale
*Cloud County Bank & Trust, Concordia
*First Bank & Trust, Concordia
*The First National Bank of Glasco, Glasco
Exchange Bank of Clyde, Clyde
Elk State Bank, Clyde
Cloud County 4-H Council, Concordia

COMANCHE

*The Peoples State Bank, Coldwater

COWLEY

*The Home National Bank of Arkansas City,
Arkansas City
*The First National Bank, Winfield
Cowley County 4-H Council, Winfield

CRAWFORD

*Farmers State Bank, Walnut
*First State Bank, Arma
*First National Bank, Girard
*The First State Bank & Trust Co., Pittsburg
*Girard National Bank, Girard
*Hepler State Bank, Hepler
*McCune State Bank, McCune
*Miners State Bank, Frontenac
*National Bank of Pittsburg, Pittsburg
The City National Bank of Pittsburg, Pittsburg

DECATUR

*Decatur Co-op Assoc., Oberlin

DICKINSON

*Farmers National Bank, Abilene

DONIPHAN

Farmers State Bank, Wathena
Doniphan County REA, Troy
Troy State Bank, Troy
Twombly Grain, Troy
Robinson Farmers Co-op, Leona
Atchison County Co-op, Denton

DOUGLAS

*Douglas County State Bank, Lawrence
Hayes-Richardson-Santee Insurance, Lawrence
Douglas County 4-H Council, Lawrence

EDWARDS

*The Home State Bank, Lewis

ELK

*Exchange State Bank, Moline
*First National Bank, Howard
*Home State Bank, Longton
*Howard State Bank, Howard

ELLIS

*Ellis State Bank, Ellis
*Farmers National Bank, Victoria
*First National Bank, Hays
Hays State Bank, Hays
Heritage Savings Assoc., Hays

ELLSWORTH

*Citizens State Bank & Trust, Ellsworth
*Kanopolis State Bank, Kanopolis
*Lorraine State Bank, Lorraine
*The Bank of Holyrood, Holyrood
*Wilson State Bank, Wilson

FINNEY

*The Fidelity State Bank, Garden City
Frontier Federal Savings & Loan, Garden City
*The Garden National Bank, Garden City
Golden Plains Credit Union, Garden City
Western State Bank, Garden City

FORD

*Fidelity State Bank & Trust, Dodge City
*Farmers State Bank, Bucklin
*Ford County State Bank, Spearville
*First Nat'l. Bank & Trust Co., Dodge City
*First National Bank, Spearville
*Bucklin State Bank, Bucklin

FRANKLIN

*Peoples National Bank, Ottawa
*Wellsville Bank, Wellsville

GEARY

*Central National Bank, Junction City
Geary Grain Elevator, Junction City

GOVE

*First National Bank, Quinter
*Peoples State Bank, Grinnell
Grainfield Elevator, Inc., Grainfield
Deges Barber Style Shop, Grainfield

GRAHAM

*Farmers & Merchants Bank, Hill City
Citizens State Bank, Morland

GRANT

*Grant County State Bank, Ulysses
Grant County 4-H Council

GRAY

*Farmers State Bank, Ingalls
*First National Bank in Cimarron, Cimarron
*Montezuma State Bank, Montezuma
Gray County 4-H Council, Cimarron

GREELEY

*First National Bank, Tribune
Greeley County 4-H Council, Tribune

GREENWOOD

*Home Lumber Co., Eureka
*Citizens National Bank, Eureka
*Eureka Federal Savings & Loan Assoc., Eureka
*Freeman's T.V. & Appliance, Eureka
*Home Bank & Trust Co., Eureka
*Parks Oil Co., Eureka
First National Bank of Hamilton, Hamilton
Greenwood County 4-H Council, Eureka

HAMILTON

*First National Bank, Syracuse
*Valley State Bank, Syracuse
Hamilton County 4-H Council, Syracuse

HARPER

*Anthony Farmers Co-op Elevator, Anthony
*Danville Co-op Assn., Danville
*Farmers Co-op Business Assn., Hazelton
*State Line Grain Co., Manchester
Harper County 4-H Council, Anthony

HARVEY

*Harvey County Banker's Assn., Newton
*Hesston State Bank, Hesston
*Kansas State Bank, Newton
*Midland National Bank, Newton
*Sedgwick State Bank, Sedgwick
*State Bank of Burrton, Burrton
*The Halstead Bank, Halstead
*Walton State Bank, Walton
Harvey County 4-H Council, Newton

HASKELL

*The Haskell Co. State Bank, Sublette
Haskell County 4-H Council, Sublette

HODGEMAN

*Farmers State Bank, Jetmore
*Hanston State Bank, Hanston
Hodgeman County 4-H Council, Jetmore

JACKSON

*Building Supply Center, Holton
Clark Chev.-Olds, Inc., Holton
Jackson Farmers, Inc., Holton
Jackson County Farm Bureau, Holton
Holton Lions Club, Holton
Jackson County 4-H Council, Holton

JEFFERSON

Valley Implement, Inc., Valley Falls
*Leavenworth-Jefferson Elect. Co-op, McLouth
*Jefferson County Homemaker Units Council,
Oskaloosa
Jefferson County 4-H Council, Oskaloosa

JEWELL

*Burr Oak State Bank, Burr Oak
*Citizens State Bank, Jewell
*The Formoso Bank, Formoso
*First National Bank, Mankato
*Randall National Bank, Randall
*State Bank of Esbon, Esbon
*State Exchange Bank, Mankato

JOHNSON

*Patrons State Bank & Trust, Olathe
*First National Bank, Olathe
*State Bank of Stanley, Stanley
*State Bank of Spring Hill, Spring Hill
*Shawnee State Bank, Shawnee
*Olathe State Bank, Olathe
The First Citibank of Olathe, Olathe

KINGMAN

*C.R. Calvert Co., Kingman

KIOWA

*First State Bank, Mullinville
*Haviland State Bank, Haviland
*Greensburg State Bank, Greensburg
Kiowa County 4-H Council, Greensburg

LABETTE

*Chetopa State Bank & Trust, Chetopa
*First State Bank, Edna
*First National Bank, Oswego
*First National Bank & Trust, Parsons
*Labette County State Bank, Altamont
*State Bank of Parsons, Parsons
*American State Bank, Oswego
*Parsons Commercial Bank, Parsons

LANE

*First National Bank, Dighton
*First State Bank, Healy
Lane County 4-H Council, Dighton

LEAVENWORTH

*First National Bank, Leavenworth
First State Bank, Tonganoxie
Leavenworth County 4-H Council, Leavenworth

LINCOLN

*Sylvan State Bank, Sylvan
Lincoln County 4-H Council, Lincoln

LINN

*Bank of Pleasanton, Pleasanton
*Centerville State Bank, Centerville
*Farmers State Bank, Blue Mound
*First State Bank, Pleasanton
*Linn County Bank, LaCygne
*Prescott State Bank, Prescott
Linn County 4-H Council, Mound City

LOGAN

*Farmers State Bank, Oakley
Logan County 4-H Council, Oakley

LYON

*Citizens National Bank & Trust Co., Emporia
Federal Land Bank Assoc., Emporia
Bluestem Farm & Ranch, Emporia
Lyon County Farm Bureau, Emporia
Hartford State Bank, Hartford
Americus State Bank, Americus
Teichgraaber Milling Co., Inc., Emporia
Lyon County 4-H Council, Emporia

MARION

Wheatland Bank of Goessel, Goessel
Crossroads Co-op, Goessel
Sears Catalog Store, Marion
Co-op Grain & Supply, Hillsboro
Elcon Services, Inc., Hillsboro
South Cottonwood 4-H Club, Hillsboro
Donahue Corporation, Durham
Marion County Co-op Assn., Durham
Farmers Co-op Grain Assoc., Durham
Williams Service, Florence
Dari Corner, Florence
Seward Hardware, Florence
O'Dells' Grocery, Florence
Florence State Bank, Florence
Town & Country Cafe, Florence
Lincolnvile Co-op Assn., Lincolnvile
Farmers Grain Co-op of Walton & Peabody, Walton
Ramona State Bank, Ramona
Tampa State Bank, Tampa
Tampa Co-op Assoc., Tampa
Artificial Insemination Breeding, Lehigh
Empire Home Furnishing, Lehigh
Lehigh Co-op, Lehigh
Sunflower Energy Works, Inc., Lehigh
Terrell Farm & Auto Repair, Lehigh
Marion County 4-H Council, Marion

MARSHALL
 *Bremen State Bank, Bremen
 *Citizens State Bank, Marysville
 *Exchange Bank of Schmidt & Koester, Marysville
 *Marshall County Bank, Beattie
 *First National Bank, Frankfort
 *First National Bank, Summerfield
 *Oketo State Bank, Oketo
 *State Bank of Axtell, Axtell
 *State Bank of Blue Rapids, Blue Rapids
 *Vermillion State Bank, Vermillion
 Citizens State Bank, Waterville

MEADE
 *Plains State Bank, Plains
 *First National Bank, Meade
 *Fowler State Bank, Fowler
 Meade County 4-H Council, Meade

MIAMI
 Runyan Funeral Home, Louisburg
 Kenneth R. Johnson Water & Oil Supplies,
 Osawatomic

Wilson & Son Funeral Home, Paola
 Bank of Louisburg, Louisburg
 Eddy-Birchard Funeral Home, Osawatomic
 1st Nat'l. Bank of Louisburg, Louisburg
 1st Nat'l. Bank of Osawatomic, Osawatomic
 Miami County Nat'l. Bank, Paola
 Miami County 4-H Council, Paola

MITCHELL
 *Farmers & Merchants State Bank, Cawker City
 *Farmers State Bank, Simpson
 *Farmers State Bank, Hunter
 *First National Bank, Beloit
 *Guaranty State Bank & Trust, Beloit
 *Tipton State Bank, Tipton
 *Traders State Bank, Glen Elder

MONTGOMERY
 People's State Bank of Cherryvale, Cherryvale
 Caney Valley National Bank, Caney
 *Citizens National Bank, Independence
 *First National Bank of Coffeyville, Coffeyville
 Montgomery County 4-H Council, Independence

MORRIS
 Burdick Hustlers 4-H Club
 Delavan-Wilsey Busy Bees 4-H Club
 Flint Hills 4-H Club
 Neosho Valley 4-H Club
 Willing Workers 4-H Club

MORTON
 *Janzen-Elder Insurance & Real Estate, Inc., Elkhart
 *Elkhart Co-op Equity Exchange, Elkhart
 *Elkhart Implement Co., Elkhart
 *Elkhart True Value Lumber Co., Elkhart
 *First State Bank, Elkhart
 *Fisher's Inc., Elkhart
 *Rolla Co-op Equity Exchange, Rolla
 Morton County 4-H Council, Elkhart

McPHERSON
 McPherson County 4-H Council, McPherson

NEMAHA
 *Farmers Co-op Elevator, Sabetha
 Nemaha County Co-op Assn., Seneca
 Seneca Elevator Co., Inc., Seneca
 Wittmer Grain Co., Sabetha
 C-G-F Grain Co., Inc., Centralia
 Lortscher Agri-Service, Inc., Bern

NEOSHO
 Ash Grove Cement Co., Chanute
 Prest Lumber Co., Erie
 Comfort Contractors, Chanute
 Kynts "Kay" Kennedy, Dodge City
 Neosho County 4-H Council, Erie

NESS
 *Citizens State Bank, Utica
 *Bazine State Bank, Bazine
 *First State Bank, Ness City
 *First State Bank of Ransom, Ransom
 Ness County 4-H Council, Ness City

NORTON
 Kellings Fine Foods, Norton
 Norton Co. Farm Bureau, Norton
 Norton Livestock Auction, Norton
 Miller Tire Center, Norton
 Phillip Rule, Dean Husted & Duane Brado A-T
 Implement Co., Norton
 Norton Appliance & Furn., Norton
 Federal Land Bank Assn., Hays
 Norton County 4-H Council, Norton

OSAGE
 First State Bank, Burlingame
 Nickel Equipment, Burlingame
 Jo's Place, Burlingame
 Burlingame Co-op, Burlingame
 Enterprise Chronicle, Burlingame
 Pattersons Food Market, Burlingame
 Burlingame Locker, Burlingame
 Western Auto, Burlingame
 Spalding Pharmacy & Variety, Burlingame
 Burlingame Manufacturing, Burlingame
 Satzler's Hardware, Burlingame
 Gary & Delores Rieck, Burlingame
 Gambles, Osage City
 Park Pharmacy, Osage City
 Jones Dairy, Osage City
 Jerry's Thriftway, Osage City
 Fur, Fin & Feather, Osage City
 Mode O'Day, Osage City
 Ronalds Variety Store, Osage City
 Wyatts Hardware, Osage City
 Osage Auto Supply, Osage City
 Martin Material Co., Inc., Osage City
 Dayhoff Elevator, Osage City
 Melvern Food Center, Melvern
 McNabb Hy-Klas Food Center, Melvern
 Country Cut & Curl, Melvern
 Aaron's Home Store, Carbondale
 Carbondale Service, Carbondale
 Catfish John's Bait Shop, Carbondale

Garcia's Automotive, Carbondale
 Kemble's Tree Farm, Carbondale
 Old Southside Cafe, Carbondale
 Roller Dale Skating, Carbondale
 Sisco's A&A Sport Center, Carbondale
 Skip's Thriftway, Carbondale
 State Bank of Carbondale, Carbondale
 Virginia Lee Beauty Salon, Carbondale
 Williams & Davidson, Attorneys at Law, Carbondale
 Gerald & Belva Scheid, Vassar
 Osage County 4-H Council, Lyndon

OSBORNE
 *Downs National Bank, Downs
 *Farmers National Bank, Osborne
 *First National Bank of Natoma, Natoma
 *First State Bank, Osborne
 *State Bank of Downs, Downs
 *First State Bank of Portis, Portis
 Osborne County 4-H Council, Osborne

OTTAWA
 *Chuck Stein Chev.-Olds-Buick, Minneapolis
 *Hoover's of Minneapolis, Inc., Minneapolis
 *Lott Implement Co., Minneapolis
 4-H Booster Club, Minneapolis
 Ottawa County 4-H Council, Minneapolis

PAWNEE
 *First State Bank, Larned
 First National Bank, Larned

PHILLIPS
 *First National Bank, Phillipsburg

POTTAWATOMIE
 Pugh, Pugh & Duesing, Attorneys at Law, Wamego
 J. Warren Hildreth, Jr., D.D.S., Wamego
 Yeager's Western Auto, Wamego
 Fairchild Agency, Westmoreland
 *Kaw Valley State Bank & Trust Co., Wamego
 *St. Marys State Bank, St. Marys
 *First National Bank, Wamego
 *Farmers State Bank, Westmoreland
 *Union State Bank of Olsburg, Olsburg

PRATT
 *Cairo Co-op Equity Exchange, Cairo
 *Iuda Co-op Exchange, Iuda
 *Pratt Equity Exchange, Pratt
 *Preston Co-op Grain & Mercantile Co., Preston
 *Sawyer Co-op Equity Exchange, Sawyer
 *Cullison Co-op, Pratt
 Pratt County 4-H Council, Pratt

RAWLINS
 *Farmers Bank & Trust, Atwood
 *Farmers State Bank, Ludell
 *Peoples State Bank, McDonald
 *State Bank of Atwood, Atwood
 *State Bank of Herndon, Herndon
 Rawlins County 4-H Council, Atwood

RENO
 Buhler State Bank, Buhler
 Central State Bank, Hutchinson
 Citizens State Bank, Arlington
 State Bank of Kansas, S. Hutchinson
 Farmers State Bank, Yoder
 First National Bank, Hutchinson
 Haven State Bank, Haven
 Hutchinson Nat'l. Bank & Trust, Hutchinson
 Nickerson State Bank, Nickerson
 Northgate National Bank, Hutchinson
 State Bank of Plevna, Plevna
 State Bank of Pretty Prairie, Pretty Prairie
 Sylvia State Bank, Sylvia
 Turon State Bank, Turon

REPUBLIC
 Arbuthnot's Drug Co., Belleville
 The Walthers Oil Co., Cuba
 First National Bank, Belleville

RICE
 *Central Kansas Elevator, Lyons
 Chandler National Bank, Lyons
 Bushnton Grain & Supply, Chase
 Rice County State Bank, Chase
 Farmers Co-op of Alden, Lyons, Sterling and Pollard,
 Sterling

*First National Bank, Sterling
 *Farmers State Bank, Sterling
 Home State Bank, Little River
 *Collingwood Grain, Inc., Little River
 *Raymond State Bank, Raymond
 *Pepsi-Cola Bottling Co., Great Bend
 Lyons IGA Store, Lyons
 Alden State Bank, Alden
 Lyons Savings & Loan, Lyons

RILEY
 *Leonardville State Bank, Leonardville
 Cox Gelbvieh Ranch, Manhattan
 Vista Drive-In Restaurant, Manhattan
 Cowan-Edwards-Vorgensen Funeral Home, Manhattan
 The Riley State Bank, Riley
 Kansas State Bank, Manhattan
 Citizens State Bank & Trust, Manhattan
 Rader Construction, Manhattan
 Riley County 4-H Council, Manhattan

ROOKS
 First National Bank, Palco
 Norton-Decatur Co-op Electric Co., Norton
 Plainville State Bank, Plainville
 Rooks County 4-H Council

RUSH
 *Farmers & Merchants State Bank, LaCrosse
 Rush County 4-H Council

RUSSELL
 *Russell State Bank, Russell
 *Farmers State Bank, Lucas
 Russell County 4-H Council, Russell

SALINE
 *The First National Bank & Trust Co., Salina
 Saline County 4-H Council, Salina

SCOTT
 *First National Bank, Scott City
 *Security State Bank, Scott City

SEDGWICK
 K.T. Wiedemann Foundation, Wichita
 Chisholm Trail State Bank, Wichita
 *First National Bank in Wichita, Wichita
 *Fourth National Bank & Trust Company, Wichita
 State Bank of Colwich, Colwich
 *Citizens State Bank, Cheney
 Home State Bank, Clearwater

SEWARD
 *Citizens State Bank, Liberal
 *First National Bank, Liberal
 *Peoples National Bank, Liberal
 Seward County 4-H Council, Liberal

SHAWNEE
 Falley's Inc., Topeka
 Southwest State Bank, Topeka
 Shawnee County 4-H Council, Topeka

SHERIDAN
 *Farmers State Bank, Selden
 *First National Bank, Hoxie
 *Hoxie State Bank, Hoxie
 *Mickey's Hardware, Hoxie
 Sheridan County 4-H Council, Hoxie

SHERMAN
 *First National Bank of Goodland, Goodland

SMITH
 First National Bank, Gaylord
 First National Bank, Kensington
 First National Bank, Lebanon
 First National Bank, Smith Center
 The Smith County State Bank & Trust Co.,
 Smith Center

STAFFORD
 *Farmers & Merchants State Bank, Macksville
 *Farmers National Bank, Stafford
 *First Nat'l. Bank & Trust, St. John
 *Hudson State Bank, Hudson
 *Macksville State Bank, Macksville
 *St. John National Bank, St. John
 Stafford County 4-H Council, St. John

STANTON
 *Collingwood Grain, Inc., Johnson
 Stanton County 4-H Council, Johnson

STEVENS
 *Citizens State Bank, Hugoton
 Stevens County 4-H Council, Hugoton

SUMNER
 Garvey Grain Co., Conway Springs
 McDaniel Grain Co., Gueda Springs
 McDaniel-Waples, Inc., Wellington
 Oxford Milling Co., Oxford
 Farmers Co-op Grain Co., Caldwell
 *Wolcott & Lincoln, Inc., Wellington
 Wolcott & Lincoln, Inc., Corbin
 Wolcott & Lincoln, Inc., Milan
 Wolcott & Lincoln, Inc., Perth
 Wolcott & Lincoln, Inc., Riverdale
 Wolcott & Lincoln, Inc., South Haven
 Farmers Co-op Grain, Wellington
 Danville Co-op Grain Co., Argonia
 Farmer Co-op Grain Co., Conway Springs
 Blackwell Co-op, Braman, OK
 Hunnewell Elevator, South Haven
 Sumner County 4-H Council, Wellington

THOMAS
 Sunflower Savings Assn., Colby

TREGO
 Mai Oil & Fertilizer Co., WaKeeney
 Rhoades Oil Co., WaKeeney
 *Schreiner's, Inc., Ogallah
 Niedens Trucking Co., WaKeeney
 Malsom & Sons, Collyer
 Miller Door Co., Bonner Springs
 Trego County 4-H Council, WaKeeney

WALLACE
 *Peoples State Bank, Sharon Springs
 Wallace County 4-H Council, Sharon Springs

WASHINGTON
 Washington County 4-H Council, Washington

WABAUSSÉE
 *Alta Vista State Bank, Alta Vista
 *Eskridge State Bank, Eskridge
 *First National Bank, Alma
 *First National Bank, Harveyville
 *The Stockgrowers State Bank, Maple Hill
 Wabaussée County 4-H Council, Alma

WICHITA
 *First State Bank, Leoti
 Wichita County 4-H Council, Leoti

WILSON
 *Cox Grain Company, Fredonia
 *First National Bank, Fredonia
 *First National Bank, Neodesha
 *Fredonia Co-op Assoc., Fredonia
 *Wiggans Pharmacy, Fredonia
 *Radiant Electric Co-op, Inc., Fredonia
 *Joe Armstrong Equip., Inc., Fredonia
 *O.E. Woods Lumber, Neodesha
 *Self-Service Grocery, Fredonia
 *State Bank of Fredonia, Fredonia
 *Wilson Co. Farm Bureau, Fredonia
 Neodesha Co-op, Neodesha
 Wilson County 4-H Council, Fredonia

WOODSON
 *State Exchange Bank, Yates Center
 *J.E. Sowder Seed Co., Toronto
 Woodson County 4-H Council, Yates Center

WYANDOTTE
 *Brotherhood Bank & Trust, Kansas City
 *Coleman Implement, Inc., Bonner Springs
 Commercial National Bank, Kansas City
 *Commercial State Bank, Bonner Springs
 *Home State Bank, Kansas City
 Melba's Fabrics, Kansas City
 Turner State Bank, Kansas City
 Suter-Chaffin Oil Co., North Kansas City, MO
 Pet Palace, Kansas City
 Wyandotte County 4-H Council, Kansas City

Photo leader attends national workshop

Dr. Cyril Brown, Harvey County photography leader, attended the first 4-H Forum—Photography Leader Training at the National 4-H Center in Washington, D.C. Brown was one of 90 volunteer leaders and Extension staff from 41 states participating in the forum.

Sponsored by Eastman Kodak Company, donor of the national 4-H photography awards program, the sessions featured practical hands-on workshops, field trips and idea sharing. Sessions were designed to help leaders use photography to strengthen a broad range of 4-H programs.

Participants attended in-depth workshops on such topics as basic photography, 4-H promotion through photography, teaching methods, photography as a community service, new technology and photo composition.

Brown said the most interesting parts of these sessions were the forums on the use of photography in other 4-H projects and the use of photography in community awareness activities.

Educational field trips added depth to the program. Included were tours of **National Geographic** magazine publishing company, and the National Museum of American History, where participants viewed the History of Photography exhibit. During the day on Capitol Hill, delegates toured the Capitol, Supreme Court, Library of Congress and James Madison Memorial Building, Museum of African History and the Smithsonian Institution. Brown said everyone should have the opportunity to visit our nation's capital, see the many



Cyril Brown reviews photographs at the National 4-H Center in Washington, D.C.

historical displays and feel the sense of patriotism.

One of the most exciting parts of the forum was sharing ideas with others. Several new teaching aids and sources of materials to enhance the 4-H photography project were made available to the forum participants.

Brown plans to apply newly-acquired skills to increase the effec-

tiveness of his Harvey County 4-H project meetings and to broaden the scope of activities of the Kansas 4-H photography advisory committee where he is currently serving as committee chairman.



4-H Leader Forums conducted throughout the year are sponsored by the National 4-H Council in support of the 4-H program of the Cooperative Extension Service.



Collingwood
GRAIN INC.

Serving Kansas
Since 1890
Country Elevators
and Terminals

For over 20 years, the Kansas Wheat Commission has recognized 4-Hers for excelling with their wheat projects. In 1982 the Wheat Commission is proud to

-  provide trips to the Port of Houston, Texas for the state wheat quality award winners and the 4-Her who displayed the top wheat variety booth at the Kansas State Fair.
-  co-sponsor the 4-H District Wheat Shows.
-  provide seed wheat for all participants in the wheat variety plot projects.

Kansas grows the best wheat in the world and 4-H helps "to make the best better."

Family Fun Page



"WELL HERE IT IS THE SHORTEST NIGHT OF THE YEAR....FROM SUNDOWN TO SON-UP."

Sue: What runs around a field but never moves?
Lou: A fence.

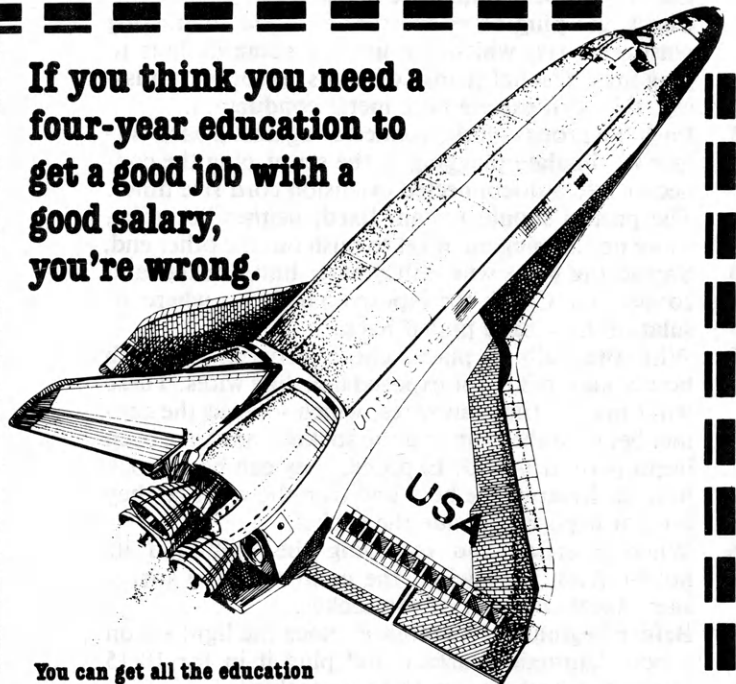
Lou: From where did the baby ear of corn come?
Sue: The stalk brought it.

Willy: How do you make gold soup?
Nilly: Put in 14 carrots.

Willy: What was the favorite TV show in prehistoric times?
Silly: The Dinah Sore Show.

Bob: Rob, what kind of cattle do people in Alaska raise?
Rob: Eski-moo cows?

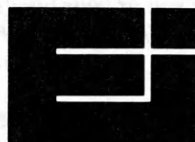
If you think you need a four-year education to get a good job with a good salary, you're wrong.



You can get all the education you'll ever need in just 18 months at Electronics Institute.

At Electronics Institute you'll receive the most up-to-date instruction available on sophisticated equipment used in business, medicine, television, avionics, computers and many other technically advanced areas. It's the kind of education that can start you off in a career where you can earn as much or more than many four-year graduates.

If you're interested in becoming a part of a field where highly trained professionals are always in demand, call Electronics Institute collect at 816-361-5656. We can help you get the education you'll need to enjoy the kind of career, and salary, you want.



ELECTRONICS INSTITUTE

A Division of Manufacturers Technical Institutes, Inc.
5605 Troost Kansas City, MO 64110
(816) 361-5656

Take the Pepsi Challenge!



KANSAS PEPSI-COLA BOTTLERS ASSOCIATION

U.S. POSTAGE
PAID
Permit 85
Non-Profit Organization
Lawrence, Kansas

Check for safety before starting holiday decorating

Before you decorate your Christmas tree or string lights for outdoor decorations, take time to check them. Defective light sets can present fire and shock hazards and even properly constructed sets can be hazardous if not used correctly.

Before using a light set, take the lights out of the box and with the light set unplugged:

1. Check for sockets that are cracked or broken.
2. Check the plug or connector for loose or missing plastic inserts, which are used in some designs to plug in additional strings of lights. If loose or missing, they can expose bare metal conductors.
3. Push the prongs on the connector against a hard surface to simulate plugging in the set or plug the connector into a disconnected extension cord five times. The prongs should remain fixed, neither becoming loose nor causing an insert to push out the other end.
4. Spread the wires where they enter bulb sockets and connectors. Check for exposed bare wires where insulation may have pulled back.
5. With the bulb in place, check between the bulb holder and socket for exposed hair-like wires. These wires may be filament wires, which serve as the contact between the bulb and the socket, that have been improperly trimmed. Exposed, they can be a shock hazard. Remove the bulb and trim the wires so they are not exposed outside the socket.
6. When inserting and removing the bulb and its holder from the socket, the contact in the socket should not slide out of the socket.
7. Before beginning to decorate, place the light set on a non-flammable surface and plug it in for 10-15 minutes. Check for smoking or melting.

Additional safety tips:

- * *Lights should never be attached to metal trees. Sharp metal edges may cut the cord insulation or the metal needles might touch an electrically charged component.*
- * *Careful handling of lights during unpacking, decorating and repacking will reduce the chance of hazardous damage.*
- * *Do not overload extension cords or light strings. Do not connect more than 200 midget lights together through one string or cord. Do not connect more than 50 larger lamps together through one string or cord. Do not connect large lamp sets through miniature light sets.*
- * *Do not use indoor lights for outside lighting.*
- * *Be sure all lights are off when you leave the house or go to bed. Unplug lights from the wall outlet. Always disconnect any electrical appliance by grasping the plug, not by pulling on the cord.*



What are you or your family doing to conserve energy? Please send your ideas, with illustrations if possible, to Electric Page, Kansas 4-H Journal, Umberger Hall, KSU, Manhattan, Kansas 66506.

Watch This Page For Ideas On Farm And Home Electric Projects

ELECTRIC LIGHT and POWER COMPANIES in KANSAS

The Kansas Power and Light Company Kansas Gas and Electric Company

Western Power — Centel Corporation

