

S
533 a
K3
K3
29/10

Kansas 4-H Journal

The Family Magazine

November-December 1981



Ramseys donate 9-Mile Ranch to Kansas 4-H Foundation

Dolph Simons, Sr., Lawrence, pays tribute to Mr. & Mrs. Ramsey

Although Mr. and Mrs. J. Clifton Ramsey had no children to connect them to 4-H, their deep love and affection for young people prompted them to will their 891-acre farm to the Kansas 4-H Foundation.

Mrs. Helen Ramsey died in July; Mr. Ramsey died in 1968. Now that Mrs. Ramsey's will is in probate, the results of their planning can be known. The wealth they accumulated was the result of their ambition and hard work. They chose Kansas 4-H'ers as one of the primary beneficiaries.

Dolph Simons, Sr., former chairman of the Kansas 4-H Foundation Board of Trustees, and board chairman of the Lawrence Journal-World, knew the Ramseys. Excerpts from an editorial Simons wrote honoring the Ramseys follow.

Cliff Ramsey, from Arkansas City, enrolled in Kansas University in 1921 with a lot of ambition and not much money. He never lost his ambition or enthusiasm, and as a result of diligence and hard work he immediately began accumulating worldly goods.

While carrying a full course of study at KU, Ramsey operated the Rock Chalk Cafe, a campus restaurant, and a coal furnace installation service.

His first degree at KU was in geology. Next was law.

From then on he had a business and professional schedule that few could match.

He soon began buying farm acreage, and before long had two large tracts of land—one, the 9-mile Ranch between Reno and Tonganoxie northeast of Lawrence, containing 891 acres, and the other a large spread near Lansing along the Missouri River, much of which he cleared himself, at times running a bulldozer to remove big trees and to level the fertile ground. He even built his own dehydrators for alfalfa, and he piloted his own plane to get from farm to farm.

The 891-acre 9-Mile Ranch is the largest gift ever received by the Kansas 4-H Foundation. 4-H is one of the finest youth development programs in America. Originally it was a farm youth activity, but now it encourages thousands upon thousands of young city and country people to become better citizens in every way, better family people, and more efficient producers of the needs of people.

This gift was made by a man who worked his way through the university, beginning as a small restaurant operator, and from the planning and generosity of his lovely and gracious wife, Helen.

This IS a land of opportunity for those who make the best of it—and who are willing to work.

Congratulations, County Electric Energy Winners

ANDERSON Juanita Morgan Keith Babcock	BUTLER Dean Claassen Trey Anderson Dale Sowell Stanley Harder	COWLEY Mike Dove	ELLIS Ted Bannister Janet Smith	GRANT Tad Kepley	JACKSON Roger Schock Mitchel Davis Joe Vanderlinde Greg Tomlinson	LABETTE Peggy Modesitt James Burke
ATCHISON Kathy Cattrell	CHASE Jim Cooper	CRAWFORD Eddie Grant John Grant	ELLSWORTH Terry Patry Paul Snyder	GREELEY Byron Sell Dale Stone	JEFFERSON Ronnie Schrick	LEAVENWORTH Andy Klamm Lee Cunningham Brian Carlock Mike Winkler
BARBER Mike Blankenship	CHEROKEE Daren Olson	DECATUR Roger May	FORD Brad Maxwell Don Ring Tim Ring Bryan Bogner	GREENWOOD Gerald Johnson	JEWELL Mike Worm John Roe Penny Menhusen Angela Topliff	LINCOLN Robert Batchman Ron Chitty Teri Lyne
BARTON Mark Ummen Damon Schloemer	CHEYENNE T.J. Douthit Craig O'Brien Duane Wright Matt Nolan	DICKINSON Mark Knopp Doug Teetzen	FRANKLIN Jay Schendel Heath Higbie	HAMILTON Curtis Wright Harlan Plunkett	JOHNSON Russ Secrest Mike Riehle Mike Koenig	LINN Mike Wade Brad Kerr Roberta Lewis Wes Chambers
BOURBON Brian Palmer	CLAY Joe Crawshaw Bryce Visser	DOUGLAS Russ McCabria Aric Branham Darren Hadl Rita Wulfskuhle	GEARY Verle Amthauer Ben Schrader Kevin Ascher Todd Strain	HARPER Todd Pray Marty Seipel	KEARNY Larry Kleeman Brett Horton	LYON Shawn Mast Shauni Mast
BROWN Steve McGinness		EDWARDS Kyle Whipple	ELK Patrick Perkins	HARVEY Michael Senn Jeff Janzen Troy Senn Amy Patton	KINGMAN Brett Sowers Bill Heatherman	
			GOVE Craig Tuttle Troy Tuttle Ted Hart	HASKELL Larry Wynn		



These investor-owned electric companies proudly salute the electric energy project winners listed here. As county winners, each received a Westinghouse medal. If you are not enrolled in electric energy, try it—it may turn you on!

Kansas Gas and Electric Company
Western Power Division of Central Telephone & Utilities Corporation



Kansas 4-H Journal

Volume XXVII, No. 10

November-December 1981

COVER: "Fine Feathered Friend"
—Brad Vacura, 16 year-old member of the Rock Island Rockets 4-H Club, Decatur County, got a close shot of this little fellow fluffing his feathers. This is Brad's sixth year in the photography project. He received a blue ribbon at the 1981 Kansas State Fair for this photo.



ARTICLES

Creepy critters intrigue 4-H'er	4,5
4-H Journal themes announced ..	5
4-H'er makes money grow for MD	9
Kansans win national and sectional 4-H project awards .	10,11
Spotlight on project sponsors ...	14
Hodgeman County people-to-people club project	16
Club performs old-fashioned melodrama	18

REGULAR FEATURES

Editorial	2
Ideas and News	8
Energy Challenge Page	15
Family Fun Page	19

*Thanks to
4-H Journal Sponsors*

pgs. 12,13

Sara Gilliland..... Editor
Teri Springer..... Secretary

Address all correspondence:
Kansas 4-H Journal
Umberger Hall, KSU
Manhattan, Kansas 66506
Phone 913-532-5881



Kansas 4-H Journal is published
10 times a year by
KANSAS 4-H FOUNDATION, INC.

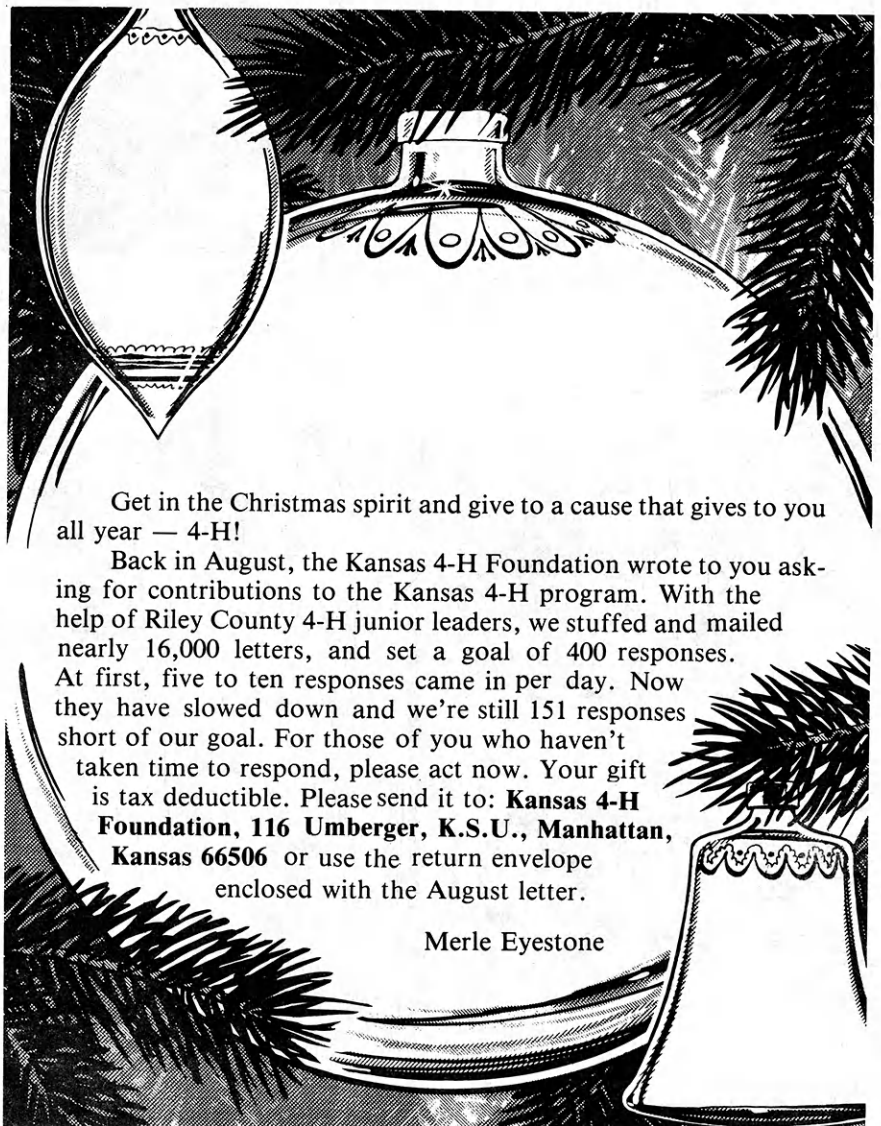
Merle Eyestone..... Executive Director
Trisha Cash..... Secretary
Ann Walker..... Asst. Treasurer

BOARD OF TRUSTEES

Governor John Carlin
Honorary Chairman

Richard Dillon, Chrm. Hutchinson
Wm. M. McDonald, Vice-Chrm. Shawnee Mission
Mrs. Charles Streeter, Treas. Manhattan
Duane Acker. Manhattan
John Junior Armstrong. Manhattan
Ross Beach. Hays
Glenn M. Busset. Manhattan
Mrs. Edna Collingwood. Johnson
W. Dale Critser. Wichita
Max Dickerson. Kansas City
John O. Dunbar. Manhattan
Mrs. Olive Garvey. Wichita
Balfour S. Jeffrey. Topeka
J. Harold Johnson. Manhattan
John D. Montgomery. Junction City
George Nettel. Pittsburg
George B. Powers. Wichita
Glee Smith. Larned
Fred Sobering. Manhattan
Robert Wagstaff. Shawnee Mission
Mrs. Dwane Wallace. Wichita
*Sen. Frank Carlson. Concordia
*Harry Darby. Kansas City
*Roger E. Regnier. Manhattan
*Dolph Simons, Sr. Lawrence
*Advisory Member

Use of the 4-H name and symbol approved by the secretary of Agriculture of the United States, January 23, 1951, under the provisions of the laws as reenacted by Sec. 707 of the Act of June 25, 1948, Public Law No. 772 80th Congress (10 USC 797).



Get in the Christmas spirit and give to a cause that gives to you all year — 4-H!

Back in August, the Kansas 4-H Foundation wrote to you asking for contributions to the Kansas 4-H program. With the help of Riley County 4-H junior leaders, we stuffed and mailed nearly 16,000 letters, and set a goal of 400 responses. At first, five to ten responses came in per day. Now they have slowed down and we're still 151 responses short of our goal. For those of you who haven't taken time to respond, please act now. Your gift is tax deductible. Please send it to: **Kansas 4-H Foundation, 116 Umberger, K.S.U., Manhattan, Kansas 66506** or use the return envelope enclosed with the August letter.

Merle Eyestone

Let John Kerschen "put the bug in your ear" about entomology project

By Kathleen Ward
Extension Editor, 4-H & Youth

If you took all the insects in the world and stacked them against all the other animals—elephants and whales included—the insects would weigh more.

"It's crazy when you consider how small they are. But there are so many insects!" said John Kerschen, Goddard 4-H Club member.

John has been fascinated by "creepy crawlers" for years. He's never collected one farther than 50 miles from his family's rural Sedgwick County home. He doesn't particularly like pinning or spreading them. "It's tedious," he pointed out.

"Anytime I see an interesting insect, I collect it. I put it in the freezer inside a jar," John said. "Mom sometimes doesn't like it too much. Our big freezer gets pretty full of insect jars."

John freezes his collected insects, rather than using a chemical to kill them, because freezing allows him to take his time about preparing them for display.

Not only does John collect and display insects; he watches them, records their behavior, reads about them, and conducts experiments.

Dragonflies are particularly fascinating to John. He has raised dragonflies in his room, tempting the nymphs to eat bologna he flits on a



Brainy About Bugs — John Kerschen, Sedgwick County 4-H'er, loves "creepy crawlers."

(continued on page 5)

**state-wide services,
border-to-border**

COLUMBUS • COUNCIL GROVE
GOODLAND • JUNCTION CITY • KANSAS
CITY (2) • LAWRENCE • LEAWOOD
MISSION • OLATHE • OTTAWA
OVERLAND PARK • SHAWNEE • WESTWOOD

THREE HUNDRED MILLION DOLLARS STRONG

INSURED
F.S.L.I.C.

**Capitol
Federal
Savings**

TOPEKA
GREATER KANSAS CITY
MANHATTAN LAWRENCE OLATHE
EMPORIA SALINA WICHITA



Isn't it great to have money for
Christmas shopping in your savings
account at your

Kansas Savings and Loan

Arkansas City
First Federal Savings and Loan Assn.

El Dorado
Mid-Continent Federal Savings and
Loan Assn.

Eureka
Eureka Federal Savings & Loan Assn.

Fort Scott
Liberty Savings and Loan Assn.

Garnett
The Garnett Savings and Loan Assn.

Hutchinson
Valley Federal Savings & Loan Assn.

Leavenworth
Citizens Mutual Savings and Loan
Assn.

Leavenworth Mutual Savings and
Loan Assn.

Liberal
Frontier Federal Savings and Loan Assn.

Lyons
Lyons Savings and Loan Assn.

Manhattan
Manhattan Federal Savings and
Loan Assn.

McPherson
Pioneer Savings and Loan Assn.

Medicine Lodge
The Barber County Savings and
Loan Assn.

Ottawa
Franklin Savings Assn.

Parsons
Mid-America Federal Savings and
Loan Assn.

Plainville and Stockton
Rooks County Savings Assn.

Themes for future issues announced

Kansas 4-H Journal themes for the next nine months have been established to allow 4-H members and leaders more time to prepare material.

January's issue will focus on education and careers. Technical careers will be featured. Journal themes and deadlines for submitting material for the following issues are: February-March — Discovery Days, deadline January 15, 1982; April — Outdoor Recreation, deadline March 1, 1982; May — Arts & Crafts, deadline April 1, 1982; June — Fair Preparation, deadline May 1, 1982. No theme was established for the July issue.

4-H enrichment programs and in-

novative 4-H projects will be featured in the August issue. The deadline is July 1, 1982. The theme for September will be new formats for community and project clubs. Submit material by August 1, 1982. The theme for September will be new formats for community and project clubs. Submit material by August 1, 1982.

Readers also are encouraged to submit letters to the editor, items for Ideas and News, and material for the Family Fun Page. Send material to: Kansas 4-H Journal, 116 Umberger Hall, Kansas State University, Manhattan, Kansas 66506.

John Kerschen, continued

string around the water surface.

He's studied them under a microscope and he's watched their entire life cycle acted out around the family's stock tanks and the creek that runs through their farm.

"Dragonflies can do some really weird things," he said. "They can eat their own body weight in mosquitoes and flies in an amazing time."

His 4-H talk "The Life of the Flying Dragon" has won John a purple ribbon in state fair competition. In this year's educational-class entomology box display at the state fair, "Insects: Fact and Folly," John pointed out dragonflies were around 280 million years ago, but then they had a 27-inch wing span.

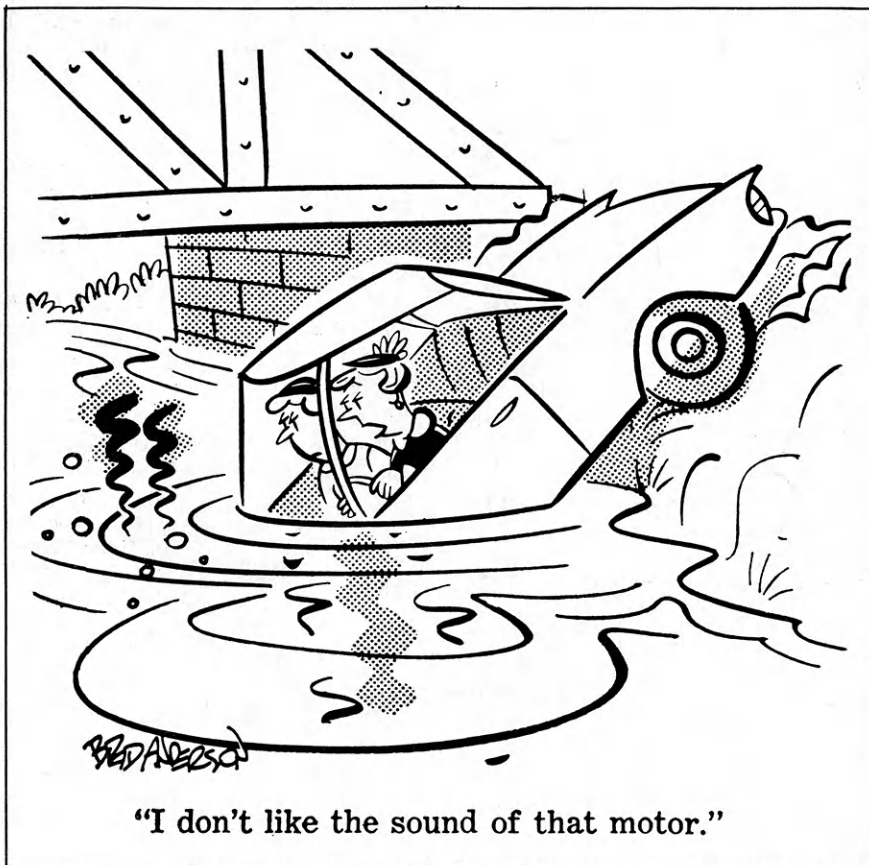
"If you think about them being alive at that size—they'd come and bite your nose off! They're very predatory," John joked.

His entire family has been involved in the entomology project. His dad, James Kerschen, made John's first glass-topped, wood box for displaying pinned insects. His mom used an old net curtain to make John's first collecting net, which he fastened to a broom handle and coat hanger circle. His eight brothers and sisters regularly served as insect sighters.

"When I was first in the project eight years ago, Mom helped me spread the insects, though she'd never done it before. I don't know if she was even interested, but she's

really neat and helped me be neater. That helped her see not all insects are pests. She knows a lady beetle and praying mantis. Some people go through life thinking every insect ought to be killed."

"Insects are so small. They teach you there's so much else besides what immediately meets the eye—especially today when everyone thinks only about the big things, in nature and out."



"I don't like the sound of that motor."

YOUR BANK FOR THE 80'S

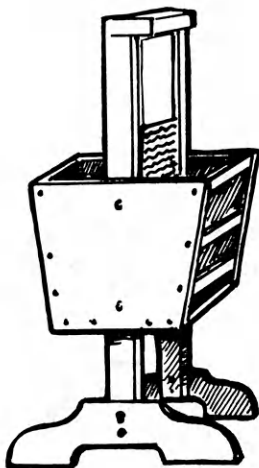
M NB **MERCHANTS NATIONAL BANK**
MEMBER F.D.I.C. TOPEKA, KANSAS

MAIN BANK 8th & JACKSON MOTOR BANK 5th & JACKSON
WHITE LAKES BANK 3600 TOPEKA AVE

Free!

4-H Woodworking Plans from YOUR LUMBER DEALER

These plans
are available:



Washboard Magazine Rack
Made by Lela Schrott
Rush County 4-H'er



Magazine Rack Table
Made by Ron Winter
Sedgwick County 4-H'er

For your free plans, see your lumber dealer; he will also help you select the material you need.

Ashland
Don Spotts Lumber Company

Atchison
Frakes Lumber Co., Inc.

Belleville
Belleville Lumber Co.

Beloit
Peoples Lumber Co.

Bern
Bern Lumber Company

Blue Rapids
Blue Rapids Lumber Company

Chapman
Hyder Building Materials

Clay Center
Fullingtons

Coldwater
Home Lumber and Supply
Company

Concordia
Mid-West Lumber Company

Dighton
Stephens Lumber Co.

El Dorado
Home Lumber & Supply Co.

Emporia
Fleming Lumber & Material Co.
Mark II Lumber

Erie
Johnson & Son Lumber Co.

Eureka
Home Lumber & Supply Co.

Frankfort
Fox Lumber Co.

Garden City
Cash & Carry Lumber Co., Inc.

Great Bend
Everitt Lumber Co., Inc.

Greensburg
Hildinger's Lumber & Hardware
& Ready Mix Inc.

Harper
Town & Country Lumber Co.

Hiawatha
Motsinger Lumber Co.

Hillsboro
Hillsboro Lumber Co.
The Lumberyard Inc.

Holton
Building Supply Center

Hoxie
Hoxie Lumber Co., Inc.

Hugoton
The Star Lumber Co.

Independence
Sandott Lumber

Iola
Klein Lumber Company

Johnson
Seyb-Tucker Lumber and
Implement Company

Junction City
Builders Lumber Inc.

Kechi
Buck Alley Lumber

La Cygne
La Cygne Lumber and
Ready Mix, Inc.

LaHarpe
Diebolt Lumber and Supply

Lansing
Lansing Lumber Inc.

Larned
T.M. Deal Lumber Co.

Lawrence
Whelan's Home Center

Leavenworth
Whelan's Home Center

Louisburg
Great Plains Hardware &
Home Center

Manhattan
Ramey Brothers

Mankato
Mid-West Lumber Company

Marion
Mack-Welling Lumber & Supply

Marysville
Howell Lumber Company

Newton
Boise Cascade Building Materials
Center

Nickerson
The Home Lumber & Supply Co.

Norton
Norton Lumber Company

Nortonville
Nortonville Lumber Inc.

Oberlin
Nichols Building Supply, Inc.

Offerle
Offerle Co-op Grain & Supply Co.

Osage City
Martin Material Co., Inc.

Ottawa
Hubbard Lumber Company, Inc.
Ottawa Lumber Co.

Parsons
Woods-Seward Lumber Co.

Pittsburg
Broadway Lumber Co. Inc.

Plains
Home Lumber and Supply Co.

Pratt
W.R. Green Lumber Co., Inc.

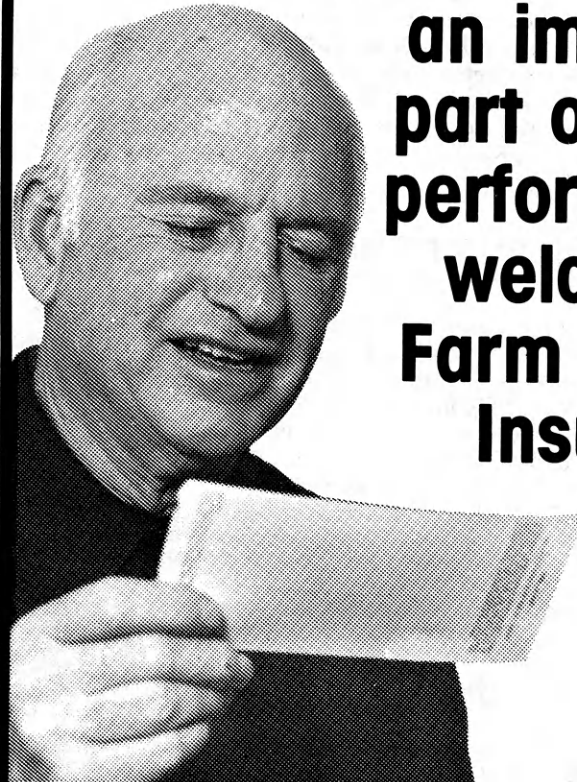
Russell
Schwaller Lumber

**OTHER PLANS
AVAILABLE**

Bicycle Rack	Nativity Creche
Bookcase	Padded Hassock
Chair	Picnic Bench
Christmas Tree	Picnic Table
Clock	Pigeon Feeder
Coat Rack	Plant Stand
Coffee Table	Planter Bench
Desk Top Organizer	Planter Mailbox
Doghouse	Portable Sandbox
Early Am. Shelf	Pump Handle Lamp
Fences	Saddle Rack
Flower Box	Safety Swing
Food Dehydrator	Shifting Pyramid
Fox & Geese	Small Bench w/storage
Garage Wall Storage	Spoon Rack
Garden Bench	Stereo Shelf
Hall Tree	Storage Chair
Hobby Horse	Tack Box
Hurricane Lamp	Tennis Rack
Ladder	Toy Storage Bench
Letter Tray	Trellises
Magazine Rack	Truck Caddy
Martin Bird House	Wood Picture
Meat Mallet	Work Table

On considering insurance...

**If you think
claim service is
an important
part of policy
performance,
welcome to
Farm Bureau
Insurance.**



You've known businesses with slogans like "bring it home for service" . . . or "the sale's not completed until you're satisfied" . . . or "we service what we sell."

Good, dependable service after the sale is most important to us at Farm Bureau Insurance. Particularly in the casualty and property lines, insurance doesn't really do much for you until there is a loss. That's when the product quality is revealed.

Farm Bureau Insurance concentrates all our efforts here in Kansas.

Farm Bureau Insurance. We service what we sell. You might say, too, that we sell what we can service.

FARM BUREAU



INSURANCE

**See Your
Local Agent**

Farm Bureau Mutual • Kansas Farm Life
KFB Insurance Co

- St. Francis**
St. Francis Mercantile Equity Exchange
- Salina**
Easterday-Boster Lumber Co.
Morrison Building Supply
- Scott City**
Scott City Building Materials
- Stafford**
T.M. Deal Lumber Co.
- Syracuse**
Hess Lumber Co.
- Tampa**
Hajek Lumber & Hardware
- Topeka**
Whelan's Main Yard
Whelan's Fairlawn Home Center
- Tribune**
Foster Lumber Company, Inc.
- Waterville**
Waterville Lumber
- Wellington**
Smith Building & Supply
- Wichita**
Alexander Lumber Co., Inc.
Star Lumber & Supply Co.
- Wilson**
Hoch Lumber Company
- Winfield**
A.B. Everly Lumber Co.
Everitt Lumber Co., Inc.
- Wright**
Right Co-op Assn.
- Zenda**
Farmers & Builders Lumber Co.

Ideas & News

From the Northeast Area:

Cloud County: Brandon Lewis, Hill and Dale 4-H Club safety committee chairman, reports that members completed farm and home safety surveys and marked hazards with red tags. The Safety Division of Kansas Farm Bureau gave a ball point pen to each member who completed the survey.

Washington County: For seven years the **Greenleaf 4-H Club** has shown the community that they care. The club calls it their "Reach Out" program. Remembering people at Christmas with plates of cookies and at May Day with May bas-

kets are part of "Reach Out." On 4-H Sunday the club invites community people to watch presentations prepared for county club days. **Elise Diederich**, club reporter, says the club is proud to organize these events for the community.

From the Southeast Area:

Lyon County: Four 4-H'ers are attending college this fall because of scholarships established by local businesses and families. **Jill Leeburg** is the recipient of the Vista Restaurant of Emporia Scholarship, sponsored by **Marshall and Sharon Miller**. **Teresa Haag** received the Bluestem Farm and Ranch Supply of Emporia Scholarship, sponsored by **Lee and Marjorie Nelson**. **Mrs. Maxine**

Dailey sponsors the **Homer A. Dailey Memorial Scholarship** which was awarded to **Brian Rees**. **Kevin Karr** received the **Russel Miller Memorial Scholarship**, sponsored by the **Larry Miller** family.

From the Northwest Area:

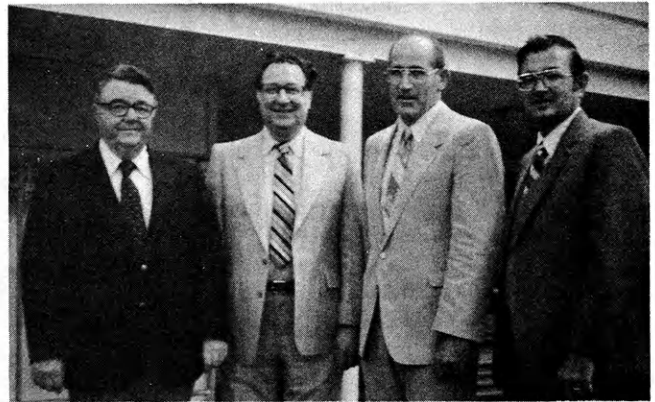
Norton County: The **Busy Beaver 4-H Club** surprised the County Extension Office staff with a basket of homemade cookies during National 4-H Week.

From the Southwest Area:

Greeley County: Thanks to the **Greeley County Republican** and stores in Tribune, National 4-H Week drew a lot of attention. Special articles, photos, and advertisements were featured in the newspaper and 4-H clubs set up window displays in many downtown stores.

Former agents return

Former Rice County Extension agents were honored at a special reception preceding the 50th annual Rice County 4-H Achievement Banquet. Attending were, from left: **Gene Watson** of Hutchinson, agent from 1941 to 1942, now a realtor and cattleman; his brother **Dale**, who served from 1952 to 1956, now in the clothing business in Kansas City, Mo.; **Paul Oltmanns**, 1964 to 1968, Marshall County Extension director; and **E.L. Van Meter**, 1964 to 1968, Douglas County Extension director. Approximately 70 guests enjoyed visiting with the former agents.



**ENERGY FOR AMERICA.
IT STARTS WITH BEING FIT!
ARE YOU?**

\$\$ for Jerry's Kids

Rock'n' roll helped raise \$5,500 for the Jerry Lewis Labor Day Telethon in Scott County. But it wasn't rock'n' roll music that brought in the money—it was rockin' in rocking chairs and rolling a bowling ball in a tournament. Door-to-door collections, an ice cream social, games, pony rides, and the call-in pledges were also part of the money raising activities.

The Town and Country 4-H Club members coordinated the activities and received good cooperation from other 4-H clubs, local businesses, and community organizations. Everyone was excited that the all-out effort raised \$500 more than the goal.



4-H: FUN AND FITNESS

Only the best pass the President's Physical Fitness Test. Can you? Find out. If you're between 10 and 17, ask your teacher or write Fitness, Washington, D.C. 20201.

Leoti teenager has a magic touch

It takes a magician or a very sharp investor to turn \$5 into more than \$100. Darren Ehrlich, a 16 year-old 4-H'er from Wichita County, is not a magician, but he does invest a lot of time and energy in raising money for good causes. For several years Darren donated a dollar or two to Muscular Dystrophy. Then he decided he could do more.

That's when the magic started. Not only did Darren increase his initial donation, he got other people enthused enough to pitch in.

Darren started by buying a \$5 newspaper ad. In the ad he asked people to save aluminum cans for a week and deposit them in containers set up at the county fair. Darren collected cans all summer. His younger brother and Scott Hahn helped with the can collection. They turned in 97 pounds of cans and made \$35.

Darren raised \$22 by selling tea and soft drinks at a local team roping event. He bought pop on sale and froze his own ice to help keep costs down and profits high. Two local businesses donated the cups. The best part of the enterprise was when the owners of the roping stock donated their profit to Darren's MD fund.

MD is not the only good cause Darren has helped. He raised a garden for the county rest home last year. Some residents helped with the gardening, others enjoyed watching. The vegetables were used in some of the rest home meals. One resident, who helped water the garden, enjoyed displaying the vegetables at the county fair.

CASH FOR NEWSPAPERS

\$20 per ton

Large quantities picked up
when our truck is in your area.
Approximately 10 ton or more.

Thermal Shield, Inc.
1001 North Kauffman Road
Hesston, Kansas 67062
Call 316/327-2131

Wishing You The Peace and Joy Of "Christmas In America"

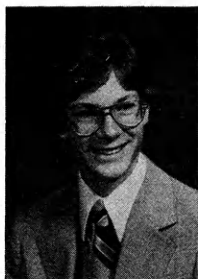


**Kansas Farm Bureau
2321 Anderson Avenue
Manhattan, Kansas 66502**

Kansas 4-H'ers win national

Out of the delegation of state 4-H award winners attending National 4-H Congress November 30 to December 3 in Chicago, five Kansas 4-H'ers won top national honors.

Named as national 4-H award winners are: **Marvin Fehlman**, agricultural winner from Wakefield; **Matt Wineinger**, beef winner from Marion; **David B. Anderson, Jr.**, citizenship winner from Shawnee; **Christy Strauss**, food-nutrition winner from Junction City; and **Stanley Bartley**, veterinary science winner from Wamego.



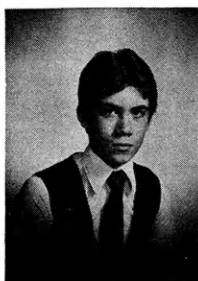
Marvin Fehlman
Clay County

Agriculture

International Harvester Company sponsored Marvin Fehlman's trip to National 4-H Congress and awarded him a \$1,000 scholarship as one of six national 4-H agricultural award winners. This is the third straight year that a Kansas 4-H'er has been selected as a national agricultural winner. Marvin's 4-H work has centered on livestock and crops projects.

In the swine project he learned the many different farrowing options and studied the advantages and disadvantages of each. He developed a record keeping system which provided reliable information for culling. He raised 83 pigs from 16 sows and bought 34 cross breed barrows.

He is starting a Hereford herd. His latest market steer was a calf from his own cow herd. Marvin is a sophomore at Kansas State University where he is preparing for a career in agricultural education. His parents are Mr. and Mrs. Harold Fehlman, Wakefield.



Matt Wineinger
Marion County

Beef

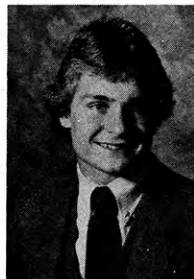
Matt Wineinger won a \$1,000 scholarship and a trip to National 4-H Congress from the National 4-H Council for achievements in the 4-H beef project.

In 1981 Matt had 36 head of beef cattle and two market steers. He uses a computer to analyze production performance data. He learned how to artificially inseminate cattle. To graze his cattle, he purchased 1/2 interest in 160 acres of native grass pasture. As part of making plans to improve the pasture, he learned to scientifically classify the soil.

Matt is proficient in livestock judging as shown by his record at the Kansas State Fair and Kansas National Junior Livestock Show. In 1980 he was a member of the Kansas team which won the national championship at the National Angus Bowl competition.

Matt is a sophomore at Marion High School. His parents are Mr. and Mrs. Earl Wineinger.

David Anderson, Jr.
Johnson County



Citizenship

David B. Anderson, Jr. is one of nine national award winners in citizenship. Coca Cola Company sponsored his trip to National 4-H Congress and presented him a \$1,000 scholarship.

David has made a special effort to bring 4-H to the handicapped, mentally retarded, low income, and elderly population. He helped organize a 4-H club at the Kansas School for the Deaf in Olathe and led project meetings there twice a month for eight months. To work with the 4-H'ers, David learned sign language.

He worked with various community groups to organize 22 project meetings in a government low income housing area. For the elderly he weeded, mowed, and cared for trees in 51 rental units. He also shingled 80 housing units for the elderly and made minor repairs where necessary.

David has been involved in an ongoing project with the Shawnee Historical Society for the past three years. He has assisted and supervised in the restoration of a log cabin and barn.

David's parents are Mr. and Mrs. David B. Anderson, Shawnee. He is a senior at Olathe High School.



Christy Strauss
Geary County

Foods-Nutrition

General Foods Corporation provided the trip to National 4-H Congress and a \$1,000 scholarship for national foods-nutrition winner Christy Strauss. Christy is not only interested in food preparation but has branched into food research through her 4-H project. She has studied microwave cooking and food additives.

In 1981 she gave six demonstrations and talks pertaining to foods. She prepared and presented a four-part series on microwave cooking and another series on gifts from the kitchen for her local radio station. She taped seven radio spots on nutrition. She was a guest on the

nal and sectional honors

television show "Nancy" where she demonstrated how to make a black forest cake.

Christy was the foods project leader for her club, the Brookside 4-H Club, Geary County. She also served as club president for five years.

She is a freshman at Kansas State University. She plans to become a home economist, specializing in food research. Mr. and Mrs. William O. Strauss are her parents.

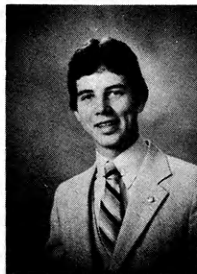
the Upjohn Company.

Stanley has worked at a veterinary clinic in Wamego for four years. "One of the most practical things I have learned (and very frequently use) is how to properly aspirate and withdraw liquid from a bottle to give a shot," he said.

Stanley believes one of the most interesting parts of the project is the research he has conducted for the past three years. Stanley observed that some of his rabbits were ex-

creting discolored urine. Laboratory tests showed that the discoloration was not due to blood. He discovered the culprit was the lead leeching from the clay and glaze of the earthenware crocks used to feed and water the rabbits.

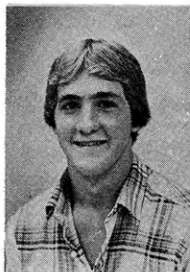
Stanley plans to pursue his interest in veterinary science and farming. He is a freshman at Colby Community College. He is the son of Mr. and Mrs. Gary Bartley.



Stanley Bartley
Pottawatomie
County

Veterinary Science

Stanley Bartley is a state, sectional, and national winner in the veterinary science project. His awards include a trip to the National 4-H Congress, a \$75 savings bond and \$1,000 scholarship presented by



Bruce Garten
Dickinson County



Donna Martin
Ford County

Sectional Winners

Gardening

Bruce Garten's trip to National 4-H Congress as sectional winner in

the gardening project was sponsored by Ortho Division, Chevron Chemical Company. In his nine years in the gardening project Bruce says, "Overall I've learned a lot of basic horticulture and gardening principles such as planting procedures, best soils to use, transplanting techniques, and use of pesticides." In 1981 he planted 46 different vegetables.

He has shared his gardening knowledge with younger members in his club, the Sand Springs Rustlers 4-H Club, Dickinson County.

Bruce's parents are Mr. and Mrs. Frank Garten. He is a junior at Abilene High School.

Dog Care

For the second year in a row Kansas has a sectional winner in the dog care and training project. Donna Martin, Ford County, is the 1981 winner. Donna was one of the organizers of the Ford County Four Paws 4-H Dog Club. She was elected teen advisor on the State Dog Advisory Committee.

Donna's family purchased a building and remodeled it extensively to provide a nursery for their increasing number of dogs. Donna's most recent purchase was a Shetland sheep dog pup. By now they have 35 dogs and a nice size 4-H kennel.

Donna is a junior at Dodge City High School. Her trip to Chicago was provided by the Purina Dog Foods Group, Ralston Purina Company. Mr. and Mrs. Donald D. Martin are her parents.

Dillons
FOOD STORES

1921
1981

60 Super Years



4-H JOURNAL SPONSORS

These are the business firms and individuals who pay your Journal subscription.

Call on them or send them a thank you note to express your appreciation.

Thirty-year Sponsors are in boldface.

ANDERSON

The Bank of Kincaid, Kincaid

BARBER

First National Bank, Medicine Lodge
Barber County 4-H Council

BARTON

American State Bank & Trust Co., Great Bend

BOURBON

The Bank of Bronson, Bronson
Citizens National Bank, Ft. Scott
City State Bank, Ft. Scott
Farmers Co-op Assoc., Ft. Scott
Liberty Savings & Loan Assn., Ft. Scott
Union State Bank, Uniontown
Bourbon County 4-H Council

BROWN

The Bank of Horton, Horton
The Bank of Robinson, Robinson
Citizens State Bank, Hiawatha
Farmers State Bank, Fairview
The Morrill & Janes Bank, Hiawatha
Morrill State Bank, Sabetha
The Union State Bank, Everest

BUTLER

Augusta State Bank, Augusta
Benton State Bank, Benton
Citizens State Bank, El Dorado
Exchange State Bank, Douglass
First National Bank & Trust, El Dorado
Potwin State Bank, Potwin
Prairie State Bank, Augusta
State Bank of Leon, Leon
Walnut Valley State Bank, El Dorado
Butler County 4-H Council

CHASE

Exchange National Bank, Cottonwood Falls
The Peoples Exchange Bank, Elmdale
Strong City State Bank, Strong City
Chase County 4-H Council

CHAUTAUQUA

Sedan State Bank, Sedan

CHEROKEE

American National Bank, Baxter Springs
The Hartley Agency, Inc., Baxter Springs
Vanatta's Beauty Salon, Columbus
Vanatta Masonry & Concrete Co., Columbus
Cherokee County 4-H Council

CHEYENNE

Citizens State Bank, St. Francis
Cheyenne County 4-H Council

CLARK

Citizens State Bank, Ashland
Peoples State Bank, Minneola
Stockgrowers State Bank, Ashland

CLAY

Union State Bank, Clay Center
Clay County 4-H Council

CLOUD

Citizens State Bank, Miltonvale
Cloud County Bank & Trust, Concordia
Elk State Bank, Clyde
Exchange Bank of Clyde, Clyde
Fidelity State Bank, Concordia
The First National Bank of Glasco, Glasco
Cloud County 4-H Council

COMANCHE

The Peoples State Bank, Coldwater

COWLEY

The First National Bank, Winfield
The Home National Bank of Arkansas City,
Arkansas City
Cowley County 4-H Council

CRAWFORD

The City National Bank of Pittsburg, Pittsburg
Farmers State Bank, Walnut
First National Bank, Girard
First State Bank, Arma
The First State Bank & Trust Co., Pittsburg
Girard National Bank, Girard
Hepler State Bank, Hepler
McCune State Bank, McCune
Miners State Bank, Frontenac
National Bank of Pittsburg, Pittsburg

DECATUR

Decatur Co-op Assoc., Oberlin

DICKINSON

Farmers National Bank, Abilene

DONIPHAN

Doniphan County Farm Bureau, Wathena
Doniphan County REA, Troy
Farmers State Bank, Wathena
Troy State Bank, Troy
Twombly Grain, Troy

DOUGLAS

Douglas County State Bank, Lawrence
Rusty's Food Centers, Lawrence
Douglas County 4-H Council

EDWARDS

The Home State Bank, Lewis

ELLIS

Ellis State Bank, Ellis
Farmers National Bank, Victoria
First National Bank, Hays
Hays State Bank, Hays
Heritage Savings Assoc., Hays

ELK

Exchange State Bank, Moline
First National Bank, Howard
Home State Bank, Longton
Howard State Bank, Howard

ELLSWORTH

The Bank of Holyrood, Holyrood
Citizens State Bank & Trust Co., Ellsworth
Kanopolis State Bank, Kanopolis
Lorraine State Bank, Lorraine
Wilson State Bank, Wilson

FINNEY

The Fidelity State Bank, Garden City
Frontier Federal Savings & Loan, Garden City
The Garden National Bank, Garden City
Golden Plains Credit Union, Garden City
Western State Bank, Garden City
Finney County 4-H Council

FORD

Bank of the Southwest, Dodge City
Bucklin State Bank, Bucklin
Farmers State Bank, Bucklin
Fidelity State Bank & Trust Co., Dodge City
First National Bank, Spearville
First National Bank & Trust Co., Dodge City
Ford County State Bank, Spearville
Ford County 4-H Council

FRANKLIN

Peoples National Bank, Ottawa
Wellsville Bank, Wellsville

GEARY

Central National Bank, Junction City
Geary Grain Elevator, Junction City

GOVE

First National Bank, Quinter
Grainfield Elevator, Inc., Grainfield
Peoples State Bank, Grinnell
Gove County 4-H Council

GRAHAM

Farmers & Merchants Bank, Hill City
Graham County 4-H Council

GREENWOOD

Citizens National Bank, Eureka
Eureka Federal Savings & Loan Assoc., Eureka
Freeman's T.V. & Appliance, Eureka
Frontier Ford-Mercury, Eureka
Home Bank & Trust Co., Eureka
Home Lumber Co., Eureka
Parks Oil Co., Eureka
Greenwood County 4-H Council

GRANT

Grant County State Bank, Ulisses
Grant County 4-H Council

GRAY

Farmers State Bank, Ingalls
First National Bank in Cimarron, Cimarron
Montezuma State Bank, Montezuma
Gray County 4-H Council

GREELEY

First National Bank, Tribune
Greeley County 4-H Council

HAMILTON

First National Bank, Syracuse
Valley State Bank, Syracuse
Hamilton County 4-H Council

HARPER

Anthony Farmers Co-op Elevator, Anthony
Danville Co-op Assn., Danville
Farmers Co-op Business Assn., Hazelton
State Line Grain Co., Manchester, OK
Harper County 4-H Council

HARVEY

First Bank of Newton, Newton
The Halstead Bank, Halstead
Hesston State Bank, Hesston
Kansas State Bank, Newton
Midland National Bank, Newton
Sedgwick State Bank, Sedgwick
State Bank of Burrton, Burrton
Walton State Bank, Walton
Harvey County 4-H Council

HASKELL

The Haskell County State Bank, Sublette
Haskell County 4-H Council

HODGEMAN

Farmers State Bank, Jetmore
Hanston State Bank, Hanston
Hodgeman County 4-H Council

JACKSON

Building Supply Center, Holton
Clark Chevrolet-Olds, Inc., Holton
Holton Lions Club, Holton
Jackson County Farm Bureau, Holton
Jackson Farmers, Inc., Holton
Mayetta Mustangs 4-H Club
Jackson County 4-H Council

JEFFERSON

Jefferson County Homemaker Units Council, Oskaloosa
Leavenworth-Jefferson Electric Co-op, McLouth
Valley Implement, Inc., Valley Falls
Jefferson County 4-H Council

JEWELL

Burr Oak State Bank, Burr Oak
Citizens State Bank, Jewell
First National Bank, Mankato
The Formoso Bank, Formoso
Randall National Bank, Randall
State Bank of Esbon, Esbon
State Exchange Bank, Mankato

JOHNSON

DeSoto State Bank, DeSoto
Farmers Bank & Trust Co., Gardner
The First Citibank of Olathe, Olathe
First National Bank, Olathe
Olathe State Bank, Olathe
Patrons State Bank & Trust, Olathe
Shawnee State Bank, Shawnee
State Bank of Spring Hill, Spring Hill
State Bank of Stanley, Stanley

KINGMAN

C.R. Calvert Co., Kingman

KIOWA

First State Bank, Mullinville
Greensburg State Bank, Greensburg
Haviland State Bank, Haviland
Kiowa County 4-H Council

LABETTE

American State Bank, Oswego
Chetopa State Bank & Trust Co., Chetopa
First National Bank, Oswego
First National Bank & Trust, Parsons
First State Bank, Edna
Labette County State Bank, Altamont
Parsons Commercial Bank, Parsons
State Bank of Parsons, Parsons

LANE

First National Bank, Dighton
First State Bank, Healy
Lane County 4-H Council

LEAVENWORTH

First National Bank, Leavenworth
First State Bank, Tonganoxie
Leavenworth County 4-H Council

LINCOLN

Sylvan State Bank, Sylvan Grove
Lincoln County 4-H Council

LINN

Bank of Pleasanton, Pleasanton
Centerville State Bank, Centerville
Farmers State Bank, Blue Mound
First State Bank, Pleasanton
Linn County Bank, LaCygne
Prescott State Bank, Prescott
Linn County 4-H Council

LOGAN

Farmers State Bank, Oakley
Logan County 4-H Council

LYON

Americus State Bank, Americus
Bluestem Farm & Ranch, Emporia
Citizens National Bank & Trust Co., Emporia
Federal Land Bank Assoc., Emporia
Hartford State Bank, Hartford
Lyon County Farm Bureau, Emporia
Teichgraber Milling Co., Inc., Emporia
Lyon County 4-H Council

MARION

Ag Services, Inc., Hillsboro
Cooperative Grain & Supply, Hillsboro
Crossroads Co-op, Goessel
Farmers Grain Co-op, Walton
Tampa Co-op Assoc., Tampa
Tampa State Bank, Tampa
Wheatland Bank of Goessel, Goessel
Marion County 4-H Council

MARSHALL

Bremen State Bank, Bremen
Citizens State Bank, Marysville
Citizens State Bank, Waterville
Exchange Bank of Schmidt & Koester, Marysville
First National Bank, Frankfort
First National Bank, Summerfield
Marshall County Bank, Beattie
Oketo State Bank, Oketo
State Bank of Axtell, Axtell

State Bank of Blue Rapids, Blue Rapids
Vermillion State Bank, Vermillion

MEADE
First National Bank, Meade
Fowler State Bank, Fowler
Plains State Bank, Plains
Meade County 4-H Council

MIAMI
American State Bank, Osawatomie
Bank of Louisburg, Louisburg
Eddy-Birchard Funeral Home, Osawatomie
First Federal Savings & Loan, Osawatomie
First National Bank of Louisburg, Louisburg
First National Bank of Osawatomie, Osawatomie
Miami County National Bank, Paola

MITCHELL
Farmers & Merchants State Bank, Cawker City
Farmers State Bank, Hunter
Farmers State Bank, Simpson
First National Bank, Beloit
Guaranty State Bank & Trust, Beloit
Tipton State Bank, Tipton
Traders State Bank, Glen Elder

MONTGOMERY
Caney Valley National Bank, Caney
Citizens National Bank, Independence
First National Bank of Coffeyville, Coffeyville
First National Bank of Elk City, Elk City
People's State Bank of Cherryvale, Cherryvale
Montgomery County 4-H Council

MORRIS
Council Grove Production Credit, Council Grove
Farmers & Drovers Bank, Council Grove
Hays Oil Co., Council Grove
Mor-Kan Grain Co., White City
Morris County 4-H Council

MORTON
Elkhart Cooperative Equity Exchange, Elkhart
Elkhart Implement Co., Elkhart
Elkhart True Value Lumber Co., Elkhart
First State Bank, Elkhart
Fisher's, Inc., Elkhart
Janzen-Elder Insurance & Real Estate, Inc., Elkhart
Rolla Cooperative Equity Exchange, Rolla
Morton County 4-H Council

MCPHERSON
McPherson County 4-H Development Fund

NEMAHA
C-G-F Grain Co., Inc., Centralia
Farmers Co-op Elevator, Sabetha
Lortscher Agri-Service, Inc., Oneida
Nemaha County Co-op Assn., Seneca
Seneca Elevator Co., Inc., Seneca
Wittmer Grain Co., Sabetha

NEOSHO
Ash Grove Cement Co., Chanute
Comfort Contractors, Chanute
Kynts "Kay" Kennedy, Dodge City
Prest Lumber Co., Erie
Lester T. Sunderland Foundation, Kansas City
Neosho County 4-H Council

NESS
Bazine State Bank, Bazine
Citizens State Bank, Utica
First State Bank, Ness City
First State Bank of Ransom, Ransom
Ness County 4-H Council

NORTON
A-T Implement Co., Norton
Federal Land Bank Assn., Hays
Kellings Fine Foods, Norton
Lenora Mercantile Assn., Lenora
Miller Tire Center, Norton
Norton Appliance & Furniture, Norton
Norton County Farm Bureau, Norton
Norton Livestock Auction, Norton
Norton County 4-H Council

OSAGE
Aarons Home Store, Carbondale
Boyles IGA, Burlingame
Burlingame Co-op, Burlingame
Burlingame Locker, Burlingame
Burlingame Lumber Co., Burlingame
Burlingame Mfg., Burlingame
Carbondale Service, Carbondale
Catfish John's Bait Shop, Carbondale
DeBaun-International, Inc., Osage City
Dunn's Cafe, Burlingame
First State Bank of Burlingame, Burlingame
Kemble's Tree Farm, Carbondale
Virginia Lee Beauty Salon, Carbondale
McNabb Grocery, Melvern
Melvern Food Center, Melvern
Nickel Equipment Co., Burlingame
Northrup King Seed, Burlingame
Patterson's Food Store, Burlingame
Roller Dale Skating, Carbondale
Satzler's Sentry Hardware, Burlingame
Ronald Shaffer Insurance, Burlingame
Shields Motor Co., Osage City
Sisco's A & A Sports Center, Carbondale
Skip's Thriftway, Carbondale
Spaldings Pharmacy & Variety, Burlingame
State Bank of Carbondale, Carbondale
Western Auto, Burlingame
Williams & Davidson, Attorneys at Law, Carbondale

OSBORNE
Downs National Bank, Downs
Farmers National Bank, Osborne
First National Bank of Natoma, Natoma
First State Bank, Osborne

First State Bank of Portis, Portis
State Bank of Downs, Downs
Osborne County 4-H Council

OTTAWA
4-H Booster Club, Minneapolis
Hoover's of Minneapolis, Inc., Minneapolis
Lott Implement Co., Minneapolis
Chuck Stein Chevrolet-Olds-Buick, Minneapolis
Ottawa County 4-H Council

PAWNEE
First National Bank, Larned
First State Bank, Larned

PHILLIPS
First National Bank, Phillipsburg

POTTAWATOMIE
Bud's Garage, Wamego
Ebert Construction Co., Wamego
Fairchild Agency, Westmoreland
Farmers State Bank, Westmoreland
First National Bank, Wamego
J. Warren Hildreth, Jr., D.D.S., Wamego
Howell's Lumber, Wamego
Kaw Valley State Bank & Trust Co., Wamego
Pugh, Pugh & Duesing, Attorneys at Law, Wamego
St. Marys State Bank, St. Marys
The Stewart Funeral Home, Wamego
Union State Bank of Olsburg, Olsburg
Yeager's Western Auto, Wamego

PRATT
Cairo Co-op Equity Exchange, Cairo
Cullison Co-op, Pratt
Iuka Co-op Exchange, Iuka
Pratt Equity Exchange, Pratt
Preston Co-op Grain & Mercantile Co., Preston
Sawyer Co-op Equity Exchange, Sawyer
Pratt County 4-H Council

RAWLINS
Farmers Bank & Trust, Atwood
Farmers State Bank, Ludell
Peoples State Bank, McDonald
State Bank of Atwood, Atwood
State Bank of Herndon, Herndon
Rawlins County 4-H Council

RENO
Buhler State Bank, Buhler
Central State Bank, Hutchinson
Citizens State Bank, Arlington
Farmers State Bank, Yoder
First National Bank, Hutchinson
Haven State Bank, Haven
Hutchinson National Bank & Trust, Hutchinson
Nickerson State Bank, Nickerson
Northgate National Bank, Hutchinson
State Bank of Kansas, S. Hutchinson
State Bank of Plevna, Plevna
State Bank of Pretty Prairie, Pretty Prairie
Sylvia State Bank, Sylvia
Turon State Bank, Turon

REPUBLIC
Arbuthnot's Drug Co., Belleville
First National Bank, Belleville
The Walthers Oil Co., Cuba

RICE
Alden State Bank, Alden
Bushton Grain & Supply, Bushton
Central Kansas Elevator, Lyons
Chandler National Bank, Lyons
Collingwood Grain, Inc., Little River
Farmers Co-op of Alden, Lyons, Sterling & Pollard,
Sterling
Farmers State Bank, Sterling
First National Bank, Sterling
Home State Bank, Little River
Lyons IGA Store, Lyons
Lyons Savings & Loan, Lyons
Miller-Price Agency & Raymond State Bank, Raymond
Otasco Store, Lyons
Palace Drug, Geneseo
Pepsi-Cola Bottling Co., Great Bend
Rice County State Bank, Chase

RILEY
Citizens State Bank & Trust Co., Manhattan
Cowan-Edwards-Yorgensen Funeral Home, Manhattan
Cox Foundation & Construction, Manhattan
Kansas State Bank, Manhattan
Leonardville State Bank, Leonardville
Rader Construction, Manhattan
The Riley State Bank, Riley
Vista Drive-In Restaurant, Manhattan
Riley County 4-H Council

ROOKS
First National Bank, Palco
Norton-Decatur Co-op Electric Co., Norton
Plainville State Bank, Plainville
Rooks County 4-H Council

RUSH
Farmers & Merchants State Bank, LaCrosse
Rush County 4-H Council

RUSSELL
Farmers State Bank, Lucas
Russell State Bank, Russell
Russell County 4-H Council

SALINE
The First National Bank & Trust Co., Salina
Saline County 4-H Council

SCOTT
First National Bank, Scott City
Security State Bank, Scott City

SEDGWICK
Chisholm Trail State Bank, Wichita
Citizens State Bank, Cheney

First National Bank in Wichita, Wichita
Fourth National Bank & Trust Co., Wichita
Home State Bank, Clearwater
State Bank of Colwich, Colwich
K.T. Wiedemann Foundation, Wichita

SEWARD
Citizens State Bank, Liberal
First National Bank, Liberal
Peoples National Bank, Liberal
Seward County 4-H Council

SHAWNEE
Falleys, Inc., Topeka
Southwest State Bank, Topeka
Shawnee County 4-H Council

SHERIDAN
Farmers State Bank, Selden
First National Bank, Hoxie
Hoxie State Bank, Hoxie
Mickey's Hardware, Hoxie
Sheridan County 4-H Council

SHERMAN
First National Bank of Goodland, Goodland

SMITH
First National Bank, Gaylord
First National Bank, Kensington
First National Bank, Lebanon
First National Bank, Smith Center
The Smith County State Bank & Trust Co.,
Smith Center

STAFFORD
Farmers & Merchants State Bank, Macksville
Farmers National Bank, Stafford
First National Bank & Trust, St. John
Hudson State Bank, Hudson
Macksville State Bank, Macksville
St. John National Bank, St. John
Stafford County 4-H Council

STANTON
Collingwood Grain, Inc., Johnson
Stanton County 4-H Council

STEVENS
Citizens State Bank, Hugoton
Stevens County 4-H Council

SUMNER
Danville Co-op Grain Co., Argonia
Farmers Cooperative Grain Co., Caldwell
Farmers Cooperative Grain Co., Conway Springs
Farmers Cooperative Grain, Wellington
Garvey Grain Co., Conway Springs
Ed Johnston Grain Co., South Haven
McDaniel Grain Co., Gueda Springs
McDaniel-Waples, Inc., Wellington
Oxford Milling Co., Oxford
Wolcott & Lincoln, Corbin
Wolcott & Lincoln, Milan
Wolcott & Lincoln, Perth
Wolcott & Lincoln, Riverdale
Wolcott & Lincoln, South Haven
Wolcott & Lincoln, Wellington
Sumner County 4-H Council

THOMAS
Sunflower Savings Assn., Colby

TREGO
Mai Oil & Fertilizer Co., WaKeeney
Malsam & Sons, Collyer
Mi-T Mart, WaKeeney
Niedens Trucking Co., WaKeeney
Rhoades Oil Co., WaKeeney
Schreiner's, Inc., Ogallah
Trego County 4-H Council

WABAUNSEE
Alta Vista State Bank, Alta Vista
Eskridge State Bank, Eskridge
First National Bank, Alma
First National Bank, Harveyville
The Stockgrowers State Bank, Maple Hill
Wabaunsee County 4-H Council

WALLACE
Peoples State Bank, Sharon Springs
Wallace County 4-H Council

WICHITA
First State Bank, Leoti
Wichita County 4-H Council

WILSON
Joe Armstrong Equipment, Inc., Fredonia
Cox Grain Co., Fredonia
First National Bank, Fredonia
First National Bank, Neodesha
Fredonia Co-op Assoc., Fredonia
Radiant Electric Co-op, Inc., Fredonia
Self-Service Grocery, Fredonia
State Bank of Fredonia, Fredonia
Wiggins Drugstore, Fredonia
Wilson County Farm Bureau, Fredonia
O.E. Woods Lumber, Neodesha
Wilson County 4-H Council

WOODSON
J.E. Sowder Seed Co., Toronto
State Exchange Bank, Yates Center
Woodson County 4-H Council

WYANDOTTE
Brotherhood Bank & Trust, Kansas City
Coleman Implement, Inc., Bonner Springs
Commercial National Bank, Kansas City
Commercial State Bank, Bonner Springs
Home State Bank, Kansas City
Melba's Fabrics, Kansas City
Suter-Chaffin Oil Co., North Kansas City
Turner State Bank, Kansas City
The Wyandotte Bank, Kansas City
Wyandotte County 4-H Council

Spotlight on Sponsors

For over 20 years, the Kansas Wheat Commission has recognized 4-H'ers for excelling with their wheat projects. In 1981 the Wheat Commission is proud to



provide trips to the Port of Houston in Texas for the four state wheat quality award winners and the 4-H'er who displayed the top wheat variety booth at the Kansas State Fair.



sponsor the 4-H District Wheat Shows.



provide seed wheat for all participants in the wheat variety plot projects.

Kansas grows the best wheat in the world and 4-H helps "to make the best better."

Wheat

The Kansas Wheat Commission is a state agency, funded by wheat producers and governed by a wheat producer board.

The Kansas Wheat Commission was authorized by the 1957 legislature for the purpose of education, promotion, and finding new markets for Kansas wheat. Kansas joins 12 other wheat producing states to promote U.S. wheat in overseas markets. It is a fact that U.S. wheat exports have more than tripled since this work began.

Contracts are maintained with Kansas State University to enhance the quality of Kansas wheat for the market. This includes the adaptation of our wheat for food products of other nations. Millers, bakers and grain buyers from other lands are brought to Kansas to learn of the quality and quantity of Kansas wheat and become better acquainted with the U.S. grain marketing system.

Further, the Commission provides wheat product nutrition information and demonstrations as well as furnishing education material.



Dog Care

Louis Pegram says he isn't proud to be the oldest person by far in the dog food business.

But he's justifiably pleased with the part he's had in working through Ralston-Purina to develop the nation's dog project.

Pegram was honored at the 1979 National 4-H Congress, receiving the first plaque ever awarded at that

assembly for an individual's long-time service to 4-H.

"I was visiting with the 4-H group in Washington last summer and told them I wanted to see firsthand what was happening. I asked them to tell me which two state dog shows were more outstanding than the others. They suggested Kansas first and Maryland second. "I've been to both those state fairs," Pegram said during his visit to Hutchinson last September.

He recalled the difficulties 4-H and Purina had in developing the original dog project literature and awards system.

"We quickly decided we couldn't require the dogs be purebred," he said. "And for years we had many more mixed breeds than purebreds in the project."

How to compare such a mixed bag of dogs—as cattle, pigs and sheep are judged—was a big problem for the developmental group, Pegram added. They decided that since dogs at that time were so important to farm and family, the project should first emphasize obedience training, not conformation.

The years have brought many changes, Pegram pointed out. The project now also includes dog care and advanced handling. Slightly more than half the nation's 4-H dog project members own purebreds.

"And it's grown so much!" he said. "You can tell from the crowd at the Kansas State Fair the project not only has owner appeal but also family and spectator appeal."

Pegram has been to every National 4-H Congress since Purina first sponsored the dog project. He hosts a dinner for the nation's state dog project winners and tells them about job opportunities. He encourages them to continue their education, even if they'd like a profession in dog-related work.

Pegram said he enjoys the enthusiasm and ideas he picks up each year in rap sessions with the project winners. They often write him in following years to tell about their plans and progress.

"4-H has always been awfully nice to work with. We have the strongest instruction there is on dog ownership. And 4-H members are the best age in the world!"

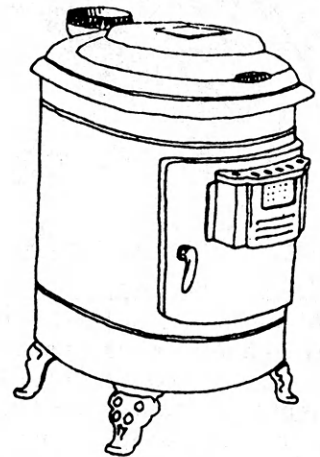
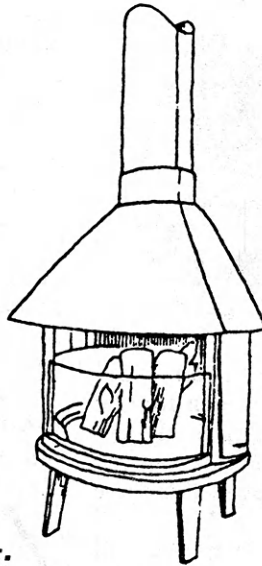
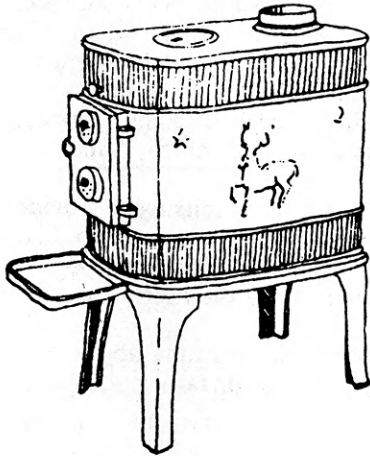
November-December Energy Challenge

ENERGY CHALLENGE: Wood Stove Safety

MEET THE CHALLENGE: Learn proper fire safety habits.

Club Activity: Invite your local fireman or fire inspector to present a program on wood stove safety at your club meeting. Here are some questions you might be prepared to ask.

- What does a non-combustible surface mean?
- How is the best way to clean a chimney?
- What is creosote and what can you do to prevent it?
- What is the safest way to put out a chimney fire?
- Ask the speaker to demonstrate how to use different kinds of fire extinguishers.



MAKE AN ENERGY DIFFERENCE:

A wood burning stove can be a good source of supplemental heat to reduce energy costs, but safety must be practiced at all times.

Complete this check list at your home or the home of a friend who has a wood stove.

- _____ Stove has sturdy legs, at least 4 inches—preferably 8 to 10 inches—of space between stove bottom and floor.
- _____ Stove is located on non-combustible floor or approved floor protection material.
- _____ There is at least 36 inches between the stove and any combustible material.
- _____ Fire extinguisher, type ABC, is readily available.
- _____ Only dry, well-seasoned hard woods are used for burning.

For more information about wood stoves and safety, ask your local county Extension Office for the following publications: L-495, "Using Wood Stoves and Fireplaces;" MF-527, "Selecting Wood Stoves;" C-640, "Wood, An Alternative Source for Home Heating."

Check these additional references: 1980 USDA Yearbook of Agriculture, "Cutting Energy Costs," or call the Kansas Energy Information Center at 1-800-432-3537 and request a copy of the "Kansas Energy Saving Handbook for Homeowners."

DID YOU DO IT?

- Did you complete the Safety Check list? If yes, note any problems you found. _____
- List 3 ways to reduce creosote in the stovepipe. _____
- List 4 different things to use to put out a non-electrical fire. _____

4-H'ers started close to home with people-to-people project

Elderly and institutionalized citizens sometimes receive so little attention they're like foreigners in their own communities. Not so in Hodgeman County.

When the Silverlake Hustlers 4-H Club adopted people-to-people as their club project, they set their goal to learn more about other people—including people close to home.



Mary Whipple, the club community leader, said, "Although we had an exchange trip, a foreign festival day, and many other international and inter-county activities, the Bake and Take Day and volunteering for arts and crafts duty at the Long Term Care Center were the favorite activities of our club members."

For Bake & Take Day the members prepared and delivered 49 plates of goodies to shut-ins, the elderly, and special friends.

Each Wednesday afternoon during the summer, members spent a couple of hours helping residents of the Long Term Care Center make craft items. The residents really enjoyed having the 4-H'ers there. One 4-H'er who participated said, "I'm getting used to lots of hugs."


Learning more about people in foreign countries was the purpose of the Foreign Festival hosted by the club. Planning and setting up the event involved nearly all the club's 32 members.

Sixty-seven guests were greeted with foreign music as they registered at a table decorated with nine foreign dolls and a centerpiece displaying flags from all countries in the world.

As visitors arrived at this come and go event, they watched informal demonstrations, sampled foods, picked up recipes for future use, viewed displays, and visited with their friends. Eight demonstrations on foreign cookery were continuously in progress. Guests learned to make Oleykoeks, a Holland fried bread; Avgholemono, a Greek meatball; two Mexican chip dips; meat pate from the Virgin Islands; Sukiaki from Japan; fortune cookies from China; and Swedish Rosettes. In addition, twelve tables displayed beautiful items brought back from Russia, Viet Nam, Lkinawa, the Holy Lands, Mexico, Germany, Italy, England, Sweden, Holland, France, and Spain. Silverware, china, carved wooden pieces, key-chains, jewelry, coins, clocks, fabrics, needlework, pictures, and much, much more were displayed.

Demonstrations and exhibits were provided by club members and community people who had traveled abroad. Lou Whipple, a 1981 state 4-H people-to-people award winner, was the chairperson for this project.

This club found that learning about other people, either those close to home or far away, is a very rewarding experience.



MBPXL
CORPORATION

**MBPXL beef products
provide a standard of
Excellence
around the world.**

Headquarters: 2901 North Mead
P.O. Box 2519, Wichita, Kansas 67201

• Dodge City, KS • Friona, TX • Nebraska City, NE
• Philadelphia, PA • Plainview, TX • Rock Port, MO
• Wichita, KS

You're better off
at Topeka's
Number One
Bank



6th and Kansas ■ 7th and Harrison ■ 29th and Gage ■ Member FDIC



4-H Dairy News

Midland United Dairy Industry Association

1981

Midland United Dairy Industry Association is proud of all 4-H'ers who complete dairy and dairy foods projects. Raising, showing, and judging dairy cattle is an important part of the whole Kansas dairy industry.

Judging Teams

Four Kansas 4-H'ers competed in the National Dairy Judging Contest in Madison, Wisconsin. Team members were: Matt Wineinger, Marion County; Elizabeth Altwegg, Geary County; Larry Gress, Nemaha County; and Curtis Willems, Labette County. Jody Garrison, Nemaha County Extension Agricultural Agent, accompanied the team.

Curtis Willems placed 27th overall among the nearly 150 contestants. The team ranked 23rd in the overall scoring. They judged Holstein, Guernsey, Brown Swiss, Jersey, and Ayrshire classes. In the Ayrshire division, the Kansas team placed 7th; Matt Wineinger placed 16th in the individual competition.

The Marion County dairy judging team won first place at the Kansas State Fair. Team members and their individual placings were: Tammy Penner, second place; Matt Wineinger, fourth place; Tom Eskeldson, eighth place; and Sherri Enns.

Dairy Production State Winners

Winning trips to the National Dairy Conference in Madison, Wisconsin, for their herds' high production records were: Tammy Penner, Marion County; Alan Myers, Dickinson County; and Bruce Ausherman, Douglas County.

Jeff Ochampaugh, Rooks County, is the 1981 state 4-H dairy winner. He lives on a dairy farm near Plainville. Milk production on the farm has increased every month since his family built a free-stall barn and set up a liquid manure system.

Jeff has eight Holstein cows and seven heifers and calves. He helped plan and conduct a tour of his family's dairy farm for 60 fourth grade students from Plainville.

The 1981 state 4-H dairy foods winner is Kelli Anderson, Leavenworth County. Kelli combines the dairy cow project with the dairy foods project. She makes butter, cottage cheese, and yogurt. The local newspaper carried a special story about Kelli during June. In the story Kelli traced the steps in making dairy products from start to finish.



Representing Kansas at the National Dairy Judging Contest are (from left): Larry Gress, Elizabeth Altwegg, Curtis Willems, and Matt Wineinger.



Cast members in the melodrama "Tilted, Jilted and Poor—or Never Play Pinball Unless You Can Score," watch in suspense as Widow Mamma, played by Leslie Pierce, shakes her fist at villain, Matt Anderson.

Will Our Hero Dan save Little Nell from Sylvester Von Slimey???

By Ann Pierce
Reporter, Lyndon Leaders 4-H Club
Osage County

"Boo-Hiss-Hooray!" These were the sounds from an excited audience as they watched Lyndon Leaders 4-H'ers perform their melodrama.

"Tilted, Jilted, and Poor—or Never Play Pinball Unless You Can Score" was an original play written by Ra Eichhorn the club's leader. It featured all the characters appropriate to an old-fashioned melodrama: Little Nellie, the damsel in distress; Sylvester Von Slimey Von Hook, the dastardly villain; Poor Widow Mamma; a little orphan boy; and Our Hero Dan, who saves Little Nell from a fate worse than death.

Narrators cued both players and crowd as Sylvester schemed to

marry Nell by cheating at pinball, but with the help of the hero and lively encouragement from the audience, the villain's plans were foiled. Sign carriers and club members seated in the audience led the cheering and hissing, as the set changed magically from a cozy farmhouse parlor to a sleazy pinball parlor. Atmosphere was provided by Ardis Pierce, who accompanied the performers on the piano in true melodramatic style.

Lyndon Leaders entered the one-act play in county 4-H competition at Club Days in the spring. There they won top blue and went on to regional, where they also took top blue.

As a community service, the club performed at the Lyndon Senior Citizens' Birthday Party.

A special honor and real challenge was entertaining at the Kansas State Historical Society in Topeka. As part of Craft Day, the cast performed throughout the day for over 1400 school children. Excitement grew as standing-room only crowds were swelled by adults from the downtown area.

A feature of the Historical Society appearance was a brief explanation of early theater in Kansas. Modeling of a theater-goer's costume and showing objects from the Society's collections enhanced the visitors' understanding of theater as an important entertainment form for Kansas settlers.

Like the romance of Dan and Little Nell, cast members agreed that it all ended "just swell!"

Family Fun Page

Enter the silly game contest! Each square contains a silly illustration for a common word or phrase. The first 4-H Journal reader who submits the correct solution for all 24 squares wins a prize. Send your entries to: Silly Games Contest, Kansas 4-H Journal, 116 Umberger, K.S.U., Manhattan, Kansas 66506. The winner and the answers will be announced in the January Kansas 4-H Journal.

SAND	MAN BOARD	STAND I	R/E/A/D/I/N/G	WEAR LONG	R ROADS A D S
T O W N	CYCLE CYCLE CYCLE	LE VEL	O M.D. P.H.D. B.S.	KNEE LIGHTS	ii ii 0 0
CHAIR	DICE DICE	T O U C H	GROUND feet feet feet feet feet	MIND MATTER	HE'S/HIMSELF
ECNALG	DEATH/LIFE	G.I. CCCC CCC CC C	PROGRAM	B L O U S E	J U S T ME

Collingwood
GRAIN INC.

Serving Kansas
Since 1890
Country Elevators
and Terminals

Money For Your Treasury
OVER 2 MILLION
Sunflower Dishcloths



WERE SOLD LAST YEAR BY
MEMBERS OF GROUPS, SOC-
IETIES, CLUBS, ETC.

THEY ENABLE YOU TO EARN
MONEY FOR YOUR TREAS-
URY AND MAKE FRIENDS
FOR YOUR ORGANIZATION

Sample FREE to Official.
SANGAMON MILLS, INC., Cohoes, N. Y. 12047
KJ Established 1915

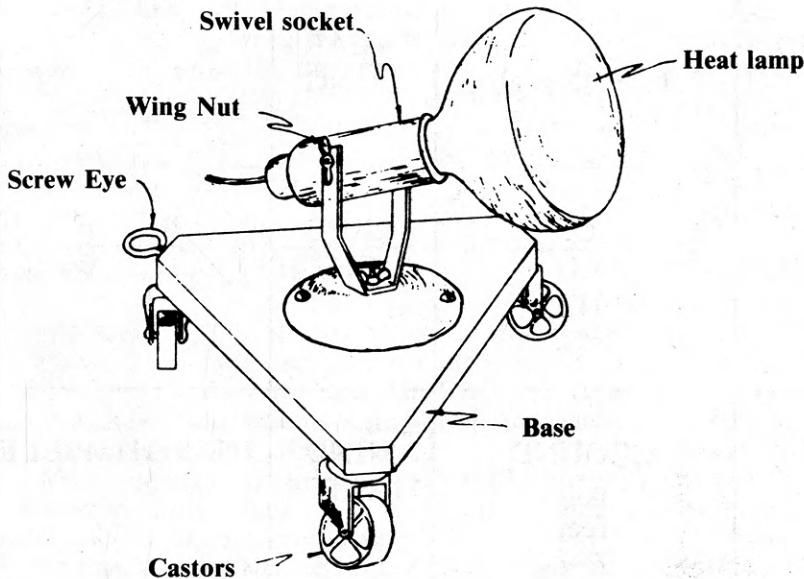
To the person who has been in trouble since this summer for losing a camera at Rock Springs Ranch: contact the Kansas 4-H Foundation, 116 Umberger, K.S.U., Manhattan, KS 66506, 913-532-5881 and identify the camera that was turned in.

Karen Russell

LR TRAINING STABLE

Route 5, Box 19 Hutchinson, Kansas 67501
316-665-7725

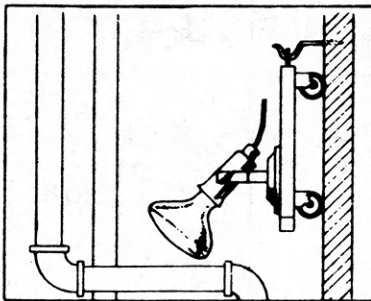
Build a portable heat lamp



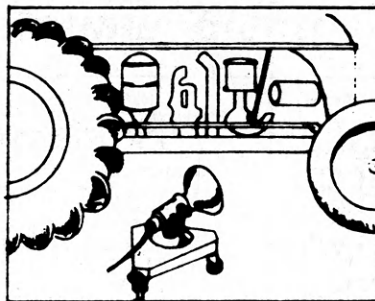
The infrared heat lamp is a handy, inexpensive source of heat for many cold weather applications. A single heat lamp on a dolly in a swivel socket can be used to warm up a tractor or car engine or to keep a "spotlight" of heat on your hands in the workshop or in the milkhouse. Several heat lamps mounted on a frame are an excellent source of quick heat over a larger area.

Material List

- 1 2" x 12" x 12" board
- 3 castors
- 1 screw eye
- 1 swivel socket
- 20 ft. No. 16 rubber covered hard service cord, type SJO
- 1 rubber or armored plug cap with cord grip clamp
- 1 infrared heat lamp, 250 watt, type R40/10



On the Wall



On the Floor

What are you or your family doing to conserve energy? Please send your ideas, with illustrations if possible, to Electric Page, Kansas 4-H Journal, Umberger Hall, KSU, Manhattan, Kansas 66506.



Watch This Page For Ideas On Farm And Home Electric Projects

ELECTRIC LIGHT and POWER COMPANIES in KANSAS

The Kansas Power and Light Company Kansas Gas and Electric Company

Western Power Division of Central Telephone & Utilities Corporation