

4-H Journal

The 4-H Family Magazine

Kansas 4-H Foundation, Inc., Publisher

v. 5: 3

In This Issue

Wives Demonstrate Garden Varieties
Page 7

Meal Service Interesting
Page 8

4-H Township Representatives and His Duties
Page 9

Who Starts Fire Alarm System
Page 10

15 Cents



Virginia Holt of the Busy Beavers Club, Ellis county, serves supper to her mother, Mrs. Richard Holt, and brother Jack. For more details on the new meal service projects see page 8.



Improving Family and Community Living . . .

This 4-H theme of the year points up a worthwhile goal of 4-H Club work. For research has shown that families in which there are active 4-H members more readily adopt modern, approved methods of farming and homemaking. We congratulate 4-H boys and girls, as well as their club leaders and Extension agents, for their able efforts toward "Improving Family and Community Living."

John Deere Company

Kansas City, Mo.

Janice Fauss Invited To Israel Farm Meet

Janice Fauss, 1957 IFYE to Israel, has been given a special invitation to attend a Farmers Convention in Israel April 4-16.

Ahead of the convention, visiting farmers are encouraged to visit and live with an Israel farm family for a week. This visit might be termed a modification of the International Farm Youth Exchange program. There is no charge to visiting farmers for the week's pre-convention visit with the Israel farm family.

Letters

If you have ideas or 4-H Club experiences that you would like to write about or if there is something you like or dislike about the Kansas 4-H Journal, write to the Editor, Kansas 4-H Journal, Manhattan, Kansas.
Leaders, parents, members, agents and 4-H friends are invited to write.

Thanks for Career Issue

Dear Editor:

May I commend you and the 4-H Journal for featuring in the February issue, career exploration. This is one of the programs in which the College administration is very much interested and we certainly appreciate the Foundation's efforts in its support.

Harold E. Jones, Director
Kansas Extension Service

Like To See More Rabbits

Dear Editor:

Now it's time to consider new projects, I'd like to see more members taking rabbits. I always found it to be a profitable as well as an inter-

(Continued on Page 14)

Kansas 4-H Journal

Vol. V, No. 3

March, 1959

Date April..... Editor

Editorial and Business Office

Phone PR 6-8811 Ext. 208

Manhattan, Kansas

Published Monthly By

KANSAS 4-H FOUNDATION, INC.
BOARD OF TRUSTEES

W. Dale Critser, Chrm.....Wichita
Clifford Hope, Vice Chrm.Garden City
R. B. ChristyScott City
Harry Darby.....Kansas City
W. Laird Dean.....Topeka
A. D. Jellison.....Junction City
Harold E. Jones.....Manhattan
George B. Powers.....Wichita
Roger E. Regnier.....Manhattan
E. B. Shawver.....Wichita
Fred D. Wilson.....Andover

Use of the 4-H name and symbol approved by the Secretary of Agriculture of the United States, January 23, 1951, under the provisions of the law as reenacted by Sec. 707 of the Act of June 25, 1948 Public Law No. 772, 80th Congress (10 USC 797)

Entered at the postoffice in Lawrence, Kansas, as second-class matter under the Act of March 3rd, 1879.

Advertising rates and circulation data on request.

Group subscriptions \$1.00 per year.
Individual subscription \$1.50 per year.
Single copy 15 cents.

THE FARMER'S OWN

FARM PROGRAM

Is Your Hometown Co-op
With Its Ownership and Control
Of Regional Marketing and Farm Supply Services

KANSAS COOPERATIVE COUNCIL

701 Jackson St., Topeka

FARMERS
LOW-COST
Complete Protection
Policy

FIRE
And
Auto

INSURANCE
Please Send Information
Name
Address

FARMERS-ALLIANCE INSURANCE — McPHERSON, KANSAS

Good Work Emily!

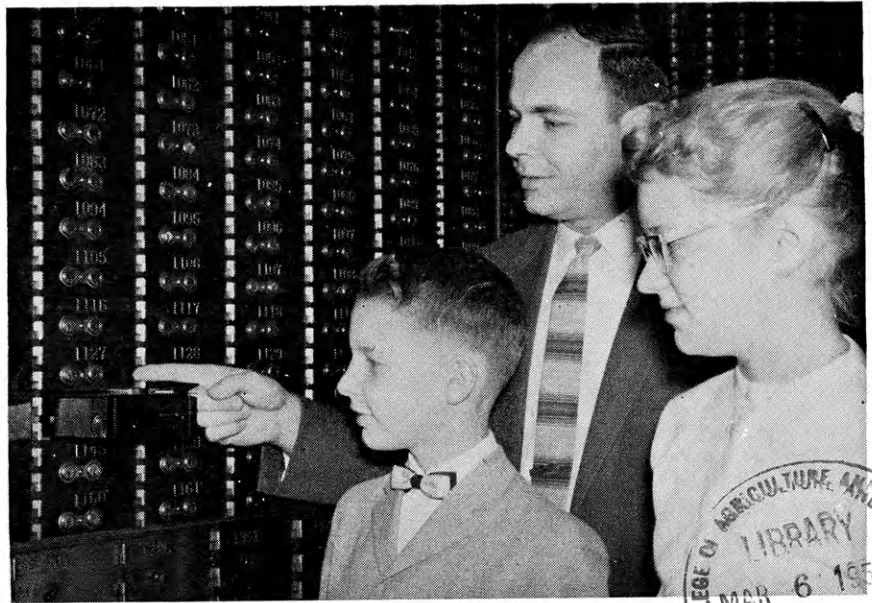
Through the International Farm Youth Exchange program Kansas has sent 88 young men and women to other countries as "grass roots ambassadors."

Most of these delegates, we feel, have been top notch ambassadors. From Australia we get word that one of this year's delegates is really promoting good will. The delegate is Emily Douthit from Cheyenne county.

A letter from Mr. A. T. Hooper of the Australian Department of Agriculture to the National 4-H Foundation in Washington, D.C. says—

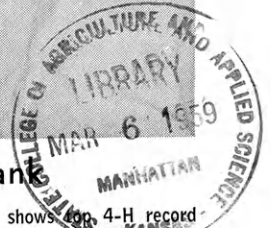
"I would be pleased if you could advise Miss Kathleen Flom of the National 4-H Foundation how much the Rural Youth Movement of South Australia has appreciated the visit of Emily Douthit. She has proved to be an exchangee of outstanding merit and the ideal ambassador for America. Her personality is such that she will be welcomed in South Australia at any time, and she is the type of young woman that any country would be proud to have representing it overseas."

Congratulations, Emily, on your good work. Your Kansas friends are looking forward to hearing a report upon your return.



4-H'ers Get Savings, Tour of Bank

John Means, ag representative of the Citizens State Bank, Hiawatha (back) shows top 4-H record keepers Van Koelliker and Darlene Strahm the safe deposit boxes of the bank. The bank provides eight \$10 savings certificates annually to first and second year 4-H members with the best record books. Brown county club agent Barnes says the awards encourage beginning club members to lay good foundations for the future and to provide recognition for youngsters who have not yet had time to build up a background of club work necessary to win achievement awards.

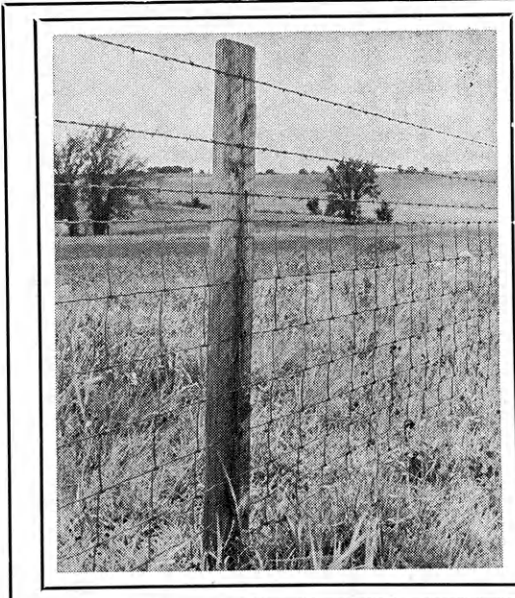


Mont. Co. Lady Wins Color Photo

Winner of the special Kansas 4-H Journal award for naming the picture post card to be used next summer at Rock Springs was Mrs. Frank Roper, Caney Kansas. Her entry was "Snooty? No, she just heard some new 4-H members have arrived at Rock Springs." Mrs. Roper will receive a natural color photo taken at Rock Springs Ranch for her entry.



"Tell Mother to get a can of Zestard right now? Tell her this wonderful drink will give you more pep, more energy, more. . ."



ARE THE FENCE POSTS ON YOUR FARM TIME-TESTED

TIME WILL TELL why LONG-BELL pressure-treated posts are the finest that can be bought. Made by the first company to commercially distribute this lifetime product and sold under a 35 year service replacement policy, they are still the choice of farmers everywhere who buy performance-tested products.

This long-Bell pressure-treated fence post has been in service over 30 years already on this farm.

INTERNATIONAL PAPER COMPANY

WOOD PRESERVING DIVISION

KANSAS CITY, MISSOURI

SEE YOUR RETAIL LUMBER DEALER

Kansas 4-H

The Kansas 4-H Journal is sponsored in each of the counties by the business firms listed below. 4-H Club members

- Allen**
Allen County State Bank, Iola
- Anderson**
Garnett State Savings Bank, Garnett
- Atchison**
Blair Milling & Elevator Co., Inc., Atchison
George W. Kerford Quarry Company, Atchison
Sunflower Cooperative Creamery, Everest
Waisner & Shelver Ladies Ready-To-Wear, Atchison
- Barber**
The First National Bank, Medicine Lodge
- Barton**
The First National Bank, Great Bend
- Bourbon**
Citizens National Bank, Ft. Scott
Liberty Savings and Loan Association, Ft. Scott
National Farm Loan Association, Ft. Scott
The Bank of Bronson, Bronson
Union State Bank, Uniontown
- Brown**
Bank of Robinson, Robinson
Citizens State Bank, Hiawatha
Farmers State Bank, Fairview
Home State Bank, Horton
The Bank of Horton, Horton
The Morrill & Janes Bank, Hiawatha
The Morrill State Bank, Morrill
The Union State Bank, Everest
- Butler**
Andover State Bank, Andover
Bank of Whitewater, Whitewater
Benton State Bank, Benton
Citizens State Bank of El Dorado, El Dorado
El Dorado National Bank, El Dorado
Exchange State Bank, Douglass
Mid-Continent Federal Savings and Loan Association, El Dorado
The Potwin State Bank, Potwin
The Prairie State Bank, Augusta
The Rose Hill State Bank, Rose Hill
The State Bank of Leon, Leon
Towanda State Bank, Towanda
Walnut Valley State Bank, El Dorado
- Chase**
Exchange National Bank, Cottonwood Falls
Peoples Exchange Bank, Elmdale
Strong City State Bank, Strong City
- Chautauqua**
The Sedan State Bank, Sedan
- Cherokee**
American National Bank, Baxter Springs
Baxter State Bank, Baxter Springs
Citizens Bank of Weir, Weir City
Columbus State Bank, Columbus
First National Bank of Columbus, Columbus
- Cheyenne**
Citizens State Bank, St. Francis
- Clark**
Citizens State Bank, Ashland
Peoples State Bank, Minneola
Stockgrowers State Bank, Ashland
- Clay**
Union State Bank, Clay Center
- Cloud**
Citizens State Bank, Miltonvale
First National Bank, Glasco
Jamestown State Bank, Jamestown
- Coffey**
Peoples National Bank, Burlington
- Comanche**
Peoples State Bank, Coldwater
- Cowley**
The First National Bank, Winfield
The Home National Bank of Arkansas City, Arkansas City
- Crawford**
Farmers State Bank, Walnut
First National Bank, Girard
First State Bank, Arma
First State Bank of Pittsburg, Pittsburg
Girard National Bank, Girard
Hepler State Bank, Hepler
Home State Bank, Arcadia
McCune State Bank, McCune
Miners State Bank, Frontenac
National Bank of Pittsburg, Pittsburg
- Decatur**
Decatur Co-op Association, Oberlin
- Dickinson**
Farmers National Bank, Abilene
- Doniphan**
Doniphan County Electric Co-op Association, Inc., Troy
- Douglas**
Farmers Cooperative Association, Lawrence
Jim Clark Motors, Lawrence
KLWN Radio, Lawrence
- Edwards**
Home State Bank, Lewis
- Eik**
Exchange State Bank, Moline
First National Bank, Howard
Home State Bank, Longton
Howard National Bank, Howard
- Ellis**
Ellis State Bank, Ellis
Farmers National Bank, Victoria
Farmers State Bank, Hays
First National Bank, Hays
- Ellsworth**
Bank of Holyrood, Holyrood
Citizens State Bank, Ellsworth
Kanopolis State Bank, Kanopolis
Lorraine State Bank, Lorraine
Wilson State Bank, Wilson
- Finney**
Fidelity State Bank, Garden City
Garden National Bank, Garden City
- Ford**
Bucklin State Bank, Bucklin
Farmers State Bank, Bucklin
Fidelity State Bank, Dodge City
First National Bank, Dodge City
Ford County State Bank, Spearville
- Franklin**
Peoples National Bank, Ottawa
The Wellsville Bank, Wellsville
- Geary**
Central National Bank, Junction City
First National Bank, Junction City
- Gove**
First National Bank, Quinter
Peoples State Bank, Grinnell
The Citizens State Bank, Grainfield
- Graham**
Farmers & Merchants Bank, Hill City
- Grant**
The Grant County State Bank, Ulysses
- Gray**
Farmers State Bank, Ingalls
First National Bank in Cimarron, Cimarron
The Montezuma State Bank, Montezuma
- Greeley**
First National Bank, Tribune
- Greenwood**
C. K. Rawlings Insurance, Eureka
Eureka Federal Savings and Loan Association, Eureka
Hartong's, Inc., Eureka
McManis Implement Company, Eureka
Race Parks Oil Company, Eureka
The A. C. Houston Lumber Company, Eureka
- Hamilton**
First National Bank, Syracuse
The Valley State Bank, Syracuse
- Harper**
Anthony Farmers Co-operative Elevator, Anthony
Danville Co-op Association, Danville
Farmers Co-op Business Association, Corwin
Shook Farmers Co-op Grain and Merchants Union, Anthony
State Line Grain Company, Manchester, Oklahoma
- Harvey**
Harvey County Bankers Association
- Haskell**
Haskell County State Bank, Sublette
- Hodgeman**
Farmers State Bank, Jetmore
Hanston State Bank, Hanston
- Jackson**
Cox Implement Company, Holton
Dannenberg Implement Company, Holton
Duffy's IGA Foodliner, Holton
Eubanks Implement Company, Holton
Farmers Union Coop. Association, Holton
Holton Lumber Company, Holton
Lueck Grain Company, Netawaka
Petree Propane-Philgas Distributor, Holton
Sock & Fern Freese, Holton
Symons Truck and Tractor, Holton
- Jefferson**
Corpstein Elevator, Perry
Jefferson County Home Demonstration Units
Leavenworth-Jefferson Elec. Coop., McLouth
Norman Hamm, Perry
- Jewell**
First National Bank, Formoso
First National Bank in Mankato, Mankato
The Burr Oak State Bank, Burr Oak
The Citizens State Bank, Jewell
The Randall National Bank, Randall
The State Bank of Esbon, Esbon
The State Exchange Bank, Mankato
- Johnson**
Johnson County Bankers Association
- Kearny**
Farmers Cooperative, Lakin and Kendall
- Kiowa**
First State Bank, Mullinville
Greensburg State Bank, Greensburg
Haviland State Bank, Haviland
- Labette**
American State Bank, Oswego
Chetopa State Bank, Chetopa
First National Bank, Edna
First National Bank, Oswego
First National Bank, Parsons
Labette County State Bank, Altamont
Parsons Commercial Bank, Parsons
State Bank of Parsons, Parsons
- Lane**
First National Bank, Dighton
First State Bank, Healy
- Leavenworth**
First National Bank, Leavenworth
- Lincoln**
Sylvan State Bank, Sylvan Grove
- Linn**
Bank of Pleasanton, Pleasanton
Centerville State Bank, Centerville
Farmers and Merchants Bank, Mound City
Farmers State Bank, Blue Mound
First National Bank, Pleasanton
Linn County Bank, LaCygne
Parker State Bank, Parker
Prescott State Bank, Prescott
- Logan**
Farmers State Bank, Oakley
Farmers State Bank, Winona
- Lyon**
Citizens National Bank, Emporia
- Marion**
Tip Top Dairies, Hillsboro

Journal Sponsors

and leaders might do well to express their appreciation to these sponsors for the contribution they are making.

Marshall

Citizens State Bank, Marysville
Citizens State Bank, Waterville
Exchange Bank of Schmidt & Koester, Marysville
First National Bank, Beattie
First National Bank, Summerfield
First National Bank in Frankfort, Frankfort
Oketo State Bank, Oketo
The Bremen State Bank, Bremen
The Irving State Bank, Irving
The State Bank of Axtell, Axtell
The State Bank of Blue Rapids, Blue Rapids
Vermillion State Bank, Vermillion

McPherson

Farmers Union Elevator Company, Lindsborg
Moundridge Cooperative Elevator Ass'n., Moundridge
The Cooperative Farmers Union Elevator Company, Marquette
The Farmers Cooperative Ass'n., McPherson
The Farmers Cooperative Grain and Supply Company, Canton

Meade

First National Bank, Meade
Fowler State Bank, Fowler
Plains State Bank, Plains

Miami

American National Bank, Osawatomie
Bank of Louisburg, Louisburg
Citizens State Bank, Paola
First National Bank, Louisburg
First National Bank, Osawatomie
Miami County National Bank, Paola

Mitchell

Farmers and Merchants State Bank, Cawker City
Farmers State Bank, Asherville
Farmers State Bank, Hunter
First National Bank, Beloit
Simpson State Bank, Simpson
The Guaranty State Bank, Beloit
Tipton State Bank, Tipton
Traders State Bank, Glen Elder

Montgomery

Citizens National Bank, Independence
First National Bank, Coffeyville

Morris

Morris County Farm Bureau, Council Grove
National Farm Loan Association, Herington

Morton

Addington's Elevator, Elkhart
Burt Elder Insurance, Elkhart
Cooperative Equity Exchange, Elkhart
Elkhart Implement, Elkhart
Fisher's International, Elkhart
Norman's Implement, Elkhart
Rolla Cooperative Equity Exchange, Rolla
Star Lumber Company, Elkhart
The First State Bank, Elkhart

Nemaha

Winterscheidt Milling Company, Seneca

Neosho

The Neosho Valley Coop. Creamery Association, Erlie

Ness

Bazine State Bank, Bazine
Citizens State Bank, Utica
Farmers State Bank, Ransom
The First State Bank, Ness City
The First State Bank, Ransom

Norton

Fredde Equipment Company, Norton

Osborne

Downs National Bank, Downs
Farmers National Bank, Osborne
First State Bank, Osborne
State Bank of Downs, Downs
The First State Bank, Portis

Ottawa

Bohnenblust Implement Company, Minneapolis
Chapman Implement Company, Minneapolis
Gilley's Firestone & Implement, Minneapolis
Hoover Implement Company, Minneapolis
Weidler Farm Supply, Minneapolis

Pawnee

First State Bank, Larned

Phillips

First National Bank, Phillipsburg

Pottawatomie

Farmers State Bank, Westmoreland
First National Bank, Onaga
First National Bank, Wamego
Havensville State Bank, Havensville
Kaw Valley State and Savings Bank, Wamego
St. Marys State Bank, St. Marys

Pratt

Cairo Co-op Equity Exchange, Cairo
Iuka Co-op Exchange, Iuka
Pratt Equity Exchange, Pratt
Preston Co-op Grain and Mercantile Co., Preston
Sawyer Co-op Equity Exchange, Sawyer
The Farmers Grain and Mercantile Company, Cullison

Rawlins

Farmers National Bank, Atwood
Farmers State Bank, Ludell
People's State Bank, McDonald
State Bank of Atwood, Atwood
State Bank of Herndon, Herndon

Reno

Hutchinson National Bank & Trust Co., Hutchinson
Winchester Packing Company, Hutchinson

Rice

Burke Grain Company, Little River
Central Kansas Elevator, Lyons
Farmers Co-op Union, Sterling
Farmers State Bank, Sterling
Moll's Market, Little River
Pepsi-Cola Bottling Co., Lyons

Riley

First National Bank, Manhattan
Leonardville State Bank, Leonardville
State Bank of Randolph, Randolph
Union National Bank, Manhattan

Rooks

Western Auto Associate Store, Stockton

Rush

Farmers and Merchants State Bank, LaCrosse

Russell

Farmers State Bank, Lucas
Russell State Bank, Russell

Saline

The Farmers National Bank, Salina

Scott

First National Bank, Scott City
Modoc State Bank, Modoc

Sedgwick

Sedgwick County Bankers Association

Seward

Citizens State Bank, Liberal
First National Bank, Liberal
People's National Bank, Liberal

Sheridan

Farmers State Bank, Selden
First National Bank, Hoxie
Hoxie State Bank, Hoxie
Mickey's Hardware, Hoxie

Sherman

The First National Bank, Goodland

Smith

The First National Bank, Gaylord
The First National Bank, Kensington
The First National Bank, Lebanon
The First National Bank, Smith Center
The Smith County State Bank, Smith Center

Stafford

Farmers and Merchants State Bank, Macksville
Farmers National Bank, Stafford
First National Bank, St. John
Hudson State Bank, Hudson
Macksville State Bank, Macksville
St. John National Bank, St. John

Stanton

Collingwood Grain Company, Johnson, Manter, and Big Bow

Stevens

The Citizens State Bank, Hugoton

Sumner

Wolcott & Lincoln, Inc., Wellington

Thomas

Farmers and Merchants State Bank, Colby

Trego

Great Plains Dairy, Wakeeney
Huxman and Dubbs, Arnold
Ogallah Coop. Association, Ogallah
Schreiner Oil Service, Ogallah
Trego County Farm Bureau, Wakeeney
Utica Grain Company, Utica

Wabaunsee

The Alta Vista State Bank, Alta Vista
The First National Bank, Alma
The First National Bank, Harveyville
The Stockgrowers State Bank, Maple Hill

Wallace

Wallace County Farm Bureau, Sharon Springs

Wichita

First State Bank, Leoti

Wilson

Airosprayer Company, Neodesha
Carl Kuntz Equipment Company, Altoona
Cox Grain Company, Fredonia
First National Bank in Fredonia, Fredonia
First National Bank, Neodesha
Foodtown Super Market, Fredonia
Fredonia Co-op Ass'n., Fredonia
Gilstrap Lumber Company, Fredonia
Glen Wiggins Drug Store, Fredonia
Home Lumber and Supply Company, Fredonia
Joe Armstrong Equipment, Fredonia
Nebraska, Kansas, Colorado Grain Co., Inc., Neodesha
O. E. Woods Lumber Company, Neodesha
Radiant Electric Co-op, Inc., Fredonia
Schoolcraft Lumber Company, Fredonia
Self Service Grocery, Fredonia
State Bank of Fredonia, Fredonia
The Jack Grubb Farm Equipment Co., Inc., Fredonia
Veterinarian Hospital, Fredonia
Wilson County Farm Bureau, Fredonia

Woodson

J. E. Sowder Seed Company, Toronto
State Exchange Bank, Yates Center
Woodson County Cooperative Association, Yates Center

Wyandotte

Bishop Lumber, Muncie
Coleman Implement Company, Bonner Springs
Commerical State Bank, Bonner Springs
Home State Bank of Kansas City, Kansas
McCormick Farm Equipment Store, Kansas City
State Tractor and Implement Company, Kansas City
The Brotherhood State Bank, Kansas City

*SAVVY

That's what young folks get from participating in 4-H activities—developing "savvy" for adulthood . . .

It's "savvy" that makes Farm Bureau Insurance the keynote of protection in Kansas.

- World's largest group of farm insurers.
- Agent's trained in the needs of farmers.

* A slang expression in the American language meaning "know-how."

Farm Bureau Mutual - Kansas Farm Life
Insurance Companies

HOME OFFICE: MANHATTAN, KANSAS



Game Corner

By Harlan Copeland
State 4-H Staff

Don't let recreation ideas slip away from you. Get a three ring notebook for them. Clip game and party ideas from magazines and newspapers, then paste in the notebook. Next year's recreation leader will have a recreation library you start.

Get a Free Notebook

Does your club have a favorite game? We will give, each month, a hard cover three ring loose leaf notebook to the club recreation leader whose games are featured in this column each month.

This month we have two ideas from the Riverview Club, Sedgwick county. Reporter Mary Pates submitted the games. The first is named "Give."

Give

One person is chairman and the rest divide into groups. Each group chooses a leader. The chairman calls for articles such as a safety pin. Each leader has to get the article named from his group. The first leader to get to the chairman with the most points wins.

Slapback

In this second Riverview game the group stands in a circle. One player is "It." He walks around the ring and "slaps" someone on the back. "It" goes one way, the other player goes the other way. When they meet they say "Good Morning" three times and then continue on around the ring. The last person back to the empty space is it.

Games for March

Irish Tag—a partner game. When partners have been selected the ankles of both players are fastened together. They also link arms. "It" must also be composed of two players whose ankles are tied together. It may not be fast, but it can be fun.

Road to Erin—equipment needed is a yardstick, a penny and a toothpick for each team. Place the yardstick on the floor. Put the penny on one end. Attempt to push the penny to the other end of the yardstick with the toothpick without knocking the penny off the yardstick.

4-H Garden Project Members Help With Demonstration Plots

Clark county 4-H'ers helped spread the word on good garden varieties in a demonstration arranged by the Clark county extension service and the Dodge City experiment station.

Six members of the Minneola Boosters Club enrolled last summer in the garden project. As a part of their project they tested varieties of rhubarb, gardens and sweet corn.

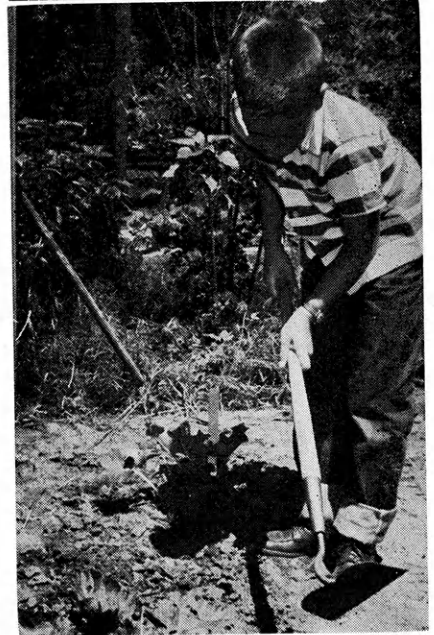
Plants and seeds were obtained through M. C. Axelton, superintendent of the Dodge City experiment station. Mr. Axelton is garden project leader of the Club and supervises the demonstration plots.

The plots aroused considerable interest among the 4-H parents and neighbors in the community as to which variety did the best. The Big Early variety yielded the first ripe tomatoes.

In addition to the Minneola

Boosters garden demonstrations, Sydne and Bobby Dorsey of the Sitka Hustlers Club, Clark county, helped their mother with a strawberry variety demonstration plot.

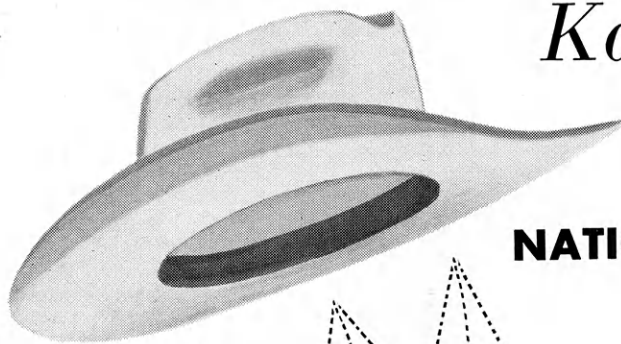
Right top, Thomas Byerley kept regular growth records on his sweet corn variety plot. His best rate of growth was slightly over three inches in three days. Right, Kerry Irons hoes his rhubarb variety plot to keep weeds under control. His second greatest problem was to keep grasshoppers under control. Below, Glenda and Mery Ellen Riley mulch Glenda's tomato variety plot. Glenda canned a part of the crop for her food preservation project.



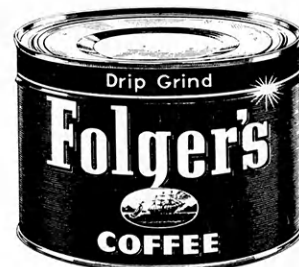
Our Hat is off to

*Kansas 4-H Clubs
during*

NATIONAL 4-H CLUB WEEK*



J. A. Folger & Co.
Kansas City, Mo.



**and the other 51 weeks, too!*

Girls Have Fun With Meal Service Projects



Most girls really enjoy serving a delicious meal for their family. Such is certainly the case with Virginia Holt, 16-year old member of the Busy Beavers Club, Ellis county.

Virginia has taken foods projects each of the six years she has been in 4-H, meal service for three years.

New Material

This year the meal service project material has been completely revised. If you are enrolled in meal service and have not yet received the new material, ask your county extension agent when it may become available in your county.

Virginia is enrolled in "It's Supper Time" this year. This is the basic meal service project and may be taken after the "preparation" courses have been completed.

Girls enrolled in the "Supper" project will learn the foods us-

ually included in suppers, how to plan supper menus, how to set the table and serve a family supper.

Top, Mrs. Richard Holt and Virginia, Ellis county, plan the menu—the first step in any 4-H meal service project. Second, Virginia prepares the main dish—a goulash. Third, Virginia takes the fresh rolls from the oven. Below right, one of the final steps is to dish up the salad. Below left, as a junior leader Virginia Holt teaches fellow 4-H'ers Leigh Ellen and Carol Jean Johnson some principles in setting the table. Here she shows how to fold paper napkins.

ually included in suppers, how to plan supper menus, how to set the table and serve a family supper.

These 4-H'ers will also learn to prepare main dishes for supper, quick breads, master mix, sponge and angel food cakes.

Some of the main dishes to be studied in this project are soups made with meat or meat broth, main dish salads, stews, and hot dishes with a protein food and noodles, rice or biscuit topping.

Prepare 15 meals

Girls must plan, prepare and serve 15 different supper menus. One must be for guests.

4-H members figure the cost of the supper meals they serve, check their own daily food habits for seven days and plan a time schedule to follow when preparing their meals.

Four food groups are listed in the new meal service bulletins. The supper menu should be planned in connection with the other meals of the day so as to make sure sufficient quantities of the four groups are included in the day's diet.

Virginia's menu for the supper she has prepared for her family includes a goulash of macaroni, tomatoes, hamburger, celery, onions and peppers; a salad of carrots, apples, cabbage and nuts; biscuits and butter; wild plum jelly; lemon custard cup and milk.

Helps Younger Members

As an older 4-H member and junior leader, Virginia helps the foods project leader with the project meetings. She helps the younger girls with demonstrations, judging, record books and preparing their fair exhibits.

If you've learned how to prepare foods in the 4-H food preparation projects, you may now be ready to prepare whole meals in the 4-H meal service project. Talk it over with your 4-H leader and county extension agents.





Left, Frisco Chief Dispatcher Wesley Claybourn (also 4-H representative for Ft. Scott) helps organize a new city club by visiting with vocational agriculture teacher Milton Kohrs and wife. Daughter Annette is a pro-



spective member. Right, at the organization meeting Claybourn (extreme right) tells of 4-H requirements to William Sailor, Billie Sailor, daughter Kay and Mrs. Farmer, newly elected community leader.

Railroad Man Wesley Claybourn Sparks Ft. Scott 4-H Program



When Chief Frisco Dispatcher Wesley Claybourn was elected 4-H township representative for the city of Ft. Scott, some 4-H projects in Bourbon county really began to roll.

One of the first items was the organization of a county 4-H advisory committee under the guidance of district 4-H supervisor Cecil Eystone. Claybourn was elected president. Mrs. Tim Murphy and Bob Howard were elected secretary and vice chairman respectively.

Set Goals

The advisory group decided to hold meetings during the year. They have had one meeting since the organization meeting. At that time they decided on goals for their group.

One of the first goals was to get sponsors for the Kansas 4-H Journal in Bourbon county. This has since been accomplished.

Another goal, and one on which they are now working, is to complete the 4-H building at the county fairgrounds.

Organizes Club

A goal set by Ft. Scott 4-H representative Wesley Claybourn was to get a new city club organized in Ft. Scott.

Claybourn, like a 4-H representative with many years ex-

perience, contacted and secured community leaders, visited with parents of prospective members and assisted at the organization meeting of the club.

"We had 17 members at the organization meeting," Claybourn reports. New community leader Mrs. Farmer reports they now have 35 members.

"Mrs. Farmer has already seen the limits to the number she can take care of in the club," Claybourn continued. "We might have to organize another club pretty soon."

Never Twist His Arm

Asked how he came to be elected as 4-H representative, Claybourn said, "I don't know but they never have to twist my arm when it comes to doing something for kids." County extension agent Wayne Tyler says Claybourn "hauled 4-H members back and forth between the county camp and swimming pool for years. He also eats dinner with us at county camp."

Other Duties

4-H township representatives act as chairmen of the adult advisory committee for the club or clubs in their community, see that clubs have adequate leaders at all times and coordinate long-time planning with the county

4-H council. It is the council's responsibility to plan and advise on short range 4-H problems.

One of the important duties of the representative is to promote club work in their community. This may mean organization of new clubs or promotion of membership in existing clubs.

Below, the three officers of the 4-H Advisory Committee—Mrs. Tim Murphy, Wesley Claybourn and Bob Howard—discuss the goals they hope to attain during the year. Bottom, Claybourn (right) accomplishes one of the goals of the Advisory Committee when he visits with banker T. M. Givens about sponsoring the Kansas 4-H Journal for the county's 4-H members.





As a test of the "South District", Mrs. O. D. Garrett, top left, gives the alarm to a District Volunteer of the Wellsville Fire Alarm system. Ten minutes later Mrs. Charles Stephens, bottom left, makes the last call on her line. A total of 60 families were notified in

the ten minute period. Right, SHAFF 4-H Club officers prepare material on the Fire Alarm Plan for mailing. Left to right they are Charles Coffman, Melba Skilling, Dale Miller, Emma Jane Hays and Eugene Wingert.

4-H Club Organizes Fire Alarm System For Areas Served by Dial Telephones

At the first rumor that the dial telephone system was to be installed at Wellsville, rural residents became concerned over the loss of the old "party line ring" in case of fire.

No one came up with a solution until the SHAFF 4-H Club or-

ganized a Fire Alarm System.

The Wellsville rural telephone area was divided into four districts. The 4-H'ers secured eight persons to act as District and Substitute District Volunteers. Line and Substitute Line Volunteers were obtained for each of

the 43 telephone lines in the area.

Instructions Prepared

Instructions for use of the fire alarm system were prepared, printed and distributed by SHAFF Club members. Telephone numbers of District and Substitute District Volunteers were included in the material.

As a reminder SHAFF Club members called the 300 telephone subscribers reminding them of the material to come in the mail.

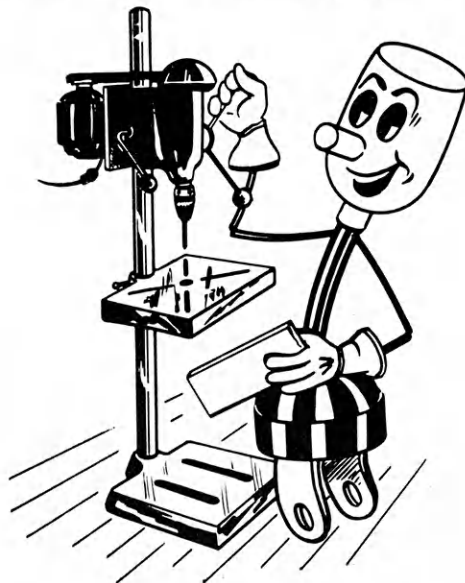
Ten Minutes For Trial

Now, when a fire occurs in the Wellsville community, the person first noticing the fire dials their District or Substitute District Volunteer. The District Volunteer then calls Line Volunteers. The Line Volunteers conclude the process by calling all parties on their line.

Since starting the alarm system has been used for four fires. An officer of the Club, Douglas Higby, and an adult advisor are charged with keeping the District Volunteers informed of all telephone changes as a continuing project of the club.

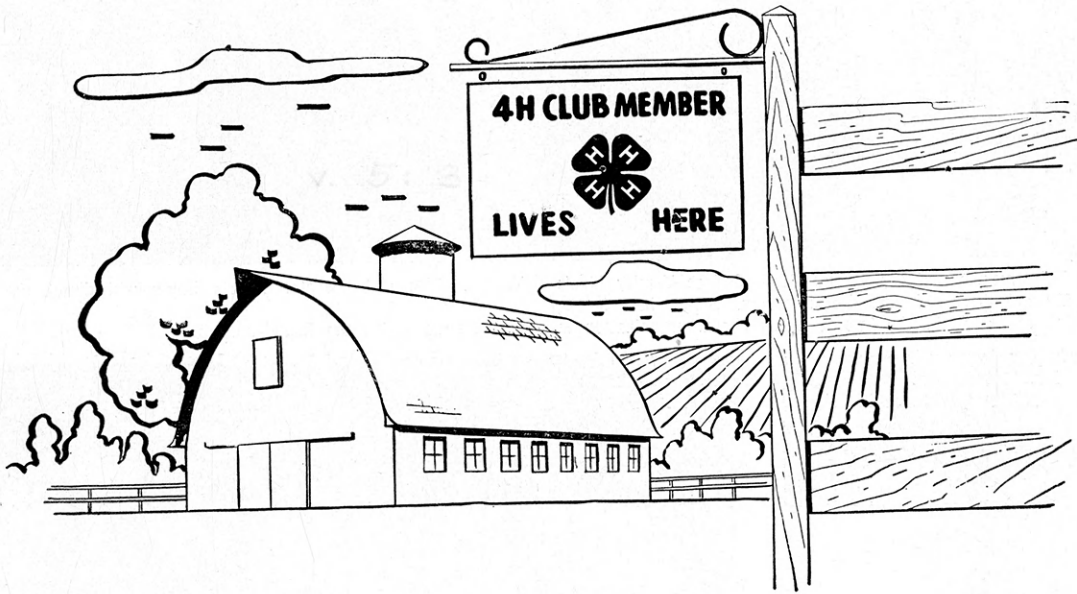


Good power tools in the farm shop can help make a success of your other farming projects. Take advantage of low-cost electric power.

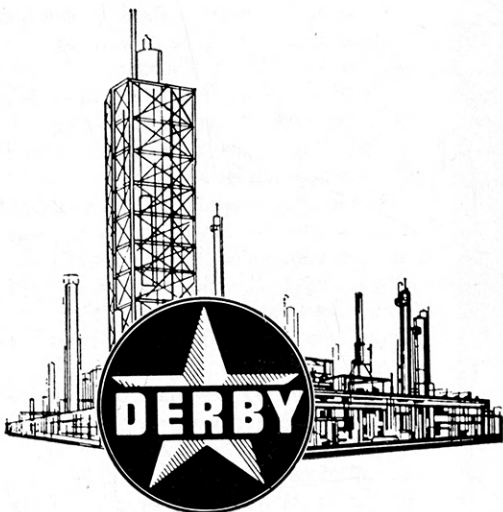


KANSAS ELECTRIC COOPERATIVES INC.

420 W. 9th TOPEKA

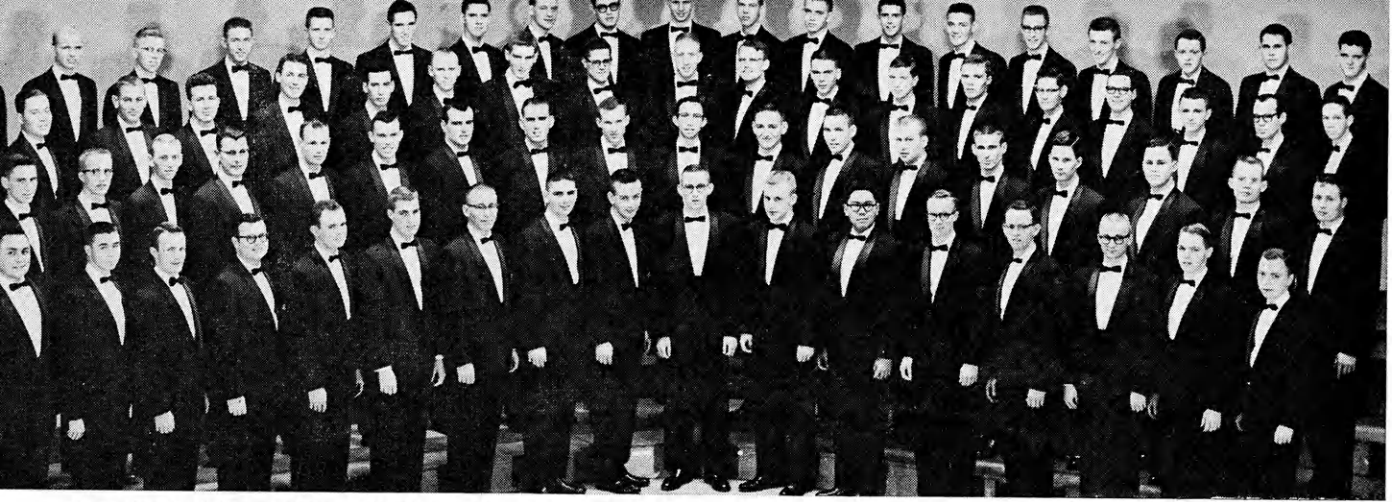


Wherever you see a 4-H Gate Sign denoting the home of a 4-H Club Member, there you will find a conscientious citizen—one who has dedicated Head, Heart, Hands, and Health to Club, Community, and Country. During 4-H Club Week, Feb. 28-Mar. 7, we salute these boys and girls, men and women, who are working together for the betterment of America.



To be a friend of 4-H is to share in one of the nation's foremost constructive causes. Derby is delighted to take part again in 1959 in the Kansas 4-H Automotive Care and Safety Project. We know of no better way to thank our many farm customers in this region for their purchases of Derby products . . . and to reaffirm our own pledge of sincere service and advanced quality to all who buy at the sign of the Derby Star.

DERBY REFINING COMPANY
Wichita, Kansas.

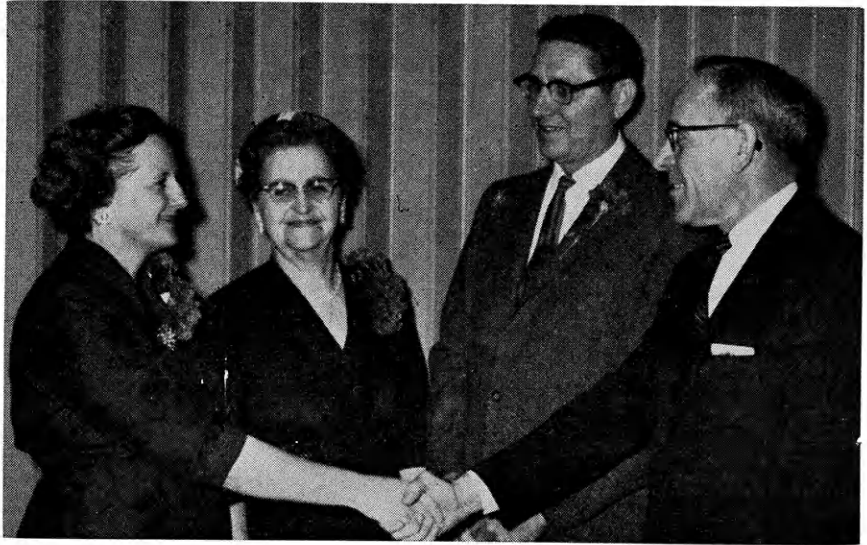


More than half the members of the Kansas State College Varsity Men's Glee Club (131 members) are former 4-H members. Shown here is the Advanced Section of the Club, the largest men's choral organization in

Kansas. Glee club director Morris Hayes will direct the Kansas 4-H Club Chorus during the Round-up.



John Ryman of the Slate Creek Strivers Club, Sumner county, uses the shop lamp he made in the electric project. It has two knuckle adjustments and extends upright to 144 inches for an emergency yard light.



Twenty-five year Saline county leaders Mrs. Lawrence Fauver and Mrs. R. V. Knowles get special recognition at the Saline county leaders recognition banquet from Salina Lions Club president O. L. Daniels and state club leader Roger E. Regnier. All leaders at the banquet received carnations—white ones to those with 1-10 years of service, pink ones for 10-20 years and scarlet carnations for those with more than 20 years service.

Smoky Valley 4-H'ers Diana Shields, Larry Landgren, Carole Underwood and Darold Oakleaf, McPherson county, dress in Swedish costumes to sing (with a Swedish accent, of course) "Catch a Pickled Herring." This talent number entry won a blue ribbon at last summer's McPherson county businessman's picnic.



Kansas 4-H'ers

SEND IN YOUR PICTURES

We want pictures taken by Kansas 4-H'ers. Prizes will be given for all pictures used in the Journal.

The picture need not be on 4-H Club work, but pictures with subjects related to 4-H Clubs are preferred. Action pictures are desired.

All pictures should be glossy prints at least five by seven inches in size unless accompanied by the negative.

Photographs should be accompanied by a short statement explaining the picture and including the names of persons shown.

Entrants should designate their choice of the following prizes. A year's subscription to the National 4-H Club News, one roll of color film—sizes 620, 120, 616, 116, 127 or 35 mm only, or a 4-H Club photograph album.

4-H members, parents, leaders, county agents or friends of 4-H may send in pictures.

Returning IFYE'S Are Good Programs; Three Spring 1959 IFYE'S Are Named

Need a club program?

You can hear of people and customs in other lands by inviting a Kansas IFYE delegate who has returned from overseas to tell of his experience.

1958 IFYE's who have returned, the country visited and where they may now be contacted are as follows — Clifford Gruver (Iran), 925 Bluemont, Manhattan; James Gooch (Italy), 1015 North Sunset, Manhattan; Dean Ebel (Greece), 1221 Thurston, Manhattan; Ann Eklund (Ireland), Atwood; Billy Clark (Scotland), Barnard.

Three 1959 delegates have been announced. The group to leave in April includes Gelane Moritz, Manhattan to The Philippines; Arnita Otte, Great Bend to England and Wales; Kenneth Peirce, Hutchinson to Norway.



Kansas City "Friends of 4-H" Honored

Honored during the American Royal 4-H Conference by visiting 4-H members were Mr. and Mrs. J. S. Atha of the J. A. Folger Company, boosters of the Kansas 4-H health activity for 30 years. Mr. Atha received a plaque for outstanding service to 4-H, Mrs. Atha received a set of earrings and a corsage. Pictured here are Don Atha of the Company, J. S. Atha, Kathleen Sughrue of the Up and Atom Club, Finney county, and Mrs. J. S. Atha.

HOMework MUST'VE BEEN AWFUL WITHOUT THIS

fresh, clean taste!



Nothing does it like Seven-Up!

Ideas That Work

Reporter's Notice: The Kansas 4-H Journal would like to print interesting stories of your local club events, activities, members and leaders. Local club meeting stories, if submitted, should contain something unusual or of interest to people outside your county.

Outstanding projects, services or events of your club, or stories of individuals within your club that would give ideas to other 4-H'ers would make excellent stories.

Prizes will be awarded all blue award stories each month. Please state your choice (1) a year's subscription to the National 4-H Club News or (2) a hard cover loose leaf 4-H notebook.

Catering Raises Money

Junior leaders of the Thrifty Thrivers Club, Labette county, prepared and served food for meetings of the 40 member Oswego Rotary Club as a money raising project for six months.

The mothers helped prepare the food, donating a part of it. One of the junior leaders baked yeast rolls and biscuits for the dinners.

Preparing food, serving the food and even the dish washing is fun if done with friends. (Of course, the extra money in the treasury helps too.)

Eileen Johnson, Rep.

Girls Style for Community

Girls of the Quincy Go-Getters Club, Greenwood county, presented a style revue for the community. They modeled articles they had made during the year.

Some of the men present then gave their opinion of some of the latest styles—not necessarily those modeled by the 4-H girls.

Ruth Ann Brown, Rep.

Make Wooden Sandals for Comfort

Marvin Peter's demonstration on "How to Make Wooden Sandals" at a meeting

of the Plum Creek Club, Cheyenne county, was both clever and practical.

To make the sandals he said to cut a piece of pine wood the size of your shoe. Paste on an inner sole of cloth and attach ties.

Fasten the ties together and you have a pair of cool, comfortable summer sandals.

Ruth Zwegardt, Reporter

White Elephant Sale Raises Money

Each member brought something from home to sell at the white elephant sale of the Grove Club, Shawnee county.

The community leaders acted as auctioneers.

The members made posters to announce the event and publicize it in Silver Lake.

A raffle and cake walk added to the receipts which totaled \$150.

Bob Crawshaw, Repoter

It's Rat Control Time

It's rat control time for Pawnee county. Members of the Pawnee Peppers club visited civic clubs in Larned, told them of the rat control program and sold rat bait to civic club members.

County agricultural agent Cliff Manry showed a film "Norway Rat Habits and Characteristics" at meetings of several clubs including the Zook Zippers.

Visit to Denver

It was quite a week-end for 4-H'ers from Lane, Rush, Ness counties in Denver!

One of the main highlights of the trip was the Mint. Club members saw some of the gold that forms the second largest deposit in the U. S. They were told that Denver produces 78% of the coins in the U. S.

Other highlights was a hockey game, a trip to the Stock Show, and a hike to the Red Rock Theatre.

Marilyn Schadel, Lane County

Learn of Engine Workings

Tractor care project members of the Rozel Hustlers, Pawnee county, studied the working of a 4-cycle engine at their last meeting. They paid particular attention to position of valves and travel of stroke. The class was given a taper-roller bearing and required to pack bearings thoroughly from a hand full of bearing grease. The method of filling a grease gun was another point of interest.

Raylene Scott, Rep.

Ideas in Brief

Diane Bargrover talked about the oboe, Rundle Brown played it for the music appreciation number for the DIY Jrs. Club, Ford county . . . Music appreciation number for the Grantville Club, Jefferson county, concerned Ricky Nelson . . . The Berryton Club, Shawnee county, has invited the Wakarusa and Riverside Clubs to a skating party . . . Are any of you "Hobos" interested in

Letters

(Continued from Page 2)

esting project. So many times its hard for a member to find a project that takes a small amount of space, and yet they'd just love to have an animal project. Rabbits are clean, quiet little animals and easy to care for.

A girl taking the rabbit project can work it into her cooking project as well. A boy taking rabbits can work it into his woodworking project easily by building hutches, feeders and nest boxes. This project fits into any family food budget by providing an almost continuous supply of rabbit meat to be used in such items as a "Rabbit Salad Sandwich Salad."

I made my project even more interesting by crossbreeding until now I almost have a pure strain of blue eyed white rabbits. In some litters I still get one or two pink eyes, but I hope to eliminate them soon. This way I worked my rabbit project into my biology class at school.

Joanne Marie Wilson
Butler county.



Kent Buster and Reba Manry talk about the county-wide 4-H rat control program at a meeting of the Larned Kiwanis club. Kiwanians were given a chance to buy rat poison from the 4-H'ers after the talks. The 4-H'ers are from the Pawnee Peppers 4-H Club.

The various 4-H Clubs were assigned various areas of the county in which to contact farmers and sell rat bait.

Frieda Fergus, Zook Zippers
Rosemary Fleming, Pawnee Peppers

dinner? Cindy Coulson of the Hilary Club, Sedgwick county, gave a demonstration on "Making a Hobo Dinner" at their last meeting . . . Members of the Home City Hustlers, Marshall county,

have given an eggbeater to the Home City school for the school lunch program . . . Cottonwood Club, **Reno** county, plans a hayrack ride while members of the Haven Club have invited members of the Obee club for a skating party . . . Members of the "4-Aces," **Reno** county junior leaders club, are in complete charge of the **Reno** county leaders banquet . . . Traffic safety and driver education are to be emphasized in the safety program of the Langdon Club, **Reno** county . . . Collecting old eye glasses for the needy is a health project of the Busy Bee Club, **Stevens** county . . . Jackie McGonigle of the Mitchell Club, **Reno** county, gave a demonstration on making a heat lamp for sheep at the club's meeting . . . Salem Club, **Reno** county, have contributed to the Rock Springs Ranch building fund . . . As a service project the Busy Bee Club, **Stevens** county, is sending their old Christmas cards to the crippled childrens home at Parsons . . . Roasting a ham was the demon-

stration given by Jan Oberg at a meeting of the Partridge Club, **Reno** county . . . At the district 4-H Day, **Bourbon** county's Northwest Scott 4-H Club won blue ribbons on their play and square dance . . . A gavel inscribed with the club's name was presented to out-going leaders of the Huntsville Club, **Reno** county, Mr. and Mrs. Forrest Roach . . . Junior leaders Kathryn Rakes and Nancy Barrier are helping at project meetings of of the Thrifty Thrivers Club, **Labette** county . . . Besides project talks, demonstrations and promotional talks, the older group of the Lawn Ridge Club, **Cheyenne** county, plans to give a play, the younger group a folk dance . . . The Prosperity Club, **Reno** county, has voted in four new members . . . Four 4-H'ers had top entries in the poster and essay contest on soil conservation sponsored by the **Cheyenne** county soil conservation district . . . **Rawlins** county 4-H'ers enrolled in junior leadership have organized a junior leader's club.



I Count On Films To Fill Out My Program

This makes the job of Program Chairman easy. I sent for the catalog of films available from the telephone company. There are scenic films, safety films, and many others.

If you are interested in a program for your school, club or church, please fill out and mail the attached coupon. A FREE BOOKLET showing films available and how to obtain them will be mailed to you promptly.

SOUTHWESTERN BELL TELEPHONE CO.

Area Information Manager
Southwestern Bell Telephone Co.
823 Quincy
Topeka, Kansas

Please send me a free copy
of your 1959 PROGRAMS
catalog.

Name

Address

City

Kansas 4-H Journal Sponsors

Welcome to These New Sponsors

Pratt

The Farmers Grain and Mercantile Company, Cullison

Rice

Burke Grain Co., Little River

Central Kansas Elevator, Lyons
Farmers Co-op Union, Sterling
Farmers State Bank, Sterling
Lyons State Bank, Lyons
Moll's Market, Little River
Pepsi-Cola Bottling Co., Lyons

These Sponsors Have Renewed Their County Support of the Kansas 4-H Journal

Cherokee

American National Bank, Baxter Springs
Baxter State Bank, Baxter Springs
Citizens Bank of Weir, Weir City
The Columbus State Bank, Columbus
The First National Bank of Columbus, Columbus

Comanche

The Peoples State Bank, Coldwater

Cowley

The First National Bank, Winfield
The Home National Bank of Arkansas City, Arkansas City

Decatur

Decatur Co-op Association, Oberlin

Grant

Grant County State Bank, Ulysses

Hamilton

First National Bank, Syracuse
The Valley State Bank, Syracuse

Harper

Anthony Farmers Co-op Elevator, Anthony
Danville Co-op Association, Danville
Farmers Co-op Business Association, Corwin
Shook Farmers Co-op Grain and Mercantile Union, Shook
State Line Grain Company, Manchester, Okla.

Hodgeman

Farmers State Bank, Jetmore
Hanston State Bank, Hanston

Labette

American State Bank, Oswego
Chetopa State Bank, Chetopa
First National Bank, Edna
First National Bank, Oswego
First National Bank, Parsons
Labette County State Bank, Altamont
Parsons Commercial Bank, Parsons
State Bank of Parsons, Parsons

Marion

Tip Top Dairies, Hillsboro

Mitchell

Farmers and Merchants State Bank, Cawker City
Farmers State Bank, Asherville
Farmers State Bank, Hunter
First National Bank, Beloit
Simpson State Bank, Simpson
Tipton State Bank, Tipton
The Guaranty State Bank, Beloit
Traders State Bank, Glen Elder

Norton

Fredde Equipment Co., Norton

Pawnee

First State Bank, Larned

Pratt

Cairo Co-op Equity Exchange, Cairo
Iuka Co-op Exchange, Iuka
Pratt Equity Exchange, Pratt
Preston Co-op Grain and Mercantile Co., Preston
Sawyer Co-op Equity Exchange, Sawyer

Russell

Farmers State Bank, Lucas
Russell State Bank, Russell

Sheridan

Farmers State Bank, Selden
First National Bank, Hoxie
Hoxie State Bank, Hoxie
Mickey's Hardware, Hoxie

Wichita

First State Bank, Leoti

Woodson

J. E. Sowder Seed Co., Toronto
State Exchange Bank, Yates Center
Woodson County Co-op Association, Yates Center



During their tour of KG&E's Murray Gill Plant, Mr. Brown took the group high up on the giant steam boilers.



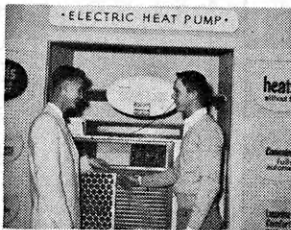
Mr. Mabrey (L. center) and Mr. Berry (R. center) with six of the Blue Award winners: (Left to right) Gary VanSickle, Bourbon; Larry Laird, Decatur; Wesley Moore, Cowley; David Jordan, Labette; Kenneth Schuster, Jewell; Arden Vernon, Lyon.

1958 KANSAS BLUE AWARD WINNERS IN 4-H ELECTRIC PROJECT HONORED BY KANSAS POWER SUPPLIERS

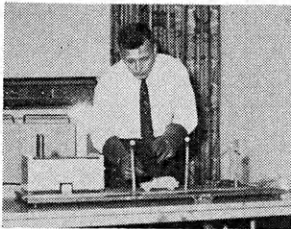
Mr. Hall giving Wesley Moore a pointer about power plant operation.



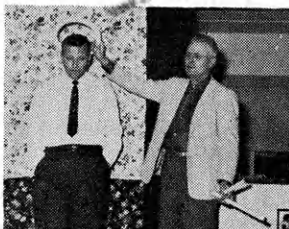
Larry Laird and Arden Vernon examine a modern electric heat pump on the KG&E display floor.



Mr. Herink demonstrated the safety of staying in a car while a fallen wire touches it, and the danger of stepping from the car onto the ground.



Mr. Mabrey is not trying to make an angel of Mr. Herink but is demonstrating the effect of different colors of fluorescent lighting upon drapery materials and other room colors.



A full day of interesting and enlightening activities at Kansas Gas and Electric Company in Wichita faced the Award Winners on Saturday, January 17th. The day's program was climaxed by the presentation of 4-H Blue Award certificates for outstanding work in Electric Project. Winners also received a handy pistol-grip soldering iron and kit as a special recognition gift from the Power Suppliers of Kansas.

A tour of KG&E's Murray Gill Plant, one of the largest and most modern generating plants in the Midwest, highlighted the morning's activities. A. W. Hall, Plant Superintendent, and Jim Brown, Technician, briefed the group on the operation and functions of a modern power plant.

After a noon luncheon, they visited the KG&E display floor where the latest electric heating methods and modern electric appliances are displayed for the public.

In the afternoon, just before the awards program, the group enjoyed two outstanding electrical demonstrations. Arleigh Herink, Assistant Manager of Flint Hills REA, demonstrated electrical safety methods, and O. E. Mabrey, Manager of Flint Hills REA, gave a lighting demonstration.

Charles Hoyt, Assistant State 4-H Club Leader, presented the Blue Award Certificates and Russell T. Berry, KG&E Sales Training Director, presented the Power Suppliers' gifts to cap a memorable day for ten Kansas 4-H'ers.

WATCH THIS
PAGE FOR IDEAS
ON FARM AND
HOME ELECTRIC
PROJECTS

Electric Light and Power Companies in Kansas

The Kansas Power and Light Company

Central Kansas Power Company

Kansas City Power & Light Company

Kansas Gas and Electric Company

Western Light & Telephone Company

Southwest Kansas Power Company