

1  
23/4

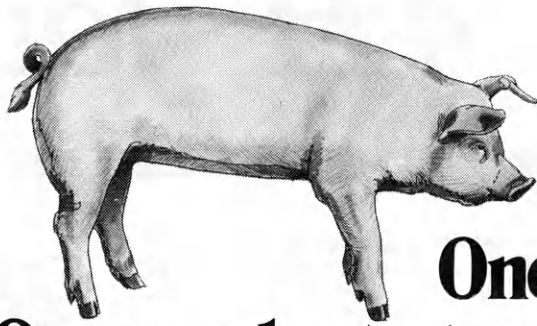
# Kansas 4-H Journal

Illustration by David Harmes

APR 1977  
RECEIVED  
APR 1977  
LIBRARY  
KANSAS STATE UNIVERSITY

★ Rock Springs or Bust ★





# One product order. One product storage. One product feeding. You get it all with CO-OP Hog Con-40.

CO-OP Hog Con-40 isn't just another one-stage feed concentrate to choose from. A rapidly growing number of hogmen with grinder-mixers are making CO-OP Hog Con-40 the *only choice*. They start those 40-pounders on CO-OP Hog Con-40, and keep them right on it until they're market ready.

They've discovered this carefully researched formula provides the continuous, and efficient balanced nutrition needed at each and every grow-

ing/finishing stage. And, they've discovered CO-OP Hog Con-40 eliminates the expense and inconvenience of multiple ration switch-overs, and it's also great for sow programs, too.

They've discovered a substantial savings in the *one product, one order* volume discounts.

They've discovered the increased efficiency and economies in *one product* storage, and, of course, the accumulative advantages to *one product* grinding-mixing, and feeding.

The "one product" advantages of CO-OP Hog Con-40 in your growing/finishing operation is only a part of a complete CO-OP "Pig-to-Plate" Swine Feeding and Marketing Program. See your Co-op "All Pro" Feed Specialist, and, get all the money-saving details about CO-OP Hog Con-40.

And, ask about the CO-OP Swine Medicon program. A variety of optional easy-to-mix antibiotics can be provided with easy-to-follow mixing directions. Proved health additives such as Lincomix\* for effective treatment of scours. Or, ASP-250\* for protection against rhinitis. For growth promotion and better feed efficiency consider adding either Tylan\* or Aureomycin\*. There's a better choice at CO-OP.



**FARMLAND INDUSTRIES, INC.**  
KANSAS CITY, MISSOURI 64116

\*Lincomix is a registered trademark of TUCO ... Division of The Upjohn Company.  
\*ASP-250 is a registered product of American Cyanamid Co.  
\*Tylan is a registered product of Elanco.  
\*Aureomycin is a registered product of American Cyanamid Co. © Farmland Industries, Inc. 1976



**More farm choices from the choice of more farmers.**

# ALLIS CHALMERS Dealers Salute— 4-H HORTICULTURE WINNERS



## STATE WINNER

Connie Pelton, Goddard, the 1976 state winner in the 4-H horticulture project, helped plan the landscaping and also assisted with planting around the Pelton's new home after the family moved to Sedgwick County from Riley County.

During the time Connie was a Riley County 4-H'er, she was a member of the horticulture team which placed first in the national contest. In 1976 she helped set up, conduct, and supervise the 1976 Kansas state horticulture judging contest at the state fair.

Connie has entered flower arrangements in shows, gave a purple ribbon winning demonstration at the Kansas State Fair in 1976, and has been project leader in her club.

A 1976 Key Award winner, Connie was on the Roundup Continuation Committee this past year, and is now president of Goddard 4-H Club.

With interests extending to such projects as beef, horses, and pigs, Connie is the 1977 Kansas Junior Livestock Association Queen. She is also reporter of the Kansas Junior Hereford Association.



## County Winners

### ALLEN

Joan Ross

### ANDERSON

Julie Fooshee

### ATCHISON

Kate Hawk

### BARBER

Karen Bell

### BARTON

Tim Demel

### BUTLER

Scott Renfro

### CHEROKEE

Kathleen Fitzgerald

### CHEYENNE

Tammy Douthit

### CLARK

Cherie Esplund

### CLAY

James Chestnut

### CLOUD

Beverly Fuller

### COMANCHE

Carolyn Cobb

### COWLEY

Teresa Wilcoxon

### CRAWFORD

Kay VonSoosten

### DECATUR

Alan Shuler

### DICKINSON

Glenda Underhill

### DONIPHAN

Dean Smith

### DOUGLAS

Yvonne DeKeyser

### ELK

Kathy McAlister

### ELLSWORTH

Darin Borgstadter

### FINNEY

Kevin Staats

### FRANKLIN

Barry Gaeddert

### GEARY

Belinda Decker

### GOVE

Joyce Lubbers

### GRANT

Michelle Randles

### GRAY

Jo Lena Berger

### HARVEY

Elizabeth Wulf

### HODGEMAN

Sue Setzkorn

### JACKSON

Kevin Alford

### JEFFERSON

Rex Rees

### JOHNSON

Debbie Anderson

### KINGMAN

Dennis Thieme

### LABETTE

Curtis Willems

### LEAVENWORTH

Tina Edmonds

### LINN

Jo Ann Long

### MCPHERSON

Cheri Fairchild

### MARION

Natalie Hiebert

### MARSHALL

Glenda Luedders

### MEADE

Barbara Winfrey

### MITCHELL

Rebecca Brobst

### MONTGOMERY

Carol Blaes

### MORRIS

Jeff Viar

### MORTON

Larissa Kelly

### NEOSHO

Carolyn Hines

### NESS

Ricky Van Vleet

### OSAGE

Judy Brown

### OSBORNE

Carlin Murphy

### OTTAWA

Brenton Kindall

### PAWNEE

Karen Fischer

### POTTAWATOMIE

Mark Goehring

### PRATT

Connie Clark

### RAWLINS

Carol Dixson

### REPUBLIC

Kim Blazek

### RILEY

Susan Schoneweis

### ROOKS

Christel Thyfault

### RUSH

Latha Georg

### SCOTT

Brad Baker

### SEDGWICK

Connie Pelton

### SHAWNEE

Becky Lewis

### SHERIDAN

Joan Schieferecke

### SHERMAN

Kristi Nelson

### STAFFORD

Alan Meyer

### STANTON

Matt Hume

### STEVENS

Billy Leonard

### SUMNER

Earl Troutman

### THOMAS

Kendra Crampton

### TREGO

Lisa Hillman

### WALLACE

Mary Schemm

### WICHITA

Gerald Baker

### WOODSON

Trisha Reed

## These ALLIS CHALMERS Farm Machinery Dealers are proud to Salute winners in the 4-H Horticulture project.

ALTA VISTA  
Buchman Farm Supply, Inc.

AUGUSTA  
J & B Implement Inc.

BUSHTON  
Bushton Garage

DIGHTON  
Bretz Inc.

DOWNS  
Voss Motor Co.

ELKHART  
Cameron Implement Co.

EVEREST  
Hutchinson Implement Co., Inc.

FREDONIA  
Cress Implement Inc.

HILL CITY  
Pratt Implement Company

HOXIE  
Tebo Implement Co.

HUGOTON  
G & S Implement Co.

KALVESTA  
Kalvesta Implement Co.

LAWRENCE  
McConnell Machinery Co.

LEAVENWORTH  
Farmers Supply Inc.

LEOTI  
Hayes Sales & Service

MARYSVILLE  
Marysville Machinery Co., Inc.

MINNEAPOLIS  
Latt Implement, Inc.

NEWTON  
J & H Farm Equipment Co.

SABETHA  
Flentie's Inc.

SUBLETTE  
Farm Service & Supply Inc.

TOPEKA  
Henry Sales & Service, Inc.

WAMEGO  
Meinhardt Farm Equipment

WATERVILLE  
Waterville Motor Co., Inc.

WHITEWATER  
Ravenscraft Oil and Implement

WINFIELD  
Sweetland-Hinson Equipment

# Four to D.C. to 1977 National 4-H Conference

Four students at Kansas State University are preparing to go to Washington, D. C., for the 47th National 4-H Conference April 23-29. They are Tim Bearnes, Ottawa County; Susan Lang, Dickinson County; Theresa Schlagel, Johnson County; and Randy Tosh, Atchison County.

The conference theme, "Involvement Brings Commitment," could be an expression of philosophy for these young people who have been involved with 4-H work for 10 years and even longer.

All four are Key Award winners. All have carried responsibility in local clubs, have assisted younger members, and have extended their areas of involvement beyond their local clubs.

During his 11 years as a member of Culver Livewires 4-H Club in Ottawa County, Tim Bearnes' favorite projects have been beef, horticulture, and crops. He was president of the Ottawa County junior leaders' organization, and twice served as president of the Ottawa County 4-H Council. In its first year, he was a member of the South Central Youth Advisory Committee.

Friendships he's gained and the pleasure of working with younger members are rewards of 4-H work, Tim says.

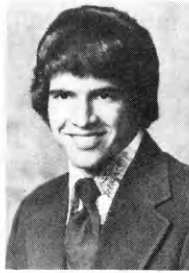
He looks forward to the conference for the opportunities it will bring to work with people, develop friendships, and learn about the 4-H program.

Tim, a freshman in agricultural engineering at Kansas State University, is the son of Mr. and Mrs. George Bearnes of Culver. At Bennington High School, he was active in basketball, football, track, and speech.

Susan Lang, a 10-year 4-H member from Dickinson County, was president of the State Youth Advisory committee in its first year. She was also a member of the advisory board in her area.

Her favorite project is public speaking; she values the training 4-H has given her in learning to prepare and deliver talks and also in learning correct parliamentary procedure. She has helped others with public speaking, also, and is now involved with debate at KSU.

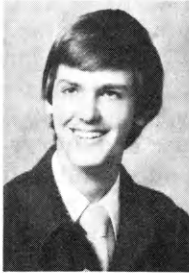
Other projects which Susan has



**Tim Bearnes**  
Culver



**Susan Lang**  
Abilene



**Randy Tosh**  
Valley Falls



**Theresa Schlagel**  
Olathe

especially enjoyed as a 4-H member are junior leadership, clothing, foods, and baby beef. She has been a junior leader in foods and knitting.

Through an exchange, Susan became acquainted with a 4-H member from Pennsylvania and she looks forward to meeting other 4-H members from other parts of the country at the national conference. She is eager to see the Capitol.

A freshman in engineering technology, Susan is preparing for a possible career in the business and sales side of such machines as computers.

She is the daughter of Mr. and Mrs. Waldo Lang, Abilene.

The registered Holsteins which made up her 4-H dairy project are now paying her college expenses, according to Theresa Schlagel, a 10-year member of Sharon 4-H Club, Johnson County. Other important projects were clothing, leadership, and food and nutrition; she especially enjoyed the bread project.

Theresa was president of the junior leaders' club and was secretary of the Johnson County 4-H Council. She has taken part in a number of phases at 4-H Days.

Her 4-H experiences have helped her learn to interact with people and to get ideas across, Theresa thinks. As an assistant foods leader, she's enjoyed helping younger members.

Because the 4-H program varies

in different states and areas of the country, Theresa looks forward to learning what others are doing, and also to sharing her own ideas with others.

A county home economist's interest in a special kind of flour which Theresa was able to use in baking sparked her interest in milling. Enrolled as a freshman in milling, Theresa hopes to work in this field, perhaps in public relations.

Theresa's parents are Mr. and Mrs. Harold Schlagel, Olathe.

Randy Tosh from Atchison County is a 10-year member of Prairie View 4-H Club and is also a member of Kansas State University Collegiate 4-H Club. He serves the latter as parliamentarian.

In 1976 Randy was the state winner in the 4-H soybean project. Other major projects have been safety, beef, and field crops.

He is a member of the State Youth Advisory, was president of the junior leaders' club in Atchison County, and was reporter for the Atchison County 4-H Council.

During his 10 years as a 4-H member, he's enjoyed the association with other 4-H'ers, helping younger members, and learning to do things with his hands. Randy anticipates meeting 4-H members from all parts of the country at the national conference, and looks forward to the opportunity to discuss and make suggestions for 4-H programs.

A freshman in horticulture, Randy hopes to own and operate a greenhouse. His parents are Mr. and Mrs. Donald Tosh, Valley Falls.

Dr. Glenn Busset, assistant extension director, 4-H and Youth, will accompany the group.

(Related story on page 7)

## CASH FOR NEWSPAPERS

**\$25 per ton**

Large Quantities picked up  
Approximately 10 ton or more

### Thermal Shield, Inc.

1001 North Kauffman Road  
Hesston, Kansas 67062  
Call 316/327-2131

# Four to D.C. to 1977 National 4-H Conference

Four students at Kansas State University are preparing to go to Washington, D. C., for the 47th National 4-H Conference April 23-29. They are Tim Bearnes, Ottawa County; Susan Lang, Dickinson County; Theresa Schlagel, Johnson County; and Randy Tosh, Atchison County.

The conference theme, "Involvement Brings Commitment," could be an expression of philosophy for these young people who have been involved with 4-H work for 10 years and even longer.

All four are Key Award winners. All have carried responsibility in local clubs, have assisted younger members, and have extended their areas of involvement beyond their local clubs.

During his 11 years as a member of Culver Livewires 4-H Club in Ottawa County, Tim Bearnes' favorite projects have been beef, horticulture, and crops. He was president of the Ottawa County junior leaders' organization, and twice served as president of the Ottawa County 4-H Council. In its first year, he was a member of the South Central Youth Advisory Committee.

Friendships he's gained and the pleasure of working with younger members are rewards of 4-H work, Tim says.

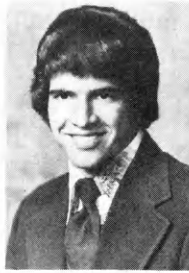
He looks forward to the conference for the opportunities it will bring to work with people, develop friendships, and learn about the 4-H program.

Tim, a freshman in agricultural engineering at Kansas State University, is the son of Mr. and Mrs. George Bearnes of Culver. At Bennington High School, he was active in basketball, football, track, and speech.

Susan Lang, a 10-year 4-H member from Dickinson County, was president of the State Youth Advisory committee in its first year. She was also a member of the advisory board in her area.

Her favorite project is public speaking; she values the training 4-H has given her in learning to prepare and deliver talks and also in learning correct parliamentary procedure. She has helped others with public speaking, also, and is now involved with debate at KSU.

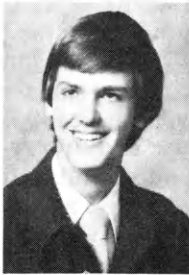
Other projects which Susan has



**Tim Bearnes**  
Culver



**Susan Lang**  
Abilene



**Randy Tosh**  
Valley Falls



**Theresa Schlagel**  
Olathe

especially enjoyed as a 4-H member are junior leadership, clothing, foods, and baby beef. She has been a junior leader in foods and knitting.

Through an exchange, Susan became acquainted with a 4-H member from Pennsylvania and she looks forward to meeting other 4-H members from other parts of the country at the national conference. She is eager to see the Capitol.

A freshman in engineering technology, Susan is preparing for a possible career in the business and sales side of such machines as computers.

She is the daughter of Mr. and Mrs. Waldo Lang, Abilene.

The registered Holsteins which made up her 4-H dairy project are now paying her college expenses, according to Theresa Schlagel, a 10-year member of Sharon 4-H Club, Johnson County. Other important projects were clothing, leadership, and food and nutrition; she especially enjoyed the bread project.

Theresa was president of the junior leaders' club and was secretary of the Johnson County 4-H Council. She has taken part in a number of phases at 4-H Days.

Her 4-H experiences have helped her learn to interact with people and to get ideas across, Theresa thinks. As an assistant foods leader, she's enjoyed helping younger members.

Because the 4-H program varies

in different states and areas of the country, Theresa looks forward to learning what others are doing, and also to sharing her own ideas with others.

A county home economist's interest in a special kind of flour which Theresa was able to use in baking sparked her interest in milling. Enrolled as a freshman in milling, Theresa hopes to work in this field, perhaps in public relations.

Theresa's parents are Mr. and Mrs. Harold Schlagel, Olathe.

Randy Tosh from Atchison County is a 10-year member of Prairie View 4-H Club and is also a member of Kansas State University Collegiate 4-H Club. He serves the latter as parliamentarian.

In 1976 Randy was the state winner in the 4-H soybean project. Other major projects have been safety, beef, and field crops.

He is a member of the State Youth Advisory, was president of the junior leaders' club in Atchison County, and was reporter for the Atchison County 4-H Council.

During his 10 years as a 4-H member, he's enjoyed the association with other 4-H'ers, helping younger members, and learning to do things with his hands. Randy anticipates meeting 4-H members from all parts of the country at the national conference, and looks forward to the opportunity to discuss and make suggestions for 4-H programs.

A freshman in horticulture, Randy hopes to own and operate a greenhouse. His parents are Mr. and Mrs. Donald Tosh, Valley Falls.

Dr. Glenn Busset, assistant extension director, 4-H and Youth, will accompany the group.

(Related story on page 7)

## CASH FOR NEWSPAPERS

**\$25 per ton**

Large Quantities picked up  
Approximately 10 ton or more

### Thermal Shield, Inc.

1001 North Kauffman Road

Hesston, Kansas 67062

Call 316/327-2131

## A 25th year goal—

# Twenty-five hundred donors

Twenty-five years ago, Kansas 4-H Foundation came into being as a channel through which private funds could be used to assist the 4-H program in Kansas.

"In honor of this 25th year, we hope 2,500 persons, one hundred persons for each one of the 25 years, will become donors to Kansas 4-H Foundation during 1977," Dr. Merle Eyestone, executive director of Kansas 4-H Foundation, commented. There were 2,108 contributors to the Foundation in 1976. "These private contributions will assist the 4-H program in ways in which tax money is not used.

"For example, the Foundation provides land and facilities for camping, aids leadership training, assists with international programs, administers awards and scholarships, sponsors Clovia Scholarship House, and publishes Kansas 4-H Journal," Dr. Eyestone said.

To join the Twenty-five Hundred Club, send your check to Kansas

4-H Foundation, Umberger Hall, Kansas State University, Manhattan, Kansas 66506.

## Housemother needed

Clovia 4-H House needs a housemother or houseparents for fall, 1977.

Clovia provides cooperative living for 62 women students at Kansas State University in Manhattan.

Duties of the position are to plan nutritious and attractive meals within the budget, to purchase food, to participate in house and university activities, to understand and maintain cooperative living, and to be available as adviser-counselor for the residents.

The housemother receives a salary as well as room and board.

If interested, write for further information to Clovia 4-H House, 1200 Pioneer Lane, Manhattan, KS 66502.

## First OSC Award to helpful couple

Members of Town and Country 4-H Club of Junction City, Geary County, chose to honor two of the older people in their community with an Outstanding Senior Citizens Award. The award, given for the first time this year, was presented during the annual model meeting.

Mr. and Mrs. Dan Taylor, Junction City, give the 4-H members all the help they can, especially with gardening and horticulture projects. The 4-H'ers feel welcome to go to their home for help and discussion. The Taylors take an interest in the young people's fair exhibits, purchase their produce, and assist with fund raising activities.

Reporter Marvin Richburg writes, "The Town and Country 4-H Club wishes to express their heartfelt thank you to this outstanding couple."

Members of Town and Country 4-H Club enjoy older people, according to Mrs. Oliver Schmutz. They have made things for the nursing homes and gone caroling to older persons' homes, she said.

Community leaders are Oliver Schmutz and Mrs. Wayne Breese.

Spring is a time for growing things; your money can be growing, too, if you deposit it in your nearest

## Kansas Savings and Loan

### Arkansas City

First Federal Savings and Loan Assn.

### Clay Center

Northwestern Federal Savings and Loan Assn.

### El Dorado

Mid-Continent Federal Savings and Loan Assn.

### Eureka

Eureka Federal Savings & Loan Assn.

### Fort Scott

Liberty Savings and Loan Assn.

### Garnett

The Garnett Savings and Loan Assn.

### Hutchinson

Valley Federal Savings & Loan Assn.

### Leavenworth

Citizens' Mutual Savings and Loan Assn.  
Leavenworth Mutual Savings and Loan Assn.

### Liberal

Frontier Federal Savings and Loan Assn.

### Lyons

Lyons Savings and Loan Assn.

### Manhattan

Manhattan Federal Savings and Loan Assn.

### McPherson

Pioneer Savings and Loan Assn.

### Medicine Lodge

The Barber County Savings and Loan Assn.

### Ottawa

Franklin Savings Assn.

### Parsons

Mid-America Federal Savings and Loan Assn.

### Plainville and Stockton

Rooks County Savings Assn.



Mr. and Mrs. Dan Adams, Junction City

state-wide services,  
border-to-border

COLUMBUS • COUNCIL GROVE  
GOODLAND • JUNCTION CITY • KANSAS  
CITY (2) • LAWRENCE • LEAWOOD  
MISSION • OLATHE • OTTAWA  
OVERLAND PARK • SHAWNEE

ONE QUARTER BILLION DOLLARS STRONG  
**anchor**  
SAVINGS ASSOCIATION  
HOME OFFICE • KANSAS CITY, KANSAS

INSURED SAFE

## The 1976 conference—

# A week to remember

By Mary Jane Smith  
Onaga  
Pottawatomie County

The Master 4-H Club\* members from the sunflower state attending the 46th National 4-H Conference in Washington, D.C. were: Bill Beems, Topeka; Laura Lee Keller, St. Francis; Mary Jane Smith, Onaga; and Jim Swanson, Kansas City.

The 1976 national conference delegates, as in past years, were selected for their accomplishments in project work, leadership, service, and citizenship in their club, community, and county.

Extension and 4-H agents from the 105 Kansas counties submit to the state 4-H office record books of outstanding 4-H'ers whom they feel are worthy of the national conference trip. A state 4-H awards committee then selects the top 10 to be considered for the trip.

"These applicants are then interviewed by a state committee and the previous year's conference delegates; the final selection is based on their overall 4-H achievement," Janet Stoffer, Kansas State University junior and 1975 conference delegate, said.

The number of delegates attending from each of the states differs according to the state's financial sponsors for the trip. The average delegation consisted of four to six delegates. Kansas' four delegates

were sponsored by the Kansas Bankers Association.

The selection process varies among the states. Many states sent state officers or picked delegates by a random selection process.

"I like the fact that we were chosen by a state 4-H advisory committee and last year's delegates on the basis of an interview," Laura Lee Keller, sophomore at KSU, said.

---

**"... take every opportunity . . . ;  
Participation is the key."**

---

"This selection committee could tell by the person's presentation of himself whether he would contribute to the conference," she added.

State 4-H leader, Dr. Glenn Busset, believes that there are two main objectives to the National Conference.

"It allows the official Washington Extension Service to take a look at what 4-H is and to actually meet the top 4-H'ers of the states," Dr. Busset said. "It gives the 4-H members attending an opportunity to explain their goals and to reveal changes that they would like to see made," he added.

Dr. Busset said that there will soon be changes in the format of the conference by expanding it broader, and the delegates will not be chosen as rigidly as before. In coming years Kansas 4-H'ers may

be allowed to nominate themselves for the national trip.

Janet Stoffer offered advice to today's 4-H members. "I urge young 4-H'ers to take every opportunity they can; PARTICIPATION is the key. Judging events, speaking to groups of people about 4-H club work, giving demonstrations, exhibiting their work at fairs, and getting to know all types of people will help in later years."

"Don't limit yourself to one project," Laura Lee Keller said in advice to 4-H members. She added, "Always hold in your mind to follow a guideline; do well in your club, work on committees, run for an office, and take pride in project work. Then do well at the county fair, district judging events and later on to state and national."

As you grow older, steps toward achievement grow bigger and when you go on to more advanced competition, you find out there are just as many people who are as good or better than you, Laura Lee believes.

The 4-H motto is "To Make the Best Better" and as a 4-H'er you always have the goal of improving yourself and your work, Laura Lee said.

The National Conference was centered around the bicentennial theme, "4-H '76—Spirit of Tomorrow" and some objectives of the event were to identify activities being planned nationally for the bicentennial which could be utilized in local 4-H programs and to gain appreciation of our heritage as a

(Continued on page 10)



During the 1976 National 4-H Conference, Kansas' delegates had an opportunity to visit with Senator Robert Dole. Pictured are, from left, Jim Swanson, Laura Lee Keller, Senator Dole, Mary Jane Smith, and Bill Beems.

# 4-H camping—

## Something for everyone

By John Abell  
Extension 4-H Specialist in  
Outdoor Education

If I were a child of 7 and could peer into a crystal ball, what kind of 4-H camping experiences would I see in my future?

Perhaps Mom and Dad, my club or project leader, a county extension agent, teacher, or a friend would all be a part of that future. They would help me in some way to learn that camping is an important part of the years I spend in 4-H. They might even show me how much fun it can be. 4-H is learning by doing; so is camping. 4-H is education; so is camping. 4-H is a social experience; so is camping. Perhaps it is for all these reasons and many more that the Kansas 4-H Foundation and Cooperative Extension have teamed together in building a strong camping tradition in 4-H.

This experience begins right in my club when a committee is appointed to plan a camping and fishing trip to the lake. Everybody pitches in and comes up with sleeping bags, bedrolls, cooking gear, and lots of food, and we all head out for a weekend of fun and adventure. Maybe another time the club decides to collect fossils, catch insects, take pictures, or go on a bike

hike. On each occasion we do our own cooking and sleep overnight. It's great just to get away from home, be with friends, and do things together. Our leaders really help us and we get to know them better.

When we are 7 and 8 years old we sometimes get a chance to go to a day camp. This is sponsored by 4-H junior leaders from all over the county and by the extension office. At the day camp we go on nature scavenger hunts, make crafts, go swimming, cook hot dogs, and play games. I get to meet lots of new friends and have watermelon and cold pop.

Some of the kids in the club keep talking about Rock Springs Ranch. I learned that this is a 4-H camp near Junction City where kids in our county go with the extension agents and get to camp with other kids my age from all over the state. That sounds like lots of fun, so when I turned 9 Mom and Dad said it was all right for me to go for three days. Rock Springs was a lot bigger than I ever dreamed. We were assigned to a cabin group with nine other kids. A girl in high school was a counselor for our group. She was really nice and helped us learn the ropes.

There were lots of other kids at the Ranch. We all got a chance to swim in the pool, ride horses, pad-



## Lake Perrin 1977 Summer

Programs	Ages	Start
*Pioneer	8-10	June 7
**Discovery	10-13	June 6
***Threshold	13-18	June 13
Youth Expedition Series	14-19	June 20
Family Camp		June 27
4-H Community Clubs		

**\*Pioneer**  
The Pioneer experience is designed for the 8-10 year old outdoor living for the youngster who is experiencing camping tents and sleep on bunk beds. Most of the food is cooked for simple meals. Living groups are deliberately kept small. Counselors work with younger children. Most of the Pioneer staff are experienced campers. The Pioneer camper will enjoy fun-filled days of swimming, hiking, predator calling, and special events such as capture

**\*\*Discovery**  
Discovery is an introduction for Kansas youth (10-13) to the 4-H Center. The five action-packed days begin when the arrival of his counselor and nine other boys and girls on a compass bearing. Shelters are constructed, fires built, and food put in the proper directions and teamwork.  
Then the real fun begins. Twelve hours in an exceptional survival, and orienteering are being taught.  
At the end of five days, Discovery campers have experienced 12 inches in stature.

**\*\*\*Threshold**  
Threshold is an expanded (10 day) program for the 13-18 age group. It includes four days canoeing, camping, and hiking in the Lake of the group when they cross the narrow portions of the Lake. Perhaps the capstone of this adventure is the solo canoe trip. They are under close supervision by the staff during this period. They catch bullfrogs. They make bedding and shelter out of natural materials. Threshold campers gain a greater appreciation of themselves in the wild outdoors.

\*\*\*\*Cost includes all technical equipment and transportation.



# 4-H Center Pioneer Schedule

Dates		Cost
July 4-6	August 1-3	\$25.
July 7-9	August 4-6	
July 11-13	August 8-10	
July 14-16	August 11-13	
July 18-20		
July 21-23		
July 25-27		
July 28-30		
July 4-8	August 1-5	\$40.
July 11-15	August 8-12	
July 18-22		
July 25-29		
Course I—June 6-15		\$80.
Course II—June 20-29		
Course III—July 4-13		
Course IV—July 18-27		
Course V—August 1-10		
July 15-July 2		\$300.****
July 31		per session

Weekends August 12  
Equipment and staff \$1 per person per day

Weekends  
Equipment and staff \$5 per day

boy or girl. The three day program offers a simple introduction to camping from home for the first time. Pioneer campers live in large army tents with other youngsters although they are occasionally asked to help prepare for the camp. Leaders leading the Pioneer group are selected for their ability to relate to campers and have college degrees.

Activities include: camp crafts, dramatics, art, nature study, story telling, fishing, archery, flag, an Indian pow wow, and Paul Bunyan Day.

the wild outdoors. The setting is the primitive 480 acre Lake Perry. Each camper is handed a backpack and rations. He then heads off with the group that will bring him to his first primitive campsite in the wilderness. Each camper learns quickly the importance of following directions.

Each day is a short day when the skills of bow hunting, fishing, canoeing, and archery are used for fun and enjoyment, some hardships, and perhaps gained several lessons.

near old. Campers are challenged further by the expedition which involves a river area. The mobil-backpacking portion tests the resourcefulness of campers in homemade rafts. Campers are placed out alone in the wilderness without food or shelter. Self-reliant campers will forage for edible plants and fish, and will use their own materials.

During the 10 days, others, and the environment during the intense 10-day period in



to paddle a canoe, make crafts, and shoot at the rifle range. One night we had a carnival where everyone had to toss a cotton ball and a straw to see who could throw it the farthest. I almost won on my first throw!

After several summers at Rock Springs my county extension agent said I was too old for the camp. He mentioned that there were more camping opportunities in 4-H and suggested that I try the Lake Perry Outdoor Center. He informed me that this would be a lot different from Rock Springs because it would be more of a wilderness camp. I figured this might be a new challenge so I sent in my application.

We drove on a dirt road for quite awhile and finally arrived at a sign that said 4-H. It overlooked a beautiful open meadow with trees and the lake in the distance. Over to the left was a farm home and a large barn.

We carried our suitcases up to the barn where we were greeted by Sherrie and Dave. They introduced themselves, and told us that we had to sort our gear and put it in backpacks. I was glad they explained how to pack the gear as I had never used one before.

Little did I know when 10 of us left the barn that day and headed into the woods with our backpacks that this would be the last time we would see civilization for 10 days.

You wouldn't believe what happened to us after we left that barn; Dave and Sherrie really knew a lot about the out of doors and they began teaching us how to construct our shelters, make our beds, and cook our meals over an open fire.

As the week progressed we tried the stress course, learned how to read a map and compass, played an all day game called orienteering, learned to shoot a bow and arrow, caught bass and catfish on trout lines, went on a 30 mile canoe expedition, identified and ate lots of edible plants, and learned to survive by ourselves for a day and a night without help from anybody.

This experience taught me a lot about myself. It taught me to be more self-reliant. It gave me lots of confidence to try new things. I learned to get along with other kids as we went through all these experiences together. Sherrie and Dave helped us to become a close group especially when we ate in front of the campfire and talked at night. It was a hard experience to explain to anyone back home, but I really liked it and learned alot.

This year I'm going back for a backpacking, mountain climbing, river floating adventure in Colorado that 4-H sponsors called the Youth Exploration Series. This 4-H program has really got me hooked.

## Conference

(Continued from page 7)

basis for future 4-H programs.

Jim Swanson, sophomore at Kansas State University, said, "The highlight of the trip for me was the visit to the Department of State. We really got into some heated discussion." This discussion dealt with four seminar topics: Moral Values and Foreign Policy, Detente with the Soviet Union, the U.S. and Developing Nations, and Food in an Interdependent World.

This activity was very significant because the State Department chose 4-H to represent youth across

---

**"Be all you can be."**

---

the nation in giving their viewpoints on these national topics of concern.

Laura Lee said, "I was amazed at the fact that we had direct input with a state department official who was an expert on the Soviet Union."

The responses of the delegates were compiled in a special report and sent to Secretary of State, Henry Kissinger, for consideration.

The week-long conference held at the National 4-H Center gave the delegates the chance to meet over 275 4-H'ers from varying backgrounds from 47 different states, as well as Puerto Rico, the Virgin Islands, and Canada.

"I enjoyed communicating with the Puerto Ricans and having the opportunity to use the Spanish that I did know," said Jim. Baker University sophomore, Bill Beems, utilized his Spanish also by serving as a helpful source for the Puerto Rican delegates who knew very little English.

"What I enjoyed the most was just being in Washington, D.C.," Laura Lee said. Since it was her first visit to the capital city, she said, "I was especially impressed with the day on Capitol Hill; visiting the Capitol, meeting with our Congressmen and Senators, and touring the White House."

The Supreme Court and the Library of Congress also provided many interesting sights and exhibits for the delegates to explore.

The rough draft of the Declaration of Independence in the Library of Congress was a particular attraction with special meaning to the delegates after seeing "1776" at Burn Brae Dinner Theater.

## **NEEDED - SAFE, IMPROVED RURAL BRIDGES AND ROADS**



**I'll make a bet with you . . .**

**The bridge on your county road has a lower load limit than intended because the bridge hasn't been kept up.**

**In fact, your dad's fully loaded farm truck may be too heavy to cross it . . . legally, that is . . . forcing a trip of extra expensive miles to get to town.**

**More county bridges in our state are this way than not.**

**Your 4-H club can do something about it.**

- 1. Check out the bridge situation in your county.**
- 2. Ask to meet with your county Farm Bureau president and policy committee . . . ask them to help you build a case for county bridge repair.**
- 3. Then request a meeting with your county commissioners and present your case. Farm Bureau can help you get the job done.**

**. . . FARM BUREAU**

**- helping is our business**

After 11 years of attending various 4-H conferences and camps, Jim Swanson puts the national conference at the top of his 4-H career, "We were on our own, we set up our own schedules as well as following the conference schedule; it is a conference definitely oriented toward the older 4-H member."

Janet Stoffer said the reason why the trip is so meaningful is because

the 4-H'ers attending are the outstanding products of their states, and none are afraid or inhibited to meet and share themselves and what they know with others.

Jim, concerned with 4-H in the future, said, "We found that even though rumor has it that 4-H membership is declining, we have the largest membership of any club in the world. We have a problem with getting older members to remain in the program, but we have an excess of younger members which will be a great asset to the 4-H program."

Jim added, "I owe 4-H what it gave me. I want to serve as a community leader and help younger members just as I was helped."

As master 4-H members, Jim, Laura Lee, Mary Jane, and Bill would like to challenge you, 4-H'ers entering a new era of 4-H, Century III, to eliminate apathy and criticism and replace it with openness, sharing, and participation.

Work hard to achieve, don't let your involvement end with 4-H — broaden your horizon into the school and community area.

This challenge also encourages youth to help others recognize their importance and potential as individuals.

You ask, How?

The answer lies in each of us waking up and realizing that we all have

abilities. As the popular song goes, "Wake up everybody, no more sleeping in bed. No more backward thinking, time for thinking ahead."

With this thought in mind, they challenge you to do just that, accept the willingness to give and take, live and grow and to be all that you can be.

The challenge is yours, the outcome is up to you . . .

\*As present or former delegates to National 4-H Conference, 205 Kansans qualify to be members of Master 4-H Club. In the past, the group met annually during state Roundup; now it meets every three years.

The first conference took place in 1927 in Washington, D.C.; then and for several years it was called National 4-H Club Camp. In 1927 this was an accurate name, with housing provided by rows of tents across the grounds of the United States Department of Agriculture. In contrast, delegates now stay at the National 4-H Center.

Kansas' delegates in 1927 were Frank Parsons from Sherman County, Frank Zitnik from Cherokee County, Mary Tilton from Mitchell County, and Louise Lumb from Clay County. That year at the conference the 4-H pledge and 4-H motto were chosen. The pledge which was selected had been written by Otis Hall when he was state leader in Kansas.

Since 1927 the conference has assembled annually except during World War II. Those four years, Kansas' delegates, except for three who did not attend, were sent to American Youth Camp at Shelby, Michigan.

Four young Kansans have been chosen as delegates each year except for 1935 when only three were selected, and in 1966 and in 1973 when five young people represented the Sunflower State.

The Kansas Bankers Association provides cost of the trips.

## HORSES

Yearling, 2-year-olds,  
and broke 3-year-olds.

Bred like the horses  
our daughter, Sherry,  
was successful with.

They could win  
for you.

F.E. Bliss

Quarter Horses

Longton, Kansas 67352  
Phone 1-316-642-6155

## Forestry

By Dan Sachse  
Leavenworth

Is it true that one walnut tree sold for \$12,000? Yes, in Johnson County, Indiana, a tree was sold for that amount. Many standing walnut trees are valued at several thousand dollars. Those little unattractive black walnuts provide lumber, wild-life food, and flavorful nut.

I've been enrolled in the forestry project for several years and plan to carry the project as long as I am a 4-H member.

The state forester visited our farm and inspected our stand of walnut trees. He used a spray can of dye to show my father and I what trees should be eliminated and what trees to prune. Christmas vacation was spent working in the woods trimming and thinning trees.

I've given several talks and de-

(Continued on page 13)



These are the sponsors who  
provide your Kansas 4-H Journal.

Be sure to thank them!

### CHASE

- \*Exchange National Bank, Cottonwood Falls
- \*Strong City State Bank, Strong City
- \*The Peoples Exchange Bank, Elmdale

### CLAY

- \*Union State Bank, Clay Center

### DICKINSON

- \*Farmers National Bank, Abilene

### FORD

- \*Bucklin State Bank, Bucklin
- \*Fidelity State Bank & Trust Company, Dodge City
- \*First National Bank, Spearville
- \*Ford County State Bank, Spearville

### GRANT

- Grant County 4-H Council

### GREELEY

- \*First National Bank, Tribune

### NESS

- \*Bazine State Bank, Bazine
- \*Citizens State Bank, Utica
- \*First State Bank, Ransom

### RUSH

- \*Farmers & Merchants State Bank, LaCrosse

### STAFFORD

- \*Farmers and Merchants State Bank, Macksville
- \*Farmers National Bank, Stafford
- \*First National Bank, St. John
- \*Macksville State Bank, Macksville
- \*St. John National Bank, St. John

\*These sponsors have provided Kansas 4-H Journal for 4-H members for 20 or more years.

# Free!

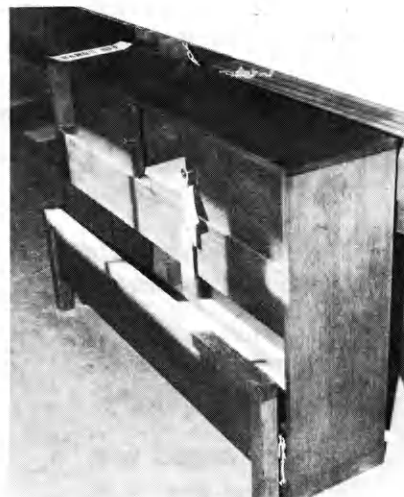
## 4-H Woodworking Plans from YOUR LUMBER DEALER

These plans  
are available



**Mail Box**

Made by Brian Pelton, Goddard



**Bed**

Made by Brad Kloefkorn, Caldwell

For your free plans, see your lumber dealer; he will also help you select the material you need.

- |   |  |   |  |
|---|--|---|--|
| Ashland<br>Don Spotts Lumber Company          | Erie<br>Johnson & Son Lumber Co.                       | Iola<br>Klein Lumber Company                        | Mankato<br>Mid-West Lumber Company                   |
| Atchison<br>J. B. Russell, Inc.               | Eureka<br>A. C. Houston Lumber Company                 | Johnson<br>Seyb-Tucker Lumber and Implement Company | Marysville<br>Howell Lumber Company                  |
| Axtell<br>Meyer Lumber & Hardware Company     | Fredonia<br>Schoolcraft Lumber Co.                     | Junction City<br>Builders Lumber Inc.               | Minneapolis<br>Dingee Lumber Co.                     |
| Basehor<br>Basehor Lumber                     | Garden City<br>Cash & Carry Lumber Co., Inc.           | Kechi<br>Buck Alley Lumber                          | Newton<br>National Building Centers Home Care Center |
| Belleville<br>Belleville Lumber Co.           | Great Bend<br>Everitt Lumber Co., Inc.                 | Kinsley<br>The Kinsley Cooperative Exchange         | Nickerson<br>The Home Lumber & Supply Co.            |
| Beloit<br>Peoples Lumber & Coal Co.           | Greensburg<br>Hildinger's Lumber, Hardware & Ready Mix | La Cygne<br>La Cygne Lumber and Ready Mix, Inc.     | Norton<br>Norton Lumber Company                      |
| Blue Rapids<br>Blue Rapids Lumber Company     | Harper<br>Town & Country Lumber Co.                    | LaHarpe<br>Diebolt Lumber and Supply                | Nortonville<br>Nortonville Lumber Inc.               |
| Burrton<br>Burrton Lumber & Development, Inc. | Hiawatha<br>Motsinger Lumber Co.                       | Lakin<br>Tate and Company                           | Oberlin<br>Nichols Building Supply, Inc.             |
| Clay Center<br>Fullingtons                    | Hillsboro<br>Hillsboro Lumber Co. The Lumberyard Inc.  | Lansing<br>Lansing Lumber, Inc.                     | Offerle<br>Offerle Co-Op Grain & Supply Co.          |
| Coffeyville<br>Kansas Lumber Company          | Holton<br>Holton Lumber Company                        | Larned<br>T. M. Deal Lumber Co.                     | Olathe<br>Cowley Lumber & Hardware Co.               |
| Coldwater<br>Home Lumber and Supply Company   | Hoxie<br>Hoxie Lumber Co.                              | Liberal<br>The Star Lumber Company                  | Osage City<br>Martin Material Co., Inc.              |
| Cottonwood Falls<br>Chase County Lumber, Inc. | Hugoton<br>The Star Lumber Company                     | Louisburg<br>Louisburg Lumber Co.                   | Osborne<br>Lewis A. Hardman Lumber Co.               |
| Dodge City<br>T. M. Deal Lumber Co.           | Independence<br>O. E. Woods Lumber Co. Sandott Lumber  | Lyons<br>Home Lumber & Supply Co.                   | Ottawa<br>Hubbard Lumber Company, Inc.               |
| Downs<br>Downs Lumber Company                 |  | Manhattan<br>Ramey Brothers                         | Parsons<br>Woods-Seward Lumber Co.                   |
| Ellinwood<br>Home Lumber & Supply Co.         |  |   | Pittsburg<br>Broadway Lumber Co., Inc.               |

## OTHER PLANS AVAILABLE

Sheep Blocking Box	Table Soccer
Dairy Barn Desk	Walnut Shelf
Wren House	Clock
Wheelbarrow	Table Podium
Mitten or Hose Dryer	Feed Bunk
Section Patio Tables	Vertical Step Fence
Bathroom Vanity	Pedestal Picnic Table & Benches
Entry Closet	Salt Box
Garden Entrance Trellis	Saddle Rack
Foldaway Table	Colonial Magazine Stand
Picnic Table	Trestle Table
Extension Dining Table	Quilting Frame
Work Bench	Colonial Table
Gun Cabinet	Cedar Chest
Wall Desk	Night Stand
Built-In Magazine & Book Rack	Pigeon Cage
Rocking Horse	Hourglass
Movable Toy Storage	Porch Swing
Mod Squad Lawn Chair	Martin House
Chess Table	Bicycle Rack
Record Cabinet	Food Drying Tray
Bookcase	Gable Roof Cupola
Portable Planter Screen	Portable Stile
Ply-Tent	Utility Table
Wind Vane	Child's Table & Seats
Bird Feeder	Hanging Shelves
Christmas Card Display	Meat Mallet



Pictured are the Kansas delegates to the 1977 National Western 4-H Roundup. In the top row, left to right, are: Jim Mosbarger, Sherman County; Darrel Dible, Thomas; Scott Showalter, Sherman; Mike Dempewolf, Decatur; Jim Mather, Logan; Bill Bergh, Wichita; and Steve Landgraf, Scott.

Middle row, left to right: Sheryl Finley, Wallace County; Cindy Griffith, Scott; Karen Darnell, Logan; Cari Werner, Greeley; Etta Walker, Wallace; Pam Kysar, Greeley; Susan Screen, Decatur; and Bonnie Dixson, Rawlins.

Bottom row, left to right: Merilan Anderson, Sherman County; Rex Schamberger, Decatur County extension agricultural agent; Libby Williams, Cheyenne County extension home economist; and Sally Wiley and Kelly Morris, Cheyenne County.

## 4-H'ers go to Western Roundup

By Etta Walker  
Sharon Springs

"4-H Around the World," the theme of the 1977 National Western 4-H Roundup, expresses the international emphasis of the 58th annual event in Denver, Colorado, in January.

More than 160 outstanding 4-H members representing nearly 200,000 others from Colorado, Kansas, Montana, South Dakota, Nevada, Utah, and Wyoming were recognized at this educational conference.

Participants attended National Western Stock Show and Rodeo and toured United Airlines Flight Training Center and Stapleton International Airport. They were also

luncheon guests of Montgomery Ward and May D&F companies.

Conferees learned about international 4-H programs from guest speaker Francis Pressley, Director of International Programs, National 4-H Foundation. Various international 4-H exchanges were further explained by members who have participated in the programs.

In keeping with the international mood, the delegates visited the Japanese Sakura Square and Buddhist temple, the American Heritage Square for dinner and a melodrama, and a Mexican restaurant, "Casa Bonita."

Kansas delegates were awarded the trip on the basis of leadership activities and overall achievement.

### Forestry (Continued from page 11)

monstrations on how to prune trees. I have also displayed leaf collections and made project displays for 4-H Days.

Forestry is a good project as it goes on the year round and I will be able to use the information after I graduate from 4-H. This year our Bell 4-H Club has eight members enrolled in forestry, so I hope to assist the leader with the younger members.

### Money For Your Treasury

OVER 2 MILLION

#### Sunflower Dishcloths



WERE SOLD LAST YEAR BY MEMBERS OF GROUPS, SOCIETIES, CLUBS, ETC.

THEY ENABLE YOU TO EARN MONEY FOR YOUR TREASURY AND MAKE FRIENDS FOR YOUR ORGANIZATION

Sample FREE to Official.

SANGAMON MILLS, INC., Cohoes, N. Y. 12047  
Established 1915

- Plains  
Home Lumber and Supply Co.
- Pratt  
W. R. Green Lumber Co., Inc.
- Redfield  
Redfield Lumber Company
- Rossville  
Hesse Lumber Company, Inc.
- Russell  
Houston Lumber Company
- St. Francis  
St. Francis Equity Exchange
- Salina  
Easterday-Boster Lumber Co.
- Scott City  
Scott City Building Materials
- Stafford  
T. M. Deal Lumber Co.
- Syracuse  
Hess Lumber Co.
- Tribune  
Foster Lumber Company, Inc.
- Waterville  
Waterville Lumber
- Wichita  
Alexander Lumber Co., Inc.  
Star Lumber & Supply Co.
- Wilson  
Hoch Lumber Company  
Wilson Lumber Co.
- Winfield  
A. B. Everly Lumber Co.  
Everitt Lumber Co., Inc.
- Wright  
Right Coop. Assn.

## Cat show

All 4-H members enrolled in the cat project are invited to a state invitational cat show on April 23 in

Scott City.

For information and an entry blank, write to: Scott County Extension Office, Courthouse, Scott City, Kansas 67871.



It was a purrfect day this past summer when the 12 members enrolled in the cat project in Scott County took part in their first annual Scott County Cat Show.

From left are Gwen Marmon with her cat which rated champion in the senior non-pedigreed division; Mrs. Phyllis Watson of Sublette, the show judge; Vonnie LaToush, reserve champion in the junior decorated crate division; Justin Phar, over-all champion; and Darren Ehrich, blue in junior non-pedigreed division.

The second annual Scott County Cat Show took place this March, with a state invitational show to follow in April—see related story in the left hand column.

## Horse Show

By Cahryl Larson

Finney County Extension 4-H Agent

Kansas horse project members can again participate in the State of Kansas 4-H Horse Show. The date is May 28 at the Finney County Fairgrounds in Garden City.

Classes for the horse show are designed for the 4-H member rather than the horse. With this policy, all 4-H'ers have an equal chance to win one of the several awards given.

During the year Finney County 4-H'ers participate in workshops led by Charles Sinclair, countywide horse project leader. This contest developed out of the interest of these 4-H'ers who participated in the workshops. Since then the horse show has been opened to all Kansas 4-H members.

An entry fee of \$2 per class is due along with the entry form on May 20. Late entries may be made until May 28 at 8 a.m. The entry fee for such entries will be \$4 per class.

Stalls are available on the fairgrounds for \$5 per stall per night.

For entry forms and further information, please contact Charyl Larson, Finney County 4-H agent, South 9th and Frederick, Garden City, Kansas 67846.

## 4-H WEEKEND

during new Spring National Crafts Festival  
SILVER DOLLAR CITY, MO. Sat. & Sun., May 14-15



For the first time Silver Dollar City is presenting a crafts festival in the Spring—and your special weekend occurs during this new "Spring National Crafts Festival," with four dozen demonstrating craft exhibits!

This year, too, the Ozarks' most famous community is enlarged by 25%! There's a whole new "Deepwoods" area for you to explore, with the most fantastic ride you've ever experienced—Rube Dugan's Diving Bell. Rube, the hillbilly inventor-genius, will take you to the very depths of Lake Silver in search of lost treasure, and we guarantee it's one thrill and surprise after another.

For 4-H'ers and their entire families, special rates prevail: the usual \$7.75 see-and-do-everything ticket for adults (age 12 and over) is just \$6.50; the children's ticket (ages 6-11), normally \$6.75, is only \$5.50. (And the Club's leader who brings a group is ticketed free.)

**FOR ADDITIONAL INFORMATION, contact 4-H Weekend, Ticket Sales Department, Silver Dollar City, Mo. 65616; (417) 338-8206.**

Since the ticket is good for both Saturday and Sunday, you may wish accommodations overnight: simply contact Ozark-wide Reservation Service, Box 309, Branson, Mo. 65616; (417) 334-6448.

### TICKET ORDER FORM

MAIL TO: 4-H Weekend, Drawer 954  
Silver Dollar City, Mo. 65616

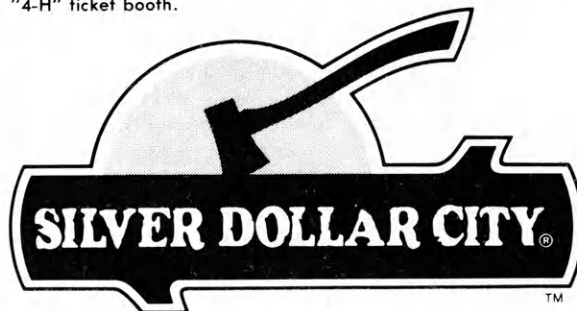
WE'LL BE THERE to enjoy the new Spring National Crafts Festival and all the fun!

— Adults (over age 12) @ \$6.50 \$ \_\_\_\_\_

— Children (ages 6-11) @ \$5.50 \$ \_\_\_\_\_

TOTAL \$ \_\_\_\_\_

Please make check payable to Silver Dollar City. Form must be received by May 6 in order to return tickets to you prior to the event. Late-arriving ticket orders will be held for you to pick up at the special "4-H" ticket booth.



# Family Fun Page

Q. What is dark but is made by light?

A. A shadow.

Setting: a theater

Boy: Can you see okay?

Girl: Yes.

Boy: Is there a draft by you?

Girl: No.

Boy: Is there gum on your seat?

Girl: No.

Boy: Do you mind changing places?

Teacher to John, who has been goofing off: John, please don't whistle while you're studying.

John: Who said I was studying?

Riddle in rhyme:

There once was a race horse

That won great fame.

What-do-you-think

Was the horses name.

Answer—What-do-you-think.

A bull has just swallowed a bomb. Which of these four words describes the situation best? awful—abominable—dreadful—shocking

Answer—A bomb in a bull (abominable)

The bomb went off. Which word below is a description of the bull? amazing—silly—messy—noble

Answer—No bull (noble)

Branda Von Fange, Salina

Q. What is black and white and flies?

A. A flying nun.

Patrick Schmidtberger, Victoria

Q. What's the tallest building in the world?

A. The library, because it has so many stories.

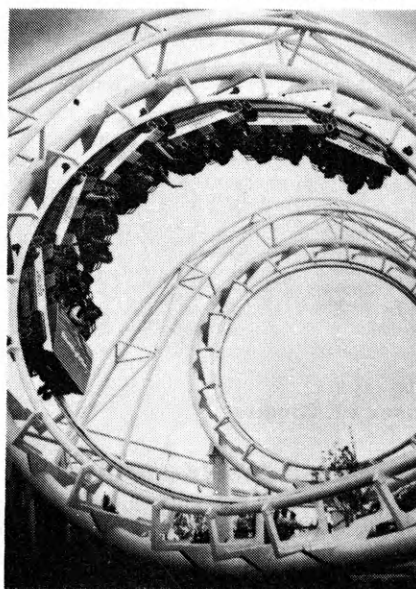
Q. Who won the race between the lettuce, water, egg, and tomato sauce?

A. The lettuce, because the egg got beaten, the water was still running, and the tomato sauce was trying to ketchup.

Kristy Thompson, Courtland



MOM, THIS SNAKE I CAUGHT ISN'T NEAR AS FRIENDLY AS THE ONE AT 4H CAMP.



SCREAMROLLER

## 4-H Weekend at Worlds of Fun

Save \$1.50 per Passport April 30 & May 1

\*\*THERE'S SOMETHING NEW IN EVERY "WORLD" THIS YEAR! GREAT NEW RIDES like the Wobble Wheel and Singapore Sling. Rides for the youngsters like the Bounce-A-Roo and Micro Moto Bahn. An action-packed, contemporary playground and a puppet-type puppet show for children.

\*\*SUPER NEW SHOWS—The all new Pygmy Playhouse and the new Old West train ride to Yumma Yucca Mesa, the home of Worlds of Fun's feuding Funfighters. Over 80 attractions on 150 beautiful landscaped acres.

\*\*SPECIAL DISCOUNT PASSPORTS \$7.00 for adults and \$6.00 for children (ages 3-11), a \$1.50 savings on the regular admission price of \$8.50 per adult or \$7.50 per child (one day Passports only).

\*\*EACH 4-H'ER WILL RECEIVE A FREE WORLDS OF FUN/4-H PATCH.

\*\*4-H GROUP LEADER WILL RECEIVE A FREE PASSPORT IF 15 OR MORE PASSPORTS ARE ORDERED.

To order Passports, simply use the attached form and enclose a check or money order. Make your plans today!

4-H'ers, we've got your good times, so what are you waiting for?

**You know you'll have a good time!**

### PASSPORT ORDER FORM

4-H Weekend April 30-May 1, 1977

—Yes, we will attend 4-H Weekend either Sat., April 30 or Sun., May 1. Enclosed please find a check or money-order covering the cost of Worlds of Fun Passports.

—No, we will be unable to attend but please send group rate information and free Worlds of Fun brochures.

NAME \_\_\_\_\_ TITLE \_\_\_\_\_

Address \_\_\_\_\_ City \_\_\_\_\_

County \_\_\_\_\_ State \_\_\_\_\_ Zip \_\_\_\_\_ Phone \_\_\_\_\_

Date of Attendance; Sat. 4/30 \_\_\_\_\_ Sun. 5/1 \_\_\_\_\_

One complimentary Passport for the 4-H leader returned if the order exceeds 15 Passports.

# \_\_\_\_\_ Adult (12 and over) @ \$7.00 each = \$ \_\_\_\_\_

# \_\_\_\_\_ Child (3-11 years) @ \$6.00 each = \$ \_\_\_\_\_

Children under 3 free TOTAL = \$ \_\_\_\_\_

Make one check or money-order payable to Worlds of Fun 4-H Weekend, 4545 Worlds of Fun Avenue, Kansas City, Missouri 64161; phone 816/454-4545. Passports must be ordered in advance and postmarked by April 22, 1977. Passports will be returned by mail in advance of your visit.

Bus drivers will be admitted free and will receive their Passports as they enter the parking area. 4-H Passports may be used on any Worlds of Fun operating day in 1977. No minimum size. Passports valid one day only.

# WE SALUTE ELECTRIC WINNERS



The investor-owned Electric Companies of Kansas proudly salute the electric energy project winners listed here. These worthy 4-H'ers received Westinghouse Medals for their fine work. If you are not enrolled, join the many 4-H'ers in this project to learn more about electricity and the proper care and use of electrical equipment. Contact your club leader for more information.

**State Winner: Joe Blake Jr., Franklin County, received a trip to National 4-H Congress in Chicago as Kansas winner of the electric energy project. Donor of the trip is Westinghouse Electric Corporation, Great Lakes Region, Chicago, Illinois.**

## Electric Energy Winners

**Logan**  
 Mike Colglazier  
 Jim Gager

**McPherson**  
 Russell Galle  
 Paul Martin

**Marion**  
 Eric Unruh\*  
 Stephen Meirowsky

**Marshall**  
 David Nordhus  
 Lyle Peterson  
 Gayle Peterson

**Meade**  
 Emil Riggan

**Miami**  
 John D. Jasper  
 Jay Stretcher  
 Clifford\*Harris

**Mitchell**  
 Thayne Thompson

**Montgomery**  
 Michael Mitchell  
 Stanley Gartner  
 Donald Crawshaw  
 Steven Corle

**Morton**  
 Kent Swinney

**Nemaha**  
 Joey Schmelzle  
 Joanie Schmelzle  
 Mike Tomlinson  
 Gerald Hervey

**Neosho**  
 Joe Simmons  
 Kent Schaal

**Ness**  
 Everett Burdett  
 Shannon Moore

**Norton**  
 Allen Ward  
 Todd Mason

**Osage**  
 Raylen Phelon

**Pawnee**  
 Craig Froetschner  
 Darren Haun  
 Steve Barrett\*  
 Kerry Froetschner

**Phillips**  
 Clinton Pumphrey  
 Scott Nyhart

**Pottawatomie**  
 Donald Honig  
 Willie Mergenmeier  
 Charles Sauvage  
 Chris Sauvage

**Rawlins**  
 Abe Fisher  
 David Studer  
 Brian Kantor  
 Tony Mentlick

**Reno**  
 Todd Thalmann\*  
 Mike Schweppe  
 David Roth  
 Joe Horton

**Rice**  
 Jim Hodgson  
 Shawn Heiny  
 Kevin McGlynn  
 Brute Wolf

**Riley**  
 Roy Duer

**Rooks**  
 Ricky Swaney  
 Henry Sander  
 Ricky Jackson  
 Mike McClellan

**Rush**  
 Charles Keener  
 Jay Brack  
 Laura Scheuerman

**Saline**  
 Sheila Peters  
 Larry Norberg

**Scott**  
 Brad Baker  
 Chris Eadens  
 Dennis Landgraf  
 Steve Landgraf

**Sedgwick**  
 Keith Rhodes  
 Craig Rhodes  
 Chris Radiel  
 Elaine Rock

**Seward**  
 Suzanne Harvey

**Shawnee**  
 Gary Peel\*  
 Matt Mannell  
 Bill Riley  
 James Swindale

**Sherman**  
 Sam Washburn

**Smith**  
 Larry Long  
 David Lee

**Stafford**  
 Grant White  
 David Paulsen  
 Randall Hildebrand

**Stanton**  
 Steven Shore

**Sumner**  
 Brad Kloefkorn  
 Jane Drumhiller

**Thomas**  
 Bonnie Crabtree  
 David Kersenbrock  
 Rich Kubik

**Trego**  
 Paul Nelson  
 John Phillips  
 Chad Phillips

**Wabaunsee**  
 Marc Feyh

**Wallace**  
 Larry McWilliams  
 Dowell Walker  
 Steve Schemm

**Washington**  
 Ron Graham  
 Alan Meyer

**Wichita**  
 Denise Harp  
 David Bergh  
 Gerald Baker  
 Mark Miller

**Wilson**  
 Rusty Crites

**Woodson**  
 Doug Campbell

**Wyandotte**  
 Eldon Smith  
 Jon Stierly  
 Bob Werst

\*Received an educational trip to Kansas 4-H Congress.

Watch This Page For Ideas On Farm And Home Electric Projects

## ELECTRIC LIGHT and POWER COMPANIES in KANSAS

The Kansas Power and Light Company      Central Kansas Power Company  
 Kansas Gas and Electric Company  
 Western Power Division of Central Telephone & Utilities Corporation

