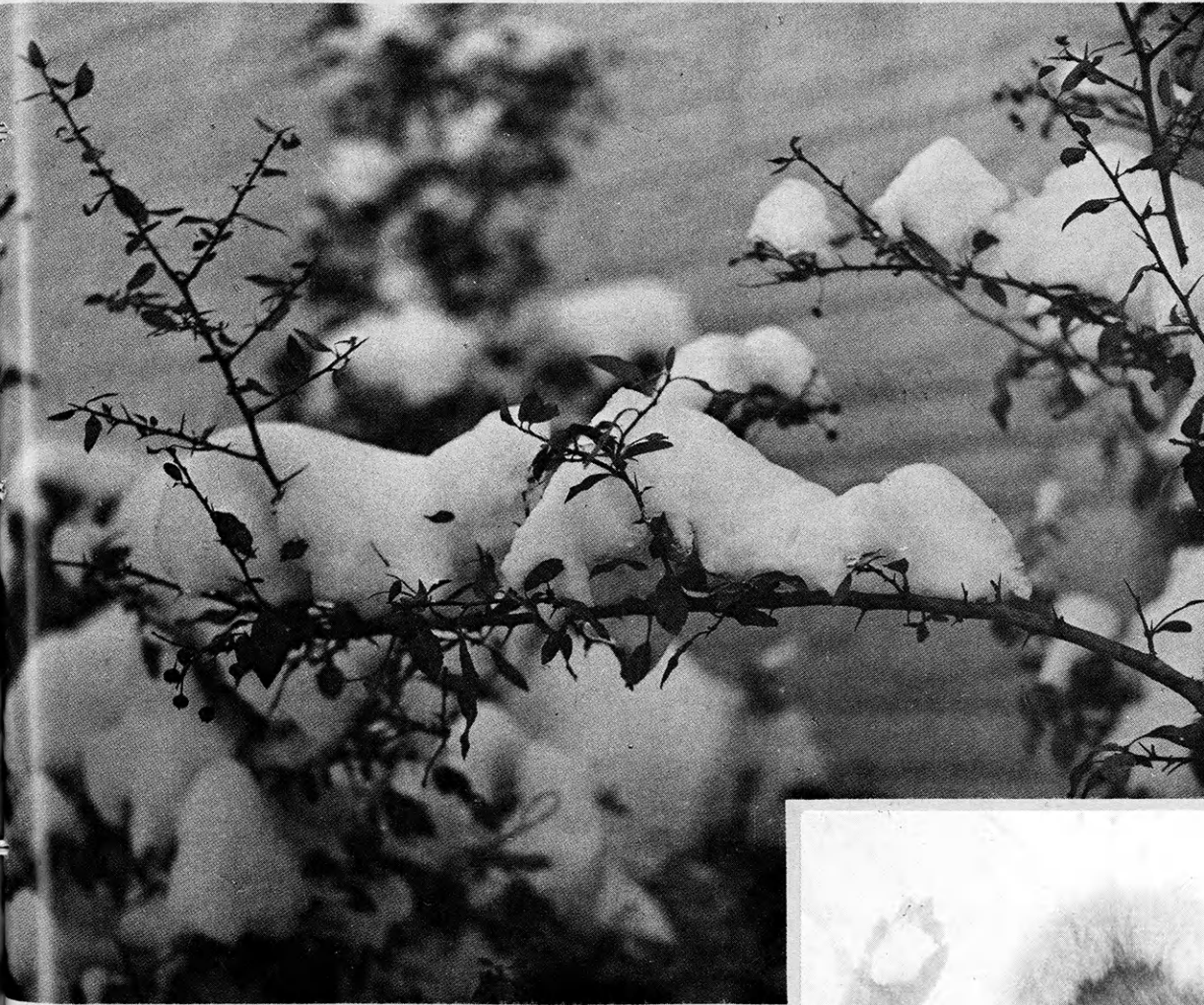


Kansas 4-H

December, 1969

Journal

The 4-H Family Magazine



Receive one of these FREE gifts with the purchase of a CO-OP Appliance

Now and until December 31, 1969, get one of these luxurious gifts FREE with the purchase of a CO-OP Freezer, Refrigerator, Combination Refrigerator/Freezer, Range, Washer, Dryer or Water Softener.

- * Hamilton Beach Can Opener/Knife Sharpener (\$15.95 value)
- * 7-Piece West Bend Continental Cookware Set (\$18.75 value)
- * Corningware 9-piece Young Moderns Set (\$19.95 value)



Model SS229 Side-By-Side Combination compact yet roomy, with more useful features than ever before. With 335 pound capacity freezer, automatic ice maker next to a big 12.44 cu. ft. deluxe featured refrigerator. (In white or coppertone. Just one of the many outstanding appliances available at your Co-op. See them all.

COOP
APPLIANCES

FARMLAND INDUSTRIES, INC.

IN THIS ISSUE

Handmade gifts are people pleasers	4
Anderson County honors leader	5
Congress hosts 35 Kansans	6
Barbed wire snags Rush County 4-H	7
The best of 4-H photography	8-9
Ideas and News	10
In Today's Mail—	
4-H Foundation news	11
It's what's happening!	14
More Ideas and News	15
Christmas Fun Crossword	15

Wm. M. Riley.....Managing Editor
 Marie Rupp.....Associate Editor
 Susanne Johnson.....Production Editor

Published Monthly By

KANSAS 4-H FOUNDATION, INC.

J. Harold Johnson.....Executive Director
 Merle Eyestone.....Associate Director
 William Riley, Jr.....Assistant Director
 Erna Bly.....Sec. Asst. Treasurer

BOARD OF TRUSTEES

Governor Robert Docking
 Honorary Chairman

W. Dale Critser, Chrm.....Wichita
 Dolph Simons, Vice Chrm.....Lawrence
 Balfour S. Jeffrey, Treas.....Topeka
 Robert A. Bohannon.....Manhattan
 Glenn M. Busset.....Manhattan
 *Sen. Frank Carlson.....Concordia
 *Harry Darby.....Kansas City
 *Ray E. Frisbie.....McDonald
 Mrs. Olive Garvey.....Wichita
 Clifford Hope.....Garden City
 †A. D. Jellison.....Junction City
 *Harold E. Jones.....Manhattan
 J. J. Moxley.....Council Grove
 George B. Powers.....Wichita
 *Roger E. Regnier.....Manhattan
 N. T. Veatch.....Kansas City
 E. B. Shawver.....Wichita
 †Fred D. Wilson.....Andover
 *Advisory Member
 †Trustee Emeritus

Editorial and Business Office

Phone 913-532-6621

Umberger Hall
 Kansas State University
 Manhattan, Kansas 66502

Second Class Postage Paid at Lawrence, Kansas. Return Form 3579 to Kansas 4-H Journal, Manhattan, Kansas 66502.

Advertising rates and circulation data on request.

Group subscriptions \$1.00 per year.
 Individual subscriptions \$1.50 per year.
 Single copy 15 cents.

Use of the 4-H name and symbol approved by the Secretary of Agriculture of the United States, January 23, 1951, under the provisions of the law as reenacted by Sec. 707 of the Act of June 25, 1948 Public Law No. 772 80th Congress (10 USC 797).

A personal philosophy

By Dr. Glenn M. Busset
 State 4-H Leader

Perhaps there is no better time than at Christmas to look at ourselves with candor and honesty, to see what we are like and to decide if we like what we see. During the Christmas season, when the response to the Christian ethic is at its highest, we sometimes attempt to examine ourselves as we are and try to decide what we ought to be. Out of this introspection often comes "resolutions" to make some changes in our personal lives. New Years Day seems to be a traditional time to express the changes we feel we ought to make in our lives. Resolutions are simply our personal objectives for the new year, based on our philosophy of life.

Publicly expressing one's personal philosophy is difficult because we are all complex and vulnerable personalities. We hesitate to put our feelings out where people can see them, fearing that we will be rejected, humiliated or hurt if someone should point out the great disparity between what we claim we are or want to be, and how we actually appear to be to others. We want to share our aspirations and beliefs, but we are hesitant because others may misunderstand our attempt at communication, and laugh at our stumbling explanations.

One of my beliefs of philosophies that I will share with you is the Grain of Sand concept, which means being an authority on any one subject, of knowing more about it than anyone else. The subject may be as varied as photographing Kansas sunsets, astronomy, model airplanes, civil war strategy or where the lupines bloom first in the spring.

The Grain of Sand concept does not mean a narrowing of interests, but a personal development to a point of deep satisfaction, wide interest, and even to the point of becoming an authority. It means study, concentration, work, development to the point of saturation, plus the willingness to share the gift with others. The Grain of Sand concept is only a popularization of the familiar Bible story of the talents and how they were used.¹

A man who had been born poor came into riches in his middle years. As soon as his other wishes were met, he satisfied a desire to own a great treasure. He purchased a genuine Stradivarius violin, and mounted it in a glass display case in his home. He showed the treasure proudly to guests and greatly enjoyed their comments on its beauty. One day he displayed his treasure to a great violinist, expecting the usual approbation and concealed envy at his good fortune. Instead, the violinist with tender ease, took the violin from its protective case, tuned it, and played a great concerto.

The great purpose of the rare violin and of our talents are identical. They are of value only when used. The use of talents is for our own development as well as how we relate to others. When we develop our talents and become an "authority" on any worthy subject, we are no longer the same person. We have changed, we have become self-actualized, we have developed ourselves. Perhaps the greatest resolution we could make would be to become a greater person, by developing our talent to its fullest. This is what the Grain of Sand concept implies.

The sorriest day in a man's life comes when he spends his time explaining why he never did accomplish that which he could still do. When this happens, he is old, regardless of the years he has been on this earth.

¹MATTHEW 25:14-31

OUR COVER

December. Snow. The holidays. The coming of a new year. Family and firesides. The beauty of

snow on a branch, the excitement when a friend beckons you out to play—thoughts of December.

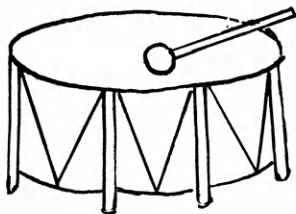


Handmade gifts are people pleasers

This is the holiday season when good thoughts, merriment and joy fill the air. It also is a time of giving.

Wouldn't you like to remember a shut-in or show your appreciation to a friend or even one of the firms that provide your Journal subscription? Why not remember them with cookies, cake, candy or fruit.

So you don't have a box to fit the cake or a container for a cookie gift. Be not dismayed. Get



busy and supply your needs; from a few household materials you can create containers to hold these goodies. They are easy and fun to make.

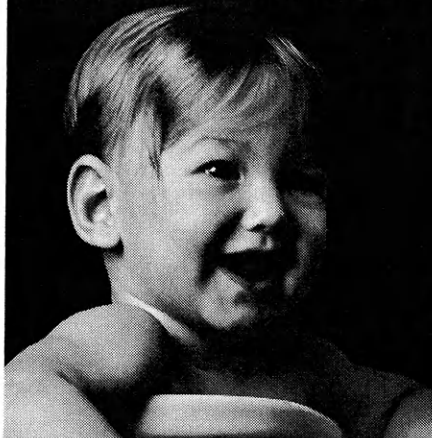
A coffee can clown filled with homemade cookies or candy will give double pleasure. It is readily made by covering the can with foil. Use cardboard for peaked hat and plastic foam ball for clown's head. Tint it with face powder and rough. Scoop out a hole for nose and attach a red ball with glue. Make eyes from tiny black buttons, or use fringed felt or other fabric. Attach head to lid with glue. String tiny beads or glue sequins to front.

To make a drum for fruit cake or for a tube pan full of frozen cinnamon rolls, cover pan with foil, using rubber cement. Make a lid of cardboard and cover with

white paper for drumhead. Spray or paint red eight wooden coffee stirrers or tongue depressors. Attach upright against sides of tin with white glue. Glue red rickrack braid to sides and lid. Use a small plastic ball, colored brown, on the end of a stick, or use a gold tree ornament.

You see, there's fun in giving and receiving.

This baby was babied...



...before she was born

The March of Dimes wants every mother-to-be to know that prenatal care can reduce birth defects — that the rubella (German measles) vaccine and the Rh vaccine can reduce birth defects.

**Give to the
MARCH
OF DIMES**

It's time to **SAVE**

Arkansas City
First Federal Savings and Loan Assn.

Clay Center
Northwestern Federal Savings and Loan Assn.

Dodge City
First Federal Savings and Loan Assn.

El Dorado
Mid-Continent Federal Savings and Loan Assn.

Fort Scott
Liberty Savings and Loan Assn.

Garnett
The Garnett Savings and Loan Assn.

Hays
The Hays Building and Loan Assn.

Hutchinson
Valley Federal Savings & Loan Assn.—1020 North Main

Leavenworth
Leavenworth Mutual Savings and Loan Assn.

Liberal
First Federal Savings and Loan Assn.

McPherson
The Pioneer Savings and Loan Assn.

Newton
First Federal Savings and Loan Assn.

Ottawa
Ottawa Savings and Loan Assn.

Parsons
First Federal Savings and Loan Assn.

Plainville
Rooks County Savings Assn.

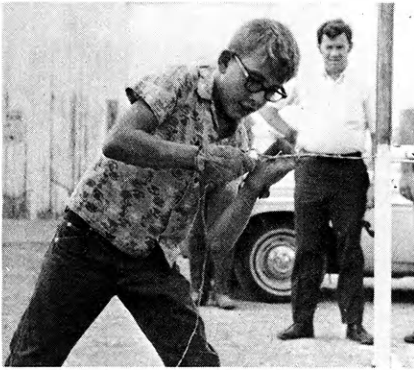
**Kansas
Savings & Loan
Associations**



**ALLIANCE INSURANCE
COMPANIES**
McPherson, Kansas
FIRE — CASUALTY — LIFE
Serving Kansas Since 1888



Wayne Kline of the Otis Busy Bees 4-H club, Rush County, tries his gloved hands at barbed wire splicing while other 4-H contestants look on.



Donald Erb works against time and tension at the 4-H barbed wire splicing contest, held in connection with the Rush County fair. Donald is a member of the Lone Star Rangers 4-H club, Rush County.



Anderson County honors leader

A native Anderson Countian, Guy Rogers, was guest recently at a county-wide open house honoring his 36th year as a 4-H leader.

KNITTED CHRISTMAS BELL

You can make these in red, green or blue yarn and can be used to decorate the Christmas tree or hang them in a doorway. Directions: size 8 needles and knitting worsted yarn.

Cast on 16 stitches

Knit across

Row 2: K 11; P 5

Repeat rows 1 and 2 for 42 rows. Bind off. Sew ends together. Edge that curls under is the bottom of the bell. Draw bell together at top. Make a loop of yarn inside bell to hang a jingle bell on. Make a yarn loop at top to hang by. Decorate bell with sequins. Makes a nice non-breakable tree ornament.



Mr. and Mrs. Guy Rogers

Rogers has been active in 4-H since 1932, when he and the Anderson County agent organized one of the first county clubs, the Silver Arrows. Rogers was lead-

er of the T.N.T. club in the Glenlock community and in 1942 took up the post he still holds, leader of the Lucky 13 club.

Rogers has served on the fair committee and is past president and treasurer of the Agriculture Extension Council. He taught in rural schools six years and was director of the Lingo school board 22 years. He served three terms as Anderson County clerk and has been on the board of directors of the Garnett Savings and Loan Association since 1960.

Rogers and his wife, Mrs. Gilma Rogers, live on the original homesite seven miles northwest of Garnett and have three grown daughters. The girls all were active in 4-H and Mrs. Rogers was project leader of the club several years.

There is a total of 72 years 4-H work in the Guy Rogers family!

Congress hosts 35 Kansans

Thirty-five Kansas 4-H'ers are in Chicago this week for the National 4-H Congress. The state and sectional award winners join 4-H'ers from other states in a week of educational programs, tours, entertainment and parties. The six-day meeting also includes a visit to the International Livestock and Horse Show.

Each delegate is sponsored by a company, donor of county, state, sectional and national

awards for a particular project. Kansas delegates, their project and county are:

Ron Gatz, achievement, Harvey; Allen J. Houk, agriculture, Douglas; Charles V. Beach, automotive, Sedgwick; Niles Wiseman, beef, Ford; Ruth Dobbins, bread, Nemaha; Diane Sleichter, clothing, Dickinson; Paul Westerman, conservation of natural resources, Ellsworth; Kathy Armstrong, consumer education-home economics, Atchison; Bruce L. Wilmeth, dairy, Elk;

Diane Jo Elnicki, dairy foods, Crawford; Marilyn Beam, dog care and training, Washington; Joanne Maring, dress revue, Cheyenne; David Cook, electric, Dickinson; Janie Rothenberger, entomology, Osborne; Dennis Alan Smith, field crops science, Pawnee; Charlene Kendall, foods-nutrition, Jefferson; LeAnn Foster, food preservation, Jackson; Will D. Kimball, health, Barber;

Joyce Ewing, home improvement, Montgomery; Diane

Dempsey, horse, Riley; Kenneth Gerdes, horticulture, Sedgwick; Dennis Busby, leadership, Cheyenne; Dennis Burt, livestock, Republic; Dennis Deaver, petroleum power, Ford; Carol H. Koster, photography, Sedgwick; Richard Davis, safety, Harper; Rodney Carsten, sheep, Rooks; Gary Burkholder, swine, Dickinson; David Wiebe, woodwork, Harvey; Carol Maxwell, general achievement, Ford; Murry Knox, Greenwood; Linda Van Daele, Johnson, Ruth Moritz, Osborne; Jay S. Smith, Sedgwick; and Deborah Thomas, Stafford.

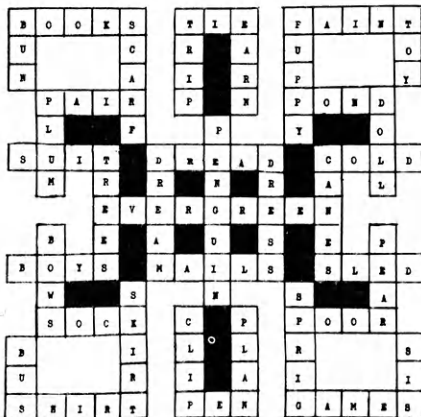
Teams take prizes

The Kansas 4-H meat identification and judging team from Reno County took a first and sixth place went to the livestock judging team from Wabaunsee County during the annual American Royal in Kansas City.

Members of the winning Reno County team: Nancy Krause, Susan Zwickel and Myron Miller. And Nancy placed first in the overall contest. Susan was second in meat judging and Myron was first in meat identification. Team coach is Otis Griggs, Reno County Extension director.

Wabaunsee County team members are Kayla McDiffett, Rodney Buchman, Alan Falk and Mike Bohn. Mike tied for first in beef cattle judging. Team coaches are Darold D. Marlow, county agent, and Clint McDiffett, livestock project leader.

Solutions



ANSWERS: 1-cat, 2-rat, 3-hat, 4-mat, 5-tam, 6-ham, 7-car, 8-tar, 9-ram, 10-Sam



A Matter of Life and Breath

This boy is getting a tuberculin test. Tuberculin testing finds TB. Your Christmas Seal association encourages tuberculin testing as part of its fight against TB.



ANSWER YOUR CHRISTMAS SEAL LETTER TODAY

Make \$71 to \$1050

PROMOTE YOUR SCHOOL • TOWN • GROUP



For states not using front plate Small size fastens to front plate in states using 2 plates

License Plates Designed for You

It works! Over 1500 groups throughout the country used this fund raiser successfully in the last 12 months. Every car owner in your area is a prospect.

YOUR WORDING & EMBLEM embossed on heavy gauge steel in choice of 7 brilliant baked enamel colors. Fits any car. Official 6 x 12" size or 4 x 12" with special metal fastener.

100%-300% PROFIT! For example: order 100 Plates @ 89c each, sell at \$1.50, earn \$61. Order 1000 @ 49c each, sell at \$1.50, earn \$1010.

NOTHING DOWN! We bill in 30-45 days after shipment, allowing you ample time to sell.

Write today for details on this proved way to earn money. We'll send FREE sample plate, factory price list and full-color illustrated folder.

QUALITY PRODUCTS, INC. P. O. Box 564-K Columbus, Miss. 39701

Please send information (no obligation)

NAME _____

Street Address _____

City _____ State _____

Phone No. _____ AC _____

Barbed Wire *snags Rush County 4-H*

It all started over a cup of coffee in LaCrosse, Kansas. And from that unlikely beginning in 1967 has grown one of the nation's fastest growing hobbies—barbed wire collecting.

And from the Kansas Barbed Wire Collectors Association grew the first barbed wire splicing contest in the world and, later, 4-H competition in the event.

The 4-H open class for barbed wire splicing at the Rush County fair drew many interested youth this year and promises to attract even more next year, according to E. L. VanMeter, county agent.

A frame 54 inches wide holds two sections of barbed wire, each 18 inches long. The contestant is given a 40-inch piece of wire to splice between the two attached wires. Splicing is done three feet off the ground.

A perfect score is 0. The negative scoring system is based on time and tension. Each second it takes the competitor to splice the wire is one second off his score. When he is through, a 75-pound weight is hung in the middle of the three wires and 20 points are subtracted for each one inch of sag.

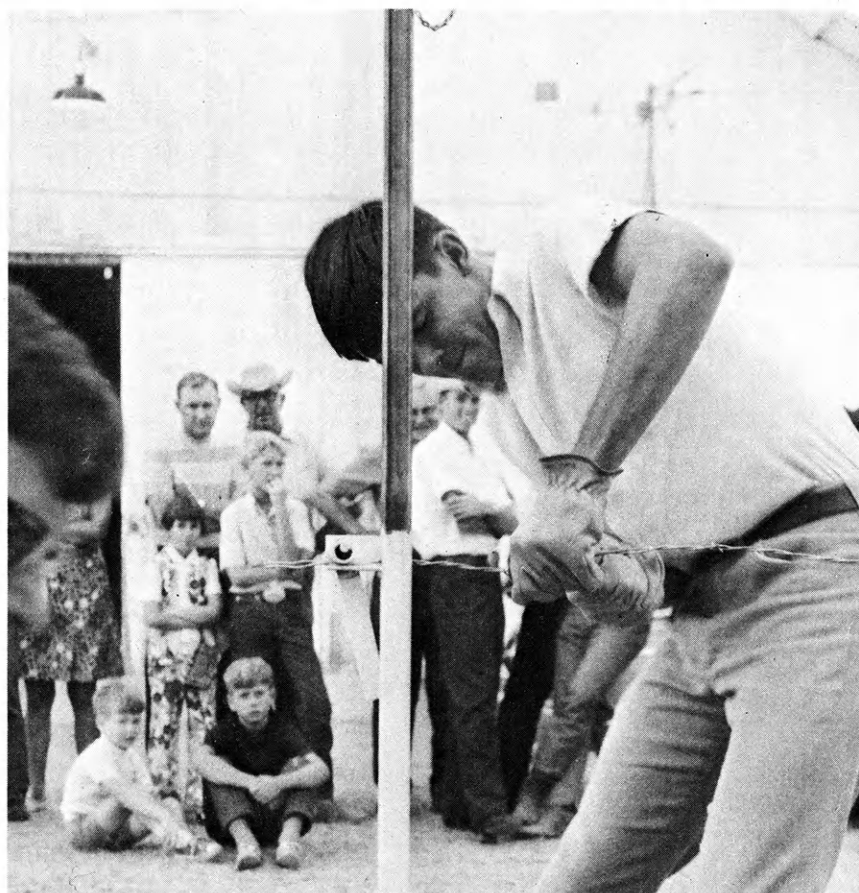
The world champion time is 98.9 held by Ernest Poe of Healy, Kansas. A senior in animal science at Kansas State University, Terry Conard, was the Rush County fair champion with a score of 103.9. Mark DeWald of the Rush County 4-H Council won the first 4-H competition with a 117.4.

Collectors from 16 states, from California to Iowa to Arkansas, were in LaCrosse last May for the Kansas Barbed Wire Show,

the best known barbed wire show. The 1,000 visitors and 150 collectors also were drawn to the annual "swap and sell" session, where collectors bargain or buy 18-inch sections of barbed wire not yet part of their collection. Prices for the standard 18-inch strand range from 50c to \$100. Many rare wires are seen at the

barbed wire auction, which climaxes the two-day show. Prices paid at this auction are used as guidelines for sales across the country. This year the top money went for an 18-inch section of Judson Wire, which brought \$45—falling behind the \$65 paid for Dodge Wire in the '68 sale.

(Additional pictures p. 5)



Mark DeWald, champion 4-H splicer, shows the strain in his face as he works against time and tension. Mark's winning time was 117.4. He is a member of the LaCrosse Harmoniers, Rush County.

the



Purple ribbon winners in photography have contributed prints to the Kansas 4-H Journal which will be used off and on during the year.

Subjects range from closing in on a plastic model to simulate a moon landing to lily pads floating alone to the malicious look of a cat. Family pets are the most photographed, with little brother or sister a close second.

Here are seven 'bests' in 4-H photography.

"A Touch of Malice" was captured by Robin Henderson of the Sunset 4-H club of Kearny County. The State Fair purple ribbon winner was taken with a Pentax, 135 mm. Lens, 1/30 sec. at f.11 with Tri X film.



Marsha Andres of Harvey County chose the Collegiate 4-H'ers garden at Kansas State University for her prize-winning shot. A close-up lens captured the water lillies floating on the pond.



"Man's Best Friend" was a purple winner at the Mid-America Fair. Twelve-year-old Karen Rediker of Morris County was too young to compete at Hutchinson.



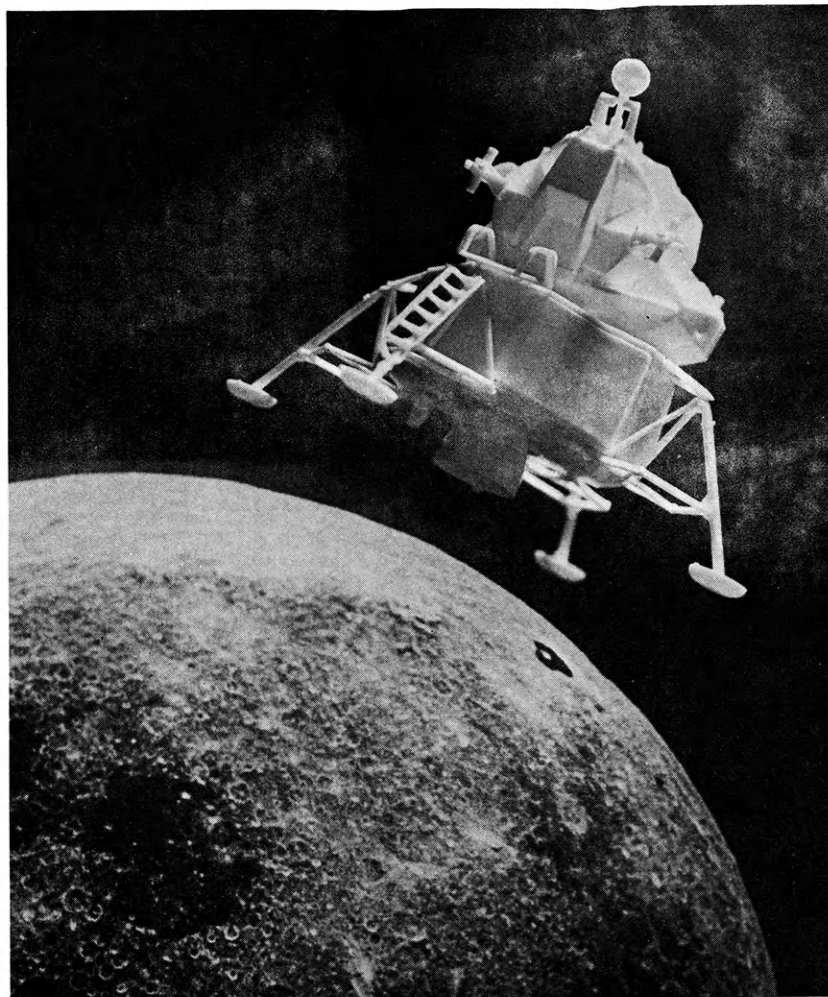
An injured bird draws the undivided attention of Scott Pendleton and the family dog, Penny, near the family home at Lawrence, and provides a prize-winning picture for John Pendleton. Scott and Penny are favorite subjects of the Douglas County 4-H'er.

best of 4-H photog

rapphy



A nine-year-old brother and a steep hill were a winning combination for Brent Long of Ford County.



A plastic model simulated man's landing on the moon and captured judges' eyes at the State Fair at Hutchinson. Dale Switzer of Formoso, Jewell County, titled his picture "The Bug."



An everyday scene looking out the back door proved to be a purple winner for a first-year photographer, Susan Blanck of Wakarusa. "It was after a rain and windstorm and the setting sun was bursting through the clouds," explains Susan, a member of the Wakarusa Valley club of Shawnee County.

IDEAS & News

(More "Ideas & News" on page 15)

Rick Schmidt is new president of the Macon Happy Hour 4-H club of Harvey County. New president of another Harvey County club is Janet Sauerwein, who will lead the Highlanders.

New president of the Falun 4-H club of Saline County is Charles Olsen. Gordon Tillberg will lead the Bavaria Livewire 4-H club, also of Saline County, as its new president.

New members of the Bavaria Livewire club is Susan Johnson, Jeanie Kline, Greg Daily and Tim Daily, of Saline County.

Six new members have joined the Kipp 4-H club of Saline County. They're Steve Fairbanks, Jolene Sundgren, Barbara Johnson, Leslie Johnson, Michelle Leister and Sharon Swanson. Welcome to 4-H! Mr. John Sundgren will serve as a community leader for the club.

George Wagner is new president of the Brookville 4-H club, also of Saline County. Vicki Elam is junior division president. Pius Jilka is new president of the Mentor 4-H club of that county.

New president of the Ichiban club of Saline County is Peggy Bethe.

New members of the Rome Rockets 4-H club of Sumner County are Mike and Melinda Sweany, Larry Lee Norris and Mitchell Rusk. And the club's new president is Martin Rusk!

The history of the Silver Lake 4-H club of Shawnee County was a recent Achievement Night program for the club's 35th anniversary. The same night, members also voted to donate \$10 a year for four years to the building program of the National 4-H Foundation, according to Becky Kelsey, reporter.

Randy Kumberg was named King Hobo and Debbie Greenstreet was named Queen Sloppy at the county-wide Junior Leadership Hobo Party in Pratt County. Randy is a member of the Sawyer club, and Queen Debbie hails from the Richland 4-H club. Thirty Junior Leaders attended.

Lynne Elder was named president of the Saline Valley club of Saline County. And Diane Morrison will lead the Cloverleaf club of that county.

WE'RE HOPING FOR GOOD GROWTH ...



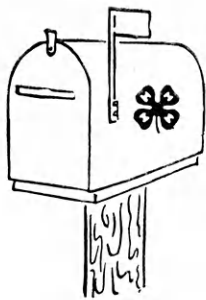
The Kansas Agricultural Marketing Association is an affiliate of Kansas Farm Bureau. The association is a member of the American Agricultural Marketing Association, an affiliate of the American Farm Bureau Federation.

The Kansas Agricultural Marketing Association is contracting with large feedlots for delivery of grain and hay. KAMA is agreeing to supply milo grain from November through June.

Contracts are being completed between each producer and KAMA for the total bushels the producer wishes to contract during any month he selects to deliver. The association is completing a master contract for all producers with the feedlot.

For more information, write to the Kansas Agricultural Marketing Association, 2321 Anderson Avenue, Manhattan, Kansas, 66502.

Kansas Farm Bureau
105 County Farm Bureaus
Working Together



In Today's Mail

81 boost development fund

Kansas clubs and individuals continue to give to the development plan of the National 4-H Center, through the Kansas 4-H Foundation.

The 81 contributors during the period Aug. 31 to Oct. 31 were:

Pioneer 4-H club, Ridgeview Rockets, Sharon, Zion Zippers and Little Cedar Sr., all of Johnson County; Boling, Lansing Busy Bees, El Dorado, Valley

View, Happy Hollow and Basehor Rustlers all of Leavenworth County; Riverton, Glittering Stones and Prairie Ramblers, Cherokee County.

Sunnyside 4-H club, Phillips County; Straight-Ahead-Strivers and Go-Getters, both of Greeley County; Richland Center, Blue Valley Hustlers, Marshall County; Lucky Horseshoe, Busy Beavers, Home Builders, Vilas Vikings, High Prairie, Buffalo Booster, Wilson County; Wide-Awake Eager Beavers, Seward County;

Schoharie, 4-H club, Ness County; County Pals, Mighty Mitchell, Midland Lucky Clovers, Rice County; Best-Yet, Morton County; Crawford 4-H Council; Ogallah, WaKeeney Willing Workers, Trego County 4-H Council, Trego County; Solomon Valley, Delphos, Woodsdale, Pleasant Valley, Ottawa County; Cardinal, Clover Leaf, 20th Malaby Pushers, Perth, Rome Rock-

ets and Sunflower, Sumner County;

Go-Getters 4-H Club, Finney County; Carlton Trailblazers, Dickinson County; Go-Getters, Sr. Sunflower, Stanton County; East Bolton, Cowley County 4-H Council, Dexter, Udall, I.X.L., Walnut Valley; Cowley County; Elm Creek Emeralds, Butler County; Bucyrus Boosters, Miami County; Prairie View, Kearny County; Pratt County 4-H Council;

Beaver Valley 4-H Club, Edson Trailblazers, Glendale Live-wires, Goodland Go-Getters, Grant Boosters, Jolly Workers, Lianos, Prairie Dale, Ruleton Eager Beavers, Stateline Elstars, Warren Star Busy Bees, Sherman County; and individuals Leon Patton, Violet I. Joiner, Carolyn Schmitt, Gloria Grimm, Richard E. Gustason, E. R. Weaver, Patricia E. Gustason, Judy Streit, Max E. Fridell and Wanda Compton.

Tree walk at RSR

A memorial tree walk has been planned at Rock Springs Ranch. Two dozen varieties of trees line the 600-foot walk from Williams Dining Hall north and then east to the boys' quarters.

Basswood, Red Oak, Walnut Hackberry, Soft Maple, Shellbark Hickory, Honey Locust, Blue Ash, Sycamore, Hawthorne and Ironwood are among the varieties represented.

Persons interested in designating a tree as a memorial are asked to contact the Kansas 4-H Foundation, 212 Umberger, Kansas State University, Manhattan, Kansas 66502.

Enrollment rise

1968 saw a record enrollment of 968,000 youth in the nationwide 4-H program, according to figures supplied by the Cooperative Extension Service in 50 states and Puerto Rico. This represents an increase of 19,000 over 1967 totals.

Agri-business today employs about 40 per cent of the working population.

**Has your club
made plans to
visit Rock Springs?**

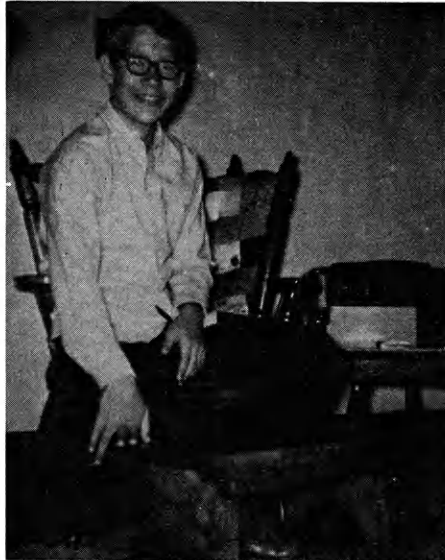


FOUNDATION HONORS TWO—Two Kansans were cited for outstanding service to 4-H during the recent Kansas 4-H Club Congress in the state's largest city. Balfour S. Jeffrey, treasurer of the Kansas 4-H Foundation's board of trustees (second from left), and George Powers, a Wichita attorney (third from left) were honored. At left is J. Harold Johnson, executive director of the Foundation and at right is Dale W. Critser, chairman of the board of trustees of the Kansas 4-H Foundation.

Free!

4-H Woodworking Plans from YOUR LUMBER DEALER

**TWO NEW
PROJECT
IDEAS NOW
AVAILABLE**



COLONIAL FOOT STOOL



SLEEVE BOARD

*See these Lumbermen for your FREE Plans — they
are your best friend when you need good material*

Argonia
Mack-Welling Lumber Co.

Ashland
Don Spotts Lumber Company
Home Lumber and Supply Co.

Bern
Bern Lumber Company

Burden
Alexander Lumber Co.

Chanute
Gray Lumber Company

Clay Center
Fullingtons

Clyde
Geo. W. Hays & Son, Inc.

Coldwater
Home Lumber and Supply Co.

Ellinwood
Home Lumber & Supply Co.

Ellsworth
Ellsworth Lumber

Emporia
Home Lumber and Supply Co.

Eureka
A. C. Houston Lumber
Company

Fredonia
The Home Lumber & Supply
Company

Garden City
McAllister-Fitzgerald Lumber
Co.

Gardner
Gardner Lumber Company

Garnett
Star Grain and Lumber
Company

Goodland
Rasure Lumber Company
Foster Lumber Company

Hanston
Halling Hardware & Supply

Healy
Healy Co-op Elevator
Company

Hiawatha
Motsinger Lumber Co.

Hillsboro
Hillsboro Lumber Co.

Holton
Holton Lumber Company

Hugoton
The Star Lumber Company

Independence
Sandott Lumber, Inc.

Iola
Klein Lumber Company

Johnson
Seyb-Tucker Lumber and
Implement Company

Junction City
Builders Lumber Inc.

Kechi
Buck Alley Lumber

Kinsley
Kinsley Co-op Exchange
Lumber Yard

LaHarpe
Diebolt Lumber and Supply

Lakin
Tate and Company

Lansing
Lansing Lumber, Inc.

Larned
Clutter-Lindas Lumber Co.

Lawrence
Logan-Moore Lumber Co.
McConnell Lumber Company

Liberal
The Star Lumber Company

Lyons
Antrim Lumber

Macksville
Home Lumber and Supply Co.

Manhattan
Ramey Brothers

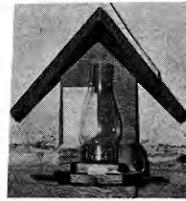
Closet Valet



Woodworking Bench



Bird Feeder



Utility Cabinet

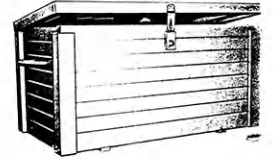


THESE PLANS ARE AVAILABLE

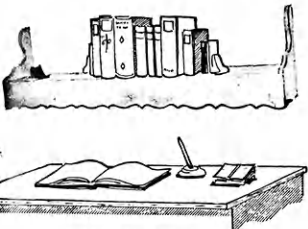
Mail Box	Cart with Removable Trays	Dairy Barn Desk	Desk
Portable Towel Rack	Magazine Rack	Wishing Well Planter	End Table
Lazy Susan	Sheep Blocking Box	Coffee Table	Wren House
Box Hockey	Child's Desk	Salt and Pepper Set	Picnic Table & Benches
Holding Gate	Hobby Horse	Colonial Bookcase and Cabinet	B-B Gun Rack
Sail Boat	Rabbit Carrier	Lawn Lounge	Redwood Planter
Dog House	Camp Kitchen	Porch Swing	Drafting Table
Sand Box	Chick Feeder	Canoe Sailing Rig	Child's Picnic Table
Comic Book Rack	Garden Trellis	Tail Gate Kitchen	Shoe Rack
Childs Step Stool & Chair	Bicycle Rack	Chest of Drawers	Tool Box
Collapsible Visual Aid Stand	Hog House	Table Lamps	Book Case
Back Yard Fence	Insect Display Box		Serving Cart



Tool Caddy



Show Box



Bookshelf Light



Patio Planter



Tennis Padl-Pak



Night Table

Mankato
Mankato Lumber Company

Offerle
Offerle Co-op Lumber Co.

Pratt
W. R. Green Lumber Co., Inc.

Tribune
Foster Lumber Company, Inc.

Marysville
Howell Lumber Company

Olathe
Cowley Lumber and Hardware Company
Hodges Bros. Lumber Co.

Pretty Prairie
The George W. Ulitch Lumber Company

Ulysses
T. M. Deal Lumber Co.

Meade
Home Lumber and Supply Co.

Osage City
Martin Material Co., Inc.

Protection
Home Lumber and Supply Co.

Wichita
Stockyards Cash and Carry Lumber Co.
Alexander Lumber Company Inc.
Star Lumber & Supply Co.

Minneapolis
Dingee Lumber Co.

Osborne
Lewis A. Hardman Lumber Co.

St. Francis
St. Francis Equity Exchange

Wilson
Hoch Lumber Company

Moundridge
Clayton Vogt Lumber Co. Inc.

Oswego
Home Lumber and Supply Co.

Salina
Esterday-Boster Lumber Co.

Winfield
A. B. Everly Lumber Co.
Everitt Lumber Co., Inc.

Newton
Antrim Lumber Company

Ottawa
Hubbard Lumber Company, Inc.

Scott City
McAllister-Fitzgerald Lumber Co.

Wright
Right Coop. Assn.

Norton
Norton Lumber Company

Parsons
O. E. Woods Lumber Co.

Seneca
Seneca Lumber Company

Zenda
The George W. Ulitch Lumber Company

Nortonville
Alexander Lumber Company

Pittsburg
Broadway Lumber Co., Inc.

Spearville
Farmers Grain & Supply Lumber Dept.

Missouri

Oberlin
Building Supply Headquarters

Plains
Home Lumber and Supply Co.

Syracuse
Foster Lumber Co. Inc.

Independence
The George W. Ulitch Lumber Company, 11432 Truman Road



COUNTY WINNERS—Johnson County teams placed first and sixth recently at a district land judging contest at Rossville. Roger Coleman, left, is conservation leader for the Oxford Hustlers 4-H club, of Johnson County. First-place team members are Alex Lowe, Alice Voigts and David Scott. They will compete next spring at the National Land Judging Contest at Oklahoma City. Members of the sixth-place team were Janis Coleman, Jeff Cochran and Steven French, not shown.

Say 'thank you'

There's not better time than right now to recall ideas to keep in mind while preparing an acceptance speech. Kansas 4-H'ers often have the opportunity to make an acceptance speech as an individual or on behalf of their club.

Tips to keep in mind:

—Thank the giver, calling him by name.

—Thank the donor, perhaps an organization or company, using the correct and full name.

—Express gratitude to those who put you in the position to achieve what this award represents.

—Attribute whatever you have done to the cooperation of others and give the impression you view others favorably in comparison with yourself.

—Indicate the significance of the award and the responsibility it puts on you now.

—End with a brief, short statement of sincere appreciation.

It's what's happening!

What's happening is the Kansas 4-H Journal, and your club could be a part of it!

Pictures and stories of your club's projects and activities are of interest to the Journal and its readers. But we're not mind guessers! It's tough to know what's going on across the state when 4-H'ers don't tell us. Stories about what your club is doing or the success story of one of you members—that's also news!

So let us know what's going on! We better warn you, though. We're not very good at keeping secrets. We'll tell the whole state!

Send your stories and black-and-white pictures only to the Kansas 4-H Journal, Umberger Hall, Kansas State University, Manhattan, Kansas 66502.

Have You Said Thank You?

To Your

4-H Journal Sponsor

THESE SPONSORS HAVE GIVEN THEIR SUPPORT FOR THE COMING YEAR

HARVEY

First National Bank, Newton
Halstead Bank, Halstead
Hesston State Bank, Hesston
Kansas State Bank, Newton
Midland National Bank, Newton
Sedgwick State Bank, Sedgwick

KIOWA

First State Bank, Mullinville
Haviland State Bank, Haviland
Greensburg State Bank, Greensburg

WILSON

First National Bank, Fredonia
First National Bank, Neodesha
Fredonia Co-op Assn., Fredonia
Glenn Wiggins Drug Store, Fredonia
Home Lumber & Supply Co., Fredonia
Radiant Electric Co-op Inc., Fredonia
Joe Armstrong Equipment, Fredonia
Self-Service Grocery, Fredonia
State Bank of Fredonia, Fredonia
Wilson County Farm Bureau, Fredonia

CLOUD

Citizens State Bank, Miltonvale
Cloud County Bank, Concordia
Fidelity State Bank, Concordia
The First National Bank of Glasco, Glasco
Jamestown State Bank, Jamestown

SCOTT

First National Bank, Scott City
Security State Bank, Scott City

ANDERSON

Garnett State Savings Bank, Garnett

PAWNEE

First State Bank, Larned

DECATUR

Decatur Co-op Association, Oberlin

EDWARDS

The Home State Bank, Lewis

COMANCHE

The Peoples State Bank, Coldwater

BARBER

First National Bank, Medicine Lodge

MEADE

Fowler State Bank, Fowler
First National Bank, Meade

WOODSON

Woodson County Co-op Assn., Yates Center
State Exchange Bank, Yates Center
J. E. Sowder Seed Co., Toronto

IDEAS & News

(More "Ideas & News" on page 10)

Teri Bishop and Karen Stutterheim are new members of the Willing Workers 4-H club of Saline County. Welcome to 4-H, Teri and Karen!

"An improvement for our 4-H club" was a recent roll call topic of the Hess-ton Union Champions of Harvey County. Good idea! And Kenny Semons is a new member of the Hesston club.

Diane Roets and Mark Fish are new members of the Richland Livewires club, also of Harvey County. Glad to have you in 4-H, Diane and Mark!

The Lawnridge Junior Leaders of Cheyenne County placed the 4-H banner over main street in St. Francis to observe National 4-H Week. And club members served cookies to the businessmen who had helped the club during the year.

A Lincolnville 4-H youth, Kenneth J. Shields, has won second place in the

Western U.S. 4-H tractor operators' contest in Dallas. Kenneth, a Kansas State University sophomore, represented the Sunflower State as winner of the state contest at Hutchinson.

Four new members have joined the Richland Rustlers 4-H club of Pratt County. They're Lisa Harris, Michael Seyfert, Keith Cowen and Kay Lynn Norris.

Another new club president is Vicki Krehbiel of the Swinging 4-H'ers of Saline County.

Amy Rinner is new president of the Kansas Jayhawkers 4-H club of Harvey County. Joy Challenger will lead the

Sedgwick Sunflowers, also of Harvey County.

New members of the Macon Happy Hour 4-H club of Harvey County are Kenny McCart and Kent Shirer. Welcome to 4-H, Kenny and Kent! In other Harvey County news, new president of the Lucky 13 club is Steve McGlachlin.

Two new presidents have been named in Harvey County. Grace Wenger will lead the Town Toppers 4-H club and at the helm of the Junior Leaders this year is Debbie Kasitz.

Janet Palmberg is new president of the Shunga Valley 4-H club of Shawnee County.

Christmas Puzzle

How many words can you make using the letters in the word "Christmas?" The following are a few. Fill in the blanks to complete the rhyming words.

1. A family pet is a _____,
2. A household nuisance is a _____;
3. Mother wears on her head a _____,
4. At the door wipe your feet on the _____;
5. A beret is a type of _____;
6. Cured pork meat is _____;
7. Father drives a _____,
8. On the roof he patches with _____;
9. A male sheep is a _____,
10. Everybody's uncle is _____.

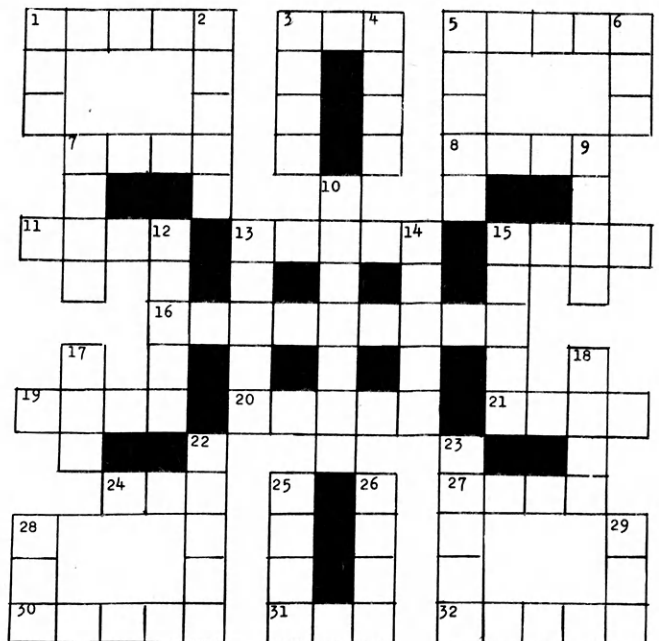
"Christmas Fun" Crossword

ACROSS

1. Reading material
3. Dad always gets one
5. Coloring used for pictures
7. Socks and shoes come in this
8. Pail of water on a farm
11. Santa wears a red and white
13. To fear
15. Chilly
16. Christmas tree is an
19. Brothers
20. The are flooded with Christmas greetings
21. It goes on snow
24. Hang it for Santa to fill
27. Not rich
30. Dad likes to get a for Christmas with his tie
31. A good ballpoint is a nice gift
32. Checkers, dominoes, etc.

DOWN

1. Type of roll
2. Worn around the neck for warmth
3. Stumble and fall
4. Make a wage
5. Little dog
6. Plaything
7. Purple fruit
9. Santa brings it to a little girl
10. A short legged waddling bird
12. A forest is full of
13. Sleep thoughts
15. Any little girl would like a pretty new to wear
15. Peppermint candy
17. Some people put pretty on their packages
18. Luscious yellow fruit
22. Part of a girl's suit
23. A of holly (branch)
25. A paper holds papers together
26. Idea
28. Some children ride a to school
29. Short for sister



Solutions on page 6

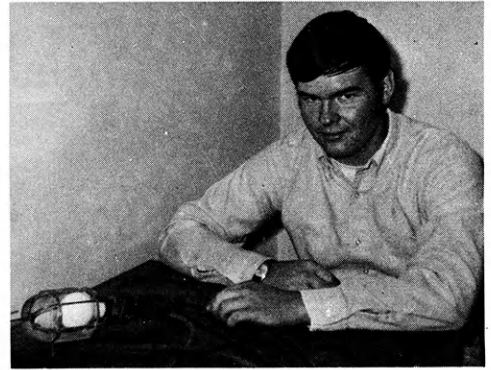
Hobby nets a fair winner



Roger Braker, a Franklin County 4-H'er, shows off his transmitter and receiver he made to pursue his hobby of "ham" radio. It won purple ribbons at the county and Mid-America fairs, and a blue at the Kansas State Fair at Hutchinson. This is Roger's second year in the 4-H electric project.



This ham radio transmitter was made during Roger's second year in the electric project. He received a license to operate the radio early this year.



Here, Roger is shown with his trouble light he made his first year in 4-H electric. For that project, Roger received a blue ribbon last year at the Franklin County fair.



* Watch This Page For Ideas On Farm And Home Electric Projects

ELECTRIC LIGHT and POWER COMPANIES in KANSAS

The Kansas Power and Light Company
Kansas City Power & Light Company

Central Kansas Power Company
Kansas Gas and Electric Company

Western Power Division of Central Telephone & Utilities Corporation