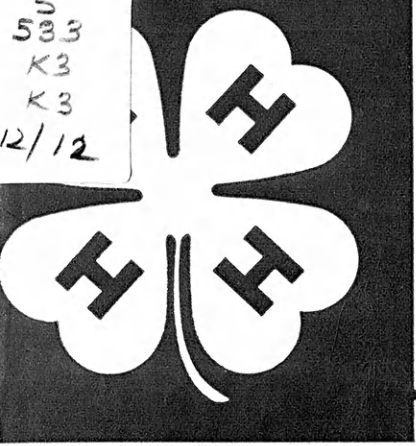


583  
K3  
K3  
12/12



December, 1966

15 Cents

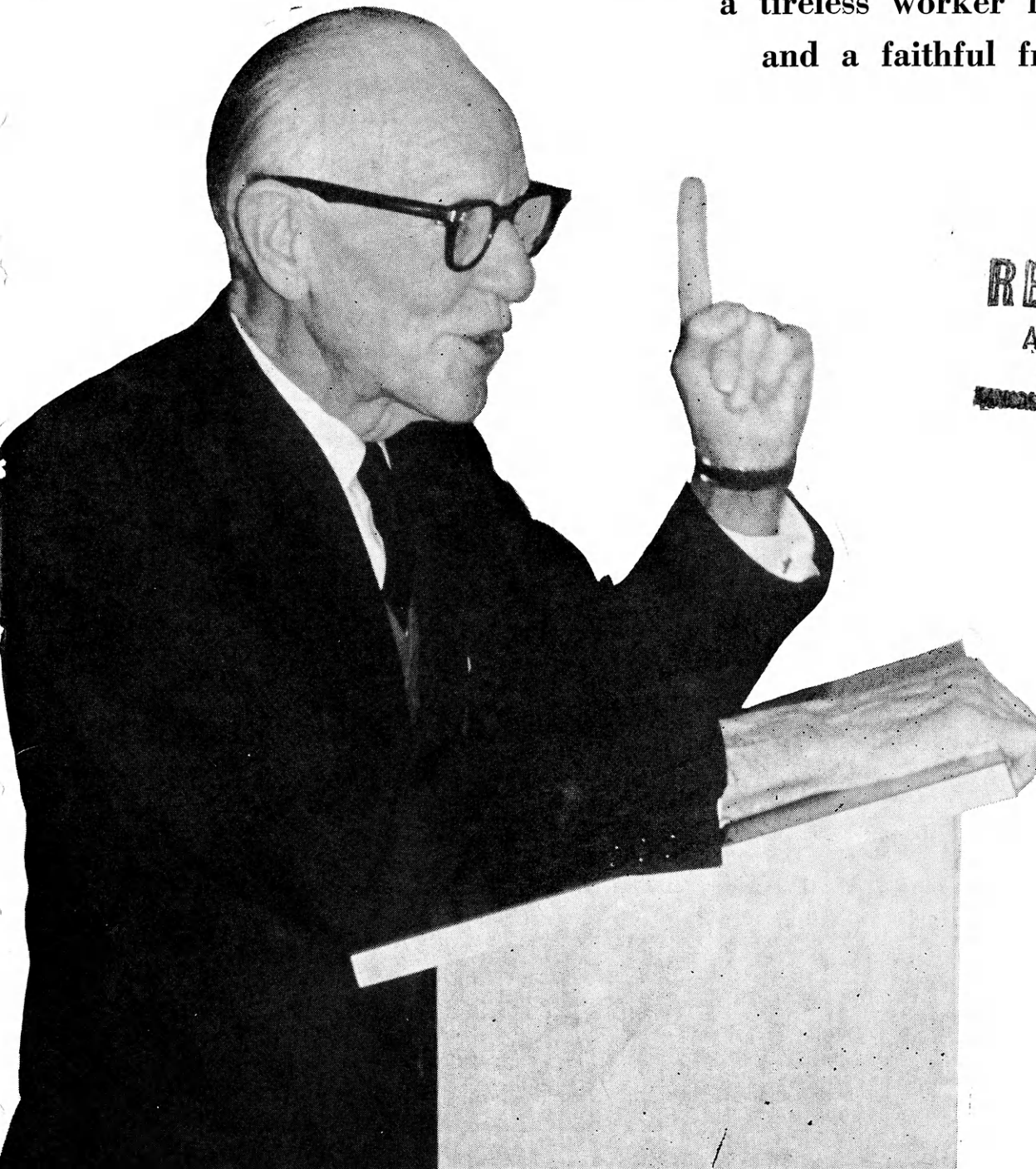
KANSAS 4-H

# Journal

The 4-H Family Magazine

Kansas 4-H Foundation, Inc., Publisher

**Lester F. Weatherwax—  
a tireless worker for 4-H  
and a faithful friend**



RECEIVED  
APR 8 1970  
THE LIBRARY  
KANSAS STATE UNIVERSITY

*your participating cooperative announces . . .*

# YOUTH FEEDER AWARDS

**A program of achievement recognition for farm youth with animals on CO-OP Feed.**

**Register now for these awards:**

- FIRST AWARD**  
1967 Case Tractor  
(1966 model shown)
- SECOND AWARD**  
Ford Bronco Roadster
- THIRD AWARD**  
G. E. Color Television Set
- FOURTH AWARD**  
Huffy Garden Tractor
- FIFTH AWARDS**  
10 G. E. Portable Television Sets

## to enter:

### **Register with your local Co-op.**

Participating cooperatives have official registration forms. Stop in and fill one out when you start your animal project. You may register now if you like.

### **Entry form will be mailed to you.**

After registration with your cooperative, you will receive an official entry form for Youth Feeder Awards in the mail. This entry form will have space to fill in your feeding and care records, ask you to provide a photograph of you and your animal together, and ask you to answer why you chose CO-OP Feed in 100 words or less. After your animal project is completed, send in your completed entry form before November 1, 1967.

### **Presentation of Awards—Dec., 1967**

You don't have to be a show winner to receive awards. Recipients of awards will be chosen solely on the basis of information sent in with the official entry form.

Entries will be judged by an independent panel. Awards will be made on the basis of sincerity, interest in the animal project, and according to the guiding philosophy of FFA and other youth organizations to which the entrant belongs. Awards will be officially presented by Farmland Industries in December, 1967.

### **State and Interstate Shows—**

#### **Cash Awards**

Additional, cash awards will be presented

to youth award winners with grand champions over all breeds for beef, swine, dairy, chicken, turkey, sheep and horse in 1967 shows. For winners in these state and interstate show categories, local cooperatives will present Farmland Industries' checks in the amounts of \$200.00 for interstate show winners, and \$100.00 for state show winners. For show winners to qualify for cash awards, animals must be fed on CO-OP Feeds and Farmland Industries must be supplied with a completed official entry form with photograph of youth and show animal. Cash awards will be presented in December, 1967.

**Stop in soon at your cooperative. Register for Youth Feeder Awards.**



# FEEDS

*"Quality backed by profit-minded research."*

FARMLAND INDUSTRIES, INC. KANSAS CITY, MISSOURI



## IN THIS ISSUE

### FEATURES

<i>4-H Has Directions of Emphasis</i> .....	5
<i>Kansas Has A Dozen National 4-H Winners</i> .....	6
<i>Foundation Is Praised</i> .....	6
<i>Tribute to Lester F. Weatherwax</i> .....	7
<i>Leaders Gain Knowledge and Learn Application at Clinic</i> .....	10
By Joan Strickler <i>Achievement Affair Stands Many Years in Douglas County</i> .....	11
<i>4-H Reporters Tell The "4-H Story"</i> .....	11

### DEPARTMENTS

<i>Family Fun Page</i> .....	4
<i>Recreation, 4-H Day Offers Opportunity For Recreation Participation</i> ..	8
By Dick Tomkinson <i>Ideas That Work</i> .....	14

## Lester Weatherwax Memorial Established With Foundation

Kansas 4-H lost a good friend in early November, Lester F. Weatherwax of Wichita. Mr. "Wax" was loved by thousands of youth and adults who are active in 4-H.

A member of the Kansas 4-H Foundation Board of Trustees, Mr. Weatherwax and his wife made 4-H their retirement work. They traveled to nearly every Kansas community in support of the Foundation and other aspects of 4-H.

The family of Mr. Weatherwax established a Memorial Fund with the Kansas 4-H Foundation. Checks made for this purpose should be made to KANSAS 4-H FOUNDATION and designated for the LESTER F. WEATHERWAX MEMORIAL.

"A decision has not been made as to the type of memorial, but we feel sure his many friends will want something which will adequately express their high regard," reported J. Harold Johnson, Executive Director of the Foundation.

In a tribute to "Wax" the **Journal** presents some of his own words and writing of others on page seven of this issue.

Don Esslinger ..... Editor

### Editorial and Business Office

Phone JE 9-2211 Ext. 208  
Manhattan, Kansas 66502

### Published Monthly By

### KANSAS 4-H FOUNDATION, INC.

J. Harold Johnson.....Executive Director  
Merle Eyestone.....Associate Director

### BOARD OF TRUSTEES

Governor William H. Avery  
Honorary Chairman

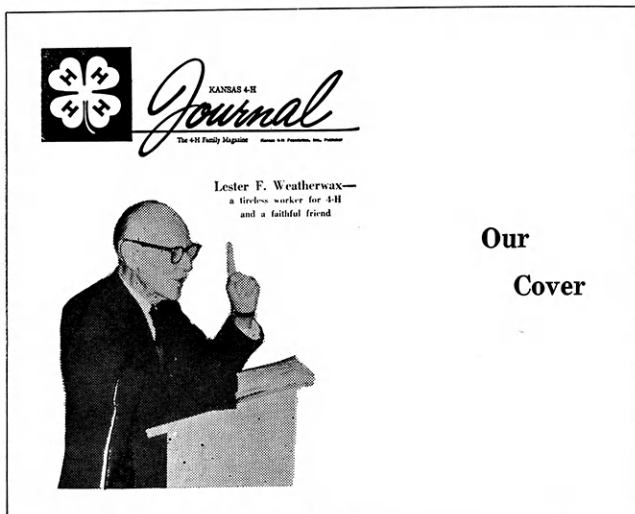
W. Dale Critser, Chrm. ....	Wichita
E. B. Shawver, Vice Chrm. ....	Wichita
Balfour S. Jeffrey, Treas. ....	Topeka
Glenn M. Busset.....	Manhattan
*Harry Darby.....	Kansas City
Mrs. Olive Garvey.....	Wichita
Clifford Hope.....	Garden City
†A. D. Jellison.....	Junction City
Harold E. Jones.....	Manhattan
J. J. Moxley.....	Council Grove
George B. Powers.....	Wichita
*Roger E. Regnier.....	Manhattan
N. T. Veatch.....	Kansas City
Dolph Simons.....	Lawrence
*Lester Weatherwax.....	Wichita
†Fred D. Wilson.....	Andover
†Advisory Member	
†Trustee Emeritus	

Second Class Postage Paid at Lawrence, Kansas. Return Form 3579 to Kansas 4-H Journal, Manhattan, Kansas. 66502

Advertising rates and circulation data on request.

Group subscriptions \$1.00 per year.  
Individual subscriptions \$1.50 per year.  
Single copy 15 cents.

Use of the 4-H name and symbol approved by the Secretary of Agriculture of the United States, January 23, 1951, under the provisions of the law as reenacted by Sec. 707 of the Act of June 25, 1948 Public Law No. 772, 80th Congress (10 USC 797)

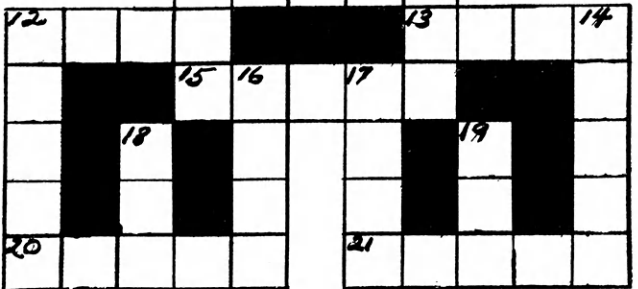
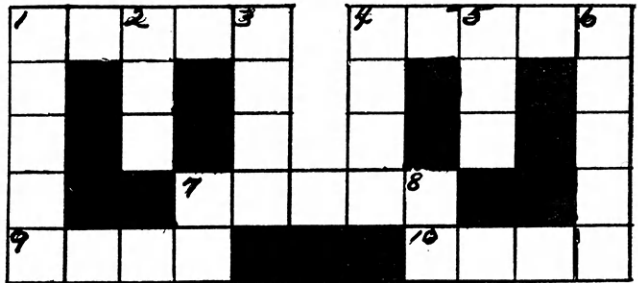


**ACROSS**

1. How many blind mice were there?
4. Funny man at circus
7. Boats
8. Toy that children fly in the air
10. A small pie
11. Having nothing in it
12. Precious metal that jewelry is made from
13. To loan
20. What the sun did when the day was clear
21. Where cowboys ride their ponies

**DOWN**

1. Vehicle that delivers goods
2. Bright color
3. Every
4. Put hands together to make a loud noise
5. Bird who sees at night
6. After sundown
7. What one plants in the ground
8. Style of clothes
12. Sports
14. Male duck
16. Not wild
17. Close by
18. To and \_\_\_\_\_
19. Hurry



**Recreation Scrambled Word**

Each of these words is a common type of recreation 4-H in which 4-H Clubs engage. See if you can unscramble them.

- |                |               |           |
|----------------|---------------|-----------|
| 1. Tnutss      | 5. Rtapeis    | 9. Slayer |
| 2. Ninggis     | 6. Katebbllas | 10. Ysalp |
| 3. Kolf cnades | 7. Lbalsaeb   | 11. Mpacs |
| 4. Mseag       | 8. Zziuesq    | 12. Kseih |

Father: Why are you jumping like that son?  
 Son: Because I ate my medicine.  
 Father: Why does that make you jump?  
 Son: Because I forgot to shake the bottle.

Cecilia M. Kasl  
 Cuba

Jo: What did one firecracker say to the other?

Jim: Beats me.

Jo: I bet my pop is bigger than yours.  
 Martha Pendleton  
 Coffeyville

Why does a baby duck walk softly?  
 Because it can't walk hardly.

Lou Ann Whitehair  
 Abilene

Lonnie: Will you do my homework?  
 Father: No, son, it wouldn't be right.  
 Lonnie: Well, you could try.

Patty Douthit  
 Riverton



Editor's Note: Send in your favorite joke. We will give you credit for sending it in and we can let many others enjoy this joke and puzzle page. . . . Send to Kansas 4-H Journal, Manhattan, Kansas.



# Directions of Emphasis

Six "directions of emphasis" will be used to add guidance to 4-H work during the coming years in Kansas.

"Although the main stream of 4-H work will not change substantially in the near future, there will be exploratory efforts in several directions," Dr. Glenn Busset, State 4-H Leader, announced.

"The new projects in 4-H are designed to serve the varying interests of all Kansas youths, including the young people in city areas," he said.

The first three "directions of emphasis" will involve 1) concerns for special programs for older 4-H members, 2) efforts to adapt programs to the interests of specific age groups, and 3) studies into programs for non-farm 4-H members (but no special "city" projects).

Three other "directions of emphasis" will explore programs designed 1) to aid the disadvantaged youth, 2) to lead to-

ward more cooperative efforts with non-Extension groups with youth programs, and 3) to place added emphasis on the use of lay leadership.

## Individual Growth

Individual growth through self direction might well describe the "direction of emphasis" the Kansas 4-H program will be taking for senior 4-H members.

Although no definite program as such has been set up for 4-H members, there will be exploratory efforts in new directions. The great demands of living in today's society require our young adults to be confident in making their own decisions and secure in their ability to get along with other people. A successful youth program must take these needs into consideration.

Future senior 4-H programs might well have much less formal structure to them. There would be no officers or formalized meeting outline. The trend

will be toward more personally set goals and away from externally imposed requirements. Records need not be kept unless they would be necessary to the study being made such as in production or marketing.

The trend will be toward group projects rather than individual projects. A group might form for a particular study and disband when the study is considered completed. Such a program would allow for fluid membership—a group might meet 3 or 30 times and disband, thus allowing participants to seek out other interest projects. Membership in senior 4-H groups will not be limited to members of community clubs.

Emphasis will be placed on the individual's personal gain in knowledge and maturity and not on awards and recognition.

It is hoped that greater flexibility in the 4-H program for older members will meet the needs and interest of senior members and better equip them for life in a rapidly changing society.

**A STATE BLUE AWARD GROUP** in the 4-H Personal Development Project joined other 4-H members in an educational trip experience honoring their outstanding work. The three-day event in Wichita was filled with special tours, recreation and idea sharing. The youths learned more about their citizenship responsibilities in special programs for their enjoyment. They also toured the long distance and information facilities of the host Company in Wichita.



**BLUE AWARD GROUP IN PERSONAL DEVELOPMENT.** Left to right, front row; Ken Georg, Rush county; Janice Wood, Sedgwick; Patty Doughtit, Cherokee; Carol Habiger, Woodson; Karen McDaniel, Salina; Twila Gore, Pawnee; and John Walker, Southwestern Bell Telephone Company, Topeka. Back row; Randal Wood, Sedgwick; Darrell Marr, Jewell; Joe Miller, Atchison; Paula Casey, Leavenworth; and Denise Reed, Pratt.



4-H members take part in an emergency preparedness exercise as part of their study of citizenship responsibility. Mr. John Walker, Southwestern Bell Telephone Company representative, chats with a group as they take part in the exercise.

THE PEOPLE AT SOUTHWESTERN BELL TELEPHONE COMPANY ARE PROUD TO HAVE A PART IN THIS 4-H PROJECT BY SPONSORING AWARDS FOR OUTSTANDING WORK.

**SOUTHWESTERN BELL**



**TELEPHONE COMPANY**

KANSAS

# 4-H Journal Sponsors

These Have Renewed  
Their County Support

- Bourbon**  
The Bank of Bronson, Bronson  
Liberty Savings & Loan Ass'n.,  
Ft. Scott  
Union State Bank, Ft. Scott  
Federal Land Bank Ass'n of Ft.  
Scott, Ft. Scott  
Citizens National Bank, Ft. Scott  
Farmers Co-op Ass'n., Ft. Scott
- Anderson**  
Garnett State Savings Bank, Garnett
- Barber**  
First National Bank, Medicine Lodge
- Cloud**  
Jamestown State Bank, Jamestown  
First National Bank of Glasco,  
Glasco  
Citizens State Bank, Miltonvale  
Fidelity State Bank, Concordia  
Cloud County Bank, Concordia
- Meade**  
Fowler State Bank, Fowler  
Plains State Bank, Plains  
First National Bank, Meade
- Republic**  
The Food Mart, Belleville
- Scott**  
First National Bank, Scott City
- Edwards**  
The Home State Bank, Lewis
- Salina**  
The First National Bank &  
Trust Co., Salina
- Comanche**  
The Peoples State Bank, Coldwater
- Woodson**  
Woodson County Co-op Ass'n.,  
Yates Center
- Wilson**  
Wilson County Farm Bureau,  
Fredonia
- Montgomery**  
First National Bank, Coffeyville  
Citizens National Bank  
of Independence, Independence
- Pawnee**  
First State Bank, Larned

# Kansas Has A Dozen National 4-H Winners Foundation Is Praised

Twelve Kansas 4-H members were named national or sectional winners at the National 4-H Congress in Chicago. A thirteenth was awarded a national scholarship.

Named as national winners of 500 dollar scholarships were: Danny Fulton, Chautauqua county, beautification project; Tanya Sue Wilson, Greenwood, home economics; Connie Kloefkorn, Sumner, health; Marcia Stout, Chase, beef; Carolyn Olson, Pottawatomie, clothing; Gary Mogge, Sherman, sheep; Charles Magoffin, Reno, tractor; and Mike Wood, Montgomery, entomology.

Awarded a trip to the Congress and named as sectional winners were: Linda Adams, Anderson, dog care; Susan Fagan, Butler, dairy foods; and Bob Strizke, Montgomery, poultry.

Margaret Jean Marsh, Cherokee county, was awarded an 800 dollar scholarship for her outstanding work in home economics.

"One reason 4-H Club work in Kansas is making so much progress is the never-failing backing of The Kansas 4-H Foundation."

This is the theme of a story carried in the November issue of the **Kansas Farmer-Stockman**. The article praises the work of the Foundation and its strong support of the Extension educational program.

The Foundation, a non-profit educational corporation, exists to make it possible for citizens and organizations to share in furthering the Kansas 4-H program with private financing.

The article mentions the services of the Foundation; Rock Springs Ranch, State 4-H Leadership Training Center; The **Kansas 4-H Journal**; sponsorship of the International Farm Youth Exchange Program; awards programs, scholarships and supply service.

"Certainly the support from the Foundation—which means the public and you — funnels youthful energy and thought into channels of worthwhile achievements," the article further points out.



# NOW IS THE TIME TO SAVE Watch It Grow!

(INSURED SAFETY)

SAVE AT  
THESE  
KANSAS  
SAVINGS  
AND  
LOAN  
ASSOCIATIONS

- Arkansas City**  
First Federal Savings and Loan Ass'n. of Arkansas City
- Augusta**  
American Savings Association
- Beloit**  
First Federal Savings and Loan Ass'n. of Beloit
- Clay Center**  
Northwestern Federal Savings and Loan Ass'n. of Clay Center
- Dodge City**  
First Federal Savings and Loan Ass'n. of Dodge City
- El Dorado**  
Mid-Continent Federal Savings and Loan Ass'n. of El Dorado
- Fort Scott**  
Liberty Savings and Loan Ass'n.
- Garnett**  
The Garnett Savings and Loan Association
- Great Bend**  
The Prudential Building and Loan Ass'n.
- Hays**  
The Hays Building and Loan Ass'n.
- Iola**  
The Security Savings and Loan Ass'n.
- Leavenworth**  
Leavenworth Mutual Savings and Loan Ass'n.
- Liberal**  
First Federal Savings and Loan Ass'n. of Liberal
- McPherson**  
The Pioneer Savings and Loan Association of McPherson
- Newton**  
First Federal Savings and Loan Ass'n. of Newton
- Ottawa**  
Ottawa Savings and Loan Ass'n.
- Parsons**  
First Federal Savings and Loan Ass'n. of Parsons
- Pittsburg**  
First Federal Savings and Loan Ass'n.
- Plainville**  
Rooks County Savings Ass'n. of Plainville
- Wellington**  
First Federal Savings and Loan Ass'n. of Sumner County
- Wichita**  
American Savings Association of Wichita, Home Office First and Main: East—4601 E. Douglas Ave.

# WE PAY TRIBUTE

*Following are excerpts from Rev. William C. Miller's eulogy given at the First Methodist Church, Wichita, Memorial service in Wichita, November 4, 1966:*



## LESTER F. WEATHERWAX

"We pay tribute to a gentleman who literally sang his way through life. He made songs immortal, and turned commonplace things into Garlands of Loveliness—and touched life with love everywhere!

"Wax" knew how to so generously share his song—and enable others to sing in midnight hours. Song was his expression of life—by it he articulated his faith—through it he communicated his compassion and concern—with it he walked with chivalry and courage through an eventful lifetime of a myriad experiences.

"His life was like a labyrinth of paths—reaching out in countless directions in his ceaseless involvement in his church and community—but always standing as a mooring place for others to shelter under. He was a man endowed with unusual gifts and a unique capacity to share them, but perhaps his strongest attribute was his ability to place them all in the framework of concern for others.

"Wax" believed in young people—he inspired youth by his strong faith and philosophy. He spoke over 600 times to 4-H gatherings—in nearly every county across the prairies of Kansas. He loved people—and placed no price mark on his involvement with people.

"He was a patriot—he believed in and shared a contagious faith in America.

"He gave himself generously to all he believed in—his family, his faith, youth, and country. His contributions to the lives of all who met him have been profound and abiding."

William C. Miller  
Associate Minister  
The First Methodist Church  
Wichita, Kansas

## "Wax" Gave A Lifetime of Service

"Lester F. Weatherwax led the singing in one of the first county 4-H achievement banquets held in Sedgwick County, in the late 20's. His participation from that time was so constant he became a "tradition" in 4-H. He was an inspirational song leader and was happiest in this field when Mrs. Myrth McGaugh Culp, another loyal friend of 4-H, was his accompanist.

"He loved to hear 4-H'ers sing. I am sure thousands will remember, as I do, those treasured moments when in the evening the hills at Rock Springs Ranch reverberated with song—to quietly fade into the night with the soft harmony of "Tell me why the stars do shine" (his favorite)—and the chapel cross reaching toward the heavens, signaled "goodnight" as darkness fell.

"In nearly every county in Kansas, "Wax" sang and talked his way into the hearts of 4-H'ers, their leaders, and friends. Every talk was a challenge—to

achieve higher goals—to give of one's self for others—to be a proud, useful citizen—yes, to go the second mile.

"During his years as Farm Director for KFBI, he was continually alert for opportunities to tell the 4-H story, or give 4-H'ers this opportunity. Many youngsters had their first radio experience during the hundreds of interviews he conducted.

"It was after his retirement from active business that he and Mrs. Weatherwax jointly decided their hobby would be **service to 4-H**. It was then that their long and intensive travels began—to nearly every Kansas county, in all kinds of weather—whenever 4-H called, they were there; not only in the countries but on a state-wide basis, as well.

"A full schedule of speaking engagements had been accepted; but a call from the Master took precedence.

"As he was laid to rest, the 4-H insignia on his lapel bore

"I am tremendously concerned about the programs for youth in America—I think 4-H is the finest youth program ever conceived by the human mind. The motto of the Texas Youth Council is tremendous—"Youth by Youth We Build a Nation." That is the genius of 4-H Club work.

"You and I KNOW that 32,690 boys and girls are passing in review today—32,690 Kansas 4-H'ers are looking to you NOW. What are you going to do about it?

"In some things money is just as immortal as the soul. What happens when you go out and get a dollar for the Foundation? You translate it into a child. Now WHY—WHY the Foundation? Let me tell you what I think. Just 50 years ago the Smith-Lever Bill was passed authorizing Extension, including 4-H. There wasn't a man, not even Smith and Lever, or a man in Congress who ever thought Extension would accomplish what it has; much less our 4-H Club work. Whoever dreamed that a boy from Rush County could come up as a little bit of a quivering soul and accept his first white ribbon, then see him as a lad of 20 before 20,000 people in Chicago being acclaimed the crops champion of the United States?—A lad from Kansas.

"My friends, your money and mine in this effort is simply a supplemental dollar to what congress never dreamed they would be called upon to do for the boy and girl life of Kansas. The insufficiency of that bill, what ever it might lack in great strength, is being made up by you and me. Now we know enough about kids, we know enough about 4-H Club work—can we translate that into action? THIS is the purpose of your Foundation."

"The most beautiful sight in the world is a child going down a path, after you have shown him the way."—A favorite quotation of Mr. Wax.

testimony of his love for boys and girls and his dedication to 4-H. Truly it can be said that he built a living monument in the lives of youth—that the lengthening shadows of time will mirror the greatness of one who gave a **lifetime of service to others.**"

J. Harold Johnson



# RECREATION— 4-H Day Offers Opportunity For Recreation Participation

By Dick Tomkinson

4-H Club Days offers 4-H'ers an opportunity to taste and try different forms of recreation. If the present trend continues with fewer people on the farm, longer vacations, a shorter work week, earlier retirement, etc., then 4-H should have some interest in encouraging 4-H'ers to explore recreation activities they can enjoy now and in the future.

Learning musical games now for club days is something 4-H'ers may enjoy a lifetime. Participation in a one act play may stimulate an interest in drama. Many adults enjoy these activities today because they became interested and learned through participation when they were younger.

Roger Regnier, former State 4-H Leader, said he was always looking for ways to encourage his children to practice their musical instruments. He and many parents realize music can be an excellent hobby.

The music and talent contests in 4-H days offers a challenge to 4-H'ers to practice and de-

velop their musical talents. Millions of people around the world have music as their hobby.

Many leaders feel they are too busy now to work on the recreational aspects of club days. True, but as one leader discovered, you can ask for help in directing a play, teaching musical games, etc. Research has proven that people will help—if asked.

There are parents, college students, collegiate 4-H members, and talented adults in your area who could give leadership to these 4-H activities. Offer 4-H'ers the chance to have fun now by participating in these 4-H Club day activities. It will help prepare them for a richer leisure in the future.

## Christmas Fun

If you saved your 4-H Journals or National 4-H News, refer to previous years November and December issues for some good ideas. The Fun Encyclopedia by E. O. Harbin has good activities for your holiday parties.

## What Can Santa Bring That With A "C"

by Nancy Nichols,  
Greenwood County

Formation—Circle  
Equipment—Small ball or bean bag

Directions—"It" is in the center of the circle with the ball. "It" says "What can Santa bring that starts with a "S" and tosses the ball to someone in the circle and counts to 10. If the person who catches the ball in answer before the count of 10, "it" tries again with someone else and a different letter, say "P". If the person catching the ball can't answer something Santa can bring that starts with that letter before the count of 10, he is the new "it."

## Christmas Sock

Fill a sock full of "goodies" and small things. Let 4-H'ers feel and guess what is in it. The person guessing the most things correctly in the sock wins.

## Santa's Coming

By Flying Saucer

Formation—Line  
Equipment—Paper box colored like a chimney or basket, and paper plates

Directions—Each person stands behind a line and tries to toss or sail flying saucers (paper plates) into Santa's chimney.

## Snowball Pass

The group makes a large circle and one person is given a white styrofoam ball (snowball). (Note, if the group is large, you may want to use two or three balls.) Start some music, radio, piano, etc., and instruct the group to pass the snowball or snowballs to the right. When the music stops, anyone caught with a ball must sit down. The last person remaining standing, never having been caught with the ball, is the winner.



## ALLIANCE INSURANCE COMPANIES

McPherson, Kansas

FIRE — CASUALTY — LIFE

Serving Kansas Since 1888

## a simple flip of the switch

Every member of the rural family can now have electricity with just a flip of the switch, thanks to Electric Cooperatives.

This ample supply of low-cost power didn't come easily. It is the result of forward-thinking people working together to build and develop Electric Cooperatives to get the electrical power they could not buy elsewhere.



**THE ELECTRIC**  **Cooperatives**  
OF KANSAS

420 West 9th, Topeka, Kansas

CE 5-5321



# HONORS IN 4-H RECREATION

These county winners are presented to honor their outstanding work in 4-H recreation.

**Atchison**  
Tom Miller  
Barber  
Kristi Mathews  
Steve Smith  
**Barton**  
Donna Varah  
Evan Stickney  
**Bourbon**  
Dale Carter

**Comanche**  
Philip Blount  
Randy Dickinson  
Cowley  
Linda Riggs  
**Crawford**  
Linda Gracey  
Debbie DeLange  
**Decatur**  
Carol Pollnow  
Carmela Goscha  
**Dickinson**  
Gary Burkholder  
Pat Halsey  
**Doniphan**  
Marlene Kleppe  
Jerry Meng  
**Edwards**  
Diana Schmitt  
Elk  
Lyneva Sherman  
Karen McIntyre  
**Ellis**  
Carmen Dies  
Jean Duitsman

**Harvey**  
Carol Sauerwein  
Tom Gatz  
**Hodgeman**  
Bill Glunt  
Jackson  
Clinton Harris  
**Jefferson**  
Linda Seever  
Corbin Trimble  
**Jewell**  
Becky Terrill  
Dannie Dempsey  
**Johnson**  
Janelle Clark  
Terry Ellsworth  
**Labette**  
Nola McMunn  
Susan Johnson  
**Lane**  
Mona Adams  
**Leavenworth**  
Rita Sachse  
Stephen Freed

**Morton**  
Pickie Wilmore  
**Nemaha**  
Betty Bauman  
Gerry Ann Roeder  
**Neosho**  
Jacquetta Edwards  
Ronne Heilman  
**Ness**  
Monie Murphy  
Franklin Kerr  
**Osborne**  
Beverly Legg  
**Pawnee**  
Twila Gore  
Janice Shuck  
**Phillips**  
Foy Pumphrey  
**Pottawatomie**  
Connie Heptig  
Marilyn Umscheid  
**Pratt**  
Steve Jenkins  
**Rawlins**  
Saundra Bishop

**Seward**  
Kristi Swearingen  
Darrel Webb  
**Shawnee**  
Sharon Lampe  
Barbara Hook  
**Sheridan**  
Denise Campbell  
**Sherman**  
Gary Splattstoesser  
Cheryl Bolt  
**Stafford**  
Clare Moore  
Karen Brim  
**Stevens**  
Judy Kuharic  
Donna Anderson  
**Sumner**  
Connie Kloefkorn  
Lynn Powell  
**Thomas**  
Mary Beth Chase  
David Arnold

**Brown**  
Joan Sunderland  
Bette Ferbrache  
**Butler**  
Sara Sluss  
Peter Ferrell  
**Chase**  
Terry Scott  
Allan Giger  
**Chautauqua**  
Karon Snyder  
Carol Koonce  
**Cherokee**  
Patty Douthit  
Brenda Judd  
**Cheyenne**  
Carla Hendricks  
Dennis Busby  
**Clark**  
Patricia Hulstine  
Carol Redger  
**Clay**  
Lona Rundle  
**Coffey**  
Susan Allen  
Peggy Wright

**Finney**  
Linda Dunavant  
Mary Dechant  
**Ford**  
Jimmy Lembright  
Nancy Hamilton  
**Franklin**  
Nancy Hewitt  
Martha Christie  
**Gove**  
Wanda Deges  
Dorothy Inloes  
**Graham**  
Gary Dinkel  
**Grant**  
Larry Alexander  
**Greeley**  
Joe Kleymann  
Mike Nutt  
**Greenwood**  
Nancy Nichols  
Jennifer Fankhauser  
**Harper**  
Tom Bauer  
Karen McDaniel

**Lincoln**  
Dale Jensen  
Mary Dohl  
**Linn**  
Clark Hall  
Katie Hall  
**Lyon**  
Marian Wagaman  
Lou Ann Wyatt  
**McPherson**  
Janis Larson  
Denise Lindholm  
**Marion**  
Linda Hinde  
**Marshall**  
Pam Plumb  
Rosemary Musil  
Meade  
Sandra Wetmore  
Steve Fisher  
**Miami**  
Eddie Scheffer  
**Montgomery**  
Jim Mathis  
**Morris**  
Linda Keys

**Republic**  
Dennis Burt  
**Rice**  
Rhonda Cory  
Connie LeClerc  
**Riley**  
Teri Anderson  
**Rooks**  
Lee Ann Harding  
Kathy Kreller  
**Rush**  
Lee Ann Schneider  
Loarn Bucl  
Russell  
Lee Gatton  
Lila Gatton  
**Saline**  
Dennis Fisher  
Sandy White  
**Scott**  
Galen Harper  
Diana Vulgamore  
**Sedgwick**  
Sandra Kees  
Brenda Kees

**Trego**  
James Marcy  
Jeannette Marcy  
**Wabaunsee**  
Pat Bohn  
Barbara Stockman  
**Wilson**  
Belinda Morris  
**Woodson**  
Donna Haen  
**Wyandotte**  
Karen Mosher

Recreation stimulates member and family interest in your 4-H club.

Seven-Up has sponsored member and club awards in 4-H recreation the past eight years



GET REAL ACTION...

Seven-Up Your Thirst Away

Kansas Seven-Up Bottlers Association



Leaders are discussing 4-H for older youth in a session led by Deborah Hobbie, Extension Family Life Specialist.

## Leaders Gain Knowledge and Learn Application at Clinic

By Joan Strickler

"Wonderful spirit! Kansas has done a fine job in training its County Project Chairmen—there's much here that could be shared with other states."

Mrs. Fern Kelley, Assistant Director of the 4-H and Youth Development Division of the Federal Extension Service, used these words to describe her feelings at the County Project Chairman Development Clinic held Nov. 9-10, at Rock Springs Ranch. Mrs. Kelley describes the concept of the Project Chairman as an emerging one. "He is a leader of leaders." "It is most desirable," she believes, "that 4-H move in this direction."

Approximately 100 Chairmen participated in the clinic, which is the third such clinic held in the state. "The Project Chairman is the link between the extension agent, the local project leader, and the 4-H member," explains Dr. Glenn M. Busset, state 4-H leader. The chairman's major job is to work with other adults, training them to work in project areas with the clubs.

The clinic covers not only specific subject matter, but practical ways to apply the knowledge gained. For instance Extension Agricultural Engineer Jack True explored ways in which the

Safety area can be applied to all 4-H projects; also, he detailed literature on safety and ways to arrange for professionally planned public demonstrations on the subject. Several firefighters from nearby Junction City instructed the Chairmen in the use of fire extinguishers by setting a ground fire.

Safety was one of five project areas covered in the Clinic. Clothing, Landscape, Entomology, and the Senior 4-H program also were discussed.

"We must always be conscious of the many different types of roads one can take in working with the young adult," said Mrs. Kelley to Chairmen in the senior 4-H group. "Members must get 'growing-up' experience—not just the same old programs offered again and again."

"A lot of people who need our help aren't getting it," added Busset in his address to the Senior group. He warned against keeping the program only for the talented, busy young people in the community who are always pleasant and easy to work with. He suggests 4-H has much to offer to the young persons who don't belong to youth groups and have little in the way of worthwhile activities to occupy their time.

Dr. Donice Hawes, Associate Professor in Clothing and Textiles at K-State, discussed the social, economical, and environmental factors related to clothing. "Clothing not only offers us comfort and protection, but it can tell us many things about people." She discussed how clothing might vary with the age of the wearer, with his occupation and economic status, and with his personal interests. "Until recently," added Dr. Hawes, "clothing was pretty helpful in identifying the sex of wearer too!"

Jim Nighswonger, Extension Specialist in Landscape Architecture at K-State, described the elements necessary in preparing a "site analysis" to the Project Chairmen in Landscape. He cautioned them to "look ahead" in making a landscape plan by knowing the exact position of all the structures and objects on the property lot.

Dell Gates, Extension Specialist in Entomology at K-State, said a case of pretty butterflies is fine but it's not the purpose of Entomology. "This project is science," explained Gates to his group, "its purpose is to teach a better understanding of the insect world." According to Gates, educational exhibits in Entomology will be

Mrs. Fern Kelley, center, Assistant Director of 4-H and Youth Development of the Federal Extension Service, and Arliss Honestead, Specialist in 4-H, hear about the program for leaders from Dr. Glenn Busset, State 4-H Leader. Mrs. Kelley was a featured speaker and seminar leader.



Two Project Chairmen attending the Clinic were Mrs. Harvey Servos, left, Wyandotte, and Mrs. Bernard Carsten, right, Rooks. With her children grown now, Mrs. Servos enjoys the enthusiasm of the 4-H members. "It's all a learning process for me too," she says, adding, "and a real satisfaction." Mrs. Carsten, whose three children are 4-H participants, says, "I regard my 4-H work as a good investment . . . an investment in the future citizens of our country."



emphasized in the 4-H future. Such exhibits might trace the life cycle of an insect.

The luncheon period could be found intermixed with talk of school, the recent elections, and travels. When your reporter asked some of the busy, enthusiastic Project Chairmen at the table why they were willing to give so much time to 4-H, the answers all sounded something like . . . "a great personal satisfaction."

Dell Gates, Extension Entomologist, discusses a 4-H display with leaders at the County Project Chairman Development Clinic.



## 4-H Reporters Tell The "4-H Story"

It begins with the "Who, What, When, Where, Why and How" of every news story. It ends by making 4-H known throughout your community. And it is the job of the 4-H Club reporter.

This year's top reporter, Janet Schasteen, Linn county, is no different from the many top reporters that have preceded her. She discovered the rewarding experience of promoting 4-H through the newswriting activity.

Every 4-H reporter should ask his county agent for a pamphlet called "Write the 4-H Story" which is available from the State Office, Marcia Lowther, a former top reporter, now a senior in journalism at Kansas State

University said. This little pamphlet tells each reporter how to organize his stories into "inverted pyramid" style of writing used in newspapers.

"The 'inverted pyramid,'" she continued, "means beginning with the most important thing that happened at a meeting, not 'the regular monthly meeting'—that's for the secretary's minutes.

The reporter should make it a point to go in and talk with the editor or some reporter working for the papers he hopes to have his material published in. By doing this, Miss Lowther stressed, he may have more articles published because he has followed the specific newspaper "style" (the way they do things) much more closely.

The best reporters books are usually broken down by sections such as club meetings, project meetings, county activities, regional activities, state activities, and special features. Each one of these sections should be indexed both by title of the story and by the number of papers receiving the story.

It is good for each reporter to include a short story telling of his year as reporter.

He should also include a "Grand Summary" where he lists the total number of articles written in each division and the number of papers that received the articles, plus a break-down of the number of stories received by each paper, she suggested.

Last, but not least, the reporter should remember, that a good reporter can be the biggest asset a 4-H Club has. Armed with the "Who, What, When, Why, and How," a knowledge of how to write and some cooperation with the newspaper, he is ready to "Spread the 4-H Story."

## Achievement Affair Stands Many Years in Douglas County

For the past 38 years the Douglas County Bankers Association has sponsored the 4-H Club Achievement Banquet.

The Association president in the first year, Mr. C. E. Cory, described this sponsorship as, "recognition of the efforts the young folks of our county are making to use and develop their opportunities."

"This spirit has existed through all the years," says James Hoover, 1966 Association president.

Starting with the second year of the event the F.F.A. chapter members of Lawrence High School have taken part, and the Banquet is named for both groups.

The Banquet, held at the Union Building at the University of Kansas, is attended by club members and their leaders. It has grown from a first year attendance in 1928 of 150 to more than 600 in 1966.

Unique with this event is that all officers and employees of the five member banks attend and join in fellowship with the youth.

The Chairman of the Association each year presides over the first part of the event and the County 4-H Council president and other officers handle the main program and the awards presentations.

Special recognition was given retiring county agricultural agent Deal Six. He accepted a plaque from the Extension Council, an attache case from the 4-H Council, and was honored by the attendance of the living members of the Farm Bureau board who hired him 31 years ago.

A special feature of the awards part of the Banquet for the past seven years has been the announcement of an "outstanding 4-H family" in Douglas county. An award is presented by

OUTSTANDING 4-H FAMILY IN DOUGLAS COUNTY, the Wesley Wulfkuhle family. L-R; Linda, Mrs. Wulfkuhle, Mr. Wulfkuhle and Noel.



the Derby Grain Company of Lawrence.

Nominations for this honor are made by 4-H Advisory Committee members and the chosen family is selected by disinterested party. Mr. Paul Smart, Derby Grain manager, handles these procedures.

The outstanding family is chosen on the basis of their participation in 4-H and other Extension activities. Their leadership in community, church and school activities is also a factor.

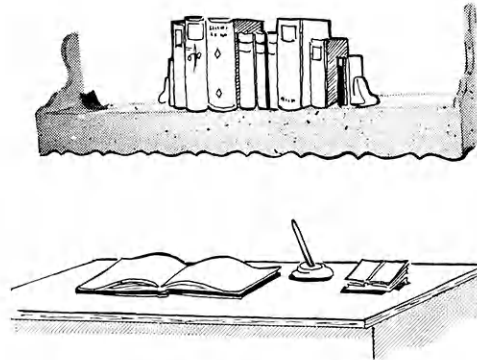


# Free!

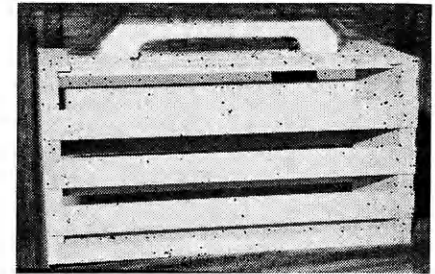
# 4-H Woodworking Plans

## from YOUR LUMBER DEALER

**TWO NEW  
PROJECT  
IDEAS NOW  
AVAILABLE**



**Bookshelf Light**



**Rabbit Carrier**

*See these Lumbermen for your FREE Plans — they are your best friend when you need good material*

**Agra**  
Agra Lumber Company

**Asherville**  
Asherville Lumber and Coal  
Company

**Ashland**  
Don Spotts Lumber Company  
Home Lumber and Supply Co.

**Atchison**  
Hixon Lumber Company

**Beloit**  
Peoples Lumber and Coal  
Company

**Bern**  
Bern Lumber Company

**Brownell**  
Richolson Lumber and  
Hardware Company, Inc.

**Cawker City**  
Cawker City Lumber  
Company

**Chanute**  
Smith Lumber Company

**Chapman**  
Sanborn Lumber Company

**Chase**  
Chase Cooperative Union

**Clyde**  
Geo. W. Hays & Son, Inc.

**Colby**  
Hardman Lumber and Coal  
Company  
Hess Lumber Company

**Coldwater**  
Home Lumber and Supply Co.

**Concordia**  
Sanborn Lumber Co.

**Denton**  
C. H. Gish Company

**Elkhart**  
Elkhart Lumber Co.  
The Star Lumber Company

**Ellsworth**  
Lake Superior Lumber Co.

**Emporia**  
Home Lumber and Supply Co.  
The Smith Lumber Company

**Eureka**  
A. C. Houston Lumber  
Company

**Everest**  
Alexander Lumber Company

**Fredonia**  
The Home Lumber & Supply  
Company

**Garden City**  
McAllister-Fitzgerald Lumber  
Co.

**Garnett**  
Star Grain and Lumber  
Company

**Gaylord**  
Hardman Lumber Company

**Glen Elder**  
Dickinson Lumber Company

**Goodland**  
Hardman Lumber Company  
Rasure Lumber Company

**Greeley**  
Greeley Lumber Co.

**Greensburg**  
Home Lumber and Supply Co.

**Hanover**  
Burgner-Bowman-Matthews  
Lumber Company

**Hartford**  
Thomas Lumber Company

**Hays**  
Hardman Lumber  
Corporation, Inc.  
Schwaller Lumber Co., Inc.

**Healy**  
Healy Co-op Elevator  
Company

**Hill City**  
Hardman Lumber Company

**Holton**  
Holton Lumber Company

**Holyrood**  
Home Lumber and Supply Co.

**Home**  
Home City Lumber &  
Hardware

**Hugoton**  
The Star Lumber Company

**Iola**  
Klein Lumber Company

**Johnson**  
Seyb-Tucker Lumber and  
Implement Company

**Kinsley**  
Kinsley Co-op Exchange  
Lumber Yard

**LaHarpe**  
Diebolt Lumber and Supply

**Lakin**  
Tate and Company  
Lakin Lumber Company, Inc.

**Lancaster**  
T. E. Snowden Lumber  
Company

**Larned**  
Cutter-Lindas Lumber Co.

**Lawrence**  
Woods Lumber Company  
Logan-Moore Lumber Co.

**Lebanon**  
Lebanon Lumber Company

**Lenora**  
Lenora Lumber Company

**Liberal**  
The Star Lumber Company

**Linn**  
Rice-Johntz Lumber Co.

**Longford**  
Longford Lumber & Grain  
Company

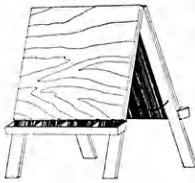
**Macksville**  
Home Lumber and Supply Co.

**Madison**  
Madison Lumber Company

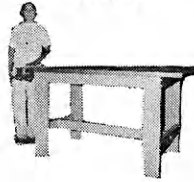
Toy Chest



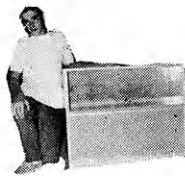
Double Easel



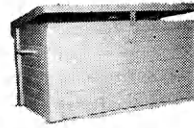
Woodworking Bench



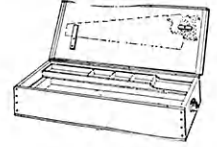
Utility Cabinet



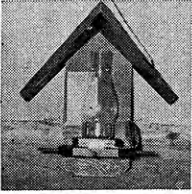
Show Box



Tool Chest



Bird Feeder



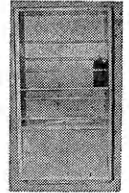
# THESE PLANS ARE AVAILABLE

Lawn Seat	Two-Level Coffee Table	Blue Bird House	Small Animal Trap
Lawn Chair	Box Hockey	Comic Book Rack	Back Yard Fence
Mail Box	Picnic Bench	Vertical Shoe Rack	Bookcase Headboard
Book Case	Holding Gate	Mail and Memo Board	Magazine Rack
Gate Sign	Sewing Cabinet	Childs Step Stool & Chair	Indoor Planter
Step Table	Sail Boat	Fishing Rod Rack	Sheep Blocking Box
Two Games	Shoe Shine Kit	Collapsible Visual Aid Stand	Christmas Tree Gifts
Portable Towel Rack	Football Game	Rotating Selection Tool Rack	Devil Game
Chest of Drawers	Baseball Rack	Cart with Removable Trays	Child's Desk
Wheel Barrow Planter	Martin House		Gun Rack
Lazy Susan	Dog House		Hobby Desk
Coffee Table	Patio Planter		Camp Stool
Yard Cart	Picnic Table		Hobby Horse
Folding Table			

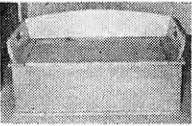
Closet Storage Cabinet



Closet Valet

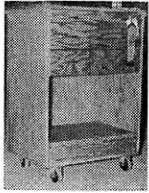


Window Seat

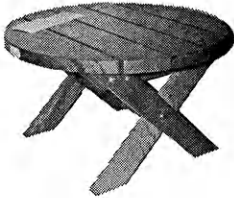


Tool Storage

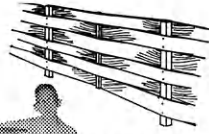
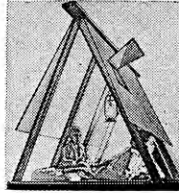
Tool Caddy



Patio Table



Wood Play Tent

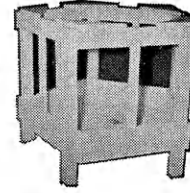


Yard Fence No. 3

End Table



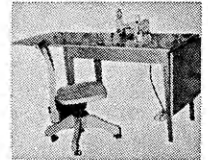
Self Feeder for Sheep



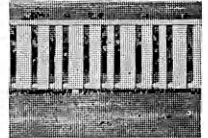
Folding Lawn Chair



Sewing Machine Table



Yard Fence, No. 2



Insect Display Box



Study Center



Manhattan  
Ramey Brothers

Mankato  
Mankato Lumber Company

Marysville  
Howell Lumber Company

Meade  
Home Lumber and Supply Co.

Moundridge  
Clayton Vogt Lumber Co., Inc.

Neodesha  
O. E. Woods Lumber Co.

Ness City  
Rock Island Lumber Co.

Norton  
Norton Lumber Company

Nortonville  
Alexander Lumber Company

Oakley  
Oakley Lumber Company

Oberlin  
Building Supply Headquarters

Offerle  
Offerle Co-op Lumber Co.

Osage  
Cowley Lumber and Hardware Company

Onaga  
Onaga Lumber & Grain Co.

Osage City  
Martin Material Co., Inc.

Oswego  
Home Lumber and Supply Co.

Ottawa  
Hubbard Lumber Company, Inc.

Parsons  
O. E. Woods Lumber Co.

Phillipsburg  
Hardman Lumber Company

Pittsburg  
Broadway Lumber Co., Inc.

Plains  
Home Lumber and Supply Co.

Pretty Prairie  
The George W. Ulch Lumber Company

Protection  
Home Lumber and Supply Co.

Russell  
Hardman Lumber Company of Russell Inc.

St. Francis  
St. Francis Equity Exchange

St. John  
Home Lumber and Supply Co.

Salina  
Everitt Lumber Company, Inc.

Seneca  
Koelzer Lumber Company  
Seneca Lumber Company

Severy  
Tolman-Gibbon Lumber Company

Smith Center  
Smith Center Lumber Co.

Stafford  
Home Lumber and Supply Co.

Stockton  
Stockton Lumber Company  
B & B Lumber & Supply

Wakeeney  
Hardman Builders Supply Co.

Wichita  
Lawrence Lumber Company  
Stockyards Cash and Carry Lumber Co.  
Alexander Lumber Company Inc.  
Star Lumber & Supply Co.

Wilson  
Hoch Lumber Company

Winfield  
A. B. Everly Lumber Co.

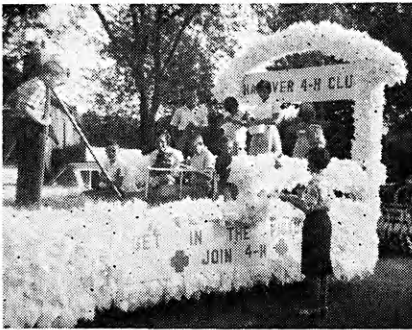
Woodbine  
Kohler Lumber Company

Zenda  
The George W. Ulch Lumber Company

Missouri  
Independence  
The George W. Ulch Lumber Company, 11432 Truman Road



# Ideas That Work



## Float Features 4-H

"Get in the Picture—John 4-H" was the theme of the Hanover 4-H Club, Washington county's, 4-H Float.

The float, constructed for the annual celebration held in Hanover featured projects including Clothing, foods, wood-working, poultry, swine, and the dog project. One member stood at the front of the float to take a picture of the others.

The float won second prize in the parade.

Connie Doebele

## Club Works Through People-to-People

Members of the Paradise Dell Club, Russell county, have centered their interest and work around the people-to-people project. Through this project they hope to learn more about their world and become "doers" in the promotion of world peace.

The group promoted people-to-people by donating money to the Heifer Project. This project provides for purchasing livestock for distribution to 4-H Club members in Venezuela.

They served as host families for IFYE's and invited foreign students to spend Thanksgiving in their homes. One family also served as host to two members of the Kenya Parliament in from East Africa.

The Paradise Dell Club has tried to bring "people-to-people" into every meeting by special talks and programs.

Theresa Shaffer

## Registered Quarter Horses

Conformation-Disposition-Intelligence

"We have Horses with Show Ability"

**C. A. COFER**

3641 N. Maize Road  
Wichita, Kansas 67205  
Phone 316 RO6-0172

## Clubs Learn of "4-H and Viet Nam"

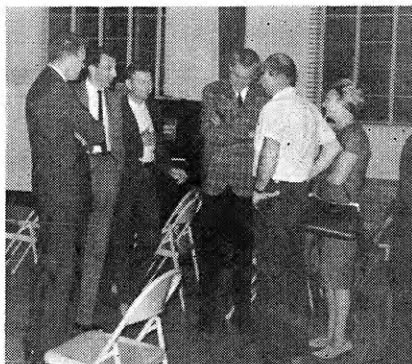
4-H and Viet Nam was the subject of George Stevens speech at a meeting of 4-H Clubs in Johnson County.

Stevens, Agriculture Director for KCMO Radio, spoke to the clubs at the Citizenship Meeting of the Zion Zippers Club.

Stevens told of the 4-T Clubs in Viet Nam which are similar to 4-H Clubs in the United States. 4-T Clubs, Stevens said, are "Real democracy in action."

He showed slides on his recent visit to Viet Nam and told of the work that is being done to improve conditions in Viet Nam.

Carol Boehm



Stevens visits with a group of people following his address. They are left to right: Dr. Joe Knappenburger, Stevens, Ken McGinness, Dr. Tom Knappenburger, and Mrs. Joe Conley.

## Recreation Training Opportunity

To increase your knowledge and skill in recreation—plan to attend the Kansas Recreation Workshop April 24 to 28 at Rock Springs Ranch. Circle the calendar and write for more information to Kathy Williams, 708 Tuttle, Manhattan, Kansas 66502.

## Saline County Clubs Aid Travelers

Three Saline county 4-H Clubs cooperated with the Salvation Army in serving free coffee and refreshments to traveling motorists during an entire holiday weekend.

Members of the Willing Workers, Saline Valley, and 81-Hustlers Clubs visited with travelers, handed out brochures and urged safe driving practices. Over 300 cars took advantage of the coffee stop and a chance to rest a bit before driving on to their destinations.

*Reporter's Notice: The Kansas 4-H Journal would like to print interesting stories of your local club events, activities, members and leaders.*

*Local club meeting stories, if submitted, should contain something unusual or of interest to people outside your county.*

*Outstanding projects, services or events of your club, or stories of individuals within your club that would give ideas to other 4-H'ers would make excellent stories.*

*Prizes will be awarded all blue award stories each month. Please state your choice (1) a year's subscription to the National 4-H News, (2) a hard cover loose leaf 4-H notebook, (3) Photograph album or (4) Roll of film—sizes 120, 35 mm, 616 or 620.*

## Gray County Family Has Over a Century of 4-H Work

Three generations of the Weller family, of Gray county, have given over one-hundred years of 4-H work, all but six years of it in the Skyhigh 4-H Club, Montezuma.

Mr. Howard Weller organized the Skyhigh Club in 1933 and became its community leader. His son Bernard was one of the charter members.

Bernard was a 4-H'er for six years and was the Kansas State Beef champion.

In 1943 Bernard married Alice Wallace, a six year 4-H'er. Then in 1946, Bernard replaced his father as the Skyhigh Club's community leader. Alice began to work as assistant clothing leader and for the past 14 years has served as the woman community leader.

Mr. and Mrs. Bernard Weller have four children who have been active 4-H'ers. Amy (Mrs. Harry Zeilkie of Lawrence) was a member for 11 years; Steven, of Kansas City, a 12 year member; Susan is completing her 12th year; and Bernie, a ten year member is presently serving as president of the club.

This fall the Skyhigh Club honored Mr. Bernard Weller with a gift from the club in recognition of his twenty years as a community leader.

Roberta Birker



The three generations of Wellers, are: Front row: Susan, Mr. Howard Weller, Mrs. Howard Weller, and Mrs. Bernard Weller: Back row: Bernie, Steven and Mr. Bernard Weller. Daughter Amy was absent when picture was taken.





### Club Improves Meeting Room

Painting can be fun say members of the Future Citizens Club, Mitchell county. The group just completed painting the meeting room of the 4-H Building.

Another new addition to the meeting room was green Scotch-plaid curtains to match the mint-green walls.

Ann Fowler

### Club Buys Ostriches

Members of the Riverview Club, Sedgewick county, purchased a pair of ostriches for a new zoo in Wichita.

The campaign was begun by Wichita merchants to procure animals for the proposed zoo. The cooperating sponsors agreed to donate money in return for labels from their products and the children of Wichita began to collect labels.

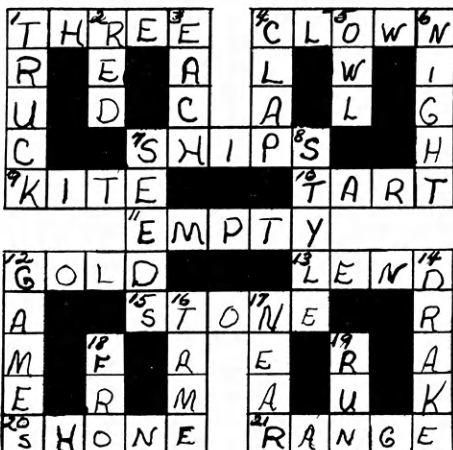
Members of the Riverview Club collected over 500,000 labels to purchase the pair of ostriches. They were named Oscar and Oscarina.

Billie Stansky

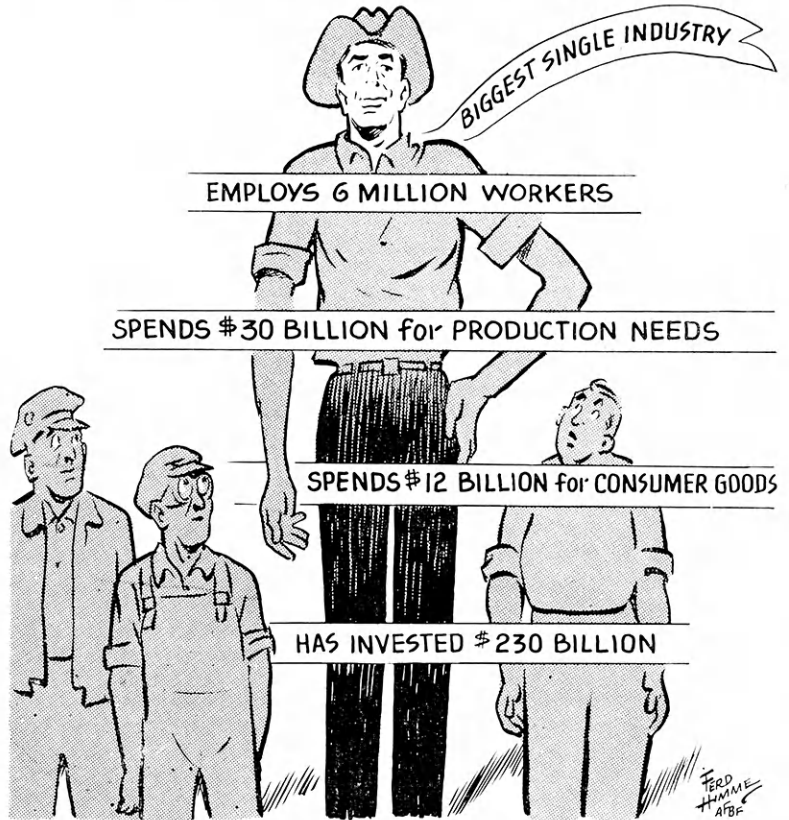
## Fun Page Answers

### Scrabbled word Answers

Stunts, singing, folk dances, games, parties, basketball, baseball, quizzes, relays, plays, camps, hikes.



**A PROSPEROUS AGRICULTURE STANDS TALL IN OUR ECONOMY.**



Today, in the United States, farmers and ranchers produce nearly twice as much as they did in 1937. They have doubled this output while working on 300 million acres of cropland, 60 million fewer than were in use 30 years ago.

The farmers and ranches of today require only 5½ million workers, compared with 12 million in 1937.

The individual production 30 years ago required one farm worker to supply 10 people; today, one worker will supply 27 persons.

Milk production is up 25 percent, but the number of dairy cows has declined from 26 million to 14½ million.

In this period of noisy complaints about food prices, this fact should be noted: In 1937, the average American spent 25 percent of his disposable income for food. Today, he spends only 18 percent.

## Kansas Farm Bureau

105 County Farm Bureaus

Working Together



TRIP WINNERS AND THEIR SPONSORS. Left to right: Front row; Dennis Appleby, Kansas Gas & Electric Co.; Earl Palmberg, Kansas Power & Light Co.; David Morrison, Saline county; Sandra Loeppke, Kearny; Leon Patton, Cherokee; David Lockwood, Harvey; and Doyle Kirby, Rush. Second row; Cecil Coddington, Pawnee county leaser; Dean Ronnebaum, Nemaha; Terry Tullis, Labette; Oscar Warner, Jewell; David Gore, Pawnee; and Gene Porter, Viola, President of Kansas Electric Cooperatives. Back row; Bill DeHaven, Sedgwick; John Krupp, Ellsworth; Larry Dunekack, Barton; Ricky Bigham, Jefferson; Kelly McFall, Pratt; and Wayne Petrick, Sumner.

## 4-H'ers OF BLUE GROUP WIN TRIP IN ELECTRIC

Fifteen 4-H members who were named to the state blue award group in the Electric Project were awarded an educational trip for their outstanding work. In this recognition program for state winners they joined members in several other projects in Wichita where they exchanged ideas, joined in fun and entertainment and met representatives of the donor companies.

Special programs for the Electric group were a tour of the Federal Aviation Agency traffic control center, a laundry demonstration and an instructional session on lighting.

A treat for members attending the program at Wichita was participation in an exercise featuring citizenship responsibilities. 4-H'ers played a game of democracy which helped them understand our representative form of government.

Electric members at the State Winners Recognition Program learned something about new fabrics and fabric treatments as well as watched the operation of some new equipment for home laundries.



\* Watch This Page For Ideas On Farm And Home Electric Projects

**ELECTRIC LIGHT and POWER COMPANIES in KANSAS**

The Kansas Power and Light Company  
Kansas City Power & Light Company

Central Kansas Power Company  
Kansas Gas and Electric Company  
Western Power and Gas Company, Inc.