



June, 1966
15 Cents

Science

KANSAS 4-H

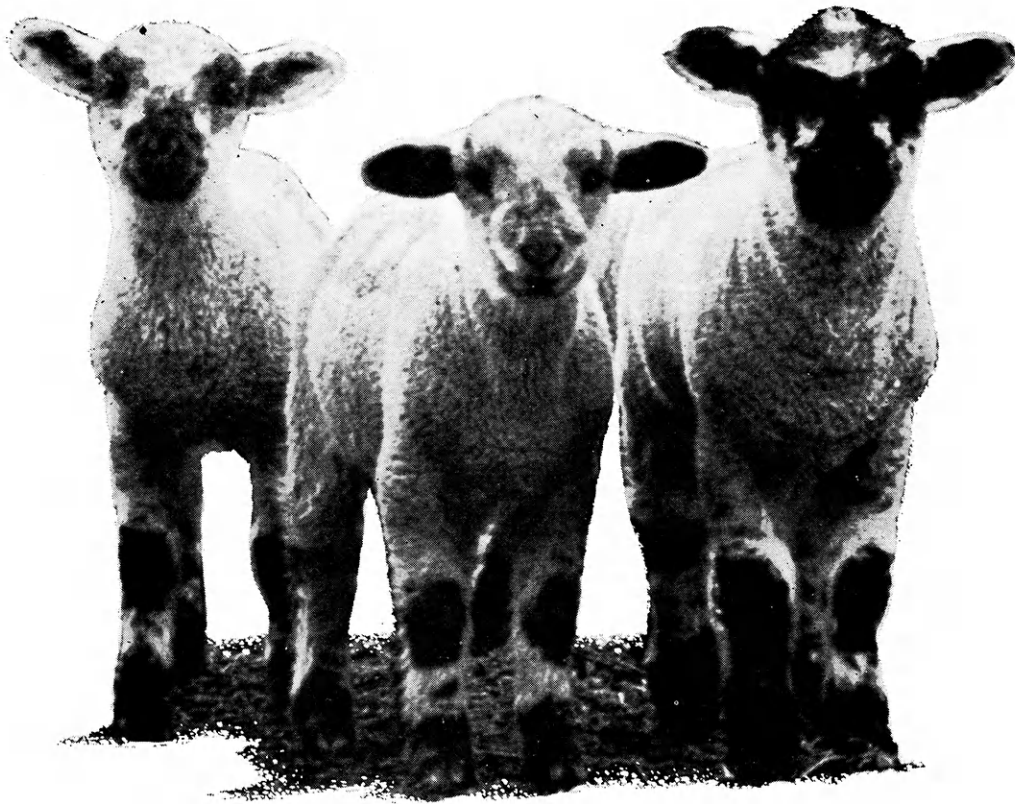
Journal

The 4-H Family Magazine
JUN 13 1966

Kansas 4-H Foundation, Inc., Publisher

The Official
KANSAS STATE UNIVERSITY





Special addition to the RED CIRCLE AUCTION!

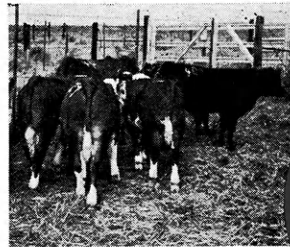
No Money—only GOOCH RED CIRCLES can be used to bid & buy the animal of your choice!

Boys and Girls—you will have a better than ever opportunity to bid and buy a club project at this year's 15th Annual Red Circle Auction.

SPECIAL EWE LAMBS — including a number of purebred Ewe Lambs will be offered along with 40 steer calves, 40 gilts, 5 registered Hereford Heifers—5 Holstein Heifers and 10 Morse Super Dial Sewing Machines.

START SAVING GOOCH RED CIRCLE STAMPS NOW! You have three ways to become the proud new owner of a top quality project for "no money." Bid and Buy Your Choice! Arrange Credit Red Circles to bid and buy! Or, be one of the lucky boys or girls to get a Special Bidder Opportunity Animal. Get your personal copy of the colorful 1966 Red Circle Auction Brochure that gives all the details and Auction rules. See your Gooch Dealer, your Gooch Service Counselor or by writing the Gooch Feed Mill Company, Salina, Kansas.

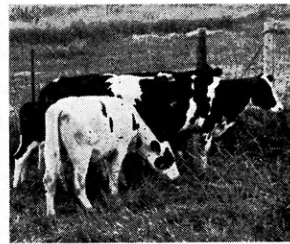
**OVER 100
TOP QUALITY
OFFERINGS!**



40 STEER CALVES



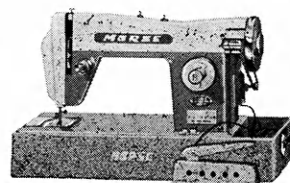
40 REGISTERED GILTS



5 HOLSTEIN HEIFERS



5 HEREFORD HEIFERS



10 MORSE SEWING MACHINES

**GOOCH'S
BEST**

**RED
CIRCLE
AUCTION**

**JULY 22-23
CK RANCH
BROOKVILLE,
KANSAS**

Proclamation Establishing Kansas 4-H Appreciation Day

To the People of Kansas, Greetings:

WHEREAS, the Kansas 4-H Foundation, incorporated to support the 4-H program with private resources, annually conducts a recognition program for all state-wide donors; and

WHEREAS, 4-H members and their families gratefully acknowledge the widespread public and private support; and

WHEREAS, it is fitting to recognize the efforts of the many voluntary adult leaders, parents, and public spirited citizens of Kansas who generously give of themselves and their means to 4-H Club work:

NOW THEREFORE, I, WM. H. AVERY, GOVERNOR OF THE STATE OF KANSAS, do hereby proclaim Wednesday, June 8, 1966, as

Kansas 4-H Appreciation Day

and urge all citizens to recognize the importance of the 4-H program to develop good citizens for our state and nation, and to give due recognition to those leaders and friends who give encouragement to their efforts.

/s/ Wm. H. Avery



OUR COVER

Rosemary Moon, Hugoton, National 4-H Conference Delegate, presents Mrs. Lyndon B. Johnson a bouquet at the White House reception for 4-H members during the Conference.

Representing more than 2 1/4 million 4-H'ers, Rosemary was selected for the honor from 200 Conference delegates. She is the daughter of Mr. and Mrs. Warren Moon. The bouquet signified 4-H with traditional green and white colors.

Ronald Hoffman, Illinois delegate, presented Mrs. Johnson a report on "4-H For Natural Beauty."



Vol. VII, No. 6

June, 1966

IN THIS ISSUE

FEATURES

1966 IFYE Delegates
Initiate New Feature 4

Trail Riders Learn,
Have Fun 4

Movie Features Kansans 4

Marketing Studied
At 4-H Wheat Shows 4

Honor Seniors of K-State
4-H Club 5

Kansas Recreation
Workshop, Training
Ground for Leaders 6

Horses Take Center Ring .. 6

Overseas Living
Experience in 4-H 6

Kansas 4-H Foundation
Report 9

DEPARTMENTS

Family Fun Page 13

Outdoor Games 18

By Dick Tomkinson

Ideas That Work and
Ideas in Brief 22

Don Esslinger Editor

Editorial and Business Office

Phone JE 9-2211 Ext. 208
Manhattan, Kansas 66502

**Published Monthly By
KANSAS 4-H FOUNDATION, INC.**

J. Harold Johnson.....Executive Director
Merle Eyestone.....Associate Director

BOARD OF TRUSTEES

Governor William H. Avery
Honorary Chairman

- W. Dale Critser, Chrm.Wichita
- E. B. Shawyer, Vice Chrm.Wichita
- Balfour S. Jeffrey, Treas.Topeka
- *Harry Darby.....Kansas City
- Mrs. Olive Garvey.....Wichita
- Clifford Hope.....Garden City
- †A. D. Jellison.....Junction City
- Harold E. Jones.....Manhattan
- J. J. Moxley.....Council Grove
- George B. Powers.....Wichita
- Roger E. Regnier.....Manhattan
- N. T. Veatch.....Kansas City
- Dolph Simons.....Lawrence
- *Lester Weatherwax.....Wichita
- †Fred D. Wilson.....Andover
- *Advisory Members
- †Trustees Emeritus

Second Class Postage Paid at Lawrence, Kansas. Return Form 3579 to Kansas 4-H Journal, Manhattan, Kansas. 66502

Advertising rates and circulation data on request.

Group subscriptions \$1.00 per year.
Individual subscriptions \$1.50 per year.
Single copy 15 cents.

Use of the 4-H name and symbol approved by the Secretary of Agriculture of the United States, January 23, 1951, under the provisions of the law as reenacted by Sec. 707 of the Act of June 25, 1948 Public Law No. 772, 80th Congress (10 USC 797)

IFYE Applications Due

July 1 is the deadline for 4-H members applications to be an IFYE delegate in 1967. Forms are available in county extension offices.

KANSAS

4-H Journal Sponsors

NEW SPONSORS

Osage

Hewitt Equipment Company,
Osage City
Moore's Feed & Supply, Scranton

These Have Renewed Their County Support

Cheyenne

Citizens State Bank, St. Francis

Cloud

Jamestown State Bank, Jamestown

Crawford

Farmers State Bank, Walnut
First National Bank, Girard
Girard National Bank, Girard
Hepler State Bank, Hepler
Miners State Bank, Frontenac
McCune State Bank, McCune
Home State Bank, Arcadia
National Bank of Pittsburg,
Pittsburg
First State Bank of Pittsburg,
Pittsburg
First State Bank, Arma
The City National Bank of
Pittsburg, Pittsburg

Finney

The Garden National Bank,
Garden City
The Fidelity State Bank,
Garden City

Gray

Farmers State Bank, Ingalls
The Montezuma State Bank,
Montezuma
First National Bank in Cimarron,
Cimarron

Haskell

The Haskell County State Bank,
Sublette

Jackson

Clark Chevrolet Company, Holton

Lincoln

Sylvan State Bank, Sylvan Grove

Logan

Farmers State Bank, Oakley
Farmers State Bank, Winona

Morton

Fishers, Inc., Elkhart
Addington Elevator, Elkhart
Elkhart Implement Co., Elkhart
Star Lumber Co., Elkhart
Burt Elder Insurance, Elkhart
Cooperative Equity Exchange,
Elkhart
First State Bank, Elkhart
Rolla Cooperative Ass'n., Rolla
Rolla Cooperative Equity Exchange,
Rolla

Nemaha

Centralia Grain Co., Centralia
Farmers Cooperative Elevator,
Sebetha

Farmers Elevator Co., Seneca
Goff Grain Co., Inc., Goff
Graham Grain Company, Oneida
Lortscher Grain Company, Bern
Nemaha County Co-op Ass'n.,
Seneca

Wittmer Grain Company, Berwick
Winterscheidt Milling Company,
Seneca

Osage

Bostrom Grocery & Locker, Melvern
Bremer & Stanley Feed & Grain,
Lyndon

Bulme Grain Co., Michigan Valley
Burlingame Co-op Elevator & Feed,
Burlingame

Coffman Bros. Equipment Co.,
Overbrook

Williams Oil Co., Lyndon

Hoyt Farm Equipment Co.,
Overbrook

McNabb Hy-Klass Store, Melvern
Osage Grain Company, Osage City

Farmers Union Co-op Elevator,
Overbrook

Vassar Grain Co., Vassar

Bradley Grocery, Carbondale

Carbondale Grain Co., Carbondale

Seward

Peoples National Bank, Liberal
Citizens State Bank, Liberal

First National Bank, Liberal

1966 IFYE Delegates Initiate New Feature

"Getting to know you," can mean your new neighbor, teacher or co-worker, but for 30 Kansas families this summer, the phrase will refer to an International Farm Youth Exchangee.

The "getting to know you" goes deeper in the IFYE program this year than at any time since its origin in 1948. In an experimental approach Kansas and Germany have a concentrated exchangee in 1966, explains Richard Tomkinson, extension 4-H club specialist and Kansas IFYE coordinator.

Three Kansans are now in Germany for 6 months. They are Linda Keller and Karen DeGood, Cheyenne county and

Loren Zabel, Stevens county.

Four young Germans arrived this month to spend until July 25 with Kansas families.

Members enrolled in the people to people project have an opportunity to concentrate on Germany as they do the international project.

This exchange will give Kansas people, particularly 4-H families, more of an opportunity to learn about music, folk dances, foods, and other aspects of Germany. 4-H members may tie this information in with their project work and club activities, with emphasis on the People-To-People project.

Trail Riders Learn,

"Let's go riding," is a common phrase in Labette county since the Oswego Trailriders 4-H Horse Club was formed.

Although it is a project group, the Trail Riders combine many social activities with their project work. They meet monthly to discuss horsemanship, care and feeding, equipment, and other topics.

Featured at each meeting are project talks and demonstrations. Trail rides are an important activity of the group. During the rides members learn to get along with each other and their horses, learn riding techniques, and have fun.

The club visited several rod-

Have Fun



eos, studied the classes and practiced reining patterns, barrel racing, pole bending and western pleasure riding.

The members plan two riding workouts per month during warm weather in preparation for the fair. They are planning as a special project the preparation of a well-lighted and maintained arena for their riding activities.

Movie Features Kansans

Two movies now available to 4-H clubs are, "Parents Are Necessary," highlighting the photography project; and "e.g. India," about the IFYE program.

Scenes of the K-State University campus are in the IFYE movie and two Kansas delegates are featured. Richard Hawkins, Rawlins county, narrates the film and Jim Riemann, Barton, is in several scenes.

The photography film includes many thoughts for adult leaders, junior leaders and parents. The movies may be ordered through county Extension offices.

Marketing Studied At 4-H Wheat Show

The grain marketing phase of the 4-H Wheat Project takes a front row seat each summer in Kansas as 4-H members enter the District 4-H Wheat Shows.

Harvest is the time to make early preparations of competing in the shows. The show at Wichita will be August 5, and the Colby show in August 17.

Two samples of wheat are prepared by 4-H'ers who enter these shows; a one-gallon physical show sample, and a 5-pound mill-bake sample.

HONOR SENIORS OF K-STATE 4-H CLUB

Although high school graduation marks the end of 4-H for many members, Kansas State University students find K-State's Collegiate 4-H Club only another step in their 4-H experiences.

Each year since 1932 the K-State club has honored the most outstanding seniors in the club for their contributions to Collegiate 4-H during their college years.

This year five members were selected from the club's 300 members. They are Diana Goertz, Marion; Wilda Loeppke, Hamilton; Arlen Etling, Gray; Patty Patton, Cherokee; and Anne Kramer, Geary.

These five honored seniors have between them completed 63 years of 4-H Club work, plus 16 years of Collegiate 4-H Club work and hold 10 state and national awards.

Diana Goertz summed up the meaning of her 4-H experiences, "In my future life, wherever I travel, I know the twelve years I spent in 4-H will be remembered as the firm foundation of my life."

Wilda Loeppke, a home economics and radio-television major attributes her choice of major to her 4-H background. "I feel 4-H has given me the inspiration to strive for greater goals, and 'make the best better'."

A five time state award winner, Arlen Etling said, "I am most thankful to 4-H for preparing me for college. It has given me a broad background in agriculture and leadership."

A home economics teaching major and one time 4-H project leader Patty Paton said "the look in the members eyes when I helped them learn to sew or cook is the biggest thank you I could ask for."

"Awards are nice, but its what you learn in earning the awards and the people you meet that are really important," according to Anne Kramer.

Eight other K-State Collegiate members received honorable mention for their work with the club. They include Charles Boles, Dickinson county; Bill Kuchen-thal, Wyandotte; Jeanne Muret, Cowley; Jim Ploger, Edwards;

John Schrader, Atchison; Jim Osage; and Elaine Breusing, Shetlar, Sumner; Carol Tiffany, Stafford.



WHY CERTIFIED SEED?

1. True to variety
2. Mechanically pure
3. Free from Weed Seed
4. Free from other crop seeds
5. Alive and vigorous

Write:

Kansas Crop Improvement Association
Waters Hall, KSU
Manhattan, Kansas

Seven Sides of PERSONAL DEVELOPMENT in 4-H

Character

Development

Manners

Appearance

Philosophy
of
Life

Expression

Relationship
With Others

Career
Exploration

FOR YOU . . .

. . . They are keys to the development of your leadership abilities and will help you become a more effective citizen.

The people at Southwestern Bell Telephone Company are proud to have a part in this 4-H project by sponsoring awards for outstanding work.

SOUTHWESTERN BELL



TELEPHONE COMPANY

Training Ground for Leaders

Mix up a recipe with ingredients too numerous to mention and serve it to just anyone who comes along.

Directions for disaster in planning a program? No. This is the unique learning experience of the Kansas Recreation Workshop, held annually at Rock Springs Ranch.

Popular for 4-H leaders and leaders of Scouts, church and other organizations, the Workshop focuses on use of natural surroundings. Some scenes from the 1966 Workshop include:

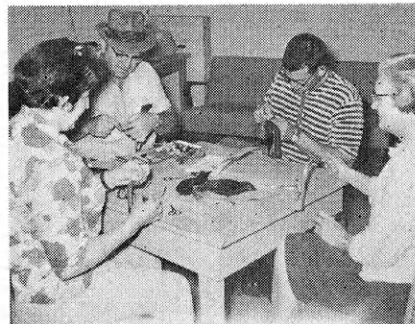


Leona Winter, right, church leader from Axtell assists Chris Sigsbee, left, Scout and church leader from Garden City, and Patty Pumphrey, 4-H leader from Glade with beginning instruction in guitar.

Tying flies, taught by Don Gugler, second from left, was popular among the workshopppers.



Mrs. Lula Purvis, Yates Center helps Corine Clark, Junction City, with her tin bouquet of dahlias.



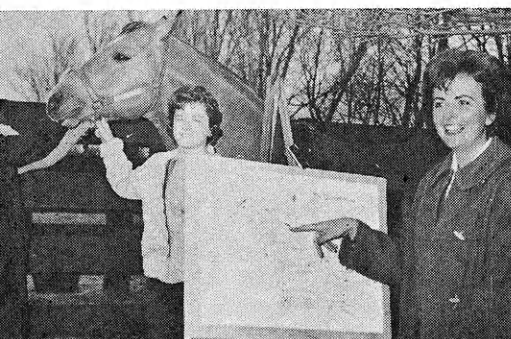
Horses Take Center Ring

Great popularity has befallen the 4-H Horse Project in many

Kansas counties. Sedgwick county members will be guests of the C. A. Cofer Farm, Maize, for a Field Day, Saturday, June 14.

Learning is the key word for the day as participants will take part in judging classes and observe fitting and showing techniques. The all-day affair is an annual event with prizes for the winning judges by age groups.

Mrs. Cofer, right, is pointing out different parts of the horse in a type demonstration.



Overseas Living Experience in 4-H

A Kansas 4-H member is taking part in a new type international exchange this summer. He is Steve Fornelli, Lawrence, who will stay with families in Denmark, Germany and the Netherlands during his two-month experience.

This 4-H member international educational experience is for mature 4-H members and is patterned from the highly successful International Farm Youth Exchange program. "This is a practical addition to extend this IFYE-type experience to more boys and girls," explains Dr. Glenn Buset, Associate State Club Leader.

This home living and working experience will be totally paid for by the delegates and costs an average of \$1,000. At this time no plans have been made for return visitors to the United States.

Open to older 4-H members, this year's group will include members from 15 states. Another Kansan, Dick Tomkinson, State 4-H Staff member, will be one of two adult leaders of the group. Tomkinson explains he expects to, "observe rural youth programs, their recreation, and recruitment and training of rural youth leaders." He is coordinator of the IFYE program for Kansas.

a new word for you . . .

e • lec' • tri • con' • o • my

(n.) . . . the amount of business and the standard of living resulting from the buying power made possible by the availability of electricity.

The Electric Cooperatives of Kansas have helped bring a greater Electricconomy to all . . . by making adequate electric power available in rural areas. This power has helped bring more productive farming . . . brings new business and industry to rural Kansas . . . a vital contribution to a growing Kansas for an even greater Electricconomy in the future.

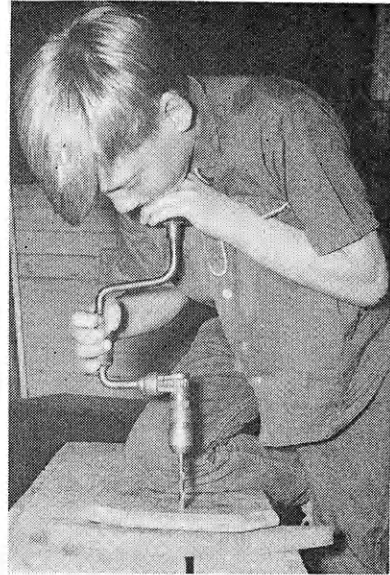
THE ELECTRIC



420 WEST 9TH, TOPEKA, KANSAS

CE 5-5321

SUTHERLAND Salutes 4-H Woodworking



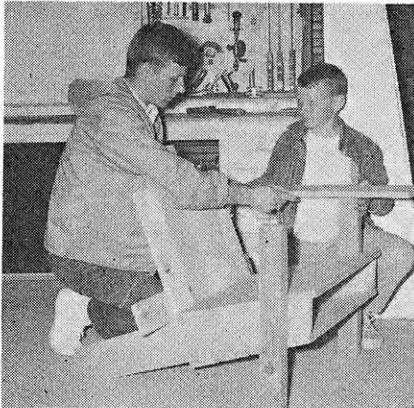
4-H'ers + Wood = Action

Woodworking project members of the Zeandale 4-H Club, Riley county, enjoy working with leader Darrel Boutz. Meetings are held in the Boutz garage once per week in the spring and stepped up to twice per week as fairtime approaches.

Upper left, Mr. Boutz helps younger members plan; l-r, Danny Park, Darrell Parks, Boutz, Gary Boutz, Charles Park, and Dana Schroll. Upper right, Melvin Dufea drills a hole in his bread board. Lower right, Mr.

Boutz helps his son Gary with a sandpaper rack which will be a convenience for all the boys. Lower left, junior leader Raymond Boutz assists Darrell Parks with his lawn chair.

Boutz supervises the group in a buzz of activity. Much of the arrangement of the four-car garage is designed for group work by the 4-H'ers. With a good supply of hand tools and ample help from junior leaders, these young boys are learning skills to last a lifetime.



The Sutherland Lumber Company is indeed proud to be able to play a small part in the all important 4-H program and particularly in the woodworking division. It has been Sutherland's privilege to provide medals for county winners and sponsor the Kansas winner to the National 4-H Club Congress.

SUTHERLAND LUMBER CO.

1901 Wyoming
Kansas City, Missouri

522 East 21st Street
Wichita, Kansas

East across the street from the American Royal Building Just west across tracks from Live Stock Exchange Building



beautiful, dutiful, that's a CO-OP RANGE!

So good looking you could put it in your living room—and still draw compliments.

The CO-OP Eye Level Electric Ranges have features you only dreamed of several years ago. Impossible? Not at all. Make us prove it to you.

At your Co-op there are many more fine CO-OP Ranges. See them now.



CONSUMERS COOPERATIVE ASSOCIATION

Building the Future *Youth by Youth*

THE KANSAS 4-H FOUNDATION IS
DEDICATED TO A PROGRAM OF
DEVELOPING USEFUL CITIZENS



Donors Invest in Youth. Share in the Future



W. Dale Critser, 4th National Bank and Trust Company, Wichita, recently retired as Executive Vice President. He has been chairman of the Kansas 4-H Foundation Board of Trustees since it was organized in 1952.

On behalf of our Board of Trustees I express sincere appreciation to each of you for the investment you made in the lives of 4-H boys and girls and their leaders during 1965. I am sure you agree that the proper education of youth pays greater dividends than any other investment we might make.

We hope the results achieved through a more effective 4-H program will justify your continued support. The many letters from 4-H'ers, their leaders and parents cause us to take pride in the many accomplishments made possible by your contributions.

May your satisfaction increase as today's youth become tomorrow's leaders.

W. Dale Critser, Chairman
Board of Trustees
Kansas 4-H Foundation

SERVICE TO 4-H

A Look at the 14th Year of the Kansas 4-H Foundation, 1965

These specific examples are but a few of the many services performed by the Foundation. Based on needs in the 4-H program, these services are made possible by financial support from public spirited individuals, firms, and organizations.

- Leadership training scholarships amounting to \$5,079 were awarded to delegates to State 4-H music camp, conservation and health camps, junior leadership conference, county project chairmen training, adult leaders conference, recreation workshop, and electric leaders clinic.
- Trips to National 4-H Club Congress in Chicago for State Woodwork and Sheep project winners.
- Trips for six 4-H members to National 4-H Dairy Conference and three to National Safety Congress in Chicago.
- Eighteen college scholarships were awarded to needy and worthy 4-H members.
- Four outstanding poultry project members and a local leader were given educational trips to National Poultry Fact Finding Conference.
- Educational trips to the Wichita 4-H Recognition Event went to 83 "Blue Award" winners in weed control, recreation, electric, foods, crops, and personal development projects.
- Twenty counselors were provided expenses to State Junior Leadership Conference at Rock Springs Ranch.
- Trips were awarded to Kansas' four delegates to National 4-H Conference in Washington, D. C.
- Subscriptions to National 4-H News were awarded to 374 leaders in 23 counties.
- Special recognition (trips, medals and other awards) was awarded in many other project areas including crops, swine and home improvement.
- The "Key Award" was presented to 342 4-H members, the top 1-1/2 of the 4-H membership.

Counties Assist, Raise Funds for Priority Projects

County Committees of the Kansas 4-H Foundation helped raise \$20,242.45 during the past two years to meet important needs in the Kansas 4-H club program.

Committeemen may point with pride to this extended service the Foundation is giving. The funds were assigned for use in 1965 and 1966 to the following priority projects:

Leadership Training Scholarships.....	\$2,943.61
Judging team trips.....	1,200.00
4-H membership promotion	
In grade schools through the	
Kansas 4-H Journal.....	2,971.79
Visuals—movie and slide sets..	5,000.00
Rock Springs Development.....	1,750.00
International Farm	
Youth Exchange.....	4,500.00



The Foundation County Committee in Ford county presented trophies for the best talks on the Foundation at the county 4-H Day. Winners were Mary Sanko, left, and Lynnette Dirks.

Foundation Scholarships Boost Member Achievement

Funds totalling \$37,146.66 for college and leadership training, scholarships, educational trips, and other incentives were provided for awards to 4-H'ers and leaders throughout Kansas in 1965.

The influence of this helping hand is strong in the resulting achievements of those involved. In 1937 Coffey county 4-H'er Glenn Busset received a \$166 college scholarship for his outstanding 4-H work which enabled him to begin his education at K-State.

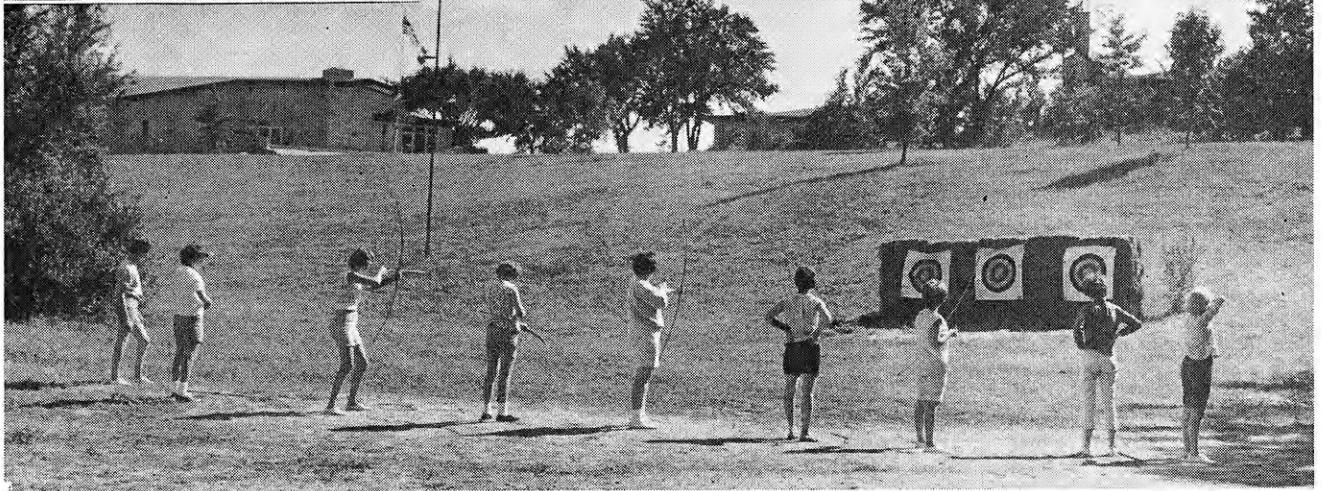
Dr. Busset will assume the leadership of 4-H work in Kansas the first of July. He says, "Climbing the 'educational ladder' is hard enough, but when there is no standing room at the bottom, the task is almost impossible. A scholarship is not a free ticket to educational paradise. It is evidence that someone is concerned enough in the educational future of an individual to 'provide standing room at the bottom'. The helping hand provided by the scholarship is as much incentive as it is cash purchasing power. Both are needed to get the student on campus where he can test his capacities."



"I wish to thank the Kansas 4-H Foundation for paying for my trip to the National 4-H Club Congress in Chicago. It was truly a rewarding experience I shall never forget."
Phyllis Gillmore

Did You Know?

- ✓ In 1965 four county 4-H councils, 165 4-H clubs and one county junior leadership group invested \$3,792.30 in their 4-H program through the Kansas 4-H Foundation—and 103 4-H clubs and 13 county 4-H councils contributed \$6,847.59 to the Williams Dining Hall fund. These total \$10,639.89 for the year.
- ✓ A former 4-H girl started the first endowment trust with a \$5,000 unrestricted contribution; a former 4-H boy is completing a \$10,000 memorial trust for 4-H scholarships; and a scholarship trust fund has been established in memory of a local leader who served over 25 years.
- ✓ The total attendance at Rock Springs Ranch was 12,301 in 1965. Of this total 5,215, or 42.3%, were in 25 Extension and 4-H camps or conferences.
- ✓ The Kansas 4-H Journal, published monthly by the Foundation, is mailed to nearly 21,000 4-H families courtesy of more than 450 business firms who sponsor at the county level.
- ✓ Rock Springs Ranch was in operation all twelve months, 224 days, in 1965.
- ✓ The Foundation will assist 4-H girls with their education through the construction of a cooperative type, scholarship house to be operated by Clovia 4-H girls—a \$200,000 project.
- ✓ Some of the finest, most dedicated friends of 4-H are the Board of Trustees of the Kansas 4-H Foundation.
- ✓ Among the friends of 4-H are many who provide services and materials. One example is the Art and Photo exhibits provided for Rock Springs. Some 20 paintings and other works of art by Kansas artists are on loan for a year. The selection was made at the Rural-Urban Art Show at Kansas State University.
- ✓ Many 4-H club members give yeoman service to the Kansas 4-H Foundation with their promotional talks on its work. Four gold watches are offered to outstanding speakers in this phase each year.
- ✓ The Kresge Foundation challenge for Rock Springs Ranch Development funds was met in 1965 and a Kresge grant of \$5,000 received. As a result, a new 64-capacity dormitory unit will be constructed, thus raising winter use capacity to 220 persons.



Your Dollars Helped Build Rock Springs Ranch — A Growing, Busy Leadership Training Center

Since its opening in 1946 with 12 groups totaling 2,267 (in summer months, only, as no winterized accommodations were available), the number has grown steadily to 114 groups with 12,301 participants in 1965. With the addition of winterized cottages, the Center remained open a little longer each year until the completion of the dining hall in 1962 made it possible to open on a year around basis.

With three winterized cottages and housing in other permanent structures, the number that can be accommodated during winter months at this time is 150. Rock Springs was open 224 days last year.

The 114 groups, with average size, were: 25 Extension with an average of 208; 14 private, averaging 77; 34 school, with an average of 75; and 41 church, averaging 87. Looking back to 1946, the 12 groups were 11 Extension and 1 church. Many groups could not be accommodated because too little time or space to meet their requests.

Rock Springs Ranch is serving a real need in Kansas and its development goal still stands at 500 capacity on a year around basis. 4-H Club members for whom the Center was planned and is being developed, are given priority on use, but are happy to share this fine facility with so many other worthwhile groups.

You Serve Youth through the **Kansas 4-H Foundation**



Photo Exhibit Beams With 4-H Members' Work

The 4-H photography project is popular with members of all ages. From the beginner with a simple camera to the advanced member with an array of equipment comes a great selection of excellent pictures.

The Kansas 4-H Foundation, agreeing that "one picture is worth a thousand words", promotes photography at Rock Springs Ranch. The 4-H purple award photography entries from the State Fair are on exhibit at Rock Springs.

Memorials Provide Tribute, Inspiration

These memorials were established in 1965:

To: *Charlene Moody*
By: Shamrock 4-H Club, Johnson County

To: *Homer Ramsour*
By: Fairfield Machine & Welding Shop, Mr. & Mrs. Purley Horn, Col. & Mrs. E. L. Sallman & Family, Lucil & Orville Sieber, Mr. & Mrs. Harry Storm, Mr. & Mrs. Wayne Sutzl, Mr. & Mrs. Frank Thierer, Mr. & Mrs. Henry Thierer, Lena Thierer, Mr. & Mrs. James Upham & Family, N. W. Upham, Mr. and Mrs. Ralph Upham, Anonymous

To: *Mr. & Mrs. Ralph M. Rounds*

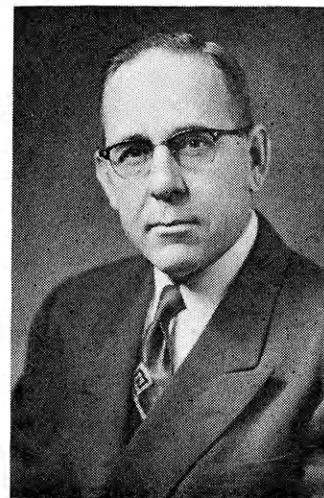
By: Wichita Foundation

Roger E. Regnier, who retires from the position of State Club Leader June 30, is a strong advocate of the work of the Foundation. Recently, he said,

"We sincerely believe 4-H Club Work, an informal educational program supplementary to family, school, and church, can help children develop the mental, emotional, and spiritual qualities essential to individual happiness and responsible citizenship.

4-H Club Work depends on private support from public spirited donors for such facets of the program as awards, trips, scholarships, developing of camping facilities, piloting new programs, supporting leader training.

In Kansas, the 4-H Foundation furnishes the essential link between this good program and those who wish to support it. *Kansas 4-H Journal*, only magazine of its kind in the world, the great facility at Rock Springs, Ranch, Kansas leadership in the IFYE program, are examples of fine donor support arranged by Kansas 4-H Foundation."



Roger E. Regnier

Sunflower Artists Honor 4-H Center

Donors of works of art to the 1966 Exhibit at Rock Springs Ranch are:

Anderson, Mrs. Eveyln—Clifton
 Asper, Mrs. Lola—Attica
 Baysinger, Duane—Scott City
 Book, Mrs. Roberta—Abilene
 Brown, Mrs. Mary Jane—Abilene
 Browne, Miss Mary—Norton
 Bullock, Helen—Norton
 Dare, Frances—Wellington
 Fent, Mrs. O. S.—Salina
 Fincham, Mrs. Myrtle—Blue Rapids
 Horn, Mrs. Clifford R.—Liberal
 Long, Mrs. Carol—Attica
 Lutz, Mrs. Jean Dexter—Sharon Springs
 McKee, Quentin—Abilene
 Nye, Mrs. Agnes—Harper
 Robinson, Lincoln—Cedarvale
 Scarlett, Mrs. Dorothy—Harper
 Stephenson, Mrs. Hannah M.—Downs



Service Above Self—

and Donors All

Among the many friends of 4-H giving outstanding service to the program are the Kansas 4-H Foundation Board of Trustees. At the 1965 Friends of 4-H Day, Lester Weatherwax, center, Advisory Trustee, received recognition for fifteen years of outstanding service to 4-H from W. Dale Critser, Chairman of the Board of Trustees, and Dolph Simons, Trustee.

Kansas 4-H Foundation
 212 Umberger Hall
 KSU, Manhattan, Kans.
 Jefferson 9-2211, Ex. 208



International Farm Youth Exchange

Karen Chitwood, center, International Farm Youth Exchange delegate to Brazil in 1965, learned another way of life while living with families during her six month stay. Also in working with 4-S, the 4-H counterpart, Karen gained and understanding and appreciation of people in her host country. More than 140 "Grassroots Ambassadors" from Kansas have helped build bridges of understanding between the United States and 66 other countries. The Kansas 4-H Foundation pays \$300 of the expenses of each Kansas delegate plus certain travel costs of exchangees who visit our State.

THE HONOR ROLL

In appreciation to those who, during 1965, gave financial support to the programs of the Kansas 4-H Foundation, and therefore encouraged and recognized outstanding achievement and citizenship growth of Kansas boys and girls.*

Friends of 4-H—1965

- | | | | | |
|------------------------------|---------------------------------|-------------------------------|-------------------------------|---------------------------------|
| 1 Abilene Foods, Inc. | 1 Bullock, Paul E. | 6 Dewell, Mr. & Mrs. Carl V. | 1 Fish, Keith | 5 Harry Darby Foundation |
| 6 Adams Business Forms, Inc. | 1 Burger Grain Co. | 1 Diacon, Dr. James L. | 1 Fisher, Mrs. Clarence | 7 Haskin, Mr. & Mrs. Glenn |
| 2 A. L. Duckwall Company | 2 Busset, Glenn M. | 7 Dies, Mr. and Mrs. Edgar | 5 Flint Hills Rural Electric | 5 Hassman, Mr. & Mrs. Irvan |
| 2 Allen, Mr. and Mrs. Elton | 6 Butler, Mr. and Mrs. Glen | 2 Dillon, Helen Woodard | 1 Co-op. | 1 Hatesohl, Herb |
| 6 Allen, Mr. and Mrs. Harvey | 2 Buzzell's Office Equipment | 3 Dillon, J. S. & Sons | 4 Floyd, Mr. and Mrs. R.D. | 5 Hatfield, Mr. & Mrs. |
| 1 Allen, Martin W. | | 1 Dingman's Drug Store | 12 Folger Coffee Company | James R. |
| 2 American National Bank, | | 2 Doebele's IGA Foodliner | 7 Fooshee, Mr. and Mrs. | 5 Haun, Mr. & Mrs. Harold |
| Baxter Springs | 1 Cady, Mr. and Mrs. Jas. | 1 Doll, Edwin F. | Claude | 6 Heersche, Mr. and Mrs. |
| 6 Anderson, Mrs. Bert H. | 1 Calderwood, Frances | 6 Douthit, Jim & Family | 1 Forrest, Mr. and Mrs. | George |
| 7 Anderson Cattle Company | 1 Campbell, Mrs. Lyle L. | 7 Dressler, H. A. | James E. | 1 Heitman Oil Company |
| 1 Anderson, Floyd N. | 1 Carlson, M. Dale | 1 Dudte, Harry | 3 Fourth National Bank & | 6 Heitschmidt, Mr. and Mrs. |
| 1 Andrews, Roberta | 1 Carr, Francis E. | 1 Dunn, Marjorie | Trust Co. | Marvin |
| 3 Angel, Mr. and Mrs. John | 2 Carston, Mr. & Mrs. Bernard | | 10 Fox & Company, Elmer E. | 2 Henry Krause Charitable |
| 7 Apel, Dale | 6 Cauble, Mr. and Mrs. Dean | | 4 Freeman, R. E. | Foundation |
| 1 Arthur, Charles S. | 2 Central State Bank, | | 5 Frey, Otto | 1 Hentzler, H. H. |
| 1 Aspegren, Mr. and Mrs. | Reno Co. | 4 Eby, Martin K. Foundation | 1 Frick, Edwin J. | 3 Herndon, May Beth |
| Delbert | 1 Chapman, William | 5 Edwards, Mr. & Mrs. Robt. | 4 Frontier Chemical Company | 4 Herring, Mr. & Mrs. Roy |
| 2 Augusta State Bank | 15 Cities Service Oil Co. | 1 Eli Bowen Insurance | 3 Fulhage, Ruthanna | 1 Hess Oil Company |
| | 1 Citizens Bank of Greenleaf | 6 Enders, Paul | 3 Fullerton, Mrs. Averill | 1 Hibbs, Roger Lynn |
| | 2 CK Processing Co., Inc. | 4 Excels Industries, Inc. | | 11 Hicks, Mr. & Mrs. W. H. |
| | 4 Clark, Billy A. | 4 Eyestone, Cecil | | 2 Hildebrand, Don |
| | 5 Clemence, Mr. and Mrs. Joe | 4 Eyestone, Merle L. | 2 Galle, Nelson D. | 1 Hiller, Mr. & Mrs. F. Charles |
| | 1 Clifton Grain Co. | | 6 Garrison, Mr. & Mrs. Donald | 3 Holgerson, C. E. |
| | 1 Cline, Orville | | 7 Garten, Mrs. and Mrs. | 12 Holstein-Friesian Ass'n of |
| | 7 Coberly, Goldie | 1 Farmers Co-op Ass'n., | Clarence | Kansas |
| | 2 Coca Cola Bottling Co. | Hanover | 7 Garten, Mr. & Mrs. Frank | 1 Holt, Mr. & Mrs. Richard |
| | 2 Cofer, Virgil | 2 Farmers Co-op Ass'n., | 6 Garvey Foundation | 1 Hoover, Inc. |
| | 1 Coffman, Gladys Smith | Manhattan | 6 Geller, Mr. & Mrs. Chas. W. | 4 Hoover, Lawrence J. |
| | 9 Collegiate 4-H Club | 4 Farmers Co-op | 5 Goodfellow, Mr. & Mrs. Don | 7 Hottman, Mrs. Orren F. |
| | 5 Collinge, Dr. & Mrs. Irwin J. | Commission Co. | 1 Gore, Earl B. | 7 Houghton, James H. |
| | 2 Columbus State Bank | 1 Farmers Co-op Elevator | 7 Gore, Keith E. | 2 Hower, Mary |
| | 1 Community State Bank, | Ass'n., Greenleaf | 1 Graff Shoe Clinic | 10 Huff, Ruth K. |
| | Hanover | 1 Farmers Co-op Elevator | 1 Greenleaf Grain & Feed Co. | 1 Huntley, L. L. |
| | 6 Conover, Mr. and Mrs. H. M. | Ass'n., Linn | 1 Gregwire, Mr. & Mrs. Gordon | 1 Hutchinson National Bank |
| | 5 Consumers Cooperative | 3 Farmers Co-op Elevator | 2 Griffith Lumber Company | & Trust Co. |
| | Association | Ass'n., Washington Co. | 2 Griffith Oil Company | |
| | 3 Cooley, Mr. and Mrs. Les | 2 Farmers & Merchants | 3 Gross, Paul M. | 11 International Harvester Co. |
| | 6 Coombs Poultry Farm | State Bank, Reno Co. | 4 Gugler, Donald P. & Evelyn | 5 Ives, H. M. & Sons |
| | 4 Cott, Mr. and Mrs. Herman | 1 Farmers Mutual Merc. Co., | 1 Guthrie, Gilbert A. | 7 Jackson, S. Lester |
| | 4 Counter, Henry E. | Greenleaf | 3 Gwin, Paul B. | 5 Jansonius, William |
| | 4 Counter, Mr. and Mrs. Perry | 7 Faus, Mrs. R. L. | | 2 J. C. Penney Co., Manhattan |
| | 1 Cox, M. Lester | 12 Federal Cartridge | | 12 Jellison, A. D. |
| | 1 Creighton, Lowell | Corporation | | 1 Johnson Feed & Grain |
| | 11 Critzer, W. Dale | 5 Federal Land Bank, Wichita | | 4 Johnson, Mrs. Gaylord |
| | 7 Cubit, James and Helen | 3 Felt, Esther L. | | 1 Johnson, H. Dale |
| | 1 Culbertson, Joan | 3 Felt, Sylvia S. | | 11 Johnson, J. Harold |
| | 1 Culver, Mrs. Wm. H. | 1 Ferm, Landvis E. & Lois | | 1 Jones, C. Clyde |
| | 1 Cunningham, James S. | 1 Finkensbinder's Dairy & | | 7 Jones, Mr. & Mrs. Eugene |
| | | Farm Equip. | | 3 Jones, Harold E. |
| | | 2 First National Bank, | | 6 Jordan, Dr. & Mrs. Frank |
| | | Columbus | | 1 Jordan, Pat |
| | | 1 First National Bank, Larned | | 4 Judy, Hal E. |
| | | 1 First National Bank, | | 7 Jurgens, Mrs. John |
| | | Washington | | |
| | 4 Davies, Lloyd M. | | | |
| | 6 DeLange, Verdan & Family | | | |
| | 4 Delmez, Edgar | | | |
| | 3 DeVore, Mr. and Mrs. Jasper | | | |

* The figure preceding the name indicates the number of years of support since the Kansas 4-H Foundation Membership and Share Recognition Plan was started in 1954. Please call omissions to our attention.

"I have received payment for the 4-H Foundation Scholarship, and wish to thank you for this award. Please extend my thoughts of appreciation for this award to others who helped make it possible."

Vicki Frey

"Thank you for all 4-H Club Reporters and myself for sponsoring our award program. I am greatly honored at receiving this beautiful watch which I will cherish always. I sincerely hope you will keep this program alive and active by encouraging 4-H'ers to strive for a dream to long for."

Sandy Kees

"Thank you for the scholarship money I received for my work in the Citizenship project. "Citizenship" was my most interesting and most challenging 4-H project. I know the knowledge I gained from my work will be beneficial to me throughout my life."

Steven Beil

Extension 4-H and Home Economics — 1965 (Continued)

- FRANKLIN COUNTY**
6 Pottawatomie Valley 4-H
- GOVE COUNTY**
4 Hackberry 4-H
2 Meadowlark 4-H
- GRAHAM COUNTY**
2 Cherry Lynn HDU
2 Millbrook Sunshiners 4-H
2 Solomon Valley 4-H
2 Sunshine HDU
- GREELEY COUNTY**
1 Golden Opportunities 4-H
1 Thrifty Thrivers 4-H
- HARPER COUNTY**
5 Freeport Trailblazers 4-H
1 Golden Rule 4-H
- HARVEY COUNTY**
1 B. W. H. B. 4-H
4 Halstead Cloverleaf 4-H
1 Halstead Go-Getters 4-H
2 Harvey County 4-H Council
1 Hesston Union Champions 4-H
1 Highland 4-H
2 Kansas Jayhawkers 4-H
1 Kellas 4-H
1 Lucky 13 4-H
1 Pleasant 4-H
2 Richland Livewires 4-H
1 Sedgwick Sunflower 4-H
1 Walton 4-H
- HASKELL COUNTY**
3 Colusa 4-H
- HODGEMAN COUNTY**
4 Pawnee Valley Boosters 4-H
- JEFFERSON COUNTY**
9 Grantville 4-H
7 Rock Creek Boosters 4-H
- JEWELL COUNTY**
2 Formoso Willing Workers 4-H
2 Jewell County 4-H Council
- JOHNSON COUNTY**
3 Little Cedar Sr. 4-H
2 Shamrock 4-H
4 Sharon 4-H
7 Zion Zippers 4-H
- KINGMAN COUNTY**
1 Adams Happy-Go-Lucky 4-H
4 Belmont 4-H
2 Busy Bee 4-H
1 Cunningham 4-H
2 Galesburg 4-H
6 Hawk 4-H
3 Nashville Meadowlarks 4-H
1 Norwich Boosters 4-H
3 Penalosa 4-H
2 Spivey 4-H
2 Vinita Happy Hearts 4-H
2 Whispering Willow 4-H
1 Willowdale Pathfinders 4-H
1 Zenda Zoomers 4-H
- KIOWA COUNTY**
1 Upward Strivers 4-H
- LABETTE COUNTY**
2 101 Go Getters 4-H
- LANE COUNTY**
2 Eager Beavers 4-H
- LEAVENWORTH COUNTY**
2 Busy Beavers 4-H
1 Lansing Busy Bees 4-H
3 Leavenworth County 4-H Council
- LOGAN COUNTY**
3 Logan County 4-H Council
1 Monument 4-H
1 Winona 4-H
- LYON COUNTY**
5 Admire 4-H
5 Badger Creek 4-H
2 Busy Beavers 4-H
4 Busy Bees 4-H
7 Chamness 4-H
2 Cloverleaf 4-H
6 Duck Creek Pals 4-H
5 Flint Hills 4-H
1 Jayhawkers 4-H
6 Logan Avenue 4-H
5 Lyon County 4-H Council
4 Merry Mixers 4-H
6 Model Boosters 4-H
1 Rapids Star HDU
5 Reading 4-H
5 Rinker 4-H
5 Sunnyside 4-H
2 Walnut 4-H
2 Whittier 4-H
- McPHERSON COUNTY**
4 Andover 4-H
5 Better Farms 4-H
3 Conway 4-H
3 Cottonwood 4-H
5 Empire Best 4-H
1 Explorers 4-H
1 Friendly Fremont 4-H
4 Golden Opportunity 4-H
4 Good Luck 4-H
4 Green Valley 4-H
4 Lindsborg Golden '60 4-H
4 Livewire 4-H
6 Lucky Leaf 4-H
2 New Frontiers 4-H
4 Roxbury Hustlers 4-H
4 Smoky Valley 4-H
5 Sunflower 4-H
- MARION COUNTY**
9 Happy Hustlers 4-H
6 Lincolnville Wide-Awake 4-H
2 Lucky Leaf 4-H
6 Silver Creek 4-H
9 South Cottonwood 4-H
10 Tampa Triple T's 4-H
- MARSHALL COUNTY**
5 Marshall County 4-H Council
- MEADE COUNTY**
1 B Busy 4-H
- MITCHELL COUNTY**
6 Asherville 4-H
2 Cloverleaf 4-H
6 Fairview 4-H
3 Future Citizens 4-H
4 Jolly Workers 4-H
3 Mitchell County 4-H Council
5 Tipton 4-H
- NEMAHA COUNTY**
1 Triangle Boosters 4-H
5 West Beloit 4-H
- NEMAHA COUNTY**
6 Nemaha County 4-H Council
2 Rustlers 4-H
- NESS COUNTY**
8 Prairie Schooners 4-H
3 Sunshine 4-H
- NORTON COUNTY**
4 Busy Beavers 4-H
5 Busy Jayhawkers 4-H
4 Cedar Ridge 4-H
4 4-Square 4-H
3 Golden Harvesters 4-H
1 Golden Sunflowers 4-H
4 Good Hope Boosters 4-H
1 Norton County 4-H Council
4 Prairie Dog Valley 4-H
3 Solomon Valley Hustlers 4-H
- OSAGE COUNTY**
11 Carbondale Rustlers 4-H
5 Full O'Pep 4-H
- OSBORNE COUNTY**
7 Osborne County 4-H Council
- OTTAWA COUNTY**
3 Culver Livewires 4-H
4 Double R 4-H
3 Lucky Seven 4-H
2 Solomon Valley 4-H
2 Woodsdale 4-H
- PHILLIPS COUNTY**
5 Deer Creek 4-H
4 Phillips County 4-H Council
- POTTAWATOMIE COUNTY**
11 Blackjack 4-H
3 Cloverleaf 4-H
1 Emmett Homemakers HDU
1 Emmett Hustlers 4-H
4 Flush Community 4-H
1 Louisville HDU
5 Olsburg Boosters 4-H
1 Onaga Homemakers HDU
1 Pottawatomie County Advisory Council
1 Rock Creek HDU
2 St. George HDU
6 Tannerville 4-H
5 Triple V 4-H
5 Vermillion 4-H
1 Vermillion HDU
5 Victory 4-H
2 Wheaton 4-H
- PRATT COUNTY**
2 Ashton Busy Bees 4-H
2 Cairo Molars 4-H
2 Glendale Reapers 4-H
4 Golden Valley 4-H
2 Lincoln Bluebirds 4-H
2 Pleasant Climbers 4-H
2 Preston 4-H
4 Richland Rustlers 4-H
2 Sawyer 4-H
- RENO COUNTY**
1 Arlington 4-H
1 Buhler 4-H
1 Hayes 4-H
2 Huntsville Helpers 4-H
- RICHMOND COUNTY**
1 Hutchinson Merry Metros 4-H
8 Langdon 4-H
2 Mitchell 4-H
1 Ninnescah 4-H
2 Partridge 4-H
5 Plevna Sunflowers 4-H
1 Pretty Prairie 4-H
3 Prosperity 4-H
5 Reno County 4-H Council
1 Reno 23 4-H
5 Salem 4-H
2 Sylvia 4-H
4 Turon 4-H
2 Union Valley 4-H
7 Walnut Willing Workers 4-H
- REPUBLIC COUNTY**
3 Republic County 4-H Council
1 Republic County Junior Leaders
- RICE COUNTY**
4 Country Pals 4-H
8 Fairplay 4-H
6 Lyons Conquerors 4-H
3 Pleasant View 4-H
6 Valley Bluebirds 4-H
- RILEY COUNTY**
5 Magic 4-H
- ROOKS COUNTY**
2 Damar 4-H
1 Eager Beavers 4-H
2 East Plainville 4-H
10 4 W 4-H
5 Rooks County 4-H Council
7 Star 4-H
2 Woodstock Sunflower 4-H
- RUSSELL COUNTY**
2 Paradise 4-H
1 Russell Rustlers 4-H
1 Smoline 4-H
5 Zweifel, Bobby
5 Zweifel, Peggy
- SALINE COUNTY**
5 Hedville Sunshiners 4-H
3 Ichiban 4-H
4 Kipp Wide Awake 4-H
5 Mentor 4-H
3 Mustard Seeds 4-H
4 Saline Valley 4-H
4 Sunny Valley 4-H
4 Sunrise 4-H
7 Willing Workers 4-H
- SCOTT COUNTY**
2 Go-Getters 4-H
2 Lake Wide Awake 4-H
2 Lucky Clover 4-H
2 Manning Jayhawkers 4-H
2 Pence Busy Beavers 4-H
4 Scott County 4-H Council & William Carpenter 4-H Fnd.
2 Town & Country 4-H
2 Vaqueroes 4-H
- SEDGWICK COUNTY**
5 Bentley Eagle 4-H
3 Eastridge 4-H
- SEWARD COUNTY**
1 Busy Bee 4-H
- SHAWNEE COUNTY**
10 Happy Homemakers HDU
8 Highlander 4-H
8 Oakland Go-Getters 4-H
7 Pleasant Hill 4-H
9 Riverside 4-H
9 Rochester Heights 4-H
8 Shawnee Jayhawkers 4-H
8 Shunga Valley 4-H
5 Silver Lake 4-H
6 Wanamaker 4-H
- SHERIDAN COUNTY**
3 Angelus 4-H
3 Hi-Plains 4-H
- SHERMAN COUNTY**
4 Beaver Valley 4-H
7 Glendale Livewires 4-H
2 Llanos 4-H
1 Prairie Dale 4-H
2 Ruleton Eager Beavers 4-H
- SMITH COUNTY**
5 Smith County 4-H Council
- STANTON COUNTY**
6 Big Bow 4-H
1 Big Bow HDU
1 Jr. Sunflowers 4-H
- STEVENS COUNTY**
3 Mapleleaf Rustlers 4-H
- SUMNER COUNTY**
7 Perth 4-H
11 Rome Rockets 4-H
7 20th Malaby Pushers 4-H
- THOMAS COUNTY**
2 Wise Owl 4-H—
People to People
- TREGO COUNTY**
1 WaKeeney Willing Workers 4-H
- WABAUNSEE-COUNTY**
4 Hinerville 4-H
- WALLACE COUNTY**
4 Harrison Endeavors 4-H
- WASHINGTON COUNTY**
9 Busy Bee 4-H
1 Greenleaf 4-H
2 Hanover 4-H
1 Joy Creek 4-H
4 Washington County 4-H Council
- WILSON COUNTY**
6 Wilson County 4-H Council
- WYANDOTTE COUNTY**
9 Horaniff Hustlers 4-H
2 Wolcott 4-H

"Thank you and all who work for the Kansas 4-H Foundation for awarding me a scholarship to the State 4-H Leaders Conference. It was a most inspiring experience. I met many enthusiastic people and gained numerous new ideas plus a new appreciation for our state and county leaders and for parents of the youngsters in our own club. It was a most rewarding three days."

Mrs. Eugene McMunn

"We would like to thank you for the Rock Springs Ranch accommodations for our pledge class trip. We had a wonderful time."

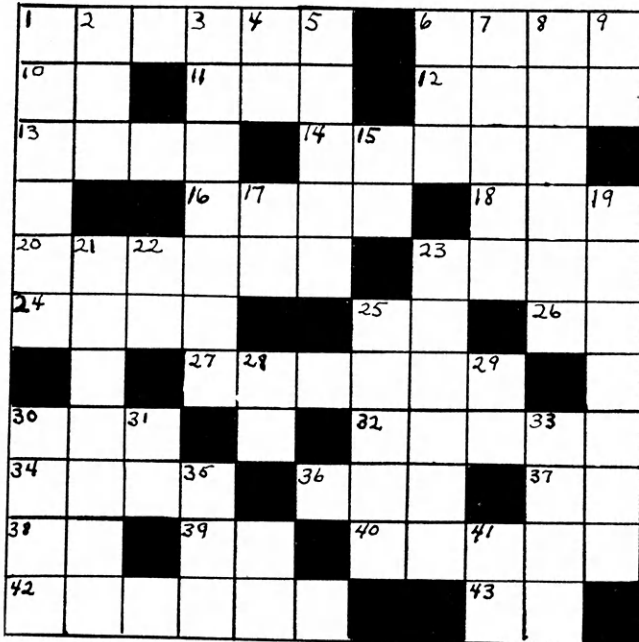
Delta Delta Delta sorority
University of Kansas

"Our club wishes to thank you and the Seven-Up Bottlers for the check for \$25 our club received as one of the top ten clubs in the state recreation program."

Carol Ann Newby
Richland Rustlers

"This trips is one of the highlights of my life. I find it difficult to describe such an inspiring thing as this 4-H conference. I only wish all teenagers could experience this type of event. If they could and would take the challenge it offered seriously, I feel that this country and its citizenship would not have to worry about the future."

James Trapp
1966 National 4-H
Conference Delegate



ACROSS

- 1. A rug
- 6. Water surrounded by land
- 10. Hello
- 11. Night before a special day
- 12. Prepare for publication
- 13. Sign of what is to happen
- 14. Mr. Durante's trademark
- 18. And so forth
- 20. Make
- 23. Energy to run engine
- 24. Be paid for work
- 25. Yes (Spanish)
- 26. Negative answer
- 27. Large crowd
- 30. region of the clouds
- 32. Path between seats
- 34. Foliage
- 36. Andrew J—c—on
- 37. There
- 38. Pernel R—ber—s
- 39. Dinah Sho— —
- 40. Goes on buying spree

- 42. Large piece of land— one owner
- 43. Our homeland (initials)

DOWN

- 1. Selection
- 2. Point weapon
- 3. Banner
- 4. — — ertt Dierkson
- 5. Torment
- 6. Grassy Field
- 7. Good-bye
- 8. Young cat
- 9. — — el Mermen
- 15. The two of us
- 17. B—s—on, Mass.
- 19. Places to hang clothes
- 21. Loud noises
- 22. Dwight D. Eisenhower— —
- 23. End
- 25. Wets thoroughly
- 28. That man
- 29. Older Brownie (initials)
- 31. —esterd—y (day before)
- 33. Way a dog drinks
- 35. Benjamin — — nklin
- 41. Amateur H — — r

HOME IMPROVEMENT WORD SCRAMBLE

Here are the names of principles you should keep in mind when planning your room improvement projects. See if you can unscramble them.

- | | |
|---------------|-----------------|
| 1. mornhay | 7. pehas |
| 2. troponriop | 8. rocol |
| 3. calenab | 9. nagnilpn |
| 4. tyhmrh | 10. ganerrmatne |
| 5. zesi | 11. seu |
| 6. hesapmis | 12. xutreet |

Mary: Why did the lady go outdoors with her purse open?

Gary: Because she expected some change in the weather.

Lauri Mai
Russell

Gleanings

Progress involves risks. You can't steal second base and keep your foot on first.

An open mind is often an invitation to someone to drop a worthwhile thought into it.

To apply one pound of learning, a man needs ten pounds of common sense.

Your machinery is in reverse when you try to raise yourself by climbing on someone else's shoulders.

No wonder today's teenager gets mixed up. Half of the adults are telling him to "find himself" and the other half are telling him to "get lost."

Nan: How did Batman know it was spring?

Nancy: Don't ask me.

Nan: Robin started singing

Nancy Sue Giefer
Girard

Teacher: Give me an example of a collective noun.

Pupil: Garbage can.

Madonna Kaskie
Wichita

Editor's Note: Send in your favorite joke. We will give you credit for sending it in and we can let many others enjoy this joke and puzzle page. . . . Send to Kansas 4-H Journal, Manhattan, Kansas.



"Isn't that the boy who told us he was soil conditioning engineer?"

This Advice Stands A Lifetime



Pay yourself first . . . save it where it
earns high profit with insured safety.
Save NOW at your nearest . . .

KANSAS Savings & Loan Association

Arkansas City

First Federal Savings and Loan Ass'n. of Arkansas City

Augusta

American Savings Association

Beloit

First Federal Savings and Loan Ass'n. of Beloit

Clay Center

Northwestern Federal Savings and Loan Ass'n. of Clay Center

Dodge City

First Federal Savings and Loan Ass'n. of Dodge City

El Dorado

Mid-Continent Federal Savings and Loan Ass'n. of El Dorado

Fort Scott

Liberty Savings and Loan Ass'n.

Garnett

The Garnett Savings and Loan Association

Great Bend

The Prudential Building and Loan Ass'n.

Hays

The Hays Building and Loan Ass'n.

Iola

The Security Savings and Loan Ass'n.

Lawrence

Capitol Federal Savings and Loan Association, 11th and Vermont Streets

Leavenworth

Leavenworth Mutual Savings and Loan Ass'n.

Liberal

First Federal Savings and Loan Ass'n. of Liberal

McPherson

The Pioneer Savings and Loan Association of McPherson

Newton

First Federal Savings and Loan Ass'n. of Newton

Ottawa

Ottawa Savings and Loan Ass'n.

Parsons

First Federal Savings and Loan Ass'n. of Parsons

Pittsburg

First Federal Savings and Loan Ass'n.

Plainville

Rooks County Savings Ass'n. of Plainville

Shawnee-Mission

Capitol Federal Saving & Loan Ass'n. at 5251 Johnson Dr., 95th & Nall and Meadow Lake Shopping Center

Topeka

Capitol Federal Savings and Loan Ass'n. at 700 Kansas Ave. 1201 Topeka Blvd. and 2100 Fairlawn Rd.

Wellington

First Federal Savings and Loan Ass'n. of Sumner County

Wichita

American Savings Association of Wichita, Home Office First and Main: East—4601 E. Douglas Ave.



Outdoor Games

By

Dick Tomkinson

Here are two games you can use outdoors at your club meeting or on your club tour.

Mary Tefft, chairman of the recreation committee of the Lucky Horeshoe 4-H Club, Wilson county, sends in this game her club enjoys that they received from Hawaii.

CABOOSE TAG

Arrange the players in groups of three with the exception of two players. The groups of three grasp each others waist representing a train; engine, car, and caboose. One of the two remaining players is "IT" and the other is being chased. The one being chased may escape being caught by catching on to a caboose. The train tries to prevent that by twisting and turning.

When the one being chased catches a caboose, the engine takes his place, as the one being chased. When a player is tagged, he must turn and chase the one who tagged him.

SPUD

This game may be played by groups of 10 to 50. The players form a circle, with one player in the center who throws a "ball" in the air, at the same time calling the name of one of the circle players. The one called rushes for the ball, catches it if possible, and, in any case, recovers it as quickly as he can. Then he calls "Halt" and the players, who have fled mean-while, stop in their tracks. He then (standing in position) tries to hit one of the players by throwing the ball at him. Players may dodge but may not move their feet. If the thrower misses the target, one "Spud" is scored against him, but if he hits the player a "Spud" is scored against that player. The game is resumed by all players making another circle and having the thrower call a new name. Any player who gets three "Spuds" against him must assume a squat position with head down and allow each player to have one throw at him. ((Ball may be made of paper or rags.)

"Spud is in a card file of 100 games available from Hurst Printing Co., Lexington, Kentucky (\$3.00).

BOOST Kansas 4-H Clubs
Kansas Youth

Invest in Programs of

Kansas 4-H Foundation

212 Umberger Hall
Manhattan

KSU
Kansas



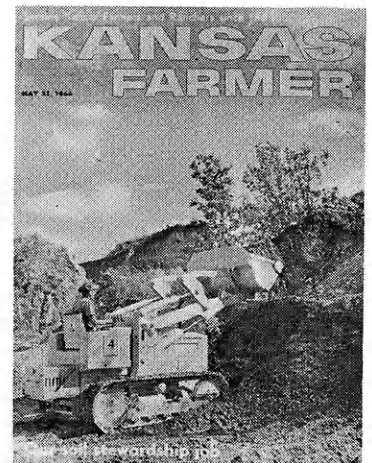
Alex McManis at his dealership, McManis Tractor & Implement, Manhattan, Kansas

"KANSAS FARMER is current, accurate and local" says Manhattan Kansas Implement Dealer, Alex McManis

"I haven't opened this issue of Kansas Farmer yet, but I know right now that it will carry information on current spring planting and spraying problems that my customers are facing right now.

"Kansas Farmer always carries the kind of technical information that helps implement dealers like myself stay abreast with the ever changing field of agriculture."

Alex McManis has been an implement dealer since 1934, first in the Blue Valley and then in 1951 moved to Manhattan, Kansas, to open his present Ford Tractor dealership.



**KANSAS
FARMER**

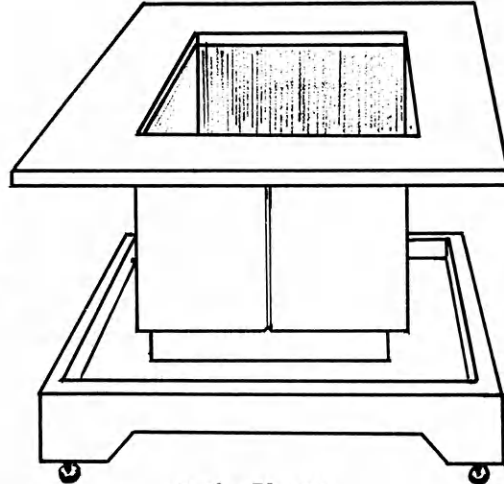
109 W. Ninth / Topeka, Kansas

"For Additional Information Circle 2nd Cover on Dealer Inquiry Card"

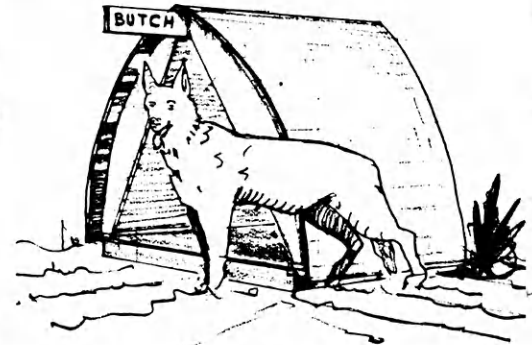
Free!

4-H Woodworking Plans from YOUR LUMBER DEALER

**TWO NEW
PROJECTS
IDEAS NOW
AVAILABLE**



Patio Planter



Dog House

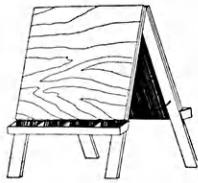
*See these Lumbermen for your FREE Plans — they
are your best friend when you need good material*

Agra Agra Lumber Company	Concordia Sanborn Lumber Co.	Great Bend Whitesell Lumber Company	Kinsley Kinsley Co-op Exchange Lumber Yard
Asherville Asherville Lumber and Coal Company	Denton C. H. Gish Company	Greeley Greeley Lumber Co.	Kiowa The J. W. Metz Lbr. Co.
Ashland Don Spotts Lumber Company Home Lumber and Supply Co.	Elkhart Elkhart Lumber Co. The Star Lumber Company	Greensburg Home Lumber and Supply Co.	LaHarpe Diebolt Lumber and Supply
Atchison Hixon Lumber Company	Ellsworth Lake Superior Lumber Co.	Hanover Burgner-Bowman-Matthews Lumber Company	Lakin Tate and Company Lakin Lumber Company, Inc.
Beloit Peoples Lumber and Coal Company	Emporia Home Lumber and Supply Co. The Smith Lumber Company	Hartford Thomas Lumber Company	Lancaster T. E. Snowden Lumber Company
Bern Bern Lumber Company	Eureka A. C. Houston Lumber Company	Hays Hardman Lumber Corporation, Inc. Schwallier Lumber Co., Inc.	Larned Cutter-Lindas Lumber Co.
Brownell Richolson Lumber and Hardware Company, Inc.	Everest Alexander Lumber Company	Healy Healy Co-op Elevator Company	Lawrence Woods Lumber Company Logan-Moore Lumber Co.
Cawker City Cawker City Lumber Company	Fredonia The Home Lumber & Supply Company	Hill City Hardman Lumber Company	Lebanon Lebanon Lumber Company
Chanute Smith Lumber Company	Garden City McAllister-Fitzgerald Lumber Co.	Holton Holton Lumber Company	Lenora Lenora Lumber Company
Chapman Sanborn Lumber Company	Garnett Star Grain and Lumber Company	Holyrood Home Lumber and Supply Co.	Liberal The Star Lumber Company
Chase Chase Cooperative Union	Gaylord Hardman Lumber Company	Home Home City Lumber & Hardware	Linn Rice-Johntz Lumber Co.
Colby Hardman Lumber and Coal Company Hess Lumber Company	Glen Elder Dickinson Lumber Company	Hugoton The Star Lumber Company	Longford Longford Lumber & Grain Company
Coldwater Home Lumber and Supply Co.	Goodland Hardman Lumber Company Rasure Lumber Company	Iola Klein Lumber Company	Macksville Home Lumber and Supply Co.
		Johnson Seyb-Tucker Lumber and Implement Company	Madison Madison Lumber Company

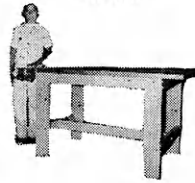
Toy Chest



Double Easel



Woodworking Bench

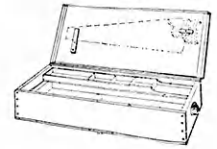


Folding Table

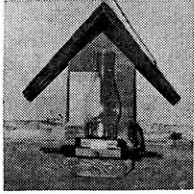


Picnic Table

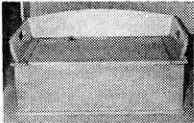
Tool Chest



Bird Feeder



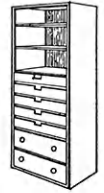
Window Seat



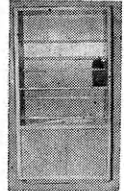
THESE PLANS ARE AVAILABLE

Lawn Seat	Two-Level Coffee Table	Vertical Shoe Rack	Sheep Blocking Box
Lawn Chair	Box Hockey	Small Animal Trap	Christmas Tree Gifts
Mail Box	Picnic Bench	Back Yard Fence	Devil Game
Book Case	Holding Gate	Mail and Memo Board	Child's Desk
Gate Sign	Sewing Cabinet	Childs Step Stool & Chair	Gun Rack
Step Table	Sail Boat	Fishing Rod Rack	Rotating Selection Tool Rack
Two Games	Shoe Shine Kit	Collapsible Visual Aid Stand	Hobby Desk
Portable Towel Rack	Football Game	Bookcase Headboard	Camp Stool
Chest of Drawers	Baseball Rack	Magazine Rack	Cart with Removable Trays
Wheel Barrow Planter	Martin House	Indoor Planter	Hobby Horse
Lazy Susan	Blue Bird House		
Coffee Table	Comic Book Rack		

Closet Storage Cabinet



Closet Valet

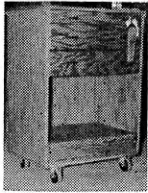


Tool Storage

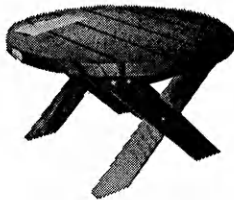


Folding Lawn Chair

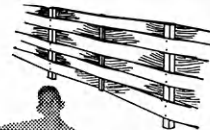
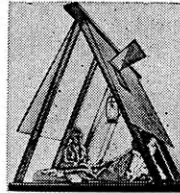
Tool Caddy



Patio Table



Wood Play Tent

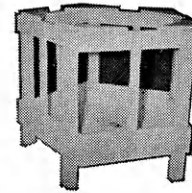


Yard Fence No. 3

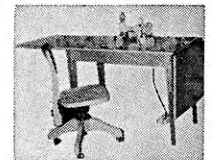


End Table

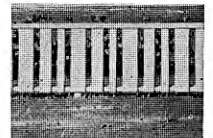
Self Feeder for Sheep



Sewing Machine Table



Yard Fence, No. 2



Insect Display Box



Study Center



Manhattan
Ramey Brothers

Mankato
Mankato Lumber Company

Marysville
Howell Lumber Company

Meade
Home Lumber and Supply Co.

Moundridge
Clayton Vogt Lumber Co., Inc.

Neodesha
O. E. Woods Lumber Co.

Ness City
Rock Island Lumber Co.

Norton
Norton Lumber Company

Nortonville
Alexander Lumber Company

Oakley
Oakley Lumber Company

Oberlin
Building Supply Headquarters

Offerle
Offerle Co-op Lumber Co.

Olathe
Cowley Lumber and Hardware Company

Onaga
Onaga Lumber & Grain Co.

Osage City
Martin Material Co., Inc.

Oswego
Home Lumber and Supply Co.

Ottawa
Hubbard Lumber Company, Inc.

Parsons
O. E. Woods Lumber Co.

Phillipsburg
Hardman Lumber Company

Pittsburg
Broadway Lumber Co. Inc.

Plains
Home Lumber and Supply Co.

Pretty Prairie
The George W. Ulth Lumber Company

Protection
Home Lumber and Supply Co.

Russell
Hardman Lumber Company of Russell Inc.

St. Francis
St. Francis Equity Exchange

St. John
Home Lumber and Supply Co.

Salina
Everitt Lumber Company, Inc.

Seneca
Koelzer Lumber Company
Seneca Lumber Company

Severy
Tolman-Gibbon Lumber Company

Smith Center
Smith Center Lumber Co.

Stafford
Home Lumber and Supply Co.

Stockton
Stockton Lumber Company
B & B Lumber & Supply

Wakeeney
Hardman Builders Supply Co.

Wichita
Lawrence Lumber Company
Stockyards Cash and Carry Lumber Co.
Alexander Lumber Company Inc.
Star Lumber & Supply Co.,
Sutherland Lumber Company,
522 East 21st Street

Wilson
Hoch Lumber Company

Winfield
A. B. Everly Lumber Co.

Woodbine
Kohler Lumber Company

Zenda
The George W. Ulth Lumber Company

Missouri

Independence
The George W. Ulth Lumber Company, 11432 Truman Road

Kansas City
Sutherland Lumber Company,
1901 Wyoming

Ideas That Work



BRANCHES TRIMMED FOR SAFETY

The Ruleton Eager Beavers Club, Sherman county, trimmed several low branches from a tree which blocked the view of a crossing as a part of their safety drive.

Cinda Topliff
Goodland

CLUB SPONSORS INTERNATIONAL SPEECH

The Grantville Club, Jefferson county, sponsored a speech by Banjong Choosakulchart, Educational Director of Chien-grai Province, Thailand. He presented slides of Thailand and answered questions about this country, his work, the people and their customs. He ended his program by leading the audience in one of his favorite songs in English, "Home on the Range." Then he sang one of the popular songs of his country in Thai.

CLUB SENDS SOAP TO VIET NAM

Because of the soap shortage in South Viet Nam, the Derby Club, Sedgwick county, sponsored a campaign "Operation S. O. S." (Send Over Soap). The citizenship committee was in charge of the project. The group sacked small bars of soap in plastic bags for the shipping to Viet Nam.

CLUB CELEBRATES 30TH BIRTHDAY

"Meeting of the Prognosticators" was the program for the 30th anniversary of the Richland Boosters Club, Ford county.

The program was presented as a meeting that took place in 1935 shortly after the club was organized. A letter from the first community leader, asked those who foretell the future by crystal balls, tea leaves, and star gazing, to look ahead thirty years and see if this club would be a successful one in the year 1965.

Junior leaders of the club in costumes representing the procession, were the forecasters reporting the work done in each project carried by members of the club in 1965, as their predictions.

The history of the club's three score years was given by Rodney Fauls.



COUNTY-WIDE INITIATION FOR ALL NEW MEMBERS

Ford County began a special county-wide initiation ceremony for all new members. This ceremony was part of the 4-H play and chorus competition after 4-H Club Days.

Junior leaders of clubs throughout the county made up the initiation team; explaining what 4-H is and presenting each member with a membership pin.

Danny Beck is presented with his membership pin by Dennis Deavers, while Larry Glenn, Wilma Browning, Mike Beck, Ann McKee and Lynnette Dirks look on.

PARENT'S NIGHT TEACHES SAFETY LESSON

Parent's night at the Sappa Valley Club, Decatur County, turned out to be an important, but almost tragic lesson in safety. During the meeting members began to develop severe headaches. Following the meeting one visitor and one member fainted.

The group decided the problem must be the heater. The cause was carbon monoxide flowing into the room because of a plugged flu. As a result of the accident, one member was taken to the hospital, others recovered after reaching fresh air.

The Sappa Valley Club reminds all clubs using gas heaters in seldom used buildings to check the heater and flu periodically to prevent carbon monoxide poisoning.

Suzanne Larson
Oberlin



BLAIR COOPER'S HONORED FOR LEADERSHIP

Mr. and Mrs. Blair N. Cooper were honored by Osage county 4-H Clubbers and alumni for his 39 years of 4-H Club leadership and support.

The Coopers were presented a plaque and gas range in honor of their years of service. Mr. Cooper organized the North Osage Livestock Club in 1927.

SALINE COUNTY GROUP TAKES FIELD TRIP

A county-wide workshop and field trip were held for Saline County members interested in the entomology project.

The outing was held at the O. S. Fent farm. Mrs. Fent told members of the importance of insects and the value of maintaining accurate records on insects collected.

The members made insect killing jars and butterfly and sweeping nets. In the afternoon the group collected insects from ponds, streams, weeds and woods.

The field trip concluded with lessons in the correct methods of pinning, spreading, indentifying, labeling and arranging the display of insects. Color slides of common insects were shown to members at the close of the class.

Ideas In Brief

GREENWOOD COUNTY—

The Lamont Boosters Club visited Kansas City as a part of their recreation program. While in Kansas City the group visited Liberty Memorial, the Nelson Art Gallery, shopped in a large shopping center and viewed the Ice Capades.

WYANDOTTE COUNTY—

The Reverend Marshall Davidson of Wolcott Baptist church was the featured speaker during Holy week with a color

**ALLIANCE INSURANCE
COMPANIES**
McPherson, Kansas

FIRE — CASUALTY — LIFE

Serving Kansas Since 1888

slide presentation of his visit to the holy lands.

The Stony Point Club "Toys for the Toy Cart" committee met to select and deliver toys for the toy cart at the Kansas University Medical Center. Each month clubs in Wyandotte County call the center to find out the types of toys most needed. Clubs then select and deliver the toys.

The Grinter-Go-Getters Club had a box supper to raise money for their treasury.

Junior leaders of the Apache Club held a sunrise breakfast for members and families at Wyandotte County Lake.

The Stony Point Club voted to distribute educational pamphlets on cancer and collect donations for the cancer fund.

RENO COUNTY—

Kim Lockman gave an illustrated talk on toothpastes at a meeting of the Hutch Merry Metros Club.

The Thomador Club canvassed the city of Buhler selling articles made by the blind.

SALINE COUNTY—

Stocking farm ponds with fish for recreation was the subject of Don Gerard's conservation talk at a meeting of the Saline Valley Club.

The 81-Hustlers Club voted to send in money to pay on their Kansas 4-H Foundation Pledge for Williams Dining Hall.

HARVEY COUNTY—

The Harvey county Junior Leaders Club held a "School's Out" party May 31.

The Lucky 13 Club is selling toothbrushes for a money making project.

The Halstead Go Getters club voted to clean Kemper Cemetary for Memorial Day as a community project.

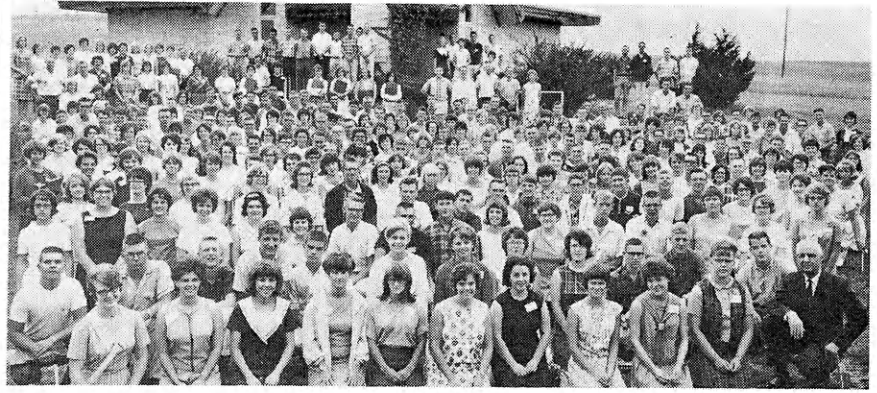
"Proper Equipment for a Camping Trip" was an activity talk presented by Nancy Allen at a meeting of the Walton Club.

Answers to Home

Improvement Word Scramble

1. harmony; 2. proportion;
3. balance; 4. rhythm; 5. size;
6. emphasis; 7. shape; 8. color;
9. planning; 10. arrangement;
11. use; 12. texture.

1	C	A	R	P	E	T	6	L	A	K	E
10	H	I	E	V	E	12	E	D	I	T	
13	O	M	E	N	14	A	W	A	I	T	
	I	16	N	O	S	E	18	E	T	C	
20	C	R	E	A	T	E	23	F	V	E	L
24	E	A	R	N	25	S	I	26	N	O	
	C	27	T	H	R	O	N	G	29	S	
30	S	K	31	E	32	A	I	S	33	L	E
34	L	E	A	F	36	A	K	S	37	A	L
39	O	T	39	R	E	40	S	H	41	O	P
42	E	S	T	A	T	E	43	U	S		



We Like Rock Springs

These pictures were taken at the Farm Bureau sponsored citizenship seminar for high school students held annually at Rock Springs Ranch in August.

We like Rock Springs because it provides excellent accommodations for a conference like ours. The 4-H Foundation and the Ranch staff are very important members of our citizenship seminar team. This splendid cooperation and the fine facilities have made an important contribution to our program each year.

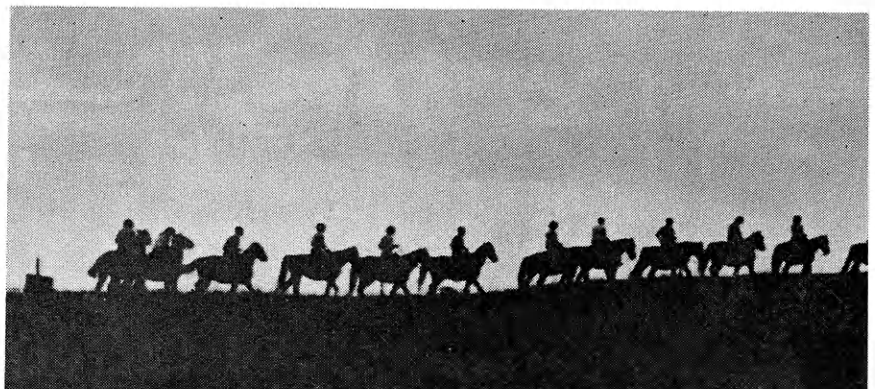
Official Farm Bureau policy approved by the voting delegates representing the 105 member county Farm Bureaus includes the following statement:

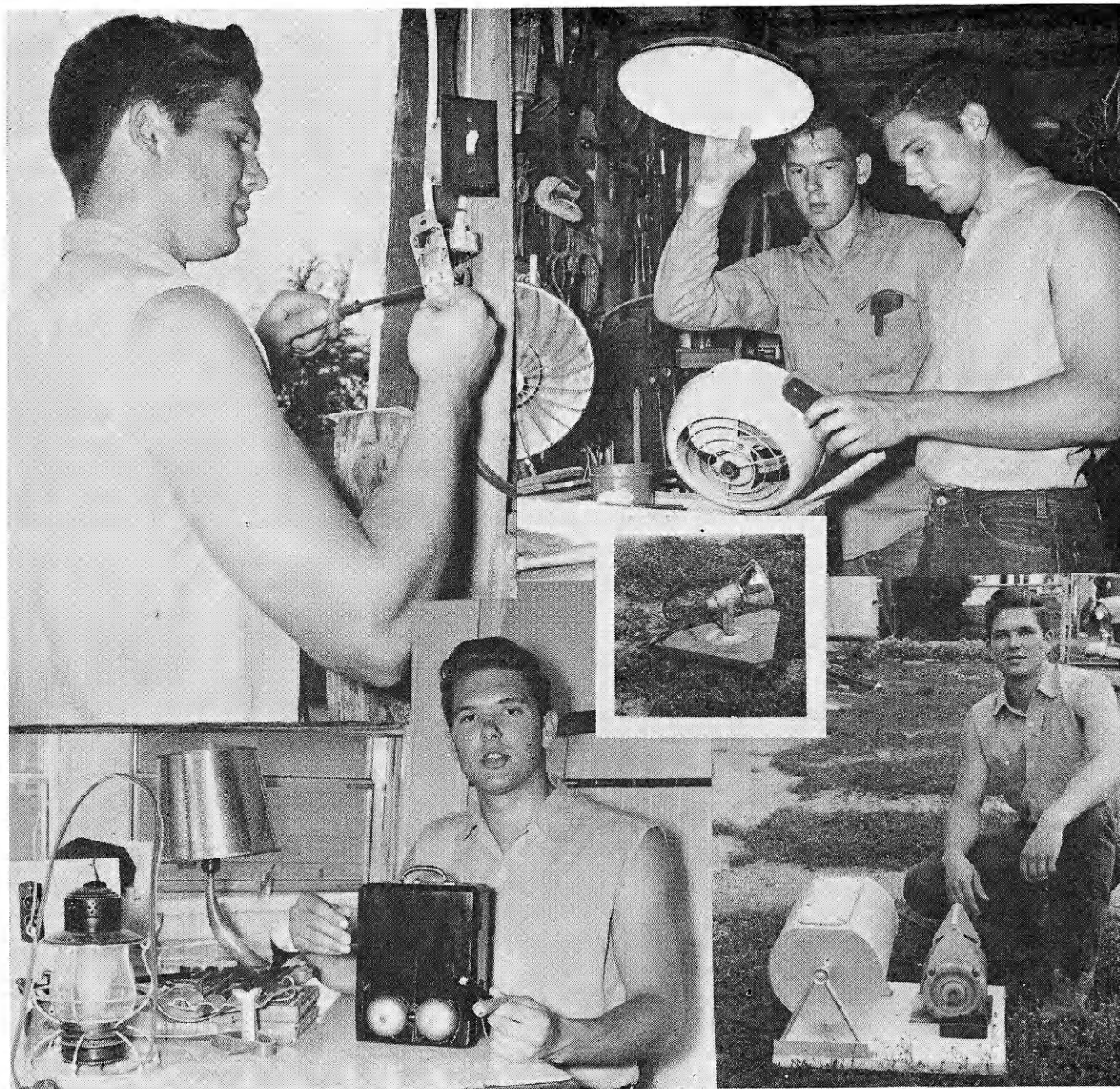
"Young people have a special stake in the outcome of current attempts by some people to change our economic system and our form of self-government. They need to learn the great truths underlying our American system and participate actively in programs designed to strengthen it.

"We therefore commend our county Farm Bureaus for their splendid support of citizenship seminars for high school students conducted by Oklahoma Christian College in Oklahoma City and our own Kansas Farm Bureau Seminar held at Rock Springs Ranch this year. We ask that the board of directors of Kansas Farm Bureau establish the Rock Springs Seminar as an event to be conducted annually as a very important part of our citizenship program and urge continued county Farm Bureau participation in the support of both seminars."

Kansas Farm Bureau

105 County Farm Bureaus
Working Together





Martin Leimer, Butler county, has worked with the 4-H Electric Project for nine years. A member of the Elm Creek Emeralds 4-H Club, he is the leader for six basic project members.

Martin works on house wiring projects with his father. Top right, he works with brother Delvan, who is also an active 4-H Electric member.

Martin made a rock tumbler, lower right, of original design. His next project to go with his rock collection is a rock saw. He tells, lower left, about the continuity tester made from an old telephone and shows a number of other projects he has made. The converted lantern is a handy portable yard light and the portable work light, inset, is handy in many shop situations.



*** Watch This Page For Ideas On Farm And Home Electric Projects**
ELECTRIC LIGHT and POWER COMPANIES in KANSAS

The Kansas Power and Light Company
 Kansas City Power & Light Company
 Western Power and Gas Company, Inc.

Central Kansas Power Company
 Kansas Gas and Electric Company