

630-7
K169
11:10

October, 1965
15 Cents

Journal

KANSAS 4-H

The 4-H Family Magazine Kansas 4-H Foundation, Inc., Publisher

RECEIVED

OCT 22 1965

THE LIBRARY
KANSAS STATE UNIVERSITY



4-H Family at the Fair

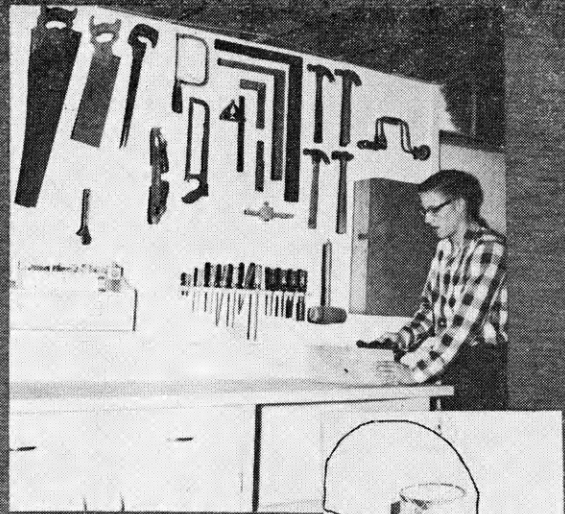
ideas for you

in 4-H

WOODWORK

Your work in 4-H wood-
working will teach you skills
you will have a lifetime. You
learn while you make useful
projects.

Many projects can be
exhibited at fairs. Ask your
leader or see your Extension
agents for more information.



Equip your shop



Build for family living and recreation

The Sutherland Lumber Company is indeed proud to be able to play a small part in the all important 4-H program and particularly in the woodworking division. It has been Sutherland's privilege to provide medals for county winners and sponsor the Kansas winner to the National 4-H Club Congress.

Sutherland LUMBER CO.

1901 Wyoming

Kansas City, Missouri

East across the street from the American Royal Building

522 East 21st Street

Wichita, Kansas

Just west across tracks from Live Stock Exchange Building

Free Plan Books



Bring this coupon to a Sutherland Yard and
select your FREE booklet of plans.

Name _____

Address _____

4-H Club _____ County _____

Age _____ Yrs. in 4-H _____

(Coupon must be presented in person by 4-H member)

National 4-H Week Ideas



Vol. XI, No. 10

October, 1965

National 4-H Week is a time when our whole country is reminded of the experiences of 4-H membership. People may feel that 4-H is good but may not know just why they feel this way.

This special week for 4-H is a special time when we should make sure all people know about 4-H and understand why the development gained from project work and other aspects of 4-H is that from which each and every young person in the world could benefit.

How do we tell others about our 4-H experiences? How do we show them the value of these experiences? What can we do? A number of clubs participate in some special activity during National 4-H Week.

One good way to gain ideas is to learn what is being done to tell others about 4-H and how effective it is. A sampling of activities this year conducted by clubs during this special week would provide many ideas for every 4-H club in Kansas.

The Kansas 4-H Journal would like to gather some of these ideas and present them to you about the time you are looking for ideas next year. With the 1965 National 4-H Week fresh in your minds, now would be a good time for you to send us a report of what your club or county did, plus some pictures for use in a feature article in the Journal.

So—send us your ideas and we will bounce many your way when you are ready to pick up the ball and plan for next year's National 4-H Week.

IN THIS ISSUE

FEATURES

<i>A 4-H Family at the Fair</i>	5
<i>Overnight Spent Camping</i> ..	8
<i>A Winning Demonstration</i>	8
<i>"Trick or Treat"</i> <i>for UNICEF</i>	9
<i>Fair Fever runs high in</i> <i>a Kansas summer</i>	10
<i>4-H Journal Cartoon</i> <i>Contest Entries</i>	12
<i>New, Revised Bulletins</i> <i>in 4-H</i>	12

DEPARTMENTS

<i>Family Fun Page</i>	7
<i>4-H Recreation</i>	12
By Dick Tomkinson	
<i>Ideas That Work and</i> <i>Ideas in Brief</i>	18

STATEMENT OF OWNERSHIP, MANAGEMENT AND CIRCULATION

Kansas 4-H Journal	October 1, 1965
Frequency of Issue: Monthly	
Location of Publication and Office of Publisher: Umberger Hall, Kansas State University, Manhattan, Kansas	
Owner and Publisher: Kansas 4-H Foundation	
Editor and Managing Editor: Don Esslinger	
	Average No. copies each issue during preceding 12 months
Circulation:	21,400
Total copies printed	
Paid Circulation (mail subscriptions)	19,624
Total	19,624
Free Distribution	1,679
Total Distribution	21,303
	Single issue nearest to filing date
	21,000
	18,938
	18,938
	1,613
	20,551

Don Esslinger Editor

Editorial and Business Office

Phone JE 9-2211 Ext. 208
Manhattan, Kansas

Published Monthly By

KANSAS 4-H FOUNDATION, INC.

J. Harold Johnson.....Executive Director
Merle Eyestone.....Associate Director

BOARD OF TRUSTEES

Governor William H. Avery
Honorary Chairman

W. Dale Critser, Chrm.Wichita
E. B. Shawver, Vice Chrm.Wichita
Balfour S. Jeffrey, Treas.Topeka
*Harry Darby.....Kansas City
Mrs. Olive Garvey.....Wichita
Clifford Hope.....Garden City
†A. D. Jellison.....Junction City
Harold E. Jones.....Manhattan
J. J. Moxley.....Council Grove
George B. Powers.....Wichita
Roger E. Regnier.....Manhattan
N. T. Veatch.....Kansas City
Dolph Simons.....Lawrence
*Lester Weatherwax.....Wichita
†Fred D. Wilson.....Andover
*Advisory Members
†Trustees Emeritus

Second Class Postage Paid at Lawrence, Kansas. Return Form 3579 to Kansas 4-H Journal, Manhattan, Kansas.

Advertising rates and circulation data on request.

Group subscriptions \$1.00 per year.
Individual subscription \$1.50 per year.
Single copy 15 cents.

Use of the 4-H name and symbol approved by the Secretary of Agriculture of the United States, January 23, 1951, under the provisions of the law as reenacted by Sec. 707 of the Act of June 25, 1948 Public Law No. 772, 80th Congress (10 USC 797)

OUR COVER











We spent some time with the Mr. and Mrs. Jack Sleichter and family, Route 4, Abilene, during the 1965 Kansas State Fair.

Their children; Jerry, a college freshman; Diane, a high school freshman; and Kathy, a nine-year-old first year 4-H member, are active members of the Willowdale 4-H Club of Dickinson county.

Turn to page 5 and take a trip around the fair with the Sleichters.

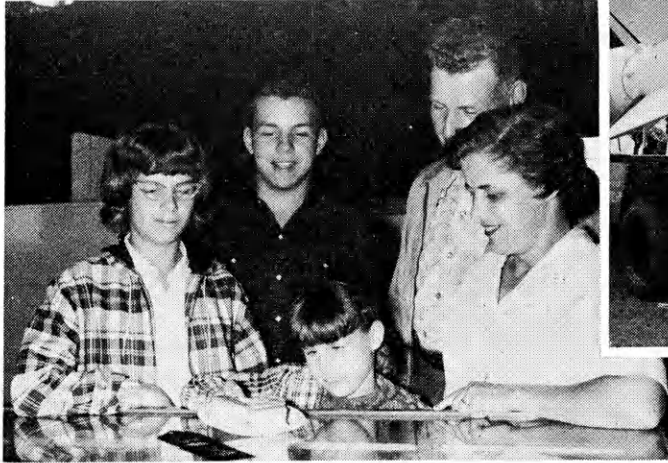


do You Need a Bank?

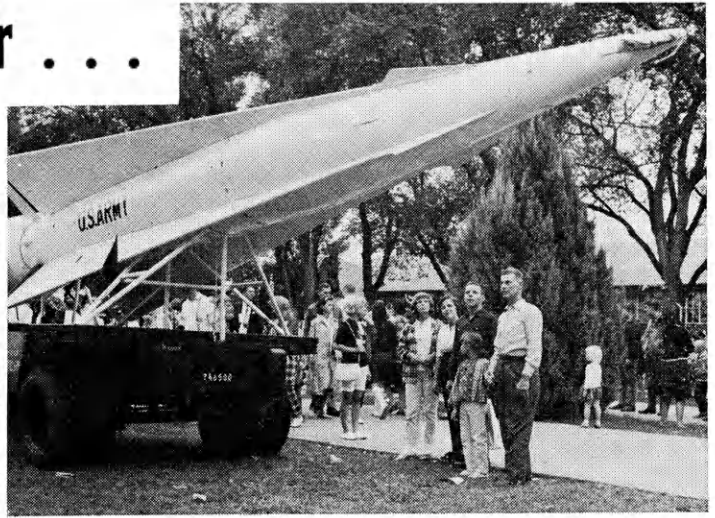
The Answer is YES, because anyone who handles money  needs a bank, and everyone handles money.  Only a bank  can take care of all your money needs. A checking account  saves steps, gives you receipts. A savings account  helps your money grow because only banks pay guaranteed interest.  Banks make loans for ALL good purposes .  A banker is your best friend with money. He has many services for you.  Remember, when money matters,  see your Home-town Kansas Banker.

A 4-H Family at the Fair . . .

The Jack Sleichters of Dickinson county



Diane, left, exhibited biscuits at the Fair. Kathy, a first year 4-H'er carefully looks at a purple-ribbon-winning exhibit.



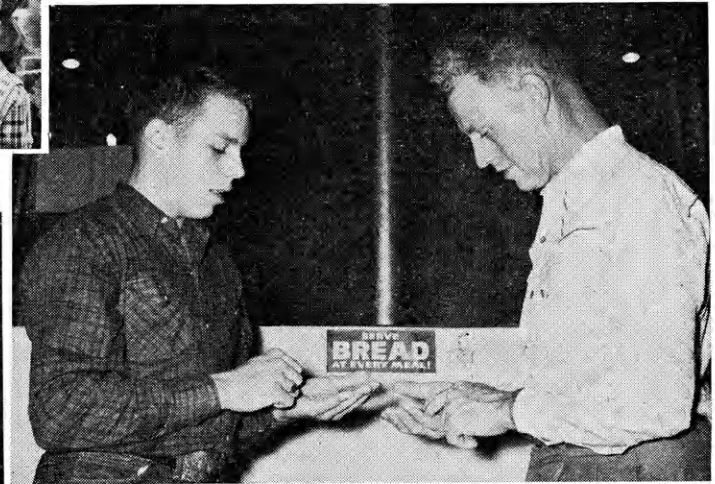
A modern sight, a missile



Jerry, Kathy and Diane take a ride in 'Scrambler'



Cotton candy is always popular at the Fair



Mr. Sleichter and Jerry visit the Wheat Fountain



They visited Mrs. Sleichter's interests, the home economics exhibits.



At left, Jerry, a freshman at Kansas State University, shows his barrow in the 4-H show. At right Diane and Mrs. Sleichter, clothing leader of the Willowdale 4-H Club, look over Diane's State Fair exhibit. Mr. Sleichter has been a club leader, so 4-H is a family affair with the Sleichters.





**GIVE
YOUR DOG
THE
CO-OP
"SHOW DOG"
DINNER!**

COOP chunk style dog food

Specially made with a fresh, appetizing "steak dinner" taste and aroma that dogs really go for! This is the dog food developed by skilled nutritionists with long experience in formulating CO-OP Feeds for all farm animals. It offers complete nutrition, to keep your dog healthy, vigorous and attractive. This is the dog food with the special "seal of quality."

see your CO-OP today



free sample

FOR YOU AT YOUR CO-OP

(offer good at Co-ops which sell CO-OP Dog Food. Expires Dec. 1)

Let your dog try it . . . you'll see the difference which CO-OP Dog Food makes. And ask for your free copy of the CO-OP Dog Feeding Guide, that tells you how to feed and care for your dog.

CONSUMERS COOPERATIVE ASSOCIATION

KANSAS CITY, MISSOURI

Editor's Note: Send in your favorite joke. We will give you credit for sending it in and we can let many others enjoy this joke and puzzle page. . . . Send to Kansas 4-H Journal, Manhattan, Kansas.

Grandma: "I like to go to bed and get up with the chickens, don't you?"

Susie: "No, I like to sleep in my own bed."
Judy Seiler, Fredonia

John: "If we had a war, you had 1,000 men and I had 1,000 men, who would win?"

Shorty: "I give up."
John: "I would because you just gave up."
Margaret Dethloff, Mankato

Annie: "My father is a diamond cutter."
Fannie: "Oh, he's a jeweler."

Annie: "No, he mows the grass on the baseball field."
Mary Anne Hart, Glasco

Question: What happens when a duck flies upside-down?
Answer: He quacks up.
Marsha Price, Liberty

Mary: "Do you see that boy over there annoying Patty?"
Charley: "Why, he isn't even looking at her."

Mary: "That's what's annoying her."
Madonna Kaskie, Wichita

Betty: "What does it mean when the barometer starts falling?"

Besty: "Somebody forgot to nail it up good."
Sheila Mills, Leoti

Question: What would our nation be if everyone drove around in pink cars?

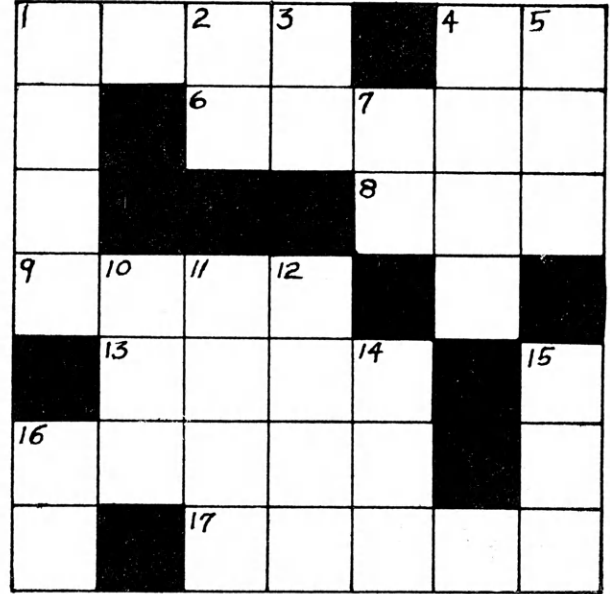
Answer: A pink car-nation.
Linda Billips, Hill City

Dad: "Son, did you put the cat out?"
Son: "No, is it on fire?"
Eileen Cress, Edson

Little Sue: "What has fifty legs, blue eyes on stems, and a red body with green stripes?"

Dad: "I give up. What?"

Little Sue: "I don't know either, but it's crawling on your collar right this minute."
Linda Weide, Iola



ACROSS

1. Halt
4. Air Force (initials)
6. Legend or myth
8. Word of agreement
9. Part of bird
13. Trim & tidy
16. Ice or roller -----
17. Smallest amount

DOWN

1. Not fast
2. Occupation Forces (initials)
3. Father
4. Ship's side away from wind.
5. T.V.,s ----- Parker (Daniel Boone)
7. Near
10. Writing fluid
11. Patricia ----- (actress)
12. Yard entrance
14. English drink
15. Large liquid container
16. South America (initials)

SCRAMBLED WORDS

In the 4-H Clothing and Textiles Project you would find terms like the ones below, but in different order. See if you can unscramble them.

- | | |
|------------|-----------|
| 1. lenede | 6. psan |
| 2. thapc | 7. hittcs |
| 3. hrdeta | 8. stabe |
| 4. ebhitml | 9. nibbob |
| 5. nutobt | 10. mesa |

BUD & BETTY



BY BART TUMEY



Overnight Spent Camping



Forty Ford county teenage 4-H members recently had an opportunity to get a taste of camping along with a chance to make new friends.

They were overnight campers at the Southwest 4-H campgrounds on the Ford county lake. All took part in regular camping duties and each group took part in activities such as swimming, skiing and educational sessions.

Sponsored as an activity of the Ford county 4-H Council, a recreation committee of the council was the planning committee. Members of the committee provided most of the equipment other than regular camping equipment. Among their responsibilities were planning and conducting a night party, weiner roast and vespers.

Water skiing lessons were one of the highlights of the en-

tire camping session. Before the boys and girls were allowed to enter the water, a film was shown that explained the basic techniques of skiing and a skiing lesson was given on shore.

Ford county club agent, Bill Lotz, reports that it was surprising the number of boys and girls who had never tired skiing. In one group more than half of the 4-H'ers had never been on skis. After the day of lessons and

many spills, though, 15 boys and girls who had never been on skis had become skiers.

Boats were provided by local farmers who were interested in 4-H and in promoting water safety.

Ford county agents say that an overnight teen camp could work for your county. It stimulates the interest of the older 4-H'ers to continue in 4-H and remain active.

KANSAS

4-H Journal Sponsors

NEW SPONSORS

Osage
Carbondale Grain Co., Carbondale
Bradley Grocery, Carbondale
Vassar Grain Company, Vassar

**These Have Renewed
Their County Support**

Ellsworth
The Bank of Holyrood, Holyrood

Lyon
Citizens National Bank, Emporia

Pottawatomie
Farmers State Bank, Westmoreland
First National Bank, Wamego
Kaw Valley State Bank of Wamego,
Wamego
St. Marys State Bank, St. Marys
Union State Bank of Olsburg,
Olsburg

Stanton
Collingwood Grain, Inc., Johnson

Stevens
Citizens State Bank, Hugoton

Wallace County
Peoples State Bank, Sharon Springs

Riley County
The First National Bank, Manhattan
Leonardville State Bank,
Leonardville
Riley State Bank of Riley, Riley
Union National Bank, Manhattan
Citizens State Bank, Manhattan

Lane County
First National Bank, Dighton
First State Bank, Healy

A Winning Demonstration

Mary Lou Obermeyer, Marshall county, says, "You don't have to ask Mom where your blouse or shirt is—see to it that it is ready to wear by doing it yourself"—and she shows how in her grand champion demonstration.

Mary Lou is a member of the Balderson Boosters 4-H Club. She stressed work and time saving methods and use of correct equipment in her demonstration at the fair this year.

To make her point, Mary Lou told about her family. She said ironing shirts and blouses for her family for one week would take an eight hour day by using methods and procedures many homemakers now use.

As shown in the picture, Mary



Lou demonstrated the use of work saving methods. A comfortable chair is of prime consideration and an adjustable ironing board is necessary if you desire to sit while working.

Mary Lou warned that these are days when all of us are try-

ing to find ways to get things done with less effort and more efficiency. She demonstrated placement of ironing equipment to save time and work—the clothes basket, clothes caddy for hanging garments, a table within reach for folded articles.

Mary Lou also warned about using long extension cords. A cord of more than ten feet will cut down the heating capacity of the iron.

The 4½ minute method of ironing a shirt was stressed by Mary Lou in her winning demonstration. She shows how to save work and time, too.

So—as Mary Lou says—aching feet and legs aren't proof of best ironing, but using correct equipment, methods and procedures will be a real start on making the job easier and still have a well-pressed look.

'Trick or Treat' for UNICEF

Many Kansas 4-H clubs will "Trick or Treat" for UNICEF this Halloween. UNICEF is the United Nations Childrens Fund which sponsors help for children around the world.

Funds for UNICEF buy milk, medicine and other needs for children. One nickel will buy 25 glasses of milk, 25 vitamin tablets or vaccine to protect 5 children from TB.

Kits of materials may be ordered from the U. S. Committee for UNICEF. The kits include identification stickers, collection containers, planning suggestions and information posters and hand-outs.

County Extension offices in Kansas have additional material for 4-H clubs wishing to "Trick or Treat for UNICEF." Orders should be placed now.

Greeting cards may also be purchased from this U. S. Committee.

BOOST Kansas 4-H Clubs
 Kansas Youth
Invest in Programs of
Kansas 4-H Foundation
 212 Umberger Hall KSU
 Manhattan Kansas

There are lots of ways to raise money...

but most of them don't have the advantages of the Dolly Deere Fund Raising Plan. You're selling deluxe chocolates, something everybody likes. You're making a hefty 45% on every sale. And you're making no investment—you pay for your candy only after you sell it—and you pay only for what you have sold. These are unusual candy specialties, made by one of America's most respected chocolate producers, and not available in any retail store. You have four types to choose from: Almondeeres are toasted almonds buried in squares of fine milk chocolate. (They sell for 50c a box of 18, and earn almost 23c for your group.) Chocolate Coconut Squares are smooth milk chocolate blended with crisp shredded cocoanut. (They sell for 50c a box of 18 and earn almost 23c for your group.) The Princeton Mix is a mixture of nut and fruit centers coated with milk or dark chocolate, full of taste surprises. (They sell for \$1.00 for a 12½ oz. box, and earn 45c for your group.) Monticello Mix is 12½ ounces of milk chocolate, and dark sweet chocolate, nut and natural fruit centers—each with its own sugar shell. (They sell for \$1.00 for a 12½ oz. box, and earn 45c for your group.) This is the kind of chocolates people would like to buy, even if it weren't for a good cause...so delicious you'll be proud to sell them. Just as we are proud to help you sell them. We've been helping people who help charitable organizations for a good many years, and if you think your drive needs special counselling, we'll be glad to provide that, too.

but none of them tastes this good!



ALMONDEERES

Roasted almonds buried in squares of fine milk chocolate. (They sell for 50c a box of 18, and earn almost 23c for your group.)



CHOCOLATE COCOANUT SQUARES

Smooth milk chocolate blended with crisp shredded cocoanut. (They sell for 50c a box of 18, and earn almost 23c for your group.)



PRINCETON MIX

Mixture of nut and fruit centers coated with milk or dark chocolate, full of taste surprises. (They sell for \$1.00 for a 12½ oz. box, and earn 45c for your group.)



MONTICELLO MIX

12½ ounces of milk chocolate, and dark sweet chocolate, nut and natural fruit centers—each with its own sugar shell. (They sell for \$1.00 for a 12½ oz. box, and earn 45c for your group.)

Dolly Deere Candy Co. Dept. K4H
 Box 4830, Philadelphia, Pa. 19124

Please tell me more about the Dolly Deere Plan.

Name _____

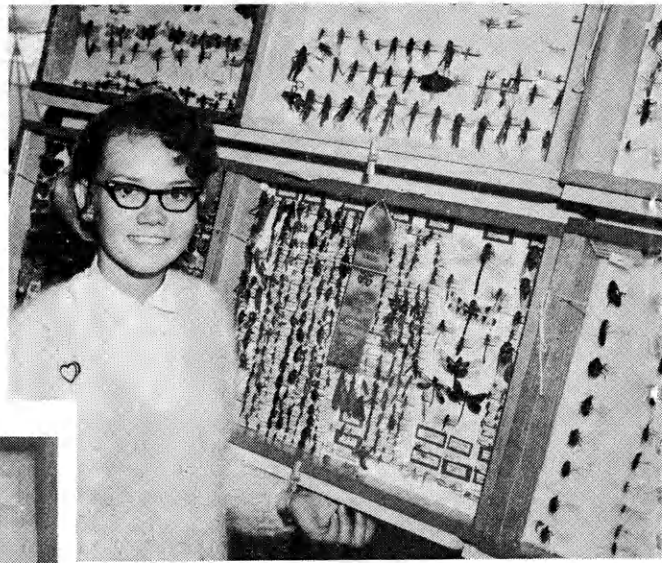
Address _____

City _____ State _____ Zip _____

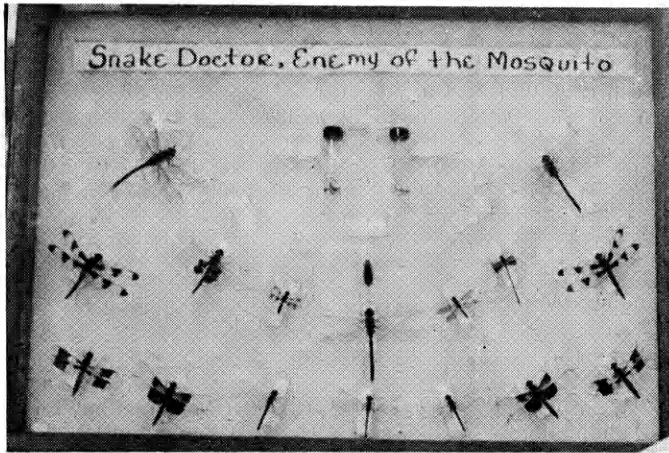
Organization _____

Phone _____ Age if under 21 _____

Fair Fever



Above—Terri Easley of Phillipsburg shows her purple-ribbon-winning exhibit at the State Fair.

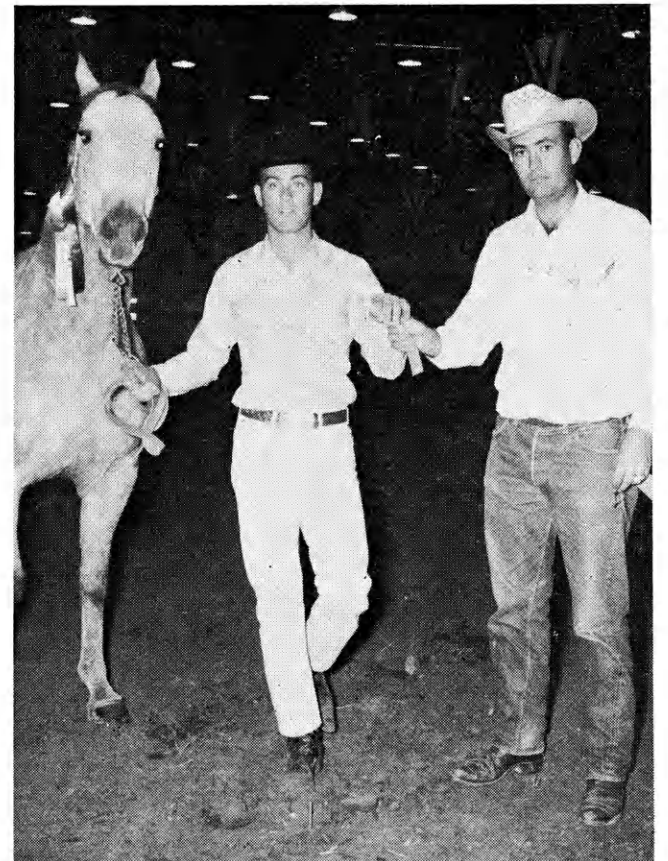


Left—An exhibit in entomology new to the fairs this year was an educational exhibit for those in the advanced phase. This is the work of Kerry Lairmore, Stevens county, a purple ribbon exhibit.

RUNS HIGH



Lower left—This quality room improvement exhibit is the work of Jill Timmons, McPherson county. Although Jill made this scale model of her room, it is not required for the exhibit. Left—Jill Stevens, Salina, and her well-mannered pet work together for a demonstration at the Mid-America Fair. Jill is enrolled in the Confirmation phase of the Dog Care Project. Below—Lane Copeland, Ness county, and his three-year-old filly swing by and pick up the champion Quarter Horse filly ribbon from Rae Luginsland, Assistant County Agent, Reno county, during the 4-H horse show at the State Fair.



Below and B of W Public Nancy Hands mill, county booths receive a whi compa shorte tit's, realist and a not ju in min

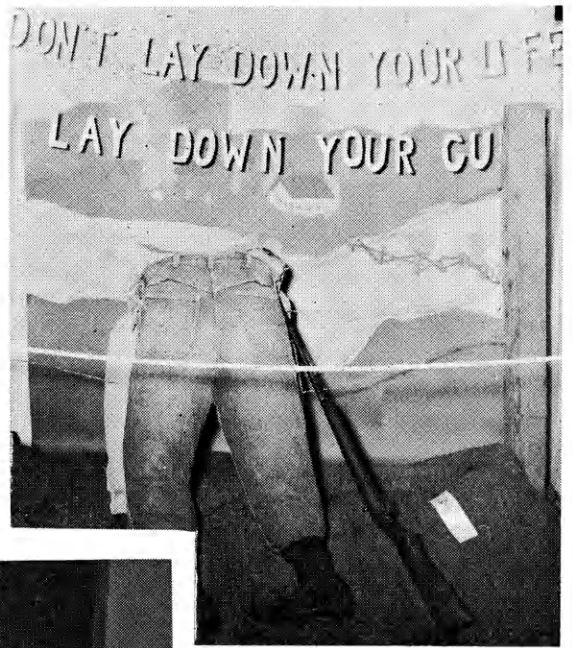


Above—A small bite of a quick bread by judge Mrs. Evelyn Fuller, gives enough information to judge this entry in one of the largest foods classes at the State Fair. Right—Christine Wiggins, Extension Specialist, shows the variety of knitting exhibits at the Mid-America Fair. Knitting classes grew in number of entries more than other classes at many fairs this year.



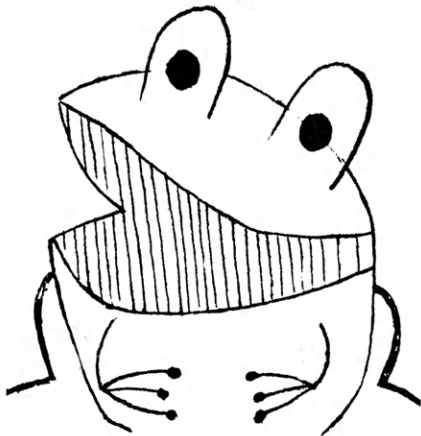
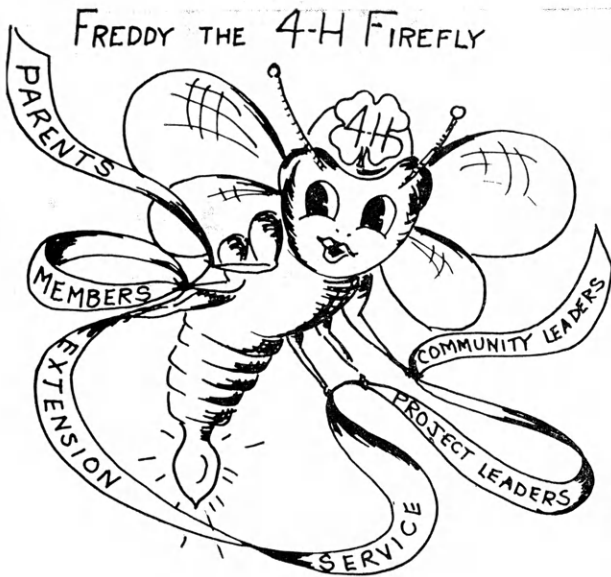
in a Kansas Summer

and winners of the State Style Review roomed Boy contest are on the set "Mr. Lady," the theme of this year's show at the State Fair. They are (l-r); [Name], McPherson county; Samuel Lee [Name], Leary county, (Champions); Pat [Name], [Name] county and Keithe Holste, Ellis [Name] county (serve Champions). Right—Two 4-H [Name] the State Fair on the same subject [Name] different awards, one a blue and one [Name] Qualities of the blue ribbon booth [Name] to the white ribbon booth include; a [Name] are positive, statement of subject or [Name] uses the approved method, use of more [Name] material, better use of color and light [Name] the polished construction (booths are [Name] comparatively, but with a standard [Name] and a score card.)



Above—Jerry Hopping, left, and Jay Yancey, Best Groomer Boy judges look over a contestant. They commented they would like to see boys use more color in their dress. Right—Dress Review judges, Donice Hawes and Naomi Johnson, look over one of the contestants.





4-H Journal Cartoon Winners

The top ten winners were published in the August issue. Here are four of the cartoons. Stephen C. White, Saline county, submitted "Freddy the 4-H Firefly," "Irving Storkly" was created by Dale H. Switzer Jr., Jewell county, the "leap frog" is the work of Vickie Roberts, Allen county, and "Waldo" was sent in by Doug Crockett, Franklin county. Watch the Journal for more contest winners.

New, Revised Bulletins Ready for Distribution

Written for you and revised with you in mind are several bulletins distributed by the Extension Service at Kansas State University.

Headlining new bulletins is one on "Experimenting with Electricity," to be used in one phase of the electric project. Two more bulletins are in the planning for the electric project.


"4-H Judging," with information and suggestions, will be of interest to every 4-H'er whether or not they particularly are interested in judging.

Younger members and their parents will find the bulletin "4-H Projects for Younger Members" of interest and of guidance.

"Junior Leadership a Guide for 13 to 15 Year Olds" will be helpful to older 4-H club members. Soon there will be a bulletin for "Older 4-H'ers."

Rounding out other recently new or revised bulletins are "Let's Learn to Knit," "4-H Entomology Manual," and "Knowing Trees as Individuals."

Requests for these free bulletins or any bulletins distributed by the Extension Service should be made to a County Extension Office.



ALLIANCE INSURANCE COMPANIES
McPherson, Kansas
FIRE — CASUALTY — LIFE
Serving Kansas Since 1888

a new word for you . . .

e • lec' • tri • con' • o • my

(n.) . . . the amount of business and the standard of living resulting from the buying power made possible by the availability of electricity.

The Electric Cooperatives of Kansas have helped bring a greater Electric Economy to all . . . by making adequate electric power available in rural areas. This power has helped bring more productive farming . . . brings new business and industry to rural Kansas . . . a vital contribution to a growing Kansas for an even greater Electric Economy in the future.



420 WEST 9TH, TOPEKA, KANSAS CE 5-5321



CONFEREES ATTENDING the fourth annual Farm Bureau sponsored citizenship seminar for high school students, held at Rock Springs Ranch, August 17-21, assemble for a picture, upper photo, in front of the meditation chapel. A total of 323 young people and adults participated in the conference. Nine were faculty speakers, 279 were high school juniors and seniors sponsored or co-sponsored by 103 county Farm Bureaus, 21 were junior counselors who attended the 1964 seminar, and 14 were adult members of the seminar administrative staff. Through the media of lectures, films and panel discussions, students became better acquainted with the American Heritage and the advantages of our political and economic systems. At the lower right of the picture is Dr. George S. Benson, Chancellor, Oklahoma Christian College, a conference speaker.

Twenty-one junior counselors assisted in program activities at the Farm Bureau citizenship seminar. Counselors participating were selected because of their outstanding citizenship activities in their communities following attendance at the 1964 seminar. In the lower photo, left to right, top row, are Christine Stucky, McPherson; Danny Buck, Kendall; David Leebrick, Atwood; James Hoobler, Wamego; John Van Dalsem, Fairview; Charles Newcom, Langdon; Donna Crawford, Lincoln; Marilyn Seacat, Ashland. Second row are Calvin Mein, Walnut; Verlyn Gilges, Baldwin; Innis Croft, Anthony; Dick Bernasek, Manhattan; Kay Vining, Richmond; Collette Martin, Independence; Kathy Jackson, Eureka. Third row are Jane Porter, Reading; Rita Burford, Milton; Ruth St. Pierre, Ames; Judy Koetkemeyer, Dorrance; Beverly Yenser, Downs; and Marilyn Brubaker, Bird City.

Kansas Farm Bureau

105 County Farm Bureau
Working Together



By Dick Tomkinson
Extension Specialist in 4-H

Easier to use and more beneficial is the goal of the newly revised "Sources for Recreation." Not only are more areas covered, but many new resources are listed.

With new officers elected and plans being completed for the new 4-H year, the revised bulletin could be of help to your club.

Divided into such sections as athletics, camping, crafts, drama, music, outdoor cookery and social recreation, it differs from the old bulletin in that the new one is divided into sections and is enlarged.

It's not too early to start making plans for club days. If members are interested in getting a one-act play selected, mu-

sic for a dance or games for a model meeting, contact some of the sources in "Sources for Recreation."

Start a recreation pleasure chest if your club doesn't have one. Start with this newly revised bulletin and write for some of the fine material—such as catalogues and literature listed in it. Ask club members to buy books, equipment, musical records and other things the club could enjoy.

Next year the recreation leader of committee can pass this pleasure chest on to the new recreation leaders or committee and they can add new supplies.

In addition to listing material, the bulletin also lists organizations and businesses who have information regarding places older 4-H'ers and adult leaders can receive recreation training. Scholarships for teenagers to the Co-op sponsored recreation training camps and for adults to attend the Kansas Recreation Workshop are available.

A good place to start planning recreation for the coming year is to get a copy of "Sources for Recreation." No matter what kind of recreation the club plans, a resource will be available for assistance. It's free—ask your county extension office for one.

"Candy, Peanut and Goodies Hunt" is a good game for young 4-H'ers. Hide wrapped candy, peanuts in shells, suckers and other goodies in a certain area, i.e., front and back yard of the meeting place. Give each 4-H'ers a sack to collect and put goodies in.

Explain to them where the "hunting grounds" are. On the signal go, 4-H'ers can rush out of the building and hunt for candy and peanuts. Complete the evening by having the "goodies" serve as refreshments.

Suggestion—Use candy that is wrapped and peanuts in shells. Save some goodies to give to 4-H'ers who don't find much.

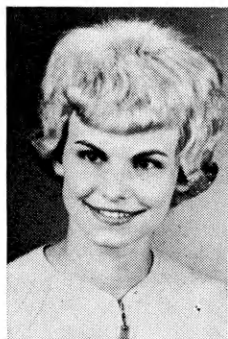
Happy hunting!



for outstanding work in 4-H

PERSONAL DEVELOPMENT PROJECT

Listen to Darlene Werner, Kingman county



"The Personal Development Project is ideal for teen-agers. It is the answer to many problems and a real challenge to the individual.

"My first work in the project was in the Expression phase. This work helped me with humorous readings and participation in musical numbers.

"Work in the Personal Development Project has helped me choose a career. I am majoring in speech pathology in college.

"I urge all teen-age 4-H members to have the experience of this project work."

The people at Southwestern Bell Telephone Company are proud to have a part in this 4-H project by sponsoring awards for outstanding work.

SOUTHWESTERN BELL



TELEPHONE COMPANY

FREE!!

New 4-H Woodworking Plans

**SAIL
BOAT**

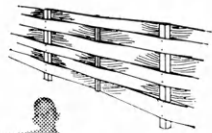
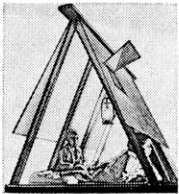


CHILD'S DESK



Plans for These Projects Are Available At The Lumber Dealers Listed on These Pages. Ask For Them.

**Wood
Play
Tent**

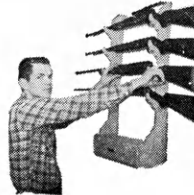


**Yard Fence
No. 3**



End Table

**Handy
Gun Rack**



**Rotating Selection
Tool Rack**



Shoe Shine Kit



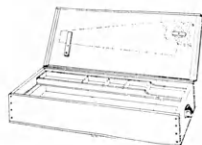
**Cart with
Removable
Trays**



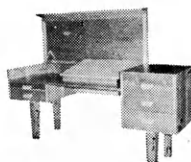
Study Center



Tool Chest



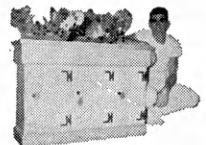
Hobby Desk



Insect Display Box



Indoor Planter



For other FREE 4-H woodworking plans, see the next pages.

Always on hand... YOUR LUMBERMAN

is your best friend when
you need good material



- | | | |
|---|---|--|
| Agra
Agra Lumber Company | Emporia
Home Lumber and Supply Co.
The Smith Lumber Company | Johnson
Seyb-Tucker Lumber and Implement
Company |
| Asherville
Asherville Lumber and Coal Company | Eureka
A. C. Houston Lumber Company | Kinsley
Kinsley Co-op Exchange Lumber Yard
Home Lumber and Supply Co. |
| Ashland
Don Spotts Lumber Company
Home Lumber and Supply Co. | Everest
Alexander Lumber Company | Kiowa
The J. W. Metz Lbr. Co. |
| Atchison
Hixon Lumber Company | Fredonia
The Home Lumber & Supply Co. | LaCrosse
LaCrosse Lumber Company |
| Beloit
Peoples Lumber and Coal Company | Garden City
McAllister-Fitzgerald Lumber Co. | LaHarpe
Diebolt Lumber and Supply |
| Bern
Bern Lumber Company | Garnett
Star Grain and Lumber Company | Lakin
Tate and Company
Lakin Lumber Company, Inc. |
| Bird City
The Bird City Equity Mercantile
Exchange
Griffin Lumber Company | Gaylord
Hardman Lumber Company | Lancaster
T. E. Snowden Lumber Company |
| Brownell
Richolson Lumber and Hardware
Company, Inc. | Glen Elder
Dickinson Lumber Company | Larned
Clutter-Lindas Lumber Company |
| Cawker City
Cawker City Lumber Company | Goodland
Hardman Lumber Company
Rasure Lumber Company | Lawrence
Woods Lumber Company
Logan-Moore Lumber Company |
| Chanute
Smith Lumber Company | Great Bend
Whitesell Lumber Company | Lebanon
Lebanon Lumber Company |
| Chapman
Sanborn Lumber Company | Greeley
Greeley Lumber Co. | Lenora
Lenora Lumber Company |
| Chase
Chase Cooperative Union | Greensburg
Home Lumber and Supply Co. | Liberal
The Star Lumber Company |
| Claflin
Houston Lumber Co. | Hartford
Thomas Lumber Company | Longford
Longford Lumber & Grain Co. |
| Colby
Hardman Lumber and Coal Company
Hess Lumber Company | Hays
Hardman Lumber Corporation, Inc.
Schwaller Lumber Co., Inc. | Macksville
Home Lumber and Supply Co. |
| Coldwater
Home Lumber and Supply Co. | Healy
Healy Co-op Elevator Company | Madison
Madison Lumber Company |
| Concordia
Sanborn Lumber Co. | Hill City
Hardman Lumber Company | Manhattan
Griffith Lumber Company
Ramey Brothers |
| Cottonwood Falls
Burgner-Bowman-Mathews Lumber Co. | Hillsboro
Burkholder Lumber Co. | Mankato
Mankato Lumber Co. |
| Denison
Denison Lumber and Hardware
Company | Holton
Holton Lumber Company | Marysville
Howell Lumber Co. |
| Denton
C. H. Gish Company | Holyrood
Home Lumber and Supply Co. | Meade
Home Lumber and Supply Co. |
| Elkhart
Elkhart Lumber Co.
The Star Lumber Company | Home
Home City Lumber & Hardware | Medicine Lodge
P. W. Doherty Lumber Company |
| Ellsworth
Lake Superior Lumber Co. | Hugoton
The Star Lumber Company | Moundridge
Clayton Vogt Lumber Co., Inc. |
| | Hutchinson
Easterday Lumber Company | Neodesha
O. E. Woods Lumber Company |
| | Iola
Klein Lumber Company | |

Looking for Woodworking Ideas?



See Any of These Lumber Dealers for a Free 4-H Woodworking Plan

Ness City
Rock Island Lumber Co.

Norton
Norton Lumber Company

Nortonville
Alexander Lumber Company

Oakley
Oakley Lumber Company
Golden Belt Lumber Company

Oberlin
Building Supply Headquarters

Offerle
Offerle Co-op Lumber Co.

Olathe
Cowley Lumber and Hardware
Company

Onaga
Onaga Lumber & Grain Co.

Oswego
Home Lumber and Supply Co.

Ottawa
Hubbard Lumber Company, Inc.

Parsons
O. E. Woods Lumber Co.

Phillipsburg
Hardman Lumber Company

Pittsburg
Broadway Lumber Co. Inc.

Plains
Home Lumber and Supply Co.

Prescott
Prescott Lumber Company

Pretty Prairie
The George W. Ulch Lumber Company

Protection
Home Lumber and Supply Co.

Russell
Hardman Lumber Company of Russell
Inc.

St. Francis
St. Francis Equity Exchange

St. Marys
St. Marys Lumber Company

St. John
Home Lumber and Supply Co.

Salina
Everitt Lumber Company, Inc.

Seneca
Koelzer Lumber Company
Seneca Lumber Company

Severy
Tolman-Gibbon Lumber Company

Sharon Springs
Hennick Lumber & Supply

Smith Center
Smith Center Lumber Company

Stafford
Home Lumber and Supply Co.

Stockton
Stockton Lumber Company
The Golden Belt Lumber Co.

Wakeeney
Hardman Builders Supply Company

Wichita
Lawrence Lumber Company
Stockyards Cash and Carry Lumber Co
Alexander Lumber Company
Star Lumber & Supply Co., Inc.
Sutherland Lumber
Company, 522 East 21st Street

Wilson
Hoch Lumber Company

Winfield
A. B. Everly Lumber Company

Woodbine
Kohler Lumber Company

Zenda
The George W. Ulch Lumber Company

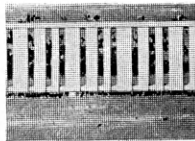
Missouri

Independence
The George W. Ulch Lumber
Company, 11432 Truman Road

Kansas City
Sutherland Lumber Company,
1901 Wyoming

Ask For Your 4-H Woodworking Plans.

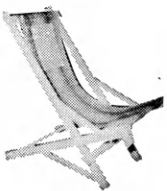
Yard Fence, No. 2



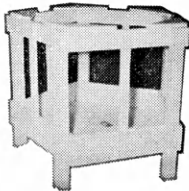
Closet
Storage
Cabinet



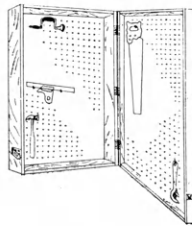
Folding
Lawn Chair



Self Feeder
for Sheep



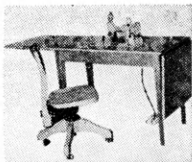
Tool Storage



Yard Cart



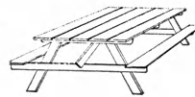
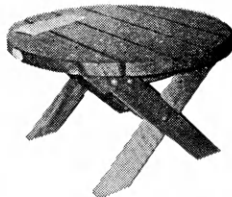
Sewing Machine
Table



Patio
Planter



Patio Table

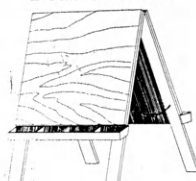


Picnic Table

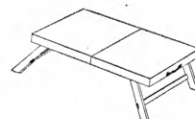
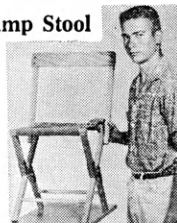
Toy Chest



Double Easel



Camp Stool



Folding Table

OTHER PLANS AVAILABLE

Lawn Seat	Football Game
Lawn Chair	Baseball Rack
Mail Box	Martin House
Book Case	Bedside Stand
Gate Sign	Blue Bird House
Step Table	Vertical Shoe Rack
Two Games	Small Animal Trap
Tete-A-Tete	Comic Book Rack
Dog House	Portable Towel Rack
Toy Stove	Back Yard Fence
Hanging Flower Box	Mail and Memo Board
Wheel Barrow Planter	Child's Step Stool & Chair
Lazy Susan	Fishing Rod Rack
Two-Level Coffee Table	Collapsible Visual Aid Stand
Coffee Table	Bookcase Headboard
Box Hockey	Magazine Rack
Wall Cabinet	Chest of Drawers
Picnic Bench	Pounding Board
Holding Gate	Sheep Blocking Box
Sewing Cabinet	Christmas Tree Gifts
	Devil Game

Ideas That Work

Members Profit from Grooming Schools

Saline County 4-H members were better groomed this year at the County Style Revue.

The reason—two grooming schools were conducted to help the boys and girls in choosing their clothing and modeling it properly. Girls learned about modeling, posture and cleanliness from a former 4-H'er. Boys had an evening session and learned about a basic wardrobe and hints on choosing clothing.

Parents and leaders attended both sessions and were invited to participate in the questions and answer sessions.

"Hobo Night" Increases Attendance

To encourage attendance at their annual Activity Night, the Mulvane 4-H Club, Sedgwick county, conducted a Hobo Party.

Members dressed as hobos and created extra fun and excitement with contests, games, songs and dances for club members, new members, 4-H families and guests.

Linda Davis, 4-H member, strummed her guitar and led a hootenanny consist-



ing of folk songs which the members knew.

Later members provided weiners and buns for a weiner roast. The Activity Night committee furnished potato chips, cold drinks, marshmallows and relishes.

After eating, everyone participated in games and contests. Worst dressed boy, girl, mother and father were selected by popular vote.

Sandra Kees, reporter

4-H'ers Clean Up After Flood

"It's slick!" were the words on the lips of 18 Harvey county 4-H'ers and leaders who came to the aid of a flood stricken 4-H Building in mid-summer.

Water rose to a height of 22" in the building. When the water receded it left approximately 2" of silt on the concrete floor and in the kitchen cupboards.

After the kitchen, floor, walls and restrooms were rid of the remainder of

the flood, 4-H'ers bailed water out of the dairy barn by hand while leaders cleaned the showcases.

Carol Sauerwein, reporter

Progressive Dinner Success

An evening of good food and recreation recently was enjoyed by 42 Harvey County Junior Leaders. A progressive dinner was the event with the first stop being for an appetizer of tomato juice and crackers.

Main course stop consisted of barbecued beef, mixed vegetables, tossed salad and zwiebach. Homemade ice cream and cookies were served at the dessert stop.

Final stop was a recreation room where the group spent the remainder of the evening.

Nancy Kasitz, reporter

Sheep Fitting, Blocking Taught

Special ability and skills with special tools are required in blocking sheep.

A. C. Hartman, Wyandotte county 4-H sheep project chairman, at his recent sheep fitting and blocking school, stressed that it is good shownmanship to groom and block all show sheep.

Blocking, a method of trimming wool to give the sheep a blocky appearance, is desired for fat lambs showing in 4-H competition.

Hartman instructed members on the use of blocking stand, wool card, shears, brush, curry comb, sharpening stone and hoof trimmer.

Counties Swap 4-H'ers

Four Rice County 4-H'ers recently were swapped for four Santa Clara County, Calif. 4-H'ers for 10 days.

Exchangees found similar facts about



4-H in their respective counties and states, but they also found dissimilar things. One item of interest to Rice County 4-H'ers was that fair premiums

Editor's Note: The Kansas 4-H Journal thrives on ideas—those that have been tried successfully by clubs throughout the state and that can be used by other clubs and members. Brief accounts of a community service project, an unusual club meeting, a unique handling of a project are just a few of the topics we can use on the "Ideas" section of the Journal. Send them to the Kansas 4-H Journal, Kansas State University, Manhattan. Copy deadlines are on the first of the preceding month.

in California sometimes go as high as \$200 for a top fair booth.

California enjoys a total membership of 37,000 4-H members; she has 10,000 leaders and 1,500 clubs.

Probably the most different thing about California 4-H and Kansas 4-H is the 4-H Council in California is composed entirely of leaders.

Both sets of delegates returned home with new ideas and a hope to perhaps have another exchange soon.

Diane Fuller, reporter

Burdett Conducts Community Fair

At the first Burdett Community Fair, 4-H exhibits and exhibitions were featured throughout the program. The fair, sponsored by local businessmen, was an outgrowth of the Burdett Blue Ribbons 4-H Club Fair conducted the previous five years.

The evening program included a 4-H square dance team and livestock type and fitting and showing demonstrations. A free barbecue supper was served to approximately 500 persons before the program.

Cooking project members sold their exhibits to help furnish the township hall for club meetings.

Lee Musil, reporter

Ideas In Brief

WYANDOTTE COUNTY . . . The first fair entomology judging contest was conducted for members of the entomology project. Participants were required to identify species and judge the quality of the collections.

LABETTE COUNTY . . . Plates of cup cakes and cookies were presented to Labette County 4-H Journal sponsors, Parsons State Bank, Commercial Bank and Altamont State Bank, by members of the Thrifty Thrivers 4-H club. Each member of the club made something to put on the plates.

ROOKS COUNTY . . . A special weight guessing contest was conducted during the Woodston Sunflower 4-H club's tour for the second year. All members, leaders and most parents participated in the judging contest with the winners receiving prizes furnished by Woodston Businessmen.

SEDGWICK COUNTY . . . Corrine Christensen, Mount Hope 4-H club, reports that all music has two things in common—Sound and Movement.

RENO COUNTY . . . To make Salem 4-H club members and their families safety conscious, warning flags to be used where needed were distributed.

SALINE COUNTY . . . David Jarvis, Willing Workers 4-H club, demonstrated "The Proper Care of the Planes" at an August meeting.

MANHATTAN . . . Citizenship Short-course participants were the only group this summer to tour a foreign embassy in Washington, D.C.

BROOKVILLE . . . After the square dance contest conducted annually at the "Red Circle" auction, participants and viewers square danced and waltzed. Parents set back and watched while members of the younger generation gyrated to the swim, frug, dog and freddie. Bidders from nine states attempted to purchase livestock and sewing machines during the auction.

HARVEY COUNTY . . . Jack Young, Halstead Go Getters 4-H club, says that two lights should be used on a subject when taking a flash picture but be sure not to have the subject face the lights.

PAWNEE COUNTY . . . Forty-four persons representing 10 families attended a recent Pawnee County IFYE reunion honoring present IFYEs and host families.

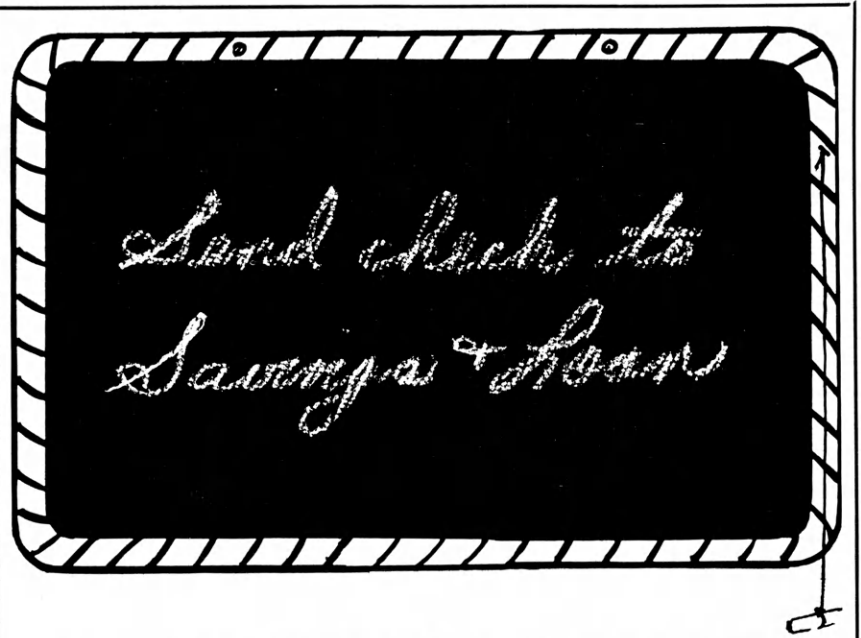
HARVEY COUNTY . . . A new roll call was tried recently at the Highland 4-H club. Each member had his foot measured and paid a penny an inch for it. Lucky 13 4-H club members answered roll call with "The subject I hate." "What I would do with \$1.98" was a recent roll call of Walton 4-H club.

SALINE COUNTY . . . Mustard Seeds 4-H club members kept tradition going when they sponsored the seventh annual family picnic.

FUN PAGE ANSWERS . . .

Scrambled Words

1. needle
2. patch
3. thread
4. thimble
5. button
6. snap
7. stitch
8. baste
9. bobbin
10. seam



A REMINDER!

to

PAY YOURSELF FIRST

Make sure that what you save earns high profit in complete insured safety . . . every time. That means save now at your nearest . . .

KANSAS Savings & Loan Association

- Arkansas City**
First Federal Savings and Loan Ass'n. of Arkansas City
- Augusta**
American Savings Association
- Beloit**
First Federal Savings and Loan Ass'n. of Beloit
- Clay Center**
Northwestern Federal Savings and Loan Ass'n. of Clay Center
- Dodge City**
First Federal Savings and Loan Ass'n. of Dodge City
- El Dorado**
Mid-Continent Federal Savings and Loan Ass'n. of El Dorado
- Fort Scott**
Liberty Savings and Loan Ass'n.
- Garnett**
The Garnett Savings and Loan Association
- Great Bend**
The Prudential Building and Loan Ass'n.
- Hays**
The Hays Building and Loan Ass'n.
- Hutchinson**
First Federal Savings and Loan Ass'n. of Hutchinson
- Iola**
The Security Savings and Loan Ass'n.
- Lawrence**
Capitol Federal Savings and Loan Association, 11th and Vermont Streets
- Leavenworth**
Leavenworth Mutual Savings and Loan Ass'n.
- Liberal**
First Federal Savings and Loan Ass'n. of Liberal
- McPherson**
The Pioneer Savings and Loan Association of McPherson
- Newton**
First Federal Savings and Loan Ass'n. of Newton
- Ottawa**
Ottawa Savings and Loan Ass'n.
- Parsons**
First Federal Savings and Loan Ass'n. of Parsons
- Pittsburg**
First Federal Savings and Loan Ass'n.
- Plainville**
Rooks County Savings Ass'n. of Plainville
- Pratt**
The Western Saving Ass'n.
- Salina**
The Homestead Building and Loan Ass'n.
- Shawnee-Mission**
Capitol Federal Saving & Loan Ass'n. at 5251 Johnson Dr., 95th & Nall and Meadow Lake Shopping Center
- Topeka**
Capitol Federal Savings and Loan Ass'n. at 700 Kansas Ave, 1201 Fairlawn Blvd. and 2100 Fairlawn Rd.
- Wellington**
First Federal Savings and Loan Ass'n. of Sumner County
- Wichita**
American Savings Association of Wichita, 4601 E. Douglas Avenue and 129 E. First Street



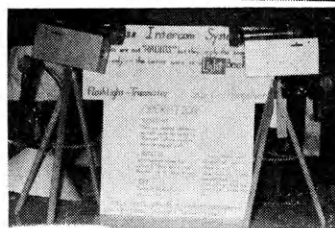
INSURED SAFE

4-H Electric

Projects Provide

Ideas . . . for Mom . . .

. . . for Dad



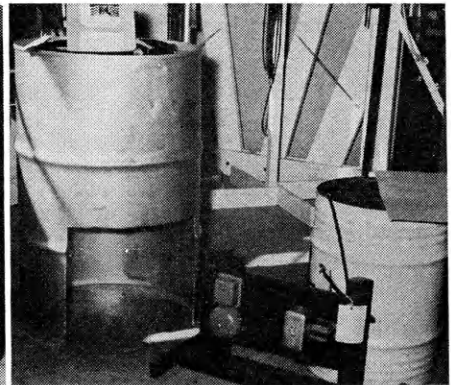
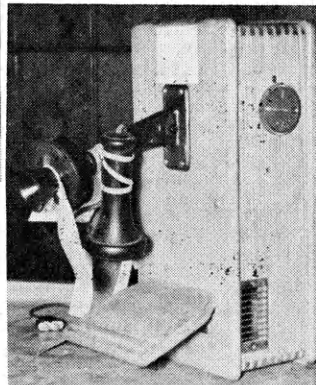
At left is a Wireless Intercom System built by Rex Miller, Butler county.



4-H Electric benefits the family. It is practical work of constructing and repairing electrical projects for the home and farm — for convenience and more comfortable living.

Many ideas are presented at Kansas fairs. Here is a glimpse of some of the projects constructed by 4-H members with the help of their leaders.

At right—Jerry Jones, Doniphan county, exhibited his telephone radio at the Mid-American Fair. Sound comes out the receiver when off the hook, otherwise from each side of the box. The barrel is a lamb brooder of original construction by Bob Walsten, Reno county. The small drum with control panel is a mock-up of a bulk bin alarm built by Scott Buchanan, Rice county. The alarm sounds when grain fills to a set level and is re-set when the bin level is lowered.



✱ Watch This Page For Ideas On Farm And Home Electric Projects

ELECTRIC LIGHT and POWER COMPANIES in KANSAS

The Kansas Power and Light Company

Central Kansas Power Company

Kansas City Power & Light Company

Kansas Gas and Electric Company

Western Power and Gas Company, Inc.