

*“I would like to have the opportunity to get outside a little bit everyday to check the weather and take care of the vegetables and flowers I planted. I kind of think a sidewalk around the edge of the courtyard would be good. I could roll my wheelchair around and check things out, sort of like checking the fence line on the farm. Thank you for trying to make life a little more like it used to be for me.”*

Schowalter Resident

The Project  
The Plan  
Design Characteristics  
A. R. T.  
Planting Plan

‘MY GARDEN’

[HTTP://WWW.PRESTONMCCALL.COM/KANSAS%20SUMMER%209X14.JPG](http://www.prestonmccall.com/KANSAS%20SUMMER%209X14.JPG)

INTRODUCTION



- A LARGE, OPEN AREA FOR PICNICS AND VISITS BY HESSTON INTERGENERATIONAL DAYCARE CHILDREN;
- PATIO SPACE TO ACCOMMODATE TWENTY TO THIRTY DINING RESIDENTS;
- OUTDOOR COOKING;
- PERENNIAL GARDENS FOR ACTIVE RECREATION;
- PONDLESS WATER FEATURE;
- CLEAR PEDESTRIAN CIRCULATION;
- UNIVERSAL DESIGN WITH ADA COMPLIANCE;
- A COMBINATION OF PASSIVE AND ACTIVE RECREATION;
- A THERAPEUTIC AND RESTORATIVE ENVIRONMENT;










PHOTO BY CHRISTA JAHAY, REIGER CONSTRUCTION SPRING

'MY GARDEN'

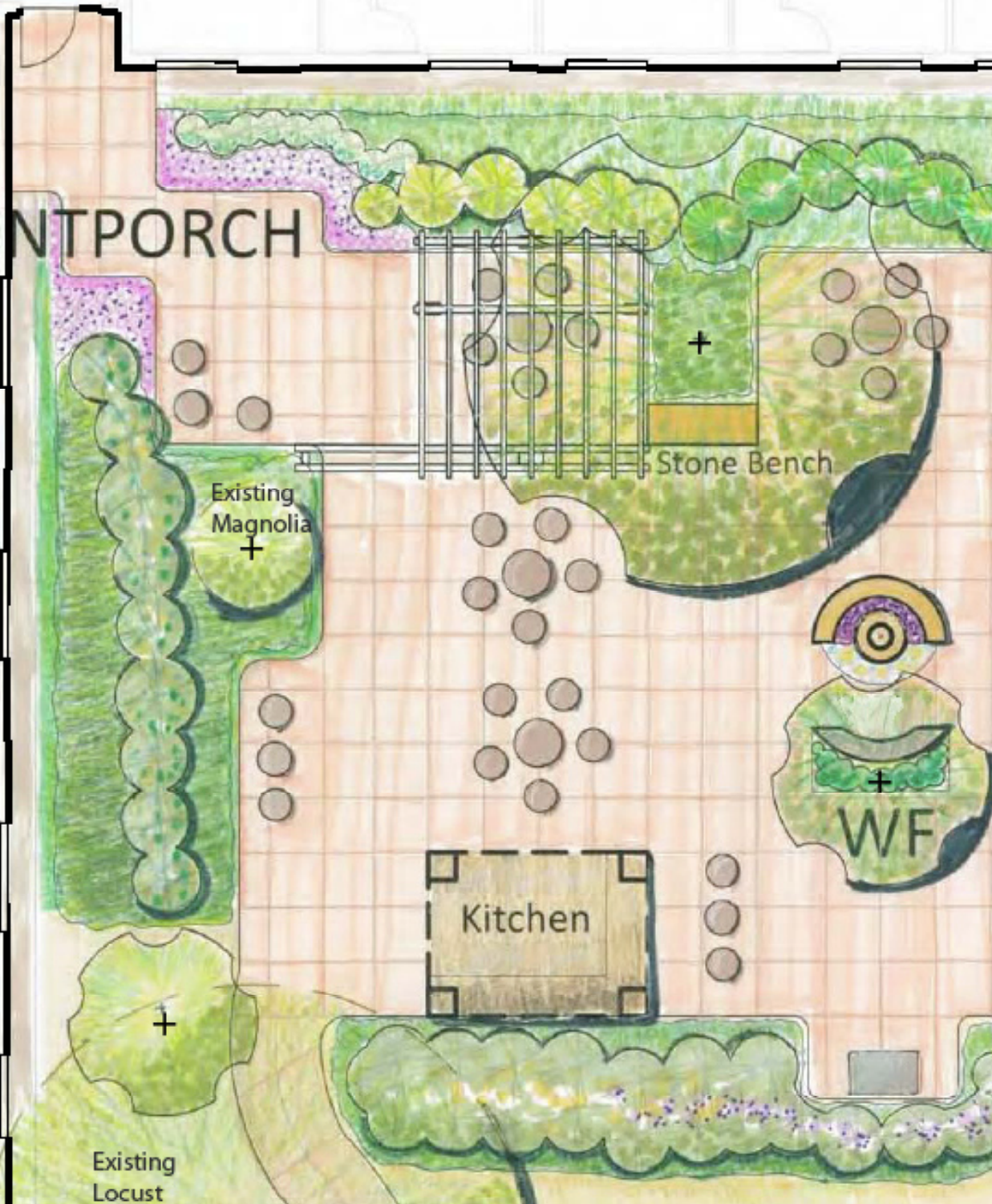
THE PROJECT



LEGEND

- Existing Tree 
- Proposed Tree 
- Proposed Shrubs 
- Proposed Ground Cover 
- Proposed Rain Garden 
- Bench with companion wheel chair seating 
- Water Feature 

# FRONTPORCH



**FRONTPORCH:** The patio area in the northwest corner takes on the designation of Front Porch—a place to be seen and observe the activities of others. A place to enjoy the weather, share a cup of coffee or a meal. A place to relax and socialize with guests or other residents. A “together place.”

*Design Characteristics:* The most formal and public area. Plantings will have year-round structure with opportunities for seasonal plantings which will help reinforce temporal patterns and access memories.



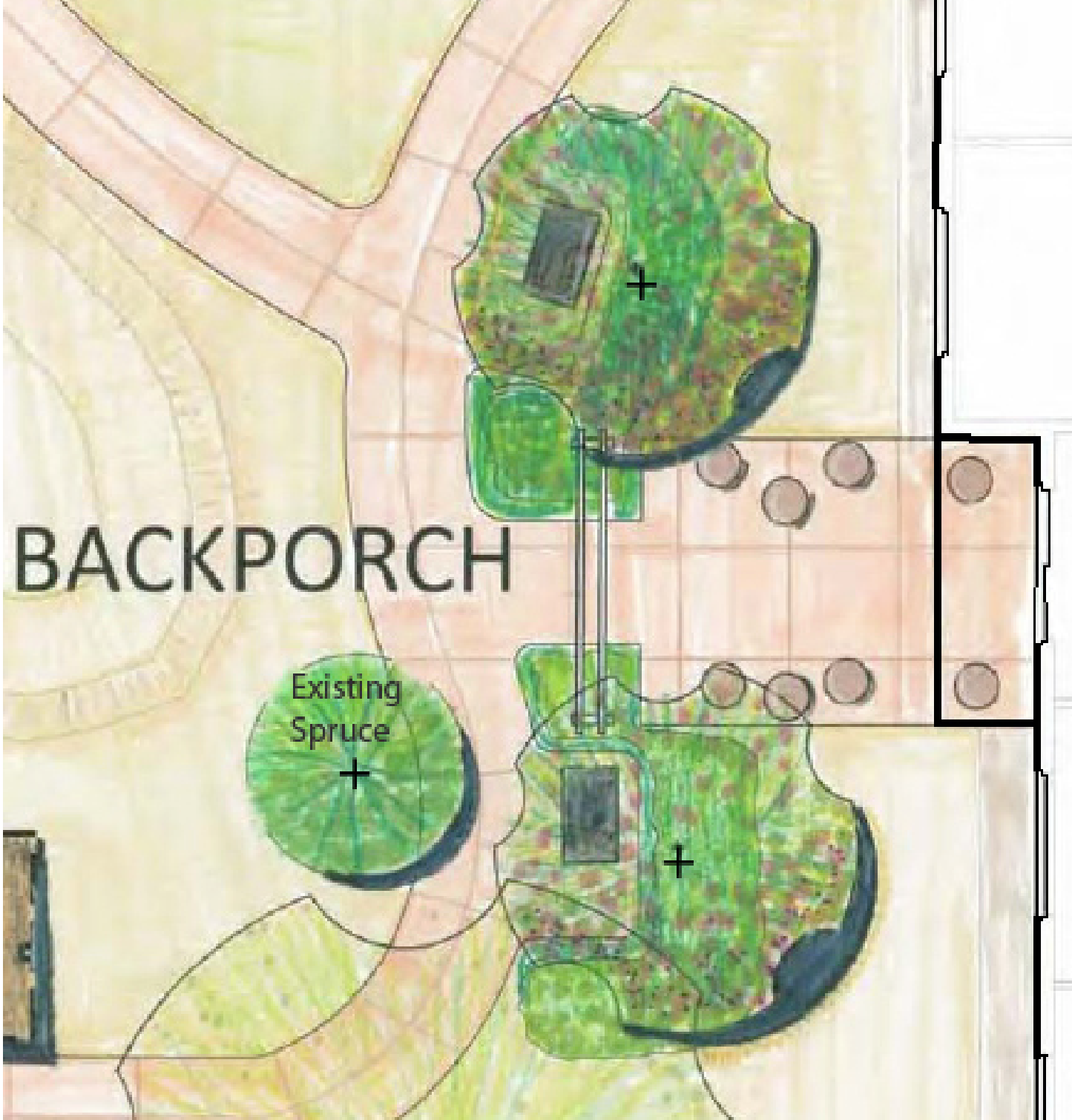
'MY GARDEN'

FRONT PORCH PERSPECTIVE



'MY GARDEN'

FOUNTAIN PERSPECTIVE



# BACKPORCH

Existing  
Spruce  
+

**BACKPORCH:** The BackPorch is more intimate than the front porch. This is where residents might slip out in the morning for a cup of coffee, check on the garden, or watch the birds gathered at the feeder.

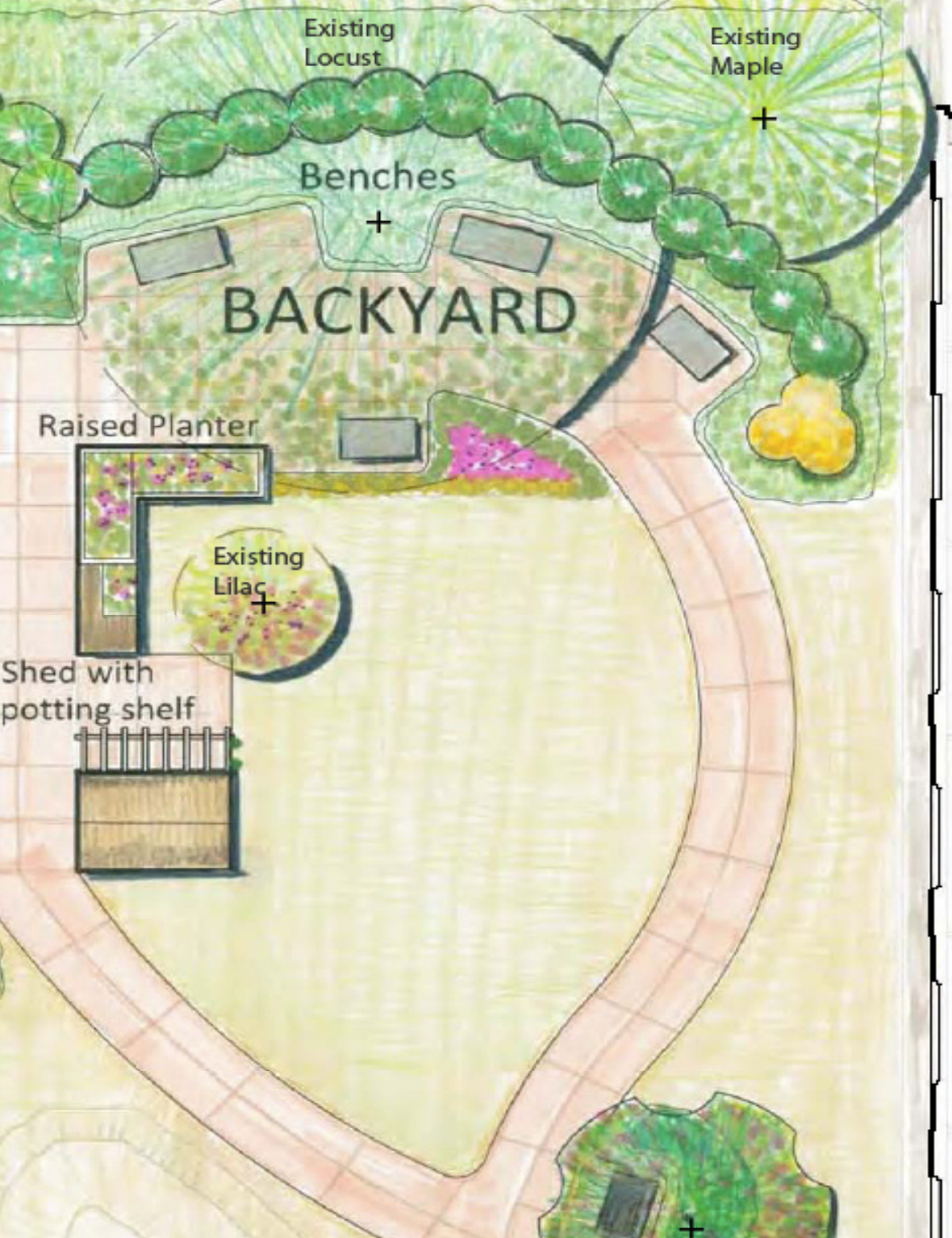
*Design Characteristics: Flexible, informal, private, a "take-over" area*



'MY GARDEN'

BACKPORCH PERSPECTIVE





**BACKYARD:** The backyard is where the work is done and where more solitude and privacy are to be found. The vegetable garden is here, as are the raised planters and the tool shed. Here one can be out of the public eye or to be in a “together place” when gardening with friends.

*Design Characteristics: Flexible, informal, messy, active, seasonal, sunny*



'MY GARDEN'

BACKYARD PERSPECTIVE



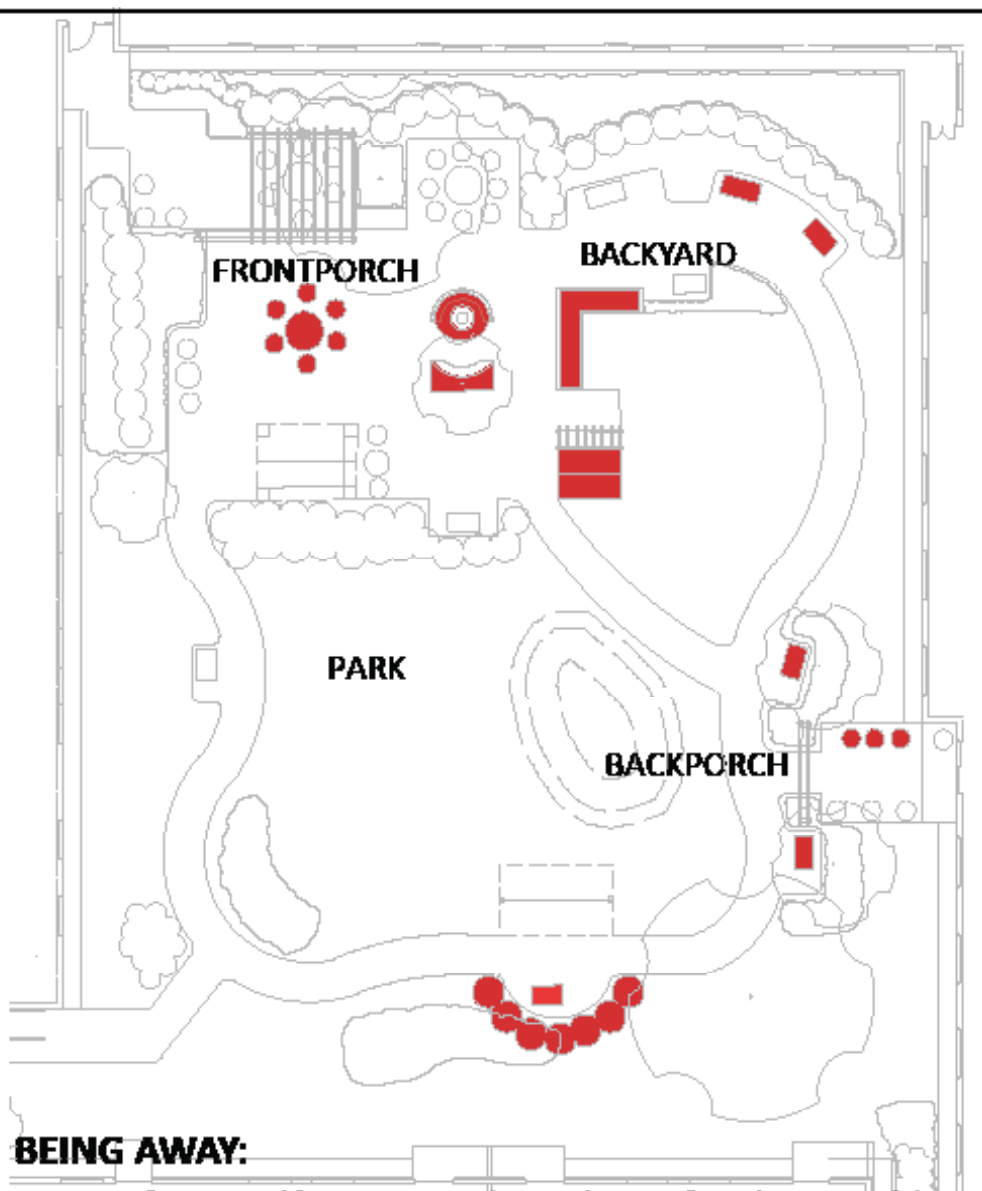
**PARK:** The Park will be a large, open area for large gatherings and barbecues. Park benches will be provided for sitting alone or with others in “companion seating areas, which allocate room for wheel chairs on either side of the bench. Residents can watch the daycare center children on their occasional treks into the park from these benches. The park area will provide pleasant views into the area from residential rooms and from the other three areas of the courtyard. Views of nature have well-documented restorative potential and will benefit even the residents who do not actively use the courtyard.

*Design Characteristics: Simple, open, restorative, solitary, fascinating.*



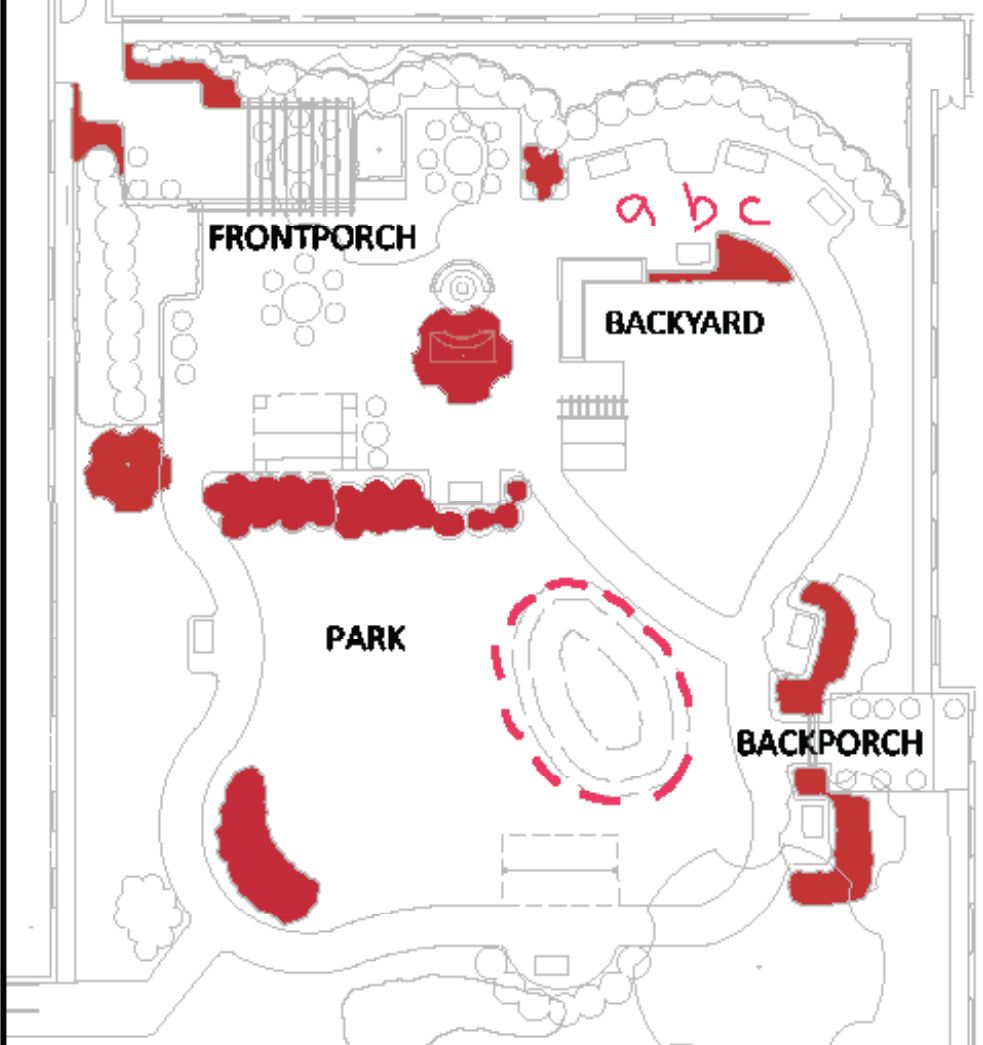
'MY GARDEN'

PARK PERSPECTIVE



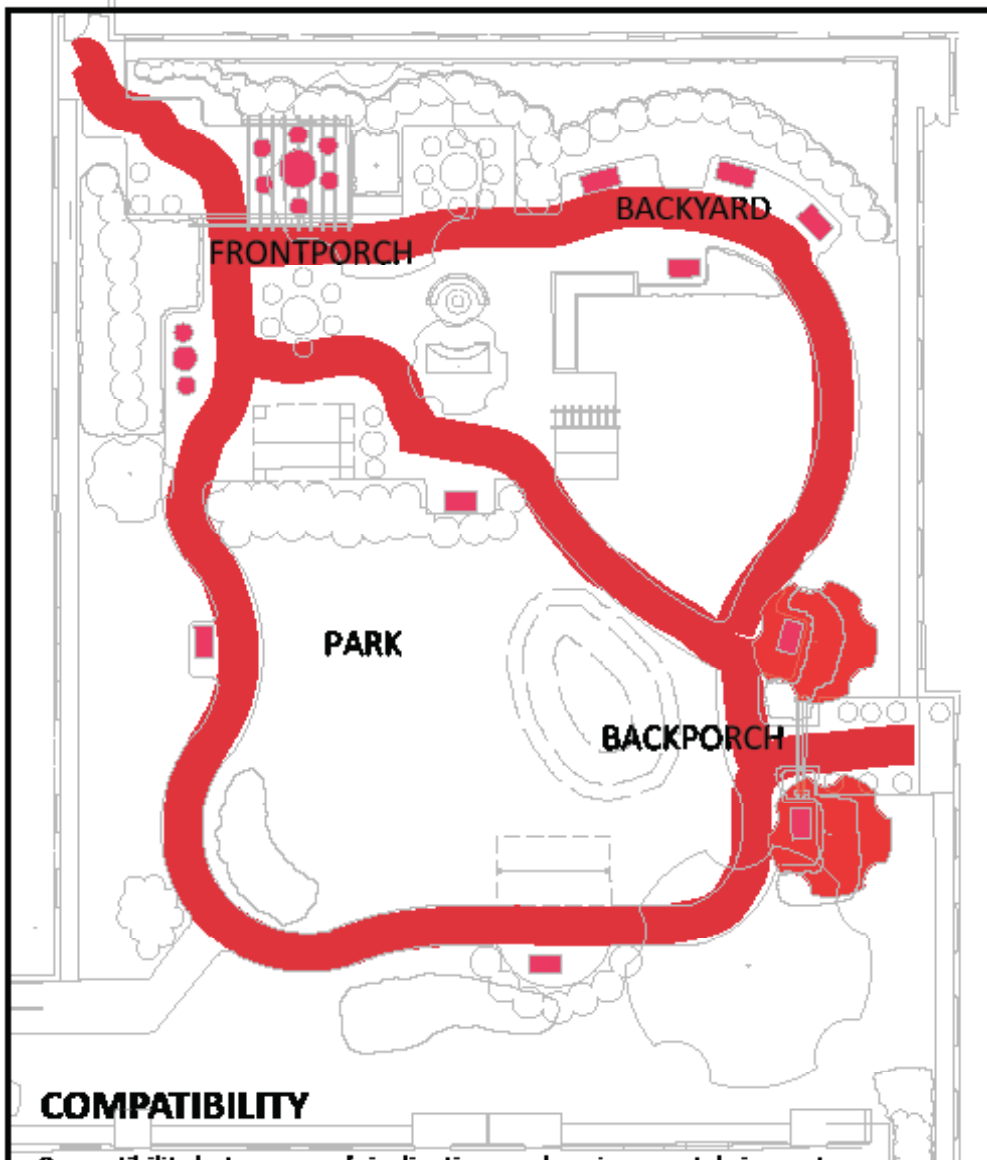
**BEING AWAY:**

Recovering from mental fatigue requires that one be away from the source of the fatigue. BEING AWAY can be physical or mental. Not all "away" locations are restorative as they must possess all four characteristics: BEING AWAY, FASCINATION, COMPATIBILITY, and EXTENT. Distinct from the quotidian." In 'My Garden', the aesthetic qualities associated with being outside and having choices about where to sit, (alone or in a group), what to look at (the water feature or the birds and squirrels) offer a break from the routines of indoor life.



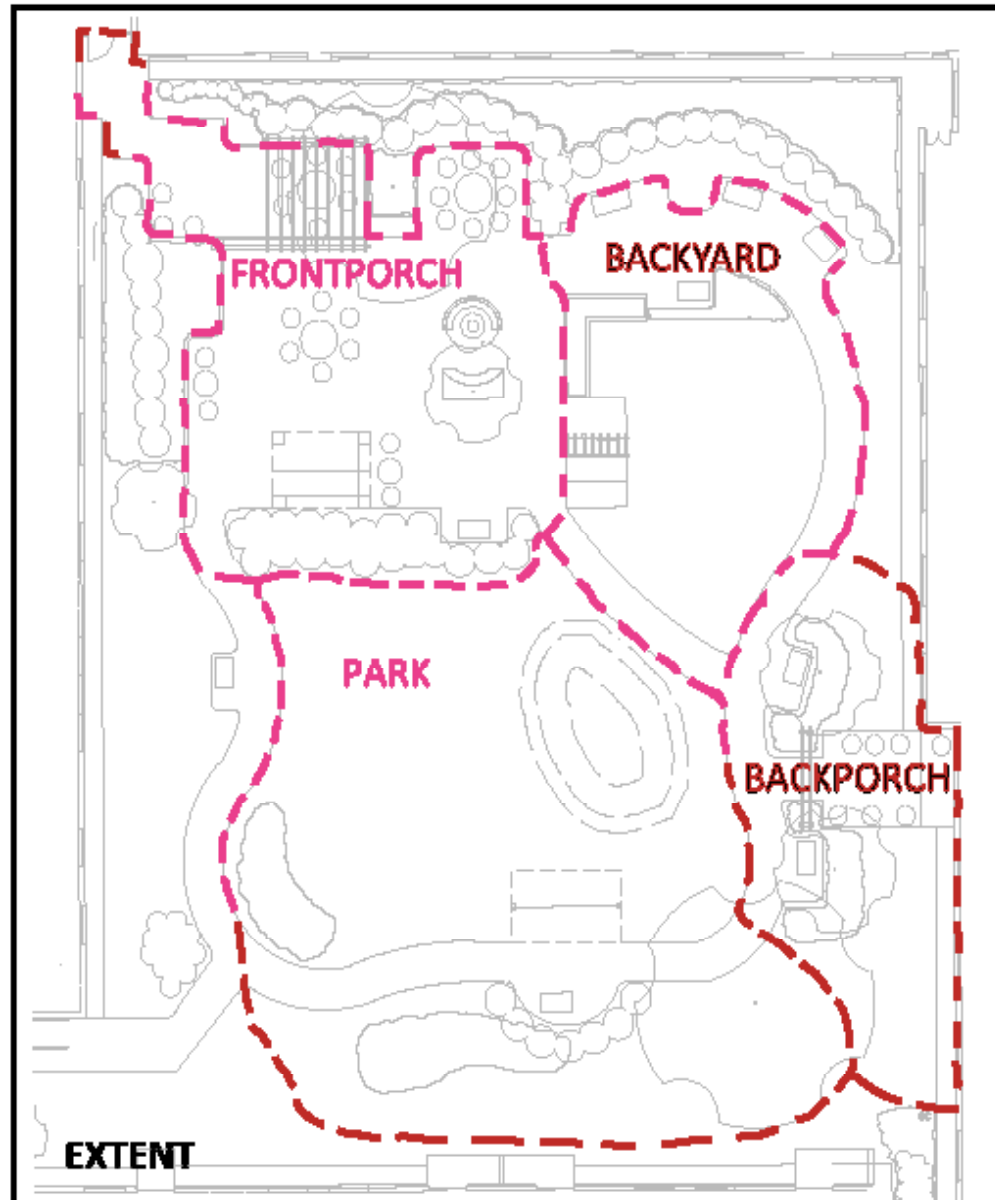
**FASCINATION**

Fascination is central to resting fatigued attention and derives from thinking, doing, wondering. People are fascinated from thinking things out. There are fascinating objects in flora, fauna, water and the endless play of light. In 'My Garden' fascination is found by listening and watching the light play off the water fountain as it falls into the rocks, from watching children from the Hesston Intergenerational Daycare Center as they chalk on the sidewalks or run up the small hill in the park. Sunlight as it filters through the tree canopies provides an object of fascination. Butterflies, birds, squirrels and other gardeners are also objects of fascination.



### COMPATIBILITY

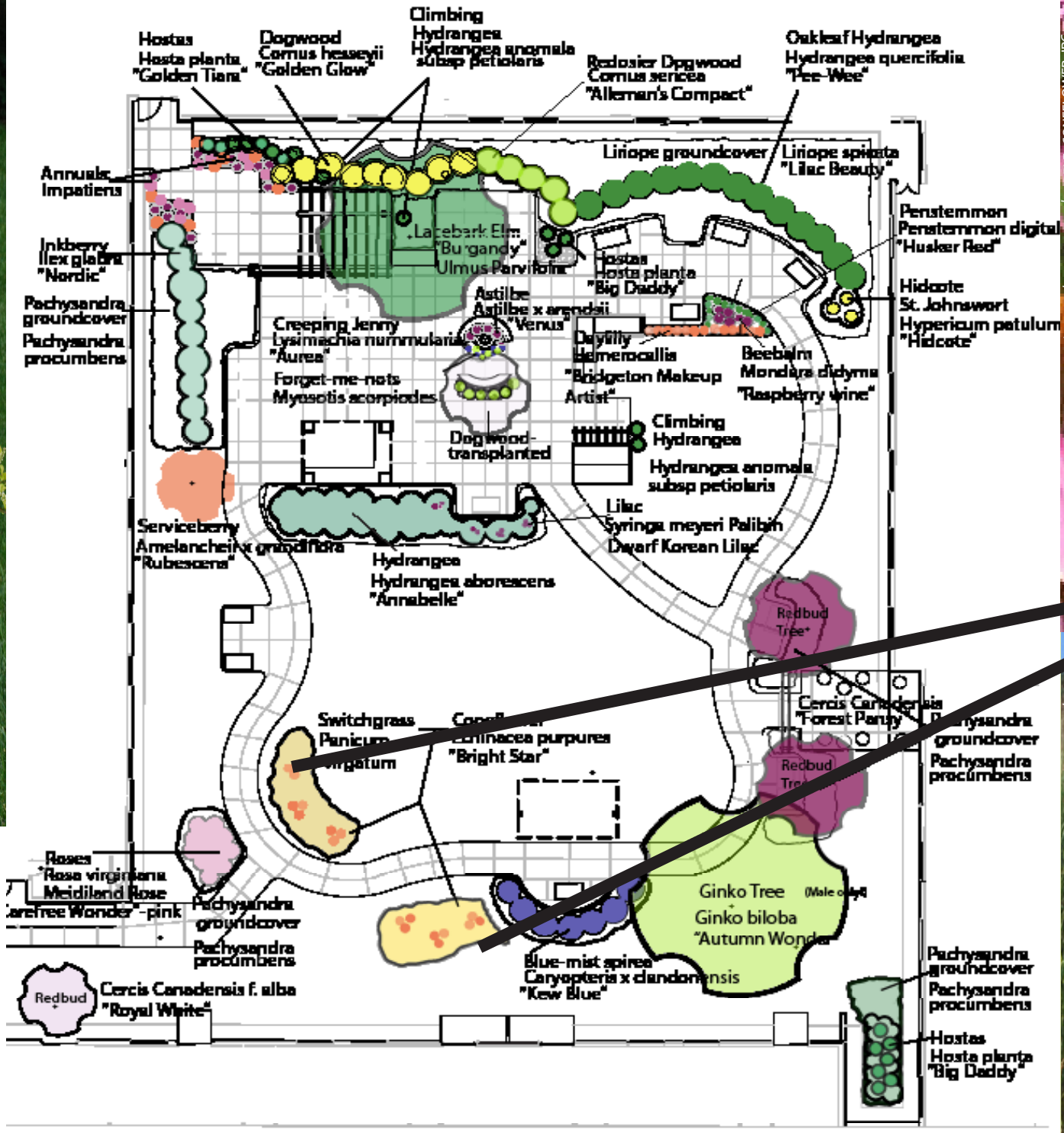
Compatibility between one's inclinations and environmental circumstances—both what the setting requires from the individual and what it offers in terms of information and opportunities. At Schowalter, the most dominant feature is the 6.5' wide walking path, which is wide enough for two wheel chairs. The path connects the two doorways into the courtyard with looping paths that also connect the Frontporch, Backyard, Backporch, and the Park. The path exhibits great compatibility for residents and their desire to be outside. Flexible seating with sun or shade options also is a compatibility characteristic.



### EXTENT

Being in a whole different world that is physically different, with its own rules and properties, and mentally different. Mentally different worlds are impacted by both knowledge and fantasy. Not limited in scope or extent. In 'My Garden' the four areas: Park; Backporch; Backyard and Frontporch provide scope and extent through residents' prior experiences, knowledge, and activity choices.

# SAFETY AND MAINTENANCE



[HTTP://WWW.PLANTSINTHEMAIL.COM/IMAGES/PLANTS/PLANTS\\_SITE/PURPLE\\_CONEFLOWER.JPG](http://www.plantsintheemail.com/images/plants/plants_site/purple_coneflower.jpg)  
[HTTP://WWW.EEOB.IASTATE.EDU/RESEARCH/HOWAGRASSE/ORNAMENTAL/AAIMAGES/PANVIR195\\_.JPG](http://www.eeob.iastate.edu/research/howagrasse/ornamental/AAIMAGES/PANVIR195_.JPG)

# 'MY GARDEN'

# PLANTING PLAN

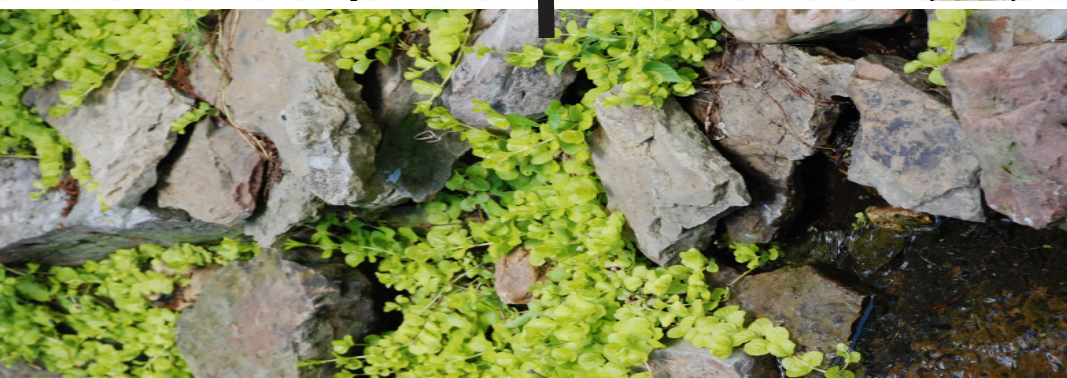


[www.nrcs.gov](http://www.nrcs.gov), [www.rainwatercollecting.com](http://www.rainwatercollecting.com) AND [www.pdc.us](http://www.pdc.us)

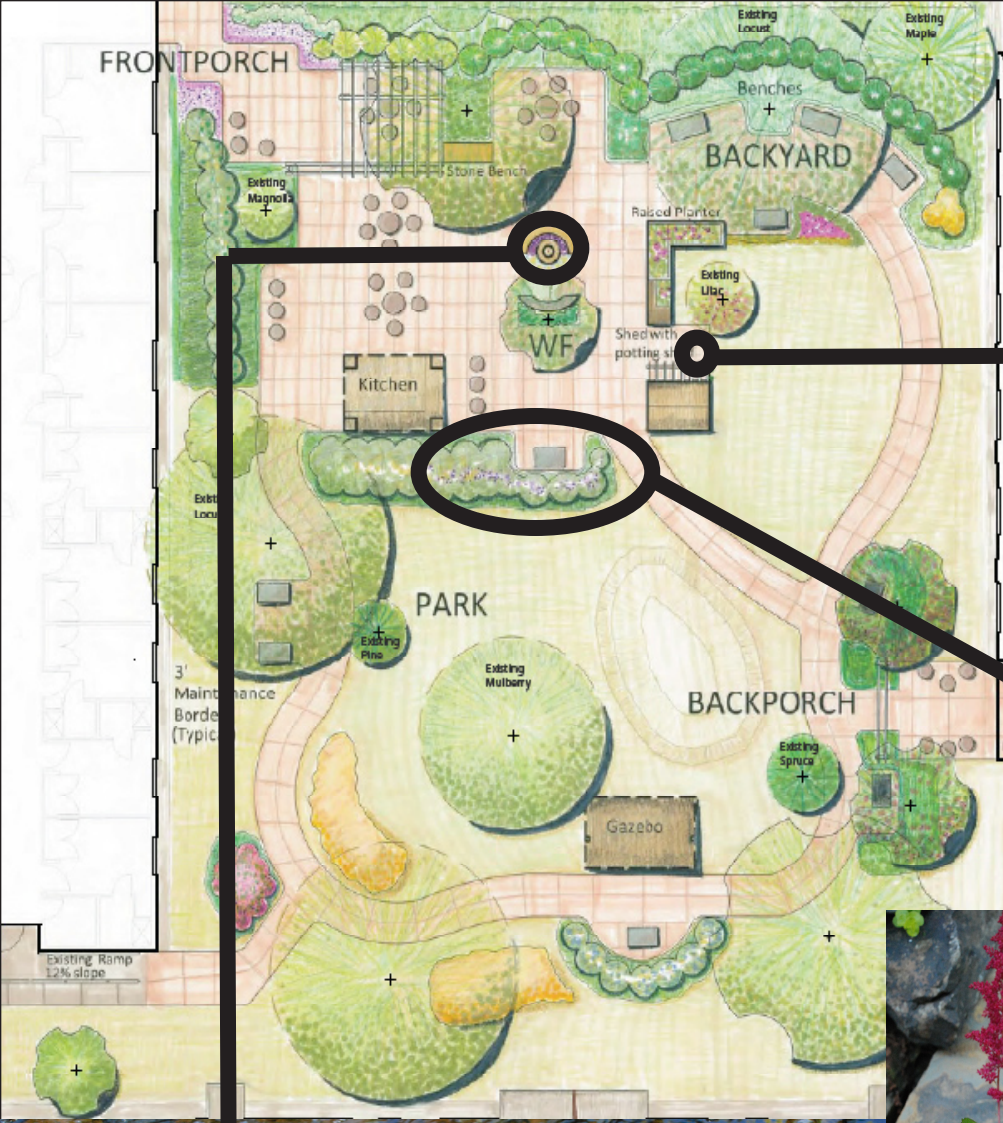
'MY GARDEN'

RAIN GARDENS





'MY GARDEN' CREEPING JENNY & FORGET-ME-NOTS



HTTP://WWW.RUTGERSLN.COM/PRODUCTIMAGES/HYDRANGEA%20CLIMBING.JPG

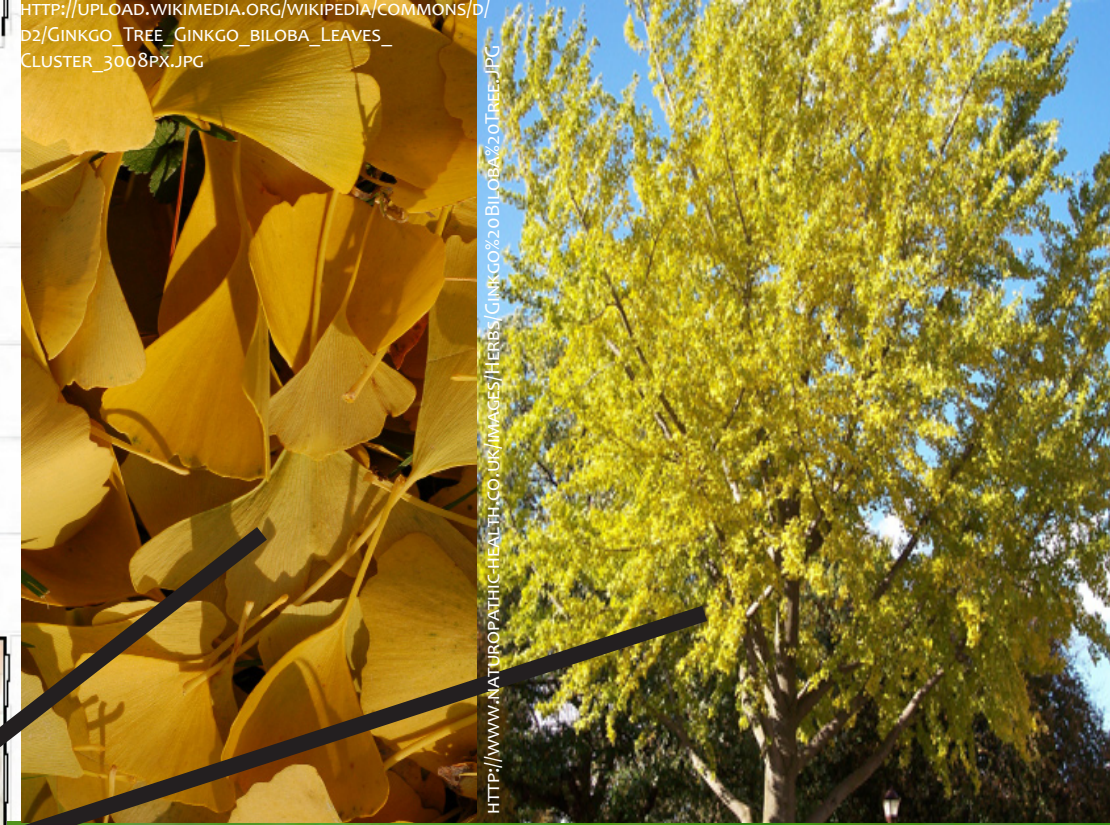


HTTP://IMAGES3.WEBSHOTS.COM/3/1/6/1/90/737161908/VWTT\_FS.JPG



'MY GARDEN'

DWARF KOREAN LILAC, CLIMBING HYDRANGEA & ASTILBE





*...“I remember being protected from spring rains as we enjoyed the sounds of thunderstorms and the smell of a wet garden”...*  
Schowalter Resident