



Kansas River Inventory



KANSAS RIVERKEEPER®
To protect and preserve the Kansas River.

Kaw River Inventory

- FOK advocated for Technical Advisory Committee (TAC)
- Call for more data
- Preliminary surveys in 2006 and 2007
- Jct City to KC inventory in 2008



The Kaw arises in the prairies
and is the longest prairie river in the world







- July 26 Junction City to 5 miles before Manhattan (173-158)
- July 27 St. George (158-134)
- July 28 Wamego (134-127)
- July 29 weathered in
- July 30 Maple Hill bridge (127-109)
- July 31 just west of Topeka (109-90)
- Aug 1 just east Topeka (90-78)
- Aug 2 Lecompton (78-61)
- Aug 3 Mud Creek east of Lawrence (61-47)
- Aug 4 De Soto (47-30)
- Aug 5 ended in Kansas City (30-16)





Waiting out the storm in Wamego



Lunch at the Oakland Plant



Ray's birthday party in Lecompton





A tent toad

Life on a sandbar

Mapping the Kaw Using Aerial Photographs





GPS Camera



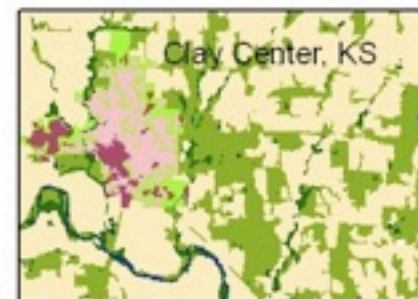
River Mile Photos

Land Use Practices in the Watershed Impact the Kaw River

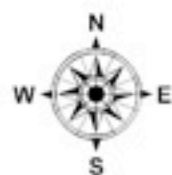
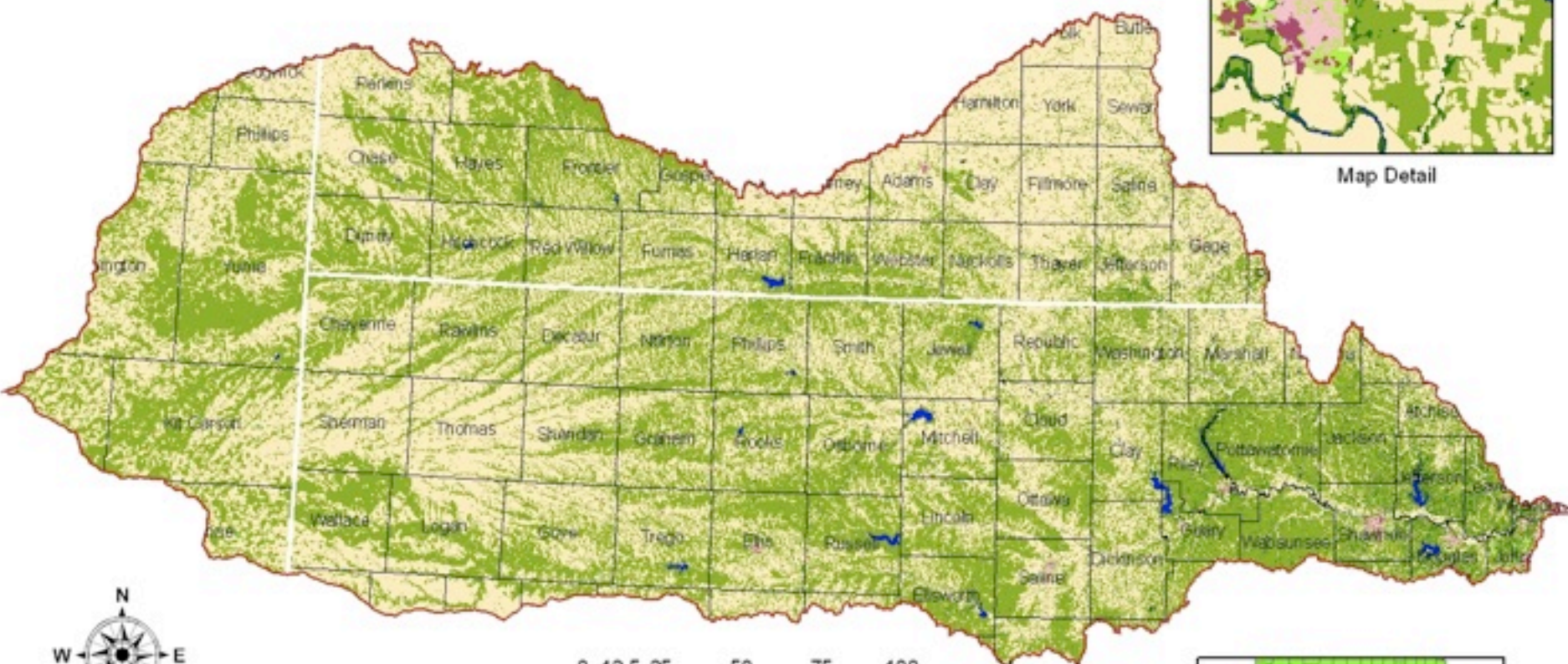


KANSAS RIVER WATERSHED

Modified Anderson Level I Land Use/Land Cover



Map Detail



Legend	
Cropland	Urban Industrial
Grassland	Urban Residential
Woodland	Urban Openland
Other	Water



KARS
Kansas Altered Resource Sampling Program



Sponsored by the National Science Foundation (EPSCoR 0553722) and the Kansas Technology Enterprise Corporation

Instream Uses Impact the Kaw River

- Sand and Gravel Dredging
- Bridges
- Powerlines
- Weirs

Dredges





Sand and Gravel Extraction Industries

Riparian Trees



JUN 27 2008



Erosion and Drainage





Bank Stabilization

Bridges





Power lines

Water weirs and dams





The End: Day 11 Kansas City



River Inventory Outcomes

Advocate for policy changes and incentives to improve landuse and riparian management for the sake of a healthy river

- Develop online database
- Develop online maps with GPS photos
- Provide data to agencies and public
- Landowner outreach



Sign in.



89° Clear Sky

See complete forecast

Marketplace

News Sports Arts & Entertainment

Archive for Sunday, August 3, 2008

Research trio cruises along Kaw



Photo by John Henry. [Enlarge photo.](#)

R.J. Stephenson, of Tonganoxie, left, and Cynthia Arnett, of Osaka, kayak their way down the Kansas River on Saturday during the Kaw River Inventory near LeCompton. Stephenson, who serves on the Friends of the Kaw board, and Arnett, a scientific advisor for the Friends of the Kaw board, are helping to collect and document information about the river and pollutants.

[Email](#) [Comment \(1\)](#) [iPod-friendly](#) [Print](#)

By [Erin Castaneda](#)
August 3, 2008

Sign in.



89° Clear Sky

See complete forecast

Marketplace

News Sports Arts & Entertainment

Archive for Friday, July 25, 2008

Trio to conduct Kaw River cleanup over 12 days



Photo by [Thad Alender](#). [Enlarge photo.](#)

Kansas Riverkeeper Laura Calwell, shown in this April 25, 2007, file photo, will explore the Kansas River to monitor, clean and restore this major source of drinking water.

[Email](#) [Comments \(13\)](#) [iPod-friendly](#) [Print](#)

By [Karey Britz](#)
July 25, 2008

Public Outreach



Kaw River I...
By Cynthia
Jul 29, 2008 - Public



Online Maps and Photos



Home

Kansas River Atlas

Riverkeeper

About Us

Contact Us

Mission Statement

Partners

Board of Directors

Photo Gallery

Become a Member

Donate

Links



The Kansas (Kaw) River stretches 170 miles from its origin in Junction City to its confluence with the Missouri River and is the primary source of drinking water for many communities in northeast Kansas. This recreational treasure was a well kept secret among a few knowing paddlers and anglers, but is fast becoming a valued recreational resource for thousands of visitors each year.



SUPPORT/JOIN

Feel free to become a member of the Friends of the Kaw and support our efforts.

Help Us Today

- [Become a Member](#)
- [Volunteer](#)
- [Calendar](#)
- [Donate!](#)

REPORT RIVER POLLUTION

Report river pollution -- it's the right thing to do.

Help Us Today

- [Report Pollution](#)
- [Fish Consumption Brochure](#)
- [Fish Consumption Advisory](#)

NEWS, FLOATS & EVENTS

Friends of the Kaw sponsors both private and public educational float trips from March through October. We are focusing our efforts on scheduling private groups of 16 to 24 people.

Help Us Today

- [News](#)
- [Floats & Events](#)
- [Cleanups](#)

KANSAS RIVER ATLAS

RIVER ACCESS MAPS

The Kansas river is formed by the junction of the Smoky Hill and Republican rivers at Junction City and flows in a general easterly direction through Geary and Riley counties, forms the boundary between Pottawatomie and Wabaunsee counties, crosses Shawnee, forms the boundary between Jefferson and Douglas, and of Wyandotte and Johnson counties in part, and empties into the Missouri river at Kansas City.



<http://kansasriver.org>

Power Plants

Jeffrey Energy Center
Tecumseh Energy Center
Lawrence Energy Center
Board of Public Utilities
(Wyandotte County)



JUL 4 2008



Contaminated Water

In 2007 the Environmental Protection Agency identified 67 coal or oil ash waste sites where ground water and wells had been contaminated over the past decades with heavy metals and other toxic materials. At 24 sites, the water had migrated to the extent that it could threaten human health.



Source: Environmental Protection Agency

THE NEW YORK TIMES

Hundreds of Coal Ash Dumps Lack Regulation

<http://www.nytimes.com/2009/01/07/us/07sludge.html>





The 40-acre pond, whose dam broke, was used by the Tennessee Valley Authority as a containment area for ash generated by the coal-burning Kingston Fossil Plant in Harriman, Tennessee



Donna Lisenby, Upper Watauga Riverkeeper, hands off a sample of coal slurry collected in the Emory River just below the TVA coal ash spill to Laura Calwell, Kansas Riverkeeper.

Westar Energy



has agreed to rebuild the flue gas desulfurization (FGD) system at the Jeffrey Energy Center

It will produce a slurry that will be dewatered and solids deposited in an on-site landfill

Wastewater from the FGD system will need to be treated to reduce pollutants

The FGD system will be on-line by summer 2008 but the wastewater treatment will not operate until May 2009

To avoid discharge of untreated wastewater during this time, the water level in Bottom Ash Lake will be drawn down to retain the FGD wastewater



April 22, 2008

Kansas Department of Health and Environment
Bureau of Water, Watershed Management Section

RE: Permit # I-KS67-PO02 Jeffrey Energy Center

It concerns Friends of the Kaw that in section 7 under “Findings of Fact and Conclusions of Law” that KDHE states “The Bottom Ash Lake is *expected* to remain non-overflowing during this time period.” We strongly suggest that Bottom Ash Lake be “required” to remain non-overflowing during this time period.

Friends of the Kaw would like to be assured that:


- Bottom Ash Lake will remain non-overflowing in the event of a 100 year flood
- Water removed from Bottom Ash Lake is properly disposed of when the lake is drawn down to retain FGD waste water
- The Consent Order should specify enforceable penalties and consequences if Bottom Ask Lake does overflow

We also believe that it is misleading to call Bottom Ash Lake a “lake” when it is really a holding facility for contaminated water

“It is impossible to write off the disaster in Tennessee as a freak accident. The absence of national standards for coal ash as resulted in environmental damage and threats to human health throughout the county- not just last month, or last year, but for decades, and as far as we know this may be just the tip of the iceberg”

House Democrat Nick Rahall, introducing the Coal Ash Reclamation and Environmental Act of 2009

COAL ASH LEGISLATION INTRODUCED IN HOUSE | CSMONITOR.COM



Laura Calwell, Kansas Riverkeeper
riverkeeper@kansasriver.org
<http://kansasriver.org/>
1 866 RIV KEEP

Dr. Cynthia Annett
cynthia.annett@gmail.com

R.J. Stephenson
rjsraft@sunflower.com



Friends
of the Kaw



KANSAS RIVERKEEPER®
To protect and preserve the Kansas River.