

KANSAS

FEBRUARY, 1960

4-H Journal

The 4-H Family Magazine

Kansas 4-H Foundation, Inc., Publisher

In This Issue

Career Choice
Important
Page 3

Cherry Pie Winners
Page 5

Scholarship
Information
Page 7

1960 IFYE's Named
Page 8

New Woodworking
Ideas
Pages 9-13

4-H'ers in College
Pages 14 and 15

4-H as a Job Applicant
Page 16

Opportunities in
Agribusiness
Page 19

15 Cents



1960 Careers Issue

A marshmallow roast is always fun. Gathered around the Clovia house fireplace at K-State University are: Don Oswald, Anderson county; Judy Bowers, Saline county; Bill New, Leavenworth county; Marjorie Roeckers, Franklin county; Janice Collins, Osage county; and Clint Bowers, Saline county. For more details on this 4-H house at K-State, see pages 14 and 15.



BUSINESS

... the tremendous modern science-industry that has replaced old-time agricultural methods ...

NEEDS 15,000 MORE YOUNG MEN EACH YEAR

KANSAS FORMULA FEED MANUFACTURERS INVITE YOU

to visit the mills listed below and get first-hand information on modern feed manufacture, one of the largest and most important areas of Agribusiness.

ARROW FEED MILLS

Junction City

BLAIR MLG. & ELEVATOR CO.

Atchison

BULLER FEED MILLS

Halstead

GOOCH FEED MILLS

Salina

HUMBOLDT ELEV. MILLS

Humboldt

J. L. SAUNDERS MLG. CO.

Council Grove

KANSAS SOYA PRODUCTS CO.

Emporia

KELSO MLG. CO., INC.

Pittsburg

KEY MILLING CO.

Clay Center

LIGHT GRAIN & MLG. COMPANY, INC.

Liberal

MITCHELL CO-OP FEED MILL

Beloit

NATURICH MILLS

Abilene

NUTRENA MILLS INC.

Coffeyville—Kansas City, Ks.

PILLSBURY MILLS, INC.

Atchison

PLUSH MILLS

Glasco

SUPERSWEET FEEDS

Salina

TOPEKA MILL & ELEV. CO.

Topeka

WINTERSCHIEDT MLG. CO.

Seneca

WALNUT CREEK MLG. CO.

Great Bend

WOLFE FEED AND GRAIN CO.

Hiawatha

And Prefers Farm Youth With A Degree in Agriculture or Related Fields!



In every city and town across our nation, companies large and small are engaged in some way with the production of meat, milk, eggs & other foods for our millions of citizens. You know of many near you; such industrial giants as duPont and General Motors are also on the Agribusiness team, which offers unlimited opportunities to college-trained farm youth. This year's survey lists over 15,000 job opportunities for qualified young men.

Isn't this the kind of "ceiling unlimited" opportunity YOU want when you get out of school?

One of the finest door-openers to this kind of future is the Feed Technology program at Kansas State University—the only program of its kind in the world. Manufacturing formula feeds is one of the ten largest industries in the entire United States, a vital part of Agribusiness and its greatest single source for job opportunities of many kinds. You should know all the facts about this program before you decide on your future career.

SCHOLARSHIP FUNDS ARE AVAILABLE

TALK IT OVER with your county agent and vo-ag teacher. Visit some of the feed mills listed at the left. And be sure to mail the coupon for more information on the 15,000 job opportunities in Agribusiness, and the Feed Technology program!

Mail this coupon—Get the whole story now.

Dr. C. Peairs Wilson
Kansas State University
Manhattan, Kansas

Please mail free brochure about the Feed Tech program, and more information about jobs in Agribusiness.

Name _____

Address _____

School _____

Careers and Education are Top 4-H Member Decisions

Farm boys and girls—farm parents, too—you should be thinking of the future!

Less than one of five Kansas farm boys will have an opportunity to be a farmer. Thus, many of you may have the idea you have to go completely out of agriculture to get a job.

Nothing could be further from the truth. 40% of all U. S. jobs are still in agriculture or related business (agribusiness). These jobs give preference to boys with farm backgrounds.

College Education Important

There's an increasing demand for more workers—but these workers will have to be better educated and trained. Due to automation there will be less demand for unskilled workers.

This puts an increasing premium on college education. Figures compiled by Glenn Busset, associate state 4-H leader, indicates a return of 1800 percent on each dollar spent for a college education.

Entirely aside from the cultural and social advantages of college life, some studies (now several years old) indicate a college graduate will earn, in his lifetime, \$75,000 more than a comparable H. S. graduate.

Kansas 4-H Journal

VOL. VI, No. 2 February, 1960
Dale Apel.....Editor

Editorial and Business Office

Phone PR 6-8811 Ext. 208
Manhattan, Kansas

Published Monthly By

KANSAS 4-H FOUNDATION, INC.

Entered at the postoffice in Lawrence, Kansas, as second-class matter under the Act of March 3rd, 1879.

Advertising rates and circulation data on request.

Group subscriptions \$1.00 per year.
Individual subscription \$1.50 per year.
Single copy 15 cents.

BOARD OF TRUSTEES

W. Dale Critser, Chrm.....Wichita
Clifford Hope, Vice Chrm.....Garden City
R. B. Christy.....Scott City
Harry Darby.....Kansas City
W. Laird Dean.....Topeka
A. D. Jellison.....Junction City
Harold E. Jones.....Manhattan
George B. Powers.....Wichita
Roger E. Regnier.....Manhattan
E. B. Shawver.....Wichita
Fred D. Wilson.....Andover

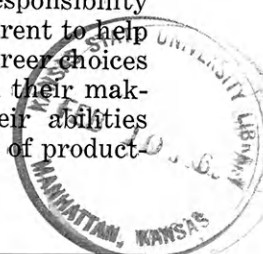
Use of the 4-H name and symbol approved by the Secretary of Agriculture of the United States, January 23, 1951, under the provisions of the law as reenacted by Sec. 707 of the Act of June 25, 1948 Public Law No. 772, 80th Congress (10 USC 797)

Tests Important

Before making any decision on a career—in agribusiness, science, engineering, etc.—it's most important high school students take aptitude and vocational tests. These tests will give you (or your child) an indication of their capabilities and primary interests. Counselling will then help steer them correctly.

High school counsellors are good sources of information. If there's no counsellor in your high school, contact the nearest office of the Kansas State Employment Service or the counselling center of a nearby college or university.

There are 30,000 future job holders now enrolled in Kansas 4-H Clubs. It's the responsibility of each leader and parent to help them make correct career choices—choices resulting in their making the most of their abilities during their 45 years of productive adult life.



"Check Into The Rewards For YOUR CAREER

in the growing

Petroleum Industry"

says Wayne Poland



"Your opportunities in the petroleum industry are limited only by your ability—and this field really offers the advantages to a young fellow," says Wayne Poland.

Mr. Poland, of Kingman, Kansas, a jobber of Continental Oil Products, has been in the petroleum business for 14 years, nine years as an employee of a major oil company and five years as a jobber. "I like being in business for myself. Anyone that likes to work with people and likes to work outdoors would enjoy a career in this field."

Good experience, and a fine start for a young man would be to work as an agent or as an employee of a jobber or a service station, is Mr. Poland's advice.

Above: Mrs. Poland keeps books for the business. Marion Ramsey, at left, is Mr. Poland's helper and tank wagon driver. Mr. Poland chats with farm customer, Omar Pritner.

Act now—investigate the varied careers offered you in the petroleum field. Write to—

Kansas Petroleum Industries Committee

Insurance Building, Wichita

State's Top 4-H Cherry Pie Baker is Margene Savage

Margene Savage, Marion county, was picked top 4-H cherry pie baker at the state contest in Wichita January 9. Last year's winner, Donna Janzen, was from Margene's Club in Marion county.

As state winner, Miss Savage will compete in the National Contest February 18 in Chicago.

Runner up in the contest was Eldon Tuttle, Kiowa county, one of the two boys entered.

Other purple ribbon winners were Carol Harris, Sumner county; Linda McVickers, Ness; Carolyn Sue Bolen, Labette; Ann Brent, Osborne; Margaret Cook, Rice; and Patricia Ann Ebel, Russell.

Sixty-seven contestants, under supervision of the K-State 4-H Department, baked pies for the event in the Kansas Gas and Electric Company auditorium. In addition to the facilities K G and E provided assistance in running the contest and gave electric mixers to the winner and alter-

nate.

The Hotpoint Appliance Company provided corsages and photographs for the contestants. They also provided the ranges. The Great Atlantic and Pacific Tea Company (A & P) gave silver trays to Miss Savage and Tuttle plus corsages for the eight purple award winners. In addition to arranging for the awards, the Kansas 4-H Foundation underwrote general expenses of the event.

Margene's "Hi-Fi" Cherry Pie

Miss Savage's recipe for filling and crust are below. Her instructions specify pre-heating the oven to 400 degrees.

The Filling

Drain and measure cherries and juice. Combine $\frac{3}{4}$ cup sugar, 3 T cornstarch and $\frac{1}{4}$ t salt. Add $\frac{3}{4}$ cup cherry juice and mix.

Add 6 drops almond extract, 4 drops red food coloring and $\frac{1}{4}$ t lemon juice. Cook till thick and clear.

Remove from heat, add 1 T butter and stir till melted. Add two cups frozen cherries (thawed and drained) and allow mixture to cool.

Butter-Crisp Crust

Sift 2 cups all-purpose flour (already sifted) and 1 t salt together. Blend in $\frac{3}{4}$ cup lard and 2 T butter with pastry blender. Add $\frac{1}{2}$ cup milk and mix lightly to form dough. Press dough into



Margene Savage is the second state cherry pie baking winner in as many years to come from the Jayhawk Club, Marion county. The club previously had two county winners represent it in the state contest.

round shape (waxed paper may be used for this).

Divide dough and place a little more than half on pastry cloth. Roll out a little larger than a nine inch pie pan. Fit into pan.

Roll out remaining dough for lattice top and cut into $\frac{1}{2}$ to $\frac{3}{4}$ inch strips. Add filling to bottom crust and weave lattice strips criss-cross. Trim ends of strips, fold edges of bottom crust over ends of lattice and flute edges.

Sprinkle lattice with sugar. Bake to golden brown—about 40 minutes. Aluminum foil may be placed around fluted edges to prevent over-browning.

I'm sure glad I insured my car

with **STATE FARM MUTUAL**

Three miles from town with the temperature below zero and me already late for the area basketball finals, the engine conks out. First man I thought of was my local State Farm Agent. After a call on a neighbor's phone my State Farm Agent got in touch with a local garage, had me towed into town within half an hour and ready to go again by the time the game was over. Two days later a check to cover my towing charges showed up. That convinced me. Dad was right when he steered me to State Farm right off the bat.

Whatever the situation, I know I can rely on my State Farm Agent to bail me out . . . fast.



It pays to know your State Farm Agent
YOU'LL FIND HIM LISTED IN THE YELLOW PAGES

STATE FARM MUTUAL AUTOMOBILE INSURANCE COMPANY

Home Office: Bloomington, Illinois



- ROCK-BOTTOM RATES
- HOMETOWN SERVICE
- BANK PLAN FOR AUTO FINANCING
- OVER 7500 AGENTS
- WORLD'S LARGEST AUTO INSURANCE COMPANY



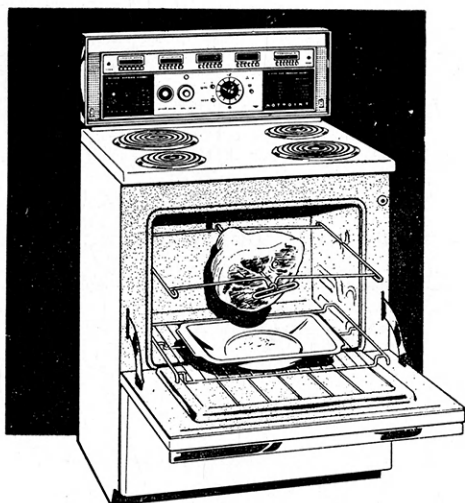
**CONGRATULATIONS
MISS MARGENE SAVAGE**

New Kansas State Champion
National Cherry Pie Baking Contest

Hotpoint

OFFICIAL RANGE
National Cherry Pie Baking Contest

NEW! NEW! NEW!
RECIPE HEAT



Hotpoint 30" Electric Range
Model RB65A
1960 MODEL

← **COOKBOOK INSTRUCTIONS
ON RANGE BACK PANEL**

FEATURES OF THE CHAMPION'S RANGE

- ★ Rota-Grill rotisserie for year 'round barbecues with no fuss or muss
- ★ Super "2600" hi-speed surface unit
- ★ Super oven cooks banquet-sized meals
- ★ Oven timing clock and minute timer
- ★ Full-width storage drawer on bottom
- ★ Lighted back panel, oven light

CHERRY PIE SPECIAL

HOTPOINT PUSHBUTTON ELECTRIC RANGE
Your Choice 30" or 39" RB202 or RC202

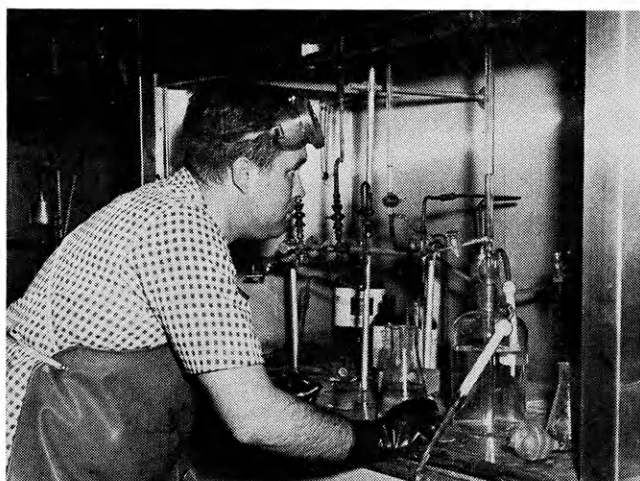
ONLY \$199⁹⁵
WITH TRADE

SEE YOUR NEAREST HOTPOINT DEALER

CAREERS IN THE PETROLEUM INDUSTRY

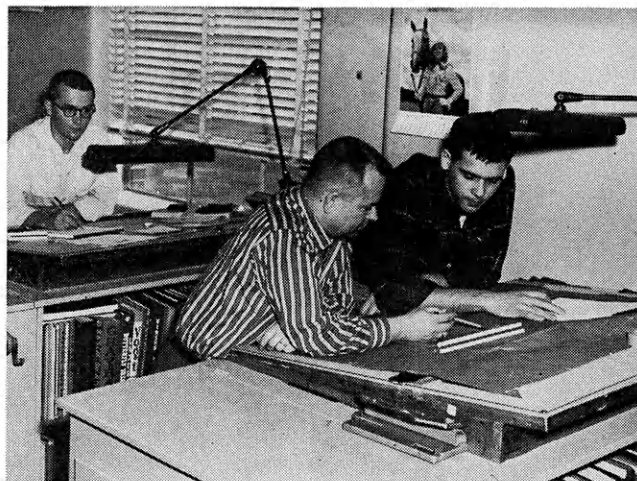
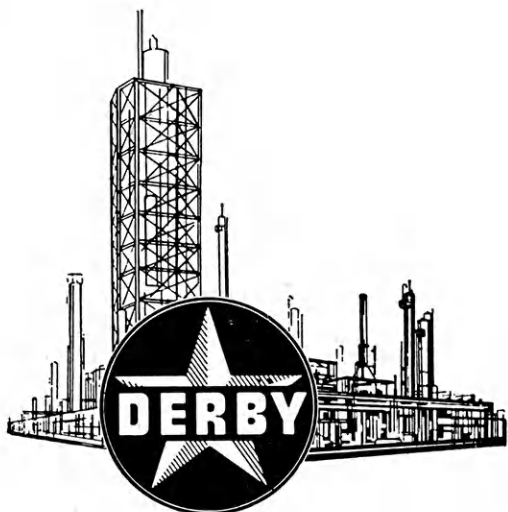
The petroleum industry has unlimited opportunities for career minded young people.

To prepare for a career in one of the three facets in the petroleum industry, production, marketing and manufacturing, it is advisable to acquire a college degree in order to qualify for the position of your choice.



George Hill, chemist at Derby Refinery, checks the Hydra Flouric Acid daily to determine the amount of concentration in the Hydra Flouric Unit.

Make your car a 5-Star Performer with new DERBY STAR*TANE. Combines anti-rust, anti-ice and detergent in all DERBY gasolines at NO EXTRA COST! Derby STAR*TANE works wonders in the delicate fuel system of your car. It cleans carburetors and keeps them clean. It prevents icing. It stops corrosion. Fill 'er up with Derby regular or premium today—both have STAR*TANE.



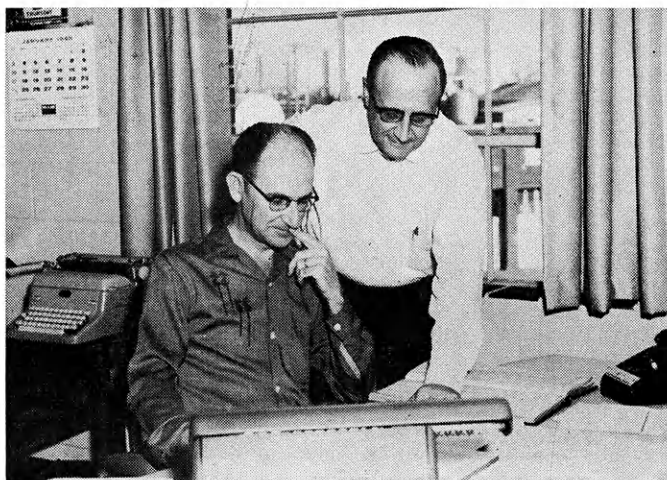
In the foreground l to r, J. M. Van Sickle, office engineer, Bob Gilbert, draftsman and behind them, Bill Stich, draftsman, assists in checking refinery maintenance drawings on old and new equipment.

Those with degrees in Geology, science that deals with the earth's crust and history, and petroleum engineering are naturally prepared to enter the field of oil production, which is the development of the oil fields.

In manufacturing, the refining of the crude oil, those with a degree in chemistry, engineering, accounting and other phases of business are well qualified for a position within the refinery.

Marketing, which is the selling of the manufactured item, is the more versatile of the three facets. Career fields with the marketing division are selling, advertising, accounting and other phases of business.

The careers mentioned are those which are open to college graduates, but many occupations are available for those who obtain on-the-job training.



Lee Ferguson, standing, chief clerk, and W. L. Merrick, Yield Clerk, checking the yield of products from various units.

Scholarships Totaling Hundreds of Thousands of Dollars Available To Kansas College Students

Do you need a scholarship to help with college finances?

Thousands of scholarships running into the hundreds of thousands of dollars are available to college freshmen each year. If you can prove a need and have good high school grades, there's probably a scholarship for you.

Where to Ask

Sometimes it's very important to know what's available. Scholarship information may be obtained in printed form from the university in which you are interested. Write to the Director of Admissions of the college or university of your choice for more information.

Large Variety

As an example of the variety and quality of scholarships available, more than 400 scholarships totaling more than \$100,000 are annually awarded Kansas State University students. The 4-H department at Kansas State, in addition, selects winners for 13 scholarships totaling \$3400. (No applications are taken for these scholarships—they are awarded on the basis of 4-H achievement.)

If the Union Pacific Railroad goes through any part of your county there is an annual \$100 scholarship available to a 4-H member or vocational agriculture student in that county. Details are available from your county extension agent.

Local Preference

Many scholarships give preference to graduates of a certain high school. Details are available from college sources.

No matter what college you plan to attend, it's good policy to get your scholarship applications in early. Most colleges like to have scholarship applications by April 1. It's not too soon to write now for information on available scholarships.

"MEN DO NOT FAIL- THEY JUST GIVE UP TRYING -" ELIHU ROOT



America's unparalleled progress is based on the freedom and dignity of the individual, initiative, and equal opportunity, sustained by our faith in God and our basic moral and ethical values.

The principles of our competitive enterprise system derive from, and are consistent with, our religious values and the highest goals that mankind seeks. Through this system the American people have produced abundant goods and services and provided widespread educational advantages and religious opportunities.

The full realization of man's dreams as envisioned by our founding fathers can only be achieved if each individual assumes active responsibility for maintaining and strengthening the principles upon which our republic was founded and vigorously opposes all programs and policies which erode the very foundation of our American system.

We believe that in his quest for "security," the individual must oppose policies leading to the curtailment of individual freedom and opportunity.

Kansas Farm Bureau
105 County Farm Bureaus
Working Together

NEW



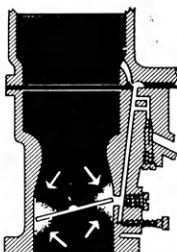
GASOLINES

PLUS mp*

ELIMINATE MAJOR CAUSES OF WINTER STALLING



PREVENT STALLING DUE TO ICING — CO-OP Gasolines plus MP prevent ice build-up that cuts off carburetor's air supply and causes stalling.



GIVE ADDED POWER AND SMOOTHNESS — CO-OP Gasolines plus MP wash

away power-robbing deposits that build up in carburetors and prevent new deposits from forming . . . helps your engine run like new.

SAVE YOU MONEY — CO-OP Gasolines plus MP give clean-carburetor efficiency, eliminate gas-wasting settings, cut maintenance costs . . . improve gas mileage.

ADD LIFE TO GAS TANKS, STORAGE TANKS, FUEL SYSTEMS — CO-OP Gasolines plus MP form a protective coating in storage tanks and lines, gas tanks, fuel lines and pumps . . . prevent rust and corrosion.

NEW MP in BOTH CO-OP REGULAR AND ETHYL AT NO EXTRA COST — Get "premium" advantages in both CO-OP Gasolines, designed for top efficiency in your car, truck and tractor.

*Now available at your
CCA-Member Co-op . . .
or from your tank
truck salesman.*



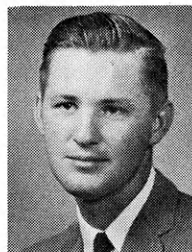
**CONSUMERS COOPERATIVE
ASSOCIATION**

KANSAS CITY, MISSOURI

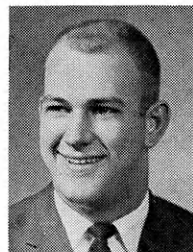
1960 Kansas IFYE Delegates Named

Seven former Kansas 4-H members have been selected as 1960 International Farm Youth Exchange delegates.

The delegates are Gary Lee, Lafferty, McPherson; Harlan Ross, Kingman; Leonard Munger, Dodge City; Richard Rankin, Howard; Connie Clary, St. George; Marilyn Hansen, Greenleaf; and Brenda Jo Morgan, Goodland.



Richard Rankin



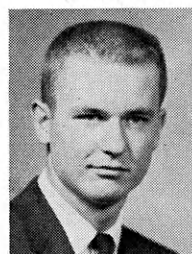
Gary Lafferty



Harlan Ross



Connie Clary



Leonard Munger



Marilyn Hansen

Brenda Morgan



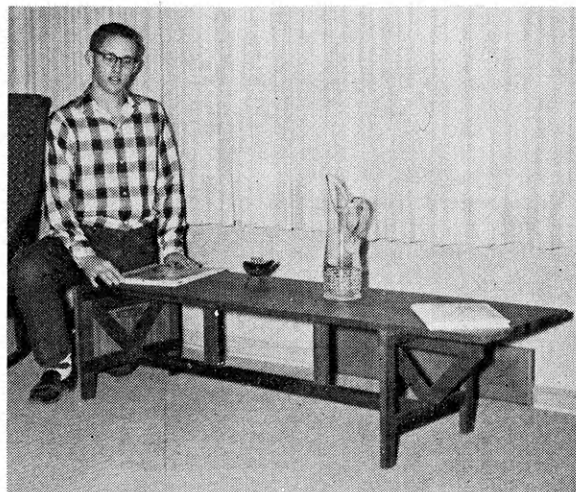
Brenda Morgan, the only delegate assigned to a host country to date, will go to Finland in April. The delegates spend six months with farm families in their host country.

Kansas sent four delegates in 1959 and 11 exchangees from other countries came to Kansas. IFYE is an exchange program between the U. S. and 50 other countries which gives young people between 20 and 30 years of age an opportunity to live and work with farm families.

MAKING THE BEST BETTER WITH WOOD

For Your Home

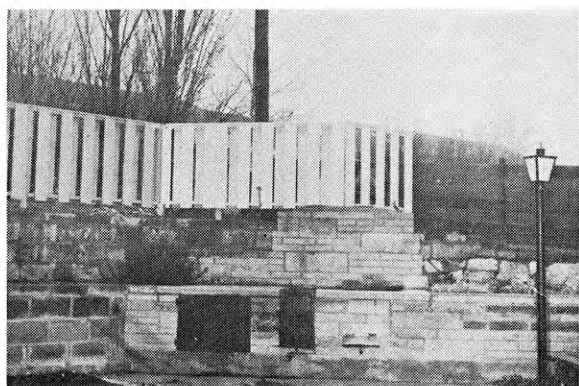
This attractive coffee table is an asset to a living room. Bob Ireland is making available the plans he used to make it.



You Can Make It

For Your Yard

Whether it's keeping children in or animals out, a yard fence is often necessary. This one is designed to be attractive, too.



_____ *Plans for These Items Are*

Available At The Listed Lumber

Dealers. Ask For Them. _____

Always on hand...

YOUR LUMBERMAN

is your best friend when
you need good material



- | | | |
|--|---|--|
| Abilene
Central Lumber Company | Colwich
Hoffman Lumber Company | Greensburg
Home Lumber and Supply Co. |
| Agra
Agra Lumber Company | Concordia
Leidigh Lumber Company
Sanborn Lumber Co. | Grainfield
The Golden Belt Lumber Company |
| Albert
Albert Lumber-Hardware and
Appliance Company | Council Grove
Rhodes Lumber | Grinnell
The Golden Belt Lumber Company |
| Alma
Wolgast & Haefke Lumber Company | DeSoto
DeSoto Lumber Company | Halstead
Harris Lumber Company |
| Alta Vista
Wolgast Lumber Company | Denison
Denison Lumber and Hardware
Company | Harper
Rock Island Lumber Company |
| Altamont
Farmers Co-op Elevator Company | Denton
C. H. Gish Company | Hartford
Thomas Lumber Company |
| Alton
Alton Lumber and Coal Company | Devon
Devon Lumber Company | Hays
Hardman Lumber Corporation, Inc. |
| Arma
Bosinio Lumber Yard | Dighton
Kingsley Lumber Company, Inc. | Healy
Healy Co-op Elevator Company |
| Anthony
Rock Island Lumber Company | Dodge City
The T. M. Deal Lumber Company | Hesston
Kropf Lumber Company |
| Arkansas City
Central Lumber Company | Downs
Central Lumber Company | Highland
Highland Lumber Company |
| Asherville
Asherville Lumber and Coal Company | Edgerton
Edgerton Lumber Company | Hill City
Farmers Lumber Company
Hardman Lumber Company |
| Ashland
Don Spotts Lumber Company
Home Lumber and Supply Co. | Edna
The McCoy Lumber Company | Hillsboro
Hillsboro Lumber Company |
| Attica
Crowell Lumber Company | El Dorado
Home Lumber Company | Holton
Brown-Hedge Lumber Company
Holton Lumber Company |
| Atwood
Niswonger Hay, Grain and Lumber
Company | Elkhart
The Star Lumber Company | Holyrood
Home Lumber and Supply Co. |
| Basehor
Basehor Lumber Company | Ellis
Golden Belt Co-op Assn., Inc. | Home
M. H. Kramme Lumber and Hardware
Company |
| Bazine
Humburg's | Emporia
Home Lumber and Supply Co.
Kansas Lumber Company
The Smith Lumber Company | Hope
Roehrman Lumber and Hardware
Company |
| Beloit
Beloit Lumber Company
Murray Lumber Company
Peoples Lumber and Coal Company | Erie
Howard Bros. Lumber Company | Horton
Horton Lumber Company, Inc. |
| Bern
Bern Lumber Company | Esbridge
Clinton L. Scott Lumber Company | Hugoton
Parsons Lumber Company
The Star Lumber Company |
| Bird City
The Bird City Equity Mercantile
Exchange
Griffin Lumber Company | Eudora
Eudora Lumber Company | Humboldt
Barfoot Lumber Company |
| Bison
Humburg Lumber Company, Inc. | Eureka
A. C. Houston Lumber Company
Rock Island Lumber Company | Hutchinson
F. E. Perry Lumber Company
The Fair-Detter Lumber Company
George Stuckey Lumber |
| Bonner Springs
Bonner Springs Lumber Company | Everest
Alexander Lumber Company | Inman
Inman Lumber Company |
| Brownell
Richolson Lumber and Hardware
Company, Inc. | Fowler
The T. M. Deal Lumber Company, Inc. | Independence
Rock Island Lumber Company |
| Bucyrus
The Blaker Lumber and Grain Company | Frankfort
Andrew Johnson and Son
Searle and Chapin Lumber Company | Iola
Klein Lumber Company |
| Buhler
Buhler Lumber Inc. | Fredonia
The Home Lumber and Supply
Company, Inc. | Johnson
Seyb-Tucker Lumber and Implement
Company |
| Burlingame
Burlingame Lumber Company | Garden City
Ed Porter Lumber Company | Junction City
Home Lumber Company
Rock Island Lumber Company |
| Burr Oak
Burr Oak Lumber and Coal Company | Garden Plain
Fisher Lumber Company | Kansas City
Logan-Moore Lumber Company |
| Burrton
Harris Lumber Company | Gardner
Gardner Lumber Company | Kensington
The Golden Belt Lumber Company |
| Caldwell
Antrim Lumber Company | Garnett
Star Grain and Lumber | Kinsley
Kinsley Co-op Exchange Lumber Yard
Home Lumber and Supply Co. |
| Cawker City
Cawker City Lumber Company | Gaylord
Hardman Lumber Company | LaCrosse
Wilhelm Lumber Company |
| Chanute
Smith Lumber Company | Glascow
The Golden Belt Lumber Company | LaCygne
Blaker Lumber and Grain Company |
| Chapman
Sanborn Lumber Company | Glen Elder
Dickinson Lumber Company | LaHarpe
Blaker Lumber and Grain Company |
| Cimarron
Anawalt-Campbell Mercantile Company
Wilson Lumber Company, Inc. | Goodland
Hardman Lumber Company
Rasure Lumber Company | Lakin
Hart and Company
Lakin Lumber Company, Inc. |
| Clay Center
Fullington's
Kansas Lumber Company | Gorham
Russell Lumber Company | Lansing
International Paper Company, Long-
Bell Division |
| Coffeyville
The Home Lumber and Supply
Company, Inc.
Kansas Lumber Company | Great Bend
Everitt Lumber Company
Rock Island Lumber Company
Whitesell Lumber Company | Larned
Antrim Lumber Company
Clutter-Lindas Lumber Company |
| Colby
Hardman Lumber and Coal Company
Hess Lumber Company | Greeley
Greeley Lumber Company | Lawrence
Logan-Moore Lumber Company
Woods Lumber Company |
| Coldwater
Gilchrist Lumber Company
Home Lumber and Supply Co. | | Lebanon
Lebanon Lumber Company |

THE lumber dealers listed on these two pages are supporting the 4-H woodworking project with this information and free woodworking plans. Get your plans from them.

Lenexa
Lenexa Lumber Company

Lenora
Lenora Lumber Company

Liberal
The Star Lumber Company

Lincoln
Leidigh and Havens Lumber Company
Nitsch Lumber and Supply Company

Lindsborg
Carlson Lumber Yard

Little River
The T. M. Deal Lumber Company, Inc.

Logan
The Hansen Lumber Company
Logan Lumber Company

Longford
Longford Lumber & Grain Co.

Louisburg
Louisburg Lumber Company

Lyons
Foster Lumber Company

Macksville
Home Lumber and Supply Co.

Manhattan
The Golden Belt Lumber Company
Griffith Lumber Company
Kansas Lumber Company
Ramey Brothers

Matfield Green
Paul Bell Hardware-Lumber-Feed

McPherson
Deal Lumber Company, Inc.
Lake Superior Lumber Company
McPherson Lumber Company

Meade
Home Lumber and Supply Co.

Medicine Lodge
P. M. Doherty Lumber Company

Milford
Milford Lumber Company

Minneola
The T. M. Deal Lumber Company, Inc.

Moundridge
Clayton Vogt Lumber Co., Inc.

Mt. Hope
Mt. Hope Lumber and Supply

Neodesha
O. E. Woods Lumber Company

Ness City
Rock Island Lumber Company

Nickerson
The D. J. Fair Lumber Company

Norton
Newbury Lumber Company

Nortonville
Alexander Lumber Company

Norwich
H. S. Eshnaur & Sons

Oakley
The Golden Belt Lumber Company
Oakley Lumber Company

Offerle
Offerle Co-op Grain and Supply Company

Olathe
Cowley Lumber and Hardware Company
Hodges Brothers

Osawatimie
Leidigh and Havens Lumber Company
Osawatimie Lumber Company

Oswego
Home Lumber and Supply Co.

Osborne
Lewis A. Hardman Lumber Company

Ottawa
Hubbard Lumber Company, Inc.
Nuzman Lumber
Ottawa Lumber Company

Overbrook
Overbrook Lumber Company

Overland Park
Overland Park Lumber Company

Paradise
Paradise Lumber Company

Parker
Blaker Lumber and Grain Company

Parsons
The Home Lumber and Supply Company, Inc.

Pawnee Rock
Clutter-Lindas Lumber Company

Phillipsburg
Hardman Lumber Company
Home Lumber Company

Plains
Home Lumber and Supply Co.

Plainville
Plainville Lumber Company

Pleasanton
Blaker Lumber and Grain Company

Pomona
Pomona Lumber Company

Pratt
W. R. Green Lumber Company
The Ortmeyer Lumber Company

Prescott
Prescott Lumber Company

Pretty Prairie
The George W. Ulch Lumber Company

Protection
Home Lumber and Supply Co.

Quinter
Quinter Building Material Company

Riley
Alexander Lumber Company

Rossville
Hesse Lumber Company

Russell
Hardman Lumber Company of Russell Inc.

Sabetha
Farmers and Merchants Lumber

St. Francis
St. Francis Equity Exchange

St. Marys
St. Marys Lumber Company

St. John
Home Lumber and Supply Co.

Salina
E. D. Bishop Lumber Company
Larson Lumber Company, Inc.
Leidigh and Havens Lumber Company
Michaelsen Lumber Company

Satanta
The T. M. Deal Lumber Company, Inc.

Sedgwick
The Sedgwick Lumber Company

Seneca
Koelzer Lumber Company
Seneca Lumber Company

Severy
Tolman-Gibbon Lumber Company

Sharon Springs
Lee Carter Lumber Company

Silver Lake
J. Thomas Lumber Company

Smith Center
Smith Center Lumber Company

Spring Hill
Spring Hill Lumber Company

Stafford
The T. M. Deal Lumber Co., Inc.
Home Lumber and Supply Co.

Stanley
Stanley Lumber Company

Sterling
The D. J. Fair Lumber Company

Stockton
The Golden Belt Lumber Company
Stockton Lumber Company

Strawn
Kansas Soya Products Company, Inc.

Sublette
The T. M. Deal Lumber Company, Inc.

Summerfield
Meyer Lumber and Hardware

Sylvia
The D. J. Fair Lumber Company

Talmage
Talmage Lumber and Hardware Company

Tampa
Murphy Lumber Company

Tipton
Tipton Lumber Company

Topeka
Whelan Lumber Company
Main Store, 715 E. 4th
Pauline Branch at Pauline
Highland Crest Branch, 200 E. 29th
Seabrook Branch, 2019 Gage

Ulysses
The T. M. Deal Lumber Company, Inc.

Victoria
The Golden Belt Lumber Company

WaKeeney
Hardman Builders Supply Company

Wakefield
Sanborn Lumber Company

Wathena
Farmers Grain and Lumber Company

Waverly
Star Grain and Lumber Co.

Wellington
Antrim Lumber Company
Wellington Lumber and Supply Company, Inc.

Wellsville
Star Grain and Lumber Company

Wetmore
Wetmore Lumber Company

White Cloud
White Cloud Lumber Company

Wichita
Farm Cash Lumber Company
Lawrence Lumber Company
Rock Island Lumber Company
Stockyards Cash and Carry Lumber Co.

Wilson
Hoch Lumber Company
Wilson Lumber Company

Winfield
Deal Lumber and Hardware Company, Inc.
A. B. Everly Lumber Company
Thompson Lumber Company

Winona
The Golden Belt Lumber Company

Woodbine
Kohler Lumber Company

Yates Center
F. H. Conger and Son

Zenda
The George W. Ulch Lumber Company

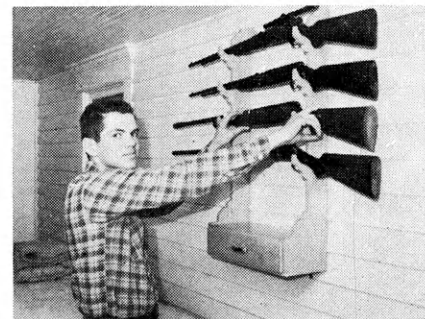
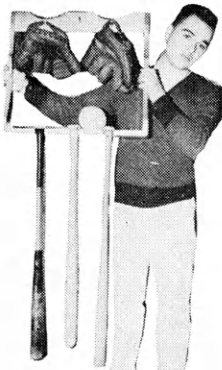
Missouri

Kansas City
The George W. Ulch Lumber Company, 11432 Truman Road



?? REMEMBER ??

These Plans Are Still Available from Your Local Lumber Dealer.



THE lumber dealers listed on these two pages are supporting the 4-H woodworking project with this information and free woodworking plans. Get your plans from them.

Lenexa
Lenexa Lumber Company

Lenora
Lenora Lumber Company

Liberal
The Star Lumber Company

Lincoln
Leidigh and Havens Lumber Company
Nitsch Lumber and Supply Company

Lindsborg
Carlson Lumber Yard

Little River
The T. M. Deal Lumber Company, Inc.

Logan
The Hansen Lumber Company
Logan Lumber Company

Longford
Longford Lumber & Grain Co.

Louisburg
Louisburg Lumber Company

Lyons
Foster Lumber Company

Macksville
Home Lumber and Supply Co.

Manhattan
The Golden Belt Lumber Company
Griffith Lumber Company
Kansas Lumber Company
Ramey Brothers

Matfield Green
Paul Bell Hardware-Lumber-Feed

McPherson
Deal Lumber Company, Inc.
Lake Superior Lumber Company
McPherson Lumber Company

Meade
Home Lumber and Supply Co.

Medicine Lodge
P. M. Doherty Lumber Company

Milford
Milford Lumber Company

Minneola
The T. M. Deal Lumber Company, Inc.

Moundridge
Clayton Vogt Lumber Co., Inc.

Mt. Hope
Mt. Hope Lumber and Supply

Neodesha
O. E. Woods Lumber Company

Ness City
Rock Island Lumber Company

Nickerson
The D. J. Fair Lumber Company

Norton
Newbury Lumber Company

Nortonville
Alexander Lumber Company

Norwich
H. S. Eshnaur & Sons

Oakley
The Golden Belt Lumber Company
Oakley Lumber Company

Offerle
Offerle Co-op Grain and Supply Company

Olathe
Cowley Lumber and Hardware Company
Hodges Brothers

Osawatimie
Leidigh and Havens Lumber Company
Osawatimie Lumber Company

Oswego
Home Lumber and Supply Co.

Osborne
Lewis A. Hardman Lumber Company

Ottawa
Hubbard Lumber Company, Inc.
Nuzman Lumber
Ottawa Lumber Company

Overbrook
Overbrook Lumber Company

Overland Park
Overland Park Lumber Company

Paradise
Paradise Lumber Company

Parker
Parker Lumber and Grain Company

Parsons
The Home Lumber and Supply Company, Inc.

Pawnee Rock
Clutter-Lindas Lumber Company

Phillipsburg
Hardman Lumber Company
Home Lumber Company

Plains
Home Lumber and Supply Co.

Plainville
Plainville Lumber Company

Pleasanton
Blaker Lumber and Grain Company

Pomona
Pomona Lumber Company

Pratt
W. R. Green Lumber Company
The Ortmeier Lumber Company

Prescott
Prescott Lumber Company

Pretty Prairie
The George W. Ulch Lumber Company

Protection
Home Lumber and Supply Co.

Quinter
Quinter Building Material Company

Riley
Alexander Lumber Company

Rossville
Hesse Lumber Company

Russell
Hardman Lumber Company of Russell Inc.

Sabetha
Farmers and Merchants Lumber

St. Francis
St. Francis Equity Exchange

St. Marys
St. Marys Lumber Company

St. John
Home Lumber and Supply Co.

Salina
E. D. Bishop Lumber Company
Larson Lumber Company, Inc.
Leidigh and Havens Lumber Company
Michaelsen Lumber Company

Satanta
The T. M. Deal Lumber Company, Inc.

Sedgwick
The Sedgwick Lumber Company

Seneca
Koelzer Lumber Company
Seneca Lumber Company

Severy
Tolman-Gibbon Lumber Company

Sharon Springs
Lee Carter Lumber Company

Silver Lake
J. Thomas Lumber Company

Smith Center
Smith Center Lumber Company

Spring Hill
Spring Hill Lumber Company

Stafford
The T. M. Deal Lumber Co., Inc.
Home Lumber and Supply Co.

Stanley
Stanley Lumber Company

Sterling
The D. J. Fair Lumber Company

Stockton
The Golden Belt Lumber Company
Stockton Lumber Company

Strawn
Kansas Soya Products Company, Inc.

Sublette
The T. M. Deal Lumber Company, Inc.

Summerfield
Meyer Lumber and Hardware

Sylvia
The D. J. Fair Lumber Company

Talmage
Talmage Lumber and Hardware Company

Tampa
Murphy Lumber Company

Tipton
Tipton Lumber Company

Topeka
Whelan Lumber Company
Main Store, 715 E. 4th
Pauline Branch at Pauline
Highland Crest Branch, 200 E. 29th
Seabrook Branch, 2019 Gage

Ulysses
The T. M. Deal Lumber Company, Inc.

Victoria
The Golden Belt Lumber Company

WaKeeney
Hardman Builders Supply Company

Wakefield
Sanborn Lumber Company

Wathena
Farmers Grain and Lumber Company

Waverly
Star Grain and Lumber Co.

Wellington
Antrim Lumber Company
Wellington Lumber and Supply Company, Inc.

Wellsville
Star Grain and Lumber Company

Wetmore
Wetmore Lumber Company

White Cloud
White Cloud Lumber Company

Wichita
Farm Cash Lumber Company
Lawrence Lumber Company
Rock Island Lumber Company
Stockyards Cash and Carry Lumber Co.

Wilson
Hoch Lumber Company
Wilson Lumber Company

Winfield
Deal Lumber and Hardware Company, Inc.
A. B. Everly Lumber Company
Thompson Lumber Company

Winona
The Golden Belt Lumber Company

Woodbine
Kohler Lumber Company

Yates Center
F. H. Conger and Son

Zenda
The George W. Ulch Lumber Company

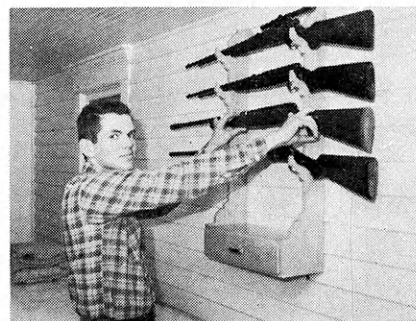
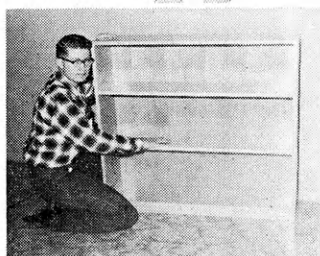
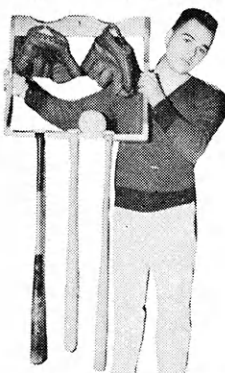
Missouri

Kansas City
The George W. Ulch Lumber Company, 11432 Truman Road



?? REMEMBER ??

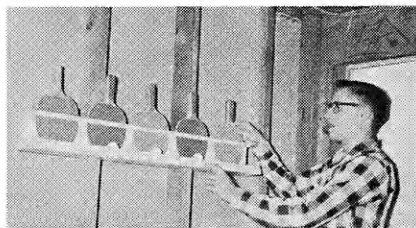
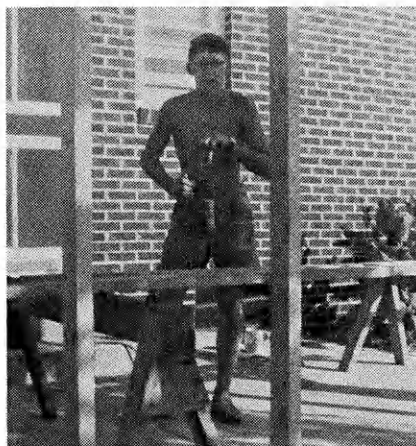
These Plans Are Still Available from
Your Local Lumber Dealer.



Renewed In Off for Bo



The Ireland family enjoyed many picnic suppers on the new screened-in porch this summer. Bob worked 71 hours to finish it. He feels that the result was well worth the time and effort it took. Below, Bob works on the porch. The frame was bolted to the concrete floor. Knowledge Bob gained through his carpentry work this summer also helped him do a more professional job on the porch.



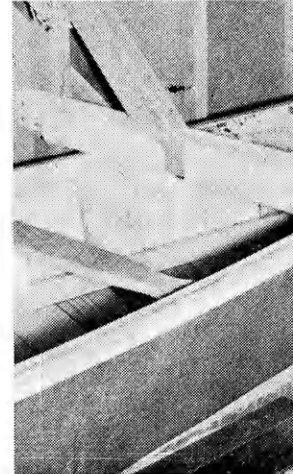
A ping-pong rack was only one of several additions Bob made to the Ireland's basement recreation room. The room itself was a 4-H Home Improvement project. Below, left, the framework begins to take shape for Bob's canoe. He used orange crates for the frame and covered them with canvas.



The 16-foot canoe takes a trial run on the river. Bob also shaped the paddles for the canoe and put up brackets (right) in the garage



to hold it when it is out of water. have had several enjoyable outings a



Renewed interest in a project he dropped has brought Bob Ireland, Sedgwick county, a wealth of new experiences and new ideas. In 1952, Bob enrolled and completed a year of woodworking, decided his interests lay elsewhere and dropped it.

By 1956, Bob had done some shop work in school and decided he would like to take more woodworking. With new enthusiasm, he started in and his project work resulted in his being named 1959 State Woodworking Winner.

Many projects went into his record, but the largest one was completed last year when Bob added a screened-in porch to his family's home. Mrs. Ireland had talked for years about such a porch so that the family could eat outside without being bothered by insects.

As Bob says, "That was Mom's pet project. It finally got to the place where we decided to wait until I would be able to handle it." Last summer, Bob quit his summer carpenter's job early and started building the porch.

Many Items Added

Not only has Bob added such articles as a stock rack, basketball goal, coffee table, and tool



The officers council meets to plan for the house activities. Left to right, are: Judith Kettler, Miami county; Janice Collins, Osage county, President; Rosalie Ward, Miami county; Thyra Krauss, Saline county, Vice-President; and Mary Atchison, Shawnee county. Seated on the floor are Martha Samuelson, Pottawatomie county; Marjorie Roeckers, Franklin county; and Judy Bowers, Saline county.

4-H'ers working together usually accomplish their goals. In 1930 a group of 4-H girls on the K-State campus began planning for a cooperative 4-H house. There they could enjoy the advantages of living in an organized house and still have the economy of doing their own housework and cooking.

By 1931 the plans were final. The Clovia house was active on the K-State campus.

Through the years the house has continued to give girls of similar interests and background the chance to live and work together at college. While living together the girls also carry on the 4-H standards and ideals they gained through club work.

Do Housework

At the present time the girls do all their own housework and

Former 4-H'ers

Living Cooperatively At Kansas State

cooking. They do have two houseboys to serve the evening meal and do the dishes afterwards.

With a number of girls taking different classes at different times, it might appear complicated to get all this work done. The scheduling of work falls to the House Manager, a girl elected by the members.

At the beginning of the semester she receives all the class and outside work schedules of the girls. She then arranges the housework and cooking assignments to fit these schedules.

Living at Clovia is not all work, however. The girls study together, plan together, have fun together.

Marjorie Roeckers, Franklin county, says: "Living here is like living in a large family. You can know everybody and you have the advantage of doing things together."

The girls plan social events for each semester including a spring and fall formal dance, exchange dinners with other houses on campus, teas, and informal houseparties.

Election of Officers

Jan Collins, Osage county,

adds: "By doing your own cooking you feel even more like you were in your own home. By living in an organized group we can participate in more campus social events than a girl living by herself."

The Clovia house has a house-mother, to add another family influence. Mrs. Eleanor Griffin is always ready to counsel and advise the girls, help them with manners, social events, or any problems that arise.

The house itself is owned by the Clovia Alumni Assn. though it is self-supporting. The alumni also help with teas and social events. They give a scholarship dinner for the girls with B averages and above and honor graduating seniors with a Senior Breakfast in the Spring.

The influence of Clovia carries over into post-college life too. Mrs. George Farmer, a former housemother, has said: "I have visited several of the girls in their homes throughout the country and they have told me how much the Clovia influence has helped them be better homemakers. It has also helped them be more useful in their church and community lives."

Left, chatting around the dinner table are Mary Atchison, Shawnee county; Loretta Roeckers, Franklin county; Mrs. Eleanor Griffin, House-mother; Janet Robinson, Wabaunsee county; and Oneta Bright, Mont-

gomery county. Right, that all-important studying also has to be done. Carolyn Pickens, Jefferson county, and Shelby Wells, Montgomery county, work together on a tough course.





Thyra Krauss, Saline county, tests the roast for dinner. Thyra was taking her turn at cooking for a week.



Mrs. Eleanor Griffin talks over a campus problem with Jane Beck, Pottawatomie county. Mrs. Griffin is always available for advice or just a friendly chat.



A favorite gathering spot is the piano. The girls may listen to a member play or join in a song fest. Loretta Roeckers, Franklin county; Carolyn Lynch, Russell county; and Martha Samuelson, Pottawatomie county, sing together while Margaret Dickinson, Russell county, plays.



Music while she works helps Shelby Wells, Montgomery county, get the job done faster. Shelby checks the records to go on the house phonograph.

How About The Newspaper Business?

If you are thinking about following a business or professional career, why not spend an hour visiting with your home town editor and learn about the possibilities in journalism?

The newspaper business offers an opportunity for a most interesting and rewarding life for the young man or woman who has a broad educational background, a liking for people, courage, and a desire to have an active part in the American way of life.

A good newspaper man has the satisfaction of knowing that he is helping others to a better life. He remembers that "The People Have The Right To Know" and, that there is no better way to have a well informed Democracy than through the printed word.

Before you make up your mind on your life's work, please think seriously about journalism. Thousands have found it a most enjoyable and rewarding career. Maybe you?

The Journal-World

Lawrence, Kansas

"The HOME Newspaper for 12,000 Families"



The 37 Rural Electric Cooperatives have over 56,000 miles of electric lines bringing electricity to your homes so that you can live better electrically.

For the modern 4-H farmer this low-cost efficient electric power is equal to many hired hands.



Kansas Electric Cooperatives, Inc.

420 West 9th, Topeka, Kansas

FARMERS
LOW-COST
Complete Protection
Policy

FIRE &
AUTO

INSURANCE
write to
ALLIANCE COMPANIES
McPherson, Kansas
Name
Address

SERVING KANSAS SINCE 1888

What Does An Employer Look for in You?

What does an employer look for in you when you apply for a job? There are certain basic qualities which are an asset in any position.

Harry Snell, Southwestern Bell Telephone Company, Top-eka, lists some of these for prospective job applicants.

Just as you are looking for a job that will interest you, the company is looking for people who will be interested in their jobs—people who will like their work and will give their best effort to do a job well.

Tied in with this quality is an important, and intangible, item called attitude. A company does not hire a person unless it needs him. When he is off the job a part of the company process is missing.

Accept Responsibility

Employers want people who realize by accepting a job they have a responsibility to be present except for genuine sickness or emergency. A person inclined to be "sick" just because he was out late the night before or just doesn't want to go to work that day is more of a liability to the firm than anything else.

Employers are beginning to look more and more beyond the actual job applicant. They are looking at the person's home situation. Mr. Snell says Bell is, this year, expanding a program they have had for several years of actually visiting the applicant at home before he or she is hired.

By being sure the parents or husband of an applicant understand the responsibilities, working conditions, pay, etc. of the job, they hope to gain greater permanency in their employees. The \$350 spent to train a girl as an operator is lost if her parents suddenly decide she shouldn't

have to work in the evenings, Mr. Snell said. "We hope to be sure the applicant's family understands the job and everything involved before the person is hired."

Be Healthy

Good health also ties into the question of "presenteeism" of an employee. Most employers will require a good physical examination.

Personal appearance plays a part in the decision to hire or not to hire. A neat, clean, conservatively dressed applicant has a decided advantage. A girl dressed in extremely high heels, party-type dress, and fussy jewelry does not give the impression she is seriously interested in learning her job and sticking to it. On the other hand, a sloppy appearance implies a carelessness which may well carry over into the person's work.

Other Requirements

Three other requirements are legible handwriting, good spelling, and a knowledge of simple arithmetic. Mr. Snell stressed they particularly applied to telephone company applicants. An operator who cannot write or spell so the billing department can read it causes many errors.

A company has certain needs, opportunities and requirements. These can't change a great deal. Individuals also have certain abilities, ambitions, personality traits and attitudes. These, too, do not change greatly. The matching of the company's requirements, etc., with the individual's traits was compared by Mr. Snell to the matching of cogs in a set of gears. When all the cogs line up, a good placement results. The applicant will be happy in his job and the company will be happy with his work.



*What is not fully understood
is not possessed"*

*If you would thoroughly know
anything, teach it to others"*

THINK

Spelling is important

YOUR SAVINGS ARE PRECIOUS TOO:



So Handle Them CAREFULLY

Your savings are your EMERGENCY PROTECTION, your open door to opportunity and good living. That's why you should handle them carefully.

Place your savings where they will be handled safely—your local Savings and Loan—where they make you an above average profit—your local Savings and Loan—where you can get your Savings when you need them—your local Savings and Loan.

— GET —

PROFIT — SAFETY — AVAILABILITY

SEE YOUR NEAREST *Progressive* **KANSAS** *Savings & Loan Association*

Arkansas City
First Federal Savings and Loan Ass'n. of Arkansas City

Augusta
The Commercial Savings and Loan Assn.

Beloit
The Beloit Building and Loan Assn.
First Federal Savings and Loan Assn. of Beloit

Chanute
The Chanute Building and Loan Assn.

Clay Center
Northwestern Federal Savings and Loan Ass'n. of Clay Center

Dodge City
First Federal Savings and Loan Ass'n. of Dodge City

El Dorado
Mid-Continent Federal Savings and Loan Assn. of El Dorado

Emporia
The Columbia Building and Loan Assn.

Erie
The Erie Savings and Loan Assn.

Fort Scott
Liberty Savings and Loan Assn.

Goodland
Goodland Savings and Loan Assn.

Great Bend
The Prudential Building and Loan Assn.

Hays
The Hays Building and Loan Assn.

Hutchinson
First Federal Savings and Loan Assn. of Hutchinson
Valley Federal Savings and Loan Assn. of Hutchinson

Iola
The Security Savings and Loan Assn.

Kansas City
American Federal Savings and Loan Assn. of Kansas City
Anchor Savings and Loan Assn.

Kinsley
The Kinsley Savings and Loan Assn.

Larned
The Larned Savings and Loan Assn.

Lawrence
Anchor Savings and Loan Assn.
Capitol Federal Savings and Loan Assn.

Leavenworth
The Leavenworth Mutual Building, Loaning and Savings Assn.

Liberal
First Federal Savings and Loan Assn. of Liberal

Lyons
The Lyons Savings and Loan Assn.

Mission
Anchor Savings and Loan Assn.
Capitol Federal Savings and Loan Assn.

Newton
First Federal Savings and Loan Assn. of Newton

Ottawa
Anchor Savings and Loan Assn.
Ottawa Savings and Loan Assn.

Overland Park
Jayhawk Savings Assn.
The Overland Park Savings and Loan Assn.

Parsons
First Federal Savings and Loan Ass'n. of Parsons

Plainville
Rooks County Savings Assn. of Plainville

Pratt
The Western Savings Assn.

Salina
The Homestead Building and Loan Assn.

Tonganoxie
The Tonganoxie Building and Loan Assn.

Topeka
Capitol Federal Savings and Loan Assn. at 6th and Kansas, and 12th and Topeka Blvd.
Postal Savings and Loan Assn.

Wichita
The Commercial Savings and Loan Assn. at 4601 E Douglas, 113 South Main and Boulevard Plaza

Pictures From Kansas 4-H'ers

SEND IN YOUR PICTURES

We want pictures taken by Kansas 4-H'ers. Prizes will be given for all pictures used in the Journal.

The picture need not be on 4-H Club work, but pictures with subjects related to 4-H Clubs are preferred. Action pictures are desired.

All pictures should be glossy prints at least five by seven inches in size unless accompanied by the negative.

Photographs should be accompanied by a short statement explaining the picture and including the names of persons shown.

Entrants should designate their choice of the following prizes. A year's subscription to the National 4-H Club News, one roll of color film—sizes 620, 120, 616, 116, 127 or 35 mm only, or a 4-H Club photograph album.

4-H members, parents, leaders, county agents or friends of 4-H may send in pictures.



These Saline Willing Workers won \$30 for their club by placing second in a local Square Dance. Center back row: Jo Ann Jolley, caller; Mary Knisley, Janet Stauffer, Eileen and Peggy Duggan. Front row: Harvey Seims, Jay Jolley, James Shank, and Doug Jolley.



Pauline Schweitzer, Riley county Magic 4-H club, helps Kriste Avery make a cooked filling for cream puffs at a project meeting.



Below: The Wayndotte county Junior Leaders group presents a check to Dr. A. Webster Tenney, executor director of the Agricultural Hall of Fame. Pictures are: Sally Smith, Dr. Tenney, John Miller, and Dorothy Reeves. Top, right: Nancy Atkinson and Sawny Thompson finish their team demonstration on "Hobo Lunch." They are members of the Udall 4-H Club. Bottom, right: Kathy Lickteig, youngest member of the Franklin county Rainbow club, lights a candle in the ceremony commemorating the club's 30th anniversary.



40% of U. S. Jobs are in Agribusiness!!

From Material Published by
the National Project in Ag-
ricultural Communications

Today, Tomorrow and Always
... there's a Big Job OPPOR-
TUNITY for you in agriculture.

You may not have an oppor-
tunity to be a farmer ... but
agriculture provides more jobs
and careers in the city than on

the farm. Of 62 million employed
Americans, 25 million (40%)
work somewhere in agriculture.

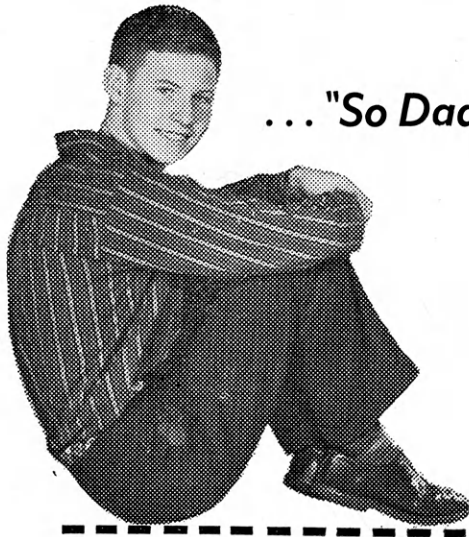
You can actually count more
than 500 distinct occupations in
the eight major fields of agri-
business (agricultural business).
Recent surveys indicate these
eight fields each year would and
could employ about 15,000 new
college graduates ... if 15,000
with agricultural college train-
ing were available!

At present land-grant colleges
graduate only about 8,500 young
men and women each year in ag-
ricultural sciences—to fill 15,000
job opportunities.

So, if you cannot become a
farmer, there are still vast op-
portunities for you in agribusi-
ness. Details may be obtained
from your county extension
agent or from the Director,
School of Agriculture, Kansas
State University, Manhattan.

EACH YEAR— 15,000 NEW JOBS IN THESE 8 FIELDS

AGRICULTURAL RESEARCH	AGRICULTURAL INDUSTRY	AGRICULTURAL BUSINESS	AGRICULTURAL EDUCATION	AGRICULTURAL COMMUNICATIONS	AGRICULTURAL CONSERVATION	AGRICULTURAL SERVICES	FARMING AND RANCHING
1,000	3,000	3,000	3,000	500	1,000	1,500	2,000
Production Marketing Economics Agricultural Engineering Equipment and Utilities Processing New Uses and Methods New Products By-Products Conservation Reclamation Rural Sociology	Machinery and Equipment Food Processing Grain and Seed Processing Meat and Poultry Packing Fertilizer and Lime Pesticides and Herbicides Feed Manufacturing Dairy Processing Fats and Oils Textiles and Fibers Buildings and Utilities Forest Products	Banking and Credit Insurance Farm Management Cooperative Management Land Appraisal Grading, Packaging and Labeling Marketing Storage and Warehousing Transportation Farm Utilities Custom Services Private Businesses	Vocational Agriculture Agricultural Extension College Instruction Governmental Agencies Farm Organizations Industrial Agencies Business Firms International Technical Aid	Farm Reporting Newspapers Market Reporting Publications Magazines Photography Motion Pictures Radio Recording Television Advertising Exhibiting Training	Soil Water Range Forest Fish Wildlife Parks Turf	Inspection and Regulation: Food and Feed Seed and Fertilizer Agricultural Chemicals Plant and Animal Quarantine Quality Control and Grading Organizations and Foundations Agricultural Technicians Agricultural Consultants Agricultural Statisticians Veterinarians Foreign Agricultural Service	General Grain Dairy Swine Beef Sheep Poultry Cotton Forage Fruits Vegetables Tobacco Seeds Nursery Specialty



... "So Dad and I had This Man-to-Man Talk!"

"Seems he values my opinion more these days
... guess he thinks I'm growing up. Like
recently he started talking about getting a new
tractor—asked me what I thought about the
different ones. I felt pretty smart to tell him
of the good things I'd heard and read about
the John Deere line. P.S. We shopped 'em all
and bought a John Deere."

Young farmers are in the know these days and
are really knowledgeable when it comes to the
best in modern farm machinery—namely John
Deere!



JOHN DEERE COMPANY

KANSAS CITY, MISSOURI

Ideas That Work

Reporter's Notice: The Kansas 4-H Journal would like to print interesting stories of your local club events, activities, members and leaders. Local club meeting stories, if submitted, should contain something unusual or of interest to people outside your county.

Outstanding projects, services or events of your club, or stories of individuals within your club that would give ideas to other 4-H'ers would make excellent stories.

Prizes will be awarded all blue award stories each month. Please state your choice (1) a year's subscription to the National 4-H Club News or (2) a hard cover loose leaf 4-H notebook.

Auction Makes Possible \$850 Gift To Dining Hall

Atchison county's 4-H council sponsored an auction to raise money for the Rock Springs Ranch Dining Hall.

The auction enabled the council to send a check for \$850 to the Kansas 4-H Foundation to apply on it's quota for the Dining Hall.

Items from each club were donated for the big event. Items donated counted as votes for a king and queen candidate. The number of votes was determined by returns from the sale of pigs, calves, toasters, percolators, garden products, picnic tables, etc. assigned to each candidate.

Lawrence Schrader

County Council Reporter

Canvass for X-Ray Unit

Shawnee county 4-H members are making a house-to-house canvass to inform Topekans when the mobile X-ray unit is in their neighborhood.

On March 15 members of the Shunga Valley, Auburn, Wakarusa and Tecumseh Club canvassed the area from First to Sixth Streets and from Kansas Avenue to Adams.

Last month six 4-H Clubs canvassed the district around the police station when the unit was in that locality.

In addition to helping with the canvassing, the Shunga Valley 4-H'ers had a booth on tuberculosis at the 4-H Fair and later at the Kansas Free Fair. Later they arranged a display about the diseases to promote the sale of TB seals at Christmas time in one of the local stores.

During their house-to-house calls the youngsters ring doorbells and present each family with pamphlets which explain the use of the mobile X-ray unit in detecting chest conditions and indications of chronic or communicable diseases.

Bob Howell, Rep.

Shunga Valley Club

Many Safety Projects

The Stull Busy Beavers Club, Douglas county, received first in safety at the Douglas county achievement banquet.

In their safety project the club members cleaned off five blind corners. On one corner the township put up a stop sign. The club also made safety posters for display in Lawrence, Watson and Stull. They passed out Teenage Driving Booklets to those boys and girls of driving age.

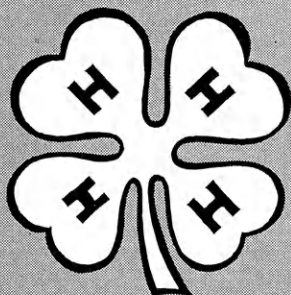
Mary Houk, Rep.

Ideas in Brief

December was a busy month for the Theaker Busy Beavers in Cowley county. Theirs was the first club to be judged for the model meeting elimination . . . Reno county's Union Valley club voted to participate in the safety contest sponsored by the county Farm Bureau . . . Louise Redger demonstrated "How to Make a Cheap Electric Popcorn Popper" for the Sitka Hustlers, Clark county . . . The Walnut Willing Workers, Reno county, have set as their 1960 goals: 100 per cent showing of record books, increased membership, working for a purple seal, developing livestock and demonstration judging teams for the county fair . . . A committee from the Willing Workers, Saline county,

BUILDING A STRONGER AMERICA...

KANSAS



through **LEADERSHIP**
EDUCATION
EXPERIENCE HEALTH

**Folger
Coffee Co.**

KANSAS CITY
MISSOURI

secured 10 people to give blood when the blood mobile was in Salina . . . The **Reno** county Haven 4-H'ers had a Christmas card exchange as the highlight of their Christmas meeting . . . The Thrifty Thrivers, **Labette** county, presented fruit plates to six shut-ins in December . . . The Abbyville 4-H club, **Reno** county, had a taffy pull at their annual Christmas party . . . Decorating a Christmas tree was the favorite Christmas custom of the Lawnridge 4-H'ers, **Cheyenne** county, as they answered the roll call in December . . . The Turon 4-H club, **Reno** county, has begun square dancing lessons under the instruction of Mr. Gus Borders of Arlington. There was 100 percent attendance at the first session . . . Merle

Eyestone, **Shawnee** county club agent, was recently honored with a "This Is Your Life" program presented by members of the Oakland Go-Getters . . . "How to Read Musical Symbols" was the demonstration given by Ann Musil for the Home City Hustlers, **Marshall** county . . . George Roblee of the Albers Feed Company presented two educational films on beef fitting and feeding for the Langdon 4-H club, **Reno** county . . . A report on the Agricultural Hall of Fame was the highlight of the December meeting of the Grantville 4-H club, **Shawnee** county . . . The first gold Achievement Pin to be given in **Russell** county was awarded to Alice Fay Nesbitt of the Lone Star 4-H club at the recent 4-H Achievement Banquet.



Christmas time was cookie time at the main Ed Marling Store, Topeka. Ed Marling Stores are **Shawnee** county 4-H Journal sponsors. They received cookies for all main store employees as an expression of appreciation from the Grove Club, **Shawnee** county. Pictured are Dorothy Comstock, club secretary, Ed and Charles Marling, 4-H president Lanny Bailey and community leader Mrs. Gordon McLin.

LOOKING FOR A CAREER?



Jobs for:

Telephone Operators
Service Representatives
Stenographers
Typists
Draftswomen

are often available with the telephone company.

If you are interested, drop in at your nearest Bell telephone office and inquire.

**SOUTHWESTERN BELL
TELEPHONE CO.**

Kansas 4-H Journal Sponsors

These Sponsors Have Renewed Their County
Support of the Kansas 4-H Journal

Anderson
Garnett State Savings Bank,
Garnett
Barber
The First National Bank, Medicine
Lodge
Clark
Citizens State Bank, Ashland
Peoples State Bank, Minneola
Stockgrowers State Bank, Ashland
Edwards
The Home State Bank, Lewis
Elk
Exchange State Bank, Moline
First National Bank, Howard
Home State Bank, Longton
Howard National Bank, Howard
Ellis
Farmers National Bank, Victoria

The Ellis State Bank, Ellis
The Farmers State Bank, Hays
The First National Bank, Hays
Lane
First National Bank, Dighton
First State Bank, Healy
Meade
First National Bank, Meade
Fowler State Bank, Fowler
Plains State Bank, Plains
Rooks
Western Auto Associate Store,
Stockton
Saline
Farmers National Bank, Salina
Scott
First National Bank, Scott City
Modoc State Bank, Modoc

Cooperatives are

Kansas people building Kansas Communities
because

Cooperatives are always
locally owned and locally controlled

Kansas Cooperative Council

701 Jackson Street, Topeka

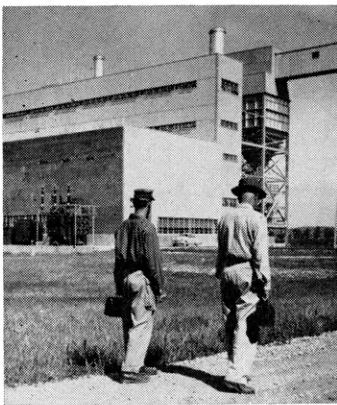


CIRCULATION DESK
LIBRARY
KANSAS STATE COLLEGE
MANHATTAN, KANSAS

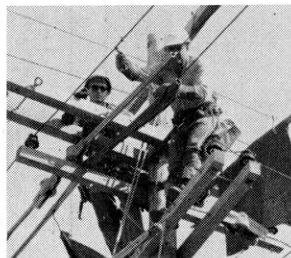
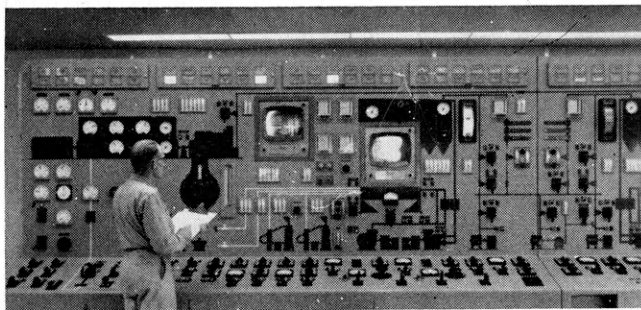
MISC KSC

ELECTRIC UTILITIES

OFFER UNEXCELLED CAREER OPPORTUNITIES



Working in a generating station, utility office, or out with the line crew gives a sense of accomplishment in serving your community.



A need always exists in the electric utility industry, and related fields, for those whose aptitudes and skills qualify them for this rewarding work. Rewarding not only financially, but in terms of interest and the enthusiasm that comes from doing an important job well. Those of you who have enjoyed 4-H electric projects will find utility work especially gratifying. And, too, vocational training in high school will point many toward associated fields; such as appliance repair—a vital responsibility in this electrical age! Yes, whether your background is now leaning toward the technical or general business side, we welcome you to come in and talk over your vocational plans at the office of any electric company listed below. Remember, the utility industry has been doubling itself every ten years . . . there's a place for *you* in it.

**WATCH THIS
PAGE FOR IDEAS
ON FARM AND
HOME ELECTRIC
PROJECTS**

Electric Light and Power Companies in Kansas

The Kansas Power and Light Company

Central Kansas Power Company

Kansas City Power & Light Company

Kansas Gas and Electric Company

Western Light & Telephone Company