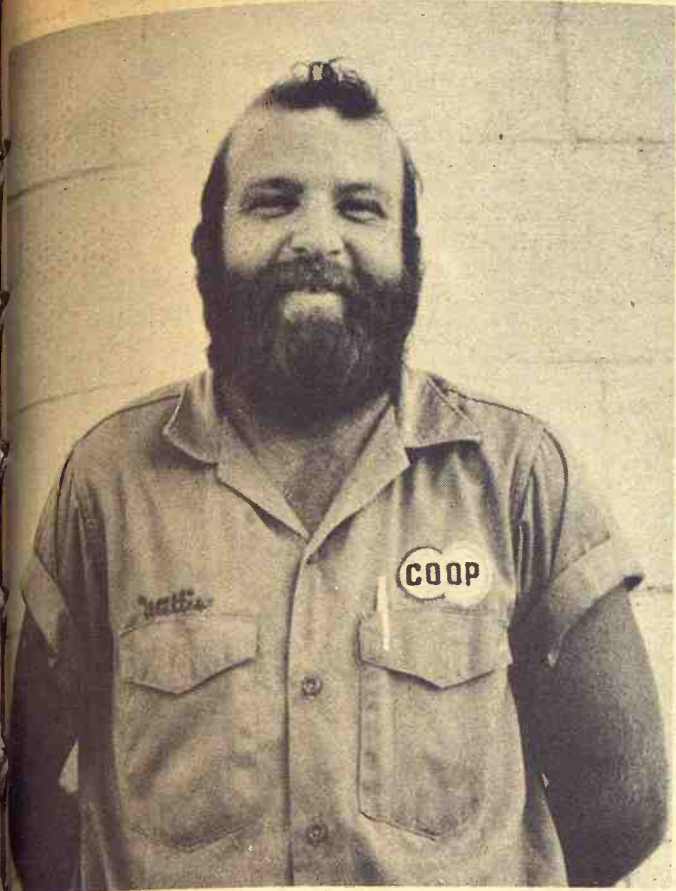


445 @ 21.00  
510 @ 20.60  
380 @ 20.50  
COWS  
975 @ 19.70  
770 @ 18.00  
940 @ 18.00  
935 @ 17.70  
990 @ 17.60  
1345 @ 17.60  
1160 @ 17.50  
1015 @ 17.50  
1060 @ 17.10  
1025 @ 17.10  
860 @ 17.10  
1060 @ 17.00  
860 @ 16.60  
1230 @ 16.50  
860 @ 15.10  
280.00  
270.00  
251.00  
240.00  
240.00  
235.00  
230.00  
225.00  
225.00  
220.00  
210.00  
187.50  
185.00  
179.00  
177.00  
MISSION  
Y  
Marys  
Kans.  
Salina  
Only  
11:00 a.m. Cattle  
er they are conside  
ix hogs 215 @ 22.20  
x pigs @ 16.30  
x pigs @ 14.00  
i hogs 211 @ 22.15  
i pigs @ 14.75  
i pigs @ 13.75  
ix hogs 190 @ 22.15  
shts 133 @ 21.00  
elt pigs @ 13.00  
ix pigs @ 15.00  
elt pigs @ 13.75  
shts 100 @ 26.00  
pigs @ 13.60  
ix pigs @ 14.00  
t pigs @ 13.25  
i pigs @ 12.25  
elt pigs @ 14.25  
ack pigs @ 14.00  
elt pigs @ 15.00  
ix shts 104 @ 25.00  
shts 99 @ 24.50  
d pigs @ 17.00  
hi shts 66 @ 27.50  
t pigs @ 17.75  
t shts @ 20.00  
i pigs @ 16.50  
lt pigs @ 14.75  
ix pigs @ 15.50  
x pigs @ 17.75  
nchers  
ION CO.  
40  
2211  
ensed



**Ellsworth Celebrant**  
One of the celebrants at the centennial celebration of Ellsworth this week is Willis Schulz. He's been growing this beard since April.

## Health Board Sees Solution To Water Pollution Problem

TOPEKA — Surface water pollution caused by runoff from feedlots should be under control in the next five to 10 years, the Kansas State Board of Health has predicted.

The board made the prediction in its "plan of implementation for water quality control and pollution abatement" prepared in compliance with the Federal Water Quality Act of 1965.

Across the state, the board expects to see "significant improvement" in law water quality conditions resulting from

## Wife Follows Pearson Lead On Rural Job Bills

A rural job development bill, similar to one recently introduced in the Senate by Sen. James B. Pearson, R-Kans., and Mrs. B. Pearson, R-Kans., was proposed in the House last week by Rep. Chesler Mize, R-Kans.

The bill would provide for special designation by the secretary of agriculture of rural areas considered to be economically deficient.

A business firm locating in such an area would receive additional tax credits against income taxes in plant and machinery, accelerated depreciation and an investment, extra deductions for wages paid to income persons, and assistance in training workers.

The concern, in return for the benefits, would have to demonstrate that its operations would create new jobs and that it would hire a specified percentage of its labor from the area.

**WATKINS GIRL IS NORTHERN LASSIE**  
McPHERSON — Teresa Gatz, 18-year-old graduate of Hiawatha High School, was chosen Kansas Shorthorn Lassie and will represent the state in the national contest in Denver.

Kathy Schroeder, 17, of Timon was named runner-up.

A panel of three judges selected the winners from four contestants from over the state.

# GRASS & GRAIN

13th year no. 22 August 1, 1967

## Downturn In Feeders First Since April 1965

HASTINGS, Iowa — "More significant than the slight decrease in cattle-on-feed July 1, 1967, compared to a year earlier, is the fact that this decrease is the first reported since April 1, 1965," said National

Livestock Feeders Association President Charles Phelps at his feedlots near here.

He was referring to the slightly less than 2 per cent decrease in cattle-on-feed reported in the USDA July 1 estimate. The Feeders Association president pointed out that cattle-on-feed totals, as compared with figures for corresponding dates a year earlier, registered increases in eight consecutive quarters. "This downward turn in the July 1 report is what we've been working and hoping for," he added.

In the eight quarterly reports between April 1, 1965, and July 1, 1967, consecutive increases ranged from a few percentage points up to a 13 per cent reported April 1, 1966, over the same date in 1965.

This year's July 1 two per cent decrease in cattle on feed compares with a whopping 11 per cent increase registered for July 1, 1966, over the same date in 1965.

Between April 1 and July 1 of this year cattle-on-feed declined 17 per cent, compared to a decline of 13 per cent for the second quarter of 1966.

Feeders President Phelps pointed out that with placements on feed about the same in the second quarter this year as in 1966, the decline in cattle-on-feed has resulted from much larger marketings.

On April 1 feeders over the nation indicated they would market 4 per cent more cattle

in the second quarter than they had marketed during the 1966 second quarter. But the final tally shows they actually marketed 9 per cent more.

The association executive stated, "This means there was wide-spread cooperation, voluntarily, in the National Livestock Feeders Association campaign initiated in March urging feeders to move heavy cattle and thereafter to market their cattle at lighter weights.

"The comforting part of it all," Mr. Phelps continued, "is the fact that fed cattle prices have increased since May 1." The average price increase between May 1 and July 7 was \$2.35 per hundred-weight on all steers sold at 7 major markets.

During the same May 1-July 7 period the average weight of slaughter steers has generally been downward to a new 1967 low of 1,123 pounds for the July 7 week. Average weight for the first week of 1967 was 1,160 pounds, and a decline — with fluctuations — has been evident.

The feeders president gave no prediction about beef cattle prices, but reaffirmed his satisfaction in seeing a decline in cattle-on-feed after a full two years of looking at increased comparative figures.

## CENTRAL OKAYS MERGER WITH FRONTIER AIRLINE

Stockholders of Central Airlines have voted in favor of a proposed merger with Frontier Airlines of Denver. Frontier stockholders had previously favored the merger. Final approval must come from the Civil Aeronautics Board. Central is the feeder line which provides most scheduled airline service in the G&G area.



## Hard Roof To Keep On

LeRoy Peterson, Manhattan, surveys the same 20 by 40-foot roof that blew off his hay shed in the June 8, 1966 tornado and again last week. Peterson thinks a small twister passed through his place again, as the fan blew off the windmill and there was minor building damage and many broken trees.



# Wheat Stocks Sink To 426 Million Bushels — Lowest Since 1952

The Agriculture department announced that all wheat in storage on July 1 totaled 426 million bushels — the smallest carryover since 1952.

The July 1 holdings were 20 per cent less than a year earlier and 62 per cent below average. The department said the decline in total stocks occurred in off-farm holdings.

Wheat storage off the farm totaled 279 million bushels, compared with 404 million a year earlier and the average of 1,021,000,000. Farm stocks of 147 million bushels were up 16 million

from a year ago and 38 million above average.

Stocks in all positions on July 1 indicate a disappearance during the crop year — July 1, 1966, to June 30, 1967 — of 1,420,000,000 compared with 1,598,000,000 bushels a year earlier.

Durum wheat holdings were about half as much as on the previous July 1, according to the Agriculture department's crop reporting board.

Record soybean stocks were 49 per cent above July 1 of a year ago and 46 per cent above average. Stocks of the four feed grains on July 1 totaled 65 million tons — 10 per cent below a year earlier and 30 per cent below average.

Corn stocks in all storage positions on July 1 totaled 1,735,000 bushels — 3 per cent less than a year earlier and 26 per cent below the average July holdings. Current stocks indicate a disappearance of 969 million bushels during the April-to-June quarter, exceeded only by the 1,080,000 bushels the same quarter a year ago. Corn stored on farms totaled 1,330,000 bushels slightly above the 1,324,000 bushels a year earlier. Holdings of corn in off-farm positions totaled 405 million bushels, 12 per cent below the 459 million in off-farm storages last year.

Soybean stocks on July 1 totaled a record 199 million bushels, 49 per cent above a year earlier and 46 per cent above average. The increase from a year earlier was a result of record farm holdings of 85,400,000 bushels. Flaxseed stocks totaled 9,200,000 bushels, down 6,100,000 bushels from a year earlier.

The department announced on July 1 that it expected a record crop of about 1,596,000 bushels of wheat to be harvested during the current year. Adding the carryover of 426 million bushels would indicate a total

this year of more than 2 billion bushels.

The carryover of 426 million bushels was somewhat higher than the department apparently had expected. Officials had been estimating that the carryover would total between 400 and 410 million bushels. The 426-million-bushel figure included 28,600,000 bushels of durum wheat.

## Junior Dairy Show At Salina Set August 25-26

The second annual Kansas All Breed Junior Dairy Show will be held in Kenwood Park, Salina, Kansas, on August 25th and 26th. Kansas 4-H and FFA members between the ages of 8 and 19 can exhibit in this year's show.

Entries are beginning to come in from many of last year's exhibitors. Last year 315 dairy animals from 40 Kansas counties exhibited for prizes from the respective dairy breed associations and premiums from interested commercial sponsors in the state. The event is sponsored by the Agricultural Com-

### GRASS & GRAIN

The Mid-Kansas news weekly. Published each Tuesday at 1207 Moro, (Box 1009) Manhattan, Kansas, 66502 by

AG PRESS

Dean Coughenour

E. R. Woodward

Second class postage paid at Manhattan, Kansas

Subscription: \$3 year

CIRCULATION ..... 11,108

mittee of the Salina Chamber of Commerce and the Kansas Interbreed Dairy Council in co-operation with Kansas State University Extension Service, Kansas 4-H clubs and Kansas Future Farmers of America.

One added feature this year is a calf sale to be held Friday night, August 25th immediately following the dairy show exhibitors' banquet. This sale will afford Kansas 4-H'ers and FFA members an opportunity to acquire good new dairy stock. Since there are only 15 selected animals in the sale, top quality is assured.

This year's show again will offer top notch competition for 4-H and FFA members who will not have an opportunity to show in a major dairy event because of conflicting school activities. Cash awards and trophies will be awarded again this year. McPherson County won the traveling trophy given to the top

August 1, 1967

county herd last year. If they are successful in winning the next two years, they will retire the trophy.

### NEW HAMPSHIRE LOTTERY SALES RUNNING BEHIND

Sales of tickets of the state-operated lottery in New Hampshire are running more than 25 per cent behind 1966 sales. About \$1.6 million worth of the \$3 ducks have been sold thru mid-July.

**KEYS** made while you wait  
AGGIE HARDWARE  
1205 Moro MANHATTAN

## WHY SHRED STALKS?



BRADY CHOPPER-SHREDDER

► For faster, easier plowing ... control of corn borers ... preparation for minimum tillage ... erosion control ... to pulverize those tough tangled stalks from today's hybrids. This lets one man do the work of 2 or 3. These are some of the good reasons why your investment in a Brady Shredder pays off.

► Brady has been building shredders longer than anyone else. That's why a Brady is fool-proof and built to last.

► Two, three and four-row models available. See them today at

Contact your local impl. dealer or

**WALT LIPS SALES**  
ME 2-5100  
CLAY CENTER, KANS.

Prevent that "Summer Slump"...



...with

**PASTURICH**

Grass Supplement

by *Naturich*

In addition to the extra gain you can expect from your PASTURICH PROGRAM you'll find your fleshier cattle will command a premium at the market. Restore the missing "Spring Factor" to your summer and fall pasture rations. See your Naturich Dealer for 18% PASTURICH CUBES or 37% PASTURICH BLOCKS.

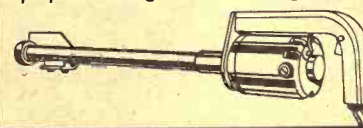


See Your **NATURICH Dealer...**

**NATURICH MILLS**  
Abilene, Kans.

## Hitch-up to the Gehl Chop-King

**NEW! Lightweight 10,000 RPM KNIFE SHARPENER.** Electric or gas models, for minute-per-knife sharpening on the machine — in the field or at the machine shed. Adjustable guide insures proper beveling of knife cutting edges.



short-chops more tons per hour than any other chopper!

Watch that crop fly! Short-chopped to 1/4-inch ... and more of it, in the box every chopping hour. Hitch your tractor to the only chopper built to take full advantage of big tractor horsepower, the brawny Gehl Chop-King. Bigger in size, bigger in capacity than any other chopper going. Big in features too!

• Narrow 2-Row and 3-Row corn heads. Regular one and two row also. 8-foot mower bar, 6-foot hay pick-up also available.

• Rugged 8-Knife flywheel with chrome-edged knives that stay sharp longer. Tungsten carbide faced knives also available.

• Big 127 sq. in. throat gulps in crops faster.

- Floating heads hug field contours.
- "Telescoping" U-joint permits full-power chopping around tight turns.
- Select-A-Cut Transmission lets you change forage lengths with the push of a lever.

Come on in and take a closer look at the really big difference in choppers today ... the Gehl Chop-King. Financing available. (\*Optional equipment)

Make us Prove it with a Demonstration!



LINN  
KUHLMAN MOTOR CO.

SABETHA  
FLENTIE'S, INC.

PERRY  
SEYLER FARM SUPPLY

ROSSVILLE  
ROSSVILLE  
TRUCK & TRACTOR

ABILENE  
WISSING MOTOR CO.

HANOVER  
HANOVER IMPL. CO.

WATERVILLE  
WATERVILLE MOTORS

MINNEAPOLIS  
CHAPMAN IMPL. CO.

GYPSUM  
KUHN IMPL. CO.



August 1, 1967

herd last year. If they  
successful in winning the  
years, they will return  
ny.

AMPSHIRE LOTTERY  
RUNNING BEHIND  
of tickets of the state  
lottery in New Ham  
e running more than  
behind 1966 sales. Al  
ion worth of the \$3  
ve been sold thru

EYS  
made  
while  
you  
walk  
GIE HARDWARE  
oro  
MANHATTAN

AUL-MOR, INC.  
m

Can Use  
Afford!

0' and smaller beds  
used on 1 ton and

ks can have

as • phone 945-32

hopper!  
d contours.  
permits full-power  
turns.  
ion lets you change  
ne push of a lever.  
closer look at the  
choppers today...  
nancing available.  
ke us Prove it with  
Demonstration!

WATERVILLE  
ERVILLE MOTORS  
MINNEAPOLIS  
APMAN IMPL. CO.  
GYPSUM  
KUH IMPL. CO.

# 10th Annual

# SIDEWALK SALE!

## CITY-WIDE



## MANHATTAN DOG DAYS

# 3

## Exciting Days!

### THURS. FRI. SAT. AUGUST

### 3, 4 and 5

ALL STORES OPEN THURSDAY NIGHT

An Annual "Wall to Wall"  
Clean-Up of Manhattan Stores  
With Bargains Worth Driving  
100 Miles or More. "Dogs" Outside  
and "Dogs" Inside. Come! You'll  
Save on Every Item You Buy.



### FREE SQUARE DANCE Thursday, 8:30 p.m.

Enjoy and see modern square  
dances under the stars in full  
costume, 3 local square dance  
groups.

CLOVERLEAF SWINGERS  
SHIRTS & SKIRTS  
Wagon Wheel WHIRLERS

PLACE: South 4th st between  
Poyntz & Houston.

EVERYONE WELCOME



## Southwest Kansas Needs 100 Days Frost-Free To Make A Milo Crop

**SUBLETTE** — Farmers in Southwest Kansas are busy replanting crops rather than relying on federal loans to recoup major losses from heavy rain and hail damage.

Success of newly-planted

crops depends on at least 100 frost-free days — a highly unlikely circumstance.

Western Haskell and Northern Seward Counties have been riddled with golf ball-size hail and more than 25 inches of rain

since June 1. Damage in this area is estimated at 2½ million dollars from the July 5 storm, and some agricultural leaders say losses may exceed that figure. Cattle losses also were heavy.

Gerald Reiss, who farms west of Kismet is one of many farmers banking on the success of replanted crops.

"Our fields are still too wet to work," he said. He said hail destroyed 16 miles of irrigation pipe and damaged his home. He estimated damage to his farm could total \$52,000.

"It's getting a little too late, but I'm still planting. Some areas can't be replanted because of standing water," he said.

Rep. Bob Dole (R-Kas.) toured the damaged area and promised to check into possible long-term low-interest loans. Referring to Dole's visit, Reiss said "If we can get the right kind of loans, it could possibly help."

Frank Dufild, a Haskell County farmer, voiced strong opposition to Federal Housing authority loans.

"I don't want any FHA

loans," he said. "You've got to sell your soul up the river. I don't want any part of the federal government."

Dufild, who has farmed in this area since 1928, said this summer's storms were the worst he ever had seen. Normal rainfall for the area is around 18 inches. He said that although his farm is on top of a hill, water filled his chicken house and drowned at least 200 hens. He said water and hail destroyed 230 acres of corn worth from \$60 to \$75 an acre and 400 acres of milo worth \$50 an acre.

"There's a lot of people in the same shape around here," said his son, Walter, who farms Dufild's land. "You get lots of money involved in irrigated land."

The Dufilds also are replanting crops, hoping for no frosts until late October.

Short-term milo is being

planted by most of the farmers.

August 1, 1967

was \$13.4 billion.

Total livestock transactions reached 218.7 million head valued at \$18.8 billion.

Total hog transactions, valued at \$4.9 billion, were up 4.4 million head to 96 million head.

Sheep transactions, valued at \$469 million, were down 2.6 million head to 25.6 million head.

### WHEAT COMMISSION HAS A NEW SALES HOPEFUL

The Kansas Wheat Commission, still looking for a new wheat product with some promising sales potential, has a new product in test. It's called Wheat-N-Honey cookie, and it was introduced this week in Dillon groceries around the state as part of Kansas Wheat Month.

### FALSTAFF UPS PRICE OF BEER IN ST. LOUIS

Are beer prices going up? Falstaff Brewing Co. has increased its price to retailers in St. Louis by 1½ cents per bottle. St. Louis taverns were expected to increase the price of their beer by 5 cents a bottle — to 35 cents. The price increase affected only the St. Louis area, which as the site of several major breweries, may affect prices elsewhere.

### PRICES REDUCED ON ALL SIZES

Example:

**Rear Tractors**  
13.6-38 — \$59

All other sizes similarly reduced.

Plus Fed. Ex. Tax and Resalable Ex. Tire

**FINK**  
TIRE SERVICE

Wamego, Kans. 456-2575

## 63 Percent Of Cattle Sold Thru Markets

Competitive livestock markets handled about 63 percent of all cattle transactions during 1966, a recent study made for the Certified Livestock Markets Association, which bases in Kansas City.

The association is composed of livestock auctions and central markets.

The total number of cattle were up 1.9 million from 1965, to 97.1 million head. Total value

Paper Back 25c - 35c  
Books 50c - 75c

**Largest Stock In Town**

**University Book Store**

623 N. Manhattan Manhattan

## AUTO RACES

FRIDAY NIGHT — 8 p.m.  
PLAZA SPEEDWAY  
Junction City

ONE MILE EAST ON J-HILL  
RACES EVERY FRIDAY  
NIGHT AND HOLIDAYS

Finest And Fastest Quarter  
Mile Track In The Country

LET'S ALL JOIN NATIONAL  
FARM SAFETY WEEK

Install **KELLEY**  
PROTECTIVE  
**HITCH COVERS**

ON YOUR TRACTOR 3-PT. HITCHES

(Placed third in Safety Division at Inventors Congress in McPherson in 1966!)

- Designed for safety — eliminates costly repairs and possible injury or death of tractor operator.
- Field tested for three years.
- Available for most makes & models.

MANUFACTURED BY  
**Vincent J. Kelley** Chapman, Ks. 67431  
Telephone 913 WA 2-6783



### WE MANUFACTURE AUGERS, CONVEYORS, STEEL BINS AND FUEL TANKS FOR PICKUPS.

Stop in... we'll gladly show you samples of our work & other ways in which we are fully equipped to serve you!

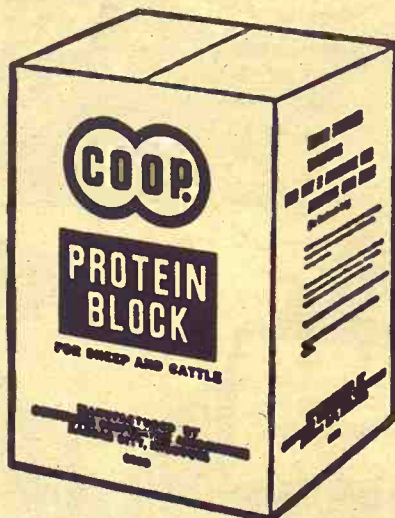
- \* FUNNEL-TYPE CHUTE FOR SILOS
- \* WE MANUFACTURE & REBUILD WENGER MANURE LOADERS
- \* WE BUILD HYDRAULIC HARROW CARRIERS, BALE LOADERS AND SLED CURLERS
- \* WE DO STEEL FABRICATION
- \* STEEL RAFTERS FOR FARM BUILDINGS
- \* ROLL SHEET METAL
- \* DO MACHINE WORK
- \* LENGTHEN TRUCK FRAMES

**BROCKHOFF MFG. CO.**  
PH. AV 4-3012 SABETHA, KANS.

## NOW . . . YOU CAN ORDER HIGH PROTEIN



## CO-OP PROTEIN BLOCKS



CO-OP Protein Blocks are ideal for on-ground feeding. CO-OP Protein Blocks supply your animals with a high concentration of protein (39%), carbohydrates, vitamin A and minerals. All you do is put them on the ground. Cattle find them quickly. Cattle do well, look good and gain fast even on late summer pasture or fall cornstalk feeding with highly palatable CO-OP Protein Blocks.

LABORATORY  
TESTED . . .  
AND  
FEEDLOT-  
PROVEN

Manhattan **FARMERS** Cooperative Assn.  
Manhattan-Alta Vista  
Westmoreland-Onaga

St. Marys **Farmers Union Co-op**  
Business Assn.

Greenleaf **Farmers Co-op Elevator Assn**  
Greenleaf-Linn  
Washington

Carlton **Farmers Union Co-op**  
CARLTON  
TELEPHONE 31

Abilene **Abilene Co-op Assn.**  
Abilene CO 3-1660

Alma **Farmers Union Co-op**  
Alma Ph. 765-3612  
Eskridge Ph. 449-2291

Junction City **Farmer-Stockman Co-op Assn**  
Council Grove  
Junction City CE 8-4158

Clay Center **FARMERS Union Co-op**  
Clay Center-Bala  
Miltonvale-Leonardville



billion.  
livestock transactions  
\$18.7 million head value  
\$3.8 billion.  
hog transactions, value  
\$4.9 billion, were up 44  
percent to 96 million head  
transactions, valued at  
\$1.1 billion, were down 26  
percent to 25.6 million head.

**COMMISSION HAS  
SALES HOPEFUL**  
Kansas Wheat Commission  
is looking for a new  
product with some prom-  
ises potential, has a new  
in test. It's called  
Honey cookie, and it  
produced this week in  
groceries around the  
part of Kansas Wheat

**FF UPS PRICE  
R IN ST. LOUIS**  
er prices going up?  
Brewing Co. has  
its price to retailers in  
by 1 1/2 cents per bo-  
louis taverns were ex-  
to increase the price of  
er by 5 cents a bottle  
cents. The price has  
affected only the St.  
rea, which as the state  
al major breweries,  
ect prices elsewhere.

**ES REDUCED  
ON ALL SIZES**  
Example:

**ar Tractors**  
6-38 — \$59  
ther sizes similarly  
ed.

s Fed. Ex. Tax and  
esalable Ex. Tire  
**FINK**  
TIRE SERVICE  
o, Kans. 456-2575

**ACES**  
8 p.m.  
AY

**HILL  
RIDAY  
IDAYS**

arter  
ntry

**S**  
CHES  
Division at Inventors  
in 1966!

s costly repairs and  
ctor operator.

odels.  
an, Ks. 67431  
33



## Bohemian Bandsman

Czech Days at Wilson drew G&G area people of Central European stock from all over the state. Mr. and Mrs. Adolph Brazda came from Larned. He plays saxophone in a Bohemian band.

## Great Plains Grassland Better In Buffalo Days?

Is the grazing capacity of the grasslands of the Great Plains as great as it was before the white man settled the land? Apparently not, in the opinion of Dr. G. L. Leinweber, head of the department of range science, Texas A. and M. university. The way he calculates, the ranges actually used to carry more animals than now.

Leinweber was one of the

speakers at the recent National Grassland field day and conference at the University of Nebraska field laboratory at Mead, Nebr., about 30 miles from Lincoln.

The Great Plains takes in a lot of territory. The area is generally considered as bounded on the west side by the Rocky Mountains and by the Rio Grande river on the south. To the east the lines are the tilled acres of the cultivated farm land. In Canada, forests mark the end of the grassy ranges.

The Great Plains experiences a wide variety of weather, including severe drought periods. The result has been the development over the ages of hardy grasses that have been able to survive heat, cold and drought.

Only estimates can be made of this vast territory in the days of the Indian, but one fact known is that it was the home of the North American bison or buffalo, which moved in herds north to south seasonally. Leinweber said that the estimates on bison in the plains herds varied from 40 to 50 million head.

In addition to the bison or buffalo there were millions of antelope, deer and probably bighorn sheep. These animals did not migrate as did the buffalo.

An educated guess, he said, would be that the Great Plains were supporting somewhere around 40 to 50 million animal units, on a total area of about 450 million acres. The grazing rate then would have been an animal unit to about 10 acres.

Recommended grazing rates now on the same kind of grassland are 20 to 35 acres to the

FOR  
SHOWING



**HALTERS • COMBS  
AND OTHER SHOW EQUIPMENT**

Available at the Manhattan Oil  
Station Only —

**FARMERS CO-OP ASSN.**

2nd & Pierre PR 6-9467 MANHATTAN

"One Friend Tells Another and HOME Grows"

For Our Rural Neighbors  
Who Want To Strengthen Their Financial Positions

**THE HOME SAVINGS PLAN**

**WILL Work For You . . . As It Does For Others**

**INSURED SAFETY OF SAVINGS**

Save in person or by mail



**HOME**  
SAVINGS AND LOAN ASSOCIATION

107 NORTH FOURTH STREET

MANHATTAN, KANSAS

**YOUR COMMUNITY HOME FINANCING CENTER**

**BUSINESS HOURS**  
9:30 A.M. — 4:00 P.M.  
**SATURDAYS**  
9:30 A.M. to 12:00 Noon

animal unit.

"If these figures are accurate," Leinweber said, "then the carrying capacity of the Great Plains has been reduced by at least one half since man started harvesting the area with domestic animals."

Of course, a lot of things have happened since the buffalo commanded the plains. Fences are one thing. Farmers and ranchers pasture the ranges through good years and bad.

Leinweber said it would take a lot of research to develop methods which would restore the ranges to their original carrying capacity. However, he believed it could be done.

## LEAR JET SHOWS \$11.9 MILLION LOSS

WICHITA — Lear Jet Industries Inc., the Wichita aircraft, stereo and helicopter firm whose stock has been a favorite of speculators for a couple of years, showed a \$11.9 million loss for the fiscal year just ended. Sales were \$27.5 million.

Grass & Grain

August 1, 1967

## State PCAs Loan \$165 Million In Past Year

Volume of the 14 Production Credit Associations in Kansas during the past fiscal year totaled \$165.8 million.

Total volume in the 4-state area (Kansas, Oklahoma, Colorado and New Mexico) for the year was \$572 million, up about 18% from the previous year.

There are 41 associations in the 4-state area, which own 41 percent of the \$7.4 million in stock in the Federal Intermediate Credit Bank of Wichita.

## NEMAHA FREE FAIR AT WETMORE THIS WEEK

WETMORE — The Nemaha County Free Fair will be held here August 3-4-5.



## for the cowman... A REWARDING MOMENT!

At last the rewarding moment for the cowman . . . the care given the mother cow has paid off!

From now until calving time is a critical period for the cow. She is not only maintaining her own body, but building the unborn calf, too.

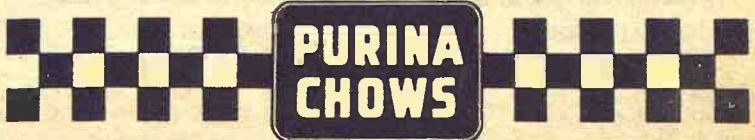
Results on range are harder to measure than in the feedlot—but just as important. Purina Dealers have demonstrated Purina's superiority in the feedlot with public feeding demonstrations.

The same high standards of research—at the Purina Ranch—formulates Purina Range Checkers . . . and for the same reason—results.

Don't be misled by "chin music" and cheap prices. Get Purina Range Checkers where you see the Checkerboard sign . . . prove to yourself Purina feeding can cost you less and make more beef!

Flint Hills Feed & Grain .... PR 8-5322 Manhattan  
Farmers Union Feed Mill ..... 437-2434 St. Marys  
Mor-Kan Elevator ..... 349-2214 White City  
Reading Grain & Lumber ..... AN 9-3842 Reading  
Bartlett Grain Co. .... CE 8-5134 Junction City  
Americus Grain Co. .... 884-3465 Americus  
Gorden Mark Elevator .. ME 2-3381 Clay Center  
Western Grain Mill ..... 767-5933 Council Grove

**LOW COST PRODUCTION...  
the reason more cattlemen feed PURINA®**





## OUR DAILY BREAD

— by G&G Area Cooks

### Mrs. Francis Woolverton, Abilene, Wins Prize

Prize winner this week is Mrs. Francis L. Woolverton, R 4, Abilene. Mrs. Woolverton writes, "I try so many of the recipes I find in your paper and enjoy them very much. I would like to share one of my favorite recipes with all the readers of a mighty fine little paper, Grass & Grain."

#### SKILLET CABBAGE

2 slices bacon, cut into bits  
4 cups cabbage, shredded  
1 cup celery, sliced thin  
1 cup carrots, shredded  
1 green pepper, sliced thin  
2 fresh tomatoes cut into pieces  
1 onion, sliced fine  
Salt and pepper to taste  
Fry bacon bits in skillet. Add the vegetables. Cook five to seven minutes with lid on. Stir occasionally. Serves four to six.

\*\*\*

Looking for something different in a casserole? How about one using shrimp?

#### SHRIMP CASSEROLE

1 can mushrooms (bits and pieces) drained  
1 can shrimp (drained and cooked till light brown)

3 tablespoons butter  
1½ cups cooked rice  
3 tablespoons catsup  
2 tablespoons Worcestershire sauce  
1 cup grated cheese  
1 cup cream or canned milk  
Salt and pepper to taste on crumbs enough to cover top. Place in a casserole in a 325-degree oven and cook till it bubbles a little. Doesn't take long as everything is already cooked, just leave till all is heated through well.

\*\*\*

Dips are a summertime favorite. Here is one that the family and guests will enjoy:

#### HICKORY CHIP DIP

1 can condensed pea soup  
½ cup mayonnaise or salad dressing  
6 slices crisp bacon, crumbled  
¼ cup chopped sweet pickles  
¼ teaspoon liquid red pepper seasoning

Combine all ingredients in a small bowl. Blend well. Chill several hours to season. Spoon into small bowls. Garnish with pickles, chips if you wish. Serve with crisp green pepper squares, carrot sticks, potato chips, pretzels or your favorite crackers. Makes 2 cups.

\*\*\*

Potato salad is always a favorite:

#### BUFFET POTATO SALAD

8 medium potatoes, pared and

### We're fussy when we fix your watch

Fastest Service In Town. Work done in our shop. All watches electrically timed and guaranteed to be as accurate as new.

*day's*  
**HOLIDAY**  
JEWELERS

OF MANHATTAN

425 Poyntz—PR 6-7821

Across from the Courthouse

diced ((9 cups)  
1 teaspoon salt  
¼ teaspoon garlic powder (or 1¼ teaspoons garlic salt may be used)  
½ envelope onion soup mix blended in ½ cup water  
½ cup mayonnaise or salad dressing  
3 tablespoons chopped dill pickles or pickle relish (optional)

Put potatoes in large pan, cover with cold water; add garlic salt or powder. Bring to a boil, reduce heat and simmer 10 minutes. Drain and put in a casserole dish. Combine all other ingredients. Pour over potatoes and bake (covered) 350 degrees for 45 minutes. Remove cover and leave in oven until slightly browned or put under broiler for a few minutes. Serves six to eight.

\*\*\*

### Plants Need Oxygen

Garden plants, indoors or out, need a constant supply of oxygen to the roots to maintain healthy growth. Porous containers, such as red clay pots, provide an adequate air supply.

### Note Of Thanks

A recent recipe contest winner, Mrs. Clyde Chayer of Palmer, sends a note of thanks: "I want to thank you so much for the teflon egg poacher. I poach eggs all the time but it is the first time I've ever used a teflon one. They really are nice and I enjoy using it so much — not having to scour. Thanks again."

## Accent Walls Of Hardwood Popular In Homes, Offices

With hardwood paneling for accent walls in homes and offices becoming more popular, many homemakers and business men welcome information on the subject. Here are a few basic facts that may be helpful in selection.

Two-thirds of all hardwood plywood produced today goes into wall paneling. Nearly 50 per cent of this is prefinished.

Walnut accounts for ten per cent of hardwood plywood. Other popular woods are birch, Lauan, gum, cherry, oak, elm and maple.

Hardwood plywood is an engineered product, fabricated into panel form and cross laminated for balanced strength and dimensional stability. It is made by joining together three or more layers of wood with modern adhesives as durable as the wood itself.

The standard size of hardwood plywood is 4x8 feet. However, 4x10 feet panels are readily available from retail lumber yards. Standard thicknesses in stock are ¼, ½ and ¾ inches.

Fire resistive plywood panels of walnut and other hardwoods with ratings as low as 0.25 can be obtained through pressure impregnation with fire retardant chemicals. Untreated walnut, being a close-grained wood, takes a long time to burn. In a recent museum fire at Fort Scott, Kans., the walnut stair rails and door jams withstood the heat which burned through the roof.

Individuality in interior home design can be obtained by selecting figure types and special matching effects. In a blueprint match, for example, selected walnut veneers can be tailored to the job: Over, under and around windows and doors as well as across a door. Mismatched panels are also manufactured purposely to add special distinctive effects.

### MATTRESS & BOX SPRINGS

Specials Every Day  
New Low Prices  
Buy Direct

Also Complete Rebuilding Service

### Manhattan Mattress Co.

414 S. 4th PR 8-5302

### why ELECTRIC heat?

### low cost

From the beginning, the history of electric rates has been one of progressively lower cost to you, the consumer, and the future promises continued reductions. Today, you can have wonderful ELECTRIC HEATING for no more than any other comparable system! Low initial cost plus low operating cost makes ELECTRIC HEAT easy on any budget. Investigate—it costs a lot less than you think!

FLAMELESS  
ELECTRIC  
HEAT COSTS  
LESS THAN  
YOU THINK



## Save corn—up to 10 bushels an acre. Save time—switch rear units in 5 minutes. The 234 corn harvester—from IH.

No other tractor-mounted picker on the market can pay off on these two big promises. Because no other picker is designed and built like the International 234.

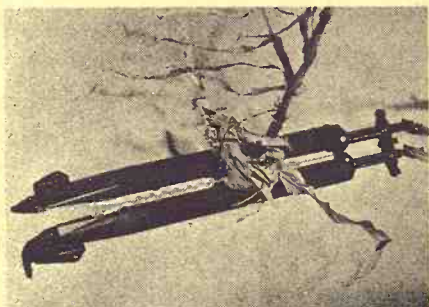
Take the snapping unit. Designed like a combine corn head. Same corn-saving efficiency. Best news is the scalloped stalk rolls and rotary stripper plates. Cut butt shelling to almost zero, even in single cross seed production. Deep pockets save loose ears. Low, gently-tapered gatherer points lift up the worst down corn, save weak-shanked ears.

That saves you corn—and a lot of it. What about time? The unique power-mounted universal frame solves that problem. Bolts on your tractor at only

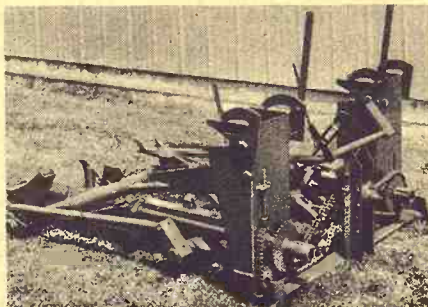
3 points—in minutes. Fits 26 different models of 5 makes of tractors, even those with rear tires as big as 18.4 x 38. Lets you mount—or switch—rear units in 3 to 5 minutes. The 12-roll husking unit. Or the sheller unit. Or the rear snapper hopper—if you want to leave the husks on. No sweat. No strain. No tools.

Want to free up your tractor for other work? Drop the snapping unit—and the rear unit—and the universal frame. In 10 minutes. Maybe less.

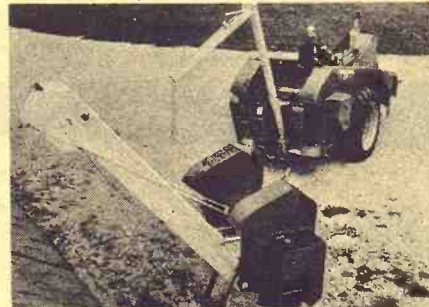
Sound too good to be true? Stop in at your IH dealer and let him prove it. And talk to him about the IHCC credit program that's tailored to your income pattern.



Scalloped stripper rolls and rotary stripper plates practically eliminate field shelling losses. Deep-pocket snapping rolls are optional.



Power-mounted universal frame mounts quickly. All drives are self contained. Drive couplers—and pto couplers—mate automatically.



Switch from husker—to sheller—to snapper hopper—in 5 minutes or less. Couplers mate automatically. No sprockets or chains to fuss with.

## "BONUS" TIME IS HERE

See one of these IH dealers and find out how you can buy certain new IH equipment now at cash-in-pocket savings.

HERINGTON  
Pioneer Service & Sales  
MINNEAPOLIS  
Chapman Impl. Co.  
CLAY CENTER  
Norquist's Inc.

ABILENE  
Abilene Truck & Tractor  
MARYSVILLE  
Bruus Brothers  
FALUN  
Dauer Impl. Co.

HANOVER  
Hanover Impl. Co.  
LEONARDVILLE  
Kendall Garage  
WAKEFIELD  
Auld Chevrolet

COUNCIL GROVE  
Macha-Revere  
BELLEVILLE  
Chapman's On US hwy. 81  
GYPSUM  
Kuhn Impl. — OW 6-4411



Need Oxygen  
plants, indoors or out.  
constant supply of oxy-  
the roots to maintain  
growth. Porous contain-  
as red clay pots, pro-  
adequate air supply.

Of Thanks  
at recipe contest win-  
Clyde Chayer of  
ends a note of thanks  
to thank you so much  
eflon egg poacher. I  
ys all the time but it  
st time I've ever used  
one. They really are  
I enjoy using it so  
not having to scour  
gain."

## Hardwood Offices

Standard size of hard-  
wood is 4x8 feet. How-  
0 feet panels are read-  
able from retail lumber  
standard thicknesses in  
1/4, 1/2 and 3/4 inches.  
Resistive plywood panels  
t and other hardwood  
ings as low as 0.25 can  
ned through pressure  
tion with fire retard-  
icals. Untreated wood  
g a close-grained wood  
long time to burn. In  
museum fire at Fort  
ans, the walnut stair-  
door jams withstood  
which burned through

Quality in interior home  
can be obtained by se-  
gure types and special  
effects. In a blueprin-  
or example, selected  
eneers can be tailored  
ob: Over, under and  
vindows and doors as  
eross a door. Mismatch  
are also manufac-  
y to add special distic-  
ts.

MATTRESS &  
BOX SPRINGS  
Specials Every Day  
New Low Prices  
Buy Direct  
Complete Rebuilding  
Service

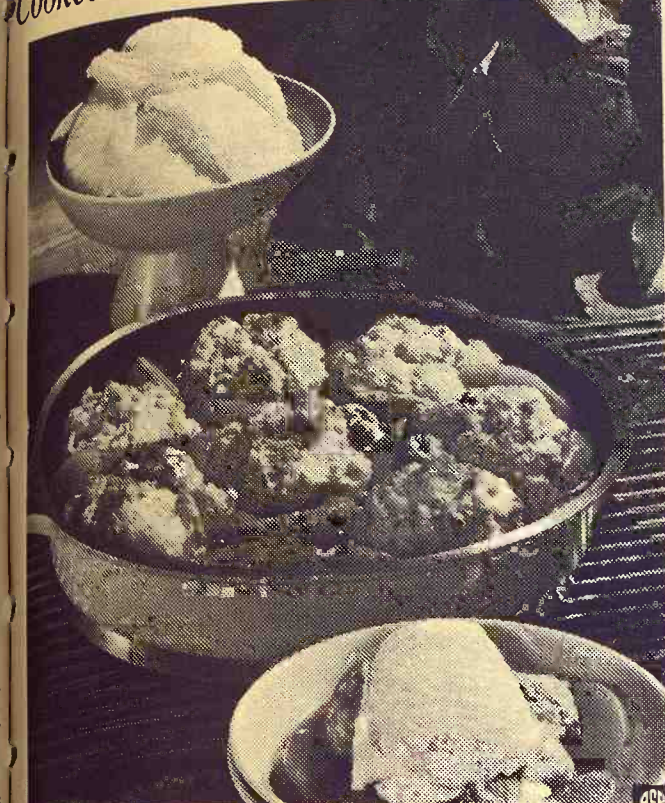
Manhattan  
Mattress Co.  
4th PR 8-5322

my  
ELECTRIC  
near?  
cost

the beginning, the  
of electric rates has  
one of progressively  
cost to you, the com-  
and the future prom-  
continued reductions.  
you can have won-  
ELECTRIC HEATING  
more than any other  
arable system! Low  
cost plus low operat-  
ost makes ELECTRIC  
easy on any budget.  
gate—it costs a lot  
han you think!

ELESS  
TRIC  
COSTS  
THAN  
THINK

## Cereal Peach Dumplings Cooked Out Of Doors



Steaming hot Cereal Peach  
Dumplings topped with a scoop  
of slightly melting ice cream  
are tempting fare with which  
to beguile guests at an outdoor  
meal away from home. It can  
be done if you have a skillet  
with a tight fitting lid. The  
dumplings steam tender and  
golden in the peach juice over  
a low charcoal fire or on an oil  
or camp stove as easily as they  
do on the surface of the kitchen

range. Try making the dump-  
plings with a corn flake biscuit  
mix base. The cereal provides  
a nice crunch. This is just an-  
other way of proving that cer-  
eal's multi-faceted flavors and  
forms lend themselves to creat-  
ive cookery.

### CEREAL PEACH DUMPLINGS

- 1 can (1 pound 14-ounce) slic-  
ed peaches, undrained
- 2 cups prepared biscuit mix

1 1/2 cups corn flakes, crushed  
to make 3/4 cup crumbs  
1/3 cup sugar  
1/4 cup butter or margarine,  
melted  
1/4 cup milk  
1/2 teaspoon cinnamon  
Pour undrained peaches into  
10-inch skillet; heat. Combine  
biscuit mix, corn flake crumbs,  
1/4 cup sugar, butter or margar-  
ine and milk; stir to make a soft  
dough. Drop 8 large spoonful  
biscuit mix onto hot peaches.  
Cover; cook slowly until dump-  
plings are thoroughly done 12-15  
minutes. Serve hot, plain or  
with vanilla ice cream. Serves  
eight.

### No Need To Measure

A 6-ounce can of evaporated  
milk is the equivalent of 3/4 cup.  
So if a recipe calls for 3/4 cup of  
the undiluted milk, there is no  
need to measure; just use it  
from the can.

August 1, 1967

Grass & Grain

7

## Salad Fork Is Quite A Versatile Utensil

Salads have achieved such  
versatility and are served at  
so many points on the menu  
that the question inevitably  
arises, "where do I properly  
place the salad fork?"

This advice might help:  
For salad served as a first  
course or appetizer, place a sal-  
ad fork to the left of the place  
fork.

For salad served with the  
main course or following it,  
place the salad fork inside the  
place fork, nearest the plate.

Any salad may be cut with  
the place knife when necessary.

For salad served as the main  
course, especially when it con-

tains foods that need cutting,  
use the regular place fork and  
place knife.

The salad fork with its broad  
tines and comfortable size, is  
eminently usable not only for  
salads but for desserts such as  
pie and cake, or for fish and  
appetizers. It's just the right  
size for a child's place fork.

The salad fork can also dou-  
ble as a place fork at buffet  
meals when the guest list is  
larger than your supply of  
place settings. If you need ex-  
tra knives, use hollow-handle  
butter spreaders. In this way,  
eight place settings can take  
care of sixteen guests.

## The First of Manhattan says... TRANSPLANT NOW

TRANSPLANT TO

50%

GUARANTEED ON  
CERTIFICATES OF DEPOSIT



We have a Green Thumb  
when it comes to helping you  
grow your money tree.

## TRANSPLANTING SOON TO THE NEW FIRST BANK BLDG.

THINK



MANHATTAN

The great new financial center on  
Poyntz at Juliette will open this fall  
with...

- \* Bankside parking for over 90 cars.
- \* Four Drive-Thru teller windows
- \* Teller facilities at our present lo-  
cation at Fourth & Poyntz.

MEMBER FEDERAL DEPOSIT INSURANCE CORP.

## G&G Directory

### AUCTIONEERING

**Lawrence E. Welter**  
AUCTIONEER  
REAL ESTATE BROKER  
Your Sale Solicited  
Large or Small  
EAST HIGHWAY US 24  
MANHATTAN PR 8-3455  
Real Estate  
And General Sales

**Ed Reimer**  
AUCTIONEER

We Specialize in Selling  
DAIRY CATTLE  
"A complete Sale Service"  
Phone or write for sale dates.  
Telephone 367-2373  
GOESSEL, KANSAS  
"Marion County"

### CONSERVATION

Land Improvement  
"Soil Conservation Doesn't  
Cost—It Pays"  
Ponds, terraces, water-  
ways, and leveling,  
drainage ditches, clear-  
ing, landscape grading.  
**ROGGENDORFF**  
Conservation Construction  
Arthur Roggendorff  
Phone JE 9-3984  
1630 Osage - Manhattan

### DAIRY SUPPLIES

**DeLaval Clay**  
All Makes  
Service & Repair  
Dairy Equipment  
**Joe McClure**  
Ph. 229-5284 Alta Vista

**Wamego Dairy Supply**  
your authorized  
DELAVAL & CLAY  
Dealer  
MILK MACHINES  
New & Used  
BULK TANKS  
New & Used

**CLAY Beef, Dairy & Hog  
Feeding Systems.**  
For estimates or service,  
phone  
913-456-7200, WAMEGO  
913-AV 4-2958, SABETHA

Dale Wells



Pipe Line Bucket Milkers  
Stalls  
324 Frederick ME 2-2811  
CLAY CENTER, KANS.

### Memorials

**CEMETERY  
MEMORIALS**  
54 Year Continuous Service  
Display Located on US24  
East of City Limits  
**SCHAUBEL**  
MONUMENT CO., INC.  
RR 3 Box 20 ME 2-3531  
Clarence Blanc, President  
CLAY CENTER

**MONUMENTS  
MANHATTAN  
MONUMENT CO.**  
J. J. BEAUDET  
Office and Display  
123 No. 3rd  
Office Phone PR 8-5137  
Res. Phone PR 8-4978  
MANHATTAN, KANS.



August 1, 1967

### Use Shades Over Shelves

Install regular window shades over open shelves so they're closed. The shades lend a decorative note to the room and they don't take up the space cabinet doors need for opening.

### To Wash Blankets

When washing blankets, string cardboard tubes from waxed paper towels on your clothesline. Hang the wet blankets over them to dry. They dry nice and fluffy without leaving a line mark on the blanket.



### PLOW BLADES

#### THROW AWAY TYPE

A.C. Hard faced 14" ....	\$7.05
A.C. Economy 14" .....	\$2.95
J.D. Hard faced 14" .....	\$6.65
J.D. Economy 14" .....	\$2.55
IHC Hard faced 14" .....	\$6.65
IHC Economy 14" .....	\$2.55
Ford Hard faced 14" .....	\$6.65
Ford Economy 14" .....	\$2.55
16" blades slightly higher —	

#### MOWER PARTS

Guards .....	\$1.05
Smooth heavy sections ..	15c
Serrated heavy sections ..	16c
Full length wear plate ..	\$2.69
7" knives .....	\$9.99 up
Rake teeth .....	29c up

Poly sale continues as long as supply lasts ... more on order.

### HOLT FARM SUPPLY

Next To Sale Barn  
MANHATTAN PR 8-4343



4th &amp; Pierre



FLOYD WOODWORTH

Stop in and get acquainted with Floyd. He can help you solve any tire problem! Floyd has been in the tire business for 19 years in this area.

Phone Collect  
PR 6-9251



#### BATTERIES

The complete lines for  
CARS - TRUCKS - TRACTORS

3 12 Volts  
Qualities As low as **12.95** Exch.

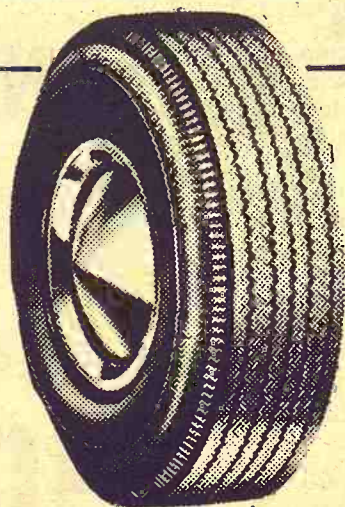
In Manhattan . . . Your Farm Headquarters  
For Tires And Batteries!  
Tractor • Automobile • Truck

### TRUCK TIRES

Regular or Lug  
Tread Designs



### PASSENGER TIRES



ALL SIZES  
Prices as low as **\$11.88**

650x13  
Blackwalls

Plus  
F.E.T.  
1.80



ALL SIZES FRONTS & REARS  
TRACTOR TIRES

12x38 6 ply ..... \$77.00 plus 6.57 F.E.T.  
600x16 4 ply ..... \$14.00 plus 98c F.E.T.

### Deauville Style AUTO SEAT COVERS

Originally Selling For \$16.88  
A GOOD SELECTION  
AT SPECIAL PRICE

ONLY **\$6**

To Fit Most American Cars

## Manhattan Commission Co., Inc. Sale Every Thursday

2 1/4 MILES EAST OF MANHATTAN ON US 24

We had another good run of cattle for this time of year. Sold over 500 head. Our market on good, top calves held steady, feeder cattle sold a little weaker, cows and bulls were on the low side.

Contact us any time for an estimate on your cattle at no obligation. The following is a partial listing of the consignments:

#### FAT CATTLE & FEEDERS

1 whiface steer	610 @	28.25
1 blkwhif steer	600 @	28.00
1 whiface steer	615 @	27.80
1 charwhif steer	665 @	26.80
1 roanwhif steer	660 @	26.60
3 charolais steers	600 @	26.30
1 blkwhif steer	600 @	26.30
2 brofwhif steers	610 @	26.10
8 black steers	888 @	25.90
7 shthorn steers	781 @	25.75
17 whiface heifers	667 @	25.50
1 whiface steer	685 @	25.50
2 blk&bwf steers	1025 @	25.25
15 whiface steers	928 @	25.25
1 shthorn steer	670 @	25.20
1 whiface steer	860 @	25.00
1 whiface steer	955 @	25.00
1 whiface steer	725 @	24.90
3 blkwhif steers	766 @	24.80
1 blkwhif steer	1120 @	24.60
1 shthorn steer	680 @	24.60
4 blkwhif steers	1023 @	24.60
2 brndwhif steers	892 @	24.55
4 whiface steers	812 @	24.55
1 black steer	950 @	24.20
1 whiface steer	715 @	24.00
1 ayrshire steer	910 @	22.60
1 holstein steer	1325 @	22.40
1 whiface heifer	835 @	22.40
6 holstein steers	808 @	21.90
2 holstein steers	757 @	21.80
1 ayrshire steer	945 @	18.90

#### STEER CALVES

2 whiface steers	415 @	31.50
14 black steers	492 @	31.30
11 black steers	479 @	31.30
4 black steers	487 @	31.20
20 whiface steers	565 @	31.00
10 whiface steers	550 @	31.00

7 black steers	419 @	31.00
2 whiface steers	415 @	30.60
3 black steers	365 @	30.30
3 whiface steers	451 @	30.30
8 black steers	557 @	30.20
2 whiface steers	515 @	30.10
1 whiface steer	365 @	30.10
20 whiface steers	539 @	30.10
1 whiface steer	445 @	30.00
5 whiface steers	520 @	29.80
3 whiface steers	526 @	29.80
1 whiface steer	315 @	29.25
1 whiface steer	475 @	29.00
4 whiface steers	557 @	28.50
1 whiface steer	470 @	28.20
2 whiface steers	437 @	28.10
2 whiface steers	505 @	28.10
1 whiface steer	545 @	28.00
2 blk&bwf steers	582 @	28.00
1 whiface steer	515 @	27.90
8 shthorn steers	560 @	27.75
1 whiface steer	540 @	27.60
4 whiface steers	545 @	27.60
1 whiface steer	540 @	27.50
1 brofwhif steer	470 @	27.50
1 black steer	430 @	27.00
2 whiface steers	532 @	27.00
3 whiface steers	525 @	26.90
6 shthorn steers	576 @	26.60
1 whiface steer	510 @	26.20
1 whiface steer	560 @	26.00
3 black steers	526 @	25.50
1 black steer	425 @	25.00
1 holstein steer	430 @	22.30

#### HEIFER CALVES

18 black heifers	471 @	27.50
7 black heifers	501 @	27.40
4 whiface heifers	425 @	27.40
5 black heifers	446 @	27.40
1 whiface heifer	425 @	27.30
15 whiface heifers	506 @	27.20
1 blkwhif heifer	530 @	27.00
11 whiface heifers	508 @	27.00
1 charwhif heifer	185 @	27.00
8 black heifers	416 @	26.80
4 black heifers	490 @	26.75
7 whiface heifers	444 @	26.70
5 black heifers	491 @	26.40
10 blkwhif heifers	596 @	25.50
1 whiface heifer	455 @	25.10
1 whiface heifer	530 @	25.10
1 blkwhif heifer	595 @	24.90
1 whiface heifer	510 @	24.40

2 whiface heifers	355 @	24.10
2 whifbrof heifers	530 @	24.10
2 whiface heifers	547 @	23.50
1 whiface heifer	545 @	23.50
3 whiface heifers	576 @	23.30
3 charolais heifers	573 @	23.10

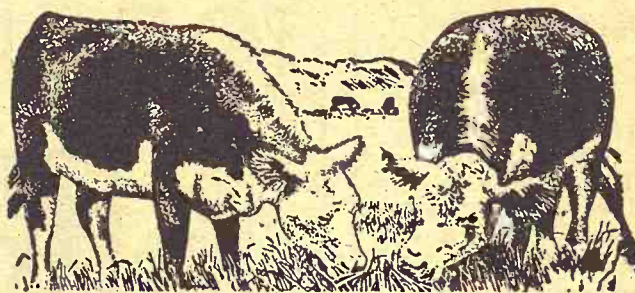
#### BULLS

1 charolais bull	1290 @	23.00
1 whiface bull	1805 @	23.00
1 whiface bull	1595 @	22.55

#### COWS

1 blkwhif cow	930 @	20.50
1 black cow	790 @	20.40
1 whiface hfret	1060 @	22.00
1 cow	1080 @	19.80
1 blkwhif cow	670 @	17.80
1 holstein cow	1150 @	17.10
1 holstein cow	1270 @	16.80

1 holstein cow	1270 @	16.10
1 whiface cow	1080 @	16.10
1 holstein cow	1600 @	16.10
1 holstein cow	1380 @	16.00
1 whiface cow	1075 @	16.00
1 holstein cow	860 @	15.80
1 whiface cow	1000 @	15.70
1 whiface cow	1120 @	15.70
1 holstein cow	1435 @	15.60
1 holstein cow	1705 @	15.50
1 whiface cow	1080 @	15.40
1 whiface cow	1115 @	15.30
1 whiface cow	1085 @	15.30
1 whiface cow	1055 @	15.20
1 whiface cow	810 @	15.10
2 black cows	902 @	15.10
1 black cow	1075 @	15.00
1 black cow	1230 @	14.70
1 brofwhif cow	1300 @	14.30
1 brnswiss cow		@ 242.50



#### FOR ESTIMATES

W. E. DUGAN ----- Alta Vista, 229-6430  
JOE RAINE ----- Maple Hill, MI 3-2226  
DON WELLS ----- Manhattan, JE 9-3744  
MERVIN SEXTON ----- Abilene, CO 3-3449  
C. J. WENTZ, bus. mgr. Manhattan, JE 9-5561

BARN PHONE ----- Manhattan, PR 8-4415

Consignment Reports  
WIBW radio 6:30 A.M. Thursdays  
WIBW-TV 12:15 Noon Wednesdays

The Manhattan Commission  
Co., Inc.



MANHATTAN, KANSAS

East On US 24

Auctioneer: Joe Raine

Please do not bring hogs in for sale on Thursday afternoon, as we will be having large runs of cattle and you might not be able to unload, and they will get hot on you. For information call the barn in Manhattan, PR 8-4415. In Alma, Oscar Nelson, 765-3861. In Alta Vista, W. E. Dugan, 229-6303. Or you may call Joe Raine at Maple Hill MI 3-2226 or Eskridge Yard 449-2347.

#### BUYING

### FAT HOGS

We buy fat hogs daily at the Manhattan Commission Co., Inc. sale barn. We buy direct with no commission to the seller.

#### BUYING HOURS:

Mondays thru Fridays  
8 a.m. to 4 p.m.  
Saturdays 8 a.m. - 2 p.m.  
Manhattan PR 8-4415

### WE ARE ALSO BUYING FAT HOGS AT THE W. E. DUGAN YARDS ALTA VISTA

SATURDAYS & MONDAYS  
8 a.m. to 3 p.m.  
Phone Alta Vista 229-6430  
or Manhattan PR 8-4415

AT ALMA & ESKRIDGE  
EVERY WEDNESDAY  
From 8 a.m. to 1 p.m.

Baby Rh  
One of the  
died in the Sw  
one day. Death  
common cause  
in a mud wall  
100 pounds.

What  
Over

The Agricult  
with a chance t  
placement for t  
price standard  
archaic, admits  
the problem tha  
up with a satis  
ment.

Directed by C  
the possibility  
prosperity yar  
says that it can  
thing better.

Secretary of  
ville Freeman h  
erous occasions  
and of parity  
provide an adeq  
concept for me  
nomic health of  
ers.

He says it is  
date.  
Parity prices  
would give far  
erally the same  
er in terms of  
es as they had  
had of 1910-14.



Johnny  
Says  
The early far  
grain; the late  
chaff.



quarters  
Truck

REARS

plus 6.57 F.E.T.  
0 plus 98c F.E.T.

Style  
COVERS

For \$16.88  
ECTION  
PRICE

ican Cars

rsday  
AN ON US 24

BUYING  
T HOGS

fat hogs daily at  
attan Commission  
ale barn. We buy  
no commission to

ING HOURS:  
ays thru Fridays  
a.m. to 4 p.m.  
ays 8 a.m. - 2 p.m.  
an PR 84415

E ALSO BUYING  
HOGS AT THE  
DUGAN YARDS  
LTA VISTA  
AYS & MONDAYS  
m. to 3 p.m.  
Alta Vista 229-6430  
hhattan PR 84415

MA & ESKRIDGE  
Y WEDNESDAY  
8 a.m. to 1 p.m.

not bring hogs in  
on Thursday after-  
noon. We will be having  
s of cattle and you  
be able to unload.  
will get hot on you.  
formation call the  
Oscar Nelson, 765-  
Alta Vista, W. E. Du-  
3303. Or you may  
tinue at Maple Hill  
or Eskridge Yard

Commission  
Co., Inc.

HATTAN, KANSAS  
East On US 24

Joe Raine



### Baby Rhino Dies at Kaycee Zoo

One of the few rhinoceros to be born in the United States died in the Swope Park zoo at Kansas City last week, living only one day. Death was caused by a ruptured artery in the lung, a common cause of animal infant mortality. The rhino was born in a mud wallow and appeared to be healthy, weighing about 100 pounds.

## What's Better? Reflects USDA Over Despised Parity Figures

The Agriculture Department, with a chance to suggest a replacement for the farm parity price standard which it says is archaic, admits after a study of the problem that it can't come up with a satisfactory replacement.

Directed by Congress to study the possibility of a new farm prosperity yardstick, USDA says that it can't think of anything better.

Secretary of Agriculture Orville Freeman has said on numerous occasions that the standard of parity prices does not provide an adequate or accurate concept for measuring the economic health of American farmers.

He says it is largely out of date.

Parity prices are those which would give farm products generally the same purchasing power in terms of goods and services as they had in the base period of 1910-14.

Freeman and other critics of the parity price standard — including Freeman's Republican cabinet predecessor, Ezra Taft Benson — contend that farm prices at such a level might or might not reflect an agriculture on an income par with businessmen, labor, and professional people.

Freeman has said a better standard would be a parity-of-income standard — one that measured farmers' earnings rather than their prices. It was largely because of this view that Congress in 1965 directed the department to make a study of the parity of income idea and submit a report by mid-1966. But the department asked for additional time. Its report was submitted about the middle of July.

"Despite our best efforts," the report said, "we were unable to develop a parity income index from available data that was satisfactory. Realized net income, however, remains the single most reliable measure of economic well-being of farm families."

At the time the report was made, farm prices reflected 74 per cent of the parity price standard — a deficit that has drawn considerable criticism from some farmers and their leaders. In 1966 farm prices reflected 80 per cent of parity. Prices have not reached the parity level since 1952.

Farm prices averaged about 83 percent of parity under the Eisenhower administration and about 78 under the Kennedy-Johnson administration. But Freeman points out farm prices have failed to reflect greatly increased government farm payments the government has made under the latter two administrations.

The department reports that the net-income figures show that in 1966 farmers were much

better off than the farm prices indicated. The report said the per-capita disposable personal income of farm people was 66 per cent of the percapita income of non-farm people. That was the highest average of record. It compared with 63.4 percent in 1965.

Officials say further that it is certain that many efficient farmers with larger production units made incomes on a par with nonfarm people.

The idea of abandoning the parity-price measuring rule was staunchly opposed by some farm groups which have supported Freeman and President Johnson. These include the National Farmers Union, the National Grange and the National Farmers Organization.

The report to Congress said it was possible to set up an index for measuring what it called parity returns to agriculture, a concept which apparently would not cover all farm income — especially non-money benefits. It said that under such a concept, farmers last year earned on the average 81 per cent as much as they might have earned by renting their land and accepting non-farm employment.

### FIRE MARSHAL FROWNS ON FIREWORKS LAWS

The Kansas Fire Marshal, Arthur Ramey, says the state system to control fireworks is not workable and that he is likely to recommend a model law which allows only paper caps and licensed supervised public fireworks displays.

### RILEY COUNTY HIRES NEW 4-H AGENT

MANHATTAN — Riley County has a new 4-H club agent. He's Gail Garton, who has been with extension offices in Rooks and Ellis counties in the past two years and before that was employed at the Hays Experiment Station.

## Docking Stalls Announcement Again

The Governor's controversy with the Kansas Livestock Association continues to stall.

Governor Docking had said he would name his own livestock sanitary commissioner last week, without the recommendation of the association, but he did not.

The Governor said the candidate himself is not yet ready for announcement.

He said the name of his candidate definitely will be made public before August 5, the date of a meeting in Garden City of the livestock association's executive committee.

## Reply From Livestock Men

EMPORIA — Three leaders of the livestock industry in Kansas last week issued a statement giving their side of the dispute with Gov. Robert Docking over the appointment of a state livestock sanitary commissioner.

Docking has been at odds with the Kansas Livestock Association which is seeking the reappointment of A. G. Pickett as commissioner. Kansas law provides for an appointment by the governor from candidates recommended by the livestock association.

The statement was issued by Earl Brookover, president of the livestock association, and Girdner Crofoot, immediate past president of the organization. Pickett also joined in issuing it.

Four points were emphasized in the statement:

- We don't want this job to become a political football that changes hands every time a different party wins the governorship. The livestock association is made up of both Republicans and Democrats. We don't want this office to become a political plum.

- The main job of the sanitary commissioner is to protect the livestock industry from the spread of diseases in cattle, sheep and hogs. Matters of public health related to livestock are handled by the State Board of Health. Since the main work of the sanitary commissioner concerns prevention of disease in livestock herds, we feel the livestock association should be

able to recommend a man for the job.

- We cannot understand why Gov. Docking does not want to reappoint Pickett. The governor has not criticized Pickett's work. There is no question of his honesty and integrity. So far the governor has not given any reason why Pickett should not continue in the job. This man has spent 18 years as livestock sanitary commissioner and we think he is doing a fine job.

- Over half of the money needed for the sanitary commissioner and his staff comes from livestock men in the form of fees and other charges."

## Stockmen Shell Out For P.R. Job

The American National Cattle Men's Association (ANCA) at Denver last week took a major step toward gaining consumer understanding, Girdner Crofoot, Cottonwood Falls cattleman, believes.

The association will hire a professional public relations service to provide comprehensive study of beef production problems for use of the consuming public.

Crofoot is chairman of the ANCA national marketing committee charged with a study of marketing conditions which have been affecting cattlemen adversely for nearly three years.

Nearly 50 Kansas cattlemen attended the ANCA meeting.

Marketing committee recommendations at the beginning of 1967 were that the beef producing industry should market at least 5 per cent less beef this year to keep prices at a stable level and provide for survival income in the cattle business.

"The July 1 federal reports of cattle on feed showed 2 per cent fewer animals in the feedlots," Crofoot said Thursday. "But it also showed a number of things that indicate we are a long way from being out of the woods yet."

"The cattle industry is still in an unstable condition and we are not on sound footing yet," he said.

He pointed out that although there was some marketing of cattle at lighter weights, there still are too many beef marketed above 1100-1200 pound weights.

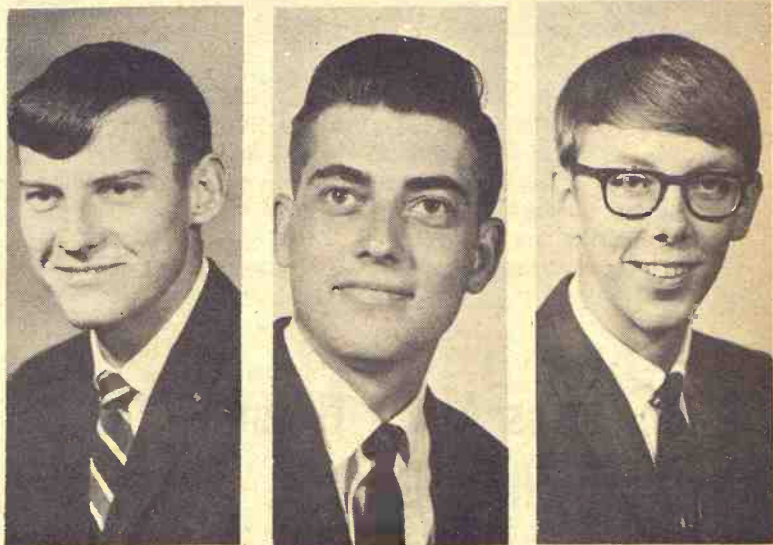
These heavier cattle offset the fact that there are fewer cattle on feed as of July 1, he pointed out.

Another aspect of the upcoming situation Crofoot said Kansans and other beefmen are discussing in Denver is that range grass, growing lushly because of the rainy summer, means that cattle coming off grass and into feedlots this fall will be heavier than usual.

"If they take these heavier cattle, and feed them for as much gain as usual, we still are going to be producing a surplus of beef for the market," Crofoot said.

Beefmen will need to fight that tendency to market their cattle with that extra hundred pounds of gain they can put on so easily in this kind of a year.

Grass, fodder and feed grain prospects all are good and this will increase the tendency to feed heavily and market heavier cattle.



### PCA Scholars

Holders of scholarships at Kansas State University this fall which are paid by the Production Credit Associations in Kansas are Ronald Lundquist, Lindsborg; Gale Fuller, Miltonvale; and David Knight, Stockton. The award to Fuller is a new one. The other two are renewals. All are seniors.



Johnny Kaw

Says:

The early farmer gets the grain; the late one gets the chaff.





## Abilene Entries In National High School Rodeo

The National High School Rodeo at Elko, Nevada, this week will draw as contestants Theresa and Bob Clemence, daughter and son of Mr. and Mrs. Joe Clemence of Abilene. They took their horses Candy and Mack with them. Theresa is 15; Bob, 14. She'll compete in pole bending, cloverleaf and girls cutting horse event. Bob will be entered in calf roping and boys cutting horse event.

We asked

Bill Richards Orleans, Nebraska

about drying grain

with an

# MC CONTINUOUS FLOW DRYER



"I've tried both batch and bin grain drying — then bought my model 600 MC Continuous Flow Grain Dryer. My MC Grain Dryer is nearly automatic — it dries grain with a low heat-air ratio — then cools the grain to perfect storage temperature before it goes into the bin. I like the "no maintenance" feature of the MC Dryer — I've replaced only 2 belts in 3 seasons of drying."

## Don't Guess About Grain Dryers. Call GEIS!

for the name of your nearest MC Flow Grain Dryer Dealer. Or write Department GG8.

### GEIS EQUIPMENT CO.

Hutchinson, Sublette, Colby, Kansas

## They Dried Their Crop At A Coin Laundry

Instead of drying your crop in one of those big grain dryers, did you ever think about drying it in the coin laundry in town? So many pounds for a quarter?

Five persons were serving 10-day jail terms in Belleville starting last week for just that. The crop they tried to dry in a Byron, Nebr., coin laundry was marijuana.

Republic County sheriff Robert Blecha arrested the five on the farm of Ben Blecha of Munden, while Blecha and his wife were away for the weekend.

The five were Kay Blecha, 26, Boulder, Colo., son of the owners of the farm but no relation to the sheriff; Thomas Patchett, 21, Port Clinton, Ohio; Terry Harding, 21, Rolla, Mo.; Stephen Bisbee, 21, Fair Haven, Mass., and Miss Barbara Jean Berger, 20, University City, Mo.

The five were caught hauling 336 pounds of both wet and dry marijuana valued at \$67,200 in a rental van truck on US36.

The five pleaded guilty to charges and were to serve 10 days in jail, to get out Tuesday this week.

Mrs. Reinhold Harms, owner of the coin laundry at Byron, Nebr., became suspicious after she found bits of the weed in

the lint traps of her dryers. She learned that cars bearing Republic County license plates had been seen at the laundromat and she called police authorities. Sheriff Blecha said marijuana grows wild in this Kansas-Nebraska area.

Grass & Grain 10

The five told the sheriff they were on their way to Massachusetts to sell the stuff. Narcotics authorities of the FBI were advised of the case.

## STORMOR DOES MORE



"PROFIT TWO WAYS WITH

**STORMOR**

## DRY-O-MATION"

Have a STORMOR Dry-O-Mation System tailored to your needs or convert your present bins — and profit from early harvest.

■ A STORMOR Dry-O-Mation System is adaptable — bins range from 14 to 60 ft. in diameter, 1,000 to 66,400 bushels in drying capacity (up to 105,000 bushels storage).

■ Farm-engineered Dry-O-Mation components will make your existing bins work even harder for you.

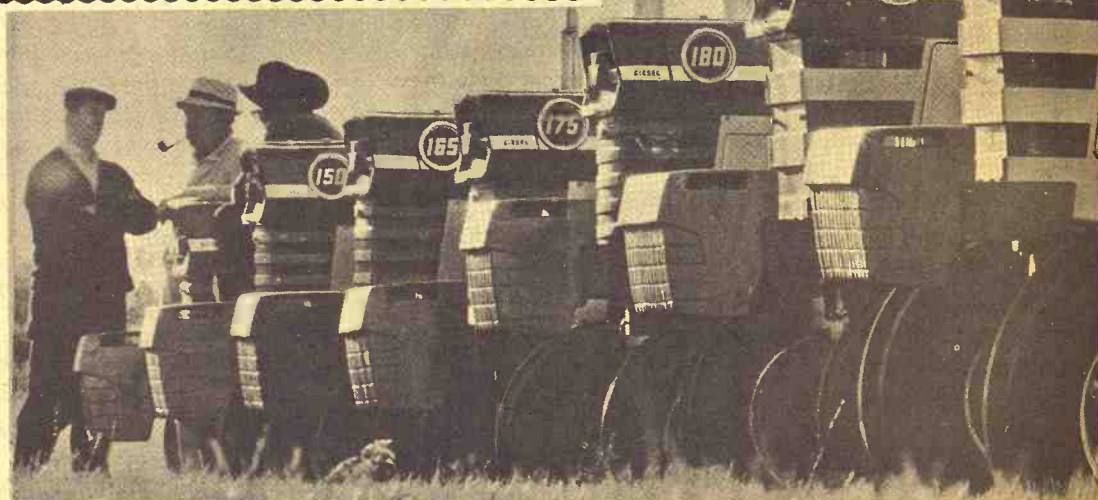
## MIX MILL SYSTEMS

JAMES WAHLE A/C 913 CE 8-7660  
RT. 2 JUNCTION CITY, KANSAS

• Dry-O-Mation • Clear-Span Steel Buildings • Cribs  
• Batch Dryers • Oxygen-Free Storage • Bulk Feed Bins

**STORMOR** Inc., Fremont, Nebraska

WHY WAIT UNTIL FALL  
TO BUY A NEW TRACTOR?



Massey-Ferguson

Offers

# NO INTEREST CHARGES

UNTIL JANUARY 1, 1968  
ON ALL NEW MASSEY-FERGUSON TRACTORS  
Financed by Massey-Ferguson on the Retain Installment Plan

## Choose From 20 New Models

## Hard To Believe?

GET ALL THE INFORMATION FROM YOUR NEARBY M-F DEALER

Swiercinsky Bros.  
BELLEVILLE

Circle T Impl. Co.  
CLAY CENTER

Pfister-Rhodes Impl. Co.  
JAMESTOWN

Kuhlman Motor Co.  
LINN

Brauchi Bros.  
MARYSVILLE

Gilley's Implement  
MINNEAPOLIS

Salina Farm Supply Inc.  
SALINA

Brown Motor Co.  
WHITE CITY

Winifred Impl. Co.  
WINIFRED

NFC  
Hato

CORNING,  
dional Farmer  
which conduc  
action earlier  
nounced its m  
next month w  
most or all f  
the market.  
Oren Lee S  
the NFO, said  
ters in Corni  
in 28 states a  
attend a strate  
Moines on Au

When

fi  
g  
t  
li

have  
tracto  
really  
lets y



530 Row Crop  
Adjust. Axle

Big-tractor c  
tractor econ  
Case high-to  
that lugs th  
spots  
4 or 8-speed  
8-speed  
fast loading  
ing operation  
Effortless  
power steering  
able axle mo  
Available wi  
diesel, LP ga



530 4 Whe

COMPLET  
FACILIT  
STOCK C

FIELD  
CASE

CLAY CENTE  
Porter Eqp.  
1121 Crawfor

LINN  
Kuhlman Mo

MARYSVILLE  
Brauchi Bro

CHESTER, N  
Grabau Imp

SALINA  
Vahsholtz I

CENTRALIA  
McBratney  
Phone 857-3

MARION  
Longhofer Su

HEBRON, NEE  
Ells Impleme  
Phone 768-63



told the sheriff they  
their way to Massa-  
sell the stuff.  
s authorities of the  
advised of the case.

MORE

ON

to your needs or  
harvest.

ptable—bins range  
0 bushels in drying

ts will make your

EMS

CE 8-7660

ANSAS

gs • Cribb

Bulk Feed Bins

ont, Nebraska

# NFO-To Meet August 16- Hatching New Boycott?

CORNING, Iowa — The National Farmers Organization, which conducted a milk holdout earlier this year, has announced its members will decide next month whether to hold most or all farm products off the market.

Oren Lee Staley, president of the NFO, said at its headquarters in Corning that members in 26 states are being urged to attend a strategy session in Des Moines on Aug. 16.

"There's no question it will be a historic meeting," said Staley. "We'll fill Des Moines."

The NFO chief said members will decide whether to go ahead with an agricultural holdout and what commodities will be withheld.

Holding products off the market, said Staley, is the farmers' best weapon for higher prices.

"It is only using the same principle that businessmen use when they put a price tag on their product," he asserted.

The NFO directors issued a statement saying the meeting in Des Moines will decide whether members are willing to adopt the slogan: "No price, no production."

The board said higher prices are needed to save the family-type farm and the nation's food supply.

## Look For A Tire Price Hike

There's meaning to the consumer that workers at the Goodyear plant at Topeka are back to work with a raise in wages.

Look for a price increase in tires any day now. Major tire manufacturers expect to raise suggested retail prices by 5%, more or less, and they plan to do it very soon.

After one of the longest strikes in the industry's history, tire makers settled for a cost of about 85 cents an hour per worker over three years.

Tire executives were talking about a price increase even before the settlement, which had a higher price than they expected.

The last general boost came in April 1966 when prices rose 1% - 3%.

## Progress On Turnpike Overlay

The Kansas Turnpike is finishing up 50 miles of asphalt overlay in sections west of Emporia and expects to start work on resurfacing spotted areas between Topeka and Kansas City soon.

The work nearly finished west of Emporia: 19 miles near Matfield Green; 12 miles near Emporia; 16 miles near Eldorado; and 3 miles near Wellington.



For Every \$ Spent  
\$3 - \$4 Return  
Works on Hay or Grain

### CONSERVES...

• More nutrients, protein, fat, carbohydrates

### INCREASES...

• Flavor, acceptability, value

### REDUCES...

• Hotspots, offensive odors, waste

GILBERT TESSENDORF or  
JOHN HABLUTZEL  
Wamego, Kans. Ph. 456-7474

NORMAN OBERHELMAN  
Maple Hill, Ks. MI 3-2482

JOHN GEORGE  
Green, Kans.

"It is becoming more evident all the time that no one else is going to meet the farmers' problems — only the farmers themselves," said the statement.

"And as long as they are willing to sell their products at the present prices, they can expect the present low prices to continue."

The NFO, founder in 1955, several times has held livestock off the market to raise prices.

Last March 15, the organization called on farmers to hold their milk until the price was raised from an average of eight cents a quart to 10 cents.

After sporadic vandalism and milk dumping in several states, the Justice Department obtained an injunction in federal court barring any violence and limiting picketing.

Although the milk holding action tapered off with little visible effect on market supplies, the NFO contends it brought public attention to the economic plight of farmers and resulted in changed federal milk marketing orders to minimize seasonal price drops and action by President Johnson limiting dairy imports.

## No Major Tax Hike In Manh'tan

MANHATTAN — Manhattan taxpayers are not likely to pay much higher property taxes this fall, as both Riley County and the city of Manhattan managed to hold their levies slightly below the levels of last year.

The third major part of the total tax bill — from the school district, which is seeking state permission to raise its budget above the 104% state limit — is still not set, altho it will be above the 28.34 mills levied by the school district last year.

The new city rate will be

\$27.44 (per \$1000 assessed valuation) and the county levy will be \$23.51.

Last year Manhattan taxpayers paid a total levy of \$89.61.

### MILFORD DEDICATION

SET FOR MAY 1968

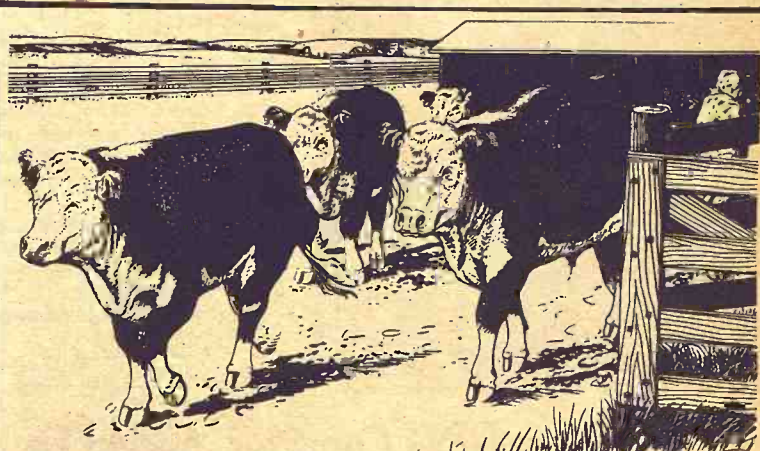
JUNCTION CITY — Dedication of Milford Dam has been set for Armed Forces Day, 1968

August 1, 1967

Grass & Grain

11

—May 18, Earl Herman, Wakefield, president of the Milford Lake Association, announced the date last week.



Commercial Cattle Supplements

by **KEY**

For commercial cattle, KEY manufactures four supplements, each designed to fulfill a need according to your feeding schedule and your type of operation. The formula of each supplement is scientific and practical... used successfully by hundreds of feeders.

**41% • 32% Supplement A**  
**32% Sweet-high Molasses**  
**22% High Molasses**

Each supplement available bagged or bulk, with a \$4 per ton discount on bulk orders. (Key also allows an additional 2% discount on cash orders).

**FALL & WINTER  
BOOKINGS AHEAD**

Time to think about post-summer feeding plans is now, while it's hot. Be sure to discuss your fall-winter needs with a KEY representative, either a dealer or a company representative.

SEE A KEY DEALER OR CALL COLLECT

**KEY MILLING CO.**

Clay Center, Kans.

ME 2-2141

## Kansas Soya provides complete services for feedlot operators...



## plus scientific supplements from nature's richest source of protein

Kansas Soya services include formula guidance; automated custom-mixing; fast, automated, in-and-out service; on-time delivery; Grain Bank facilities. And, of course, 32% and 40% feedlot supplements from nature's richest source of protein. Call collect. Let us know how we can serve you.

**KANSAS SOYA PRODUCTS CO., INC.**  
Phone Dickens 2-7270 • Emporia, Kansas



When your  
fields  
give you  
the green  
light

have the  
tractor that  
really  
lets you go!



530 Row Crop—  
Adjust. Axle

- Big-tractor design, small-tractor economy
- Case high-torque power that lugs through tough spots
- 4 or 8-speed transmission... 8-speed shuttle for fast loading and unloading operations
- Effortless hydrostatic power steering (adjustable axle models)
- Available with gasoline, diesel, LP gas engines



530 4 Wheel Standard

COMPLETE SERVICE  
FACILITIES AND  
STOCK OF PARTS

FIELD TEST A  
CASE NOW!

CLAY CENTER  
Porter Eqt. Co.  
1121 Crawford ME 2-5202

LINN  
Kuhlman Motor Co.

MARYSVILLE  
Brauchi Brothers

CHESTER, NEBR.  
Grabau Impl. Co.

SALINA  
Vahsholtz Impl. Co.

CENTRALIA  
McBratney Impl.  
Phone 857-3815

MARION  
Longhofer Supply

HEBRON, NEBRASKA  
Els Implement Company  
Phone 768-6320





### 3-Legged Calf

A 3-legged calf is getting around quite well in the herd of Hereford and Charolais cattle on the John Schiebel farm. It wasn't born that way. It lost a leg by amputation.

The calf's front left leg was broken just above the hoof when it was born in May. Splints were placed around the leg, but the leg became infected and amputation was necessary.

The calf mastered a 3-legged gait and is now in the pasture with the rest of the herd. It weighs about 200 pounds.

## Three More G&G Counties Added To Great Plains Conservation Program

Barton, McPherson, Stafford, and Smith Counties have recently been designated by the U.S. Secretary of Agriculture to be eligible to receive cost-sharing and technical assistance under the Great Plains Conservation Program.

This brings 59 counties in Kansas under resource aid through the program administered by the Soil Conservation Service.

There are 412 counties in the 10 Great Plains states under the program. The Great Plains Conservation act, passed by Congress in 1956, provides that 62 counties in Western and Central Kansas could come under the law.

The program is limited to areas in the Great Plains where high winds, erodible soils, low rainfall, and other climatic conditions make agriculture hazardous.

The purpose of the program is to stabilize farming and ranching and improve the economy of rural areas by helping land owners plan and install long-range soil and water conservation systems, and by converting unsuitable cropland to permanent plant cover.

When a farmer or rancher signs up under the program,

the SCS, through the local soil conservation district, is obligated to provide him with technical and cost-sharing help.

More than 2600 farmers and ranchers in Kansas have more than two million acres in the program. Some 74,965 acres of cropland will be converted to grass and 101,351 acres of rangeland will be improved.

## Amish Father To Try Ohio School Laws

HUTCHINSON — An Amish farmer who violated Kansas law in order to keep his young daughter away from the worldly contacts of public schools is seeking a new home for his family in Ohio, his attorney revealed last week.

The attorney, E. Dexter Galloway, said Leroy Garber, 41, recently sold his farm in the Old Order Amish community near Yoder and planned to move. He is in Ohio seeking a suitable location, Galloway said.

Garber's daughter, Sharon, whose failure to attend an accredited high school led to a case currently before the U.S. Supreme Court, is now beyond the age of compulsory attendance in Kansas schools, but there are younger children in the family.

Galloway said the Amish in Ohio have parochial-vocational schools which apparently satisfy state law there. He said the Amish school at Yoder was patterned after the Ohio parochial-vocational schools.

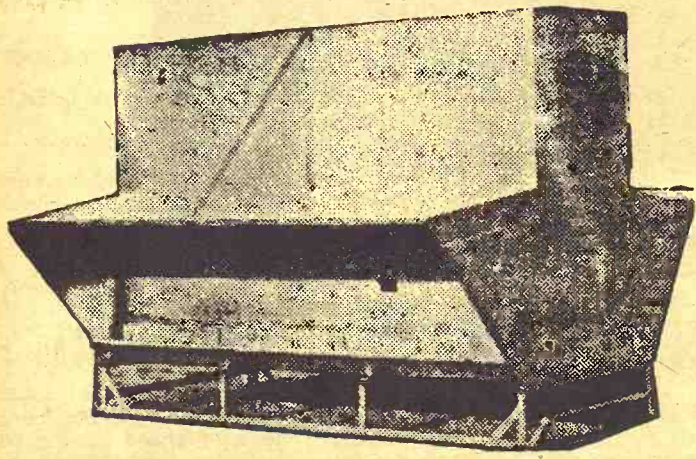
Kansas officials have said, however, that the school at Yoder did not meet accreditation standards.

### Rear Mt. Blades For Year-Round Use

We have on hand a supply of rear mount blades in 6, 7 and 8 ft. sizes that will pay for themselves in extra use. Landscaping, terracing, snow plowing, many uses in feed-lots. Wherever this type of blade can work.

Priced Reasonable.

Manufactured by:  
**FORGY WELDING**  
Phone 857-3241  
CENTRALIA, KANS.



Use a LUTTIG metal all-welded self-feeder to self-feed your cattle. Will not leak or rot, and feeds down good, reasonable in price.

Capacities of 150, 250, and 350 bushels.

**LUTTIG TRAILER COMPANY**

Telephones: Office 535-2810—Res.: 535-2350  
EMMETT, KANSAS

GRASS & GRAIN

## CLASSIFIED ADVERTISING

RATES: \$1 a week for 15 words or less. Add 5c a word for additional words. SPECIAL: Four weeks for the price of three. Boxed ads: \$1.68 an inch per issue, flat rate. Send your ads to Ag Press, 1207 Moro, Manhattan, Kansas. Phone PR 8-4458 (25c handling charge if cash not with order.)

### Livestock

**WANTED TO BUY FEEDER HOGS**  
40 to 100 lbs. Top prices paid.  
J. D. SIMPSON  
130 Grant Ave., Junction City  
Phone CE 8-3754 or CE 8-3939

Kans. State AYRSHIRE  
Consignment SALE

SAT., AUG. 5

Newton Fairgrounds

12 bred heifers

Aug. freshening

4 bred heifers

Sept. freshening

2 bred heifers

Oct. freshening

4 milking cows, 1 cow freshening Aug.

Clarence Beat, sale mgr.; 621 Delrose, Wellington, Kans. Ph. 316 FA 6-4988.

**GOOD 8-YR. old cowhorse**, gentle for anyone to ride. Gentle, broke team ponies, wt. 500, dapples. White mares & tails, colts by side, broke to ride. Also complete show harness. D. B. Grutzmacher, Westmoreland. SB22

**FOR SALE** — Good and choice feeder lambs and ewes for sale at all times. I can furnish you any amount from 1 to 1,000 on a few days notice. Will deliver to your farm or you can pick them up at our yards. We are one of the oldest sheep order buying firms in Kans. Bonded for your protection and we guarantee satisfaction. Call or write Col. Carson E. Hansen, Hansen Livestock Auction, Inc., Phone Area Code 316, MO 5-7771, Hutchinson, Kans. SB22

**EXCELLENT YORKSHIRE & Hampshire boars**, carcass data. Also 50 crossbred gilts, 20 Hampshire gilts. Don Gronau, 316-AT 3-6571, Newton. x22

**NATIONALLY ACCREDITED** Yorkshire and Hampshire boars. Open Yorkshire, Hampshire and crossbred gilts. Eligible for registry. Floyd Meyer, Palmer, Kans. Phone 308. x22

**FOR SALE** — Good age Hereford and crossbred cows out of drought area. \$135 a head in load lots. Theo. R. Stowell, Frankfort, BY 2-4275. SB22

**FOR SALE** — Heavy Holstein springers, Glenn Kandt, Woodbine, Phone 53. SB22

**FOR SALE** — Purebred Hampshire boars. Glenn E. Miller, Vermillion, Kansas. x24

**FOR SALE** — Purebred Hampshire boars. Born Dec. 1966, 250 lbs. Also 4-month-old boars. Stanley Cairns, Greenleaf, Ks., Phone 747-5795. x22

**FOR SALE** — Shorthorn bulls, 17 months old, sired by Elmwood Sportsman Lord. Allen Lord, Clay Center, Kans. x24

**FOR SALE** — Registered Angus bull & open heifers. Eileenmere Breeding. Perry Saffell, 901 Dreiling Rd., Junction City, Kans. x22

**FOR SALE** — Registered Polled Shorthorn bulls. Serviceable age. 1 1/2 E. Pawnee Rock, Kans. Jack Loving. x23

**FOR SALE** — 7-yr. old spotted mare; 3 yr. old Bay gelding. G. L. Carrender, Rt. 4, Manhattan. Phone PR 6-4478. x23

**FOR SALE** — Good age Hereford and cross bred cows out of drought area. \$135 and up in load lots. Theo. R. Stowell, Ph. BY 2-4275, Frankfort, Ks. 66497. SB22

**FOR SALE** — 1 registered meat-type Hamp yearling boar, Valks bloodlines. Theo Musil, Blue Rapids, Kansas. x22

**PALOMINO GELDING**, 7 year old, for sale. Well broke and extra nice. Parade type. Milt Nagely, Rt. 3, Abilene, Kans., Acme, phone 305. SB22

**FOR SALE** — Reg. Spotted & Yorkshire boars 150-225 lbs. Also open gilts, both breeds, vac. for C & E. D. T. Lindquist & Son, 6 mi. So. of Waterville, hwy. 77. Phone ST 5-2358 or ST 5-2784. SB27

**MEAT TYPE** Nationally Accredited SPF Yorkshire boars. Serviceable age, guaranteed. Harvey Herrs, Linn, Kans., phone DI 8-2252. x27

**FOR SALE** — Shetland sheep dogs. White poodle and sheltie stud service. Dorothy Enright, Box 176, Solomon, Kans. x22

**FOR SALE** — Charolais bull. Joe Knoettgen, Clifton, Kans. x22

**FOR SALE** — Four Holstein heifers, two milking and two to freshen in August. K.A.B.S.U. breeding. Telephone 736-2738 Axtell, Kans. John Hothaus, R. R. 2 Axtell, Kans. x22

**FOR SALE** — Bred gilts, 1/2 Poland China, 1/2 Duroc, bred to Duroc boars — to farrow after Sept. 1. Also 1000 gal. tank. Marcellus Matzke, Wheaton, Kans. Phone EX 6-2617. SB22

**REGISTERED SHORTHORN** bulls, serviceable age, suitable for crossbreeding, commercial or purebred use. Keith Lauer, RR3, Abilene. x23

**FOR SALE** — York and Duroc boars eligible for registration. Serviceable age. Louis Weixelman, Wamego, Kans. 456-9805. x23

**PURE BRED** Columbia ewes; 249 2's — 3's \$22.50, 531 4's — Solids \$16.50; 196 Shortmouth \$10.50; 35 stud rams; all from one breeder, used to raise stud rams. Sold only because of extreme drought. Also 50 thin stock cows, 24 Angus; 26 Herefords, Bangs tested and from clean area, \$145. Call Doug Wildin (316) MO 2-7543, Hutchinson, Kansas. SB23

**FOR SALE** — Reg. SPF production tested duroc boars & bred gilts, a few full brothers & a large selection of half brothers to the top selling & indexing boars at KS University test station with the following record. Average daily gain 2.44 average backfat 1.18. Feed efficiency 2.58. Age at 200 lbs, 122 days. Individual index 170. Haves Beck, Junction City, CE 8-6064. SB25

**FOR SALE** — Reg. SPF production tested Yorkshire boars & bred gilts. A few full brothers & a large selection of half brothers to the top selling & indexing boars at KS University test station with the following record. Average daily gain 2.20, average backfat .93, feed efficiency 2.80. Age at 200 lbs., 128 days. Individual index 163. Hayes Beck, Junction City, Kans. CE 8-6064. SB25

### Feed & Seed

**DAIRY PELLETS**, range pellets and all kinds of fertilizers. Manhattan Milling Co., 107 Pierre, Manhattan. TF Chg

**WE ARE** in the market for an unlimited amount of good, dry brome seed. Mason Flora, Harveyville Seed Co., Harveyville, Kans. Ph. 589-2497. SB23

**WE CAN** use good Brome seed, plenty of sacks on hand. Call or see us. Council Grove Elev. Co. Ph. 767-5534. SB22

**CERTIFIED PARKER** and Scout seed wheat. Sidney Johnson, Lindsborg, Kans. Route 2, Phone AC 7-2532. x25

### Poultry

**POULTRY & EGGS** wanted. Deliver or we'll pick up, Wed. Fri.-Sat. Kochs Produce, 702 Elm, Marysville, HI 3-3510. SB37

**CUSTOM POULTRY** dressing, minimum 24 head. Make appointment. Manhattan Creamery, Manhattan, Kansas, PR 8-3192.

### Automotive

### GMC

### TRUCKS

1/2 Ton - 60 Ton

Sales & Service

**TRI-COUNTY MOTORS**

307 N. 3rd MANHATTAN

### AULD'S

IN WAKEFIELD FOR

USED TRUCKS

1963 Ford 1/2 T pickup, V-8, overdrive

1963 Chevrolet 1/2 ton, 4-wheel drive, 6-cylinder, 3-speed

1959 International 1/2 ton, 6-cylinder, 4-speed

1949 Ford 1-T SWB with bed & hoist

1949 Dodge 1 1/4 ton with bed, 6-cyl., 4-speed

1947 Ford 1 1/4 T w/ bed & hoist

1940 Chevrolet 1/2 ton, 4-speed, 6 cylinder



### AULD

CHEVROLET

HO 1-5414

WAKEFIELD

### Need A Pickup?

THESE ARE GOOD ONES

1964 Ford Styleside 1/2 ton pickup, locally owned, only 18,000 miles

1963 Chevrolet 1/2 ton Fleetside pickup, 6-cylinder, 4-speed, 8-foot bed, radio, heater and wrap-around bumper

1963 Chevrolet 1/2 ton Fleetside pickup, V-8 engine, 3-speed transmission, 8-foot bed, radio and heater.

1960 Ford 1/2 ton Styleside pickup, 6-cylinder, 4-speed, 8-foot bed

1959 Chevrolet 1/2 ton Fleetside pickup, V-8 engine, 3-speed transmission, camper cover and deluxe equipment.

1959 Ford 1/2 ton Styleside pickup, 6-cylinder, 3-speed transmission, new engine overhaul

1957 Chevrolet 1/2 ton Stepside pickup, 6 cylinder, 4-speed, 8-foot bed.

### USED TRUCKS

1959 Chevrolet 2 ton truck, V-8 engine, 2-speed axle, 84 in. cab to axle for 13 1/2 ft. bed.

1957 Chevrolet 1 1/2 ton truck, 6-cylinder, 84 in. cab to axle for 13 1/2 ft. bed.

1945 Chevrolet 2 ton truck, 6 cylinder with 13 1/2 ft. combination bed and underbody hoist.

**Open Evenings At 1st & Main**

**OBERMEYER**

Marvin Obermeyer, Owner

Ph. BL 8-2421 Open to 9 p.m.

HERINGTON, KANSAS

Call BL 8-2421 For Evening Appointment

### TRUCKS

1966 IH Scout 4x4, new ... \$2300

1963 IH 1600 2 ton, 2-speed axle ... \$1595

1957 IH 170 2-speed axle ... \$875

1950 IH L150 with bed & hoist ... \$845

1950 IH L150 good ... \$250

1948 Chev. 1 1/2 ton with bed & hoist ... \$575

1962 Studebaker 3/4 ton pickup ... \$550

1950 IH L160 2-speed with bed & hoist, OH ... \$945

### Schumacher's Inc.

Highway 36

EA 5-2316

WASHINGTON, KANS.



**SING**  
words, SPE  
issue, flat  
PR 8-4438

**POULTRY** dressing,  
24 head. Make ap-  
Manhattan Cream  
Manhattan, Kans., PR  
SE2

**Automotive**

**GMC**  
**TRUCKS**  
Ton - 60 Ton  
Sales & Service  
**COUNTY MOTORS**  
d MANHATTAN

**AULD'S**  
**WAKEFIELD FOR**  
**USED TRUCKS**  
1 1/2 T pickup, V8, ov-

vrolet 1/2 ton, 4-wheel  
cylinder, 3-speed  
national 1/2 ton, 6-cy-  
speed  
1 T SWB with bed

ge 1 1/2 ton with bed,  
-speed  
1 1/4 T w/ bed & hoist  
vrolet 1/2 ton, 4-speed,  
ler

**AULD**  
**CHEVROLET**  
HO 1-5414  
**WAKEFIELD**

ed A Pickup?  
ARE GOOD ONES  
1 Styleide 1/2 ton pick-  
ally owned, only 18,000

vrolet 1/2 ton Fleetside  
6-cylinder, 4-speed,  
d, radio, heater and  
ound bumper

vrolet 1/2 ton Fleetside  
V-8 engine, 3-speed  
ission, 8-foot bed, radio  
ater.

1 1/2 ton Styleide pick-  
cylinder, 4-speed, 8-foot

vrolet 1/2 ton Fleetside  
V-8 engine, 3-speed  
ission, camper cover  
uxe equipment.

1 1/2 ton Styleide pick-  
cylinder, 3-speed trans-  
n, new engine overhaul  
vrolet 1/2 ton Styleide  
6 cylinder, 4-speed, 8-

**SED TRUCKS**  
vrolet 2 ton truck, V8  
2-speed axle, 84 in.  
axle for 13 1/2 ft. bed.  
vrolet 1 1/2 ton truck  
er, 84 in. cab to axle  
1/2 ft. bed.

vrolet 2 ton truck, 6  
r with 13 1/2 ft. combine  
ed and underbody hoist

enings At 1st & Main  
**BERMEYER**

**CHEVROLET**

Oberrmeyer, Owner  
-2421 Open to 9 p.m.  
NGTON, KANSAS

il BL 8-2421 For  
ning Appointment

**TRUCKS**  
Scout 4x4, new... \$2200  
600 2 ton, 2-speed axle  
\$1850  
70 2-speed axle... \$875  
L150 with bed & hoist  
\$845  
L150 good... \$550  
v. 1 1/2 ton with bed &  
\$775  
lebakker 3/4 ton pickup  
\$550  
L160 2-speed with bed  
\$845  
OH

**imacher's Inc.**  
Highway 36  
EA 5-2316  
HINGTON, KANS.

**FARMS FOR SALE**

Well improved 640, modern 3-bedroom home, insulated, 433 acres good native grass, 207 cultivated, 136 A wheat. This is an outstanding offering, \$115,000.

Improved 280 in 2 tracts, modern home, 180 cultivated, 150 creek bottom, 130 under irrigation from large creek, \$70,000, cash or contract.

Improved 480 on oil, 215 cultivated, 100 A creek bottom, 265 good native grass, \$150 per acre.

Improved 240 on good road, modern home, very clean farm, 112A cultivated, \$42,000, cash or contract.

Call Collect for Appointment

**Kvasnicka Realty**  
GERALD A. KVASNICKA  
Realtor  
HADDAM, KANS.  
Ph. FR 6-2874

**MILFORD LAKE SITES**  
5000A commercial feedlot ranch  
2000A improved grass ranch  
500A improved irrigated farm

Your Listing Is Needed

**A-OK REALTY**  
Wakefield, Kansas  
Floyd Falter, Broker

**OLDER BUNGALOW HOME**

With two bedrooms, large living-dining combination, complete basement, garage. Near Lincoln School and Lincoln Heights Market. Ideal for family or couple.

**LOREN E. LAW**  
REALTOR  
Clay Center, Kans.  
"If It's A Home, See Loren"

**2020 Acre**  
**Kansas Ranch**

The Miltonvale unit of Sun Ranches, Cloud County, (north central) Kansas.

All in excellent grass, borders U.S. Highway 24, two sets of improvements. 270 acres farm land (now in brome), 13 good lakes, good fences. All minerals intact. Will sell with herd of 240 clean pedigreed registered Hereford cows with their calves and the herd bulls or will sell ranch and cattle separately.

Land and cattle priced for immediate sale!

**GENE WATSON**  
REAL ESTATE  
14 Hillcrest 316 MO 3-3174  
Hutchinson, Kansas

**DOUG WILDIN**  
Rt. 1, Hutchinson, Kans.  
316 MO 2-7543

**SPLIT LEVEL HOME**  
IN MANHATTAN, KANS.

**NEAR MARLATT SCHOOL:**  
central air conditioned, 4 bedrooms, 2 baths, basements (L) living & dining room, modern kitchen, built-in range, oven, dishwasher, dining area kitchen, family room, double garage. \$30,000.

**LIKE NEW,** close to Westloop Shopping Center, 3-bedroom home, 2 baths, ceramic tile, carpeted living & dining room, large kitchen, built-in appliances, spacious bedrooms, full basement, central air conditioned, garage. \$24,950.

**5-BEDROOM HOME** north of Jr High School, 2 baths, separate dining room, pl's dinette in kitchen, utility room first floor, basement, double garage. \$13,900.

**3-BEDROOM BUNGALOW** east of Aggieville, fireplace, apt. basement, formal dining room, garage. \$14,000.

For  
Complete Real Estate  
& Insurance Service  
Call

**Maurice McNeil**  
Realtor  
Suite No. 11  
Union National Bank Building  
Office PR 8-4401 Res. JE 9-5164  
MANHATTAN

**THIS HAS GLAMOUR PLUS**

When you approach the front door you know this home has lots of personality! Beautiful, large living room with wood-burning fireplace; comfortable family room off the family-sized kitchen. Complete basement finished for additional family living and entertaining. The landscaped yard is a credit to any neighborhood. Shown by appointment only. You might be able to get settled in this before school starts.

**LOREN E. LAW**  
REALTOR  
ME 2-3159 907 6th  
Clay Center, Kans.  
"If It's a Home, See Loren"

10 LOTS in Gypsum will sale \$900 on contract. Also 6 lots, house & garage for \$1200. Buy like rent. Warren Peck, Gypsum, Kans. x22

**FOR SALE** — 160 acres of good pasture land. Abundance of water. Located 6 miles southeast of Westmoreland or 12 miles northwest of Wamego. Call collect, Mrs. Amos Regnier, 456-7310, Wamego, or LaNora Regnier, 456-9180, Wamego. x22

**FOR SALE** — Improved 120 acre farm near Clay Center, all weather road, plenty water. Mr. & Mrs. W. W. Eckelberry, Clay Center, Kansas. x23

**BUSINESS FOR SALE** — Moving to Manhattan? Coin operating car wash and service station. Choice downtown location. Contact Jay Arlington, Box 881, Manhattan, Kansas. SB23

**FIVE ROOM house** for sale at 1607 Sunset in Wamego, Kans. 3 bedrooms, large living area, full basement. Phone owner after 5 p.m. Lloyd Rand, 456-9185. SB22

**FOR SALE** — 2 bedroom house, range, cabinets, shower, t.b. 707 Oak, Wamego. \$6000 Phone 456-7287 evenings. x24

**Farm Equipment**

**Fairbanks Motor & Elec.**  
  
**FORD MCHRY.**  
EX 6-2481  
**WHEATON, KS.**

**ALLIS ROTO-BALER,** good condition, \$450. Alfred Roeder, Seneca, Kansas. x24


**MACHINERY SPECIALS**  
AT HIAWATHA

JD 55 combine, 1963, 13', cab  
JD 334 corn att., 1966, 150 acres  
M&W robot header control for  
1964 JD 45, 13', new... \$275  
JD 45 combine, 1957, 12', cab  
JD 3010 tractor, overhauled  
JD 70 tractor, good condition  
AC D-17 tractor

**Cowan Implement Co.**  
710 Utah 742-2281  
HIAWATHA, KANSAS

**USED MACHINES**  
AT WHITEWATER, KANS.

1947 DC Case in running order \$350  
1961 SH69 New Holland twine baler \$875  
1961 2R Gehl field cutter, center gatherer \$950  
Case silage blower \$165  
M&M side delivery rake \$85  
16x8 JD fertilizer drill on rubber \$195  
16x8 M&M drill (steel), fert., grass seeder, steel press wheels \$135

**Neuman Hdw. & Imp.**  
  
Phone TU 3-2128  
WHITEWATER, KANS.

**TRACTOR SPECIALS**  
1966 4020 D power shift  
1961 4010D  
1963 3010D, WF  
1963 3010 gas  
1958 IHC 450 LP  
1955 JD 70 LP  
1955 JD 70D

**Klippenstein's**  
BEATRICE, NEBR.  
Phone 223-4052

**If You Need It**  
**SHOUSE MAY HAVE IT**

1959 JD 730 D with 3 pt., wide front  
1962 JD 2010 gas RC with 3 pt., wide front, 1200 hrs.  
52 Deere G; 43 Deere G; 48 Deere A; Couple DC Cases  
50 Ford 8N; 44D Massey  
1962 Fox 2-row Industrial cutter  
1966 Deere 2-row No. 6 cutter  
Case blower, with 45' pipe  
1962 IHC 16 one row cutter  
8W mower with conditioner drive  
210 corn head for 55 combine  
1962 Deere 45 combine with 12' platform  
1955 Deere 55 combine with 14' platform  
1956 Massey 60 combine with 12' head  
Old SP12 Case combine  
Case 4x14 semi-mtd. plow  
Deere 620 wheel 4x14 plow  
Deere 4x16 mtd. F120 plow  
1956 Deere 70D standard tractor  
JD 168 fluted feed drill with new fert. att.  
1962 Massey No. 3 PTO baler  
1956 Holland 66 twine baler  
Deere 14T baler with motor & bale thrower  
F120 Deere mtd. plow, 5x14  
Moline 8' one-way, excellent, on steel  
Quite a few older 168 fertilizer drills, some real good  
4 section IHC spring tooth  
1965 Deere 224WS hay baler  
1959 Deere 214W baler  
1958 IHC 55W baler  
Case 3x14 ground lift wheel plow  
1948 JD Model A with power steering  
45 JD manure loader for 2 cv. tr  
1958 JD 720 dsl. with new tires & overhauled

**SHOUSE**  
  
**IMPL. CO.**  
Abilene, Kans.  
Store Ed Shouse Ron Shouse  
CO 3-3051  
CO 3-1066  
CO 3-4515

**USED TRACTORS & MACHINERY AT PAXICO**

1959 A-C D-17, like new  
1959 A-C D-14, real good  
1959 Ford 841, wide front end, loader & hydr. bucket  
1959 IHC No. 141 combine  
1965 New Idea combine  
1966 Gleaner A, demonstrator  
1962 International mower  
E-Z Flow fert. spreader

**USED TRUCKS**  
1961 Chev. 1 1/2 T, long wheel base, bed & stock racks  
1949 IHC 1 1/2 T, grain side, stock racks, 12' bed, underbody hoist  
1952 Ford 1 1/2 T V-8, grain bed  
1956 GMC 1 1/2 T, grain bed, stock rack, underbody hoist  
1946 Chev. 1 1/2 T, SWB, 10' bed  
IN STOCK; New Allis tractors D-17, D-15 & 190XT. All lines of New Holland haying equipment.

**Eddie's Service**  
  
Phone 636-8295  
PAXICO, KANS.

**New Hay Tools**  
**Ready To Go**

14-ft. 201 windrower, dual auger w/ conditioner  
9-ft. 816 mower & conditioner  
9-ft. No. 100 mower  
9-ft. No. 16 rake

**USED**  
1963 No. 56 wire baler, hyd. tension  
12-ft. JD wheel disc  
10-ft. Krause wheel disk  
3/14 FH plow  
4/16 FH Steerable plow

**Abilene Truck & Tractor, Inc.**  
  
714 So. Buckeye  
CO 3-4727

**ABILENE, KANS**

**FOR SALE** — 1 8-12 Van Brunt drill: 1 8-16 Van Brunt drill; tractor hitch; wood boxes, always shedded, cheap: 1 3-14 No. 55 JD plow, rubber: 3 sets No. 217 hard surfaced lvs for 14" JD plow. L. Hart, Delphos, Ks. x23

**AULD'S**  
**IN WAKEFIELD**  
**IS THE PLACE TO TRADE**

**Used Tractors**  
1959 Ford 971-D, with cover  
1952 International M  
1951 International WD-6  
IH Model C with mower  
1950 Massey Harris 30  
1949 IH M  
1947 International M-D  
1947 International M  
1947 Allis WC with cult.  
1940 International M  
1936 Allis U

**TRAILERS**  
Used 4-wheel trailer w/ bed

**COMBINES**  
1959 John Deere 12'  
1955 International 141 with cab  
International 125 self propelled  
1966 International No. 55 field harvester cutter  
1963 No. 50 field cutter  
20-C field cutter

**DISKS**  
IH 8' No. 25 wheel disk  
IH No. 37 12" wheel disk  
Case 10'9" wheel disk  
IH No. 36 fast hitch

**BALERS**  
IH 45T baler  
1956 International 45T baler  
1955 International 55W baler with engine

**MOWERS**  
IH 25V mower  
Ferguson 3 pt. hitch bar  
International 9A mower  
Self propelled lawn mower

**CULTIVATORS**  
IH mower for C tractor  
Allis 2-row cultivator with rear section

**PLOWS**  
New IH 309A 3-pt. 3-14  
New IH 311 3-16 FH  
John Deere 2x14 plow  
MM 2x14 plow  
IH No. 8 3x16 plow  
Case 3x16 plow  
International 9L 4x14 plow  
IH no. 400 3-sec. springtooth  
M-M 3-sec. pegtooth

**AULD**  
**CHEVROLET**  
HO 1-5414  
**WAKEFIELD**

**USED TRACTOR BARGAINS**

65 Ford 4000 Selecto gas  
65 Ford 4000 4sp. trans. gas  
64 Ford 4sp. trans. gas  
63 Ford 4000 gas 4sp. trans.  
63 Ford Selecto diesel  
63 Ford 2000 gas 4sp. trans.  
60 Ford 841 diesel O-U trans.  
62 Fordson 5000 diesel LPTO  
59 Ford 841 diesel  
58 Ford 841 gas 4sp. trans.  
57 Ford 860 gas live PTO  
56 Ford 850 gas 5sp. trans.  
55 Ford 850 LP 5sp. trans.  
52 Massey 55 std. gas model  
54 Ferg 30 live PTO  
51 Case D w/ Davis loader  
50 Case DC row crop  
50 Ford 8N good tires  
49 Case LA LP fuel  
49 Massey 55 std. diesel  
46 Massey 101 row crop  
48 Ford 8N good shape  
46 John Deere D St. & Lts.  
40 IHC H Farmall  
40 M&M KTA  
46 Ford 9N, fair shape

**USED BALERS**  
63 Ferguson 10 PTO twine  
56 New Holland S66 PTO  
56 New Holland S66 motor  
56 New Holland S77 motor  
54 IHC 45 PTO twine  
62 Case 135 PTO wire  
58 New Holland 55 rake

**McPherson**  
**Tractor Company**

"Ford Tractor —  
New Holland Dealer"  
Ph. CH 1-2900, McPherson, Ks.

**FOR SALE** — Large Farm-machine manure spreader, truck mountings, excellent condition, \$200. Dale Merritt, Route 4, Manhattan, Kans. PR 6-7201. x22

**WANTED** — Wide front end to fit 44 Massey Harris tractor. Herman Cook, Route 1, Concordia, Kansas. Phone CH 3-4404. x23

**FOR SALE** — Dual wheels for M thru 560 direct axle mounted 13.6x38.6 ply. Harold Rainis, Wamego, Kans. 456-9238. x22



## At Schumacher's

**USED TRACTORS**  
1964 F706D Farmall, new tires \$5750  
1964 F504 Gas Farmall, 480 hrs. \$2450  
1959 F560D Farmall, good \$2450  
1964 D-17 Allis diesel, Series III \$3550  
1955 Farmall 300, fast hitch \$1095  
1953 Massey Harris 44 gas \$545  
1951 Farmall MD, good \$875  
Farmall H \$295

**USED COMBINES**  
IH No. 101 overhauled, extra good \$2950  
Massey Harris No. 80 \$945  
No. 12 Case SP \$450  
IH No. 125 SPVC \$250

**USED HAY MACHINES**  
Case Automatic baler \$145  
IH No. 45 baler, PTO \$250  
IH No. 46 baler, good \$950  
Ford No. 250 baler \$445  
New Holland No. 66 baler \$245  
John Deere Mower No. 5, extra good \$235  
John Deere mower No. 5, good \$175  
NH No. 20 mower \$50  
IH No. 25V mower \$95  
New Holland No. 400 hay conditioner \$795  
IH No. 27 mower \$125

**USED CULTIVATORS**  
IH No. 461 4 row cultivator \$575  
IH No. 761 2-row cultivator, FH, rear sec. \$275  
John Deere 2 row cult. \$65  
AC 2-row cultivator \$75  
AC 2-row cultivator, late type \$145  
IH 250 cultivator \$95  
IH F35 Go-Dig lister cult. \$95

**USED TILLAGE MACHINES**  
Krause 3 pt. oneway \$135  
John Deere 6' Oneway \$145  
John Deere RW 11 ft. wheel disk \$495  
John Deere KBA 11' wheel disk \$295  
IH No. 309A 3 pt. 3-14 plow, like new \$375  
Ford 3 pt. tandem \$275  
John Deere 3-16 plow \$145  
Cockshutt 3-14 plow \$65  
IH 4-14 No. 10 plow \$775  
AC 2-14 mounted plow \$65  
Oliver 15 ft. spring tooth \$65  
IH 4-section springtooth \$75  
IH No. 400 12 ft. springtooth \$175  
IH power set springtooth, 10 ft. \$125

**USED TILLAGE MACHINERY**  
Ford 3-14 3 pt. plow \$95  
IH No. 37 12 ft. wheel disk \$525  
Case 11 ft. wheel disk, extra good \$525  
MM 8 ft. 3 pt. tandem disk, extra good \$275  
Krause 11 ft. wheel disk, extra good \$575  
Allis-Chalmers 4-14 mounted plow, good \$465  
IH No. 20 3-14 FH plow \$145  
IH No. 20 2-16 FH plow \$125

**OTHER USED MACHINERY**  
No. 15 IH field harvester, good \$875  
No. 20 IH field harvester \$575  
Case ensilage harvester \$445  
AC ensilage harvester \$595  
Papec ensilage harvester \$95  
Massey Harris ensilage harvester \$495  
John Deere ensilage harvester \$150  
Case windrow attachment \$125  
Case blower with pipe \$75  
Case manure spreader \$195  
IH No. 30 manure loader, good \$175  
Farm Hand manure loader, good \$225  
Wilking 26' elevator \$275  
Mulroy 32' elevator \$245  
IH 10C hammermill \$75  
Easy-Way post hole digger \$75  
Ford 3 pt. post hole digger \$95  
End gate spreader, new \$50  
Bear Cat 10" hammermill \$65

## Schumacher's, Inc.



Highway 36

EA 5-2316

WASHINGTON, KANS.

**FOR SALE** — International 163 self-propelled windrower with conditioner. Excellent condition. Merle Albrecht, Lincolnville, Kansas. x22

**FOR SALE** — 1966 C-II Gleaner, 16 ft. header, excellent condition. Otis Hammett, 903 Jackson, Marysville, Kansas. Phone HI 3-4070. SB24

**WANTED TO Buy** — Pickup attachment for No. 50 International fieldcutter. Dwight Kruse, Marion, Kans. SB22

**IHC NO. 311 3-16 plow**, Eugene Visser, Goff, Kans., 868-2398. x23



## NEW FORD TRACTOR BARGAINS

Model 3000 8 speed LPTO \$2995  
Model 4000 8 speed LPTO \$3895  
Model 5000 diesel LPTO \$4995  
Model 6000 diesel \$5995  
F80 Garden Tractor \$695  
F100 Garden Tractor \$745

**NEW FORD EQUIPMENT**  
3 btm. 14" mounted plows \$415  
4 btm. 14" mounted plow \$525  
10-ft. mtd. tandem disc \$445  
Post hole diggers \$215  
No. 515 7-ft. rear mt. mower \$495

No. 501 8-ft. rear mowers \$465  
12-ft. mounted spr. tooth \$245  
**NEW HOLLAND EQUIPMENT**  
New 269 PTO twine baler \$1967  
New 56 side rakes \$525  
646 head for 616 FHarv. \$495  
717 Forage Harvester \$2292  
No. 72 6-ft. mtd. rotary mower \$495

**McPHERSON TRACTOR COMPANY**  
"Ford Tractor Dealer"  
McPherson, Kansas  
Phone CH 1-2900

## 15 USED TRACTORS FOR YOUR SELECTION

1964 JD 4020 dsl., new tires  
1961 JD 4010 dsl., new tires  
1961 JD 3010 dsl., new tires  
1961 JD 3010 dsl., 15.5 tires  
1962 No. 901 Ford dsl.  
1959 No. 861 Ford dsl.  
1954 JD 60; 1962 3010 gas  
1952 LP IH M; 1952 Super M IH  
1952 A JD; 1948 M IH 1946 M IH; 1942 M IH; 1942 H IH

**PLOWS**  
4x14 JD steerable  
5x14 3 pt.; 4x14 3 pt.; 4x16 3 pt.  
3x16 IH fast hitch  
3x14 IH slat  
3x16 IH chisel

**MISCELLANEOUS**  
7' Noble plow & coulter  
214T JD PTO baler  
3 14T JD PTO balers  
No. 858 JD semi-integral rake  
2 IH rakes on rubber  
New Holland cutter  
MM 1 row cutter  
No. 30 Grain-O-Vator  
No. 115 JD Chuck Wagon

**IT'S TIME TO TRADE WHEAT DRILLS**

## Washington Impl.

EA 5-2301



WASHINGTON

## HERINGTON



USED TRACTORS

1966 JD 3020 gas, 300 hrs.  
1966 A-C D15gas, 170 hrs.  
1962 JD 2010 utility  
1960 M-M model M5, propane  
1960 A-C D14, wfe, pwr. strg.  
1958 JD 620; 1958 720 dsl.; 1957 Ferg. 35  
1956 IHC 300 w/ 3-pt. hitch  
1956 JD 70 dsl.; 1956 Oliver Super 55 dsl.; 1957 JD 60; 1952 M-H 44 dsl.; 1952 MM U; 1947 & 1943 JD D

1948 IHC M; 1941 IHC H  
**BALERS**  
1958 N-H No. 68T  
1957 N-H 66; 1954 IH 45T  
1964 JD 215A windrower w/ hay conditioner  
JD 8 & 9 used mowers

**MACHINERY**  
IHC 4-row curler, extra good  
Massey 4-sec rotary hoe, like new  
JD & IHC springtooth harrows with wheel carriers  
JD 15' & 20' tine tooth harrows  
Ford 5-14 semi-mtd. plow  
JD No. 66 4-14 plow  
JD 810 plows, 4-14 & 4-16  
JD No 55 3-14 plow  
A-C 3-14 mounted plow

**SEE US FOR NEW**  
Grain-O-Vators; Blair and Gehl feeding machinery; Heston windrowers; Crust Buster harrows; GB loaders; Ansel cabs; Danuser diggers.  
All this machinery is in stock and on display on our lots.

## Tri-County Sales

George Munkres  
Phone Collect  
BL 8-2249 or BL 8-2991  
HERINGTON, KANSAS

## GOOD TRADING at Alta Vista

### USED TRACTORS

1962 IHC 460 utility Farmall;  
1951 AC WD; 1949 B JD  
1941 B JD; 1949 C Farmall  
One loader for AC D-14

### USED BALERS

2 AC roto; 45T IHC, 2; 56W IHC.  
New Holland 66

### OTHER MACHINERY

Nearly new side mount mower for AC D-14 or D-15  
N-I trail mowers  
Front mtd. cult. for D series  
2 used AC snap coupler 3-14 plows

### USED TRUCKS

1964 IH Scout, half top  
1962 IHC Scout 4-wheel drive, full top  
1958 4x4 Jeep with cab  
1966 IHC B110 ¾ pickup  
Two 1960 IHC pickups  
1952 IHC; 1957 GMC; 1957 Chev. & 1960 Ford pickups

**Buchman Farm Sply.**  
A-C DEALER IH TRUCKS  
Phone 229-6619  
ALTA VISTA, KANS.

## DAUER IMPLEMENT CO.

Innes pickup atts. for 101 IH combine, nearly new  
1958 F450 tractor, gas  
1965 McCormick F806 gasoline tractor, 900 hours.

1941 M tractor  
IH 4-16 No. 60 plow  
McCormick No. 35 13 ft. wheel disk  
McCormick No. 35 10'9" wheel disk

1960 F-460 tractor, 1300 hrs.  
1954 Super MTA tractor  
1957 McCormick 46T twine baler  
1962 McCormick 46T twine baler  
1964 McCormick 46W wire baler  
1966 McCormick 47W wire baler  
McCormick No. 100 mower, 2 pt. hitch

1950 W6 McCormick tractor  
One nearly new tractor tire 13.6x36 4 ply \$60  
McCormick 16x8 MF drill, low rubber & rubber press



## Falun

Phone 1011

**SEE THIS EQUIPMENT AT LONGHOFERS, MARION**

IHC 350 Backhoe loader unit \$2950  
13-ft. Kewanee wheel disc \$425  
New Parker 28-ft. wheel carrier, springtooth \$565  
1 WD Allis tractor \$495  
1 50 Model D Case \$229  
Allis 4-bottom mounted plow \$275

IHC 4-bottom mounted plow \$225  
New twine tie baler \$1475  
New wire tie baler \$1675  
Massey Harris work-bill backhoe loader unit \$2450  
530 Case backhoe loader unit \$3450

## LONGHOFER SUPPLY CO.

J. I. Case & A-C  
Phone EV 2-2620  
MARION, KANS.

### FOR FIELD WORK

No. 70 H 5-14 IHC plow  
4-14 Minn. Moline plow  
3-16 Minn. Moline plow  
No. 200 Farmhand power boxes  
18' 22' 24' Mordidge spring tooth field mulchers  
New Idea rakes, steel or rubber tooth  
Rotary mowers  
Papec field cutters, single or double row  
Richardson Mulch treader & Adflex blades  
Used Fox field cutter, very good  
Krause disks  
Self propelled New Idea field cutter  
Stop by and see the latest in a Mulch press drill.

## Jorden Impl. Co.

ABILENE

Dav Phone  
CO 3-2041  
Night Phone  
CO 3-2057



## JUNCTION CITY



### TRUCKS

1965 International Scout, right hand drive, lock-out hubs, radio hubs, radio, full top-clean- AT \$1095  
IHC 1954 R-112 ¾ ton pickup \$295

1964 International Travelall station wagon, V-8, radio, big heater, 2-tone paint, low mileage \$1395  
Ford 1950 truck, duals, 2-speed axle, 12-ft. steel bed with high sides, hoist all for \$800  
Chevrolet 1955 ¾ ton, flat bed \$350

1952 Chevrolet 1-ton chassis & cab with duals at \$200  
Ford 1954 F-250 ¾ ton, good platform with grain & stock sides \$750

### TRADE NOW. WE NEED GOOD USED TRACTORS

IH Farmall F-20, on rubber, runs good \$80  
IH Farmall H, fully equipped \$295

1944 IH Farmall H, new red paint \$450  
Allis WC, looks ruff, runs good \$100  
Allis WC, extra clean \$275  
IH I-300, Utility TA, INPTO, fast hitch \$1250

### HAY MACHINES

IH No. 100 fast-hitch mower, 3-point or F.H. with hay cond. hook up \$425  
IH No. 100 fast hitch mower \$395

IH No. 5 low wheel rake \$195  
New Idea 4-bar side del. rake \$100  
IH No. 15 side del. rake \$395  
JD No. 14T PTO hay baler \$695  
JD wire tie baler with motor \$50

### PLOWS

IH 550 5x14 steerable demonstrator, discount  
IH 3x14 on rubber hyd. control \$195  
IH No. 412 4x14 semi-mount F.H. \$495  
IH No. 314 3x16 pull type slatted M.B. \$150  
JD No. 55 3x16 null \$195  
JD No. 55 3x14 pull \$195  
Woods rotary mower 3-point \$185

Allis 8-ft. tandem disk \$75  
JD 10-ft. tandem disk \$85

## Mohn Implement Co.

Telephone CE 8-5101

Junction City, Kansas

### USED TRACTORS IN MANHATTAN

850 Ford \$1295  
52 Super M Farmall \$995  
46 9N Fords (2) \$450

### HAY MACHINERY

250 Ford baler \$595  
65 269 wire tie, NH \$1695  
66 269 wire tie, NH \$1795  
No. 5 John Deere mower, A-1 \$150  
NH 77 balers w/ motors (3) \$75 ea

5' ft. pull type BMB rotary cutter \$250  
1 used Toro pull type cutter.  
New field choppers in stock  
717 NH, Papec, Ford

A good supply of twine and wire on hand. Special price on barb wire, per roll \$9.85.  
Your friendly tractor dealer

### YOUR FRIENDLY FORD TRACTOR DEALER

## Burns-Salisbury



315 So. 3rd

Ph. PR 8-5731

MANHATTAN

### Store Hours:

7 a.m.-5:30 p.m. Sat. 7 a.m.-noon

**FOR SALE** — Feeder pigs castrated & vaccinated, ready to go. C. D. Renswick, Ada, Kans. x22

**WANTED** — WIDE front end for Farmall 340. Rotary mower for Farmall Cub. Gordon V. Zajic, Delphos, Kans. x23

**EVERSMAN SCRAPERS** — 1 4 to 6 yd., used very little; 1 2½ yard new. Eversman heavy duty 14-ft. wheel disk. Phone McPherson CH 1-164. Leebert Johnson, Conway, Kans. x25

**FOR SALE** — 1963 self propelled 12 ft. Ford combine, good condition. Priced to sell. Call area code 913, 698-2309. SB22

## Buys Of The Week

**NEW FULL 3-PLOW TRACTOR** — \$3295  
Must sell this week  
**NEW 4-PLOW TRACTOR** — \$4495  
Way below market

### OTHER TRACTORS

1964 Ford tractor, like new \$750  
1955 Ford tractor \$895  
1964 Case Comfort King, like new, 930 \$2450  
1959 Case 900 diesel, low hrs., new tires \$2695  
1959 Case 900 diesel tractor, clean \$2495  
1959 Case 800 diesel tractor, ready to go \$1575  
1962 M-5 Moline on propane, new tires \$2450  
1954 Moline UB tractor \$795  
1951 Moline U tractor \$495  
1952 Massey 44 row crop, hyd. extra good tires \$450  
1953 IHC Super M LP, new tires, new overhauled \$1095  
1950 IHC M LP, new tires, repainted \$325  
IHC 300 tractor, high wheel row crop \$1195  
1952 LA Case tractor, hydraulic \$1195  
1951 LA Case — LP. equipped \$750  
New Blair demonstrator feed wagon, 5-12 170 bu. \$1095  
1 used S-12 Blair feeder wagon \$695  
Allis Chalmers roto baler, rebuilt, new bands \$775  
Allis D-17 row crop gas tractor \$1995  
1 nearly new G.B. loader, fits 460 IHC \$325  
1 used Industrial loader, fits all Fords \$495  
1 Schafer 14-ft. wheel disc (demo) \$775  
1 used 5-bottom plow \$175  
1 used 4-bottom Case A plow \$495  
10 new 4-bottom, 5-bottom & 6-bottom Case wheel plows in stock, priced from \$900 up  
10 New Case mounted & semi-mounted plows, 3s, 4s, 5s, & 6s \$375 up  
1937 IHC F30 tractor on steel runs good \$375  
Nearly new 66 model 930 Case row crop tractor \$595  
New rotary 5-ft. mower \$269  
Nearly new Ford 4-bottom semi-mounted plow \$595  
Nearly new Ford 5-bottom semi-mounted plow \$669  
New 14-ft. Case wheel disc \$949  
New Case 10-ft. wheel disc \$525  
Allis 4-bottom semi-mounted plow, 64 model \$375  
8-ft. Moline one way \$129  
12-ft. Ford wheel disc, 12½-ft. (sealed bearings) \$375

## LONGHOFER SUPPLY CO.

J. I. Case & A-C  
Phone EV 2-2620  
MARION, KANS.

### SALINA



1 JD 760 9-yd. elevat. scraper  
2 JD 5010 9-yd. scrapers  
1 IHC 2706 w/ 5-yd. scraper  
3 JD 1010 crawler-loaders  
1 JD 2010 crawler-loader  
4 Ford 8N gas w/ loaders  
1 Ford 881 gas, w/ loader  
4 JD No. 50 backhoes, good  
1 5' 3-pt. rotary cutter, cheap  
1 6' pull-type rotary cutter  
2 JD No. 14T PTO balers  
1 Case 140W engine baler  
1 IHC 55W PTO baler  
2 JD No. 9 3-pt. mowers  
1 Ferguson 3-pt. 7-ft. mower  
1 JD No. 6 1-row harvester  
1 JD No. 12 2-row harvester  
6 JD 168 1610 disk drills  
4 Oliver 158-168 disk drills  
3 MH 168-208 disk drills  
2 JD manure spreader, good  
2 trailer sprayers, cheap  
1 Farmhand loader, like new  
1 JD No. 78 3-pt. blade, clean  
1 MH 12'6" 3-pt. disk harrow  
1 JD RWA 12'6" disk harrow  
2 JD RW 12' disk harrows  
1 JD 15A 12' disk tiller  
1 Krause K-20 12' tiller

## Salina Impl. Co.

Box 1029  
SALINA, KANSAS 67401

**WANTED** — 30 ft. of 7 in. blower pipe. Marvin White, 706 S Chestnut, McPherson. x22



FULL 3-PLOW  
TRACTOR — \$3295  
sell this week  
NEW 4-PLOW  
TRACTOR — \$4495  
below market

ER TRACTORS

tractor, like new \$750  
tractor  
Comfort King, like  
\$855  
900 diesel, low hrs.  
\$250  
900 diesel tractor,  
\$285  
800 diesel tractor,  
\$245  
go  
Moline on propane  
\$1575  
es  
UB tractor — \$2450  
e U tractor — \$750  
ey 44 row crop, hyd.  
\$450  
Super M L.P., new  
\$550  
M LP, new tires, re-  
\$1050  
tractor, high wheel, row  
\$1150  
Case tractor, hyd.  
\$1150  
Case — L.P. equipped  
\$550  
demonstrator feed  
5-12 170 bu. — \$1050  
2 Blair feeder wagon  
\$550  
mmer's roto baler, re-  
\$750  
row bands — \$750  
row crop gas trac-  
\$1950  
new G.B. loader, fits  
\$850  
Industrial loader, fits all  
\$450  
14-ft. wheel disc  
\$375  
bottom plow — \$375  
bottom Case A plow  
\$450  
bottom, 5-bottom & 6  
Case wheel plows in  
priced from \$900 up  
Case mounted & semi-  
\$375 up  
d plows, 3s, 4s, 5s, &  
\$375 up  
F30 tractor on steel  
\$800  
w 66 model 930 Case  
p tractor — \$550  
ry 5-ft. mower — \$350  
w Ford 4-bottom semi-  
\$580  
d plow — \$580  
w Ford 5-bottom semi-  
\$680  
d plow — \$680  
Case wheel disc \$580  
10-ft. wheel disc \$550  
ttom semi-mounted  
\$575  
4 model — \$575  
ne one way — \$125  
d wheel disc, 12-14  
bearings) — \$375

## USED TRACTORS

1962 IH 706 gas, fully equipped,  
1000 hrs.  
1962 460 dsl. Farmall, fast hitch  
gas, completely o'hauled,  
new paint  
Ford 971 diesel, wide  
front, Select-O  
IH 350 Utility, fully equip-  
ped & overhauled; F.H.  
WD Allis; snap hitch or  
3-pt.  
IH H; 1947 JD A gas  
Oliver No. 60  
Farmall C w/ cult.  
Minn. Moline U  
PLOW  
IH 414, fast hitch  
IH 3-14, hyd. lift  
JD 4-14, hyd. lift  
OTHER MACHINERY  
IH 16x8 grain drill, fert. pwr.  
low rubber, rubber press  
Deere 16x8 grain drill;  
mod tires  
Super M L.P., new  
overhauled — \$1050  
M LP, new tires, re-  
tractor, high wheel, row  
Case tractor, hyd.  
Case — L.P. equipped  
demonstrator feed  
5-12 170 bu. — \$1050  
2 Blair feeder wagon  
mmer's roto baler, re-  
row bands — \$750  
row crop gas trac-  
new G.B. loader, fits  
Industrial loader, fits all  
14-ft. wheel disc  
bottom plow — \$375  
bottom Case A plow  
bottom, 5-bottom & 6  
Case wheel plows in  
priced from \$900 up  
Case mounted & semi-  
d plows, 3s, 4s, 5s, &  
4 model — \$575  
ne one way — \$125  
d wheel disc, 12-14  
bearings) — \$375

## Kendall Garage

& IMPLEMENT

Phone 122

Leonardville, Ks.

## All Equipment Reconditioned - P'nted

### COMBINE BARGAINS

JD 55, 14' header .. \$1300  
JD 55, 14' header .. \$1500  
JD 55, 14' header .. \$2450  
JD 55, 14' header .. \$4250  
JD 55, 14' header .. \$4300  
JD 55, 14' header .. \$6900  
MF S92, 14' header .. \$3300  
MF S92, 14' header .. \$3700  
pickup reel .. \$150

### TRACTORS

Case 530 gas, RC with  
loader, 200 hrs. .. \$3250  
JD 3020 RC dsl., 3-pt. o'hld.  
\$5400  
JD 2010 RC dsl., 3-pt. \$3650  
JD 2010 gas, RCU with 3-  
\$2600  
JD 670 LP std. .... \$2200  
JD 730 LP std. .... \$2800  
JD 730 dsl. std. .... \$2950  
JD 730 RC dsl. 3-pt. \$2900  
IH 340 RC gas LDD \$1675  
IH 555 dsl. hvd. o'hld \$1500  
JD 720 std. dsl., 3-pt. \$2750  
IH 50 RC gas LPTO \$1400  
JD 820 LPTO, hyd., o'hld.  
\$3200  
JD 720 RC, gas, 3-pt. \$2650  
JD 720 dsl. std. .... \$2500  
IH 350 dsl. RC, loaded,  
overhauled .. \$1250  
JD 70 LP RC, 3-pt. \$1650  
JD 60 gas, RC, 3-pt. \$1250  
JD AR, Pwr. trol. .... \$650  
JD As .. \$350 to \$625

### HAY TOOLS

No. 6 2-row chopper .. \$300  
No. 70T baler .. \$675  
24 W baler .. \$950  
mower .. \$25  
25V mower .. \$25  
form rake .. \$95  
2-row choppers \$800 & \$450  
50 2-row chopper .. \$1500

## Western Impl. Co.

2256 So. West St.  
Phone WH 3-4261  
WICHITA, KANSAS

SALE — 1951 R John  
diesel tractor in good con-  
tion, Norris Brown, Minn-  
Kans. Ph. 913 EX 2-2340.  
SB23

SALE — Case field cut-  
w/ row crop and pickup  
Also unloading wagon 857-  
Centralia, Kansas, Floyd  
SB22

1962 MM G IV, LP gas  
1963 JD 3010 gas, R/C, wide  
front axle, 3-pt. hitch w/  
46A loader  
1955 IH F400, gas, TA, IPTA  
1953 JD 60, R/C, wide front  
1952 MM "G", LP gas  
1955 MM UTS, LP gas  
4x16 Oliver plow, late model  
4x16 mounted JD plow  
1952 "LA" Case w/ Charlynn  
hyd. pump  
Flex-King V-plows

## Blanding Impl. Co.



PE 8-3066

BELOIT, KS.

## USED MACHINERY IN GLASCO, KANS.

1961 930 Case, sharp; 1960  
730 D, sharp; 1954 70 D, good;  
1959 610 B Case LP, sharp; 2,  
45 and 47 "M"; 1952 JD "G",  
good; JD "D", overhauled; E 4  
Co-op.  
AW 13-ft. 10" disk harrow,  
good; 4B 14" JD mounted plow;  
6-section JD sp. tooth harrows;  
several 3B, 14" and 16" plows;  
side rakes.  
Parker spring tooth harrow-  
ing; Hydra Power land level-  
ers.

## Wolf Impl. Co.

Phone 568-2349



GLASCO, KANS.

FOR SALE — 1956 IHC Super  
W9 diesel, 4000 hrs., good tires  
and paint. 2 way hyd. with new  
pump, rear end completely  
overhauled, 150 hrs. Loren Bla-  
zek, 5 E & 1/2 N of Belleville,  
phone Cuba. SB23

1959 JD COMBINE No. 95 for  
sale; 16', real good condition.  
18x26 rice tires, pickup reel,  
pickup attachment. This com-  
bine won't get stuck. George  
Tischhauser, Carlton, Kans.,  
phone Elmo 2013. SB22

### Miscellaneous

FOR SALE — Leather bale ap-  
rons \$9.95 post paid. Write  
Dick's Ranch Supply, Olsburg,  
Kans. 66520. x22

## ARMY SURPLUS OUTSIDE WHITE

## PAINT

\$2.93

Per Gallon

Kimberly Washable  
Vinyl Latex Wall Paint

## FAITH'S

Furniture

East US 24 PR 8-3786  
MANHATTAN

FOR THE ride of your life,  
ride a Big Horn saddle from  
Key Milling, Clay Center, Kans.  
SB TF

WATER WELL Drilling; gravel  
packed wells, write or call col-  
lect CA 6-7276. Strader Drilling  
Co., Blue Rapids. x24

ONLY AT Visser's — 15' Star-  
craft Carval V 95 hp. Mercury  
and trailer, extras, \$2600. Demo  
model priced to sell. Vacation  
special. Starcraft trailer camp-  
er, \$950 value. 1960 Pontiac Ven-  
tura, a real buy \$395. Garden  
tractor with attachments. Ma-  
ny other marine specials at  
Visser's Radiator & Marine,  
Herington, Kans. BL 8-2800. x24

BIG HORN saddles and riding  
equipment. Call Tom Williams,  
Manhattan, Kans., PR 6-8189  
after 6 p.m. x24

WANTED TO BUY — Good used  
acetylene welding outfit.  
With or without bottles. Rich-  
ard Stahl, Route 4, Junction Ci-  
ty, Kans. 66441, Phone Dwight  
482-3232. x22

### Mobile Homes

WANTED TO BUY — A good  
mobile home, or would trade  
John Deere farm tractor. Ivan  
Woolsoncroft, Centralia, Kans.  
66415. x22

OLD UPRIGHT piano for sale,  
good condition. Telephone JE  
9-3140, Manhattan, Kans. x23

### Stud Service

**STALLION FOR SERVICE**  
Perm. reg. Quarter Horse by  
Wimpy II. Excellent conforma-  
tion and disposition which he  
passes on to his colts. Fee \$35.  
Pasture for mares. Dwayne  
Turner, Belleville, Kans. 913  
JA7-2828.

### Help Wanted

## COMMERCIAL TRUCK TIRE SALESMAN WANTED

Large volume truck tire sales  
organization needs aggressive,  
successful salesman to direct  
further penetration of Geary  
and Riley County area market.  
Successful employment history  
required and good knowledge of  
market. Compensation to \$7200.  
Potential much greater. Age no  
factor. Our employees know of  
this ad. Reply in confidence to:

Write Box 580  
JUNCTION CITY, KS. 66441

WANTED — Someone to mow,  
rake, bale prairie hay or will let  
out on share basis. Large acre-  
age. Contact Dale Miller, Mil-  
ford, Phone CE 8-7354, Junction  
City or Howard Miller, Manhat-  
tan, Phone JE 9-6917, Manhat-  
tan. x23

### Pets

VIZSLAS, BEAUTIFUL rust  
golden gun dogs. Excellent  
stock, 4 months old, 2 females,  
one male. \$25 each. Joe Hynek,  
Bremen, Kans., Phone ED  
7-2521, Hanover. x21

FOR SALE — Aussie Male, Blu-  
tan, 4 mo. Cairn Stud, proven,  
red brindle, excellent pedigree.  
Stud service for Scottie, Schnau-  
zer, Peke, Wire, Chihuahua and  
Yorkies. Paper white Peke stud  
service, some grown stock, al-  
ways some puppies. Flora Hay,  
Onaga, 889-4877. x24

## LETTERS

### Ellsworth Bush Matches Nebraska's

You ran pictures and stories  
about the Nebraska whiskers.  
Now Grass & Grain should see  
the whisker crop at Ellsworth.  
You really should see Paul  
Mannel, 15 miles north of Ells-  
worth. See Dick Urban in Ells-  
worth.

Brothers of the Bush

ELLSWORTH

### Do Companies Pay For Riots

Do not casualty insurance pol-  
icies have an exclusion in them  
that means the companies do  
not pay in case of damage caus-  
ed by war or riot? Yet I have  
read that the insurance compa-  
nies are saying they are paying  
out millions of dollars for the  
Watts, Cleveland, Newark, De-  
troit, and other riots. Are they  
special policies or are the com-  
panies trying to pick up public  
relations points?

L.H.V.

HILLSBORO

The exclusion in most policies  
refers to war and "civil insur-  
rection." But policies commonly  
include "riot and civil commo-  
tion in their extended coverage  
section which protects against  
wind, smoke, vehicles, and the  
like. Thus insurance companies  
haven't yet rejected any claims  
plainly caused by the riots. Pre-  
sumably if the government  
would declare that the riots  
were "insurrections" — that is,  
revolts against the government  
— the insurance companies  
would not accept the claims. But

August 1, 1967

The King Ranch is the world's  
largest, embracing 1 1/4 million  
acres including an entire Texas  
county and parts of six others.

"This Year Put Up

## MONSANTO

## SEAL-VAC

## VACUUM SILAGE

- \* Sealed Storage . . No Air.
- \* Unheard of Low Cost
- \* Next to No Spoilage
- \* Highest Feeding Value of All
- \* Proven Performance

For more information, call  
your SEAL-VAC Dealer.

Victor Kruse

Phone 2609

Barnes, Kans.

## NEWTON

## SALE

## BARN

## Announcement

Sale will re-open  
with a Horse Sale

MONDAY, AUG. 7

NIGHT SALE

UNDER NEW OWNERSHIP

Regular Cattle  
and Hog Sales

Start

WEDN., AUG. 9

Contact New Owners  
thru NEWTON AT 3-5566  
or temporarily  
at St. Marys, Kans., 437-2388

— OWNERS —

Ray Dohrman

"Bill" Dohrman

Vern Koch

(Now at St. Marys, Kans.)

# John Deere-GMC

### TRACTORS

1957 IHC 350, pr. steering, fast hitch, power ad-  
just rear wheels, 3-point hitch adapter, good . \$1295

1949 IHC M, clean .. \$795

1964 Ford 5000 Super Major diesel, low hrs., good  
rubber, belt pulley, 3-pt. hitch .. \$3195

### MACHINERY

1961 John Deere 14T PTO twine baler .. \$695

IHC 12-ft. springtooth harrow, with smoothing at-  
tachments .. \$150

IHC No. 37 11' wheel disc .. \$295

Case 3-14 plow on rubber, hyd. lift, good condition \$175

Call Us Collect CE 8-4103

# BOWMAN'S

Your Manhattan Area John Deere Dealer

GMC

240 Eo 8th

JUNCTION CITY, KANS.



# Wheat A Good Feed- If The Price Is Right



## Mixed Cultures

Complete with derby hat and wrist watch, one of the Indian dancers at the annual Pottawatomie Pow Wow at Mayetta in Jackson county mixes his cultures a little. The 3-day performances attracted hundreds of lookers, overfilling parking facilities and spreading into adjacent fields. Things were more orderly than in many other years. Undersheriff Ed Curtis said that no arrests were made during the 3-day gathering.

Wheat can be a profitable cattle feed if the price is right. Whenever you can buy wheat at about the same price as corn, it is a profitable alternative, Dr. Philip Phar, Extension nutritionist at Kansas State University, says.

If you are in a position where you are buying corn or grain sorghum to finish your cattle, you should be aware of this possibility of reducing your feed cost.

Phar says if you have cattle on a high grain ration, wheat can replace 25 to 30 percent of the corn or sorghum in the ration. If they are on a roughage ration, wheat can replace 50 percent of the corn or sorghum, if the grain is mixed with roughage.

Protein from wheat can be used as satisfactorily as protein from other sources in balancing a beef cattle ration, Phar says. Researchers found that the amount of 41 percent protein supplement in the ration could be reduced about 1/3 pound for each pound of high-protein wheat added.

When researchers mixed wheat with corn or sorghum it was 8 or 9 percent more efficient than when fed alone. However, when wheat was fed alone, the daily intake decreased enough to affect the rate of gain of steers.

Phar says that if the amount of wheat in the ration is limited to 50 percent, rate of gain is not greatly affected, according to experiments by Kansas State University. And the yield and carcass grade were not decreased in the tests.

If you plan to feed wheat, have it coarsely ground or rolled, the nutritionist says. Cattle do not like finely ground wheat because it becomes pasty in their mouths. There seems to be no advantage of steam rolling wheat or adding molasses to wheat rations.

Wheat is also a valuable energy and protein source in high roughage wintering rations. It should command the same relative value for this use as for a fattening feed, Phar says. Differences in types of wheat in feeding value have not been defined.

He says changes in cattle rations should be made gradually. This means that if you decide to feed wheat, introduce it over a 2- to 3-week period to reduce chances of digestive upsets or throwing the cattle off feed. Also, it is sometimes difficult to keep cattle on full feed, and intake is usually less when wheat is used as part of the grain in a ration.

## Germination May Be A Fall Wheat Program

Germination may be a problem for Kansas wheat farmers who use newly harvested grain for seed this fall, cautions Howard D. Wilkins, secretary of the Kansas Crop Improvement Association, Manhattan.

Some producers have reported that wheat which was exposed to changing wet and dry conditions before harvest this year is showing some sprouting damage.

Other growers found it necessary to harvest their wheat while the moisture content was high — over 13 percent. This can also cause some loss of germination before planting time in September.

Most seed sold by dealers and

## AUCTION

As I have sold my home I will sell by auction the following listed & described items located at 509 Northeast Eighth in Abilene, Kansas on

**SAT., AUG. 5**  
Starts 1:00 p.m.

In case of rainy weather this sale will be held at Sterl Hall at the fairgrounds.

1965 Westinghouse double door refrigerator with cross-top freezer

1964 Westinghouse heavy duty laundramat & dryer

4-pc. walnut bedroom suite with bookcase headboard, late style

Zenith console TV

8-pc. walnut dining room set including hutch

Single size canopy bed, with spread & matching curtains

Hollywood bed, box springs & mattress

Wardrobe

1939 Chevy coupe in good condition

Nearly new large garbage pail

Westinghouse toaster; wax & paper towel dispenser; toys of all kinds; whatnots; garden hose & tools; possibly more furniture & other items by day of sale.

Cooking utensils & dishes

Nearly all of these items are in No. 1 condition, some like new.

**Maxine Kookan**  
Owner

Cols. Carl Schnell, Lee Remy & Wm. Schnell, Auctioneers  
Abilene National Bank, Cashier



## New School At Lyons

Lyons expects to have a \$1.8 million high school on the southeast edge of the city open by December 1968.

certified seed growers has an analysis tag which shows the germination percentage. But farmers who plant their own seed or buy it locally from another farmer should have the germination checked, Wilkins advises.

To get a germination count, send a 2-pound seed sample to the State Seed Laboratory, 2524 West 6th Street, Topeka, Kansas, 66606.

If results show that the germination percentage is low, farmers will have to increase the amount of seed per acre in order to get an acceptable stand or will need to seek a new source of seed.

Since the supply of good seed will be limited this fall, Wilkins urges that farmers start now to acquire an adequate supply of seed wheat. Recommended planting dates for planting wheat in Northwest Kansas is only 6 weeks away.

## DISCOURAGING VISITS WICHITA HOSPITALS

WICHITA — While not specifically banning the practice, Wichita hospitals are discouraging visits to patients by any but immediate family members.

## CATTLE SALE EVERY MONDAY

## HOG SALE EVERY WEDNESDAY

Sale Time 12:00 Noon  
BEATRICE, NEBR.

## Beatrice 77 LIVESTOCK SALES CO.

2 miles north of Beatrice, Nebr., opposite the airport

Phone 223-3571  
CLARENCE TEGTMER  
DELMAR JURGENS

## AUCTION

**Walter M. Price Estate**  
**Saturday, August 5, 1967**

1:00 O'Clock P.M.

404 Vine Street, Wamego, Kansas

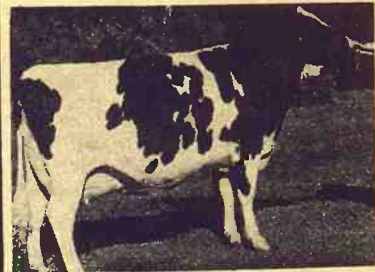
Household Goods  
Furniture  
Appliances

Antiques  
Shop & Hand Tools (Large amount)  
Lawnmower  
Miscellaneous Items

Auctioneers: Lawrence Welter  
& Glenn Applegate

Executor: Richard M.  
Pugh, Wamego, Kansas

## GRADE A HOLSTEIN DISPERSAL



**Wedn., Aug. 9**

Starts 12:30 Noon  
Lunch Served

At farm 1 mile west of Garland, Nebraska, or five miles east of SEWARD, NEBRASKA, on Highway 34, and then 2 miles north.

NEBRASKA SALE

## 61 - HOLSTEINS - 61

**DHIA RECORDS**  
To 17,700 Milk  
37 matured cows, mostly early fall fresheners  
10 large 1st calf heavy springer heifers  
12 open and bred heifers  
2 heifer calves

Midwest Genes & Curtiss bulls used in this herd include "Marquis", "Athlone Leader", "Moosehart Monogram" and "Pabst Command Leader."  
Health: TB & Bangs Tested

## DAIRY EQUIPMENT

250 gallon C.P. bulk tank — 4-unit Conde pipeline milker, near new — 50 gallon electric hot water heater

Financing: 3 years to pay. State Securities Co., Lincoln, Neb.

**Jerry Adams, Owner**  
Garland, Nebraska

Paul W. Rolfsmeier, Sales Mgr., Seward, Nebraska, Ph. 6143  
Art Leitner, Auctioneer, Herndon, Kansas

## PLAZA SPEEDWAY WINNERS JULY 28

**Hobo heat time:** Bob Springer, J. C.; Al McKim, Ogden; Bob Kruger, J.C.; Shelby Stinson, Abil.; Terry Morrand, Ogden; Jack Humboldt, J. C.

**Hobo Trophy Time:** Bob Springer, J. C.; Shelby Stinson, Abil.; Ron Walsh, Wamego.

**Hobo Consolation:** Harry Sartain, Wamego; Jerry Walsh, Wamego; Carl Edholm, J.C.

**Hobo Feature Time:** Springer: Gary Gorden, St. George; Stinson; Humboldt; Carl Edholm, J. C.

**Powder Puff:** Nora Havenner; Bobbie Klotz.

## AUCTION SALE

**Monday  
AUGUST 14**

Starts 12:30 Noon  
Lunch Served

Located 9 miles southwest of Alma, Kans., on old No. 10 highway; or 8 miles north and west of Alta Vista, or 1 mile southwest of Volland.

## 33 Head Cattle

13 Hereford cows with calves  
2 Blk WF cows with calves  
6 crossbred cows to freshen in Sept. & Oct.  
11 black heifers  
1 Registered Hereford bull  
Most of these cows are calf-hood vaccinated.

## Farm Machinery

1952 IHC 300 tractor, original tires and paint, good  
1941 IHC H tractor  
1951 AC combine, with milo guards, always shedded  
AC tandem disc  
IHC low wheel side rake  
Farmhand hay stacker  
IHC tractor mower  
IHC 2-point 2x16 plow  
IHC cultivator  
IHC mounted lister  
Post hole digger, 2 point hitch  
Rear mounted blade, 2 point

Comfort sprayer with new pump  
IHC Model 200 manure spreader, 2-wheel  
1 bale wagon  
2 old bale wagons  
IHC grain drill with fertilizer and grass seeder attachment  
Aluminum portable grain elevator  
Pickup attachment for AC combine  
Papee cutter and pipe  
Mowing machine windrow attachment

## OTHER MACHINERY

2 Farm Master milkers  
4-can milk cooler  
Press drill  
Anvil and forge  
2 sets of harness, 2 sets of leather fly nets  
Miscellaneous

## GOOD SADDLE MARE

Good stock saddle, several bridles, 2 collars.

**ART HEIDEMAN, Owner**

Jim Kirkemide, Auctioneer

Willis Herren, Clerk





## Another Blow From Weather

Joe Romick stands in a field of corn battered by hail last week as bad farming weather continued to accumulate in the G&G area. The field belongs to Steele Romick, south of Maple Hill in Wabaunsee County.

High winds and hail hit much of the G&G area last week, flipping trucks on the Kansas Turnpike near Matfield Green in Chase County; knocking down utility poles at Cottonwood falls, Salina, Delphos, Gypsum and Barnard; and interrupting phone service at McPherson, Ellsworth, Minneapolis, Herington, and Lindsborg.

Heavy rains produced moderate flooding on the Solomon river.

For G&G area farmers it was merely another week in a series of drouth, heavy rains, flooding, and hail that has made 1967 one of the most disagreeable, least productive growing years in the past three decades.

### FOR SALE

#### 2 FARMS and WAMEGO RESIDENCE WALTER PRICE ESTATE

**160 ACRES, WELL IMPROVED** — Located 1 1/2 miles East, 1 1/2 miles North, 1/2 mile East and 1/2 mile North of Louisville, Kansas; described as E 1/2 of SW 1/4 of Section 2 and E 1/2 of NW 1/4 of Section 11, all in Township 9, Range 10 in Pottawatomie County, Kansas. Some creek bottom land. (Approximately 93 acres cultivated).

**80 ACRES IMPROVED** — Located across road from above tract; described at W 1/2 of NE 1/4 of Section 11, Township 9, Range 10 in Pottawatomie County, Kansas. Some creek bottom land. (All farm land).

**MODERN 2 BEDROOM HOUSE** — Located at 404 Vine Street, Wamego, Kansas; described as Lot 317 less a tract in SE corner, 8' North and South by 30' East and West. Full basement which has been rented for apartment, large garage.

For Sale by Richard M. Pugh, Executor of the Estate.  
Wamego, Kansas Telephone 456-9377 (office hours)  
456-7297 (residence)

## AUCTION SALE

**Thursday  
AUGUST 10**

**Starts 1:00 p.m.  
Lunch Served**

I will sell at public auction the personal property of the late Harvey Kauffman at his farm located 3 miles east of Enterprise, Ks., 5 south and 2 1/4 west of Chapman or 3 north and 1/4 west of Pearl on black top road.

### Machinery

1965 Ford 4000 tractor, gas, LPT, L hyd., power steering, wghts, very good  
1965 John Deere No. 9, 3-pt., 7 ft. mower, like new  
1962 John Deere rotary mower 5 ft., 3 point, good  
1965 Ford 12 ft. spring tooth, 3 point, good  
1965 Ford 3x14 plow, radex, 3 point, good  
Ford dirt scoop, 3 point  
1968 Ford 8 ft. tandem disc, 3 point, used very little  
Ford 2-row weeder, disc and shanks, good  
Old 3 section drag harrow  
Century trail type weed sprayer, on rubber, booms, jet, hand sprayer att., 2 barrels, good  
Wheel trailer with pickup belt

Snowco 20 ft. pipe type bale good elevator with electric mtr., 12 1/2" grain auger, el. mtr., good  
2-wheel utility trailer  
Power lawn mower

### BUILDING, FEEDERS & MISCELLANEOUS

10x14 utility bldg., metal roof  
100 bu. cattle self feeder  
3 hay or silage bunks; used lumber; used tin; 9-ft. & 18-ft. garage doors; pump jack; & mtr.; 3 4-ft. concrete culverts; 100 gal. gas barrel, hose & nozzle.

7 ft. stock water tank; 4 ft. water stand; old tank; old doors; old cabinet base; wood heater; steel posts; 14 ft. ladder; bench grinder & mtr.  
Hand tools; forks; shovels, and many misc. small items too numerous to mention.

**Dale Kauffman, Adm.**

Clerk: Clarence Gatch, Hope, Ks.  
Banker, Farmers National Bank of Abilene  
Auctioneers: Foster Kretz & Elmo Steffen  
Clay Center, Phone Morganville 926-4422  
Attorney for Estate, Jim Winn, Abilene

# Stubble Mulching Moving East

By Earl J. Bondy  
Conservation Agronomist  
SCS, Salina, Kansas

Stubble mulching is an old soil conservation practice that is taking on new momentum. Long ago it proved effective in controlling wind erosion on cropland in the western Great Plains and Far West. Now it is moving east to meet urgent multipurpose needs.

Wheat growers in central Kansas, along the eastern edge of the Great Plains, are today successfully adapting the practice to check serious soil and water conservation problems that have been developing in recent years.

These farmers generally grow continuous wheat, without a year of fallow between crops, because they expect more precipitation than growers further west do. Until 10 to 15 years ago, most central Kansas wheat farmers grew sweet clover about one year in four on their wheat ground. The sweet clover provided nitrogen, organic matter, and good soil tilth. It helped hold moisture, aerate the soil, and control soil erosion.

But times have changed. Few wheat growers in central Kansas raise a legume crop any more. They moved rapidly toward more intensive row-crop farming when they found that nitrogen could be obtained at less cost from the bag or tank. Wheat acreage allotments were also a factor. Other benefits of sweet clover were perhaps overlooked.

Take the case of Matthew Heigle, Longford, an ardent soil conservation farmer who has terraced all of his cropland and farms on the contour. These measures simply weren't doing the job well enough with his farming program of wheat, grain sorghum and soybeans. Sheet erosion between the terraces during heavy rains disturbed Heigle. His upland soil blew readily in dry weather.

While Central Kansas receives a naverage of 27 to 30 inches of

precipitation a year, compared with 20 inches and less in western counties, the moisture is distributed unevenly in both areas.

"Several years ago I decided to try stubble mulching. Today, I am a strong believer in it. It has filled the gap in wind and water erosion control and conserving soil moisture," he said.

As soon as wheat is harvested, Heigle goes over the stubble with a 7 1/2 foot blade sweep that undercuts the stubble and weeds at a "medium" depth of about four inches to get a good weed kill. He usually goes over the ground four times before planting wheat. He undercuts about six inches deep the second time over, because he feels that varying the depth prevents any chance of a hardpan forming. About 10 percent reduction of stubble takes place each time. When he has too much stubble left on the surface, he discs some of it under. For Heigle, 500 to 1000 pounds of stubble per acre, along with other conservation measures, protects the soil surface from erosion.

In central Kansas silty clay loam and silt loam require at least 500 pounds of residue per acre for small grains; fine sandy loam twice that much. Double these amounts for sorghum or corn.

There is no "right" number of times to go over the ground between harvest and planting. Often the most important purpose of sweep tillage is to control weeds. It should not be done any more often than necessary to do that job.

Heigle's wheat yields at least as well as when he used a moldboard plow. He uses a 10" 14 hole hoe drill because it will

drill better through crop residues than the usual seven- or eight-inch drill used in that area.

## AUCTION

**SAT., AUG. 5**

**Starts 9:30 a.m.  
213 East 3rd St.**

**Junction City, Kans.**

**CARPENTER TOOLS  
& FURNITURE**

Wards comb. portable arm saw on stand; Wards comb. saw & table; Wards 7 1/2" power saw; 7" disc sander & buffer; saber saw; Super saw for 1/2" drill; 2 air compressor pumps; 7 1/2 gal. tank compressor & 28 ft. air hose; 3 gal. paint tank; 53 ft. air & paint hose; 2 paint guns. 2 hand saws; wheel barrow; 6 ft. step ladder, good; 8 ft. combination wood 3-in-1 ladder; 2 24-ft. extensions; aluminum ladders.

5 gal. paint; lawn mower; hand hedge trimmers; 1/4" drill; orbital sander, good; brace; 14" plane; 6' straight edge.

Overload springs for 37-38 Chev. 1/2 ton pickup; 200 ft. 3/4" used plywood; clean used 2x4 & 2x6; heavy work bench; barber chair base.

### FURNITURE

3 elec. refrigerators; 2 gas stoves; chest of drawers; utility cabinet; 2 sofas; overstuffed chairs; 3 beds, one bookcase headboard; 4 dressers; recliner chair; end tables; lamps; chifoneer, wardrobe; several odd chairs several other chairs.

Terms Cash  
Not Responsible for Accidents

**Ted Coop, Owner**

C. W. "Bill" Crites & Ron Montgomery, Auctioneers. For sale dates call CE 8-5720, Junction City.  
Everett Sheets, Clerk

## NIGHT SALES Every Wednesday

**START 8:00 P.M. — THRU HARVEST**

## Onaga Community Sale

**Marvin Cottrell — Phone 889-4461 or 889-4665**

## 2-Day Holstein & Equipment Sale

Sale 2 1/2 miles southwest of Reserve, or 9 1/2 miles northwest of Hiawatha, Kansas. Lunch both days. — Cattle Sale in Tent — Watch for Signs.



**120 HEAD  
High Grade Cattle  
TUES., AUG. 8**

**Sell at 11:00 a.m.**

**EQUIPMENT SELLS WEDN., AUG. 9 — 11:00 A.M.  
70 TOP COWS, MOSTLY YOUNG**

Many Fresh & Heavy Springers — 50 Outstanding Heifers Two-year old Reg. Holstein bull by Harden Farms Duke Mark, & 3 Reg. Holstein Cows. Years of Top ABS Breeding. Herd on Official DHIA Test — Herd average 14,670 lb. M — 523 lb. F — 3.6%. Records furnished. Tested TB & Bangs; CV & vacc. Lepto.

**DAIRY EQUIPMENT:** 2 Van Vetter Bulk Tanks, 500 & 600 gal., both good; 4 unit Surge Pipeline Milker, Tonganoxie System, excellent; 4 Diagonal Surge Stalls, & Misc.

**Farm Eqpt. & Machinery Dispersion  
Wedn., Aug. 9 at 11 a.m. (DST)**

2 Massey Ferguson Tractors — 1960 Model 65 Diesel & 1955 Model 35; Big Line of M-F Equipment; 3x16 plow; 12 1/2 ft. Disc; 4 row planter; 12 ft. spring tooth harrow and other M-F Items.

**BIG LINE HAY & SILAGE EQUIPMENT:** 2 Case Forage Wagons; Ford Chopper & Blower; M-F No. 3 Baler; New Holland Hay Crusher; Silo unloaders with augers & bunks; Big Kelly Ryan Spreader and many other Machinery & Misc. Items.

**FEED:** 200 Tons ensilage

**MR. & MRS. LYLE BLUHM, Reserve, Ks.**

**For Catalog & Information, Contact:**

**Donald J. Bowman, Hamilton, Mo., Auct. & Sale Mgr.**

**TEX REAL  
ONWARD 55th**

Cow Herd —  
Royal Essar  
CKato, Heir  
Apparent

**SERVICEABLE BULLS  
WITH WEIGHT RECORDS**  
Priced . . . \$300 to \$500

**GRANT POOLE  
MANHATTAN, KANS.**  
Located 4 mi. south of I-70-K177  
intersection, 2 mi. west on Mc-  
Dowell Creek Rd. Ph. PR 6-8315.



## G&G Calendar

- Aug. 1 — Household & misc. farm equipment southwest of Upland, Kans., C. G. Weller. Auct. C. W. Crites.
- Aug. 1 — Furniture & miscellaneous southwest of Upland, C. G. Weller. Auct. C. W. Crites.
- Aug. 5 — Misc. tool sale in Junction City, Ronald Coop. Auct. C. W. Crites.
- Aug. 5 — Household goods in Abilene, Kans., Maxine Kook. Aucts. Carl Schnell, Lee Remy & Wm. Schnell.
- Aug. 5 — Kans. State Ayrshire sale in Newton, Clarence Beat, Wellington, sale mgr.
- Aug. 5 — Household goods & shop eqpt. in Wamego, Kans., Walter Price est., R. M. Pugs, exec. Auct. Lawrence Welter.
- August 5 — Building and lots in Salina, Kans. M. W. Hills. Auct. Frank Harz & Bob Perry.
- Aug. 5 — Farm sale northwest of Beverly, Kans., Geo. Achterberg Est. Auct. Victor Bros. Sales.
- Aug. 5 — Furniture sale in Junction City, Ronald Coop. Auct. C. W. Crites.
- Aug. 8 — Quitting business sale in Harveyville, Kans., Garinger Lumber Co., P. L. Garinger. Auct. Dick Brewer, Mt. Hope.
- Aug. 8 & 9 (2-day sale) — Holstein dispersal and dairy equipment northwest of Hiawatha, Kans., Mr. & Mrs. Lyle Bluhm. Auct. Donald J. Bowman.
- Aug. 9 — Holstein dispersal northeast of Seward, Nebr., Jerry Adams. Sale mgr. Paul W. Rolsmeier.
- Aug. 10 — Farm sale southeast of Seneca, Kans., Albert L. Winkler. Auct. Gene Toby.
- Aug. 12 — Household goods southeast of Solomon, Kans., Walter Grogger estate. Aucts. Carl Schnell, Lee Remy & Wm. Schnell.
- Aug. 12 — Income property & furniture in Salina, Mrs. L. C. Kidd. Aucts. Frank Harz and Bob Perry.
- Aug. 12 — Household goods in Clay Center, Mrs. Myrtle Lewis. Auct. Foster Kretz.
- Aug. 14 — Farm sale southwest of Alma, Kans., Art Heide-man. Auct. Jim Kirkemine.
- Aug. 15 — Farmland sale near Paxico, Kans., heirs of Clarence & Irene T. Hund. M. M. Muckenthaler, St. Marys, agent.
- Aug. 15 — Sealed bids opening for farmland in Wabaunsee county estates of Clarence and Irene T. Hund. M. M. Muckenthaler, St. Marys, Kans. agent, Richard P. Royer, St. Marys, atty.
- Aug. 16 — Household & misc. in Idana, Kans., Mrs. Jerold Meeh. Auct. Foster Kretz.
- Aug. 17 — Dairy cattle, sheep & farm sale southeast of Beatrice, Nebr., Mr. & Mrs. Dean Carpenter. Auct. Harold R. Siegel.
- Aug. 18 — Real estate & household goods in Clay Center, Kans., Martin Nanninga. Auct. Foster Kretz.
- Aug. 19 — Farm sale south of Manhattan, Kans., Don Sar-Gent. Auct. Lawrence Welter.
- Aug. 23 — Herd dispersal northwest of Colby, Kans., HG Hereford Farms, Mr. & Mrs. Howard Grover.
- Aug. 28 — Farm sale near Washington, Kans., George Pannacker est. Auct. Foster Kretz.

Aug. 28 — Performance tested boar sale at K State University, Manhattan, Kansas Swine Improvement Assn., Dr. R. H. Hines, sale mgr.

Aug. 28 — Performance tested boar sale in Manhattan, Ks. Dr. R. H. Hines, KSU, sec.

Sept. 2 — Angus production sale northwest of Paola, Kans., Wilmer Radér. Sale mgr. John Barton; Auct. Ray Sims.

Sept. 2 — Registered Holstein dairy dispersal sale northwest of Salina, Allen Smith herd of milk cows and bred heifers. Sale mgr. E. A. Dawdy.

Sept. 4 — Registered Angus joint production sale, Washington, Kans.; Glen Bowdish & Barbara B. Houghton; and F. R. & Shirley Nutsch. Sale mgr. Phil Ljungdahl; auct. Roy G. Johnston.

Sept. 4 — Joint production sale in Washington, Kans., Bar B Farm, Hanover, Kans.; and Mormon Springs Angus Farm, Francis & Shirley E. Nutsch.

Sept. 7 — Farm sale at Barnard, Kans., Mae Laity. Aucts. Frank Harz and Bob Perry.

Sept. 11 & 12 (2-day sale) — Post office buildings in Blue Rapids, Waterville and Hanover, Kans.; 4 farms and several town properties in Blue Rapids. Kester Hammett estate. Auct. & real est. broker Don Roche.

Sept. 15 & 16 — Antiques and personal property at Marysville, Omar Hawkins Est.; Howard Funk, owner. Auct. Ron Roche.

Sept. 20 — Land and farm machinery west of Frankfort Mr. and Mrs. Marc Knudsen. Auct. Don Roche.

Oct. 9 — Fall hog sale in Newton, Kans., Balthrop Farms of Wichita.

Oct. 20 — Registered Quarter Horse consignment sale in Salina, Kans., Sale mgr. Bernard Ireton. Aucts. Bob Perry and Roger Johnson.

Oct. 21—25th annual Kansas Guernsey sale in Hutchinson, W. G. Ransom, Williamsburg, co-chairman sale committee.

Oct. 28 — Kansas Milking Shorthorn Society state sale in Hutchinson, Freg Rogers, sale mgr. Dick Sears, auct.

Nov. 4 — Crowther-Walker Quarter Horse production sale in Salina, Duane Walker, Canton, sale mgr.

Nov. 4 — All breed calf sale in Manhattan, Olson, Fagerberg & Hawkinson, joint sale.

Nov. 3 — 5th annual Hammarlund-Shamrock Angus sale. St. Marys, Kansas.

Nov. 15, 1967 — Registered Hereford sale, Smolan, Johnson Hereford Farms; Elmer L. Johnson & Sons.

Nov. 18 — Kocher Herefords production sale in Onaga, Herman Kocher & Sons.

Nov. 18 — State ewe sale in Hutchinson, Kans. Purebred Sheep Breeders Assn., V. E. McAdams, sec.

Nov. 21 — Hereford production sale in Marysville, Peterson's Herefords. Elmer Peterson & Son.

Nov. 22 — Hereford production sale in Marysville, Peterson's Herefords. Elmer Peterson & Son.

Nov. 25 — Fall sale of Arbuthnot Herefords, Haddam, Ks. Bob Arbuthnot.

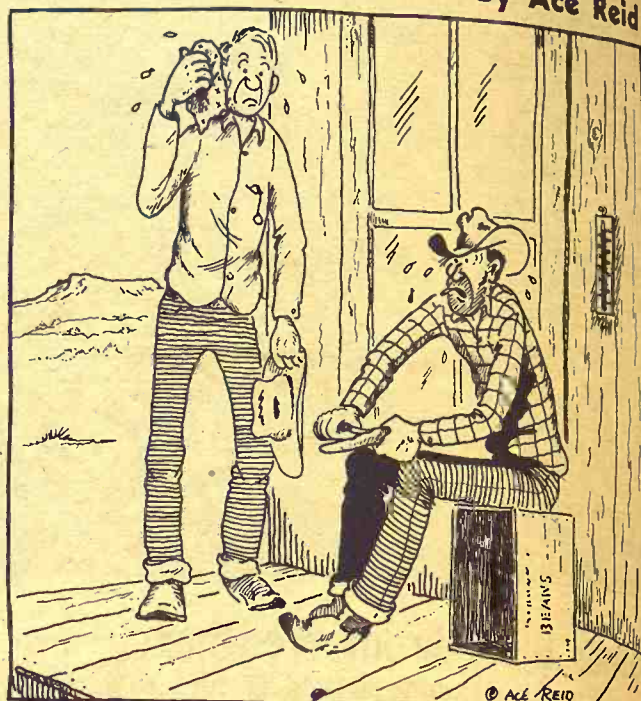
Jan. 20, 1968 — Rebenstorf Herefords Production sale,

Elmer Rebenstorf, Sylvan Grove, Kans.

August 1, 1967

## COW POKES

By Ace Reid



"Yep, we have our ups and downs... our temperature is up and our cow market is down."

## The Growing Hog Market Is At WASHINGTON SALES CO.

TRY US SOON

HOGS every TUESDAY  
CATTLE every WEDNESDAY

A Growing Market  
for Finished Cattle

All Sales  
Start 1:00 p.m.

ED BURT

Barn Phone EA 5-2266 Residence EA 5-2393  
Washington, Kans.



DUE TO THE LARGER NUMBER OF LIVESTOCK BEING HANDLED, THE HOG MARKET WILL BEGIN PROMPTLY AT 11:00 P.M.

We had another good run of cattle and hogs last Saturday, with a steady to higher market on all classes of cattle except cows. They were down some. Good cows brought \$16.00 to \$17.50, and the poorer grade sold @ \$15.00 to \$17.00, which were about in line with the markets in the area.

We had some real activity on baby calves. They sold @ \$30.00 to \$50.00 by the head. Started calves with a little weight went @ \$50.00 to \$70.00.

Our run of hogs continues heavy on all classes. We have four major packer buyers, and they can use all the butcher hogs you bring in, and we always have buyers for pigs and feeders. If you have not tried the Junction City Saturday market, why don't you see what we can do for you here. The following is a sampling of our sales last Saturday:

STEER CALVES			HOGS		
11 black steers	515 @	29.30	20 white butchers	227 @	21.65
7 whiface steers	430 @	29.00	24 mixed butchers	202 @	21.55
3 blkwhif steers	405 @	29.05	30 mixed butchers	213 @	21.75
3 black steers	396 @	30.80	26 red butchers	220 @	21.65
16 whiface steers	635 @	25.75	6 hamp hogs	220 @	21.60
3 black steers	570 @	27.80	17 mixed butchers	198 @	21.55
4 whiface steers	500 @	27.30	21 mixed butchers	244 @	21.50
HEIFER CALVES			SOWS		
13 black heifers	520 @	25.50	3 mixed sows	330 @	18.70
7 black heifers	470 @	26.05	1 hamp sow	340 @	19.00
11 black heifers	445 @	26.20	3 red sows	310 @	19.20
5 whiface heifers	525 @	25.50	1 blackspt sow	500 @	16.70
23 whiface heifers	430 @	25.50	7 white sows	350 @	17.75
10 blkwhif heifers	500 @	25.95	2 hamp sows	465 @	17.75
			1 red sow	445 @	17.80
FEEDER CATTLE			PIGS		
21 feeders	910 @	25.25	Good pigs weighing 60 to 80 lbs brought \$17.00 to \$19.50 per head. 30 to 60 lbs pigs brought \$14.00 to \$17.00 and the smaller ones from \$9.00 to \$14.00		
11 mixed feeders	870 @	25.70			
3 blkwhif feeders	850 @	25.90			

LICENSED AND BONDED  
BARN PH. JUNCTION CITY CE 8-1471

If you have livestock to appraise, call:

VERN LANGVARDT, Manager, 502 UPLAND  
HOWARD LANGVARDT, Auctioneer, 520 UPLAND  
HERB NEUMEYER, White City, Phone 349-2863

## Ronald Rice Motors, Inc.

CHEVROLET OLDSMOBILE CADILLAC  
North Kansas' Largest Volume Dealer  
NW 2nd Phone CO 3-4000 ABILENE, KANS.

## Great Deals On Like-New Cars

Listed Below You Will Find Your Best  
AIR CONDITIONED BUYS

- 1967 OLDSMOBILE F-85 Save Over \$600  
4 dr. Radio, heater, automatic transmission, power steering, power brakes, air conditioner. Sold new for \$3,725.02, 10,000 miles.
- 1967 OLDS Toronado Save \$1100  
2 dr. hardtop. Radio, heater, automatic transmission, full power, air conditioner. Sold new \$6,600.00. Just a few thousand miles.
- 1966 TEMPEST Custom \$2495  
4 dr. V-8. Radio, heater, automatic transmission, power steering, power brakes, air conditioner.
- 1966 OLDSMOBILE Delta 88 \$3295  
2 dr. hardtop. Radio, heater, automatic transmission, power steering, power brakes, air conditioner.
- 1964 OLDSMOBILE 98 \$2295  
Town Sedan. Radio, heater, automatic transmission, power steering, power brakes, air conditioner. Local Abilene car, real nice.
- 1963 OLDSMOBILE Starfire \$1895  
2 dr. hardtop. Radio, heater, automatic transmission, power steering, power brakes, air conditioner.
- 1963 CADILLAC Hardtop \$2995  
4 dr. Radio, heater, automatic transmission, full power, air conditioner.
- 1962 CHEVROLET Impala \$1295  
4 dr. V-8 hardtop. Radio, heater, automatic transmission, power steering, power brakes, air conditioner. Red and white. Very sharp, better have a look at this one.
- 1961 CHEVROLET Biscayne \$895  
4 dr. Radio, heater, automatic transmission, air conditioner.

## 65 NEW CARS

In Stock

## TO CHOOSE FROM

Get a better buy on a New Car, while Rices are clearing the deck of '67 Models!



August 1, 1967  
By Ace Reid

### License To Hunt Musk Ox Will Cost \$4000

Canadian authorities plan a limited season next year on the musk ox in Canada's Arctic islands. Price, \$4000 a head. All one has to do to kill a musk ox is walk up to it and shoot, says Paul Kwatorowsky, superintendent of game for the Northwest Territories.

It's no sport in the proper sense," he told a Canadian press interviewer, "There's no skill involved. The only skill required is to select the biggest one."

Over strenuous objections of the Canadian Wildlife service, the Northwest Territories government tentatively plans to permit the hunting of musk oxen as a source of revenue for the Eskimos who apparently will not be permitted to shoot the shaggy animals themselves.

A final decision is not expected until October after a musk ox census has been taken.

The musk ox, Canada's only survivor of the Ice Age, has been protected from all human hunters since 1917. One expert estimated there are only 7500 in the Queen Elizabeth islands, the Canadian Arctic archipelago, and said the herds have not yet recovered from the slaughter of about 1000 animals by Arctic explorers in the first decade of the century.

The islands afford no cover for the musk oxen, he said. "A hunter will be able to land beside a herd and shoot one without even getting out of the boat."

Plans are to limit the kill to one per hunter and 32 per year. The \$4000 cost includes air charter, eskimo guides and seal and caribou hunting licenses.

... our market is down, ... market is at ... CO. ... DAY ... All Sales Start 1:00 p.m. ... ED BURT ... residence EA 5-2383 ... Kans. ... K SALES ... TURDAY ... LIVESTOCK BEING ... L BEGIN PROMPTLY ... and hogs last Saturday, ... classes of cattle ... Good cows brought ... ade sold @ \$15.00 to ... th the markets in the ... alves. They sold @ ... ted calves with a ... 00. ... ll classes. We have ... can use all the butcher ... ve buyers for pigs and ... nction City Saturday ... can do for you here. ... les last Saturday:

**HOGS**  
te butchers 227 @ 21.50  
ed butchers 202 @ 21.50  
ed butchers 213 @ 21.50  
butchers 220 @ 21.50  
hogs 220 @ 21.50  
ed butchers 198 @ 21.50  
ed butchers 244 @ 21.50

**SOWS**  
d sows 330 @ 18.00  
sow 340 @ 19.00  
sows 310 @ 19.00  
sows 500 @ 16.00  
spt sow 350 @ 17.00  
sows 465 @ 17.50  
sows 445 @ 17.00

**PIGS**  
igs weighing 60 to 80 lbs ... \$17.00 to \$19.50 per ... 30 to 60 lbs pigs brought ... to \$17.00 and the small ... m \$9.00 to \$14.00

DED ... CITY CE 8-1471 ... raise, call: ... 502 UPLAND ... er, 520 UPLAND ... Phone 349-2863

# You can't beat Riverside tires at Wards low prices!

REPLACEMENT LEVEL

## RIVERSIDE HI-WAY TRACTION

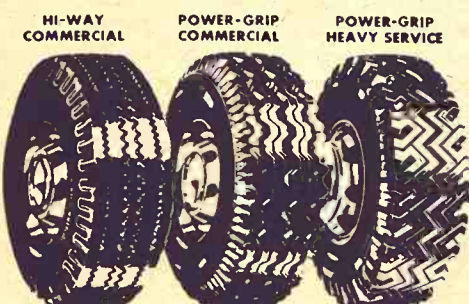
NYLON CORD

Single bead

# 14<sup>88</sup>

**NO MONEY DOWN... BUY NOW AND SAVE!**

Pick-up, Panel, Light van, Fleet operator or single truck owner. Whatever your truck and whatever your needs, here's the tire that will beat expressways yet give you good performance off the road as its deeply-slanted tread churns out 9-row traction.

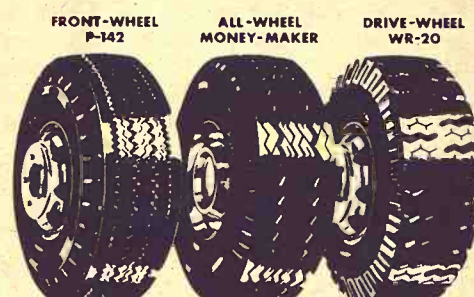


Dual bead

# 37<sup>66</sup>

**STOP IN YOUR WARDS TIRE CENTER TODAY!**

When the big equipment starts rolling here's the tire and price that will put profit into every mile of operation. Not only does it give good stability and control, but with its strong, Riverside engineered nylon cord body it comes back for recap after recap.



**DELIVERY AND MOUNTING FREE WITHIN 50 MILES OF JUNCTION CITY**

**OUT-OF-TOWN SHIPMENTS PRE-PAID BY**

## WARD'S TRUCK TIRE CENTER

**1010 West 6th Junction City, Kan. CE 8-4350**

## Reynolds Sale Barn

ABILENE, KANS. CO 3-3394

Selling Every Friday

### NOTICE REYNOLDS SALE BARN

**GOES BACK TO DAYTIME SALE  
FRI. AFTERNOON, AUG. 4 at 1:00**

The Reynolds Sale Barn will hold their first special stocker and feeder auction of the season in conjunction with the regular sale Friday afternoon August 4, starting at 1:00 p.m.

This sale has been advertised through the corn belt states as well as our regular trade area.

Already listed:  
200 choice feeder heifers 600 to 700 pounds  
200 choice feeder steers 700 to 900 pounds  
Many consignments of Angus and Whiteface steer and heifer calves.

To consign cattle, call collect:

**DUDE REYNOLDS CO 3-3394**  
Abilene, Kansas

For information, requests for appraisals at no obligation, or inquiries regarding coming sales, call me any time, day or night.

**DUDE REYNOLDS Abilene, Kans.**  
CO 3-3394

Bring your cattle in at any time day or night; we'll handle them for you at your request.

## Sale Every Thursday

Hogs 11:30 a.m.  
Cattle 1 p.m.

Cattle are beginning to move now, and we had a pretty good run. Prices on feeder cattle were steady. Cows were down \$1.00 to \$1.50, bulls were steady. The butcher hog top was up 25¢ and weaning and feeder pigs were steady with a big supply and in good demand. The following is a sampling of our Thursday's sale:

### FAT CATTLE & FEEDERS

6 whiface steers	--- 600 @	27.15
3 blkwhif steers	--- 683 @	26.90
1 black steer	--- 580 @	25.90
35 whiface heifers	--- 608 @	25.35
3 blkwhif steers	--- 590 @	25.05
3 whiface heifers	--- 597 @	24.70
8 black heifers	--- 578 @	24.60
18 whiface heifers	--- 518 @	24.40
2 whiface heifers	--- 580 @	23.90
5 black heifers	--- 590 @	23.25
3 black heifers	--- 880 @	23.00
1 red heifers	--- 620 @	22.90
1 blkwhiface heifer	--- 640 @	22.90

### COWS

1 blkwhiface cow	--- 765 @	22.50
1 holstein cow	--- 910 @	16.80
1 red cow	--- 995 @	16.10
1 red cow	--- 1305 @	15.70
1 roan cow	--- 1110 @	15.10
1 holstein cow	--- 1220 @	14.70
1 guernsey cow	--- 750 @	14.50

### BULLS

1 black bull	--- 1350 @	22.90
1 whiface bull	--- 1390 @	22.90
1 whiface bull	--- 1540 @	21.90
1 black bull	--- 1370 @	21.90

### BULL & STEER CALVES

2 blkwhif steers	--- 355 @	29.75
1 blkwhiface steer	--- 390 @	28.25
7 whiface steers	--- 484 @	28.10
2 whiface steers	--- 483 @	27.30
5 black steers	--- 441 @	27.20
6 red steers	--- 443 @	27.10
2 whiface steers	--- 380 @	26.75
2 black steers	--- 340 @	25.00

### HEIFER CALVES

1 whiface heifer	--- 190 @	30.50
2 whiface heifers	--- 272 @	27.75
1 whiface heifer	--- 195 @	27.50
7 whiface heifers	--- 431 @	26.00
4 whiface heifers	--- 401 @	25.75
3 blkwhif heifers	--- 402 @	25.20
4 black heifers	--- 470 @	23.80
2 whiface heifers	--- 475 @	23.10

### HOGS & PIGS

31 mixed hogs	--- 228 @	22.10
22 mixed hogs	--- 248 @	21.90
13 mixed hogs	--- 218 @	21.85
4 mixed sows	--- 354 @	19.10
7 hamp sows	--- 391 @	18.10
5 mixed sows	--- 500 @	17.10
1 hamp boar	--- 325 @	12.80
1 hamp boar	--- 545 @	12.60
1 white feeder	--- 165 @	20.20
3 mixed feeders	--- 175 @	19.00
1 hamp feeder	--- 140 @	17.75
59 mixed pigs	--- @	18.25
15 mixed pigs	--- @	17.00
7 mixed pigs	--- @	15.50
34 mixed pigs	--- @	14.25
29 mixed pigs	--- @	13.75
27 mixed pigs	--- @	12.25
9 mixed pigs	--- @	8.50

### RALEIGH BREEDING, MANAGER

barn HI 3-3671; home HI 3-3647

Auctioneer: Larry Lagasse,  
Ph. Concordia, Kans. CH3-1714

**MARYSVILLE LIVESTOCK & COMMISSION CO.**  
MARYSVILLE, KANSAS



# Sell At St. Marys

Sell  
Or Buy

Cattle & Hogs

By  
Auction

Tuesdays

On receipts of 631 cattle our market this week was very active and about steady on all classes of stockers and feeders. All grades of killing cows were 25¢ to 50¢ lower.

## STOCKER & FEEDER STEERS

3 black steers	580 @	29.80
4 black steers	610 @	29.30
2 black steers	557 @	29.30
16 black steers	623 @	28.00
1 whiface steers	620 @	28.00
5 blk&blkwhif steers	655 @	27.70
1 whiface steer	565 @	27.60
1 charolais steer	560 @	27.25
1 blackwhiface steer	600 @	27.10
1 whiface steers	670 @	27.00
5 charolais steers	682 @	26.80
1 broface steer	720 @	26.70
2 black steers	570 @	26.50
2 blackwhiface steers	657 @	26.50
24 mixed steers	685 @	26.25
14 whiface steers	780 @	26.05
6 whiface steers	640 @	26.00
7 whiface steers	817 @	25.65
1 whiface steer	620 @	25.60
28 mixed steers	757 @	25.50
17 mixed fats	818 @	25.40
1 whiface steer	675 @	25.25
1 charolais steer	1020 @	24.80
21 mixed fats	922 @	24.75
1 whiface steer	740 @	23.40
1 white steer	835 @	23.60
19 holstein steers	1236 @	23.50
1 roan steer	790 @	23.10
1 black steer	665 @	23.10
1 whiface steer	865 @	23.00
1 holstein steer	630 @	23.00
5 holstein steers	1142 @	22.50
10 holstein steers	916 @	22.45
1 holstein steer	840 @	21.90

## STEER CALVES

1 whiface bull	245 @	36.50
1 blackwhiface steer	350 @	31.75
6 black steers	370 @	31.10
2 blackwhiface steers	342 @	31.10
1 black steer	280 @	31.10
2 black steers	420 @	31.10
12 black steers	501 @	30.75
10 black steers	442 @	30.65
2 black steers	470 @	30.65
2 black steers	435 @	30.60
2 whiface steers	462 @	30.50
9 whiface steers	463 @	30.50
3 black steers	470 @	30.30
2 black steers	502 @	30.30
13 black steers	494 @	30.10
1 whiface steer	500 @	30.10
1 whiface steer	530 @	30.00
2 black steers	550 @	29.90
1 blkbroface steer	485 @	29.75
1 whiface steer	550 @	29.70
2 blkwhiface steers	460 @	29.50
8 black steers	540 @	29.50
1 blkwhiface steer	445 @	28.00
1 whiface steer	445 @	27.75
1 black steer	485 @	27.30
1 black steer	495 @	27.10
1 whiface steer	450 @	27.00
1 black steer	470 @	26.80
1 whiface steer	510 @	26.70
1 black steer	445 @	26.10
1 black steer	395 @	25.60

## STOCKER & FEEDER HEIFERS

6 black heifers	573 @	25.60
3 whiface heifers	563 @	25.30
2 whiface heifers	572 @	25.30
1 blackwhif heifer	565 @	25.10
3 charolais heifers	578 @	25.10
1 whiface heifer	685 @	25.10
3 whiface heifers	576 @	24.80
1 blkwhiface heifer	635 @	24.75
3 black heifers	606 @	24.60
32 whiface heifers	664 @	24.60
3 black heifers	583 @	24.60
4 whiface&blk heifers	815 @	24.00
5 mixed heifers	912 @	23.90
6 blk&blkwhif heifers	735 @	23.60
1 whiface heifer	570 @	23.60
14 mixed heifers	823 @	23.55
2 whiface heifers	735 @	23.50
8 whiface heifers	657 @	23.30
6 mixed heifers	890 @	23.30

## HEIFER CALVES

1 whiface heifer	230 @	28.30
3 black heifers	355 @	26.20
1 black heifer	435 @	26.10
6 black heifers	406 @	26.10
3 black heifers	430 @	25.75
18 whiface heifers	475 @	25.60
13 black heifers	537 @	25.60
2 whiface heifers	410 @	25.60
12 blk&blkwhif heifers	492 @	25.30

3 whiface heifers	481 @	25.30
3 black heifers	486 @	25.25
4 black heifers	490 @	25.25
2 whiface heifers	447 @	25.10
2 black heifers	515 @	25.00
2 whiface heifers	425 @	24.80
2 whiface heifers	535 @	24.60
2 black heifers	517 @	24.60
1 whiface heifer	520 @	24.20
1 blkwhiface heifer	405 @	24.20
2 whiface heifers	517 @	24.10
3 black heifers	430 @	23.90
2 charolais heifers	505 @	23.60
1 red heifer	480 @	23.60

## COWS

1 blkwhif hfrett	1065 @	19.80
1 black hfrett	800 @	18.30
2 whiface hfretts	1040 @	18.10
1 black cow	745 @	17.90
2 whiface cows	890 @	17.10
1 whiface cow	915 @	17.10
2 black cows	1035 @	17.10
1 holstein cow	1420 @	17.00
1 holstein cow	1380 @	16.60
1 whiface cow	1250 @	16.50
1 whiface cow	1270 @	16.50
1 whiface cow	1070 @	16.30
1 black cow	1130 @	16.00
1 whiface cow	1025 @	16.00
1 black cow	1075 @	15.60
1 black cow	800 @	15.50
1 whiface cow	940 @	15.30
3 black cows	943 @	15.25
5 whiface cows	1066 @	15.10

## For Information or Estimates

Rezac Barn	St. Marys 437-2999
Delaine Rezac	St. Marys 437-6266
Elmer Imthurn	Maple Hill MI 3-2440
Paul Kramer	St. Marys 437-2993

Auctioneers: Lawrence Welter, Gene Toby & Verlin Green

LIVESTOCK COMMISSION  
COMPANY

Rezac



St. Marys,  
Kans.

## IMPORTANT NOTICE

Starting This Week  
THURSDAY, AUG. 3

We return to our regular twice a week sale schedule.

We sold 196 cattle and 599 hogs at our regular Monday Sale. The hog top was \$22.45. The feeder steers and heifers sold steady to strong. The butcher cows and bulls were 50¢ to \$1.00 lower than the previous week. Here is a sampling of sales made.

## CATTLE

Milton Nagley, Abilene	1 blk hfr	720 @	21.30
Milton Nagley, Abilene	1 hol cow	1050 @	14.90
Milton Nagley, Abilene	1 blk str	905 @	24.50
Glen Hannenbaum, Salina	5 wf str	590 @	28.60
Bryce Blake, Minneapolis	4 blk hfrs	423 @	24.80
Bryce Blake, Minneapolis	1 blk hfr	550 @	24.00
Bryce Blake, Minneapolis	1 blk str	500 @	27.20
Bryce Blake, Minneapolis	1 blk str	605 @	25.20
Don Lahr, Abilene	3 wf str	775 @	27.00
Don Lahr, Abilene	1 hol str	665 @	21.80
Don Lahr, Abilene	1 blk str	725 @	24.60
Allen Knopp, Chapman	29 mix hfrs	783 @	24.25
Darvin Bacon, Bavaria	1 hol bull	720 @	21.60
Darvin Bacon, Bavaria	1 hol bull	485 @	23.90
Bacon Bros., Bavaria	1 hol cow	1290 @	17.10
Bacon Bros., Bavaria	1 hol cow	1270 @	17.40
Bacon Bros., Bavaria	1 hol cow	1260 @	17.50
Bacon Bros., Bavaria	1 hol cow	1190 @	17.90
Bacon Bros., Bavaria	1 hol cow	1450 @	17.20
Earl Mattison, Salina	1 hol cow	1265 @	17.20
Earl Mattison, Salina	1 hol cow	1245 @	17.90
Marvin Steinbrock, Manch.	1 hol cow	1180 @	17.00
Marvin Steinbrock, Manch.	1 hol cow	1170 @	17.10
Clyde Comfort, Wells	1 bwf cow	1055 @	18.30
Clyde Comfort, Wells	1 wf hfr	700 @	23.50
Clyde Comfort, Wells	2 blk hfrs	637 @	23.10
Richard Mathews, Tescott	6 blk str	590 @	27.00
Richard Mathews, Tescott	2 blk str	455 @	28.80
Richard Mathews, Tescott	7 blk hfrs	558 @	24.90
Richard Mathews, Tescott	3 blk hfrs	455 @	25.60
Lyle Mathews, Tescott	2 blk str	455 @	27.60
Lyle Mathews, Tescott	3 blk str	548 @	26.70
Albert Vanek, Oak Hill	1 wf bull	1250 @	20.30
Melvin Sparks, Ellsworth	1 blk str	570 @	26.30
CK Ranch, Brookville	1 wf cow	965 @	17.10

Charles Brockway, Barnard	1 char cow	925 @	17.80
Glen Nelson, Jr., Lincoln	1 blk str	560 @	24.90
Vernon McCall, Salina	1 wf hfr	455 @	25.50
Vernon McCall, Salina	1 wf cow	880 @	16.20
James Berg, Lindsborg	1 blk bull	1305 @	21.60
Delmar Sidener, Solomon	2 blk str	857 @	25.10
G. H. Watters, Brookville	1 wf bull	1450 @	21.60
G. H. Watters, Brookville	1 wf bull	1370 @	21.90
Wendell Shirack, Solomon	1 wf cow	1070 @	16.30
Wendell Shirack, Solomon	1 rn cow	975 @	16.40
I. A. Minneman, Tescott	4 rn str	721 @	26.20
I. A. Minneman, Tescott	3 rd hfrs	673 @	22.50
Frank Svava, Kanopolis	1 wf cow	1175 @	16.50
Frank Svava, Kanopolis	1 rn cow	970 @	16.80
Frank Svava, Kanopolis	1 wf str	430 @	28.30
Dorothy Erhardt, Ellsworth	1 wf str	490 @	27.10
Dorothy Erhardt, Ellsworth	2 wf hfrs	445 @	24.40
Lester Pflugheft, Ellsworth	1 wf str	500 @	26.40
Lester Pflugheft, Ellsworth	1 bwf hfr	495 @	24.70
Lester Pflugheft, Ellsworth	1 wf hfr	235 @	23.80
Eugene Godsey, Brookville	4 wf str	502 @	29.05
Eugene Godsey, Brookville	1 bwf str	530 @	29.20
Eugene Godsey, Brookville	3 bwf str	651 @	26.55
Eugene Godsey, Brookville	2 wf hfrs	522 @	25.60
Carl & Morris Rasher, Sol.	10 rn str	475 @	28.20
Carl & Morris Rasher, Sol.	4 rn hfrs	445 @	24.80

## FOR INFORMATION OR ESTIMATES

LAURENCE CLEMENCE	Abilene	Phone CO 3-3091
MERRILL CHRISTIANSEN	Durham	Phone 732-3371
BOB MUIR	Salina	Phone TA 3-2963

Market Reports  
Radio Station KSAL, Salina  
6:45 a.m. Every  
Monday, Wednesday & Friday  
KFRM  
6:55 a.m. Mon. through Fri.

Central Kansas Most

Modern Livestock Auction . . West Side Of Salina

TWO SALES EVERY WEEK

MONDAY

Fat Cattle 9 a.m.

Hogs sell at 11:00 a.m. followed by our regular cattle sale as they are unloaded.

THURSDAY

Cattle Only

Selling starts at 11:00 a.m. Cattle will sell in the order they are consigned on the books.

## HOGS

Donald Kissick, Beverly	26 mix hogs	250 @	21.60
Lowell Larson, Smolan	12 mix hogs	215 @	22.30
Ab Mortimer, Gypsum	20 rd hogs	217 @	22.45
Eldon Arpin, Salina	5 whi hogs	236 @	22.10
Dwight Sperry, Beverly	20 mix hogs	246 @	21.80
Kenneth Erickson, Marq.	24 mix hogs	231 @	22.05
James Griffin, Abilene	11 mix hogs	203 @	22.40
Milton Bickel, Gypsum	7 belt hogs	239 @	21.85
Dean Stauffer, Salina	14 rd hogs	209 @	22.40
Robert Wenthe, Sylvan Gr.	8 whi hogs	224 @	22.30
Verene Nelson, Falun	4 belt sows	464 @	17.90
William Boyce, Hope	7 rd hogs	204 @	22.30
Marvin Gorrell, Culver	17 mix hogs	209 @	22.40
Arthur Guy, Abilene	10 whi hogs	210 @	22.45
Chas. Brockway, Barnard	6 mix hogs	221 @	22.15
Alfred Mayers, Gypsum	22 mix hogs	227 @	22.40
Donald Kissick, Beverly	27 mix hogs	226 @	22.25
Emery Frost, Smolan	22 mix hogs	225 @	22.35
Chas. Brockway, Barnard	17 belt pigs		10.50
Robbie Morrison, Salina	1 whi sow	425 @	18.60
Emery Frost, Salina	24 mix hogs	239 @	22.05
Lloyd Stule, Salina	8 spt pigs		13.00
Everett Keller, Salina	1 rd boar	320 @	13.30
Grant Wicoff, Brookville	1 belt sow	440 @	18.00
Lloyd Stule, Salina	8 spt pigs		13.00
Vern Cherry, Niles	15 mix pigs		12.75
Tom Cherry, Niles	8 mix pigs		13.25
Everett Champ, Junction C.	29 mix pigs		16.75

Farmers & Ranchers  
LIVESTOCK COMMISSION CO.

West On Old US 40

Salina, Kansas

Barn Phone TA 5-0211

Bonded • Licensed