

(re)thinking rural

jonathan knight | sustainability conference | spring 2011







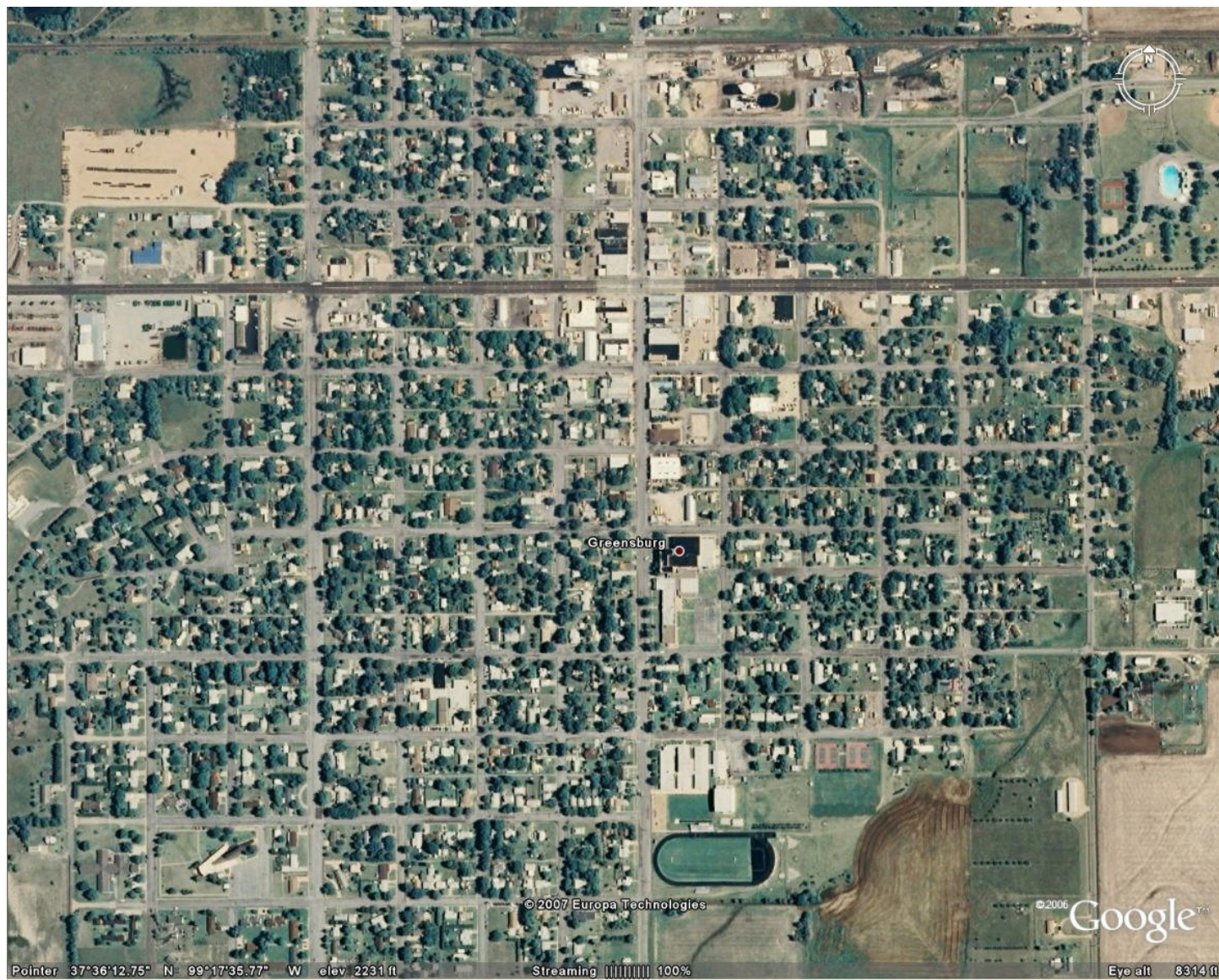


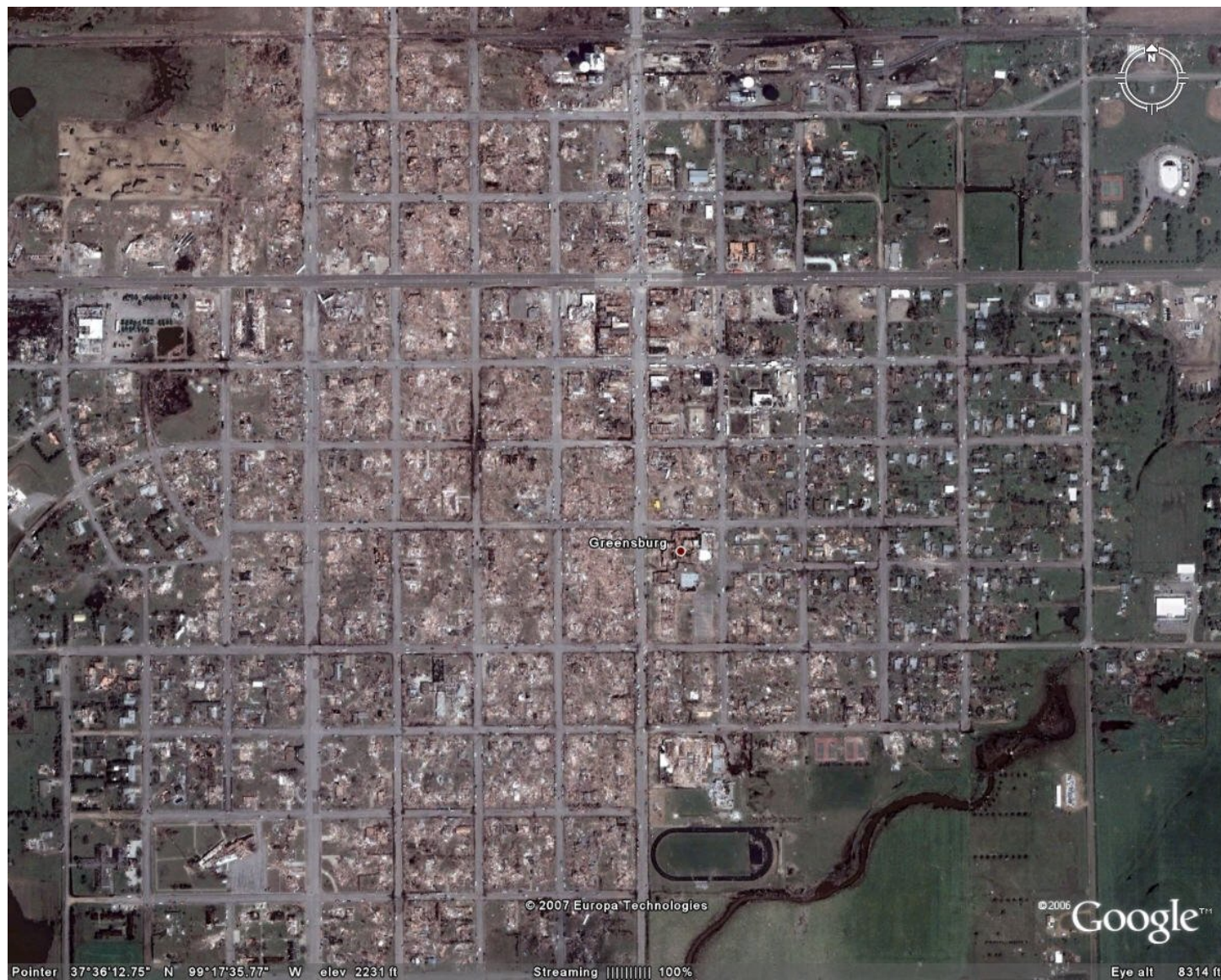












“It is morning in Greensburg, population uncertain.”

new york times article















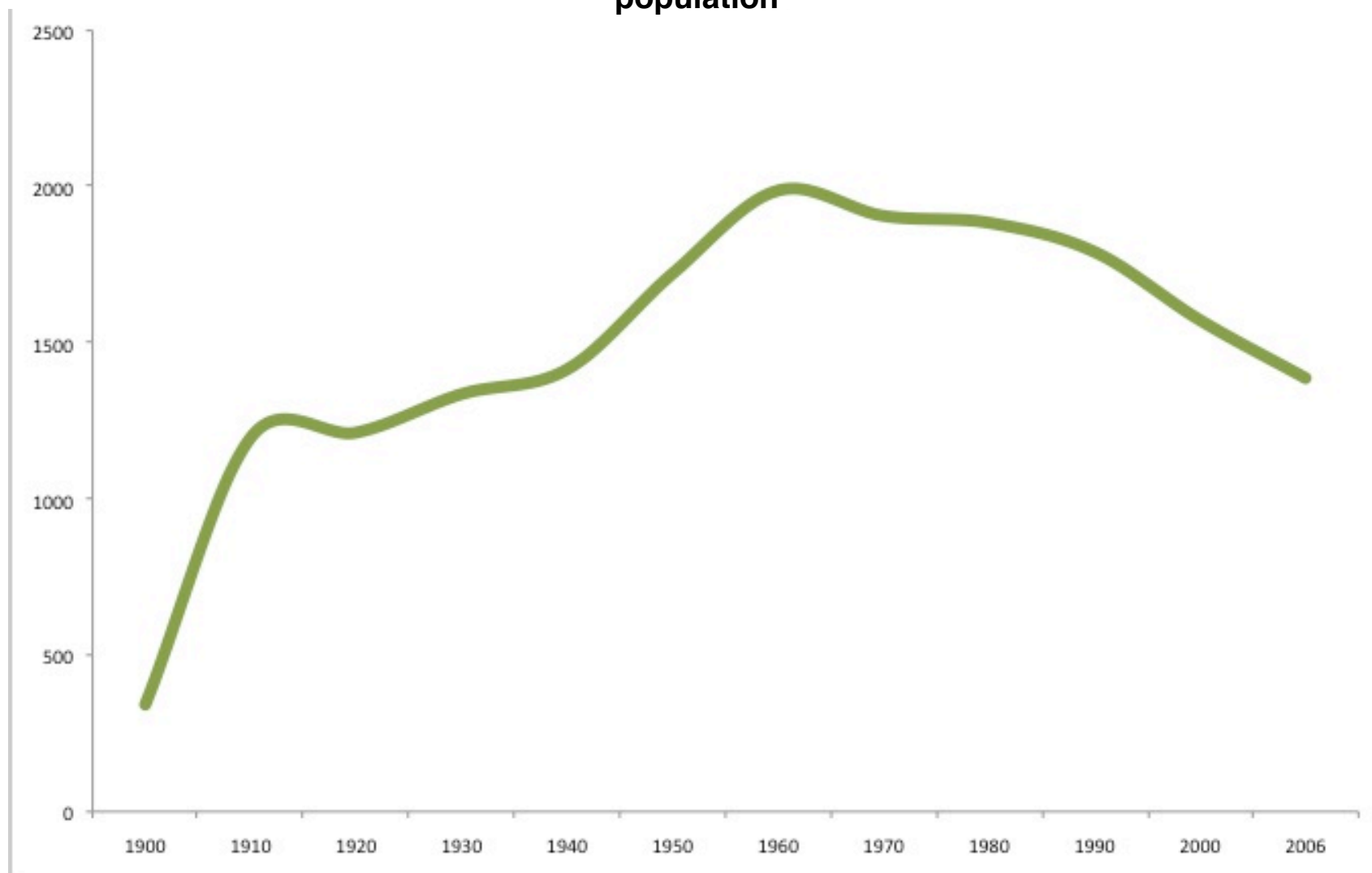




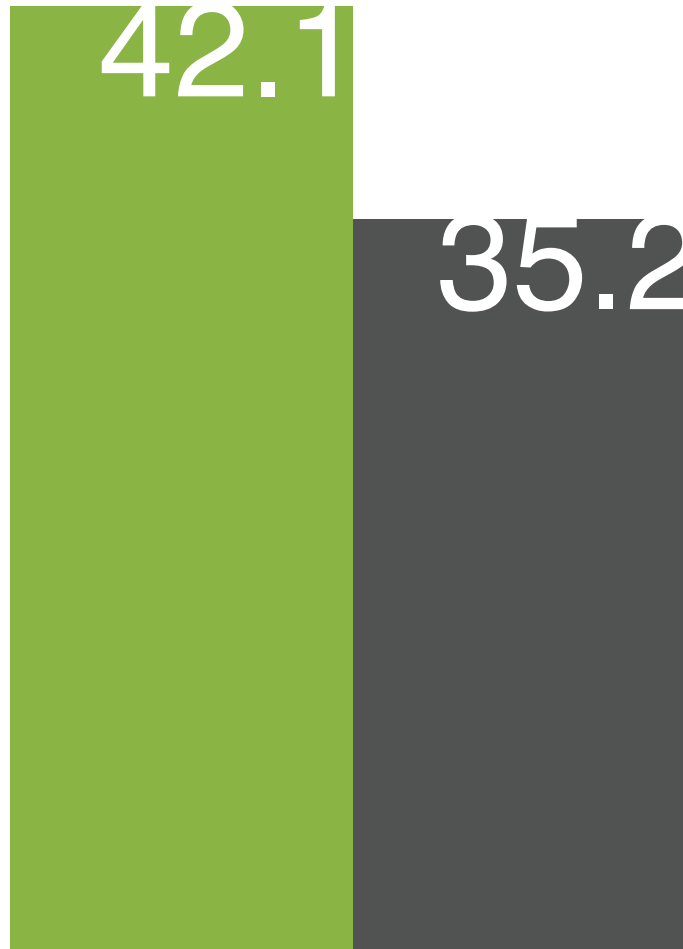
“Out of crisis emerges opportunity, and as a community, Greensburg citizens believe they have the chance to build a stronger, thriving town.”

sustainable comprehensive plan / bnim

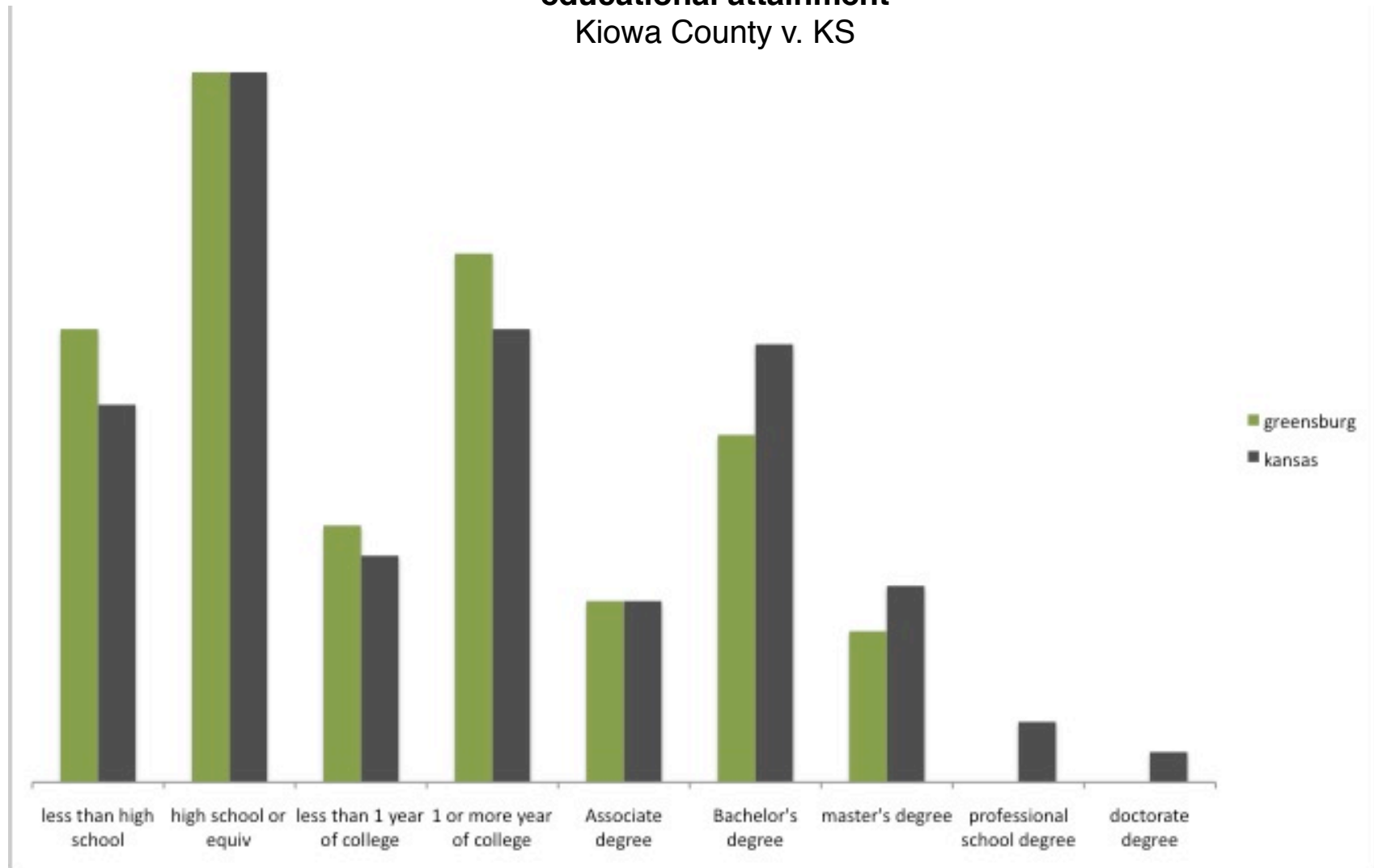
population



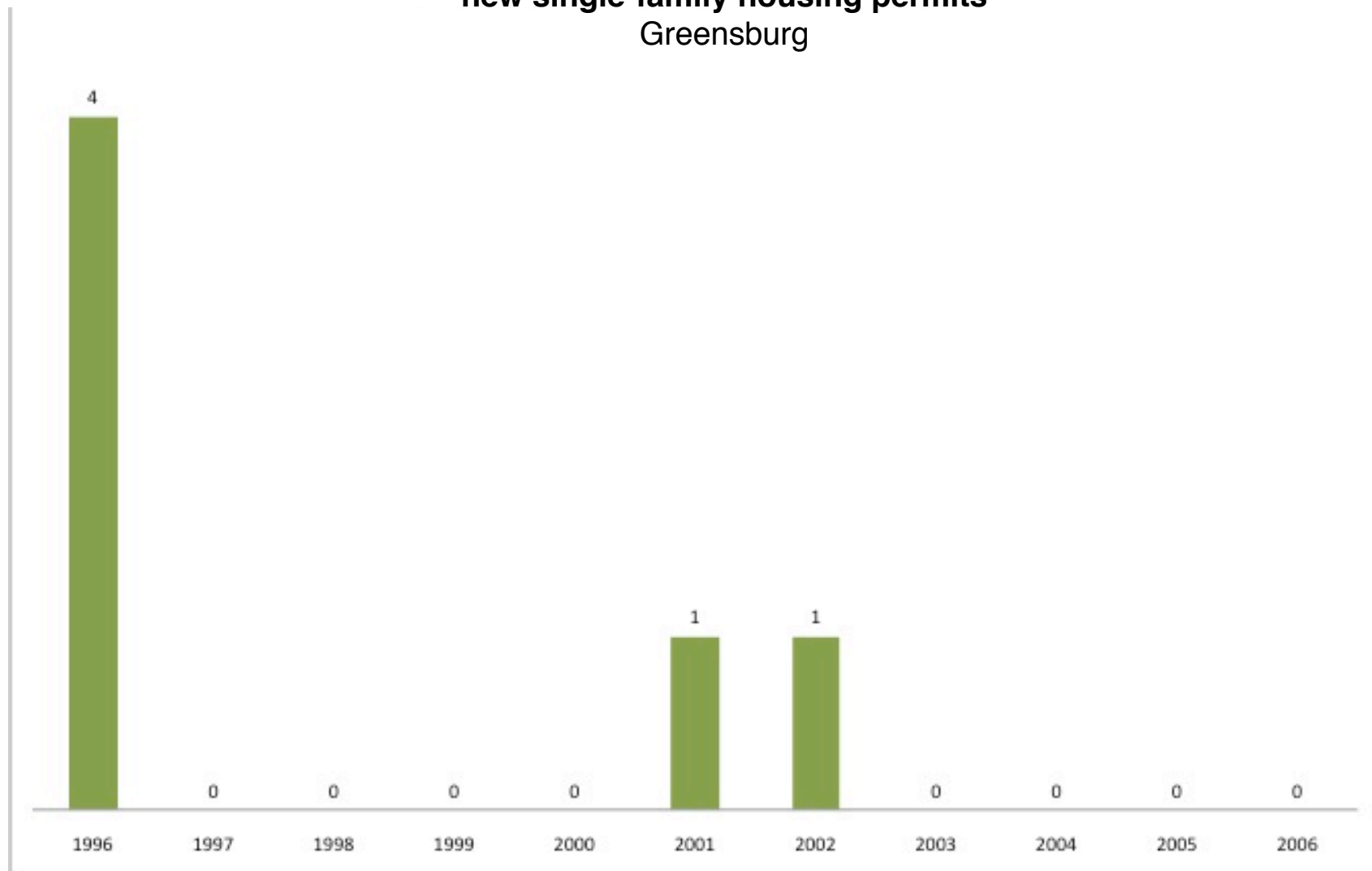
average age
Kiowa County v. KS

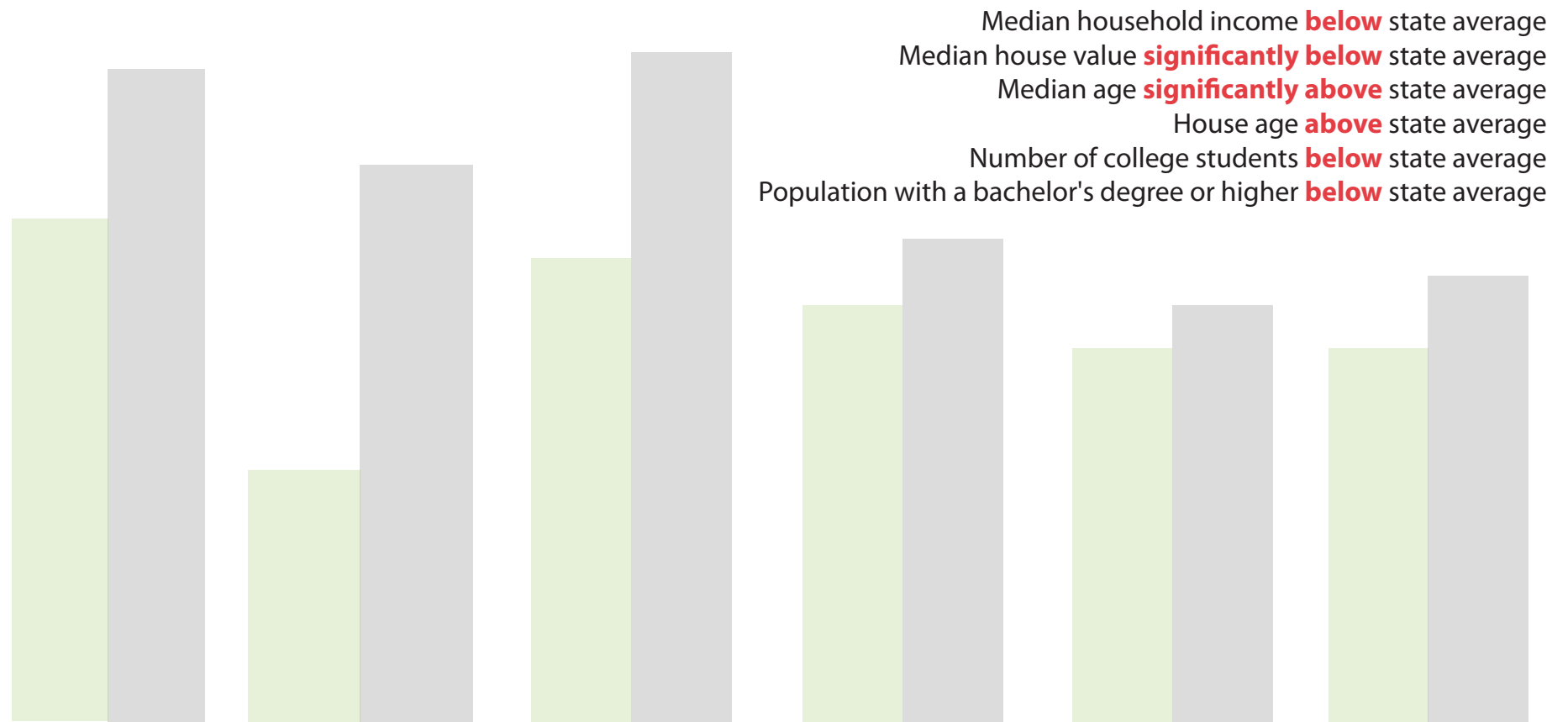


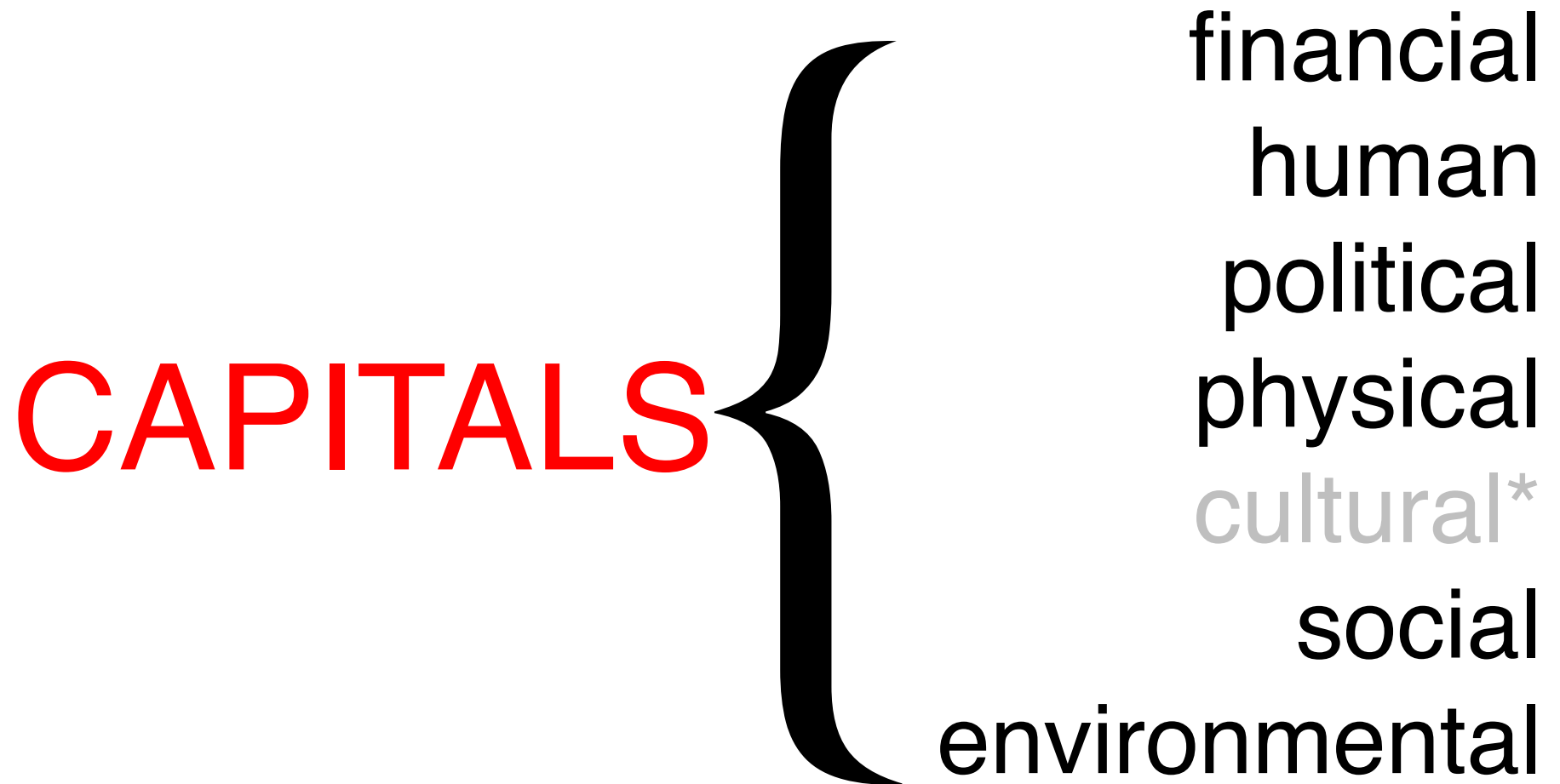
educational attainment
Kiowa County v. KS



new single-family housing permits
Greensburg







financial **CAPITAL**
human
political
physical
social
environmental

>\$100,000,000

Cessna Aircraft Company Community Affairs
Kansas Department of Transportation Habitat for Humanity
Kansas Housing Resource Corporation Centera Bank
Federal Emergency Management Agency
Lowe's Charitable Trust North American Builders Recovery Extension Act
Enterprise Foundation
Kansas Emergency Management Agency Kansas Housing Corporation
Business Restoration Assistance Program Economic Adjustment Program
Economic Development Administration **National Renewable Energy Laboratory**
Crisis Counseling The People's Bank Home Business Partnership Program
Kansas Development Finance Authority Environmental Protection Agency
Greensburg State Bank **Small Business Administration**
Housing Tax Credit Program US Forest Service
US Department of Housing & Urban Development Army Corps of Engineers
I'm Home Program Home Depot Foundation Disaster Unemployment Benefits
Department of Energy Kansas Department of Commerce
United States Department of Agriculture

financial
human **CAPITAL**
political
physical
social
environmental

*“Before the tornado, our city was dying. **Our biggest export was youth.**
Now, people are moving here to see what we will become.”*

taylor schmidt, greensburg student





Kiowa County United



Business Incubator

financial
human
political **CAPITAL**
physical
social
environmental



City Manager Steve Hewitt



Then-Mayor Bob Dixon



city council



Then-Governor Kathleen Sebelius



Scott Brown

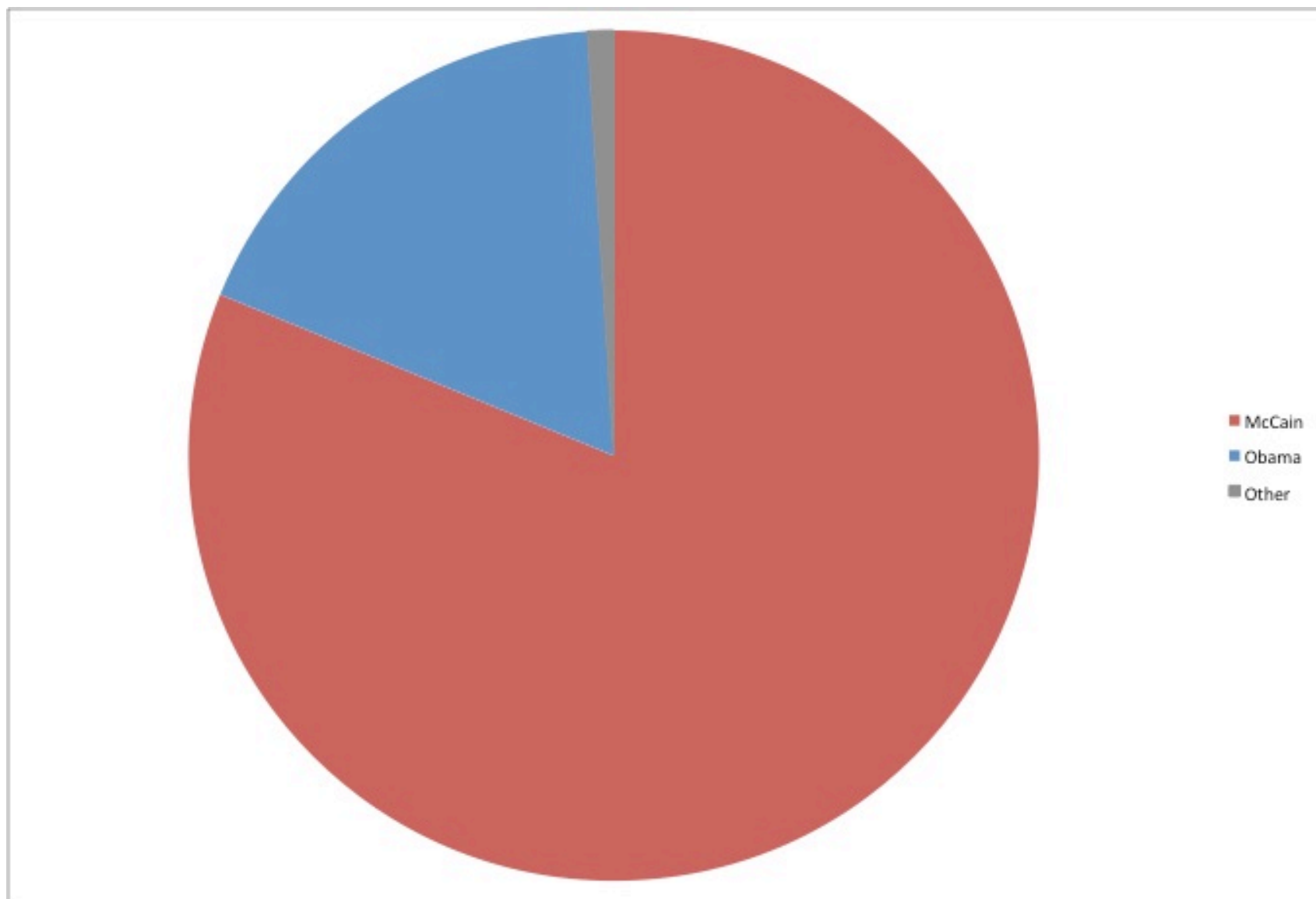


Mike Estes

GREENSBURG
GreenTown™



YOUR SOURCE FOR EVERYTHING GREEN IN GREENSBURG, KANSAS



financial
human
political
physical **CAPITAL**
social
environmental



City Hall



5.4.7 Art Center

43% energy savings

financial

human

political

physical

social

environmental

CAPITAL

*In the midterm election four years ago, Kiowa County posted a
68 percent voter turnout - the highest of any county in the state.*



*The **process of planning** and the coming together to envision a common goal **is often more valuable than the planning itself.***

sustainable comprehensive plan / bnim

financial

human

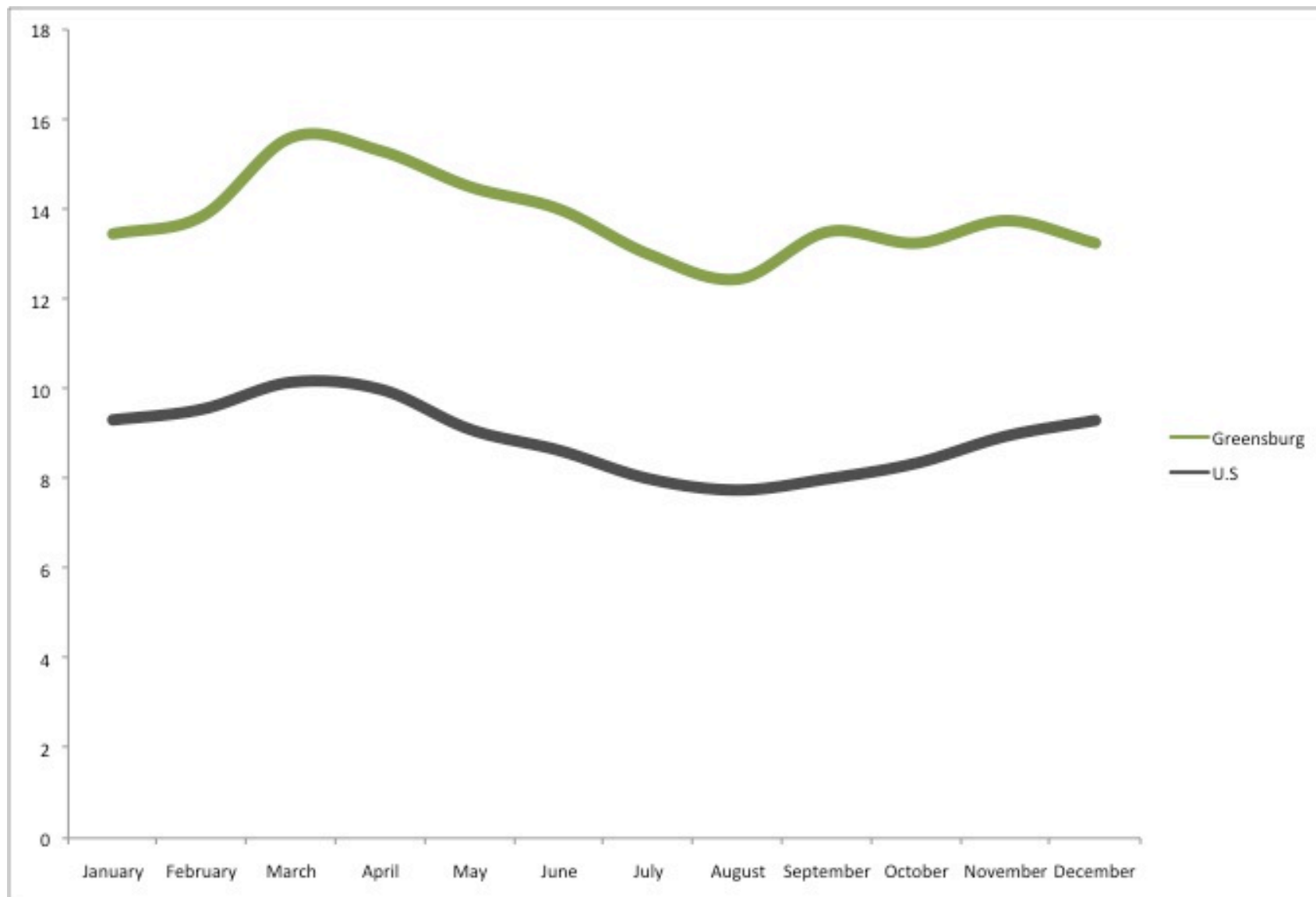
political

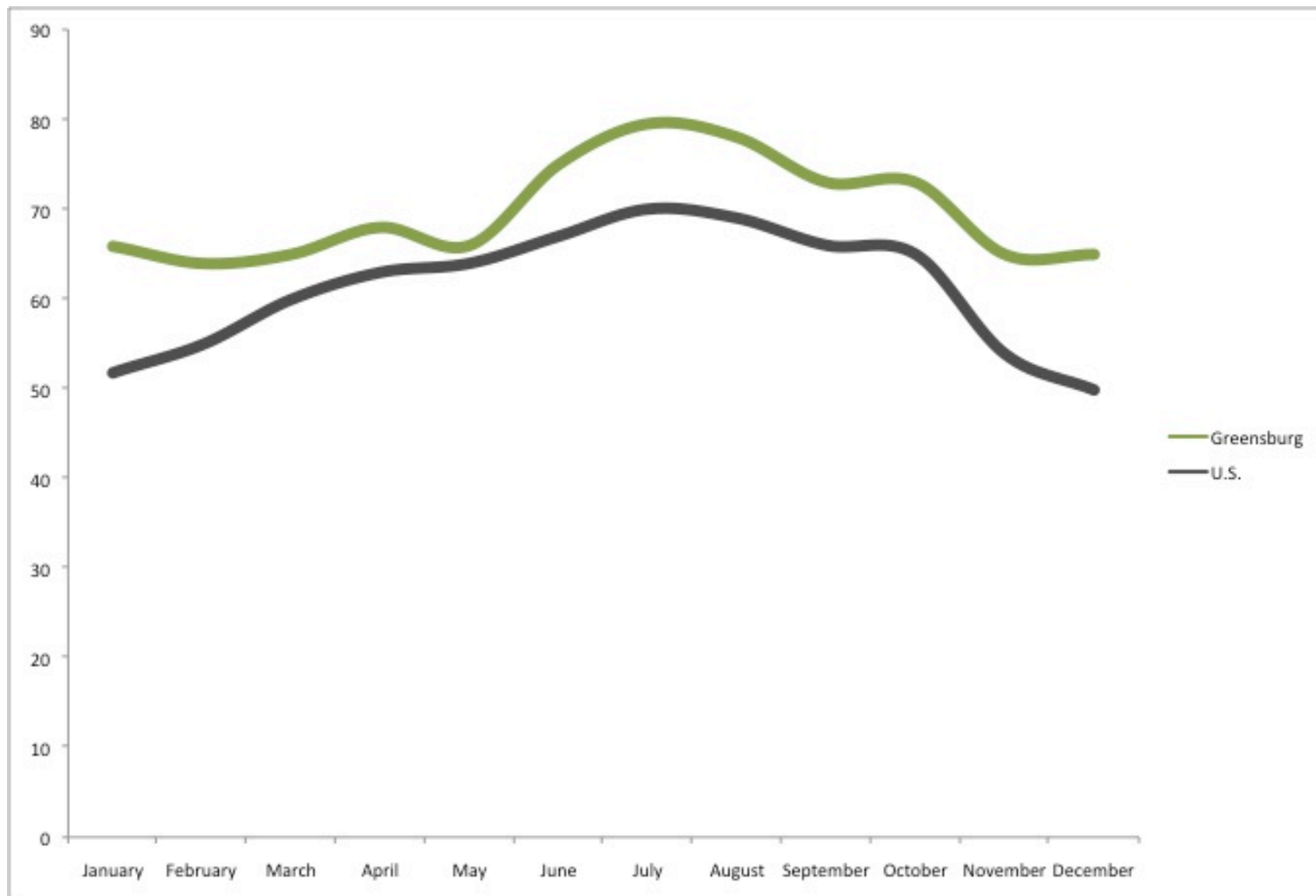
physical

social

environmental **CAPITAL**





















Questions, comments, thoughts?

Jonathan Knight
jeknight [at] ksu [dot] edu

(re)thinking rural

jonathan knight | sustainability conference | spring 2011