



1963  
K165  
Lualaba

May, 1963

15 Cents

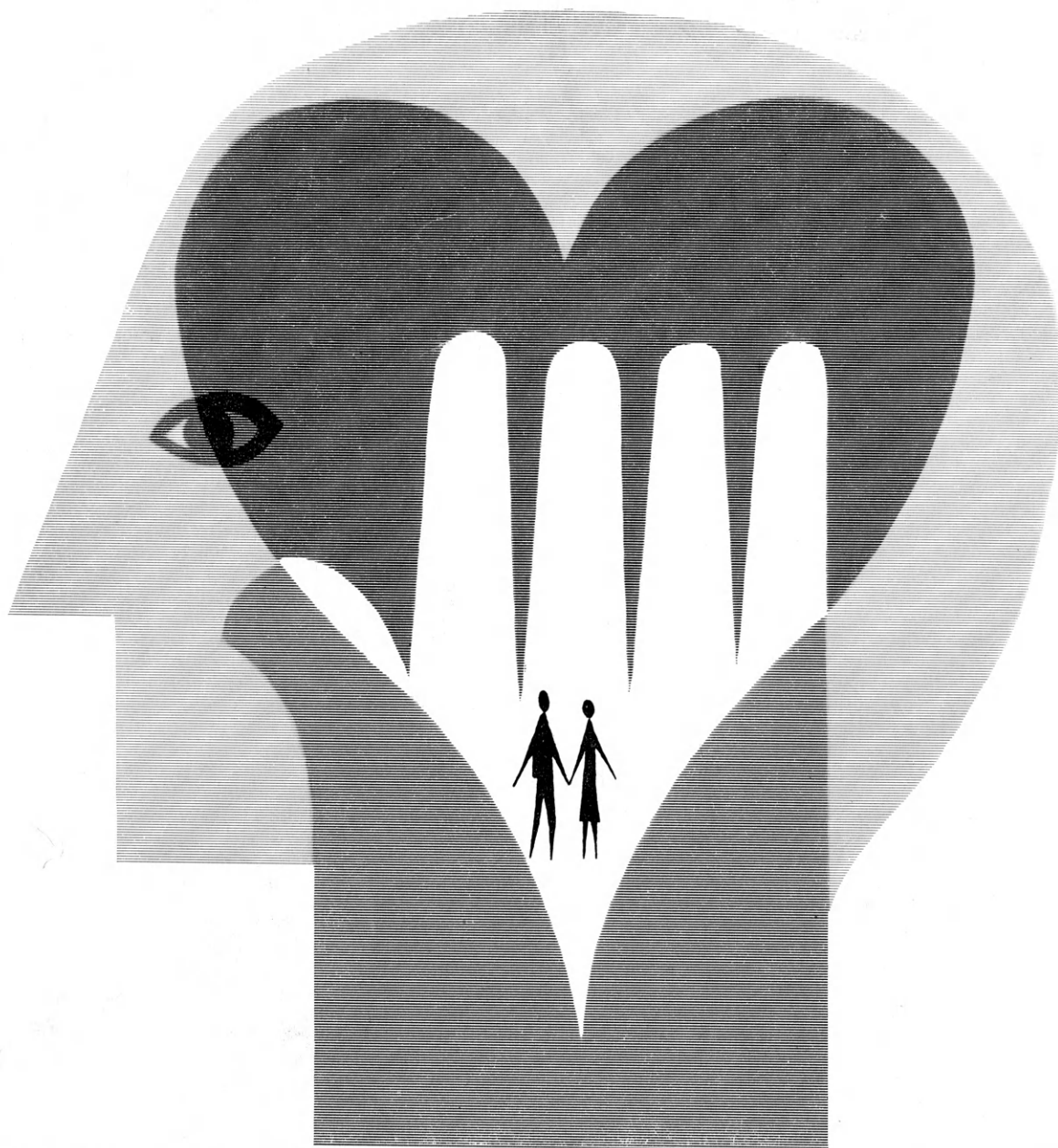
KANSAS 4-H

# Journal

The 4-H Family Magazine

Kansas 4-H Foundation, Inc., Publisher





## HEAD·HEART·HANDS·HEALTH X 30,000=KANSAS 4-H

What a tremendous force at work for the future of Kansas is represented by the 30,000 Kansas 4-H boys and girls each year!

Working constructively to better themselves and their communities, 4-H Clubs are very truly "democracy in action."

May your heads be clear, your hearts strong, your hands skilled and your health abundant as you work in 1963.

**FOLGER COFFEE COMPANY** Kansas City

## 50th Year For Bankers Local 4-H Clubs Can Show Appreciation

This year marks the 50th year the Kansas Bankers Association has supported 4-H Club Work in the state.

The Kansas 4-H Foundation has commended the bankers of Kansas and the State Association in a resolution, adopted recently, pointing up this support.

This support has taken many forms but has mainly been contributing to the recognition of state 4-H winners, and since 1931, primarily has been for trips to the National 4-H Conference in Washington, D. C.

Local banks have joined other groups and businesses in county support of 4-H. One important part of this is the 4-H Journal sponsorship by local banks and county associations in many counties in Kansas.

**This is an opportune time for 4-H Clubs and county councils to pay tribute and show appreciation to their local bankers and associations.**

J. Harold Johnson, Executive Director of the Kansas 4-H Foundation, has summed it up by saying, "this recognition (support by the bankers) has been of tremendous value in stimulating achievement in the 4-H program."

### An Opportunity For You In Publications Training

Shutterbugs and Newshounds attention!!!! Would you like some advanced training in photography and news writing?

You may wish to attend the Publications Workshop to be held June 9 through 15 on the campus of Kansas State University, Manhattan.

Cost of this workshop is \$36 including room and board for the week. For more information, write Department of Continuing Education, Umberger Hall, Kansas State University, Manhattan.

### Correction in April Issue

The following names were omitted from the Honor Roll in the last issue of the Journal—our apology:

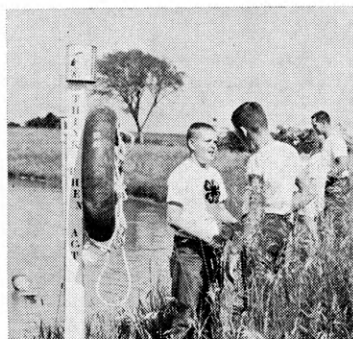
- 3 Atha, Donald J.
- 2 Atha, Donald J. Family
- 2 Atha, Joseph S. Family

### Our Cover

Safety practices are important to each of us at all times. This picture illustrates the importance of correct and complete safety equipment at farm ponds used for swimming.

The cover picture, taken by the National 4-H Service Committee, shows 4-H Club members from the Wellsville 4-H Club in Miami county.

4-H Clubs in Kansas are strong in safety work. This is one example of community service projects that are being carried out.



Vol. IX, No. 5

May, 1963

## IN THIS ISSUE

<i>Crops Judging</i> (4-H'ers Learn, Leaders Teach)	5
<i>Busy Dairy Princess</i>	5
<i>Recreation Column</i> (Four Squares)	6
<i>Song of The Month</i> (The Ballet)	8
<i>A Turn Of Events</i>	9
<i>People-To-People</i>	11
<i>This Is 4-H In Kansas</i> (Pictures from 4-H'ers)	12
<i>Sponsors Directory</i>	13
<i>Ideas That Work</i>	14

Don Esslinger.....Editor

### Editorial and Business Office

Phone JE 9-2211 Ext. 208  
Manhattan, Kansas

Published Monthly By

**KANSAS 4-H FOUNDATION, INC.**

J. Harold Johnson.....Executive Director

### BOARD OF TRUSTEES

W. Dale Critser, Chrm. ....Wichita  
E. B. Shawver, Vice Chrm. ....Wichita  
D. J. Atha.....Shawnee Mission  
\*Harry Darby.....Kansas City  
Mrs. Olive Garvey.....Wichita  
Clifford Hope.....Garden City  
A. D. Jellison.....Junction City  
Harold E. Jones.....Manhattan  
J. J. Moxley.....Council Grove  
George B. Powers.....Wichita  
Roger E. Regnier.....Manhattan  
Dolph Simons.....Lawrence  
\*Lester Weatherwax.....Wichita  
\*Fred D. Wilson.....Andover  
\*Advisory Members

Second Class Postage Paid at Lawrence, Kansas. Return Form 3579 to Kansas 4-H Journal, Manhattan, Kansas.

Advertising rates and circulation data on request.

Group subscriptions \$1.00 per year.  
Individual subscription \$1.50 per year.  
Single copy 15 cents.

Use of the 4-H name and symbol approved by the Secretary of Agriculture of the United States, January 23, 1951, under the provisions of the law as reenacted by Sec. 707 of the Act of June 25, 1948 Public Law No. 772, 80th Congress (10 USC 797)



# 4-H SURVEY OF SAFETY

## A Safety Program for 4-H Members

All members, regardless of age, may participate in this program and receive recognition. Additional information is available from your county agent or 4-H leader.

### Awards

A "Safety Pen" award for ALL 4-H members who complete Safety Surveys and return checks.

#### Trip for 5

Five 4-H boys and girls from Kansas will receive an all expense paid trip to the National Safety Congress in Chicago in October. The group will travel by chartered plane from Manhattan and while in Chicago will be guests of many national organizations.



**CORRECT THIS  
HAZARD**  
BEFORE IT RESULTS IN AN  
**ACCIDENT**  
Use other side for suggestions

Kansas 4-H Survey of Safety  
in cooperation  
with  
Kansas Farm Bureau  
Safety Dept.

- *On the Farm*
- *In the Home*
- *On the Highways*
- *Everywhere there  
are People*

DONOR: SAFETY DEPARTMENT  
**KANSAS FARM BUREAU**

## CROPS JUDGING

Crops judging hit a sprak with 4-H'ers in Jefferson county.

"We have been real pleased and surprised at the interest in crops judging this year," says Art Johnson, county agricultural agent. "We have had good parent participation and some of the Dads have been surprised at how much their sons have learned about weeds and grains."

At three meetings so far this spring they have worked on weed identification with some judging of grain. Later



Rice county 4-H crops judges are at work during a county judging school held for the interested members.

they plan tours to see the actual weed plants.

Resource people at their meetings are Mr. Charles Hannah, County Weed Supervisor, Dean Dicken, Area Extension Agronomist, and Art Johnson.

Mr. Hannah has shown colored slides of weed seeds. This makes the study interesting and colorful and has allowed a closer look at seed characteristics.

The weed study was started with the noxious weeds although others have been added. Their guide is the weed list used in the State Fair crops judging contest which is available from county agents.

## Busy Dairy Princess

Janet Patton, Cherokee county 4-H member, is Kansas' busy Dairy Princess.

She has spoken to the Kansas House of Representatives and has met with many dairy producer associations, 4-H Clubs, and civic groups in promoting dairy products.

Janet says, "Without my experiences in 4-H, I could not have received this honor."

June will be a busy month, during which, she will crown county and district princesses and attend State 4-H Health Conference at Rock Springs Ranch. Her mother, Mrs. Bruce Patton, will accompany her.

Janet will be in Miami, Florida, September 15-20 to compete in the national contest following the crowning of a new Kansas Dairy Princess at the State Fair, September 14.



Jefferson county weed supervisor, Charles Hannah, explains identifying characteristics of weed seeds to a group of potential crop judges.



## Alliance Companies

McPherson, Kansas

FIRE — CASUALTY — LIFE

Serving Kansas Since 1888

## IN CHANGING TIMES

SOUND MANAGEMENT COUNTS MORE

- Capital Investments mounting!
- Production costs skyrocketing!
- Profit margin narrowing!
- Income needs multiplying!

WITH..



Federal Crop Insurance Corp.

U.S. Department of Agriculture

Manhattan

Kansas

## YOUNG LADIES!!

WIN A

# \$300 SCHOLARSHIP

To Enter—

Other Awards Include

Young Ladies must be 16 to 24 years old, single, a high school graduate and have a dairy farm background.

- \* Travel as Kansas Dairy Princess Representing American Dairy Association of Kansas.
- \* Wardrobe
- \* Represent Kansas in 1964 American Dairy Princess Contest

*Clubs May Sponsor Candidates*

For Details See Your

County Agent, June Dairy Month Chairman

OR WRITE:

## AMERICAN DAIRY ASSOCIATION OF KANSAS

2044 Fillmore

Topeka



This seal means that your money is insured safe up to \$10,000.00 by the Federal Savings and Loan Insurance Corporation. Save now —tomorrow for sure.

## VISIT YOUR NEAREST KANSAS *Savings & Loan*

**Arkansas City**  
First Federal Savings and Loan Ass'n. of Arkansas City

**Augusta**  
The Commercial Savings and Loan Ass'n.

**Beloit**  
First Federal Savings and Loan Ass'n. of Beloit

**Clay Center**  
Northwestern Federal Savings and Loan Ass'n. of Clay Center

**Dodge City**  
First Federal Savings and Loan Ass'n. of Dodge City

**El Dorado**  
Mid-Continent Federal Savings and Loan Ass'n. of El Dorado

**Fort Scott**  
Liberty Savings and Loan Ass'n.

**Garnett**  
The Garnett Savings and Loan Association

**Great Bend**  
The Prudential Building and Loan Ass'n.

**Hays**  
The Hays Building and Loan Ass'n.

**Hutchinson**  
First Federal Savings and Loan Ass'n. of Hutchinson

**Iola**  
The Security Savings and Loan Ass'n.

**Larned**  
The Larned Savings and Loan Ass'n.

**Lawrence**  
Capitol Federal Savings and Loan

**Leavenworth**  
The Leavenworth Mutual Building Loaning and Savings Ass'n.

**Liberal**  
First Federal Savings and Loan Ass'n. of Liberal

**McPherson**  
The Pioneer Savings and Loan Association of McPherson

**Mission**  
Capitol Federal Savings and Loan Ass'n.

**Newton**  
First Federal Savings and Loan Ass'n. of Newton

**Oberlin**  
Reserve Building and Loan Association of Oberlin

**Ottawa**  
Ottawa Savings and Loan Ass'n.

**Parsons**  
First Federal Savings and Loan Ass'n. of Parsons

**Plainville**  
Rooks County Savings Ass'n. of Plainville

**Pratt**  
The Western Savings Ass'n.

**Salina**  
The Homestead Building and Loan Ass'n.

**Topeka**  
Capitol Federal Savings and Loan Ass'n. at 6th and Kansas, and 12th and Topeka Blvd.

**Wichita**  
The Commercial Savings and Loan Ass'n. at 4601 E. Douglas Avenue and 147 North Market Street



## TRY FOUR SQUARES

By Dick Tomkinson  
Specialist in 4-H

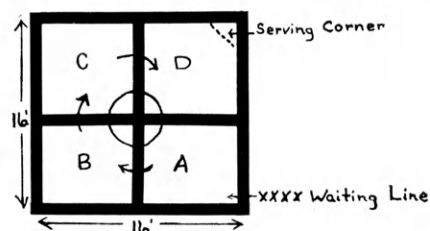
### RECREATION

Don't forget to send in your favorite game, song, dance or skit. See the April issue for details. (Rec.)

### FOUR SQUARES

Here is an exciting game that can be played indoors or out. Take a piece of chalk and draw this diagram.

The playing area can be 16' x 16', divided into four equal



squares — A, B, C and D. A smaller area may be used if necessary (12' x 12' makes a good size for basements.) One player is stationed in each square; there may be any number in the waiting line although 15-20 maximum is best.

The object of the game is to advance to square D and remain there as long as possible. The player in square D starts the play. The outside corner of his square is marked off with a 3-foot semicircle in which he must stand to serve.

From an underhand serve (some play that the server must bounce the ball) he lofts a volley ball—or beach ball works well on grass—with either one or two hands, (it must arch up and not be smashed down on the serve) directing the flight of the ball to one of the other squares.

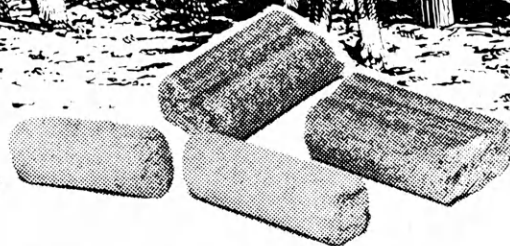
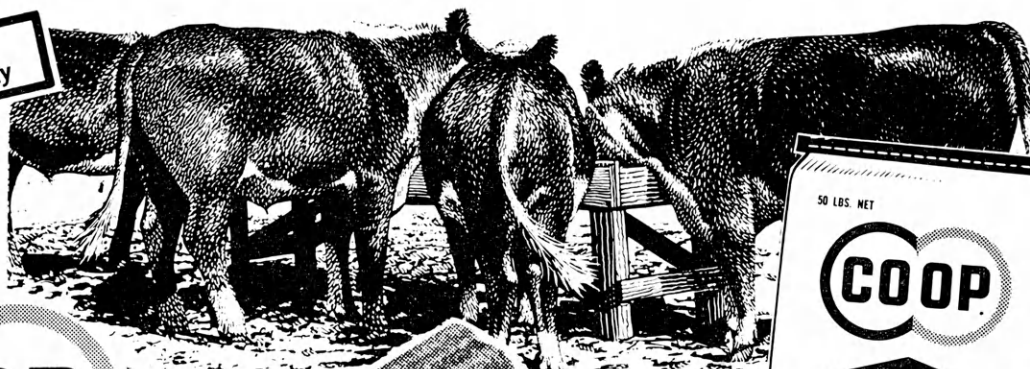
The player in the receiving area keeps the ball in play (off the first bounce only) by directing the flight of the ball to one of the other three areas.

Play proceeds until one of the

(Continued on page 15)



Stimulates  
Rumen Activity



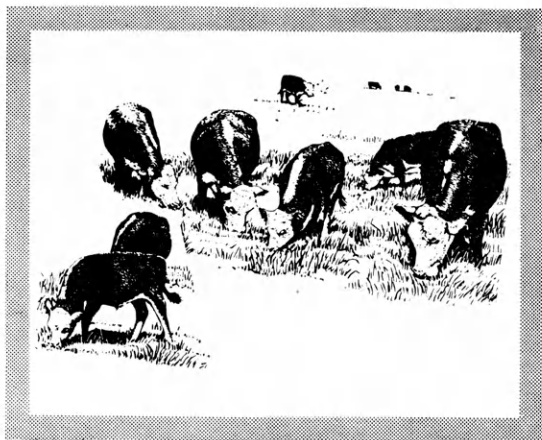
# BEEF FEEDS

IN PELLETS, CUBES OR PROTEIN BLOCKS

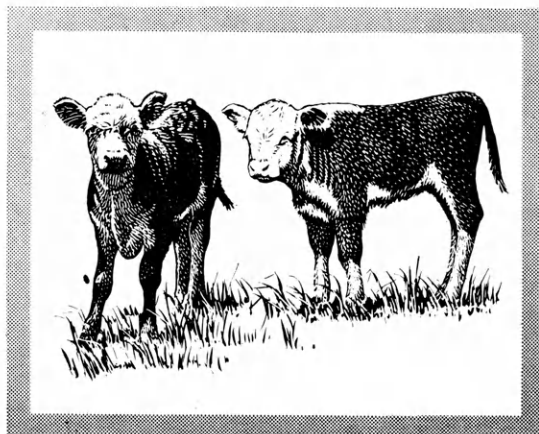
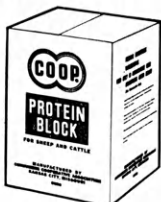
VITAMIN A FORTIFIED • RICH IN BODY BUILDING MINERALS  
• STIMULATE RUMEN ACTIVITY

EASY to eat, weather-resistant and palatable . . . new CO-OP Beef Feed cubes are high in protein, vitamins, minerals and energy. The needed balance for roughage and grain can be adapted to any of the various CO-OP Beef Feeding rations that provides scientifically computed beef fattening rations based on latest feedlot research. You get the average daily gain you need for profit when you feed CO-OP Beef Feeds.

**FEEDLOT CATTLE**—The CO-OP Beef Feeding Program offers a wide range of uses for your farm-grown grains and roughages to produce efficient RED MEAT gains. CO-OP Beef Concentrates provide a vital protein-vitamin-mineral balance for maximum feed conversion with a wide variety of feeding programs.



**RANGE CATTLE**—Fattening cattle, cow and calf herds, weaned calves and breeding stock all need the vital ingredients CO-OP Beef Feeds provide. CO-OP Protein Blocks are ideal for range and pasture feeding. On-ground feeding with CO-OP Protein Blocks supplies a high concentration of vital nutrients cattle need to gain quickly and efficiently. Just put CO-OP Protein Blocks on the ground . . . cattle find them quickly and like the palatable taste.



## PRODUCE CALF GAINS AT LOW COST TOO!

CO-OP Calf Creep Feed makes up nutritional shortages in the diet of an unweaned baby calf . . . builds extra pounds at weaning time. Slash feeding costs with CO-OP Calf Creep Feed.

VISIT YOUR  
CCA-MEMBER CO-OP NOW!

CONSUMERS COOPERATIVE ASSOCIATION

KANSAS CITY, MISSOURI



Janice McClaren, Kearny  
county, promotes . . .

## PERSONAL DEVELOPMENT

as a county-wide project.

MANNERS

RELATIONSHIPS  
WITH OTHERS

APPEARANCE

EXPRESSION

CAREER  
EXPLORATION

CHARACTER  
DEVELOPMENT

PHILOSOPHY  
OF LIFE

"I strived to promote Personal Development as a county-wide project as well as my own," says Janice.

Every club in Kearny county was contacted and given plans for the county-wide meeting well in advance of the meeting date.

Each club was represented at the meeting. Films were shown on Appearance and dating with a question and answer period following.

Janice gave a talk on the personal development project which was also given at county 4-H Day and to a local civic group.

The picture at right shows Janice speaking to the civic group.

Of her work to promote this project, Janice says, "I feel the contacts I have made through this project have been worth the effort."



**SOUTHWESTERN BELL**



**TELEPHONE COMPANY**

## MUSIC Appreciation

*Song of the Month Feature*

### The Ballet

Not many years ago, very few Kansans would have ever seen a ballet performance. Television has changed all this, and if you are not watching the beautiful ballets that are being performed frequently, you are missing a real thrill. But in order to really enjoy this classic dance, you need to know something about what is going on.

For instance, did you know that there are only five basic positions and seven basic movements that are combined in many different patterns to make up every ballet performance. The five positions are simply numbered First, Second, Third, Fourth, and Fifth Positions. The seven movements in English are To Slide, To Dart, To Stretch, To Jump, To Raise, To Bend, and To Turn Around. Try watching a ballet and see if you can identify these steps and positions.

Serious ballet students practice many hours every day at a bar fastened along one side of a room. They will watch themselves in mirrors, and their teachers will watch closely to see that they do everything just so.

Every ballet tells a story, and often it will be a fairy tale that you already know, and by watching closely and following the music you will know exactly what is going on.

The choreographer is the per-

(Continued on page 15)

## These Kansas 4-H Journal Sponsors Have Renewed Their County Support

**Allen**  
Allen County State Bank, Iola

**Brown**  
Bank of Horton, Horton  
Bank of Robinson, Robinson  
Citizens State Bank, Hiawatha  
Farmers State Bank, Fairview  
Morrill State Bank, Morrill  
The Morrill and James Bank,  
Hiawatha  
The Union State Bank, Everest

**Chase**  
Strong City State Bank  
Strong City

**Chautauqua**  
Sedan State Bank, Sedan

**Cherokee**  
American National Bank,  
Baxter Springs  
Baxter State Bank, Baxter Springs  
Columbus State Bank, Columbus  
First National Bank, Columbus  
The Citizens Bank of Weir, Weir

**Geary**  
Central National Bank  
Junction City

First National Bank, Junction City

**Marshall**  
Oketo State Bank, Oketo

**Morton**  
Addington Elevator, Elkhart  
Burt Elder Insurance, Elkhart  
Cooperative Equity Exchange,  
Elkhart  
Elkhart Implement Co., Elkhart  
First State Bank, Elkhart  
Fishers International, Elkhart  
Rolla Cooperative Ass'n., Rolla  
Rolla Cooperative Equity Exchange,  
Rolla  
Star Lumber Co., Elkhart

**Osage**  
Bremer & Stanley Grain and Feed,  
Lyndon  
Bulmer Grain Company, Michigan  
Valley  
Burlingame Co-op Elevator and  
Feed, Burlingame  
Dayhoff Elevator and Feed, Osage  
City  
Farmers Union Co-op Ass'n.,  
Overbrook

Hoyt Farm Implement Company,  
Overbrook  
Melvern Lockers, Market and  
Slaughterhouse, Melvern  
McNabb Hy-Klas Food Store,  
Melvern  
Ross A. Coffman and Sons, Inc.,  
Overbrook  
Scranton Grain Company, Scranton  
Surber Hardware, Carbondale  
Williams Oil Company, Lyndon

**Pratt**  
Cairo Co-op Equity Exchange, Cairo  
Iuka Co-op Exchange, Iuka  
Pratt Equity Exchange, Pratt  
Preston Co-op Grain &  
Mercantile Co., Preston  
Sawyer Co-op Equity Exchange,  
Sawyer  
The Farmers Grain & Mercantile  
Company, Cullison

**Reno**  
Hutchinson National Bank and  
Trust Co., Hutchinson, Kansas  
Winchester Packing Co., Hutchinson

**Wilson**  
Cox Grain Company, Fredonia





# A Turn Of Events

By Margaret Jacobsmeyer

Sue was being very quiet. The thought bothered Lyn as the two girls pedaled their bicycles home from school.

"Are you getting tired?" she asked, "we could stop and walk our bikes for a while."

"No—I'm all right, unless you want to rest," Sue said.

"Why don't we go on for a while yet and walk them up Lookout Hill," Lyn suggested.

Sue nodded. "Why do they call it Lookout Hill?"

"My Dad said when he was growing up this road wasn't paved so the hill was a popular place for sledding, and when the kids started down they'd yell 'lookout below,'" Lyn explained with a laugh, "so they started calling it Lookout Hill."

"And I thought the settlers might have had a fort on it where they could 'lookout' for Indians," Sue said with a faint smile.

Lyn's spirits rose and she began to enjoy her surroundings. The trees were all leafed out but they still had the fresh green look of Spring, and daisies were blooming along the side of the road. She and Sue had decided to ride their bicycles so they could stay after school and work on posters for the 4-H Ice Cream Social, but it took longer than they expected, and the lowering sun was sending their long wheeling shadows down the road ahead of them.

"It'll be too late to work in the garden by the time I get home," Lyn said looking at her watch. "I hope Mike and Larry got at it. You know—that Truck Garden Project is going to mean work, but it'll be fun having a

roadside stand. We were wondering if you and Jan—"

Sue began to pedal furiously and before Lyn realized what had happened she was left behind.

"Hey — wait for me!" Lyn stood up to get more power in her pedaling but Sue was getting away. "What's gotten into her?" she said aloud. Sue had never acted like this before. Lyn tried to figure out a reason for her strange behavior. They hadn't had an argument. They never had any disagreements. Sue was her best friend and had been almost from the day they met. They studied together and worked together in Early Birds —went to school together—they always ate their lunch together—but now that she thought about it—Sue hadn't been herself all day. She couldn't put her finger on it exactly, but whatever it was, she meant to get to the bottom of it.

Sue had disappeared in a turn on the road but she'd be coming to the hill soon. Lyn began to pedal faster and her head scarf made little flapping sounds as she picked up speed. When she came to the bend she could see Sue up ahead. She was pedaling slowly now and Lyn knew she could catch up with her.

"What's the idea?" Lyn asked breathlessly.

Sue shrugged without looking at her.

"Sue—what's wrong?"

Without a word Sue handed her the 4-H emblem necklace Lyn had given her for Christmas.

"Are you angry—have I done something—"

"Oh no," Sue said quickly.

"Well then why—"

"I—we—" Sue broke off and began to cry.

"Come on," Lyn put an arm around her friend, "it can't be that bad."

"But it is," Sue managed between sobs, "I can't be in 4-H any more."

"Why not?" Lyn cried.

"Because we're moving back to the city."

Lyn was stunned. She couldn't believe her ears. "When—" the other words wouldn't come.

"As soon as school is out—that'll just be a few more weeks." Sue's voice was still tearful.

Lyn shook her head. "I meant when did you find out?"

"Last night."

"Why didn't you tell me right away?"

"I guess I didn't want to believe it and as long as I didn't tell anyone it didn't seem like it was really going to happen."

"But your father's health—" Lyn remarked.

"That's just it. These eight months in the country have made him well and he was offered a job with this big company and he doesn't feel he can turn it down—Oh Lyn—I don't want to leave—what'll I do?" she asked miserably.

"I don't know." Lyn started walking her bicycle. "We could talk to our parents."

"Would that do any good?" Sue asked doubtfully.

"It can't do any harm," Lyn tried to sound encouraging. "In the meantime we better think about what we're going to say."

They were quiet and thoughtful the rest of the way home.

"Have you thought of anything?" Sue asked when they were close to Lyn's place.

"Not yet. Maybe you can stay for supper—that'll give us more time to come up with an idea."

"Where have you been?" Larry was setting the table when the girls came into the kitchen.

"Where's Mom?" Lyn asked.

"She'll be right back and she left me in charge and I want to know where you've been."

"I know it'll be all right with my Mom if you stay," Lyn told Sue, "why don't you call your mother while I have a few words with my younger brother." Lyn turned to Larry. "Something's happened and I want you to be real nice to Sue."

"O k a y!" Larry shrugged. "What happened?"

"I can't tell you now—shh—here she comes."

"It's all right with Mother, but she wants me to come right home after I've helped with the dishes."

"Did Lyn tell you we're going to have a roadside stand and we're going to ask you and Jan to go into business with us?"

"Oh Larry!" Lyn exclaimed.

"What did I say?" Larry asked innocently.

"What's going on?" Mrs. Fletcher asked returning to the kitchen.

"Lyn said something happened and I should be nice to Sue and I was and Lyn got sore."

"Oh Mother—" Lyn began.

"See what I mean?" Larry asked.

"I imagine Lyn and Sue are quite upset because Sue's moving away," Mrs. Fletcher explained.

"You know about it?" Lyn asked.

"Sue's folks stopped over and talked to us this afternoon."

"Isn't it terrible Mother?" Lyn said.

"I know how you feel, but you're both overlooking something very wonderful."

The girls looked puzzled. "Wonderful!"

"Yes, isn't it wonderful that Mr. Perkins has made such a remarkable recovery from his illness?"

"I didn't think of it that way," Sue confessed, "I wasn't being a very good 4-H'er I'm afraid—but these have been the best

eight months of my life. Being in 4-H and knowing all of you and the rest of the Early Birds is the most wonderful thing that ever happened to me."

"I understand," Mrs. Fletcher smiled, "but it isn't over you know. You don't have to leave 4-H behind—4-H Clubs are at home in the city too. And as for your friendship with Lyn—"

"We can write to each other every day," Lyn said eagerly.

"And you can come for a visit—could she, Mrs. Fletcher?"

Mrs. Fletcher smiled. "Your mother already invited her to come after school's out and you're all settled, now run along and wash up for supper."

Lyn and Sue left the room full of plans for the future.

"Mom—"

"Yes Larry?"

"I'm never going to move to the city."

"Why not?"

Larry's eyes twinkled. "Well, who ever heard of a farmer living in the city?"

"Just for that young man," Mrs. Fletcher said with a playful shove, "go and wash your hands and face for supper."



# FUN FOR YOU!

## Seven-Up Announces 4-H Club 1963 RECREATION AWARDS

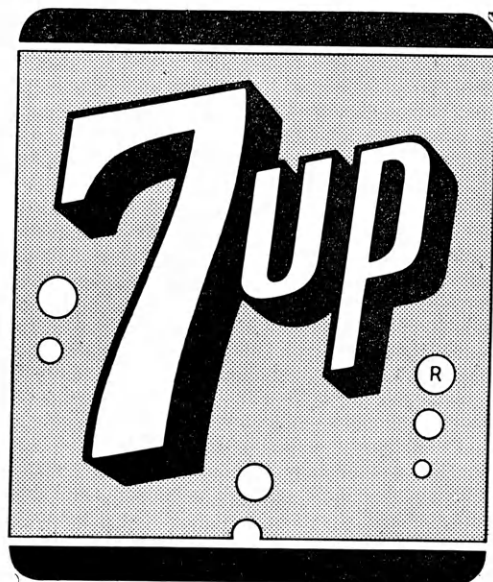
The Kansas Seven-Up Bottlers Association

★ \$25 in recreation equipment to Clubs selected as outstanding in 4-H Recreation.

★ Delegates and leaders from the outstanding 4-H Club in Recreation to be awarded an educational trip.

★ An educational trip for members selected as outstanding in 4-H Recreation.

★ Certificates of merit for county winners.



# PEOPLE-TO-PEOPLE

## Is Getting Popular

"Our Club wanted something new and different," so writes the publicity committee of the Valley View 4-H Club, Leavenworth county.

So they decided "People-To-People" would be an interesting theme on which members could base their talks and demonstrations.

They felt these talks and demonstrations would be of interest to both boys and girls.

The club took up a collection which was sent to CARE, as one of their interests. They have written to Wagga Wagga in New South Wales which is Leavenworth's Sister City.

They have a number of other things on their agenda and it sounds like People-To-People is interesting all the Valley View Club members.

One club with a somewhat deeper experience with People-

To-People is the Rainbow 4-H Club of Franklin county. Mrs. Raymond Houston, one of the leaders, writes the members decided the sister club idea was the place to really start on this program.

They started by asking Connie Clary, an IFYE to Ireland, to find a Macra Na Tuaithe club with which to correspond. Mrs. Houston reports the program grew slowly but is now starting to snowball as members begin to understand and become interested in it.

Mrs. Houston had an opportunity to visit the German Rural Youth Clubs. She reports, "Club work in Germany is much different from ours, they study music, history, literature and social development instead of projects as we know them. It

is not government controlled."

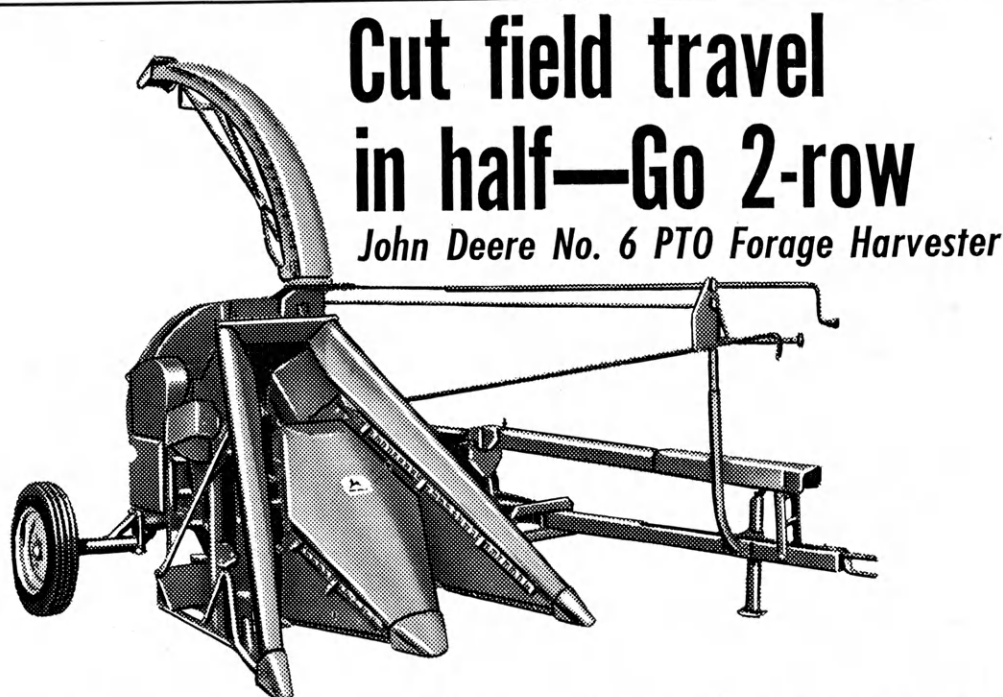
From Germany, she traveled to Dublin Ireland to visit the Macra Na Tuaithe, Irish 4-H, headquarters. Here she had a chance to visit their sister club in Ireland and was even given the chance to award some prizes at their meeting.

Recently, Miss Marie Gallagher, one of the staff members of Macra Na Tuaithe in Ireland visited the Rainbow club, the top ranking People-To-People club in Kansas in 1962.

The People-To-People activity in Kansas is sponsored by the IFYE Alumni Association. Ten members of the Rainbow club will receive a trip to IFYE Week End at Rock Springs Ranch, July 20 and 21. Ten other individuals throughout the State will also receive this trip.



Left to right; Billy Anderson, Diane Lickteig, Patty Wasmund, Jimmy Brenner and Marie Gallagher a youth worker from Ireland.



**THE LONG GREEN LINE OF CUSTOMERIZED  
JOHN DEERE FORAGE EQUIPMENT**

**JOHN DEERE COMPANY**

KANSAS CITY

MISSOURI





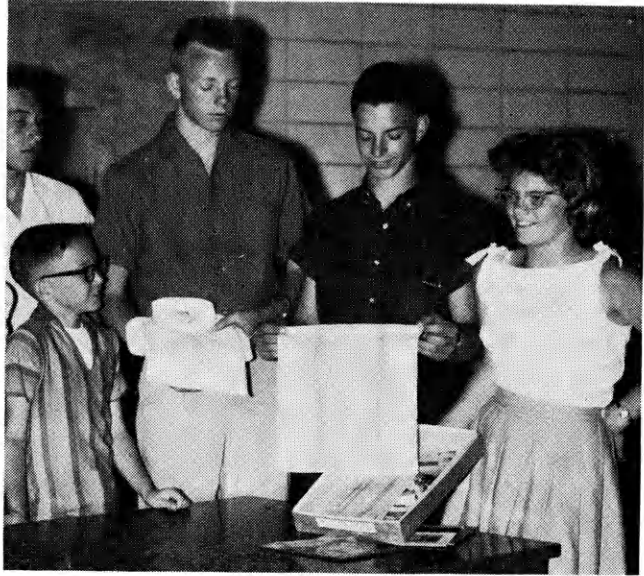
C. E. Brehm, center, of Mt. Vernon, Illinois, a former Sedgwick county 4-H member, was cited by Kansas State University for Distinguished Service in Engineering and Architecture at ceremonies recently in Manhattan. He is shown here with J. Harold Johnson, Executive Director of the Kansas 4-H Foundation, left, and Wayne Krehbiel, an accountant with the Brehm firm.



Five parents of members of the Trisdale 4-H Club, Cowley county, show the latest Paris Fashions at the annual parents night of the club. They are Warren Scott, Jay Brothers, Leland Cranston, Kenneth Brothers and Jim Nichols.



Jocelyn Jones, Beattie Musketeers Club in Marshall County, presents a gift of her prize winning jam from her food preservation exhibit to Mrs. Barney Heeney and Richard Heeney of the Beattie First National Bank as a "thank you" from the club for the bank's sponsorship of the Kansas 4-H Journal.



Bernie Reinert, Arlen Etling, Jim Reinert and Sue Herrman of the Ensign Boosters Club in Gray county examine some of the articles they have received from pen pals. Seventeen of the club's members are corresponding with 22 pen pals.

# THIS IS 4-H IN KANSAS

## SEND IN YOUR PICTURES

We want pictures taken by Kansas 4-H'ers. Prizes will be given for all pictures used in the Journal.

The picture need not be on 4-H Club work, but pictures with subjects related to 4-H Clubs are preferred. Action pictures are desired.

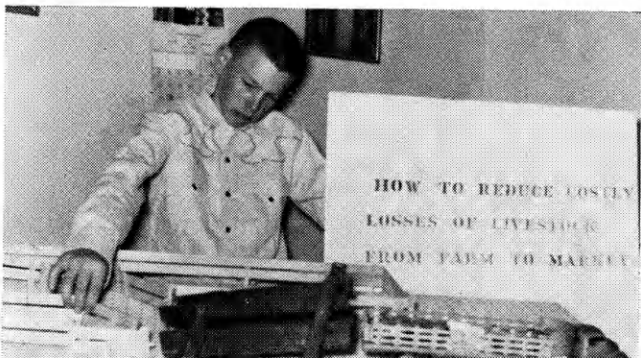
All pictures should be glossy prints at least five by seven inches in size unless accompanied by the negative.

Photographs should be accompanied by a short statement explaining the picture and including the names of persons shown.

Entrants should designate their choice of the following prizes. A year's subscription to the National 4-H Club News, one roll of color film—sizes 620, 120, 616, 116, 127 or 35 mm only, or a 4-H Club photograph album.

4-H members, parents, leaders, county agents or friends of 4-H may send in pictures.

Michael Ebert, member of the Bonfire 4-H Club, Pottawatomie county, demonstrates the safe loading of livestock for market.



Happy are these members of the Skyliners 4-H Club, Nemaha county, as they clean up the nearby highways and also build their club treasury with the sale of pop bottles.



# KANSAS



## 4-H JOURNAL SPONSORS

*The Kansas 4-H Journal is sponsored in each of the counties by the business firms listed below. 4-H Club members and leaders might do well to express their appreciation to these sponsors for the contribution they are making.*

### Marshall

Citizens State Bank, Marysville  
Citizens State Bank, Waterville  
Exchange Bank of Schmitt & Koester, Marysville  
First National Bank, Beattie  
First National Bank, Summerfield  
First National Bank in Frankfort, Frankfort  
Oketo State Bank, Oketo  
The Bremen State Bank, Bremen  
The State Bank of Axtell, Axtell  
The State Bank of Blue Rapids, Blue Rapids  
Vermillion State Bank, Vermillion

### McPherson

Farmers Union Elevator Company, Lindsborg  
Moundridge Co-operative Elevator Ass'n., Moundridge  
The Co-operative Farmers Union Elevator Company, Marquette  
The Farmers Co-operative Ass'n., McPherson  
The Farmers Co-operative Grain and Supply Company, Canton

### Meade

First National Bank, Meade  
Fowler State Bank, Fowler  
Plains State Bank, Plains

### Miami

Buchman's Seed & Feed Company, Paola  
Hinkle Truck and Tractor Company, Paola  
Louisburg Grain Company, Louisburg

### Mitchell

Farmers and Merchants State Bank, Cawker City  
Farmers State Bank, Asherville  
Farmers State Bank, Hunter  
First National Bank, Beloit  
Simpson State Bank, Simpson  
The Guaranty State Bank, Beloit  
Tipton State Bank, Tipton  
Traders State Bank, Glen Elder

### Montgomery

Citizens National Bank, Independence  
First National Bank, Coffeyville

### Morris

Morris County Farm Bureau Ass'n., Council Grove

### Morton

Addington's Elevator, Elkhart  
Burt Elder Insurance, Elkhart  
Co-operative Equity Exchange, Elkhart  
Elkhart Implement, Elkhart  
Fisher's International, Elkhart  
Rolla Cooperative Association, Rolla  
Rolla Cooperative Equity Exchange, Rolla  
Star Lumber Company, Elkhart  
The First State Bank, Elkhart

### Nemaha

Winterscheidt Milling Company, Seneca

### Neosho

The Neosho Valley Co-op Creamery Ass'n., Erie

### Ness

Bazine State Bank, Bazine  
Citizens State Bank, Utica  
Farmers State Bank, Ransom  
The First State Bank, Ness City  
The First State Bank, Ransom

### Norton

C & H Implement Company, Norton  
Fredde Equipment Company, Norton

### Osage

Bremer & Stanley Grain and Feed, Lyndon  
Bulmer Grain Company, Michigan Valley  
Burlingame Co-op Elevator and Feed, Burlingame  
Dayhoff Elevator and Feed, Osage City  
Farmers Union Co-op Ass'n., Overbrook  
Hoyt Farm Implement Company, Overbrook  
Melvern Lockers, Market and Slaughterhouse, Melvern  
McNabb Hy-Klas Food Store, Melvern  
Ross A. Coffman and Sons, Inc., Overbrook  
Scranton Grain Company, Scranton  
Surber Hardware, Carbondale  
Williams Oil Company, Lyndon

### Osborne

Downs National Bank, Downs  
Farmers National Bank, Osborne  
First State Bank, Osborne  
State Bank of Downs, Downs  
The First State Bank, Portis  
First National Bank, Natoma

### Ottawa

Chapman Implement Company, Minneapolis  
Gilley's Firestone & Implement, Minneapolis  
Handy Motor Company, Minneapolis  
Hoover Implement Company, Minneapolis  
Lott & Istas Implement, Minneapolis

### Pawnee

First State Bank, Larned

### Phillips

First National Bank, Phillipsburg

### Pottawatomie

Farmers State Bank, Westmoreland  
First National Bank, Onaga  
First National Bank, Wamego  
Kaw Valley State and Savings Bank, Wamego  
St. Marys State Bank, St. Marys  
Union State Bank of Olsburg, Olsburg

### Pratt

Cairo Co-op Equity Exchange, Cairo  
Iuka Co-op Exchange, Iuka  
Pratt Equity Exchange, Pratt  
Preston Co-op Grain and Mercantile Co., Preston  
Sawyer Co-op Equity Exchange, Sawyer  
The Farmers Grain and Mercantile Company, Cullison

### Rawlins

Farmers National Bank, Atwood  
Farmers State Bank, Ludell  
Peoples' State Bank, McDonald  
State Bank of Atwood, Atwood  
State Bank of Herndon, Herndon

### Reno

Hutchinson National Bank & Trust Company, Hutchinson  
Winchester Packing Company, Hutchinson

### Rice

Burke Grain Company, Little River  
Central Kansas Elevator, Lyons  
Farmers Co-op Union, Sterling  
Farmers State Bank, Sterling  
Lyons State Bank, Lyons  
Oklahoma Tire & Supply Co., Lyons  
Pepsi Cola Bottling Co., Lyons  
Raymond State Bank and Miller-Price Agency, Raymond

### Riley

First National Bank, Manhattan  
Leonardville State Bank, Leonardville  
Union National Bank, Manhattan

### Rooks

Western Auto Associate Store, Stockton

### Rush

Farmers and Merchants State Bank, LaCrosse

### Russell

Farmers State Bank, Lucas  
Russell State Bank, Russell

### Saline

The First National Bank & Trust Company, (formerly Farmers National Bank) Salina

### Scott

First National Bank, Scott City  
Modoc State Bank, Modoc

### Sedwick

Sedwick County Bankers Association

### Seward

Citizens State Bank, Liberal  
First National Bank, Liberal  
People's National Bank, Liberal

### Shawnee

The Topeka Clearing House Banks, Topeka  
Fidelity State Bank  
The First National Bank of Topeka  
Kaw Valley Citizens State Bank  
The Merchants National Bank  
State Savings Bank  
The Topeka State Bank

### Sheridan

Farmers State Bank, Selden  
First National Bank, Hoxie  
Hoxie State Bank, Hoxie  
Mickey's Hardware, Hoxie

### Sherman

The First National Bank, Goodland

### Stafford

Farmers and Merchants State Bank, Macksville  
Farmers National Bank, Stafford  
First National Bank, St. John  
Hudson State Bank, Hudson  
Macksville State Bank, Macksville  
St. John National Bank, St. John

### Stanton

Collingwood Grain Company, Johnson  
Manter and Big Bow

### Stevens

The Citizens State Bank, Hugoton

### Sumner

Wolcott & Lincoln, Inc., Wellington

### Thomas

Farmers and Merchants State Bank, Colby

### Trego

Collyer Co-op Association, Collyer  
Midwest Market, Wakeeney  
Norris Grain Co., Collyer  
Schreiner Oil Service, Ogallah  
Trego County Farm Bureau, Wakeeney  
Trego-Wakeeney State Bank, Wakeeney  
Utica Grain Company, Utica

### Wabaunsee

The Alta Vista State Bank, Alta Vista  
The Eskridge State Bank, Eskridge  
The First National Bank, Alma  
The First National Bank, Harveyville  
The Stockgrowers State Bank, Maple Hill

### Wallace

Peoples State Bank, Sharon Springs

### Washington

Farmers Coop Elevator Association, Greenleaf  
First National Bank, Washington  
Lull Oil Company and Skelly Station Outlets, Washington  
Washington County Cooperative Creamery Company, Linn  
Washington County Farm Bureau Association, Washington

### Wichita

First State Bank, Leoti

### Wilson

Carl Kuntz Implement Company, Altoona  
Cox Grain Company, Fredonia  
First National Bank in Fredonia  
First National Bank, Neodesha  
Foodtown Super Market, Fredonia  
Fredonia Super Market, Fredonia  
Fredonia Co-op Ass'n., Fredonia  
Glenn Wiggins Drug Store, Fredonia  
Home Lumber and Supply Company, Fredonia  
Joe Armstrong Equipment, Fredonia  
O. E. Woods Lumber Company, Neodesha  
Radiant Electric Co-op, Inc., Fredonia  
Self Service Grocery, Fredonia  
State Bank of Fredonia, Fredonia  
Wilson County Farm Bureau, Fredonia

### Woodson

J. E. Sowder Seed Company, Toronto  
State Exchange Bank, Yates Center  
Woodson County Co-operative Association, Yates Center

### Wyandotte

Bishop Lumber, Munice  
Coleman Implement Company, Bonner Springs  
Commercial State Bank, Bonner Springs  
Home State Bank of Kansas City, Kansas  
McCormick Farm Equipment Store, Kansas City  
State Tractor and Implement Company, Kansas City  
The Brotherhood State Bank, Kansas City



# Ideas That Work

## Health Work Is Worth Effort

Ten members and two adult leaders from the Shunga Valley 4-H Club, Shawnee county, represented the club on a trip won by the club on being named winner of the State Health Award.

In the picture a technician in the Neurological Division, University of



Kansas Medical Center, Kansas City explains the use of water therapy in treatment and demonstrates equipment to the members and leaders.

Some of the highlights of the trip were meeting Vice-President Lyndon Johnson, a tour of the Folger Coffee Company plant, and a tour of the Proctor and Gamble Soap Company.

After returning home, the group agreed that the time spent and the work done to earn the health award were worth the effort.

Reporter  
Jim Miller

## Fill that Jar

"Hurry up and fill that Jar", says Bloodmobile Nurse to Mrs. Jerry Bryan of Burden. Treva Parsons, Cambridge



4-H assistant is shown as an aid. The Cambridge 4-H Club, Cowley county, sponsored the bloodmobile as a community project in the Health activity.

## Health "H" Comes To Life

The Sunflower 4-H Club, Sumner county, decided to make the health "H" come to life by stressing health in many ways. They got a good start by helping promote the Chest X-ray Clinic in Caldwell.

Members of the health committee prepared posters to remind persons of the

importance of annual chest x-rays and placed them in windows in many business places.

Through the use of pamphlets and personal visits they especially urged all the parents and grandparents of 4-H Club members to take advantage of the clinic.

Two junior leaders from the club and one from nearby Skylark 4-H Club served as typists during the clinic.

## Ideas In Brief

Nancy Yunghans is a new member of the Brauer Beavers 4-H Club, Wyandotte county . . . The Junior Leaders of Wyandotte county will sell ads again this year to finance the fair book . . . The Salem 4-H Club members, Reno county, are selling red reflectors for farm machinery . . . Edith Day of the Langdon 4-H Club, Reno county, gave a flannel-graph talk on a year round garden at a recent meeting of the club . . . Mrs. Nigg showed slides of her trip to Europe at the meeting of the Richland Livewires 4-H Club, Harvey county . . . Larry Kater talked on "Seed Grains" at the meeting of the Highland 4-H Club, Harvey county, and gave the three main causes of damage as cracking, heat damage and weevil damage . . . Dennis Eckhardt of the Glittering Stones 4-H Club, Cherokee county, received a top blue on his project talk entitled "Is Your Dairy Calf A Pest?" . . . Dick Ramsey instructed members of the Manning Jayhawkers 4-H Club, Scott county, in the Virginia Reel and a square dance for recreation at a recent meeting . . . A skit on correct parliamentary procedure was presented by Mark Gosney, Keith Gosney, Bob Cofer, and Tom Thoele at a meeting of the Welborn 4-H Club, Wyandotte county . . . Members of the White Church 4-H Club No. 2, Wyandotte county, planned to repair toys and make gifts for children in an orphanage . . . "Manicure the Lawn" was the title of Deloris Janzen's project talk to the members of Kellas 4-H Club, Harvey county . . . At an exchange meeting of the Burrton Western Harvey Boosters 4-H Club and the Campus Champions 4-H Club, Harvey county, members of the Campus Champions presented the program . . . An interesting demonstration on First Aid was given by Carol Kennedy at the meeting of the Wakarusa Valley 4-H Club, Shawnee county . . . A new group sponsored by the 4-H program was recently established in Quindaro township, Wyandotte county, which will use the "thot 'n talk" discussion program as

Reporter's Notice: The Kansas 4-H Journal would like to print interesting stories of your local club events, activities, members and leaders.

Local club meeting stories, if submitted, should contain something unusual or of interest to people outside your county.

Outstanding projects, services or events of your club, or stories of individuals within your club that would give ideas to other 4-H'ers would make excellent stories.

Prizes will be awarded all blue award stories each month. Please state your choice (1) a year's subscription to the National 4-H Club News or (2) a hard cover loose leaf 4-H notebook.

The clinic was one of the most successful in many years and the 4-H members felt happy to have had a part in it.

Reporter  
Connie Kloefkorn

the basis of their work . . . Micheal Ball gave a talk on bicycle safety at the meeting of the KC-OK 4-H Club, Wyandotte county . . . The Cherry Creek cooking group, Cheyenne county, made a game of exchanging recipes by making puzzles from the product pictures . . . Dennis Busby talked on "Know Your Nails" at the meeting of the Lawn Ridge 4-H Club, Cheyenne county . . . The Partridge 4-H Club, Reno county, voted to have safety as the chief club activity this year . . . Members, parents and guests at the meeting of the Langdon 4-H Club, Reno county were entertained with films on land judging and soil conservation at their meeting . . . "Why I Like Kansas" was the roll call at the meeting of the Newton City Slickers 4-H Club, Harvey county . . . A special part of the parents night at the Macon 4-H Club, Harvey county, was a cake walk with cakes brought by the parents . . . Through the efforts of the health committee of the Cardinal 4-H Club, Sumner county, the junior leaders worked as volunteers at the three oral polio vaccine clinics by greeting the people, stamping and filing cards and helping in other areas as needed . . . The Grinter-Go-Getters 4-H Club, Wyandotte county, observed the tenth anniversary of the organization of the club . . . Reporters of the 4-H Clubs in Wyandotte county planned to meet and discuss interviewing techniques and follow-up stories . . . Glenda Burnett stressed safety in flying a kite in a talk at the meeting of the Advance 4-H Club, Wyandotte county . . . Suggestions for a project to help the community were given as roll call at the meeting of the Mitchell 4-H Club, Reno county . . . A scavenger hunt was Doug Mosiers' recreation at the meeting of the Salem 4-H Club, Reno county . . . Janice Miller reported to members of the Plum Creek 4-H Club, Cheyenne county, that a highlight of their "Snacks and Little Lunches" project . . . Roll call at the meeting of the Halstead Cloverleaf 4-H Club, Harvey county, was "A tree in Kansas" . . .



## Try Four Squares

(Continued from page 6)

players fouls or fails to return the ball properly. When this occurs, the offending player is eliminated and goes to the end of the waiting line.

Players behind the offending player all move up one square. The first player in the waiting line always moves into square A. The server stands in the serving area of square D and gives a fair service.

A fair serve is one which bounces at least one foot. A player may go anywhere to return a fair ball—out of court or into another square.

The following are fouls:

1. A ball that hits any inside line. (Outside lines are good.)

2. A ball that hits a player while that player is standing in his own square. The foul is committed by the player struck by the ball. If a player is outside the playing court and hit by a ball on the fly, the player that hit the ball has fouled.

## Music Appreciation

(Continued from page 8)

son who makes up the dance while the composer writes the music. Often these two people will work closely together to be sure that the dance and the music fit together perfectly. A choreographer once described a ballet as a colorful painting come to life.

As a music appreciation project, why don't you see if you can find a ballet dancer to attend a meeting and bring her shoes with her. You will be interested in seeing how even the shoes must be put on and tied in a special way.

If you do not know a dancer you can invite, why not look up the Ballet in your encyclopedia at school. (World Book has an excellent article). You can make up charts using stick figures to show the five basic positions and seven movements. Have the club members see if they can assume the positions. This is one way to really appreciate how much practice must go into a ballet dance.

# EVER HEARD THE EXPRESSION

## *"I'm Insurance Poor!"*

To a lot of people this means they pay so much for insurance it gives them a feeling of continually paying with nothing in return . . .

Whether it be Automobile, Fire, Liability, Hail or Life Insurance—Returns are great in the knowledge that whatever happens in the way of accident or mishap, their insurance is ready to provide the cushion against financial ruin.

## *Insurance Poor?*

Not with a planned program of protection . . . One that a Farm Bureau Insurance agent can provide through his experiences in over-all planning. . . . Providing the most coverage for the money has always been the Farm Bureau Insurance way!

**Ask your Farm Bureau Insurance  
Agent to "PLAN" your program**

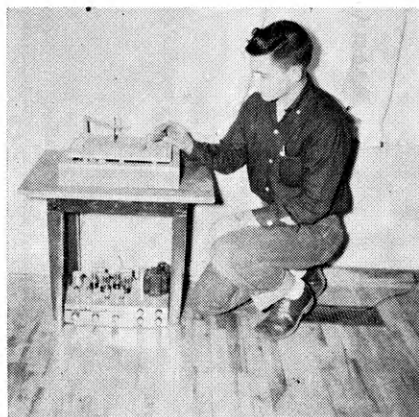
**FARM BUREAU MUTUAL  
KANSAS FARM LIFE  
KFB**

Insurance Companies

HOME OFFICE

MANHATTAN, KANSAS





David with the hi-fi amplifier and turntable he built from a kit.



... sitting by an old churn converted to a lamp, as a 4-H electric project.

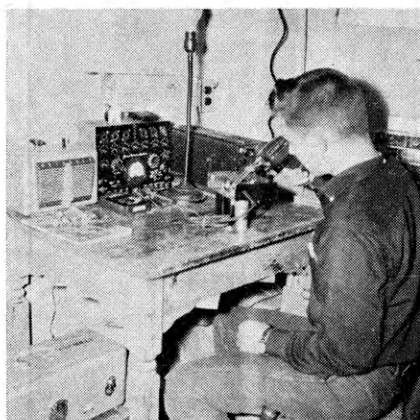


... at his workshop in the basement of the family home.

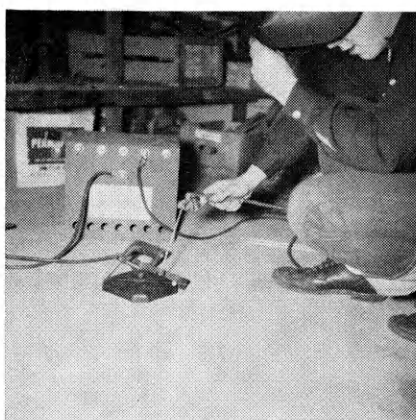
## *Electrical Hobby Can grow into a Vocation...*

"Although electrical work is my hobby at the present time, it could become my vocation," says David Cochran, 15 years old, RR 2 Olathe, Johnson County, Kansas. "But if it doesn't," he continues, "it will give me a good understanding of electric theory." And many others now engaged in 4-H electrical projects, no doubt, feel the same way about making this field possibly their lifetime work.

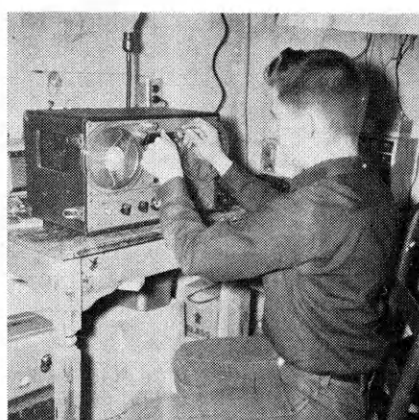
David, a member of the Oxford Hustlers 4-H Club and in his sixth year of electrical work, has several other projects to his credit this year, including wheat, junior leadership, and conservation. But electricity is still a major interest. "All youth should have a basic knowledge of electricity," he adds, "—what it does, and how to handle it. Electricity is such a part of our everyday living that it would be hard for many of us to imagine life without it."



David doing some repair work at his shop in the family home.



One piece of equipment handy for use in the Cochran home is the welder. Here David exercises his skill at welding.



David has spent time taking some of the "bugs" out of this tape recorder given to him by a friend.

**WATCH THIS  
PAGE FOR IDEAS  
ON FARM AND  
HOME ELECTRIC  
PROJECTS**

### *Electric Light and Power Companies in Kansas*

The Kansas Power and Light Company    Central Kansas Power Company  
Kansas City Power & Light Company    Kansas Gas and Electric Company  
Western Light & Telephone Company