

GRASS & GRAIN

12th year no. 48

January 24, 1967

No Stir For New Farm Bills

For the first time in his 31 years of helping draft federal farm legislation, Sen. Allen J. Ellender (D-La.), expects no request for major new programs or laws this session.

The chairman of the Senate agriculture committee said present farm programs should "gradually end government interference in agriculture and return farm prices to the market places where they belong."

Ellender, 76 years old, who

said he expects no major proposals this year from President Johnson, and Sen. George D. Aiken (R-Vt.), ranking GOP agriculture committee member, agreed in separate interviews.

"We have enough farm laws on the books now to last the entire universe for some time," Aiken said. "We should concentrate on administrative oversight and making adjustments."

Both senators noted that net farm income last year was more than 16 billion dollars, including some 3.4 billion of government payments and price supports.

This was the highest in many years and there were fewer farmers to share it.

Ellender said his committee soon will give attention to an extension of the food stamp program expiring June 30, and a request to establish a central bank for the Rural Electrification Administration program, patterned after the bank system for the older Farm Credit Administration.

The food stamp program provides needy individuals and families with stamps that are used instead of cash at most grocery and food stores and are redeemed by banks through the Agriculture Department's Commodity Credit Corporation.

The program is displacing direct allotment of government food surpluses through state

and local welfare agencies. More than one million persons shared in it last year. Its extension appears likely.

Some REA supporters want to set up a central financing system which could borrow funds from private lenders for use in expanding and improving rural services, and operate it as a revolving fund.

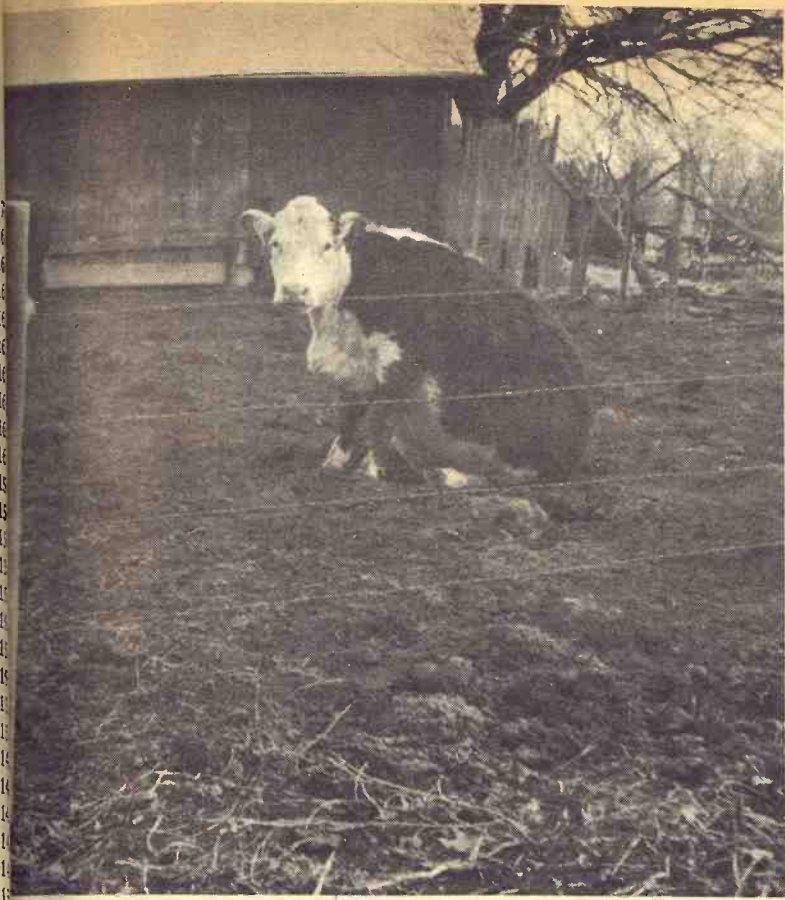
For many years Congress has provided millions of dollars for REA to loan to local and regional cooperatives to bring electric power and telephone service to farms and rural areas.

Both senators agreed the most likely controversy during the next two years will be over efforts to trim the annual agricultural money bill, which has been at or more than the 7 billion dollar mark in recent years.

Huge postwar surpluses of wheat, feed grains and other farm commodities — which caused federal acreage and marketing controls and price support programs — have largely disappeared.

One exception is cotton, which still has a surplus of more than 16 million bales, or more than a year's supply.

"I am hopeful that cutbacks in cotton production can continue until we get a balance," Ellender said.



Cow On Her Pratt

This cow finds a comfortable position sitting on her haunches, like a dog. Bill Gleue of Bremen owns the cow, and he says she often sits this way but usually not long at a time. Perhaps it has something to do about bulls with cold noses.

MissioCopper Mines In Kansas?

Commercial deposits of copper and profitable strip-mining operations in south central Kansas Friday loomed as a possibility that could push the state's industry into an undreamed of sector of mineral exploration.

The possibility attained the status of near practicality as Dr. Frank C. Foley, director of the Kansas State Geological Survey at the University of Kansas, Lawrence, reported results of a survey field study revealing copper-bearing mineral in concentrations that could be commercial.

Promising concentrations, the survey reported, were found in southern Sedgwick, southeastern Kingman, eastern Harper and western Sumner counties. Harper was especially promising.

Describing a systematic mineral search began last summer, Dr. Foley said "analyses from more than 450 outcrop samples from this area turned up numerous concentrations ranging from .8 per cent to 5 per cent, and the richest sample reads 6.6 per cent."

A similar search in southwestern Oklahoma found comparable ore deposits ranging from 1 to 3 per cent in concentration. The deposits now are being exploited by Eagle-Picher Mining Co. That firm and several others are reported to be taking a close look at the Kansas survey findings.

Warning against over enthusiasm, Dr. Foley said, "We have not determined the areal extent of the deposits, so we can make no prediction as to reserves. Mineability and processing have yet to be evaluated also."

The successful mineral search, he said, utilized X-ray fluorescence spectography for sample analysis in the first such application to be used in Kansas. Dr. Ernest E. Angina, chief of the survey's geochemistry section, directed the project.

Coincidentally, the tight copper market, which in part inspired the search, broke loose as the "big three"—Kennecott, Anaconda and Phelps Dodge—boosted their prices from 36 to 38 cents per pound.

The government, through release of its large emergency stockpiles, has attempted to control prices of domestically mined copper. On the world market it sells for about 54 cents a pound.

Exploitation, Foley said, would be a matter of comparative economics. "The deposits, if found to be commercial, would have to be strip-mined and that destroys the agriculture value of land for a long period. The question to be answered is simply whether the deposits may be commercially extracted in amounts significantly more valuable than farming."

A complete report on the discovery, "Copper in Redbeds of South Central Kansas," soon will be published by the survey group.

The general areas (see map) explored by the survey:

Sedgwick County: (No. 1) Lake Afton areas southeast of Garden Plain—samples ranged from .05 to .48 per cent.

Kingman County: (No. 2) Southeast of Kingman in the Murdock, Belmont and Adams areas—samples ranged from .05 to .21 per cent.

Sumner County: (No. 5) between Anson and Conway Springs—single sample rated at .09 per cent.

(No. 5) South of Milan—samples ranged from .07 to .69 per cent.

(No. 7) Caldwell vicinity—samples ranged from .07 to .21 per cent.

Harper County: (No. 4) North of Dansville, the richest area explored—samples ranged from .06 to .23 per cent.

(No. 8) West of Bluff City—samples ranged from .06 to .60 per cent.

ANGUS HONORS YOUNG CRENSHAW

Julia and Roy Crenshaw of Manhattan were the junior exhibitors at the recent Arizona National Livestock Show. Showing Angus steers and heifers, they had first and second place junior steer calves, first place summer yearling heifer, second place senior heifer calf, third place junior yearling heifer, and second place junior bull calf. Julia Crenshaw won reserve championship honors in beef showmanship.



Clean Clover

Henry Samsel, Waterville, pauses on the way to town to pick up clover seed he had cleaned.

Mary
Kan

Salin

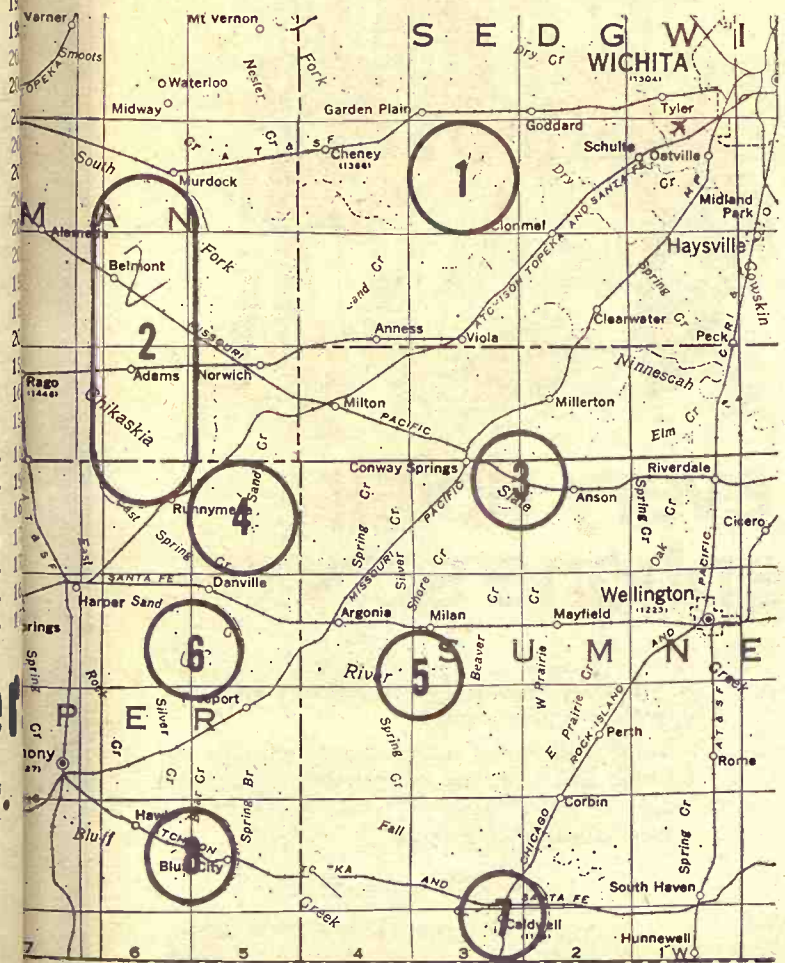
Only

1:00 a.m. Can
they are consid

198 @
221 @
203 @
203 @
221 @
222 @
253 @
258 @
227 @
227 @
239 @
235 @
213 @
212 @
202 @
223 @
239 @
207 @
202 @
400 @

ncher
ION CO.
40

211
ensed



WHERE GEOLOGISTS FOUND PROMISING TRACES OF COPPER
... Ore with concentrations up to 6.6 per cent in four counties ...

State Pork Producers To Meet At Hutchinson

DES MOINES, Iowa — Bob Rose, Cawker City swine producer, was named part of a national committee to promote increased consumption of pork during a meeting of the national directors of the National Pork Producers Council here.

**FREE OFF-STREET
Parking
While Eating at**

SCHUESS

The Family House
Cafe
MANHATTAN

Rose is expected to explain plans of the executive group at the special conference of Kansas pork producers in an all-day meeting in the Baker Hotel, Hutchinson, Jan. 26.

Rose, president of the Kansas Swine Improvement Association, was one of the 10-member national board at the Des Moines meeting.

At Des Moines the directors planned a membership drive for each of the nation's pork-producing states. They set a goal of 5 percent of the producers and/or 35 percent of the hogs marketed for each state by the end of 1967.

The directors' planning session was to carry out wishes of more than 1000 hog producers from 22 states who met in Springfield, Ill., Dec. 6-7, and voted five cents a head membership donation for a National

Pork Producers Council war fund to promote use, sale, development and organization of pork producers into a national commodity group.

Three major program committees were named at the executive session. Chairmen are Roy Keppy, Davenport, Iowa, organization and structure committee; Albert Gehlbach, Lincoln, Ill., production committee; and Jim Volk, Battle Creek, Nebr., increased consumption committee.

The NPPC board went on record as strongly favoring the program of animal identification at the market level in a step proposed by the Livestock Conservation Inc. to determine sources and to help eradicate cholera, brucellosis, and other swine diseases, according to Rolland Paul, executive director of the NPPC.

The national directors clarified the five cents donation pro-

GRASS & GRAIN

The Mid-Kansas news weekly. Published each Tuesday at 1207 Moro, (Box 1009) Manhattan, Kansas, 66502 by

AG PRESS

Dean Coughenour

E. R. Woodward

Second class postage paid at Manhattan, Kansas

Subscription: \$3 year

CIRCULATION 11,108

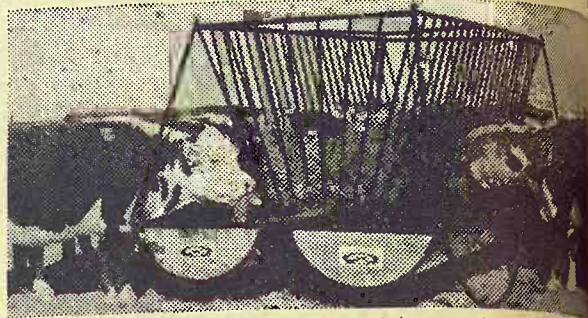
cedure noting that it is voluntary at the first point of sale at the rate of five cents a head sold for fat swine, and two and one-half cents a head for feeder pigs.

At the Hutchinson meeting,

swine breeders and producers from throughout the state will attend. Speakers will include Dr. Berl Koch, Ken Broughton of the Board of Agriculture, Wolf, South Haven, and former NPPC Kansas president; and Pyles, state veterinarian.



Feed Bunks



with Ha-Stak-R Attachments

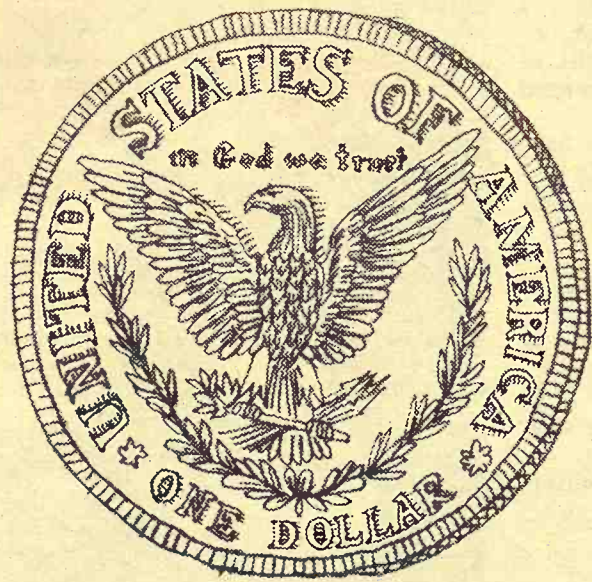
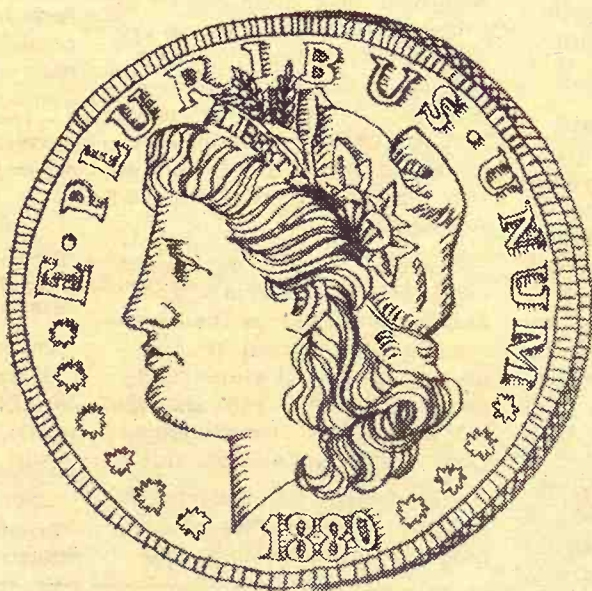
- Holds 15-plus bales of hay
- 12' trough weighs approximately 175 lbs.
- Interior coated to retard corrosion
- Built to withstand lots of hard use.
- No wasted feed. Rounded bottom helps cattle clean it up.

Leon's HOUSE of SALES

PO Box 1613

HUTCHINSON, KANSAS
Some Dealerships Available

Phone MO



There are two sides to every dollar you spend in Kansas for telephone service.

One side buys you good telephone service at a bargain price. The other plays a vital role in the state's continued economic growth.

In 1967, Southwestern Bell's construction program will pump \$32 million into our Kansas economy. New buildings, more weather-proofed cable and installation of modern communications equipment are just a few of the construction projects scheduled to insure continuation of top-notch telephone service.

This building program calls for everything from

bricks to bulldozers, limestone to lumber—plus the skilled manpower to get the job done.

There's also the \$35 million in wages Southwestern Bell people spend in Kansas for meat and groceries, shoes and clothing, recreation, gasoline and many other everyday items. These dollars mean more and better paying jobs for thousands in Kansas.

The \$11-1/2 million the company pays in real estate, sales, earnings and other taxes makes Southwestern Bell one of the state's largest taxpayers. Much

of that money comes back to you in better schools, new highways and finer hospitals.

Add it all up and you get a grand total of more than \$78 million. So you see, that other side to your telephone dollar is important. It rolls on and on helping to build a better Kansas.

James F. Haake
JAMES F. HAAKE
Vice President and General Manager

Southwestern Bell





"We Won't Forget the Part the Land Bank Played!"

For half a century, the Federal Land Bank has played an important part in the lives of hundreds of thousands of farmers and ranchers.

It helped them own the land they work.

The Land Bank helped them improve the land, and make it more productive.

It provided working capital as agriculture grew bigger and more complex.

The Land Bank helped educate their sons, and establish new family units.

It helped them survive drought and depression.

The Land Bank helped them feed many of the world's peoples in times of war and famine.

The Federal Land Bank uses no government funds, either to make loans or for operating expenses.

The Land Bank is owned entirely by the people it serves.

This Is the 50th Anniversary of the

FEDERAL LAND BANK



Emporia

Office: 115 West 5th
O. E. Roberts, mgr.
Serving Chase, Coffey, Lyon
and Osage counties

Topeka

Office: 1717 Gage Blvd.
Wm. H. Snyder, mgr.
Serving Jackson, Shawnee
and Wabaunsee counties

Manhattan

Office: 6th and Humboldt
R. Stanley Parsons, mgr.
Serving Pottawatomie, Riley
Clay and Geary counties

Herington

Office: 107 N. Broadway
Richard L. Worley, mgr.
Serving Marion, Morris
and Dickinson counties

Marysville

Office: 1019 Broadway
Allen L. Holeman, mgr.
Serving Washington, Marshall
and Nemaha counties

1917... There was a war on. Dad was too old to go. I was too young. Congress had passed a law creating the Federal Land Banks to help farmers and ranchers pay for their land.

1918... Dad bought a quarter with the help of a Federal Land Bank loan, obtained through the local Land Bank association.

1922... Hazel and I got married. A quarter wasn't enough to support two families, so Dad and I went to the local Land Bank man again—we got another loan and bought more land.

1927... Prices were sky high—except for agricultural products. We got by due to the small payments and low interest on our loans.

1931... Things were really tough—but we were managing somehow. And we were raising a fine family—Tom, the oldest, and two girls.

1933... The great depression—business in a turmoil, banks closing. We went to the local Land Bank association and arranged to refinance our loan to cut the payments down. Many people lost their places, but the Land Bank stuck by us and other folks who had Land Bank loans.

1936... Drought and dust—with the outlook pretty dreary. But Dad and I decided if we were to stay in business we would need more land, so we bought the adjoining place with the help of a Land Bank loan.

1938... Things looked better and I bought a top bull. Some of the neighbors said he was too expensive—but I got the best calves I'd ever had.

1940... War in Europe. I bought some high quality heifers—neighbors said I'd paid too much but I noticed they were looking for better stock.

1943... Tom was in the army, one of the girls was home, the other in college. Dad passed away last year.

1947... Tom was home and married, with a place of his own. Yes, there was another Land Bank loan in the family.

1955... That original quarter had turned into a considerably larger unit. We built a new house and renovated some pasture land that year.

1961... Bought new haying equipment and built a new cattle barn. Modern agriculture takes a lot of equipment and a lot of money. Over the years the Land Bank has provided the money to buy land, to improve it, buy equipment—to keep abreast of the newest developments.

1967... Hazel and I have had a good life—we raised a fine family—we have six wonderful grandchildren—and we own a good place. The Federal Land Bank and the local Land Bank association certainly played an important part in our success.

Established in 1917... Owned by the People it Serves.

Self-Supporting... Operated without Government Funds.

Seven Farm Lobbyists

Farm interests will be represented by seven persons registered as lobbyists for the 1967 session of the Kansas legislature.

The seven are included among the 89 individuals who have registered with the secretary of state as "legislative agents."

Under recent provisions of the legislature, these agents are required to wear a name badge identifying them as lobbyists.

Of the seven listed with agricultural interests, two are from the Kansas Farm Bureau, which, of course, also has insurance interests.

The seven:

- Clarence Rupp and Charles Esslinger of Kansas Farm Bureau.

- John Blythe, Council Grove, representing the Kansas Livestock Association.

- Ray Welsh, former legislator from Weskan in western Kansas, who listed himself with the secretary of state as simply representing "rural and agricultural interests."

- William Crotinger, Tribune, Kansas Committee of Farm Organizations.

- Tom Townsend, Wichita, Southwest Milk Producers Association.

- Ivan Van Nortwick, Lawrence, Dairy Institute of Kansas

Farm groups are among the most represented of the special interest groups in the halls outside the legislature. Eleven men represent labor and there are 10 lobbyists for various general business and industrial groups. Aside from the general groups and associations, many specific trades and professions are represented.

resented. Lobbyists for various oil groups, not necessarily with similar legislative aims, number five.

Kansas Power & Light and Southwestern Bell Telephone each have three men at Topeka, as do the railroads.

Among the other represented groups are teachers, food dealers, psychologists, hospitals, engineers, physicians, Blue Cross, nurses, car dealers, savings & loan associations, banks, brewers and liquor interests, dry forces, American Legion, PTA, League of Women Voters, right-to-work, churches, insurance and restaurants.

The full list as provided by the secretary of state's office:

James L. Kluender, Topeka, Civil Air Patrol; W. T. (Bill) Morris, Wichita, Kansas Restaurant Association Inc.; George J. Frey, Topeka, Kansas State Teachers Association; Ray V. Guffey, Wichita, Kansas for the Right to Work; Lee E. Circle, Arkansas City, Kansas Food Dealers Assn.; Peggy Gatewood, Topeka, League of Women Voters of Kansas.

BARRY BENNINGTON, Lawrence, Kansas Psychological Association; H. L. (Hal) Hudson, and John B. Reubens, Topeka, Midwest Industry & Central States Construction Magazines; Jay L. Sellers, Topeka, Kansas Restaurant Association; Frank Gentry, Topeka, Kansas Hospital Association.

DON TARVER, Topeka, Kansas Savings & Loan League; Charles W. Huston, Topeka, Kansas Tobacco-Candy Distributors & Vendors Inc.; Wesley A. Bastedo, Topeka, Kansas Builders Chapter A.G.C.; Richard S. (Dick) Hunter, Topeka, Associated Industries of Kansas.

KENNETH R. RISSLER, Topeka, United States Brewers Association; Herol Farmer, Fort Scott, Brotherhood of Locomotive Engineers; Paul D. Newcomer, Topeka, Kansas Engineering Society; Ralph E. Gillett, Topeka, Kansas Wholesalers of Malt Beverage Association; Amos Kramer, Wichita, Kansas Petroleum Industries Committee.

MARY TURKINGTON, and James Preston, Topeka, Kansas Motor Carriers Association; George A. Sims, Hugoton, Mobil Oil Co.; Ray W. Lindbergh, Topeka, Kansas Motor Carriers Association; L. K. (Dusty) Greene, Topeka, Midwest Industry Magazine.

DARRELL CARLTON and Bill Shropshire, both of El Dorado, Oil-Chemical-Atomic Workers, No. 524; Dennis Hoffa, Kansas Credit Union League; Roy S. Hollomon, Topeka, United Dry Forces.

JAMES SNYDER, Ken Klein, Bill Perdue, Topeka, Kansas Power & Light Co.; John K. Blythe, Council Grove, Kansas Livestock Association; Glenn Coulter, Topeka, Kansas Consulting Engineers.

JOHN W. WALKER, L. J. Marshall Jr., T. H. Popplewell, Topeka, Southwestern Bell Telephone Co.; Clarence Rupp, and Charles Esslinger, Manhattan; Kansas Farm Bureau; Carl A. Bowman, and Roger Kirkwood, Topeka, Kansas Bankers Association.

RAY WELSH, Weskan, rural and agriculture interests; Perry Miller, Topeka, Kansas Electric Cooperatives; Frank S. Bednar, St. Joseph, Mo.—Union Pacific Railroad; John C. Allen, Topeka, Atchison, Topeka & Santa Fe Railway Co.; Noble W. Drake, Robert O. Johnstone and Carl C. Nordstrom, Topeka, Kansas Chamber of Commerce.

C. E. HOLMES, Wichita, Institute of Logopedics; William L. Oswald, Hutchinson, Kansas Oilmen Association; M. Jay Wanamaker, Topeka, Kansas Association of Independent Insurance Agents; Harold Heinrich and James V. Andrews, Topeka, Kansas Nursing Home Association; Arthur C. Peterman, Topeka, Blue Cross-Blue Shield; Charles M. Miller, Topeka, Kansas Council of Carpenters.

SAVE! UNION PACIFIC'S LOW WEEK-END ROUND-TRIP FARES

Only slightly higher than
regular one-way fares

LEAVE FRIDAY, SATURDAY, OR SUNDAY
RETURN BY MIDNIGHT MONDAY

In effect

NOW THRU MAY 28

See or call your nearest Union
Pacific office for complete
information and reservations.



Kansas Soya provides complete services for feedlot operators...



plus scientific supplements from nature's richest source of protein

Kansas Soya services include formula guidance; automated custom-mixing; fast, automated, in-and-out service; on-time delivery; Grain Bank facilities. And, of course, 32% and 40% feedlot supplements from nature's richest source of protein. Call collect. Let us know how we can serve you.

KANSAS SOYA PRODUCTS CO., INC.
Phone Dickens 2-7270 • Emporia, Kansas



HARRY A. GIRTON, Kansas City, Mo., Union Pacific Railroad Co.; William H. Crotinger, Tribune, Kansas Committee of Farm Organizations; Bryan K. Whitehead, Pratt, Kansas Legislative Committee of Brotherhood of Railway Clerks; Laurin W. Jones, Dodge City, Kansas Association of Independent Insurance Agents Inc.; Jack McElathlin, Pittsburg, Brotherhood of Locomotive Firemen & Enginemen; J. B. Barbee, Wichita, Brotherhood of Railroad Trainmen.

H. E. DE VILLIERS, Wichita, National Electrical Contractors Association Inc.; Swede Swenson and Oliver E. Ebel, Topeka, Kansas Medical Society; Jim Young, Topeka, Kansas State Federation of Labor Producers Association; Floyd Black, Topeka, Kansas State Federation of Labor AFL-CIO; Ivan Van Nortwick, Lawrence, Dairy Institute of Kansas; Mrs. Kenneth (Ina) Young Dodge City, Parent-Teachers Association.

MARION ZINK, Topeka, Kansas Electric Cooperatives Inc.; Edward Wellepp, Topeka, Kansas Contractors Association; Tom Townsend, Wichita, Southwest Milk Producers Association; Floyd Black, Topeka, Kansas State Federation of Labor AFL-CIO; Ivan Van Nortwick, Lawrence, Dairy Institute of Kansas; Mrs. Kenneth (Ina) Young Dodge City, Parent-Teachers Association.

EUGENE W. HIATT, Topeka, Kansas State Council of Firefighters; Kansas State Firemen's Association, Kansas Association of Independent Insurance Agents; Myron Garrelts, McPherson, Association of Mutual Insurance Companies of America; Fred D. Diehl, McPherson, City of McPherson; Bob Lusk, Merriam, TWA.

FLORENCE J. NELSON, Topeka, Kansas State Nurses Association; Ray L. Frost, Wichita, Kansas Petroleum Industry; Kenneth R. Allen, Council Grove, Kansas Food Dealers Association; Veryl Whisler, Topeka, Fraternal Order of Police, Lodge No. 3, Topeka Police Department; L. M. Rymph, Topeka, Kansas Council of Churches; Kenneth Young and Floyd Rogers, Topeka American Legion.

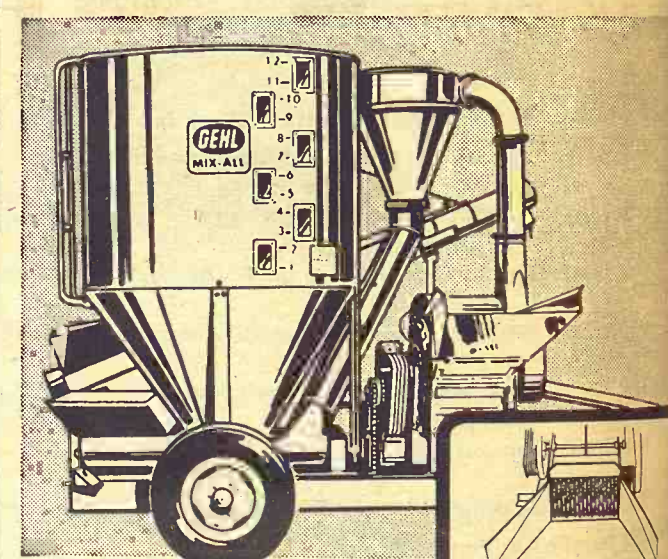
Set Hog Show Date At Marysville

MARYSVILLE — The 13th annual Marysville Hog Show has been set for February 22.

Any producer of market hogs is eligible to show one or more animals in each of the two single animal classes, weighing 220 pounds and less and animals weighing 221 pounds and over.

In addition to the single animal classes, there will be two classes for a pen of three animals, which will be divided into the same weight classification as the single class.

As in last year's show there will be a class for a truckload of 10 market hogs, with no division of weight in this class.



GEHL MIX-ALL

Grinds! Mixes! Delivers!

The Gehl Mix-All, with economy plain feeder and exclusive crusher-feeder attachment, grinds, mixes and delivers the most uniform on-the-farm feed.

Here's proof: Samples of feed grains, ground by Gehl and competitive mills, were compared in a "sieve-shake" analysis (a grinding uniformity test used also by commercial feed manufacturers). In test after test, Gehl samples were the most uniformly ground. And, the more uniform the grind, the better the mix!

In the Mix-All hammermill, 66 thin, alloy-steel hammers cut . . . not pound ingredients on a big grinding surface for faster feed flow with reduced "fines." Check on in for a close-up look at the Mix-All features, including the swinging auger-feeder.



Make us Prove it with a Demonstration!

VALLEY FALLS
VALLEY IMPL. CO.

SENECA
SENECA IMPL. CO.

HERINGTON
TRI-COUNTY SALES

CLAY CENTER
TOBUREN IMPL. CO.

WAMEGO
WAMEGO TRUCK
& TRACTOR, INC.

GYPSUM
KUHN IMPL. CO.

HANOVER
HANOVER IMPL.

LINCOLN
RHUDY & SONS

January 24, 1967

Discount Baby Chick



Early Order Discount
baby chicks ordered
February 15 for the
select this spring.

at the following dealers:
Weiters Produce
Farmers Union Co-op
Mark Grain & Lumber
Farmer-Stockman Co-op
Morrison Grain Elevator
Grange Produce
Flint Hills Produce
Marion Elevator
Farmers Union Feed Store
Hines Farm Center
White City Grain Co.
Wilsey Feed & Grain

Carey Hatchery
US Appr. Pullorum Test
Clean
Ph. 765-3611
ALMA, KANSAS

FARMER

Hogs n Pr

The Pig Crop
by the USDA
ould be of
eople. It prov
out prospect
ripts of hogs,
ues to the de
and soybeans
ies and price
The report i
g upsurge in
hich began al
almost over.
hich began t
fore levels k
continue over y
til next fall.
The number
ended for m
ember 1 w
ad, up 10 per
rlier. We exp
g increase in

MATT
BOX S
Specials
New Lo
Buy
Also Compl
Se
Man
Mattr
414 S. 4th

FARM & RANCH

R. STANL
manager o
is ready to
farm or
offices:

CLAY CE
KM Sec
Tues., 1

JUNCTION
105 Wes
Fri., 1 to

MANHAT
Home of
open Mo
6th & H

Serving Cl
Geary, P

FARMERS OUTLOOK

L.H. Simerl

Hogs To Stay In Profit Range

The Pig Crop Report issued by the USDA late in December should be of interest to many people. It provides information about prospective market receipts of hogs, but it also gives clues to the demand for corn and soybeans and to the supplies and prices of pork.

The report indicates that the pig upsurge in sow farrowings, which began about a year ago, is almost over. Market receipts, which began to exceed year-previous levels last August, will continue over year-earlier levels until next fall.

The number of hogs and pigs intended for market on hand December 1 was 46.5 million head, up 10 percent from a year earlier. We expect a corresponding increase in market receipts

during the first half of this year.

Hog producers reported plans to increase winter farrowings (December-February) 6 percent over those of a year ago. They expected to have about the same number of sows to farrow during March-May as last year.

From these facts it appears that many hog producers stepped up their production level in 1966, but there is no general move to increase output further at this time.

Where will this put us in hog production? Pork output in the year ending next June will total about 11.5 billion pounds. That would be 10 percent more than last year, and just back to the level of two years ago. It is still a billion pounds less than the output three years ago.

With pork output at an intermediate level, and a prospect of some shortage of beef, hog prices seem likely to stay in a profitable range through most of 1967.

A cut in beef supplies would provide some support for the hog market. Cattle numbers appear to have decreased 2 or 3 percent in the past two years. Some ranchers and farmers have begun to hold back cows

and heifers to expand breeding herds. If this practice becomes general, beef output could be cut as much as 5 percent in 1967.

Over the last hog cycle, 1963-66, prices of hogs averaged about \$18.50, at 8 midwestern central markets, while pork production averaged about 11.9 billion pounds per year.

Since prospective supplies of pork for 1967 are about 4 percent short of the average, and beef supplies may also be less than the average for the past four years, hog prices should remain well above the \$18.50 level for at least most of the year.

Though there are many un-

certainities in the outlook, we expect prices of hogs to fluctuate from \$20 to \$24 during most of 1967. The best prices of the year seem likely to develop in May, June and July. Prices in that period may be about \$2 over the lower levels of this winter.

Although farmers have reported that they did not intend to increase March-May farrowings above 1966 levels, we believe that the relatively favorable outlook will bring a small increase in farrowings throughout the year. The increase may be 3 to 5 percent for the year as a whole.

L. H. Simerl
Univ. of Illinois

Russell Levy — But No Tax

RUSSELL — What happens when a tax levy isn't levied?

Surprised city officials here are looking for an answer.

They discovered that a one-mill industrial levy, approved by voters in last spring's election, was overlooked in the 1967 city budget.

The levy, which was to raise approximately \$8,000 for industrial expansion and development, simply was left out of the budget.

Following dealers
Produce
... Industry
... Union Co-op
... Eskridge
... & Lumber Co.
... Durr
... Rockman Co-op
... Council Gro
... Grain Elevator
... Junction
... Produce
... Harvey
... Produce
... Osage
... Elevator
... Ma
... Union Feed Store
... St. Ma
... m Center
... Warr
... y Grain Co.
... White
... ed & Grain
... W
or
Hatche

Pullorum Typ
Clean
h. 765-3611
IA, KANSAS

AIN FEEDER
USHER HEAD

elivers

lain feeder and
rinds, mixes and
feed.

ground by Geb
a "sieve-shaker"
used also by com
after test, Geb
d. And, the mon

alloy-steel ha
on a big grinding
ed "fines." Com
se-up look at al
features, includi
g auger-feeder.

onstration!

WAMEGO
EGO TRUCK
ACTOR, INC.
GYPSUM
N IMPL. CO.
ANOVER
VER IMPL. CO.
LINCOLN
Y & SONS, IN

MATTRESS & BOX SPRINGS

Specials Every Day
New Low Prices
Buy Direct

Also Complete Rebuilding
Service

Manhattan
Mattress Co.

414 S. 4th PR 8-5302

FARM & RANCH LOANS

R. STANLEY PARSONS,
manager of Manhattan FLBA,
is ready to serve you at your
farm or at three convenient
offices:

CLAY CENTER
KM Securities Bldg.
Tues., 1 to 3 p.m.

JUNCTION CITY
105 West 7th
Fri., 1 to 3 p.m.

MANHATTAN
Home office at Manhattan is
open Mon. thru Fri.
6th & Humboldt



OFFICE PHONE
PR 8-2971
Residence Phone
PR 6-9044

Federal
LAND BANK Assn. of
MANHATTAN

Serving Clay,
Geary, Pottawatomie, & Riley counties.

EARN MORE NET PROFITS FROM YOUR FARM GRAIN



COOP HOG CONCENTRATE

Feed This Farmer-Owned CO-OP Feeding Program

Shooting for more NET profits from your farm grains is the reason for feeding livestock. Don't let a poor feeding program rob you of precious dollars.

See your CO-OP Feed Service Center for the complete farmer-owned CO-OP Feed Program of custom mixed rations using maximum amounts of farm grains. Your Farmland-member CO-OP has rations designed for the exact age and weight of your swine. Follow this farmer-owned program:

Clifton
Farmers Co-op. Ship. Assn.
Clifton Ph. 455-3315

Manhattan
FARMERS Cooperative Assn.
Manhattan-Alta Vista
-Westmoreland-Onaga

Alma
Farmers Union Co-op
Alma Ph. 765-3612
Eskridge Ph. 449-2291

St. Marys
Farmers Union Co-op
Business Assn.

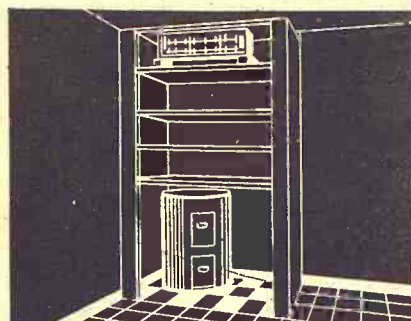
Junction City
Farmer-Stockman Co-op Assn
Council Grove
-Junction City CE 8-4158

Mahaska
Farmers Union Co-op Elev.
Mahaska Ph. 41

Greenleaf
Farmers Co-op Elevator Assn
Greenleaf-Linn
-Washington

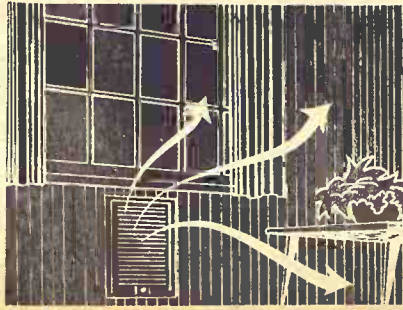
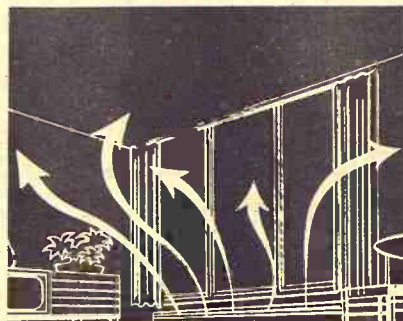
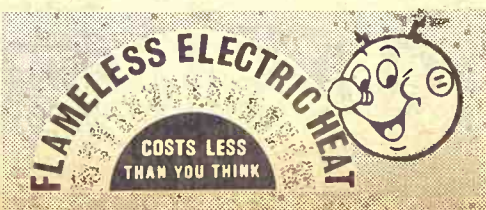
Clay Center
FARMERS Union Co-op
Clay Center-Bala
-Miltonvale-Leonardville

MAKE A CLEAN BREAK WITH THE PAST WITH FLEXIBLE FLAMELESS ELECTRIC HEAT



Only electric heat is versatile enough to heat your entire home, one or two rooms, an enclosed porch, utility room, or just for cold spots such as in corners or under large glass windows. In addition, electric heating equipment is easy to install and takes up little or no floor space.

Right now is a good time to modernize your entire home, or one room at a time, with no heating inconvenience. There's a wide selection of electric heating equipment available to let you choose the one perfectly suited to your needs. Contact your KPL office today for free details.



OUR DAILY BREAD

— by G&G Area Cooks

Miss Linda Woolverton, Abilene, Winner Of Recipe Contest

The contest winner is Miss Linda Woolverton, R4, Abilene. Miss Woolverton writes, "I would like to enter this recipe in your contest. It makes a very good club snack or just a delicious change of dessert for the family. I'm getting married soon and love to get ideas for new recipes from the recipes on your page."

MISSISSIPPI MUD CAKE

Melt 2 sticks oleo or butter and 1/3 cup of cocoa and cool.
2 cups sugar
1 1/4 cups flour
4 eggs, beat until foamy
1 cup chopped nuts
Blend sugar and eggs, add flour and pecans. Add cooled mixture and 1 teaspoon vanilla. Bake at 375 degrees in metal pan or 350 degrees in glass pan. While still hot spread 1 jar marshmallow cream on cake.

ICING

1 box powdered sugar
1 stick butter or oleo
4 tablespoons cocoa
1/2 cup chopped pecans
Mix with water or milk until right to spread. Spread on cake while cake is still hot.

Mrs. Walter Seley, R 3, Junction City: "I make these cookies and they stay real moist for a diabetic and are real good."

APPLESAUCE OATMEAL DIABETIC COOKIE

1 1/2 cups quick oatmeal, uncooked
2/3 cup melted oleo or butter
2 eggs, beaten
1 tablespoon liquid sweetener
1 1/2 cups sifted flour
1 teaspoon cinnamon
1/2 teaspoon salt (scant)
2 teaspoons baking powder
1/4 cup skim milk
1/2 cup applesauce sweetened with liquid sweetener
1 teaspoon vanilla
1/4 cup currants or raisins
1/4 cup nutmeats, preferably black walnuts

Measure out oatmeal into a large mixing bowl. Stir in melted oleo; mix well. Blend in combined beaten eggs and sweetener and combined dry ingredients alternately with milk

and vanilla; mix well. Mix 1/4 teaspoon soda into applesauce and blend in. Mix in currants or raisins and nuts. Drop by level teaspoonsful onto cookie sheet. Bake 10-15 minutes in 400-degree oven or until golden brown. (Mrs. Seley mentioned that she would like a cake recipe using liquid sweetener. If anyone has one, please send it to Grass & Grain so that we may print it.—ed.)

Mrs. G. G. Cobb, Culver: "I received the beautiful teflon pan. My first of this kind and I like it very much. I thank you so much that I'm sending another recipe."

BAKED CHICKEN BREASTS IN MUSHROOM GRAVY

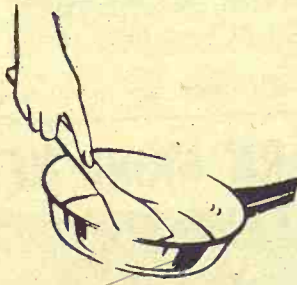
1 whole chicken breast for each adult
Canned cream of mushroom soup heated and very thin with milk

Generously flour chicken and brown in shortening 1/2-inch deep. Then place each portion in a flat pan. Pour on warmed soup so that it covers chicken. Bake in moderate oven until chicken is tender. Gravy may have to be thinned as it cooks. Takes about one hour in oven.

Mrs. C. D. Snyder, Superior, Neb.: "I read and enjoy the

The Latest 'Daily Bread' Prize

TEFLON FRY PAN



SKILLET is 10-inch size. Fried foods, with or without grease, slide easily from pan. Quick easy cleanup... scouring is never needed. Comet brand, a product of Mirro Aluminum Company, Manitowoc, Wisconsin.

The winner each week is drawn by lot from the recipes printed.

Win one by sending us your favorite recipe — this can be main dish, leftover, salad, side dish, dessert or what have you.

1. Check your recipe carefully to be sure all ingredients are accurate and accounted for.

2. Be sure your name and address are on the entry.

3. Only one recipe at a time, please.

4. Send it to Woman's Page Editor, Grass & Grain, Box 1009, Manhattan, Kansas.

many good recipes in Grass & Grain."

RED TOP SALAD

1 package of cherry gelatin dissolved in 1 cup boiling water. Add 1 cup cold water, pour in a square baking dish 8x8x2 inches. Let set. Dissolve 1 package lemon gelatin in 1 cup boiling water and dissolve 8 large marshmallows in this. Add 1 cup cold water. When cool add 1 cup cubed celery, 1 cup Velveeta cheese grated, 1/2 cup nuts chopped, 1 cup crushed pineapple and 1 cup whipped cream or whipped evaporated milk to which is added 1/4 cup salad dressing or Miracle Whip. Cool and put on top of the red gelatin. Cut in squares and place on plate upside down with a bit of Miracle Whip on top. May use a maraschino cherry, also.

Mrs. Ray Bishop, Axtell: "This is a bread pudding, quick and thrives on leftover fruit."

POVERTY PUDDING FOR PROSPERITY

Let bread soak in 2 cups warm milk. Add 2 eggs, 1/2 teaspoon salt. Then add chopped fruit: Cocktail, peaches, nuts, pears or any fruit you might have. Then put in cottage cheese. Put this in cups inside a pan of water in a pan with a tight lid and place on top burner on No. 2 heat and when it boils put on lower heat till done. If you have REA heat, turn burner off 10-15 minutes earlier. This takes about 20 minutes.

Winter Is Time To Ready The Garden Tools

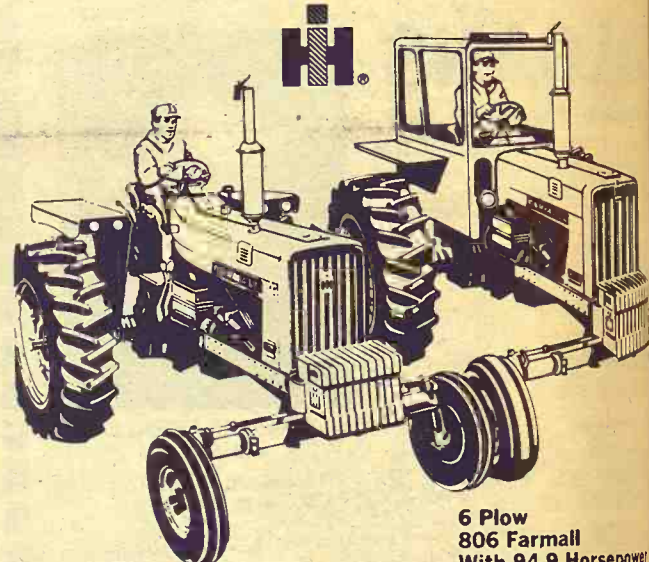
Winter is the time to get ready for spring—and summer. The gardener can help make his work easier by getting together all the hard tools, clean and sharpen them, need it and then paint them. Why these colors? They are proven most likely to be

Save Broken Tree, Shrub Branches

Do you have some broken shrubs that lost some branches during an ice or wind storm? Before you take all the shrubs to the burner, sort them by size. Large ones might be used in the fireplace, discarded, but hang on to medium-sized, medium branches to use as stakes in your flower garden.

Twiggy branches can be used between rows of peas, sweet peas, to support plants, ditto for vining that are grown for flowers. Other use for brush is to use between and among tall perennials so that they grow up through it and are supported.

HIGH-SPEED HARD-PULL CHAMPS



5 Plow
706 Farmall
Now with 76 PTO* HP

6 Plow
806 Farmall
With 94.9 Horsepower

Both of these PROVEN PERFORMERS feature:

- Low-friction, multi-range engines with more usable horsepower for each cubic inch of displacement
- Safe, sure and easy IH hydrostatic power steering
- Dyna-Life clutch that dissipates heat fast, lasts up to five times as long as ordinary fiber clutches
- Available with draft controlled 3-point hitch or 2-point Fast-Hitch. Torsion bar lower link sensing
- Dry-type air cleaner with automatic dirt discharge, recleanable element

Let us demonstrate one of these champs on your farm.

*Manufacturer's Estimated Horsepower

MARYSVILLE
Bruna Brothers

COUNCIL GROVE
Macha-Revere

WAMEGO
Wamego Truck & Tractor
Phone 456-9661

WASHINGTON
Schumacher's

MINNEAPOLIS
Chapman Impl. Co.

CLAY CENTER
Norquist's Inc.

LEONARDVILLE
Kendall Garage

FALUN
Dauer Impl. Co.

HERINGTON
Pioneer Service & Sales

HANOVER
Hanover Impl. Co.

SALINA
Harmon Truck & Impl.

WAKEFIELD
Auld Chevrolet

ABILENE
Abilene Truck & Tr

STIGGE'S JANUARY

CLEARANCE

SHOE SALE

IN LADIES SHOES
MAIN FLOOR SHOE DEPT.
Dress Heels - Stacked Casual
Queen Quality & Fashion Craft
reg. 11.95 — 12.95

\$7.00

Velvet Step - Miracle Tred

regular \$9.95 — \$10.95 **\$6.00**
regular \$8.95 **\$5.00**

LADIES FLATS

Regular \$4.95 **\$2.99**
Regular \$5.95 — \$6.95 **\$3.99**
Regular \$6.95 — \$7.95 **\$4.99**
Regular \$7.95 — \$8.95 **\$5.99**

Leathers - Suedes - Many small and narrow widths

HI-HEELS Dress Pumps

By Velvet Steps - were 8.95 - 9.95 **\$3.99**

DAVIS 4-D SOCKS

Slight irregulars of 79c styles, not affecting wear — Basement

2 PAIR 94c

DON'T FORGET TO SHOP OUR
JANUARY WHITE SALE
BARGAINS

Ladies Winter Coats Must Go! ENTIRE STOCK REDUCED

1/3 to 1/2

Genuine mink trimmed coats only
\$40.00 to \$55.00 NOW

Mens & Boys Winter Coats ENTIRE STOCK REDUCED

1/3 off

Values from \$11.95 to \$20.95
\$8 \$10 \$12

SPECIAL SALE

Fascination Brand
NYLON HOSE

Seamless, 3 pair are guaranteed to last 21 days

3 PAIR \$1.99

CHILDREN'S PLAYWEAR

BLOUSES - SLACKS - Sets
Buster Brown and Stonewear
SPECIAL GROUP

1/3 off

STIGGE'S

WASHINGTON, KANSAS

BUY YOUR CASE NOW COMBINE

and collect your **\$200 TO \$400**

PRE-SEASON CASH BONUS!

Payoff no. 1: Buy now and pocket \$200 to \$400 cash bonus depending on which of six Case combines you need. 40 to 52-inch threshing-separating.

Payoff no. 2: Every Case combine delivers more capacity per dollar. Come in and compare!

Payoff no. 3: No interest charges 'til season of use with Case Crop-Way Purchase Plan.

Hurry! Limited time offer!

MARYSVILLE
Brauchi Brothers

MARION
Longhofer Supply

LINN
Kuhlman Motor Co.

SALINA
Vasholtz Impl. Co.

CLAY CENTER
Porter Eqpt. Co.
1121 Crawford ME 2-5202

CENTRALIA
McBratney Impl.
Phone 857-3815



Home-Grown Winter Salads

One crop that anyone can grow, even a person with a thumb far from green, is cress for use in winter salads. Various called "salad cress," "upland cress" or "pepper grass," this tangy green may be mixed with others in a salad bowl or chopped and added to cheese or butter in sandwiches or canapes.

Salad cress grows so quickly that it is ready to be eaten a week after planting! Sounds unbelievable but it's true.

Kits are available in your local stores already planted with salad cress, with nutrients already added to the growing medium, so that you need only add water and place the plastic tray in a sunny window.

Follow directions for watering as printed in the folder included in the kit. No other care is necessary.



New Foxglove Blooms Five Months After Seeds Sown

The foxgloves that have previously been grown in gardens are biennials—that is the seeds are planted one year, grow and form leaves that year, but wait until the next year to flower. Not so a new foxglove named Foxy.

Foxy won an all-America Selections silver medal for 1967 because of its different flowering habit. Blooms can be expected only five months from the time seeds are sown.

In terms of plant breeding, these fewer months to flowering present a great achievement. In terms of gardening they mean that gardeners no longer need think ahead a whole year in order to have the white, cream, yellow, pink, lavender, magenta and purple-spotted blooms in their yards. Foxy is a dwarf foxglove, averaging two and one-half feet in height. In addition to the main bloom spike a plant may have as many as nine branch spikes, all with florets closely along the top eight to twelve inches. Foxy has two foibles. Plants react adversely to being transplanted except when seedlings are very small. And plants need moisture at their roots all summer long.

If the gardener moves plants when half grown or neglects to water in dry spells Foxy will not flower in five months. Instead it will observe the usual biennial schedule and bloom the following year.

Indulge these two minor whims and treat your garden to Foxy's display of 15-inch-wide plants topped with delicately-colored flowers for weeks in mid-to late summer.



**If you want economy
IN THE FEEDLOT
you have to buy it!**

True economy is not achieved by leaving something out—it's the result of putting extra values in.

In fact, to determine which feedlot supplement can give you the lowest feed costs, you have to forget the price per pound a supplement costs altogether. Because, the only way you can measure the value of a feedlot supplement is its demonstrated performance and the fast, efficient gains it helps cattle return for each feed dollar invested.

If you want to buy feed performance... STEAK-MAKER is the supplement to buy. Steak-Maker can put all these beef builders to work in your feedlot; stillbestrol, aureomycin, guaranteed true Vitamin A, high levels of available phosphorus, iodine, zinc, cobalt, Vitamin D-2 and many more needed ingredients. Where performance counts Steak-Maker meets the test.

See Your Naturich Dealer Now For Steak-Maker

NATURICH MILLS

Abilene

Kansas

G&G Directory

AUCTIONEERING

Lawrence E. Welter
AUCTIONEER
REAL ESTATE BROKER
Your Sale Solicited
Large or Small
EAST HIGHWAY US 24
MANHATTAN PR 8-3455
Real Estate
And General Sales

Ed Reimer
AUCTIONEER

We Specialize In Selling
DAIRY CATTLE

"A complete Sale Service"
Phone or write for sale dates.
Telephone 367-2373
GOESSEL, KANSAS
"Marion County"

CONSERVATION

Land Improvement
"Soil Conservation Doesn't
Cost—It Pays"
Ponds, terraces, waterways, and leveling, drainage ditches, clearing, landscape grading.

ROGGENDORFF
Conservation Construction
Arthur Roggendorff
Phone JE 9-3984
1630 Osage - Manhattan

Memorials

MONUMENTS
MANHATTAN
MONUMENT CO.
J. J. BEAUDET
Office and Display
123 No. 3rd

Office Phone Res. Phone
PR 8-5137 PR 8-4978
MANHATTAN, KANS.

CEMETERY
MEMORIALS

54 Year Continuous Service
Display Located on US24
East of City Limits

SCHAUBEL
MONUMENT CO., INC.
RR 3 Box 20 ME 2-3531
Clarence Blanc, President
CLAY CENTER

DAIRY SUPPLIES

DeLaval Clay

All Makes
Service & Repair
Dairy Equipment

Joe McClure

Ph. 229-5284 Alta Vista

January 24, 1967

**MILK AREAS MAY
QUIT SEASONAL PRICING**

A hearing to consider eliminating seasonal pricing of class I (fluid) milk in the G&G area and other parts of the U.S. will be held by USDA in Kansas City January 26. Producers associations and milk co-ops had asked USDA for the hearing to determine if the seasonal pricing could be dropped in federal milk order areas.

**IMPLEMENT • TRACTOR
ITCO**
PARTS • ACCESSORIES**TRACTOR MOTOR KITS**

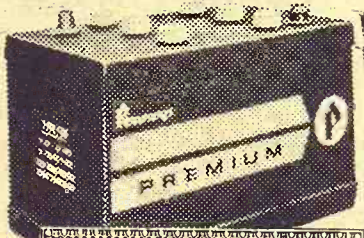
Sleeves, Pistons, Pins & Rings	
AC WD WD 45, D-17	49.95
AC WD, WD45, D-17 gasket set	5.75
IHC H motor kit	40.25
IHC H gasket set	5.98
IHC 300 motor kit	45.50
IHC 300 gasket set	5.98
IHC with motor kit	46.49
IHC M high comp. motor kit	47.49
IHC M gasket set	6.93
IHC 400-450 motor kit	59.50
IHC 400 450 gasket set	6.93
Ford 9N, 2N, 8N motor kit, thin sleeve	22.95
Ford 9N, 2N, 8N motor kit, thick sleeve	26.25
Ford NAA 600, 700 motor kit	33.50
Ford 800, 900 motor kit	37.15
Ford gasket sets \$4.00 to \$5.97	
Engine heaters 850 watt	7.59
Engine heaters, 1500 Watt	10.65
Battery chargers, 6 amp	13.59
Battery chargers, 10 amp	17.89
Battery booster cables 12', 4.35	

**HOLT
FARM SUPPLY**
Next to Sale Barn
MANHATTAN PR 8-4343

4th
& Pierre**FLOYD WOODWORTH**

Stop in and get acquainted with Floyd. He can help you solve any tire problem! Floyd has been in the tire business for 18 years in this area.

Phone Collect
PR 6-9251



BATTERY GUARANTEE
If the battery fails (not merely discharged) (1) within the first 90 days—a free replacement. (2) after 90 days but within the specified period of time shown, we will replace the battery charging only for the period of ownership. This charge will be based on the current retail price less trade-in at the time of return, prorated over the stated months of guarantee.

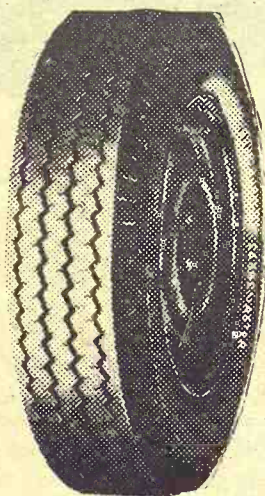
**COMPLETE LINE OF BATTERIES
FOR CARS — TRUCKS — TRACTORS**
3 QUALITIES 12 Volt As Low As **\$11.88**

In Manhattan Your Headquarters
For Tires And Batteries!

Tractor

Automobile

Truck

TRUCK TIRESRegular or Lug
Tread Designs

Cargomaster 8.25x20 — **\$39.88**
Plus recappable carcass and
and \$6.26 F.E.T.
All other sizes also available.

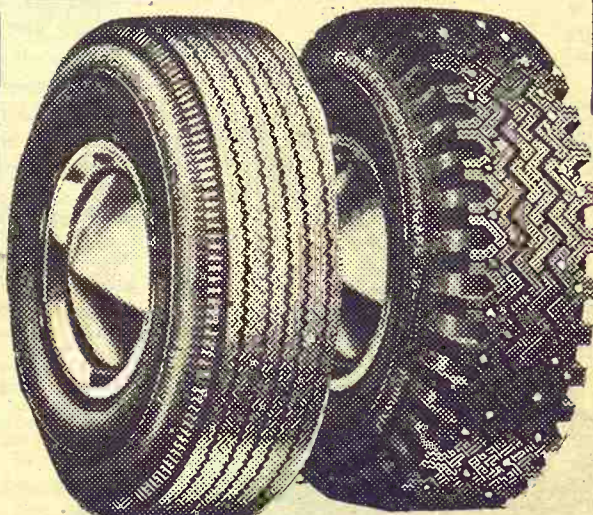


**ALL SIZES FRONTS & REARS
TRACTOR TIRES**

12x38 6 ply \$75.00 plus \$6.84 F.E.T.
600x16 4 ply \$14.00 plus \$1.00 F.E.T.

ALL FOREMOST TIRES ARE NYLON CORD

**OPEN NIGHTS
MON. & THURS.
TO 9:00 P.M.**



**PERMANENT BUILD
ANTI-FREEZE**

\$1.29

per gallon in your
container

**COMPLETE
LINE OF
CAR & SNOW
TIRES**

ALL SIZES

LOW
AS **\$9.88**

Plus
1.88 Fed. Tax
7.50x14 BLA

Manhattan Commission Co., Inc.

Sale Every Thursday
2 1/4 MILES EAST OF MANHATTAN ON US

We had a good run of cattle; sold over 1,000 head with lots of buyers from everywhere competing very strongly on all classes of cattle. Prices on all feeder steers were 25¢ to 50¢ higher. All other cattle were steady except cows; they were steady to 25¢ lower. The following is a partial listing of our sale:

FAT CATTLE & FEEDERS

1 black steer	655 @	27.00
2 black steers	657 @	26.90
12 whifce steers	662 @	26.00
11 mixed steers	669 @	25.60
1 red steer	620 @	25.10
15 whifce steers	751 @	25.10
33 mixed steers	1295 @	25.10
1 bwf steer	630 @	25.00
5 black steers	847 @	24.80
57 mixed steers	903 @	24.60
2 whifce steers	645 @	24.60
29 whifce steers	913 @	24.60
7 whifce steers	921 @	24.50
4 black steers	859 @	24.50
4 black steers	864 @	24.10
4 mixed steers	916 @	24.05
12 blkwhif steers	925 @	24.00
3 black heifers	800 @	24.00
21 mixed heifers	652 @	23.95
9 whifce steers	977 @	23.80
4 black steers	999 @	23.60
5 whifblk steers	1001 @	23.60
2 whifce steers	915 @	23.50
2 blkwhif steers	1107 @	23.30
3 mixed steers	1045 @	23.30
7 black heifers	823 @	23.00
6 blkwhif heifers	612 @	23.00
3 blk&bwf heifers	703 @	23.00
4 mixed steers	1034 @	23.00
8 mixed heifers	757 @	22.80
39 mixed heifers	894 @	22.50
8 mixed heifers	914 @	22.50
8 black heifers	813 @	22.50
11 blk&bwf steers	1050 @	22.45
2 whifce heifers	745 @	22.40
8 whifbwf heifers	751 @	22.10

STEER CALVES

1 whifce steer	245 @	33.50
4 blkwhif steers	412 @	29.80
3 whifce steers	421 @	29.75
6 black steers	250 @	29.70
24 whifce steers	510 @	29.40
4 whifce steers	512 @	29.40
1 black steer	445 @	29.10
1 whifce steer	305 @	28.75
3 whifce steers	418 @	28.40
12 black steers	516 @	28.30
8 whifce steers	484 @	28.30
2 whifce steers	460 @	28.30
1 whifce steer	550 @	28.00
3 shthorn steers	468 @	28.00
3 black steers	385 @	27.70
2 whifce steers	500 @	27.50
1 whifce steer	450 @	27.20
5 whifce steers	412 @	27.20
10 black steers	577 @	27.20
2 blkwhif steers	515 @	27.00
11 mixed steers	595 @	26.90
3 red steers	521 @	26.70
2 bwif steers	510 @	26.50
2 black steers	337 @	26.25
3 black steers	595 @	26.10
19 whifce steers	552 @	26.10
5 whifce steers	582 @	25.10
1 whifce steer	825 @	24.20

HEIFER CALVES

2 black heifers	215 @	28.40
1 whifce heifer	405 @	28.20
2 whifce heifers	535 @	25.50
13 whifce heifers	479 @	25.50
4 whifce heifers	391 @	25.25
3 black heifers	385 @	25.20
2 whifce heifers	410 @	25.10
1 whifce heifer	360 @	25.00
11 black heifers	500 @	24.70
8 black heifers	513 @	24.60
18 mixed heifers	520 @	24.50
4 whifce heifers	516 @	24.20
2 whifce heifers	405 @	24.10
2 red heifers	475 @	24.10
17 whifce heifers	565 @	24.00
4 whifce heifers	519 @	23.70

BULLS

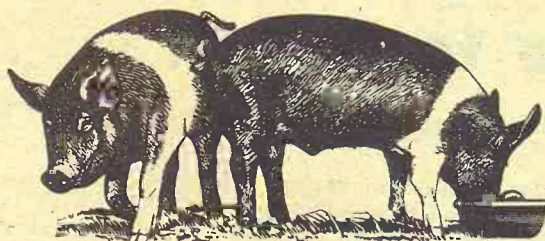
1 black bull	1325 @	21.30
--------------	--------	-------

1 black bull	1455 @	21.10
--------------	--------	-------

COWS

1 black cow	800 @	19.50
1 whifce cow	940 @	19.20
1 bluerogan cow	855 @	18.30
1 black cow	1110 @	18.00
1 roan cow	1105 @	17.00
1 holstein cow	1245 @	16.30
1 whifce cow	795 @	16.00
11 whifce cows	906 @	15.70
1 black cow	1420 @	15.70

1 whifce cow	1245 @	15.70
1 holstein cow	1280 @	15.70
11 whifce cows	924 @	15.65
1 brnswiss cow	1300 @	15.60
2 whifce cows	1037 @	15.55
12 whifce cows	1005 @	15.50
1 holstein cow	1210 @	15.40
2 whifce cows	1240 @	15.00
16 cows&calves		266.00
1 black cow&calf		236.00
18 black cows		227.50

**FOR ESTIMATES**

W. E. DUGAN ----- Alta Vista, 229-6430
JOE RAINE ----- Maple Hill, MI 3-2226
DON WELLS ----- Manhattan, JE 9-3744
MERVIN SEXTON ----- Abilene, CO 3-3449
C. J. WENTZ, bus. mgr. Manhattan, JE 9-5561
VICTOR LEWERENZ ---Manhattan, PR 8-3243

BARN PHONE -----Manhattan, PR 8-4415

Consignment Reports
BAF WIBW radio 6:30 A.M. Thursdays
WIBW-TV 12:15 Noon Wednesdays

**BUYING
FAT HOGS**

We buy fat hogs daily the Manhattan Commission Co., Inc. sale barn. We direct with no commission the seller.

BUYING HOGS
Mondays thru Friday
8 a.m. to 4 p.m.
Saturdays 8 a.m. to 4 p.m.
Manhattan PR 8-4415

**WE ARE ALSO BUYING
FAT HOGS AT THE
W. E. DUGAN YARD
ALTA VISTA**

Mondays 8 a.m. to 5 p.m.
Phone Alta Vista 229-6430
or Manhattan PR 8-4415

**AT ALMA & ESKRIDGE
EVERY WEDNESDAY**
From 8 a.m. to 1 p.m.

Please do not bring hogs for sale on Thursday afternoon, as we will be handling large runs of cattle and might not be able to handle them and they will get hot on the pen.
For information call the sale barn in Manhattan, PR 8-4415. In Alma, Oscar Newman 765-3861. In Alta Vista, W. E. Dugan, 229-6430. Or you can call Joe Raine at Manhattan, MI 3-2226 or Eskridge, MI 449-2347.

The Manhattan Commission Co., Inc.
MANHATTAN, KANSAS



Auctioneer: Joe Raine

THE BLUE-STEM BROWSER

COUNCIL GROVE PRODUCTION CREDIT ASSOCIATION
Council Grove, Kansas

STATEMENT OF CONDITION December 31, 1966

ASSETS

Loans (net)	\$3,281,843.79
Cash	33,521.76
Bonds	209,045.99
Investment in FICB	85,083.41
Interest Receivable	128,742.80
Office Building	27,416.59
Other Assets	4,983.12
TOTAL ASSETS	\$3,770,637.46

LIABILITIES

Loans Rediscounted	\$3,174,147.91
Notes Payable — FICB	53,714.83
Interest Payable	65,697.22
Other Liabilities	1,892.60
TOTAL LIABILITIES	\$3,295,452.56

NET WORTH

Class A Stock	27,775.00
Class B Stock	236,105.00
Surplus — Reserved	211,304.90

\$ 475,184.90
Total Liabilities and Net Worth

OFFICERS AND DIRECTORS

Lloyd N. Phipps, President
Marion Parker, Vice-President
Charles E. Graham, Manager

Paul E. Taylor, Director
Karl Kayser, Director
Paul Epp, Director

Charles "Bill" Alspaw, Asst. Manager

Feeder Count Suggests Lower Beef Price

A greater than anticipated increase in the cattle and calves on feed for slaughter markets promises consumers lower than expected meat prices in coming months.

The Agriculture Department said 11,279,000 head were on hand in 39 feeding states as of Jan. 1, up 7% from the year-earlier level. In early November, department analysts had forecast a rise of 3% to 5%.

Moreover, cattle feeders in 32 major states said they intend to market 8% more animals in the first quarter than they did a year earlier. Steers weighing

more than 900 pounds and heifers of over 700 pounds represent the animals best suited for market, and analysis of total cattle on feed showed both categories were up 12% from a year earlier.

Department economists haven't abandoned their prediction that cattle marketings will begin dropping toward mid-year as cattlemen step up herd rebuilding in response to strong market prices. But, one cattle specialist says the full extent of rebuilding can't be judged until spring range conditions are known.



THE EASY WAY TO FEED CATTLE!



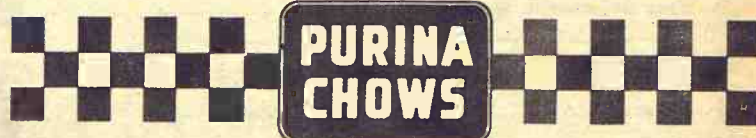
Purina's "Built-in Roughage"™ Program for feedlot cattle has made self-feeding practical and efficient. Self-feeding Purina's "Built-in Roughage" Program is becoming known as the easy way to feed cattle.

We are equipped to grind and mix you a "Built-in Roughage" for your cattle, using Purina Special Steer Fatena ... and deliver it to your self-feeder in bulk. This saves your time, labor, capital investment ... and it produces maximum daily gains at low cost. New Purina Special Steer Fatenas are research-proved and field-demonstrated in feedlots using various roughages and grain. Ask for the one that's "Built-to-Fit" your cattle and feed supplies at our mill with the Checkerboard sign.

Prove to yourself that feeding Purina can cost you less and make more beef!

Abilene Co-Op Assn.	CO 3-1660	Abilene
Gorden Mark Elevator	ME 2-3381	Clay Center
Western Grain Mill	767-5933	Council Grove
Bartlett Grain Co.	CE 8-5134	Junction City
Farmers Co-op Elev. & Supply	157	Hope
Flint Hills Feed & Grain	PR 8-5322	Manhattan
Palmer Grain Co.	Phone 3	Palmer
Farmers Union Feed Mill	437-2434	St. Marys
Mor-Kan Elevator	349-2214	White City
Reading Grain & Lumber	AN 9-3842	Reading

LOW COST PRODUCTION...
the reason more cattlemen feed **PURINA®**



AT CLAY CENTER FURNITURE CITY'S GIGANTIC Bargain Blizzard

CONTINUES THROUGH JAN. 31

Nowhere can you find such Quality
at these spectacularly LOW PRICES

Furniture Bedding
Carpeting Gifts Novelties
APPLIANCES RADIOS TV SETS

MATTRESSES

Change Now To KING KOIL
ORTHO FOAM • RESTONIC
Innersprings as low as \$29
BUNK BEDS

Priced for this sale at \$39 and up
Free Delivery

ROPER GAS RANGES

Full Size, wide oven — \$179
PHILCO RANGES
FREEZERS - REFRIGERATORS
Everything

At Drastic Price Cuts

PHONE ME 2-5215

"The Furniture Fashion Center of the Mid-West"
Furniture City
IN CLAY CENTER

SALINA
Livestock Commission
Company, Inc.



Bonded
and
Licensed

MONDAY
HOGS & CATTLE
FRIDAY
CATTLE ONLY

E. R. McCULLICK, Salina Phone TA 3-2963
EDWARD TOLLE, Roxbury Phone 1613
IRVIN CHRISTIANSEN, Durham Phone 732-3185
JOE CLEMENCE, Abilene Phone Acme 3405

Farm Base To 40% Of U.S. Economy

American wheat growers have been told that economists estimate 40 percent of the national economy is based directly or indirectly on agriculture.

Speaking at the National Association of Wheat Growers convention in Seattle recently, Glen L. Bayne, former association president, backed up his claim with:

- Agriculture is the largest single user of mechanical power in the United States using more engine power than the combined railroads, aircraft, merchant ships, mines and factories annually.
- Only auto manufacturers approach farmers in use of steel.
- Farmers use more petroleum than any other industry.
- Estimates are that farmers use enough rubber in their business each year to provide tires for 6 million autos and also are major users of chemicals and plastics.
- Bayne dropped another load of facts on the business community:
- Total food expenditure in the United States in 1966 was \$92 million — about 18.2 percent of disposable income in the nation.
- In other nations, cost of food varies from 50 to 75 percent of disposable income.
- For the housewife — cost of food actually has gone down,

not up, percentage-wise, since 1951.

• One hour of factory labor now buys 9.3 quarts of milk, compared with buying only 8.7 quarts in 1960.

• The same hour buys 12.4 loaves of bread now, compared with 11.1 loaves of bread in 1960.

He had other startling information for the businessman who is concerned with efficiency. The output per man hour in the agriculture field is increasing at the rate of 6 percent annually, while in industry, this rate of increase is 2 percent.

Today, one Yankee farmer produces enough food for himself and 34 others. This same farmer, collectively, has changed production methods progressively to a point where the United States provides famine relief throughout the world.

Court Stands On Grain Support By Millers

The Supreme Court refused last week to hear challenges to the way Agriculture Department regulations require commercial users of wheat to help finance government price support programs.

A group of 18 flour mills and cereal product firms said they

had been required by these regulations to pay about \$190 million more than they should have been.

The regulations were adopted by the department to carry out a 1964 law which, for the first time, shifted some of the costs of wheat price supports to commercial wheat-processing industries.

Under the law processors were to pay a fee — by buying wheat marketing certificates — that was based upon the amount of wheat "contained in" human food products which they make.

Paid On Total

The Agriculture Department regulations interpreted this to mean the total number of bushels of wheat that the processors started with. The processors argue that the regulations should have limited the payments to the wheat that actually wound up in the final food products.

This figure would have excluded wheat that was spoiled, moisture that was in it at the start but later evaporated, and foreign matter, such as rocks and stocks, in the original volumes of wheat.

Lower federal courts rejected the processors' argument and upheld the regulations. This result the Supreme Court left standing.

CROP IMPROVEMENT ASSN. SETS MEETING

The Kansas Crop Improvement Association has set February 3 for its annual meeting at Hutchinson. The KCIA certifies is the official crop seed certification unit in the state.

School League Geography Stretch

Unification of state public schools has produced some peculiar situations in smaller school districts, and one in the G&G area calls attention to itself with the recent vote to accept Bennington and Tescott high schools into the McPherson County League.

Both Bennington and Tescott are in Ottawa County, which isn't even adjacent to McPherson County, and the re-formed 8-team league will include only two towns — Galva and Canton — which are in McPherson County. The other schools in the league are Assaria and Gypsum, both in Saline County; Heston, in Harvey County; and Goessel, in Marion County.



AGGIE HARDWARE
1205 Moro MANHATTAN

made while you wait

The best Rat is a DEAD RAT



And dead rats are what you'll have on your wall when you use Tomco Genetic Giant's Ferret mouse bait. Individually wrapped packets are easy to use and easy to get back to rat and mouse for complete rodent control. Won't spoil even when out for a long period of time. Ferret is guaranteed to perform any known rat or mouse problem. **OR YOUR MONEY WILL BE REFUNDED.** Buy Ferret from your Tomco Genetic Giant dealer.

Carl Blake & Co.
ME 2-2296 CLAY CENTER



Corner Post Comments

LOOKING FOR MORE TAX DEDUCTIONS?

Do you have office space in your home that is primarily used for farm business? If not, this could mean a possible tax deduction in the future if you're planning to build or remodel your home. If you already have office space the business portion of the costs of a residence are deductible farm expenses which would include the pro-rata share of annual expenses such as utilities, repairs and interest. The square footage share of the residence used for the business would be a possible basis for determining the business share of residence depreciation.

A lot of good record keeping has been done on the kitchen or dining room table, but a farmer owes it to himself to provide a more favorable environment for the preparation or analysis of his farm records. I'm sure much more time would be spent toward managing the business in an atmosphere of quiet and away from the common household noises. Setting up a cash flow budget or planning the year's operations would become a pleasure rather than drudgery.

Mr. and Mrs. Max McAdams of Route 1, Miltonvale,



GARY W. BECK
Farm Service Director

Kansas, built an attractive new home in 1964 and provided for an office and their floor plan. The accompanying photograph of Max McAdams making use of his office space is getting his record shape for his 1966 tax return. Mr. and Mrs. McAdams have three children, 11, Deirdre, 9, and Robert, all attending Morgan Grade School.



Deposits insured up to \$15,000.00 for each depositor by the Federal Deposit Insurance Corporation.

UNION STATE BANK



CLAY CENTER, KANSAS
Member Federal Deposit Insurance Corporation

ONLY 4 DAYS TO GO-



14 - piece
MIX-N-STORE
BOWL SET

FREE

FOR SAVING
\$500 or More
Thru JANUARY

The Best In EARNINGS, SAFETY And SERVICE At KANSAS' LARGEST

Get the most for your money . . . now up to 5 1/4% . . . backed by Capitol Federal's Triple Safety . . . PLUS this most useful gift for saving \$500 now—6 polypropylene bowls for mixing, storing or freezing, with 6 air-tight covers and 2 handy measure-dippers. Remember—we have more Insured Safety by the Federal Savings and Loan Insurance Corporation . . . now up to \$15,000 on accounts.

5 1/4%

SAVINGS
CERTIFICATES
compounded
each six months

PLEASE MAIL MY FREE BOWL SET

CUT ON DOTTED LINE AND MAIL WITH CHECK OR MONEY ORDER

I enclose \$ _____ Add to my account No. _____
(Passbook enclosed)

Issue new account as follows:

Individual Account _____ Joint Account _____
Name or names to appear on Account _____

(If joint account desired—Give full names of all persons)

Address _____ City _____

State _____ Zip _____

Signed _____

GOOD THROUGH JANUARY LIMIT: ONE GIFT PER FAMILY



**Capitol
Federal
Savings**

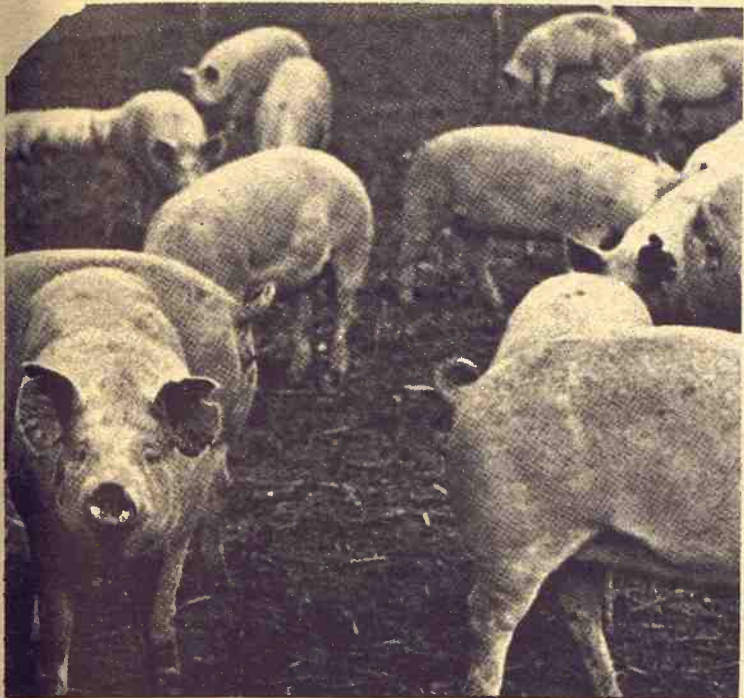
700 KANSAS AVE. TOPEKA

1201 TOPEKA BLVD. LAWRENCE
2100 FAIRLAWN RD. KANSAS CITY

Postage Paid Both Ways
"The Most Trusted Name In Savings"

Beat The Protein Squeeze

This KEY Special Will Help You



KEY 40% HOG SUPPLEMENT

\$5 PER TON DISCOUNT

Meal or Pellets, Sacked
Bulk Orders \$4 off Sacked Price

Thousands of hogs are brought to market weight with KEY 40% every year. This is the supplement loaded with the kind of protein that takes hold. And at this special one-week low price, you can really beat the protein squeeze.

CASH ORDERS GET AN ADDITIONAL 2% OFF

OFFER GOOD ONLY THROUGH JAN. 31

See Your KEY Dealer Or Call ME 2-2141 Collect

KEY MILLING CO.

Clay Center, Kansas

Continued Need For Farm Plan, Says Freeman

TULSA, Okla. — Secretary of Agriculture Orville L. Freeman has served notice that the administration would fight to preserve present farm programs to keep agriculture from plunging into "chaos."

"If we ignore the lessons of history and let supply outrace demand again, we could plunge ourselves right back into the predicament of 1960, a predicament it has taken us six years to overcome," he said.

Freeman's statement came at a time when some farm groups and some members of Congress are demanding an end to the present production control programs, since surpluses have disappeared and world food demands are rising. His views were outlined in a speech to the Southwest Agriculture Forum in Tulsa.

Before leaving Washington for Tulsa Freeman said that he did not expect a frontal attack on the farm programs in Congress this year. However, he said, some foes of the programs may make an attack through the appropriations committees to shut off farm funds and thus cripple the programs.

Freeman said in Tulsa that agriculture was entering a "new era."

The secretary also reiterated in an interview that the administration was going to exercise more "discrimination" in food aid to foreign countries. "American food is not going to be a crutch for countries that ignore their agriculture," he said.

He again praised India for paying more attention to its agriculture and said that he was optimistic that India was on its way toward a workable self-help program which the administration has demanded as a condition of continuing aid through wheat and other foodstuffs.

HANOVER GIRL AN IFYE TO SWEDEN

HANOVER — Patti Lampe of Hanover will be a delegate to Sweden in the IFYE program. She will leave for Sweden in early April. She and Sara Bentley of Dighton, who will go to Argentina, are the first Kansas IFYE's announced for 1967.



CARL BLAKE



MAYNARD BLAKE

OUR DISTRICT WON THE TOMCO FALL CONTEST

TOMCO GENETIC GIANT CORN CO.
Congratulations District 61, Central Kansas, supervised by Carl & Maynard Blake and the following dealers who participated to win top honors and valuable prizes by getting 580 orders from new customers by Dec. 15 with an average of almost 5 units per customer. 12 states were represented in this contest.

580 ORDERS FROM NEW CUSTOMERS DURING FALL SEASON.

WE DID THE SELLING:

R. N. Allaman	Ed Mathy
Junction City	Morrowville
Fred L. Baxa & Sons	Robert Mathoit
Cuba	Marion
Carl Blake	Leslie Nelson
Clay Center	Courtland
Ernest Boyle	Roger Plantz
Axtell	Bushton
Marion Brenner	John Reed
Randolph	Belleville
Vic Brown	John Reitzel
Republic	Waterville
Howard Kevin Constable	George Rose
Delphos	Mahaska
Don Doberer	Otto Rutti
Clay Center	Marysville
Bernard Gerleve	John Sheedy
Washington	Abilene
Eldon C. Goering	Wm. E. Spangler
Newton	Walton
Eldon Henton	Clarence Spittles
Manhattan	Alta Vista
Willie Hillan	Calvin G. Stalford
Aurora	Hope
John Hollen	Gary Stichternath
Leonardville	Marysville
William H. Keller	Floyd A. Thompson
Haddam	Concordia
Vernon D. Kolle	Robert Wegerer
Washington	Marion
Myron Krohn	
Blaine	Jerald Wolf
Robert E. Kruse	Manchester
Lyons	Hoyt Woodbury
Cleo B. Lester	Clifton
Belvue	J. P. Wulschleger
M. J. Lienemann	Home
Herkimer	

Tomco Seed sales have skyrocketed for the 1967 season. Many farm and country tests have proven Tomco's Research has paid off in higher yields and better standability.

- New R-107 shorter in height. one you will like.
- New R-109 yellow Indosperm, high yield, very drought resistant. Sold out.
- R-112 highly praised wherever grown. Many more top numbers.

See your local Tomco dealer for farm seeds to meet your needs.

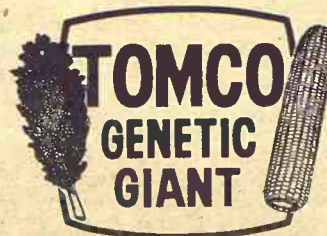
As much as \$1.50 per unit discount. With cash on delivery.

Carl Affolter ----- Morganville	Blaine Fletcher ---- Manhattan
Kenneth Ballow ----- Delphos	Poutrie Produce ----- Greenleaf
Barnes Feed & Supply --- Barnes	Victor Pralle ----- Bremen
James Bearman & Son--- Wamego	Edward Ramsey ----- Concordia
Wm. Biehler ----- Herington	Randolph Reimer --- Hillsboro
Blue Rapids Hatchery-Blue Rapids	Chester P. Rensink ----- Ada
Otto Brennies & Son - Hollenberg	Victor Dale Stuckey ---- Galva
W. F. Bullock ----- Vliets	Reuben Schrag ----- Little River
Erick Etzold ----- Sylvan Grove	Republic Grain Co. --- Republic
Lynn Fairbanks ----- Onaga	Eddie Valek, Jr. ----- Agenda
J. E. Freed ----- Scandia	Merle Kipple ----- Culver
E. J. Hecker Imp. ----- Salina	Loren J. Volle ----- Summerfield
Francis Harland ----- Frankfort	Alfred Wiegert ----- Lincoln
Andrew Heim ----- Canton	Walter Weims ----- Inman
Jones Grain Co. --- Vermillion	Robert Heen ----- Durham
Lavern E. Joy ----- Narka	Coop Elevator ----- Pearl
Chas. Palmquist ----- Lindsborg	H. E. Dotal ----- Elmo
	T. J. Ekman ----- Enterprise

A few dealer territories available. For information

CARL BLAKE & SON

CLAY CENTER, KANS.



Manhattan Hatchery 1967 Chick Buyers Guide

We offer this year the choice of four breeds that have proven most profitable.

H & N, which we feature, again leads the parade because H & N are easy to raise and work with; and they produce best with proper management.

DIAMOND LAYERS (100 Series) is the same bird we have sold for several years, and it, too, has gained in favor. This bird is superior to most top crosses and at a price much lower.

CALIFORNIA WHITES. Probably on its way to becoming the most profitable cross in America. It is bred and produced by one of the outstanding poultry breeders in America.

CORNISH ROCK. The top broiler cross. It will run at least 1/4 lb. heavier than any other bird at a given age.

1967 CHICK PRICE SCALE

KIND OF CHICKS	100 St. run Each	100 Pullets Each	100 Cockerels Each
H & N NICK CHICKS	20c	40c	5c
DIAMOND LAYER (100 Series)	17c	34c	5c
CALIFORNIA WHITE	16c	32c	5c
CORNISH X ROCK	17c		

OUR NEW CATALOG WILL REACH YOU SOON.
Or write for information... replies prompt.

MANHATTAN HATCHERY

Phone PR 8-3412

East on US 24 (Route 5)

Manhattan, Kans. 66502

GRASS & GRAIN CLASSIFIED ADVERTISING

RATES: \$1 a week for 15 words or less. Add 5c a word for additional words.
Boxed ads: \$1.82 an inch per issue, no discount. Send your ads to Ag Press, 1207
Moro, Manhattan, Kansas 66502, PO Box 1009. Phone PR 8-4458 (25c handling charge
if payment does not accompany ads charged by the word.

Livestock

CALVES - CALVES - CALVES

FOR SALE

We specialize in Angus & Holstein crossbreds, Holstein heifer calves, Holstein bull calves, Swiss and Guernsey heifer and bull calves. 2 weeks to 6 months old.

Delivered To Your Farm

Call Collect 234-3229
or write

JERRY AMUNDSON
Livestock Building
Route 1, Box 37
RICE LAKE, WISC.

FOR SALE — 32 head weaning pigs. Phone Paxico 636-2191, Henry Gehring, Rt. 1, Belvue. x48

FOR SALE — Nationally accredited SPF Purebred Hampshire and Yorkshire boars, serviceable age. Phone collect Palmer 308, Floyd Meyer, Palmer, Kansas. x48

EWES, 175 head extra good 2 yr. old Columbia Rambouillet, starting to lamb. Armin Scrippler, Rt. 5, Abilene, Phone UP 1509. SB48

PUREBRED Duroc Auction and SHOW

SAT., FEB. 4

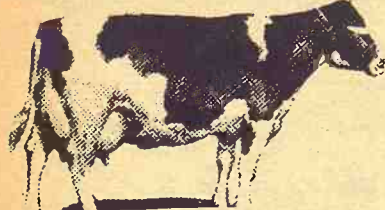
Show 9:30 a.m. Sale 1 p.m.

SMITH CENTER, KANS.

110 Head — Bred Gilts, Boars, Open Gilts. Champion Sires used. 10% disc. to 4-H. Catalog: Vern Albrecht, Smith Center; Herman Popp, Haven.

FOR SALE — Some of the growthiest, good headed and heavy boned two year old Hereford Bulls you'll find anywhere. CK and Husker bloodlines. August Carlson, three miles south, one mile west of Smolan. SB48

13 Hereford cows with 13 black-whiteface calves, \$220; 12 choice young Hereford springers, \$205; 14 thin Hereford springers, \$160; 7 young Angus cows with 7 calves, \$235; 9 Hereford-Charloais cows and calves, \$220. Call Doug Wildin, 316-662-7543, Hutchinson. SB49



For the biggest and best selection of dairy cows and heifers, come to Summerfield, Kans. We have at all times 200 head of fresh and heavy springers — Holstein, Guernsey, Jersey, Brown Swiss and Milking Short-horn cows and heifers.

**TESTED — VACCINATED
GUARANTEED**

SPECIAL

50 Holstein heifers, heavy springers.
*25 Guernsey springer heifers.
*20 Brown Swiss springer heifers.
*40 Holstein heifers, 600-800 lbs., open.

CALVES - CALVES - CALVES
We'll have 250 to 400 head of Beef Cross calves 2 weeks to 400 lbs. at our barn every week. Also Holstein bull and heifer calves.

Come and select the size and type of these good fast gaining beef cross calves best suited for your operation, before prices advance.

**ALL CALVES
TRIPLE VACCINATED
FREE OF CHARGE**

W. G. Wiebe

Phone CI 4-7625
SUMMERFIELD, KANS.

B.F.Y. HAMPSHIRE PRODUCTION

Sale Sat., Feb. 4

(This is correct date)

1 p.m. — Nat'l. Guard Armory
North Highway 99
EMPORIA, KANS.

Featuring get of PB ECHO
PCM CL; PRECISION SPCL
SCMS & WILD FIRE BY AR-
ROWHEAD, from Hines Farms
20 BOARS - 20 OPEN GILTS
45 BRED GILTS

Plus A Few Commercial Opens
15 gilts bred to Tycoon Beam
CL; 15 to Preamble SC1; 15 to
Duplicator.

Auct. Loren Thiele
Owners: Marion Boggs,
Kenneth Fuller, Jas. Yearout

FOR SALE — One large serviceable purebred York boar. Kenneth Zerbe, Wamego, 456-9517. x48

SEVERAL GOOD grade Holstein heifers, milking or heavy springers. Dams have DHIA records. Phone 913 EXpress 2-2494, Lloyd Pruitt, Barnard, Kans. SB48

FOR SALE — Nationally accredited SPF Registered Duroc boars & gilts. Serviceable age. 4 miles west on Highway 18, 1 north, 1/2 west. Harold R. Brumm, RR 3, Junction City, Kans. 66441. Phone CE 8-7258. SB 52

FOR DAIRY performance, winning in feedlot tests; greater efficiency at both, add up to Milk- ing Shorthorns. Add them to your farm. Harry Reeves, Fieldman, R3, Hutchinson. x50

FOR SALE — 150 Choice 2 yr. old Angus springer heifers (O.C.V.) and preg. tested. Calving now. Phone Jamestown ID 9-2346, Burton L. Richards, Scottsville, Kans. x50

CHAROLAIS BULLS for sale or lease. 3/4 thru purebreds. Also a few bred females. Paul Manuel, Lincoln, Kansas. SB48

FOR SALE — Nationally accredited SP Registered Duroc boars & gilts. Serviceable age. 4 miles west on Highway 18, 1 north, 1/2 west. Harold R. Brumm, RR 3, Junction City, Kans. 66441. x48

Mr. Cattle & Sheep Feeder

Short On Alfalfa Hay?
Don't Worry!

We Offer Alfalfa Pellets
Blended With Molasses

One ton will replace 2 ton baled Hay.

No waste - Easy To Handle -
Better Gains - Lower Feed Costs

Contact

Preston Milling Ind.
Home of Sur-Gain Feeds
Fairbury, Nebr. Ph. 729-6145

DUROC BOARS for sale, serviceable age, nationally accredited SPF. Fred C. Germann, Dwight, Kans., Phone Junction City CE 8-4382. SB49

FOR SALE — corn fed beef from our own feed lot by quarters or half or live weight. Alta Vista Locker, Ph. 229-6829. x1

FOR SALE — Outstanding Angus herd sire classifies 90. Choice young cows bred to a top son of Ankony Jingo 2nd. Midway Stock Farm, Downs, Kansas. x49

40 **PUREBRED** Hereford cows. 40 choice open yearling heifers. Also 2 year old registered Hereford bulls. Carroll Oleen, Falun, Phone Salemsborg 1541. x41

FOR SALE — 2 registered Angus 1400 lb. bulls 22 months old. 6 registered Angus open 500 lb. heifers. Honeycutt Angus Farms, Blue Rapids, Kansas. x50

FOR SALE — 22 registered Angus heifers coming two years old. Charles A. Miller, Gypsum, Kans., Phone OW 6-4518. x49

FOR SALE — Nationally Accredited SPF Hampshire open gilts. Galen Wietharn, Axtell, Kansas. Ph. 736-2777. x1

GOOD USED stock saddle with round skirts. Wayne Knopp, Chapman, Ks., Ph. Woodbine 1824. SB48

FOR SALE — SPF Duroc boars 12 about 250 lbs., 2 weigh 400 lbs. Arlan Argo, Wymore, Neb. x48

FOR SALE — 3 year old Angus bull, matched pair mare ponies, coyote trail hounds. Call JE 9-3375, Manhattan, Kansas. x48

40 **HEREFORD** cows \$185; 22 Hereford cows \$190; 70 Hereford cows \$225; 10 Hereford bulls \$275 to \$350. Above cows all good quality, pregnancy tested. Phone Paul Evans, 439-5354, Kincaid, Kans. 439-5642. SB50

FOR SALE — 20 choice Hereford cows bred to top purebred Charolais bull. Start calving in March. Production tested with P.R.I. Records may be seen, also 1966 calves. Earl Shoemaker, Kanopolis, 913 GR 2-3503. SB48

FOR SALE — Choice registered Angus open heifers, 13 to 17 month of age. Eileenmere and Bandolier breeding. B&Z Angus Farms, Phone CH 3-4157, Scandia, Kansas. x48

FOR SALE — 6 bred white gilts due to farrow March 2nd through March 18th. Large and lengthy. bred to SPF Duroc boars. These gilts were sired by Yorkshire boars bred to Duroc dams. Registered boars always used for sires. Vaccinated for cholera, leptos and erysipelas and guaranteed to be with pig. Call before 7:30 a.m., noon hour or after 6 p.m. Gerard E. Leuwer, Clifton, Kans., phone 455-3558. SB48

FOR SALE — One good purebred York male hog out of registered stock, 15 months old, nh 229-5296. Ziegenhirt Bros., Alta Vista, Kans. x48

FOR SALE — Purebred Duroc boars, weigh about 260 pounds. Vacc but not registered. \$65. Phone 446-3356, Clyde, Kans., Wilbur Appleetaoin. x48

FOR SALE — 14 head 10-month old Angus Heifers. Calfhood vacc. Extra nice for cow herd. John Gerhk & Son, Herington, Kans. Phone BL 8-2074. x49

FOR SALE — 2-yr. old registered, horned Hereford bulls. 12 good commercial cows, some with fall calves, rest to calve soon.

Waldemar Hanke & Son
Waterville, Kans.
Telephone ST 5-2186 x49

FOR SALE — 12 Holstein Heifers. will start calving soon. Contact Herbert Rogers, Alma, Kans. Phone 765-3968. x49

FOR SALE: 50-2nd calf Angus Cows, calf in March. 65 young Hereford cows calving now. 68 1st calf Hereford Heifers. Leonard Travelute, Waterville Kans. x51

SPF Duroc gilts to farrow in February & March. Nationally accredited. Phil Adrian, Moundridge, Kans. 316-345-6469. x51

FOR SALE — 36 Registered Angus heifers, large growthy type. Top pedigrees \$160. Elmer J. Dieker, RR 3, Emporia, Ph. DI 2-0409. SB48

FOR SALE — Reg. Angus bulls Kileenmere & Ermitre breeding. See these bulls for size & quality. Ages 15 to 18 months. Star Angus Farms, Miltonvale, Kans. Phone HA 7-4506 or HA 7-3210. x50

FOR SALE — Bred gilts, 15 registered Spotted Poland China, Feb. & March farrowing. Choice quality, bred & feed for large litters. Dean Constable, Randolph, Kans., Ph. ST 5-2730. x50

FOR SALE — Berkshire boar calf creep feeder, 500 bales 1st & 2nd crop alfalfa. L. E. Brill, Westmoreland, Kans. Phone Wamego 456-7240. x48

FOR SALE — Registered "Spots" fall boars and gilts, sired by Nebraska Colonel, CL. Some from certified dams. Extra large and meaty for age. Large litters. J. V. Candiff, 4 1/2 miles north Talmage, Kans. Telephone Manchester 3311. x49

FOR SALE — Serviceable age Hereford bulls. Larry O'Neill, Rt. 3, Manhattan, Phone PR 6-5980. x48

FOR SALE — 25 WF Hereford cows, will drop calves in 60 days. Guaranteed vac. calfhood & pregnancy tested etc. These cows are real good 4&5 years old. Weight 1100 average. Harold George, Clyde, Ks. Phone 446-3340. Home Ph. 446-3341. SB48

REG. YORKSHIRE bred gilts & fall boars, bred like state fair grand champions. Litter mates to testing station boars. Neill R. Walker, Rt. 2, McPherson, CH 1-2599. SB30

FOR SALE — 9 choice Angus first calf heifers, to calf soon; 6 young Hereford cows with big calves. Emerson Mugler, Clay Center, Kans. x48

FOR SALE — 24 head young Hereford cows, to calve soon. Delmer Holle, Hanover, Ks., Ph. ED 7-2766. x48

CHAROLAIS BULLS for sale, percentage and purebred. Mc Fadden Bros., Riley, Kans. Ph. HU 5-2668. x48

Feed & Seed

DAIRY PELLETS, range pellets and all kinds of fertilizers Manhattan Milling Co., 107 Pierre, Manhattan. TF Chg

ALFALFA HAY — Round bales approx. 2000. Inquire Meriden, Kans., 484-2342 after 6:00 p.m. SB49

FOR SALE — 500 tons cane ensilage located at Junction City. Pat Murphy, Phone PR 6-7437, Manhattan. x49

WANTED — Pasture for 50 head past yearling heifers. Ph. 229-5290, Alta Vista, Kansas. SB48

FOR SALE — Alfalfa, all cuttings, shedded. Phone evenings 765-3937. Arnold Ringel, Alma, Kansas. x48

FOR SALE — 3000 bales wire tied alfalfa in barn near Westmoreland. Melvin Behrens, Marvsville HI 3-3973. x49

WANTED — PASTURE for 30 stock cows for 67 season. Darrel E. Boyd, Beattie, Kans. x48

FOR SALE — Alfalfa, round bales. Shedded, \$22.50 per ton. Joe Harrington, Wheaton. Ph. EX 6-2862. x49

Alfalfa, Prairie — Square bales, stored in barn. Alfred Pishnv. Blue Rapids, Kans. Ph. CA 6-7147 x49

Automotive

STEEL PICKUP RACKS with floor & glass guards. Also steel hay feed racks. Dale Starr, Soldier, Kansas. 924-2631. x51

50 USED TRUCKS

14 Chevys, 58 & 59
21 Ford 750's, 55 to 58
1 55 Ford F900 dump, with air
3 56 Ford F600's
1 59 Dodge D700 with air
5 IHC 180's, 56 to 58
4 IHC 160's, 1956's

1 60 Chev. tractor with air

1 59 Ford 75 tractor, air

Kansas Hiway trade-ins, chassis, dumps, flatbeds with hoists. Motor records available.

AMES

CHEVROLET CO.
Phone 316-MI 7-3251
MOLINE, KANS.

GMC TRUCKS

1/4 Ton - 60 Ton
Sales & Service

TRI-COUNTY MOTOR
307 N. 3rd. MANHATTAN

**ONLY YOUR FORD
SELLS TRUE**

A-1 Used Cars

These are some
Skaggs A-1 cars:

1965 Buick Skylark 2dr
top, V8, automatic
steering, p-brakes, ac-
tioning, bucket seat
one owner.

1964 Mercury Montclair
V8, automatic trans.
p-steering

1964 Ford Galaxie
Hardtop, V8, automatic
Hardtop, V8, R & H
ing, standard trans.
age

1963 Galaxie 500 4dr
V8, automatic trans.
all vinyl interior. Ex-
tremely rebuilt

1955 Chevrolet 4dr
standard trans., R &
2nd car.

Open Evenings Till

**SKAGGS
(FORD) MOTOR**
"Where Customers
Send Their Friends"

2nd & Houston
MANHATTAN

Unbeatable PICKUPS

STATION WAGON

1960 Chevrolet 1/4-ton
cylinder, 4-speed with
ation platform, grain
and stock rack

1960 Chevrolet 1/2-ton
Pickup, 6-cylinder
speed transmission, in-
heater, 8-ft. bed

1959 Ford 1/2-ton Styleside
up with 3-speed trans-
sion, 6 1/2-ft. bed with
racks

1958 Chevrolet, 1/2-ton
8-ft. Stepside bed, V8
4-speed transmission,
mechanical and apper-
condition

3-1958 Chevrolet 1/4-ton
ups, 6 1/2-ft. beds and
transmissions, stop in
our prices on these.

1957 Ford 1/2-ton Pickup
inder, 4-speed trans-
Styleside bed.

1964 Chevrolet Impala
ger Station Wagon,
gine, Powerglide, ra-
heater, 1-owner, local
ed and room for ever-

1963 Rambler 6-Passenger
tion wagon, 6-cylinder
standard shift, radio and
er, extra clean

1962 Chevrolet Bel Air
ger Station Wagon,
standard transmission
and heater

OBERMEYER

Marvin Obermeyer,
Ph. BL 8-2421 Open
HERINGTON, KANS.

FOR SALE — 1948
Dodge 4x4 Power Wagon
bed with 6x8 automatic
and 900x16 inch tires.
built in 1965. Truck is in
good shape. Price \$1000.
Frve, Centralia, Kansas
857-3901.

FOR SALE — 1949 Willys
4-wheel drive, all metal
cently overhauled. Ph.
5-3120, Topeka, Kans.

Real Estate

FOR SALE — Farm NE
3: 160 acres, 73A water
pasture; 15A meadow;
south, 1 west, 1/2 north
man. Ks.: modern stone
Ph. WA 2-6784, Chan-
Seaton, Chapman, Ks.

160 ACRES, all
30 pasture, bal-
dern home 7 ro-
ment. Possession
Also 640 acres
117 acres whea-
land except 90
and 99 acres for
Price \$160 per a-
Better look at a
bargain. See Ro-
Axtell, Kansas.

FARMS FOR

160 acre farm
Manhattan, bal-
with modern
broke with b-
Located on
\$24,000.

Over 1300 acres
near Manhattan
200 acres of g-
with balance
lent water and
ideal stock fa-
average impro-
newly remode-
home. Part of
could be deve-
An excellent in-
per acre. May
under contrac-

80 acre farm lo-
George. Impro-
dern house. \$1

246 acre highly
stock farm ad-
go, Kansas wi-
room modern
cellent improv-
water, excell-
acres cropland
as an outstand-
operation. Loc-
highway. \$80,

20 acre farm, 1
room home v-
ments. 90 acre
wheat base lo-
Manhattan on-

440 acre dairy fa-
Holton. 50 ac-
with balance p-
large loan that
ed at 4 1/2% in-
bedroom mod-
a large dairy

60 acre farm
with modern h-
acre pasture
cropland. May
under contrac-

We have many
re interested in
farm property.
appreciate your lis-

AROLD CARL
8th & Poyntz
Lawrence Welte

Harold Carlsson
Kenneth Pultz
MANHATTAN

FARM
500 A 1st & 2nd
all under irrig-
ells with equi-
anch type hom-
ouse. One of t-
choice of 3 tow-
st \$450 per acre
80 A improved
Call on

George I
Real E
R 8-4947

Fulmer F
CATHERINE
REAL

OR SALE by o-
pasture. Wal-
estmoreland, K

WANTED to ren-
more in Clay
equipment. Lon-
dve, Kans., ph-
fter 7 p.m.

RAW — Appr-
ales, no chaff,
ongford, Ks., F

GMC TRUCKS
1/2 Ton - 60 Ton
Sales & Service
COUNTY MOTOR
N. 3rd. MANHATTAN
YOUR FORD SELLER
-1 Used Cars

are some A-1 cars:
1968 Skylark 2400
V8, automatic, air
cond., p-brakes, etc.
g, bucket seat, etc.
owner.
Mercury Montclair
automatic trans.
ring
Ford Galaxie 500
op. V8, R & H
standard trans.
Galaxie 500 4-dr.
automatic trans.
nyl interior. En-
tirely rebuilt.
Chevrolet 4-dr. 60
ard trans. R &
ar.
en Evenings TR
SKAGGS
RD) MOT
Where Customers
and Their Friends
Houston
MANHATTAN

Unbeatable PICKUPS
ATION WAGON
Chevrolet 1/2-ton
er, 4-speed with
platform, grain
stock rack
Chevrolet 1/2-ton
p, 6-cylinder
transmission, ra-
8-ft. bed
rd 1/2-ton Styles
with 3-speed
6 1/2-ft. bed with
Chevrolet, 1/2-ton
stepside bed, V8
d transmission,
arm property. We would ap-
preciate your listing. Call us at
ion
Chevrolet 1/2-ton
6 1/2-ft. beds and
missions, stop in
ices on these.
rd 1/2-ton Picku
4-speed transi-
ide bed.
Chevrolet Impala
itation Wagon,
Powerglide, tra-
1-owner, local
i room for every
500 A 1st & 2nd bottom, most
under irrigation. 4 good
wells with equipment, nice
wagon, 6-cylinder
ch type home and tenant
use. One of the best farms.
choice of 3 towns to trade in.
\$450 per acre, with terms.
80 A improved near Alta Vis-
..... \$14,000
Call or See

George Hoerner
Real Estate
8-4947 MANHATTAN
Fulmer Real Est.
CATHERINE J. FULMER
REALTOR
Office 456-7696
Res. 456-9281
WAMEGO
WANTED - Pasture for 14
ws and calves. Edward Dett-
er, Green, Kans. x49
WANT TO RENT stock farm.
one PR 6-5373 Manhattan or
en Wickstrum, Olsburg, Ks.
x50
R SALE by owner: 80 acres
pasture. Walter Andrich,
stmoreland, Kans. SB49
WANTED to rent half section
more in Clay County. New
quipment. Lon Livengood,
de, Kans., phone 446-3425
ver 7 p.m. SB49
LE - Farm NE
acres, 73A wheel
15A meadow, 5
west, 1/2 north
modern stone
2-6784, Chapman,
Chapman, Ks.

160 ACRES, all can be farmed.
30 pasture, bal. cultivated. Mo-
dern home 7 rooms and base-
ment. Possession March 1, 1967.
Also 640 acres fair buildings,
117 acres wheat, balance farm
land except 90 acres pasture
and 99 acres feed and grain.
Price \$160 per acre, also terms.
Better look at these farms. A
bargain. See Roy Christy, Agt.,
Axtell, Kansas. x50

FARMS FOR SALE
160 acre farm located close to
Manhattan, well improved
with modern home. 90 acres
broke with balance pasture.
Located on a good road.
\$24,000.
Over 1300 acres well located
near Manhattan with nearly
200 acres of good bottom land
with balance pasture. Excel-
lent water and regarded as an
ideal stock farm with above
average improvements with a
newly remodeled modern
home. Part of the acreage
could be development land.
An excellent investment. \$135
per acre. May be purchased
under contract.
10 acre farm located near St.
George. Improved with a mo-
dern house. \$10,500.00.
46 acre highly improved live-
stock farm adjoining Wame-
go, Kansas with a three bed-
room modern home and ex-
cellent improvements, good
water, excellent fences. 157
acres cropland and operated
as an outstanding livestock
operation. Located on a main
highway. \$80,000.
20 acre farm, modern 2-bed-
room home with improve-
ments. 90 acres pasture, bal-
ance cropland with 24 acre
wheat base located north of
Manhattan on US Highway.
40 acre dairy farm located near
Holton. 50 acres farmland
with balance pasture. Has a
large loan that may be assum-
ed at 4 1/2% interest. Three
bedroom modern home with
a large dairy barn. \$42,000.
60 acre farm located north
with modern home. A good 80
acre pasture with balance
cropland. May be purchased
under contract. \$20,000.
We have many prospects who
are interested in all types of
d transmission, arm property. We would ap-
preciate your listing. Call us at
ion
Chevrolet 1/2-ton
6 1/2-ft. beds and
missions, stop in
ices on these.
rd 1/2-ton Picku
4-speed transi-
ide bed.
Chevrolet Impala
itation Wagon,
Powerglide, tra-
1-owner, local
i room for every
500 A 1st & 2nd bottom, most
under irrigation. 4 good
wells with equipment, nice
wagon, 6-cylinder
ch type home and tenant
use. One of the best farms.
choice of 3 towns to trade in.
\$450 per acre, with terms.
80 A improved near Alta Vis-
..... \$14,000
Call or See

George Hoerner
Real Estate
8-4947 MANHATTAN

Fulmer Real Est.
CATHERINE J. FULMER
REALTOR
Office 456-7696
Res. 456-9281
WAMEGO
WANTED - Pasture for 14
ws and calves. Edward Dett-
er, Green, Kans. x49
WANT TO RENT stock farm.
one PR 6-5373 Manhattan or
en Wickstrum, Olsburg, Ks.
x50
R SALE by owner: 80 acres
pasture. Walter Andrich,
stmoreland, Kans. SB49
WANTED to rent half section
more in Clay County. New
quipment. Lon Livengood,
de, Kans., phone 446-3425
ver 7 p.m. SB49
LE - Farm NE
acres, 73A wheel
15A meadow, 5
west, 1/2 north
modern stone
2-6784, Chapman,
Chapman, Ks.

160 ACRES, all can be farmed.
30 pasture, bal. cultivated. Mo-
dern home 7 rooms and base-
ment. Possession March 1, 1967.
Also 640 acres fair buildings,
117 acres wheat, balance farm
land except 90 acres pasture
and 99 acres feed and grain.
Price \$160 per acre, also terms.
Better look at these farms. A
bargain. See Roy Christy, Agt.,
Axtell, Kansas. x50

1600 ACRE RANCH
Located on all weather road,
school bus and mail route. Well
improved, 3 bedroom home, cat-
tle shed, large barn, and real
good corrals. 300 A. cropland,
168 A. irrigated land, balance
in grass with good fence. 1 ir-
rigation well rated 800 to 900 gal.
per minute, about 1 1/2 mi. of ir-
rigation pipe and 9 ponds and
five water wells in pasture. \$125
per acre, 1/4 down, and balance
in 4 years at 5%. Shown by ap-
pointment.

500 ACRE RANCH
Good road and improved.
About 300 acres cropland. Bal-
ance grass. Good allotments.
\$135. per acre. 29% down.

GRAIN ELEVATOR
Grain, feed and seed business.
Good warehouse and office. Lo-
cated in prosperous county seat
town. Doing good business.
Price: \$13,000.

MOTEL
15 unit motel, all remodeled
and redecorated in good condi-
tion. Would sell on contract.

Also other farms and busi-
nesses for sale.

Melvin Blecha Agcy.
MANKATO, KANS.

CHOICE LISTINGS
IN MANHATTAN

LIKE NEW - 4-bedroom home
- Northwest of University, 2 1/2
baths, central air conditioned,
family room, full basement.

NEAR UNIVERSITY - 4-bed-
room home, close to shopping
center, 2 1/2 baths, large paneled
family room, formal dining
room, basement, garage.

800-ACRE RANCH - Near
Manhattan, 180 acres creek bot-
tom, balance pasture. Good
road, modern home, ideal setup
for handling livestock. \$140,000.

GOOD INVESTMENT - Side
by side duplex. Income \$160.00
per mo. Bills paid by tenants.
Only \$13,500.00

Maurice McNeil
Realtor
Suite No. 11
Union National Bank Building
Office PR 8-4401 Res. JE 9-5164
MANHATTAN

FOR SALE - Hollenberg tav-
ern and cafe. Good opportunity
for couple. Live in. Complete
building & business \$2500 plus
inventory. Contact Roe or De-
lores Brenneis, Hollenberg, Ks.
66946. SB48

FARMLAND FOR SALE
Well improved 320, modern
home, school bus to door, out-
buildings in excellent condi-
tion, 200A cultivated, balance
grass. No waste land. \$43,000
with \$5000 down, \$5000 March
1, 10 yrs. to pay balance with
5 1/2% interest. You can buy
one Quarter with half the am-
ount down and rent the un-
improved one for 3 years with
option to buy. You just can't
find a better deal than this.

Unimproved 80, all tillable, all
conservation work completed,
good allotments, a good pro-
ducer and an excellent invest-
ment. Priced at \$12,000.

Improved 320 with 280 acres
cultivated, 40 acres meadow,
280 acres allotment. This is a
money maker, has 210 acres
growing wheat. \$52,000.

Improved 360, nice modern
home, 2 stall garage attached,
school bus to door, 160 culti-
vated, 80 good creek bottom,
200 native grass with live per-
petual water, improved road.
This is an outstanding first
time offered grain and stock
farm at \$65,000. You will like
it if you are looking for a home
and income.

Please Call Collect
For Appointment

Gerald A. Kvasnicka
FR 6-2874
HADDAM, KANS.

FOR SALE - Sweet clover
seed, recleaned, scarified, sack-
ed, state tested. Free of com-
mon and noxious weed seed.
Harv Hartner, Manhattan, PR
6-7435. x51

435 WICKHAM ROAD - One
of Manhattan's best built
homes. Three bedrooms, 2 1/2
baths, full basement with work-
shop and large recreation
room. Two fireplaces. A few
blocks from K-State U. Manhat-
tan's best buy at \$32,000, all
cash or terms to suit. Fred
Howse, 2130 North Cascade,
Colo. Springs, 90907. x48

FOR SALE - 2 bedroom home,
five years old. Large kitchen &
bath, large utility, garage. Own-
er, Mrs. Inez Gish, 711 Walnut,
Phone 456-2301, Wamego, Ks.
x50

Farm Equipment

WANTED: 4-ROW
Front Mounted
Cultivator for 44 MH, 3 point
J. B. WIEBE
Rt. 5 NEWTON

FOR SALE 1951 M Farmall, cat-
tle squeeze chute, 3-16 JD pull
plow hyd. on rubber, 4-row
sleed kirlin, 8' oneway plow on
rubber, 11' JD disc portable.
John Young, Centralia, Ks. Ph.
857-3855. SB48

USED MACHINERY
AT EMPORIA

1958 Oliver Super 88 Diesel
1959 MF 65 LP; 1959 Ford 861
1951 Oliver 88 Gas
John Deere B
1961 Oliver Model 25 10-foot
combine
Skyline Loader
14-foot Kewanee Wheel Disc
4-16 MM three point hitch plow
3-14 Ford plow
3-16 IHC fast hitch plow

Arndt Brothers
OLIVER SALES
West Highway 50
Emporia, Kans.

USED MACHINERY
1964 F706 Gas Tractor
1950 Farmall M, 1949 Farmall
M, 1941 Farmall M, 1945
Farmall H
1961 No. 46 PTO Baler
1958 No. 141 14-ft. combine
1957 No. 45 PTO Baler
J.D. No. 5 mower; IH No. 25V
mower
HM 46 Lister
F-25 Lister cultivators
HM 238 cultivator
IH No. 16 4/14 plow good
John Deere 4/14 plow
Several 3 btm. plows
IH 20C Field Harvester
IH No. 5 4 bar rake
1946 1 1/2 Ton S.W.B. Chev.
truck

Pioneer Service
& Sales
BL 8-3222
HERINGTON

I DON'T WANT
Everyone's Business -
I JUST WANT YOURS

Repossessed complete 200 cow
size portable corral, used on-
ly 5 times, huge saving.

1 near new heavy duty portable
loading chute with adjustable
floor \$195
3 electric drive-thru gates
..... ea. \$29.95
1 metal feed bunk (12', new
..... \$36
5 Plainsmen feed bunks, ea. \$50
2 extra heavy duty mineral
feeders ea. \$36.75
New portable corrals with load-
ing chute \$499 & up
Feeder panels; stock racks
(truck & pickup); wire rollers;
metal feed bunks; electric fence
posts; other items too numer-
ous to mention.

I Sell Everything From
Portable Corrals
to Ketch-All Mouse Traps

Leon's House of Sales
Box 1613 417 E. 16th
Mohawk 2-5858
HUTCHINSON, KANSAS
Dealer Inquiries Welcomed

CHAIN SAW BARGAINS
New Mono Model 47-16 (list
\$105) Our price \$79
Mono Model 67-20 (list \$165)
Our Price \$119
Mono Model SL-145-16 (list \$175)
Our Price \$129
Mono Price SL-145-20 (list \$185)
Our Price \$139
See the new
Super-Lightweight models

ROTARY CUTTER
HEADQUARTERS
New Mono 6-ft. lift type less
tires (list \$250) our price \$185
Mono 4-ft. pull type with tires
(list \$360) our price \$250
5-ft. lift type with rear wheel
(list \$380) our price \$275
5-ft. pull type with tires
(list \$380) our price \$275
6-ft. heavy duty lift type (list
\$495) our price \$350
6-ft. heavy duty pull type with
tires (list \$530) our price \$375
8-ft. heavy duty type with rear
wheel (list \$710) our price
\$475
8-ft. heavy duty pull type with
tires (list \$730) our price \$495
See 16 different models on
display

Wenger Impl. Co.
Boys Industrial
School Road
off US 24
North Topeka
Call CE 4-8198

WANTED - Pasture for 40
cows. 1/2 rent in advance. Loyal
Shirley, Vermillion, Kans.
Phone DU 2-5316. x48

DAUER
IMPLEMENT CO.

1963 International Scout pickup,
4-wheel drive, 28,000 miles.
1957 McCormick 46T twine baler
1962 McCormick 46T twine baler
1964 McCormick 46W wire baler
1966 McCormick 47W wire baler
McCormick 55W wire tie baler
with engine
1959 McCormick F-460D tractor
1966 McCormick 403 16' com-
bine, only cut 500 acres
1952 Massey-Harris Super 27
16' combine
1953 Massey-Harris No. 70 12'
combine
1961 F-560D, new pistons &
sleeves, new rear tires.
McCormick No. 412 4-16 semi-
mounted plow
McCormick No. 60 3-16 plow
McCormick No. 37 10'9" wheel
disk
1949 W6 McCormick tractor
1950 W6 McCormick tractor
1955 R160 International truck
with bed & hoist
1962 IH 101 combine, 12'
1963 John Deere 45 manure
loader, hydraulic bucket

Falun
Phone 1011

COMBINES
1966 Gleaner C-II, 18 ft.
1963 Gleaner A, 14 ft., straw
chopper, low acreage
1951 Gleaner R, 14 ft.

TRACTORS
1966 AC 190 LT diesel, 350 hrs.
1966 AC 190 gas, 250 hrs.
1960 AC D-17-D PS, choice of 3
1960 AC D-17LPG, PS, over-
hauled
1956 IH F-400, clean
1952 AC WD, 45 kit, WF
1951 NH 44; 1951 AC WD
1962 New Holland S69T baler
1965 13 1/2 ft. Kewanee disc
1965 24 ft. Mordidge springtooth
1966 30 ft. Mordidge Springtooth,
like new

See Us For The
Field Master Springtooth

Jost Impl. Co.
Phone 947-3182
HILLSBORO, KS.

FOR SALE - 3 unit glass pipe-
line milker with washer and
pump \$300. 3 Surge stalls \$75
each. 1950 two ton GMC truck
with 15 1/2 foot Omaha Standard
grain bed \$295. Melvin Stunkel,
Greenleaf, Kans. Phone Linn
DI 8-2194. x48

TRACTORS
1959 JD 630 LP with 3 pt. \$2295
1961 4010 dsl. with 16.9 tires
..... \$4095
1959 JD 630 with 3 point \$2295
1959 JD 730 dsl. with 3 point
..... \$2895
1962 3010 gas with new tires &
pistons \$3495
1961 4010 dsl. with 18.4 & 4020
pump \$4395
1961 4010 dsl. with new 18.4
tires \$4450
All Are Ready To Go

COMBINES
1956 JD 45, 10' \$1795
1957 JD 45 10' \$1895
1962 JD 55 14' PS \$3995
1961 JD 55 13' with pickup reel
..... \$3995
1959 JD 55 14' with cab .. \$3495
1954 JD 55 14' with Farrar drive
..... \$1795
1956 JD 55 14' \$1795
1964 JD 95 16' with cab & elec-
tromagnetic clutch, not a cus-
tom \$7595
1965 C2 Baldwin with 16', PS,
hyd. reel, cab, straw spreader,
straw chopper \$7595
All have been thru our shop &
we can waive interest till June 1

ROW CROP TOOLS
494A planter (near new) with
fert., pre-emergence .. \$1095
494 planter with fert. \$795
406 lister planter with insectici-
de fert. \$675
406 lister planter with fert. \$675
4 row front cult. with rear rig,
630 hookup \$395
RG with 3 point 4-row JD cul-
tivator \$575
2 T4R JD 4-row cultivators with
3 point rear rigs, hookup &
impl. arms for 3010, 3020,
4010, 4020 \$645
4-row Dempster Plantall with
gauge wheels, markers, hin-
ge bar & fertilizer, applica-
tors \$695
4-row Dempster Plantall with
hinge bar, gauge wheels,
pre-emerge kit \$525
4 section no. 14 3 point hoe,
new last year \$465
Demonstrator No. 100 JD chis-
el plow 10' cut
3 point farm & industrial rear
blades from \$97.50
New shipment of JD No. 46A
loaders
An extra chain with each new
McCulloch saw
We are the dealer for Oswalt
Ensiloaders & Ensilmixers in
this area !!

Washington Impl.
EA 5-2301
WASHINGTON
WANTED - Farmhand bale
handling system, Gehl blower,
9" pipe. Ed Wessling, New Cam-
bria, Ks., TA 3-3695. x48

USED MACHINERY
A GOOD SELECTION
LA Case tractor
Avery tractor with cultivator
Minn. Moline 335 tractor
Minn. Moline ZA tractor with
loader
Oliver 88 tractor
Graham Hoeme plow
2 way disk
4 ton Farmhand feed wagon

PLOWS
Graham Hoeme
3x14 John Deere; 3x14 Case;
4x14 MM; 3x14 MM; 6' MM one-
way.
Several good used McCulloch
saws
New 10" portable Peerless mill,
bargain price
Complete stock of parts for
Moline, New Idea, Papec,
Farmhand, Krause and Mc-
Culloch.

Jorden Impl. Co.
ABILENE
Day Phone
CO 3-2041
Night Phone
CO 3-2057

DUAL REAR wheels for farm
tractors; 8x15 front wheels; us-
ed rear tires with new tubes;
11.00x15 new front tires. Power
Tools Co. Inc. 403 South Belt,
St. Joseph, Mo. AD 3-2257.
SB3

MISCELLANEOUS

John Deere N spreader with bunk feeder attachment
John Deere 35 loader for 1010
6' Mono rotary 3 pt. mower
Used Letz 220X portable mill
Used 20x8 John Deere DR drill, slick, with fert. & rubber press
Extra good 5 sections JD spring tooth
12' Schaefer wheel disk
New Idea Horn loader for Ford Root riding mower
20-8 Moline high wheeled drill with fert.
Lots of used drill \$45 and up
F125 3x16 mtd. plow like new
810A 3x16 mtd. plow, NGP bottoms
810A 3x16 mtd. plow, HS bottoms
Deere 55H plow with HS bottom, excellent
Krause 12' wheel disk
10' Schaefer wheel disk
16x8 Moline drill, high wheel, rubber press
12' RWA Deere disk, like new
PTO No. 3 Massey baler, ready
2 Deere 14T balers to be overhauled
214T baler, always shedded
Massey 12' 3 nt. disk, real good
1955 Holland PTO baler, cheap
1963 Deere 210 corn head
Ford box beam manure loader
311 IHC 2 pt. plow
Deere 4x14 mtd. plow
Ferguson 2 bottom mtd. plow
88" belt pickup for 55 combine
5 section JD spring tooth & JD cart

COMBINES

1952 SP12 Case, sharp
1950 Deere 55. lots of acres left
1952 Deere 55 with 14' head
1962 Deere 95 with 16' head
1958 Deere 55 with 14' head
1962 Deere 45 with 12' head
1960 Deere 45 12' with cab
1955 Deere 55 with 14' head
1957 Deere 55 with 14' head

TRACTORS

1964 Moline 602 propane
1960 Moline M-5 gas
1950 Allis WD
1951 Case DC with hyd.
1955 Deere 70 diesel, OH
1958 Deere 790D, OH
1959 Deere 730D, OH
1962 Deere 1010 utility gas
Above 1010 with or without loader
1962 Deere 4010 diesel, above average
1961 Massey 85D, OH
1960 IHC 460 gas, OH
1954 Ferguson 30, new tires
1955 JD 60 with power steering

Remember John Deere Day
February 8th



SHOUSE
IMPL. CO.

Abilene, Kans.

Store
Ed Shouse
Ron Shouse

CO 3-3051
CO 3-1066
CO 3-4515

GOOD LATE MODEL USED COMBINES

1966 MF 410 14 ft. like new with cab, lights, cut less than 300 acres.
1964 MF 300 13 ft. like new, with cab, lights & No. 222 corn head, A-1
1962 C Baldwin, 14 ft., in A-1 condition, with cab, lights, radi, ext. bean sprocket.
1962 403 IHC 14 ft with cab, lights, Hume reel, very clean combine
1962 No. 72 MF, 12 ft. header, lights, cab, milo sprocket
1959 IHC 151 with cab, lights, a very good combine and priced to sell.
1957 No. 35 Oliver 14 ft. with Hume reel, complete with 2-row corn head, 1962 model, very good

Brauchi Bros.

CASE - MASSEY-FERGUSON
Phone HI 3-4171
MARYSVILLE, KANSAS

HESSTON MEETING

Jan. 26

7:30 p.m.
Movies & factory representation

REFRESHMENTS

Wright Impl. Co.

South Highway 15
ABILENE, KANS.



Plows

Just got in — IH No. 314 3x16 roll-over plow, looks like new — SAVE —
Dearborn 3-point 7 ft. mounted disk \$125
IH 3x14 fast-hitch plow \$125
IH No. 10 3x14 plow on rubber \$175
IH 550 5x14 steerable plow, like new, but SAVE
Ferguson 3x14 3-point mounted \$100
JD No. 55 3x16 on rubber \$245
MM 3x16 on rubber, hyd. cont. \$265
JD No. 44 2x16 on rubber \$75
IH 7 ft. offset disk blades, good, on wheels \$265
IH 4-section peg harrow with evenner \$75
JD 3-section peg harrow W/E \$50
Case impl. carrier with 5 sections, spring tooth \$375
IH 8 ft. 9" wheel disk \$195
IH 10 ft. tandem disk \$100
IH No. 5 low wheel 4-bar side del. rake \$195

NEW

PEERLESS ROLLER MILL
ALL PURPOSE — SAVE LOTS

TRACTORS

IH I-300 utility, TA, INPTO, FH, with Woods rear mount rotary mower
JD 1945 Model G, lift etc.
1950 IH Farmall H, clean local tractor
IH Farmall H 1941 at \$295
1963 IH 3414 tractor & loader, with Danuser blade & scarifier, low hours — see it
IH Farmall M 1945, new sleeves & pistons \$495
IH Farmall 340 gas, 1959 wide front, PS, TA, INPTO, FH \$1695
1960 F-460 gas, fully equipped, new tires \$2545

Trucks

1960 IH B-184 heavy duty dump truck, power steering with Anthony 10 ft. dump body, 5-speed, 2-speed, 900x20 10P tires, heater, priced to move
Here is a buy — 1961 IH B-112 3/4 ton pickup, will need some repair at \$395
Ford 1954 F-250 3/4 ton with steel platform, grain & stock sides \$395
1961 GMC Suburban 2-seat, 4-speed, radio & heater, spot light, clean \$695
We Have Good Selection Of Used Pickups From 1965 Models

1/4 & 3/4 Tons On Down
Drop In & Have A Look

WE TRADE

Mohn Implement Co.
Telephone CE 8-5101
Junction City, Kans.

ATTENTION TRACTOR OWNERS

Does your tractor need engine overhauling? Save Money, and Time with our Machine Shop completely rebuilt Short Block Assemblies.

Expert craftsmanship is assured at reasonable prices.

Large stock on hand for John Deere, International, Case, Allis Chalmers, Ford, Massey Harris, and others. Write for prices.

JOE GOODMAN
TRACTOR PARTS CO.
Box 748 Phone 489-1432
LINCOLN, NEBRASKA

For Sale or trade for calves — 3 can milk cooler; Model 64 IHC combine with engine; 6" — 12 Case grain drill with fertilizer box. Wanted Purebred Duroc boar around 80 pounds. Edwin Kuhn, Alta Vista, Kans. Phone 229-6482. x48

WANTED — over and under transmission for Ford tractor, Denny Trumble, Palmer, Kans. Phone 1209. SB48

WANTED — Nearly new 4-14 semimounted John Deere plow. Write Vernon Beneda, Clyde, Kans. x48

FOR SALE — New Allis Chalmers combine pickup attachment. Jonas Eitel, Durham, Kansas. x48

WANTED — Milk can cooler. Must be good. Jonas Eitel, Durham, Kansas. x48

USED TRACTORS

1964 John Deere 4020 diesel, fully equipped, 1950 hrs.
1963 John Deere 5010 diesel, fully equipped, 2550 hrs.
1960 Cockshutt 560 diesel with live PTO & hyd., power steering.
1959 IH Farmall 560 gas with live PTO, hyd., TA, power steering & wide front axle.
1959 IH International 460U diesel, fully equipped
1957 M&M UB on LP gas
1956 MH 44 special with 3 pt. adj. axle & live PTO, hyd.
1955 MM UTS diesel with live PTO
1955 Oliver Super 99 diesel with live PTO & hyd.
1954 AC WD 45 with adj. front axle, live PTO & hyd.
1953 MH 55 on LP gas with PTO & live hyd.
1950 MH 55 diesel with live hyd., with or without PTO
1949 AC WD with live PTO & hyd.
1949 Case VAC with hyd. PTO

PLOWS

John Deere 4x16 No. 666 with hyd. & trip beams, pull
John Deere 4x16 No. 66 pull
John Deere 4x14 No. 66 pull
IH No. 8 3x16 pull; Case 4x16 3 pt.; Case 3x16 3 pt.
AC 3x16 snap coupler
AC 3x14 snap coupler
MM 4x16 pull

COMBINES

1959 John Deere 14 ft. 55
1959 John Deere 12 ft. 45, also with corn head
1949 John Deere 12 ft. 55
14 ft. Hume pickup reel for 55 John Deere
14 ft. Rice pickup reel for Massey Harris
12 ft. Hume pickup reel for IH 101

WHEEL DISCS

14 ft. RW John Deere with sealed bearings
10'9" No. 37 IH with sealed brgs
11 ft. MM
7 ft. Ford 3 pt. tandem
7 ft. AC snap coupler tandem

MISCELLANEOUS

4 row John Deere No. 307 lister 3 pt. with fertilizer att.
New Holland 130 bushel No. 331 PTO manure spreader
IH 12 ft. fertilizer spreader
34 ft. Speed King grain auger
No. 350 John Deere 3 pt. side rake
Dearborn 3 pt. side rake with sealed bearings
Massey Ferguson trail type balanced head mower
New Holland No. 69 wire baler
Swartz wide front axle for 70 John Deere
John Deere No. 20 3 pt. scoop
AC snap coupler subsoiler
AC snap coupler tool bar carrier

We have approximately 150 pieces of older equipment: plows, mowers, rakes, spring teeth, tractors, grain drills, etc. Buy this older equipment dirt cheap and repair at your convenience.

Lott Impl., Inc.



EX 2-3110

MINNEAPOLIS, KANS.

FOR SALE — 9' Letorneau dozer, winch & frame; 1948 1 1/2 ton sub 4 wheel drive Dodge Powerwagon, underbody hoist. Phone CE 8-7486, Junction City. x48

ALLIS CHALMERS WD tractor; Allis-Chalmers WD tractor & 3-bottom mounted plow; Allis Chalmers D-17 tractor with mounted 4-bottom plow; Allis Chalmers semi-mounted mower, good condition. John Weidler, Minneapolis, Kansas. Phone EX 2-2284. Mrs. Chas. Weidler, Minneapolis, Ph. EX 2-2090. SB50

FOR SALE — JD No. 45 loader fits 3010 or 3020 tricycle. Extra good. \$350. Call 10-155 Agenda. x48

FOR SALE — 1964 A-II Gleaner 14 ft. \$5200. New 1966 A240 cornhead for A-II \$1375. Don Hostetter, Hope, Kans., Ph. 1F11. x51

Big Spring Machinery Sale

TRACTORS

1 John Deere 730 Gas tractor, 3 point hitch, power steering, new tires, A-1 condition.
Farmall 560 Gas tractor, fully equipped, ready to go.
3 Farmall 460 Diesel tractors, all fully equipped, A-1 condition.
Farmall 400 Diesel tractor, fully equipped, fast hitch, real good.
Farmall Super C tractor, real nice condition, new paint.
John Deere A tractor, good tires, late model, good condition.

DISCS

2 International No. 37 wheel discs, 11 foot, one sealed bearing.
2 Oliver 11-foot wheel discs, both sealed bearing, excellent blades.
2 John Deere 12-foot wheel discs, one rigid, one KBA, both real good.
Kewanee 11-foot wheel disc, excellent blades, real good condition.

Ford 9-foot wheel disc, good blades, real good condition.

OTHER IMPLEMENTS

4 used International No. 50 field choppers, these are good choppers.
International No. 56 wire baler, real good condition.
International No. 46 twine baler, excellent condition.
2 International No. 45 twine balers, good low priced balers.
John Deere 858 hay rake, excellent condition.
4 used mowers, all types for all makes, trail and fast hitch.
2 International 255 cultivators, real good.
International 268 cultivator, for 460, 560, 656, 706, 806.

TRUCKS

1962 International V-220 tractor with tandem axle, 549 engine, real good.
1958 International 160 truck with bed, a real nice farm truck.
1955 International 160 truck, with bed and hoist, look at this one.
Used 20-foot bed with stock racks, a real good bed.
3 used pickup trucks, some late model, good cheap trucks.
DON'T MISS THE BIG PLANTER MEETING HERE ON JANUARY 31. AT 7:30 P.M. SEE THE NEW INTERNATIONAL 6 ROW PLANTER AND MANY OTHER NEW TOOLS FOR PLANTING.

Flint Hills Truck



And Tractor

EMPORIA
DI 2-4756

HERINGTON



IT WAS A Great Party

People came from miles round to help us celebrate our 10th anniversary last week-end, and we enjoyed every moment of the celebration. There were 29 prize winners. Grand prize, the La-Z-Boy recliner rocker was won by Gustave Schubert of Lost Springs, Kans.

NOTICE

For those who could not be helped on sale price merchandise due to the large crowds, we are continuing the sale of new and used implements for the balance of this week. If you were disappointed, come in any day this week and you will receive the same anniversary prices as were in effect last Thurs., Fri. & Sat.

Thank all of you for making our anniversary such a grand success.

Tri County Sales

George Munkres
Phone Collect
BL 8-2249 or BL 8-2991
HERINGTON, KANS.

GOOD CALF creep feeder, can eat from both sides. Will hold 150 bu. James Davis, Rossville, Kansas 66533, Phone 584-3290. x48

PRE-SEASON BUY ON

TRACTORS & MACHINERY

1960 JD 4010 dsl., new overhauled
1961 JD 4010 dsl. with low price
1962 JD 3010 gas, good
1959 JD 730 overhauled &
1948 JD G & A
1946 JD A
1961 IHC 460 gas, good
1959 IHC 460 gas
1958 IHC 450 dsl.
1957 IHC 300, real sharp
1948 IHC M
1951 IHC H, painted, good
1956 AC WD 45 gas
1956 AC WD 45 gas, with power steering
1962 MH 85 dsl.
1960 MH 35 dsl., overhauled
1954 MH 33, live power
1951 MH 44
1947 MH 30
1960 Ford 871 Select-o-matic
1951 Ford 8N

COMBINES

1963 JD 55 SP, 14'
1959 JD 55 SP, 14', PS
1959 JD 55 SP 12 ft., PS
1957 JD 55 SP, 12 ft.
1952 JD 55 SP, 12 ft., 800
3 1958 JD 45 SP 10 ft.
1956 MH 80 Special SP

OTHER MACHINERY

JD 16x8 fert. drill, yellow
3 JD 16x8 plain drills
JD 16'6" folding gang wheel disc
2 JD 13'10" AW wheel disc
JD 10' RWA wheel disc
JD 9' RWH wheel disc
JD F145 semi-mounted plow
JD F120 4-14" plow
3 JD F814 3-16 plow
IHC fast 3-16 plow
AC 4-14 plow, mounted
AC 3-14 plow, mounted
AC 2-16 plow, mounted over
2 New Holland forage choppers
2 JD 3 point 12 ft. spring
JD 16' pull type spring
JD Model R spreader
New Idea spreader
IHC 5 bar rake, almost new
2 BMB 5 ft. rotary cutter
JD 494 corn planter
JD 4-section rota-hoe, 3
JD 4 row front mounted
Gehl shop-worn blower of pipe

We have a lot of new machinery on hand. Come and see it. We'll sure try to get you a good deal.

JD Day is Thursday, starting at 10:30. All welcome.

Farmers Union & Imp.

Ph. 437-3333

EVERETT

HOOD

Manager

ST. MARIE

YOU'LL DO BETTER AT WAKEFIELD

Used Tractors

1959 Ford 971 dsl. with Cover.

1956 IH 300 utility, FH

1951 Allis WD; IH WD

M-H 30; 1947 IH MD

M; 1940 IH M; 1936

COMBINES — PLANTERS

IH 141 with cab, 14 ft.

IH 125 Sp, 12 ft.

JD 406 planter, 4 row

IH 455 planter, 4 row

Always come to Wakefield where you'll find a large selection of new and used machinery. And for new or used, no one can do it better than Auld's.

Wakefield, Mo.

Wakefield, Mo.

Wakefield, Mo.

Wakefield, Mo.

Wakefield, Mo.

Wakefield, Mo.

Wakefield, Mo.

Wakefield, Mo.

Wakefield, Mo.

Wakefield, Mo.

Wakefield, Mo.

Wakefield, Mo.

Wakefield, Mo.

Wakefield, Mo.

Wakefield, Mo.

Wakefield, Mo.

Wakefield, Mo.

Wakefield, Mo.

Wakefield, Mo.

Wakefield, Mo.

Wakefield, Mo.

Wakefield, Mo.

Wakefield, Mo.

Wakefield, Mo.

Wakefield, Mo.

Wakefield, Mo.

Wakefield, Mo.

Wakefield, Mo.

Wakefield, Mo.

Wakefield, Mo.

Wakefield, Mo.

Wakefield, Mo.

Wakefield, Mo.

Wakefield, Mo.

Wakefield, Mo.

Wakefield, Mo.

Wakefield, Mo.

Wakefield, Mo.

Wakefield, Mo.

Wakefield, Mo.

Wakefield, Mo.

Wakefield, Mo.

SEASON BUY
ON
RS & MACHIN
1010 dsl., new rub
010 dsl. with
010 gas, good
30 overhaul &
& A
460 gas, good
460 gas
450 dsl.
300, real sharp
M
H, painted, good
WD 45 gas
VD 45 gas, wide
steering
85 dsl.
35 dsl., overhaul
33, live power
44
80
871 Select-o-sp
8N
COMBINES
5 SP, 14'
5 SP, 14', PS
5 SP, 12 ft., PS
5 SP, 12 ft.
5 SP, 12 ft., good
45 SP 10 ft.
80 Special SP, 14'
ER MACHINERY
ert. drill, yellow
plain drills
folding gang wh
" AW wheel disc
VA wheel disc
WH wheel disc
semi-mounted
4-14" plow
4 3-16 plow
3-16 plow
plow, mounted
low, mounted
plow, mounted
olland forage cut
int 12 ft. spring
all type spring
R spreader
3-14, A-C 2-16, mtd.
ver 4-16 pull type.
BALERS
140 wire; IHC 45T.
MISCELLANEOUS
Peerless Roller mill
e model IHC 2-row field
atter.
used wagon gears.
e 4-sec. drag harrow
5-sec. springtooth
e 3-sec. spring tine, 3-pt.
Mulkey 40' elevator.
gs No. 23D gas engine, 9
rsepower.
eral belt type hammer and
rr mills.
e are the authorized dealer
Case, Kewanee, Dempster,
Hedell, Side Winder, Semco
ch.
Ph. 437-2
EVERETT
HOOBLE
Manage
ST. MARYS
I'LL DO BETTE
T WAKEFIELD
Used Tractors
d 971 dsl. with
300 utility, FH
s WD; IH WD;
1947 IH MD;
40 IH M; 1936
BINES-PLANT
with cab, 14 ft.
r, 8N, NAA, 600, 800 and
p, 12 ft.
planter, 4 row
lanter, 4 row
s come to Auld's
d where you'll
ection of new
inery. And for
used, nobod
an Auld's.
AU
CHEVRO
HO 1-5
WAKEF
LE - Humb
oader, fits John
o, excellent con
Scheader, Route
nsas.

FARM MACHINERY AUCTION 60 Tractors

and all kinds of mowers,
mows, balers, combines, discs,
cultivators and other farm
equipment.

SAT., JAN. 28

10 a.m. sharp

OGDEN EQPT. CO.
Warrensburg, Mo.

Massey-Ferguson, Ford, and
& M Dealer.

Write Ogden Eqpt. Co.

for complete sale bill

cts: R. D. McWhirter,
axter, Iowa; & Jack Snell,
Mexico, Missouri.

Everything

Must

Sell

PORTER EQPT. OFFERS:

TRACTORS

5 M-M G705 std., LP
5 M-F 65, hi arch, gas, fully
quipped.
1 Case 830 dsl., tricycle, full
equipment.
8 Oliver 770, LP, std.
WHEEL DISKS
ver 12'; Kewanee 13' 5";
trause 15'.
PLOW
3-14, A-C 2-16, mtd.
ver 4-16 pull type.
BALERS
140 wire; IHC 45T.
MISCELLANEOUS
Peerless Roller mill
e model IHC 2-row field
atter.
used wagon gears.
e 4-sec. drag harrow
5-sec. springtooth
e 3-sec. spring tine, 3-pt.
Mulkey 40' elevator.
gs No. 23D gas engine, 9
rsepower.
eral belt type hammer and
rr mills.
e are the authorized dealer
Case, Kewanee, Dempster,
Hedell, Side Winder, Semco
ch.

WHEEL DISKS

3-14, A-C 2-16, mtd.

ver 4-16 pull type.

BALERS

140 wire; IHC 45T.

MISCELLANEOUS

Peerless Roller mill

e model IHC 2-row field

atter.

used wagon gears.

e 4-sec. drag harrow

5-sec. springtooth

e 3-sec. spring tine, 3-pt.

Mulkey 40' elevator.

gs No. 23D gas engine, 9

rsepower.

eral belt type hammer and

rr mills.

e are the authorized dealer

Case, Kewanee, Dempster,

Hedell, Side Winder, Semco

ch.

Ph. 437-2

EVERETT

HOOBLE

Manage

ST. MARYS

I'LL DO BETTE

T WAKEFIELD

Used Tractors

d 971 dsl. with

300 utility, FH

s WD; IH WD;

1947 IH MD;

40 IH M; 1936

BINES-PLANT

with cab, 14 ft.

r, 8N, NAA, 600, 800 and

p, 12 ft.

planter, 4 row

lanter, 4 row

s come to Auld's

d where you'll

ection of new

inery. And for

used, nobod

an Auld's.

AU

CHEVRO

HO 1-5

WAKEF

LE - Humb

oader, fits John

o, excellent con

Scheader, Route

nsas.

1963 JD 4010 Dsl. reconditioned
930 CK Case Diesel, low hrs.
..... \$3995
1954 IH SUP MTA hyd. IPTO
excellent \$1850
1955 MM UTS, LP gas, hyd.
with cyl., very good .. \$1095
1955 IH F400 gas R/C .. \$1295
1952 IH "W6", very good \$595
Good LA Case tractor with hy-
draulic
4x14 IH plow with slatted mold-
boards
Several 3 x 14, 4 x 14, 5 x 14, 3
x 16 & 4 x 16 plows
15 ft. Sunflower V-blade, used
very little \$850
12-ft. Flex King, V-Blade, demo.
..... \$950

G-B LOADERS
FLEX-KING V-BLADES

Blanding Impl. Co.



FE 8-3065

BELOTT, KANS.

FOR SALE — No. 35 MH 12 ft.
wheel disc. Phone 456-9878. Jun-
ior Breymeyer, Wamego, Kans.
x50

FOR SALE — 1959 Massey Har-
ris No. 60 SP 12' combine, cab,
pickup reel. Harry Hartner,
Manhattan PR 6-7435. x49

1962 JD 3010D, wide front end,
fully eqpt.; Kewanee 11-2 disk;
Van Brunt drill, fertilizer &
grass seeder; hyd., on rubber;
70 gal., 600 gal., 350 gal. and 200
gal. bulk tanks, 10x10, 10' long;
10x10, 6' long; treated 2x4, 16'
long; hedge posts, all sizes. J.
P. Stockman, St. Marys, Kans.
66536, Phone 437-2239. SB48

FOR SALE — Two centrifugal
pumps 2 and 5 in. \$50 each. Wil-
bert Hofman, Green, Kans. Ph.
WI 4-2231. x48

WANTED — A small good
brooder house, state price. Don-
ald Winter, Frankfort. x48

SPECIALS — Excellent 1958
John Deere 55 combine, always
shedded, motor reconditioned.
In 1958 Gleaner, reconditioned,
straw chopper. Either, only
\$2750 8 other combines. 12 good
tractors. Late 31 International
manure spreader. New, used
wheel discs, listers, cultivators.
Nickel Brothers, Buhler, Kans.
x48

FOR SALE — 8x10 truck bed
with stock racks. Telephone 765-
3467. Melvin Zeckser, Alma
Kans. x48

1957 MM LP gas Row Crop
tractor, new tires, paint, big
pistons, power steering, 3-
point ambitoro, live PTO,
very good \$1250
1958 MM 5-Star LPG Row Crop
tractor, 3-point ambitoro, live
PTO, good \$1750
2-year old hydraulic loader \$450
2 row MM 3-point lister, like
new \$100
2 row MM cultivator, fit Z or U
tractor \$75
IHC 45T baler, fair condition
..... \$250
Marion Stucky, Galva Kans. x51

SET OF M&W snap-on duals
with 15x30 tires complete, \$220.
Frederick Kupfersmith, Home,
Kansas. x50

FOR SALE — John Deere 45
combine. Would trade for
young cows. J. Zeigler, Abilene,
Kans. x48

FOR SALE — Farm scales.
Will weigh 8500 lbs. Otto Mills,
Chapman, Kans. 67431, Phone
WA 2-6664. x48

WANTED — 4-row rotary mold
board lister or will trade 494
JD planter for lister. Alfred
Roeder, Seneca, Kans. x48

FOR SALE — Twin cylinder 25
ton Gator hoist. Phone Alfred
Johnson, Morrowville, Andrew
5-3442 or Harvey Krause, Wash-
ington, East 5-2412. x49

SPECIAL DISCOUNT — Tex-
Flow Irrigation plain and gated
pipe, limited time. Used 4" and
6" pipe. Gate your pipe with
new yellow top sliding gates.
Newly designed Tex-Flow tractor
move towlines. Berkeley cen-
trifugal pumps. Gaskets avail-
able for any pipe. Irrigation
headquarters North Central
Kansas. 10% Discount: Waldon
tractor dozers, Noble disc har-
rows, Richardson Furrowers
and Shanks, Koehn Electric
Gates. Warren St. Pierre, 1
west, 1/2 north Ames, Phone
446-3631. SB1

FOR SALE — 1963 IHC T340A
crawler tractor with 3/4 yd.
Drott 4 in 1 bucket with teeth
and 1963 JD 51 backhoe, 24"
bucket and stabilizers, front
mounted hydraulic pump, all
components in excellent con-
dition, like new, 428 hrs. \$6700.
Must move immediately. Phone
Maize, Kans. AC 316 RO 6-0265
or RO 6-0564, Carlson Construc-
tion Sales. SB48

Miscellaneous

FARM PONDS cleaned or dug,
drainage ditch cleaned or dug.
Ray Bros. Crane Service, 3412
Bryant, Phone AM 6-8598, Tope-
ka, Kans. 66605 x48

FOR THE ride of your life, ride
a Big Horn saddle from Key
Milling, Clay Center, Kansas.
SB TF

GOVT. SURPLUS OVERSHOES

We now have over 9 tons of
govt. surplus overshoes. Some
priced as low as 97c pr.

LLOYD'S SURPLUS SALES
St. Marys, Kansas

FOR SALE — Approximately
1500 ft. well seasoned walnut
lumber. \$500. Write John Stork,
907 Carolina, Marysville, Kan-
sas. x48

RUG & PAD 12x37, burnt or-
ange, \$281.75. Also double sink
& fixtures, white, \$25. Both
brand new. 1131 Houston, Man-
hattan, Phone PR 8-3896. x49

JANUARY SPECIAL

Free Trailer

with purchase of

Boat & Motor

Manhattan

Marineland

601 N. 3rd PR 8-5771
MANHATTAN, KANSAS

METAL SHEETS FOR SALE.
Zinc-aluminum, about 2 ft. x 3
ft., usable to line bins, ratproof,
cover rough fencing and shel-
ters, patch bin floors, various
miscellaneous farm uses. They
are used printing plates, not
heavy enough to stop a charg-
ing steer but heavier than toilet
paper. 10 for \$1; 50 or more, 8c
each. Ag Press, 1207 Moro,
Manhattan, Kans. x51

1000 GAL. Propane tank \$250.
S. W. Arthur, Topeka, Phone
WV 3-5041, Tecumseh RR1
66542. x48

FOR SALE — 1960 camper
trailer 13 ft. long, Elwood Ev-
erett, Longford, Kans. Phone
77. x48

Services

Income Tax

Farm Returns Our Specialty
Mr. Byron Taylor is again in
our office to assist with your in-
come tax. Please call PR 8-3424
or write for appointment.

BENNETT-LINDSAY AGENCY
1st Natl. Bank Bldg. PR 8-3424
MANHATTAN, KANS.

INCOME TAX & Accounting —
special services for farmers.
Contact us about bookkeeping
basis. Telephone 623-4514, Dale
and accounting on a monthly
and Geneva Brown, Delphos,
P.O. Box 137. Also Concordia
and Jamestown area offices.
x51

Help Wanted

WANTED — ARTIFICIAL in-
seminator to take over well est-
ablished business in Manhattan
area. Excellent opportunity for
self-employment. Free training.
No investment necessary. Can
be easily handled with small
farming operation. For details,
call Manhattan AC 913 JE
9-3319 after 4:00 p.m. SB48

Pets

FOR SALE — Complete set
coyote hounds and dog box.
Gerald Bergeson, Idlewood 9-
2228, Jamestown, Kansas. x49

Land Bank Loans To \$422 Million

WICHITA — The 24 Federal
Land Bank Associations in Kan-
sas closed over \$47.6 million in
long-term Federal Land Bank
loans during the 1966 business
year ending December 31. This
was an increase of \$5.5 million
over the 1965 business year.

Wm. G. Plested, Jr., President
of The Federal Land Bank of
Wichita, said that loans out-
standing reached an all time
high of \$422 million at the close
of 1966. This is an increase of
more than \$70.5 million for the
year despite the shortages in
the U. S. money market in 1966.

One of the brighter spots
emerging at year-end, Mr. Ples-
ted said, was that the money
market was easing slightly.
"The last interest rate we paid,
for bonds sold on December 20,
was down to 5.95 percent."

JOHNSON HEREFORDS SELL AT DENVER

SMOLAN — The Johnson Here-
ford Farms of Smolan was one
of the G&G area sellers at the
Western Stock Show at Denver.
The Johnson Farms sold a car-
load of bulls to Von Edgar, Or-
ient, S.D.; Singleton Ranch, Dix,
Neb.; Vowers Brothers, Kim-
ball, Neb.; and Sidney Tibbits,
Livermore, Colo.

--FARMER NOTICE--

We are discontinuing the International
Harvester line of Farm Equipment.

All New Farm Equipment
will be sold immediately for
Less Than Cost!

All Used Farm Equipment. Will Be

Sold As Much As 30%-50% Off

Many Parts Also at Large Discounts

For a short time, as a special service to the farmers,
We Will Order Any New Equipment
And Sell For Cost!

We will order any parts for
10% Off CT Discount Price.
—TERMS CASH—

We will continue to be the
Authorized Dealer for IHC Trucks



HARMON

Truck & Implement

615 E. Pacific

Salina

TA 3-6397

John Deere - GMC

TRACTORS

1961 John Deere 2010 row crop, power steering, 3
point hitch, overhauled, new paint, very good. **\$2225**

IHC Tractor — 350 — fast hitch, very good, 3-pt.
hitch adapter, 1957 Model **\$1495**

John Deere B, 1944, good tires, starter & lights,
runs good **\$275**

TRADED FOR -- DUE IN

1959 John Deere 730 diesel, fully equipped

1946 A John Deere

1948 John Deere A, rol-matic, power-trol

1958 John Deere 45 combine

MACHINERY

John Deere Model R Manure Spreader, new box,
completely overhauled, new paint, 95 bu. **\$385**

John Deere 3-14, hyd. control, on rubber, good **\$295**

IHC hay conditioner, rubber and steel rolls **\$275**

John Deere elevator — hay & grain, 30' with 5 hp
electric motor — both **\$245**

John Deere No. 5 Mower, Quick-Tach **\$95**

2 — IHC Model 37 Wheel Discs, good from **\$350**

John Deere 8-ft. Field Cultivator, with 10" sweeps,
hydraulic control, on rubber **\$75**

See Our Stock of Homelite Chain Saws.
We need used chain saws, will trade.

We are dealers for Blair & Grain-O-Vator silage & grain wagons.

Call Us Collect CE 8-4103

BOWMAN'S

JUNCTION CITY

Your

Junction City - Manhattan Area
John Deere Dealer

SEDLACEK'S GIGANTIC FURNITURE STORE-WIDE FLOOR SAMPLE SALE

ODDS and ENDS from our warehouses • **FLOOR SAMPLES** and **SOME APPLIANCES**
YOU CAN SAVE UP TO 70% ON MANY ITEMS... EVEN MORE!

IN THIS BIG CLEARANCE • ALL NEWLY ARRIVED MERCHANDISE ALSO
MARKED DOWN TO MAKE IT WORTH YOUR WHILE TO DRIVE TO HANOVER, KANS.
TO THE LARGEST STORE OF ITS KIND IN THE ENTIRE MID-WEST

**Closed
Sunday**

Sale Starts Jan. 25 — Ends Jan. 31

**Open Wednesday and
Saturday Nights
Till 9:00 P.M.**

**Red Hot
Specials**
Reg. \$39.50
Innerspring
Mattress
Full or twin size

16⁸⁸

**Red Hot
Specials**
Reg. \$49.95
5-pc. Dinetto Set
Table, 4 padded
chairs

29⁸⁸

**Red Hot
Specials**
Reg. \$299.95
G. E. Stereo • Console
walnut, AM & FM
Radio

149⁸⁸

**Red Hot
Specials**
Reg. \$99.95
Speed Queen
WASHER
Enameled Tub

69⁸⁸

**Red Hot
Specials**
Reg. \$129.95
Upl. Living Room
Chair, foam rubber
reversible cushions,
large casters

69⁸⁸

**Red Hot
Specials**
Reg. \$10.95
Pole Lamp
3-bulb Lamp
adjustable

3⁸⁸

**Red Hot
Specials**
Reg. \$119.95
3-Pc. Bedroom suite
New Modern
Double Dresser
Mirror, full size bed
Fine Workmanship

74⁸⁸

**Red Hot
Specials**
Reg. \$69.95
L.O. Bassett
Extension Dining
Room table

34⁸⁸

**Red Hot
Specials**
Reg. \$129.95
G. E. DRYER
with Filter
Porcelain Tub

89⁸⁸

**Red Hot
Specials**
\$10.95
L.O. Vinyl Seat
Dining Room Chairs
Sturdy Wood
Construction

5⁸⁸

Bedroom Suite
\$279.95 3-pc. Sectional, beautiful \$119.00
\$239.95 2-pc. Living Room Suite, nylon cover \$179.00
\$99.95 Studio Couch, nylon cover, coil spring
construction \$59.00
\$229.95 French Prov., choice of colors \$189.00

Bedroom Suite
chest and bed \$149.88
4-pc. Bassett Bedroom Suite, latest style and
design \$159.88
4-pc. Triple Dresser, mirror, chest, panel bed,
a real buy \$179.88

Bedroom Suite
\$39.50 Tufted Innerspring mattress \$19.88
\$39.50 Sealy Innerspring mattress
Heavy Damask ticking Closeout tick \$24.88
\$89.50 Foam Mattress and matching box spring \$49.88

One of the Largest Selections of Chairs
You Have Ever Seen.

MIRRORS

LIVING ROOM FURNITURE

- \$279.95 3-pc. Sectional, beautiful
- \$239.95 2-pc. Living Room Suite, nylon cover
- \$99.95 Studio Couch, nylon cover, coil spring construction
- \$329.95 French Prov., choice of colors

The most fabulous set of living room furniture you ever had

BEDROOM SUITES

- 4-pc. Bassett Bedroom Suite, latest style and design
- 4-pc. Triple Dresser, mirror, chest, panel bed, a real buy
- 4-pc. Wal. Johnson-Carper Bedroom Suite
- Over 600 Bed Room Pieces To Choose From

MATTRESSES & BOX SPRINGS

- \$39.50 Sealy Innerspring mattress
- \$89.50 Foam Mattress and matching box spring
- \$79.50 King Koil Quiltress, Innerspring

OVER 4 CARLOADS OF QUALITY BEDDING
SEALY, KING KOIL, SIMMONS AND OTHERS

CHAIRS AND ROCKERS

One of The Largest Selections of Chairs You Have Ever Seen

MIRRORS

- \$9.95 Plate Glass mirror 16x24
- \$12.95 Quality mirror 20x24
- \$19.95 16x56 door mirror

DINETTE SETS

- \$39.95 Drop Leaf Table
- \$49.95 Drop Leaf table & 2 chairs
- \$49.95 5-pc. table & 4 chairs
- \$59.95 5-pc. Large table, 4 chairs
- \$79.95 7-pc. Dinette table, 6 chairs
- \$75.00 5-pc. Round table, 4 chairs
- \$129.95 9-pc. Dinette, Large Extension table and 8 chairs

Over 600 Dinette pieces to Choose From

EARLY AMERICAN

- \$29.95 Early American chairs
- \$24.95 Delker Maple Night stand
- \$46.95 Maple book case
- \$110.00 Lounge wing chair
- \$259.95 Davenport, reversible cushions

END TABLES

- \$8.95 Cocktail Tables Wal.
- \$8.95 Step tables Wal.
- \$19.95 Square sectional table
- \$26.95 Crown-Italian Prov. Table

\$95.00 Bunk Bed

Includes ladder, guard rail, springs and two mattress-es. All wood parts are maple finish.

COMPLETE

59.88

\$36.95 Rollaway Bed

With Innerspring Mattress COMPLETE

24.88

DINING ROOM SUITES

- \$69.95 Modern extension table
- \$89.95 Solid Maple round table Delker
- \$75.00 Round wal. tables
- \$129.88 Wal. Hutch cabinet with glass sliding doors

DESKS

- \$39.95 student desk, wal.
- \$44.95 Wal. desk
- \$49.95 7 drawer maple finish
- \$72.95 Solid Maple Desk

Gigantic Selection of Desks.

Choose From Nationally Known Brand Names

Easy Terms

Sealy • Mastercraft • Bishop of Lebanon • Howard Parlor • Fort Smith • Lane • Bassett • King Koil
Timely • Johnson Carpenter • Broyhill • Coleman • Burris • Berkline • Sprague & Carelton • Simmons Etc.

Free Delivery

SPECIALS

- \$3.95 24x72 Luxurious carpet runners
- \$1.98 fashionable fiberglass toss pillows
- Prestone anti freeze with magnetic film
- \$9.95 chrome sturdy dinette chairs

FLOOR COVERING

- \$9.95 9x12 Linoleum Rugs
- \$69.95 9x12 Nylon carpet
- \$109.95 12x18 100% Nylon carpet
- 9x12 Rug Pad

Save Many Dollars on Carpet by the Yard. A large group of odds and ends on remnant accrolon linoleum, at discount prices.

LAMPS

- \$9.95 Three bullet adjustable pole lamp
- \$10.95 Tree lamp
- \$13.95 Tall table Lamp
- \$10.95 Denna Table Lamp, a Bargain
- \$2.95 Vanity Lamp
- \$4.95 Denna Vanity Lamp
- \$20.95 Beautiful floor lamps

LAMPS! LAMPS! And more LAMPS!

STUDIO & SOFA SLEEPERS

- Studio Couch, coil springs const.
- Nylon Studio Couch, beautiful
- Studio Couch with matching chair in nylon
- Hide-A-Way, beautiful, davenport by day - bed at night
- Beige Sleeper, nylon cover

Many Hide-A-Beds to choose from

Bargains

Attention Newlyweds:
Furnish your new house at prices never before possible. See us before you buy. Special discount on your purchases!

Prices subject to merchandise on hand. Some are one or two of a kind. Some slightly damaged. First come, first served.

SEDLACEK'S

Hanover

Phone ED 7-2345

Kansas

Open Wednesday and Saturday Nights
Till 9:00 P.M.

Yes, I Want Grass & Grain

Enclosed Find \$3 for 52 issues

Name

RFD or

Address

Town

USED MCHRY. AT SALE PRICES

- 1 used 630 John Deere Tractor, with farm-hand loader; tractor has power steering, good tires and in fine shape mechanically \$2,195.00
- 1 used M-F 65 gas Tractor, all extras, with loader \$2,650.00
- 1 used belt conveyor ensiloader for use in pit silo.
- 1 used J. D. 440 gas crawler-loader \$3,250.00
- 1 used J. D. 2010 Utility Tractor with new gas engine, adapt to loader real easy.
- 1 used 70 J.D. gas, with wide F. end, P.S., live P.T.O. \$1,850.00
- 1 730-D R.C. Tractor, Excellent, with front end \$3,350.00

NEW 2010 GAS R.C. TRACTOR, DEMONSTRATOR, CHECK WITH US FOR A REAL BARGAIN PRICE. 25 HOURS.

- 1 New J. D. 2 btm. plow — 60 per cent off new price.
- 7 used combines in stock (1 a 1964 J.D. 45 in excellent condition).
- 1 J.D. M-T Tractor with loader.
- 5 used tandem disk harrows re-conditioned and ready to go.



SALINA IMPLEMENT CO.

601 SOUTH BROADWAY TA 3-2206 SALINA, KANS.

We'll test your soil

FREE

during



"Ask Your Soil" month



Come in today and ask for your free soil sampling kit. Each kit contains sample bags and information sheets for several soil samples, along with easy-to-follow instructions. Then, bring your soil samples to us. We will send them out for complete analysis at no charge to you.

Act now! Free offer expires Feb.

This is your chance to "ask your soil" what it needs to produce the yield you want. We have a special free gift waiting for you when your soil test results are returned, so hurry!

C K PROCESSING CO.

2 1/2 Miles East of Sale Barn
MANHATTAN

PR 6-9269

January 24, 1967

18

Grass & Grain

Decision Soon On 'Fish Flour'

Is ground up whole fish a wholesome and beneficial food supplement?

The argument around "fish flour" may be resolved by the Food and Drug Administration before February 1 if it decides to approve fish flour as a food supplement.

Fish protein concentrate has long been looked on as a cheap, promising weapon against worldwide malnutrition.

Fish flour must be approved for use in this country before the government can sponsor its use in others. The reason is the fear that a Communist propaganda attack would be invited unless fish protein concentrate is first ruled safe and wholesome for Americans.

Fish flour is an almost odorless and tasteless light gray flour made from whole fish, including gills and guts.

The rated protein content of is about 80%, with the balance being, according to the Interior Department, mostly "beneficial minerals."

About 60% of the world's population borders on protein starvation. Another 20% receives insufficient protein.

A Food and Drug spokesman indicated at a recent Senate subcommittee hearing that his department expected to make a decision by February 1.

One of the leading advocates of the fish flour at the hearings has been Sen. Edward Kennedy (D-Mass) whose state's fishing industry has a large stake in the issue.



FOR SALE
Miniature wall brackets
lamps, black, white or gold
tal with colored glass 2"
(burns oil); modern.
\$3.50 each or 6 for \$17.
MRS. PHYLLIS LAKIN
2040 Ft. Riley Blvd.
Manhattan, Kansas

FARMS - RANCHES

Offered By Legere Auction & Realty Co.
Phone 913-674-2249, Hill City, Kansas

EXCLUSIVE LISTINGS

YUMA COUNTY, COLORADO — Irrigation! 1,206 Charley Crews farm mid-way between Burlington Wray, Colorado, 1 1/4 mile below the noted Bonney farm. Also Republican River rights. Also, one new with AC pump, 75 hp, estimate 1000 GPM, 56" shale. Only 11 miles to sugar beet dump! 150 acres alfalfa, 3 acres wheat — all goes, full possession! 3 sets improvements. Terms: 29% down, balance ten equal annual stallments @ 5 1/2%. PRICE ONLY \$132.50 per acre. Don Legere NOW!

GOVE COUNTY, KANSAS — 1,760 acres, TERMS 4 1/2% All in one tract; 125 acres cultivation, balance native grass, considerable acreage of grassland lays for cultivation, deep, fertile soil; fences good. Price \$100 acre, 29% down, balance ten equal annual stallments @ 4 1/2% per annum. (Choice investment)

OSBORNE COUNTY, KANSAS — 240 acre Grade A Farm, improved. Home large old stone, dairy barn, poultry house, supporting outbuildings, close to town, all-weather road. Dairy & Irrigation equipment go with farm. Owner says due to health SELL! Priced to do with or without Holstein cows. Additional acreage grass land available. Call your Nationally accredited farm land broker, Don Legere, 913-674-2249 NOW!

NORTON COUNTY, KANSAS — 1040 acres, fair improvements, native grass & farm land. Excellent, fences good. One of Norton County's finest farm ponds. Long term cal terms available; priced for quick sale. Call Don Legere 913-674-2249.

Call Don Legere, "Nationally Accredited Farm & Broker" Hill City, Kansas. (Real Estate Brokers cooperate)

LEGERE AUCTION & REALTY CO.

AUCTIONEERS

REALTORS

913-674-2249

HILL CITY, KANSAS

(Licensed Kansas-Colorado-Nebraska-Oklahoma)

MR. FARMER YOU'RE INVITED

CORN — SORGHUM — SOYBEAN PRODUCTION CLINIC

COVERING THE LATEST PRODUCTION TECHNIQUES

FOR GREATEST NET RETURN

ALL PHASES OF CROP MANAGEMENT FROM PLANTING THROUGH HARVEST — DISCUSSED BY THE EXPERTS

Mid-America Fairgrounds, Topeka, Kansas
Exhibition Hall — 9:30 a.m. to 3:00 p.m.

Friday, February 3, 1967

Your Hosts

- Allied Chemical Company
- Allis Chalmers Manufacturing Co.
- Amchem Products, Inc.
- Behlen Manufacturing Company
- DeKalb Agricultural Assn., Inc.
- Velsicol Chemical Corporation

Come Early

Coffee

Free Lunch

SALE
all brackets
white or gold
d glass 2"
modern.
or 6 for \$17.
LAKIN
Riley Blvd.
ttan, Kansas

ES

alty Co.
Kansas

ion! 1,206
Burlington
ed Bonney
full length
so, one new
t, 56' shale. Mile
equipment go
3 sets improv
equal annual
0 per acre.

res, TERMS
tion, balance
assland lays
good. Price
al annual ins
tment)

re Grade A Dai
dairy barn, ba
close to town
quipment go
Priced to do
al acreage gra
credited farm
OW!

res, fair improv
ent, fences go
nds. Long prac
le. Call Don

ALTY CO

ALTY CO

ALTY CO

ALTY CO

ALTY CO

ALTY CO

ALTY CO

ALTY CO

ALTY CO

ALTY CO

ALTY CO

ALTY CO

ALTY CO

ALTY CO

ALTY CO

ALTY CO

ALTY CO

ALTY CO

ALTY CO

ALTY CO

ALTY CO

ALTY CO

ALTY CO

ALTY CO

ALTY CO

ALTY CO

ALTY CO

ALTY CO

ALTY CO

ALTY CO

ALTY CO

ALTY CO

ALTY CO

ALTY CO

ALTY CO



Cloud SCD Winners

Winners of conservation awards at the annual meeting of the Cloud County Soil Conservation District were Lawrence Ark, Wilmer Resco, Milt Pilcher, Ed Chaput, and Dean Holbert.

Federal Loan Plans Give Farmer Hedge On Grain Market

Many farms are using federal mechanisms to speculate on grain markets.

They are storing more than million dollars worth of wheat, corn, rice, other grains and soybeans under Agriculture Department price support loans as a means of holding title to these commodities while at the same time obtaining money to finance their farm operations.

They're expecting to redeem crops when prices rise even higher than current levels.

It has been normal for farmers to put extra crops under loans, particularly when prices were in line with market prices or above those prices.

But 1966 market prices have been running considerably above loan rates. This reflects the fact that price-depressing

pluses of the past no longer exist and possibilities that supplies may become tight before crops are harvested.

By placing grains under loans, the farmer is able to take advantage of later advances in prices. There is a general feeling in agriculture that prices of

st grains and of soybeans rise considerably above

present levels during the spring and early summer. If and when prices advance, the farmer can pay off his loan and cash in on the advance.

The amount of 1966 crop corn put under support loans through December was 110 million bushels compared with 102 million in the like period a year earlier. Soybeans put under loans totaled 116 million bushels compared with 67 million a year earlier. Wheat totaled 109 million bushels compared with 150 million last year.

Wheat prices at the farm averaged \$1.61 a bushel in December compared with the loan rate of \$1.25; corn was \$1.29 compared with the \$1 loan; soybeans were \$2.82 compared with the \$2.50 loan.

Department officials said if farmers sold crops on the markets rather than storing some under loans, market prices would be reduced at post-harvest periods of sale.

But, they said, prices would rise ultimately with grain merchants and market speculators reaping all the benefits. The support program helps, they said, to share any price advance benefits with producers.

Set A Date For Big Area Angus Day

The nation's oldest and largest Angus field day has set its 1967 date.

The 1967 Better Livestock Day will be April 20 at the Andy Schuler farm southeast of Chapman. This will be the 39th annual event sponsored by the Geary-Dickinson Angus Association.

Loyd Black, Leon Gelsert, Clyde Albers, and Dean Felbush.

LINCOLN CO. SCD MEETING IS JAN. 26

LINCOLN — The annual meeting of the Lincoln County Soil Conservation District will be Thursday, January 26, at the Lincoln Grade School. Tom Dicken, area conservationist from the SCS, Hays, will be speaker.

ANOTHER NO TO STATE MEAT IMPORT LAW

Another state has had set aside by courts a law which required that meat imports be so labeled. Three federal judges in Des Moines have ruled that such an Iowa law is void and unconstitutional. A similar law in Oregon was recently ruled invalid by a federal court.

DURHAM CO-OP NET SAVING OVER \$40,000

DURHAM — The Farmers Cooperative Grain Association had sales of \$763,183 with a saving of \$41,940 it was reported at the annual meeting. Members reelected Harry Helmer and Clinton Kaiser to the board. Virgil Weibe is the manager.

PROPERTY TAX ROUTE TO VET. SCHOOL REBUILDING

K-State's College of Veterinary Medicine is going to need a cash building program to put back within accreditation, the taxpayer may have to set up another quarter of a million more in property taxes.

The State Board of Regents last week agreed to ask the Legislature to increase the educational building fund so that the veterinary college could get \$2 million to start a \$14 million rebuilding program.

Charles Cornelius, dean of the veterinary college, said the national accrediting body has given K-State 18 months to make for improvements or lose accreditation. Losing such sanction would mean that K-State graduates would not be licensed to practice.

K-State made the request to Board of Regents to ask for \$1 million from the state over the next five years. The other \$13 million in the program would come from the federal government, institutional grants, and possibly a bond issue.

If the legislature accepts the Board of Regents' proposal, it would likely mean an increase of one-fourth to one-half mill on all state property taxpayers. While nearly all property taxes are collected for city, county, school, and other local purposes, the state does collect a blanket 1.5 mills (\$1.50 for each \$100 of assessed valuation) across the state. Of this .75 mill is for educational buildings, mills for dormitories, and mills for other state institutional buildings.

A quarter of a mill raises \$1 million in revenue for the state.

To Cost More To Graze U.S. Public Land

Grazing livestock on federal land in the Rocky Mountain and Southwest U.S. areas is going to cost more money this year.

Edward Cliff, chief of the U.S. Forest Service, said the fee will be for sheep and two cents a

for sheep and two cents a month for cattle.

He said the entire grazing fee system will be revised in 1968, and that increased recreational demands are forcing modification of grazing practices on federal land.

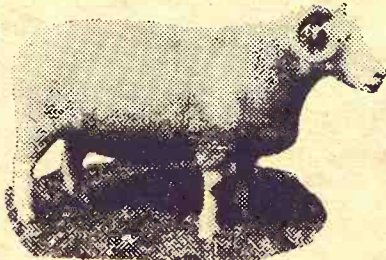
January 24, 1967

Grass & Grain

19

SHEEP SALE

Monday, January 30



WEST SALE BARN

Concordia, Kans.

Starts 1:00 p.m.

EXPECTING

500 TO 750 HEAD

SHEEP OF ALL KINDS

BREEDING EWES FEEDER LAMBS FAT LAMBS EWES WITH LAMBS

For Information Contact Tom Walker, Concordia, CH 3-1674 Or Auctioneers

Larry Lagasse — Concordia Phone CH 3-1714

Rollie Lagasse — Concordia Phone CH 3-2215

Concordia Sales Company

"NO COAXING"

needed to get baby

pigs eating early!



when you start them on



PIG GUARD 250

This is the starting creep feed that caters to baby pigs' tastes with concentrated growing power! . . . Aureo SP 250 to safeguard health! SEE US!

CK Processing Co.

MANHATTAN, KANSAS

Telephone PR 6-9269

Clay Center Alfalfa Mill

CLAY CENTER, KANSAS

Telephone ME 2-3401

AUCTION SALE

Friday JANUARY 27

Starts 11:00 a.m. Lunch Served

I will sell at Public Auction the following described property located 2 miles south and 1 mile east of the 24-81 Highway Junction or 16 miles south and 1 mile east of Concordia.

Machinery

1952 IHC M tractor, good rubber and A-1 shape
1937 Allis Chalmers WC tractor, good rubber
IHC 25V 7-ft. mower
Moline 16-8 drill with fertilizer and press wheels and near new discs
Moline tandem disc, drag type; IHC 16-ft. spring tooth; IHC 2-row lister; IHC 2-row cultivator; 2 IHC 2-row weeders; JD 2-row lister, good shape; JD 3-16 plow, good shape.
Ford 2-row cultivator, 3 pt.; Ford 2-row lister, 3 pt.; Post hole digger, 3 pt.; 4-section rotary hoe; 24-ft. hay elevator with electric motor; tumble

bug; Dempster pump; Flex-N-Gate stock racks for long, wide bed, near new; sideboards for 1/2-ton pickup; Allis Chalmers 3-16 plow.

106 HOGS

39 — Cattle

6 Black WF first calf heifers, calve soon
6 Black Angus cows, 4 to 6 yrs. old, calve soon
10 Crossbred cows, 4 to 6 yrs. old, calve soon
7 Crossbred cows with calves, 4 to 6 yrs. old
2 Crossbred yearling steers
1 Crossbred yearling heifer

SHEEP — CHICKENS

MISC. & FURNITURE

HARRY VANEK, Owner

Clerk: First National Bank, Concordia
Aucts: Rollie Lagasse, Ph. CH 3-2215, Concordia; Larry Lagasse, Ph. CH 3-1714, Concordia



5th Annual Production Sale

VALLEY HEREFORD FARM

REGISTERED POLLED HEREFORDS

Thurs., Feb. 2 at Goff, Kans.

55 HEAD

18 BULLS

17 BRED HEIFERS

20 OPEN HEIFERS

BULLS, coming 2 year old, good growthy bulls, ready for service.

BRED HEIFERS, bred to M.S.F. Bib Chief 9th, in good pasture condition.

OPEN HEIFERS, most old enough to breed, some may be bred by sale date.

ALL CLEAN PEDIGREES

Sale will be held in new heated sale barn at the farm, 2 miles west of Goff, Kansas on Hwy. 9. Lunch will be served by Goff W.S.C.S.

FOR CATALOG:

Valley Hereford Farm

Carl Funk

Edward Funk

Goff, Kans.



Auctioneer:
JEWETT FULKERSON
Liberty, Mo.

SAME OFFICERS IN FARM CREDIT BANKS

The same officers continue in their positions with the three farm credit banks in Wichita following annual meetings. Kenneth E. Lyon continues as president of the Federal Intermediate Credit Banks; William G. Plested Jr., Federal Land Bank; and James R. Williams, the Bank for Cooperatives. The three banks make loans thru FLBAs, PCAs, and other farm co-ops in Kansas, Oklahoma, Colorado, and New Mexico.

DISTRICT SHEEP MEETING AT ABILENE TODAY

ABILENE — A district sheep and wool meeting is being held today (January 24) in Abilene. Edgar Hoover is secretary of the district association.

Breakthru On Wheat Smut

WICHITA — A breakthrough in control of diseased wheat, termed the greatest development in 25 years, was reported last week to the Kansas Seed Dealers Association.

About one-third of the 10 million acre Kansas wheat crop could be treated with the process with a savings to growers of up to 2 million dollars a year, said Dr. Earl Hansing of Kansas State University.

Dr. Hansing said that for 70 years the only control of the disease known as loose smut has been to treat seed with hot water. This is difficult and not entirely effective, he added.

The new method involves a pink powder called vitavax, which was developed by the United States Rubber Company and approved by the U.S. Department of Agriculture, he said.

Dr. Hansing said farmers can add three ounces of the powder to a bushel of wheat. The chemical is absorbed into young plants and kills the disease in four or five weeks.

Dr. Hansing said the chemical can also be used on such grains as barley, oats and sorghums. He said present chemicals on the market do not control the disease and are not absorbed by young plants, but rather coat the seed surface.

Dr. Hansing said the powder is now limited to experimental stations, but could be made available to farmers later this year. He explained the loose smut disease as a fungus which eventually turns the head of a seed black and forms tiny spores which affect other seeds.

Dr. Hansing said the disease is not easily detected in early stages and that when such seed is planted it may be a year before the fungus becomes fully active.

Dr. Hansing said tests in Kansas with the chemical have been mainly on winter wheat and sorghums, but that experi-

ments in North Dakota and South Dakota have been on spring barley.

AUCTION SALE

Thursday
JANUARY 26

Starts 1:00 p.m.

Lunch Served

We will sell at Public Auction our entire dairy herd and most of our stock cows at farm located 8 north and 1 1/4 east of Clay Center or 1 1/2 south and 1 1/4 east of the Garfield Center store.

Dairy Cattle

Holstein cow, 6 yrs., was fresh Jan. 2
Holstein cow, 6 yrs., was fresh Jan. 6
Holstein cow, 6 yrs., was fresh Jan. 4
Holstein cow, 6 yrs., will freshen by sale day
Holstein cow, 6 yrs., was fresh Sept. 1
Blk. WF cow, 4 yrs., was fresh Jan. 2
Holstein cow, 4 yrs., was fresh Dec. 26
Holstein cow, 2 yrs., was fresh Dec. 31
Holstein cow, 2 yrs., was fresh Dec. 31
Holstein cow, 2 yrs., was fresh Dec. 30
Holstein cow, 2 yrs., was fresh Dec. 31
Note: Bangs tested in last 3 weeks, cows giving up to 8 a day. Good herd.

Hereford Stock Cows



10 Hereford cows, 4 to 7 yrs.
10 Hereford cows, 4 to 7 yrs. to calf in Feb, Mar, & April
2 Hereford cows, 6 & 7 yrs., to calf by sale day
Blk WF cow, 4 yrs., to freshen by sale day
2 Hereford bull calves, 450 lbs.
Holstein bull calf, purebred 5 months
4 blk WF bucket calves
Area Tested

Mr. & Mrs. Leroy W. Nelson, Owners

Aucts: Foster Kretz & Elmo Steffen
Clay Center, Morganville WA 6-4422

Clerk: Peoples National Bank, Clay Center

AUCTION SALE

Friday
JANUARY 27

Starts 9:30 a.m.

Lunch Served

Having decided to quit farming and rented our farm, we will sell at Public Auction on the farm located 2 miles east and 1 mile south of Riley, Kansas.

Farm Machinery

Following are just a few of over 50 pieces of better grade farm machinery. For complete inventory see Grass & Grain, Jan. 17.

1956 IHC 40 Otractor, fully equipped, good rubber, LPO and L hyd., good
1954 IHC Super H tractor, fully equipped, L hyd., good rubber, good
1954 IHC Super C tractor, wide front end, fast hitch, good rubber, good
1963 Baldwin 12 ft. combine, model E, low acreage, always shedded, like new
1958 IHC No. 46 hay baler, fully equipped, good
1964 Fox silage wagon on wide track, Electric Wheel trailer, very good
1963 IHC No. 10 16x8 grain drill, fertilizer, power lift, very good
1961 IHC No. 100 balance head trail type mower, with hook up for hay conditioner, good
1961 Cunningham No. 8 hay

conditioner, good
1962 IHC 12 ft. No. 37 wheel disc, good
IHC No. 2 spring tooth with evenner control, good

HOGS

12 Yorkshire sows to farrow the 1st week of March, 2nd & 3rd litters.

HORSES AND EQUIPMENT
1 Bay Quarter Horse mare, 7 years, well broke; bay Quarter mare, 5 years, broke. stock saddle; 2 bridles; set good work harness.

TRUCKS

1959 Ford F-600, 2-speed, V-8, radio and heater, hoist, 13 1/2 ft. grain bed, stock racks, hog deck, top boards, 32,000 actual miles, very good.
1950 Ford 3/4 ton pickup, 4-speed, HD, grain sides & stock racks, good

HAY, FEEDERS, PANELS, SHOP TOOLS, CHICKEN EQUIPMENT & MISC.

AND SOME

HOUSEHOLD GOODS

For Full Listings, See Grass & Grain, Jan. 17

OREN MORRIS

Aucts: Foster Kretz & Elmo Steffen
Clay Center, Phone WA 6-4422 Morganville

Clerk: Riley State Bank of Riley, Kans.

QUITTING BUSINESS

AUCTION

Coons and Kohler Garage and Service Station, White City, Ks.

Wedn., Feb. 1

Starts 10:00 a.m.

PARTIAL LIST

'46 Willys Jeep; '56 Chev. 1/2 ton panel; '58 Chev., 4-dr.; 14 parts bins, 2 Coates air oper. tire changers, jacks, 2 hydraulic post lifts, 2 air compressors, lube equip; 3 gas pumps—2 are low-boy; overhead heaters, 7-case upright Pepsi-Cola vending machine, cigarette vending machine; 120 new Firestone auto tires, auto, truck and tractor tubes, line of AC and Delco auto parts including plugs, points, etc., oil filters, brake shoes, generator parts, bearings, etc.
For more complete list contact:

Jim Kirkeminde,
Auctioneer

135 E. 29th, Topeka, Kans.
AM 6-4590

REMINDER

AUCTION

Having decided to quit farming I will sell at public auction on my farm located 4 north and 1/4 west of Morganville, or 10 north & 4 1/4 west of Clay Center.

Wedn., Jan. 25

Starts 12:30 Noon

Farm machinery, including 1937 John Deere A tractor on rubber.

GOOD HOUSE TO BE MOVED

20x30 frame 1 story 4 rooms & bath, oak floors; builtins, was built in 1954. 1st Jan. 1968 for removal. Your inspection invited by appointment with Lafe Schwab.

Also Household Goods

For full listings see Grass & Grain, Jan. 17.

HARVEY GOOCH

Auct.: Foster Kretz

AUCTION SALE

Having decided to quit farming we will sell at public auction on the farm located 12 north and 2 east of Abilene, 2 1/2 and 2 west of Clay Center, or 3 south of Industry, Kans. on el road.

Farm Machinery

1952 Oliver 77 tractor, row crop, L Hyd., L.P.O., good rubber, very good
1952 Massey Harris 7-ft. Clipper combine, P.T.O., good
1954 Dodge 3/4 ton H.D. pickup, heater, new motor & rubber, 4 speed, grain sides, good
IHC 8-ft. tandem disc
IHC 12-ft. dump rake
IHC single-row lister
IHC 6-ft. mower with tractor hitch
6-ft. mower swather
IHC 2-row weeder
Emerson manure spreader, on steel
Case 16x8 grain drill, on steel, press, good
Oliver 2-row mounted cultivator
Oliver 2x16 plow, on steel
12-ft. 4-in. grain auger, with motor
10-ft. 6-in. auger, with motor
Single-row cultivator
Fanning mill
4-wheel trailer with wagon box
Lumber wagon and box, good
8-ft. land roller; 1 antique

corn drill, walking plow, tooth cultivator; H. sh. plow; several old tongue junk iron and old machine old wagon wheel irons.

CHICKENS
24 heavy breed pullets (Nice ones).

FEED AND MISC.
50 bu. oats; 100 bu. ear corn; 400 hedge some barb wire; small form scale; 500 chick brooder; grind stone; belts;

Fairbanks gas engine; sheller; stock saddle; sets harness; 1 set single double driving harness; barrels; car chains; log 2 Oliver hyd. cylinders; Cistern pump & chain; sprayer; rope; forks; er; shovels; hand tools many small misc. items numerous to mention.

HOUSEHOLD GOODS
Platform rocker; 3/4 bed; odd chairs; cot; drop table; wood or coal range; tique commode, sausage er; kero lamp; lantern; jars; stone jars; and some er household items.

Mr. & Mrs. Earl Kauffman, Owners

Aucts.: Foster Kretz & Elmo Steffen,
Clay Center, Kans.

Phone WA 6-4422, Morganville.

Clerk: Claire Talmage,
Banker: Bank of All

AUCTION SALE

Monday
JANUARY

Starts 11:00 a.m.

Lunch Served

Due to the death of my husband I will sell at public on the farm located 5 north and 1/2 east of Riley, Kans. east of Leonardville on Highway No. 77.

CATTLE
2 Holstein heifers, coming yearlings
3 black bucket calves, 3 mo. old
Red brindle calf, 3 mo. old

Horses & Equip.

Appaloosa gelding 2 yrs., roan, well broke, wgt. 900 lbs., nice
Appaloosa mare, 2 yrs., green broke, bred, light roan, nice
2 matched Sorrel Shetland geldings, broke, drive or ride, pullers
Small 4-wheel wagon and box for Shetlands, on rubber
2-wheel breaking cart for Shetlands, on rubber
Good stock saddle; bridles; halters; set good work harness; pony collars for Shetlands; other horse equipment.

Weed sprayer with boom tractor mounted, good
Shop built 4-wheel trailer flatbed
Horse drawn mower
Old wagon box, some old iron and machinery

TRUCKS

1963 Dodge 1/2 ton pickup wide bed, 4-speed, good radio and heater, real nice
IHC 1-ton truck with bed in good condition
Set steel stock racks for Dodge pickup, push in good

HAY, GRAIN, PANELS, BUILDINGS, POSTS & MISC.

300 square bales prairie inside; 50 square bales inside; 100 bales wheat 160 bu. milo; 150 bu. some rolled milo; double rowing house; 6x4 building; a lot panels.
Steel posts; electric posts; electric wire; electric fence; steel post driven stock electric clipper; set with wood vice; dehorn small gas heater; vise; Lincoln 180 amp. welder gas cutting torch with pump jack and motor; 4 in. grain auger; wheel er; bench grinder and electric drill; saws; wrenches; grease guns; et set; large metal tool paint sprayer with motor; hyd jack; drop cord; hose; bars; saws; rope; good hand tools and misc. items too numerous to mention.

Farm Machinery

1954 WD 45 Allis tractor, fully equipped, power steering, L hyd., LPT., fair rubber, good
Allis mounted 3x14 or 4x14 plow, good
Allis mounted 2-row cultivator, good
1952 IHC No. 45 hay baler, good
1952 IHC No. 45 hay baler, good
New Idea manure spreader, A-1, on rubber, good
JD No. 5 mower, good
Case 12-ft. spring tooth, good
3-section drag harrow and evenner
2 IHC 8-ft. tandem discs, pull type

MRS. ROBERT MANKA, Owner

Clerk: C. T. Benninga, Leonardville, Kans.
Aucts: Foster Kretz and Elmo Steffen, Clay Center,
Phone WA 6-4422 Morganville.

Reco

A record 586
tle and calves
Kansas as of Jan
the Federal Sta
Livestock Repo
The service s
increase of 22 f

CHAN SOM

As recent

necessary to
therefore ha
value.

SA

N

BU

315 South

REVISED

1961 Ford 800
1961 Ford 800
1947 Ford-Fer
1960 B275 IH
1941 Oliver g
1941 Minn-Mo
1941 M Farm
1952 MD Farm
hitch ...
New Holland

250 Ford PTO
2-New Holla
Kewanee 9-ft.
New Holland

A-C single ro
6' Allis Chalm
2-3-14 IHC s
2-14 Late sty
Ford Corn He
Allis Chalmers
A-1 ...
JD PTO corn
New Holland
Massey-Harris
Horne Loader
Da West Loa
IHC 2 wheel
Leroy motor
1956 Ford Car
1948 Ford 8N
Several new p
priced for
1966 new Ford
1966 Ford mo
1965 Noble 3
2-1966 Ford 3
1965 Ford 5-1
1966 Ford Ser

1966 model 32
1966 Ford 3-pt
1966 BMB 5-ft
1965 Landmas
1966 Superior
—Demo.
1965 3-pt. Har
1965 269 PTO
KSU one
1965 269 PTO
warranty
New 3-pt. 6-ft
1966 Ford Pic
New 1966 Win

Tractor Cabs
items

17th

KVH

Sellin

3

H

M

KAW VA

GARLAND GI

Record Number Of Feeders

A record 586,000 head of cattle and calves were on feed in Kansas as of Jan. 1 according to the Federal-State Crop and Livestock Reporting Service. The service said this was an increase of 22 percent above the

humber on feed for slaughter market a year ago, and 41 percent above the 1961-65 average for the date.

Farm feeding operations accounted for 275,000 and 311,000 were on feed in large feedlots

with a capacity of 1000 head or more.

Sheep and old crop lambs on feed for market as of Jan. 1 were 75,000 head, less than half the number a year ago.

The service said this year's number on feed is the smallest since records began in 1940 and only about one-third of the 1961-65 average.

The service said the reduction is due to relatively poor feeding conditions in all areas except for scattered localities in western Kansas that have some wheat pasture available for grazing.

paig.

Strnad said he would oppose any action by the Kansas Farmers Union for any kind of a trade boycott.

Grass & Grain

21

January 24, 1967

LAND AUCTION

(real estate formerly owned by L. C. Kieferle, now deceased)

TRACT NO. 1: East Half (E½) of the Northeast Quarter (NE¼) of Section 35, Township 14 South, Range 2 East, Dickinson County, Kansas

located 3 miles west of Navarre — all grass, well-fenced, never-failing spring water — Possession when title approved and purchase price paid.

TRACT No. 2: North Half (N½) of the North Half (N½) of Section 2, Township 15 South, Range 2 East, Dickinson County, Kansas

located 3 miles west, 1 mile south of Navarre — very productive quarter, approximately half choice Turkey Creek bottom, contains 105.7 acres crop land, balance good grass — wheat allotment 49.2 acres, feed grain 23.0 acres, conserving base 6.0 acres — Possession when title approved and purchase price paid, except growing wheat, which possession will be given after 1967 wheat harvest, landlord's ½ share of wheat crop to purchaser. Landlord's share of ASC payments to purchaser.

Sellers to pay 1966 and prior years' taxes on both tracts.

Warranty deed and abstracts showing merchantable title furnished, except above tracts sold subject to pipeline easements and an outstanding one-half interest in minerals on 85 acres of tract No. 2.

SALE WILL BE HELD AT SOUTH FRONT DOOR OF THE COURTHOUSE IN ABILENE, KANSAS FEBRUARY 7, 1967, 10 O'CLOCK A.M.

Terms: 25% down on date of sale and balance when title is approved.

For particulars contact **RAY D. WILSON**, broker, Abilene, Kansas, or **LEHMAN, ROMINE & GUILFOYLE**, Abilene, Kansas, attorneys for owners.

CLARENCE RIEKEMAN and EDWARD SHERRADEN
Agents For Owners

Farm Boycott 'For Nitwits'

BREWSTER — A prominent Kansas wheat farmer said last week a "stop buying" campaign by some farm groups in several northwestern states is "idiotic."

Lud Strnad, who also is president of the Farmers Union Cooperative Marketing Association, said such a campaign "makes good, self-respecting farmers look like economic nitwits."

"If farmers would stop purchasing, a statewide depression would be underway immediately, needlessly hurting thousands of small businessmen," said Strnad in a prepared statement. "Excessive profits made by farm equipment and car manufacturers are the objects of the farmers' wrath, not main street businessmen."

Strnad's statement followed a visit at Topeka between the North Dakota and Kansas Farmers Union presidents to discuss possible Kansas participation in the stop-buying campaign.

Line A Bin

Every few months we collect enough used printing plates that we sell them at less than scrap prices to farmers who find various uses for them. The plates are about 2 ft. x 3 ft., and made of zinc-aluminum. They're not heavy enough to stop a charging steer but they are useful to ratproof and line bins, cover rough fencing and shelters, patch bin floors, and use for various farm purposes.

First come, first served. 10 for \$1; 50 or more, 8c each. Ag Press, 1207 Moro, Manhattan, Ks.

CHANGE OF OWNERSHIP SALE SOME ITEMS REDUCED 50%

As recent purchasers of McManis Ford Implement Co. of Manhattan, we find it necessary to reduce the inventory as soon as possible, and therefore have cut asking prices far below the machinery's value.

SALE ENDS JANUARY 28

**SALE INCLUDES MACHINERY,
NEW & USED ITEMS & HARDWARE**

BURNS-SALISBURY, INC.

315 South 3rd Street **PR 8-5731**
MANHATTAN, KANS.

REVISED LISTINGS FOR FINAL WEEK

- | | |
|--|-----------|
| 1961 Ford 800 model tractor, SOS Live PTO Gas | \$1595 |
| 1961 Ford 800 model tractor, SOS Live PTO Diesel | \$1650 |
| 1947 Ford-Ferg. 9N w/with stepup transmission | \$395 |
| 1960 B275 IHC Diesel, 3-pt., good | \$725 |
| 1941 Oliver gas tractor | \$95 |
| 1941 Minn-Moline tractor with mounted cultivator | \$80 |
| 1941 M Farmall gas | \$395 |
| 1952 MD Farmall, 9 speed, live PTO, Power Steering, snap hitch | \$895 |
| New Holland 271, string tie, PTO baler, with thrower, A-1 | \$1000 |
| 250 Ford PTO, string tie baler, Reconditioned | \$300 |
| 2-New Holland 66 Hay Balers, PTO, String, good choice | \$165 |
| Kewanee 9-ft. wheel disc, 1963, good | \$295 |
| New Holland super 77 hay baler with motor (2) your choice | \$125 |
| A-C single row field cutter, PTO | \$125 |
| 6' Allis Chalmers mounted disc | \$30 |
| 2-3-14 IHC snap hitch plows, slatted moldboard, good | \$100 |
| 2-14 Late style Dearborn plow, good | \$85 |
| Ford Corn Head, 2 row for Ford self propelled combine | \$110 |
| Allis Chalmers 2 row 3 pt. mounted top planter w/ fert. A-1 | \$135 |
| JD PTO corn sheller, good condition | \$135 |
| New Holland 611 Single field cutter, w/motor | \$225 |
| Massey-Harris Clipper 7' combine, PTO good | \$45 |
| Horne Loader w/brackets for 800 Ford tractor | \$60 |
| Da West Loader w/ brackets for IHC | \$75 |
| IHC 2 wheel manure spreader | \$75 |
| Leroy motor off of Papez chopper | \$50 |
| 1956 Ford Car, 6 cyl., stick | \$75 |
| 1948 Ford 8N tractor, good | \$485 |
| Several new pieces of machinery in stock, weathered, some priced for quick sale, no trade at this price. | |
| 1966 new Ford string tie, PTO baler, model 530 | \$1475 |
| 1966 Ford model 510 crimper, — Demo | \$550 |
| 1965 Noble 3 pt. 5 ft. v type plow — Demo | \$135 |
| 2-1966 Ford 3 pt. monitors | Ea. \$275 |
| 1965 Ford 5-14 semi mounted plow — Demo | \$450 |
| 1966 Ford Series 311 pull type planter w/ fert. attach. (demo) | \$950 |
| 1966 model 325 N-H spreader — Leased one year | \$595 |
| 1966 Ford 3-pt. tandem disc — Demo | \$265 |
| 1966 BMB 5-ft. pull type rotary cutter — Demo | \$285 |
| 1965 Landmaster Dirt Scoop, 10 ft. — Demo | \$325 |
| 1966 Superior front end loader w/front pump, mech dump — Demo | \$475 |
| 1965 3-pt. Hammil real cultivator (new) | \$140 |
| 1965 269 PTO string tie baler, w/ bale thrower, leased to KSU one year, new warranty | \$1650 |
| 1965 269 PTO wire tie baler, leased to KSU one year, new warranty | \$1795 |
| New 3-pt. 6-ft. blades | Ea. \$70 |
| 1966 Ford Pitmanless 8' 3-pt. mower — Demo | \$425 |
| New 1966 Winpower posthole digger w/9" auger Demo | \$115 |
| Tractor Cabs \$39.95. Knipco heaters \$99.95 up. Many other items. Stop by the store and get acquainted. | |

17th ANNUAL KAW VALLEY HEREFORD ASSOCIATION

SHOW and SALE

Wednesday, February 1, 1967 — Manhattan, Kansas

Manhattan Sale Barn, 2 miles East of Manhattan - Highway 24

For List of Consignors, See Grass & Grain January 17.

Selling ...

33 BULLS

HORNED AND POLLED

Many Serviceable Age

15 BRED AND OPEN HEIFERS

**ALSO COMMERCIAL
HEIFERS**

Gene Watson, Auctioneer

KAW VALLEY HEREFORD ASSOCIATION

For Catalog Write

GARLAND GIDEON, Sale Manager, • Paxico, Kansas

SHOW 10:00 A.M.

SALE 1:00 P.M.

IMPLEMENTS & EQUIPMENT

- 1953 W.C. Allis tractor with P.T.O., good
1953 B. Allis tractor with 5 ft. mower, P.T.O., good
1960 Ford Industrial 800 series tractor with Industrial Hydraulic loader, scoop, new John Deere 6 ft. blade
2 - 5 ft. Allis combines, good
3-14 IHC plow, 3 pt. hitch, good
2 row Case cultivator
7 ft. IHC power mower
Slip-in pickup truck rack

TRUCK

- 1963 Chev. 2 T, 2 sp., with grain bed, twin cylinder hoist, A-1; 8x18 truck tarp

Grain Equipment

- 280 bu. Morridge grain drier, used 1 season, A-1
2 - 500 bu. steel hopper bins on stands
2200 bu. oil field tank
2 - 34 ft. Speed King augers, on rubber carriage, P.T.O. new
27 ft. Speed King grain auger, on rubber carriage, new
60 ft. Mayrath grain auger, on rubber carriage, P.T.O., new in 1965
27 ft. Mayrath grain auger, on rubber carriage, good
30 ft. Mayrath grain auger, on rubber carriage, good
21 ft. Mayrath grain auger, on rubber carriage, good
16 ft. 4 in. grain auger with electric motor, A-1
2 - 16 ft. 4 in. grain augers, new
2 - 12 ft. 4 in. grain augers, good
2 - Dunham 5 ft. rotary mowers, P.T.O. 3 pt. new
30 ft. bale elevator, new
4 ton fertilizer spreader, A-1
2 - 1500 lb. fertilizer spreaders, new 1966

- 2 - 9 H. Briggs & Stratton gas engines, new
2 - 9 H. Briggs & Stratton gas engines, used, good
4 H. Briggs & Stratton gas engine
3 H. electric motor, enclosed, A-1
¾ H. electric motor
Allis stationary power unit

OFFICE EQUIPMENT

Vicker adding machine calculator, new in 1963, A-1; office desk; 2 swivel chairs; 4 drawer steel file; gas stove; radio; 4 case pop cooler; water cooler.

MISCELLANEOUS

Steenlite moisture tester, A-1; grain scale for tester; grain thermometer; 24 ft. brass extension probe; 4 ft. brass probe; Dockage sieve and screens; Grain Forger; gas masks;
2 ½ HP Aerator fans, new;
2 ½ HP Aerator fans, used;
Skil saw like new; 2 electric drills; 24 ft. aluminum extension ladder, A-1; 14 ft. wood ladder; 2 4-ft. step ladders; comfort cab, fit IHC tractor, like new; 2 rubber grain auger hoppers, new; tractor umbrella, good
2 air compressors; portable air tank; 3 bag carts; 500 lb. platform scale, H.I.; 30 ft. Flighting and tube; 10 gal. bin spray; Auger pulley; V belts, 200 lbs. new nails; new brooms; scoop shovels; log chains; hand tools; hammers, saws, mitre box; Wright chain saw, A-1; 300 gal. fuel tank on steel stand, like new;
2 55 gal. fuel barrels; used lumber, used tin; 5 rolls used hog wire; Army cot and other articles.

SEEDS

4500 lbs. Clover seed; 2000 lbs. Alfalfa seed; 1000 lbs. Western wheat grass seed.

ELYRIA GRAIN CO., Owner

Aucts.: **Ted Krehbiel**, McPherson; **Floyd Gehring**, Moundridge
Clerk: **Joe W. Goering**

G&G Calendar

- Jan. 25 — Reg. Hereford sale in Concordia, Swanson Bros.
- Jan. 25 — Farm sale north of Morganville, Harvey Gooch. Auct. Foster Kretz.
- Jan. 25, 1967—Trinity Lutheran church consignment sale northwest of Waterville, Herman Holle and Henry Zabokrtsky, church committee. Aucts. Fisher and Holle.
- Jan. 26 — Dairy & stock cow dispersal north of Clay Center, Mr. & Mrs. Le Roy Nelson. Auct. Foster Kretz.
- Jan. 27 — Farm sale southeast of Concordia, Harry Vanek. Aucts. Rollie and Larry Lagasse.
- Jan. 27 — Apartment house sale in Junction City, Mary J. Haun est. Auct. Jim Kirkemine.
- Jan. 27 — Farm sale southeast of Riley, Oren Morris. Auct. Foster Kretz.
- Jan. 28 — Farm sale southwest of Mayetta, C. A. Slattery. Evertt Hoobler, auct.
- Jan. 28 — Reg. Shorthorn dispersal sale, Effingham, Kans., Orville & Tom McLaughlin (Muscotah, Kans.). Sale mgr. Milton H. Nagely.
- Jan. 28 — Grain elevator close out in Elyria, southeast of McPherson, Elyria Grain Co. Aucts. Ted Krehbiel and Floyd Gehring.
- Jan. 28 — Reg. Polled Hereford dispersal southeast of Mt. Hope, Paul A. Dick & Sons, Mt. Hope, Kans.
- Jan. 30 — Farm sale east of Leonardville, Mrs. Robert Manka. Auct. Foster Kretz.
- Feb. 1 — Quitting business sale in White City, Kans., Coons & Kohler Garage. Auct. Jim Kirkemine.
- Feb. 1 — Farm sale south of Industry, Carl Kauffman. Auct. Foster Kretz.
- Feb. 1, 1967 — Kaw Valley Hereford Assn. Sale in Manhattan, Garland Gideon, sale mgr.
- Feb. 2 — Registered Polled Hereford sale west of Goff, Kans., Valley Hereford Farms. Carl Funk and Edward Funk.
- Feb. 4 — Machinery auction in
- Ponca City, Okla., Wilkins Equipment, Inc. Auct. Hagel Auction Co.
- Feb. 4 — Closing out sale in Junction City, Jacobs auto repair. Auct. C. W. Crites.
- Feb. 4 — Duroc sale and judging contest, Smith Center. Contest co-sponsored by Chamber of Commerce; Vern V. Albrecht and Herman Popp.
- Feb. 4 — B.F.Y. swine sale in Emporia, Marion Boggs, Kenneth Fuller and James Yearout. Auct.: Loren Thiele.
- Feb. 4, 1967 — Reg. Duroc sale and judging school, Smith Center. Vern V. Albrecht and Herman Popp.
- Feb. 6 — Farm sale east of Green, Clyde Olson. Auct. Foster Kretz.
- Feb. 7 — Farm sale, Strong City, Glen Miller & Sons. Auct. Jim Barr.
- Feb. 7 — Land auction in Abilene, L. C. Kieferle estate. Ray D. Wilson, broker; Lehman, Romine & Guilfoyle, attorneys for owners, Abilene.
- Feb. 10, 1967—Farm sale south of Fairbury, Nebr., Mr. and Mrs. Harold Flower. Auct. Harold R. Siegel.
- Feb. 11 — Kans. Hampshire Breeders spring sale in Hutchinson, Loren Thiele, auct.; Eddie Hull, sec.
- Feb. 11 — House and lot in Junction City, Wood estate. Auct. C. W. Crites.
- Feb. 11 & 12 — Gun, coin & rock show in Abilene, Paul Hazelton, committee chairman.
- Feb. 13 — Kansas Angus Assn. 8th annual all bull sale in Oakley, John Barton, Inman, sale mgr.
- Feb. 13 — Dairy sale northwest of Linn, Leroy Alexander. Auct. Foster Kretz.
- Feb. 13 — Farm sale northwest of Beatrice, Nebr., Homer J. Wenzel. Aucts.: Schultis & Son & Wolken.
- Feb. 15 — Holstein dairy herd dispersal northwest of Hanover, Lyle Henneberg and Alvin Henneberg. Aucts. Schultis & Son & Wolken.
- Feb. 15 — Farm sale south of

- Junction City, Jim Wood. Aucts. C. W. Crites and Montgomery.
- Feb. 20 — Hereford stock cow dispersal sale northeast of Clay Center, Don Martin, Auct. Foster Kretz.
- Feb. 22 — Farm sale northeast of Fairbury, Nebr., Harold Peters estate. Aucts.: Schultis & Son & Wolken.
- Feb. 27 — Dairy herd sale east edge of Greenleaf, Phil Parker. Auct.: Foster Kretz.
- Feb. 28 — Kansas Angus Assn. bull and commercial female sale in Kiowa. John Barton, sale mgr.
- Mar. 3 — Angus production joint sale in Ottawa, Peckman Brothers - Morgan. John Barton, sale mgr.
- Mar. 4 — Sixth production sale of reg. Polled Herefords, Chester, Nebr., State Line Farm, E. G. Nesmith & Son.
- Mar. 4 — Farm sale northwest of Chapman, Mrs. Elbert Gardner. Aucts. Carl and Wm. Schnell and Lee Remy.
- Mar. 4 — Antique consignment sale, Salina; Soroptimist Club. Frank Harz & Bob Perry, aucts.
- Mar. 6 — Farm sale southwest of Hanover, Ed Allerheiligen. Auct. Foster Kretz. Changed from Jan. 20.
- Mar. 15, 1967 — Blue Valley Hereford Breeders Assn. show and sale in Fairbury, Nebr., Auct. Gene Watson; sec. sale mgr. Don Banahan, Steele City, Nebr.
- Mar. 15, 1967 — Latzke Angus of Junction City, Oscar and Larry A. Latzke. Changed from Mar. 14.
- Mar. 17 — Shop tools & misc. in Clay Center, Mrs. J. C. Armstrong. Auct.: Foster Kretz.
- Mar. 18, 1967—P. R. I. Angus sale southeast of Olsburg, Lafflin Bros. & Fagerberg.
- Mar. 24 — Complete dispersal of registered Polled Herefords, Elwin Thoes, Alma. Leo Ebel, Wamego, sale mgr.; Gene Watson, auct.
- Mar. 24 — Production sale, Pohlman's Angus Ranch, Natoma, Kans. John Barton, sale mgr.; Ray Sims, Auct.
- Mar. 24 — Complete dispersal of registered Polled Herefords, Elwin Thoes, Alma. Leo Ebel, Wamego, sale mgr.; Gene Watson, auct.
- Mar. 25 — Central Kans. Polled Hereford Assn. show & sale, Abilene. Arnold Wittorff, Inman, sale mgr.
- Mar. 27 — Farm sale northeast of Leonardville, Mrs. Rud Peterson. Auct.: Foster Kretz.
- Mar. 31 — Farm & livestock sale northeast of Washington, Dean Fasse. Auct. Harold R. Siegel.
- Mar. 31 — North Central Kansas Hereford Assn. show & sale at Glasco, Jarold Hayden, Concordia, sale mgr.; George Morse, auct.
- Apr. 8 — Third Annual Quarter Horse sale in Manhattan, Lee Walters, sale mgr.
- Apr. 10 — Farm sale north of Abilene, Sam Minter. Auct.: Foster Kretz.
- June 10 — Complete dispersal sale of registered Quarter horses, Elmer & Evelyn Zeckser, Alma, Kans.
- Nov. 15, 1967 — Registered Hereford sale, Smolan, Johnson Hereford Farms; Elmer L. Johnson & Sons.
- Nov. 18 — Kocher Herefords

production sale in Onaga, Herman Kocher & Sons.

Nov. 25, 1967 — Kocher Herefords production sale in Onaga, Herman Kocher & Sons.

Nov. 25 — Fall sale of Arbuthnot Herefords, Haddam, Ks. Bob Arbuthnot.

JIM HARSHMAN NAMED TO NATIONAL BOARD

Jim Harshman, Wichita livestock dealer, was recently named a district director for the National Livestock Dealers Association, at its annual meeting at Denver. New president is Bob Starks of Mendota, Ill.

No Luck In SCD Campaign

COUNCIL GROVE — a Morris county farmer who says that too many elections among farmers are not competitive put himself into nomination for the board of supervisors of the Morris County Soil Conservation District last week but then lost

the election.

L. D. Larry Blythe defeated for the supervision by Harold F. Johnson had been on the board for several years so has been an officer of the Kansas Association of Conservation Districts.

Blythe took his position—almost unopposed SCD and ASC election in G&G area—and even money to advertise in newspaper.



SERVICEABLE WITH WEIGHT
Priced . . . \$300 to \$350
35 HEAD REG. GRANT POOL
MANHATTAN, KANS.
Located 4 mi. south of intersection, 2 mi. west of Dowell Creek Rd. P. R.

WASHINGTON SALES CO.

HOGS every TUESDAY
CATTLE every WEDNESDAY

All Sales Start 1:00 p.m.

A GOOD TURNING POINT FOR HEAVY CATTLE

A Growing Market for Finished Cattle

ED BURT,

Barn Phone EA 5-2266 Residence EA 5-2266
WASHINGTON, KANS.

J.C. LIVESTOCK SALES INC.
SALE EVERY SATURDAY

HOGS START 12 Noon

Our sale last Saturday proved to be one of the best we had. The market was very active on both cattle and hogs. The selection of cattle was good; as they were of good quality. All classes were higher and steady with the exception of the cows which were slightly lower as were the major circles. We had 54 piggy gilts that sold for \$92.50 per head. A bright sale is forming for this Saturday, with lots of good livestock and many buyers with increasing interest in doing business the Junction City auction way.

We will be glad to come out and take a look at your livestock at no obligation to you.

*****SPECIAL CONSIGNMENTS*****

87 high choice, whiteface calves weighing 350-425

65 good choice calves, black and blackwhite weighing 450-500

The following is a sampling of our sale:

STEER CALVES			
13 black steers	530 @	29.30	Good cows, \$14.50 to \$16.00
12 black steers	530 @	29.00	Shellies \$13.00 to \$14.00
14 black steers	350 @	30.10	
6 blk steers & bulls	435 @	29.60	Calves were active at \$80.00 by the head
2 whifac steers	350 @	30.50	
21 black steers	580 @	25.65	2 black bulls by the head \$245.00 and \$247.50
6 whifac steers	490 @	27.35	

HEIFER CALVES			
13 black heifers	450 @	25.30	
4 black heifers	285 @	22.10	
4 whifac heifers	495 @	23.95	
8 whifac heifers	570 @	23.50	
8 whifac heifers	455 @	23.80	
3 whifac heifers	505 @	24.20	

FAT CATTLE & FEEDERS			
59 whifac steers	885 @	24.60	
9 whifac steers	635 @	25.10	
17 whifac steers	750 @	25.25	
24 black steers	915 @	24.45	
36 whifac steers	780 @	24.70	

COWS			
5 mixed cows	425 @	22.00	
3 white cows	522 @	39.00	
4 mixed cows	390 @	34.00	
1 hamp cow			

We had a good active market.

LICENSED AND BONDED

BARN PH. JUNCTION CITY CE

VERN LANGVARDT, Manager, 502 UPLAND
HOWARD LANGVARDT, Auctioneer, 520 UPLAND

Ronald Rice Motors, Inc.

CHEVROLET OLDSMOBILE CADILLAC

North Kansas' Largest Volume Dealer

NW 2nd Phone CO 3-4000 ABILENE, KANS.

MORE & MORE CAR BUYERS COME TO ABILENE BECAUSE RONALD RICE MOTORS CAN MAKE BETTER DEALS.

During our January-February volume contest you'll do even better—because we're taking every reasonable deal. Here are a few good ones:

1966 CHEVROLET Impala 4-dr., V8 \$2295
Radio, heater, automatic transmission, power steering, power brakes, air conditioner.

1966 OLDSMOBILE Deluxe 88 4-dr. Hardtop Sedan . \$3295
Radio, heater, automatic transmission, power steering, power brakes, air conditioner.

1965 CORVAIR CORSA 2-dr. Hardtop \$1695
Radio, heater, 4 speed.

1965 CHEVY II NOVA 4-dr. \$1895
Radio, heater, automatic transmission, power steering, air conditioner.

1965 CHEVELLE Malibu 2-dr. V8, Sports Coupe. . \$1895
Radio, heater, automatic transmission, 1 owner, 9,000 actual miles.

1965 CORVETTE 2-dr. Hardtop. \$3495
Radio, heater, 4 speed, power steering, big 350 engine. Never will we have a nicer Corvette.

1964 OLDSMOBILE F-85 4-dr. Station Wagon. \$1895
Radio, heater, automatic transmission, power steering, power brakes, air conditioner.

Early

County cultural Stab were notified and feed gra Original begin Feb. farmers mor office in Mar "It was ing a longer chairman sa could start

Strike Lay To Label Imported

The Supreme hat Oregon ma wholesalers of f Imported meat t

The court gave in a brief decis ruling by a thr court in Portlan on meat-labelin titutitional.

The decision or the Ness Pr Oregon firm wh distributes imp oned, lean bee meat comes fro Oregon is on including Kansa quiring mercha sign origin lab meat products.

Paper Back Books

Largest Stock In Town

Univ Book

23 N. Manhatt

Sale

Our ma cows \$ steady pounds es of \$13.75 ing of

2 blk hf

1 blk st

4 blk st

3 wf hfr

5 ang hf

3 ang hf

2 wf hfr

4 blk st

4 blk st

6 blk st

25 bwf s

9 brof s

1 char s

3 wf bul

3 wf bul

2 blk bu

5 wf str

2 wf hfr

3 blk st

2 blk st

3 bwf st

2 blk st

5 hol st

2 hol st

1 wf bul

4 hol st

3 hol st

37 wf st

25 wf st

12 wfb s

NEW

Early Signup Start

County offices of the federal government's Agricultural Stabilization and Conservation Service (ASCS) were notified last week that signup for the 1967 wheat and feed grains program will begin this week.

Originally, the signup period was scheduled to begin Feb. 6, but was moved up to Jan. 23 to allow farmers more time for applications, the State ASCS office in Manhattan said.

"It was done simply to help the producer by having a longer signup period," G. W. Egbert, ASCS chairman said. "All counties were notified that they could start Monday if they're ready."

Strike Law No Label Imported Meat

The Supreme Court has ruled that Oregon may not require wholesalers of fresh or frozen imported meat to label it as imported.

The court gave no explanation in a brief decision affirming a ruling by a three-judge federal court in Portland that the Oregon meat-labeling law is unconstitutional.

The decision was a victory for the Ness Produce Co., an Oregon firm which deals in and distributes imported frozen, boned, lean beef. Most of this meat comes from Australia.

Oregon is one of 19 states, including Kansas, with laws requiring merchants to put foreign origin labels on imported meat products.

Paper Back
25c - 35c
50c - 75c
Books
Largest Stock
In Town

**University
Book Store**
3 N. Manhattan Manhattan

HAROLD LECKRON HEADS DIET CONTRACTORS ASSN.

ABILENE — Harold Leckron of Abilene is the newly elected president of the Kansas Conservation Contractors Association. He succeeds Randall Diver of Chanute. The KCCA held its annual meeting this month at Hutchinson.

Set Feed Mill Area Meetings

MANHATTAN — Thirteen workshops in feed mill operations will be conducted across the state during February and March by Extension specialists from Kansas State University.

The evening dinner meetings are designed to aid Kansas feed manufacturers in handling maintenance, customer service, safety problems, and quality control, reports Dr. Robert W. Schoeff, Extension formula feeds marketing specialist.

Dates and host cities for the workshops are as follows: February 7, Garden City; February 8, Liberal; February 9, Pratt; February 14, Hays; February 15, Colby; February 16, Phillipsburg; February 22, Brookville; February 23, Wichita; February 28, Concordia; March 1, Seneca; March 2, Topeka; March 7, Emporia; and March 8, Pittsburg.

B.F. Goodrich

TRACTOR TIRES



\$43

11.2 x 28
4-Ply

12.4x28 4 ply	\$ 46
13.6x28 4 ply	\$ 51
14.9x28 4 ply	\$ 59
11.2x38 4 ply	\$ 52
12.4x38 4 ply	\$ 59
13.6x38 4 ply	\$ 62
13.6x38 6 ply	\$ 74
14.9x38 6 ply	\$ 84
15.5x38 6 ply	\$ 85
16.9x34 6 ply	\$104
18.4x34 6 ply	\$121

Plus Tax And Tire Off
Your Tractor

BARGAIN ROW

REAR TRACTOR TIRES

New — Slight Blemish

9.5x24	\$29
12.4x24	\$40
12.4x28	\$41
12.4x38	\$54
13.6x28	\$46
13.6x38	\$56
14.9x28	\$54

6-Ply

13.6x38	\$63
15.5x38	\$72
18.4x34	\$110
16.9x30	\$90
16.9x26	\$82

Plus tax & tire off your tractor.

New Truck Take-Offs

MAJOR BRANDS

7.50x20 8 ply	\$35 exchange
Fed. Excise Tax	\$4.91
8.25x20 10 ply	\$47 exchange
Fed. Excise Tax	\$6.26

Front Tractor 4-Plys

5.50x16	\$9.95 tax 87c
6.00x16	\$10.95 tax \$1.00

FARM TERMS ON ALL TIRES
Up To One Year To Pay

M & W Dual Wheels



WE HAVE THEM
IN STOCK

USED TRACTOR TIRES? We've Got 170 of Them — (Tubes Too)

SIZE	PLY	NO.	SIZE	PLY	NO.	SIZE	PLY	NO.	SIZE	PLY	NO.
9 x 24	4	3	14.9 x 28	6	6	11.2 x 36	4	1	13.6 x 38	6	27
11 x 24	4	2	16.9 x 28	6	8	13.9 x 36	6	3	14.9 x 38	6	3
11.2 x 28	4	2	16.9 x 30	6	5	11.2 x 38	4	2	15.5 x 38	6	42
12.4 x 28	4	8	18.4 x 30	6	4	12.4 x 38	4	5	14.9 x 26	6	2
13.6 x 28	4	6	16.9 x 34	6	11	12.4 x 38	6	3	16.9 x 26	6	8
14.9 x 28	4	6	18.4 x 34	6	12	13.6 x 38	4	3			



TIRE STORE

REX KOPPEL

Clay Center, Kansas

813 Sixth St. Dial ME 2-2167
Open evenings until 9:00 p.m.

OK Rubber Workers

BFGoodrich

Sale Every Wednesday

Hogs 12 noon
Cattle 1 p.m.

at NEWTON

Our market was steady on most classes of cattle, cows \$1.00 lower from last week, feeder steers steady to 50¢ lower on the heavy cattle, 850 pounds up. We have a good demand for all classes of livestock. Fat hog top \$20.25, sows were \$13.75 to \$16.10. Following is a partial listing of our last sale.

2 blk hfrs-- 364 @ 23.40	24 wf str-- 727 @ 24.70
1 blk str--- 360 @ 28.50	1 red cow---1210 @ 15.80
4 blk str-- 446 @ 28.20	1 red cow---1000 @ 15.00
3 wf hfrs--- 520 @ 23.40	1 blk cow--- 950 @ 1.00
5 ang hfrs-- 334 @ 25.50	1 hol cow---1070 @ 16.70
3 ang hfrs-- 415 @ 25.40	1 red cow---1045 @ 14.80
2 wf hfrs--- 300 @ 25.00	1 ger cow---1220 @ 13.80
4 blk str-- 394 @ 28.70	1 hol cow---1290 @ 16.00
4 blk str-- 351 @ 25.20	1 blk bull--1165 @ 20.90
4 blk str-- 858 @ 24.15	
6 blk str-- 746 @ 24.55	
25 bwf str-- 805 @ 23.95	
9 brof str-- 783 @ 24.15	
1 char str-- 555 @ 25.10	
3 wf bulls-- 439 @ 26.90	
3 wf bulls-- 536 @ 26.00	
2 blk bulls-- 497 @ 26.30	
5 wf str-- 658 @ 24.70	
2 wf hfrs--- 472 @ 23.10	
3 blk str-- 398 @ 27.90	
2 blk str-- 310 @ 28.10	
3 bwf str-- 752 @ 24.70	
2 blk str-- 833 @ 24.00	
5 hol str-- 586 @ 22.00	
2 hol str-- 518 @ 22.00	
1 wf bull--- 265 @ 29.20	
4 hol str-- 546 @ 22.60	
3 hol str-- 464 @ 22.20	
37 wf str-- 936 @ 23.35	
25 wf str-- 740 @ 24.45	
12 wfb str-- 693 @ 24.45	



BARN PHONE AT 3-5566

There is someone at the barn all day Tuesday & Wednesday & Thursday morning. Otherwise call:

AUCTIONEER:

Floyd Gehring
Moundridge Phone 345-8195

NEWTON LIVESTOCK & COMMISSION CO. • NEWTON KANSAS

Sale Every Thursday

Hogs 11:30 a.m.
Cattle 1 p.m.

Our cattle market was steady to strong at our sale Thursday with all classes of cattle in good demand. The butcher hog market was up 70¢ over a week ago with an extreme top of \$20.40 with the bulk going for around \$20.15. The following is a sampling of our consignments:

FAT CATTLE & FEEDERS

10 whifce steers---	570 @ 27.80
9 black steers-----	528 @ 27.50
34 angus steers-----	587 @ 27.30
5 whifce steers-----	579 @ 27.00
4 whifce steers-----	620 @ 25.90
2 black steers-----	720 @ 25.20
8 black steers-----	834 @ 25.00
4 black heifers-----	620 @ 24.95
3 whifce heifers-----	510 @ 24.60
1 red steer-----	1065 @ 23.90
2 black steers-----	585 @ 23.80
11 whifce steers---	878 @ 23.65
28 whifce heifers---	756 @ 22.70
5 whifce heifers---	805 @ 22.65
5 holstein steers---	570 @ 22.45
1 whifce heifer---	650 @ 22.20
12 whifce heifers---	755 @ 22.00
2 whifce heifers---	570 @ 21.50
24 holstein steers---	847 @ 21.05
1 black steers-----	890 @ 20.90
4 blkwhif heifers---	755 @ 19.95
1 blkwhif heifer---	1095 @ 19.40

COWS

1 wf cow&cf-----	@ 225.00
3 wf cows&cf-----	@ 214.00
1 holstein cow-----	1220 @ 20.80
1 whifce cow-----	1010 @ 18.50
1 whifce cow-----	1040 @ 17.10
5 whifce cows-----	1145 @ 16.95
2 whifce cows-----	1025 @ 16.00
1 whifce cow-----	1245 @ 15.20
1 holstein cow-----	1405 @ 15.90
1 red cow-----	1335 @ 15.10
2 whifce cows-----	1330 @ 15.00
1 guernsey cow-----	1160 @ 14.50

BULLS

1 whifce bull-----	@ 375.00
1 whifce bull-----	@ 270.00
2 whifce bulls-----	693 @ 24.70

BULL & STEER CALVES

1 whifce bull-----	300 @ 33.00
1 whifce bull-----	280 @ 31.25
2 whifce steers-----	418 @ 31.00
2 whifce steers-----	455 @ 29.50
1 whifce bull-----	425 @ 29.30
1 black steer-----	465 @ 27.50
1 black steer-----	405 @ 27.30
4 whifce steers-----	462 @ 26.80

HEIFER CALVES

1 whifce heifer---	235 @ 27.75
1 whifce heifer---	320 @ 27.50
1 black heifer-----	380 @ 25.50
12 black heifers---	472 @ 25.25
4 whifce heifers---	465 @ 25.20
4 black heifers---	418 @ 25.05
5 blkwhif heifers---	488 @ 24.90
1 whifce heifer---	420 @ 24.60
1 whifce heifer---	220 @ 24.25

HOGS & PIGS

20 mixed fats-----	235 @ 20.40
20 mixed fats-----	228 @ 20.40
19 mixed fats-----	253 @ 19.85
2 white sows-----	300 @ 15.90
7 white sows-----	487 @ 14.30
1 piggy sow-----	570 @ 14.25
1 hamp boar-----	245 @ 18.25
1 white boar-----	490 @ 14.90
1 red feeder-----	100 @ 21.50
4 mixed feeders---	92 @ 20.00
14 red feeders-----	160 @ 18.40
19 mixed pigs-----	@ 19.50
18 mixed pigs-----	@ 13.25
9 mixed pigs-----	@ 12.50
4 white pigs-----	@ 9.00

RALEIGH BREEDING, MANAGER

barn HI 3-3671; home HI 3-3547

Auctioneer: Larry Lagasse,
Ph. Concordia, Kans. CH3-1714

MARYSVILLE LIVESTOCK & COMMISSION CO. MARYSVILLE, KANSAS

Sell At St. Marys

Sell
Or Buy

Cattle & Hogs

By
Auction

Tuesdays

On receipts of 1113 cattle the market was active. The bulk of the stockers and feeders sold steady, with the exception of heavy feeder steers over 950 pounds and up were 50¢ lower. All classes of killing cows and bulls were steady. Partial listing of last sale.

STOCKER & FEEDER STEERS

10 whifce steers-----	659 @ 26.80
10 black steers-----	638 @ 26.40
9 black steers-----	581 @ 26.00
21 black steers-----	654 @ 25.90
17 whifce steers-----	634 @ 25.80
25 whifce steers-----	621 @ 25.70
10 black steers-----	697 @ 25.70
5 whif & blkwhif str--	584 @ 25.20
13 black steers-----	583 @ 25.10
22 whifce steers-----	904 @ 25.05
18 whifce steers-----	920 @ 25.05
24 whifce steers-----	814 @ 24.90
18 whifce steers-----	793 @ 24.80
8 whif & black steers--	765 @ 24.70
3 black steers-----	558 @ 24.70
25 mixed steers-----	799 @ 24.60
20 mixed steers-----	779 @ 24.60
4 blkwhif steers-----	571 @ 24.60
14 mixed steers-----	945 @ 24.30
23 mixed steers-----	928 @ 24.30
4 black steers-----	835 @ 24.25
3 whifce steers-----	900 @ 24.10
9 whif & blkwhif str--	617 @ 23.80
3 whifce steers-----	1030 @ 23.80
13 whifce steers-----	1043 @ 23.75
30 whifce steers-----	1106 @ 23.75
4 charolais steers-----	731 @ 23.70
3 whifce steers-----	756 @ 23.65
5 blk & blkwhif steers--	1012 @ 22.65
10 blkwhif & whif str--	1093 @ 22.55

36 holstein steers-----	901 @ 20.60
17 holstein steers-----	895 @ 20.60

STEER CALVES

11 whifce steers-----	405 @ 29.40
4 black steers-----	377 @ 28.80
8 blk & blkwhif steers--	462 @ 28.50
7 black steers-----	431 @ 28.20
32 black steers-----	514 @ 28.10
40 black steers-----	526 @ 28.10
4 black steers-----	468 @ 28.10
2 blkwhif steers-----	505 @ 27.90
3 whifce steers-----	440 @ 27.90
2 whifce steers-----	432 @ 27.50
4 black steers-----	506 @ 27.50
6 blkwhif & brof str--	523 @ 27.40
2 blkwhif steers-----	495 @ 27.30
4 whifce steers-----	517 @ 27.30
5 whifcehn steers-----	496 @ 27.30
11 whifce steers-----	545 @ 27.10
15 black steers-----	432 @ 26.90
4 whifce steers-----	530 @ 26.80
2 black steers-----	450 @ 26.80
4 whif & red steers-----	490 @ 26.75
15 whifce steers-----	518 @ 26.55
2 whifce steers-----	551 @ 26.50
3 whifce steers-----	510 @ 26.00

STOCKER & FEEDER HEIFERS

15 whifce heifers-----	590 @ 24.50
8 blk & blkwhif heifs--	600 @ 24.40
9 whif & blk heifers-----	836 @ 23.30
28 blk & blkwhif heifs--	681 @ 22.85
2 whifce heifers-----	942 @ 22.70

For Information or Estimates

Rezac Barn	St. Marys 437-2999
Delaine Rezac	St. Marys 437-6266
Elmer Imthurn	Maple Hill MI 3-2440
Paul Kramer	St. Marys 437-2993

28 whifce heifers-----	781 @ 22.65
1 whifce heifer-----	745 @ 22.30
3 whifce heifers-----	703 @ 22.20
1 black heifers-----	750 @ 22.00
2 broface heifers-----	872 @ 21.60
1 broface heifer-----	790 @ 21.60
1 black heifer-----	835 @ 21.40
1 whifce heifer-----	635 @ 21.20
2 broface heifers-----	580 @ 21.10
7 black heifers-----	695 @ 21.10
2 whifce heifers-----	630 @ 21.10
2 red heifers-----	1220 @ 20.90
1 black heifer-----	690 @ 20.00
1 black heifer-----	870 @ 18.00

HEIFER CALVES

20 blk & blkwhif heifs--	521 @ 25.90
4 whifce heifers-----	380 @ 25.70
3 black heifers-----	375 @ 25.60
14 whifce heifers-----	408 @ 25.30
7 black heifers-----	367 @ 25.30
8 black heifers-----	476 @ 25.20
16 blk & blkwhif heifs--	445 @ 25.15
6 black heifers-----	371 @ 25.10
4 blk & blkwhif heifs--	437 @ 25.10
7 whifce heifers-----	507 @ 25.10
5 black heifers-----	528 @ 25.00
9 whif & brof heifers---	472 @ 24.90
6 whifce heifers-----	387 @ 24.80
2 blkwhif heifers-----	440 @ 24.80
5 whifce heifers-----	524 @ 24.80

3 blkbroface heifers---	495 @
4 whifce heifers-----	487 @
3 whifce heifers-----	325 @
6 whifce heifers-----	551 @
9 whifce heifers-----	430 @
2 whifce heifers-----	542 @
3 broface heifers-----	446 @
3 black heifers-----	508 @
3 broface heifers-----	415 @
4 black heifers-----	361 @

COWS

1 blkwhif hfrette-----	1145 @
1 whifce cow-----	1064 @
1 holstein cow-----	1100 @
1 black cow-----	1420 @
1 black cow-----	1300 @
1 whifce cow-----	1185 @
1 holstein cow-----	1035 @
1 guernsey cow-----	1135 @
1 broface cow-----	1080 @
1 blkbrof cow-----	1005 @
1 black cow-----	1050 @
1 whifce cow-----	1145 @
1 red spotted cow-----	960 @
1 black cow-----	1245 @
1 holstein cow-----	1145 @
1 holstein cow-----	1145 @
1 holstein cow-----	1145 @
1 holstein cow-----	1145 @

BULLS

1 whifce bull-----	1320 @
1 black bull-----	1270 @
1 whifce bull-----	1410 @

LIVESTOCK COMMISSION COMPANY

Rezac



St. Marys

Auctioneers: Lawrence Welter, Gene Toby & Verlin Green



Central Kansas Most
Modern Livestock Auction . . West Side Of Salina

TWO SALES EVERY WEEK

MONDAY
Hogs And Cattle

Hogs sell at 11:00 a.m. followed by cattle, which will sell as they are unloaded.

THURSDAY
Cattle Only

Selling starts at 11:00 a.m. will sell in the order they are loaded on the books.

We sold 1926 cattle and 611 hogs last week. Our hog top on Monday was \$20.55. Both the fat hogs and feeder pigs sold on very active markets. We had a lot of good quality cattle Thursday. The yearlings and calves were steady, but the cows and heavy feeders were 25¢ to 50¢ lower than the previous week. The following is a partial listing of our last sale.

CATTLE

George Timmins, Marq	48 bwf hfrs	852 @ 22.55
Albin Nelson, Falun	9 wf str	794 @ 24.75
Godfrey Oborg, Smolan	1 wf cow	1100 @ 15.40
Godfrey Oborg, Smolan	1 wf cow	1235 @ 15.20
Charles Hobbson, Carl	9 wf str	785 @ 24.25
Charles Hobbson, Carl	9 wf hfrs	721 @ 22.60
LaVern Heim, Canton	5 wf str	624 @ 25.10
Dave Swenson, Lindsborg	7 wf str	560 @ 26.60
Dave Swenson, Lindsborg	2 wf str	770 @ 24.80
Thelbert Griffith, Genes	6 blk str	687 @ 25.20
Thelbert Griffith, Genes	2 blk str	575 @ 26.10
Lewis Chartier, OakHill	13 wf str	540 @ 26.50
Lewis Chartier, OakHill	9 wf hfrs	443 @ 24.50
Clarence Paterson, Ells	5 bf str	468 @ 28.50
Clarence Paterson, Ells	4 bf hfrs	447 @ 25.30
Charlie Mullen, ClayCe	17 blk str	565 @ 26.95
Charlie Mullen, ClayCe	45 blk str	700 @ 25.60
Charlie Mullen, ClayCe	36 blk str	904 @ 24.50
Ruben Voth, LittleRiver	5 wf str	499 @ 27.60
Ruben Voth, LittleRiver	4 bwf hfrs	487 @ 25.00
William Wachs, Ellswor	13 bwf str	821 @ 24.50
William Wachs, Ellswor	3 wf str	840 @ 24.10
George Vopat, Wilson	3 wf str	585 @ 26.00
Oberg Bros, Smolan	6 blk str	690 @ 23.90
Oberg Bros, Smolan	2 wf str	695 @ 25.40
Morrison Bros, Salina	13 mix str	1147 @ 23.30
Morrison Bros, Salina	6 bwf str	1304 @ 22.55
Stenen Lawron, Smolan	1 whi str	1200 @ 20.80
Lawron Bros, Smolan	36 wf str	958 @ 24.15
Charles Alers, Conway	9 blk str	1004 @ 23.05
Charles Alers, Conway	5 wf str	1022 @ 23.55
Weslie Eilers, Tampa	8 bwf str	841 @ 23.55
Albert Henke, Ellsworth	4 wf str	510 @ 27.60

Albert Henke, Ellsworth	4 ron str	448 @ 28.70
Glenn Lacey, Miltonvale	16 red str	867 @ 24.25
John Orath, Lindsborg	6 bwf str	573 @ 25.90
John Orath, Lindsborg	3 bwf hfrs	480 @ 23.80
Dan Burnhardt, Romana	5 blk str	854 @ 24.25
Dan Burnhardt, Romana	1 wf str	600 @ 24.90
Alyward Bros, Salina	27 wf str	1012 @ 23.35
Alyward Bros, Salina	32 bron str	1062 @ 22.60
L V Baccus, Minneapolis	1 wf cow	1035 @ 19.00
Howard Morrical, Culver	11 blk str	446 @ 29.10
Howard Morrical, Culver	2 blk str	645 @ 25.60
Lewis D Bermuler, Linc	8 blk str	430 @ 29.90
Lewis D Bermuler, Linc	15 blk hfrs	467 @ 25.20
Phillip Lawron, Marq	21 wf str	921 @ 23.70
Phillip Lawron, Marq	18 wf str	985 @ 23.25
Earl Forsberg, Burdick	17 brah str	825 @ 21.60
George Kratzer, Geneseo	11 bwf str	406 @ 30.00
George Kratzer, Geneseo	12 bwf str	490 @ 29.70
Howard Harri, Brookville	2 red str	463 @ 28.10
Bob Armstrong, Salina	1 blk bull	1415 @ 21.00
Doug Constouble, Salina	1 blk bull	1595 @ 21.70
C E Clark, McPherson	2 wf str	850 @ 23.20
Carl Vesterberg, Wells	1 wf str	325 @ 31.25
Carl Vesterberg, Wells	1 wf str	375 @ 28.90
John White, Culver	5 wf str	690 @ 24.90
Curry Bros, Gypsum	1 hol cow	1695 @ 15.10
Curry Bros, Gypsum	1 hol cow	1405 @ 15.90
John Stout, Minneapolis	3 blk str	360 @ 31.50
John Stout, Minneapolis	3 blk str	410 @ 31.00

FOR INFORMATION OR ESTIMATES

LAURENCE CLEMENCE
Abilene Phone CO 3-3091

MERRILL CHRISTIANSEN
Durham Phone 732-3371

BOB MUIR
Salina Phone TA 3-2963

Market Reports

Radio Station KFRM, Salina
6:50 a.m. 12:30 Noon
Monday Through Friday

Farmers & Ranchers
LIVESTOCK COMMISSION CO.

West On Old US 40
Salina, Kansas
Barn Phone TA 5-0211
Bonded • Licensed