

A STUDY OF URBAN AESTHETICS

by

CHARLES GRANT BUNKER

B. Arch., University of Miami, Florida, 1970

9589

---

A MASTER'S THESIS

submitted in partial fulfillment of the

requirements for the degree

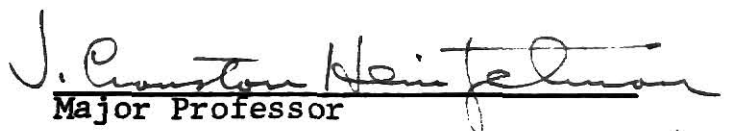
MASTER OF ARCHITECTURE

Department of Architecture

KANSAS STATE UNIVERSITY  
Manhattan, Kansas

1972

Approved by:

  
Major Professor

LD  
2668  
T4  
1972  
B8  
C.2

ii

#### ACKNOWLEDGMENT

The author wishes to express his sincere appreciation for the counsel given by his major advisor, Professor J. Cranston Heintzelman. His sensitivity of design and understanding of the designer's objectives, gave valuable inspiration and assistance towards the realization of this thesis.

## TABLE OF CONTENTS

	Page
ACKNOWLEDGMENT . . . . .	ii
LIST OF PLATES . . . . .	iv
PREMISE . . . . .	1
PROGRAM FOR PROPOSED CIVIC CENTER IN WICHITA, KANSAS . . . . .	9
PLATES . . . . .	15
BIBLIOGRAPHY . . . . .	38

## LIST OF PLATES

Plate	Page
I. Partial Overhead View looking South, of Wichita, Kansas showing Conceptual Future Building and Street Pattern and Their Relationship to Proposed Civic Center . . .	17
II. View from South, of Proposed Civic Center . .	19
III. First Level Plan . . . . .	21
IV. Fourth Level Plan . . . . .	23
V. Sections and Building Key . . . . .	25
VI. Overhead View from South, of Site Develop- ment and Building Complex . . . . .	27
VII. Overhead View from North, of Site Develop- ment and Building Complex . . . . .	29
VIII. Overhead View from East, of Site Develop- ment and Building Complex . . . . .	31
IX. Overhead View from West, of Site Develop- ment and Building Complex . . . . .	33
X. Partial View of Buildings and Exterior Circulation System . . . . .	35
XI. View of Highrise Building . . . . .	37

## PREMISE

There is an increasing and disturbing tendency in our society for life to become routine, regimented and monotonous. Certain advances in some areas have lead to minimize the creative potential and expressive diversities of mankind. Technology, economics and a transient society have created standardized forms and methods in architecture. Building projects based upon rigid dimensions and formal assumptions leave no room for creativity. The solutions produced for contemporary buildings result in a depressing uniformity, anonymity and monotony.

It is assumed that man is interdependent with his environment. Without its support, at least, his existance would be terminated. Similarly, as man modifies the environment, the environment in turn influences man. It shapes, to varying degrees, the behavior of the people exposed to it. Architects, (along with many others) have the responsibility of constructing and modifying parts of the environment and therefore influence the behavioral and emotional patterns of the inhabitants.

If we define architecture as being the spatial expression of human conduct, then the architects medium is space. Through the moulding of space and the interrelated patterns of spatial design, he constructs for the needs of man.

In this technological age, the approach towards organizing human space tends to become purely rational and solves for only the physical demands, while neglecting the spiritual qualities. The

designer should be responsive to the extraordinary variety of elements of which the human being contains. "The rational approach to organizing space must thus include all those elements which lead to balance and harmony between the human being and his environment, even if those elements turn out to be irrational under the microscope of purely logical analysis. We must also be aware that what is logical is not necessarily irrational, and that what is rational does not necessarily have to be logical."<sup>1</sup>

While architecture produces very tangible solutions, its forms fundamentally do not differ from that of other creative activities: that is to express the essence of existence. A building, like any other man-made form, can make those who experience its mass and volume more intelligible. An architect who designs with this awareness will construct the elements of the building not only as efficient components of functions, but also as visual symbols. He develops a language of space, mass, line and colour. It is through this language that man experiences architecture and the images become accessible to the human spirit.

The sense of vision is the most acute (we are able to differentiate more with our vision than with the other senses) and dominates our perception of the environment. Significant perceptual images must be invented by the designer for all physical characteristics and their relationships. Architecture will then become accessible to the human spirit by the stimulation of one's senses.

---

<sup>1</sup> Henryk Skolimowski, "Human Space in the Technological Age," Architectural Association Quarterly, (July 1969) p. 83.

The aesthetic value of a building thus becomes of great importance. Aesthetics are difficult to define, but there are elements which are undesirable by any measure; such as monotony and chaos. Such negative responses can help to formulate goals which would seek to increase the spiritual quality of the environment. To define these goals in advance, would lead to a purely sculptural and isolated solution which would only be a testament to the architects expressive skills. The architect must approach the design process with sensitivity and have the intellect to go beyond just enclosing space. He must strive to meet the broader implications of relating to the environment and the effects his structures will have physically, visually and emotionally upon man. It should be possible to set reasonable, constructive limits of design, which would limit total anarchy in design and also the dull conformity of regimentation, but allow for a wide scope in creativity and originality.<sup>2</sup>

The artists visual analysis of space and movement gives life to forms which would otherwise result only from objective and measurable facts. His works are invigorated by a contact with reality and enhanced by his imagination. This is the substance of a creative expression. It seeks symbols which are opposed to merely just an interpretation of current aesthetic fads or bland functional considerations alone. The symbols should be universal in character and reflect a variety of phenomena, picking out the deepest meaning and reflecting it in an exciting manner.

---

<sup>2</sup> Anthony Kettaneh, Project Romulus, (Cambridge, Mass.: The M.I.T. Press, 1967), p. 17.

Function, as a criterion for the designing of forms, should not be limited to suitability for physical purposes alone. There is the further need that function should include visual considerations. These help bring about the character of the expression which also derives from the material and physical forces which act upon it. In a more complex sense, our particular civilization shapes the character through traditional preferences, personal needs, diverse goals and value systems, striving for originality, novelty and fashion, lack of cooperation, building trade regulations, and limited information about perceptual experiences. In the urban environment, form is also generated in part, by responding to existing forms. The designer must consider the relationships between districts, buildings, the individual and the total urban entity.

"Form follows function" is too simplistic an approach to contemporary building needs. It implies that for each function there is a form. It ignores the mixed character of functions. Forms are put to multiple tasks and one design cannot serve them all. "Form follows function" suggests form as being a static element. But form has an impact upon our senses and can determine functions. It is possible for form to precede function.

The total form of a building will result from the function of the structure, the needs of the people who use them, the character of the material and what can be done in a given situation towards ordering a composition. Relevant to the situation, the designer should seek the most eloquent expression for each material and design visually exciting forms. A richness of meaning should be his objective, rather



than just clarity of meaning. This is suggestive of the sculptors ability to mould and elaborate, rather than just construct forms.

"Natural shapes (form) is not accounted for wholly or even essentially by function. There are hundreds of ways of being a tree, a fish or a bird and while of course, each organism was formed by a set of determining conditions, there is no way of explaining the difference between an oak and a maple by reference to their present needs or function."<sup>3</sup> Perhaps a better approach would be to follow the axiom "form evokes function", in which forms suggest the limitations of functions that can be achieved.

The architects judgment, in the last resort, is subjective. He shapes the environment with skill and imagination in meeting functional demands and must bring forth an intuitive and artistic awareness which can not be justified by rational means alone.

The need for large numbers of similar elements through prefabrication, and the desire for differentiation, represents a difficult problem for designers. Architects will have to create forms which can withstand repetition. They must also organize those units plastically into a unique whole in which they are interesting and stimulating in themselves, but also form a distinctive pattern. The parts and the whole should have a dynamic response to each other.

In the urban environment, the architect cannot detail every situation with the care shown in more isolated buildings. He can show

---

<sup>3</sup> Rudolf Arnheim, "From Function to Expression," in Aesthetic Inquiry ed. by Monroe C. Beardsley and Herbert M. Schueller (Belmont, California: Dickerson Publishing Co. Inc., 1967), p. 201.

differentiation due to the specialization of parts and provide a strong order which allows for variations within a theme. Thus, proportionally, geometrically and through interaction in space, the individual elements can participate as a collection, and as parts of other groups. This is analogous to the artists lifelong search for variety in unity. Without this, the architect will continue to produce aesthetic stagnation or chaos.

As individual units are seen as parts of an interrelated whole, so must the design of each building be imagined. Architecture does not function as buildings isolated and independent of each other, relating only to their internal needs and services. Urban design must be seen as a single design problem in which a framework is provided where the specific is well designed, but relates to a larger complex. The whole is dependent upon its parts and is also greater than the sum of its parts. Therefore, buildings must relate to each other in harmonious and functional patterns with movement and spatial relationships providing connections. The general urban scale and the particular internal scale of each structure, should be compatibly and expressively related.

The architect must consider the total organization of space, not only the spaces in a building, but the open spaces between buildings. Space, therefore, will be shaped through both internal and external relationships. This will produce an interplay of defined spaces that are linked sequentially and form an ordered space environment. Contemporary designers have continued to design with a method in which buildings grow from the inside to the outside. They are concerned with just the enclosure of space. The urban environment of existing

complexities and relationships must influence the design with external forces that will help provide a unity with the city as a whole, thus the spatial solution of a building is determined by the internal structure and also the rational composition and spatial unity of the entire urban setting.

There are no fixed laws in architecture. The architect must make decisions and those subtle evaluations are his principal function. As present conditions in most cities have reached a critical and disturbing level, new systems, techniques, forms and values will have to be developed. The necessary goal for the designer is to produce a comprehensive design which is mechanically and emotionally efficient. Such a solution will have to employ logic, discipline and coherent thinking as well as an artistic sensitivity and the perception of the vast number of interactions occurring between man and his physical environment.<sup>4</sup>

"Great architecture is art, and the art in architecture is an unmeasurable quality. But great architecture is primarily technique, and therefore a building must clearly reflect the order, discipline, and the measurable aspects of its being. The real art in architecture is not arbitrary style or ethereal symbolism, but the extent to which a building can transcend the measurable to the unmeasurable; the extent to which a building can evoke pleasure and profound emotion; the extent

---

<sup>4</sup> Robert Venturi, Complexity and Contradiction in Architecture, (New York: The Museum of Modern Art, 1966), p. 46.

to which a building can spiritually uplift and inspire man while simultaneously reflecting the logic of technique."<sup>5</sup>

A final quote might further suggest what has been proposed:

"Mies is great but Corbu communicates."

---

<sup>5</sup> Paul Heyer, Architects on Architecture, (New York: Walker and Co., 1966), p. 149-150.

## PROGRAM FOR PROPOSED CIVIC CENTER IN WICHITA, KANSAS

### Site

972 feet by 860 feet  
835,920 square feet

### Facilities Requirements

#### Police Department

11 work rooms  
Lineup room  
Holdover jail  
Jailer's office  
Office--Police Chief  
Office--Assistant Police Chief  
4 offices--Investigators  
2 offices--Vice Squad  
Office--Training Officer  
Internal Security Office  
Personnel Director's Office  
Examination room  
2 offices--Juvenile Officers  
Press room  
Patrol Command Office  
Traffic Command Office  
Tactical Unit Office  
Records Room  
Office--Records Supervisor  
Planning and Research Room  
Office--Auxiliary Services Command  
Office--Fingerprinting and Mugging  
2 offices--Attorneys  
Youth and Women's Command Office  
2 Doctor's Offices and Examination Rooms  
2 Conference Rooms  
Clerical  
Public Counter  
Personnel Lounge  
Washrooms and Showers  
Lockers

Fire Department

Office--Fire Chief  
Office--Assistant Fire Chief  
Records Room  
Office--Records Supervisor  
Press Room  
Fire Prevention Office  
Conference Room  
Personnel Director's Office  
Examination Room  
3 offices--Inspectors  
Command Office  
Clerical  
Public Counter  
Personnel Lounge  
Office--Training Officer

Department of Civil Defense

4 offices--Directors  
Clerical

Planning Department

Office--Chief Engineer  
4 offices--Assistants  
Drafting Room  
Conference Room  
Record and Map Room  
Printing Room  
Clerical  
Personnel Lounge  
Personnel Lockers  
Public Counter

Building and Zoning Department

Office--Chief Engineer  
2 offices--Construction Inspectors  
Office--Structural Inspector  
Office--Electrical Inspector  
Office--Heating and Air Conditioning Inspector  
4 Work Rooms  
2 offices--Permits Officers  
Conference Room  
Records Room  
Clerical  
Public Counter  
Personnel Lounge

Traffic Department

Office--Director  
3 offices--Technical Assistants  
Map and Record Room  
Drafting Room  
Clerical  
Public Counter

Real Estate Department

Office--Director  
4 offices--Assistants  
Clerical  
Public Counter  
Conference Room

Housing Department

Office--Director  
5 offices--Assistants  
Clerical  
Conference Room  
Public Counter

Public Works Department

Office--Director  
2 offices--Clerks  
Office--Cost Accounting  
Office--Administrative Assistance  
Roads Office  
Sewers Office  
Water Office  
Clerical  
Public Counter  
Records Room  
Conference Room

Public Health Department

Office--Director  
Statistical Office  
4 offices--Clerks  
Laboratory  
Office--Sanitary Supervisor  
Records Room  
2 offices--Specialists

Office--Sanitarium Supervisor  
Office--Public Health Nursing Officer  
4 Doctors Offices--Including Secretaries office,  
Examination Room, Laboratory and Waiting Room  
2 Conference Rooms  
Clerical  
Personnel Lounge  
Records Room  
Public Counter

#### Welfare Department

Office--Directors  
5 offices--Assistants  
Conference Room  
Clerical  
Public Counter

#### Finance Department

Office--Director  
Office--Budget Officer  
Office--Accounting Officer  
Office--Purchasing Officer  
Office--City Treasurer  
Office--Payroll Officer  
Office--Tax Officer  
5 offices--Assistant Tax Offices  
Computer Room  
Records Room  
Office--Records Officer  
2 offices--Audit and Accounts Officers  
4 Interview Rooms  
3 offices--Assessing Officers  
Printing Room  
2 Conference Rooms  
Clerical  
Public Counter  
Vault  
Personnel Lounge

#### Parks and Recreation Department

Office--Recreation Director  
3 offices--Recreation Program Supervisors  
Office--Parks Director  
Clerical  
Public Counter  
Conference Room



Board of Education Department

Office--Director  
Office--Assistant Director  
4 offices--Inspectors  
2 offices--Secondary School Inspectors  
2 offices--Public School Inspectors  
Clerical  
Conference Room  
Records Room

Public Building Maintenance Department

Office--Director  
Office--Assistant Director  
Clerical

City Hall Maintenance Department

Office--Director  
Office--Assistant Director

Personnel Department

Office--Director  
2 offices--Assistant Directors  
Examination Room  
Clerical

Public Records Department

Records Room  
Office--Records Supervisor  
2 offices--Assistant Records Supervisors  
2 Work Rooms  
Duplicating Room

Executive Facilities

Council Chamber  
Press Room  
Equipment Room  
2 Conference Rooms  
Clerical  
Male Robing Room  
Female Robing Room  
Lounge

Mayor's Office  
 Office--Mayor's Secretary  
 6 offices--Councillors  
 Executive Lounge

### Law Courts

6 Court Rooms  
 Ante Rooms  
 Waiting Areas  
 6 offices--Judges Chambers  
 4 offices--Clerks  
 6 Work Rooms  
 3 offices--Police Officers  
 3 Interview Rooms  
 4 offices--Solicitors  
 Clerical  
 Public Counter  
 2 Conference Rooms  
 Office--City Clerk  
 Office--Deputy City Clerk  
 Office--City Attorney  
 Office--Deputy City Attorney  
 Office--City Manager  
 Office--Assistant City Manager

### Miscellaneous Facilities

Theater  
 Restaurant  
 Cafeteria  
 Bar  
 Library  
 Art Gallery  
 Public Conference Rooms  
 Public Lounges  
 Public Reading Room  
 Parking  
 Receiving Area  
 Supplies Storage  
 Press Room  
 Duplicating Room  
 Reception and Information Station  
 Mail Room  
 Mechanical Room  
 Coat Room  
 Offices for Private Rental (for future use by municipal departments)  
 Restrooms, Waiting Areas, Personnel Lounges, and  
 Records and Supply Storage to be provided where  
 necessary

**PLATES**

**Photographs of Model and Drawings for  
Proposed Civic Center for  
Wichita, Kansas**



**THIS BOOK  
CONTAINS  
NUMEROUS PAGES  
THAT WERE  
BOUND WITHOUT  
PAGE NUMBERS.**

**THIS IS AS  
RECEIVED FROM  
CUSTOMER.**

PLATE I

PARTIAL OVERHEAD VIEW LOOKING SOUTH, OF WICHITA, KANSAS SHOWING CONCEPTUAL FUTURE BUILDING AND STREET PATTERN AND THEIR RELATIONSHIP TO PROPOSED CIVIC CENTER. CIVIC CENTER IS IN THE FOREGROUND. PEDESTRIAN AND SHOPPING MALL IN CENTER. CULTURAL COMPLEX TOWARDS TOP OF PHOTOGRAPH. RIVER AT THE RIGHT.

**THIS BOOK  
CONTAINS SEVERAL  
DOCUMENTS THAT  
ARE OF POOR  
QUALITY DUE TO  
BEING A  
PHOTOCOPY OF A  
PHOTO.**

**THIS IS AS RECEIVED  
FROM CUSTOMER.**

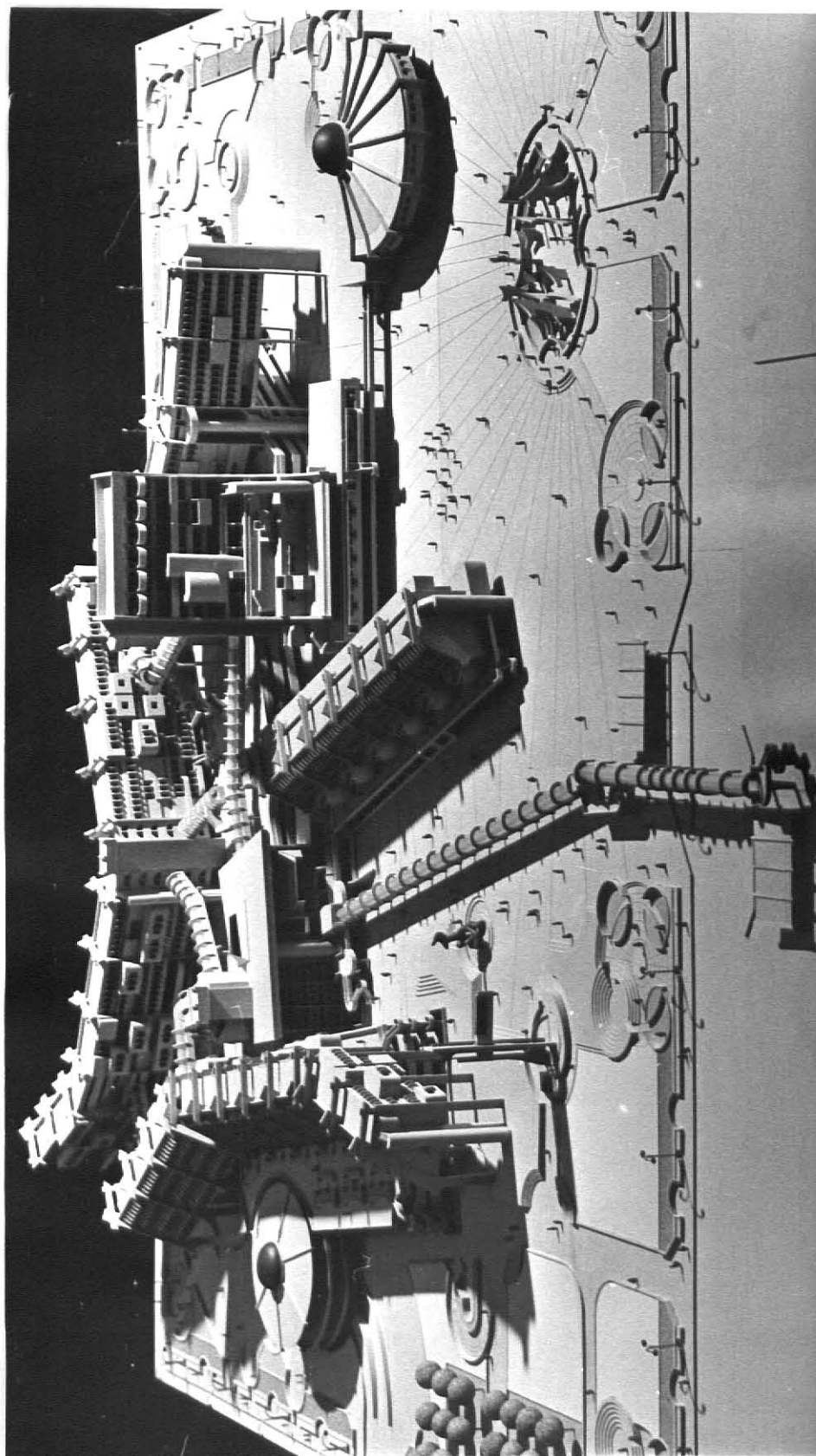






**PLATE II**

**VIEW FROM SOUTH, OF PROPOSED CIVIC CENTER**





**PLATE III**

**FIRST LEVEL PLAN**

**THIS BOOK  
CONTAINS  
NUMEROUS PAGES  
WITH DIAGRAMS  
THAT ARE CROOKED  
COMPARED TO THE  
REST OF THE  
INFORMATION ON  
THE PAGE.**

**THIS IS AS  
RECEIVED FROM  
CUSTOMER.**

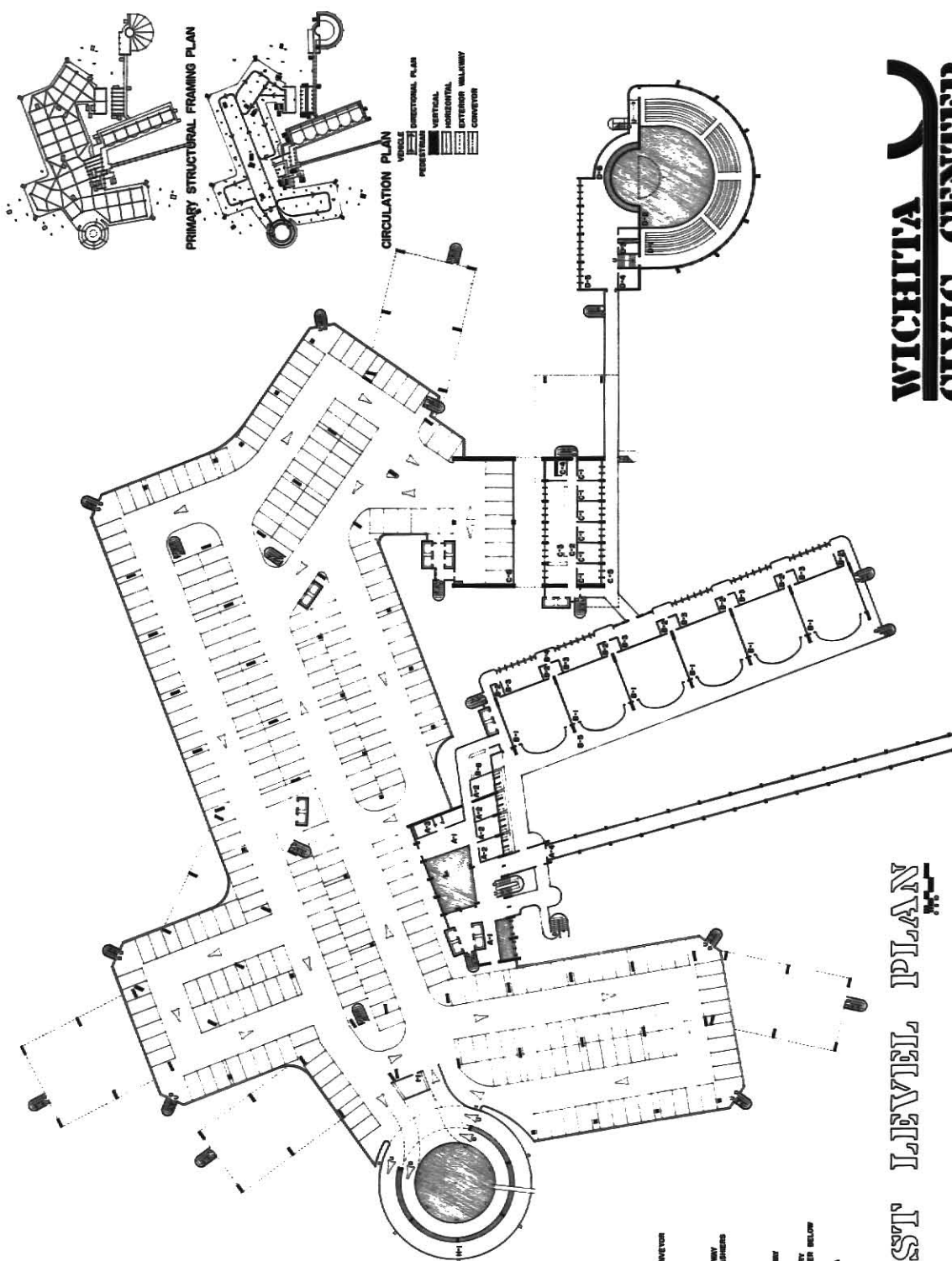
# WICHITA CIVIC CENTER

MASTERS OF ARCHITECTURE, THOMAS  
KANSAS STATE UNIVERSITY  
C.E. BURNETT - ARCHITECT - PROF. J.C. HOFFMEIER

## FIRST LEVEL PLAN



- A-1 OFFICE
- A-2 OFFICE
- A-3 RESTROOMS
- A-4 PERISTYLE CORRECTOR
- B-1 LAW COURTS
- B-2 COURT ROOM
- B-3 WAITING
- B-4 CORRIDOR
- B-5 INFORMATION - CASHIERS
- C-1 OFFICE
- C-2 CORRIDOR
- C-3 WAITING
- C-4 RESTROOMS
- C-5 PERISTYLE
- C-6 PERISTYLE
- D-1 VESTIBULE HALLWAY
- D-2 VESTIBULE CHAMBER BELOW
- D-3 RESTROOMS
- D-4 OFFICE
- D-5 CHAMBER AREA
- D-6 CORRIDOR
- N-1 RAMP
- I-1 TICKET BOOTH



PRIMARY STRUCTURAL FRAMING PLAN

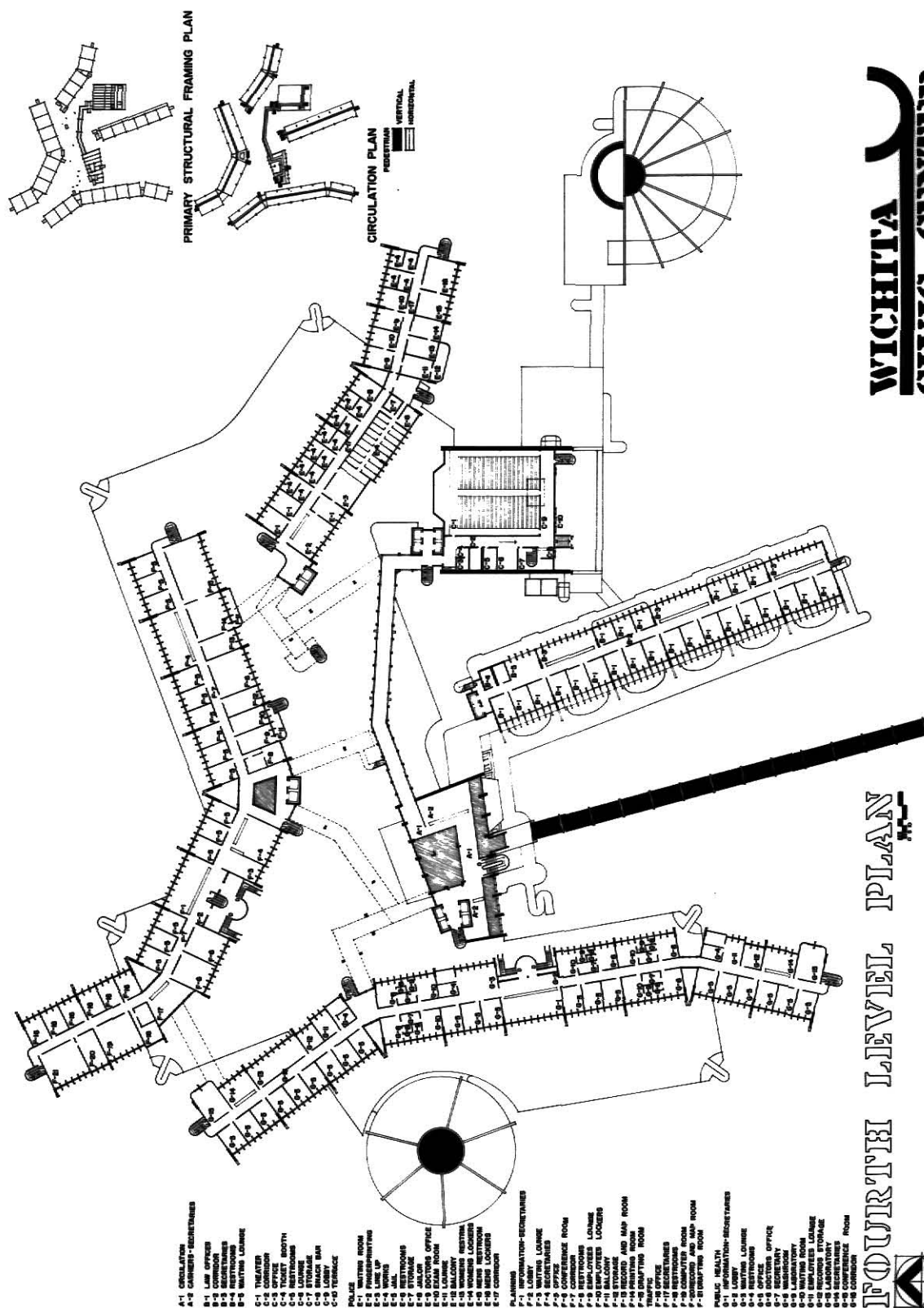
CIRCULATION PLAN





**PLATE IV**

**FOURTH LEVEL PLAN**



# NYNEX LEAFLET



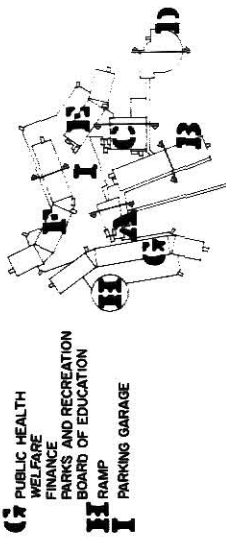
WICHITA  
CIVIC CENTER

MASTER OF ARCHITECTURE THESIS  
KANSAS STATE UNIVERSITY  
C. G. BUNKER AUGUST 2006 10 MONTHS



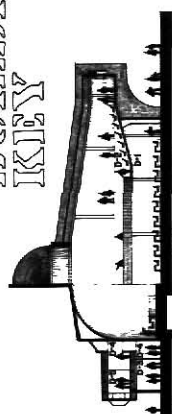
**PLATE V**

**SECTIONS AND BUILDING KEY**



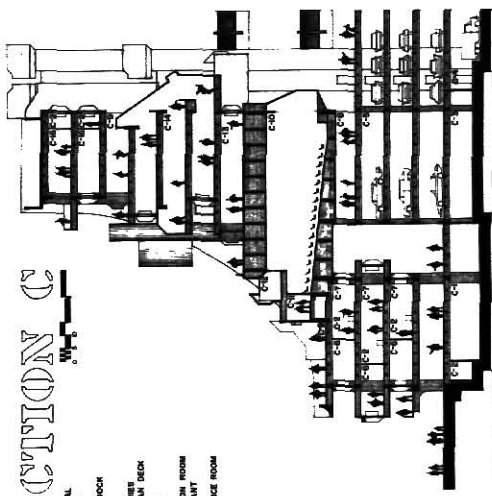
- A** ORIENTATION BUILDING
- B** LAW COURTS
- C** MUNICIPAL GOVERNMENT OFFICES
- D** COUNCIL CHAMBER
- E** POLICE
- F** FIRE
- G** CIVIL DEFENSE
- H** PLANNING
- I** TRAFFIC
- J** BUILDING AND ZONING
- K** REAL ESTATE
- L** HOUSING
- M** PUBLIC WORKS
- N** PUBLIC HEALTH
- O** WELFARE
- P** FINANCE
- Q** PARKS AND RECREATION
- R** BOARD OF EDUCATION
- S** RAMP
- T** PARKING GARAGE

# BUILDING KEY



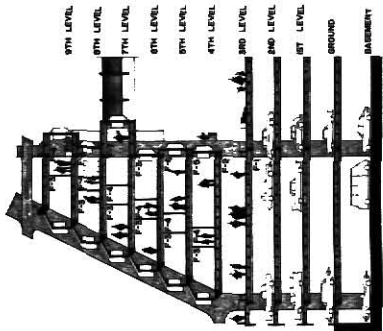
## SECTION B

- B-1 OFFICE
- B-2 CORRIDOR
- B-3 LAW COURT
- B-4 COURT
- B-5 RECREATION



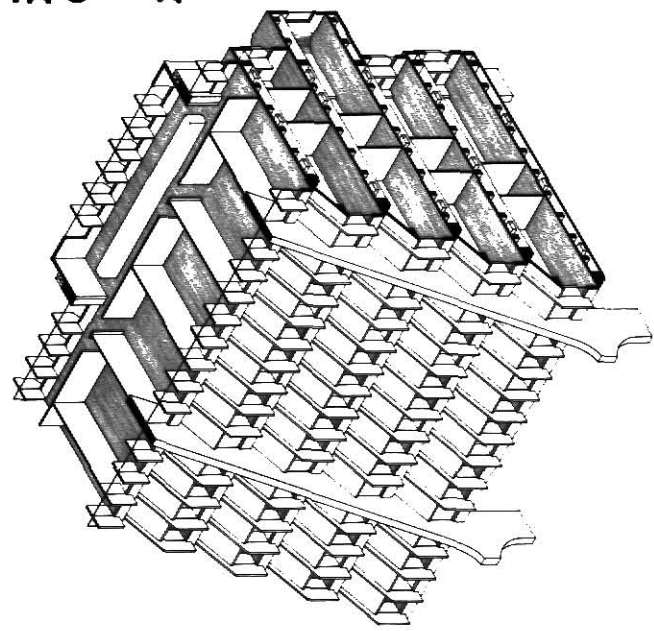
## SECTION C

- C-1 MECHANICAL
- C-2 CORRIDOR
- C-3 LOBBY
- C-4 LANDING DOOR
- C-5 PARKING
- C-6 RECREATION
- C-7 RECREATION
- C-8 THEATER
- C-9 LOBBY
- C-10 THEATER
- C-11 RECREATION
- C-12 RESTAURANT
- C-13 CONFERENCE ROOM



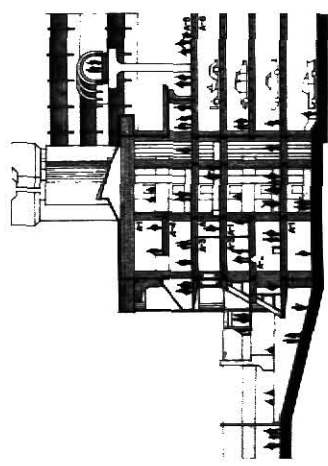
## SECTION D

- D-1 PARKING
- D-2 RECREATION
- D-3 OFFICE
- D-4 CORRIDOR
- D-5 RECORD AND MAP ROOM
- D-6 RECREATION
- D-7 CONFERENCE ROOM
- D-8 PLUMB STORAGE
- D-9 RECREATION



# ISOMETRIC

ASSEMBLY OF PRECAST BUILDING COMPONENTS



## SECTION A

- A-1 CIRCULATION
- A-2 PARKING
- A-3 OFFICE
- A-4 LOBBY
- A-5 RECREATION
- A-6 PARKING

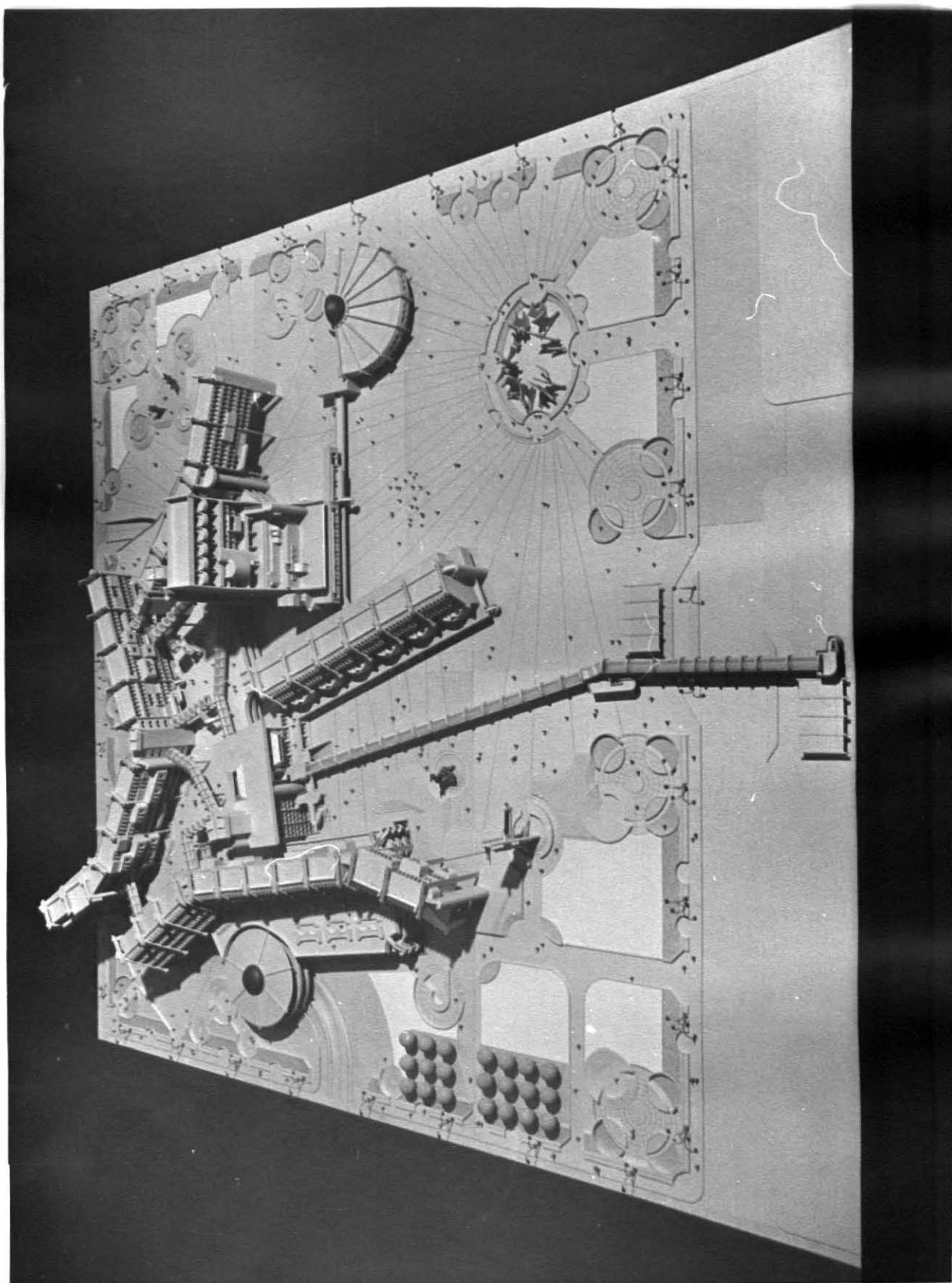
# WICHITA CIVIC CENTER

UNIVERSITY OF KANSAS  
KANSAS STATE UNIVERSITY  
C. R. BARNER ARCHITECT  
J. C. HERTZELMAN



PLATE VI

OVERHEAD VIEW FROM SOUTH, OF SITE DEVELOPMENT AND BUILDING COMPLEX







**PLATE VII**

**OVERHEAD VIEW FROM NORTH, OF SITE DEVELOPMENT AND BUILDING COMPLEX**

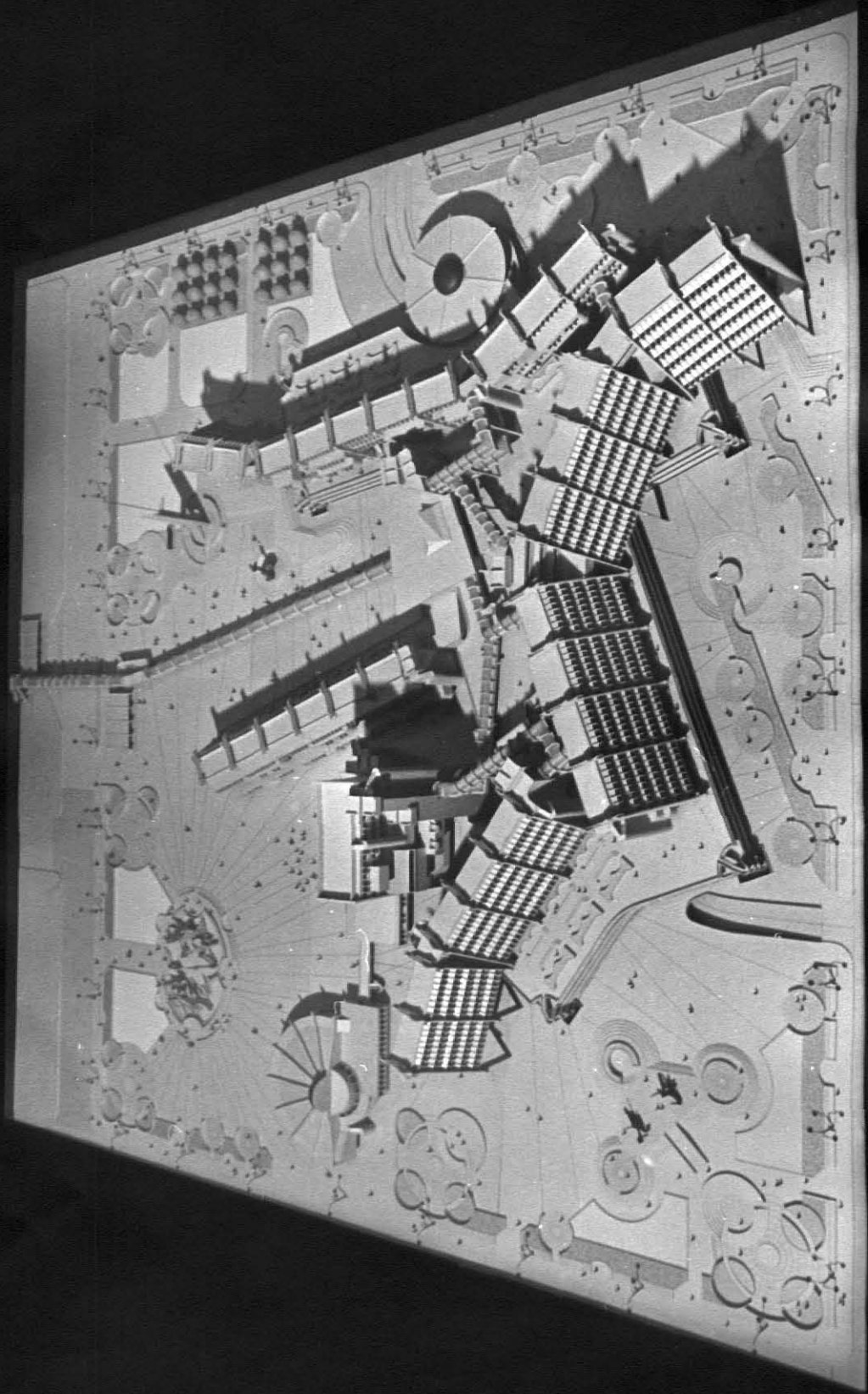
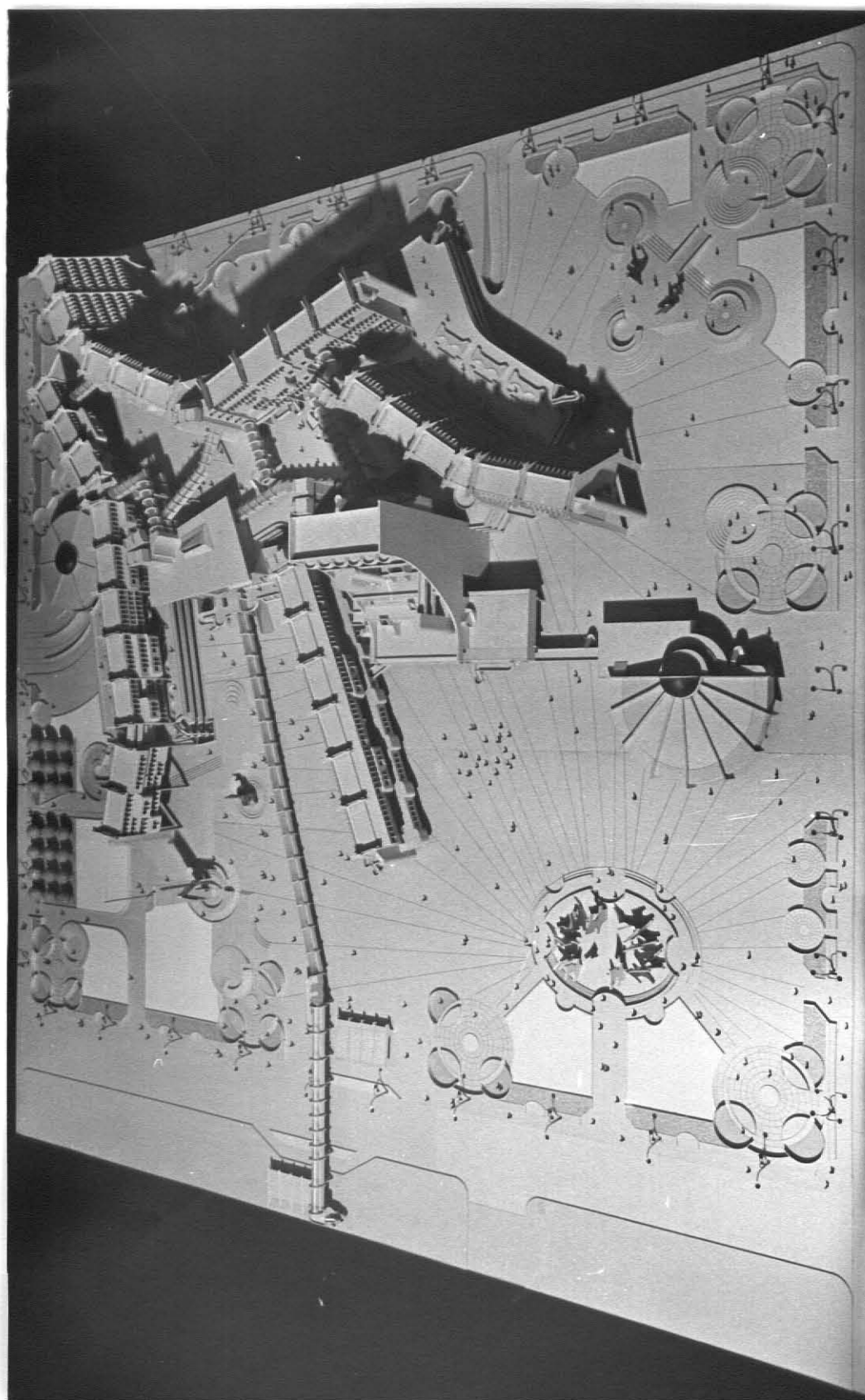




PLATE VIII

OVERHEAD VIEW FROM EAST, OF SITE DEVELOPMENT AND BUILDING COMPLEX





**PLATE IX**

**OVERHEAD VIEW FROM WEST, OF SITE DEVELOPMENT AND BUILDING COMPLEX**



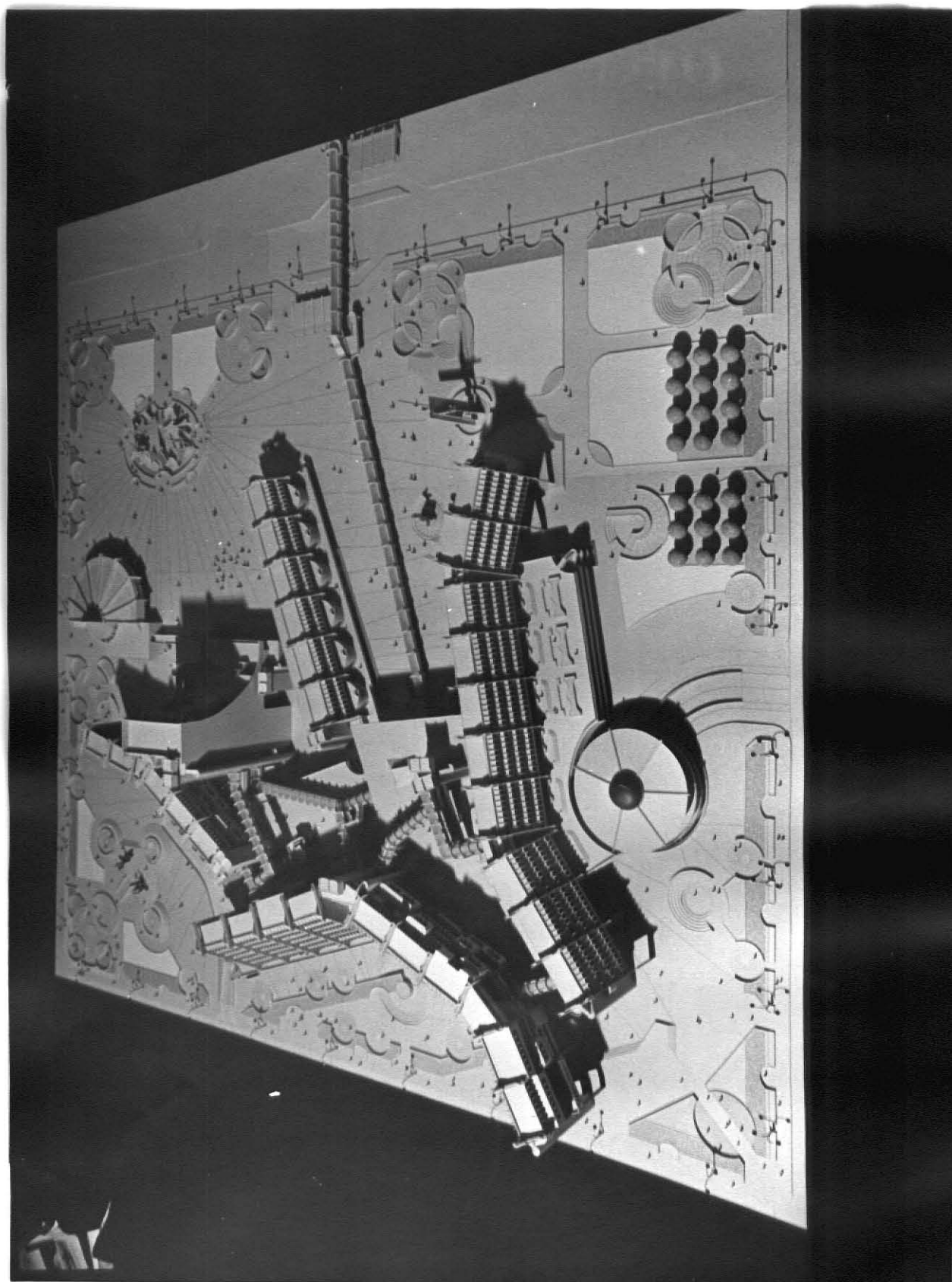




PLATE X

PARTIAL VIEW OF BUILDINGS AND EXTERIOR CIRCULATION SYSTEM.  
ELEVATED PEOPLE CONVEYOR IN THE FOREGROUND OF PHOTOGRAPH,  
TERMINATES AT ORIENTATION BUILDING. LAW COURTS AND OFFICES  
ARE AT THE RIGHT SIDE OF PHOTOGRAPH.

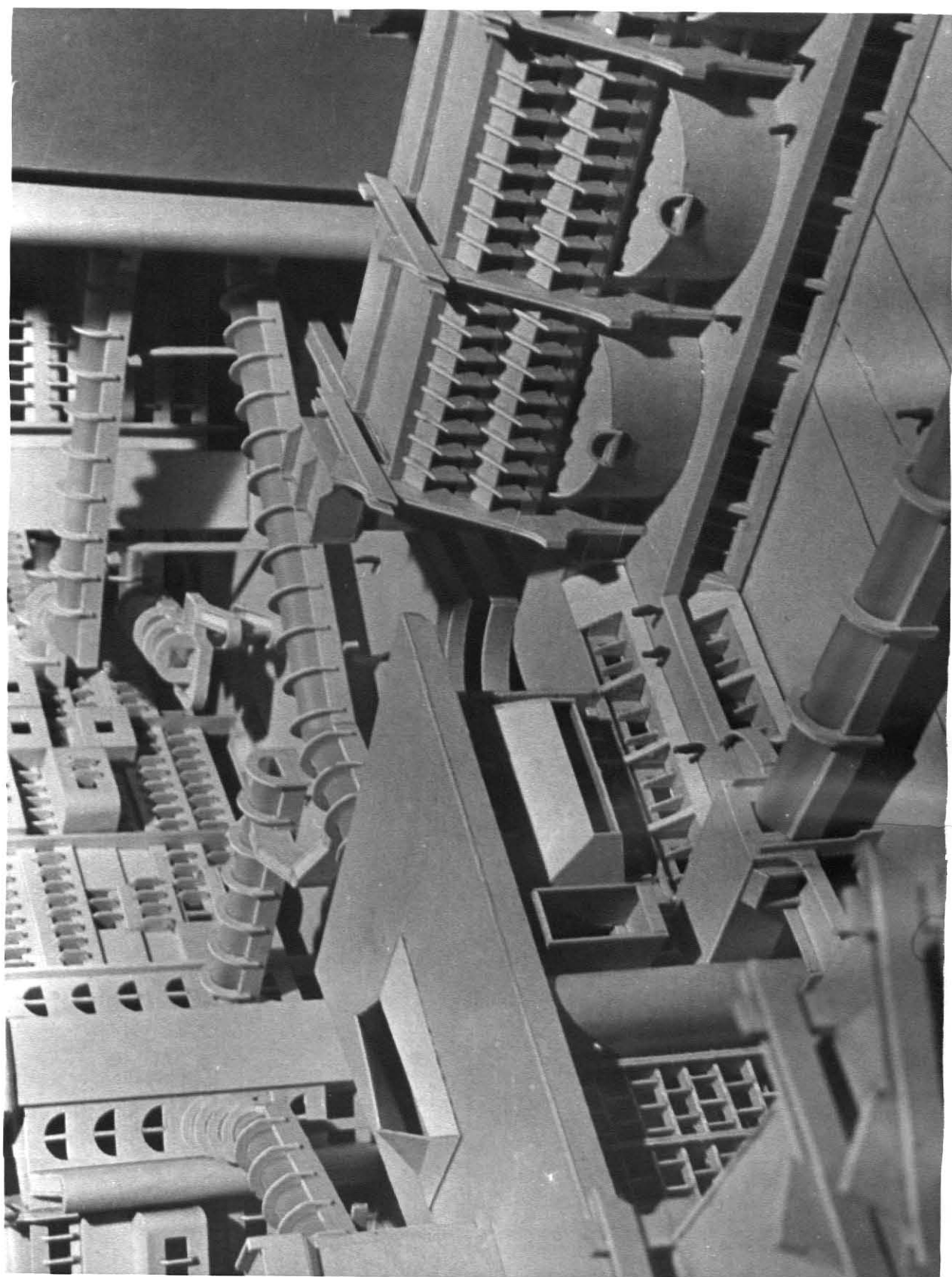
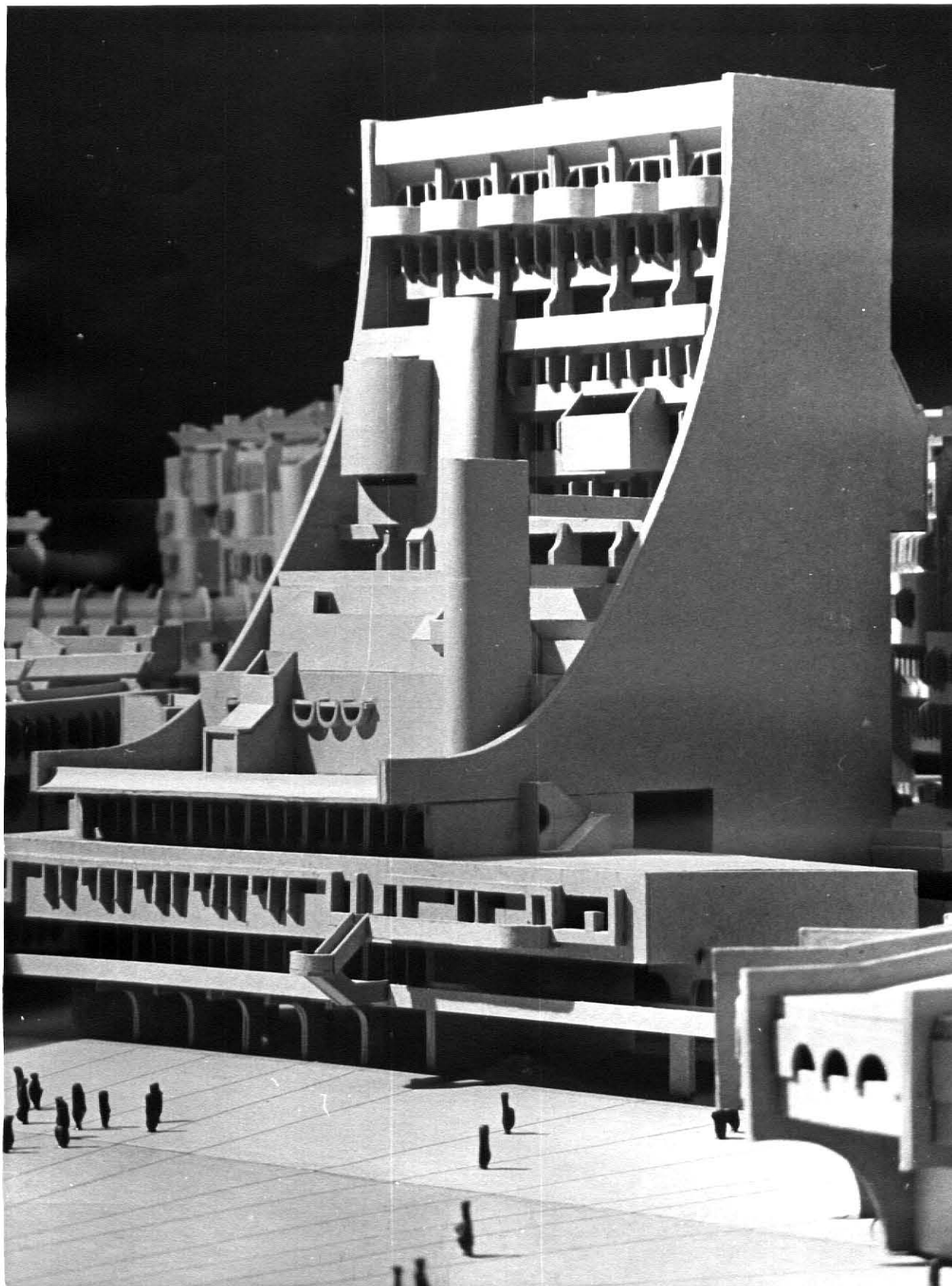


PLATE XI

VIEW OF ROBERTSON BUILDING WHICH INCLUDES  
FACILITIES FOR GOVERNMENT OFFICIALS AND THE  
GENERAL PUBLIC

PLATE XI

VIEW OF HIGHRISE BUILDING WHICH INCLUDES  
FACILITIES FOR GOVERNMENT OFFICIALS AND THE  
GENERAL PUBLIC



## BIBLIOGRAPHY

- Aregger, Hans and Glaus, Otto. Highrise Building and Urban Design. London: Thames and Hudson Ltd., 1967.
- Ashihara, Yoshinobu. Exterior Design in Architecture. New York: Van Nostvand Reinhold Company, 1970.
- Beardsley, Monroe C. and Schueller, Herbert M. Aesthetic Inquiry. Belmont, California: Dickenson Publishing Co. Inc., 1967.
- Collins, Peter. Changing Ideals in Modern Architecture. London: Faber and Faber Limited, 1965.
- Cook, Peter. Architecture: Action and Plan. London: Studio Vista, 1967.
- Cook, Peter. Experimental Architecture. London: Studio Vista, 1970.
- Crosby, Theo. Architecture: City Sense. London: Studio Vista, 1965.
- Faulkner, Ray and Ziegfeld, Edwin. Art Today. New York: Holt, Rinehart and Winston, Inc., 1969.
- Greenough, Horatio. Form and Function. Los Angeles, California: University of California Press, 1969.
- Hall, Edward T. The Hidden Dimension. New York: Doubleday and Co. Inc., 1966.
- Heyer, Paul. Architects on Architecture. New York: Walker and Co., 1966.
- Jencks, Charles. Architecture 2000. London: Studio Vista, 1971.
- Kettaneh, Anthony. Project Romulus. Cambridge, Mass.: The M.I.T. Press, 1967.
- Lynch, Kevin. The Image of the City. Cambridge, Mass.: The M.I.T. Press, 1960.
- Norberg-Schulz, Christian. Existence, Space and Architecture. London: Studio Vista, 1971.
- Okamoto, Rai Y. and Williams, Frank E. Urban Design Manhattan. New York: The Viking Press, Inc., 1969.
- Pawley, Martin. Le Corbusier. New York: Simon and Schuster, 1970.



- Pye, David. The Nature of Design. New York: Reinhold Publishing Corp., 1964.
- Richards, Brian. New Movement in Cities. London: Studio Vista, 1966.
- Safdie, Moshe. Beyond Habitat. Montreal: Tundra Books, 1970.
- Schwab, Gerhard. The Architecture of Paul Rudolph. New York: Praeger Publishers, 1970.
- Severino, Renato. Equipotential Space. London: Pall Mall Press, 1970.
- Skolimowski, Henryk. "Human Space in the Technological Age." Architectural Association Quarterly, (July 1969), 81-83.
- Smithson, Alison and Smithson, Peter. Urban Structuring. London: Studio Vista, 1967.
- Spade, Rupert. Paul Rudolph. London: Thames and Hudson, 1971.
- Spreiregen, Paul D. The Architecture of Towns and Cities. New York: McGraw-Hill Book Co., 1965.
- Stern, Robert. New Directions in American Architecture. New York: George Braziller, 1969.
- Venturi, Robert. Complexity and Contradiction in Architecture. New York: The Museum of Modern Art, 1966.

A STUDY OF URBAN AESTHETICS

by

CHARLES GRANT BUNKER

B. Arch., University of Miami, Florida, 1970

---

AN ABSTRACT OF A MASTER'S THESIS

submitted in partial fulfillment of the

requirements for the degree

MASTER OF ARCHITECTURE

Department of Architecture

KANSAS STATE UNIVERSITY  
Manhattan, Kansas

1972

This thesis is a study to explore and develop urban aesthetics in a rational and intuitive manner. It represents the implementation of a philosophy concerning architecture. This philosophy is derived from ideas about modern architecture in general, but is modified to accommodate a unique situation. These ideas are not in any way meant to be extreme or final, but form a basis from which further and more advanced ideas can be developed.

A comprehensive program is developed for the architectural design of a Civic Center Complex in an urban environment. The Civic Center is the means by which the philosophy is implemented. It is a building and spatial type that is inclusive of many design needs. While the program is hypothetical, it accepts the existing urban social and physical systems. The complexities and problems encountered are anticipated as being relevant to those in which the designer will be challenged in future professional practice.

This work makes no claim to originality. It is not original in its general assumptions, method of inquiry, and in some instances choice of details. Rather, it attempts to synthesize many sources into a coherent approach.