

ys

ifers -- 506 @ 25.40
ifers -- 522 @ 25.30
heifers -- 535 @ 25.30
heifers 505 @ 25.10
ifers -- 463 @ 25.10
ifers -- 546 @ 25.10
ifers -- 463 @ 25.10
ifers -- 488 @ 24.90
ifers -- 458 @ 24.85
ifers -- 492 @ 24.70
ifers -- 335 @ 24.36
ifers -- 522 @ 23.80
ifers -- 470 @ 23.60
heifers 392 @ 23.20
heifers -- 524 @ 23.20
COWS
1125 @ 18.10
1100 @ 18.00
1170 @ 18.00
1250 @ 17.50
1310 @ 17.50
1945 @ 17.30
1175 @ 17.20
915 @ 17.10
1190 @ 17.10
1210 @ 17.10
1140 @ 17.00
1135 @ 17.00
930 @ 16.80
925 @ 16.70
990 @ 16.50
1030 @ 16.40
840 @ 16.10
910 @ 16.10
1185 @ 16.10

MISSION
Y

st. Marys
Kans.

f Salina

le Only

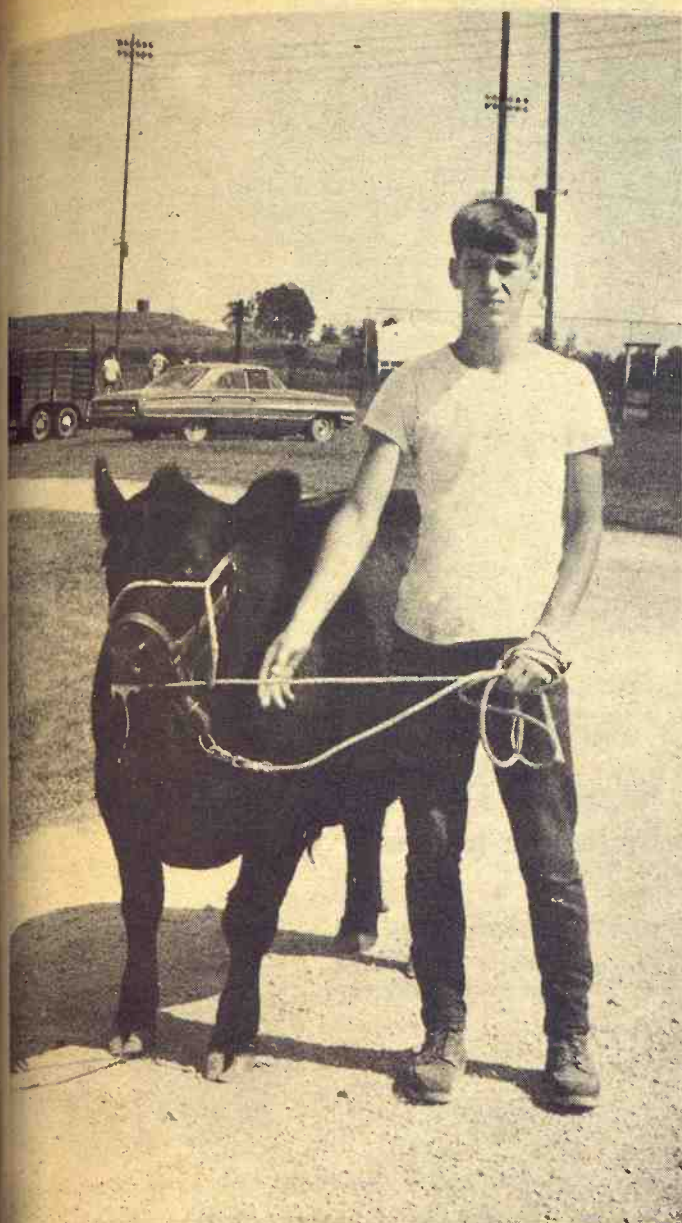
at 12:00 a.m. cattle
der they are consid-

hogs 221 @ 21.35
e hogs 223 @ 21.45
hogs 233 @ 21.20
t hogs 207 @ 21.45
ed hgs 208 @ 21.45
hogs 222 @ 21.30
oar hg 475 @ 11.90
ow 450 @ 16.50
ow 500 @ 17.05
t hgs 205 @ 21.40
ite hgs 229 @ 21.15
ow 400 @ 17.80
ed svs 405 @ 18.00
ed svs 486 @ 17.10
t pigs @ 16.25
t pigs @ 13.00
ed pigs @ 12.25
ed pigs @ 12.75

lt pigs @ 12.30
nite pigs @ 17.50
otted pgs @ 15.25
otted pgs @ 12.30
mp pigs @ 13.75

anchers
SION CO.
S 40

0211
censed



Angus Entry

Sid Oxandale, Dickinson county, had a 4-H Angus project ready for fair season in G&G area.

GRASS

& GRAIN

13th year no. 26

August 29, 1967

Press Further For Farm Bargaining Board

Secretary Orville L. Freeman of the Agriculture department said last week the administration was serious about setting up the machinery for farmers to bargain collectively, much like labor unions, for the price they received for their products.

But Freeman told a news conference no decisions had been made on the type of bargaining procedure which might evolve from discussions now going on.

Law Is Studied
Legislation was under consid-

eration, he said, and possibly would include establishment of a national labor relations board for the farmer.

Freeman reported to newsmen comments he made at a cabinet meeting with President Johnson.

The President himself told a news conference last Friday the government should give "very serious consideration to evolving some kind of program that will give the farmer an equity of fairness," similar to that enjoyed by union members.

Freeman said he discussed the collective bargaining issue at shirtsleeve meetings with farm groups last week in Nebraska, Kansas, Utah and Idaho. He said there was great interest in the issue everywhere he had traveled this year.

Could Earn More

Freeman said the farmer could get better prices on some commodities without the consumer paying more at his grocery store. But he admitted in other cases consumer prices might increase.

But the secretary said many consumers would be glad to pay the higher price if they could be assured the money would go to the farmer.

The emphasis, he said, would be on negotiating and giving the farmer a stronger position in the market place.

Freeman said about 60 per cent of all farm income came from products not covered by an agricultural program and the farmer's position in the market place was weak.

Asked About Strike

Asked about the possibility of a farm strike, Freeman said farmers had the right to withhold products from market in an attempt to get a better price. But he said withholding efforts by the National Farmers organization had not succeeded because they lacked a broad base.

As an example of what might evolve, Freeman said dairy farmers now covered by milk-marketing orders might form regional councils to negotiate with milk handlers for a better price than that set by the federal government.

Higher Prices Without Raising Support

USDA Seeks Way —

Agriculture department officials said yesterday the government is concentrating on ways of strengthening farm prices, but is not contemplating increases in previously announced price support rates.

"These efforts are being emphasized for grains and soybeans — crops which have lost price ground in commodity markets since it became apparent this year's production of wheat, corn and soybeans would be at record high levels.

The price support rates average \$1.25 a bushel for wheat, \$1.05 for corn and \$2.75 for soybeans. Officials said no thought is being given now to raising these rates, although considerable pressure is being exerted, they said, by some farm groups that this be done. "Any suggestion that would involve an increase in farm program costs is highly unpopular now," one official said.

The department's main thrust at this time involves appeals to farmers that they hold back 1967 crop grains until later in the marketing year. It advises them to take advantage of the price support loans.

In this connection, Orville L. Freeman, secretary of agriculture, said earlier this week that this year's drop in wheat prices was not justified on the basis of this year's production and prospective demands.

"Unfortunately, too much wheat has been loaded into marketing channels at harvest resulting in temporary gluts that have pushed prices down," he said.

The government is seeking to expedite shipment of wheat abroad under its food-for-peace program. This would increase market demands now and conceivably add some strength to prices.

More grain will be moved to India as soon as the government

can determine what assistance has already been provided or soon will be provided by other countries.

The government continues to make clear that it will not sell any government-owned wheat for less than 115 percent of the loan rate plus carrying charges — a price which is above current market prices.

The department also has under consideration a proposal that it extend the maturity date of price support loans on wheat stored in commercial warehouses. Such action would keep some wheat from moving out

from under price support loans into the already heavy market supply.

In the case of corn, the department may soon announce changes in its schedule of paying premiums and discounts under the price support program. Under such a change, higher quality corn would draw a higher premium over the basic price support than at present. This could add several cents a bushel to the loan value of higher grades of corn, officials said. But the basis support rate of \$1.05 a bushel would not be changed.

We Can Handle Insurance Needs Without FCIC

A major Kansas hail insurance company has protested the extension of the Federal Crop Insurance program.

F. C. Walker, president of the Wheat Growers Mutual Hail Insurance Co. of Cimarron, specifically protested to Congressman Bob Dole, who reportedly had asked that FCIC be allowed to extend its program to irrigated corn in Seward and Haskell counties.

Said Walker: "There are plenty of taxpaying companies to handle all the protection the farmers want."

He asked Dole to vote against the requested budget of the government insurance agency headed by John Luft, former Rush County Kansas farmer.

"It is time to stop expanding bureaucracy into unneeded fields," said Walker. "We feel that Federal Crop Insurance should not only be self-supporting but limited to those areas not served by the insurance industry."

PUT CROP UNDER LOAN, SAY NEBRASKA WHEATMEN

LINCOLN, Neb. — Ray Davis of Potter, Neb., president of the Nebraska Wheat Growers association, has asked the state's wheat farmers to delay marketing their 1967 wheat crop until the price goes up.

Davis said his recommendations cannot be considered a holding action as defined by the National Farmers Organization. Instead of direct withholding, he recommended that the growers put their current crop under loan — government or private.



Sister Act

Sisters Melissa, Melinda and Melanie Hett, Florence Jayhawk club of Marion County, line up their projects at the recent Tri-County Fair at Herington.

August 29, 1967

2

Grass & Grain

TWO BARN BURN
NEAR JUNCTION CITY
JUNCTION CITY — Lightning set fires that destroyed two barns near here last week. A barn holding about 2000 bales of hay was destroyed five miles west of here on a farm operated by Leslie Thorpe. Three miles west on K18 the Munson

brothers lost a barn containing about 100 bales of hay.

GRASS & GRAIN

The Mid-Kansas news weekly. Published each Tuesday at 1200 Moro, (Box 1009) Manhattan, Kansas, 66502 by
AG PRESS
Dean Coughenour
E. R. Woodward
Second class postage paid at Manhattan, Kansas
Subscription: \$3 year
CIRCULATION 11,108

ONLY \$325 Fully Guaranteed Completely Installed



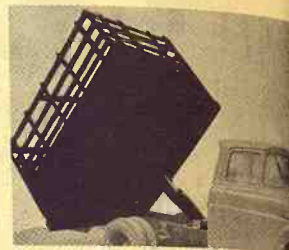
The Hydraulic Hoist Anyone Can Use At A Price Everyone Can Afford!

PTO operated hydraulic hoist for 10' and smaller beds! Six ton hoisting power. Can be used on 1 ton and smaller trucks.

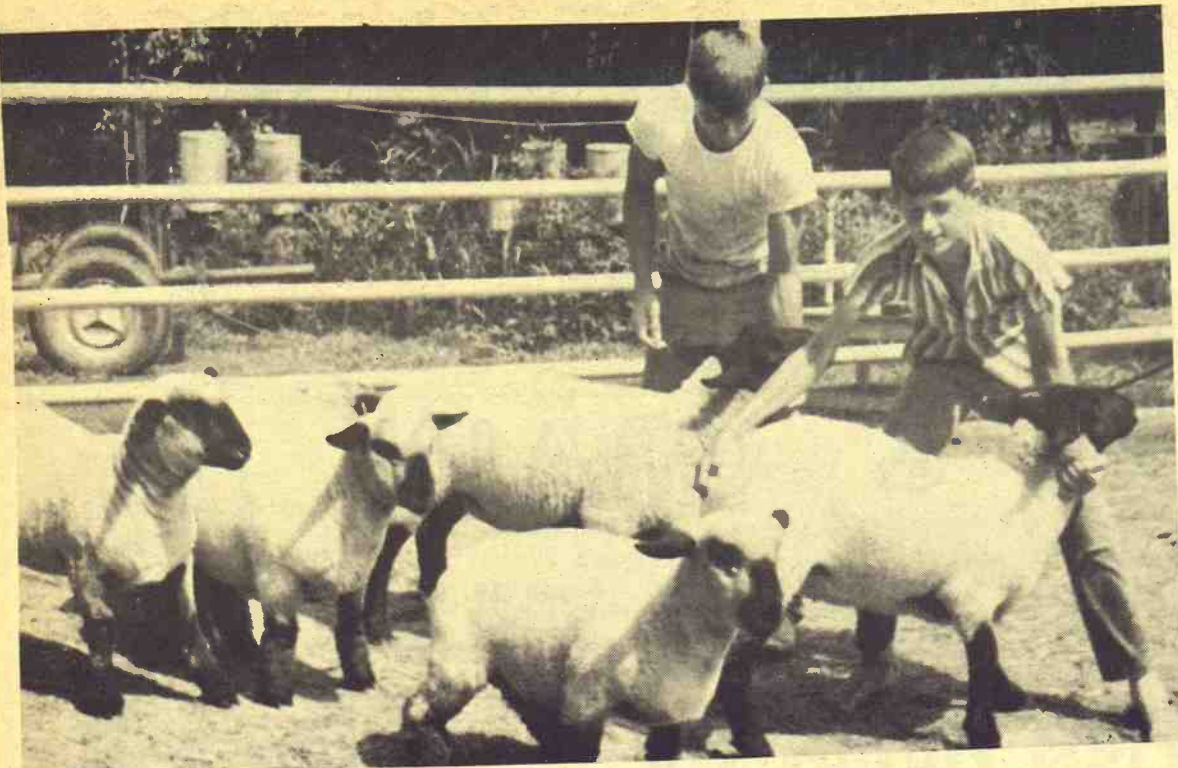
NOW — Even small trucks can have hydraulic hoisting.

Fingertip Control From Cab
Chrome Plated Piston Gives You Smooth, Positive Power

- Durable
- Practical
- Convenient



HAUL-MOR, INC. valley falls, kansas • phone 945-3211



Busy Fair-Goers

Gary and Curtis Dreier, who lives four miles east of Hesston in Harvey County, took Suffolk lambs to show at fairs at Canton, Inman, Salina, Newton and McPherson. The Dreier boys have a lot of ribbons they won at fairs, bringing home 19 from the Canton fair. The Dreier farm is a rural showplace. Delbert Dreier milks 68 Holstein dairy cows and farms 400 acres.

Wheat Under Loan Moving At Slow Rate

The Agriculture Department has reported that farmers had stored 35.5 million bushels of 1967-crop wheat under price support loans through July. This compared with 30.3 million stored from the 1966 crop through the same period.

This report indicated that farmers have been relatively slow to make use of the price support loan program at a time when they are harvesting a record crop and prices are down sharply from a year earlier.

Farmers in Kansas led by 16 million bushels stored under loans, followed by Oklahoma with 9.7 million, Texas with 3.6 million and Missouri with 1.5 million.

The department reported that farmers had redeemed 63.8 million bushels of the 242.9 million bushels of corn from last year's crop which they had stored under support loans.

MOST WOMEN DRIVERS IN U. S. IN KANSAS

Kansas has the highest percentage of women drivers of

any state in the Union. Of Kansas' 1.36 million drivers licenses, 45.4% are held by women. Nebraska is next high with 43.6%. Lowest percentage in the

U. S. is in Colorado, with women holding 37.9% of the drivers licenses. There are now 101 million drivers licenses held in the U. S.

new automatic feeding service for feedlot operators:



(15.05
261.00
52.01)



kansas soya will custom-mix...

your formula... and make deliveries at specified times on a pre-arranged basis.

Contract with us now for a complete feeding program on a 60 to 120 day basis. We'll handle all the details automatically... every step of the way. Other Kansas Soya services include sound formula guidance; fast, automated, in-and-out service and Grain Bank facilities. For details, call collect...without obligation, of course.

Kansas Soya Products Co., Inc.
Phone Dickens 2-7270
Emporia, Kansas



Paper Back
Books
Largest Stock
In Town

25c - 35c
50c - 75c



University
Book Store

623 N. Manhattan Manhattan

Rear Mt. Blades For Year-Round Use

We have on hand a supply of rear mount blades in 6, 7 and 8 ft. sizes that will pay for themselves in extra use. Landscaping, terracing, snow plowing, many uses in feedlots. Wherever this type of blade can work.

These can be offset 12 inches and are completely reversible. These are big labor savers at silo filling time.

Weights start at 400 lbs. on 6-ft. size.

Prices 6-ft. \$100—7-ft. \$110—8-ft. \$120.

Manufactured by:
FORGY WELDING
Phone 857-3241
CENTRALIA, KANS.

lost a barn containing
00 bales of hay.

GRASS & GRAIN

Mid-Kansas news weekly
ed each Tuesday at 12
(Box 1009) Manhattan
66502 by
AG PRESS
Dean Coughenour
E. R. Woodward
class postage paid
Man, Kansas
option: \$3 year
LATION

AUL-MOR, INC.

Can Use
Afford!

0' and smaller beds
used on 1 ton and

ks can have



as • phone 945-3211

12 1

6 5

at

ed



NEITHER RAIN OR SLEET — When the sun becomes too hot and there's a moment to rest, Max Shoemaker, Ottawa postman, finds a comfortable spot in the shade to rest.

FARMERS OUTLOOK

L.H. Simerl

Lift Under Fall Hog Prices

Hog prices may hold up better than usual this fall. And we believe that prices will be more profitable and more stable than usual in 1968.

In August last year, hog prices averaged nearly \$26 a hundred pounds at central markets. But they slid to the \$20 level by November.

Hog prices recently were around \$21 to \$22, \$4 to \$5 lower than a year earlier. If prices drop as they did last fall many hog producers would find little profit in the business. We think that prices will decline, but much less than they did a year ago.

Hog prices were lower recently than they were a year before, principally because supplies of pork were larger. Pork output was 9 percent greater in June than it was the year before. In July, pork output was up more than 10 percent. Beef output was also larger, though not so much as pork.

Weekly hog slaughter jumped sharply after Labor Day last year, but then leveled off. The increase from July to mid-September was about 40 percent. Prices sagged under pressure of increased supplies, especially during the Holiday season when turkey took over on many tables.

There will be another jump in hog slaughter after Labor Day this year, but it is expected to be much smaller than last year. Slaughter starts from a higher level this year. And by No-

vember and December the slaughter of hogs will be less than in 1966, judging from the last official Pig Crop Report.

Supplies of competitive meats may be less burdensome than they were last fall. Beef output set new records at that time, and poultry meats were also at record highs by some 8 to 10 percent.

Beef output has continued to set new records this year, but the margin over 1966 levels is diminishing. By late fall, beef output may be less than it was a year before.

Broiler production, too, has leveled off, which is quite unusual for that industry. It usually increases 5 to 8 percent each year.

In summary, it now appears that supplies of pork and other meats will be no greater, and will probably be less, late this fall than they were a year before. The demand side of the market should be a little stronger. So we see no reason to expect prices to fall below about \$20.

The June Pig Crop report showed that hog producers planned to cut June-November sow farrowings 3 percent from the 1966 level. But the sharp improvement of hog prices for recent months may prevent any further decrease.

It appears that the hog-corn ratio will be very favorable this fall. It should be good enough to prevent any substantial reduction in hog production in

August 29, 1967

Grass & Grain **3**

1968. And memories of the low prices of last spring will help to prevent over-expansion.

Feed will be considerably cheaper than it has been during the past couple of years. We expect good profits in 1968 — but 1969 may be something else again!



CLAY CENTER — A Key Location for Mid-Kansas Feeders • On US 24 & K 15

Manufacturers Distributors

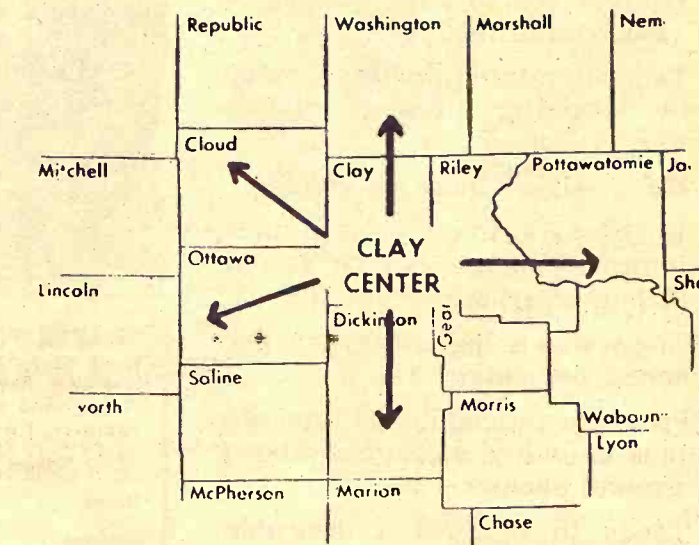
7

Bulk Trucks

For

Direct To Your

Farm Delivery



ONE STOP DOES IT ALL FOR MID-KANSAS & SO. NEBR. FEEDERS

Distributors For
Brower Stock & Poultry Equipment
American Cyanamid • Myzon
Pfizer • Dr. Salisbury's
Hess & Clark

WAGGIN' MASTER DOG FOOD
Bulk Tanks and Farm Augers

**For Cattle, Swine and Poultry Feeds
Animal Health Products**

See Your KEY Dealer or call ME 2-2141 Collect

KEY MILLING COMPANY
Clay Center, Kansas

SEDLACEK'S AUGUST CHALLENGE SALE
FINAL DAYS ... PRICES GUARANTEED THROUGH AUG. 31

People have come here from miles around and told us they have never seen such bargains in home furnishings and appliances. They doubted, they looked, they bought. Deliveries are running behind, but you'll be glad to wait a day or two.

OPEN WEDNESDAY NIGHT TO 9 P.M.

**FREE DELIVERY
WITHIN 200 MILES OF**

HANOVER, KANS.

THIS IS OUR CHALLENGE

We challenge any store in our 40,000 square mile trading area to match or beat the prices during this tremendous August sale. Shop around ... then come to Sedlacek's and be convinced.

**PHONE
ED 7-2345**

STOCK DEAL BOILING AT ALLIS-CHALMERS

Allis-Chalmers continues to be in the midst of some high finance strategy, with the company's directors refusing support of an offer to buy controlling interest of the implement firm by Ling-Temco-Vought. James Ling, chairman of the

company offering to buy Allis, then made an offer to buy all the Allis stock. His offer to buy controlling interest was pegged at \$235 million cash, while the proposal to buy all the stock was for an estimated \$590 million. Allis-Chalmers directors said they were considering a

August 29, 1967

4

Grass & Grain

possible merger with General Dynamics thru a tax-free exchange of stock.



HY-SI®

Original Silage Improver

IN YOUR SILAGE

- Enables you to store silage for year around feeding
- Tends to retain nutritional value by retaining more of plant's natural juices
- Makes silage more palatable
- Enables you to cut earlier since improved silage can be stored at higher moisture contents
- Gives you a higher return per acre from silage
- Proves beneficial in any type silo plus unlimited storage in above ground packs
- Tends to produce a desirable meat type carcass
- Applies easily



SHAHER FORMULA CO., INC.

Loren Thorp, Rt. 3, Junction City or Eugene Frigon, Wakefield, Kansas Distributors. Please send more information about Hy-Si Silage Improver. I am primarily interested in Hy-Si for:

☐ Silage ☐ High Moisture ground corn

Name

Address

County

State

Zip



Hand-Built Harvester

Designed by Jake Plett and hand built by Albert Balzer and Eldo Regier, all of Inman, this harvesting machine has a 238-horsepower Detroit Diesel engine and is known to farmers in the McPherson-Harvey-Reno county areas for its tremendous cutting power. The machine has hydrostatic drive and has an airconditioned cab. It's working here on the Gerald Molzen farm north of Newton.

Sell or Store? Many Ignore Wheat Loans

Farmers apparently aren't so sure that holding wheat off the market by putting it under government loan will get them a better price later.

Despite urging from USDA to put wheat under loan and keep markets from being glutted, farmers have put little more wheat under government sup-

port loans averaging \$1.25 a bushel than a year ago when the crop was smaller and prices were very much higher. During the 1966 crop harvesting season, national average farm prices reached \$1.75 a bushel.

Prices began declining late in the year and have continued to ease off an average of \$1.30 in July this year. As a consequence, farmers who sold wheat during the 1966 crop harvesting period got a much higher return than have farmers who stored their grain under the support loan which last year also was \$1.25 a bushel.

Certainly most of the latter have been able to pay off their loans, with interest, and get a little additional. But nothing like the amount received by the farmers who sold at market time last year.

Department officials say that because of this experience, a lot of farmers are ignoring the loan program and selling this year's wheat for whatever they can get. These farmers apparently have little confidence, they said, that there will be any marked improvement in grain prices for some time to come.

Otherwise, they would store under the loan and hold for better prices.

The trouble with America's most popular Bourbon is...



...it tastes too good to last.

Tasted any Old Crow lately?

KENTUCKY STRAIGHT BOURBON WHISKEY 86 PROOF. DISTILLED AND BOTTLED BY FAMOUS OLD CROW DISTILLERY CO., FRANKFORT, KY.



Johnny Kaw Says:

If you disagree — don't be stubborn — just say "no."

Fertilizer Pe
The pencil u
Newton Experime
superintendent of
the grass with fer
also advertisi
high in 10-inch g
was growing taller
field. Too late

Russell Find

RUSSELL — A
source of a city wa
for Russell, may h
land.

At least, a wide u
channel of water th

WESTER

J. J. RITTE

WESTER

In Mid-

Largest Sado

for the Ent

BOOTS • HO

Square Danc

HOPE, KANSAS

NEV



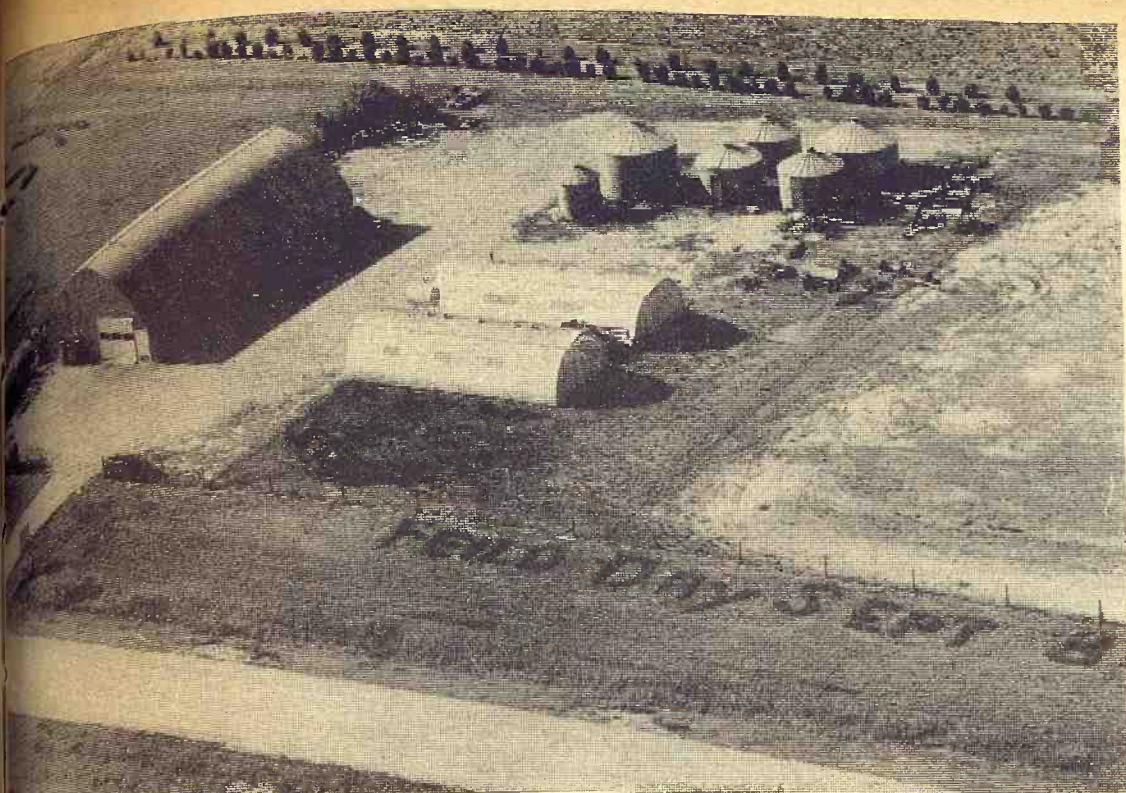
New Auctioneer

A new auctioneer in the G&G area is Robert G. Wilson of St. George, Pottawatomie County. Wilson recently completed auctioneering training at the Missouri Auction School, Kansas City. Wilson is 44 and has been active in Quarter Horse breeding. He formerly operated a feed warehouse.

ing adequate supplies are available at Pfeifer — would cost Russell about 3.5 million dollars for wells, pipelines and allied equipment. The cost would be paid by bonds if that meets the approval of Russell voters.

The Pfeifer project would be the least costly of three plans to provide a 50-year water supply.

The second proposal by the consulting engineering firm, would be a dam on Paradise creek north of Russell. The third would be a well system in the Arkansas river valley about five miles northwest of Great Bend.



Fertilizer Pencil —that misspells

The pencil used to write a message advertising a field day at the Newton Experimental Field was a 3-foot lawn spreader. Don Gronau, superintendent of the K-State station, said the message was written in the grass with fertilizer, not only showing what fertilizing does to grass but also advertising the September event. The letters are about 10 feet high in 10-inch grass. One of the hired men did the job and the grass was growing taller and taller before Gronau discovered the misspelling of field. Too late to do anything about it, tho, he said.

Russell Finds Needed Water Source?

RUSSELL — A bountiful source of a city water supply for Russell, may have been found.

At least, a wide underground channel of water that indicates

the prospect of a large water supply has been discovered.

Test holes in a new well bed of the Smoky Hill river have revealed an underground channel width of more than 500 feet.

These are west of the Pfeifer diversion dam and collection gallery, which has been the mainstay of the city's water system on the Smoky Hill river about twenty years.

At Pfeifer, the original channel — 55 feet below the present river bed — is about 200 feet wide.

"At least three of the 27 test holes drilled so far, are promising," said Frank Peirano, Russell city water department superintendent.

The most promising tests will be enlarged to take 8-inch casing, and will be test pumped.

The entire project — assum-

WESTERN SADDLE SUPPLY

J. J. RITTEL & SONS

WESTERN WEAR

In Mid-Kansas

Largest Saddle Selection

for the Entire Family

BOOTS • HORSE TRAILERS
Square Dancers Supplies
HOPE, KANSAS PHONE 43



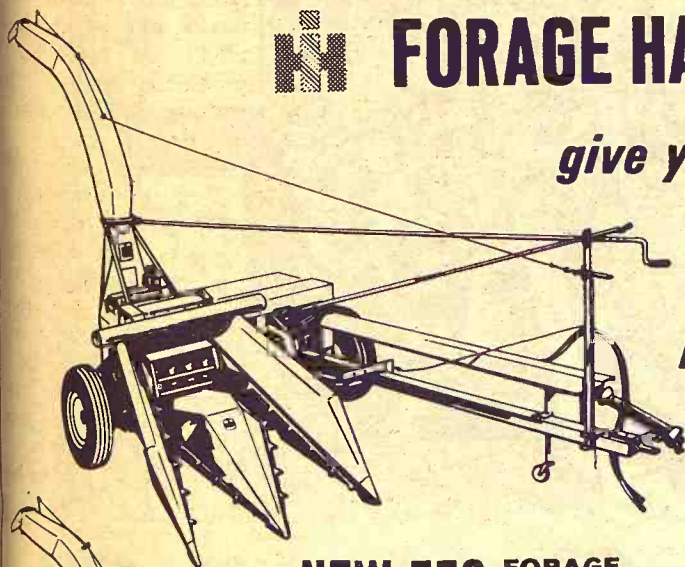
NEW 350 & 550

McCormick INTERNATIONAL

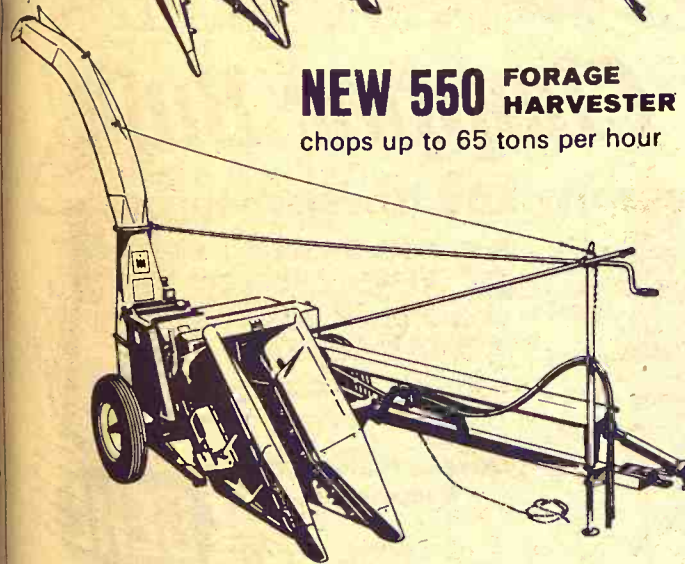


FORAGE HARVESTERS

give you more
reliability
big capacity
better floatation



NEW 550 FORAGE HARVESTER
chops up to 65 tons per hour



- More simple design and lighter weight makes nine knife cutter head more resistant to damage... easier to adjust.
- Tungsten carbide-faced knives and shear bar for extra acres of clean, fine chopping.
- Chops fine, medium or long— $\frac{1}{4}$ " to $1\frac{1}{2}$ ". No need for a screen.
- Built-in power sharpener re-hones blades razor sharp without removing cutter head.
- Heavy-duty main frame, spindles and hubs.
- New high floatation tires get you in and out of rough fields—even after a rain.
- Harvesting units attach in 10 minutes or less.

COUNCIL GROVE
Macha-Revere

BELLEVILLE
Chapman's On US hwy. 81

GYPSUM
Kuhn Impl. — OW 6-4411

WAKEFIELD
Auld Chevrolet

MARYSVILLE
Bruna Brothers

FALUN
Dauer Impl. Co.

HANOVER
Hanover Impl. Co.

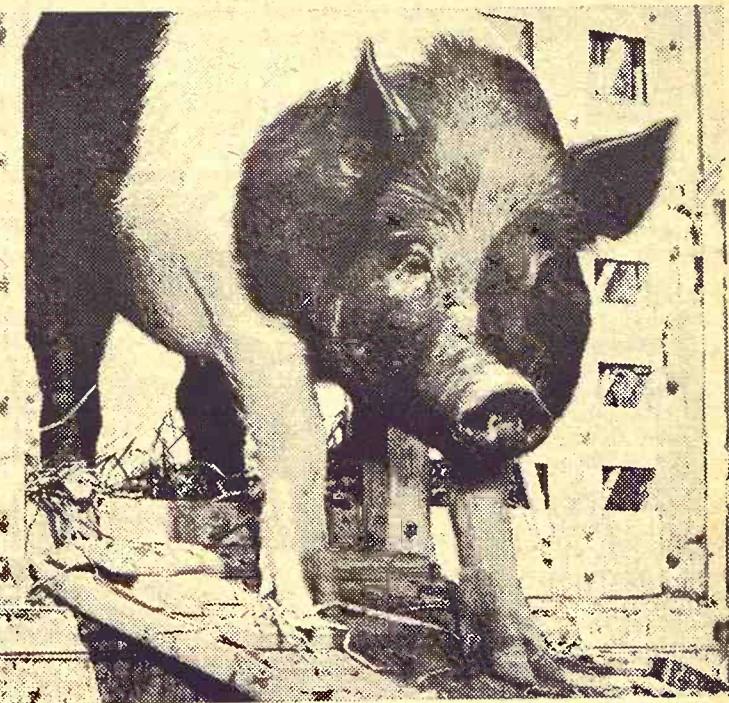
LEONARDVILLE
Kendall Garage

HERINGTON
Pioneer Service & Sales

MINNEAPOLIS
Chapman Impl. Co.

CLAY CENTER
Norquist's Inc.

ABILENE
Abilene Truck & Tractor



Here's how to send hogs
to market 2 weeks sooner...
32 lbs. heavier...on
40 lbs. less feed

Today hogs fed the Purina Way go to market 2 weeks sooner—at 32 lbs. heavier weight—and on 40 lbs. less feed than just 10 short years ago!

These benefits are a result of improvements continually being made in Purina's Hog Program. Purina Hog Chow and your home-grown grain will help you market your hogs fast and at economical cost.

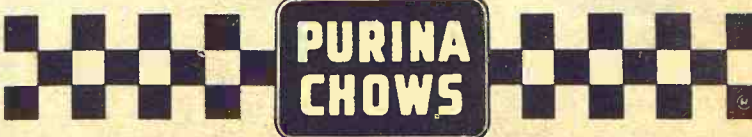
Getting hogs to market in a hurry is important—the longer they stay on your farm the more feed they consume. Resolve now to send 'em to market in a hurry the Purina Way. Ask for Purina Hog Chow at our store with the Checkerboard Sign. Prove to yourself Purina feeding can cost you less!



These Purina
dealers
Know the Score
on Pig
Production

Flint Hills Feed & Grain PR 8-5322 Manhattan
Farmers Union Feed Mill 437-2434 St. Marys
Mor-Kan Elevator 349-2214 White City
Reading Grain & Lumber AN 9-3842 Reading
Bartlett Grain Co. CE 8-5134 Junction City
Americus Grain Co. 884-3465 Americus
Gorden Mark Elevator .. ME 2-3381 Clay Center
Western Grain Mill 767-5933 Council Grove

LOW COST PRODUCTION...
the reason why more farmers feed PURINA®



OUR DAILY BREAD

— by G&G Area Cooks

Mrs. Frank Oliver, Clements, To Receive Recipe Prize

The winner this week is Mrs. Frank Oliver, R 1, Clements, who writes, "I enjoy the recipes in 'Our Daily Bread' section in Grass & Grain every week. I am enclosing a recipe which I hope the readers will enjoy."

TEA STRIPS

- 1 cup sugar
- 1/2 cup butter
- pinch of salt
- 2 egg yolks
- 2 egg whites
- 1 1/2 cups flour
- 1 teaspoon baking powder
- 1/2 teaspoon vanilla

Cream together the sugar, butter and salt. Beat egg whites and egg yolks separately and then fold together. Add alternately to the sugar mixture with the flour and baking powder sifted together. Add the vanilla. This will be very stiff. Pat it into a greased and floured pan to about 1/4-inch thickness.

TOPPING

Beat 2 egg whites until stiff. Fold in 1 cup brown sugar, free from lumps and solidly packed. Add 1/2 teaspoon vanilla. Spread on dough. Sprinkle 1/2 cup nuts, chopped fine, on top. Bake at 300 degrees for 45 minutes.

Here is a meat loaf that not only makes a delicious main dish but is good in sandwiches:

STUFFED OLIVE MEAT LOAF

- 1 1/2 pounds beef, veal, pork (ground together)
 - 1/2 cup bread crumbs
 - 2 eggs
 - 10 small stuffed olives (chopped)
 - 1 1/2 teaspoons salt
 - 3/4 teaspoon pepper
 - 1 tablespoon minced onion
 - 1/4 teaspoon celery salt
 - 1/2 cup tomatoes (canned)
 - 2 slices bacon
- Mix crumbs, eggs, chopped olives, onion and seasonings. Add meat and blend well. Shape into long loaf. Place in baking dish. Pour tomatoes over loaf and place bacon on top. Bake in 350-degree oven about one hour, adding little water, if needed.

How about steak with an Italian touch?

STEAK ITALIAN STYLE

- 2 T-bone, sirloin or minute steaks
 - 2 cloves garlic
 - 1 cup olive oil
 - 3 tablespoons grated parmesan cheese
 - 1 cup bread crumbs
 - salt and pepper
- Crush garlic in bowl. Add oil and blend well. Dip steaks in garlic and oil. Combine cheese, crumbs and seasonings and roll steak in crumbs. Grill or broil steaks until they have reached desired degree of rareness. Serves two.

Your guests will enjoy these appetizers:

APPETIZER DEVILED HAM MOUSSE

- 1 2 1/4-ounce can deviled ham
 - 1/2 cup mayonnaise or salad dressing
 - 1 5-ounce jar pimiento cheese spread
 - 1 tablespoon minced onion
 - 1 teaspoon hot mustard
 - few drops tabasco sauce
- Combine ingredients, chill. Makes 1 1/2 cups. Serve with crisp crackers, potato chips or crisp vegetables.

Extra "Beds" For P.J. Party

If you're planning a ten jama party soon, you can provide extra "beds" by borrowing sleeping bags. If some of your guests are campers, they probably could bring their own.

The bags have a warm filling and can be opened to double as quilts. Since most are machine-washable, they can be "changed" as readily as sheets after use.

Protects Knees, Skirt While Scrubbing

Cut away one side of a grocery carton, then kneel in this three-sided box when scrubbing floors. It will protect your knees and skirt from suds and water.

August 29, 1967

6

Grass & Grain

Faster Knitting

Use two balls of yarn and cast on both sleeves at once when you are knitting a sweater. It's much quicker to make both sleeves at the same time.

Paper Bag Holder

A screen door spring fastened across the inside of a kitchen cabinet door will hold paper bags firmly in place until you need them.

Prolongs Life Of Garbage Can

Your new garbage can will last twice as long if you seal the bottom from moisture with melted paraffin.

We're fussy when we fix your watch

Fastest Service In Town. Work done in our shop. All watches electrically timed and guaranteed to be as accurate as new.

HOLIDAY JEWELERS
OF MANHATTAN
425 Poyntz—PR 6-7821
Across from the Courthouse

Good Sandwiches

Saute strips of green pepper in butter, then add seasoned beaten eggs and scramble. The

combination makes a delightful sandwich filling when layered between the two halves of a crusty roll.



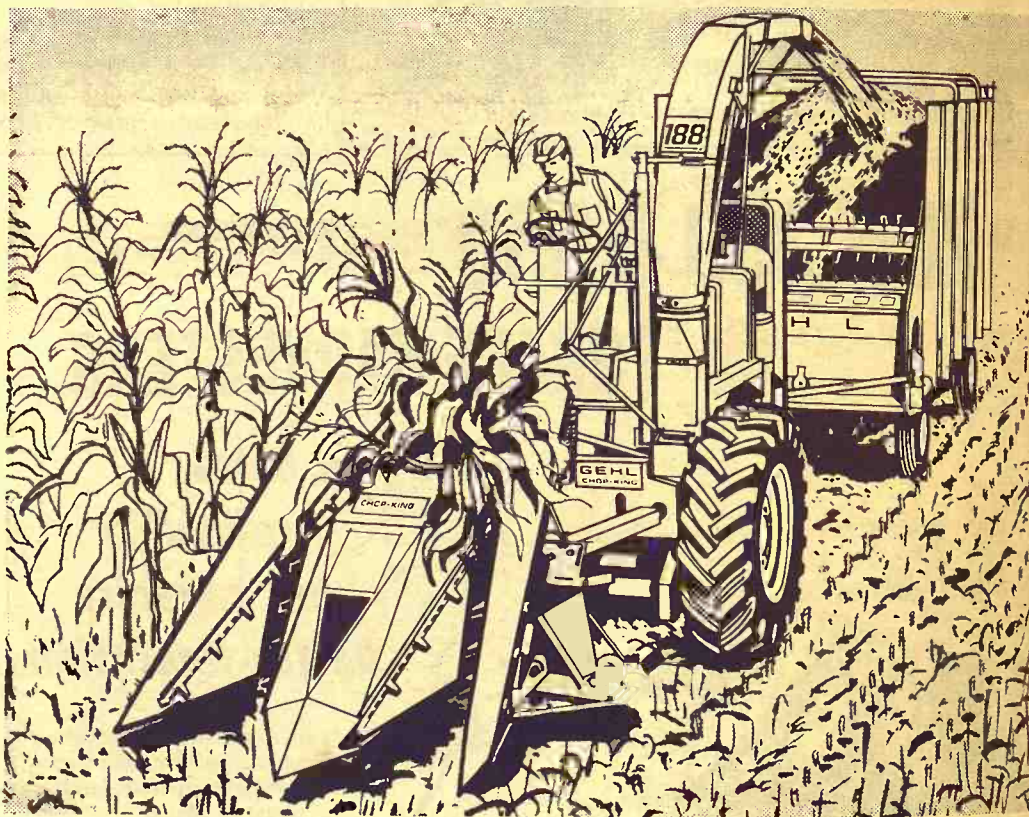
You Can Build a BETTER HERD with a PCA LOAN!

If you've made up your mind to upgrade your herd, why not talk over your needs with someone who knows something about the cattle business?

Your Production Credit Association understands. Get your cattle loan from the rancher-owned local PCA...pay only simple interest...and set up a repayment plan that fits your marketing plan.

SEE YOUR LOCAL PCA MAN

CONCORDIA.....James D. Ganson (North Central Kansas PCA)	HOLTON.....Robert O. Green (Holton PCA)
COUNCIL GROVE.....Charles E. Graham (Council Grove PCA)	MANHATTAN.....Floyd A. Rutherford (Manhattan PCA)
SALINA.....Curtis Syring (Salina PCA)	



Biggest Chopper Built!

unmatched capacity and finest chopping

It's the biggest, brawniest of them all... the Gehl Self-Propelled Chop-King. Chops more tons per hour than any other chopper! Owners report over 700 tons in a day... 11,000 tons a season. Eight tungsten carbide faced knives short-chop even the toughest crop to a fine 1/4-inch. Select-A-Cut Transmission changes cutting lengths in seconds. Rear-wheel power steering gives you a 10-ft. turning radius, perfect tracking. Floating heads adjust to field contours, even at full speed. See the new Gehl Chop-King today! Financing available. (*Optional equipment)

NEW! 10,000 RPM PORTABLE KNIFE SHARPENER*. Lightweight, gas or electric models. Gives minute-per-knife sharpening on the machine—in the field or at the machine shed. Adjustable guide insures proper beveling of knife cutting edges.

Make us Prove it with a Demonstration!



GEHL

WINIFRED
Winifred Impl. Co.

LINN
KUHLMAN MOTOR CO.

ROSSVILLE
ROSSVILLE
TRUCK & TRACTOR

HANOVER
HANOVER IMPL. CO.

WATERVILLE
WATERVILLE MOTORS

MINNEAPOLIS
CHAPMAN IMPL. CO.

SABETHA
FLENTIE'S, INC.

GYPSUM
KUHN IMPL. CO.

PERRY
SEYLER FARM SUPPLY

ABILENE
WISSING MOTOR CO.

The Latest 'Daily Bread' Prize

GARLIC PRESS

NEW IMPROVED! For juicing garlic, onion and mint. One squeeze adds zest to meats, soups, salads and sauces. Sturdy two-piece construction for easy cleaning. Another fine product by Ek-co.

The winner each week is drawn by lot from the recipes printed.

Win one by sending us your favorite recipe — this can be main dish, leftover, salad, side dish, dessert or what have you.

1. Check your recipe carefully to be sure all ingredients are accurate and accounted for.

2. Be sure your name and address are on the entry.

3. Only one recipe at a time, please.

4. Send it to Woman's Page Editor, Grass & Grain, Box 1009, Manhattan, Kansas.



FARM & RANCH LOANS

Federal Land Bank loans are made for any useful purpose... for family needs, expansion, more land. If financing is a need, we'd like to visit you.

R. STANLEY PARSONS, Mgr.
SEE ME AT

604 HUMBOLDT PR 8-2971
Res. Phone PR 6-9044

MANHATTAN

Open Mon. through Fri.

8 a.m. to 5 p.m. (closed 12-1)

Branch Offices: CLAY CENTER & JUNCTION CITY

Federal
LAND BANK Assn. of
MANHATTAN

Serving Clay, Geary, Pottawatomie & Riley counties.

7½ cups (3¼ pounds) sugar
1 box (1¼ ounces) powdered fruit pectin

First prepare the fruit. Slip skins from about 4 pounds loose-skinned grapes. Add 1 cup water and spices to pulp; bring to a boil and simmer, covered, five minutes. Sieve to remove the seeds. Chop or grind skins and add to pulp. Measure 6 cups into a very large saucepan.

Then make the jam. Measure sugar and set aside. Mix fruit pectin into fruit in saucepan. Place over high heat and stir until mixture comes to a hard boil. Immediately add all sugar and stir. Bring to a full rolling boil and boil hard one minute, stirring constantly. Remove from heat and skim off foam with metal spoon. Then stir and skim for five minutes to cool slightly and prevent floating fruit. Ladle quickly into glasses. Cover at once with ¼-inch hot paraffin. Makes about thirteen medium glasses jam.

Easier Cleaning

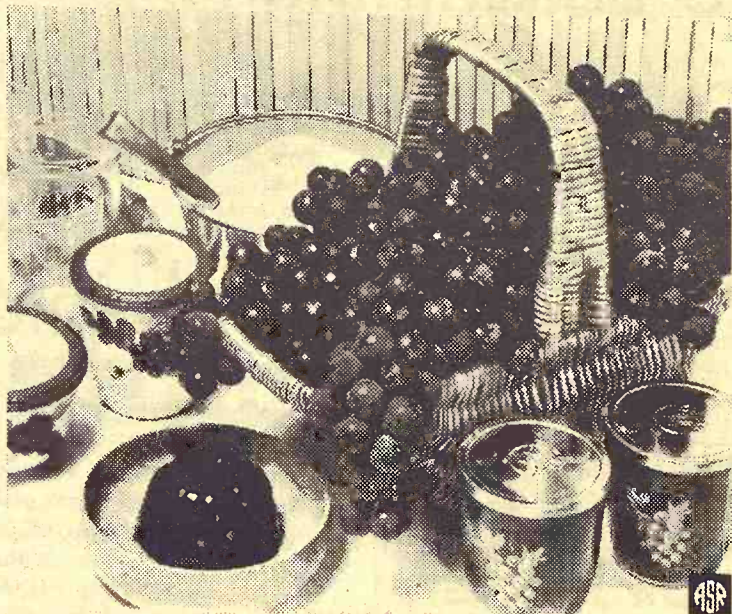
Greasy frying pans and broiler pans will be easier to clean if a teaspoon of baking soda is added to the water in which pans are to soak.



Tools Too

AGGIE
HARDWARE
1205 Moro
Manhattan, Ks.

Purple Grape Jam — Make It For Family; Gift-Giving



It's that wonderful season again and time to get out the jelly glasses, paraffin and big kettle with which to make

some home-made jam from those purple beauties ripening on the vine. Of course, jam made with powdered fruit pectin is the short-boil way, preserving all the full fresh flavor of the grapes and assuring you of a good big batch — so have plenty of glasses ready. Plain Grape jam comes high on the list of favorites, but a flavorful variation is offered here, Spiced Grape Jam. It's the perfect accompaniment to ham, pork or lamb roast. A nice gift-giving jam, too.

SPICED GRAPE JAM

6 cups prepared fruit (about 4 pounds fully ripe grapes and ¼ cup water)
¼ to 1 teaspoon each cinnamon, ginger and allspice

your children's mittens with pieces cut from the toes of discarded socks. Turn the mittens wrong-side-out and slip-stitch portions of the sock in place. Not only will the mittens wear longer, they will be warmer.

Tasty Franks

Fill frankfurters with sticks of cheddar cheese and wrap with bacon before broiling. They're extra good.

Reinforce Mittens

Reinforce the fingertips of

Back-to-school Fashion Wear For Younger Set

There's always something new about teaching Johnny to read. As for little girls, there's always something new to wear to school, beginning in kindergarten and first grade.

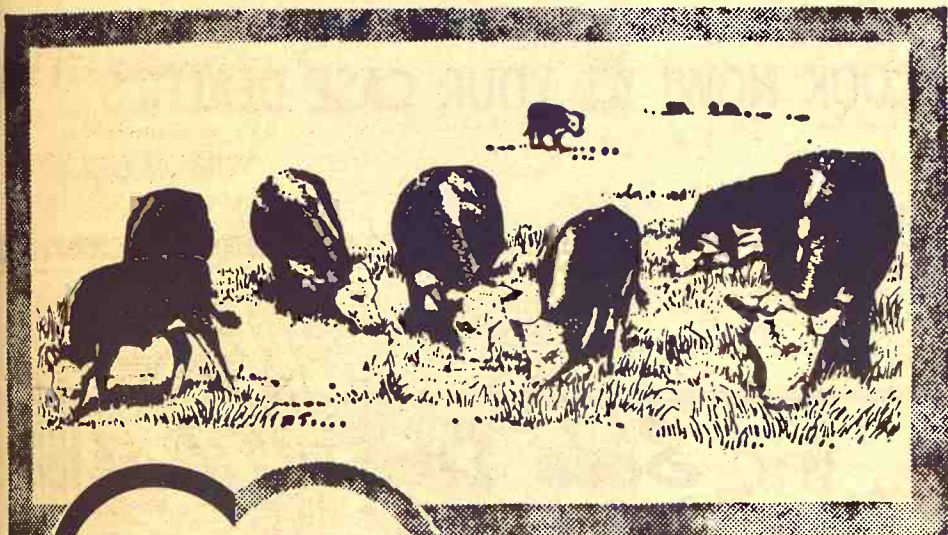
Mini versions of the knit jumper dress and the knit jumper dress and the skinny, low-tied sweater dress are among favorites for little girls, along with the little pantsuit. All come in stripes, plaid, checks and zigzag knits as well as in plain rib knits. Generally, the kindergarten and early graders will wear almost everything bigger girls

wear back to school. This includes tartan plaids in one and two-piece kilt dresses with brief pleated skirts, pinned on one side with a big safety.

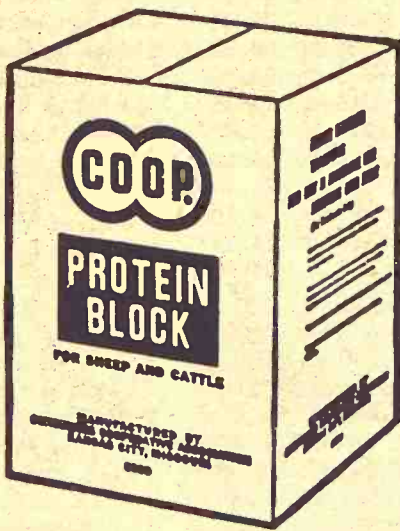
Corduroy jumpers and jumper dresses and mini-skirt dresses — either skinny or A-line — are other leading fashions for moppets as well as their older sisters.

Big "hardware" is also big news. With the help of a big zipper down the front of a dress or jacket, or the side of a coat, every little girl can just about dress herself.

NOW . . . YOU CAN ORDER HIGH PROTEIN



PROTEIN BLOCKS



CO-OP Protein Blocks are ideal for on-ground feeding. CO-OP Protein Blocks supply your animals with a high concentration of protein (39%), carbohydrates, vitamin A and minerals. All you do is put them on the ground. Cattle find them quickly. Cattle do well, look good and gain fast even on late summer pasture or fall cornstalk feeding with highly palatable CO-OP Protein Blocks.

LABORATORY
TESTED . . .
AND
FEEDLOT-
PROVEN

Junction City Farmer-Stockman Co-op Assn
Council Grove
Junction City CE 8-4158

Manhattan FARMERS Cooperative Assn.
Manhattan-Alta Vista
Westmoreland-Onaga

Alma Farmers Union Co-op
Alma Ph. 765-3612
Eskridge Ph. 449-2291

St. Marys Farmers Union Co-op
Business Assn.

Carlton Farmers Union Co-op
CARLTON
TELEPHONE 31

Clay Center FARMERS Union Co-op
Clay Center-Bala
Miltonvale-Leonardville

Greenleaf Farmers Co-op Elevator Assn
Greenleaf-Linn
Washington

Abilene Abilene Co-op Assn.
Abilene CO 3-1660

G&G Directory

AUCTIONEERING

Lawrence E. Welter

AUCTIONEER
REAL ESTATE BROKER
Your Sale Solicited
Large or Small
EAST HIGHWAY US 24
MANHATTAN PR 8-3455
Real Estate
And General Sales

Ed Reimer -AUCTIONEER-

We Specialize in Selling
DAIRY CATTLE

"A complete Sale Service"
Phone or write for sale dates.
Telephone 367-2373
GOESSEL, KANSAS
"Marion County"

ROBT. G. "BOB" WILSON Auctioneering Sales Mgr.

All Types of Sales
Phone 494-2552
Box 118 St. George, Kans.

CONSERVATION

Land Improvement
"Soil Conservation Doesn't
Cost—It Pays"
Ponds, terraces, water-
ways, and leveling,
drainage ditches, clear-
ing, landscape grading.

ROGGENDORFF
Conservation Construction
Arthur Roggendorff
Phone JE 9-3984
1630 Osage - Manhattan

PEOPLE READ

The G&G Directory
Just as You are Now

DAIRY SUPPLIES

DeLaval Clay

All Makes
Service & Repair
Dairy Equipment

Joe McClure

Ph. 229-5284 Alta Vista

Wamego Dairy Supply

your authorized
DELAVAL & CLAY
Dealer
MILK MACHINES
New & Used
BULK TANKS
New & Used
CLAY Beef, Dairy & Ho.
Feeding Systems.

For estimates or service,
phone
913-456-7200, WAMEGO
913-AV 4-2958, SABETHA

Memorials

CEMETERY MEMORIALS

54 Year Continuous Service
Display Located on US24
East of City Limits

SCHAUBEL
MONUMENT CO., INC.
RR 3 Box 20 ME 2-3531
Clarence Blanc, President
CLAY CENTER

MONUMENTS

MANHATTAN
MONUMENT CO.
J. J. BEAUDET
Office and Display
123 No. 3rd

Office Phone Res. Phone
PR 8-5137 PR 8-4978
MANHATTAN, KANS.

Freeman Continues Pitch On 'Collective Bargaining'

Secretary of Agriculture Orville L. Freeman made a strong plea at Des Moines last week for collective bargaining machinery for farmers to give them "muscle in the marketplace."

Freeman, on one of his increasingly frequent trips to the politically sensitive farm belt, made his remarks at a news conference before he addressed the 22nd annual meeting of the Soil Conservation Society of America at the hotel Fort Des Moines. He then gave them added emphasis by expanding on them in his speech to the 1,500 professional conservationists who jammed the hotel's main ballroom.

In the last few months, as farm protests over falling prices and increased production costs have spread, the Secretary has leaned more and more toward collective bargaining as a means of solving the farmer's recurring problems.

As a result of the cost-price squeeze, the Department of Agriculture is predicting that net farm income will be down 10 per cent this year from last year's record high \$16.4 billion. Moreover, forecasts of record crops in corn, wheat, soybeans and grain sorghums, or milo, are already depressing the price of grain, which could result in a further drop in income.

Adding to Freeman's concern is the political corollary. The Johnson administration's stock has sagged as sharply as farm profits in the Middle West, most of which is difficult territory for the Democrats in the best of times.

Discussing the sharp rise in farm production costs today, Freeman said:

"It comes right down to bargaining again. The farmer has to pay these costs, but he has no way to pass them on as the manufacturer can pass them on."

Although he denied having a specific collective bargaining program, Freeman distributed



PLOW BLADES

	Hrd. fld.	Pln. fld.
A.C. 14"	7.05	2.95
A.C. 16"	7.79	3.19
J.D. 14"	6.65	2.55
J.D. 16"	6.85	2.79
IHC 14"	6.65	2.55
IHC 16"	6.85	2.79
Other makes at similar prices		
16" plain disc blades	3.10	
18" plain disc blades	4.15	
2" single action hyd. cyl.	16.75	
2" double action hyd. cyl.	18.95	
3" double action hyd. cyl.	23.95	
3 1/2" double action hyd. cyl.	30.95	

All lengths hyd. hoses
Rebuilt generators as low as 13.85 ex.
Rebuilt starters as low as 12.95 ex.
New shipment of air compressors & air tanks. Compressors 89.95. Air tanks 15.95.
Little Giant bale elevators 16' 89.95
Little Giant bale elevators 24' 122.45

HOLT FARM SUPPLY

Next To Sale Barn
MANHATTAN PR 8-4343

at his news conference here a speech he gave before farm leaders in Salt Lake City.

Two New Approaches

In that speech he proposed two new approaches that would

allow farmers to have more influence over prices:

—A National Farm Bargaining Board that could, at the request of a producer group, determine boundaries, size and composition of a product bargaining unit, then supervise an election to determine a bargaining agent. Such a board, he suggested, might provide that prices negotiated by the bargaining agent would be binding on all suppliers, after ratifica-

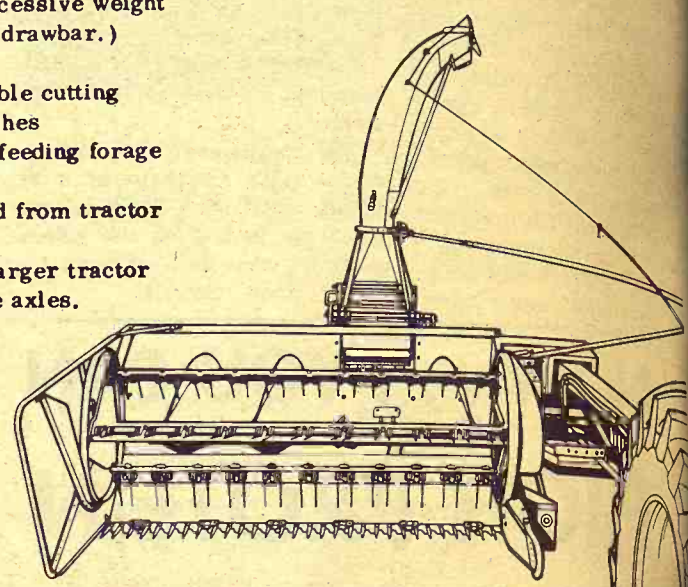
August 29, 1967

tion in an election supervised by the board.

—Changes in the Agricultural Marketing Agreement Act of 1937 that could provide for inclusion of additional commodities, authority to establish minimum prices and more flexible authority to make adjustments in producer allotments and marketing quotas.

Look into the features of the CASE 300 FORAGE HARVESTOR

- Structurally rugged without excessive weight (Built-in brawn. Light on the drawbar.)
- Roller chain and gear drive
- Heavy-duty cylinder. Adjustable cutting length from 13/64 to 2-1/8 inches
- Spring-loaded rolls for force-feeding forage
- Built-in knife sharpener
- Cutting and delivery controlled from tractor seat
- Hook the 300 to any 50 hp or larger tractor
- Swinging drawbar. Adjustable axles.



LOOK NOW! AT YOUR CASE DEALER'S

LINN
Kuhlman Motor Co.
MARYSVILLE
Brauchi Brothers
CHESTER, NEBR.
Grabau Impl. Co.

MARION
Longhofer Supply
CLAY CENTER
Porter Ept. Co.
1121 Crawford ME 2-5202

SALINA
Vahsholtz Impl. Co.
CENTRALIA
McBratney Impl.
Phone 857-3815
HEBRON, NEBRASKA
Ells Implement Company
Phone 768-6320

Manhattan Commission Co., Inc. Sale Every Thursday

We had a real good sale last Thursday. Sold 1426 head with a good active market. Prices on all classes of cattle were steady with last week, except cows they were lower.

CONSIGNED FOR NEXT THURSDAY, AUGUST 31st SALE:

107 choice Angus heifers, calf-hood vaccinated. Would make a wonderful cow herd wt. 700
38 Choice shorthorn steers, 750
85 Good blackwhif steer and heifer calves.

The following is a partial listing of the sale:

FAT CATTLE & FEEDERS

1 whiface steers	655 @	29.25
8 whiface steers	600 @	29.25
6 whiface steers	606 @	28.10
6 whiface steers	641 @	28.10
14 whiface steers	619 @	27.60
14 black steers	617 @	27.30
2 whiface steers	637 @	27.20
1 whiface steers	610 @	27.10
5 whiface steers	660 @	27.00
1 blkwhif steer	620 @	27.00
9 whiface steers	616 @	27.00
2 whiface steers	627 @	27.00
10 whiface steers	657 @	26.70
5 charolais steers	668 @	26.00
14 whiface steers	673 @	26.00
3 whiface steers	718 @	26.00
4 blackwhif steers	637 @	26.00
8 whiface steers	788 @	25.95
3 whiface steers	745 @	25.90
32 whiface heifers	666 @	25.90
2 whiface steers	692 @	25.70
18 whiface steers	1112 @	25.55
7 whiface heifers	662 @	25.55
17 black heifers	687 @	25.50
7 whiface heifers	720 @	25.50
2 whiface steers	990 @	25.50
5 whiface steers	879 @	25.50
4 whiface steers	668 @	25.50
8 whiface heifers	685 @	25.40
32 whiface heifers	607 @	25.30
18 whiface steers	1097 @	25.30
4 black steers	698 @	25.20
5 black steers	852 @	25.20

3 black steers	638 @	25.20
1 whiface steer	685 @	25.00
4 whiface heifers	709 @	24.80
1 whiface heifer	605 @	24.80
2 black heifers	735 @	24.70
2 whiface heifers	607 @	24.70
2 blkwhif steers	810 @	24.60
15 whiface steers	876 @	24.55
6 whiface heifers	687 @	24.50
3 black steers	831 @	24.10
7 whiface heifers	805 @	24.10
2 rwb&brf heifers	642 @	24.10
2 whiface heifers	682 @	24.10
4 black heifers	729 @	24.00
2 black steers	750 @	24.00

STEER CALVES

1 whiface steer	275 @	32.75
1 whiface steer	290 @	31.50
20 whiface steers	462 @	31.30
7 whiface steers	465 @	31.10
2 whiface steers	517 @	31.10
53 whiface steers	597 @	31.00
7 whiface steers	514 @	30.90
1 blkwhif steer	450 @	30.80
7 whiface steers	488 @	30.80
4 whiface steers	357 @	30.70
6 black steers	420 @	30.50
3 whiface steers	495 @	30.20
1 whiface steers	445 @	30.10
3 whiface steer	482 @	30.00
1 whiface steer	380 @	30.00
2 whiface steers	515 @	29.80
7 whiface steers	544 @	29.60
3 whiface steers	530 @	29.50
6 whiface steers	500 @	29.50
1 black steer	575 @	29.50
7 black steers	559 @	28.50
5 whiface steers	552 @	29.50
11 black steers	529 @	29.20
15 black steers	524 @	29.10
1 whiface steer	455 @	29.10
1 black steer	460 @	29.00
4 whiface steers	515 @	29.00
9 whiface steers	563 @	29.00
12 black steers	597 @	29.00
2 blkwhif steers	502 @	28.80
7 black steers	573 @	28.70
7 whiface steers	578 @	28.40
9 whiface steers	574 @	28.40
7 black steers	599 @	27.75
2 whiface steers	520 @	27.90
4 black steers	511 @	27.50
2 blkwhif steers	582 @	27.50
2 black steers	320 @	27.25

3 whiface steers	563 @	27.10
6 whiface steers	481 @	27.10
1 whiface steer	510 @	26.90
2 whiface steers	575 @	26.80
2 whiface steers	360 @	26.40
1 whiface steer	585 @	26.30
5 shthorn steers	593 @	26.20
2 holstein bulls	315 @	25.25
2 black steers	240 @	25.25
3 black steers	546 @	24.80
2 blkwhif steers	520 @	24.50
1 holstein steer	415 @	24.10
7 holstein steers	554 @	24.10
5 whiface steers	599 @	24.05

HEIFER CALVES

6 blkwhif heifers	455 @	27.45
2 whiface heifers	230 @	27.25
21 whiface heifers	416 @	27.10
2 black heifers	415 @	26.70
7 blkwhif heifers	479 @	26.70
3 whiface heifers	395 @	26.60
10 black heifers	514 @	26.50
5 whiface heifers	550 @	26.50
4 black heifers	406 @	26.40
2 whiface heifers	345 @	26.40
15 whiface heifers	469 @	26.40
3 whiface heifers	383 @	26.25
19 whiface heifers	546 @	26.20
2 whiface heifers	405 @	26.10
1 whiface heifer	495 @	26.00
2 whiface heifers	510 @	25.90
4 whiface heifers	480 @	25.90
9 whiface heifers	497 @	25.90
18 b&bwf heifers	531 @	25.80
2 black heifers	502 @	25.80
8 whiface heifers	541 @	25.80
9 black heifers	568 @	25.80
4 whiface heifers	402 @	25.80
11 black heifers	575 @	25.70
4 whiface heifers	485 @	25.60
5 black heifers	432 @	25.60

2 1/4 MILES EAST OF MANHATTAN ON US 24

6 blkwhif heifers	583 @	25.60
2 whiface heifers	392 @	25.50
4 whiface heifers	538 @	25.50
8 black heifers	596 @	25.40
5 whiface heifers	448 @	25.40
12 whiface heifers	438 @	25.40
12 black heifers	548 @	25.30
7 whiface heifers	493 @	25.20
17 blkwf heifers	538 @	25.00
3 whiface heifers	481 @	25.00
8 whiface heifers	560 @	25.80
5 charolais heifers	553 @	24.75
2 black heifers	532 @	24.70
2 whiface heifers	467 @	24.70
12 blkwhif heifers	507 @	24.60
7 black heifers	458 @	24.10
2 whiface heifers	567 @	23.80
3 wfrednk heifers	595 @	23.60
34 blkwhif heifers	586 @	23.15
4 black heifers	316 @	23.10
10 blkwhif heifers	492 @	23.00

BULLS

2 whiface bulls	787 @	22.85
3 whiface bulls	976 @	22.85
1 black bull	1315 @	22.75
1 whiface bull	1525 @	22.60
1 whiface bull	1455 @	22.50

COWS

1 black cow	765 @	20.00
1 whiface cow	880 @	19.50
2 holstein cows	952 @	19.10
1 whiface cow	910 @	18.00
1 black cow	865 @	17.80
3 whiface cows	936 @	17.55
1 whiface cow	1005 @	17.30
1 holstein cow	1060 @	17.20
3 whifcblk cows	965 @	16.90
1 holstein cow	1380 @	16.70
1 holstein cow	1170 @	16.50

FOR ESTIMATES

W. E. DUGAN ----- Alta Vista, 229-6430
JOE RAINE ----- Maple Hill, MI 3-2226
DON WELLS ----- Manhattan, JE 9-3744
MERVIN SEXTON ----- Abilene, CO 3-3449
C. J. WENTZ, bus. mgr. Manhattan, JE 9-5561

BARN PHONE ----- Manhattan, PR 8-4415

Consignment Reports
WIBW radio 6:30 A.M. Thursdays
WIBW-TV 12:15 Noon Wednesdays

The Manhattan Commission Co., Inc.



MANHATTAN, KANSAS

East On US 24

Auctioneer: Joe Raine

BUYING FAT HOGS

We buy fat hogs daily at the Manhattan Commission Co., Inc. sale barn. We buy direct with no commission to the seller.

BUYING HOURS:
Mondays thru Fridays
8 a.m. to 4 p.m.
Saturdays 8 a.m. - 2 p.m.
Manhattan PR 8-4415

WE ARE ALSO BUYING FAT HOGS AT THE W. E. DUGAN YARDS ALTA VISTA

SATURDAYS
8 a.m. to 3 p.m.
Phone Alta Vista 229-6430
or Manhattan PR 8-4415

AT ALMA & ESKRIDGE EVERY WEDNESDAY From 8 a.m. to 1 p.m.

Please do not bring hogs for sale on Thursday afternoon, as we will be having large runs of cattle and you might not be able to unload and they will get hot on you. For information call the barn in Manhattan. PR 8-4415

In Alta Vista, W. E. Dugan, 229-6303. Or you may call Joe Raine at Maple Hill, MI 3-2226 or Eskridge Yard 449-2347.

Years A I

Claude McClintock 45 years a horse sh... year-old chestnut... championship troph... McClintock rid... farm home six m... County.

UTILITIES K-N GAS

Kansas-Nebraska Co. will be merged i... utilities, the two fir... The gas com... a pipeline oper... gas service in

COW POKES

Thought I read s... their pos...

August 29, 1967

an election supervised
rd.
anges in the Agriculture
ing Agreement Act
at could provide for
of additional commu-
thority to establish
vices and more flexi-
ty to make adjust-
ucer allotments and
quotas.

of the
RVESTOR

ER'S

Moltz Impl. Co.

ALIA

atney Impl.

857-3815

ON, NEBRASKA

Implement Company

768-6320

Thursday

ATTAN ON US 24

BUYING

AT HOGS

uy fat hogs daily
anhattan Commis-
nc. sale barn. We buy
with no commission
der.

BUYING HOURS:

ondays thru Fridays

8 a.m. to 4 p.m.

urdays 8 a.m. - 2 p.m.

hhattan PR 8415

ARE ALSO BUYING

AT HOGS AT THE

E. DUGAN YARDS

ALTA VISTA

SATURDAYS

8 a.m. to 3 p.m.

one Alta Vista 229-6800

Manhattan PR 8415

ALMA & ESKRIDGE

VERY WEDNESDAY

rom 8 a.m. to 1 p.m.

e do not bring hogs

ale on Thursday after-

as we will be having

runs of cattle and you

not be able to unload

they will get hot on you

information call the

in Manhattan. PR 8415

In Alta Vista, W. E. P.

229-6303. Or you may

oe Raine at Maple H.

2226 or Eskridge Yards

47.

an Commission

Co., Inc.

MANHATTAN, KANSAS

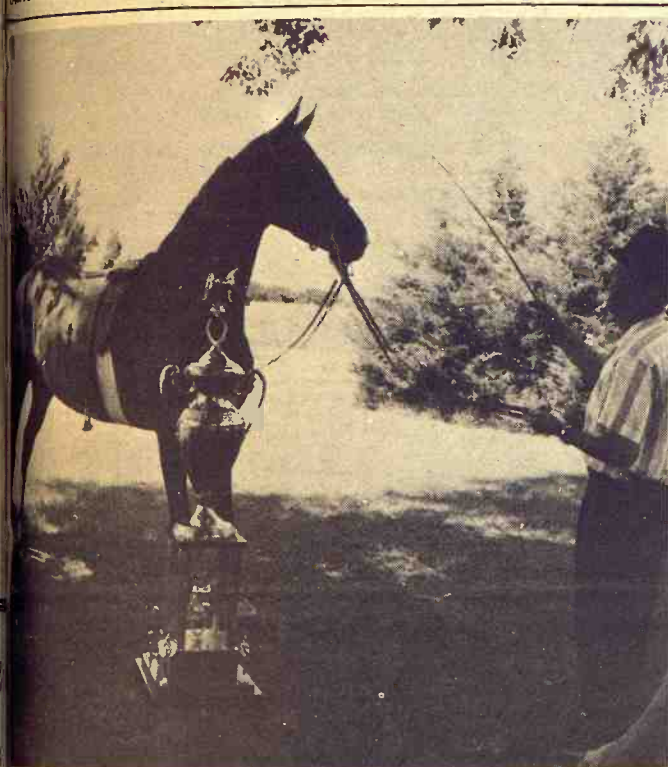
East On US 24

er: Joe Raine



Kiss On The Toe

Maybe 11-month old Karrie Ann Kyle will remember her first visit to a fair when a steer kissed her toe at the Illinois State Fair.



45 Years A Horseman

Claude McClintock, 69, rode in his first horse show at Beloit 45 years ago, and he's still winning prizes at G&G area horse shows. Recently McClintock rode his 17-year-old chestnut mare, Shady Oaks Serenade, for a championship trophy at the Delphos Horse Show. McClintock rides early each morning, just east of his farm home six miles southwest of Simpson in Mitchell County.

UNITED UTILITIES

ABSORBS K-N GAS

The Kansas-Nebraska Natural Gas Co. will be merged into United Utilities, the two firms have announced. The gas company, primarily a pipeline operator, provides gas service in North-

west Kansas and Southwest Nebraska. It had sales of \$41 million in the past year. United Utilities, which once headquartered in Abilene, is the third largest telephone system in the country and also operates other utilities.

COW POKES

By Ace Reid



"Thought I read somewhere that some people put their posi holes in the ground!"

More Changes In Slaughtering Methods

For the second time in the past decade, meatpackers are having to make drastic changes in their methods of slaughtering livestock.

In 1958 new laws pushed by humane societies outlawed killing cattle by the hammer method, and as of August the government in effect put an end to the method most commonly used in recent years.

The "hammer" method came from the old practice of killing larger animals, such as steers, by a severe sledge-hammer blow to the skull. Sometimes a single blow did not kill a steer, and humane societies lobbied against the method.

Since then various methods have been used. One of the most widely-used techniques was the "frangible bullet." In this operation, a bullet made of sponge iron or a molded, powdered metal and plastic combination was fired into the animal's brain.

The method has not specifically been outlawed now, but new meat inspection regulations now prohibit the sale of head and cheek meat from animals killed by frangible bullets.

Packers had regarded as useless for consumption the brains of a steer killed by such a method, but the edict by USDA to include the cheek and head meat removed from sale what packers regarded as relatively economic slices of the whole animal.

Processed sausage, for example, contains cheek meat, and USDA said it had complaints from consumers that they found particles in it.

Packers can still use bullet-charged stunners and penetrators. Stunners are gunlike devices with captive bolts fitted at the business end with a steel knob. The device was loaded with a bullet which, when fired, slammed against the bolt, driving the knob against the animal's temple.

Penetrators are similar except that instead of a knob, a steel rod is driven into the brain

of the animal, then returned to the barrel for the next kill.

While these methods are faster than the old sledge-hammer method, they do not compare in speed with the frangible bullet method which was used in connection with on-the-rail slaughter methods, which speeded up the butchering of an animal after it was killed.

The old sledge-hammer methods produced kills of about 60 an hour. With the frangible bullet and on-the-rail butchering, packers had increased their efficiency to 200 an hour. Single bullet stunners and penetrators generally are not fast enough to keep up with newer butchering methods to which most packers have converted.

Many packers figure a new pneumatic stunner will come into common use.

In this method, as with bullet-charged stunning knobs, the animal is rendered unconscious by a sharp blow on the head. (Actually the animal dies moments later when butchering begins but the heart still pumping, the blood will flow out freely and not coagulate in the animal's body.)

The pneumatic stunner has about 2000 pounds of air pressure behind it and is continually charged. The blow is so powerful and swift that the animal is knocked unconscious instantly and unfeelingly but it leaves no visible wound or fractured bones in the head.

Pictures of the grazing or feeding steer or a thick steak are pleasant to most people. Changing one picture to the other involves a grisly process that no one talks about much.

But changing 30 million head of cattle a year into billions of pounds of meat means it must be done. For packers, the changes in the process are becoming more rapid.

NEW COUNTY BRIDGE ACROSS VERMILLION

WAMEGO — Pottawatomie County is replacing a bridge across the Vermillion river northeast of here with an \$80,000 steel and concrete construction. Completion is expected in three months. The old bridge was moved across the Vermillion in 1930. It will be dismantled.

Pasture Near Osborne Brings \$100 An Acre

OSBORNE — The Roy Clemence land, consisting of 1120 acres, has sold south of here, bringing \$100 an acre at auction. The buyer was Lawrence Weilert of Hays.

The land was mostly pasture, with 808 acres in grass, and 312 acres cultivated. The auctioneer was Marvin Mayers of Russell.

AREA ORGANIZATION

SEEKS NATIONAL AWARD

A Manhattan organization, incorporated as The Federation for Handicapped Children, is in contention for a \$1000 award given annually for outstanding community service as a part of the Lane Bryant Annual Awards competition.

OPEN HOUSE FOR

MR. AND MRS. LEO EBEL

WAMEGO — Longtime G&G area cattleman Leo Ebel and his wife will be honored with an open house at their farm north of Wamego on Sunday, September 3. The open house will celebrate their 40th wedding anniversary.

BARN LOST TO

FIRE NEAR MARYSVILLE

Menno Lienemann lost a 36-foot square barn to fire last week. Fourteen brood sows and a boar in the barn were saved.

\$37 TOP PRICE FOR ELLSWORTH 4H STEER

ELLSWORTH — Top price of \$37 per hundredweight was paid for the champion 4H steer at the Ellsworth County 4H Fair sale. Jeffrey Janssen received the top price for his 855 lb. Hereford. John Haus got the top hog price, \$45 a hundred.

STATE TEACHERS SALARY AVERAGE AT \$6270

Kansas teachers salaries now average \$6270, up 64% in the past 10 years. Kansas ranks 31st in average teachers salary in the U.S., according to the National Education Association. The Oklahoma average is \$6190 and the Missouri average is \$6400.

JUNIOR HEREFORD ASSN.

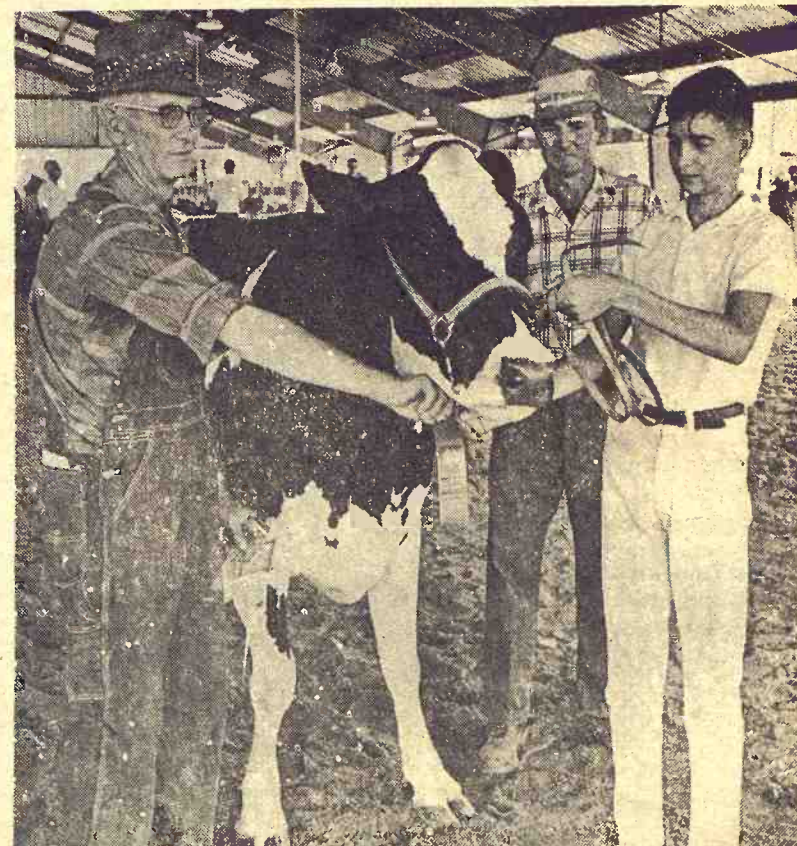
PLANS BANQUET AT HUTCH

HUTCHINSON — The Kansas Junior Hereford Association is celebrating its 10th anniversary with a banquet here September 19. The date coincides with the judging of open class Hereford competition at the Kansas State Fair.



Wheat Champion

Brent Halefeska of Miltonvale was wheat champion at the Cloud County Fair. His sample of Golden 50 also won a district wheat show at Wichita.



Best At Butler County

Grand champion dairy animal at the Butler County Fair at El Dorado was this Holstein shown by Jack Wade of Douglass. Leo Lipscomb of Augusta and Leonard Stalnaker of El Dorado look the animal over.

Late Start For Feeder Sales?

Kansas feeders are hitting the sale rings a little later this year with some observers predicting a lot of Kansas cattle will be kept on grass until Oct. 1.

The number of cattle on feed in Kansas was down July 1, and well it might be since there was little grass and feed was running mighty short after a droughty winter. It was the second week of June before grass got good enough to put on much weight.

It has stayed good, and a lot of feeder growers will hold them off the market as long as they can put on a few more pounds of grass beef before they get hauled to the sale barns.

Girdner Crofoot, Cottonwood Falls, Kans., past president of Kansas Livestock Association, said the other day Kansas cattlemen could forsearily put themselves into a pocket by

adding an extra hundred pounds per beef on grass, then put an extra hundred on them in the feedlots this fall, and defeat their hopes for higher beef prices this winter.

Charles Phelps, Hastings, Iowa, cattle feeder and president of the National Livestock Feeders Association, a couple of weeks ago said in reference to the national effort to keep red meat production 5 per cent lower than last year:

"It's these finished cattle that lead the way the market goes and if we get too many heavy ones, then they're apt to become price depressing.

"Further reduction in average weights of fed steers and heifers can stimulate the continued price improvement we want and need—even though slaughter numbers continue at a rather high level," he said.

He cited the fact that intentions of feeders show they will

increase by 2 per cent the number of cattle to be marketed in the third quarter of 1967. Unless these cattle are marketed at lighter weights an oversupplied market will follow, he said.

NEW HOME ECONOMIST IN OTTAWA COUNTY

MINNEAPOLIS — Sally Lydick is the new Ottawa County Home Economist. She has tak-



Sally Lydick

en training here and in Saline County, and she comes from Hamlin, in Brown County, where her father operates a 980 acre hog and Shorthorn operation.



Morris Champ

Stuart Collier had the champion 4H steer, a Shorthorn, at the Morris County Fair at Council Grove.

FLETCHER THE 4-H'R

© JOE E. BURESCH

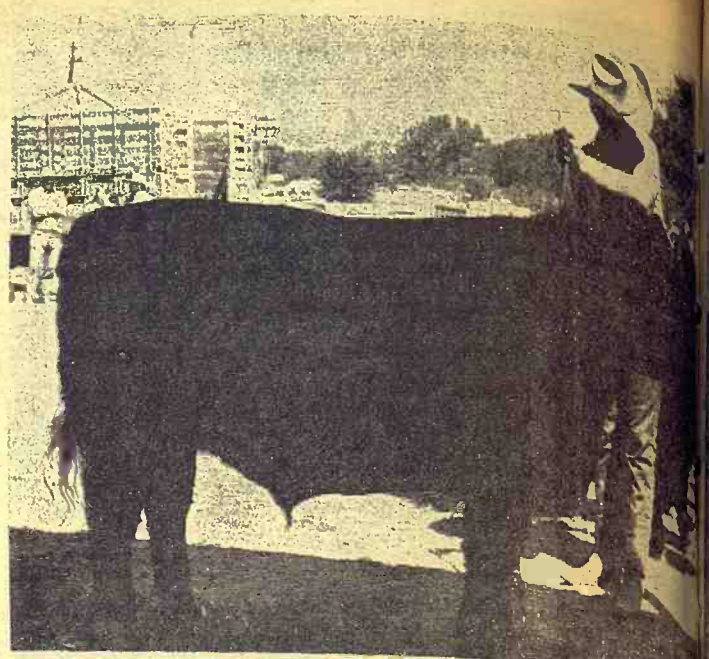


"IT'S TIMES LIKE THIS I WISH AUTOMATION WOULD TAKE OVER MY FARM STAND!"



WE CAN FIT YOU

Justin • Acme • Texas
Nocona and Tony Lama
On US 24 — 2 Blocks East
of Cloverleaf on US 24
TOPEKA, KANS.



BEST IN HARVEY COUNTY — Andy McCurry of Sedgwick County had the champion 4H steer at the Harvey County Town & Country Fair at Newton.



WE MANUFACTURE AUGERS, CONVEYORS, STEEL BINS AND FUEL TANKS FOR PICKUPS.

Stop in... we'll gladly show you samples of our work & other ways in which we are fully equipped to serve you!

- * FUNNEL-TYPE CHUTE FOR SILOS
- * WE MANUFACTURE & REBUILD WENGER MANURE LOADERS
- * WE BUILD HYDRAULIC HARROW CARRIERS, BALE LOADERS AND SLED CURLERS
- * WE DO STEEL FABRICATION
- * STEEL RAFTERS FOR FARM BUILDINGS
- * ROLL SHEET METAL
- * DO MACHINE WORK
- * LENGTHEN TRUCK FRAMES

BROCKHOFF MFG. CO.
PH. AV 4-3012 SABETHA, KANS.



Don't Tie Your Hands ...when you get a loan on land!

Get the freedom you need with a Land Bank loan. Freedom to pay in advance without penalty, freedom from high payments, and freedom from commissions. These and other freedoms are yours with a Federal Land Bank loan...built-in freedoms which guarantee that your loan will meet your requirements in the future as well as today. So, don't tie your hands when you get a loan on land—see the manager of your local Land Bank Association. Ask him about mortgage protection life insurance, too!

IF YOU NEED TO EXPAND
SEE THE FLBA MAN IN YOUR COUNTY



TOPEKA
Office: 1717 Gage Blvd.
Wm. H. Snyder, Manager
Serving Jackson, Shawnee
and Wabaunsee Counties

EMPORIA
Office: 115 West 5th
O. E. Roberts, Manager
Serving Chase, Coffey, Lyon
and Osage Counties

HERINGTON
Office: 107 N. Broadway
Richard L. Worley
Serving Marion, Morris
and Dickinson Counties

MANHATTAN
Office: 6th and Humboldt
R. Stanley Parsons
Serving Pottawatomie, Riley,
Clay and Geary Counties

MARYSVILLE
Office: 211 South 10th St.
Allen L. Holeman, Manager
Serving Washington, Marshall
and Nemaha Counties

12th ANNUAL LONGFORD RODEO THURS. & FRI. Sept. 7 & 8

2000 LBS. OF CHOICE BEEF GIVEN AWAY
FREE THURSDAY NIGHT, SEPT. 7, AT 6 P.M.

\$400 ADDED MONEY

Bareback Bronc Riding (Limit 20 riders)	\$10	\$60
Calf Roping (Open)	\$15	\$60
Steer Wrestling (Open)	\$15	\$60
Brahma Bull Riding (Limit 20 riders)	\$10	\$60
Saddle Bronc Riding	\$10	\$60
Junior Steer Riding Contest (Limit 15 riders, Age Limit 17)	\$5	\$25
Girls' Barrel Race (Thursday and Friday Nights)	\$5	\$25

Wild Steer Scramble

Calf Scramble, 1st, 2nd and 3rd Prizes
Thursday Night, age limit 9 years and under
Friday Night, age limit 12 years and under — Boys,
be sure and bring your ropes and be ready when called

Entries Close At 12:00 Noon Day Of Event
Mail or Phone Entries to Mr. or Mrs. C. F. Bergmeier
Longford, Kansas Phone 21
Stock Contractor: Floyd Rumford Jr., Abbieville, Kans.
Featuring Some Of The Wildest Steers In The Rodeo Circuit
Sponsored By Longford Rodeo Club, Lions Club
And The Longford Community

PARADE FRI. 6 PM FREE BARBEQUE

Pigs "urge to grow" turns into an Early Market on . . .



PIG GUARD 250 — gets baby pigs eating early like pigs should.

PIG GROWER 250 — makes growing days out of weaning days.

SUPER 40 HOG SUPPLEMENT — balances grain so completely, hogs finish fast and meaty.



Helping You Step Up Your Hog Profits Is Our Business.

CK Processing Co.

Manhattan, Kansas Telephone PR 6-9269

or

Clay Center Alfalfa Mill

Clay Center, Kansas Telephone ME 2-3401

Cattle Loans Key Of Area Bank Muddle?

Internal Revenue Service agents have seized and filed liens on property owned in Kansas and Oklahoma by R. D. Oltjen, president of the bankrupt Cedar Vale, Kan., National Bank, for an alleged \$1.4 million in unpaid income taxes.

As the IRS, FBI, and Federal Deposit Insurance Corp. began unraveling the intricate financial skein surrounding the bank's July 7 closing, the tax agents late last week began seizures and lien filings on Oltjen's property. The liens insure collection of the alleged back taxes by preventing property sales by Oltjen.

IRS officials in Wichita said they are "exploring the possibility of filing other liens." But they won't say where. Oltjen is known to have interests in property in several states west of the Mississippi and in at least one foreign country.

Claiming Oltjen owes \$1,403,382 in unpaid income taxes since 1964, the IRS seized Oltjen's interests in the Winfield Livestock Auction Co., seven miles west of Winfield.

Records in Chautauqua County indicate Oltjen sold a 460 acre farm east of Cedar Vale 10 days after the bank failed.

A key issue in the bank investigation has been the former bank's financial involvement

with the L & O Cattle Co., in which Oltjen was one of two partners.

The managing partner, William D. Lohman, formerly of Mobridge, S.D., was found dead four days after the bank failed. He was discovered lying by his pickup truck near Fort Yates, N.D., with a gunshot wound in the head. A coroner's jury in Sioux County, N.D., later ruled the death resulted from an accidental self-inflicted rifle wound.

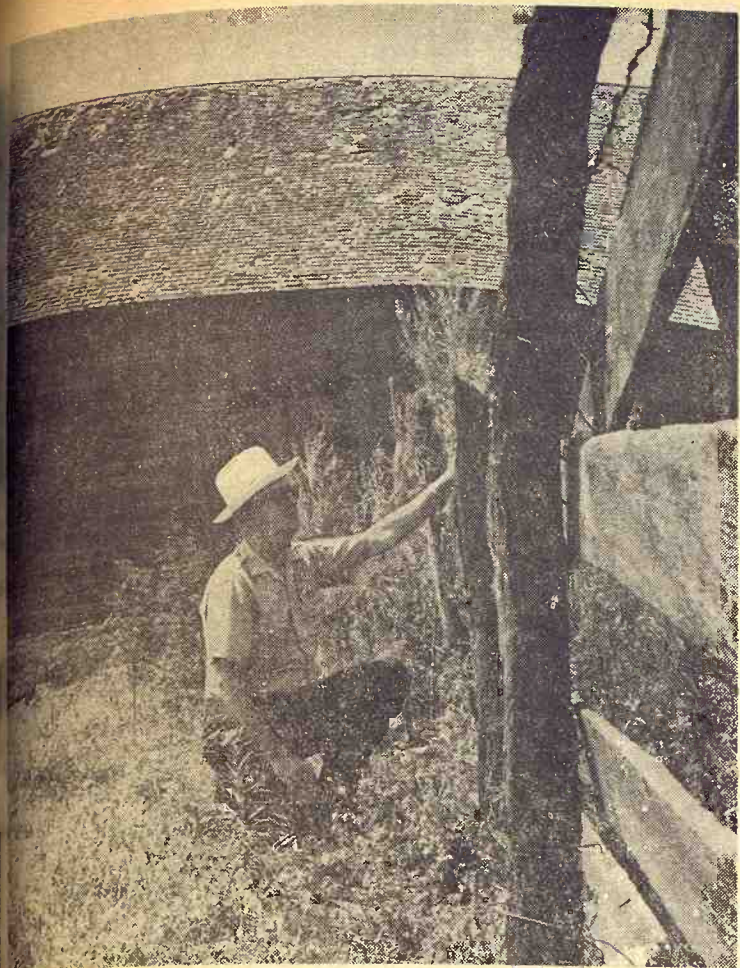
It was confirmed that the L & C Cattle Co. borrowed money from the Cedar Vale bank before it closed. Cattle and other company assets were reportedly put up as collateral, but now cannot be located.

A U.S. District Court judge in Wichita appointed a receiver for the cattle company after Oltjen filed a civil suit to force Lohman's heirs to make full disclosure of their holdings of partnership property.

In the receiver petition, Oltjen said location of much of the partnership property is unknown to him. He said the company's assets should be about \$3.5 million, including thousands of cattle and personal and real property in Kansas, Oklahoma, North and South Dakota, Montana, Wyoming, Arizona, Colorado, Iowa, California Mexico and Canada.



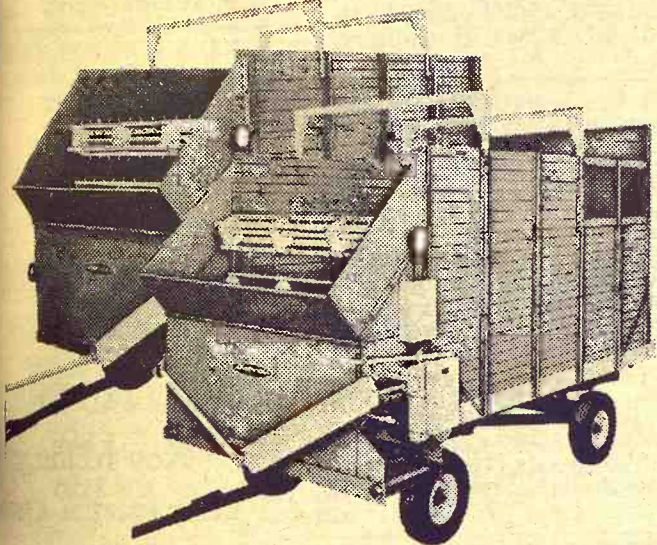
THE FABULOUS
NEW CHRISTY MINSTRELS
AT THE NIGHT SHOW
SEPT. 16-17-18-19
KANSAS STATE
FAIR
HUTCHINSON



Barbed Wire Collector

One of the popular hobbies in the G&G area is barbed-wire collecting. One of the collectors in the area is Gordon Rumbaugh, Jefferson county sheriff, who searches for old barb samples near Oskaloosa. Collectors say there are about 550 common barb styles.

BIG AND BRAWNY FORAGE BOXES...



Either of these New Idea forage boxes means years of service at a low investment. All-wood standard box or steel reinforced deluxe box — whichever you choose you get the same top quality variable speed belt driven transmission, bed conveyor and cross conveyor that unload box in 3 to 12 minutes as desired. Two or three beater mechanism available. Both boxes have a 7' x 14' platform, offer capacity to 588 cu. ft. They're built big . . . built tough . . . carry New Idea's famous full year warranty. See them on display at

See your local New Idea Dealer

Jorden Implement Co.
Phone CO 3-2041
ABILENE, KANSAS

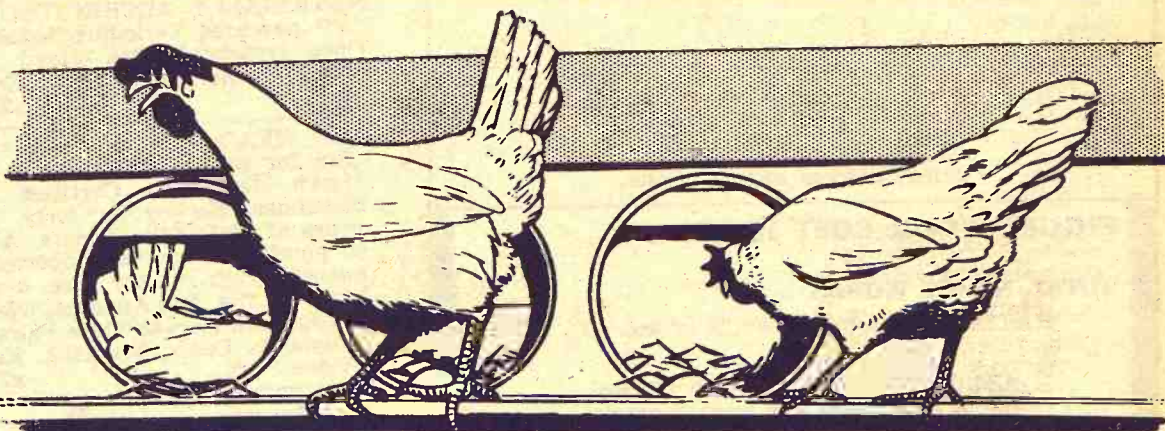
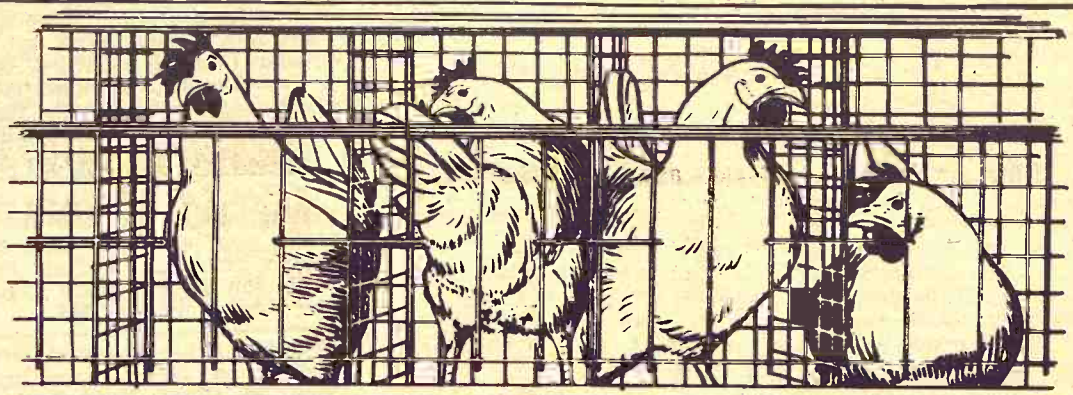
Smart & Morgan Tractor & Supp. Co.
Jct. 56 & 75 — Phone 793-2200
SCRANTON, KANSAS

Valley Implement Co.
Phone 945-3311
VALLEY FALLS, KANSAS

81 Farm Supply Inc.
Phone CH 1-0256
MCPHERSON, KANSAS

Hinkles Implement Co.
Phone EA 5-2334
WASHINGTON, KANSAS

D & D Farm Equip. Co.
Phone ME 2-5212
CLAY CENTER, KANSAS



Cage or floor?

Either Way You Save By Feeding
Top Quality Naturich Layer Feeds

The NATURICH MARKET EGG PROGRAM consists of recommended formulas for the commercial laying flock. The formulations are the most up-to-date available. Complete feeds or concentrates that may be utilized under a variety of conditions to suit the needs of the poultryman. For total feeding results, call or stop by your Naturich Dealer. You'll be glad you decided on NATURICH.

NATURICH MILLS

Abilene Kansas

"A finer feed for every need"

12½' GRAIN BED and hoist
for sale. Like new. Melvin Bar-
ry, Manhattan, PR 8-2332. SE27

GMC TRUCKS
1/2 Ton - 60 T
Sales & Service
TEL-COUNTY MANHATTAN 3rd

Bearman Equipment
ALLIS-CHALMERS
MINNEAPOLIS 1
Phone 456-2
East US 2
WAMEGO, KA

FOR SALE - 1946
truck with 13'6"
side. Fo r 14-
one and one 14-12 t
Freeman, RR2,
Miss.

FOR SALE or trade
1 1/2 ton truck
racks and ho
on 2MH or 1
ment. Prefer with
Everett
Argenville, Kans.

FOR SALE - 1963
truck with two speed
and hoist. Wou
or will trade fo
John Deere 16-8
Walden hitch.
Miltonvale, Kan
Phone No. 427-4786.

Real Estate

Fulmer Real Estate
CATHERINE J. FULMER
REALTOR
Office
Res. WA

WANTED TO RENT
well improved
ford Dam or tra
240 acres near
Lucas, K
7335.

LIKE NEW
Near Marlatt S
IN MANHATTAN

4 bedroom home;
conditioned; wood
floor; walnut paneli
family room; double
breed patio; under 5

FREE SCHOOL DISTRICT
possession, near
4 bedroom home; 1 1/2
garage.

BLOCKS UNIVERSITY
active 3 bedroom 1
separate dini
basement finished, \$
home; garage - \$

ROOSEVELT DISTRICT
4 bedroom home; fire
many shade trees,
new furnace. \$1500

HOME SITE ON HUNTER
- 100 ft. x 200 ft.
taxes - \$2250.

HOME SITE - Tu
lake - Short Drive
Dam - Good Vi
1500.

RACRE TRACT
New 3-Bedroom Home
at improvements -
backtop.

For
Complete Real E
Insurance Se
Call

Maurice M. Shyne
Realtor
Suite No.
Union National B
Office PR 8-4401 R
MANHATTAN

E. H. SHANE
Real Estate
REALTOR
Office 112 West
Ph. CE 8-
Residence 2/4 S-2
CE 8-247

Can your farms a
with us
E. H. SHANE JUN

FOR SALE - 238
farm in Walnut
Marshall Co., Kans
debrand, Marysville
2501, Oketo.

now — no interest
ing charge on new
ors till March 1st.
s to June 1, 1968.
to May 1st, 1968.
roperty & life insurance

TRACTORS

SED MACHINERY

5 XT 190 LP with
de front

5 3020 dsl, wide front
4010 dsl, wide front

2 3010 gas
1 3010 dsl.
3 60 with P.S.
2 2010 gas
59 560 dsl.
57 450 dsl.
56 300gas
53 Super M, PS, real

Model M

4 444 with P.S.
3 44 special
2 44
4 33

959, Selecto speed
more to choose from

new JD forage harve
g good, works even
n it looks. Here's
es that we've traded
row Fox, real good
odel 12, single row
JD single row
AC forage cutter
sed self-propelled
in stock. One just

odel 95 with 16" head
4"4 corn head
t returned from vaca
d still a little sleep
a good time to come

farmers Union
w. & Implement

Everett Hoo
Mgr.

Ph. 437-2813

T. MARYS, KANS.

For The Best
Deals See Us

High quality, long
lots, per bale

TRACTORS

d tractor, good condition
rubber

d, 5-speed, live PTO
d, 10-speed, Live PTO

rd diesel, over/under
d diesel, live PTO
M, hydraulic, foot clutch

er, good
disc brakes, live PTO

Major, live PTO
ic, 3-point hitch

NEW AT D&D
w Idea Uni-Harvester

MACHINERY

12" Krause wheel
C 37 whl. disk
ase forage harvester,
heavy duty
epower brush hog
mower, power take
IH sprngth; JD 858 rake
new 16.9-34 tires \$295

Peschel Bros.

304 Center
HI 3-4377

MARYSVILLE, KANS.

FOR SALE — Propane tank,
radiator and regulator for
IC 560 tractor. William Burg-
Palmer, Kans. x27

FOR SALE — 1959 Ford 602
series 2-row corn picker. Alfred
ichter, Clay Center, Kans.
one ME 2-5025. x29

INTERNATIONAL POWER

steoff corn binder on rubber,
good shape. Gehl silo fillers.
Kans. R 4. Two miles east of
water tower. x27

WANTED — HESSTON Crop
savers. Give description and
price. Box 406, Buhler, Kans.
x28

FOR SALE — Grain-O-Vator
loading wagon (60 ser-
cellent condition. Ray
urch, Phone 2330, Buh-
ers. x29

TRACTORS

Deere 4010D, looks nice

Deere 4010D, overhauled,

new tires

Ford 871 gas, slick

IHC 460 utility w/ hyd.

bucket loader

IHC Model MTA, full

opt.

Ford 8N w/ cultivator w/

plow

Deere 2010 gas, overhauled

7N A; 1946 Deere G; 50 Case

IC; 42 Deere B; 52 Deere G;

Case VAC; 50 Deere AR

IHC WD-9 w/ hydraulics,

good tires

Deere 70D standard, new

tires

SILAGE EQUIPMENT

IHC 16 PTO, single row

blower w/ 45" pipe

JD 12 single row PTO cut-

ter

Fox 2-row PTO c tter

Deere 8 w/ single row hyd.

forage box w/ 963 running

gear

PLOW MTD.

3x14; Deere 3x14; Case

semi-mtd.; Deere 5x14,

4x14 & 4x16

PLOW WHEEL

3x14; JD 650, 4x16

MISCELLANEOUS

JD RW wheel disc

JD 45 combine

JD 55 combine

corn head for 55 combine

55 Massey 60 combine

drive w/ new cutter bar

8 mower w/ conditioner

for Deere 45 combine

disk on wheels, 7" cut

quite a few older good used

als w/ fert.

used 4-section IHC spring

tooth

good used JD spring tooth

New Idea wheel corn

picker, real good

JD corn picker, bargain

IHC mtd. picker

R Deere manure spreader

John Deere subsoiler

553 JD running gear

er o.; A5:xi t

BALERS

IHC 55; JD 14T w/ bale

thrower & engine; 65 JD 224

WS; NH 66; Massey No. 3;

Deere 114W w/ JD motor

See us at the Abilene Fair.

SHOUSE

IMPL. CO.

Abilene, Kans.

CO 3-3051

CO 3-1066

CO 3-4515

USED TRACTORS

Oliver 1650, W.F., 620 hrs.,

like new

Massey-Ferguson 65

Farmall 460, new bearing

g. & TA; o'hauled.

Oliver 770

MH 444, PS, 3 pt.

JD 45 12' combine

5-14 M-F semi mounted

plow, like new

IH sprngth; JD 858 rake

new 16.9-34 tires \$295

Peschel Bros.

304 Center

HI 3-4377

MARYSVILLE, KANS.

FOR SALE — Propane tank,
radiator and regulator for
IC 560 tractor. William Burg-
Palmer, Kans. x27

FOR SALE — 1959 Ford 602
series 2-row corn picker. Alfred
ichter, Clay Center, Kans.
one ME 2-5025. x29

INTERNATIONAL POWER

steoff corn binder on rubber,
good shape. Gehl silo fillers.
Kans. R 4. Two miles east of
water tower. x27

WANTED — HESSTON Crop
savers. Give description and
price. Box 406, Buhler, Kans.
x28

FOR SALE — Grain-O-Vator
loading wagon (60 ser-
cellent condition. Ray
urch, Phone 2330, Buh-
ers. x29

1954 GLEANER, 1955 No. 55
John Deere combine. TRAC-
TORS — 1963 LP Massey 65, hi-
clearance. Good M-M G-IV; John
Deeres; 1956 70, new tires; 1954
60; 1952 G, new tires. Excellent
LA LP Case. 1953 NAA Ford,
1948 Ford, both with loaders.
International No. 60 3x16 plow,
nearly new. Quick-tach JD cul-
tivator. 3-point tandem discs.
16x8 John Deere RS drill with
fertilizer, rubber press. Inter-
national 45T baler, \$195. New
60" rotary mower, \$360, take
\$295. Morridge and Parker
springtooths. Used Hesston Crop
Savers. Most sizes used tractor
tires. Nickel Brothers, Buh-
ler. x26

FOR SALE — 1965 Gehl self-
propelled 2-row Chop King, Ber-
nard Fehr, 1166 Prospect, Sali-
na, Kans. TA 5-4715. x26

FOR SALE — Bulk milk tanks,
300 gal. Zero & 200 Mueller,
nearly new. Both easily moved
& cheap. Ph. 736-2235, Chas.
Shaughnessy, Axtell, Kans.
SB26

FOR SALE — Farrowing
crates, pig feeders, cattle feed-
ers, waterers, oilers. Authorized
representative for Dolly Enter-
prise, Inc. for this area. Hoyt
Woodbury, Clifton, Kans. x27

WANTED — Corn heads for
Gleaner Baldwin combines. By
letter state year, serial, price &
condition. Jerry Kamler, Kam-
ler Impl. Co., Geneva, Nebr.
SB26

NEARLY NEW Tox-Wix grain
dryer. 250 bushels. Price \$1000.
Robert Chaffee, Green, Kans
WI 4-2432. x27

FOR SALE — 1964 Fox self-
propelled field cutter, 427 gas
engine, full vision cab, electric
motor to turn spout, hitch to
two chopper on road. Chopper
rebuilt, ready for field. Price
\$4950. Rex Logan, Eskridge,
Kans. Phone Dover PR 5-6334.
x27

FOR SALE — John Deere 4-
section springtooth, 3-point,
levelers Dixon Law, Longford,
Kans. x27

FOR SALE — 1950 IHC C trac-
tor, hydraulic control, PTO.
Belt, extra good shape, on excel-
lent rubber. Smith Stiles, 912
Kearney. Phone PR 6-4186, Man-
hattan. SB

FOR SALE — Good 227 corn
picker; 13 disc one way; 2 Bur-
kens hydraulic wagon cylin-
der. Donald Hartner, R. R. 2,
Manhattan, Kans. Phone PR 6-
7425. x27

WANTED — Late model pick-
up attachment for No. 6 John
Deere cutter. Donald Bechard,
Clifton, Kans. x27

TO TRADE — Morridge grain
drier, bought new in 1966. Dried
less than 2000 bu. Fully automa-
tic — on a 560 or 450 IHC trac-
tor in A-1 shape. Everett Liven-
good, Morganville, Kans. x26

FOR SALE — Good 301 New
Idea mounted corn picker. Gary
Sylvester, Leonardville, Kans.
x27

FOR SALE — 1959 Internation-
al 2MH corn picker. Phone FE
5-2670, Vernon Smith, Scandia,
Kansas. x26

FOR SALE — Good Papec one
row ensilage harvester, ensilage
wagon box. Mrs. Bernard Was-
senberg, Marysville, Kans. x29

FOR SALE — 1960 Allis roto-
baler, excellent condition. Ralph
Simpson, Miltonvale, Kans.
SB27

FOR SALE — 1963 two-row
Gehl field cutter and pickup
unit Used three seasons, Jaf-
fers Bros. Tel. LA 4-4758 or LA
4-4559. Lincoln, Kans. x27

Miscellaneous

WATER WELL drilling; gravel
packed wells. Write or call col-
lect CA 6-7276. Strader Drilling
Co., Blue Rapids. x32

WE CONTRACT build all types
of new fences. D. L. Lindquist,
ST 5-2618, Arnold Lindquist, ST
5-2619, Waterville, Kans. SB27

FOR SALE or Rent — Starcraft
trailer & pickup campers, for
hunting or fairs, Visser Radi-
ator & Marine, Herington, Kans.
x28

FOR THE ride of your life,
ride a Big Horn saddle from
Key Milling. Clay Center, Kans.
SB TF

ARMY SURPLUS
OUTSIDE WHITE
PAINT
\$2.93
Per Gallon
Kimberly Washable
Vinyl Latex Wall Paint
FAITH'S
Furniture
East US 24 PR 8-3786
MANHATTAN

Pets

FOR SALE — Purebred Spitz
puppies, \$25. Phone Manhattan
PR 6-7479. x26

Help Wanted

HELP WANTED — Farm fore-
man, general farm work. Living
quarters furnished. Box 1009 J.
R., Manhattan. SB26

WANTED — Farm hand, mar-
ried, permanent, good salary,
modern home plus extras. Must
have livestock experience. Call
or write Ed Burt, Washington,
Kans. Phone EA 5-2393. SB26

POSITION OPEN now for
partsman. Prefer aggressive
man with military service be-
hind him. Jantz-Kaufman, Inc.,
McPherson, Kans. SB27

WE NEED
A GOOD MAN
who loves livestock, general
farming and country life. Must
have ability to make decisions,
etc. Location in Central Kan-
sas. Pay commensurate with
ability. Write JR Box 1009
MANHATTAN, KANS. 66502

YOUNG MEN for grain eleva-
tor and feed mill construction.
\$2.10 per hour plus time and
half for overtime. Normal work
week 50-55 hours. For applica-
tions phone or write, Frisbie
Construction Co., Inc., Gypsum,
Kans. Phone OWen 6-4288. SB27

WANTED — RESPONSIBLE
experienced married farm hand.
Working with new farm equip-
ment and livestock. Must have
references. Will provide modern
house. Salary comparable to in-
dustry. Melvin Stanford, Ad-
mire, Kans. x27

Notices

SONG WRITERS OR
INVENTORS
Sheet music from your
tape recordings. Cash for
your ideas. Free brochure.
Write Dept. U, Box 906,
Pomona, Calif. 91769.

Brand New — Full Services —
Private or Semi-Private Rooms
Total electric comfort in s: bur-
ban setting. Write or call
Leonardville Nursing Home
P.O. Box 217 (Phone 29)
Leonardville, Kansas

Mobile Homes

FOR SALE or Trade — Good
clean used House Trailer. Good
condition. Allen Travelute, Wat-
erville, Kans. x26

FOR SALE — 1960 10x55 Mar-
lette Mobile Home. Carpeted,
gas heat and stove, new wash-
er, very nice. Rance Headley,
Ellsworth, Kans. GR 2-3353. x27

1964 SKYLINE mobile home
56x10, Early American, 2-bed-
room. Contact Mrs. Harold D.
Goss, Dwight, Kans. 482-3850.
x26

August 29, 1967

Grass & Grain

15

COW POKES

By Ace Reid



"Now see what can happen if you don't buckle
yer safety belt!"

IH EQUIPMENT OWNERS IN CLAY COUNTY CAN RELY ON

Auld's in Wakefield

PARTS AND SERVICE

NEW IH MACHINERY IN STOCK

NO INTEREST UNTIL SPECIFIED DATES IN 1968.

Buy now with interest free
financing on certain machines.

Phone HO 1-5414 in Wakefield

NEW CHEVROLET TRUCKS ALL OUR USED TRUCKS Out They Go

IT'S TIME TO CLEAN UP
FOR NEW 1968 PICKUPS & TRUCKS

Forget The List Prices
JUST COME IN AND DEAL

— 9 NEW CHEVY TRUCKS —

- ½ ton LWB Fleetside pickup, 327 cu. in. V-8, Hydramatic, power steering, side trim, radio, gauges, overloads, Deluxe heater, red trim
- ½ Ton LWB Pickup, light yellow & off-white, 6-cylinder, 4-speed, gauges, overloads, custom comfort interior, deluxe heater, green vinyl trim
- ½-Ton LWB pickup, light green, V8 engine, 4-speed, overloads, gauges, deluxe heater, foam seat, and green vinyl trim.
- ½ Ton LWB Fleetside pickup, light yellow and off-white, 6-cylinder, 4-speed, overloads, heater, gauges, foam seat, fawn trim.
- ½ ton LWB Fleetside pickup, light blue, 6 cylinder, 4-speed, overloads, heater, gauges, blue vinyl trim.
- ½ ton LWB pickup, light yellow and off-white, V-8 engine, gauges, heater, custom comfort interior, radio and side trim.
- ½ ton LWB pickup, vermilion & off-white, V-8 engine, 4-speed transmission, overloads, gauges, and foam seat.
- ½ ton LWB pickup, light blue & off-white, 6-cylinder, 4-speed transmission, overloads, gauges, foam seat and side trim.
- 2-ton Truck for 16-ft. bed, Big 6 engine, 2-speed axle, HD radiator, West Coast mirror, marker lamps, foam seat, Deluxe heater.

9 FINE USED TRUCKS

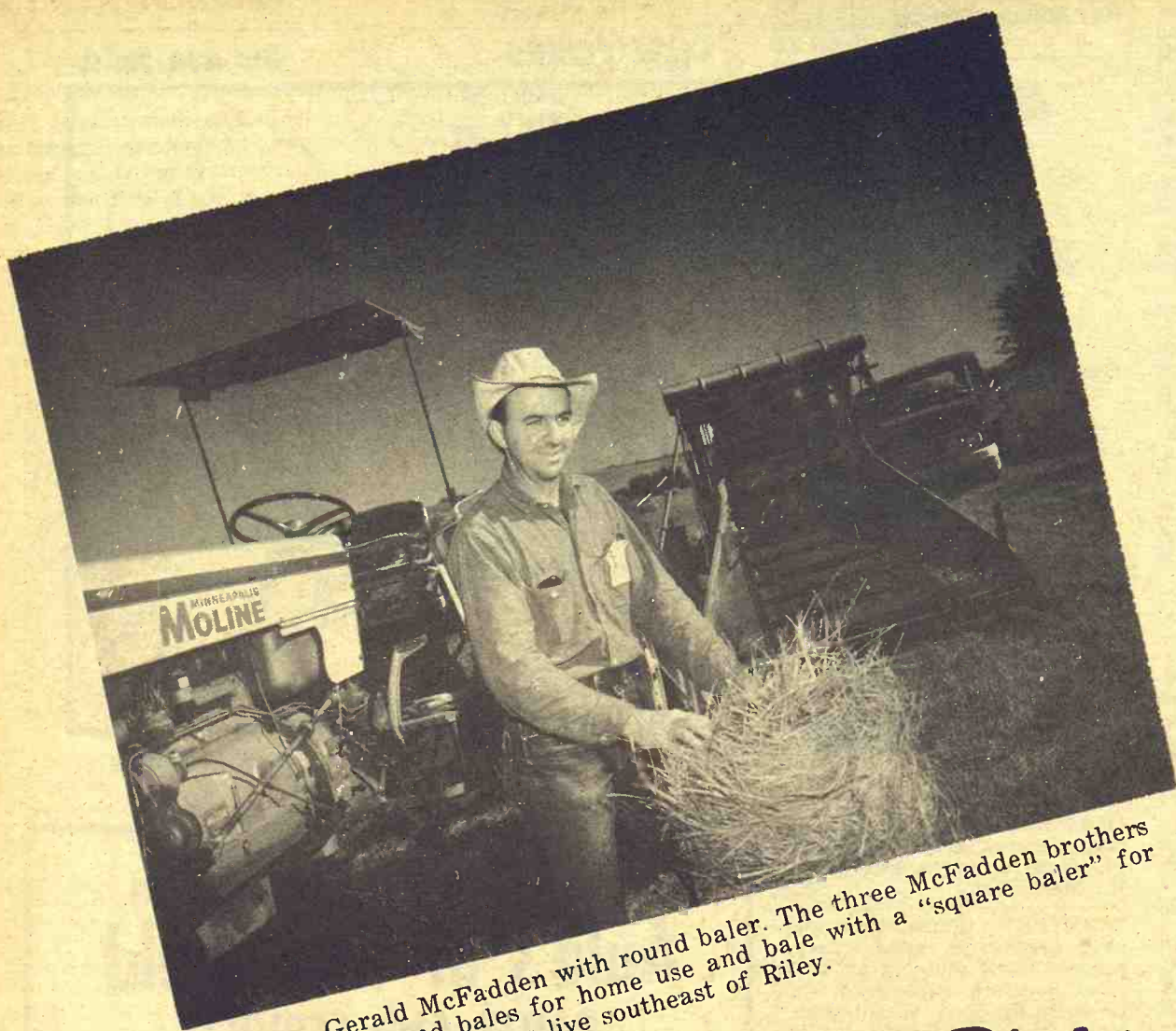
- 1964 Ford ½ ton Styleside, 6-cyl., 3-speed, radio and heater, only 18,000 miles.
- 1963 Chevrolet ½ ton Fleetside pickup, 8-ft. bed, 6 cyl., 4-speed, radio and heater.
- 1960 Ford ½ ton Styleside pickup, 8 ft. bed, 6 cylinder, 4-speed.
- 1959 Chevrolet ½ ton pickup, V-8, 3-speed.
- 1959 Ford ½ ton pickup, 6 cyl., 3-speed, new engine overhaul.
- 1958 Chevrolet ¾ ton pickup, V-8, 4-speed transmission.
- 1957 Chevrolet ¾ ton pickup, 6-cylinder, 4-speed.
- 1959 Chevrolet 2-ton Truck, V-8, with 2-speed axle, 84" cab to axle for 13½ ft. bed.
- 1957 Chevrolet 1¾ ton truck, 6-cylinder, single speed, 84" cab to axle for 13½ ft. bed.

Open Evenings To 9 p.m.

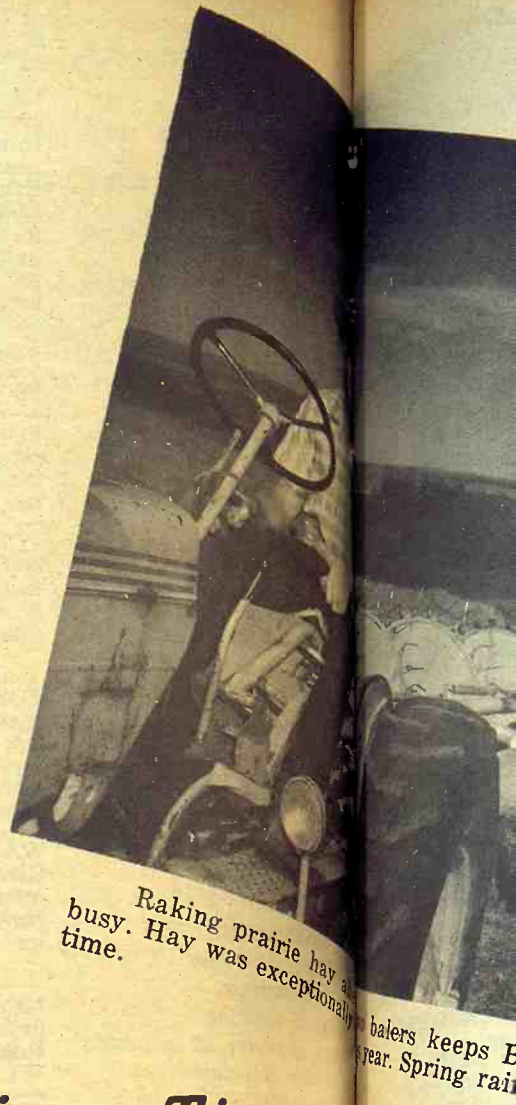
OBERMEYER

CHEVROLET OLDSMOBILE

HERINGTON, KANS. BL 8-2421



Gerald McFadden with round baler. The three McFadden brothers use the round bales for home use and bale with a "square baler" for selling. The brothers live southeast of Riley.



Raking prairie hay is busy. Hay was exceptionally good this year. Spring rain

Right At Haying Time

by Gilbert Walters

This is the season when most farmers in the G&G area are pursuing an annual popular pastime called putting up hay, an educational sport, both physically and psychologically.

The peak of physical alertness is usually arrived at the first morning after active participation. It is at this point one is fully aware of just which muscles he has not been using. By mid-afternoon this same day the mental process deepens, much thought being given to placement of the bales to conserve steps and energy. Also there is an awareness of perspective: it only takes twenty seven bales to fill that hole. And after packing 200 bales up in the peak of the barn, you realize how really good a drink of cold water tastes.

Probably many of our senior readers will recall the days when the game was played by pitching the hay on the rack and then pitching it off. Then someone came up with the idea that

if you could lay some ropes between the layers of hay on the rack, by using a track and carrier in the barn, the whole load could be unloaded in several big wads. In smaller barns a fork was used in place of the slings. This saved much time and labor, until in the winter when the hay was fed, the farmer had to pull and tug to get a fork full, he began to wonder about the labor saved. At least it was cooler then.

Over the years many methods have been employed to make the task easier. A series of stacking devices have been used quite successfully for many years. In the early days horse powered bucks brought great piles of hay to the stack. This was then pitched by hand up to the stackman, whose finished product looked like a giant loaf of bread. Later devices lifted the hay and dumped it on the stack.

Probably the best remembered of all the haying equipment was the old stationary baler. The first models were

powered by horses hitched to a beam and driven in circles to operate the plunger. As the gasoline engine evolved, so did the baler.

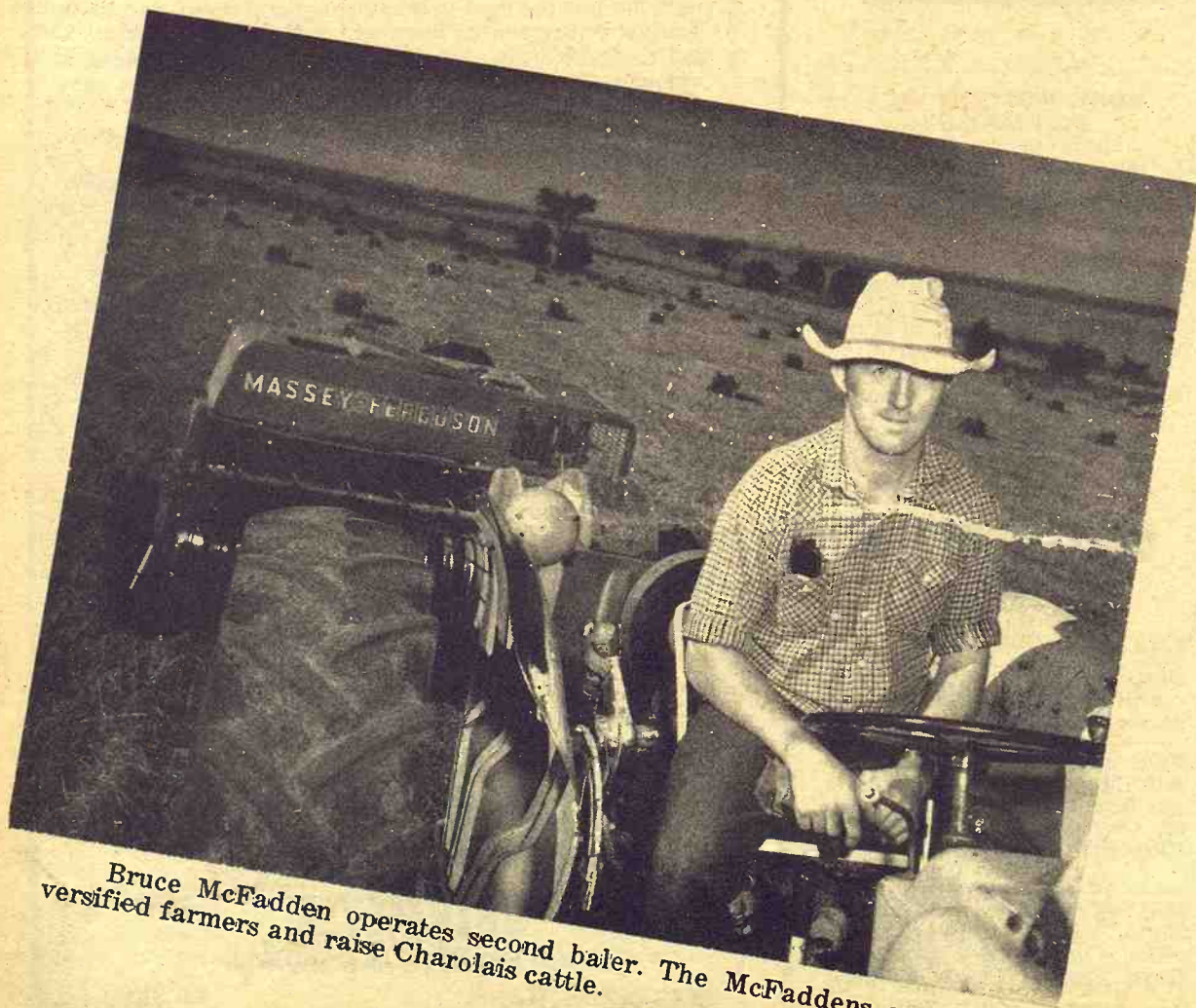
If in this era your Dad had one of these balers and you were 12 or 13, Lady Luck certainly wasn't smiling on you. The prospects of several evils befalling you were good.

One was raking scatterings, a lost art today. To do this properly three things were absolutely necessary. One kid, an old team of horses, and an old dump rake. Preferably the team and rake were both worn out. The best time of day for this was early morning, so that there would be plenty raked before the high wind hit. This way there was more to re-rake. At this time of day the bumble bees seem to have a tendency to be more aggressive also. Of course, there was the normal run of trouble with the rake, the dumping, the not dumping, all at the wrong time. And then, there was the old team.

If you missed the raking bit, it was

a certainty that perform another little was a dandy. This bit of known as "poking wires" This involved quite a dexterity and teamwork. A consisted of the baler, a monster in operation, a man on the platform, a man to keep hay where it was fed into some kid, who would rake than poke wires.

A wooden into the chamber, until the block reached mark to maintain until the bale, as another block. Then as the first block second indicator you the wires through the blocks and waited till the back and the block fell back, got the block platform. This gave you enough time to get back a couple more



Bruce McFadden operates second baler. The McFaddens are diversified farmers and raise Charolais cattle.



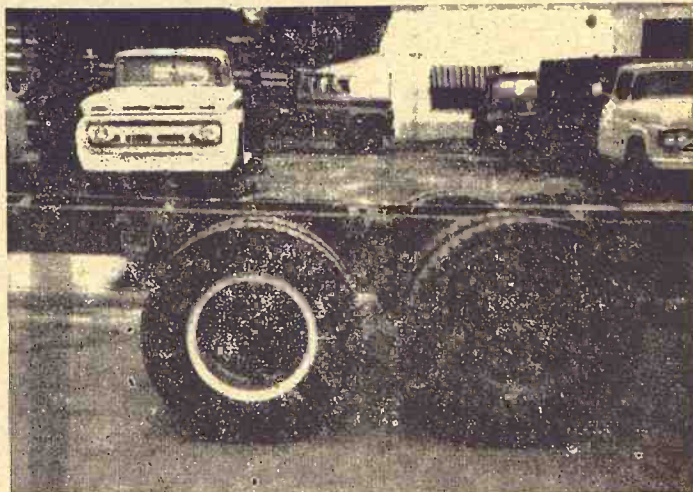
Randolph, and a boy came from the farm

August 29, 1967

FAMILY ON FARMLAND FOR 100 YEARS

WAKARUSA — Mr. and Mrs. Earl Barngrover have celebrated the 100th anniversary of the Mrs. Barngrover's family living on the farmstead south of Topeka on US75. Her father, A. J. Avey, a Civil War veteran, purchased the farm on August 9,

1967. The Barngrovers still farm part of the original land and part of the farm home is the original brick house built by Avey in 1869.



We specialize in truck lengthening, installing factory tax axles for farmers or commercial truck lines. Also frame straightening if it's for a truck or need a truck see "Norm" or "Rod".

For Sale Good Used Trucks

We buy these trucks in farm community and from Ford and Chevy Dealers their "trade-ins", we also give a 25% guarantee on parts and labor on motor, transmission and rear end for 1 year.

1966 CHEVROLET 2 ton, 2-speed V-8, 22,000 actual miles. New 16-ft. Omaha Standard box and new 14 ton Harsch hoist.

1964 GMC 6 cyl. diesel, just spent \$600 on motor. Will carry 16-ft. box.

1964 FORD V-8 2 ton 2 speed, new 13½-ft. box, Omaha Standard and 14 ton Harsch hoist. Was Phillips 66 delivery truck.

1963 LCF CHEVROLET V-8, 11,000 miles on new short block. Will carry 16-ft. box.

1955 CHEVROLET 2 ton 2 speed. Will carry 13½-ft. box.

1960 CHEVROLET ½-ton Pickup, long and wide box.

We will have more every week.

We are the largest dealer in boxes and hoists in southern Nebr.

We also install for Dealers.

16-ft. box and 14 ton hoist — \$1060.

13½-ft. box and 14 ton hoist — \$953.

These are installed in our shop. Boxes are all made in Omaha.

SIEBE'S REPAIR

Phone 424-2670

Jansen, Nebr.

ANNOUNCING

We have purchased the former Grain & Feed Service Co. in Marysville. We invite you to drop in and get acquainted.

We would like to discuss with you your needs this fall for seed, fertilizer, grain banking and storage. Custom feed milking.

Also we would like to discuss a good feeding program with you.

Check with us before selling your grain as we have an every day cash grain market.

Richard (Smiley) Oltman

Nutrena Fieldman, will be happy to drop by your place and show you our complete line of Nutrena Feeds and Concentrates, and help tailor a feeding program to fit your needs.



Richard Oltman, Nutrena Fieldman

Graham Grain Co.

606 Calhoun

Phone HI 3-3046

NUTRENA FEEDS

Hawkeye Fertilizers
Liquid Blend & Dry Mixes

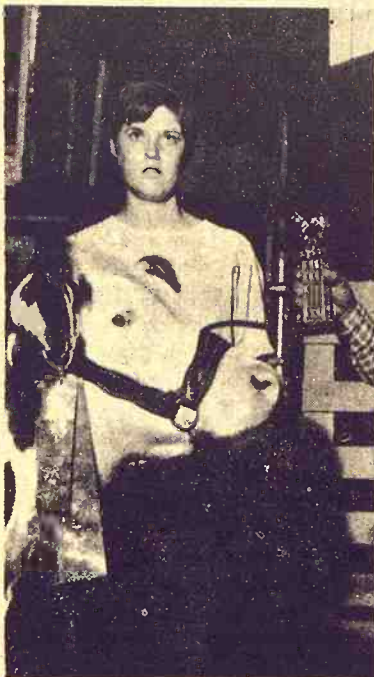
Marysville

Kansas



Best At Abilene

Champion 4H steer at the Central Kansas Free Fair at Abilene was this one shown by Gary Hoffman.



Pott'mie Champ

Grand champion 4H steer at the Pottawatomie County Fair at Onaga was the Polled Hereford of June Blanka of Wamego.

WAMEGO FUN SHOW SET FOR SEPTEMBER 1

WAMEGO — A Fun Show will be held here Friday, September 1, at 7:30 p.m., featuring a quarter horse show, queen contest, and competition for youngsters. The show is the fourth annual venture of the Manhattan Recreation Commission, and the Wamego Lions Club.

McPHERSON FAIR BEEF CHAMP SELLS AT \$62

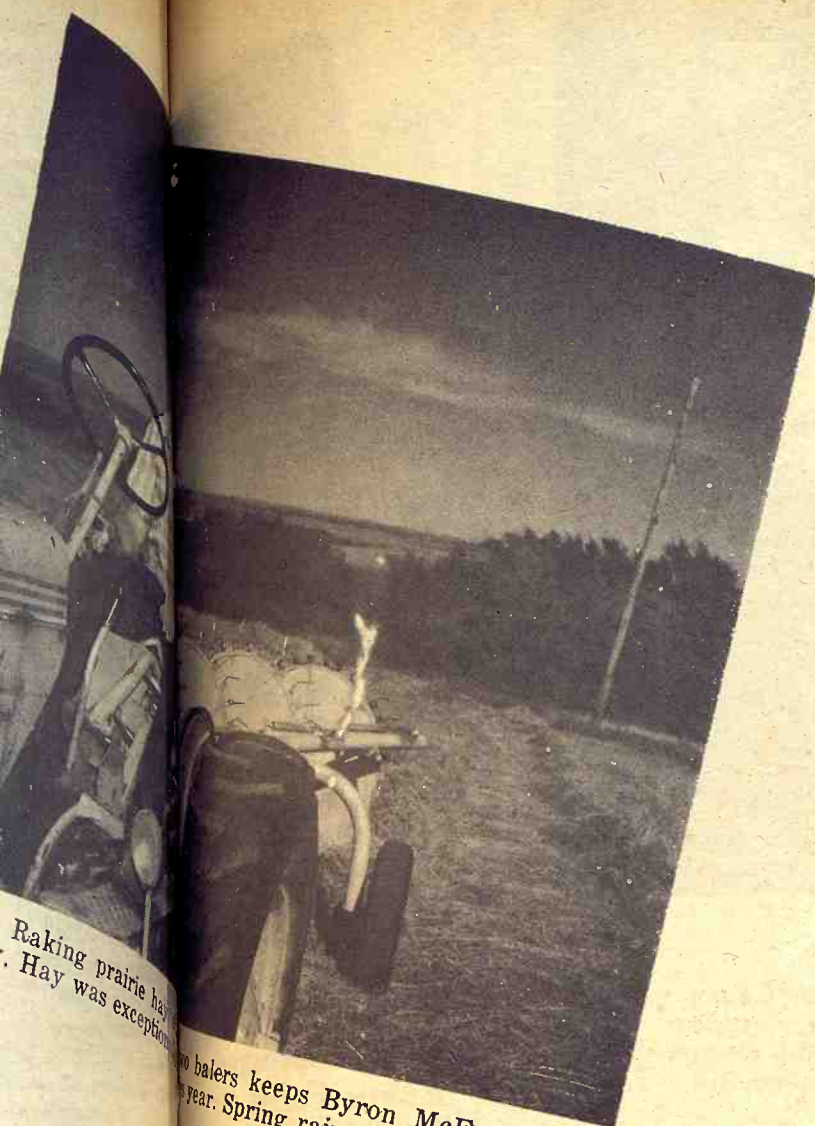
McPHERSON — The beef champion of the McPherson County 4-H Fair sold for \$62 a hundred at the sale following the fair. The champion was owned by Merle Erickson of Marquette. Thomas Toll of Lindsborg had runnerup. The top market pig, owned by Brad Walker of McPherson, sold for \$55 per hundred.

FLETCHER THE 4-H'er

@ JOE E. BURESCH



"I NEVER SAW ANYTHING LIKE IT EITHER. I GUESS THEY WORK HARD TO MAKE BOTH ENDS MEAT."



Raking prairie hay. Hay was exceptional. Baler keeps Byron McFadden. Spring rains came at right Time

a certainly perform another little as a dandy. This bit of known as "poking wires." This involved quite a dexterity and teamwork. It consisted of the baler operator, a man on the platform, and a man on the ground where it was fed into the baler. The kid, who would poke wires.

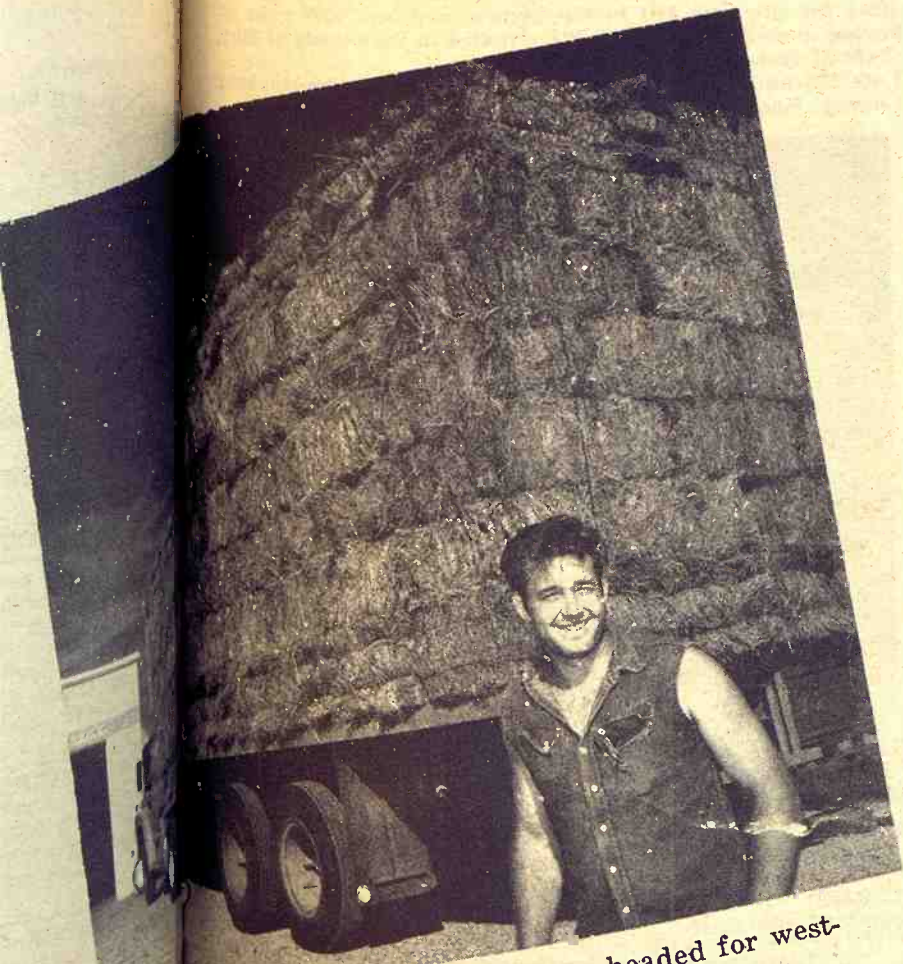
A wooden platform into the chamber, but until the block reached the mark to maintain the bale, as another block in. Then as the first block reached the indicator you of the wires through the blocks and waited till the baler and the block fed back, got the block on platform. This gave enough time to get back couple more

wires.

As the day wore on, there were times when your thoughts might wander, and by accident get the wires on the wrong side of the block, causing two bales to be tied together. Even in the lowest of haling circles this was considered in bad taste, because it shut the whole crew down till the bobble was corrected, and this was usually followed by rude comments from the baler operator.

After World War II a slicer baler with a pickup attachment was introduced and was very successful. It needed three men to operate — two to poke and tie the wires and a man to operate the tractor.

From this point haying has taken gigantic strides towards automation, self tying balers, ejectors that throw the bales in wagons, bale loaders that pick them up in the field, and the latest units that load and stack large numbers of bales, and then retrieve them from the stack as needed.



Randolph, and a load of prairie hay headed for west. Hay came from the Westmoreland area.

AUCTION

4 1/2 miles east of
ALTA VISTA, KANS.
and 1 1/2 south

Tues., Aug. 29
Starts 1:00 p.m.

15 head cattle, including 10 Holstein cows, 4 and 5 years old, from Wisconsin. Calfhood vaccinated. To start calving in November. Have history of clean Bangs ring test and will be tested by day of sale.

1950 JD B; 1-row New Holland field cutter, PTO; AC PTO combine, etc.

Clyde Thomas, Owner
Jim Kirkeminde, Auct.

AUCTION

I will sell at public auction the personal property of my father, the late Axel F. Johnson, at the house located 918 Dexter St. in Clay Center, Kansas.

Mon., Sept. 4

Starts 9:30 a.m.
(Note Sale Time)

Tappan gas range, good Frigidaire 6 ft. refrigerator, good

Speen Queen washing machine Eldredge treadle type sewing machine; steel utility cabinet; steel cabinet base; buffet; 6 dining chairs; high chair; studio divan; platform rocker; library table; end tables; console radio. Antique captain chair; large antique desk with glass doors above, very nice; Hamilton piano and bench, good; metal bed; dresser with mirror; chest drawers; pictures and frames; throw rugs; porch swing.

Large and small steamer trunks from Sweden; Swedish books; antique trunks; some dated fruit jars; flower pots; small antique chests.

Ladder; electric hot plate; some used flooring; vise; garden cultivator; hand and garden tools; push the lawn mower; trimmers; dishes; pots; pans; and other small misc. items too numerous to mention.

Dorothy Johnson

Executrix, Axel F. Johnson Est. Clerk: Union State Bank, Clay Center. Auctions: Foster Kretz & Elmo Steffen, Clay Center, Ph. WA 6-4422, Morganville.



Best At Geary Fair

Kayla McDuffet of Alta Vista had the top 4H steer at the Geary County Fair, and at the sale following the fair she sold her prize Hereford for 60 cents a pound to four Alta Vista businesses. The gross on the animal was \$576. Shown here with Kayla are auctioneer Bill Crites, and Fred Clark, Alta Vista banker.

Mike Rogers had the champion lamb at the Geary Fair, and Greg McDuffet the champion market hog.



KANSAS BEAUTIES — Leta Riley, 19, left, of Valley Falls has been named Miss Kansas World and will represent the state in the national finals at Baltimore August 14-19. Runnerup was Kandy Kutilek of Fairway.

JULIA CRENSHAW DIES IN CAR ACCIDENT

MANHATTAN — The daughter of a G&G area Angus breeder died last week after a one-car accident north of Interstate 70 in Wabunsee county. She was Julia Marie Crenshaw, 17, daughter of Mr. and Mrs. George Crenshaw.

FLINT HILLS RECA PAYS OVER \$3 MILLION

COUNCIL GROVE — The largest electric co-op in the G&G area, the Flint Hills RECA, says it now has made payments of over \$3 million principal and interest since it was formed. Over \$2 million has been paid on the principal, including \$277,000 in advance payments, and interest has totaled \$973,000. The cooperative has \$5.5 million invested in its system of 2430 miles of line, serving 4550 consumers.

CATTLE SALE EVERY MONDAY

HOG SALE EVERY WEDNESDAY
Sale Time 12:00 Noon
BEATRICE, NEBR.

Beatrice 77
LIVESTOCK SALES CO.
2 miles north of Beatrice, Nebr., opposite the airport.
Phone 223-3571
CLARENCE TEGTMEIER
DELMAR JURGENS
J.B. THIMM

FINAL REMINDER
Rader Angus Farm
FIRST ANGUS
PRODUCTION SALE
Saturday, Sept. 2, 1967
12:30 P.M.
PAOLA, KANSAS

Selling 85 Head as 71 Lots
10 BULLS 61 FEMALES
For catalogs write:
JOHN BARTON, Sale Mgr.
2505 Lundman Drive, Hutchinson, Kansas
or
WILMER RADER, Owner:
Route 1, Paola, Kansas 66071
RAY SIMS, Auctioneer

18

Grass & Grain

August 29, 1967

"LABOR DAY SPECIAL"
REGISTERED ANGUS
JOINT PRODUCTION SALE

Monday, Sept. 4
12:30 p.m. (CDST)
Washington Co. Fairgrounds
WASHINGTON, KANSAS

SELLING 68 LOTS

BULLS — COWS & CALVES
BRED COWS & HEIFERS
OPEN HEIFERS

Offering the service of SW Centurian 275th, a son of the International Grand Champion, Dor Macs Bardoliermere 100th.

Sale Headquarters:
Sale Headquarters: Park Hill Motel, Washington, Kans.
Sale Mgr.: Phil Ljungdahl
Box 1209, Dodge City, Ks. 67801
Phone 316 HU 2-2735

OWNERS
Bar B Angus Farm

Glen Bowdish and
Barbara B. Houghton
Washington, Ks. 66968
Phone 913 325-2383

Mormon Springs
Angus Farm

F. R. & Shirley Nutsch
Washington, Ks. 913 EA 5-2879
Auct: Roy G. Johnston

Special Stocker & Feeder Sale

Friday, Sept. 1 — 1 p.m.

We will begin our regular day sales
Wednesday, September 6, 1 p.m.

Onaga Community Sale

Marvin Cottrell, Phone 889-4461 or 889-4665, ONAGA, KS.

AUCTION SALE

Saturday
SEPTEMBER 9

Starts 2:00 p.m.
MANHATTAN
REAL ESTATE

Notice is hereby given that on the 9th day of September, 1967, at 2:00 o'clock P.M., at 906 Osage, in the City of Manhattan, Kansas, the undersigned administrator of said estate will offer for sale and sell to the highest and best bidder the following described real property situated in the County of Riley, State of Kansas, to wit:
Lots 273 and 274 in Ward 4 in the City of Manhattan, Riley County, Kansas.



GENERAL DESCRIPTION: Four-bedroom home with two baths; basement. Location on two full city corner lots. See photo above.

TAXES: Seller pays all 1967 taxes based on 1966 tax, and all prior taxes.

TERMS: 20% down day of sale, balance upon delivery of merchantable title.

Lawrence Welter, Auctioneer — PR 8-3455
Harold Carlson, Broker — PR 8-3083

Reah Jeanette Muir Estate

W. B. Glenn, Administrator

AUCTION SALE

Saturday
SEPTEMBER 2

Starts 1:30 p.m.

Real Estate — Manhattan, Kansas

Located two miles east of Manhattan on US24 highway



LEGAL DESCRIPTION: Lots 11 and 12 in Lee subdivision. SW 1/4 of Sec. 10, Twp. 10 South, Range 8 East.
GENERAL DESCRIPTION: This new duplex located on tract 200 ft. x 200 ft. with brick & stone construction. Side by side duplex, 2 bedrooms, large living room, bath & shower, attractive kitchen bar with built in oven, table top range, large double garages, breeze way.

Convenient, new fire station located in area. Gas line located along property line. City convenience plus country living.

TERMS: 20 percent of purchase price day of sale, sign contract. Balance due upon approval of title.

POSSESSION: Given when final settlement made.

TAXES: 1966 and all prior years paid by sellers. 1967 prorated as of 1966 taxes.

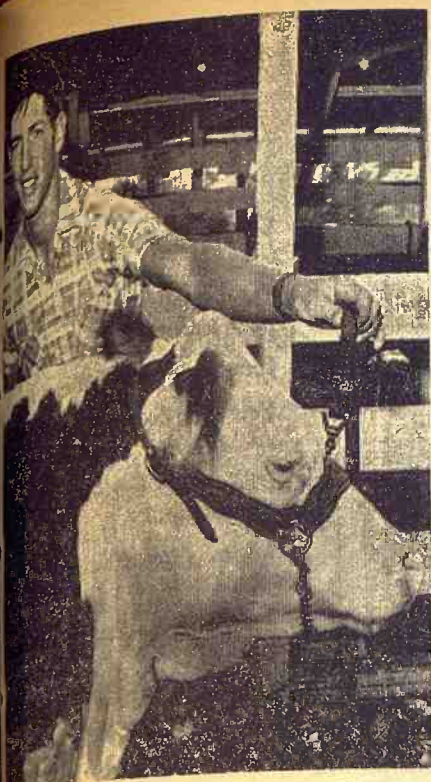
Real Estate Sold By Carlson Agency

For more information call or see:

LAWRENCE WELTER, Auctioneer PR 8-3455

HAROLD CARLSON, Broker PR 8-3083

Earl & Edith Tyson



Tri-Rivers Winner

Glenn Oleen of Fal-un had the champion steer at the Tri-Rivers Fair at Salina. Karen McDaniel's entry, also a Hereford, was rated reserve champion by edging the Angus of Larry Kelly of Fal-un.

Dick Reinhardt, herdsman at the Suder Ranch at Zurich, was the judge.

Top Shorthorn was shown by Janice Peterson, and Karen Kohman of Gypsum had the champ Charolais.

Dairymen Evade Pennsylvania Milk Price Controls Thru 'Pet Shops'

Farmers seeking higher profits opened a store in Pittsburgh, Pa., last week to sell milk—just plain, ordinary milk—but they called it pet food.

The farmers, selling milk at below state-regulated prices, are laughing. Customers, who are saving 20 cents a gallon, are smiling. But the Pennsylvania Milk Control Commission is frowning. The commission has set prices at \$1.03 per gallon for the consumer. The store, in its first day, did a brisk business. A couple of dozen customers were

lined up before the doors opened.

Ernest Hayes, head of the United Dairy Farmers which is behind the operation, said with a grin: "We would like the commission to investigate to see that we're doing the right thing for the pets."

An early customer, Phyllis Kernick of suburban Penn Hills, said: "I have two cats, two dogs and six kids at home. You can guess who's going to get the milk."

Also in line to buy milk at 79

cents a gallon were Mr. and Mrs. Cyril Stoehr, parents of five, who own a dog and puppies.

"I'll taste it," said Mrs. Stoehr. "If it tastes all right to me, I don't know why we shouldn't use it for the family to drink." A sign on the wall says: "This milk is sold for pets, and the Pennsylvania Milk Control Commission does not allow it to be sold for human consumption."

Another says: "This is the same quality Pennsylvania farm fresh milk as you buy in your stores. The only difference is it is fresher and better. Treat your pets as you treat yourself."

The farmers say they get 50 to 55 cents a gallon for milk sold under the "pet food" plan while milk sold elsewhere, some of which goes into cheese and butter, returns only 40 cents a gallon.

McPherson OKs More Industrial Bonds

McPherson is working on more industrial development.

The city commission last week put its approval on \$450,000 in industrial bonds which might be used for an addition to Certain-Teed Products Corp., local manufacturer of extruded plastic products. The corporation, which is McPherson's largest employer with 350 persons on the payroll, may or may not use the bonds as a method of finance.

The firm, which started operations at McPherson only four years ago, makes siding, guttering, and downspout materials, among other building products.



Best At Jackson Co. Fair

Champion 4-H steer at the Jackson County Fair was the Hereford of Raney Gilliland.

ED BAKER RESIGNS AS LINCOLN FARM AGENT

LINCOLN — Ed Baker has resigned as Lincoln County extension agent, effective September 5. Baker came here in 1965. He plans to return to Kansas State University to work on a masters degree in animal nutrition.

LINCOLN CO-OP NAMES NEW MANAGER

LINCOLN, Ks. — Emerson Bolte will become manager of the local branch of the Mitchell County Co-op here. Bolte has been employed at the Dandur-

and Lumber Co. He replaces Keith Oakley, who has moved to Sabetha to manage a co-op there.

ST. JOSEPH FIRM BUYS MARYSVILLE ELEVATOR

MARYSVILLE — Grain & Feed Co. here has been sold to Graham Grain Co. of St. Joseph by Glenn Holsapple. New manager of the firm will be Don Partridge, who comes from Burlington Junction, Mo. The Graham firm has a string of elevators in Nebraska, Kansas and Missouri.

Antiques

Wedn., Sept. 6

Starts 10:00 a.m.

Lunch Served

202 NORTH VINE — ABILENE, KANSAS

We will sell at auction the listed and described items belonging to Dr. Glen Hampton, some of which has formerly been owned by Dr. Pete Witmer and family. Many of these items are dated back as far as 1847. Many items are dated 1882.

Large marble top table with fancy carved pedestal; large hall umbrella & hat rack, walnut; small hall bench; large walnut table & 5 chairs, 1892; large oval center table, walnut; large walnut bookcase with 3 glass doors, 3 drawers with drop pulls; 4 antique walnut chairs; table model Zenith TV and stand; slant front desk (Scotland) mahogany; walnut slant front desk, both antique.

Walnut whatnot shelf; several walnut stands; several ladder back chairs; 9x12 Oriental rug; large wall mirror with marble top shelf; walnut fire-side seats, handmade, 1847; walnut center table, good; antique divan; maple end table; small dropleaf table.

Bendix table model record player & amplifier; many antique statues including pair of wild horses with women & man, approx. 200 yrs. old; antique serving stand; Seth Thomas 8 day clock, approx. 10 in. high, brass frame with glass on four sides; child's cane bottom chair; dining room table.

Sideboard; 5 chairs & host chair (oak); ornamental hall lamp designed for kerosene lamp; 4 modern dining room chairs, good; walnut corner shelf, antique; approx. dozen pr. of candle holders; F. Dan-nerman 12 gauge shotgun model 1890; 4 hard rock maple captains chairs; walnut dropleaf table, good; antique library table; 35 mm projector & screen.

This sale consists of approx. 75% antique articles. This sale may be of long duration so come prepared for all day.

Dr. Glen Hampton, Owner

Carl Schnell, Lee Remy & Wm. Schnell, Auctioneers
Citizens Bank, Abilene, Cashier — Karl Harshman, Clerk

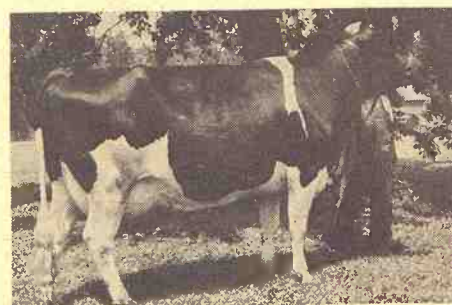
Hall tree & umbrella holder; antique oak combination ladder & shelves; small monkey stove; old side saddle & bridle; several high back rockers; wicker oval table; antique couch & chair; walnut antique dresser with carved pulls.

1892 cedar chest; antique rope bed; antique spool cabinet; 1875 building blocks (toys); 1890 doctor's tool cabinet with mirror, good; Schatz Germany 400 day clock; Childs cane rocker, antique; J. C. Brown weight clock, antique; maple desk; 2 sewing rockers; several antique rockers; oak antique chair; lots of picture frames, some antique.

Antique wash stand; several Penn. Dutch kitchen chairs, good; antique gas heater; wrought iron paper rack; some antique lamps; other lamps; large modern coffee table; floor lamps; Westing-house elec. roaster; twin size beds complete with chest; & dresser matching.

4 drawer Penn. Dutch chest; mahogany bedroom suite; picnic folding table; 2 metal twin beds complete; small coffee table; Westinghouse washer; divan set; large bird bath; twin size Jenny Lind bed; large draftsman's table.

Dishes of all descriptions, Austrian, German, French, etc.; some cut glass; Haviland China ware; Higgins & Seiter ware; many silver plated pieces; pewter; old bottles; crockery; jugs; wrought iron items; books, several hundred in amount, some in volumes, some old dated.



A TOP PROSPECT — Fresh by sale day

COLANTHA FOND BLEND G+
Sire—Son of Lakefield Fond Hope

2-6	335d	14,850M	589F
3-6	292	13,260	524
4-6	291	12,410	498



10 SPRINGER DAUGHTERS

Due August & September — first calf.
These heifers are big—have good udder prospect. With the udders and milk displayed by their half-sisters these 10 heifers could start a good foundation. THEY ARE NICE.

The present herd sire, Wis Messenger Lad, a six year old Mooseheart Pioneer son from an Excellent daughter of Wisconsin Masterpiece. She was an 18,000 lb. daughter with an excellent udder. This bull is classified 88 and the milking two years olds and bred heifers are his daughters. They have size and exceptionally good udders.

—Calfhood Vaccinated — Health Papers Furnished —

ALLAN SMITH, Owner

Allan Smith Registered Holstein DISPERSAL Saturday, Sept. 2

12:30 Noon Lunch Available

Selling at the farm — 6 miles north-west of Salina, Kansas, west on I-70 to Shipton-Trenton Exit; 1½ miles north & 1½ west.

SALINA, KANS.

80 Registered Holsteins

ALL MILKING

COWS & BRED HEIFERS

70 MILKING & SPRINGER COWS

10 BIG SEPT. FRESHENING HEIFERS

DHIA PERFORMANCE

1963	54 cows	13,107 milk	3.6%	468 fat
1964	73 cows	13,778 milk	3.8%	505 fat
1965	75 cows	13,843 milk	3.7%	510 fat
1966	82 cows	13,433 milk	3.7%	492 fat

This Farmer-Breeder herd was started with a son of Wis Burke Ideal from an 800 lb. VG Sir Bess Tidy Daughter.



KING FOND BESS 5390029

Born Aug. 25, 1961. Classified 85. Fresh 9-22-66. Bred 12-8-66 to Wis Messenger Lad 1408354. Records: 2-10 290d 15,390m 541f 3-10 367d 18,770m 608f 5-1 285d 14,370m 515f

RT. 2, SALINA, KANSAS
E. A. Dawdy, Sale Mgr., Salina, Kans.

August 29, 1967

Cholera Outbreak Around Wichita

An outbreak of hog cholera in the north edge of Wichita as

far north as Valley Center and west as far as Maize has kept government veterinarians busy the past couple of weeks.

Reports so far don't show how many head of hogs are involved, but it is believed the outbreak may be under control.

Dr. David Manley, U.S. Department of Agriculture veterinary in charge, Animal Health Division for Kansas, Topeka, said full summaries on the outbreak are not yet available, but state and federal veterinarians have been working rapidly to circumscribe the outbreak.

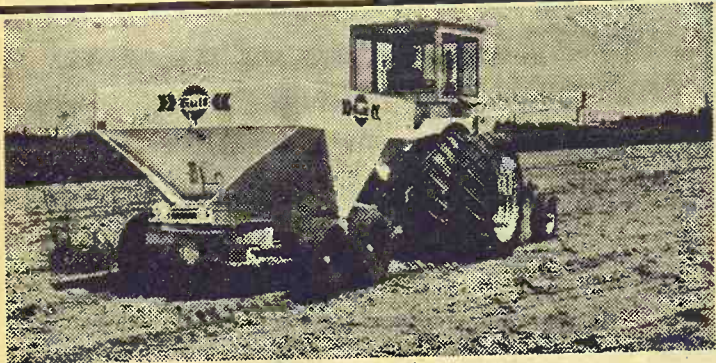
This is the first outbreak of the hog killing disease since July 1, one veterinarian said. However, some 20 outbreaks of the disease were reported in

Kansas in the year prior to July 1, 1967.

Five herds in the Wichita, Valley Center, Maize area have had cholera in their hog pens this month, the veterinarians said. An area north of the stockyards in Wichita with a sort of "common" hog pen involving 12 or 15 owners also is involved.

Hog owners for miles around are cleaning up and revaccinating herds in an effort to keep the disease from spreading.

There is no known cure for cholera, and infected hogs must be destroyed, and other animals inspected. No infected hogs are accepted for market in any way, officials said.



See us for Mr. Green for broadcast ahead of planting

Give your new crop a strong fertility base to build on all season long. Let us help you select the right grade of Gulf Mr. Green* high analysis mixed fertilizer for application ahead of planting.

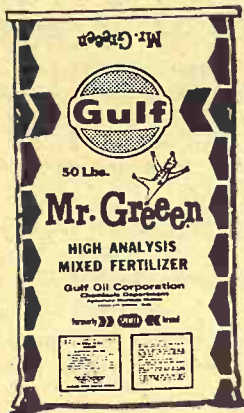
Genuine Gulf Mr. Green is your assurance of guaranteed plant food analysis, free-flowing material for trouble-free application and chemically combined grades that deliver the same plant food ratio in every granule. Use our bulk spreaders for fast, accurate application.

*Trademark of Gulf Oil Corporation

"Don't just fertilize...be Gulf wise!"

C K PROCESSING CO., INC.

Telephone PR 6-9269
2 1/2 Miles East of Sale Barn MANHATTAN, KANS.



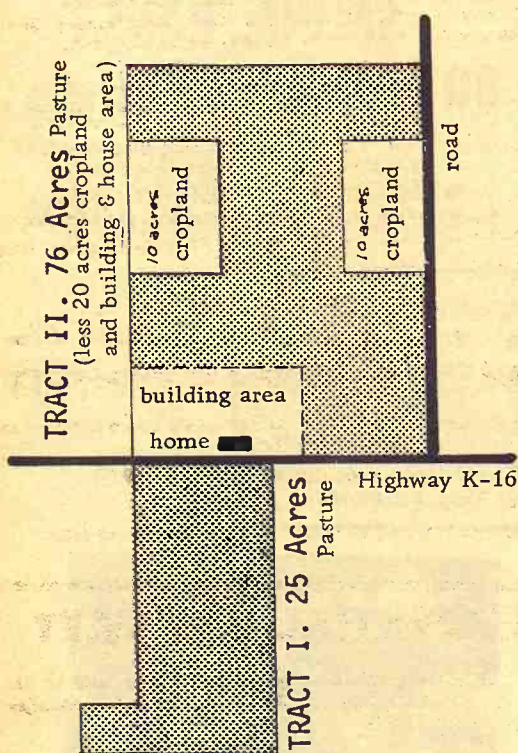
REELECTED — Elected again to the board of the Farm Credit Banks of Wichita has been Leo Paulsen, Concordia farmer.

AUCTION SALE

Saturday, Sept. 23

1:30 p.m. — East edge of OLSBURG, KS.
on K-16 Highway

LAND SALE — 101 ACRES, BUILDINGS NEAR OLSBURG, POTTAWATOMIE COUNTY



Modern Home at the edge of Olsburg, on K16

This farm lays in two different tracts — 76 acres north of K16 and 25 acres on the south.

The farm will be offered in two tracts, then as a unit. Can be purchased on contract, subject to approval by owner, prior to day of sale.

LEGAL DESCRIPTION: Tract 2, E 1/2 of NE 1/4 23-7-7, 76 acres. Tract 1, 20A of E 1/2 of SE 1/4 less tr. .64A to hy, and 5 acres in SE corner of W 1/2 of SE 1/4, 23-7-7.

Consisting of 101 acre farm, of which 20 acres farm land, bal. pasture, modern home, barns, sheds, feed rack, stock pond, good fences. City water by property line, some choice frontage along Highway 16.

TERMS: 20 per cent of purchase price day of sale. Balance upon approval of title.

POSSESSION announced day of sale.
TAXES: 1967 prorated as of 1966 taxes. All prior taxes paid by seller.

EXCELLENT OPPORTUNITY to the person who doesn't want to completely quit farming. Pasture, corrals, sheds for livestock, some farm land to farm at the edge of town, near the Tuttle Creek lake.

REAL ESTATE SOLD BY CARLSON AGENCY, Manhattan

Phone PR 8-3455, LAWRENCE WELTER, Auctioneer
or PR 8-3083, HAROLD CARLSON, Real Estate Agency

VERNON HOLT, Owner

PUBLIC AUCTION

2 DAYS — 2 LOCATIONS

SERVICE STATION — APPLIANCE STORE
EQUIPMENT, STOCK & PERSONAL PROPERTY

Friday, September 8 — 9 a.m.

at the Black Wolf Store, Black Wolf, Kansas, 7 miles west of Ellsworth, Kansas on Highway 40.

Saturday, September 9 — 9 a.m.

at the Toman Highway Service Station, Highway 40 and Prospect Street, Ellsworth.

Gilbert J. Toman & William R. Toman
Administrators of the estate of

J. H. TOMAN

For complete sale bill listing contact

G & H AUCTION SERVICE

Ellsworth, Kansas — Ray Gerbitz — GR 2-3491

AUCTION SALE

Saturday

SEPTEMBER 2

Starts 10:30 a.m.

Lunch Served

Having decided to quit farming, I will sell at public auction, at the place 5 miles south of Barneston, Nebraska and 1 1/2 miles east; 1/2 mile north and 1 1/2 east of Oketo; 3 miles south of Summerfield and 11 miles west, 1 mile back north and 1/2 mile west; 2 miles east, 8 miles north, 2 miles east, 1 mile north and 1/2 mile west of Marysville.

Farm Machinery 93 Head of Cattle Dairy Cattle

1965 190 Allis tractor, only 500 hrs., gas

1949 Ford tractor, just overhauled

1967 990 David Brown tractor, diesel, brand new

1966 MF semi-mtd. 4-16 plow

1958 Ford plow, 2-16

1967 384 Oliver 4-row rear mount cult.

1967 5-ridge Clark weeder

1961 JD 11 ft. wheel disc, rigid, RW

1962 JD lister, 4-row rotary moldboard and press wheels

1959 Oliver drill, rubber tired, 16 bu. box

1964 Kovar 11 ft. spring tooth JD 15 ft. disc

1958 3-pt. wood saw for Ford tractor

3-pt. heavy duty 7-ft. blade

4-sec. harrow, steel eveners

8-ft. McCormick tandem disk

2-barrel 10-row sprayer

1957 66 New Holland baler, completely recon.

1958 McCormick side del. rake, new rear rubber

1957 Ford mower, 7-ft. bar, 3-pt. hookup

Rubber tired gear with 6x10 box

1963 Electric Wheel gear with flatbed

2-wheel 6x10 trailer with dump bed

Ford manure loader, rear mt., 3 pt.

1957 80 bu. Case manure spreader, rubber, like new

Ford dirt scoop, 3-pt.; 36 ft.

Kelly Ryan elev., power take off; Wetmore hammermill;

1966 Mayrath post hole digger, 3-point; loading chute, rubber tired, brand new; new tractor cab, fits any tractor;

steel stock rack for 3/4 ton pickup, new.

Easy ride seat for Ford tractor, good cond.; swinging draw bar for Ford tractor; bumper for Ford tractor, like new;

large cattle oiler with stand, new; Hurd sure Seed seeder, 3 bu., new, for rear of tractor;

covered mineral box on turntable; hydraulic wagon jack, heavy iron; cement mixer.

Auctioneers Note: All machinery is in tip top shape.

2 4 yr. old Holstein, 6 gal. each

2 5-yr. old Holstein, 7 gal. each

3 1st calf Holstein heifers, 4 gal. each

Holstein heifer, coming with first calf

5-yr. old Holstein-Guernsey, 5 gal.

1st calf Guernsey hfr., 4 gal.

4-yr. old Guernsey, fresh by sale, 5 gal.

5 yr. old Guern.-Hol., fresh Sept., 6 gal.

6 yr. old Guern., fresh Oct., 5 gal.

5 yr. old Brown Swiss, 5 gal.

5 yr. old Holstein, 5 gal.

6 yr. old Holstein, 5 gal.

5 yr. old Holstein, 5 gal.

Long yearling Guernsey-Holstein heifer

NOTE: Cows and calves will be sorted day of sale. All cows bred to Reg. Angus bull.

Miscellaneous

Beige tweed Acrilan rug and pad, 11'1"x13'2", brand new, can be cut to fit any room;

17,500 BTU Carrier air conditioner, new; metal wardrobe, kitchen step stool; blonde step end table and coffee table;

blonde 3 pedestal drop leaf table, 3 extra leaves; 4 matching chairs; blonde china cabinet, 3 shelves, glass doors, all like new.

20" window fan; new vinyl floorcovering, 7'9"x12'; beige pattern; 7 Venetian blinds, 30"x5", 1 26"x5'; telescoping

40 ft. pipe, antenna and rotor; picnic table; 4 metal lawn chairs; fluorescent light fixture for over sink, extra bulb;

gray storage hassock; dishes, pans, fruit jars, lamps, etc.; some new curtains, 54" long; other items too numerous to mention.

STRAW, CLOVER, ALFALFA

50 square straw bales

1200 square clover bales

750 square alfalfa bales

TERMS: CASH

Mr. & Mrs. Elmer L. Gilbert

Aucts: Jim O'Neil & Delmar Jurgens

Clerk: 1st National Bank, Summerfield

August 29, 1967

Grass & Grain

21

More Expense In Animal Research

Animal experiments get costlier as a result of new legislation. A federal law that took effect

earlier this year put strict animal care, feeding and shelter requirements on both dealers and laboratories.

Now, some researchers say they are paying twice as much for cats and dogs as they did a year ago, and supply problems are developing. Case Western Reserve University is planning to substitute monkeys for hard-to-get cats in brain research.

Many labs say they intend to

bypass dealers by breeding their own animals.

Other expenses are rising. The University of Pennsylvania School of Medicine says it must spend about \$1 million to remodel its animal care facilities to meet the new standards.

A spokesman for Temple University Hospital says the quality of research animals has declined because dealers now must hold animals for five days before shipping them, increasing

their exposure to other animals and the incidence of contagious diseases.

SHE'S DISTRICT DAIRY PRINCESS AT ABILENE

Delores Hoffman of Abilene won the district 6 Dairy Princess title at Abilene last week. She was winner over Patricia Reed, Rice County; Brenda Lee Laas, Saline; Sheryl Lockhart, Lincoln; and Kristine Schubert, Marion.

MATTRESS & BOX SPRINGS

Specials Every Day
New Low Prices
Buy Direct

Also Complete Rebuilding Service

Manhattan
Mattress Co.

414 S. 4th PR 8-5302

REAL ESTATE AUCTION

To settle the estate of the late Kester Hammett, we will sell at Public Auction the following listed Real Estate at the times and places listed below.

MONDAY & TUESDAY, SEPT. 11th, 12th, 1967

Starting At 10:00 A. M. Each Day

NOTE: Tracts 1, 2 and all Blue Rapids Tracts will be sold at the American Legion Building in Blue Rapids, Kansas on Monday, September 11, 1967. Tracts 5, 6, 7, 8, 9 and 10 will be sold Tuesday, September 12, 1967 at the time and location shown with their description.

1709 ACRES OF LAND IN MARSHALL & POTTAWATOMIE COUNTY
3 POST OFFICE BUILDINGS (BLUE RAPIDS, WATERVILLE, HANOVER)
5 COMMERCIAL BUILDINGS (3 IN BLUE RAPIDS, 2 IN MARYSVILLE)
21 RESIDENTIAL PROPERTIES (ALL IN BLUE RAPIDS)

1709 ACRES LAND

TRACT NO. 1 740 ACRE HAMMETT RANCH

LOCATION: Located just South of Blue Rapids, Marshall County, Kansas.
DESCRIPTION: Ranch has 253 acres cropland and balance in pasture and meadow. 72.4 acres wheat allotment, 174 acres feed grain base, no conserving acres. More than ample water, and is improved with large modern home, implement and hay shed and several other buildings.
TIME OF SALE: 1:00 P. M., Monday, September 11, 1967.

TRACT NO. 2 - 325 ACRE FARM

LOCATION: Located 5 miles East of Blue Rapids on Hiway No. 9 and then 1/2 mile North.
DESCRIPTION: Farm has 140 acres cropland and balance in pasture. 37.9 acres wheat allotment, 90 acres feed grain base, 10 acres conserving base. Farm unimproved.
TIME OF SALE: 3:30 P. M., Monday, September 11, 1967.

TRACT NO. 9 - 484 ACRE FARM

LOCATION: Located about 3/4 mile Northeast of Fostoria, Pottawatomie County, Kansas on Hiway No. 16.
DESCRIPTION: Farm is unimproved and has 154 acres of cropland and balance in pasture and meadow. 15 acres wheat, 101 acres feed grain, 34 acres conserving base.
TIME AND PLACE OF SALE: 10:00 A. M., Tuesday, September 12, 1967 at the Farm about 3/4 mile Northeast of Fostoria.

TRACT NO. 8 - 160 ACRE FARM

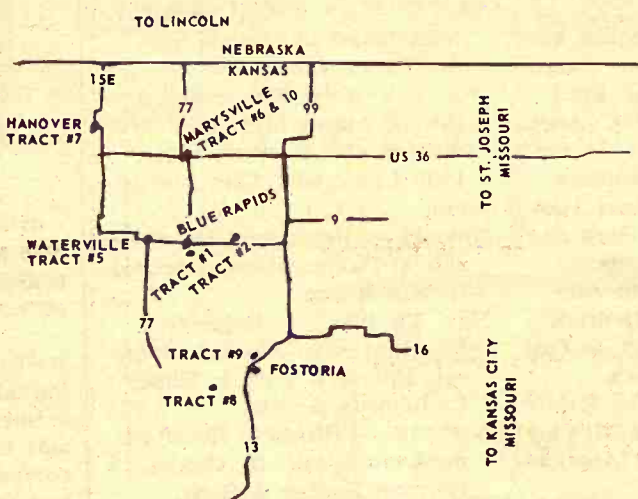
LOCATION: Located 4 miles East of Olsburg, then 4 miles south, in Pottawatomie County, Kansas.
DESCRIPTION: 100 acres cropland, balance meadow and waste. 9.8 acres wheat, 57 acres feed grain, 37 acres conserving base.
TIME AND PLACE OF SALE: 10:30 A. M., Tuesday, September 12, 1967 at location of Tract No. 9.

TERMS ON LAND

TERMS: 25% down day of sale and balance on delivery of Deed and Merchantable Title.
POSSESSION: Immediate possession of wheat ground and full possession March 1, 1968.
TAXES: 1967 and all prior years paid in full.
INSURANCE: Responsibility of buyer as of day of sale.

ALL PROPERTIES SELL TO THE HIGH BIDDER

SUBJECT TO APPROVAL OF PROBATE COURT.



POST OFFICE BUILDINGS

TRACT B. R. NO. 15 BLUE RAPIDS POST OFFICE

LOCATION: Lots No. 22, 24, 26 on Public Square, Blue Rapids, Kansas.
DESCRIPTION: Concrete block and cut stone construction, built in 1960. Paying \$268.00 per month. Original Lease runs to October 31, 1970, with option for 2 more 5 year terms at same rental.
TIME OF SALE: 11:00 A. M., Monday, September 11, 1967.

TRACT NO. 7 HANOVER POST OFFICE

LOCATION: Part of Lots No. 6, 7, 8, Block 16, Hanover.
DESCRIPTION: Concrete block and brick construction, built in 1961. Paying \$260.00 per month. Original Lease runs to March 19, 1971, with option for 2 more 5 year terms at same rental.
TIME AND PLACE OF SALE: 3:00 P. M., Tuesday, September 12, 1967 at the Post Office in Hanover.

TRACT NO. 5 WATERVILLE POST OFFICE

LOCATION: Lot No. 1, Block No. 7, Waterville, Kansas.
DESCRIPTION: Concrete block and brick construction, built in 1962. Paying \$214.69 per month. Original Lease runs to December 31, 1972, with option for 4 more 5 year terms at same rental.
TIME AND PLACE OF SALE: 4:00 P. M., Tuesday, September 12, 1967 at the Post Office in Waterville.

TERMS ON POST OFFICE BUILDINGS

TERMS: 25% down day of sale and balance on delivery of Deed and Merchantable Title.
POSSESSION: 1st of month following acceptance of Title and Final Payment in full.
TAXES: Pro-rata to date of possession.
INSURANCE: Responsibility of buyer as of day of sale.

COMMERCIAL PROPERTY

TRACT NO. 6

809 BROADWAY - MARYSVILLE

LOCATION: West 1/2 of Lot No. 4, Block 9, Ballard and Morrill's Addition, Marysville, Kansas.
DESCRIPTION: Brick and glass front building now occupied by "MacLeod's Cleaners" in downtown Marysville.
TIME AND PLACE OF SALE: 1:30 P. M., Tuesday, September 12, 1967 at the Courthouse in Marysville.

TRACT NO. 10

801 NORTH 11TH - MARYSVILLE

6 APARTMENT - APARTMENT HOUSE
LOCATION: South 1/2, Lots 10, 11, 12 Palmetto Add., Marysville, Kansas.
DESCRIPTION: Tile construction, brick faced, fairly new roof, full basement, steam heat, 4 car garage. All apartments furnished and furniture goes with building.
TIME AND PLACE OF SALE: 2:00 P. M., Tuesday, September 12, 1967 at the Courthouse in Marysville.

TRACT NO. B. R. NO. 14

35 PUBLIC SQUARE - BLUE RAPIDS

LOCATION: Lot No. 35, Public Square, Blue Rapids.

TRACT B. R. NO. 13

37 PUBLIC SQUARE - BLUE RAPIDS

LOCATION: West 24' of Lot No. 37, Public Square, Blue Rapids, Kansas.

TRACT B. R. NO. 11

LOCATION: Lot No. 94, Main Street, Blue Rapids, Kansas.

TERMS ON COMMERCIAL PROPERTY

TERMS: 25% down day of sale and balance on delivery of Deed and Merchantable Title.

POSSESSION: Possession given October 1, 1967.

TAXES: Pro-rata as of October 1, 1967.

INSURANCE: Responsibility of buyer as of day of sale.

RESIDENTIAL PROPERTY

All of the following properties will be sold at the American Legion Building in Blue Rapids, Kansas, Monday, September 11, 1967.

21 RESIDENTIAL PROPERTIES (ALL IN BLUE RAPIDS)

TERMS ON RESIDENTIAL PROPERTY

TERMS: 25% down day of sale and balance on delivery of Deed and Merchantable Title.

POSSESSION: Possession given October 1, 1967.

TAXES: Pro-rata as of October 1, 1967.

INSURANCE: Responsibility of buyer as of day of sale.

NOTICE NOTICE: To inspect any of these properties prior to sale, and to receive a Sale Catalog showing a picture of each property along with a complete description of each property, contact Don Roche, Real Estate Broker and Auctioneer, Blue Rapids, Kansas. Phone CA 6-7282.

HEIRS OF KESTER HAMMETT

REAL ESTATE BROKER & AUCTIONEER
DON ROCHE BLUE RAPIDS, KANSAS, PHONE 913 CAPITAL 6-7282

G&G Calendar

- Aug. 29 — Farm sale southeast of Alta Vista, Ks., Clyde Thomas. Auct. Jim Kirkemide.
- Aug. 30 — Holstein dispersal sale, Milford, Nebr. Auct. Rolfsmier.
- August 30 — Phillip A. Hedrick-con Estate, real estate north of Clay Center. Foster Kretz, auct.
- August 30 — Rogniat Estate, Clay Center, Kansas. Real estate. Foster Kretz, auct.
- Aug. 30 — Land sale north of Clay Center, Ks., Henderson estate. Auct. Foster Kretz.
- Aug. 30 — House in Clay Center, Ks., Rogniat estate. Auct. Foster Kretz.
- August 31 — Real estate in Clay Center, Vern Hitsman. Foster Kretz, auct.
- Aug. 31 — Real estate in Clay Center, Ks., Vern Hitsman. Auct. Foster Kretz.
- Sept. 1 — Government grain bins in Clay Center, Ks. Auct. Foster Kretz.
- Sept. 2 — Household goods & antiques northwest of Topeka, Lowery Girvin. Auct. Al Warner.
- Sept. 2 — Allan Smith Holstein Dispersal, Salina, Ks. E. D. Dawdy, sale manager.
- Sept. 2 — Real estate east of Manhattan. Earl & Edith Ty-Lawrence Welter, auct.
- Sept. 2 — Angus production sale northwest of Paola, Ks., Wilmer Rader. Sale mgr. John Barton; Auct. Ray Sims.
- Sept. 2 — Registered Holstein dairy dispersal sale northwest of Salina, Allen Smith herd of milk cows and bred heifers. Sale mgr. E. A. Dawdy.
- Sept. 4 (Labor Day) — High grade Holstein dispersal northwest of Hiawatha, Ks., southwest of Reserve, Ks., Boyd & George Fridell.
- Sept. 4 — Household goods in Clay Center, Dorothy Johnson. Auct. Foster Kretz.
- Sept. 4 — Registered Angus joint production sale, Washington, Ks.; Glen Bowdish & Barbara B. Houghton; and F. R. & Shirley Nutsch. Sale mgr. Phil Ljungdahl; auct. Roy G. Johnston.
- Sept. 4 — Joint production sale in Washington, Ks., Bar B Farm, Hanover, Ks.; and Mormon Springs Angus Farm, Francis & Shirley E. Nutsch.
- Sept. 30 — Kansas Hampshire Breeders annual show & sale, Horton, Ks., Eddie Hull, Ottawa, sale sec.
- Sept. 6 — Antique auction in Abilene, Ks., Dr. Glen Hampton. Aucts. Carl Schnell, Lee Remy & Wm. Schnell.
- Sept. 7 — Farm sale at Barnard, Ks., Mae Laity. Aucts. Frank Harz and Bob Perry.
- September 8 — Real estate & household in Clay Center. Clara Boyle Schurle Estate. Foster Kretz, Auct.
- Sept. 8-9 — Service Station Appliance Store and Personal Property west of Blackwolf, Ks. G&H Auction Service.
- Sept. 9 — Real estate sale at 906 Osage, Manhattan. Rea Muir Estate, W. G. Glenn, adm. Lawrence Welter, auct.
- Sept. 11 — Mrs. Millard Anderson. NW of Clyde. Lagasse & Lagasse, auct.
- Sept. 11 — Farm sale west of Barnes, Ks., James Reece. Auct. Foster Kretz.
- Sept. 11 & 12 (2-day sale) — Post office buildings in Blue Rapids, Waterville and Hanover, Ks.; 4 farms and several town properties in Blue Rapids. Kester Hammett estate. Auct. & real est. broker Don Roche.
- Sept. 13 — Farm sale east of Longford, Ray A. Feathers. Auct. Foster Kretz.
- Sept. 15 & 16 — Antiques and personal property at Marysville, Omar Hawkins Est.; Howard Funk, owner. Auct. Don Roche.
- Sept. 16 — Nemec Brothers farm sale southwest of Hanover, Ks. Marvin L. Heck and Lawrence Welter, aucts.
- September 18 — Farm sale south of Hanover, Dedrick Hillmer. Jim Dickson & Foster Kretz, Auctioneers.
- Sept. 19 — Schwartz Estate Land Auction south of Clay Center. Foster Kretz Auctioneer.
- Sept. 20 — Land and farm machinery west of Frankfort. Mr. and Mrs. Marc Knudsen. Auct. Don Roche.

- Sept. 23 — Household goods and Antiques, Arthur Rosenberg estate, Olsburg, Ks. Ed L. Fritz, Auctioneer.
- Sept. 25 — Household goods and Antiques, Arthur Rosenberg estate, Olsburg, Ks. Ed L. Fritz, Auctioneer.
- Sept. 23 — Real estate at Olsburg. Vernon Holt. Lawrence Welter, auct.
- Sept. 30 — Household & antique sale at Olsburg. Mrs. Hilma Vogue. Lawrence Welter, auct.
- Oct. 3 — Arthur Hay Estate Miltonvale, farm sale. Paul Pruitt, auctioneer.
- October 6 — North Central Feeder Sale. Foster Kretz.
- Oct. 9 — Fall hog sale in Newton, Ks., Balthrop Farms of Wichita.
- Oct. 20 — Annual registered Quarter Horse consignment sale in Salina, Ks., Bernard Ireton, sale mgr.; Bob Perry and Roger A. Johnson, aucts.
- Oct. 20 — Registered Quarter Horse consignment sale in Salina, Ks., Sale mgr. Bernard Ireton. Aucts. Bob Perry and Roger Johnson.
- Oct. 21—25th annual Kansas Guernsey sale in Hutchinson, W. G. Ransom, Williamsburg, co-chairman sale committee.
- Oct. 28 — Kansas Milking Shorthorn Society state sale in Hutchinson, Freg Rogers, sale mgr. Dick Sears, auct.
- Nov. 4 — Crowther-Walker Quarter Horse production sale in Salina, Duane Walker, Canton, sale mgr.
- Nov. 4 — All breed calf sale in Manhattan, Olson, Fagerberg & Hawkinson, joint sale.
- Nov. 3 — 5th annual Hammarlund-Shamrock Angus sale. St. Marys, Kansas.
- Nov. 10 — John Stephenson and Becker Angus farm joint production sale, Downs, Ks. Phil Ljungdahl, Sale Manager.
- Nov. 10 — Registered Hereford sale at Paxico, Ks., Garland Gideon & Son.
- Nov. 15, 1967 — Registered Hereford sale, Smolan, Johnson Hereford Farms; Elmer L. Johnson & Sons.
- Nov. 18 — Kocher Herefords production sale in Onaga, Herman Kocher & Sons.
- Nov. 18 — State ewe sale in Hutchinson, Ks. Purebred Sheep Breeders Assn., V. E. McAdams, sec.
- Nov. 21 — Hereford production sale in Marysville, Peterson's Herefords. Elmer Peterson & Son.
- Nov. 22 — Hereford production sale in Marysville, Peterson's Herefords. Elmer Peterson & Son.

- Nov. 25 — Fall sale of Arbuthnot Herefords, Haddam, Ks. Bob Arbuthnot.
- Dec. 16 — Marshall County Hereford Assn. annual consignment sale, Marysville Sales Barn.
- Jan. 20, 1968 — Rebenstorf Herefords Production sale,

TEX REAL
ONWARD 55th

Cow Herd — Royal Essar CKato, Heir Apparent

SERVICEABLE BULLS WITH WEIGHT RECORDS
Priced . . . \$300 to \$500

GRANT POOLE
MANHATTAN, KANS.

Located 4 mi. south of I-70-K177 intersection, 2 mi. west on McDowell Creek Rd. Ph. PR 6-8315.

Elmer Rebenstorf, Sylvan Grove, Kans.

Livestock Supply Headquarters

ANIMAL HEALTH PROTECTION
Let Us Discuss With You—Your Needs For VACCINES & BACTERINS INSECTICIDES INSTRUMENTS - TREATMENTS REMEDIES

A FULL-SERVICE STORE FOR ANIMAL MEDICINES
PHONE ME 2-3272

HELD'S STORE
CLAY CENTER, KANS.

The Growing Hog Market Is At

WASHINGTON SALES CO.

TRY US SOON

HOGS every TUESDAY
CATTLE every WEDNESDAY

A Growing Market for Finished Cattle

Barn Phone EA 5-2266 Residence EA 5-2393
Washington, Kans.

J.C. LIVESTOCK SALES INC.
SALE EVERY SATURDAY

HOGS START AT 11:00 A.M.
CATTLE AT 1:00 P.M.

A larger run of cattle than we expected made last Saturday's market a real active one, both on cattle and hogs, with calves off cows showing the way.

We have a big demand for both steer and heifer feeders, and for calves. If you have cattle in this class and are thinking of marketing them, we'd like to look them over for you. This may be a good time to move calves and feeders. If you will compare the prices on consignments listed below, you'll see how active the market has been.

Also, we'd like to remind our hog consignors to get their animals in as soon as possible so we can start the sale promptly at 11 A.M., and get to the cattle by 1:00 P.M. We'll appreciate your cooperation.

The following is a sampling of our consignments last week:

STEER CALVES			7 holstein steers		
2 whiface steers	305 @	31.25	4 holstein steers	305 @	23.60
27 whiface steers	535 @	29.05	3 holstein steers	420 @	23.60
6 whiface steers	410 @	29.60	COWS		
5 whiface steers	345 @	29.80	The cow market held steady with last week. Good cows sold from \$16.00 to \$17.50, heifer calves \$18.00 to \$20.00, and the shelles went from \$14.50 to \$16.00.		
14 whiface steers	525 @	28.00	HEIFER CALVES		
9 black steers	915 @	29.20	11 whiface heifers	510 @	26.00
12 black steers	380 @	32.30	4 whiface heifers	365 @	27.00
13 black steers	565 @	27.70	29 whiface heifers	505 @	26.60
HEIFER CALVES			11 black heifers	450 @	25.90
11 whiface heifers	510 @	26.00	9 whiface heifers	415 @	25.60
4 whiface heifers	365 @	27.00	10 whiface heifers	425 @	26.10
29 whiface heifers	505 @	26.60	5 blkwhif heifers	555 @	25.10
11 black heifers	450 @	25.90	5 whiface heifers	455 @	25.50
9 whiface heifers	415 @	25.60	4 black heifers	415 @	25.90
10 whiface heifers	425 @	26.10	FAT CATTLE & FEEDERS		
5 blkwhif heifers	555 @	25.10	16 whiface steers	770 @	26.30
5 whiface heifers	455 @	25.50	6 black steers	790 @	25.30
4 black heifers	415 @	25.90	6 blkwhif steers	950 @	25.10
FAT CATTLE & FEEDERS			8 whiface steers	805 @	26.15
16 whiface steers	770 @	26.30	6 whiface steers	835 @	25.20
6 black steers	790 @	25.30	12 whiface heifers	740 @	24.85
6 blkwhif steers	950 @	25.10	HOLSTEIN STEERS		
8 whiface steers	805 @	26.15	2 holstein steers	400 @	23.90
6 whiface steers	835 @	25.20	21 holstein steers	1005 @	22.40
12 whiface heifers	740 @	24.85	11 holstein steers	970 @	22.50
HOLSTEIN STEERS			HOGS		
2 holstein steers	400 @	23.90	15 white hogs	234 @	19.90
21 holstein steers	1005 @	22.40	33 mix butchers	239 @	19.90
11 holstein steers	970 @	22.50	50 mix butchers	224 @	19.50
HOGS			24 mix butchers	230 @	19.45
3 red sows	425 @	17.35	18 mix butchers	218 @	19.60
2 mixed sows	380 @	17.90	11 mixed butchers	227 @	19.60
2 hamp sows	320 @	18.00	SOWS		
1 white sow	565 @	15.25	3 red sows	425 @	17.35
1 hamp sow	450 @	15.75	2 mixed sows	380 @	17.90
PIGS			2 hamp sows	320 @	18.00
The pig market was steady. Good pigs 60 to 90 lbs, \$18.00 to \$23.00 per head. Pigs from 40 to 60 lbs, \$16.00 to \$18.00 per head. The little ones sold from \$11.00 to \$16.00.			1 white sow	565 @	15.25

CATTLE SALE EVERY Wednesday

Starting 1:00 p.m. at
NEWTON, KS.

We have been farmers and stockmen all our lives. We should know how to conduct a sale for the best interests of the area.

HORSE SALE MON., SEPT. 4

NIGHT SALE

We continue our regular first Monday of the month horse sale.

— OWNERS —
Ray Dohrman
"Bill" Dohrman
Vern Koch

— Auctioneer —
Floyd Gehring

Newton Livestock & Commission Co.
Barn Phone AT 3-6700

LICENSED AND BONDED
BARN PH. JUNCTION CITY CE 8-1471

If you have livestock to appraise, call:

VERN LANGVARDT, Manager, 502 UPLAND
HOWARD LANGVARDT, Auctioneer, 520 UPLAND
HERB NEUMEYER, White City, Phone 349-2863

Ronald Rice Motors, Inc.

CHEVROLET OLDSMOBILE CADILLAC
North Kansas' Largest Volume Dealer
NW 2nd Phone CO 3-4000 ABILENE, KANS.

HURRY! HURRY! HURRY!

We have a good selection of new 1967 Model Chevrolets, Oldsmobiles and Cadillacs left. These are not going to last! Hurry for the best selections.

- 1967 CHEVROLET Impala** \$3095
4 dr., V-8, Radio, heater, automatic transmission, power steering.
- 1966 CHEVROLET Impala** \$2795
2 dr. V-8 Hardtop. Radio, heater, automatic transmission, power steering, power brakes, air conditioner.
- 1966 CHEVROLET Biscayne** \$1995
4 dr. V-8, Radio, heater, automatic transmission, power steering, air conditioner.
- 1966 OLDSMOBILE Delta 88** \$3295
2 dr. hardtop Coupe. Radio, heater, automatic transmission, power steering, power brakes, air conditioner.
- 1966 TEMPEST Custom** \$2495
4 dr. V-8, Radio, heater, automatic transmission, power steering, power brakes, air conditioner.
- 1965 CHEVROLET Impala** \$2095
2 dr. V-8, Hardtop. Radio, heater, 4-speed.
- 1965 PONTIAC Catalina** \$2195
2 dr. hardtop. Radio, heater, automatic transmission.
- 1964 OLDSMOBILE 98** \$2295
4 dr. Town Sedan. Radio, heater, automatic transmission, power steering, power brakes, air conditioner.
- 1964 VOLKSWAGEN 1500 Series** \$1595
2 dr. Radio, heater, stick shift, overdrive.
- 1964 CHEVROLET Impala** \$1595
4 dr. V-8, Radio, heater, automatic transmission, power steering, power brakes, air conditioner.
- 1964 CORVAIR Monza** \$1095
2 dr. Sports Coupe. Radio, heater, 4 speed.

mer Rebenstorf, S...
rove, Kans.
vestock Supply
Headquarters
ANIMAL HEALTH
PROTECTION
Us Discuss With You—Your Health
VACCINES & BACTERINS
TREATMENTS
FULL-SERVICE STORE
ANIMAL MEDICINE
PHONE ME 2-3272
HELD'S
STORE
LAY CENTER, KANS.

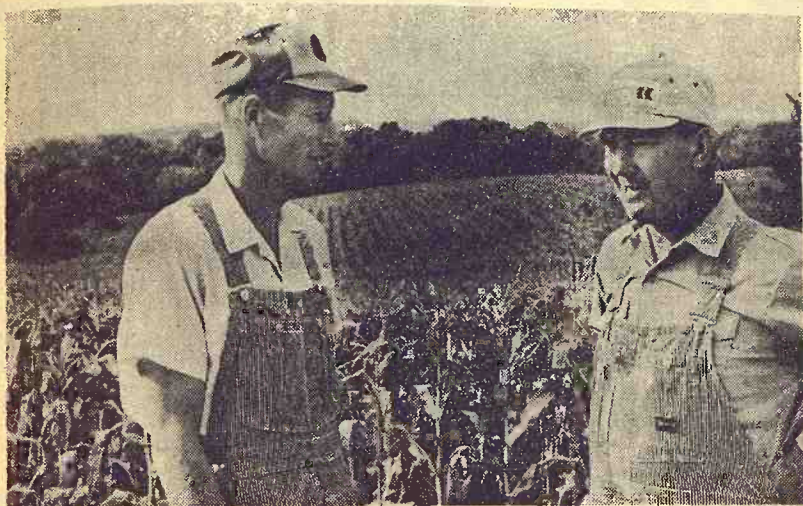
arket Is At
CO.
DAY
All Sales
Start 1:00 p.m.
ED BURT
Residence EA 5-2383
Kans.

CK SALES
SATURDAY
11:00 A.M.
00 P.M.
made last Saturday's
and hogs, with calves

heifer feeders, and
ss and are thinking of
over for you. This
feeders. If you will
d below, you'll see
nors to get their ani-
t the sale promptly at
p.m. We'll appreci-
nments last week

in steers 900 @ 22.50
in steers 305 @ 23.00
in steers 420 @ 23.50
COWS
y market held steady
t week. Good cows
6.00 to \$17.50, heifers
to \$20.00, and the she-
t from \$14.50 to \$16.00
HOGS
e hogs 234 @ 18.50
butchers 239 @ 19.50
butchers 224 @ 19.50
butchers 230 @ 19.50
d butchers 227 @ 19.50
SOWS
ws 425 @ 17.50
sows 380 @ 17.50
sows 320 @ 18.00
sow 565 @ 15.25
sow 450 @ 15.75
PIGS
market was steady. Good
o 90 lbs, \$18.00 to
per head. Pigs from 40 to
\$16.00 to \$18.00 per
the little ones sold from
o \$16.00

DED
ITY CE & 1471
raise, call:
502 UPLAND
er, 520 UPLAND
Phone 348-2883



Doniphan Vies For Corn Lead

Doniphan County — in the far northeast corner of Kansas — produced four million bushels of corn in 1965 and five million last year. This year? Who knows? But corn farmers Adam Huss and Harold Rush of Troy figure this is the year their county replaces neighboring Brown County as the state's leading corn producer.

Could Doniphan be after a six or seven or even eight-million bushel crop? Many county farmers think almost perfect weather conditions may produce corn outputs never before approached.

A county extension program that started in 1962 mostly as a yield contest has blossomed out into a broader plan in which participating farmers keep detailed records for labor, fuel, seed, fertilizer, herbicide, insecticide, depreciation, repairs, land use charge, machine hire, total costs per acre, cost per bushel, profit per acre, yield per acre, soil type, corn variety, planting date, row width and planting rate, tillage practices, area harvested and harvest date.

Harold Rush thinks the county program made a big step forward when many corn farmers went to continuous corn and stopped legumes.

Says county agent Jay West: "It's gotten so anymore that a farmer who doesn't get 100 bushels an acre starts looking around to see what's wrong. It used to be a goal; now it's average."

Will someone break the 200-bushel barrier on some extended acreage this year? Rush doesn't think he will go that far, but then he has reason to be leary of such talk. He promised his wife a mink coat when production reaches that level.

August 29, 1967

Look, Ma...

Look, ma, no cavities!

The American Dental Association says that in 1965 dentists pulled one tooth for every male in the country and 0.8 tooth per female. In 1952 the figures were two per man and 1.6 per woman.

RECOVERING AFTER

24 HOURS UNDER TRACTOR

WICHITA — A Sedgwick County farmer, Harry Erdwein, 64, is recovering after having been pinned for nearly 24 hours under an overturned tractor.

The farm is six miles north of Kechi. Erdwein suffered rib fractures, a hand injury, chest, and internal injuries.

PRICES REDUCED

ON ALL SIZES

Example:

Rear Tractors

13.6-38 — \$59

All other sizes similarly reduced.

Plus Fed. Ex. Tax and

Resalable Ex. Tire

FINK

TIRE SERVICE

Wamego, Kans. 456-2575

High Grade Holstein Complete Dispersal



Mon., September 4

Labor Day Starts 10:00 a.m.

Lunch Served

In tent at Bluhm farm 2 miles south & 1/2 west of

RESERVE, KS.

FIR — FIRE — FIRE — On August 9th the entire Grade A Dairy setup of Boyd & George Fridell near Robinson, Kans., burned up. The cattle were moved immediately to the Lyle Bluhm Grade A setup near Reserve, Kans., which had been sold the day before. The herd must be sold. The farm is 5 miles north of Hiawatha, Kans., on Highway 73, then 3 miles west, 1 mile north, and 1/2 west on gravel road. Watch for signs.

212 Head Sell — 151 Good Young Cows

Mostly 3, 4 & 5 — Many Fresh & Heavy Springers — many Base Cows; 27 2-yr. old Springers Heifers; 34 Heifer Calves. Foundation Stock.

DHIA Herd Avg. 89%, 10,806 lbs. M 426 lbs. Records furnished ABS Herd — Bred to & many sired by top ABS bulls. Herd built on very top DHIA stock from top herds in Missouri and Kansas.

BEST OF HEALTH — Tested for TB and Bangs; C.V. and vaccinated for Lepto.

FARM TRUCK — 1957 Ford Cab-over Cattle Truck Sells

BOYD & GEORGE FRIDELL, Owners

For Catalog & Information: DONALD J. BOWMAN
Auct. & Sale Manager — Hamilton, Missouri 64644

Reynolds Sale Barn

ABILENE, KANS. CO 3-3394

SELLING EVERY FRIDAY AFTERNOON

Starting At 1:00 p.m.

Buyers and sellers, locally and from a wide area, made last Friday's Auction one of the best sales we have ever had.

Many fine strings of cattle moved through the ring at prices that looked steady to strong on stockers and feeders, cows

50¢ to \$1.00 lower, grain fed cattle about steady. Following are some of the representative sales of Friday August 25:

BULLS		
1 bull	1220 @	21.10
1 bull	1450 @	21.00
COWS		
1 holstein cow	1160 @	18.00
1 holstein cow	1480 @	16.80
1 holstein cow	1210 @	16.60
1 holstein cow	1035 @	16.95
GRAIN FED CATTLE		
40 mixed steers	908 @	25.85
22 shthorn steers	911 @	25.75
24 shthorn steers	901 @	25.75
24 shthorn steers	888 @	25.75
33 mixed steers	850 @	25.45
4 mixed heifers	775 @	24.80
5 heifers	851 @	24.45
STOCKER & FEEDER HEIFERS		
7 whiface heifers	511 @	26.40
10 black heifers	487 @	26.15
5 black heifer	470 @	25.70
3 blkwhif heifers	543 @	25.65
23 blkwf heifers	644 @	24.85
22 medsth heifers	668 @	24.00
15 medwf heifers	732 @	24.50

WE ARE OPEN 24 HOURS A DAY

Livestock is our business... our only business. Licensed, bonded and operating under Gov't Supervision.

For information, requests for appraisals at no obligation, or inquiries regarding coming sales, call me any time, day or night.

Bring your cattle in at any time day or night; we'll handle them for you at your request.

DUDE REYNOLDS Abilene, Kans.
CO 3-3394

Sale Every Thursday

Hogs 11:30 a.m.

Cattle 1 p.m.

We had a big run of cattle at our sale Thursday. The cattle are beginning to move from the pastures and we anticipate heavy runs in the future. Fat Cattle and feeders were up from a week ago, while cows, bulls and calves were steady. The fat hog market was down with an extreme top of \$20.60. Feeder and weaning pigs were up from a week ago with a short supply. The following is a sampling of our consignments:

FAT CATTLE & FEEDERS		
3 whiface steers	738 @	26.70
2 charolais steers	650 @	26.50
12 mixed steers	600 @	26.40
32 whiface steers	754 @	26.35
5 whiface steers	760 @	26.20
11 whiface steers	560 @	25.85
15 mixed steers	735 @	25.80
17 whiface steers	537 @	25.80
8 whiface steers	805 @	25.60
46 mixed steers	512 @	25.50
51 mixed steers	943 @	25.45
17 mixed steers	942 @	25.05
8 black heifers	594 @	24.85
21 whiface heifers	656 @	24.20
2 red steers	990 @	24.10
10 mixed heifers	563 @	24.05
36 holstein steers	505 @	23.85
10 mixed steers	679 @	23.90
66 holstein steers	628 @	23.80
12 holstein steers	814 @	23.10
COWS		
2 holstein cows	290.00 @	
1 whiface cow	1145 @	17.40
2 red cows	1065 @	16.60
1 black cow	1040 @	16.30
1 whiface cow	995 @	16.10
5 whiface cows	1220 @	15.80
BULLS		
1 black bull	1340 @	22.60
1 whiface bull	1305 @	22.20
1 whiface bull	1010 @	21.75
BULL & STEER CALVES		
1 whiface bull clf	215 @	35.00
1 whiface steer	230 @	33.50
1 red bull clf	205 @	31.50
1 black bull clf	279 @	30.50
5 black steers	382 @	28.90
HEIFER CALVES		
1 charolais heifer	215 @	31.50
1 whiface heifer	225 @	30.50
1 whiface heifer	320 @	28.00
1 whiface heifer	360 @	26.75
24 black heifers	438 @	25.50
2 whiface heifers	402 @	23.30
HOGS & PIGS		
9 white fats	220 @	20.60
53 mixed fats	218 @	20.55
27 mixed fats	230 @	20.50
51 mixed fats	206 @	20.35
33 mixed fats	244 @	20.25
2 mixed sows	348 @	19.10
7 white sows	400 @	18.50
1 hamp sow	545 @	17.80
2 hamp boars	212 @	18.75
1 white boar	435 @	12.30
1 hamp boar	775 @	12.30
1 black boar	565 @	12.20
3 white feeders	125 @	19.25
3 hamp feeders	172 @	19.10
8 mixed feeders	165 @	18.80
4 berk pigs	20.75 @	
20 mixed pig	16.25 @	
8 mixed pigs	13.75 @	
32 white pigs	11.25 @	

RALEIGH BREEDING, MANAGER

barn HI 3-3671; home HI 3-3547

Auctioneer: Larry Lagasse,
Ph. Concordia, Kans. CH3-1714

MARYSVILLE

LIVESTOCK & COMMISSION CO.

MARYSVILLE, KANSAS.

Sell At St. Marys

Sell
Or Buy

Cattle & Hogs

By
Auction

Tuesdays

On receipts of 1306 cattle the market was very active and fully steady on all classes of stockers and feeders. Our cow market was 25¢ to 50¢ lower. Killing bulls were steady.

STOCKER & FEEDER STEERS

5 whiface steers	-----605 @	28.25
3 black steers	-----585 @	28.20
18 whiface steers	-----622 @	28.00
9 black steers	-----640 @	27.40
4 whiface steers	-----598 @	27.40
3 whiface steers	-----618 @	27.30
6 whiface steers	-----601 @	27.00
16 black steers	-----680 @	27.00
6 whiface steers	-----657 @	26.90
12 whiface steers	-----696 @	26.80
7 black steers	-----621 @	26.55
6 black steers	-----657 @	26.40
17 mixed steers	-----667 @	26.35
32 black steers	-----801 @	26.00
26 mixed steers	-----875 @	25.70
14 mixed steers	-----672 @	25.65
13 whiface steers	-----982 @	25.50
22 mixed steers	-----805 @	25.50
11 mixed steers	-----850 @	22.25
18 mixed steers	-----661 @	25.20
3 mixed steers	-----961 @	25.00
27 mixed steers	-----886 @	24.75
4 mixed steers	-----777 @	24.70
13 black steers	-----815 @	24.50
3 mixed steers	-----926 @	24.50
4 mixed steers	-----1011 @	24.40
8 charolais steers	-----965 @	24.30
14 mixed steers	-----930 @	24.25
9 mixed steers	-----858 @	24.05
10 holstein steers	-----588 @	24.00
14 mixed steers	-----868 @	23.95
15 mixed steers	-----1044 @	23.80
15 holstein steers	-----739 @	22.80
32 holstein steers	-----988 @	22.50
36 holstein steers	-----912 @	22.50
4 holstein steers	-----962 @	22.00

STEER CALVES

1 whiface steer	-----270 @	34.50
1 whiface steer	-----335 @	33.50
1 blkwhiface steer	-----335 @	33.00
15 whiface steers	-----432 @	32.15
16 whiface steers	-----506 @	31.80
13 mixed steers	-----403 @	31.75
2 whiface steers	-----400 @	30.60
1 black steer	-----335 @	30.30
1 blkwhiface steer	-----330 @	30.30
1 whiface steer	-----345 @	30.00
4 whiface steers	-----480 @	29.60
11 whiface steers	-----540 @	28.20
3 whiface steers	-----540 @	27.85
2 black steers	-----427 @	27.40
2 black steers	-----510 @	27.40
2 black steers	-----500 @	27.10
2 whiface steers	-----530 @	27.00
4 whiface steers	-----528 @	26.10
3 black steers	-----493 @	25.60
2 black steers	-----512 @	25.10

STOCKER AND FEEDER HEIFERS

7 whiface heifers	-----611 @	25.75
10 whiface heifers	-----576 @	25.70

For Information or Estimates

Rezac Barn St. Marys 437-2999
Delaine Rezac St. Marys 437-6266
Elmer Inthurn Maple Hill MI 3-2440
Paul Kramer St. Marys 437-2993

Auctioneers: Lawrence Welter, Gene Toby

15 black heifers	-----637 @	25.70
52 mixed heifers	-----613 @	25.70
28 black heifers	-----643 @	25.65
44 black heifers	-----635 @	25.65
3 black heifers	-----563 @	25.50
25 mixed heifers	-----657 @	25.40
26 mixed heifers	-----661 @	25.40
36 black heifers	-----707 @	25.10
7 whiface heifers	-----585 @	25.10
4 mixed heifers	-----606 @	24.90
7 mixed heifers	-----607 @	24.75
21 whiface heifers	-----752 @	24.70
3 whiface heifers	-----595 @	24.70
2 black heifers	-----560 @	24.60
2 whiface heifers	-----605 @	24.40
2 whiface heifers	-----715 @	24.20
5 mixed heifers	-----595 @	24.10
30 whiface heifers	-----860 @	24.05
2 blk whiface heifers	-----615 @	23.60
1 blk whiface heifer	-----935 @	21.60
4 whiface heifers	-----892 @	20.50
3 blk whiface heifers	-----788 @	20.30

HEIFER CALVES

1 whiface heifer	-----250 @	28.90
2 black heifers	-----250 @	28.70
4 whiface heifers	-----530 @	26.90
8 whiface heifers	-----430 @	26.75
22 whiface heifers	-----486 @	26.65
6 whiface heifers	-----378 @	26.60
2 whiface heifers	-----490 @	25.90

4 whiface heifers	-----520 @	25.50
4 whiface heifers	-----460 @	25.35
2 black heifers	-----492 @	25.20
2 whiface heifers	-----530 @	25.10
2 whiface heifers	-----450 @	24.75

COWS

1 holstein cow	-----1595 @	18.00
1 holstein cow	-----1310 @	18.00
1 holstein cow	-----1480 @	17.70
1 holstein cow	-----1470 @	17.50
1 holstein cow	-----1160 @	17.50
8 whiface cow	-----1109 @	17.50
1 holstein cow	-----1410 @	17.10
1 black cow	-----1010 @	17.10
1 whiface cow	-----1085 @	17.00
1 black cow	-----940 @	17.00
4 whiface cows	-----1030 @	16.55
1 black cow	-----1200 @	16.50
1 black cow	-----935 @	16.50
1 whiface cow	-----1070 @	16.30
1 red cow	-----980 @	16.20
5 whiface cows	-----548 @	16.20
7 whiface cows	-----1342 @	16.10
1 black cow	-----915 @	16.10
2 whiface cows	-----845 @	15.70
1 whiface cow	-----1300 @	15.10
1 blkwhiface heifer	-----550 @	24.60
1 red heifer	-----535 @	24.60
1 whiface heifer	-----490 @	23.70
1 whiface heifer	-----380 @	23.50
2 whiface heifers	-----450 @	23.10
1 whiface heifers	-----405 @	21.10

LIVESTOCK COMMISSION
COMPANY

Rezac



St. Marys,
Kans.



We sold 1314 cattle, 792 hogs last week. The hog top was \$21.15. Our cattle market was steady to higher on all classes, except the cows, which were \$1 to \$2 lower. We have had a lot of inquiries from buyers wanting to buy cattle next week. We would appreciate selling cattle for you, if you have cattle to sell, give us a call. The following is a sampling of our sale:

CATTLE

Albert Vanek, Oak Hill	1 wf cow	980 @	12.90
Albert Vanek, Oak Hill	1 wf str	495 @	27.80
Ray VanMeter, Canton	1 wf cow	940 @	17.10
Paul Schroeder, Lorraine	1 blk cow	1000 @	16.10
Paul Schroeder, Lorraine	1 blk cow	1100 @	15.50
Forest Comfort, Wells	2 blk str	552 @	28.00
Marlin Sittner, Ellinwood	5 hol str	555 @	23.50
Geo. White, Canton	21 blk str	616 @	27.10
Frank Sma, Barnard	2 wf str	631 @	26.40
Carl Swenson, Bridgeport	14 mix hfrs	847 @	23.50
W. E. Bender, Ellsworth	10 blk str	584 @	28.50
Carl Doud, Brookville	2 wf str	788 @	25.60
Loyd Bishop, Canton	33 blk hfrs	635 @	25.50
Don Woods, Carlton	16 wf str	890 @	25.65
Pat Kralzer, Geneseo	12 blk str	575 @	29.10
Frank Svara, Kanopolis	7 wf str	567 @	28.10
Gladwin Koehm, Galva	19 wf hfrs	504 @	26.10
Gladwin Koehm, Galva	15 blk hfrs	557 @	25.00
Frank Ewart, Minneapolis	8 whf str	820 @	26.05
Don Ninke, Ellsworth	4 wf str	711 @	26.40
Don Ninke, Ellsworth	5 mix str	1048 @	24.60
J. B. Adey, Miltonvale	2 hol str	855 @	22.50
J. B. Adey, Miltonvale	3 blk str	468 @	29.50
Roger Welchel, Solomon	12 b&bwf str	529 @	25.30
Glennon Crowther, Roxbury	46 b&bwf hfrs	599 @	25.10
Glennon Crowther, Roxbury	33 wf hfrs	631 @	25.05
Glennon Crowther, Roxbury	17 wf hfrs	656 @	25.05
Kenneth Galharl, Russell	2 blk str	602 @	26.50
Kenneth Galharl, Russell	1 wf str	440 @	29.10
David Meier, Beverly	5 mix str	645 @	26.25
David Meier, Beverly	6 blk hfrs	448 @	26.15
David Meier, Beverly	7 b&bwf hfrs	532 @	24.60
Harold Harper, Tescott	7 b&bwf hfrs	575 @	23.55

Tom Young, Oak Hill	17 wf str	529 @	27.60
Clyde Comfort, Wells	5 blk str	763 @	26.05
William Allen, Minneapolis	1 wf cow	1240 @	16.10
William Allen, Minneapolis	1 wf cow	1060 @	16.70
Danny Sma, Culver	1 hol cow	1355 @	17.30
E. Altman, Tescott	1 spt cow	940 @	17.00
Melvin Allison, Delphos	1 hol cow	1190 @	17.80
Melvin Allison, Delphos	1 hol cow	1345 @	17.80
Carol Oleen, Falun	1 wf bull	1540 @	21.90
Bill Powell, Tescott	1 wf cow	940 @	17.00
Alyward Bros., Solomon	7 bf str	959 @	24.95
John Carson, Miltonvale	3 blk str	545 @	27.40
Ross Wickham, Lindsborg	4 hol str	422 @	24.20
Joe Armstrong, Salina	1 wf bull	1595 @	21.30
Russell Huston, Abilene	1 wf cow	850 @	15.50
Russell Huston, Abilene	1 blk clf	360 @	31.00
Albert Wesley, Ada	1 grn cow	1170 @	15.80
Albert Wesley, Ada	1 grn cow	1160 @	15.50
Herb Walle, Culver	4 wf str	481 @	28.40
Herb Walle, Culver	6 wf hfrs	511 @	25.50
John Kottman, Lincoln	10 blk str	557 @	29.30
LaVerne York, Nevarre	8 b&bwf str	526 @	29.90
A. J. Wagner, Bennington	4 wf str	557 @	26.50
Boyd Tinklen, Bennington	4 wf str	653 @	27.00
Herman Nightingale, Galva	28 wf hfrs	721 @	25.30
Wayne Peck, Bennington	7 mix str	840 @	25.60
Wayne Peck, Bennington	8 mix str	585 @	25.70

FOR INFORMATION OR ESTIMATES

LAURENCE CLEMENCE

Abilene Phone CO 3-3091

MERRILL CHRISTIANSEN

Durham Phone 732-3371

BOB MUIR

Salina Phone TA 3-2963

Market Reports

Radio Station KSAL, Salina
6:45 a.m. Every
Monday, Wednesday & Friday
KFRM
6:55 a.m. Mon. through Fri.

Central Kansas Most

Modern Livestock Auction . . West Side Of Salina

TWO SALES EVERY WEEK

MONDAY

Hogs & Cattle

Hogs sell at 11:00 a.m. followed by our regular cattle sale as they are unloaded.

THURSDAY

Cattle Only

Selling starts at 12:00 Cattle will sell in the order they are consigned on the books.

HOGS

W. N. Day, Lincoln	6 mix hogs	219 @	20.65
Lonnie Hayden, Ellsworth	7 mix hogs	207 @	20.80
Lowell Larson, Lincoln	11 mix hogs	224 @	20.60
Geo. Bearnes, Culver	8 mix hogs	206 @	20.80
Joe Mills, Enterprise	8 mix hogs	221 @	21.00
Rex Reed, Kanopolis	6 blk hogs	197 @	20.45
A. Traulsen, Lincoln	11 mix hogs	225 @	20.95
Kenneth Erickson, Marquett	26 mix hogs	227 @	21.10
Robbie Morrison, Salina	6 whi hogs	222 @	20.65
Fred Bell, Tescott	10 mix hogs	195 @	20.30
Palmer Price, Salina	16 mix hogs	196 @	20.70
Donald Buyer, Assaria	14 whi hogs	241 @	20.55
Almer Anderson, Roxbury	10 mix hogs	225 @	20.85
Cecil Rumley, Bunker Hill	17 mix hogs	203 @	20.90
Fred Hofmeister, Claflin	15 hmp hogs	211 @	21.15
Donald Kissick, Beverly	10 mix hogs	219 @	20.65
Emery Frost, Smolan	27 mix hogs	203 @	20.80
Emery Frost, Smolan	26 mix hogs	239 @	20.75
Arden Janssen, Geneseo	20 mix hogs	200 @	20.85
Chas. Carlson, Minneapo.	28 spt pigs	@	13.00
Walt Hannebaum, Tescott	29 mix pigs	@	15.75
Art Johnson, Brookville	10 hamp pigs	@	15.75
Axel Jansen, Lincoln	12 whi pigs	@	14.25
G. W. Lamb, Solomon	18 mix pigs	@	17.00
G. W. Lamb, Solomon	25 mix pigs	@	14.75
Ralph Bigson, Westfall	21 mix pigs	@	18.50

Farmers & Ranchers
LIVESTOCK COMMISSION CO.

West on old US 40

Barn Phone

913-TA 5-0211 SALINA, K.S.



Bonded

Licensed