



April, 1963  
15 Cents

KANSAS 4-H  
*Journal*

The 4-H Family Magazine

Kansas 4-H Foundation, Inc., Publisher

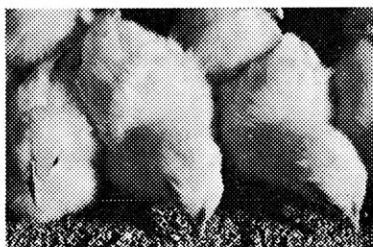




# FEED PAYS EVERY STEP OF THE WAY!



1st THROUGH 5th WEEK

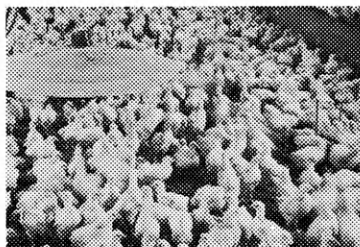


## START CHICKS FAST

The day they arrive on CO-OP Chick Pre-Starter Complete. Feed the first 5 weeks or until you have fed 2 pounds per bird. CO-OP Feeds contain the coccidiostat proved best for high livability.



6th THROUGH 10th WEEK

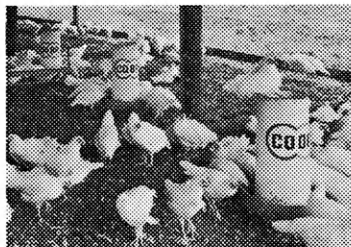


## KEEP 'EM GROWING

By feeding CO-OP Chick Starter-Grower. Feed until each bird has consumed 5 pounds. Your chicks will develop fast because CO-OP Feeds contain effective levels of balanced proteins, minerals, vitamins and potent disease fighters.

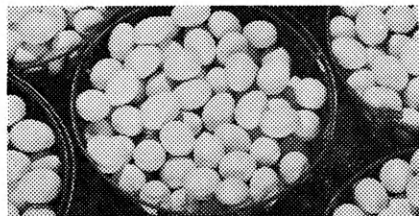


11th THROUGH 20th WEEK



## DEVELOP TOP LAYERS

With CO-OP Pullet Grower Feeds. Feed either CO-OP Pullet Grower Complete or CO-OP Pullet Grower Supplement plus your farm grains. CO-OP Feeds develop your pullets into big framed birds which are prepared to lay at 20-22 weeks of age.



## THEN COMES THE BIG DIVIDEND

It is in the laying house where the farmer-owned CO-OP Chick and Pullet Feeding Program really starts paying off. CO-OP Layer Feeds have extra amounts of nutrients which can improve feed efficiency and production when compared to poorly balanced rations.

No matter what type of laying operation you have — floor, cage, slats or wire—CO-OP Layer Feeds will give your hens the energy-protein-vitamin balance they need to lay all of the eggs they are capable of producing.

- ✓ High Livability
- ✓ Fast Growth Nutrients
- ✓ Profit-Checked Efficiency
- ✓ Maximum Egg Production



## "IT'S IN THE BAG"

Before your baby chicks arrive, stop at your Co-op and get CO-OP Chick Pre-Starter Complete.

## VISIT YOUR CO-OP NOW!

CONSUMERS COOPERATIVE ASSOCIATION, KANSAS CITY, MISSOURI



## SPECIAL THANKS

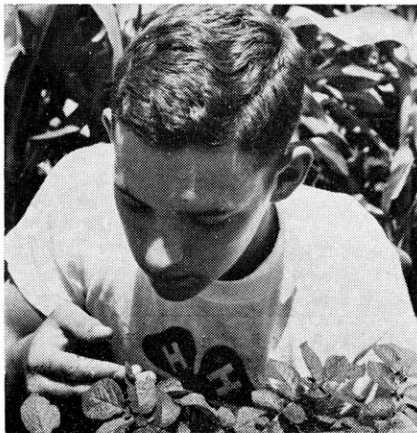
The Honor Roll section in this issue is dedicated to those who make possible the work of the Kansas 4-H Foundation. This financial support provides trips, scholarships, and other awards; leadership training; Rock Springs Ranch improvements; the International Farm Youth Exchange; and others.

4-H Club members, 4-H alumni, parents, and leaders may take a great deal of satisfaction in the part they have had in furthering this work.

The invitation is always open; in fact, 4-H'ers are urged to participate, thus helping themselves through the Foundation. **Much can be done when many work together as one.**

In addition to financial support many contribute time and energy in various services to support the Foundation program. For example, Donald Atha of Folgers provided art work and layout for the Honor Roll, Collegiate 4-H members hold a work day at Rock Springs to prepare it for summer operation, and county committeemen encourage support.

To all donors who make this great work possible, **THANKS** in behalf of all 4-H'ers, their families, and friends. **You are helping build a better tomorrow.**



Our cover picture is of Douglas Kelsey, 4-H member from Rossville, Kansas taken in 1960 by the National 4-H Service Committee.

It is presented here to demonstrate the fast growth the entomology project has made in the past several years.

One of our features this month is about the entomology project. It is on page 4.



KANSAS 4-H  
*Journal*

Vol. IX, No. 4

April, 1963

## IN THIS ISSUE

<i>Bugs, Bugs, Bugs</i> .....	4
<i>Letters</i> .....	5
<i>Recreation (Invitation to share)</i> .....	6
<i>The Birthday</i> .....	11
<i>"New Look" 4-H Uniform</i> .....	13
<i>Invest in Youth</i> .....	13
<i>This Is Kansas 4-H</i> .....	15
<i>Song of The Month (Musical Quiz)</i> .....	16
<i>Sponsors Directory</i> .....	17
<i>Ideas That Work</i> .....	18

Don Esslinger ..... Editor

### Editorial and Business Office

Phone JE 9-2211 Ext. 208 — Manhattan, Kansas

Published Monthly By

**KANSAS 4-H FOUNDATION, INC.**

J. Harold Johnson ..... Executive Director

### BOARD OF TRUSTEES

W. Dale Critser, Chrm. ....	Wichita
E. B. Shawver, Vice Chrm. ....	Wichita
D. J. Atha.....	Shawnee Mission
*Harry Darby.....	Kansas City
*W. Laird Dean.....	Topeka
Mrs. Olive Garvey.....	Wichita
Clifford Hope.....	Garden City
A. D. Jellison.....	Junction City
Harold E. Jones.....	Manhattan
J. J. Moxley.....	Council Grove
George B. Powers.....	Wichita
Roger E. Regnier.....	Manhattan
Dolph Simons.....	Lawrence
*Lester Weatherwax.....	Wichita
*Fred D. Wilson.....	Andover
*Advisory Members	

Second Class Postage Paid at Lawrence, Kansas. Return Form 3579 to Kansas 4-H Journal, Manhattan, Kansas.

Advertising rates and circulation data on request.

Group subscriptions \$1.00 per year. Individual subscription \$1.50 per year. Single copy 15 cents.

Use of the 4-H name and symbol approved by the Secretary of Agriculture of the United States, January 23, 1951, under the provisions of the law as reenacted by Sec. 707 of the Act of June 25, 1948 Public Law No. 772, 80th Congress (10 USC 797)





Interest in the entomology project in Rice county is on the county-wide basis. Here leader Don Keesling, foreground, is working with project members on a collection tour.

Field trips are more enjoyable when there is a group. Here 4-H members at State Conservation Camp are collecting insects in a field.

## Bugs . . . Bugs . . . Bugs . . .

Here's a project that goes hand-in-hand with almost any other 4-H project.

The entomology project is getting more popular every year. Exhibits have doubled at many of the fairs.

This project provides opportunities for 4-H members to work on an individual basis as well as with a club group or a county-wide group.

Adult leaders work with the 4-H members in about as many ways. In Rice county a leader works with the members on a county-wide basis.

### Urban and Rural

Popularity of this project is due to its suitability to 4-H members in the city as well as the rural areas.

4-H members are amazed to find the many hundreds of kinds of insects while learning about them and their habits. This study provides a rich experience in project work.

### Three Phases

The entomology project is divided into three phases: basic, intermediate and advanced.

Attractions of the project include collecting and identifying insects, studying control of them, making the equipment used, studying the life history of insects and preparing educa-

tional exhibits to tell others about the insect world.

In this way project work in entomology is a part of crops, livestock, garden, landscape design, clothing and woodwork. The display box is suggested as a woodwork project and plans for it are offered to 4-H members by the lumbermen listed on pages 9 and 10 of this issue.

### Project Helps

"Insects In Kansas" may be checked out from the County Extension Office by clubs and project groups. Your county agent will have other sources of information about insects.

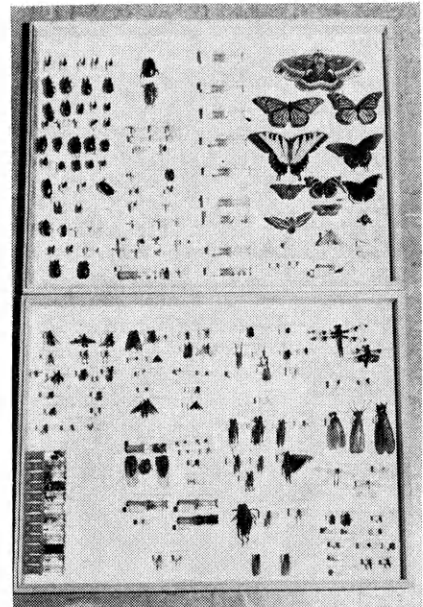
A leaders' Manual is furnished by the 4-H Club Department and is available to leaders from county agents.

4-H Club groups and leaders report that many people in the county are potential leaders of the entomology project. Among those helping with individuals and groups are farmers, school teachers, businessmen, librarians as well as the extension agents.

### Helpful Hints

This is the time of year when 4-H members and project groups should be making their plans to start collecting insects.

Although insects such as roaches and stored grain insects



Presenting the collection for display is an enjoyable part of the entomology project. Here is Allen Jones' collection, Riley county.

can be collected the year around, Dell Gates, Extension Entomologist, points out that May until frost is the best collecting period.

Group tours are popular for collecting insects. Also group meetings to make killing jars, collection nets and spreading boards are providing enjoyment for many 4-H'ers in the entomology project.



## Letters

*If you have ideas or 4-H Club experiences that you would like to write about or if there is something you like or dislike about the Kansas 4-H Journal, write to the Editor, Kansas 4-H Journal, Manhattan, Kansas.  
Leaders, parents, members, agents and 4-H friends are invited to write.*

Dear Editor:

Thank you for the thumb nail sketches of the colleges in Kansas in your February issue. We have eight juniors and seniors in our Club so this issue was well read. Within a week after this issue came out, four different parents had called me to discuss it. We really appreciate what the 4-H Journal has done for us. Thank you.

Mrs. Albert A. Redger  
Sitka, Kansas

Dear Editor:

.... I would like to suggest that I feel your readers would like to know a little bit about the junior colleges in the state because I think they are making a significant contribution to higher education. In addition to the public junior colleges, we have five church-related junior colleges which would be delighted to have additional 4-H members in attendance ....

John W. Ferrell  
Director of Admissions  
Central College  
McPherson, Kansas

Dear Editor:

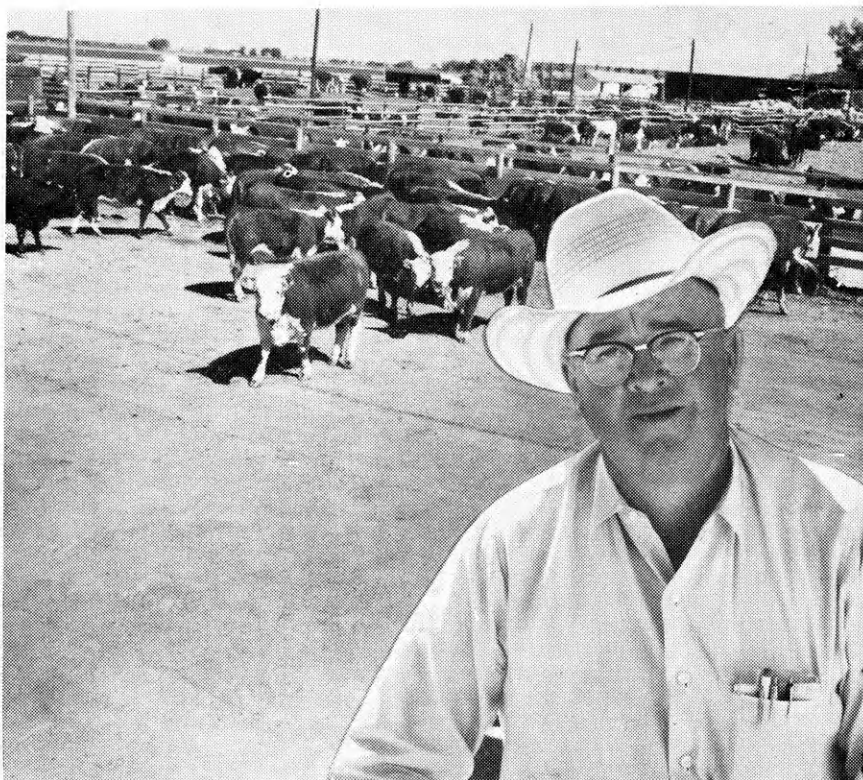
We have a request from the District Agricultural Agent in College, Alaska for the 4-H woodworking plans. We sent one each of all the plans we have. Please send some copies of all future woodworking plans to—Mr. Virgil Severns, Box B, College, Alaska.

Don Launchbaugh  
Norton Lumber Co.  
Norton, Kansas

If we had to walk awhile in the other fellow's shoes, perhaps we wouldn't criticize his gait.

The best way to get a job done is to get started.

You may not draw a check at the bank until you have made a deposit; so with life, you cannot take out more than you put in.



*Grant Heidrick runs the growing feedlot operation for Tieman Cattle Company. As a new pen is put in use, they pave it a strip at a time, starting at the feed bunks.*

## "Cattle on concrete gain faster!"

says GRANT HEIDRICK, Ft. Morgan, Colorado

"With no mud to flounder in, feeder cattle stay right on the job of eating. On firm concrete footing, they eat more—as much as 5 pounds per head every day. They have an easier life so *all* the feed goes to making weight. We're getting to market as much as ten days earlier since we put in concrete.

"Naturally, our stock stay cleaner on concrete. We aren't docked at the market for dirty cattle. And we think we save on vet bills. Hoof rot and other mud-borne diseases have been reduced.

"Concrete saves money around the feed storage area, too. Our 22x80-ft. slab for ground hay storage paid for itself in saved feed the very first year."

Low in cost, concrete is a lasting investment in efficiency for beef feeders in every part of the country. Write for free 16-page color booklet showing concrete improvements around the feedlot. (U.S. and Canada only)

**PORTLAND CEMENT  
ASSOCIATION**

811 Home Savings Building,  
Kansas City 6, Missouri

THE MARK OF A  
MODERN FARM ...

**concrete**

*A national organization to improve and extend the uses of concrete*

**HE BLOWS SO SWEET - AND IT COMES OUT SO SOUR !**



A major objective of Farm Bureau policy is to create conditions whereby farmer may earn and get a high per-family real income in a manner which will preserve freedom and opportunity. We firmly believe that this objective can best be accomplished by preserving the market price system as the principal influence in allocating the use of farm resources and in distributing farm production.

It is abundantly clear from years of experience that needed adjustments are made more readily and the economic well being of farmers is better served in those areas of agriculture which have not been subject to government control and price support programs. Witness livestock, fruits, and vegetables which have remained free of government programs as contrasted to those commodities where government control and price support programs have been operative for many years.

We vigorously oppose all attempts to depart from the market price system in areas of agriculture still operating under this system. In those areas of agriculture where farm programs have led to a departure from the price system, we urge a return to this system as rapidly as possible.

# **Kansas Farm Bureau**

## **105 County Farm Bureaus**

### **Working Together**

## **SHARE YOUR "FUN" ACTIVITIES**

**By Dick Tomkinson  
Specialist in 4-H**

Thinking that the games, musical games, stunts or skits, parties and other recreational activities you and your 4-H Club members enjoy might also be enjoyed by other 4-H boys and girls, we are asking you to share your "fun" activities with us.

Any 4-H member, junior leader, or 4-H leader can submit their favorite recreational activity to us. We will then have it printed in the monthly recreation column in the **Kansas 4-H Journal**. This way, you will be sharing your most enjoyable "fun" ideas with the more than 31,000 4-H members and 1,200 clubs in Kansas. You may share any good ideas you or your club enjoyed, a special party, tasty snacks, attractive decorations, or activities you have used that were successful. Club recreation ideas are eagerly sought after by people as they are always looking for recreation suggestions.

We will give you a by-line for sharing, for example:

### **TONGUE TWISTER FUN—**

Have slips of paper, one for each guest, with a tongue twister written on it. Each person, in order, must read his tongue twister as rapidly as possible three times; the person who does his the fastest with the fewest mistakes is awarded a prize. Check your library for a book of tongue twisters. (Note, you could use the same one for everybody and see who does that one the best.)

Shared by Dave Zook, member, Sunshine 4-H Club, Hoosier County.

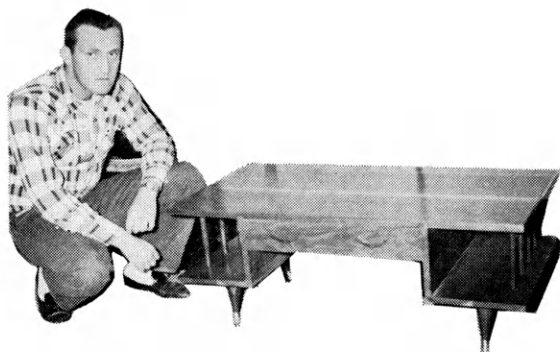
### **APRIL FOOL SPELLING —**

This is a relay form of spelling. The group has to know how to spell the word and also run fast to be the first done. Play with two sets of alphabet cards at opposite ends of the room (one

(Continued on page 19)

# FREE!!

## New 4-H Woodworking Plans



**TWO-LEVEL COFFEE TABLE**

Mike Orr has designed and constructed this attractive coffee table as a suggestion for 4-H woodworking project members.



**SHOE SHINE KIT**

June Bechelmayer recommends this handy shine kit as a 4-H woodworking project.

*Plans for These Projects Are  
Available At The Lumber Dealers  
Listed on These Pages. Ask For Them.*

**Insect Display Box**



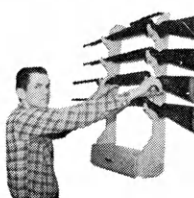
**Vertical Shoe Rack**



**Sewing Cabinet**



**Handy Gun Rack**



**Rotating Selection Tool Rack**



**Automatic Bird Feeder**



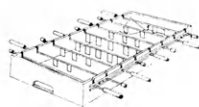
**Cart with Removable Trays**



**Typing Desk and Bench**



**Football Game**



**Book Case**



**Pounding Board**



**Magazine Rack**



**Walnut Chest**

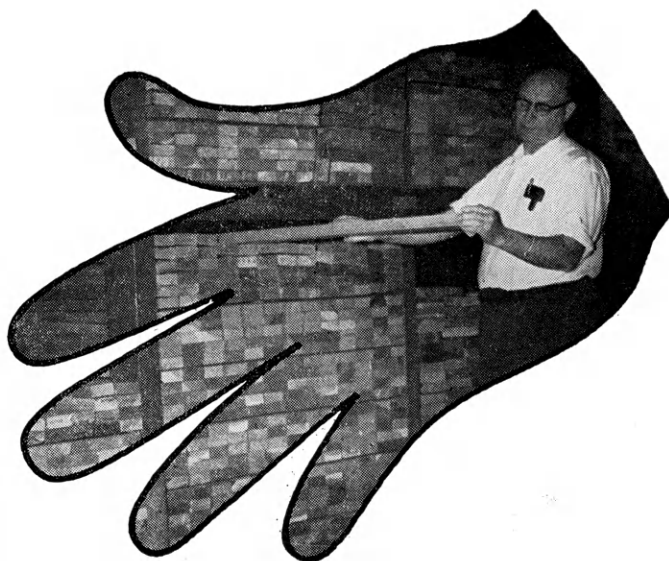


For other FREE 4-H woodworking plans, see the next pages.



# Always on hand... YOUR LUMBERMAN

is your best friend when  
you need good material



**Abilene**  
Central Lumber Company

**Agra**  
Agra Lumber Company

**Alton**  
Alton Lumber and Coal Company

**Arkansas City**  
Central Lumber Company

**Asherville**  
Asherville Lumber and Coal Company

**Ashland**  
Don Spotts Lumber Company  
Home Lumber and Supply Co.

**Atchison**  
Hixon Lumber Company

**Atwood**  
Atwood Lumber Company

**Augusta**  
Safford Lumber Company  
The J. W. Metz Lumber Company

**Beloit**  
Peoples Lumber and Coal Company

**Bern**  
Bern Lumber Company

**Bird City**  
The Bird City Equity Mercantile  
Exchange  
Griffin Lumber Company

**Brownell**  
Richolson Lumber and Hardware  
Company, Inc.

**Cawker City**  
Cawker City Lumber Company

**Chanute**  
Smith Lumber Company

**Chapman**  
Sanborn Lumber Company

**Colby**  
Hardman Lumber and Coal Company  
Hess Lumber Company

**Coldwater**  
Home Lumber and Supply Co.

**Concordia**  
Sanborn Lumber Co.

**Cottonwood Falls**  
Burgner-Bowman-Mathews Lumber Co.

**Denison**  
Denison Lumber and Hardware  
Company

**Denton**  
C. H. Gish Company

**Dodge City**  
The T. M. Deal Lumber Company  
International Paper Co., Long Bell Div.

**Easton**  
Easton Lumber Company

**Elkhart**  
Elkhart Lumber Co.  
The Star Lumber Company

**Emporia**  
Home Lumber and Supply Co.  
The Smith Lumber Company

**Eureka**  
A. C. Houston Lumber Company

**Everest**  
Alexander Lumber Company

**Fowler**  
The T. M. Deal Lumber Company, Inc.

**Fredonia**  
The Home Lumber & Supply Co.

**Garden City**  
Ed Porter Lumber Company

**Garnett**  
Star Grain and Lumber Company

**Gaylord**  
Hardman Lumber Company

**Glen Elder**  
Dickinson Lumber Company

**Goodland**  
Hardman Lumber Company  
Rasure Lumber Company

**Great Bend**  
Everitt Lumber Company  
Whitesell Lumber Company

**Greensburg**  
Home Lumber and Supply Co.

**Halstead**  
Harris Lumber Company

**Hartford**  
Thomas Lumber Company

**Hays**  
Hardman Lumber Corporation, Inc.

**Healy**  
Healy Co-op Elevator Company

**Hill City**  
Hardman Lumber Company

**Hillsboro**  
Hillsboro Lumber Company

**Holton**  
Holton Lumber Company

**Holyrood**  
Home Lumber and Supply Co.

**Horton**  
Horton Lumber Company, INC.

**Hugoton**  
The Star Lumber Company

**Hutchinson**  
Davis Lumber & Building Center, Inc.  
F. E. Perry Lumber Company

**Iola**  
Klein Lumber Company

**Johnson**  
Seyb-Tucker Lumber and Implement  
Company

**Kinsley**  
Kinsley Co-op Exchange Lumber Yard  
Home Lumber and Supply Co.

**LaCygne**  
Blaker Lumber and Grain Company

**LaHarpe**  
Blaker Lumber and Grain Company  
Diebolt Lumber and Supply

**Lakin**  
Hart and Company  
Lakin Lumber Company, Inc.

**Lancaster**  
T. E. Snowden Lumber Company

**Lansing**  
International Paper Co., Long-Bell Div.

**Larned**  
Clutter-Lindas Lumber Company

**Lawrence**  
Woods Lumber Company  
Logan-Moore Lumber Company

**Lebanon**  
Lebanon Lumber Company

**Lenora**  
Lenora Lumber Company

**Liberal**  
The Star Lumber Company

**Little River**  
The T. M. Deal Lumber Company, Inc.

**Macksville**  
Home Lumber and Supply Co.

**Madison**  
Madison Lumber Company

**Manhattan**  
Griffith Lumber Company  
Ramey Brothers

**Mankato**  
Mankato Lumber Co.

**Marysville**  
Howell Lumber Co.

**Meade**  
Home Lumber and Supply Co.

**Minneola**  
The T. M. Deal Lumber Company, Inc.

**Moundridge**  
Clayton Vogt Lumber Co., Inc.

**Neodesha**  
O. E. Woods Lumber Company

**Ness City**  
Rock Island Lumber Co.

**Norton**  
Norton Lumber Company

**Nortonville**  
Alexander Lumber Company

**Oakley**  
Oakley Lumber Company  
Golden Belt Lumber Company

FREE 4-H Woodworking Plans  
Available at Lumber Yards  
Listed On These Pages  
They Display This Emblem



THE lumber dealers listed on these two pages are supporting the 4-H woodworking project with this information and free woodworking plans. Get your plans from them.

**Oberlin**  
Building Supply Headquarters

**Offerle**  
Offerle Co-op Lumber Co.

**Olathe**  
Cowley Lumber and Hardware Company

**Onaga**  
Onaga Lumber & Grain Co.

**Oswego**  
Home Lumber and Supply Co.

**Ottawa**  
Hubbard Lumber Company, Inc.

**Paradise**  
Paradise Lumber Company

**Parker**  
Blaker Lumber and Grain Company

**Parsons**  
O. E. Woods Lumber Co.

**Phillipsburg**  
Hardman Lumber Company

**Plains**  
Home Lumber and Supply Co.

**Pleasanton**  
Blaker Lumber and Grain Company

**Prescott**  
Prescott Lumber Company

**Pretty Prairie**  
The George W. Ulitch Lumber Company

**Protection**  
Home Lumber and Supply Co.

**Russell**  
Hardman Lumber Company of Russell Inc.

**St. Francis**  
St. Francis Equity Exchange

**St. Marys**  
St. Marys Lumber Company

**St. John**  
English Lumber and Supply Company  
Home Lumber and Supply Co.

**Salina**  
Everett Lumber Co., Inc.

**Satanta**  
The T. M. Deal Lumber Company, Inc.

**Seneca**  
Koelzer Lumber Company  
Seneca Lumber Company

**Severy**  
Tolman-Gibbon Lumber Company

**Smith Center**  
Mid-West Lumber Company  
Smith Center Lumber Company

**Stafford**  
The T. M. Deal Lumber Co., Inc.  
Home Lumber and Supply Co.

**Stockton**  
Stockton Lumber Company  
The Golden Belt Lumber Co.

**Sublette**  
The T. M. Deal Lumber Company, Inc.

**Syracuse**  
Everitt Lumber Company, Inc.

**Tonganoxie**  
Tonganoxie Lumber Co.  
Hunter Lumber Company

**Topeka**  
Whelan Lumber Company  
Main Store, 715 E. 4th  
Pauline Branch at Pauline  
Highland Crest Branch, 200 E. 29th  
Seabrook Branch, 2019 Gage

**Ulysses**  
The T. M. Deal Lumber Company, Inc.  
Ulysses Lumber Co.

**WaKeeney**  
Hardman Builders Supply Company

**Wakefield**  
Sanborn Lumber Company

**Wathena**  
Farmers Grain and Lumber Company

**Wichita**  
Lawrence Lumber Company  
Stockyards Cash and Carry Lumber Co.  
Alexander Lumber Company

**Wilson**  
Hoch Lumber Company  
Wilson Lumber Company

**Winfield**  
A. B. Everly Lumber Company

**Woodbine**  
Kohler Lumber Company

**Zenda**  
The George W. Ulitch Lumber Company

**Missouri**

**Kansas City**  
The George W. Ulitch Lumber Company, 11432 Truman Road

**Ask For  
Your 4-H  
Woodworking  
Plans.**

**Looking for Woodworking Ideas?  
See Any of These Lumber Dealers  
for a Free 4-H Woodworking Plan**

**Bedside Stand**



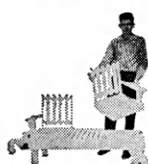
**Simple Work Bench**



**Chest of Drawers**



**Lawn Set**



**Bill's Baseball Rack**



**Patio Planter**



**Two Games**



**Yard Cart**



**Child's Step Stool and Chair**



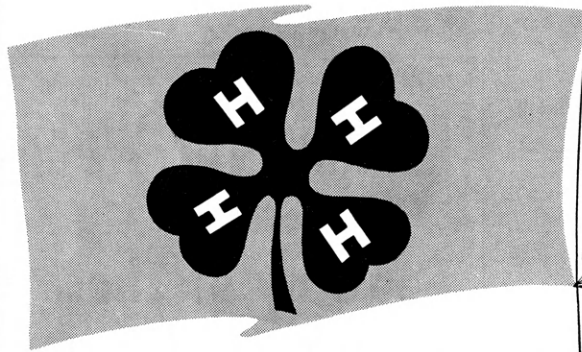
**OTHERS**

Gate Sign	Coffee Table
Martin House	Back Yard Fence
Hanging	Lazy Susan
Flower Box	Tete-A-Tete
Funny Book	Bathroom
Rack	Holding Gate
Dog House	Wall Cabinet
Picnic Table	Sandbox
Sheep	Blue Bird House
Blocking Box	Picnic Bench
Bookcase	Mail and
Headboard	Memo Board
Collapsible Visual	Christmas
Aid Stand	Tree Gifts
Toy Stove	

# SO PROUDLY WE HAIL



## DEMOCRACY IN ACTION



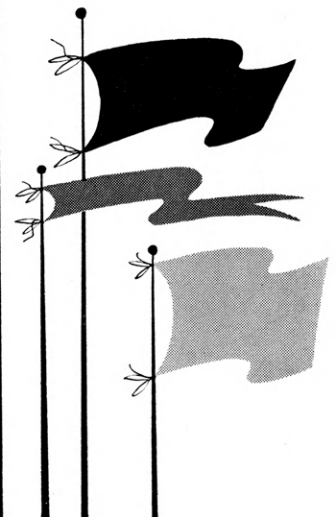
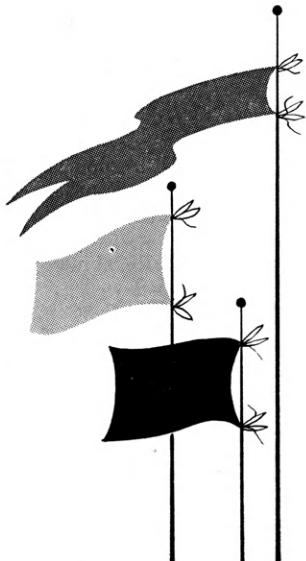
## KANSAS 4-H CLUB WORK

There can be no finer evidence of America's sound present and promising future than is to be found in the 30,000 Kansas 4-H boys and girls, who are preparing themselves physically, mentally, spiritually and for citizenship in all these vital ways:

- Developing talents for greater usefulness!
- Joining with friends for work, fun and fellowship!
- Learning to live in a changing world!
- Choosing a way to earn a living!
- Producing food and fiber for home and market!
- Creating better homes for better living!
- Conserving nature's resources for security and happiness!
- Building health for a stronger America!
- Sharing responsibilities for community improvement!
- Serving as citizens in maintaining world peace!

What nobler aims... what more progressive program for achieving them than in your own club work? Keep up the good work!

**FOLGER COFFEE CO., Kansas City**

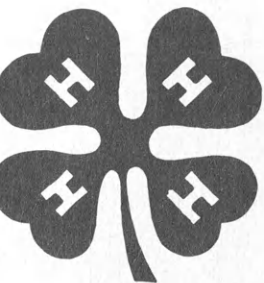




**1962**

**KANSAS 4-H FOUNDATION**

**Honor  
Roll**



These are the public-spirited contributors who have made possible the work of the Kansas 4-H Foundation in 1962. Included are all who contributed during 1962, for whatever purpose—IFYE, incentives to 4-H members, leader training, Alumni Roll Call or improvements at Rock Springs Ranch.

The figure preceding the name indicates the number of years of support since the *Foundation Membership and Share Recognition plan was started in June, 1954*. Every effort has been made to avoid errors or omissions. Please notify the Foundation if any contributor has been left off the Honor Roll.

## ALUMNI ROLL CALL • 1962

Amount—\$967.25

### A

- 2 Allen, Harvey
- 4 Anderson, Alvin A.
- 3 Anderson, Roberta
- 4 Apel, Dale
- 3 Armistead, Mr. & Mrs. Dale
- 1 Artz, Mrs. Mary M.
- 1 Ayers, Larry L.

### B

- 2 Balthrop, John
- 2 Banbury, Evans E.
- 3 Barr, Mr. & Mrs. Bernard
- 4 Bassett, Janice Fauss
- 4 Bebermeyer, Mrs. Marvin
- 3 Beezley, Patricia
- 1 Blackard, Clyde
- 2 Blankenship, Una Kay
- 3 Blecha, Mrs. & Mrs. Amos
- 3 Bonjour, Julia A.
- 4 Booth, Arden
- 3 Bossi, Catherine
- 4 Bugbee, Mrs. W. E.

### C

- 1 Casey, Mrs. Frances
- 4 Cassidy, Marie L.
- 4 Cauble, Mr. & Mrs. Dean
- 1 Ceronsky, Vera
- 2 Challenger, Willard
- 4 Chambers, J. Wayne
- 2 Circle, James E.
- 2 Clemence, Mr. & Mrs. Joe
- 4 Coberly, Goldie
- 3 Collinge, Dr. & Mrs. Irwin J.
- 4 Conover, Margaret H.
- 2 Cooley, Leslie & Vera
- 1 Cooper, Mrs. David
- 3 Cott, Mr. & Mrs. Herman, Jr.
- 1 Counter, Henry E.
- 1 Counter, Perry Wayne
- 4 Cubit, James & Helen
- 3 Cunningham, Mr. & Mrs. Kenneth

### D

- 2 Deutscher, Mrs. Norbert
- 4 Dies, Mrs. Edgar
- 4 Dressler, H. A.
- 1 Duncan, Mrs. Robert

### A

- 4 Adams, Mrs. P. E.
- 3 Adams Business Forms, Inc.
- 3 Anderson, Mrs. Bert H.
- 1 Angel, Mr. & Mrs. John

### B

- 1 Babbitt, Dale E.
- 1 Banman, Alvin & Florence
- 1 Barnes, John H.
- 2 Barr, Mr. & Mrs. Bryan
- 3 Barrier, Max
- 1 Bates, Kay L.
- 1 Becker, LaVern
- 1 Blue Stem Cow Belles
- 1 Boyce, Hugh & Family
- 1 Brant, John
- 4 Brehm, Merle
- 1 Brooks, Blanche
- 1 Busy Bee Jr. 4-H, Hodgeman Co.

### C

- 3 Cauble, Mr. & Mrs. Dean
- 1 Cherokee County 4-H Council
- 3 Childs, Orville
- 1 Coen, Floyd O.
- 1 Cooper, Mr. & Mrs. Ted
- 1 Cox, Dana D.

### E

- 4 Edwards, Mr. & Mrs. Robt.
- 4 Ellas, Allen & Josephine
- 3 Elson, Donald E.
- 3 Enders, Paul
- 1 Englert, Mrs. Bob
- 4 Erb, Mrs. Shirley
- 3 Essmiller, Mr. & Mrs. Ralph
- 2 Eyestone, Cecil L.

### F

- 2 Fabian, Cherie LaFromboise
- 4 Fauss, Mrs. R. L.
- 1 Ferrell, Mrs. Pauline W.
- 1 Foerschler, William
- 4 Frazier, Mrs. Elaine
- 2 Fulhage, Ruthanna
- 1 Fuller, Mr. & Mrs. Kenneth
- 1 Fullerton, Mrs. Averil

### G

- 3 Garrison, Mr. & Mrs. Donald
- 4 Garten, Mr. & Mrs. Clarence
- 4 Garten, Mr. & Mrs. Frank
- 4 Gfeller, Mr. & Mrs. Charles W.
- 4 Gillmore, Ralph E.
- 1 Good, Wayne
- 4 Gore, Keith E.
- 1 Grover, Mr. & Mrs. Oria F.

### H

- 2 Hamon, John
- 2 Hammarlund, Dale
- 2 Hassman, Mr. & Mrs. Irvan
- 3 Hatfield, Mr. & Mrs. James
- 4 Hearn, Marion L.
- 3 Heersche, Mr. & Mrs. George
- 2 Heitschmidt, Mr. & Mrs. Marvin
- 1 Hemphill, Arthur
- 3 Hostetler, Pius H.
- 3 Hottman, Mrs. Orren F.

### J

- 1 Jaderborg, Mrs. Emil
- 4 Jordan, Dr. & Mrs. Frank

- 1 Jordan, Hazel W.
- 1 Jording, Arnold G.
- 4 Jurgens, Mrs. John

### K

- 2 Kerbs, Freddie J.
- 3 Kirkwood, Francis
- 1 Knapp, Wayne
- 4 Kurtz, Wayne

### L

- 1 Lanham, Edna
- 2 Larson, Janet Ruth
- 2 Larson, Richard E.
- 2 Lauer, Mr. & Mrs. Keith
- 2 Levering, Wilbur
- 2 Lewis, Mr. & Mrs. Joe W.
- 4 Lewis, Mr. & Mrs. Walter M.
- 1 Lierz, Mrs. Edward
- 2 Lindon, Mrs. Martin
- 4 Lobmeyer, Mr. & Mrs. Louis
- 1 Long, Mrs. Eldon
- 1 Lull, Linton C.
- 1 Lundstrom, Carolyn Myers
- 4 Luthi, Mr. & Mrs. Ray

### M

- 1 McClure, Mr. & Mrs. Clayton
- 1 McClure, Maurice
- 1 McCune, Alfred
- 4 McGhee, Mrs. Shirley Ann
- 1 McIntosh, Bernette
- 3 McKee, Florence
- 4 Madden, Phillip
- 4 Manry, Mr. & Mrs. E. Clifford
- 2 Martin, Walter W. & Gavona J.
- 2 Mayhew, Mrs. Donald
- 1 Meyer, Mrs. Edwin
- 2 Minneman, Mrs. Alberta T.
- 1 Mockry, Maxine Heller
- 3 Moore, Francis J.
- 3 Morgan, Albert
- 4 Morgan, Mr. & Mrs. L. D.
- 4 Mull, Mrs. Keith W.
- 4 Murray, W. Lovilo
- 3 Musil, Mr. & Mrs. Elmer R.
- 2 Musil, Esther M.
- 3 Musil, Mr. & Mrs. Theo. F.

### N

- 2 Nagel, Mr. & Mrs. Glenn
- 1 Newby, Grace Wallace
- 1 Nichols, Miriam Hoover
- 4 Niles, Mrs. Irving R.

### O

- 3 Ohmes, Richard L.
- 4 O'Neill, Larry & Barbara
- 3 Orsborn, Mr. & Mrs. Lawrence J.
- 3 Ottaway, Lois M.

### P

- 1 Patton, Robert
- 4 Paulsen, Mr. & Mrs. Rex
- 3 Peck, Maurine Knouse
- 3 Peterson, Arlyn
- 4 Pine, Mr. & Mrs. Wilfred H.
- 1 Presnal, Glade
- 3 Price, Wilmot B.
- 1 Pritchard, Wayne
- 4 Pucket, Dale W.

### Q

- 1 Quackenbush, Mrs. E. R.

### R

- 1 Reed, A. Doyle
- 4 Reehling, Mrs. Cecil B.
- 4 Rice, Shirley
- 2 Roberts, Joyce Ann
- 3 Robson, Mr. & Mrs. Dean
- 1 Rusco, Mrs. Leona

### S

- 1 Samuelson, Armin
- 1 Sayler, John G.
- 4 Scheuerman, Mrs. Everett
- 1 Schlagel, Mr. & Mrs. Paul
- 1 Schmidt, Mr. & Mrs. LeRoy
- 4 Schmitt, Mrs. Ben
- 1 Schwab, Mr. & Mrs. Walter
- 1 Scott, Mrs. Mary P.
- 2 Shaw, Willard B.
- 4 Shepherd, Mrs. Ronald
- 1 Simmons, Mr. & Mrs. Daryl
- 1 Sites, Ralph E.

### N

- 1 Jordan, Dr. & Mrs. Frank
- 1 Judy, Hal E.
- 1 Judy, Mr. & Mrs. Stacy E.

### K

- 1 Kansas Soya Products
- 1 Keller, E. J.
- 3 Kilbourn, Mrs. Robert
- 3 Kleymann, Mr. & Mrs. Fred
- 3 Knappenberger, Joe
- 2 Knoche, Fred

### L

- 1 Laidig, Janice
- 2 Laidig, Mr. & Mrs. Floyd
- 2 LaRosh, Mr. & Mrs. W. I.
- 4 Lindholm, Mr. & Mrs. E. C.
- 1 Loyal Neighbors HDU, Franklin Co.

### M

- 3 McDaniel, Harry
- 4 Miksch, Charles D.
- 4 Miksch, Mr. & Mrs. Forrest E.
- 2 Miller, Leroy Family
- 2 Munger, Leonard
- 2 Musil, Mr. & Mrs. Elmer R.

### P

- 2 Patton, Mrs. Bruce
- 1 Pearson, Mr. & Mrs. H. S.
- 1 Penner, Alvin
- 2 Penner, Willis D.
- 1 Phillips Co. Farm Bureau

### R

- 2 Rainbow 4-H Club, Franklin Co.
- 4 Raleigh, Francis J.
- 4 Ramsey, Mr. & Mrs. Glen
- 1 Reimer, Dick
- 4 Remy, Gerald
- 4 Reusser, Mr. & Mrs. Rae

- 3 Smerchek, Mrs. J. D.
- 4 Smith, Tom & Mary Ann
- 3 Smith, Mrs. R. V.
- 1 Snider, Mary Susan
- 2 Staadt, Mr. & Mrs. Harold, Jr.
- 4 Strickler, Mr. & Mrs. Ivan
- 2 Stucky, Diane
- 1 Swart, Mrs. Leonard

### T

- 2 Talbot, Mr. & Mrs. Fred
- 4 Teagarden, Mr. & Mrs. Carl
- 1 Thompson, Betty McPherson
- 1 Todd, Chester R.
- 1 Truax, Mr. & Mrs. L. L.
- 4 Truman, Mrs. Maxine

### U

- 1 Unger, Harry A.

### V

- 3 VanSkiel, William
- 4 Vann, Mr. & Mrs. Willis B.
- 2 Velthoen, Mr. & Mrs. Vernon
- 4 Vining, Mr. & Mrs. Cecil E.
- 2 Visser, Mr. & Mrs. Virgil
- 3 Vogel, W. A.

### W

- 1 Walker, Mrs. Enos M.
- 2 Walton, Mrs. Keith
- 4 Walton, Marjorie Presnal
- 3 Wilkinson, Shirley M.
- 2 Williams, Mrs. Eugenia
- 2 Williams, Rowland
- 1 Wilson, John L.
- 1 Wilson, Mrs. Warren R.
- 2 Wright, Mrs. Chester
- 3 Wyckoff, Mr. & Mrs. Maurice I.

### Y

- 1 Yenzen, Mack

### Z

- 4 Zitnik, Frank
- 2 Zweifel, Bernice
- 2 Zweifel, Robert

## IFYE ALUMNI AND HOST FAMILY CAMPAIGN—1962

Amount—\$1,320.00

### A

- 4 Adams, Mrs. P. E.
- 3 Adams Business Forms, Inc.
- 3 Anderson, Mrs. Bert H.
- 1 Angel, Mr. & Mrs. John

### B

- 1 Babbitt, Dale E.
- 1 Banman, Alvin & Florence
- 1 Barnes, John H.
- 2 Barr, Mr. & Mrs. Bryan
- 3 Barrier, Max
- 1 Bates, Kay L.
- 1 Becker, LaVern
- 1 Blue Stem Cow Belles
- 1 Boyce, Hugh & Family
- 1 Brant, John
- 4 Brehm, Merle
- 1 Brooks, Blanche
- 1 Busy Bee Jr. 4-H, Hodgeman Co.

### C

- 3 Cauble, Mr. & Mrs. Dean
- 1 Cherokee County 4-H Council
- 3 Childs, Orville
- 1 Coen, Floyd O.
- 1 Cooper, Mr. & Mrs. Ted
- 1 Cox, Dana D.

### D

- 4 DeLange, Verdan Family
- 4 Dietz, Henry
- 4 Douthit, Jim W.
- 1 Dressler, H. A.
- 3 Droge, Mr. & Mrs. Leslie A.
- 3 Dyck, Mr. & Mrs. Cornie E.
- 1 Dyck, Evelyn

### E

- 4 Eklund, Carl
- 1 Emporia Ele. & Feed Co.
- 1 Elliott, Wilfred
- 4 Engle, Joan
- 3 Entrikin, Mr. & Mrs. Frank
- 1 Etling, Calvin S.

### F

- 4 Faidley, Mrs. Karl
- 4 Faidley, Paul
- 4 Fauss, Mr. & Mrs. R. L.
- 2 Flora, Leonard
- 4 Fooshee, Mr. & Mrs. Claude
- 2 Funston, Floyd H.

### G

- 2 Galle, Dale S.
- 4 Garvey Foundation

- 4 Gaumer, Wesley
- 3 Glasco Lions Club
- 2 Goodfellow, Mr. & Mrs. Don
- 2 Goyen, Lester
- 1 Graber, Clarence J.
- 4 Greene, Mr. & Mrs. J. H.
- 2 Griffin, Mr. & Mrs. James A.
- 1 Gruver, Clifford
- 3 Gruver, Thomas A.
- 4 Guthrie, Mrs. Charles W.

### H

- 2 Hall, Howard
- 1 Hamon, Mary Jo Mauler
- 4 Harper, Mr. & Mrs. Fred
- 1 Harter, Eugene H.
- 4 Haskin, Glenn
- 2 Haskin, Mr. & Mrs. Sam
- 3 Haun, Mr. & Mrs. Harold
- 4 Hayse, Mr. & Mrs. Nathan B.
- 3 Hazen, Mr. & Mrs. W. E.
- 1 Herring, Mr. & Mrs. Roy

### J

- 4 Jackson, S. Lester
- 2 Jansonius, William
- 1 Johnson Co. Home Ec. Advisory Council
- 2 Johnson, Raymond E.
- 4 Jones, Mr. & Mrs. Eugene

### N

- 1 Jordan, Dr. & Mrs. Frank
- 1 Judy, Hal E.
- 1 Judy, Mr. & Mrs. Stacy E.

### K

- 1 Kansas Soya Products
- 1 Keller, E. J.
- 3 Kilbourn, Mrs. Robert
- 3 Kleymann, Mr. & Mrs. Fred
- 3 Knappenberger, Joe
- 2 Knoche, Fred

### L

- 1 Laidig, Janice
- 2 Laidig, Mr. & Mrs. Floyd
- 2 LaRosh, Mr. & Mrs. W. I.
- 4 Lindholm, Mr. & Mrs. E. C.
- 1 Loyal Neighbors HDU, Franklin Co.

### M

- 3 McDaniel, Harry
- 4 Miksch, Charles D.
- 4 Miksch, Mr. & Mrs. Forrest E.
- 2 Miller, Leroy Family
- 2 Munger, Leonard
- 2 Musil, Mr. & Mrs. Elmer R.

### P

- 2 Patton, Mrs. Bruce
- 1 Pearson, Mr. & Mrs. H. S.
- 1 Penner, Alvin
- 2 Penner, Willis D.
- 1 Phillips Co. Farm Bureau

### R

- 2 Rainbow 4-H Club, Franklin Co.
- 4 Raleigh, Francis J.
- 4 Ramsey, Mr. & Mrs. Glen
- 1 Reimer, Dick
- 4 Remy, Gerald
- 4 Reusser, Mr. & Mrs. Rae



- 2 Riat, Larry D.  
1 Rodgers, Mr. & Mrs. A. E.  
1 Rodgers, John Ex  
4 Rumsey, George  
4 Rusk, Mr. & Mrs. Ray  
4 Russell, M. L.
- S
- 4 Salyer, Mr. & Mrs. Paul  
1 Samuelson, Armin  
3 Schlesener, Mr. & Mrs. Norman  
3 Schultz, Dewey  
2 Schultz, Mrs. Ron  
2 Setter, Andrew  
2 Shaffer, Mrs. Lola E.  
3 Sliferette HDU, Crawford Co.  
4 Smerchek, Mr. & Mrs. F. J.

- 4 Snook, Dr. R. R.  
3 Sourk, Mr. & Mrs. Ward  
2 Southerland, Charles F.  
1 Steele, Floyd O.  
1 Steffens, Pat DeLange  
1 Stockton Production Credit  
1 Sunflower 4-H, Russell Co.
- T
- 1 Thomas County Advisory Council  
2 Thompson, Robert E.  
2 Truax, Mr. & Mrs. L. L.  
3 Tuley, Mr. & Mrs. Kenneth M.  
3 Tuma, Harold  
4 Tuttle, Floyd & Mary

- U
- 1 Union Youth Fellowship, Clay Center  
1 United Commercial Travellers
- V
- 1 VanSickle, Mr. & Mrs. Vincent  
3 VanSkeie, Mr. & Mrs. Harry  
1 Verdigris Valley Community Club  
1 Vincent, Mrs. Marion  
1 Voights, Hadley H.
- W
- 4 Walker, Mr. & Mrs. Howard R.

- 2 Wampler, Donna Childs  
2 Wegner, Giltner  
2 Wellman, Mr. & Mrs. Edward  
1 White, Wilbur W.  
1 Wide Awake 4-H, Lincoln County  
3 Wilbur, George R.  
3 Wilcoxon, Jesse I.  
2 Williams, C. M.
- Y
- 3 Yoder, Mr. & Mrs. Royal F.
- Z
- 2 Zweygardt, Gus

- RILEY COUNTY
- 4 Bonfire 4-H  
3 College Hill 4-H  
3 Happy Go Lucky 4-H  
3 Lucky 4-H  
3 Pillsbury 4-H  
3 Wildcat 4-H  
3 Zeandale 4-H
- ROOKS COUNTY
- 3 Busy Bee 4-H  
7 4W 4-H  
3 Palco 4-H  
3 Star 4-H
- RUSSELL COUNTY
- 2 Smoky Valley 4-H  
1 Sunflower 4-H  
2 Zweifel, Barbara  
2 Zweifel, Bobby  
2 Zweifel, Peggy
- SEDGWICK COUNTY
- 4 Andover Aces 4-H  
2 Bentley Eagle 4-H  
2 Clonmel 4-H  
4 Delano 4-H

- 4 Derby 4-H  
1 Eastridge 4-H  
3 Enterprise Eagles 4-H  
6 Furley 4-H  
3 Goddard 4-H  
3 Haysville 4-H  
3 Hilary 4-H  
7 Kechi 4-H  
3 Mt. Hope 4-H  
3 Mulvane 4-H  
3 Ninneseah Valley 4-H  
1 Oatville 4-H  
2 Ripley Reapers 4-H  
3 Riverside 4-H  
5 Riverview 4-H  
3 Rolling Hills 4-H  
1 Schulte 4-H  
4 Sunnydale 4-H  
2 Valley Victors 4-H
- SEWARD COUNTY
- 1 Kismet Tip-Top 4-H
- SHAWNEE COUNTY
- 7 Happy Homemakers HDU  
6 Highlander 4-H  
5 Kaw Valley 4-H  
6 Oakland Go-Getters 4-H

- 6 Pleasant Hill 4-H  
6 Rochester Heights 4-H  
5 Shawnee Jayhawkers 4-H  
5 Wanamaker 4-H
- SHERIDAN COUNTY
- 1 Hi-Plains 4-H
- SHERMAN COUNTY
- 1 Beaver Valley 4-H  
4 Glendale Livewires 4-H
- SMITH COUNTY
- 2 Smith County 4-H Council
- STANTON COUNTY
- 3 Big Bow 4-H  
1 Big Bow HDU
- STEVENS COUNTY
- 3 Moscow Zippers 4-H
- SUMNER COUNTY
- 4 Cardinal 4-H  
4 Clippers 4-H  
4 Perth 4-H

- 4 Sunflower 4-H  
4 20th Malaby Pushers 4-H
- THOMAS COUNTY
- 4 Thomas County 4-H Council
- TREGO COUNTY
- 2 Pleasant Valley 4-H
- WABAUNSEE COUNTY
- 2 Hinerville 4-H  
1 Maple Hill Hustlers 4-H
- WALLACE COUNTY
- 1 Smoky Valley 4-H
- WASHINGTON CO.
- 1 Washington Co. 4-H Council
- WILSON COUNTY
- 2 Skyrocket 4-H  
2 Verdigris Valley 4-H
- WOODSON COUNTY
- 3 Woodson County 4-H Council
- WYANDOTTE COUNTY
- 5 Hazel Grove 4-H  
6 Horaniff Hustlers 4-H

## EXTENSION 4-H AND HOME ECONOMICS

- ANDERSON COUNTY
- 4 Anderson County 4-H Council  
1 Bush City Boosters 4-H  
1 Cherry Mound 4-H  
3 Colony Hustlers 4-H  
1 Dynamite 4-H  
1 Flying W 4-H  
1 Lucky Diamond 4-H  
2 Lucky 13 4-H  
1 Seekers Not Slackers 4-H  
1 Selma Flaming Arrow 4-H  
1 Silver Arrow 4-H  
1 Star Shooting 4-H
- ATCHINSON COUNTY
- 1 Effingham Community 4-H
- BARTON COUNTY
- 3 Barton County 4-H Council
- BROWN COUNTY
- 4 Robinson Meadowlark 4-H
- BUTLER COUNTY
- 4 Butler County 4-H Council  
5 Chelsea Be-Square 4-H  
7 El Dorado Boosters 4-H  
6 Elm Creek Emeralds 4-H  
1 Green Acres 4-H  
6 Hickory Helpers 4-H  
1 Maple Creek HDU  
1 Rock Creek 4-H
- CHASE COUNTY
- 3 Bazaar 4-H  
1 Cedar Point 4-H  
4 Chase County 4-H Council  
2 C. W. F. 4-H  
2 Emerald 4-H  
2 Flint Hills 4-H  
2 Gladstone 4-H  
2 Lucky 13 4-H  
1 Southeast Chase HDU  
2 Toledo 4-H
- CHEROKEE COUNTY
- 1 Helmic Gingersnaps 4-H
- CLAY COUNTY
- 2 Clay County 4-H Council  
3 Industry Hustlers 4-H
- CLOUD COUNTY
- 3 Cloud County 4-H Council  
2 Elk Creek 4-H  
5 Sunny 4-H
- DECATUR COUNTY
- 2 Busy Bee HDU  
1 Decatur County Alumni Committee  
2 Decatur County 4-H Council
- DICKINSON COUNTY
- 1 Abilene Aggies 4-H
- DOUGLAS COUNTY
- 3 Douglas County 4-H Clubs  
5 Kanwaka 4-H  
3 Marion Boosters 4-H  
3 Stull 4-H  
3 Sunflower 4-H  
3 Vinland Valley 4-H
- EDWARDS COUNTY
- 1 Better Homes HDU  
6 Edwards County 4-H Council  
1 Happy Clover 4-H  
1 Jayhawk HDU  
2 Kinsley Livewires 4-H  
1 Lucky Clover 4-H  
2 Northern Star 4-H  
4 Sunflower 4-H  
1 Wayne Workers 4-H

- ELLIS COUNTY
- 4 Good Hope 4-H  
5 Winner's 4-H
- ELLSWORTH COUNTY
- 5 Ellsworth County 4-H Council
- FINNEY COUNTY
- 2 Beacon Boosters 4-H  
2 Finney County 4-H Council  
2 Sherlock Strivers 4-H  
2 Wide-Awake 4-H
- FORD COUNTY
- 2 D. I. Y. Jrs. 4-H
- FRANKLIN COUNTY
- 3 Pottawatomie Valley 4-H  
5 Rainbow 4-H  
2 Shining Star 4-H  
2 Victory Workers 4-H
- GEARY COUNTY
- 1 Geary County 4-H Clubs
- GOVE COUNTY
- 2 Gove County 4-H Council  
1 Hackberry 4-H
- GRAHAM COUNTY
- 4 Graham County 4-H Council
- GRAY COUNTY
- 1 Sky High 4-H
- HARVEY COUNTY
- 1 Campus Champions 4-H  
1 Newton City Slickers 4-H
- HASKELL COUNTY
- 2 Colusa 4-Getters 4-H
- HODGEMAN COUNTY
- 2 Busy Bee Jrs. 4-H  
3 Pawnee Valley Boosters 4-H
- JACKSON COUNTY
- 2 Mayetta Mustangs 4-H
- JEFFERSON COUNTY
- 6 Grantville 4-H
- JEWELL COUNTY
- 1 Buffalo Valley 4-H  
1 Formoso Willing Workers 4-H  
1 Harrison Highlights 4-H  
1 Mankato Eager Beavers 4-H  
1 Montrose 4-Leaf Clover 4-H  
1 North Branch Busy Bee 4-H  
1 Odessa 4-H  
1 Randall Cheerful Chiefs 4-H  
1 Webber Wide Awake 4-H  
1 Whittemound Builders 4-H  
1 White Rock Hustlers 4-H
- JOHNSON COUNTY
- 5 Zion Zippers 4-H
- LEAVENWORTH CO.
- 1 Livewires 4-H  
2 Nine Mile 4-H
- LINCOLN COUNTY
- 4 Lincoln Sunrise 4-H  
4 Sylvan Hustlers 4-H  
3 Wide-A-Wake 4-H
- LOGAN COUNTY
- 1 Good Luck 4-H  
2 Logan County 4-H Council
- LYON COUNTY
- 2 Admire 4-H  
3 Bethel Boosters 4-H

- 1 Busy Bees 4-H  
4 Channess 4-H  
3 Duck Creek Pals 4-H  
4 Frost 4-H  
3 Logan Avenue 4-H  
2 Merry Mixers 4-H  
3 Model Boosters 4-H  
2 Reading 4-H  
2 Rinker 4-H  
3 Sunnyside 4-H  
1 Whittier 4-H
- MCPHERSON COUNTY
- 2 Andover 4-H  
3 Better Farms 4-H  
2 Cloverleaf 4-H  
2 Conway 4-H  
2 Cottonwood 4-H  
2 Empire Best 4-H  
2 Friendly Fremont 4-H  
3 Golden Opportunity 4-H  
2 Good Luck 4-H  
2 Green Valley 4-H  
2 Larson, Robert A.  
2 Lindsborg Golden '60 4-H  
4 Livewire 4-H  
4 Lucky Leaf 4-H  
2 Roxbury Hustlers 4-H  
2 Smoky Valley 4-H  
2 Sunflower 4-H
- MARION COUNTY
- 6 Happy Hustlers 4-H  
3 Lincolnville Wide-Awake 4-H  
1 Lucky Leaf 4-H  
5 Marion County 4-H Council  
1 Marion Go-Getters 4-H  
7 Peabody Hustlers 4-H  
6 Pilsen Lucky 13 4-H  
6 Ramona Red Chiefs 4-H  
5 Summit Boosters 4-H  
7 Tampa Triple T's 4-H
- MEADE COUNTY
- 1 Meade County 4-H Council  
1 Plains Livewires 4-H  
1 Town and Country 4-H
- MITCHELL COUNTY
- 3 Asherville 4-H  
3 Fairview 4-H  
2 Future Citizens 4-H  
1 Hunter 4-H  
2 Jolly Workers 4-H  
2 Mitchell County 4-H Council  
3 Pleasant View 4-H  
2 Tipton 4-H  
2 Walnut Creek 4-H  
2 West Beloit 4-H
- MORRIS COUNTY
- 3 Big John 4-H  
3 Burdick Hustlers 4-H  
6 Delavan 4-H  
3 Dwight Sunflowers 4-H  
3 Flint Hills 4-H  
2 Four Mile 4-H  
2 Morris County 4-H Council  
5 Neosho Valley 4-H  
2 Parkerville Progress 4-H  
3 Willing Workers 4-H  
3 Wilsey Busy Bees 4-H
- NEMAHA COUNTY
- 1 Centralia Aces 4-H
- NEOSHO COUNTY
- 3 Best Yet 4-H  
2 Bob White Flyers 4-H  
2 Galesburg 4-H  
2 Hillcrest 4-H  
3 Jolly Go Getters 4-H  
2 Jolly Jayhawkers 4-H  
4 Lucky 13 4-H  
2 Meadowlark 4-H  
2 Neosho County 4-H Council  
2 Neosho Valley Busy Bees 4-H  
2 Prairie Schooners 4-H  
2 Shamrock 4-H

- 2 Up and Atom 4-H  
2 Wide Awake 4-H  
2 Willing Workers 4-H
- NESS COUNTY
- 5 Ransom Jr. Farmers 4-H
- OSAGE COUNTY
- 2 Burlingame 4-H  
4 Busy Bee 4-H  
8 Carbondale Rustlers 4-H  
3 Fairfax 4-H  
2 Full O'Pep 4-H  
2 Lyndon Leaders 4-H  
2 Melvern Jr. Highlines 4-H  
2 North Osage 4-H  
2 Sunny Side 4-H  
1 Vassar Blue Ribbon 4-H
- OSBORNE COUNTY
- 1 Penn 4-H  
1 Solomon Valley 4-H
- OTTAWA COUNTY
- 2 Double R 4-H  
3 Ottawa County 4-H Council  
2 Pleasant Valley 4-H  
6 Rockhill 4-H
- PAWNEE COUNTY
- 2 Conkling 4-H
- PHILLIPS COUNTY
- 2 Deer Creek 4-H
- POTTAWATOMIE CO.
- 8 Blackjack 4-H  
1 Flush Community 4-H  
2 Lucky 'Leven 4-H  
3 Olsburg Boosters 4-H  
5 Tannerville 4-H  
4 Triple V 4-H  
4 Victory 4-H
- RENO COUNTY
- 1 Huntville Helpers 4-H  
5 Langdon 4-H  
1 Mitchell 4-H  
1 Partridge 4-H  
1 Plevna Sunflower 4-H  
1 Prosperity 4-H  
1 Reno 25 4-H  
3 Reno County 4-H Council  
1 Thomadora 4-H  
2 Turon 4-H  
1 Union Valley 4-H  
4 Walnut Willing Workers 4-H
- RICE COUNTY
- 1 Atlanta Achievers HDU  
1 Big Four HDU  
3 Bon Ame 4-H  
3 Bushton Boosters 4-H  
1 Bushton Home Arts HDU  
3 Busy Homemakers HDU  
1 Chase HDU  
2 Country Pals 4-H  
1 Ebenezer HDU  
5 Fairplay 4-H  
1 Farmineers HDU  
2 Jolly Aldenites 4-H  
1 Loyal Lyons HDU  
3 Lyons Conquerors 4-H  
2 Mighty Mitchell 4-H  
1 Mitchell HDU  
1 Oakland Homemakers HDU  
1 Pleasant View 4-H  
1 Raymond Homemakers HDU  
1 Raymond Lucky 4's 4-H  
3 Rice County 4-H Council  
1 Roaring Lions 4-H  
1 Sterling HDU  
1 Sunshine HDU  
1 Triumph HDU  
3 Valley Bluebirds 4-H  
2 Valley Homemakers HDU  
1 Willing To Learn HDU  
1 Willing Works HDU  
1 Worthwhile HDU

## FRIENDS OF 4-H

- A
- 1 Adams, Mabel C.  
1 Albright, Penrose S.  
2 American Dairy Ass'n of Kansas  
3 Andale Farmers Coop. Co.  
4 Anderson Cattle Company  
1 Anderson, George H.  
1 Ash, C. E.  
1 Augusta State Bank
- B
- 1 Baker, Louis A.  
1 Balthrop, C.  
1 Barr, Eula M.  
1 Bastian, Homer C.  
1 Beardmore, H. K.  
1 Bechtel, Mr. & Mrs. Curtis E.  
1 Becker, D. H.  
1 Bertholf, W. H.  
3 Berwick Coop. Oil Co.  
1 Bever, Ellis D.  
1 Blaes, Emmet A.  
1 Blood, Mr. & Mrs. Clarence P.  
8 Bly, Erna  
1 Bowersox Mills & Power Co.  
1 Bradley Bros.  
1 Braun, S. M.  
1 Broadway, P. C.  
2 Brown, Mr. & Mrs. Ralph E.  
1 Burlington Coop. Ass'n, Ok.  
1 Busset, Glenn M.  
2 Buzick, H. J., Jr.  
1 Buzick, W. A.
- C
- 1 Capote, Truman  
1 Capitol Fed. Sav. & Loan Ass'n, Lawrence  
1 Carrier Mill & Ele. Co., Ok.  
2 Chase Coop. Ele. Mill & Merc. Union  
1 Chickasha PCA, Ok.  
1 Chapman, William  
1 Christy, W. Glen  
9 Cities Service Oil Company  
1 Clinton PCA, Ok.  
1 Clutter, A. E.  
1 Clutter, C. L.  
1 Clutter, James  
1 C. M. S. Elec. Coop., Meade  
2 Consumers Cooperative Ass'n  
1 Coombs, Eugene G.  
5 Coombs Poultry Farm  
2 Coop. Farm Chemicals Ass'n  
2 Coop. Grain Dealers Union, Sublette  
1 Coop. Grain & Supply Co., Bazine  
2 Cramm, R. W.  
1 Crawford, Max  
1 Crescent Coop. Ass'n, Ok.  
8 Critzer, W. Dale
- D
- 2 Darby, Edith & Harry Foundation  
1 Davis, Charles J.  
4 Dean, W. Laird  
1 Deems Farm Equip.  
1 Derby Grain, Inc.  
2 Dewell, Mr. & Mrs. Carl V.  
2 DeWitt, Durward G.  
1 Dickinson, Annabelle J.  
1 Dixon, Mrs. R. H.  
3 Dodge City Coop. Exchg.  
1 Dodson Mfg. Co.  
1 Dold, F. L.  
1 Dondlinger, Martin D.  
1 Douglas Co. State Bank  
1 Drummond Coop. Ele. Co., Ok.
- E
- 3 Eby, Martin K. Construction Co.  
1 Enid PCA, Ok.  
1 Estep, Roger W.  
1 Evans, Wilbur

- F
- 1 Farmers Alliance Mutual Ins. Co.  
1 Farmers Coop. Ass'n, Alva, Ok.  
3 Farmers Coop., Lakin  
3 Farmers Coop. Ass'n, Manhattan  
1 Farmers Coop. Ass'n, Vici, Ok.  
2 Farmers Coop. Comm. Co., Hutchinson  
1 Farmers Coop. Co., Mooreland, Ok.  
1 Farmers Coop. Grain Dealers Ass'n, Enid, Ok.  
1 Farmers Coop. Grain & Merc. Co., Lehigh  
1 Farmers Coop. Ele Co., Douglas, Ok.  
1 Farmers Coop. Ele & Supply Co., Newkirk, Ok.  
1 Farmers Ele. Co., Ames, Ok.  
1 Farmers Grain Co., Kremlin, Ok.  
1 Farmers Union Coop., Collinsville, Ok.  
2 Farmers Union Coop. Mktg. Ass'n, Kansas City, Mo.  
9 Federal Cartridge Corporation  
1 Federal Land Bank Ass'n, Herington  
2 Federal Intermediate Credit Bank, Wichita  
1 Federal Land Bank Ass'n, Ness City  
2 Federal Land Bank, Wichita  
1 First Nat'l Bank, Lawrence  
1 Floyd, Mrs. R. D.  
1 Foley, Paul  
9 Folger & Company, J. A.  
1 Ford Coop. Exchange  
1 Frontier Chemical Company
- G
- 3 Garden City Coop. Equity Exchange  
3 Garden City PCA  
1 Gish, Clarence L.  
3 Greeley Co. Coop. Exchg.  
1 Greiner-Fifield  
1 Lithographing Co.  
1 Griffith, Paul W.  
1 Guthrie, Gersilda
- H
- 1 Hague, Mr. & Mrs. Lyle L., Ok.  
1 Haley, H. J.  
1 Hall, F. G.  
1 Hallmark Cards, Lawrence  
2 Hallmark Educational Fnd.  
1 Harms, Edwin M.  
1 Harris & Sons  
1 Harris, A. Eugene  
2 Harry Darby Foundation  
1 Hay, L. C.  
8 Hicks, Mr. & Mrs. W. H.  
1 Hinkle Oil Company  
1 Hodgson, Mr. & Mrs. Arthur C.  
9 Holstein-Friesian Ass'n of Kansas  
1 Hoover, Lawrence J.  
2 Hope, Clifford R.  
1 Hope, Haag, Saffels & Hope  
1 Horner, Harry  
4 Houghton, James H.  
1 Humphrey, Henry A.  
1 Hunter, Dewey  
1 Hydro Coop. Ass'n, Hydro, Ok.
- I
- 1 Ingle, Donald W.  
9 International Harvester Co.  
1 Ise, Frank H.  
2 Ives, H. M. & Sons
- J
- 9 Jellison, A. D.  
2 Johnson Coop. Grain Co.  
8 Johnson, J. Harold

- K
- 1 Kansas Ass'n of Wheat Growers, Dodge City  
9 Kansas Ayrshire Breeders Ass'n  
9 Kansas Bankers Association  
7 Kansas Brown Swiss Breeders Association  
9 Kansas City Power & Light Company  
9 KCREA—Electric Power Suppliers of Kansas  
6 Kansas Farm Bureau & Ins. Services  
9 Kansas Gas & Electric Co.  
1 Kansas Milking Shorthorn Society  
9 Kansas Power & Light Co.  
1 Kansas Public Service Co., Lawrence  
4 Kansas 7-Up Bottlers  
8 Kansas Turkey Federation  
2 Kelly, Art  
1 Kelley, Forrest L.  
1 Kellfisher Coop. Ele. Ass'n, Ok.  
Kissick Memorial  
1 Klinger, Dwight D.  
1 Koch, Fred  
1 Krasser, Elsie  
1 Kuhn Truck & Tractor Co.  
1 Kuhn, Walter
- L
- 1 Laing, Verne M.  
1 Lambe, Claude R.  
1 Lauck, D. R.  
1 Lawrence, H. W.  
1 Lawrence National Bank  
1 Lawrence Sanitary Milk & Ice Cream Co.  
1 Lawton Coop. Ass'n, Ok.  
1 Laybourn, Mr. & Mrs. L. A.  
1 Lear, J. T.  
1 Lester, Bertrand M., Jr.  
1 Lindholm, Howard
- M
- 1 McClure, Jay H.  
1 Major Co. Coop. Ele Ass'n, Orienta, Ok.  
1 Marcus, Sam  
1 Martin, Ora V.  
1 Meeker, George L.  
1 Meeker, Mr. & Mrs. G. W.  
1 Midwest Wool Mktg. Coop., Kansas City, Mo.  
1 Miller, Ralph H.  
1 Mineral Prod. Div., FMC Corp.  
4 Morawitz, Mr. & Mrs. Carl  
1 Morris, Lester L.  
1 Murfin, I. W.  
1 Muirhead, W. R. & Ollie
- N
- 1 Nath, E. W.  
8 National Dairy Products Corp.  
1 National Farm Org., Lawrence  
3 Natrich Mills  
1 Nelson, Mr. & Mrs. Harry  
1 Norby, Oscar W.  
2 N. C. K. Elec. Coop.  
2 North Central Kansas PCA
- O
- 1 Oakes, E. W.  
1 Oberg, Frank O.
- P
- 1 Peabody Coop. Equity Exchange  
1 Perryton Equity Exchg., Perryton, Tex.  
1 Petrack, Mr. & Mrs. Julius  
1 Phifer Motor Company  
2 Powers, George B.  
1 Price Candy Company

- 1 Jones, Charles E.  
3 Jones, Harold E.
- R
- 1 Radcliff, B. M.  
1 Rawlins, R. L.  
1 Red Oak Farmers Coop., Perry, Ok.  
1 Reed, Elmer W.  
2 Regnier, Roger E.  
1 Richardson, Edw. L.  
1 Rieman, Shaw Webb  
1 Rittenoure, Lawrence W.  
1 Robbins, Richard W.  
1 Ross, Don C.  
3 Ross, F. B.  
1 Rural Dance Association  
1 Ruth, Vila
- S
- 9 Safeway Stores, Inc.  
3 Safeway Stores, Inc.—Egg Dept.  
1 Salter, Tom  
1 Salyer, Ivan P.  
1 Sargent, Mr. & Mrs. O. W.  
1 Sauer-Lygrisse  
9 Sears-Roebuck Foundation  
8 Seymour Foods, Inc.  
3 Shawver, E. B.  
1 Shawver, E. B., Jr.  
6 Shepler, Harry  
1 Shrewder, R. V.  
5 Simons, Dolph  
1 Simpson, G. M.  
3 Southwestern Bell Telephone Co.  
1 Soy-Rich Products Foundation  
2 Springdale Stock Farm  
1 Springer, V. C.  
9 Standard Oil Foundation  
3 Starlight Literary Club  
1 Stephens, P. H.  
1 Strauss, Cecelia R.  
4 Sunflower Tip Top Dairies  
1 Sutcliffe, J. M.  
5 Swift and Company, Salina  
1 Swigart, Mr. & Mrs. Ben
- T
- 1 Taylor, J. Edward  
1 Theo. A. Hiebert Ranch
- U
- 1 Union Equity Coop. Exchange, Enid, Okla.
- V
- 1 Veatch, N. T.  
1 Voss, J. H.  
1 Voth, George, Jr.
- W
- 1 Wallace, Dwane L.  
1 Walling, Vernon  
6 Wallingford Foundation  
1 Walton, Eugene  
1 Ware, E. F.  
9 Watkins Company, J. R.  
9 Weatherwax, Lester F.  
1 Webber Supply Co.  
1 Weller, Bernard E.  
1 Welshimer, W. S.  
9 Western Light & Telephone  
3 Wichita Bank of Co-ops.  
1 White, Wilbur  
1 Williams, Dick  
1 Williams, Odd  
1 Williams, Skipper  
9 Wilson, Fred D.  
2 Woods, David S.  
1 Woodward Coop. Ele. Co., Ok.  
1 Woodward P. C. A., Ok.  
7 Woolworth Company, F. W.
- Z
- 1 Zavatsky, J. B.



**Investments in 4-H  
Youth Pay Permanent Dividends  
for the Good of All Mankind.**

Happily, the 1962 Honor Roll of donors to the Kansas 4-H Foundation is eloquent proof that more and more people have responded to the dynamic spirit of the 4-H program. This constantly growing list includes 4-H members and their families, 4-H alumni and friends of 4-H—all with a common awareness of the importance of this tremendously vital program to Kansas youth. Every contribution helps carry forward the supremely worthwhile activities of 4-H Club work—all influential in helping Kansas youth develop as increasingly well-trained, capable, progressive-minded and self-reliant citizens. To every individual, organization and firm on this Honor Roll, sincere thanks and congratulations on a wisely-contributed gift!

The Kansas 4-H Foundation, Inc., established in 1952, is supported entirely by private sources like those listed on the following pages. Funds received finance the Foundation's

**Five-Point Program:**

- (1) **SERVES 4-H MEMBERS** by budgeting more than \$17,000 annually for trips, awards and incentives;
- (2) **SERVES 4-H LEADERS** through providing special leader-training in soil-, water- and wildlife-conservation, electrical, health, automotive and tractor projects and by offering scholarships for adult leaders' conferences;
- (3) **DEVELOPS AND OPERATES ROCK SPRINGS RANCH**, state leadership center and a nationally known conference facility;
- (4) **STRENGTHENS INTERNATIONAL UNDERSTANDING** by providing funds to permit travel and participation by outstanding delegates to the International Farm Youth Exchange program;
- (5) **ENCOURAGES PARENT COOPERATION** in extending fullest educational advantages to their children by taking part in 4-H Club work.





## *The Birthday*

By  
Margaret Jacobsmeyer

"Hi Mom—I'm home," Larry exclaimed.

Mrs. Fletcher nodded and smiled and continued her telephone conversation.

Larry made a fast trip through the house, then he made a second slower trip. Everything looked the same as usual. Disappointed he returned to the kitchen. His mother was still on the phone.

"That's all right," she was saying, "I have time—it's Larry's birthday so we're having fried chicken for supper."

Larry's face brightened, but it clouded again as his mother continued.

"No, we aren't having a party—this is Early Bird's night and Mike is giving a demonstration . . . yes, it's too bad it falls on the same day, but Larry's being very grown up about it . . . he's eight . . . I know—I can't believe it either—it seems like only yesterday that he was a baby . . ."

Larry hurried to his room. It made him feel funny when grownups talked like that. He hadn't

been a baby for as long as he could remember. He could remember being little. There was the time he fell out of the tree swing and hit his head on the wagon Mike and Lyn forgot to put away. He could still remember crying and how the whole family gathered around to comfort him. He felt like crying now. Here it was his birthday and no sign of a cake or a present. It was just like any other day. He had known his birthday would be on the same day as the 4-H meeting, and it was all right with him that Mike wanted the whole family to be there for his demonstration, but he didn't think his birthday would be neglected like this.

"Larry," his mother called.

"I'm in my room." He quickly started to change his clothes.

"That was Mrs. MacDougal on the phone. She has an old antique organ she wants us to pick up. The way things are coming in for the auction we



might get that new Fair Building. Are you going out to play?"

Larry shook his head. "I think I'll go down to the barn."

"Would you like a glass of milk first?"

"No—I'm not hungry."

His mother smiled. "I know—you want to have plenty of room for that fried chicken."

Larry managed a smile and nodded, but he didn't see how he'd be able to eat a bite.

Jinx was waiting for him at the back door with a stick between his teeth, but Larry passed him without a word.

The barn was dim and cool after the warm Spring sunshine but Larry didn't mind. He wanted to be alone and the barn was empty—even the cats had deserted it to soak up some of the welcome sun. He sat down on a bale of hay and stared at the floor. Everything was quiet, then all at once Jinx started barking. Larry listened for a moment. It was the bark Jinx used to greet someone he knew. It could be Mike or Lyn coming home. Or maybe it was Jan Perkins wanting to play with him. He didn't want to see anybody—especially not her. She was partly to blame that his birthday was such a letdown. Ever since he could remember he had thought that when he was eight he could join 4-H, and she had to be the one to tell him that you had to be eight by the first of January to be a member. He could still feel himself getting red in the face when she told everybody that he thought he'd get to join. Old know-it-all—just because she was a year older than he—she hadn't even heard of 4-H before she became their neighbor. She was the last person he wanted to see. But his mother knew he was here. He looked around. There were still bales of hay stored in the loft. He could climb up the ladder and hide, and if Jan came she'd think he changed his mind about coming to the barn and leave. He had to hurry though. He scrambled up the ladder and climbed over the bales. They were stacked six deep but there was enough room to squeeze in between the last bale and the wall. The dust from the loft and the hay tickled his nose and made him sneeze. He strained his ears for any sounds from below and held his fingers tightly against his nose so he wouldn't sneeze any more. He remained quiet for several minutes listening to the little rustling sounds of the hay loft. Then he heard something else. It sounded like the barn door. He waited tensely but everything was quiet again.

"Larry?"

The unexpected voice made him jump. It was Jan. Well let her call.

"Larry—are you in here?"

He heard her walking around. She called several more times, then the barn door closed and he was alone again. He had a sudden idea. Why not just stay here! Then they'd be sorry they hadn't treated him better, and when they found him they'd make a big fuss over him. He could see them all gathered around him and comforting him. He was surprised how he could picture it all so clearly. Then he remembered. It had happened—a long time ago when he was little and

fell out of the swing. He felt a feeling of shock and the first "H" of the 4-H Pledge flashed into his mind.

**I pledge my head to clearer thinking.**

He had never quite understood what that meant until now. He had to get back to the house. If Jan told his mother he wasn't in the barn she'd be worried.

He was half way down the ladder when Lyn and Mike rushed into the barn.

"Hey, come on," Lyn called, "this is no place to celebrate your birthday."

"I'll race you up to the house," Mike challenged.

Larry dashed through the door before the other two knew what was happening.

"No fair," Mike puffed when he got to the house, "you had a head start."

But Larry knew Mike could have beaten him.

"Dad's home," Lyn said, "and I think I saw something on the kitchen table that might belong to you."

Larry made for the kitchen where his eyes took in the decorated cake and the packages in one glance.

"Mrs. Perkins decorated the cake," his mother said, "and Jan brought it over."

"That's supposed to be your house," Jan explained.

She sounded almost shy Larry thought. "It's swell," he said, "thanks and thank your Mom."

"Aren't you going to open your presents?" his father asked.

"Yes Sir-r-r," Larry declared and started undoing a square-shaped package. "Oh boy—a camera!"

"Now maybe you'll leave mine alone," Mike said.

"Open the other package," everyone urged.

"It feels like something to wear." He lifted out a white sweatshirt decorated with the 4-H emblem and the words, "Early Birds". Larry looked puzzled. "I don't get it," he told the smiling faces around him.

"Simple—" Mike said, "—Jan tells everybody you think you get to join 4-H when you're eight—it isn't hard for us to see that you're disappointed to say the least, so we act—we talk to Mr. Anderson who checks with the Extension Office which says we can take you into our club since Lyn and I are members—so Jan here is responsible for getting the machinery rolling and you are an Early Bird as of tonight."

"WOW-EEE!" Larry shouted.

"Seriously though—" Mike added, "Mr. Anderson's going to talk to you and tell you what you can take part in—I don't know if you'll get to have a project yet—"

"That's all right," Larry said. "When I can have a project I'll pick photography and I can start practicing now—come on outside Jan—I'll take your picture."

"Hmmm—" Mr. Fletcher said thoughtfully as Jan and Larry went out the door, "—I had the feeling that Larry didn't care for Jan."

Mrs. Fletcher smiled. "He has sort of given that impression, but I believe something happened to make him change his mind."





Roberta Overall of Sumner county is modeling her new 4-H uniform. She has chosen the roll-up sleeve version with the convertible collar.

## New Look For Girls 4-H Uniforms

Have you seen the "new look" in the girls 4-H uniform? It is now two-piece with several blouse versions.

The fabric is the same green and white stripe cotton coravan material. Girls may choose from the blouse style worn by Roberta (left) with a convertible collar or a collarless style.

The blouse may be made with roll-up sleeves or sleeveless. This makes the uniform very versatile.

The softly pleated skirt is comfortable to wear and very feminine in appearance.

Dorothy Reeves (right), Wyandotte county is looking at the latest fashion book to see the jewel neckline style which she will be wearing to National 4-H Conference in Washington, D. C.

She will wear a single strand of white or pearl beads at the neckline, a white crocheted bandeau, white shoes, purse and gloves for dress occasions.

The one-piece 4-H dress may still be worn as is or remodeled by those who have them.



## INVESTMENT IN YOUTH

Service is an important part of 4-H: Service to people and to the community.

Service to the 4-H Club program is the purpose of the Kansas 4-H Foundation.

Even though 4-H Clubs are more interested in service than the recognition they receive in contributing to the Foundation, questions about the recognition plan are received.

The recognition plan provides a permanent record of support given.

### Recognition Plan

The recognition plan, established in 1954, provides Membership Certificates to those whose contributions come within the following minimum scale:

**Organizations such as 4-H Clubs at \$1.00 per member, business firms \$100.00 and individuals \$25.00.**

### Shares

"Shares" may be purchased in less amounts as desired. Special arrangements are made for those desiring to make major investments. Annual contributions are encouraged.

### Memberships

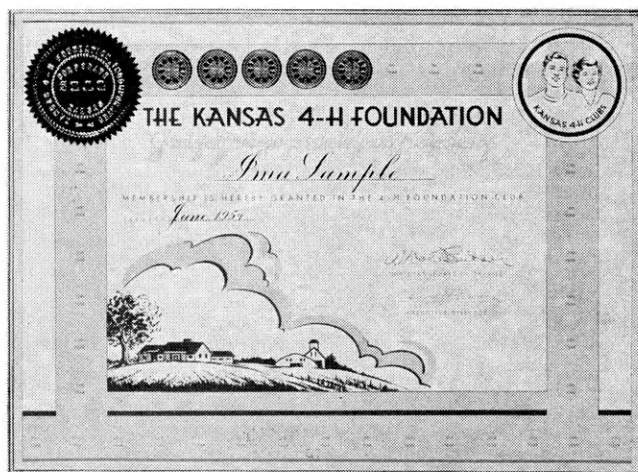
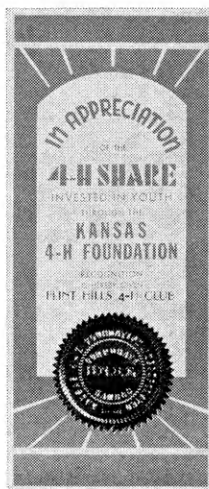
Memberships have been received from 4-H Clubs, home demonstrations units, businessmen, farm people, foundations and trusts, and many others.

Several 4-H Clubs have purchased \$100 memberships and also give yearly to the Foundation program.

Last year five 4-H Clubs were honored for long time support of 4-H Club work through the Foundation. These clubs have contributed seven years. They are Busy Bees, Washington county; Riverside, Shawnee; Rome Rockets, Sumner; Blackjack, Pottawatomie; and Carbondale Rustlers, Osage.

Each year, as memberships are sent in, special seals are provided for the recognition certificates. These are added to the certificates as illustrated here.

## Through Kansas 4-H Foundation



# To Give Your Every

# DOLLAR

# SAFETY

# STRENGTH

# PROFIT

VISIT YOUR NEAREST  
**KANSAS** *Savings & Loan*

## Arkansas City

First Federal Savings and Loan  
Ass'n. of Arkansas City

## Augusta

The Commercial Savings and Loan  
Ass'n.

## Beloit

First Federal Savings and Loan  
Ass'n. of Beloit

## Clay Center

Northwestern Federal Savings and  
Loan Ass'n. of Clay Center

## Dodge City

First Federal Savings and Loan  
Ass'n. of Dodge City

## El Dorado

Mid-Continent Federal Savings and  
Loan Ass'n. of El Dorado

## Fort Scott

Liberty Savings and Loan Ass'n.

## Garnett

The Garnett Savings and Loan  
Association

## Great Bend

The Prudential Building and Loan  
Ass'n.

## Hays

The Hays Building and Loan Ass'n.

## Hutchinson

First Federal Savings and Loan  
Ass'n. of Hutchinson

## Iola

The Security Savings and Loan  
Ass'n.

## Larned

The Larned Savings and Loan Ass'n.

## Lawrence

Capitol Federal Savings and Loan

## Leavenworth

The Leavenworth Mutual Building  
Loaning and Savings Ass'n.

## Liberal

First Federal Savings and Loan  
Ass'n. of Liberal

## McPherson

The Pioneer Savings and Loan  
Association of McPherson

## Mission

Capitol Federal Savings and Loan  
Ass'n.

## Newton

First Federal Savings and Loan  
Ass'n. of Newton

## Oberlin

Reserve Building and Loan  
Association of Oberlin

## Ottawa

Ottawa Savings and Loan Ass'n.

## Parsons

First Federal Savings and Loan  
Ass'n. of Parsons

## Plainville

Rooks County Savings Ass'n. of  
Plainville

## Pratt

The Western Savings Ass'n.

## Salina

The Homestead Building and Loan  
Ass'n.

## Topeka

Capitol Federal Savings and Loan  
Ass'n. at 6th and Kansas, and  
12th and Topeka Blvd.

## Wichita

The Commercial Savings and Loan  
Ass'n. at 4601 E. Douglas Avenue  
and 147 North Market Street



## Song of the Month

### Special Feature

#### A Musical Quiz

1. What is a horse opera?
2. When you sing "Comin' Thru the Rye," what is meant by the "Rye"?
3. What instrument in the orchestra sounds the "A" to which the rest of the instruments are tuned?
4. What does the word "Opera" mean?
5. How many keys, both black and white, are there on the piano?
6. Is the saxophone used in a symphony orchestra?
7. Why were the first pianos called the pianoforte?
8. Why do audiences most always stand when the Hallelujah Chorus from the Messiah is sung?
9. What is a soap opera?
10. What famous composer had 20 children?

#### Answers

1. A western movie. In the days of silent films, the movies were accompanied by music that tried to reflect the mood of the action on the screen.
2. The Rye is a river in Scotland.
3. The oboe (Why do you suppose this is?)
4. It is the plural of the word Opus which means "Work" (Musical)
5. 88
6. Seldom
7. Piano means "soft". Forte means 'loud'. The pianoforte could be played both ways. The forerunners of the piano could not.
8. When King George II first heard it, he was so inspired that he rose to his feet, and the whole audience followed.
9. The continued stories from day to day on TV or radio. Mood music plays an important part in setting the stage.
10. Bach



Above, Maxine Warner of the Watch Us Grow 4-H Club, Morton county, is giving her demonstration on Spot and Stain Removal.



Joan Sunderland, left, and Kathy Wenger of the Modern Sunflower 4-H Club, Brown county, are shown as they are giving their demonstration on "How to Pack a Hobo Lunch."

# THIS IS KANSAS 4-H

## SEND IN YOUR PICTURES

We want pictures taken by Kansas 4-H'ers. Prizes will be given for all pictures used in the Journal.

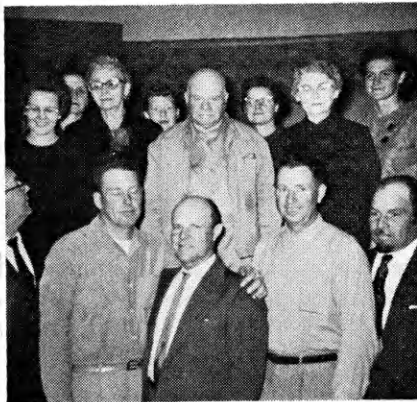
The picture need not be on 4-H Club work, but pictures with subjects related to 4-H Clubs are preferred. Action pictures are desired.

All pictures should be glossy prints at least five by seven inches in size unless accompanied by the negative.

Photographs should be accompanied by a short statement explaining the picture and including the names of persons shown.

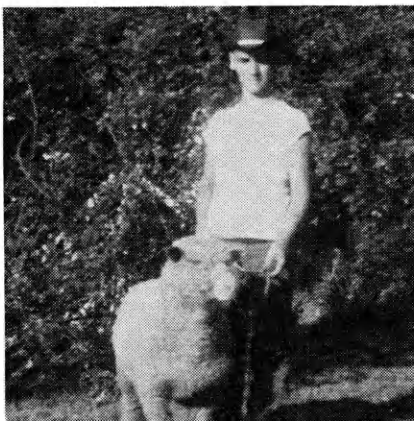
Entrants should designate their choice of the following prizes. A year's subscription to the National 4-H Club News, one roll of color film—sizes 620, 120, 616, 116, 127 or 35 mm only, or a 4-H Club photograph album.

4-H members, parents, leaders, county agents or friends of 4-H may send in pictures.

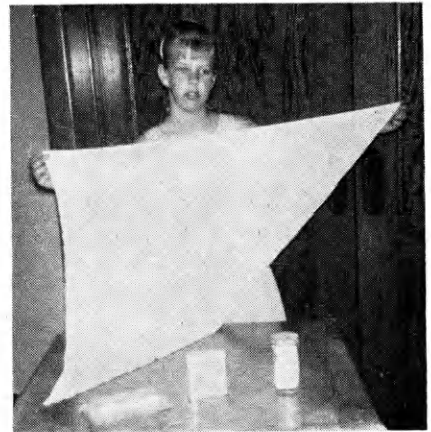


Past leaders of the Jr. Farmers Club, Ellis county, were honored at a 4-H Appreciation Day during National 4-H Week.

David Hubbard, member of the 101-Go-Getters 4-H Club, Labette county, is shown here with his lamb, "Susie," getting ready for show.



Henry Queen of the Cloverleaf Club, Gove county, shows members of the new Sunflower Club a few tricks he's learned in his electric project.



Sharilyn Jahnke, Magic Club in Riley county, demonstrates how to make a triangle bandage.

Parents, in costume, presenting their program at the parents' night meeting of the Nine Mile Club, Leavenworth county.





# Be Your Own Best Project . . .

## Enroll in Personal Development



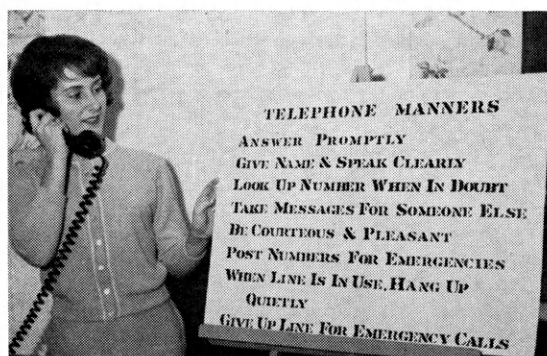
Mary Lauber, Sedgwick county, says HELP is what you need if you freeze when you have been introduced to someone. Think of Hobbies, Entertainment, Literature or Politics.



Making introductions correctly is sometimes a problem. This is just one of the many social aptitudes 4-H'ers may gain in the Manners Phase of Personal Development. Mary is introducing Gary Pearson to her mother, Mrs. John Lauber, Derby 4-H community leader.



Being a hostess and helping everyone to be a part of the party is something you can practice in the Personal Development project. You can get experience before you are put on the spot.



Mary is urging everyone to practice these telephone manners. This was a blue award demonstration this year at 4-H Day.

**SOUTHWESTERN BELL**



**TELEPHONE COMPANY**

# KANSAS



## 4-H JOURNAL SPONSORS

*The Kansas 4-H Journal is sponsored in each of the counties by the business firms listed below. 4-H Club members and leaders might do well to express their appreciation to these sponsors for the contribution they are making.*

- Allen**  
Allen County State Bank, Iola
- Anderson**  
Garnett State Savings Bank, Garnett
- Atchison**  
Blair Milling & Elevator Co., Inc.  
Atchison  
Bartlett Seed Co., Inc., Atchison  
Sunflower Dairy, Inc., Valley Falls  
Waisner & Shelver Ladies Ready-To-Wear, Atchison
- Barber**  
The First National Bank, Medicine Lodge
- Barton**  
The First National Bank, Great Bend
- Bourbon**  
Citizens National Bank, Ft. Scott  
Farmers Coop Association, Ft. Scott  
Federal Land Bank Association of Ft. Scott  
Liberty Savings and Loan Association, Ft. Scott  
The Bank of Bronson, Bronson  
Union State Bank, Uniontown
- Brown**  
Bank of Robinson, Robinson  
Citizens State Bank, Hiawatha  
Farmers State Bank, Fairview  
Home State Bank, Horton  
The Bank of Horton, Horton  
The Morrill & Janes Bank, Hiawatha  
The Morrill State Bank, Morrill  
The Union State Bank, Everest
- Butler**  
Andover State Bank, Andover  
Augusta State Bank, Augusta  
Bank of Whitewater, Whitewater  
Benton State Bank, Benton  
Citizens State Bank of El Dorado, El Dorado  
El Dorado National Bank, El Dorado  
Mid-Continent Federal Savings and Loan Association, El Dorado  
The Potwin State Bank, Potwin  
The Prairie State Bank, Augusta  
The Rose Hill State Bank, Rose Hill  
The State Bank of Leon, Leon  
Walnut Valley State Bank, El Dorado
- Chase**  
Exchange National Bank, Cottonwood Falls  
Peoples Exchange Bank, Elmdale  
Strong City State Bank, Strong City
- Chautauqua**  
The Sedan State Bank, Sedan
- Cherokee**  
American National Bank, Baxter Springs  
Baxter State Bank, Baxter Springs  
Citizens Bank of Weir, Weir City  
Columbus State Bank, Columbus  
First National Bank of Columbus, Columbus
- Cheyenne**  
Citizens State Bank, St. Francis
- Clark**  
Citizens State Bank, Ashland  
Peoples State Bank, Minneola  
Stockgrowers State Bank, Ashland
- Clay**  
Union State Bank, Clay Center
- Cloud**  
Citizens State Bank, Miltonvale  
Cloud County Bank, Concordia  
Exchange National Bank, Clyde  
Fidelity State Bank, Concordia  
First National Bank, Glasco  
Jamestown State Bank, Jamestown
- Coffey**  
Peoples National Bank, Burlington
- Comanche**  
Peoples State Bank, Coldwater
- Cowley**  
The First National Bank, Winfield  
The Home National Bank of Arkansas City, Arkansas City
- Crawford**  
Farmers State Bank, Walnut  
First National Bank, Girard  
First State Bank, Arma  
First State Bank of Pittsburg, Pittsburg  
Girard National Bank, Girard  
Hepler State Bank, Hepler  
Home State Bank, Arcadia
- McCune State Bank, McCune  
Miners State Bank, Frontenac  
National Bank of Pittsburg, Pittsburg
- Decatur**  
Decatur Co-op Association, Oberlin
- Dickinson**  
Farmers National Bank, Abilene
- Doniphan**  
Bank of Denton, Denton  
Bendena State Bank, Bendena  
Farmers Bank of Leona, Leona  
Farmers State Bank, Highland  
Farmers State Bank, Wathena  
First National Bank, Troy  
First State Bank, White Cloud  
Troy State Bank, Troy
- Douglas**  
Farmers Co-op Association, Lawrence  
First National Bank, Lawrence  
Rusty's IGA Foodliner, Lawrence
- Edwards**  
Home State Bank, Lewis
- Elk**  
Exchange State Bank, Moline  
First National Bank, Howard  
Home State Bank, Longton  
Howard National Bank, Howard
- Ellis**  
Farmers National Bank, Victoria  
Ellis State Bank, Ellis  
Farmers State Bank, Hays  
First National Bank, Hays
- Ellsworth**  
Bank of Holyrood, Holyrood  
Citizens State Bank, Ellsworth  
Kanopolis State Bank, Kanopolis  
Lorraine State Bank, Lorraine  
Wilson State Bank, Wilson
- Finney**  
Fidelity State Bank, Garden City  
Garden National Bank, Garden City
- Ford**  
Bucklin State Bank, Bucklin  
Farmers State Bank, Bucklin  
Fidelity State Bank, Dodge City  
First National Bank, Dodge City  
Ford County State Bank, Spearville
- Franklin**  
Peoples National Bank, Ottawa  
The Wellsville Bank, Wellsville
- Geary**  
Central National Bank, Junction City  
First National Bank, Junction City
- Goetz**  
First National Bank, Quinter  
Peoples State Bank, Grinnell  
The Citizens State Bank, Grainfield
- Graham**  
Farmers & Merchants Bank, Hill City
- Grant**  
The Grant County State Bank, Ulysses
- Gray**  
Farmers State Bank, Ingalls  
First National Bank in Cimarron, Cimarron  
The Montezuma State Bank, Montezuma
- Greeley**  
First National Bank, Tribune
- Greenwood**  
Citizens National Bank, Eureka  
Eureka Federal Savings and Loan Association, Eureka  
Farm Bureau Insurance, Eureka  
Freeman's Tire and Appliance, Eureka  
Home National Bank, Eureka  
Race Parks Oil Company, Eureka  
The A. C. Houston Lumber Company, Eureka  
Ward A. McGinnis
- Hamilton**  
First National Bank, Syracuse  
The Valley State Bank, Syracuse
- Harper**  
Anthony Farmers Co-operative Elevator, Anthony  
Danville Co-op Association, Danville  
Farmers Co-op Business Association, Corwin  
State Line Grain Company, Manchester, Oklahoma
- Harvey**  
Harvey County Bankers Association
- Haskell**  
Haskell County State Bank, Sublette
- Hodgeman**  
Farmers State Bank, Jetmore  
Hanston State Bank, Hanston
- Jackson**  
Dammenberg Implement Company, Holton  
Eubanks Implement Company, Holton  
Farmers Union Co-op Association, Holton  
Haubold Chevrolet Company, Holton  
Holton Lumber Company, Holton  
Lueck Grain Company, Netawaka  
Sock & Fern Freese's A&W Drive-In, Holton  
Symons Truck and Tractor, Holton
- Jefferson**  
Jefferson County Home Demonstration Units  
Leavenworth-Jefferson Electric Cooperative, McClouth  
Valley Implement Inc., Valley Falls
- Jewell**  
First National Bank, Formoso  
First National Bank in Mankato, Mankato  
The Burr Oak State Bank, Burr Oak  
The Citizens State Bank, Jewell  
The Randall National Bank, Randall  
The State Bank of Esbon, Esbon  
The State Exchange Bank, Mankato
- Johnson**  
DeSoto State Bank, DeSoto  
Farmers Bank, Gardner  
Farmers State Bank, Lenexa  
First National Bank, Olathe  
Patrons Co-operative Bank, Olathe  
Shawnee State Savings Bank, Shawnee  
State Bank of Spring Hill, Spring Hill  
State Bank of Stanley, Stanley
- Kearny**  
Farmers Co-operative, Lakin and Kendall
- Kingman**  
C. R. Calvert Company, Kingman
- Kiowa**  
First State Bank, Mullinville  
Greensburg State Bank, Greensburg  
Haviland State Bank, Haviland
- Labette**  
American State Bank, Oswego  
Chetopa State Bank, Chetopa  
First National Bank, Edna  
First National Bank, Oswego  
First National Bank, Parsons  
Labette County State Bank, Altamont  
Parsons Commercial Bank, Parsons  
State Bank of Parsons, Parsons
- Lane**  
First National Bank, Dighton  
First State Bank, Healy
- Leavenworth**  
First National Bank, Leavenworth
- Lincoln**  
Sylvan State Bank, Sylvan Grove
- Linn**  
Bank of Pleasanton, Pleasanton  
Centerville State Bank, Centerville  
Farmers and Merchants Bank, Mound City  
Farmers State Bank, Blue Mound  
First National Bank, Pleasanton  
Linn County Bank, LaCygne  
Parker State Bank, Parker  
Prescott State Bank, Prescott
- Logan**  
Farmers State Bank, Oakley  
Farmers State Bank, Winona
- Lyon**  
Citizens National Bank, Emporia
- Marion**  
Farmers Co-operative Association, Marion  
Farmers Co-op Equity Union, Hillsboro  
Farmers Co-operative Grain and Merchantile Company, Lehigh  
Farmers Co-operative Grain Association, Durham  
Marion County Co-op Association, Durham  
Peabody Co-op Equity Exchange, Peabody  
Tampa Co-operative Association, Tampa  
Tip-Top Dairies, Hillsboro

Sponsors for the remaining counties will be listed in the May issue.

# Ideas That Work

## In Appreciation

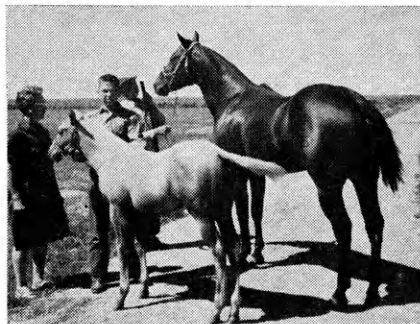
In appreciation—Karen Timmons, a member of the Mapleleaf 4-H Club of Stevens county, recently presented a Swedish tea ring to Mr. and Mrs. Wendell Hubbard, publishers of the *Hermes*, in appreciation for their cooperation in



giving publicity to 4-H activities. Karen has made more than 200 rings and has demonstrated making them at local club meetings, club days and State Fair.

## Interest in 4-H and Horses

Mary and Rol Dixon have been cooperating with the Edwards county 4-H'ers in trying to improve the horse project in the county. In the picture above Mary Dixon, Lyle Dean Jensen with Lyle's colt and also Rol Dixon



holding the sire of the colt. The sire of the colt is Mission George with the registration number P-153608 Rol and Mary Dixon are servicing all the 4-H'ers quarter horse mares free of charge if they will show their colt at the fair and also at the quarter horse show.

## 4-H in the Gay Nineties

Parents of members of the Nine Mile Club, Leavenworth county, conducted the parents' night meeting as it might have been done in the Gay Nineties.

Mrs. J. C. Benge, health leader, had her head tied up to cure the mumps.

She told of many home remedies, from sulfur and molasses to goose grease.

Mrs. Emory Force was music leader. She played and sang "My Blue Heaven."

Mrs. Charles Wood pushed her sun-bonnet back to give safety hints for the horse and buggy. Mr. and Mrs. Mcgee Leipard gave a novelty comedy number.

Mrs. Ed White recited a Thanksgiving poem. Alex Grabeal, complete with crockery water jug, gave a project talk

## Ideas In Brief

The recreation committee of the Manning Jayhawkers 4-H Club, **Scott** county announced that they purchased a record player for the members' enjoyment . . . Vickie Mueller of the Go-Getters 4-H Club, **Cheyenne** county, made a nutritional survey of her high school and junior high and found that teenagers are the poorest fed members of the family but that the boys eat better than the girls . . . Leaders of the T 'n T 4-H Club, **Wyandotte** county, occasionally invite guest discussion leaders to be with them at their meetings . . . The KC-OK 4-H Club, **Wyandotte** county, held a demonstration and project talk workshop . . . Six members of the Sitka Hustlers 4-H Club, **Clark** county, presented the play "Breeches From Bond Street" at 4-H day . . . Terry Weber of the Home City Hustlers 4-H Club, **Marshall** county, told how to give artificial respiration for his health number . . . Donna Claassen and Mary Jane Maddox of the Richland Livewires 4-H Club, **Harvey** county, presented their 4-H promotional talks on the Newton radio station during National 4-H Club Week . . . The publicity committee of the Highland 4-H Club, **Harvey** county, erected a 4-H promotion booth during National 4-H Week . . . Linda Fraser titled her talk "4-H Youth—Friends For Peace" given to the Norway Vikings 4-H Club, **Republic** county . . . Plans for the junior foods project meeting of the KC-OK 4-H Club, **Wyandotte** county, were to have preparation of snack 8 and 9 and judge chocolate chip cookies . . . "How to improve the club" ideas were given as roll call by members of the Nearman Busy Bees, **Wyandotte** county . . . "Good Grooming Tips" were given as roll call at the meeting of the Highland 4-H Club, **Harvey** county . . . The Macon Happy Hour 4-H Club and the Highland 4-H Club, **Harvey** county, held an exchange meeting . . . Members of the Ringo Ranchers 4-H Club, **Montgomery** county, presented a radio broadcast on a weekly safety program . . . The Ringo Ranchers 4-H Club, **Mont-**

*Reporter's Notice: The Kansas 4-H Journal would like to print interesting stories of your local club events, activities, members and leaders.*

*Local club meeting stories, if submitted, should contain something unusual or of interest to people outside your county.*

*Outstanding projects, services or events of your club, or stories of individuals within your club that would give ideas to other 4-H'ers would make excellent stories.*

*Prizes will be awarded all blue award stories each month. Please state your choice (1) a year's subscription to the National 4-H Club News or (2) a hard cover loose leaf 4-H notebook.*

on preparing the team to go to the field. Mrs. A. G. Amaro demonstrated the proper hem line of the day.

Refreshments were cider and doughnuts.

Nelta Grabela, Rep.

**gomery** county, plan exchange meeting with the Peppy Progressive and the West Brownies 4-H Clubs this month . . . LeJane Epp, a member of the Lucky Leaf 4-H Club, **McPherson** county, and also a member of the National Junior Vegetable Growers Association reports that a garden can be a profitable and satisfying venture for the farmer and city dweller alike . . . "A Historical Fact About Our Club" was the roll call answered by members of the Hays 4-H Club, **Reno** county, . . . Bill Morgan gave a talk on feed for baby beef at the meeting of the Part-ridge 4-H Club, **Reno** county . . . Stony Point 4-H Club members, **Wyandotte** county, held their traditional parents night program recently when the parents presented the program . . . Members of the Campus Champions 4-H Club, **Harvey** county, answered roll call by naming a man of Brotherhood in commemoration of the 100th Anniversary of the Emancipation Proclamation . . . Raymond Johnson told how interesting the Automotive Care project is for 4-H members over 14 years at the meeting of the Obee-Go-Getters 4-H Club, **Reno** county, eleven members of the Haven 4-H club are taking 55 sheep as project this year . . . The difference between old and new phonographs was given by Ronald Prigel in his music appreciation number to the Home City Hustlers, **Marshall** county . . . The Rock Creek Boosters and the Meriden 4-H Clubs, **Jefferson** county, plan to join their efforts with a chili supper this month . . . Mary Ellen Entz told of the importance of color in a salad in her project talk to the Kellas 4-H Club, **Harvey** county . . . Christopher Musaka from Kenya, Africa, a student from Bethel College, talked about the agriculture of his country to the Pleasant 4-H Club, **Harvey** county . . . KC-OK 4-H Club, **Wyandotte** county, clothing project members planned to study proper methods of hemming at their meeting this month . . . Claudine Duren and Cheryl Stuart are new members of the Shawnee Spitfires 4-H Club, **Wyandotte** county . . . Anita Maire Hansen, re-



porter for the Sunflower 4-H Club, **Lyon** county, suggests her version of president Kennedy's famous statement; "ask not what 4-H can do for you, but rather what you can do for 4-H". . . "Stretch Your Food Dollar" was the name of a meat utilization talk given by Sue Neitzel at the meeting of the Lawn Ridge 4-H Club, **Cheyenne** county . . . Members of the Turon Lucky 4's 4-H Club, **Reno** county, have decided to sell safety flares as a money raising project . . . The Huntsville 4-H Club members, **Reno** county, have decided to promote the use of safety reflectors for farm machinery as part of their safety program . . . Cheryl Keller and Gary Danner are new members of the Halstead Cloverleaf 4-H Club, **Harvey** county . . . During National 4-H Week, Twila Keller of **Harvey** county gave her promotional talk entitled "I Found my Future Through 4-H Experiences" on radio . . . Members of the Greenleaf 4-H Club, **Washington** county used the Heart Fund Drive as their Community Service Project and received donations amounting to over one hundred dollars . . . "The Minutes" was the title of Janet Leach's parliamentary talk to members of the Arlington 4-H Club, **Reno** county.

## Share Fun

(Continued from page 6)

set for each team) and two lines of players. Words are called out one at a time as in a spelling bee, the first player immediately runs to his cards and finds the first letter of the word and as soon as he is back in line, the next person goes for the second letter and so on. The team with the word correctly spelled first is the winner and receives five points. Play for several words and have the losing team do a stunt. (Do not use words with duplicate letters.) After each word is spelled, the letters will have to be returned to the pile for use in the next word, but substitute a whistle for every vowel in the word. If they misspell or forget to whistle instead of saying vowel, that person drops out and the person remaining the longest is the winner.

Shared by Ann Nordfoe,  
Secretary, 4-H Clover Club,  
Hoosier County.

Send your recreation ideas now to Dick Tomkinson, State 4-H Office, Kansas State University, Manhattan. If you have enjoyed it—others will too!

# Kansas 4-H Journal Sponsors

## These Sponsors Have Renewed Their County Support of the Kansas 4-H Journal

<b>Butler</b> Andover State Bank, Andover	<b>Marshall</b> Bremen State Bank, Bremen Exchange Bank of Schmidt & Koester, Marysville
<b>Chase</b> Exchange National Bank, Cottonwood Falls The Peoples Exchange Bank, Elmdale	<b>First National Bank, Beattie</b> <b>First National Bank, Frankfort</b> <b>First National Bank, Summerfield</b> <b>State Bank of Axtell, Axtell</b> <b>State Bank of Blue Rapids, Blue Rapids</b>
<b>Clay</b> Union State Bank, Clay Center	<b>Montgomery</b> Citizens National Bank of Independence, Independence First National Bank, Coffeyville
<b>Coffey</b> Peoples National Bank, Burlington	<b>Ness</b> Bazine State Bank, Bazine Citizens State Bank, Utica Farmers State Bank, Ransom First State Bank, Ness City First State Bank, Ransom
<b>Comanche</b> The Peoples State Bank, Coldwater	<b>Riley</b> Union National Bank, Manhattan
<b>Dickinson</b> Farmers National Bank, Abilene	<b>Rush</b> Farmers & Merchants State Bank, LaCrosse
<b>Douglas</b> Farmers Co-op Association, Lawrence First National Bank, Lawrence Rusty's IGA Foodliner, Lawrence	<b>Sheridan</b> Farmers State Bank, Elden First National Bank, Hoxie Hoxie State Bank, Hoxie Mickey's Hardware, Hoxie
<b>Ellis</b> Farmers National Bank, Victoria The Ellis State Bank, Ellis The Farmers State Bank, Hays The First National Bank, Hays	<b>Sherman</b> First National Bank of Goodland, Goodland
<b>Greeley</b> First National Bank, Tribune	<b>Stafford</b> Farmers & Merchants State Bank, Macksville Farmers National Bank, Stafford First National Bank, St. John Hudson State Bank, Hudson Macksville State Bank, Macksville St. John National Bank, St. John
<b>Kingman</b> C. R. Calvert Company, Kingman	<b>Thomas</b> Farmers and Merchants State Bank, Colby
<b>Leavenworth</b> First National Bank, Leavenworth	
<b>Linn</b> Bank of Pleasanton, Pleasanton Centerville State Bank, Centerville Farmers and Merchants Bank, Mound City Farmers State Bank, Blue Mound First National Bank, Pleasanton Linn County Bank, LaCygne Parker State Bank, Parker Prescott State Bank, Prescott	



## Alliance Companies

McPherson, Kansas

FIRE — CASUALTY — LIFE

Serving Kansas Since 1888

Whether it be westerns, comedy, or an educational program, "Willie Wirehand" brings entertainment to you in your living room.

Television is just one of the many benefits of rural electrification to the farmer.

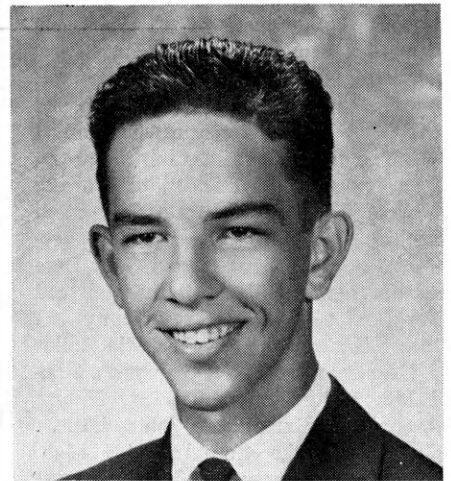


**KANSAS ELECTRIC  
COOPERATIVES, INC.**

420 W. 9th

Topeka, Kansas

# Chase County 4-H'er Uses Electric Project To Help Become a "Ham" Radio Operator



Larry Martin, 18 year old Chase County 4-H'er, is using his electric project to become a "Ham" radio operator right away ... and to help prepare himself for an electric engineer degree in the future.

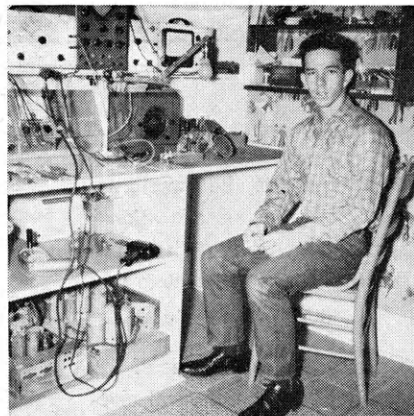
As Larry states, "The electric project has aided me in learning the proper wiring techniques and construction procedures relating to motors, ra-

dios, lighting and other electrical devices. I feel that the electric project is a definite help to any 4-H'er—not only while working in electronics, but also with practically any other project."

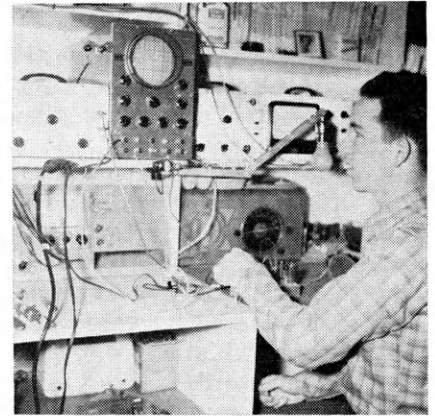
The investor-owned Kansas electric companies salute Larry Martin for his part electrical accomplishments and wish him well in the growing field of electronics.



Larry looks through his "spare parts" drawer for just the right piece of electronic equipment.



Larry has assembled all of his testing equipment from kits. His workshop is located in his room.



Larry gives a final check to one of his electric projects with an oscilloscope he also assembled.

**WATCH THIS  
PAGE FOR IDEAS  
ON FARM AND  
HOME ELECTRIC  
PROJECTS**

## *Electric Light and Power Companies in Kansas*

The Kansas Power and Light Company    Central Kansas Power Company  
Kansas City Power & Light Company    Kansas Gas and Electric Company  
Western Light & Telephone Company